

FINAL SCORE



LYNN UNIVERSITY
**FIGHTING
KNIGHTS**

Lynn

59



Florida Southern

91

**January 05, 2019 • Jenkins Field House (Streamline Sale Arena) -
Lakeland, Fla.**

FINAL STATISTICS

Official Box Score
Lynn vs Florida Southern
Game Totals -- Final Statistics
January 05, 2019 at Jenkins Field House (Streamline Sale Arena) - Lakeland, Fla.

Lynn 59

No.	Player	S	Pts	FG	3FG	FT	OR	DR	TR	PF	A	TO	Blk	Stl	Min	+/-
03	Snipes, Jaylen		0	0-6	0-3	0-0	0	0	0	3	2	3	0	1	20	-29
10	Lozzi, Dani		4	2-5	0-1	0-0	0	0	0	2	2	1	0	1	26	-11
11	Fields, Sydney		4	2-3	0-1	0-0	0	1	1	4	0	1	1	0	10	0
21	Fizer, Kelsi		6	2-9	0-0	2-4	5	2	7	4	0	6	0	2	22	-24
25	Potts, Christina		10	4-7	2-2	0-0	1	3	4	0	1	1	0	1	20	-20
01	Uloma, Juju		9	4-6	1-1	0-0	0	3	3	4	2	2	0	0	16	-12
02	Webb, Loie		14	3-6	3-5	5-6	1	2	3	0	1	3	0	0	26	-16
05	Hall, Mahogany		2	0-2	0-1	2-2	0	1	1	0	1	1	0	1	12	1
13	Ferriera, Kevyn		4	1-7	0-1	2-2	0	2	2	0	1	1	0	0	13	-21
24	Williams, Janay		2	1-2	0-0	0-2	1	3	4	0	0	0	0	0	21	-27
32	Shanahan, Meagan		4	2-2	0-0	0-0	0	2	2	1	1	2	0	0	11	-1
33	Agenor, Noelle		0	0-1	0-0	0-0	0	0	0	0	0	0	0	0	2	0
	Team						1	2	3	0		0				
TOTALS			59	21-56	6-15	11-16	9	21	30	18	11	21	1	6	199	

Shooting By Period

Period	FG	FG%	3FG	3FG%	FT	FT%
1st Qtr	3-11	27%	1-2	50%	0-0	0%
2nd Qtr	6-13	46%	1-3	33%	4-6	67%
3rd Qtr	7-17	41%	1-5	20%	1-2	50%
4th Qtr	5-15	33%	3-5	60%	6-8	75%
1st Half	9-24	38%	2-5	40%	4-6	67%
2nd Half	12-32	38%	4-10	40%	7-10	70%
Game	21-56	37.5%	6-15	40.0%	11-16	68.8%

Last FG: 4th-00:12
Biggest Run: 7-0
Largest lead: By 2 at 1-09:12
Technical Fouls: None.

Florida Southern 91

No.	Player	S	Pts	FG	3FG	FT	OR	DR	TR	PF	A	TO	Blk	Stl	Min	+/-
21	Jenike, Julia		14	6-8	2-4	0-0	0	3	3	3	1	0	0	0	20	18
22	Giardina, Camille		10	5-8	0-1	0-0	1	5	6	1	1	1	0	0	19	26
23	Pazzaglia-Khomenko, Katerina		7	3-8	0-0	1-1	2	5	7	2	1	3	1	1	16	17
24	Fuchs-Robetin, Anja		20	8-14	0-0	4-4	3	0	3	0	0	1	0	1	22	28
32	Kalaydjiev, Bekki		3	1-1	1-1	0-0	0	2	2	3	8	2	0	1	27	13
02	Burkett, Monet		7	3-6	1-3	0-0	2	0	2	0	0	0	0	0	7	-2
14	Steele, Mackenzie		12	4-8	4-5	0-0	0	1	1	0	1	0	0	1	22	19
25	Shell, Ashley		4	2-4	0-0	0-0	0	5	5	1	1	1	0	1	16	-1
31	Landberg, Elsa		3	1-2	1-2	0-0	0	0	0	4	5	3	0	2	13	19
33	Aranda, Marta		4	1-2	1-1	1-2	1	1	2	1	2	1	0	0	12	3
42	Campbell, Chesney		7	2-6	1-3	2-2	1	5	6	2	6	1	1	1	25	20
	Team						0	2	2	0		2				
TOTALS			91	36-67	11-20	8-9	10	29	39	17	26	15	2	8	199	

Shooting By Period

Period	FG	FG%	3FG	3FG%	FT	FT%
1st Qtr	12-18	67%	2-5	40%	1-1	100%
2nd Qtr	9-15	60%	1-2	50%	2-2	100%
3rd Qtr	7-18	39%	3-5	60%	3-4	75%
4th Qtr	8-16	50%	5-8	63%	2-2	100%
1st Half	21-33	64%	3-7	43%	3-3	100%
2nd Half	15-34	44%	8-13	62%	5-6	83%
Game	36-67	53.7%	11-20	55.0%	8-9	88.9%

Last FG: 4th-00:53
Biggest Run: 18-0
Largest lead: By 36 at 4-08:14
Technical Fouls: None.

Game Notes:
Officials: John Akins, Troy Carr, Ian Rosse
Attendance: 121

Start Time: 2019-01-05 22:28:26
End Time: 2019-01-05 23:58:26
Game Duration: 90
Conference Game:

Score	1st	2nd	3rd	4th	TOT
LU	7	17	16	19	59
FSC	27	21	20	23	91

LU led for 0:18. FSC led for 38:06.
Game was tied for 1:27.
Times tied: 2 Lead Changes: 1

Points from	LU	FSC
In the Paint	20	32
Off Turns	12	22
2nd Chance	13	18
Fast Break	11	22
Bench	35	37

Official Box Score
Lynn vs Florida Southern
First Half Statistics Only
January 05, 2019 at Jenkins Field House (Streamline Sale Arena) - Lakeland, Fla.

Lynn 24

No.	Player	S	Pts	FG	3FG	FT	OR	DR	TR	PF	A	TO	Blk	Stl	Min	+/-
01	Uloma, Juju		2	1-2	0-0	0-0	0	1	1	1	0	1	0	0	9	-14
02	Webb, Loie		3	1-1	1-1	0-0	0	0	0	0	0	2	0	0	13	-14
03	Snipes, Jaylen		0	0-5	0-2	0-0	0	0	0	2	2	2	0	1	13	-23
05	Hall, Mahogany		2	0-0	0-0	2-2	0	0	0	0	0	0	0	1	3	4
10	Lozzi, Dani		4	2-4	0-1	0-0	0	0	0	2	1	1	0	1	13	-9
11	Fields, Sydney		2	1-1	0-0	0-0	0	0	0	3	0	1	1	0	8	0
13	Ferriera, Kevyn		2	0-2	0-0	2-2	0	2	2	0	0	0	0	0	6	-12
21	Fizer, Kelsi		2	1-4	0-0	0-0	1	1	2	2	0	4	0	0	8	-18
24	Williams, Janay		2	1-2	0-0	0-2	1	2	3	0	0	0	0	0	15	-16
25	Potts, Christina		5	2-3	1-1	0-0	0	1	1	0	1	1	0	0	11	-18
32	Shanahan, Meagan		0	0-0	0-0	0-0	0	0	0	0	0	0	0	0	0	0
33	Agenor, Noelle		0	0-0	0-0	0-0	0	0	0	0	0	0	0	0	0	0
	Team		0	0-0	0-0	0-0	0	1	1	0	0	0	0	0	0	0
TOTALS			24	9-24	2-5	4-6	2	8	10	10	4	12	1	3	100	

Shooting By Period

Period	FG	FG%	3FG	3FG%	FT	FT%
1st Qtr	3-11	27%	1-2	50%	0-0	0%
2nd Qtr	6-13	46%	1-3	33%	4-6	67%
1st Half	9-24	38%	2-5	40%	4-6	67%
Game	21-56	37.5%	6-15	40.0%	11-16	68.8%

Last FG Half: LU 2nd-00:16

Florida Southern 48

No.	Player	S	Pts	FG	3FG	FT	OR	DR	TR	PF	A	TO	Blk	Stl	Min	+/-
02	Burkett, Monet		0	0-0	0-0	0-0	0	0	0	0	0	0	0	0	0	0
14	Steele, Mackenzie		0	0-0	0-0	0-0	0	0	0	0	0	0	0	1	7	12
21	Jenike, Julia		11	5-7	1-3	0-0	0	2	2	1	1	0	0	0	16	15
22	Giardina, Camille		8	4-5	0-1	0-0	0	4	4	1	1	0	0	0	12	17
23	Pazzaglia-Khomenko, Katerina		7	3-5	0-0	1-1	0	3	3	1	0	2	0	0	10	8
24	Fuchs-Robetin, Anja		12	5-9	0-0	2-2	2	0	2	0	0	1	0	1	14	20
25	Shell, Ashley		2	1-2	0-0	0-0	0	1	1	0	0	0	0	1	4	-1
31	Landberg, Elsa		3	1-2	1-2	0-0	0	0	0	2	4	2	0	2	11	20
32	Kalaydjiev, Bekki		0	0-0	0-0	0-0	0	0	0	0	2	2	0	1	9	4
33	Aranda, Marta		0	0-0	0-0	0-0	1	0	1	1	1	0	0	0	5	4
42	Campbell, Chesney		5	2-3	1-1	0-0	1	2	3	1	6	0	0	0	12	21
	Team		0	0-0	0-0	0-0	0	2	2	0	0	1	0	0	0	0
TOTALS			48	21-33	3-7	3-3	4	14	18	7	15	8	0	6	100	

Shooting By Period

Period	FG	FG%	3FG	3FG%	FT	FT%
1st Qtr	12-18	67%	2-5	40%	1-1	100%
2nd Qtr	9-15	60%	1-2	50%	2-2	100%
1st Half	21-33	64%	3-7	43%	3-3	100%
Game	36-67	53.7%	11-20	55.0%	8-9	88.9%

Last FG Half: FSC 2nd-00:03

Game Notes:

Officials: John Akins,Troy Carr,Ian Rosse
Attendance: 121

Start Time: 2019-01-05 22:28:26

End Time: 2019-01-05 23:58:26

Game Duration: 90
Conference Game;

Score	1st	2nd	3rd	4th	TOT
LU	7	17	16	19	59
FSC	27	21	20	23	91

Points from (This Period)	LU	FSC
In the Paint	12	24
Off Turns	4	15
2nd Chance	2	9
Fast Break	2	12
Bench	11	10

Official Box Score
Lynn vs Florida Southern
First Quarter Statistics Only
January 05, 2019 at Jenkins Field House (Streamline Sale Arena) - Lakeland, Fla.

Lynn 7

No.	Player	S	Pts	FG	3FG	FT	OR	DR	TR	PF	A	TO	Blk	Stl	Min	+/-
03	Snipes, Jaylen		0	0-3	0-1	0-0	0	0	0	0	0	1	0	0	10	-20
10	Lozzi, Dani		0	0-0	0-0	0-0	0	0	0	2	1	1	0	0	5	-5
11	Fields, Sydney		0	0-0	0-0	0-0	0	0	0	0	0	0	0	0	4	-3
21	Fizer, Kelsi		2	1-4	0-0	0-0	1	1	2	2	0	4	0	0	8	-18
25	Potts, Christina		3	1-2	1-1	0-0	0	1	1	0	1	1	0	0	9	-18
01	Uloma, Juju		0	0-0	0-0	0-0	0	0	0	1	0	1	0	0	3	-7
02	Webb, Loie		0	0-0	0-0	0-0	0	0	0	0	0	0	0	0	3	-10
05	Hall, Mahogany		0	0-0	0-0	0-0	0	0	0	0	0	0	0	0	0	0
13	Ferreira, Kevyn		0	0-1	0-0	0-0	0	2	2	0	0	0	0	0	3	-7
24	Williams, Janay		2	1-1	0-0	0-0	0	0	0	0	0	0	0	0	5	-12
32	Shanahan, Meagan		0	0-0	0-0	0-0	0	0	0	0	0	0	0	0	0	0
33	Agenor, Noelle		0	0-0	0-0	0-0	0	0	0	0	0	0	0	0	0	0
	Team						0	0	0	0		0				
TOTALS			7	3-11	1-2	0-0	1	4	5	5	2	8	0	0	50	

Shooting By Period

Period	FG	FG%	3FG	3FG%	FT	FT%
1st Qtr	3-11	27%	1-2	50%	0-0	0%
2nd Qtr	6-13	46%	1-3	33%	4-6	67%
1st Half	3-11	27%	1-2	50%	0-0	0%
1st Half	9-24	38%	2-5	40%	4-6	67%
Game	21-56	37.5%	6-15	40.0%	11-16	68.8%

Florida Southern 27

No.	Player	S	Pts	FG	3FG	FT	OR	DR	TR	PF	A	TO	Blk	Stl	Min	+/-
21	Jenike, Julia		9	4-6	1-3	0-0	0	1	1	0	0	0	0	0	8	15
22	Giardina, Camille		6	3-3	0-0	0-0	0	2	2	1	1	0	0	0	6	8
23	Pazzaglia-Khomenko, Katerina		3	1-2	0-0	1-1	0	3	3	0	0	1	0	0	6	8
24	Fuchs-Robetin, Anja		6	3-5	0-0	0-0	1	0	1	0	0	0	0	0	8	15
32	Kalaydjiev, Bekki		0	0-0	0-0	0-0	0	0	0	0	1	0	0	1	4	3
02	Burkett, Monet		0	0-0	0-0	0-0	0	0	0	0	0	0	0	0	0	0
14	Steele, Mackenzie		0	0-0	0-0	0-0	0	0	0	0	0	0	0	1	4	12
25	Shell, Ashley		0	0-0	0-0	0-0	0	0	0	0	0	0	0	0	0	0
31	Landberg, Elsa		3	1-2	1-2	0-0	0	0	0	1	1	1	0	1	6	17
33	Aranda, Marta		0	0-0	0-0	0-0	1	0	1	0	1	0	0	0	2	5
42	Campbell, Chesney		0	0-0	0-0	0-0	0	1	1	0	4	0	0	0	6	17
	Team						0	0	0	0		0				
TOTALS			27	12-18	2-5	1-1	2	7	9	2	8	2	0	3	50	

Shooting By Period

Period	FG	FG%	3FG	3FG%	FT	FT%
1st Qtr	12-18	67%	2-5	40%	1-1	100%
2nd Qtr	9-15	60%	1-2	50%	2-2	100%
1st Half	12-18	67%	2-5	40%	1-1	100%
1st Half	21-33	64%	3-7	43%	3-3	100%
Game	36-67	53.7%	11-20	55.0%	8-9	88.9%

Game Notes:
Officials: John Akins, Troy Carr, Ian Rosse
Attendance: 121

Start Time: 2019-01-05 22:28:26
End Time: 2019-01-05 23:58:26
Game Duration: 90
Conference Game:

Score	1st	2nd	3rd	4th	TOT
LU	7	17	16	19	59
FSC	27	21	20	23	91

Points from (This Period)	LU	FSC
In the Paint	4	12
Off Turns	0	11
2nd Chance	2	5
Fast Break	0	5
Bench	2	3

**Official Play-By-Play
Lynn vs Florida Southern
First Quarter**

January 05, 2019 at Jenkins Field House (Streamline Sale Arena) - Lakeland, Fla.

Period 1

Starters:

Lynn: 3 SNIPES,JAYLEN; 10 LOZZI,DANI; 11 FIELDS,SYDNEY; 21 FIZER,KELSI; 25 POTTS,CHRISTINA;

Florida Southern: 21 JENIKE,JULIA; 22 GIARDINA,CAMILLE; 23 PAZZAGLIA-KHOMENKO,KATERINA; 24 FUCHS-ROBETIN,ANJA; 32 KALAYDJIEV,BEKKI;

Time	VISITORS: Lynn	Score	Margin	HOME: Florida Southern
09:49	MISSED JUMPER by POTTS,CHRISTINA			
09:44				REBOUND (DEF) by GIARDINA,CAMILLE
09:34				MISSED JUMPER by FUCHS-ROBETIN,ANJA
09:29	REBOUND (DEF) by FIZER,KELSI			
09:22	MISSED LAYUP by FIZER,KELSI			
09:14	REBOUND (OFF) by FIZER,KELSI			
09:12	GOOD! LAYUP by FIZER,KELSI	0-2	V 2	
08:54		2-2	T	GOOD! LAYUP by FUCHS-ROBETIN,ANJA
08:54				ASSIST by KALAYDJIEV,BEKKI
08:44	MISSED LAYUP by SNIPES,JAYLEN			
08:39				REBOUND (DEF) by PAZZAGLIA-KHOMENKO,KATERINA
08:18		4-2	H 2	GOOD! LAYUP by FUCHS-ROBETIN,ANJA
08:18				ASSIST by GIARDINA,CAMILLE
08:09	TURNOVER (LOSTBALL) by FIZER,KELSI			
08:09				STEAL by KALAYDJIEV,BEKKI
07:59				TURNOVER (LOSTBALL) by PAZZAGLIA-KHOMENKO,KATERINA
07:45	MISSED JUMPER by FIZER,KELSI			
07:42				REBOUND (DEF) by PAZZAGLIA-KHOMENKO,KATERINA
07:25		6-2	H 4	GOOD! JUMPER by FUCHS-ROBETIN,ANJA [PNT]
07:07	GOOD! 3PTR by POTTS,CHRISTINA	6-5	H 1	
07:07	ASSIST by LOZZI,DANI			
06:50		8-5	H 3	GOOD! JUMPER by GIARDINA,CAMILLE
06:28	MISSED JUMPER by SNIPES,JAYLEN			
06:24				REBOUND (DEF) by PAZZAGLIA-KHOMENKO,KATERINA
06:10	FOUL (PERSONAL) by LOZZI,DANI			
06:10				SUB OUT: GIARDINA,CAMILLE
06:10				SUB IN: CAMPBELL,CHESNEY
06:10				SUB OUT: PAZZAGLIA-KHOMENKO,KATERINA
06:10				SUB IN: STEELE,MACKENZIE
06:10				SUB OUT: KALAYDJIEV,BEKKI
06:10				SUB IN: LANDBERG,ELSA
06:10	SUB OUT: LOZZI,DANI			
06:10	SUB IN: ULOMA,JUJU			
06:10	SUB OUT: FIELDS,SYDNEY			
06:10	SUB IN: FERRIERA,KEVYN			
06:08				MISSED 3PTR by JENIKE,JULIA
06:06	REBOUND (DEF) by FERRIERA,KEVYN			
06:03	TURNOVER (TRAVEL) by FIZER,KELSI			
05:40		10-5	H 5	GOOD! LAYUP by JENIKE,JULIA
05:40				ASSIST by CAMPBELL,CHESNEY
05:39	TURNOVER (OTHER) by FIZER,KELSI			
05:26	FOUL (PERSONAL) by ULOMA,JUJU			
05:21				TURNOVER (LOSTBALL) by LANDBERG,ELSA
05:04	TURNOVER (BADPASS) by POTTS,CHRISTINA			
05:04				STEAL by LANDBERG,ELSA
04:58				MISSED LAYUP by FUCHS-ROBETIN,ANJA
04:53				REBOUND (OFF) by FUCHS-ROBETIN,ANJA
04:51		13-5	H 8	GOOD! 3PTR by LANDBERG,ELSA
04:51				ASSIST by CAMPBELL,CHESNEY
04:51	TIMEOUT 30SEC			
04:51	SUB OUT: FIZER,KELSI			
04:51	SUB IN: LOZZI,DANI			
04:51	SUB OUT: POTTS,CHRISTINA			
04:51	SUB IN: WILLIAMS,JANAY			
04:37	TURNOVER (3SEC) by LOZZI,DANI			
04:13		15-5	H 10	GOOD! JUMPER by JENIKE,JULIA
03:56	MISSED JUMPER by FERRIERA,KEVYN			
03:50				REBOUND (DEF) by JENIKE,JULIA
03:50	FOUL (PERSONAL) by LOZZI,DANI			
03:50	SUB OUT: LOZZI,DANI			
03:50	SUB IN: POTTS,CHRISTINA			
03:37				MISSED 3PTR by JENIKE,JULIA
03:33	REBOUND (DEF) by FERRIERA,KEVYN			
03:19	TURNOVER (BADPASS) by ULOMA,JUJU			
03:19	SUB OUT: ULOMA,JUJU			
03:19	SUB IN: FIZER,KELSI			
03:19	SUB OUT: FERRIERA,KEVYN			
03:19	SUB IN: WEBB,LOIE			
03:05				MISSED 3PTR by LANDBERG,ELSA
03:01	REBOUND (DEF) by POTTS,CHRISTINA			
02:52	TURNOVER (LOSTBALL) by SNIPES,JAYLEN			
02:52				STEAL by STEELE,MACKENZIE
02:38		17-5	H 12	GOOD! JUMPER by JENIKE,JULIA
02:38				ASSIST by LANDBERG,ELSA
02:21	MISSED JUMPER by FIZER,KELSI			
02:17				REBOUND (DEF) by CAMPBELL,CHESNEY

Time	VISITORS: Lynn	Score	Margin	HOME: Florida Southern
02:13		20-5	H 15	GOOD! 3PTR by JENIKE,JULIA [FB]
02:13				ASSIST by CAMPBELL,CHESNEY
01:56				FOUL (PERSONAL) by LANDBERG,ELSA
01:56				SUB OUT: STEELE,MACKENZIE
01:56				SUB IN: ARANDA,MARTA
01:56				SUB OUT: JENIKE,JULIA
01:56				SUB IN: PAZZAGLIA-KHOMENKO,KATERINA
01:56				SUB OUT: FUCHS-ROBETIN,ANJA
01:56				SUB IN: GIARDINA,CAMILLE
01:46	FOUL (OFF) by FIZER,KELSI			
01:46	TURNOVER (OFFENSIVE) by FIZER,KELSI			
01:28				MISSED JUMPER by PAZZAGLIA-KHOMENKO,KATERINA
01:25				REBOUND (OFF) by ARANDA,MARTA
01:21		22-5	H 17	GOOD! JUMPER by GIARDINA,CAMILLE
01:21				ASSIST by ARANDA,MARTA
01:07				FOUL (PERSONAL) by GIARDINA,CAMILLE
00:56	MISSED 3PTR by SNIPES,JAYLEN			
00:52				REBOUND (DEF) by GIARDINA,CAMILLE
00:49		24-5	H 19	GOOD! LAYUP by GIARDINA,CAMILLE [FB]
00:17	GOOD! LAYUP by WILLIAMS,JANAY	24-7	H 17	
00:17	ASSIST by POTTS,CHRISTINA			
00:02		26-7	H 19	GOOD! LAYUP by PAZZAGLIA-KHOMENKO,KATERINA
00:02				ASSIST by CAMPBELL,CHESNEY
00:02	FOUL (PERSONAL) by FIZER,KELSI			
00:02		27-7	H 20	GOOD! FT by PAZZAGLIA-KHOMENKO,KATERINA

Lynn 7, Florida Southern 27

Points from (This Period)	LU	FSC
In the Paint	4	12
Off Turns	0	11
2nd Chance	2	5
Fast Break	0	5
Bench	2	3

Official Box Score
Lynn vs Florida Southern
Second Quarter Statistics Only
January 05, 2019 at Jenkins Field House (Streamline Sale Arena) - Lakeland, Fla.

Lynn 17

No.	Player	S	Pts	FG	3FG	FT	OR	DR	TR	PF	A	TO	Blk	Stl	Min	+/-
03	Snipes, Jaylen		0	0-2	0-1	0-0	0	0	0	2	2	1	0	1	3	-3
10	Lozzi, Dani		4	2-4	0-1	0-0	0	0	0	0	0	0	0	1	8	-4
11	Fields, Sydney		2	1-1	0-0	0-0	0	0	0	3	0	1	1	0	4	3
21	Fizer, Kelsi		0	0-0	0-0	0-0	0	0	0	0	0	0	0	0	0	0
25	Potts, Christina		2	1-1	0-0	0-0	0	0	0	0	0	0	0	0	2	0
01	Uloma, Juju		2	1-2	0-0	0-0	0	1	1	0	0	0	0	0	6	-7
02	Webb, Loie		3	1-1	1-1	0-0	0	0	0	0	0	2	0	0	10	-4
05	Hall, Mahogany		2	0-0	0-0	2-2	0	0	0	0	0	0	0	1	3	4
13	Ferreira, Kevyn		2	0-1	0-0	2-2	0	0	0	0	0	0	0	0	3	-5
24	Williams, Janay		0	0-1	0-0	0-2	1	2	3	0	0	0	0	0	10	-4
32	Shanahan, Meagan		0	0-0	0-0	0-0	0	0	0	0	0	0	0	0	0	0
33	Agenor, Noelle		0	0-0	0-0	0-0	0	0	0	0	0	0	0	0	0	0
	Team						0	1	1	0		0				
TOTALS			17	6-13	1-3	4-6	1	4	5	5	2	4	1	3	50	

Shooting By Period

Period	FG	FG%	3FG	3FG%	FT	FT%
3rd Qtr	7-17	41%	1-5	20%	1-2	50%
4th Qtr	5-15	33%	3-5	60%	6-8	75%
2nd Half	6-13	46%	1-3	33%	4-6	67%
2nd Half	12-32	38%	4-10	40%	7-10	70%
Game	21-56	37.5%	6-15	40.0%	11-16	68.8%

Florida Southern 21

No.	Player	S	Pts	FG	3FG	FT	OR	DR	TR	PF	A	TO	Blk	Stl	Min	+/-
21	Jenike, Julia		2	1-1	0-0	0-0	0	1	1	1	1	0	0	0	8	0
22	Giardina, Camille		2	1-2	0-1	0-0	0	2	2	0	0	0	0	0	6	9
23	Pazzaglia-Khomenko, Katerina		4	2-3	0-0	0-0	0	0	0	1	0	1	0	0	4	0
24	Fuchs-Robetin, Anja		6	2-4	0-0	2-2	1	0	1	0	0	1	0	1	6	5
32	Kalaydjiev, Bekki		0	0-0	0-0	0-0	0	0	0	0	1	2	0	0	5	1
02	Burkett, Monet		0	0-0	0-0	0-0	0	0	0	0	0	0	0	0	0	0
14	Steele, Mackenzie		0	0-0	0-0	0-0	0	0	0	0	0	0	0	0	3	0
25	Shell, Ashley		2	1-2	0-0	0-0	0	1	1	0	0	0	0	1	4	-1
31	Landberg, Elsa		0	0-0	0-0	0-0	0	0	0	1	3	1	0	1	5	3
33	Aranda, Marta		0	0-0	0-0	0-0	0	0	0	1	0	0	0	0	3	-1
42	Campbell, Chesney		5	2-3	1-1	0-0	1	1	2	1	2	0	0	0	6	4
	Team						0	2	2	0		1				
TOTALS			21	9-15	1-2	2-2	2	7	9	5	7	6	0	3	50	

Shooting By Period

Period	FG	FG%	3FG	3FG%	FT	FT%
3rd Qtr	7-18	39%	3-5	60%	3-4	75%
4th Qtr	8-16	50%	5-8	63%	2-2	100%
2nd Half	9-15	60%	1-2	50%	2-2	100%
2nd Half	15-34	44%	8-13	62%	5-6	83%
Game	36-67	53.7%	11-20	55.0%	8-9	88.9%

Game Notes:

Officials: John Akins, Troy Carr, Ian Rosse
Attendance: 121

Start Time: 2019-01-05 22:28:26
End Time: 2019-01-05 23:58:26
Game Duration: 90
Conference Game:

Score	1st	2nd	3rd	4th	TOT
LU	7	17	16	19	59
FSC	27	21	20	23	91

Points from (This Period)	LU	FSC
In the Paint	8	12
Off Turns	4	4
2nd Chance	0	4
Fast Break	2	7
Bench	9	7

**Official Play-By-Play
Lynn vs Florida Southern
Second Quarter**

January 05, 2019 at Jenkins Field House (Streamline Sale Arena) - Lakeland, Fla.

Period 2

Starters:

Lynn: 3 SNIPES,JAYLEN; 10 LOZZI,DANI; 11 FIELDS,SYDNEY; 21 FIZER,KELSI; 25 POTTS,CHRISTINA;

Florida Southern: 21 JENIKE,JULIA; 22 GIARDINA,CAMILLE; 23 PAZZAGLIA-KHOMENKO,KATERINA; 24 FUCHS-ROBETIN,ANJA; 32 KALAYDJIEV,BEKKI;

Time	VISITORS: Lynn	Score	Margin	HOME: Florida Southern
09:47				TURNOVER (3SEC) by PAZZAGLIA-KHOMENKO,KATERINA
09:37	GOOD! LAYUP by FIELDS,SYDNEY	27-9	H 18	
09:37	ASSIST by SNIPES,JAYLEN			
09:28	FOUL (PERSONAL) by SNIPES,JAYLEN			
09:24	FOUL (PERSONAL) by FIELDS,SYDNEY			
09:11		29-9	H 20	GOOD! JUMPER by PAZZAGLIA-KHOMENKO,KATERINA [PNT]
09:11				ASSIST by JENIKE,JULIA
08:55	GOOD! JUMPER by POTTS,CHRISTINA	29-11	H 18	
08:39				MISSED LAYUP by FUCHS-ROBETIN,ANJA
08:39				REBOUND (OFF) by FUCHS-ROBETIN,ANJA
08:39	FOUL (PERSONAL) by FIELDS,SYDNEY			
08:39		30-11	H 19	GOOD! FT by FUCHS-ROBETIN,ANJA
08:39	SUB OUT: SNIPES,JAYLEN			
08:39	SUB IN: ULOMA,JUJU			
08:39	SUB OUT: FIELDS,SYDNEY			
08:39	SUB IN: FERRIERA,KEVYN			
08:39		31-11	H 20	GOOD! FT by FUCHS-ROBETIN,ANJA
08:11	MISSED JUMPER by FERRIERA,KEVYN			
08:11				REBOUND (DEF) by TEAM
08:11	SUB OUT: POTTS,CHRISTINA			
08:11	SUB IN: LOZZI,DANI			
07:43				MISSED LAYUP by PAZZAGLIA-KHOMENKO,KATERINA
07:42	REBOUND (DEF) by WILLIAMS,JANAY			
07:42				FOUL (PERSONAL) by PAZZAGLIA-KHOMENKO,KATERINA
07:28				FOUL (PERSONAL) by ARANDA,MARTA
07:28	GOOD! FT by FERRIERA,KEVYN	31-12	H 19	
07:28				SUB OUT: ARANDA,MARTA
07:28				SUB IN: CAMPBELL,CHESNEY
07:28				SUB OUT: PAZZAGLIA-KHOMENKO,KATERINA
07:28				SUB IN: GIARDINA,CAMILLE
07:28	GOOD! FT by FERRIERA,KEVYN	31-13	H 18	
06:56				MISSED JUMPER by FUCHS-ROBETIN,ANJA
06:52				REBOUND (OFF) by CAMPBELL,CHESNEY
06:49		33-13	H 20	GOOD! LAYUP by CAMPBELL,CHESNEY
06:49				ASSIST by KALAYDJIEV,BEKKI
06:39	GOOD! LAYUP by ULOMA,JUJU	33-15	H 18	
06:18		35-15	H 20	GOOD! JUMPER by JENIKE,JULIA
06:18				ASSIST by CAMPBELL,CHESNEY
05:51	MISSED JUMPER by ULOMA,JUJU			
05:47				REBOUND (DEF) by CAMPBELL,CHESNEY
05:43		37-15	H 22	GOOD! JUMPER by GIARDINA,CAMILLE [FB]
05:27	TURNOVER (BADPASS) by WEBB,LOIE			
05:27				STEAL by FUCHS-ROBETIN,ANJA
05:22		39-15	H 24	GOOD! LAYUP by FUCHS-ROBETIN,ANJA [FB]
05:22	TIMEOUT 30SEC			
05:22				SUB OUT: FUCHS-ROBETIN,ANJA
05:22				SUB IN: SHELL,ASHLEY
05:22				SUB OUT: KALAYDJIEV,BEKKI
05:22				SUB IN: LANDBERG,ELSA
05:22	SUB OUT: FERRIERA,KEVYN			
05:22	SUB IN: HALL,MAHOGANY			
05:09	GOOD! LAYUP by LOZZI,DANI	39-17	H 22	
04:54				TURNOVER (BADPASS) by LANDBERG,ELSA
04:54	STEAL by HALL,MAHOGANY			
04:54	SUB OUT: ULOMA,JUJU			
04:54	SUB IN: FIELDS,SYDNEY			
04:52				FOUL (PERSONAL) by JENIKE,JULIA
04:42	TURNOVER (BADPASS) by WEBB,LOIE			
04:42				STEAL by LANDBERG,ELSA
04:25				MISSED 3PTR by GIARDINA,CAMILLE
04:22	REBOUND (DEF) by WILLIAMS,JANAY			
04:15	MISSED 3PTR by LOZZI,DANI			
04:11				REBOUND (DEF) by GIARDINA,CAMILLE
03:55		41-17	H 24	GOOD! LAYUP by SHELL,ASHLEY
03:55				ASSIST by CAMPBELL,CHESNEY
03:44	TURNOVER (BADPASS) by FIELDS,SYDNEY			
03:44				STEAL by SHELL,ASHLEY
03:19				SUB OUT: GIARDINA,CAMILLE
03:19				SUB IN: STEELE,MACKENZIE
03:14				TURNOVER (SHOTCLOCK) by
02:58	MISSED LAYUP by WILLIAMS,JANAY			
02:57	REBOUND (OFF) by WILLIAMS,JANAY			
02:57				FOUL (PERSONAL) by CAMPBELL,CHESNEY
02:57	MISSED FT by WILLIAMS,JANAY			
02:57	REBOUND (OFF) by TEAM			
02:57	MISSED FT by WILLIAMS,JANAY			

Time	VISITORS: Lynn	Score	Margin	HOME: Florida Southern
02:57				REBOUND (DEF) by JENIKE,JULIA
02:51				MISSED JUMPER by SHELL,ASHLEY
02:51	BLOCK by FIELDS,SYDNEY			
02:47	REBOUND (DEF) by TEAM			
02:39				FOUL (PERSONAL) by LANDBERG,ELSA
02:36	GOOD! FT by HALL,MAHOGANY	41-18	H 23	
02:32				SUB OUT: LANDBERG,ELSA
02:32				SUB IN: KALAYDJIEV,BEKKI
02:31	GOOD! FT by HALL,MAHOGANY	41-19	H 22	
02:25				TURNOVER (LOSTBALL) by KALAYDJIEV,BEKKI
02:25	STEAL by LOZZI,DANI			
02:19	GOOD! LAYUP by LOZZI,DANI [FB]	41-21	H 20	
02:12				TURNOVER (BADPASS) by KALAYDJIEV,BEKKI
02:12	STEAL by SNIPES,JAYLEN			
02:09	MISSED JUMPER by LOZZI,DANI			
02:08				REBOUND (DEF) by TEAM
02:01	FOUL (PERSONAL) by FIELDS,SYDNEY			
02:00				SUB OUT: JENIKE,JULIA
02:00				SUB IN: GIARDINA,CAMILLE
02:00				SUB OUT: KALAYDJIEV,BEKKI
02:00				SUB IN: LANDBERG,ELSA
02:00	SUB OUT: HALL,MAHOGANY			
02:00	SUB IN: SNIPES,JAYLEN			
02:00	SUB OUT: FIELDS,SYDNEY			
02:00	SUB IN: ULOMA,JUJU			
01:47				MISSED JUMPER by CAMPBELL,CHESNEY
01:44	REBOUND (DEF) by ULOMA,JUJU			
01:29	MISSED JUMPER by SNIPES,JAYLEN			
01:25				REBOUND (DEF) by SHELL,ASHLEY
01:19		44-21	H 23	GOOD! 3PTR by CAMPBELL,CHESNEY [FB]
01:19				ASSIST by LANDBERG,ELSA
01:11	MISSED 3PTR by SNIPES,JAYLEN			
01:08				REBOUND (DEF) by GIARDINA,CAMILLE
01:03				SUB OUT: CAMPBELL,CHESNEY
01:03				SUB IN: FUCHS-ROBETIN,ANJA
01:03				SUB OUT: SHELL,ASHLEY
01:03				SUB IN: PAZZAGLIA-KHOMENKO,KATERINA
00:58				TURNOVER (BADPASS) by FUCHS-ROBETIN,ANJA
00:42	FOUL (OFF) by SNIPES,JAYLEN			
00:42	TURNOVER (OFFENSIVE) by SNIPES,JAYLEN			
00:26		46-21	H 25	GOOD! LAYUP by FUCHS-ROBETIN,ANJA
00:26				ASSIST by LANDBERG,ELSA
00:16	GOOD! 3PTR by WEBB,LOIE	46-24	H 22	
00:16	ASSIST by SNIPES,JAYLEN			
00:03		48-24	H 24	GOOD! LAYUP by PAZZAGLIA-KHOMENKO,KATERINA
00:03				ASSIST by LANDBERG,ELSA

Lynn 24, Florida Southern 48

Points from (This Period)	LU	FSC
In the Paint	8	12
Off Turns	4	4
2nd Chance	0	4
Fast Break	2	7
Bench	9	7

Official Box Score
Lynn vs Florida Southern
Second Half Statistics Only
January 05, 2019 at Jenkins Field House (Streamline Sale Arena) - Lakeland, Fla.

Lynn 35

No.	Player	S	Pts	FG	3FG	FT	OR	DR	TR	PF	A	TO	Blk	Stl	Min	+/-
01	Uloma, Juju		7	3-4	1-1	0-0	0	2	2	3	2	1	0	0	8	2
02	Webb, Loie		11	2-5	2-4	5-6	1	2	3	0	1	1	0	0	13	-2
03	Snipes, Jaylen		0	0-1	0-1	0-0	0	0	0	1	0	1	0	0	7	-6
05	Hall, Mahogany		0	0-2	0-1	0-0	0	1	1	0	1	1	0	0	9	-3
10	Lozzi, Dani		0	0-1	0-0	0-0	0	0	0	0	1	0	0	0	12	-2
11	Fields, Sydney		2	1-2	0-1	0-0	0	1	1	1	0	0	0	0	2	0
13	Ferreira, Kevyn		2	1-5	0-1	0-0	0	0	0	0	1	1	0	0	7	-9
21	Fizer, Kelsi		4	1-5	0-0	2-4	4	1	5	2	0	2	0	2	14	-6
24	Williams, Janay		0	0-0	0-0	0-0	0	1	1	0	0	0	0	0	6	-11
25	Potts, Christina		5	2-4	1-1	0-0	1	2	3	0	0	0	0	1	10	-2
32	Shanahan, Meagan		4	2-2	0-0	0-0	0	2	2	1	1	2	0	0	11	-1
33	Agenor, Noelle		0	0-1	0-0	0-0	0	0	0	0	0	0	0	0	2	0
	Team		0	0-0	0-0	0-0	1	1	2	0	0	0	0	0	0	
TOTALS			35	12-32	4-10	7-10	7	13	20	8	7	9	0	3	99	

Shooting By Period

Period	FG	FG%	3FG	3FG%	FT	FT%
3rd Qtr	7-17	41%	1-5	20%	1-2	50%
4th Qtr	5-15	33%	3-5	60%	6-8	75%
2nd Half	12-32	38%	4-10	40%	7-10	70%
Game	21-56	37.5%	6-15	40.0%	11-16	68.8%

Last FG Half: LU 4th-00:12

Florida Southern 43

No.	Player	S	Pts	FG	3FG	FT	OR	DR	TR	PF	A	TO	Blk	Stl	Min	+/-
02	Burkett, Monet		7	3-6	1-3	0-0	2	0	2	0	0	0	0	0	7	-2
14	Steele, Mackenzie		12	4-8	4-5	0-0	0	1	1	0	1	0	0	0	15	7
21	Jenike, Julia		3	1-1	1-1	0-0	0	1	1	2	0	0	0	0	4	3
22	Giardina, Camille		2	1-3	0-0	0-0	1	1	2	0	0	1	0	0	7	9
23	Pazzaglia-Khomenko, Katerina		0	0-3	0-0	0-0	2	2	4	1	1	1	1	1	8	9
24	Fuchs-Robetin, Anja		8	3-5	0-0	2-2	1	0	1	0	0	0	0	0	8	8
25	Shell, Ashley		2	1-2	0-0	0-0	0	4	4	1	1	1	0	0	12	0
31	Landberg, Elsa		0	0-0	0-0	0-0	0	0	0	2	1	1	0	0	2	-1
32	Kalaydjiev, Bekki		3	1-1	1-1	0-0	0	2	2	3	6	0	0	0	18	9
33	Aranda, Marta		4	1-2	1-1	1-2	0	1	1	0	1	1	0	0	7	-1
42	Campbell, Chesney		2	0-3	0-2	2-2	0	3	3	1	0	1	1	1	12	-1
	Team		0	0-0	0-0	0-0	0	0	0	0	0	1	0	0	0	
TOTALS			43	15-34	8-13	5-6	6	15	21	10	11	7	2	2	99	

Shooting By Period

Period	FG	FG%	3FG	3FG%	FT	FT%
3rd Qtr	7-18	39%	3-5	60%	3-4	75%
4th Qtr	8-16	50%	5-8	63%	2-2	100%
2nd Half	15-34	44%	8-13	62%	5-6	83%
Game	36-67	53.7%	11-20	55.0%	8-9	88.9%

Last FG Half: FSC 4th-00:53

Game Notes:

Officials: John Akins,Troy Carr,Ian Rosse
Attendance: 121

Start Time: 2019-01-05 22:28:26

End Time: 2019-01-05 23:58:26

Game Duration: 90

Conference Game;

Score	1st	2nd	3rd	4th	TOT
LU	7	17	16	19	59
FSC	27	21	20	23	91

Points from (This Period)	LU	FSC
In the Paint	8	8
Off Turns	8	7
2nd Chance	11	9
Fast Break	9	10
Bench	24	27

Official Box Score
Lynn vs Florida Southern
Third Quarter Statistics Only
January 05, 2019 at Jenkins Field House (Streamline Sale Arena) - Lakeland, Fla.

Lynn 35

No.	Player	S	Pts	FG	3FG	FT	OR	DR	TR	PF	A	TO	Blk	Stl	Min	+/-
03	Snipes, Jaylen		0	0-1	0-1	0-0	0	0	0	1	0	1	0	0	7	-6
10	Lozzi, Dani		0	0-1	0-0	0-0	0	0	0	0	0	0	0	0	7	0
11	Fields, Sydney		2	1-2	0-1	0-0	0	1	1	1	0	0	0	0	2	0
21	Fizer, Kelsi		1	0-1	0-0	1-2	1	1	2	1	0	1	0	1	4	-2
25	Potts, Christina		0	0-2	0-0	0-0	1	0	1	0	0	0	0	1	4	-6
01	Uloma, Juju		7	3-3	1-1	0-0	0	2	2	3	1	1	0	0	6	2
02	Webb, Loie		0	0-0	0-0	0-0	0	1	1	0	0	0	0	0	3	2
05	Hall, Mahogany		0	0-1	0-1	0-0	0	1	1	0	1	1	0	0	5	-1
13	Ferreira, Kevyn		2	1-4	0-1	0-0	0	0	0	0	1	0	0	0	4	-1
24	Williams, Janay		0	0-0	0-0	0-0	0	0	0	0	0	0	0	0	2	-6
32	Shanahan, Meagan		4	2-2	0-0	0-0	0	1	1	1	1	1	0	0	6	-2
33	Agenor, Noelle		0	0-0	0-0	0-0	0	0	0	0	0	0	0	0	0	0
	Team						0	0	0	0		0				
TOTALS			16	7-17	1-5	1-2	2	7	9	7	4	5	0	2	50	

Shooting By Period

Period	FG	FG%	3FG	3FG%	FT	FT%
2nd Half	0-0	0%	0-0	0%	0-0	0%
Game	21-56	37.5%	6-15	40.0%	11-16	68.8%

Florida Southern 43

No.	Player	S	Pts	FG	3FG	FT	OR	DR	TR	PF	A	TO	Blk	Stl	Min	+/-
21	Jenike, Julia		3	1-1	1-1	0-0	0	1	1	2	0	0	0	0	4	3
22	Giardina, Camille		2	1-3	0-0	0-0	1	1	2	0	0	1	0	0	7	9
23	Pazzaglia-Khomenko, Katerina		0	0-2	0-0	0-0	2	2	4	0	1	1	1	0	4	4
24	Fuchs-Robetin, Anja		8	3-5	0-0	2-2	1	0	1	0	0	0	0	0	8	8
32	Kalaydjiev, Bekki		0	0-0	0-0	0-0	0	2	2	1	3	0	0	0	9	7
02	Burkett, Monet		0	0-0	0-0	0-0	0	0	0	0	0	0	0	0	0	0
14	Steele, Mackenzie		6	2-5	2-3	0-0	0	0	0	0	0	0	0	0	7	-1
25	Shell, Ashley		0	0-0	0-0	0-0	0	1	1	0	0	0	0	0	2	-4
31	Landberg, Elsa		0	0-0	0-0	0-0	0	0	0	1	0	0	0	0	1	-3
33	Aranda, Marta		1	0-0	0-0	1-2	0	0	0	0	0	1	0	0	2	-3
42	Campbell, Chesney		0	0-2	0-1	0-0	0	1	1	0	0	1	0	0	6	0
	Team						0	0	0	0		0				
TOTALS			20	7-18	3-5	3-4	4	8	12	4	4	4	1	0	50	

Shooting By Period

Period	FG	FG%	3FG	3FG%	FT	FT%
2nd Half	0-0	0%	0-0	0%	0-0	0%
Game	36-67	53.7%	11-20	55.0%	8-9	88.9%

Game Notes:

Officials: **John Akins,Troy Carr,Ian Rosse**
Attendance: **121**

Start Time: **2019-01-05 22:28:26**
End Time: **2019-01-05 23:58:26**
Game Duration: **90**
Conference Game:

Score	1st	2nd	3rd	4th	TOT
LU	7	17	16	19	59
FSC	27	21	20	23	91

Points from (This Period)	LU	FSC
In the Paint	6	2
Off Turns	5	4
2nd Chance	4	4
Fast Break	2	2
Bench	13	7

**Official Play-By-Play
Lynn vs Florida Southern
Third Quarter**

January 05, 2019 at Jenkins Field House (Streamline Sale Arena) - Lakeland, Fla.

Period 3

Starters:

Lynn: 3 SNIPES,JAYLEN; 10 LOZZI,DANI; 11 FIELDS,SYDNEY; 21 FIZER,KELSI; 25 POTTS,CHRISTINA;

Florida Southern: 21 JENIKE,JULIA; 22 GIARDINA,CAMILLE; 23 PAZZAGLIA-KHOMENKO,KATERINA; 24 FUCHS-ROBETIN,ANJA; 32 KALAYDJIEV,BEKKI;

Time	VISITORS: Lynn	Score	Margin	HOME: Florida Southern
09:45	MISSED JUMPER by POTTS,CHRISTINA			
09:40				REBOUND (DEF) by PAZZAGLIA-KHOMENKO,KATERINA
09:20		51-24	H 27	GOOD! 3PTR by JENIKE,JULIA
09:20				ASSIST by KALAYDJIEV,BEKKI
08:57	MISSED JUMPER by LOZZI,DANI			
08:57				BLOCK by PAZZAGLIA-KHOMENKO,KATERINA
08:51				REBOUND (DEF) by JENIKE,JULIA
08:48				MISSED JUMPER by GIARDINA,CAMILLE
08:44				REBOUND (OFF) by GIARDINA,CAMILLE
08:42		53-24	H 29	GOOD! JUMPER by FUCHS-ROBETIN,ANJA
08:42				ASSIST by PAZZAGLIA-KHOMENKO,KATERINA
08:19	MISSED JUMPER by FIZER,KELSI			
08:15				REBOUND (DEF) by PAZZAGLIA-KHOMENKO,KATERINA
08:00				MISSED LAYUP by PAZZAGLIA-KHOMENKO,KATERINA
07:59				REBOUND (OFF) by PAZZAGLIA-KHOMENKO,KATERINA
07:59				MISSED LAYUP by PAZZAGLIA-KHOMENKO,KATERINA
07:59				REBOUND (OFF) by PAZZAGLIA-KHOMENKO,KATERINA
07:59	FOUL (PERSONAL) by FIZER,KELSI			
07:59	SUB OUT: FIZER,KELSI			
07:59	SUB IN: ULOMA,JUJU			
07:59	SUB OUT: WILLIAMS,JANAY			
07:59	SUB IN: SHANAHAN,MEAGAN			
07:53				TURNOVER (LOSTBALL) by GIARDINA,CAMILLE
07:53	STEAL by POTTS,CHRISTINA			
07:53				FOUL (PERSONAL) by JENIKE,JULIA
07:39	MISSED 3PTR by SNIPES,JAYLEN			
07:34				REBOUND (DEF) by KALAYDJIEV,BEKKI
07:17				TURNOVER (3SEC) by PAZZAGLIA-KHOMENKO,KATERINA
07:13				SUB OUT: GIARDINA,CAMILLE
07:13				SUB IN: STEELE,MACKENZIE
07:13				SUB OUT: PAZZAGLIA-KHOMENKO,KATERINA
07:13				SUB IN: CAMPBELL,CHESNEY
06:54	GOOD! JUMPER by SHANAHAN,MEAGAN	53-26	H 27	
06:54	ASSIST by ULOMA,JUJU			
06:36		56-26	H 30	GOOD! 3PTR by STEELE,MACKENZIE
06:36				ASSIST by KALAYDJIEV,BEKKI
06:25	MISSED LAYUP by POTTS,CHRISTINA			
06:25	REBOUND (OFF) by POTTS,CHRISTINA			
06:25				FOUL (PERSONAL) by JENIKE,JULIA
06:25				SUB OUT: KALAYDJIEV,BEKKI
06:25				SUB IN: LANDBERG,ELSA
06:25	SUB OUT: POTTS,CHRISTINA			
06:25	SUB IN: HALL,MAHOGANY			
06:19	GOOD! 3PTR by ULOMA,JUJU	56-29	H 27	
06:19	ASSIST by SHANAHAN,MEAGAN			
05:53	FOUL (PERSONAL) by ULOMA,JUJU			
05:48	FOUL (PERSONAL) by SHANAHAN,MEAGAN			
05:43				MISSED JUMPER by FUCHS-ROBETIN,ANJA
05:40	REBOUND (DEF) by ULOMA,JUJU			
05:38				FOUL (PERSONAL) by LANDBERG,ELSA
05:38				SUB OUT: JENIKE,JULIA
05:38				SUB IN: GIARDINA,CAMILLE
05:38				SUB OUT: LANDBERG,ELSA
05:38				SUB IN: KALAYDJIEV,BEKKI
05:33	TURNOVER (3SEC) by SHANAHAN,MEAGAN			
05:13		58-29	H 29	GOOD! JUMPER by FUCHS-ROBETIN,ANJA
04:54	GOOD! JUMPER by ULOMA,JUJU	58-31	H 27	
04:54	ASSIST by HALL,MAHOGANY			
04:33				MISSED JUMPER by FUCHS-ROBETIN,ANJA
04:29	REBOUND (DEF) by HALL,MAHOGANY			
04:26	FOUL (OFF) by SNIPES,JAYLEN			
04:26	TURNOVER (OFFENSIVE) by SNIPES,JAYLEN			
04:26				
04:26	SUB OUT: LOZZI,DANI			
04:26	SUB IN: FERRIERA,KEVYN			
04:11				MISSED JUMPER by CAMPBELL,CHESNEY
04:08	REBOUND (DEF) by SHANAHAN,MEAGAN			
03:59	GOOD! LAYUP by SHANAHAN,MEAGAN	58-33	H 25	
03:59	ASSIST by FERRIERA,KEVYN			
03:50		61-33	H 28	GOOD! 3PTR by STEELE,MACKENZIE
03:50				ASSIST by KALAYDJIEV,BEKKI
03:36	TURNOVER (BADPASS) by HALL,MAHOGANY			
03:23		63-33	H 30	GOOD! LAYUP by GIARDINA,CAMILLE
03:06	FOUL (OFF) by ULOMA,JUJU			
03:06	TURNOVER (OFFENSIVE) by ULOMA,JUJU			
03:06	SUB OUT: SNIPES,JAYLEN			

Time	VISITORS: Lynn	Score	Margin	HOME: Florida Southern
03:06	SUB IN: WEBB,LOIE			
03:06	SUB OUT: ULOMA,JUJU			
03:06	SUB IN: FIELDS,SYDNEY			
02:50				MISSED JUMPER by STEELE,MACKENZIE
02:46	REBOUND (DEF) by FIELDS,SYDNEY			
02:44	MISSED JUMPER by FERRIERA,KEVYN			
02:39				REBOUND (DEF) by CAMPBELL,CHESNEY
02:38				TURNOVER (LOSTBALL) by CAMPBELL,CHESNEY
02:28	GOOD! JUMPER by FIELDS,SYDNEY	63-35	H 28	
02:21		65-35	H 30	GOOD! JUMPER by FUCHS-ROBETIN,ANJA
02:14	MISSED 3PTR by FIELDS,SYDNEY			
02:07				REBOUND (DEF) by KALAYDJIEV,BEKKI
02:03				MISSED 3PTR by STEELE,MACKENZIE
02:00	REBOUND (DEF) by WEBB,LOIE			
01:53	MISSED 3PTR by HALL,MAHOGANY			
01:49				REBOUND (DEF) by GIARDINA,CAMILLE
01:46				MISSED JUMPER by GIARDINA,CAMILLE
01:45				REBOUND (OFF) by FUCHS-ROBETIN,ANJA
01:45	FOUL (PERSONAL) by FIELDS,SYDNEY			
01:45		66-35	H 31	GOOD! FT by FUCHS-ROBETIN,ANJA [FB]
01:45				SUB OUT: GIARDINA,CAMILLE
01:45				SUB IN: ARANDA,MARTA
01:45	SUB OUT: HALL,MAHOGANY			
01:45	SUB IN: LOZZI,DANI			
01:45	SUB OUT: SHANAHAN,MEAGAN			
01:45	SUB IN: FIZER,KELSI			
01:45		67-35	H 32	GOOD! FT by FUCHS-ROBETIN,ANJA [FB]
01:45				SUB OUT: FUCHS-ROBETIN,ANJA
01:45				SUB IN: SHELL,ASHLEY
01:35	GOOD! JUMPER by FERRIERA,KEVYN	67-37	H 30	
01:23				MISSED 3PTR by CAMPBELL,CHESNEY
01:19	REBOUND (DEF) by FIZER,KELSI			
01:18	TURNOVER (TRAVEL) by FIZER,KELSI			
01:18	SUB OUT: FIELDS,SYDNEY			
01:18	SUB IN: ULOMA,JUJU			
00:56				TURNOVER (BADPASS) by ARANDA,MARTA
00:56	STEAL by FIZER,KELSI			
00:50	MISSED 3PTR by FERRIERA,KEVYN			
00:48	REBOUND (OFF) by FIZER,KELSI			
00:48				FOUL (PERSONAL) by KALAYDJIEV,BEKKI
00:48	GOOD! FT by FIZER,KELSI	67-38	H 29	
00:48				SUB OUT: CAMPBELL,CHESNEY
00:48				SUB IN: PAZZAGLIA-KHOMENKO,KATERINA
00:47	MISSED FT by FIZER,KELSI			
00:45				REBOUND (DEF) by SHELL,ASHLEY
00:34				MISSED JUMPER by STEELE,MACKENZIE
00:31	REBOUND (DEF) by ULOMA,JUJU			
00:27	GOOD! LAYUP by ULOMA,JUJU [FB]	67-40	H 27	
00:16	FOUL (PERSONAL) by ULOMA,JUJU			
00:16				MISSED FT by ARANDA,MARTA
00:16				REBOUND (OFF) by TEAM
00:16	SUB OUT: ULOMA,JUJU			
00:16	SUB IN: WILLIAMS,JANAY			
00:16		68-40	H 28	GOOD! FT by ARANDA,MARTA
00:00	MISSED JUMPER by FERRIERA,KEVYN			
00:00	REBOUND (OFF) by TEAM			

Lynn 40, Florida Southern 68

Points from (This Period)	LU	FSC
In the Paint	6	2
Off Turns	5	4
2nd Chance	4	4
Fast Break	2	2
Bench	13	7

Official Box Score
Lynn vs Florida Southern
Fourth Quarter Statistics Only
January 05, 2019 at Jenkins Field House (Streamline Sale Arena) - Lakeland, Fla.

Lynn 19

No.	Player	S	Pts	FG	3FG	FT	OR	DR	TR	PF	A	TO	Blk	Stl	Min	+/-
03	Snipes, Jaylen		0	0-0	0-0	0-0	0	0	0	0	0	0	0	0	0	0
10	Lozzi, Dani		0	0-0	0-0	0-0	0	0	0	0	1	0	0	0	5	-2
11	Fields, Sydney		0	0-0	0-0	0-0	0	0	0	0	0	0	0	0	0	0
21	Fizer, Kelsi		3	1-4	0-0	1-2	3	0	3	1	0	1	0	1	10	-4
25	Potts, Christina		5	2-2	1-1	0-0	0	2	2	0	0	0	0	0	6	4
01	Uloma, Juju		0	0-1	0-0	0-0	0	0	0	0	1	0	0	0	2	0
02	Webb, Loie		11	2-5	2-4	5-6	1	1	2	0	1	1	0	0	10	-4
05	Hall, Mahogany		0	0-1	0-0	0-0	0	0	0	0	0	0	0	0	4	-2
13	Ferreira, Kevyn		0	0-1	0-0	0-0	0	0	0	0	0	1	0	0	3	-8
24	Williams, Janay		0	0-0	0-0	0-0	0	1	1	0	0	0	0	0	4	-5
32	Shanahan, Meagan		0	0-0	0-0	0-0	0	1	1	0	0	1	0	0	5	1
33	Agenor, Noelle		0	0-1	0-0	0-0	0	0	0	0	0	0	0	0	2	0
	Team						1	1	2	0		0				
TOTALS			19	5-15	3-5	6-8	5	6	11	1	3	4	0	1	49	

Shooting By Period

Period	FG	FG%	3FG	3FG%	FT	FT%
Game	21-56	37.5%	6-15	40.0%	11-16	68.8%

Florida Southern 23

No.	Player	S	Pts	FG	3FG	FT	OR	DR	TR	PF	A	TO	Blk	Stl	Min	+/-
21	Jenike, Julia		0	0-0	0-0	0-0	0	0	0	0	0	0	0	0	0	0
22	Giardina, Camille		0	0-0	0-0	0-0	0	0	0	0	0	0	0	0	0	0
23	Pazzaglia-Khomenko, Katerina		0	0-1	0-0	0-0	0	0	0	1	0	0	0	1	4	5
24	Fuchs-Robetin, Anja		0	0-0	0-0	0-0	0	0	0	0	0	0	0	0	0	0
32	Kalaydjiev, Bekki		3	1-1	1-1	0-0	0	0	0	2	3	0	0	0	9	2
02	Burkett, Monet		7	3-6	1-3	0-0	2	0	2	0	0	0	0	0	7	-2
14	Steele, Mackenzie		6	2-3	2-2	0-0	0	1	1	0	1	0	0	0	8	8
25	Shell, Ashley		2	1-2	0-0	0-0	0	3	3	1	1	1	0	0	10	4
31	Landberg, Elsa		0	0-0	0-0	0-0	0	0	0	1	1	1	0	0	1	2
33	Aranda, Marta		3	1-2	1-1	0-0	0	1	1	0	1	0	0	0	5	2
42	Campbell, Chesney		2	0-1	0-1	2-2	0	2	2	1	0	0	1	1	6	-1
	Team						0	0	0	0		1				
TOTALS			23	8-16	5-8	2-2	2	7	9	6	7	3	1	2	49	

Shooting By Period

Period	FG	FG%	3FG	3FG%	FT	FT%
Game	36-67	53.7%	11-20	55.0%	8-9	88.9%

Game Notes:

Officials: **John Akins, Troy Carr, Ian Rosse**
Attendance: **121**

Start Time: **2019-01-05 22:28:26**
End Time: **2019-01-05 23:58:26**
Game Duration: **90**
Conference Game:

Score	1st	2nd	3rd	4th	TOT
LU	7	17	16	19	59
FSC	27	21	20	23	91

Points from (This Period)	LU	FSC
In the Paint	2	6
Off Turns	3	3
2nd Chance	7	5
Fast Break	7	8
Bench	11	20

**Official Play-By-Play
Lynn vs Florida Southern
Fourth Quarter**

January 05, 2019 at Jenkins Field House (Streamline Sale Arena) - Lakeland, Fla.

Period 4

Starters:

Lynn: 3 SNIPES,JAYLEN; 10 LOZZI,DANI; 11 FIELDS,SYDNEY; 21 FIZER,KELSI; 25 POTTS,CHRISTINA;

Florida Southern: 21 JENIKE,JULIA; 22 GIARDINA,CAMILLE; 23 PAZZAGLIA-KHOMENKO,KATERINA; 24 FUCHS-ROBETIN,ANJA; 32 KALAYDJIEV,BEKKI;

Time	VISITORS: Lynn	Score	Margin	HOME: Florida Southern
09:41		71-40	H 31	GOOD! 3PTR by ARANDA,MARTA
09:41				ASSIST by LANDBERG,ELSA
09:24	TURNOVER (LOSTBALL) by FERRIERA,KEVYN			
09:10				TURNOVER (BADPASS) by LANDBERG,ELSA
09:10	STEAL by FIZER,KELSI			
09:05				FOUL (PERSONAL) by LANDBERG,ELSA
09:05	GOOD! FT by WEBB,LOIE [FB]	71-41	H 30	
09:05				SUB OUT: LANDBERG,ELSA
09:05				SUB IN: KALAYDJIEV,BEKKI
09:04	MISSED FT by WEBB,LOIE			
09:02				REBOUND (DEF) by SHELL,ASHLEY
08:42		74-41	H 33	GOOD! 3PTR by KALAYDJIEV,BEKKI
08:42				ASSIST by STEELE,MACKENZIE
08:23	MISSED JUMPER by FERRIERA,KEVYN			
08:20				REBOUND (DEF) by SHELL,ASHLEY
08:14		77-41	H 36	GOOD! 3PTR by STEELE,MACKENZIE [FB]
08:14				ASSIST by ARANDA,MARTA
07:49				FOUL (PERSONAL) by KALAYDJIEV,BEKKI
07:44				FOUL (PERSONAL) by SHELL,ASHLEY
07:28	TURNOVER (LOSTBALL) by WEBB,LOIE			
07:28				STEAL by PAZZAGLIA-KHOMENKO,KATERINA
07:16				MISSED JUMPER by ARANDA,MARTA
07:16	REBOUND (DEF) by TEAM			
07:15	SUB OUT: FERRIERA,KEVYN			
07:15	SUB IN: POTTS,CHRISTINA			
07:03	MISSED 3PTR by WEBB,LOIE			
07:00	REBOUND (OFF) by FIZER,KELSI			
06:51	GOOD! LAYUP by POTTS,CHRISTINA	77-43	H 34	
06:51	ASSIST by LOZZI,DANI			
06:49				SUB OUT: STEELE,MACKENZIE
06:49				SUB IN: BURKETT,MONET
06:32				MISSED JUMPER by PAZZAGLIA-KHOMENKO,KATERINA
06:28	REBOUND (DEF) by WILLIAMS,JANAY			
06:27				FOUL (PERSONAL) by PAZZAGLIA-KHOMENKO,KATERINA
06:27	GOOD! FT by FIZER,KELSI [FB]	77-44	H 33	
06:27				SUB OUT: PAZZAGLIA-KHOMENKO,KATERINA
06:27				SUB IN: CAMPBELL,CHESNEY
06:27	SUB OUT: WILLIAMS,JANAY			
06:27	SUB IN: SHANAHAN,MEAGAN			
06:26	MISSED FT by FIZER,KELSI			
06:24				REBOUND (DEF) by ARANDA,MARTA
06:12	FOUL (PERSONAL) by FIZER,KELSI			
06:12		78-44	H 34	GOOD! FT by CAMPBELL,CHESNEY
06:12		79-44	H 35	GOOD! FT by CAMPBELL,CHESNEY
06:06				FOUL (PERSONAL) by KALAYDJIEV,BEKKI
06:06	GOOD! FT by WEBB,LOIE [FB]	79-45	H 34	
06:06	GOOD! FT by WEBB,LOIE [FB]	79-46	H 33	
05:45				MISSED LAYUP by BURKETT,MONET
05:41	REBOUND (DEF) by POTTS,CHRISTINA			
05:38	GOOD! 3PTR by WEBB,LOIE [FB]	79-49	H 30	
05:20				MISSED 3PTR by CAMPBELL,CHESNEY
05:16	REBOUND (DEF) by POTTS,CHRISTINA			
05:09	TURNOVER (LOSTBALL) by FIZER,KELSI			
05:09				STEAL by CAMPBELL,CHESNEY
04:40				
04:40				TURNOVER (SHOTCLOCK) by
04:37				SUB OUT: ARANDA,MARTA
04:37				SUB IN: STEELE,MACKENZIE
04:37	SUB OUT: LOZZI,DANI			
04:37	SUB IN: HALL,MAHOGANY			
04:21	MISSED LAYUP by FIZER,KELSI			
04:19	REBOUND (OFF) by FIZER,KELSI			
04:19	MISSED LAYUP by FIZER,KELSI			
04:19	REBOUND (OFF) by TEAM			
04:11				FOUL (PERSONAL) by CAMPBELL,CHESNEY
04:11	GOOD! FT by WEBB,LOIE	79-50	H 29	
04:11	GOOD! FT by WEBB,LOIE	79-51	H 28	
03:55				MISSED 3PTR by BURKETT,MONET
03:52				REBOUND (OFF) by BURKETT,MONET
03:50		81-51	H 30	GOOD! LAYUP by BURKETT,MONET [PNT]
03:37	MISSED JUMPER by FIZER,KELSI			
03:37				BLOCK by CAMPBELL,CHESNEY
03:32	REBOUND (OFF) by FIZER,KELSI			
03:32	TURNOVER (BADPASS) by SHANAHAN,MEAGAN			
03:16				MISSED JUMPER by STEELE,MACKENZIE
03:12				REBOUND (OFF) by BURKETT,MONET

Time	VISITORS: Lynn	Score	Margin	HOME: Florida Southern
03:10		84-51	H 33	GOOD! 3PTR by STEELE,MACKENZIE
03:10				ASSIST by KALAYDJIEV,BEKKI
02:44	GOOD! JUMPER by FIZER,KELSI	84-53	H 31	
02:37				MISSED 3PTR by BURKETT,MONET
02:32	REBOUND (DEF) by SHANAHAN,MEAGAN			
02:26	MISSED JUMPER by WEBB,LOIE			
02:23	REBOUND (OFF) by WEBB,LOIE			
02:22	GOOD! 3PTR by POTTS,CHRISTINA	84-56	H 28	
02:22	ASSIST by WEBB,LOIE			
02:04		86-56	H 30	GOOD! LAYUP by SHELL,ASHLEY
02:04				ASSIST by KALAYDJIEV,BEKKI
01:48	MISSED 3PTR by WEBB,LOIE			
01:44				REBOUND (DEF) by SHELL,ASHLEY
01:43		88-56	H 32	GOOD! LAYUP by BURKETT,MONET [FB]
01:43				ASSIST by SHELL,ASHLEY
01:42	TIMEOUT 30SEC			
01:42	SUB OUT: POTTS,CHRISTINA			
01:42	SUB IN: ULOMA,JUJU			
01:42	SUB OUT: SHANAHAN,MEAGAN			
01:42	SUB IN: AGENOR,NOELLE			
01:28	MISSED JUMPER by HALL,MAHOGANY			
01:25				REBOUND (DEF) by CAMPBELL,CHESNEY
01:13				TURNOVER (3SEC) by SHELL,ASHLEY
01:02	MISSED LAYUP by ULOMA,JUJU			
00:57				REBOUND (DEF) by CAMPBELL,CHESNEY
00:53		91-56	H 35	GOOD! 3PTR by BURKETT,MONET [FB]
00:53				ASSIST by KALAYDJIEV,BEKKI
00:39	MISSED LAYUP by AGENOR,NOELLE			
00:35				REBOUND (DEF) by STEELE,MACKENZIE
00:27				MISSED JUMPER by SHELL,ASHLEY
00:23	REBOUND (DEF) by WEBB,LOIE			
00:12	GOOD! 3PTR by WEBB,LOIE	91-59	H 32	
00:12	ASSIST by ULOMA,JUJU			

Lynn 59, Florida Southern 91

Points from (This Period)	LU	FSC
In the Paint	2	6
Off Turns	3	3
2nd Chance	7	5
Fast Break	7	8
Bench	11	20

**Official Scoring/Possession Reference Chart
Lynn vs Florida Southern**

Period 1

January 05, 2019 at Jenkins Field House (Streamline Sale Arena) - Lakeland, Fla.

Period 1

Starters:

Lynn: 3 SNIPES,JAYLEN; 10 LOZZI,DANI; 11 FIELDS,SYDNEY; 21 FIZER,KELSI; 25 POTTS,CHRISTINA;

Florida Southern: 21 JENIKE,JULIA; 22 GIARDINA,CAMILLE; 23 PAZZAGLIA-KHOMENKO,KATERINA; 24 FUCHS-ROBETIN,ANJA; 32 KALAYDJIEV,BEKKI;

Time	VISITORS: Lynn	Score	Margin	HOME: Florida Southern
09:12	GOOD! LAYUP by FIZER,KELSI	0-2	V 2	
08:54		2-2	T	GOOD! LAYUP by FUCHS-ROBETIN,ANJA
08:18		4-2	H 2	GOOD! LAYUP by FUCHS-ROBETIN,ANJA
07:25		6-2	H 4	GOOD! JUMPER by FUCHS-ROBETIN,ANJA [PNT]
07:07	GOOD! 3PTR by POTTS,CHRISTINA	6-5	H 1	
06:50		8-5	H 3	GOOD! JUMPER by GIARDINA,CAMILLE
05:40		10-5	H 5	GOOD! LAYUP by JENIKE,JULIA
04:51		13-5	H 8	GOOD! 3PTR by LANDBERG,ELSA
04:13		15-5	H 10	GOOD! JUMPER by JENIKE,JULIA
02:38		17-5	H 12	GOOD! JUMPER by JENIKE,JULIA
02:13		20-5	H 15	GOOD! 3PTR by JENIKE,JULIA [FB]
01:21		22-5	H 17	GOOD! JUMPER by GIARDINA,CAMILLE
00:49		24-5	H 19	GOOD! LAYUP by GIARDINA,CAMILLE [FB]
00:17	GOOD! LAYUP by WILLIAMS,JANAY	24-7	H 17	
00:02		26-7	H 19	GOOD! LAYUP by PAZZAGLIA-KHOMENKO,KATERINA
00:02		27-7	H 20	GOOD! FT by PAZZAGLIA-KHOMENKO,KATERINA

Lynn 7, Florida Southern 27

Official Scoring/Possession Reference Chart
Lynn vs Florida Southern

Period 2

January 05, 2019 at Jenkins Field House (Streamline Sale Arena) - Lakeland, Fla.

Period 2

Starters:

Lynn: 3 SNIPES,JAYLEN; 10 LOZZI,DANI; 11 FIELDS,SYDNEY; 21 FIZER,KELSI; 25 POTTS,CHRISTINA;

Florida Southern: 21 JENIKE,JULIA; 22 GIARDINA,CAMILLE; 23 PAZZAGLIA-KHOMENKO,KATERINA; 24 FUCHS-ROBETIN,ANJA; 32 KALAYDJIEV,BEKKI;

Time	VISITORS: Lynn	Score	Margin	HOME: Florida Southern
09:37	GOOD! LAYUP by FIELDS,SYDNEY	27-9	H 18	
09:11		29-9	H 20	GOOD! JUMPER by PAZZAGLIA-KHOMENKO,KATERINA [PNT]
08:55	GOOD! JUMPER by POTTS,CHRISTINA	29-11	H 18	
08:39		30-11	H 19	GOOD! FT by FUCHS-ROBETIN,ANJA
08:39		31-11	H 20	GOOD! FT by FUCHS-ROBETIN,ANJA
07:28	GOOD! FT by FERRIERA,KEVYN	31-12	H 19	
07:28	GOOD! FT by FERRIERA,KEVYN	31-13	H 18	
06:49		33-13	H 20	GOOD! LAYUP by CAMPBELL,CHESNEY
06:39	GOOD! LAYUP by ULOMA,JUJU	33-15	H 18	
06:18		35-15	H 20	GOOD! JUMPER by JENIKE,JULIA
05:43		37-15	H 22	GOOD! JUMPER by GIARDINA,CAMILLE [FB]
05:22		39-15	H 24	GOOD! LAYUP by FUCHS-ROBETIN,ANJA [FB]
05:09	GOOD! LAYUP by LOZZI,DANI	39-17	H 22	
03:55		41-17	H 24	GOOD! LAYUP by SHELL,ASHLEY
02:36	GOOD! FT by HALL,MAHOGANY	41-18	H 23	
02:31	GOOD! FT by HALL,MAHOGANY	41-19	H 22	
02:19	GOOD! LAYUP by LOZZI,DANI [FB]	41-21	H 20	
01:19		44-21	H 23	GOOD! 3PTR by CAMPBELL,CHESNEY [FB]
00:26		46-21	H 25	GOOD! LAYUP by FUCHS-ROBETIN,ANJA
00:16	GOOD! 3PTR by WEBB,LOIE	46-24	H 22	
00:03		48-24	H 24	GOOD! LAYUP by PAZZAGLIA-KHOMENKO,KATERINA

Lynn 24, Florida Southern 48

**Official Scoring/Possession Reference Chart
Lynn vs Florida Southern**

Period 3

January 05, 2019 at Jenkins Field House (Streamline Sale Arena) - Lakeland, Fla.

Period 3

Starters:

Lynn: 3 SNIPES,JAYLEN; 10 LOZZI,DANI; 11 FIELDS,SYDNEY; 21 FIZER,KELSI; 25 POTTS,CHRISTINA;

Florida Southern: 21 JENIKE,JULIA; 22 GIARDINA,CAMILLE; 23 PAZZAGLIA-KHOMENKO,KATERINA; 24 FUCHS-ROBETIN,ANJA; 32 KALAYDJIEV,BEKKI;

Time	VISITORS: Lynn	Score	Margin	HOME: Florida Southern
09:20		51-24	H 27	GOOD! 3PTR by JENIKE,JULIA
08:42		53-24	H 29	GOOD! JUMPER by FUCHS-ROBETIN,ANJA
06:54	GOOD! JUMPER by SHANAHAN,MEAGAN	53-26	H 27	
06:36		56-26	H 30	GOOD! 3PTR by STEELE,MACKENZIE
06:19	GOOD! 3PTR by ULOMA,,JUJU	56-29	H 27	
05:13		58-29	H 29	GOOD! JUMPER by FUCHS-ROBETIN,ANJA
04:54	GOOD! JUMPER by ULOMA,,JUJU	58-31	H 27	
03:59	GOOD! LAYUP by SHANAHAN,MEAGAN	58-33	H 25	
03:50		61-33	H 28	GOOD! 3PTR by STEELE,MACKENZIE
03:23		63-33	H 30	GOOD! LAYUP by GIARDINA,CAMILLE
02:28	GOOD! JUMPER by FIELDS,SYDNEY	63-35	H 28	
02:21		65-35	H 30	GOOD! JUMPER by FUCHS-ROBETIN,ANJA
01:45		66-35	H 31	GOOD! FT by FUCHS-ROBETIN,ANJA [FB]
01:45		67-35	H 32	GOOD! FT by FUCHS-ROBETIN,ANJA [FB]
01:35	GOOD! JUMPER by FERRIERA,KEVYN	67-37	H 30	
00:48	GOOD! FT by FIZER,KELSI	67-38	H 29	
00:27	GOOD! LAYUP by ULOMA,,JUJU [FB]	67-40	H 27	
00:16		68-40	H 28	GOOD! FT by ARANDA,MARTA

Lynn 40, Florida Southern 68

**Official Scoring/Possession Reference Chart
Lynn vs Florida Southern**

Period 4

January 05, 2019 at Jenkins Field House (Streamline Sale Arena) - Lakeland, Fla.

Period 4

Starters:

Lynn: 3 SNIPES,JAYLEN; 10 LOZZI,DANI; 11 FIELDS,SYDNEY; 21 FIZER,KELSI; 25 POTTS,CHRISTINA;

Florida Southern: 21 JENIKE,JULIA; 22 GIARDINA,CAMILLE; 23 PAZZAGLIA-KHOMENKO,KATERINA; 24 FUCHS-ROBETIN,ANJA; 32 KALAYDJIEV,BEKKI;

Time	VISITORS: Lynn	Score	Margin	HOME: Florida Southern
09:41		71-40	H 31	GOOD! 3PTR by ARANDA,MARTA
09:05	GOOD! FT by WEBB,LOIE [FB]	71-41	H 30	
08:42		74-41	H 33	GOOD! 3PTR by KALAYDJIEV,BEKKI
08:14		77-41	H 36	GOOD! 3PTR by STEELE,MACKENZIE [FB]
06:51	GOOD! LAYUP by POTTS,CHRISTINA	77-43	H 34	
06:27	GOOD! FT by FIZER,KELSI [FB]	77-44	H 33	
06:12		78-44	H 34	GOOD! FT by CAMPBELL,CHESNEY
06:12		79-44	H 35	GOOD! FT by CAMPBELL,CHESNEY
06:06	GOOD! FT by WEBB,LOIE [FB]	79-45	H 34	
06:06	GOOD! FT by WEBB,LOIE [FB]	79-46	H 33	
05:38	GOOD! 3PTR by WEBB,LOIE [FB]	79-49	H 30	
04:11	GOOD! FT by WEBB,LOIE	79-50	H 29	
04:11	GOOD! FT by WEBB,LOIE	79-51	H 28	
03:50		81-51	H 30	GOOD! LAYUP by BURKETT,MONET [PNT]
03:10		84-51	H 33	GOOD! 3PTR by STEELE,MACKENZIE
02:44	GOOD! JUMPER by FIZER,KELSI	84-53	H 31	
02:22	GOOD! 3PTR by POTTS,CHRISTINA	84-56	H 28	
02:04		86-56	H 30	GOOD! LAYUP by SHELL,ASHLEY
01:43		88-56	H 32	GOOD! LAYUP by BURKETT,MONET [FB]
00:53		91-56	H 35	GOOD! 3PTR by BURKETT,MONET [FB]
00:12	GOOD! 3PTR by WEBB,LOIE	91-59	H 32	

Lynn 59, Florida Southern 91

**Official Substitutions Log
Lynn vs Florida Southern
Period 1**

January 05, 2019 at Jenkins Field House (Streamline Sale Arena) - Lakeland, Fla.

VISITORS: Lynn	Time	Score	HOME: Florida Southern
3 SNIPES,JAYLEN			21 JENIKE,JULIA
10 LOZZI,DANI			22 GIARDINA,CAMILLE
11 FIELDS,SYDNEY			23 PAZZAGLIA-KHOMENKO,KATERINA
21 FIZER,KELSI			24 FUCHS-ROBETIN,ANJA
25 POTTS,CHRISTINA			32 KALAYDJIEV,BEKKI
	06:10	5-8	SUB OUT: GIARDINA,CAMILLE
	06:10		SUB IN: CAMPBELL,CHESNEY
	06:10		SUB OUT: PAZZAGLIA-KHOMENKO,KATERINA
	06:10		SUB IN: STEELE,MACKENZIE
	06:10		SUB OUT: KALAYDJIEV,BEKKI
	06:10		SUB IN: LANDBERG,ELSA
SUB OUT: 10 LOZZI,DANI	06:10		
SUB IN: 1 ULOMA,JUJU	06:10		
SUB OUT: 11 FIELDS,SYDNEY	06:10		
SUB IN: 13 FERRIERA,KEVYN	06:10		
SUB OUT: 21 FIZER,KELSI	04:51	5-13	
SUB IN: 10 LOZZI,DANI	04:51		
SUB OUT: 25 POTTS,CHRISTINA	04:51		
SUB IN: 24 WILLIAMS,JANAY	04:51		
SUB OUT: 10 LOZZI,DANI	03:50	5-15	
SUB IN: 25 POTTS,CHRISTINA	03:50		
SUB OUT: 1 ULOMA,JUJU	03:19	5-15	
SUB IN: 21 FIZER,KELSI	03:19		
SUB OUT: 13 FERRIERA,KEVYN	03:19		
SUB IN: 2 WEBB,LOIE	03:19		
	01:56	5-20	SUB OUT: STEELE,MACKENZIE
	01:56		SUB IN: ARANDA,MARTA
	01:56		SUB OUT: JENIKE,JULIA
	01:56		SUB IN: PAZZAGLIA-KHOMENKO,KATERINA
	01:56		SUB OUT: FUCHS-ROBETIN,ANJA
	01:56		SUB IN: GIARDINA,CAMILLE

Lynn 7, Florida Southern 27

**Official Substitutions Log
Lynn vs Florida Southern
Period 2**

January 05, 2019 at Jenkins Field House (Streamline Sale Arena) - Lakeland, Fla.

VISITORS: Lynn	Time	Score	HOME: Florida Southern
3 SNIPES,JAYLEN			21 JENIKE,JULIA
10 LOZZI,DANI			22 GIARDINA,CAMILLE
11 FIELDS,SYDNEY			23 PAZZAGLIA-KHOMENKO,KATERINA
21 FIZER,KELSI			24 FUCHS-ROBETIN,ANJA
25 POTTS,CHRISTINA			32 KALAYDJIEV,BEKKI
SUB OUT: 3 SNIPES,JAYLEN	08:39	11-30	
SUB IN: 1 ULOMA,JUJU	08:39		
SUB OUT: 11 FIELDS,SYDNEY	08:39		
SUB IN: 13 FERRIERA,KEVYN	08:39		
SUB OUT: 25 POTTS,CHRISTINA	08:11	11-31	
SUB IN: 10 LOZZI,DANI	08:11		
	07:28	12-31	SUB OUT: ARANDA,MARTA
	07:28		SUB IN: CAMPBELL,CHESNEY
	07:28		SUB OUT: PAZZAGLIA-KHOMENKO,KATERINA
	07:28		SUB IN: GIARDINA,CAMILLE
	05:22	15-39	SUB OUT: FUCHS-ROBETIN,ANJA
	05:22		SUB IN: SHELL,ASHLEY
	05:22		SUB OUT: KALAYDJIEV,BEKKI
	05:22		SUB IN: LANDBERG,ELSA
SUB OUT: 13 FERRIERA,KEVYN	05:22		
SUB IN: 5 HALL,MAHOGANY	05:22		
SUB OUT: 1 ULOMA,JUJU	04:54	17-39	
SUB IN: 11 FIELDS,SYDNEY	04:54		
	03:19	17-41	SUB OUT: GIARDINA,CAMILLE
	03:19		SUB IN: STEELE,MACKENZIE
	02:32	18-41	SUB OUT: LANDBERG,ELSA
	02:32		SUB IN: KALAYDJIEV,BEKKI
	02:00	21-41	SUB OUT: JENIKE,JULIA
	02:00		SUB IN: GIARDINA,CAMILLE
	02:00		SUB OUT: KALAYDJIEV,BEKKI
	02:00		SUB IN: LANDBERG,ELSA
SUB OUT: 5 HALL,MAHOGANY	02:00		
SUB IN: 3 SNIPES,JAYLEN	02:00		
SUB OUT: 11 FIELDS,SYDNEY	02:00		
SUB IN: 1 ULOMA,JUJU	02:00		
	01:03	21-44	SUB OUT: CAMPBELL,CHESNEY
	01:03		SUB IN: FUCHS-ROBETIN,ANJA
	01:03		SUB OUT: SHELL,ASHLEY
	01:03		SUB IN: PAZZAGLIA-KHOMENKO,KATERINA

Lynn 24, Florida Southern 48

**Official Substitutions Log
Lynn vs Florida Southern
Period 3**

January 05, 2019 at Jenkins Field House (Streamline Sale Arena) - Lakeland, Fla.

VISITORS: Lynn	Time	Score	HOME: Florida Southern
3 SNIPES, JAYLEN			21 JENIKE, JULIA
10 LOZZI, DANI			22 GIARDINA, CAMILLE
11 FIELDS, SYDNEY			23 PAZZAGLIA-KHOMENKO, KATERINA
21 FIZER, KELSI			24 FUCHS-ROBETIN, ANJA
25 POTTS, CHRISTINA			32 KALAYDJIEV, BEKKI
SUB OUT: 21 FIZER, KELSI	07:59	24-53	
SUB IN: 1 ULOMA, JUJU	07:59		
SUB OUT: 24 WILLIAMS, JANAY	07:59		
SUB IN: 32 SHANAHAN, MEAGAN	07:59		
	07:13	24-53	SUB OUT: GIARDINA, CAMILLE
	07:13		SUB IN: STEELE, MACKENZIE
	07:13		SUB OUT: PAZZAGLIA-KHOMENKO, KATERINA
	07:13		SUB IN: CAMPBELL, CHESNEY
	06:25	26-56	SUB OUT: KALAYDJIEV, BEKKI
	06:25		SUB IN: LANDBERG, ELSA
SUB OUT: 25 POTTS, CHRISTINA	06:25		
SUB IN: 5 HALL, MAHOGANY	06:25		
	05:38	29-56	SUB OUT: JENIKE, JULIA
	05:38		SUB IN: GIARDINA, CAMILLE
	05:38		SUB OUT: LANDBERG, ELSA
	05:38		SUB IN: KALAYDJIEV, BEKKI
SUB OUT: 10 LOZZI, DANI	04:26	31-58	
SUB IN: 13 FERRIERA, KEVYN	04:26		
SUB OUT: 3 SNIPES, JAYLEN	03:06	33-63	
SUB IN: 2 WEBB, LOIE	03:06		
SUB OUT: 1 ULOMA, JUJU	03:06		
SUB IN: 11 FIELDS, SYDNEY	03:06		
	01:45	35-66	SUB OUT: GIARDINA, CAMILLE
	01:45		SUB IN: ARANDA, MARTA
SUB OUT: 5 HALL, MAHOGANY	01:45		
SUB IN: 10 LOZZI, DANI	01:45		
SUB OUT: 32 SHANAHAN, MEAGAN	01:45		
SUB IN: 21 FIZER, KELSI	01:45		
	01:45		SUB OUT: FUCHS-ROBETIN, ANJA
	01:45		SUB IN: SHELL, ASHLEY
SUB OUT: 11 FIELDS, SYDNEY	01:18	37-67	
SUB IN: 1 ULOMA, JUJU	01:18		
	00:48	38-67	SUB OUT: CAMPBELL, CHESNEY
	00:48		SUB IN: PAZZAGLIA-KHOMENKO, KATERINA
SUB OUT: 1 ULOMA, JUJU	00:16	40-67	
SUB IN: 24 WILLIAMS, JANAY	00:16		

Lynn 40, Florida Southern 68

**Official Substitutions Log
Lynn vs Florida Southern
Period 4**

January 05, 2019 at Jenkins Field House (Streamline Sale Arena) - Lakeland, Fla.

VISITORS: Lynn	Time	Score	HOME: Florida Southern
3 SNIPES,JAYLEN			21 JENIKE,JULIA
10 LOZZI,DANI			22 GIARDINA,CAMILLE
11 FIELDS,SYDNEY			23 PAZZAGLIA-KHOMENKO,KATERINA
21 FIZER,KELSI			24 FUCHS-ROBETIN,ANJA
25 POTTS,CHRISTINA			32 KALAYDJIEV,BEKKI
	09:05	41-71	SUB OUT: LANDBERG,ELSA
	09:05		SUB IN: KALAYDJIEV,BEKKI
SUB OUT: 13 FERRIERA,KEVYN	07:15	41-77	
SUB IN: 25 POTTS,CHRISTINA	07:15		
	06:49	43-77	SUB OUT: STEELE,MACKENZIE
	06:49		SUB IN: BURKETT,MONET
	06:27	44-77	SUB OUT: PAZZAGLIA-KHOMENKO,KATERINA
	06:27		SUB IN: CAMPBELL,CHESNEY
SUB OUT: 24 WILLIAMS,JANAY	06:27		
SUB IN: 32 SHANAHAN,MEAGAN	06:27		
	04:37	49-79	SUB OUT: ARANDA,MARTA
	04:37		SUB IN: STEELE,MACKENZIE
SUB OUT: 10 LOZZI,DANI	04:37		
SUB IN: 5 HALL,MAHOGANY	04:37		
SUB OUT: 25 POTTS,CHRISTINA	01:42	56-88	
SUB IN: 1 ULOMA,JUJU	01:42		
SUB OUT: 32 SHANAHAN,MEAGAN	01:42		
SUB IN: 33 AGENOR,NOELLE	01:42		

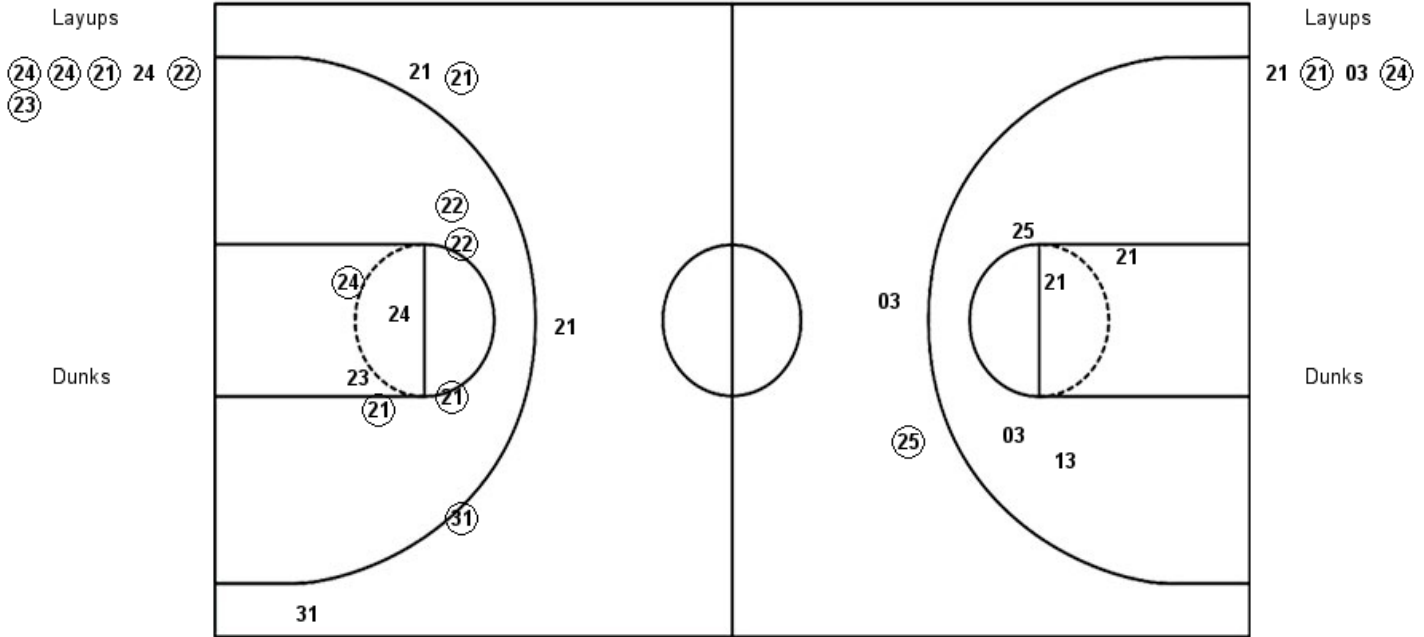
Lynn 59, Florida Southern 91

Official Shot Chart
Lynn vs Florida Southern
PERIOD 1 Shots

January 05, 2019 at Jenkins Field House (Streamline Sale Arena) - Lakeland, Fla.

Florida Southern

Lynn



FSC : Period 1	Made	Att	Pct
Layups	5	6	83.3
Dunks	0	0	0
2PT Field Goals	10	13	76.9
3PT Field Goals	2	5	40.0
Total Field Goals	12	18	66.7

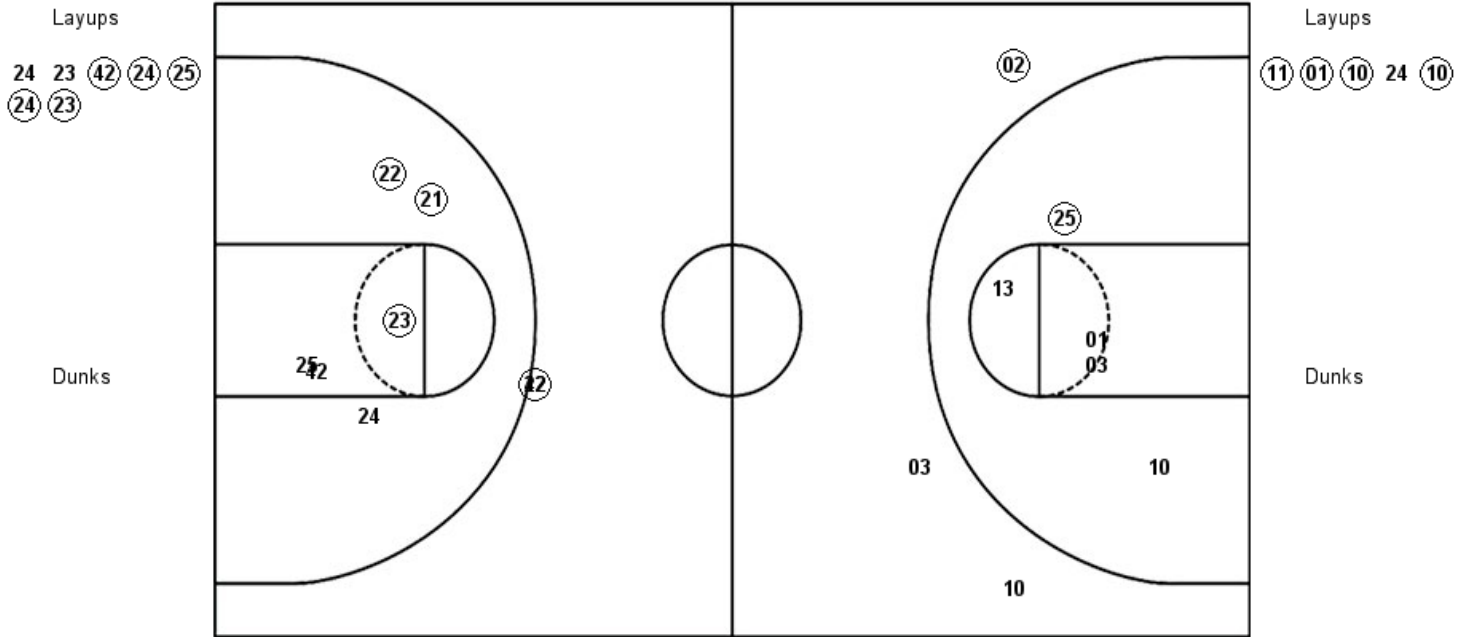
LU : Period 1	Made	Att	Pct
Layups	2	4	50.0
Dunks	0	0	0
2PT Field Goals	2	9	22.2
3PT Field Goals	1	2	50.0
Total Field Goals	3	11	27.3

Official Shot Chart
Lynn vs Florida Southern
PERIOD 2 Shots

January 05, 2019 at Jenkins Field House (Streamline Sale Arena) - Lakeland, Fla.

Florida Southern

Lynn



FSC : Period 2	Made	Att	Pct
Layups	5	7	71.4
Dunks	0	0	0
2PT Field Goals	8	13	61.5
3PT Field Goals	1	2	50.0
Total Field Goals	9	15	60.0

LU : Period 2	Made	Att	Pct
Layups	4	5	80.0
Dunks	0	0	0
2PT Field Goals	5	10	50.0
3PT Field Goals	1	3	33.3
Total Field Goals	6	13	46.2

Official Shot Chart
Lynn vs Florida Southern
PERIOD 3 Shots

January 05, 2019 at Jenkins Field House (Streamline Sale Arena) - Lakeland, Fla.

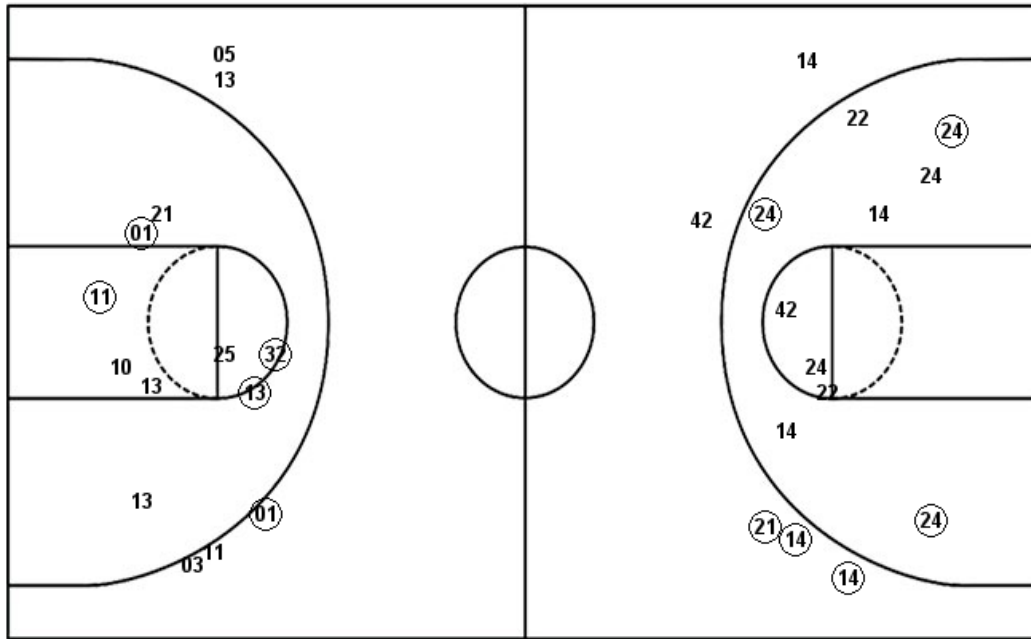
Florida Southern

Lynn

Layups

23 23 (22)

Dunks



Layups

25 (32) (01)

Dunks

FSC : Period 3	Made	Att	Pct
Layups	1	3	33.3
Dunks	0	0	0
2PT Field Goals	4	13	30.8
3PT Field Goals	3	5	60.0
Total Field Goals	7	18	38.9

LU : Period 3	Made	Att	Pct
Layups	2	3	66.7
Dunks	0	0	0
2PT Field Goals	6	12	50.0
3PT Field Goals	1	5	20.0
Total Field Goals	7	17	41.2

Official Shot Chart
Lynn vs Florida Southern
PERIOD 4 Shots

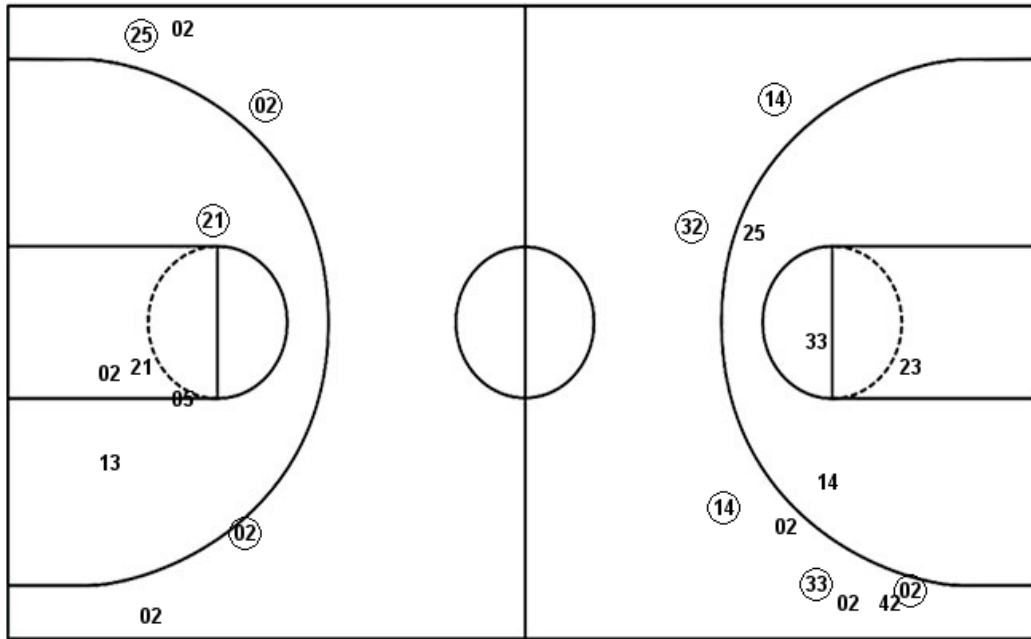
January 05, 2019 at Jenkins Field House (Streamline Sale Arena) - Lakeland, Fla.

Florida Southern

Lynn

Layups
 02 (02) (25) (02)

Dunks



Layups
 (25) 21 21 01 33

Dunks

FSC : Period 4	Made	Att	Pct
Layups	3	4	75.0
Dunks	0	0	0
2PT Field Goals	3	8	37.5
3PT Field Goals	5	8	62.5
Total Field Goals	8	16	50.0

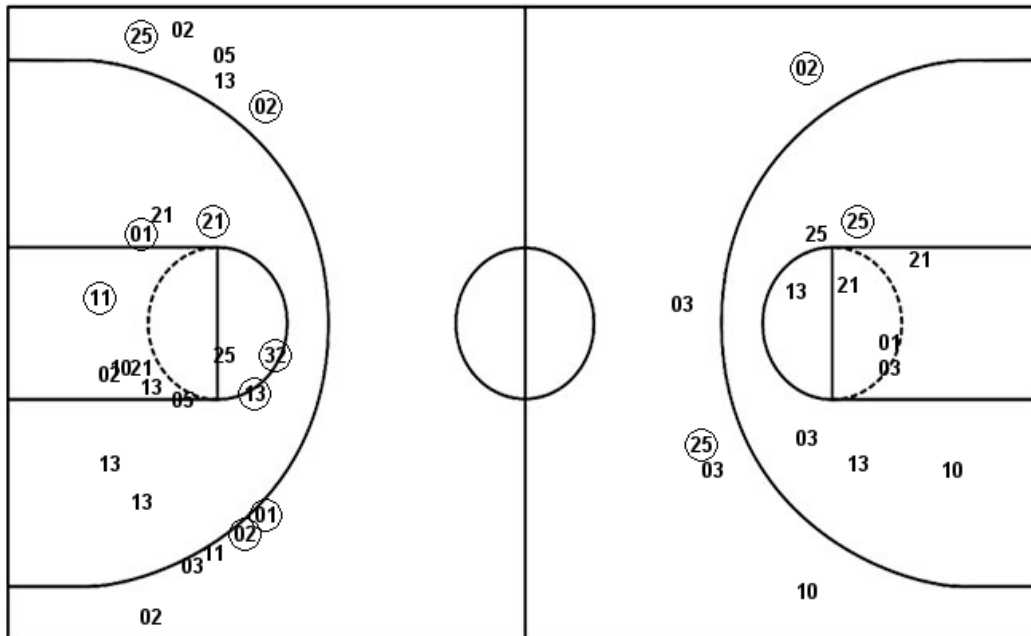
LU : Period 4	Made	Att	Pct
Layups	1	5	20.0
Dunks	0	0	0
2PT Field Goals	2	10	20.0
3PT Field Goals	3	5	60.0
Total Field Goals	5	15	33.3

Official Shot Chart
Lynn vs Florida Southern
Lynn Team Shots

January 05, 2019 at Jenkins Field House (Streamline Sale Arena) - Lakeland, Fla.

Layups

Dunks



Layups

Dunks

LU : Period 1	Made	Att	Pct
Layups	2	4	50.0
Dunks	0	0	0
2PT Field Goals	2	9	22.2
3PT Field Goals	1	2	50.0
Total Field Goals	3	11	27.3

LU : Period 3	Made	Att	Pct
Layups	2	3	66.7
Dunks	0	0	0
2PT Field Goals	6	12	50.0
3PT Field Goals	1	5	20.0
Total Field Goals	7	17	41.2

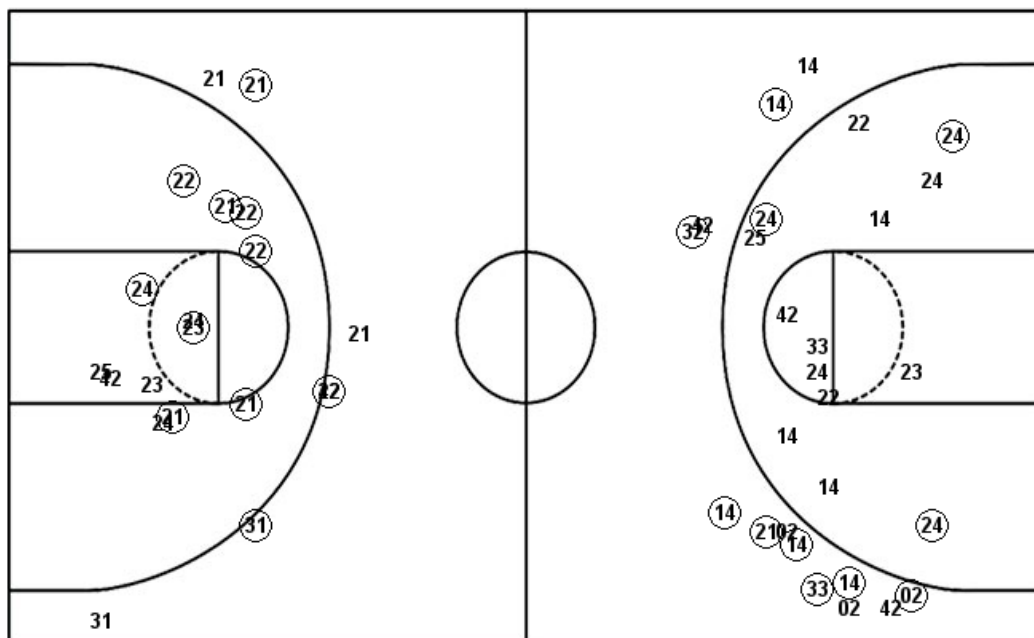
LU : Period 2	Made	Att	Pct
Layups	4	5	80.0
Dunks	0	0	0
2PT Field Goals	5	10	50.0
3PT Field Goals	1	3	33.3
Total Field Goals	6	13	46.2

LU : Period 4	Made	Att	Pct
Layups	1	5	20.0
Dunks	0	0	0
2PT Field Goals	2	10	20.0
3PT Field Goals	3	5	60.0
Total Field Goals	5	15	33.3

Official Shot Chart
Lynn vs Florida Southern
Florida Southern Team Shots
January 05, 2019 at Jenkins Field House (Streamline Sale Arena) - Lakeland, Fla.

Layups

Dunks



Layups

Dunks

(24) (24) (21) 24 (22)
 (23) 24 23 (42) (24)
 (25) (24) (23) 23 23
 (22) 02 (02) (25) (02)

FSC : Period 1	Made	Att	Pct
Layups	5	6	83.3
Dunks	0	0	0
2PT Field Goals	10	13	76.9
3PT Field Goals	2	5	40.0
Total Field Goals	12	18	66.7

FSC : Period 3	Made	Att	Pct
Layups	1	3	33.3
Dunks	0	0	0
2PT Field Goals	4	13	30.8
3PT Field Goals	3	5	60.0
Total Field Goals	7	18	38.9

FSC : Period 2	Made	Att	Pct
Layups	5	7	71.4
Dunks	0	0	0
2PT Field Goals	8	13	61.5
3PT Field Goals	1	2	50.0
Total Field Goals	9	15	60.0

FSC : Period 4	Made	Att	Pct
Layups	3	4	75.0
Dunks	0	0	0
2PT Field Goals	3	8	37.5
3PT Field Goals	5	8	62.5
Total Field Goals	8	16	50.0