

FINAL SCORE

Eastern N.M.

71



Texas Woman's

63



March 02, 2019 • Kitty Magee Arena - Denton, Texas

FINAL STATISTICS

Official Box Score
Eastern N.M. vs Texas Woman's
Game Totals -- Final Statistics
March 02, 2019 at Kitty Magee Arena - Denton, Texas



Eastern N.M. 71

No.	Player	S	Pts	FG	3FG	FT	OR	DR	TR	PF	A	TO	Blk	Stl	Min	+/-
12	COX, ZAMORYE		14	4-6	0-1	6-7	0	1	1	3	3	3	0	5	24	4
21	LEWIS, ALIVIA		10	4-10	0-0	2-6	3	7	10	3	1	2	1	0	28	14
22	CLAY, TREYANNA		17	7-10	0-0	3-10	3	2	5	3	0	4	0	1	36	8
23	HUNTER, CHELSEA		5	1-7	1-3	2-2	1	5	6	1	1	0	0	1	30	8
32	JONES, SHELBY		5	2-8	0-0	1-1	0	4	4	4	1	4	1	1	26	10
01	CLARK, SYDNEY		0	0-0	0-0	0-0	1	0	1	0	0	0	0	0	3	-2
11	OKEY, TILASHA		0	0-0	0-0	0-0	0	0	0	0	0	0	0	0	5	-5
15	MEHLBRECH, JENA		11	4-5	2-3	1-2	0	0	0	0	1	1	0	0	21	7
30	ROWE, LAURA		9	3-7	3-4	0-0	1	0	1	2	0	0	0	0	16	0
35	DECKER, KAMIRAH		0	0-3	0-0	0-0	0	0	0	4	0	1	0	1	11	-4
	TEAM						5	8	13	0		0				
	TOTALS		71	25-56	6-11	15-28	14	27	41	20	7	15	2	9	200	

Shooting By Period

Period	FG	FG%	3FG	3FG%	FT	FT%
1st Qtr	4-12	33%	0-2	00%	1-3	33%
2nd Qtr	9-15	60%	2-3	67%	2-3	67%
3rd Qtr	6-15	40%	4-5	80%	3-8	38%
4th Qtr	6-14	43%	0-1	00%	9-14	64%
1st Half	13-27	48%	2-5	40%	3-6	50%
2nd Half	12-29	41%	4-6	67%	12-22	55%
Game	25-56	44.6%	6-11	54.5%	15-28	53.6%

Last FG: 4th-02:15
Biggest Run: 11-0
Largest lead: By 13 at 3-02:24
Technical Fouls: None.

Texas Woman's 63

No.	Player	S	Pts	FG	3FG	FT	OR	DR	TR	PF	A	TO	Blk	Stl	Min	+/-
01	STASTNY, KJ		4	1-11	0-6	2-2	0	1	1	3	4	3	0	1	40	-11
20	WOODS, MA'K'LA		14	6-10	0-0	2-3	0	4	4	4	0	4	0	1	26	1
21	ARCHER, LONDON		9	3-5	0-0	3-4	3	3	6	5	1	4	0	0	19	10
25	MOODY, CARISSA		13	2-10	2-4	7-8	2	7	9	5	0	1	1	0	26	-10
33	TAYLOR, AJINE		2	1-5	0-1	0-0	2	1	3	1	1	0	0	2	29	-6
02	WILKERSON, MACY		15	4-7	3-4	4-4	2	2	4	3	1	0	0	2	29	-10
22	STEPHENSON, MAGGIE		0	0-2	0-0	0-0	0	0	0	2	0	1	0	0	2	-5
23	BELL, TRINITY		2	1-2	0-0	0-0	0	1	1	2	0	0	0	0	4	0
50	DAILY, KAM		4	2-6	0-0	0-0	3	1	4	1	2	3	1	0	24	-9
	TEAM						2	4	6	0		0				
	TOTALS		63	20-58	5-15	18-21	14	24	38	26	9	16	2	6	200	

Shooting By Period

Period	FG	FG%	3FG	3FG%	FT	FT%
1st Qtr	5-16	31%	1-5	20%	0-1	00%
2nd Qtr	5-17	29%	0-2	00%	2-2	100%
3rd Qtr	5-12	42%	2-3	67%	8-8	100%
4th Qtr	5-13	38%	2-5	40%	8-10	80%
1st Half	10-33	30%	1-7	14%	2-3	67%
2nd Half	10-25	40%	4-8	50%	16-18	89%
Game	20-58	34.5%	5-15	33.3%	18-21	85.7%

Last FG: 4th-00:02
Biggest Run: 6-0
Largest lead: By 3 at 2-03:53
Technical Fouls: None.

Game Notes:

Officials: , ,
Attendance: 275

Start Time: 2019-03-02 20:13:57
End Time: 2019-03-02 22:16:19
Game Duration: 122
Conference Game;

Score	1st	2nd	3rd	4th	TOT
ENM	9	22	19	21	71
TWU	11	12	20	20	63

ENM led for 30:23. TWU led for 9:24.
Game was tied for 0:14.
Times tied: 0 Lead Changes: 8

Points from	ENM	TWU
In the Paint	32	28
Off Turns	18	11
2nd Chance	14	13
Fast Break	2	5
Bench	20	21

Official Box Score
Eastern N.M. vs Texas Woman's
First Half Statistics Only
March 02, 2019 at Kitty Magee Arena - Denton, Texas



Eastern N.M. 31

No.	Player	S	Pts	FG	3FG	FT	OR	DR	TR	PF	A	TO	Blk	Stl	Min	+/-
11	OKEY, TILASHA		0	0-0	0-0	0-0	0	0	0	0	0	0	0	0	3	-5
12	COX, ZAMORYE		2	1-2	0-0	0-0	0	0	0	2	0	1	0	0	9	6
15	MEHLBRECH, JENA		8	3-4	1-2	1-2	0	0	0	0	0	1	0	0	14	0
21	LEWIS, ALIVIA		6	3-5	0-0	0-1	1	5	6	1	1	1	0	0	13	17
22	CLAY, TREYANNA		10	4-5	0-0	2-3	0	1	1	0	0	0	0	0	20	8
23	HUNTER, CHELSEA		3	1-2	1-2	0-0	0	4	4	0	1	0	0	0	12	13
30	ROWE, LAURA		0	0-2	0-1	0-0	0	0	0	1	0	0	0	0	6	-5
32	JONES, SHELBY		2	1-5	0-0	0-0	0	2	2	1	0	2	1	1	16	8
35	DECKER, KAMIRAH		0	0-2	0-0	0-0	0	0	0	2	0	1	0	1	4	0
01	CLARK, SYDNEY		0	0-0	0-0	0-0	1	0	1	0	0	0	0	0	3	-2
	TEAM		0	0-0	0-0	0-0	1	4	5	0	0	0	0	0	0	
TOTALS			31	13-27	2-5	3-6	3	16	19	7	2	6	1	2	100	

Shooting By Period

Period	FG	FG%	3FG	3FG%	FT	FT%
1st Qtr	4-12	33%	0-2	00%	1-3	33%
2nd Qtr	9-15	60%	2-3	67%	2-3	67%
1st Half	13-27	48%	2-5	40%	3-6	50%
Game	25-56	44.6%	6-11	54.5%	15-28	53.6%

Last FG Half: ENM 2nd-00:00

Texas Woman's 23

No.	Player	S	Pts	FG	3FG	FT	OR	DR	TR	PF	A	TO	Blk	Stl	Min	+/-
01	STASTNY, KJ		2	1-7	0-3	0-0	0	1	1	0	2	2	0	1	20	-8
02	WILKERSON, MACY		3	1-2	1-2	0-0	0	0	0	0	1	0	0	0	13	-7
20	WOODS, MA'K'LA		6	3-4	0-0	0-1	0	3	3	2	0	0	0	1	12	-1
21	ARCHER, LONDON		6	2-4	0-0	2-2	3	1	4	2	0	3	0	0	12	5
22	STEPHENSON, MAGGIE		0	0-2	0-0	0-0	0	0	0	2	0	1	0	0	2	-5
23	BELL, TRINITY		2	1-2	0-0	0-0	0	1	1	2	0	0	0	0	4	-3
25	MOODY, CARISSA		0	0-4	0-1	0-0	1	1	2	2	0	0	0	0	6	-7
33	TAYLOR, AJINE		2	1-4	0-1	0-0	2	0	2	0	0	0	0	0	18	-5
50	DAILY, KAM		2	1-4	0-0	0-0	1	1	2	0	2	1	0	0	12	-9
	TEAM		0	0-0	0-0	0-0	1	4	5	0	0	0	0	0	0	
TOTALS			23	10-33	1-7	2-3	8	12	20	10	5	7	0	2	100	

Shooting By Period

Period	FG	FG%	3FG	3FG%	FT	FT%
1st Qtr	5-16	31%	1-5	20%	0-1	00%
2nd Qtr	5-17	29%	0-2	00%	2-2	100%
1st Half	10-33	30%	1-7	14%	2-3	67%
Game	20-58	34.5%	5-15	33.3%	18-21	85.7%

Last FG Half: TWU 2nd-03:53

Game Notes:

Officials: , ,
 Attendance: 275

Start Time: 2019-03-02 20:13:57
 End Time: 2019-03-02 22:16:19
 Game Duration: 122
 Conference Game;

Score	1st	2nd	3rd	4th	TOT
ENM	9	22	19	21	71
TWU	11	12	20	20	63

Points from (This Period)	ENM	TWU
In the Paint	18	16
Off Turns	5	2
2nd Chance	2	4
Fast Break	0	0
Bench	8	7

Official Box Score
Eastern N.M. vs Texas Woman's
First Quarter Statistics Only
March 02, 2019 at Kitty Magee Arena - Denton, Texas



Eastern N.M. 9

No.	Player	S	Pts	FG	3FG	FT	OR	DR	TR	PF	A	TO	Blk	Stl	Min	+/-
12	COX, ZAMORYE		0	0-1	0-0	0-0	0	0	0	2	0	1	0	0	5	3
21	LEWIS, ALIVIA		2	1-2	0-0	0-1	0	2	2	0	1	0	0	0	6	2
22	CLAY, TREYANNA		5	2-3	0-0	1-2	0	0	0	0	0	0	0	0	10	-2
23	HUNTER, CHELSEA		0	0-1	0-1	0-0	0	2	2	0	0	0	0	0	7	0
32	JONES, SHELBY		2	1-3	0-0	0-0	0	2	2	0	0	1	0	0	8	0
01	CLARK, SYDNEY		0	0-0	0-0	0-0	1	0	1	0	0	0	0	0	3	-2
11	OKEY, TILASHA		0	0-0	0-0	0-0	0	0	0	0	0	0	0	0	0	0
15	MEHLBRECH, JENA		0	0-1	0-1	0-0	0	0	0	0	0	1	0	0	8	-7
30	ROWE, LAURA		0	0-0	0-0	0-0	0	0	0	1	0	0	0	0	1	-2
35	DECKER, KAMIRAH		0	0-1	0-0	0-0	0	0	0	1	0	0	0	0	2	-2
	TEAM						1	1	2	0		0				
TOTALS			9	4-12	0-2	1-3	2	7	9	4	1	3	0	0	50	

Shooting By Period

Period	FG	FG%	3FG	3FG%	FT	FT%
1st Qtr	4-12	33%	0-2	00%	1-3	33%
2nd Qtr	9-15	60%	2-3	67%	2-3	67%
1st Half	4-12	33%	0-2	00%	1-3	33%
1st Half	13-27	48%	2-5	40%	3-6	50%
Game	25-56	44.6%	6-11	54.5%	15-28	53.6%

Texas Woman's 11

No.	Player	S	Pts	FG	3FG	FT	OR	DR	TR	PF	A	TO	Blk	Stl	Min	+/-
01	STASTNY, KJ		2	1-6	0-3	0-0	0	1	1	0	1	2	0	0	10	2
20	WOODS, MA'K'LA		4	2-3	0-0	0-1	0	1	1	1	0	0	0	1	10	2
21	ARCHER, LONDON		2	1-3	0-0	0-0	2	0	2	1	0	2	0	0	8	1
25	MOODY, CARISSA		0	0-2	0-1	0-0	1	1	2	2	0	0	0	0	4	-1
33	TAYLOR, AJINE		0	0-0	0-0	0-0	1	0	1	0	0	0	0	0	10	2
02	WILKERSON, MACY		3	1-1	1-1	0-0	0	0	0	0	0	0	0	0	6	3
22	STEPHENSON, MAGGIE		0	0-0	0-0	0-0	0	0	0	0	0	0	0	0	0	0
23	BELL, TRINITY		0	0-0	0-0	0-0	0	0	0	0	0	0	0	0	0	0
50	DAILY, KAM		0	0-1	0-0	0-0	0	1	1	0	1	0	0	0	2	1
	TEAM						1	3	4	0		0				
TOTALS			11	5-16	1-5	0-1	5	7	12	4	2	4	0	1	50	

Shooting By Period

Period	FG	FG%	3FG	3FG%	FT	FT%
1st Qtr	5-16	31%	1-5	20%	0-1	00%
2nd Qtr	5-17	29%	0-2	00%	2-2	100%
1st Half	5-16	31%	1-5	20%	0-1	00%
1st Half	10-33	30%	1-7	14%	2-3	67%
Game	20-58	34.5%	5-15	33.3%	18-21	85.7%

Game Notes:

Officials: , ,
Attendance: 275

Start Time: 2019-03-02 20:13:57
End Time: 2019-03-02 22:16:19
Game Duration: 122
Conference Game;

Score	1st	2nd	3rd	4th	TOT
ENM	9	22	19	21	71
TWU	11	12	20	20	63

Points from (This Period)	ENM	TWU
In the Paint	6	8
Off Turns	1	2
2nd Chance	0	2
Fast Break	0	0
Bench	0	3

Official Play-By-Play
Eastern N.M. vs Texas Woman's
First Quarter
March 02, 2019 at Kitty Magee Arena - Denton, Texas



Period 1

Starters:

Eastern N.M.: 12 COX,ZAMORYE ; 21 LEWIS,ALIVIA; 22 CLAY,TREYANNA; 23 HUNTER,CHELSEA; 32 JONES,SHELBY;
Texas Woman's: 1 STASTNY,KJ; 20 WOODS,MA'K'LA; 21 ARCHER,LONDON; 25 MOODY,CARISSA; 33 TAYLOR,AJINE;

Time	VISITORS: Eastern N.M.	Score	Margin	HOME: Texas Woman's
09:46	GOOD! JUMPER by CLAY, TREYANNA [PNT]	0-2	V 2	
09:26				MISSED JUMPER by WOODS, MA'K'LA
09:21	REBOUND (DEF) by JONES, SHELBY			
08:59	GOOD! JUMPER by JONES, SHELBY	0-4	V 4	
08:59	ASSIST by LEWIS, ALIVIA			
08:42				TURNOVER (BADPASS) by STASTNY, KJ
08:23				FOUL (PERSONAL) by MOODY, CARISSA
08:23	MISSED FT by CLAY, TREYANNA			
08:23	REBOUND (OFF) by TEAM			
08:23	GOOD! FT by CLAY, TREYANNA	0-5	V 5	
08:17				TURNOVER (TRAVEL) by STASTNY, KJ
08:09	MISSED JUMPER by JONES, SHELBY			
08:06				REBOUND (DEF) by MOODY, CARISSA
07:58	FOUL (PERSONAL) by COX, ZAMORYE			
07:49				MISSED JUMPER by ARCHER, LONDON
07:45	REBOUND (DEF) by LEWIS, ALIVIA			
07:43	TURNOVER (BADPASS) by COX, ZAMORYE			
07:34	SUB OUT: COX, ZAMORYE			
07:34	SUB IN: MEHLBRECH, JENA			
07:30		2-5	V 3	GOOD! LAYUP by ARCHER, LONDON
07:12	MISSED JUMPER by LEWIS, ALIVIA			
07:11	REBOUND (OFF) by TEAM			
07:11	SUB OUT: JONES, SHELBY			
07:11	SUB IN: DECKER, KAMIRAH			
07:11	SUB OUT: LEWIS, ALIVIA			
07:11	SUB IN: ROWE, LAURA			
07:06	MISSED 3PTR by HUNTER, CHELSEA			
07:00				REBOUND (DEF) by TEAM
06:50				MISSED 3PTR by STASTNY, KJ
06:46				REBOUND (OFF) by TAYLOR, AJINE
06:40				MISSED 3PTR by MOODY, CARISSA
06:35				REBOUND (OFF) by MOODY, CARISSA
06:30		4-5	V 1	GOOD! JUMPER by WOODS, MA'K'LA
06:30	FOUL (PERSONAL) by ROWE, LAURA			
06:30				MISSED FT by WOODS, MA'K'LA
06:30				REBOUND (OFF) by ARCHER, LONDON
06:12	SUB OUT: DECKER, KAMIRAH			
06:12	SUB IN: JONES, SHELBY			
06:12	SUB OUT: ROWE, LAURA			
06:12	SUB IN: CLARK, SYDNEY			
06:07				MISSED JUMPER by MOODY, CARISSA
05:53	REBOUND (DEF) by TEAM			
05:53				FOUL (PERSONAL) by MOODY, CARISSA
05:52				SUB OUT: MOODY, CARISSA
05:52				SUB IN: WILKERSON, MACY
05:38	SUB OUT: HUNTER, CHELSEA			
05:38	SUB IN: COX, ZAMORYE			
05:34	GOOD! JUMPER by CLAY, TREYANNA	4-7	V 3	
05:32				TURNOVER (TRAVEL) by ARCHER, LONDON
05:30	MISSED JUMPER by JONES, SHELBY			
05:26				REBOUND (DEF) by WOODS, MA'K'LA
05:06		6-7	V 1	GOOD! JUMPER by WOODS, MA'K'LA
05:06				ASSIST by STASTNY, KJ
04:50	MISSED JUMPER by CLAY, TREYANNA			
04:46				REBOUND (DEF) by STASTNY, KJ
04:22		8-7	H 1	GOOD! JUMPER by STASTNY, KJ
04:06	MISSED JUMPER by COX, ZAMORYE			
04:05				REBOUND (DEF) by TEAM
04:05				
03:51				MISSED JUMPER by STASTNY, KJ
03:47				REBOUND (OFF) by ARCHER, LONDON
03:37				MISSED JUMPER by ARCHER, LONDON
03:36				REBOUND (OFF) by TEAM
03:32	SUB OUT: JONES, SHELBY			
03:32	SUB IN: DECKER, KAMIRAH			
03:32	SUB OUT: DECKER, KAMIRAH			
03:32	SUB IN: JONES, SHELBY			
03:32	SUB OUT: COX, ZAMORYE			
03:32	SUB IN: LEWIS, ALIVIA			
03:32	FOUL (PERSONAL) by COX, ZAMORYE			

Time	VISITORS: Eastern N.M.	Score	Margin	HOME: Texas Woman's
03:29				TURNOVER (BADPASS) by ARCHER, LONDON
03:12	MISSED 3PTR by MEHLBRECH, JENA			
03:07	REBOUND (OFF) by CLARK, SYDNEY			
02:52	SUB OUT: JONES, SHELBY			
02:52	SUB IN: DECKER, KAMIRAH			
02:51				FOUL (PERSONAL) by ARCHER, LONDON
02:45	SUB OUT: CLARK, SYDNEY			
02:45	SUB IN: HUNTER, CHELSEA			
02:45	MISSED FT by LEWIS, ALIVIA			
02:45				REBOUND (DEF) by TEAM
02:44				MISSED JUMPER by STASTNY, KJ
02:44	REBOUND (DEF) by LEWIS, ALIVIA			
02:23				SUB OUT: ARCHER, LONDON
02:23				SUB IN: DAILY, KAM
02:08				FOUL (PERSONAL) by WOODS, MA'K'LA
02:06	TURNOVER (BADPASS) by MEHLBRECH, JENA			
02:06				STEAL by WOODS, MA'K'LA
01:52				MISSED JUMPER by DAILY, KAM
01:48	REBOUND (DEF) by HUNTER, CHELSEA			
01:33	MISSED JUMPER by DECKER, KAMIRAH			
01:32				REBOUND (DEF) by DAILY, KAM
01:32	FOUL (PERSONAL) by DECKER, KAMIRAH			
01:31	SUB OUT: DECKER, KAMIRAH			
01:31	SUB IN: JONES, SHELBY			
01:10				MISSED 3PTR by STASTNY, KJ
01:06	REBOUND (DEF) by HUNTER, CHELSEA			
00:48	GOOD! JUMPER by LEWIS, ALIVIA [PNT]	8-9	V 1	
00:33		11-9	H 2	GOOD! 3PTR by WILKERSON, MACY
00:33				ASSIST by DAILY, KAM
00:18	TURNOVER (BADPASS) by JONES, SHELBY			
00:18				SUB OUT: TAYLOR, AJINE
00:18				SUB IN: MOODY, CARISSA
00:04				MISSED 3PTR by STASTNY, KJ
00:04	REBOUND (DEF) by JONES, SHELBY			

Eastern N.M. 9, Texas Woman's 11

Points from (This Period)	ENM	TWU
In the Paint	6	8
Off Turns	1	2
2nd Chance	0	2
Fast Break	0	0
Bench	0	3

Official Box Score
Eastern N.M. vs Texas Woman's
Second Quarter Statistics Only
March 02, 2019 at Kitty Magee Arena - Denton, Texas



Eastern N.M. 22

No.	Player	S	Pts	FG	3FG	FT	OR	DR	TR	PF	A	TO	Blk	Stl	Min	+/-
12	COX, ZAMORYE		2	1-1	0-0	0-0	0	0	0	0	0	0	0	0	4	3
21	LEWIS, ALIVIA		4	2-3	0-0	0-0	1	3	4	1	0	1	0	0	7	15
22	CLAY, TREYANNA		5	2-2	0-0	1-1	0	1	1	0	0	0	0	0	10	10
23	HUNTER, CHELSEA		3	1-1	1-1	0-0	0	2	2	0	1	0	0	0	5	13
32	JONES, SHELBY		0	0-2	0-0	0-0	0	0	0	1	0	1	1	1	8	8
01	CLARK, SYDNEY		0	0-0	0-0	0-0	0	0	0	0	0	0	0	0	0	0
11	OKEY, TILASHA		0	0-0	0-0	0-0	0	0	0	0	0	0	0	0	3	-5
15	MEHLBRECH, JENA		8	3-3	1-1	1-2	0	0	0	0	0	0	0	0	6	7
30	ROWE, LAURA		0	0-2	0-1	0-0	0	0	0	0	0	0	0	0	5	-3
35	DECKER, KAMIRAH		0	0-1	0-0	0-0	0	0	0	1	0	1	0	1	2	2
TEAM							0	3	3	0		0				
TOTALS			22	9-15	2-3	2-3	1	9	10	3	1	3	1	2	50	

Shooting By Period

Period	FG	FG%	3FG	3FG%	FT	FT%
3rd Qtr	6-15	40%	4-5	80%	3-8	38%
4th Qtr	6-14	43%	0-1	00%	9-14	64%
2nd Half	9-15	60%	2-3	67%	2-3	67%
2nd Half	12-29	41%	4-6	67%	12-22	55%
Game	25-56	44.6%	6-11	54.5%	15-28	53.6%

Texas Woman's 12

No.	Player	S	Pts	FG	3FG	FT	OR	DR	TR	PF	A	TO	Blk	Stl	Min	+/-
01	STASTNY, KJ		0	0-1	0-0	0-0	0	0	0	0	1	0	0	1	10	-10
20	WOODS, MA'K'LA		2	1-1	0-0	0-0	0	2	2	1	0	0	0	0	2	-3
21	ARCHER, LONDON		4	1-1	0-0	2-2	1	1	2	1	0	1	0	0	4	4
25	MOODY, CARISSA		0	0-2	0-0	0-0	0	0	0	0	0	0	0	0	2	-6
33	TAYLOR, AJINE		2	1-4	0-1	0-0	1	0	1	0	0	0	0	0	8	-7
02	WILKERSON, MACY		0	0-1	0-1	0-0	0	0	0	0	1	0	0	0	7	-10
22	STEPHENSON, MAGGIE		0	0-2	0-0	0-0	0	0	0	2	0	1	0	0	2	-5
23	BELL, TRINITY		2	1-2	0-0	0-0	0	1	1	2	0	0	0	0	4	-3
50	DAILY, KAM		2	1-3	0-0	0-0	1	0	1	0	1	1	0	0	10	-10
TEAM							0	1	1	0		0				
TOTALS			12	5-17	0-2	2-2	3	5	8	6	3	3	0	1	50	

Shooting By Period

Period	FG	FG%	3FG	3FG%	FT	FT%
3rd Qtr	5-12	42%	2-3	67%	8-8	100%
4th Qtr	5-13	38%	2-5	40%	8-10	80%
2nd Half	5-17	29%	0-2	00%	2-2	100%
2nd Half	10-25	40%	4-8	50%	16-18	89%
Game	20-58	34.5%	5-15	33.3%	18-21	85.7%

Game Notes:

Officials: , ,
Attendance: 275

Start Time: 2019-03-02 20:13:57
End Time: 2019-03-02 22:16:19
Game Duration: 122
Conference Game;

Score	1st	2nd	3rd	4th	TOT
ENM	9	22	19	21	71
TWU	11	12	20	20	63

Points from (This Period)	ENM	TWU
In the Paint	12	8
Off Turns	4	0
2nd Chance	2	2
Fast Break	0	0
Bench	8	4

Official Play-By-Play
Eastern N.M. vs Texas Woman's
Second Quarter
March 02, 2019 at Kitty Magee Arena - Denton, Texas



Period 2

Starters:

Eastern N.M.: 12 COX,ZAMORYE ; 21 LEWIS,ALIVIA; 22 CLAY,TREYANNA; 23 HUNTER,CHELSEA; 32 JONES,SHELBY;
Texas Woman's: 1 STASTNY,KJ; 20 WOODS,MA'K'LA; 21 ARCHER,LONDON; 25 MOODY,CARISSA; 33 TAYLOR,AJINE;

Time	VISITORS: Eastern N.M.	Score	Margin	HOME: Texas Woman's
09:41				SUB OUT: MOODY, CARISSA
09:41				SUB IN: TAYLOR, AJINE
09:34	GOOD! 3PTR by MEHLBRECH, JENA	11-12	V 1	
09:34	ASSIST by HUNTER, CHELSEA			
09:19		13-12	H 1	GOOD! JUMPER by WOODS, MA'K'LA [PNT]
09:19				ASSIST by WILKERSON, MACY
09:05	MISSED JUMPER by LEWIS, ALIVIA			
09:01				REBOUND (DEF) by WOODS, MA'K'LA
08:53				MISSED JUMPER by STASTNY, KJ
08:52	REBOUND (DEF) by TEAM			
08:37	GOOD! JUMPER by LEWIS, ALIVIA	13-14	V 1	
08:19				MISSED 3PTR by TAYLOR, AJINE
08:14	REBOUND (DEF) by LEWIS, ALIVIA			
08:06	MISSED JUMPER by JONES, SHELBY			
08:02				REBOUND (DEF) by WOODS, MA'K'LA
07:53				MISSED JUMPER by DAILY, KAM
07:50	REBOUND (DEF) by TEAM			
07:50				FOUL (PERSONAL) by WOODS, MA'K'LA
07:50				SUB OUT: WOODS, MA'K'LA
07:50				SUB IN: ARCHER, LONDON
07:28	GOOD! JUMPER by MEHLBRECH, JENA	13-16	V 3	
07:12	FOUL (PERSONAL) by LEWIS, ALIVIA			
07:12		14-16	V 2	GOOD! FT by ARCHER, LONDON
07:12	SUB OUT: LEWIS, ALIVIA			
07:12	SUB IN: ROWE, LAURA			
07:12	SUB OUT: HUNTER, CHELSEA			
07:12	SUB IN: OKEY, TILASHA			
07:12		15-16	V 1	GOOD! FT by ARCHER, LONDON
06:59	FOUL (OFF) by JONES, SHELBY			
06:59	TURNOVER (OFFENSIVE) by JONES, SHELBY			
06:44				MISSED JUMPER by TAYLOR, AJINE
06:40				REBOUND (OFF) by TAYLOR, AJINE
06:38				MISSED JUMPER by TAYLOR, AJINE
06:31				REBOUND (OFF) by DAILY, KAM
06:30				MISSED JUMPER by DAILY, KAM
06:23	REBOUND (DEF) by HUNTER, CHELSEA			
06:21	MISSED JUMPER by ROWE, LAURA			
06:03				REBOUND (DEF) by ARCHER, LONDON
05:56		17-16	H 1	GOOD! JUMPER by DAILY, KAM
05:38	MISSED JUMPER by JONES, SHELBY			
05:35				REBOUND (DEF) by TEAM
05:28				SUB OUT: WILKERSON, MACY
05:28				SUB IN: BELL, TRINITY
05:28	SUB OUT: MEHLBRECH, JENA			
05:28	SUB IN: COX, ZAMORYE			
05:23		19-16	H 3	GOOD! JUMPER by ARCHER, LONDON [PNT]
05:23				ASSIST by STASTNY, KJ
05:03	GOOD! JUMPER by CLAY, TREYANNA [PNT]	19-18	H 1	
04:42				MISSED JUMPER by BELL, TRINITY
04:42	BLOCK by JONES, SHELBY			
04:30				REBOUND (OFF) by ARCHER, LONDON
04:25		21-18	H 3	GOOD! JUMPER by BELL, TRINITY
04:17				FOUL (OFF) by ARCHER, LONDON
04:17				TURNOVER (OFFENSIVE) by ARCHER, LONDON
04:17				
04:16				SUB OUT: ARCHER, LONDON
04:16				SUB IN: STEPHENSON, MAGGIE
04:16	SUB OUT: OKEY, TILASHA			
04:16	SUB IN: DECKER, KAMIRAH			
04:16	SUB OUT: JONES, SHELBY			
04:16	SUB IN: LEWIS, ALIVIA			
04:09	GOOD! JUMPER by COX, ZAMORYE	21-20	H 1	
03:53		23-20	H 3	GOOD! JUMPER by TAYLOR, AJINE [PNT]
03:53				ASSIST by DAILY, KAM
03:42	MISSED 3PTR by ROWE, LAURA			
03:33	REBOUND (OFF) by LEWIS, ALIVIA			
03:31	GOOD! JUMPER by LEWIS, ALIVIA	23-22	H 1	
03:19				TURNOVER (BADPASS) by DAILY, KAM
03:19	STEAL by DECKER, KAMIRAH			
03:10	MISSED JUMPER by DECKER, KAMIRAH			

Time	VISITORS: Eastern N.M.	Score	Margin	HOME: Texas Woman's
03:06				REBOUND (DEF) by BELL, TRINITY
02:48				MISSED JUMPER by STEPHENSON, MAGGIE
02:44	REBOUND (DEF) by LEWIS, ALIVIA			
02:34				FOUL (PERSONAL) by BELL, TRINITY
02:34				SUB OUT: TAYLOR, AJINE
02:34				SUB IN: WILKERSON, MACY
02:31	TURNOVER (BADPASS) by LEWIS, ALIVIA			
02:31				STEAL by STASTNY, KJ
02:23				MISSED JUMPER by STEPHENSON, MAGGIE
02:21	REBOUND (DEF) by TEAM			
02:21				FOUL (PERSONAL) by STEPHENSON, MAGGIE
02:08	FOUL (OFF) by DECKER, KAMIRAH			
02:08	TURNOVER (OFFENSIVE) by DECKER, KAMIRAH			
02:08	SUB OUT: DECKER, KAMIRAH			
02:08	SUB IN: JONES, SHELBY			
02:08	SUB OUT: ROWE, LAURA			
02:08	SUB IN: HUNTER, CHELSEA			
01:58				TURNOVER (BADPASS) by STEPHENSON, MAGGIE
01:58	STEAL by JONES, SHELBY			
01:47	GOOD! JUMPER by CLAY, TREYANNA [PNT]	23-24	V 1	
01:47				FOUL (PERSONAL) by STEPHENSON, MAGGIE
01:47	GOOD! FT by CLAY, TREYANNA	23-25	V 2	
01:47				SUB OUT: STEPHENSON, MAGGIE
01:47				SUB IN: MOODY, CARISSA
01:47	SUB OUT: COX, ZAMORYE			
01:47	SUB IN: MEHLBRECH, JENA			
01:35				MISSED 3PTR by WILKERSON, MACY
01:29	REBOUND (DEF) by CLAY, TREYANNA			
01:14				FOUL (PERSONAL) by BELL, TRINITY
01:14	MISSED FT by MEHLBRECH, JENA			
01:14	REBOUND (OFF) by TEAM			
01:14				SUB OUT: BELL, TRINITY
01:14				SUB IN: TAYLOR, AJINE
01:14	GOOD! FT by MEHLBRECH, JENA	23-26	V 3	
00:53				MISSED JUMPER by MOODY, CARISSA
00:49	REBOUND (DEF) by LEWIS, ALIVIA			
00:34	GOOD! 3PTR by HUNTER, CHELSEA	23-29	V 6	
00:13				MISSED JUMPER by MOODY, CARISSA
00:09	REBOUND (DEF) by HUNTER, CHELSEA			
00:00	GOOD! JUMPER by MEHLBRECH, JENA [PNT]	23-31	V 8	

Eastern N.M. 31, Texas Woman's 23

Points from (This Period)	ENM	TWU
In the Paint	12	8
Off Turns	4	0
2nd Chance	2	2
Fast Break	0	0
Bench	8	4

Official Box Score
Eastern N.M. vs Texas Woman's
Second Half Statistics Only
March 02, 2019 at Kitty Magee Arena - Denton, Texas



Eastern N.M. 40

No.	Player	S	Pts	FG	3FG	FT	OR	DR	TR	PF	A	TO	Blk	Stl	Min	+/-
11	OKEY, TILASHA		0	0-0	0-0	0-0	0	0	0	0	0	0	0	0	2	0
12	COX, ZAMORYE		12	3-4	0-1	6-7	0	1	1	1	3	2	0	5	16	-2
15	MEHLBRECH, JENA		3	1-1	1-1	0-0	0	0	0	0	1	0	0	0	7	7
21	LEWIS, ALIVIA		4	1-5	0-0	2-5	2	2	4	2	0	1	1	0	14	-3
22	CLAY, TREYANNA		7	3-5	0-0	1-7	3	1	4	3	0	4	0	1	16	0
23	HUNTER, CHELSEA		2	0-5	0-1	2-2	1	1	2	1	0	0	0	1	18	-5
30	ROWE, LAURA		9	3-5	3-3	0-0	1	0	1	1	0	0	0	0	10	5
32	JONES, SHELBY		3	1-3	0-0	1-1	0	2	2	3	1	2	0	0	10	2
35	DECKER, KAMIRAH		0	0-1	0-0	0-0	0	0	0	2	0	0	0	0	7	-4
01	CLARK, SYDNEY		0	0-0	0-0	0-0	0	0	0	0	0	0	0	0	0	0
	TEAM		0	0-0	0-0	0-0	4	4	8	0	0	0	0	0	0	0
TOTALS			40	12-29	4-6	12-22	11	11	22	13	5	9	1	7	100	

Shooting By Period

Period	FG	FG%	3FG	3FG%	FT	FT%
3rd Qtr	6-15	40%	4-5	80%	3-8	38%
4th Qtr	6-14	43%	0-1	00%	9-14	64%
2nd Half	12-29	41%	4-6	67%	12-22	55%
Game	25-56	44.6%	6-11	54.5%	15-28	53.6%

Last FG Half: ENM 4th-02:15

Texas Woman's 40

No.	Player	S	Pts	FG	3FG	FT	OR	DR	TR	PF	A	TO	Blk	Stl	Min	+/-
01	STASTNY, KJ		2	0-4	0-3	2-2	0	0	0	3	2	1	0	0	20	-3
02	WILKERSON, MACY		12	3-5	2-2	4-4	2	2	4	3	0	0	0	2	16	-3
20	WOODS, MA'K'LA		8	3-6	0-0	2-2	0	1	1	2	0	4	0	0	14	2
21	ARCHER, LONDON		3	1-1	0-0	1-2	0	2	2	3	1	1	0	0	8	5
22	STEPHENSON, MAGGIE		0	0-0	0-0	0-0	0	0	0	0	0	0	0	0	0	0
23	BELL, TRINITY		0	0-0	0-0	0-0	0	0	0	0	0	0	0	0	0	3
25	MOODY, CARISSA		13	2-6	2-3	7-8	1	6	7	3	0	1	1	0	19	-3
33	TAYLOR, AJINE		0	0-1	0-0	0-0	0	1	1	1	1	0	0	2	11	-1
50	DAILY, KAM		2	1-2	0-0	0-0	2	0	2	1	0	2	1	0	12	0
	TEAM		0	0-0	0-0	0-0	1	0	1	0	0	0	0	0	0	0
TOTALS			40	10-25	4-8	16-18	6	12	18	16	4	9	2	4	100	

Shooting By Period

Period	FG	FG%	3FG	3FG%	FT	FT%
3rd Qtr	5-12	42%	2-3	67%	8-8	100%
4th Qtr	5-13	38%	2-5	40%	8-10	80%
2nd Half	10-25	40%	4-8	50%	16-18	89%
Game	20-58	34.5%	5-15	33.3%	18-21	85.7%

Last FG Half: TWU 4th-00:02

Game Notes:

Officials: , ,
 Attendance: 275

Start Time: 2019-03-02 20:13:57
 End Time: 2019-03-02 22:16:19
 Game Duration: 122
 Conference Game;

Score	1st	2nd	3rd	4th	TOT
ENM	9	22	19	21	71
TWU	11	12	20	20	63

Points from (This Period)	ENM	TWU
In the Paint	14	12
Off Turns	13	9
2nd Chance	12	9
Fast Break	2	5
Bench	12	14

Official Box Score
Eastern N.M. vs Texas Woman's
Third Quarter Statistics Only
March 02, 2019 at Kitty Magee Arena - Denton, Texas



Eastern N.M. 40

No.	Player	S	Pts	FG	3FG	FT	OR	DR	TR	PF	A	TO	Blk	Stl	Min	+/-
12	COX, ZAMORYE		0	0-0	0-0	0-0	0	0	0	0	2	2	0	3	6	-3
21	LEWIS, ALIVIA		2	0-1	0-0	2-4	0	1	1	1	0	0	1	0	6	-1
22	CLAY, TREYANNA		5	2-4	0-0	1-4	2	1	3	2	0	2	0	0	8	0
23	HUNTER, CHELSEA		0	0-2	0-1	0-0	0	0	0	1	0	0	0	0	8	-6
32	JONES, SHELBY		0	0-2	0-0	0-0	0	1	1	1	1	1	0	0	5	-2
01	CLARK, SYDNEY		0	0-0	0-0	0-0	0	0	0	0	0	0	0	0	0	0
11	OKEY, TILASHA		0	0-0	0-0	0-0	0	0	0	0	0	0	0	0	0	0
15	MEHLBRECH, JENA		3	1-1	1-1	0-0	0	0	0	0	1	0	0	0	7	7
30	ROWE, LAURA		9	3-5	3-3	0-0	1	0	1	0	0	0	0	0	8	3
35	DECKER, KAMIRAH		0	0-0	0-0	0-0	0	0	0	1	0	0	0	0	3	-3
TEAM							3	2	5	0		0				
TOTALS			19	6-15	4-5	3-8	6	5	11	6	4	5	1	3	50	

Shooting By Period

Period	FG	FG%	3FG	3FG%	FT	FT%
2nd Half	0-0	0%	0-0	0%	0-0	0%
Game	25-56	44.6%	6-11	54.5%	15-28	53.6%

Texas Woman's 40

No.	Player	S	Pts	FG	3FG	FT	OR	DR	TR	PF	A	TO	Blk	Stl	Min	+/-
01	STASTNY, KJ		2	0-2	0-1	2-2	0	0	0	1	2	0	0	0	10	1
20	WOODS, MA'K'LA		8	3-4	0-0	2-2	0	0	0	1	0	3	0	0	9	5
21	ARCHER, LONDON		0	0-0	0-0	0-0	0	1	1	2	1	0	0	0	2	4
25	MOODY, CARISSA		7	1-2	1-1	4-4	1	3	4	1	0	1	1	0	10	1
33	TAYLOR, AJINE		0	0-1	0-0	0-0	0	0	0	1	1	0	0	2	8	2
02	WILKERSON, MACY		3	1-2	1-1	0-0	1	1	2	0	0	0	0	0	6	-2
22	STEPHENSON, MAGGIE		0	0-0	0-0	0-0	0	0	0	0	0	0	0	0	0	0
23	BELL, TRINITY		0	0-0	0-0	0-0	0	0	0	0	0	0	0	0	0	0
50	DAILY, KAM		0	0-1	0-0	0-0	0	0	0	0	0	1	1	0	6	-6
TEAM							0	0	0	0		0				
TOTALS			20	5-12	2-3	8-8	2	5	7	6	4	5	2	2	50	

Shooting By Period

Period	FG	FG%	3FG	3FG%	FT	FT%
2nd Half	0-0	0%	0-0	0%	0-0	0%
Game	20-58	34.5%	5-15	33.3%	18-21	85.7%

Game Notes:

Officials: , ,
Attendance: 275

Start Time: 2019-03-02 20:13:57
End Time: 2019-03-02 22:16:19
Game Duration: 122
Conference Game;

Score	1st	2nd	3rd	4th	TOT
ENM	9	22	19	21	71
TWU	11	12	20	20	63

Points from (This Period)	ENM	TWU
In the Paint	4	6
Off Turns	9	6
2nd Chance	8	4
Fast Break	0	5
Bench	12	3

Official Play-By-Play
Eastern N.M. vs Texas Woman's
Third Quarter
March 02, 2019 at Kitty Magee Arena - Denton, Texas



Period 3

Starters:

Eastern N.M.: 12 COX,ZAMORYE ; 21 LEWIS,ALIVIA; 22 CLAY,TREYANNA; 23 HUNTER,CHELSEA; 32 JONES,SHELBY;

Texas Woman's: 1 STASTNY,KJ; 20 WOODS,MA'K'LA; 21 ARCHER,LONDON; 25 MOODY,CARISSA; 33 TAYLOR,AJINE;

Time	VISITORS: Eastern N.M.	Score	Margin	HOME: Texas Woman's
09:42		25-31	V 6	GOOD! JUMPER by WOODS, MA'K'LA [PNT]
09:42				ASSIST by ARCHER, LONDON
09:26				FOUL (PERSONAL) by ARCHER, LONDON
09:26	MISSED FT by LEWIS, ALIVIA			
09:26	REBOUND (OFF) by TEAM			
09:25	MISSED FT by LEWIS, ALIVIA			
09:23				REBOUND (DEF) by ARCHER, LONDON
09:11				MISSED JUMPER by STASTNY, KJ
09:10	REBOUND (DEF) by TEAM			
09:10				FOUL (PERSONAL) by WOODS, MA'K'LA
08:50	TURNOVER (BADPASS) by COX, ZAMORYE			
08:50				STEAL by TAYLOR, AJINE
08:41	FOUL (PERSONAL) by JONES, SHELBY			
08:41		26-31	V 5	GOOD! FT by WOODS, MA'K'LA
08:41		27-31	V 4	GOOD! FT by WOODS, MA'K'LA
08:25	MISSED JUMPER by CLAY, TREYANNA			
08:24	REBOUND (OFF) by TEAM			
08:24				FOUL (PERSONAL) by ARCHER, LONDON
08:22				SUB OUT: ARCHER, LONDON
08:22				SUB IN: DAILY, KAM
08:22	FOUL (OFF) by CLAY, TREYANNA			
08:22	TURNOVER (OFFENSIVE) by CLAY, TREYANNA			
08:08				TIMEOUT 30SEC
08:08	SUB OUT: COX, ZAMORYE			
08:08	SUB IN: MEHLBRECH, JENA			
07:54	SUB OUT: CLAY, TREYANNA			
07:54	SUB IN: ROWE, LAURA			
07:53				MISSED JUMPER by TAYLOR, AJINE
07:44	REBOUND (DEF) by CLAY, TREYANNA			
07:34	SUB OUT: LEWIS, ALIVIA			
07:34	SUB IN: CLAY, TREYANNA			
07:32	TURNOVER (BADPASS) by CLAY, TREYANNA			
07:32				STEAL by TAYLOR, AJINE
07:24	FOUL (PERSONAL) by CLAY, TREYANNA			
07:14		29-31	V 2	GOOD! JUMPER by WOODS, MA'K'LA [PNT]
07:14				ASSIST by STASTNY, KJ
06:56	MISSED JUMPER by JONES, SHELBY			
06:54	REBOUND (OFF) by CLAY, TREYANNA			
06:54				FOUL (PERSONAL) by TAYLOR, AJINE
06:54	MISSED FT by CLAY, TREYANNA			
06:54	REBOUND (OFF) by TEAM			
06:54	MISSED FT by CLAY, TREYANNA			
06:54				REBOUND (DEF) by MOODY, CARISSA
06:37				MISSED JUMPER by WOODS, MA'K'LA
06:34	REBOUND (DEF) by JONES, SHELBY			
06:21	MISSED JUMPER by ROWE, LAURA			
06:21				BLOCK by DAILY, KAM
06:14	REBOUND (OFF) by ROWE, LAURA			
06:10	GOOD! 3PTR by ROWE, LAURA	29-34	V 5	
06:10	ASSIST by JONES, SHELBY			
05:56				TURNOVER (OTHER) by WOODS, MA'K'LA
05:56				SUB OUT: TAYLOR, AJINE
05:56				SUB IN: WILKERSON, MACY
05:41	MISSED JUMPER by JONES, SHELBY			
05:39	REBOUND (OFF) by TEAM			
05:36	GOOD! 3PTR by ROWE, LAURA	29-37	V 8	
05:36	ASSIST by MEHLBRECH, JENA			
05:19		31-37	V 6	GOOD! JUMPER by WOODS, MA'K'LA
05:03	TURNOVER (BADPASS) by JONES, SHELBY			
05:03	SUB OUT: JONES, SHELBY			
05:03	SUB IN: LEWIS, ALIVIA			
04:47				MISSED JUMPER by MOODY, CARISSA
04:44	REBOUND (DEF) by LEWIS, ALIVIA			
04:27	MISSED JUMPER by CLAY, TREYANNA			
04:23				REBOUND (DEF) by MOODY, CARISSA
04:14				MISSED JUMPER by DAILY, KAM
04:14	BLOCK by LEWIS, ALIVIA			
04:07				REBOUND (OFF) by MOODY, CARISSA
04:06	FOUL (PERSONAL) by HUNTER, CHELSEA			
04:06				

Time	VISITORS: Eastern N.M.	Score	Margin	HOME: Texas Woman's
04:06				SUB OUT: WOODS, MA'K'LA
04:06				SUB IN: TAYLOR, AJINE
04:06	SUB OUT: CLAY, TREYANNA			
04:06	SUB IN: COX, ZAMORYE			
04:06		32-37	V 5	GOOD! FT by STASTNY, KJ
04:06		33-37	V 4	GOOD! FT by STASTNY, KJ
03:54	MISSED JUMPER by ROWE, LAURA			
03:48	REBOUND (OFF) by CLAY, TREYANNA			
03:46	GOOD! JUMPER by CLAY, TREYANNA [PNT]	33-39	V 6	
03:33	SUB OUT: HUNTER, CHELSEA			
03:33	SUB IN: CLAY, TREYANNA			
03:30				MISSED JUMPER by WILKERSON, MACY
03:28	REBOUND (DEF) by TEAM			
03:17				FOUL (PERSONAL) by STASTNY, KJ
03:17	MISSED FT by CLAY, TREYANNA			
03:17	REBOUND (OFF) by TEAM			
03:17	GOOD! FT by CLAY, TREYANNA	33-40	V 7	
03:03				TURNOVER (BADPASS) by DAILY, KAM
02:53	GOOD! 3PTR by ROWE, LAURA	33-43	V 10	
02:53	ASSIST by COX, ZAMORYE			
02:50				SUB OUT: DAILY, KAM
02:50				SUB IN: WOODS, MA'K'LA
02:50	SUB OUT: CLAY, TREYANNA			
02:50	SUB IN: DECKER, KAMIRAH			
02:36				TURNOVER (BADPASS) by WOODS, MA'K'LA
02:36	STEAL by COX, ZAMORYE			
02:24	GOOD! 3PTR by MEHLBRECH, JENA	33-46	V 13	
02:24	ASSIST by COX, ZAMORYE			
02:22	TIMEOUT 30SEC			
02:07		36-46	V 10	GOOD! 3PTR by WILKERSON, MACY
02:07				ASSIST by TAYLOR, AJINE
01:50				FOUL (PERSONAL) by MOODY, CARISSA
01:50	GOOD! FT by LEWIS, ALIVIA	36-47	V 11	
01:50	GOOD! FT by LEWIS, ALIVIA	36-48	V 12	
01:38				TURNOVER (BADPASS) by WOODS, MA'K'LA
01:38	STEAL by COX, ZAMORYE			
01:34	TURNOVER (BADPASS) by COX, ZAMORYE			
01:28				MISSED 3PTR by STASTNY, KJ
01:28				REBOUND (OFF) by WILKERSON, MACY
01:28	FOUL (PERSONAL) by LEWIS, ALIVIA			
01:28		37-48	V 11	GOOD! FT by MOODY, CARISSA [FB]
01:28	SUB OUT: MEHLBRECH, JENA			
01:28	SUB IN: HUNTER, CHELSEA			
01:28		38-48	V 10	GOOD! FT by MOODY, CARISSA [FB]
01:14	MISSED JUMPER by LEWIS, ALIVIA			
01:14				BLOCK by MOODY, CARISSA
01:14				REBOUND (DEF) by MOODY, CARISSA
01:14	FOUL (PERSONAL) by DECKER, KAMIRAH			
01:14		39-48	V 9	GOOD! FT by MOODY, CARISSA
01:14	SUB OUT: LEWIS, ALIVIA			
01:14	SUB IN: CLAY, TREYANNA			
01:14		40-48	V 8	GOOD! FT by MOODY, CARISSA
00:46	GOOD! JUMPER by CLAY, TREYANNA	40-50	V 10	
00:30				TURNOVER (BADPASS) by MOODY, CARISSA
00:30	STEAL by COX, ZAMORYE			
00:23	MISSED 3PTR by HUNTER, CHELSEA			
00:18				REBOUND (DEF) by WILKERSON, MACY
00:14		43-50	V 7	GOOD! 3PTR by MOODY, CARISSA [FB]
00:14				ASSIST by STASTNY, KJ
00:04	MISSED JUMPER by HUNTER, CHELSEA			
00:04	REBOUND (OFF) by TEAM			

Eastern N.M. 50, Texas Woman's 43

Points from (This Period)	ENM	TWU
In the Paint	4	6
Off Turns	9	6
2nd Chance	8	4
Fast Break	0	5
Bench	12	3

Official Box Score
Eastern N.M. vs Texas Woman's
Fourth Quarter Statistics Only
March 02, 2019 at Kitty Magee Arena - Denton, Texas



Eastern N.M. 21

No.	Player	S	Pts	FG	3FG	FT	OR	DR	TR	PF	A	TO	Blk	Stl	Min	+/-
12	COX, ZAMORYE		12	3-4	0-1	6-7	0	1	1	1	1	0	0	2	10	1
21	LEWIS, ALIVIA		2	1-4	0-0	0-1	2	1	3	1	0	1	0	0	8	-2
22	CLAY, TREYANNA		2	1-1	0-0	0-3	1	0	1	1	0	2	0	1	8	0
23	HUNTER, CHELSEA		2	0-3	0-0	2-2	1	1	2	0	0	0	0	1	10	1
32	JONES, SHELBY		3	1-1	0-0	1-1	0	1	1	2	0	1	0	0	5	4
01	CLARK, SYDNEY		0	0-0	0-0	0-0	0	0	0	0	0	0	0	0	0	0
11	OKEY, TILASHA		0	0-0	0-0	0-0	0	0	0	0	0	0	0	0	2	0
15	MEHLBRECH, JENA		0	0-0	0-0	0-0	0	0	0	0	0	0	0	0	0	0
30	ROWE, LAURA		0	0-0	0-0	0-0	0	0	0	1	0	0	0	0	2	2
35	DECKER, KAMIRAH		0	0-1	0-0	0-0	0	0	0	1	0	0	0	0	4	-1
	TEAM						1	2	3	0		0				
TOTALS			21	6-14	0-1	9-14	5	6	11	7	1	4	0	4	50	

Shooting By Period

Period	FG	FG%	3FG	3FG%	FT	FT%
Game	25-56	44.6%	6-11	54.5%	15-28	53.6%

Texas Woman's 20

No.	Player	S	Pts	FG	3FG	FT	OR	DR	TR	PF	A	TO	Blk	Stl	Min	+/-
01	STASTNY, KJ		0	0-2	0-2	0-0	0	0	0	2	0	1	0	0	10	-4
20	WOODS, MA'K'LA		0	0-2	0-0	0-0	0	1	1	1	0	1	0	0	5	-3
21	ARCHER, LONDON		3	1-1	0-0	1-2	0	1	1	1	0	1	0	0	6	1
25	MOODY, CARISSA		6	1-4	1-2	3-4	0	3	3	2	0	0	0	0	9	-4
33	TAYLOR, AJINE		0	0-0	0-0	0-0	0	1	1	0	0	0	0	0	3	-3
02	WILKERSON, MACY		9	2-3	1-1	4-4	1	1	2	3	0	0	0	2	10	-1
22	STEPHENSON, MAGGIE		0	0-0	0-0	0-0	0	0	0	0	0	0	0	0	0	0
23	BELL, TRINITY		0	0-0	0-0	0-0	0	0	0	0	0	0	0	0	0	3
50	DAILY, KAM		2	1-1	0-0	0-0	2	0	2	1	0	1	0	0	6	6
	TEAM						1	0	1	0		0				
TOTALS			20	5-13	2-5	8-10	4	7	11	10	0	4	0	2	50	

Shooting By Period

Period	FG	FG%	3FG	3FG%	FT	FT%
Game	20-58	34.5%	5-15	33.3%	18-21	85.7%

Game Notes:

Officials: , ,
Attendance: 275

Start Time: 2019-03-02 20:13:57
End Time: 2019-03-02 22:16:19
Game Duration: 122
Conference Game;

Score	1st	2nd	3rd	4th	TOT
ENM	9	22	19	21	71
TWU	11	12	20	20	63

Points from (This Period)	ENM	TWU
In the Paint	10	6
Off Turns	4	3
2nd Chance	4	5
Fast Break	2	0
Bench	0	11

Official Play-By-Play
Eastern N.M. vs Texas Woman's
Fourth Quarter
March 02, 2019 at Kitty Magee Arena - Denton, Texas



Period 4

Starters:

Eastern N.M.: 12 COX,ZAMORYE ; 21 LEWIS,ALIVIA; 22 CLAY,TREYANNA; 23 HUNTER,CHELSEA; 32 JONES,SHELBY;

Texas Woman's: 1 STASTNY,KJ; 20 WOODS,MA'K'LA; 21 ARCHER,LONDON; 25 MOODY,CARISSA; 33 TAYLOR,AJINE;

Time	VISITORS: Eastern N.M.	Score	Margin	HOME: Texas Woman's
09:47	GOOD! JUMPER by JONES, SHELBY	43-52	V 9	
09:47	ASSIST by COX, ZAMORYE			
09:47				FOUL (PERSONAL) by WOODS, MA'K'LA
09:47	GOOD! FT by JONES, SHELBY	43-53	V 10	
09:30				TURNOVER (BADPASS) by WOODS, MA'K'LA
09:30	STEAL by COX, ZAMORYE			
09:25	GOOD! JUMPER by COX, ZAMORYE	43-55	V 12	
09:10	FOUL (PERSONAL) by JONES, SHELBY			
09:10		44-55	V 11	GOOD! FT by MOODY, CARISSA
09:10				SUB OUT: WOODS, MA'K'LA
09:10				SUB IN: DAILY, KAM
09:10				SUB OUT: TAYLOR, AJINE
09:10				SUB IN: ARCHER, LONDON
09:10		45-55	V 10	GOOD! FT by MOODY, CARISSA
08:52	MISSED 3PTR by COX, ZAMORYE			
08:49				REBOUND (DEF) by MOODY, CARISSA
08:26	FOUL (PERSONAL) by JONES, SHELBY			
08:26	SUB OUT: ROWE, LAURA			
08:26	SUB IN: LEWIS, ALIVIA			
08:26	SUB OUT: JONES, SHELBY			
08:26	SUB IN: DECKER, KAMIRAH			
08:20	FOUL (PERSONAL) by CLAY, TREYANNA			
08:08		46-55	V 9	GOOD! FT by MOODY, CARISSA
08:08				MISSED FT by MOODY, CARISSA
08:08	REBOUND (DEF) by TEAM			
07:55	MISSED JUMPER by HUNTER, CHELSEA			
07:50	REBOUND (OFF) by CLAY, TREYANNA			
07:48	MISSED JUMPER by LEWIS, ALIVIA			
07:43	REBOUND (OFF) by HUNTER, CHELSEA			
07:41	MISSED JUMPER by HUNTER, CHELSEA			
07:36				REBOUND (DEF) by ARCHER, LONDON
07:33				MISSED JUMPER by MOODY, CARISSA
07:31				REBOUND (OFF) by TEAM
07:28				MISSED JUMPER by MOODY, CARISSA
07:23				REBOUND (OFF) by DAILY, KAM
07:10	FOUL (PERSONAL) by DECKER, KAMIRAH			
07:09	FOUL (PERSONAL) by LEWIS, ALIVIA			
06:57		47-55	V 8	GOOD! FT by ARCHER, LONDON
06:57				MISSED FT by ARCHER, LONDON
06:57	REBOUND (DEF) by TEAM			
06:40				FOUL (PERSONAL) by WILKERSON, MACY
06:40	GOOD! FT by COX, ZAMORYE	47-56	V 9	
06:40	GOOD! FT by COX, ZAMORYE	47-57	V 10	
06:17				MISSED 3PTR by STASTNY, KJ
06:08				REBOUND (OFF) by DAILY, KAM
06:08		49-57	V 8	GOOD! LAYUP by DAILY, KAM
06:08				FOUL (PERSONAL) by MOODY, CARISSA
05:56	MISSED JUMPER by DECKER, KAMIRAH			
05:53	REBOUND (OFF) by LEWIS, ALIVIA			
05:53	GOOD! JUMPER by LEWIS, ALIVIA	49-59	V 10	
05:53				FOUL (PERSONAL) by STASTNY, KJ
05:44	MISSED FT by LEWIS, ALIVIA			
05:40				REBOUND (DEF) by WILKERSON, MACY
05:34		52-59	V 7	GOOD! 3PTR by MOODY, CARISSA
05:23	TURNOVER (BADPASS) by CLAY, TREYANNA			
05:23				STEAL by WILKERSON, MACY
05:23	SUB OUT: CLAY, TREYANNA			
05:23	SUB IN: OKEY, TILASHA			
05:07				TURNOVER (BADPASS) by ARCHER, LONDON
05:07	STEAL by COX, ZAMORYE			
04:58	GOOD! JUMPER by COX, ZAMORYE [PNT]	52-61	V 9	
04:35	SUB OUT: HUNTER, CHELSEA			
04:35	SUB IN: ROWE, LAURA			
04:32		54-61	V 7	GOOD! JUMPER by ARCHER, LONDON
04:32	GOOD! JUMPER by COX, ZAMORYE [FB]	54-63	V 9	
04:32				FOUL (PERSONAL) by DAILY, KAM
04:32				
04:32				SUB OUT: ARCHER, LONDON
04:32				SUB IN: WOODS, MA'K'LA
04:32	SUB OUT: DECKER, KAMIRAH			

Time	VISITORS: Eastern N.M.	Score	Margin	HOME: Texas Woman's
04:32	SUB IN: HUNTER, CHELSEA			
04:32	MISSED FT by COX, ZAMORYE			
04:32				REBOUND (DEF) by MOODY, CARISSA
04:21				TURNOVER (BADPASS) by DAILY, KAM
04:21	STEAL by HUNTER, CHELSEA			
03:56	MISSED JUMPER by HUNTER, CHELSEA			
03:52				REBOUND (DEF) by MOODY, CARISSA
03:44	FOUL (PERSONAL) by ROWE, LAURA			
03:44		55-63	V 8	GOOD! FT by WILKERSON, MACY
03:44				SUB OUT: DAILY, KAM
03:44				SUB IN: ARCHER, LONDON
03:44	SUB OUT: ROWE, LAURA			
03:44	SUB IN: CLAY, TREYANNA			
03:44		56-63	V 7	GOOD! FT by WILKERSON, MACY
03:44	SUB OUT: OKEY, TILASHA			
03:44	SUB IN: JONES, SHELBY			
03:11	MISSED JUMPER by LEWIS, ALIVIA			
03:09	REBOUND (OFF) by LEWIS, ALIVIA			
03:09	TURNOVER (TRAVEL) by LEWIS, ALIVIA			
02:52				MISSED JUMPER by WOODS, MA'K'LA
02:48	REBOUND (DEF) by LEWIS, ALIVIA			
02:37	MISSED JUMPER by LEWIS, ALIVIA			
02:30	REBOUND (OFF) by TEAM			
02:30	TIMEOUT TEAM			
02:15	GOOD! JUMPER by CLAY, TREYANNA [PNT]	56-65	V 9	
02:15				FOUL (PERSONAL) by ARCHER, LONDON
02:15				SUB OUT: ARCHER, LONDON
02:15				SUB IN: TAYLOR, AJINE
02:15	MISSED FT by CLAY, TREYANNA			
02:15				REBOUND (DEF) by WOODS, MA'K'LA
02:08				MISSED JUMPER by WOODS, MA'K'LA
02:04	REBOUND (DEF) by COX, ZAMORYE			
01:54	TURNOVER (BADPASS) by CLAY, TREYANNA			
01:54				STEAL by WILKERSON, MACY
01:40				MISSED 3PTR by MOODY, CARISSA
01:35	REBOUND (DEF) by JONES, SHELBY			
01:12				FOUL (PERSONAL) by STASTNY, KJ
01:12	GOOD! FT by HUNTER, CHELSEA	56-66	V 10	
01:12	GOOD! FT by HUNTER, CHELSEA	56-67	V 11	
01:05				MISSED 3PTR by STASTNY, KJ
01:01				REBOUND (OFF) by WILKERSON, MACY
00:59	FOUL (PERSONAL) by COX, ZAMORYE			
00:59		57-67	V 10	GOOD! FT by WILKERSON, MACY
00:59		58-67	V 9	GOOD! FT by WILKERSON, MACY
00:45				FOUL (PERSONAL) by WILKERSON, MACY
00:45	GOOD! FT by COX, ZAMORYE	58-68	V 10	
00:45	GOOD! FT by COX, ZAMORYE	58-69	V 11	
00:45				TIMEOUT TEAM
00:36				TURNOVER (BADPASS) by STASTNY, KJ
00:36	STEAL by CLAY, TREYANNA			
00:36				FOUL (PERSONAL) by MOODY, CARISSA
00:36				SUB OUT: MOODY, CARISSA
00:36				SUB IN: DAILY, KAM
00:36	MISSED FT by CLAY, TREYANNA			
00:36	REBOUND (OFF) by TEAM			
00:36	MISSED FT by CLAY, TREYANNA			
00:34				REBOUND (DEF) by TAYLOR, AJINE
00:34				TIMEOUT 30SEC
00:28		60-69	V 9	GOOD! JUMPER by WILKERSON, MACY [PNT]
00:27	TIMEOUT 30SEC			
00:16				FOUL (PERSONAL) by WILKERSON, MACY
00:15	GOOD! FT by COX, ZAMORYE	60-70	V 10	
00:15	GOOD! FT by COX, ZAMORYE	60-71	V 11	
00:15				TIMEOUT 30SEC
00:08				MISSED JUMPER by WILKERSON, MACY
00:06	REBOUND (DEF) by HUNTER, CHELSEA			
00:06	TIMEOUT 30SEC			
00:04	TURNOVER (TRAVEL) by JONES, SHELBY			
00:04				SUB OUT: STASTNY, KJ
00:04				SUB IN: BELL, TRINITY
00:02		63-71	V 8	GOOD! 3PTR by WILKERSON, MACY

Eastern N.M. 71, Texas Woman's 63

Points from (This Period)	ENM	TWU
In the Paint	10	6
Off Turns	4	3
2nd Chance	4	5
Fast Break	2	0
Bench	0	11

Official Scoring/Possession Reference Chart
Eastern N.M. vs Texas Woman's
Period 1
March 02, 2019 at Kitty Magee Arena - Denton, Texas



Period 1

Starters:

Eastern N.M.: 12 COX,ZAMORYE ; 21 LEWIS,ALIVIA; 22 CLAY,TREYANNA; 23 HUNTER,CHELSEA; 32 JONES,SHELBY;
Texas Woman's: 1 STASTNY,KJ; 20 WOODS,MA'K'LA; 21 ARCHER,LONDON; 25 MOODY,CARISSA; 33 TAYLOR,AJINE;

Time	VISITORS: Eastern N.M.	Score	Margin	HOME: Texas Woman's
09:46	GOOD! JUMPER by CLAY, TREYANNA [PNT]	0-2	V 2	
08:59	GOOD! JUMPER by JONES, SHELBY	0-4	V 4	
08:23	GOOD! FT by CLAY, TREYANNA	0-5	V 5	
07:30		2-5	V 3	GOOD! LAYUP by ARCHER, LONDON
06:30		4-5	V 1	GOOD! JUMPER by WOODS, MA'K'LA
05:34	GOOD! JUMPER by CLAY, TREYANNA	4-7	V 3	
05:06		6-7	V 1	GOOD! JUMPER by WOODS, MA'K'LA
04:22		8-7	H 1	GOOD! JUMPER by STASTNY, KJ
00:48	GOOD! JUMPER by LEWIS, ALIVIA [PNT]	8-9	V 1	
00:33		11-9	H 2	GOOD! 3PTR by WILKERSON, MACY

Eastern N.M. 9, Texas Woman's 11

Official Scoring/Possession Reference Chart
Eastern N.M. vs Texas Woman's
Period 2
March 02, 2019 at Kitty Magee Arena - Denton, Texas



Period 2

Starters:

Eastern N.M.: 12 COX,ZAMORYE ; 21 LEWIS,ALIVIA; 22 CLAY,TREYANNA; 23 HUNTER,CHELSEA; 32 JONES,SHELBY;

Texas Woman's: 1 STASTNY,KJ; 20 WOODS,MA'K'LA; 21 ARCHER,LONDON; 25 MOODY,CARISSA; 33 TAYLOR,AJINE;

Time	VISITORS: Eastern N.M.	Score	Margin	HOME: Texas Woman's
09:34	GOOD! 3PTR by MEHLBRECH, JENA	11-12	V 1	
09:19		13-12	H 1	GOOD! JUMPER by WOODS, MA'K'LA [PNT]
08:37	GOOD! JUMPER by LEWIS, ALIVIA	13-14	V 1	
07:28	GOOD! JUMPER by MEHLBRECH, JENA	13-16	V 3	
07:12		14-16	V 2	GOOD! FT by ARCHER, LONDON
07:12		15-16	V 1	GOOD! FT by ARCHER, LONDON
05:56		17-16	H 1	GOOD! JUMPER by DAILY, KAM
05:23		19-16	H 3	GOOD! JUMPER by ARCHER, LONDON [PNT]
05:03	GOOD! JUMPER by CLAY, TREYANNA [PNT]	19-18	H 1	
04:25		21-18	H 3	GOOD! JUMPER by BELL, TRINITY
04:09	GOOD! JUMPER by COX, ZAMORYE	21-20	H 1	
03:53		23-20	H 3	GOOD! JUMPER by TAYLOR, AJINE [PNT]
03:31	GOOD! JUMPER by LEWIS, ALIVIA	23-22	H 1	
01:47	GOOD! JUMPER by CLAY, TREYANNA [PNT]	23-24	V 1	
01:47	GOOD! FT by CLAY, TREYANNA	23-25	V 2	
01:14	GOOD! FT by MEHLBRECH, JENA	23-26	V 3	
00:34	GOOD! 3PTR by HUNTER, CHELSEA	23-29	V 6	
00:00	GOOD! JUMPER by MEHLBRECH, JENA [PNT]	23-31	V 8	

Eastern N.M. 31, Texas Woman's 23

Official Scoring/Possession Reference Chart
Eastern N.M. vs Texas Woman's
Period 3
March 02, 2019 at Kitty Magee Arena - Denton, Texas



Period 3

Starters:

Eastern N.M.: 12 COX,ZAMORYE ; 21 LEWIS,ALIVIA; 22 CLAY,TREYANNA; 23 HUNTER,CHELSEA; 32 JONES,SHELBY;
Texas Woman's: 1 STASTNY,KJ; 20 WOODS,MA'K'LA; 21 ARCHER,LONDON; 25 MOODY,CARISSA; 33 TAYLOR,AJINE;

Time	VISITORS: Eastern N.M.	Score	Margin	HOME: Texas Woman's
09:42		25-31	V 6	GOOD! JUMPER by WOODS, MA'K'LA [PNT]
08:41		26-31	V 5	GOOD! FT by WOODS, MA'K'LA
08:41		27-31	V 4	GOOD! FT by WOODS, MA'K'LA
07:14		29-31	V 2	GOOD! JUMPER by WOODS, MA'K'LA [PNT]
06:10	GOOD! 3PTR by ROWE, LAURA	29-34	V 5	
05:36	GOOD! 3PTR by ROWE, LAURA	29-37	V 8	
05:19		31-37	V 6	GOOD! JUMPER by WOODS, MA'K'LA
04:06		32-37	V 5	GOOD! FT by STASTNY, KJ
04:06		33-37	V 4	GOOD! FT by STASTNY, KJ
03:46	GOOD! JUMPER by CLAY, TREYANNA [PNT]	33-39	V 6	
03:17	GOOD! FT by CLAY, TREYANNA	33-40	V 7	
02:53	GOOD! 3PTR by ROWE, LAURA	33-43	V 10	
02:24	GOOD! 3PTR by MEHLBRECH, JENA	33-46	V 13	
02:07		36-46	V 10	GOOD! 3PTR by WILKERSON, MACY
01:50	GOOD! FT by LEWIS, ALIVIA	36-47	V 11	
01:50	GOOD! FT by LEWIS, ALIVIA	36-48	V 12	
01:28		37-48	V 11	GOOD! FT by MOODY, CARISSA [FB]
01:28		38-48	V 10	GOOD! FT by MOODY, CARISSA [FB]
01:14		39-48	V 9	GOOD! FT by MOODY, CARISSA
01:14		40-48	V 8	GOOD! FT by MOODY, CARISSA
00:46	GOOD! JUMPER by CLAY, TREYANNA	40-50	V 10	
00:14		43-50	V 7	GOOD! 3PTR by MOODY, CARISSA [FB]

Eastern N.M. 50, Texas Woman's 43

Official Scoring/Possession Reference Chart
Eastern N.M. vs Texas Woman's
Period 4
March 02, 2019 at Kitty Magee Arena - Denton, Texas



Period 4

Starters:

Eastern N.M.: 12 COX,ZAMORYE ; 21 LEWIS,ALIVIA; 22 CLAY,TREYANNA; 23 HUNTER,CHELSEA; 32 JONES,SHELBY;
Texas Woman's: 1 STASTNY,KJ; 20 WOODS,MA'K'LA; 21 ARCHER,LONDON; 25 MOODY,CARISSA; 33 TAYLOR,AJINE;

Time	VISITORS: Eastern N.M.	Score	Margin	HOME: Texas Woman's
09:47	GOOD! JUMPER by JONES, SHELBY	43-52	V 9	
09:47	GOOD! FT by JONES, SHELBY	43-53	V 10	
09:25	GOOD! JUMPER by COX, ZAMORYE	43-55	V 12	
09:10		44-55	V 11	GOOD! FT by MOODY, CARISSA
09:10		45-55	V 10	GOOD! FT by MOODY, CARISSA
08:08		46-55	V 9	GOOD! FT by MOODY, CARISSA
06:57		47-55	V 8	GOOD! FT by ARCHER, LONDON
06:40	GOOD! FT by COX, ZAMORYE	47-56	V 9	
06:40	GOOD! FT by COX, ZAMORYE	47-57	V 10	
06:08		49-57	V 8	GOOD! LAYUP by DAILY, KAM
05:53	GOOD! JUMPER by LEWIS, ALIVIA	49-59	V 10	
05:34		52-59	V 7	GOOD! 3PTR by MOODY, CARISSA
04:58	GOOD! JUMPER by COX, ZAMORYE [PNT]	52-61	V 9	
04:32		54-61	V 7	GOOD! JUMPER by ARCHER, LONDON
04:32	GOOD! JUMPER by COX, ZAMORYE [FB]	54-63	V 9	
03:44		55-63	V 8	GOOD! FT by WILKERSON, MACY
03:44		56-63	V 7	GOOD! FT by WILKERSON, MACY
02:15	GOOD! JUMPER by CLAY, TREYANNA [PNT]	56-65	V 9	
01:12	GOOD! FT by HUNTER, CHELSEA	56-66	V 10	
01:12	GOOD! FT by HUNTER, CHELSEA	56-67	V 11	
00:59		57-67	V 10	GOOD! FT by WILKERSON, MACY
00:59		58-67	V 9	GOOD! FT by WILKERSON, MACY
00:45	GOOD! FT by COX, ZAMORYE	58-68	V 10	
00:45	GOOD! FT by COX, ZAMORYE	58-69	V 11	
00:28		60-69	V 9	GOOD! JUMPER by WILKERSON, MACY [PNT]
00:15	GOOD! FT by COX, ZAMORYE	60-70	V 10	
00:15	GOOD! FT by COX, ZAMORYE	60-71	V 11	
00:02		63-71	V 8	GOOD! 3PTR by WILKERSON, MACY

Eastern N.M. 71, Texas Woman's 63

Official Substitutions Log
Eastern N.M. vs Texas Woman's
Period 1
March 02, 2019 at Kitty Magee Arena - Denton, Texas



VISITORS: Eastern N.M.	Time	Score	HOME: Texas Woman's
12 COX,ZAMORYE			1 STASTNY,KJ
21 LEWIS,ALIVIA			20 WOODS,MA'K'LA
22 CLAY,TREYANNA			21 ARCHER,LONDON
23 HUNTER,CHELSEA			25 MOODY,CARISSA
32 JONES,SHELBY			33 TAYLOR,AJINE
SUB OUT: 12 COX,ZAMORYE	07:34	5-0	
SUB IN: 15 MEHLBRECH,JENA	07:34		
SUB OUT: 32 JONES,SHELBY	07:11	5-2	
SUB IN: 35 DECKER,KAMIRAH	07:11		
SUB OUT: 21 LEWIS,ALIVIA	07:11		
SUB IN: 30 ROWE,LAURA	07:11		
SUB OUT: 35 DECKER,KAMIRAH	06:12	5-4	
SUB IN: 32 JONES,SHELBY	06:12		
SUB OUT: 30 ROWE,LAURA	06:12		
SUB IN: 1 CLARK,SYDNEY	06:12		
	05:52	5-4	SUB OUT: MOODY,CARISSA
	05:52		SUB IN: WILKERSON,MACY
SUB OUT: 23 HUNTER,CHELSEA	05:38	5-4	
SUB IN: 12 COX,ZAMORYE	05:38		
SUB OUT: 32 JONES,SHELBY	03:32	7-8	
SUB IN: 35 DECKER,KAMIRAH	03:32		
SUB OUT: 35 DECKER,KAMIRAH	03:32		
SUB IN: 32 JONES,SHELBY	03:32		
SUB OUT: 12 COX,ZAMORYE	03:32		
SUB IN: 21 LEWIS,ALIVIA	03:32		
SUB OUT: 32 JONES,SHELBY	02:52	7-8	
SUB IN: 35 DECKER,KAMIRAH	02:52		
SUB OUT: 1 CLARK,SYDNEY	02:45	7-8	
SUB IN: 23 HUNTER,CHELSEA	02:45		
	02:23	7-8	SUB OUT: ARCHER,LONDON
	02:23		SUB IN: DAILY,KAM
SUB OUT: 35 DECKER,KAMIRAH	01:31	7-8	
SUB IN: 32 JONES,SHELBY	01:31		
	00:18	9-11	SUB OUT: TAYLOR,AJINE
	00:18		SUB IN: MOODY,CARISSA

Eastern N.M. 9, Texas Woman's 11

Official Substitutions Log
Eastern N.M. vs Texas Woman's
Period 2
March 02, 2019 at Kitty Magee Arena - Denton, Texas



VISITORS: Eastern N.M.	Time	Score	HOME: Texas Woman's
12 COX,ZAMORYE			1 STASTNY,KJ
21 LEWIS,ALIVIA			20 WOODS,MA'K'LA
22 CLAY,TREYANNA			21 ARCHER,LONDON
23 HUNTER,CHELSEA			25 MOODY,CARISSA
32 JONES,SHELBY			33 TAYLOR,AJINE
	09:41	-	SUB OUT: MOODY,CARISSA
	09:41		SUB IN: TAYLOR,AJINE
	07:50	14-13	SUB OUT: WOODS,MA'K'LA
	07:50		SUB IN: ARCHER,LONDON
SUB OUT: 21 LEWIS,ALIVIA	07:12	16-14	
SUB IN: 30 ROWE,LAURA	07:12		
SUB OUT: 23 HUNTER,CHELSEA	07:12		
SUB IN: 11 OKEY,TILASHA	07:12		
	05:28	16-17	SUB OUT: WILKERSON,MACY
	05:28		SUB IN: BELL,TRINITY
SUB OUT: 15 MEHLBRECH,JENA	05:28		
SUB IN: 12 COX,ZAMORYE	05:28		
	04:16	18-21	SUB OUT: ARCHER,LONDON
	04:16		SUB IN: STEPHENSON,MAGGIE
SUB OUT: 11 OKEY,TILASHA	04:16		
SUB IN: 35 DECKER,KAMIRAH	04:16		
SUB OUT: 32 JONES,SHELBY	04:16		
SUB IN: 21 LEWIS,ALIVIA	04:16		
	02:34	22-23	SUB OUT: TAYLOR,AJINE
	02:34		SUB IN: WILKERSON,MACY
SUB OUT: 35 DECKER,KAMIRAH	02:08	22-23	
SUB IN: 32 JONES,SHELBY	02:08		
SUB OUT: 30 ROWE,LAURA	02:08		
SUB IN: 23 HUNTER,CHELSEA	02:08		
	01:47	25-23	SUB OUT: STEPHENSON,MAGGIE
	01:47		SUB IN: MOODY,CARISSA
SUB OUT: 12 COX,ZAMORYE	01:47		
SUB IN: 15 MEHLBRECH,JENA	01:47		
	01:14	25-23	SUB OUT: BELL,TRINITY
	01:14		SUB IN: TAYLOR,AJINE

Eastern N.M. 31, Texas Woman's 23

Official Substitutions Log
Eastern N.M. vs Texas Woman's
Period 3
March 02, 2019 at Kitty Magee Arena - Denton, Texas



VISITORS: Eastern N.M.	Time	Score	HOME: Texas Woman's
12 COX,ZAMORYE			1 STASTNY,KJ
21 LEWIS,ALIVIA			20 WOODS,MA'K'LA
22 CLAY,TREYANNA			21 ARCHER,LONDON
23 HUNTER,CHELSEA			25 MOODY,CARISSA
32 JONES,SHELBY			33 TAYLOR,AJINE
	08:22	31-27	SUB OUT: ARCHER,LONDON
	08:22		SUB IN: DAILY,KAM
SUB OUT: 12 COX,ZAMORYE	08:08	31-27	
SUB IN: 15 MEHLBRECH,JENA	08:08		
SUB OUT: 22 CLAY,TREYANNA	07:54	31-27	
SUB IN: 30 ROWE,LAURA	07:54		
SUB OUT: 21 LEWIS,ALIVIA	07:34	31-27	
SUB IN: 22 CLAY,TREYANNA	07:34		
	05:56	34-29	SUB OUT: TAYLOR,AJINE
	05:56		SUB IN: WILKERSON,MACY
SUB OUT: 32 JONES,SHELBY	05:03	37-31	
SUB IN: 21 LEWIS,ALIVIA	05:03		
	04:06	37-31	SUB OUT: WOODS,MA'K'LA
	04:06		SUB IN: TAYLOR,AJINE
SUB OUT: 22 CLAY,TREYANNA	04:06		
SUB IN: 12 COX,ZAMORYE	04:06		
SUB OUT: 23 HUNTER,CHELSEA	03:33	39-33	
SUB IN: 22 CLAY,TREYANNA	03:33		
	02:50	43-33	SUB OUT: DAILY,KAM
	02:50		SUB IN: WOODS,MA'K'LA
SUB OUT: 22 CLAY,TREYANNA	02:50		
SUB IN: 35 DECKER,KAMIRAH	02:50		
SUB OUT: 15 MEHLBRECH,JENA	01:28	48-37	
SUB IN: 23 HUNTER,CHELSEA	01:28		
SUB OUT: 21 LEWIS,ALIVIA	01:14	48-39	
SUB IN: 22 CLAY,TREYANNA	01:14		

Eastern N.M. 50, Texas Woman's 43

Official Substitutions Log
Eastern N.M. vs Texas Woman's
Period 4
March 02, 2019 at Kitty Magee Arena - Denton, Texas



VISITORS: Eastern N.M.	Time	Score	HOME: Texas Woman's
12 COX,ZAMORYE			1 STASTNY,KJ
21 LEWIS,ALIVIA			20 WOODS,MA'K'LA
22 CLAY,TREYANNA			21 ARCHER,LONDON
23 HUNTER,CHELSEA			25 MOODY,CARISSA
32 JONES,SHELBY			33 TAYLOR,AJINE
	09:10	55-44	SUB OUT: WOODS,MA'K'LA
	09:10		SUB IN: DAILY,KAM
	09:10		SUB OUT: TAYLOR,AJINE
	09:10		SUB IN: ARCHER,LONDON
SUB OUT: 30 ROWE,LAURA	08:26	55-45	
SUB IN: 21 LEWIS,ALIVIA	08:26		
SUB OUT: 32 JONES,SHELBY	08:26		
SUB IN: 35 DECKER,KAMIRAH	08:26		
SUB OUT: 22 CLAY,TREYANNA	05:23	59-52	
SUB IN: 11 OKEY,TILASHA	05:23		
SUB OUT: 23 HUNTER,CHELSEA	04:35	61-52	
SUB IN: 30 ROWE,LAURA	04:35		
	04:32	63-54	SUB OUT: ARCHER,LONDON
	04:32		SUB IN: WOODS,MA'K'LA
SUB OUT: 35 DECKER,KAMIRAH	04:32		
SUB IN: 23 HUNTER,CHELSEA	04:32		
	03:44	63-55	SUB OUT: DAILY,KAM
	03:44		SUB IN: ARCHER,LONDON
SUB OUT: 30 ROWE,LAURA	03:44		
SUB IN: 22 CLAY,TREYANNA	03:44		
SUB OUT: 11 OKEY,TILASHA	03:44		
SUB IN: 32 JONES,SHELBY	03:44		
	02:15	65-56	SUB OUT: ARCHER,LONDON
	02:15		SUB IN: TAYLOR,AJINE
	00:36	69-58	SUB OUT: MOODY,CARISSA
	00:36		SUB IN: DAILY,KAM
	00:04	71-60	SUB OUT: STASTNY,KJ
	00:04		SUB IN: BELL,TRINITY

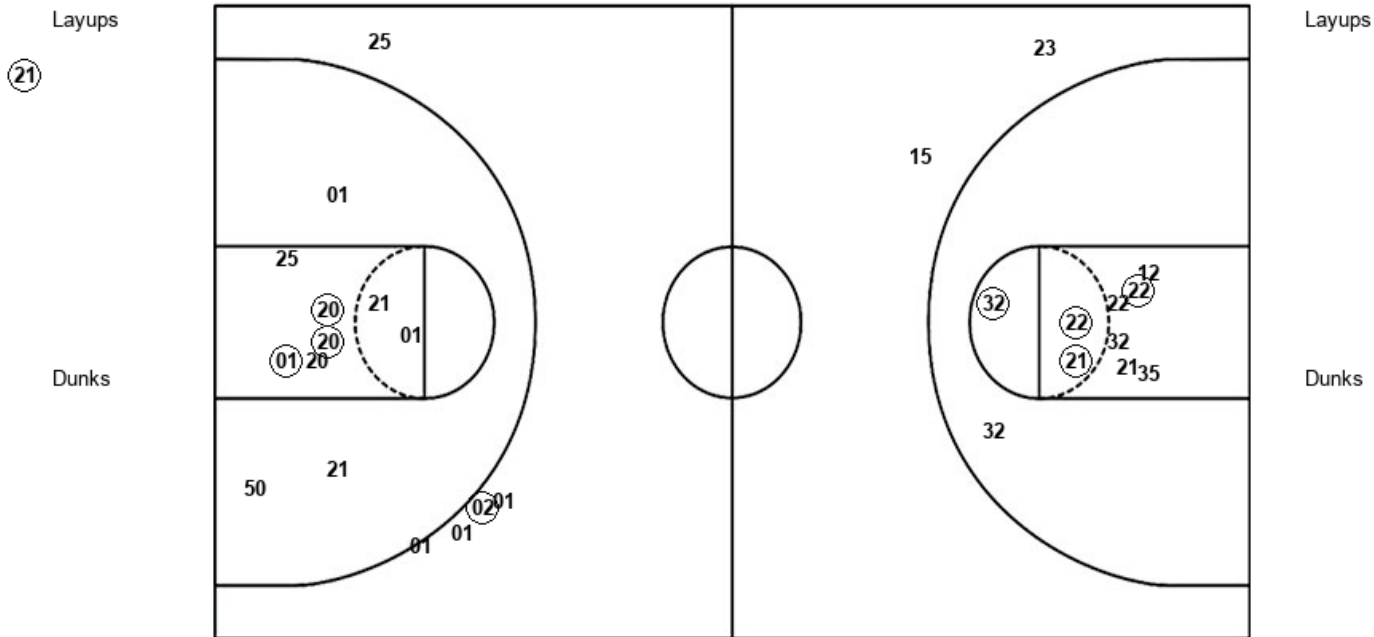
Eastern N.M. 71, Texas Woman's 63

Official Shot Chart
Eastern N.M. vs Texas Woman's
PERIOD 1 Shots
 March 02, 2019 at Kitty Magee Arena - Denton, Texas



Texas Woman's

Eastern N.M.



TWU : Period 1	Made	Att	Pct
Layups	1	1	100.0
Dunks	0	0	0
2PT Field Goals	4	11	36.4
3PT Field Goals	1	5	20.0
Total Field Goals	5	16	31.3

ENM : Period 1	Made	Att	Pct
Layups	0	0	0
Dunks	0	0	0
2PT Field Goals	4	10	40.0
3PT Field Goals	0	2	00.0
Total Field Goals	4	12	33.3

Official Shot Chart
Eastern N.M. vs Texas Woman's
 PERIOD 2 Shots
 March 02, 2019 at Kitty Magee Arena - Denton, Texas



Texas Woman's

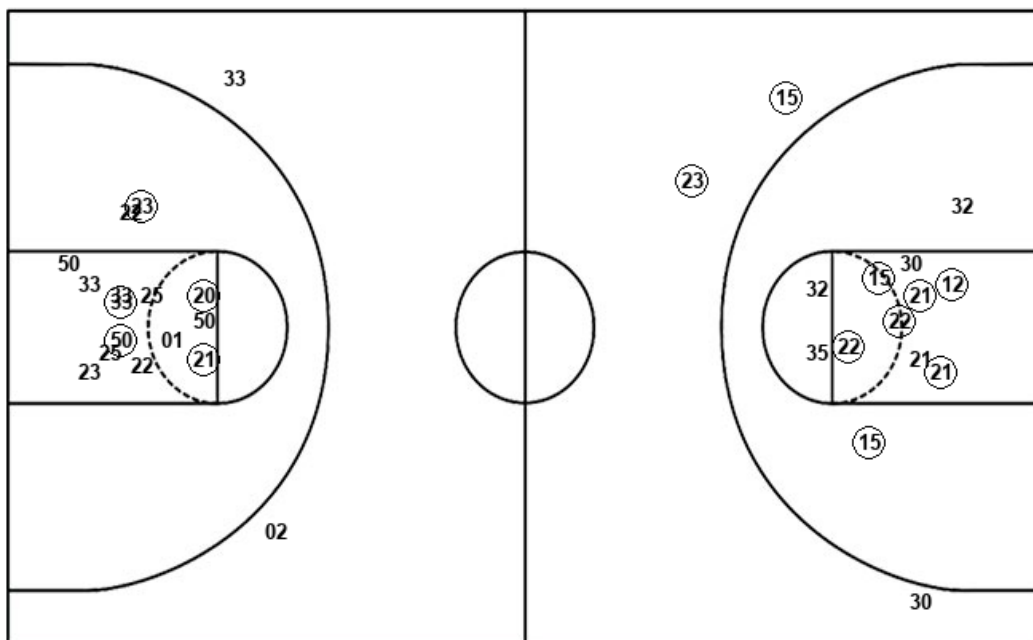
Eastern N.M.

Layups

Layups

Dunks

Dunks



TWU : Period 2	Made	Att	Pct
Layups	0	0	0
Dunks	0	0	0
2PT Field Goals	5	15	33.3
3PT Field Goals	0	2	00.0
Total Field Goals	5	17	29.4

ENM : Period 2	Made	Att	Pct
Layups	0	0	0
Dunks	0	0	0
2PT Field Goals	7	12	58.3
3PT Field Goals	2	3	66.7
Total Field Goals	9	15	60.0

Official Shot Chart
Eastern N.M. vs Texas Woman's
PERIOD 3 Shots
 March 02, 2019 at Kitty Magee Arena - Denton, Texas



Texas Woman's

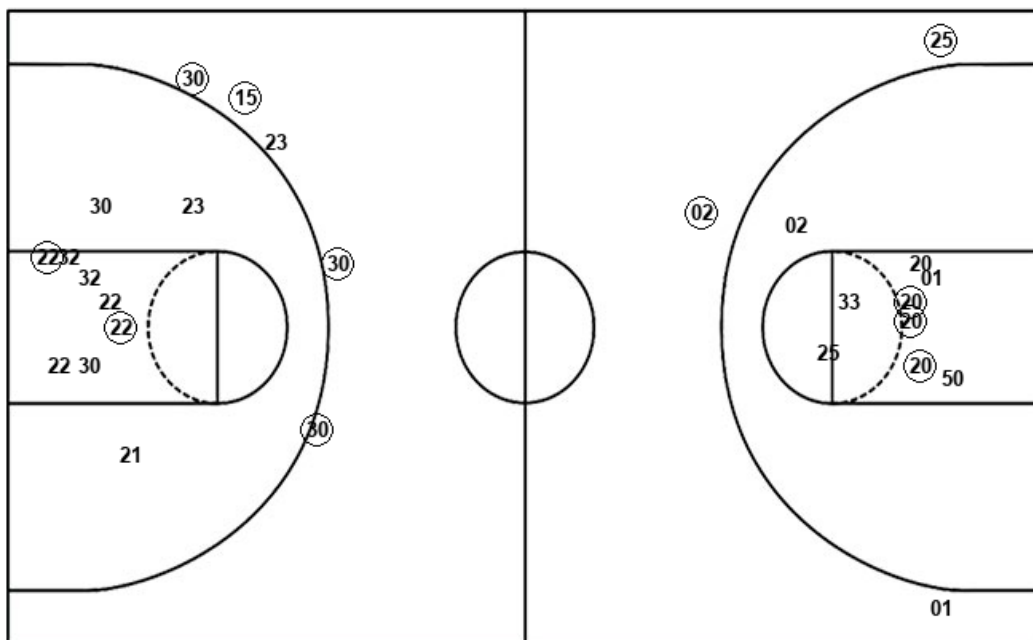
Eastern N.M.

Layups

Layups

Dunks

Dunks



TWU : Period 3	Made	Att	Pct
Layups	0	0	0
Dunks	0	0	0
2PT Field Goals	3	9	33.3
3PT Field Goals	2	3	66.7
Total Field Goals	5	12	41.7

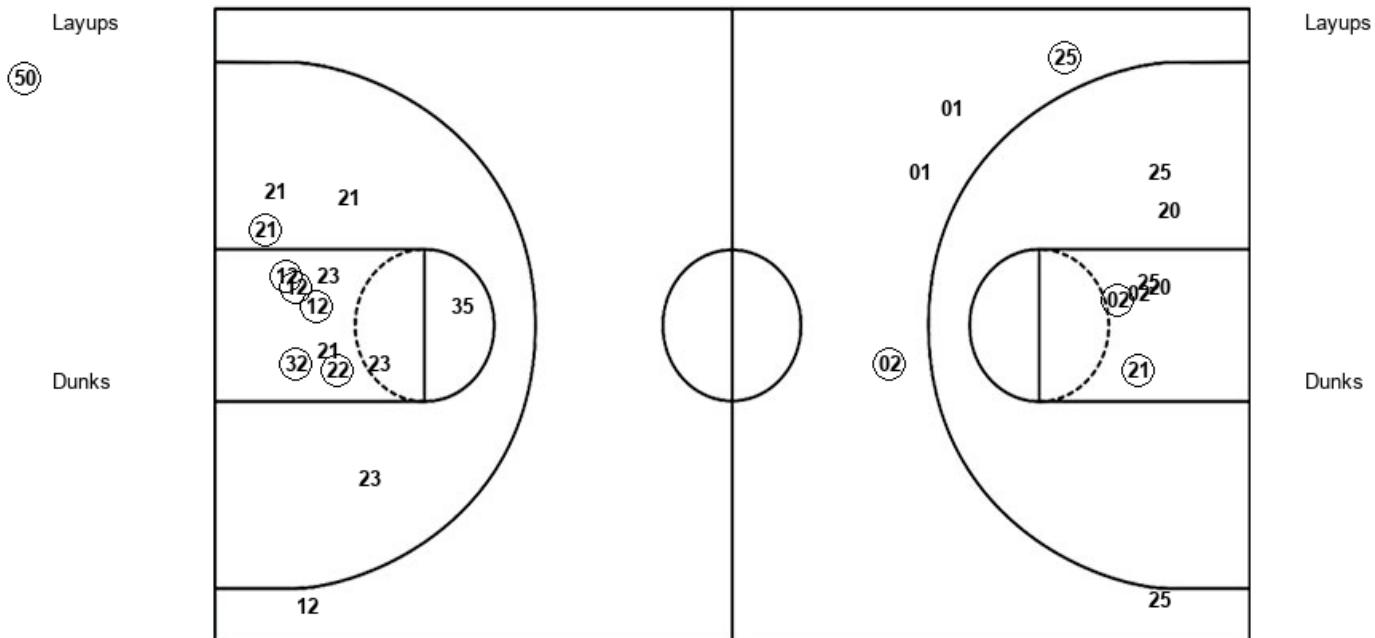
ENM : Period 3	Made	Att	Pct
Layups	0	0	0
Dunks	0	0	0
2PT Field Goals	2	10	20.0
3PT Field Goals	4	5	80.0
Total Field Goals	6	15	40.0

Official Shot Chart
Eastern N.M. vs Texas Woman's
 PERIOD 4 Shots
 March 02, 2019 at Kitty Magee Arena - Denton, Texas



Texas Woman's

Eastern N.M.



TWU : Period 4	Made	Att	Pct
Layups	1	1	100.0
Dunks	0	0	0
2PT Field Goals	3	8	37.5
3PT Field Goals	2	5	40.0
Total Field Goals	5	13	38.5

ENM : Period 4	Made	Att	Pct
Layups	0	0	0
Dunks	0	0	0
2PT Field Goals	6	13	46.2
3PT Field Goals	0	1	00.0
Total Field Goals	6	14	42.9

Official Shot Chart
Eastern N.M. vs Texas Woman's
 Eastern N.M. Team Shots
 March 02, 2019 at Kitty Magee Arena - Denton, Texas

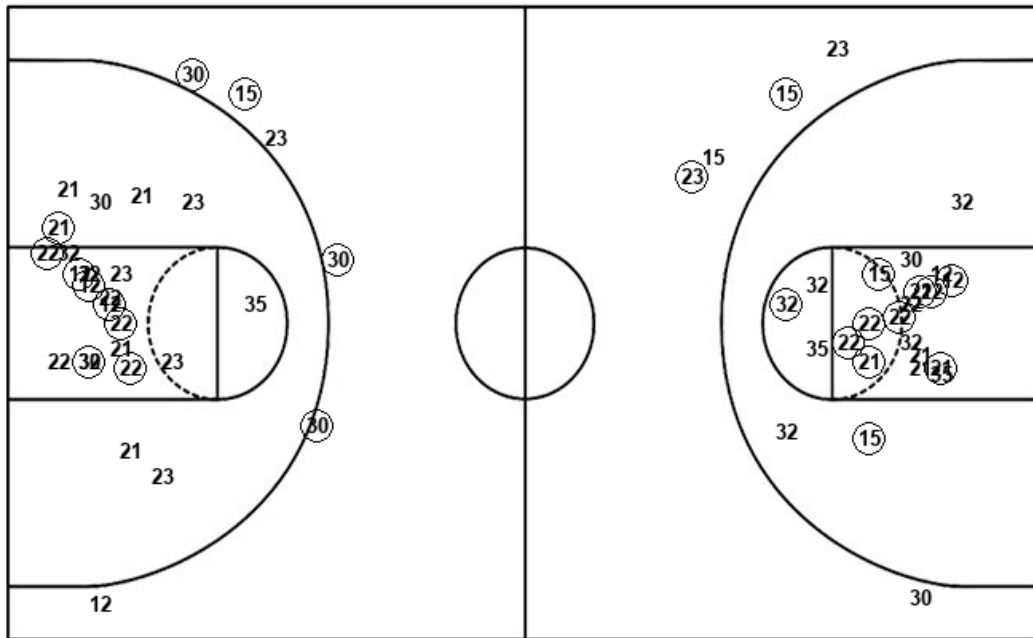


Layups

Layups

Dunks

Dunks



ENM : Period 1	Made	Att	Pct
Layups	0	0	0
Dunks	0	0	0
2PT Field Goals	4	10	40.0
3PT Field Goals	0	2	00.0
Total Field Goals	4	12	33.3

ENM : Period 2	Made	Att	Pct
Layups	0	0	0
Dunks	0	0	0
2PT Field Goals	7	12	58.3
3PT Field Goals	2	3	66.7
Total Field Goals	9	15	60.0

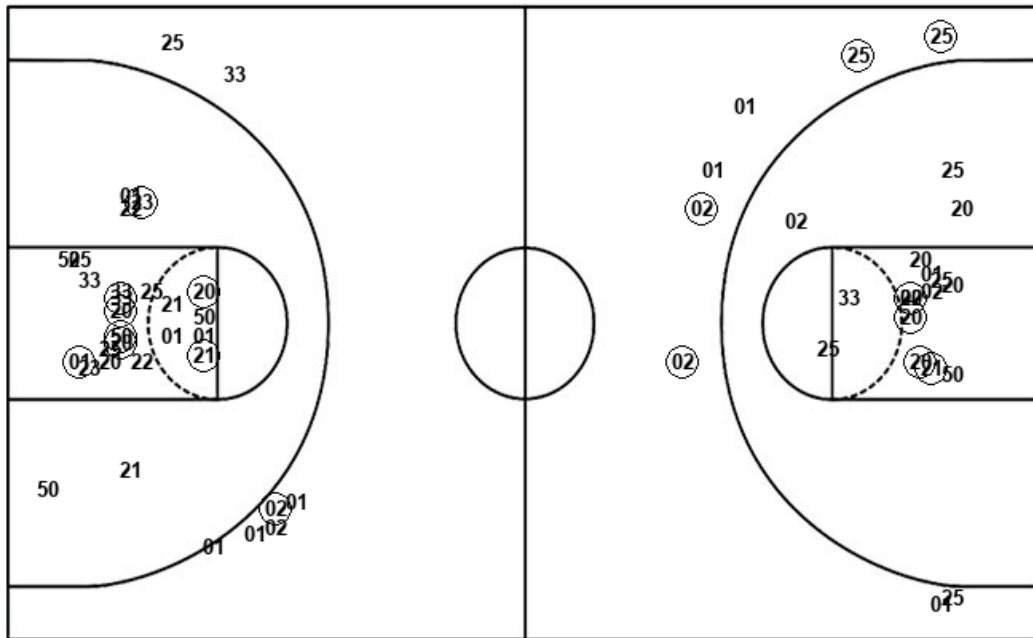
ENM : Period 3	Made	Att	Pct
Layups	0	0	0
Dunks	0	0	0
2PT Field Goals	2	10	20.0
3PT Field Goals	4	5	80.0
Total Field Goals	6	15	40.0

ENM : Period 4	Made	Att	Pct
Layups	0	0	0
Dunks	0	0	0
2PT Field Goals	6	13	46.2
3PT Field Goals	0	1	00.0
Total Field Goals	6	14	42.9

Official Shot Chart
Eastern N.M. vs Texas Woman's
Texas Woman's Team Shots
March 02, 2019 at Kitty Magee Arena - Denton, Texas



Layups



Layups

Dunks

Dunks

TWU : Period 1	Made	Att	Pct
Layups	1	1	100.0
Dunks	0	0	0
2PT Field Goals	4	11	36.4
3PT Field Goals	1	5	20.0
Total Field Goals	5	16	31.3

TWU : Period 3	Made	Att	Pct
Layups	0	0	0
Dunks	0	0	0
2PT Field Goals	3	9	33.3
3PT Field Goals	2	3	66.7
Total Field Goals	5	12	41.7

TWU : Period 2	Made	Att	Pct
Layups	0	0	0
Dunks	0	0	0
2PT Field Goals	5	15	33.3
3PT Field Goals	0	2	00.0
Total Field Goals	5	17	29.4

TWU : Period 4	Made	Att	Pct
Layups	1	1	100.0
Dunks	0	0	0
2PT Field Goals	3	8	37.5
3PT Field Goals	2	5	40.0
Total Field Goals	5	13	38.5