

## FINAL SCORE



**Tarleton St.**

**58**



**Texas Woman's**

**57**

February 16, 2019 • Kitty Magee Arena - Denton, Texas

## FINAL STATISTICS

**Official Box Score**  
**Tarleton St. vs Texas Woman's**  
**Game Totals -- Final Statistics**  
**February 16, 2019 at Kitty Magee Arena - Denton, Texas**



**Tarleton St. 58**

No.	Player	S	Pts	FG	3FG	FT	OR	DR	TR	PF	A	TO	Blk	Stl	Min	+/-
00	ALLEN, KAYLEE		17	6-15	1-5	4-6	1	7	8	4	2	1	0	4	32	3
02	COLLINS, KYLIE		8	3-5	2-3	0-1	0	1	1	0	1	1	0	1	27	-1
14	BOSTAD, MCKINLEY		11	3-8	2-3	3-6	1	1	2	1	0	3	0	1	37	-8
23	WEBSTER, KATIE		2	0-3	0-0	2-2	0	1	1	4	2	2	0	2	26	-5
41	HAILEY, MACKENZIE		10	4-12	0-0	2-3	1	2	3	4	1	3	0	4	32	4
01	BENSON, LUCY		5	1-2	0-0	3-5	3	1	4	2	0	1	0	4	17	4
05	WINKFIELD, DESTINEY		0	0-1	0-0	0-0	0	0	0	0	0	1	0	0	3	-2
10	ALVAREZ, NINA		4	2-5	0-1	0-0	0	2	2	0	0	1	0	0	13	2
11	HYDE, HANNAH		1	0-0	0-0	1-2	0	1	1	1	0	0	0	0	5	-1
32	FAURIE, KANDYN		0	0-1	0-1	0-0	0	1	1	0	0	0	0	0	8	9
TEAM								1	3	4	0	0				
<b>TOTALS</b>			<b>58</b>	<b>19-52</b>	<b>5-13</b>	<b>15-25</b>	<b>7</b>	<b>20</b>	<b>27</b>	<b>16</b>	<b>6</b>	<b>13</b>	<b>0</b>	<b>16</b>	<b>200</b>	

*Shooting By Period*

Period	FG	FG%	3FG	3FG%	FT	FT%
1st Qtr	2-10	20%	1-3	33%	5-8	63%
2nd Qtr	5-13	38%	1-4	25%	4-5	80%
3rd Qtr	6-15	40%	1-3	33%	3-5	60%
4th Qtr	6-14	43%	2-3	67%	3-7	43%
1st Half	7-23	30%	2-7	29%	9-13	69%
2nd Half	12-29	41%	3-6	50%	6-12	50%
<b>Game</b>	<b>19-52</b>	<b>36.5%</b>	<b>5-13</b>	<b>38.5%</b>	<b>15-25</b>	<b>60.0%</b>

*Last FG: 4th-00:31*  
*Biggest Run: 9-0*  
*Largest lead: By 4 at 4-02:21*  
*Technical Fouls: None.*

**Texas Woman's 57**

No.	Player	S	Pts	FG	3FG	FT	OR	DR	TR	PF	A	TO	Blk	Stl	Min	+/-
01	STASTNY, KJ		0	0-4	0-2	0-0	1	7	8	3	4	6	0	3	28	5
04	MOODY, CARISSA		17	7-16	1-6	2-4	5	7	12	2	1	1	1	1	35	-1
05	WILKERSON, MACY		11	3-6	3-4	2-2	0	4	4	5	3	3	0	1	26	-1
20	WOODS, MA'K'LA		14	7-8	0-1	0-0	2	6	8	4	2	4	1	0	31	12
21	ARCHER, LONDON		8	3-9	0-0	2-2	1	6	7	3	4	6	0	1	31	-3
22	STEPHENSON, MAGGIE		0	0-0	0-0	0-0	0	0	0	1	0	0	0	0	5	-4
23	BELL, TRINITY		2	1-2	0-1	0-0	0	2	2	1	0	2	0	0	4	-9
33	TAYLOR, AJINE		3	1-6	1-3	0-0	0	1	1	0	0	1	0	1	24	1
50	DAILY, KAM		2	1-3	0-0	0-0	2	0	2	1	1	0	0	1	15	-5
TEAM								1	1	2	0	0				
<b>TOTALS</b>			<b>57</b>	<b>23-54</b>	<b>5-17</b>	<b>6-8</b>	<b>12</b>	<b>34</b>	<b>46</b>	<b>20</b>	<b>15</b>	<b>23</b>	<b>2</b>	<b>8</b>	<b>200</b>	

*Shooting By Period*

Period	FG	FG%	3FG	3FG%	FT	FT%
1st Qtr	7-16	44%	2-6	33%	0-0	0%
2nd Qtr	5-11	45%	1-5	20%	2-2	100%
3rd Qtr	6-13	46%	0-4	00%	0-2	00%
4th Qtr	5-14	36%	2-2	100%	4-4	100%
1st Half	12-27	44%	3-11	27%	2-2	100%
2nd Half	11-27	41%	2-6	33%	4-6	67%
<b>Game</b>	<b>23-54</b>	<b>42.6%</b>	<b>5-17</b>	<b>29.4%</b>	<b>6-8</b>	<b>75.0%</b>

*Last FG: 4th-00:41*  
*Biggest Run: 9-0*  
*Largest lead: By 7 at 3-05:03*  
*Technical Fouls: None.*

Game Notes:

Officials: , ,

Start Time: 2019-02-16 20:08:09  
 End Time: 2019-02-16 22:07:50  
 Game Duration: 119  
 Conference Game;

Score	1st	2nd	3rd	4th	TOT
TSU	10	15	16	17	<b>58</b>
TWU	16	13	12	16	<b>57</b>

TSU led for 7:39. TWU led for 26:42.  
 Game was tied for 5:40.  
 Times tied: 5      Lead Changes: 6

Points from	TSU	TWU
In the Paint	22	28
Off Turns	19	9
2nd Chance	6	11
Fast Break	12	13
Bench	10	7

**Official Box Score**  
**Tarleton St. vs Texas Woman's**  
**First Half Statistics Only**  
**February 16, 2019 at Kitty Magee Arena - Denton, Texas**



**Tarleton St. 25**

No.	Player	S	Pts	FG	3FG	FT	OR	DR	TR	PF	A	TO	Blk	Stl	Min	+/-
00	ALLEN, KAYLEE		7	2-5	0-2	3-4	0	1	1	1	0	1	0	3	14	0
10	ALVAREZ, NINA		2	1-3	0-0	0-0	0	2	2	0	0	1	0	0	8	-5
11	HYDE, HANNAH		1	0-0	0-0	1-2	0	1	1	1	0	0	0	0	4	-1
14	BOSTAD, MCKINLEY		1	0-2	0-1	1-2	0	0	0	1	0	0	0	0	17	-13
23	WEBSTER, KATIE		2	0-3	0-0	2-2	0	1	1	1	2	0	0	2	18	-2
32	FAURIE, KANDYN		0	0-1	0-1	0-0	0	1	1	0	0	0	0	0	6	7
41	HAILEY, MACKENZIE		2	1-3	0-0	0-0	0	2	2	2	0	2	0	0	14	-1
01	BENSON, LUCY		2	0-1	0-0	2-2	1	0	1	0	0	1	0	0	4	-4
02	COLLINS, KYLIE		8	3-4	2-3	0-1	0	1	1	0	0	1	0	1	12	1
05	WINKFIELD, DESTINEY		0	0-1	0-0	0-0	0	0	0	0	0	1	0	0	3	-2
	TEAM		0	0-0	0-0	0-0	0	2	2	0	0	0	0	0	0	0
<b>TOTALS</b>			<b>25</b>	<b>7-23</b>	<b>2-7</b>	<b>9-13</b>	<b>1</b>	<b>11</b>	<b>12</b>	<b>6</b>	<b>2</b>	<b>7</b>	<b>0</b>	<b>6</b>	<b>100</b>	

*Shooting By Period*

Period	FG	FG%	3FG	3FG%	FT	FT%
1st Qtr	2-10	20%	1-3	33%	5-8	63%
2nd Qtr	5-13	38%	1-4	25%	4-5	80%
1st Half	7-23	30%	2-7	29%	9-13	69%
Game	19-52	36.5%	5-13	38.5%	15-25	60.0%

*Last FG Half: TSU 2nd-01:33*

**Texas Woman's 29**

No.	Player	S	Pts	FG	3FG	FT	OR	DR	TR	PF	A	TO	Blk	Stl	Min	+/-
01	STASTNY, KJ		0	0-2	0-1	0-0	0	3	3	3	1	2	0	2	13	0
05	WILKERSON, MACY		3	1-3	1-2	0-0	0	4	4	2	2	3	0	0	10	2
20	WOODS, MA'K'LA		8	4-4	0-0	0-0	1	2	3	1	0	3	0	0	14	8
21	ARCHER, LONDON		6	2-2	0-0	2-2	0	3	3	1	3	2	0	1	18	3
22	STEPHENSON, MAGGIE		0	0-0	0-0	0-0	0	0	0	1	0	0	0	0	5	-4
23	BELL, TRINITY		2	1-2	0-1	0-0	0	1	1	0	0	1	0	0	3	-4
04	MOODY, CARISSA		7	3-9	1-5	0-0	2	4	6	1	1	0	0	0	19	2
33	TAYLOR, AJINE		3	1-4	1-2	0-0	0	1	1	0	0	0	0	1	13	10
50	DAILY, KAM		0	0-1	0-0	0-0	1	0	1	1	1	0	0	0	5	3
	TEAM		0	0-0	0-0	0-0	0	0	0	0	0	0	0	0	0	0
<b>TOTALS</b>			<b>29</b>	<b>12-27</b>	<b>3-11</b>	<b>2-2</b>	<b>4</b>	<b>18</b>	<b>22</b>	<b>10</b>	<b>8</b>	<b>11</b>	<b>0</b>	<b>4</b>	<b>100</b>	

*Shooting By Period*

Period	FG	FG%	3FG	3FG%	FT	FT%
1st Qtr	7-16	44%	2-6	33%	0-0	0%
2nd Qtr	5-11	45%	1-5	20%	2-2	100%
1st Half	12-27	44%	3-11	27%	2-2	100%
Game	23-54	42.6%	5-17	29.4%	6-8	75.0%

*Last FG Half: TWU 2nd-00:06*

Game Notes:

Officials: , ,

Start Time: 2019-02-16 20:08:09

End Time: 2019-02-16 22:07:50

Game Duration: 119

Conference Game;

Score	1st	2nd	3rd	4th	TOT
TSU	10	15	16	17	<b>58</b>
TWU	16	13	12	16	<b>57</b>

Points from (This Period)	TSU	TWU
In the Paint	8	14
Off Turns	7	9
2nd Chance	2	6
Fast Break	5	4
Bench	5	5

**Official Box Score**  
**Tarleton St. vs Texas Woman's**  
**First Quarter Statistics Only**  
**February 16, 2019 at Kitty Magee Arena - Denton, Texas**



**Tarleton St. 10**

No.	Player	S	Pts	FG	3FG	FT	OR	DR	TR	PF	A	TO	Blk	Stl	Min	+/-
00	ALLEN, KAYLEE		3	1-1	0-0	1-2	0	1	1	1	0	1	0	0	7	-4
02	COLLINS, KYLIE		3	1-2	1-2	0-0	0	1	1	0	0	0	0	0	5	-3
14	BOSTAD, MCKINLEY		1	0-2	0-1	1-2	0	0	0	1	0	0	0	0	10	-6
23	WEBSTER, KATIE		2	0-2	0-0	2-2	0	1	1	1	1	0	0	1	8	-5
41	HAILEY, MACKENZIE		0	0-1	0-0	0-0	0	1	1	0	0	1	0	0	7	-4
01	BENSON, LUCY		0	0-0	0-0	0-0	0	0	0	0	0	1	0	0	1	-2
05	WINKFIELD, DESTINEY		0	0-0	0-0	0-0	0	0	0	0	0	0	0	0	0	0
10	ALVAREZ, NINA		0	0-2	0-0	0-0	0	2	2	0	0	1	0	0	5	-3
11	HYDE, HANNAH		1	0-0	0-0	1-2	0	1	1	1	0	0	0	0	4	-1
32	FAURIE, KANDYN		0	0-0	0-0	0-0	0	0	0	0	0	0	0	0	3	-2
	TEAM						0	0	0	0		0				
<b>TOTALS</b>			<b>10</b>	<b>2-10</b>	<b>1-3</b>	<b>5-8</b>	<b>0</b>	<b>7</b>	<b>7</b>	<b>4</b>	<b>1</b>	<b>4</b>	<b>0</b>	<b>1</b>	<b>50</b>	

*Shooting By Period*

Period	FG	FG%	3FG	3FG%	FT	FT%
1st Qtr	2-10	20%	1-3	33%	5-8	63%
2nd Qtr	5-13	38%	1-4	25%	4-5	80%
1st Half	2-10	20%	1-3	33%	5-8	63%
1st Half	7-23	30%	2-7	29%	9-13	69%
Game	19-52	36.5%	5-13	38.5%	15-25	60.0%

**Texas Woman's 16**

No.	Player	S	Pts	FG	3FG	FT	OR	DR	TR	PF	A	TO	Blk	Stl	Min	+/-
01	STASTNY, KJ		0	0-2	0-1	0-0	0	1	1	1	0	1	0	1	4	3
04	MOODY, CARISSA		5	2-4	1-3	0-0	2	1	3	1	1	0	0	0	9	4
05	WILKERSON, MACY		3	1-3	1-2	0-0	0	4	4	1	2	2	0	0	9	4
20	WOODS, MA'K'LA		6	3-3	0-0	0-0	0	1	1	1	0	1	0	0	9	6
21	ARCHER, LONDON		0	0-0	0-0	0-0	0	1	1	0	2	0	0	0	8	5
22	STEPHENSON, MAGGIE		0	0-0	0-0	0-0	0	0	0	0	0	0	0	0	3	2
23	BELL, TRINITY		2	1-1	0-0	0-0	0	1	1	0	0	0	0	0	1	2
33	TAYLOR, AJINE		0	0-2	0-0	0-0	0	1	1	0	0	0	0	1	6	3
50	DAILY, KAM		0	0-1	0-0	0-0	0	0	0	1	0	0	0	0	2	1
	TEAM						0	0	0	0		0				
<b>TOTALS</b>			<b>16</b>	<b>7-16</b>	<b>2-6</b>	<b>0-0</b>	<b>2</b>	<b>10</b>	<b>12</b>	<b>5</b>	<b>5</b>	<b>4</b>	<b>0</b>	<b>2</b>	<b>50</b>	

*Shooting By Period*

Period	FG	FG%	3FG	3FG%	FT	FT%
1st Qtr	7-16	44%	2-6	33%	0-0	0%
2nd Qtr	5-11	45%	1-5	20%	2-2	100%
1st Half	7-16	44%	2-6	33%	0-0	0%
1st Half	12-27	44%	3-11	27%	2-2	100%
Game	23-54	42.6%	5-17	29.4%	6-8	75.0%

Game Notes:

Officials: , ,

Start Time: 2019-02-16 20:08:09

End Time: 2019-02-16 22:07:50

Game Duration: 119

Conference Game;

Score	1st	2nd	3rd	4th	TOT
TSU	10	15	16	17	<b>58</b>
TWU	16	13	12	16	<b>57</b>

Points from (This Period)	TSU	TWU
In the Paint	0	6
Off Turns	2	5
2nd Chance	0	2
Fast Break	3	2
Bench	1	2

**Official Play-By-Play**  
**Tarleton St. vs Texas Woman's**  
**First Quarter**  
**February 16, 2019 at Kitty Magee Arena - Denton, Texas**



**Period 1**

**Starters:**

**Tarleton St.:** 00 ALLEN, KAYLEE; 14 BOSTAD, MCKINLEY; 23 WEBSTER, KATIE; 41 HAILEY, MACKENZIE; 2 COLLINS, KYLIE;  
**Texas Woman's:** 1 STASTNY, KJ; 5 WILKERSON, MACY; 20 WOODS, MA'K'LA; 21 ARCHER, LONDON; 4 MOODY, CARISSA;

Time	VISITORS: Tarleton St.	Score	Margin	HOME: Texas Woman's
09:50				MISSED JUMPER by STASTNY, KJ
09:46	REBOUND (DEF) by HAILEY, MACKENZIE			
09:38	GOOD! 3PTR by COLLINS, KYLIE	0-3	V 3	
09:38	ASSIST by WEBSTER, KATIE			
09:16		2-3	V 1	GOOD! LAYUP by WOODS, MA'K'LA
09:16				ASSIST by ARCHER, LONDON
09:01	TURNOVER (TRAVEL) by ALLEN, KAYLEE			
08:57	FOUL (PERSONAL) by ALLEN, KAYLEE			
08:50		5-3	H 2	GOOD! 3PTR by MOODY, CARISSA
08:50				ASSIST by WILKERSON, MACY
08:34	MISSED JUMPER by HAILEY, MACKENZIE			
08:31				REBOUND (DEF) by WILKERSON, MACY
08:11				TURNOVER (BADPASS) by WOODS, MA'K'LA
08:11	STEAL by WEBSTER, KATIE			
07:55	MISSED 3PTR by BOSTAD, MCKINLEY			
07:50				REBOUND (DEF) by WILKERSON, MACY
07:36				MISSED 3PTR by STASTNY, KJ
07:32	REBOUND (DEF) by ALLEN, KAYLEE			
07:27				FOUL (PERSONAL) by STASTNY, KJ
07:27	GOOD! FT by WEBSTER, KATIE [FB]	5-4	H 1	
07:27				SUB OUT: STASTNY, KJ
07:27				SUB IN: TAYLOR, AJINE
07:27	GOOD! FT by WEBSTER, KATIE [FB]	5-5	T	
07:09		7-5	H 2	GOOD! LAYUP by WOODS, MA'K'LA [PNT]
07:09				ASSIST by WILKERSON, MACY
06:51				FOUL (PERSONAL) by WOODS, MA'K'LA
06:51	GOOD! FT by BOSTAD, MCKINLEY	7-6	H 1	
06:51	MISSED FT by BOSTAD, MCKINLEY			
06:48				REBOUND (DEF) by WOODS, MA'K'LA
06:24				MISSED JUMPER by TAYLOR, AJINE
06:20				REBOUND (OFF) by MOODY, CARISSA
06:11				MISSED JUMPER by TAYLOR, AJINE
06:07	REBOUND (DEF) by COLLINS, KYLIE			
05:49	MISSED JUMPER by WEBSTER, KATIE			
05:46				REBOUND (DEF) by WILKERSON, MACY
05:39		9-6	H 3	GOOD! LAYUP by WOODS, MA'K'LA [FB]
05:39				ASSIST by ARCHER, LONDON
05:16	MISSED 3PTR by COLLINS, KYLIE			
05:12				REBOUND (DEF) by TAYLOR, AJINE
05:04	FOUL (PERSONAL) by WEBSTER, KATIE			
05:02				SUB OUT: ARCHER, LONDON
05:02				SUB IN: DAILY, KAM
05:02	SUB OUT: WEBSTER, KATIE			
05:02	SUB IN: HYDE, HANNAH			
05:02	SUB OUT: COLLINS, KYLIE			
05:02	SUB IN: ALVAREZ, NINA			
04:52				MISSED 3PTR by MOODY, CARISSA
04:45	REBOUND (DEF) by HYDE, HANNAH			
04:40				FOUL (PERSONAL) by MOODY, CARISSA
04:40				
04:40	MISSED FT by ALLEN, KAYLEE			
04:40	REBOUND (OFF) by TEAM			
04:40	GOOD! FT by ALLEN, KAYLEE [FB]	9-7	H 2	
04:34				TURNOVER (BADPASS) by WILKERSON, MACY
04:16	GOOD! JUMPER by ALLEN, KAYLEE	9-9	T	
04:00		12-9	H 3	GOOD! 3PTR by WILKERSON, MACY
04:00				ASSIST by MOODY, CARISSA
03:45	MISSED JUMPER by ALVAREZ, NINA			
03:41				REBOUND (DEF) by WILKERSON, MACY
03:40	FOUL (PERSONAL) by BOSTAD, MCKINLEY			
03:32				MISSED JUMPER by WILKERSON, MACY
03:28				REBOUND (OFF) by MOODY, CARISSA
03:27		14-9	H 5	GOOD! JUMPER by MOODY, CARISSA
03:21	TURNOVER (TRAVEL) by HAILEY, MACKENZIE			
02:49				MISSED JUMPER by DAILY, KAM
02:46	REBOUND (DEF) by ALVAREZ, NINA			
02:36				FOUL (PERSONAL) by DAILY, KAM
02:36	GOOD! FT by HYDE, HANNAH	14-10	H 4	
02:36				SUB OUT: DAILY, KAM
02:36				SUB IN: STEPHENSON, MAGGIE

Time	VISITORS: Tarleton St.	Score	Margin	HOME: Texas Woman's
02:36				SUB OUT: WOODS, MA'K'LA
02:36				SUB IN: ARCHER, LONDON
02:36	SUB OUT: ALLEN, KAYLEE			
02:36	SUB IN: WEBSTER, KATIE			
02:36	SUB OUT: HAILEY, MACKENZIE			
02:36	SUB IN: FAURIE, KANDYN			
02:36	MISSED FT by HYDE, HANNAH			
02:34				REBOUND (DEF) by MOODY, CARISSA
02:27				MISSED 3PTR by MOODY, CARISSA
02:22	REBOUND (DEF) by ALVAREZ, NINA			
02:20	TURNOVER (BADPASS) by ALVAREZ, NINA			
02:20				STEAL by TAYLOR, AJINE
02:04				MISSED 3PTR by WILKERSON, MACY
01:59	REBOUND (DEF) by WEBSTER, KATIE			
01:48	MISSED JUMPER by ALVAREZ, NINA			
01:46				REBOUND (DEF) by ARCHER, LONDON
01:46	FOUL (PERSONAL) by HYDE, HANNAH			
01:36				FOUL (OFF) by WILKERSON, MACY
01:36				TURNOVER (OFFENSIVE) by WILKERSON, MACY
01:24				SUB OUT: TAYLOR, AJINE
01:24				SUB IN: STASTNY, KJ
01:24				SUB OUT: WILKERSON, MACY
01:24				SUB IN: BELL, TRINITY
01:24				SUB OUT: MOODY, CARISSA
01:24				SUB IN: WOODS, MA'K'LA
01:24	SUB OUT: HYDE, HANNAH			
01:24	SUB IN: BENSON, LUCY			
01:14	TURNOVER (BADPASS) by BENSON, LUCY			
01:14				STEAL by STASTNY, KJ
01:02		16-10	H 6	GOOD! JUMPER by BELL, TRINITY
00:52	MISSED JUMPER by WEBSTER, KATIE			
00:50				REBOUND (DEF) by BELL, TRINITY
00:45				TURNOVER (BADPASS) by STASTNY, KJ
00:36	MISSED JUMPER by BOSTAD, MCKINLEY			
00:32				REBOUND (DEF) by STASTNY, KJ

### Tarleton St. 10, Texas Woman's 16

Points from (This Period)	TSU	TWU
In the Paint	0	6
Off Turns	2	5
2nd Chance	0	2
Fast Break	3	2
Bench	1	2

**Official Box Score**  
**Tarleton St. vs Texas Woman's**  
**Second Quarter Statistics Only**  
**February 16, 2019 at Kitty Magee Arena - Denton, Texas**



**Tarleton St. 15**

No.	Player	S	Pts	FG	3FG	FT	OR	DR	TR	PF	A	TO	Blk	Stl	Min	+/-
00	ALLEN, KAYLEE		4	1-4	0-2	2-2	0	0	0	0	0	0	0	3	7	4
02	COLLINS, KYLIE		5	2-2	1-1	0-1	0	0	0	0	0	1	0	1	7	4
14	BOSTAD, MCKINLEY		0	0-0	0-0	0-0	0	0	0	0	0	0	0	0	7	-7
23	WEBSTER, KATIE		0	0-1	0-0	0-0	0	0	0	0	1	0	0	1	10	3
41	HAILEY, MACKENZIE		2	1-2	0-0	0-0	0	1	1	2	0	1	0	0	7	3
01	BENSON, LUCY		2	0-1	0-0	2-2	1	0	1	0	0	0	0	0	3	-2
05	WINKFIELD, DESTINEY		0	0-1	0-0	0-0	0	0	0	0	0	1	0	0	3	-2
10	ALVAREZ, NINA		2	1-1	0-0	0-0	0	0	0	0	0	0	0	0	3	-2
11	HYDE, HANNAH		0	0-0	0-0	0-0	0	0	0	0	0	0	0	0	0	0
32	FAURIE, KANDYN		0	0-1	0-1	0-0	0	1	1	0	0	0	0	0	3	9
	TEAM						0	2	2	0		0				
<b>TOTALS</b>			<b>15</b>	<b>5-13</b>	<b>1-4</b>	<b>4-5</b>	<b>1</b>	<b>4</b>	<b>5</b>	<b>2</b>	<b>1</b>	<b>3</b>	<b>0</b>	<b>5</b>	<b>50</b>	

*Shooting By Period*

Period	FG	FG%	3FG	3FG%	FT	FT%
3rd Qtr	6-15	40%	1-3	33%	3-5	60%
4th Qtr	6-14	43%	2-3	67%	3-7	43%
2nd Half	5-13	38%	1-4	25%	4-5	80%
2nd Half	12-29	41%	3-6	50%	6-12	50%
Game	19-52	36.5%	5-13	38.5%	15-25	60.0%

**Texas Woman's 13**

No.	Player	S	Pts	FG	3FG	FT	OR	DR	TR	PF	A	TO	Blk	Stl	Min	+/-
01	STASTNY, KJ		0	0-0	0-0	0-0	0	2	2	2	1	1	0	1	9	-3
04	MOODY, CARISSA		2	1-5	0-2	0-0	0	3	3	0	0	0	0	0	10	-2
05	WILKERSON, MACY		0	0-0	0-0	0-0	0	0	0	1	0	1	0	0	1	-2
20	WOODS, MA'K'LA		2	1-1	0-0	0-0	1	1	2	0	0	2	0	0	5	2
21	ARCHER, LONDON		6	2-2	0-0	2-2	0	2	2	1	1	2	0	1	10	-2
22	STEPHENSON, MAGGIE		0	0-0	0-0	0-0	0	0	0	1	0	0	0	0	2	-6
23	BELL, TRINITY		0	0-1	0-1	0-0	0	0	0	0	0	1	0	0	2	-6
33	TAYLOR, AJINE		3	1-2	1-2	0-0	0	0	0	0	0	0	0	0	7	7
50	DAILY, KAM		0	0-0	0-0	0-0	1	0	1	0	1	0	0	0	3	2
	TEAM						0	0	0	0		0				
<b>TOTALS</b>			<b>13</b>	<b>5-11</b>	<b>1-5</b>	<b>2-2</b>	<b>2</b>	<b>8</b>	<b>10</b>	<b>5</b>	<b>3</b>	<b>7</b>	<b>0</b>	<b>2</b>	<b>50</b>	

*Shooting By Period*

Period	FG	FG%	3FG	3FG%	FT	FT%
3rd Qtr	6-13	46%	0-4	00%	0-2	00%
4th Qtr	5-14	36%	2-2	100%	4-4	100%
2nd Half	5-11	45%	1-5	20%	2-2	100%
2nd Half	11-27	41%	2-6	33%	4-6	67%
Game	23-54	42.6%	5-17	29.4%	6-8	75.0%

Game Notes:

Officials: , ,

Start Time: 2019-02-16 20:08:09  
 End Time: 2019-02-16 22:07:50  
 Game Duration: 119  
 Conference Game;

Score	1st	2nd	3rd	4th	TOT
TSU	10	15	16	17	<b>58</b>
TWU	16	13	12	16	<b>57</b>

Points from (This Period)	TSU	TWU
In the Paint	8	8
Off Turns	5	4
2nd Chance	2	4
Fast Break	2	2
Bench	4	3

**Official Play-By-Play**  
**Tarleton St. vs Texas Woman's**  
**Second Quarter**  
**February 16, 2019 at Kitty Magee Arena - Denton, Texas**



**Period 2**

**Starters:**

**Tarleton St.:** 00 ALLEN, KAYLEE; 14 BOSTAD, MCKINLEY; 23 WEBSTER, KATIE; 41 HAILEY, MACKENZIE; 2 COLLINS, KYLIE;  
**Texas Woman's:** 1 STASTNY, KJ; 5 WILKERSON, MACY; 20 WOODS, MA'K'LA; 21 ARCHER, LONDON; 4 MOODY, CARISSA;

Time	VISITORS: Tarleton St.	Score	Margin	HOME: Texas Woman's
09:42	GOOD! JUMPER by ALLEN, KAYLEE [PNT]	16-12	H 4	
09:22				MISSED JUMPER by MOODY, CARISSA
09:17	REBOUND (DEF) by FAURIE, KANDYN			
09:11	MISSED 3PTR by ALLEN, KAYLEE			
09:08				REBOUND (DEF) by STASTNY, KJ
09:01				MISSED 3PTR by BELL, TRINITY
08:58	REBOUND (DEF) by TEAM			
08:36	GOOD! JUMPER by HAILEY, MACKENZIE [PNT]	16-14	H 2	
08:17				TURNOVER (BADPASS) by BELL, TRINITY
08:17	STEAL by COLLINS, KYLIE			
08:11	GOOD! JUMPER by COLLINS, KYLIE [FB/PNT]	16-16	T	
08:11				FOUL (PERSONAL) by STEPHENSON, MAGGIE
08:00				SUB OUT: STEPHENSON, MAGGIE
08:00				SUB IN: WILKERSON, MACY
08:00				SUB OUT: BELL, TRINITY
08:00				SUB IN: WOODS, MA'K'LA
08:00	MISSED FT by COLLINS, KYLIE			
07:53				REBOUND (DEF) by ARCHER, LONDON
07:45				TURNOVER (BADPASS) by ARCHER, LONDON
07:45	STEAL by ALLEN, KAYLEE			
07:38	MISSED 3PTR by FAURIE, KANDYN			
07:30				REBOUND (DEF) by STASTNY, KJ
07:26				FOUL (OFF) by WILKERSON, MACY
07:26				TURNOVER (OFFENSIVE) by WILKERSON, MACY
07:20	GOOD! 3PTR by COLLINS, KYLIE	16-19	V 3	
07:20	ASSIST by WEBSTER, KATIE			
07:16				
07:12				SUB OUT: WILKERSON, MACY
07:12				SUB IN: TAYLOR, AJINE
07:12	SUB OUT: FAURIE, KANDYN			
07:12	SUB IN: BOSTAD, MCKINLEY			
06:55	FOUL (PERSONAL) by HAILEY, MACKENZIE			
06:33				TURNOVER (BADPASS) by ARCHER, LONDON
06:33	STEAL by WEBSTER, KATIE			
06:23	TURNOVER (BADPASS) by HAILEY, MACKENZIE			
06:23				STEAL by STASTNY, KJ
06:18		18-19	V 1	GOOD! LAYUP by ARCHER, LONDON [FB/PNT]
06:00				FOUL (PERSONAL) by STASTNY, KJ
05:51				FOUL (PERSONAL) by ARCHER, LONDON
05:51	GOOD! FT by ALLEN, KAYLEE	18-20	V 2	
05:51	GOOD! FT by ALLEN, KAYLEE	18-21	V 3	
05:46				TURNOVER (BADPASS) by WOODS, MA'K'LA
05:46	STEAL by ALLEN, KAYLEE			
05:39	MISSED 3PTR by ALLEN, KAYLEE			
05:34				REBOUND (DEF) by WOODS, MA'K'LA
05:26				MISSED 3PTR by MOODY, CARISSA
05:20				REBOUND (OFF) by WOODS, MA'K'LA
05:20		20-21	V 1	GOOD! LAYUP by WOODS, MA'K'LA
05:06	TURNOVER (BADPASS) by COLLINS, KYLIE			
05:06				STEAL by ARCHER, LONDON
04:58				MISSED LAYUP by MOODY, CARISSA
04:52	REBOUND (DEF) by HAILEY, MACKENZIE			
04:31	MISSED JUMPER by WEBSTER, KATIE			
04:27				REBOUND (DEF) by MOODY, CARISSA
04:10		23-21	H 2	GOOD! 3PTR by TAYLOR, AJINE
04:10				ASSIST by STASTNY, KJ
03:52	MISSED JUMPER by HAILEY, MACKENZIE			
03:46				REBOUND (DEF) by ARCHER, LONDON
03:34				TURNOVER (BADPASS) by STASTNY, KJ
03:34	STEAL by ALLEN, KAYLEE			
03:27	MISSED JUMPER by ALLEN, KAYLEE			
03:23				REBOUND (DEF) by MOODY, CARISSA
03:11				TURNOVER (BADPASS) by WOODS, MA'K'LA
03:07				SUB OUT: WOODS, MA'K'LA
03:07				SUB IN: DAILY, KAM
03:07	SUB OUT: ALLEN, KAYLEE			
03:07	SUB IN: BENSON, LUCY			
03:07	SUB OUT: COLLINS, KYLIE			
03:07	SUB IN: ALVAREZ, NINA			
03:07	SUB OUT: WEBSTER, KATIE			



Time	VISITORS: Tarleton St.	Score	Margin	HOME: Texas Woman's
03:07	SUB IN: WINKFIELD, DESTINEY			
02:57	MISSED JUMPER by BENSON, LUCY			
02:53				REBOUND (DEF) by MOODY, CARISSA
02:39	FOUL (PERSONAL) by HAILEY, MACKENZIE			
02:39		24-21	H 3	GOOD! FT by ARCHER, LONDON
02:39	SUB OUT: HAILEY, MACKENZIE			
02:39	SUB IN: WEBSTER, KATIE			
02:39		25-21	H 4	GOOD! FT by ARCHER, LONDON
02:07	TURNOVER (OTHER) by WINKFIELD, DESTINEY			
01:49		27-21	H 6	GOOD! LAYUP by MOODY, CARISSA
01:49				ASSIST by ARCHER, LONDON
01:33	GOOD! LAYUP by ALVAREZ, NINA [PNT]	27-23	H 4	
01:10				MISSED 3PTR by MOODY, CARISSA
01:07	REBOUND (DEF) by TEAM			
00:37	MISSED JUMPER by WINKFIELD, DESTINEY			
00:36	REBOUND (OFF) by BENSON, LUCY			
00:36				FOUL (PERSONAL) by STASTNY, KJ
00:36	GOOD! FT by BENSON, LUCY	27-24	H 3	
00:36				SUB OUT: STASTNY, KJ
00:36				SUB IN: WILKERSON, MACY
00:36	GOOD! FT by BENSON, LUCY	27-25	H 2	
00:27				MISSED 3PTR by TAYLOR, AJINE
00:22				REBOUND (OFF) by DAILY, KAM
00:06		29-25	H 4	GOOD! LAYUP by ARCHER, LONDON
00:06				ASSIST by DAILY, KAM

### Tarleton St. 25, Texas Woman's 29

Points from (This Period)	TSU	TWU
In the Paint	8	8
Off Turns	5	4
2nd Chance	2	4
Fast Break	2	2
Bench	4	3

**Official Box Score**  
**Tarleton St. vs Texas Woman's**  
**Second Half Statistics Only**  
**February 16, 2019 at Kitty Magee Arena - Denton, Texas**



**Tarleton St. 33**

No.	Player	S	Pts	FG	3FG	FT	OR	DR	TR	PF	A	TO	Blk	Stl	Min	+/-
00	ALLEN, KAYLEE		10	4-10	1-3	1-2	1	6	7	3	2	0	0	1	18	3
10	ALVAREZ, NINA		2	1-2	0-1	0-0	0	0	0	0	0	0	0	0	5	7
11	HYDE, HANNAH		0	0-0	0-0	0-0	0	0	0	0	0	0	0	0	2	0
14	BOSTAD, MCKINLEY		10	3-6	2-2	2-4	1	1	2	0	0	3	0	1	19	5
23	WEBSTER, KATIE		0	0-0	0-0	0-0	0	0	0	3	0	2	0	0	9	-3
32	FAURIE, KANDYN		0	0-0	0-0	0-0	0	0	0	0	0	0	0	0	2	2
41	HAILEY, MACKENZIE		8	3-9	0-0	2-3	1	0	1	2	1	1	0	4	17	5
01	BENSON, LUCY		3	1-1	0-0	1-3	2	1	3	2	0	0	0	4	13	8
02	COLLINS, KYLIE		0	0-1	0-0	0-0	0	0	0	0	1	0	0	0	15	-2
05	WINKFIELD, DESTINEY		0	0-0	0-0	0-0	0	0	0	0	0	0	0	0	0	0
	TEAM		0	0-0	0-0	0-0	1	1	2	0	0	0	0	0	0	0
<b>TOTALS</b>			<b>33</b>	<b>12-29</b>	<b>3-6</b>	<b>6-12</b>	<b>6</b>	<b>9</b>	<b>15</b>	<b>10</b>	<b>4</b>	<b>6</b>	<b>0</b>	<b>10</b>	<b>100</b>	

*Shooting By Period*

Period	FG	FG%	3FG	3FG%	FT	FT%
3rd Qtr	6-15	40%	1-3	33%	3-5	60%
4th Qtr	6-14	43%	2-3	67%	3-7	43%
2nd Half	12-29	41%	3-6	50%	6-12	50%
Game	19-52	36.5%	5-13	38.5%	15-25	60.0%

*Last FG Half: TSU 4th-00:31*

**Texas Woman's 28**

No.	Player	S	Pts	FG	3FG	FT	OR	DR	TR	PF	A	TO	Blk	Stl	Min	+/-
01	STASTNY, KJ		0	0-2	0-1	0-0	1	4	5	0	3	4	0	1	15	5
05	WILKERSON, MACY		8	2-3	2-2	2-2	0	0	0	3	1	0	0	1	16	-3
20	WOODS, MA'K'LA		6	3-4	0-1	0-0	1	4	5	3	2	1	1	0	17	4
21	ARCHER, LONDON		2	1-7	0-0	0-0	1	3	4	2	1	4	0	0	13	-6
22	STEPHENSON, MAGGIE		0	0-0	0-0	0-0	0	0	0	0	0	0	0	0	0	0
23	BELL, TRINITY		0	0-0	0-0	0-0	0	1	1	1	0	1	0	0	1	-5
04	MOODY, CARISSA		10	4-7	0-1	2-4	3	3	6	1	0	1	1	1	17	-3
33	TAYLOR, AJINE		0	0-2	0-1	0-0	0	0	0	0	0	1	0	0	12	-9
50	DAILY, KAM		2	1-2	0-0	0-0	1	0	1	0	0	0	0	1	9	-8
	TEAM		0	0-0	0-0	0-0	1	1	2	0	0	0	0	0	0	0
<b>TOTALS</b>			<b>28</b>	<b>11-27</b>	<b>2-6</b>	<b>4-6</b>	<b>8</b>	<b>16</b>	<b>24</b>	<b>10</b>	<b>7</b>	<b>12</b>	<b>2</b>	<b>4</b>	<b>100</b>	

*Shooting By Period*

Period	FG	FG%	3FG	3FG%	FT	FT%
3rd Qtr	6-13	46%	0-4	00%	0-2	00%
4th Qtr	5-14	36%	2-2	100%	4-4	100%
2nd Half	11-27	41%	2-6	33%	4-6	67%
Game	23-54	42.6%	5-17	29.4%	6-8	75.0%

*Last FG Half: TWU 4th-00:41*

Game Notes:

Officials: , ,

Start Time: 2019-02-16 20:08:09

End Time: 2019-02-16 22:07:50

Game Duration: 119

Conference Game;

Score	1st	2nd	3rd	4th	TOT
TSU	10	15	16	17	<b>58</b>
TWU	16	13	12	16	<b>57</b>

Points from (This Period)	TSU	TWU
In the Paint	14	14
Off Turns	12	0
2nd Chance	4	5
Fast Break	7	9
Bench	5	2

**Official Box Score**  
**Tarleton St. vs Texas Woman's**  
**Third Quarter Statistics Only**  
**February 16, 2019 at Kitty Magee Arena - Denton, Texas**



**Tarleton St. 33**

No.	Player	S	Pts	FG	3FG	FT	OR	DR	TR	PF	A	TO	Blk	Stl	Min	+/-
00	ALLEN, KAYLEE		8	3-6	1-2	1-2	0	3	3	1	0	0	0	1	8	2
02	COLLINS, KYLIE		0	0-0	0-0	0-0	0	0	0	0	0	0	0	0	5	-3
14	BOSTAD, MCKINLEY		2	1-3	0-0	0-0	1	1	2	0	0	2	0	0	9	4
23	WEBSTER, KATIE		0	0-0	0-0	0-0	0	0	0	1	0	1	0	0	7	-3
41	HAILEY, MACKENZIE		4	1-4	0-0	2-3	0	0	0	1	1	1	0	3	9	4
01	BENSON, LUCY		0	0-0	0-0	0-0	1	1	2	2	0	0	0	3	5	7
05	WINKFIELD, DESTINEY		0	0-0	0-0	0-0	0	0	0	0	0	0	0	0	0	0
10	ALVAREZ, NINA		2	1-2	0-1	0-0	0	0	0	0	0	0	0	0	5	7
11	HYDE, HANNAH		0	0-0	0-0	0-0	0	0	0	0	0	0	0	0	0	0
32	FAURIE, KANDYIN		0	0-0	0-0	0-0	0	0	0	0	0	0	0	0	2	2
<b>TEAM</b>								1	0	1	0	0				
<b>TOTALS</b>			<b>16</b>	<b>6-15</b>	<b>1-3</b>	<b>3-5</b>	<b>3</b>	<b>5</b>	<b>8</b>	<b>5</b>	<b>1</b>	<b>4</b>	<b>0</b>	<b>7</b>	<b>50</b>	

*Shooting By Period*

Period	FG	FG%	3FG	3FG%	FT	FT%
2nd Half	0-0	0%	0-0	0%	0-0	0%
Game	19-52	36.5%	5-13	38.5%	15-25	60.0%

**Texas Woman's 28**

No.	Player	S	Pts	FG	3FG	FT	OR	DR	TR	PF	A	TO	Blk	Stl	Min	+/-
01	STASTNY, KJ		0	0-1	0-1	0-0	0	1	1	0	2	3	0	1	8	1
04	MOODY, CARISSA		8	4-5	0-1	0-2	0	1	1	0	0	1	0	0	9	1
05	WILKERSON, MACY		0	0-0	0-0	0-0	0	0	0	1	0	0	0	1	7	-2
20	WOODS, MA'K'LA		4	2-3	0-1	0-0	1	2	3	1	0	0	0	0	9	1
21	ARCHER, LONDON		0	0-2	0-0	0-0	1	2	3	2	1	3	0	0	7	-3
22	STEPHENSON, MAGGIE		0	0-0	0-0	0-0	0	0	0	0	0	0	0	0	0	0
23	BELL, TRINITY		0	0-0	0-0	0-0	0	1	1	1	0	1	0	0	1	-5
33	TAYLOR, AJINE		0	0-2	0-1	0-0	0	0	0	0	0	0	0	0	5	-7
50	DAILY, KAM		0	0-0	0-0	0-0	0	0	0	0	0	0	0	1	3	-6
<b>TEAM</b>								1	1	2	0	0				
<b>TOTALS</b>			<b>12</b>	<b>6-13</b>	<b>0-4</b>	<b>0-2</b>	<b>3</b>	<b>8</b>	<b>11</b>	<b>5</b>	<b>3</b>	<b>8</b>	<b>0</b>	<b>3</b>	<b>50</b>	

*Shooting By Period*

Period	FG	FG%	3FG	3FG%	FT	FT%
2nd Half	0-0	0%	0-0	0%	0-0	0%
Game	23-54	42.6%	5-17	29.4%	6-8	75.0%

Game Notes:

Officials: , ,

Start Time: 2019-02-16 20:08:09

End Time: 2019-02-16 22:07:50

Game Duration: 119

Conference Game;

Score	1st	2nd	3rd	4th	TOT
TSU	10	15	16	17	<b>58</b>
TWU	16	13	12	16	<b>57</b>

Points from (This Period)	TSU	TWU
In the Paint	8	8
Off Turns	8	0
2nd Chance	2	0
Fast Break	4	2
Bench	2	0

**Official Play-By-Play**  
**Tarleton St. vs Texas Woman's**  
**Third Quarter**  
**February 16, 2019 at Kitty Magee Arena - Denton, Texas**



**Period 3**

**Starters:**

**Tarleton St.:** 00 ALLEN, KAYLEE; 14 BOSTAD, MCKINLEY; 23 WEBSTER, KATIE; 41 HAILEY, MACKENZIE; 2 COLLINS, KYLIE;  
**Texas Woman's:** 1 STASTNY, KJ; 5 WILKERSON, MACY; 20 WOODS, MA'K'LA; 21 ARCHER, LONDON; 4 MOODY, CARISSA;

Time	VISITORS: Tarleton St.	Score	Margin	HOME: Texas Woman's
09:43				MISSED JUMPER by ARCHER, LONDON
09:40	REBOUND (DEF) by ALLEN, KAYLEE			
09:26	TURNOVER (BADPASS) by HAILEY, MACKENZIE			
09:07				MISSED JUMPER by ARCHER, LONDON
09:06				REBOUND (OFF) by ARCHER, LONDON
09:06	FOUL (PERSONAL) by WEBSTER, KATIE			
08:59				MISSED 3PTR by STASTNY, KJ
08:54	REBOUND (DEF) by ALLEN, KAYLEE			
08:40	GOOD! 3PTR by ALLEN, KAYLEE	29-28	H 1	
08:17		31-28	H 3	GOOD! LAYUP by WOODS, MA'K'LA [PNT]
08:04	TURNOVER (BADPASS) by WEBSTER, KATIE			
08:04				STEAL by WILKERSON, MACY
07:56				MISSED 3PTR by MOODY, CARISSA
07:51	REBOUND (DEF) by BOSTAD, MCKINLEY			
07:36				FOUL (PERSONAL) by ARCHER, LONDON
07:32	GOOD! LAYUP by BOSTAD, MCKINLEY	31-30	H 1	
07:32	ASSIST by HAILEY, MACKENZIE			
07:09		33-30	H 3	GOOD! JUMPER by MOODY, CARISSA [PNT]
06:53	MISSED 3PTR by ALLEN, KAYLEE			
06:49				REBOUND (DEF) by STASTNY, KJ
06:45				TURNOVER (BADPASS) by STASTNY, KJ
06:45	STEAL by HAILEY, MACKENZIE			
06:40	GOOD! LAYUP by ALLEN, KAYLEE [FB]	33-32	H 1	
06:30		35-32	H 3	GOOD! JUMPER by MOODY, CARISSA
06:15	MISSED JUMPER by HAILEY, MACKENZIE			
06:11				REBOUND (DEF) by WOODS, MA'K'LA
06:02		37-32	H 5	GOOD! JUMPER by WOODS, MA'K'LA
06:02				ASSIST by ARCHER, LONDON
05:30	MISSED JUMPER by BOSTAD, MCKINLEY			
05:26	REBOUND (OFF) by BOSTAD, MCKINLEY			
05:24	MISSED JUMPER by BOSTAD, MCKINLEY			
05:20				REBOUND (DEF) by ARCHER, LONDON
05:15				TURNOVER (BADPASS) by ARCHER, LONDON
05:15	STEAL by ALLEN, KAYLEE			
05:09	MISSED JUMPER by ALLEN, KAYLEE			
05:04				REBOUND (DEF) by ARCHER, LONDON
05:03		39-32	H 7	GOOD! LAYUP by MOODY, CARISSA [FB]
05:03				ASSIST by STASTNY, KJ
04:42				FOUL (PERSONAL) by WOODS, MA'K'LA
04:42				
04:42				SUB OUT: STASTNY, KJ
04:42				SUB IN: TAYLOR, AJINE
04:42				SUB OUT: MOODY, CARISSA
04:42				SUB IN: BELL, TRINITY
04:42				SUB OUT: WOODS, MA'K'LA
04:42				SUB IN: DAILY, KAM
04:42	SUB OUT: COLLINS, KYLIE			
04:42	SUB IN: ALVAREZ, NINA			
04:42	SUB OUT: WEBSTER, KATIE			
04:42	SUB IN: BENSON, LUCY			
04:42	GOOD! FT by ALLEN, KAYLEE	39-33	H 6	
04:42	MISSED FT by ALLEN, KAYLEE			
04:42				REBOUND (DEF) by BELL, TRINITY
04:27	FOUL (PERSONAL) by ALLEN, KAYLEE			
04:27				TURNOVER (BADPASS) by BELL, TRINITY
04:27	STEAL by BENSON, LUCY			
04:27				FOUL (PERSONAL) by BELL, TRINITY
04:27	GOOD! JUMPER by ALVAREZ, NINA [PNT]	39-35	H 4	
04:14				TURNOVER (BADPASS) by ARCHER, LONDON
04:14	STEAL by HAILEY, MACKENZIE			
04:05	GOOD! JUMPER by HAILEY, MACKENZIE	39-37	H 2	
04:05				FOUL (PERSONAL) by WILKERSON, MACY
04:05	MISSED FT by HAILEY, MACKENZIE			
04:05				REBOUND (DEF) by MOODY, CARISSA
03:58				SUB OUT: BELL, TRINITY
03:58				SUB IN: MOODY, CARISSA
03:58				SUB OUT: DAILY, KAM
03:58				SUB IN: WOODS, MA'K'LA
03:51	SUB OUT: ALLEN, KAYLEE			
03:51	SUB IN: FAURIE, KANDYN			

Time	VISITORS: Tarleton St.	Score	Margin	HOME: Texas Woman's
03:37				MISSED 3PTR by WOODS, MA'K'LA
03:35				REBOUND (OFF) by TEAM
03:31				TURNOVER (OTHER) by MOODY, CARISSA
03:05	MISSED JUMPER by HAILEY, MACKENZIE			
03:01				REBOUND (DEF) by WOODS, MA'K'LA
02:44				TURNOVER (BADPASS) by ARCHER, LONDON
02:44	STEAL by HAILEY, MACKENZIE			
02:44				SUB OUT: WILKERSON, MACY
02:44				SUB IN: STASTNY, KJ
02:37	MISSED 3PTR by ALVAREZ, NINA			
02:35	REBOUND (OFF) by TEAM			
02:35				FOUL (PERSONAL) by ARCHER, LONDON
02:35	GOOD! FT by HAILEY, MACKENZIE	39-38	H 1	
02:35				SUB OUT: ARCHER, LONDON
02:35				SUB IN: DAILY, KAM
02:35	GOOD! FT by HAILEY, MACKENZIE	39-39	T	
02:19				TURNOVER (BADPASS) by STASTNY, KJ
02:19	STEAL by BENSON, LUCY			
02:10	TURNOVER (BADPASS) by BOSTAD, MCKINLEY			
02:10				STEAL by DAILY, KAM
02:02	SUB OUT: BOSTAD, MCKINLEY			
02:02	SUB IN: ALLEN, KAYLEE			
01:54	FOUL (PERSONAL) by BENSON, LUCY			
01:49				MISSED JUMPER by TAYLOR, AJINE
01:45				REBOUND (OFF) by WOODS, MA'K'LA
01:29				TURNOVER (BADPASS) by STASTNY, KJ
01:29	STEAL by BENSON, LUCY			
01:25	MISSED JUMPER by HAILEY, MACKENZIE			
01:25	REBOUND (OFF) by BENSON, LUCY			
01:25	FOUL (PERSONAL) by HAILEY, MACKENZIE			
01:25	SUB OUT: FAURIE, KANDYN			
01:25	SUB IN: BOSTAD, MCKINLEY			
01:25	SUB OUT: HAILEY, MACKENZIE			
01:25	SUB IN: WEBSTER, KATIE			
01:12		41-39	H 2	GOOD! LAYUP by MOODY, CARISSA
01:12				ASSIST by STASTNY, KJ
00:44	TURNOVER (BADPASS) by BOSTAD, MCKINLEY			
00:44				STEAL by STASTNY, KJ
00:35				MISSED 3PTR by TAYLOR, AJINE
00:30	REBOUND (DEF) by ALLEN, KAYLEE			
00:26	GOOD! JUMPER by ALLEN, KAYLEE [FB/PNT]	41-41	T	
00:08	FOUL (PERSONAL) by BENSON, LUCY			
00:08				MISSED FT by MOODY, CARISSA
00:08				REBOUND (OFF) by TEAM
00:08				MISSED FT by MOODY, CARISSA
00:08	REBOUND (DEF) by BENSON, LUCY			
00:02	MISSED JUMPER by ALLEN, KAYLEE			
00:02				REBOUND (DEF) by TEAM

### Tarleton St. 41, Texas Woman's 41

Points from (This Period)	TSU	TWU
In the Paint	8	8
Off Turns	8	0
2nd Chance	2	0
Fast Break	4	2
Bench	2	0

**Official Box Score**  
**Tarleton St. vs Texas Woman's**  
**Fourth Quarter Statistics Only**  
**February 16, 2019 at Kitty Magee Arena - Denton, Texas**



**Tarleton St. 17**

No.	Player	S	Pts	FG	3FG	FT	OR	DR	TR	PF	A	TO	Blk	Stl	Min	+/-
00	ALLEN, KAYLEE		2	1-4	0-1	0-0	1	3	4	2	2	0	0	0	10	1
02	COLLINS, KYLIE		0	0-1	0-0	0-0	0	0	0	0	1	0	0	0	10	1
14	BOSTAD, MCKINLEY		8	2-3	2-2	2-4	0	0	0	0	0	1	0	1	10	1
23	WEBSTER, KATIE		0	0-0	0-0	0-0	0	0	0	2	0	1	0	0	2	0
41	HAILEY, MACKENZIE		4	2-5	0-0	0-0	1	0	1	1	0	0	0	1	8	1
01	BENSON, LUCY		3	1-1	0-0	1-3	1	0	1	0	0	0	0	1	8	1
05	WINKFIELD, DESTINEY		0	0-0	0-0	0-0	0	0	0	0	0	0	0	0	0	0
10	ALVAREZ, NINA		0	0-0	0-0	0-0	0	0	0	0	0	0	0	0	0	0
11	HYDE, HANNAH		0	0-0	0-0	0-0	0	0	0	0	0	0	0	0	2	0
32	FAURIE, KANDYN		0	0-0	0-0	0-0	0	0	0	0	0	0	0	0	0	0
	TEAM						0	1	1	0		0				
<b>TOTALS</b>			<b>17</b>	<b>6-14</b>	<b>2-3</b>	<b>3-7</b>	<b>3</b>	<b>4</b>	<b>7</b>	<b>5</b>	<b>3</b>	<b>2</b>	<b>0</b>	<b>3</b>	<b>50</b>	

*Shooting By Period*

Period	FG	FG%	3FG	3FG%	FT	FT%
Game	19-52	36.5%	5-13	38.5%	15-25	60.0%

**Texas Woman's 16**

No.	Player	S	Pts	FG	3FG	FT	OR	DR	TR	PF	A	TO	Blk	Stl	Min	+/-
01	STASTNY, KJ		0	0-1	0-0	0-0	1	3	4	0	1	1	0	0	7	4
04	MOODY, CARISSA		2	0-2	0-0	2-2	3	2	5	1	0	0	1	1	8	-4
05	WILKERSON, MACY		8	2-3	2-2	2-2	0	0	0	2	1	0	0	0	9	-1
20	WOODS, MA'K'LA		2	1-1	0-0	0-0	0	2	2	2	2	1	1	0	8	3
21	ARCHER, LONDON		2	1-5	0-0	0-0	0	1	1	0	0	1	0	0	6	-3
22	STEPHENSON, MAGGIE		0	0-0	0-0	0-0	0	0	0	0	0	0	0	0	0	0
23	BELL, TRINITY		0	0-0	0-0	0-0	0	0	0	0	0	0	0	0	0	0
33	TAYLOR, AJINE		0	0-0	0-0	0-0	0	0	0	0	0	1	0	0	7	-2
50	DAILY, KAM		2	1-2	0-0	0-0	1	0	1	0	0	0	0	0	6	-2
	TEAM						0	0	0	0		0				
<b>TOTALS</b>			<b>16</b>	<b>5-14</b>	<b>2-2</b>	<b>4-4</b>	<b>5</b>	<b>8</b>	<b>13</b>	<b>5</b>	<b>4</b>	<b>4</b>	<b>2</b>	<b>1</b>	<b>50</b>	

*Shooting By Period*

Period	FG	FG%	3FG	3FG%	FT	FT%
Game	23-54	42.6%	5-17	29.4%	6-8	75.0%

Game Notes:

Officials: , ,

Start Time: 2019-02-16 20:08:09

End Time: 2019-02-16 22:07:50

Game Duration: 119

Conference Game:

Score	1st	2nd	3rd	4th	TOT
TSU	10	15	16	17	<b>58</b>
TWU	16	13	12	16	<b>57</b>

Points from (This Period)	TSU	TWU
In the Paint	6	6
Off Turns	4	0
2nd Chance	2	5
Fast Break	3	7
Bench	3	2

**Official Play-By-Play**  
**Tarleton St. vs Texas Woman's**  
**Fourth Quarter**  
**February 16, 2019 at Kitty Magee Arena - Denton, Texas**



**Period 4**

**Starters:**

**Tarleton St.:** 00 ALLEN, KAYLEE; 14 BOSTAD, MCKINLEY; 23 WEBSTER, KATIE; 41 HAILEY, MACKENZIE; 2 COLLINS, KYLIE;  
**Texas Woman's:** 1 STASTNY, KJ; 5 WILKERSON, MACY; 20 WOODS, MA'K'LA; 21 ARCHER, LONDON; 4 MOODY, CARISSA;

Time	VISITORS: Tarleton St.	Score	Margin	HOME: Texas Woman's
09:52	FOUL (OFF) by WEBSTER, KATIE			
09:52	TURNOVER (OFFENSIVE) by WEBSTER, KATIE			
09:48	SUB OUT: ALVAREZ, NINA			
09:48	SUB IN: COLLINS, KYLIE			
09:29				TURNOVER (BADPASS) by STASTNY, KJ
09:29	STEAL by BOSTAD, MCKINLEY			
09:10	MISSED JUMPER by COLLINS, KYLIE			
09:06	REBOUND (OFF) by ALLEN, KAYLEE			
09:01	MISSED 3PTR by ALLEN, KAYLEE			
08:57				REBOUND (DEF) by WOODS, MA'K'LA
08:51				SUB OUT: MOODY, CARISSA
08:51				SUB IN: WILKERSON, MACY
08:31				MISSED JUMPER by DAILY, KAM
08:30				REBOUND (OFF) by DAILY, KAM
08:30	FOUL (PERSONAL) by WEBSTER, KATIE			
08:18	SUB OUT: HYDE, HANNAH			
08:18	SUB IN: HAILEY, MACKENZIE			
08:14				MISSED JUMPER by STASTNY, KJ
08:12				REBOUND (OFF) by STASTNY, KJ
08:12				
08:12	SUB OUT: WEBSTER, KATIE			
08:12	SUB IN: BENSON, LUCY			
07:57		44-41	H 3	GOOD! 3PTR by WILKERSON, MACY
07:57				ASSIST by WOODS, MA'K'LA
07:34	MISSED JUMPER by HAILEY, MACKENZIE			
07:34				BLOCK by WOODS, MA'K'LA
07:22	REBOUND (OFF) by HAILEY, MACKENZIE			
07:20	MISSED JUMPER by HAILEY, MACKENZIE			
07:15				REBOUND (DEF) by STASTNY, KJ
07:07		46-41	H 5	GOOD! LAYUP by DAILY, KAM [FB/PNT]
07:07				ASSIST by WOODS, MA'K'LA
06:41	MISSED JUMPER by ALLEN, KAYLEE			
06:38	REBOUND (OFF) by BENSON, LUCY			
06:38	GOOD! JUMPER by BENSON, LUCY [PNT]	46-43	H 3	
06:38				FOUL (PERSONAL) by WOODS, MA'K'LA
06:38	MISSED FT by BENSON, LUCY			
06:38				REBOUND (DEF) by WOODS, MA'K'LA
06:28				SUB OUT: STASTNY, KJ
06:28				SUB IN: MOODY, CARISSA
06:28	FOUL (PERSONAL) by ALLEN, KAYLEE			
06:25		48-43	H 5	GOOD! JUMPER by WOODS, MA'K'LA [PNT]
06:25				ASSIST by WILKERSON, MACY
06:03				FOUL (PERSONAL) by MOODY, CARISSA
06:03	GOOD! FT by BOSTAD, MCKINLEY	48-44	H 4	
06:03	GOOD! FT by BOSTAD, MCKINLEY	48-45	H 3	
05:55				TURNOVER (BADPASS) by WOODS, MA'K'LA
05:55	STEAL by BENSON, LUCY			
05:53				FOUL (PERSONAL) by WOODS, MA'K'LA
05:53	GOOD! FT by BENSON, LUCY [FB]	48-46	H 2	
05:53				SUB OUT: WOODS, MA'K'LA
05:53				SUB IN: ARCHER, LONDON
05:53	MISSED FT by BENSON, LUCY			
05:53				REBOUND (DEF) by MOODY, CARISSA
05:32				MISSED JUMPER by ARCHER, LONDON
05:29				REBOUND (OFF) by MOODY, CARISSA
05:27				MISSED JUMPER by ARCHER, LONDON
05:27				REBOUND (OFF) by MOODY, CARISSA
05:27				MISSED JUMPER by MOODY, CARISSA
05:27				REBOUND (OFF) by MOODY, CARISSA
05:27	FOUL (PERSONAL) by HAILEY, MACKENZIE			
05:27		49-46	H 3	GOOD! FT by MOODY, CARISSA
05:27		50-46	H 4	GOOD! FT by MOODY, CARISSA
05:10	MISSED JUMPER by ALLEN, KAYLEE			
05:07				REBOUND (DEF) by MOODY, CARISSA
05:02				MISSED JUMPER by MOODY, CARISSA
04:58	REBOUND (DEF) by ALLEN, KAYLEE			
04:55	GOOD! LAYUP by HAILEY, MACKENZIE [FB]	50-48	H 2	
04:55	ASSIST by ALLEN, KAYLEE			
04:49	TIMEOUT 30SEC			
04:49	FOUL (PERSONAL) by ALLEN, KAYLEE			

Time	VISITORS: Tarleton St.	Score	Margin	HOME: Texas Woman's
04:49		51-48	H 3	GOOD! FT by WILKERSON, MACY [FB]
04:49		52-48	H 4	GOOD! FT by WILKERSON, MACY [FB]
04:27	GOOD! 3PTR by BOSTAD, MCKINLEY	52-51	H 1	
04:27	ASSIST by COLLINS, KYLIE			
04:06				TURNOVER (BADPASS) by TAYLOR, AJINE
04:06	STEAL by HAILEY, MACKENZIE			
03:50	GOOD! 3PTR by BOSTAD, MCKINLEY	52-54	V 2	
03:50	ASSIST by ALLEN, KAYLEE			
03:32				TURNOVER (TRAVEL) by ARCHER, LONDON
03:32				SUB OUT: DAILY, KAM
03:32				SUB IN: STASTNY, KJ
03:32				SUB OUT: TAYLOR, AJINE
03:32				SUB IN: WOODS, MA'K'LA
03:12	MISSED JUMPER by HAILEY, MACKENZIE			
03:08				REBOUND (DEF) by ARCHER, LONDON
02:43				MISSED JUMPER by WILKERSON, MACY
02:42	REBOUND (DEF) by TEAM			
02:21	GOOD! JUMPER by ALLEN, KAYLEE	52-56	V 4	
01:57		54-56	V 2	GOOD! JUMPER by ARCHER, LONDON [PNT]
01:57				ASSIST by STASTNY, KJ
01:54				TIMEOUT 30SEC
01:36	TURNOVER (BADPASS) by BOSTAD, MCKINLEY			
01:36				STEAL by MOODY, CARISSA
01:20				MISSED JUMPER by ARCHER, LONDON
01:17	REBOUND (DEF) by ALLEN, KAYLEE			
00:51	MISSED JUMPER by BOSTAD, MCKINLEY			
00:51				BLOCK by MOODY, CARISSA
00:41				REBOUND (DEF) by STASTNY, KJ
00:41		57-56	H 1	GOOD! 3PTR by WILKERSON, MACY [FB]
00:31	GOOD! JUMPER by HAILEY, MACKENZIE	57-58	V 1	
00:30				TIMEOUT TEAM
00:06				MISSED JUMPER by ARCHER, LONDON
00:06	REBOUND (DEF) by ALLEN, KAYLEE			
00:06				FOUL (PERSONAL) by WILKERSON, MACY
00:06	TIMEOUT 30SEC			
00:03				FOUL (PERSONAL) by WILKERSON, MACY
00:03				SUB OUT: WILKERSON, MACY
00:03				SUB IN: TAYLOR, AJINE
00:03	MISSED FT by BOSTAD, MCKINLEY			
00:03	REBOUND (OFF) by TEAM			
00:03	MISSED FT by BOSTAD, MCKINLEY			
00:03				REBOUND (DEF) by STASTNY, KJ

### Tarleton St. 58, Texas Woman's 57

Points from (This Period)	TSU	TWU
In the Paint	6	6
Off Turns	4	0
2nd Chance	2	5
Fast Break	3	7
Bench	3	2



**Official Scoring/Possession Reference Chart**  
**Tarleton St. vs Texas Woman's**  
**Period 1**  
**February 16, 2019 at Kitty Magee Arena - Denton, Texas**



**Period 1**

**Starters:**

**Tarleton St.:** 00 ALLEN,KAYLEE; 14 BOSTAD,MCKINLEY; 23 WEBSTER,KATIE; 41 HAILEY,MACKENZIE; 2 COLLINS,KYLIE;  
**Texas Woman's:** 1 STASTNY,KJ; 5 WILKERSON,MACY; 20 WOODS,MA'K'LA; 21 ARCHER,LONDON; 4 MOODY,CARISSA;

Time	VISITORS: Tarleton St.	Score	Margin	HOME: Texas Woman's
09:38	GOOD! 3PTR by COLLINS, KYLIE	0-3	V 3	
09:16		2-3	V 1	GOOD! LAYUP by WOODS, MA'K'LA
08:50		5-3	H 2	GOOD! 3PTR by MOODY, CARISSA
07:27	GOOD! FT by WEBSTER, KATIE [FB]	5-4	H 1	
07:27	GOOD! FT by WEBSTER, KATIE [FB]	5-5	T	
07:09		7-5	H 2	GOOD! LAYUP by WOODS, MA'K'LA [PNT]
06:51	GOOD! FT by BOSTAD, MCKINLEY	7-6	H 1	
05:39		9-6	H 3	GOOD! LAYUP by WOODS, MA'K'LA [FB]
04:40	GOOD! FT by ALLEN, KAYLEE [FB]	9-7	H 2	
04:16	GOOD! JUMPER by ALLEN, KAYLEE	9-9	T	
04:00		12-9	H 3	GOOD! 3PTR by WILKERSON, MACY
03:27		14-9	H 5	GOOD! JUMPER by MOODY, CARISSA
02:36	GOOD! FT by HYDE, HANNAH	14-10	H 4	
01:02		16-10	H 6	GOOD! JUMPER by BELL, TRINITY

**Tarleton St. 10, Texas Woman's 16**

**Official Scoring/Possession Reference Chart**  
**Tarleton St. vs Texas Woman's**  
**Period 2**  
**February 16, 2019 at Kitty Magee Arena - Denton, Texas**



**Period 2**

**Starters:**

**Tarleton St.:** 00 ALLEN,KAYLEE; 14 BOSTAD,MCKINLEY; 23 WEBSTER,KATIE; 41 HAILEY,MACKENZIE; 2 COLLINS,KYLIE;

**Texas Woman's:** 1 STASTNY,KJ; 5 WILKERSON,MACY; 20 WOODS,MA'K'LA; 21 ARCHER,LONDON; 4 MOODY,CARISSA;

Time	VISITORS: Tarleton St.	Score	Margin	HOME: Texas Woman's
09:42	GOOD! JUMPER by ALLEN, KAYLEE [PNT]	16-12	H 4	
08:36	GOOD! JUMPER by HAILEY, MACKENZIE [PNT]	16-14	H 2	
08:11	GOOD! JUMPER by COLLINS, KYLIE [FB/PNT]	16-16	T	
07:20	GOOD! 3PTR by COLLINS, KYLIE	16-19	V 3	
06:18		18-19	V 1	GOOD! LAYUP by ARCHER, LONDON [FB/PNT]
05:51	GOOD! FT by ALLEN, KAYLEE	18-20	V 2	
05:51	GOOD! FT by ALLEN, KAYLEE	18-21	V 3	
05:20		20-21	V 1	GOOD! LAYUP by WOODS, MA'K'LA
04:10		23-21	H 2	GOOD! 3PTR by TAYLOR, AJINE
02:39		24-21	H 3	GOOD! FT by ARCHER, LONDON
02:39		25-21	H 4	GOOD! FT by ARCHER, LONDON
01:49		27-21	H 6	GOOD! LAYUP by MOODY, CARISSA
01:33	GOOD! LAYUP by ALVAREZ, NINA [PNT]	27-23	H 4	
00:36	GOOD! FT by BENSON, LUCY	27-24	H 3	
00:36	GOOD! FT by BENSON, LUCY	27-25	H 2	
00:06		29-25	H 4	GOOD! LAYUP by ARCHER, LONDON

**Tarleton St. 25, Texas Woman's 29**

**Official Scoring/Possession Reference Chart**  
**Tarleton St. vs Texas Woman's**  
**Period 3**  
**February 16, 2019 at Kitty Magee Arena - Denton, Texas**



**Period 3**

**Starters:**

**Tarleton St.:** 00 ALLEN, KAYLEE; 14 BOSTAD, MCKINLEY; 23 WEBSTER, KATIE; 41 HAILEY, MACKENZIE; 2 COLLINS, KYLIE;  
**Texas Woman's:** 1 STASTNY, KJ; 5 WILKERSON, MACY; 20 WOODS, MA'K'LA; 21 ARCHER, LONDON; 4 MOODY, CARISSA;

Time	VISITORS: Tarleton St.	Score	Margin	HOME: Texas Woman's
08:40	GOOD! 3PTR by ALLEN, KAYLEE	29-28	H 1	
08:17		31-28	H 3	GOOD! LAYUP by WOODS, MA'K'LA [PNT]
07:32	GOOD! LAYUP by BOSTAD, MCKINLEY	31-30	H 1	
07:09		33-30	H 3	GOOD! JUMPER by MOODY, CARISSA [PNT]
06:40	GOOD! LAYUP by ALLEN, KAYLEE [FB]	33-32	H 1	
06:30		35-32	H 3	GOOD! JUMPER by MOODY, CARISSA
06:02		37-32	H 5	GOOD! JUMPER by WOODS, MA'K'LA
05:03		39-32	H 7	GOOD! LAYUP by MOODY, CARISSA [FB]
04:42	GOOD! FT by ALLEN, KAYLEE	39-33	H 6	
04:27	GOOD! JUMPER by ALVAREZ, NINA [PNT]	39-35	H 4	
04:05	GOOD! JUMPER by HAILEY, MACKENZIE	39-37	H 2	
02:35	GOOD! FT by HAILEY, MACKENZIE	39-38	H 1	
02:35	GOOD! FT by HAILEY, MACKENZIE	39-39	T	
01:12		41-39	H 2	GOOD! LAYUP by MOODY, CARISSA
00:26	GOOD! JUMPER by ALLEN, KAYLEE [FB/PNT]	41-41	T	

**Tarleton St. 41, Texas Woman's 41**

**Official Scoring/Possession Reference Chart**  
**Tarleton St. vs Texas Woman's**  
**Period 4**  
**February 16, 2019 at Kitty Magee Arena - Denton, Texas**



**Period 4**

**Starters:**

**Tarleton St.:** 00 ALLEN,KAYLEE; 14 BOSTAD,MCKINLEY; 23 WEBSTER,KATIE; 41 HAILEY,MACKENZIE; 2 COLLINS,KYLIE;

**Texas Woman's:** 1 STASTNY,KJ; 5 WILKERSON,MACY; 20 WOODS,MA'K'LA; 21 ARCHER,LONDON; 4 MOODY,CARISSA;

Time	VISITORS: Tarleton St.	Score	Margin	HOME: Texas Woman's
07:57		44-41	H 3	GOOD! 3PTR by WILKERSON, MACY
07:07		46-41	H 5	GOOD! LAYUP by DAILY, KAM [FB/PNT]
06:38	GOOD! JUMPER by BENSON, LUCY [PNT]	46-43	H 3	
06:25		48-43	H 5	GOOD! JUMPER by WOODS, MA'K'LA [PNT]
06:03	GOOD! FT by BOSTAD, MCKINLEY	48-44	H 4	
06:03	GOOD! FT by BOSTAD, MCKINLEY	48-45	H 3	
05:53	GOOD! FT by BENSON, LUCY [FB]	48-46	H 2	
05:27		49-46	H 3	GOOD! FT by MOODY, CARISSA
05:27		50-46	H 4	GOOD! FT by MOODY, CARISSA
04:55	GOOD! LAYUP by HAILEY, MACKENZIE [FB]	50-48	H 2	
04:49		51-48	H 3	GOOD! FT by WILKERSON, MACY [FB]
04:49		52-48	H 4	GOOD! FT by WILKERSON, MACY [FB]
04:27	GOOD! 3PTR by BOSTAD, MCKINLEY	52-51	H 1	
03:50	GOOD! 3PTR by BOSTAD, MCKINLEY	52-54	V 2	
02:21	GOOD! JUMPER by ALLEN, KAYLEE	52-56	V 4	
01:57		54-56	V 2	GOOD! JUMPER by ARCHER, LONDON [PNT]
00:41		57-56	H 1	GOOD! 3PTR by WILKERSON, MACY [FB]
00:31	GOOD! JUMPER by HAILEY, MACKENZIE	57-58	V 1	

**Tarleton St. 58, Texas Woman's 57**

**Official Substitutions Log**  
**Tarleton St. vs Texas Woman's**  
**Period 1**  
**February 16, 2019 at Kitty Magee Arena - Denton, Texas**



VISITORS: Tarleton St.	Time	Score	HOME: Texas Woman's
00 ALLEN,KAYLEE			1 STASTNY,KJ
14 BOSTAD,MCKINLEY			5 WILKERSON,MACY
23 WEBSTER,KATIE			20 WOODS,MA'K'LA
41 HAILEY,MACKENZIE			21 ARCHER,LONDON
2 COLLINS,KYLIE			4 MOODY,CARISSA
	07:27	4-5	SUB OUT: STASTNY,KJ
	07:27		SUB IN: TAYLOR,AJINE
	05:02	6-9	SUB OUT: ARCHER,LONDON
	05:02		SUB IN: DAILY,KAM
SUB OUT: 23 WEBSTER,KATIE	05:02		
SUB IN: 11 HYDE,HANNAH	05:02		
SUB OUT: 2 COLLINS,KYLIE	05:02		
SUB IN: 10 ALVAREZ,NINA	05:02		
	02:36	10-14	SUB OUT: DAILY,KAM
	02:36		SUB IN: STEPHENSON,MAGGIE
	02:36		SUB OUT: WOODS,MA'K'LA
	02:36		SUB IN: ARCHER,LONDON
SUB OUT: 00 ALLEN,KAYLEE	02:36		
SUB IN: 23 WEBSTER,KATIE	02:36		
SUB OUT: 41 HAILEY,MACKENZIE	02:36		
SUB IN: 32 FAURIE,KANDYN	02:36		
	01:24	10-14	SUB OUT: TAYLOR,AJINE
	01:24		SUB IN: STASTNY,KJ
	01:24		SUB OUT: WILKERSON,MACY
	01:24		SUB IN: BELL,TRINITY
	01:24		SUB OUT: MOODY,CARISSA
	01:24		SUB IN: WOODS,MA'K'LA
SUB OUT: 11 HYDE,HANNAH	01:24		
SUB IN: 1 BENSON,LUCY	01:24		

**Tarleton St. 10, Texas Woman's 16**

**Official Substitutions Log**  
**Tarleton St. vs Texas Woman's**  
**Period 2**  
**February 16, 2019 at Kitty Magee Arena - Denton, Texas**



VISITORS: Tarleton St.	Time	Score	HOME: Texas Woman's
00 ALLEN, KAYLEE			1 STASTNY, KJ
14 BOSTAD, MCKINLEY			5 WILKERSON, MACY
23 WEBSTER, KATIE			20 WOODS, MA'K'LA
41 HAILEY, MACKENZIE			21 ARCHER, LONDON
2 COLLINS, KYLIE			4 MOODY, CARISSA
	08:00	16-16	SUB OUT: STEPHENSON, MAGGIE
	08:00		SUB IN: WILKERSON, MACY
	08:00		SUB OUT: BELL, TRINITY
	08:00		SUB IN: WOODS, MA'K'LA
	07:12	19-16	SUB OUT: WILKERSON, MACY
	07:12		SUB IN: TAYLOR, AJINE
SUB OUT: 32 FAURIE, KANDYN	07:12		
SUB IN: 14 BOSTAD, MCKINLEY	07:12		
	03:07	21-23	SUB OUT: WOODS, MA'K'LA
	03:07		SUB IN: DAILY, KAM
SUB OUT: 00 ALLEN, KAYLEE	03:07		
SUB IN: 1 BENSON, LUCY	03:07		
SUB OUT: 2 COLLINS, KYLIE	03:07		
SUB IN: 10 ALVAREZ, NINA	03:07		
SUB OUT: 23 WEBSTER, KATIE	03:07		
SUB IN: 5 WINKFIELD, DESTINEY	03:07		
SUB OUT: 41 HAILEY, MACKENZIE	02:39	21-24	
SUB IN: 23 WEBSTER, KATIE	02:39		
	00:36	24-27	SUB OUT: STASTNY, KJ
	00:36		SUB IN: WILKERSON, MACY

**Tarleton St. 25, Texas Woman's 29**

**Official Substitutions Log**  
**Tarleton St. vs Texas Woman's**  
**Period 3**  
**February 16, 2019 at Kitty Magee Arena - Denton, Texas**



VISITORS: Tarleton St.	Time	Score	HOME: Texas Woman's
00 ALLEN,KAYLEE			1 STASTNY,KJ
14 BOSTAD,MCKINLEY			5 WILKERSON,MACY
23 WEBSTER,KATIE			20 WOODS,MA'K'LA
41 HAILEY,MACKENZIE			21 ARCHER,LONDON
2 COLLINS,KYLIE			4 MOODY,CARISSA
	04:42	32-39	SUB OUT: STASTNY,KJ
	04:42		SUB IN: TAYLOR,AJINE
	04:42		SUB OUT: MOODY,CARISSA
	04:42		SUB IN: BELL,TRINITY
	04:42		SUB OUT: WOODS,MA'K'LA
	04:42		SUB IN: DAILY,KAM
SUB OUT: 2 COLLINS,KYLIE	04:42		
SUB IN: 10 ALVAREZ,NINA	04:42		
SUB OUT: 23 WEBSTER,KATIE	04:42		
SUB IN: 1 BENSON,LUCY	04:42		
	03:58	37-39	SUB OUT: BELL,TRINITY
	03:58		SUB IN: MOODY,CARISSA
	03:58		SUB OUT: DAILY,KAM
	03:58		SUB IN: WOODS,MA'K'LA
SUB OUT: 00 ALLEN,KAYLEE	03:51	37-39	
SUB IN: 32 FAURIE,KANDYN	03:51		
	02:44	37-39	SUB OUT: WILKERSON,MACY
	02:44		SUB IN: STASTNY,KJ
	02:35	38-39	SUB OUT: ARCHER,LONDON
	02:35		SUB IN: DAILY,KAM
SUB OUT: 14 BOSTAD,MCKINLEY	02:02	39-39	
SUB IN: 00 ALLEN,KAYLEE	02:02		
SUB OUT: 32 FAURIE,KANDYN	01:25	39-39	
SUB IN: 14 BOSTAD,MCKINLEY	01:25		
SUB OUT: 41 HAILEY,MACKENZIE	01:25		
SUB IN: 23 WEBSTER,KATIE	01:25		

**Tarleton St. 41, Texas Woman's 41**

**Official Substitutions Log**  
**Tarleton St. vs Texas Woman's**  
**Period 4**  
**February 16, 2019 at Kitty Magee Arena - Denton, Texas**



VISITORS: Tarleton St.	Time	Score	HOME: Texas Woman's
00 ALLEN,KAYLEE			1 STASTNY,KJ
14 BOSTAD,MCKINLEY			5 WILKERSON,MACY
23 WEBSTER,KATIE			20 WOODS,MA'K'LA
41 HAILEY,MACKENZIE			21 ARCHER,LONDON
2 COLLINS,KYLIE			4 MOODY,CARISSA
SUB OUT: 10 ALVAREZ,NINA	09:48	-	
SUB IN: 2 COLLINS,KYLIE	09:48		
	08:51	-	SUB OUT: MOODY,CARISSA
	08:51		SUB IN: WILKERSON,MACY
SUB OUT: 11 HYDE,HANNAH	08:18	-	
SUB IN: 41 HAILEY,MACKENZIE	08:18		
SUB OUT: 23 WEBSTER,KATIE	08:12	-	
SUB IN: 1 BENSON,LUCY	08:12		
	06:28	43-46	SUB OUT: STASTNY,KJ
	06:28		SUB IN: MOODY,CARISSA
	05:53	46-48	SUB OUT: WOODS,MA'K'LA
	05:53		SUB IN: ARCHER,LONDON
	03:32	54-52	SUB OUT: DAILY,KAM
	03:32		SUB IN: STASTNY,KJ
	03:32		SUB OUT: TAYLOR,AJINE
	03:32		SUB IN: WOODS,MA'K'LA
	00:03	58-57	SUB OUT: WILKERSON,MACY
	00:03		SUB IN: TAYLOR,AJINE

**Tarleton St. 58, Texas Woman's 57**



Official Shot Chart  
**Tarleton St. vs Texas Woman's**  
 PERIOD 1 Shots  
 February 16, 2019 at Kitty Magee Arena - Denton, Texas



**Texas Woman's**

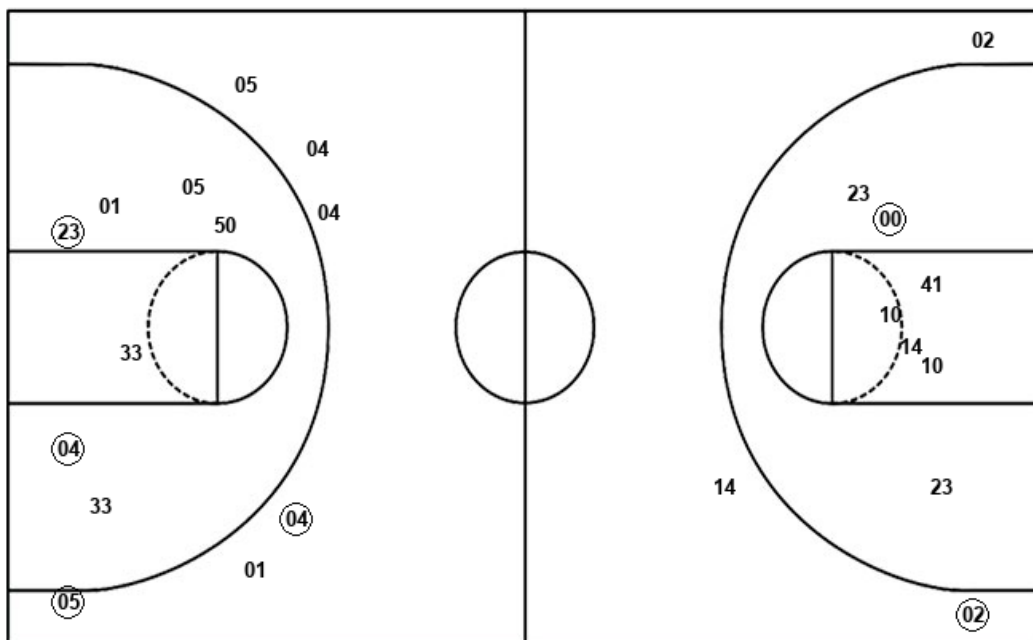
**Tarleton St.**

Layups  
 (20) (20) (20)

Layups

Dunks

Dunks



TWU : Period 1	Made	Att	Pct
Layups	3	3	100.0
Dunks	0	0	0
2PT Field Goals	5	10	50.0
3PT Field Goals	2	6	33.3
<b>Total Field Goals</b>	<b>7</b>	<b>16</b>	<b>43.8</b>

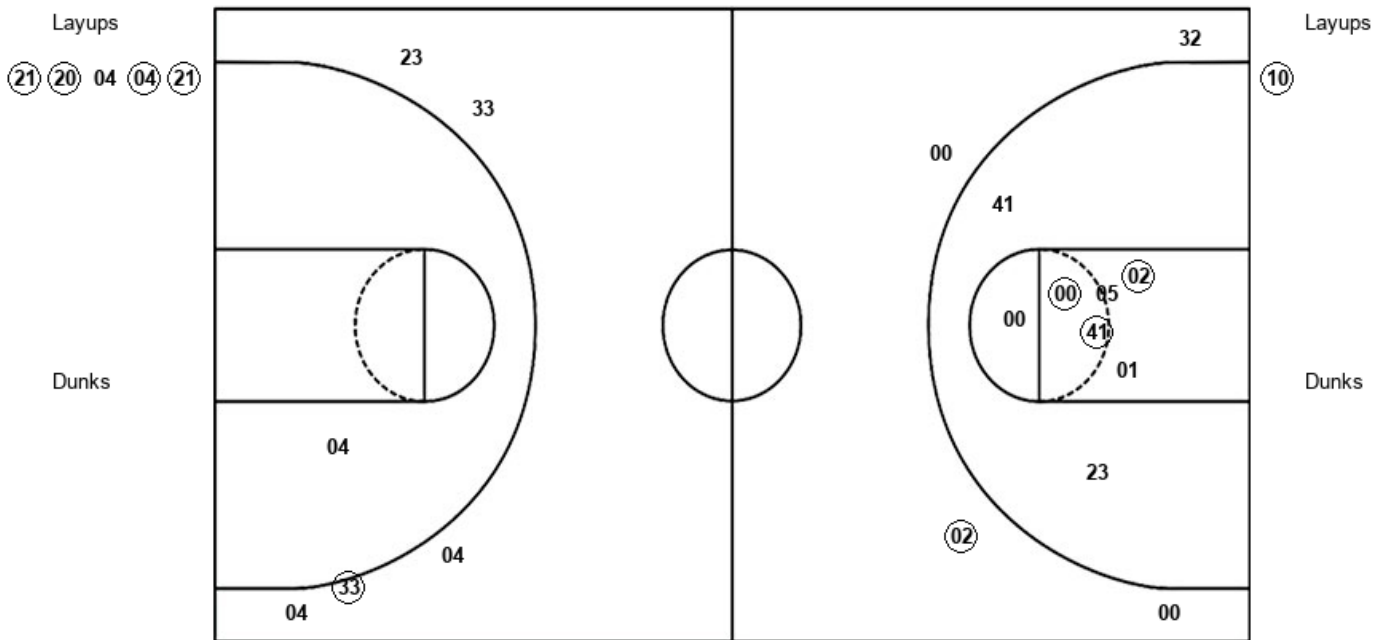
TSU : Period 1	Made	Att	Pct
Layups	0	0	0
Dunks	0	0	0
2PT Field Goals	1	7	14.3
3PT Field Goals	1	3	33.3
<b>Total Field Goals</b>	<b>2</b>	<b>10</b>	<b>20.0</b>

Official Shot Chart  
**Tarleton St. vs Texas Woman's**  
 PERIOD 2 Shots  
 February 16, 2019 at Kitty Magee Arena - Denton, Texas



**Texas Woman's**

**Tarleton St.**



TWU : Period 2	Made	Att	Pct
Layups	4	5	80.0
Dunks	0	0	0
2PT Field Goals	4	6	66.7
3PT Field Goals	1	5	20.0
<b>Total Field Goals</b>	<b>5</b>	<b>11</b>	<b>45.5</b>

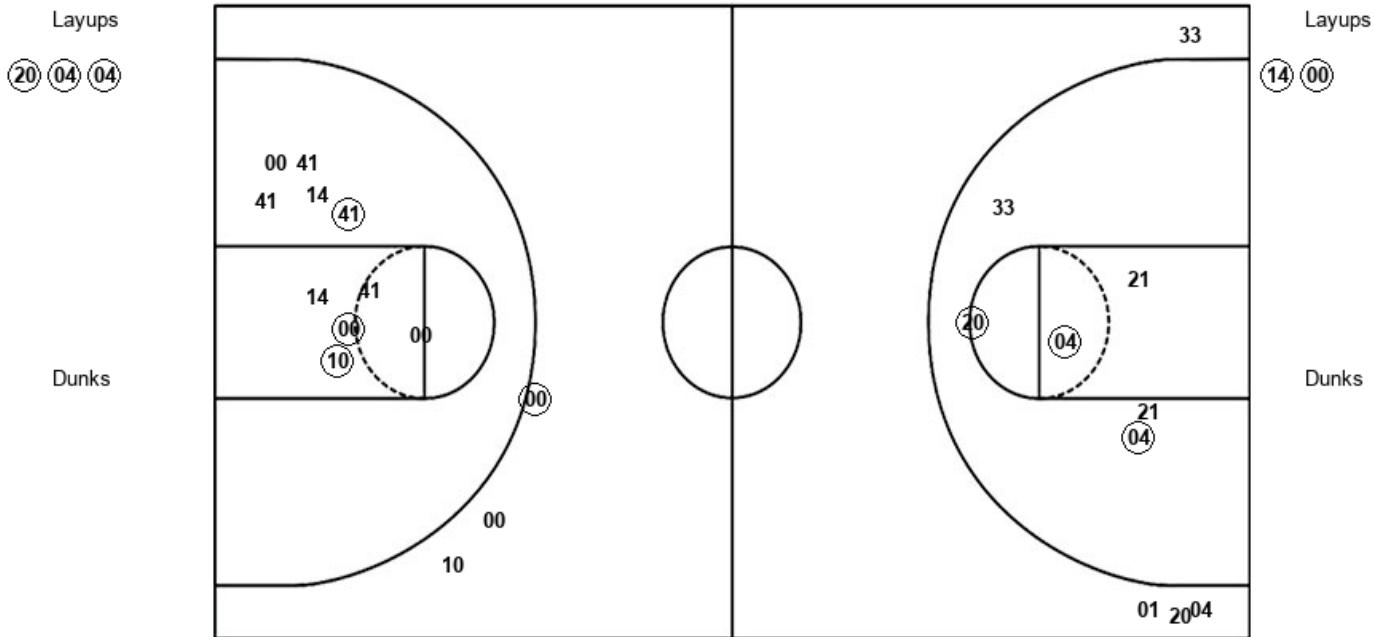
TSU : Period 2	Made	Att	Pct
Layups	1	1	100.0
Dunks	0	0	0
2PT Field Goals	4	9	44.4
3PT Field Goals	1	4	25.0
<b>Total Field Goals</b>	<b>5</b>	<b>13</b>	<b>38.5</b>

**Official Shot Chart**  
**Tarleton St. vs Texas Woman's**  
**PERIOD 3 Shots**  
 February 16, 2019 at Kitty Magee Arena - Denton, Texas



**Texas Woman's**

**Tarleton St.**



TWU : Period 3	Made	Att	Pct
Layups	3	3	100.0
Dunks	0	0	0
2PT Field Goals	6	9	66.7
3PT Field Goals	0	4	00.0
<b>Total Field Goals</b>	<b>6</b>	<b>13</b>	<b>46.2</b>

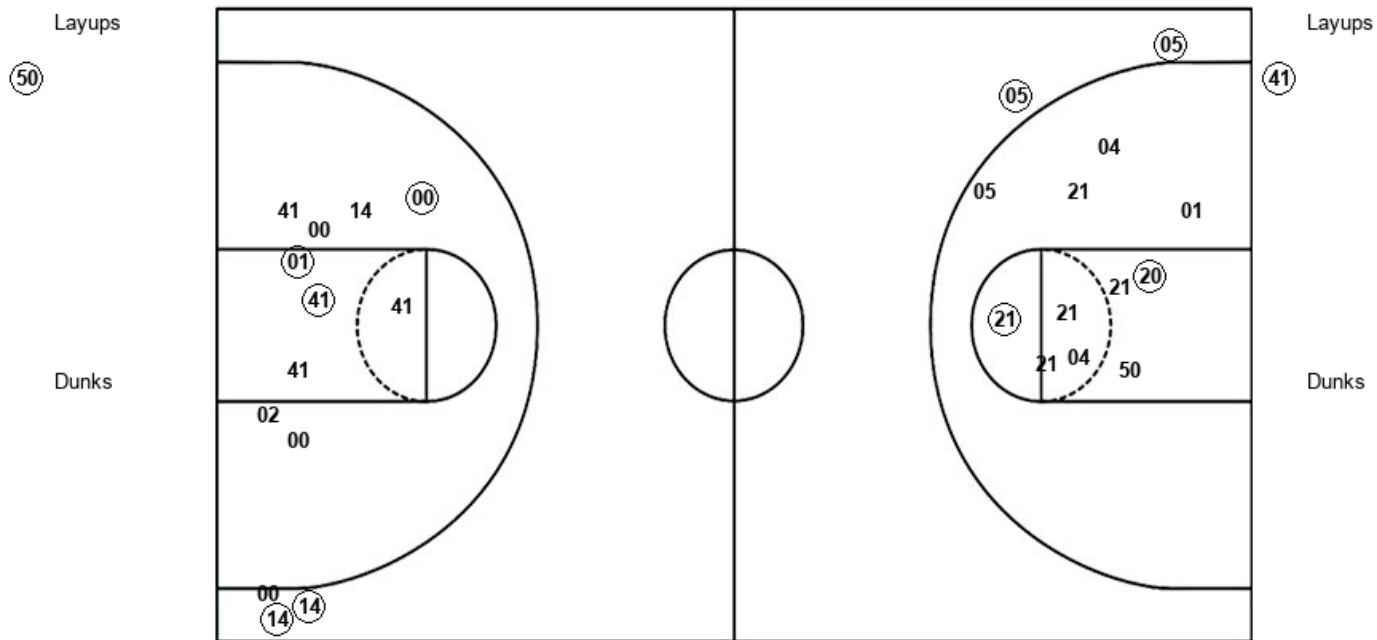
TSU : Period 3	Made	Att	Pct
Layups	2	2	100.0
Dunks	0	0	0
2PT Field Goals	5	12	41.7
3PT Field Goals	1	3	33.3
<b>Total Field Goals</b>	<b>6</b>	<b>15</b>	<b>40.0</b>

Official Shot Chart  
**Tarleton St. vs Texas Woman's**  
 PERIOD 4 Shots  
 February 16, 2019 at Kitty Magee Arena - Denton, Texas



**Texas Woman's**

**Tarleton St.**



TWU : Period 4	Made	Att	Pct
Layups	1	1	100.0
Dunks	0	0	0
2PT Field Goals	3	12	25.0
3PT Field Goals	2	2	100.0
<b>Total Field Goals</b>	<b>5</b>	<b>14</b>	<b>35.7</b>

TSU : Period 4	Made	Att	Pct
Layups	1	1	100.0
Dunks	0	0	0
2PT Field Goals	4	11	36.4
3PT Field Goals	2	3	66.7
<b>Total Field Goals</b>	<b>6</b>	<b>14</b>	<b>42.9</b>

**Official Shot Chart**  
**Tarleton St. vs Texas Woman's**  
 Tarleton St. Team Shots  
 February 16, 2019 at Kitty Magee Arena - Denton, Texas

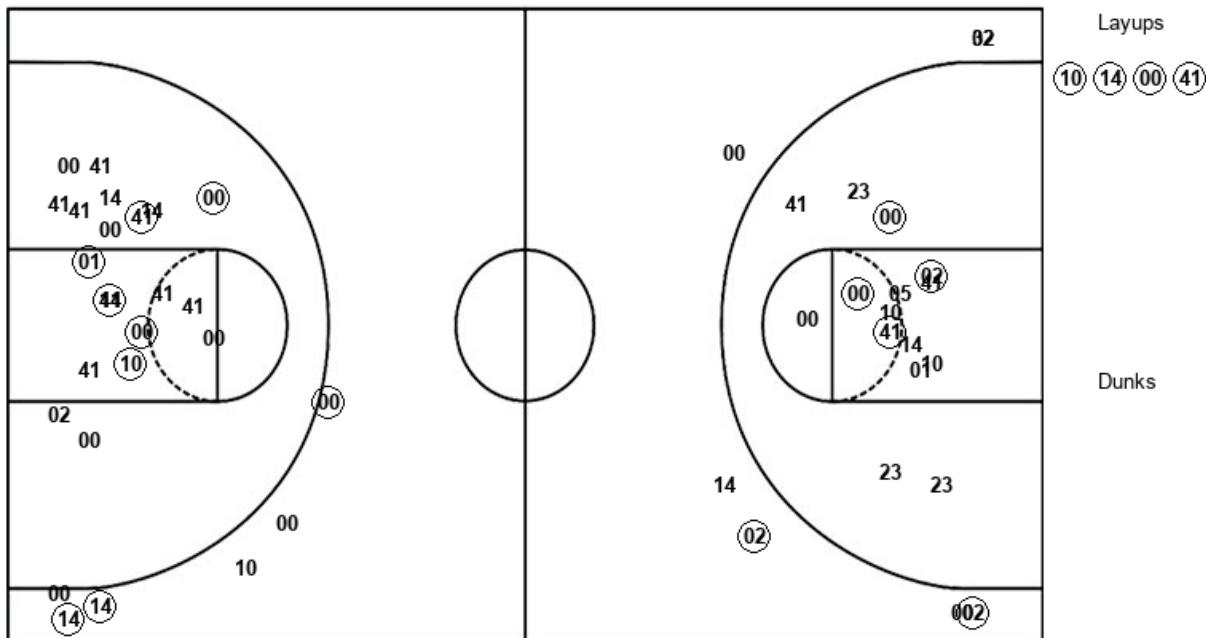


Layups

Layups

Dunks

Dunks



TSU : Period 1	Made	Att	Pct
Layups	0	0	0
Dunks	0	0	0
2PT Field Goals	1	7	14.3
3PT Field Goals	1	3	33.3
<b>Total Field Goals</b>	<b>2</b>	<b>10</b>	<b>20.0</b>

TSU : Period 2	Made	Att	Pct
Layups	1	1	100.0
Dunks	0	0	0
2PT Field Goals	4	9	44.4
3PT Field Goals	1	4	25.0
<b>Total Field Goals</b>	<b>5</b>	<b>13</b>	<b>38.5</b>

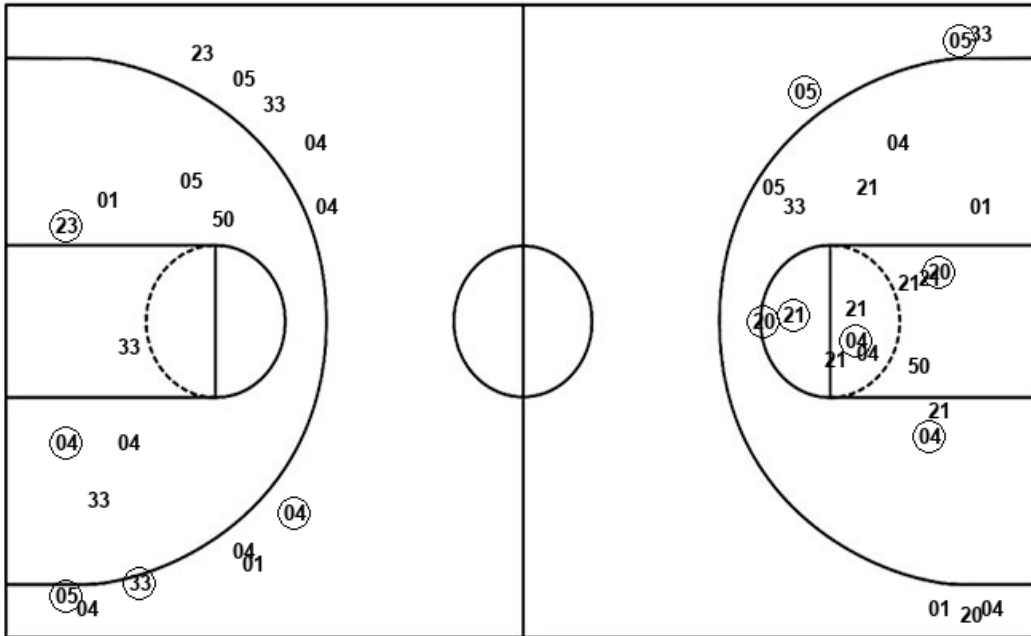
TSU : Period 3	Made	Att	Pct
Layups	2	2	100.0
Dunks	0	0	0
2PT Field Goals	5	12	41.7
3PT Field Goals	1	3	33.3
<b>Total Field Goals</b>	<b>6</b>	<b>15</b>	<b>40.0</b>

TSU : Period 4	Made	Att	Pct
Layups	1	1	100.0
Dunks	0	0	0
2PT Field Goals	4	11	36.4
3PT Field Goals	2	3	66.7
<b>Total Field Goals</b>	<b>6</b>	<b>14</b>	<b>42.9</b>

**Official Shot Chart**  
**Tarleton St. vs Texas Woman's**  
**Texas Woman's Team Shots**  
**February 16, 2019 at Kitty Magee Arena - Denton, Texas**



Layups



Layups

Dunks

Dunks

TWU : Period 1	Made	Att	Pct
Layups	3	3	100.0
Dunks	0	0	0
2PT Field Goals	5	10	50.0
3PT Field Goals	2	6	33.3
<b>Total Field Goals</b>	<b>7</b>	<b>16</b>	<b>43.8</b>

TWU : Period 2	Made	Att	Pct
Layups	4	5	80.0
Dunks	0	0	0
2PT Field Goals	4	6	66.7
3PT Field Goals	1	5	20.0
<b>Total Field Goals</b>	<b>5</b>	<b>11</b>	<b>45.5</b>

TWU : Period 3	Made	Att	Pct
Layups	3	3	100.0
Dunks	0	0	0
2PT Field Goals	6	9	66.7
3PT Field Goals	0	4	00.0
<b>Total Field Goals</b>	<b>6</b>	<b>13</b>	<b>46.2</b>

TWU : Period 4	Made	Att	Pct
Layups	1	1	100.0
Dunks	0	0	0
2PT Field Goals	3	12	25.0
3PT Field Goals	2	2	100.0
<b>Total Field Goals</b>	<b>5</b>	<b>14</b>	<b>35.7</b>