

FINAL SCORE



St. John's

19-14

62



West Virginia

24-11

76

WNIT Quarterfinals

March 25, 2018 • WVU Coliseum | Morgantown, W.Va.

FINAL STATISTICS

Official Basketball Box Score -- Game Totals -- Final Statistics
 St. John's vs West Virginia
 3/25/2018 4:00 p.m. at WVU Coliseum | Morgantown, W.Va.



St. John's 62 - 19-14

##	Player	g	Total		3-Ptr	Rebounds			PF	TP	A	TO	Blk	Stl	Min
			FG-FGA	FG-FGA	FT-FTA	Off	Def	Tot							
00	KEBBE,ALISHA		2-8	1-5	0-0	0	1	1	3	5	0	4	0	0	27
03	ENGLAND,TIANA		2-9	0-0	0-0	0	2	2	2	4	2	2	0	0	25
20	WELLERE,AKINA		8-13	2-5	5-8	2	4	6	4	23	3	6	1	4	38
34	SINGLETON,MAYA		6-14	0-0	1-1	6	1	7	3	13	2	1	1	3	38
35	LITTLETON,IMANI		1-2	0-0	1-2	2	5	7	2	3	2	0	1	1	31
05	DUNCAN,SHAMACHYA		0-1	0-1	0-0	0	0	0	2	0	0	0	0	0	4
11	CHARLES,KAYLA		0-1	0-0	0-0	1	1	2	0	0	0	0	0	0	6
15	ADAMS,ANDRAYAH		4-10	4-5	0-0	1	1	2	1	12	0	1	0	1	17
21	HOPPIE,QADASHAH		0-3	0-1	2-4	2	1	3	1	2	3	1	0	0	15
TEAM						2	2	4	0		0				
TOTALS			23-61	7-17	9-15	16	18	34	18	62	12	15	3	9	201

Deadball Rebounds: 3,1

FG %	1st Half:	12-34	35.3%	2nd Half:	11-27	40.7%	Game:	23-61	37.7%					
	1st Qtr	7-15	46.7%	2nd Qtr	5-19	26.3%	3rd Qtr	6-13	46.2%	4th Qtr	5-14	35.7%		
3FG %	1st Half:	3-6	50.0%	2nd Half:	4-11	36.4%	Game:	7-17	41.2%					
	1st Qtr	3-5	60.0%	2nd Qtr	0-1	00.0%	3rd Qtr	3-5	60.0%	4th Qtr	1-6	16.7%		
FT %	1st Half:	1-4	25.0%	2nd Half:	8-11	72.7%	Game:	9-15	60.0%					
	1st Qtr	0-2	00.0%	2nd Qtr	1-2	50.0%	3rd Qtr	0-0	0%	4th Qtr	8-11	72.7%		

West Virginia 76 - 24-11

##	Player	g	Total		3-Ptr	Rebounds			PF	TP	A	TO	Blk	Stl	Min
			FG-FGA	FG-FGA	FT-FTA	Off	Def	Tot							
00	DAVENPORT,NAOMI		6-14	0-4	0-1	0	5	5	2	12	1	4	2	3	36
11	MULDROW,TEANA		9-12	1-2	14-15	2	5	7	2	33	1	1	1	2	38
12	RAY,CHANIA		2-8	2-5	2-2	1	4	5	1	8	8	3	0	3	36
13	KING,KRISTINA		2-2	0-0	0-0	1	0	1	3	4	0	0	0	1	15
22	PARDEE,KATRINA		6-10	3-3	0-0	1	3	4	4	15	4	2	0	2	35
01	JONES,ASHLEY		1-2	0-1	1-2	0	3	3	1	3	2	1	0	0	12
03	HARDEN,DESTINY		0-2	0-0	0-0	0	0	0	1	0	0	1	0	0	9
04	STAPLES,NIA		0-0	0-0	0-0	0	0	0	0	0	0	0	0	0	1
34	EKHELAR,THEHERESA		0-1	0-0	1-2	1	2	3	2	1	0	0	2	0	18
TEAM						2	3	5	0		0				
TOTALS			26-51	6-15	18-22	8	25	33	16	76	16	12	5	11	200

Deadball Rebounds: 2,0

FG %	1st Half:	15-33	45.5%	2nd Half:	11-18	61.1%	Game:	26-51	51.0%					
	1st Qtr	8-20	40.0%	2nd Qtr	7-13	53.8%	3rd Qtr	7-13	53.8%	4th Qtr	4-5	80.0%		
3FG %	1st Half:	3-11	27.3%	2nd Half:	3-4	75.0%	Game:	6-15	40.0%					
	1st Qtr	1-5	20.0%	2nd Qtr	2-6	33.3%	3rd Qtr	3-4	75.0%	4th Qtr	0-0	0%		
FT %	1st Half:	5-7	71.4%	2nd Half:	13-15	86.7%	Game:	18-22	81.8%					
	1st Qtr	1-3	33.3%	2nd Qtr	4-4	100.0%	3rd Qtr	5-5	100.0%	4th Qtr	8-10	80.0%		

Officials: Bruce Morris, Nykesha Thompson, Bob Enterline
 Technical Fouls: St. John's- None. West Virginia- None.
 Attendance: 2280

Score by periods	1st	2nd	3rd	4th	Total
St. John's	17	11	15	19	62
West Virginia	18	20	22	16	76

Points	In Paint	Off T/O	2nd Chance	Fast Break	Bench
STJOHN	22	10	7	6	14
WVU	32	14	12	6	4

Last FG - STJOHN 4th-01:39, WVU 4th-00:30.
 Largest lead - St. John's by 4 1st-03:07; West Virginia by 18 4th-02:57
 STJOHN led for 8:24. WVU led for 30:59. Game was tied for 0:37.

Score tied - 1 times; Lead changed - 2 times

Official Basketball Box Score -- Game Totals -- First Half Statistics
 St. John's vs West Virginia
 3/25/2018 4:00 p.m. at WVU Coliseum | Morgantown, W.Va.



St. John's 28 • 19-14

##	Player	g	Total			3-Ptr			Rebounds			PF	TP	A	TO	Blk	Stl	Min				
			FG	FGA	%	FG	FGA	%	FT	FTA	%								Off	Def	Tot	
00	KEBBE,ALISHA		1	3	33.3%	0	1	0%	0	0	0%	0	1	1	1	2	0	1	0	0	16	
03	ENGLAND,TIANA		1	5	20.0%	0	0	0%	0	0	0%	0	2	2	2	2	1	0	0	0	14	
20	WELLERE,AKINA		5	7	71.4%	2	3	66.7%	0	2	0%	1	3	4	2	12	0	2	1	0	19	
34	SINGLETON,MAYA		3	10	30.0%	0	0	0%	0	0	0%	3	1	4	0	6	2	0	1	0	19	
35	LITTLETON,IMANI		1	1	100.0%	0	0	0%	0	0	0%	0	2	2	2	2	0	0	1	0	12	
05	DUNCAN,SHAMACHYA		0	0	0%	0	0	0%	0	0	0%	0	0	0	0	0	0	0	0	0	0	
11	CHARLES,KAYLA		0	1	0%	0	0	0%	0	0	0%	1	1	2	0	0	0	0	0	0	5	
15	ADAMS,ANDRAYAH		1	4	25.0%	1	1	100.0%	0	0	0%	0	1	1	0	3	0	0	0	0	5	
21	HOPPIE,QADASHAH		0	3	0%	0	1	0%	1	0	0%	1	0	1	0	1	2	1	0	0	10	
TEAM												2	1	3	0		0					
Totals				12	34	35.3%	3	6	50.0%	1	4	25.0%	8	12	20	7	28	5	4	3	0	100

FG % 1st Qtr 7-15 46.7% 2nd Qtr 5-19 26.3% Half: 12-34 35.3%
 3FG % 1st Qtr 3-5 60.0% 2nd Qtr 0-1 00.0% Half: 3-6 50.0%
 FT % 1st Qtr 0-2 00.0% 2nd Qtr 1-2 50.0% Half: 1-4 25.0%

West Virginia 38 • 24-11

##	Player	g	Total			3-Ptr			Rebounds			PF	TP	A	TO	Blk	Stl	Min				
			FG	FGA	%	FG	FGA	%	FT	FTA	%								Off	Def	Tot	
00	DAVENPORT,NAOMI		5	13	38.5%	0	4	0%	0	3	3	0	10	1	1	1	0	18				
11	MULDROW,TEANA		4	5	80.0%	0	1	0%	1	3	4	0	10	1	0	0	2	20				
12	RAY,CHANIA		1	4	25.0%	1	3	33.3%	1	1	2	0	5	4	0	0	0	18				
13	KING,KRISTINA		1	1	100.0%	0	0	0%	1	0	1	2	2	0	0	0	0	5				
22	PARDEE,KATRINA		3	6	50.0%	2	2	100.0%	0	2	2	1	8	2	0	0	0	19				
01	JONES,ASHLEY		1	2	50.0%	0	1	0%	0	2	2	0	2	2	0	0	0	5				
03	HARDEN,DESTINY		0	2	0%	0	0	0%	0	0	0	1	0	0	0	0	0	6				
04	STAPLES,NIA		0	0	0%	0	0	0%	0	0	0	0	0	0	0	0	0	0				
34	EKHELAR,THEHERESA		0	0	0%	0	0	0%	1	2	3	0	1	0	0	2	0	9				
TEAM									2	3	5	0		0								
Totals				15	33	45.5%	3	11	27.3%	5	7	71.4%	6	16	22	4	38	10	1	3	2	100

FG % 1st Qtr 8-20 40.0% 2nd Qtr 7-13 53.8% Half: 15-33 45.5%
 3FG % 1st Qtr 1-5 20.0% 2nd Qtr 2-6 33.3% Half: 3-11 27.3%
 FT % 1st Qtr 1-3 33.3% 2nd Qtr 4-4 100.0% Half: 5-7 71.4%

Officials: Bruce Morris, Nykesha Thompson, Bob Enterline
 Technical Fouls: St. John's- None. West Virginia- None.

Score by periods	1st	2nd	3rd	4th	Total
St. John's	17	11	15	19	62
West Virginia	18	20	22	16	76

Points	In Paint	Off T/O	2nd Chance	Fast Break	Bench
STJOHN	10	0	2	0	4
West Virginia	22	3	7	4	3

Last FG - STJOHN 2nd-01:00, WVU 2nd-01:12.
 STJOHN led for 8:24. WVU led for 10:59. Game was tied for 0:37.

Score tied - 1 times
 Lead changed - 2 times

St. John's vs West Virginia
3/25/2018; 4:00 p.m. at WVU Coliseum | Morgantown, W.Va.
Period 1 Play-By-Play



VISITORS: St. John's	Time	Score	Margin	HOME: West Virginia
	09:49	2-0	H 2	GOOD! LAYUP by MULDRON,TEANA [PNT]
	09:49			ASSIST by PARDEE,KATRINA
GOOD! LAYUP by KEBBE,ALISHA [PNT]	09:25	2-2	T	
	09:09			MISSED JUMPER by DAVENPORT,NAOMI
REBOUND (DEF) by WELLERE,AKINA	09:09			
GOOD! 3PTR by WELLERE,AKINA	08:59	2-5	V 3	
	08:42			MISSED 3PTR by DAVENPORT,NAOMI
	08:42			REBOUND (OFF) by RAY,CHANIA
	08:32	4-5	V 1	GOOD! LAYUP by DAVENPORT,NAOMI [PNT]
	08:32			ASSIST by RAY,CHANIA
MISSED 3PTR by KEBBE,ALISHA	08:10			
	08:10			REBOUND (DEF) by TEAM
	07:53			MISSED 3PTR by DAVENPORT,NAOMI
REBOUND (DEADB) by TEAM	07:53			
GOOD! JUMPER by SINGLETON,MAYA [PNT]	07:30	4-7	V 3	
	07:07	6-7	V 1	GOOD! LAYUP by KING,KRISTINA [PNT]
	07:07			ASSIST by RAY,CHANIA
	06:40			FOUL by KING,KRISTINA
TURNOVER by KEBBE,ALISHA	06:23			
	06:22			STEAL by MULDRON,TEANA
	06:18			MISSED LAYUP by PARDEE,KATRINA
	06:18			REBOUND (OFF) by KING,KRISTINA
	05:54			MISSED JUMPER by PARDEE,KATRINA
REBOUND (DEF) by LITTLETON,IMANI	05:54			
MISSED LAYUP by ENGLAND,TIANA	05:33			
	05:33			BLOCK by DAVENPORT,NAOMI
	05:28			REBOUND (DEF) by PARDEE,KATRINA
	05:24			MISSED JUMPER by RAY,CHANIA
REBOUND (DEF) by KEBBE,ALISHA	05:24			
	04:59			FOUL by KING,KRISTINA
TIMEOUT MEDIA	04:59			
MISSED FT by WELLERE,AKINA	04:59			
REBOUND (DEADB) by TEAM	04:59			
MISSED FT by WELLERE,AKINA	04:59			
	04:59			REBOUND (DEF) by MULDRON,TEANA
SUB IN: HOPPIE,QADASHAH	04:59			
SUB OUT: KEBBE,ALISHA	04:59			
	04:59			SUB IN: HARDEN,DESTINY
	04:59			SUB OUT: KING,KRISTINA
	04:38			MISSED JUMPER by HARDEN,DESTINY
REBOUND (DEF) by ENGLAND,TIANA	04:38			
GOOD! JUMPER by WELLERE,AKINA	04:22	6-9	V 3	
ASSIST by SINGLETON,MAYA	04:22			
	03:58			MISSED 3PTR by RAY,CHANIA
REBOUND (DEF) by ENGLAND,TIANA	03:58			
MISSED 3PTR by HOPPIE,QADASHAH	03:46			
	03:46			REBOUND (DEF) by DAVENPORT,NAOMI
	03:30	8-9	V 1	GOOD! JUMPER by MULDRON,TEANA [PNT]
GOOD! 3PTR by WELLERE,AKINA	03:07	8-12	V 4	
ASSIST by HOPPIE,QADASHAH	03:07			
	02:47			MISSED JUMPER by PARDEE,KATRINA
	02:47			REBOUND (OFF) by MULDRON,TEANA
	02:43	10-12	V 2	GOOD! JUMPER by MULDRON,TEANA [PNT]
GOOD! LAYUP by ENGLAND,TIANA [PNT]	02:27	10-14	V 4	
	02:18			MISSED JUMPER by HARDEN,DESTINY
BLOCK by SINGLETON,MAYA	02:18			
	02:18			REBOUND (OFF) by TEAM
SUB IN: ADAMS,ANDRAYAH	02:18			
SUB OUT: HOPPIE,QADASHAH	02:18			
	02:18			SUB IN: EKHELAR,THERESA
	02:18			SUB IN: JONES,ASHLEY
	02:18			SUB OUT: HARDEN,DESTINY
	02:18			SUB OUT: PARDEE,KATRINA
	02:17	12-14	V 2	GOOD! JUMPER by DAVENPORT,NAOMI
	02:17			ASSIST by JONES,ASHLEY
FOUL by WELLERE,AKINA	02:17			
	02:17			MISSED FT by DAVENPORT,NAOMI
	02:17			REBOUND (OFF) by TEAM
	02:08			MISSED JUMPER by DAVENPORT,NAOMI

VISITORS: St. John's	Time	Score	Margin	HOME: West Virginia
	02:08			REBOUND (OFF) by EKHELAR,THERESA
FOUL by LITTLETON,IMANI	02:05			
	02:05			MISSED FT by EKHELAR,THERESA
	02:05			REBOUND (DEADB) by TEAM
	02:05	13-14	V 1	GOOD! FT by EKHELAR,THERESA
GOOD! 3PTR by ADAMS,ANDRAYAH	01:56	13-17	V 4	
ASSIST by ENGLAND,TIANA	01:56			
	01:41			MISSED 3PTR by JONES,ASHLEY
REBOUND (DEF) by LITTLETON,IMANI	01:41			
MISSED JUMPER by SINGLETON,MAYA	01:20			
REBOUND (OFF) by WELLERE,AKINA	01:20			
MISSED JUMPER by ENGLAND,TIANA	01:12			
	01:12			REBOUND (DEF) by MULDROW,TEANA
	01:05	15-17	V 2	GOOD! LAYUP by DAVENPORT,NAOMI [FB/PNT]
	01:05			ASSIST by JONES,ASHLEY
SUB IN: KEBBE,ALISHA	00:50			
SUB OUT: WELLERE,AKINA	00:50			
	00:50			SUB IN: PARDEE,KATRINA
	00:50			SUB OUT: DAVENPORT,NAOMI
MISSED JUMPER by SINGLETON,MAYA	00:43			
	00:43			REBOUND (DEF) by RAY,CHANIA
	00:35	18-17	H 1	GOOD! 3PTR by RAY,CHANIA
MISSED JUMPER by ENGLAND,TIANA	00:31			
REBOUND (OFF) by TEAM	00:31			
MISSED JUMPER by ADAMS,ANDRAYAH	00:01			
	00:01			REBOUND (DEF) by PARDEE,KATRINA

St. John's 17, West Virginia 18

Period 1-only	In Paint	Off T/O	2nd Chance	Fast Break	Bench	
STJOHN	6	0	0	0	3	Score tied - 2 times
WVU	12	0	7	2	1	Lead changed - 2 times

St. John's vs West Virginia
3/25/2018; 4:00 p.m. at WVU Coliseum | Morgantown, W.Va.
Period 2 Play-By-Play



VISITORS: St. John's	Time	Score	Margin	HOME: West Virginia
SUB IN: ADAMS,ANDRAYAH	10:00			
SUB OUT: LITTLETON,IMANI	10:00			
	10:00			SUB IN: EKHELAR,THERESA
	10:00			SUB IN: JONES,ASHLEY
	10:00			SUB OUT: DAVENPORT,NAOMI
	10:00			SUB OUT: KING,KRISTINA
MISSED JUMPER by ADAMS,ANDRAYAH	09:51			
REBOUND (OFF) by SINGLETON,MAYA	09:51			
MISSED JUMPER by SINGLETON,MAYA	09:45			
	09:45			REBOUND (DEF) by MULDROW,TEANA
	09:28			MISSED 3PTR by MULDROW,TEANA
REBOUND (DEF) by ADAMS,ANDRAYAH	09:28			
MISSED JUMPER by KEBBE,ALISHA	09:08			
	09:08			REBOUND (DEF) by JONES,ASHLEY
FOUL by KEBBE,ALISHA	08:52			
	08:52	19-17	H 2	GOOD! FT by RAY,CHANIA
	08:52	20-17	H 3	GOOD! FT by RAY,CHANIA
	08:52			SUB IN: DAVENPORT,NAOMI
	08:52			SUB OUT: RAY,CHANIA
GOOD! JUMPER by SINGLETON,MAYA	08:35	20-19	H 1	
	08:21	22-19	H 3	GOOD! JUMPER by MULDROW,TEANA [PNT]
	08:21			ASSIST by PARDEE,KATRINA
MISSED JUMPER by WELLERE,AKINA	07:55			
	07:55			REBOUND (DEF) by DAVENPORT,NAOMI
	07:45	24-19	H 5	GOOD! LAYUP by JONES,ASHLEY [FB/PNT]
TIMEOUT 30SEC	07:44			
SUB IN: LITTLETON,IMANI	07:44			
SUB IN: HOPPIE,QADASHAH	07:44			
SUB OUT: SINGLETON,MAYA	07:44			
SUB OUT: ADAMS,ANDRAYAH	07:44			
GOOD! JUMPER by LITTLETON,IMANI [PNT]	07:26	24-21	H 3	
ASSIST by HOPPIE,QADASHAH	07:26			
	07:08	27-21	H 6	GOOD! 3PTR by PARDEE,KATRINA
	07:08			ASSIST by MULDROW,TEANA
MISSED JUMPER by HOPPIE,QADASHAH	06:48			
	06:48			BLOCK by EKHELAR,THERESA
	06:45			REBOUND (DEF) by JONES,ASHLEY
FOUL by ENGLAND,TIANA	06:32			
	06:32	28-21	H 7	GOOD! FT by MULDROW,TEANA
	06:32	29-21	H 8	GOOD! FT by MULDROW,TEANA
SUB IN: SINGLETON,MAYA	06:32			
SUB OUT: HOPPIE,QADASHAH	06:32			
	06:32			SUB IN: RAY,CHANIA
	06:32			SUB OUT: JONES,ASHLEY
MISSED LAYUP by ENGLAND,TIANA	06:12			
	06:12			BLOCK by EKHELAR,THERESA
	06:12			REBOUND (DEF) by TEAM
FOUL by ENGLAND,TIANA	06:11			
	06:01			MISSED JUMPER by DAVENPORT,NAOMI
BLOCK by WELLERE,AKINA	06:01			
REBOUND (DEF) by WELLERE,AKINA	05:57			
MISSED 3PTR by WELLERE,AKINA	05:41			
	05:41			REBOUND (DEF) by EKHELAR,THERESA
FOUL by LITTLETON,IMANI	05:36			
SUB IN: HOPPIE,QADASHAH	05:36			
SUB OUT: ENGLAND,TIANA	05:36			
	05:25			MISSED JUMPER by DAVENPORT,NAOMI
BLOCK by LITTLETON,IMANI	05:25			
REBOUND (DEF) by TEAM	05:25			
SUB IN: CHARLES,KAYLA	05:22			
SUB OUT: LITTLETON,IMANI	05:22			
GOOD! JUMPER by SINGLETON,MAYA	05:08	29-23	H 6	
	04:54			MISSED 3PTR by DAVENPORT,NAOMI
REBOUND (DEF) by SINGLETON,MAYA	04:54			
MISSED JUMPER by SINGLETON,MAYA	04:29			
	04:29			REBOUND (DEF) by EKHELAR,THERESA
	04:19	31-23	H 8	GOOD! LAYUP by DAVENPORT,NAOMI [PNT]
	04:19			ASSIST by RAY,CHANIA
MISSED JUMPER by SINGLETON,MAYA	04:01			

VISITORS: St. John's	Time	Score	Margin	HOME: West Virginia
REBOUND (OFF) by SINGLETON,MAYA	04:01			
TURNOVER by HOPPIE,QADASHAH	03:39			
	03:39			TIMEOUT TEAM
	03:39			SUB IN: HARDEN,DESTINY
	03:39			SUB OUT: EKHELAR,THERESA
	03:21			MISSED 3PTR by DAVENPORT,NAOMI
REBOUND (DEF) by CHARLES,KAYLA	03:21			
	03:21			FOUL by HARDEN,DESTINY
FOUL by WELLERE,AKINA	03:09			
TURNOVER by WELLERE,AKINA	03:09			
	02:43	34-23	H 11	GOOD! 3PTR by PARDEE,KATRINA
	02:43			ASSIST by DAVENPORT,NAOMI
MISSED JUMPER by HOPPIE,QADASHAH	02:18			
REBOUND (OFF) by HOPPIE,QADASHAH	02:18			
GOOD! JUMPER by WELLERE,AKINA [PNT]	02:11	34-25	H 9	
	01:55	36-25	H 11	GOOD! LAYUP by PARDEE,KATRINA [PNT]
MISSED LAYUP by SINGLETON,MAYA	01:38			
	01:38			REBOUND (DEF) by DAVENPORT,NAOMI
	01:12	38-25	H 13	GOOD! LAYUP by DAVENPORT,NAOMI [PNT]
	01:12			ASSIST by RAY,CHANIA
GOOD! JUMPER by WELLERE,AKINA	01:00	38-27	H 11	
ASSIST by SINGLETON,MAYA	01:00			
	00:55			MISSED 3PTR by RAY,CHANIA
REBOUND (DEF) by WELLERE,AKINA	00:54			
	00:30			FOUL by PARDEE,KATRINA
GOOD! FT by HOPPIE,QADASHAH	00:30	38-28	H 10	
MISSED FT by HOPPIE,QADASHAH	00:30			
REBOUND (OFF) by TEAM	00:30			
SUB IN: ADAMS,ANDRAYAH	00:28			
SUB OUT: WELLERE,AKINA	00:28			
	00:28			SUB IN: EKHELAR,THERESA
	00:28			SUB OUT: HARDEN,DESTINY
TURNOVER by WELLERE,AKINA	00:25			
	00:24			STEAL by MULDROW,TEANA
	00:20			TURNOVER by DAVENPORT,NAOMI
MISSED JUMPER by ADAMS,ANDRAYAH	00:10			
REBOUND (OFF) by SINGLETON,MAYA	00:10			
MISSED JUMPER by SINGLETON,MAYA	00:07			
REBOUND (OFF) by CHARLES,KAYLA	00:07			
MISSED JUMPER by CHARLES,KAYLA	00:03			
	00:03			REBOUND (DEF) by TEAM

St. John's 28, West Virginia 38

Period 2-only	In Paint	Off T/O	2nd Chance	Fast Break	Bench	
STJOHN	4	0	2	0	1	Score tied - 0 times
WVU	10	3	0	2	2	Lead changed - 0 times

Official Basketball Box Score -- Game Totals -- Second Half Statistics
 St. John's vs West Virginia
 3/25/2018 4:00 p.m. at WVU Coliseum | Morgantown, W.Va.



St. John's 34 • 19-14

##	Player	g	Total		3-Ptr	Rebounds			PF	TP	A	TO	Blk	Stl	Min
			FG-FGA	FG-FGA	FT-FTA	Off	Def	Tot							
00	KEBBE,ALISHA		1-5	1-4	0-0	0	0	0	2	3	0	3	0	0	11
03	ENGLAND,TIANA		1-4	0-0	0-0	0	0	0	0	2	1	2	0	0	11
20	WELLERE,AKINA		3-6	0-2	5-6	1	1	2	2	11	3	4	0	4	19
34	SINGLETON,MAYA		3-4	0-0	1-1	3	0	3	3	7	0	1	0	3	19
35	LITTLETON,IMANI		0-1	0-0	1-2	2	3	5	0	1	2	0	0	1	19
05	DUNCAN,SHAMACHYA		0-1	0-1	0-0	0	0	0	2	0	0	0	0	0	4
11	CHARLES,KAYLA		0-0	0-0	0-0	0	0	0	0	0	0	0	0	0	1
15	ADAMS,ANDRAYAH		3-6	3-4	0-0	1	0	1	1	9	0	1	0	1	12
21	HOPPIE,QADASHAH		0-0	0-0	1-2	1	1	2	1	1	1	0	0	0	5
TEAM						0	1	1	0			0			
Totals			11-27	4-11	8-11	8	6	14	11	34	7	11	0	9	101

FG % 3rd Qtr 6-13 46.2% 4th Qtr 5-14 35.7% Half: 11-27 40.7%
 3FG % 3rd Qtr 3-5 60.0% 4th Qtr 1-6 16.7% Half: 4-11 50.0%
 FT % 3rd Qtr 0-0 0% 4th Qtr 8-11 72.7% Half: 8-11 72.7%

West Virginia 38 • 24-11

##	Player	g	Total		3-Ptr	Rebounds			PF	TP	A	TO	Blk	Stl	Min
			FG-FGA	FG-FGA	FT-FTA	Off	Def	Tot							
00	DAVENPORT,NAOMI		1-1	0-0	0-0	0	2	2	2	2	0	3	1	3	18
11	MULDROW,TEANA		5-7	1-1	12-13	1	2	3	2	23	0	1	1	0	18
12	RAY,CHANIA		1-4	1-2	0-0	0	3	3	1	3	4	3	0	3	18
13	KING,KRISTINA		1-1	0-0	0-0	0	0	0	1	2	0	0	0	1	10
22	PARDEE,KATRINA		3-4	1-1	0-0	1	1	2	3	7	2	2	0	2	16
01	JONES,ASHLEY		0-0	0-0	1-2	0	1	1	1	1	0	1	0	0	7
03	HARDEN,DESTINY		0-0	0-0	0-0	0	0	0	0	0	0	1	0	0	3
04	STAPLES,NIA		0-0	0-0	0-0	0	0	0	0	0	0	0	0	0	1
34	EKHELAR,THERESA		0-1	0-0	0-0	0	0	0	2	0	0	0	0	0	9
TEAM						0	0	0	0			0			
Totals			11-18	3-4	13-15	2	9	11	12	38	6	11	2	9	100

FG % 3rd Qtr 7-13 53.8% 4th Qtr 4-5 80.0% Half: 11-18 61.1%
 3FG % 3rd Qtr 3-4 75.0% 4th Qtr 0-0 0% Half: 3-4 27.3%
 FT % 3rd Qtr 5-5 100.0% 4th Qtr 8-10 80.0% Half: 13-15 86.7%

Officials: Bruce Morris, Nykesha Thompson, Bob Enterline
 Technical Fouls: St. John's- None. West Virginia- None.

Score by periods	1st	2nd	3rd	4th	Total
St. John's	17	11	15	19	62
West Virginia	18	20	22	16	76

Points	In Paint	Off T/O	2nd Chance	Fast Break	Bench
STJOHN	12	10	5	6	10
	10	11	5	2	1

Last FG - STJOHN 4th-01:39, WVU 4th-00:30.
 STJOHN led for 0:00. WVU led for 20:00. Game was tied for 0:00.

Score tied - 0 times
 Lead changed - 0 times

St. John's vs West Virginia
3/25/2018; 4:00 p.m. at WVU Coliseum | Morgantown, W.Va.
Period 3 Play-By-Play



VISITORS: St. John's	Time	Score	Margin	HOME: West Virginia
	09:47	40-28	H 12	GOOD! JUMPER by MULDROW,TEANA
	09:47			ASSIST by PARDEE,KATRINA
TURNOVER by KEBBE,ALISHA	09:25			
	09:24			STEAL by KING,KRISTINA
	09:16			MISSED JUMPER by MULDROW,TEANA
REBOUND (DEF) by WELLERE,AKINA	09:16			
TURNOVER by KEBBE,ALISHA	09:08			
	09:06			STEAL by DAVENPORT,NAOMI
	09:04			TURNOVER by DAVENPORT,NAOMI
STEAL by SINGLETON,MAYA	09:04			
MISSED 3PTR by KEBBE,ALISHA	08:56			
	08:56			REBOUND (DEF) by RAY,CHANIA
	08:45			MISSED JUMPER by RAY,CHANIA
	08:45			REBOUND (OFF) by MULDROW,TEANA
FOUL by SINGLETON,MAYA	08:42			
	08:42	41-28	H 13	GOOD! FT by MULDROW,TEANA
	08:42	42-28	H 14	GOOD! FT by MULDROW,TEANA
	08:23			FOUL by KING,KRISTINA
	08:23			SUB IN: EKHELAR,THERESA
	08:23			SUB OUT: KING,KRISTINA
GOOD! 3PTR by KEBBE,ALISHA	08:10	42-31	H 11	
ASSIST by WELLERE,AKINA	08:10			
	07:47	44-31	H 13	GOOD! JUMPER by PARDEE,KATRINA
MISSED JUMPER by WELLERE,AKINA	07:27			
	07:27			REBOUND (DEF) by MULDROW,TEANA
	07:18	47-31	H 16	GOOD! 3PTR by RAY,CHANIA
TIMEOUT 30SEC	07:06			
SUB IN: ADAMS,ANDRAYAH	07:06			
SUB OUT: ENGLAND,TIANA	07:06			
TURNOVER by SINGLETON,MAYA	06:54			
	06:53			STEAL by DAVENPORT,NAOMI
	06:41			TURNOVER by RAY,CHANIA
STEAL by ADAMS,ANDRAYAH	06:40			
GOOD! LAYUP by WELLERE,AKINA [FB/PNT]	06:36	47-33	H 14	
	06:09			MISSED 3PTR by RAY,CHANIA
REBOUND (DEF) by TEAM	06:09			
MISSED JUMPER by ADAMS,ANDRAYAH	05:51			
	05:51			REBOUND (DEF) by PARDEE,KATRINA
	05:33	49-33	H 16	GOOD! JUMPER by MULDROW,TEANA [PNT]
	05:33			ASSIST by RAY,CHANIA
GOOD! JUMPER by WELLERE,AKINA	05:03	49-35	H 14	
	04:40			MISSED LAYUP by PARDEE,KATRINA
REBOUND (DEF) by LITTLETON,IMANI	04:40			
MISSED LAYUP by KEBBE,ALISHA	04:32			
	04:32			REBOUND (DEF) by RAY,CHANIA
FOUL by KEBBE,ALISHA	04:32			
	04:32			TIMEOUT media
SUB IN: HOPPIE,QADASHAH	04:32			
SUB OUT: KEBBE,ALISHA	04:32			
	04:32			SUB IN: JONES,ASHLEY
	04:32			SUB OUT: PARDEE,KATRINA
	04:03			MISSED JUMPER by RAY,CHANIA
REBOUND (DEF) by HOPPIE,QADASHAH	04:03			
TURNOVER by WELLERE,AKINA	03:43			
	03:43			SUB IN: PARDEE,KATRINA
	03:43			SUB OUT: DAVENPORT,NAOMI
	03:36	52-35	H 17	GOOD! 3PTR by PARDEE,KATRINA
	03:36			ASSIST by RAY,CHANIA
	03:35			FOUL by EKHELAR,THERESA
GOOD! 3PTR by ADAMS,ANDRAYAH	03:19	52-38	H 14	
ASSIST by WELLERE,AKINA	03:19			
FOUL by HOPPIE,QADASHAH	02:57			
	02:57	53-38	H 15	GOOD! FT by MULDROW,TEANA
	02:57	54-38	H 16	GOOD! FT by MULDROW,TEANA
SUB IN: ENGLAND,TIANA	02:57			
SUB OUT: HOPPIE,QADASHAH	02:57			
GOOD! 3PTR by ADAMS,ANDRAYAH	02:45	54-41	H 13	
ASSIST by WELLERE,AKINA	02:45			
	02:25			TURNOVER by MULDROW,TEANA

VISITORS: St. John's	Time	Score	Margin	HOME: West Virginia
STEAL by SINGLETON,MAYA	02:23			
MISSED LAYUP by ADAMS,ANDRAYAH	02:19			
REBOUND (OFF) by LITTLETON,IMANI	02:19			
MISSED JUMPER by LITTLETON,IMANI	02:16			
REBOUND (OFF) by ADAMS,ANDRAYAH	02:16			
	02:15			FOUL by MULDROW,TEANA
MISSED 3PTR by WELLERE,AKINA	01:57			
	01:57			REBOUND (DEF) by JONES,ASHLEY
	01:43			MISSED LAYUP by EKHELAR,THERESA
	01:43			REBOUND (OFF) by PARDEE,KATRINA
	01:26	56-41	H 15	GOOD! LAYUP by MULDROW,TEANA [PNT]
FOUL by ADAMS,ANDRAYAH	01:26			
	01:26	57-41	H 16	GOOD! FT by MULDROW,TEANA
	01:26			SUB IN: DAVENPORT,NAOMI
	01:26			SUB IN: HARDEN,DESTINY
	01:26			SUB OUT: EKHELAR,THERESA
	01:26			SUB OUT: JONES,ASHLEY
GOOD! LAYUP by WELLERE,AKINA [PNT]	01:13	57-43	H 14	
ASSIST by LITTLETON,IMANI	01:13			
	00:46			TURNOVER by HARDEN,DESTINY
STEAL by WELLERE,AKINA	00:43			
TURNOVER by ENGLAND,TIANA	00:38			
	00:36			STEAL by DAVENPORT,NAOMI
	00:30	60-43	H 17	GOOD! 3PTR by MULDROW,TEANA
	00:30			ASSIST by PARDEE,KATRINA
TURNOVER by WELLERE,AKINA	00:00			
	00:00			STEAL by RAY,CHANIA

St. John's 62, West Virginia 76

Period 3-only	In Paint	Off T/O	2nd Chance	Fast Break	Bench	
STJOHN	4	2	0	2	6	Score tied - 0 times
WVU	4	6	5	0	0	Lead changed - 0 times

St. John's vs West Virginia
3/25/2018; 4:00 p.m. at WVU Coliseum | Morgantown, W.Va.
Period 4 Play-By-Play



VISITORS: St. John's	Time	Score	Margin	HOME: West Virginia
SUB IN: DUNCAN,SHAMACHYA	10:00			
SUB OUT: KEBBE,ALISHA	10:00			
GOOD! JUMPER by SINGLETON,MAYA [PNT]	09:45	60-45	H 15	
ASSIST by ENGLAND,TIANA	09:45			
	09:45			FOUL by PARDEE,KATRINA
GOOD! FT by SINGLETON,MAYA	09:45	60-46	H 14	
	09:31			TURNOVER by DAVENPORT,NAOMI
STEAL by WELLERE,AKINA	09:30			
	09:28			FOUL by DAVENPORT,NAOMI
MISSED FT by WELLERE,AKINA	09:28			
REBOUND (DEADB) by TEAM	09:28			
GOOD! FT by WELLERE,AKINA	09:28	60-47	H 13	
	09:19			FOUL by PARDEE,KATRINA
	09:19			TURNOVER by PARDEE,KATRINA
MISSED JUMPER by ENGLAND,TIANA	09:05			
	09:05			BLOCK by MULDROW,TEANA
REBOUND (OFF) by LITTLETON,IMANI	09:03			
MISSED LAYUP by ENGLAND,TIANA	08:51			
	08:51			REBOUND (DEF) by RAY,CHANIA
	08:34	62-47	H 15	GOOD! JUMPER by DAVENPORT,NAOMI [PNT]
MISSED 3PTR by DUNCAN,SHAMACHYA	08:04			
REBOUND (OFF) by SINGLETON,MAYA	08:04			
GOOD! JUMPER by SINGLETON,MAYA [PNT]	07:57	62-49	H 13	
FOUL by DUNCAN,SHAMACHYA	07:36			
	07:36	63-49	H 14	GOOD! FT by MULDROW,TEANA
	07:36	64-49	H 15	GOOD! FT by MULDROW,TEANA
SUB IN: KEBBE,ALISHA	07:36			
SUB OUT: DUNCAN,SHAMACHYA	07:36			
	07:25			FOUL by RAY,CHANIA
TURNOVER by ENGLAND,TIANA	07:16			
	07:14			STEAL by PARDEE,KATRINA
	07:02			TURNOVER by RAY,CHANIA
STEAL by LITTLETON,IMANI	07:01			
GOOD! LAYUP by ENGLAND,TIANA [FB/PNT]	06:58	64-51	H 13	
ASSIST by LITTLETON,IMANI	06:58			
	06:36			TURNOVER by DAVENPORT,NAOMI
STEAL by SINGLETON,MAYA	06:34			
GOOD! LAYUP by SINGLETON,MAYA [FB/PNT]	06:32	64-53	H 11	
	06:27			TIMEOUT 30SEC
	06:13			MISSED LAYUP by MULDROW,TEANA
REBOUND (DEF) by LITTLETON,IMANI	06:13			
MISSED 3PTR by KEBBE,ALISHA	05:58			
REBOUND (OFF) by SINGLETON,MAYA	05:58			
MISSED JUMPER by SINGLETON,MAYA	05:54			
REBOUND (OFF) by SINGLETON,MAYA	05:54			
MISSED JUMPER by ENGLAND,TIANA	05:38			
	05:38			BLOCK by DAVENPORT,NAOMI
	05:32			REBOUND (DEF) by DAVENPORT,NAOMI
	05:08			FOUL by PARDEE,KATRINA
	05:08			TURNOVER by PARDEE,KATRINA
SUB IN: ADAMS,ANDRAYAH	05:08			
SUB OUT: ENGLAND,TIANA	05:08			
	05:08			SUB IN: JONES,ASHLEY
	05:08			SUB OUT: PARDEE,KATRINA
FOUL by WELLERE,AKINA	04:58			
TURNOVER by WELLERE,AKINA	04:58			
FOUL by SINGLETON,MAYA	04:37			
FOUL by SINGLETON,MAYA	04:30			
	04:30	65-53	H 12	GOOD! FT by MULDROW,TEANA
	04:30			MISSED FT by MULDROW,TEANA
REBOUND (DEF) by LITTLETON,IMANI	04:30			
TURNOVER by WELLERE,AKINA	04:21			
	04:19			STEAL by RAY,CHANIA
	03:53	67-53	H 14	GOOD! LAYUP by MULDROW,TEANA [PNT]
	03:53			ASSIST by RAY,CHANIA
MISSED 3PTR by WELLERE,AKINA	03:33			
	03:33			REBOUND (DEF) by MULDROW,TEANA
FOUL by KEBBE,ALISHA	03:13			
	03:13	68-53	H 15	GOOD! FT by MULDROW,TEANA

VISITORS: St. John's	Time	Score	Margin	HOME: West Virginia
	03:13	69-53	H 16	GOOD! FT by MULDROW,TEANA
TURNOVER by KEBBE,ALISHA	03:02			
	03:01			STEAL by RAY,CHANIA
	02:57	71-53	H 18	GOOD! LAYUP by KING,KRISTINA [FB/PNT]
	02:57			ASSIST by RAY,CHANIA
MISSED 3PTR by ADAMS,ANDRAYAH	02:47			
REBOUND (OFF) by WELLERE,AKINA	02:47			
	02:45			FOUL by MULDROW,TEANA
GOOD! FT by WELLERE,AKINA	02:45	71-54	H 17	
GOOD! FT by WELLERE,AKINA	02:45	71-55	H 16	
SUB IN: HOPPIE,QADASHAH	02:45			
SUB OUT: KEBBE,ALISHA	02:45			
	02:21			TURNOVER by RAY,CHANIA
STEAL by WELLERE,AKINA	02:19			
	02:16			FOUL by DAVENPORT,NAOMI
GOOD! FT by LITTLETON,IMANI	02:16	71-56	H 15	
MISSED FT by LITTLETON,IMANI	02:16			
	02:16			REBOUND (DEF) by DAVENPORT,NAOMI
	02:16			SUB IN: PARDEE,KATRINA
	02:16			SUB OUT: RAY,CHANIA
SUB IN: DUNCAN,SHAMACHYA	02:14			
SUB OUT: ADAMS,ANDRAYAH	02:14			
FOUL by WELLERE,AKINA	01:50			
	01:50	72-56	H 16	GOOD! FT by MULDROW,TEANA
	01:50	73-56	H 17	GOOD! FT by MULDROW,TEANA
SUB IN: ADAMS,ANDRAYAH	01:50			
SUB OUT: DUNCAN,SHAMACHYA	01:50			
	01:50			SUB IN: EKHELAR,THERESA
	01:50			SUB OUT: MULDROW,TEANA
GOOD! 3PTR by ADAMS,ANDRAYAH	01:39	73-59	H 14	
ASSIST by HOPPIE,QADASHAH	01:39			
TIMEOUT 30SEC	01:35			
SUB IN: DUNCAN,SHAMACHYA	01:35			
SUB OUT: ADAMS,ANDRAYAH	01:35			
	01:35			SUB IN: HARDEN,DESTINY
	01:35			SUB OUT: KING,KRISTINA
FOUL by DUNCAN,SHAMACHYA	01:29			
	01:29			MISSED FT by JONES,ASHLEY
	01:29			REBOUND (DEADB) by TEAM
	01:29	74-59	H 15	GOOD! FT by JONES,ASHLEY
SUB IN: ADAMS,ANDRAYAH	01:29			
SUB OUT: DUNCAN,SHAMACHYA	01:29			
TURNOVER by ADAMS,ANDRAYAH	01:16			
	01:14			STEAL by PARDEE,KATRINA
SUB IN: CHARLES,KAYLA	01:13			
SUB OUT: LITTLETON,IMANI	01:13			
	00:53			TURNOVER by JONES,ASHLEY
STEAL by WELLERE,AKINA	00:53			
	00:53			FOUL by JONES,ASHLEY
GOOD! FT by WELLERE,AKINA	00:53	74-60	H 14	
GOOD! FT by WELLERE,AKINA	00:53	74-61	H 13	
SUB IN: KEBBE,ALISHA	00:53			
SUB IN: DUNCAN,SHAMACHYA	00:53			
SUB OUT: WELLERE,AKINA	00:53			
SUB OUT: SINGLETON,MAYA	00:53			
	00:53			SUB IN: STAPLES,NIA
	00:53			SUB OUT: JONES,ASHLEY
	00:30	76-61	H 15	GOOD! JUMPER by PARDEE,KATRINA
MISSED 3PTR by KEBBE,ALISHA	00:22			
REBOUND (OFF) by HOPPIE,QADASHAH	00:22			
	00:18			FOUL by EKHELAR,THERESA
MISSED FT by HOPPIE,QADASHAH	00:18			
REBOUND (DEADB) by TEAM	00:18			
GOOD! FT by HOPPIE,QADASHAH	00:18	76-62	H 14	

St. John's 62, West Virginia 76

Period 4-only	In Paint	Off T/O	2nd Chance	Fast Break	Bench	
STJOHN	8	8	5	4	4	Score tied - 0 times
WVU	6	5	0	2	1	Lead changed - 0 times

St. John's vs West Virginia
3/25/2018; 4:00 p.m. at WVU Coliseum | Morgantown, W.Va.
Scoring/Runs Reference



Period 1

St. John's	VRun	Score	Margin	HRun	West Virginia
		0-2	2		MULDROW LAYUP [P] - 09:49
09:25 - KEBBE LAYUP [P]	-	2-2	0		
08:59 - WELLERE 3PTR	5-0	5-2	-3		
		5-4	-1		DAVENPORT LAYUP [P] - 08:32
07:30 - SINGLETON JUMPER [P]	-	7-4	-3		
		7-6	-1		KING LAYUP [P] - 07:07
04:22 - WELLERE JUMPER	-	9-6	-3		
		9-8	-1		MULDROW JUMPER [P] - 03:30
03:07 - WELLERE 3PTR	-	12-8	-4		
		12-10	-2		MULDROW JUMPER [P] - 02:43
02:27 - ENGLAND LAYUP [P]	-	14-10	-4		
		14-12	-2		DAVENPORT JUMPER - 02:17
		14-13	-1	3-0	EKHELAR FT - 02:05
01:56 - ADAMS 3PTR	-	17-13	-4		
		17-15	-2		DAVENPORT LAYUP [P] [F] - 01:05
		17-18	1	5-0	RAY 3PTR - 00:35

St. John's vs West Virginia
 3/25/2018; 4:00 p.m. at WVU Coliseum | Morgantown, W.Va.
 Scoring/Runs Reference



Period 2

St. John's	VRun	Score	Margin	HRun	West Virginia
		17-19	2		RAY FT - 08:52
		17-20	3	NaN-0	RAY FT - 08:52
08:35 - SINGLETON JUMPER	-	19-20	1		
		19-22	3		MULDROW JUMPER [P] - 08:21
		19-24	5	4-0	JONES LAYUP [P] [F] - 07:45
07:26 - LITTLETON JUMPER [P]	-	21-24	3		
		21-27	6		PARDEE 3PTR - 07:08
		21-28	7	4-0	MULDROW FT - 06:32
		21-29	8	5-0	MULDROW FT - 06:32
05:08 - SINGLETON JUMPER	-	23-29	6		
		23-31	8		DAVENPORT LAYUP [P] - 04:19
		23-34	11	5-0	PARDEE 3PTR - 02:43
02:11 - WELLERE JUMPER [P]	-	25-34	9		
		25-36	11		PARDEE LAYUP [P] - 01:55
		25-38	13	4-0	DAVENPORT LAYUP [P] - 01:12
01:00 - WELLERE JUMPER	-	27-38	11		
00:30 - HOPPIE FT	3-0	28-38	10		

St. John's vs West Virginia
3/25/2018; 4:00 p.m. at WVU Coliseum | Morgantown, W.Va.
Scoring/Runs Reference



Period 3

St. John's	VRun	Score	Margin	HRun	West Virginia
		28-40	12		MULDROW JUMPER - 09:47
		28-41	13	NaN-0	MULDROW FT - 08:42
		28-42	14	NaN-0	MULDROW FT - 08:42
08:10 - KEBBE 3PTR	-	31-42	11		
		31-44	13		PARDEE JUMPER - 07:47
		31-47	16	5-0	RAY 3PTR - 07:18
06:36 - WELLERE LAYUP [P] [F]	-	33-47	14		
		33-49	16		MULDROW JUMPER [P] - 05:33
05:03 - WELLERE JUMPER	-	35-49	14		
		35-52	17		PARDEE 3PTR - 03:36
03:19 - ADAMS 3PTR	-	38-52	14		
		38-53	15		MULDROW FT - 02:57
		38-54	16	2-0	MULDROW FT - 02:57
02:45 - ADAMS 3PTR	-	41-54	13		
		41-56	15		MULDROW LAYUP [P] - 01:26
		41-57	16	3-0	MULDROW FT - 01:26
01:13 - WELLERE LAYUP [P]	-	43-57	14		
		43-60	17		MULDROW 3PTR - 00:30

St. John's vs West Virginia
3/25/2018; 4:00 p.m. at WVU Coliseum | Morgantown, W.Va.
Scoring/Runs Reference

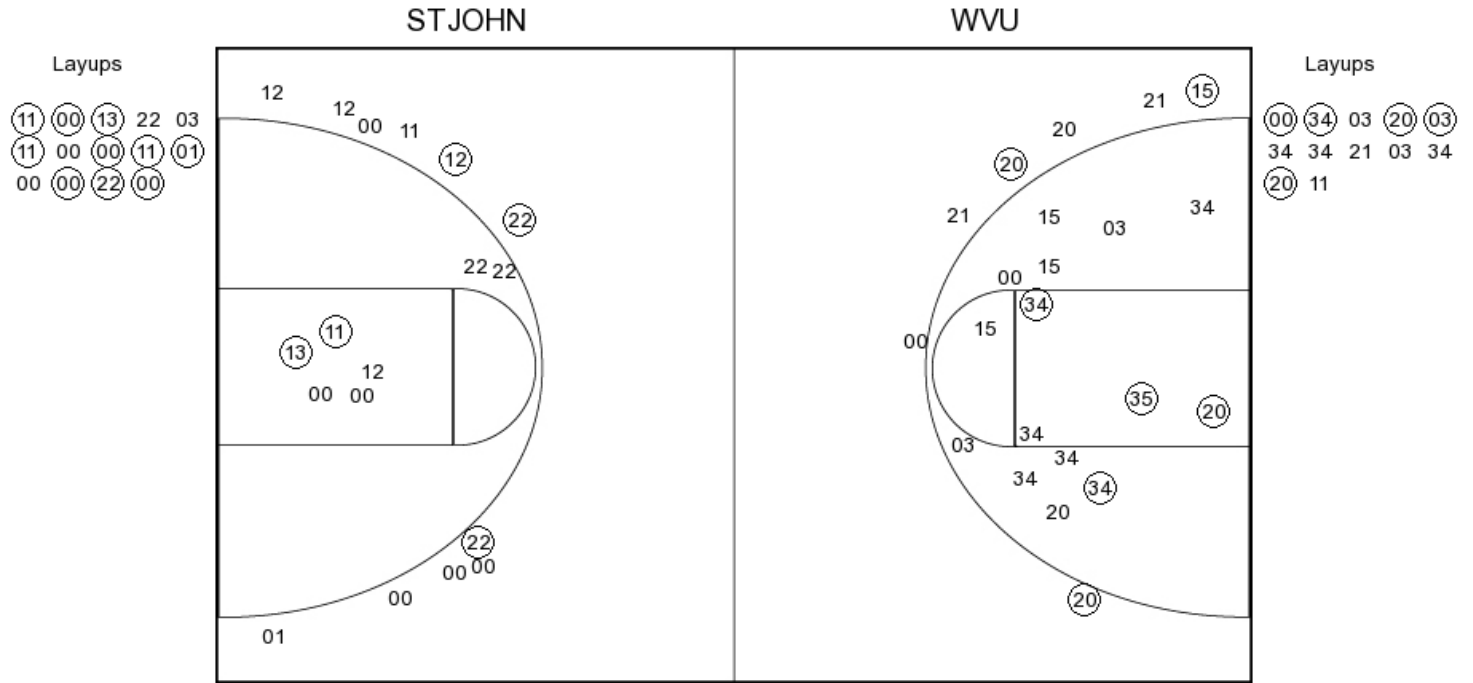


Period 4

St. John's	VRun	Score	Margin	HRun	West Virginia
09:45 - SINGLETON JUMPER [P]	-	45-60	15		
09:45 - SINGLETON FT	NaN-0	46-60	14		
09:28 - WELLERE FT	NaN-0	47-60	13		
		47-62	15		DAVENPORT JUMPER [P] - 08:34
07:57 - SINGLETON JUMPER [P]	-	49-62	13		
		49-63	14		MULDROW FT - 07:36
		49-64	15	2-0	MULDROW FT - 07:36
06:58 - ENGLAND LAYUP [P] [F]	-	51-64	13		
06:32 - SINGLETON LAYUP [P] [F]	4-0	53-64	11		
		53-65	12		MULDROW FT - 04:30
		53-67	14	3-0	MULDROW LAYUP [P] - 03:53
		53-68	15	4-0	MULDROW FT - 03:13
		53-69	16	5-0	MULDROW FT - 03:13
		53-71	18	7-0	KING LAYUP [P] [F] - 02:57
02:45 - WELLERE FT	-	54-71	17		
02:45 - WELLERE FT	2-0	55-71	16		
02:16 - LITTLETON FT	3-0	56-71	15		
		56-72	16		MULDROW FT - 01:50
		56-73	17	2-0	MULDROW FT - 01:50
01:39 - ADAMS 3PTR	-	59-73	14		
		59-74	15		JONES FT - 01:29
00:53 - WELLERE FT	-	60-74	14		
00:53 - WELLERE FT	2-0	61-74	13		
		61-76	15		PARDEE JUMPER - 00:30
00:18 - HOPPIE FT	-	62-76	14		



PERIOD 1



STJOHN PERIOD 1

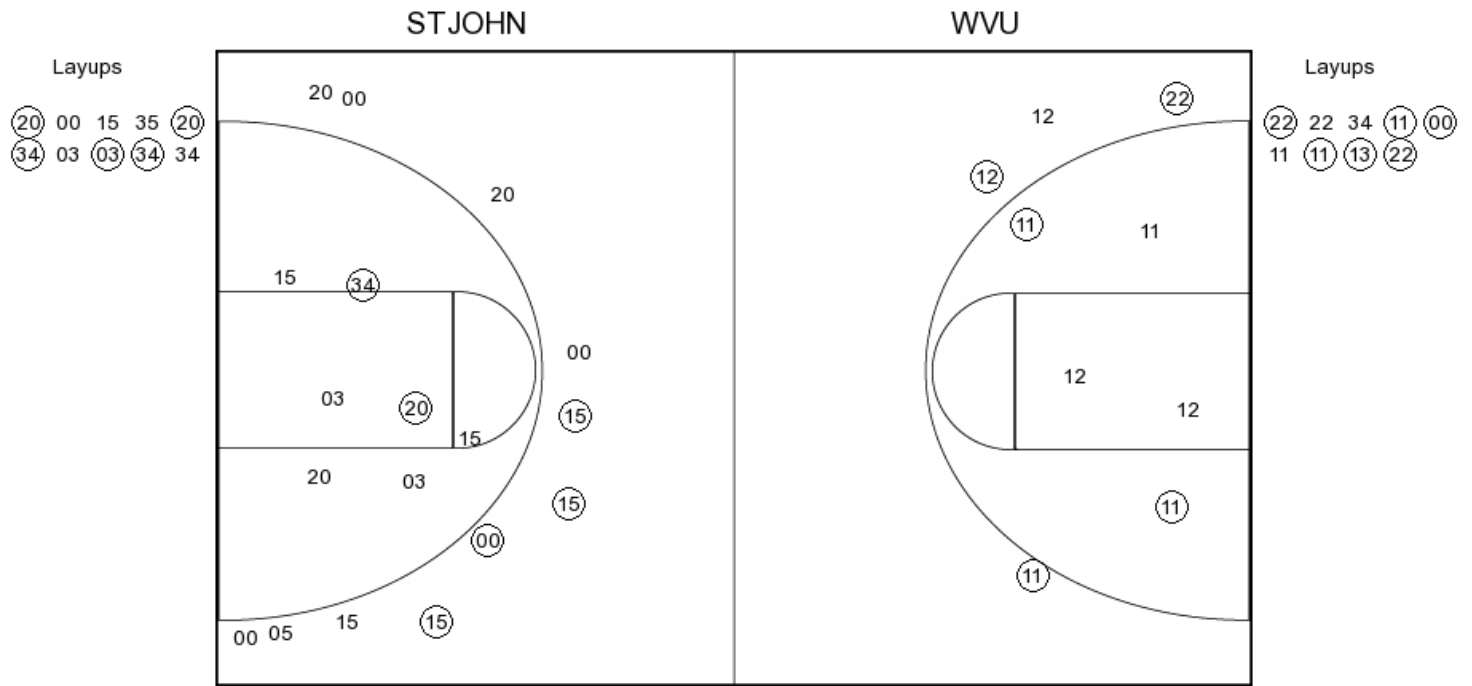
FG Made	12
FG Attempted	34
3PFG Made	3
3PFG Attempted	6

WVU PERIOD 1

FG Made	15
FG Attempted	33
3PFG Made	3
3PFG Attempted	11



PERIOD 2



STJOHN PERIOD 2

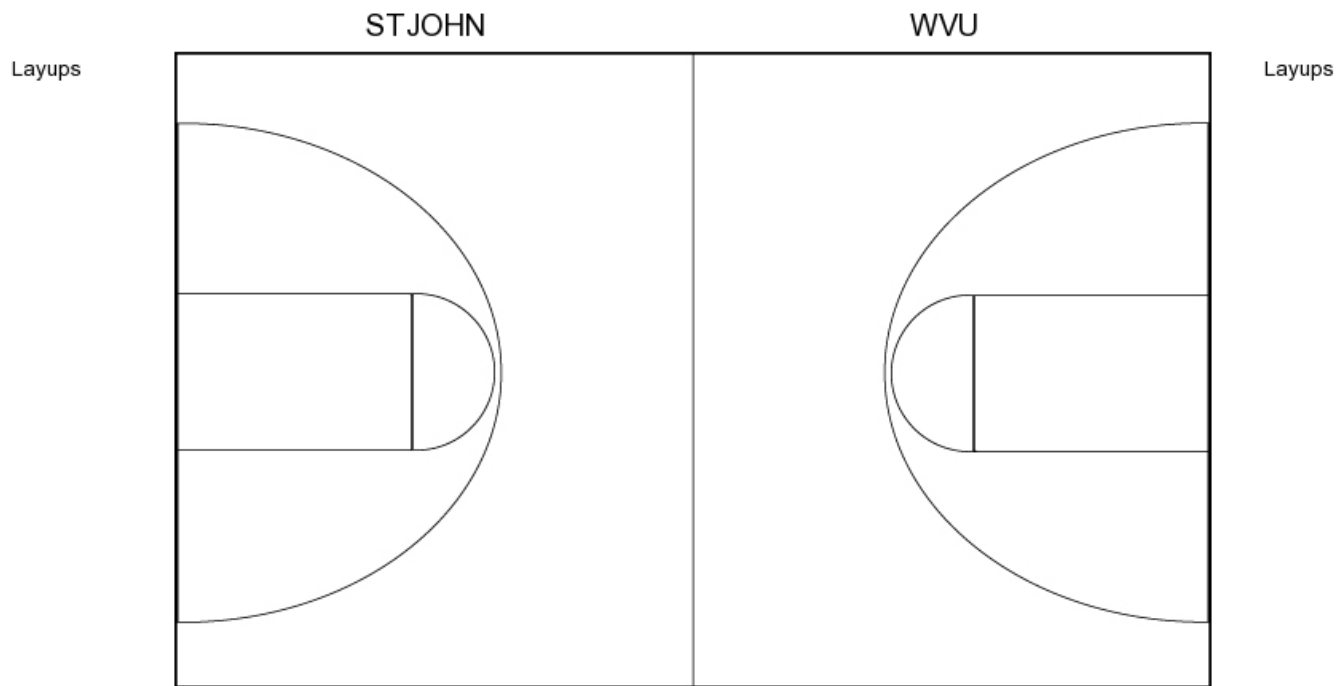
FG Made
 FG Attempted
 3PFG Made
 3PFG Attempted

WVU PERIOD 2

FG Made
 FG Attempted
 3PFG Made
 3PFG Attempted



PERIOD 3



STJOHN PERIOD 3

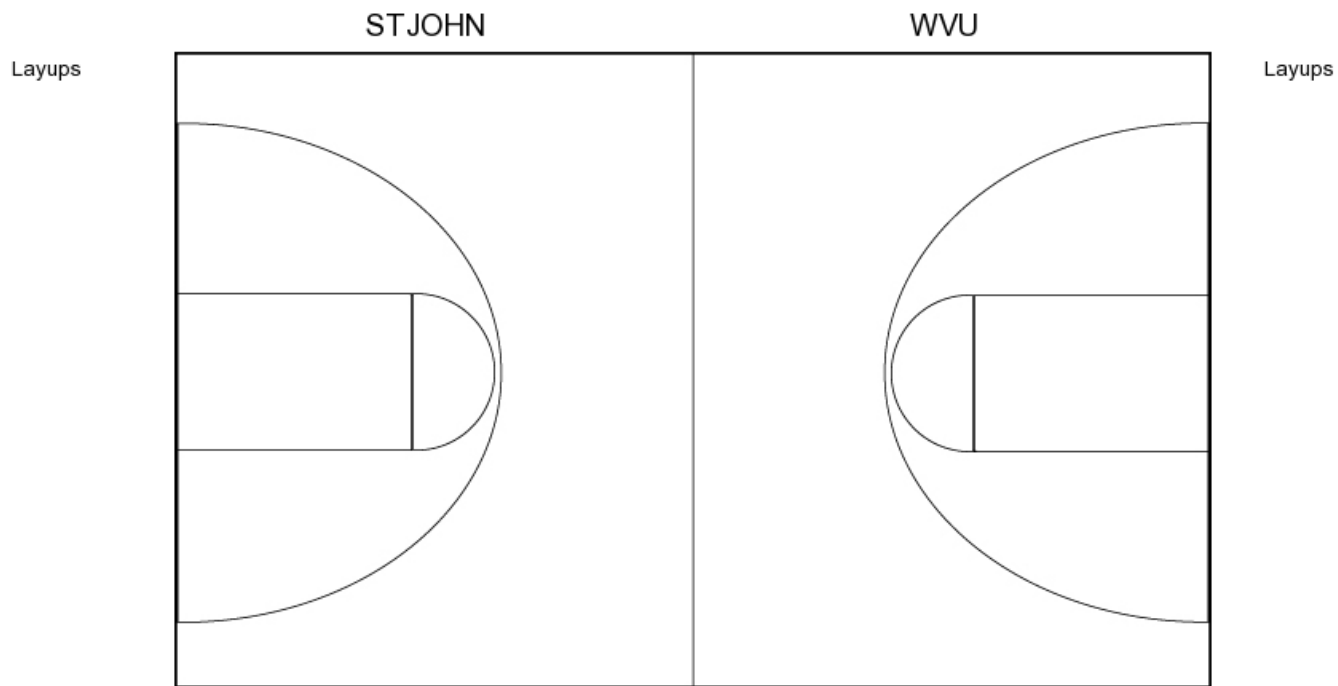
FG Made	11
FG Attempted	27
3PFG Made	4
3PFG Attempted	11

WVU PERIOD 3

FG Made	11
FG Attempted	18
3PFG Made	3
3PFG Attempted	4



PERIOD 4



STJOHN PERIOD 4

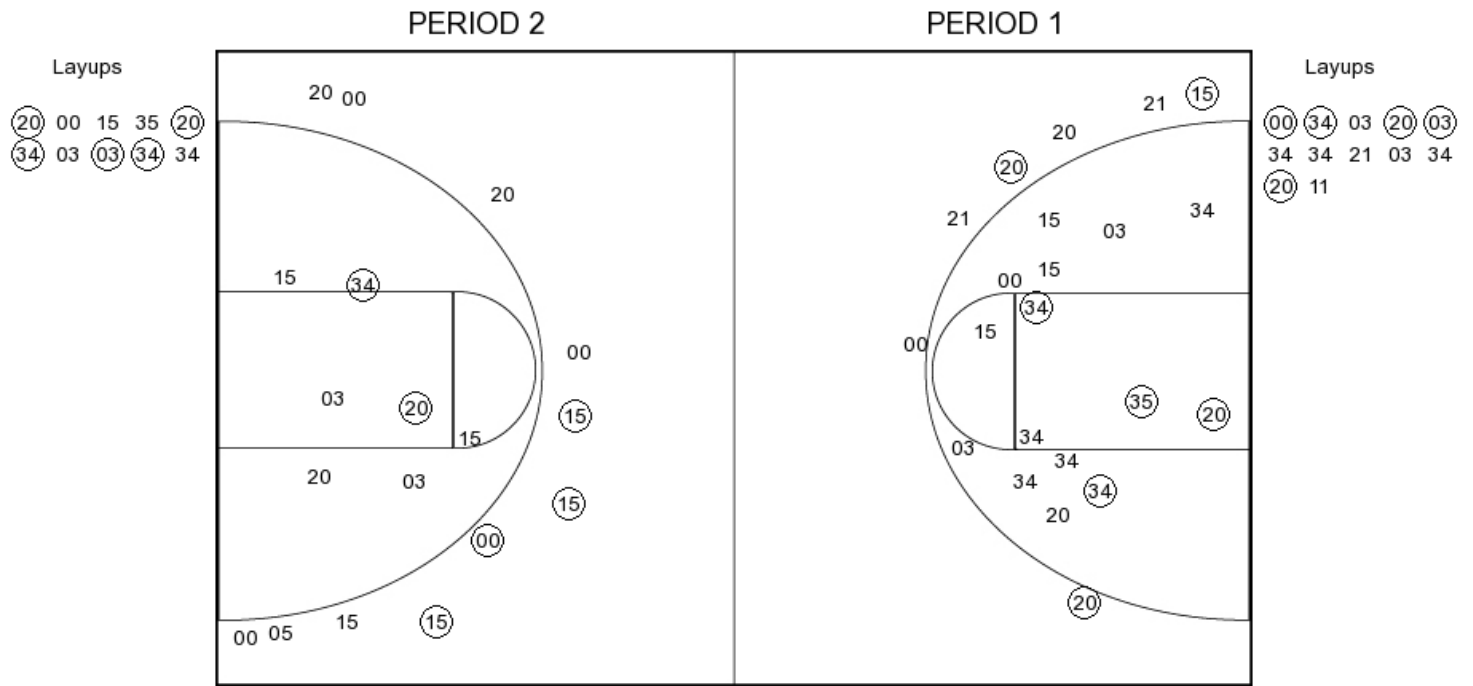
FG Made
FG Attempted
3PFG Made
3PFG Attempted

WVU PERIOD 4

FG Made
FG Attempted
3PFG Made
3PFG Attempted



St. John's



STJOHN PERIOD 1

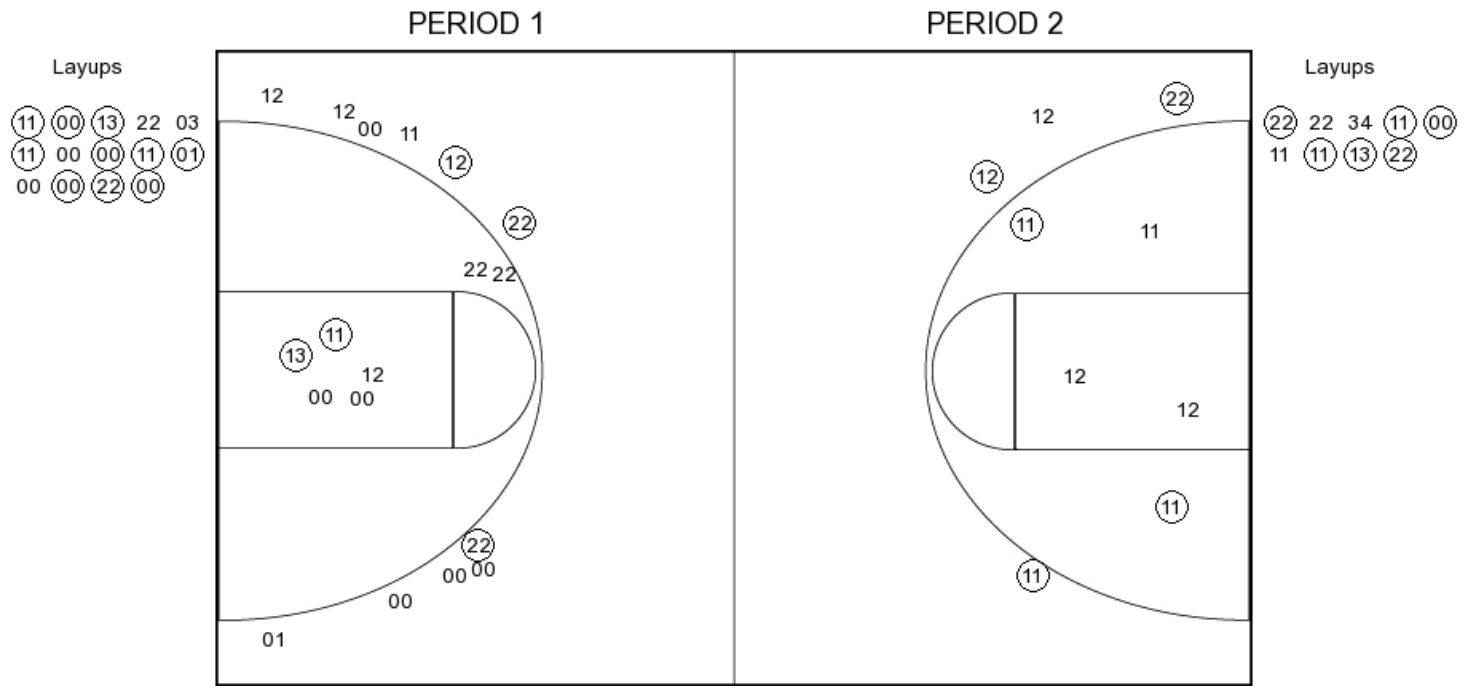
FG Made	12
FG Attempted	34
3PFG Made	3
3PFG Attempted	6

STJOHN PERIOD 2

FG Made	
FG Attempted	
3PFG Made	
3PFG Attempted	



West Virginia



WVU PERIOD 1

FG Made	15
FG Attempted	33
3PFG Made	3
3PFG Attempted	11

WVU PERIOD 2

FG Made	
FG Attempted	
3PFG Made	
3PFG Attempted	