

FINAL SCORE



James Madison

23-10

55



West Virginia

23-11

67

WNIT Third Round

March 23, 2018 • WVU Coliseum, Morgantown, W.Va.

FINAL STATISTICS

Official Basketball Box Score -- Game Totals -- Final Statistics
James Madison vs West Virginia
3/23/2018 5:30 p.m. at WVU Coliseum, Morgantown, W.Va.



James Madison 55 - 23-10

| ## | Player | g | Total | 3-Ptr | FT-FTA | Rebounds | | | PF | TP | A | TO | Blk | Stl | Min |
|--------|----------------------|---|--------|--------|--------|----------|-----|-----|----|----|---|----|-----|-----|-----|
| | | | FG-FGA | FG-FGA | | Off | Def | Tot | | | | | | | |
| 03 | SMALLS,KAMIAH | | 3-15 | 1-8 | 3-4 | 1 | 3 | 4 | 2 | 10 | 1 | 2 | 0 | 1 | 31 |
| 13 | REYNOLDS,LOGAN | | 2-4 | 0-1 | 3-3 | 1 | 2 | 3 | 5 | 7 | 1 | 3 | 0 | 2 | 28 |
| 15 | BARRIER,LEXIE | | 3-17 | 0-6 | 3-3 | 0 | 5 | 5 | 3 | 9 | 1 | 1 | 0 | 1 | 27 |
| 31 | COOPERWILLIAMS,KAYLA | | 1-2 | 0-0 | 0-0 | 3 | 3 | 6 | 2 | 2 | 0 | 1 | 1 | 2 | 19 |
| 33 | KOSHUTA,KELLY | | 10-21 | 2-6 | 0-0 | 5 | 4 | 9 | 2 | 22 | 0 | 3 | 1 | 0 | 37 |
| 01 | HARRIS,TORI | | 0-0 | 0-0 | 0-0 | 0 | 0 | 0 | 0 | 0 | 0 | 0 | 0 | 0 | 3 |
| 04 | BUTLER,TASIA | | 0-0 | 0-0 | 0-0 | 0 | 2 | 2 | 2 | 0 | 0 | 2 | 0 | 0 | 13 |
| 05 | BELLERAND,BREYENNE | | 1-1 | 0-0 | 0-0 | 1 | 1 | 2 | 2 | 2 | 0 | 0 | 0 | 1 | 10 |
| 10 | YOUNG,ANEAH | | 0-1 | 0-0 | 0-0 | 0 | 0 | 0 | 1 | 0 | 0 | 0 | 0 | 0 | 7 |
| 14 | BARRON,HAILEE | | 1-2 | 1-2 | 0-0 | 0 | 1 | 1 | 0 | 3 | 0 | 2 | 0 | 0 | 14 |
| 42 | MERRITT,DEVON | | 0-0 | 0-0 | 0-0 | 0 | 1 | 1 | 1 | 0 | 0 | 0 | 0 | 0 | 11 |
| TEAM | | | | | | 2 | 0 | 2 | 0 | | | 0 | | | |
| TOTALS | | | 21-63 | 4-23 | 9-10 | 13 | 22 | 35 | 20 | 55 | 3 | 14 | 2 | 7 | 200 |

Deadball Rebounds: 0,1

| | | | | | |
|-------|-----------------------|-----------------------|---------------------|---------------------|------------|
| FG % | 1st Half: 10-27 37.0% | 2nd Half: 11-36 30.6% | Game: 21-63 33.3% | 4th Qtr | 2-18 11.1% |
| 3FG % | 1st Half: 8-10 80.0% | 2nd Half: 2-17 11.8% | 3rd Qtr: 9-18 50.0% | | |
| | 1st Half: 3-9 33.3% | 2nd Half: 1-14 07.1% | Game: 4-23 17.4% | | |
| | 1st Qtr: 3-4 75.0% | 2nd Qtr: 0-5 00.0% | 3rd Qtr: 0-4 00.0% | 4th Qtr: 1-10 10.0% | |
| FT % | 1st Half: 3-4 75.0% | 2nd Half: 6-6 100.0% | Game: 9-10 90.0% | | |
| | 1st Qtr: 2-2 100.0% | 2nd Qtr: 1-2 50.0% | 3rd Qtr: 4-4 100.0% | 4th Qtr: 2-2 100.0% | |

West Virginia 67 - 23-11

| ## | Player | g | Total | 3-Ptr | FT-FTA | Rebounds | | | PF | TP | A | TO | Blk | Stl | Min |
|--------|-------------------|---|--------|--------|--------|----------|-----|-----|----|----|----|----|-----|-----|-----|
| | | | FG-FGA | FG-FGA | | Off | Def | Tot | | | | | | | |
| 00 | DAVENPORT,NAOMI | | 4-11 | 0-5 | 2-3 | 0 | 9 | 9 | 1 | 10 | 4 | 6 | 1 | 3 | 37 |
| 11 | MULDROW,TEANA | | 3-14 | 0-3 | 3-5 | 5 | 5 | 10 | 3 | 9 | 3 | 2 | 0 | 1 | 38 |
| 12 | RAY,CHANIA | | 3-4 | 2-2 | 2-2 | 1 | 3 | 4 | 1 | 10 | 1 | 4 | 1 | 1 | 34 |
| 13 | KING,KRISTINA | | 7-11 | 0-0 | 3-4 | 3 | 3 | 6 | 2 | 17 | 0 | 2 | 3 | 1 | 35 |
| 22 | PARDEE,KATRINA | | 4-11 | 2-6 | 6-6 | 2 | 3 | 5 | 3 | 16 | 2 | 1 | 0 | 0 | 33 |
| 01 | JONES,ASHLEY | | 1-3 | 1-3 | 0-0 | 0 | 1 | 1 | 0 | 3 | 2 | 0 | 0 | 1 | 15 |
| 03 | HARDEN,DESTINY | | 1-3 | 0-0 | 0-0 | 0 | 1 | 1 | 0 | 2 | 0 | 0 | 0 | 0 | 5 |
| 04 | STAPLES,NIA | | 0-0 | 0-0 | 0-0 | 0 | 0 | 0 | 0 | 0 | 0 | 0 | 0 | 0 | 1 |
| 34 | EKHELAR,THEHERESA | | 0-0 | 0-0 | 0-0 | 0 | 0 | 0 | 0 | 0 | 0 | 0 | 0 | 0 | 2 |
| TEAM | | | | | | 1 | 5 | 6 | 0 | | | 0 | | | |
| TOTALS | | | 23-57 | 5-19 | 16-20 | 12 | 30 | 42 | 10 | 67 | 12 | 15 | 5 | 7 | 200 |

Deadball Rebounds: 3,0

| | | | | | |
|-------|-----------------------|-----------------------|---------------------|---------------------|------------|
| FG % | 1st Half: 14-35 40.0% | 2nd Half: 9-22 40.9% | Game: 23-57 40.4% | 4th Qtr | 5-12 41.7% |
| 3FG % | 1st Half: 7-18 38.9% | 2nd Half: 7-17 41.2% | 3rd Qtr: 4-10 40.0% | | |
| | 1st Half: 2-12 16.7% | 2nd Half: 3-7 42.9% | Game: 5-19 26.3% | | |
| | 1st Qtr: 1-5 20.0% | 2nd Qtr: 1-7 14.3% | 3rd Qtr: 2-5 40.0% | 4th Qtr: 1-2 50.0% | |
| FT % | 1st Half: 5-7 71.4% | 2nd Half: 11-13 84.6% | Game: 16-20 80.0% | | |
| | 1st Qtr: 5-5 100.0% | 2nd Qtr: 0-2 00.0% | 3rd Qtr: 3-3 100.0% | 4th Qtr: 8-10 80.0% | |

Officials: Kevin Pethtel, Frank Steratore, Erika Herriamn-Camarota
 Technical Fouls: James Madison- None. West Virginia- None.
 Attendance: 1709

| Score by periods | 1st | 2nd | 3rd | 4th | Total |
|------------------|-----|-----|-----|-----|-------|
| James Madison | 21 | 5 | 22 | 7 | 55 |
| West Virginia | 20 | 15 | 13 | 19 | 67 |

| Points | In Paint | Off T/O | 2nd Chance | Fast Break | Bench |
|--------|----------|---------|------------|------------|-------|
| JMU | 28 | 14 | 10 | 2 | 5 |
| WVU | 26 | 12 | 11 | 4 | 5 |

Last FG - JMU 4th-01:14, WVU 4th-03:44.
 Largest lead - James Madison by 2 1st-09:49; West Virginia by 14 2nd-03:23
 JMU led for 2:50. WVU led for 35:11. Game was tied for 1:59.

Score tied - 7 times; Lead changed - 9 times

Official Basketball Box Score -- Game Totals -- First Half Statistics
 James Madison vs West Virginia
 3/23/2018 5:30 p.m. at WVU Coliseum, Morgantown, W.Va.



James Madison 26 • 23-10

| ## | Player | | Total | | | 3-Ptr | | | Rebounds | | | PF | TP | A | TO | Blk | Stl | Min | | |
|--------|----------------------|---|-------|-----|--|-------|-----|----|----------|-----|-----|----|----|---|----|-----|-----|-----|-----|-----|
| | | | FG | FGA | | FG | FGA | FT | FTA | Off | Def | | | | | | | | Tot | |
| 03 | SMALLS,KAMIAH | g | 2 | 7 | | 0 | 3 | | 3 | 4 | 1 | 3 | 4 | 0 | 7 | 1 | 1 | 0 | 1 | 14 |
| 13 | REYNOLDS,LOGAN | g | 0 | 1 | | 0 | 0 | | 0 | 0 | 1 | 0 | 1 | 2 | 0 | 1 | 3 | 0 | 0 | 11 |
| 15 | BARRIER,LEXIE | g | 0 | 7 | | 0 | 2 | | 0 | 0 | 1 | 1 | 1 | 2 | 0 | 0 | 1 | 0 | 1 | 9 |
| 31 | COOPERWILLIAMS,KAYLA | c | 1 | 1 | | 0 | 0 | | 2 | 2 | 4 | 2 | 2 | 2 | 2 | 0 | 1 | 0 | 2 | 12 |
| 33 | KOSHUTA,KELLY | f | 6 | 8 | | 2 | 2 | | 1 | 2 | 3 | 0 | 14 | 0 | 14 | 0 | 2 | 0 | 0 | 17 |
| 01 | HARRIS,TORI | | 0 | 0 | | 0 | 0 | | 0 | 0 | 0 | 0 | 0 | 0 | 0 | 0 | 0 | 0 | 0 | 3 |
| 04 | BUTLER,TASIA | | 0 | 0 | | 0 | 0 | | 0 | 1 | 1 | 1 | 0 | 1 | 0 | 0 | 1 | 0 | 0 | 5 |
| 05 | BELLERAND,BREYENNE | | 0 | 0 | | 0 | 0 | | 0 | 0 | 0 | 0 | 0 | 0 | 0 | 0 | 0 | 0 | 1 | 0 |
| 10 | YOUNG,ANEAH | | 0 | 1 | | 0 | 0 | | 0 | 0 | 0 | 1 | 0 | 1 | 0 | 0 | 0 | 0 | 0 | 5 |
| 14 | BARRON,HAILEE | | 1 | 2 | | 1 | 2 | | 0 | 1 | 1 | 0 | 3 | 0 | 3 | 0 | 2 | 0 | 0 | 13 |
| 42 | MERRITT,DEVON | | 0 | 0 | | 0 | 0 | | 0 | 1 | 1 | 0 | 0 | 0 | 0 | 0 | 0 | 0 | 0 | 11 |
| TEAM | | | | | | | | | 0 | 0 | 0 | 0 | | | | 0 | | | | |
| Totals | | | 10 | 27 | | 3 | 9 | | 3 | 4 | 5 | 11 | 16 | 8 | 26 | 2 | 11 | 0 | 5 | 100 |

FG % 1st Qtr 8-10 80.0% 2nd Qtr 2-17 11.8% Half: 10-27 37.0%
 3FG % 1st Qtr 3-4 75.0% 2nd Qtr 0-5 00.0% Half: 3-9 33.3%
 FT % 1st Qtr 2-2 100.0% 2nd Qtr 1-2 50.0% Half: 3-4 75.0%

West Virginia 35 • 23-11

| ## | Player | | Total | | | 3-Ptr | | | Rebounds | | | PF | TP | A | TO | Blk | Stl | Min | | |
|--------|-------------------|---|-------|-----|--|-------|-----|----|----------|-----|-----|----|----|---|----|-----|-----|-----|-----|-----|
| | | | FG | FGA | | FG | FGA | FT | FTA | Off | Def | | | | | | | | Tot | |
| 00 | DAVENPORT,NAOMI | g | 3 | 8 | | 0 | 4 | | 0 | 3 | 3 | 0 | 6 | 2 | 5 | 0 | 3 | 17 | | |
| 11 | MULDROW,TEANA | f | 1 | 9 | | 0 | 2 | | 5 | 2 | 7 | 1 | 3 | 1 | 1 | 0 | 1 | 19 | | |
| 12 | RAY,CHANIA | g | 2 | 3 | | 1 | 1 | | 1 | 2 | 3 | 1 | 5 | 1 | 1 | 0 | 1 | 15 | | |
| 13 | KING,KRISTINA | f | 6 | 7 | | 0 | 0 | | 3 | 0 | 3 | 0 | 14 | 0 | 1 | 0 | 1 | 17 | | |
| 22 | PARDEE,KATRINA | g | 1 | 5 | | 1 | 4 | | 1 | 3 | 4 | 1 | 5 | 1 | 1 | 0 | 0 | 18 | | |
| 01 | JONES,ASHLEY | | 0 | 1 | | 0 | 1 | | 0 | 1 | 1 | 0 | 0 | 2 | 0 | 0 | 1 | 10 | | |
| 03 | HARDEN,DESTINY | | 1 | 2 | | 0 | 0 | | 0 | 1 | 1 | 0 | 2 | 0 | 0 | 0 | 0 | 3 | | |
| 04 | STAPLES,NIA | | 0 | 0 | | 0 | 0 | | 0 | 0 | 0 | 0 | 0 | 0 | 0 | 0 | 0 | 0 | | |
| 34 | EKHELAR,THEHERESA | | 0 | 0 | | 0 | 0 | | 0 | 0 | 0 | 0 | 0 | 0 | 0 | 0 | 0 | 1 | | |
| TEAM | | | | | | | | | 1 | 1 | 2 | 0 | | | 0 | | | | | |
| Totals | | | 14 | 35 | | 2 | 12 | | 5 | 7 | 11 | 13 | 24 | 3 | 35 | 7 | 9 | 0 | 7 | 100 |

FG % 1st Qtr 7-18 38.9% 2nd Qtr 7-17 41.2% Half: 14-35 40.0%
 3FG % 1st Qtr 1-5 20.0% 2nd Qtr 1-7 14.3% Half: 2-12 16.7%
 FT % 1st Qtr 5-5 100.0% 2nd Qtr 0-2 00.0% Half: 5-7 71.4%

Officials: Kevin Pethtel, Frank Steratore, Erika Herriamn-Camarota
 Technical Fouls: James Madison- None. West Virginia- None.

| Score by periods | 1st | 2nd | 3rd | 4th | Total |
|------------------|-----|-----|-----|-----|-------|
| James Madison | 21 | 5 | 22 | 7 | 55 |
| West Virginia | 20 | 15 | 13 | 19 | 67 |

| Points | In Paint | Off T/O | 2nd Chance | Fast Break | Bench |
|--------|----------|---------|------------|------------|-------|
| JMU | 10 | 6 | 4 | 0 | 3 |
| | 20 | 6 | 9 | 4 | 2 |

Last FG - JMU 2nd-01:05, WVU 2nd-03:23.
 JMU led for 2:35. WVU led for 16:47. Game was tied for 0:38.

Score tied - 4 times
 Lead changed - 7 times

James Madison vs West Virginia
3/23/2018; 5:30 p.m. at WVU Coliseum, Morgantown, W.Va.
Period 1 Play-By-Play



| VISITORS: James Madison | Time | Score | Margin | HOME: West Virginia |
|-------------------------------------|-------|-------|--------|-------------------------------------|
| GOOD! JUMPER by KOSHUTA,KELLY [PNT] | 09:49 | 0-2 | V 2 | |
| | 09:37 | 3-2 | H 1 | GOOD! 3PTR by PARDEE,KATRINA |
| | 09:37 | | | ASSIST by DAVENPORT,NAOMI |
| FOUL by BARRIER,LEXIE | 09:15 | | | |
| TURNOVER by BARRIER,LEXIE | 09:15 | | | |
| | 09:02 | | | TURNOVER by DAVENPORT,NAOMI |
| MISSED JUMPER by SMALLS,KAMIAH | 08:36 | | | |
| | 08:36 | | | REBOUND (DEF) by RAY,CHANIA |
| | 08:27 | | | MISSED 3PTR by DAVENPORT,NAOMI |
| | 08:27 | | | REBOUND (OFF) by KING,KRISTINA |
| | 08:21 | | | MISSED 3PTR by PARDEE,KATRINA |
| | 08:21 | | | REBOUND (OFF) by MULDROW,TEANA |
| | 08:19 | 5-2 | H 3 | GOOD! LAYUP by MULDROW,TEANA [PNT] |
| FOUL by BARRIER,LEXIE | 08:19 | | | |
| | 08:19 | 6-2 | H 4 | GOOD! FT by MULDROW,TEANA |
| SUB IN: BARRON,HAILEE | 08:19 | | | |
| SUB OUT: BARRIER,LEXIE | 08:19 | | | |
| | 08:01 | | | FOUL by MULDROW,TEANA |
| MISSED 3PTR by SMALLS,KAMIAH | 07:55 | | | |
| | 07:55 | | | REBOUND (DEF) by TEAM |
| | 07:36 | | | TURNOVER by DAVENPORT,NAOMI |
| STEAL by COOPERWILLIAMS,KAYLA | 07:35 | | | |
| TURNOVER by REYNOLDS,LOGAN | 07:28 | | | |
| | 07:27 | | | STEAL by DAVENPORT,NAOMI |
| | 07:24 | 8-2 | H 6 | GOOD! LAYUP by RAY,CHANIA [FB/PNT] |
| TURNOVER by SMALLS,KAMIAH | 06:57 | | | |
| | 06:55 | | | STEAL by DAVENPORT,NAOMI |
| | 06:52 | | | TURNOVER by DAVENPORT,NAOMI |
| SUB IN: MERRITT,DEVON | 06:52 | | | |
| SUB OUT: COOPERWILLIAMS,KAYLA | 06:52 | | | |
| | 06:52 | | | SUB IN: JONES,ASHLEY |
| | 06:52 | | | SUB OUT: DAVENPORT,NAOMI |
| TURNOVER by REYNOLDS,LOGAN | 06:40 | | | |
| | 06:38 | | | STEAL by KING,KRISTINA |
| | 06:36 | | | MISSED JUMPER by RAY,CHANIA |
| REBOUND (DEF) by MERRITT,DEVON | 06:36 | | | |
| GOOD! JUMPER by KOSHUTA,KELLY [PNT] | 06:21 | 8-4 | H 4 | |
| | 06:05 | 10-4 | H 6 | GOOD! JUMPER by KING,KRISTINA [PNT] |
| | 06:05 | | | ASSIST by JONES,ASHLEY |
| GOOD! 3PTR by BARRON,HAILEE | 05:42 | 10-7 | H 3 | |
| ASSIST by SMALLS,KAMIAH | 05:42 | | | |
| | 05:31 | | | TURNOVER by PARDEE,KATRINA |
| SUB IN: YOUNG,ANEAH | 05:31 | | | |
| SUB OUT: SMALLS,KAMIAH | 05:31 | | | |
| | 05:31 | | | SUB IN: DAVENPORT,NAOMI |
| | 05:31 | | | SUB OUT: PARDEE,KATRINA |
| GOOD! 3PTR by KOSHUTA,KELLY | 05:19 | 10-10 | T | |
| ASSIST by REYNOLDS,LOGAN | 05:19 | | | |
| | 04:52 | 12-10 | H 2 | GOOD! JUMPER by KING,KRISTINA [PNT] |
| FOUL by REYNOLDS,LOGAN | 04:52 | | | |
| | 04:52 | | | TIMEOUT MEDIA |
| | 04:52 | 13-10 | H 3 | GOOD! FT by KING,KRISTINA |
| SUB IN: SMALLS,KAMIAH | 04:52 | | | |
| SUB OUT: REYNOLDS,LOGAN | 04:52 | | | |
| | 04:42 | | | MISSED LAYUP by HARDEN,DESTINY |
| | 04:42 | | | REBOUND (OFF) by MULDROW,TEANA |
| | 04:05 | | | MISSED JUMPER by MULDROW,TEANA |
| | 04:05 | | | REBOUND (OFF) by MULDROW,TEANA |
| | 04:05 | | | MISSED JUMPER by MULDROW,TEANA |
| REBOUND (DEF) by KOSHUTA,KELLY | 04:05 | | | |
| GOOD! LAYUP by KOSHUTA,KELLY [PNT] | 03:59 | 13-12 | H 1 | |
| | 03:47 | 15-12 | H 3 | GOOD! LAYUP by KING,KRISTINA [PNT] |
| GOOD! JUMPER by KOSHUTA,KELLY | 03:28 | 15-14 | H 1 | |
| | 03:21 | | | SUB IN: PARDEE,KATRINA |
| | 03:21 | | | SUB OUT: JONES,ASHLEY |
| | 03:17 | | | TURNOVER by DAVENPORT,NAOMI |
| TURNOVER by KOSHUTA,KELLY | 03:08 | | | |
| | 03:02 | | | MISSED 3PTR by PARDEE,KATRINA |
| REBOUND (DEF) by SMALLS,KAMIAH | 03:02 | | | |

| VISITORS: James Madison | Time | Score | Margin | HOME: West Virginia |
|---------------------------------------|-------|-------|--------|------------------------------------|
| GOOD! 3PTR by KOSHUTA,KELLY | 02:53 | 15-17 | V 2 | |
| | 02:38 | 17-17 | T | GOOD! LAYUP by KING,KRISTINA [PNT] |
| | 02:38 | | | ASSIST by RAY,CHANIA |
| FOUL by YOUNG,ANEAH | 02:38 | | | |
| | 02:38 | 18-17 | H 1 | GOOD! FT by KING,KRISTINA |
| SUB IN: REYNOLDS,LOGAN | 02:38 | | | |
| SUB IN: COOPERWILLIAMS,KAYLA | 02:38 | | | |
| SUB OUT: BARRON,HAILEE | 02:38 | | | |
| SUB OUT: KOSHUTA,KELLY | 02:38 | | | |
| TURNOVER by COOPERWILLIAMS,KAYLA | 02:28 | | | |
| SUB IN: BUTLER,TASIA | 02:28 | | | |
| SUB OUT: MERRITT,DEVON | 02:28 | | | |
| | 02:04 | | | MISSED JUMPER by MULDROW,TEANA |
| REBOUND (DEF) by BUTLER,TASIA | 02:04 | | | |
| FOUL by BUTLER,TASIA | 01:36 | | | |
| TURNOVER by BUTLER,TASIA | 01:36 | | | |
| | 01:24 | | | MISSED JUMPER by MULDROW,TEANA |
| REBOUND (DEF) by COOPERWILLIAMS,KAYLA | 01:24 | | | |
| | 01:11 | | | SUB IN: HARDEN,DESTINY |
| | 01:11 | | | SUB OUT: KING,KRISTINA |
| | 01:10 | | | FOUL by PARDEE,KATRINA |
| GOOD! FT by SMALLS,KAMIAH | 01:10 | 18-18 | T | |
| GOOD! FT by SMALLS,KAMIAH | 01:10 | 18-19 | V 1 | |
| | 00:52 | | | MISSED JUMPER by PARDEE,KATRINA |
| REBOUND (DEF) by COOPERWILLIAMS,KAYLA | 00:52 | | | |
| TURNOVER by REYNOLDS,LOGAN | 00:25 | | | |
| | 00:22 | | | STEAL by RAY,CHANIA |
| | 00:17 | | | MISSED 3PTR by DAVENPORT,NAOMI |
| | 00:17 | | | REBOUND (OFF) by PARDEE,KATRINA |
| SUB IN: KOSHUTA,KELLY | 00:15 | | | |
| SUB OUT: COOPERWILLIAMS,KAYLA | 00:15 | | | |
| FOUL by COOPERWILLIAMS,KAYLA | 00:14 | | | |
| | 00:14 | 19-19 | T | GOOD! FT by PARDEE,KATRINA |
| | 00:14 | 20-19 | H 1 | GOOD! FT by PARDEE,KATRINA |
| GOOD! JUMPER by SMALLS,KAMIAH | 00:04 | 20-21 | V 1 | |

James Madison 21, West Virginia 20

| Period 1-only | In Paint | Off T/O | 2nd Chance | Fast Break | Bench | |
|---------------|----------|---------|------------|------------|-------|------------------------|
| JMU | 6 | 3 | 0 | 0 | 3 | Score tied - 4 times |
| WVU | 12 | 4 | 5 | 2 | 0 | Lead changed - 6 times |

James Madison vs West Virginia
3/23/2018; 5:30 p.m. at WVU Coliseum, Morgantown, W.Va.
Period 2 Play-By-Play



| VISITORS: James Madison | Time | Score | Margin | HOME: West Virginia |
|--------------------------------|-------|-------|--------|---------------------------------------|
| SUB IN: BUTLER,TASIA | 10:00 | | | |
| SUB IN: HARRIS,TORI | 10:00 | | | |
| | 10:00 | | | SUB IN: HARDEN,DESTINY |
| | 10:00 | | | SUB IN: EKHELAR,THERESA |
| | 09:57 | | | MISSED 3PTR by DAVENPORT,NAOMI |
| REBOUND (DEF) by SMALLS,KAMIAH | 09:57 | | | |
| MISSED LAYUP by SMALLS,KAMIAH | 09:39 | | | |
| | 09:39 | | | REBOUND (DEF) by HARDEN,DESTINY |
| | 09:04 | | | SUB OUT: EKHELAR,THERESA |
| | 08:52 | 22-21 | H 1 | GOOD! JUMPER by HARDEN,DESTINY |
| | 08:52 | | | ASSIST by DAVENPORT,NAOMI |
| TURNOVER by KOSHUTA,KELLY | 08:18 | | | |
| | 08:17 | | | STEAL by MULDROW,TEANA |
| FOUL by REYNOLDS,LOGAN | 08:14 | | | |
| | 08:14 | | | REBOUND (DEADB) by TEAM |
| | 08:14 | | | MISSED FT by MULDROW,TEANA |
| | 08:14 | | | MISSED FT by MULDROW,TEANA |
| REBOUND (DEF) by KOSHUTA,KELLY | 08:14 | | | |
| SUB IN: MERRITT,DEVON | 08:14 | | | |
| SUB IN: BARRON,HAILEE | 08:14 | | | |
| SUB OUT: REYNOLDS,LOGAN | 08:14 | | | |
| SUB OUT: BUTLER,TASIA | 08:14 | | | |
| SUB OUT: HARRIS,TORI | 08:14 | | | |
| | 08:14 | | | SUB OUT: HARDEN,DESTINY |
| MISSED 3PTR by SMALLS,KAMIAH | 08:03 | | | |
| | 08:03 | | | REBOUND (DEF) by DAVENPORT,NAOMI |
| MISSED JUMPER by BARRIER,LEXIE | 08:00 | | | |
| REBOUND (OFF) by SMALLS,KAMIAH | 08:00 | | | |
| MISSED LAYUP by KOSHUTA,KELLY | 08:00 | | | |
| | 08:00 | | | REBOUND (DEF) by RAY,CHANIA |
| | 07:55 | 24-21 | H 3 | GOOD! LAYUP by DAVENPORT,NAOMI [PNT] |
| | 07:40 | | | MISSED JUMPER by DAVENPORT,NAOMI |
| REBOUND (DEF) by SMALLS,KAMIAH | 07:40 | | | |
| MISSED 3PTR by SMALLS,KAMIAH | 07:40 | | | |
| | 07:40 | | | REBOUND (DEF) by DAVENPORT,NAOMI |
| MISSED JUMPER by BARRIER,LEXIE | 06:57 | | | |
| | 06:57 | | | REBOUND (DEF) by PARDEE,KATRINA |
| | 06:30 | | | MISSED JUMPER by MULDROW,TEANA |
| REBOUND (DEF) by BARRON,HAILEE | 06:30 | | | |
| MISSED 3PTR by BARRON,HAILEE | 06:15 | | | |
| | 06:15 | | | REBOUND (DEF) by MULDROW,TEANA |
| | 05:59 | 27-21 | H 6 | GOOD! 3PTR by RAY,CHANIA |
| | 05:59 | | | ASSIST by PARDEE,KATRINA |
| TIMEOUT 30SEC | 05:57 | | | |
| SUB OUT: SMALLS,KAMIAH | 05:57 | | | |
| | 05:57 | | | SUB IN: JONES,ASHLEY |
| | 05:57 | | | SUB OUT: RAY,CHANIA |
| MISSED 3PTR by BARRIER,LEXIE | 05:30 | | | |
| REBOUND (OFF) by KOSHUTA,KELLY | 05:30 | | | |
| MISSED JUMPER by BARRIER,LEXIE | 05:21 | | | |
| | 05:21 | | | REBOUND (DEF) by JONES,ASHLEY |
| | 05:11 | | | MISSED 3PTR by JONES,ASHLEY |
| | 05:11 | | | REBOUND (OFF) by TEAM |
| | 05:05 | 29-21 | H 8 | GOOD! JUMPER by DAVENPORT,NAOMI [PNT] |
| MISSED JUMPER by KOSHUTA,KELLY | 04:55 | | | |
| | 04:55 | | | REBOUND (DEF) by MULDROW,TEANA |
| | 04:35 | 31-21 | H 10 | GOOD! LAYUP by KING,KRISTINA [PNT] |
| | 04:35 | | | ASSIST by JONES,ASHLEY |
| MISSED JUMPER by BARRIER,LEXIE | 04:15 | | | |
| | 04:15 | | | REBOUND (DEF) by DAVENPORT,NAOMI |
| | 04:07 | 33-21 | H 12 | GOOD! LAYUP by KING,KRISTINA [FB/PNT] |
| | 04:07 | | | ASSIST by MULDROW,TEANA |
| TURNOVER by BARRON,HAILEE | 03:58 | | | |
| | 03:56 | | | STEAL by JONES,ASHLEY |
| | 03:52 | | | MISSED 3PTR by MULDROW,TEANA |
| | 03:52 | | | REBOUND (OFF) by KING,KRISTINA |
| | 03:41 | | | MISSED 3PTR by PARDEE,KATRINA |
| | 03:41 | | | REBOUND (OFF) by MULDROW,TEANA |
| | 03:23 | 35-21 | H 14 | GOOD! JUMPER by DAVENPORT,NAOMI |

| VISITORS: James Madison | Time | Score | Margin | HOME: West Virginia |
|---|-------------|--------------|---------------|---------------------------------|
| TURNOVER by BARRON,HAILEE | 03:04 | | | |
| | 03:03 | | | STEAL by DAVENPORT,NAOMI |
| | 02:52 | | | MISSED LAYUP by KING,KRISTINA |
| | 02:52 | | | REBOUND (OFF) by MULDROW,TEANA |
| | 02:47 | | | MISSED JUMPER by MULDROW,TEANA |
| REBOUND (DEF) by BARRIER,LEXIE | 02:47 | | | |
| MISSED LAYUP by BARRIER,LEXIE | 02:40 | | | |
| REBOUND (OFF) by COOPERWILLIAMS,KAYLA | 02:40 | | | |
| GOOD! LAYUP by COOPERWILLIAMS,KAYLA [PNT] | 02:37 | 35-23 | H 12 | |
| | 02:14 | | | MISSED 3PTR by DAVENPORT,NAOMI |
| | 02:14 | | | REBOUND (OFF) by KING,KRISTINA |
| | 01:58 | | | TURNOVER by DAVENPORT,NAOMI |
| STEAL by BARRIER,LEXIE | 01:57 | | | |
| MISSED 3PTR by BARRIER,LEXIE | 01:50 | | | |
| | 01:50 | | | REBOUND (DEF) by PARDEE,KATRINA |
| | 01:31 | | | TURNOVER by MULDROW,TEANA |
| STEAL by COOPERWILLIAMS,KAYLA | 01:29 | | | |
| MISSED JUMPER by YOUNG,ANEAH | 01:24 | | | |
| REBOUND (OFF) by COOPERWILLIAMS,KAYLA | 01:24 | | | |
| SUB IN: BUTLER,TASIA | 01:19 | | | |
| SUB IN: REYNOLDS,LOGAN | 01:19 | | | |
| SUB IN: HARRIS,TORI | 01:19 | | | |
| SUB IN: SMALLS,KAMIAH | 01:19 | | | |
| SUB OUT: MERRITT,DEVON | 01:19 | | | |
| SUB OUT: BARRIER,LEXIE | 01:19 | | | |
| SUB OUT: KOSHUTA,KELLY | 01:19 | | | |
| SUB OUT: BARRON,HAILEE | 01:19 | | | |
| | 01:19 | | | SUB IN: RAY,CHANIA |
| | 01:19 | | | SUB OUT: DAVENPORT,NAOMI |
| MISSED JUMPER by REYNOLDS,LOGAN | 01:12 | | | |
| REBOUND (OFF) by REYNOLDS,LOGAN | 01:12 | | | |
| GOOD! JUMPER by SMALLS,KAMIAH [PNT] | 01:05 | 35-25 | H 10 | |
| | 00:33 | | | TURNOVER by KING,KRISTINA |
| STEAL by SMALLS,KAMIAH | 00:29 | | | |
| | 00:24 | | | FOUL by RAY,CHANIA |
| GOOD! FT by SMALLS,KAMIAH | 00:24 | 35-26 | H 9 | |
| MISSED FT by SMALLS,KAMIAH | 00:24 | | | |
| | 00:24 | | | REBOUND (DEF) by PARDEE,KATRINA |
| FOUL by COOPERWILLIAMS,KAYLA | 00:20 | | | |
| SUB IN: MERRITT,DEVON | 00:20 | | | |
| SUB IN: YOUNG,ANEAH | 00:20 | | | |
| SUB IN: BELLERAND,BREYENNE | 00:20 | | | |
| SUB OUT: COOPERWILLIAMS,KAYLA | 00:20 | | | |
| SUB OUT: REYNOLDS,LOGAN | 00:20 | | | |
| SUB OUT: HARRIS,TORI | 00:20 | | | |
| | 00:05 | | | MISSED 3PTR by MULDROW,TEANA |
| | 00:05 | | | REBOUND (OFF) by RAY,CHANIA |
| | 00:00 | | | TURNOVER by RAY,CHANIA |
| STEAL by BELLERAND,BREYENNE | 00:00 | | | |

James Madison 26, West Virginia 35

| Period 2-only | In Paint | Off T/O | 2nd Chance | Fast Break | Bench | |
|----------------------|-----------------|----------------|-------------------|-------------------|--------------|------------------------|
| JMU | 4 | 3 | 4 | 0 | 0 | Score tied - 0 times |
| WVU | 8 | 2 | 4 | 2 | 2 | Lead changed - 0 times |

Official Basketball Box Score -- Game Totals -- Second Half Statistics
 James Madison vs West Virginia
 3/23/2018 5:30 p.m. at WVU Coliseum, Morgantown, W.Va.



James Madison 29 • 23-10

| ## | Player | | Total | | 3-Ptr | Rebounds | | | PF | TP | A | TO | Blk | Stl | Min |
|--------|----------------------|------|--------|---------|--------|----------|-------|-------|--------|----|---|----|-----|-----|-----|
| | | | FG-FGA | FG-FGA | FT-FTA | Off | Def | Tot | | | | | | | |
| 03 | SMALLS,KAMIAH | g | 1-8 | 1-5 | 0-0 | 0 | 0 | 0 | 2 | 3 | 0 | 1 | 0 | 0 | 17 |
| 13 | REYNOLDS,LOGAN | g | 2-3 | 0-1 | 3-3 | 0 | 2 | 2 | 3 | 7 | 0 | 0 | 0 | 2 | 17 |
| 15 | BARRIER,LEXIE | g | 3-10 | 0-4 | 3-3 | 0 | 4 | 4 | 1 | 9 | 1 | 0 | 0 | 0 | 18 |
| 31 | COOPERWILLIAMS,KAYLA | c | 0-1 | 0-0 | 0-0 | 1 | 1 | 2 | 0 | 0 | 0 | 0 | 1 | 0 | 7 |
| 33 | KOSHUTA,KELLY | f | 4-13 | 0-4 | 0-0 | 4 | 2 | 6 | 2 | 8 | 0 | 1 | 1 | 0 | 20 |
| 01 | HARRIS,TORI | | 0-0 | 0-0 | 0-0 | 0 | 0 | 0 | 0 | 0 | 0 | 0 | 0 | 0 | 0 |
| 04 | BUTLER,TASIA | | 0-0 | 0-0 | 0-0 | 0 | 1 | 1 | 1 | 0 | 0 | 1 | 0 | 0 | 8 |
| 05 | BELLERAND,BREYENNE | | 1-1 | 0-0 | 0-0 | 1 | 1 | 2 | 2 | 2 | 0 | 0 | 0 | 0 | 10 |
| 10 | YOUNG,ANEAH | | 0-0 | 0-0 | 0-0 | 0 | 0 | 0 | 0 | 0 | 0 | 0 | 0 | 0 | 2 |
| 14 | BARRON,HAILEE | | 0-0 | 0-0 | 0-0 | 0 | 0 | 0 | 0 | 0 | 0 | 0 | 0 | 0 | 1 |
| 42 | MERRITT,DEVON | | 0-0 | 0-0 | 0-0 | 0 | 0 | 0 | 1 | 0 | 0 | 0 | 0 | 0 | 0 |
| TEAM | | | | | | 2 | 0 | 2 | 0 | | 0 | | | | |
| Totals | | | 11-36 | 1-14 | 6-6 | 8 | 11 | 19 | 12 | 29 | 1 | 3 | 2 | 2 | 100 |
| FG % | 3rd Qtr | 9-18 | 50.0% | 4th Qtr | 2-18 | 11.1% | Half: | 11-36 | 30.6% | | | | | | |
| 3FG % | 3rd Qtr | 0-4 | 00.0% | 4th Qtr | 1-10 | 10.0% | Half: | 1-14 | 33.3% | | | | | | |
| FT % | 3rd Qtr | 4-4 | 100.0% | 4th Qtr | 2-2 | 100.0% | Half: | 6-6 | 100.0% | | | | | | |

West Virginia 32 • 23-11

| ## | Player | | Total | | 3-Ptr | Rebounds | | | PF | TP | A | TO | Blk | Stl | Min |
|--------|-------------------|------|--------|---------|--------|----------|-------|-------|-------|----|---|----|-----|-----|-----|
| | | | FG-FGA | FG-FGA | FT-FTA | Off | Def | Tot | | | | | | | |
| 00 | DAVENPORT,NAOMI | g | 1-3 | 0-1 | 2-3 | 0 | 6 | 6 | 1 | 4 | 2 | 1 | 1 | 0 | 20 |
| 11 | MULDROW,TEANA | f | 2-5 | 0-1 | 2-2 | 0 | 3 | 3 | 2 | 6 | 2 | 1 | 0 | 0 | 19 |
| 12 | RAY,CHANIA | g | 1-1 | 1-1 | 2-2 | 0 | 1 | 1 | 0 | 5 | 0 | 3 | 1 | 0 | 19 |
| 13 | KING,KRISTINA | f | 1-4 | 0-0 | 1-2 | 0 | 3 | 3 | 2 | 3 | 0 | 1 | 3 | 0 | 18 |
| 22 | PARDEE,KATRINA | g | 3-6 | 1-2 | 4-4 | 1 | 0 | 1 | 2 | 11 | 1 | 0 | 0 | 0 | 15 |
| 01 | JONES,ASHLEY | | 1-2 | 1-2 | 0-0 | 0 | 0 | 0 | 0 | 3 | 0 | 0 | 0 | 0 | 5 |
| 03 | HARDEN,DESTINY | | 0-1 | 0-0 | 0-0 | 0 | 0 | 0 | 0 | 0 | 0 | 0 | 0 | 0 | 2 |
| 04 | STAPLES,NIA | | 0-0 | 0-0 | 0-0 | 0 | 0 | 0 | 0 | 0 | 0 | 0 | 0 | 0 | 1 |
| 34 | EKHELAR,THEHERESA | | 0-0 | 0-0 | 0-0 | 0 | 0 | 0 | 0 | 0 | 0 | 0 | 0 | 0 | 1 |
| TEAM | | | | | | 0 | 4 | 4 | 0 | | 0 | | | | |
| Totals | | | 9-22 | 3-7 | 11-13 | 1 | 17 | 18 | 7 | 32 | 5 | 6 | 5 | 0 | 100 |
| FG % | 3rd Qtr | 4-10 | 40.0% | 4th Qtr | 5-12 | 41.7% | Half: | 9-22 | 40.9% | | | | | | |
| 3FG % | 3rd Qtr | 2-5 | 40.0% | 4th Qtr | 1-2 | 50.0% | Half: | 3-7 | 16.7% | | | | | | |
| FT % | 3rd Qtr | 3-3 | 100.0% | 4th Qtr | 8-10 | 80.0% | Half: | 11-13 | 84.6% | | | | | | |

Officials: Kevin Pethtel, Frank Steratore, Erika Herriamn-Camarota
 Technical Fouls: James Madison- None. West Virginia- None.

| Score by periods | 1st | 2nd | 3rd | 4th | Total |
|------------------|-----|-----|-----|-----|-------|
| James Madison | 21 | 5 | 22 | 7 | 55 |
| West Virginia | 20 | 15 | 13 | 19 | 67 |

| Points | In Paint | Off T/O | 2nd Chance | Fast Break | Bench |
|--------|----------|---------|------------|------------|-------|
| JMU | 18 | 8 | 6 | 2 | 2 |
| | 6 | 6 | 2 | 0 | 3 |

Last FG - JMU 4th-01:14, WVU 4th-03:44.
 JMU led for 0:15. WVU led for 18:24. Game was tied for 1:21.

Score tied - 3 times
 Lead changed - 2 times

James Madison vs West Virginia
3/23/2018; 5:30 p.m. at WVU Coliseum, Morgantown, W.Va.
Period 3 Play-By-Play



| VISITORS: James Madison | Time | Score | Margin | HOME: West Virginia |
|--|-------|-------|--------|----------------------------------|
| | 09:38 | | | MISSED LAYUP by KING,KRISTINA |
| REBOUND (DEF) by BARRIER,LEXIE | 09:38 | | | |
| MISSED JUMPER by KOSHUTA,KELLY | 09:14 | | | |
| | 09:14 | | | BLOCK by KING,KRISTINA |
| REBOUND (OFF) by KOSHUTA,KELLY | 09:14 | | | |
| MISSED 3PTR by BARRIER,LEXIE | 09:10 | | | |
| REBOUND (OFF) by KOSHUTA,KELLY | 09:10 | | | |
| GOOD! LAYUP by KOSHUTA,KELLY [PNT] | 09:05 | 35-28 | H 7 | |
| | 08:46 | | | MISSED 3PTR by PARDEE,KATRINA |
| REBOUND (DEADB) by TEAM | 08:46 | | | |
| MISSED JUMPER by SMALLS,KAMIAH | 08:27 | | | |
| | 08:27 | | | REBOUND (DEF) by DAVENPORT,NAOMI |
| | 08:13 | | | TURNOVER by RAY,CHANIA |
| STEAL by REYNOLDS,LOGAN | 08:12 | | | |
| GOOD! LAYUP by REYNOLDS,LOGAN [FB/PNT] | 08:10 | 35-30 | H 5 | |
| | 07:41 | | | TURNOVER by RAY,CHANIA |
| MISSED 3PTR by SMALLS,KAMIAH | 07:27 | | | |
| REBOUND (OFF) by KOSHUTA,KELLY | 07:27 | | | |
| MISSED 3PTR by KOSHUTA,KELLY | 07:13 | | | |
| | 07:13 | | | REBOUND (DEF) by DAVENPORT,NAOMI |
| FOUL by SMALLS,KAMIAH | 06:54 | | | |
| | 06:30 | 37-30 | H 7 | GOOD! JUMPER by KING,KRISTINA |
| | 06:30 | | | ASSIST by DAVENPORT,NAOMI |
| MISSED 3PTR by BARRIER,LEXIE | 06:05 | | | |
| | 06:05 | | | REBOUND (DEF) by DAVENPORT,NAOMI |
| | 05:55 | | | MISSED 3PTR by DAVENPORT,NAOMI |
| REBOUND (DEF) by BARRIER,LEXIE | 05:55 | | | |
| GOOD! LAYUP by BARRIER,LEXIE [PNT] | 05:38 | 37-32 | H 5 | |
| | 05:38 | | | FOUL by PARDEE,KATRINA |
| GOOD! FT by BARRIER,LEXIE | 05:38 | 37-33 | H 4 | |
| SUB IN: MERRITT,DEVON | 05:38 | | | |
| SUB OUT: COOPERWILLIAMS,KAYLA | 05:38 | | | |
| FOUL by MERRITT,DEVON | 05:25 | | | |
| | 05:25 | 38-33 | H 5 | GOOD! FT by MULDRON,TEANA |
| | 05:25 | 39-33 | H 6 | GOOD! FT by MULDRON,TEANA |
| SUB IN: BUTLER,TASIA | 05:25 | | | |
| SUB OUT: MERRITT,DEVON | 05:25 | | | |
| | 05:09 | | | FOUL by MULDRON,TEANA |
| GOOD! LAYUP by REYNOLDS,LOGAN [PNT] | 05:02 | 39-35 | H 4 | |
| | 05:02 | | | FOUL by PARDEE,KATRINA |
| GOOD! FT by REYNOLDS,LOGAN | 05:02 | 39-36 | H 3 | |
| SUB IN: BELLERAND,BREYENNE | 05:02 | | | |
| SUB OUT: SMALLS,KAMIAH | 05:02 | | | |
| | 05:02 | | | SUB IN: JONES,ASHLEY |
| | 05:02 | | | SUB OUT: PARDEE,KATRINA |
| | 04:38 | 42-36 | H 6 | GOOD! 3PTR by JONES,ASHLEY |
| | 04:38 | | | ASSIST by MULDRON,TEANA |
| GOOD! JUMPER by BARRIER,LEXIE | 04:23 | 42-38 | H 4 | |
| | 04:07 | | | FOUL by DAVENPORT,NAOMI |
| | 04:07 | | | TURNOVER by DAVENPORT,NAOMI |
| TIMEOUT media | 04:07 | | | |
| GOOD! JUMPER by BARRIER,LEXIE [PNT] | 03:51 | 42-40 | H 2 | |
| | 03:26 | | | TURNOVER by RAY,CHANIA |
| GOOD! LAYUP by KOSHUTA,KELLY [PNT] | 03:11 | 42-42 | T | |
| ASSIST by BARRIER,LEXIE | 03:11 | | | |
| | 02:57 | 45-42 | H 3 | GOOD! 3PTR by RAY,CHANIA |
| | 02:57 | | | ASSIST by MULDRON,TEANA |
| MISSED LAYUP by BARRIER,LEXIE | 02:38 | | | |
| | 02:38 | | | BLOCK by KING,KRISTINA |
| REBOUND (OFF) by KOSHUTA,KELLY | 02:35 | | | |
| GOOD! LAYUP by KOSHUTA,KELLY [PNT] | 02:28 | 45-44 | H 1 | |
| | 02:16 | | | MISSED 3PTR by JONES,ASHLEY |
| REBOUND (DEF) by REYNOLDS,LOGAN | 02:16 | | | |
| MISSED JUMPER by KOSHUTA,KELLY | 01:44 | | | |
| | 01:44 | | | REBOUND (DEF) by RAY,CHANIA |
| | 01:37 | | | MISSED JUMPER by DAVENPORT,NAOMI |
| REBOUND (DEF) by BELLERAND,BREYENNE | 01:37 | | | |
| | 01:36 | | | FOUL by KING,KRISTINA |
| GOOD! FT by REYNOLDS,LOGAN | 01:36 | 45-45 | T | |

| VISITORS: James Madison | Time | Score | Margin | HOME: West Virginia |
|------------------------------------|-------------|--------------|---------------|---------------------------------|
| GOOD! FT by REYNOLDS,LOGAN | 01:36 | 45-46 | V 1 | |
| SUB IN: SMALLS,KAMIAH | 01:36 | | | |
| SUB OUT: BARRIER,LEXIE | 01:36 | | | |
| | 01:21 | 47-46 | H 1 | GOOD! JUMPER by DAVENPORT,NAOMI |
| FOUL by BELLERAND,BREYENNE | 01:21 | | | |
| | 01:21 | 48-46 | H 2 | GOOD! FT by DAVENPORT,NAOMI |
| | 01:21 | | | SUB IN: HARDEN,DESTINY |
| | 01:21 | | | SUB OUT: KING,KRISTINA |
| GOOD! LAYUP by KOSHUTA,KELLY [PNT] | 00:56 | 48-48 | T | |
| | 00:44 | | | MISSED JUMPER by HARDEN,DESTINY |
| REBOUND (DEF) by BUTLER,TASIA | 00:44 | | | |
| MISSED JUMPER by KOSHUTA,KELLY | 00:27 | | | |
| | 00:27 | | | REBOUND (DEF) by TEAM |
| SUB IN: COOPERWILLIAMS,KAYLA | 00:25 | | | |
| SUB IN: YOUNG,ANEAH | 00:25 | | | |
| SUB OUT: REYNOLDS,LOGAN | 00:25 | | | |
| SUB OUT: KOSHUTA,KELLY | 00:25 | | | |

James Madison 55, West Virginia 67

| Period 3-only | In Paint | Off T/O | 2nd Chance | Fast Break | Bench | |
|----------------------|-----------------|----------------|-------------------|-------------------|--------------|------------------------|
| JMU | 16 | 6 | 4 | 2 | 0 | Score tied - 6 times |
| WVU | 0 | 0 | 0 | 0 | 3 | Lead changed - 2 times |

James Madison vs West Virginia
3/23/2018; 5:30 p.m. at WVU Coliseum, Morgantown, W.Va.
Period 4 Play-By-Play



| VISITORS: James Madison | Time | Score | Margin | HOME: West Virginia |
|--|-------|-------|--------|--------------------------------------|
| SUB IN: YOUNG, ANEAH | 10:00 | | | |
| SUB OUT: REYNOLDS, LOGAN | 10:00 | | | |
| | 09:49 | 50-48 | H 2 | GOOD! JUMPER by MULDROW, TEANA [PNT] |
| MISSED JUMPER by SMALLS, KAMIAH | 09:37 | | | |
| | 09:37 | | | REBOUND (DEF) by KING, KRISTINA |
| | 09:14 | | | MISSED JUMPER by MULDROW, TEANA |
| BLOCK by COOPERWILLIAMS, KAYLA | 09:14 | | | |
| REBOUND (DEF) by COOPERWILLIAMS, KAYLA | 09:12 | | | |
| MISSED LAYUP by KOSHUTA, KELLY | 09:02 | | | |
| REBOUND (OFF) by COOPERWILLIAMS, KAYLA | 09:02 | | | |
| MISSED LAYUP by COOPERWILLIAMS, KAYLA | 08:59 | | | |
| | 08:59 | | | REBOUND (DEF) by MULDROW, TEANA |
| | 08:33 | | | MISSED 3PTR by MULDROW, TEANA |
| REBOUND (DEF) by KOSHUTA, KELLY | 08:33 | | | |
| MISSED 3PTR by KOSHUTA, KELLY | 08:22 | | | |
| | 08:22 | | | REBOUND (DEF) by DAVENPORT, NAOMI |
| | 08:06 | | | MISSED JUMPER by PARDEE, KATRINA |
| | 08:06 | | | REBOUND (OFF) by PARDEE, KATRINA |
| | 08:02 | 52-48 | H 4 | GOOD! LAYUP by PARDEE, KATRINA [PNT] |
| MISSED 3PTR by SMALLS, KAMIAH | 07:53 | | | |
| | 07:53 | | | REBOUND (DEF) by TEAM |
| SUB IN: BUTLER, TASIA | 07:49 | | | |
| SUB IN: REYNOLDS, LOGAN | 07:49 | | | |
| SUB OUT: YOUNG, ANEAH | 07:49 | | | |
| SUB OUT: COOPERWILLIAMS, KAYLA | 07:49 | | | |
| | 07:29 | | | MISSED JUMPER by PARDEE, KATRINA |
| REBOUND (DEF) by REYNOLDS, LOGAN | 07:29 | | | |
| MISSED 3PTR by SMALLS, KAMIAH | 06:59 | | | |
| | 06:59 | | | REBOUND (DEF) by MULDROW, TEANA |
| | 06:48 | | | MISSED JUMPER by KING, KRISTINA |
| BLOCK by KOSHUTA, KELLY | 06:48 | | | |
| REBOUND (DEF) by BARRIER, LEXIE | 06:45 | | | |
| FOUL by BUTLER, TASIA | 06:42 | | | |
| TURNOVER by BUTLER, TASIA | 06:42 | | | |
| FOUL by BARRIER, LEXIE | 06:28 | | | |
| | 06:06 | 54-48 | H 6 | GOOD! LAYUP by MULDROW, TEANA [PNT] |
| | 06:06 | | | ASSIST by PARDEE, KATRINA |
| MISSED JUMPER by SMALLS, KAMIAH | 05:34 | | | |
| | 05:34 | | | BLOCK by RAY, CHANIA |
| | 05:33 | | | REBOUND (DEF) by KING, KRISTINA |
| | 05:11 | 57-48 | H 9 | GOOD! 3PTR by PARDEE, KATRINA |
| | 05:11 | | | ASSIST by DAVENPORT, NAOMI |
| TIMEOUT 30SEC | 05:08 | | | |
| SUB IN: BELLERAND, BREYENNE | 05:08 | | | |
| SUB OUT: BUTLER, TASIA | 05:08 | | | |
| | 04:44 | | | FOUL by KING, KRISTINA |
| TIMEOUT MEDIA | 04:44 | | | |
| GOOD! FT by BARRIER, LEXIE | 04:44 | 57-49 | H 8 | |
| GOOD! FT by BARRIER, LEXIE | 04:44 | 57-50 | H 7 | |
| | 04:21 | | | MISSED JUMPER by KING, KRISTINA |
| REBOUND (DEF) by KOSHUTA, KELLY | 04:21 | | | |
| TURNOVER by KOSHUTA, KELLY | 04:04 | | | |
| | 03:44 | 59-50 | H 9 | GOOD! JUMPER by PARDEE, KATRINA |
| MISSED LAYUP by KOSHUTA, KELLY | 03:33 | | | |
| | 03:33 | | | BLOCK by KING, KRISTINA |
| REBOUND (OFF) by TEAM | 03:33 | | | |
| MISSED LAYUP by BARRIER, LEXIE | 03:25 | | | |
| | 03:25 | | | REBOUND (DEF) by KING, KRISTINA |
| FOUL by REYNOLDS, LOGAN | 03:07 | | | |
| | 02:43 | | | MISSED JUMPER by MULDROW, TEANA |
| REBOUND (DEF) by BARRIER, LEXIE | 02:43 | | | |
| MISSED 3PTR by BARRIER, LEXIE | 02:32 | | | |
| | 02:32 | | | REBOUND (DEF) by DAVENPORT, NAOMI |
| FOUL by REYNOLDS, LOGAN | 02:26 | | | |
| | 02:25 | | | TURNOVER by KING, KRISTINA |
| STEAL by REYNOLDS, LOGAN | 02:23 | | | |
| MISSED 3PTR by KOSHUTA, KELLY | 02:19 | | | |
| REBOUND (OFF) by BELLERAND, BREYENNE | 02:19 | | | |
| GOOD! LAYUP by BELLERAND, BREYENNE [PNT] | 02:08 | 59-52 | H 7 | |

| VISITORS: James Madison | Time | Score | Margin | HOME: West Virginia |
|--------------------------------|-------------|--------------|---------------|----------------------------------|
| | 01:52 | | | FOUL by MULDRON,TEANA |
| | 01:52 | | | TURNOVER by MULDRON,TEANA |
| | 01:52 | | | TIMEOUT 30SEC |
| MISSED JUMPER by BARRIER,LEXIE | 01:39 | | | |
| | 01:39 | | | BLOCK by DAVENPORT,NAOMI |
| REBOUND (OFF) by TEAM | 01:39 | | | |
| MISSED 3PTR by SMALLS,KAMIAH | 01:32 | | | |
| | 01:32 | | | REBOUND (DEF) by TEAM |
| FOUL by KOSHUTA,KELLY | 01:25 | | | |
| | 01:25 | | | MISSED FT by KING,KRISTINA |
| | 01:25 | | | REBOUND (DEADB) by TEAM |
| | 01:25 | 60-52 | H 8 | GOOD! FT by KING,KRISTINA |
| SUB IN: MERRITT,DEVON | 01:25 | | | |
| SUB OUT: BELLERAND,BREYENNE | 01:25 | | | |
| GOOD! 3PTR by SMALLS,KAMIAH | 01:14 | 60-55 | H 5 | |
| TIMEOUT TEAM | 01:13 | | | |
| SUB IN: COOPERWILLIAMS,KAYLA | 01:13 | | | |
| SUB IN: BELLERAND,BREYENNE | 01:13 | | | |
| SUB OUT: MERRITT,DEVON | 01:13 | | | |
| FOUL by BELLERAND,BREYENNE | 01:06 | | | |
| | 01:06 | 61-55 | H 6 | GOOD! FT by RAY,CHANIA |
| | 01:06 | 62-55 | H 7 | GOOD! FT by RAY,CHANIA |
| MISSED 3PTR by BARRIER,LEXIE | 00:55 | | | |
| | 00:55 | | | REBOUND (DEF) by DAVENPORT,NAOMI |
| FOUL by KOSHUTA,KELLY | 00:51 | | | |
| | 00:51 | | | MISSED FT by DAVENPORT,NAOMI |
| | 00:51 | | | REBOUND (DEADB) by TEAM |
| | 00:51 | 63-55 | H 8 | GOOD! FT by DAVENPORT,NAOMI |
| MISSED 3PTR by REYNOLDS,LOGAN | 00:43 | | | |
| | 00:43 | | | REBOUND (DEF) by MULDRON,TEANA |
| FOUL by REYNOLDS,LOGAN | 00:34 | | | |
| | 00:34 | 64-55 | H 9 | GOOD! FT by PARDEE,KATRINA |
| | 00:34 | 65-55 | H 10 | GOOD! FT by PARDEE,KATRINA |
| SUB IN: BARRON,HAILEE | 00:34 | | | |
| SUB OUT: REYNOLDS,LOGAN | 00:34 | | | |
| | 00:34 | | | SUB IN: STAPLES,NIA |
| | 00:34 | | | SUB IN: HARDEN,DESTINY |
| | 00:34 | | | SUB IN: EKHELAR,THERESA |
| | 00:34 | | | SUB OUT: MULDRON,TEANA |
| | 00:34 | | | SUB OUT: RAY,CHANIA |
| | 00:34 | | | SUB OUT: KING,KRISTINA |
| TURNOVER by SMALLS,KAMIAH | 00:27 | | | |
| FOUL by SMALLS,KAMIAH | 00:26 | | | |
| | 00:26 | 66-55 | H 11 | GOOD! FT by PARDEE,KATRINA |
| | 00:26 | 67-55 | H 12 | GOOD! FT by PARDEE,KATRINA |
| TIMEOUT 30SEC | 00:23 | | | |
| MISSED 3PTR by KOSHUTA,KELLY | 00:15 | | | |
| | 00:15 | | | REBOUND (DEF) by TEAM |
| SUB IN: MERRITT,DEVON | 00:11 | | | |
| SUB IN: YOUNG,ANEAH | 00:11 | | | |
| SUB IN: HARRIS,TORI | 00:11 | | | |
| SUB OUT: SMALLS,KAMIAH | 00:11 | | | |
| SUB OUT: BARRIER,LEXIE | 00:11 | | | |
| SUB OUT: KOSHUTA,KELLY | 00:11 | | | |

James Madison 55, West Virginia 67

| Period 4-only | In Paint | Off T/O | 2nd Chance | Fast Break | Bench | |
|----------------------|---------------------|--------------------|-----------------------|-----------------------|--------------|------------------------|
| JMU | 2 | 2 | 2 | 0 | 2 | Score tied - 0 times |
| WVU | 6 | 6 | 2 | 0 | 0 | Lead changed - 0 times |

James Madison vs West Virginia
3/23/2018; 5:30 p.m. at WVU Coliseum, Morgantown, W.Va.
Scoring/Runs Reference



Period 1

| James Madison | VRun | Score | Margin | HRun | West Virginia |
|----------------------------|------|-------|--------|------|---------------------------|
| 09:49 - KOSHUTA JUMPER [P] | - | 2-0 | -2 | | |
| | | 2-3 | 1 | | PARDEE 3PTR - 09:37 |
| | | 2-5 | 3 | 5-0 | MULDROW LAYUP [P] - 08:19 |
| | | 2-6 | 4 | 6-0 | MULDROW FT - 08:19 |
| | | 2-8 | 6 | 8-0 | RAY LAYUP [P] [F] - 07:24 |
| 06:21 - KOSHUTA JUMPER [P] | - | 4-8 | 4 | | |
| | | 4-10 | 6 | | KING JUMPER [P] - 06:05 |
| 05:42 - BARRON 3PTR | - | 7-10 | 3 | | |
| 05:19 - KOSHUTA 3PTR | 6-0 | 10-10 | 0 | | |
| | | 10-12 | 2 | | KING JUMPER [P] - 04:52 |
| | | 10-13 | 3 | 3-0 | KING FT - 04:52 |
| 03:59 - KOSHUTA LAYUP [P] | - | 12-13 | 1 | | |
| | | 12-15 | 3 | | KING LAYUP [P] - 03:47 |
| 03:28 - KOSHUTA JUMPER | - | 14-15 | 1 | | |
| 02:53 - KOSHUTA 3PTR | 5-0 | 17-15 | -2 | | |
| | | 17-17 | 0 | | KING LAYUP [P] - 02:38 |
| | | 17-18 | 1 | 3-0 | KING FT - 02:38 |
| 01:10 - SMALLS FT | - | 18-18 | 0 | | |
| 01:10 - SMALLS FT | 2-0 | 19-18 | -1 | | |
| | | 19-19 | 0 | | PARDEE FT - 00:14 |
| | | 19-20 | 1 | 2-0 | PARDEE FT - 00:14 |
| 00:04 - SMALLS JUMPER | - | 21-20 | -1 | | |

James Madison vs West Virginia
3/23/2018; 5:30 p.m. at WVU Coliseum, Morgantown, W.Va.
Scoring/Runs Reference



Period 2

| James Madison | VRun | Score | Margin | HRun | West Virginia |
|----------------------------------|------|-------|--------|-------|------------------------------|
| | | 21-22 | 1 | | HARDEN JUMPER - 08:52 |
| | | 21-24 | 3 | NaN-0 | DAVENPORT LAYUP [P] - 07:55 |
| | | 21-27 | 6 | NaN-0 | RAY 3PTR - 05:59 |
| | | 21-29 | 8 | NaN-0 | DAVENPORT JUMPER [P] - 05:05 |
| | | 21-31 | 10 | NaN-0 | KING LAYUP [P] - 04:35 |
| | | 21-33 | 12 | NaN-0 | KING LAYUP [P] [F] - 04:07 |
| | | 21-35 | 14 | NaN-0 | DAVENPORT JUMPER - 03:23 |
| 02:37 - COOPERWILLIAMS LAYUP [P] | - | 23-35 | 12 | | |
| 01:05 - SMALLS JUMPER [P] | 4-0 | 25-35 | 10 | | |
| 00:24 - SMALLS FT | 5-0 | 26-35 | 9 | | |

James Madison vs West Virginia
3/23/2018; 5:30 p.m. at WVU Coliseum, Morgantown, W.Va.
Scoring/Runs Reference



Period 3

| James Madison | VRun | Score | Margin | HRun | West Virginia |
|--------------------------------|-------|-------|--------|------|--------------------------|
| 09:05 - KOSHUTA LAYUP [P] | - | 28-35 | 7 | | |
| 08:10 - REYNOLDS LAYUP [P] [F] | NaN-0 | 30-35 | 5 | | |
| | | 30-37 | 7 | | KING JUMPER - 06:30 |
| 05:38 - BARRIER LAYUP [P] | - | 32-37 | 5 | | |
| 05:38 - BARRIER FT | 3-0 | 33-37 | 4 | | |
| | | 33-38 | 5 | | MULDROW FT - 05:25 |
| | | 33-39 | 6 | 2-0 | MULDROW FT - 05:25 |
| 05:02 - REYNOLDS LAYUP [P] | - | 35-39 | 4 | | |
| 05:02 - REYNOLDS FT | 3-0 | 36-39 | 3 | | |
| | | 36-42 | 6 | | JONES 3PTR - 04:38 |
| 04:23 - BARRIER JUMPER | - | 38-42 | 4 | | |
| 03:51 - BARRIER JUMPER [P] | 4-0 | 40-42 | 2 | | |
| 03:11 - KOSHUTA LAYUP [P] | 6-0 | 42-42 | 0 | | |
| | | 42-45 | 3 | | RAY 3PTR - 02:57 |
| 02:28 - KOSHUTA LAYUP [P] | - | 44-45 | 1 | | |
| 01:36 - REYNOLDS FT | 3-0 | 45-45 | 0 | | |
| 01:36 - REYNOLDS FT | 4-0 | 46-45 | -1 | | |
| | | 46-47 | 1 | | DAVENPORT JUMPER - 01:21 |
| | | 46-48 | 2 | 3-0 | DAVENPORT FT - 01:21 |
| 00:56 - KOSHUTA LAYUP [P] | - | 48-48 | 0 | | |

James Madison vs West Virginia
3/23/2018; 5:30 p.m. at WVU Coliseum, Morgantown, W.Va.
Scoring/Runs Reference

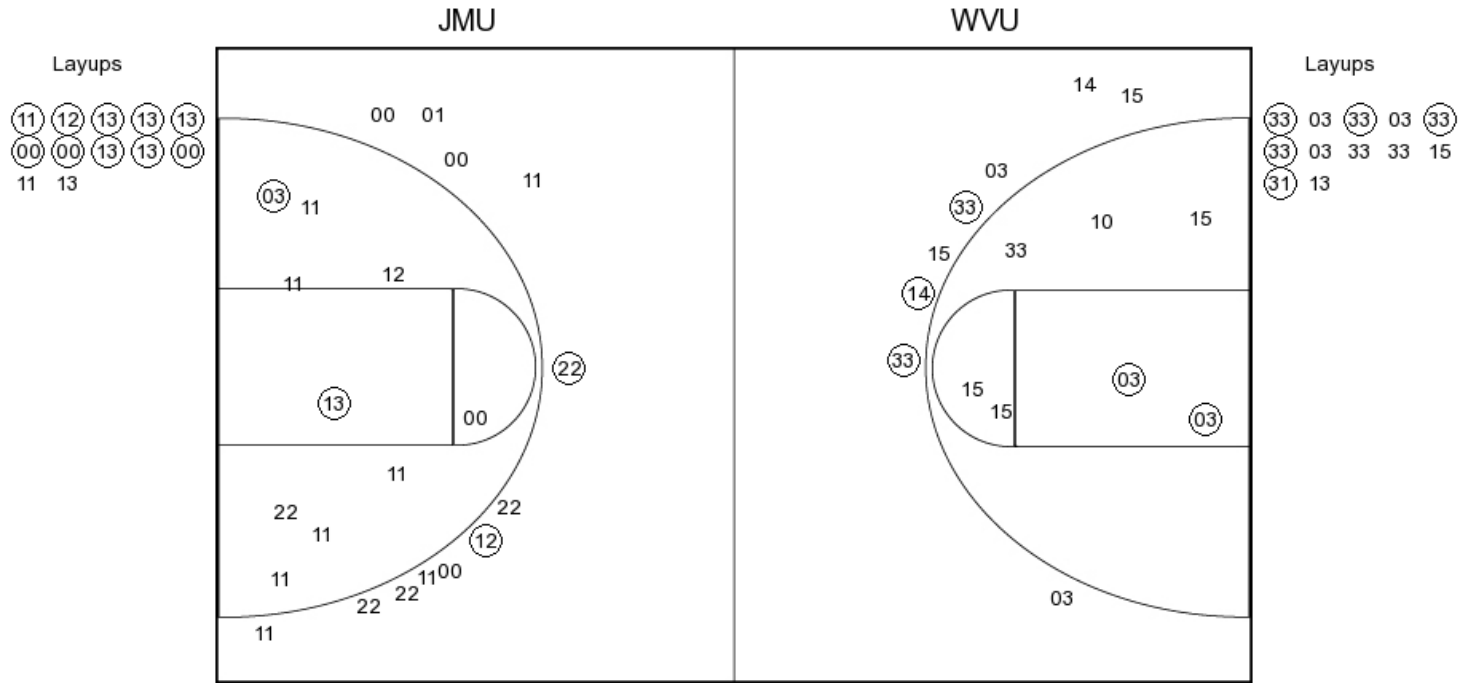


Period 4

| James Madison | VRun | Score | Margin | HRun | West Virginia |
|-----------------------------|------|-------|--------|-------|----------------------------|
| | | 48-50 | 2 | | MULDROW JUMPER [P] - 09:49 |
| | | 48-52 | 4 | NaN-0 | PARDEE LAYUP [P] - 08:02 |
| | | 48-54 | 6 | NaN-0 | MULDROW LAYUP [P] - 06:06 |
| | | 48-57 | 9 | NaN-0 | PARDEE 3PTR - 05:11 |
| 04:44 - BARRIER FT | - | 49-57 | 8 | | |
| 04:44 - BARRIER FT | 2-0 | 50-57 | 7 | | |
| | | 50-59 | 9 | | PARDEE JUMPER - 03:44 |
| 02:08 - BELLERAND LAYUP [P] | - | 52-59 | 7 | | |
| | | 52-60 | 8 | | KING FT - 01:25 |
| 01:14 - SMALLS 3PTR | - | 55-60 | 5 | | |
| | | 55-61 | 6 | | RAY FT - 01:06 |
| | | 55-62 | 7 | 2-0 | RAY FT - 01:06 |
| | | 55-63 | 8 | 3-0 | DAVENPORT FT - 00:51 |
| | | 55-64 | 9 | 4-0 | PARDEE FT - 00:34 |
| | | 55-65 | 10 | 5-0 | PARDEE FT - 00:34 |
| | | 55-66 | 11 | 6-0 | PARDEE FT - 00:26 |
| | | 55-67 | 12 | 7-0 | PARDEE FT - 00:26 |



PERIOD 1



JMU PERIOD 1

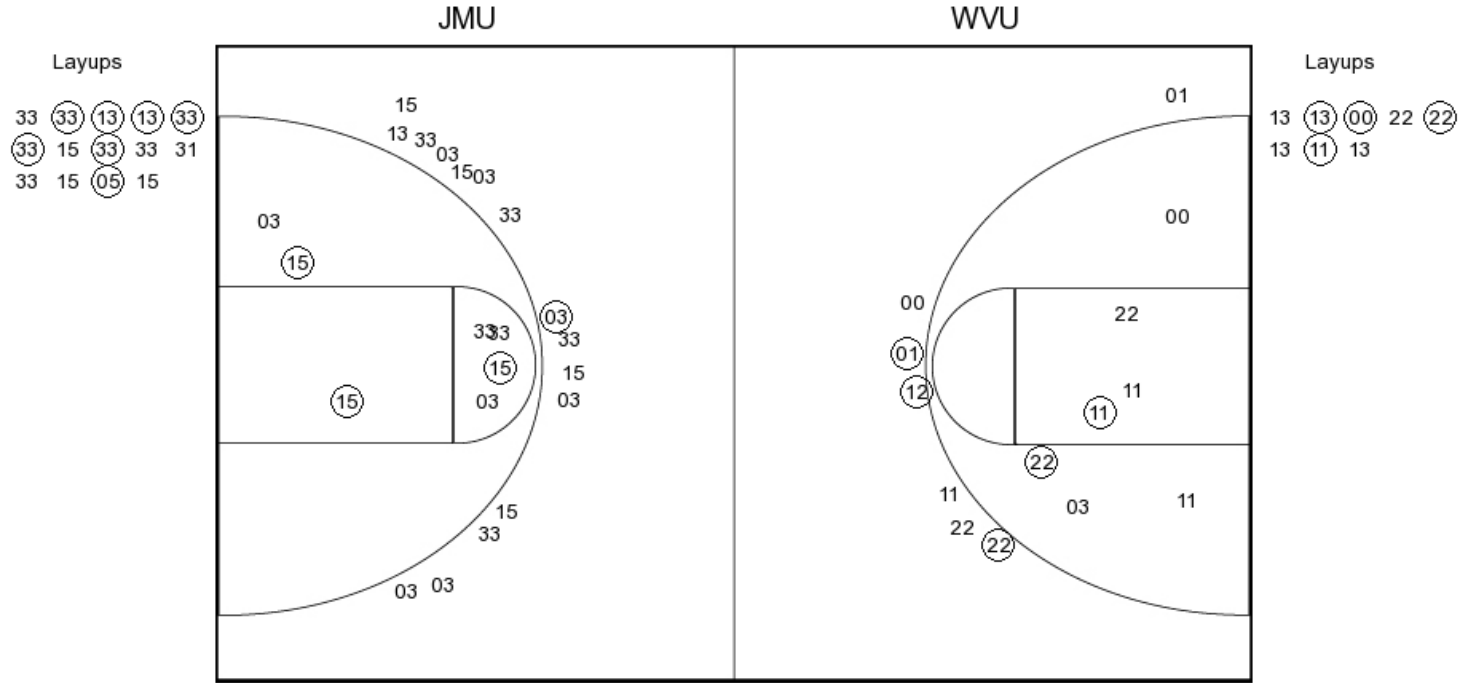
| | |
|----------------|----|
| FG Made | 10 |
| FG Attempted | 27 |
| 3PFG Made | 3 |
| 3PFG Attempted | 9 |

WVU PERIOD 1

| | |
|----------------|----|
| FG Made | 14 |
| FG Attempted | 35 |
| 3PFG Made | 2 |
| 3PFG Attempted | 12 |



PERIOD 2



JMU PERIOD 2

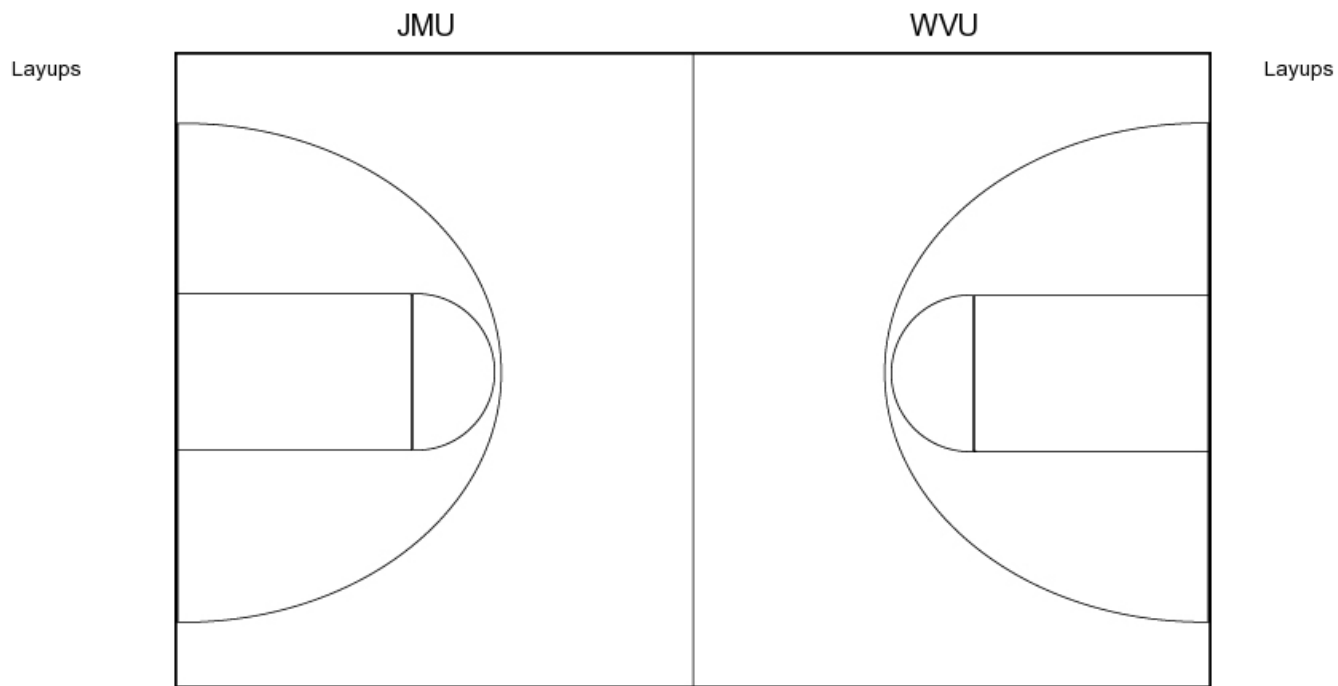
FG Made
 FG Attempted
 3PFG Made
 3PFG Attempted

WVU PERIOD 2

FG Made
 FG Attempted
 3PFG Made
 3PFG Attempted



PERIOD 3



JMU PERIOD 3

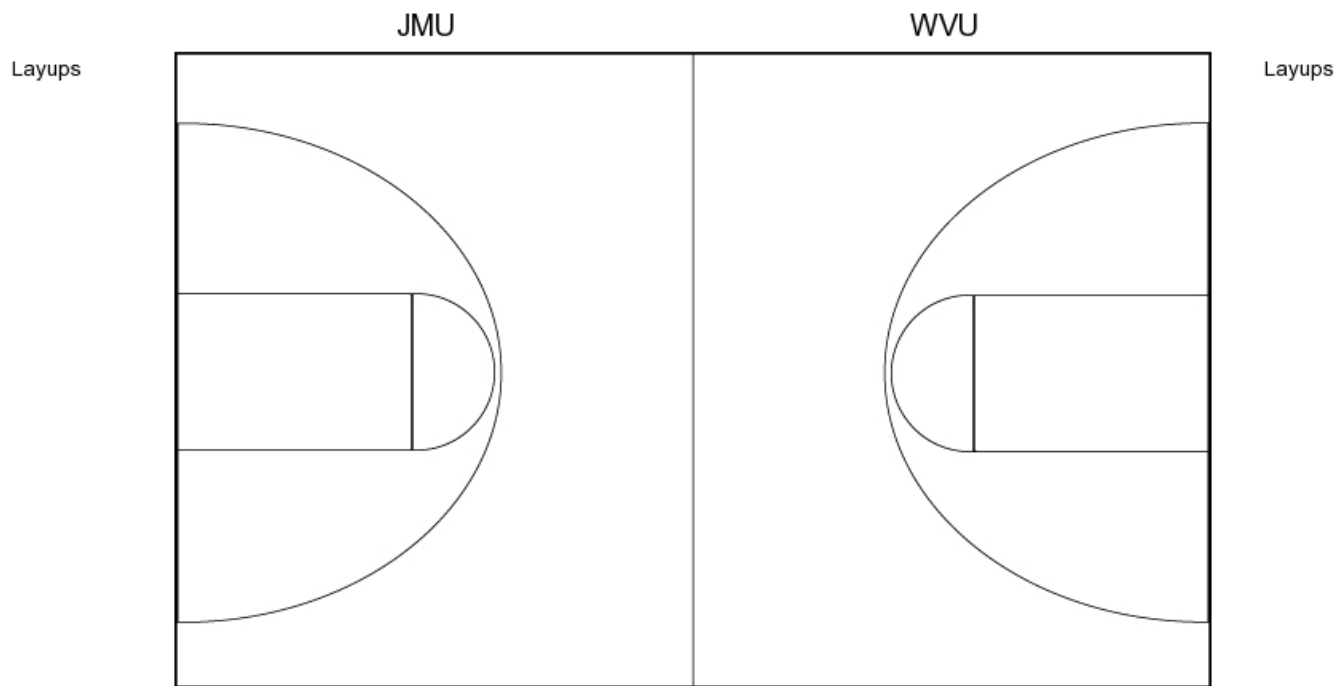
| | |
|----------------|----|
| FG Made | 11 |
| FG Attempted | 36 |
| 3PFG Made | 1 |
| 3PFG Attempted | 14 |

WVU PERIOD 3

| | |
|----------------|----|
| FG Made | 9 |
| FG Attempted | 22 |
| 3PFG Made | 3 |
| 3PFG Attempted | 7 |



PERIOD 4



JMU PERIOD 4

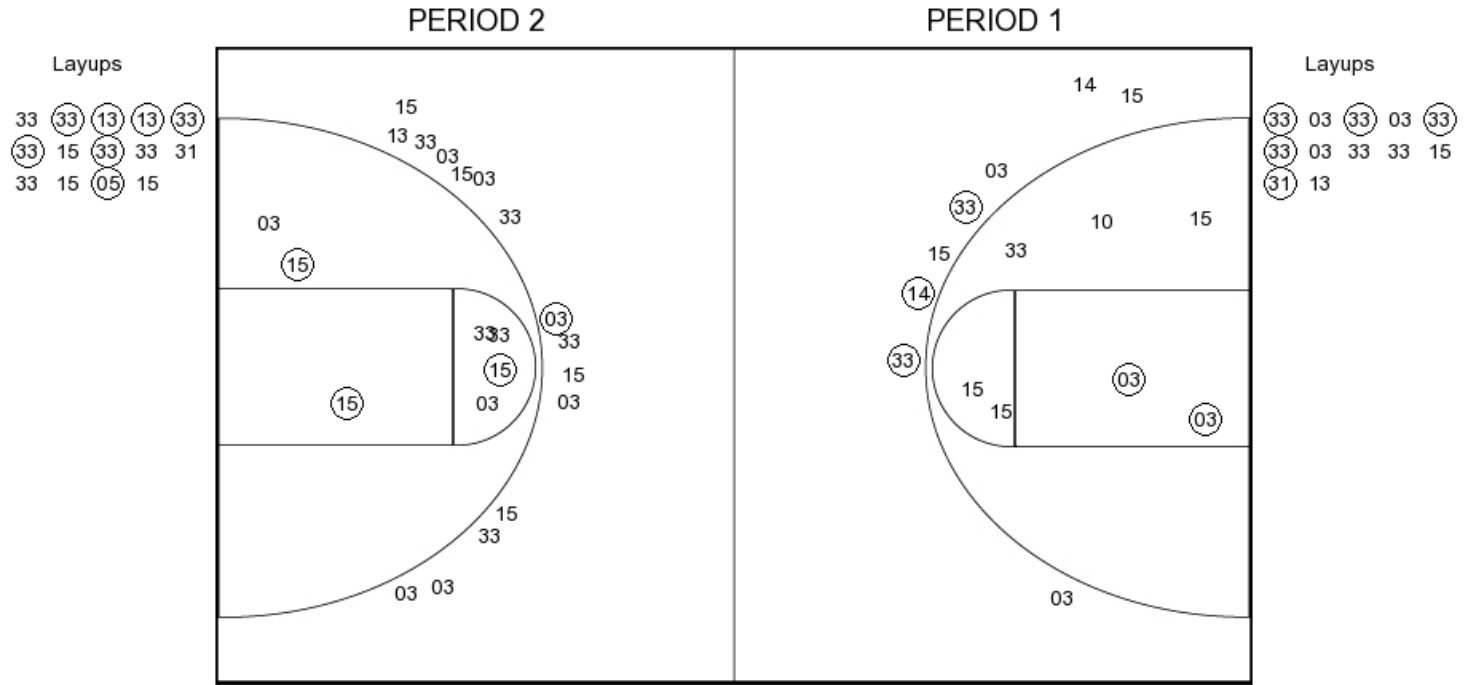
FG Made
FG Attempted
3PFG Made
3PFG Attempted

WVU PERIOD 4

FG Made
FG Attempted
3PFG Made
3PFG Attempted



James Madison



JMU PERIOD 1

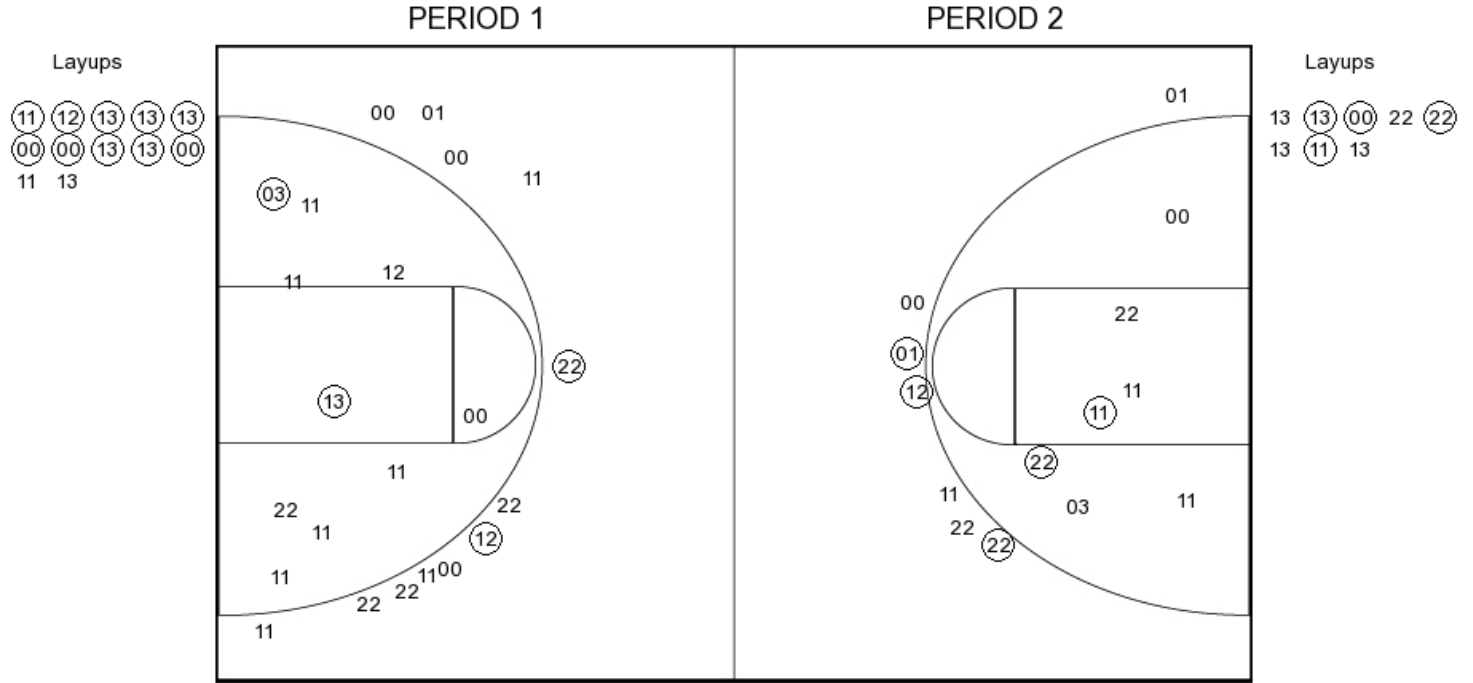
| | |
|----------------|----|
| FG Made | 10 |
| FG Attempted | 27 |
| 3PFG Made | 3 |
| 3PFG Attempted | 9 |

JMU PERIOD 2

| | |
|----------------|----|
| FG Made | 10 |
| FG Attempted | 27 |
| 3PFG Made | 3 |
| 3PFG Attempted | 9 |



West Virginia



WVU PERIOD 1

| | |
|----------------|----|
| FG Made | 14 |
| FG Attempted | 35 |
| 3PFG Made | 2 |
| 3PFG Attempted | 12 |

WVU PERIOD 2

| | |
|----------------|----|
| FG Made | 0 |
| FG Attempted | 12 |
| 3PFG Made | 0 |
| 3PFG Attempted | 12 |