

FINAL SCORE



Missouri State

21-11

63



Louisiana Tech

19-12

59

Missouri State at LA Tech

March 15, 2018 • Thomas Assembly Center (Ruston, La.)

FINAL STATISTICS

Official Basketball Box Score -- Game Totals -- Final Statistics
 Missouri State vs Louisiana Tech
 3/15/2018 6:30 PM at Thomas Assembly Center (Ruston, La.)



Missouri State 63 - 21-11

##	Player	*	Total		3-Ptr	Rebounds			PF	TP	A	TO	Blk	Stl	Min
			FG-FGA	FG-FGA	FT-FTA	Off	Def	Tot							
01	GITZEN,DANIELLE	*	6-10	0-1	3-6	1	5	6	2	15	3	2	0	2	36
05	FRUENDT,LIZA	*	1-3	0-2	0-0	0	1	1	0	2	0	0	0	6	
11	CALIP,BRICE	*	3-8	0-1	10-14	2	2	4	2	16	4	3	0	2	32
21	BUCKLEY,AUBREY	*	4-12	1-4	2-2	3	6	9	4	11	2	2	0	5	30
22	WILLARD,ALEXA	*	3-9	0-2	0-0	0	2	2	1	6	0	2	1	0	25
02	RUFFRIDGE,ELLE		0-2	0-2	0-0	0	0	0	0	0	0	1	0	9	
03	POLOWY,LEE ANN		0-3	0-2	0-0	2	0	2	1	0	0	1	0	18	
04	HIPP,ABBY		2-3	0-1	0-0	2	4	6	0	4	1	4	0	13	
30	EALY,SHAMEKA		3-8	1-4	0-0	0	7	7	2	7	0	1	1	0	25
50	GARTNER,EMILY		0-2	0-0	2-2	0	2	2	1	2	0	3	0	0	6
TEAM						4	2	6	0		0				
TOTALS			22-60	2-19	17-24	14	31	45	13	63	10	19	2	9	200

Deadball Rebounds: 5,0

FG %	1st Half: 7-29 24.1%	2nd Half: 15-31 48.4%	Game: 22-60 36.7%	4th Qtr	6-14 42.9%
	1st Qtr 4-16 25.0%	2nd Qtr 3-13 23.1%	3rd Qtr 9-17 52.9%		
3FG %	1st Half: 1-13 07.7%	2nd Half: 1-6 16.7%	Game: 2-19 10.5%	4th Qtr	0-2 00.0%
	1st Qtr 0-7 00.0%	2nd Qtr 1-6 16.7%	3rd Qtr 1-4 25.0%		
FT %	1st Half: 8-12 66.7%	2nd Half: 9-12 75.0%	Game: 17-24 70.8%	4th Qtr	9-12 75.0%
	1st Qtr 1-2 50.0%	2nd Qtr 7-10 70.0%	3rd Qtr 0-0 0%		

Louisiana Tech 59 - 19-12

##	Player	*	Total		3-Ptr	Rebounds			PF	TP	A	TO	Blk	Stl	Min
			FG-FGA	FG-FGA	FT-FTA	Off	Def	Tot							
03	LANG,KIERRA	*	1-2	0-0	0-0	1	0	1	3	2	7	5	1	2	26
04	ANTHONY,KIERRA	*	5-14	1-4	0-0	0	2	2	4	11	0	4	0	1	26
23	CLEAVER,REAUNA	*	2-6	0-0	0-2	2	4	6	3	4	1	1	3	0	23
24	STAHLY,TAYLOR	*	3-13	2-10	0-0	0	1	1	2	8	0	3	0	0	34
34	MALONE,ALEXUS	*	9-19	1-6	5-6	6	12	18	2	24	2	2	0	4	35
10	DIXON,AMBER		2-2	0-0	0-2	0	2	2	3	4	4	3	0	1	14
12	MCCUTCHEON,DARIA		0-1	0-0	0-0	1	0	1	0	0	0	0	0	0	8
14	MCLEOD,ANNA		1-7	1-3	0-0	1	3	4	3	3	0	1	1	2	21
25	MCDONALD,NIKKI		0-0	0-0	0-0	1	0	1	1	0	0	1	0	1	4
32	WHITNEY,ZHANAE		1-1	0-0	1-4	1	1	2	0	3	0	1	0	0	9
TEAM						2	1	3	0		0				
TOTALS			24-65	5-23	6-14	15	26	41	21	59	14	21	5	11	200

Deadball Rebounds: 3,0

FG %	1st Half: 8-31 25.8%	2nd Half: 16-34 47.1%	Game: 24-65 36.9%	4th Qtr	8-18 44.4%
	1st Qtr 5-19 26.3%	2nd Qtr 3-12 25.0%	3rd Qtr 8-16 50.0%		
3FG %	1st Half: 1-10 10.0%	2nd Half: 4-13 30.8%	Game: 5-23 21.7%	4th Qtr	3-9 33.3%
	1st Qtr 1-7 14.3%	2nd Qtr 0-3 00.0%	3rd Qtr 1-4 25.0%		
FT %	1st Half: 1-5 20.0%	2nd Half: 5-9 55.6%	Game: 6-14 42.9%	4th Qtr	2-3 66.7%
	1st Qtr 1-1 100.0%	2nd Qtr 0-4 00.0%	3rd Qtr 3-6 50.0%		

Officials: Jules Gallien, Demaya Williams, John Fletcher
 Technical Fouls: Missouri State- None. Louisiana Tech- None.
 Attendance: 1734

WNIT Round 1

Score by periods	1st	2nd	3rd	4th	Total
Missouri State	9	14	19	21	63
Louisiana Tech	12	6	20	21	59

Points	In Paint	Off T/O	2nd Chance	Fast Break	Bench
MSU	22	17	14	2	13
LATECH	32	13	11	6	10

Last FG - MSU 4th-01:06, LATECH 4th-00:25.
 Largest lead - Missouri State by 9 3rd-08:29; Louisiana Tech by 5 4th-04:10
 MSU led for 17:26. LATECH led for 16:53. Game was tied for 5:30.

Score tied - 9 times; Lead changed - 7 times

Official Basketball Box Score -- Game Totals -- First Half Statistics
 Missouri State vs Louisiana Tech
 3/15/2018 6:30 PM at Thomas Assembly Center (Ruston, La.)



Missouri State 23 • 21-11

##	Player	*	Total		3-Ptr	Rebounds			PF	TP	A	TO	Blk	Stl	Min
			FG-FGA	FG-FGA	FT-FTA	Off	Def	Tot							
01	GITZEN,DANIELLE	*	1-3	0-1	1-2	1	3	4	0	3	1	0	0	1	18
05	FRUENDT,LIZA	*	1-3	0-2	0-0	0	1	1	0	2	0	0	0	0	5
11	CALIP,BRICE	*	1-4	0-1	5-8	1	1	2	0	7	0	2	0	2	15
21	BUCKLEY,AUBREY	*	2-6	1-3	0-0	2	4	6	1	5	0	1	0	0	15
22	WILLARD,ALEXA	*	1-6	0-2	0-0	0	2	2	1	2	0	1	0	0	12
02	RUFFRIDGE,ELLE		0-1	0-1	0-0	0	0	0	0	0	0	0	0	0	7
03	POLOWY,LEE ANN		0-2	0-2	0-0	1	0	1	0	0	0	0	0	0	9
04	HIPP,ABBY		1-2	0-1	0-0	1	2	3	0	2	1	3	0	0	7
30	EALY,SHAMEKA		0-1	0-0	0-0	0	6	6	2	0	0	1	1	0	8
50	GARTNER,EMILY		0-1	0-0	2-2	0	0	0	1	2	0	3	0	0	4
TEAM						2	1	3	0		0				
Totals			7-29	1-13	8-12	8	20	28	5	23	2	11	1	3	100
FG %	1st Qtr	4-16	25.0%	2nd Qtr	3-13	23.1%	Half:	7-29	24.1%						
3FG %	1st Qtr	0-7	00.0%	2nd Qtr	1-6	16.7%	Half:	1-13	07.7%						
FT %	1st Qtr	1-2	50.0%	2nd Qtr	7-10	70.0%	Half:	8-12	66.7%						

Louisiana Tech 18 • 19-12

##	Player	*	Total		3-Ptr	Rebounds			PF	TP	A	TO	Blk	Stl	Min
			FG-FGA	FG-FGA	FT-FTA	Off	Def	Tot							
03	LANG,KIERRA	*	0-0	0-0	0-0	0	0	0	1	0	1	3	0	0	12
04	ANTHONY,KIERRA	*	3-10	1-3	0-0	0	2	2	2	7	0	2	0	1	17
23	CLEAVER,REAUNA	*	0-2	0-0	0-0	0	2	2	2	0	0	0	1	0	6
24	STAHLY,TAYLOR	*	1-7	0-5	0-0	0	1	1	1	2	0	1	0	0	15
34	MALONE,ALEXUS	*	3-5	0-0	1-1	3	6	9	2	7	1	1	0	2	17
10	DIXON,AMBER		1-1	0-0	0-2	0	0	0	1	2	2	1	0	0	7
12	MCCUTCHEON,DARIA		0-1	0-0	0-0	0	0	0	0	0	0	0	0	0	2
14	MCLEOD,ANNA		0-5	0-2	0-0	0	3	3	1	0	0	1	0	2	14
25	MCDONALD,NIKKI		0-0	0-0	0-0	1	0	1	1	0	0	1	0	1	4
32	WHITNEY,ZHANAE		0-0	0-0	0-2	1	1	2	0	0	0	1	0	0	6
TEAM						0	1	1	0		0				
Totals			8-31	1-10	1-5	5	16	21	11	18	4	11	1	6	100
FG %	1st Qtr	5-19	26.3%	2nd Qtr	3-12	25.0%	Half:	8-31	25.8%						
3FG %	1st Qtr	1-7	14.3%	2nd Qtr	0-3	00.0%	Half:	1-10	10.0%						
FT %	1st Qtr	1-1	100.0%	2nd Qtr	0-4	00.0%	Half:	1-5	20.0%						

Officials: Jules Gallien, Demaya Williams, John Fletcher
 Technical Fouls: Missouri State- None. Louisiana Tech- None.
 WNIT Round 1

Score by periods	1st	2nd	3rd	4th	Total
Missouri State	9	14	19	21	63
Louisiana Tech	12	6	20	21	59

Points	In Paint	Off T/O	2nd Chance	Fast Break	Bench
MSU	10	4	6	0	4
	10	7	5	2	2

Last FG - MSU 2nd-01:20, LATECH 2nd-01:04.
 MSU led for 3:21. LATECH led for 12:08. Game was tied for 4:26.

Score tied - 4 times
 Lead changed - 5 times

Missouri State vs Louisiana Tech
 3/15/2018; 6:30 PM at Thomas Assembly Center (Ruston, La.)
 Period 1 Play-By-Play



VISITORS: Missouri State	Time	Score	Margin	HOME: Louisiana Tech
	09:35			TURNOVER by LANG,KIERRA
MISSED JUMPER by WILLARD,ALEXA	09:22			
	09:22			BLOCK by CLEAVER,REAUNA
	09:20			REBOUND (DEF) by MALONE,ALEXUS
	09:16	2-0	H 2	GOOD! LAYUP by ANTHONY,KIERRA [FB/PNT]
	09:16			ASSIST by MALONE,ALEXUS
MISSED 3PTR by BUCKLEY,AUBREY	08:58			
	08:58			REBOUND (DEF) by ANTHONY,KIERRA
	08:51			MISSED 3PTR by STAHLY,TAYLOR
	08:51			REBOUND (OFF) by MALONE,ALEXUS
	08:26			MISSED JUMPER by CLEAVER,REAUNA
REBOUND (DEF) by FRUENDT,LIZA	08:26			
GOOD! JUMPER by FRUENDT,LIZA	08:18	2-2	T	
	08:10	4-2	H 2	GOOD! LAYUP by ANTHONY,KIERRA [PNT]
	08:10			ASSIST by LANG,KIERRA
MISSED 3PTR by GITZEN,DANIELLE	07:58			
	07:58			REBOUND (DEF) by CLEAVER,REAUNA
	07:50			MISSED LAYUP by ANTHONY,KIERRA
REBOUND (DEF) by CALIP,BRICE	07:50			
GOOD! JUMPER by CALIP,BRICE [PNT]	07:41	4-4	T	
	07:21			MISSED 3PTR by STAHLY,TAYLOR
REBOUND (DEF) by GITZEN,DANIELLE	07:21			
	07:14			SUB IN: WHITNEY,ZHANA E
	07:14			SUB IN: MCLEOD,ANNA
	07:14			SUB OUT: ANTHONY,KIERRA
	07:14			SUB OUT: CLEAVER,REAUNA
MISSED LAYUP by BUCKLEY,AUBREY	07:11			
	07:11			REBOUND (DEF) by MCLEOD,ANNA
	06:52			TURNOVER by LANG,KIERRA
MISSED 3PTR by FRUENDT,LIZA	06:37			
	06:37			REBOUND (DEF) by MALONE,ALEXUS
	06:29			MISSED 3PTR by MCLEOD,ANNA
REBOUND (DEF) by GITZEN,DANIELLE	06:29			
MISSED 3PTR by WILLARD,ALEXA	06:15			
REBOUND (OFF) by GITZEN,DANIELLE	06:15			
GOOD! LAYUP by WILLARD,ALEXA [PNT]	06:11	4-6	V 2	
ASSIST by GITZEN,DANIELLE	06:11			
	05:56			TURNOVER by STAHLY,TAYLOR
STEAL by CALIP,BRICE	05:54			
MISSED JUMPER by CALIP,BRICE	05:49			
	05:49			REBOUND (DEF) by WHITNEY,ZHANA E
	05:26			MISSED 3PTR by STAHLY,TAYLOR
	05:26			REBOUND (OFF) by WHITNEY,ZHANA E
FOUL by BUCKLEY,AUBREY	05:25			
SUB IN: GARTNER,EMILY	05:25			
SUB IN: POLOWY,LEE ANN	05:25			
SUB OUT: BUCKLEY,AUBREY	05:25			
SUB OUT: WILLARD,ALEXA	05:25			
	05:25			SUB IN: CLEAVER,REAUNA
	05:25			SUB IN: DIXON,AMBER
	05:25			SUB IN: ANTHONY,KIERRA
	05:25			SUB OUT: LANG,KIERRA
	05:25			SUB OUT: STAHLY,TAYLOR
	05:25			SUB OUT: MALONE,ALEXUS
	05:20	7-6	H 1	GOOD! 3PTR by ANTHONY,KIERRA
	05:20			ASSIST by DIXON,AMBER
TIMEOUT MEDIA	04:57			
SUB IN: EALY,SHAMEKA	04:57			
SUB OUT: CALIP,BRICE	04:57			
MISSED 3PTR by FRUENDT,LIZA	04:45			
REBOUND (OFF) by POLOWY,LEE ANN	04:45			
SUB IN: WILLARD,ALEXA	04:42			
SUB OUT: FRUENDT,LIZA	04:42			
	04:42			SUB IN: MALONE,ALEXUS
	04:42			SUB OUT: WHITNEY,ZHANA E
TURNOVER by GARTNER,EMILY	04:31			
	04:30			STEAL by MCLEOD,ANNA
	04:24			MISSED LAYUP by MALONE,ALEXUS
REBOUND (DEF) by EALY,SHAMEKA	04:24			

VISITORS: Missouri State	Time	Score	Margin	HOME: Louisiana Tech
TURNOVER by EALY,SHAMEKA	04:21			
	04:19			STEAL by MALONE,ALEXUS
	04:18			MISSED 3PTR by ANTHONY,KIERRA
REBOUND (DEF) by GITZEN,DANIELLE	04:18			
	04:14			FOUL by CLEAVER,REAUNA
MISSED 3PTR by WILLARD,ALEXA	04:01			
	04:01			REBOUND (DEF) by MCLEOD,ANNA
	03:56			FOUL by MCLEOD,ANNA
	03:56			TURNOVER by MCLEOD,ANNA
MISSED LAYUP by GARTNER,EMILY	03:44			
	03:44			REBOUND (DEF) by CLEAVER,REAUNA
	03:31			TURNOVER by DIXON,AMBER
TURNOVER by GARTNER,EMILY	03:14			
SUB IN: HIPPI,ABBY	03:14			
SUB IN: CALIP,BRICE	03:14			
SUB IN: RUFFRIDGE,ELLE	03:14			
SUB OUT: GITZEN,DANIELLE	03:14			
SUB OUT: GARTNER,EMILY	03:14			
SUB OUT: POLOWY,LEE ANN	03:14			
	03:02	9-6	H 3	GOOD! LAYUP by MALONE,ALEXUS [PNT]
	03:02			ASSIST by DIXON,AMBER
FOUL by WILLARD,ALEXA	03:02			
	03:02	10-6	H 4	GOOD! FT by MALONE,ALEXUS
MISSED LAYUP by WILLARD,ALEXA	02:54			
REBOUND (OFF) by HIPPI,ABBY	02:54			
GOOD! JUMPER by HIPPI,ABBY [PNT]	02:50	10-8	H 2	
	02:32			MISSED LAYUP by CLEAVER,REAUNA
REBOUND (DEF) by EALY,SHAMEKA	02:32			
	02:29			FOUL by CLEAVER,REAUNA
	02:29			SUB IN: STAHLY,TAYLOR
	02:29			SUB OUT: CLEAVER,REAUNA
TURNOVER by WILLARD,ALEXA	02:18			
	02:16			STEAL by MCLEOD,ANNA
	02:12			MISSED LAYUP by STAHLY,TAYLOR
REBOUND (DEF) by WILLARD,ALEXA	02:12			
TURNOVER by CALIP,BRICE	02:06			
	01:59			MISSED 3PTR by STAHLY,TAYLOR
	01:59			REBOUND (OFF) by MALONE,ALEXUS
	01:52	12-8	H 4	GOOD! LAYUP by MALONE,ALEXUS [PNT]
TURNOVER by HIPPI,ABBY	01:43			
	01:41			STEAL by ANTHONY,KIERRA
	01:38			MISSED JUMPER by MCLEOD,ANNA
REBOUND (DEF) by EALY,SHAMEKA	01:38			
	01:28			FOUL by MALONE,ALEXUS
MISSED FT by CALIP,BRICE	01:28			
REBOUND (DEADB) by TEAM	01:28			
GOOD! FT by CALIP,BRICE	01:28	12-9	H 3	
	01:28			SUB IN: LANG,KIERRA
	01:28			SUB OUT: DIXON,AMBER
	01:14			MISSED LAYUP by MALONE,ALEXUS
	01:14			REBOUND (OFF) by MALONE,ALEXUS
	01:03			FOUL by ANTHONY,KIERRA
	01:03			TURNOVER by ANTHONY,KIERRA
TURNOVER by CALIP,BRICE	00:31			
SUB IN: GITZEN,DANIELLE	00:31			
SUB OUT: WILLARD,ALEXA	00:31			
	00:06			MISSED JUMPER by MCLEOD,ANNA
REBOUND (DEF) by EALY,SHAMEKA	00:06			
MISSED 3PTR by CALIP,BRICE	00:01			
REBOUND (OFF) by TEAM	00:01			

Missouri State 9, Louisiana Tech 12

Period 1-only	In Paint	Off T/O	2nd Chance	Fast Break	Bench	
MSU	6	0	4	0	2	Score tied - 4 times
LATECH	8	5	5	2	0	Lead changed - 2 times

Missouri State vs Louisiana Tech
 3/15/2018; 6:30 PM at Thomas Assembly Center (Ruston, La.)
 Period 2 Play-By-Play



VISITORS: Missouri State	Time	Score	Margin	HOME: Louisiana Tech
SUB IN: RUFFRIDGE,ELLE	10:00			
SUB IN: HIPPI,ABBY	10:00			
SUB OUT: FRUENDT,LIZA	10:00			
SUB OUT: WILLARD,ALEXA	10:00			
	10:00			SUB IN: MCDONALD,NIKKI
	10:00			SUB OUT: CLEAVER,REAUNA
	09:44			MISSED 3PTR by ANTHONY,KIERRA
REBOUND (DEF) by BUCKLEY,AUBREY	09:44			
GOOD! LAYUP by GITZEN,DANIELLE [PNT]	09:34	12-11	H 1	
	09:24	14-11	H 3	GOOD! JUMPER by STAHL,TAYLOR
MISSED LAYUP by GITZEN,DANIELLE	09:06			
REBOUND (OFF) by BUCKLEY,AUBREY	09:06			
GOOD! LAYUP by BUCKLEY,AUBREY [PNT]	09:04	14-13	H 1	
	08:46			MISSED LAYUP by ANTHONY,KIERRA
REBOUND (DEF) by HIPPI,ABBY	08:46			
MISSED 3PTR by HIPPI,ABBY	08:34			
	08:34			REBOUND (DEF) by TEAM
	08:32			SUB IN: MCLEOD,ANNA
	08:32			SUB OUT: MALONE,ALEXUS
	08:15			MISSED JUMPER by ANTHONY,KIERRA
REBOUND (DEF) by BUCKLEY,AUBREY	08:15			
TURNOVER by HIPPI,ABBY	08:03			
	08:02			STEAL by MCDONALD,NIKKI
	07:55			TURNOVER by ANTHONY,KIERRA
STEAL by GITZEN,DANIELLE	07:54			
MISSED 3PTR by RUFFRIDGE,ELLE	07:42			
	07:42			REBOUND (DEF) by MCLEOD,ANNA
	07:22			TURNOVER by LANG,KIERRA
MISSED JUMPER by CALIP,BRICE	07:19			
REBOUND (OFF) by CALIP,BRICE	07:19			
MISSED FT by CALIP,BRICE	07:18			
	07:18			FOUL by STAHL,TAYLOR
REBOUND (DEADB) by TEAM	07:17			
MISSED FT by CALIP,BRICE	07:16			
	07:16			REBOUND (DEF) by MALONE,ALEXUS
SUB IN: POLOWY,LEE ANN	07:16			
SUB IN: GARTNER,EMILY	07:16			
SUB OUT: RUFFRIDGE,ELLE	07:16			
SUB OUT: HIPPI,ABBY	07:16			
	07:16			SUB IN: WHITNEY,ZHANA
	07:16			SUB IN: MALONE,ALEXUS
	07:16			SUB OUT: MCDONALD,NIKKI
	07:16			SUB OUT: MCLEOD,ANNA
	07:07			TURNOVER by MALONE,ALEXUS
	06:44			FOUL by LANG,KIERRA
GOOD! FT by GARTNER,EMILY	06:44	14-14	T	
GOOD! FT by GARTNER,EMILY	06:44	14-15	V 1	
	06:14			TURNOVER by WHITNEY,ZHANA
SUB IN: WILLARD,ALEXA	06:14			
SUB OUT: CALIP,BRICE	06:14			
TURNOVER by GARTNER,EMILY	05:59			
	05:59			SUB IN: MCLEOD,ANNA
	05:59			SUB IN: DIXON,AMBER
	05:59			SUB OUT: LANG,KIERRA
	05:59			SUB OUT: STAHL,TAYLOR
	05:34	16-15	H 1	GOOD! JUMPER by DIXON,AMBER
MISSED 3PTR by POLOWY,LEE ANN	05:22			
REBOUND (OFF) by TEAM	05:22			
TURNOVER by BUCKLEY,AUBREY	05:10			
	05:09			STEAL by MALONE,ALEXUS
FOUL by GARTNER,EMILY	04:50			
	04:50			TIMEOUT media
	04:50			MISSED FT by WHITNEY,ZHANA
	04:50			REBOUND (DEADB) by TEAM
	04:50			MISSED FT by WHITNEY,ZHANA
REBOUND (DEF) by TEAM	04:50			
SUB IN: EALY,SHAMEKA	04:50			
SUB OUT: GARTNER,EMILY	04:50			
MISSED JUMPER by WILLARD,ALEXA	04:32			

VISITORS: Missouri State	Time	Score	Margin	HOME: Louisiana Tech
	04:32			REBOUND (DEF) by MALONE,ALEXUS
FOUL by EALY,SHAMEKA	04:10			
	04:10			MISSED FT by DIXON,AMBER
	04:10			REBOUND (DEADB) by TEAM
	04:10			MISSED FT by DIXON,AMBER
REBOUND (DEF) by EALY,SHAMEKA	04:10			
	04:10			SUB IN: STAHLY,TAYLOR
	04:10			SUB OUT: WHITNEY,ZHANA E
MISSED 3PTR by BUCKLEY,AUBREY	03:54			
	03:54			REBOUND (DEF) by ANTHONY,KIERRA
	03:45			MISSED 3PTR by MCLEOD,ANNA
REBOUND (DEF) by WILLARD,ALEXA	03:45			
	03:24			FOUL by DIXON,AMBER
GOOD! FT by GITZEN,DANIELLE	03:24	16-16	T	
MISSED FT by GITZEN,DANIELLE	03:24			
	03:24			REBOUND (DEF) by MALONE,ALEXUS
SUB IN: CALIP,BRICE	03:24			
SUB OUT: WILLARD,ALEXA	03:24			
	03:15			MISSED LAYUP by ANTHONY,KIERRA
REBOUND (DEF) by BUCKLEY,AUBREY	03:15			
MISSED 3PTR by POLOWY,LEE ANN	03:04			
	03:04			REBOUND (DEF) by STAHLY,TAYLOR
	02:51			SUB IN: LANG,KIERRA
	02:51			SUB OUT: DIXON,AMBER
	02:33			MISSED JUMPER by MCLEOD,ANNA
BLOCK by EALY,SHAMEKA	02:33			
REBOUND (DEF) by BUCKLEY,AUBREY	02:30			
MISSED JUMPER by EALY,SHAMEKA	02:12			
REBOUND (OFF) by BUCKLEY,AUBREY	02:12			
MISSED LAYUP by BUCKLEY,AUBREY	02:09			
	02:09			REBOUND (DEF) by MALONE,ALEXUS
FOUL by EALY,SHAMEKA	02:06			
	01:36			MISSED JUMPER by ANTHONY,KIERRA
REBOUND (DEF) by EALY,SHAMEKA	01:36			
	01:30			FOUL by ANTHONY,KIERRA
SUB IN: HIPPI,ABBY	01:30			
SUB OUT: EALY,SHAMEKA	01:30			
	01:30			SUB IN: MCCUTCHEON,DARIA
	01:30			SUB OUT: ANTHONY,KIERRA
GOOD! 3PTR by BUCKLEY,AUBREY	01:20	16-19	V 3	
ASSIST by HIPPI,ABBY	01:20			
	01:04	18-19	V 1	GOOD! LAYUP by MALONE,ALEXUS [PNT]
	00:55			FOUL by MALONE,ALEXUS
GOOD! FT by CALIP,BRICE	00:55	18-20	V 2	
GOOD! FT by CALIP,BRICE	00:55	18-21	V 3	
SUB IN: RUFFRIDGE,ELLE	00:55			
SUB OUT: POLOWY,LEE ANN	00:55			
	00:55			SUB IN: MCDONALD,NIKKI
	00:55			SUB OUT: MALONE,ALEXUS
	00:42			MISSED 3PTR by STAHLY,TAYLOR
REBOUND (DEF) by HIPPI,ABBY	00:42			
TURNOVER by HIPPI,ABBY	00:39			
	00:20			MISSED JUMPER by MCCUTCHEON,DARIA
	00:20			REBOUND (OFF) by MCDONALD,NIKKI
	00:15			TURNOVER by MCDONALD,NIKKI
STEAL by CALIP,BRICE	00:13			
	00:01			FOUL by MCDONALD,NIKKI
GOOD! FT by CALIP,BRICE	00:01	18-22	V 4	
GOOD! FT by CALIP,BRICE	00:01	18-23	V 5	

Missouri State 23, Louisiana Tech 18

Period 2-only	In Paint	Off T/O	2nd Chance	Fast Break	Bench	
MSU	4	4	2	0	2	Score tied - 4 times
LATECH	2	2	0	0	2	Lead changed - 4 times

Official Basketball Box Score -- Game Totals -- Second Half Statistics
 Missouri State vs Louisiana Tech
 3/15/2018 6:30 PM at Thomas Assembly Center (Ruston, La.)



Missouri State 40 • 21-11

##	Player	*	Total		3-Ptr	Rebounds			PF	TP	A	TO	Blk	Stl	Min
			FG-FGA	FG-FGA	FT-FTA	Off	Def	Tot							
01	GITZEN,DANIELLE	*	5-7	0-0	2-4	0	2	2	2	12	2	2	0	1	18
05	FRUENDT ,LIZA	*	0-0	0-0	0-0	0	0	0	0	0	0	0	0	1	
11	CALIP,BRICE	*	2-4	0-0	5-6	1	1	2	2	9	4	1	0	17	
21	BUCKLEY,AUBREY	*	2-6	0-1	2-2	1	2	3	3	6	2	1	0	15	
22	WILLARD,ALEXA	*	2-3	0-0	0-0	0	0	0	0	4	0	1	1	13	
02	RUFFRIDGE,ELLE		0-1	0-1	0-0	0	0	0	0	0	0	1	0	2	
03	POLOWY,LEE ANN		0-1	0-0	0-0	1	0	1	1	0	0	1	0	9	
04	HIPP,ABBY		1-1	0-0	0-0	1	2	3	0	2	0	1	0	6	
30	EALY,SHAMEKA		3-7	1-4	0-0	0	1	1	0	7	0	0	0	17	
50	GARTNER,EMILY		0-1	0-0	0-0	0	2	2	0	0	0	0	0	2	
TEAM						2	1	3	0		0				
Totals			15-31	1-6	9-12	6	11	17	8	40	8	8	1	6	100

FG % 3rd Qtr 9-17 52.9% 4th Qtr 6-14 42.9% Half: 15-31 48.4%
 3FG % 3rd Qtr 1-4 25.0% 4th Qtr 0-2 00.0% Half: 1-6 07.7%
 FT % 3rd Qtr 0-0 0% 4th Qtr 9-12 75.0% Half: 9-12 75.0%

Louisiana Tech 41 • 19-12

##	Player	*	Total		3-Ptr	Rebounds			PF	TP	A	TO	Blk	Stl	Min
			FG-FGA	FG-FGA	FT-FTA	Off	Def	Tot							
03	LANG,KIERRA	*	1-2	0-0	0-0	1	0	1	2	2	6	2	1	2	14
04	ANTHONY,KIERRA	*	2-4	0-1	0-0	0	0	0	2	4	0	2	0	9	
23	CLEAVER,REAUNA	*	2-4	0-0	0-2	2	2	4	1	4	1	1	2	17	
24	STAHLY,TAYLOR	*	2-6	2-5	0-0	0	0	0	1	6	0	2	0	19	
34	MALONE,ALEXUS	*	6-14	1-6	4-5	3	6	9	0	17	1	1	0	18	
10	DIXON,AMBER		1-1	0-0	0-0	0	2	2	2	2	2	2	0	7	
12	MCCUTCHEON,DARIA		0-0	0-0	0-0	1	0	1	0	0	0	0	0	6	
14	MCLEOD,ANNA		1-2	1-1	0-0	1	0	1	2	3	0	0	1	7	
25	MCDONALD,NIKKI		0-0	0-0	0-0	0	0	0	0	0	0	0	0	0	
32	WHITNEY,ZHANAE		1-1	0-0	1-2	0	0	0	0	3	0	0	0	3	
TEAM						2	0	2	0		0				
Totals			16-34	4-13	5-9	10	10	20	10	41	10	10	4	5	100

FG % 3rd Qtr 8-16 50.0% 4th Qtr 8-18 44.4% Half: 16-34 47.1%
 3FG % 3rd Qtr 1-4 25.0% 4th Qtr 3-9 33.3% Half: 4-13 10.0%
 FT % 3rd Qtr 3-6 50.0% 4th Qtr 2-3 66.7% Half: 5-9 55.6%

Officials: Jules Gallien, Demaya Williams, John Fletcher
 Technical Fouls: Missouri State- None. Louisiana Tech- None.
 WNIT Round 1

Score by periods	1st	2nd	3rd	4th	Total
Missouri State	9	14	19	21	63
Louisiana Tech	12	6	20	21	59

Points	In Paint	Off T/O	2nd Chance	Fast Break	Bench
MSU	12	13	8	2	9
	22	6	6	4	8

Last FG - MSU 4th-01:06, LATECH 4th-00:25.
 MSU led for 14:05. LATECH led for 4:45. Game was tied for 1:04.

Score tied - 5 times
 Lead changed - 2 times

Missouri State vs Louisiana Tech
3/15/2018; 6:30 PM at Thomas Assembly Center (Ruston, La.)
Period 3 Play-By-Play



VISITORS: Missouri State	Time	Score	Margin	HOME: Louisiana Tech
SUB IN: EALY,SHAMEKA	10:00			
GOOD! JUMPER by EALY,SHAMEKA	09:41	18-25	V 7	
ASSIST by BUCKLEY,AUBREY	09:41			
	09:23			MISSED JUMPER by MALONE,ALEXUS
	09:23			REBOUND (OFF) by CLEAVER,REAUNA
FOUL by BUCKLEY,AUBREY	09:20			
	09:20			MISSED FT by CLEAVER,REAUNA
	09:20			REBOUND (DEADB) by TEAM
	09:20			MISSED FT by CLEAVER,REAUNA
REBOUND (DEF) by TEAM	09:20			
TURNOVER by WILLARD,ALEXA	08:59			
	08:58			STEAL by MALONE,ALEXUS
	08:53			MISSED 3PTR by STAHLY,TAYLOR
	08:53			REBOUND (OFF) by TEAM
	08:49			FOUL by ANTHONY,KIERRA
	08:49			TURNOVER by ANTHONY,KIERRA
	08:49			SUB IN: MCLEOD,ANNA
	08:49			SUB OUT: ANTHONY,KIERRA
GOOD! JUMPER by CALIP,BRICE	08:29	18-27	V 9	
	08:14	20-27	V 7	GOOD! LAYUP by LANG,KIERRA [PNT]
MISSED 3PTR by EALY,SHAMEKA	07:54			
	07:54			REBOUND (DEF) by MALONE,ALEXUS
	07:48	22-27	V 5	GOOD! LAYUP by MALONE,ALEXUS [FB/PNT]
MISSED 3PTR by EALY,SHAMEKA	07:36			
REBOUND (OFF) by CALIP,BRICE	07:36			
GOOD! JUMPER by GITZEN,DANIELLE	07:28	22-29	V 7	
	07:01	24-29	V 5	GOOD! LAYUP by CLEAVER,REAUNA [PNT]
	07:01			ASSIST by LANG,KIERRA
MISSED LAYUP by WILLARD,ALEXA	06:44			
	06:44			BLOCK by MCLEOD,ANNA
REBOUND (OFF) by TEAM	06:44			
GOOD! LAYUP by GITZEN,DANIELLE [PNT]	06:42	24-31	V 7	
ASSIST by CALIP,BRICE	06:42			
	06:22	27-31	V 4	GOOD! 3PTR by MALONE,ALEXUS
	06:22			ASSIST by LANG,KIERRA
GOOD! JUMPER by BUCKLEY,AUBREY	06:11	27-33	V 6	
ASSIST by GITZEN,DANIELLE	06:11			
	05:55			MISSED JUMPER by MCLEOD,ANNA
REBOUND (DEF) by BUCKLEY,AUBREY	05:55			
SUB IN: POLOWY,LEE ANN	05:45			
SUB OUT: WILLARD,ALEXA	05:45			
	05:45			SUB IN: WHITNEY,ZHANA
	05:45			SUB IN: DIXON,AMBER
	05:45			SUB OUT: CLEAVER,REAUNA
	05:45			SUB OUT: LANG,KIERRA
MISSED LAYUP by GITZEN,DANIELLE	05:38			
	05:38			REBOUND (DEF) by DIXON,AMBER
FOUL by POLOWY,LEE ANN	05:16			
SUB IN: GARTNER,EMILY	05:16			
SUB OUT: BUCKLEY,AUBREY	05:16			
FOUL by CALIP,BRICE	05:15			
	05:15	28-33	V 5	GOOD! FT by WHITNEY,ZHANA
	05:15			MISSED FT by WHITNEY,ZHANA
REBOUND (DEF) by GARTNER,EMILY	05:15			
GOOD! LAYUP by GITZEN,DANIELLE [PNT]	05:05	28-35	V 7	
	04:48	30-35	V 5	GOOD! LAYUP by WHITNEY,ZHANA [PNT]
	04:48			ASSIST by MALONE,ALEXUS
TURNOVER by GITZEN,DANIELLE	04:37			
	04:35			STEAL by DIXON,AMBER
	04:31	32-35	V 3	GOOD! LAYUP by DIXON,AMBER [FB/PNT]
MISSED LAYUP by GARTNER,EMILY	04:12			
	04:12			REBOUND (DEF) by MALONE,ALEXUS
	03:58			MISSED 3PTR by MALONE,ALEXUS
REBOUND (DEF) by GARTNER,EMILY	03:58			
	03:46			FOUL by MCLEOD,ANNA
TIMEOUT MEDIA	03:46			
SUB IN: BUCKLEY,AUBREY	03:46			
SUB IN: HIPPI,ABBY	03:46			
SUB OUT: GARTNER,EMILY	03:46			

VISITORS: Missouri State	Time	Score	Margin	HOME: Louisiana Tech
SUB OUT: EALY,SHAMEKA	03:46			
	03:46			SUB IN: CLEAVER,REAUNA
	03:46			SUB IN: ANTHONY,KIERRA
	03:46			SUB OUT: STAHLY,TAYLOR
	03:46			SUB OUT: MALONE,ALEXUS
FOUL by CALIP,BRICE	03:41			
TURNOVER by CALIP,BRICE	03:41			
	03:30			TURNOVER by CLEAVER,REAUNA
STEAL by BUCKLEY,AUBREY	03:28			
MISSED LAYUP by BUCKLEY,AUBREY	03:10			
	03:10			BLOCK by CLEAVER,REAUNA
REBOUND (OFF) by HIPPI,ABBY	03:08			
GOOD! JUMPER by HIPPI,ABBY [PNT]	03:05	32-37	V 5	
	02:54			FOUL by ANTHONY,KIERRA
	02:54			TURNOVER by ANTHONY,KIERRA
SUB IN: RUFFRIDGE,ELLE	02:54			
SUB OUT: CALIP,BRICE	02:54			
	02:54			SUB IN: MALONE,ALEXUS
	02:54			SUB IN: STAHLY,TAYLOR
	02:54			SUB IN: MCCUTCHEON,DARIA
	02:54			SUB IN: LANG,KIERRA
	02:54			SUB OUT: CLEAVER,REAUNA
	02:54			SUB OUT: ANTHONY,KIERRA
	02:54			SUB OUT: MCLEOD,ANNA
	02:54			SUB OUT: DIXON,AMBER
	02:40			SUB IN: CLEAVER,REAUNA
	02:40			SUB OUT: WHITNEY,ZHANA
TURNOVER by GITZEN,DANIELLE	02:27			
	02:26			STEAL by LANG,KIERRA
	02:22			MISSED LAYUP by LANG,KIERRA
REBOUND (DEF) by HIPPI,ABBY	02:22			
TURNOVER by RUFFRIDGE,ELLE	02:09			
	02:08			STEAL by MALONE,ALEXUS
	02:05			MISSED LAYUP by STAHLY,TAYLOR
REBOUND (DEF) by HIPPI,ABBY	02:05			
SUB IN: CALIP,BRICE	01:51			
SUB OUT: GITZEN,DANIELLE	01:51			
GOOD! JUMPER by BUCKLEY,AUBREY	01:47	32-39	V 7	
ASSIST by CALIP,BRICE	01:47			
	01:25			MISSED LAYUP by CLEAVER,REAUNA
	01:25			REBOUND (OFF) by MALONE,ALEXUS
FOUL by BUCKLEY,AUBREY	01:25			
	01:25	33-39	V 6	GOOD! FT by MALONE,ALEXUS
	01:25	34-39	V 5	GOOD! FT by MALONE,ALEXUS
SUB IN: EALY,SHAMEKA	01:25			
SUB OUT: BUCKLEY,AUBREY	01:25			
MISSED LAYUP by POLOWY,LEE ANN	01:07			
REBOUND (OFF) by POLOWY,LEE ANN	01:07			
TURNOVER by POLOWY,LEE ANN	01:01			
	01:01			STEAL by LANG,KIERRA
	00:46	36-39	V 3	GOOD! LAYUP by MALONE,ALEXUS [PNT]
GOOD! 3PTR by EALY,SHAMEKA	00:33	36-42	V 6	
ASSIST by CALIP,BRICE	00:33			
	00:17	38-42	V 4	GOOD! LAYUP by MALONE,ALEXUS [PNT]
	00:17			ASSIST by LANG,KIERRA
MISSED 3PTR by RUFFRIDGE,ELLE	00:07			
	00:07			REBOUND (DEF) by MALONE,ALEXUS
	00:01			MISSED 3PTR by MALONE,ALEXUS
	00:01			REBOUND (OFF) by TEAM
SUB IN: BUCKLEY,AUBREY	00:00			
SUB IN: WILLARD,ALEXA	00:00			
SUB OUT: RUFFRIDGE,ELLE	00:00			
SUB OUT: HIPPI,ABBY	00:00			

Missouri State 63, Louisiana Tech 59

Period 3-only	In Paint	Off T/O	2nd Chance	Fast Break	Bench	
MSU	6	4	6	0	7	Score tied - 0 times
LATECH	14	4	2	4	5	Lead changed - 0 times

Missouri State vs Louisiana Tech
 3/15/2018; 6:30 PM at Thomas Assembly Center (Ruston, La.)
 Period 4 Play-By-Play



VISITORS: Missouri State	Time	Score	Margin	HOME: Louisiana Tech
MISSED JUMPER by BUCKLEY,AUBREY	09:46			
	09:46			BLOCK by CLEAVER,REAUNA
	09:45			REBOUND (DEF) by CLEAVER,REAUNA
	09:35			TURNOVER by MALONE,ALEXUS
STEAL by BUCKLEY,AUBREY	09:34			
MISSED 3PTR by EALY,SHAMEKA	09:23			
REBOUND (OFF) by BUCKLEY,AUBREY	09:23			
MISSED LAYUP by CALIP,BRICE	09:13			
	09:13			REBOUND (DEF) by MALONE,ALEXUS
	09:03			MISSED 3PTR by MALONE,ALEXUS
	09:03			REBOUND (OFF) by LANG,KIERRA
FOUL by BUCKLEY,AUBREY	09:01			
SUB IN: EALY,SHAMEKA	09:01			
SUB IN: HIPPI,ABBY	09:01			
SUB OUT: FRUENDT,LIZA	09:01			
SUB OUT: BUCKLEY,AUBREY	09:01			
	08:56	40-42	V 2	GOOD! LAYUP by MALONE,ALEXUS [PNT]
	08:56			ASSIST by LANG,KIERRA
FOUL by GITZEN,DANIELLE	08:56			
	08:56			MISSED FT by MALONE,ALEXUS
	08:56			REBOUND (OFF) by MCCUTCHEON,DARIA
	08:47	42-42	T	GOOD! LAYUP by MALONE,ALEXUS [PNT]
	08:47			ASSIST by CLEAVER,REAUNA
GOOD! JUMPER by EALY,SHAMEKA	08:25	42-44	V 2	
ASSIST by CALIP,BRICE	08:25			
FOUL by GITZEN,DANIELLE	07:56			
	07:56	43-44	V 1	GOOD! FT by MALONE,ALEXUS
	07:56	44-44	T	GOOD! FT by MALONE,ALEXUS
	07:56			SUB IN: DIXON,AMBER
	07:56			SUB OUT: LANG,KIERRA
	07:38			FOUL by STAHL,TAYLOR
MISSED FT by CALIP,BRICE	07:38			
REBOUND (DEADB) by TEAM	07:38			
GOOD! FT by CALIP,BRICE	07:38	44-45	V 1	
	07:29			TIMEOUT TEAM
	07:29			TIMEOUT media
	07:29			SUB IN: MCCUTCHEON,DARIA
	07:29			SUB OUT: ANTHONY,KIERRA
	07:22			TURNOVER by STAHL,TAYLOR
TURNOVER by HIPPI,ABBY	06:56			
SUB IN: BUCKLEY,AUBREY	06:56			
SUB OUT: HIPPI,ABBY	06:56			
	06:56			SUB IN: ANTHONY,KIERRA
	06:56			SUB OUT: MCCUTCHEON,DARIA
	06:48	46-45	H 1	GOOD! LAYUP by ANTHONY,KIERRA [PNT]
MISSED JUMPER by EALY,SHAMEKA	06:29			
	06:29			REBOUND (DEF) by MALONE,ALEXUS
	06:20	49-45	H 4	GOOD! 3PTR by STAHL,TAYLOR
	06:20			ASSIST by DIXON,AMBER
TIMEOUT TEAM	06:13			
	06:13			SUB IN: MCCUTCHEON,DARIA
	06:13			SUB OUT: ANTHONY,KIERRA
GOOD! JUMPER by WILLARD,ALEXA	05:59	49-47	H 2	
	05:51			TURNOVER by DIXON,AMBER
STEAL by BUCKLEY,AUBREY	05:50			
	05:39			FOUL by DIXON,AMBER
GOOD! FT by CALIP,BRICE	05:39	49-48	H 1	
GOOD! FT by CALIP,BRICE	05:39	49-49	T	
	05:39			SUB IN: ANTHONY,KIERRA
	05:39			SUB OUT: MCCUTCHEON,DARIA
	05:35	51-49	H 2	GOOD! JUMPER by ANTHONY,KIERRA
MISSED LAYUP by GITZEN,DANIELLE	05:24			
	05:24			REBOUND (DEF) by DIXON,AMBER
	05:20			TURNOVER by DIXON,AMBER
STEAL by BUCKLEY,AUBREY	05:18			
GOOD! LAYUP by GITZEN,DANIELLE [FB/PNT]	05:17	51-51	T	
ASSIST by BUCKLEY,AUBREY	05:17			
	04:57	54-51	H 3	GOOD! 3PTR by STAHL,TAYLOR
	04:57			ASSIST by DIXON,AMBER

VISITORS: Missouri State	Time	Score	Margin	HOME: Louisiana Tech
	04:41			FOUL by DIXON,AMBER
	04:41			SUB IN: LANG,KIERRA
	04:41			SUB IN: MCCUTCHEON,DARIA
	04:41			SUB OUT: DIXON,AMBER
	04:41			SUB OUT: ANTHONY,KIERRA
MISSED JUMPER by CALIP,BRICE	04:37			
	04:37			REBOUND (DEF) by MALONE,ALEXUS
	04:10	56-51	H 5	GOOD! LAYUP by CLEAVER,REAUNA [PNT]
	04:10			ASSIST by LANG,KIERRA
MISSED 3PTR by BUCKLEY,AUBREY	03:50			
	03:50			REBOUND (DEF) by CLEAVER,REAUNA
	03:38			TURNOVER by STAHLY,TAYLOR
SUB IN: POLOWY,LEE ANN	03:38			
SUB OUT: CALIP,BRICE	03:38			
MISSED LAYUP by BUCKLEY,AUBREY	03:27			
	03:27			BLOCK by LANG,KIERRA
REBOUND (OFF) by TEAM	03:27			
GOOD! LAYUP by GITZEN,DANIELLE [PNT]	03:22	56-53	H 3	
	02:51			MISSED 3PTR by STAHLY,TAYLOR
REBOUND (DEF) by GITZEN,DANIELLE	02:51			
GOOD! JUMPER by WILLARD,ALEXA	02:43	56-55	H 1	
ASSIST by GITZEN,DANIELLE	02:43			
	02:36			TIMEOUT 30SEC
	02:36			SUB IN: ANTHONY,KIERRA
	02:36			SUB OUT: MCCUTCHEON,DARIA
	02:25			MISSED LAYUP by CLEAVER,REAUNA
	02:25			REBOUND (OFF) by CLEAVER,REAUNA
	02:05			MISSED 3PTR by MALONE,ALEXUS
	02:05			REBOUND (OFF) by MALONE,ALEXUS
	01:58			MISSED JUMPER by MALONE,ALEXUS
BLOCK by WILLARD,ALEXA	01:58			
	01:56			REBOUND (OFF) by MALONE,ALEXUS
	01:46			TURNOVER by LANG,KIERRA
STEAL by BUCKLEY,AUBREY	01:44			
	01:39			FOUL by CLEAVER,REAUNA
GOOD! FT by BUCKLEY,AUBREY	01:39	56-56	T	
GOOD! FT by BUCKLEY,AUBREY	01:39	56-57	V 1	
SUB IN: CALIP,BRICE	01:39			
SUB OUT: WILLARD,ALEXA	01:39			
	01:39			SUB IN: MCLEOD,ANNA
	01:39			SUB OUT: CLEAVER,REAUNA
	01:28			MISSED 3PTR by STAHLY,TAYLOR
REBOUND (DEF) by EALY,SHAMEKA	01:28			
SUB IN: WILLARD,ALEXA	01:19			
SUB OUT: POLOWY,LEE ANN	01:19			
	01:19			SUB IN: DIXON,AMBER
	01:19			SUB IN: CLEAVER,REAUNA
	01:19			SUB OUT: MCLEOD,ANNA
	01:19			SUB OUT: MALONE,ALEXUS
GOOD! JUMPER by CALIP,BRICE [PNT]	01:06	56-59	V 3	
	00:42			MISSED 3PTR by ANTHONY,KIERRA
REBOUND (DEF) by CALIP,BRICE	00:42			
	00:35			FOUL by LANG,KIERRA
GOOD! FT by CALIP,BRICE	00:35	56-60	V 4	
GOOD! FT by CALIP,BRICE	00:35	56-61	V 5	
	00:35			TIMEOUT TEAM
SUB IN: POLOWY,LEE ANN	00:35			
SUB OUT: WILLARD,ALEXA	00:35			
	00:35			SUB IN: MALONE,ALEXUS
	00:35			SUB IN: MCLEOD,ANNA
	00:35			SUB OUT: DIXON,AMBER
	00:35			SUB OUT: CLEAVER,REAUNA
	00:29			MISSED LAYUP by ANTHONY,KIERRA
REBOUND (DEF) by GITZEN,DANIELLE	00:29			
	00:28			FOUL by LANG,KIERRA
MISSED FT by GITZEN,DANIELLE	00:28			
REBOUND (DEADB) by TEAM	00:28			
GOOD! FT by GITZEN,DANIELLE	00:28	56-62	V 6	
	00:25	59-62	V 3	GOOD! 3PTR by MCLEOD,ANNA
	00:25			ASSIST by LANG,KIERRA
TIMEOUT 30SEC	00:25			
SUB IN: RUFFRIDGE,ELLE	00:25			
SUB IN: WILLARD,ALEXA	00:25			
SUB OUT: EALY,SHAMEKA	00:25			
SUB OUT: POLOWY,LEE ANN	00:25			

VISITORS: Missouri State	Time	Score	Margin	HOME: Louisiana Tech
	00:25			SUB IN: MCCUTCHEON,DARIA
	00:25			SUB IN: DIXON,AMBER
	00:25			SUB OUT: ANTHONY,KIERRA
	00:25			SUB OUT: LANG,KIERRA
TURNOVER by BUCKLEY,AUBREY	00:24			
SUB IN: POLOWY,LEE ANN	00:24			
SUB IN: EALY,SHAMEKA	00:24			
SUB OUT: RUFFRIDGE,ELLE	00:24			
SUB OUT: WILLARD,ALEXA	00:24			
	00:24			SUB IN: LANG,KIERRA
	00:24			SUB IN: ANTHONY,KIERRA
	00:24			SUB OUT: MCCUTCHEON,DARIA
	00:24			SUB OUT: DIXON,AMBER
	00:18			TURNOVER by LANG,KIERRA
STEAL by GITZEN,DANIELLE	00:18			
	00:17			FOUL by MCLEOD,ANNA
MISSED FT by GITZEN,DANIELLE	00:17			
REBOUND (DEADB) by TEAM	00:17			
GOOD! FT by GITZEN,DANIELLE	00:17	59-63	V 4	
	00:17			TIMEOUT TEAM
	00:09			MISSED 3PTR by MALONE,ALEXUS
	00:09			REBOUND (OFF) by MCLEOD,ANNA
	00:03			MISSED JUMPER by MALONE,ALEXUS
REBOUND (DEF) by BUCKLEY,AUBREY	00:03			

Missouri State 63, Louisiana Tech 59

Period 4-only	In Paint	Off T/O	2nd Chance	Fast Break	Bench	
MSU	6	9	2	2	2	Score tied - 6 times
LATECH	8	2	4	0	3	Lead changed - 2 times

Missouri State vs Louisiana Tech
 3/15/2018; 6:30 PM at Thomas Assembly Center (Ruston, La.)
 Scoring/Runs Reference



Period 1

Missouri State	VRun	Score	Margin	HRun	Louisiana Tech
		0-2	2		ANTHONY LAYUP [P] [F] - 09:16
08:18 - FRUENDT JUMPER	-	2-2	0		
		2-4	2		ANTHONY LAYUP [P] - 08:10
07:41 - CALIP JUMPER [P]	-	4-4	0		
06:11 - WILLARD LAYUP [P]	4-0	6-4	-2		
		6-7	1		ANTHONY 3PTR - 05:20
		6-9	3	5-0	MALONE LAYUP [P] - 03:02
		6-10	4	6-0	MALONE FT - 03:02
02:50 - HIPPIE JUMPER [P]	-	8-10	2		
		8-12	4		MALONE LAYUP [P] - 01:52
01:28 - CALIP FT	-	9-12	3		

Missouri State vs Louisiana Tech
 3/15/2018; 6:30 PM at Thomas Assembly Center (Ruston, La.)
 Scoring/Runs Reference



Period 2

Missouri State	VRun	Score	Margin	HRun	Louisiana Tech
09:34 - GITZEN LAYUP [P]	-	11-12	1		
		11-14	3		STAHLY JUMPER - 09:24
09:04 - BUCKLEY LAYUP [P]	-	13-14	1		
06:44 - GARTNER FT	3-0	14-14	0		
06:44 - GARTNER FT	4-0	15-14	-1		
		15-16	1		DIXON JUMPER - 05:34
03:24 - GITZEN FT	-	16-16	0		
01:20 - BUCKLEY 3PTR	4-0	19-16	-3		
		19-18	-1		MALONE LAYUP [P] - 01:04
00:55 - CALIP FT	-	20-18	-2		
00:55 - CALIP FT	2-0	21-18	-3		
00:01 - CALIP FT	3-0	22-18	-4		
00:01 - CALIP FT	4-0	23-18	-5		

Missouri State vs Louisiana Tech
 3/15/2018; 6:30 PM at Thomas Assembly Center (Ruston, La.)
 Scoring/Runs Reference



Period 3

Missouri State	VRun	Score	Margin	HRun	Louisiana Tech
09:41 - EALY JUMPER	-	25-18	-7		
08:29 - CALIP JUMPER	NaN-0	27-18	-9		
		27-20	-7		LANG LAYUP [P] - 08:14
		27-22	-5	4-0	MALONE LAYUP [P] [F] - 07:48
07:28 - GITZEN JUMPER	-	29-22	-7		
		29-24	-5		CLEAVER LAYUP [P] - 07:01
06:42 - GITZEN LAYUP [P]	-	31-24	-7		
		31-27	-4		MALONE 3PTR - 06:22
06:11 - BUCKLEY JUMPER	-	33-27	-6		
		33-28	-5		WHITNEY FT - 05:15
05:05 - GITZEN LAYUP [P]	-	35-28	-7		
		35-30	-5		WHITNEY LAYUP [P] - 04:48
		35-32	-3	4-0	DIXON LAYUP [P] [F] - 04:31
03:05 - HIPPIE JUMPER [P]	-	37-32	-5		
01:47 - BUCKLEY JUMPER	4-0	39-32	-7		
		39-33	-6		MALONE FT - 01:25
		39-34	-5	2-0	MALONE FT - 01:25
		39-36	-3	4-0	MALONE LAYUP [P] - 00:46
00:33 - EALY 3PTR	-	42-36	-6		
		42-38	-4		MALONE LAYUP [P] - 00:17

Missouri State vs Louisiana Tech
 3/15/2018; 6:30 PM at Thomas Assembly Center (Ruston, La.)
 Scoring/Runs Reference

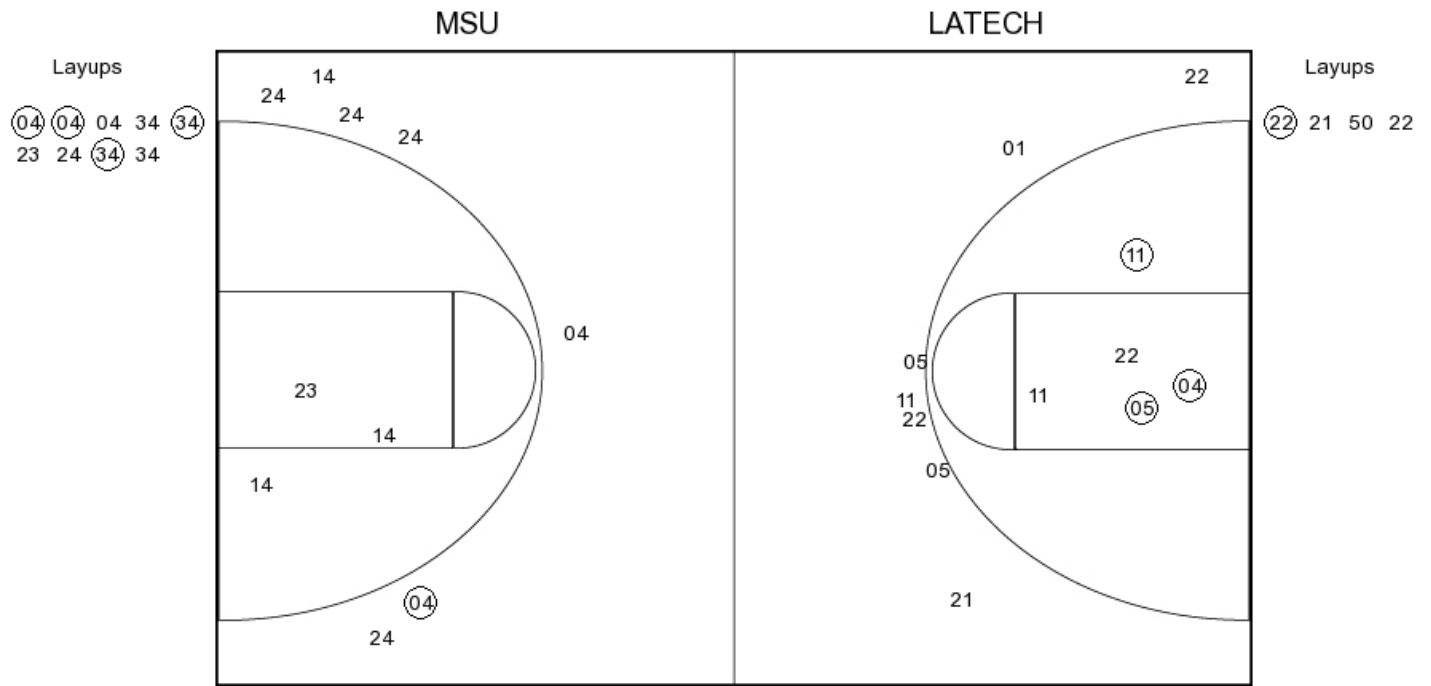


Period 4

Missouri State	VRun	Score	Margin	HRun	Louisiana Tech
		42-40	-2		MALONE LAYUP [P] - 08:56
		42-42	0	NaN-0	MALONE LAYUP [P] - 08:47
08:25 - EALY JUMPER	-	44-42	-2		
		44-43	-1		MALONE FT - 07:56
		44-44	0	2-0	MALONE FT - 07:56
07:38 - CALIP FT	-	45-44	-1		
		45-46	1		ANTHONY LAYUP [P] - 06:48
		45-49	4	5-0	STAHLY 3PTR - 06:20
05:59 - WILLARD JUMPER	-	47-49	2		
05:39 - CALIP FT	3-0	48-49	1		
05:39 - CALIP FT	4-0	49-49	0		
		49-51	2		ANTHONY JUMPER - 05:35
05:17 - GITZEN LAYUP [P] [F]	-	51-51	0		
		51-54	3		STAHLY 3PTR - 04:57
		51-56	5	5-0	CLEAVER LAYUP [P] - 04:10
03:22 - GITZEN LAYUP [P]	-	53-56	3		
02:43 - WILLARD JUMPER	4-0	55-56	1		
01:39 - BUCKLEY FT	5-0	56-56	0		
01:39 - BUCKLEY FT	6-0	57-56	-1		
01:06 - CALIP JUMPER [P]	8-0	59-56	-3		
00:35 - CALIP FT	9-0	60-56	-4		
00:35 - CALIP FT	10-0	61-56	-5		
00:28 - GITZEN FT	11-0	62-56	-6		
		62-59	-3		MCLEOD 3PTR - 00:25
00:17 - GITZEN FT	-	63-59	-4		



PERIOD 1



MSU PERIOD 1

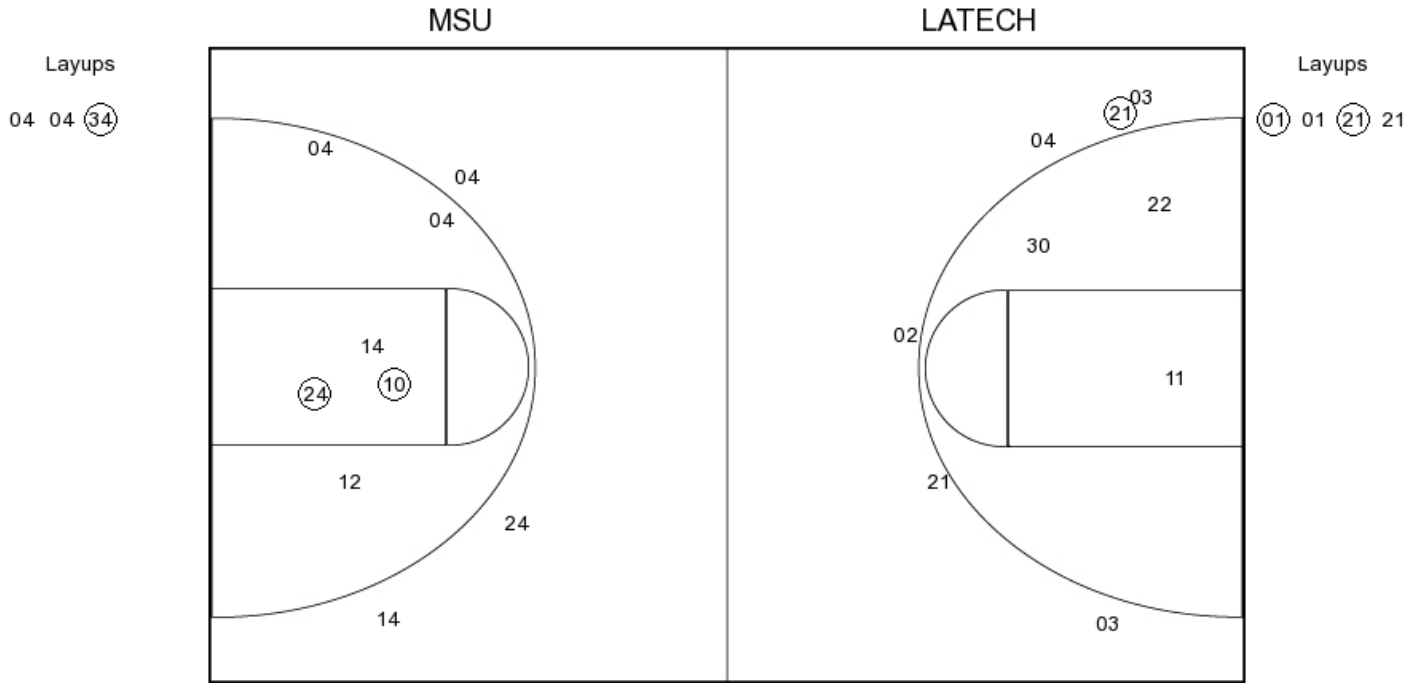
FG Made	7
FG Attempted	29
3PFG Made	1
3PFG Attempted	13

LATECH PERIOD 1

FG Made	8
FG Attempted	31
3PFG Made	1
3PFG Attempted	10



PERIOD 2



MSU PERIOD 2

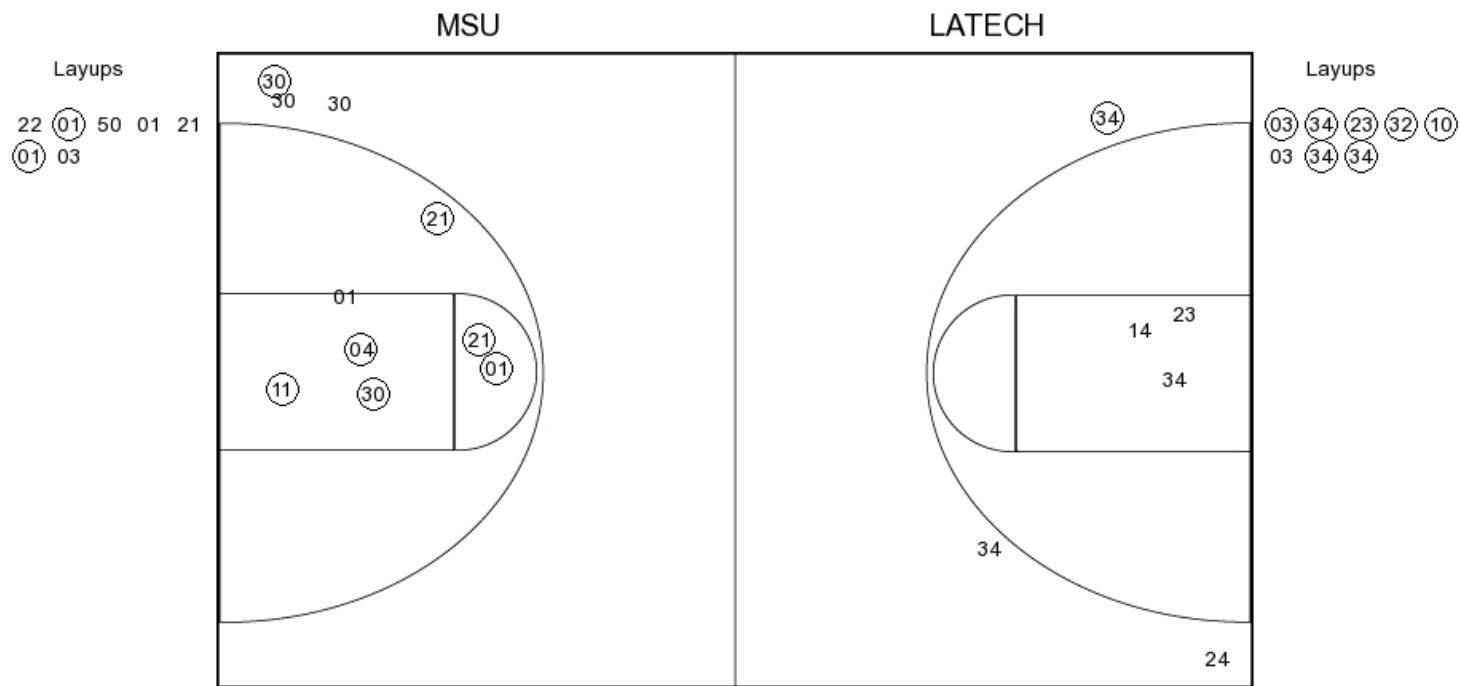
FG Made
 FG Attempted
 3PFG Made
 3PFG Attempted

LATECH PERIOD 2

FG Made
 FG Attempted
 3PFG Made
 3PFG Attempted



PERIOD 3



MSU PERIOD 3

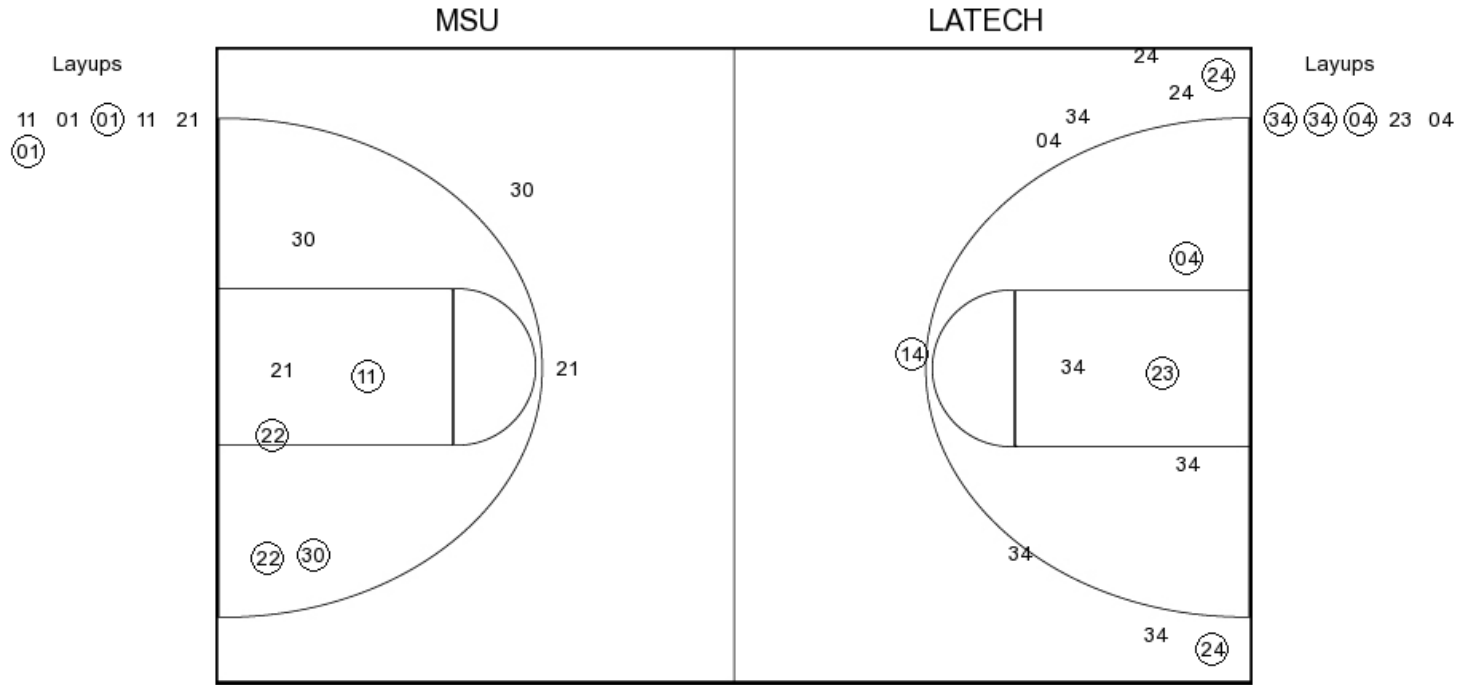
FG Made	15
FG Attempted	31
3PFG Made	1
3PFG Attempted	6

LATECH PERIOD 3

FG Made	16
FG Attempted	34
3PFG Made	4
3PFG Attempted	13



PERIOD 4



MSU PERIOD 4

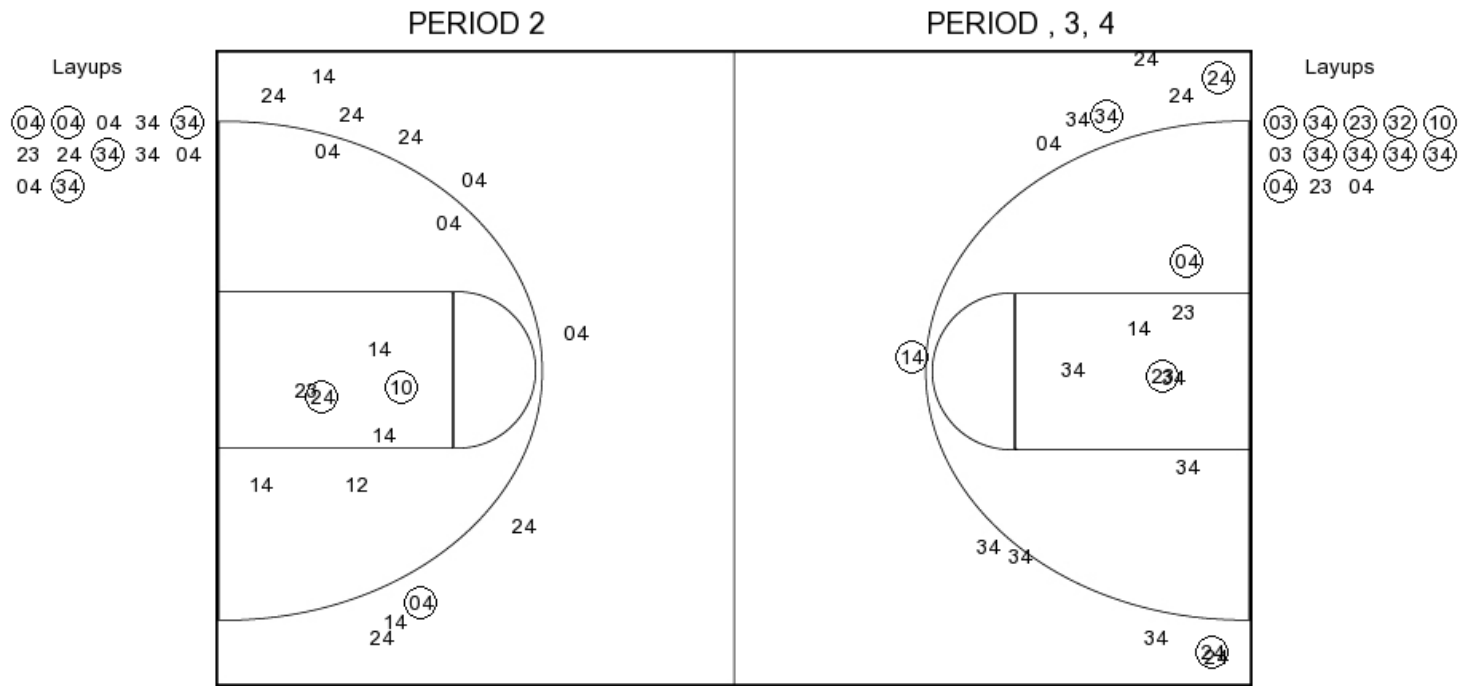
FG Made
 FG Attempted
 3PFG Made
 3PFG Attempted

LATECH PERIOD 4

FG Made
 FG Attempted
 3PFG Made
 3PFG Attempted



Louisiana Tech



LATECH PERIOD 1

FG Made	8
FG Attempted	31
3PFG Made	1
3PFG Attempted	10

LATECH PERIOD 2

FG Made	
FG Attempted	
3PFG Made	
3PFG Attempted	