

## FINAL SCORE

**Southeastern Okla.**

9-8, 8-4 GAC

**67**

**Harding**

1-16, 1-11 GAC

**73**

January 27, 2018 • Searcy, Ark. (Rhodes-Reaves Field House)

## FINAL STATISTICS

**Official Basketball Box Score -- Game Totals -- Final Statistics**  
**Southeastern Okla. vs Harding**  
**1/27/2018 3 p.m. at Searcy, Ark. (Rhodes-Reaves Field House)**

**Southeastern Okla. 67 - 9-8, 8-4 GAC**

##	Player	g	Total	3-Ptr	FT-FTA	Rebounds			PF	TP	A	TO	Blk	Stl	Min
			FG-FGA	FG-FGA		Off	Def	Tot							
02	DWORSKY,ADAM		5-11	1-3	2-2	0	2	2	1	13	5	1	0	1	32
03	EVERETT,A'TOREY		6-17	0-1	1-1	3	3	6	4	13	0	2	0	1	32
15	JOBE,JETT		2-8	1-2	3-4	2	2	4	5	8	2	4	0	3	37
20	BUCKINGHAM,KEVIN		8-16	2-4	8-9	6	8	14	5	26	0	2	0	2	36
40	LIBANIO,JOSE		0-2	0-2	2-2	0	3	3	4	2	0	0	1	1	10
05	JOHNSON,BOBBY		0-3	0-1	1-2	0	1	1	0	1	0	0	0	0	11
11	HENDERSON,DJ		0-5	0-3	0-0	0	1	1	1	0	1	1	0	1	12
22	ROSIC,STEFAN		0-0	0-0	0-0	0	0	0	1	0	0	1	0	0	5
24	NESBITT,MYLES		0-1	0-0	0-0	1	1	2	1	0	0	0	0	0	7
33	DONELAN,JAMES		1-3	0-0	0-0	0	4	4	1	2	1	1	0	1	16
42	PALMER,ANTHONY		1-2	0-0	0-0	1	1	2	0	2	0	0	0	0	2
	TEAM					1	2	3	0		0				
TOTALS			23-68	4-16	17-20	14	28	42	23	67	9	12	1	10	200

Deadball Rebounds: 2,0

FG %	1st Half:	13-31	41.9%	2nd Half:	10-37	27.0%	Game:	23-68	33.8%
3FG %	1st Half:	1-5	20.0%	2nd Half:	3-11	27.3%	Game:	4-16	25.0%
FT %	1st Half:	4-6	66.7%	2nd Half:	13-14	92.9%	Game:	17-20	85.0%

**Harding 73 - 1-16, 1-11 GAC**

##	Player	g	Total	3-Ptr	FT-FTA	Rebounds			PF	TP	A	TO	Blk	Stl	Min
			FG-FGA	FG-FGA		Off	Def	Tot							
03	ANTHONY,REGGIE		5-11	0-2	0-1	1	4	5	4	10	7	4	3	1	31
04	WARD,ZAC		5-9	4-7	3-5	0	2	2	3	17	1	0	1	0	31
10	ROTH,TYLER		3-7	1-2	2-3	2	4	6	0	9	6	3	0	3	34
12	REEVES,BRANDON		3-5	0-0	1-2	0	1	1	5	7	0	0	3	0	12
15	FRANCIS,ALEX		2-4	1-2	1-2	1	5	6	3	6	2	1	0	4	32
01	WAGNER,TIM		1-6	0-3	1-1	0	2	2	3	3	0	1	0	0	11
02	MEDJO,FILIP		0-1	0-0	0-0	0	0	0	0	0	0	1	0	0	5
22	SANDERSON,GARRETT		0-0	0-0	0-0	0	1	1	0	0	0	0	0	0	5
24	EGGLESTON,BRADEN		5-8	2-2	2-3	1	3	4	4	14	0	3	0	0	19
34	HORN,ADAM		2-4	0-0	3-6	2	6	8	0	7	1	4	0	0	21
	TEAM					2	2	4	0		0				
TOTALS			26-55	8-18	13-23	9	30	39	22	73	17	17	7	8	201

Deadball Rebounds: 2,2

FG %	1st Half:	11-28	39.3%	2nd Half:	15-27	55.6%	Game:	26-55	47.3%
3FG %	1st Half:	4-11	36.4%	2nd Half:	4-7	57.1%	Game:	8-18	44.4%
FT %	1st Half:	5-10	50.0%	2nd Half:	8-13	61.5%	Game:	13-23	56.5%

Officials: Robert Burris, Shea Hamilton and Justin Brewer  
 Technical Fouls: Southeastern Okla.- None. Harding- None.  
 Attendance: 902

Score by periods	1st	2nd	Total
Southeastern Okla.	31	36	67
Harding	31	42	73

Points	Off T/O	2nd Chance	Bench
SOSU	19	14	5
HU	12	4	24

Last FG - SOSU 2nd-00:03, HU 2nd-02:00.  
 Largest lead - Southeastern Okla. by 9 1st-09:39; Harding by 15 2nd-10:36  
 SOSU led for 17:00. HU led for 19:50. Game was tied for 3:10.

Score tied - 5 times; Lead changed - 3 times

**Official Basketball Box Score -- Game Totals -- First Half Statistics**  
**Southeastern Okla. vs Harding**  
**1/27/2018 3 p.m. at Searcy, Ark. (Rhodes-Reaves Field House)**

**Southeastern Okla. 31 • 9-8, 8-4 GAC**

##	Player	g	Total			Rebounds			PF	TP	A	TO	Blk	Stl	Min
			FG-FGA	3-Ptr FG-FGA	FT-FTA	Off	Def	Tot							
02	DWORSKY,ADAM	g	3-5	0-0	2-2	0	2	2	0	8	2	1	0	0	15
03	EVERETT,A'TOREY	g	3-7	0-1	0-0	0	1	1	0	6	0	0	0	1	15
15	JOBE,JETT	g	1-5	1-1	0-1	1	2	3	2	3	2	2	0	1	18
20	BUCKINGHAM,KEVIN	f	5-9	0-1	2-3	4	5	9	2	12	0	1	0	1	16
40	LIBANIO,JOSE	f	0-1	0-1	0-0	0	1	1	3	0	0	0	0	0	5
05	JOHNSON,BOBBY		0-1	0-1	0-0	0	0	0	0	0	0	0	0	0	7
11	HENDERSON,DJ		0-0	0-0	0-0	0	1	1	1	0	1	1	0	1	5
22	ROSIC,STEFAN		0-0	0-0	0-0	0	0	0	0	0	0	0	0	0	0
24	NESBITT,MYLES		0-0	0-0	0-0	0	0	0	0	0	0	0	0	0	5
33	DONELAN,JAMES		1-3	0-0	0-0	0	3	3	1	2	1	0	0	1	12
42	PALMER,ANTHONY		0-0	0-0	0-0	0	1	1	0	0	0	0	0	0	2
TEAM						0	0	0	0		0				
Totals			13-31	1-5	4-6	5	16	21	9	31	6	5	0	5	100

FG % Half: 13-31 41.9%  
 3FG % Half: 1-5 20.0%  
 FT % Half: 4-6 66.7%

**Harding 31 • 1-16, 1-11 GAC**

##	Player	g	Total			Rebounds			PF	TP	A	TO	Blk	Stl	Min
			FG-FGA	3-Ptr FG-FGA	FT-FTA	Off	Def	Tot							
03	ANTHONY,REGGIE	g	2-4	0-1	0-1	1	3	4	1	4	2	1	0	0	13
04	WARD,ZAC	g	2-5	2-4	0-0	0	1	1	2	6	0	0	0	0	17
10	ROTH,TYLER	g	1-4	0-1	1-1	0	1	1	0	3	1	1	0	2	17
12	REEVES,BRANDON	f	1-2	0-0	1-2	0	1	1	2	3	0	0	3	0	7
15	FRANCIS,ALEX	g	1-3	1-2	0-0	1	1	2	2	3	1	1	0	1	13
01	WAGNER,TIM		1-3	0-2	1-1	0	2	2	2	3	0	1	0	0	5
02	MEDJO,FILIP		0-1	0-0	0-0	0	0	0	0	0	0	1	0	0	5
22	SANDERSON,GARRETT		0-0	0-0	0-0	0	1	1	0	0	0	0	0	0	5
24	EGGLESTON,BRADEN		3-4	1-1	0-1	1	2	3	1	7	0	0	0	0	11
34	HORN,ADAM		0-2	0-0	2-4	0	2	2	0	2	1	2	0	0	7
TEAM						2	0	2	0		0				
Totals			11-28	4-11	5-10	5	14	19	10	31	5	7	3	3	100

FG % Half: 11-28 39.3%  
 3FG % Half: 4-11 36.4%  
 FT % Half: 5-10 50.0%

Officials: Robert Burris, Shea Hamilton and Justin Brewer  
 Technical Fouls: Southeastern Okla.- None. Harding- None.

Score by periods	1st	2nd	Total
Southeastern Okla.	31	36	<b>67</b>
Harding	31	42	<b>73</b>

Points	In Paint	Off T/O	2nd Chance	Bench
SOSU	0	10	8	2
HU	0	3	2	12

Last FG - SOSU 1st-02:49, HU 1st-00:02.  
 SOSU led for 17:00. HU led for 0:33. Game was tied for 2:27.

Score tied - 4 times  
 Lead changed - 2 times

**Southeastern Okla. vs Harding**  
**1/27/2018; 3 p.m. at Searcy, Ark. (Rhodes-Reaves Field House)**  
**Period 1 Play-By-Play**

VISITORS: Southeastern Okla.	Time	Score	Margin	HOME: Harding
	19:37			MISSED LAYUP by ROTH,TYLER
REBOUND (DEF) by BUCKINGHAM,KEVIN	19:37			
MISSED LAYUP by JOBE,JETT	19:16			
	19:16			BLOCK by REEVES,BRANDON
REBOUND (OFF) by BUCKINGHAM,KEVIN	19:15			
GOOD! JUMPER by EVERETT,A'TOREY [PNT]	19:14	0-2	V 2	
ASSIST by JOBE,JETT	19:14			
	18:56			MISSED JUMPER by WARD,ZAC
REBOUND (DEF) by LIBANIO,JOSE	18:56			
	18:47			FOUL by ANTHONY,REGGIE
TURNOVER by JOBE,JETT	18:45			
	18:44			STEAL by ROTH,TYLER
	18:21			MISSED LAYUP by REEVES,BRANDON
	18:21			REBOUND (OFF) by TEAM
	18:19			TURNOVER by ANTHONY,REGGIE
STEAL by EVERETT,A'TOREY	18:18			
GOOD! LAYUP by EVERETT,A'TOREY [FB/PNT]	18:15	0-4	V 4	
FOUL by JOBE,JETT	17:52			
	17:52			MISSED FT by REEVES,BRANDON
	17:52			REBOUND (DEADB) by TEAM
MISSED 3PTR by LIBANIO,JOSE	17:52	1-4	V 3	GOOD! FT by REEVES,BRANDON
	17:52			REBOUND (DEF) by HORN,ADAM
	17:52	3-4	V 1	GOOD! LAYUP by REEVES,BRANDON [PNT]
	17:52			SUB IN: HORN,ADAM
	17:52			SUB OUT: ANTHONY,REGGIE
GOOD! LAYUP by BUCKINGHAM,KEVIN [PNT]	16:49	3-6	V 3	
ASSIST by JOBE,JETT	16:49			
FOUL by LIBANIO,JOSE	16:38			
	16:38	4-6	V 2	GOOD! FT by HORN,ADAM
	16:38			MISSED FT by HORN,ADAM
REBOUND (DEF) by EVERETT,A'TOREY	16:38			
MISSED JUMPER by JOBE,JETT	16:26			
	16:26			REBOUND (DEF) by REEVES,BRANDON
FOUL by LIBANIO,JOSE	16:24			
SUB IN: DONELAN,JAMES	16:24			
SUB OUT: LIBANIO,JOSE	16:24			
	16:09	7-6	H 1	GOOD! 3PTR by FRANCIS,ALEX
	16:09			ASSIST by HORN,ADAM
MISSED LAYUP by DWORSKY,ADAM	15:59			
	15:59			BLOCK by REEVES,BRANDON
	15:57			REBOUND (DEF) by FRANCIS,ALEX
	15:55			MISSED LAYUP by FRANCIS,ALEX
	15:55			REBOUND (OFF) by FRANCIS,ALEX
	15:42			TURNOVER by HORN,ADAM
STEAL by BUCKINGHAM,KEVIN	15:41			
GOOD! LAYUP by BUCKINGHAM,KEVIN [PNT]	15:36	7-8	V 1	
ASSIST by DWORSKY,ADAM	15:36			
	15:09			MISSED LAYUP by HORN,ADAM
REBOUND (DEF) by DONELAN,JAMES	15:09			
	14:50			FOUL by REEVES,BRANDON
TIMEOUT MEDIA	14:50			
SUB IN: HENDERSON,DJ	14:45			
SUB IN: JOHNSON,BOBBY	14:45			
SUB OUT: DWORSKY,ADAM	14:45			
SUB OUT: EVERETT,A'TOREY	14:45			
MISSED LAYUP by BUCKINGHAM,KEVIN	14:38			
	14:38			BLOCK by REEVES,BRANDON
	14:37			REBOUND (DEF) by WARD,ZAC
	14:20			MISSED LAYUP by HORN,ADAM
REBOUND (DEF) by BUCKINGHAM,KEVIN	14:20			
GOOD! LAYUP by BUCKINGHAM,KEVIN [PNT]	14:00	7-10	V 3	
ASSIST by DONELAN,JAMES	14:00			
	13:26			MISSED LAYUP by ROTH,TYLER
REBOUND (DEF) by JOBE,JETT	13:26			
MISSED 3PTR by BUCKINGHAM,KEVIN	13:18			
	13:18			REBOUND (DEF) by HORN,ADAM
	13:12			TURNOVER by FRANCIS,ALEX
STEAL by JOBE,JETT	13:11			

VISITORS: Southeastern Okla.	Time	Score	Margin	HOME: Harding
	13:10			FOUL by REEVES, BRANDON
	13:10			SUB IN: MEDJO, FILIP
	13:10			SUB IN: ANTHONY, REGGIE
	13:10			SUB IN: EGGLESTON, BRADEN
	13:10			SUB IN: WAGNER, TIM
	13:10			SUB OUT: HORN, ADAM
	13:10			SUB OUT: WARD, ZAC
	13:10			SUB OUT: ROTH, TYLER
	13:10			SUB OUT: REEVES, BRANDON
	12:57			FOUL by WAGNER, TIM
	12:40			FOUL by FRANCIS, ALEX
SUB IN: DWORSKY, ADAM	12:40			
SUB OUT: JOBE, JETT	12:40			
GOOD! LAYUP by DONELAN, JAMES [PNT]	12:22	7-12	V 5	
ASSIST by DWORSKY, ADAM	12:22			
	12:13			MISSED 3PTR by WAGNER, TIM
REBOUND (DEF) by HENDERSON, DJ	12:13			
FOUL by BUCKINGHAM, KEVIN	12:03			
TURNOVER by BUCKINGHAM, KEVIN	12:03			
SUB IN: PALMER, ANTHONY	12:03			
SUB IN: EVERETT, A'TOREY	12:03			
SUB OUT: HENDERSON, DJ	12:03			
SUB OUT: BUCKINGHAM, KEVIN	12:03			
	11:50			MISSED 3PTR by WAGNER, TIM
	11:50			REBOUND (OFF) by TEAM
	11:47			TIMEOUT MEDIA
	11:39			TURNOVER by WAGNER, TIM
SUB IN: JOBE, JETT	11:39			
SUB OUT: JOHNSON, BOBBY	11:39			
TURNOVER by JOBE, JETT	11:23			
	11:22			STEAL by FRANCIS, ALEX
	11:03			MISSED LAYUP by ANTHONY, REGGIE
	11:03			REBOUND (OFF) by ANTHONY, REGGIE
	10:54			MISSED LAYUP by MEDJO, FILIP
REBOUND (DEF) by DONELAN, JAMES	10:54			
MISSED JUMPER by DONELAN, JAMES	10:40			
	10:40			REBOUND (DEF) by WAGNER, TIM
	10:24			MISSED 3PTR by FRANCIS, ALEX
REBOUND (DEF) by PALMER, ANTHONY	10:24			
GOOD! JUMPER by DWORSKY, ADAM [PNT]	10:06	7-14	V 7	
	10:03			TIMEOUT 30SEC
SUB IN: BUCKINGHAM, KEVIN	10:03			
SUB IN: LIBANIO, JOSE	10:03			
SUB OUT: PALMER, ANTHONY	10:03			
SUB OUT: DONELAN, JAMES	10:03			
	10:03			SUB IN: ROTH, TYLER
	10:03			SUB IN: WARD, ZAC
	10:03			SUB OUT: ANTHONY, REGGIE
	10:03			SUB OUT: FRANCIS, ALEX
	09:46			TURNOVER by MEDJO, FILIP
GOOD! LAYUP by DWORSKY, ADAM [PNT]	09:39	7-16	V 9	
	09:05	9-16	V 7	GOOD! LAYUP by WAGNER, TIM [PNT]
FOUL by LIBANIO, JOSE	09:05			
	09:05	10-16	V 6	GOOD! FT by WAGNER, TIM
TURNOVER by DWORSKY, ADAM	09:03			
SUB IN: DONELAN, JAMES	09:03			
SUB OUT: LIBANIO, JOSE	09:03			
	08:48			MISSED LAYUP by EGGLESTON, BRADEN
	08:48			REBOUND (OFF) by EGGLESTON, BRADEN
	08:47	12-16	V 4	GOOD! LAYUP by EGGLESTON, BRADEN [PNT]
MISSED LAYUP by EVERETT, A'TOREY	08:38			
	08:38			REBOUND (DEF) by WAGNER, TIM
	08:28	15-16	V 1	GOOD! 3PTR by WARD, ZAC
	08:28			ASSIST by FRANCIS, ALEX
	08:14			FOUL by WAGNER, TIM
	08:14			SUB IN: ANTHONY, REGGIE
	08:14			SUB OUT: WAGNER, TIM
MISSED JUMPER by EVERETT, A'TOREY	08:13			
REBOUND (OFF) by BUCKINGHAM, KEVIN	08:13			
GOOD! LAYUP by BUCKINGHAM, KEVIN [PNT]	08:09	15-18	V 3	
	08:09			FOUL by FRANCIS, ALEX
MISSED FT by BUCKINGHAM, KEVIN	08:09			
	08:09			REBOUND (DEF) by ANTHONY, REGGIE
	08:09			SUB IN: FRANCIS, ALEX
	08:09			SUB OUT: MEDJO, FILIP

VISITORS: Southeastern Okla.	Time	Score	Margin	HOME: Harding
	07:59			TURNOVER by ROTH,TYLER
STEAL by DONELAN,JAMES	07:58			
GOOD! LAYUP by EVERETT,A'TOREY [PNT]	07:54	15-20	V 5	
	07:27	17-20	V 3	GOOD! JUMPER by EGGLESTON,BRADEN
	07:27			ASSIST by ANTHONY,REGGIE
MISSED JUMPER by EVERETT,A'TOREY	07:07			
	07:07			REBOUND (DEF) by ROTH,TYLER
	06:47			MISSED 3PTR by ANTHONY,REGGIE
REBOUND (DEF) by DWORSKY,ADAM	06:47			
MISSED 3PTR by EVERETT,A'TOREY	06:38			
	06:38			REBOUND (DEF) by EGGLESTON,BRADEN
	06:28	20-20	T	GOOD! 3PTR by EGGLESTON,BRADEN
	06:28			ASSIST by ANTHONY,REGGIE
MISSED LAYUP by BUCKINGHAM,KEVIN	05:57			
	05:57			REBOUND (DEF) by ANTHONY,REGGIE
	05:49			MISSED 3PTR by ROTH,TYLER
REBOUND (DEF) by DWORSKY,ADAM	05:49			
GOOD! LAYUP by DWORSKY,ADAM [PNT]	05:41	20-22	V 2	
	05:21			MISSED 3PTR by WARD,ZAC
REBOUND (DEF) by BUCKINGHAM,KEVIN	05:21			
	05:07			FOUL by WARD,ZAC
TIMEOUT MEDIA	05:07			
GOOD! FT by DWORSKY,ADAM	05:07	20-23	V 3	
GOOD! FT by DWORSKY,ADAM	05:07	20-24	V 4	
SUB IN: NESBITT,MYLES	05:07			
SUB IN: HENDERSON,DJ	05:07			
SUB IN: JOHNSON,BOBBY	05:07			
SUB OUT: BUCKINGHAM,KEVIN	05:07			
SUB OUT: DWORSKY,ADAM	05:07			
SUB OUT: EVERETT,A'TOREY	05:07			
	05:07			SUB IN: HORN,ADAM
	05:07			SUB IN: SANDERSON,GARRETT
	05:07			SUB OUT: FRANCIS,ALEX
	05:07			SUB OUT: EGGLESTON,BRADEN
	04:43	22-24	V 2	GOOD! LAYUP by ROTH,TYLER [PNT]
FOUL by JOBE,JETT	04:43			
	04:43	23-24	V 1	GOOD! FT by ROTH,TYLER
MISSED LAYUP by DONELAN,JAMES	04:26			
	04:26			REBOUND (DEF) by ANTHONY,REGGIE
	04:17			TURNOVER by HORN,ADAM
STEAL by HENDERSON,DJ	04:15			
TURNOVER by HENDERSON,DJ	04:12			
	04:11			STEAL by ROTH,TYLER
FOUL by DONELAN,JAMES	04:02			
	04:02	24-24	T	GOOD! FT by HORN,ADAM
	04:02			MISSED FT by HORN,ADAM
REBOUND (DEF) by BUCKINGHAM,KEVIN	04:02			
SUB IN: BUCKINGHAM,KEVIN	04:02			
SUB OUT: DONELAN,JAMES	04:02			
TIMEOUT MEDIA	03:54			
GOOD! 3PTR by JOBE,JETT	03:32	24-27	V 3	
ASSIST by HENDERSON,DJ	03:32			
	03:09	26-27	V 1	GOOD! LAYUP by ANTHONY,REGGIE [PNT]
MISSED 3PTR by JOHNSON,BOBBY	02:53			
REBOUND (OFF) by BUCKINGHAM,KEVIN	02:53			
GOOD! LAYUP by BUCKINGHAM,KEVIN [PNT]	02:49	26-29	V 3	
FOUL by HENDERSON,DJ	02:29			
	02:29			MISSED FT by ANTHONY,REGGIE
REBOUND (DEF) by BUCKINGHAM,KEVIN	02:29			
SUB IN: EVERETT,A'TOREY	02:29			
SUB IN: DWORSKY,ADAM	02:29			
SUB OUT: HENDERSON,DJ	02:29			
SUB OUT: JOHNSON,BOBBY	02:29			
	02:29			SUB IN: EGGLESTON,BRADEN
	02:29			SUB OUT: HORN,ADAM
	02:23			FOUL by WARD,ZAC
MISSED FT by JOBE,JETT	02:23			
	02:23			REBOUND (DEF) by EGGLESTON,BRADEN
	02:05			MISSED 3PTR by WARD,ZAC
REBOUND (DEF) by JOBE,JETT	02:05			
MISSED LAYUP by JOBE,JETT	01:48			
REBOUND (OFF) by JOBE,JETT	01:48			
MISSED LAYUP by JOBE,JETT	01:46			
	01:46			REBOUND (DEF) by SANDERSON,GARRETT
	01:35	29-29	T	GOOD! 3PTR by WARD,ZAC

<b>VISITORS: Southeastern Okla.</b>	<b>Time</b>	<b>Score</b>	<b>Margin</b>	<b>HOME: Harding</b>
	01:35			ASSIST by ROTH,TYLER
MISSED LAYUP by BUCKINGHAM,KEVIN	01:14			
REBOUND (OFF) by BUCKINGHAM,KEVIN	01:14			
	01:13			FOUL by EGGLESTON,BRADEN
GOOD! FT by BUCKINGHAM,KEVIN	01:13	29-30	V 1	
GOOD! FT by BUCKINGHAM,KEVIN	01:13	29-31	V 2	
SUB IN: JOHNSON,BOBBY	01:13			
SUB OUT: JOBE,JETT	01:13			
FOUL by BUCKINGHAM,KEVIN	00:59			
	00:59			MISSED FT by EGGLESTON,BRADEN
REBOUND (DEF) by DONELAN,JAMES	00:59			
SUB IN: DONELAN,JAMES	00:59			
SUB OUT: BUCKINGHAM,KEVIN	00:59			
MISSED LAYUP by DWORSKY,ADAM	00:29			
	00:29			REBOUND (DEADB) by TEAM
	00:02	31-31	T	GOOD! LAYUP by ANTHONY,REGGIE [PNT]

Southeastern Okla. 31, Harding 31

<b>Period 1-only</b>	<b>In Paint</b>	<b>Off T/O</b>	<b>2nd Chance</b>	<b>Fast Break</b>	<b>Bench</b>	
SOSU		10	8		2	Score tied - 0 times
HU		3	2		12	Lead changed - 2 times

**Official Basketball Box Score -- Game Totals -- Second Half Statistics**  
**Southeastern Okla. vs Harding**  
**1/27/2018 3 p.m. at Searcy, Ark. (Rhodes-Reaves Field House)**

**Southeastern Okla. 36 • 9-8, 8-4 GAC**

##	Player		Total			3-Ptr			Rebounds			PF	TP	A	TO	Blk	Stl	Min
			FG-FGA	FG-FGA	FT-FTA	FG-FGA	FG-FGA	FT-FTA	Off	Def	Tot							
02	DWORSKY,ADAM	g	2-6	1-3	0-0	0	0	0	1	5	3	0	0	1			17	
03	EVERETT ,A'TOREY	g	3-10	0-0	1-1	3	2	5	4	7	0	2	0	0			17	
15	JOBE,JETT	g	1-3	0-1	3-3	1	0	1	3	5	0	2	0	2			19	
20	BUCKINGHAM,KEVIN	f	3-7	2-3	6-6	2	3	5	3	14	0	1	0	1			20	
40	LIBANIO,JOSE	f	0-1	0-1	2-2	0	2	2	1	2	0	0	1	1			5	
05	JOHNSON,BOBBY		0-2	0-0	1-2	0	1	1	0	1	0	0	0	0			4	
11	HENDERSON,DJ		0-5	0-3	0-0	0	0	0	0	0	0	0	0	0			7	
22	ROSIC,STEFAN		0-0	0-0	0-0	0	0	0	1	0	0	1	0	0			5	
24	NESBITT ,MYLES		0-1	0-0	0-0	1	1	2	1	0	0	0	0	0			2	
33	DONELAN,JAMES		0-0	0-0	0-0	0	1	1	0	0	0	1	0	0			4	
42	PALMER,ANTHONY		1-2	0-0	0-0	1	0	1	0	2	0	0	0	0			0	
TEAM						1	2	3	0		0							
Totals			10-37	3-11	13-14	9	12	21	14	36	3	7	1	5			100	
FG %	Half:		10-37	27.0%														
3FG %	Half:		3-11	20.0%														
FT %	Half:		13-14	92.9%														

**Harding 42 • 1-16, 1-11 GAC**

##	Player		Total			3-Ptr			Rebounds			PF	TP	A	TO	Blk	Stl	Min
			FG-FGA	FG-FGA	FT-FTA	FG-FGA	FG-FGA	FT-FTA	Off	Def	Tot							
03	ANTHONY,REGGIE	g	3-7	0-1	0-0	0	1	1	3	6	5	3	3	1			18	
04	WARD,ZAC	g	3-4	2-3	3-5	0	1	1	1	11	1	0	1	0			14	
10	ROTH,TYLER	g	2-3	1-1	1-2	2	3	5	0	6	5	2	0	1			17	
12	REEVES,BRANDON	f	2-3	0-0	0-0	0	0	0	3	4	0	0	0	0			5	
15	FRANCIS,ALEX	g	1-1	0-0	1-2	0	4	4	1	3	1	0	0	3			19	
01	WAGNER,TIM		0-3	0-1	0-0	0	0	0	1	0	0	0	0	0			6	
02	MEDJO,FILIP		0-0	0-0	0-0	0	0	0	0	0	0	0	0	0			0	
22	SANDERSON,GARRETT		0-0	0-0	0-0	0	0	0	0	0	0	0	0	0			0	
24	EGGLESTON,BRADEN		2-4	1-1	2-2	0	1	1	3	7	0	3	0	0			8	
34	HORN,ADAM		2-2	0-0	1-2	2	4	6	0	5	0	2	0	0			14	
TEAM						0	2	2	0		0							
Totals			15-27	4-7	8-13	4	16	20	12	42	12	10	4	5			101	
FG %	Half:		15-27	55.6%														
3FG %	Half:		4-7	36.4%														
FT %	Half:		8-13	61.5%														

Officials: Robert Burris, Shea Hamilton and Justin Brewer  
 Technical Fouls: Southeastern Okla.- None. Harding- None.

Score by periods	1st	2nd	Total
Southeastern Okla.	31	36	<b>67</b>
Harding	31	42	<b>73</b>

Points	In Paint	Off T/O	2nd Chance	Bench
SOSU	0	9	6	3
HU	0	9	2	12

Last FG - SOSU 2nd-00:03, HU 2nd-02:00.  
 SOSU led for 0:00. HU led for 19:17. Game was tied for 0:43.

Score tied - 1 times  
 Lead changed - 1 times



**Southeastern Okla. vs Harding**  
**1/27/2018; 3 p.m. at Searcy, Ark. (Rhodes-Reaves Field House)**  
**Period 2 Play-By-Play**

VISITORS: Southeastern Okla.	Time	Score	Margin	HOME: Harding
	19:40	33-31	H 2	GOOD! LAYUP by REEVES,BRANDON [PNT]
	19:40			ASSIST by FRANCIS,ALEX
	19:11			FOUL by REEVES,BRANDON
GOOD! FT by BUCKINGHAM,KEVIN	19:11	33-32	H 1	
GOOD! FT by BUCKINGHAM,KEVIN	19:11	33-33	T	
	18:48	35-33	H 2	GOOD! LAYUP by ROTH,TYLER [PNT]
MISSED JUMPER by BUCKINGHAM,KEVIN	18:30			
	18:30			REBOUND (DEF) by ROTH,TYLER
	18:22	37-33	H 4	GOOD! LAYUP by FRANCIS,ALEX [PNT]
	18:22			ASSIST by ROTH,TYLER
GOOD! LAYUP by EVERETT,A'TOREY [PNT]	18:03	37-35	H 2	
ASSIST by DWORSKY,ADAM	18:03			
	18:03			FOUL by WARD,ZAC
GOOD! FT by EVERETT,A'TOREY	18:03	37-36	H 1	
	17:50			MISSED LAYUP by REEVES,BRANDON
BLOCK by LIBANIO,JOSE	17:50			
REBOUND (DEF) by LIBANIO,JOSE	17:49			
MISSED 3PTR by DWORSKY,ADAM	17:44			
	17:44			REBOUND (DEF) by FRANCIS,ALEX
	17:34			MISSED 3PTR by WARD,ZAC
REBOUND (DEF) by EVERETT,A'TOREY	17:34			
TURNOVER by EVERETT,A'TOREY	17:30			
	17:28			STEAL by FRANCIS,ALEX
FOUL by LIBANIO,JOSE	17:21			
	17:15	39-36	H 3	GOOD! LAYUP by REEVES,BRANDON [PNT]
	17:15			ASSIST by ANTHONY,REGGIE
MISSED LAYUP by EVERETT,A'TOREY	17:03			
	17:03			REBOUND (DEF) by TEAM
SUB IN: DONELAN,JAMES	17:02			
SUB OUT: LIBANIO,JOSE	17:02			
	16:35			MISSED LAYUP by ANTHONY,REGGIE
REBOUND (DEF) by DONELAN,JAMES	16:35			
MISSED LAYUP by DWORSKY,ADAM	16:27			
	16:27			REBOUND (DEF) by ROTH,TYLER
	16:21	42-36	H 6	GOOD! 3PTR by ROTH,TYLER
	16:21			ASSIST by ANTHONY,REGGIE
	15:59			FOUL by REEVES,BRANDON
SUB IN: HENDERSON,DJ	15:59			
SUB IN: JOHNSON,BOBBY	15:59			
SUB OUT: DWORSKY,ADAM	15:59			
SUB OUT: EVERETT,A'TOREY	15:59			
	15:59			SUB IN: HORN,ADAM
	15:59			SUB IN: EGGLESTON,BRADEN
	15:59			SUB OUT: WARD,ZAC
	15:59			SUB OUT: REEVES,BRANDON
MISSED JUMPER by JOHNSON,BOBBY	15:58			
	15:58			REBOUND (DEF) by FRANCIS,ALEX
	15:34			TURNOVER by HORN,ADAM
TIMEOUT MEDIA	15:34			
TURNOVER by DONELAN,JAMES	15:24			
	14:55	45-36	H 9	GOOD! 3PTR by EGGLESTON,BRADEN
	14:55			ASSIST by ANTHONY,REGGIE
MISSED 3PTR by BUCKINGHAM,KEVIN	14:46			
	14:46			REBOUND (DEF) by TEAM
	14:19			MISSED LAYUP by EGGLESTON,BRADEN
	14:19			REBOUND (OFF) by HORN,ADAM
SUB IN: ROSIC,STEFAN	14:16			
SUB OUT: JOHNSON,BOBBY	14:16			
	13:58	47-36	H 11	GOOD! LAYUP by ANTHONY,REGGIE [PNT]
	13:58			ASSIST by ROTH,TYLER
TURNOVER by JOBE,JETT	13:54			
	13:53			STEAL by FRANCIS,ALEX
	13:49	49-36	H 13	GOOD! LAYUP by EGGLESTON,BRADEN [FB/PNT]
	13:49			ASSIST by ANTHONY,REGGIE
TIMEOUT 30SEC	13:47			
TIMEOUT MEDIA	13:47			
MISSED 3PTR by HENDERSON,DJ	13:36			
	13:36			REBOUND (DEADB) by TEAM
	13:09			TURNOVER by ANTHONY,REGGIE

VISITORS: Southeastern Okla.	Time	Score	Margin	HOME: Harding
MISSED LAYUP by HENDERSON,DJ	12:53			
	12:53			REBOUND (DEF) by HORN,ADAM
	12:37			TURNOVER by HORN,ADAM
SUB IN: EVERETT,A'TOREY	12:37			
SUB IN: DWORSKY,ADAM	12:37			
SUB OUT: HENDERSON,DJ	12:37			
SUB OUT: DONELAN,JAMES	12:37			
TURNOVER by ROSIC,STEFAN	12:26			
	12:26			STEAL by ROTH,TYLER
	12:12			MISSED JUMPER by EGGLESTON,BRADEN
	12:12			REBOUND (OFF) by ROTH,TYLER
	12:10			MISSED LAYUP by ROTH,TYLER
	12:10			REBOUND (OFF) by ROTH,TYLER
	12:05			TURNOVER by ROTH,TYLER
STEAL by JOBE,JETT	12:05			
TURNOVER by EVERETT,A'TOREY	11:51			
	11:51			TIMEOUT MEDIA
	11:51			SUB IN: WAGNER,TIM
	11:51			SUB OUT: ROTH,TYLER
	11:25			FOUL by EGGLESTON,BRADEN
	11:25			TURNOVER by EGGLESTON,BRADEN
MISSED LAYUP by BUCKINGHAM,KEVIN	11:11			
REBOUND (OFF) by EVERETT,A'TOREY	11:11			
MISSED LAYUP by EVERETT,A'TOREY	11:09			
REBOUND (OFF) by JOBE,JETT	11:09			
MISSED LAYUP by EVERETT,A'TOREY	11:05			
	11:05			BLOCK by ANTHONY,REGGIE
	11:03			REBOUND (DEF) by HORN,ADAM
	10:36	51-36	H 15	GOOD! LAYUP by ANTHONY,REGGIE [PNT]
	10:26			FOUL by EGGLESTON,BRADEN
GOOD! JUMPER by EVERETT,A'TOREY [PNT]	10:19	51-38	H 13	
	09:58			FOUL by EGGLESTON,BRADEN
	09:58			TURNOVER by EGGLESTON,BRADEN
MISSED 3PTR by JOBE,JETT	09:46			
REBOUND (OFF) by TEAM	09:46			
	09:43			SUB IN: WARD,ZAC
	09:43			SUB OUT: EGGLESTON,BRADEN
MISSED LAYUP by BUCKINGHAM,KEVIN	09:29			
	09:29			BLOCK by ANTHONY,REGGIE
	09:27			REBOUND (DEF) by HORN,ADAM
	09:21			MISSED 3PTR by WAGNER,TIM
	09:21			REBOUND (OFF) by HORN,ADAM
FOUL by ROSIC,STEFAN	09:18			
SUB IN: LIBANIO,JOSE	09:18			
SUB OUT: ROSIC,STEFAN	09:18			
	09:18			SUB IN: ROTH,TYLER
	09:18			SUB OUT: FRANCIS,ALEX
	08:57			MISSED 3PTR by ANTHONY,REGGIE
REBOUND (DEF) by BUCKINGHAM,KEVIN	08:57			
MISSED 3PTR by DWORSKY,ADAM	08:47			
REBOUND (OFF) by BUCKINGHAM,KEVIN	08:47			
GOOD! TIPIN by BUCKINGHAM,KEVIN [PNT]	08:44	51-40	H 11	
	08:34	53-40	H 13	GOOD! LAYUP by HORN,ADAM [PNT]
	08:34			ASSIST by ROTH,TYLER
TURNOVER by JOBE,JETT	08:24			
	08:23			STEAL by ANTHONY,REGGIE
	08:16			MISSED JUMPER by WAGNER,TIM
REBOUND (DEF) by LIBANIO,JOSE	08:16			
MISSED 3PTR by LIBANIO,JOSE	07:57			
REBOUND (DEADB) by TEAM	07:57			
	07:54			FOUL by WAGNER,TIM
TIMEOUT MEDIA	07:54			
GOOD! FT by BUCKINGHAM,KEVIN	07:54	53-41	H 12	
GOOD! FT by BUCKINGHAM,KEVIN	07:54	53-42	H 11	
	07:54			SUB IN: REEVES,BRANDON
	07:54			SUB IN: FRANCIS,ALEX
	07:54			SUB OUT: HORN,ADAM
	07:54			SUB OUT: WAGNER,TIM
	07:29			TURNOVER by ANTHONY,REGGIE
STEAL by LIBANIO,JOSE	07:27			
	07:24			FOUL by REEVES,BRANDON
GOOD! FT by LIBANIO,JOSE	07:24	53-43	H 10	
GOOD! FT by LIBANIO,JOSE	07:24	53-44	H 9	
SUB IN: NESBITT,MYLES	07:24			
SUB OUT: LIBANIO,JOSE	07:24			

VISITORS: Southeastern Okla.	Time	Score	Margin	HOME: Harding
	07:24			SUB IN: HORN,ADAM
	07:24			SUB OUT: REEVES,BRANDON
FOUL by NESBITT,MYLES	06:58			
	06:52			MISSED JUMPER by ANTHONY,REGGIE
REBOUND (DEF) by TEAM	06:52			
MISSED JUMPER by EVERETT,A'TOREY	06:36			
REBOUND (OFF) by EVERETT,A'TOREY	06:36			
MISSED LAYUP by JOBE,JETT	06:28			
	06:28			REBOUND (DEF) by HORN,ADAM
	06:20	55-44	H 11	GOOD! LAYUP by WARD,ZAC [FB/PNT]
MISSED JUMPER by EVERETT,A'TOREY	06:06			
REBOUND (OFF) by BUCKINGHAM,KEVIN	06:06			
	06:04			FOUL by ANTHONY,REGGIE
GOOD! FT by BUCKINGHAM,KEVIN	06:04	55-45	H 10	
GOOD! FT by BUCKINGHAM,KEVIN	06:04	55-46	H 9	
SUB IN: HENDERSON,DJ	06:04			
SUB OUT: NESBITT,MYLES	06:04			
	05:54	58-46	H 12	GOOD! 3PTR by WARD,ZAC
	05:54			ASSIST by ANTHONY,REGGIE
MISSED 3PTR by HENDERSON,DJ	05:36			
	05:36			REBOUND (DEF) by FRANCIS,ALEX
	05:28			TURNOVER by ANTHONY,REGGIE
STEAL by JOBE,JETT	05:27			
GOOD! LAYUP by JOBE,JETT [FB/PNT]	05:25	58-48	H 10	
	05:25			FOUL by ANTHONY,REGGIE
GOOD! FT by JOBE,JETT	05:25	58-49	H 9	
	05:25			SUB IN: WAGNER,TIM
	05:25			SUB OUT: ANTHONY,REGGIE
	04:56			MISSED JUMPER by WAGNER,TIM
REBOUND (DEF) by EVERETT,A'TOREY	04:56			
MISSED JUMPER by HENDERSON,DJ	04:43			
	04:43			REBOUND (DEF) by WARD,ZAC
	04:25	61-49	H 12	GOOD! 3PTR by WARD,ZAC
	04:25			ASSIST by ROTH,TYLER
GOOD! JUMPER by EVERETT,A'TOREY [PNT]	04:11	61-51	H 10	
FOUL by BUCKINGHAM,KEVIN	03:48			
	03:48			TIMEOUT MEDIA
	03:48			SUB IN: ANTHONY,REGGIE
	03:48			SUB OUT: WAGNER,TIM
	03:30			MISSED JUMPER by ANTHONY,REGGIE
REBOUND (DEF) by TEAM	03:30			
MISSED 3PTR by HENDERSON,DJ	03:14			
	03:14			REBOUND (DEF) by FRANCIS,ALEX
	02:50	63-51	H 12	GOOD! LAYUP by HORN,ADAM [PNT]
	02:50			ASSIST by ROTH,TYLER
	02:38			FOUL by FRANCIS,ALEX
GOOD! FT by JOBE,JETT	02:38	63-52	H 11	
GOOD! FT by JOBE,JETT	02:38	63-53	H 10	
SUB IN: JOHNSON,BOBBY	02:38			
SUB OUT: HENDERSON,DJ	02:38			
	02:19			TURNOVER by ROTH,TYLER
STEAL by BUCKINGHAM,KEVIN	02:19			
GOOD! 3PTR by BUCKINGHAM,KEVIN	02:14	63-56	H 7	
ASSIST by DWORSKY,ADAM	02:14			
TIMEOUT TEAM	02:10			
	02:08			TIMEOUT 30SEC
FOUL by EVERETT,A'TOREY	02:02			
	02:00	65-56	H 9	GOOD! LAYUP by ANTHONY,REGGIE [PNT]
	02:00			ASSIST by WARD,ZAC
MISSED LAYUP by EVERETT,A'TOREY	01:50			
	01:50			BLOCK by ANTHONY,REGGIE
REBOUND (OFF) by EVERETT,A'TOREY	01:49			
MISSED LAYUP by EVERETT,A'TOREY	01:48			
	01:48			REBOUND (DEF) by ROTH,TYLER
FOUL by EVERETT,A'TOREY	01:45			
FOUL by JOBE,JETT	01:43			
	01:43	66-56	H 10	GOOD! FT by HORN,ADAM
	01:43			MISSED FT by HORN,ADAM
REBOUND (DEF) by BUCKINGHAM,KEVIN	01:43			
GOOD! 3PTR by BUCKINGHAM,KEVIN	01:36	66-59	H 7	
ASSIST by DWORSKY,ADAM	01:36			
TIMEOUT 30SEC	01:32			
FOUL by DWORSKY,ADAM	01:31			
	01:31			MISSED FT by WARD,ZAC
REBOUND (DEF) by BUCKINGHAM,KEVIN	01:31			

VISITORS: Southeastern Okla.	Time	Score	Margin	HOME: Harding
	01:31			SUB IN: EGGLESTON,BRADEN
	01:31			SUB OUT: HORN,ADAM
MISSED LAYUP by JOHNSON,BOBBY	01:22			
	01:22			BLOCK by WARD,ZAC
	01:21			REBOUND (DEF) by ANTHONY,REGGIE
FOUL by BUCKINGHAM,KEVIN	01:13			
	01:13	67-59	H 8	GOOD! FT by WARD,ZAC
	01:13	68-59	H 9	GOOD! FT by WARD,ZAC
MISSED LAYUP by DWORSKY,ADAM	01:08			
	01:08			REBOUND (DEF) by EGGLESTON,BRADEN
	01:04			TURNOVER by EGGLESTON,BRADEN
STEAL by DWORSKY,ADAM	01:03			
	01:02			FOUL by ANTHONY,REGGIE
MISSED FT by JOHNSON,BOBBY	01:02			
REBOUND (DEADB) by TEAM	01:02			
GOOD! FT by JOHNSON,BOBBY	01:02	68-60	H 8	
FOUL by JOBE,JETT	00:53			
FOUL by JOBE,JETT	00:53			
	00:53			MISSED FT by FRANCIS,ALEX
	00:53			REBOUND (DEADB) by TEAM
	00:53	69-60	H 9	GOOD! FT by FRANCIS,ALEX
SUB IN: NESBITT,MYLES	00:53			
SUB OUT: JOBE,JETT	00:53			
TURNOVER by BUCKINGHAM,KEVIN	00:44			
	00:42			STEAL by FRANCIS,ALEX
FOUL by EVERETT,A'TOREY	00:39			
	00:39	70-60	H 10	
	00:39	71-60	H 11	GOOD! FT by EGGLESTON,BRADEN
GOOD! LAYUP by DWORSKY,ADAM [PNT]	00:34	71-62	H 9	GOOD! FT by EGGLESTON,BRADEN
FOUL by BUCKINGHAM,KEVIN	00:29			
	00:29	72-62	H 10	GOOD! FT by WARD,ZAC
	00:29			MISSED FT by WARD,ZAC
REBOUND (DEF) by JOHNSON,BOBBY	00:29			
SUB IN: PALMER,ANTHONY	00:29			
SUB OUT: BUCKINGHAM,KEVIN	00:29			
GOOD! 3PTR by DWORSKY,ADAM	00:24	72-65	H 7	
FOUL by EVERETT,A'TOREY	00:21			
	00:21	73-65	H 8	GOOD! FT by ROTH,TYLER
	00:21			MISSED FT by ROTH,TYLER
REBOUND (DEF) by NESBITT,MYLES	00:21			
MISSED LAYUP by PALMER,ANTHONY	00:08			
REBOUND (OFF) by NESBITT,MYLES	00:08			
MISSED LAYUP by NESBITT,MYLES	00:05			
REBOUND (OFF) by PALMER,ANTHONY	00:05			
GOOD! LAYUP by PALMER,ANTHONY [PNT]	00:03	73-67	H 6	

Southeastern Okla. 67, Harding 73

Period 2-only	In Paint	Off T/O	2nd Chance	Fast Break	Bench	
SOSU		9	6		3	Score tied - 2 times
HU		9	2		12	Lead changed - 0 times

**Southeastern Okla. vs Harding**  
**1/27/2018; 3 p.m. at Searcy, Ark. (Rhodes-Reaves Field House)**  
**Scoring/Runs Reference**

**Period 1**

Southeastern Okla.	VRun	Score	Margin	HRun	Harding
19:14 - EVERETT JUMPER [P]	-	2-0	-2		
18:15 - EVERETT LAYUP [P] [F]	NaN-0	4-0	-4		
		4-1	-3		REEVES FT - 17:52
		4-3	-1	3-0	REEVES LAYUP [P] - 17:52
16:49 - BUCKINGHAM LAYUP [P]	-	6-3	-3		
		6-4	-2		HORN FT - 16:38
		6-7	1	4-0	FRANCIS 3PTR - 16:09
15:36 - BUCKINGHAM LAYUP [P]	-	8-7	-1		
14:00 - BUCKINGHAM LAYUP [P]	4-0	10-7	-3		
12:22 - DONELAN LAYUP [P]	6-0	12-7	-5		
10:06 - DWORSKY JUMPER [P]	8-0	14-7	-7		
09:39 - DWORSKY LAYUP [P]	10-0	16-7	-9		
		16-9	-7		WAGNER LAYUP [P] - 09:05
		16-10	-6	3-0	WAGNER FT - 09:05
		16-12	-4	5-0	EGGLESTON LAYUP [P] - 08:47
		16-15	-1	8-0	WARD 3PTR - 08:28
08:09 - BUCKINGHAM LAYUP [P]	-	18-15	-3		
07:54 - EVERETT LAYUP [P]	4-0	20-15	-5		
		20-17	-3		EGGLESTON JUMPER - 07:27
		20-20	0	5-0	EGGLESTON 3PTR - 06:28
05:41 - DWORSKY LAYUP [P]	-	22-20	-2		
05:07 - DWORSKY FT	3-0	23-20	-3		
05:07 - DWORSKY FT	4-0	24-20	-4		
		24-22	-2		ROTH LAYUP [P] - 04:43
		24-23	-1	3-0	ROTH FT - 04:43
		24-24	0	4-0	HORN FT - 04:02
03:32 - JOBE 3PTR	-	27-24	-3		
		27-26	-1		ANTHONY LAYUP [P] - 03:09
02:49 - BUCKINGHAM LAYUP [P]	-	29-26	-3		
		29-29	0		WARD 3PTR - 01:35
01:13 - BUCKINGHAM FT	-	30-29	-1		
01:13 - BUCKINGHAM FT	2-0	31-29	-2		
		31-31	0		ANTHONY LAYUP [P] - 00:02

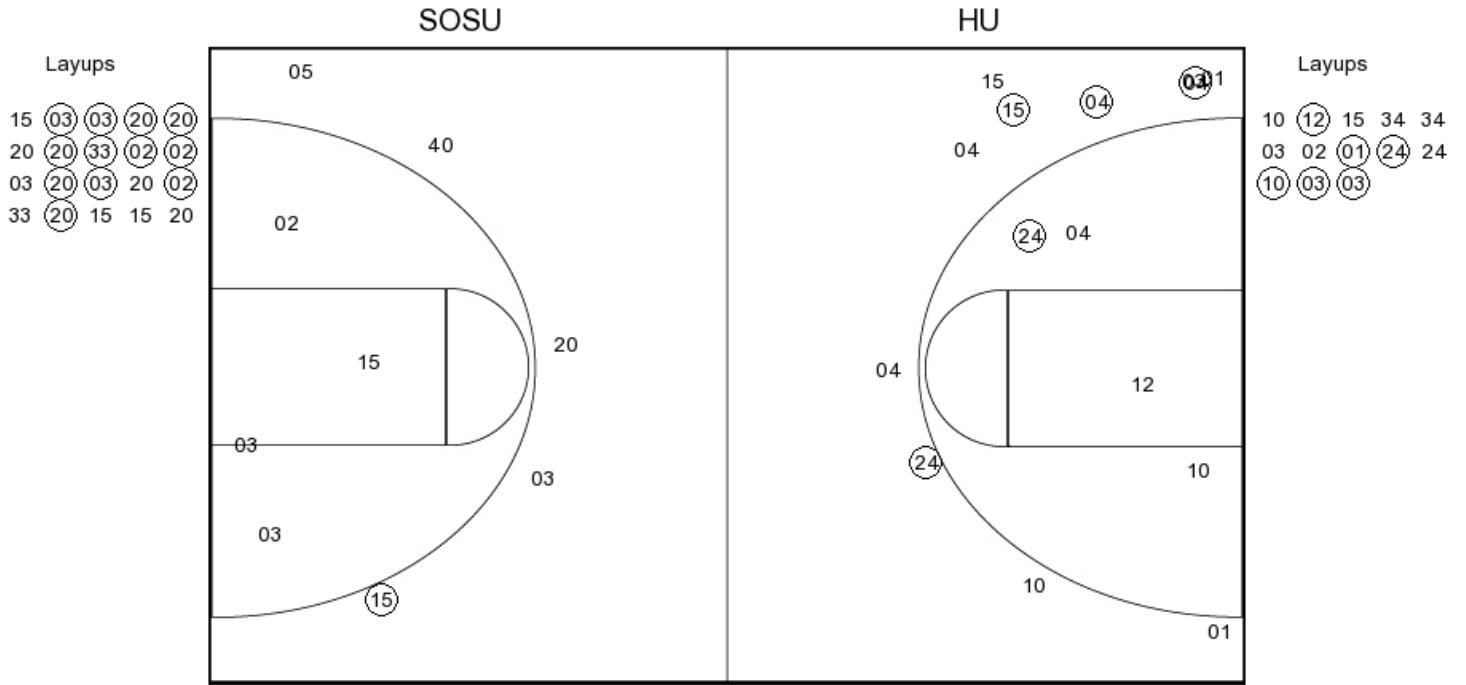
**Southeastern Okla. vs Harding**  
**1/27/2018; 3 p.m. at Searcy, Ark. (Rhodes-Reaves Field House)**  
**Scoring/Runs Reference**

**Period 2**

Southeastern Okla.	VRun	Score	Margin	HRun	Harding
		31-33	2		REEVES LAYUP [P] - 19:40
19:11 - BUCKINGHAM FT	-	32-33	1		
19:11 - BUCKINGHAM FT	2-0	33-33	0		
		33-35	2		ROTH LAYUP [P] - 18:48
		33-37	4	4-0	FRANCIS LAYUP [P] - 18:22
18:03 - EVERETT LAYUP [P]	-	35-37	2		
18:03 - EVERETT FT	3-0	36-37	1		
		36-39	3		REEVES LAYUP [P] - 17:15
		36-42	6	5-0	ROTH 3PTR - 16:21
		36-45	9	8-0	EGGLESTON 3PTR - 14:55
		36-47	11	10-0	ANTHONY LAYUP [P] - 13:58
		36-49	13	12-0	EGGLESTON LAYUP [P] [F] - 13:49
		36-51	15	14-0	ANTHONY LAYUP [P] - 10:36
10:19 - EVERETT JUMPER [P]	-	38-51	13		
08:44 - BUCKINGHAM TIPIN [P]	4-0	40-51	11		
		40-53	13		HORN LAYUP [P] - 08:34
07:54 - BUCKINGHAM FT	-	41-53	12		
07:54 - BUCKINGHAM FT	2-0	42-53	11		
07:24 - LIBANIO FT	3-0	43-53	10		
07:24 - LIBANIO FT	4-0	44-53	9		
		44-55	11		WARD LAYUP [P] [F] - 06:20
06:04 - BUCKINGHAM FT	-	45-55	10		
06:04 - BUCKINGHAM FT	2-0	46-55	9		
		46-58	12		WARD 3PTR - 05:54
05:25 - JOBE LAYUP [P] [F]	-	48-58	10		
05:25 - JOBE FT	3-0	49-58	9		
		49-61	12		WARD 3PTR - 04:25
04:11 - EVERETT JUMPER [P]	-	51-61	10		
		51-63	12		HORN LAYUP [P] - 02:50
02:38 - JOBE FT	-	52-63	11		
02:38 - JOBE FT	2-0	53-63	10		
02:14 - BUCKINGHAM 3PTR	5-0	56-63	7		
		56-65	9		ANTHONY LAYUP [P] - 02:00
		56-66	10	3-0	HORN FT - 01:43
01:36 - BUCKINGHAM 3PTR	-	59-66	7		
		59-67	8		WARD FT - 01:13
		59-68	9	2-0	WARD FT - 01:13
01:02 - JOHNSON FT	-	60-68	8		
		60-69	9		FRANCIS FT - 00:53
		60-70	10	2-0	EGGLESTON FT - 00:39
		60-71	11	3-0	EGGLESTON FT - 00:39
00:34 - DWORSKY LAYUP [P]	-	62-71	9		
		62-72	10		WARD FT - 00:29
00:24 - DWORSKY 3PTR	-	65-72	7		
		65-73	8		ROTH FT - 00:21
00:03 - PALMER LAYUP [P]	-	67-73	6		

**Southeastern Okla. vs Harding**  
**OFFICIAL SHOT CHART**  
 1/27/2018 at Searcy, Ark. (Rhodes-Reaves Field House)

**PERIOD 1**



**SOSU PERIOD 1**

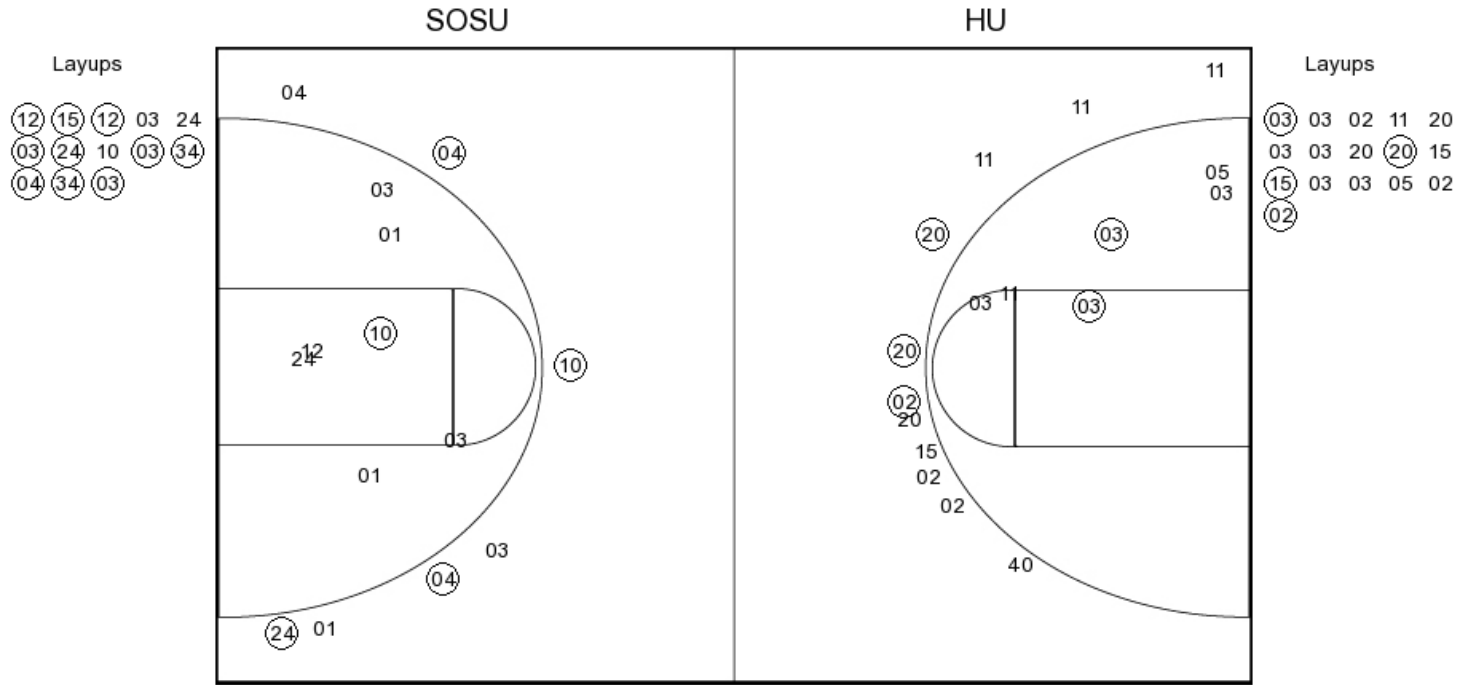
FG Made	13
FG Attempted	31
3PFG Made	1
3PFG Attempted	5

**HU PERIOD 1**

FG Made	11
FG Attempted	28
3PFG Made	4
3PFG Attempted	11

**Southeastern Okla. vs Harding**  
**OFFICIAL SHOT CHART**  
 1/27/2018 at Searcy, Ark. (Rhodes-Reaves Field House)

**PERIOD 2**



**SOSU PERIOD 2**

FG Made	10
FG Attempted	37
3PFG Made	3
3PFG Attempted	11

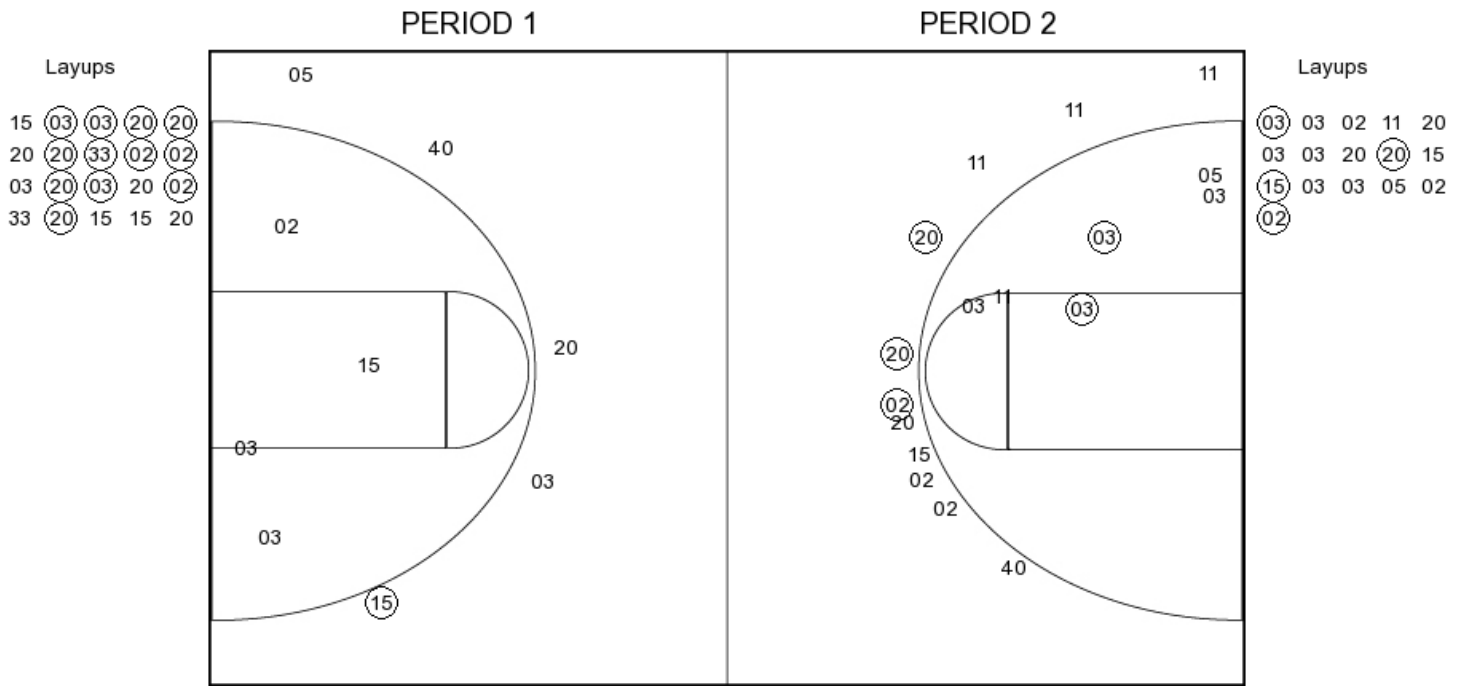
**HU PERIOD 2**

FG Made	15
FG Attempted	27
3PFG Made	4
3PFG Attempted	7



**Southeastern Okla. vs Harding**  
**OFFICIAL SHOT CHART**  
 1/27/2018 at Searcy, Ark. (Rhodes-Reaves Field House)

**Southeastern Okla.**



**SOSU PERIOD 1**

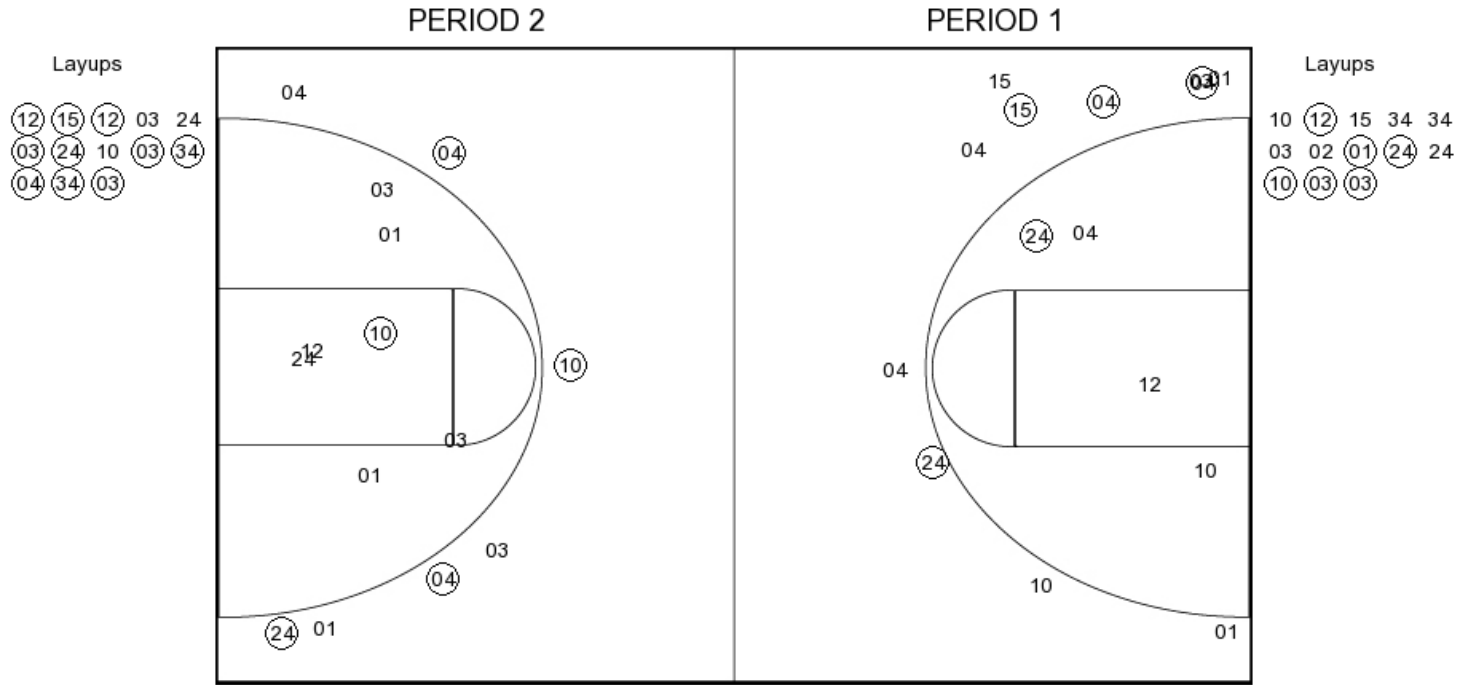
FG Made	13
FG Attempted	31
3PFG Made	1
3PFG Attempted	5

**SOSU PERIOD 2**

FG Made	10
FG Attempted	37
3PFG Made	3
3PFG Attempted	11

**Southeastern Okla. vs Harding**  
**OFFICIAL SHOT CHART**  
 1/27/2018 at Searcy, Ark. (Rhodes-Reaves Field House)

**Harding**



**HU PERIOD 1**

FG Made	11
FG Attempted	28
3PFG Made	4
3PFG Attempted	11

**HU PERIOD 2**

FG Made	15
FG Attempted	27
3PFG Made	4
3PFG Attempted	7