

FINAL SCORE

Southwestern Okla. **71**

1-6, 0-3 GAC

Harding

70

0-4, 0-3 GAC

December 02, 2017 • Searcy, Ark. (Rhodes-Reaves Field House)

FINAL STATISTICS

Official Basketball Box Score -- Game Totals -- Final Statistics
Southwestern Okla. vs Harding
12/2/2017 3 p.m. at Searcy, Ark. (Rhodes-Reaves Field House)

Southwestern Okla. 71 - 1-6, 0-3 GAC

| ## | Player | g | Total | | 3-Ptr | Rebounds | | | PF | TP | A | TO | Blk | Stl | Min |
|--------|----------------------|---|--------|--------|--------|----------|-----|-----|----|----|---|----|-----|-----|-----|
| | | | FG-FGA | FG-FGA | FT-FTA | Off | Def | Tot | | | | | | | |
| 03 | EIBEL,DANIEL | | 1-4 | 1-4 | 0-0 | 0 | 3 | 3 | 3 | 3 | 1 | 0 | 0 | 0 | 28 |
| 04 | BEAUREGARD,CHARLES | | 7-18 | 1-6 | 3-4 | 0 | 6 | 6 | 5 | 18 | 1 | 3 | 0 | 1 | 30 |
| 15 | PUGH,DEVIN | | 1-2 | 1-1 | 0-0 | 0 | 2 | 2 | 5 | 3 | 0 | 1 | 0 | 1 | 5 |
| 21 | SHOEMAKER,NICK | | 2-6 | 2-6 | 2-2 | 1 | 3 | 4 | 2 | 8 | 2 | 1 | 1 | 0 | 30 |
| 50 | HIGHTOWER,GEOFFERY | f | 0-4 | 0-4 | 0-0 | 0 | 2 | 2 | 4 | 0 | 0 | 0 | 0 | 0 | 14 |
| 00 | BATTISTI,COOPER | | 1-3 | 0-0 | 5-6 | 1 | 0 | 1 | 1 | 7 | 0 | 2 | 0 | 2 | 21 |
| 01 | HURT,JERRY | | 9-17 | 3-6 | 1-2 | 0 | 2 | 2 | 2 | 22 | 3 | 2 | 0 | 1 | 35 |
| 05 | AGYEMAN-BUDU,JEFKINS | | 0-0 | 0-0 | 0-0 | 0 | 0 | 0 | 0 | 0 | 0 | 0 | 0 | 0 | 0 |
| 20 | LEWALLEN,LUKE | | 0-1 | 0-0 | 0-2 | 3 | 2 | 5 | 1 | 0 | 1 | 0 | 0 | 0 | 10 |
| 32 | LUNA,LUKE | | 3-3 | 0-0 | 0-0 | 0 | 6 | 6 | 1 | 6 | 0 | 0 | 1 | 0 | 15 |
| 35 | KING,JUSTIN | | 1-4 | 0-2 | 2-8 | 0 | 3 | 3 | 4 | 4 | 1 | 0 | 0 | 0 | 12 |
| | TEAM | | | | | 2 | 1 | 3 | 0 | | | 1 | | | |
| TOTALS | | | 25-62 | 8-29 | 13-24 | 7 | 30 | 37 | 28 | 71 | 9 | 10 | 2 | 5 | 200 |

Deadball Rebounds: 4,1

| | | | | | | | | | |
|-------|-----------|-------|-------|-----------|-------|-------|-------|-------|-------|
| FG % | 1st Half: | 11-29 | 37.9% | 2nd Half: | 14-33 | 42.4% | Game: | 25-62 | 40.3% |
| 3FG % | 1st Half: | 4-13 | 30.8% | 2nd Half: | 4-16 | 25.0% | Game: | 8-29 | 27.6% |
| FT % | 1st Half: | 7-14 | 50.0% | 2nd Half: | 6-10 | 60.0% | Game: | 13-24 | 54.2% |

Harding 70 - 0-4, 0-3 GAC

| ## | Player | g | Total | | 3-Ptr | Rebounds | | | PF | TP | A | TO | Blk | Stl | Min |
|--------|-------------------|---|--------|--------|--------|----------|-----|-----|----|----|----|----|-----|-----|-----|
| | | | FG-FGA | FG-FGA | FT-FTA | Off | Def | Tot | | | | | | | |
| 01 | WAGNER,TIM | | 3-9 | 3-7 | 8-16 | 0 | 4 | 4 | 4 | 17 | 1 | 4 | 0 | 0 | 37 |
| 03 | ANTHONY,REGGIE | | 3-6 | 0-1 | 2-5 | 0 | 7 | 7 | 3 | 8 | 6 | 2 | 0 | 2 | 26 |
| 15 | FRANCIS,ALEX | | 1-3 | 0-2 | 4-4 | 0 | 2 | 2 | 2 | 6 | 2 | 2 | 0 | 3 | 32 |
| 34 | HORN,ADAM | f | 4-9 | 0-0 | 4-6 | 4 | 7 | 11 | 2 | 12 | 1 | 2 | 1 | 0 | 28 |
| 44 | BRANDON,JP | f | 1-4 | 0-0 | 2-5 | 0 | 6 | 6 | 4 | 4 | 4 | 2 | 3 | 0 | 22 |
| 04 | WARD,ZAC | | 1-3 | 1-3 | 0-0 | 0 | 4 | 4 | 1 | 3 | 0 | 1 | 0 | 1 | 10 |
| 12 | REEVES,BRANDON | | 0-0 | 0-0 | 0-0 | 0 | 0 | 0 | 1 | 0 | 0 | 0 | 1 | 0 | 2 |
| 21 | ANDERSON,PRESTON | | 3-8 | 2-6 | 0-0 | 0 | 2 | 2 | 0 | 8 | 0 | 0 | 0 | 0 | 17 |
| 22 | SANDERSON,GARRETT | | 2-5 | 0-2 | 0-0 | 1 | 3 | 4 | 2 | 4 | 0 | 0 | 1 | 1 | 15 |
| 24 | EGGLESTON,BRADEN | | 3-5 | 0-1 | 2-2 | 0 | 0 | 0 | 4 | 8 | 1 | 0 | 0 | 0 | 10 |
| | TEAM | | | | | 1 | 2 | 3 | 0 | | | 1 | | | |
| TOTALS | | | 21-52 | 6-22 | 22-38 | 6 | 37 | 43 | 23 | 70 | 15 | 14 | 6 | 7 | 199 |

Deadball Rebounds: 10,0

| | | | | | | | | | |
|-------|-----------|-------|-------|-----------|-------|-------|-------|-------|-------|
| FG % | 1st Half: | 10-27 | 37.0% | 2nd Half: | 11-25 | 44.0% | Game: | 21-52 | 40.4% |
| 3FG % | 1st Half: | 4-13 | 30.8% | 2nd Half: | 2-9 | 22.2% | Game: | 6-22 | 27.3% |
| FT % | 1st Half: | 10-19 | 52.6% | 2nd Half: | 12-19 | 63.2% | Game: | 22-38 | 57.9% |

Officials:

Technical Fouls: Southwestern Okla.- None. Harding- None.

| Score by periods | 1st | 2nd | Total |
|--------------------|-----|-----|-------|
| Southwestern Okla. | 33 | 38 | 71 |
| Harding | 34 | 36 | 70 |

| Points | In Paint | Off T/O | 2nd Chance | Fast Break | Bench |
|--------|----------|---------|------------|------------|-------|
| SWOSU | 24 | 13 | 4 | 2 | 39 |
| HU | 28 | 13 | 2 | 2 | 23 |

Last FG - SWOSU 2nd-00:54, HU 2nd-00:41.

Largest lead - Southwestern Okla. by 6 2nd-14:31; Harding by 9 1st-10:44

SWOSU led for 12:46. HU led for 20:27. Game was tied for 6:41.

Score tied - 9 times; Lead changed - 8 times

Official Basketball Box Score -- Game Totals -- First Half Statistics
Southwestern Okla. vs Harding
12/2/2017 3 p.m. at Searcy, Ark. (Rhodes-Reaves Field House)

Southwestern Okla. 33 • 1-6, 0-3 GAC

| ## | Player | | Total | | 3-Ptr | | Rebounds | | | PF | TP | A | TO | Blk | Stl | Min |
|--------|----------------------|---|--------|--------|--------|-----|----------|-----|----|----|----|---|----|-----|-----|-----|
| | | | FG-FGA | FG-FGA | FT-FTA | Off | Def | Tot | | | | | | | | |
| 03 | EIBEL,DANIEL | g | 1-2 | 1-2 | 0-0 | 0 | 2 | 2 | 2 | 3 | 0 | 0 | 0 | 0 | 14 | |
| 04 | BEAUREGARD,CHARLES | g | 1-7 | 0-2 | 2-2 | 0 | 4 | 4 | 2 | 4 | 0 | 3 | 0 | 1 | 15 | |
| 15 | PUGH,DEVIN | g | 1-2 | 1-1 | 0-0 | 0 | 2 | 2 | 3 | 3 | 0 | 1 | 0 | 1 | 5 | |
| 21 | SHOEMAKER,NICK | g | 1-2 | 1-2 | 2-2 | 0 | 2 | 2 | 1 | 5 | 2 | 0 | 1 | 0 | 15 | |
| 50 | HIGHTOWER,GEOFFERY | f | 0-2 | 0-2 | 0-0 | 0 | 2 | 2 | 2 | 0 | 0 | 0 | 0 | 0 | 10 | |
| 00 | BATTISTI,COOPER | | 1-2 | 0-0 | 2-2 | 0 | 0 | 0 | 1 | 4 | 0 | 1 | 0 | 1 | 10 | |
| 01 | HURT,JERRY | | 3-7 | 1-3 | 1-2 | 0 | 0 | 0 | 2 | 8 | 0 | 1 | 0 | 0 | 15 | |
| 05 | AGYEMAN-BUDU,JEFKINS | | 0-0 | 0-0 | 0-0 | 0 | 0 | 0 | 0 | 0 | 0 | 0 | 0 | 0 | 0 | |
| 20 | LEWALLEN,LUKE | | 0-1 | 0-0 | 0-2 | 2 | 1 | 3 | 0 | 0 | 1 | 0 | 0 | 0 | 5 | |
| 32 | LUNA,LUKE | | 2-2 | 0-0 | 0-0 | 0 | 1 | 1 | 0 | 4 | 0 | 0 | 0 | 0 | 4 | |
| 35 | KING,JUSTIN | | 1-2 | 0-1 | 0-4 | 0 | 2 | 2 | 2 | 2 | 1 | 0 | 0 | 0 | 7 | |
| | TEAM | | | | | 1 | 0 | 1 | 0 | | | 1 | | | | |
| Totals | | | 11-29 | 4-13 | 7-14 | 3 | 16 | 19 | 15 | 33 | 4 | 7 | 1 | 3 | 100 | |

| | | | |
|-------|-------|-------|-------|
| FG % | Half: | 11-29 | 37.9% |
| 3FG % | Half: | 4-13 | 30.8% |
| FT % | Half: | 7-14 | 50.0% |

Harding 34 • 0-4, 0-3 GAC

| ## | Player | | Total | | 3-Ptr | | Rebounds | | | PF | TP | A | TO | Blk | Stl | Min |
|--------|-------------------|---|--------|--------|--------|-----|----------|-----|----|----|----|---|----|-----|-----|-----|
| | | | FG-FGA | FG-FGA | FT-FTA | Off | Def | Tot | | | | | | | | |
| 01 | WAGNER,TIM | g | 2-7 | 2-5 | 4-10 | 0 | 3 | 3 | 1 | 10 | 1 | 3 | 0 | 0 | 17 | |
| 03 | ANTHONY,REGGIE | g | 1-2 | 0-0 | 2-4 | 0 | 1 | 1 | 2 | 4 | 1 | 0 | 0 | 1 | 10 | |
| 15 | FRANCIS,ALEX | g | 0-1 | 0-1 | 2-2 | 0 | 1 | 1 | 1 | 2 | 1 | 1 | 0 | 1 | 17 | |
| 34 | HORN,ADAM | f | 1-2 | 0-0 | 0-0 | 2 | 3 | 5 | 2 | 2 | 1 | 2 | 0 | 0 | 10 | |
| 44 | BRANDON,JP | f | 0-2 | 0-0 | 1-2 | 0 | 3 | 3 | 1 | 1 | 3 | 1 | 1 | 0 | 13 | |
| 04 | WARD,ZAC | | 1-1 | 1-1 | 0-0 | 0 | 3 | 3 | 0 | 3 | 0 | 1 | 0 | 1 | 6 | |
| 12 | REEVES,BRANDON | | 0-0 | 0-0 | 0-0 | 0 | 0 | 0 | 1 | 0 | 0 | 0 | 1 | 0 | 2 | |
| 21 | ANDERSON,PRESTON | | 2-6 | 1-4 | 0-0 | 0 | 2 | 2 | 0 | 5 | 0 | 0 | 0 | 0 | 10 | |
| 22 | SANDERSON,GARRETT | | 1-3 | 0-1 | 0-0 | 0 | 3 | 3 | 2 | 2 | 0 | 0 | 0 | 1 | 10 | |
| 24 | EGGLESTON,BRADEN | | 2-3 | 0-1 | 1-1 | 0 | 0 | 0 | 3 | 5 | 1 | 0 | 0 | 0 | 5 | |
| | TEAM | | | | | 1 | 0 | 1 | 0 | | | 0 | | | | |
| Totals | | | 10-27 | 4-13 | 10-19 | 3 | 19 | 22 | 13 | 34 | 8 | 8 | 2 | 4 | 100 | |

| | | | |
|-------|-------|-------|-------|
| FG % | Half: | 10-27 | 37.0% |
| 3FG % | Half: | 4-13 | 30.8% |
| FT % | Half: | 10-19 | 52.6% |

Officials:
 Technical Fouls: Southwestern Okla.- None. Harding- None.

| Score by periods | 1st | 2nd | Total |
|--------------------|-----|-----|-----------|
| Southwestern Okla. | 33 | 38 | 71 |
| Harding | 34 | 36 | 70 |

| Points | In Paint | Off T/O | 2nd Chance | Fast Break | Bench |
|--------|----------|---------|------------|------------|-------|
| SWOSU | 8 | 5 | 0 | 0 | 18 |
| HU | 10 | 8 | 2 | 0 | 15 |

Last FG - SWOSU 1st-00:07, HU 1st-00:39.
 SWOSU led for 0:27. HU led for 15:08. Game was tied for 4:19.

Score tied - 3 times
 Lead changed - 3 times

Southwestern Okla. vs Harding
12/2/2017; 3 p.m. at Searcy, Ark. (Rhodes-Reaves Field House)
Period 1 Play-By-Play

| VISITORS: Southwestern Okla. | Time | Score | Margin | HOME: Harding |
|-------------------------------------|-------|-------|--------|------------------------------------|
| MISSED LAYUP by PUGH,DEVIN | 19:51 | | | |
| | 19:51 | | | REBOUND (DEF) by BRANDON,JP |
| | 19:36 | | | MISSED 3PTR by WAGNER,TIM |
| REBOUND (DEF) by BEAUREGARD,CHARLES | 19:36 | | | |
| MISSED 3PTR by SHOEMAKER,NICK | 19:20 | | | |
| | 19:20 | | | REBOUND (DEF) by WAGNER,TIM |
| FOUL by HIGHTOWER,GEOFFERY | 19:10 | | | |
| | 18:55 | | | MISSED LAYUP by BRANDON,JP |
| REBOUND (DEF) by PUGH,DEVIN | 18:55 | | | |
| MISSED JUMPER by BEAUREGARD,CHARLES | 18:45 | | | |
| | 18:45 | | | REBOUND (DEF) by HORN,ADAM |
| | 18:20 | | | TURNOVER by WAGNER,TIM |
| STEAL by BEAUREGARD,CHARLES | 18:19 | | | |
| GOOD! 3PTR by PUGH,DEVIN | 18:06 | 0-3 | V 3 | |
| | 17:46 | 3-3 | T | |
| | 17:46 | | | GOOD! 3PTR by WAGNER,TIM |
| | 17:46 | | | ASSIST by BRANDON,JP |
| MISSED 3PTR by HIGHTOWER,GEOFFERY | 17:33 | | | |
| | 17:33 | | | REBOUND (DEF) by FRANCIS,ALEX |
| | 17:16 | | | MISSED JUMPER by WAGNER,TIM |
| | 17:16 | | | REBOUND (OFF) by HORN,ADAM |
| | 17:13 | | | MISSED LAYUP by HORN,ADAM |
| REBOUND (DEF) by HIGHTOWER,GEOFFERY | 17:13 | | | |
| MISSED JUMPER by BEAUREGARD,CHARLES | 16:51 | | | |
| | 16:51 | | | REBOUND (DEF) by HORN,ADAM |
| FOUL by PUGH,DEVIN | 16:34 | | | |
| SUB IN: LUNA,LUKE | 16:34 | | | |
| SUB IN: HURT,JERRY | 16:34 | | | |
| SUB OUT: PUGH,DEVIN | 16:34 | | | |
| SUB OUT: HIGHTOWER,GEOFFERY | 16:34 | | | |
| | 16:34 | | | SUB IN: ANDERSON,PRESTON |
| | 16:34 | | | SUB OUT: ANTHONY,REGGIE |
| | 16:30 | 6-3 | H 3 | GOOD! 3PTR by ANDERSON,PRESTON |
| | 16:30 | | | ASSIST by HORN,ADAM |
| MISSED 3PTR by HURT,JERRY | 16:05 | | | |
| | 16:05 | | | REBOUND (DEF) by HORN,ADAM |
| | 15:50 | | | MISSED 3PTR by ANDERSON,PRESTON |
| | 15:50 | | | REBOUND (OFF) by HORN,ADAM |
| | 15:46 | | | FOUL by HORN,ADAM |
| | 15:46 | | | TURNOVER by HORN,ADAM |
| TIMEOUT MEDIA | 15:46 | | | |
| MISSED LAYUP by BEAUREGARD,CHARLES | 15:35 | | | |
| | 15:35 | | | BLOCK by BRANDON,JP |
| REBOUND (OFF) by TEAM | 15:33 | | | |
| TURNOVER by TEAM | 15:15 | | | |
| SUB IN: KING,JUSTIN | 15:15 | | | |
| SUB IN: PUGH,DEVIN | 15:15 | | | |
| SUB OUT: BEAUREGARD,CHARLES | 15:15 | | | |
| SUB OUT: LUNA,LUKE | 15:15 | | | |
| FOUL by EIBEL,DANIEL | 15:03 | | | |
| | 15:01 | | | TURNOVER by HORN,ADAM |
| TURNOVER by PUGH,DEVIN | 14:48 | | | |
| | 14:47 | | | STEAL by FRANCIS,ALEX |
| FOUL by PUGH,DEVIN | 14:45 | | | |
| | 14:45 | 7-3 | H 4 | GOOD! FT by FRANCIS,ALEX |
| | 14:45 | 8-3 | H 5 | GOOD! FT by FRANCIS,ALEX |
| SUB IN: BEAUREGARD,CHARLES | 14:45 | | | |
| SUB OUT: PUGH,DEVIN | 14:45 | | | |
| | 14:45 | | | SUB IN: SANDERSON,GARRETT |
| | 14:45 | | | SUB IN: ANTHONY,REGGIE |
| | 14:45 | | | SUB OUT: WAGNER,TIM |
| | 14:45 | | | SUB OUT: FRANCIS,ALEX |
| GOOD! 3PTR by SHOEMAKER,NICK | 14:30 | 8-6 | H 2 | |
| ASSIST by KING,JUSTIN | 14:30 | | | |
| | 14:15 | | | FOUL by BRANDON,JP |
| | 14:15 | | | TURNOVER by BRANDON,JP |
| MISSED 3PTR by EIBEL,DANIEL | 14:03 | | | |
| | 14:03 | | | REBOUND (DEF) by SANDERSON,GARRETT |
| | 13:45 | | | MISSED 3PTR by SANDERSON,GARRETT |
| REBOUND (DEF) by KING,JUSTIN | 13:45 | | | |

| VISITORS: Southwestern Okla. | Time | Score | Margin | HOME: Harding |
|---|-------|-------|--------|---------------------------------------|
| | 13:38 | | | FOUL by ANTHONY,REGGIE |
| | 13:38 | | | SUB IN: EGGLESTON,BRADEN |
| | 13:38 | | | SUB OUT: BRANDON,JP |
| | 13:36 | | | FOUL by SANDERSON,GARRETT |
| MISSED JUMPER by BEAUREGARD,CHARLES | 13:33 | | | |
| | 13:33 | | | REBOUND (DEF) by ANTHONY,REGGIE |
| | 13:27 | | | MISSED LAYUP by ANTHONY,REGGIE |
| BLOCK by SHOEMAKER,NICK | 13:27 | | | |
| | 13:27 | | | REBOUND (OFF) by TEAM |
| | 13:10 | 10-6 | H 4 | GOOD! LAYUP by ANDERSON,PRESTON [PNT] |
| | 13:10 | | | ASSIST by ANTHONY,REGGIE |
| MISSED LAYUP by HURT,JERRY | 12:51 | | | |
| | 12:51 | | | REBOUND (DEF) by SANDERSON,GARRETT |
| | 12:34 | | | MISSED 3PTR by EGGLESTON,BRADEN |
| REBOUND (DEF) by EIBEL,DANIEL | 12:34 | | | |
| | 12:14 | | | FOUL by EGGLESTON,BRADEN |
| MISSED FT by KING,JUSTIN | 12:14 | | | |
| REBOUND (DEADB) by TEAM | 12:14 | | | |
| MISSED FT by KING,JUSTIN | 12:14 | | | |
| | 12:14 | | | REBOUND (DEF) by ANDERSON,PRESTON |
| SUB IN: BATTISTI,COOPER | 12:14 | | | |
| SUB IN: LEWALLEN,LUKE | 12:14 | | | |
| SUB OUT: EIBEL,DANIEL | 12:14 | | | |
| SUB OUT: SHOEMAKER,NICK | 12:14 | | | |
| | 12:14 | | | SUB IN: FRANCIS,ALEX |
| | 12:14 | | | SUB IN: WAGNER,TIM |
| | 12:14 | | | SUB OUT: ANTHONY,REGGIE |
| | 12:14 | | | SUB OUT: HORN,ADAM |
| FOUL by KING,JUSTIN | 11:51 | | | |
| | 11:51 | | | TIMEOUT MEDIA |
| SUB IN: LUNA,LUKE | 11:51 | | | |
| SUB OUT: KING,JUSTIN | 11:51 | | | |
| | 11:42 | 12-6 | H 6 | GOOD! LAYUP by EGGLESTON,BRADEN [PNT] |
| | 11:42 | | | ASSIST by WAGNER,TIM |
| MISSED 3PTR by BEAUREGARD,CHARLES | 11:24 | | | |
| REBOUND (OFF) by LEWALLEN,LUKE | 11:24 | | | |
| MISSED LAYUP by HURT,JERRY | 11:18 | | | |
| | 11:18 | | | REBOUND (DEF) by ANDERSON,PRESTON |
| | 11:05 | | | MISSED LAYUP by SANDERSON,GARRETT |
| REBOUND (DEF) by BEAUREGARD,CHARLES | 11:05 | | | |
| TURNOVER by BEAUREGARD,CHARLES | 11:02 | | | |
| | 11:02 | | | STEAL by SANDERSON,GARRETT |
| FOUL by HURT,JERRY | 11:02 | | | |
| SUB IN: HIGHTOWER,GEOFFERY | 11:02 | | | |
| SUB IN: SHOEMAKER,NICK | 11:02 | | | |
| SUB OUT: LUNA,LUKE | 11:02 | | | |
| SUB OUT: LEWALLEN,LUKE | 11:02 | | | |
| | 10:44 | 14-6 | H 8 | GOOD! LAYUP by EGGLESTON,BRADEN [PNT] |
| FOUL by HIGHTOWER,GEOFFERY | 10:44 | | | |
| | 10:44 | 15-6 | H 9 | GOOD! FT by EGGLESTON,BRADEN |
| GOOD! LAYUP by BATTISTI,COOPER [PNT] | 10:29 | 15-8 | H 7 | |
| | 10:04 | | | MISSED 3PTR by FRANCIS,ALEX |
| REBOUND (DEADB) by TEAM | 10:04 | | | |
| | 10:02 | | | FOUL by EGGLESTON,BRADEN |
| | 10:02 | | | SUB IN: ANTHONY,REGGIE |
| | 10:02 | | | SUB OUT: SANDERSON,GARRETT |
| GOOD! JUMPER by HURT,JERRY | 09:40 | 15-10 | H 5 | |
| ASSIST by SHOEMAKER,NICK | 09:40 | | | |
| | 09:11 | | | MISSED 3PTR by ANDERSON,PRESTON |
| REBOUND (DEF) by BEAUREGARD,CHARLES | 09:11 | | | |
| GOOD! LAYUP by BEAUREGARD,CHARLES [PNT] | 09:01 | 15-12 | H 3 | |
| | 08:44 | 17-12 | H 5 | GOOD! LAYUP by ANTHONY,REGGIE [PNT] |
| | 08:44 | | | ASSIST by EGGLESTON,BRADEN |
| | 08:31 | | | FOUL by EGGLESTON,BRADEN |
| GOOD! FT by HURT,JERRY | 08:31 | 17-13 | H 4 | |
| MISSED FT by HURT,JERRY | 08:31 | | | |
| | 08:31 | | | REBOUND (DEF) by WAGNER,TIM |
| SUB IN: PUGH,DEVIN | 08:31 | | | |
| SUB OUT: BEAUREGARD,CHARLES | 08:31 | | | |
| | 08:31 | | | SUB IN: BRANDON,JP |
| | 08:31 | | | SUB IN: HORN,ADAM |
| | 08:31 | | | SUB OUT: ANDERSON,PRESTON |
| | 08:31 | | | SUB OUT: EGGLESTON,BRADEN |
| FOUL by SHOEMAKER,NICK | 08:23 | | | |
| | 08:23 | 18-13 | H 5 | GOOD! FT by ANTHONY,REGGIE |

| VISITORS: Southwestern Okla. | Time | Score | Margin | HOME: Harding |
|-------------------------------------|-------|-------|--------|----------------------------------|
| | 08:23 | | | MISSED FT by ANTHONY,REGGIE |
| REBOUND (DEF) by PUGH,DEVIN | 08:23 | | | |
| MISSED 3PTR by HURT,JERRY | 08:08 | | | |
| | 08:08 | | | REBOUND (DEF) by BRANDON,JP |
| | 07:56 | | | TURNOVER by WAGNER,TIM |
| STEAL by PUGH,DEVIN | 07:54 | | | |
| TURNOVER by HURT,JERRY | 07:54 | | | |
| | 07:54 | | | STEAL by ANTHONY,REGGIE |
| FOUL by PUGH,DEVIN | 07:54 | | | |
| | 07:54 | 19-13 | H 6 | GOOD! FT by ANTHONY,REGGIE |
| | 07:54 | | | MISSED FT by ANTHONY,REGGIE |
| REBOUND (DEF) by SHOEMAKER,NICK | 07:54 | | | |
| SUB IN: BEAUREGARD,CHARLES | 07:54 | | | |
| SUB IN: EIBEL,DANIEL | 07:54 | | | |
| SUB OUT: BATTISTI,COOPER | 07:54 | | | |
| SUB OUT: PUGH,DEVIN | 07:54 | | | |
| GOOD! 3PTR by HURT,JERRY | 07:41 | 19-16 | H 3 | |
| | 07:24 | 22-16 | H 6 | GOOD! 3PTR by WAGNER,TIM |
| | 07:24 | | | ASSIST by BRANDON,JP |
| TURNOVER by BEAUREGARD,CHARLES | 07:17 | | | |
| | 07:02 | 24-16 | H 8 | GOOD! LAYUP by HORN,ADAM [PNT] |
| | 07:02 | | | ASSIST by BRANDON,JP |
| | 06:40 | | | FOUL by HORN,ADAM |
| GOOD! FT by SHOEMAKER,NICK | 06:40 | 24-17 | H 7 | |
| GOOD! FT by SHOEMAKER,NICK | 06:40 | 24-18 | H 6 | |
| | 06:40 | | | SUB IN: ANDERSON,PRESTON |
| | 06:40 | | | SUB OUT: HORN,ADAM |
| | 06:30 | | | MISSED LAYUP by WAGNER,TIM |
| | 06:30 | | | REBOUND (DEADB) by TEAM |
| FOUL by BEAUREGARD,CHARLES | 06:29 | | | |
| | 06:28 | | | MISSED FT by BRANDON,JP |
| | 06:28 | | | REBOUND (DEADB) by TEAM |
| | 06:28 | 25-18 | H 7 | GOOD! FT by BRANDON,JP |
| SUB IN: BATTISTI,COOPER | 06:28 | | | |
| SUB OUT: HURT,JERRY | 06:28 | | | |
| MISSED 3PTR by HIGHTOWER,GEOFFERY | 06:12 | | | |
| | 06:12 | | | REBOUND (DEF) by WAGNER,TIM |
| | 05:52 | | | MISSED LAYUP by BRANDON,JP |
| REBOUND (DEF) by BEAUREGARD,CHARLES | 05:52 | | | |
| | 05:51 | | | FOUL by ANTHONY,REGGIE |
| GOOD! FT by BEAUREGARD,CHARLES | 05:51 | 25-19 | H 6 | |
| GOOD! FT by BEAUREGARD,CHARLES | 05:51 | 25-20 | H 5 | |
| | 05:51 | | | SUB IN: WARD,ZAC |
| | 05:51 | | | SUB OUT: ANTHONY,REGGIE |
| | 05:38 | | | MISSED 3PTR by ANDERSON,PRESTON |
| REBOUND (DEF) by SHOEMAKER,NICK | 05:38 | | | |
| MISSED 3PTR by BEAUREGARD,CHARLES | 05:29 | | | |
| | 05:29 | | | REBOUND (DEF) by BRANDON,JP |
| | 05:22 | | | MISSED LAYUP by ANDERSON,PRESTON |
| REBOUND (DEF) by HIGHTOWER,GEOFFERY | 05:22 | | | |
| GOOD! 3PTR by EIBEL,DANIEL | 05:11 | 25-23 | H 2 | |
| ASSIST by SHOEMAKER,NICK | 05:11 | | | |
| FOUL by EIBEL,DANIEL | 04:55 | | | |
| | 04:55 | | | MISSED FT by WAGNER,TIM |
| | 04:55 | | | REBOUND (DEADB) by TEAM |
| | 04:55 | | | MISSED FT by WAGNER,TIM |
| REBOUND (DEF) by KING,JUSTIN | 04:55 | | | |
| SUB IN: HURT,JERRY | 04:55 | | | |
| SUB IN: KING,JUSTIN | 04:55 | | | |
| SUB OUT: HIGHTOWER,GEOFFERY | 04:55 | | | |
| SUB OUT: EIBEL,DANIEL | 04:55 | | | |
| | 04:55 | | | SUB IN: SANDERSON,GARRETT |
| | 04:55 | | | SUB OUT: ANDERSON,PRESTON |
| TURNOVER by BEAUREGARD,CHARLES | 04:45 | | | |
| | 04:45 | | | STEAL by WARD,ZAC |
| | 04:33 | | | TURNOVER by FRANCIS,ALEX |
| STEAL by BATTISTI,COOPER | 04:32 | | | |
| | 04:30 | | | FOUL by FRANCIS,ALEX |
| GOOD! FT by BATTISTI,COOPER | 04:30 | 25-24 | H 1 | |
| GOOD! FT by BATTISTI,COOPER | 04:30 | 25-25 | T | |
| | 04:23 | | | FOUL by WAGNER,TIM |
| | 04:23 | | | TURNOVER by WAGNER,TIM |
| MISSED 3PTR by KING,JUSTIN | 03:58 | | | |
| | 03:58 | | | REBOUND (DEF) by WARD,ZAC |
| FOUL by BEAUREGARD,CHARLES | 03:40 | | | |

| VISITORS: Southwestern Okla. | Time | Score | Margin | HOME: Harding |
|----------------------------------|-------|-------|--------|------------------------------------|
| | 03:40 | | | TIMEOUT MEDIA |
| | 03:40 | | | MISSED FT by WAGNER,TIM |
| | 03:40 | | | REBOUND (DEADB) by TEAM |
| | 03:40 | 26-25 | H 1 | GOOD! FT by WAGNER,TIM |
| SUB IN: LEWALLEN,LUKE | 03:40 | | | |
| SUB IN: EIBEL,DANIEL | 03:40 | | | |
| SUB OUT: BEAUREGARD,CHARLES | 03:40 | | | |
| SUB OUT: SHOEMAKER,NICK | 03:40 | | | |
| | 03:40 | | | SUB IN: REEVES,BRANDON |
| | 03:40 | | | SUB OUT: BRANDON,JP |
| MISSED LAYUP by BATTISTI,COOPER | 03:22 | | | |
| REBOUND (OFF) by LEWALLEN,LUKE | 03:22 | | | |
| MISSED LAYUP by LEWALLEN,LUKE | 03:20 | | | |
| | 03:20 | | | BLOCK by REEVES,BRANDON |
| | 03:18 | | | REBOUND (DEF) by SANDERSON,GARRETT |
| | 02:57 | | | MISSED 3PTR by WAGNER,TIM |
| REBOUND (DEF) by EIBEL,DANIEL | 02:57 | | | |
| GOOD! LAYUP by KING,JUSTIN [PNT] | 02:45 | 26-27 | V 1 | |
| | 02:38 | 29-27 | H 2 | GOOD! 3PTR by WARD,ZAC |
| | 02:38 | | | ASSIST by FRANCIS,ALEX |
| TURNOVER by BATTISTI,COOPER | 02:15 | | | |
| | 02:03 | | | TURNOVER by WARD,ZAC |
| | 01:52 | | | FOUL by REEVES,BRANDON |
| MISSED FT by KING,JUSTIN | 01:52 | | | |
| REBOUND (DEADB) by TEAM | 01:52 | | | |
| MISSED FT by KING,JUSTIN | 01:52 | | | |
| | 01:52 | | | REBOUND (DEF) by WARD,ZAC |
| FOUL by KING,JUSTIN | 01:41 | | | |
| | 01:41 | 30-27 | H 3 | GOOD! FT by WAGNER,TIM |
| | 01:41 | | | MISSED FT by WAGNER,TIM |
| REBOUND (DEF) by LUNA,LUKE | 01:41 | | | |
| SUB IN: LUNA,LUKE | 01:41 | | | |
| SUB OUT: KING,JUSTIN | 01:41 | | | |
| GOOD! JUMPER by LUNA,LUKE | 01:26 | 30-29 | H 1 | |
| FOUL by BATTISTI,COOPER | 01:17 | | | |
| | 01:17 | | | MISSED FT by WAGNER,TIM |
| | 01:17 | | | REBOUND (DEADB) by TEAM |
| | 01:17 | 31-29 | H 2 | GOOD! FT by WAGNER,TIM |
| | 01:17 | | | SUB IN: BRANDON,JP |
| | 01:17 | | | SUB OUT: REEVES,BRANDON |
| GOOD! JUMPER by LUNA,LUKE | 01:04 | 31-31 | T | |
| ASSIST by LEWALLEN,LUKE | 01:04 | | | |
| FOUL by HURT,JERRY | 00:45 | | | |
| | 00:45 | 32-31 | H 1 | GOOD! FT by WAGNER,TIM |
| | 00:45 | | | MISSED FT by WAGNER,TIM |
| REBOUND (DEF) by LEWALLEN,LUKE | 00:45 | | | |
| | 00:45 | | | FOUL by SANDERSON,GARRETT |
| MISSED FT by LEWALLEN,LUKE | 00:45 | | | |
| REBOUND (DEADB) by TEAM | 00:45 | | | |
| MISSED FT by LEWALLEN,LUKE | 00:45 | | | |
| | 00:45 | | | REBOUND (DEF) by WARD,ZAC |
| | 00:39 | 34-31 | H 3 | GOOD! JUMPER by SANDERSON,GARRETT |
| GOOD! LAYUP by HURT,JERRY [PNT] | 00:07 | 34-33 | H 1 | |
| | 00:01 | | | MISSED 3PTR by WAGNER,TIM |
| | 00:01 | | | REBOUND (DEADB) by TEAM |

Southwestern Okla. 33, Harding 34

| Period 1-only | In Paint | Off T/O | 2nd Chance | Fast Break | Bench | |
|---------------|----------|---------|------------|------------|-------|------------------------|
| SWOSU | 8 | 5 | 0 | 0 | 18 | Score tied - 4 times |
| HU | 10 | 8 | 2 | 0 | 15 | Lead changed - 2 times |

Official Basketball Box Score -- Game Totals -- Second Half Statistics
Southwestern Okla. vs Harding
12/2/2017 3 p.m. at Searcy, Ark. (Rhodes-Reaves Field House)

Southwestern Okla. 38 • 1-6, 0-3 GAC

| ## | Player | | Total | | | 3-Ptr | | | Rebounds | | | PF | TP | A | TO | Blk | Stl | Min |
|--------|----------------------|---|--------|--------|--------|--------|--------|--------|----------|-----|-----|----|----|---|----|-----|-----|-----|
| | | | FG-FGA | FG-FGA | FT-FTA | FG-FGA | FG-FGA | FT-FTA | Off | Def | Tot | | | | | | | |
| 03 | EIBEL,DANIEL | g | 0-2 | 0-2 | 0-0 | 0 | 1 | 1 | 1 | 0 | 0 | 1 | 0 | 0 | 0 | 0 | 14 | |
| 04 | BEAUREGARD,CHARLES | g | 6-11 | 1-4 | 1-2 | 0 | 2 | 2 | 3 | 14 | 1 | 0 | 0 | 0 | 0 | 15 | | |
| 15 | PUGH,DEVIN | g | 0-0 | 0-0 | 0-0 | 0 | 0 | 0 | 2 | 0 | 0 | 0 | 0 | 0 | 0 | 0 | | |
| 21 | SHOEMAKER,NICK | g | 1-4 | 1-4 | 0-0 | 1 | 1 | 2 | 1 | 3 | 0 | 1 | 0 | 0 | 0 | 15 | | |
| 50 | HIGHTOWER,GEOFFERY | f | 0-2 | 0-2 | 0-0 | 0 | 0 | 0 | 2 | 0 | 0 | 0 | 0 | 0 | 0 | 4 | | |
| 00 | BATTISTI,COOPER | | 0-1 | 0-0 | 3-4 | 1 | 0 | 1 | 0 | 3 | 0 | 1 | 0 | 1 | 1 | 11 | | |
| 01 | HURT,JERRY | | 6-10 | 2-3 | 0-0 | 0 | 2 | 2 | 0 | 14 | 3 | 1 | 0 | 1 | 1 | 20 | | |
| 05 | AGYEMAN-BUDU,JEFKINS | | 0-0 | 0-0 | 0-0 | 0 | 0 | 0 | 0 | 0 | 0 | 0 | 0 | 0 | 0 | 0 | | |
| 20 | LEWALLEN,LUKE | | 0-0 | 0-0 | 0-0 | 1 | 1 | 2 | 1 | 0 | 0 | 0 | 0 | 0 | 0 | 5 | | |
| 32 | LUNA,LUKE | | 1-1 | 0-0 | 0-0 | 0 | 5 | 5 | 1 | 2 | 0 | 0 | 1 | 0 | 0 | 11 | | |
| 35 | KING,JUSTIN | | 0-2 | 0-1 | 2-4 | 0 | 1 | 1 | 2 | 2 | 0 | 0 | 0 | 0 | 0 | 5 | | |
| TEAM | | | | | | 1 | 1 | 2 | 0 | | | | | | | | | |
| Totals | | | 14-33 | 4-16 | 6-10 | 4 | 14 | 18 | 13 | 38 | 5 | 3 | 1 | 2 | | 100 | | |
| FG % | Half: | | 14-33 | 42.4% | | | | | | | | | | | | | | |
| 3FG % | Half: | | 4-16 | 30.8% | | | | | | | | | | | | | | |
| FT % | Half: | | 6-10 | 60.0% | | | | | | | | | | | | | | |

Harding 36 • 0-4, 0-3 GAC

| ## | Player | | Total | | | 3-Ptr | | | Rebounds | | | PF | TP | A | TO | Blk | Stl | Min |
|--------|-------------------|---|--------|--------|--------|--------|--------|--------|----------|-----|-----|----|----|---|----|-----|-----|-----|
| | | | FG-FGA | FG-FGA | FT-FTA | FG-FGA | FG-FGA | FT-FTA | Off | Def | Tot | | | | | | | |
| 01 | WAGNER,TIM | g | 1-2 | 1-2 | 4-6 | 0 | 1 | 1 | 3 | 7 | 0 | 1 | 0 | 0 | 0 | 20 | | |
| 03 | ANTHONY,REGGIE | g | 2-4 | 0-1 | 0-1 | 0 | 6 | 6 | 1 | 4 | 5 | 2 | 0 | 1 | 16 | | | |
| 15 | FRANCIS,ALEX | g | 1-2 | 0-1 | 2-2 | 0 | 1 | 1 | 1 | 4 | 1 | 1 | 0 | 2 | 15 | | | |
| 34 | HORN,ADAM | f | 3-7 | 0-0 | 4-6 | 2 | 4 | 6 | 0 | 10 | 0 | 0 | 1 | 0 | 18 | | | |
| 44 | BRANDON,JP | f | 1-2 | 0-0 | 1-3 | 0 | 3 | 3 | 3 | 3 | 1 | 1 | 2 | 0 | 9 | | | |
| 04 | WARD,ZAC | | 0-2 | 0-2 | 0-0 | 0 | 1 | 1 | 1 | 0 | 0 | 0 | 0 | 0 | 4 | | | |
| 12 | REEVES,BRANDON | | 0-0 | 0-0 | 0-0 | 0 | 0 | 0 | 0 | 0 | 0 | 0 | 0 | 0 | 0 | | | |
| 21 | ANDERSON,PRESTON | | 1-2 | 1-2 | 0-0 | 0 | 0 | 0 | 0 | 3 | 0 | 0 | 0 | 0 | 7 | | | |
| 22 | SANDERSON,GARRETT | | 1-2 | 0-1 | 0-0 | 1 | 0 | 1 | 0 | 2 | 0 | 0 | 1 | 0 | 5 | | | |
| 24 | EGGLESTON,BRADEN | | 1-2 | 0-0 | 1-1 | 0 | 0 | 0 | 1 | 3 | 0 | 0 | 0 | 0 | 5 | | | |
| TEAM | | | | | | 0 | 2 | 2 | 0 | | | | | | | | | |
| Totals | | | 11-25 | 2-9 | 12-19 | 3 | 18 | 21 | 10 | 36 | 7 | 6 | 4 | 3 | 99 | | | |
| FG % | Half: | | 11-25 | 44.0% | | | | | | | | | | | | | | |
| 3FG % | Half: | | 2-9 | 30.8% | | | | | | | | | | | | | | |
| FT % | Half: | | 12-19 | 63.2% | | | | | | | | | | | | | | |

Officials:
 Technical Fouls: Southwestern Okla.- None. Harding- None.

| Score by periods | 1st | 2nd | Total |
|--------------------|-----|-----|-----------|
| Southwestern Okla. | 33 | 38 | 71 |
| Harding | 34 | 36 | 70 |

| Points | In Paint | Off T/O | 2nd Chance | Fast Break | Bench |
|--------|----------|---------|------------|------------|-------|
| SWOSU | 16 | 8 | 4 | 2 | 21 |
| HU | 18 | 5 | 0 | 2 | 8 |

Last FG - SWOSU 2nd-00:54, HU 2nd-00:41.
 SWOSU led for 12:19. HU led for 5:19. Game was tied for 2:22.

Score tied - 6 times
 Lead changed - 5 times

Southwestern Okla. vs Harding
12/2/2017; 3 p.m. at Searcy, Ark. (Rhodes-Reaves Field House)
Period 2 Play-By-Play

| VISITORS: Southwestern Okla. | Time | Score | Margin | HOME: Harding |
|---|-------|-------|--------|---------------------------------------|
| FOUL by PUGH,DEVIN | 19:56 | | | |
| | 19:56 | 35-33 | H 2 | GOOD! FT by BRANDON,JP |
| | 19:56 | | | MISSED FT by BRANDON,JP |
| REBOUND (DEF) by EIBEL,DANIEL | 19:56 | | | |
| SUB IN: HURT,JERRY | 19:56 | | | |
| SUB OUT: PUGH,DEVIN | 19:56 | | | |
| | 19:47 | | | SUB IN: EGGLESTON,BRADEN |
| | 19:47 | | | SUB OUT: BRANDON,JP |
| MISSED 3PTR by HIGHTOWER,GEOFFERY | 19:41 | | | |
| | 19:41 | | | REBOUND (DEF) by WAGNER,TIM |
| | 19:12 | | | MISSED LAYUP by HORN,ADAM |
| REBOUND (DEF) by HURT,JERRY | 19:12 | | | |
| GOOD! LAYUP by BEAUREGARD,CHARLES [PNT] | 19:01 | 35-35 | T | |
| | 18:32 | | | FOUL by ANTHONY,REGGIE |
| | 18:32 | | | TURNOVER by ANTHONY,REGGIE |
| GOOD! 3PTR by BEAUREGARD,CHARLES | 18:21 | 35-38 | V 3 | |
| ASSIST by HURT,JERRY | 18:21 | | | |
| | 18:00 | 37-38 | V 1 | GOOD! LAYUP by EGGLESTON,BRADEN [PNT] |
| | 18:00 | | | ASSIST by ANTHONY,REGGIE |
| FOUL by HIGHTOWER,GEOFFERY | 18:00 | | | |
| | 18:00 | 38-38 | T | GOOD! FT by EGGLESTON,BRADEN |
| SUB IN: KING,JUSTIN | 18:00 | | | |
| SUB OUT: HIGHTOWER,GEOFFERY | 18:00 | | | |
| | 18:00 | | | SUB IN: WARD,ZAC |
| | 18:00 | | | SUB OUT: ANTHONY,REGGIE |
| | 17:45 | | | FOUL by WARD,ZAC |
| GOOD! JUMPER by HURT,JERRY [PNT] | 17:33 | 38-40 | V 2 | |
| | 17:05 | | | MISSED 3PTR by WARD,ZAC |
| REBOUND (DEF) by KING,JUSTIN | 17:05 | | | |
| MISSED JUMPER by HURT,JERRY | 16:54 | | | |
| | 16:54 | | | REBOUND (DEF) by HORN,ADAM |
| | 16:43 | | | MISSED JUMPER by EGGLESTON,BRADEN |
| REBOUND (DEF) by HURT,JERRY | 16:43 | | | |
| | 16:34 | | | FOUL by EGGLESTON,BRADEN |
| | 16:34 | | | SUB IN: ANDERSON,PRESTON |
| | 16:34 | | | SUB OUT: EGGLESTON,BRADEN |
| GOOD! JUMPER by BEAUREGARD,CHARLES | 16:32 | 38-42 | V 4 | |
| ASSIST by HURT,JERRY | 16:32 | | | |
| | 16:15 | | | MISSED 3PTR by FRANCIS,ALEX |
| | 16:15 | | | REBOUND (OFF) by HORN,ADAM |
| FOUL by KING,JUSTIN | 16:12 | | | |
| SUB IN: LUNA,LUKE | 16:12 | | | |
| SUB OUT: KING,JUSTIN | 16:12 | | | |
| | 16:03 | | | MISSED 3PTR by WARD,ZAC |
| REBOUND (DEF) by SHOEMAKER,NICK | 16:03 | | | |
| MISSED 3PTR by BEAUREGARD,CHARLES | 15:41 | | | |
| | 15:41 | | | REBOUND (DEF) by WARD,ZAC |
| FOUL by EIBEL,DANIEL | 15:32 | | | |
| | 15:32 | | | TIMEOUT MEDIA |
| | 15:32 | 39-42 | V 3 | GOOD! FT by FRANCIS,ALEX |
| | 15:32 | 40-42 | V 2 | GOOD! FT by FRANCIS,ALEX |
| GOOD! LAYUP by LUNA,LUKE [PNT] | 15:13 | 40-44 | V 4 | |
| ASSIST by EIBEL,DANIEL | 15:13 | | | |
| | 15:01 | | | MISSED LAYUP by HORN,ADAM |
| REBOUND (DEF) by LUNA,LUKE | 15:01 | | | |
| GOOD! JUMPER by BEAUREGARD,CHARLES | 14:31 | 40-46 | V 6 | |
| | 14:13 | 43-46 | V 3 | GOOD! 3PTR by ANDERSON,PRESTON |
| | 14:13 | | | ASSIST by FRANCIS,ALEX |
| | 14:10 | | | TIMEOUT 30SEC |
| TIMEOUT MEDIA | 14:10 | | | |
| SUB IN: BATTISTI,COOPER | 14:10 | | | |
| SUB OUT: EIBEL,DANIEL | 14:10 | | | |
| | 14:10 | | | SUB IN: SANDERSON,GARRETT |
| | 14:10 | | | SUB IN: ANTHONY,REGGIE |
| | 14:10 | | | SUB OUT: WARD,ZAC |
| | 14:10 | | | SUB OUT: FRANCIS,ALEX |
| GOOD! 3PTR by HURT,JERRY | 13:58 | 43-49 | V 6 | |
| ASSIST by BEAUREGARD,CHARLES | 13:58 | | | |
| | 13:38 | 45-49 | V 4 | GOOD! LAYUP by HORN,ADAM [PNT] |

| VISITORS: Southwestern Okla. | Time | Score | Margin | HOME: Harding |
|-------------------------------------|-------|-------|--------|--|
| | 13:38 | | | ASSIST by ANTHONY,REGGIE |
| MISSED LAYUP by HURT,JERRY | 13:20 | | | |
| | 13:20 | | | BLOCK by SANDERSON,GARRETT |
| REBOUND (OFF) by TEAM | 13:20 | | | |
| GOOD! LAYUP by HURT,JERRY [PNT] | 13:09 | 45-51 | V 6 | |
| | 12:50 | | | MISSED 3PTR by ANDERSON,PRESTON |
| REBOUND (DEF) by BEAUREGARD,CHARLES | 12:50 | | | |
| MISSED LAYUP by BATTISTI,COOPER | 12:39 | | | |
| | 12:39 | | | REBOUND (DEF) by ANTHONY,REGGIE |
| | 12:29 | 47-51 | V 4 | GOOD! LAYUP by SANDERSON,GARRETT [PNT] |
| | 12:29 | | | ASSIST by ANTHONY,REGGIE |
| MISSED 3PTR by BEAUREGARD,CHARLES | 12:16 | | | |
| | 12:16 | | | REBOUND (DEF) by ANTHONY,REGGIE |
| FOUL by BEAUREGARD,CHARLES | 12:07 | | | |
| | 12:07 | | | MISSED FT by HORN,ADAM |
| | 12:07 | | | REBOUND (DEADB) by TEAM |
| | 12:07 | 48-51 | V 3 | GOOD! FT by HORN,ADAM |
| SUB IN: LEWALLEN,LUKE | 12:07 | | | |
| SUB IN: HIGHTOWER,GEOFFERY | 12:07 | | | |
| SUB IN: EIBEL,DANIEL | 12:07 | | | |
| SUB OUT: BATTISTI,COOPER | 12:07 | | | |
| SUB OUT: SHOEMAKER,NICK | 12:07 | | | |
| SUB OUT: LUNA,LUKE | 12:07 | | | |
| | 12:07 | | | SUB IN: BRANDON,JP |
| | 12:07 | | | SUB OUT: ANDERSON,PRESTON |
| MISSED LAYUP by HURT,JERRY | 11:49 | | | |
| | 11:49 | | | BLOCK by BRANDON,JP |
| | 11:49 | | | REBOUND (DEF) by TEAM |
| | 11:49 | | | TIMEOUT MEDIA |
| | 11:23 | 50-51 | V 1 | GOOD! LAYUP by BRANDON,JP [PNT] |
| MISSED 3PTR by EIBEL,DANIEL | 11:03 | | | |
| | 11:03 | | | REBOUND (DEF) by BRANDON,JP |
| FOUL by HIGHTOWER,GEOFFERY | 10:55 | | | |
| SUB IN: SHOEMAKER,NICK | 10:55 | | | |
| SUB IN: KING,JUSTIN | 10:55 | | | |
| SUB OUT: LEWALLEN,LUKE | 10:55 | | | |
| SUB OUT: HIGHTOWER,GEOFFERY | 10:55 | | | |
| FOUL by KING,JUSTIN | 10:39 | | | |
| | 10:39 | | | MISSED FT by BRANDON,JP |
| | 10:39 | | | REBOUND (OFF) by SANDERSON,GARRETT |
| | 10:36 | | | FOUL by BRANDON,JP |
| | 10:36 | | | TURNOVER by BRANDON,JP |
| MISSED LAYUP by BEAUREGARD,CHARLES | 10:24 | | | |
| | 10:24 | | | REBOUND (DEF) by ANTHONY,REGGIE |
| | 10:15 | | | MISSED 3PTR by SANDERSON,GARRETT |
| REBOUND (DEF) by BEAUREGARD,CHARLES | 10:15 | | | |
| MISSED LAYUP by KING,JUSTIN | 09:56 | | | |
| | 09:56 | | | BLOCK by BRANDON,JP |
| | 09:54 | | | REBOUND (DEF) by ANTHONY,REGGIE |
| | 09:45 | 52-51 | H 1 | GOOD! LAYUP by ANTHONY,REGGIE [PNT] |
| | 09:45 | | | ASSIST by BRANDON,JP |
| | 09:23 | | | FOUL by BRANDON,JP |
| GOOD! FT by KING,JUSTIN | 09:23 | 52-52 | T | |
| GOOD! FT by KING,JUSTIN | 09:23 | 52-53 | V 1 | |
| SUB IN: BATTISTI,COOPER | 09:23 | | | |
| SUB OUT: EIBEL,DANIEL | 09:23 | | | |
| | 08:52 | | | MISSED JUMPER by BRANDON,JP |
| | 08:52 | | | REBOUND (OFF) by HORN,ADAM |
| | 08:52 | | | TURNOVER by TEAM |
| | 08:52 | | | SUB IN: FRANCIS,ALEX |
| | 08:52 | | | SUB OUT: SANDERSON,GARRETT |
| MISSED LAYUP by BEAUREGARD,CHARLES | 08:39 | | | |
| REBOUND (OFF) by BATTISTI,COOPER | 08:39 | | | |
| | 08:33 | | | FOUL by WAGNER,TIM |
| MISSED FT by KING,JUSTIN | 08:33 | | | |
| REBOUND (DEADB) by TEAM | 08:33 | | | |
| MISSED FT by KING,JUSTIN | 08:33 | | | |
| | 08:33 | | | REBOUND (DEF) by HORN,ADAM |
| | 08:17 | 54-53 | H 1 | GOOD! LAYUP by HORN,ADAM [PNT] |
| | 08:17 | | | ASSIST by ANTHONY,REGGIE |
| MISSED 3PTR by KING,JUSTIN | 08:02 | | | |
| | 08:02 | | | REBOUND (DEF) by TEAM |
| | 07:55 | | | TIMEOUT MEDIA |
| SUB IN: HIGHTOWER,GEOFFERY | 07:55 | | | |
| SUB IN: LEWALLEN,LUKE | 07:55 | | | |

| VISITORS: Southwestern Okla. | Time | Score | Margin | HOME: Harding |
|---|-------|-------|--------|---------------------------------|
| SUB OUT: SHOEMAKER,NICK | 07:55 | | | |
| SUB OUT: KING,JUSTIN | 07:55 | | | |
| FOUL by LEWALLEN,LUKE | 07:44 | | | |
| | 07:44 | 55-53 | H 2 | GOOD! FT by HORN,ADAM |
| | 07:44 | 56-53 | H 3 | GOOD! FT by HORN,ADAM |
| MISSED 3PTR by HIGHTOWER,GEOFFERY | 07:36 | | | |
| REBOUND (OFF) by LEWALLEN,LUKE | 07:36 | | | |
| TURNOVER by HURT,JERRY | 07:30 | | | |
| | 07:29 | | | STEAL by ANTHONY,REGGIE |
| | 07:24 | 59-53 | H 6 | GOOD! 3PTR by WAGNER,TIM |
| | 07:24 | | | ASSIST by ANTHONY,REGGIE |
| TIMEOUT TEAM | 07:13 | | | |
| SUB IN: LUNA,LUKE | 07:13 | | | |
| SUB OUT: HIGHTOWER,GEOFFERY | 07:13 | | | |
| MISSED 3PTR by BEAUREGARD,CHARLES | 07:03 | | | |
| | 07:03 | | | REBOUND (DEF) by BRANDON,JP |
| | 06:45 | | | MISSED LAYUP by HORN,ADAM |
| BLOCK by LUNA,LUKE | 06:45 | | | |
| REBOUND (DEF) by LUNA,LUKE | 06:45 | | | |
| SUB IN: PUGH,DEVIN | 06:45 | | | |
| SUB OUT: BATTISTI,COOPER | 06:45 | | | |
| MISSED 3PTR by HURT,JERRY | 06:32 | | | |
| | 06:32 | | | REBOUND (DEF) by ANTHONY,REGGIE |
| FOUL by PUGH,DEVIN | 06:27 | | | |
| | 06:27 | | | MISSED FT by ANTHONY,REGGIE |
| REBOUND (DEF) by LEWALLEN,LUKE | 06:27 | | | |
| SUB IN: BATTISTI,COOPER | 06:27 | | | |
| SUB OUT: PUGH,DEVIN | 06:27 | | | |
| GOOD! LAYUP by BEAUREGARD,CHARLES [PNT] | 06:20 | 59-55 | H 4 | |
| | 06:00 | | | FOUL by WAGNER,TIM |
| | 06:00 | | | TURNOVER by WAGNER,TIM |
| SUB IN: SHOEMAKER,NICK | 06:00 | | | |
| SUB OUT: LEWALLEN,LUKE | 06:00 | | | |
| | 05:47 | | | FOUL by BRANDON,JP |
| GOOD! FT by BEAUREGARD,CHARLES | 05:47 | 59-56 | H 3 | |
| MISSED FT by BEAUREGARD,CHARLES | 05:47 | | | |
| | 05:47 | | | REBOUND (DEF) by HORN,ADAM |
| | 05:47 | | | SUB IN: EGGLESTON,BRADEN |
| | 05:47 | | | SUB OUT: BRANDON,JP |
| FOUL by BEAUREGARD,CHARLES | 05:35 | | | |
| | 05:35 | 60-56 | H 4 | GOOD! FT by WAGNER,TIM |
| | 05:35 | | | MISSED FT by WAGNER,TIM |
| REBOUND (DEF) by LUNA,LUKE | 05:35 | | | |
| | 05:35 | | | SUB IN: ANDERSON,PRESTON |
| | 05:35 | | | SUB OUT: HORN,ADAM |
| GOOD! LAYUP by BEAUREGARD,CHARLES [PNT] | 05:25 | 60-58 | H 2 | |
| FOUL by BEAUREGARD,CHARLES | 05:18 | | | |
| | 05:18 | | | MISSED FT by WAGNER,TIM |
| | 05:18 | | | REBOUND (DEADB) by TEAM |
| | 05:18 | 61-58 | H 3 | GOOD! FT by WAGNER,TIM |
| SUB IN: EIBEL,DANIEL | 05:18 | | | |
| SUB OUT: BEAUREGARD,CHARLES | 05:18 | | | |
| MISSED 3PTR by SHOEMAKER,NICK | 05:10 | | | |
| | 05:10 | | | REBOUND (DEF) by ANTHONY,REGGIE |
| | 05:00 | | | TURNOVER by ANTHONY,REGGIE |
| STEAL by BATTISTI,COOPER | 04:58 | | | |
| | 04:57 | | | FOUL by FRANCIS,ALEX |
| GOOD! FT by BATTISTI,COOPER | 04:57 | 61-59 | H 2 | |
| GOOD! FT by BATTISTI,COOPER | 04:57 | 61-60 | H 1 | |
| | 04:34 | | | MISSED 3PTR by ANTHONY,REGGIE |
| REBOUND (DEF) by LUNA,LUKE | 04:34 | | | |
| GOOD! 3PTR by SHOEMAKER,NICK | 04:19 | 61-63 | V 2 | |
| ASSIST by HURT,JERRY | 04:19 | | | |
| FOUL by LUNA,LUKE | 03:59 | | | |
| | 03:59 | | | TIMEOUT MEDIA |
| | 03:59 | 62-63 | V 1 | GOOD! FT by WAGNER,TIM |
| | 03:59 | 63-63 | T | GOOD! FT by WAGNER,TIM |
| | 03:59 | | | SUB IN: HORN,ADAM |
| | 03:59 | | | SUB OUT: ANDERSON,PRESTON |
| | 03:42 | | | FOUL by WAGNER,TIM |
| GOOD! FT by BATTISTI,COOPER | 03:42 | 63-64 | V 1 | |
| MISSED FT by BATTISTI,COOPER | 03:42 | | | |
| | 03:42 | | | REBOUND (DEF) by HORN,ADAM |
| | 03:42 | | | SUB IN: BRANDON,JP |
| | 03:42 | | | SUB OUT: EGGLESTON,BRADEN |

| VISITORS: Southwestern Okla. | Time | Score | Margin | HOME: Harding |
|------------------------------------|-------|-------|--------|--------------------------------------|
| FOUL by SHOEMAKER,NICK | 03:41 | | | |
| | 03:41 | | | MISSED FT by HORN,ADAM |
| | 03:41 | | | REBOUND (DEADB) by TEAM |
| | 03:41 | 64-64 | T | GOOD! FT by HORN,ADAM |
| MISSED 3PTR by SHOEMAKER,NICK | 03:30 | | | |
| | 03:30 | | | BLOCK by HORN,ADAM |
| REBOUND (OFF) by SHOEMAKER,NICK | 03:29 | | | |
| GOOD! LAYUP by HURT,JERRY [PNT] | 03:14 | 64-66 | V 2 | |
| | 02:41 | 66-66 | T | GOOD! LAYUP by HORN,ADAM [PNT] |
| TURNOVER by SHOEMAKER,NICK | 02:31 | | | |
| | 02:30 | | | STEAL by FRANCIS,ALEX |
| | 02:26 | | | MISSED LAYUP by HORN,ADAM |
| REBOUND (DEF) by TEAM | 02:26 | | | |
| GOOD! 3PTR by HURT,JERRY | 02:10 | 66-69 | V 3 | |
| TIMEOUT 30SEC | 02:07 | | | |
| SUB IN: LEWALLEN,LUKE | 02:07 | | | |
| SUB OUT: SHOEMAKER,NICK | 02:07 | | | |
| | 01:53 | | | MISSED LAYUP by ANTHONY,REGGIE |
| REBOUND (DEF) by LUNA,LUKE | 01:53 | | | |
| TURNOVER by BATTISTI,COOPER | 01:43 | | | |
| | 01:42 | | | STEAL by FRANCIS,ALEX |
| | 01:40 | 68-69 | V 1 | GOOD! LAYUP by FRANCIS,ALEX [FB/PNT] |
| MISSED 3PTR by EIBEL,DANIEL | 01:15 | | | |
| | 01:15 | | | REBOUND (DEF) by BRANDON,JP |
| | 00:56 | | | TURNOVER by FRANCIS,ALEX |
| STEAL by HURT,JERRY | 00:56 | | | |
| GOOD! LAYUP by HURT,JERRY [FB/PNT] | 00:54 | 68-71 | V 3 | |
| | 00:48 | | | TIMEOUT TEAM |
| SUB IN: AGYEMAN-BUDU,JEFKINS | 00:48 | | | |
| SUB OUT: EIBEL,DANIEL | 00:48 | | | |
| | 00:48 | | | SUB IN: ANDERSON,PRESTON |
| | 00:48 | | | SUB OUT: BRANDON,JP |
| | 00:41 | 70-71 | V 1 | GOOD! LAYUP by ANTHONY,REGGIE [PNT] |
| TIMEOUT 30SEC | 00:27 | | | |
| SUB IN: EIBEL,DANIEL | 00:27 | | | |
| SUB IN: SHOEMAKER,NICK | 00:27 | | | |
| SUB IN: KING,JUSTIN | 00:27 | | | |
| SUB OUT: LUNA,LUKE | 00:27 | | | |
| SUB OUT: AGYEMAN-BUDU,JEFKINS | 00:27 | | | |
| SUB OUT: LEWALLEN,LUKE | 00:27 | | | |
| MISSED 3PTR by SHOEMAKER,NICK | 00:18 | | | |
| | 00:18 | | | REBOUND (DEF) by FRANCIS,ALEX |
| | 00:01 | | | MISSED 3PTR by WAGNER,TIM |
| | 00:00 | | | REBOUND (DEADB) by TEAM |

Southwestern Okla. 71, Harding 70

| Period 2-only | In Paint | Off T/O | 2nd Chance | Fast Break | Bench | |
|---------------|----------|---------|------------|------------|-------|------------------------|
| SWOSU | 16 | 8 | 4 | 2 | 21 | Score tied - 4 times |
| HU | 18 | 5 | 0 | 2 | 8 | Lead changed - 6 times |

Southwestern Okla. vs Harding
12/2/2017; 3 p.m. at Searcy, Ark. (Rhodes-Reaves Field House)
Scoring/Runs Reference

Period 1

| Southwestern Okla. | VRun | Score | Margin | HRun | Harding |
|------------------------------|------|-------|--------|------|-----------------------------|
| 18:06 - PUGH 3PTR | - | 3-0 | -3 | | |
| | | 3-3 | 0 | | WAGNER 3PTR - 17:46 |
| | | 3-6 | 3 | 6-0 | ANDERSON 3PTR - 16:30 |
| | | 3-7 | 4 | 7-0 | FRANCIS FT - 14:45 |
| | | 3-8 | 5 | 8-0 | FRANCIS FT - 14:45 |
| 14:30 - SHOEMAKER 3PTR | - | 6-8 | 2 | | |
| | | 6-10 | 4 | | ANDERSON LAYUP [P] - 13:10 |
| | | 6-12 | 6 | 4-0 | EGGLESTON LAYUP [P] - 11:42 |
| | | 6-14 | 8 | 6-0 | EGGLESTON LAYUP [P] - 10:44 |
| | | 6-15 | 9 | 7-0 | EGGLESTON FT - 10:44 |
| 10:29 - BATTISTI LAYUP [P] | - | 8-15 | 7 | | |
| 09:40 - HURT JUMPER | 4-0 | 10-15 | 5 | | |
| 09:01 - BEAUREGARD LAYUP [P] | 6-0 | 12-15 | 3 | | |
| | | 12-17 | 5 | | ANTHONY LAYUP [P] - 08:44 |
| 08:31 - HURT FT | - | 13-17 | 4 | | |
| | | 13-18 | 5 | | ANTHONY FT - 08:23 |
| | | 13-19 | 6 | 2-0 | ANTHONY FT - 07:54 |
| 07:41 - HURT 3PTR | - | 16-19 | 3 | | |
| | | 16-22 | 6 | | WAGNER 3PTR - 07:24 |
| | | 16-24 | 8 | 5-0 | HORN LAYUP [P] - 07:02 |
| 06:40 - SHOEMAKER FT | - | 17-24 | 7 | | |
| 06:40 - SHOEMAKER FT | 2-0 | 18-24 | 6 | | |
| | | 18-25 | 7 | | BRANDON FT - 06:28 |
| 05:51 - BEAUREGARD FT | - | 19-25 | 6 | | |
| 05:51 - BEAUREGARD FT | 2-0 | 20-25 | 5 | | |
| 05:11 - EIBEL 3PTR | 5-0 | 23-25 | 2 | | |
| 04:30 - BATTISTI FT | 6-0 | 24-25 | 1 | | |
| 04:30 - BATTISTI FT | 7-0 | 25-25 | 0 | | |
| | | 25-26 | 1 | | WAGNER FT - 03:40 |
| 02:45 - KING LAYUP [P] | - | 27-26 | -1 | | |
| | | 27-29 | 2 | | WARD 3PTR - 02:38 |
| | | 27-30 | 3 | 4-0 | WAGNER FT - 01:41 |
| 01:26 - LUNA JUMPER | - | 29-30 | 1 | | |
| | | 29-31 | 2 | | WAGNER FT - 01:17 |
| 01:04 - LUNA JUMPER | - | 31-31 | 0 | | |
| | | 31-32 | 1 | | WAGNER FT - 00:45 |
| | | 31-34 | 3 | 3-0 | SANDERSON JUMPER - 00:39 |
| 00:07 - HURT LAYUP [P] | - | 33-34 | 1 | | |

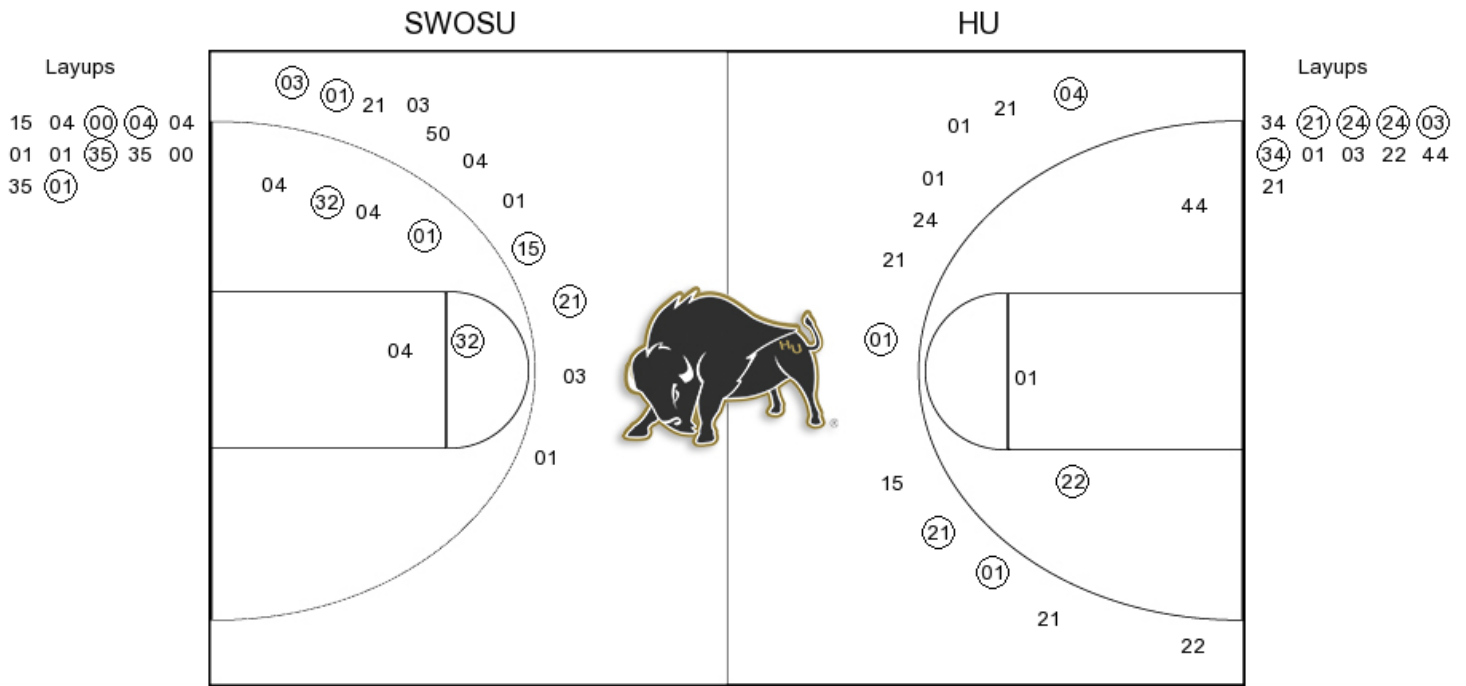
Southwestern Okla. vs Harding
12/2/2017; 3 p.m. at Searcy, Ark. (Rhodes-Reaves Field House)
Scoring/Runs Reference

Period 2

| Southwestern Okla. | VRun | Score | Margin | HRun | Harding |
|------------------------------|------|-------|--------|------|-------------------------------|
| | | 33-35 | 2 | | BRANDON FT - 19:56 |
| 19:01 - BEAUREGARD LAYUP [P] | - | 35-35 | 0 | | |
| 18:21 - BEAUREGARD 3PTR | 5-0 | 38-35 | -3 | | |
| | | 38-37 | -1 | | EGGLESTON LAYUP [P] - 18:00 |
| | | 38-38 | 0 | 3-0 | EGGLESTON FT - 18:00 |
| 17:33 - HURT JUMPER [P] | - | 40-38 | -2 | | |
| 16:32 - BEAUREGARD JUMPER | 4-0 | 42-38 | -4 | | |
| | | 42-39 | -3 | | FRANCIS FT - 15:32 |
| | | 42-40 | -2 | 2-0 | FRANCIS FT - 15:32 |
| 15:13 - LUNA LAYUP [P] | - | 44-40 | -4 | | |
| 14:31 - BEAUREGARD JUMPER | 4-0 | 46-40 | -6 | | |
| | | 46-43 | -3 | | ANDERSON 3PTR - 14:13 |
| 13:58 - HURT 3PTR | - | 49-43 | -6 | | |
| | | 49-45 | -4 | | HORN LAYUP [P] - 13:38 |
| 13:09 - HURT LAYUP [P] | - | 51-45 | -6 | | |
| | | 51-47 | -4 | | SANDERSON LAYUP [P] - 12:29 |
| | | 51-48 | -3 | 3-0 | HORN FT - 12:07 |
| | | 51-50 | -1 | 5-0 | BRANDON LAYUP [P] - 11:23 |
| | | 51-52 | 1 | 7-0 | ANTHONY LAYUP [P] - 09:45 |
| 09:23 - KING FT | - | 52-52 | 0 | | |
| 09:23 - KING FT | 2-0 | 53-52 | -1 | | |
| | | 53-54 | 1 | | HORN LAYUP [P] - 08:17 |
| | | 53-55 | 2 | 3-0 | HORN FT - 07:44 |
| | | 53-56 | 3 | 4-0 | HORN FT - 07:44 |
| | | 53-59 | 6 | 7-0 | WAGNER 3PTR - 07:24 |
| 06:20 - BEAUREGARD LAYUP [P] | - | 55-59 | 4 | | |
| 05:47 - BEAUREGARD FT | 3-0 | 56-59 | 3 | | |
| | | 56-60 | 4 | | WAGNER FT - 05:35 |
| 05:25 - BEAUREGARD LAYUP [P] | - | 58-60 | 2 | | |
| | | 58-61 | 3 | | WAGNER FT - 05:18 |
| 04:57 - BATTISTI FT | - | 59-61 | 2 | | |
| 04:57 - BATTISTI FT | 2-0 | 60-61 | 1 | | |
| 04:19 - SHOEMAKER 3PTR | 5-0 | 63-61 | -2 | | |
| | | 63-62 | -1 | | WAGNER FT - 03:59 |
| | | 63-63 | 0 | 2-0 | WAGNER FT - 03:59 |
| 03:42 - BATTISTI FT | - | 64-63 | -1 | | |
| | | 64-64 | 0 | | HORN FT - 03:41 |
| 03:14 - HURT LAYUP [P] | - | 66-64 | -2 | | |
| | | 66-66 | 0 | | HORN LAYUP [P] - 02:41 |
| 02:10 - HURT 3PTR | - | 69-66 | -3 | | |
| | | 69-68 | -1 | | FRANCIS LAYUP [P] [F] - 01:40 |
| 00:54 - HURT LAYUP [P] [F] | - | 71-68 | -3 | | |
| | | 71-70 | -1 | | ANTHONY LAYUP [P] - 00:41 |

Southwestern Okla. vs Harding
 OFFICIAL SHOT CHART
 12/2/2017 at Searcy, Ark. (Rhodes-Reaves Field House)

PERIOD 1



SWOSU PERIOD 1

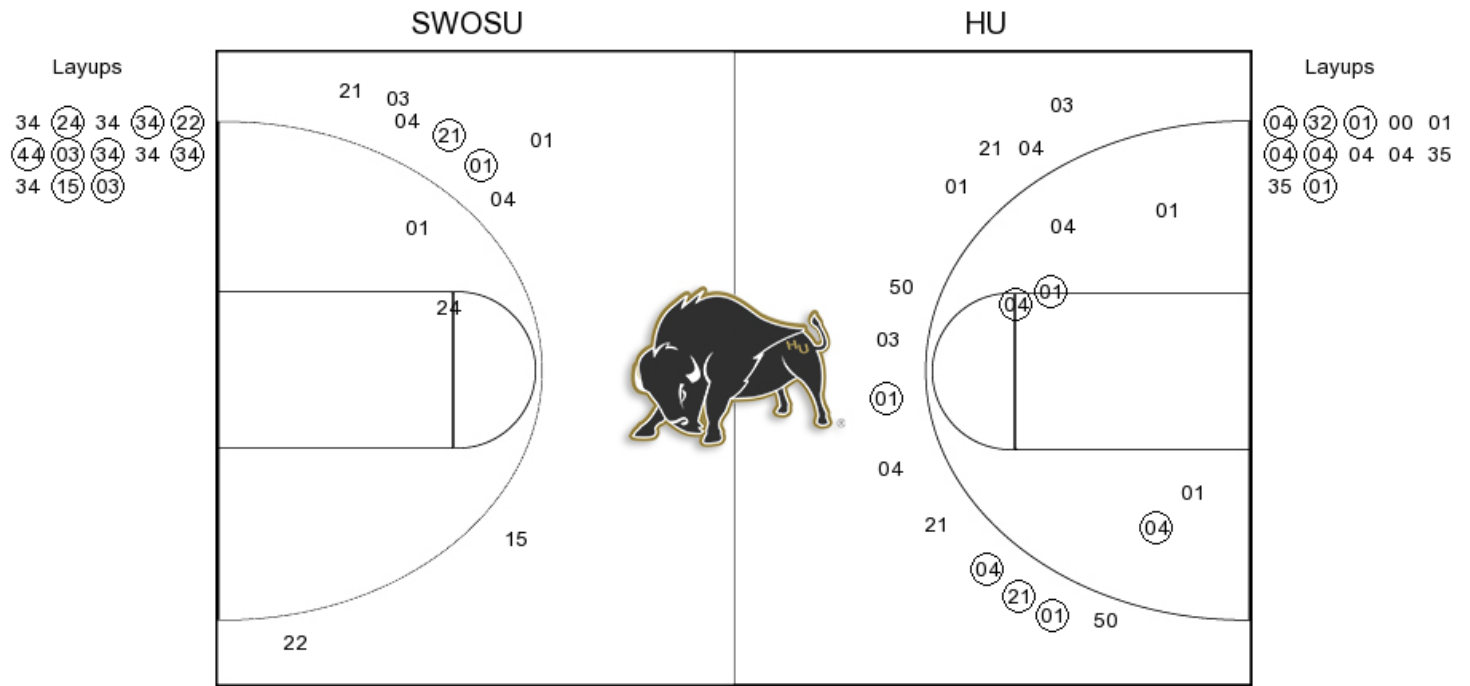
| | |
|----------------|----|
| FG Made | 11 |
| FG Attempted | 29 |
| 3PFG Made | 4 |
| 3PFG Attempted | 13 |

HU PERIOD 1

| | |
|----------------|----|
| FG Made | 10 |
| FG Attempted | 27 |
| 3PFG Made | 4 |
| 3PFG Attempted | 13 |

Southwestern Okla. vs Harding
 OFFICIAL SHOT CHART
 12/2/2017 at Searcy, Ark. (Rhodes-Reaves Field House)

PERIOD 2



SWOSU PERIOD 2

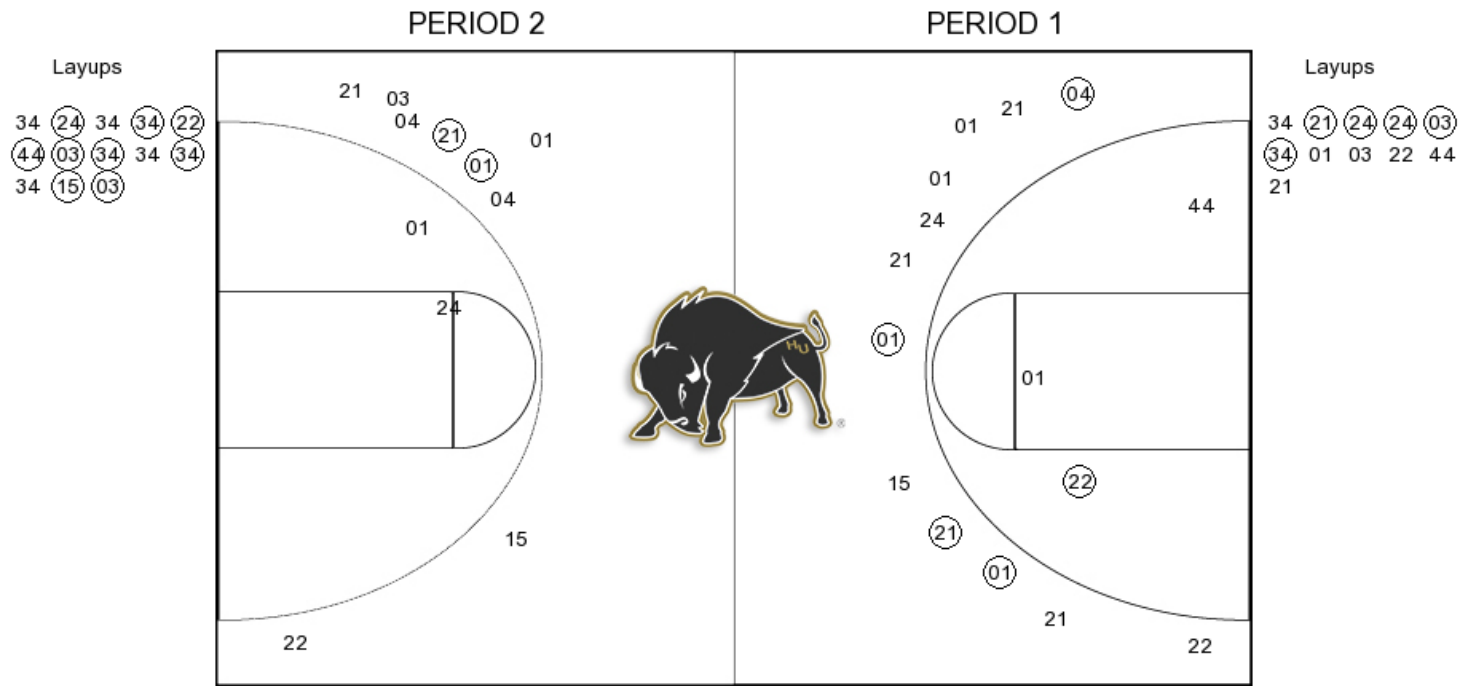
| | |
|----------------|----|
| FG Made | 14 |
| FG Attempted | 33 |
| 3PFG Made | 4 |
| 3PFG Attempted | 16 |

HU PERIOD 2

| | |
|----------------|----|
| FG Made | 11 |
| FG Attempted | 25 |
| 3PFG Made | 2 |
| 3PFG Attempted | 9 |

Southwestern Okla. vs Harding
 OFFICIAL SHOT CHART
 12/2/2017 at Searcy, Ark. (Rhodes-Reaves Field House)

Harding



HU PERIOD 1

| | |
|----------------|----|
| FG Made | 10 |
| FG Attempted | 27 |
| 3PFG Made | 4 |
| 3PFG Attempted | 13 |

HU PERIOD 2

| | |
|----------------|----|
| FG Made | 11 |
| FG Attempted | 25 |
| 3PFG Made | 2 |
| 3PFG Attempted | 9 |