

FINAL SCORE

Southern Arkansas

8-16, 7-11 GAC

54

Harding

13-13, 9-9 GAC

63

February 17, 2018 • Searcy, Ark. (Rhodes-Reaves Field House)

FINAL STATISTICS

Official Basketball Box Score -- Game Totals -- Final Statistics
Southern Arkansas vs Harding
2/17/2018 5:30 p.m. at Searcy, Ark. (Rhodes-Reaves Field House)

Southern Arkansas 54 - 8-16, 7-11 GAC

| ## | Player | g | Total | | 3-Ptr | | Rebounds | | | PF | TP | A | TO | Blk | Stl | Min |
|--------|-------------------|---|--------|--------|--------|-----|----------|-----|----|----|----|----|----|-----|-----|-----|
| | | | FG-FGA | FG-FGA | FT-FTA | Off | Def | Tot | | | | | | | | |
| 05 | DJEDJEMEL,ANNA | g | 3-6 | 3-6 | 0-0 | 0 | 3 | 3 | 3 | 9 | 3 | 3 | 0 | 3 | 28 | |
| 13 | BRINKLEY,ERIN | f | 1-4 | 0-0 | 1-2 | 1 | 4 | 5 | 4 | 3 | 1 | 1 | 2 | 0 | 29 | |
| 21 | KEY,SUE | g | 3-14 | 2-5 | 0-0 | 0 | 2 | 2 | 4 | 8 | 1 | 4 | 3 | 1 | 34 | |
| 25 | MCWILLIAMS,OLIVIA | g | 5-13 | 1-2 | 2-6 | 2 | 2 | 4 | 2 | 13 | 7 | 3 | 0 | 3 | 38 | |
| 30 | CROWN,KIMBERLY | f | 2-10 | 0-0 | 1-2 | 3 | 6 | 9 | 4 | 5 | 0 | 2 | 4 | 2 | 27 | |
| 03 | WACHA,BRETTE | | 0-0 | 0-0 | 0-0 | 1 | 0 | 1 | 0 | 0 | 0 | 0 | 0 | 0 | 1 | |
| 10 | HENRY,RAMIAH | | 4-8 | 2-4 | 3-4 | 0 | 0 | 0 | 1 | 13 | 2 | 0 | 1 | 1 | 26 | |
| 23 | EVANS,MAGGIE | | 1-3 | 0-0 | 1-2 | 1 | 2 | 3 | 4 | 3 | 0 | 1 | 1 | 0 | 18 | |
| TEAM | | | | | | 2 | 6 | 8 | 0 | | 0 | | | | | |
| TOTALS | | | 19-58 | 8-17 | 8-16 | 10 | 25 | 35 | 22 | 54 | 14 | 14 | 11 | 10 | 201 | |

Deadball Rebounds: 4.0

| | | | | | | | | | | | | | | |
|-------|-----------|-------|-------|-----------|------|-------|---------|-------|-------|---------|------|-------|--|--|
| FG % | 1st Half: | 10-34 | 29.4% | 2nd Half: | 9-24 | 37.5% | Game: | 19-58 | 32.8% | | | | | |
| | 1st Qtr | 4-16 | 25.0% | 2nd Qtr | 6-18 | 33.3% | 3rd Qtr | 5-11 | 45.5% | 4th Qtr | 4-13 | 30.8% | | |
| 3FG % | 1st Half: | 5-9 | 55.6% | 2nd Half: | 3-8 | 37.5% | Game: | 8-17 | 47.1% | | | | | |
| | 1st Qtr | 2-3 | 66.7% | 2nd Qtr | 3-6 | 50.0% | 3rd Qtr | 1-2 | 50.0% | 4th Qtr | 2-6 | 33.3% | | |
| FT % | 1st Half: | 4-8 | 50.0% | 2nd Half: | 4-8 | 50.0% | Game: | 8-16 | 50.0% | | | | | |
| | 1st Qtr | 2-4 | 50.0% | 2nd Qtr | 2-4 | 50.0% | 3rd Qtr | 4-8 | 50.0% | 4th Qtr | 0-0 | 0% | | |

Harding 63 - 13-13, 9-9 GAC

| ## | Player | g | Total | | 3-Ptr | | Rebounds | | | PF | TP | A | TO | Blk | Stl | Min |
|--------|--------------------|---|--------|--------|--------|-----|----------|-----|----|----|----|----|----|-----|-----|-----|
| | | | FG-FGA | FG-FGA | FT-FTA | Off | Def | Tot | | | | | | | | |
| 03 | MILLER,FALAN | g | 4-9 | 4-8 | 3-4 | 2 | 1 | 3 | 3 | 15 | 2 | 1 | 1 | 0 | 33 | |
| 10 | LAMPO,KELLIE | g | 5-13 | 0-0 | 1-3 | 3 | 3 | 6 | 4 | 11 | 1 | 4 | 1 | 0 | 22 | |
| 13 | PADGETT,PEYTON | g | 1-4 | 0-1 | 3-5 | 2 | 7 | 9 | 1 | 5 | 3 | 3 | 0 | 4 | 37 | |
| 21 | LAYROCK,SYDNEY | f | 5-12 | 0-1 | 4-6 | 2 | 5 | 7 | 2 | 14 | 1 | 4 | 1 | 1 | 32 | |
| 24 | KEARNEY,AMANDA | g | 0-5 | 0-2 | 2-6 | 0 | 2 | 2 | 2 | 2 | 1 | 0 | 0 | 0 | 25 | |
| 04 | MCNAMARA,MACKENZIE | | 0-0 | 0-0 | 0-0 | 0 | 2 | 2 | 0 | 0 | 0 | 0 | 0 | 0 | 1 | |
| 14 | CAPLES,CARISSA | | 0-1 | 0-1 | 0-0 | 0 | 3 | 3 | 0 | 0 | 0 | 2 | 0 | 0 | 23 | |
| 33 | JONES,SYDNIE | | 2-5 | 0-0 | 2-4 | 2 | 4 | 6 | 2 | 6 | 1 | 1 | 0 | 0 | 18 | |
| 42 | COOPER,KENNEDY | | 5-8 | 0-0 | 0-1 | 3 | 3 | 6 | 1 | 10 | 1 | 1 | 0 | 0 | 9 | |
| TEAM | | | | | | 3 | 3 | 6 | 0 | | 1 | | | | | |
| TOTALS | | | 22-57 | 4-13 | 15-29 | 17 | 33 | 50 | 15 | 63 | 10 | 17 | 3 | 5 | 200 | |

Deadball Rebounds: 7.0

| | | | | | | | | | | | | | | |
|-------|-----------|-------|-------|-----------|------|-------|---------|-------|-------|---------|------|-------|--|--|
| FG % | 1st Half: | 14-30 | 46.7% | 2nd Half: | 8-27 | 29.6% | Game: | 22-57 | 38.6% | | | | | |
| | 1st Qtr | 7-15 | 46.7% | 2nd Qtr | 7-15 | 46.7% | 3rd Qtr | 4-17 | 23.5% | 4th Qtr | 4-10 | 40.0% | | |
| 3FG % | 1st Half: | 4-10 | 40.0% | 2nd Half: | 0-3 | 00.0% | Game: | 4-13 | 30.8% | | | | | |
| | 1st Qtr | 1-5 | 20.0% | 2nd Qtr | 3-5 | 60.0% | 3rd Qtr | 0-2 | 00.0% | 4th Qtr | 0-1 | 00.0% | | |
| FT % | 1st Half: | 6-16 | 37.5% | 2nd Half: | 9-13 | 69.2% | Game: | 15-29 | 51.7% | | | | | |
| | 1st Qtr | 4-5 | 80.0% | 2nd Qtr | 2-11 | 18.2% | 3rd Qtr | 7-10 | 70.0% | 4th Qtr | 2-3 | 66.7% | | |

Officials: Montrel Simmons, Shane Boozer and Lance Smith
 Technical Fouls: Southern Arkansas- None. Harding- None.
 Attendance: 476

| Score by periods | 1st | 2nd | 3rd | 4th | Total |
|-------------------|-----|-----|-----|-----|-------|
| Southern Arkansas | 12 | 17 | 15 | 10 | 54 |
| Harding | 19 | 19 | 15 | 10 | 63 |

| Points | In Paint | Off T/O | 2nd Chance | Fast Break | Bench |
|--------|----------|---------|------------|------------|-------|
| SAUW | 8 | 11 | 2 | 0 | 16 |
| HU | 32 | 17 | 15 | 0 | 16 |

Last FG - SAUW 4th-00:34, HU 4th-03:24.

Largest lead - Southern Arkansas by 2 1st-09:47; Harding by 14 2nd-06:53

SAUW led for 0:45. HU led for 39:02. Game was tied for 0:13.

Score tied - 0 times; Lead changed - 1 times

Official Basketball Box Score -- Game Totals -- First Half Statistics
Southern Arkansas vs Harding
 2/17/2018 5:30 p.m. at Searcy, Ark. (Rhodes-Reaves Field House)

Southern Arkansas 29 • 8-16, 7-11 GAC

| ## | Player | | Total | | 3-Ptr | FT-FTA | Rebounds | | | PF | TP | A | TO | Blk | Stl | Min |
|--------|-------------------|---|--------|--------|--------|--------|----------|-----|-----|----|----|---|----|-----|-----|-----|
| | | | FG-FGA | FG-FGA | FG-FGA | | Off | Def | Tot | | | | | | | |
| 05 | DJEDJEMEL,ANNA | g | 3-5 | 3-5 | 0-0 | 0 | 2 | 2 | 2 | 9 | 2 | 0 | 0 | 1 | 17 | |
| 13 | BRINKLEY,ERIN | f | 0-1 | 0-0 | 0-0 | 0 | 2 | 2 | 2 | 0 | 0 | 1 | 0 | 0 | 12 | |
| 21 | KEY,SUE | g | 1-7 | 1-2 | 0-0 | 0 | 1 | 1 | 2 | 3 | 0 | 2 | 2 | 1 | 16 | |
| 25 | MCWILLIAMS,OLIVIA | g | 3-9 | 0-1 | 1-2 | 1 | 1 | 2 | 1 | 7 | 3 | 1 | 0 | 1 | 18 | |
| 30 | CROWN,KIMBERLY | f | 2-9 | 0-0 | 1-2 | 3 | 3 | 6 | 2 | 5 | 0 | 2 | 2 | 0 | 15 | |
| 03 | WACHA,BRETTE | | 0-0 | 0-0 | 0-0 | 1 | 0 | 1 | 0 | 0 | 0 | 0 | 0 | 0 | 1 | |
| 10 | HENRY,RAMIAH | | 1-2 | 1-1 | 1-2 | 0 | 0 | 0 | 0 | 4 | 2 | 0 | 0 | 1 | 12 | |
| 23 | EVANS,MAGGIE | | 0-1 | 0-0 | 1-2 | 1 | 2 | 3 | 3 | 1 | 0 | 1 | 1 | 0 | 9 | |
| TEAM | | | | | | 1 | 5 | 6 | 0 | | 0 | | | | | |
| Totals | | | 10-34 | 5-9 | 4-8 | 7 | 16 | 23 | 12 | 29 | 7 | 7 | 5 | 4 | 100 | |

FG % 1st Qtr 4-16 25.0% 2nd Qtr 6-18 33.3% Half: 10-34 29.4%
 3FG % 1st Qtr 2-3 66.7% 2nd Qtr 3-6 50.0% Half: 5-9 55.6%
 FT % 1st Qtr 2-4 50.0% 2nd Qtr 2-4 50.0% Half: 4-8 50.0%

Harding 38 • 13-13, 9-9 GAC

| ## | Player | | Total | | 3-Ptr | FT-FTA | Rebounds | | | PF | TP | A | TO | Blk | Stl | Min |
|--------|--------------------|---|--------|--------|--------|--------|----------|-----|-----|----|----|---|----|-----|-----|-----|
| | | | FG-FGA | FG-FGA | FG-FGA | | Off | Def | Tot | | | | | | | |
| 03 | MILLER,FALAN | g | 4-6 | 4-6 | 1-2 | 0 | 1 | 1 | 1 | 13 | 2 | 0 | 1 | 0 | 18 | |
| 10 | LAMPO,KELLIE | g | 2-4 | 0-0 | 0-0 | 0 | 2 | 2 | 2 | 4 | 1 | 1 | 1 | 0 | 9 | |
| 13 | PADGETT,PEYTON | g | 1-1 | 0-0 | 1-3 | 0 | 2 | 2 | 0 | 3 | 2 | 0 | 0 | 1 | 17 | |
| 21 | LAYROCK,SYDNEY | f | 2-7 | 0-1 | 2-4 | 1 | 4 | 5 | 1 | 6 | 1 | 2 | 1 | 0 | 14 | |
| 24 | KEARNEY,AMANDA | g | 0-3 | 0-2 | 2-6 | 0 | 1 | 1 | 1 | 2 | 0 | 0 | 0 | 0 | 14 | |
| 04 | MCMAMARA,MACKENZIE | | 0-0 | 0-0 | 0-0 | 0 | 1 | 1 | 0 | 0 | 0 | 0 | 0 | 0 | 0 | |
| 14 | CAPLES,CARISSA | | 0-1 | 0-1 | 0-0 | 0 | 2 | 2 | 0 | 0 | 0 | 1 | 0 | 0 | 11 | |
| 33 | JONES,SYDNE | | 2-3 | 0-0 | 0-0 | 0 | 2 | 2 | 1 | 4 | 1 | 1 | 0 | 0 | 11 | |
| 42 | COOPER,KENNEDY | | 3-5 | 0-0 | 0-1 | 3 | 2 | 5 | 1 | 6 | 1 | 1 | 0 | 0 | 6 | |
| TEAM | | | | | | 2 | 1 | 3 | 0 | | 0 | | | | | |
| Totals | | | 14-30 | 4-10 | 6-16 | 6 | 18 | 24 | 7 | 38 | 8 | 6 | 3 | 1 | 100 | |

FG % 1st Qtr 7-15 46.7% 2nd Qtr 7-15 46.7% Half: 14-30 46.7%
 3FG % 1st Qtr 1-5 20.0% 2nd Qtr 3-5 60.0% Half: 4-10 40.0%
 FT % 1st Qtr 4-5 80.0% 2nd Qtr 2-11 18.2% Half: 6-16 37.5%

Officials: Montrel Simmons, Shane Boozer and Lance Smith
 Technical Fouls: Southern Arkansas- None. Harding- None.

| Score by periods | 1st | 2nd | 3rd | 4th | Total |
|-------------------|-----|-----|-----|-----|-----------|
| Southern Arkansas | 12 | 17 | 15 | 10 | 54 |
| Harding | 19 | 19 | 15 | 10 | 63 |

| Points | In Paint | Off T/O | 2nd Chance | Fast Break | Bench |
|--------|----------|---------|------------|------------|-------|
| SAUW | 2 | 4 | 2 | 0 | 5 |
| | 16 | 9 | 7 | 0 | 10 |

Last FG - SAUW 2nd-00:39, HU 2nd-02:12.
 SAUW led for 0:45. HU led for 19:02. Game was tied for 0:13.

Score tied - 0 times
 Lead changed - 1 times

Southern Arkansas vs Harding
2/17/2018; 5:30 p.m. at Searcy, Ark. (Rhodes-Reaves Field House)
Period 1 Play-By-Play

| VISITORS: Southern Arkansas | Time | Score | Margin | HOME: Harding |
|------------------------------------|-------|-------|--------|-------------------------------------|
| GOOD! JUMPER by MCWILLIAMS,OLIVIA | 09:47 | 0-2 | V 2 | |
| | 09:24 | | | MISSED JUMPER by LAYROCK,SYDNEY |
| REBOUND (DEF) by BRINKLEY,ERIN | 09:24 | | | |
| MISSED JUMPER by KEY,SUE | 09:09 | | | |
| | 09:09 | | | REBOUND (DEF) by PADGETT,PEYTON |
| | 09:02 | 3-2 | H 1 | GOOD! 3PTR by MILLER,FALAN |
| | 09:02 | | | ASSIST by PADGETT,PEYTON |
| FOUL by CROWN,KIMBERLY | 08:47 | | | |
| TURNOVER by CROWN,KIMBERLY | 08:47 | | | |
| | 08:36 | | | MISSED 3PTR by MILLER,FALAN |
| REBOUND (DEF) by DJEDJEMEL,ANNA | 08:36 | | | |
| MISSED 3PTR by MCWILLIAMS,OLIVIA | 08:23 | | | |
| REBOUND (DEADB) by TEAM | 08:23 | | | |
| | 08:22 | | | FOUL by LAYROCK,SYDNEY |
| MISSED LAYUP by CROWN,KIMBERLY | 08:14 | | | |
| | 08:14 | | | REBOUND (DEF) by TEAM |
| | 08:04 | 5-2 | H 3 | GOOD! LAYUP by LAMPO,KELLIE [PNT] |
| | 08:04 | | | ASSIST by MILLER,FALAN |
| MISSED LAYUP by CROWN,KIMBERLY | 07:48 | | | |
| | 07:48 | | | REBOUND (DEF) by LAMPO,KELLIE |
| | 07:27 | | | MISSED LAYUP by LAMPO,KELLIE |
| BLOCK by CROWN,KIMBERLY | 07:27 | | | |
| REBOUND (DEF) by CROWN,KIMBERLY | 07:25 | | | |
| MISSED JUMPER by MCWILLIAMS,OLIVIA | 07:04 | | | |
| REBOUND (OFF) by CROWN,KIMBERLY | 07:04 | | | |
| | 07:00 | | | FOUL by LAMPO,KELLIE |
| FOUL by KEY,SUE | 06:55 | | | |
| TURNOVER by KEY,SUE | 06:55 | | | |
| | 06:46 | 7-2 | H 5 | GOOD! LAYUP by LAYROCK,SYDNEY [PNT] |
| TURNOVER by CROWN,KIMBERLY | 06:26 | | | |
| | 06:13 | | | TURNOVER by LAMPO,KELLIE |
| STEAL by DJEDJEMEL,ANNA | 06:13 | | | |
| MISSED JUMPER by MCWILLIAMS,OLIVIA | 06:05 | | | |
| | 06:05 | | | REBOUND (DEF) by PADGETT,PEYTON |
| | 05:57 | 9-2 | H 7 | GOOD! LAYUP by PADGETT,PEYTON [PNT] |
| FOUL by BRINKLEY,ERIN | 05:57 | | | |
| | 05:57 | 10-2 | H 8 | GOOD! FT by PADGETT,PEYTON |
| | 05:57 | | | SUB IN: CAPLES,CARISSA |
| | 05:57 | | | SUB IN: JONES,SYDNIE |
| | 05:57 | | | SUB OUT: LAMPO,KELLIE |
| | 05:57 | | | SUB OUT: KEARNEY,AMANDA |
| MISSED LAYUP by CROWN,KIMBERLY | 05:32 | | | |
| | 05:32 | | | BLOCK by LAYROCK,SYDNEY |
| REBOUND (OFF) by TEAM | 05:32 | | | |
| GOOD! JUMPER by CROWN,KIMBERLY | 05:31 | 10-4 | H 6 | |
| ASSIST by DJEDJEMEL,ANNA | 05:31 | | | |
| | 05:14 | | | MISSED 3PTR by LAYROCK,SYDNEY |
| REBOUND (DEF) by TEAM | 05:14 | | | |
| MISSED JUMPER by MCWILLIAMS,OLIVIA | 05:02 | | | |
| | 05:02 | | | REBOUND (DEF) by JONES,SYDNIE |
| | 04:43 | 12-4 | H 8 | GOOD! LAYUP by JONES,SYDNIE [PNT] |
| GOOD! 3PTR by DJEDJEMEL,ANNA | 04:29 | 12-7 | H 5 | |
| ASSIST by MCWILLIAMS,OLIVIA | 04:29 | | | |
| | 04:13 | | | MISSED LAYUP by LAYROCK,SYDNEY |
| REBOUND (DEF) by CROWN,KIMBERLY | 04:13 | | | |
| FOUL by BRINKLEY,ERIN | 04:02 | | | |
| TURNOVER by BRINKLEY,ERIN | 04:02 | | | |
| | 04:02 | | | TIMEOUT MEDIA |
| SUB IN: HENRY,RAMIAH | 04:02 | | | |
| SUB IN: EVANS,MAGGIE | 04:02 | | | |
| SUB OUT: BRINKLEY,ERIN | 04:02 | | | |
| SUB OUT: MCWILLIAMS,OLIVIA | 04:02 | | | |
| | 03:32 | | | MISSED 3PTR by MILLER,FALAN |
| | 03:32 | | | REBOUND (OFF) by TEAM |
| | 03:28 | | | SUB IN: LAMPO,KELLIE |
| | 03:28 | | | SUB IN: COOPER,KENNEDY |
| | 03:28 | | | SUB OUT: LAYROCK,SYDNEY |
| | 03:28 | | | SUB OUT: JONES,SYDNIE |
| | 03:16 | 14-7 | H 7 | GOOD! JUMPER by COOPER,KENNEDY |

| VISITORS: Southern Arkansas | Time | Score | Margin | HOME: Harding |
|---------------------------------|-------|-------|--------|---------------------------------|
| | 03:16 | | | ASSIST by PADGETT,PEYTON |
| MISSED LAYUP by KEY,SUE | 03:01 | | | |
| REBOUND (OFF) by CROWN,KIMBERLY | 03:01 | | | |
| MISSED LAYUP by CROWN,KIMBERLY | 02:58 | | | |
| | 02:58 | | | BLOCK by MILLER,FALAN |
| | 02:56 | | | REBOUND (DEF) by CAPLES,CARISSA |
| | 02:46 | | | MISSED 3PTR by CAPLES,CARISSA |
| REBOUND (DEF) by EVANS,MAGGIE | 02:46 | | | |
| | 02:45 | | | FOUL by COOPER,KENNEDY |
| | 02:45 | | | SUB IN: KEARNEY,AMANDA |
| | 02:45 | | | SUB OUT: MILLER,FALAN |
| MISSED JUMPER by CROWN,KIMBERLY | 02:35 | | | |
| | 02:35 | | | REBOUND (DEF) by CAPLES,CARISSA |
| FOUL by CROWN,KIMBERLY | 02:25 | | | |
| | 02:25 | 15-7 | H 8 | GOOD! FT by KEARNEY,AMANDA |
| | 02:25 | 16-7 | H 9 | GOOD! FT by KEARNEY,AMANDA |
| SUB IN: MCWILLIAMS,OLIVIA | 02:25 | | | |
| SUB OUT: CROWN,KIMBERLY | 02:25 | | | |
| | 02:08 | | | FOUL by KEARNEY,AMANDA |
| MISSED FT by EVANS,MAGGIE | 02:08 | | | |
| REBOUND (DEADB) by TEAM | 02:08 | | | |
| GOOD! FT by EVANS,MAGGIE | 02:08 | 16-8 | H 8 | |
| | 01:57 | | | TURNOVER by CAPLES,CARISSA |
| STEAL by MCWILLIAMS,OLIVIA | 01:54 | | | |
| | 01:43 | | | FOUL by LAMPO,KELLIE |
| GOOD! FT by HENRY,RAMIAH | 01:43 | 16-9 | H 7 | |
| MISSED FT by HENRY,RAMIAH | 01:43 | | | |
| | 01:43 | | | REBOUND (DEF) by LAYROCK,SYDNEY |
| | 01:43 | | | SUB IN: LAYROCK,SYDNEY |
| | 01:43 | | | SUB IN: JONES,SYDNEIE |
| | 01:43 | | | SUB IN: MILLER,FALAN |
| | 01:43 | | | SUB OUT: CAPLES,CARISSA |
| | 01:43 | | | SUB OUT: LAMPO,KELLIE |
| | 01:43 | | | SUB OUT: COOPER,KENNEDY |
| | 01:29 | | | MISSED LAYUP by KEARNEY,AMANDA |
| | 01:29 | | | REBOUND (OFF) by LAYROCK,SYDNEY |
| FOUL by EVANS,MAGGIE | 01:28 | | | |
| | 01:28 | 17-9 | H 8 | GOOD! FT by LAYROCK,SYDNEY |
| | 01:28 | | | MISSED FT by LAYROCK,SYDNEY |
| REBOUND (DEF) by BRINKLEY,ERIN | 01:28 | | | |
| SUB IN: BRINKLEY,ERIN | 01:28 | | | |
| SUB OUT: HENRY,RAMIAH | 01:28 | | | |
| MISSED JUMPER by BRINKLEY,ERIN | 01:06 | | | |
| | 01:06 | | | REBOUND (DEF) by MILLER,FALAN |
| | 00:48 | | | TURNOVER by LAYROCK,SYDNEY |
| GOOD! 3PTR by DJEDJEMEL,ANNA | 00:36 | 17-12 | H 5 | |
| ASSIST by MCWILLIAMS,OLIVIA | 00:36 | | | |
| | 00:01 | 19-12 | H 7 | GOOD! JUMPER by LAYROCK,SYDNEY |

Southern Arkansas 12, Harding 19

| Period 1-only | In Paint | Off T/O | 2nd Chance | Fast Break | Bench | |
|---------------|-------------|------------|---------------|---------------|-------|------------------------|
| SAUW | 0 | 4 | 2 | 0 | 2 | Score tied - 0 times |
| HU | 8 | 4 | 3 | 0 | 4 | Lead changed - 0 times |

Southern Arkansas vs Harding
2/17/2018; 5:30 p.m. at Searcy, Ark. (Rhodes-Reaves Field House)
Period 2 Play-By-Play

| VISITORS: Southern Arkansas | Time | Score | Margin | HOME: Harding |
|-------------------------------------|-------|-------|--------|-------------------------------------|
| SUB IN: EVANS,MAGGIE | 10:00 | | | |
| SUB OUT: CROWN,KIMBERLY | 10:00 | | | |
| | 10:00 | | | SUB IN: JONES,SYDNE |
| | 10:00 | | | SUB OUT: LAMPO,KELLIE |
| | 09:44 | 22-12 | H 10 | GOOD! 3PTR by MILLER,FALAN |
| | 09:44 | | | ASSIST by JONES,SYDNE |
| MISSED JUMPER by KEY,SUE | 09:26 | | | |
| | 09:26 | | | REBOUND (DEF) by LAYROCK,SYDNEY |
| FOUL by EVANS,MAGGIE | 09:16 | | | |
| | 09:16 | | | MISSED FT by PADGETT,PEYTON |
| | 09:16 | | | REBOUND (DEADB) by TEAM |
| | 09:16 | | | MISSED FT by PADGETT,PEYTON |
| REBOUND (DEF) by DJEDJEMEL,ANNA | 09:16 | | | |
| MISSED LAYUP by EVANS,MAGGIE | 09:11 | | | |
| REBOUND (OFF) by MCWILLIAMS,OLIVIA | 09:11 | | | |
| TURNOVER by MCWILLIAMS,OLIVIA | 09:08 | | | |
| | 09:07 | | | STEAL by PADGETT,PEYTON |
| FOUL by DJEDJEMEL,ANNA | 09:04 | | | |
| | 09:04 | | | MISSED FT by KEARNEY,AMANDA |
| | 09:04 | | | REBOUND (DEADB) by TEAM |
| | 09:04 | | | MISSED FT by KEARNEY,AMANDA |
| | 09:04 | | | REBOUND (OFF) by COOPER,KENNEDY |
| SUB IN: CROWN,KIMBERLY | 09:04 | | | |
| SUB IN: HENRY,RAMIAH | 09:04 | | | |
| SUB OUT: DJEDJEMEL,ANNA | 09:04 | | | |
| SUB OUT: EVANS,MAGGIE | 09:04 | | | |
| | 09:04 | | | SUB IN: COOPER,KENNEDY |
| | 09:04 | | | SUB OUT: LAYROCK,SYDNEY |
| | 09:03 | 24-12 | H 12 | GOOD! LAYUP by COOPER,KENNEDY [PNT] |
| GOOD! LAYUP by CROWN,KIMBERLY [PNT] | 08:45 | 24-14 | H 10 | |
| ASSIST by MCWILLIAMS,OLIVIA | 08:45 | | | |
| | 08:35 | | | MISSED LAYUP by JONES,SYDNE |
| BLOCK by CROWN,KIMBERLY | 08:35 | | | |
| | 08:33 | | | REBOUND (OFF) by TEAM |
| | 08:28 | | | MISSED 3PTR by KEARNEY,AMANDA |
| REBOUND (DEF) by KEY,SUE | 08:28 | | | |
| MISSED JUMPER by MCWILLIAMS,OLIVIA | 08:20 | | | |
| | 08:20 | | | REBOUND (DEF) by COOPER,KENNEDY |
| | 08:07 | 26-14 | H 12 | GOOD! LAYUP by JONES,SYDNE [PNT] |
| | 08:07 | | | ASSIST by COOPER,KENNEDY |
| TIMEOUT 30SEC | 08:01 | | | |
| TIMEOUT MEDIA | 08:01 | | | |
| | 08:01 | | | SUB IN: CAPLES,CARISSA |
| | 08:01 | | | SUB IN: LAMPO,KELLIE |
| | 08:01 | | | SUB OUT: JONES,SYDNE |
| | 08:01 | | | SUB OUT: KEARNEY,AMANDA |
| MISSED JUMPER by CROWN,KIMBERLY | 07:50 | | | |
| | 07:50 | | | BLOCK by LAMPO,KELLIE |
| | 07:48 | | | REBOUND (DEF) by COOPER,KENNEDY |
| SUB IN: DJEDJEMEL,ANNA | 07:25 | | | |
| SUB IN: EVANS,MAGGIE | 07:25 | | | |
| SUB OUT: CROWN,KIMBERLY | 07:25 | | | |
| SUB OUT: KEY,SUE | 07:25 | | | |
| | 07:23 | | | TURNOVER by COOPER,KENNEDY |
| | 07:23 | | | SUB IN: KEARNEY,AMANDA |
| | 07:23 | | | SUB OUT: PADGETT,PEYTON |
| MISSED JUMPER by HENRY,RAMIAH | 07:05 | | | |
| | 07:05 | | | REBOUND (DEF) by LAMPO,KELLIE |
| | 06:53 | 28-14 | H 14 | GOOD! LAYUP by LAMPO,KELLIE [PNT] |
| | 06:53 | | | ASSIST by MILLER,FALAN |
| GOOD! 3PTR by DJEDJEMEL,ANNA | 06:29 | 28-17 | H 11 | |
| ASSIST by HENRY,RAMIAH | 06:29 | | | |
| | 06:18 | | | MISSED LAYUP by LAMPO,KELLIE |
| REBOUND (DEF) by TEAM | 06:18 | | | |
| | 06:16 | | | SUB IN: LAYROCK,SYDNEY |
| | 06:16 | | | SUB OUT: COOPER,KENNEDY |
| GOOD! JUMPER by MCWILLIAMS,OLIVIA | 05:56 | 28-19 | H 9 | |
| | 05:44 | 31-19 | H 12 | GOOD! 3PTR by MILLER,FALAN |
| | 05:44 | | | ASSIST by LAMPO,KELLIE |

| VISITORS: Southern Arkansas | Time | Score | Margin | HOME: Harding |
|------------------------------------|-------|-------|--------|-------------------------------------|
| GOOD! JUMPER by MCWILLIAMS,OLIVIA | 05:35 | 31-21 | H 10 | |
| | 05:08 | | | MISSED 3PTR by KEARNEY,AMANDA |
| REBOUND (DEF) by TEAM | 05:08 | | | |
| SUB IN: CROWN,KIMBERLY | 05:06 | | | |
| SUB OUT: BRINKLEY,ERIN | 05:06 | | | |
| | 05:06 | | | SUB IN: JONES,SYDNEIE |
| | 05:06 | | | SUB OUT: LAMPO,KELLIE |
| MISSED 3PTR by DJEDJEMEL,ANNA | 04:59 | | | |
| | 04:59 | | | REBOUND (DEF) by KEARNEY,AMANDA |
| | 04:43 | | | MISSED LAYUP by LAYROCK,SYDNEY |
| BLOCK by EVANS,MAGGIE | 04:43 | | | |
| REBOUND (DEF) by EVANS,MAGGIE | 04:41 | | | |
| MISSED JUMPER by MCWILLIAMS,OLIVIA | 04:30 | | | |
| REBOUND (OFF) by CROWN,KIMBERLY | 04:30 | | | |
| MISSED 3PTR by DJEDJEMEL,ANNA | 04:25 | | | |
| REBOUND (OFF) by EVANS,MAGGIE | 04:25 | | | |
| TURNOVER by EVANS,MAGGIE | 03:57 | | | |
| FOUL by EVANS,MAGGIE | 03:40 | | | |
| | 03:40 | 32-21 | H 11 | GOOD! FT by MILLER,FALAN |
| | 03:40 | | | MISSED FT by MILLER,FALAN |
| | 03:40 | | | REBOUND (OFF) by COOPER,KENNEDY |
| SUB IN: KEY,SUE | 03:40 | | | |
| SUB OUT: EVANS,MAGGIE | 03:40 | | | |
| | 03:40 | | | SUB IN: COOPER,KENNEDY |
| | 03:40 | | | SUB IN: PADGETT,PEYTON |
| | 03:40 | | | SUB OUT: CAPLES,CARISSA |
| | 03:40 | | | SUB OUT: LAYROCK,SYDNEY |
| | 03:38 | | | MISSED LAYUP by COOPER,KENNEDY |
| BLOCK by KEY,SUE | 03:38 | | | |
| REBOUND (DEF) by TEAM | 03:36 | | | |
| | 03:26 | | | FOUL by JONES,SYDNEIE |
| MISSED FT by CROWN,KIMBERLY | 03:26 | | | |
| REBOUND (DEADB) by TEAM | 03:26 | | | |
| GOOD! FT by CROWN,KIMBERLY | 03:26 | 32-22 | H 10 | |
| | 03:14 | | | TURNOVER by JONES,SYDNEIE |
| STEAL by KEY,SUE | 03:14 | | | |
| TURNOVER by KEY,SUE | 03:14 | | | |
| | 03:10 | | | MISSED LAYUP by COOPER,KENNEDY |
| BLOCK by KEY,SUE | 03:10 | | | |
| | 03:08 | | | REBOUND (OFF) by COOPER,KENNEDY |
| | 03:08 | 34-22 | H 12 | GOOD! LAYUP by COOPER,KENNEDY [PNT] |
| FOUL by KEY,SUE | 03:08 | | | |
| | 03:08 | | | MISSED FT by COOPER,KENNEDY |
| REBOUND (DEF) by TEAM | 03:08 | | | |
| | 03:06 | | | SUB IN: CAPLES,CARISSA |
| | 03:06 | | | SUB OUT: MILLER,FALAN |
| GOOD! 3PTR by HENRY,RAMIAH | 02:57 | 34-25 | H 9 | |
| ASSIST by DJEDJEMEL,ANNA | 02:57 | | | |
| FOUL by MCWILLIAMS,OLIVIA | 02:48 | | | |
| | 02:48 | | | MISSED FT by KEARNEY,AMANDA |
| | 02:48 | | | REBOUND (DEADB) by TEAM |
| | 02:48 | | | MISSED FT by KEARNEY,AMANDA |
| REBOUND (DEF) by MCWILLIAMS,OLIVIA | 02:48 | | | |
| | 02:33 | | | SUB IN: MILLER,FALAN |
| | 02:33 | | | SUB IN: LAYROCK,SYDNEY |
| | 02:33 | | | SUB OUT: COOPER,KENNEDY |
| | 02:33 | | | SUB OUT: KEARNEY,AMANDA |
| MISSED JUMPER by KEY,SUE | 02:22 | | | |
| | 02:22 | | | REBOUND (DEF) by LAYROCK,SYDNEY |
| | 02:12 | 37-25 | H 12 | GOOD! 3PTR by MILLER,FALAN |
| | 02:12 | | | ASSIST by LAYROCK,SYDNEY |
| | 01:55 | | | FOUL by MILLER,FALAN |
| GOOD! FT by MCWILLIAMS,OLIVIA | 01:55 | 37-26 | H 11 | |
| MISSED FT by MCWILLIAMS,OLIVIA | 01:55 | | | |
| | 01:55 | | | REBOUND (DEF) by LAYROCK,SYDNEY |
| FOUL by DJEDJEMEL,ANNA | 01:42 | | | |
| | 01:42 | | | MISSED FT by LAYROCK,SYDNEY |
| | 01:42 | | | REBOUND (DEADB) by TEAM |
| | 01:42 | 38-26 | H 12 | GOOD! FT by LAYROCK,SYDNEY |
| SUB IN: WACHA,BRETTE | 01:42 | | | |
| SUB OUT: DJEDJEMEL,ANNA | 01:42 | | | |
| MISSED LAYUP by KEY,SUE | 01:28 | | | |
| REBOUND (OFF) by WACHA,BRETTE | 01:28 | | | |
| MISSED LAYUP by CROWN,KIMBERLY | 01:13 | | | |
| | 01:13 | | | REBOUND (DEF) by JONES,SYDNEIE |

| VISITORS: Southern Arkansas | Time | Score | Margin | HOME: Harding |
|------------------------------------|-------------|--------------|---------------|-------------------------------------|
| | 00:47 | | | MISSED JUMPER by LAYROCK,SYDNEY |
| REBOUND (DEF) by CROWN,KIMBERLY | 00:47 | | | |
| GOOD! 3PTR by KEY,SUE | 00:39 | 38-29 | H 9 | |
| ASSIST by HENRY,RAMIAH | 00:39 | | | |
| | 00:22 | | | TURNOVER by LAYROCK,SYDNEY |
| STEAL by HENRY,RAMIAH | 00:22 | | | |
| | 00:22 | | | SUB IN: MCNAMARA,MACKENZIE |
| | 00:22 | | | SUB OUT: LAYROCK,SYDNEY |
| MISSED 3PTR by KEY,SUE | 00:03 | | | |
| | 00:03 | | | REBOUND (DEF) by MCNAMARA,MACKENZIE |

Southern Arkansas 29, Harding 38

| Period 2-only | In Paint | Off T/O | 2nd Chance | Fast Break | Bench | |
|----------------------|---------------------|--------------------|-----------------------|-----------------------|--------------|------------------------|
| SAUW | 2 | 0 | 0 | 0 | 3 | Score tied - 0 times |
| HU | 8 | 5 | 4 | 0 | 6 | Lead changed - 0 times |

Official Basketball Box Score -- Game Totals -- Second Half Statistics
Southern Arkansas vs Harding
2/17/2018 5:30 p.m. at Searcy, Ark. (Rhodes-Reaves Field House)

Southern Arkansas 25 • 8-16, 7-11 GAC

| ## | Player | g | Total | | | 3-Ptr | | | Rebounds | | | PF | TP | A | TO | Blk | Stl | Min |
|--------|-------------------|------|--------|---------|--------|--------|--------|--------|----------|-----|-----|----|----|---|----|-----|-----|-----|
| | | | FG-FGA | FG-FGA | FT-FTA | FG-FGA | FG-FGA | FT-FTA | Off | Def | Tot | | | | | | | |
| 05 | DJEDJEMEL,ANNA | g | 0-1 | 0-1 | 0-0 | 0 | 1 | 1 | 1 | 0 | 1 | 3 | 0 | 2 | | | 11 | |
| 13 | BRINKLEY,ERIN | f | 1-3 | 0-0 | 1-2 | 1 | 2 | 3 | 2 | 3 | 1 | 0 | 2 | 0 | | | 17 | |
| 21 | KEY,SUE | g | 2-7 | 1-3 | 0-0 | 0 | 1 | 1 | 2 | 5 | 1 | 2 | 1 | 0 | | | 18 | |
| 25 | MCWILLIAMS,OLIVIA | g | 2-4 | 1-1 | 1-4 | 1 | 1 | 2 | 1 | 6 | 4 | 2 | 0 | 2 | | | 20 | |
| 30 | CROWN,KIMBERLY | f | 0-1 | 0-0 | 0-0 | 0 | 3 | 3 | 2 | 0 | 0 | 0 | 2 | 2 | | | 12 | |
| 03 | WACHA,BRET T E | | 0-0 | 0-0 | 0-0 | 0 | 0 | 0 | 0 | 0 | 0 | 0 | 0 | 0 | | | 0 | |
| 10 | HENRY,RAMIAH | | 3-6 | 1-3 | 2-2 | 0 | 0 | 0 | 1 | 9 | 0 | 0 | 1 | 0 | | | 14 | |
| 23 | EVANS,MAGGIE | | 1-2 | 0-0 | 0-0 | 0 | 0 | 0 | 1 | 2 | 0 | 0 | 0 | 0 | | | 9 | |
| TEAM | | | | | | 1 | 1 | 2 | 0 | | 0 | | | | | | | |
| Totals | | | 9-24 | 3-8 | 4-8 | 3 | 9 | 12 | 10 | 25 | 7 | 7 | 6 | 6 | | | 101 | |
| FG % | 3rd Qtr | 5-11 | 45.5% | 4th Qtr | 4-13 | 30.8% | Half: | 9-24 | 37.5% | | | | | | | | | |
| 3FG % | 3rd Qtr | 1-2 | 50.0% | 4th Qtr | 2-6 | 33.3% | Half: | 3-8 | 55.6% | | | | | | | | | |
| FT % | 3rd Qtr | 4-8 | 50.0% | 4th Qtr | 0-0 | 0% | Half: | 4-8 | 50.0% | | | | | | | | | |

Harding 25 • 13-13, 9-9 GAC

| ## | Player | g | Total | | | 3-Ptr | | | Rebounds | | | PF | TP | A | TO | Blk | Stl | Min |
|--------|--------------------|------|--------|---------|--------|--------|--------|--------|----------|-----|-----|----|----|---|----|-----|-----|-----|
| | | | FG-FGA | FG-FGA | FT-FTA | FG-FGA | FG-FGA | FT-FTA | Off | Def | Tot | | | | | | | |
| 03 | MILLER,FALAN | g | 0-3 | 0-2 | 2-2 | 2 | 0 | 2 | 2 | 2 | 0 | 1 | 0 | 0 | | | 15 | |
| 10 | LAMPO,KELLIE | g | 3-9 | 0-0 | 1-3 | 3 | 1 | 4 | 2 | 7 | 0 | 3 | 0 | 0 | | | 13 | |
| 13 | PADGETT,PEYTON | g | 0-3 | 0-1 | 2-2 | 2 | 5 | 7 | 1 | 2 | 1 | 3 | 0 | 3 | | | 20 | |
| 21 | LAYROCK,SYDNEY | f | 3-5 | 0-0 | 2-2 | 1 | 1 | 2 | 1 | 8 | 0 | 2 | 0 | 1 | | | 18 | |
| 24 | KEARNEY,AMANDA | g | 0-2 | 0-0 | 0-0 | 0 | 1 | 1 | 1 | 0 | 1 | 0 | 0 | 0 | | | 11 | |
| 04 | MCNAMARA,MACKENZIE | | 0-0 | 0-0 | 0-0 | 0 | 1 | 1 | 0 | 0 | 0 | 0 | 0 | 0 | | | 1 | |
| 14 | CAPLES,CARISSA | | 0-0 | 0-0 | 0-0 | 0 | 1 | 1 | 0 | 0 | 0 | 1 | 0 | 0 | | | 12 | |
| 33 | JONES,SYDNIE | | 0-2 | 0-0 | 2-4 | 2 | 2 | 4 | 1 | 2 | 0 | 0 | 0 | 0 | | | 7 | |
| 42 | COOPER,KENNEDY | | 2-3 | 0-0 | 0-0 | 0 | 1 | 1 | 0 | 4 | 0 | 0 | 0 | 0 | | | 3 | |
| TEAM | | | | | | 1 | 2 | 3 | 0 | | 1 | | | | | | | |
| Totals | | | 8-27 | 0-3 | 9-13 | 11 | 15 | 26 | 8 | 25 | 2 | 11 | 0 | 4 | | | 100 | |
| FG % | 3rd Qtr | 4-17 | 23.5% | 4th Qtr | 4-10 | 40.0% | Half: | 8-27 | 29.6% | | | | | | | | | |
| 3FG % | 3rd Qtr | 0-2 | 00.0% | 4th Qtr | 0-1 | 00.0% | Half: | 0-3 | 40.0% | | | | | | | | | |
| FT % | 3rd Qtr | 7-10 | 70.0% | 4th Qtr | 2-3 | 66.7% | Half: | 9-13 | 69.2% | | | | | | | | | |

Officials: Montrel Simmons, Shane Boozer and Lance Smith
 Technical Fouls: Southern Arkansas- None. Harding- None.

| Score by periods | 1st | 2nd | 3rd | 4th | Total |
|-------------------|-----|-----|-----|-----|-----------|
| Southern Arkansas | 12 | 17 | 15 | 10 | 54 |
| Harding | 19 | 19 | 15 | 10 | 63 |

| Points | In Paint | Off T/O | 2nd Chance | Fast Break | Bench |
|--------|----------|---------|------------|------------|-------|
| SAUW | 6 | 7 | 0 | 0 | 11 |
| | 16 | 8 | 8 | 0 | 6 |

Last FG - SAUW 4th-00:34, HU 4th-03:24.
 SAUW led for 0:00. HU led for 20:00. Game was tied for 0:00.

Score tied - 0 times
 Lead changed - 0 times

Southern Arkansas vs Harding
2/17/2018; 5:30 p.m. at Searcy, Ark. (Rhodes-Reaves Field House)
Period 3 Play-By-Play

| VISITORS: Southern Arkansas | Time | Score | Margin | HOME: Harding |
|------------------------------------|-------|-------|--------|-------------------------------------|
| | 09:48 | | | MISSED LAYUP by LAMPO,KELLIE |
| BLOCK by CROWN,KIMBERLY | 09:48 | | | |
| REBOUND (DEF) by MCWILLIAMS,OLIVIA | 09:47 | | | |
| MISSED LAYUP by CROWN,KIMBERLY | 09:29 | | | |
| REBOUND (OFF) by TEAM | 09:29 | | | |
| TURNOVER by DJEDJEMEL,ANNA | 09:27 | | | |
| | 09:26 | | | STEAL by PADGETT,PEYTON |
| | 09:06 | | | MISSED LAYUP by LAYROCK,SYDNEY |
| REBOUND (DEF) by DJEDJEMEL,ANNA | 09:06 | | | |
| MISSED JUMPER by BRINKLEY,ERIN | 08:48 | | | |
| | 08:48 | | | REBOUND (DEF) by PADGETT,PEYTON |
| | 08:40 | | | MISSED LAYUP by KEARNEY,AMANDA |
| | 08:40 | | | REBOUND (OFF) by LAMPO,KELLIE |
| | 08:39 | | | MISSED LAYUP by LAMPO,KELLIE |
| | 08:39 | | | REBOUND (OFF) by PADGETT,PEYTON |
| | 08:20 | | | TURNOVER by LAMPO,KELLIE |
| STEAL by DJEDJEMEL,ANNA | 08:19 | | | |
| GOOD! JUMPER by BRINKLEY,ERIN | 08:01 | 38-31 | H 7 | |
| ASSIST by DJEDJEMEL,ANNA | 08:01 | | | |
| | 07:38 | | | MISSED LAYUP by MILLER,FALAN |
| | 07:38 | | | REBOUND (OFF) by MILLER,FALAN |
| FOUL by CROWN,KIMBERLY | 07:37 | | | |
| | 07:37 | 39-31 | H 8 | GOOD! FT by MILLER,FALAN |
| | 07:37 | 40-31 | H 9 | GOOD! FT by MILLER,FALAN |
| | 07:37 | | | SUB IN: CAPLES,CARISSA |
| | 07:37 | | | SUB OUT: KEARNEY,AMANDA |
| | 07:29 | | | FOUL by PADGETT,PEYTON |
| GOOD! JUMPER by MCWILLIAMS,OLIVIA | 07:21 | 40-33 | H 7 | |
| | 06:58 | | | MISSED LAYUP by LAMPO,KELLIE |
| BLOCK by CROWN,KIMBERLY | 06:58 | | | |
| REBOUND (DEF) by CROWN,KIMBERLY | 06:57 | | | |
| MISSED 3PTR by KEY,SUE | 06:51 | | | REBOUND (DEF) by CAPLES,CARISSA |
| | 06:42 | | | TURNOVER by CAPLES,CARISSA |
| STEAL by DJEDJEMEL,ANNA | 06:40 | | | |
| TURNOVER by DJEDJEMEL,ANNA | 06:39 | | | |
| | 06:38 | | | STEAL by LAYROCK,SYDNEY |
| | 06:35 | | | MISSED 3PTR by MILLER,FALAN |
| | 06:35 | | | REBOUND (OFF) by MILLER,FALAN |
| | 06:28 | | | MISSED 3PTR by PADGETT,PEYTON |
| REBOUND (DEF) by CROWN,KIMBERLY | 06:28 | | | |
| GOOD! 3PTR by MCWILLIAMS,OLIVIA | 06:00 | 40-36 | H 4 | |
| ASSIST by KEY,SUE | 06:00 | | | |
| FOUL by CROWN,KIMBERLY | 05:39 | | | |
| | 05:39 | | | MISSED FT by LAMPO,KELLIE |
| | 05:39 | | | REBOUND (DEADB) by TEAM |
| | 05:39 | 41-36 | H 5 | GOOD! FT by LAMPO,KELLIE |
| | 05:39 | | | SUB IN: COOPER,KENNEDY |
| | 05:39 | | | SUB IN: KEARNEY,AMANDA |
| | 05:39 | | | SUB IN: JONES,SYDNIE |
| | 05:39 | | | SUB OUT: LAMPO,KELLIE |
| | 05:39 | | | SUB OUT: LAYROCK,SYDNEY |
| | 05:39 | | | SUB OUT: CAPLES,CARISSA |
| SUB IN: EVANS,MAGGIE | 05:37 | | | |
| SUB OUT: MCWILLIAMS,OLIVIA | 05:37 | | | |
| MISSED JUMPER by BRINKLEY,ERIN | 05:31 | | | |
| | 05:31 | | | REBOUND (DEF) by COOPER,KENNEDY |
| SUB IN: MCWILLIAMS,OLIVIA | 05:22 | | | |
| SUB OUT: CROWN,KIMBERLY | 05:22 | | | |
| | 05:21 | 43-36 | H 7 | GOOD! LAYUP by COOPER,KENNEDY [PNT] |
| | 05:21 | | | ASSIST by KEARNEY,AMANDA |
| TURNOVER by DJEDJEMEL,ANNA | 05:14 | | | |
| | 05:13 | | | STEAL by PADGETT,PEYTON |
| FOUL by DJEDJEMEL,ANNA | 05:10 | | | |
| | 04:55 | | | TIMEOUT MEDIA |
| | 04:55 | 44-36 | H 8 | GOOD! FT by PADGETT,PEYTON |
| | 04:55 | 45-36 | H 9 | GOOD! FT by PADGETT,PEYTON |
| | 04:35 | | | FOUL by MILLER,FALAN |
| | 04:17 | | | FOUL by MILLER,FALAN |

| VISITORS: Southern Arkansas | Time | Score | Margin | HOME: Harding |
|------------------------------------|-------|-------|--------|-------------------------------------|
| MISSED FT by MCWILLIAMS,OLIVIA | 04:17 | | | |
| REBOUND (DEADB) by TEAM | 04:17 | | | |
| MISSED FT by MCWILLIAMS,OLIVIA | 04:17 | | | |
| | 04:17 | | | REBOUND (DEF) by PADGETT,PEYTON |
| SUB IN: HENRY,RAMIAH | 04:17 | | | |
| SUB OUT: DJEDJEMEL,ANNA | 04:17 | | | |
| | 04:17 | | | SUB IN: CAPLES,CARISSA |
| | 04:17 | | | SUB IN: LAMPO,KELLIE |
| | 04:17 | | | SUB OUT: MILLER,FALAN |
| | 04:17 | | | SUB OUT: JONES,SYDNIE |
| | 03:56 | | | MISSED LAYUP by COOPER,KENNEDY |
| REBOUND (DEF) by KEY,SUE | 03:56 | | | |
| GOOD! LAYUP by EVANS,MAGGIE [PNT] | 03:48 | 45-38 | H 7 | |
| ASSIST by MCWILLIAMS,OLIVIA | 03:48 | | | |
| | 03:42 | | | TIMEOUT 30SEC |
| | 03:42 | | | TIMEOUT MEDIA |
| | 03:42 | | | SUB IN: LAYROCK,SYDNEY |
| | 03:42 | | | SUB OUT: COOPER,KENNEDY |
| | 03:25 | | | TURNOVER by LAMPO,KELLIE |
| GOOD! LAYUP by KEY,SUE [PNT] | 03:04 | 45-40 | H 5 | |
| ASSIST by MCWILLIAMS,OLIVIA | 03:04 | | | |
| | 02:48 | 47-40 | H 7 | GOOD! JUMPER by LAMPO,KELLIE [PNT] |
| FOUL by KEY,SUE | 02:32 | | | |
| TURNOVER by KEY,SUE | 02:32 | | | |
| | 02:13 | 49-40 | H 9 | GOOD! LAYUP by LAYROCK,SYDNEY [PNT] |
| | 02:04 | | | FOUL by KEARNEY,AMANDA |
| GOOD! FT by MCWILLIAMS,OLIVIA | 02:03 | 49-41 | H 8 | |
| MISSED FT by MCWILLIAMS,OLIVIA | 02:03 | | | |
| | 02:03 | | | REBOUND (DEF) by LAMPO,KELLIE |
| | 01:48 | | | MISSED LAYUP by KEARNEY,AMANDA |
| REBOUND (DEF) by BRINKLEY,ERIN | 01:48 | | | |
| | 01:47 | | | FOUL by LAMPO,KELLIE |
| GOOD! FT by BRINKLEY,ERIN | 01:47 | 49-42 | H 7 | |
| MISSED FT by BRINKLEY,ERIN | 01:47 | | | |
| | 01:47 | | | REBOUND (DEF) by PADGETT,PEYTON |
| | 01:47 | | | SUB IN: COOPER,KENNEDY |
| | 01:47 | | | SUB IN: JONES,SYDNIE |
| | 01:47 | | | SUB OUT: KEARNEY,AMANDA |
| | 01:47 | | | SUB OUT: LAMPO,KELLIE |
| | 01:23 | 51-42 | H 9 | GOOD! LAYUP by COOPER,KENNEDY [PNT] |
| | 01:14 | | | FOUL by JONES,SYDNIE |
| GOOD! FT by HENRY,RAMIAH | 01:14 | 51-43 | H 8 | |
| GOOD! FT by HENRY,RAMIAH | 01:14 | 51-44 | H 7 | |
| | 00:59 | | | MISSED LAYUP by JONES,SYDNIE |
| BLOCK by BRINKLEY,ERIN | 00:59 | | | |
| | 00:59 | | | REBOUND (OFF) by TEAM |
| | 00:49 | | | MISSED LAYUP by JONES,SYDNIE |
| BLOCK by BRINKLEY,ERIN | 00:49 | | | |
| | 00:48 | | | REBOUND (OFF) by JONES,SYDNIE |
| FOUL by BRINKLEY,ERIN | 00:46 | | | |
| | 00:46 | | | MISSED FT by JONES,SYDNIE |
| | 00:46 | | | REBOUND (DEADB) by TEAM |
| | 00:46 | 52-44 | H 8 | GOOD! FT by JONES,SYDNIE |
| | 00:46 | | | SUB IN: KEARNEY,AMANDA |
| | 00:46 | | | SUB OUT: COOPER,KENNEDY |
| MISSED JUMPER by MCWILLIAMS,OLIVIA | 00:37 | | | |
| | 00:37 | | | REBOUND (DEF) by KEARNEY,AMANDA |
| | 00:08 | | | MISSED LAYUP by PADGETT,PEYTON |
| | 00:08 | | | REBOUND (OFF) by JONES,SYDNIE |
| FOUL by HENRY,RAMIAH | 00:06 | | | |
| | 00:06 | | | MISSED FT by JONES,SYDNIE |
| | 00:06 | | | REBOUND (DEADB) by TEAM |
| | 00:06 | 53-44 | H 9 | GOOD! FT by JONES,SYDNIE |
| | 00:06 | | | SUB IN: MCNAMARA,MACKENZIE |
| | 00:06 | | | SUB OUT: LAYROCK,SYDNEY |
| MISSED JUMPER by KEY,SUE | 00:01 | | | |
| | 00:01 | | | REBOUND (DEF) by MCNAMARA,MACKENZIE |

Southern Arkansas 44, Harding 53

| Period 3-only | In Paint | Off T/O | 2nd Chance | Fast Break | Bench | |
|---------------|----------|---------|------------|------------|-------|------------------------|
| SAUW | 4 | 4 | 0 | 0 | 4 | Score tied - 0 times |
| HU | 8 | 4 | 4 | 0 | 6 | Lead changed - 0 times |

Southern Arkansas vs Harding
2/17/2018; 5:30 p.m. at Searcy, Ark. (Rhodes-Reaves Field House)
Period 4 Play-By-Play

| VISITORS: Southern Arkansas | Time | Score | Margin | HOME: Harding |
|------------------------------------|-------|-------|--------|-------------------------------------|
| SUB IN: EVANS,MAGGIE | 10:00 | | | |
| SUB IN: HENRY,RAMIAH | 10:00 | | | |
| SUB OUT: DJEDJEMEL,ANNA | 10:00 | | | |
| SUB OUT: CROWN,KIMBERLY | 10:00 | | | |
| | 09:53 | 55-44 | H 11 | GOOD! LAYUP by LAMPO,KELLIE [PNT] |
| | 09:53 | | | ASSIST by PADGETT,PEYTON |
| FOUL by EVANS,MAGGIE | 09:53 | | | |
| | 09:53 | | | MISSED FT by LAMPO,KELLIE |
| REBOUND (DEF) by BRINKLEY,ERIN | 09:53 | | | |
| GOOD! 3PTR by KEY,SUE | 09:32 | 55-47 | H 8 | |
| ASSIST by BRINKLEY,ERIN | 09:32 | | | |
| | 09:00 | | | TURNOVER by PADGETT,PEYTON |
| STEAL by MCWILLIAMS,OLIVIA | 08:58 | | | |
| MISSED LAYUP by KEY,SUE | 08:55 | | | |
| REBOUND (OFF) by MCWILLIAMS,OLIVIA | 08:55 | | | |
| MISSED LAYUP by EVANS,MAGGIE | 08:46 | | | |
| | 08:46 | | | REBOUND (DEF) by TEAM |
| | 08:24 | 57-47 | H 10 | GOOD! LAYUP by LAYROCK,SYDNEY [PNT] |
| MISSED JUMPER by MCWILLIAMS,OLIVIA | 08:00 | | | |
| | 08:00 | | | REBOUND (DEF) by PADGETT,PEYTON |
| | 07:42 | | | MISSED LAYUP by LAMPO,KELLIE |
| | 07:42 | | | REBOUND (OFF) by LAMPO,KELLIE |
| | 07:41 | | | MISSED LAYUP by LAMPO,KELLIE |
| | 07:41 | | | REBOUND (OFF) by LAMPO,KELLIE |
| GOOD! LAYUP by HENRY,RAMIAH [PNT] | 07:38 | 59-47 | H 12 | GOOD! LAYUP by LAMPO,KELLIE [PNT] |
| ASSIST by MCWILLIAMS,OLIVIA | 07:24 | 59-49 | H 10 | |
| | 07:00 | | | MISSED LAYUP by LAMPO,KELLIE |
| | 07:00 | | | REBOUND (OFF) by PADGETT,PEYTON |
| FOUL by MCWILLIAMS,OLIVIA | 06:57 | | | |
| SUB IN: CROWN,KIMBERLY | 06:57 | | | |
| SUB OUT: EVANS,MAGGIE | 06:57 | | | |
| | 06:35 | | | MISSED 3PTR by MILLER,FALAN |
| REBOUND (DEF) by TEAM | 06:35 | | | |
| | 06:33 | | | FOUL by LAMPO,KELLIE |
| | 06:33 | | | SUB IN: JONES,SYDNIE |
| | 06:33 | | | SUB OUT: LAMPO,KELLIE |
| MISSED LAYUP by HENRY,RAMIAH | 06:21 | | | |
| | 06:21 | | | REBOUND (DEF) by LAYROCK,SYDNEY |
| | 06:01 | | | TURNOVER by PADGETT,PEYTON |
| STEAL by CROWN,KIMBERLY | 05:59 | | | |
| FOUL by KEY,SUE | 05:55 | | | |
| TURNOVER by KEY,SUE | 05:55 | | | |
| | 05:55 | | | SUB IN: CAPLES,CARISSA |
| | 05:55 | | | SUB OUT: KEARNEY,AMANDA |
| FOUL by BRINKLEY,ERIN | 05:33 | | | |
| | 05:33 | 60-49 | H 11 | GOOD! FT by LAYROCK,SYDNEY |
| | 05:33 | 61-49 | H 12 | GOOD! FT by LAYROCK,SYDNEY |
| SUB IN: DJEDJEMEL,ANNA | 05:33 | | | |
| SUB OUT: BRINKLEY,ERIN | 05:33 | | | |
| | 05:33 | | | SUB IN: MCNAMARA,MACKENZIE |
| | 05:33 | | | SUB OUT: MILLER,FALAN |
| MISSED 3PTR by KEY,SUE | 05:19 | | | |
| | 05:19 | | | REBOUND (DEF) by JONES,SYDNIE |
| | 04:51 | | | MISSED LAYUP by PADGETT,PEYTON |
| BLOCK by KEY,SUE | 04:51 | | | |
| REBOUND (DEF) by CROWN,KIMBERLY | 04:50 | | | |
| MISSED 3PTR by DJEDJEMEL,ANNA | 04:44 | | | |
| | 04:44 | | | REBOUND (DEF) by TEAM |
| TIMEOUT 30SEC | 04:41 | | | |
| TIMEOUT media | 04:41 | | | |
| | 04:41 | | | SUB IN: MILLER,FALAN |
| | 04:41 | | | SUB OUT: MCNAMARA,MACKENZIE |
| | 04:14 | | | TURNOVER by LAYROCK,SYDNEY |
| STEAL by MCWILLIAMS,OLIVIA | 04:14 | | | |
| TURNOVER by MCWILLIAMS,OLIVIA | 03:56 | | | |
| | 03:55 | | | STEAL by PADGETT,PEYTON |
| | 03:28 | | | MISSED LAYUP by LAYROCK,SYDNEY |
| BLOCK by HENRY,RAMIAH | 03:28 | | | |

| VISITORS: Southern Arkansas | Time | Score | Margin | HOME: Harding |
|------------------------------------|-------------|--------------|---------------|-------------------------------------|
| | 03:26 | | | REBOUND (OFF) by LAYROCK,SYDNEY |
| | 03:24 | 63-49 | H 14 | GOOD! LAYUP by LAYROCK,SYDNEY [PNT] |
| GOOD! JUMPER by HENRY,RAMIAH | 03:20 | 63-51 | H 12 | |
| | 02:59 | | | TURNOVER by MILLER,FALAN |
| STEAL by CROWN,KIMBERLY | 02:57 | | | |
| MISSED LAYUP by KEY,SUE | 02:52 | | | |
| | 02:52 | | | REBOUND (DEF) by JONES,SYDNIE |
| | 02:22 | | | TURNOVER by PADGETT,PEYTON |
| SUB IN: BRINKLEY,ERIN | 02:22 | | | |
| SUB OUT: KEY,SUE | 02:22 | | | |
| | 02:22 | | | SUB IN: LAMPO,KELLIE |
| | 02:22 | | | SUB OUT: JONES,SYDNIE |
| TURNOVER by MCWILLIAMS,OLIVIA | 02:06 | | | |
| | 01:44 | | | TURNOVER by LAMPO,KELLIE |
| MISSED 3PTR by HENRY,RAMIAH | 01:23 | | | |
| REBOUND (OFF) by BRINKLEY,ERIN | 01:23 | | | |
| MISSED 3PTR by HENRY,RAMIAH | 01:16 | | | |
| | 01:16 | | | REBOUND (DEF) by PADGETT,PEYTON |
| | 00:45 | | | FOUL by LAYROCK,SYDNEY |
| | 00:45 | | | TURNOVER by LAYROCK,SYDNEY |
| GOOD! 3PTR by HENRY,RAMIAH | 00:34 | 63-54 | H 9 | |
| ASSIST by MCWILLIAMS,OLIVIA | 00:34 | | | |
| | 00:01 | | | TURNOVER by TEAM |

Southern Arkansas 54, Harding 63

| Period 4-only | In Paint | Off T/O | 2nd Chance | Fast Break | Bench | |
|----------------------|---------------------|--------------------|-----------------------|-----------------------|--------------|------------------------|
| SAUW | 2 | 3 | 0 | 0 | 7 | Score tied - 0 times |
| HU | 8 | 4 | 4 | 0 | 0 | Lead changed - 0 times |

Southern Arkansas vs Harding
2/17/2018; 5:30 p.m. at Searcy, Ark. (Rhodes-Reaves Field House)
Scoring/Runs Reference

Period 1

| Southern Arkansas | VRun | Score | Margin | HRun | Harding |
|---------------------------|------|-------|--------|------|---------------------------|
| 09:47 - MCWILLIAMS JUMPER | - | 2-0 | -2 | | |
| | | 2-3 | 1 | | MILLER 3PTR - 09:02 |
| | | 2-5 | 3 | 5-0 | LAMPO LAYUP [P] - 08:04 |
| | | 2-7 | 5 | 7-0 | LAYROCK LAYUP [P] - 06:46 |
| | | 2-9 | 7 | 9-0 | PADGETT LAYUP [P] - 05:57 |
| | | 2-10 | 8 | 10-0 | PADGETT FT - 05:57 |
| 05:31 - CROWN JUMPER | - | 4-10 | 6 | | |
| | | 4-12 | 8 | | JONES LAYUP [P] - 04:43 |
| 04:29 - DJEDJEMEL 3PTR | - | 7-12 | 5 | | |
| | | 7-14 | 7 | | COOPER JUMPER - 03:16 |
| | | 7-15 | 8 | 3-0 | KEARNEY FT - 02:25 |
| | | 7-16 | 9 | 4-0 | KEARNEY FT - 02:25 |
| 02:08 - EVANS FT | - | 8-16 | 8 | | |
| 01:43 - HENRY FT | 2-0 | 9-16 | 7 | | |
| | | 9-17 | 8 | | LAYROCK FT - 01:28 |
| 00:36 - DJEDJEMEL 3PTR | - | 12-17 | 5 | | |
| | | 12-19 | 7 | | LAYROCK JUMPER - 00:01 |

Southern Arkansas vs Harding
2/17/2018; 5:30 p.m. at Searcy, Ark. (Rhodes-Reaves Field House)
Scoring/Runs Reference

Period 2

| Southern Arkansas | VRun | Score | Margin | HRun | Harding |
|---------------------------|------|-------|--------|-------|--------------------------|
| | | 12-22 | 10 | | MILLER 3PTR - 09:44 |
| | | 12-24 | 12 | NaN-0 | COOPER LAYUP [P] - 09:03 |
| 08:45 - CROWN LAYUP [P] | - | 14-24 | 10 | | |
| | | 14-26 | 12 | | JONES LAYUP [P] - 08:07 |
| | | 14-28 | 14 | 4-0 | LAMPO LAYUP [P] - 06:53 |
| 06:29 - DJEDJEMEL 3PTR | - | 17-28 | 11 | | |
| 05:56 - MCWILLIAMS JUMPER | 5-0 | 19-28 | 9 | | |
| | | 19-31 | 12 | | MILLER 3PTR - 05:44 |
| 05:35 - MCWILLIAMS JUMPER | - | 21-31 | 10 | | |
| | | 21-32 | 11 | | MILLER FT - 03:40 |
| 03:26 - CROWN FT | - | 22-32 | 10 | | |
| | | 22-34 | 12 | | COOPER LAYUP [P] - 03:08 |
| 02:57 - HENRY 3PTR | - | 25-34 | 9 | | |
| | | 25-37 | 12 | | MILLER 3PTR - 02:12 |
| 01:55 - MCWILLIAMS FT | - | 26-37 | 11 | | |
| | | 26-38 | 12 | | LAYROCK FT - 01:42 |
| 00:39 - KEY 3PTR | - | 29-38 | 9 | | |

Southern Arkansas vs Harding
2/17/2018; 5:30 p.m. at Searcy, Ark. (Rhodes-Reaves Field House)
Scoring/Runs Reference

Period 3

| Southern Arkansas | VRun | Score | Margin | HRun | Harding |
|---------------------------|------|-------|--------|------|---------------------------|
| 08:01 - BRINKLEY JUMPER | - | 31-38 | 7 | | |
| | | 31-39 | 8 | | MILLER FT - 07:37 |
| | | 31-40 | 9 | 2-0 | MILLER FT - 07:37 |
| 07:21 - MCWILLIAMS JUMPER | - | 33-40 | 7 | | |
| 06:00 - MCWILLIAMS 3PTR | 5-0 | 36-40 | 4 | | |
| | | 36-41 | 5 | | LAMPO FT - 05:39 |
| | | 36-43 | 7 | 3-0 | COOPER LAYUP [P] - 05:21 |
| | | 36-44 | 8 | 4-0 | PADGETT FT - 04:55 |
| | | 36-45 | 9 | 5-0 | PADGETT FT - 04:55 |
| 03:48 - EVANS LAYUP [P] | - | 38-45 | 7 | | |
| 03:04 - KEY LAYUP [P] | 4-0 | 40-45 | 5 | | |
| | | 40-47 | 7 | | LAMPO JUMPER [P] - 02:48 |
| | | 40-49 | 9 | 4-0 | LAYROCK LAYUP [P] - 02:13 |
| 02:03 - MCWILLIAMS FT | - | 41-49 | 8 | | |
| 01:47 - BRINKLEY FT | 2-0 | 42-49 | 7 | | |
| | | 42-51 | 9 | | COOPER LAYUP [P] - 01:23 |
| 01:14 - HENRY FT | - | 43-51 | 8 | | |
| 01:14 - HENRY FT | 2-0 | 44-51 | 7 | | |
| | | 44-52 | 8 | | JONES FT - 00:46 |
| | | 44-53 | 9 | 2-0 | JONES FT - 00:06 |

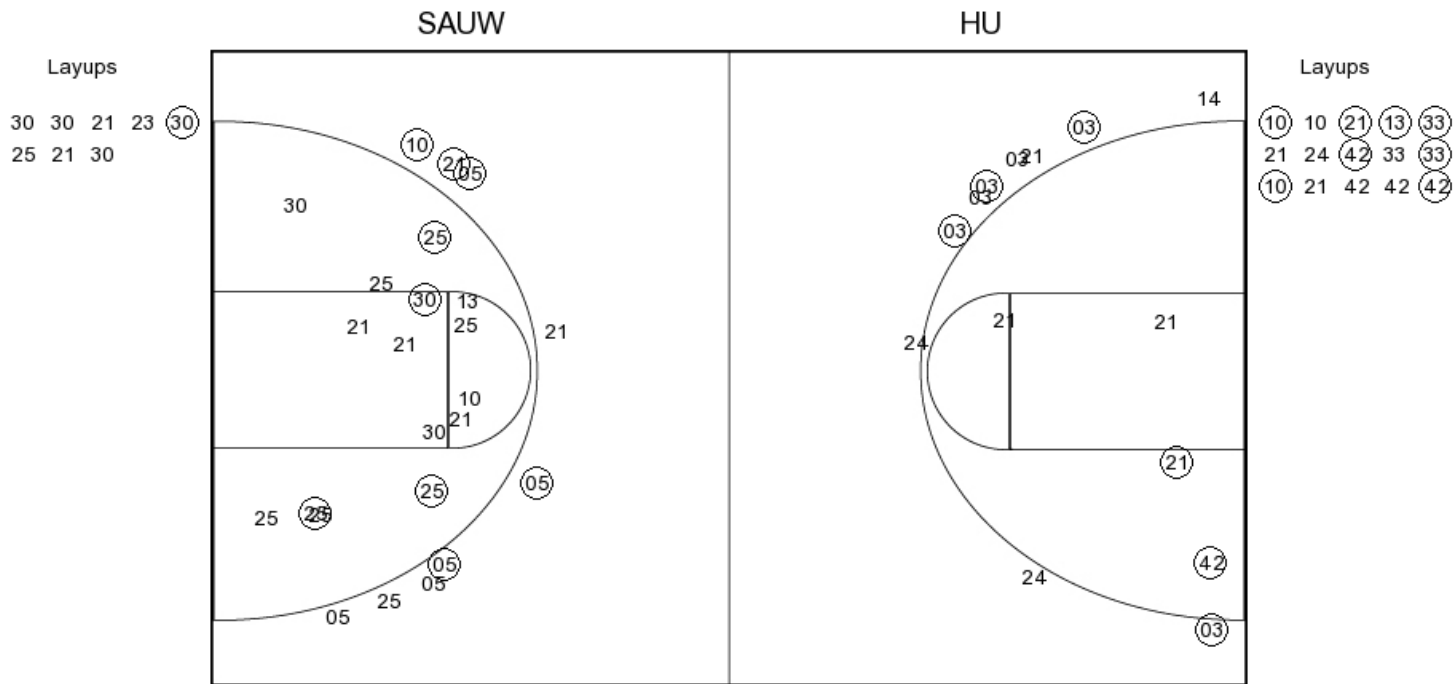
Southern Arkansas vs Harding
2/17/2018; 5:30 p.m. at Searcy, Ark. (Rhodes-Reaves Field House)
Scoring/Runs Reference

Period 4

| Southern Arkansas | VRun | Score | Margin | HRun | Harding |
|-------------------------|------|-------|--------|------|---------------------------|
| | | 44-55 | 11 | | LAMPO LAYUP [P] - 09:53 |
| 09:32 - KEY 3PTR | - | 47-55 | 8 | | |
| | | 47-57 | 10 | | LAYROCK LAYUP [P] - 08:24 |
| | | 47-59 | 12 | 4-0 | LAMPO LAYUP [P] - 07:38 |
| 07:24 - HENRY LAYUP [P] | - | 49-59 | 10 | | |
| | | 49-60 | 11 | | LAYROCK FT - 05:33 |
| | | 49-61 | 12 | 2-0 | LAYROCK FT - 05:33 |
| | | 49-63 | 14 | 4-0 | LAYROCK LAYUP [P] - 03:24 |
| 03:20 - HENRY JUMPER | - | 51-63 | 12 | | |
| 00:34 - HENRY 3PTR | 5-0 | 54-63 | 9 | | |

Southern Arkansas vs Harding
 OFFICIAL SHOT CHART
 2/17/2018 at Searcy, Ark. (Rhodes-Reaves Field House)

PERIOD 1



SAUW PERIOD 1

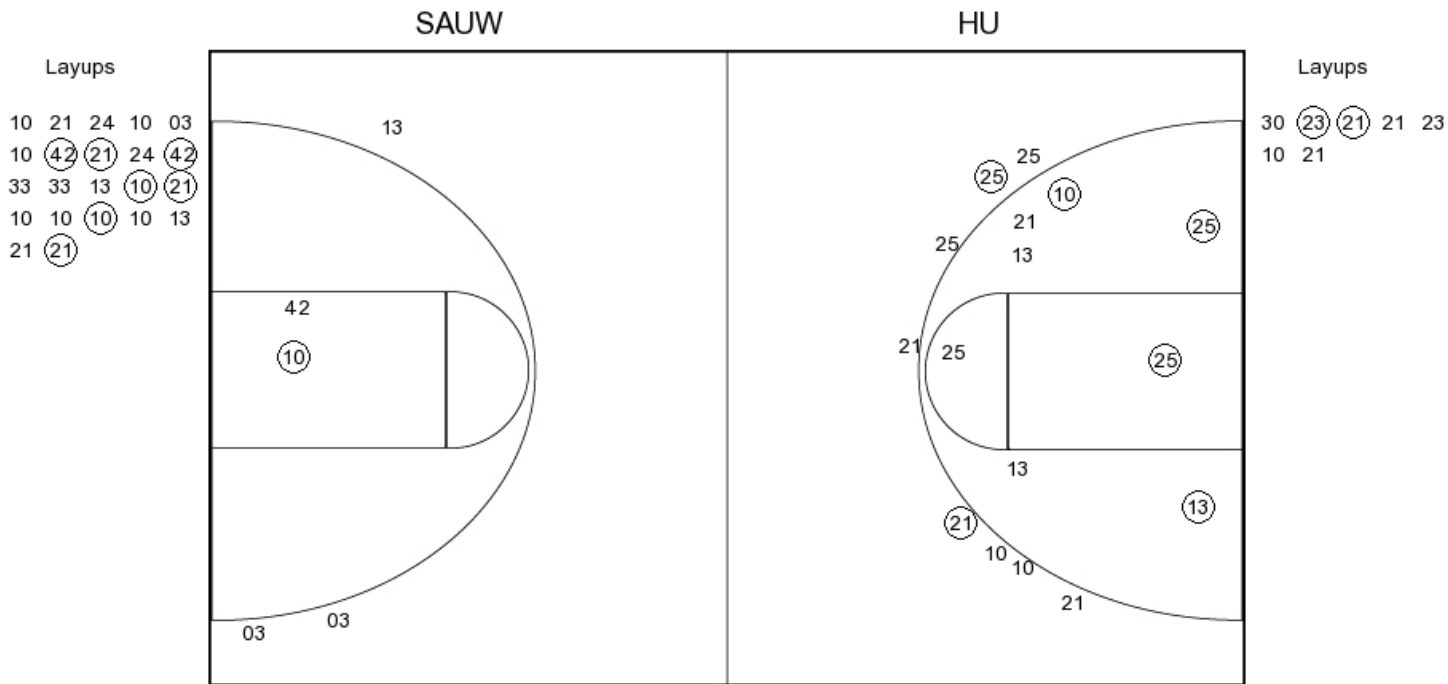
| | |
|----------------|----|
| FG Made | 10 |
| FG Attempted | 34 |
| 3PFG Made | 5 |
| 3PFG Attempted | 9 |

HU PERIOD 1

| | |
|----------------|----|
| FG Made | 14 |
| FG Attempted | 30 |
| 3PFG Made | 4 |
| 3PFG Attempted | 10 |

Southern Arkansas vs Harding
 OFFICIAL SHOT CHART
 2/17/2018 at Searcy, Ark. (Rhodes-Reaves Field House)

PERIOD 2



SAUW PERIOD 2

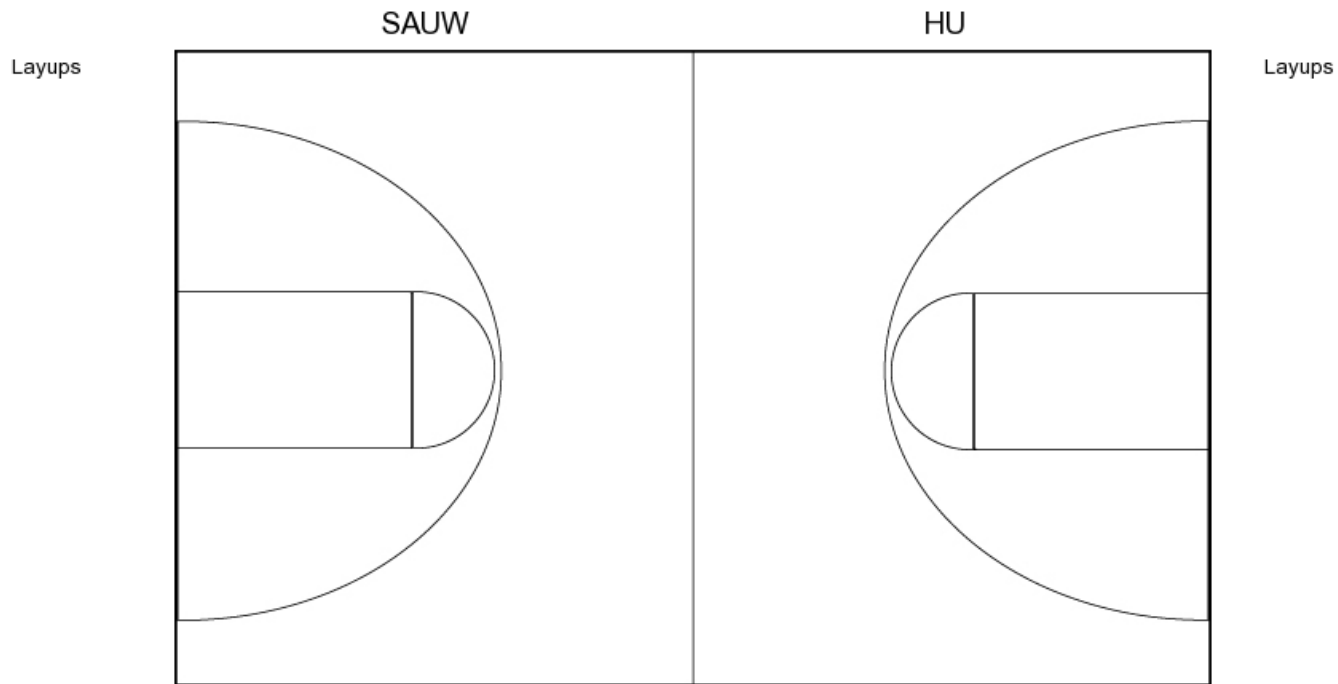
FG Made
 FG Attempted
 3PFG Made
 3PFG Attempted

HU PERIOD 2

FG Made
 FG Attempted
 3PFG Made
 3PFG Attempted

Southern Arkansas vs Harding
 OFFICIAL SHOT CHART
 2/17/2018 at Searcy, Ark. (Rhodes-Reaves Field House)

PERIOD 3



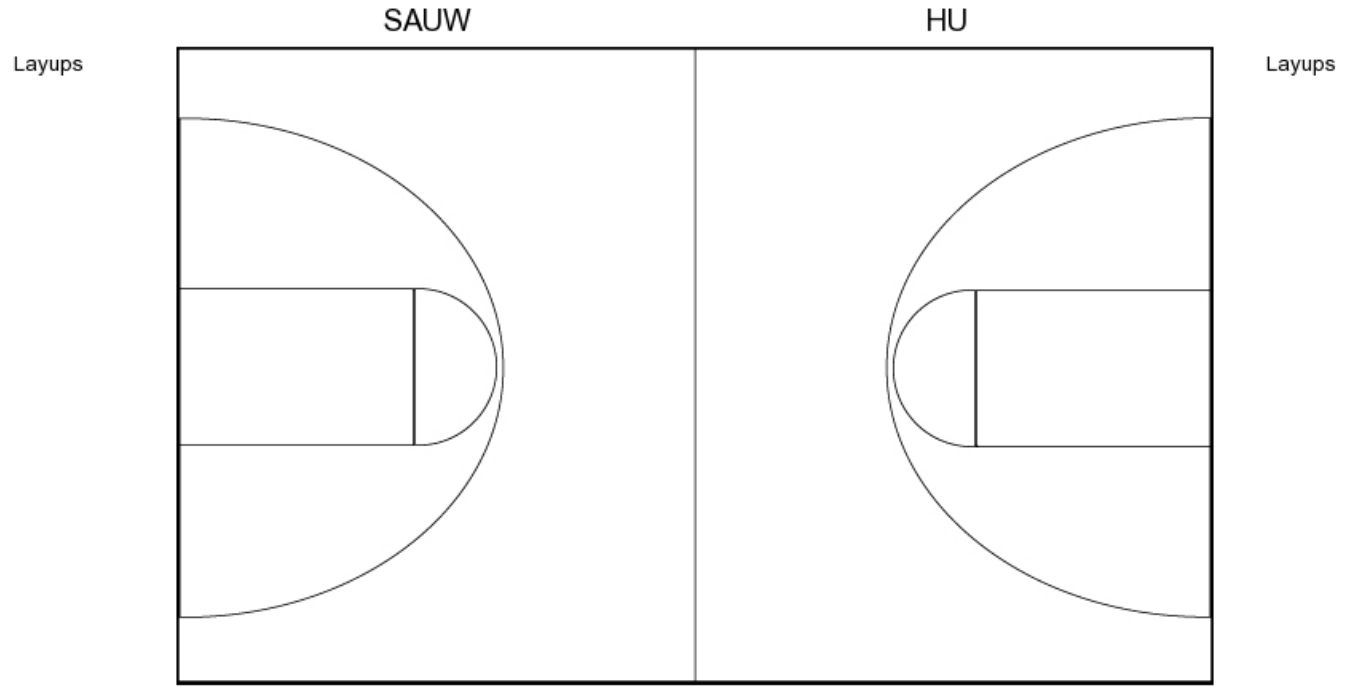
SAUW PERIOD 3

| | |
|----------------|----|
| FG Made | 9 |
| FG Attempted | 24 |
| 3PFG Made | 3 |
| 3PFG Attempted | 8 |

HU PERIOD 3

| | |
|----------------|----|
| FG Made | 8 |
| FG Attempted | 27 |
| 3PFG Made | 0 |
| 3PFG Attempted | 3 |

PERIOD 4



SAUW PERIOD 4

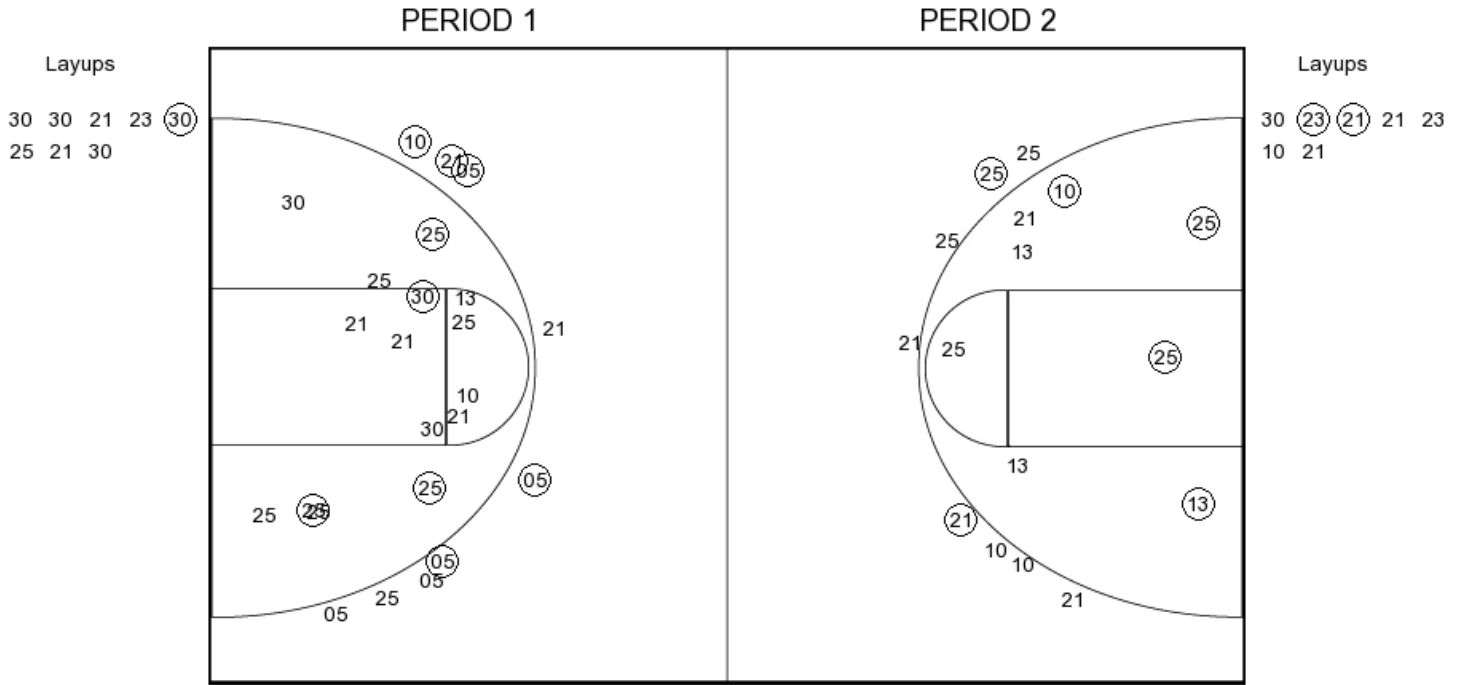
FG Made
FG Attempted
3PFG Made
3PFG Attempted

HU PERIOD 4

FG Made
FG Attempted
3PFG Made
3PFG Attempted

Southern Arkansas vs Harding
 OFFICIAL SHOT CHART
 2/17/2018 at Searcy, Ark. (Rhodes-Reaves Field House)

Southern Arkansas



SAUW PERIOD 1

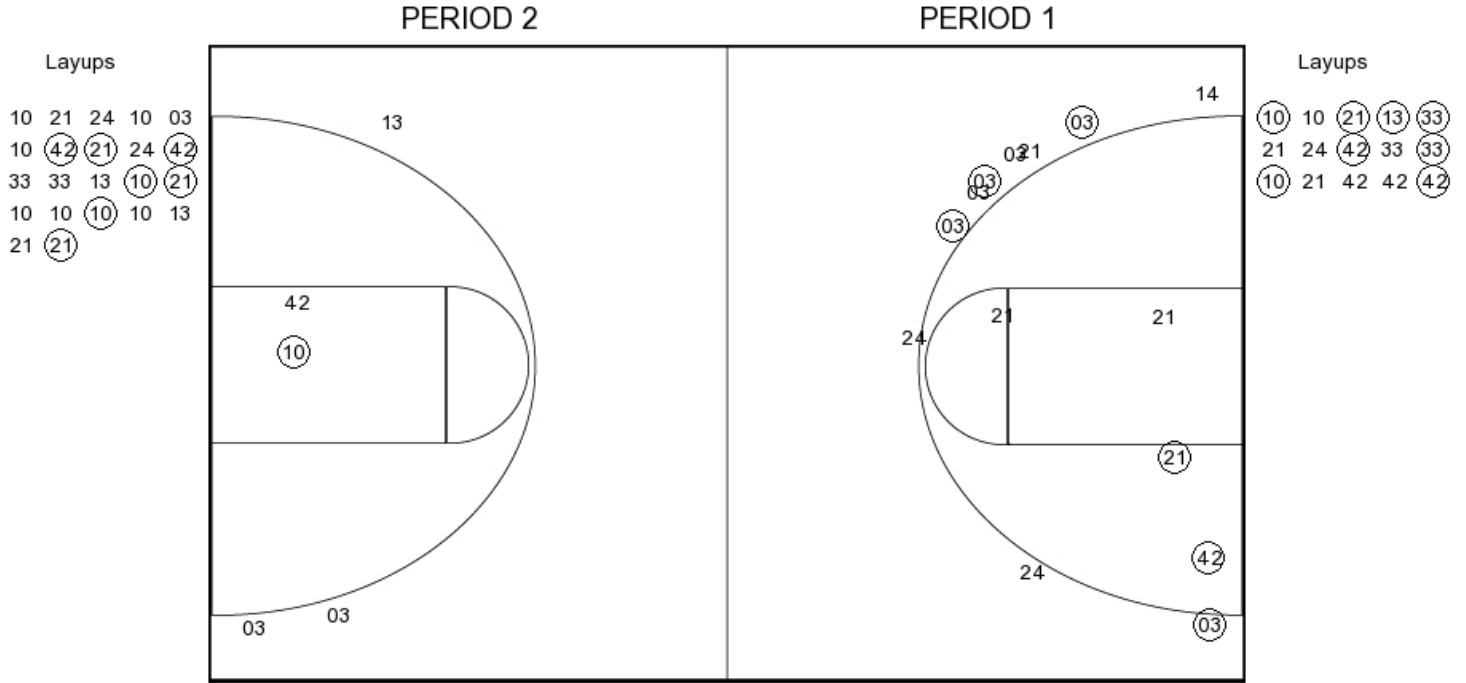
| | |
|----------------|----|
| FG Made | 10 |
| FG Attempted | 34 |
| 3PFG Made | 5 |
| 3PFG Attempted | 9 |

SAUW PERIOD 2

| | |
|----------------|--|
| FG Made | |
| FG Attempted | |
| 3PFG Made | |
| 3PFG Attempted | |

Southern Arkansas vs Harding
 OFFICIAL SHOT CHART
 2/17/2018 at Searcy, Ark. (Rhodes-Reaves Field House)

Harding



HU PERIOD 1

| | |
|----------------|----|
| FG Made | 14 |
| FG Attempted | 30 |
| 3PFG Made | 4 |
| 3PFG Attempted | 10 |

HU PERIOD 2

| | |
|----------------|--|
| FG Made | |
| FG Attempted | |
| 3PFG Made | |
| 3PFG Attempted | |