

FINAL SCORE

Okla. Baptist

12-9, 7-8 GAC

66

Harding

10-13, 6-9 GAC

70

February 08, 2018 • Searcy, Ark. (Rhodes-Reaves Field House)

FINAL STATISTICS

Official Basketball Box Score -- Game Totals -- Final Statistics
Okla. Baptist vs Harding
2/8/2018 5:30 p.m. at Searcy, Ark. (Rhodes-Reaves Field House)

Okla. Baptist 66 - 12-9, 7-8 GAC

##	Player	g	Total		3-Ptr	Rebounds			PF	TP	A	TO	Blk	Stl	Min
			FG-FGA	FG-FGA	FG-FGA	Off	Def	Tot							
03	COLEMAN,SHAYLAN		6-11	0-0	1-2	1	3	4	4	13	1	3	1	2	24
20	COOPER,MCKENZIE		8-18	3-7	1-2	1	7	8	3	20	1	1	0	1	39
21	EDGE,TASHA		3-7	0-1	4-5	0	5	5	4	10	0	4	1	1	32
23	AVINA,AUTUMN		5-11	1-2	3-6	2	1	3	3	14	3	3	3	6	39
25	WILLIAMS,LEXI		2-8	1-4	0-0	2	3	5	3	5	1	1	0	3	34
14	HEIN,SYDNEY		1-4	0-2	2-2	0	2	2	0	4	1	0	0	1	18
44	COOPER,KADESHA		0-3	0-0	0-0	0	0	0	2	0	1	0	0	0	14
TEAM						0	2	2	0		0				
TOTALS			25-62	5-16	11-17	6	23	29	19	66	8	12	5	14	200

Deadball Rebounds: 5,0

FG %	1st Half:	11-33	33.3%	2nd Half:	14-29	48.3%	Game:	25-62	40.3%					
	1st Qtr	4-16	25.0%	2nd Qtr	7-17	41.2%	3rd Qtr	7-16	43.8%	4th Qtr	7-13	53.8%		
3FG %	1st Half:	2-9	22.2%	2nd Half:	3-7	42.9%	Game:	5-16	31.3%					
	1st Qtr	1-5	20.0%	2nd Qtr	1-4	25.0%	3rd Qtr	2-4	50.0%	4th Qtr	1-3	33.3%		
FT %	1st Half:	8-13	61.5%	2nd Half:	3-4	75.0%	Game:	11-17	64.7%					
	1st Qtr	6-9	66.7%	2nd Qtr	2-4	50.0%	3rd Qtr	0-0	0%	4th Qtr	3-4	75.0%		

Harding 70 - 10-13, 6-9 GAC

##	Player	g	Total		3-Ptr	Rebounds			PF	TP	A	TO	Blk	Stl	Min
			FG-FGA	FG-FGA	FG-FGA	Off	Def	Tot							
03	MILLER,FALAN		6-10	2-4	2-3	3	3	6	4	16	3	2	0	1	28
10	LAMPO,KELLIE		2-9	0-0	3-4	5	1	6	4	7	1	1	0	0	12
13	PADGETT,PEYTON		1-3	0-1	0-0	0	3	3	2	2	5	3	1	2	23
21	LAYROCK,SYDNEY		4-13	0-3	2-2	0	6	6	5	10	1	2	0	1	31
24	KEARNEY,AMANDA		3-9	1-6	4-6	2	4	6	3	11	1	3	0	0	31
04	MCMAMARA,MACKENZIE		0-0	0-0	0-0	0	1	1	1	0	1	1	0	0	8
14	CAPLES,CARISSA		5-7	1-2	2-2	0	5	5	0	13	0	3	0	0	28
33	JONES,SYDNIE		2-3	0-0	1-2	1	3	4	2	5	1	0	0	0	23
42	COOPER,KENNEDY		3-9	0-1	0-0	1	2	3	1	6	3	2	2	0	17
TEAM						3	4	7	0		0				
TOTALS			26-63	4-17	14-19	15	32	47	22	70	16	17	3	4	201

Deadball Rebounds: 4,0

FG %	1st Half:	14-33	42.4%	2nd Half:	12-30	40.0%	Game:	26-63	41.3%					
	1st Qtr	9-17	52.9%	2nd Qtr	5-16	31.3%	3rd Qtr	8-18	44.4%	4th Qtr	4-12	33.3%		
3FG %	1st Half:	3-9	33.3%	2nd Half:	1-8	12.5%	Game:	4-17	23.5%					
	1st Qtr	1-3	33.3%	2nd Qtr	2-6	33.3%	3rd Qtr	0-5	00.0%	4th Qtr	1-3	33.3%		
FT %	1st Half:	4-5	80.0%	2nd Half:	10-14	71.4%	Game:	14-19	73.7%					
	1st Qtr	4-5	80.0%	2nd Qtr	0-0	0%	3rd Qtr	3-4	75.0%	4th Qtr	7-10	70.0%		

Officials: Barry Hickingbotham, Aaron BAiley and Wesley Smith
 Technical Fouls: Okla. Baptist- None. Harding- None.
 Attendance: 452

Score by periods	1st	2nd	3rd	4th	Total
Okla. Baptist	15	17	16	18	66
Harding	23	12	19	16	70

Points	In Paint	Off T/O	2nd Chance	Fast Break	Bench
OKLABAP	38	17	8	4	4
HU	40	18	13	6	24

Last FG - OKLABAP 4th-00:16, HU 4th-04:17.
 Largest lead - Okla. Baptist by ; Harding by 9 1st-04:29
 OKLABAP led for 0:00. HU led for 38:22. Game was tied for 1:10.

Score tied - 1 times; Lead changed - 0 times

Official Basketball Box Score -- Game Totals -- First Half Statistics
Okla. Baptist vs Harding
2/8/2018 5:30 p.m. at Searcy, Ark. (Rhodes-Reaves Field House)

Okla. Baptist 32 • 12-9, 7-8 GAC

##	Player		Total			3-Ptr			Rebounds			PF	TP	A	TO	Blk	Stl	Min
			FG-FGA	FG-FGA	FT-FTA	FG-FGA	FG-FGA	FT-FTA	Off	Def	Tot							
03	COLEMAN,SHAYLAN	g	0-1	0-0	1-2	1	1	2	2	1	0	1	0	0	0	0	4	
20	COOPER,MCKENZIE	g	5-11	2-4	1-2	1	3	4	1	13	0	0	0	0	0	19		
21	EDGE,TASHA	f	1-2	0-0	2-3	0	1	1	2	4	0	2	0	1	14			
23	AVINA,AUTUMN	g	3-7	0-1	2-4	1	1	2	1	8	1	1	2	4	20			
25	WILLIAMS,LEXI	g	1-5	0-2	0-0	1	1	2	0	2	0	1	0	3	17			
14	HEIN,SYDNEY		1-4	0-2	2-2	0	2	2	0	4	1	0	0	1	14			
44	COOPER,KADESHA		0-3	0-0	0-0	0	0	0	2	0	1	0	0	0	12			
TEAM						0	2	2	0			0						
Totals			11-33	2-9	8-13	4	11	15	8	32	3	5	2	9	100			
FG %	1st Qtr	4-16	25.0%	2nd Qtr	7-17	41.2%	Half:	11-33	33.3%									
3FG %	1st Qtr	1-5	20.0%	2nd Qtr	1-4	25.0%	Half:	2-9	22.2%									
FT %	1st Qtr	6-9	66.7%	2nd Qtr	2-4	50.0%	Half:	8-13	61.5%									

Harding 35 • 10-13, 6-9 GAC

##	Player		Total			3-Ptr			Rebounds			PF	TP	A	TO	Blk	Stl	Min
			FG-FGA	FG-FGA	FT-FTA	FG-FGA	FG-FGA	FT-FTA	Off	Def	Tot							
03	MILLER,FALAN	g	2-3	1-1	1-1	0	2	2	2	6	1	2	0	1	14			
10	LAMPO,KELLIE	f	2-5	0-0	0-0	3	1	4	3	4	0	1	0	0	5			
13	PADGETT,PEYTON	g	0-0	0-0	0-0	0	0	0	2	0	3	0	0	5				
21	LAYROCK,SYDNEY	f	3-7	0-3	0-0	0	3	3	1	6	0	0	0	16				
24	KEARNEY,AMANDA	g	2-5	1-3	2-2	1	4	5	2	7	0	3	0	15				
04	MCNAMARA,MACKENZIE		0-0	0-0	0-0	0	0	0	1	0	1	1	0	8				
14	CAPLES,CARISSA		3-5	1-2	0-0	0	4	4	0	7	0	3	0	15				
33	JONES,SYDNEI		1-2	0-0	1-2	1	3	4	1	3	1	0	0	13				
42	COOPER,KENNEDY		1-6	0-0	0-0	1	1	2	1	2	3	0	1	9				
TEAM						2	2	4	0			0						
Totals			14-33	3-9	4-5	8	20	28	13	35	9	10	1	1	100			
FG %	1st Qtr	9-17	52.9%	2nd Qtr	5-16	31.3%	Half:	14-33	42.4%									
3FG %	1st Qtr	1-3	33.3%	2nd Qtr	2-6	33.3%	Half:	3-9	33.3%									
FT %	1st Qtr	4-5	80.0%	2nd Qtr	0-0	0%	Half:	4-5	80.0%									

Officials: Barry Hickingbotham, Aaron BAiley and Wesley Smith
 Technical Fouls: Okla. Baptist- None. Harding- None.

Score by periods	1st	2nd	3rd	4th	Total
Okla. Baptist	15	17	16	18	66
Harding	23	12	19	16	70

Points	In Paint	Off T/O	2nd Chance	Fast Break	Bench
OKLABAP	18	11	6	2	4
	20	11	5	2	12

Last FG - OKLABAP 2nd-01:22, HU 2nd-01:33.
 OKLABAP led for 0:00. HU led for 19:41. Game was tied for 0:19.

Score tied - 0 times
 Lead changed - 0 times

Okla. Baptist vs Harding
2/8/2018; 5:30 p.m. at Searcy, Ark. (Rhodes-Reaves Field House)
Period 1 Play-By-Play

VISITORS: Okla. Baptist	Time	Score	Margin	HOME: Harding
	09:41	2-0	H 2	GOOD! JUMPER by LAYROCK,SYDNEY [PNT]
	09:41			ASSIST by MILLER,FALAN
TURNOVER by WILLIAMS,LEXI	09:18			
	09:07	5-0	H 5	GOOD! 3PTR by MILLER,FALAN
	09:07			ASSIST by PADGETT,PEYTON
MISSED JUMPER by COLEMAN,SHAYLAN	08:51			
	08:51			REBOUND (DEF) by TEAM
	08:38			MISSED LAYUP by LAMPO,KELLIE
	08:38			REBOUND (OFF) by LAMPO,KELLIE
	08:36			MISSED LAYUP by LAMPO,KELLIE
	08:36			REBOUND (OFF) by TEAM
	08:27	7-0	H 7	GOOD! LAYUP by LAMPO,KELLIE [PNT]
	08:27			ASSIST by PADGETT,PEYTON
MISSED 3PTR by AVINA,AUTUMN	08:04			
REBOUND (OFF) by COLEMAN,SHAYLAN	08:04			
	08:02			FOUL by PADGETT,PEYTON
MISSED JUMPER by COOPER,MCKENZIE	07:56			
REBOUND (OFF) by COOPER,MCKENZIE	07:56			
GOOD! LAYUP by COOPER,MCKENZIE [PNT]	07:54	7-2	H 5	
	07:46			TURNOVER by KEARNEY,AMANDA
STEAL by EDGE,TASHA	07:45			
	07:40			FOUL by PADGETT,PEYTON
MISSED FT by COLEMAN,SHAYLAN	07:40			
REBOUND (DEADB) by TEAM	07:40			
GOOD! FT by COLEMAN,SHAYLAN	07:40	7-3	H 4	
	07:40			SUB IN: CAPLES,CARISSA
	07:40			SUB OUT: PADGETT,PEYTON
FOUL by EDGE,TASHA	07:33			
	07:33	8-3	H 5	GOOD! FT by KEARNEY,AMANDA
	07:33	9-3	H 6	GOOD! FT by KEARNEY,AMANDA
	07:23			FOUL by LAMPO,KELLIE
GOOD! LAYUP by EDGE,TASHA [PNT]	07:11	9-5	H 4	
	07:11			FOUL by LAYROCK,SYDNEY
MISSED FT by EDGE,TASHA	07:11			
	07:11			REBOUND (DEF) by LAYROCK,SYDNEY
FOUL by COLEMAN,SHAYLAN	07:05			
	06:52			TURNOVER by CAPLES,CARISSA
STEAL by AVINA,AUTUMN	06:51			
	06:46			FOUL by LAMPO,KELLIE
GOOD! FT by EDGE,TASHA	06:46	9-6	H 3	
GOOD! FT by EDGE,TASHA	06:46	9-7	H 2	
	06:46			SUB IN: JONES,SYDNEI
	06:46			SUB OUT: LAMPO,KELLIE
	06:20			MISSED LAYUP by MILLER,FALAN
REBOUND (DEF) by COLEMAN,SHAYLAN	06:20			
TURNOVER by COLEMAN,SHAYLAN	06:16			
	06:15			STEAL by MILLER,FALAN
	06:13	11-7	H 4	GOOD! LAYUP by MILLER,FALAN [FB/PNT]
	06:13			ASSIST by JONES,SYDNEI
FOUL by COLEMAN,SHAYLAN	06:13			
	06:13	12-7	H 5	GOOD! FT by MILLER,FALAN
SUB IN: HEIN,SYDNEY	06:13			
SUB OUT: COLEMAN,SHAYLAN	06:13			
	06:13			SUB IN: COOPER,KENNEDY
	06:13			SUB OUT: LAYROCK,SYDNEY
MISSED 3PTR by HEIN,SYDNEY	05:58			
	05:58			REBOUND (DEF) by KEARNEY,AMANDA
	05:44			MISSED LAYUP by KEARNEY,AMANDA
BLOCK by AVINA,AUTUMN	05:44			
REBOUND (DEF) by HEIN,SYDNEY	05:43			
MISSED LAYUP by WILLIAMS,LEXI	05:39			
	05:39			BLOCK by COOPER,KENNEDY
	05:38			REBOUND (DEF) by COOPER,KENNEDY
	05:33			MISSED JUMPER by COOPER,KENNEDY
	05:33			REBOUND (OFF) by KEARNEY,AMANDA
	05:30	14-7	H 7	GOOD! LAYUP by KEARNEY,AMANDA [PNT]
TIMEOUT 30SEC	05:29			
TIMEOUT MEDIA	05:29			
MISSED 3PTR by WILLIAMS,LEXI	05:22			

VISITORS: Okla. Baptist	Time	Score	Margin	HOME: Harding
	05:22			REBOUND (DEF) by MILLER,FALAN
	05:12			TURNOVER by MILLER,FALAN
STEAL by AVINA,AUTUMN	05:11			
GOOD! LAYUP by COOPER,MCKENZIE [FB/PNT]	05:07	14-9	H 5	
	04:53	16-9	H 7	GOOD! JUMPER by CAPLES,CARISSA [PNT]
FOUL by AVINA,AUTUMN	04:43			
TURNOVER by AVINA,AUTUMN	04:43			
	04:29	18-9	H 9	GOOD! JUMPER by CAPLES,CARISSA
MISSED LAYUP by EDGE,TASHA	04:08			
REBOUND (OFF) by AVINA,AUTUMN	04:08			
	04:05			FOUL by JONES,SYDNIE
GOOD! FT by AVINA,AUTUMN	04:05	18-10	H 8	
GOOD! FT by AVINA,AUTUMN	04:05	18-11	H 7	
	04:05			SUB IN: LAYROCK,SYDNEY
	04:05			SUB IN: MCNAMARA,MACKENZIE
	04:05			SUB OUT: JONES,SYDNIE
	04:05			SUB OUT: KEARNEY,AMANDA
	03:55			MISSED LAYUP by CAPLES,CARISSA
REBOUND (DEF) by EDGE,TASHA	03:55			
TURNOVER by EDGE,TASHA	03:42			
SUB IN: COOPER,KADESHA	03:42			
SUB OUT: EDGE,TASHA	03:42			
	03:21			TURNOVER by MILLER,FALAN
STEAL by AVINA,AUTUMN	03:20			
MISSED LAYUP by AVINA,AUTUMN	03:17			
	03:17			REBOUND (DEF) by MILLER,FALAN
	03:01	20-11	H 9	GOOD! LAYUP by LAYROCK,SYDNEY [PNT]
	03:01			ASSIST by COOPER,KENNEDY
SUB IN: EDGE,TASHA	02:53			
SUB OUT: WILLIAMS,LEXI	02:53			
	02:53			SUB IN: KEARNEY,AMANDA
	02:53			SUB OUT: MILLER,FALAN
MISSED JUMPER by COOPER,KADESHA	02:49			
	02:49			REBOUND (DEF) by KEARNEY,AMANDA
MISSED 3PTR by HEIN,SYDNEY	02:28			
	02:28			REBOUND (DEF) by CAPLES,CARISSA
	02:23			FOUL by COOPER,KENNEDY
MISSED FT by COOPER,MCKENZIE	02:23			
REBOUND (DEADB) by TEAM	02:23			
GOOD! FT by COOPER,MCKENZIE	02:23	20-12	H 8	
	02:23			SUB IN: JONES,SYDNIE
	02:23			SUB OUT: COOPER,KENNEDY
	02:08			MISSED 3PTR by KEARNEY,AMANDA
	02:08			REBOUND (OFF) by TEAM
FOUL by COOPER,MCKENZIE	02:03			
	02:03			MISSED FT by JONES,SYDNIE
	02:03			REBOUND (DEADB) by TEAM
	02:03	21-12	H 9	GOOD! FT by JONES,SYDNIE
GOOD! 3PTR by COOPER,MCKENZIE	01:50	21-15	H 6	
	01:35			MISSED 3PTR by CAPLES,CARISSA
REBOUND (DEF) by TEAM	01:35			
MISSED JUMPER by COOPER,MCKENZIE	01:01			
	01:01			REBOUND (DEF) by TEAM
	01:01			SUB IN: MILLER,FALAN
	01:01			SUB IN: PADGETT,PEYTON
	01:01			SUB OUT: CAPLES,CARISSA
	01:01			SUB OUT: MCNAMARA,MACKENZIE
	00:30	23-15	H 8	GOOD! LAYUP by JONES,SYDNIE [PNT]
	00:30			ASSIST by PADGETT,PEYTON
MISSED JUMPER by AVINA,AUTUMN	00:05			
	00:05			REBOUND (DEF) by JONES,SYDNIE

Okla. Baptist 15, Harding 23

Period 1-only	In Paint	Off T/O	2nd Chance	Fast Break	Bench	
OKLABAP	6	5	4	2	0	Score tied - 0 times
HU	14	8	5	2	7	Lead changed - 0 times

Okla. Baptist vs Harding
2/8/2018; 5:30 p.m. at Searcy, Ark. (Rhodes-Reaves Field House)
Period 2 Play-By-Play

VISITORS: Okla. Baptist	Time	Score	Margin	HOME: Harding
SUB IN: HEIN,SYDNEY	10:00			
SUB OUT: COLEMAN,SHAYLAN	10:00			
	10:00			SUB IN: JONES,SYDNEI
	10:00			SUB IN: CAPLES,CARISSA
	10:00			SUB OUT: LAMPO,KELLIE
	10:00			SUB OUT: PADGETT,PEYTON
GOOD! LAYUP by AVINA,AUTUMN [PNT]	09:46	23-17	H 6	
	09:15			TURNOVER by KEARNEY,AMANDA
STEAL by HEIN,SYDNEY	09:10			
MISSED LAYUP by COOPER,MCKENZIE	09:07			
	09:07			REBOUND (DEF) by JONES,SYDNEI
	08:53			MISSED LAYUP by LAYROCK,SYDNEY
REBOUND (DEF) by AVINA,AUTUMN	08:53			
GOOD! LAYUP by AVINA,AUTUMN [PNT]	08:44	23-19	H 4	
	08:25	25-19	H 6	GOOD! LAYUP by LAYROCK,SYDNEY [PNT]
MISSED 3PTR by COOPER,MCKENZIE	08:00			
	08:00			REBOUND (DEF) by LAYROCK,SYDNEY
	07:49			MISSED LAYUP by JONES,SYDNEI
BLOCK by AVINA,AUTUMN	07:49			
REBOUND (DEF) by COOPER,MCKENZIE	07:47			
MISSED LAYUP by COOPER,MCKENZIE	07:41			
	07:41			REBOUND (DEF) by KEARNEY,AMANDA
	07:34			TURNOVER by KEARNEY,AMANDA
STEAL by WILLIAMS,LEXI	07:34			
	07:34			FOUL by KEARNEY,AMANDA
SUB IN: COOPER,KADESHA	07:34			
SUB OUT: COOPER,MCKENZIE	07:34			
	07:34			SUB IN: COOPER,KENNEDY
	07:34			SUB IN: LAMPO,KELLIE
	07:34			SUB IN: MCNAMARA,MACKENZIE
	07:34			SUB OUT: JONES,SYDNEI
	07:34			SUB OUT: LAYROCK,SYDNEY
	07:34			SUB OUT: KEARNEY,AMANDA
GOOD! LAYUP by HEIN,SYDNEY [PNT]	07:21	25-21	H 4	
ASSIST by COOPER,KADESHA	07:21			
	06:58	27-21	H 6	GOOD! LAYUP by LAMPO,KELLIE [PNT]
	06:58			ASSIST by COOPER,KENNEDY
MISSED JUMPER by COOPER,KADESHA	06:46			
	06:46			REBOUND (DEF) by CAPLES,CARISSA
	06:31			MISSED LAYUP by COOPER,KENNEDY
	06:31			REBOUND (OFF) by LAMPO,KELLIE
	06:30			MISSED LAYUP by LAMPO,KELLIE
	06:30			REBOUND (OFF) by LAMPO,KELLIE
FOUL by COOPER,KADESHA	06:28			
SUB IN: COOPER,MCKENZIE	06:28			
SUB OUT: HEIN,SYDNEY	06:28			
	06:28			SUB IN: PADGETT,PEYTON
	06:28			SUB OUT: CAPLES,CARISSA
	06:21			TURNOVER by MCNAMARA,MACKENZIE
STEAL by AVINA,AUTUMN	06:20			
	06:20			FOUL by MCNAMARA,MACKENZIE
	06:11			FOUL by MILLER,FALAN
MISSED JUMPER by COOPER,KADESHA	06:00			
	06:00			REBOUND (DEF) by LAMPO,KELLIE
	05:45	29-21	H 8	GOOD! LAYUP by COOPER,KENNEDY [PNT]
MISSED LAYUP by WILLIAMS,LEXI	05:32			
REBOUND (OFF) by WILLIAMS,LEXI	05:32			
GOOD! JUMPER by COOPER,MCKENZIE [PNT]	05:14	29-23	H 6	
	05:05			FOUL by LAMPO,KELLIE
	05:05			TURNOVER by LAMPO,KELLIE
	05:05			SUB IN: JONES,SYDNEI
	05:05			SUB IN: KEARNEY,AMANDA
	05:05			SUB IN: LAYROCK,SYDNEY
	05:05			SUB OUT: MILLER,FALAN
	05:05			SUB OUT: COOPER,KENNEDY
	05:05			SUB OUT: LAMPO,KELLIE
FOUL by EDGE,TASHA	04:55			
TURNOVER by EDGE,TASHA	04:55			
	04:55			TIMEOUT media

VISITORS: Okla. Baptist	Time	Score	Margin	HOME: Harding
SUB IN: HEIN,SYDNEY	04:55			
SUB OUT: EDGE,TASHA	04:55			
	04:55			SUB IN: COOPER,KENNEDY
	04:55			SUB OUT: MCNAMARA,MACKENZIE
	04:36	32-23	H 9	GOOD! 3PTR by KEARNEY,AMANDA
	04:36			ASSIST by COOPER,KENNEDY
MISSED LAYUP by AVINA,AUTUMN	04:16			
	04:16			REBOUND (DEF) by JONES,SYDNIE
FOUL by COOPER,KADESHA	04:15			
	04:15			SUB IN: CAPLES,CARISSA
	04:15			SUB OUT: PADGETT,PEYTON
	03:51			TURNOVER by CAPLES,CARISSA
STEAL by WILLIAMS,LEXI	03:50			
	03:46			FOUL by KEARNEY,AMANDA
GOOD! FT by HEIN,SYDNEY	03:46	32-24	H 8	
GOOD! FT by HEIN,SYDNEY	03:46	32-25	H 7	
	03:46			SUB IN: MILLER,FALAN
	03:46			SUB OUT: KEARNEY,AMANDA
	03:32			MISSED 3PTR by LAYROCK,SYDNEY
REBOUND (DEF) by HEIN,SYDNEY	03:32			
GOOD! 3PTR by COOPER,MCKENZIE	03:21	32-28	H 4	
ASSIST by AVINA,AUTUMN	03:21			
	03:20			TIMEOUT 30SEC
	03:07			MISSED LAYUP by COOPER,KENNEDY
REBOUND (DEF) by WILLIAMS,LEXI	03:07			
MISSED 3PTR by WILLIAMS,LEXI	02:58			
	02:58			REBOUND (DEF) by CAPLES,CARISSA
	02:40			MISSED LAYUP by COOPER,KENNEDY
	02:40			REBOUND (OFF) by COOPER,KENNEDY
	02:38			MISSED LAYUP by COOPER,KENNEDY
REBOUND (DEF) by COOPER,MCKENZIE	02:38			
	02:28			FOUL by MILLER,FALAN
MISSED FT by AVINA,AUTUMN	02:28			
REBOUND (DEADB) by TEAM	02:28			
MISSED FT by AVINA,AUTUMN	02:28			
	02:28			REBOUND (DEF) by LAYROCK,SYDNEY
	02:28			SUB IN: MCNAMARA,MACKENZIE
	02:28			SUB IN: KEARNEY,AMANDA
	02:28			SUB OUT: MILLER,FALAN
	02:28			SUB OUT: COOPER,KENNEDY
	02:16			MISSED 3PTR by LAYROCK,SYDNEY
	02:16			REBOUND (OFF) by JONES,SYDNIE
	02:08			TURNOVER by CAPLES,CARISSA
STEAL by WILLIAMS,LEXI	02:07			
GOOD! LAYUP by AVINA,AUTUMN [PNT]	01:51	32-30	H 2	
	01:33	35-30	H 5	GOOD! 3PTR by CAPLES,CARISSA
	01:33			ASSIST by MCNAMARA,MACKENZIE
GOOD! LAYUP by WILLIAMS,LEXI [PNT]	01:22	35-32	H 3	
ASSIST by HEIN,SYDNEY	01:22			
	01:09			MISSED 3PTR by LAYROCK,SYDNEY
REBOUND (DEF) by TEAM	01:09			
MISSED 3PTR by COOPER,MCKENZIE	00:42			
	00:42			REBOUND (DEF) by KEARNEY,AMANDA
	00:12			MISSED 3PTR by KEARNEY,AMANDA
REBOUND (DEF) by COOPER,MCKENZIE	00:12			
MISSED LAYUP by HEIN,SYDNEY	00:03			
	00:03			REBOUND (DEF) by CAPLES,CARISSA

Okla. Baptist 32, Harding 35

Period 2-only	In Paint	Off T/O	2nd Chance	Fast Break	Bench	
OKLABAP	12	6	2	0	4	Score tied - 0 times
HU	6	3	0	0	5	Lead changed - 0 times

Official Basketball Box Score -- Game Totals -- Second Half Statistics
Okla. Baptist vs Harding
2/8/2018 5:30 p.m. at Searcy, Ark. (Rhodes-Reaves Field House)

Okla. Baptist 34 • 12-9, 7-8 GAC

##	Player		Total		3-Ptr	Rebounds			PF	TP	A	TO	Blk	Stl	Min
			FG-FGA	FG-FGA	FT-FTA	Off	Def	Tot							
03	COLEMAN,SHAYLAN	g	6-10	0-0	0-0	0	2	2	2	12	1	2	1	2	20
20	COOPER,MCKENZIE	g	3-7	1-3	0-0	0	4	4	2	7	1	1	0	1	20
21	EDGE,TASHA	f	2-5	0-1	2-2	0	4	4	2	6	0	2	1	0	18
23	AVINA,AUT UMN	g	2-4	1-1	1-2	1	0	1	2	6	2	2	1	2	19
25	WILLIAMS,LEXI	g	1-3	1-2	0-0	1	2	3	3	3	1	0	0	0	17
14	HEIN,SYDNEY		0-0	0-0	0-0	0	0	0	0	0	0	0	0	0	4
44	COOPER,KADESHA		0-0	0-0	0-0	0	0	0	0	0	0	0	0	0	2
TEAM						0	0	0	0		0				
Totals			14-29	3-7	3-4	2	12	14	11	34	5	7	3	5	100
FG %	3rd Qtr	7-16	43.8%	4th Qtr	7-13	53.8%	Half:	14-29	48.3%						
3FG %	3rd Qtr	2-4	50.0%	4th Qtr	1-3	33.3%	Half:	3-7	22.2%						
FT %	3rd Qtr	0-0	0%	4th Qtr	3-4	75.0%	Half:	3-4	75.0%						

Harding 35 • 10-13, 6-9 GAC

##	Player		Total		3-Ptr	Rebounds			PF	TP	A	TO	Blk	Stl	Min
			FG-FGA	FG-FGA	FT-FTA	Off	Def	Tot							
03	MILLER,FALAN	g	4-7	1-3	1-2	3	1	4	2	10	2	0	0	0	14
10	LAMPO,KELLIE	f	0-4	0-0	3-4	2	0	2	1	3	1	0	0	0	7
13	PADGETT,PEYTON	g	1-3	0-1	0-0	0	3	3	0	2	2	3	1	2	18
21	LAYROCK,SYDNEY	f	1-6	0-0	2-2	0	3	3	4	4	1	2	0	1	15
24	KEARNEY,AMANDA	g	1-4	0-3	2-4	1	0	1	1	4	1	0	0	0	16
04	MCNAMARA,MACKENZIE		0-0	0-0	0-0	0	1	1	0	0	0	0	0	0	0
14	CAPLES,CARISSA		2-2	0-0	2-2	0	1	1	0	6	0	0	0	0	13
33	JONES,SYDNIE		1-1	0-0	0-0	0	0	0	1	2	0	0	0	0	10
42	COOPER,KENNEDY		2-3	0-1	0-0	0	1	1	0	4	0	2	1	0	8
TEAM						1	2	3	0		0				
Totals			12-30	1-8	10-14	7	12	19	9	35	7	7	2	3	101
FG %	3rd Qtr	8-18	44.4%	4th Qtr	4-12	33.3%	Half:	12-30	40.0%						
3FG %	3rd Qtr	0-5	00.0%	4th Qtr	1-3	33.3%	Half:	1-8	33.3%						
FT %	3rd Qtr	3-4	75.0%	4th Qtr	7-10	70.0%	Half:	10-14	71.4%						

Officials: Barry Hickingbotham, Aaron BAiley and Wesley Smith
 Technical Fouls: Okla. Baptist- None. Harding- None.

Score by periods	1st	2nd	3rd	4th	Total
Okla. Baptist	15	17	16	18	66
Harding	23	12	19	16	70

Points	In Paint	Off T/O	2nd Chance	Fast Break	Bench
OKLABAP	20	6	2	2	0
	20	7	8	4	12

Last FG - OKLABAP 4th-00:16, HU 4th-04:17.
 OKLABAP led for 0:00. HU led for 18:41. Game was tied for 0:51.

Score tied - 1 times
 Lead changed - 0 times

Okla. Baptist vs Harding
2/8/2018; 5:30 p.m. at Searcy, Ark. (Rhodes-Reaves Field House)
Period 3 Play-By-Play

VISITORS: Okla. Baptist	Time	Score	Margin	HOME: Harding
	09:54	37-32	H 5	GOOD! LAYUP by MILLER,FALAN [PNT]
	09:54			ASSIST by PADGETT,PEYTON
GOOD! 3PTR by WILLIAMS,LEXI	09:41	37-35	H 2	
ASSIST by COLEMAN,SHAYLAN	09:41			
	09:31			MISSED 3PTR by KEARNEY,AMANDA
REBOUND (DEF) by COOPER,MCKENZIE	09:31			
	09:29			FOUL by LAMPO,KELLIE
	09:29			SUB IN: JONES,SYDNEIE
	09:29			SUB OUT: LAMPO,KELLIE
GOOD! LAYUP by COLEMAN,SHAYLAN [PNT]	09:20	37-37	T	
	09:05			TURNOVER by LAYROCK,SYDNEY
STEAL by COLEMAN,SHAYLAN	09:05			
	09:05			FOUL by LAYROCK,SYDNEY
MISSED LAYUP by COLEMAN,SHAYLAN	08:53			
	08:53			BLOCK by PADGETT,PEYTON
	08:49			REBOUND (DEF) by MILLER,FALAN
FOUL by WILLIAMS,LEXI	08:47			
	08:32			MISSED LAYUP by LAYROCK,SYDNEY
	08:32			REBOUND (OFF) by KEARNEY,AMANDA
FOUL by COOPER,MCKENZIE	08:29			
	08:29			MISSED FT by KEARNEY,AMANDA
	08:29			REBOUND (DEADB) by TEAM
	08:29	38-37	H 1	GOOD! FT by KEARNEY,AMANDA
TURNOVER by COLEMAN,SHAYLAN	08:15			
	08:15			STEAL by LAYROCK,SYDNEY
	08:05			MISSED 3PTR by MILLER,FALAN
REBOUND (DEF) by COLEMAN,SHAYLAN	08:05			
MISSED JUMPER by COOPER,MCKENZIE	07:44			
	07:44			REBOUND (DEF) by PADGETT,PEYTON
	07:27	40-37	H 3	GOOD! LAYUP by KEARNEY,AMANDA [PNT]
TIMEOUT 30SEC	07:23			
TIMEOUT MEDIA	07:23			
MISSED LAYUP by EDGE,TASHA	07:00			
	07:00			REBOUND (DEF) by LAYROCK,SYDNEY
	06:43	42-37	H 5	GOOD! LAYUP by MILLER,FALAN [PNT]
	06:43			ASSIST by KEARNEY,AMANDA
FOUL by EDGE,TASHA	06:22			
TURNOVER by EDGE,TASHA	06:22			
	06:22			SUB IN: COOPER,KENNEDY
	06:22			SUB OUT: JONES,SYDNEIE
	06:08			MISSED LAYUP by LAYROCK,SYDNEY
	06:08			REBOUND (OFF) by MILLER,FALAN
	06:04			MISSED LAYUP by MILLER,FALAN
BLOCK by AVINA,AUTUMN	06:04			
	06:03			REBOUND (OFF) by MILLER,FALAN
FOUL by COLEMAN,SHAYLAN	05:57			
	05:57	43-37	H 6	GOOD! FT by LAYROCK,SYDNEY
	05:57	44-37	H 7	GOOD! FT by LAYROCK,SYDNEY
SUB IN: COOPER,KADESHA	05:57			
SUB OUT: EDGE,TASHA	05:57			
	05:57			SUB IN: CAPLES,CARISSA
	05:57			SUB OUT: PADGETT,PEYTON
MISSED 3PTR by COOPER,MCKENZIE	05:41			
	05:41			REBOUND (DEF) by LAYROCK,SYDNEY
	05:25			MISSED 3PTR by KEARNEY,AMANDA
	05:25			REBOUND (OFF) by MILLER,FALAN
	05:17	46-37	H 9	GOOD! LAYUP by COOPER,KENNEDY [PNT]
	05:17			ASSIST by LAYROCK,SYDNEY
FOUL by COOPER,MCKENZIE	04:59			
TURNOVER by COOPER,MCKENZIE	04:59			
	04:59			SUB IN: JONES,SYDNEIE
	04:59			SUB OUT: LAYROCK,SYDNEY
	04:45			MISSED 3PTR by MILLER,FALAN
REBOUND (DEF) by WILLIAMS,LEXI	04:45			
GOOD! 3PTR by COOPER,MCKENZIE	04:37	46-40	H 6	
ASSIST by AVINA,AUTUMN	04:37			
	04:23			TURNOVER by COOPER,KENNEDY
STEAL by COLEMAN,SHAYLAN	04:22			
	04:21			FOUL by MILLER,FALAN

VISITORS: Okla. Baptist	Time	Score	Margin	HOME: Harding
TIMEOUT MEDIA	04:21			
SUB IN: EDGE,TASHA	04:21			
SUB OUT: COOPER,KADESHA	04:21			
	04:21			SUB IN: LAYROCK,SYDNEY
	04:21			SUB IN: PADGETT,PEYTON
	04:21			SUB OUT: MILLER,FALAN
	04:21			SUB OUT: COOPER,KENNEDY
TURNOVER by AVINA,AUTUMN	04:06			
	04:05			STEAL by PADGETT,PEYTON
	03:54			MISSED 3PTR by KEARNEY,AMANDA
REBOUND (DEF) by WILLIAMS,LEXI	03:54			
MISSED LAYUP by WILLIAMS,LEXI	03:46			
REBOUND (OFF) by WILLIAMS,LEXI	03:46			
GOOD! LAYUP by EDGE,TASHA [PNT]	03:42	46-42	H 4	
ASSIST by WILLIAMS,LEXI	03:42			
	03:23			MISSED JUMPER by LAYROCK,SYDNEY
REBOUND (DEF) by EDGE,TASHA	03:23			
MISSED 3PTR by COOPER,MCKENZIE	03:14			
	03:14			REBOUND (DEF) by CAPLES,CARISSA
	02:51	48-42	H 6	GOOD! LAYUP by LAYROCK,SYDNEY [PNT]
MISSED LAYUP by EDGE,TASHA	02:33			
	02:33			REBOUND (DEF) by TEAM
	02:32			SUB IN: MILLER,FALAN
	02:32			SUB IN: COOPER,KENNEDY
	02:32			SUB OUT: JONES,SYDNEI
	02:32			SUB OUT: KEARNEY,AMANDA
	02:21	50-42	H 8	GOOD! JUMPER by CAPLES,CARISSA
	02:21			ASSIST by MILLER,FALAN
GOOD! LAYUP by COLEMAN,SHAYLAN [PNT]	02:00	50-44	H 6	
	01:49			TURNOVER by PADGETT,PEYTON
STEAL by AVINA,AUTUMN	01:48			
GOOD! LAYUP by AVINA,AUTUMN [FB/PNT]	01:45	50-46	H 4	
	01:28			MISSED LAYUP by LAYROCK,SYDNEY
BLOCK by EDGE,TASHA	01:28			
REBOUND (DEF) by EDGE,TASHA	01:27			
MISSED LAYUP by AVINA,AUTUMN	01:19			
	01:19			REBOUND (DEF) by PADGETT,PEYTON
	01:12	52-46	H 6	GOOD! LAYUP by MILLER,FALAN [FB/PNT]
	01:12			ASSIST by PADGETT,PEYTON
GOOD! LAYUP by COLEMAN,SHAYLAN [PNT]	00:41	52-48	H 4	
	00:31	54-48	H 6	GOOD! LAYUP by CAPLES,CARISSA [PNT]
MISSED LAYUP by COLEMAN,SHAYLAN	00:03			
REBOUND (OFF) by AVINA,AUTUMN	00:03			

Okla. Baptist 48, Harding 54

Period 3-only	In Paint	Off T/O	2nd Chance	Fast Break	Bench	
OKLABAP	10	2	2	2	0	Score tied - 2 times
HU	14	2	5	2	6	Lead changed - 0 times

Okla. Baptist vs Harding
2/8/2018; 5:30 p.m. at Searcy, Ark. (Rhodes-Reaves Field House)
Period 4 Play-By-Play

VISITORS: Okla. Baptist	Time	Score	Margin	HOME: Harding
	10:00			SUB IN: COOPER,KENNEDY
	10:00			SUB IN: JONES,SYDNEI
	10:00			SUB OUT: LAMPO,KELLIE
	10:00			SUB OUT: LAYROCK,SYDNEY
	09:39			FOUL by KEARNEY,AMANDA
GOOD! FT by EDGE,TASHA	09:39	54-49	H 5	
GOOD! FT by EDGE,TASHA	09:39	54-50	H 4	
	09:27			MISSED LAYUP by PADGETT,PEYTON
BLOCK by COLEMAN,SHAYLAN	09:27			
	09:27			REBOUND (OFF) by TEAM
	09:23	56-50	H 6	GOOD! LAYUP by COOPER,KENNEDY [PNT]
MISSED 3PTR by WILLIAMS,LEXI	09:15			
	09:15			REBOUND (DEF) by TEAM
	09:00			TURNOVER by COOPER,KENNEDY
GOOD! JUMPER by COLEMAN,SHAYLAN	08:43	56-52	H 4	
ASSIST by AVINA,AUTUMN	08:43			
	08:25			MISSED 3PTR by COOPER,KENNEDY
REBOUND (DEF) by COOPER,MCKENZIE	08:25			
MISSED LAYUP by AVINA,AUTUMN	08:15			
	08:15			BLOCK by COOPER,KENNEDY
	08:14			REBOUND (DEF) by COOPER,KENNEDY
	07:59	58-52	H 6	GOOD! LAYUP by JONES,SYDNEI [PNT]
	07:59			ASSIST by MILLER,FALAN
TURNOVER by COLEMAN,SHAYLAN	07:27			
SUB IN: HEIN,SYDNEY	07:27			
SUB OUT: AVINA,AUTUMN	07:27			
	07:27			SUB IN: LAMPO,KELLIE
	07:27			SUB IN: LAYROCK,SYDNEY
	07:27			SUB OUT: COOPER,KENNEDY
	07:27			SUB OUT: JONES,SYDNEI
FOUL by WILLIAMS,LEXI	07:03			
	07:03	59-52	H 7	GOOD! FT by LAMPO,KELLIE
	07:03	60-52	H 8	GOOD! FT by LAMPO,KELLIE
	07:03			SUB IN: CAPLES,CARISSA
	07:03			SUB OUT: KEARNEY,AMANDA
MISSED JUMPER by COOPER,MCKENZIE	06:46			
REBOUND (DEADB) by TEAM	06:46			
	06:43			FOUL by LAYROCK,SYDNEY
SUB IN: AVINA,AUTUMN	06:43			
SUB OUT: WILLIAMS,LEXI	06:43			
GOOD! 3PTR by AVINA,AUTUMN	06:31	60-55	H 5	
ASSIST by COOPER,MCKENZIE	06:31			
	06:00	63-55	H 8	GOOD! 3PTR by MILLER,FALAN
	06:00			ASSIST by LAMPO,KELLIE
	05:38			FOUL by MILLER,FALAN
	05:38			SUB IN: JONES,SYDNEI
	05:38			SUB IN: KEARNEY,AMANDA
	05:38			SUB OUT: MILLER,FALAN
	05:38			SUB OUT: LAMPO,KELLIE
GOOD! LAYUP by COLEMAN,SHAYLAN [PNT]	05:33	63-57	H 6	
	05:13			TURNOVER by PADGETT,PEYTON
STEAL by AVINA,AUTUMN	05:13			
	05:13			FOUL by JONES,SYDNEI
GOOD! LAYUP by EDGE,TASHA [PNT]	04:57	63-59	H 4	
	04:30			TURNOVER by PADGETT,PEYTON
STEAL by COOPER,MCKENZIE	04:29			
TURNOVER by AVINA,AUTUMN	04:22			
	04:21			STEAL by PADGETT,PEYTON
	04:17	65-59	H 6	GOOD! LAYUP by PADGETT,PEYTON [FB/PNT]
	04:02			FOUL by LAYROCK,SYDNEY
TIMEOUT MEDIA	04:02			
MISSED FT by AVINA,AUTUMN	04:02			
REBOUND (DEADB) by TEAM	04:02			
GOOD! FT by AVINA,AUTUMN	04:02	65-60	H 5	
	04:02			SUB IN: LAMPO,KELLIE
	04:02			SUB OUT: JONES,SYDNEI
FOUL by AVINA,AUTUMN	03:44			
	03:44	66-60	H 6	GOOD! FT by CAPLES,CARISSA
	03:44	67-60	H 7	GOOD! FT by CAPLES,CARISSA

VISITORS: Okla. Baptist	Time	Score	Margin	HOME: Harding
SUB IN: WILLIAMS,LEXI	03:44			
SUB OUT: HEIN,SYDNEY	03:44			
MISSED JUMPER by COLEMAN,SHAYLAN	03:13			
	03:13			REBOUND (DEF) by LAYROCK,SYDNEY
	02:41			MISSED JUMPER by LAYROCK,SYDNEY
	02:41			REBOUND (DEADB) by TEAM
	02:31			MISSED 3PTR by PADGETT,PEYTON
REBOUND (DEF) by COLEMAN,SHAYLAN	02:31			
GOOD! LAYUP by COLEMAN,SHAYLAN [PNT]	02:13	67-62	H 5	
	02:00			MISSED LAYUP by LAMPO,KELLIE
	02:00			REBOUND (OFF) by LAMPO,KELLIE
	01:57			MISSED LAYUP by LAMPO,KELLIE
REBOUND (DEF) by EDGE,TASHA	01:57			
GOOD! LAYUP by COOPER,MCKENZIE [PNT]	01:47	67-64	H 3	
	01:44			TIMEOUT 30SEC
	01:44			SUB IN: MILLER,FALAN
	01:44			SUB OUT: KEARNEY,AMANDA
	01:40			FOUL by LAYROCK,SYDNEY
	01:40			TURNOVER by LAYROCK,SYDNEY
	01:40			SUB IN: KEARNEY,AMANDA
	01:40			SUB OUT: LAYROCK,SYDNEY
MISSED LAYUP by COLEMAN,SHAYLAN	01:32			
	01:32			REBOUND (DEF) by PADGETT,PEYTON
FOUL by WILLIAMS,LEXI	01:24			
	00:54			MISSED LAYUP by LAMPO,KELLIE
REBOUND (DEF) by EDGE,TASHA	00:54			
TURNOVER by EDGE,TASHA	00:53			
	00:28			MISSED JUMPER by LAMPO,KELLIE
	00:28			REBOUND (OFF) by LAMPO,KELLIE
FOUL by AVINA,AUTUMN	00:27			
	00:27	68-64	H 4	GOOD! FT by LAMPO,KELLIE
	00:27			MISSED FT by LAMPO,KELLIE
REBOUND (DEF) by COOPER,MCKENZIE	00:27			
TIMEOUT TEAM	00:26			
GOOD! LAYUP by COOPER,MCKENZIE [PNT]	00:16	68-66	H 2	
	00:15			TIMEOUT 30SEC
FOUL by EDGE,TASHA	00:14			
	00:14			MISSED FT by KEARNEY,AMANDA
	00:14			REBOUND (DEADB) by TEAM
	00:14	69-66	H 3	GOOD! FT by KEARNEY,AMANDA
TIMEOUT 30SEC	00:14			
	00:14			SUB IN: MCNAMARA,MACKENZIE
	00:14			SUB OUT: LAMPO,KELLIE
MISSED 3PTR by EDGE,TASHA	00:05			
	00:05			REBOUND (DEF) by MCNAMARA,MACKENZIE
	00:04			TIMEOUT 30SEC
FOUL by COLEMAN,SHAYLAN	00:03			
	00:03	70-66	H 4	GOOD! FT by MILLER,FALAN
	00:03			MISSED FT by MILLER,FALAN
REBOUND (DEF) by COOPER,MCKENZIE	00:03			
	00:03			SUB IN: LAMPO,KELLIE

Okla. Baptist 66, Harding 70

Period 4-only	In Paint	Off T/O	2nd Chance	Fast Break	Bench	
OKLABAP	10	4	0	0	0	Score tied - 0 times
HU	6	5	3	2	6	Lead changed - 0 times

Okla. Baptist vs Harding
2/8/2018; 5:30 p.m. at Searcy, Ark. (Rhodes-Reaves Field House)
Scoring/Runs Reference

Period 1

Okla. Baptist	VRun	Score	Margin	HRun	Harding
		0-2	2		LAYROCK JUMPER [P] - 09:41
		0-5	5	NaN-0	MILLER 3PTR - 09:07
		0-7	7	NaN-0	LAMPO LAYUP [P] - 08:27
07:54 - COOPER LAYUP [P]	-	2-7	5		
07:40 - COLEMAN FT	3-0	3-7	4		
		3-8	5		KEARNEY FT - 07:33
		3-9	6	2-0	KEARNEY FT - 07:33
07:11 - EDGE LAYUP [P]	-	5-9	4		
06:46 - EDGE FT	3-0	6-9	3		
06:46 - EDGE FT	4-0	7-9	2		
		7-11	4		MILLER LAYUP [P] [F] - 06:13
		7-12	5	3-0	MILLER FT - 06:13
		7-14	7	5-0	KEARNEY LAYUP [P] - 05:30
05:07 - COOPER LAYUP [P] [F]	-	9-14	5		
		9-16	7		CAPLES JUMPER [P] - 04:53
		9-18	9	4-0	CAPLES JUMPER - 04:29
04:05 - AVINA FT	-	10-18	8		
04:05 - AVINA FT	2-0	11-18	7		
		11-20	9		LAYROCK LAYUP [P] - 03:01
02:23 - COOPER FT	-	12-20	8		
		12-21	9		JONES FT - 02:03
01:50 - COOPER 3PTR	-	15-21	6		
		15-23	8		JONES LAYUP [P] - 00:30

Okla. Baptist vs Harding
2/8/2018; 5:30 p.m. at Searcy, Ark. (Rhodes-Reaves Field House)
Scoring/Runs Reference

Period 2

Okla. Baptist	VRun	Score	Margin	HRun	Harding
09:46 - AVINA LAYUP [P]	-	17-23	6		
08:44 - AVINA LAYUP [P]	NaN-0	19-23	4		
		19-25	6		LAYROCK LAYUP [P] - 08:25
07:21 - HEIN LAYUP [P]	-	21-25	4		
		21-27	6		LAMPO LAYUP [P] - 06:58
		21-29	8	4-0	COOPER LAYUP [P] - 05:45
05:14 - COOPER JUMPER [P]	-	23-29	6		
		23-32	9		KEARNEY 3PTR - 04:36
03:46 - HEIN FT	-	24-32	8		
03:46 - HEIN FT	2-0	25-32	7		
03:21 - COOPER 3PTR	5-0	28-32	4		
01:51 - AVINA LAYUP [P]	7-0	30-32	2		
		30-35	5		CAPLES 3PTR - 01:33
01:22 - WILLIAMS LAYUP [P]	-	32-35	3		

Okla. Baptist vs Harding
2/8/2018; 5:30 p.m. at Searcy, Ark. (Rhodes-Reaves Field House)
Scoring/Runs Reference

Period 3

Okla. Baptist	VRun	Score	Margin	HRun	Harding
		32-37	5		MILLER LAYUP [P] - 09:54
09:41 - WILLIAMS 3PTR	-	35-37	2		
09:20 - COLEMAN LAYUP [P]	5-0	37-37	0		
		37-38	1		KEARNEY FT - 08:29
		37-40	3	3-0	KEARNEY LAYUP [P] - 07:27
		37-42	5	5-0	MILLER LAYUP [P] - 06:43
		37-43	6	6-0	LAYROCK FT - 05:57
		37-44	7	7-0	LAYROCK FT - 05:57
		37-46	9	9-0	COOPER LAYUP [P] - 05:17
04:37 - COOPER 3PTR	-	40-46	6		
03:42 - EDGE LAYUP [P]	5-0	42-46	4		
		42-48	6		LAYROCK LAYUP [P] - 02:51
		42-50	8	4-0	CAPLES JUMPER - 02:21
02:00 - COLEMAN LAYUP [P]	-	44-50	6		
01:45 - AVINA LAYUP [P] [F]	4-0	46-50	4		
		46-52	6		MILLER LAYUP [P] [F] - 01:12
00:41 - COLEMAN LAYUP [P]	-	48-52	4		
		48-54	6		CAPLES LAYUP [P] - 00:31

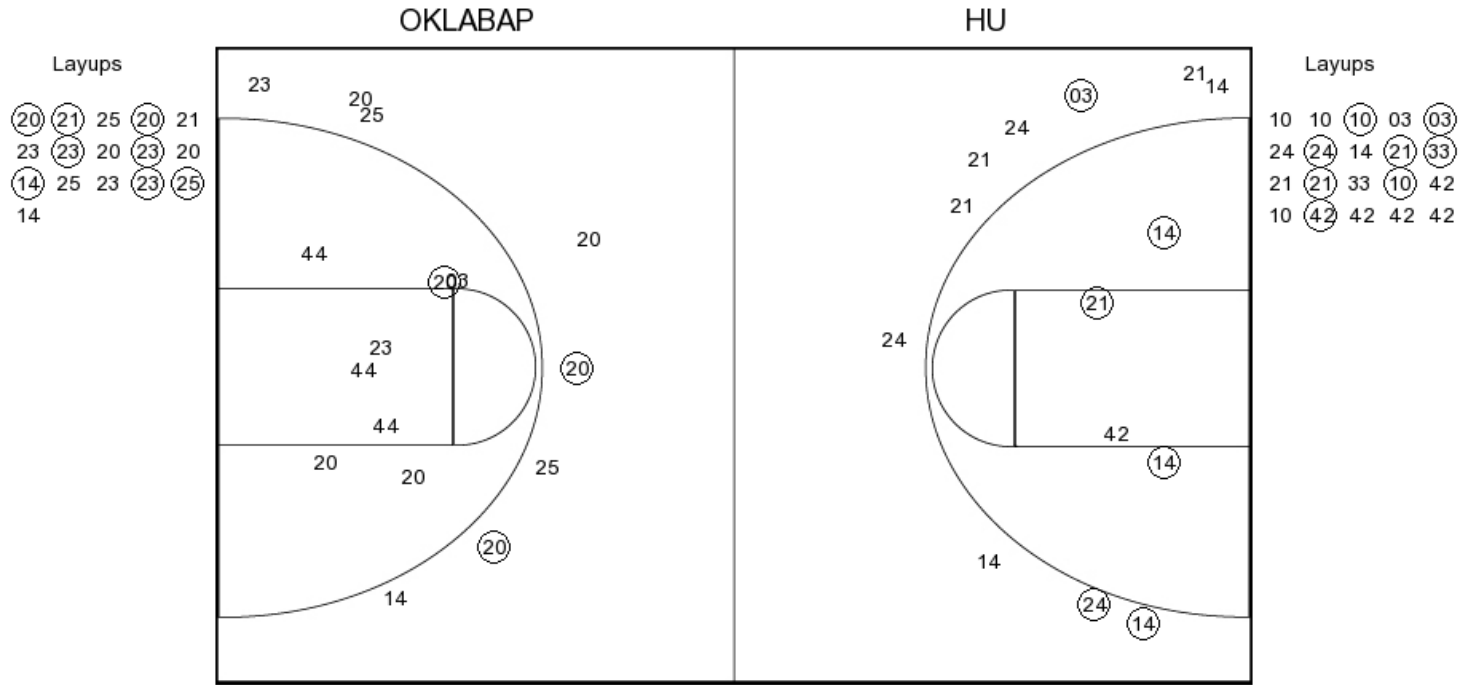
Okla. Baptist vs Harding
2/8/2018; 5:30 p.m. at Searcy, Ark. (Rhodes-Reaves Field House)
Scoring/Runs Reference

Period 4

Okla. Baptist	VRun	Score	Margin	HRun	Harding
09:39 - EDGE FT	-	49-54	5		
09:39 - EDGE FT	NaN-0	50-54	4		
		50-56	6		COOPER LAYUP [P] - 09:23
08:43 - COLEMAN JUMPER	-	52-56	4		
		52-58	6		JONES LAYUP [P] - 07:59
		52-59	7	3-0	LAMPO FT - 07:03
		52-60	8	4-0	LAMPO FT - 07:03
06:31 - AVINA 3PTR	-	55-60	5		
		55-63	8		MILLER 3PTR - 06:00
05:33 - COLEMAN LAYUP [P]	-	57-63	6		
04:57 - EDGE LAYUP [P]	4-0	59-63	4		
		59-65	6		PADGETT LAYUP [P] [F] - 04:17
04:02 - AVINA FT	-	60-65	5		
		60-66	6		CAPLES FT - 03:44
		60-67	7	2-0	CAPLES FT - 03:44
02:13 - COLEMAN LAYUP [P]	-	62-67	5		
01:47 - COOPER LAYUP [P]	4-0	64-67	3		
		64-68	4		LAMPO FT - 00:27
00:16 - COOPER LAYUP [P]	-	66-68	2		
		66-69	3		KEARNEY FT - 00:14
		66-70	4	2-0	MILLER FT - 00:03

Okla. Baptist vs Harding
OFFICIAL SHOT CHART
 2/8/2018 at Searcy, Ark. (Rhodes-Reaves Field House)

PERIOD 1



OKLABAP PERIOD 1

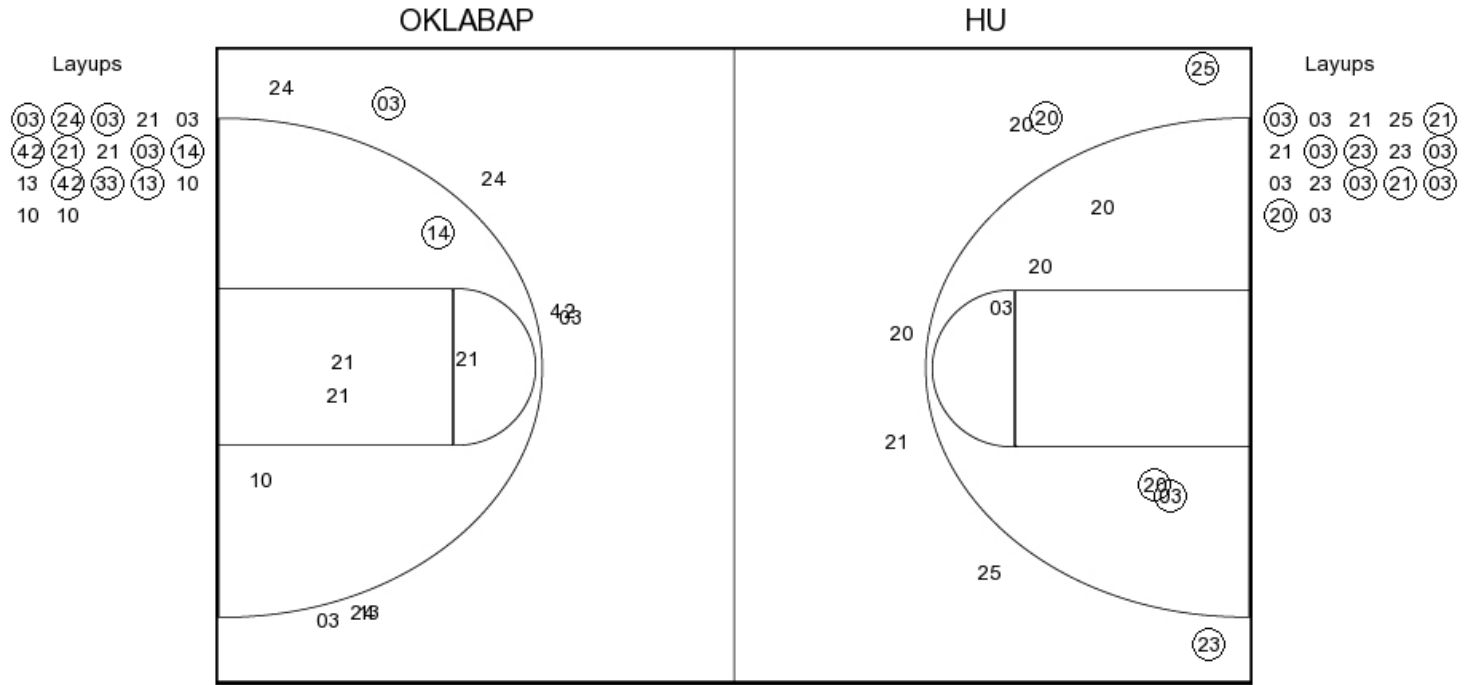
FG Made	11
FG Attempted	33
3PFG Made	2
3PFG Attempted	9

HU PERIOD 1

FG Made	14
FG Attempted	33
3PFG Made	3
3PFG Attempted	9

Okla. Baptist vs Harding
OFFICIAL SHOT CHART
 2/8/2018 at Searcy, Ark. (Rhodes-Reaves Field House)

PERIOD 2



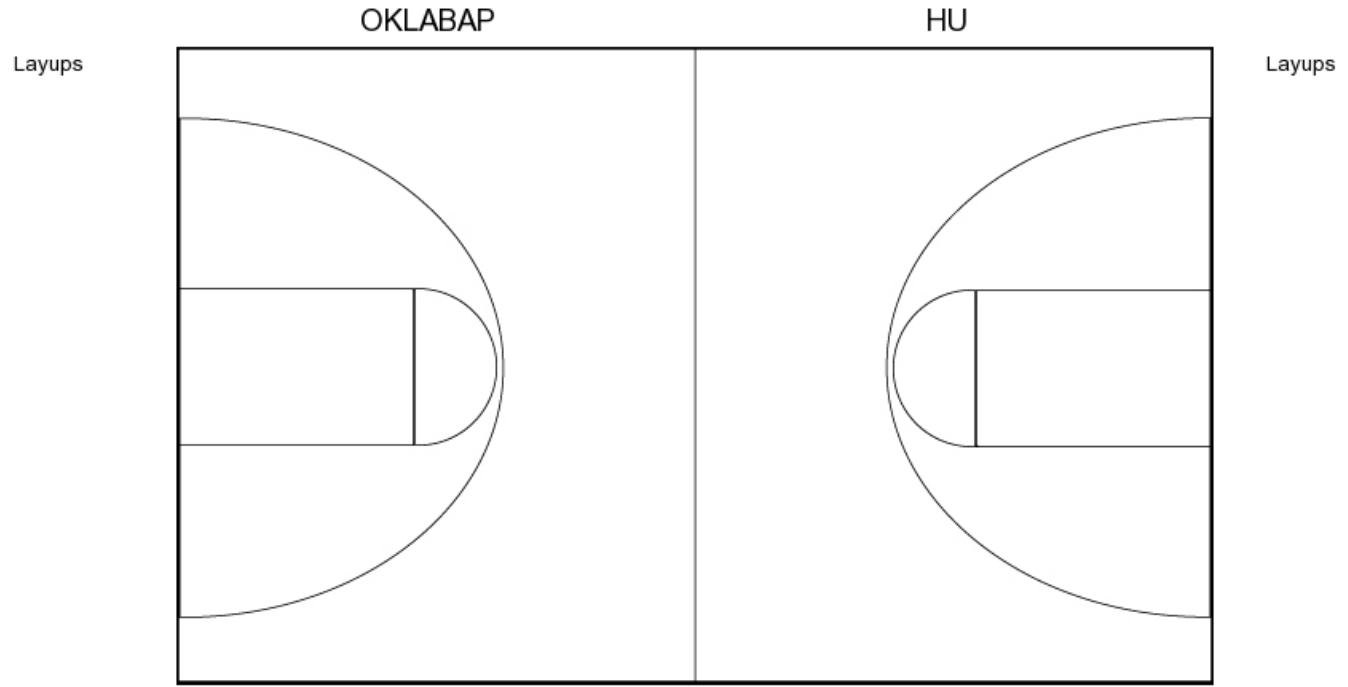
OKLABAP PERIOD 2

FG Made
 FG Attempted
 3PFG Made
 3PFG Attempted

HU PERIOD 2

FG Made
 FG Attempted
 3PFG Made
 3PFG Attempted

PERIOD 3



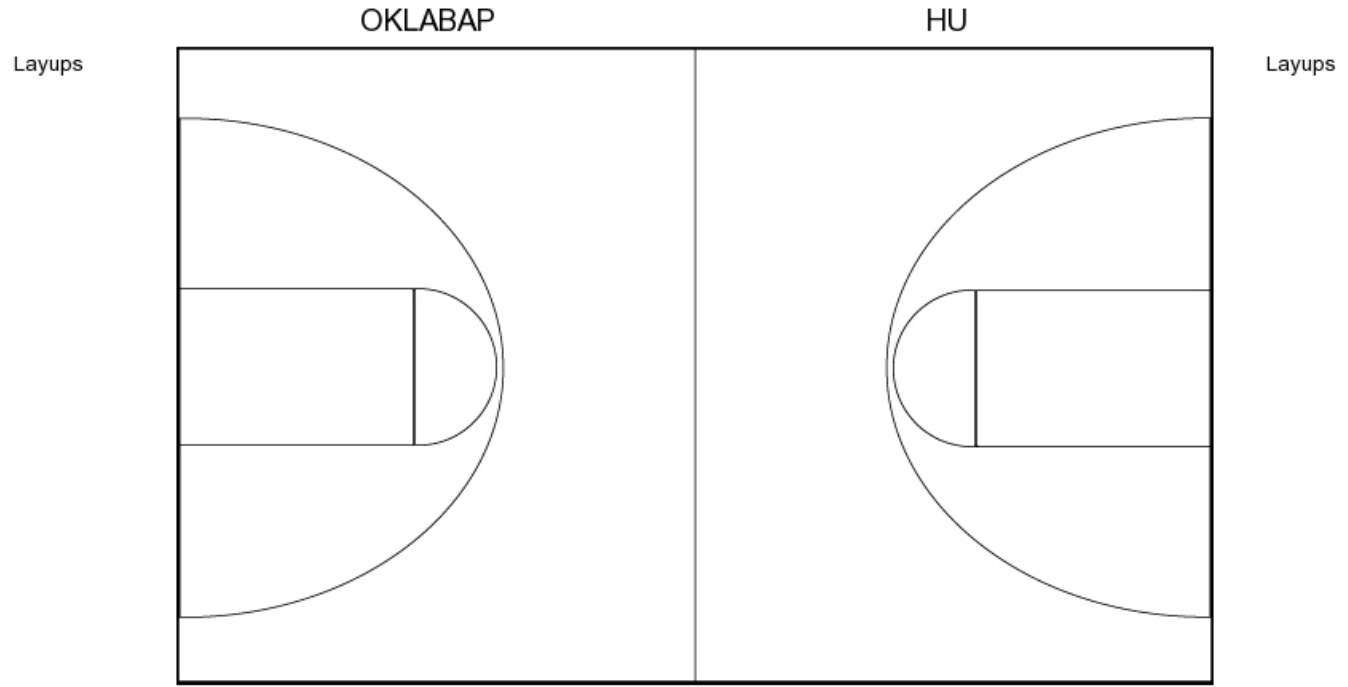
OKLABAP PERIOD 3

FG Made	14
FG Attempted	29
3PFG Made	3
3PFG Attempted	7

HU PERIOD 3

FG Made	12
FG Attempted	30
3PFG Made	1
3PFG Attempted	8

PERIOD 4



OKLABAP PERIOD 4

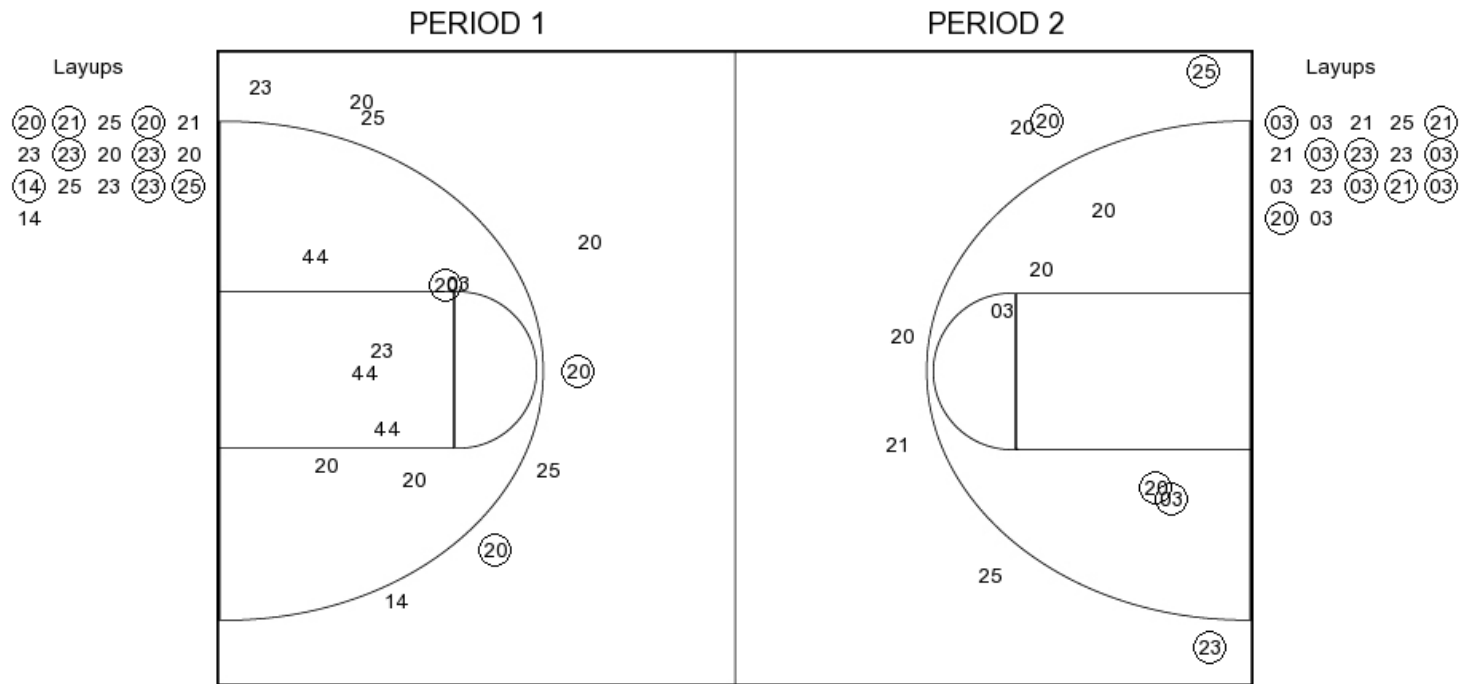
FG Made
FG Attempted
3PFG Made
3PFG Attempted

HU PERIOD 4

FG Made
FG Attempted
3PFG Made
3PFG Attempted

Okla. Baptist vs Harding
OFFICIAL SHOT CHART
 2/8/2018 at Searcy, Ark. (Rhodes-Reaves Field House)

Okla. Baptist



OKLABAP PERIOD 1

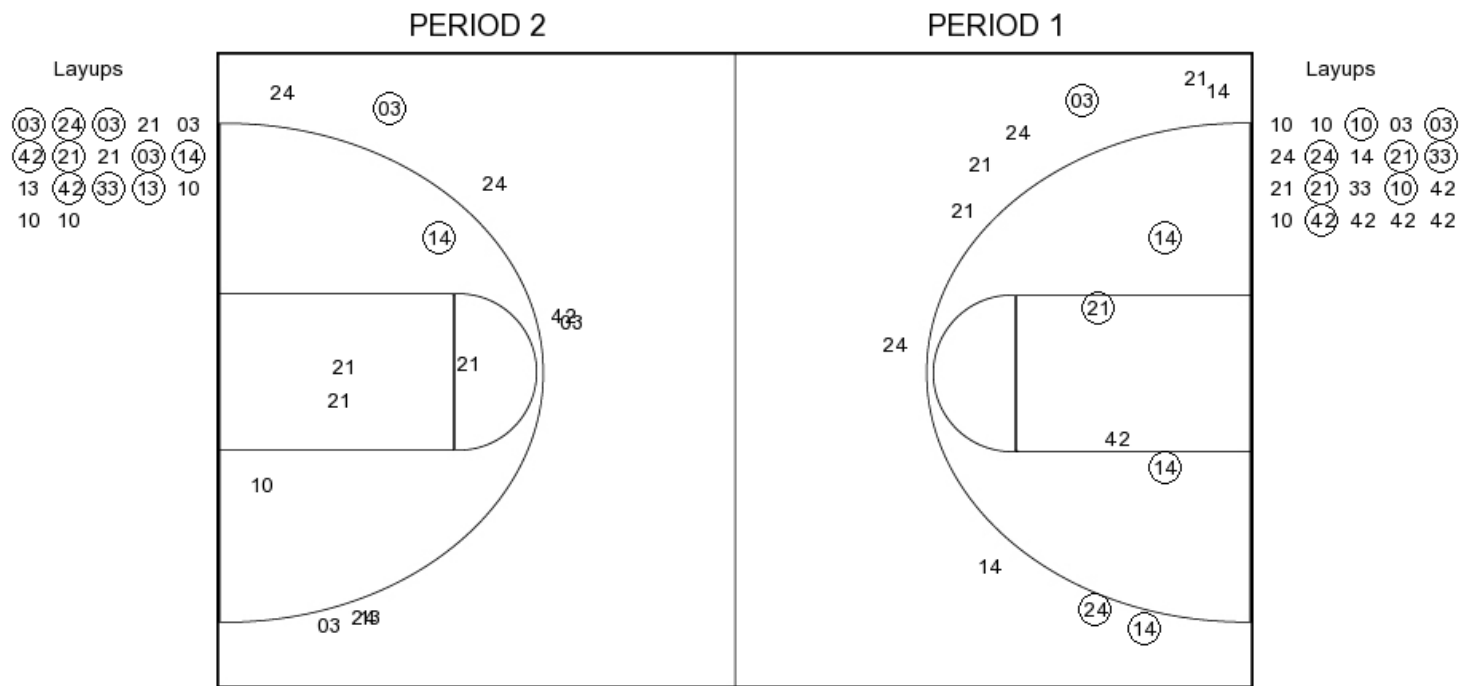
FG Made 11
 FG Attempted 33
 3PFG Made 2
 3PFG Attempted 9

OKLABAP PERIOD 2

FG Made 0
 FG Attempted 33
 3PFG Made 0
 3PFG Attempted 9

Okla. Baptist vs Harding
 OFFICIAL SHOT CHART
 2/8/2018 at Searcy, Ark. (Rhodes-Reaves Field House)

Harding



HU PERIOD 1

FG Made	14
FG Attempted	33
3PFG Made	3
3PFG Attempted	9

HU PERIOD 2

FG Made	
FG Attempted	
3PFG Made	
3PFG Attempted	