

FINAL SCORE

East Central

6-9, 3-8 GAC

42

Harding

7-12, 3-8 GAC

51

January 25, 2018 • Searcy, Ark. (Rhodes-Reaves Field House)

FINAL STATISTICS

Official Basketball Box Score -- Game Totals -- Final Statistics
East Central vs Harding
1/25/2018 5:30 p.m. at Searcy, Ark. (Rhodes-Reaves Field House)

East Central 42 - 6-9, 3-8 GAC

##	Player		Total		3-Ptr	FT-FTA	Rebounds			PF	TP	A	TO	Blk	Stl	Min
			FG-FGA	FG-FGA	FG-FGA		Off	Def	Tot							
01	PREISNER,LAKIN	g	1-8	1-6	1-2	1	5	6		3	4	1	3	1	2	28
03	REHL,MADISON	g	1-6	0-1	2-2	3	1	4		3	4	0	1	0	1	21
10	ADAIR,ALEXA	g	2-8	0-3	0-0	0	3	3		0	4	1	1	0	0	24
21	HANSON,MACI	f	1-1	1-1	2-2	1	1	2		4	5	0	1	1	0	31
24	BRANCH,DEVON	g	2-12	1-6	3-4	2	1	3		3	8	2	2	0	0	30
04	WILLIAMS,TIA		1-2	1-2	0-0	1	3	4		2	3	1	0	0	0	8
05	NICKENS,MADISON		1-5	1-3	2-2	1	1	2		4	5	1	3	0	1	15
12	SCHULTE,KENDALL		0-5	0-3	0-0	0	0	0		1	0	1	1	0	0	14
32	BLAKLEY,AALYIAH		3-8	1-4	2-2	2	0	2		2	9	1	3	1	1	30
TEAM						0	4	4		0		0				
TOTALS			12-55	6-29	12-14	11	19	30		22	42	8	15	3	5	201

Deadball Rebounds: 1,1

FG %	1st Half:	5-23	21.7%	2nd Half:	7-32	21.9%	Game:	12-55	21.8%							
	1st Qtr	1-13	07.7%		4-10	40.0%	3rd Qtr	3-17	17.6%			4th Qtr	4-15	26.7%		
3FG %	1st Half:	3-16	18.8%	2nd Half:	3-13	23.1%	Game:	6-29	20.7%							
	1st Qtr	1-9	11.1%		2-7	28.6%	3rd Qtr	0-7	00.0%			4th Qtr	3-6	50.0%		
FT %	1st Half:	7-8	87.5%	2nd Half:	5-6	83.3%	Game:	12-14	85.7%							
	1st Qtr	7-8	87.5%		0-0	0%	3rd Qtr	2-2	100.0%			4th Qtr	3-4	75.0%		

Harding 51 - 7-12, 3-8 GAC

##	Player		Total		3-Ptr	FT-FTA	Rebounds			PF	TP	A	TO	Blk	Stl	Min
			FG-FGA	FG-FGA	FG-FGA		Off	Def	Tot							
03	MILLER,FALAN	g	1-2	0-0	3-5	3	3	6		1	5	0	1	3	0	33
10	LAMPO,KELLIE	f	2-7	0-0	6-8	1	3	4		5	10	1	3	0	2	23
13	PADGETT,PEYTON	g	1-4	0-1	1-2	1	9	10		1	3	3	1	1	1	36
14	CAPLES,CARISSA	g	1-3	0-2	2-2	0	1	1		3	4	0	0	1	0	22
21	LAYROCK,SYDNEY	f	5-8	0-1	4-6	1	8	9		3	14	2	4	0	1	26
04	MCMAMARA,MACKENZIE		0-0	0-0	0-0	0	3	3		2	0	1	1	0	0	14
24	KEARNEY,AMANDA		4-7	3-4	0-0	0	2	2		3	11	1	3	0	2	27
33	JONES,SYDNIE		0-3	0-0	0-0	0	0	0		1	0	1	1	1	0	6
42	COOPER,KENNEDY		1-6	1-3	1-2	1	2	3		3	4	0	4	0	0	13
TEAM						0	1	1		0		1				
TOTALS			15-40	4-11	17-25	7	32	39		22	51	9	19	6	6	200

Deadball Rebounds: 6,1

FG %	1st Half:	7-22	31.8%	2nd Half:	8-18	44.4%	Game:	15-40	37.5%							
	1st Qtr	3-11	27.3%		4-11	36.4%	3rd Qtr	5-10	50.0%			4th Qtr	3-8	37.5%		
3FG %	1st Half:	1-5	20.0%	2nd Half:	3-6	50.0%	Game:	4-11	36.4%							
	1st Qtr	0-4	00.0%		1-1	100.0%	3rd Qtr	2-3	66.7%			4th Qtr	1-3	33.3%		
FT %	1st Half:	7-12	58.3%	2nd Half:	10-13	76.9%	Game:	17-25	68.0%							
	1st Qtr	3-4	75.0%		4-8	50.0%	3rd Qtr	2-2	100.0%			4th Qtr	8-11	72.7%		

Officials: Ken Davis, Mike Lewis and Herb Burl
Technical Fouls: East Central- None. Harding- None.

Score by periods	1st	2nd	3rd	4th	Total
East Central	10	10	8	14	42
Harding	9	13	14	15	51

Points	In Paint	Off T/O	2nd Chance	Fast Break	Bench
ECU	10	8	6	2	17
HU	22	16	7	0	15

Last FG - ECU 4th-01:48, HU 4th-01:02.

Largest lead - East Central by 6 2nd-08:05; Harding by 10 3rd-04:34
ECU led for 12:41. HU led for 24:40. Game was tied for 2:39.

Score tied - 3 times; Lead changed - 4 times

Official Basketball Box Score -- Game Totals -- First Half Statistics
East Central vs Harding
1/25/2018 5:30 p.m. at Searcy, Ark. (Rhodes-Reaves Field House)

East Central 20 • 6-9, 3-8 GAC

##	Player		Total		3-Ptr		FT-FTA		Rebounds			PF	TP	A	TO	Blk	Stl	Min
			FG	FGA	FG	FGA	FT	FTA	Off	Def	Tot							
01	PREISNER,LAKIN	g	0-4		0-3		0-0		1	3	4	1	0	1	2	1	2	16
03	REHL,MADISON	g	0-2		0-1		0-0		1	0	1	2	0	0	1	0	0	9
10	ADAIR,ALEXA	g	1-4		0-1		0-0		0	2	2	0	2	1	1	0	0	12
21	HANSON,MACI	f	0-0		0-0		2-2		0	0	0	2	2	0	0	1	0	11
24	BRANCH,DEVON	g	1-5		1-4		3-4		1	1	2	1	6	0	1	0	0	16
04	WILLIAMS,TIA		1-2		1-2		0-0		1	3	4	2	3	1	0	0	0	8
05	NICKENS,MADISON		0-2		0-2		0-0		1	0	1	1	0	1	1	0	0	7
12	SCHULTE,KENDALL		0-0		0-0		0-0		0	0	0	1	0	0	1	0	0	7
32	BLAKLEY,AALYIAH		2-4		1-3		2-2		0	0	0	2	7	0	2	1	0	14
TEAM									0	3	3	0			0			
Totals			5-23		3-16		7-8		5	12	17	12	20	4	9	3	2	100

FG % 1st Qtr 1-13 07.7% 2nd Qtr 4-10 40.0% Half: 5-23 21.7%
 3FG % 1st Qtr 1-9 11.1% 2nd Qtr 2-7 28.6% Half: 3-16 18.8%
 FT % 1st Qtr 7-8 87.5% 2nd Qtr 0-0 0% Half: 7-8 87.5%

Harding 22 • 7-12, 3-8 GAC

##	Player		Total		3-Ptr		FT-FTA		Rebounds			PF	TP	A	TO	Blk	Stl	Min
			FG	FGA	FG	FGA	FT	FTA	Off	Def	Tot							
03	MILLER,FALAN	g	1-1		0-0		1-2		2	2	4	0	3	0	0	0	0	15
10	LAMPO,KELLIE	f	2-5		0-0		3-4		1	1	2	1	7	0	2	0	1	13
13	PADGETT,PEYTON	g	0-1		0-1		0-0		1	4	5	1	0	2	0	1	1	18
14	CAPLES,CARISSA	g	1-1		0-0		0-0		0	0	0	3	2	0	0	1	0	8
21	LAYROCK,SYDNEY	f	2-3		0-0		2-4		0	3	3	2	6	1	1	0	0	9
04	MCNAMARA,MACKENZIE		0-0		0-0		0-0		0	2	2	0	0	1	0	0	0	11
24	KEARNEY,AMANDA		1-3		1-2		0-0		0	1	1	1	3	1	2	0	2	13
33	JONES,SYDNIE		0-3		0-0		0-0		0	0	0	1	0	0	1	1	0	4
42	COOPER,KENNEDY		0-5		0-2		1-2		1	0	1	2	1	0	2	0	0	9
TEAM									0	0	0	0			1			
Totals			7-22		1-5		7-12		5	13	18	11	22	5	9	3	4	100

FG % 1st Qtr 3-11 27.3% 2nd Qtr 4-11 36.4% Half: 7-22 31.8%
 3FG % 1st Qtr 0-4 00.0% 2nd Qtr 1-1 100.0% Half: 1-5 20.0%
 FT % 1st Qtr 3-4 75.0% 2nd Qtr 4-8 50.0% Half: 7-12 58.3%

Officials: Ken Davis, Mike Lewis and Herb Burl
 Technical Fouls: East Central- None. Harding- None.

Score by periods	1st	2nd	3rd	4th	Total
East Central	10	10	8	14	42
Harding	9	13	14	15	51

Points	In	Off	2nd	Fast	Bench
	Paint	T/O	Chance	Break	
ECU	4	5	1	0	10
	12	7	5	0	4

Last FG - ECU 2nd-00:35, HU 2nd-01:07.
 ECU led for 11:49. HU led for 5:32. Game was tied for 2:39.

Score tied - 3 times
 Lead changed - 2 times

East Central vs Harding
1/25/2018; 5:30 p.m. at Searcy, Ark. (Rhodes-Reaves Field House)
Period 1 Play-By-Play

VISITORS: East Central	Time	Score	Margin	HOME: Harding
	09:45			MISSED 3PTR by PADGETT,PEYTON
REBOUND (DEF) by TEAM	09:45			
MISSED LAYUP by ADAIR,ALEXA	09:23			
	09:23			BLOCK by CAPLES,CARISSA
	09:22			REBOUND (DEF) by LAYROCK,SYDNEY
	09:06			MISSED LAYUP by LAMPO,KELLIE
REBOUND (DEF) by PREISNER,LAKIN	09:06			
TURNOVER by BRANCH,DEVON	08:48			
	08:25	2-0	H 2	GOOD! LAYUP by LAYROCK,SYDNEY [PNT]
MISSED 3PTR by PREISNER,LAKIN	08:02			
	08:02			REBOUND (DEF) by MILLER,FALAN
	07:41			TURNOVER by LAYROCK,SYDNEY
STEAL by PREISNER,LAKIN	07:41			
	07:41			FOUL by LAYROCK,SYDNEY
	07:31			FOUL by LAYROCK,SYDNEY
	07:31			SUB IN: COOPER,KENNEDY
	07:31			SUB OUT: LAYROCK,SYDNEY
MISSED 3PTR by ADAIR,ALEXA	07:22			
	07:22			REBOUND (DEF) by PADGETT,PEYTON
	07:09			TURNOVER by COOPER,KENNEDY
MISSED 3PTR by PREISNER,LAKIN	06:58			
REBOUND (OFF) by BRANCH,DEVON	06:58			
MISSED LAYUP by ADAIR,ALEXA	06:48			
	06:48			REBOUND (DEF) by MILLER,FALAN
	06:40			FOUL by LAMPO,KELLIE
	06:40			TURNOVER by LAMPO,KELLIE
	06:40			SUB IN: JONES,SYDNIE
	06:40			SUB OUT: LAMPO,KELLIE
MISSED 3PTR by BRANCH,DEVON	06:27			
REBOUND (OFF) by REHL,MADISON	06:27			
TURNOVER by REHL,MADISON	06:23			
	06:03			TURNOVER by JONES,SYDNIE
STEAL by PREISNER,LAKIN	06:03			
MISSED LAYUP by REHL,MADISON	05:38			
	05:38			BLOCK by JONES,SYDNIE
	05:37			REBOUND (DEF) by PADGETT,PEYTON
	05:23			MISSED LAYUP by JONES,SYDNIE
	05:23			REBOUND (OFF) by COOPER,KENNEDY
	05:12	4-0	H 4	GOOD! LAYUP by CAPLES,CARISSA [PNT]
	04:59			FOUL by JONES,SYDNIE
TIMEOUT MEDIA	04:59			
	04:59			FOUL by PADGETT,PEYTON
GOOD! FT by HANSON,MACI	04:59	4-1	H 3	
GOOD! FT by HANSON,MACI	04:59	4-2	H 2	
	04:59			SUB IN: KEARNEY,AMANDA
	04:59			SUB OUT: CAPLES,CARISSA
	04:41			MISSED 3PTR by COOPER,KENNEDY
REBOUND (DEF) by BRANCH,DEVON	04:41			
GOOD! 3PTR by BRANCH,DEVON	04:25	4-5	V 1	
ASSIST by ADAIR,ALEXA	04:25			
	04:10			MISSED LAYUP by JONES,SYDNIE
BLOCK by HANSON,MACI	04:10			
REBOUND (DEF) by ADAIR,ALEXA	04:09			
MISSED 3PTR by BRANCH,DEVON	04:01			
	04:01			REBOUND (DEF) by KEARNEY,AMANDA
FOUL by HANSON,MACI	03:57			
SUB IN: BLAKLEY,AALYIAH	03:57			
SUB IN: SCHULTE,KENDALL	03:57			
SUB OUT: ADAIR,ALEXA	03:57			
SUB OUT: HANSON,MACI	03:57			
	03:57			SUB IN: LAMPO,KELLIE
	03:57			SUB IN: CAPLES,CARISSA
	03:57			SUB OUT: JONES,SYDNIE
	03:57			SUB OUT: PADGETT,PEYTON
	03:43			MISSED 3PTR by COOPER,KENNEDY
REBOUND (DEF) by TEAM	03:43			
TURNOVER by PREISNER,LAKIN	03:28			
	03:28			SUB IN: MCNAMARA,MACKENZIE
	03:28			SUB OUT: COOPER,KENNEDY

VISITORS: East Central	Time	Score	Margin	HOME: Harding
FOUL by SCHULTE,KENDALL	03:07			
FOUL by REHL,MADISON	02:56			
	02:56			MISSED FT by LAMPO,KELLIE
	02:56			REBOUND (DEADB) by TEAM
	02:56	5-5	T	GOOD! FT by LAMPO,KELLIE
SUB IN: NICKENS,MADISON	02:56			
SUB OUT: REHL,MADISON	02:56			
	02:39			FOUL by CAPLES,CARISSA
GOOD! FT by BRANCH,DEVON	02:39	5-6	V 1	
GOOD! FT by BRANCH,DEVON	02:39	5-7	V 2	
	02:39			SUB IN: PADGETT,PEYTON
	02:39			SUB OUT: MILLER,FALAN
	02:15	7-7	T	GOOD! LAYUP by LAMPO,KELLIE [PNT]
	02:15			ASSIST by KEARNEY,AMANDA
MISSED 3PTR by PREISNER,LAKIN	02:00			
REBOUND (OFF) by NICKENS,MADISON	02:00			
MISSED LAYUP by PREISNER,LAKIN	01:51			
	01:51			BLOCK by PADGETT,PEYTON
REBOUND (OFF) by PREISNER,LAKIN	01:50			
	01:43			FOUL by CAPLES,CARISSA
GOOD! FT by BRANCH,DEVON	01:43	7-8	V 1	
MISSED FT by BRANCH,DEVON	01:43			
	01:43			REBOUND (DEF) by LAMPO,KELLIE
	01:43			SUB IN: COOPER,KENNEDY
	01:43			SUB IN: MILLER,FALAN
	01:43			SUB OUT: CAPLES,CARISSA
	01:43			SUB OUT: MCNAMARA,MACKENZIE
	01:25			MISSED LAYUP by LAMPO,KELLIE
	01:25			REBOUND (OFF) by MILLER,FALAN
FOUL by BLAKLEY,AALYIAH	01:20			
SUB IN: HANSON,MACI	01:20			
SUB IN: ADAIR,ALEXA	01:20			
SUB OUT: NICKENS,MADISON	01:20			
SUB OUT: BLAKLEY,AALYIAH	01:20			
	01:17			MISSED 3PTR by KEARNEY,AMANDA
REBOUND (DEF) by TEAM	01:17			
SUB IN: BLAKLEY,AALYIAH	01:13			
SUB IN: NICKENS,MADISON	01:13			
SUB IN: WILLIAMS,TIA	01:13			
SUB OUT: PREISNER,LAKIN	01:13			
SUB OUT: SCHULTE,KENDALL	01:13			
SUB OUT: BRANCH,DEVON	01:13			
	01:00			FOUL by COOPER,KENNEDY
GOOD! FT by BLAKLEY,AALYIAH	01:00	7-9	V 2	
GOOD! FT by BLAKLEY,AALYIAH	01:00	7-10	V 3	
FOUL by NICKENS,MADISON	00:27			
	00:27	8-10	V 2	GOOD! FT by LAMPO,KELLIE
	00:27	9-10	V 1	GOOD! FT by LAMPO,KELLIE
	00:27			SUB IN: JONES,SYDNIE
	00:27			SUB IN: MCNAMARA,MACKENZIE
	00:27			SUB OUT: LAMPO,KELLIE
	00:27			SUB OUT: COOPER,KENNEDY
MISSED 3PTR by BLAKLEY,AALYIAH	00:06			
REBOUND (OFF) by WILLIAMS,TIA	00:06			
MISSED 3PTR by NICKENS,MADISON	00:00			
	00:00			REBOUND (DEADB) by TEAM

East Central 10, Harding 9

Period 1-only	In Paint	Off T/O	2nd Chance	Fast Break	Bench	
ECU	0	0	1	0	2	Score tied - 0 times
HU	6	3	2	0	0	Lead changed - 2 times

East Central vs Harding
1/25/2018; 5:30 p.m. at Searcy, Ark. (Rhodes-Reaves Field House)
Period 2 Play-By-Play

VISITORS: East Central	Time	Score	Margin	HOME: Harding
SUB IN: NICKENS,MADISON	10:00			
SUB IN: BLAKLEY,AALYIAH	10:00			
SUB IN: WILLIAMS,TIA	10:00			
SUB OUT: PREISNER,LAKIN	10:00			
SUB OUT: REHL,MADISON	10:00			
SUB OUT: BRANCH,DEVON	10:00			
	10:00			SUB IN: MCNAMARA,MACKENZIE
	10:00			SUB IN: JONES,SYDNIE
	10:00			SUB OUT: LAMPO,KELLIE
	10:00			SUB OUT: CAPLES,CARISSA
	09:49			MISSED LAYUP by JONES,SYDNIE
REBOUND (DEF) by ADAIR,ALEXA	09:49			
TURNOVER by NICKENS,MADISON	09:23			
	09:23			SUB IN: COOPER,KENNEDY
	09:23			SUB OUT: JONES,SYDNIE
	09:07			MISSED JUMPER by COOPER,KENNEDY
REBOUND (DEF) by WILLIAMS,TIA	09:07			
GOOD! 3PTR by BLAKLEY,AALYIAH	08:40	9-13	V 4	
ASSIST by NICKENS,MADISON	08:40			
	08:16			FOUL by COOPER,KENNEDY
	08:16			TURNOVER by COOPER,KENNEDY
TIMEOUT media	08:16			
	08:16			TIMEOUT 30SEC
GOOD! LAYUP by BLAKLEY,AALYIAH [PNT]	08:05	9-15	V 6	
ASSIST by WILLIAMS,TIA	08:05			
FOUL by WILLIAMS,TIA	07:46			
	07:46			SUB IN: CAPLES,CARISSA
	07:46			SUB IN: KEARNEY,AMANDA
	07:46			SUB OUT: MCNAMARA,MACKENZIE
	07:46			SUB OUT: PADGETT,PEYTON
	07:31			MISSED LAYUP by LAYROCK,SYDNEY
REBOUND (DEF) by WILLIAMS,TIA	07:31			
TURNOVER by ADAIR,ALEXA	07:14			
	07:14			STEAL by KEARNEY,AMANDA
	07:03			MISSED LAYUP by COOPER,KENNEDY
REBOUND (DEF) by WILLIAMS,TIA	07:03			
	06:46			FOUL by CAPLES,CARISSA
SUB IN: REHL,MADISON	06:46			
SUB IN: BRANCH,DEVON	06:46			
SUB IN: PREISNER,LAKIN	06:46			
SUB OUT: NICKENS,MADISON	06:46			
SUB OUT: ADAIR,ALEXA	06:46			
SUB OUT: WILLIAMS,TIA	06:46			
	06:46			SUB IN: LAMPO,KELLIE
	06:46			SUB IN: PADGETT,PEYTON
	06:46			SUB OUT: CAPLES,CARISSA
	06:46			SUB OUT: COOPER,KENNEDY
TURNOVER by BLAKLEY,AALYIAH	06:19			
	06:17			STEAL by LAMPO,KELLIE
FOUL by HANSON,MACI	05:59			
	05:59			MISSED FT by LAYROCK,SYDNEY
	05:59			REBOUND (DEADB) by TEAM
	05:59			MISSED FT by LAYROCK,SYDNEY
REBOUND (DEF) by PREISNER,LAKIN	05:59			
SUB IN: SCHULTE,KENDALL	05:59			
SUB OUT: HANSON,MACI	05:59			
	05:59			SUB IN: MCNAMARA,MACKENZIE
	05:59			SUB OUT: MILLER,FALAN
MISSED 3PTR by REHL,MADISON	05:46			
	05:46			REBOUND (DEF) by MCNAMARA,MACKENZIE
	05:26			FOUL by KEARNEY,AMANDA
	05:26			TURNOVER by KEARNEY,AMANDA
TURNOVER by BLAKLEY,AALYIAH	05:05			
FOUL by REHL,MADISON	04:50			
SUB IN: NICKENS,MADISON	04:50			
SUB OUT: REHL,MADISON	04:50			
	04:44	11-15	V 4	GOOD! LAYUP by LAYROCK,SYDNEY [PNT]
	04:44			ASSIST by MCNAMARA,MACKENZIE
MISSED 3PTR by BRANCH,DEVON	04:22			

VISITORS: East Central	Time	Score	Margin	HOME: Harding
	04:22			REBOUND (DEF) by LAYROCK,SYDNEY
	04:09	13-15	V 2	GOOD! LAYUP by LAMPO,KELLIE [PNT]
	04:09			ASSIST by PADGETT,PEYTON
TIMEOUT 30SEC	04:08			
MISSED 3PTR by NICKENS,MADISON	03:53			
	03:53			REBOUND (DEF) by PADGETT,PEYTON
FOUL by PREISNER,LAKIN	03:36			
SUB IN: WILLIAMS,TIA	03:36			
SUB OUT: NICKENS,MADISON	03:36			
	03:36			SUB IN: COOPER,KENNEDY
	03:36			SUB OUT: LAYROCK,SYDNEY
	03:30			MISSED LAYUP by LAMPO,KELLIE
	03:30			REBOUND (OFF) by LAMPO,KELLIE
	03:28			TURNOVER by LAMPO,KELLIE
GOOD! 3PTR by WILLIAMS,TIA	03:16	13-18	V 5	
ASSIST by PREISNER,LAKIN	03:16			
	02:49			MISSED LAYUP by COOPER,KENNEDY
BLOCK by BLAKLEY,AALYIAH	02:49			
	02:48			REBOUND (OFF) by PADGETT,PEYTON
	02:46			SUB IN: LAYROCK,SYDNEY
	02:46			SUB OUT: LAMPO,KELLIE
	02:43	15-18	V 3	GOOD! LAYUP by MILLER,FALAN [PNT]
	02:43			ASSIST by LAYROCK,SYDNEY
MISSED 3PTR by BLAKLEY,AALYIAH	02:27			
	02:27			REBOUND (DEF) by PADGETT,PEYTON
	02:21			TURNOVER by KEARNEY,AMANDA
MISSED LAYUP by BRANCH,DEVON	02:07			
	02:07			REBOUND (DEF) by LAYROCK,SYDNEY
FOUL by BRANCH,DEVON	02:06			
	02:06	16-18	V 2	GOOD! FT by LAYROCK,SYDNEY
	02:06	17-18	V 1	GOOD! FT by LAYROCK,SYDNEY
	02:06			SUB IN: MILLER,FALAN
	02:06			SUB OUT: COOPER,KENNEDY
TURNOVER by SCHULTE,KENDALL	01:59			
	01:58			STEAL by KEARNEY,AMANDA
SUB IN: ADAIR,ALEXA	01:51			
SUB OUT: SCHULTE,KENDALL	01:51			
	01:51			SUB IN: LAMPO,KELLIE
	01:51			SUB IN: COOPER,KENNEDY
	01:51			SUB OUT: MCNAMARA,MACKENZIE
	01:51			SUB OUT: PADGETT,PEYTON
FOUL by WILLIAMS,TIA	01:47			
	01:47			MISSED FT by COOPER,KENNEDY
	01:47			REBOUND (DEADB) by TEAM
	01:47	18-18	T	GOOD! FT by COOPER,KENNEDY
	01:47			SUB IN: PADGETT,PEYTON
	01:47			SUB IN: MCNAMARA,MACKENZIE
	01:47			SUB OUT: LAYROCK,SYDNEY
	01:47			SUB OUT: COOPER,KENNEDY
TURNOVER by PREISNER,LAKIN	01:39			
	01:38			STEAL by PADGETT,PEYTON
	01:33			MISSED LAYUP by KEARNEY,AMANDA
BLOCK by PREISNER,LAKIN	01:33			
	01:32			REBOUND (OFF) by MILLER,FALAN
FOUL by BLAKLEY,AALYIAH	01:32			
	01:32	19-18	H 1	GOOD! FT by MILLER,FALAN
	01:32			MISSED FT by MILLER,FALAN
REBOUND (DEF) by PREISNER,LAKIN	01:32			
MISSED 3PTR by WILLIAMS,TIA	01:15			
	01:15			REBOUND (DEF) by MCNAMARA,MACKENZIE
	01:07	22-18	H 4	GOOD! 3PTR by KEARNEY,AMANDA
	01:07			ASSIST by PADGETT,PEYTON
GOOD! JUMPER by ADAIR,ALEXA [PNT]	00:35	22-20	H 2	
	00:01			TURNOVER by TEAM

East Central 20, Harding 22

Period 2-only	In Paint	Off T/O	2nd Chance	Fast Break	Bench	
ECU	4	5	0	0	8	Score tied - 0 times
HU	6	4	3	0	4	Lead changed - 0 times

Official Basketball Box Score -- Game Totals -- Second Half Statistics
East Central vs Harding
1/25/2018 5:30 p.m. at Searcy, Ark. (Rhodes-Reaves Field House)

East Central 22 • 6-9, 3-8 GAC

##	Player		Total		3-Ptr		FT-FTA	Rebounds			PF	TP	A	TO	Blk	Stl	Min
			FG-FGA		FG-FGA			Off	Def	Tot							
01	PREISNER,LAKIN	g	1-4		1-3		1-2	0	2	2	2	4	0	1	0	0	12
03	REHL,MADISON	g	1-4		0-0		2-2	2	1	3	1	4	0	0	0	1	12
10	ADAIR,ALEXA	g	1-4		0-2		0-0	0	1	1	0	2	0	0	0	0	12
21	HANSON,MACI	f	1-1		1-1		0-0	1	1	2	2	3	0	1	0	0	20
24	BRANCH,DEVON	g	1-7		0-2		0-0	1	0	1	2	2	2	1	0	0	14
04	WILLIAMS,TIA		0-0		0-0		0-0	0	0	0	0	0	0	0	0	0	0
05	NICKENS,MADISON		1-3		1-1		2-2	0	1	1	3	5	0	2	0	1	8
12	SCHULTE,KENDALL		0-5		0-3		0-0	0	0	0	0	0	1	0	0	0	7
32	BLAKLEY,AALYIAH		1-4		0-1		0-0	2	0	2	0	2	1	1	0	1	16
TEAM								0	1	1	0			0			
Totals			7-32		3-13		5-6	6	7	13	10	22	4	6	0	3	101

FG % 3rd Qtr 3-17 17.6% 4th Qtr 4-15 26.7% Half: 7-32 21.9%
 3FG % 3rd Qtr 0-7 00.0% 4th Qtr 3-6 50.0% Half: 3-13 18.8%
 FT % 3rd Qtr 2-2 100.0% 4th Qtr 3-4 75.0% Half: 5-6 83.3%

Harding 29 • 7-12, 3-8 GAC

##	Player		Total		3-Ptr		FT-FTA	Rebounds			PF	TP	A	TO	Blk	Stl	Min
			FG-FGA		FG-FGA			Off	Def	Tot							
03	MILLER,FALAN	g	0-1		0-0		2-3	1	1	2	1	2	0	1	3	0	18
10	LAMPO,KELLIE	f	0-2		0-0		3-4	0	2	2	4	3	1	1	0	1	10
13	PADGETT,PEYTON	g	1-3		0-0		1-2	0	5	5	0	3	1	1	0	0	18
14	CAPLES,CARISSA	g	0-2		0-2		2-2	0	1	1	0	2	0	0	0	0	14
21	LAYROCK,SYDNEY	f	3-5		0-1		2-2	1	5	6	1	8	1	3	0	1	17
04	MCMAMARA,MACKENZIE		0-0		0-0		0-0	0	1	1	2	0	0	1	0	0	3
24	KEARNEY,AMANDA		3-4		2-2		0-0	0	1	1	2	8	0	1	0	0	14
33	JONES,SYDNEE		0-0		0-0		0-0	0	0	0	0	0	1	0	0	0	2
42	COOPER,KENNEDY		1-1		1-1		0-0	0	2	2	1	3	0	2	0	0	4
TEAM								0	1	1	0			0			
Totals			8-18		3-6		10-13	2	19	21	11	29	4	10	3	2	100

FG % 3rd Qtr 5-10 50.0% 4th Qtr 3-8 37.5% Half: 8-18 44.4%
 3FG % 3rd Qtr 2-3 66.7% 4th Qtr 1-3 33.3% Half: 3-6 20.0%
 FT % 3rd Qtr 2-2 100.0% 4th Qtr 8-11 72.7% Half: 10-13 76.9%

Officials: Ken Davis, Mike Lewis and Herb Burl
 Technical Fouls: East Central- None. Harding- None.

Score by periods	1st	2nd	3rd	4th	Total
East Central	10	10	8	14	42
Harding	9	13	14	15	51

Points	In Paint	Off T/O	2nd Chance	Fast Break	Bench
ECU	6	3	5	2	7
	10	9	2	0	11

Last FG - ECU 4th-01:48, HU 4th-01:02.
 ECU led for 0:52. HU led for 19:08. Game was tied for 0:00.

Score tied - 0 times
 Lead changed - 2 times

East Central vs Harding
1/25/2018; 5:30 p.m. at Searcy, Ark. (Rhodes-Reaves Field House)
Period 3 Play-By-Play

VISITORS: East Central	Time	Score	Margin	HOME: Harding
	10:00			SUB IN: KEARNEY,AMANDA
	10:00			SUB OUT: CAPLES,CARISSA
MISSED 3PTR by ADAIR,ALEXA	09:45			
	09:45			REBOUND (DEF) by PADGETT,PEYTON
	09:26			MISSED LAYUP by LAYROCK,SYDNEY
REBOUND (DEF) by PREISNER,LAKIN	09:26			
FOUL by BRANCH,DEVON	09:03			
TURNOVER by BRANCH,DEVON	09:03			
FOUL by PREISNER,LAKIN	08:49			
	08:49	23-20	H 3	GOOD! FT by LAMPO,KELLIE
	08:49	24-20	H 4	GOOD! FT by LAMPO,KELLIE
MISSED 3PTR by BRANCH,DEVON	08:33			
	08:33			REBOUND (DEF) by LAYROCK,SYDNEY
	08:18			MISSED 3PTR by LAYROCK,SYDNEY
REBOUND (DEF) by PREISNER,LAKIN	08:18			
GOOD! LAYUP by REHL,MADISON [FB/PNT]	08:08	24-22	H 2	
	07:47			MISSED JUMPER by LAMPO,KELLIE
	07:47			REBOUND (OFF) by MILLER,FALAN
	07:43			MISSED JUMPER by MILLER,FALAN
REBOUND (DEF) by TEAM	07:43			
MISSED 3PTR by PREISNER,LAKIN	07:24			
	07:24			REBOUND (DEF) by PADGETT,PEYTON
	07:13	27-22	H 5	GOOD! 3PTR by KEARNEY,AMANDA
	07:13			ASSIST by LAMPO,KELLIE
MISSED LAYUP by REHL,MADISON	06:44			
	06:44			REBOUND (DEF) by LAMPO,KELLIE
	06:30	29-22	H 7	GOOD! LAYUP by LAYROCK,SYDNEY [PNT]
TURNOVER by PREISNER,LAKIN	06:12			
	06:12			STEAL by LAYROCK,SYDNEY
SUB IN: BLAKLEY,AALYIAH	06:12			
SUB OUT: PREISNER,LAKIN	06:12			
	06:12			SUB IN: COOPER,KENNEDY
	06:12			SUB OUT: LAYROCK,SYDNEY
	05:59			FOUL by KEARNEY,AMANDA
	05:59			TURNOVER by KEARNEY,AMANDA
	05:43			FOUL by LAMPO,KELLIE
	05:43			SUB IN: CAPLES,CARISSA
	05:43			SUB IN: JONES,SYDNIE
	05:43			SUB OUT: LAMPO,KELLIE
	05:43			SUB OUT: PADGETT,PEYTON
MISSED LAYUP by REHL,MADISON	05:40			
	05:40			BLOCK by MILLER,FALAN
REBOUND (OFF) by BLAKLEY,AALYIAH	05:39			
MISSED LAYUP by BRANCH,DEVON	05:29			
REBOUND (OFF) by REHL,MADISON	05:29			
MISSED JUMPER by BRANCH,DEVON	05:25			
	05:25			REBOUND (DEF) by KEARNEY,AMANDA
	05:03			TURNOVER by COOPER,KENNEDY
MISSED 3PTR by ADAIR,ALEXA	04:48			
	04:48			REBOUND (DEF) by COOPER,KENNEDY
	04:34	32-22	H 10	GOOD! 3PTR by COOPER,KENNEDY
	04:34			ASSIST by JONES,SYDNIE
	04:15			FOUL by COOPER,KENNEDY
TIMEOUT MEDIA	04:15			
MISSED 3PTR by SCHULTE,KENDALL	04:10			
REBOUND (OFF) by BLAKLEY,AALYIAH	04:10			
SUB IN: SCHULTE,KENDALL	04:07			
SUB OUT: BRANCH,DEVON	04:07			
	04:07			SUB IN: LAYROCK,SYDNEY
	04:07			SUB IN: PADGETT,PEYTON
	04:07			SUB IN: LAMPO,KELLIE
	04:07			SUB IN: MCNAMARA,MACKENZIE
	04:07			SUB OUT: MILLER,FALAN
	04:07			SUB OUT: JONES,SYDNIE
	04:07			SUB OUT: KEARNEY,AMANDA
	04:07			SUB OUT: COOPER,KENNEDY
GOOD! JUMPER by BLAKLEY,AALYIAH	03:40	32-24	H 8	
ASSIST by SCHULTE,KENDALL	03:40			
	03:27			TURNOVER by LAYROCK,SYDNEY

VISITORS: East Central	Time	Score	Margin	HOME: Harding
MISSED JUMPER by BLAKLEY,AALYIAH	03:09			
REBOUND (OFF) by HANSON,MACI	03:09			
	03:07			FOUL by LAMPO,KELLIE
	03:07			SUB IN: KEARNEY,AMANDA
	03:07			SUB OUT: MCNAMARA,MACKENZIE
TURNOVER by BLAKLEY,AALYIAH	02:55			
	02:54			STEAL by LAMPO,KELLIE
	02:47			MISSED LAYUP by KEARNEY,AMANDA
REBOUND (DEF) by ADAIR,ALEXA	02:47			
GOOD! LAYUP by ADAIR,ALEXA [PNT]	02:39	32-26	H 6	
	02:29			TURNOVER by PADGETT,PEYTON
STEAL by REHL,MADISON	02:28			
MISSED 3PTR by SCHULTE,KENDALL	02:23			
	02:23			REBOUND (DEF) by LAYROCK,SYDNEY
	02:00			FOUL by LAYROCK,SYDNEY
	02:00			TURNOVER by LAYROCK,SYDNEY
	02:00			SUB IN: MILLER,FALAN
	02:00			SUB OUT: LAMPO,KELLIE
MISSED JUMPER by SCHULTE,KENDALL	01:29			
	01:29			REBOUND (DEF) by CAPLES,CARISSA
	01:04	34-26	H 8	GOOD! LAYUP by LAYROCK,SYDNEY [PNT]
MISSED LAYUP by SCHULTE,KENDALL	00:41			
	00:41			BLOCK by MILLER,FALAN
	00:40			REBOUND (DEF) by LAYROCK,SYDNEY
	00:28	36-26	H 10	GOOD! LAYUP by PADGETT,PEYTON [PNT]
	00:28			ASSIST by LAYROCK,SYDNEY
	00:15			FOUL by KEARNEY,AMANDA
GOOD! FT by REHL,MADISON	00:15	36-27	H 9	
GOOD! FT by REHL,MADISON	00:15	36-28	H 8	
	00:15			SUB IN: COOPER,KENNEDY
	00:15			SUB IN: JONES,SYDNIE
	00:15			SUB OUT: LAYROCK,SYDNEY
	00:15			SUB OUT: PADGETT,PEYTON
	00:07			TURNOVER by MILLER,FALAN
STEAL by BLAKLEY,AALYIAH	00:06			
MISSED 3PTR by BLAKLEY,AALYIAH	00:01			
	00:00			REBOUND (DEF) by COOPER,KENNEDY

East Central 28, Harding 36

Period 3-only	In Paint	Off T/O	2nd Chance	Fast Break	Bench	
ECU	4	0	2	2	2	Score tied - 0 times
HU	6	2	0	0	6	Lead changed - 0 times

East Central vs Harding
1/25/2018; 5:30 p.m. at Searcy, Ark. (Rhodes-Reaves Field House)
Period 4 Play-By-Play

VISITORS: East Central	Time	Score	Margin	HOME: Harding
SUB IN: SCHULTE,KENDALL	10:00			
SUB IN: BLAKLEY,AALYIAH	10:00			
SUB OUT: PREISNER,LAKIN	10:00			
SUB OUT: BRANCH,DEVON	10:00			
	10:00			SUB IN: KEARNEY,AMANDA
	10:00			SUB IN: COOPER,KENNEDY
	10:00			SUB OUT: CAPLES,CARISSA
	10:00			SUB OUT: LAYROCK,SYDNEY
GOOD! 3PTR by HANSON,MACI	09:59	36-31	H 5	
ASSIST by BLAKLEY,AALYIAH	09:59			
	09:15			TIMEOUT 30SEC
	09:15			TIMEOUT MEDIA
	09:13			MISSED LAYUP by PADGETT,PEYTON
REBOUND (DEF) by REHL,MADISON	09:13			
MISSED 3PTR by SCHULTE,KENDALL	09:10			
	09:10			REBOUND (DEF) by PADGETT,PEYTON
	09:10			SUB IN: LAYROCK,SYDNEY
	09:10			SUB OUT: COOPER,KENNEDY
	08:52			MISSED JUMPER by LAMPO,KELLIE
REBOUND (DEF) by HANSON,MACI	08:52			
TIMEOUT 30SEC	08:49			
TIMEOUT MEDIA	08:49			
MISSED LAYUP by REHL,MADISON	08:35			
REBOUND (OFF) by REHL,MADISON	08:35			
MISSED LAYUP by ADAIR,ALEXA	08:05			
	08:05			REBOUND (DEF) by PADGETT,PEYTON
FOUL by REHL,MADISON	07:52			
SUB IN: NICKENS,MADISON	07:52			
SUB IN: BRANCH,DEVON	07:52			
SUB IN: PREISNER,LAKIN	07:52			
SUB OUT: SCHULTE,KENDALL	07:52			
SUB OUT: REHL,MADISON	07:52			
SUB OUT: ADAIR,ALEXA	07:52			
	07:52			SUB IN: COOPER,KENNEDY
	07:52			SUB IN: CAPLES,CARISSA
	07:52			SUB OUT: LAMPO,KELLIE
	07:52			SUB OUT: KEARNEY,AMANDA
	07:28			TURNOVER by COOPER,KENNEDY
STEAL by NICKENS,MADISON	07:27			
MISSED JUMPER by BLAKLEY,AALYIAH	07:04			
	07:04			REBOUND (DEF) by TEAM
	07:01			SUB IN: MCNAMARA,MACKENZIE
	07:01			SUB OUT: COOPER,KENNEDY
	06:39			TURNOVER by LAYROCK,SYDNEY
	06:22			FOUL by MCNAMARA,MACKENZIE
MISSED LAYUP by BRANCH,DEVON	05:56			
	05:56			REBOUND (DEF) by LAYROCK,SYDNEY
	05:43			TURNOVER by MCNAMARA,MACKENZIE
	05:43			SUB IN: LAMPO,KELLIE
	05:43			SUB OUT: MCNAMARA,MACKENZIE
MISSED 3PTR by BRANCH,DEVON	05:35			
	05:35			REBOUND (DEF) by LAMPO,KELLIE
FOUL by HANSON,MACI	05:07			
	05:07			MISSED FT by LAMPO,KELLIE
	05:07			REBOUND (DEADB) by TEAM
	05:07	37-31	H 6	GOOD! FT by LAMPO,KELLIE
	04:57			FOUL by MILLER,FALAN
GOOD! FT by PREISNER,LAKIN	04:57	37-32	H 5	
MISSED FT by PREISNER,LAKIN	04:57			
	04:57			REBOUND (DEF) by LAYROCK,SYDNEY
	04:46			MISSED 3PTR by CAPLES,CARISSA
REBOUND (DEF) by NICKENS,MADISON	04:46			
MISSED 3PTR by PREISNER,LAKIN	04:37			
REBOUND (DEADB) by TEAM	04:37			
	04:34			FOUL by LAMPO,KELLIE
MISSED LAYUP by BRANCH,DEVON	04:28			
	04:28			BLOCK by MILLER,FALAN
REBOUND (OFF) by BRANCH,DEVON	04:27			
GOOD! 3PTR by PREISNER,LAKIN	04:25	37-35	H 2	

VISITORS: East Central	Time	Score	Margin	HOME: Harding
ASSIST by BRANCH,DEVON	04:25			
	04:12			FOUL by LAMPO,KELLIE
	04:12			TURNOVER by LAMPO,KELLIE
	04:12			SUB IN: COOPER,KENNEDY
	04:12			SUB OUT: LAMPO,KELLIE
GOOD! 3PTR by NICKENS,MADISON	03:54	37-38	V 1	
ASSIST by BRANCH,DEVON	03:54			
	03:36			MISSED 3PTR by CAPLES,CARISSA
REBOUND (DEADB) by TEAM	03:36			
	03:34			SUB IN: MCNAMARA,MACKENZIE
	03:34			SUB OUT: COOPER,KENNEDY
FOUL by HANSON,MACI	03:20			
TURNOVER by HANSON,MACI	03:20			
	03:20			SUB IN: KEARNEY,AMANDA
	03:20			SUB OUT: MCNAMARA,MACKENZIE
	03:02	39-38	H 1	GOOD! LAYUP by KEARNEY,AMANDA [PNT]
FOUL by NICKENS,MADISON	02:43			
TURNOVER by NICKENS,MADISON	02:43			
	02:15	42-38	H 4	GOOD! 3PTR by KEARNEY,AMANDA
	02:15			ASSIST by PADGETT,PEYTON
GOOD! LAYUP by BRANCH,DEVON [PNT]	01:48	42-40	H 2	
FOUL by NICKENS,MADISON	01:29			
	01:29			MISSED FT by MILLER,FALAN
	01:29			REBOUND (DEADB) by TEAM
	01:29	43-40	H 3	GOOD! FT by MILLER,FALAN
	01:29	44-40	H 4	GOOD! FT by MILLER,FALAN
	01:29			SUB IN: MCNAMARA,MACKENZIE
	01:29			SUB OUT: KEARNEY,AMANDA
	01:27			FOUL by MCNAMARA,MACKENZIE
GOOD! FT by NICKENS,MADISON	01:27	44-41	H 3	
GOOD! FT by NICKENS,MADISON	01:27	44-42	H 2	
	01:27			SUB IN: KEARNEY,AMANDA
	01:27			SUB OUT: MCNAMARA,MACKENZIE
	01:02	46-42	H 4	GOOD! LAYUP by LAYROCK,SYDNEY [PNT]
MISSED LAYUP by PREISNER,LAKIN	00:48			
	00:48			REBOUND (DEF) by MILLER,FALAN
	00:39			MISSED LAYUP by PADGETT,PEYTON
	00:39			REBOUND (OFF) by LAYROCK,SYDNEY
FOUL by BRANCH,DEVON	00:36			
	00:36	47-42	H 5	GOOD! FT by LAYROCK,SYDNEY
	00:36	48-42	H 6	GOOD! FT by LAYROCK,SYDNEY
TIMEOUT 30SEC	00:36			
	00:36			SUB IN: MCNAMARA,MACKENZIE
	00:36			SUB OUT: KEARNEY,AMANDA
MISSED LAYUP by NICKENS,MADISON	00:32			
	00:32			REBOUND (DEF) by PADGETT,PEYTON
FOUL by NICKENS,MADISON	00:29			
	00:29			MISSED FT by PADGETT,PEYTON
	00:29			REBOUND (DEADB) by TEAM
	00:29	49-42	H 7	GOOD! FT by PADGETT,PEYTON
SUB IN: SCHULTE,KENDALL	00:29			
SUB OUT: HANSON,MACI	00:29			
TURNOVER by NICKENS,MADISON	00:21			
	00:20			TIMEOUT 30SEC
FOUL by PREISNER,LAKIN	00:19			
	00:19	50-42	H 8	GOOD! FT by CAPLES,CARISSA
	00:19	51-42	H 9	GOOD! FT by CAPLES,CARISSA
TIMEOUT TEAM	00:18			
MISSED LAYUP by NICKENS,MADISON	00:10			
	00:10			REBOUND (DEF) by MCNAMARA,MACKENZIE

East Central 42, Harding 51

Period 4-only	In Paint	Off T/O	2nd Chance	Fast Break	Bench	
ECU	2	3	3	0	5	Score tied - 0 times
HU	4	7	2	0	5	Lead changed - 2 times

East Central vs Harding
1/25/2018; 5:30 p.m. at Searcy, Ark. (Rhodes-Reaves Field House)
Scoring/Runs Reference

Period 1

East Central	VRun	Score	Margin	HRun	Harding
		0-2	2		LAYROCK LAYUP [P] - 08:25
		0-4	4	NaN-0	CAPLES LAYUP [P] - 05:12
04:59 - HANSON FT	-	1-4	3		
04:59 - HANSON FT	2-0	2-4	2		
04:25 - BRANCH 3PTR	5-0	5-4	-1		
		5-5	0		LAMPO FT - 02:56
02:39 - BRANCH FT	-	6-5	-1		
02:39 - BRANCH FT	2-0	7-5	-2		
		7-7	0		LAMPO LAYUP [P] - 02:15
01:43 - BRANCH FT	-	8-7	-1		
01:00 - BLAKLEY FT	2-0	9-7	-2		
01:00 - BLAKLEY FT	3-0	10-7	-3		
		10-8	-2		LAMPO FT - 00:27
		10-9	-1	2-0	LAMPO FT - 00:27

East Central vs Harding
1/25/2018; 5:30 p.m. at Searcy, Ark. (Rhodes-Reaves Field House)
Scoring/Runs Reference

Period 2

East Central	VRun	Score	Margin	HRun	Harding
08:40 - BLAKLEY 3PTR	-	13-9	-4		
08:05 - BLAKLEY LAYUP [P]	NaN-0	15-9	-6		
		15-11	-4		LAYROCK LAYUP [P] - 04:44
		15-13	-2	4-0	LAMPO LAYUP [P] - 04:09
03:16 - WILLIAMS 3PTR	-	18-13	-5		
		18-15	-3		MILLER LAYUP [P] - 02:43
		18-16	-2	3-0	LAYROCK FT - 02:06
		18-17	-1	4-0	LAYROCK FT - 02:06
		18-18	0	5-0	COOPER FT - 01:47
		18-19	1	6-0	MILLER FT - 01:32
		18-22	4	9-0	KEARNEY 3PTR - 01:07
00:35 - ADAIR JUMPER [P]	-	20-22	2		

East Central vs Harding
1/25/2018; 5:30 p.m. at Searcy, Ark. (Rhodes-Reaves Field House)
Scoring/Runs Reference

Period 3

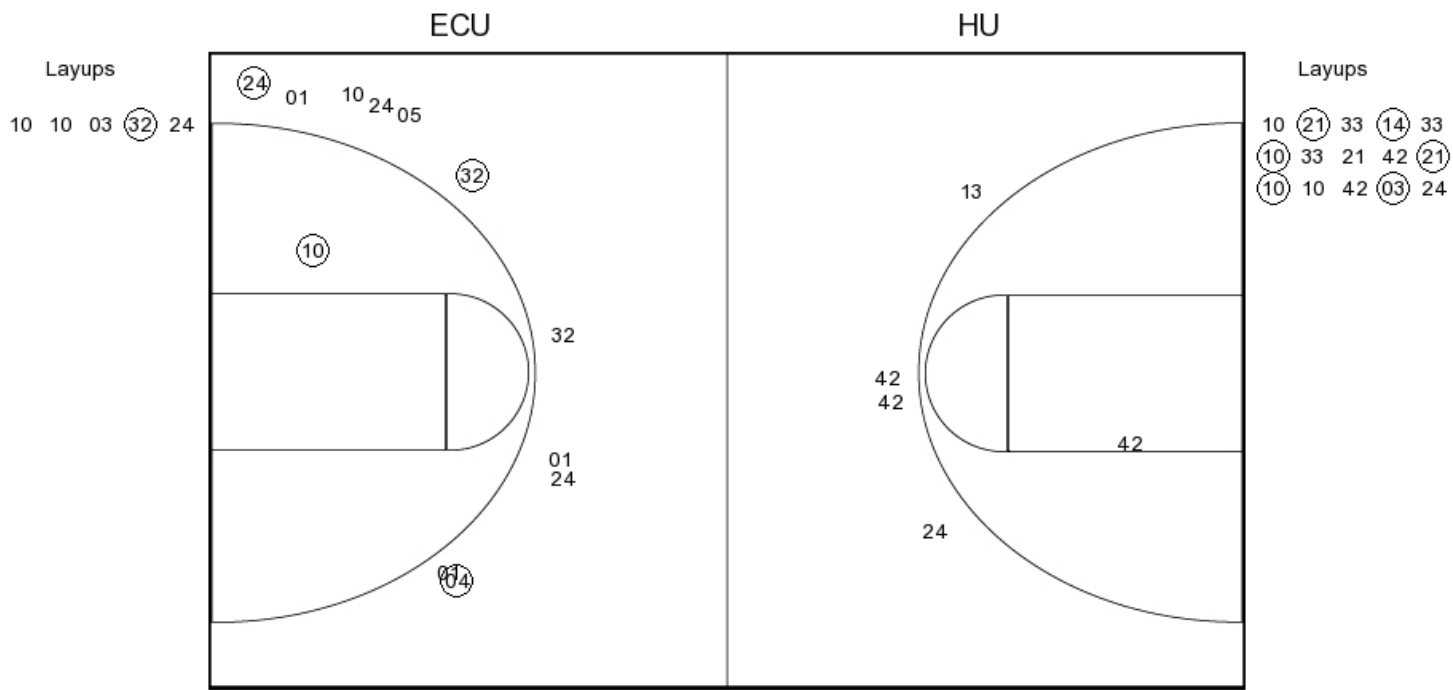
East Central	VRun	Score	Margin	HRun	Harding
		20-23	3		LAMPO FT - 08:49
		20-24	4	NaN-0	LAMPO FT - 08:49
08:08 - REHL LAYUP [P] [F]	-	22-24	2		
		22-27	5		KEARNEY 3PTR - 07:13
		22-29	7	5-0	LAYROCK LAYUP [P] - 06:30
		22-32	10	8-0	COOPER 3PTR - 04:34
03:40 - BLAKLEY JUMPER	-	24-32	8		
02:39 - ADAIR LAYUP [P]	4-0	26-32	6		
		26-34	8		LAYROCK LAYUP [P] - 01:04
		26-36	10	4-0	PADGETT LAYUP [P] - 00:28
00:15 - REHL FT	-	27-36	9		
00:15 - REHL FT	2-0	28-36	8		

East Central vs Harding
1/25/2018; 5:30 p.m. at Searcy, Ark. (Rhodes-Reaves Field House)
Scoring/Runs Reference

Period 4

East Central	VRun	Score	Margin	HRun	Harding
09:59 - HANSON 3PTR	-	31-36	5		
		31-37	6		LAMPO FT - 05:07
04:57 - PREISNER FT	-	32-37	5		
04:25 - PREISNER 3PTR	4-0	35-37	2		
03:54 - NICKENS 3PTR	7-0	38-37	-1		
		38-39	1		KEARNEY LAYUP [P] - 03:02
		38-42	4	5-0	KEARNEY 3PTR - 02:15
01:48 - BRANCH LAYUP [P]	-	40-42	2		
		40-43	3		MILLER FT - 01:29
		40-44	4	2-0	MILLER FT - 01:29
01:27 - NICKENS FT	-	41-44	3		
01:27 - NICKENS FT	2-0	42-44	2		
		42-46	4		LAYROCK LAYUP [P] - 01:02
		42-47	5	3-0	LAYROCK FT - 00:36
		42-48	6	4-0	LAYROCK FT - 00:36
		42-49	7	5-0	PADGETT FT - 00:29
		42-50	8	6-0	CAPLES FT - 00:19
		42-51	9	7-0	CAPLES FT - 00:19

PERIOD 1



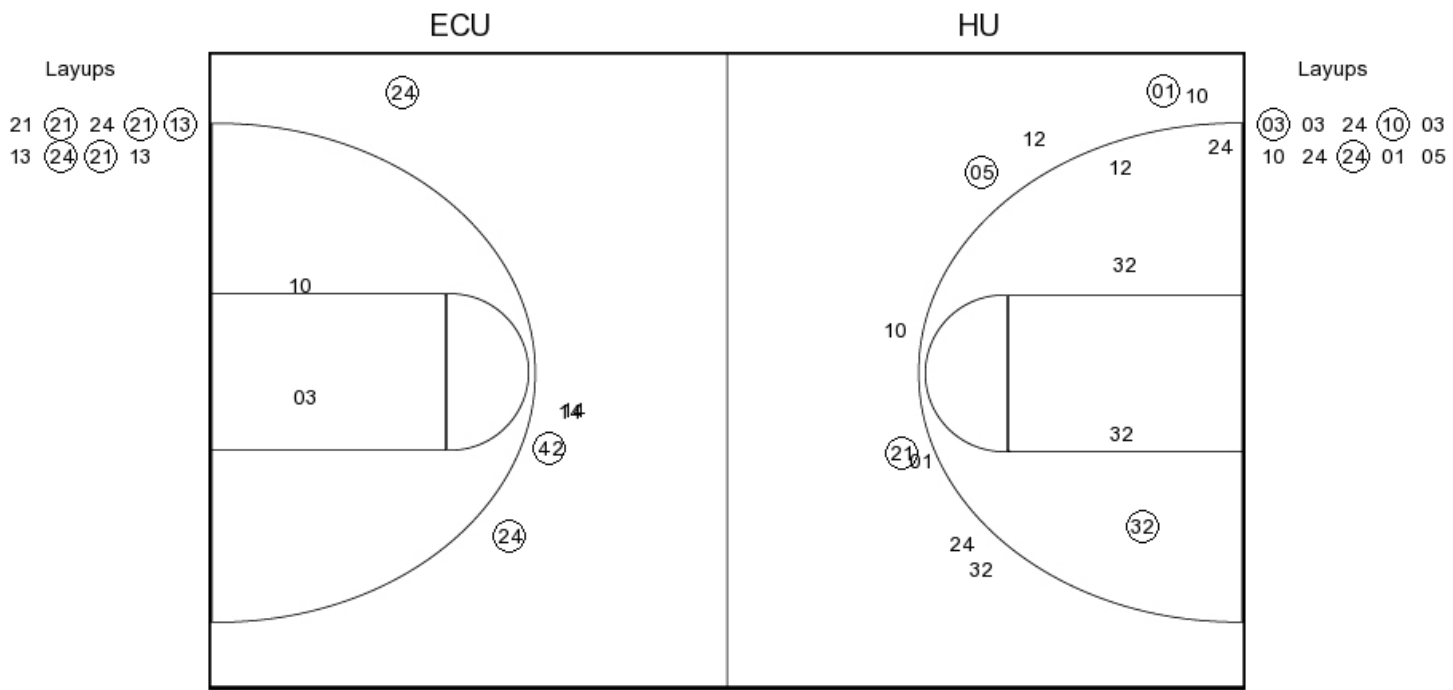
ECU PERIOD 1

FG Made	5
FG Attempted	23
3PFG Made	3
3PFG Attempted	16

HU PERIOD 1

FG Made	7
FG Attempted	22
3PFG Made	1
3PFG Attempted	5

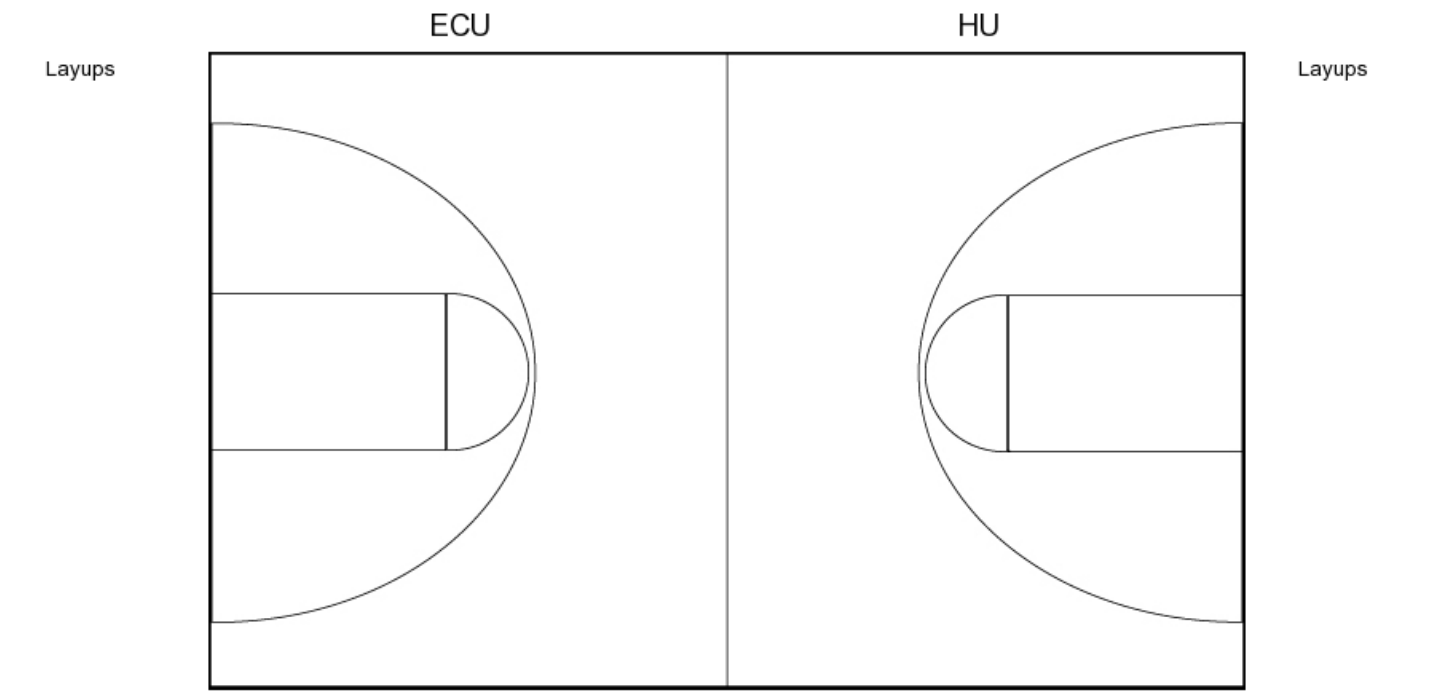
PERIOD 2



ECU PERIOD 2
FG Made
FG Attempted
3PFG Made
3PFG Attempted

HU PERIOD 2
FG Made
FG Attempted
3PFG Made
3PFG Attempted

PERIOD 3



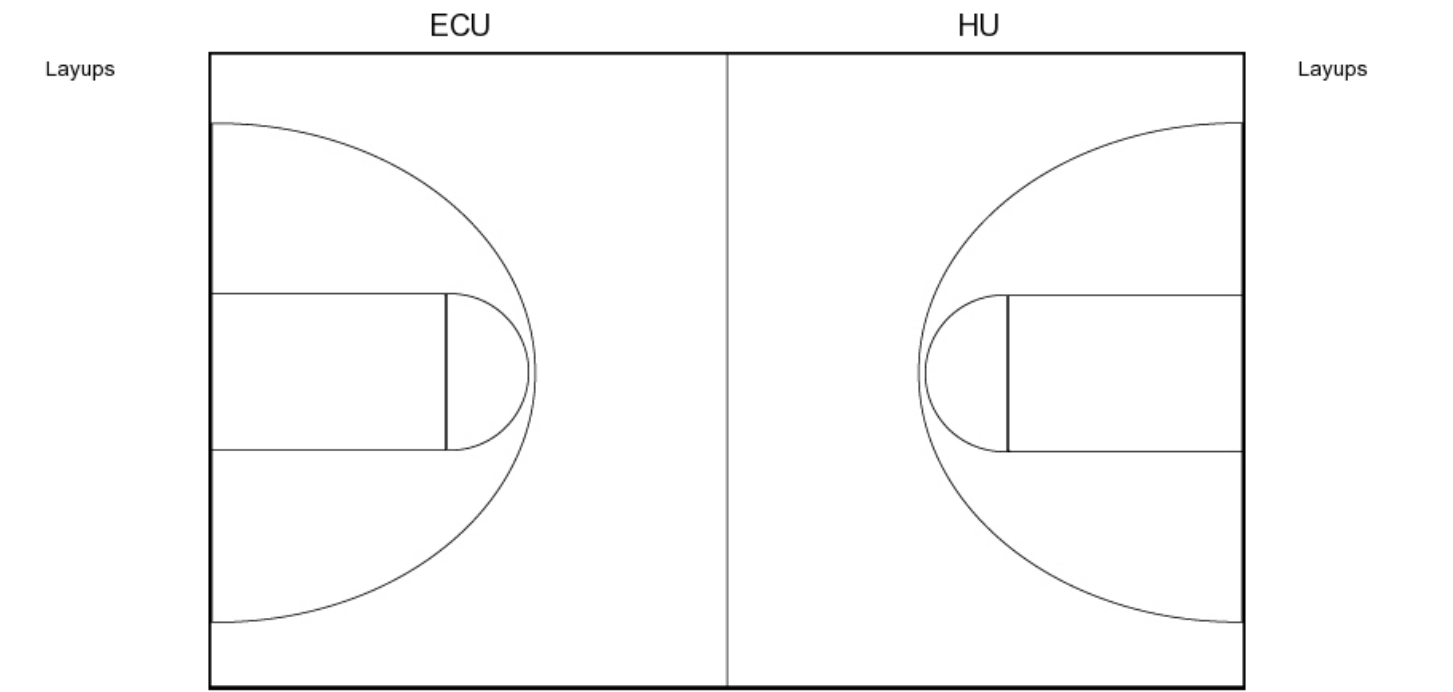
ECU PERIOD 3

FG Made	7
FG Attempted	32
3PFG Made	3
3PFG Attempted	13

HU PERIOD 3

FG Made	8
FG Attempted	18
3PFG Made	3
3PFG Attempted	6

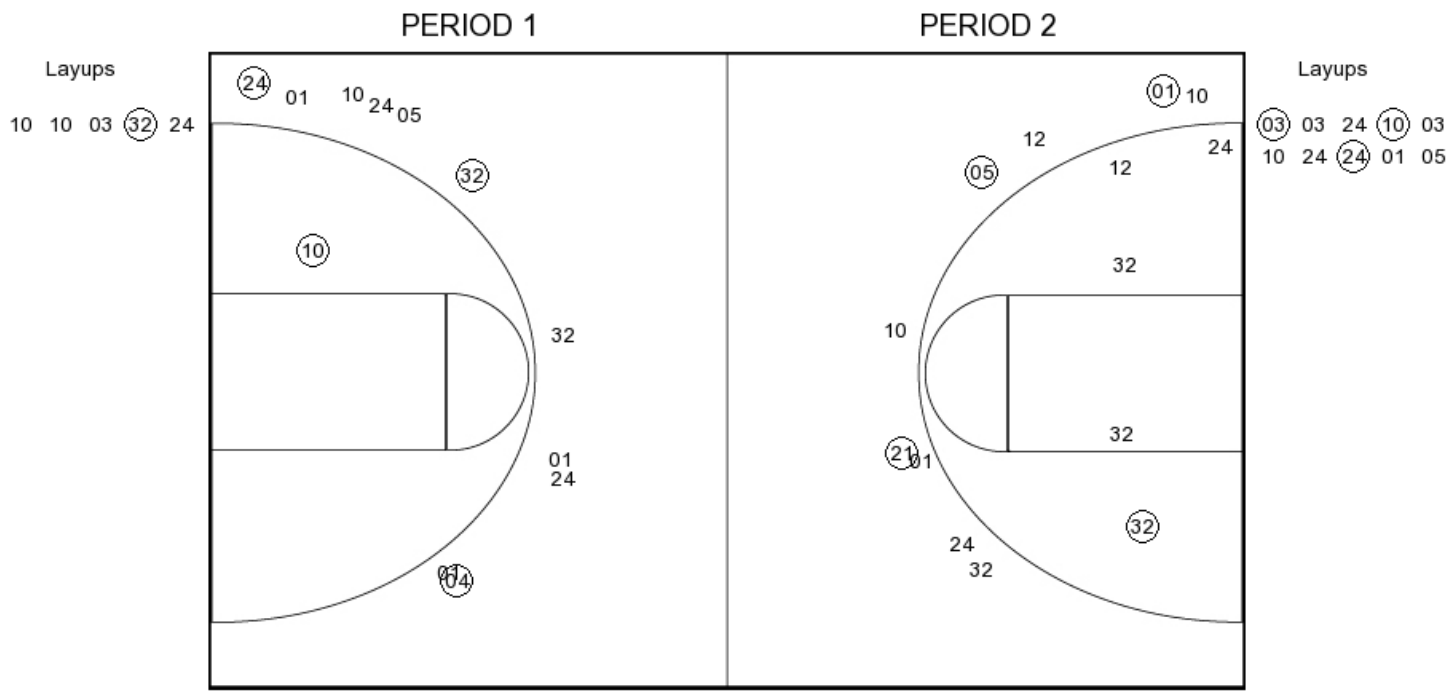
PERIOD 4



ECU PERIOD 4
FG Made
FG Attempted
3PFG Made
3PFG Attempted

HU PERIOD 4
FG Made
FG Attempted
3PFG Made
3PFG Attempted

East Central



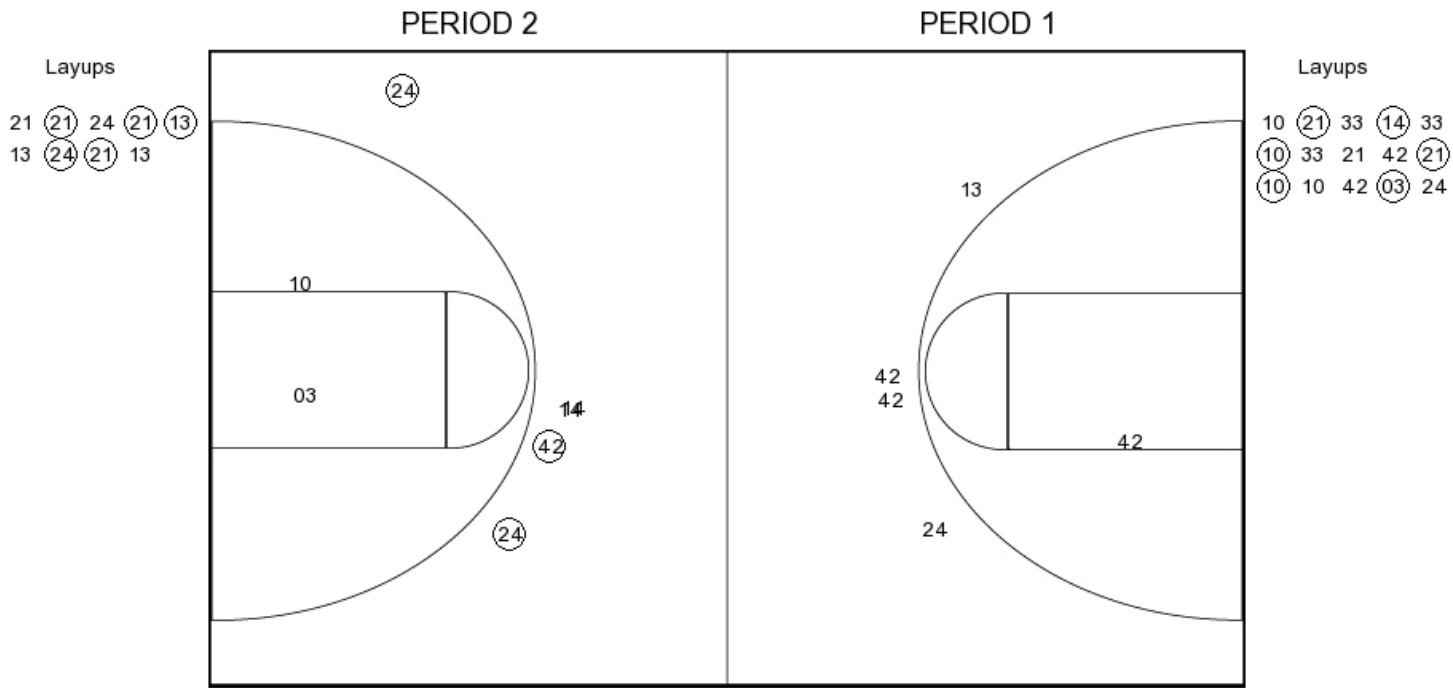
ECU PERIOD 1

FG Made	5
FG Attempted	23
3PFG Made	3
3PFG Attempted	16

ECU PERIOD 2

FG Made	
FG Attempted	
3PFG Made	
3PFG Attempted	

Harding



HU PERIOD 1

FG Made	7
FG Attempted	22
3PFG Made	1
3PFG Attempted	5

HU PERIOD 2

FG Made	
FG Attempted	
3PFG Made	
3PFG Attempted	