

FINAL SCORE

Drury

7-1

65

Harding

3-5

57

December 05, 2017 • Searcy, Ark. (Rhodes-Reaves Field House)

FINAL STATISTICS

Official Basketball Box Score -- Game Totals -- Final Statistics
Drury vs Harding
12/5/2017 7 p.m. at Searcy, Ark. (Rhodes-Reaves Field House)

Drury 65 - 7-1

##	Player	g	Total			3-Ptr			Rebounds			PF	TP	A	TO	Blk	Stl	Min
			FG-FGA	FG-FGA	FT-FTA	FG-FGA	FG-FGA	FT-FTA	Off	Def	Tot							
05	BERNARD,DAEJAH		1-2	1-2	3-4	1	3	4	3	6	5	4	0	2			30	
14	HEINZLER,ALICE		7-16	5-10	1-2	0	0	0	4	20	4	1	0	3			27	
15	HARMAN,HEATHER		7-15	3-5	6-8	0	3	3	1	23	4	4	0	5			35	
24	FERNANDEZ,LUCIA		0-4	0-0	0-0	2	1	3	4	0	1	1	0	0			12	
34	DIEST ELKAMP,HAILEY		4-6	1-1	0-2	2	3	5	2	9	1	2	1	3			23	
10	VAUGHT,LEXIE		0-1	0-0	0-0	0	0	0	1	0	0	0	0	0			8	
20	SHIPLEY,LAUREN		0-0	0-0	0-0	0	0	0	0	0	0	0	0	0			1	
21	RICHARDS,PAYTON		2-6	0-2	0-0	0	1	1	1	4	0	0	1	1			22	
23	LYNCH,AZIA		0-0	0-0	0-0	1	0	1	0	0	0	1	0	0			4	
30	STANFIELD,BROOKE		0-3	0-1	0-0	0	2	2	2	0	0	1	0	0			14	
33	PARKER,EMILY		1-6	0-3	1-2	0	0	0	2	3	0	1	0	1			24	
	TEAM					2	6	8	0									
TOTALS			22-59	10-24	11-18	8	19	27	20	65	15	15	2	15			200	

Deadball Rebounds: 5,1

FG %	1st Half:	12-32	37.5%	2nd Half:	10-27	37.0%	Game:	22-59	37.3%				
	1st Qtr	6-13	46.2%	2nd Qtr	6-19	31.6%	3rd Qtr	8-15	53.3%	4th Qtr	2-12	16.7%	
3FG %	1st Half:	6-12	50.0%	2nd Half:	4-12	33.3%	Game:	10-24	41.7%				
	1st Qtr	4-6	66.7%	2nd Qtr	2-6	33.3%	3rd Qtr	4-8	50.0%	4th Qtr	0-4	00.0%	
FT %	1st Half:	4-6	66.7%	2nd Half:	7-12	58.3%	Game:	11-18	61.1%				
	1st Qtr	3-4	75.0%	2nd Qtr	1-2	50.0%	3rd Qtr	2-4	50.0%	4th Qtr	5-8	62.5%	

Harding 57 - 3-5

##	Player	f	Total			3-Ptr			Rebounds			PF	TP	A	TO	Blk	Stl	Min
			FG-FGA	FG-FGA	FT-FTA	FG-FGA	FG-FGA	FT-FTA	Off	Def	Tot							
10	LAMPO,KELLIE		2-4	1-1	2-2	1	3	4	2	7	1	2	0	0			19	
13	PADGETT,PEYTON		1-3	0-1	2-2	1	3	4	3	4	1	6	0	3			33	
14	CAPLES,CARISSA		3-4	1-2	0-0	0	0	0	0	7	1	0	2	0			17	
21	LAYROCK,SYDNEY		2-8	1-4	4-7	2	4	6	5	9	3	2	0	1			29	
42	COOPER,KENNEDY		2-7	0-3	0-0	1	3	4	2	4	1	8	1	3			20	
03	MILLER,FALAN		1-4	0-1	2-2	1	1	2	2	4	0	0	1	0			15	
04	MCMAMARA,MACKENZIE		0-1	0-0	0-0	0	0	0	3	0	1	3	0	0			5	
24	KEARNEY,AMANDA		2-4	0-2	0-1	0	0	0	2	4	5	3	2	1			24	
30	HOGUE,CAROLINE		4-6	0-0	0-0	0	10	10	1	8	1	3	2	1			20	
33	JONES,SYDNEE		4-4	0-0	2-3	2	4	6	1	10	1	1	2	0			18	
	TEAM					0	2	2	0			1						
TOTALS			21-45	3-14	12-17	8	30	38	21	57	15	29	10	9			200	

Deadball Rebounds: 1,1

FG %	1st Half:	9-22	40.9%	2nd Half:	12-23	52.2%	Game:	21-45	46.7%				
	1st Qtr	6-14	42.9%	2nd Qtr	3-8	37.5%	3rd Qtr	6-14	42.9%	4th Qtr	6-9	66.7%	
3FG %	1st Half:	1-9	11.1%	2nd Half:	2-5	40.0%	Game:	3-14	21.4%				
	1st Qtr	0-6	00.0%	2nd Qtr	1-3	33.3%	3rd Qtr	0-3	00.0%	4th Qtr	2-2	100.0%	
FT %	1st Half:	5-9	55.6%	2nd Half:	7-8	87.5%	Game:	12-17	70.6%				
	1st Qtr	2-4	50.0%	2nd Qtr	3-5	60.0%	3rd Qtr	3-4	75.0%	4th Qtr	4-4	100.0%	

Officials: Barry Hickingbotham, Garrett Forehand and Denis Tyus
 Technical Fouls: Drury- None. Harding- None.

Score by periods	1st	2nd	3rd	4th	Total
Drury	19	15	22	9	65
Harding	14	10	15	18	57

Points	In Paint	Off T/O	2nd Chance	Fast Break	Bench
DU	20	26	5	0	7
HU	32	10	3	2	26

Last FG - DU 4th-01:00, HU 4th-00:30.

Largest lead - Drury by 17 3rd-00:03; Harding by 2 1st-09:41
 DU led for 39:26. HU led for 0:14. Game was tied for 0:19.

Score tied - 0 times; Lead changed - 1 times

Official Basketball Box Score -- Game Totals -- First Half Statistics
Drury vs Harding
12/5/2017 7 p.m. at Searcy, Ark. (Rhodes-Reaves Field House)

Drury 34 • 7-1

##	Player		Total		3-Ptr	FT-FTA	Rebounds			PF	TP	A	TO	Blk	Stl	Min
			FG-FGA	FG-FGA	FG-FGA		Off	Def	Tot							
05	BERNARD,DAEJAH	g	0-0	0-0	0-0	0-0	1	1	2	2	0	3	1	0	0	12
14	HEINZLER,ALICE	g	3-8	3-5	0-0	0-0	0	0	0	1	9	2	1	0	2	14
15	HARMAN,HEATHER	g	6-10	3-5	4-6	0-0	0	1	1	1	19	2	2	0	4	18
24	FERNANDEZ,LUCIA	f	0-3	0-0	0-0	0-0	1	1	2	2	0	1	1	0	0	8
34	DIESTELKAMP,HAILEY	f	1-2	0-0	0-0	0-0	2	1	3	2	2	0	1	0	0	6
10	VAUGHT,LEXIE		0-1	0-0	0-0	0-0	0	0	0	1	0	0	0	0	0	7
20	SHIPLEY,LAUREN		0-0	0-0	0-0	0-0	0	0	0	0	0	0	0	0	0	1
21	RICHARDS,PAYTON		1-2	0-0	0-0	0-0	0	0	0	0	2	0	0	0	1	11
23	LYNCH,AZIA		0-0	0-0	0-0	0-0	1	0	1	0	0	0	1	0	0	2
30	STANFIELD,BROOKE		0-3	0-1	0-0	0-0	0	2	2	1	0	0	1	0	0	11
33	PARKER,EMILY		1-3	0-1	0-0	0-0	0	0	0	1	2	0	1	0	1	10
TEAM							2	4	6	0			0			
Totals			12-32	6-12	4-6		7	10	17	11	34	8	9	0	8	100

FG % 1st Qtr 6-13 46.2% 2nd Qtr 6-19 31.6% Half: 12-32 37.5%
 3FG % 1st Qtr 4-6 66.7% 2nd Qtr 2-6 33.3% Half: 6-12 50.0%
 FT % 1st Qtr 3-4 75.0% 2nd Qtr 1-2 50.0% Half: 4-6 66.7%

Harding 24 • 3-5

##	Player		Total		3-Ptr	FT-FTA	Rebounds			PF	TP	A	TO	Blk	Stl	Min
			FG-FGA	FG-FGA	FG-FGA		Off	Def	Tot							
10	LAMPO,KELLIE	f	1-2	0-0	0-0	0-0	1	0	1	0	2	0	1	0	0	9
13	PADGETT,PEYTON	g	0-2	0-1	0-0	0-0	1	2	3	1	0	0	5	0	2	16
14	CAPLES,CARISSA	g	1-2	1-2	0-0	0-0	0	0	0	0	3	1	0	2	0	12
21	LAYROCK,SYDNEY	f	1-4	0-3	1-3	1-3	1	2	3	1	3	2	2	0	1	17
42	COOPER,KENNEDY	f	1-2	0-1	0-0	0-0	1	1	2	1	2	0	4	0	1	10
03	MILLER,FALAN		1-2	0-0	2-2	0-0	0	1	1	1	4	0	0	1	0	9
04	MCNAMARA,MACKENZIE		0-0	0-0	0-0	0-0	0	0	0	2	0	0	2	0	0	3
24	KEARNEY,AMANDA		1-3	0-2	0-1	0-1	0	0	0	1	2	2	1	0	1	9
30	HOGUE,CAROLINE		1-3	0-0	0-0	0-0	0	2	2	1	2	0	2	0	0	8
33	JONES,SYDNEI		2-2	0-0	2-3	2-3	2	3	5	0	6	1	1	1	0	7
TEAM							0	2	2	0			0			
Totals			9-22	1-9	5-9		6	13	19	8	24	6	18	4	5	100

FG % 1st Qtr 6-14 42.9% 2nd Qtr 3-8 37.5% Half: 9-22 40.9%
 3FG % 1st Qtr 0-6 00.0% 2nd Qtr 1-3 33.3% Half: 1-9 11.1%
 FT % 1st Qtr 2-4 50.0% 2nd Qtr 3-5 60.0% Half: 5-9 55.6%

Officials: Barry Hickingbotham, Garrett Forehand and Denis Tyus
 Technical Fouls: Drury- None. Harding- None.

Score by periods	1st	2nd	3rd	4th	Total
Drury	19	15	22	9	65
Harding	14	10	15	18	57

Points	In Paint	Off T/O	2nd Chance	Fast Break	Bench
DU	12	19	5	0	4
	14	8	3	0	14

Last FG - DU 2nd-01:28, HU 2nd-01:45.
 DU led for 19:27. HU led for 0:14. Game was tied for 0:19.

Score tied - 0 times
 Lead changed - 1 times

Drury vs Harding
12/5/2017; 7 p.m. at Searcy, Ark. (Rhodes-Reaves Field House)
Period 1 Play-By-Play

VISITORS: Drury	Time	Score	Margin	HOME: Harding
	09:41	2-0	H 2	GOOD! LAYUP by LAMPO,KELLIE [PNT]
	09:41			ASSIST by CAPLES,CARISSA
GOOD! 3PTR by HEINZLER,ALICE	09:27	2-3	V 1	
ASSIST by BERNARD,DAEJAH	09:27			
	08:59			MISSED 3PTR by LAYROCK,SYDNEY
	08:59			REBOUND (OFF) by PADGETT,PEYTON
	08:30			TURNOVER by PADGETT,PEYTON
STEAL by HARMAN,HEATHER	08:28			
MISSED 3PTR by HEINZLER,ALICE	08:26			
	08:26			REBOUND (DEF) by TEAM
	08:13			MISSED 3PTR by CAPLES,CARISSA
	08:13			REBOUND (OFF) by LAMPO,KELLIE
	08:09			TURNOVER by LAMPO,KELLIE
FOUL by FERNANDEZ,LUCIA	08:01			
TURNOVER by FERNANDEZ,LUCIA	08:01			
FOUL by DIESTELKAMP,HAILEY	07:46			
	07:45			MISSED 3PTR by COOPER,KENNEDY
	07:45			REBOUND (OFF) by LAYROCK,SYDNEY
	07:33			TURNOVER by COOPER,KENNEDY
SUB IN: PARKER,EMILY	07:31			
SUB OUT: FERNANDEZ,LUCIA	07:31			
MISSED JUMPER by DIESTELKAMP,HAILEY	07:17			
REBOUND (OFF) by BERNARD,DAEJAH	07:17			
GOOD! 3PTR by HARMAN,HEATHER	07:13	2-6	V 4	
ASSIST by BERNARD,DAEJAH	07:13			
	07:01			MISSED 3PTR by PADGETT,PEYTON
REBOUND (DEF) by BERNARD,DAEJAH	07:01			
MISSED LAYUP by HEINZLER,ALICE	06:49			
	06:49			REBOUND (DEF) by PADGETT,PEYTON
	06:42	4-6	V 2	GOOD! LAYUP by COOPER,KENNEDY [PNT]
GOOD! LAYUP by DIESTELKAMP,HAILEY [PNT]	06:35	4-8	V 4	
ASSIST by HARMAN,HEATHER	06:35			
	06:17			MISSED LAYUP by LAMPO,KELLIE
REBOUND (DEF) by DIESTELKAMP,HAILEY	06:17			
	06:06			FOUL by LAYROCK,SYDNEY
MISSED FT by HARMAN,HEATHER	06:06			
REBOUND (DEADB) by TEAM	06:06			
GOOD! FT by HARMAN,HEATHER	06:06	4-9	V 5	
	06:06			SUB IN: HOGUE,CAROLINE
	06:06			SUB IN: MILLER,FALAN
	06:06			SUB IN: KEARNEY,AMANDA
	06:06			SUB OUT: LAMPO,KELLIE
	06:06			SUB OUT: CAPLES,CARISSA
	06:06			SUB OUT: COOPER,KENNEDY
	05:46	6-9	V 3	GOOD! JUMPER by MILLER,FALAN
GOOD! 3PTR by HEINZLER,ALICE	05:36	6-12	V 6	
ASSIST by BERNARD,DAEJAH	05:35			
	05:26			TURNOVER by PADGETT,PEYTON
SUB IN: STANFIELD,BROOKE	05:26			
SUB OUT: DIESTELKAMP,HAILEY	05:26			
TURNOVER by HEINZLER,ALICE	05:09			
	05:08			STEAL by KEARNEY,AMANDA
	04:56	8-12	V 4	GOOD! LAYUP by KEARNEY,AMANDA [PNT]
FOUL by HARMAN,HEATHER	04:56			
	04:56			TIMEOUT MEDIA
	04:56			MISSED FT by KEARNEY,AMANDA
REBOUND (DEF) by TEAM	04:56			
GOOD! 3PTR by HARMAN,HEATHER	04:31	8-15	V 7	
ASSIST by HEINZLER,ALICE	04:31			
FOUL by BERNARD,DAEJAH	04:18			
SUB IN: RICHARDS,PAYTON	04:18			
SUB OUT: BERNARD,DAEJAH	04:18			
	04:18			SUB IN: CAPLES,CARISSA
	04:18			SUB IN: MCNAMARA,MACKENZIE
	04:18			SUB OUT: PADGETT,PEYTON
	04:18			SUB OUT: LAYROCK,SYDNEY
	04:01			TURNOVER by MCNAMARA,MACKENZIE
STEAL by PARKER,EMILY	04:00			
	03:54			FOUL by MCNAMARA,MACKENZIE

VISITORS: Drury	Time	Score	Margin	HOME: Harding
GOOD! FT by HARMAN,HEATHER	03:54	8-16	V 8	
GOOD! FT by HARMAN,HEATHER	03:54	8-17	V 9	
SUB IN: VAUGHT,LEXIE	03:54			
SUB OUT: HEINZLER,ALICE	03:54			
	03:34			MISSED 3PTR by KEARNEY,AMANDA
REBOUND (DEF) by TEAM	03:34			
MISSED LAYUP by HARMAN,HEATHER	03:17			
	03:17			REBOUND (DEF) by HOGUE,CAROLINE
	03:14			TURNOVER by HOGUE,CAROLINE
STEAL by HARMAN,HEATHER	03:13			
TURNOVER by HARMAN,HEATHER	03:13			
	03:13			SUB IN: JONES,SYDNEI
	03:13			SUB OUT: HOGUE,CAROLINE
	03:09			MISSED LAYUP by MILLER,FALAN
	03:09			REBOUND (OFF) by JONES,SYDNEI
FOUL by STANFIELD,BROOKE	03:07			
	03:07	9-17	V 8	GOOD! FT by JONES,SYDNEI
	03:07			MISSED FT by JONES,SYDNEI
REBOUND (DEF) by STANFIELD,BROOKE	03:07			
	03:07			SUB IN: PADGETT,PEYTON
	03:07			SUB IN: COOPER,KENNEDY
	03:07			SUB OUT: MILLER,FALAN
	03:07			SUB OUT: KEARNEY,AMANDA
MISSED LAYUP by VAUGHT,LEXIE	02:39			
	02:39			BLOCK by CAPLES,CARISSA
	02:37			REBOUND (DEF) by JONES,SYDNEI
	02:19			FOUL by MCNAMARA,MACKENZIE
	02:19			TURNOVER by MCNAMARA,MACKENZIE
SUB IN: LYNCH,AZIA	02:19			
SUB OUT: PARKER,EMILY	02:19			
	02:19			SUB IN: LAYROCK,SYDNEY
	02:19			SUB OUT: MCNAMARA,MACKENZIE
TURNOVER by STANFIELD,BROOKE	02:09			
	02:08			STEAL by COOPER,KENNEDY
	01:58	11-17	V 6	GOOD! LAYUP by JONES,SYDNEI [PNT]
	01:58			ASSIST by LAYROCK,SYDNEY
FOUL by VAUGHT,LEXIE	01:58			
	01:58	12-17	V 5	GOOD! FT by JONES,SYDNEI
MISSED 3PTR by STANFIELD,BROOKE	01:45			
	01:45			REBOUND (DEF) by TEAM
	01:21			MISSED 3PTR by LAYROCK,SYDNEY
REBOUND (DEF) by HARMAN,HEATHER	01:21			
TURNOVER by HARMAN,HEATHER	01:13			
	01:13			STEAL by LAYROCK,SYDNEY
SUB IN: HEINZLER,ALICE	01:13			
SUB OUT: VAUGHT,LEXIE	01:13			
	01:11			TURNOVER by PADGETT,PEYTON
STEAL by HARMAN,HEATHER	01:11			
MISSED JUMPER by STANFIELD,BROOKE	00:54			
REBOUND (OFF) by LYNCH,AZIA	00:54			
TURNOVER by LYNCH,AZIA	00:51			
SUB IN: FERNANDEZ,LUCIA	00:51			
SUB OUT: STANFIELD,BROOKE	00:51			
	00:51			SUB IN: LAMPO,KELLIE
	00:51			SUB OUT: COOPER,KENNEDY
	00:25	14-17	V 3	GOOD! LAYUP by JONES,SYDNEI [PNT]
	00:25			ASSIST by LAYROCK,SYDNEY
GOOD! LAYUP by HARMAN,HEATHER [PNT]	00:05	14-19	V 5	

Drury 19, Harding 14

Period 1-only	In Paint	Off T/O	2nd Chance	Fast Break	Bench	
DU	4	5	3	0	0	Score tied - 0 times
HU	10	8	1	0	10	Lead changed - 2 times

Drury vs Harding
12/5/2017; 7 p.m. at Searcy, Ark. (Rhodes-Reaves Field House)
Period 2 Play-By-Play

VISITORS: Drury	Time	Score	Margin	HOME: Harding
SUB IN: RICHARDS,PAYTON	10:00			
SUB OUT: BERNARD,DAEJAH	10:00			
	10:00			SUB IN: MILLER,FALAN
	10:00			SUB OUT: CAPLES,CARISSA
MISSED LAYUP by FERNANDEZ,LUCIA	09:48			
REBOUND (OFF) by DIESTELKAMP,HAILEY	09:48			
TURNOVER by DIESTELKAMP,HAILEY	09:40			
	09:39			STEAL by PADGETT,PEYTON
	09:16			TURNOVER by LAYROCK,SYDNEY
MISSED 3PTR by HARMAN,HEATHER	09:06			
REBOUND (OFF) by DIESTELKAMP,HAILEY	09:06			
MISSED LAYUP by FERNANDEZ,LUCIA	08:54			
REBOUND (OFF) by FERNANDEZ,LUCIA	08:54			
MISSED JUMPER by RICHARDS,PAYTON	08:47			
	08:47			REBOUND (DEF) by COOPER,KENNEDY
FOUL by DIESTELKAMP,HAILEY	08:43			
SUB IN: STANFIELD,BROOKE	08:43			
SUB OUT: DIESTELKAMP,HAILEY	08:43			
	08:34			TURNOVER by COOPER,KENNEDY
GOOD! LAYUP by RICHARDS,PAYTON [PNT]	08:15	14-21	V 7	
ASSIST by FERNANDEZ,LUCIA	08:15			
	08:03			TURNOVER by PADGETT,PEYTON
STEAL by RICHARDS,PAYTON	08:01			
GOOD! 3PTR by HARMAN,HEATHER	07:54	14-24	V 10	
ASSIST by HEINZLER,ALICE	07:54			
FOUL by HEINZLER,ALICE	07:41			
	07:41	15-24	V 9	GOOD! FT by MILLER,FALAN
	07:41	16-24	V 8	GOOD! FT by MILLER,FALAN
SUB IN: BERNARD,DAEJAH	07:41			
SUB OUT: HARMAN,HEATHER	07:41			
	07:41			SUB IN: HOGUE,CAROLINE
	07:41			SUB IN: KEARNEY,AMANDA
	07:41			SUB OUT: LAMPO,KELLIE
	07:41			SUB OUT: COOPER,KENNEDY
MISSED LAYUP by FERNANDEZ,LUCIA	07:30			
	07:30			REBOUND (DEF) by PADGETT,PEYTON
	07:21			MISSED 3PTR by LAYROCK,SYDNEY
REBOUND (DEF) by TEAM	07:21			
TURNOVER by BERNARD,DAEJAH	06:51			
	06:49			STEAL by PADGETT,PEYTON
	06:39			MISSED JUMPER by HOGUE,CAROLINE
REBOUND (DEF) by FERNANDEZ,LUCIA	06:39			
MISSED JUMPER by HEINZLER,ALICE	06:27			
	06:27			BLOCK by MILLER,FALAN
	06:25			REBOUND (DEF) by MILLER,FALAN
	06:14			TURNOVER by KEARNEY,AMANDA
STEAL by HEINZLER,ALICE	06:12			
	06:07			FOUL by MILLER,FALAN
SUB IN: PARKER,EMILY	06:07			
SUB IN: HARMAN,HEATHER	06:07			
SUB OUT: HEINZLER,ALICE	06:07			
SUB OUT: FERNANDEZ,LUCIA	06:07			
	06:07			SUB IN: CAPLES,CARISSA
	06:07			SUB IN: JONES,SYDNIE
	06:07			SUB OUT: PADGETT,PEYTON
	06:07			SUB OUT: LAYROCK,SYDNEY
MISSED LAYUP by STANFIELD,BROOKE	06:02			
	06:02			BLOCK by JONES,SYDNIE
	06:00			REBOUND (DEF) by JONES,SYDNIE
	06:00			TURNOVER by JONES,SYDNIE
MISSED LAYUP by PARKER,EMILY	05:56			
	05:56			BLOCK by CAPLES,CARISSA
REBOUND (OFF) by TEAM	05:54			
	05:50			FOUL by KEARNEY,AMANDA
GOOD! LAYUP by HARMAN,HEATHER [PNT]	05:39	16-26	V 10	
	05:20	19-26	V 7	GOOD! 3PTR by CAPLES,CARISSA
	05:20			ASSIST by JONES,SYDNIE
MISSED 3PTR by PARKER,EMILY	05:01			
	05:01			REBOUND (DEADB) by TEAM

VISITORS: Drury	Time	Score	Margin	HOME: Harding
SUB IN: SHIPLEY,LAUREN	04:57			
SUB OUT: BERNARD,DAEJAH	04:57			
	04:57			SUB IN: LAYROCK,SYDNEY
	04:57			SUB OUT: MILLER,FALAN
	04:48			TIMEOUT MEDIA
	04:37			MISSED 3PTR by KEARNEY,AMANDA
	04:37			REBOUND (OFF) by JONES,SYDNEI
	04:31	21-26	V 5	GOOD! LAYUP by HOGUE,CAROLINE [PNT]
	04:31			ASSIST by KEARNEY,AMANDA
MISSED LAYUP by HARMAN,HEATHER	04:20			
	04:20			REBOUND (DEF) by LAYROCK,SYDNEY
	04:05			MISSED LAYUP by HOGUE,CAROLINE
REBOUND (DEADB) by TEAM	04:05			
	04:04			FOUL by HOGUE,CAROLINE
SUB IN: BERNARD,DAEJAH	04:04			
SUB IN: HEINZLER,ALICE	04:04			
SUB OUT: RICHARDS,PAYTON	04:04			
SUB OUT: SHIPLEY,LAUREN	04:04			
MISSED 3PTR by HARMAN,HEATHER	03:44			
	03:44			REBOUND (DEF) by JONES,SYDNEI
	03:25			TURNOVER by HOGUE,CAROLINE
STEAL by HEINZLER,ALICE	03:23			
MISSED JUMPER by HEINZLER,ALICE	03:19			
REBOUND (OFF) by TEAM	03:19			
SUB IN: VAUGHT,LEXIE	03:17			
SUB OUT: STANFIELD,BROOKE	03:17			
	03:17			SUB IN: PADGETT,PEYTON
	03:17			SUB OUT: HOGUE,CAROLINE
TURNOVER by PARKER,EMILY	03:16			
	03:02			TURNOVER by LAYROCK,SYDNEY
STEAL by HARMAN,HEATHER	03:02			
GOOD! JUMPER by PARKER,EMILY [PNT]	02:49	21-28	V 7	
SUB IN: SHIPLEY,LAUREN	02:34			
SUB IN: FERNANDEZ,LUCIA	02:34			
SUB OUT: BERNARD,DAEJAH	02:34			
SUB OUT: PARKER,EMILY	02:34			
	02:34			SUB IN: LAMPO,KELLIE
	02:34			SUB IN: COOPER,KENNEDY
	02:34			SUB OUT: CAPLES,CARISSA
	02:34			SUB OUT: JONES,SYDNEI
	02:21			TURNOVER by PADGETT,PEYTON
SUB IN: BERNARD,DAEJAH	02:21			
SUB OUT: SHIPLEY,LAUREN	02:21			
GOOD! LAYUP by HARMAN,HEATHER [PNT]	02:05	21-30	V 9	
	01:45	23-30	V 7	GOOD! LAYUP by LAYROCK,SYDNEY [PNT]
	01:45			ASSIST by KEARNEY,AMANDA
FOUL by FERNANDEZ,LUCIA	01:45			
	01:45			MISSED FT by LAYROCK,SYDNEY
	01:45			REBOUND (OFF) by COOPER,KENNEDY
SUB IN: PARKER,EMILY	01:45			
SUB OUT: FERNANDEZ,LUCIA	01:45			
	01:45			SUB IN: MILLER,FALAN
	01:45			SUB OUT: KEARNEY,AMANDA
	01:42			FOUL by COOPER,KENNEDY
	01:42			TURNOVER by COOPER,KENNEDY
GOOD! 3PTR by HEINZLER,ALICE	01:28	23-33	V 10	
ASSIST by HARMAN,HEATHER	01:28			
	01:23			TIMEOUT 30SEC
FOUL by BERNARD,DAEJAH	00:58			
SUB IN: RICHARDS,PAYTON	00:58			
SUB OUT: BERNARD,DAEJAH	00:58			
	00:56			TURNOVER by COOPER,KENNEDY
MISSED 3PTR by HEINZLER,ALICE	00:45			
	00:45			REBOUND (DEF) by LAYROCK,SYDNEY
FOUL by PARKER,EMILY	00:42			
	00:42	24-33	V 9	GOOD! FT by LAYROCK,SYDNEY
	00:42			MISSED FT by LAYROCK,SYDNEY
REBOUND (DEF) by TEAM	00:42			
	00:42			SUB IN: HOGUE,CAROLINE
	00:42			SUB IN: MCNAMARA,MACKENZIE
	00:42			SUB OUT: LAMPO,KELLIE
	00:42			SUB OUT: COOPER,KENNEDY
	00:30			FOUL by PADGETT,PEYTON
GOOD! FT by HARMAN,HEATHER	00:30	24-34	V 10	
MISSED FT by HARMAN,HEATHER	00:30			

VISITORS: Drury	Time	Score	Margin	HOME: Harding
	00:30			REBOUND (DEF) by HOGUE,CAROLINE
SUB IN: STANFIELD,BROOKE	00:30			
SUB OUT: HEINZLER,ALICE	00:30			
	00:04			MISSED LAYUP by PADGETT,PEYTON
REBOUND (DEF) by STANFIELD,BROOKE	00:04			

Drury 34, Harding 24

Period 2-only	In Paint	Off T/O	2nd Chance	Fast Break	Bench	
DU	8	14	2	0	4	Score tied - 0 times
HU	4	0	2	0	4	Lead changed - 0 times

Official Basketball Box Score -- Game Totals -- Second Half Statistics
Drury vs Harding
12/5/2017 7 p.m. at Searcy, Ark. (Rhodes-Reaves Field House)

Drury 31 • 7-1

##	Player	g	Total			3-Ptr			Rebounds			PF	TP	A	TO	Blk	Stl	Min
			FG-FGA	FG-FGA	FT-FTA	FG-FGA	FG-FGA	FT-FTA	Off	Def	Tot							
05	BERNARD,DAEJAH	g	1-2	1-2	3-4	0	2	2	1	6	2	3	0	2			18	
14	HEINZLER,ALICE	g	4-8	2-5	1-2	0	0	0	3	11	2	0	0	1			13	
15	HARMAN,HEAT HER	g	1-5	0-0	2-2	0	2	2	0	4	2	2	0	1			17	
24	FERNANDEZ,LUCIA	f	0-1	0-0	0-0	1	0	1	2	0	0	0	0	0			4	
34	DIEST ELKAMP,HAILEY	f	3-4	1-1	0-2	0	2	2	0	7	1	1	1	3			17	
10	VAUGHT ,LEXIE		0-0	0-0	0-0	0	0	0	0	0	0	0	0	0			1	
20	SHIPLEY,LAUREN		0-0	0-0	0-0	0	0	0	0	0	0	0	0	0			0	
21	RICHARDS,PAYTON		1-4	0-2	0-0	0	1	1	1	2	0	0	1	0			11	
23	LYNCH,AZIA		0-0	0-0	0-0	0	0	0	0	0	0	0	0	0			2	
30	STANFIELD,BROOKE		0-0	0-0	0-0	0	0	0	1	0	0	0	0	0			3	
33	PARKER,EMILY		0-3	0-2	1-2	0	0	0	1	1	0	0	0	0			14	
TEAM						0	2	2	0			0						
Totals			10-27	4-12	7-12	1	9	10	9	31	7	6	2	7			100	
FG %	3rd Qtr	8-15	53.3%	4th Qtr	2-12	16.7%	Half:	10-27	37.0%									
3FG %	3rd Qtr	4-8	50.0%	4th Qtr	0-4	00.0%	Half:	4-12	50.0%									
FT %	3rd Qtr	2-4	50.0%	4th Qtr	5-8	62.5%	Half:	7-12	58.3%									

Harding 33 • 3-5

##	Player	g	Total			3-Ptr			Rebounds			PF	TP	A	TO	Blk	Stl	Min
			FG-FGA	FG-FGA	FT-FTA	FG-FGA	FG-FGA	FT-FTA	Off	Def	Tot							
10	LAMPO,KELLIE	f	1-2	1-1	2-2	0	3	3	2	5	1	1	0	0			10	
13	PADGETT ,PEYTON	g	1-1	0-0	2-2	0	1	1	2	4	1	1	0	1			17	
14	CAPLES,CARISSA	g	2-2	0-0	0-0	0	0	0	0	4	0	0	0	0			5	
21	LAYROCK,SYDNEY	f	1-4	1-1	3-4	1	2	3	4	6	1	0	0	0			12	
42	COOPER,KENNEDY	f	1-5	0-2	0-0	0	2	2	1	2	1	4	1	2			10	
03	MILLER,FALAN		0-2	0-1	0-0	1	0	1	1	0	0	0	0	0			6	
04	MCNAMARA,MACKENZIE		0-1	0-0	0-0	0	0	0	1	0	1	1	0	0			2	
24	KEARNEY,AMANDA		1-1	0-0	0-0	0	0	0	1	2	3	2	2	0			15	
30	HOGUE,CAROLINE		3-3	0-0	0-0	0	8	8	0	6	1	1	2	1			12	
33	JONES,SYDNIE		2-2	0-0	0-0	0	1	1	1	4	0	0	1	0			11	
TEAM						0	0	0	0			1						
Totals			12-23	2-5	7-8	2	17	19	13	33	9	11	6	4			100	
FG %	3rd Qtr	6-14	42.9%	4th Qtr	6-9	66.7%	Half:	12-23	52.2%									
3FG %	3rd Qtr	0-3	00.0%	4th Qtr	2-2	100.0%	Half:	2-5	11.1%									
FT %	3rd Qtr	3-4	75.0%	4th Qtr	4-4	100.0%	Half:	7-8	87.5%									

Officials: Barry Hickingbotham, Garrett Forehand and Denis Tyus
 Technical Fouls: Drury- None. Harding- None.

Score by periods	1st	2nd	3rd	4th	Total
Drury	19	15	22	9	65
Harding	14	10	15	18	57

Points	In Paint	Off T/O	2nd Chance	Fast Break	Bench
DU	8	7	0	0	3
	18	2	0	2	12

Last FG - DU 4th-01:00, HU 4th-00:30.
 DU led for 19:59. HU led for 0:00. Game was tied for 0:00.

Score tied - 0 times
 Lead changed - 0 times

Drury vs Harding
12/5/2017; 7 p.m. at Searcy, Ark. (Rhodes-Reaves Field House)
Period 3 Play-By-Play

VISITORS: Drury	Time	Score	Margin	HOME: Harding
GOOD! JUMPER by DIESTELKAMP,HAILEY [PNT]	09:48	24-36	V 12	
ASSIST by HEINZLER,ALICE	09:48			
	09:33	26-36	V 10	GOOD! LAYUP by COOPER,KENNEDY [PNT]
	09:33			ASSIST by LAYROCK,SYDNEY
GOOD! 3PTR by HEINZLER,ALICE	09:23	26-39	V 13	
ASSIST by DIESTELKAMP,HAILEY	09:23			
	08:55	28-39	V 11	GOOD! LAYUP by CAPLES,CARISSA [PNT]
GOOD! 3PTR by HEINZLER,ALICE	08:45	28-42	V 14	
ASSIST by BERNARD,DAEJAH	08:45			
	08:30			MISSED 3PTR by COOPER,KENNEDY
REBOUND (DEF) by HARMAN,HEATHER	08:30			
MISSED 3PTR by HEINZLER,ALICE	08:23			
	08:23			REBOUND (DEF) by LAMPO,KELLIE
	08:09			MISSED LAYUP by LAMPO,KELLIE
REBOUND (DEF) by DIESTELKAMP,HAILEY	08:09			
	08:01			FOUL by LAMPO,KELLIE
	08:01			SUB IN: MILLER,FALAN
	08:01			SUB OUT: CAPLES,CARISSA
TURNOVER by HARMAN,HEATHER	08:00			
	07:59			STEAL by COOPER,KENNEDY
	07:56			FOUL by COOPER,KENNEDY
	07:56			TURNOVER by COOPER,KENNEDY
GOOD! LAYUP by HARMAN,HEATHER [PNT]	07:45	28-44	V 16	
FOUL by FERNANDEZ,LUCIA	07:32			
SUB IN: PARKER,EMILY	07:32			
SUB OUT: FERNANDEZ,LUCIA	07:32			
	07:28			MISSED LAYUP by COOPER,KENNEDY
REBOUND (DEF) by TEAM	07:28			
MISSED LAYUP by HARMAN,HEATHER	07:17			
	07:17			REBOUND (DEF) by LAYROCK,SYDNEY
	07:02	30-44	V 14	GOOD! LAYUP by PADGETT,PEYTON [PNT]
	07:02			ASSIST by COOPER,KENNEDY
TURNOVER by HARMAN,HEATHER	06:57			
	06:56			STEAL by COOPER,KENNEDY
	06:35			SUB IN: HOGUE,CAROLINE
	06:35			SUB OUT: LAMPO,KELLIE
	06:33			MISSED JUMPER by COOPER,KENNEDY
BLOCK by DIESTELKAMP,HAILEY	06:33			
REBOUND (DEF) by DIESTELKAMP,HAILEY	06:30			
GOOD! JUMPER by HEINZLER,ALICE	06:23	30-46	V 16	
ASSIST by HARMAN,HEATHER	06:23			
	06:07			MISSED LAYUP by MILLER,FALAN
	06:07			REBOUND (OFF) by MILLER,FALAN
SUB IN: RICHARDS,PAYTON	05:59			
SUB OUT: HARMAN,HEATHER	05:59			
	05:53			MISSED 3PTR by COOPER,KENNEDY
REBOUND (DEF) by BERNARD,DAEJAH	05:53			
MISSED LAYUP by DIESTELKAMP,HAILEY	05:42			
	05:42			BLOCK by COOPER,KENNEDY
	05:41			REBOUND (DEF) by HOGUE,CAROLINE
FOUL by HEINZLER,ALICE	05:28			
SUB IN: VAUGHT,LEXIE	05:28			
SUB IN: STANFIELD,BROOKE	05:28			
SUB OUT: HEINZLER,ALICE	05:28			
SUB OUT: DIESTELKAMP,HAILEY	05:28			
	05:28			SUB IN: KEARNEY,AMANDA
	05:28			SUB IN: MCNAMARA,MACKENZIE
	05:28			SUB IN: CAPLES,CARISSA
	05:28			SUB OUT: PADGETT,PEYTON
	05:28			SUB OUT: LAYROCK,SYDNEY
	05:28			SUB OUT: COOPER,KENNEDY
	05:27			MISSED 3PTR by MILLER,FALAN
REBOUND (DEF) by TEAM	05:27			
MISSED 3PTR by PARKER,EMILY	05:15			
	05:15			REBOUND (DEF) by HOGUE,CAROLINE
	04:52	32-46	V 14	GOOD! LAYUP by HOGUE,CAROLINE [PNT]
	04:52			ASSIST by MCNAMARA,MACKENZIE
TIMEOUT MEDIA	04:36			
GOOD! LAYUP by RICHARDS,PAYTON [PNT]	04:32	32-48	V 16	

VISITORS: Drury	Time	Score	Margin	HOME: Harding
	04:10			TURNOVER by MCNAMARA,MACKENZIE
STEAL by BERNARD,DAEJAH	04:08			
SUB IN: HARMAN,HEATHER	04:06			
SUB IN: HEINZLER,ALICE	04:06			
SUB OUT: BERNARD,DAEJAH	04:06			
SUB OUT: VAUGHT,LEXIE	04:06			
MISSED LAYUP by HARMAN,HEATHER	03:54			
	03:54			REBOUND (DEF) by HOGUE,CAROLINE
	03:31			MISSED LAYUP by MCNAMARA,MACKENZIE
REBOUND (DEF) by RICHARDS,PAYTON	03:31			
MISSED 3PTR by RICHARDS,PAYTON	03:09			
	03:09			REBOUND (DEF) by HOGUE,CAROLINE
	02:59	34-48	V 14	GOOD! JUMPER by CAPLES,CARISSA [PNT]
	02:42			FOUL by MCNAMARA,MACKENZIE
	02:42			SUB IN: LAYROCK,SYDNEY
	02:42			SUB IN: PADGETT,PEYTON
	02:42			SUB IN: LAMPO,KELLIE
	02:42			SUB IN: JONES,SYDNE
	02:42			SUB OUT: HOGUE,CAROLINE
	02:42			SUB OUT: KEARNEY,AMANDA
	02:42			SUB OUT: MCNAMARA,MACKENZIE
	02:42			SUB OUT: CAPLES,CARISSA
MISSED 3PTR by HEINZLER,ALICE	02:36			
	02:36			REBOUND (DEF) by LAMPO,KELLIE
FOUL by RICHARDS,PAYTON	02:14			
SUB IN: BERNARD,DAEJAH	02:14			
SUB OUT: HARMAN,HEATHER	02:14			
FOUL by STANFIELD,BROOKE	02:09			
	02:09	35-48	V 13	GOOD! FT by LAYROCK,SYDNEY
	02:09	36-48	V 12	GOOD! FT by LAYROCK,SYDNEY
	02:04			FOUL by LAYROCK,SYDNEY
SUB IN: DIESTELKAMP,HAILEY	02:04			
SUB OUT: STANFIELD,BROOKE	02:04			
TURNOVER by BERNARD,DAEJAH	02:03			
	02:02			STEAL by PADGETT,PEYTON
	02:00			TURNOVER by PADGETT,PEYTON
	01:57			FOUL by JONES,SYDNE
MISSED FT by DIESTELKAMP,HAILEY	01:57			
REBOUND (DEADB) by TEAM	01:57			
MISSED FT by DIESTELKAMP,HAILEY	01:57			
	01:57			REBOUND (DEF) by LAMPO,KELLIE
SUB IN: LYNCH,AZIA	01:57			
SUB OUT: PARKER,EMILY	01:57			
	01:57			SUB IN: KEARNEY,AMANDA
	01:57			SUB OUT: MILLER,FALAN
	01:40			TIMEOUT 30SEC
	01:40			TIMEOUT MEDIA
FOUL by HEINZLER,ALICE	01:29			
	01:29			MISSED FT by LAYROCK,SYDNEY
	01:29			REBOUND (DEADB) by TEAM
	01:29	37-48	V 11	GOOD! FT by LAYROCK,SYDNEY
GOOD! 3PTR by DIESTELKAMP,HAILEY	01:19	37-51	V 14	
ASSIST by BERNARD,DAEJAH	01:19			
	00:59			TURNOVER by LAMPO,KELLIE
STEAL by DIESTELKAMP,HAILEY	00:57			
	00:45			FOUL by PADGETT,PEYTON
GOOD! FT by BERNARD,DAEJAH	00:45	37-52	V 15	
GOOD! FT by BERNARD,DAEJAH	00:45	37-53	V 16	
SUB IN: HARMAN,HEATHER	00:45			
SUB OUT: HEINZLER,ALICE	00:45			
	00:26	39-53	V 14	GOOD! JUMPER by KEARNEY,AMANDA
GOOD! 3PTR by BERNARD,DAEJAH	00:03	39-56	V 17	
ASSIST by HARMAN,HEATHER	00:03			

Drury 56, Harding 39

Period 3-only	In Paint	Off T/O	2nd Chance	Fast Break	Bench	
DU	6	4	0	0	2	Score tied - 0 times
HU	10	0	0	0	4	Lead changed - 0 times

Drury vs Harding
12/5/2017; 7 p.m. at Searcy, Ark. (Rhodes-Reaves Field House)
Period 4 Play-By-Play

VISITORS: Drury	Time	Score	Margin	HOME: Harding
SUB IN: PARKER,EMILY	10:00			
SUB IN: RICHARDS,PAYTON	10:00			
SUB OUT: HEINZLER,ALICE	10:00			
SUB OUT: FERNANDEZ,LUCIA	10:00			
	10:00			SUB IN: JONES,SYDNIE
	10:00			SUB IN: KEARNEY,AMANDA
	10:00			SUB IN: HOGUE,CAROLINE
	10:00			SUB OUT: LAMPO,KELLIE
	10:00			SUB OUT: CAPLES,CARISSA
	10:00			SUB OUT: LAYROCK,SYDNEY
TURNOVER by BERNARD,DAEJAH	09:47			
	09:34	41-56	V 15	GOOD! LAYUP by JONES,SYDNIE [PNT]
	09:34			ASSIST by HOGUE,CAROLINE
MISSED 3PTR by PARKER,EMILY	09:09			
	09:09			REBOUND (DEF) by PADGETT,PEYTON
	08:37			TURNOVER by TEAM
SUB IN: HEINZLER,ALICE	08:37			
SUB OUT: RICHARDS,PAYTON	08:37			
MISSED 3PTR by HEINZLER,ALICE	08:17			
	08:17			BLOCK by KEARNEY,AMANDA
	08:16			REBOUND (DEF) by HOGUE,CAROLINE
	08:09	43-56	V 13	GOOD! LAYUP by JONES,SYDNIE [FB/PNT]
	08:09			ASSIST by KEARNEY,AMANDA
MISSED JUMPER by HARMAN,HEATHER	07:55			
	07:55			BLOCK by HOGUE,CAROLINE
	07:54			REBOUND (DEF) by COOPER,KENNEDY
	07:32	45-56	V 11	GOOD! LAYUP by HOGUE,CAROLINE [PNT]
	07:32			ASSIST by PADGETT,PEYTON
TIMEOUT 30SEC	07:31			
MISSED 3PTR by BERNARD,DAEJAH	07:01			
	07:01			REBOUND (DEF) by HOGUE,CAROLINE
	06:49			TURNOVER by COOPER,KENNEDY
STEAL by BERNARD,DAEJAH	06:47			
TURNOVER by BERNARD,DAEJAH	06:39			
	06:38			STEAL by HOGUE,CAROLINE
	06:18			TIMEOUT 30SEC
	06:13			TURNOVER by COOPER,KENNEDY
STEAL by HARMAN,HEATHER	06:11			
MISSED LAYUP by HEINZLER,ALICE	05:45			
	05:45			BLOCK by KEARNEY,AMANDA
	05:44			REBOUND (DEF) by JONES,SYDNIE
FOUL by HEINZLER,ALICE	05:42			
SUB IN: RICHARDS,PAYTON	05:42			
SUB OUT: HEINZLER,ALICE	05:42			
	05:42			SUB IN: LAYROCK,SYDNEY
	05:42			SUB IN: LAMPO,KELLIE
	05:42			SUB OUT: HOGUE,CAROLINE
	05:42			SUB OUT: COOPER,KENNEDY
FOUL by BERNARD,DAEJAH	05:31			
	05:31	46-56	V 10	GOOD! FT by LAMPO,KELLIE
	05:31	47-56	V 9	GOOD! FT by LAMPO,KELLIE
MISSED LAYUP by PARKER,EMILY	05:20			
	05:20			BLOCK by JONES,SYDNIE
	05:18			REBOUND (DEF) by LAYROCK,SYDNEY
	05:03	50-56	V 6	GOOD! 3PTR by LAYROCK,SYDNEY
	05:03			ASSIST by LAMPO,KELLIE
	04:37			FOUL by LAMPO,KELLIE
MISSED FT by PARKER,EMILY	04:37			
REBOUND (DEADB) by TEAM	04:37			
GOOD! FT by PARKER,EMILY	04:37	50-57	V 7	
	04:10	53-57	V 4	GOOD! 3PTR by LAMPO,KELLIE
	04:10			ASSIST by KEARNEY,AMANDA
MISSED 3PTR by RICHARDS,PAYTON	03:52			
REBOUND (DEADB) by TEAM	03:52			
	03:48			FOUL by LAYROCK,SYDNEY
SUB IN: FERNANDEZ,LUCIA	03:48			
SUB OUT: PARKER,EMILY	03:48			
	03:48			SUB IN: HOGUE,CAROLINE
	03:48			SUB OUT: JONES,SYDNIE

VISITORS: Drury	Time	Score	Margin	HOME: Harding
TURNOVER by DIESTELKAMP,HAILEY	03:44			
	03:19			MISSED LAYUP by LAYROCK,SYDNEY
	03:19			REBOUND (OFF) by LAYROCK,SYDNEY
	03:16			MISSED LAYUP by LAYROCK,SYDNEY
BLOCK by RICHARDS,PAYTON	03:16			
REBOUND (DEF) by HARMAN,HEATHER	03:14			
MISSED LAYUP by HARMAN,HEATHER	03:06			
	03:06			BLOCK by HOGUE,CAROLINE
REBOUND (OFF) by FERNANDEZ,LUCIA	03:05			
MISSED LAYUP by FERNANDEZ,LUCIA	02:53			
	02:53			REBOUND (DEF) by HOGUE,CAROLINE
	02:41			TURNOVER by HOGUE,CAROLINE
STEAL by DIESTELKAMP,HAILEY	02:39			
MISSED JUMPER by RICHARDS,PAYTON	02:15			
	02:15			REBOUND (DEF) by HOGUE,CAROLINE
	02:06			FOUL by KEARNEY,AMANDA
	02:06			TURNOVER by KEARNEY,AMANDA
SUB IN: HEINZLER,ALICE	02:06			
SUB OUT: RICHARDS,PAYTON	02:06			
	02:06			SUB IN: JONES,SYDNIE
	02:06			SUB OUT: LAMPO,KELLIE
GOOD! LAYUP by HEINZLER,ALICE [PNT]	01:37	53-59	V 6	
FOUL by FERNANDEZ,LUCIA	01:28			
SUB IN: PARKER,EMILY	01:28			
SUB OUT: FERNANDEZ,LUCIA	01:28			
	01:26			MISSED JUMPER by LAYROCK,SYDNEY
REBOUND (DEF) by BERNARD,DAEJAH	01:26			
GOOD! JUMPER by DIESTELKAMP,HAILEY	01:00	53-61	V 8	
ASSIST by HEINZLER,ALICE	01:00			
FOUL by PARKER,EMILY	00:44			
	00:44	54-61	V 7	GOOD! FT by PADGETT,PEYTON
	00:44	55-61	V 6	GOOD! FT by PADGETT,PEYTON
TIMEOUT TEAM	00:44			
	00:44			SUB IN: COOPER,KENNEDY
	00:44			SUB OUT: JONES,SYDNIE
	00:43			FOUL by LAYROCK,SYDNEY
	00:37			FOUL by PADGETT,PEYTON
MISSED FT by BERNARD,DAEJAH	00:37			
REBOUND (DEADB) by TEAM	00:37			
GOOD! FT by BERNARD,DAEJAH	00:37	55-62	V 7	
	00:30	57-62	V 5	GOOD! LAYUP by HOGUE,CAROLINE [PNT]
	00:30			ASSIST by KEARNEY,AMANDA
TIMEOUT 30SEC	00:29			
	00:28			FOUL by LAYROCK,SYDNEY
GOOD! FT by HARMAN,HEATHER	00:28	57-63	V 6	
GOOD! FT by HARMAN,HEATHER	00:28	57-64	V 7	
	00:28			TIMEOUT TEAM
	00:28			SUB IN: MILLER,FALAN
	00:28			SUB OUT: LAYROCK,SYDNEY
	00:20			TURNOVER by COOPER,KENNEDY
STEAL by HEINZLER,ALICE	00:19			
	00:19			FOUL by MILLER,FALAN
GOOD! FT by HEINZLER,ALICE	00:19	57-65	V 8	
MISSED FT by HEINZLER,ALICE	00:19			
	00:19			REBOUND (DEF) by COOPER,KENNEDY
	00:04			TURNOVER by KEARNEY,AMANDA
STEAL by DIESTELKAMP,HAILEY	00:03			

Drury 65, Harding 57

Period 4-only	In Paint	Off T/O	2nd Chance	Fast Break	Bench	
DU	2	3	0	0	1	Score tied - 0 times
HU	8	2	0	2	8	Lead changed - 0 times

Drury vs Harding
12/5/2017; 7 p.m. at Searcy, Ark. (Rhodes-Reaves Field House)
Scoring/Runs Reference

Period 1

Drury	VRun	Score	Margin	HRun	Harding
		0-2	2		LAMPO LAYUP [P] - 09:41
09:27 - HEINZLER 3PTR	-	3-2	-1		
07:13 - HARMAN 3PTR	6-0	6-2	-4		
		6-4	-2		COOPER LAYUP [P] - 06:42
06:35 - DIESTELKAMP LAYUP [P]	-	8-4	-4		
06:06 - HARMAN FT	3-0	9-4	-5		
		9-6	-3		MILLER JUMPER - 05:46
05:36 - HEINZLER 3PTR	-	12-6	-6		
		12-8	-4		KEARNEY LAYUP [P] - 04:56
04:31 - HARMAN 3PTR	-	15-8	-7		
03:54 - HARMAN FT	4-0	16-8	-8		
03:54 - HARMAN FT	5-0	17-8	-9		
		17-9	-8		JONES FT - 03:07
		17-11	-6	3-0	JONES LAYUP [P] - 01:58
		17-12	-5	4-0	JONES FT - 01:58
		17-14	-3	6-0	JONES LAYUP [P] - 00:25
00:05 - HARMAN LAYUP [P]	-	19-14	-5		

Drury vs Harding
12/5/2017; 7 p.m. at Searcy, Ark. (Rhodes-Reaves Field House)
Scoring/Runs Reference

Period 2

Drury	VRun	Score	Margin	HRun	Harding
08:15 - RICHARDS LAYUP [P]	-	21-14	-7		
07:54 - HARMAN 3PTR	NaN-0	24-14	-10		
		24-15	-9		MILLER FT - 07:41
		24-16	-8	2-0	MILLER FT - 07:41
05:39 - HARMAN LAYUP [P]	-	26-16	-10		
		26-19	-7		CAPLES 3PTR - 05:20
		26-21	-5	5-0	HOGUE LAYUP [P] - 04:31
02:49 - PARKER JUMPER [P]	-	28-21	-7		
02:05 - HARMAN LAYUP [P]	4-0	30-21	-9		
		30-23	-7		LAYROCK LAYUP [P] - 01:45
01:28 - HEINZLER 3PTR	-	33-23	-10		
		33-24	-9		LAYROCK FT - 00:42
00:30 - HARMAN FT	-	34-24	-10		

Drury vs Harding
12/5/2017; 7 p.m. at Searcy, Ark. (Rhodes-Reaves Field House)
Scoring/Runs Reference

Period 3

Drury	VRun	Score	Margin	HRun	Harding
09:48 - DIESTELKAMP JUMPER [P]	-	36-24	-12		
		36-26	-10		COOPER LAYUP [P] - 09:33
09:23 - HEINZLER 3PTR	-	39-26	-13		
		39-28	-11		CAPLES LAYUP [P] - 08:55
08:45 - HEINZLER 3PTR	-	42-28	-14		
07:45 - HARMAN LAYUP [P]	5-0	44-28	-16		
		44-30	-14		PADGETT LAYUP [P] - 07:02
06:23 - HEINZLER JUMPER	-	46-30	-16		
		46-32	-14		HOGUE LAYUP [P] - 04:52
04:32 - RICHARDS LAYUP [P]	-	48-32	-16		
		48-34	-14		CAPLES JUMPER [P] - 02:59
		48-35	-13	3-0	LAYROCK FT - 02:09
		48-36	-12	4-0	LAYROCK FT - 02:09
		48-37	-11	5-0	LAYROCK FT - 01:29
01:19 - DIESTELKAMP 3PTR	-	51-37	-14		
00:45 - BERNARD FT	4-0	52-37	-15		
00:45 - BERNARD FT	5-0	53-37	-16		
		53-39	-14		KEARNEY JUMPER - 00:26
00:03 - BERNARD 3PTR	-	56-39	-17		

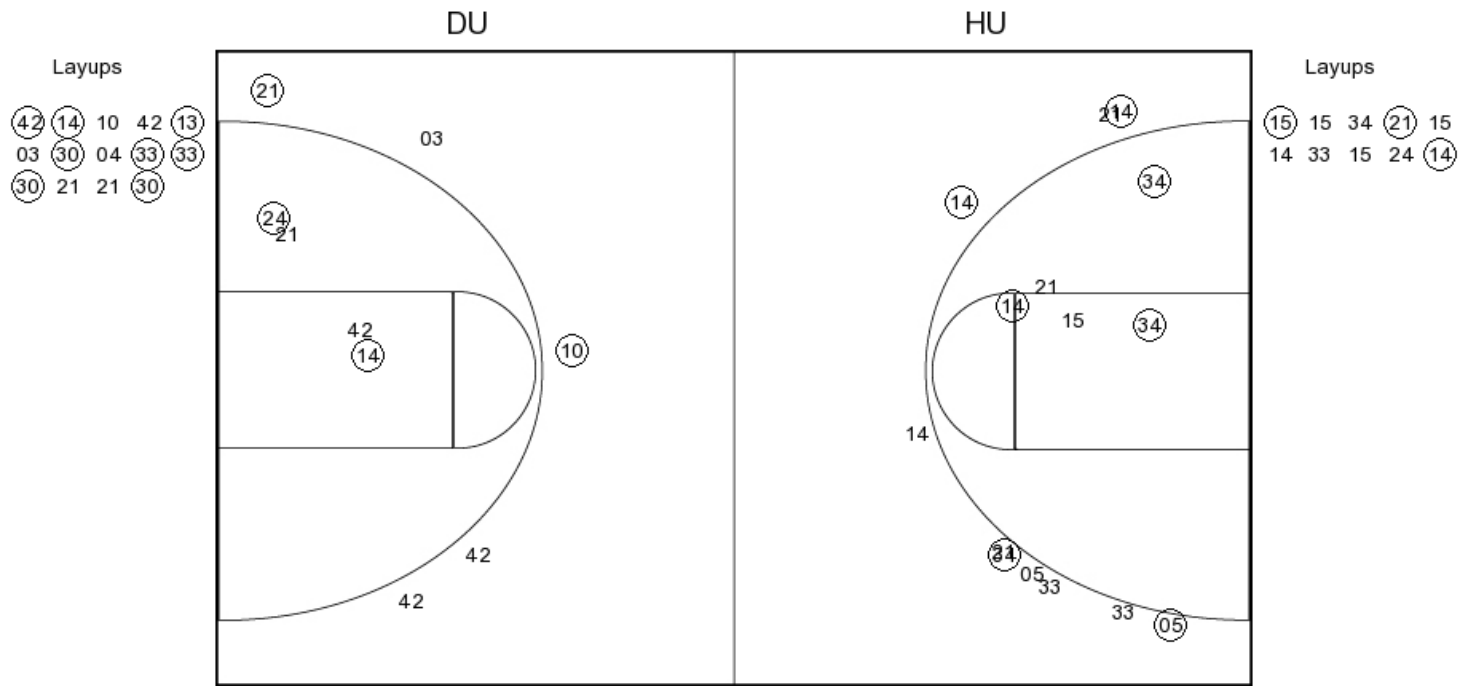
Drury vs Harding
12/5/2017; 7 p.m. at Searcy, Ark. (Rhodes-Reaves Field House)
Scoring/Runs Reference

Period 4

Drury	VRun	Score	Margin	HRun	Harding
		56-41	-15		JONES LAYUP [P] - 09:34
		56-43	-13	NaN-0	JONES LAYUP [P] [F] - 08:09
		56-45	-11	NaN-0	HOGUE LAYUP [P] - 07:32
		56-46	-10	NaN-0	LAMPO FT - 05:31
		56-47	-9	NaN-0	LAMPO FT - 05:31
		56-50	-6	NaN-0	LAYROCK 3PTR - 05:03
04:37 - PARKER FT	-	57-50	-7		
		57-53	-4		LAMPO 3PTR - 04:10
01:37 - HEINZLER LAYUP [P]	-	59-53	-6		
01:00 - DIESTELKAMP JUMPER	4-0	61-53	-8		
		61-54	-7		PADGETT FT - 00:44
		61-55	-6	2-0	PADGETT FT - 00:44
00:37 - BERNARD FT	-	62-55	-7		
		62-57	-5		HOGUE LAYUP [P] - 00:30
00:28 - HARMAN FT	-	63-57	-6		
00:28 - HARMAN FT	2-0	64-57	-7		
00:19 - HEINZLER FT	3-0	65-57	-8		

Drury vs Harding
OFFICIAL SHOT CHART
 12/5/2017 at Searcy, Ark. (Rhodes-Reaves Field House)

PERIOD 2



DU PERIOD 2

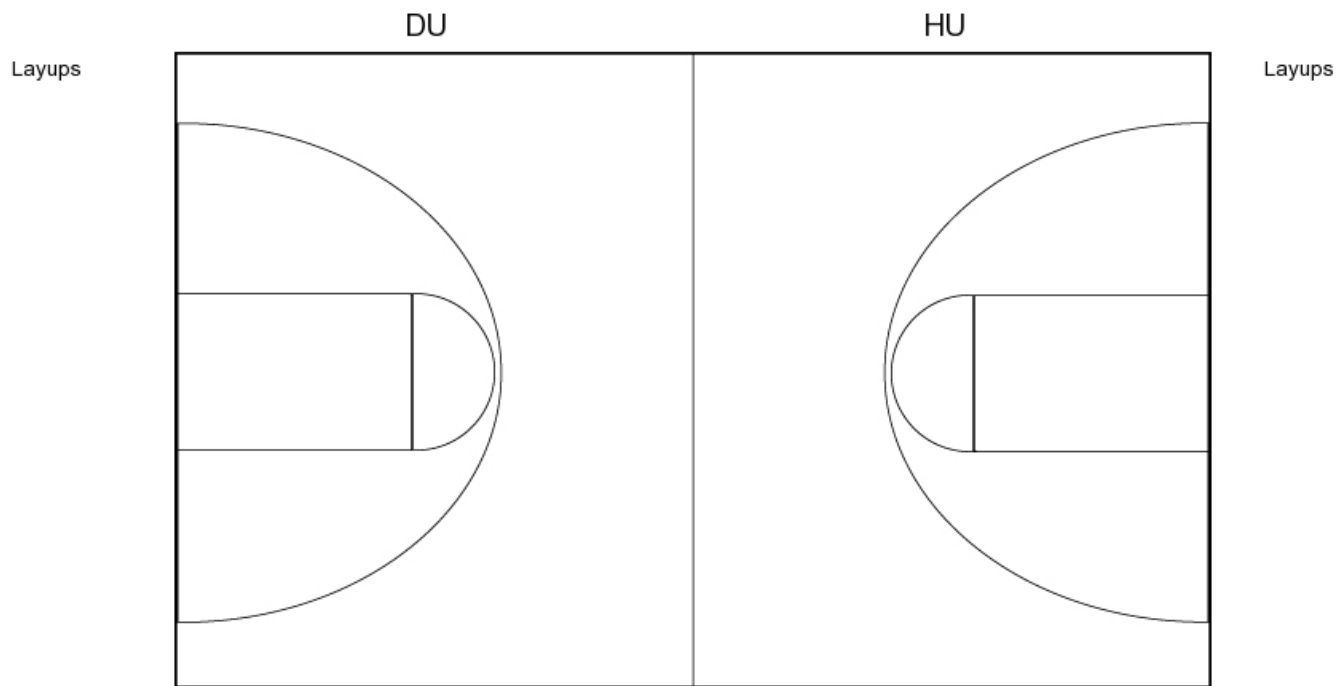
FG Made
 FG Attempted
 3PFG Made
 3PFG Attempted

HU PERIOD 2

FG Made
 FG Attempted
 3PFG Made
 3PFG Attempted

Drury vs Harding
 OFFICIAL SHOT CHART
 12/5/2017 at Searcy, Ark. (Rhodes-Reaves Field House)

PERIOD 3



DU PERIOD 3

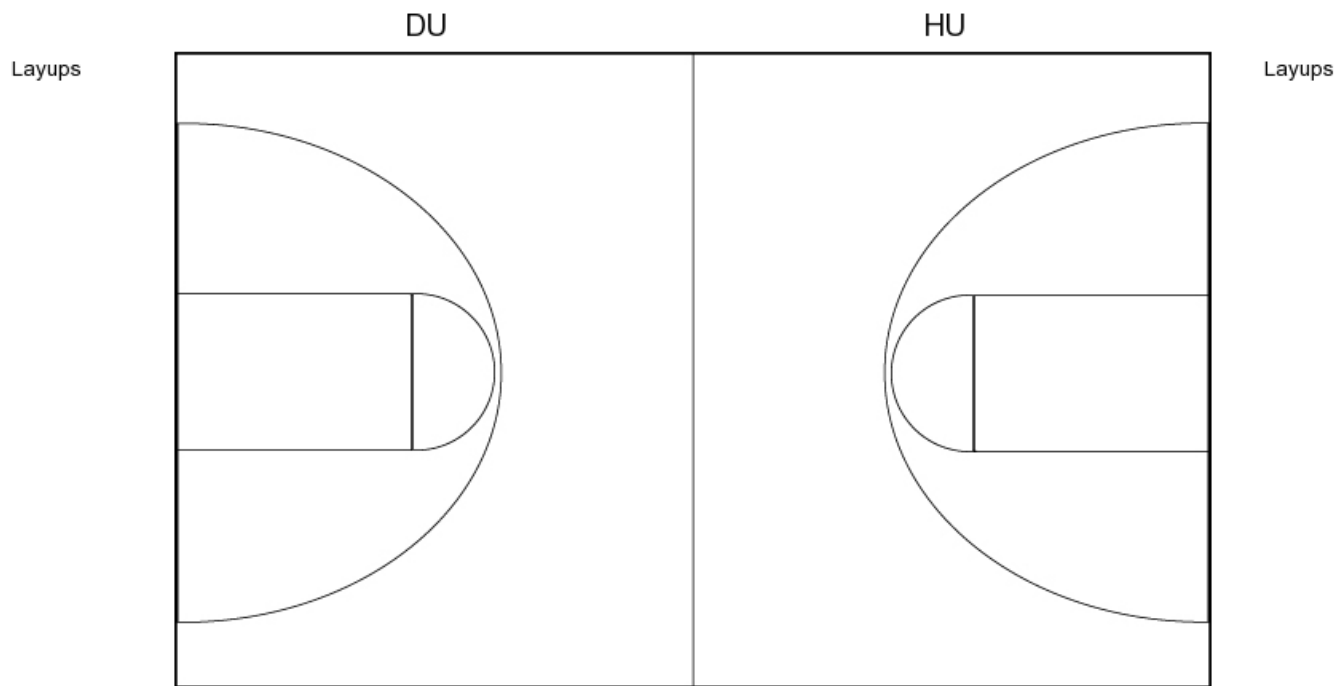
FG Made	10
FG Attempted	27
3PFG Made	4
3PFG Attempted	12

HU PERIOD 3

FG Made	12
FG Attempted	23
3PFG Made	2
3PFG Attempted	5

Drury vs Harding
OFFICIAL SHOT CHART
12/5/2017 at Searcy, Ark. (Rhodes-Reaves Field House)

PERIOD 4



DU PERIOD 4

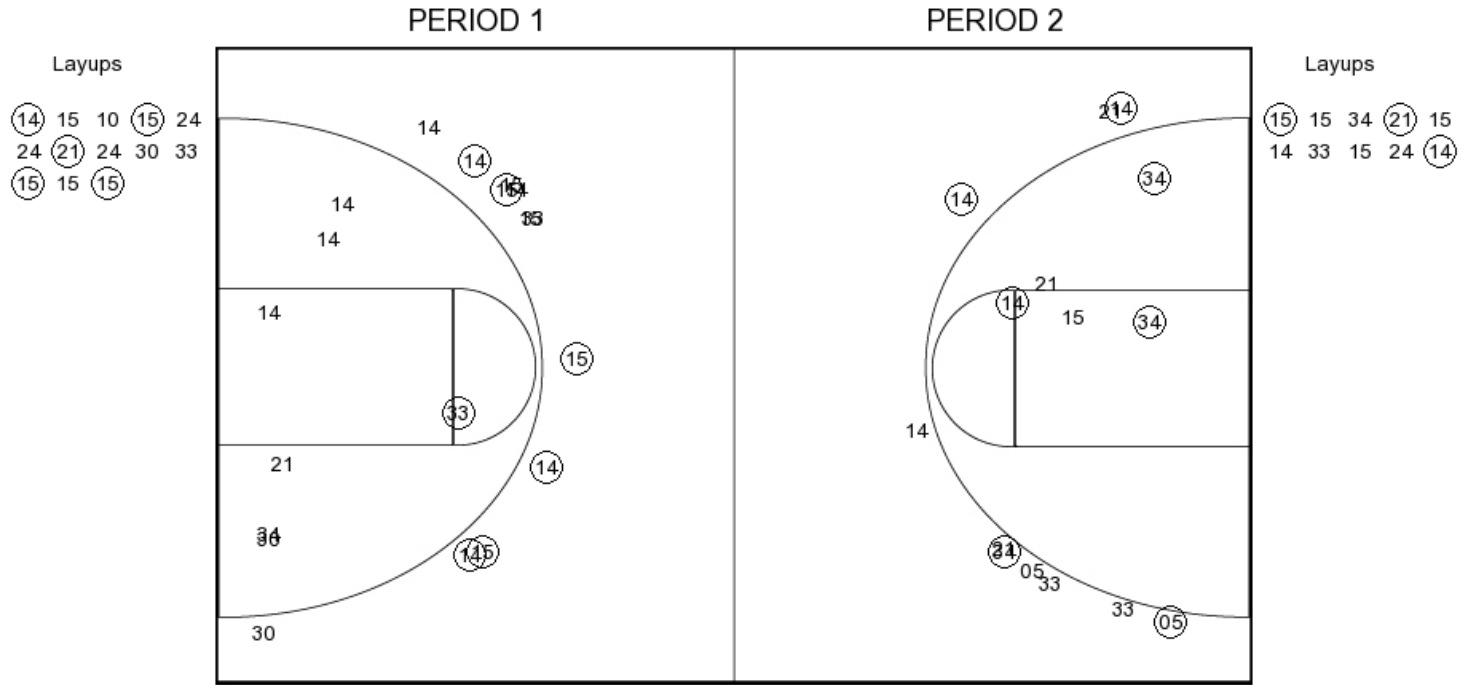
FG Made
FG Attempted
3PFG Made
3PFG Attempted

HU PERIOD 4

FG Made
FG Attempted
3PFG Made
3PFG Attempted

Drury vs Harding
OFFICIAL SHOT CHART
 12/5/2017 at Searcy, Ark. (Rhodes-Reaves Field House)

Drury



DU PERIOD 1

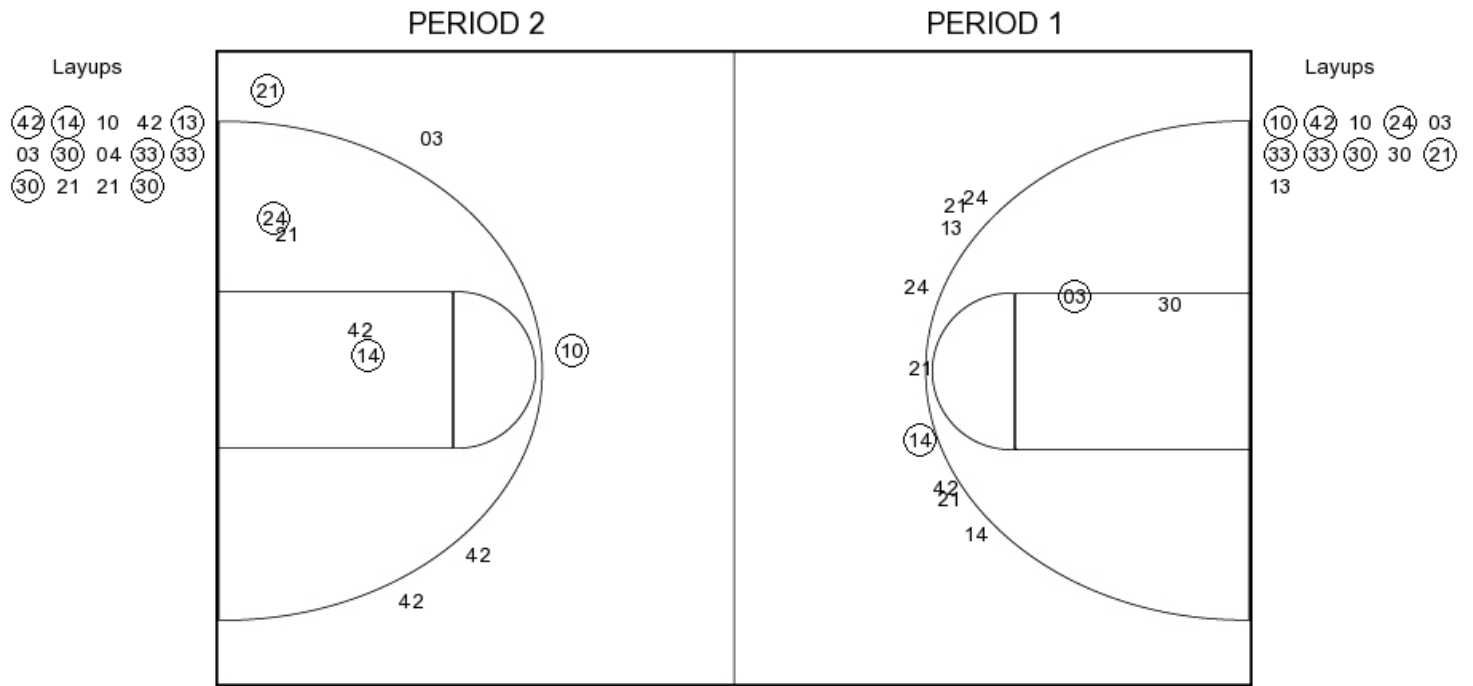
FG Made	12
FG Attempted	32
3PFG Made	6
3PFG Attempted	12

DU PERIOD 2

FG Made	
FG Attempted	
3PFG Made	
3PFG Attempted	

Drury vs Harding
OFFICIAL SHOT CHART
12/5/2017 at Searcy, Ark. (Rhodes-Reaves Field House)

Harding



HU PERIOD 1

FG Made	9
FG Attempted	22
3PFG Made	1
3PFG Attempted	9

HU PERIOD 2

FG Made	
FG Attempted	
3PFG Made	
3PFG Attempted	