

FINAL SCORE

Southwestern Okla. **84**
8-0, 4-0 GAC

Harding **73**
3-5, 1-3 GAC

December 02, 2017 • Searcy, Ark. (Rhodes-Reaves Field House)

FINAL STATISTICS

Official Basketball Box Score -- Game Totals -- Final Statistics
Southwestern Okla. vs Harding
12/2/2017 1 p.m. at Searcy, Ark. (Rhodes-Reaves Field House)

Southwestern Okla. 84 - 8-0, 4-0 GAC

##	Player	g	Total		3-Ptr		Rebounds			PF	TP	A	TO	Blk	Stl	Min
			FG-FGA	FG-FGA	FT-FTA	Off	Def	Tot								
12	TUCKER,HAILEY		9-25	3-6	3-4	4	4	8	3	24	0	1	6	2	38	
14	PRIDDY,HAYDEN		7-16	0-2	10-11	1	2	3	1	24	3	1	0	1	40	
15	HEDRICK,TAYLOR		2-11	0-2	2-4	1	2	3	4	6	1	1	0	2	26	
21	ASKA,TYRA		7-12	1-3	2-2	2	6	8	4	17	0	4	0	0	30	
23	FRANKS,BETHANY	f	2-5	0-0	1-1	2	7	9	4	5	0	0	2	4	21	
05	MIDDLETON,NICOLE		0-2	0-0	0-2	2	0	2	5	0	0	0	1	1	13	
11	GRAY,SAVANNAH		1-3	0-2	0-0	0	2	2	3	2	1	0	0	0	11	
32	MCALISTER,SHALIE		0-0	0-0	0-0	0	1	1	0	0	0	1	1	0	5	
33	FAUMUI,PENINA		2-3	0-0	1-2	1	1	2	1	5	0	0	0	0	6	
34	HARVEY,ALEXA		0-1	0-1	1-2	0	0	0	0	1	1	1	0	0	10	
TEAM						6	5	11	0		0					
TOTALS			30-78	4-16	20-28	19	30	49	25	84	6	9	10	10	200	

Deadball Rebounds: 3,2

FG %	1st Half:	15-44	34.1%	2nd Half:	15-34	44.1%	Game:	30-78	38.5%					
	1st Qtr	6-20	30.0%	2nd Qtr	9-24	37.5%	3rd Qtr	9-18	50.0%	4th Qtr	6-16	37.5%		
3FG %	1st Half:	1-8	12.5%	2nd Half:	3-8	37.5%	Game:	4-16	25.0%					
	1st Qtr	1-5	20.0%	2nd Qtr	0-3	00.0%	3rd Qtr	2-4	50.0%	4th Qtr	1-4	25.0%		
FT %	1st Half:	2-6	33.3%	2nd Half:	18-22	81.8%	Game:	20-28	71.4%					
	1st Qtr	1-2	50.0%	2nd Qtr	1-4	25.0%	3rd Qtr	3-6	50.0%	4th Qtr	15-16	93.8%		

Harding 73 - 3-5, 1-3 GAC

##	Player	g	Total		3-Ptr		Rebounds			PF	TP	A	TO	Blk	Stl	Min
			FG-FGA	FG-FGA	FT-FTA	Off	Def	Tot								
03	MILLER,FALAN		3-10	2-6	2-3	1	4	5	2	10	3	2	0	1	33	
13	PADGETT,PEYTON		2-5	1-3	0-0	5	1	6	4	5	3	2	0	1	31	
21	LAYROCK,SYDNEY	f	3-9	1-3	3-4	0	3	3	4	10	1	4	3	0	24	
30	HOGUE,CAROLINE	f	2-14	0-2	4-8	5	11	16	1	8	3	2	2	0	21	
42	COOPER,KENNEDY	f	2-8	0-2	0-0	1	1	2	2	4	0	0	1	0	16	
04	MCNAMARA,MACKENZIE		0-0	0-0	0-0	0	0	0	1	0	1	0	1	0	10	
10	LAMPO,KELLIE		7-11	0-1	8-11	3	5	8	1	22	0	2	1	0	21	
14	CAPLES,CARISSA		2-3	0-0	1-2	0	1	1	0	5	1	2	2	0	16	
24	KEARNEY,AMANDA		1-7	1-5	1-2	0	4	4	4	4	1	0	0	0	12	
33	JONES,SYDNIE		2-3	0-0	1-2	2	3	5	1	5	1	2	0	1	16	
TEAM						2	1	3	0		0					
TOTALS			24-70	5-22	20-32	19	34	53	20	73	14	16	10	3	200	

Deadball Rebounds: 7,0

FG %	1st Half:	10-31	32.3%	2nd Half:	14-39	35.9%	Game:	24-70	34.3%					
	1st Qtr	4-15	26.7%	2nd Qtr	6-16	37.5%	3rd Qtr	5-15	33.3%	4th Qtr	9-24	37.5%		
3FG %	1st Half:	3-10	30.0%	2nd Half:	2-12	16.7%	Game:	5-22	22.7%					
	1st Qtr	3-6	50.0%	2nd Qtr	0-4	00.0%	3rd Qtr	0-3	00.0%	4th Qtr	2-9	22.2%		
FT %	1st Half:	4-8	50.0%	2nd Half:	16-24	66.7%	Game:	20-32	62.5%					
	1st Qtr	1-2	50.0%	2nd Qtr	3-6	50.0%	3rd Qtr	7-10	70.0%	4th Qtr	9-14	64.3%		

Officials: Eric Baker, Gene Etheridge and Steve Miller
 Technical Fouls: Southwestern Okla.- None. Harding- TEAM;
 Attendance: 702

Score by periods	1st	2nd	3rd	4th	Total
Southwestern Okla.	14	19	23	28	84
Harding	12	15	17	29	73

Points	In Paint	Off T/O	2nd Chance	Fast Break	Bench
SWOSU	50	16	10	4	8
HU	34	10	17	2	36

Last FG - SWOSU 4th-00:50, HU 4th-00:28.
 Largest lead - Southwestern Okla. by 17 4th-08:21; Harding by 3 1st-09:21
 SWOSU led for 38:27. HU led for 0:42. Game was tied for 0:51.

Score tied - 1 times; Lead changed - 1 times

Official Basketball Box Score -- Game Totals -- First Half Statistics
Southwestern Okla. vs Harding
12/2/2017 1 p.m. at Searcy, Ark. (Rhodes-Reaves Field House)

Southwestern Okla. 33 • 8-0, 4-0 GAC

##	Player		Total			Rebounds			PF	TP	A	TO	Blk	Stl	Min
			FG-FGA	3-Ptr FG-FGA	FT-FTA	Off	Def	Tot							
12	TUCKER,HAILEY	g	3-15	0-2	1-2	2	1	3	0	7	0	0	1	2	18
14	PRIDDY,HAYDEN	g	4-10	0-1	0-0	1	1	2	1	8	1	0	0	0	20
15	HEDRICK,TAYLOR	g	0-4	0-2	1-2	0	2	2	0	1	0	0	0	0	12
21	ASKA,TYRA	g	6-8	1-3	0-0	1	3	4	2	13	0	1	0	0	19
23	FRANKS,BETHANY	f	1-4	0-0	0-0	2	6	8	0	2	0	0	2	3	12
05	MIDDLETON,NICOLE		0-1	0-0	0-2	1	0	1	2	0	0	0	0	1	7
11	GRAY,SAVANNAH		0-0	0-0	0-0	0	1	1	1	0	0	0	0	0	5
32	MCALISTER,SHALIE		0-0	0-0	0-0	0	1	1	0	0	0	1	1	0	5
33	FAUMUI,PENINA		1-2	0-0	0-0	1	0	1	1	2	0	0	0	0	1
34	HARVEY,ALEXA		0-0	0-0	0-0	0	0	0	0	0	0	0	0	0	1
TEAM						3	0	3	0			0			
Totals			15-44	1-8	2-6	11	15	26	7	33	1	2	4	6	100
FG %	1st Qtr	6-20	30.0%	2nd Qtr	9-24	37.5%	Half:	15-44	34.1%						
3FG %	1st Qtr	1-5	20.0%	2nd Qtr	0-3	00.0%	Half:	1-8	12.5%						
FT %	1st Qtr	1-2	50.0%	2nd Qtr	1-4	25.0%	Half:	2-6	33.3%						

Harding 27 • 3-5, 1-3 GAC

##	Player		Total			Rebounds			PF	TP	A	TO	Blk	Stl	Min
			FG-FGA	3-Ptr FG-FGA	FT-FTA	Off	Def	Tot							
03	MILLER,FALAN	g	1-3	1-2	0-0	0	1	1	1	3	1	2	0	0	15
13	PADGETT,PEYTON	g	2-3	1-2	0-0	1	0	1	2	5	1	1	0	0	11
21	LAYROCK,SYDNEY	f	1-2	1-2	1-2	0	3	3	2	4	0	2	2	0	11
30	HOGUE,CAROLINE	f	0-7	0-1	0-0	1	10	11	0	0	2	1	2	0	9
42	COOPER,KENNEDY	f	1-6	0-2	0-0	0	1	1	0	2	0	0	0	0	11
04	MCNAMARA,MACKENZIE		0-0	0-0	0-0	0	0	0	0	0	1	0	0	0	6
10	LAMPO,KELLIE		3-4	0-0	1-2	1	2	3	1	7	0	2	0	0	9
14	CAPLES,CARISSA		0-1	0-0	0-0	0	0	0	0	0	1	1	2	0	10
24	KEARNEY,AMANDA		0-2	0-1	1-2	0	1	1	0	1	0	0	0	0	5
33	JONES,SYDNEI		2-3	0-0	1-2	2	2	4	1	5	0	2	0	0	13
TEAM						2	0	2	0			0			
Totals			10-31	3-10	4-8	7	20	27	7	27	6	11	6	0	100
FG %	1st Qtr	4-15	26.7%	2nd Qtr	6-16	37.5%	Half:	10-31	32.3%						
3FG %	1st Qtr	3-6	50.0%	2nd Qtr	0-4	00.0%	Half:	3-10	30.0%						
FT %	1st Qtr	1-2	50.0%	2nd Qtr	3-6	50.0%	Half:	4-8	50.0%						

Officials: Eric Baker, Gene Etheridge and Steve Miller
 Technical Fouls: Southwestern Okla.- None. Harding- None.

Score by periods	1st	2nd	3rd	4th	Total
Southwestern Okla.	14	19	23	28	84
Harding	12	15	17	29	73

Points	In Paint	Off T/O	2nd Chance	Fast Break	Bench
SWOSU	26	9	6	2	2
Harding	12	1	5	2	13

Last FG - SWOSU 2nd-00:02, HU 2nd-00:19.
 SWOSU led for 18:27. HU led for 0:42. Game was tied for 0:51.

Score tied - 1 times
 Lead changed - 1 times

Southwestern Okla. vs Harding
12/2/2017; 1 p.m. at Searcy, Ark. (Rhodes-Reaves Field House)
Period 1 Play-By-Play

VISITORS: Southwestern Okla.	Time	Score	Margin	HOME: Harding
	09:44			MISSED LAYUP by COOPER,KENNEDY
BLOCK by TUCKER,HAILEY	09:44			
REBOUND (DEF) by TUCKER,HAILEY	09:43			
MISSED JUMPER by TUCKER,HAILEY	09:31			
	09:31			REBOUND (DEF) by HOGUE,CAROLINE
	09:21	3-0	H 3	GOOD! 3PTR by LAYROCK,SYDNEY
	09:21			ASSIST by MILLER,FALAN
GOOD! JUMPER by ASKA,TYRA [PNT]	09:02	3-2	H 1	
	08:49			MISSED LAYUP by MILLER,FALAN
BLOCK by FRANKS,BETHANY	08:49			
REBOUND (DEF) by HEDRICK,TAYLOR	08:48			
GOOD! LAYUP by TUCKER,HAILEY [PNT]	08:39	3-4	V 1	
	08:26			MISSED 3PTR by COOPER,KENNEDY
REBOUND (DEF) by ASKA,TYRA	08:26			
MISSED LAYUP by PRIDDY,HAYDEN	08:13			
REBOUND (OFF) by PRIDDY,HAYDEN	08:13			
	08:06			FOUL by LAYROCK,SYDNEY
MISSED FT by HEDRICK,TAYLOR	08:06			
REBOUND (DEADB) by TEAM	08:06			
GOOD! FT by HEDRICK,TAYLOR	08:06	3-5	V 2	
	07:52			MISSED JUMPER by HOGUE,CAROLINE
REBOUND (DEF) by FRANKS,BETHANY	07:52			
GOOD! LAYUP by TUCKER,HAILEY [PNT]	07:40	3-7	V 4	
	07:27	6-7	V 1	GOOD! 3PTR by PADGETT,PEYTON
	07:27			ASSIST by HOGUE,CAROLINE
MISSED LAYUP by HEDRICK,TAYLOR	07:08			
	07:08			REBOUND (DEF) by LAYROCK,SYDNEY
FOUL by ASKA,TYRA	06:57			
	06:57			SUB IN: LAMPO,KELLIE
	06:57			SUB IN: JONES,SYDNIE
	06:57			SUB OUT: HOGUE,CAROLINE
	06:57			SUB OUT: COOPER,KENNEDY
	06:53			TURNOVER by LAMPO,KELLIE
STEAL by FRANKS,BETHANY	06:53			
GOOD! 3PTR by ASKA,TYRA	06:31	6-10	V 4	
ASSIST by PRIDDY,HAYDEN	06:31			
	06:13			TURNOVER by LAYROCK,SYDNEY
MISSED LAYUP by PRIDDY,HAYDEN	06:05			
	06:05			REBOUND (DEF) by JONES,SYDNIE
	05:58			SUB IN: CAPLES,CARISSA
	05:58			SUB IN: MCNAMARA,MACKENZIE
	05:58			SUB OUT: PADGETT,PEYTON
	05:58			SUB OUT: LAYROCK,SYDNEY
	05:43			TURNOVER by MILLER,FALAN
STEAL by TUCKER,HAILEY	05:41			
GOOD! LAYUP by PRIDDY,HAYDEN [PNT]	05:31	6-12	V 6	
	05:15			MISSED JUMPER by CAPLES,CARISSA
REBOUND (DEF) by FRANKS,BETHANY	05:15			
MISSED 3PTR by TUCKER,HAILEY	04:59			
	04:59			REBOUND (DEF) by LAMPO,KELLIE
	04:44			FOUL by JONES,SYDNIE
	04:44			TURNOVER by JONES,SYDNIE
TIMEOUT MEDIA	04:43			
	04:43			SUB IN: PADGETT,PEYTON
	04:43			SUB IN: HOGUE,CAROLINE
	04:43			SUB OUT: MILLER,FALAN
	04:43			SUB OUT: LAMPO,KELLIE
MISSED LAYUP by HEDRICK,TAYLOR	04:36			
	04:36			BLOCK by CAPLES,CARISSA
REBOUND (OFF) by TEAM	04:35			
MISSED LAYUP by FRANKS,BETHANY	04:32			
	04:32			REBOUND (DEF) by HOGUE,CAROLINE
	04:16			TURNOVER by CAPLES,CARISSA
STEAL by TUCKER,HAILEY	04:15			
MISSED 3PTR by ASKA,TYRA	03:56			
REBOUND (OFF) by TEAM	03:56			
	03:53			SUB IN: COOPER,KENNEDY
	03:53			SUB IN: LAYROCK,SYDNEY
	03:53			SUB OUT: CAPLES,CARISSA

VISITORS: Southwestern Okla.	Time	Score	Margin	HOME: Harding
	03:53			SUB OUT: MCNAMARA,MACKENZIE
MISSED LAYUP by TUCKER,HAILEY	03:40			
	03:40			BLOCK by LAYROCK,SYDNEY
	03:39			REBOUND (DEF) by HOGUE,CAROLINE
	03:27			TURNOVER by LAYROCK,SYDNEY
STEAL by FRANKS,BETHANY	03:26			
MISSED 3PTR by TUCKER,HAILEY	03:20			
	03:20			REBOUND (DEF) by COOPER,KENNEDY
	03:04			MISSED 3PTR by HOGUE,CAROLINE
REBOUND (DEF) by FRANKS,BETHANY	03:04			
MISSED 3PTR by HEDRICK,TAYLOR	02:53			
	02:53			REBOUND (DEF) by HOGUE,CAROLINE
	02:38			MISSED 3PTR by LAYROCK,SYDNEY
	02:38			REBOUND (OFF) by TEAM
SUB IN: MCALISTER,SHALIE	02:32			
SUB IN: MIDDLETON,NICOLE	02:32			
SUB OUT: HEDRICK,TAYLOR	02:32			
SUB OUT: FRANKS,BETHANY	02:32			
	02:32			SUB IN: LAMPO,KELLIE
	02:32			SUB IN: MILLER,FALAN
	02:32			SUB OUT: HOGUE,CAROLINE
	02:32			SUB OUT: JONES,SYDNE
	02:20			MISSED LAYUP by COOPER,KENNEDY
	02:20			REBOUND (OFF) by LAMPO,KELLIE
	02:18	8-12	V 4	GOOD! LAYUP by LAMPO,KELLIE [PNT]
	02:11			FOUL by PADGETT,PEYTON
MISSED LAYUP by TUCKER,HAILEY	02:02			
	02:02			REBOUND (DEF) by LAYROCK,SYDNEY
	01:50	11-12	V 1	GOOD! 3PTR by MILLER,FALAN
	01:50			ASSIST by PADGETT,PEYTON
GOOD! LAYUP by ASKA,TYRA [PNT]	01:35	11-14	V 3	
	01:22			SUB IN: CAPLES,CARISSA
	01:22			SUB OUT: PADGETT,PEYTON
	01:13			MISSED LAYUP by LAMPO,KELLIE
REBOUND (DEF) by ASKA,TYRA	01:13			
MISSED LAYUP by PRIDDY,HAYDEN	01:02			
	01:02			BLOCK by CAPLES,CARISSA
REBOUND (OFF) by TEAM	01:02			
MISSED LAYUP by TUCKER,HAILEY	00:52			
	00:52			BLOCK by LAYROCK,SYDNEY
	00:51			REBOUND (DEF) by LAYROCK,SYDNEY
	00:37			MISSED JUMPER by COOPER,KENNEDY
REBOUND (DEF) by MCALISTER,SHALIE	00:37			
	00:25			SUB IN: JONES,SYDNE
	00:25			SUB OUT: COOPER,KENNEDY
TURNOVER by MCALISTER,SHALIE	00:23			
	00:23			SUB IN: MCNAMARA,MACKENZIE
	00:23			SUB OUT: LAYROCK,SYDNEY
FOUL by MIDDLETON,NICOLE	00:14			
	00:14			MISSED FT by LAMPO,KELLIE
	00:14			REBOUND (DEADB) by TEAM
	00:14	12-14	V 2	GOOD! FT by LAMPO,KELLIE
	00:14			SUB IN: KEARNEY,AMANDA
	00:14			SUB OUT: LAMPO,KELLIE
TURNOVER by ASKA,TYRA	00:05			
	00:01			MISSED JUMPER by KEARNEY,AMANDA
	00:00			REBOUND (DEADB) by TEAM

Southwestern Okla. 14, Harding 12

Period 1-only	In Paint	Off T/O	2nd Chance	Fast Break	Bench	
SWOSU	10	5	1	0	0	Score tied - 0 times
HU	2	1	2	0	3	Lead changed - 2 times

Southwestern Okla. vs Harding
12/2/2017; 1 p.m. at Searcy, Ark. (Rhodes-Reaves Field House)
Period 2 Play-By-Play

VISITORS: Southwestern Okla.	Time	Score	Margin	HOME: Harding
SUB IN: MIDDLETON,NICOLE	10:00			
SUB OUT: FRANKS,BETHANY	10:00			
	10:00			SUB IN: KEARNEY,AMANDA
	10:00			SUB IN: JONES,SYDNIE
	10:00			SUB OUT: LAYROCK,SYDNEY
	10:00			SUB OUT: COOPER,KENNEDY
	09:46			MISSED 3PTR by PADGETT,PEYTON
REBOUND (DEF) by PRIDDY,HAYDEN	09:46			
	09:31			FOUL by MILLER,FALAN
MISSED FT by MIDDLETON,NICOLE	09:31			
REBOUND (DEADB) by TEAM	09:31			
MISSED FT by MIDDLETON,NICOLE	09:31			
	09:31			REBOUND (DEF) by HOGUE,CAROLINE
	09:15			MISSED LAYUP by HOGUE,CAROLINE
REBOUND (DEF) by HEDRICK,TAYLOR	09:15			
MISSED LAYUP by TUCKER,HAILEY	09:07			
REBOUND (OFF) by MIDDLETON,NICOLE	09:07			
MISSED LAYUP by MIDDLETON,NICOLE	09:05			
REBOUND (OFF) by TUCKER,HAILEY	09:05			
MISSED 3PTR by HEDRICK,TAYLOR	09:01			
	09:01			REBOUND (DEF) by MILLER,FALAN
	08:48			TURNOVER by HOGUE,CAROLINE
STEAL by MIDDLETON,NICOLE	08:48			
MISSED LAYUP by FRANKS,BETHANY	08:36			
	08:36			BLOCK by HOGUE,CAROLINE
	08:34			REBOUND (DEF) by KEARNEY,AMANDA
	08:12	14-14	T	GOOD! LAYUP by LAMPO,KELLIE [PNT]
	08:12			ASSIST by HOGUE,CAROLINE
GOOD! JUMPER by ASKA,TYRA [PNT]	08:00	14-16	V 2	
	07:38			MISSED 3PTR by KEARNEY,AMANDA
REBOUND (DEF) by FRANKS,BETHANY	07:38			
	07:35			SUB IN: LAYROCK,SYDNEY
	07:35			SUB IN: LAMPO,KELLIE
	07:35			SUB OUT: MILLER,FALAN
	07:35			SUB OUT: JONES,SYDNIE
MISSED LAYUP by PRIDDY,HAYDEN	07:33			
	07:33			REBOUND (DEF) by HOGUE,CAROLINE
SUB IN: FRANKS,BETHANY	07:31			
SUB OUT: MIDDLETON,NICOLE	07:31			
	07:22			FOUL by PADGETT,PEYTON
	07:22			TURNOVER by PADGETT,PEYTON
	07:22			SUB IN: CAPLES,CARISSA
	07:22			SUB IN: COOPER,KENNEDY
	07:22			SUB OUT: PADGETT,PEYTON
	07:22			SUB OUT: HOGUE,CAROLINE
GOOD! LAYUP by ASKA,TYRA [PNT]	07:18	14-18	V 4	
FOUL by PRIDDY,HAYDEN	07:02			
	07:02			MISSED FT by LAYROCK,SYDNEY
	07:02			REBOUND (DEADB) by TEAM
	07:02	15-18	V 3	GOOD! FT by LAYROCK,SYDNEY
	07:02			SUB IN: MILLER,FALAN
	07:02			SUB OUT: KEARNEY,AMANDA
GOOD! LAYUP by ASKA,TYRA [PNT]	06:51	15-20	V 5	
	06:37	17-20	V 3	GOOD! LAYUP by COOPER,KENNEDY [PNT]
GOOD! JUMPER by TUCKER,HAILEY [FB]	06:25	17-22	V 5	
	06:12			MISSED 3PTR by COOPER,KENNEDY
REBOUND (DEF) by ASKA,TYRA	06:12			
MISSED LAYUP by TUCKER,HAILEY	06:00			
	06:00			REBOUND (DEF) by LAMPO,KELLIE
	05:51			TURNOVER by MILLER,FALAN
	05:51			SUB IN: JONES,SYDNIE
	05:51			SUB IN: MCNAMARA,MACKENZIE
	05:51			SUB OUT: MILLER,FALAN
	05:51			SUB OUT: LAMPO,KELLIE
MISSED 3PTR by ASKA,TYRA	05:43			
REBOUND (OFF) by FRANKS,BETHANY	05:43			
GOOD! LAYUP by FRANKS,BETHANY [PNT]	05:36	17-24	V 7	
	05:21	19-24	V 5	GOOD! LAYUP by JONES,SYDNIE [PNT]
	05:21			ASSIST by MCNAMARA,MACKENZIE

VISITORS: Southwestern Okla.	Time	Score	Margin	HOME: Harding
MISSED LAYUP by PRIDDY,HAYDEN	05:12			
REBOUND (OFF) by FRANKS,BETHANY	05:12			
	05:07			FOUL by LAYROCK,SYDNEY
SUB IN: GRAY,SAVANNAH	05:07			
SUB OUT: HEDRICK,TAYLOR	05:07			
	05:07			SUB IN: MILLER,FALAN
	05:07			SUB OUT: LAYROCK,SYDNEY
MISSED LAYUP by TUCKER,HAILEY	04:58			
	04:58			REBOUND (DEF) by JONES,SYDNIE
	04:42			TURNOVER by JONES,SYDNIE
TIMEOUT MEDIA	04:42			
MISSED LAYUP by TUCKER,HAILEY	04:13			
	04:13			REBOUND (DEF) by HOGUE,CAROLINE
	04:02			MISSED LAYUP by HOGUE,CAROLINE
BLOCK by FRANKS,BETHANY	04:02			
	04:02			REBOUND (OFF) by TEAM
	04:02			SUB IN: LAMPO,KELLIE
	04:02			SUB OUT: MCNAMARA,MACKENZIE
	03:47			MISSED 3PTR by MILLER,FALAN
	03:47			REBOUND (OFF) by HOGUE,CAROLINE
	03:45			MISSED LAYUP by HOGUE,CAROLINE
REBOUND (DEF) by FRANKS,BETHANY	03:45			
MISSED LAYUP by FRANKS,BETHANY	03:31			
	03:31			REBOUND (DEF) by HOGUE,CAROLINE
	03:21			MISSED LAYUP by HOGUE,CAROLINE
REBOUND (DEF) by FRANKS,BETHANY	03:21			
GOOD! LAYUP by PRIDDY,HAYDEN [PNT]	03:10	19-26	V 7	
	02:54			TURNOVER by LAMPO,KELLIE
STEAL by FRANKS,BETHANY	02:54			
SUB IN: MIDDLETON,NICOLE	02:54			
SUB OUT: FRANKS,BETHANY	02:54			
	02:54			SUB IN: PADGETT,PEYTON
	02:54			SUB OUT: COOPER,KENNEDY
MISSED LAYUP by TUCKER,HAILEY	02:42			
	02:42			REBOUND (DEF) by HOGUE,CAROLINE
	02:35	21-26	V 5	GOOD! LAYUP by PADGETT,PEYTON [FB/PNT]
GOOD! LAYUP by PRIDDY,HAYDEN [PNT]	02:20	21-28	V 7	
	01:59	23-28	V 5	GOOD! JUMPER by LAMPO,KELLIE
	01:59			ASSIST by CAPLES,CARISSA
MISSED LAYUP by TUCKER,HAILEY	01:46			
	01:46			BLOCK by HOGUE,CAROLINE
REBOUND (OFF) by TUCKER,HAILEY	01:45			
	01:44			FOUL by LAMPO,KELLIE
GOOD! FT by TUCKER,HAILEY	01:44	23-29	V 6	
MISSED FT by TUCKER,HAILEY	01:44			
	01:44			REBOUND (DEF) by HOGUE,CAROLINE
	01:44			SUB IN: KEARNEY,AMANDA
	01:44			SUB IN: MCNAMARA,MACKENZIE
	01:44			SUB IN: HOGUE,CAROLINE
	01:44			SUB OUT: MILLER,FALAN
	01:44			SUB OUT: CAPLES,CARISSA
	01:44			SUB OUT: LAMPO,KELLIE
SUB IN: MCALISTER,SHALIE	01:31			
SUB OUT: TUCKER,HAILEY	01:31			
	01:19			MISSED JUMPER by HOGUE,CAROLINE
	01:19			REBOUND (OFF) by PADGETT,PEYTON
FOUL by MIDDLETON,NICOLE	01:13			
	01:13	24-29	V 5	GOOD! FT by JONES,SYDNIE
	01:13			MISSED FT by JONES,SYDNIE
REBOUND (DEF) by GRAY,SAVANNAH	01:13			
SUB IN: FAUMUI,PENINA	01:13			
SUB OUT: MIDDLETON,NICOLE	01:13			
	01:13			SUB IN: CAPLES,CARISSA
	01:13			SUB OUT: PADGETT,PEYTON
MISSED 3PTR by PRIDDY,HAYDEN	01:03			
REBOUND (OFF) by ASKA,TYRA	01:03			
MISSED LAYUP by FAUMUI,PENINA	00:53			
REBOUND (OFF) by FAUMUI,PENINA	00:53			
GOOD! LAYUP by FAUMUI,PENINA [PNT]	00:50	24-31	V 7	
FOUL by ASKA,TYRA	00:31			
SUB IN: HARVEY,ALEXA	00:31			
SUB OUT: ASKA,TYRA	00:31			
	00:31			SUB IN: LAYROCK,SYDNEY
	00:31			SUB OUT: MCNAMARA,MACKENZIE
FOUL by FAUMUI,PENINA	00:29			

VISITORS: Southwestern Okla.	Time	Score	Margin	HOME: Harding
FOUL by GRAY,SAVANNAH	00:29			
	00:29	25-31	V 6	GOOD! FT by KEARNEY,AMANDA
	00:29			MISSED FT by KEARNEY,AMANDA
	00:29			REBOUND (OFF) by JONES,SYDNIE
	00:29			SUB IN: MCNAMARA,MACKENZIE
	00:29			SUB OUT: LAYROCK,SYDNEY
	00:24			MISSED LAYUP by JONES,SYDNIE
BLOCK by MCALISTER,SHALIE	00:24			
	00:21			REBOUND (OFF) by JONES,SYDNIE
	00:19	27-31	V 4	GOOD! LAYUP by JONES,SYDNIE [PNT]
GOOD! LAYUP by PRIDDY,HAYDEN [PNT]	00:02	27-33	V 6	

Southwestern Okla. 33, Harding 27

Period 2-only	In Paint	Off T/O	2nd Chance	Fast Break	Bench	
SWOSU	16	4	5	2	2	Score tied - 0 times
HU	10	0	3	2	10	Lead changed - 0 times

Official Basketball Box Score -- Game Totals -- Second Half Statistics
Southwestern Okla. vs Harding
12/2/2017 1 p.m. at Searcy, Ark. (Rhodes-Reaves Field House)

Southwestern Okla. 51 • 8-0, 4-0 GAC

##	Player		Total		3-Ptr	Rebounds			PF	TP	A	TO	Blk	Stl	Min
			FG-FGA	FG-FGA	FT-FTA	Off	Def	Tot							
12	TUCKER,HAILEY	g	6-10	3-4	2-2	2	3	5	3	17	0	1	5	0	20
14	PRIDDY,HAYDEN	g	3-6	0-1	10-11	0	1	1	0	16	2	1	0	1	20
15	HEDRICK,TAYLOR	g	2-7	0-0	1-2	1	0	1	4	5	1	1	0	2	14
21	ASKA,TYRA	g	1-4	0-0	2-2	1	3	4	2	4	0	3	0	0	11
23	FRANKS,BETHANY	f	1-1	0-0	1-1	0	1	1	4	3	0	0	0	1	9
05	MIDDLETON,NICOLE		0-1	0-0	0-0	1	0	1	3	0	0	0	1	0	6
11	GRAY,SAVANNAH		1-3	0-2	0-0	0	1	1	2	2	1	0	0	0	6
32	MCALISTER,SHALIE		0-0	0-0	0-0	0	0	0	0	0	0	0	0	0	0
33	FAUMUI,PENINA		1-1	0-0	1-2	0	1	1	0	3	0	0	0	0	5
34	HARVEY,ALEXA		0-1	0-1	1-2	0	0	0	0	1	1	1	0	0	9
TEAM						3	5	8	0		0				
Totals			15-34	3-8	18-22	8	15	23	18	51	5	7	6	4	100
FG %	3rd Qtr	9-18	50.0%	4th Qtr	6-16	37.5%	Half:	15-34	44.1%						
3FG %	3rd Qtr	2-4	50.0%	4th Qtr	1-4	25.0%	Half:	3-8	12.5%						
FT %	3rd Qtr	3-6	50.0%	4th Qtr	15-16	93.8%	Half:	18-22	81.8%						

Harding 46 • 3-5, 1-3 GAC

##	Player		Total		3-Ptr	Rebounds			PF	TP	A	TO	Blk	Stl	Min
			FG-FGA	FG-FGA	FT-FTA	Off	Def	Tot							
03	MILLER,FALAN	g	2-7	1-4	2-3	1	3	4	1	7	2	0	0	1	18
13	PADGETT,PEYTON	g	0-2	0-1	0-0	4	1	5	2	0	2	1	0	1	20
21	LAYROCK,SYDNEY	f	2-7	0-1	2-2	0	0	0	2	6	1	2	1	0	13
30	HOGUE,CAROLINE	f	2-7	0-1	4-8	4	1	5	1	8	1	1	0	0	12
42	COOPER,KENNEDY	f	1-2	0-0	0-0	1	0	1	2	2	0	0	1	0	5
04	MCNAMARA,MACKENZIE		0-0	0-0	0-0	0	0	0	1	0	0	0	1	0	4
10	LAMPO,KELLIE		4-7	0-1	7-9	2	3	5	0	15	0	0	1	0	12
14	CAPLES,CARISSA		2-2	0-0	1-2	0	1	1	0	5	0	1	0	0	6
24	KEARNEY,AMANDA		1-5	1-4	0-0	0	3	3	4	3	1	0	0	0	7
33	JONES,SYDNEI		0-0	0-0	0-0	0	1	1	0	0	1	0	0	1	3
TEAM						0	1	1	0		0				
Totals			14-39	2-12	16-24	12	14	26	13	46	8	5	4	3	100
FG %	3rd Qtr	5-15	33.3%	4th Qtr	9-24	37.5%	Half:	14-39	35.9%						
3FG %	3rd Qtr	0-3	00.0%	4th Qtr	2-9	22.2%	Half:	2-12	30.0%						
FT %	3rd Qtr	7-10	70.0%	4th Qtr	9-14	64.3%	Half:	16-24	66.7%						

Officials: Eric Baker, Gene Etheridge and Steve Miller
 Technical Fouls: Southwestern Okla.- None. Harding- TEAM;

Score by periods	1st	2nd	3rd	4th	Total
Southwestern Okla.	14	19	23	28	84
Harding	12	15	17	29	73

Points	In Paint	Off T/O	2nd Chance	Fast Break	Bench
SWOSU	24	7	4	2	6
Harding	22	9	12	0	23

Last FG - SWOSU 4th-00:50, HU 4th-00:28.
 SWOSU led for 20:00. HU led for 0:00. Game was tied for 0:00.

Score tied - 0 times
 Lead changed - 0 times

Southwestern Okla. vs Harding
12/2/2017; 1 p.m. at Searcy, Ark. (Rhodes-Reaves Field House)
Period 3 Play-By-Play

VISITORS: Southwestern Okla.	Time	Score	Margin	HOME: Harding
	09:31	29-33	V 4	GOOD! JUMPER by HOGUE,CAROLINE [PNT]
	09:31			ASSIST by MILLER,FALAN
GOOD! LAYUP by ASKA,TYRA [PNT]	09:15	29-35	V 6	
FOUL by ASKA,TYRA	09:03			
SUB IN: HARVEY,ALEXA	09:03			
SUB OUT: ASKA,TYRA	09:03			
	09:01			TURNOVER by LAYROCK,SYDNEY
STEAL by FRANKS,BETHANY	09:00			
MISSED 3PTR by HARVEY,ALEXA	08:54			
	08:54			REBOUND (DEF) by MILLER,FALAN
	08:41			MISSED 3PTR by MILLER,FALAN
REBOUND (DEF) by TEAM	08:41			
	08:38			SUB IN: JONES,SYDNIE
	08:38			SUB OUT: COOPER,KENNEDY
GOOD! 3PTR by TUCKER,HAILEY	08:26	29-38	V 9	
ASSIST by HEDRICK,TAYLOR	08:26			
	08:08			MISSED JUMPER by MILLER,FALAN
	08:08			REBOUND (OFF) by HOGUE,CAROLINE
FOUL by FRANKS,BETHANY	07:49			
FOUL by TUCKER,HAILEY	07:34			
	07:34	30-38	V 8	GOOD! FT by LAYROCK,SYDNEY
	07:34	31-38	V 7	GOOD! FT by LAYROCK,SYDNEY
GOOD! LAYUP by PRIDDY,HAYDEN [PNT]	07:26	31-40	V 9	
	07:03			MISSED LAYUP by LAYROCK,SYDNEY
REBOUND (DEF) by TUCKER,HAILEY	07:03			
TURNOVER by TUCKER,HAILEY	06:59			
	06:58			STEAL by JONES,SYDNIE
	06:56	33-40	V 7	GOOD! JUMPER by LAYROCK,SYDNEY
	06:56			ASSIST by JONES,SYDNIE
GOOD! 3PTR by TUCKER,HAILEY	06:50	33-43	V 10	
ASSIST by PRIDDY,HAYDEN	06:50			
	06:28			TURNOVER by HOGUE,CAROLINE
STEAL by HEDRICK,TAYLOR	06:28			
	06:28			FOUL by LAYROCK,SYDNEY
	06:28			SUB IN: MCNAMARA,MACKENZIE
	06:28			SUB IN: LAMPO,KELLIE
	06:28			SUB OUT: LAYROCK,SYDNEY
	06:28			SUB OUT: HOGUE,CAROLINE
GOOD! LAYUP by HEDRICK,TAYLOR [PNT]	06:18	33-45	V 12	
	06:12			SUB IN: COOPER,KENNEDY
	06:12			SUB OUT: JONES,SYDNIE
FOUL by FRANKS,BETHANY	06:02			
	06:02	34-45	V 11	GOOD! FT by LAMPO,KELLIE
	06:02	35-45	V 10	GOOD! FT by LAMPO,KELLIE
SUB IN: MIDDLETON,NICOLE	06:02			
SUB OUT: FRANKS,BETHANY	06:02			
	05:52			FOUL by MCNAMARA,MACKENZIE
	05:48			FOUL by COOPER,KENNEDY
GOOD! FT by HEDRICK,TAYLOR	05:48	35-46	V 11	
MISSED FT by HEDRICK,TAYLOR	05:48			
REBOUND (OFF) by MIDDLETON,NICOLE	05:48			
MISSED LAYUP by TUCKER,HAILEY	05:35			
	05:35			BLOCK by COOPER,KENNEDY
REBOUND (OFF) by TUCKER,HAILEY	05:33			
MISSED LAYUP by TUCKER,HAILEY	05:31			
	05:31			REBOUND (DEF) by LAMPO,KELLIE
	05:19	37-46	V 9	GOOD! LAYUP by COOPER,KENNEDY [PNT]
GOOD! LAYUP by PRIDDY,HAYDEN [PNT]	05:03	37-48	V 11	
ASSIST by HARVEY,ALEXA	05:03			
	04:50			MISSED LAYUP by LAMPO,KELLIE
	04:50			REBOUND (DEADB) by TEAM
FOUL by MIDDLETON,NICOLE	04:49			
	04:49	38-48	V 10	GOOD! FT by LAMPO,KELLIE
	04:49			MISSED FT by LAMPO,KELLIE
REBOUND (DEF) by TUCKER,HAILEY	04:49			
SUB IN: FAUMUI,PENINA	04:49			
SUB OUT: MIDDLETON,NICOLE	04:49			
MISSED 3PTR by PRIDDY,HAYDEN	04:39			
	04:39			REBOUND (DEF) by MILLER,FALAN

VISITORS: Southwestern Okla.	Time	Score	Margin	HOME: Harding
	04:29	40-48	V 8	GOOD! LAYUP by LAMPO,KELLIE [PNT]
	04:29			ASSIST by MILLER,FALAN
MISSED LAYUP by HEDRICK,TAYLOR	04:17			
	04:17			REBOUND (DEF) by LAMPO,KELLIE
	04:11			TURNOVER by PADGETT,PEYTON
	04:11			SUB IN: HOGUE,CAROLINE
	04:11			SUB OUT: LAMPO,KELLIE
GOOD! LAYUP by HEDRICK,TAYLOR [PNT]	03:49	40-50	V 10	
FOUL by HEDRICK,TAYLOR	03:37			
	03:37	41-50	V 9	GOOD! FT by HOGUE,CAROLINE
	03:37			MISSED FT by HOGUE,CAROLINE
	03:37			REBOUND (OFF) by COOPER,KENNEDY
	03:37			SUB IN: CAPLES,CARISSA
	03:37			SUB IN: LAYROCK,SYDNEY
	03:37			SUB OUT: MILLER,FALAN
	03:37			SUB OUT: MCNAMARA,MACKENZIE
	03:35			MISSED LAYUP by COOPER,KENNEDY
BLOCK by TUCKER,HAILEY	03:35			
REBOUND (DEF) by TEAM	03:34			
TURNOVER by HARVEY,ALEXA	03:24			
	03:24			SUB IN: LAMPO,KELLIE
	03:24			SUB OUT: COOPER,KENNEDY
	03:06			MISSED LAYUP by HOGUE,CAROLINE
BLOCK by TUCKER,HAILEY	03:06			
REBOUND (DEF) by TEAM	03:05			
GOOD! LAYUP by TUCKER,HAILEY [PNT]	02:47	41-52	V 11	
	02:24			MISSED 3PTR by LAMPO,KELLIE
REBOUND (DEF) by TUCKER,HAILEY	02:24			
MISSED LAYUP by HEDRICK,TAYLOR	02:11			
REBOUND (OFF) by HEDRICK,TAYLOR	02:11			
	02:08			FOUL by LAYROCK,SYDNEY
	02:08			SUB IN: MILLER,FALAN
	02:08			SUB OUT: LAYROCK,SYDNEY
MISSED LAYUP by PRIDDY,HAYDEN	02:00			
	02:00			REBOUND (DEF) by PADGETT,PEYTON
	01:49			MISSED LAYUP by LAMPO,KELLIE
BLOCK by TUCKER,HAILEY	01:49			
	01:48			REBOUND (OFF) by PADGETT,PEYTON
	01:47			MISSED LAYUP by PADGETT,PEYTON
BLOCK by TUCKER,HAILEY	01:47			
	01:45			REBOUND (OFF) by PADGETT,PEYTON
FOUL by TUCKER,HAILEY	01:31			
	01:31	42-52	V 10	GOOD! FT by HOGUE,CAROLINE
	01:31			MISSED FT by HOGUE,CAROLINE
REBOUND (DEF) by FAUMUI,PENINA	01:31			
GOOD! LAYUP by FAUMUI,PENINA [PNT]	01:15	42-54	V 12	
	00:57	44-54	V 10	GOOD! LAYUP by LAMPO,KELLIE [PNT]
	00:57			ASSIST by PADGETT,PEYTON
	00:49			FOUL by MILLER,FALAN
GOOD! FT by HARVEY,ALEXA	00:49	44-55	V 11	
MISSED FT by HARVEY,ALEXA	00:49			
	00:49			REBOUND (DEF) by CAPLES,CARISSA
	00:49			SUB IN: MCNAMARA,MACKENZIE
	00:49			SUB IN: JONES,SYDNE
	00:49			SUB OUT: HOGUE,CAROLINE
	00:49			SUB OUT: LAMPO,KELLIE
	00:31			MISSED 3PTR by PADGETT,PEYTON
REBOUND (DEF) by TEAM	00:31			
MISSED LAYUP by PRIDDY,HAYDEN	00:03			
REBOUND (OFF) by TEAM	00:03			
	00:02			FOUL by PADGETT,PEYTON
GOOD! FT by FAUMUI,PENINA	00:02	44-56	V 12	
MISSED FT by FAUMUI,PENINA	00:02			
REBOUND (OFF) by TUCKER,HAILEY	00:02			
MISSED LAYUP by TUCKER,HAILEY	00:01			
	00:00			BLOCK by MCNAMARA,MACKENZIE
	00:00			REBOUND (DEF) by JONES,SYDNE

Southwestern Okla. 56, Harding 44

Period 3-only	In Paint	Off T/O	2nd Chance	Fast Break	Bench	
SWOSU	14	4	1	0	4	Score tied - 0 times
HU	8	2	3	0	7	Lead changed - 0 times

Southwestern Okla. vs Harding
12/2/2017; 1 p.m. at Searcy, Ark. (Rhodes-Reaves Field House)
Period 4 Play-By-Play

VISITORS: Southwestern Okla.	Time	Score	Margin	HOME: Harding
	10:00			SUB IN: CAPLES,CARISSA
	10:00			SUB IN: LAMPO,KELLIE
	10:00			SUB OUT: LAYROCK,SYDNEY
	10:00			SUB OUT: COOPER,KENNEDY
MISSED LAYUP by HEDRICK,TAYLOR	09:45			
	09:45			REBOUND (DEF) by LAMPO,KELLIE
	09:23			MISSED LAYUP by HOGUE,CAROLINE
	09:23			REBOUND (OFF) by HOGUE,CAROLINE
FOUL by HEDRICK,TAYLOR	09:21			
	09:21	45-56	V 11	GOOD! FT by HOGUE,CAROLINE
	09:21	46-56	V 10	GOOD! FT by HOGUE,CAROLINE
	09:21			SUB IN: COOPER,KENNEDY
	09:21			SUB OUT: CAPLES,CARISSA
MISSED JUMPER by ASKA,TYRA	09:11			
REBOUND (OFF) by TEAM	09:11			
GOOD! LAYUP by FRANKS,BETHANY [PNT]	09:04	46-58	V 12	
	09:04			FOUL by HOGUE,CAROLINE
GOOD! FT by FRANKS,BETHANY	09:04	46-59	V 13	
FOUL by FRANKS,BETHANY	08:46			
	08:46	47-59	V 12	GOOD! FT by MILLER,FALAN
	08:46	48-59	V 11	GOOD! FT by MILLER,FALAN
	08:38			FOUL by PADGETT,PEYTON
GOOD! FT by PRIDDY,HAYDEN	08:38	48-60	V 12	
GOOD! FT by PRIDDY,HAYDEN	08:38	48-61	V 13	
	08:38			SUB IN: CAPLES,CARISSA
	08:38			SUB OUT: PADGETT,PEYTON
	08:30			FOUL (TECH) by TEAM
MISSED FT by PRIDDY,HAYDEN	08:30			
REBOUND (DEADB) by TEAM	08:30			
GOOD! FT by PRIDDY,HAYDEN	08:30	48-62	V 14	
	08:24			TURNOVER by CAPLES,CARISSA
STEAL by PRIDDY,HAYDEN	08:23			
GOOD! LAYUP by PRIDDY,HAYDEN [FB/PNT]	08:21	48-64	V 16	
	08:21			FOUL by COOPER,KENNEDY
GOOD! FT by PRIDDY,HAYDEN	08:21	48-65	V 17	
	08:21			SUB IN: LAYROCK,SYDNEY
	08:21			SUB IN: PADGETT,PEYTON
	08:21			SUB OUT: CAPLES,CARISSA
	08:21			SUB OUT: COOPER,KENNEDY
	07:58			MISSED 3PTR by HOGUE,CAROLINE
	07:58			REBOUND (OFF) by LAMPO,KELLIE
	07:31	50-65	V 15	GOOD! JUMPER by LAYROCK,SYDNEY [PNT]
MISSED LAYUP by HEDRICK,TAYLOR	07:10			
	07:09			REBOUND (DEF) by HOGUE,CAROLINE
	07:01	52-65	V 13	GOOD! LAYUP by LAMPO,KELLIE [PNT]
	07:01			ASSIST by HOGUE,CAROLINE
MISSED LAYUP by HEDRICK,TAYLOR	06:52			
	06:52			BLOCK by LAMPO,KELLIE
REBOUND (OFF) by TEAM	06:52			
	06:52			SUB IN: KEARNEY,AMANDA
	06:52			SUB OUT: LAMPO,KELLIE
TURNOVER by PRIDDY,HAYDEN	06:49			
	06:47			STEAL by MILLER,FALAN
	06:45			MISSED LAYUP by KEARNEY,AMANDA
	06:45			REBOUND (OFF) by HOGUE,CAROLINE
	06:41	54-65	V 11	GOOD! LAYUP by HOGUE,CAROLINE [PNT]
	06:32			FOUL by KEARNEY,AMANDA
GOOD! FT by PRIDDY,HAYDEN	06:32	54-66	V 12	
GOOD! FT by PRIDDY,HAYDEN	06:32	54-67	V 13	
	06:19			TURNOVER by LAYROCK,SYDNEY
STEAL by HEDRICK,TAYLOR	06:18			
FOUL by HEDRICK,TAYLOR	06:13			
TURNOVER by HEDRICK,TAYLOR	06:13			
	06:03			MISSED 3PTR by LAYROCK,SYDNEY
	06:03			REBOUND (OFF) by HOGUE,CAROLINE
FOUL by FRANKS,BETHANY	05:59			
SUB IN: MIDDLETON,NICOLE	05:59			
SUB OUT: FRANKS,BETHANY	05:59			
	05:59			SUB IN: LAMPO,KELLIE

VISITORS: Southwestern Okla.	Time	Score	Margin	HOME: Harding
	05:59			SUB OUT: HOGUE,CAROLINE
FOUL by HEDRICK,TAYLOR	05:48			
	05:48	55-67	V 12	GOOD! FT by LAMPO,KELLIE
	05:48	56-67	V 11	GOOD! FT by LAMPO,KELLIE
SUB IN: GRAY,SAVANNAH	05:48			
SUB OUT: HEDRICK,TAYLOR	05:48			
MISSED 3PTR by GRAY,SAVANNAH	05:40			
	05:40			REBOUND (DEF) by MILLER,FALAN
	05:28	58-67	V 9	GOOD! LAYUP by LAMPO,KELLIE [PNT]
	05:28			ASSIST by KEARNEY,AMANDA
MISSED LAYUP by ASKA,TYRA	05:07			
REBOUND (OFF) by ASKA,TYRA	05:07			
MISSED LAYUP by MIDDLETON,NICOLE	05:04			
	05:04			REBOUND (DEF) by KEARNEY,AMANDA
	04:52			MISSED 3PTR by MILLER,FALAN
	04:52			REBOUND (OFF) by PADGETT,PEYTON
	04:42			MISSED LAYUP by LAYROCK,SYDNEY
BLOCK by MIDDLETON,NICOLE	04:42			
REBOUND (DEF) by PRIDDY,HAYDEN	04:40			
GOOD! 3PTR by TUCKER,HAILEY	04:34	58-70	V 12	
ASSIST by PRIDDY,HAYDEN	04:34			
	04:21	61-70	V 9	GOOD! 3PTR by KEARNEY,AMANDA
	04:21			ASSIST by PADGETT,PEYTON
GOOD! LAYUP by GRAY,SAVANNAH [PNT]	03:57	61-72	V 11	
	03:44			MISSED 3PTR by KEARNEY,AMANDA
REBOUND (DEADB) by TEAM	03:44			
TIMEOUT media	03:42			
	03:42			SUB IN: HOGUE,CAROLINE
	03:42			SUB OUT: LAMPO,KELLIE
TURNOVER by ASKA,TYRA	03:39			
	03:37			STEAL by PADGETT,PEYTON
	03:31			MISSED LAYUP by LAYROCK,SYDNEY
BLOCK by TUCKER,HAILEY	03:31			
REBOUND (DEF) by GRAY,SAVANNAH	03:30			
MISSED 3PTR by GRAY,SAVANNAH	03:21			
	03:21			REBOUND (DEF) by KEARNEY,AMANDA
FOUL by TUCKER,HAILEY	03:07			
	03:07			MISSED FT by HOGUE,CAROLINE
	03:07			REBOUND (DEADB) by TEAM
	03:07			MISSED FT by HOGUE,CAROLINE
REBOUND (DEF) by ASKA,TYRA	03:07			
MISSED 3PTR by TUCKER,HAILEY	02:47			
	02:47			REBOUND (DEF) by KEARNEY,AMANDA
	02:35			MISSED LAYUP by HOGUE,CAROLINE
	02:35			REBOUND (OFF) by PADGETT,PEYTON
	02:28			MISSED LAYUP by HOGUE,CAROLINE
	02:28			REBOUND (OFF) by MILLER,FALAN
	02:26			MISSED LAYUP by MILLER,FALAN
REBOUND (DEF) by ASKA,TYRA	02:26			
FOUL by ASKA,TYRA	02:18			
TURNOVER by ASKA,TYRA	02:18			
	02:18			SUB IN: LAMPO,KELLIE
	02:18			SUB OUT: HOGUE,CAROLINE
	02:04	64-72	V 8	GOOD! 3PTR by MILLER,FALAN
	02:04			ASSIST by LAYROCK,SYDNEY
MISSED LAYUP by ASKA,TYRA	01:50			
	01:50			BLOCK by LAYROCK,SYDNEY
	01:49			REBOUND (DEF) by TEAM
FOUL by MIDDLETON,NICOLE	01:37			
	01:37			MISSED FT by LAMPO,KELLIE
	01:37			REBOUND (DEADB) by TEAM
	01:37	65-72	V 7	GOOD! FT by LAMPO,KELLIE
GOOD! LAYUP by TUCKER,HAILEY [PNT]	01:15	65-74	V 9	
	01:03			MISSED 3PTR by MILLER,FALAN
	01:03			REBOUND (OFF) by LAMPO,KELLIE
FOUL by MIDDLETON,NICOLE	00:59			
	00:59	66-74	V 8	GOOD! FT by LAMPO,KELLIE
	00:59			MISSED FT by CAPLES,CARISSA
REBOUND (DEF) by TEAM	00:59			
SUB IN: FRANKS,BETHANY	00:59			
SUB OUT: MIDDLETON,NICOLE	00:59			
	00:59			SUB IN: CAPLES,CARISSA
	00:59			SUB OUT: LAMPO,KELLIE
GOOD! LAYUP by TUCKER,HAILEY [PNT]	00:50	66-76	V 10	
ASSIST by GRAY,SAVANNAH	00:50			

VISITORS: Southwestern Okla.	Time	Score	Margin	HOME: Harding
	00:45	68-76	V 8	GOOD! LAYUP by MILLER,FALAN [PNT]
	00:44			MISSED FT by MILLER,FALAN
REBOUND (DEADB) by TEAM	00:43			
FOUL by GRAY,SAVANNAH	00:42			
GOOD! FT by ASKA,TYRA	00:41	68-77	V 9	
GOOD! FT by ASKA,TYRA	00:41	68-78	V 10	
	00:35	70-78	V 8	GOOD! LAYUP by CAPLES,CARISSA [PNT]
FOUL by GRAY,SAVANNAH	00:35			
	00:35	71-78	V 7	GOOD! FT by CAPLES,CARISSA
	00:34			FOUL by KEARNEY,AMANDA
GOOD! FT by PRIDDY,HAYDEN	00:34	71-79	V 8	
GOOD! FT by PRIDDY,HAYDEN	00:34	71-80	V 9	
	00:28	73-80	V 7	GOOD! LAYUP by CAPLES,CARISSA [PNT]
	00:27			FOUL by KEARNEY,AMANDA
GOOD! FT by PRIDDY,HAYDEN	00:26	73-81	V 8	
GOOD! FT by PRIDDY,HAYDEN	00:26	73-82	V 9	
	00:20			MISSED 3PTR by KEARNEY,AMANDA
REBOUND (DEF) by FRANKS,BETHANY	00:20			
	00:13			FOUL by KEARNEY,AMANDA
GOOD! FT by TUCKER,HAILEY	00:13	73-83	V 10	
GOOD! FT by TUCKER,HAILEY	00:13	73-84	V 11	
	00:04			MISSED LAYUP by LAYROCK,SYDNEY
REBOUND (DEF) by ASKA,TYRA	00:04			
TURNOVER by ASKA,TYRA	00:01			
	00:00			MISSED 3PTR by KEARNEY,AMANDA
	00:00			REBOUND (DEADB) by TEAM

Southwestern Okla. 84, Harding 73

Period 4-only	In Paint	Off T/O	2nd Chance	Fast Break	Bench	
SWOSU	10	3	3	2	2	Score tied - 0 times
HU	14	7	9	0	16	Lead changed - 0 times

Southwestern Okla. vs Harding
12/2/2017; 1 p.m. at Searcy, Ark. (Rhodes-Reaves Field House)
Scoring/Runs Reference

Period 1

Southwestern Okla.	VRun	Score	Margin	HRun	Harding
		0-3	3		LAYROCK 3PTR - 09:21
09:02 - ASKA JUMPER [P]	-	2-3	1		
08:39 - TUCKER LAYUP [P]	4-0	4-3	-1		
08:06 - HEDRICK FT	5-0	5-3	-2		
07:40 - TUCKER LAYUP [P]	7-0	7-3	-4		
		7-6	-1		PADGETT 3PTR - 07:27
06:31 - ASKA 3PTR	-	10-6	-4		
05:31 - PRIDY LAYUP [P]	5-0	12-6	-6		
		12-8	-4		LAMPO LAYUP [P] - 02:18
		12-11	-1	5-0	MILLER 3PTR - 01:50
01:35 - ASKA LAYUP [P]	-	14-11	-3		
		14-12	-2		LAMPO FT - 00:14

Southwestern Okla. vs Harding
12/2/2017; 1 p.m. at Searcy, Ark. (Rhodes-Reaves Field House)
Scoring/Runs Reference

Period 2

Southwestern Okla.	VRun	Score	Margin	HRun	Harding
		14-14	0		LAMPO LAYUP [P] - 08:12
08:00 - ASKA JUMPER [P]	-	16-14	-2		
07:18 - ASKA LAYUP [P]	4-0	18-14	-4		
		18-15	-3		LAYROCK FT - 07:02
06:51 - ASKA LAYUP [P]	-	20-15	-5		
		20-17	-3		COOPER LAYUP [P] - 06:37
06:25 - TUCKER JUMPER [F]	-	22-17	-5		
05:36 - FRANKS LAYUP [P]	4-0	24-17	-7		
		24-19	-5		JONES LAYUP [P] - 05:21
03:10 - PRIDDY LAYUP [P]	-	26-19	-7		
		26-21	-5		PADGETT LAYUP [P] [F] - 02:35
02:20 - PRIDDY LAYUP [P]	-	28-21	-7		
		28-23	-5		LAMPO JUMPER - 01:59
01:44 - TUCKER FT	-	29-23	-6		
		29-24	-5		JONES FT - 01:13
00:50 - FAUMUI LAYUP [P]	-	31-24	-7		
		31-25	-6		KEARNEY FT - 00:29
		31-27	-4	3-0	JONES LAYUP [P] - 00:19
00:02 - PRIDDY LAYUP [P]	-	33-27	-6		

Southwestern Okla. vs Harding
12/2/2017; 1 p.m. at Searcy, Ark. (Rhodes-Reaves Field House)
Scoring/Runs Reference

Period 3

Southwestern Okla.	VRun	Score	Margin	HRun	Harding
		33-29	-4		HOGUE JUMPER [P] - 09:31
09:15 - ASKA LAYUP [P]	-	35-29	-6		
08:26 - TUCKER 3PTR	5-0	38-29	-9		
		38-30	-8		LAYROCK FT - 07:34
		38-31	-7	2-0	LAYROCK FT - 07:34
07:26 - PRIDDY LAYUP [P]	-	40-31	-9		
		40-33	-7		LAYROCK JUMPER - 06:56
06:50 - TUCKER 3PTR	-	43-33	-10		
06:18 - HEDRICK LAYUP [P]	5-0	45-33	-12		
		45-34	-11		LAMPO FT - 06:02
		45-35	-10	2-0	LAMPO FT - 06:02
05:48 - HEDRICK FT	-	46-35	-11		
		46-37	-9		COOPER LAYUP [P] - 05:19
05:03 - PRIDDY LAYUP [P]	-	48-37	-11		
		48-38	-10		LAMPO FT - 04:49
		48-40	-8	3-0	LAMPO LAYUP [P] - 04:29
03:49 - HEDRICK LAYUP [P]	-	50-40	-10		
		50-41	-9		HOGUE FT - 03:37
02:47 - TUCKER LAYUP [P]	-	52-41	-11		
		52-42	-10		HOGUE FT - 01:31
01:15 - FAUMUI LAYUP [P]	-	54-42	-12		
		54-44	-10		LAMPO LAYUP [P] - 00:57
00:49 - HARVEY FT	-	55-44	-11		
00:02 - FAUMUI FT	2-0	56-44	-12		

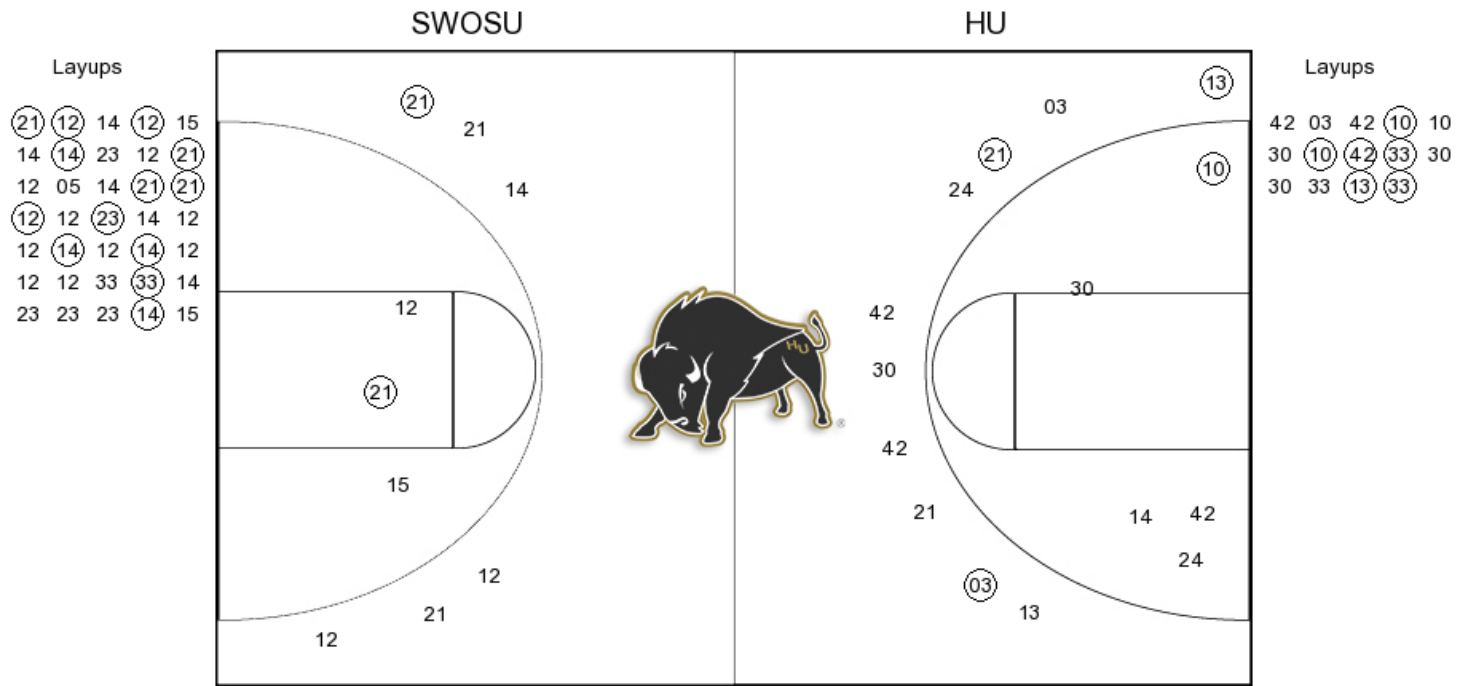
Southwestern Okla. vs Harding
12/2/2017; 1 p.m. at Searcy, Ark. (Rhodes-Reaves Field House)
Scoring/Runs Reference

Period 4

Southwestern Okla.	VRun	Score	Margin	HRun	Harding
		56-45	-11		HOGUE FT - 09:21
		56-46	-10	NaN-0	HOGUE FT - 09:21
09:04 - FRANKS LAYUP [P]	-	58-46	-12		
09:04 - FRANKS FT	3-0	59-46	-13		
		59-47	-12		MILLER FT - 08:46
		59-48	-11	2-0	MILLER FT - 08:46
08:38 - PRIDDY FT	-	60-48	-12		
08:38 - PRIDDY FT	2-0	61-48	-13		
08:30 - PRIDDY FT	3-0	62-48	-14		
08:21 - PRIDDY LAYUP [P] [F]	5-0	64-48	-16		
08:21 - PRIDDY FT	6-0	65-48	-17		
		65-50	-15		LAYROCK JUMPER [P] - 07:31
		65-52	-13	4-0	LAMPO LAYUP [P] - 07:01
		65-54	-11	6-0	HOGUE LAYUP [P] - 06:41
06:32 - PRIDDY FT	-	66-54	-12		
06:32 - PRIDDY FT	2-0	67-54	-13		
		67-55	-12		LAMPO FT - 05:48
		67-56	-11	2-0	LAMPO FT - 05:48
		67-58	-9	4-0	LAMPO LAYUP [P] - 05:28
04:34 - TUCKER 3PTR	-	70-58	-12		
		70-61	-9		KEARNEY 3PTR - 04:21
03:57 - GRAY LAYUP [P]	-	72-61	-11		
		72-64	-8		MILLER 3PTR - 02:04
		72-65	-7	4-0	LAMPO FT - 01:37
01:15 - TUCKER LAYUP [P]	-	74-65	-9		
		74-66	-8		LAMPO FT - 00:59
00:50 - TUCKER LAYUP [P]	-	76-66	-10		
		76-68	-8		MILLER LAYUP [P] - 00:45
00:41 - ASKA FT	-	77-68	-9		
00:41 - ASKA FT	2-0	78-68	-10		
		78-70	-8		CAPLES LAYUP [P] - 00:35
		78-71	-7	3-0	CAPLES FT - 00:35
00:34 - PRIDDY FT	-	79-71	-8		
00:34 - PRIDDY FT	2-0	80-71	-9		
		80-73	-7		CAPLES LAYUP [P] - 00:28
00:26 - PRIDDY FT	-	81-73	-8		
00:26 - PRIDDY FT	2-0	82-73	-9		
00:13 - TUCKER FT	3-0	83-73	-10		
00:13 - TUCKER FT	4-0	84-73	-11		

Southwestern Okla. vs Harding
 OFFICIAL SHOT CHART
 12/2/2017 at Searcy, Ark. (Rhodes-Reaves Field House)

PERIOD 1



SWOSU PERIOD 1

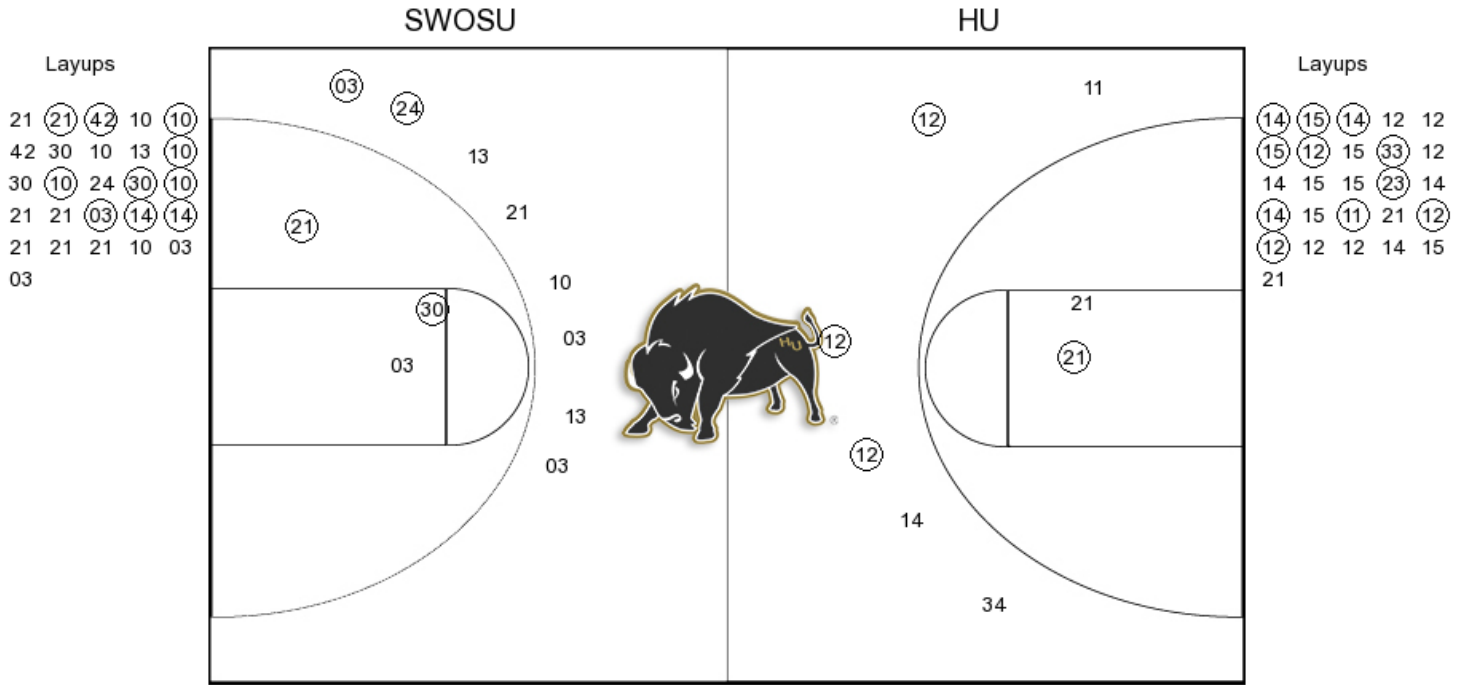
FG Made	15
FG Attempted	44
3PFG Made	1
3PFG Attempted	8

HU PERIOD 1

FG Made	10
FG Attempted	31
3PFG Made	3
3PFG Attempted	10

Southwestern Okla. vs Harding
 OFFICIAL SHOT CHART
 12/2/2017 at Searcy, Ark. (Rhodes-Reaves Field House)

PERIOD 2



SWOSU PERIOD 2

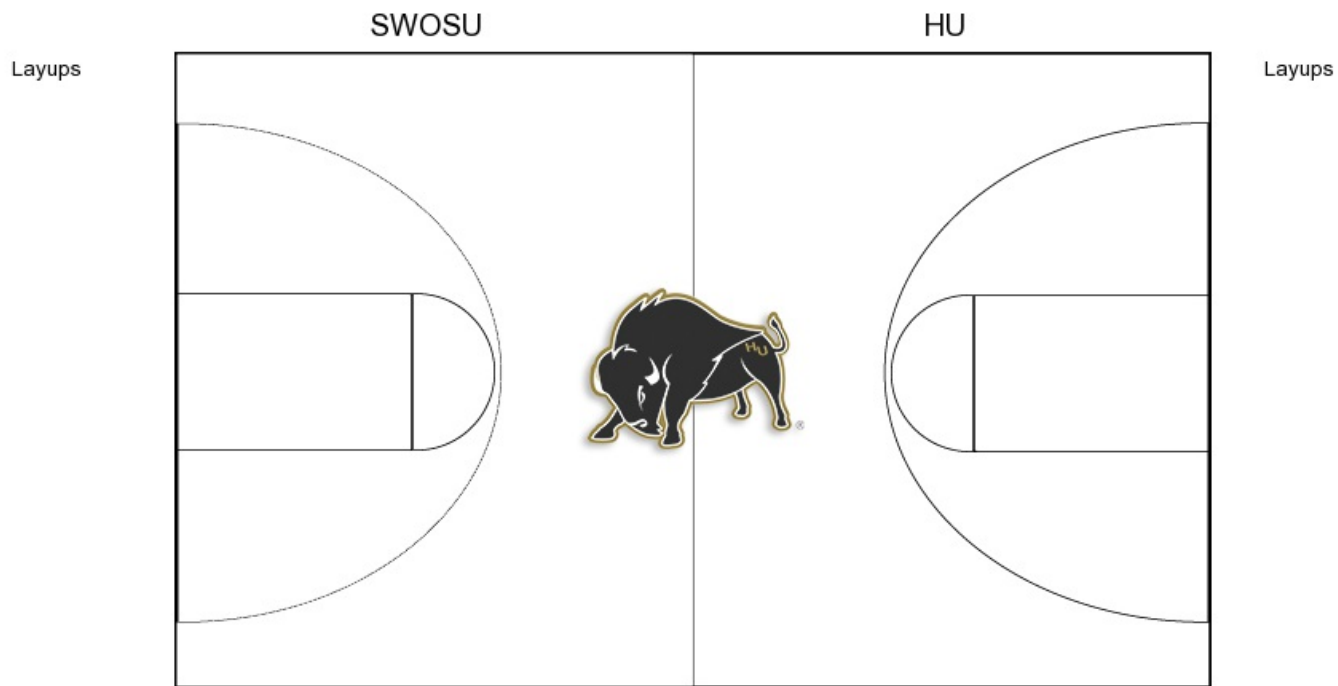
FG Made
 FG Attempted
 3PFG Made
 3PFG Attempted

HU PERIOD 2

FG Made
 FG Attempted
 3PFG Made
 3PFG Attempted

Southwestern Okla. vs Harding
 OFFICIAL SHOT CHART
 12/2/2017 at Searcy, Ark. (Rhodes-Reaves Field House)

PERIOD 3



SWOSU PERIOD 3

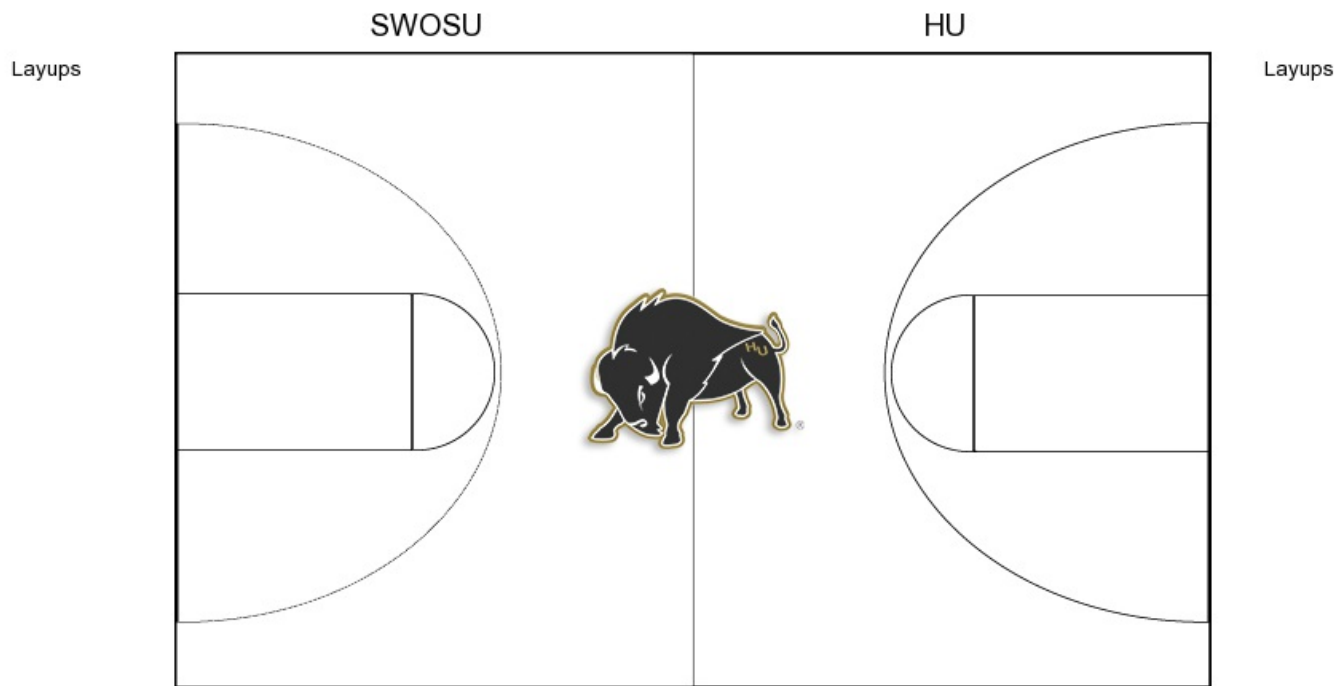
FG Made	15
FG Attempted	34
3PFG Made	3
3PFG Attempted	8

HU PERIOD 3

FG Made	14
FG Attempted	39
3PFG Made	2
3PFG Attempted	12

Southwestern Okla. vs Harding
OFFICIAL SHOT CHART
12/2/2017 at Searcy, Ark. (Rhodes-Reaves Field House)

PERIOD 4



SWOSU PERIOD 4

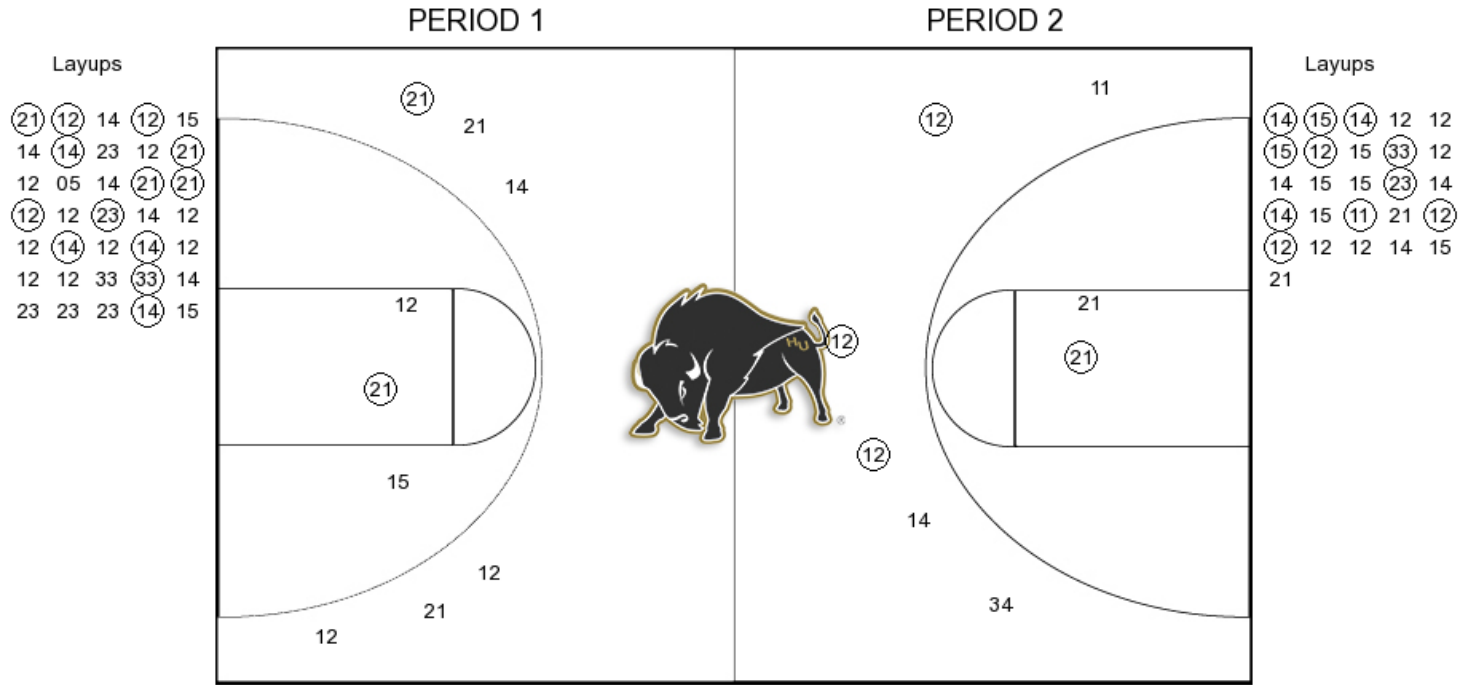
FG Made
FG Attempted
3PFG Made
3PFG Attempted

HU PERIOD 4

FG Made
FG Attempted
3PFG Made
3PFG Attempted

Southwestern Okla. vs Harding
 OFFICIAL SHOT CHART
 12/2/2017 at Searcy, Ark. (Rhodes-Reaves Field House)

Southwestern Okla.



SWOSU PERIOD 1

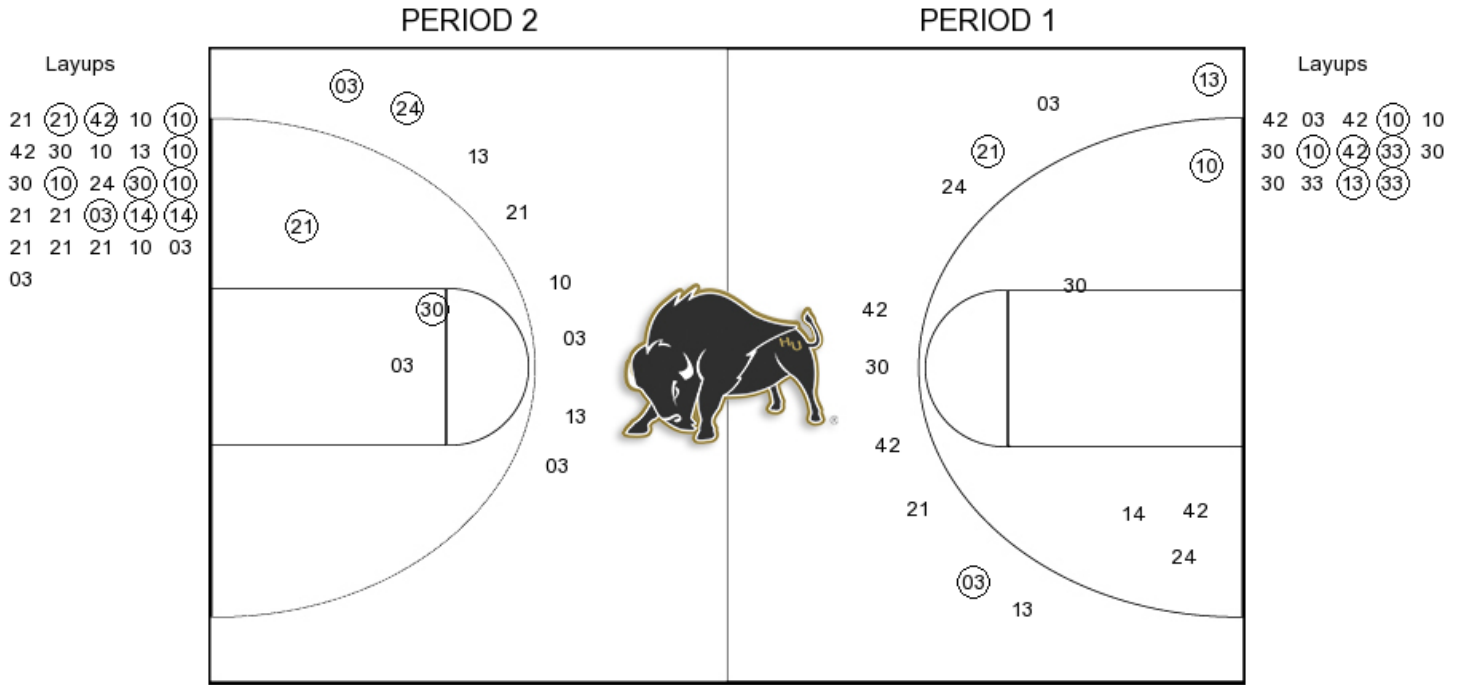
FG Made	15
FG Attempted	44
3PFG Made	1
3PFG Attempted	8

SWOSU PERIOD 2

FG Made	11
FG Attempted	34
3PFG Made	1
3PFG Attempted	8

Southwestern Okla. vs Harding
 OFFICIAL SHOT CHART
 12/2/2017 at Searcy, Ark. (Rhodes-Reaves Field House)

Harding



HU PERIOD 1

FG Made	10
FG Attempted	31
3PFG Made	3
3PFG Attempted	10

HU PERIOD 2

FG Made	
FG Attempted	
3PFG Made	
3PFG Attempted	