

FINAL SCORE

Cameron

2-2

55

Harding

1-4

77

November 25, 2017 • Searcy, Ark. (Rhodes-Reaves Field House)

FINAL STATISTICS

Official Basketball Box Score -- Game Totals -- Final Statistics
Cameron vs Harding
11/25/2017 1 p.m. at Searcy, Ark. (Rhodes-Reaves Field House)

Cameron 55 - 2-2

##	Player	g	Total			3-Ptr			Rebounds			PF	TP	A	TO	Blk	Stl	Min
			FG-FGA	FG-FGA	FT-FTA	FG-FGA	FG-FGA	FT-FTA	Off	Def	Tot							
11	UNDERWOOD,BRIANA	g	0-4	0-0	0-0	1	2	3	2	0	2	2	0	2	2	0	2	23
12	BONNARENS,JAMIE	f	4-12	1-4	0-0	1	1	2	3	9	2	1	0	4			28	
15	MCNAIR,PARFIT T	g	3-6	0-1	1-2	3	3	6	3	7	5	4	0	2			25	
25	SMITH,I,LEJHA	f	2-7	0-0	5-6	2	8	10	4	9	0	3	5	0			24	
30	BATTESE,AVA	g	6-14	3-9	2-2	1	2	3	0	17	0	0	0	1			35	
01	NWAKAMMA,AMAKA		2-9	0-1	0-0	2	2	4	4	4	0	3	0	1			23	
02	TURNER,BRIANNA		0-0	0-0	2-4	0	0	0	1	2	0	0	0	0			5	
03	SELLIN,PETRA		1-3	0-1	0-0	0	2	2	2	2	1	0	1	0			17	
20	MARTINEZ,ANDREA		1-3	1-2	2-2	0	1	1	3	5	0	1	0	0			14	
22	ELLIS,SYDNEY		0-1	0-0	0-0	0	1	1	1	0	0	3	0	0			7	
23	LUSTER,JAZMINE		0-0	0-0	0-0	0	0	0	2	0	0	1	0	0			0	
TEAM						1	3	4	0					1				
TOTALS			19-59	5-18	12-16	11	25	36	25	55	10	19	6	10			201	

Deadball Rebounds: 3,0

FG %	1st Half:	10-28	35.7%	2nd Half:	9-31	29.0%	Game:	19-59	32.2%				
	1st Qtr	6-13	46.2%	2nd Qtr	4-15	26.7%	3rd Qtr	3-10	30.0%	4th Qtr	6-21	28.6%	
3FG %	1st Half:	2-7	28.6%	2nd Half:	3-11	27.3%	Game:	5-18	27.8%				
	1st Qtr	2-5	40.0%	2nd Qtr	0-2	00.0%	3rd Qtr	0-3	00.0%	4th Qtr	3-8	37.5%	
FT %	1st Half:	4-6	66.7%	2nd Half:	8-10	80.0%	Game:	12-16	75.0%				
	1st Qtr	1-2	50.0%	2nd Qtr	3-4	75.0%	3rd Qtr	4-4	100.0%	4th Qtr	4-6	66.7%	

Harding 77 - 1-4

##	Player	g	Total			3-Ptr			Rebounds			PF	TP	A	TO	Blk	Stl	Min
			FG-FGA	FG-FGA	FT-FTA	FG-FGA	FG-FGA	FT-FTA	Off	Def	Tot							
03	MILLER,FALAN	g	2-5	1-3	2-2	1	5	6	1	7	7	1	1	3			30	
13	PADGETT,PEYTON	g	0-3	0-2	0-0	4	4	8	1	0	3	2	2	0			33	
21	LAYROCK,SYDNEY	f	3-8	1-5	1-2	1	2	3	2	8	2	1	0	2			29	
30	HOGUE,CAROLINE	f	10-17	0-0	7-8	2	6	8	2	27	1	0	1	1			23	
42	COOPER,KENNEDY	f	2-4	0-1	6-8	0	3	3	1	10	2	4	0	0			16	
00	NADEAU,JENNI		0-1	0-1	0-0	0	0	0	0	0	1	1	0	0			1	
04	MCNAMARA,MACKENZIE		0-2	0-0	0-0	1	1	2	0	0	2	0	0	1			10	
05	THORNTON,SADIE		0-0	0-0	0-0	0	0	0	0	0	0	0	0	0			1	
10	LAMPO,KELLIE		3-8	0-0	2-4	0	2	2	2	8	0	0	1	0			16	
11	BROWN,ALLIE		0-0	0-0	0-0	0	0	0	0	0	0	0	0	0			1	
14	CAPLES,CARISSA		2-4	0-1	2-2	1	0	1	2	6	1	3	0	0			27	
24	KEARNEY,AMANDA		0-1	0-1	2-2	0	1	1	1	2	1	0	0	1			6	
33	JONES,SYDNIE		3-7	0-0	3-6	1	4	5	1	9	1	1	0	1			7	
TEAM						2	2	4	0					0				
TOTALS			25-60	2-14	25-34	13	30	43	13	77	21	13	5	9			200	

Deadball Rebounds: 6,0

FG %	1st Half:	9-28	32.1%	2nd Half:	16-32	50.0%	Game:	25-60	41.7%				
	1st Qtr	2-16	12.5%	2nd Qtr	7-12	58.3%	3rd Qtr	5-18	27.8%	4th Qtr	11-14	78.6%	
3FG %	1st Half:	1-6	16.7%	2nd Half:	1-8	12.5%	Game:	2-14	14.3%				
	1st Qtr	1-4	25.0%	2nd Qtr	0-2	00.0%	3rd Qtr	1-6	16.7%	4th Qtr	0-2	00.0%	
FT %	1st Half:	13-20	65.0%	2nd Half:	12-14	85.7%	Game:	25-34	73.5%				
	1st Qtr	3-6	50.0%	2nd Qtr	10-14	71.4%	3rd Qtr	6-6	100.0%	4th Qtr	6-8	75.0%	

Officials:

Technical Fouls: Cameron- TEAM; Harding- None.

Score by periods	1st	2nd	3rd	4th	Total
Cameron	15	11	10	19	55
Harding	8	24	17	28	77

Points	In Paint	Off T/O	2nd Chance	Fast Break	Bench
CU	22	13	8	2	13
HU	46	19	9	0	25

Last FG - CU 4th-00:07, HU 4th-00:13.

Largest lead - Cameron by 8 1st-02:34; Harding by 25 4th-01:03
 CU led for 11:08. HU led for 26:27. Game was tied for 2:25.

Score tied - 2 times; Lead changed - 2 times

Official Basketball Box Score -- Game Totals -- First Half Statistics
Cameron vs Harding
11/25/2017 1 p.m. at Searcy, Ark. (Rhodes-Reaves Field House)

Cameron 26 • 2-2

##	Player	g	Total		3-Ptr		FT-FTA		Rebounds			PF	TP	A	TO	Blk	Stl	Min
			FG-FGA	FG-FGA	FG-FGA	FT-FTA	Off	Def	Tot									
11	UNDERWOOD,BRIANA	g	0-2	0-0	0-0	1	0	1	2	0	0	2	0	1	0	1	8	
12	BONNARENS,JAMIE	f	2-5	0-1	0-0	0	1	1	3	4	0	0	0	0	3	9		
15	MCNAIR,PARFIT T	g	2-2	0-0	1-2	2	1	3	3	5	2	2	0	0	13			
25	SMITH,LEJHA	f	0-1	0-0	1-2	0	5	5	2	1	0	0	2	11				
30	BATTESE,AVA	g	3-8	1-4	2-2	1	1	2	0	9	0	0	0	1	19			
01	NWAKAMMA,AMAKA		1-5	0-0	0-0	2	2	4	2	2	0	2	0	1	16			
02	TURNER,BRIANNA		0-0	0-0	0-0	0	0	0	0	0	0	0	0	0				
03	SELLIN,PETRA		1-2	0-1	0-0	0	2	2	0	2	1	0	0	10				
20	MARTINEZ,ANDREA		1-2	1-1	0-0	0	0	0	0	3	0	1	0	8				
22	ELLIS,SYDNEY		0-1	0-0	0-0	0	1	1	1	0	0	2	0	6				
23	LUSTER,JAZMINE		0-0	0-0	0-0	0	0	0	2	0	0	1	0	0				
TEAM						1	0	1	0				1					
Totals			10-28	2-7	4-6	7	13	20	15	26	3	11	2	6	100			

FG % 1st Qtr 6-13 46.2% 2nd Qtr 4-15 26.7% Half: 10-28 35.7%
 3FG % 1st Qtr 2-5 40.0% 2nd Qtr 0-2 00.0% Half: 2-7 28.6%
 FT % 1st Qtr 1-2 50.0% 2nd Qtr 3-4 75.0% Half: 4-6 66.7%

Harding 32 • 1-4

##	Player	g	Total		3-Ptr		FT-FTA		Rebounds			PF	TP	A	TO	Blk	Stl	Min
			FG-FGA	FG-FGA	FG-FGA	FT-FTA	Off	Def	Tot									
03	MILLER,FALAN	g	1-3	0-1	0-0	1	1	2	1	2	4	0	1	1	14			
13	PADGETT,PEYTON	g	0-2	0-1	0-0	3	1	4	1	0	1	1	1	0	16			
21	LAYROCK,SYDNEY	f	1-3	1-2	1-2	1	1	2	0	4	0	1	0	2	13			
30	HOGUE,CAROLINE	f	4-9	0-0	1-2	2	3	5	1	9	0	0	0	1	11			
42	COOPER,KENNEDY	f	1-2	0-1	6-8	0	2	2	0	8	1	4	0	0	10			
00	NADEAU,JENNI		0-0	0-0	0-0	0	0	0	0	0	0	0	0	0				
04	MCNAMARA,MACKENZIE		0-0	0-0	0-0	0	0	0	0	0	0	0	0	4				
05	THORNTON,SADIE		0-0	0-0	0-0	0	0	0	0	0	0	0	0	0				
10	LAMPO,KELLIE		1-4	0-0	2-4	0	1	1	1	4	0	0	1	0	11			
11	BROWN,ALLIE		0-0	0-0	0-0	0	0	0	0	0	0	0	0	0				
14	CAPLES,CARISSA		0-2	0-1	2-2	0	0	0	1	2	1	1	0	0	16			
24	KEARNEY,AMANDA		0-0	0-0	0-0	0	0	0	0	0	0	0	0	2				
33	JONES,SYDNEI		1-3	0-0	1-2	0	2	2	0	3	0	0	0	1	3			
TEAM						1	0	1	0				0					
Totals			9-28	1-6	13-20	8	11	19	5	32	7	7	3	5	100			

FG % 1st Qtr 2-16 12.5% 2nd Qtr 7-12 58.3% Half: 9-28 32.1%
 3FG % 1st Qtr 1-4 25.0% 2nd Qtr 0-2 00.0% Half: 1-6 16.7%
 FT % 1st Qtr 3-6 50.0% 2nd Qtr 10-14 71.4% Half: 13-20 65.0%

Officials:
 Technical Fouls: Cameron- None. Harding- None.

Score by periods	1st	2nd	3rd	4th	Total
Cameron	15	11	10	19	55
Harding	8	24	17	28	77

Points	In Paint	Off T/O	2nd Chance	Fast Break	Bench
CU	14	7	4	2	7
	16	11	3	0	9

Last FG - CU 2nd-02:11, HU 2nd-00:05.
 CU led for 11:08. HU led for 6:27. Game was tied for 2:25.

Score tied - 2 times
 Lead changed - 2 times

Cameron vs Harding
11/25/2017; 1 p.m. at Searcy, Ark. (Rhodes-Reaves Field House)
Period 1 Play-By-Play

VISITORS: Cameron	Time	Score	Margin	HOME: Harding
	09:56			MISSED 3PTR by MILLER,FALAN
REBOUND (DEF) by BONNARENS,JAMIE	09:56			
MISSED LAYUP by BATTESE,AVA	09:44			
	09:44			REBOUND (DEF) by HOGUE,CAROLINE
	09:31			TURNOVER by COOPER,KENNEDY
STEAL by UNDERWOOD,BRIANA	09:29			
TURNOVER by UNDERWOOD,BRIANA	09:17			
	09:16			STEAL by LAYROCK,SYDNEY
	09:09			MISSED LAYUP by HOGUE,CAROLINE
	09:09			REBOUND (DEADB) by TEAM
FOUL by MCNAIR,PARFITT	09:07			
	09:01	3-0	H 3	GOOD! 3PTR by LAYROCK,SYDNEY
	09:01			ASSIST by PADGETT,PEYTON
GOOD! LAYUP by BONNARENS,JAMIE [PNT]	08:49	3-2	H 1	
	08:37			TURNOVER by PADGETT,PEYTON
STEAL by BONNARENS,JAMIE	08:36			
MISSED JUMPER by BONNARENS,JAMIE	08:25			
REBOUND (OFF) by MCNAIR,PARFITT	08:25			
MISSED 3PTR by BATTESE,AVA	08:09			
	08:09			REBOUND (DEF) by HOGUE,CAROLINE
SUB IN: NWAKAMMA,AMAKA	07:51			
SUB OUT: UNDERWOOD,BRIANA	07:51			
	07:51			SUB IN: CAPLES,CARISSA
	07:51			SUB IN: LAMPO,KELLIE
	07:51			SUB OUT: LAYROCK,SYDNEY
	07:51			SUB OUT: COOPER,KENNEDY
	07:34			MISSED 3PTR by PADGETT,PEYTON
REBOUND (DEF) by SMITH,LEJHA	07:34			
	07:26			FOUL by HOGUE,CAROLINE
MISSED FT by SMITH,LEJHA	07:26			
REBOUND (DEADB) by TEAM	07:26			
GOOD! FT by SMITH,LEJHA	07:26	3-3	T	
	07:13			MISSED JUMPER by CAPLES,CARISSA
	07:13			REBOUND (OFF) by HOGUE,CAROLINE
	07:06			MISSED LAYUP by LAMPO,KELLIE
	07:06			REBOUND (OFF) by PADGETT,PEYTON
	07:00			MISSED LAYUP by HOGUE,CAROLINE
BLOCK by SMITH,LEJHA	07:00			
REBOUND (DEF) by SMITH,LEJHA	06:58			
TURNOVER by NWAKAMMA,AMAKA	06:47			
	06:27			MISSED LAYUP by LAMPO,KELLIE
REBOUND (DEF) by SMITH,LEJHA	06:27			
GOOD! 3PTR by BATTESE,AVA	06:13	3-6	V 3	
ASSIST by MCNAIR,PARFITT	06:13			
	05:55			MISSED LAYUP by HOGUE,CAROLINE
REBOUND (DEF) by MCNAIR,PARFITT	05:55			
	05:28			SUB IN: LAYROCK,SYDNEY
	05:28			SUB IN: JONES,SYDNEIE
	05:28			SUB OUT: MILLER,FALAN
	05:28			SUB OUT: HOGUE,CAROLINE
TURNOVER by TEAM	05:23			
FOUL by SMITH,LEJHA	04:57			
	04:57			MISSED FT by LAMPO,KELLIE
	04:57			REBOUND (DEADB) by TEAM
	04:57			TIMEOUT MEDIA
	04:57			MISSED FT by LAMPO,KELLIE
REBOUND (DEF) by SMITH,LEJHA	04:57			
SUB IN: MARTINEZ,ANDREA	04:57			
SUB OUT: BATTESE,AVA	04:57			
TURNOVER by MCNAIR,PARFITT	04:44			
	04:24			MISSED LAYUP by JONES,SYDNEIE
	04:24			REBOUND (OFF) by LAYROCK,SYDNEY
	04:19			TURNOVER by LAYROCK,SYDNEY
STEAL by BONNARENS,JAMIE	04:18			
SUB IN: BATTESE,AVA	04:08			
SUB IN: SELLIN,PETRA	04:08			
SUB OUT: BONNARENS,JAMIE	04:08			
SUB OUT: MCNAIR,PARFITT	04:08			
	04:08			SUB IN: MCNAMARA,MACKENZIE

VISITORS: Cameron	Time	Score	Margin	HOME: Harding
	04:08			SUB IN: MILLER,FALAN
	04:08			SUB OUT: PADGETT,PEYTON
	04:08			SUB OUT: LAMPO,KELLIE
GOOD! 3PTR by MARTINEZ,ANDREA	03:58	3-9	V 6	
ASSIST by SELLIN,PETRA	03:58			
	03:41			MISSED LAYUP by LAYROCK,SYDNEY
	03:41			REBOUND (OFF) by MILLER,FALAN
	03:37			MISSED LAYUP by MILLER,FALAN
REBOUND (DEF) by SMITH,LEJHA	03:37			
MISSED LAYUP by NWAKAMMA,AMAKA	03:21			
	03:21			BLOCK by PADGETT,PEYTON
REBOUND (OFF) by NWAKAMMA,AMAKA	03:19			
	03:18			SUB IN: HOGUE,CAROLINE
	03:18			SUB IN: COOPER,KENNEDY
	03:18			SUB OUT: JONES,SYDNEY
	03:18			SUB OUT: MILLER,FALAN
	03:16			SUB IN: PADGETT,PEYTON
	03:16			SUB OUT: MCNAMARA,MACKENZIE
TURNOVER by MARTINEZ,ANDREA	03:06			
	03:05			STEAL by LAYROCK,SYDNEY
SUB IN: BONNARENS,JAMIE	03:01			
SUB OUT: SMITH,LEJHA	03:01			
	02:53			MISSED 3PTR by CAPLES,CARISSA
	02:53			REBOUND (OFF) by PADGETT,PEYTON
	02:49			MISSED LAYUP by HOGUE,CAROLINE
REBOUND (DEF) by SELLIN,PETRA	02:49			
GOOD! LAYUP by NWAKAMMA,AMAKA [PNT]	02:34	3-11	V 8	
FOUL by BONNARENS,JAMIE	02:13			
	02:13	4-11	V 7	GOOD! FT by COOPER,KENNEDY
	02:13	5-11	V 6	GOOD! FT by COOPER,KENNEDY
SUB IN: MCNAIR,PARFITT	02:13			
SUB IN: ELLIS,SYDNEY	02:13			
SUB OUT: NWAKAMMA,AMAKA	02:13			
SUB OUT: MARTINEZ,ANDREA	02:13			
	02:13			SUB IN: KEARNEY,AMANDA
	02:13			SUB OUT: CAPLES,CARISSA
MISSED 3PTR by BONNARENS,JAMIE	02:01			
	02:01			REBOUND (DEF) by HOGUE,CAROLINE
	01:47	7-11	V 4	GOOD! LAYUP by COOPER,KENNEDY [PNT]
MISSED 3PTR by SELLIN,PETRA	01:33			
REBOUND (OFF) by MCNAIR,PARFITT	01:33			
GOOD! JUMPER by BONNARENS,JAMIE	01:27	7-13	V 6	
ASSIST by MCNAIR,PARFITT	01:27			
	01:12			TURNOVER by COOPER,KENNEDY
STEAL by BONNARENS,JAMIE	01:11			
TURNOVER by ELLIS,SYDNEY	01:00			
	00:59			STEAL by HOGUE,CAROLINE
FOUL by BONNARENS,JAMIE	00:56			
	00:56			MISSED FT by HOGUE,CAROLINE
	00:56			REBOUND (DEADB) by TEAM
	00:56	8-13	V 5	GOOD! FT by HOGUE,CAROLINE
SUB IN: SMITH,LEJHA	00:56			
SUB IN: UNDERWOOD,BRIANA	00:56			
SUB OUT: SELLIN,PETRA	00:56			
SUB OUT: BONNARENS,JAMIE	00:56			
	00:56			SUB IN: LAMPO,KELLIE
	00:56			SUB IN: MCNAMARA,MACKENZIE
	00:56			SUB OUT: LAYROCK,SYDNEY
	00:56			SUB OUT: HOGUE,CAROLINE
GOOD! LAYUP by MCNAIR,PARFITT [PNT]	00:40	8-15	V 7	
	00:23			MISSED JUMPER by LAMPO,KELLIE
REBOUND (DEF) by ELLIS,SYDNEY	00:23			
	00:19			FOUL by LAMPO,KELLIE
SUB IN: NWAKAMMA,AMAKA	00:19			
SUB OUT: ELLIS,SYDNEY	00:19			
MISSED JUMPER by NWAKAMMA,AMAKA	00:01			
	00:00			REBOUND (DEF) by COOPER,KENNEDY

Cameron 15, Harding 8

Period 1-only	In Paint	Off T/O	2nd Chance	Fast Break	Bench	
CU	6	3	2	0	5	Score tied - 2 times
HU	2	4	0	0	0	Lead changed - 2 times

Cameron vs Harding
11/25/2017; 1 p.m. at Searcy, Ark. (Rhodes-Reaves Field House)
Period 2 Play-By-Play

VISITORS: Cameron	Time	Score	Margin	HOME: Harding
SUB IN: NWAKAMMA,AMAKA	10:00			
SUB OUT: BONNARENS,JAMIE	10:00			
	10:00			SUB IN: LAMPO,KELLIE
	10:00			SUB IN: CAPLES,CARISSA
	10:00			SUB IN: MCNAMARA,MACKENZIE
	10:00			SUB OUT: MILLER,FALAN
	10:00			SUB OUT: LAYROCK,SYDNEY
	10:00			SUB OUT: HOGUE,CAROLINE
	09:43			MISSED 3PTR by COOPER,KENNEDY
	09:43			REBOUND (OFF) by PADGETT,PEYTON
FOUL by MCNAIR,PARFITT	09:37			
	09:23	10-15	V 5	GOOD! LAYUP by LAMPO,KELLIE [PNT]
	09:23			ASSIST by COOPER,KENNEDY
GOOD! LAYUP by MCNAIR,PARFITT [PNT]	09:05	10-17	V 7	
FOUL by NWAKAMMA,AMAKA	08:48			
	08:48	11-17	V 6	GOOD! FT by LAMPO,KELLIE
	08:48	12-17	V 5	GOOD! FT by LAMPO,KELLIE
SUB IN: MARTINEZ,ANDREA	08:48			
SUB OUT: MCNAIR,PARFITT	08:48			
	08:48			SUB IN: LAYROCK,SYDNEY
	08:48			SUB OUT: MCNAMARA,MACKENZIE
MISSED LAYUP by SMITH,LEJHA	08:27			
	08:27			REBOUND (DEF) by LAMPO,KELLIE
FOUL by UNDERWOOD,BRIANA	08:20			
	08:20	13-17	V 4	GOOD! FT by CAPLES,CARISSA
	08:20	14-17	V 3	GOOD! FT by CAPLES,CARISSA
SUB IN: BONNARENS,JAMIE	08:20			
SUB OUT: UNDERWOOD,BRIANA	08:20			
	08:20			SUB IN: MILLER,FALAN
	08:20			SUB OUT: COOPER,KENNEDY
MISSED JUMPER by MARTINEZ,ANDREA	08:06			
	08:06			REBOUND (DEF) by PADGETT,PEYTON
	07:49			TURNOVER by CAPLES,CARISSA
STEAL by NWAKAMMA,AMAKA	07:49			
TIMEOUT 30SEC	07:49			
MISSED JUMPER by BONNARENS,JAMIE	07:36			
	07:36			REBOUND (DEF) by JONES,SYDNIE
FOUL by BONNARENS,JAMIE	07:25			
SUB IN: SELLIN,PETRA	07:25			
SUB OUT: BONNARENS,JAMIE	07:25			
	07:14			MISSED LAYUP by JONES,SYDNIE
BLOCK by SMITH,LEJHA	07:14			
	07:13			REBOUND (OFF) by TEAM
FOUL by SMITH,LEJHA	07:10			
	07:10			MISSED FT by LAYROCK,SYDNEY
	07:10			REBOUND (DEADB) by TEAM
	07:10	15-17	V 2	GOOD! FT by LAYROCK,SYDNEY
SUB IN: MCNAIR,PARFITT	07:10			
SUB OUT: SMITH,LEJHA	07:10			
	06:57			FOUL by CAPLES,CARISSA
	06:55			FOUL by MILLER,FALAN
MISSED FT by MCNAIR,PARFITT	06:55			
REBOUND (DEADB) by TEAM	06:55			
GOOD! FT by MCNAIR,PARFITT	06:55	15-18	V 3	
	06:42	17-18	V 1	GOOD! LAYUP by JONES,SYDNIE [PNT]
	06:42			ASSIST by MILLER,FALAN
	06:26			FOUL by PADGETT,PEYTON
GOOD! FT by BATTESE,AVA	06:26	17-19	V 2	
GOOD! FT by BATTESE,AVA	06:26	17-20	V 3	
	06:26			SUB IN: HOGUE,CAROLINE
	06:26			SUB OUT: PADGETT,PEYTON
	06:00	19-20	V 1	GOOD! LAYUP by HOGUE,CAROLINE [PNT]
	06:00			ASSIST by MILLER,FALAN
MISSED 3PTR by BATTESE,AVA	05:47			
	05:47			REBOUND (DEF) by JONES,SYDNIE
	05:33			MISSED 3PTR by LAYROCK,SYDNEY
REBOUND (DEF) by NWAKAMMA,AMAKA	05:33			
TURNOVER by MCNAIR,PARFITT	05:17			
	05:17			SUB IN: COOPER,KENNEDY

VISITORS: Cameron	Time	Score	Margin	HOME: Harding
	05:17			SUB OUT: LAMPO,KELLIE
	05:05	21-20	H 1	GOOD! LAYUP by HOGUE,CAROLINE [PNT]
	05:05			ASSIST by MILLER,FALAN
MISSED 3PTR by BATTESE,AVA	04:53			
	04:53			REBOUND (DEF) by COOPER,KENNEDY
FOUL by MCNAIR,PARFITT	04:50			
	04:50			TIMEOUT MEDIA
	04:50	22-20	H 2	GOOD! FT by COOPER,KENNEDY
	04:50			MISSED FT by COOPER,KENNEDY
	04:50			REBOUND (OFF) by HOGUE,CAROLINE
	04:49			MISSED LAYUP by HOGUE,CAROLINE
REBOUND (DEF) by SELLIN,PETRA	04:49			
GOOD! LAYUP by SELLIN,PETRA [PNT]	04:29	22-22	T	
	04:16	24-22	H 2	GOOD! LAYUP by HOGUE,CAROLINE [PNT]
	04:16			ASSIST by CAPLES,CARISSA
FOUL by LUSTER,JAZMINE	03:52			
TURNOVER by LUSTER,JAZMINE	03:52			
	03:52			SUB IN: LAMPO,KELLIE
	03:52			SUB IN: PADGETT,PEYTON
	03:52			SUB OUT: HOGUE,CAROLINE
	03:52			SUB OUT: LAYROCK,SYDNEY
FOUL by LUSTER,JAZMINE	03:47			
	03:47	25-22	H 3	GOOD! FT by COOPER,KENNEDY
	03:47	26-22	H 4	GOOD! FT by COOPER,KENNEDY
SUB IN: LUSTER,JAZMINE	03:47			
SUB IN: UNDERWOOD,BRIANA	03:47			
SUB IN: ELLIS,SYDNEY	03:47			
SUB OUT: NWAKAMMA,AMAKA	03:47			
SUB OUT: MCNAIR,PARFITT	03:47			
MISSED LAYUP by ELLIS,SYDNEY	03:35			
REBOUND (OFF) by TEAM	03:35			
SUB IN: NWAKAMMA,AMAKA	03:26			
SUB OUT: MARTINEZ,ANDREA	03:26			
MISSED LAYUP by NWAKAMMA,AMAKA	03:22			
REBOUND (OFF) by NWAKAMMA,AMAKA	03:22			
MISSED LAYUP by NWAKAMMA,AMAKA	03:21			
	03:21			BLOCK by LAMPO,KELLIE
	03:19			REBOUND (DEF) by MILLER,FALAN
FOUL by NWAKAMMA,AMAKA	03:07			
	03:07	27-22	H 5	GOOD! FT by COOPER,KENNEDY
	03:07			MISSED FT by COOPER,KENNEDY
REBOUND (DEF) by NWAKAMMA,AMAKA	03:07			
MISSED JUMPER by BATTESE,AVA	02:59			
REBOUND (OFF) by UNDERWOOD,BRIANA	02:59			
TURNOVER by UNDERWOOD,BRIANA	02:54			
	02:54			STEAL by MILLER,FALAN
	02:47			TURNOVER by COOPER,KENNEDY
MISSED LAYUP by UNDERWOOD,BRIANA	02:33			
	02:33			BLOCK by MILLER,FALAN
REBOUND (OFF) by BATTESE,AVA	02:30			
GOOD! LAYUP by BATTESE,AVA [PNT]	02:27	27-24	H 3	
	02:15			TURNOVER by COOPER,KENNEDY
STEAL by BATTESE,AVA	02:13			
GOOD! LAYUP by BATTESE,AVA [FB/PNT]	02:11	27-26	H 1	
	02:08			TIMEOUT 30SEC
	02:08			SUB IN: HOGUE,CAROLINE
	02:08			SUB IN: LAYROCK,SYDNEY
	02:08			SUB OUT: COOPER,KENNEDY
	02:08			SUB OUT: LAMPO,KELLIE
	01:37			MISSED JUMPER by PADGETT,PEYTON
REBOUND (DEF) by BATTESE,AVA	01:37			
MISSED LAYUP by UNDERWOOD,BRIANA	01:27			
	01:27			REBOUND (DEF) by LAYROCK,SYDNEY
	01:15	29-26	H 3	GOOD! LAYUP by HOGUE,CAROLINE [PNT]
	01:15			ASSIST by MILLER,FALAN
FOUL by ELLIS,SYDNEY	01:00			
TURNOVER by ELLIS,SYDNEY	01:00			
	01:00			SUB IN: JONES,SYDNIE
	01:00			SUB OUT: HOGUE,CAROLINE
FOUL by UNDERWOOD,BRIANA	00:39			
	00:39			MISSED FT by JONES,SYDNIE
	00:39			REBOUND (DEADB) by TEAM
	00:39	30-26	H 4	GOOD! FT by JONES,SYDNIE
	00:39			SUB IN: MCNAMARA,MACKENZIE
	00:39			SUB OUT: LAYROCK,SYDNEY

VISITORS: Cameron

Time Score Margin

HOME: Harding

TURNOVER by NWAKAMMA,AMAKA

00:25

00:24

STEAL by JONES,SYDNIE

00:05 32-26 H 6

GOOD! LAYUP by MILLER,FALAN [PNT]

Cameron 26, Harding 32

Period 2-only	In Paint	Off T/O	2nd Chance	Fast Break	Bench	
CU	8	4	2	2	2	Score tied - 2 times
HU	14	7	3	0	9	Lead changed - 0 times

Official Basketball Box Score -- Game Totals -- Second Half Statistics
Cameron vs Harding
11/25/2017 1 p.m. at Searcy, Ark. (Rhodes-Reaves Field House)

Cameron 29 • 2-2

##	Player		Total		3-Ptr	Rebounds			PF	TP	A	TO	Blk	Stl	Min
			FG-FGA	FG-FGA	FT-FTA	Off	Def	Tot							
11	UNDERWOOD,BRIANA	g	0-2	0-0	0-0	0	2	2	0	0	2	0	0	1	15
12	BONNARENS,JAMIE	f	2-7	1-3	0-0	1	0	1	0	5	2	1	0	1	19
15	MCNAIR,PARFITT	g	1-4	0-1	0-0	1	2	3	0	2	3	2	0	2	12
25	SMITH,LEJHA	f	2-6	0-0	4-4	2	3	5	2	8	0	3	3	0	13
30	BATTESE,AVA	g	3-6	2-5	0-0	0	1	1	0	8	0	0	0	0	16
01	NWAKAMMA,AMAKA		1-4	0-1	0-0	0	0	0	2	2	0	1	0	0	7
02	TURNER,BRIANNA		0-0	0-0	2-4	0	0	0	1	2	0	0	0	0	5
03	SELLIN,PETRA		0-1	0-0	0-0	0	0	0	2	0	0	0	1	0	7
20	MARTINEZ,ANDREA		0-1	0-1	2-2	0	1	1	3	2	0	0	0	0	6
22	ELLIS,SYDNEY		0-0	0-0	0-0	0	0	0	0	0	0	1	0	0	1
23	LUSTER,JAZMINE		0-0	0-0	0-0	0	0	0	0	0	0	0	0	0	0
TEAM						0	3	3	0		0				
Totals			9-31	3-11	8-10	4	12	16	10	29	7	8	4	4	101
FG %	3rd Qtr	3-10	30.0%	4th Qtr	6-21	28.6%	Half:	9-31	29.0%						
3FG %	3rd Qtr	0-3	00.0%	4th Qtr	3-8	37.5%	Half:	3-11	28.6%						
FT %	3rd Qtr	4-4	100.0%	4th Qtr	4-6	66.7%	Half:	8-10	80.0%						

Harding 45 • 1-4

##	Player		Total		3-Ptr	Rebounds			PF	TP	A	TO	Blk	Stl	Min
			FG-FGA	FG-FGA	FT-FTA	Off	Def	Tot							
03	MILLER,FALAN	g	1-2	1-2	2-2	0	4	4	0	5	3	1	0	2	16
13	PADGETT,PEYTON	g	0-1	0-1	0-0	1	3	4	0	0	2	1	1	0	17
21	LAYROCK,SYDNEY	f	2-5	0-3	0-0	0	1	1	2	4	2	0	0	0	16
30	HOGUE,CAROLINE	f	6-8	0-0	6-6	0	3	3	1	18	1	0	1	0	12
42	COOPER,KENNEDY	f	1-2	0-0	0-0	0	1	1	1	2	1	0	0	0	6
00	NADEAU,JENNI		0-1	0-1	0-0	0	0	0	0	0	1	1	0	0	1
04	MCNAMARA,MACKENZIE		0-2	0-0	0-0	1	1	2	0	0	2	0	0	1	6
05	THORNTON,SADIE		0-0	0-0	0-0	0	0	0	0	0	0	0	0	0	1
10	LAMPO,KELLIE		2-4	0-0	0-0	0	1	1	1	4	0	0	0	0	5
11	BROWN,ALLIE		0-0	0-0	0-0	0	0	0	0	0	0	0	0	0	1
14	CAPLES,CARISSA		2-2	0-0	0-0	1	0	1	1	4	0	2	0	0	11
24	KEARNEY,AMANDA		0-1	0-1	2-2	0	1	1	1	2	1	0	0	1	4
33	JONES,SYDNEI		2-4	0-0	2-4	1	2	3	1	6	1	1	0	0	4
TEAM						1	2	3	0		0				
Totals			16-32	1-8	12-14	5	19	24	8	45	14	6	2	4	100
FG %	3rd Qtr	5-18	27.8%	4th Qtr	11-14	78.6%	Half:	16-32	50.0%						
3FG %	3rd Qtr	1-6	16.7%	4th Qtr	0-2	00.0%	Half:	1-8	16.7%						
FT %	3rd Qtr	6-6	100.0%	4th Qtr	6-8	75.0%	Half:	12-14	85.7%						

Officials:

Technical Fouls: Cameron- TEAM; Harding- None.

Score by periods	1st	2nd	3rd	4th	Total
Cameron	15	11	10	19	55
Harding	8	24	17	28	77

Points	In Paint	Off T/O	2nd Chance	Fast Break	Bench
CU	8	6	4	0	6
	30	8	6	0	16

Last FG - CU 4th-00:07, HU 4th-00:13.
 CU led for 0:00. HU led for 20:00. Game was tied for 0:00.

Score tied - 0 times
 Lead changed - 0 times

Cameron vs Harding
11/25/2017; 1 p.m. at Searcy, Ark. (Rhodes-Reaves Field House)
Period 3 Play-By-Play

VISITORS: Cameron	Time	Score	Margin	HOME: Harding
GOOD! LAYUP by SMITH,LEJHA [PNT]	09:37	32-28	H 4	
ASSIST by MCNAIR,PARFITT	09:37			
	09:11	34-28	H 6	GOOD! LAYUP by COOPER,KENNEDY [PNT]
	09:11			ASSIST by HOGUE,CAROLINE
GOOD! JUMPER by BONNARENS,JAMIE	08:55	34-30	H 4	
ASSIST by MCNAIR,PARFITT	08:55			
	08:39			MISSED 3PTR by LAYROCK,SYDNEY
REBOUND (DEF) by SMITH,LEJHA	08:39			
TURNOVER by MCNAIR,PARFITT	08:32			
	08:32			SUB IN: CAPLES,CARISSA
	08:32			SUB OUT: COOPER,KENNEDY
	08:23			TIMEOUT 30SEC
	08:23			TIMEOUT MEDIA
	08:15			TURNOVER by CAPLES,CARISSA
STEAL by MCNAIR,PARFITT	08:13			
TURNOVER by BONNARENS,JAMIE	08:07			
	08:05			STEAL by MILLER,FALAN
	08:01			MISSED 3PTR by LAYROCK,SYDNEY
REBOUND (DEF) by TEAM	08:01			
GOOD! LAYUP by SMITH,LEJHA [PNT]	07:44	34-32	H 2	
ASSIST by MCNAIR,PARFITT	07:44			
	07:23			MISSED LAYUP by HOGUE,CAROLINE
BLOCK by SMITH,LEJHA	07:23			
REBOUND (DEF) by SMITH,LEJHA	07:21			
	07:18			FOUL by LAYROCK,SYDNEY
	07:18			SUB IN: LAMPO,KELLIE
	07:18			SUB OUT: HOGUE,CAROLINE
	07:07			FOUL by LAYROCK,SYDNEY
MISSED 3PTR by BONNARENS,JAMIE	06:51			
	06:51			REBOUND (DEF) by LAMPO,KELLIE
	06:40	37-32	H 5	GOOD! 3PTR by MILLER,FALAN
	06:40			ASSIST by LAYROCK,SYDNEY
TURNOVER by MCNAIR,PARFITT	06:31			
SUB IN: NWAKAMMA,AMAKA	06:31			
SUB OUT: MCNAIR,PARFITT	06:31			
	06:21	39-32	H 7	GOOD! LAYUP by LAMPO,KELLIE [PNT]
	06:21			ASSIST by MILLER,FALAN
TURNOVER by SMITH,LEJHA	05:55			
	05:52			STEAL by MILLER,FALAN
	05:43			MISSED LAYUP by LAMPO,KELLIE
BLOCK by SMITH,LEJHA	05:43			
REBOUND (DEF) by UNDERWOOD,BRIANA	05:41			
MISSED 3PTR by BATTESE,AVA	05:27			
	05:27			REBOUND (DEF) by MILLER,FALAN
	05:17	41-32	H 9	GOOD! LAYUP by LAMPO,KELLIE [PNT]
	05:17			ASSIST by LAYROCK,SYDNEY
	04:52			SUB IN: JONES,SYDNIE
	04:52			SUB OUT: LAMPO,KELLIE
	04:50			FOUL by LAMPO,KELLIE
TIMEOUT MEDIA	04:50			
MISSED LAYUP by NWAKAMMA,AMAKA	04:40			
	04:40			REBOUND (DEF) by JONES,SYDNIE
	04:29			MISSED 3PTR by LAYROCK,SYDNEY
	04:29			REBOUND (OFF) by CAPLES,CARISSA
	04:23	42-32	H 10	GOOD! FT by JONES,SYDNIE
	04:23	43-32	H 11	GOOD! FT by JONES,SYDNIE
SUB IN: MARTINEZ,ANDREA	04:23			
SUB IN: SELLIN,PETRA	04:23			
SUB OUT: UNDERWOOD,BRIANA	04:23			
SUB OUT: BONNARENS,JAMIE	04:23			
	04:23			SUB IN: COOPER,KENNEDY
	04:23			SUB IN: KEARNEY,AMANDA
	04:23			SUB OUT: LAYROCK,SYDNEY
	04:23			SUB OUT: CAPLES,CARISSA
FOUL by MARTINEZ,ANDREA	04:20			
FOUL by NWAKAMMA,AMAKA	04:15			
TURNOVER by NWAKAMMA,AMAKA	04:15			
	03:59			MISSED LAYUP by JONES,SYDNIE
BLOCK by SMITH,LEJHA	03:59			

VISITORS: Cameron	Time	Score	Margin	HOME: Harding
	03:57			REBOUND (OFF) by PADGETT,PEYTON
FOUL by NWAKAMMA,AMAKA	03:56			
SUB IN: ELLIS,SYDNEY	03:56			
SUB OUT: NWAKAMMA,AMAKA	03:56			
	03:51			MISSED 3PTR by PADGETT,PEYTON
REBOUND (DEF) by TEAM	03:51			
MISSED LAYUP by SMITH,LEJHA	03:36			
	03:36			REBOUND (DEF) by KEARNEY,AMANDA
	03:30			MISSED LAYUP by COOPER,KENNEDY
BLOCK by SELLIN,PETRA	03:30			
REBOUND (DEF) by BATTESE,AVA	03:27			
TURNOVER by ELLIS,SYDNEY	03:22			
	03:21			STEAL by KEARNEY,AMANDA
FOUL by MARTINEZ,ANDREA	03:18			
	03:18	44-32	H 12	GOOD! FT by KEARNEY,AMANDA
	03:18	45-32	H 13	GOOD! FT by KEARNEY,AMANDA
SUB IN: BONNARENS,JAMIE	03:18			
SUB OUT: BATTESE,AVA	03:18			
	03:18			SUB IN: MCNAMARA,MACKENZIE
	03:18			SUB OUT: MILLER,FALAN
MISSED 3PTR by BONNARENS,JAMIE	03:07			
	03:07			REBOUND (DEF) by COOPER,KENNEDY
	02:53			MISSED LAYUP by JONES,SYDNIE
REBOUND (DEF) by SMITH,LEJHA	02:53			
	02:43			FOUL by JONES,SYDNIE
GOOD! FT by SMITH,LEJHA	02:43	45-33	H 12	
GOOD! FT by SMITH,LEJHA	02:43	45-34	H 11	
SUB IN: UNDERWOOD,BRIANA	02:43			
SUB OUT: ELLIS,SYDNEY	02:43			
	02:43			SUB IN: LAYROCK,SYDNEY
	02:43			SUB IN: HOGUE,CAROLINE
	02:43			SUB OUT: COOPER,KENNEDY
	02:43			SUB OUT: JONES,SYDNIE
	02:30			MISSED 3PTR by KEARNEY,AMANDA
REBOUND (DEF) by TEAM	02:30			
MISSED LAYUP by UNDERWOOD,BRIANA	02:07			
	02:07			BLOCK by PADGETT,PEYTON
	02:05			REBOUND (DEF) by HOGUE,CAROLINE
	01:51			MISSED LAYUP by HOGUE,CAROLINE
	01:51			REBOUND (OFF) by MCNAMARA,MACKENZIE
	01:48			MISSED LAYUP by MCNAMARA,MACKENZIE
REBOUND (DEF) by MARTINEZ,ANDREA	01:48			
TURNOVER by SMITH,LEJHA	01:35			
	01:33			STEAL by MCNAMARA,MACKENZIE
	01:21	47-34	H 13	GOOD! LAYUP by HOGUE,CAROLINE [PNT]
	01:21			ASSIST by KEARNEY,AMANDA
	00:53			FOUL by KEARNEY,AMANDA
GOOD! FT by MARTINEZ,ANDREA	00:53	47-35	H 12	
GOOD! FT by MARTINEZ,ANDREA	00:53	47-36	H 11	
SUB IN: MCNAIR,PARFITT	00:53			
SUB IN: BATTESE,AVA	00:53			
SUB OUT: SELLIN,PETRA	00:53			
	00:53			SUB IN: CAPLES,CARISSA
	00:53			SUB IN: LAMPO,KELLIE
	00:53			SUB IN: MILLER,FALAN
	00:53			SUB OUT: MCNAMARA,MACKENZIE
	00:53			SUB OUT: PADGETT,PEYTON
	00:53			SUB OUT: KEARNEY,AMANDA
FOUL by SMITH,LEJHA	00:37			
	00:37	48-36	H 12	GOOD! FT by HOGUE,CAROLINE
	00:37	49-36	H 13	GOOD! FT by HOGUE,CAROLINE
	00:37			SUB IN: MCNAMARA,MACKENZIE
	00:37			SUB OUT: LAYROCK,SYDNEY
MISSED LAYUP by SMITH,LEJHA	00:10			
	00:10			REBOUND (DEF) by HOGUE,CAROLINE
	00:01			MISSED JUMPER by LAMPO,KELLIE
REBOUND (DEF) by UNDERWOOD,BRIANA	00:01			

Cameron 36, Harding 49

Period 3-only	In Paint	Off T/O	2nd Chance	Fast Break	Bench	
CU	4	0	0	0	2	Score tied - 0 times
HU	8	6	2	0	8	Lead changed - 0 times

Cameron vs Harding
11/25/2017; 1 p.m. at Searcy, Ark. (Rhodes-Reaves Field House)
Period 4 Play-By-Play

VISITORS: Cameron	Time	Score	Margin	HOME: Harding
	10:00			SUB IN: LAMPO,KELLIE
	10:00			SUB OUT: COOPER,KENNEDY
TURNOVER by SMITH,LEJHA	09:46			
	09:33	51-36	H 15	GOOD! LAYUP by HOGUE,CAROLINE [PNT]
	09:33			ASSIST by MILLER,FALAN
MISSED JUMPER by BONNARENS,JAMIE	09:19			
REBOUND (OFF) by SMITH,LEJHA	09:19			
MISSED 3PTR by BATTESE,AVA	09:13			
REBOUND (OFF) by MCNAIR,PARFITT	09:13			
MISSED LAYUP by MCNAIR,PARFITT	09:08			
	09:08			REBOUND (DEF) by PADGETT,PEYTON
	09:04			TURNOVER by PADGETT,PEYTON
GOOD! 3PTR by BATTESE,AVA	08:52	51-39	H 12	
ASSIST by UNDERWOOD,BRIANA	08:52			
FOUL by SMITH,LEJHA	08:33			
	08:33	52-39	H 13	GOOD! FT by HOGUE,CAROLINE
	08:33	53-39	H 14	GOOD! FT by HOGUE,CAROLINE
SUB IN: SELLIN,PETRA	08:33			
SUB OUT: SMITH,LEJHA	08:33			
	08:33			SUB IN: COOPER,KENNEDY
	08:33			SUB OUT: LAMPO,KELLIE
GOOD! 3PTR by BONNARENS,JAMIE	08:24	53-42	H 11	
ASSIST by UNDERWOOD,BRIANA	08:24			
	08:06	55-42	H 13	GOOD! LAYUP by HOGUE,CAROLINE [PNT]
	08:06			ASSIST by COOPER,KENNEDY
GOOD! JUMPER by MCNAIR,PARFITT	07:49	55-44	H 11	
	07:26	57-44	H 13	GOOD! LAYUP by LAYROCK,SYDNEY [PNT]
	07:26			ASSIST by PADGETT,PEYTON
MISSED LAYUP by SELLIN,PETRA	07:12			
	07:12			REBOUND (DEF) by MILLER,FALAN
	07:01			MISSED 3PTR by MILLER,FALAN
REBOUND (DEF) by MCNAIR,PARFITT	07:01			
MISSED JUMPER by UNDERWOOD,BRIANA	06:51			
	06:51			REBOUND (DEF) by TEAM
SUB IN: MARTINEZ,ANDREA	06:48			
SUB IN: NWAOKAMMA,AMAKA	06:48			
SUB OUT: UNDERWOOD,BRIANA	06:48			
SUB OUT: BATTESE,AVA	06:48			
	06:48			SUB IN: JONES,SYDNEIE
	06:48			SUB IN: CAPLES,CARISSA
	06:48			SUB OUT: HOGUE,CAROLINE
	06:48			SUB OUT: COOPER,KENNEDY
FOUL by MARTINEZ,ANDREA	06:25			
	06:10	59-44	H 15	GOOD! LAYUP by LAYROCK,SYDNEY [PNT]
	06:10			ASSIST by JONES,SYDNEIE
MISSED LAYUP by BONNARENS,JAMIE	06:00			
	06:00			REBOUND (DEF) by MILLER,FALAN
FOUL by SELLIN,PETRA	05:54			
	05:54			SUB IN: MCNAMARA,MACKENZIE
	05:54			SUB OUT: MILLER,FALAN
FOUL by SELLIN,PETRA	05:49			
	05:49			MISSED FT by JONES,SYDNEIE
	05:49			REBOUND (DEADB) by TEAM
	05:49			MISSED FT by JONES,SYDNEIE
REBOUND (DEF) by MCNAIR,PARFITT	05:49			
SUB IN: SMITH,LEJHA	05:49			
SUB OUT: SELLIN,PETRA	05:49			
MISSED LAYUP by SMITH,LEJHA	05:40			
	05:40			REBOUND (DEF) by LAYROCK,SYDNEIE
	05:18			MISSED LAYUP by MCNAMARA,MACKENZIE
	05:18			REBOUND (OFF) by JONES,SYDNEIE
	05:16	61-44	H 17	GOOD! LAYUP by JONES,SYDNEIE [PNT]
MISSED LAYUP by SMITH,LEJHA	05:05			
	05:05			REBOUND (DEF) by JONES,SYDNEIE
	05:01			TURNOVER by JONES,SYDNEIE
STEAL by MCNAIR,PARFITT	05:00			
MISSED 3PTR by MARTINEZ,ANDREA	04:56			
	04:56			REBOUND (DEF) by PADGETT,PEYTON
	04:44	63-44	H 19	GOOD! LAYUP by JONES,SYDNEIE [PNT]

VISITORS: Cameron	Time	Score	Margin	HOME: Harding
	04:44			ASSIST by MCNAMARA,MACKENZIE
TIMEOUT 30SEC	04:42			
TIMEOUT MEDIA	04:42			
SUB IN: BATTESE,AVA	04:42			
SUB IN: TURNER,BRIANNA	04:42			
SUB OUT: MARTINEZ,ANDREA	04:42			
SUB OUT: NWAKAMMA,AMAKA	04:42			
	04:42			SUB IN: HOGUE,CAROLINE
	04:42			SUB IN: MILLER,FALAN
	04:42			SUB IN: COOPER,KENNEDY
	04:42			SUB OUT: PADGETT,PEYTON
	04:42			SUB OUT: LAYROCK,SYDNEY
	04:42			SUB OUT: JONES,SYDNIE
	04:32			FOUL by CAPLES,CARISSA
MISSED FT by TURNER,BRIANNA	04:32			
REBOUND (DEADB) by TEAM	04:32			
GOOD! FT by TURNER,BRIANNA	04:32	63-45	H 18	
	04:11	65-45	H 20	GOOD! LAYUP by HOGUE,CAROLINE [PNT]
	04:11			ASSIST by MCNAMARA,MACKENZIE
MISSED LAYUP by MCNAIR,PARFITT	03:59			
	03:59			BLOCK by HOGUE,CAROLINE
REBOUND (OFF) by SMITH,LEJHA	03:57			
	03:57			FOUL by COOPER,KENNEDY
GOOD! FT by SMITH,LEJHA	03:57	65-46	H 19	
GOOD! FT by SMITH,LEJHA	03:57	65-47	H 18	
TIMEOUT 30SEC	03:57			
FOUL (TECH) by TEAM	03:57			
	03:57	66-47	H 19	GOOD! FT by HOGUE,CAROLINE
	03:57	67-47	H 20	GOOD! FT by HOGUE,CAROLINE
SUB IN: UNDERWOOD,BRIANA	03:57			
SUB OUT: SMITH,LEJHA	03:57			
	03:57			SUB IN: LAYROCK,SYDNEY
	03:57			SUB IN: PADGETT,PEYTON
	03:57			SUB OUT: COOPER,KENNEDY
	03:57			SUB OUT: CAPLES,CARISSA
	03:34			TURNOVER by MILLER,FALAN
STEAL by BONNARENS,JAMIE	03:31			
	03:25			FOUL by HOGUE,CAROLINE
GOOD! FT by TURNER,BRIANNA	03:25	67-48	H 19	
MISSED FT by TURNER,BRIANNA	03:25			
	03:25			REBOUND (DEF) by PADGETT,PEYTON
	03:25			SUB IN: CAPLES,CARISSA
	03:25			SUB OUT: MCNAMARA,MACKENZIE
	03:00	69-48	H 21	GOOD! JUMPER by CAPLES,CARISSA [PNT]
MISSED 3PTR by BATTESE,AVA	02:49			
REBOUND (OFF) by BONNARENS,JAMIE	02:49			
GOOD! LAYUP by BATTESE,AVA [PNT]	02:45	69-50	H 19	
ASSIST by BONNARENS,JAMIE	02:45			
	02:27			TURNOVER by CAPLES,CARISSA
STEAL by UNDERWOOD,BRIANA	02:26			
MISSED 3PTR by MCNAIR,PARFITT	02:18			
	02:18			REBOUND (DEF) by MILLER,FALAN
SUB IN: NWAKAMMA,AMAKA	02:15			
SUB OUT: MCNAIR,PARFITT	02:15			
	02:06	71-50	H 21	GOOD! LAYUP by HOGUE,CAROLINE [PNT]
	02:06			ASSIST by PADGETT,PEYTON
MISSED LAYUP by BONNARENS,JAMIE	01:38			
	01:38			REBOUND (DEF) by HOGUE,CAROLINE
FOUL by TURNER,BRIANNA	01:32			
	01:32	72-50	H 22	GOOD! FT by MILLER,FALAN
	01:32	73-50	H 23	GOOD! FT by MILLER,FALAN
	01:32			SUB IN: MCNAMARA,MACKENZIE
	01:32			SUB OUT: LAYROCK,SYDNEY
MISSED LAYUP by NWAKAMMA,AMAKA	01:16			
	01:16			REBOUND (DEF) by MCNAMARA,MACKENZIE
	01:03	75-50	H 25	GOOD! LAYUP by HOGUE,CAROLINE [PNT]
	01:03			ASSIST by MILLER,FALAN
MISSED 3PTR by NWAKAMMA,AMAKA	00:50			
	00:50			REBOUND (DEF) by TEAM
	00:46			SUB IN: LAMPO,KELLIE
	00:46			SUB IN: THORNTON,SADIE
	00:46			SUB IN: NADEAU,JENNI
	00:46			SUB IN: BROWN,ALLIE
	00:46			SUB OUT: HOGUE,CAROLINE
	00:46			SUB OUT: MILLER,FALAN

VISITORS: Cameron	Time	Score	Margin	HOME: Harding
	00:46			SUB OUT: MCNAMARA,MACKENZIE
	00:46			SUB OUT: PADGETT,PEYTON
	00:38			TURNOVER by NADEAU,JENNI
GOOD! LAYUP by NWAKAMMA,AMAKA [PNT]	00:27	75-52	H 23	
	00:16			MISSED 3PTR by NADEAU,JENNI
	00:16			REBOUND (OFF) by TEAM
	00:13	77-52	H 25	GOOD! LAYUP by CAPLES,CARISSA [PNT]
	00:13			ASSIST by NADEAU,JENNI
GOOD! 3PTR by BATTESE,AVA	00:07	77-55	H 22	
ASSIST by BONNARENS,JAMIE	00:07			

Cameron 55, Harding 77

Period 4-only	In Paint	Off T/O	2nd Chance	Fast Break	Bench	
CU	4	6	4	0	4	Score tied - 0 times
HU	22	2	4	0	8	Lead changed - 0 times

Cameron vs Harding
11/25/2017; 1 p.m. at Searcy, Ark. (Rhodes-Reaves Field House)
Scoring/Runs Reference

Period 1

Cameron	VRun	Score	Margin	HRun	Harding
		0-3	3		LAYROCK 3PTR - 09:01
08:49 - BONNARENS LAYUP [P]	-	2-3	1		
07:26 - SMITH FT	3-0	3-3	0		
06:13 - BATTESE 3PTR	6-0	6-3	-3		
03:58 - MARTINEZ 3PTR	9-0	9-3	-6		
02:34 - NWAKAMMA LAYUP [P]	11-0	11-3	-8		
		11-4	-7		COOPER FT - 02:13
		11-5	-6	2-0	COOPER FT - 02:13
		11-7	-4	4-0	COOPER LAYUP [P] - 01:47
01:27 - BONNARENS JUMPER	-	13-7	-6		
		13-8	-5		HOGUE FT - 00:56
00:40 - MCNAIR LAYUP [P]	-	15-8	-7		

Cameron vs Harding
11/25/2017; 1 p.m. at Searcy, Ark. (Rhodes-Reaves Field House)
Scoring/Runs Reference

Period 2

Cameron	VRun	Score	Margin	HRun	Harding
		15-10	-5		LAMPO LAYUP [P] - 09:23
09:05 - MCNAIR LAYUP [P]	-	17-10	-7		
		17-11	-6		LAMPO FT - 08:48
		17-12	-5	2-0	LAMPO FT - 08:48
		17-13	-4	3-0	CAPLES FT - 08:20
		17-14	-3	4-0	CAPLES FT - 08:20
		17-15	-2	5-0	LAYROCK FT - 07:10
06:55 - MCNAIR FT	-	18-15	-3		
		18-17	-1		JONES LAYUP [P] - 06:42
06:26 - BATTESE FT	-	19-17	-2		
06:26 - BATTESE FT	2-0	20-17	-3		
		20-19	-1		HOGUE LAYUP [P] - 06:00
		20-21	1	4-0	HOGUE LAYUP [P] - 05:05
		20-22	2	5-0	COOPER FT - 04:50
04:29 - SELLIN LAYUP [P]	-	22-22	0		
		22-24	2		HOGUE LAYUP [P] - 04:16
		22-25	3	3-0	COOPER FT - 03:47
		22-26	4	4-0	COOPER FT - 03:47
		22-27	5	5-0	COOPER FT - 03:07
02:27 - BATTESE LAYUP [P]	-	24-27	3		
02:11 - BATTESE LAYUP [P] [F]	4-0	26-27	1		
		26-29	3		HOGUE LAYUP [P] - 01:15
		26-30	4	3-0	JONES FT - 00:39
		26-32	6	5-0	MILLER LAYUP [P] - 00:05

Cameron vs Harding
11/25/2017; 1 p.m. at Searcy, Ark. (Rhodes-Reaves Field House)
Scoring/Runs Reference

Period 3

Cameron	VRun	Score	Margin	HRun	Harding
09:37 - SMITH LAYUP [P]	-	28-32	4		
		28-34	6		COOPER LAYUP [P] - 09:11
08:55 - BONNARENS JUMPER	-	30-34	4		
07:44 - SMITH LAYUP [P]	4-0	32-34	2		
		32-37	5		MILLER 3PTR - 06:40
		32-39	7	5-0	LAMPO LAYUP [P] - 06:21
		32-41	9	7-0	LAMPO LAYUP [P] - 05:17
		32-42	10	8-0	JONES FT - 04:23
		32-43	11	9-0	JONES FT - 04:23
		32-44	12	10-0	KEARNEY FT - 03:18
		32-45	13	11-0	KEARNEY FT - 03:18
02:43 - SMITH FT	-	33-45	12		
02:43 - SMITH FT	2-0	34-45	11		
		34-47	13		HOGUE LAYUP [P] - 01:21
00:53 - MARTINEZ FT	-	35-47	12		
00:53 - MARTINEZ FT	2-0	36-47	11		
		36-48	12		HOGUE FT - 00:37
		36-49	13	2-0	HOGUE FT - 00:37

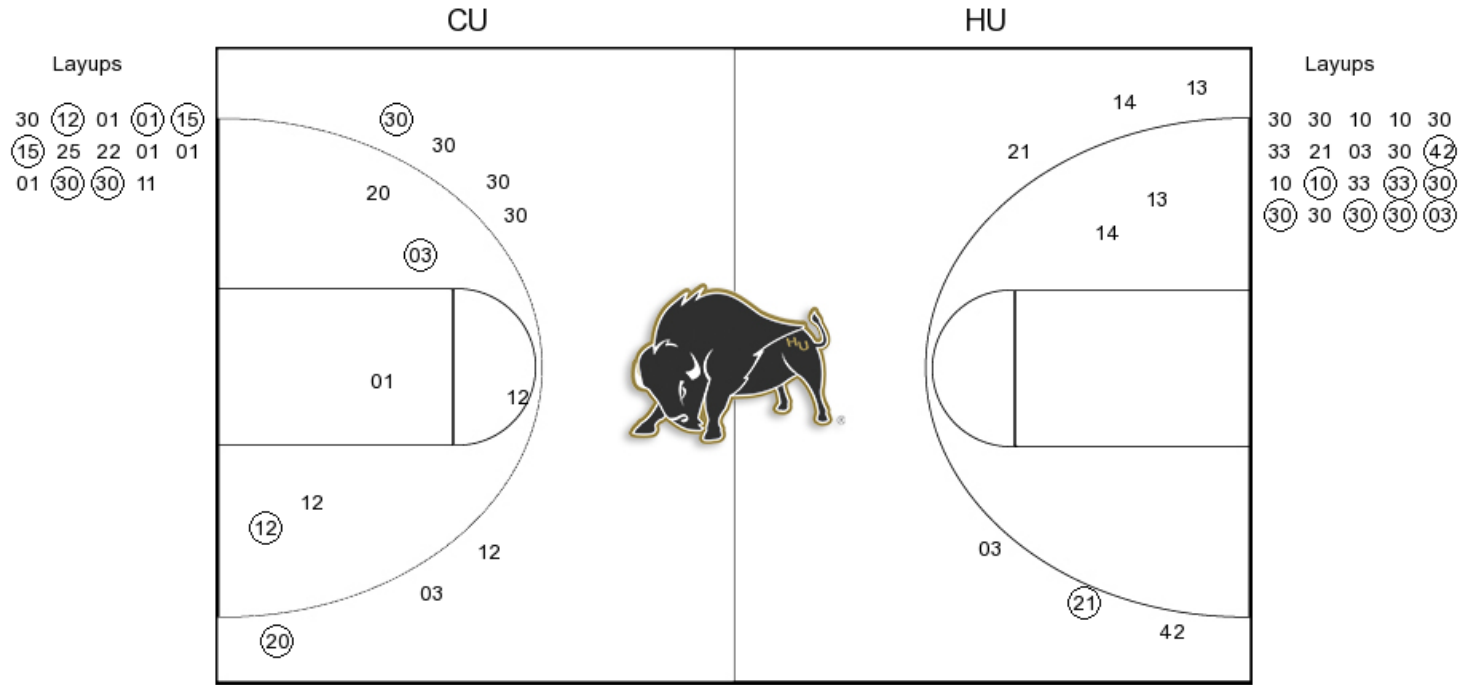
Cameron vs Harding
11/25/2017; 1 p.m. at Searcy, Ark. (Rhodes-Reaves Field House)
Scoring/Runs Reference

Period 4

Cameron	VRun	Score	Margin	HRun	Harding
		36-51	15		HOGUE LAYUP [P] - 09:33
08:52 - BATTESE 3PTR	-	39-51	12		
		39-52	13		HOGUE FT - 08:33
		39-53	14	2-0	HOGUE FT - 08:33
08:24 - BONNARENS 3PTR	-	42-53	11		
		42-55	13		HOGUE LAYUP [P] - 08:06
07:49 - MCNAIR JUMPER	-	44-55	11		
		44-57	13		LAYROCK LAYUP [P] - 07:26
		44-59	15	4-0	LAYROCK LAYUP [P] - 06:10
		44-61	17	6-0	JONES LAYUP [P] - 05:16
		44-63	19	8-0	JONES LAYUP [P] - 04:44
04:32 - TURNER FT	-	45-63	18		
		45-65	20		HOGUE LAYUP [P] - 04:11
03:57 - SMITH FT	-	46-65	19		
03:57 - SMITH FT	2-0	47-65	18		
		47-66	19		HOGUE FT - 03:57
		47-67	20	2-0	HOGUE FT - 03:57
03:25 - TURNER FT	-	48-67	19		
		48-69	21		CAPLES JUMPER [P] - 03:00
02:45 - BATTESE LAYUP [P]	-	50-69	19		
		50-71	21		HOGUE LAYUP [P] - 02:06
		50-72	22	3-0	MILLER FT - 01:32
		50-73	23	4-0	MILLER FT - 01:32
		50-75	25	6-0	HOGUE LAYUP [P] - 01:03
00:27 - NWAKAMMA LAYUP [P]	-	52-75	23		
		52-77	25		CAPLES LAYUP [P] - 00:13
00:07 - BATTESE 3PTR	-	55-77	22		

Cameron vs Harding
OFFICIAL SHOT CHART
 11/25/2017 at Searcy, Ark. (Rhodes-Reaves Field House)

PERIOD 1



CU PERIOD 1

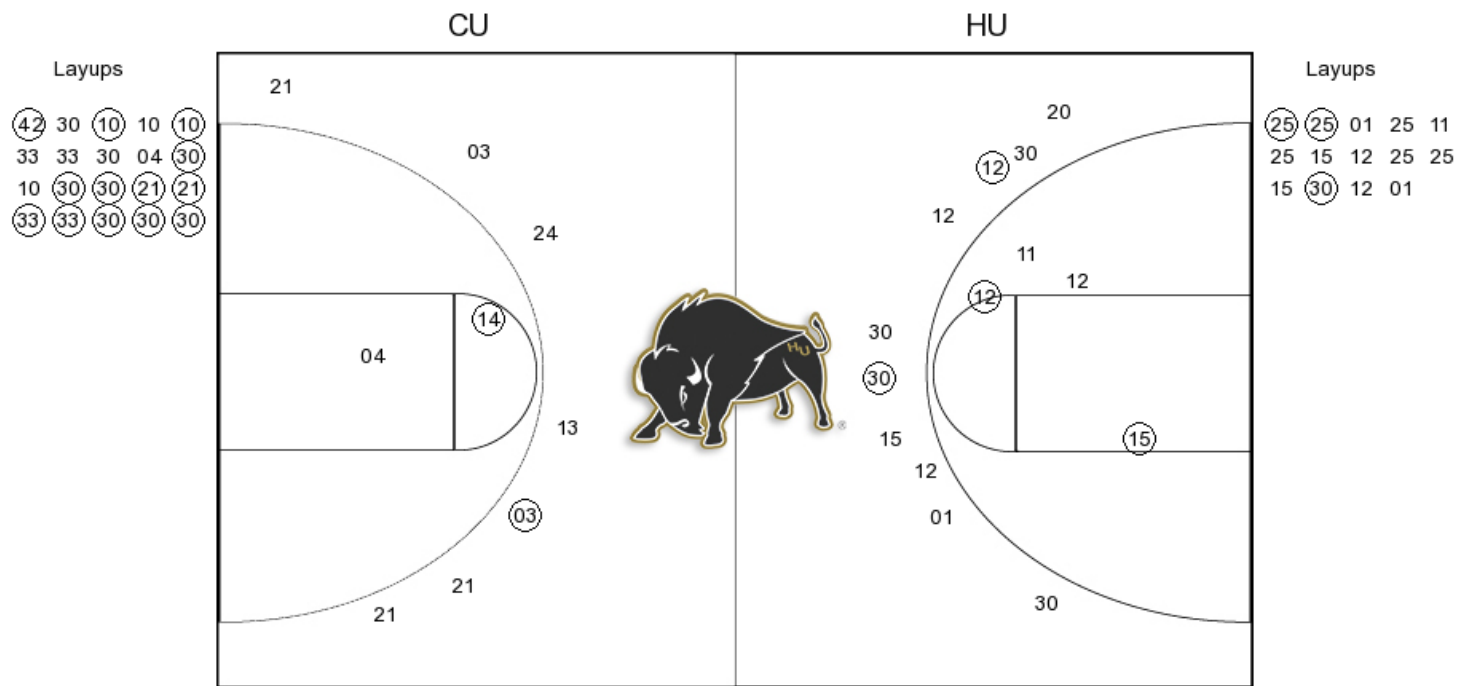
FG Made	10
FG Attempted	28
3PFG Made	2
3PFG Attempted	7

HU PERIOD 1

FG Made	9
FG Attempted	28
3PFG Made	1
3PFG Attempted	6

Cameron vs Harding
OFFICIAL SHOT CHART
 11/25/2017 at Searcy, Ark. (Rhodes-Reaves Field House)

PERIOD 2



CU PERIOD 2

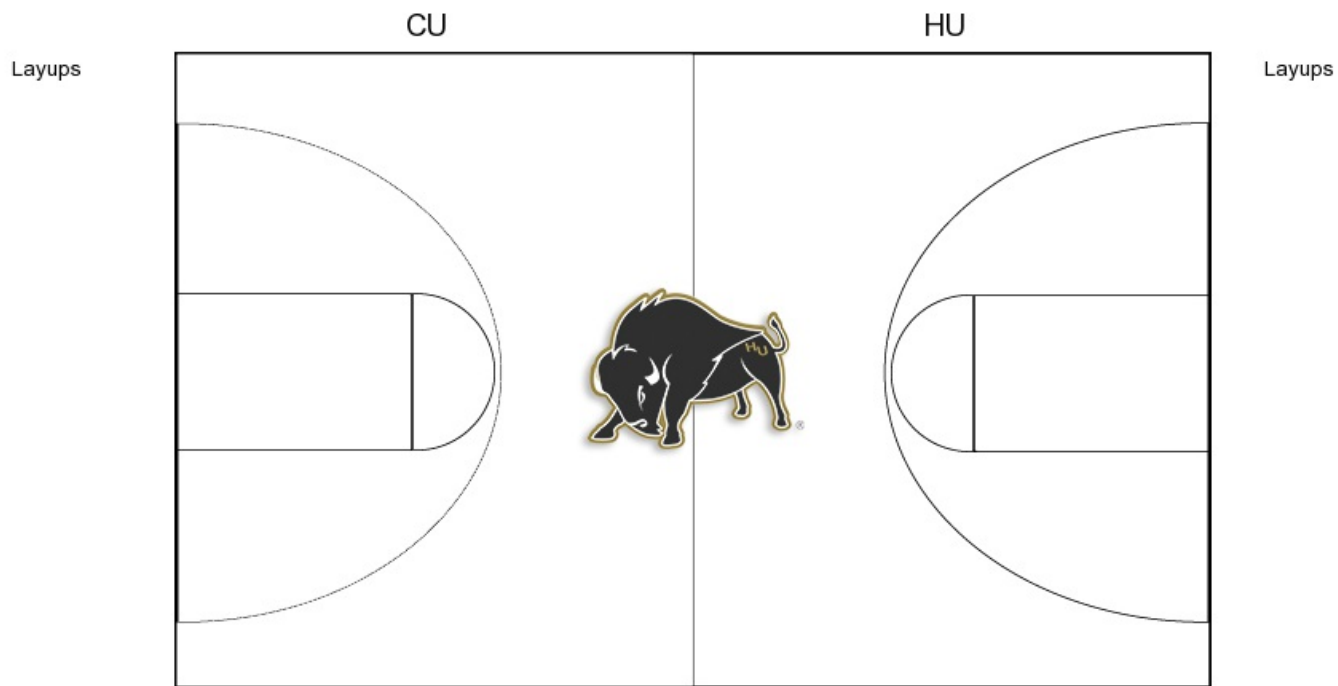
FG Made
 FG Attempted
 3PFG Made
 3PFG Attempted

HU PERIOD 2

FG Made
 FG Attempted
 3PFG Made
 3PFG Attempted

**Cameron vs Harding
OFFICIAL SHOT CHART
11/25/2017 at Searcy, Ark. (Rhodes-Reaves Field House)**

PERIOD 3



CU PERIOD 3

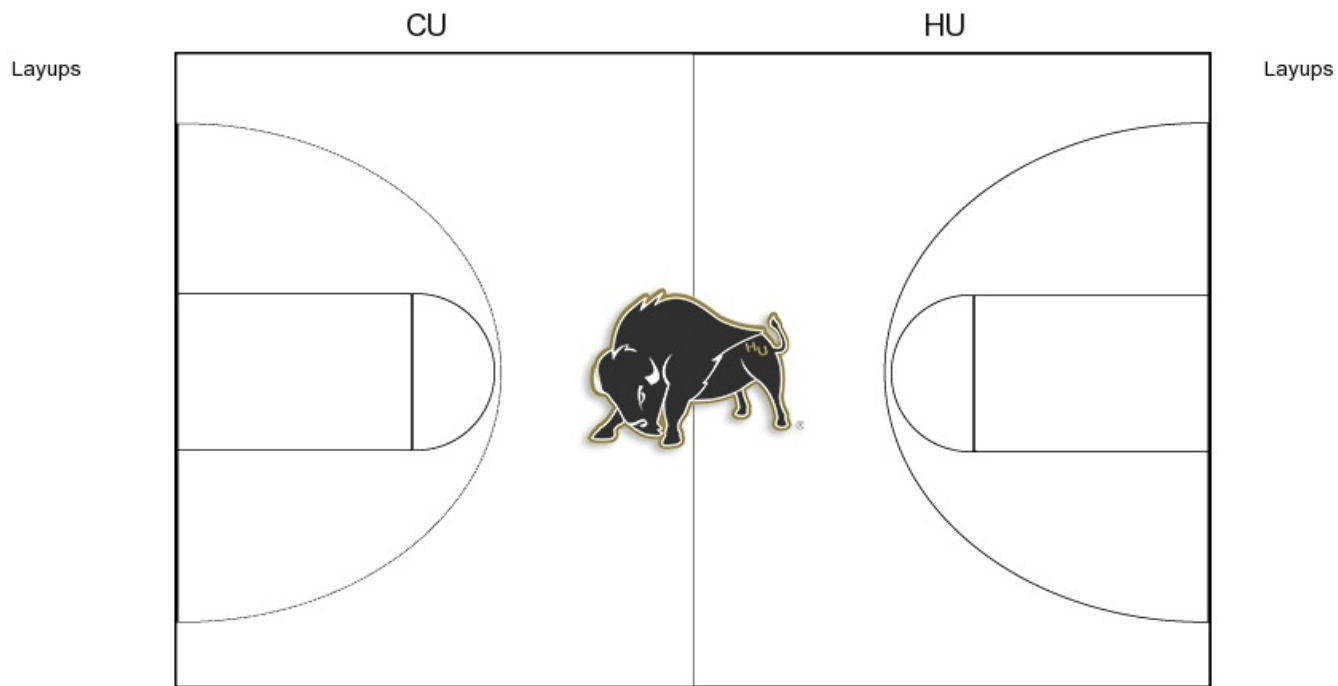
FG Made	9
FG Attempted	31
3PFG Made	3
3PFG Attempted	11

HU PERIOD 3

FG Made	16
FG Attempted	32
3PFG Made	1
3PFG Attempted	8

Cameron vs Harding
OFFICIAL SHOT CHART
11/25/2017 at Searcy, Ark. (Rhodes-Reaves Field House)

PERIOD 4



CU PERIOD 4

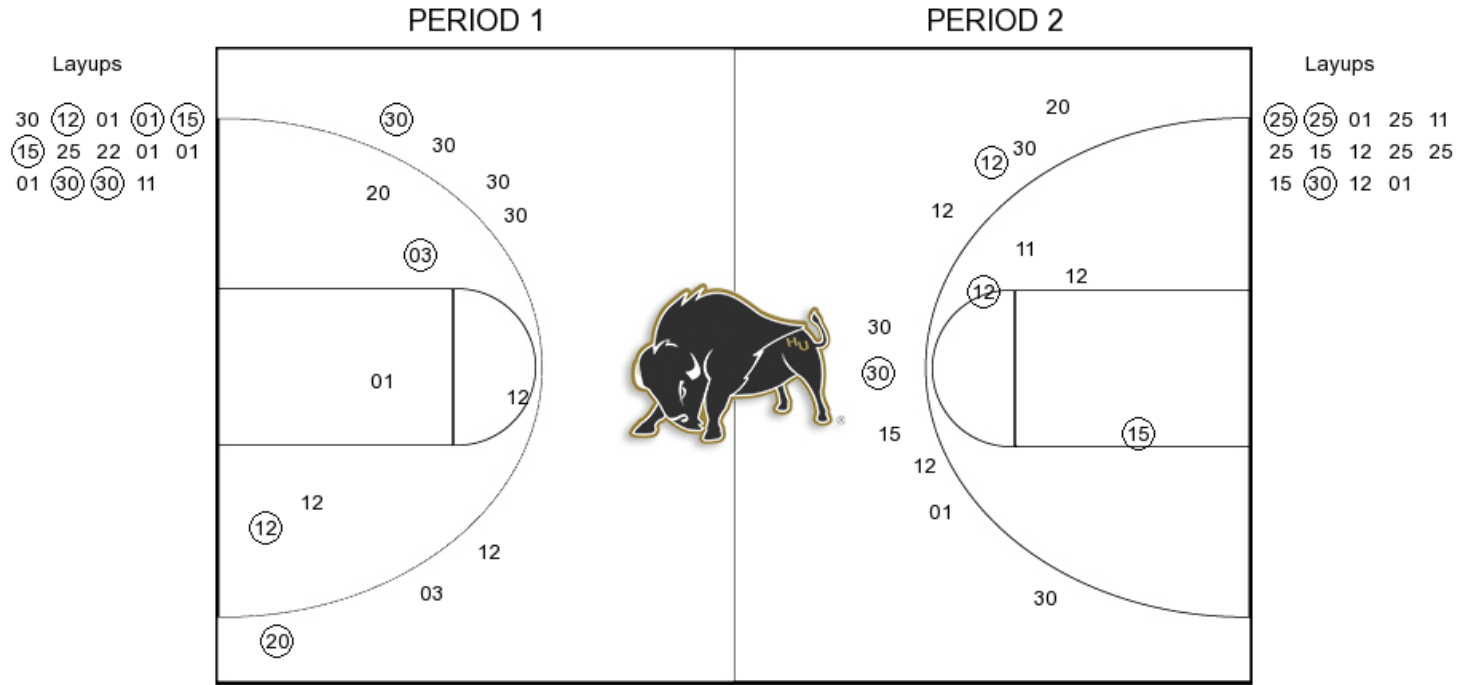
FG Made
FG Attempted
3PFG Made
3PFG Attempted

HU PERIOD 4

FG Made
FG Attempted
3PFG Made
3PFG Attempted

Cameron vs Harding
OFFICIAL SHOT CHART
 11/25/2017 at Searcy, Ark. (Rhodes-Reaves Field House)

Cameron



CU PERIOD 1

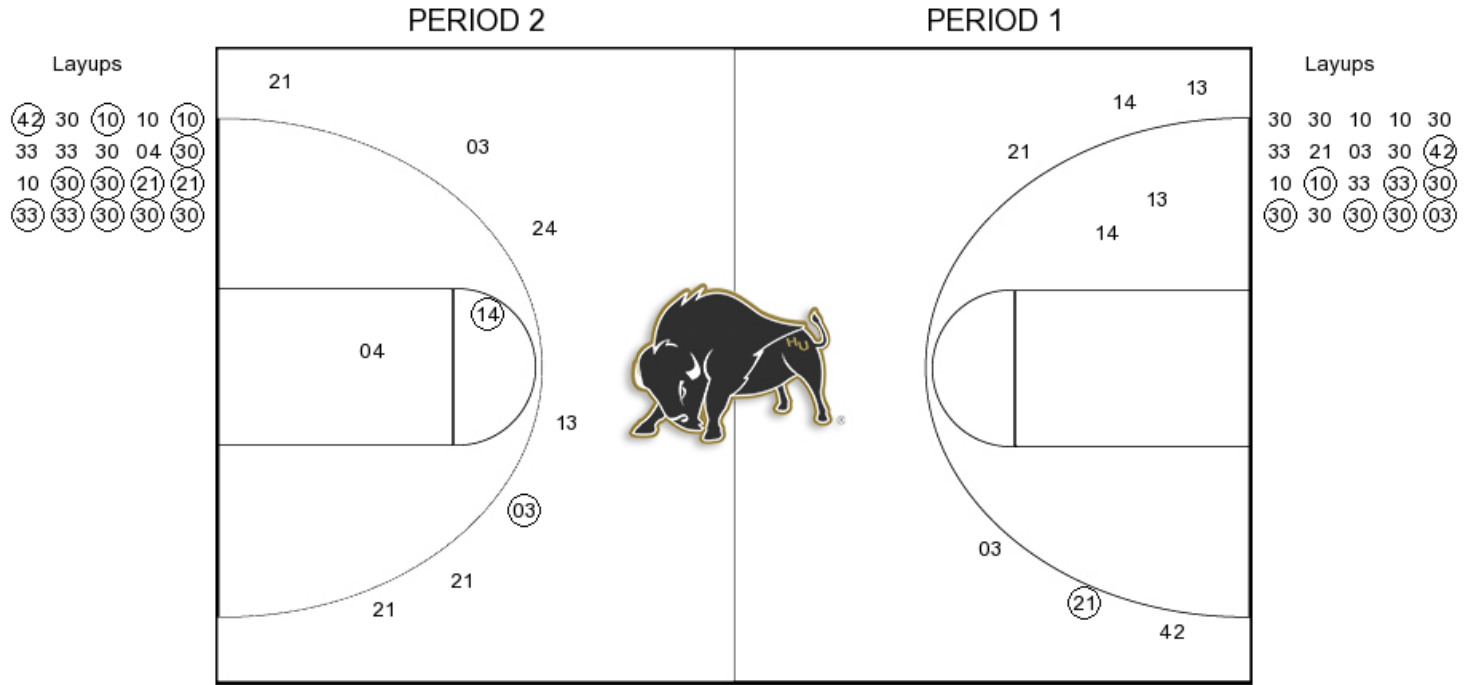
FG Made	10
FG Attempted	28
3PFG Made	2
3PFG Attempted	7

CU PERIOD 2

FG Made	
FG Attempted	
3PFG Made	
3PFG Attempted	

Cameron vs Harding
OFFICIAL SHOT CHART
 11/25/2017 at Searcy, Ark. (Rhodes-Reaves Field House)

Harding



HU PERIOD 1

FG Made	9
FG Attempted	28
3PFG Made	1
3PFG Attempted	6

HU PERIOD 2

FG Made	9
FG Attempted	28
3PFG Made	1
3PFG Attempted	6