

FINAL SCORE



Texas

18-4 / 9-2

73



West Virginia

17-6 / 5-6

55

February 05, 2018 • WVU Coliseum, Morgantown, W.Va.

FINAL STATISTICS

Official Basketball Box Score -- Game Totals -- Final Statistics
 Texas vs West Virginia
 2/5/2018 7:00 p.m. at WVU Coliseum, Morgantown, W.Va.



Texas 73 - 18-4 / 9-2

##	Player	g	Total			3-Ptr			Rebounds			PF	TP	A	TO	Blk	Stl	Min
			FG-FGA	FG-FGA	FT-FTA	FG-FGA	FG-FGA	FT-FTA	Off	Def	Tot							
10	HIGGS,LASHANN		3-8	0-1	0-0	0	3	3	0	6	3	4	0	2			31	
11	MCCARTY,BROOKE		4-12	1-5	0-0	0	2	2	1	9	6	2	0	3			37	
23	ATKINS,ARIEL		7-10	3-4	0-0	0	3	3	2	17	4	1	2	1			28	
31	CARON-GOUDREAU,A		4-8	1-2	0-0	5	5	10	1	9	0	1	3	2			27	
40	WHITE,JATARIE		7-10	0-0	4-5	4	6	10	3	18	0	1	0	0			26	
01	SUTTON,ALECIA		3-6	1-3	0-2	0	6	6	0	7	3	3	0	2			24	
05	HOSEY,JORDAN		0-1	0-0	0-0	0	1	1	1	0	0	0	0	0			6	
12	UNDERWOOD,JADA		0-0	0-0	0-0	0	0	0	0	0	0	0	0	0			3	
24	HOLMES,JOYNER		2-7	0-0	3-4	2	5	7	2	7	0	3	1	0			19	
TEAM						0	2	2	0		0							
TOTALS			30-62	6-15	7-11	11	33	44	10	73	16	15	6	10			201	

Deadball Rebounds: 2,0

FG %	1st Half:	16-32	50.0%	2nd Half:	14-30	46.7%	Game:	30-62	48.4%								
	1st Qtr	8-15	53.3%	2nd Qtr	8-17	47.1%	3rd Qtr	7-17	41.2%	4th Qtr	7-13	53.8%					
3FG %	1st Half:	3-9	33.3%	2nd Half:	3-6	50.0%	Game:	6-15	40.0%								
	1st Qtr	1-2	50.0%	2nd Qtr	2-7	28.6%	3rd Qtr	0-2	00.0%	4th Qtr	3-4	75.0%					
FT %	1st Half:	2-3	66.7%	2nd Half:	5-8	62.5%	Game:	7-11	63.6%								
	1st Qtr	1-2	50.0%	2nd Qtr	1-1	100.0%	3rd Qtr	5-8	62.5%	4th Qtr	0-0	0%					

West Virginia 55 - 17-6 / 5-6

##	Player	g	Total			3-Ptr			Rebounds			PF	TP	A	TO	Blk	Stl	Min
			FG-FGA	FG-FGA	FT-FTA	FG-FGA	FG-FGA	FT-FTA	Off	Def	Tot							
00	DAVENPORT ,NAOMI		4-14	3-5	3-4	2	3	5	2	14	3	4	0	2			34	
11	MULDROW,T EANA		4-12	3-5	1-2	2	2	4	3	12	2	5	1	0			31	
12	RAY,CHANIA		3-11	2-5	0-0	0	5	5	1	8	4	3	1	2			39	
13	KING,KRISTINA		3-9	0-0	2-2	3	4	7	1	8	3	2	0	1			39	
22	PARDEE,KATRINA		3-8	1-4	1-2	0	1	1	3	8	1	2	0	1			29	
01	JONES,ASHLEY		1-2	1-1	0-0	0	2	2	3	3	2	0	0	0			16	
03	HARDEN,DESTINY		0-4	0-0	0-0	2	0	2	0	0	0	0	0	0			6	
34	EKHELAR,THEHERESA		1-1	0-0	0-0	0	1	1	1	2	0	0	0	0			6	
TEAM						2	5	7	0		0							
TOTALS			19-61	10-20	7-10	11	23	34	14	55	15	16	2	6			200	

Deadball Rebounds: 1,0

FG %	1st Half:	10-33	30.3%	2nd Half:	9-28	32.1%	Game:	19-61	31.1%								
	1st Qtr	7-17	41.2%	2nd Qtr	3-16	18.8%	3rd Qtr	7-17	41.2%	4th Qtr	2-11	18.2%					
3FG %	1st Half:	6-11	54.5%	2nd Half:	4-9	44.4%	Game:	10-20	50.0%								
	1st Qtr	5-8	62.5%	2nd Qtr	1-3	33.3%	3rd Qtr	3-8	37.5%	4th Qtr	1-1	100.0%					
FT %	1st Half:	0-0	0%	2nd Half:	7-10	70.0%	Game:	7-10	70.0%								
	1st Qtr	0-0	0%	2nd Qtr	0-0	0%	3rd Qtr	3-4	75.0%	4th Qtr	4-6	66.7%					

Officials: Roy Gulbeyan, Doug Knight, Cheryl Flores
 Technical Fouls: Texas- None. West Virginia- None.
 Attendance: 2149

Score by periods	1st	2nd	3rd	4th	Total
Texas	18	19	19	17	73
West Virginia	19	7	20	9	55

Points	In Paint	Off T/O	2nd Chance	Fast Break	Bench
UT	38	16	17	12	14
WVU	12	9	17	2	5

Last FG - UT 4th-00:47, WVU 4th-06:03.

Largest lead - Texas by 18 4th-00:47; West Virginia by 2 1st-03:26

UT led for 36:04. WVU led for 2:50. Game was tied for 1:06.

Score tied - 2 times; Lead changed - 6 times

Official Basketball Box Score -- Game Totals -- First Half Statistics
 Texas vs West Virginia
 2/5/2018 7:00 p.m. at WVU Coliseum, Morgantown, W.Va.



Texas 37 • 18-4 / 9-2

##	Player	g	Total			3-Ptr			Rebounds			PF	TP	A	TO	Blk	Stl	Min
			FG	FGA	FT	FTA	FG	FGA	FT	FTA	Off							
10	HIGGS,LASHANN	g	3	5	0	0	0	0	0	1	1	0	6	2	1	0	1	13
11	MCCARTY,BROOKE	g	2	6	1	3	0	0	0	0	0	1	5	2	1	0	2	19
23	ATKINS,ARIEL	g	2	5	0	1	0	0	0	2	2	0	4	3	0	1	0	15
31	CARON-GOUDREAU,A	f	2	5	1	2	0	0	4	1	5	0	5	0	1	2	2	16
40	WHITE,JATARIE	f	3	3	0	0	1	2	0	4	4	1	7	0	0	0	0	12
01	SUTTON,ALECIA		3	5	1	2	0	0	0	3	3	0	7	0	2	0	0	13
05	HOSEY,JORDAN		0	1	0	0	0	0	0	1	1	0	0	0	0	0	0	3
12	UNDERWOOD,JADA		0	0	0	0	0	0	0	0	0	0	0	0	0	0	0	0
24	HOLMES,JOYNER		1	2	0	0	1	1	0	3	3	0	3	0	1	0	0	9
TEAM									0	1	1	0		0				
Totals			16	32	3	9	2	3	4	16	20	2	37	7	6	3	5	100
FG %	1st Qtr	8-15	53.3%	2nd Qtr	8-17	47.1%	Half:	16-32	50.0%									
3FG %	1st Qtr	1-2	50.0%	2nd Qtr	2-7	28.6%	Half:	3-9	33.3%									
FT %	1st Qtr	1-2	50.0%	2nd Qtr	1-1	100.0%	Half:	2-3	66.7%									

West Virginia 26 • 17-6 / 5-6

##	Player	g	Total			3-Ptr			Rebounds			PF	TP	A	TO	Blk	Stl	Min
			FG	FGA	FT	FTA	FG	FGA	FT	FTA	Off							
00	DAVENPORT,NAOMI	g	3	9	2	3	0	0	0	2	2	0	8	3	1	0	1	18
11	MULDROW,TEANA	f	1	5	1	2	0	0	2	2	4	2	3	2	3	0	0	16
12	RAY,CHANIA	g	1	6	1	3	0	0	0	3	3	0	3	1	3	1	1	20
13	KING,KRISTINA	f	2	5	0	0	0	0	2	0	2	0	4	0	1	0	0	20
22	PARDEE,KATRINA	g	1	3	1	2	0	0	0	0	0	2	3	0	1	0	1	9
01	JONES,ASHLEY		1	2	1	1	0	0	0	2	2	3	3	2	0	0	0	13
03	HARDEN,DESTINY		0	2	0	0	0	0	2	0	2	0	0	0	0	0	0	2
34	EKHELAR,THEHERESA		1	1	0	0	0	0	0	1	1	0	2	0	0	0	0	2
TEAM									1	2	3	0		0				
Totals			10	33	6	11	0	0	7	12	19	7	26	8	9	1	3	100
FG %	1st Qtr	7-17	41.2%	2nd Qtr	3-16	18.8%	Half:	10-33	30.3%									
3FG %	1st Qtr	5-8	62.5%	2nd Qtr	1-3	33.3%	Half:	6-11	54.5%									
FT %	1st Qtr	0-0	0%	2nd Qtr	0-0	0%	Half:	0-0	0%									

Officials: Roy Gulbeyan, Doug Knight, Cheryl Flores
 Technical Fouls: Texas- None. West Virginia- None.

Score by periods	1st	2nd	3rd	4th	Total
Texas	18	19	19	17	73
West Virginia	19	7	20	9	55

Points	In Paint	Off T/O	2nd Chance	Fast Break	Bench
UT	20	9	4	6	10
	6	5	5	2	5

Last FG - UT 2nd-01:12, WVU 2nd-02:52.
 UT led for 16:04. WVU led for 2:50. Game was tied for 1:06.

Score tied - 2 times
 Lead changed - 6 times

Texas vs West Virginia
2/5/2018; 7:00 p.m. at WVU Coliseum, Morgantown, W.Va.
Period 1 Play-By-Play



VISITORS: Texas	Time	Score	Margin	HOME: West Virginia
GOOD! JUMPER by ATKINS,ARIEL	09:48	0-2	V 2	
ASSIST by MCCARTY,BROOKE	09:48			
	09:31			MISSED JUMPER by DAVENPORT,NAOMI
REBOUND (DEF) by WHITE,JATARIE	09:31			
MISSED JUMPER by CARON-GOUDREAU,A	09:07			
	09:07			REBOUND (DEF) by TEAM
	08:52			MISSED JUMPER by PARDEE,KATRINA
	08:52			REBOUND (OFF) by MULDRON,TEANA
	08:42			FOUL by MULDRON,TEANA
	08:42			TURNOVER by MULDRON,TEANA
GOOD! LAYUP by HIGGS,LASHANN [PNT]	08:28	0-4	V 4	
	08:23			TURNOVER by RAY,CHANIA
STEAL by MCCARTY,BROOKE	08:21			
TURNOVER by HIGGS,LASHANN	08:09			
	08:09			SUB IN: JONES,ASHLEY
	08:09			SUB OUT: PARDEE,KATRINA
	07:58			TURNOVER by RAY,CHANIA
STEAL by CARON-GOUDREAU,A	07:57			
	07:48			FOUL by JONES,ASHLEY
MISSED FT by WHITE,JATARIE	07:48			
REBOUND (DEADB) by TEAM	07:48			
GOOD! FT by WHITE,JATARIE	07:48	0-5	V 5	
	07:28			TURNOVER by MULDRON,TEANA
GOOD! LAYUP by WHITE,JATARIE [PNT]	07:15	0-7	V 7	
	06:55	3-7	V 4	GOOD! 3PTR by JONES,ASHLEY
	06:55			ASSIST by DAVENPORT,NAOMI
MISSED JUMPER by HIGGS,LASHANN	06:40			
	06:40			REBOUND (DEF) by MULDRON,TEANA
	06:33	6-7	V 1	GOOD! 3PTR by MULDRON,TEANA
	06:33			ASSIST by JONES,ASHLEY
MISSED 3PTR by HIGGS,LASHANN	06:18			
	06:18			REBOUND (DEF) by JONES,ASHLEY
	06:07			MISSED LAYUP by MULDRON,TEANA
REBOUND (DEF) by ATKINS,ARIEL	06:07			
GOOD! 3PTR by MCCARTY,BROOKE	05:58	6-10	V 4	
ASSIST by ATKINS,ARIEL	05:58			
	05:40			MISSED JUMPER by DAVENPORT,NAOMI
BLOCK by ATKINS,ARIEL	05:40			
	05:40			REBOUND (OFF) by TEAM
SUB IN: SUTTON,ALECIA	05:40			
SUB OUT: HIGGS,LASHANN	05:40			
	05:40			SUB IN: PARDEE,KATRINA
	05:40			SUB OUT: DAVENPORT,NAOMI
	05:29	9-10	V 1	GOOD! 3PTR by PARDEE,KATRINA
	05:29			ASSIST by RAY,CHANIA
TURNOVER by CARON-GOUDREAU,A	05:08			
	05:05			STEAL by PARDEE,KATRINA
	05:02			MISSED 3PTR by PARDEE,KATRINA
	05:02			REBOUND (OFF) by KING,KRISTINA
	04:56			MISSED 3PTR by RAY,CHANIA
REBOUND (DEF) by TEAM	04:56			
TIMEOUT MEDIA	04:53			
MISSED JUMPER by ATKINS,ARIEL	04:26			
	04:26			REBOUND (DEF) by JONES,ASHLEY
	03:58	11-10	H 1	GOOD! LAYUP by KING,KRISTINA [PNT]
	03:50			FOUL by JONES,ASHLEY
SUB IN: HOLMES,JOYNER	03:50			
SUB OUT: CARON-GOUDREAU,A	03:50			
	03:50			SUB IN: DAVENPORT,NAOMI
	03:50			SUB OUT: JONES,ASHLEY
GOOD! JUMPER by WHITE,JATARIE [PNT]	03:45	11-12	V 1	
ASSIST by ATKINS,ARIEL	03:45			
	03:26	14-12	H 2	GOOD! 3PTR by DAVENPORT,NAOMI
	03:26			ASSIST by MULDRON,TEANA
MISSED JUMPER by SUTTON,ALECIA	03:02			
	03:02			BLOCK by RAY,CHANIA
	03:00			REBOUND (DEF) by MULDRON,TEANA
	02:52			MISSED 3PTR by DAVENPORT,NAOMI
REBOUND (DEF) by SUTTON,ALECIA	02:52			

VISITORS: Texas	Time	Score	Margin	HOME: West Virginia
MISSED LAYUP by MCCARTY,BROOKE	02:41			
	02:41			REBOUND (DEF) by TEAM
SUB IN: CARON-GOUDREAU,A	02:39			
SUB IN: HIGGS,LASHANN	02:39			
SUB OUT: ATKINS,ARIEL	02:39			
SUB OUT: WHITE,JATARIE	02:39			
	02:13			TURNOVER by KING,KRISTINA
GOOD! LAYUP by HIGGS,LASHANN [PNT]	02:00	14-14	T	
	01:39			MISSED JUMPER by DAVENPORT,NAOMI
REBOUND (DEF) by HOLMES,JOYNER	01:39			
TURNOVER by HOLMES,JOYNER	01:31			
	01:29			STEAL by DAVENPORT,NAOMI
	01:27	16-14	H 2	GOOD! LAYUP by DAVENPORT,NAOMI [FB/PNT]
MISSED JUMPER by HOLMES,JOYNER	01:07			
REBOUND (OFF) by CARON-GOUDREAU,A	01:07			
GOOD! LAYUP by CARON-GOUDREAU,A [PNT]	01:03	16-16	T	
	00:54			MISSED JUMPER by RAY,CHANIA
	00:54			REBOUND (OFF) by MULDROW,TEANA
	00:51			MISSED JUMPER by MULDROW,TEANA
REBOUND (DEF) by SUTTON,ALECIA	00:51			
GOOD! LAYUP by SUTTON,ALECIA [FB/PNT]	00:42	16-18	V 2	
	00:13	19-18	H 1	GOOD! 3PTR by RAY,CHANIA
	00:13			ASSIST by DAVENPORT,NAOMI
TURNOVER by MCCARTY,BROOKE	00:01			
FOUL by MCCARTY,BROOKE	00:01			

Texas 18, West Virginia 19

Period 1-only	In Paint	Off T/O	2nd Chance	Fast Break	Bench	
UT	12	7	2	2	2	Score tied - 4 times
WVU	4	2	3	2	3	Lead changed - 4 times

Texas vs West Virginia
2/5/2018; 7:00 p.m. at WVU Coliseum, Morgantown, W.Va.
Period 2 Play-By-Play



VISITORS: Texas	Time	Score	Margin	HOME: West Virginia
SUB IN: SUTTON,ALECIA	10:00			
SUB IN: HOLMES,JOYNER	10:00			
SUB OUT: MCCARTY,BROOKE	10:00			
SUB OUT: WHITE,JATARIE	10:00			
	09:51			MISSED LAYUP by RAY,CHANIA
BLOCK by CARON-GOUDREAU,A	09:51			
REBOUND (DEF) by SUTTON,ALECIA	09:47			
TURNOVER by SUTTON,ALECIA	09:42			
	09:41			STEAL by RAY,CHANIA
	09:33			MISSED 3PTR by MULDROW,TEANA
REBOUND (DEF) by HIGGS,LASHANN	09:33			
GOOD! LAYUP by HOLMES,JOYNER [FB/PNT]	09:26	19-20	V 1	
ASSIST by HIGGS,LASHANN	09:26			
	09:26			FOUL by PARDEE,KATRINA
GOOD! FT by HOLMES,JOYNER	09:26	19-21	V 2	
SUB IN: MCCARTY,BROOKE	09:26			
SUB OUT: SUTTON,ALECIA	09:26			
	08:59			TURNOVER by PARDEE,KATRINA
STEAL by CARON-GOUDREAU,A	08:58			
MISSED 3PTR by ATKINS,ARIEL	08:48			
REBOUND (OFF) by CARON-GOUDREAU,A	08:48			
MISSED 3PTR by MCCARTY,BROOKE	08:42			
REBOUND (OFF) by CARON-GOUDREAU,A	08:42			
	08:40			FOUL by PARDEE,KATRINA
SUB IN: WHITE,JATARIE	08:40			
SUB OUT: HOLMES,JOYNER	08:40			
	08:40			SUB IN: JONES,ASHLEY
	08:40			SUB OUT: PARDEE,KATRINA
	08:22			FOUL by MULDROW,TEANA
	08:22			SUB IN: EKHELAR,THERESA
	08:22			SUB OUT: MULDROW,TEANA
MISSED JUMPER by ATKINS,ARIEL	08:17			
	08:17			REBOUND (DEF) by EKHELAR,THERESA
FOUL by WHITE,JATARIE	08:16			
	08:03			TURNOVER by DAVENPORT,NAOMI
STEAL by HIGGS,LASHANN	08:02			
GOOD! LAYUP by HIGGS,LASHANN [FB/PNT]	08:00	19-23	V 4	
	07:38	21-23	V 2	GOOD! LAYUP by EKHELAR,THERESA [PNT]
	07:38			ASSIST by JONES,ASHLEY
GOOD! 3PTR by CARON-GOUDREAU,A	07:28	21-26	V 5	
ASSIST by HIGGS,LASHANN	07:28			
	07:01			MISSED LAYUP by KING,KRISTINA
REBOUND (DEF) by WHITE,JATARIE	07:01			
MISSED JUMPER by CARON-GOUDREAU,A	06:35			
	06:35			REBOUND (DEF) by DAVENPORT,NAOMI
	06:28			MISSED JUMPER by DAVENPORT,NAOMI
BLOCK by CARON-GOUDREAU,A	06:28			
REBOUND (DEF) by CARON-GOUDREAU,A	06:26			
GOOD! LAYUP by WHITE,JATARIE [PNT]	06:16	21-28	V 7	
ASSIST by ATKINS,ARIEL	06:16			
	06:16			TIMEOUT 30SEC
SUB IN: SUTTON,ALECIA	06:16			
SUB IN: HOSEY,JORDAN	06:16			
SUB OUT: ATKINS,ARIEL	06:16			
SUB OUT: CARON-GOUDREAU,A	06:16			
	06:16			SUB IN: HARDEN,DESTINY
	06:16			SUB OUT: EKHELAR,THERESA
	05:56			MISSED JUMPER by KING,KRISTINA
	05:56			REBOUND (OFF) by HARDEN,DESTINY
	05:37	23-28	V 5	GOOD! JUMPER by KING,KRISTINA
	05:37			ASSIST by DAVENPORT,NAOMI
GOOD! 3PTR by SUTTON,ALECIA	05:18	23-31	V 8	
ASSIST by MCCARTY,BROOKE	05:18			
	05:16			TIMEOUT 30SEC
	05:02			MISSED JUMPER by JONES,ASHLEY
	05:02			REBOUND (OFF) by HARDEN,DESTINY
	04:56			MISSED JUMPER by HARDEN,DESTINY
	04:56			REBOUND (OFF) by KING,KRISTINA
	04:46			MISSED LAYUP by HARDEN,DESTINY

VISITORS: Texas	Time	Score	Margin	HOME: West Virginia
REBOUND (DEF) by HOSEY,JORDAN	04:46			
	04:41			FOUL by JONES,ASHLEY
SUB IN: ATKINS,ARIEL	04:41			
SUB OUT: HIGGS,LASHANN	04:41			
	04:41			SUB IN: EKHELAR,THERESA
	04:41			SUB OUT: HARDEN,DESTINY
GOOD! LAYUP by MCCARTY,BROOKE [PNT]	04:30	23-33	V 10	
	04:26			SUB IN: MULDROW,TEANA
	04:26			SUB OUT: EKHELAR,THERESA
	04:16			TURNOVER by MULDROW,TEANA
STEAL by MCCARTY,BROOKE	04:15			
MISSED JUMPER by HOSEY,JORDAN	04:13			
	04:13			REBOUND (DEF) by RAY,CHANIA
	04:07			MISSED JUMPER by RAY,CHANIA
REBOUND (DEF) by WHITE,JATARIE	04:07			
MISSED 3PTR by MCCARTY,BROOKE	03:51			
	03:51			REBOUND (DEF) by RAY,CHANIA
	03:34			MISSED JUMPER by DAVENPORT,NAOMI
REBOUND (DEF) by WHITE,JATARIE	03:34			
TURNOVER by SUTTON,ALECIA	03:19			
SUB IN: HOLMES,JOYNER	03:19			
SUB IN: CARON-GOUDREAU,A	03:19			
SUB OUT: HOSEY,JORDAN	03:19			
SUB OUT: WHITE,JATARIE	03:19			
	02:52	26-33	V 7	GOOD! 3PTR by DAVENPORT,NAOMI
	02:52			ASSIST by MULDROW,TEANA
MISSED LAYUP by MCCARTY,BROOKE	02:22			
	02:22			REBOUND (DEF) by DAVENPORT,NAOMI
	02:04			MISSED JUMPER by KING,KRISTINA
REBOUND (DEF) by HOLMES,JOYNER	02:04			
GOOD! JUMPER by ATKINS,ARIEL	01:45	26-35	V 9	
	01:36			MISSED 3PTR by RAY,CHANIA
REBOUND (DEF) by ATKINS,ARIEL	01:36			
MISSED 3PTR by SUTTON,ALECIA	01:26			
REBOUND (OFF) by CARON-GOUDREAU,A	01:26			
GOOD! JUMPER by SUTTON,ALECIA	01:12	26-37	V 11	
	00:53			MISSED LAYUP by MULDROW,TEANA
REBOUND (DEF) by HOLMES,JOYNER	00:53			
MISSED 3PTR by CARON-GOUDREAU,A	00:29			
	00:29			REBOUND (DEF) by RAY,CHANIA
	00:02			TURNOVER by RAY,CHANIA
	00:02			SUB IN: EKHELAR,THERESA
	00:02			SUB OUT: MULDROW,TEANA

Texas 37, West Virginia 26

Period 2-only	In Paint	Off T/O	2nd Chance	Fast Break	Bench	
UT	8	2	2	4	8	Score tied - 0 times
WVU	2	3	2	0	2	Lead changed - 2 times

Official Basketball Box Score -- Game Totals -- Second Half Statistics
 Texas vs West Virginia
 2/5/2018 7:00 p.m. at WVU Coliseum, Morgantown, W.Va.



Texas 36 • 18-4 / 9-2

##	Player		Total		3-Ptr	Rebounds			PF	TP	A	TO	Blk	Stl	Min
			FG-FGA	FG-FGA	FT-FTA	Off	Def	Tot							
10	HIGGS,LASHANN	g	0-3	0-0	0-0	0	2	2	0	0	1	3	0	1	18
11	MCCARTY,BROOKE	g	2-6	0-2	0-0	0	2	2	0	4	4	1	0	1	18
23	ATKINS,ARIEL	g	5-5	3-3	0-0	0	1	1	2	13	1	1	1	1	13
31	CARON-GOUDREAU,A	f	2-3	0-0	0-0	1	4	5	1	4	0	0	1	0	11
40	WHITE,JATARIE	f	4-7	0-0	3-3	4	2	6	2	11	0	1	0	0	14
01	SUTTON,ALECIA		0-1	0-1	0-2	0	3	3	0	0	3	1	0	2	11
05	HOSEY,JORDAN		0-0	0-0	0-0	0	0	0	1	0	0	0	0	0	3
12	UNDERWOOD,JADA		0-0	0-0	0-0	0	0	0	0	0	0	0	0	0	3
24	HOLMES,JOYNER		1-5	0-0	2-3	2	2	4	2	4	0	2	1	0	10
TEAM						0	1	1	0			0			
Totals			14-30	3-6	5-8	7	17	24	8	36	9	9	3	5	101

FG %	3rd Qtr	7-17	41.2%	4th Qtr	7-13	53.8%	Half:	14-30	46.7%
3FG %	3rd Qtr	0-2	00.0%	4th Qtr	3-4	75.0%	Half:	3-6	33.3%
FT %	3rd Qtr	5-8	62.5%	4th Qtr	0-0	0%	Half:	5-8	62.5%

West Virginia 29 • 17-6 / 5-6

##	Player		Total		3-Ptr	Rebounds			PF	TP	A	TO	Blk	Stl	Min
			FG-FGA	FG-FGA	FT-FTA	Off	Def	Tot							
00	DAVENPORT ,NAOMI	g	1-5	1-2	3-4	2	1	3	2	6	0	3	0	1	16
11	MULDROW,TEANA	f	3-7	2-3	1-2	0	0	0	1	9	0	2	1	0	15
12	RAY,CHANIA	g	2-5	1-2	0-0	0	2	2	1	5	3	0	0	1	19
13	KING,KRISTINA	f	1-4	0-0	2-2	1	4	5	1	4	3	1	0	1	19
22	PARDEE,KATRINA	g	2-5	0-2	1-2	0	1	1	1	5	1	1	0	0	20
01	JONES,ASHLEY		0-0	0-0	0-0	0	0	0	0	0	0	0	0	0	3
03	HARDEN,DESTINY		0-2	0-0	0-0	0	0	0	0	0	0	0	0	0	4
34	EKHELAR,THEHERESA		0-0	0-0	0-0	0	0	0	1	0	0	0	0	0	4
TEAM						1	3	4	0			0			
Totals			9-28	4-9	7-10	4	11	15	7	29	7	7	1	3	100

FG %	3rd Qtr	7-17	41.2%	4th Qtr	2-11	18.2%	Half:	9-28	32.1%
3FG %	3rd Qtr	3-8	37.5%	4th Qtr	1-1	100.0%	Half:	4-9	54.5%
FT %	3rd Qtr	3-4	75.0%	4th Qtr	4-6	66.7%	Half:	7-10	70.0%

Officials: Roy Gulbeyan, Doug Knight, Cheryl Flores
 Technical Fouls: Texas- None. West Virginia- None.

Score by periods	1st	2nd	3rd	4th	Total
Texas	18	19	19	17	73
West Virginia	19	7	20	9	55

Points	In Paint	Off T/O	2nd Chance	Fast Break	Bench
UT	18	7	13	6	4
	6	4	3	0	0

Last FG - UT 4th-00:47, WVU 4th-06:03.
 UT led for 20:00. WVU led for 0:00. Game was tied for 0:00.

Score tied - 0 times
 Lead changed - 0 times

Texas vs West Virginia
2/5/2018; 7:00 p.m. at WVU Coliseum, Morgantown, W.Va.
Period 3 Play-By-Play



VISITORS: Texas	Time	Score	Margin	HOME: West Virginia
MISSED LAYUP by WHITE,JATARIE	09:48			
	09:48			BLOCK by MULDROW,TEANA
REBOUND (OFF) by WHITE,JATARIE	09:45			
GOOD! LAYUP by WHITE,JATARIE [PNT]	09:43	26-39	V 13	
	09:30			MISSED 3PTR by PARDEE,KATRINA
	09:30			REBOUND (OFF) by KING,KRISTINA
	09:23	29-39	V 10	GOOD! 3PTR by DAVENPORT,NAOMI
	09:23			ASSIST by KING,KRISTINA
MISSED 3PTR by MCCARTY,BROOKE	09:02			
	09:02			REBOUND (DEF) by TEAM
FOUL by WHITE,JATARIE	08:46			
	08:46	30-39	V 9	GOOD! FT by DAVENPORT,NAOMI
	08:46	31-39	V 8	GOOD! FT by DAVENPORT,NAOMI
GOOD! JUMPER by WHITE,JATARIE [PNT]	08:37	31-41	V 10	
	08:28	34-41	V 7	GOOD! 3PTR by RAY,CHANIA
	08:28			ASSIST by KING,KRISTINA
MISSED JUMPER by WHITE,JATARIE	08:06			
REBOUND (OFF) by WHITE,JATARIE	08:06			
	08:03			FOUL by MULDROW,TEANA
GOOD! FT by WHITE,JATARIE	08:03	34-42	V 8	
GOOD! FT by WHITE,JATARIE	08:03	34-43	V 9	
	08:03			SUB IN: EKHELAR,THERESA
	08:03			SUB OUT: MULDROW,TEANA
	07:48			MISSED JUMPER by DAVENPORT,NAOMI
REBOUND (DEF) by HIGGS,LASHANN	07:48			
TURNOVER by HIGGS,LASHANN	07:40			
	07:39			STEAL by DAVENPORT,NAOMI
	07:23	36-43	V 7	GOOD! JUMPER by PARDEE,KATRINA
	07:23			ASSIST by KING,KRISTINA
MISSED LAYUP by CARON-GOUDREAU,A	07:13			
	07:13			REBOUND (DEF) by RAY,CHANIA
	07:04			MISSED JUMPER by KING,KRISTINA
REBOUND (DEF) by MCCARTY,BROOKE	07:04			
	07:01			FOUL by DAVENPORT,NAOMI
SUB IN: HOLMES,JOYNER	07:01			
SUB OUT: CARON-GOUDREAU,A	07:01			
	07:01			SUB IN: HARDEN,DESTINY
	07:01			SUB OUT: EKHELAR,THERESA
MISSED LAYUP by MCCARTY,BROOKE	06:53			
REBOUND (OFF) by HOLMES,JOYNER	06:53			
	06:47			FOUL by KING,KRISTINA
GOOD! FT by HOLMES,JOYNER	06:47	36-44	V 8	
GOOD! FT by HOLMES,JOYNER	06:47	36-45	V 9	
	06:29	38-45	V 7	GOOD! JUMPER by PARDEE,KATRINA [PNT]
TURNOVER by HIGGS,LASHANN	06:18			
SUB IN: SUTTON,ALECIA	06:18			
SUB OUT: ATKINS,ARIEL	06:18			
	06:03			TURNOVER by DAVENPORT,NAOMI
STEAL by MCCARTY,BROOKE	06:01			
MISSED JUMPER by HOLMES,JOYNER	05:55			
	05:55			REBOUND (DEF) by KING,KRISTINA
	05:50			TURNOVER by KING,KRISTINA
STEAL by HIGGS,LASHANN	05:48			
TURNOVER by HIGGS,LASHANN	05:45			
	05:44			STEAL by RAY,CHANIA
	05:41			TURNOVER by PARDEE,KATRINA
	05:41			SUB IN: EKHELAR,THERESA
	05:41			SUB OUT: KING,KRISTINA
GOOD! JUMPER by MCCARTY,BROOKE [PNT]	05:33	38-47	V 9	
	05:16	40-47	V 7	GOOD! JUMPER by RAY,CHANIA [PNT]
TURNOVER by HOLMES,JOYNER	04:57			
	04:57			TIMEOUT MEDIA
	04:44			MISSED JUMPER by HARDEN,DESTINY
REBOUND (DEF) by MCCARTY,BROOKE	04:44			
GOOD! LAYUP by WHITE,JATARIE [PNT]	04:21	40-49	V 9	
ASSIST by HIGGS,LASHANN	04:21			
	04:21			FOUL by DAVENPORT,NAOMI
GOOD! FT by WHITE,JATARIE	04:21	40-50	V 10	
	04:21			SUB IN: KING,KRISTINA

VISITORS: Texas	Time	Score	Margin	HOME: West Virginia
	04:21			SUB OUT: HARDEN,DESTINY
FOUL by HOLMES,JOYNER	04:18			
	04:04			MISSED 3PTR by PARDEE,KATRINA
REBOUND (DEF) by WHITE,JATARIE	04:04			
GOOD! JUMPER by HOLMES,JOYNER [PNT]	03:55	40-52	V 12	
ASSIST by SUTTON,ALECIA	03:55			
	03:55			FOUL by EKHELAR,THERESA
MISSED FT by HOLMES,JOYNER	03:55			
	03:55			REBOUND (DEF) by DAVENPORT,NAOMI
	03:55			SUB IN: MULDROW,TEANA
	03:55			SUB OUT: EKHELAR,THERESA
	03:50			MISSED 3PTR by MULDROW,TEANA
REBOUND (DEF) by SUTTON,ALECIA	03:50			
TURNOVER by HOLMES,JOYNER	03:40			
FOUL by HOLMES,JOYNER	03:40			
SUB IN: CARON-GOUDREAU,A	03:40			
SUB OUT: WHITE,JATARIE	03:40			
	03:18			MISSED JUMPER by DAVENPORT,NAOMI
REBOUND (DEF) by CARON-GOUDREAU,A	03:18			
MISSED 3PTR by MCCARTY,BROOKE	03:09			
	03:09			REBOUND (DEF) by KING,KRISTINA
	02:51	43-52	V 9	GOOD! 3PTR by MULDROW,TEANA
	02:51			ASSIST by RAY,CHANIA
MISSED LAYUP by MCCARTY,BROOKE	02:34			
REBOUND (OFF) by HOLMES,JOYNER	02:34			
MISSED LAYUP by HOLMES,JOYNER	02:30			
	02:30			REBOUND (DEF) by RAY,CHANIA
	02:25			MISSED 3PTR by DAVENPORT,NAOMI
REBOUND (DEF) by HOLMES,JOYNER	02:25			
GOOD! LAYUP by CARON-GOUDREAU,A [FB/PNT]	02:18	43-54	V 11	
ASSIST by SUTTON,ALECIA	02:18			
	01:55	45-54	V 9	GOOD! JUMPER by KING,KRISTINA
	01:55			ASSIST by RAY,CHANIA
MISSED JUMPER by HOLMES,JOYNER	01:32			
REBOUND (OFF) by CARON-GOUDREAU,A	01:32			
GOOD! LAYUP by CARON-GOUDREAU,A [PNT]	01:29	45-56	V 11	
	01:14			MISSED 3PTR by RAY,CHANIA
REBOUND (DEF) by SUTTON,ALECIA	01:14			
	01:05			FOUL by RAY,CHANIA
MISSED FT by SUTTON,ALECIA	01:05			
REBOUND (DEADB) by TEAM	01:05			
MISSED FT by SUTTON,ALECIA	01:05			
	01:05			REBOUND (DEF) by TEAM
SUB IN: ATKINS,ARIEL	01:05			
SUB IN: UNDERWOOD,JADA	01:05			
SUB IN: HOSEY,JORDAN	01:05			
SUB IN: WHITE,JATARIE	01:05			
SUB OUT: HIGGS,LASHANN	01:05			
SUB OUT: MCCARTY,BROOKE	01:05			
SUB OUT: HOLMES,JOYNER	01:05			
SUB OUT: CARON-GOUDREAU,A	01:05			
	01:05			SUB IN: JONES,ASHLEY
	01:05			SUB OUT: DAVENPORT,NAOMI
FOUL by HOSEY,JORDAN	00:39			
	00:39	46-56	V 10	GOOD! FT by PARDEE,KATRINA
	00:39			MISSED FT by PARDEE,KATRINA
REBOUND (DEF) by WHITE,JATARIE	00:39			
TURNOVER by SUTTON,ALECIA	00:17			
	00:06			MISSED JUMPER by PARDEE,KATRINA
REBOUND (DEF) by SUTTON,ALECIA	00:06			

Texas 73, West Virginia 55

Period 3-only	In Paint	Off T/O	2nd Chance	Fast Break	Bench	
UT	14	2	8	2	4	Score tied - 0 times
WVU	4	2	3	0	0	Lead changed - 0 times

Texas vs West Virginia
2/5/2018; 7:00 p.m. at WVU Coliseum, Morgantown, W.Va.
Period 4 Play-By-Play



VISITORS: Texas	Time	Score	Margin	HOME: West Virginia
SUB IN: HOSEY,JORDAN	10:00			
SUB IN: UNDERWOOD,JADA	10:00			
SUB IN: SUTTON,ALECIA	10:00			
SUB OUT: MCCARTY,BROOKE	10:00			
SUB OUT: ATKINS,ARIEL	10:00			
SUB OUT: CARON-GOUDREAU,A	10:00			
	09:43			MISSED JUMPER by MULDROW,TEANA
REBOUND (DEF) by HIGGS,LASHANN	09:43			
TURNOVER by WHITE,JATARIE	09:10			
SUB IN: ATKINS,ARIEL	09:10			
SUB IN: HOLMES,JOYNER	09:10			
SUB OUT: HOSEY,JORDAN	09:10			
SUB OUT: UNDERWOOD,JADA	09:10			
FOUL by WHITE,JATARIE	08:54			
	08:54	47-56	V 9	GOOD! FT by KING,KRISTINA
	08:54	48-56	V 8	GOOD! FT by KING,KRISTINA
SUB IN: MCCARTY,BROOKE	08:54			
SUB OUT: SUTTON,ALECIA	08:54			
	08:41			FOUL by PARDEE,KATRINA
TURNOVER by MCCARTY,BROOKE	08:36			
	08:34			STEAL by KING,KRISTINA
	08:31			MISSED LAYUP by KING,KRISTINA
BLOCK by ATKINS,ARIEL	08:31			
	08:29			REBOUND (OFF) by DAVENPORT,NAOMI
	08:27			MISSED LAYUP by DAVENPORT,NAOMI
REBOUND (DEF) by TEAM	08:27			
MISSED JUMPER by HIGGS,LASHANN	08:12			
REBOUND (OFF) by WHITE,JATARIE	08:12			
GOOD! 3PTR by ATKINS,ARIEL	07:50	48-59	V 11	
ASSIST by MCCARTY,BROOKE	07:50			
	07:32	51-59	V 8	GOOD! 3PTR by MULDROW,TEANA
	07:32			ASSIST by RAY,CHANIA
MISSED LAYUP by HOLMES,JOYNER	07:02			
	07:02			REBOUND (DEF) by KING,KRISTINA
	06:52			MISSED LAYUP by MULDROW,TEANA
BLOCK by HOLMES,JOYNER	06:52			
	06:52			REBOUND (OFF) by TEAM
SUB IN: CARON-GOUDREAU,A	06:48			
SUB IN: SUTTON,ALECIA	06:48			
SUB OUT: HOLMES,JOYNER	06:48			
SUB OUT: WHITE,JATARIE	06:48			
	06:41			MISSED JUMPER by MULDROW,TEANA
	06:41			REBOUND (OFF) by DAVENPORT,NAOMI
	06:34			TURNOVER by DAVENPORT,NAOMI
STEAL by SUTTON,ALECIA	06:31			
GOOD! 3PTR by ATKINS,ARIEL	06:27	51-62	V 11	
ASSIST by SUTTON,ALECIA	06:27			
	06:03	53-62	V 9	GOOD! LAYUP by MULDROW,TEANA [PNT]
	06:03			ASSIST by PARDEE,KATRINA
TIMEOUT 30SEC	05:43			
MISSED 3PTR by SUTTON,ALECIA	05:31			
	05:31			REBOUND (DEF) by TEAM
FOUL by CARON-GOUDREAU,A	05:12			
	05:12			MISSED FT by DAVENPORT,NAOMI
	05:12			REBOUND (DEADB) by TEAM
	05:12	54-62	V 8	GOOD! FT by DAVENPORT,NAOMI
SUB IN: WHITE,JATARIE	05:12			
SUB OUT: CARON-GOUDREAU,A	05:12			
MISSED JUMPER by HIGGS,LASHANN	04:56			
REBOUND (OFF) by WHITE,JATARIE	04:56			
GOOD! JUMPER by WHITE,JATARIE	04:42	54-64	V 10	
ASSIST by MCCARTY,BROOKE	04:42			
	04:21			TURNOVER by MULDROW,TEANA
STEAL by SUTTON,ALECIA	04:19			
MISSED LAYUP by WHITE,JATARIE	04:03			
	04:03			REBOUND (DEF) by PARDEE,KATRINA
	04:00			TIMEOUT MEDIA
SUB IN: CARON-GOUDREAU,A	04:00			
SUB OUT: WHITE,JATARIE	04:00			

VISITORS: Texas	Time	Score	Margin	HOME: West Virginia
	04:00			SUB IN: JONES,ASHLEY
	04:00			SUB OUT: DAVENPORT,NAOMI
FOUL by ATKINS,ARIEL	03:51			
	03:51	55-64	V 9	GOOD! FT by MULDROW,TEANA
	03:51			MISSED FT by MULDROW,TEANA
REBOUND (DEF) by CARON-GOUDREAU,A	03:51			
TURNOVER by ATKINS,ARIEL	03:35			
FOUL by ATKINS,ARIEL	03:25			
SUB IN: WHITE,JATARIE	03:25			
SUB OUT: SUTTON,ALECIA	03:25			
	03:25			SUB IN: DAVENPORT,NAOMI
	03:25			SUB OUT: JONES,ASHLEY
	03:07			TURNOVER by DAVENPORT,NAOMI
MISSED JUMPER by HIGGS,LASHANN	02:43			
	02:43			REBOUND (DEF) by KING,KRISTINA
	02:34			TURNOVER by MULDROW,TEANA
STEAL by ATKINS,ARIEL	02:33			
GOOD! LAYUP by MCCARTY,BROOKE [FB/PNT]	02:28	55-66	V 11	
ASSIST by ATKINS,ARIEL	02:28			
	02:09			MISSED JUMPER by KING,KRISTINA
REBOUND (DEF) by CARON-GOUDREAU,A	02:09			
GOOD! JUMPER by ATKINS,ARIEL	01:45	55-68	V 13	
	01:27			MISSED JUMPER by RAY,CHANIA
BLOCK by CARON-GOUDREAU,A	01:27			
REBOUND (DEF) by CARON-GOUDREAU,A	01:25			
GOOD! LAYUP by ATKINS,ARIEL [FB/PNT]	01:20	55-70	V 15	
ASSIST by MCCARTY,BROOKE	01:20			
	01:09			TIMEOUT 30SEC
SUB IN: HOLMES,JOYNER	01:09			
SUB OUT: WHITE,JATARIE	01:09			
	01:09			SUB IN: EKHELAR,THERESA
	01:09			SUB IN: JONES,ASHLEY
	01:09			SUB OUT: DAVENPORT,NAOMI
	01:09			SUB OUT: MULDROW,TEANA
	00:56			MISSED JUMPER by RAY,CHANIA
REBOUND (DEF) by ATKINS,ARIEL	00:56			
GOOD! 3PTR by ATKINS,ARIEL	00:47	55-73	V 18	
ASSIST by MCCARTY,BROOKE	00:47			
	00:41			TIMEOUT TEAM
SUB IN: HOSEY,JORDAN	00:41			
SUB IN: UNDERWOOD,JADA	00:41			
SUB IN: SUTTON,ALECIA	00:41			
SUB OUT: HIGGS,LASHANN	00:41			
SUB OUT: ATKINS,ARIEL	00:41			
SUB OUT: CARON-GOUDREAU,A	00:41			
	00:41			SUB IN: HARDEN,DESTINY
	00:41			SUB OUT: RAY,CHANIA
	00:29			MISSED JUMPER by HARDEN,DESTINY
REBOUND (DEF) by HOLMES,JOYNER	00:29			

Texas 73, West Virginia 55

Period 4-only	In Paint	Off T/O	2nd Chance	Fast Break	Bench	
UT	4	5	5	4	0	Score tied - 0 times
WVU	2	2	0	0	0	Lead changed - 0 times

Texas vs West Virginia
2/5/2018; 7:00 p.m. at WVU Coliseum, Morgantown, W.Va.
Scoring/Runs Reference



Period 1

Texas	VRun	Score	Margin	HRun	West Virginia
09:48 - ATKINS JUMPER	-	2-0	-2		
08:28 - HIGGS LAYUP [P]	NaN-0	4-0	-4		
07:48 - WHITE FT	NaN-0	5-0	-5		
07:15 - WHITE LAYUP [P]	NaN-0	7-0	-7		
		7-3	-4		JONES 3PTR - 06:55
		7-6	-1	6-0	MULDROW 3PTR - 06:33
05:58 - MCCARTY 3PTR	-	10-6	-4		
		10-9	-1		PARDEE 3PTR - 05:29
		10-11	1	5-0	KING LAYUP [P] - 03:58
03:45 - WHITE JUMPER [P]	-	12-11	-1		
		12-14	2		DAVENPORT 3PTR - 03:26
02:00 - HIGGS LAYUP [P]	-	14-14	0		
		14-16	2		DAVENPORT LAYUP [P] [F] - 01:27
01:03 - CARON-GOUDREAU LAYUP [P]	-	16-16	0		
00:42 - SUTTON LAYUP [P] [F]	4-0	18-16	-2		
		18-19	1		RAY 3PTR - 00:13

Texas vs West Virginia
2/5/2018; 7:00 p.m. at WVU Coliseum, Morgantown, W.Va.
Scoring/Runs Reference



Period 2

Texas	VRun	Score	Margin	HRun	West Virginia
09:26 - HOLMES LAYUP [P] [F]	-	20-19	-1		
09:26 - HOLMES FT	NaN-0	21-19	-2		
08:00 - HIGGS LAYUP [P] [F]	NaN-0	23-19	-4		
		23-21	-2		EKHELAR LAYUP [P] - 07:38
07:28 - CARON-GOUDREAU 3PTR	-	26-21	-5		
06:16 - WHITE LAYUP [P]	5-0	28-21	-7		
		28-23	-5		KING JUMPER - 05:37
05:18 - SUTTON 3PTR	-	31-23	-8		
04:30 - MCCARTY LAYUP [P]	5-0	33-23	-10		
		33-26	-7		DAVENPORT 3PTR - 02:52
01:45 - ATKINS JUMPER	-	35-26	-9		
01:12 - SUTTON JUMPER	4-0	37-26	-11		

Texas vs West Virginia
2/5/2018; 7:00 p.m. at WVU Coliseum, Morgantown, W.Va.
Scoring/Runs Reference



Period 3

Texas	VRun	Score	Margin	HRun	West Virginia
09:43 - WHITE LAYUP [P]	-	39-26	-13		
		39-29	-10		DAVENPORT 3PTR - 09:23
		39-30	-9	4-0	DAVENPORT FT - 08:46
		39-31	-8	5-0	DAVENPORT FT - 08:46
08:37 - WHITE JUMPER [P]	-	41-31	-10		
		41-34	-7		RAY 3PTR - 08:28
08:03 - WHITE FT	-	42-34	-8		
08:03 - WHITE FT	2-0	43-34	-9		
		43-36	-7		PARDEE JUMPER - 07:23
06:47 - HOLMES FT	-	44-36	-8		
06:47 - HOLMES FT	2-0	45-36	-9		
		45-38	-7		PARDEE JUMPER [P] - 06:29
05:33 - MCCARTY JUMPER [P]	-	47-38	-9		
		47-40	-7		RAY JUMPER [P] - 05:16
04:21 - WHITE LAYUP [P]	-	49-40	-9		
04:21 - WHITE FT	3-0	50-40	-10		
03:55 - HOLMES JUMPER [P]	5-0	52-40	-12		
		52-43	-9		MULDROW 3PTR - 02:51
02:18 - CARON-GOUDREAU LAYUP [P] [F]	-	54-43	-11		
		54-45	-9		KING JUMPER - 01:55
01:29 - CARON-GOUDREAU LAYUP [P]	-	56-45	-11		
		56-46	-10		PARDEE FT - 00:39

Texas vs West Virginia
2/5/2018; 7:00 p.m. at WVU Coliseum, Morgantown, W.Va.
Scoring/Runs Reference

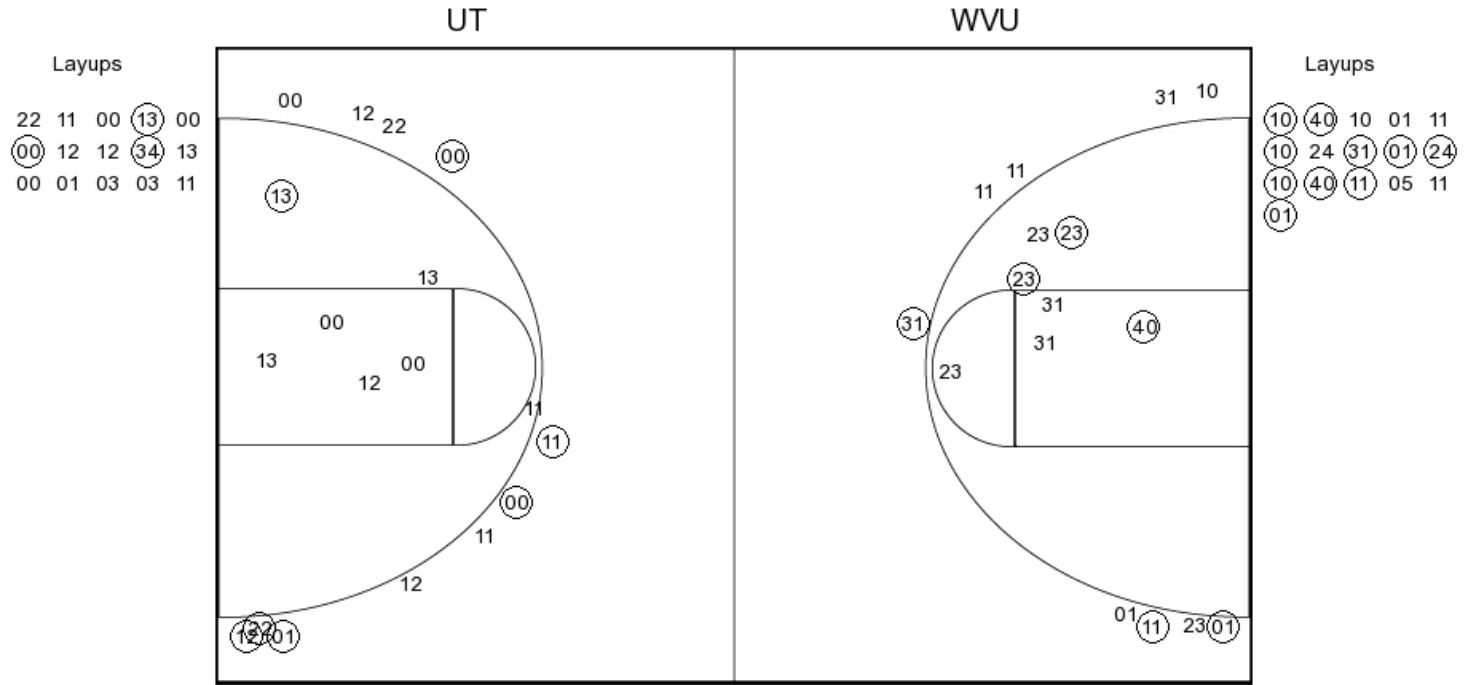


Period 4

Texas	VRun	Score	Margin	HRun	West Virginia
		56-47	-9		KING FT - 08:54
		56-48	-8	NaN-0	KING FT - 08:54
07:50 - ATKINS 3PTR	-	59-48	-11		
		59-51	-8		MULDROW 3PTR - 07:32
06:27 - ATKINS 3PTR	-	62-51	-11		
		62-53	-9		MULDROW LAYUP [P] - 06:03
		62-54	-8	3-0	DAVENPORT FT - 05:12
04:42 - WHITE JUMPER	-	64-54	-10		
		64-55	-9		MULDROW FT - 03:51
02:28 - MCCARTY LAYUP [P] [F]	-	66-55	-11		
01:45 - ATKINS JUMPER	4-0	68-55	-13		
01:20 - ATKINS LAYUP [P] [F]	6-0	70-55	-15		
00:47 - ATKINS 3PTR	9-0	73-55	-18		



PERIOD 1



UT PERIOD 1

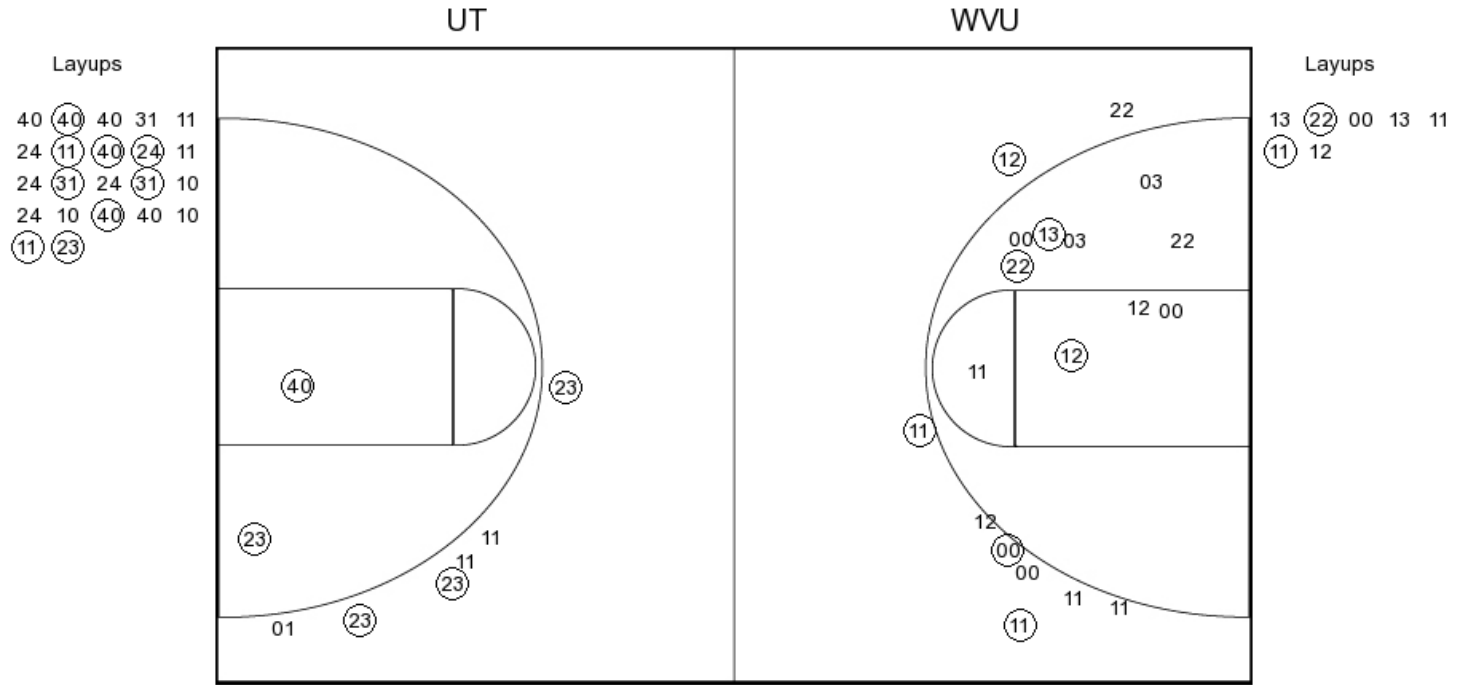
FG Made	16
FG Attempted	32
3PFG Made	3
3PFG Attempted	9

WVU PERIOD 1

FG Made	10
FG Attempted	33
3PFG Made	6
3PFG Attempted	11



PERIOD 2



UT PERIOD 2

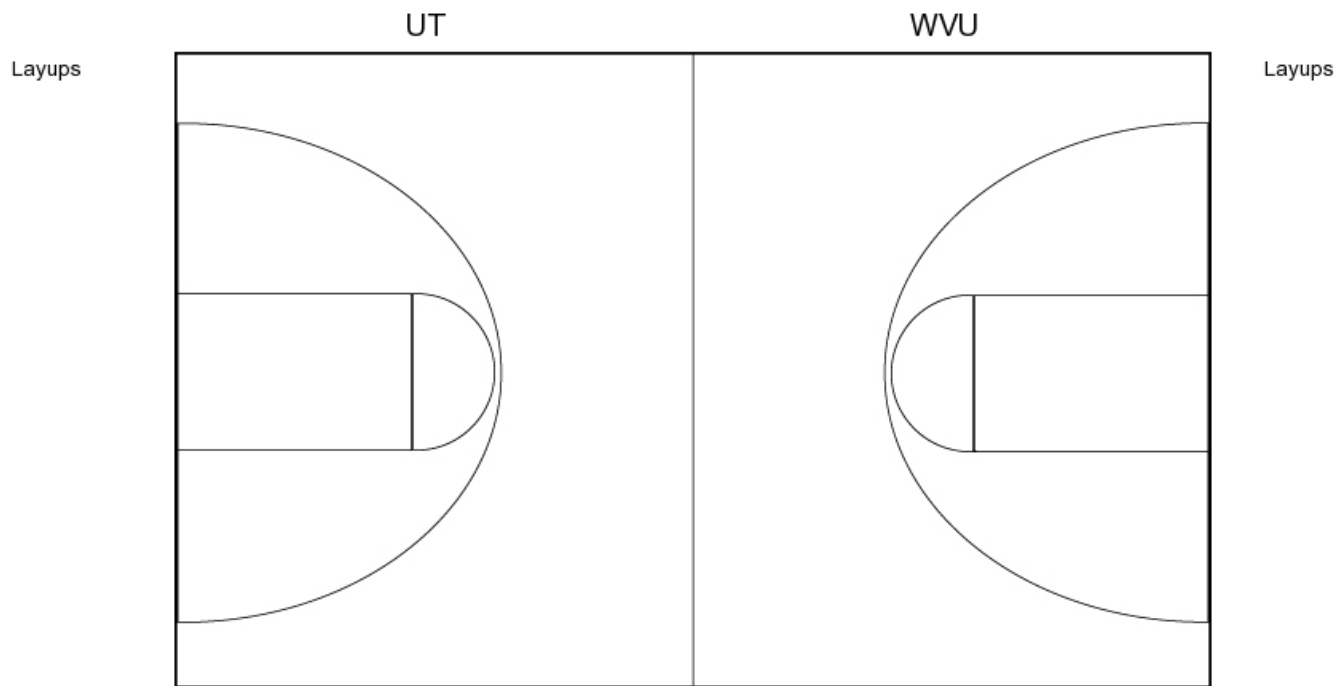
FG Made
 FG Attempted
 3PFG Made
 3PFG Attempted

WVU PERIOD 2

FG Made
 FG Attempted
 3PFG Made
 3PFG Attempted



PERIOD 3



UT PERIOD 3

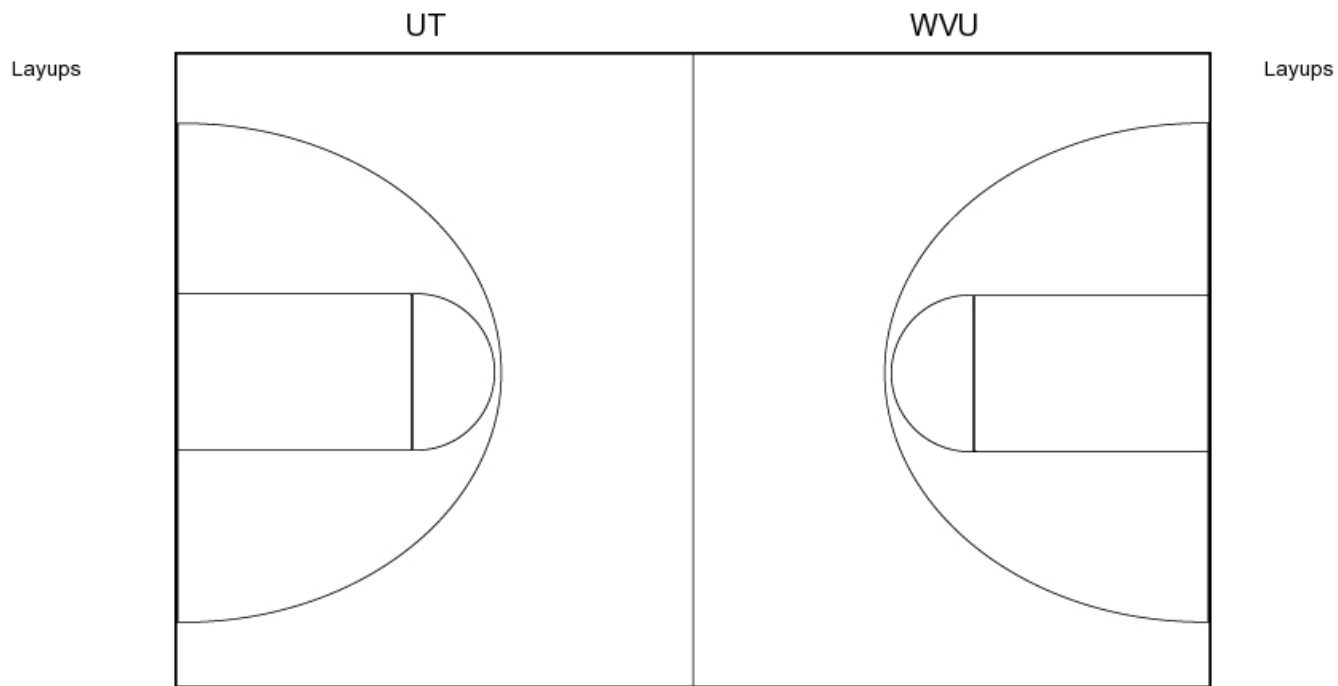
FG Made	14
FG Attempted	30
3PFG Made	3
3PFG Attempted	6

WVU PERIOD 3

FG Made	9
FG Attempted	28
3PFG Made	4
3PFG Attempted	9



PERIOD 4



UT PERIOD 4

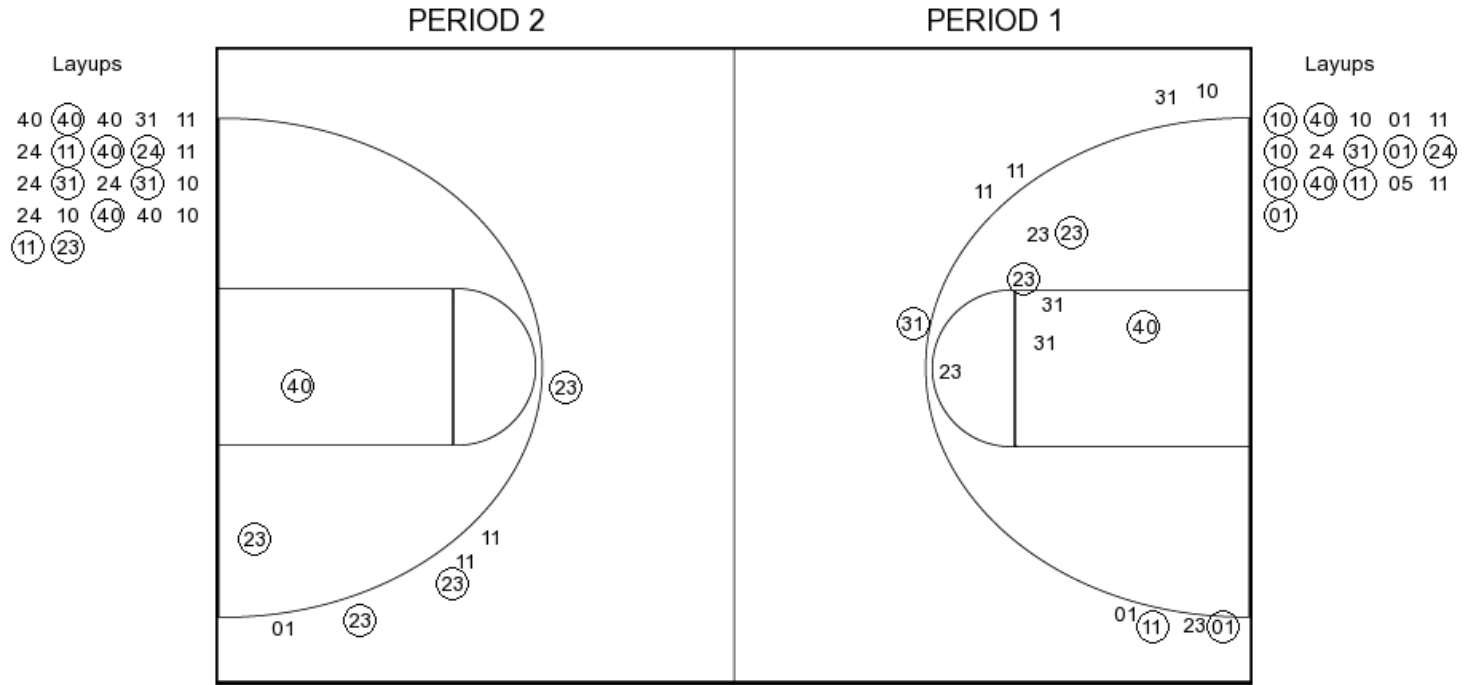
FG Made
FG Attempted
3PFG Made
3PFG Attempted

WVU PERIOD 4

FG Made
FG Attempted
3PFG Made
3PFG Attempted



Texas



UT PERIOD 1

FG Made	16
FG Attempted	32
3PFG Made	3
3PFG Attempted	9

UT PERIOD 2

FG Made	
FG Attempted	
3PFG Made	
3PFG Attempted	

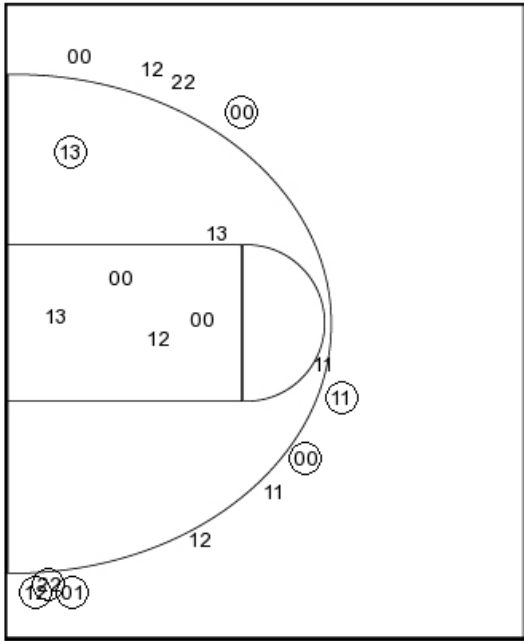


West Virginia

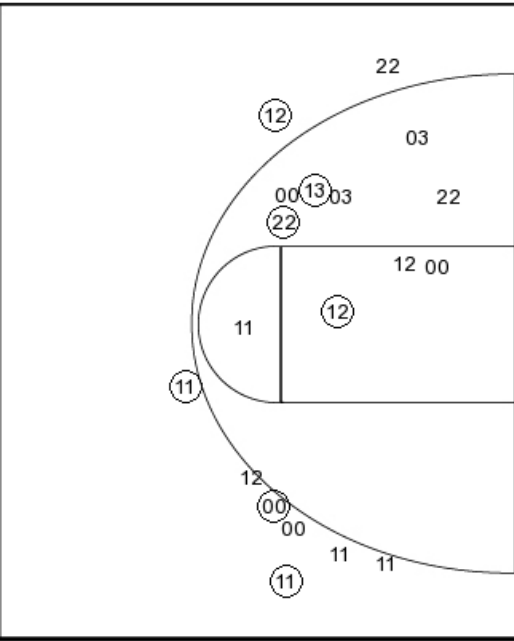
PERIOD 1

PERIOD 2

Layups
22 11 00 ⑬ 00
①① 12 12 ③④ 13
00 01 03 03 11



Layups
13 ②② 00 13 11
①① 12



WVU PERIOD 1

FG Made	10
FG Attempted	33
3PFG Made	6
3PFG Attempted	11

WVU PERIOD 2

FG Made	
FG Attempted	
3PFG Made	
3PFG Attempted	