

FINAL SCORE

Mississippi State

18-8, 6-7 SEC

80

Vanderbilt

10-16, 4-9 SEC

81

February 14, 2018 • Nashville, Tenn. (Memorial Gym)

FINAL STATISTICS

Official Basketball Box Score -- Game Totals -- Final Statistics
Mississippi State vs Vanderbilt
2/14/2018 6 p.m. at Nashville, Tenn. (Memorial Gym)

Mississippi State 80 - 18-8, 6-7 SEC

| ## | Player | g | Total | | 3-Ptr | | Rebounds | | | PF | TP | A | TO | Blk | Stl | Min |
|--------|-------------------|---|--------|--------|--------|-----|----------|-----|----|----|----|----|----|-----|-----|-----|
| | | | FG-FGA | FG-FGA | FT-FTA | Off | Def | Tot | | | | | | | | |
| 00 | WEATHERSPOON,NICK | g | 4-5 | 0-0 | 2-2 | 0 | 1 | 1 | 2 | 10 | 1 | 0 | 0 | 0 | 23 | |
| 01 | PETERS,LAMAR | g | 1-8 | 0-1 | 1-1 | 0 | 2 | 2 | 0 | 3 | 8 | 3 | 0 | 0 | 33 | |
| 11 | WEATHERSPOON,Q | g | 4-6 | 1-2 | 0-0 | 0 | 2 | 2 | 2 | 9 | 3 | 3 | 1 | 1 | 32 | |
| 24 | ADO,ABDUL | f | 6-6 | 0-0 | 3-4 | 5 | 2 | 7 | 4 | 15 | 2 | 1 | 1 | 2 | 28 | |
| 35 | HOLMAN,ARIC | f | 5-8 | 0-2 | 1-2 | 0 | 2 | 2 | 1 | 11 | 0 | 1 | 3 | 1 | 23 | |
| 02 | WRIGHT,ELI | | 1-2 | 0-0 | 0-0 | 0 | 2 | 2 | 1 | 2 | 2 | 0 | 0 | 0 | 9 | |
| 03 | STAPLETON,XAVIAN | | 6-8 | 5-5 | 1-2 | 0 | 1 | 1 | 3 | 18 | 2 | 1 | 0 | 0 | 25 | |
| 22 | FEAZELL,KEYSHAWN | | 0-0 | 0-0 | 0-0 | 0 | 0 | 0 | 0 | 0 | 0 | 1 | 0 | 0 | 0 | |
| 23 | CARTER,TYSON | | 4-9 | 4-7 | 0-0 | 0 | 2 | 2 | 0 | 12 | 0 | 0 | 0 | 0 | 24 | |
| 45 | DATCHER,EJ | | 0-1 | 0-0 | 0-0 | 0 | 0 | 0 | 1 | 0 | 0 | 0 | 0 | 0 | 3 | |
| TEAM | | | | | | 1 | 3 | 4 | 0 | | 0 | | | | | |
| TOTALS | | | 31-53 | 10-17 | 8-11 | 6 | 17 | 23 | 14 | 80 | 18 | 10 | 5 | 4 | 200 | |

Deadball Rebounds: 1,0

| | | | | | | | | | |
|-------|-----------|-------|-------|-----------|-------|-------|-------|-------|-------|
| FG % | 1st Half: | 13-26 | 50.0% | 2nd Half: | 18-27 | 66.7% | Game: | 31-53 | 58.5% |
| 3FG % | 1st Half: | 2-5 | 40.0% | 2nd Half: | 8-12 | 66.7% | Game: | 10-17 | 58.8% |
| FT % | 1st Half: | 3-4 | 75.0% | 2nd Half: | 5-7 | 71.4% | Game: | 8-11 | 72.7% |

Vanderbilt 81 - 10-16, 4-9 SEC

| ## | Player | g | Total | | 3-Ptr | | Rebounds | | | PF | TP | A | TO | Blk | Stl | Min |
|--------|-----------------|---|--------|--------|--------|-----|----------|-----|----|----|----|----|----|-----|-----|-----|
| | | | FG-FGA | FG-FGA | FT-FTA | Off | Def | Tot | | | | | | | | |
| 00 | LEE,SABEN | g | 2-2 | 0-0 | 0-0 | 0 | 0 | 0 | 2 | 4 | 0 | 0 | 0 | 0 | 14 | |
| 10 | EVANS,MAXWELL | g | 0-0 | 0-0 | 0-0 | 0 | 0 | 0 | 0 | 0 | 0 | 0 | 0 | 0 | 5 | |
| 11 | ROBERSON,JEFF | f | 6-11 | 3-6 | 7-12 | 5 | 6 | 11 | 2 | 22 | 2 | 2 | 2 | 1 | 36 | |
| 13 | LACHANCE,RILEY | g | 6-14 | 3-7 | 1-1 | 1 | 2 | 3 | 1 | 16 | 8 | 3 | 0 | 2 | 37 | |
| 50 | OBINNA,EJIKE | c | 1-3 | 0-0 | 0-0 | 0 | 0 | 0 | 0 | 2 | 0 | 0 | 0 | 0 | 9 | |
| 01 | WILLIS,PAYTON | | 5-9 | 5-9 | 0-0 | 0 | 2 | 2 | 2 | 15 | 2 | 0 | 1 | 1 | 29 | |
| 02 | TOYE,JOE | | 6-10 | 3-3 | 1-2 | 2 | 4 | 6 | 3 | 16 | 4 | 1 | 1 | 1 | 31 | |
| 03 | AUSTIN,JR,LARRY | | 0-1 | 0-0 | 0-0 | 1 | 0 | 1 | 0 | 0 | 0 | 1 | 0 | 0 | 4 | |
| 12 | BAPTISTE,DJERY | | 1-2 | 0-0 | 2-2 | 1 | 1 | 2 | 2 | 4 | 0 | 1 | 0 | 0 | 12 | |
| 15 | BROWN,CLEVON | | 1-4 | 0-2 | 0-0 | 1 | 2 | 3 | 1 | 2 | 0 | 2 | 1 | 0 | 23 | |
| TEAM | | | | | | 2 | 1 | 3 | 0 | | 0 | | | | | |
| TOTALS | | | 28-56 | 14-27 | 11-17 | 13 | 18 | 31 | 13 | 81 | 16 | 10 | 5 | 5 | 200 | |

Deadball Rebounds: 4,0

| | | | | | | | | | |
|-------|-----------|-------|--------|-----------|-------|-------|-------|-------|-------|
| FG % | 1st Half: | 15-29 | 51.7% | 2nd Half: | 13-27 | 48.1% | Game: | 28-56 | 50.0% |
| 3FG % | 1st Half: | 7-13 | 53.8% | 2nd Half: | 7-14 | 50.0% | Game: | 14-27 | 51.9% |
| FT % | 1st Half: | 3-3 | 100.0% | 2nd Half: | 8-14 | 57.1% | Game: | 11-17 | 64.7% |

Officials: Olandis Poole, Keith Kimble, Vladimir Voyard-Tadal
 Technical Fouls: Mississippi State- STAPLETON,XAVIAN; Vanderbilt- None.
 Attendance: 8592

| Score by periods | 1st | 2nd | Total |
|-------------------|-----|-----|-------|
| Mississippi State | 31 | 49 | 80 |
| Vanderbilt | 40 | 41 | 81 |

| Points | In Paint | Off T/O | 2nd Chance | Fast Break | Bench |
|--------|----------|---------|------------|------------|-------|
| MS | 32 | 19 | 11 | 2 | 32 |
| VU | 28 | 10 | 11 | 4 | 37 |

Last FG - MS 2nd-00:18, VU 2nd-00:01.

Largest lead - Mississippi State by 8 1st-09:49; Vanderbilt by 11 2nd-12:54

MS led for 12:10. VU led for 25:31. Game was tied for 2:19.

Score tied - 5 times; Lead changed - 11 times

Official Basketball Box Score -- Game Totals -- First Half Statistics
Mississippi State vs Vanderbilt
2/14/2018 6 p.m. at Nashville, Tenn. (Memorial Gym)

Mississippi State 31 • 18-8, 6-7 SEC

| ## | Player | g | Total | | | 3-Ptr | | | Rebounds | | | PF | TP | A | TO | Blk | Stl | Min |
|--------|-------------------|---|--------|--------|--------|--------|--------|--------|----------|-----|-----|----|----|---|-----|-----|-----|-----|
| | | | FG-FGA | FG-FGA | FT-FTA | FG-FGA | FG-FGA | FT-FTA | Off | Def | Tot | | | | | | | |
| 00 | WEATHERSPOON,NICK | | 2-2 | 0-0 | 0-0 | 0 | 1 | 1 | 1 | 4 | 0 | 0 | 0 | 0 | 0 | 0 | 11 | |
| 01 | PETERS,LAMAR | | 0-4 | 0-0 | 0-0 | 0 | 2 | 2 | 0 | 0 | 2 | 3 | 0 | 0 | 0 | 17 | | |
| 11 | WEATHERSPOON,Q | | 2-4 | 1-2 | 0-0 | 0 | 2 | 2 | 1 | 5 | 1 | 2 | 0 | 0 | 0 | 15 | | |
| 24 | ADO,ABDUL | | 3-3 | 0-0 | 2-2 | 3 | 0 | 3 | 1 | 8 | 1 | 1 | 0 | 1 | 14 | | | |
| 35 | HOLMAN,ARIC | | 3-3 | 0-0 | 1-2 | 0 | 1 | 1 | 0 | 7 | 0 | 1 | 3 | 1 | 13 | | | |
| 02 | WRIGHT,ELI | | 1-2 | 0-0 | 0-0 | 0 | 1 | 1 | 0 | 2 | 1 | 0 | 0 | 0 | 6 | | | |
| 03 | STAPLETON,XAVIAN | | 1-3 | 0-0 | 0-0 | 0 | 1 | 1 | 0 | 2 | 1 | 0 | 0 | 0 | 10 | | | |
| 22 | FEAZELL,KEYSHAWN | | 0-0 | 0-0 | 0-0 | 0 | 0 | 0 | 0 | 0 | 0 | 0 | 0 | 0 | 0 | | | |
| 23 | CARTER,TYSON | | 1-4 | 1-3 | 0-0 | 0 | 1 | 1 | 0 | 3 | 0 | 0 | 0 | 0 | 12 | | | |
| 45 | DATCHER,EJ | | 0-1 | 0-0 | 0-0 | 0 | 0 | 0 | 0 | 0 | 0 | 0 | 0 | 0 | 2 | | | |
| TEAM | | | | | | 0 | 1 | 1 | 0 | | 0 | | | | | | | |
| Totals | | | 13-26 | 2-5 | 3-4 | 3 | 10 | 13 | 3 | 31 | 6 | 7 | 3 | 2 | 100 | | | |

FG % Half: 13-26 50.0%
 3FG % Half: 2-5 40.0%
 FT % Half: 3-4 75.0%

Vanderbilt 40 • 10-16, 4-9 SEC

| ## | Player | g | Total | | | 3-Ptr | | | Rebounds | | | PF | TP | A | TO | Blk | Stl | Min |
|--------|------------------|---|--------|--------|--------|--------|--------|--------|----------|-----|-----|----|----|---|-----|-----|-----|-----|
| | | | FG-FGA | FG-FGA | FT-FTA | FG-FGA | FG-FGA | FT-FTA | Off | Def | Tot | | | | | | | |
| 00 | LEE,SABEN | | 1-1 | 0-0 | 0-0 | 0 | 0 | 0 | 2 | 2 | 0 | 0 | 0 | 0 | 0 | 11 | | |
| 10 | EVANS,MAXWELL | | 0-0 | 0-0 | 0-0 | 0 | 0 | 0 | 0 | 0 | 0 | 0 | 0 | 0 | 4 | | | |
| 11 | ROBERSON,JEFF | | 4-7 | 2-4 | 2-2 | 1 | 2 | 3 | 2 | 12 | 2 | 0 | 1 | 1 | 16 | | | |
| 13 | LACHANCE,RILEY | | 3-7 | 1-2 | 1-1 | 0 | 1 | 1 | 0 | 8 | 4 | 2 | 0 | 1 | 17 | | | |
| 50 | OBINNA,EJIKE | | 1-3 | 0-0 | 0-0 | 0 | 0 | 0 | 0 | 2 | 0 | 0 | 0 | 0 | 8 | | | |
| 01 | WILLIS,PAYTON | | 3-4 | 3-4 | 0-0 | 0 | 1 | 1 | 0 | 9 | 0 | 0 | 1 | 0 | 12 | | | |
| 02 | TOYE,JOE | | 2-2 | 1-1 | 0-0 | 0 | 4 | 4 | 1 | 5 | 2 | 0 | 1 | 1 | 12 | | | |
| 03 | AUSTIN,JR, LARRY | | 0-1 | 0-0 | 0-0 | 1 | 0 | 1 | 0 | 0 | 0 | 1 | 0 | 0 | 4 | | | |
| 12 | BAPTISTE,DJERY | | 1-2 | 0-0 | 0-0 | 1 | 1 | 2 | 1 | 2 | 0 | 0 | 0 | 0 | 7 | | | |
| 15 | BROWN,CLEVON | | 0-2 | 0-2 | 0-0 | 0 | 1 | 1 | 0 | 0 | 0 | 1 | 0 | 0 | 9 | | | |
| TEAM | | | | | | 1 | 1 | 2 | 0 | | 0 | | | | | | | |
| Totals | | | 15-29 | 7-13 | 3-3 | 4 | 11 | 15 | 6 | 40 | 8 | 4 | 3 | 3 | 100 | | | |

FG % Half: 15-29 51.7%
 3FG % Half: 7-13 53.8%
 FT % Half: 3-3 100.0%

Officials: Olandis Poole, Keith Kimble, Vladimir Voyard-Tadal
 Technical Fouls: Mississippi State- None. Vanderbilt- None.

| Score by periods | 1st | 2nd | Total |
|-------------------|-----|-----|-------|
| Mississippi State | 31 | 49 | 80 |
| Vanderbilt | 40 | 41 | 81 |

| Points | In Paint | Off T/O | 2nd Chance | Fast Break | Bench |
|--------|----------|---------|------------|------------|-------|
| MS | 18 | 8 | 4 | 2 | 7 |
| VU | 16 | 10 | 2 | 4 | 16 |

Last FG - MS 1st-04:03, VU 1st-01:53.
 MS led for 9:24. VU led for 8:17. Game was tied for 2:19.

Score tied - 4 times
 Lead changed - 5 times

Mississippi State vs Vanderbilt
2/14/2018; 6 p.m. at Nashville, Tenn. (Memorial Gym)
Period 1 Play-By-Play

| VISITORS: Mississippi State | Time | Score | Margin | HOME: Vanderbilt |
|--------------------------------------|-------|-------|--------|---------------------------------------|
| GOOD! JUMPER by WEATHERSPOON,NICK | 19:45 | 0-2 | V 2 | |
| | 19:20 | 2-2 | T | GOOD! JUMPER by OBINNA,EJIKE [PNT] |
| TURNOVER by PETERS,LAMAR | 19:06 | | | |
| | 19:04 | | | STEAL by LACHANCE,RILEY |
| | 19:02 | | | MISSED LAYUP by LACHANCE,RILEY |
| | 19:02 | | | REBOUND (OFF) by ROBERSON,JEFF |
| | 18:59 | 4-2 | H 2 | GOOD! LAYUP by ROBERSON,JEFF [FB/PNT] |
| GOOD! JUMPER by WEATHERSPOON,Q [PNT] | 18:40 | 4-4 | T | |
| | 18:09 | | | MISSED LAYUP by LACHANCE,RILEY |
| REBOUND (DEF) by HOLMAN,ARIC | 18:09 | | | |
| TURNOVER by WEATHERSPOON,Q | 17:51 | | | |
| | 17:36 | | | TURNOVER by LACHANCE,RILEY |
| STEAL by HOLMAN,ARIC | 17:34 | | | |
| MISSED JUMPER by PETERS,LAMAR | 17:21 | | | |
| REBOUND (OFF) by ADO,ABDUL | 17:21 | | | |
| GOOD! LAYUP by ADO,ABDUL [PNT] | 17:17 | 4-6 | V 2 | |
| | 16:53 | 7-6 | H 1 | GOOD! 3PTR by ROBERSON,JEFF |
| | 16:53 | | | ASSIST by LACHANCE,RILEY |
| TURNOVER by ADO,ABDUL | 16:27 | | | |
| | 16:19 | | | TURNOVER by LACHANCE,RILEY |
| MISSED LAYUP by PETERS,LAMAR | 16:04 | | | |
| REBOUND (OFF) by ADO,ABDUL | 16:04 | | | |
| | 16:03 | | | FOUL by LEE,SABEN |
| GOOD! FT by ADO,ABDUL | 16:03 | 7-7 | T | |
| GOOD! FT by ADO,ABDUL | 16:03 | 7-8 | V 1 | |
| | 16:03 | | | SUB IN: BROWN,CLEVON |
| | 16:03 | | | SUB IN: AUSTIN,JR, LARRY |
| | 16:03 | | | SUB IN: WILLIS,PAYTON |
| | 16:03 | | | SUB OUT: LEE,SABEN |
| | 16:03 | | | SUB OUT: EVANS,MAXWELL |
| | 16:03 | | | SUB OUT: OBINNA,EJIKE |
| | 15:53 | | | MISSED 3PTR by ROBERSON,JEFF |
| REBOUND (DEF) by PETERS,LAMAR | 15:53 | | | |
| MISSED LAYUP by PETERS,LAMAR | 15:44 | | | |
| | 15:44 | | | BLOCK by ROBERSON,JEFF |
| | 15:43 | | | REBOUND (DEF) by ROBERSON,JEFF |
| | 15:29 | | | MISSED 3PTR by BROWN,CLEVON |
| REBOUND (DEF) by WEATHERSPOON,Q | 15:29 | | | |
| GOOD! DUNK by HOLMAN,ARIC [PNT] | 14:59 | 7-10 | V 3 | |
| ASSIST by ADO,ABDUL | 14:59 | | | |
| | 14:59 | | | FOUL by ROBERSON,JEFF |
| TIMEOUT MEDIA | 14:59 | | | |
| MISSED FT by HOLMAN,ARIC | 14:59 | | | |
| | 14:59 | | | REBOUND (DEF) by BROWN,CLEVON |
| SUB IN: CARTER,TYSON | 14:59 | | | |
| SUB OUT: PETERS,LAMAR | 14:59 | | | |
| | 14:34 | | | MISSED LAYUP by AUSTIN,JR, LARRY |
| BLOCK by HOLMAN,ARIC | 14:34 | | | |
| REBOUND (DEF) by WEATHERSPOON,NICK | 14:32 | | | |
| MISSED LAYUP by WEATHERSPOON,Q | 14:29 | | | |
| | 14:29 | | | BLOCK by WILLIS,PAYTON |
| | 14:28 | | | REBOUND (DEF) by TEAM |
| SUB IN: STAPLETON,XAVIAN | 14:28 | | | |
| SUB OUT: HOLMAN,ARIC | 14:28 | | | |
| | 14:11 | | | MISSED JUMPER by ROBERSON,JEFF |
| | 14:11 | | | REBOUND (OFF) by AUSTIN,JR, LARRY |
| | 13:50 | | | TURNOVER by AUSTIN,JR, LARRY |
| GOOD! JUMPER by ADO,ABDUL [PNT] | 13:35 | 7-12 | V 5 | |
| ASSIST by WEATHERSPOON,Q | 13:35 | | | |
| | 13:19 | | | MISSED JUMPER by LACHANCE,RILEY |
| REBOUND (DEF) by TEAM | 13:19 | | | |
| SUB IN: WRIGHT,ELI | 13:17 | | | |
| SUB IN: PETERS,LAMAR | 13:17 | | | |
| SUB IN: DATCHER,EJ | 13:17 | | | |
| SUB OUT: WEATHERSPOON,NICK | 13:17 | | | |
| SUB OUT: WEATHERSPOON,Q | 13:17 | | | |
| SUB OUT: ADO,ABDUL | 13:17 | | | |
| GOOD! LAYUP by WRIGHT,ELI [PNT] | 13:01 | 7-14 | V 7 | |
| | 12:30 | 10-14 | V 4 | GOOD! 3PTR by WILLIS,PAYTON |

| VISITORS: Mississippi State | Time | Score | Margin | HOME: Vanderbilt |
|-----------------------------------|-------|-------|--------|-------------------------------------|
| | 12:30 | | | ASSIST by ROBERSON,JEFF |
| | 12:23 | | | SUB IN: TOYE,JOE |
| | 12:23 | | | SUB IN: LEE,SABEN |
| | 12:23 | | | SUB OUT: AUSTIN,JR, LARRY |
| | 12:23 | | | SUB OUT: LACHANCE,RILEY |
| GOOD! 3PTR by CARTER,TYSON | 12:05 | 10-17 | V 7 | |
| ASSIST by WRIGHT,ELI | 12:05 | | | |
| | 11:34 | | | MISSED 3PTR by ROBERSON,JEFF |
| REBOUND (DEF) by WRIGHT,ELI | 11:34 | | | |
| MISSED LAYUP by DATCHER,EJ | 11:14 | | | |
| | 11:14 | | | BLOCK by TOYE,JOE |
| | 11:11 | | | REBOUND (DEF) by TOYE,JOE |
| | 11:08 | 12-17 | V 5 | GOOD! DUNK by LEE,SABEN [FB/PNT] |
| | 11:08 | | | ASSIST by TOYE,JOE |
| | 10:49 | | | TIMEOUT media |
| SUB IN: HOLMAN,ARIC | 10:49 | | | |
| SUB OUT: DATCHER,EJ | 10:49 | | | |
| | 10:49 | | | SUB IN: BAPTISTE,DJERY |
| | 10:49 | | | SUB OUT: BROWN,CLEVON |
| GOOD! DUNK by HOLMAN,ARIC [PNT] | 10:37 | 12-19 | V 7 | |
| ASSIST by PETERS,LAMAR | 10:37 | | | |
| | 10:15 | 14-19 | V 5 | GOOD! LAYUP by TOYE,JOE [PNT] |
| GOOD! LAYUP by HOLMAN,ARIC [PNT] | 09:49 | 14-21 | V 7 | |
| ASSIST by PETERS,LAMAR | 09:49 | | | |
| | 09:49 | | | FOUL by TOYE,JOE |
| GOOD! FT by HOLMAN,ARIC | 09:49 | 14-22 | V 8 | |
| SUB IN: ADO,ABDUL | 09:49 | | | |
| SUB OUT: STAPLETON,XAVIAN | 09:49 | | | |
| | 09:49 | | | SUB IN: LACHANCE,RILEY |
| | 09:49 | | | SUB OUT: LEE,SABEN |
| | 09:35 | 17-22 | V 5 | GOOD! 3PTR by WILLIS,PAYTON |
| | 09:35 | | | ASSIST by ROBERSON,JEFF |
| MISSED JUMPER by CARTER,TYSON | 09:06 | | | |
| | 09:06 | | | REBOUND (DEF) by BAPTISTE,DJERY |
| | 08:52 | 19-22 | V 3 | GOOD! LAYUP by BAPTISTE,DJERY [PNT] |
| | 08:52 | | | ASSIST by TOYE,JOE |
| TURNOVER by PETERS,LAMAR | 08:24 | | | |
| | 08:22 | | | STEAL by ROBERSON,JEFF |
| | 08:19 | | | MISSED 3PTR by LACHANCE,RILEY |
| REBOUND (DEF) by PETERS,LAMAR | 08:19 | | | |
| TURNOVER by HOLMAN,ARIC | 08:09 | | | |
| SUB IN: WEATHERSPOON,NICK | 08:09 | | | |
| SUB IN: WEATHERSPOON,Q | 08:09 | | | |
| SUB IN: STAPLETON,XAVIAN | 08:09 | | | |
| SUB OUT: CARTER,TYSON | 08:09 | | | |
| SUB OUT: PETERS,LAMAR | 08:09 | | | |
| SUB OUT: HOLMAN,ARIC | 08:09 | | | |
| | 07:55 | 21-22 | V 1 | GOOD! LAYUP by ROBERSON,JEFF [PNT] |
| TURNOVER by WEATHERSPOON,Q | 07:38 | | | |
| | 07:38 | | | TIMEOUT MEDIA |
| | 07:38 | | | SUB IN: BROWN,CLEVON |
| | 07:38 | | | SUB OUT: ROBERSON,JEFF |
| | 07:28 | 24-22 | H 2 | GOOD! 3PTR by WILLIS,PAYTON |
| | 07:28 | | | ASSIST by LACHANCE,RILEY |
| MISSED JUMPER by WRIGHT,ELI | 07:07 | | | |
| | 07:07 | | | REBOUND (DEF) by TOYE,JOE |
| | 06:59 | 26-22 | H 4 | GOOD! LAYUP by LACHANCE,RILEY [PNT] |
| FOUL by ADO,ABDUL | 06:59 | | | |
| TIMEOUT 30SEC | 06:59 | | | |
| | 06:59 | 27-22 | H 5 | GOOD! FT by LACHANCE,RILEY |
| SUB IN: PETERS,LAMAR | 06:59 | | | |
| SUB OUT: WRIGHT,ELI | 06:59 | | | |
| | 06:45 | | | FOUL by BAPTISTE,DJERY |
| GOOD! JUMPER by STAPLETON,XAVIAN | 06:28 | 27-24 | H 3 | |
| | 06:05 | | | MISSED 3PTR by BROWN,CLEVON |
| REBOUND (DEF) by WEATHERSPOON,Q | 06:05 | | | |
| GOOD! 3PTR by WEATHERSPOON,Q | 05:55 | 27-27 | T | |
| ASSIST by STAPLETON,XAVIAN | 05:55 | | | |
| | 05:35 | 30-27 | H 3 | GOOD! 3PTR by LACHANCE,RILEY |
| MISSED JUMPER by STAPLETON,XAVIAN | 05:10 | | | |
| | 05:10 | | | REBOUND (DEF) by LACHANCE,RILEY |
| | 04:50 | | | TURNOVER by BROWN,CLEVON |
| STEAL by ADO,ABDUL | 04:48 | | | |
| GOOD! DUNK by ADO,ABDUL [FB/PNT] | 04:46 | 30-29 | H 1 | |
| | 04:45 | | | TIMEOUT 30SEC |

| VISITORS: Mississippi State | Time | Score | Margin | HOME: Vanderbilt |
|--|-------|-------|--------|--------------------------------------|
| SUB IN: CARTER,TYSON | 04:45 | | | |
| SUB IN: HOLMAN,ARIC | 04:45 | | | |
| SUB OUT: PETERS,LAMAR | 04:45 | | | |
| SUB OUT: STAPLETON,XAVIAN | 04:45 | | | |
| | 04:45 | | | SUB IN: OBINNA,EJIKE |
| | 04:45 | | | SUB IN: ROBERSON,JEFF |
| | 04:45 | | | SUB IN: LEE,SABEN |
| | 04:45 | | | SUB OUT: BAPTISTE,DJERY |
| | 04:45 | | | SUB OUT: BROWN,CLEVON |
| | 04:45 | | | SUB OUT: WILLIS,PAYTON |
| FOUL by WEATHERSPOON,NICK | 04:26 | | | |
| | 04:26 | 31-29 | H 2 | GOOD! FT by ROBERSON,JEFF |
| | 04:26 | 32-29 | H 3 | GOOD! FT by ROBERSON,JEFF |
| GOOD! LAYUP by WEATHERSPOON,NICK [PNT] | 04:03 | 32-31 | H 1 | |
| SUB IN: PETERS,LAMAR | 04:00 | | | |
| SUB OUT: WEATHERSPOON,NICK | 04:00 | | | |
| FOUL by WEATHERSPOON,Q | 03:46 | | | |
| | 03:46 | | | TIMEOUT MEDIA |
| | 03:44 | 35-31 | H 4 | GOOD! 3PTR by ROBERSON,JEFF |
| | 03:44 | | | ASSIST by LACHANCE,RILEY |
| MISSED JUMPER by PETERS,LAMAR | 03:24 | | | |
| | 03:24 | | | REBOUND (DEF) by TOYE,JOE |
| | 03:01 | 37-31 | H 6 | GOOD! JUMPER by LACHANCE,RILEY [PNT] |
| MISSED 3PTR by CARTER,TYSON | 02:30 | | | |
| REBOUND (OFF) by ADO,ABDUL | 02:30 | | | |
| | 02:28 | | | FOUL by ROBERSON,JEFF |
| TURNOVER by PETERS,LAMAR | 02:17 | | | |
| | 02:17 | | | STEAL by TOYE,JOE |
| SUB IN: STAPLETON,XAVIAN | 02:17 | | | |
| SUB OUT: ADO,ABDUL | 02:17 | | | |
| | 01:53 | 40-31 | H 9 | GOOD! 3PTR by TOYE,JOE |
| | 01:53 | | | ASSIST by LACHANCE,RILEY |
| MISSED 3PTR by WEATHERSPOON,Q | 01:29 | | | |
| | 01:29 | | | REBOUND (DEF) by ROBERSON,JEFF |
| | 01:05 | | | MISSED LAYUP by OBINNA,EJIKE |
| BLOCK by HOLMAN,ARIC | 01:05 | | | |
| | 01:04 | | | REBOUND (OFF) by TEAM |
| | 01:01 | | | MISSED JUMPER by OBINNA,EJIKE |
| BLOCK by HOLMAN,ARIC | 01:01 | | | |
| REBOUND (DEF) by CARTER,TYSON | 00:58 | | | |
| | 00:58 | | | FOUL by LEE,SABEN |
| | 00:58 | | | SUB IN: BROWN,CLEVON |
| | 00:58 | | | SUB IN: BAPTISTE,DJERY |
| | 00:58 | | | SUB IN: WILLIS,PAYTON |
| | 00:58 | | | SUB OUT: OBINNA,EJIKE |
| | 00:58 | | | SUB OUT: ROBERSON,JEFF |
| | 00:58 | | | SUB OUT: LEE,SABEN |
| MISSED 3PTR by CARTER,TYSON | 00:52 | | | |
| | 00:52 | | | REBOUND (DEF) by WILLIS,PAYTON |
| | 00:35 | | | MISSED 3PTR by WILLIS,PAYTON |
| | 00:35 | | | REBOUND (OFF) by BAPTISTE,DJERY |
| | 00:31 | | | MISSED DUNK by BAPTISTE,DJERY |
| REBOUND (DEF) by STAPLETON,XAVIAN | 00:31 | | | |
| MISSED JUMPER by STAPLETON,XAVIAN | 00:07 | | | |
| | 00:07 | | | REBOUND (DEF) by TOYE,JOE |

Mississippi State 31, Vanderbilt 40

| Period 1-only | In Paint | Off T/O | 2nd Chance | Fast Break | Bench | |
|---------------|----------|---------|------------|------------|-------|------------------------|
| MS | 18 | 8 | 4 | 2 | 7 | Score tied - 6 times |
| VU | 16 | 10 | 2 | 4 | 16 | Lead changed - 4 times |

Official Basketball Box Score -- Game Totals -- Second Half Statistics
Mississippi State vs Vanderbilt
2/14/2018 6 p.m. at Nashville, Tenn. (Memorial Gym)

Mississippi State 49 • 18-8, 6-7 SEC

| ## | Player | g | Total | | 3-Ptr | | Rebounds | | | PF | TP | A | TO | Blk | Stl | Min |
|--------|-------------------|---|--------|--------|--------|--------|----------|-----|-----|----|----|----|----|-----|-----|-----|
| | | | FG-FGA | FT-FTA | FG-FGA | FT-FTA | Off | Def | Tot | | | | | | | |
| 00 | WEATHERSPOON,NICK | | 2-3 | 2-2 | 0-0 | 0-0 | 0 | 0 | 0 | 1 | 6 | 1 | 0 | 0 | 0 | 12 |
| 01 | PETERS,LAMAR | | 1-4 | 1-1 | 0-1 | 0-0 | 0 | 0 | 0 | 0 | 3 | 6 | 0 | 0 | 0 | 16 |
| 11 | WEATHERSPOON,Q | | 2-2 | 0-0 | 0-0 | 0-0 | 0 | 0 | 0 | 1 | 4 | 2 | 1 | 1 | 1 | 17 |
| 24 | ADO,ABDUL | | 3-3 | 1-2 | 0-0 | 0-0 | 2 | 2 | 4 | 3 | 7 | 1 | 0 | 1 | 1 | 14 |
| 35 | HOLMAN,ARIC | | 2-5 | 0-0 | 0-2 | 0-0 | 0 | 1 | 1 | 1 | 4 | 0 | 0 | 0 | 0 | 10 |
| 02 | WRIGHT,ELI | | 0-0 | 0-0 | 0-0 | 0-0 | 0 | 1 | 1 | 1 | 0 | 1 | 0 | 0 | 0 | 3 |
| 03 | STAPLETON,XAVIAN | | 5-5 | 1-2 | 5-5 | 1-2 | 0 | 0 | 0 | 3 | 16 | 1 | 1 | 0 | 0 | 15 |
| 22 | FEAZELL,KEYSHAWN | | 0-0 | 0-0 | 0-0 | 0-0 | 0 | 0 | 0 | 0 | 0 | 0 | 1 | 0 | 0 | 0 |
| 23 | CARTER,TYSON | | 3-5 | 0-0 | 3-4 | 0-0 | 0 | 1 | 1 | 0 | 9 | 0 | 0 | 0 | 0 | 12 |
| 45 | DATCHER,EJ | | 0-0 | 0-0 | 0-0 | 0-0 | 0 | 0 | 0 | 1 | 0 | 0 | 0 | 0 | 0 | 1 |
| TEAM | | | | | | | 1 | 2 | 3 | 0 | | 0 | | | | |
| Totals | | | 18-27 | 5-7 | 8-12 | 5-7 | 3 | 7 | 10 | 11 | 49 | 12 | 3 | 2 | 2 | 100 |

FG % Half: 18-27 66.7%
 3FG % Half: 8-12 40.0%
 FT % Half: 5-7 71.4%

Vanderbilt 41 • 10-16, 4-9 SEC

| ## | Player | g | Total | | 3-Ptr | | Rebounds | | | PF | TP | A | TO | Blk | Stl | Min |
|--------|------------------|---|--------|--------|--------|--------|----------|-----|-----|----|----|---|----|-----|-----|-----|
| | | | FG-FGA | FT-FTA | FG-FGA | FT-FTA | Off | Def | Tot | | | | | | | |
| 00 | LEE,SABEN | | 1-1 | 0-0 | 0-0 | 0-0 | 0 | 0 | 0 | 0 | 2 | 0 | 0 | 0 | 0 | 3 |
| 10 | EVANS,MAXWELL | | 0-0 | 0-0 | 0-0 | 0-0 | 0 | 0 | 0 | 0 | 0 | 0 | 0 | 0 | 0 | 1 |
| 11 | ROBERSON,JEFF | | 2-4 | 5-10 | 1-2 | 0-0 | 4 | 4 | 8 | 0 | 10 | 0 | 2 | 1 | 0 | 20 |
| 13 | LACHANCE,RILEY | | 3-7 | 0-0 | 2-5 | 0-0 | 1 | 1 | 2 | 1 | 8 | 4 | 1 | 0 | 1 | 20 |
| 50 | OBINNA,EJIKE | | 0-0 | 0-0 | 0-0 | 0-0 | 0 | 0 | 0 | 0 | 0 | 0 | 0 | 0 | 0 | 1 |
| 01 | WILLIS,PAYTON | | 2-5 | 0-0 | 2-5 | 0-0 | 0 | 1 | 1 | 2 | 6 | 2 | 0 | 0 | 1 | 17 |
| 02 | TOYE,JOE | | 4-8 | 1-2 | 2-2 | 0-0 | 2 | 0 | 2 | 2 | 11 | 2 | 1 | 0 | 0 | 19 |
| 03 | AUSTIN,JR, LARRY | | 0-0 | 0-0 | 0-0 | 0-0 | 0 | 0 | 0 | 0 | 0 | 0 | 0 | 0 | 0 | 0 |
| 12 | BAPTISTE,DJERY | | 0-0 | 2-2 | 0-0 | 0-0 | 0 | 0 | 0 | 1 | 2 | 0 | 1 | 0 | 0 | 5 |
| 15 | BROWN,CLEVON | | 1-2 | 0-0 | 0-0 | 0-0 | 1 | 1 | 2 | 1 | 2 | 0 | 1 | 1 | 0 | 14 |
| TEAM | | | | | | | 1 | 0 | 1 | 0 | | 0 | | | | |
| Totals | | | 13-27 | 8-14 | 7-14 | 8-14 | 9 | 7 | 16 | 7 | 41 | 8 | 6 | 2 | 2 | 100 |

FG % Half: 13-27 48.1%
 3FG % Half: 7-14 53.8%
 FT % Half: 8-14 57.1%

Officials: Olandis Poole, Keith Kimble, Vladimir Voyard-Tadal
 Technical Fouls: Mississippi State- STAPLETON,XAVIAN; Vanderbilt- None.

| Score by periods | 1st | 2nd | Total |
|-------------------|-----|-----|-----------|
| Mississippi State | 31 | 49 | 80 |
| Vanderbilt | 40 | 41 | 81 |

| Points | In Paint | Off T/O | 2nd Chance | Fast Break | Bench |
|--------|----------|---------|------------|------------|-------|
| MS | 14 | 11 | 7 | 0 | 25 |
| VU | 12 | 0 | 9 | 0 | 21 |

Last FG - MS 2nd-00:18, VU 2nd-00:01.
 MS led for 2:46. VU led for 17:14. Game was tied for 0:00.

Score tied - 1 times
 Lead changed - 6 times

Mississippi State vs Vanderbilt
2/14/2018; 6 p.m. at Nashville, Tenn. (Memorial Gym)
Period 2 Play-By-Play

| VISITORS: Mississippi State | Time | Score | Margin | HOME: Vanderbilt |
|-------------------------------------|-------|-------|--------|-------------------------------------|
| | 19:53 | | | TURNOVER by ROBERSON,JEFF |
| GOOD! LAYUP by WEATHERSPOON,Q [PNT] | 19:43 | 40-33 | H 7 | |
| | 19:18 | | | MISSED 3PTR by ROBERSON,JEFF |
| REBOUND (DEF) by ADO,ABDUL | 19:18 | | | |
| GOOD! JUMPER by HOLMAN,ARIC | 19:05 | 40-35 | H 5 | |
| ASSIST by WEATHERSPOON,Q | 19:05 | | | |
| | 18:43 | | | MISSED JUMPER by ROBERSON,JEFF |
| | 18:43 | | | REBOUND (OFF) by ROBERSON,JEFF |
| FOUL by HOLMAN,ARIC | 18:41 | | | |
| | 18:41 | | | SUB IN: BAPTISTE,DJERY |
| | 18:41 | | | SUB IN: WILLIS,PAYTON |
| | 18:41 | | | SUB IN: TOYE,JOE |
| | 18:41 | | | SUB OUT: LEE,SABEN |
| | 18:41 | | | SUB OUT: EVANS,MAXWELL |
| | 18:41 | | | SUB OUT: OBINNA,EJIKE |
| | 18:38 | | | MISSED 3PTR by LACHANCE,RILEY |
| | 18:38 | | | REBOUND (OFF) by LACHANCE,RILEY |
| | 18:31 | 43-35 | H 8 | GOOD! 3PTR by WILLIS,PAYTON |
| | 18:31 | | | ASSIST by LACHANCE,RILEY |
| MISSED 3PTR by PETERS,LAMAR | 18:13 | | | |
| | 18:13 | | | REBOUND (DEF) by ROBERSON,JEFF |
| | 18:06 | 45-35 | H 10 | GOOD! LAYUP by LACHANCE,RILEY [PNT] |
| GOOD! JUMPER by HOLMAN,ARIC | 17:48 | 45-37 | H 8 | |
| FOUL by ADO,ABDUL | 17:18 | | | |
| SUB IN: CARTER,TYSON | 17:18 | | | |
| SUB OUT: PETERS,LAMAR | 17:18 | | | |
| | 17:16 | | | MISSED JUMPER by TOYE,JOE |
| REBOUND (DEF) by HOLMAN,ARIC | 17:16 | | | |
| | 17:10 | | | FOUL by BAPTISTE,DJERY |
| GOOD! FT by WEATHERSPOON,NICK | 17:10 | 45-38 | H 7 | |
| GOOD! FT by WEATHERSPOON,NICK | 17:10 | 45-39 | H 6 | |
| SUB IN: STAPLETON,XAVIAN | 17:10 | | | |
| SUB OUT: ADO,ABDUL | 17:10 | | | |
| | 16:48 | | | MISSED 3PTR by WILLIS,PAYTON |
| | 16:48 | | | REBOUND (OFF) by ROBERSON,JEFF |
| | 16:42 | | | MISSED 3PTR by LACHANCE,RILEY |
| REBOUND (DEF) by CARTER,TYSON | 16:42 | | | |
| MISSED DUNK by HOLMAN,ARIC | 16:34 | | | |
| | 16:34 | | | REBOUND (DEF) by WILLIS,PAYTON |
| | 16:24 | | | TURNOVER by BAPTISTE,DJERY |
| SUB IN: PETERS,LAMAR | 16:24 | | | |
| SUB IN: DATCHER,EJ | 16:24 | | | |
| SUB OUT: WEATHERSPOON,NICK | 16:24 | | | |
| SUB OUT: HOLMAN,ARIC | 16:24 | | | |
| TURNOVER by STAPLETON,XAVIAN | 16:12 | | | |
| | 16:12 | | | STEAL by WILLIS,PAYTON |
| | 15:54 | | | TURNOVER by TOYE,JOE |
| STEAL by WEATHERSPOON,Q | 15:52 | | | |
| MISSED LAYUP by CARTER,TYSON | 15:48 | | | |
| | 15:48 | | | BLOCK by ROBERSON,JEFF |
| REBOUND (OFF) by TEAM | 15:48 | | | |
| TIMEOUT media | 15:48 | | | |
| | 15:48 | | | SUB IN: BROWN,CLEVON |
| | 15:48 | | | SUB OUT: BAPTISTE,DJERY |
| GOOD! 3PTR by CARTER,TYSON | 15:33 | 45-42 | H 3 | |
| ASSIST by PETERS,LAMAR | 15:33 | | | |
| FOUL by DATCHER,EJ | 15:22 | | | |
| FOUL by STAPLETON,XAVIAN | 15:06 | | | |
| FOUL (TECH) by STAPLETON,XAVIAN | 15:06 | | | |
| | 15:06 | 46-42 | H 4 | GOOD! FT by ROBERSON,JEFF |
| | 15:06 | | | MISSED FT by ROBERSON,JEFF |
| | 15:06 | | | REBOUND (DEADB) by TEAM |
| SUB IN: HOLMAN,ARIC | 15:06 | | | |
| SUB IN: ADO,ABDUL | 15:06 | | | |
| SUB OUT: STAPLETON,XAVIAN | 15:06 | | | |
| SUB OUT: DATCHER,EJ | 15:06 | | | |
| | 15:04 | 48-42 | H 6 | GOOD! LAYUP by ROBERSON,JEFF [PNT] |
| | 15:04 | | | ASSIST by WILLIS,PAYTON |
| MISSED 3PTR by HOLMAN,ARIC | 14:46 | | | |

| VISITORS: Mississippi State | Time | Score | Margin | HOME: Vanderbilt |
|---|-------|-------|--------|----------------------------------|
| REBOUND (OFF) by ADO,ABDUL | 14:46 | | | |
| GOOD! LAYUP by ADO,ABDUL [PNT] | 14:40 | 48-44 | H 4 | |
| | 14:14 | 50-44 | H 6 | GOOD! LAYUP by BROWN,CLEVN [PNT] |
| | 14:14 | | | ASSIST by TOYE,JOE |
| MISSED 3PTR by HOLMAN,ARIC | 13:53 | | | |
| | 13:53 | | | REBOUND (DEF) by BROWN,CLEVN |
| | 13:43 | 53-44 | H 9 | GOOD! 3PTR by ROBERSON,JEFF |
| | 13:43 | | | ASSIST by LACHANCE,RILEY |
| | 13:18 | | | FOUL by BROWN,CLEVN |
| MISSED FT by ADO,ABDUL | 13:18 | | | |
| REBOUND (DEADB) by TEAM | 13:18 | | | |
| GOOD! FT by ADO,ABDUL | 13:18 | 53-45 | H 8 | |
| SUB IN: WEATHERSPOON,NICK | 13:18 | | | |
| SUB IN: WRIGHT,ELI | 13:18 | | | |
| SUB OUT: PETERS,LAMAR | 13:18 | | | |
| SUB OUT: WEATHERSPOON,Q | 13:18 | | | |
| | 13:02 | | | MISSED 3PTR by WILLIS,PAYTON |
| | 13:02 | | | REBOUND (OFF) by TOYE,JOE |
| | 12:54 | 56-45 | H 11 | GOOD! 3PTR by WILLIS,PAYTON |
| | 12:54 | | | ASSIST by TOYE,JOE |
| TIMEOUT 30SEC | 12:50 | | | |
| SUB IN: STAPLETON,XAVIAN | 12:50 | | | |
| SUB OUT: HOLMAN,ARIC | 12:50 | | | |
| GOOD! JUMPER by WEATHERSPOON,NICK [PNT] | 12:32 | 56-47 | H 9 | |
| | 12:04 | 58-47 | H 11 | GOOD! LAYUP by TOYE,JOE [PNT] |
| MISSED 3PTR by CARTER,TYSON | 11:36 | | | |
| | 11:36 | | | REBOUND (DEF) by ROBERSON,JEFF |
| | 11:24 | | | MISSED LAYUP by BROWN,CLEVN |
| BLOCK by ADO,ABDUL | 11:24 | | | |
| REBOUND (DEF) by TEAM | 11:21 | | | |
| TIMEOUT MEDIA | 11:21 | | | |
| SUB IN: WEATHERSPOON,Q | 11:21 | | | |
| SUB OUT: CARTER,TYSON | 11:21 | | | |
| TURNOVER by WEATHERSPOON,Q | 11:10 | | | |
| FOUL by WRIGHT,ELI | 11:10 | | | |
| | 10:58 | | | TURNOVER by ROBERSON,JEFF |
| GOOD! JUMPER by WEATHERSPOON,NICK | 10:43 | 58-49 | H 9 | |
| ASSIST by WRIGHT,ELI | 10:43 | | | |
| | 10:11 | | | MISSED LAYUP by TOYE,JOE |
| REBOUND (DEF) by WRIGHT,ELI | 10:11 | | | |
| MISSED JUMPER by WEATHERSPOON,NICK | 10:03 | | | |
| | 10:03 | | | REBOUND (DEF) by ROBERSON,JEFF |
| FOUL by WEATHERSPOON,NICK | 09:55 | | | |
| | 09:55 | 59-49 | H 10 | GOOD! FT by ROBERSON,JEFF |
| | 09:55 | 60-49 | H 11 | GOOD! FT by ROBERSON,JEFF |
| SUB IN: PETERS,LAMAR | 09:55 | | | |
| SUB IN: CARTER,TYSON | 09:55 | | | |
| SUB IN: HOLMAN,ARIC | 09:55 | | | |
| SUB OUT: WEATHERSPOON,NICK | 09:55 | | | |
| SUB OUT: WRIGHT,ELI | 09:55 | | | |
| SUB OUT: ADO,ABDUL | 09:55 | | | |
| GOOD! 3PTR by CARTER,TYSON | 09:36 | 60-52 | H 8 | |
| ASSIST by WEATHERSPOON,Q | 09:36 | | | |
| | 09:06 | | | MISSED JUMPER by LACHANCE,RILEY |
| | 09:06 | | | REBOUND (OFF) by ROBERSON,JEFF |
| FOUL by WEATHERSPOON,Q | 09:04 | | | |
| | 09:04 | | | MISSED FT by ROBERSON,JEFF |
| | 09:04 | | | REBOUND (DEADB) by TEAM |
| | 09:04 | 61-52 | H 9 | GOOD! FT by ROBERSON,JEFF |
| GOOD! 3PTR by STAPLETON,XAVIAN | 08:53 | 61-55 | H 6 | |
| ASSIST by PETERS,LAMAR | 08:53 | | | |
| | 08:42 | | | TIMEOUT 30SEC |
| | 08:16 | 64-55 | H 9 | GOOD! 3PTR by LACHANCE,RILEY |
| | 08:16 | | | ASSIST by WILLIS,PAYTON |
| GOOD! 3PTR by STAPLETON,XAVIAN | 07:47 | 64-58 | H 6 | |
| ASSIST by PETERS,LAMAR | 07:47 | | | |
| | 07:12 | 66-58 | H 8 | GOOD! DUNK by TOYE,JOE [PNT] |
| TIMEOUT media | 07:09 | | | |
| GOOD! 3PTR by STAPLETON,XAVIAN | 06:56 | 66-61 | H 5 | |
| ASSIST by PETERS,LAMAR | 06:56 | | | |
| | 06:31 | 69-61 | H 8 | GOOD! 3PTR by TOYE,JOE |
| | 06:31 | | | ASSIST by LACHANCE,RILEY |
| GOOD! 3PTR by CARTER,TYSON | 06:08 | 69-64 | H 5 | |
| ASSIST by STAPLETON,XAVIAN | 06:08 | | | |
| FOUL by STAPLETON,XAVIAN | 05:46 | | | |

| VISITORS: Mississippi State | Time | Score | Margin | HOME: Vanderbilt |
|-------------------------------------|-------|-------|--------|---------------------------------|
| | 05:46 | | | MISSED FT by ROBERSON,JEFF |
| | 05:46 | | | REBOUND (DEADB) by TEAM |
| | 05:46 | | | MISSED FT by ROBERSON,JEFF |
| REBOUND (DEF) by ADO,ABDUL | 05:46 | | | |
| SUB IN: WEATHERSPOON,NICK | 05:46 | | | |
| SUB IN: ADO,ABDUL | 05:46 | | | |
| SUB OUT: WEATHERSPOON,Q | 05:46 | | | |
| SUB OUT: HOLMAN,ARIC | 05:46 | | | |
| GOOD! DUNK by ADO,ABDUL [PNT] | 05:31 | 69-66 | H 3 | |
| ASSIST by PETERS,LAMAR | 05:31 | | | |
| | 05:21 | | | TIMEOUT TEAM |
| | 05:21 | | | SUB IN: BAPTISTE,DJERY |
| | 05:21 | | | SUB IN: LEE,SABEN |
| | 05:21 | | | SUB OUT: BROWN,CLEVON |
| | 05:21 | | | SUB OUT: WILLIS,PAYTON |
| GOOD! 3PTR by STAPLETON,XAVIAN | 05:03 | 71-66 | H 5 | GOOD! JUMPER by LEE,SABEN [PNT] |
| ASSIST by PETERS,LAMAR | 04:45 | 71-69 | H 2 | |
| | 04:18 | | | MISSED LAYUP by TOYE,JOE |
| REBOUND (DEF) by TEAM | 04:18 | | | |
| SUB IN: WEATHERSPOON,Q | 04:16 | | | |
| SUB OUT: CARTER,TYSON | 04:16 | | | |
| GOOD! 3PTR by STAPLETON,XAVIAN | 03:53 | 71-72 | V 1 | |
| ASSIST by WEATHERSPOON,NICK | 03:53 | | | |
| FOUL by ADO,ABDUL | 03:28 | | | |
| | 03:28 | | | TIMEOUT MEDIA |
| | 03:28 | 72-72 | T | GOOD! FT by BAPTISTE,DJERY |
| | 03:28 | 73-72 | H 1 | GOOD! FT by BAPTISTE,DJERY |
| GOOD! LAYUP by PETERS,LAMAR [PNT] | 03:10 | 73-74 | V 1 | |
| | 03:10 | | | FOUL by TOYE,JOE |
| GOOD! FT by PETERS,LAMAR | 03:10 | 73-75 | V 2 | |
| | 03:10 | | | SUB IN: WILLIS,PAYTON |
| | 03:10 | | | SUB IN: BROWN,CLEVON |
| | 03:10 | | | SUB OUT: BAPTISTE,DJERY |
| | 03:10 | | | SUB OUT: LEE,SABEN |
| | 02:46 | 76-75 | H 1 | GOOD! 3PTR by TOYE,JOE |
| | 02:46 | | | ASSIST by LACHANCE,RILEY |
| MISSED JUMPER by PETERS,LAMAR | 02:25 | | | |
| | 02:25 | | | REBOUND (DEF) by LACHANCE,RILEY |
| | 02:21 | | | TURNOVER by LACHANCE,RILEY |
| GOOD! LAYUP by WEATHERSPOON,Q [PNT] | 01:58 | 76-77 | V 1 | |
| ASSIST by ADO,ABDUL | 01:58 | | | |
| TIMEOUT TEAM | 01:57 | | | |
| | 01:42 | | | MISSED 3PTR by LACHANCE,RILEY |
| | 01:42 | | | REBOUND (OFF) by TEAM |
| | 01:12 | | | MISSED JUMPER by TOYE,JOE |
| BLOCK by WEATHERSPOON,Q | 01:12 | | | |
| | 01:10 | | | REBOUND (OFF) by BROWN,CLEVON |
| | 01:06 | | | TURNOVER by BROWN,CLEVON |
| STEAL by ADO,ABDUL | 01:04 | | | |
| | 00:41 | | | FOUL by LACHANCE,RILEY |
| | 00:34 | | | FOUL by WILLIS,PAYTON |
| MISSED LAYUP by PETERS,LAMAR | 00:20 | | | |
| | 00:20 | | | BLOCK by BROWN,CLEVON |
| REBOUND (OFF) by ADO,ABDUL | 00:18 | | | |
| GOOD! DUNK by ADO,ABDUL [PNT] | 00:18 | 76-79 | V 3 | |
| TIMEOUT 30SEC | 00:18 | | | |
| | 00:12 | | | MISSED 3PTR by WILLIS,PAYTON |
| | 00:12 | | | REBOUND (OFF) by ROBERSON,JEFF |
| FOUL by ADO,ABDUL | 00:08 | | | |
| | 00:08 | 77-79 | V 2 | GOOD! FT by ROBERSON,JEFF |
| | 00:08 | | | MISSED FT by ROBERSON,JEFF |
| | 00:08 | | | REBOUND (OFF) by TOYE,JOE |
| SUB IN: HOLMAN,ARIC | 00:08 | | | |
| SUB OUT: ADO,ABDUL | 00:08 | | | |
| FOUL by STAPLETON,XAVIAN | 00:07 | | | |
| | 00:07 | | | MISSED FT by TOYE,JOE |
| | 00:07 | | | REBOUND (DEADB) by TEAM |
| | 00:07 | 78-79 | V 1 | GOOD! FT by TOYE,JOE |
| | 00:07 | | | TIMEOUT 30SEC |
| | 00:07 | | | FOUL by WILLIS,PAYTON |
| | 00:07 | | | SUB IN: LEE,SABEN |
| | 00:07 | | | SUB OUT: BROWN,CLEVON |
| | 00:06 | | | FOUL by TOYE,JOE |
| GOOD! FT by STAPLETON,XAVIAN | 00:06 | 78-80 | V 2 | |

| VISITORS: Mississippi State | Time | Score | Margin | HOME: Vanderbilt |
|------------------------------------|-------------|--------------|---------------|--------------------------------|
| MISSED FT by STAPLETON,XAVIAN | 00:06 | | | |
| | 00:06 | | | REBOUND (DEF) by ROBERSON,JEFF |
| | 00:06 | | | SUB IN: BROWN,CLEVON |
| | 00:06 | | | SUB OUT: LEE,SABEN |
| | 00:01 | 81-80 | H 1 | GOOD! 3PTR by LACHANCE,RILEY |
| TURNOVER by FEAZELL,KEYSHAWN | 00:01 | | | |
| | 00:01 | | | STEAL by LACHANCE,RILEY |
| SUB IN: FEAZELL,KEYSHAWN | 00:00 | | | |
| SUB OUT: WEATHERSPOON,NICK | 00:00 | | | |

Mississippi State 80, Vanderbilt 81

| Period 2-only | In Paint | Off T/O | 2nd Chance | Fast Break | Bench | |
|----------------------|---------------------|--------------------|-----------------------|-----------------------|--------------|------------------------|
| MS | 14 | 11 | 7 | 0 | 25 | Score tied - 0 times |
| VU | 12 | 0 | 9 | 0 | 21 | Lead changed - 6 times |

Mississippi State vs Vanderbilt
2/14/2018; 6 p.m. at Nashville, Tenn. (Memorial Gym)
Scoring/Runs Reference

Period 1

| Mississippi State | VRun | Score | Margin | HRun | Vanderbilt |
|---------------------------------|------|-------|--------|------|--------------------------------|
| 19:45 - WEATHERSPOON JUMPER | - | 2-0 | -2 | | |
| | | 2-2 | 0 | | OBINNA JUMPER [P] - 19:20 |
| | | 2-4 | 2 | 4-0 | ROBERSON LAYUP [P] [F] - 18:59 |
| 18:40 - WEATHERSPOON JUMPER [P] | - | 4-4 | 0 | | |
| 17:17 - ADO LAYUP [P] | 4-0 | 6-4 | -2 | | |
| | | 6-7 | 1 | | ROBERSON 3PTR - 16:53 |
| 16:03 - ADO FT | - | 7-7 | 0 | | |
| 16:03 - ADO FT | 2-0 | 8-7 | -1 | | |
| 14:59 - HOLMAN DUNK [P] | 4-0 | 10-7 | -3 | | |
| 13:35 - ADO JUMPER [P] | 6-0 | 12-7 | -5 | | |
| 13:01 - WRIGHT LAYUP [P] | 8-0 | 14-7 | -7 | | |
| | | 14-10 | -4 | | WILLIS 3PTR - 12:30 |
| 12:05 - CARTER 3PTR | - | 17-10 | -7 | | |
| | | 17-12 | -5 | | LEE DUNK [P] [F] - 11:08 |
| 10:37 - HOLMAN DUNK [P] | - | 19-12 | -7 | | |
| | | 19-14 | -5 | | TOYE LAYUP [P] - 10:15 |
| 09:49 - HOLMAN LAYUP [P] | - | 21-14 | -7 | | |
| 09:49 - HOLMAN FT | 3-0 | 22-14 | -8 | | |
| | | 22-17 | -5 | | WILLIS 3PTR - 09:35 |
| | | 22-19 | -3 | 5-0 | BAPTISTE LAYUP [P] - 08:52 |
| | | 22-21 | -1 | 7-0 | ROBERSON LAYUP [P] - 07:55 |
| | | 22-24 | 2 | 10-0 | WILLIS 3PTR - 07:28 |
| | | 22-26 | 4 | 12-0 | LACHANCE LAYUP [P] - 06:59 |
| | | 22-27 | 5 | 13-0 | LACHANCE FT - 06:59 |
| 06:28 - STAPLETON JUMPER | - | 24-27 | 3 | | |
| 05:55 - WEATHERSPOON 3PTR | 5-0 | 27-27 | 0 | | |
| | | 27-30 | 3 | | LACHANCE 3PTR - 05:35 |
| 04:46 - ADO DUNK [P] [F] | - | 29-30 | 1 | | |
| | | 29-31 | 2 | | ROBERSON FT - 04:26 |
| | | 29-32 | 3 | 2-0 | ROBERSON FT - 04:26 |
| 04:03 - WEATHERSPOON LAYUP [P] | - | 31-32 | 1 | | |
| | | 31-35 | 4 | | ROBERSON 3PTR - 03:44 |
| | | 31-37 | 6 | 5-0 | LACHANCE JUMPER [P] - 03:01 |
| | | 31-40 | 9 | 8-0 | TOYE 3PTR - 01:53 |

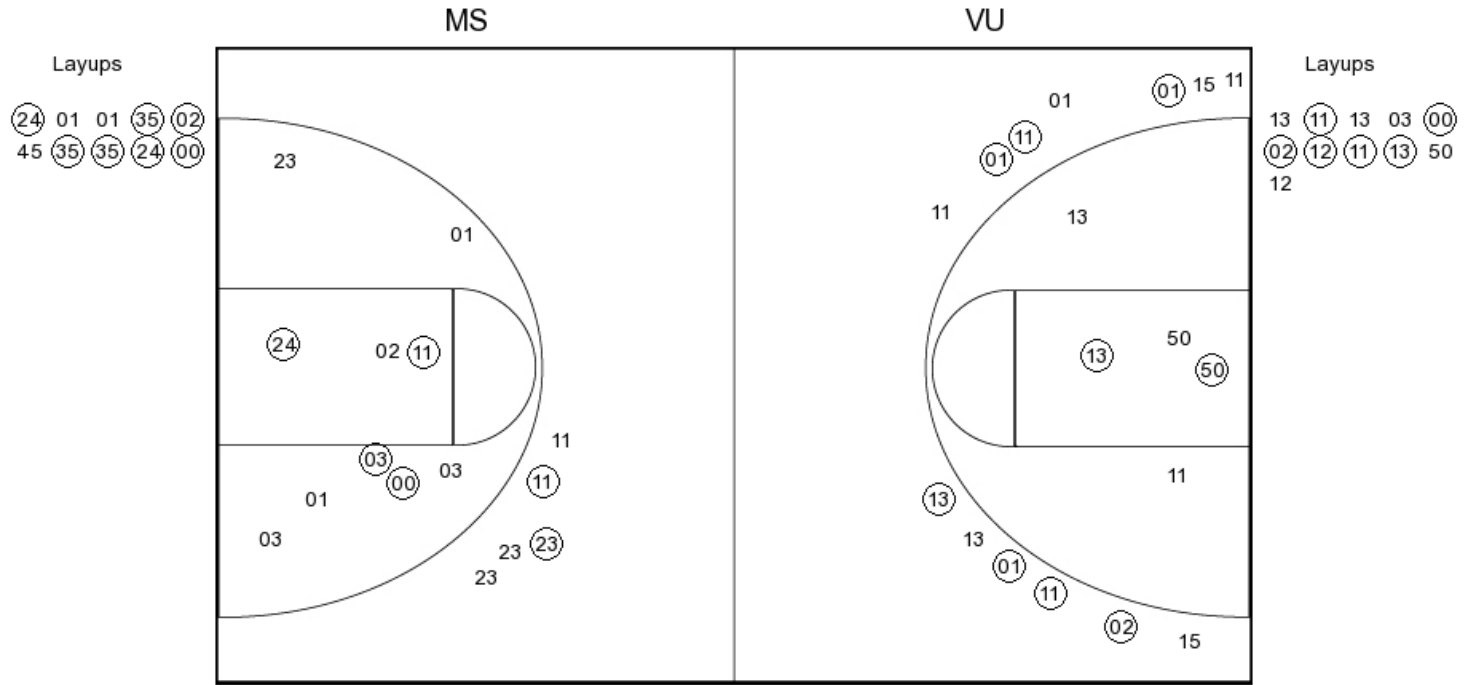
Mississippi State vs Vanderbilt
2/14/2018; 6 p.m. at Nashville, Tenn. (Memorial Gym)
Scoring/Runs Reference

Period 2

| Mississippi State | VRun | Score | Margin | HRun | Vanderbilt |
|---------------------------------|-------|-------|--------|------|----------------------------|
| 19:43 - WEATHERSPOON LAYUP [P] | - | 33-40 | 7 | | |
| 19:05 - HOLMAN JUMPER | NaN-0 | 35-40 | 5 | | |
| | | 35-43 | 8 | | WILLIS 3PTR - 18:31 |
| | | 35-45 | 10 | 5-0 | LACHANCE LAYUP [P] - 18:06 |
| 17:48 - HOLMAN JUMPER | - | 37-45 | 8 | | |
| 17:10 - WEATHERSPOON FT | 3-0 | 38-45 | 7 | | |
| 17:10 - WEATHERSPOON FT | 4-0 | 39-45 | 6 | | |
| 15:33 - CARTER 3PTR | 7-0 | 42-45 | 3 | | |
| | | 42-46 | 4 | | ROBERSON FT - 15:06 |
| | | 42-48 | 6 | 3-0 | ROBERSON LAYUP [P] - 15:04 |
| 14:40 - ADO LAYUP [P] | - | 44-48 | 4 | | |
| | | 44-50 | 6 | | BROWN LAYUP [P] - 14:14 |
| | | 44-53 | 9 | 5-0 | ROBERSON 3PTR - 13:43 |
| 13:18 - ADO FT | - | 45-53 | 8 | | |
| | | 45-56 | 11 | | WILLIS 3PTR - 12:54 |
| 12:32 - WEATHERSPOON JUMPER [P] | - | 47-56 | 9 | | |
| | | 47-58 | 11 | | TOYE LAYUP [P] - 12:04 |
| 10:43 - WEATHERSPOON JUMPER | - | 49-58 | 9 | | |
| | | 49-59 | 10 | | ROBERSON FT - 09:55 |
| | | 49-60 | 11 | 2-0 | ROBERSON FT - 09:55 |
| 09:36 - CARTER 3PTR | - | 52-60 | 8 | | |
| | | 52-61 | 9 | | ROBERSON FT - 09:04 |
| 08:53 - STAPLETON 3PTR | - | 55-61 | 6 | | |
| | | 55-64 | 9 | | LACHANCE 3PTR - 08:16 |
| 07:47 - STAPLETON 3PTR | - | 58-64 | 6 | | |
| | | 58-66 | 8 | | TOYE DUNK [P] - 07:12 |
| 06:56 - STAPLETON 3PTR | - | 61-66 | 5 | | |
| | | 61-69 | 8 | | TOYE 3PTR - 06:31 |
| 06:08 - CARTER 3PTR | - | 64-69 | 5 | | |
| 05:31 - ADO DUNK [P] | 5-0 | 66-69 | 3 | | |
| | | 66-71 | 5 | | LEE JUMPER [P] - 05:03 |
| 04:45 - STAPLETON 3PTR | - | 69-71 | 2 | | |
| 03:53 - STAPLETON 3PTR | 6-0 | 72-71 | -1 | | |
| | | 72-72 | 0 | | BAPTISTE FT - 03:28 |
| | | 72-73 | 1 | 2-0 | BAPTISTE FT - 03:28 |
| 03:10 - PETERS LAYUP [P] | - | 74-73 | -1 | | |
| 03:10 - PETERS FT | 3-0 | 75-73 | -2 | | |
| | | 75-76 | 1 | | TOYE 3PTR - 02:46 |
| 01:58 - WEATHERSPOON LAYUP [P] | - | 77-76 | -1 | | |
| 00:18 - ADO DUNK [P] | 4-0 | 79-76 | -3 | | |
| | | 79-77 | -2 | | ROBERSON FT - 00:08 |
| | | 79-78 | -1 | 2-0 | TOYE FT - 00:07 |
| 00:06 - STAPLETON FT | - | 80-78 | -2 | | |
| | | 80-81 | 1 | | LACHANCE 3PTR - 00:01 |

Mississippi State vs Vanderbilt
 OFFICIAL SHOT CHART
 2/14/2018 at Nashville, Tenn. (Memorial Gym)

PERIOD 1



MS PERIOD 1

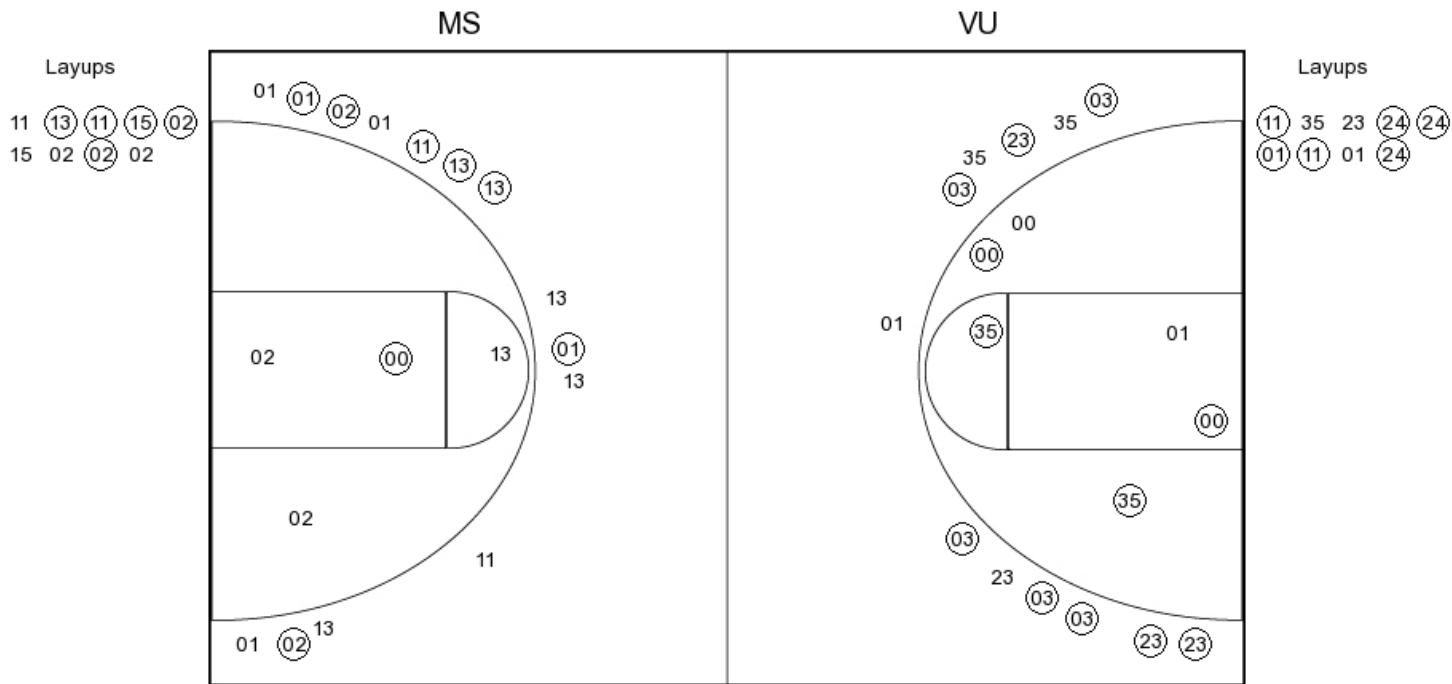
| | |
|----------------|----|
| FG Made | 13 |
| FG Attempted | 26 |
| 3PFG Made | 2 |
| 3PFG Attempted | 5 |

VU PERIOD 1

| | |
|----------------|----|
| FG Made | 15 |
| FG Attempted | 29 |
| 3PFG Made | 7 |
| 3PFG Attempted | 13 |

Mississippi State vs Vanderbilt
 OFFICIAL SHOT CHART
 2/14/2018 at Nashville, Tenn. (Memorial Gym)

PERIOD 2



MS PERIOD 2

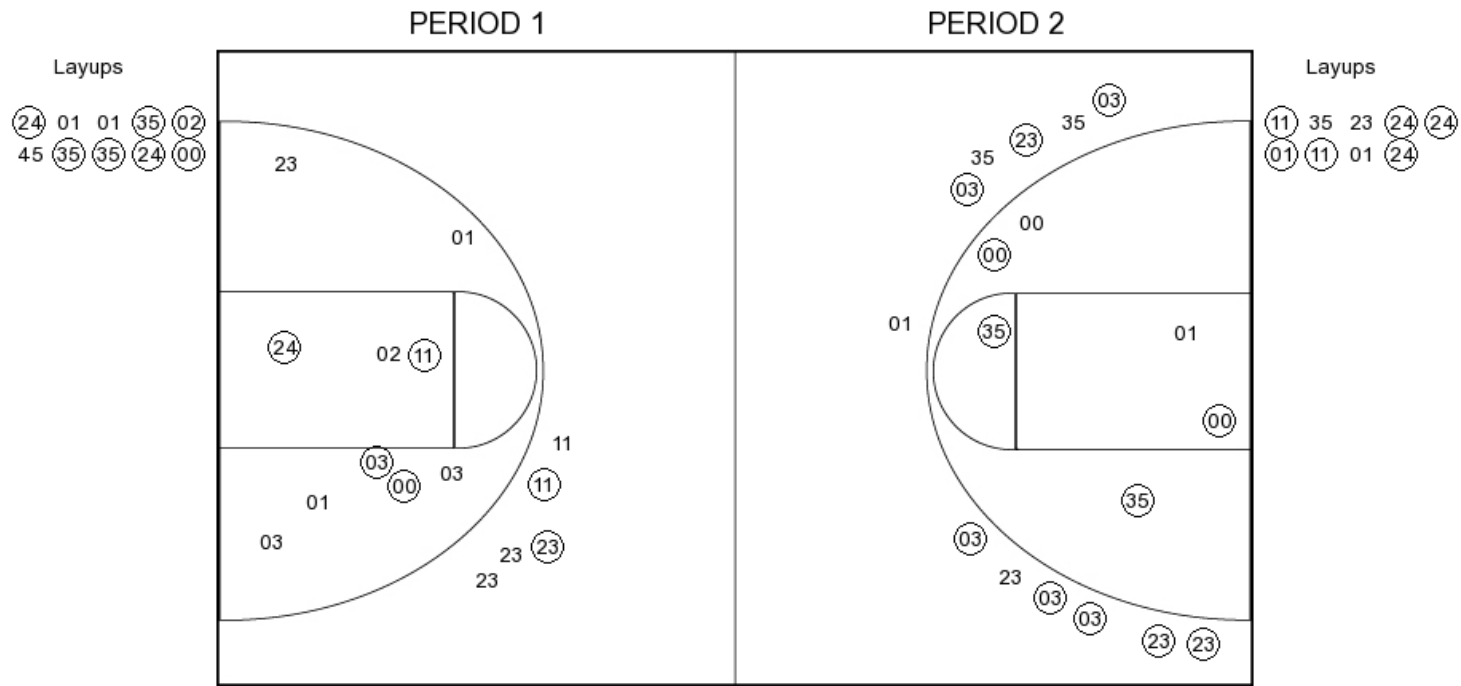
| | |
|----------------|----|
| FG Made | 18 |
| FG Attempted | 27 |
| 3PFG Made | 8 |
| 3PFG Attempted | 12 |

VU PERIOD 2

| | |
|----------------|----|
| FG Made | 13 |
| FG Attempted | 27 |
| 3PFG Made | 7 |
| 3PFG Attempted | 14 |

Mississippi State vs Vanderbilt
 OFFICIAL SHOT CHART
 2/14/2018 at Nashville, Tenn. (Memorial Gym)

Mississippi State



MS PERIOD 1

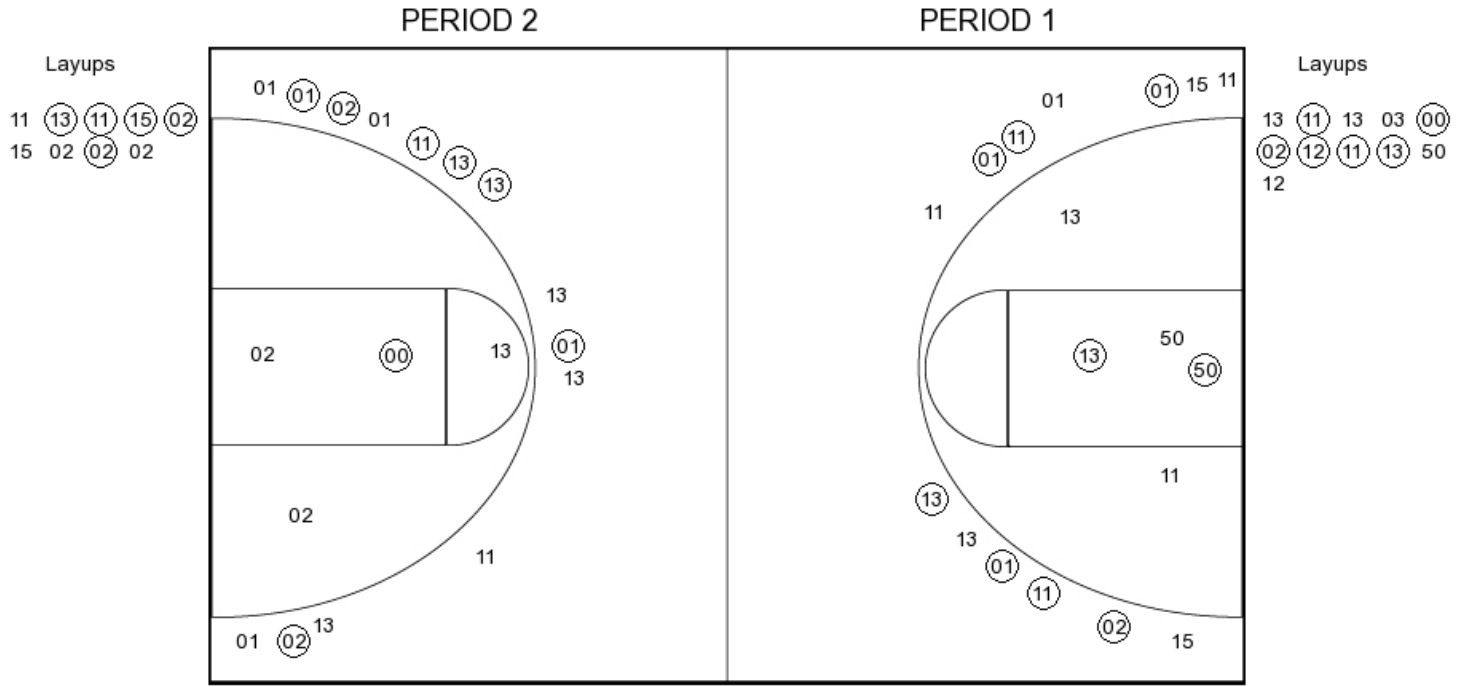
| | |
|----------------|----|
| FG Made | 13 |
| FG Attempted | 26 |
| 3PFG Made | 2 |
| 3PFG Attempted | 5 |

MS PERIOD 2

| | |
|----------------|----|
| FG Made | 18 |
| FG Attempted | 27 |
| 3PFG Made | 8 |
| 3PFG Attempted | 12 |

Mississippi State vs Vanderbilt
 OFFICIAL SHOT CHART
 2/14/2018 at Nashville, Tenn. (Memorial Gym)

Vanderbilt



VU PERIOD 1

| | |
|----------------|----|
| FG Made | 15 |
| FG Attempted | 29 |
| 3PFG Made | 7 |
| 3PFG Attempted | 13 |

VU PERIOD 2

| | |
|----------------|----|
| FG Made | 13 |
| FG Attempted | 27 |
| 3PFG Made | 7 |
| 3PFG Attempted | 14 |