

## FINAL SCORE

**LSU**

11-6, 2-3 SEC

**71**

**Vanderbilt**

6-12, 1-5 SEC

**77**

**January 20, 2018 • Nashville, Tenn. (Memorial Gym)**

## FINAL STATISTICS

**Official Basketball Box Score -- Game Totals -- Final Statistics**  
**LSU vs Vanderbilt**  
**1/20/2018 12 p.m. at Nashville, Tenn. (Memorial Gym)**

**LSU 71 - 11-6, 2-3 SEC**

##	Player		Total		3-Ptr		FT-FTA	Rebounds			PF	TP	A	TO	Blk	Stl	Min
			FG	F-GA	FG	F-GA		Off	Def	Tot							
00	SAMPSON,BRANDON	g	1	3	0	2	1	0	0	0	1	3	0	1	0	1	19
01	REATH,DUOP	f	13	20	1	2	4	5	8	13	4	31	1	3	3	0	34
03	WATERS,TREMONT	g	3	12	1	6	0	2	2	4	5	7	4	3	0	1	36
04	MAYS,SKYLAR	g	4	11	1	4	4	0	3	3	1	13	1	0	0	2	36
21	EPPE, AARON	f	1	3	0	1	0	0	3	3	4	2	0	1	0	0	11
02	RACHAL,BRANDON		2	6	0	0	4	1	1	2	3	8	0	1	1	1	18
05	EDWARDS,DARYL		1	2	1	2	0	0	2	2	3	3	1	1	0	0	17
10	ALEXANDER,GALEN		0	1	0	1	0	1	1	2	0	0	0	0	0	0	3
14	ONWUASOR,RANDY		1	3	0	1	0	2	2	4	1	2	0	1	0	0	21
44	SIMS,WAYDE		1	1	0	0	0	1	0	1	2	2	0	0	0	0	5
TEAM								2	2	4	0			1			
TOTALS			27	62	4	19	13	14	24	38	24	71	7	12	4	5	200

Deadball Rebounds: 3,0

FG %	1st Half:	10-28	35.7%	2nd Half:	17-34	50.0%	Game:	27-62	43.5%
3FG %	1st Half:	2-8	25.0%	2nd Half:	2-11	18.2%	Game:	4-19	21.1%
FT %	1st Half:	6-8	75.0%	2nd Half:	7-13	53.8%	Game:	13-21	61.9%

**Vanderbilt 77 - 6-12, 1-5 SEC**

##	Player		Total		3-Ptr		FT-FTA	Rebounds			PF	TP	A	TO	Blk	Stl	Min
			FG	F-GA	FG	F-GA		Off	Def	Tot							
00	LEE,SABEN	g	5	7	0	1	2	0	5	5	2	12	5	3	1	3	34
01	WILLIS,PAYTON	g	1	6	1	4	3	1	5	6	1	6	1	3	0	0	35
11	ROBERSON,JEFF	f	7	13	2	5	4	1	5	6	3	20	1	4	0	0	36
12	BAPTISTE,DJERY	c	0	2	0	0	1	2	3	5	3	1	0	0	3	0	25
13	LACHANCE,RILEY	g	8	14	4	7	6	1	5	6	3	26	3	0	0	0	38
02	TOYE,JOE		1	2	0	1	3	0	1	1	3	5	0	1	0	0	11
03	AUSTIN,JR, LARRY		1	2	0	0	0	0	1	1	1	2	0	0	0	0	6
15	BROWN,CLEVON		1	2	0	1	1	1	1	2	1	3	0	0	0	0	9
50	OBINNA,EJIKE		1	1	0	0	0	0	0	0	3	2	0	1	0	0	6
TEAM								1	0	1	0			0			
TOTALS			25	49	7	19	20	7	26	33	20	77	10	12	4	3	200

Deadball Rebounds: 3,0

FG %	1st Half:	14-27	51.9%	2nd Half:	11-22	50.0%	Game:	25-49	51.0%
3FG %	1st Half:	5-10	50.0%	2nd Half:	2-9	22.2%	Game:	7-19	36.8%
FT %	1st Half:	1-5	20.0%	2nd Half:	19-25	76.0%	Game:	20-30	66.7%

Officials: Brian Shey, Chuck Jones, Todd Austin  
 Technical Fouls: LSU- None. Vanderbilt- None.  
 Attendance: 8760

Score by periods	1st	2nd	Total
LSU	28	43	71
Vanderbilt	34	43	77

Points	In	Off	2nd	Fast	Bench
	Paint	T/O	Chance	Break	
LSU	34	15	19	4	15
VU	30	19	12	6	12

Last FG - LSU 2nd-00:05, VU 2nd-00:46.  
 Largest lead - LSU by 1 2nd-02:21; Vanderbilt by 16 2nd-16:54  
 LSU led for 0:21. VU led for 38:30. Game was tied for 1:00.

Score tied - 2 times; Lead changed - 2 times

**Official Basketball Box Score -- Game Totals -- First Half Statistics**  
**LSU vs Vanderbilt**  
**1/20/2018 12 p.m. at Nashville, Tenn. (Memorial Gym)**

**LSU 28 • 11-6, 2-3 SEC**

##	Player		Total		3-Ptr		FT-FTA		Rebounds			PF	TP	A	TO	Blk	Stl	Min
			FG	FGA	FG	FGA	FT	FTA	Off	Def	Tot							
00	SAMPSON,BRANDON	g	0-1		0-1		0-0		0	0	0	0	0	0	0	0	0	7
01	REATH,DUOP	f	5-8		1-1		2-2		2	2	4	0	13	1	0	1	0	15
03	WATERS,TREMONT	g	1-6		0-2		0-0		1	1	2	1	2	1	2	0	0	18
04	MAYS,SKYLAR	g	2-4		1-2		0-0		0	0	0	1	5	0	0	0	1	17
21	EPPS,AARON	f	1-2		0-1		0-0		0	3	3	2	2	0	1	0	0	9
02	RACHAL,BRANDON		1-5		0-0		4-6		0	0	0	2	6	0	1	1	1	12
05	EDWARDS,DARYL		0-0		0-0		0-0		0	1	1	1	0	1	1	0	0	6
10	ALEXANDER,GALEN		0-1		0-1		0-0		1	1	2	0	0	0	0	0	0	3
14	ONWUASOR,RANDY		0-1		0-0		0-0		1	1	2	1	0	0	1	0	0	12
44	SIMS,WAYDE		0-0		0-0		0-0		0	0	0	0	0	0	0	0	0	1
TEAM									2	2	4	0			1			
Totals			10-28		2-8		6-8		7	11	18	8	28	3	7	2	2	100

FG % Half: 10-28 35.7%  
 3FG % Half: 2-8 25.0%  
 FT % Half: 6-8 75.0%

**Vanderbilt 34 • 6-12, 1-5 SEC**

##	Player		Total		3-Ptr		FT-FTA		Rebounds			PF	TP	A	TO	Blk	Stl	Min
			FG	FGA	FG	FGA	FT	FTA	Off	Def	Tot							
00	LEE,SABEN	g	1-3		0-1		0-0		0	2	2	0	2	4	1	1	2	16
01	WILLIS,PAYTON	g	1-3		1-2		1-4		0	2	2	0	4	1	2	0	0	18
11	ROBERSON,JEFF	f	4-7		1-2		0-1		1	3	4	1	9	0	2	0	0	17
12	BAPTISTE,DJERY	c	0-0		0-0		0-0		1	1	2	0	0	0	0	2	0	12
13	LACHANCE,RILEY	g	6-10		3-4		0-0		1	2	3	1	15	0	0	0	0	19
02	TOYE,JOE		0-1		0-1		0-0		0	0	0	1	0	0	0	0	0	5
03	AUSTIN,JR, LARRY		1-2		0-0		0-0		0	1	1	0	2	0	0	0	0	4
15	BROWN,CLEVON		0-0		0-0		0-0		0	1	1	1	0	0	0	0	0	3
50	OBINNA,EJIKE		1-1		0-0		0-0		0	0	0	3	2	0	1	0	0	6
TEAM									1	0	1	0			0			
Totals			14-27		5-10		1-5		4	12	16	7	34	5	6	3	2	100

FG % Half: 14-27 51.9%  
 3FG % Half: 5-10 50.0%  
 FT % Half: 1-5 20.0%

Officials: Brian Shey, Chuck Jones, Todd Austin  
 Technical Fouls: LSU- None. Vanderbilt- None.

Score by periods	1st	2nd	Total
LSU	28	43	<b>71</b>
Vanderbilt	34	43	<b>77</b>

Points	In	Off	2nd	Fast	
	Paint	T/O	Chance	Break	
LSU	10	7	8	2	6
VU	12	12	7	2	4

Last FG - LSU 1st-02:34, VU 1st-02:02.  
 LSU led for 0:00. VU led for 18:51. Game was tied for 1:00.

Score tied - 1 times  
 Lead changed - 0 times

**LSU vs Vanderbilt**  
**1/20/2018; 12 p.m. at Nashville, Tenn. (Memorial Gym)**  
**Period 1 Play-By-Play**

VISITORS: LSU	Time	Score	Margin	HOME: Vanderbilt
MISSED JUMPER by REATH,DUOP	19:47			
	19:47			REBOUND (DEF) by LACHANCE,RILEY
	19:27	2-0	H 2	GOOD! JUMPER by ROBERSON,JEFF [PNT]
MISSED 3PTR by MAYS,SKYLAR	19:02			
	19:02			REBOUND (DEF) by LEE,SABEN
	18:52	5-0	H 5	GOOD! 3PTR by LACHANCE,RILEY
	18:52			ASSIST by LEE,SABEN
MISSED 3PTR by SAMPSON,BRANDON	18:27			
REBOUND (OFF) by REATH,DUOP	18:27			
GOOD! JUMPER by REATH,DUOP	18:13	5-2	H 3	
	17:46			MISSED 3PTR by WILLIS,PAYTON
REBOUND (DEF) by WATERS,TREMONT	17:46			
MISSED JUMPER by WATERS,TREMONT	17:36			
	17:36			REBOUND (DEF) by LACHANCE,RILEY
	17:28			FOUL by ROBERSON,JEFF
	17:28			TURNOVER by ROBERSON,JEFF
MISSED LAYUP by MAYS,SKYLAR	17:11			
	17:11			BLOCK by BAPTISTE,DJERY
REBOUND (OFF) by TEAM	17:11			
TURNOVER by TEAM	16:58			
	16:35			MISSED 3PTR by ROBERSON,JEFF
	16:35			REBOUND (OFF) by BAPTISTE,DJERY
	16:18	8-2	H 6	GOOD! 3PTR by WILLIS,PAYTON
MISSED 3PTR by EPPS,AARON	16:04			
	16:04			REBOUND (DEF) by BAPTISTE,DJERY
	15:38			MISSED JUMPER by LACHANCE,RILEY
REBOUND (DEF) by EPPS,AARON	15:38			
MISSED LAYUP by WATERS,TREMONT	15:29			
	15:29			BLOCK by LEE,SABEN
	15:28			REBOUND (DEF) by WILLIS,PAYTON
	15:28			TIMEOUT media
SUB IN: ONWUASOR,RANDY	15:28			
SUB IN: RACHAL,BRANDON	15:28			
SUB OUT: SAMPSON,BRANDON	15:28			
SUB OUT: REATH,DUOP	15:28			
	15:04	10-2	H 8	GOOD! LAYUP by ROBERSON,JEFF [PNT]
	15:04			ASSIST by LEE,SABEN
MISSED JUMPER by ONWUASOR,RANDY	14:55			
	14:55			BLOCK by BAPTISTE,DJERY
	14:53			REBOUND (DEF) by ROBERSON,JEFF
	14:45			MISSED LAYUP by WILLIS,PAYTON
	14:45			REBOUND (OFF) by TEAM
	14:44			SUB IN: OBINNA,EJIKE
	14:44			SUB OUT: BAPTISTE,DJERY
	14:34			MISSED LAYUP by ROBERSON,JEFF
BLOCK by RACHAL,BRANDON	14:34			
REBOUND (DEF) by EPPS,AARON	14:31			
GOOD! LAYUP by MAYS,SKYLAR [PNT]	14:21	10-4	H 6	
	13:59			TURNOVER by WILLIS,PAYTON
STEAL by RACHAL,BRANDON	13:58			
MISSED LAYUP by RACHAL,BRANDON	13:56			
REBOUND (OFF) by WATERS,TREMONT	13:56			
	13:43			FOUL by OBINNA,EJIKE
GOOD! FT by RACHAL,BRANDON	13:43	10-5	H 5	
GOOD! FT by RACHAL,BRANDON	13:43	10-6	H 4	
SUB IN: REATH,DUOP	13:43			
SUB OUT: EPPS,AARON	13:43			
	13:43			SUB IN: BROWN,CLEVON
	13:43			SUB IN: TOYE,JOE
	13:43			SUB OUT: ROBERSON,JEFF
	13:43			SUB OUT: LACHANCE,RILEY
	13:30			TURNOVER by OBINNA,EJIKE
STEAL by MAYS,SKYLAR	13:28			
MISSED JUMPER by REATH,DUOP	13:16			
	13:16			REBOUND (DEF) by BROWN,CLEVON
	12:54			MISSED 3PTR by LEE,SABEN
REBOUND (DEF) by TEAM	12:54			
MISSED 3PTR by WATERS,TREMONT	12:34			
REBOUND (OFF) by ONWUASOR,RANDY	12:34			

VISITORS: LSU	Time	Score	Margin	HOME: Vanderbilt
	12:24			FOUL by BROWN,CLEVON
GOOD! FT by RACHAL,BRANDON	12:24	10-7	H 3	
GOOD! FT by RACHAL,BRANDON	12:24	10-8	H 2	
SUB IN: EDWARDS,DARYL	12:24			
SUB OUT: WATERS,TREMONT	12:24			
	12:24			SUB IN: LACHANCE,RILEY
	12:24			SUB IN: AUSTIN,JR, LARRY
	12:24			SUB OUT: LEE,SABEN
	12:24			SUB OUT: WILLIS,PAYTON
	11:55			MISSED LAYUP by LACHANCE,RILEY
REBOUND (DEF) by REATH,DUOP	11:55			
MISSED LAYUP by RACHAL,BRANDON	11:48			
	11:48			REBOUND (DEF) by AUSTIN,JR, LARRY
	11:26	13-8	H 5	GOOD! 3PTR by LACHANCE,RILEY
GOOD! 3PTR by MAYS,SKYLAR	11:06	13-11	H 2	
	10:46			MISSED 3PTR by TOYE,JOE
REBOUND (DEF) by EDWARDS,DARYL	10:46			
	10:39			FOUL by LACHANCE,RILEY
TIMEOUT MEDIA	10:39			
MISSED FT by RACHAL,BRANDON	10:39			
REBOUND (DEADB) by TEAM	10:39			
MISSED FT by RACHAL,BRANDON	10:39			
	10:39			REBOUND (DEF) by ROBERSON,JEFF
SUB IN: WATERS,TREMONT	10:39			
SUB IN: EPPS,AARON	10:39			
SUB OUT: MAYS,SKYLAR	10:39			
SUB OUT: REATH,DUOP	10:39			
	10:39			SUB IN: ROBERSON,JEFF
	10:39			SUB IN: WILLIS,PAYTON
	10:39			SUB OUT: BROWN,CLEVON
	10:39			SUB OUT: OBINNA,EJIKE
	10:16	15-11	H 4	GOOD! JUMPER by AUSTIN,JR, LARRY
TURNOVER by ONWUASOR,RANDY	10:07			
SUB IN: ALEXANDER,GALEN	10:07			
SUB OUT: RACHAL,BRANDON	10:07			
	09:47			MISSED JUMPER by ROBERSON,JEFF
REBOUND (DEF) by ALEXANDER,GALEN	09:47			
GOOD! JUMPER by WATERS,TREMONT [FB/PNT]	09:40	15-13	H 2	
	09:19			MISSED JUMPER by AUSTIN,JR, LARRY
REBOUND (DEF) by ONWUASOR,RANDY	09:19			
MISSED 3PTR by ALEXANDER,GALEN	09:00			
REBOUND (OFF) by ALEXANDER,GALEN	09:00			
	08:55			FOUL by TOYE,JOE
SUB IN: SAMPSON,BRANDON	08:55			
SUB OUT: ONWUASOR,RANDY	08:55			
	08:55			SUB IN: LEE,SABEN
	08:55			SUB OUT: TOYE,JOE
GOOD! JUMPER by EPPS,AARON [PNT]	08:53	15-15	T	
ASSIST by EDWARDS,DARYL	08:53			
FOUL by EDWARDS,DARYL	08:28			
SUB IN: MAYS,SKYLAR	08:28			
SUB OUT: EDWARDS,DARYL	08:28			
	08:28			SUB IN: BAPTISTE,DJERY
	08:28			SUB OUT: AUSTIN,JR, LARRY
	08:26	18-15	H 3	GOOD! 3PTR by LACHANCE,RILEY
	08:26			ASSIST by WILLIS,PAYTON
TURNOVER by WATERS,TREMONT	08:15			
	08:00	20-15	H 5	GOOD! JUMPER by LACHANCE,RILEY
TURNOVER by WATERS,TREMONT	07:56			
	07:55			STEAL by LEE,SABEN
	07:34	22-15	H 7	GOOD! LAYUP by LEE,SABEN [FB/PNT]
FOUL by EPPS,AARON	07:32			
TURNOVER by EPPS,AARON	07:32			
	07:32			TIMEOUT media
SUB IN: RACHAL,BRANDON	07:32			
SUB IN: REATH,DUOP	07:32			
SUB OUT: ALEXANDER,GALEN	07:32			
SUB OUT: EPPS,AARON	07:32			
FOUL by WATERS,TREMONT	07:24			
FOUL by MAYS,SKYLAR	07:15			
	06:57			MISSED 3PTR by LACHANCE,RILEY
	06:57			REBOUND (OFF) by ROBERSON,JEFF
FOUL by RACHAL,BRANDON	06:55			
	06:51	24-15	H 9	GOOD! LAYUP by ROBERSON,JEFF [PNT]
GOOD! JUMPER by REATH,DUOP [PNT]	06:25	24-17	H 7	

VISITORS: LSU	Time	Score	Margin	HOME: Vanderbilt
	06:11			TURNOVER by ROBERSON,JEFF
SUB IN: ONWUASOR,RANDY	06:11			
SUB OUT: SAMPSON,BRANDON	06:11			
GOOD! JUMPER by REATH,DUOP	05:51	24-19	H 5	
	05:33			TURNOVER by LEE,SABEN
TURNOVER by RACHAL,BRANDON	05:19			
	05:04	27-19	H 8	GOOD! 3PTR by ROBERSON,JEFF
	05:04			ASSIST by LEE,SABEN
GOOD! LAYUP by RACHAL,BRANDON [PNT]	04:50	27-21	H 6	
ASSIST by REATH,DUOP	04:50			
	04:20			MISSED JUMPER by LACHANCE,RILEY
	04:20			REBOUND (OFF) by LACHANCE,RILEY
	04:16	29-21	H 8	GOOD! JUMPER by LACHANCE,RILEY [PNT]
MISSED JUMPER by RACHAL,BRANDON	03:53			
REBOUND (OFF) by REATH,DUOP	03:53			
TIMEOUT MEDIA	03:51			
	03:51			SUB IN: OBINNA,EJIKE
	03:51			SUB OUT: BAPTISTE,DJERY
	03:44			FOUL by OBINNA,EJIKE
MISSED JUMPER by RACHAL,BRANDON	03:39			
	03:39			REBOUND (DEF) by WILLIS,PAYTON
	03:33			TURNOVER by WILLIS,PAYTON
GOOD! 3PTR by REATH,DUOP	03:14	29-24	H 5	
ASSIST by WATERS,TREMONT	03:14			
	02:52	31-24	H 7	GOOD! DUNK by OBINNA,EJIKE [PNT]
	02:52			ASSIST by LEE,SABEN
GOOD! JUMPER by REATH,DUOP	02:34	31-26	H 5	
	02:02	33-26	H 7	GOOD! JUMPER by LACHANCE,RILEY
	01:41			FOUL by OBINNA,EJIKE
GOOD! FT by REATH,DUOP	01:41	33-27	H 6	
GOOD! FT by REATH,DUOP	01:41	33-28	H 5	
SUB IN: EDWARDS,DARYL	01:41			
SUB OUT: MAYS,SKYLAR	01:41			
	01:41			SUB IN: BAPTISTE,DJERY
	01:41			SUB OUT: OBINNA,EJIKE
FOUL by RACHAL,BRANDON	01:20			
	01:20			MISSED FT by WILLIS,PAYTON
	01:20			REBOUND (DEADB) by TEAM
	01:20			MISSED FT by WILLIS,PAYTON
REBOUND (DEF) by EPPS,AARON	01:20			
SUB IN: EPPS,AARON	01:20			
SUB OUT: RACHAL,BRANDON	01:20			
MISSED JUMPER by WATERS,TREMONT	01:08			
	01:08			REBOUND (DEF) by LEE,SABEN
FOUL by ONWUASOR,RANDY	01:01			
	01:01			MISSED FT by WILLIS,PAYTON
	01:01			REBOUND (DEADB) by TEAM
	01:01	34-28	H 6	GOOD! FT by WILLIS,PAYTON
SUB IN: MAYS,SKYLAR	01:01			
SUB OUT: ONWUASOR,RANDY	01:01			
MISSED JUMPER by REATH,DUOP	00:46			
	00:46			REBOUND (DEF) by ROBERSON,JEFF
FOUL by EPPS,AARON	00:46			
	00:46			MISSED FT by ROBERSON,JEFF
REBOUND (DEF) by REATH,DUOP	00:46			
SUB IN: SIMS,WAYDE	00:46			
SUB OUT: EPPS,AARON	00:46			
SUB OUT: REATH,DUOP	00:46			
TURNOVER by EDWARDS,DARYL	00:42			
	00:40			STEAL by LEE,SABEN
SUB IN: REATH,DUOP	00:38			
	00:11			MISSED LAYUP by LEE,SABEN
BLOCK by REATH,DUOP	00:11			
REBOUND (DEF) by TEAM	00:11			
MISSED 3PTR by WATERS,TREMONT	00:02			
REBOUND (OFF) by TEAM	00:02			

LSU 28, Vanderbilt 34

Period 1-only	In Paint	Off T/O	2nd Chance	Fast Break	Bench	
LSU	10	7	8	2	6	Score tied - 2 times
VU	12	12	7	2	4	Lead changed - 0 times



**Official Basketball Box Score -- Game Totals -- Second Half Statistics**  
**LSU vs Vanderbilt**  
**1/20/2018 12 p.m. at Nashville, Tenn. (Memorial Gym)**

**LSU 43 • 11-6, 2-3 SEC**

##	Player		Total		3-Ptr		FT-FTA	Rebounds			PF	TP	A	TO	Blk	Stl	Min
			FG-FGA		FG-FGA			Off	Def	Tot							
00	SAMPSON,BRANDON	g	1-2		0-1		1-2	0	0	0	1	3	0	1	0	1	12
01	REATH,DUOP	f	8-12		0-1		2-6	3	6	9	4	18	0	3	2	0	19
03	WATERS,TREMONT	g	2-6		1-4		0-0	1	1	2	4	5	3	1	0	1	18
04	MAYS,SKYLAR	g	2-7		0-2		4-5	0	3	3	0	8	1	0	0	1	19
21	EPPS,AARON	f	0-1		0-0		0-0	0	0	0	2	0	0	0	0	0	2
02	RACHAL,BRANDON		1-1		0-0		0-0	1	1	2	1	2	0	0	0	0	6
05	EDWARDS,DARYL		1-2		1-2		0-0	0	1	1	2	3	0	0	0	0	11
10	ALEXANDER,GALEN		0-0		0-0		0-0	0	0	0	0	0	0	0	0	0	0
14	ONWUASOR,RANDY		1-2		0-1		0-0	1	1	2	0	2	0	0	0	0	9
44	SIMS,WAYDE		1-1		0-0		0-0	1	0	1	2	2	0	0	0	0	4
TEAM								0	0	0	0			0			
Totals			17-34		2-11		7-13	7	13	20	16	43	4	5	2	3	100
FG %			Half: 17-34		50.0%												
3FG %			Half: 2-11		25.0%												
FT %			Half: 7-13		53.8%												

**Vanderbilt 43 • 6-12, 1-5 SEC**

##	Player		Total		3-Ptr		FT-FTA	Rebounds			PF	TP	A	TO	Blk	Stl	Min
			FG-FGA		FG-FGA			Off	Def	Tot							
00	LEE,SABEN	g	4-4		0-0		2-3	0	3	3	2	10	1	2	0	1	18
01	WILLIS,PAYTON	g	0-3		0-2		2-2	1	3	4	1	2	0	1	0	0	17
11	ROBERSON,JEFF	f	3-6		1-3		4-4	0	2	2	2	11	1	2	0	0	19
12	BAPTISTE,DJERY	c	0-2		0-0		1-3	1	2	3	3	1	0	0	1	0	13
13	LACHANCE,RILEY	g	2-4		1-3		6-6	0	3	3	2	11	3	0	0	0	19
02	TOYE,JOE		1-1		0-0		3-5	0	1	1	2	5	0	1	0	0	6
03	AUSTIN,JR, LARRY		0-0		0-0		0-0	0	0	0	1	0	0	0	0	0	2
15	BROWN,CLEVON		1-2		0-1		1-2	1	0	1	0	3	0	0	0	0	6
50	OBINNA,EJIKE		0-0		0-0		0-0	0	0	0	0	0	0	0	0	0	0
TEAM								0	0	0	0			0			
Totals			11-22		2-9		19-25	3	14	17	13	43	5	6	1	1	100
FG %			Half: 11-22		50.0%												
3FG %			Half: 2-9		50.0%												
FT %			Half: 19-25		76.0%												

Officials: Brian Shey, Chuck Jones, Todd Austin  
Technical Fouls: LSU- None. Vanderbilt- None.

Score by periods	1st	2nd	Total
LSU	28	43	<b>71</b>
Vanderbilt	34	43	<b>77</b>

Points	In	Off	2nd	Fast	
	Paint	T/O	Chance	Break	
LSU	24	8	11	2	9
VU	18	7	5	4	8

Last FG - LSU 2nd-00:05, VU 2nd-00:46.  
LSU led for 0:21. VU led for 19:39. Game was tied for 0:00.

Score tied - 1 times  
Lead changed - 2 times



**LSU vs Vanderbilt**  
**1/20/2018; 12 p.m. at Nashville, Tenn. (Memorial Gym)**  
**Period 2 Play-By-Play**

VISITORS: LSU	Time	Score	Margin	HOME: Vanderbilt
	19:47	36-28	H 8	GOOD! LAYUP by ROBERSON,JEFF [PNT]
	19:47			ASSIST by LEE,SABEN
GOOD! JUMPER by REATH,DUOP [PNT]	19:29	36-30	H 6	
	19:06	38-30	H 8	GOOD! JUMPER by ROBERSON,JEFF [PNT]
MISSED JUMPER by EPPS,AARON	18:53			
	18:53			REBOUND (DEF) by LACHANCE,RILEY
	18:46			MISSED 3PTR by WILLIS,PAYTON
	18:46			REBOUND (OFF) by BAPTISTE,DJERY
FOUL by EPPS,AARON	18:24			
	18:24	39-30	H 9	GOOD! FT by ROBERSON,JEFF
	18:24	40-30	H 10	GOOD! FT by ROBERSON,JEFF
SUB IN: RACHAL,BRANDON	18:24			
SUB OUT: EPPS,AARON	18:24			
MISSED JUMPER by REATH,DUOP	18:09			
	18:09			REBOUND (DEF) by LEE,SABEN
FOUL by RACHAL,BRANDON	17:53			
SUB IN: SIMS,WAYDE	17:53			
SUB OUT: RACHAL,BRANDON	17:53			
	17:46	43-30	H 13	GOOD! 3PTR by ROBERSON,JEFF
	17:46			ASSIST by LACHANCE,RILEY
	17:36			FOUL by LEE,SABEN
TURNOVER by REATH,DUOP	17:21			
	16:54	46-30	H 16	GOOD! 3PTR by LACHANCE,RILEY
MISSED LAYUP by WATERS,TREMONT	16:35			
	16:35			BLOCK by BAPTISTE,DJERY
	16:32			REBOUND (DEF) by WILLIS,PAYTON
	16:29			MISSED 3PTR by LACHANCE,RILEY
REBOUND (DEF) by REATH,DUOP	16:29			
	16:15			FOUL by ROBERSON,JEFF
MISSED FT by SAMPSON,BRANDON	16:15			
REBOUND (DEADB) by TEAM	16:15			
GOOD! FT by SAMPSON,BRANDON	16:15	46-31	H 15	
	16:10			TURNOVER by ROBERSON,JEFF
STEAL by SAMPSON,BRANDON	16:08			
GOOD! DUNK by SAMPSON,BRANDON [PNT]	16:07	46-33	H 13	
	16:04			TURNOVER by LEE,SABEN
STEAL by MAYS,SKYLAR	16:03			
MISSED JUMPER by MAYS,SKYLAR	16:03			
REBOUND (OFF) by SIMS,WAYDE	16:03			
GOOD! DUNK by SIMS,WAYDE [PNT]	16:03	46-35	H 11	
	16:03			TIMEOUT 30SEC
FOUL by SIMS,WAYDE	15:35			
	15:35			TIMEOUT media
	15:35			MISSED FT by BAPTISTE,DJERY
	15:35			REBOUND (DEADB) by TEAM
	15:35	47-35	H 12	GOOD! FT by BAPTISTE,DJERY
MISSED JUMPER by REATH,DUOP	15:17			
	15:17			REBOUND (DEF) by WILLIS,PAYTON
	14:51			MISSED JUMPER by WILLIS,PAYTON
REBOUND (DEF) by WATERS,TREMONT	14:51			
	14:36			FOUL by ROBERSON,JEFF
	14:36			SUB IN: TOYE,JOE
	14:36			SUB OUT: WILLIS,PAYTON
GOOD! JUMPER by REATH,DUOP [PNT]	14:31	47-37	H 10	
	14:04			FOUL by TOYE,JOE
	14:04			TURNOVER by TOYE,JOE
	14:04			SUB IN: BROWN,CLEVON
	14:04			SUB OUT: BAPTISTE,DJERY
MISSED 3PTR by WATERS,TREMONT	13:52			
	13:52			REBOUND (DEF) by ROBERSON,JEFF
FOUL by SIMS,WAYDE	13:31			
	13:31	48-37	H 11	GOOD! FT by ROBERSON,JEFF
	13:31	49-37	H 12	GOOD! FT by ROBERSON,JEFF
SUB IN: ONWUASOR,RANDY	13:31			
SUB OUT: SIMS,WAYDE	13:31			
	13:31			SUB IN: AUSTIN,JR, LARRY
	13:31			SUB OUT: LEE,SABEN
TURNOVER by REATH,DUOP	13:12			
	12:54	51-37	H 14	GOOD! DUNK by BROWN,CLEVON [PNT]

VISITORS: LSU	Time	Score	Margin	HOME: Vanderbilt
	12:54			ASSIST by LACHANCE,RILEY
MISSED 3PTR by REATH,DUOP	12:27			
REBOUND (OFF) by WATERS,TREMONT	12:27			
	12:25			FOUL by TOYE,JOE
GOOD! 3PTR by WATERS,TREMONT	12:22	51-40	H 11	
	11:57	53-40	H 13	GOOD! LAYUP by LACHANCE,RILEY [PNT]
	11:48			FOUL by AUSTIN,JR, LARRY
TIMEOUT media	11:48			
	11:48			SUB IN: LEE,SABEN
	11:48			SUB OUT: AUSTIN,JR, LARRY
GOOD! LAYUP by MAYS,SKYLAR [PNT]	11:45	53-42	H 11	
	11:45			FOUL by LACHANCE,RILEY
MISSED FT by MAYS,SKYLAR	11:45			
REBOUND (OFF) by ONWUASOR,RANDY	11:45			
SUB IN: EPPS,AARON	11:45			
SUB OUT: REATH,DUOP	11:45			
MISSED 3PTR by MAYS,SKYLAR	11:42			
	11:42			REBOUND (DEF) by ROBERSON,JEFF
FOUL by WATERS,TREMONT	11:31			
	11:17			MISSED 3PTR by ROBERSON,JEFF
REBOUND (DEF) by MAYS,SKYLAR	11:17			
	11:10			FOUL by LACHANCE,RILEY
GOOD! FT by MAYS,SKYLAR	11:10	53-43	H 10	
GOOD! FT by MAYS,SKYLAR	11:10	53-44	H 9	
SUB IN: EDWARDS,DARYL	11:10			
SUB OUT: MAYS,SKYLAR	11:10			
	11:10			SUB IN: WILLIS,PAYTON
	11:10			SUB OUT: LACHANCE,RILEY
FOUL by EPPS,AARON	11:02			
	11:02	54-44	H 10	GOOD! FT by TOYE,JOE
	11:02			MISSED FT by TOYE,JOE
REBOUND (DEF) by REATH,DUOP	11:02			
SUB IN: REATH,DUOP	11:02			
SUB IN: MAYS,SKYLAR	11:02			
SUB OUT: SAMPSON,BRANDON	11:02			
SUB OUT: EPPS,AARON	11:02			
GOOD! LAYUP by WATERS,TREMONT [PNT]	10:53	54-46	H 8	
	10:44	56-46	H 10	GOOD! LAYUP by TOYE,JOE [FB/PNT]
	10:44			ASSIST by ROBERSON,JEFF
FOUL by REATH,DUOP	10:44			
	10:44			MISSED FT by TOYE,JOE
REBOUND (DEF) by REATH,DUOP	10:44			
GOOD! LAYUP by ONWUASOR,RANDY [PNT]	10:23	56-48	H 8	
	10:08			MISSED 3PTR by BROWN,CLEVON
REBOUND (DEF) by MAYS,SKYLAR	10:08			
	10:02			FOUL by LEE,SABEN
GOOD! FT by MAYS,SKYLAR	10:02	56-49	H 7	
GOOD! FT by MAYS,SKYLAR	10:02	56-50	H 6	
	10:02			SUB IN: BAPTISTE,DJERY
	10:02			SUB IN: LACHANCE,RILEY
	10:02			SUB OUT: ROBERSON,JEFF
	10:02			SUB OUT: BROWN,CLEVON
	09:35			MISSED JUMPER by BAPTISTE,DJERY
BLOCK by REATH,DUOP	09:35			
REBOUND (DEF) by REATH,DUOP	09:33			
MISSED LAYUP by MAYS,SKYLAR	09:26			
REBOUND (OFF) by REATH,DUOP	09:26			
GOOD! DUNK by REATH,DUOP [PNT]	09:18	56-52	H 4	
	09:16			TIMEOUT 30SEC
	09:16			SUB IN: ROBERSON,JEFF
	09:16			SUB OUT: TOYE,JOE
	09:01			TURNOVER by ROBERSON,JEFF
STEAL by WATERS,TREMONT	08:57			
GOOD! LAYUP by REATH,DUOP [FB/PNT]	08:56	56-54	H 2	
ASSIST by WATERS,TREMONT	08:56			
	08:56			FOUL by BAPTISTE,DJERY
MISSED FT by REATH,DUOP	08:56			
	08:56			REBOUND (DEF) by LEE,SABEN
SUB IN: SAMPSON,BRANDON	08:56			
SUB OUT: MAYS,SKYLAR	08:56			
	08:29			TURNOVER by WILLIS,PAYTON
MISSED 3PTR by EDWARDS,DARYL	08:07			
	08:07			REBOUND (DEF) by LACHANCE,RILEY
FOUL by REATH,DUOP	08:05			
	08:05	57-54	H 3	GOOD! FT by LACHANCE,RILEY

VISITORS: LSU	Time	Score	Margin	HOME: Vanderbilt
	08:05	58-54	H 4	GOOD! FT by LACHANCE,RILEY
TURNOVER by SAMPSON,BRANDON	07:49			
	07:49			TIMEOUT MEDIA
SUB IN: MAYS,SKYLAR	07:49			
SUB OUT: SAMPSON,BRANDON	07:49			
	07:29			MISSED 3PTR by ROBERSON,JEFF
REBOUND (DEF) by REATH,DUOP	07:29			
MISSED 3PTR by WATERS,TREMONT	07:20			
	07:20			REBOUND (DEF) by BAPTISTE,DJERY
FOUL by REATH,DUOP	07:18			
	07:18			MISSED FT by BAPTISTE,DJERY
REBOUND (DEF) by ONWUASOR,RANDY	07:18			
GOOD! LAYUP by REATH,DUOP [PNT]	07:05	58-56	H 2	
ASSIST by MAYS,SKYLAR	07:05			
	07:05			FOUL by WILLIS,PAYTON
MISSED FT by REATH,DUOP	07:05			
	07:05			REBOUND (DEF) by BAPTISTE,DJERY
FOUL by WATERS,TREMONT	06:49			
	06:49	59-56	H 3	GOOD! FT by LEE,SABEN
	06:49	60-56	H 4	GOOD! FT by LEE,SABEN
SUB IN: SAMPSON,BRANDON	06:49			
SUB OUT: WATERS,TREMONT	06:49			
MISSED JUMPER by REATH,DUOP	06:32			
	06:32			REBOUND (DEF) by LACHANCE,RILEY
	06:11			MISSED 3PTR by WILLIS,PAYTON
REBOUND (DEF) by EDWARDS,DARYL	06:11			
MISSED 3PTR by ONWUASOR,RANDY	05:56			
	05:56			REBOUND (DEF) by LEE,SABEN
	05:35	62-56	H 6	GOOD! LAYUP by LEE,SABEN [PNT]
	05:18			FOUL by BAPTISTE,DJERY
MISSED FT by REATH,DUOP	05:18			
REBOUND (DEADB) by TEAM	05:18			
GOOD! FT by REATH,DUOP	05:18	62-57	H 5	
SUB IN: RACHAL,BRANDON	05:18			
SUB IN: WATERS,TREMONT	05:18			
SUB OUT: SAMPSON,BRANDON	05:18			
SUB OUT: ONWUASOR,RANDY	05:18			
	05:09			MISSED 3PTR by LACHANCE,RILEY
REBOUND (DEF) by MAYS,SKYLAR	05:09			
MISSED LAYUP by MAYS,SKYLAR	05:03			
REBOUND (OFF) by REATH,DUOP	05:03			
TURNOVER by REATH,DUOP	05:03			
	04:38			MISSED LAYUP by BAPTISTE,DJERY
REBOUND (DEF) by REATH,DUOP	04:38			
GOOD! JUMPER by REATH,DUOP [PNT]	04:16	62-59	H 3	
	03:47	64-59	H 5	GOOD! LAYUP by LEE,SABEN [PNT]
GOOD! 3PTR by EDWARDS,DARYL	03:36	64-62	H 2	
ASSIST by WATERS,TREMONT	03:36			
TIMEOUT 30SEC	03:35			
	03:35			TIMEOUT MEDIA
	03:19			MISSED LAYUP by ROBERSON,JEFF
BLOCK by REATH,DUOP	03:19			
REBOUND (DEF) by RACHAL,BRANDON	03:18			
	02:59			FOUL by BAPTISTE,DJERY
GOOD! FT by REATH,DUOP	02:59	64-63	H 1	
MISSED FT by REATH,DUOP	02:59			
	02:59			REBOUND (DEF) by WILLIS,PAYTON
	02:35			TURNOVER by LEE,SABEN
	02:35			SUB IN: BROWN,CLEVON
	02:35			SUB OUT: BAPTISTE,DJERY
GOOD! LAYUP by REATH,DUOP [PNT]	02:21	64-65	V 1	
ASSIST by WATERS,TREMONT	02:21			
FOUL by EDWARDS,DARYL	02:00			
	02:00	65-65	T	GOOD! FT by LACHANCE,RILEY
	02:00	66-65	H 1	GOOD! FT by LACHANCE,RILEY
TURNOVER by WATERS,TREMONT	01:47			
	01:46			STEAL by LEE,SABEN
	01:43	68-65	H 3	GOOD! DUNK by LEE,SABEN [FB/PNT]
	01:43			ASSIST by LACHANCE,RILEY
MISSED 3PTR by WATERS,TREMONT	01:20			
REBOUND (OFF) by RACHAL,BRANDON	01:20			
GOOD! JUMPER by RACHAL,BRANDON	01:16	68-67	H 1	
	00:46	70-67	H 3	GOOD! JUMPER by LEE,SABEN [PNT]
FOUL by REATH,DUOP	00:46			
	00:46			MISSED FT by LEE,SABEN

VISITORS: LSU	Time	Score	Margin	HOME: Vanderbilt
	00:46			REBOUND (OFF) by BROWN,CLEVON
FOUL by WATERS,TREMONT	00:44			
	00:44	71-67	H 4	GOOD! FT by BROWN,CLEVON
	00:44			MISSED FT by BROWN,CLEVON
	00:44			REBOUND (OFF) by WILLIS,PAYTON
SUB IN: ONWUASOR,RANDY	00:44			
SUB OUT: RACHAL,BRANDON	00:44			
FOUL by EDWARDS,DARYL	00:23			
	00:23	72-67	H 5	GOOD! FT by LACHANCE,RILEY
	00:23	73-67	H 6	GOOD! FT by LACHANCE,RILEY
GOOD! JUMPER by MAYS,SKYLAR	00:16	73-69	H 4	
TIMEOUT 30SEC	00:16			
SUB IN: SAMPSON,BRANDON	00:16			
SUB OUT: REATH,DUOP	00:16			
	00:16			SUB IN: TOYE,JOE
	00:16			SUB OUT: BROWN,CLEVON
FOUL by SAMPSON,BRANDON	00:15			
	00:15	74-69	H 5	GOOD! FT by TOYE,JOE
	00:15	75-69	H 6	GOOD! FT by TOYE,JOE
SUB IN: REATH,DUOP	00:15			
SUB OUT: ONWUASOR,RANDY	00:15			
MISSED 3PTR by MAYS,SKYLAR	00:10			
REBOUND (OFF) by REATH,DUOP	00:10			
GOOD! JUMPER by REATH,DUOP	00:05	75-71	H 4	
TIMEOUT 30SEC	00:05			
FOUL by WATERS,TREMONT	00:05			
	00:05	76-71	H 5	GOOD! FT by WILLIS,PAYTON
	00:05	77-71	H 6	GOOD! FT by WILLIS,PAYTON
SUB IN: ONWUASOR,RANDY	00:05			
SUB OUT: WATERS,TREMONT	00:05			
MISSED 3PTR by SAMPSON,BRANDON	00:00			
	00:00			REBOUND (DEF) by TOYE,JOE
LSU 71, Vanderbilt 77				

Period 2-only	In Paint	Off T/O	2nd Chance	Fast Break	Bench	
LSU	24	8	11	2	9	Score tied - 0 times
VU	18	7	5	4	8	Lead changed - 2 times

**LSU vs Vanderbilt**  
**1/20/2018; 12 p.m. at Nashville, Tenn. (Memorial Gym)**  
**Scoring/Runs Reference**

**Period 1**

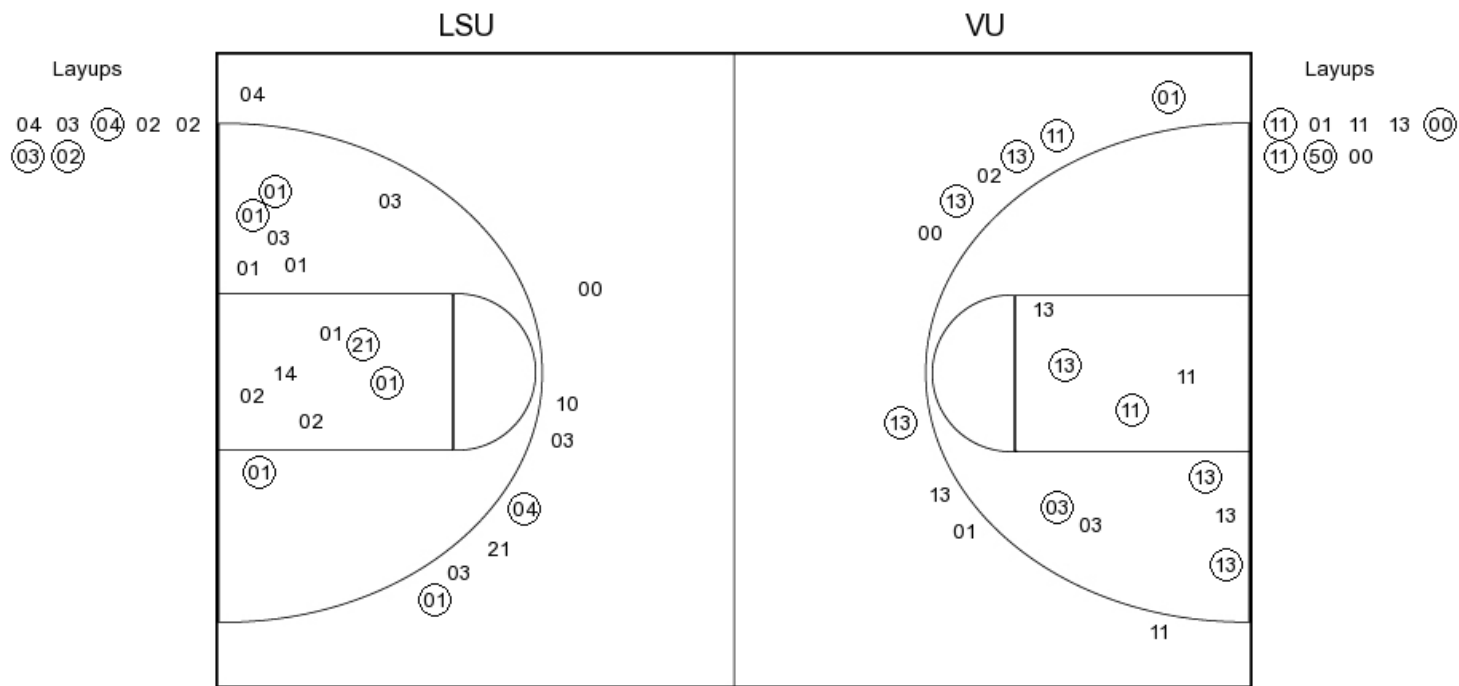
LSU	VRun	Score	Margin	HRun	Vanderbilt
		0-2	2		ROBERSON JUMPER [P] - 19:27
		0-5	5	NaN-0	LACHANCE 3PTR - 18:52
18:13 - REATH JUMPER	-	2-5	3		
		2-8	6		WILLIS 3PTR - 16:18
		2-10	8	5-0	ROBERSON LAYUP [P] - 15:04
14:21 - MAYS LAYUP [P]	-	4-10	6		
13:43 - RACHAL FT	3-0	5-10	5		
13:43 - RACHAL FT	4-0	6-10	4		
12:24 - RACHAL FT	5-0	7-10	3		
12:24 - RACHAL FT	6-0	8-10	2		
		8-13	5		LACHANCE 3PTR - 11:26
11:06 - MAYS 3PTR	-	11-13	2		
		11-15	4		AUSTIN JUMPER - 10:16
09:40 - WATERS JUMPER [P] [F]	-	13-15	2		
08:53 - EPPS JUMPER [P]	4-0	15-15	0		
		15-18	3		LACHANCE 3PTR - 08:26
		15-20	5	5-0	LACHANCE JUMPER - 08:00
		15-22	7	7-0	LEE LAYUP [P] [F] - 07:34
		15-24	9	9-0	ROBERSON LAYUP [P] - 06:51
06:25 - REATH JUMPER [P]	-	17-24	7		
05:51 - REATH JUMPER	4-0	19-24	5		
		19-27	8		ROBERSON 3PTR - 05:04
04:50 - RACHAL LAYUP [P]	-	21-27	6		
		21-29	8		LACHANCE JUMPER [P] - 04:16
03:14 - REATH 3PTR	-	24-29	5		
		24-31	7		OBINNA DUNK [P] - 02:52
02:34 - REATH JUMPER	-	26-31	5		
		26-33	7		LACHANCE JUMPER - 02:02
01:41 - REATH FT	-	27-33	6		
01:41 - REATH FT	2-0	28-33	5		
		28-34	6		WILLIS FT - 01:01

**LSU vs Vanderbilt**  
**1/20/2018; 12 p.m. at Nashville, Tenn. (Memorial Gym)**  
**Scoring/Runs Reference**

**Period 2**

LSU	VRun	Score	Margin	HRun	Vanderbilt
		28-36	8		ROBERSON LAYUP [P] - 19:47
19:29 - REATH JUMPER [P]	-	30-36	6		
		30-38	8		ROBERSON JUMPER [P] - 19:06
		30-39	9	3-0	ROBERSON FT - 18:24
		30-40	10	4-0	ROBERSON FT - 18:24
		30-43	13	7-0	ROBERSON 3PTR - 17:46
		30-46	16	10-0	LACHANCE 3PTR - 16:54
16:15 - SAMPSON FT	-	31-46	15		
16:07 - SAMPSON DUNK [P]	3-0	33-46	13		
16:03 - SIMS DUNK [P]	5-0	35-46	11		
		35-47	12		BAPTISTE FT - 15:35
14:31 - REATH JUMPER [P]	-	37-47	10		
		37-48	11		ROBERSON FT - 13:31
		37-49	12	2-0	ROBERSON FT - 13:31
		37-51	14	4-0	BROWN DUNK [P] - 12:54
12:22 - WATERS 3PTR	-	40-51	11		
		40-53	13		LACHANCE LAYUP [P] - 11:57
11:45 - MAYS LAYUP [P]	-	42-53	11		
11:10 - MAYS FT	3-0	43-53	10		
11:10 - MAYS FT	4-0	44-53	9		
		44-54	10		TOYE FT - 11:02
10:53 - WATERS LAYUP [P]	-	46-54	8		
		46-56	10		TOYE LAYUP [P] [F] - 10:44
10:23 - ONWUASOR LAYUP [P]	-	48-56	8		
10:02 - MAYS FT	3-0	49-56	7		
10:02 - MAYS FT	4-0	50-56	6		
09:18 - REATH DUNK [P]	6-0	52-56	4		
08:56 - REATH LAYUP [P] [F]	8-0	54-56	2		
		54-57	3		LACHANCE FT - 08:05
		54-58	4	2-0	LACHANCE FT - 08:05
07:05 - REATH LAYUP [P]	-	56-58	2		
		56-59	3		LEE FT - 06:49
		56-60	4	2-0	LEE FT - 06:49
		56-62	6	4-0	LEE LAYUP [P] - 05:35
05:18 - REATH FT	-	57-62	5		
04:16 - REATH JUMPER [P]	3-0	59-62	3		
		59-64	5		LEE LAYUP [P] - 03:47
03:36 - EDWARDS 3PTR	-	62-64	2		
02:59 - REATH FT	4-0	63-64	1		
02:21 - REATH LAYUP [P]	6-0	65-64	-1		
		65-65	0		LACHANCE FT - 02:00
		65-66	1	2-0	LACHANCE FT - 02:00
		65-68	3	4-0	LEE DUNK [P] [F] - 01:43
01:16 - RACHAL JUMPER	-	67-68	1		
		67-70	3		LEE JUMPER [P] - 00:46
		67-71	4	3-0	BROWN FT - 00:44
		67-72	5	4-0	LACHANCE FT - 00:23
		67-73	6	5-0	LACHANCE FT - 00:23
00:16 - MAYS JUMPER	-	69-73	4		
		69-74	5		TOYE FT - 00:15
		69-75	6	2-0	TOYE FT - 00:15
00:05 - REATH JUMPER	-	71-75	4		
		71-76	5		WILLIS FT - 00:05
		71-77	6	2-0	WILLIS FT - 00:05

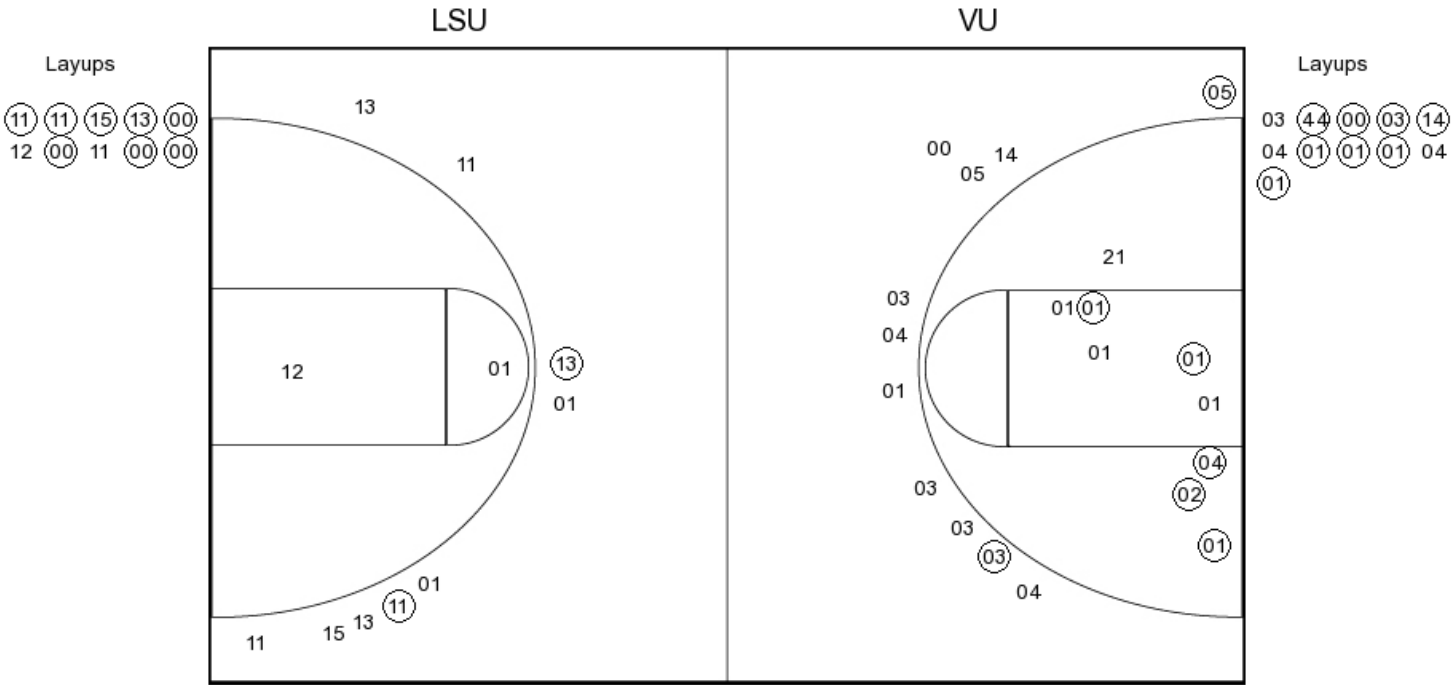
## PERIOD 1



FG Made	10
FG Attempted	28
3PFG Made	2
3PFG Attempted	8

FG Made	14
FG Attempted	27
3PFG Made	5
3PFG Attempted	10

PERIOD 2



LSU PERIOD 2

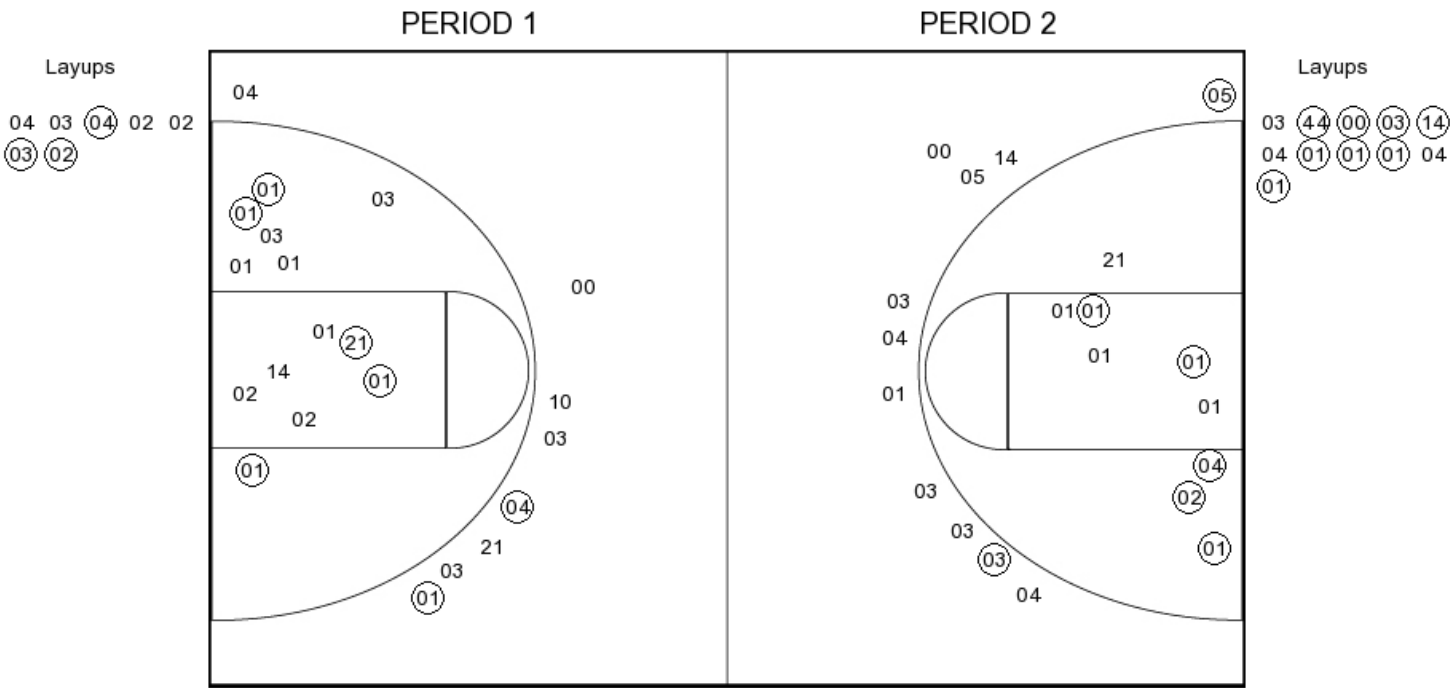
FG Made	17
FG Attempted	34
3PFG Made	2
3PFG Attempted	11

VU PERIOD 2

FG Made	11
FG Attempted	22
3PFG Made	2
3PFG Attempted	9



LSU



LSU PERIOD 1

FG Made	10
FG Attempted	28
3PFG Made	2
3PFG Attempted	8

LSU PERIOD 2

FG Made	17
FG Attempted	34
3PFG Made	2
3PFG Attempted	11

# Vanderbilt

