

## FINAL SCORE



**Kansas State**

7-1

**84**



**Vanderbilt**

3-5

**79**

December 03, 2017 • Nashville, Tenn. (Memorial Gym)

## FINAL STATISTICS

**Official Basketball Box Score -- Game Totals -- Final Statistics**  
**Kansas State vs Vanderbilt**  
**12/3/2017 1:30 p.m. at Nashville, Tenn. (Memorial Gym)**



**Kansas State 84 - 7-1**

##	Player	g	Total		3-Ptr	Rebounds			PF	TP	A	TO	Blk	Stl	Min
			FG-FGA	FG-FGA	FT-FTA	Off	Def	Tot							
03	STOKES,KAMAU	g	6-11	2-5	6-6	1	0	1	2	20	6	0	0	0	36
05	BROWN,BARRY	g	6-12	1-1	5-5	0	2	2	4	18	0	2	0	2	35
14	MAWIEN,MAKOL	f	2-2	0-0	0-0	0	1	1	2	4	0	2	1	0	16
20	SNEED,XAVIER	f	8-11	1-4	4-4	0	2	2	1	21	1	0	0	3	36
32	WADE,DEAN	f	2-6	0-1	2-3	1	6	7	5	6	3	1	1	0	32
01	SALLAH,MAWDO		1-1	0-0	0-0	0	0	0	4	2	0	1	1	0	10
02	DIARRA,CARTIER		2-3	0-0	0-0	0	2	2	3	4	2	0	0	1	13
11	PATRICK,BRIAN		0-0	0-0	0-0	0	0	0	0	0	0	0	0	0	3
23	WAINRIGHT ,AMAAD		1-3	0-1	0-0	0	1	1	0	2	0	0	0	0	5
34	STOCKARD III,LEVI		1-1	0-0	5-6	1	0	1	3	7	0	1	0	0	14
TEAM						2	2	4	0		0				
TOTALS			29-50	4-12	22-24	5	16	21	24	84	12	7	3	6	200

Deadball Rebounds: 1,1

FG %	1st Half:	16-26	61.5%	2nd Half:	13-24	54.2%	Game:	29-50	58.0%
3FG %	1st Half:	3-8	37.5%	2nd Half:	1-4	25.0%	Game:	4-12	33.3%
FT %	1st Half:	8-8	100.0%	2nd Half:	14-16	87.5%	Game:	22-24	91.7%

**Vanderbilt 79 - 3-5**

##	Player	g	Total		3-Ptr	Rebounds			PF	TP	A	TO	Blk	Stl	Min
			FG-FGA	FG-FGA	FT-FTA	Off	Def	Tot							
00	LEE,SABEN	g	3-6	1-3	12-17	0	2	2	3	19	5	3	0	1	33
02	TOYE,JOE	f	4-6	1-2	2-2	1	0	1	3	11	2	2	0	0	23
11	ROBERSON,JEFF	f	6-8	4-4	6-8	6	4	10	2	22	2	0	2	2	34
12	BAPTISTE,DJERY	c	2-6	0-0	1-2	4	5	9	5	5	0	3	2	1	25
13	LACHANCE,RILEY	g	4-9	1-5	0-0	2	2	4	5	9	2	1	0	0	25
01	WILLIS,PAYTON		1-5	1-4	1-2	0	1	1	2	4	0	1	0	0	17
05	FISHER-DAVIS,MATTHEW		1-6	1-4	0-0	0	2	2	2	3	1	3	0	0	24
10	EVANS,MAXWELL		1-2	0-1	1-2	0	0	0	1	3	0	0	0	0	6
15	BROWN,CLEVON		1-2	1-2	0-0	2	0	2	2	3	0	1	1	0	13
TEAM						1	1	2	0		0				
TOTALS			23-50	10-25	23-33	16	17	33	25	79	12	14	5	4	200

Deadball Rebounds: 4,0

FG %	1st Half:	7-21	33.3%	2nd Half:	16-29	55.2%	Game:	23-50	46.0%
3FG %	1st Half:	5-14	35.7%	2nd Half:	5-11	45.5%	Game:	10-25	40.0%
FT %	1st Half:	11-16	68.8%	2nd Half:	12-17	70.6%	Game:	23-33	69.7%

Officials: Pat Adams, Doug Sirmons, Kipp Kissinger  
 Technical Fouls: Kansas State- BROWN,BARRY; Vanderbilt- LACHANCE,RILEY;  
 Attendance: 8570

Score by periods	1st	2nd	Total
Kansas State	43	41	84
Vanderbilt	30	49	79

Points	In Paint	Off T/O	2nd Chance	Fast Break	Bench
KS	34	21	9	7	15
VU	26	8	9	3	13

Last FG - KS 2nd-01:08, VU 2nd-00:49.  
 Largest lead - Kansas State by 16 1st-05:07; Vanderbilt by 3 1st-17:29  
 KS led for 35:17. VU led for 2:28. Game was tied for 2:15.

Score tied - 4 times; Lead changed - 4 times

Official Basketball Box Score -- Game Totals -- First Half Statistics  
 Kansas State vs Vanderbilt  
 12/3/2017 1:30 p.m. at Nashville, Tenn. (Memorial Gym)



**Kansas State 43 • 7-1**

##	Player		Total		3-Ptr	Rebounds			PF	TP	A	TO	Blk	Stl	Min
			FG-FGA	FG-FGA	FT-FTA	Off	Def	Tot							
03	STOKES,KAMAU	g	3-6	2-4	0-0	1	0	1	0	8	3	0	0	0	16
05	BROWN,BARRY	g	3-5	0-0	5-5	0	2	2	1	11	0	2	0	1	18
14	MAWIEN,MAKOL	f	2-2	0-0	0-0	0	1	1	2	4	0	0	0	0	9
20	SNEED,XAVIER	f	3-5	1-3	0-0	0	1	1	1	7	1	0	0	2	17
32	WADE,DEAN	f	1-2	0-0	1-1	1	3	4	1	3	2	0	0	0	16
01	SALLAH,MAWDO		1-1	0-0	0-0	0	0	0	2	2	0	1	1	0	8
02	DIARRA,CARTIER		2-2	0-0	0-0	0	2	2	0	4	1	0	0	0	6
11	PATRICK,BRIAN		0-0	0-0	0-0	0	0	0	0	0	0	0	0	0	3
23	WAINRIGHT,AMAAD		1-3	0-1	0-0	0	1	1	0	2	0	0	0	0	3
34	STOCKARD III,LEVI		0-0	0-0	2-2	0	0	0	3	2	0	1	0	0	4
TEAM						1	1	2	0		0				
Totals			16-26	3-8	8-8	3	11	14	10	43	7	4	1	3	100

FG % Half: 16-26 61.5%  
 3FG % Half: 3-8 37.5%  
 FT % Half: 8-8 100.0%

**Vanderbilt 30 • 3-5**

##	Player		Total		3-Ptr	Rebounds			PF	TP	A	TO	Blk	Stl	Min
			FG-FGA	FG-FGA	FT-FTA	Off	Def	Tot							
00	LEE,SABEN	g	1-2	1-2	8-12	0	1	1	1	11	2	1	0	1	17
02	TOYE,JOE	f	0-1	0-1	0-0	0	0	0	1	0	1	1	0	0	12
11	ROBERSON,JEFF	f	2-2	2-2	2-2	1	3	4	1	8	1	0	0	1	14
12	BAPTISTE,DJERY	c	0-2	0-0	0-0	0	2	2	1	0	0	1	1	0	10
13	LACHANCE,RILEY	g	1-4	0-2	0-0	2	0	2	1	2	2	0	0	0	12
01	WILLIS,PAYTON		1-3	1-2	0-0	0	0	0	1	3	0	1	0	0	6
05	FISHER-DAVIS,MATTHEW		0-3	0-2	0-0	0	1	1	1	0	0	3	0	0	13
10	EVANS,MAXWELL		1-2	0-1	1-2	0	0	0	1	3	0	0	0	0	6
15	BROWN,CLEVON		1-2	1-2	0-0	2	0	2	2	3	0	0	1	0	10
TEAM						0	0	0	0		0				
Totals			7-21	5-14	11-16	5	7	12	10	30	6	7	2	2	100

FG % Half: 7-21 33.3%  
 3FG % Half: 5-14 35.7%  
 FT % Half: 11-16 68.8%

Officials: Pat Adams, Doug Simons, Kipp Kissinger  
 Technical Fouls: Kansas State- None. Vanderbilt- None.

Score by periods	1st	2nd	Total
Kansas State	43	41	<b>84</b>
Vanderbilt	30	49	<b>79</b>

Points	In Paint	Off T/O	2nd Chance	Fast Break	Bench
KS	20	10	5	5	10
VU	4	1	2	0	9

Last FG - KS 1st-02:08, VU 1st-01:10.  
 KS led for 15:39. VU led for 2:28. Game was tied for 1:53.

Score tied - 3 times  
 Lead changed - 4 times

**Kansas State vs Vanderbilt**  
**12/3/2017; 1:30 p.m. at Nashville, Tenn. (Memorial Gym)**  
**Period 1 Play-By-Play**



VISITORS: Kansas State	Time	Score	Margin	HOME: Vanderbilt
GOOD! 3PTR by STOKES,KAMAU	19:43	0-3	V 3	
ASSIST by WADE,DEAN	19:43			
	19:18	3-3	T	GOOD! 3PTR by ROBERSON,JEFF
	19:18			ASSIST by LEE,SABEN
MISSED LAYUP by BROWN,BARRY	18:54			
	18:54			BLOCK by BAPTISTE,DJERY
	18:52			REBOUND (DEF) by ROBERSON,JEFF
FOUL by MAWIEN,MAKOL	18:49			
	18:49	4-3	H 1	GOOD! FT by LEE,SABEN
	18:49	5-3	H 2	GOOD! FT by LEE,SABEN
MISSED 3PTR by SNEED,XAVIER	18:33			
	18:33			REBOUND (DEF) by ROBERSON,JEFF
	18:14			MISSED JUMPER by BAPTISTE,DJERY
REBOUND (DEF) by MAWIEN,MAKOL	18:14			
GOOD! LAYUP by BROWN,BARRY [PNT]	18:02	5-5	T	
	17:29	8-5	H 3	GOOD! 3PTR by LEE,SABEN
	17:29			ASSIST by LACHANCE,RILEY
GOOD! LAYUP by MAWIEN,MAKOL [PNT]	17:08	8-7	H 1	
FOUL by WADE,DEAN	16:53			
	16:33			MISSED 3PTR by TOYE,JOE
	16:33			REBOUND (OFF) by LACHANCE,RILEY
	16:06			TURNOVER by LEE,SABEN
STEAL by BROWN,BARRY	16:05			
GOOD! JUMPER by STOKES,KAMAU [FB]	16:02	8-9	V 1	
ASSIST by SNEED,XAVIER	16:02			
	15:39	11-9	H 2	GOOD! 3PTR by ROBERSON,JEFF
	15:39			ASSIST by LEE,SABEN
GOOD! JUMPER by SNEED,XAVIER	15:25	11-11	T	
	15:08			MISSED JUMPER by LACHANCE,RILEY
REBOUND (DEF) by SNEED,XAVIER	15:08			
TIMEOUT MEDIA	15:04			
	15:04			SUB IN: WILLIS,PAYTON
	15:04			SUB IN: FISHER-DAVIS,MATTHEW
	15:04			SUB IN: BROWN,CLEVON
	15:04			SUB OUT: LEE,SABEN
	15:04			SUB OUT: TOYE,JOE
	15:04			SUB OUT: BAPTISTE,DJERY
GOOD! 3PTR by STOKES,KAMAU	14:51	11-14	V 3	
ASSIST by WADE,DEAN	14:51			
	14:20			MISSED 3PTR by FISHER-DAVIS,MATTHEW
	14:20			REBOUND (OFF) by ROBERSON,JEFF
	14:13			MISSED 3PTR by LACHANCE,RILEY
REBOUND (DEF) by BROWN,BARRY	14:13			
	14:07			FOUL by LACHANCE,RILEY
SUB IN: SALLAH,MAWDO	14:07			
SUB OUT: MAWIEN,MAKOL	14:07			
GOOD! LAYUP by SALLAH,MAWDO [PNT]	14:04	11-16	V 5	
ASSIST by STOKES,KAMAU	14:04			
	13:45	14-16	V 2	GOOD! 3PTR by WILLIS,PAYTON
	13:45			ASSIST by LACHANCE,RILEY
MISSED 3PTR by STOKES,KAMAU	13:35			
	13:35			REBOUND (DEF) by ROBERSON,JEFF
SUB IN: DIARRA,CARTIER	13:31			
SUB OUT: BROWN,BARRY	13:31			
	13:10			MISSED 3PTR by FISHER-DAVIS,MATTHEW
REBOUND (DEF) by WADE,DEAN	13:10			
MISSED JUMPER by STOKES,KAMAU	13:00			
	13:00			BLOCK by BROWN,CLEVON
REBOUND (OFF) by TEAM	13:00			
GOOD! JUMPER by DIARRA,CARTIER [PNT]	12:47	14-18	V 4	
	12:26			MISSED LAYUP by WILLIS,PAYTON
BLOCK by SALLAH,MAWDO	12:26			
REBOUND (DEF) by DIARRA,CARTIER	12:24			
	12:20			FOUL by ROBERSON,JEFF
SUB IN: STOCKARD III,LEVI	12:20			
SUB OUT: SNEED,XAVIER	12:20			
	12:20			SUB IN: BAPTISTE,DJERY
	12:20			SUB IN: LEE,SABEN
	12:20			SUB IN: TOYE,JOE

VISITORS: Kansas State	Time	Score	Margin	HOME: Vanderbilt
	12:20			SUB OUT: ROBERSON,JEFF
	12:20			SUB OUT: BROWN,CLEVON
	12:20			SUB OUT: LACHANCE,RILEY
MISSED JUMPER by BROWN,BARRY	12:16			
	12:16			REBOUND (DEF) by LEE,SABEN
FOUL by STOCKARD III,LEVI	11:58			
	11:58	15-18	V 3	GOOD! FT by LEE,SABEN
	11:58	16-18	V 2	GOOD! FT by LEE,SABEN
SUB IN: MAWIEN,MAKOL	11:58			
SUB IN: SNEED,XAVIER	11:58			
SUB IN: WAINRIGHT,AMAAD	11:58			
SUB IN: BROWN,BARRY	11:58			
SUB OUT: STOCKARD III,LEVI	11:58			
SUB OUT: WADE,DEAN	11:58			
GOOD! LAYUP by WAINRIGHT,AMAAD [PNT]	11:43	16-20	V 4	
ASSIST by DIARRA,CARTIER	11:43			
	11:21			TURNOVER by BAPTISTE,DJERY
GOOD! LAYUP by DIARRA,CARTIER [PNT]	11:10	16-22	V 6	
	10:41			MISSED LAYUP by FISHER-DAVIS,MATTHEW
REBOUND (DEF) by WAINRIGHT,AMAAD	10:41			
MISSED JUMPER by WAINRIGHT,AMAAD	10:36			
	10:36			REBOUND (DEF) by BAPTISTE,DJERY
	10:28			TURNOVER by FISHER-DAVIS,MATTHEW
SUB IN: WADE,DEAN	10:28			
SUB OUT: DIARRA,CARTIER	10:28			
SUB OUT: SNEED,XAVIER	10:28			
	10:28			SUB IN: LACHANCE,RILEY
	10:28			SUB IN: ROBERSON,JEFF
	10:28			SUB OUT: WILLIS,PAYTON
	10:28			SUB OUT: TOYE,JOE
GOOD! JUMPER by BROWN,BARRY	10:00	16-24	V 8	
FOUL by SALLAH,MAWDO	09:37			
	09:37	17-24	V 7	GOOD! FT by LEE,SABEN
	09:37	18-24	V 6	GOOD! FT by LEE,SABEN
SUB OUT: SALLAH,MAWDO	09:37			
MISSED 3PTR by WAINRIGHT,AMAAD	09:09			
	09:09			REBOUND (DEF) by BAPTISTE,DJERY
FOUL by BROWN,BARRY	08:59			
	08:59			MISSED FT by LEE,SABEN
	08:59			REBOUND (DEADB) by TEAM
	08:59			MISSED FT by LEE,SABEN
REBOUND (DEF) by WADE,DEAN	08:59			
SUB IN: SNEED,XAVIER	08:59			
SUB OUT: WAINRIGHT,AMAAD	08:59			
MISSED 3PTR by STOKES,KAMAU	08:42			
REBOUND (OFF) by WADE,DEAN	08:42			
GOOD! LAYUP by WADE,DEAN [PNT]	08:37	18-26	V 8	
	08:37			FOUL by BAPTISTE,DJERY
	08:37			TIMEOUT 30SEC
GOOD! FT by WADE,DEAN	08:37	18-27	V 9	
	08:10			MISSED JUMPER by BAPTISTE,DJERY
	08:10			REBOUND (OFF) by LACHANCE,RILEY
	08:03	20-27	V 7	GOOD! JUMPER by LACHANCE,RILEY [PNT]
GOOD! 3PTR by SNEED,XAVIER [FB]	07:57	20-30	V 10	
ASSIST by STOKES,KAMAU	07:57			
	07:34			TURNOVER by FISHER-DAVIS,MATTHEW
	07:34			FOUL by FISHER-DAVIS,MATTHEW
	07:34			SUB IN: WILLIS,PAYTON
	07:34			SUB IN: BROWN,CLEVON
	07:34			SUB OUT: FISHER-DAVIS,MATTHEW
	07:34			SUB OUT: BAPTISTE,DJERY
GOOD! LAYUP by MAWIEN,MAKOL [PNT]	07:21	20-32	V 12	
ASSIST by STOKES,KAMAU	07:21			
	06:51			TURNOVER by WILLIS,PAYTON
STEAL by SNEED,XAVIER	06:51			
TURNOVER by BROWN,BARRY	06:46			
	06:44			STEAL by ROBERSON,JEFF
FOUL by MAWIEN,MAKOL	06:41			
	06:41	21-32	V 11	GOOD! FT by LEE,SABEN
	06:41			MISSED FT by LEE,SABEN
REBOUND (DEADB) by TEAM	06:41			
SUB IN: SALLAH,MAWDO	06:41			
SUB IN: PATRICK,BRIAN	06:41			
SUB OUT: MAWIEN,MAKOL	06:41			
SUB OUT: SNEED,XAVIER	06:41			

VISITORS: Kansas State	Time	Score	Margin	HOME: Vanderbilt
	06:40			FOUL by BROWN,CLEVON
TURNOVER by SALLAH,MAWDO	06:19			
	06:17			STEAL by LEE,SABEN
	06:13			MISSED 3PTR by LEE,SABEN
	06:13			REBOUND (OFF) by BROWN,CLEVON
	06:08			MISSED 3PTR by LACHANCE,RILEY
REBOUND (DEF) by BROWN,BARRY	06:08			
GOOD! LAYUP by BROWN,BARRY [PNT]	05:47	21-34	V 13	
	05:47			FOUL by WILLIS,PAYTON
GOOD! FT by BROWN,BARRY	05:47	21-35	V 14	
SUB IN: SNEED,XAVIER	05:47			
SUB OUT: WADE,DEAN	05:47			
	05:47			SUB IN: EVANS,MAXWELL
	05:47			SUB IN: TOYE,JOE
	05:47			SUB OUT: LACHANCE,RILEY
	05:47			SUB OUT: ROBERSON,JEFF
	05:28			MISSED 3PTR by WILLIS,PAYTON
REBOUND (DEF) by TEAM	05:28			
	05:25			SUB IN: FISHER-DAVIS,MATTHEW
	05:25			SUB OUT: WILLIS,PAYTON
	05:07			FOUL by BROWN,CLEVON
GOOD! FT by BROWN,BARRY	05:07	21-36	V 15	
GOOD! FT by BROWN,BARRY	05:07	21-37	V 16	
	04:37	24-37	V 13	GOOD! 3PTR by BROWN,CLEVON
	04:37			ASSIST by TOYE,JOE
MISSED 3PTR by SNEED,XAVIER	04:16			
REBOUND (OFF) by STOKES,KAMAU	04:16			
FOUL by SALLAH,MAWDO	03:55			
	03:55			TIMEOUT MEDIA
SUB IN: WADE,DEAN	03:55			
SUB IN: DIARRA,CARTIER	03:55			
SUB IN: STOCKARD III,LEVI	03:55			
SUB OUT: STOKES,KAMAU	03:55			
SUB OUT: SALLAH,MAWDO	03:55			
SUB OUT: PATRICK,BRIAN	03:55			
	03:37			MISSED 3PTR by EVANS,MAXWELL
REBOUND (DEF) by DIARRA,CARTIER	03:37			
TURNOVER by STOCKARD III,LEVI	03:28			
	03:14			MISSED 3PTR by BROWN,CLEVON
	03:14			REBOUND (OFF) by BROWN,CLEVON
	03:05			FOUL by TOYE,JOE
	03:05			TURNOVER by TOYE,JOE
TURNOVER by BROWN,BARRY	02:42			
	02:24			TURNOVER by FISHER-DAVIS,MATTHEW
STEAL by SNEED,XAVIER	02:19			
GOOD! LAYUP by SNEED,XAVIER [PNT]	02:08	24-39	V 15	
FOUL by STOCKARD III,LEVI	01:45			
	01:45	25-39	V 14	GOOD! FT by EVANS,MAXWELL
	01:45			MISSED FT by EVANS,MAXWELL
REBOUND (DEF) by WADE,DEAN	01:45			
SUB IN: STOKES,KAMAU	01:45			
SUB OUT: DIARRA,CARTIER	01:45			
	01:45			SUB IN: ROBERSON,JEFF
	01:45			SUB OUT: TOYE,JOE
	01:33			FOUL by EVANS,MAXWELL
GOOD! FT by STOCKARD III,LEVI	01:33	25-40	V 15	
GOOD! FT by STOCKARD III,LEVI	01:33	25-41	V 16	
	01:10	27-41	V 14	GOOD! DUNK by EVANS,MAXWELL [PNT]
	01:10			ASSIST by ROBERSON,JEFF
MISSED JUMPER by WADE,DEAN	00:52			
	00:52			REBOUND (DEF) by FISHER-DAVIS,MATTHEW
FOUL by STOCKARD III,LEVI	00:42			
	00:42			MISSED FT by LEE,SABEN
	00:42			REBOUND (DEADB) by TEAM
	00:42	28-41	V 13	GOOD! FT by LEE,SABEN
SUB IN: DIARRA,CARTIER	00:42			
SUB OUT: STOCKARD III,LEVI	00:42			
	00:42			SUB IN: TOYE,JOE
	00:42			SUB OUT: BROWN,CLEVON
TIMEOUT 30SEC	00:31			
	00:17			FOUL by LEE,SABEN
GOOD! FT by BROWN,BARRY	00:17	28-42	V 14	
GOOD! FT by BROWN,BARRY	00:17	28-43	V 15	
SUB IN: WAINRIGHT,AMAAD	00:17			
SUB OUT: WADE,DEAN	00:17			

VISITORS: Kansas State	Time	Score	Margin	HOME: Vanderbilt
FOUL by SNEED,XAVIER	00:02			
	00:02	29-43	V 14	GOOD! FT by ROBERSON,JEFF
	00:02	30-43	V 13	GOOD! FT by ROBERSON,JEFF
SUB IN: WADE,DEAN	00:02			
SUB OUT: DIARRA,CARTIER	00:02			
	00:02			SUB IN: BROWN,CLEVON
	00:02			SUB OUT: TOYE,JOE

Kansas State 43, Vanderbilt 30

Period 1-only	In Paint	Off T/O	2nd Chance	Fast Break	Bench	
KS	20	10	5	5	10	Score tied - 4 times
VU	4	1	2	0	9	Lead changed - 4 times

Official Basketball Box Score -- Game Totals -- Second Half Statistics  
 Kansas State vs Vanderbilt  
 12/3/2017 1:30 p.m. at Nashville, Tenn. (Memorial Gym)



**Kansas State 41 • 7-1**

##	Player	g	Total			3-Ptr			Rebounds			PF	TP	A	TO	Blk	Stl	Min
			FG-FGA	FG-FGA	FT-FTA	FG-FGA	FG-FGA	FT-FTA	Off	Def	Tot							
03	STOKES,KAMAU	g	3-5	0-1	6-6	0	0	0	2	12	3	0	0	0	0	0	20	
05	BROWN,BARRY	g	3-7	1-1	0-0	0	0	0	3	7	0	0	0	0	1	17		
14	MAWIEN,MAKOL	f	0-0	0-0	0-0	0	0	0	0	0	0	2	1	0	0	7		
20	SNEED,XAVIER	f	5-6	0-1	4-4	0	1	1	0	14	0	0	0	1	19			
32	WADE,DEAN	f	1-4	0-1	1-2	0	3	3	4	3	1	1	1	0	16			
01	SALLAH,MAWDO		0-0	0-0	0-0	0	0	0	2	0	0	0	0	0	2			
02	DIARRA,CARTIER		0-1	0-0	0-0	0	0	0	3	0	1	0	0	1	7			
11	PATRICK,BRIAN		0-0	0-0	0-0	0	0	0	0	0	0	0	0	0	0			
23	WAINRIGHT,AMAAD		0-0	0-0	0-0	0	0	0	0	0	0	0	0	0	2			
34	STOCKARD III,LEVI		1-1	0-0	3-4	1	0	1	0	5	0	0	0	0	10			
TEAM						1	1	2	0		0							
Totals			13-24	1-4	14-16	2	5	7	14	41	5	3	2	3	100			

FG %	Half:	13-24	54.2%
3FG %	Half:	1-4	37.5%
FT %	Half:	14-16	87.5%

**Vanderbilt 49 • 3-5**

##	Player	g	Total			3-Ptr			Rebounds			PF	TP	A	TO	Blk	Stl	Min
			FG-FGA	FG-FGA	FT-FTA	FG-FGA	FG-FGA	FT-FTA	Off	Def	Tot							
00	LEE,SABEN	g	2-4	0-1	4-5	0	1	1	2	8	3	2	0	0	0	16		
02	TOYE,JOE	f	4-5	1-1	2-2	1	0	1	2	11	1	1	0	0	11			
11	ROBERSON,JEFF	f	4-6	2-2	4-6	5	1	6	1	14	1	0	2	1	20			
12	BAPTISTE,DJERY	c	2-4	0-0	1-2	4	3	7	4	5	0	2	1	1	15			
13	LACHANCE,RILEY	g	3-5	1-3	0-0	0	2	2	4	7	0	1	0	0	13			
01	WILLIS,PAYTON		0-2	0-2	1-2	0	1	1	1	1	0	0	0	0	11			
05	FISHER-DAVIS,MATTHEW		1-3	1-2	0-0	0	1	1	1	3	1	0	0	0	11			
10	EVANS,MAXWELL		0-0	0-0	0-0	0	0	0	0	0	0	0	0	0	0			
15	BROWN,CLEVON		0-0	0-0	0-0	0	0	0	0	0	0	1	0	0	3			
TEAM						1	1	2	0		0							
Totals			16-29	5-11	12-17	11	10	21	15	49	6	7	3	2	100			

FG %	Half:	16-29	55.2%
3FG %	Half:	5-11	35.7%
FT %	Half:	12-17	70.6%

Officials: Pat Adams, Doug Sirmons, Kipp Kissinger  
 Technical Fouls: Kansas State- BROWN,BARRY; Vanderbilt- LACHANCE,RILEY;

Score by periods	1st	2nd	Total
Kansas State	43	41	<b>84</b>
Vanderbilt	30	49	<b>79</b>

Points	In Paint	Off T/O	2nd Chance	Fast Break	Bench
KS	14	11	4	2	5
VU	22	7	14	3	4

Last FG - KS 2nd-01:08, VU 2nd-00:49.  
 KS led for 19:38. VU led for 0:00. Game was tied for 0:22.

Score tied - 1 times  
 Lead changed - 0 times



**Kansas State vs Vanderbilt**  
**12/3/2017; 1:30 p.m. at Nashville, Tenn. (Memorial Gym)**  
**Period 2 Play-By-Play**



VISITORS: Kansas State	Time	Score	Margin	HOME: Vanderbilt
MISSED JUMPER by BROWN,BARRY	19:46			
	19:46			REBOUND (DEF) by BAPTISTE,DJERY
	19:28			MISSED LAYUP by ROBERSON,JEFF
	19:28			REBOUND (OFF) by BAPTISTE,DJERY
	19:23			MISSED LAYUP by TOYE,JOE
BLOCK by MAWIEN,MAKOL	19:23			
	19:20			REBOUND (OFF) by BAPTISTE,DJERY
FOUL by WADE,DEAN	19:20			
	19:20			MISSED FT by BAPTISTE,DJERY
	19:20			REBOUND (DEADB) by TEAM
	19:20	31-43	V 12	GOOD! FT by BAPTISTE,DJERY
	19:01			FOUL by LEE,SABEN
	19:01			FOUL by LACHANCE,RILEY
GOOD! 3PTR by BROWN,BARRY	18:50	31-46	V 15	
ASSIST by WADE,DEAN	18:50			
	18:25	33-46	V 13	GOOD! JUMPER by BAPTISTE,DJERY [PNT]
MISSED JUMPER by WADE,DEAN	18:07			
	18:07			REBOUND (DEF) by BAPTISTE,DJERY
	17:57			FOUL by BAPTISTE,DJERY
	17:57			TURNOVER by BAPTISTE,DJERY
TURNOVER by WADE,DEAN	17:30			
	17:26			MISSED 3PTR by LACHANCE,RILEY
	17:26			REBOUND (OFF) by ROBERSON,JEFF
	17:20	35-46	V 11	GOOD! TIPIN by ROBERSON,JEFF [PNT]
GOOD! JUMPER by STOKES,KAMAU	17:08	35-48	V 13	
	16:50	37-48	V 11	GOOD! LAYUP by LEE,SABEN [PNT]
MISSED JUMPER by STOKES,KAMAU	16:28			
	16:28			REBOUND (DEF) by ROBERSON,JEFF
	16:19			MISSED LAYUP by BAPTISTE,DJERY
	16:19			REBOUND (OFF) by TOYE,JOE
	16:18	39-48	V 9	GOOD! LAYUP by TOYE,JOE [PNT]
TIMEOUT 30SEC	16:17			
SUB IN: SALLAH,MAWDO	16:17			
SUB OUT: MAWIEN,MAKOL	16:17			
GOOD! DUNK by SNEED,XAVIER [PNT]	16:07	39-50	V 11	
ASSIST by STOKES,KAMAU	16:07			
	15:50			MISSED JUMPER by ROBERSON,JEFF
	15:50			REBOUND (OFF) by BAPTISTE,DJERY
FOUL by SALLAH,MAWDO	15:48			
	15:47			TIMEOUT MEDIA
	15:39	41-50	V 9	GOOD! LAYUP by TOYE,JOE [PNT]
GOOD! JUMPER by SNEED,XAVIER	15:18	41-52	V 11	
ASSIST by STOKES,KAMAU	15:18			
FOUL by BROWN,BARRY	15:07			
FOUL by SALLAH,MAWDO	14:48			
	14:48	42-52	V 10	GOOD! FT by ROBERSON,JEFF
	14:48	43-52	V 9	GOOD! FT by ROBERSON,JEFF
SUB IN: MAWIEN,MAKOL	14:48			
SUB OUT: SALLAH,MAWDO	14:48			
GOOD! LAYUP by STOKES,KAMAU [PNT]	14:30	43-54	V 11	
	14:11	45-54	V 9	GOOD! JUMPER by TOYE,JOE [PNT]
TURNOVER by MAWIEN,MAKOL	13:50			
	13:50			STEAL by ROBERSON,JEFF
	13:21			MISSED JUMPER by LEE,SABEN
	13:21			REBOUND (OFF) by BAPTISTE,DJERY
	13:15			MISSED JUMPER by BAPTISTE,DJERY
BLOCK by WADE,DEAN	13:15			
	13:15			REBOUND (OFF) by TEAM
	13:10			MISSED 3PTR by LACHANCE,RILEY
	13:10			REBOUND (OFF) by ROBERSON,JEFF
	13:07	47-54	V 7	GOOD! JUMPER by LACHANCE,RILEY [PNT]
GOOD! JUMPER by WADE,DEAN	12:45	47-56	V 9	
TIMEOUT 30SEC	12:41			
	12:28			TURNOVER by TOYE,JOE
STEAL by BROWN,BARRY	12:27			
	12:25			FOUL by LACHANCE,RILEY
GOOD! JUMPER by SNEED,XAVIER	12:22	47-58	V 11	
ASSIST by STOKES,KAMAU	12:22			
	12:02	49-58	V 9	GOOD! LAYUP by ROBERSON,JEFF [PNT]

VISITORS: Kansas State	Time	Score	Margin	HOME: Vanderbilt
	12:02			ASSIST by LEE,SABEN
TURNOVER by MAWIEN,MAKOL	11:36			
	11:35			STEAL by BAPTISTE,DJERY
	11:31	52-58	V 6	GOOD! 3PTR by ROBERSON,JEFF [FB]
	11:31			ASSIST by TOYE,JOE
MISSED LAYUP by BROWN,BARRY	11:15			
	11:15			BLOCK by BAPTISTE,DJERY
	11:13			REBOUND (DEF) by LACHANCE,RILEY
	11:10			MISSED 3PTR by LEE,SABEN
REBOUND (DEF) by SNEED,XAVIER	11:10			
	11:06			FOUL by BAPTISTE,DJERY
TIMEOUT MEDIA	11:06			
SUB IN: STOCKARD III,LEVI	11:06			
SUB OUT: MAWIEN,MAKOL	11:06			
	11:06			SUB IN: BROWN,CLEVON
	11:06			SUB IN: FISHER-DAVIS,MATTHEW
	11:06			SUB IN: WILLIS,PAYTON
	11:06			SUB OUT: LEE,SABEN
	11:06			SUB OUT: TOYE,JOE
	11:06			SUB OUT: BAPTISTE,DJERY
MISSED LAYUP by BROWN,BARRY	10:49			
	10:49			REBOUND (DEF) by TEAM
	10:33	54-58	V 4	GOOD! LAYUP by LACHANCE,RILEY [PNT]
	10:33			ASSIST by FISHER-DAVIS,MATTHEW
MISSED 3PTR by STOKES,KAMAU	10:07			
	10:07			REBOUND (DEF) by LACHANCE,RILEY
	09:41			MISSED 3PTR by WILLIS,PAYTON
	09:41			REBOUND (OFF) by ROBERSON,JEFF
	09:15	57-58	V 1	GOOD! 3PTR by LACHANCE,RILEY
GOOD! JUMPER by BROWN,BARRY	08:55	57-60	V 3	
	08:29			TURNOVER by BROWN,CLEVON
SUB IN: DIARRA,CARTIER	08:29			
SUB OUT: WADE,DEAN	08:29			
	08:11			FOUL by FISHER-DAVIS,MATTHEW
MISSED FT by STOCKARD III,LEVI	08:11			
REBOUND (DEADB) by TEAM	08:11			
	08:11			TIMEOUT 30SEC
TIMEOUT MEDIA	08:11			
GOOD! FT by STOCKARD III,LEVI	08:11	57-61	V 4	
SUB IN: WAINRIGHT,AMAAD	08:11			
SUB OUT: BROWN,BARRY	08:11			
	08:11			SUB IN: BAPTISTE,DJERY
	08:11			SUB OUT: BROWN,CLEVON
	07:44			MISSED JUMPER by FISHER-DAVIS,MATTHEW
	07:44			REBOUND (OFF) by ROBERSON,JEFF
FOUL by DIARRA,CARTIER	07:41			
FOUL by BROWN,BARRY	07:41			
SUB IN: BROWN,BARRY	07:41			
SUB OUT: DIARRA,CARTIER	07:41			
	07:39			FOUL by LACHANCE,RILEY
	07:39			TURNOVER by LACHANCE,RILEY
	07:38			FOUL (TECH) by LACHANCE,RILEY
	07:38			FOUL by LACHANCE,RILEY
FOUL (TECH) by BROWN,BARRY	07:38			
FOUL by BROWN,BARRY	07:38			
GOOD! LAYUP by STOKES,KAMAU [PNT]	07:27	57-63	V 6	
	07:21			TIMEOUT 30SEC
SUB IN: DIARRA,CARTIER	07:21			
SUB IN: WADE,DEAN	07:21			
SUB OUT: SNEED,XAVIER	07:21			
SUB OUT: BROWN,BARRY	07:21			
	07:21			SUB IN: LEE,SABEN
	07:21			SUB OUT: LACHANCE,RILEY
FOUL by DIARRA,CARTIER	07:15			
	07:15	58-63	V 5	GOOD! FT by LEE,SABEN
	07:15	59-63	V 4	GOOD! FT by LEE,SABEN
MISSED LAYUP by DIARRA,CARTIER	07:03			
	07:03			BLOCK by ROBERSON,JEFF
REBOUND (OFF) by STOCKARD III,LEVI	07:01			
GOOD! LAYUP by STOCKARD III,LEVI [PNT]	06:58	59-65	V 6	
	06:49	62-65	V 3	GOOD! 3PTR by ROBERSON,JEFF
	06:49			ASSIST by LEE,SABEN
MISSED JUMPER by WADE,DEAN	06:18			
	06:18			REBOUND (DEF) by WILLIS,PAYTON
FOUL by WADE,DEAN	06:12			

VISITORS: Kansas State	Time	Score	Margin	HOME: Vanderbilt
	06:12	63-65	V 2	GOOD! FT by WILLIS,PAYTON
	06:12			MISSED FT by WILLIS,PAYTON
REBOUND (DEF) by WADE,DEAN	06:12			
SUB IN: SNEED,XAVIER	06:12			
SUB OUT: WAINRIGHT,AMAAD	06:12			
	05:57			FOUL by ROBERSON,JEFF
GOOD! FT by STOKES,KAMAU	05:57	63-66	V 3	
GOOD! FT by STOKES,KAMAU	05:57	63-67	V 4	
	05:40	65-67	V 2	GOOD! LAYUP by LEE,SABEN [PNT]
FOUL by DIARRA,CARTIER	05:40			
	05:40	66-67	V 1	GOOD! FT by LEE,SABEN
MISSED 3PTR by WADE,DEAN	05:29			
	05:29			REBOUND (DEF) by FISHER-DAVIS,MATTHEW
	05:03			TURNOVER by BAPTISTE,DJERY
GOOD! JUMPER by SNEED,XAVIER [PNT]	04:50	66-69	V 3	
	04:25			MISSED 3PTR by WILLIS,PAYTON
	04:25			REBOUND (OFF) by ROBERSON,JEFF
FOUL by STOKES,KAMAU	04:22			
	04:22	67-69	V 2	GOOD! FT by ROBERSON,JEFF
	04:22	68-69	V 1	GOOD! FT by ROBERSON,JEFF
SUB IN: BROWN,BARRY	04:22			
SUB OUT: DIARRA,CARTIER	04:22			
SUB IN: DIARRA,CARTIER	04:19			
SUB OUT: WADE,DEAN	04:19			
MISSED 3PTR by SNEED,XAVIER	04:02			
	04:02			REBOUND (DEF) by LEE,SABEN
	03:56			TURNOVER by LEE,SABEN
STEAL by DIARRA,CARTIER	03:55			
GOOD! LAYUP by SNEED,XAVIER [FB/PNT]	03:52	68-71	V 3	
ASSIST by DIARRA,CARTIER	03:52			
	03:33	71-71	T	GOOD! 3PTR by FISHER-DAVIS,MATTHEW
	03:33			ASSIST by LEE,SABEN
	03:11			FOUL by WILLIS,PAYTON
TIMEOUT MEDIA	03:11			
GOOD! FT by SNEED,XAVIER	03:11	71-72	V 1	
GOOD! FT by SNEED,XAVIER	03:11	71-73	V 2	
SUB IN: WADE,DEAN	03:11			
SUB OUT: BROWN,BARRY	03:11			
FOUL by WADE,DEAN	02:55			
	02:55			MISSED FT by ROBERSON,JEFF
	02:55			REBOUND (DEADB) by TEAM
	02:55			MISSED FT by ROBERSON,JEFF
REBOUND (DEF) by WADE,DEAN	02:55			
SUB IN: BROWN,BARRY	02:55			
SUB OUT: DIARRA,CARTIER	02:55			
	02:54			FOUL by BAPTISTE,DJERY
GOOD! FT by WADE,DEAN	02:54	71-74	V 3	
MISSED FT by WADE,DEAN	02:54			
	02:54			REBOUND (DEF) by BAPTISTE,DJERY
	02:43	73-74	V 1	GOOD! LAYUP by BAPTISTE,DJERY [PNT]
	02:43			ASSIST by ROBERSON,JEFF
	02:18			FOUL by BAPTISTE,DJERY
GOOD! FT by STOKES,KAMAU	02:18	73-75	V 2	
GOOD! FT by STOKES,KAMAU	02:18	73-76	V 3	
	02:18			SUB IN: TOYE,JOE
	02:18			SUB OUT: BAPTISTE,DJERY
FOUL by STOKES,KAMAU	02:11			
	02:11	74-76	V 2	GOOD! FT by LEE,SABEN
	02:11			MISSED FT by LEE,SABEN
REBOUND (DEF) by WADE,DEAN	02:11			
	01:49			FOUL by LEE,SABEN
GOOD! FT by STOKES,KAMAU	01:49	74-77	V 3	
GOOD! FT by STOKES,KAMAU	01:49	74-78	V 4	
SUB IN: DIARRA,CARTIER	01:49			
SUB OUT: STOCKARD III,LEVI	01:49			
FOUL by WADE,DEAN	01:33			
	01:33	75-78	V 3	GOOD! FT by TOYE,JOE
	01:33	76-78	V 2	GOOD! FT by TOYE,JOE
SUB IN: STOCKARD III,LEVI	01:33			
SUB OUT: WADE,DEAN	01:33			
MISSED LAYUP by BROWN,BARRY	01:13			
	01:13			BLOCK by ROBERSON,JEFF
REBOUND (OFF) by TEAM	01:13			
GOOD! LAYUP by BROWN,BARRY [PNT]	01:08	76-80	V 4	
	00:49	79-80	V 1	GOOD! 3PTR by TOYE,JOE

<b>VISITORS: Kansas State</b>	<b>Time</b>	<b>Score</b>	<b>Margin</b>	<b>HOME: Vanderbilt</b>
	00:24			FOUL by TOYE,JOE
GOOD! FT by STOCKARD III,LEVI	00:24	79-81	V 2	
GOOD! FT by STOCKARD III,LEVI	00:24	79-82	V 3	
TIMEOUT TEAM	00:24			
SUB IN: WAINRIGHT,AMAAD	00:24			
SUB OUT: STOCKARD III,LEVI	00:24			
	00:15			TURNOVER by LEE,SABEN
STEAL by SNEED,XAVIER	00:14			
	00:13			FOUL by TOYE,JOE
GOOD! FT by SNEED,XAVIER	00:13	79-83	V 4	
GOOD! FT by SNEED,XAVIER	00:13	79-84	V 5	
	00:05			MISSED 3PTR by FISHER-DAVIS,MATTHEW
REBOUND (DEF) by TEAM	00:05			

Kansas State 84, Vanderbilt 79

<b>Period 2-only</b>	<b>In Paint</b>	<b>Off T/O</b>	<b>2nd Chance</b>	<b>Fast Break</b>	<b>Bench</b>	
KS	14	11	4	2	5	Score tied - 0 times
VU	22	7	14	3	4	Lead changed - 0 times

**Kansas State vs Vanderbilt**  
**12/3/2017; 1:30 p.m. at Nashville, Tenn. (Memorial Gym)**  
**Scoring/Runs Reference**



**Period 1**

Kansas State	VRun	Score	Margin	HRun	Vanderbilt
19:43 - STOKES 3PTR	-	3-0	-3		
		3-3	0		ROBERSON 3PTR - 19:18
		3-4	1	4-0	LEE FT - 18:49
		3-5	2	5-0	LEE FT - 18:49
18:02 - BROWN LAYUP [P]	-	5-5	0		
		5-8	3		LEE 3PTR - 17:29
17:08 - MAWIEN LAYUP [P]	-	7-8	1		
16:02 - STOKES JUMPER [F]	4-0	9-8	-1		
		9-11	2		ROBERSON 3PTR - 15:39
15:25 - SNEED JUMPER	-	11-11	0		
14:51 - STOKES 3PTR	5-0	14-11	-3		
14:04 - SALLAH LAYUP [P]	7-0	16-11	-5		
		16-14	-2		WILLIS 3PTR - 13:45
12:47 - DIARRA JUMPER [P]	-	18-14	-4		
		18-15	-3		LEE FT - 11:58
		18-16	-2	2-0	LEE FT - 11:58
11:43 - WAINRIGHT LAYUP [P]	-	20-16	-4		
11:10 - DIARRA LAYUP [P]	4-0	22-16	-6		
10:00 - BROWN JUMPER	6-0	24-16	-8		
		24-17	-7		LEE FT - 09:37
		24-18	-6	2-0	LEE FT - 09:37
08:37 - WADE LAYUP [P]	-	26-18	-8		
08:37 - WADE FT	3-0	27-18	-9		
		27-20	-7		LACHANCE JUMPER [P] - 08:03
07:57 - SNEED 3PTR [F]	-	30-20	-10		
07:21 - MAWIEN LAYUP [P]	5-0	32-20	-12		
		32-21	-11		LEE FT - 06:41
05:47 - BROWN LAYUP [P]	-	34-21	-13		
05:47 - BROWN FT	3-0	35-21	-14		
05:07 - BROWN FT	4-0	36-21	-15		
05:07 - BROWN FT	5-0	37-21	-16		
		37-24	-13		BROWN 3PTR - 04:37
02:08 - SNEED LAYUP [P]	-	39-24	-15		
		39-25	-14		EVANS FT - 01:45
01:33 - STOCKARD III FT	-	40-25	-15		
01:33 - STOCKARD III FT	2-0	41-25	-16		
		41-27	-14		EVANS DUNK [P] - 01:10
		41-28	-13	3-0	LEE FT - 00:42
00:17 - BROWN FT	-	42-28	-14		
00:17 - BROWN FT	2-0	43-28	-15		
		43-29	-14		ROBERSON FT - 00:02
		43-30	-13	2-0	ROBERSON FT - 00:02

**Kansas State vs Vanderbilt**  
**12/3/2017; 1:30 p.m. at Nashville, Tenn. (Memorial Gym)**  
**Scoring/Runs Reference**

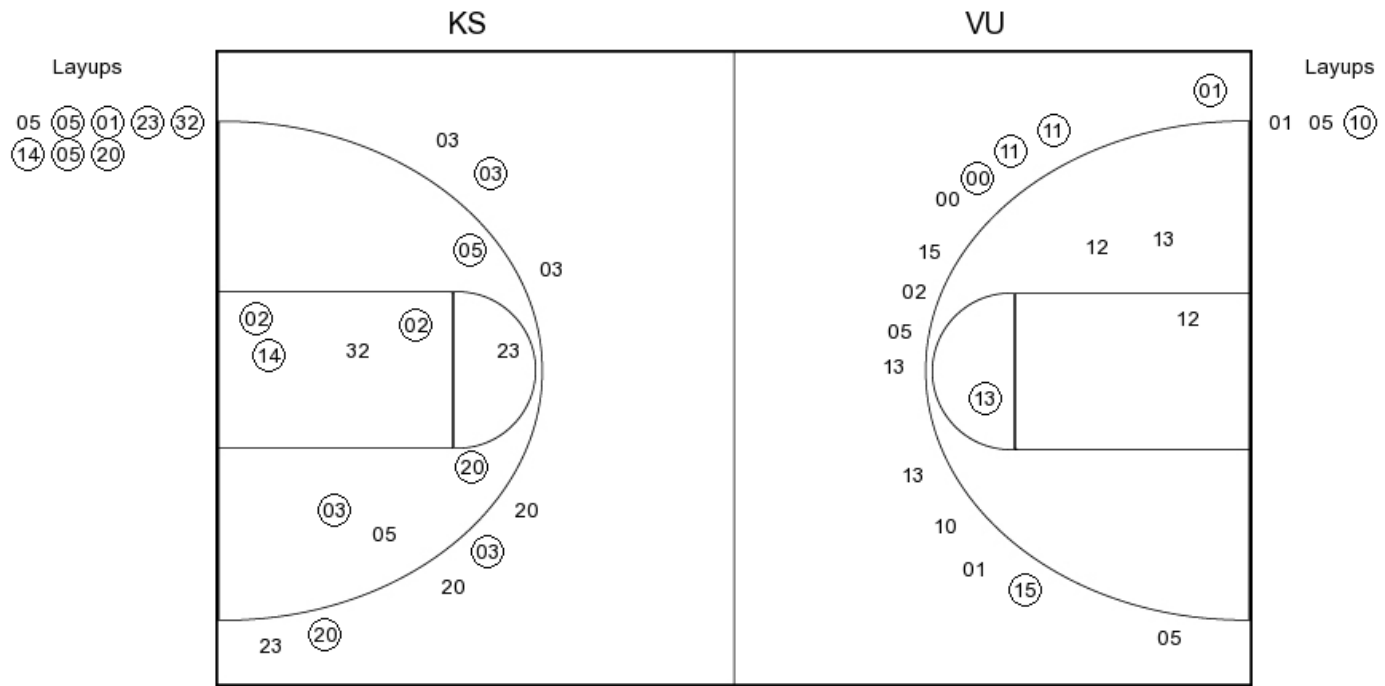


**Period 2**

Kansas State	VRun	Score	Margin	HRun	Vanderbilt
		43-31	-12		BAPTISTE FT - 19:20
18:50 - BROWN 3PTR	-	46-31	-15		
		46-33	-13		BAPTISTE JUMPER [P] - 18:25
		46-35	-11	4-0	ROBERSON TIPIN [P] - 17:20
17:08 - STOKES JUMPER	-	48-35	-13		
		48-37	-11		LEE LAYUP [P] - 16:50
		48-39	-9	4-0	TOYE LAYUP [P] - 16:18
16:07 - SNEED DUNK [P]	-	50-39	-11		
		50-41	-9		TOYE LAYUP [P] - 15:39
15:18 - SNEED JUMPER	-	52-41	-11		
		52-42	-10		ROBERSON FT - 14:48
		52-43	-9	2-0	ROBERSON FT - 14:48
14:30 - STOKES LAYUP [P]	-	54-43	-11		
		54-45	-9		TOYE JUMPER [P] - 14:11
		54-47	-7	4-0	LACHANCE JUMPER [P] - 13:07
12:45 - WADE JUMPER	-	56-47	-9		
12:22 - SNEED JUMPER	4-0	58-47	-11		
		58-49	-9		ROBERSON LAYUP [P] - 12:02
		58-52	-6	5-0	ROBERSON 3PTR [F] - 11:31
		58-54	-4	7-0	LACHANCE LAYUP [P] - 10:33
		58-57	-1	10-0	LACHANCE 3PTR - 09:15
08:55 - BROWN JUMPER	-	60-57	-3		
08:11 - STOCKARD III FT	3-0	61-57	-4		
07:27 - STOKES LAYUP [P]	5-0	63-57	-6		
		63-58	-5		LEE FT - 07:15
		63-59	-4	2-0	LEE FT - 07:15
06:58 - STOCKARD III LAYUP [P]	-	65-59	-6		
		65-62	-3		ROBERSON 3PTR - 06:49
		65-63	-2	4-0	WILLIS FT - 06:12
05:57 - STOKES FT	-	66-63	-3		
05:57 - STOKES FT	2-0	67-63	-4		
		67-65	-2		LEE LAYUP [P] - 05:40
		67-66	-1	3-0	LEE FT - 05:40
04:50 - SNEED JUMPER [P]	-	69-66	-3		
		69-67	-2		ROBERSON FT - 04:22
		69-68	-1	2-0	ROBERSON FT - 04:22
03:52 - SNEED LAYUP [P] [F]	-	71-68	-3		
		71-71	0		FISHER-DAVIS 3PTR - 03:33
03:11 - SNEED FT	-	72-71	-1		
03:11 - SNEED FT	2-0	73-71	-2		
02:54 - WADE FT	3-0	74-71	-3		
		74-73	-1		BAPTISTE LAYUP [P] - 02:43
02:18 - STOKES FT	-	75-73	-2		
02:18 - STOKES FT	2-0	76-73	-3		
		76-74	-2		LEE FT - 02:11
01:49 - STOKES FT	-	77-74	-3		
01:49 - STOKES FT	2-0	78-74	-4		
		78-75	-3		TOYE FT - 01:33
		78-76	-2	2-0	TOYE FT - 01:33
01:08 - BROWN LAYUP [P]	-	80-76	-4		
		80-79	-1		TOYE 3PTR - 00:49
00:24 - STOCKARD III FT	-	81-79	-2		
00:24 - STOCKARD III FT	2-0	82-79	-3		
00:13 - SNEED FT	3-0	83-79	-4		
00:13 - SNEED FT	4-0	84-79	-5		



**PERIOD 1**



**KS PERIOD 1**

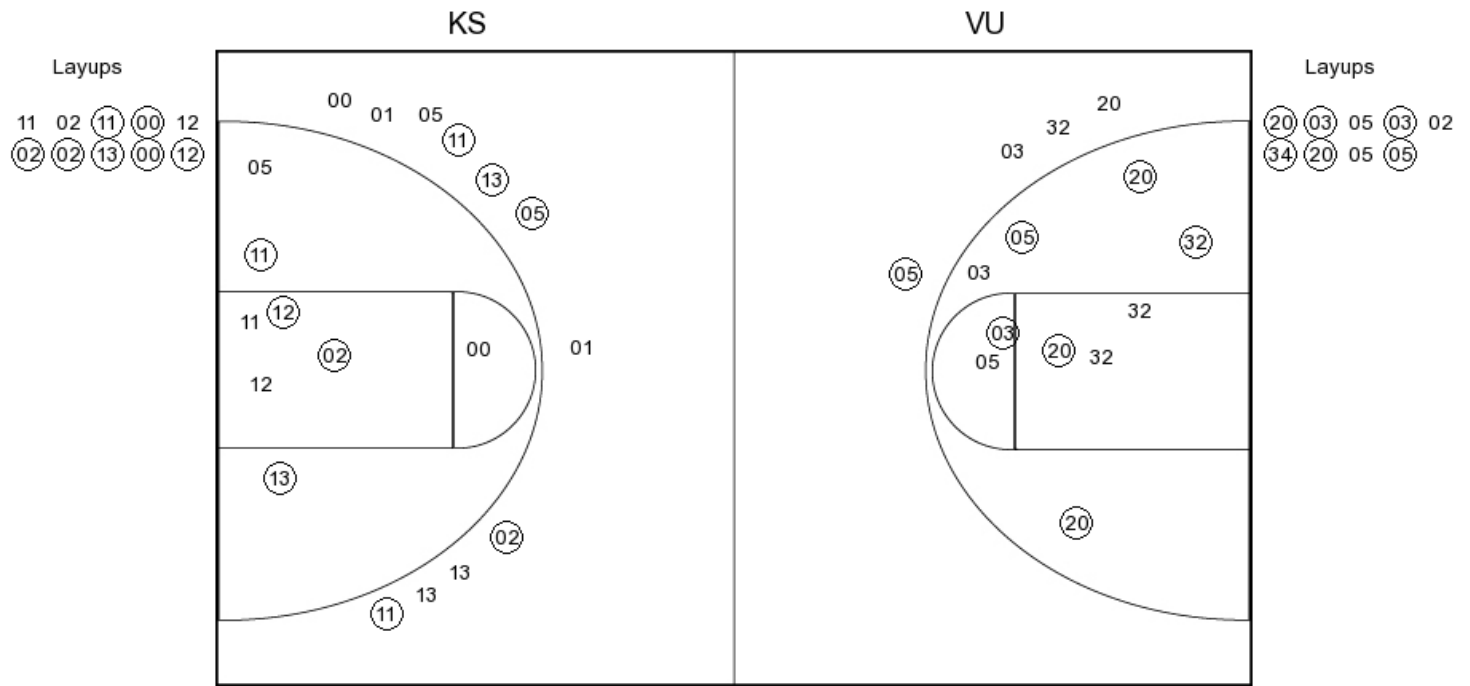
FG Made	16
FG Attempted	26
3PFG Made	3
3PFG Attempted	8

**VU PERIOD 1**

FG Made	7
FG Attempted	21
3PFG Made	5
3PFG Attempted	14



**PERIOD 2**



**KS PERIOD 2**

FG Made	13
FG Attempted	24
3PFG Made	1
3PFG Attempted	4

**VU PERIOD 2**

FG Made	16
FG Attempted	29
3PFG Made	5
3PFG Attempted	11



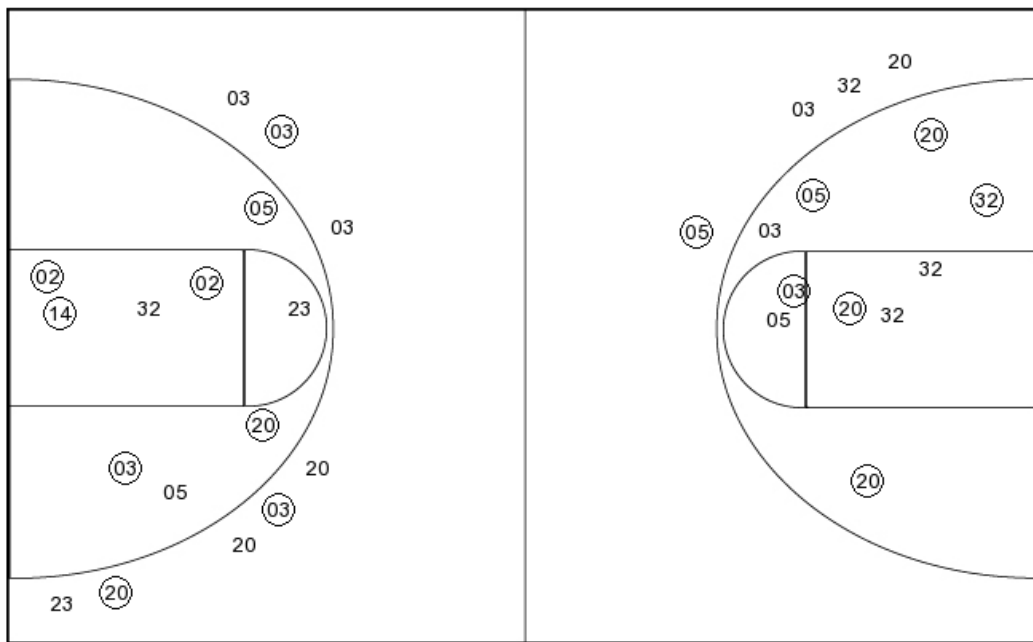


**Kansas State**

**PERIOD 1**

**PERIOD 2**

Layups  
 05 05 01 23 32  
 14 05 20



Layups  
 20 03 05 03 02  
 34 20 05 05

**KS PERIOD 1**

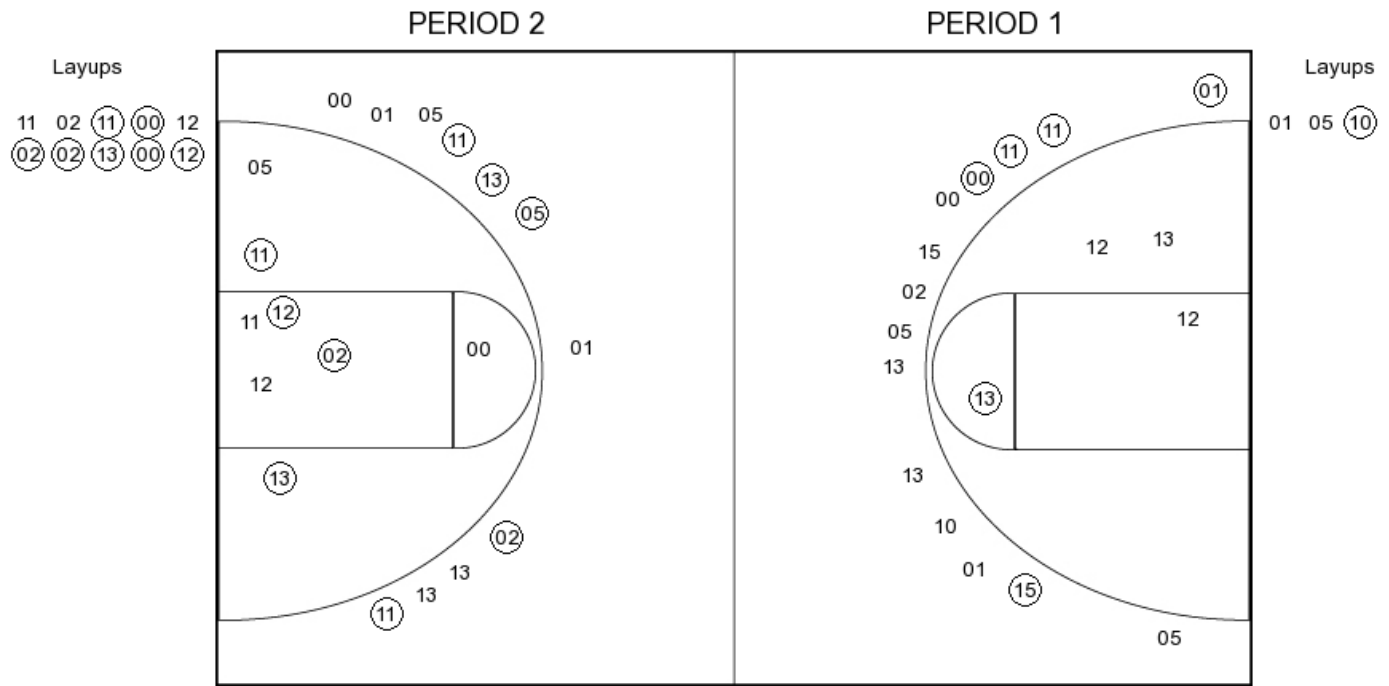
FG Made	16
FG Attempted	26
3PFG Made	3
3PFG Attempted	8

**KS PERIOD 2**

FG Made	13
FG Attempted	24
3PFG Made	1
3PFG Attempted	4



**Vanderbilt**



**VU PERIOD 1**

FG Made	7
FG Attempted	21
3PFG Made	5
3PFG Attempted	14

**VU PERIOD 2**

FG Made	16
FG Attempted	29
3PFG Made	5
3PFG Attempted	11