

FINAL SCORE



Morehead State

10-5, 1-1 OVC

64



Jacksonville State

8-5, 2-0 OVC

70

December 30, 2017 • Jacksonville, Ala. (Pete Mathews Col.)

FINAL STATISTICS

Official Basketball Box Score -- Game Totals -- Final Statistics
 Morehead State vs Jacksonville State
 12/30/2017 2:00 PM at Jacksonville, Ala. (Pete Mathews Col.)



Morehead State 64 - 10-5, 1-1 OVC

##	Player	*	Total		3-Ptr		Rebounds			PF	TP	A	TO	Blk	Stl	Min
			FG-FGA	FG-FGA	FT-FTA	Off	Def	Tot								
02	BLAINE,ERIN	*	2-4	0-0	0-0	0	1	1	1	4	1	1	0	1	24	
04	SEWARD,DARIANNE	*	6-19	2-7	3-3	1	4	5	4	17	2	3	0	2	38	
11	CROCKETT ,MIRANDA	*	10-17	0-0	1-2	3	2	5	4	21	2	3	0	3	35	
22	MCGOWAN,TIERRA	*	3-8	0-0	0-1	3	9	12	1	6	0	1	0	1	29	
32	MCKEE,ERIEL	*	3-10	1-1	3-6	0	3	3	3	10	2	3	2	2	34	
01	JACKSON,BREUNA		0-3	0-0	0-0	0	1	1	0	0	2	0	0	0	9	
20	TODD,BROOKE		3-6	0-0	0-0	1	1	2	1	6	0	0	1	0	15	
21	LOPEZ,ASHLEI		0-2	0-2	0-0	0	0	0	1	0	1	1	0	0	6	
25	NORMAN,SISALYNN		0-0	0-0	0-0	0	0	0	0	0	0	0	0	0	0	
33	ST. LOUIS,DOMINIQUE		0-0	0-0	0-0	0	0	0	1	0	0	0	0	0	10	
TEAM						4	2	6	0		0					
TOTALS			27-69	3-10	7-12	12	23	35	16	64	10	12	3	9	200	

Deadball Rebounds: 3,0

FG %	1st Half:	14-35	40.0%	2nd Half:	13-34	38.2%	Game:	27-69	39.1%	4th Qtr	6-19	31.6%
	1st Qtr	6-20	30.0%	2nd Qtr	8-15	53.3%	3rd Qtr	7-15	46.7%			
3FG %	1st Half:	1-4	25.0%	2nd Half:	2-6	33.3%	Game:	3-10	30.0%	4th Qtr	1-4	25.0%
	1st Qtr	0-2	00.0%	2nd Qtr	1-2	50.0%	3rd Qtr	1-2	50.0%			
FT %	1st Half:	5-7	71.4%	2nd Half:	2-5	40.0%	Game:	7-12	58.3%	4th Qtr	2-4	50.0%
	1st Qtr	1-1	100.0%	2nd Qtr	4-6	66.7%	3rd Qtr	0-1	00.0%			

Jacksonville State 70 - 8-5, 2-0 OVC

##	Player	*	Total		3-Ptr		Rebounds			PF	TP	A	TO	Blk	Stl	Min
			FG-FGA	FG-FGA	FT-FTA	Off	Def	Tot								
00	HAWKS,TAYLOR	*	2-10	1-6	0-0	0	4	4	1	5	8	3	0	0	25	
11	JOHNSON,KIANA	*	5-8	1-2	1-2	1	5	6	3	12	0	1	0	0	25	
24	MORRISON,GRET CHEN	*	2-8	2-8	4-5	0	2	2	1	10	2	0	0	1	36	
33	MAGRUDER,TASHA	*	2-4	0-0	0-0	1	1	2	0	4	2	1	0	1	15	
34	PEARSON,RAYVEN	*	5-6	0-0	2-2	1	9	10	1	12	2	3	2	0	29	
02	STRAIN,LEAH		2-6	1-4	2-2	1	2	3	0	7	3	2	0	0	15	
03	PATTERSON,KI-KI		1-2	0-0	0-0	0	1	1	1	2	2	2	0	0	15	
15	LONG,CHLOE		3-4	0-0	2-3	3	4	7	2	8	1	3	0	1	21	
22	WALKER,JAYLA		0-1	0-0	0-0	0	0	0	1	0	0	0	0	0	4	
32	PHELION,TYLER		4-8	0-0	2-3	2	4	6	0	10	0	2	4	2	15	
TEAM						1	0	1	0		3					
TOTALS			26-57	5-20	13-17	10	32	42	10	70	20	20	6	5	200	

Deadball Rebounds: 2,0

FG %	1st Half:	14-31	45.2%	2nd Half:	12-26	46.2%	Game:	26-57	45.6%	4th Qtr	6-14	42.9%
	1st Qtr	8-14	57.1%	2nd Qtr	6-17	35.3%	3rd Qtr	6-12	50.0%			
3FG %	1st Half:	2-11	18.2%	2nd Half:	3-9	33.3%	Game:	5-20	25.0%	4th Qtr	1-4	25.0%
	1st Qtr	1-4	25.0%	2nd Qtr	1-7	14.3%	3rd Qtr	2-5	40.0%			
FT %	1st Half:	3-6	50.0%	2nd Half:	10-11	90.9%	Game:	13-17	76.5%	4th Qtr	3-4	75.0%
	1st Qtr	0-0	0%	2nd Qtr	3-6	50.0%	3rd Qtr	7-7	100.0%			

Officials: R-Kylie Galloway, U1-Keith Wages, U2-Jeffrey McNichol
 Technical Fouls: Morehead State- None. Jacksonville State- TEAM;
 Attendance: 419

Score by periods	1st	2nd	3rd	4th	Total
Morehead State	13	21	15	15	64
Jacksonville State	17	16	21	16	70

Points	In	Off	2nd	Fast	Bench
	Paint	T/O	Chance	Break	
MOR-W	34	16	10	4	6
JSU	34	12	10	10	27

Last FG - MOR-W 4th-00:10, JSU 4th-01:40.
 Largest lead - Morehead State by 4 3rd-06:53; Jacksonville State by 9 4th-00:10
 MOR-W led for 15:15. JSU led for 18:14. Game was tied for 6:31.

Score tied - 9 times; Lead changed - 10 times

Official Basketball Box Score -- Game Totals -- First Half Statistics
 Morehead State vs Jacksonville State
 12/30/2017 2:00 PM at Jacksonville, Ala. (Pete Mathews Col.)



Morehead State 34 • 10-5, 1-1 OVC

##	Player	*	Total		3-Ptr	Rebounds			PF	TP	A	TO	Blk	Stl	Min
			FG-FGA	FG-FGA	FT-FTA	Off	Def	Tot							
02	BLAINE,ERIN	*	0-2	0-0	0-0	0	1	1	0	0	1	0	0	0	13
04	SEWARD,DARIANNE	*	3-9	1-3	1-1	0	3	3	0	8	1	2	0	1	19
11	CROCKETT,MIRANDA	*	6-8	0-0	1-2	3	1	4	1	13	0	1	0	1	15
22	MCGOWAN,TIERRA	*	1-3	0-0	0-0	0	6	6	1	2	0	0	0	0	12
32	MCKEE,ERIEL	*	2-5	0-0	3-4	0	2	2	2	7	1	1	1	2	15
01	JACKSON,BREUNA		0-2	0-0	0-0	0	1	1	0	0	1	0	0	0	6
20	TODD,BROOKE		2-5	0-0	0-0	1	1	2	1	4	0	0	0	0	10
21	LOPEZ,ASHLEI		0-1	0-1	0-0	0	0	0	0	0	1	1	0	0	4
25	NORMAN,SISALYNN		0-0	0-0	0-0	0	0	0	0	0	0	0	0	0	0
33	ST. LOUIS,DOMINIQUE		0-0	0-0	0-0	0	0	0	1	0	0	0	0	0	6
TEAM						2	1	3	0		0				
Totals			14-35	1-4	5-7	6	16	22	6	34	5	5	1	4	100
FG %	1st Qtr	6-20	30.0%	2nd Qtr	8-15	53.3%	Half:	14-35	40.0%						
3FG %	1st Qtr	0-2	00.0%	2nd Qtr	1-2	50.0%	Half:	1-4	25.0%						
FT %	1st Qtr	1-1	100.0%	2nd Qtr	4-6	66.7%	Half:	5-7	71.4%						

Jacksonville State 33 • 8-5, 2-0 OVC

##	Player	*	Total		3-Ptr	Rebounds			PF	TP	A	TO	Blk	Stl	Min
			FG-FGA	FG-FGA	FT-FTA	Off	Def	Tot							
00	HAWKS,TAYLOR	*	2-7	1-5	0-0	0	2	2	1	5	5	1	0	0	15
11	JOHNSON,KIANA	*	2-3	1-1	0-0	1	2	3	1	5	0	1	0	0	8
24	MORRISON,GRETCHEN	*	0-3	0-3	2-3	0	1	1	0	2	1	0	0	0	16
33	MAGRUDER,TASHA	*	2-4	0-0	0-0	1	1	2	0	4	2	1	0	1	15
34	PEARSON,RAYVEN	*	4-5	0-0	0-0	0	6	6	0	8	1	1	0	0	16
02	STRAIN,LEAH		0-2	0-2	0-0	0	1	1	0	0	2	1	0	0	5
03	PATTERSON,KI-KI		1-1	0-0	0-0	0	0	0	1	2	1	1	0	0	12
15	LONG,CHLOE		1-2	0-0	1-2	1	1	2	0	3	1	1	0	1	5
22	WALKER,JAYLA		0-1	0-0	0-0	0	0	0	1	0	0	0	0	0	4
32	PHELION,TYLER		2-3	0-0	0-1	0	1	1	0	4	0	0	1	1	4
TEAM						0	0	0	0		1				
Totals			14-31	2-11	3-6	3	15	18	4	33	13	8	1	3	100
FG %	1st Qtr	8-14	57.1%	2nd Qtr	6-17	35.3%	Half:	14-31	45.2%						
3FG %	1st Qtr	1-4	25.0%	2nd Qtr	1-7	14.3%	Half:	2-11	18.2%						
FT %	1st Qtr	0-0	0%	2nd Qtr	3-6	50.0%	Half:	3-6	50.0%						

Officials: R-Kylie Galloway, U1-Keith Wages, U2-Jeffrey McNichol
 Technical Fouls: Morehead State- None. Jacksonville State- None.

Score by periods	1st	2nd	3rd	4th	Total
Morehead State	13	21	15	15	64
Jacksonville State	17	16	21	16	70

Points	In Paint	Off T/O	2nd Chance	Fast Break	Bench
MOR-W	16	5	6	2	4
JACKSONVILLE STATE	18	8	0	8	9

Last FG - MOR-W 2nd-02:17, JSU 2nd-01:23.
 MOR-W led for 8:31. JSU led for 6:01. Game was tied for 5:28.

Score tied - 6 times
 Lead changed - 7 times

Morehead State vs Jacksonville State
12/30/2017; 2:00 PM at Jacksonville, Ala. (Pete Mathews Col.)
Period 1 Play-By-Play



VISITORS: Morehead State	Time	Score	Margin	HOME: Jacksonville State
	09:37			MISSED JUMPER by MAGRUDER,TASHA
REBOUND (DEF) by SEWARD,DARIANNE	09:37			
MISSED 3PTR by SEWARD,DARIANNE	09:13			
	09:13			REBOUND (DEF) by MAGRUDER,TASHA
	08:59			MISSED 3PTR by HAWKS,TAYLOR
REBOUND (DEF) by SEWARD,DARIANNE	08:59			
MISSED JUMPER by MCGOWAN,TIERRA	08:47			
	08:47			REBOUND (DEF) by PEARSON,RAYVEN
	08:36			TURNOVER by TEAM
MISSED JUMPER by MCKEE,ERIEL	08:26			
	08:26			REBOUND (DEF) by HAWKS,TAYLOR
	08:17			MISSED LAYUP by HAWKS,TAYLOR
REBOUND (DEF) by CROCKETT,MIRANDA	08:17			
	07:50	2-0	H 2	GOOD! LAYUP by PEARSON,RAYVEN [PNT]
	07:50			ASSIST by MAGRUDER,TASHA
	07:34			FOUL by HAWKS,TAYLOR
GOOD! LAYUP by SEWARD,DARIANNE [PNT]	07:34	2-2	T	
GOOD! FT by SEWARD,DARIANNE	07:34	2-3	V 1	
	07:34			TURNOVER by JOHNSON,KIANA
GOOD! LAYUP by SEWARD,DARIANNE [PNT]	07:34	2-5	V 3	
STEAL by SEWARD,DARIANNE	07:34			
	07:13			SUB IN: PATTERSON,KI-KI
	07:13			SUB OUT: JOHNSON,KIANA
	07:02			MISSED 3PTR by MORRISON,GRETCHEN
REBOUND (DEF) by MCKEE,ERIEL	07:02			
MISSED JUMPER by BLAINE,ERIN	06:53			
	06:53			REBOUND (DEF) by HAWKS,TAYLOR
	06:39			TURNOVER by PEARSON,RAYVEN
MISSED LAYUP by MCKEE,ERIEL	06:21			
	06:21			REBOUND (DEF) by MORRISON,GRETCHEN
SUB IN: TODD,BROOKE	06:16			
SUB OUT: BLAINE,ERIN	06:16			
	06:15			TURNOVER by HAWKS,TAYLOR
MISSED JUMPER by CROCKETT,MIRANDA	06:05			
REBOUND (OFF) by CROCKETT,MIRANDA	06:05			
MISSED JUMPER by TODD,BROOKE	06:00			
	06:00			REBOUND (DEF) by PEARSON,RAYVEN
FOUL by CROCKETT,MIRANDA	05:56			
SUB IN: JACKSON,BREUNA	05:56			
SUB OUT: CROCKETT,MIRANDA	05:56			
	05:49	4-5	V 1	GOOD! LAYUP by PATTERSON,KI-KI [FB/PNT]
MISSED JUMPER by JACKSON,BREUNA	05:24			
REBOUND (OFF) by TODD,BROOKE	05:24			
MISSED JUMPER by TODD,BROOKE	05:21			
	05:21			REBOUND (DEF) by PEARSON,RAYVEN
FOUL by MCGOWAN,TIERRA	05:19			
SUB IN: BLAINE,ERIN	05:19			
SUB OUT: MCGOWAN,TIERRA	05:19			
	05:13			TURNOVER by PATTERSON,KI-KI
STEAL by MCKEE,ERIEL	05:11			
GOOD! LAYUP by MCKEE,ERIEL [FB/PNT]	05:10	4-7	V 3	
FOUL by MCKEE,ERIEL	04:54			
	04:54			TIMEOUT MEDIA
SUB IN: CROCKETT,MIRANDA	04:54			
SUB OUT: MCKEE,ERIEL	04:54			
	04:48	7-7	T	GOOD! 3PTR by HAWKS,TAYLOR
	04:48			ASSIST by PEARSON,RAYVEN
MISSED JUMPER by JACKSON,BREUNA	04:37			
	04:37			REBOUND (DEF) by PEARSON,RAYVEN
	04:09			MISSED 3PTR by HAWKS,TAYLOR
REBOUND (DEF) by JACKSON,BREUNA	04:09			
MISSED LAYUP by SEWARD,DARIANNE	03:54			
	03:54			REBOUND (DEF) by PEARSON,RAYVEN
	03:48	9-7	H 2	GOOD! LAYUP by MAGRUDER,TASHA [FB/PNT]
	03:48			ASSIST by HAWKS,TAYLOR
GOOD! JUMPER by TODD,BROOKE	03:28	9-9	T	
ASSIST by JACKSON,BREUNA	03:28			
	03:09			MISSED LAYUP by MAGRUDER,TASHA
REBOUND (DEF) by SEWARD,DARIANNE	03:09			

VISITORS: Morehead State	Time	Score	Margin	HOME: Jacksonville State
MISSED JUMPER by SEWARD,DARIANNE	02:39			
REBOUND (OFF) by CROCKETT,MIRANDA	02:39			
GOOD! LAYUP by CROCKETT,MIRANDA [PNT]	02:37	9-11	V 2	
	02:06	11-11	T	GOOD! JUMPER by PEARSON,RAYVEN
	02:06			ASSIST by PATTERSON,KI-KI
MISSED JUMPER by SEWARD,DARIANNE	01:39			
REBOUND (OFF) by CROCKETT,MIRANDA	01:39			
GOOD! JUMPER by CROCKETT,MIRANDA [PNT]	01:35	11-13	V 2	
	01:13	13-13	T	GOOD! JUMPER by PEARSON,RAYVEN
	01:13			ASSIST by MORRISON,GRETCHEN
TURNOVER by SEWARD,DARIANNE	01:00			
	00:59			STEAL by MAGRUDER,TASHA
	00:55	15-13	H 2	GOOD! LAYUP by HAWKS,TAYLOR [FB/PNT]
	00:55			ASSIST by MAGRUDER,TASHA
TURNOVER by CROCKETT,MIRANDA	00:39			
SUB IN: LOPEZ,ASHLEI	00:39			
SUB IN: ST. LOUIS,DOMINIQUE	00:39			
SUB IN: MCKEE,ERIEL	00:39			
SUB OUT: TODD,BROOKE	00:39			
SUB OUT: JACKSON,BREUNA	00:39			
SUB OUT: BLAINE,ERIN	00:39			
	00:39			SUB IN: PHELION,TYLER
	00:39			SUB IN: STRAIN,LEAH
	00:39			SUB IN: LONG,CHLOE
	00:39			SUB IN: JOHNSON,KIANA
	00:39			SUB OUT: HAWKS,TAYLOR
	00:39			SUB OUT: PATTERSON,KI-KI
	00:39			SUB OUT: MAGRUDER,TASHA
	00:39			SUB OUT: PEARSON,RAYVEN
	00:22	17-13	H 4	GOOD! JUMPER by JOHNSON,KIANA
	00:22			ASSIST by LONG,CHLOE
MISSED 3PTR by LOPEZ,ASHLEI	00:03			
	00:03			REBOUND (DEF) by JOHNSON,KIANA

Morehead State 13, Jacksonville State 17

Period 1-only	In Paint	Off T/O	2nd Chance	Fast Break	Bench	
MOR-W	10	4	4	2	2	Score tied - 4 times
JSU	8	4	0	6	2	Lead changed - 4 times

Morehead State vs Jacksonville State
12/30/2017; 2:00 PM at Jacksonville, Ala. (Pete Mathews Col.)
Period 2 Play-By-Play



VISITORS: Morehead State	Time	Score	Margin	HOME: Jacksonville State
SUB IN: TODD,BROOKE	10:00			
SUB OUT: BLAINE,ERIN	10:00			
	10:00			SUB IN: WALKER,JAYLA
	10:00			SUB OUT: MORRISON,GRETCHEN
MISSED 3PTR by SEWARD,DARIANNE	09:50			
	09:50			REBOUND (DEF) by JOHNSON,KIANA
	09:35	19-13	H 6	GOOD! LAYUP by LONG,CHLOE [PNT]
	09:35			ASSIST by STRAIN,LEAH
MISSED LAYUP by MCGOWAN,TIERRA	09:22			
	09:22			REBOUND (DEF) by STRAIN,LEAH
	09:18			SUB IN: STRAIN,LEAH
	09:18			SUB OUT: HAWKS,TAYLOR
	09:15			MISSED JUMPER by WALKER,JAYLA
REBOUND (DEF) by MCGOWAN,TIERRA	09:15			
MISSED JUMPER by TODD,BROOKE	08:56			
	08:56			REBOUND (DEF) by PHELION,TYLER
	08:49			TURNOVER by STRAIN,LEAH
STEAL by MCKEE,ERIEL	08:48			
	08:40			FOUL by WALKER,JAYLA
MISSED FT by MCKEE,ERIEL	08:40			
REBOUND (DEADB) by TEAM	08:40			
GOOD! FT by MCKEE,ERIEL	08:40	19-14	H 5	
SUB IN: LOPEZ,ASHLEI	08:40			
SUB IN: ST. LOUIS,DOMINIQUE	08:40			
SUB OUT: TODD,BROOKE	08:40			
SUB OUT: SEWARD,DARIANNE	08:40			
	08:34			TURNOVER by LONG,CHLOE
STEAL by CROCKETT,MIRANDA	08:32			
SUB IN: JACKSON,BREUNA	08:31			
SUB OUT: LOPEZ,ASHLEI	08:31			
TURNOVER by LOPEZ,ASHLEI	08:30			
	08:20			MISSED 3PTR by STRAIN,LEAH
REBOUND (DEF) by MCGOWAN,TIERRA	08:20			
	07:58			FOUL by JOHNSON,KIANA
GOOD! FT by MCKEE,ERIEL	07:58	19-15	H 4	
GOOD! FT by MCKEE,ERIEL	07:58	19-16	H 3	
SUB IN: SEWARD,DARIANNE	07:58			
SUB OUT: JACKSON,BREUNA	07:58			
	07:50	22-16	H 6	GOOD! 3PTR by JOHNSON,KIANA
	07:50			ASSIST by STRAIN,LEAH
GOOD! JUMPER by CROCKETT,MIRANDA [PNT]	07:38	22-18	H 4	
	07:24			MISSED LAYUP by LONG,CHLOE
REBOUND (DEF) by MCGOWAN,TIERRA	07:24			
GOOD! JUMPER by CROCKETT,MIRANDA [PNT]	07:01	22-20	H 2	
	06:45			MISSED JUMPER by JOHNSON,KIANA
REBOUND (DEF) by MCGOWAN,TIERRA	06:45			
GOOD! JUMPER by CROCKETT,MIRANDA [PNT]	06:35	22-22	T	
	06:10			MISSED 3PTR by STRAIN,LEAH
REBOUND (DEF) by MCGOWAN,TIERRA	06:10			
MISSED LAYUP by SEWARD,DARIANNE	05:42			
	05:42			BLOCK by PHELION,TYLER
REBOUND (OFF) by TEAM	05:42			
SUB IN: TODD,BROOKE	05:42			
SUB IN: LOPEZ,ASHLEI	05:42			
SUB IN: BLAINE,ERIN	05:42			
SUB OUT: ST. LOUIS,DOMINIQUE	05:42			
SUB OUT: CROCKETT,MIRANDA	05:42			
SUB OUT: MCGOWAN,TIERRA	05:42			
	05:42			SUB IN: PATTERSON,KI-KI
	05:42			SUB IN: PHELION,TYLER
	05:42			SUB IN: MORRISON,GRETCHEN
	05:42			SUB IN: LONG,CHLOE
	05:42			SUB IN: HAWKS,TAYLOR
	05:42			SUB OUT: STRAIN,LEAH
	05:42			SUB OUT: JOHNSON,KIANA
	05:42			SUB OUT: WALKER,JAYLA
	05:42			SUB OUT: MAGRUDER,TASHA
	05:42			SUB OUT: PEARSON,RAYVEN
TURNOVER by SEWARD,DARIANNE	05:41			

VISITORS: Morehead State	Time	Score	Margin	HOME: Jacksonville State
	05:40			STEAL by PHELION,TYLER
	05:36	24-22	H 2	GOOD! LAYUP by PHELION,TYLER [FB/PNT]
	05:36			ASSIST by HAWKS,TAYLOR
FOUL by TODD,BROOKE	05:36			
	05:36			MISSED FT by PHELION,TYLER
	05:36			REBOUND (OFF) by LONG,CHLOE
	05:36			MISSED 3PTR by MORRISON,GRETCHEN
REBOUND (DEF) by TODD,BROOKE	05:36			
GOOD! 3PTR by SEWARD,DARIANNE	05:16	24-25	V 1	
ASSIST by LOPEZ,ASHLEI	05:16			
	04:56			MISSED JUMPER by PHELION,TYLER
REBOUND (DEF) by BLAINE,ERIN	04:56			
MISSED LAYUP by BLAINE,ERIN	04:31			
	04:31			REBOUND (DEF) by LONG,CHLOE
	04:22	26-25	H 1	GOOD! LAYUP by PHELION,TYLER [PNT]
	04:22			ASSIST by HAWKS,TAYLOR
GOOD! JUMPER by TODD,BROOKE	04:04	26-27	V 1	
ASSIST by BLAINE,ERIN	04:04			
	03:43			MISSED 3PTR by HAWKS,TAYLOR
REBOUND (DEF) by MCKEE,ERIEL	03:43			
GOOD! JUMPER by MCKEE,ERIEL	03:35	26-29	V 3	
FOUL by MCKEE,ERIEL	03:16			
	03:11			TIMEOUT MEDIA
	03:11	27-29	V 2	GOOD! FT by MORRISON,GRETCHEN
	03:11			MISSED FT by MORRISON,GRETCHEN
	03:11			REBOUND (DEADB) by TEAM
	03:11	28-29	V 1	GOOD! FT by MORRISON,GRETCHEN
SUB IN: JACKSON,BREUNA	03:11			
SUB IN: MCGOWAN,TIERRA	03:11			
SUB IN: CROCKETT,MIRANDA	03:11			
SUB OUT: TODD,BROOKE	03:11			
SUB OUT: LOPEZ,ASHLEI	03:11			
SUB OUT: MCKEE,ERIEL	03:11			
	03:11			SUB IN: MAGRUDER,TASHA
	03:11			SUB OUT: LONG,CHLOE
MISSED JUMPER by CROCKETT,MIRANDA	02:56			
REBOUND (OFF) by TEAM	02:56			
GOOD! JUMPER by CROCKETT,MIRANDA	02:53	28-31	V 3	
ASSIST by MCKEE,ERIEL	02:53			
SUB IN: MCKEE,ERIEL	02:53			
SUB OUT: JACKSON,BREUNA	02:53			
	02:53			SUB IN: PEARSON,RAYVEN
	02:53			SUB OUT: PHELION,TYLER
	02:40	30-31	V 1	GOOD! LAYUP by MAGRUDER,TASHA [PNT]
	02:40			ASSIST by HAWKS,TAYLOR
GOOD! JUMPER by MCGOWAN,TIERRA	02:17	30-33	V 3	
ASSIST by SEWARD,DARIANNE	02:17			
	01:56			MISSED 3PTR by MORRISON,GRETCHEN
	01:56			REBOUND (OFF) by MAGRUDER,TASHA
	01:53			SUB IN: LONG,CHLOE
	01:53			SUB OUT: MAGRUDER,TASHA
	01:52			TURNOVER by MAGRUDER,TASHA
TURNOVER by MCKEE,ERIEL	01:39			
	01:39			STEAL by LONG,CHLOE
SUB IN: ST. LOUIS,DOMINIQUE	01:39			
SUB IN: LOPEZ,ASHLEI	01:39			
SUB OUT: MCKEE,ERIEL	01:39			
SUB OUT: BLAINE,ERIN	01:39			
	01:23	32-33	V 1	GOOD! LAYUP by PEARSON,RAYVEN [PNT]
	01:23			ASSIST by HAWKS,TAYLOR
	01:05			FOUL by PATTERSON,KI-KI
MISSED FT by CROCKETT,MIRANDA	01:05			
REBOUND (DEADB) by TEAM	01:05			
GOOD! FT by CROCKETT,MIRANDA	01:05	32-34	V 2	
SUB IN: MCKEE,ERIEL	01:05			
SUB OUT: LOPEZ,ASHLEI	01:05			
	01:05			SUB IN: JOHNSON,KIANA
	01:05			SUB IN: PHELION,TYLER
	01:05			SUB OUT: PATTERSON,KI-KI
	00:50			MISSED 3PTR by HAWKS,TAYLOR
BLOCK by MCKEE,ERIEL	00:50			
REBOUND (DEF) by MCGOWAN,TIERRA	00:48			
MISSED JUMPER by MCKEE,ERIEL	00:13			
	00:13			REBOUND (DEF) by PEARSON,RAYVEN
SUB IN: NORMAN,SISALYNN	00:03			

VISITORS: Morehead State	Time	Score	Margin	HOME: Jacksonville State
SUB IN: JACKSON,BREUNA	00:03			
SUB OUT: SEWARD,DARIANNE	00:03			
SUB OUT: MCKEE,ERIEL	00:03			
FOUL by ST. LOUIS,DOMINIQUE	00:02			
	00:02	33-34	V 1	GOOD! FT by LONG,CHLOE
	00:02			MISSED FT by LONG,CHLOE
	00:02			REBOUND (OFF) by JOHNSON,KIANA
SUB IN: SEWARD,DARIANNE	00:02			
SUB OUT: JACKSON,BREUNA	00:02			
	00:01			MISSED JUMPER by PEARSON,RAYVEN
REBOUND (DEF) by TEAM	00:01			
SUB IN: MCKEE,ERIEL	00:00			
SUB OUT: ST. LOUIS,DOMINIQUE	00:00			

Morehead State 34, Jacksonville State 33

Period 2-only	In Paint	Off T/O	2nd Chance	Fast Break	Bench	
MOR-W	6	1	2	0	2	Score tied - 2 times
JSU	10	4	0	2	7	Lead changed - 4 times

Official Basketball Box Score -- Game Totals -- Second Half Statistics
 Morehead State vs Jacksonville State
 12/30/2017 2:00 PM at Jacksonville, Ala. (Pete Mathews Col.)



Morehead State 30 • 10-5, 1-1 OVC

##	Player	*	Total		3-Ptr	FT-FTA	Rebounds			PF	TP	A	TO	Blk	Stl	Min
			FG-FGA	FG-FGA	FG-FGA		Off	Def	Tot							
02	BLAINE,ERIN	*	2-2	0-0	0-0	0-0	0	0	0	1	4	0	1	0	1	11
04	SEWARD,DARIANNE	*	3-10	1-4	2-2	2-2	1	1	2	4	9	1	1	0	1	19
11	CROCKETT,MIRANDA	*	4-9	0-0	0-0	0-0	0	1	1	3	8	2	2	0	2	20
22	MCGOWAN,TIERRA	*	2-5	0-0	0-1	0-1	3	3	6	0	4	0	1	0	1	17
32	MCKEE,ERIEL	*	1-5	1-1	0-2	0-2	0	1	1	1	3	1	2	1	0	19
01	JACKSON,BREUNA		0-1	0-0	0-0	0-0	0	0	0	0	0	1	0	0	0	3
20	TODD,BROOKE		1-1	0-0	0-0	0-0	0	0	0	0	2	0	0	1	0	5
21	LOPEZ,ASHLEI		0-1	0-1	0-0	0-0	0	0	0	1	0	0	0	0	0	2
25	NORMAN,SISALYNN		0-0	0-0	0-0	0-0	0	0	0	0	0	0	0	0	0	0
33	ST. LOUIS,DOMINIQUE		0-0	0-0	0-0	0-0	0	0	0	0	0	0	0	0	0	4
TEAM							2	1	3	0		0				
Totals			13-34	2-6	2-5	2-5	6	7	13	10	30	5	7	2	5	100
FG %	3rd Qtr	7-15	46.7%	4th Qtr	6-19	31.6%	Half:	13-34	38.2%							
3FG %	3rd Qtr	1-2	50.0%	4th Qtr	1-4	25.0%	Half:	2-6	25.0%							
FT %	3rd Qtr	0-1	00.0%	4th Qtr	2-4	50.0%	Half:	2-5	40.0%							

Jacksonville State 37 • 8-5, 2-0 OVC

##	Player	*	Total		3-Ptr	FT-FTA	Rebounds			PF	TP	A	TO	Blk	Stl	Min
			FG-FGA	FG-FGA	FG-FGA		Off	Def	Tot							
00	HAWKS,TAYLOR	*	0-3	0-1	0-0	0-0	0	2	2	0	0	3	2	0	0	10
11	JOHNSON,KIANA	*	3-5	0-1	1-2	1-2	0	3	3	2	7	0	0	0	0	17
24	MORRISON,GRET CHEN	*	2-5	2-5	2-2	2-2	0	1	1	1	8	1	0	0	1	20
33	MAGRUDER,TASHA	*	0-0	0-0	0-0	0-0	0	0	0	0	0	0	0	0	0	0
34	PEARSON,RAYVEN	*	1-1	0-0	2-2	2-2	1	3	4	1	4	1	2	2	0	13
02	STRAIN,LEAH		2-4	1-2	2-2	2-2	1	1	2	0	7	1	1	0	0	10
03	PATTERSON,KI-KI		0-1	0-0	0-0	0-0	0	1	1	0	0	1	1	0	0	3
15	LONG,CHLOE		2-2	0-0	1-1	1-1	2	3	5	2	5	0	2	0	0	16
22	WALKER,JAYLA		0-0	0-0	0-0	0-0	0	0	0	0	0	0	0	0	0	0
32	PHELION,TYLER		2-5	0-0	2-2	2-2	2	3	5	0	6	0	2	3	1	11
TEAM							1	0	1	0		2				
Totals			12-26	3-9	10-11	10-11	7	17	24	6	37	7	12	5	2	100
FG %	3rd Qtr	6-12	50.0%	4th Qtr	6-14	42.9%	Half:	12-26	46.2%							
3FG %	3rd Qtr	2-5	40.0%	4th Qtr	1-4	25.0%	Half:	3-9	18.2%							
FT %	3rd Qtr	7-7	100.0%	4th Qtr	3-4	75.0%	Half:	10-11	90.9%							

Officials: R-Kylie Galloway, U1-Keith Wages, U2-Jeffrey McNichol
 Technical Fouls: Morehead State- None. Jacksonville State- TEAM;

Score by periods	1st	2nd	3rd	4th	Total
Morehead State	13	21	15	15	64
Jacksonville State	17	16	21	16	70

Points	In Paint	Off T/O	2nd Chance	Fast Break	Bench
MOR-W	18	11	4	2	2
JACKSONVILLE STATE	16	4	9	2	18

Last FG - MOR-W 4th-00:10, JSU 4th-01:40.
 MOR-W led for 6:44. JSU led for 12:13. Game was tied for 1:03.

Score tied - 3 times
 Lead changed - 3 times

Morehead State vs Jacksonville State
12/30/2017; 2:00 PM at Jacksonville, Ala. (Pete Mathews Col.)
Period 3 Play-By-Play



VISITORS: Morehead State	Time	Score	Margin	HOME: Jacksonville State
	10:00			SUB IN: LONG,CHLOE
	10:00			SUB OUT: MAGRUDER,TASHA
	09:43			MISSED LAYUP by HAWKS,TAYLOR
	09:43			REBOUND (OFF) by PEARSON,RAYVEN
	09:41	35-34	H 1	GOOD! LAYUP by PEARSON,RAYVEN [PNT]
MISSED JUMPER by CROCKETT,MIRANDA	09:31			
	09:31			REBOUND (DEF) by JOHNSON,KIANA
	09:09			MISSED 3PTR by HAWKS,TAYLOR
REBOUND (DEF) by MCGOWAN,TIERRA	09:09			
MISSED JUMPER by MCKEE,ERIEL	08:39			
	08:39			REBOUND (DEF) by PEARSON,RAYVEN
	08:23			TURNOVER by HAWKS,TAYLOR
STEAL by CROCKETT,MIRANDA	08:22			
GOOD! JUMPER by CROCKETT,MIRANDA [FB/PNT]	08:19	35-36	V 1	
	07:53			TURNOVER by PEARSON,RAYVEN
STEAL by SEWARD,DARIANNE	07:52			
MISSED LAYUP by SEWARD,DARIANNE	07:49			
REBOUND (OFF) by MCGOWAN,TIERRA	07:49			
MISSED LAYUP by MCGOWAN,TIERRA	07:46			
REBOUND (OFF) by SEWARD,DARIANNE	07:46			
TURNOVER by MCGOWAN,TIERRA	07:28			
	07:28			SUB IN: STRAIN,LEAH
	07:28			SUB OUT: HAWKS,TAYLOR
	07:08			FOUL by LONG,CHLOE
	07:08			TURNOVER by LONG,CHLOE
GOOD! 3PTR by SEWARD,DARIANNE	06:53	35-39	V 4	
ASSIST by CROCKETT,MIRANDA	06:53			
	06:36			MISSED 3PTR by STRAIN,LEAH
	06:36			REBOUND (OFF) by STRAIN,LEAH
	06:32			TURNOVER by STRAIN,LEAH
TURNOVER by BLAINE,ERIN	06:32			
SUB IN: ST. LOUIS,DOMINIQUE	06:14			
SUB OUT: BLAINE,ERIN	06:14			
SUB IN: BLAINE,ERIN	05:46			
SUB OUT: ST. LOUIS,DOMINIQUE	05:46			
FOUL by SEWARD,DARIANNE	05:45			
	05:46	36-39	V 3	GOOD! FT by STRAIN,LEAH
	05:46	37-39	V 2	GOOD! FT by STRAIN,LEAH
	05:33			FOUL by JOHNSON,KIANA
GOOD! LAYUP by SEWARD,DARIANNE [PNT]	05:28	37-41	V 4	
FOUL by SEWARD,DARIANNE	05:06			
	05:06	38-41	V 3	GOOD! FT by PEARSON,RAYVEN
	05:06	39-41	V 2	GOOD! FT by PEARSON,RAYVEN
FOUL by MCKEE,ERIEL	04:42			
TURNOVER by MCKEE,ERIEL	04:42			
	04:42			TIMEOUT MEDIA
	04:42			TURNOVER by TEAM
SUB IN: JACKSON,BREUNA	04:42			
SUB OUT: BLAINE,ERIN	04:42			
MISSED JUMPER by MCKEE,ERIEL	04:37			
REBOUND (OFF) by MCGOWAN,TIERRA	04:37			
GOOD! LAYUP by MCGOWAN,TIERRA [PNT]	04:35	39-43	V 4	
	04:12	42-43	V 1	GOOD! 3PTR by MORRISON,GRETCHEN
GOOD! LAYUP by MCGOWAN,TIERRA [PNT]	03:47	42-45	V 3	
ASSIST by JACKSON,BREUNA	03:47			
	03:47			FOUL by LONG,CHLOE
MISSED FT by MCGOWAN,TIERRA	03:47			
	03:47			REBOUND (DEF) by JOHNSON,KIANA
	03:47			SUB IN: PHELION,TYLER
	03:47			SUB OUT: PEARSON,RAYVEN
	03:31			MISSED LAYUP by STRAIN,LEAH
	03:31			REBOUND (OFF) by PHELION,TYLER
	03:30			TURNOVER by PHELION,TYLER
MISSED 3PTR by SEWARD,DARIANNE	03:09			
	03:09			REBOUND (DEF) by LONG,CHLOE
	02:39	45-45	T	GOOD! 3PTR by STRAIN,LEAH
	02:39			ASSIST by MORRISON,GRETCHEN
MISSED LAYUP by SEWARD,DARIANNE	02:28			
	02:28			BLOCK by PHELION,TYLER

VISITORS: Morehead State	Time	Score	Margin	HOME: Jacksonville State
SUB IN: BLAINE,ERIN	02:28			
SUB OUT: JACKSON,BREUNA	02:28			
REBOUND (OFF) by TEAM	02:27			
GOOD! LAYUP by CROCKETT,MIRANDA [PNT]	02:27	45-47	V 2	
ASSIST by MCKEE,ERIEL	02:27			
FOUL by CROCKETT,MIRANDA	02:06			
	02:06	46-47	V 1	GOOD! FT by PHELION,TYLER
	02:06	47-47	T	GOOD! FT by PHELION,TYLER
TURNOVER by SEWARD,DARIANNE	01:52			
	01:52			STEAL by PHELION,TYLER
SUB IN: TODD,BROOKE	01:52			
SUB IN: ST. LOUIS,DOMINIQUE	01:52			
SUB OUT: BLAINE,ERIN	01:52			
SUB OUT: MCGOWAN,TIERRA	01:52			
	01:39			MISSED 3PTR by JOHNSON,KIANA
REBOUND (DEF) by TEAM	01:39			
SUB IN: BLAINE,ERIN	01:37			
SUB OUT: ST. LOUIS,DOMINIQUE	01:37			
GOOD! JUMPER by TODD,BROOKE	01:15	47-49	V 2	
ASSIST by CROCKETT,MIRANDA	01:15			
	00:51			MISSED JUMPER by PHELION,TYLER
	00:51			REBOUND (OFF) by LONG,CHLOE
	00:51	49-49	T	GOOD! LAYUP by LONG,CHLOE [PNT]
FOUL by BLAINE,ERIN	00:51			
	00:51	50-49	H 1	GOOD! FT by LONG,CHLOE
MISSED JUMPER by CROCKETT,MIRANDA	00:35			
	00:35			REBOUND (DEF) by PHELION,TYLER
	00:25	52-49	H 3	GOOD! LAYUP by JOHNSON,KIANA [PNT]
	00:25			ASSIST by STRAIN,LEAH
TURNOVER by MCKEE,ERIEL	00:04			
SUB IN: JACKSON,BREUNA	00:04			
SUB OUT: SEWARD,DARIANNE	00:04			
	00:00	54-49	H 5	GOOD! LAYUP by STRAIN,LEAH [PNT]

Morehead State 64, Jacksonville State 70

Period 3-only	In Paint	Off T/O	2nd Chance	Fast Break	Bench	
MOR-W	10	7	4	2	2	Score tied - 0 times
JSU	8	4	5	0	12	Lead changed - 2 times

Morehead State vs Jacksonville State
12/30/2017; 2:00 PM at Jacksonville, Ala. (Pete Mathews Col.)
Period 4 Play-By-Play



VISITORS: Morehead State	Time	Score	Margin	HOME: Jacksonville State
SUB IN: TODD,BROOKE	10:00			
SUB OUT: BLAINE,ERIN	10:00			
	10:00			SUB IN: PHELION,TYLER
	10:00			SUB IN: STRAIN,LEAH
	10:00			SUB IN: LONG,CHLOE
	10:00			SUB OUT: HAWKS,TAYLOR
	10:00			SUB OUT: MAGRUDER,TASHA
	10:00			SUB OUT: PEARSON,RAYVEN
	09:53			FOUL by JOHNSON,KIANA
	09:52			SUB IN: PATTERSON,KI-KI
	09:52			SUB OUT: JOHNSON,KIANA
MISSED LAYUP by CROCKETT,MIRANDA	09:43			
	09:43			BLOCK by PHELION,TYLER
REBOUND (OFF) by MCGOWAN,TIERRA	09:41			
MISSED LAYUP by MCGOWAN,TIERRA	09:38			
	09:38			BLOCK by PHELION,TYLER
	09:37			REBOUND (DEF) by STRAIN,LEAH
	09:35			MISSED LAYUP by PHELION,TYLER
BLOCK by TODD,BROOKE	09:35			
REBOUND (DEF) by MCGOWAN,TIERRA	09:33			
MISSED 3PTR by SEWARD,DARIANNE	09:26			
	09:26			REBOUND (DEF) by PATTERSON,KI-KI
	09:19			MISSED JUMPER by PATTERSON,KI-KI
REBOUND (DEF) by CROCKETT,MIRANDA	09:19			
TURNOVER by CROCKETT,MIRANDA	08:59			
	08:59			STEAL by MORRISON,GRETCHEN
SUB IN: ST. LOUIS,DOMINIQUE	08:59			
SUB OUT: TODD,BROOKE	08:59			
	08:36			MISSED 3PTR by MORRISON,GRETCHEN
REBOUND (DEF) by MCKEE,ERIEL	08:36			
GOOD! JUMPER by SEWARD,DARIANNE	08:24	54-51	H 3	
	08:10			TURNOVER by PATTERSON,KI-KI
STEAL by CROCKETT,MIRANDA	08:09			
GOOD! JUMPER by CROCKETT,MIRANDA [PNT]	08:07	54-53	H 1	
	07:51	56-53	H 3	GOOD! LAYUP by LONG,CHLOE [PNT]
	07:51			ASSIST by PATTERSON,KI-KI
MISSED LAYUP by MCGOWAN,TIERRA	07:42			
	07:42			REBOUND (DEF) by LONG,CHLOE
	07:32			MISSED 3PTR by MORRISON,GRETCHEN
	07:32			REBOUND (OFF) by LONG,CHLOE
	07:24			MISSED JUMPER by PHELION,TYLER
REBOUND (DEF) by SEWARD,DARIANNE	07:24			
MISSED JUMPER by SEWARD,DARIANNE	07:16			
	07:16			REBOUND (DEF) by PHELION,TYLER
SUB IN: TODD,BROOKE	07:13			
SUB IN: LOPEZ,ASHLEI	07:13			
SUB IN: JACKSON,BREUNA	07:13			
SUB OUT: SEWARD,DARIANNE	07:13			
SUB OUT: MCGOWAN,TIERRA	07:13			
SUB OUT: MCKEE,ERIEL	07:13			
	07:13			SUB IN: HAWKS,TAYLOR
	07:13			SUB IN: JOHNSON,KIANA
	07:13			SUB IN: PEARSON,RAYVEN
	07:13			SUB OUT: PATTERSON,KI-KI
	07:13			SUB OUT: STRAIN,LEAH
	07:13			SUB OUT: LONG,CHLOE
	06:57	58-53	H 5	GOOD! LAYUP by PHELION,TYLER [PNT]
	06:57			ASSIST by PEARSON,RAYVEN
MISSED LAYUP by JACKSON,BREUNA	06:27			
	06:27			REBOUND (DEF) by PHELION,TYLER
FOUL by CROCKETT,MIRANDA	06:16			
	06:16			MISSED FT by JOHNSON,KIANA
	06:16			REBOUND (DEADB) by TEAM
	06:16	59-53	H 6	GOOD! FT by JOHNSON,KIANA
SUB IN: MCGOWAN,TIERRA	06:16			
SUB IN: MCKEE,ERIEL	06:16			
SUB IN: BLAINE,ERIN	06:16			
SUB IN: SEWARD,DARIANNE	06:16			
SUB OUT: ST. LOUIS,DOMINIQUE	06:16			

VISITORS: Morehead State	Time	Score	Margin	HOME: Jacksonville State
SUB OUT: TODD,BROOKE	06:16			
SUB OUT: LOPEZ,ASHLEI	06:16			
SUB OUT: JACKSON,BREUNA	06:16			
GOOD! LAYUP by BLAINE,ERIN [PNT]	05:55	59-55	H 4	
	05:35			MISSED JUMPER by JOHNSON,KIANA
	05:35			REBOUND (OFF) by PHELION,TYLER
	05:31	61-55	H 6	GOOD! LAYUP by PHELION,TYLER [PNT]
GOOD! LAYUP by CROCKETT,MIRANDA [PNT]	05:04	61-57	H 4	
	04:50	64-57	H 7	GOOD! 3PTR by MORRISON,GRETCHEN
	04:50			ASSIST by HAWKS,TAYLOR
TURNOVER by CROCKETT,MIRANDA	04:28			
	04:28			TIMEOUT MEDIA
GOOD! FT by SEWARD,DARIANNE	04:10	64-58	H 6	
	04:10			FOUL (TECH) by TEAM
GOOD! FT by SEWARD,DARIANNE	04:10	64-59	H 5	
	04:09			FOUL by PEARSON,RAYVEN
	04:09			TURNOVER by PEARSON,RAYVEN
GOOD! LAYUP by BLAINE,ERIN [PNT]	03:53	64-61	H 3	
	03:24			TURNOVER by PHELION,TYLER
STEAL by BLAINE,ERIN	03:22			
MISSED 3PTR by SEWARD,DARIANNE	03:06			
	03:06			REBOUND (DEF) by PEARSON,RAYVEN
	02:55			MISSED LAYUP by HAWKS,TAYLOR
	02:55			REBOUND (OFF) by TEAM
SUB IN: TODD,BROOKE	02:53			
SUB OUT: BLAINE,ERIN	02:53			
	02:53			SUB IN: LONG,CHLOE
	02:53			SUB OUT: PHELION,TYLER
	02:51	66-61	H 5	GOOD! JUMPER by JOHNSON,KIANA
	02:51			ASSIST by HAWKS,TAYLOR
MISSED JUMPER by CROCKETT,MIRANDA	02:36			
	02:36			REBOUND (DEF) by HAWKS,TAYLOR
	02:14			MISSED 3PTR by MORRISON,GRETCHEN
BLOCK by MCKEE,ERIEL	02:14			
REBOUND (DEF) by MCGOWAN,TIERRA	02:13			
MISSED JUMPER by MCKEE,ERIEL	01:46			
	01:46			REBOUND (DEF) by PEARSON,RAYVEN
	01:40	68-61	H 7	GOOD! LAYUP by JOHNSON,KIANA [FB/PNT]
	01:40			ASSIST by HAWKS,TAYLOR
TIMEOUT 30SEC	01:33			
TIMEOUT MEDIA	01:33			
SUB IN: BLAINE,ERIN	01:28			
SUB OUT: TODD,BROOKE	01:28			
MISSED LAYUP by MCKEE,ERIEL	01:27			
	01:27			BLOCK by PEARSON,RAYVEN
REBOUND (OFF) by TEAM	01:27			
MISSED LAYUP by SEWARD,DARIANNE	01:21			
	01:21			REBOUND (DEF) by LONG,CHLOE
	01:18			TURNOVER by LONG,CHLOE
	01:15			FOUL by MORRISON,GRETCHEN
MISSED FT by MCKEE,ERIEL	01:15			
REBOUND (DEADB) by TEAM	01:15			
MISSED FT by MCKEE,ERIEL	01:15			
	01:15			REBOUND (DEF) by MORRISON,GRETCHEN
SUB IN: ST. LOUIS,DOMINIQUE	01:15			
SUB OUT: BLAINE,ERIN	01:15			
	01:04			TURNOVER by TEAM
SUB IN: BLAINE,ERIN	01:04			
SUB OUT: ST. LOUIS,DOMINIQUE	01:04			
MISSED LAYUP by CROCKETT,MIRANDA	00:53			
	00:53			BLOCK by PEARSON,RAYVEN
	00:51			REBOUND (DEF) by JOHNSON,KIANA
SUB IN: LOPEZ,ASHLEI	00:47			
SUB OUT: BLAINE,ERIN	00:47			
FOUL by SEWARD,DARIANNE	00:43			
	00:43			TURNOVER by HAWKS,TAYLOR
STEAL by MCGOWAN,TIERRA	00:43			
MISSED 3PTR by LOPEZ,ASHLEI	00:43			
	00:43			REBOUND (DEF) by HAWKS,TAYLOR
FOUL by SEWARD,DARIANNE	00:26			
FOUL by LOPEZ,ASHLEI	00:18			
FOUL by CROCKETT,MIRANDA	00:10			
	00:10	69-61	H 8	GOOD! FT by MORRISON,GRETCHEN
	00:10	70-61	H 9	GOOD! FT by MORRISON,GRETCHEN
TIMEOUT 30SEC	00:10			

VISITORS: Morehead State	Time	Score	Margin	HOME: Jacksonville State
GOOD! 3PTR by MCKEE,ERIEL	00:10	70-64	H 6	
ASSIST by SEWARD,DARIANNE	00:10			
SUB IN: NORMAN,SISALYNN	00:10			
SUB OUT: MCGOWAN,TIERRA	00:10			
SUB OUT: CROCKETT,MIRANDA	00:10			
SUB OUT: SEWARD,DARIANNE	00:10			
	00:10			SUB IN: PHELION,TYLER
	00:10			SUB OUT: LONG,CHLOE
SUB IN: JACKSON,BREUNA	00:05			
SUB IN: SEWARD,DARIANNE	00:05			

Morehead State 64, Jacksonville State 70

Period 4-only	In Paint	Off T/O	2nd Chance	Fast Break	Bench	
MOR-W	8	4	0	0	0	Score tied - 0 times
JSU	8	0	4	2	6	Lead changed - 0 times

Morehead State vs Jacksonville State
12/30/2017; 2:00 PM at Jacksonville, Ala. (Pete Mathews Col.)
Scoring/Runs Reference



Period 1

Morehead State	VRun	Score	Margin	HRun	Jacksonville State
		0-2	2		PEARSON LAYUP [P] - 07:50
07:34 - SEWARD LAYUP [P]	-	2-2	0		
07:34 - SEWARD FT	3-0	3-2	-1		
07:34 - SEWARD LAYUP [P]	5-0	5-2	-3		
		5-4	-1		PATTERSON LAYUP [P] [F] - 05:49
05:10 - MCKEE LAYUP [P] [F]	-	7-4	-3		
		7-7	0		HAWKS 3PTR - 04:48
		7-9	2	5-0	MAGRUDER LAYUP [P] [F] - 03:48
03:28 - TODD JUMPER	-	9-9	0		
02:37 - CROCKETT LAYUP [P]	4-0	11-9	-2		
		11-11	0		PEARSON JUMPER - 02:06
01:35 - CROCKETT JUMPER [P]	-	13-11	-2		
		13-13	0		PEARSON JUMPER - 01:13
		13-15	2	4-0	HAWKS LAYUP [P] [F] - 00:55
		13-17	4	6-0	JOHNSON JUMPER - 00:22

Morehead State vs Jacksonville State
12/30/2017; 2:00 PM at Jacksonville, Ala. (Pete Mathews Col.)
Scoring/Runs Reference



Period 2

Morehead State	VRun	Score	Margin	HRun	Jacksonville State
		13-19	6		LONG LAYUP [P] - 09:35
08:40 - MCKEE FT	-	14-19	5		
07:58 - MCKEE FT	2-0	15-19	4		
07:58 - MCKEE FT	3-0	16-19	3		
		16-22	6		JOHNSON 3PTR - 07:50
07:38 - CROCKETT JUMPER [P]	-	18-22	4		
07:01 - CROCKETT JUMPER [P]	4-0	20-22	2		
06:35 - CROCKETT JUMPER [P]	6-0	22-22	0		
		22-24	2		PHELION LAYUP [P] [F] - 05:36
05:16 - SEWARD 3PTR	-	25-24	-1		
		25-26	1		PHELION LAYUP [P] - 04:22
04:04 - TODD JUMPER	-	27-26	-1		
03:35 - MCKEE JUMPER	4-0	29-26	-3		
		29-27	-2		MORRISON FT - 03:11
		29-28	-1	2-0	MORRISON FT - 03:11
02:53 - CROCKETT JUMPER	-	31-28	-3		
		31-30	-1		MAGRUDER LAYUP [P] - 02:40
02:17 - MCGOWAN JUMPER	-	33-30	-3		
		33-32	-1		PEARSON LAYUP [P] - 01:23
01:05 - CROCKETT FT	-	34-32	-2		
		34-33	-1		LONG FT - 00:02

Morehead State vs Jacksonville State
12/30/2017; 2:00 PM at Jacksonville, Ala. (Pete Mathews Col.)
Scoring/Runs Reference



Period 3

Morehead State	VRun	Score	Margin	HRun	Jacksonville State
		34-35	1		PEARSON LAYUP [P] - 09:41
08:19 - CROCKETT JUMPER [P] [F]	-	36-35	-1		
06:53 - SEWARD 3PTR	5-0	39-35	-4		
		39-36	-3		STRAIN FT - 05:46
		39-37	-2	2-0	STRAIN FT - 05:46
05:28 - SEWARD LAYUP [P]	-	41-37	-4		
		41-38	-3		PEARSON FT - 05:06
		41-39	-2	2-0	PEARSON FT - 05:06
04:35 - MCGOWAN LAYUP [P]	-	43-39	-4		
		43-42	-1		MORRISON 3PTR - 04:12
03:47 - MCGOWAN LAYUP [P]	-	45-42	-3		
		45-45	0		STRAIN 3PTR - 02:39
02:27 - CROCKETT LAYUP [P]	-	47-45	-2		
		47-46	-1		PHELION FT - 02:06
		47-47	0	2-0	PHELION FT - 02:06
01:15 - TODD JUMPER	-	49-47	-2		
		49-49	0		LONG LAYUP [P] - 00:51
		49-50	1	3-0	LONG FT - 00:51
		49-52	3	5-0	JOHNSON LAYUP [P] - 00:25
		49-54	5	7-0	STRAIN LAYUP [P] - 00:00

Morehead State vs Jacksonville State
12/30/2017; 2:00 PM at Jacksonville, Ala. (Pete Mathews Col.)
Scoring/Runs Reference

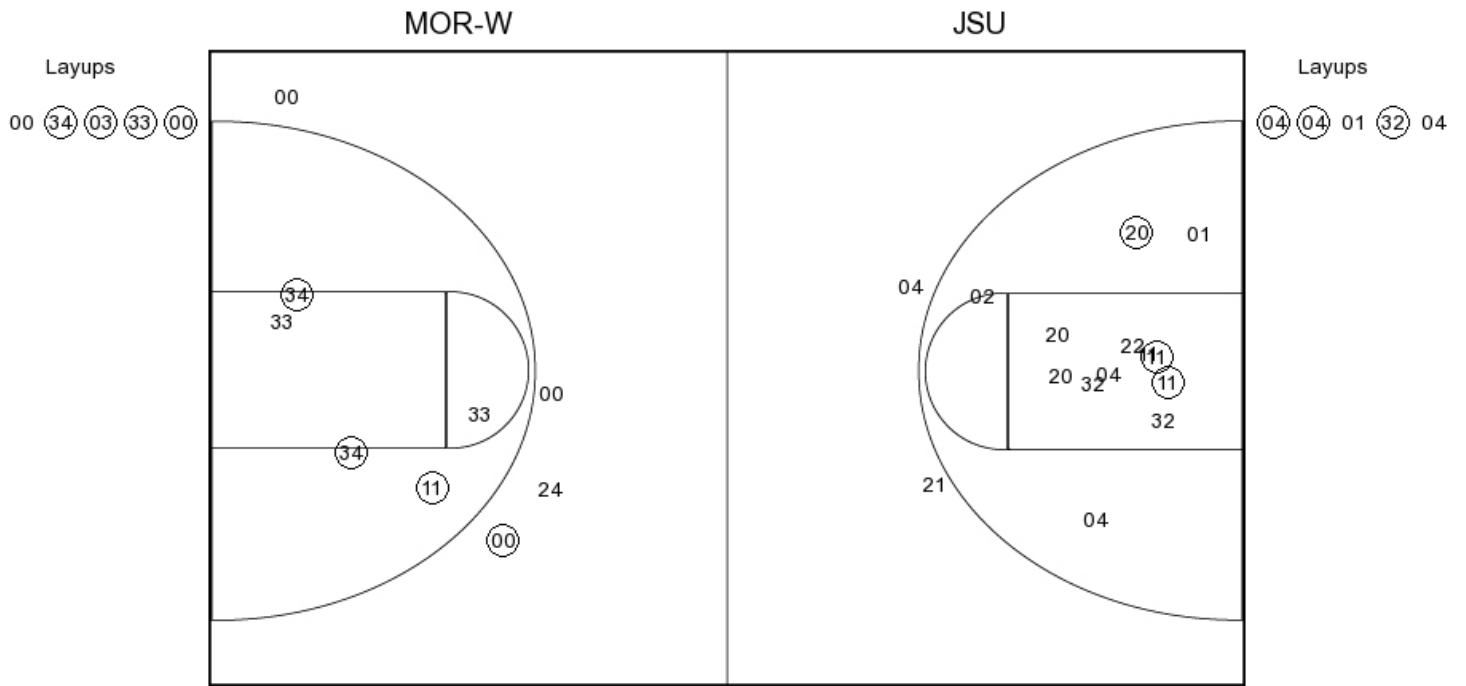


Period 4

Morehead State	VRun	Score	Margin	HRun	Jacksonville State
08:24 - SEWARD JUMPER	-	51-54	3		
08:07 - CROCKETT JUMPER [P]	NaN-0	53-54	1		
		53-56	3		LONG LAYUP [P] - 07:51
		53-58	5	4-0	PHELION LAYUP [P] - 06:57
		53-59	6	5-0	JOHNSON FT - 06:16
05:55 - BLAINE LAYUP [P]	-	55-59	4		
		55-61	6		PHELION LAYUP [P] - 05:31
05:04 - CROCKETT LAYUP [P]	-	57-61	4		
		57-64	7		MORRISON 3PTR - 04:50
04:10 - SEWARD FT	-	58-64	6		
04:10 - SEWARD FT	2-0	59-64	5		
03:53 - BLAINE LAYUP [P]	4-0	61-64	3		
		61-66	5		JOHNSON JUMPER - 02:51
		61-68	7	4-0	JOHNSON LAYUP [P] [F] - 01:40
		61-69	8	5-0	MORRISON FT - 00:10
		61-70	9	6-0	MORRISON FT - 00:10
00:10 - MCKEE 3PTR	-	64-70	6		



PERIOD 1



MOR-W PERIOD 1

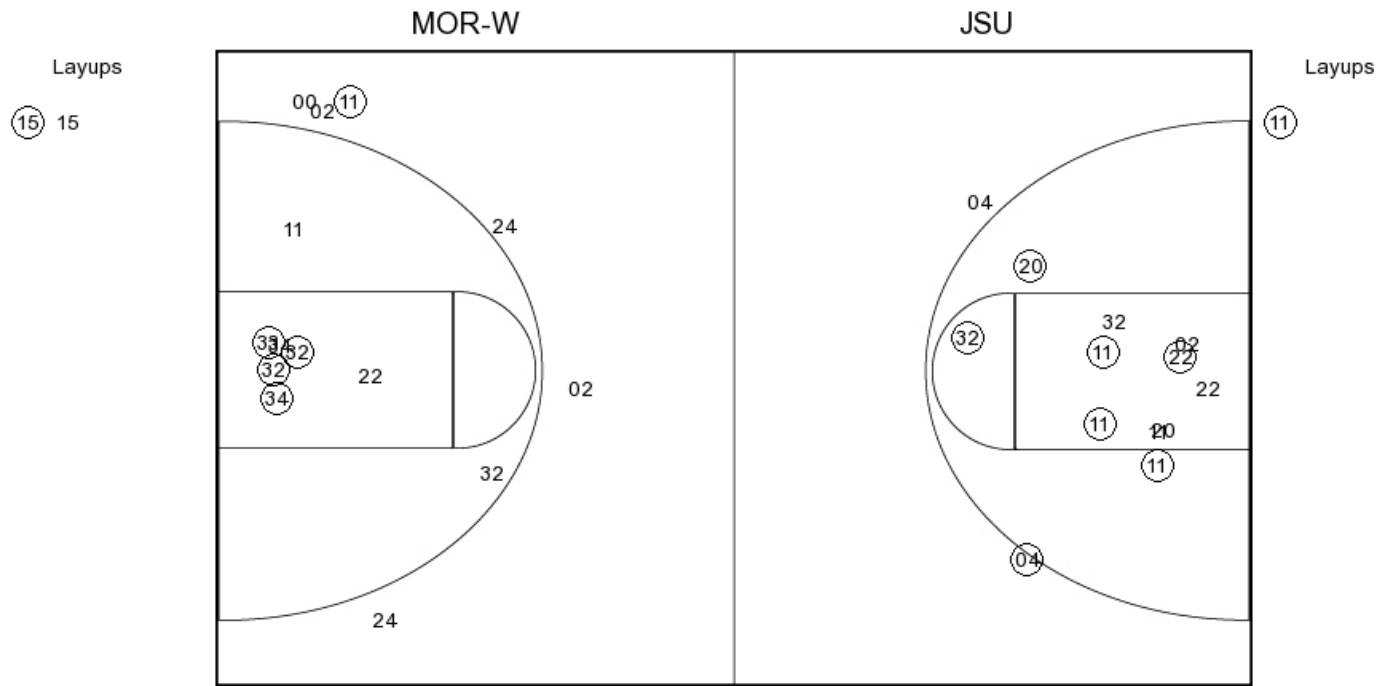
FG Made	14
FG Attempted	35
3PFG Made	1
3PFG Attempted	4

JSU PERIOD 1

FG Made	14
FG Attempted	31
3PFG Made	2
3PFG Attempted	11



PERIOD 2



MOR-W PERIOD 2

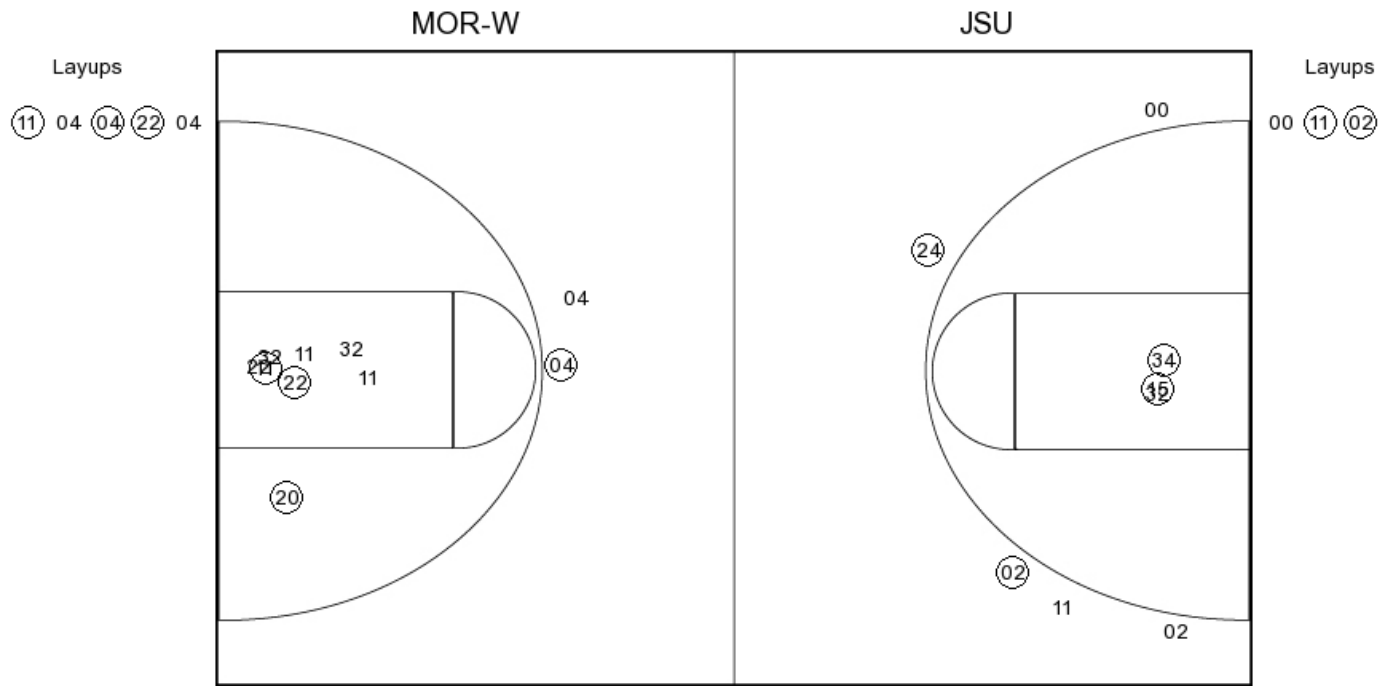
FG Made
 FG Attempted
 3PFG Made
 3PFG Attempted

JSU PERIOD 2

FG Made
 FG Attempted
 3PFG Made
 3PFG Attempted



PERIOD 3



MOR-W PERIOD 3

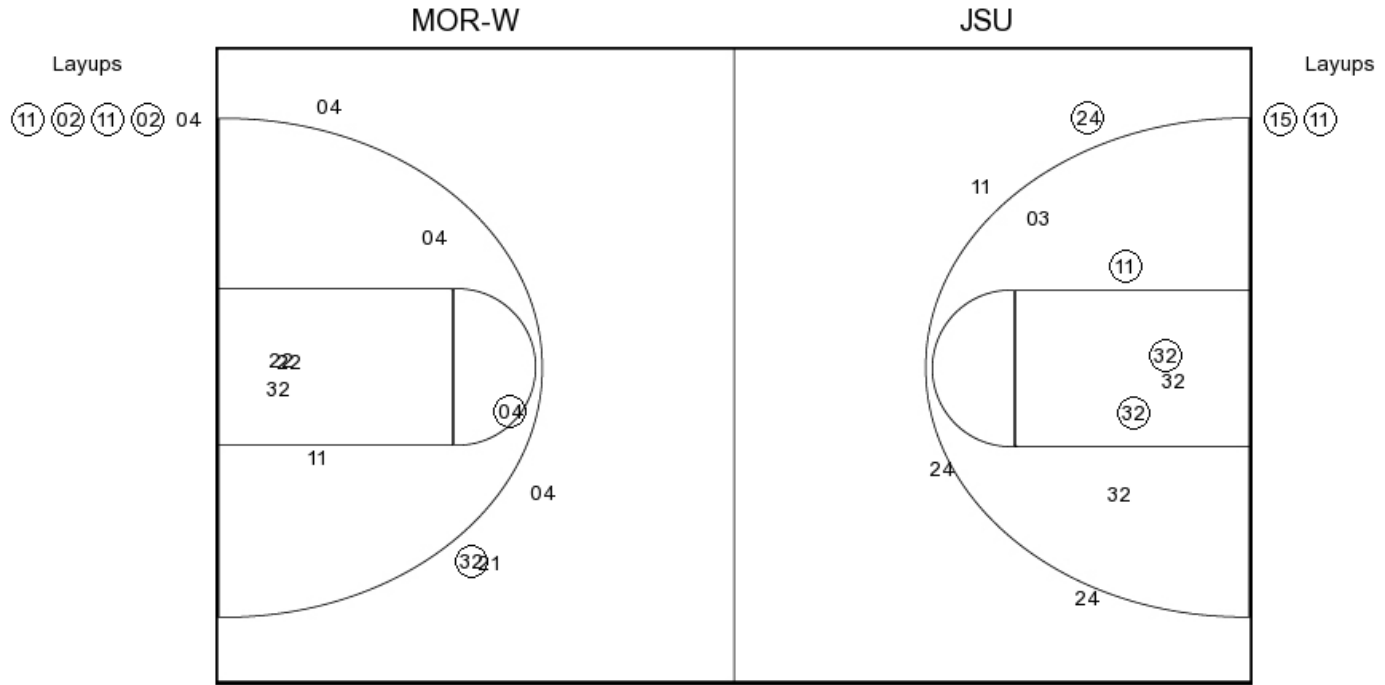
FG Made	13
FG Attempted	34
3PFG Made	2
3PFG Attempted	6

JSU PERIOD 3

FG Made	12
FG Attempted	26
3PFG Made	3
3PFG Attempted	9



PERIOD 4



MOR-W PERIOD 4

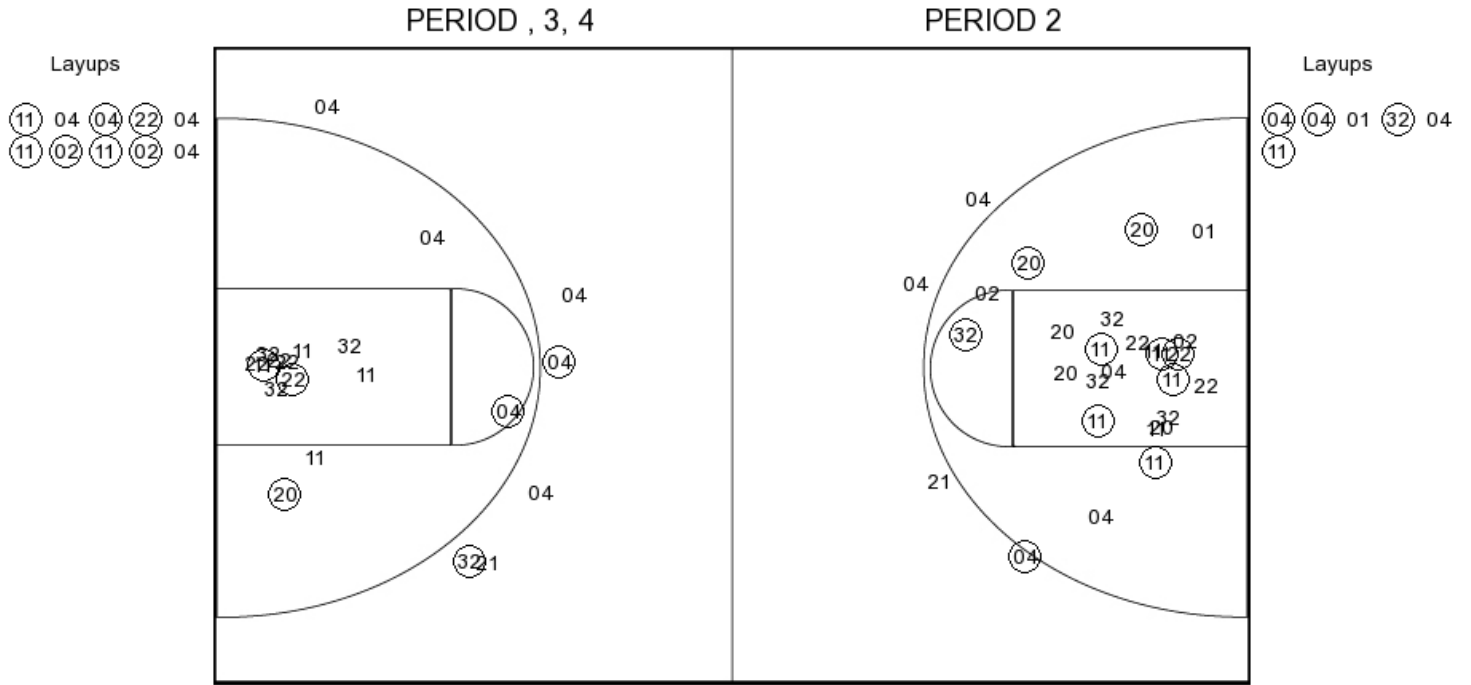
FG Made
 FG Attempted
 3PFG Made
 3PFG Attempted

JSU PERIOD 4

FG Made
 FG Attempted
 3PFG Made
 3PFG Attempted



Morehead State



MOR-W PERIOD 1

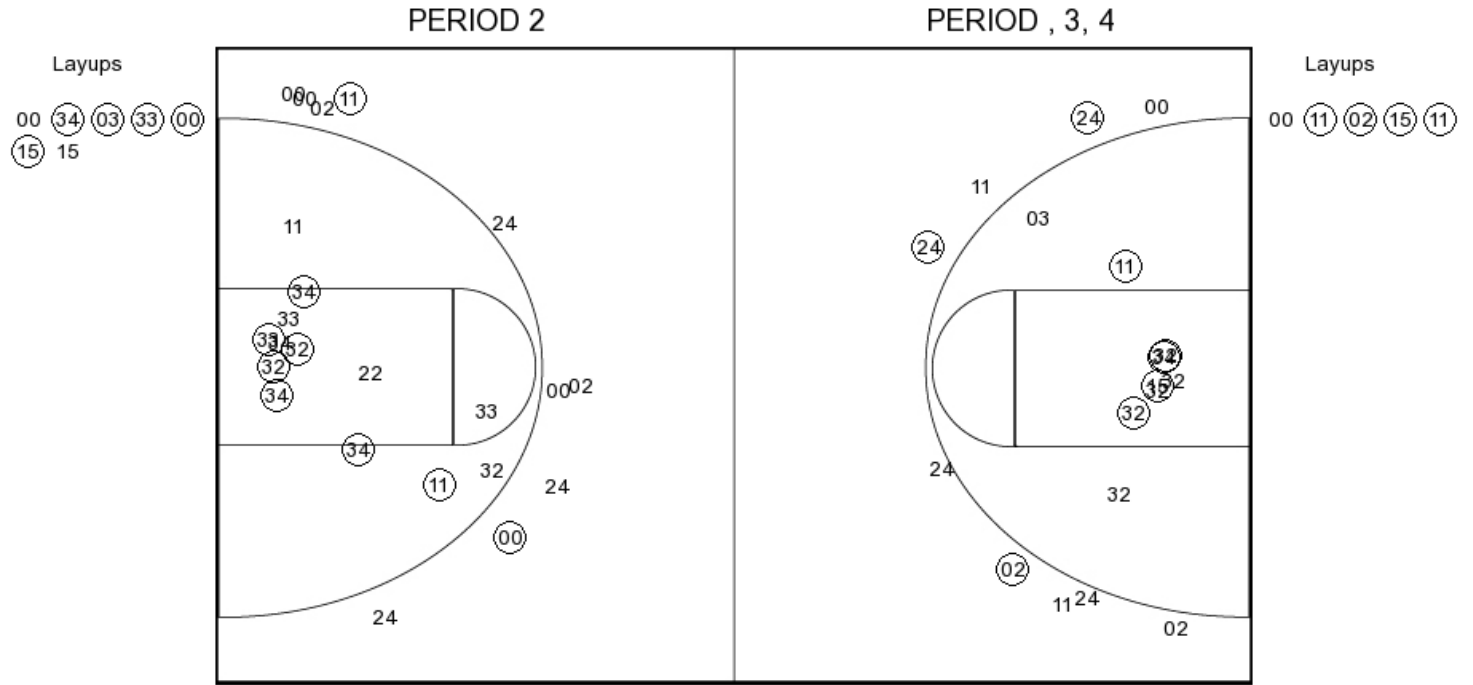
FG Made	14
FG Attempted	35
3PFG Made	1
3PFG Attempted	4

MOR-W PERIOD 2

FG Made	
FG Attempted	
3PFG Made	
3PFG Attempted	



Jacksonville State



JSU PERIOD 1

FG Made	14
FG Attempted	31
3PFG Made	2
3PFG Attempted	11

JSU PERIOD 2

FG Made	
FG Attempted	
3PFG Made	
3PFG Attempted	