

## FINAL SCORE



**Alabama A&M**

4-3

**33**



**Jacksonville State**

5-3

**49**

December 12, 2017 • Jacksonville, Ala. (Pete Mathews Col.)

## FINAL STATISTICS

Official Basketball Box Score -- Game Totals -- Final Statistics  
 Alabama A&M vs Jacksonville State  
 12/12/2017 7:00 pm at Jacksonville, Ala. (Pete Mathews Col.)



Alabama A&M 33 - 4-3

#	Player	Total FG-FGA	3-Ptr FG-FGA	FT-FTA	Rebounds			PF	TP	A	TO	Blk	Stl	Min
					Off	Def	Tot							
01	BONNER,AUBRIANA	1-4	0-0	0-0	2	0	2	1	2	0	1	0	3	19
02	COLLINS,NATALIE	1-3	1-3	2-2	1	2	3	1	5	0	2	2	0	20
05	JONES,NIGERIA	1-10	0-2	1-2	0	2	2	2	3	0	3	0	2	17
35	THARPE,KENISHA	1-3	0-0	0-1	2	4	6	2	2	1	5	0	0	15
44	DOTSON,ASHLYN	2-8	0-1	0-0	0	3	3	2	4	0	0	1	1	28
03	EGGLESTON,COURTNEY	0-2	0-1	0-0	1	0	1	0	0	0	0	0	0	2
04	COBB,JAMEICA	1-7	0-0	2-2	1	1	2	0	4	1	1	1	1	19
10	MCKEE,LAUREN	1-5	0-3	1-2	1	3	4	1	3	3	4	0	0	26
21	JOHNSON,ALEXANDRA	0-1	0-0	0-0	2	3	5	0	0	0	1	2	0	20
22	DAVIS,ALISHA	0-0	0-0	0-0	1	0	1	0	0	0	0	0	0	0
23	HARPER,DESHAWNA	0-3	0-1	0-0	0	0	0	3	0	0	1	0	0	14
24	DARK,TIERRA	4-11	0-0	2-4	0	3	3	2	10	1	0	0	1	20
	TEAM				2	4	6	0			1			
	TOTALS	12-57	1-11	8-13	13	25	38	14	33	6	19	6	8	200

Deadball Rebounds: 2.0

FG %	1st Half: 4-24 16.7%	2nd Half: 8-33 24.2%	Game: 12-57 21.1%										
	1st Qtr 4-14 28.6%	2nd Qtr 0-10 00.0%	3rd Qtr 2-15 13.3%	4th Qtr 6-18 33.3%									
3FG %	1st Half: 0-5 00.0%	2nd Half: 1-6 16.7%	Game: 1-11 09.1%										
	1st Qtr 0-4 00.0%	2nd Qtr 0-1 00.0%	3rd Qtr 0-1 00.0%	4th Qtr 1-5 20.0%									
FT %	1st Half: 8-11 72.7%	2nd Half: 0-2 00.0%	Game: 8-13 61.5%										
	1st Qtr 2-5 40.0%	2nd Qtr 6-6 100.0%	3rd Qtr 0-0 0%	4th Qtr 0-2 00.0%									

Jacksonville State 49 - 5-3

#	Player	Total FG-FGA	3-Ptr FG-FGA	FT-FTA	Rebounds			PF	TP	A	TO	Blk	Stl	Min
					Off	Def	Tot							
00	HAWKS,TAYLOR	0-5	0-2	0-0	0	1	1	1	0	2	0	2	0	22
11	JOHNSON,KIANA	2-6	2-5	2-4	0	1	1	2	8	0	3	0	2	20
15	LONG,CHLOE	2-6	0-0	0-1	2	7	9	1	4	1	1	1	0	17
24	MORRISON,GRETCHEN	2-5	2-5	0-0	0	0	0	1	6	0	1	0	1	19
34	PEARSON,RAYVEN	2-6	0-0	0-0	3	9	12	3	4	2	3	0	0	14
01	TOWELLS,MORGAN	1-3	1-2	0-0	0	0	0	1	3	0	1	0	1	9
02	STRAIN,LEAH	2-3	0-1	0-2	0	1	1	3	4	0	2	0	1	11
03	PATTERSON,KI-KI	0-3	0-3	2-2	0	0	0	0	2	0	1	0	0	6
13	PERRY,BRIANNA	1-4	0-0	0-0	0	1	1	0	2	2	0	0	0	6
14	LAWRENCE,MCKENNA	1-3	1-1	0-0	0	1	1	0	3	1	2	0	0	10
22	WALKER,JAYLA	1-4	1-4	0-0	1	3	4	2	3	1	1	1	2	16
32	PHELION,TYLER	3-6	0-1	0-0	3	4	7	1	6	0	4	2	2	25
33	MAGRUDER,TASHA	2-4	0-0	0-0	3	4	7	0	4	2	2	0	1	24
	TEAM				5	3	8	0			1			
	TOTALS	19-58	7-24	4-9	17	35	52	15	49	11	22	6	10	199

Deadball Rebounds: 2.0

FG %	1st Half: 9-32 28.1%	2nd Half: 10-26 38.5%	Game: 19-58 32.8%										
	1st Qtr 3-17 17.6%	2nd Qtr 6-15 40.0%	3rd Qtr 6-16 37.5%	4th Qtr 4-10 40.0%									
3FG %	1st Half: 4-16 25.0%	2nd Half: 3-8 37.5%	Game: 7-24 29.2%										
	1st Qtr 1-9 11.1%	2nd Qtr 3-7 42.9%	3rd Qtr 2-5 40.0%	4th Qtr 1-3 33.3%									
FT %	1st Half: 4-6 66.7%	2nd Half: 0-3 00.0%	Game: 4-9 44.4%										
	1st Qtr 4-6 66.7%	2nd Qtr 0-0 0%	3rd Qtr 0-3 00.0%	4th Qtr 0-0 0%									

Officials: R-Kylie Galloway, U1-Talisa Green, U2-Kiesha Brown  
 Technical Fouls: Alabama A&M- None. Jacksonville State- None.

Score by periods	1st	2nd	3rd	4th	Total Points	In Paint	Off T/O	2nd Chance	Fast Break	Bench	
Alabama A&M	10	6	4	13	33	AAMUWBB	20	15	9	0	17
Jacksonville State	11	15	14	9	49	JSU	22	14	9	0	27

Last FG - AAMUWBB 4th-01:04, JSU 4th-00:40.

Largest lead - Alabama A&M by 2 1st-08:00; Jacksonville State by 20 3rd-00:00

AAMUWBB led for 0:43. JSU led for 35:11. Game was tied for 4:06.

Score tied - 2 times; Lead changed - 1 times



Official Basketball Box Score -- Game Totals -- First Half Statistics  
 Alabama A&M vs Jacksonville State  
 12/12/2017 7:00 pm at Jacksonville, Ala. (Pete Mathews Col.)



Alabama A&M 16 • 4-3

##	Player	*	Total		3-Ptr	Rebounds			PF	TP	A	TO	Blk	Stl	Min
			FG-FGA	FG-FGA	FT-FTA	Off	Def	Tot							
01	BONNER,AUBRIANA	*	0-0	0-0	0-0	1	0	1	1	0	0	1	0	0	9
02	COLLINS,NATALIE	*	0-0	0-0	2-2	1	2	3	0	2	0	1	1	0	10
05	JONES,NIGERIA	*	0-5	0-1	1-2	0	2	2	2	1	0	2	0	2	8
35	THARPE,KENISHA	*	1-2	0-0	0-1	0	1	1	2	2	0	1	0	0	5
44	DOTSON,ASHLYN	*	1-4	0-1	0-0	0	3	3	0	2	0	0	0	1	16
03	EGGLESTON,COURTNEY		0-0	0-0	0-0	0	0	0	0	0	0	0	0	0	0
04	COBB,JAMEICA		1-4	0-0	2-2	1	0	1	0	4	0	1	1	1	10
10	MCKEE,LAUREN		0-2	0-2	1-2	1	1	2	0	1	1	2	0	0	14
21	JOHNSON,ALEXANDRA		0-0	0-0	0-0	0	1	1	0	0	0	1	1	0	12
22	DAVIS,ALISHA		0-0	0-0	0-0	0	0	0	0	0	0	0	0	0	0
23	HARPER,DESHAWNA		0-2	0-1	0-0	0	0	0	2	0	0	1	0	0	7
24	DARK,TIERRA		1-5	0-0	2-2	0	2	2	0	4	1	0	0	1	9
TEAM						1	3	4	0		0				
Totals			4-24	0-5	8-11	5	15	20	7	16	2	10	3	5	100
FG %	1st Qtr	4-14	28.6%	2nd Qtr	0-10	00.0%	Half:	4-24	16.7%						
3FG %	1st Qtr	0-4	00.0%	2nd Qtr	0-1	00.0%	Half:	0-5	00.0%						
FT %	1st Qtr	2-5	40.0%	2nd Qtr	6-6	100.0%	Half:	8-11	72.7%						

Jacksonville State 26 • 5-3

##	Player	*	Total		3-Ptr	Rebounds			PF	TP	A	TO	Blk	Stl	Min
			FG-FGA	FG-FGA	FT-FTA	Off	Def	Tot							
00	HAWKS,TAYLOR	*	0-3	0-1	0-0	0	1	1	1	0	1	0	0	0	10
11	JOHNSON,KIANA	*	2-3	2-3	2-4	0	0	0	1	8	0	2	0	1	11
15	LONG,CHLOE	*	1-5	0-0	0-0	1	4	5	1	2	0	0	0	0	8
24	MORRISON,GRETCHEN	*	1-4	1-4	0-0	0	0	0	1	3	0	0	0	1	13
34	PEARSON,RAYVEN	*	1-2	0-0	0-0	2	4	6	2	2	1	0	0	0	7
01	TOWELLS,MORGAN		0-0	0-0	0-0	0	0	0	0	0	0	0	0	0	2
02	STRAIN,LEAH		1-2	0-1	0-0	0	0	0	2	2	0	0	0	0	6
03	PATTERSON,KI-KI		0-3	0-3	2-2	0	0	0	0	2	0	0	0	0	3
13	PERRY,BRIANNA		1-4	0-0	0-0	0	1	1	0	2	2	0	0	0	4
14	LAWRENCE,MCKENNA		0-0	0-0	0-0	0	1	1	0	0	1	2	0	0	3
22	WALKER,JAYLA		1-3	1-3	0-0	1	0	1	0	3	0	0	0	1	8
32	PHELION,TYLER		0-1	0-1	0-0	1	1	2	0	0	0	2	2	1	12
33	MAGRUDER,TASHA		1-2	0-0	0-0	2	3	5	0	2	1	1	0	1	13
TEAM						2	2	4	0		1				
Totals			9-32	4-16	4-6	9	17	26	8	26	6	8	2	5	100
FG %	1st Qtr	3-17	17.6%	2nd Qtr	6-15	40.0%	Half:	9-32	28.1%						
3FG %	1st Qtr	1-9	11.1%	2nd Qtr	3-7	42.9%	Half:	4-16	25.0%						
FT %	1st Qtr	4-6	66.7%	2nd Qtr	0-0	0%	Half:	4-6	66.7%						

Officials: R-Kylie Galloway, U1-Talisa Green, U2-Kiesha Brown  
 Technical Fouls: Alabama A&M- None. Jacksonville State- None.

Score by periods	1st	2nd	3rd	4th	Total Points	In Paint	Off T/O	2nd Chance	Fast Break	Bench
Alabama A&M	10	6	4	13	33	6	4	3	0	9
Jacksonville State	11	15	14	9	49	8	12	7	0	11

Last FG - AAMUWBB -, JSU 2nd-00:44.  
 AAMUWBB led for 0:43. JSU led for 15:11. Game was tied for 4:06.

Score tied - 2 times  
 Lead changed - 1 times

**Alabama A&M vs Jacksonville State**  
**12/12/2017; 7:00 pm at Jacksonville, Ala. (Pete Mathews Col.)**  
**Period 1 Play-By-Play**



VISITORS: Alabama A&M	Time	Score	Margin	HOME: Jacksonville State
MISSED LAYUP by DOTSON,ASHLYN	09:50			
	09:50			REBOUND (DEF) by PEARSON,RAYVEN
	09:41			MISSED LAYUP by LONG,CHLOE
REBOUND (DEF) by THARPE,KENISHA	09:41			
MISSED LAYUP by JONES,NIGERIA	09:32			
	09:32			REBOUND (DEF) by PEARSON,RAYVEN
	09:21			MISSED LAYUP by LONG,CHLOE
REBOUND (DEF) by TEAM	09:21			
MISSED JUMPER by JONES,NIGERIA	08:49			
	08:49			REBOUND (DEF) by LONG,CHLOE
FOUL by JONES,NIGERIA	08:36			
	08:30			MISSED 3PTR by MORRISON,GRETCHEN
	08:30			REBOUND (OFF) by PEARSON,RAYVEN
	08:23			MISSED 3PTR by HAWKS,TAYLOR
REBOUND (DEF) by JONES,NIGERIA	08:23			
SUB IN: COBB,JAMEICA	08:17			
SUB OUT: COLLINS,NATALIE	08:17			
GOOD! LAYUP by COBB,JAMEICA [PNT]	08:00	0-2	V 2	
	07:44			MISSED 3PTR by MORRISON,GRETCHEN
REBOUND (DEF) by DOTSON,ASHLYN	07:44			
TURNOVER by JONES,NIGERIA	07:21			
	07:20			STEAL by JOHNSON,KIANA
FOUL by THARPE,KENISHA	07:17			
	07:17	1-2	V 1	GOOD! FT by JOHNSON,KIANA
	07:17	2-2	T	GOOD! FT by JOHNSON,KIANA
SUB IN: MCKEE,LAUREN	07:17			
SUB OUT: JONES,NIGERIA	07:17			
MISSED JUMPER by THARPE,KENISHA	07:09			
	07:09			REBOUND (DEF) by LONG,CHLOE
	06:57			MISSED JUMPER by PEARSON,RAYVEN
	06:57			REBOUND (OFF) by LONG,CHLOE
	06:52			MISSED JUMPER by LONG,CHLOE
REBOUND (DEF) by TEAM	06:52			
SUB IN: HARPER,DESHAWNA	06:52			
SUB IN: JOHNSON,ALEXANDRA	06:52			
SUB OUT: BONNER,AUBRIANA	06:52			
SUB OUT: THARPE,KENISHA	06:52			
	06:52			SUB IN: MAGRUDER,TASHA
	06:52			SUB OUT: LONG,CHLOE
	06:51			FOUL by PEARSON,RAYVEN
TURNOVER by JOHNSON,ALEXANDRA	06:24			
	06:24			STEAL by MORRISON,GRETCHEN
FOUL by HARPER,DESHAWNA	06:11			
	06:11			MISSED FT by JOHNSON,KIANA
	06:11			REBOUND (DEADB) by TEAM
	06:11			MISSED FT by JOHNSON,KIANA
	06:11			REBOUND (OFF) by MAGRUDER,TASHA
	06:06			MISSED 3PTR by JOHNSON,KIANA
REBOUND (DEF) by DOTSON,ASHLYN	06:06			
TURNOVER by MCKEE,LAUREN	05:59			
	05:58			STEAL by MAGRUDER,TASHA
	05:56			MISSED JUMPER by HAWKS,TAYLOR
REBOUND (DEF) by TEAM	05:56			
	05:54			FOUL by HAWKS,TAYLOR
	05:53			SUB IN: STRAIN,LEAH
	05:53			SUB OUT: HAWKS,TAYLOR
MISSED 3PTR by DOTSON,ASHLYN	05:36			
	05:36			REBOUND (DEF) by PEARSON,RAYVEN
	05:25			MISSED LAYUP by MAGRUDER,TASHA
	05:25			REBOUND (OFF) by PEARSON,RAYVEN
	05:22	4-2	H 2	GOOD! LAYUP by PEARSON,RAYVEN [PNT]
TIMEOUT MEDIA	04:56			
SUB IN: DARK,TIERRA	04:56			
SUB IN: THARPE,KENISHA	04:56			
SUB OUT: COBB,JAMEICA	04:56			
SUB OUT: DOTSON,ASHLYN	04:56			
MISSED JUMPER by DARK,TIERRA	04:48			
	04:48			REBOUND (DEF) by PEARSON,RAYVEN
	04:32	7-2	H 5	GOOD! 3PTR by JOHNSON,KIANA

VISITORS: Alabama A&M	Time	Score	Margin	HOME: Jacksonville State
	04:32			ASSIST by PEARSON,RAYVEN
GOOD! JUMPER by DARK, TIERRA	04:01	7-4	H 3	
	03:43	9-4	H 5	GOOD! LAYUP by STRAIN, LEAH [PNT]
GOOD! JUMPER by THARPE, KENISHA [PNT]	03:21	9-6	H 3	
ASSIST by DARK, TIERRA	03:21			
	03:21			FOUL by PEARSON, RAYVEN
MISSED FT by THARPE, KENISHA	03:21			
	03:21			REBOUND (DEF) by MAGRUDER, TASHA
SUB IN: JONES, NIGERIA	03:21			
SUB OUT: MCKEE, LAUREN	03:21			
	03:21			SUB IN: PHELION, TYLER
	03:21			SUB OUT: PEARSON, RAYVEN
	03:14			TURNOVER by JOHNSON, KIANA
STEAL by DARK, TIERRA	03:13			
	03:07			SUB IN: PATTERSON, KI-KI
	03:07			SUB OUT: JOHNSON, KIANA
FOUL by THARPE, KENISHA	02:44			
TURNOVER by THARPE, KENISHA	02:44			
SUB IN: DOTSON, ASHLYN	02:43			
SUB OUT: THARPE, KENISHA	02:43			
	02:32			MISSED 3PTR by PATTERSON, KI-KI
REBOUND (DEF) by JOHNSON, ALEXANDRA	02:32			
MISSED 3PTR by JONES, NIGERIA	02:08			
	02:08			REBOUND (DEF) by PHELION, TYLER
SUB IN: MCKEE, LAUREN	01:52			
SUB IN: COLLINS, NATALIE	01:52			
SUB OUT: HARPER, DESHAWNA	01:52			
SUB OUT: DARK, TIERRA	01:52			
	01:51			TURNOVER by TEAM
TIMEOUT 30SEC	01:52			
GOOD! LAYUP by DOTSON, ASHLYN [PNT]	01:39	9-8	H 1	
ASSIST by MCKEE, LAUREN	01:39			
	01:20			MISSED 3PTR by PATTERSON, KI-KI
REBOUND (DEF) by JONES, NIGERIA	01:20			
	00:58			FOUL by STRAIN, LEAH
MISSED FT by JONES, NIGERIA	00:58			
REBOUND (DEADB) by TEAM	00:58			
GOOD! FT by JONES, NIGERIA	00:58	9-9	T	
SUB IN: COBB, JAMEICA	00:58			
SUB OUT: JOHNSON, ALEXANDRA	00:58			
	00:49			MISSED 3PTR by STRAIN, LEAH
	00:49			REBOUND (OFF) by TEAM
	00:47			SUB IN: LAWRENCE, MCKENNA
	00:47			SUB OUT: MORRISON, GRETCHEN
FOUL by JONES, NIGERIA	00:46			
	00:47	10-9	H 1	GOOD! FT by PATTERSON, KI-KI
	00:47	11-9	H 2	GOOD! FT by PATTERSON, KI-KI
MISSED JUMPER by JONES, NIGERIA	00:20			
	00:20			BLOCK by PHELION, TYLER
REBOUND (OFF) by TEAM	00:20			
MISSED 3PTR by MCKEE, LAUREN	00:19			
REBOUND (OFF) by MCKEE, LAUREN	00:19			
	00:16			FOUL by STRAIN, LEAH
GOOD! FT by MCKEE, LAUREN	00:16	11-10	H 1	
MISSED FT by MCKEE, LAUREN	00:16			
	00:16			REBOUND (DEF) by LAWRENCE, MCKENNA
	00:16			SUB IN: HAWKS, TAYLOR
	00:16			SUB OUT: STRAIN, LEAH
	00:06			MISSED 3PTR by PATTERSON, KI-KI
REBOUND (DEF) by COLLINS, NATALIE	00:06			
MISSED 3PTR by MCKEE, LAUREN	00:00			
	00:00			REBOUND (DEF) by TEAM

Alabama A&M 10, Jacksonville State 11

Period 1-only	In Paint	Off T/O	2nd Chance	Fast Break	Bench	
AAMUWBB	6	2	1	0	5	Score tied - 2 times
JSU	4	2	4	0	4	Lead changed - 0 times

**Alabama A&M vs Jacksonville State**  
**12/12/2017; 7:00 pm at Jacksonville, Ala. (Pete Mathews Col.)**  
**Period 2 Play-By-Play**



VISITORS: Alabama A&M	Time	Score	Margin	HOME: Jacksonville State
SUB IN: COBB,JAMEICA	10:00			
SUB OUT: THARPE,KENISHA	10:00			
	10:00			SUB IN: MAGRUDER,TASHA
	10:00			SUB IN: PHELION,TYLER
	10:00			SUB IN: LAWRENCE,MCKENNA
	10:00			SUB IN: WALKER,JAYLA
	10:00			SUB OUT: JOHNSON,KIANA
	10:00			SUB OUT: LONG,CHLOE
	10:00			SUB OUT: MORRISON,GRETCHEN
	10:00			SUB OUT: PEARSON,RAYVEN
	09:40			TURNOVER by LAWRENCE,MCKENNA
STEAL by JONES,NIGERIA	09:40			
MISSED LAYUP by JONES,NIGERIA	09:36			
	09:36			BLOCK by PHELION,TYLER
	09:34			REBOUND (DEF) by MAGRUDER,TASHA
	09:23			TURNOVER by PHELION,TYLER
STEAL by DOTSON,ASHLYN	09:22			
MISSED JUMPER by COBB,JAMEICA	09:16			
	09:16			REBOUND (DEF) by MAGRUDER,TASHA
	09:08			TURNOVER by LAWRENCE,MCKENNA
STEAL by JONES,NIGERIA	09:07			
TURNOVER by JONES,NIGERIA	09:01			
	09:00			STEAL by WALKER,JAYLA
	08:50	14-10	H 4	GOOD! 3PTR by WALKER,JAYLA
	08:50			ASSIST by HAWKS,TAYLOR
TURNOVER by COLLINS,NATALIE	08:28			
	08:27			STEAL by PHELION,TYLER
	08:21	16-10	H 6	GOOD! LAYUP by MAGRUDER,TASHA [PNT]
	08:21			ASSIST by LAWRENCE,MCKENNA
TIMEOUT 20SEC	07:57			
TIMEOUT MEDIA	07:57			
SUB IN: MCKEE,LAUREN	07:57			
SUB IN: JOHNSON,ALEXANDRA	07:57			
SUB IN: HARPER,DESHAWNA	07:57			
SUB OUT: COLLINS,NATALIE	07:57			
SUB OUT: JONES,NIGERIA	07:57			
SUB OUT: COBB,JAMEICA	07:57			
	07:57			SUB IN: MORRISON,GRETCHEN
	07:57			SUB OUT: LAWRENCE,MCKENNA
MISSED JUMPER by HARPER,DESHAWNA	07:42			
	07:42			REBOUND (DEF) by HAWKS,TAYLOR
	07:33			TURNOVER by MAGRUDER,TASHA
FOUL by BONNER,AUBRIANA	07:20			
TURNOVER by BONNER,AUBRIANA	07:20			
	06:59			MISSED 3PTR by WALKER,JAYLA
	06:59			REBOUND (OFF) by MAGRUDER,TASHA
	06:49	19-10	H 9	GOOD! 3PTR by MORRISON,GRETCHEN
	06:49			ASSIST by MAGRUDER,TASHA
MISSED 3PTR by HARPER,DESHAWNA	06:16			
REBOUND (OFF) by BONNER,AUBRIANA	06:16			
FOUL by HARPER,DESHAWNA	05:52			
TURNOVER by HARPER,DESHAWNA	05:52			
SUB IN: DARK,TIERRA	05:52			
SUB OUT: HARPER,DESHAWNA	05:52			
	05:52			SUB IN: LONG,CHLOE
	05:52			SUB OUT: MAGRUDER,TASHA
	05:41			MISSED JUMPER by HAWKS,TAYLOR
REBOUND (DEF) by DARK,TIERRA	05:41			
MISSED JUMPER by DARK,TIERRA	05:12			
	05:12			REBOUND (DEF) by LONG,CHLOE
	05:04			MISSED 3PTR by WALKER,JAYLA
REBOUND (DEF) by DARK,TIERRA	05:04			
MISSED JUMPER by DOTSON,ASHLYN	04:35			
	04:35			REBOUND (DEF) by LONG,CHLOE
	04:30			MISSED 3PTR by MORRISON,GRETCHEN
	04:30			REBOUND (OFF) by WALKER,JAYLA
	04:23			MISSED 3PTR by PHELION,TYLER
REBOUND (DEF) by DOTSON,ASHLYN	04:23			
	04:04			FOUL by MORRISON,GRETCHEN

VISITORS: Alabama A&M	Time	Score	Margin	HOME: Jacksonville State
GOOD! FT by DARK,TIERRA	04:04	19-11	H 8	
GOOD! FT by DARK,TIERRA	04:04	19-12	H 7	
SUB IN: COBB,JAMEICA	04:04			
SUB IN: COLLINS,NATALIE	04:04			
SUB OUT: BONNER,AUBRIANA	04:04			
SUB OUT: DOTSON,ASHLYN	04:04			
	04:04			SUB IN: PERRY,BRIANNA
	04:04			SUB IN: JOHNSON,KIANA
	04:04			SUB OUT: HAWKS,TAYLOR
	04:04			SUB OUT: MORRISON,GRETCHEN
	03:44	22-12	H 10	GOOD! 3PTR by JOHNSON,KIANA
	03:44			ASSIST by PERRY,BRIANNA
TURNOVER by MCKEE,LAUREN	03:22			
	02:56	24-12	H 12	GOOD! LAYUP by LONG,CHLOE [PNT]
	02:56			ASSIST by PERRY,BRIANNA
MISSED JUMPER by DARK,TIERRA	02:23			
REBOUND (OFF) by COBB,JAMEICA	02:23			
MISSED LAYUP by COBB,JAMEICA	02:18			
REBOUND (OFF) by COLLINS,NATALIE	02:18			
	02:16			FOUL by LONG,CHLOE
GOOD! FT by COLLINS,NATALIE	02:16	24-13	H 11	
GOOD! FT by COLLINS,NATALIE	02:16	24-14	H 10	
	02:16			SUB IN: TOWELLS,MORGAN
	02:16			SUB IN: MAGRUDER,TASHA
	02:16			SUB OUT: PHELION,TYLER
	02:16			SUB OUT: WALKER,JAYLA
	02:03			MISSED LAYUP by LONG,CHLOE
BLOCK by JOHNSON,ALEXANDRA	02:03			
REBOUND (DEF) by MCKEE,LAUREN	02:02			
TURNOVER by COBB,JAMEICA	01:57			
	01:47			MISSED LAYUP by PERRY,BRIANNA
BLOCK by COLLINS,NATALIE	01:47			
	01:46			REBOUND (OFF) by TEAM
SUB IN: DOTSON,ASHLYN	01:45			
SUB OUT: JOHNSON,ALEXANDRA	01:45			
	01:28			TURNOVER by JOHNSON,KIANA
MISSED LAYUP by COBB,JAMEICA	00:56			
	00:56			REBOUND (DEF) by TEAM
	00:54			SUB IN: PHELION,TYLER
	00:54			SUB OUT: LONG,CHLOE
	00:44	26-14	H 12	GOOD! JUMPER by PERRY,BRIANNA
MISSED JUMPER by DARK,TIERRA	00:24			
	00:24			REBOUND (DEF) by PERRY,BRIANNA
	00:15			MISSED LAYUP by PERRY,BRIANNA
	00:15			REBOUND (OFF) by PHELION,TYLER
	00:02			TURNOVER by PHELION,TYLER
STEAL by COBB,JAMEICA	00:02			
	00:00			FOUL by JOHNSON,KIANA
GOOD! FT by COBB,JAMEICA	00:07	26-15	H 11	
GOOD! FT by COBB,JAMEICA	00:07	26-16	H 10	
	00:00			MISSED JUMPER by PERRY,BRIANNA
BLOCK by COBB,JAMEICA	00:00			
REBOUND (DEF) by COLLINS,NATALIE	00:00			

Alabama A&M 16, Jacksonville State 26

Period 2-only	In Paint	Off T/O	2nd Chance	Fast Break	Bench	
AAMUWBB	0	2	2	0	4	Score tied - 0 times
JSU	4	10	3	0	7	Lead changed - 0 times



Official Basketball Box Score -- Game Totals -- Second Half Statistics  
 Alabama A&M vs Jacksonville State  
 12/12/2017 7:00 pm at Jacksonville, Ala. (Pete Mathews Col.)



Alabama A&M 17 • 4-3

##	Player	*	Total			3-Ptr			Rebounds			PF	TP	A	TO	Blk	Stl	Min
			FG-FGA	FG-FGA	FT-FTA	FG-FGA	FG-FGA	FT-FTA	Off	Def	Tot							
01	BONNER,AUBRIANA	*	1-4	0-0	0-0	0-0	0-0	0-0	1	0	1	0	2	0	0	0	3	10
02	COLLINS,NATALIE	*	1-3	1-3	0-0	0-0	0-0	0-0	0	0	0	1	3	0	1	1	0	10
05	JONES,NIGERIA	*	1-5	0-1	0-0	0-0	0-0	0-0	0	0	0	0	2	0	1	0	0	9
35	THARPE,KENISHA	*	0-1	0-0	0-0	0-0	0-0	0-0	2	3	5	0	0	1	4	0	0	10
44	DOTSON,ASHLYN	*	1-4	0-0	0-0	0-0	0-0	0-0	0	0	0	2	2	0	0	1	0	12
03	EGGLESTON,COURTNEY		0-2	0-1	0-0	0-0	0-0	0-0	1	0	1	0	0	0	0	0	0	2
04	COBB,JAMEICA		0-3	0-0	0-0	0-0	0-0	0-0	0	1	1	0	0	1	0	0	0	9
10	MCKEE,LAUREN		1-3	0-1	0-0	0-0	0-0	0-0	0	2	2	1	2	2	2	0	0	12
21	JOHNSON,ALEXANDRA		0-1	0-0	0-0	0-0	0-0	0-0	2	2	4	0	0	0	0	1	0	8
22	DAVIS,ALISHA		0-0	0-0	0-0	0-0	0-0	0-0	1	0	1	0	0	0	0	0	0	0
23	HARPER,DESHAWNA		0-1	0-0	0-0	0-0	0-0	0-0	0	0	0	1	0	0	0	0	0	7
24	DARK,TIERRA		3-6	0-0	0-2	0-2	0-2	0-2	0	1	1	2	6	0	0	0	0	11
TEAM									1	1	2	0			1			
Totals			8-33	1-6	0-2	0-2	0-2	0-2	8	10	18	7	17	4	9	3	3	100
FG %	3rd Qtr	2-15	13.3%	4th Qtr	6-18	33.3%	Half:	8-33	24.2%									
3FG %	3rd Qtr	0-1	00.0%	4th Qtr	1-5	20.0%	Half:	1-6	00.0%									
FT %	3rd Qtr	0-0	0%	4th Qtr	0-2	00.0%	Half:	0-2	00.0%									

Jacksonville State 23 • 5-3

##	Player	*	Total			3-Ptr			Rebounds			PF	TP	A	TO	Blk	Stl	Min
			FG-FGA	FG-FGA	FT-FTA	FG-FGA	FG-FGA	FT-FTA	Off	Def	Tot							
00	HAWKS,TAYLOR	*	0-2	0-1	0-0	0-0	0-0	0-0	0	0	0	0	0	1	0	2	0	12
11	JOHNSON,KIANA	*	0-3	0-2	0-0	0-0	0-0	0-0	0	1	1	1	0	0	1	0	1	9
15	LONG,CHLOE	*	1-1	0-0	0-1	0-1	0-1	0-1	1	3	4	0	2	1	1	1	0	9
24	MORRISON,GRETCHEN	*	1-1	1-1	0-0	0-0	0-0	0-0	0	0	0	0	3	0	1	0	0	6
34	PEARSON,RAYVEN	*	1-4	0-0	0-0	0-0	0-0	0-0	1	5	6	1	2	1	3	0	0	7
01	TOWELLS,MORGAN		1-3	1-2	0-0	0-0	0-0	0-0	0	0	0	1	3	0	1	0	1	7
02	STRAIN,LEAH		1-1	0-0	0-2	0-2	0-2	0-2	0	1	1	1	2	0	2	0	1	5
03	PATTERSON,KI-KI		0-0	0-0	0-0	0-0	0-0	0-0	0	0	0	0	0	0	1	0	0	3
13	PERRY,BRIANNA		0-0	0-0	0-0	0-0	0-0	0-0	0	0	0	0	0	0	0	0	0	2
14	LAWRENCE,MCKENNA		1-3	1-1	0-0	0-0	0-0	0-0	0	0	0	0	3	0	0	0	0	7
22	WALKER,JAYLA		0-1	0-1	0-0	0-0	0-0	0-0	0	3	3	2	0	1	1	1	1	8
32	PHELION,TYLER		3-5	0-0	0-0	0-0	0-0	0-0	2	3	5	1	6	0	2	0	1	13
33	MAGRUDER,TASHA		1-2	0-0	0-0	0-0	0-0	0-0	1	1	2	0	2	1	1	0	0	11
TEAM									3	1	4	0			0			
Totals			10-26	3-8	0-3	0-3	0-3	0-3	8	18	26	7	23	5	14	4	5	99
FG %	3rd Qtr	6-16	37.5%	4th Qtr	4-10	40.0%	Half:	10-26	38.5%									
3FG %	3rd Qtr	2-5	40.0%	4th Qtr	1-3	33.3%	Half:	3-8	25.0%									
FT %	3rd Qtr	0-3	00.0%	4th Qtr	0-0	0%	Half:	0-3	00.0%									

Officials: R-Kylie Galloway, U1-Talisa Green, U2-Kiesha Brown  
 Technical Fouls: Alabama A&M- None. Jacksonville State- None.

Score by periods	1st	2nd	3rd	4th	Total	Points	In Paint	Off T/O	2nd Chance	Fast Break	Bench
Alabama A&M	10	6	4	13	33	AAMUWBB	14	11	6	0	8
Jacksonville State	11	15	14	9	49		14	2	4	0	16

Last FG - AAMUWBB 4th-01:04, JSU 4th-00:40.  
 AAMUWBB led for 0:00. JSU led for 20:00. Game was tied for 0:00.

Score tied - 0 times  
 Lead changed - 0 times

**Alabama A&M vs Jacksonville State**  
**12/12/2017; 7:00 pm at Jacksonville, Ala. (Pete Mathews Col.)**  
**Period 3 Play-By-Play**



VISITORS: Alabama A&M	Time	Score	Margin	HOME: Jacksonville State
	10:00			SUB IN: MAGRUDER,TASHA
	10:00			SUB OUT: LONG,CHLOE
	09:43	28-16	H 12	GOOD! JUMPER by PEARSON,RAYVEN [PNT]
MISSED LAYUP by DOTSON,ASHLYN	09:27			
	09:27			REBOUND (DEF) by PEARSON,RAYVEN
	09:15	31-16	H 15	GOOD! 3PTR by MORRISON,GRETCHEN
TURNOVER by THARPE,KENISHA	08:49			
	08:48			STEAL by JOHNSON,KIANA
	08:46			TURNOVER by JOHNSON,KIANA
MISSED 3PTR by JONES,NIGERIA	08:27			
	08:27			REBOUND (DEF) by PEARSON,RAYVEN
	08:17			TURNOVER by PEARSON,RAYVEN
TIMEOUT 30SEC	08:15			
TIMEOUT MEDIA	08:15			
SUB IN: MCKEE,LAUREN	08:15			
SUB IN: DARK,TIERRA	08:15			
SUB OUT: COLLINS,NATALIE	08:15			
SUB OUT: JONES,NIGERIA	08:15			
MISSED JUMPER by DARK,TIERRA	08:08			
	08:08			REBOUND (DEF) by JOHNSON,KIANA
	07:55			TURNOVER by PEARSON,RAYVEN
MISSED LAYUP by DOTSON,ASHLYN	07:35			
REBOUND (OFF) by THARPE,KENISHA	07:35			
GOOD! LAYUP by DOTSON,ASHLYN [PNT]	07:13	31-18	H 13	
ASSIST by THARPE,KENISHA	07:13			
	06:59			MISSED 3PTR by JOHNSON,KIANA
	06:59			REBOUND (OFF) by MAGRUDER,TASHA
FOUL by DARK,TIERRA	06:54			
SUB IN: HARPER,DESHAWNA	06:54			
SUB OUT: DARK,TIERRA	06:54			
	06:52			TURNOVER by MORRISON,GRETCHEN
STEAL by BONNER,AUBRIANA	06:51			
MISSED LAYUP by BONNER,AUBRIANA	06:47			
	06:47			REBOUND (DEF) by PEARSON,RAYVEN
FOUL by MCKEE,LAUREN	06:44			
	06:22			MISSED LAYUP by JOHNSON,KIANA
	06:22			REBOUND (OFF) by TEAM
SUB IN: COBB,JAMEICA	06:20			
SUB OUT: MCKEE,LAUREN	06:20			
FOUL by DOTSON,ASHLYN	06:14			
SUB IN: JOHNSON,ALEXANDRA	06:14			
SUB OUT: DOTSON,ASHLYN	06:14			
	06:07			MISSED LAYUP by PEARSON,RAYVEN
REBOUND (DEF) by THARPE,KENISHA	06:07			
MISSED LAYUP by BONNER,AUBRIANA	05:48			
	05:48			REBOUND (DEF) by PEARSON,RAYVEN
	05:36			MISSED LAYUP by MAGRUDER,TASHA
	05:36			REBOUND (OFF) by PEARSON,RAYVEN
	05:32			MISSED LAYUP by PEARSON,RAYVEN
REBOUND (DEF) by JOHNSON,ALEXANDRA	05:32			
SUB IN: JONES,NIGERIA	05:32			
SUB OUT: BONNER,AUBRIANA	05:32			
	05:32			SUB IN: LONG,CHLOE
	05:32			SUB IN: PHELION,TYLER
	05:32			SUB OUT: MAGRUDER,TASHA
	05:32			SUB OUT: PEARSON,RAYVEN
	05:30			FOUL by PEARSON,RAYVEN
MISSED LAYUP by COBB,JAMEICA	05:24			
	05:24			BLOCK by LONG,CHLOE
	05:22			REBOUND (DEF) by LONG,CHLOE
	05:18			MISSED 3PTR by HAWKS,TAYLOR
	05:18			REBOUND (OFF) by TEAM
	05:12			MISSED LAYUP by PHELION,TYLER
	05:12			REBOUND (OFF) by PHELION,TYLER
	05:09	33-18	H 15	GOOD! LAYUP by PHELION,TYLER [PNT]
MISSED LAYUP by JONES,NIGERIA	05:01			
	05:01			BLOCK by HAWKS,TAYLOR
REBOUND (OFF) by THARPE,KENISHA	04:58			
MISSED JUMPER by THARPE,KENISHA	04:57			

VISITORS: Alabama A&M	Time	Score	Margin	HOME: Jacksonville State
	04:57			REBOUND (DEF) by LONG,CHLOE
	04:47			MISSED 3PTR by JOHNSON,KIANA
REBOUND (DEF) by TEAM	04:47			
TIMEOUT media	04:47			
SUB IN: COLLINS,NATALIE	04:47			
SUB OUT: THARPE,KENISHA	04:47			
	04:47			SUB IN: PATTERSON,KI-KI
	04:47			SUB IN: LAWRENCE,MCKENNA
	04:47			SUB OUT: JOHNSON,KIANA
	04:47			SUB OUT: MORRISON,GRETCHEN
TURNOVER by COLLINS,NATALIE	04:24			
	04:24			STEAL by PHELION,TYLER
	04:15			TURNOVER by PHELION,TYLER
GOOD! JUMPER by JONES,NIGERIA [PNT]	03:52	33-20	H 13	
ASSIST by COBB,JAMEICA	03:52			
	03:25			SUB IN: STRAIN,LEAH
	03:25			SUB OUT: HAWKS,TAYLOR
FOUL by COLLINS,NATALIE	03:24			
	03:19			MISSED JUMPER by LAWRENCE,MCKENNA
REBOUND (DEF) by JOHNSON,ALEXANDRA	03:19			
MISSED LAYUP by HARPER,DESHAWNA	03:09			
	03:09			REBOUND (DEF) by LONG,CHLOE
	02:46	36-20	H 16	GOOD! 3PTR by LAWRENCE,MCKENNA
	02:46			ASSIST by LONG,CHLOE
MISSED LAYUP by JONES,NIGERIA	02:25			
	02:25			REBOUND (DEF) by PHELION,TYLER
	02:00			TURNOVER by PATTERSON,KI-KI
SUB IN: DOTSON,ASHLYN	02:00			
SUB IN: THARPE,KENISHA	02:00			
SUB OUT: COLLINS,NATALIE	02:00			
SUB OUT: JOHNSON,ALEXANDRA	02:00			
	02:00			SUB IN: WALKER,JAYLA
	02:00			SUB OUT: PATTERSON,KI-KI
TURNOVER by THARPE,KENISHA	01:56			
	01:46			MISSED FT by STRAIN,LEAH
	01:46			REBOUND (DEADB) by TEAM
	01:46			MISSED FT by STRAIN,LEAH
REBOUND (DEF) by THARPE,KENISHA	01:46			
FOUL by HARPER,DESHAWNA	01:45			
	01:23			FOUL by WALKER,JAYLA
MISSED JUMPER by COBB,JAMEICA	01:11			
	01:11			REBOUND (DEF) by STRAIN,LEAH
	01:00	38-20	H 18	GOOD! LAYUP by MAGRUDER,TASHA [PNT]
	01:00			ASSIST by WALKER,JAYLA
MISSED JUMPER by JONES,NIGERIA	00:26			
	00:26			BLOCK by WALKER,JAYLA
TURNOVER by TEAM	00:25			
SUB IN: DARK,TIERRA	00:25			
SUB OUT: COBB,JAMEICA	00:25			
	00:24			REBOUND (DEF) by TEAM
	00:09			TURNOVER by STRAIN,LEAH
	00:07			SUB IN: HAWKS,TAYLOR
	00:07			SUB OUT: STRAIN,LEAH
TURNOVER by THARPE,KENISHA	00:06			
	00:02			MISSED JUMPER by LAWRENCE,MCKENNA
	00:02			REBOUND (OFF) by LONG,CHLOE
	00:00	40-20	H 20	GOOD! LAYUP by LONG,CHLOE [PNT]
FOUL by DOTSON,ASHLYN	00:00			
	00:00			MISSED FT by LONG,CHLOE
	00:00			REBOUND (OFF) by PHELION,TYLER

Alabama A&M 33, Jacksonville State 49

Period 3-only	In Paint	Off T/O	2nd Chance	Fast Break	Bench	
AAMUWBB	4	4	2	0	0	Score tied - 0 times
JSU	8	2	4	0	7	Lead changed - 0 times

Alabama A&M vs Jacksonville State  
 12/12/2017; 7:00 pm at Jacksonville, Ala. (Pete Mathews Col.)  
 Period 4 Play-By-Play



VISITORS: Alabama A&M	Time	Score	Margin	HOME: Jacksonville State
SUB IN: MCKEE,LAUREN	10:00			
SUB IN: DARK,TIERRA	10:00			
SUB IN: JOHNSON,ALEXANDRA	10:00			
SUB OUT: BONNER,AUBRIANA	10:00			
SUB OUT: THARPE,KENISHA	10:00			
SUB OUT: DOTSON,ASHLYN	10:00			
	10:00			SUB IN: WALKER,JAYLA
	10:00			SUB IN: LAWRENCE,MCKENNA
	10:00			SUB IN: PHELION,TYLER
	10:00			SUB OUT: JOHNSON,KIANA
	10:00			SUB OUT: MORRISON,GRETCHEN
	10:00			SUB OUT: PEARSON,RAYVEN
TIMEOUT 30SEC	09:50			
	09:50			TIMEOUT media
GOOD! LAYUP by DARK,TIERRA [PNT]	09:36	40-22	H 18	
	09:23			TURNOVER by PHELION,TYLER
MISSED LAYUP by DARK,TIERRA	09:08			
REBOUND (OFF) by JOHNSON,ALEXANDRA	09:08			
MISSED JUMPER by JOHNSON,ALEXANDRA	09:04			
	09:04			REBOUND (DEF) by WALKER,JAYLA
	08:57	42-22	H 20	GOOD! LAYUP by PHELION,TYLER [PNT]
	08:57			ASSIST by HAWKS,TAYLOR
TURNOVER by JONES,NIGERIA	08:31			
	08:29			STEAL by WALKER,JAYLA
	08:21			MISSED LAYUP by PHELION,TYLER
BLOCK by COLLINS,NATALIE	08:21			
REBOUND (DEF) by MCKEE,LAUREN	08:20			
GOOD! JUMPER by DARK,TIERRA [PNT]	08:15	42-24	H 18	
ASSIST by MCKEE,LAUREN	08:15			
	07:57			MISSED LAYUP by HAWKS,TAYLOR
BLOCK by JOHNSON,ALEXANDRA	07:57			
	07:57			REBOUND (OFF) by TEAM
SUB IN: COBB,JAMEICA	07:56			
SUB IN: EGGLESTON,COURTNEY	07:56			
SUB IN: DOTSON,ASHLYN	07:56			
SUB OUT: COLLINS,NATALIE	07:56			
SUB OUT: JONES,NIGERIA	07:56			
SUB OUT: JOHNSON,ALEXANDRA	07:56			
	07:56			SUB IN: TOWELLS,MORGAN
	07:56			SUB OUT: LAWRENCE,MCKENNA
	07:55			MISSED 3PTR by WALKER,JAYLA
REBOUND (DEF) by COBB,JAMEICA	07:55			
GOOD! JUMPER by DARK,TIERRA [PNT]	07:34	42-26	H 16	
	07:14			TURNOVER by LONG,CHLOE
	07:14			SUB IN: MAGRUDER,TASHA
	07:14			SUB IN: PEARSON,RAYVEN
	07:14			SUB OUT: LONG,CHLOE
	07:14			SUB OUT: PHELION,TYLER
MISSED 3PTR by EGGLESTON,COURTNEY	06:57			
	06:57			REBOUND (DEF) by WALKER,JAYLA
	06:44			MISSED LAYUP by PEARSON,RAYVEN
BLOCK by DOTSON,ASHLYN	06:44			
REBOUND (DEF) by MCKEE,LAUREN	06:43			
MISSED LAYUP by MCKEE,LAUREN	06:37			
REBOUND (OFF) by EGGLESTON,COURTNEY	06:37			
MISSED LAYUP by EGGLESTON,COURTNEY	06:34			
	06:34			REBOUND (DEF) by PEARSON,RAYVEN
FOUL by DARK,TIERRA	06:05			
SUB IN: BONNER,AUBRIANA	06:05			
SUB IN: THARPE,KENISHA	06:05			
SUB OUT: EGGLESTON,COURTNEY	06:05			
SUB OUT: DARK,TIERRA	06:05			
	05:57	45-26	H 19	GOOD! 3PTR by TOWELLS,MORGAN
	05:57			ASSIST by PEARSON,RAYVEN
MISSED LAYUP by COBB,JAMEICA	05:40			
	05:40			BLOCK by HAWKS,TAYLOR
	05:38			REBOUND (DEF) by WALKER,JAYLA
	05:35			TURNOVER by WALKER,JAYLA
STEAL by BONNER,AUBRIANA	05:34			

VISITORS: Alabama A&M	Time	Score	Margin	HOME: Jacksonville State
MISSED LAYUP by BONNER,AUBRIANA	05:33			
REBOUND (OFF) by TEAM	05:33			
GOOD! LAYUP by MCKEE,LAUREN [PNT]	05:10	45-28	H 17	
	04:38			TURNOVER by PEARSON,RAYVEN
STEAL by BONNER,AUBRIANA	04:38			
SUB IN: DARK,TIERRA	04:35			
SUB OUT: COBB,JAMEICA	04:35			
	04:35			SUB IN: PERRY,BRIANNA
	04:35			SUB IN: PHELION,TYLER
	04:35			SUB OUT: HAWKS,TAYLOR
	04:35			SUB OUT: PEARSON,RAYVEN
	04:24			SUB IN: JOHNSON,KIANA
	04:24			SUB OUT: WALKER,JAYLA
	04:23			FOUL by WALKER,JAYLA
MISSED FT by DARK,TIERRA	04:24			
REBOUND (DEADB) by TEAM	04:24			
MISSED FT by DARK,TIERRA	04:24			
	04:24			REBOUND (DEF) by MAGRUDER,TASHA
	04:09			MISSED 3PTR by TOWELLS,MORGAN
REBOUND (DEF) by DARK,TIERRA	04:09			
MISSED LAYUP by DOTSON,ASHLYN	03:50			
	03:50			REBOUND (DEF) by PHELION,TYLER
	03:26			MISSED JUMPER by TOWELLS,MORGAN
REBOUND (DEF) by THARPE,KENISHA	03:26			
TURNOVER by MCKEE,LAUREN	03:07			
SUB IN: JOHNSON,ALEXANDRA	03:06			
SUB OUT: DOTSON,ASHLYN	03:06			
	02:49			TURNOVER by MAGRUDER,TASHA
TURNOVER by THARPE,KENISHA	02:49			
	02:49			STEAL by TOWELLS,MORGAN
	02:47			TURNOVER by TOWELLS,MORGAN
	02:47			FOUL by TOWELLS,MORGAN
SUB IN: COLLINS,NATALIE	02:47			
SUB OUT: THARPE,KENISHA	02:47			
	02:40			FOUL by JOHNSON,KIANA
MISSED JUMPER by DARK,TIERRA	02:16			
REBOUND (OFF) by JOHNSON,ALEXANDRA	02:16			
	02:14			SUB IN: STRAIN,LEAH
	02:14			SUB OUT: PERRY,BRIANNA
	02:13			FOUL by PHELION,TYLER
MISSED 3PTR by MCKEE,LAUREN	02:07			
REBOUND (OFF) by BONNER,AUBRIANA	02:07			
GOOD! LAYUP by BONNER,AUBRIANA [PNT]	02:03	45-30	H 15	
	01:42	47-30	H 17	GOOD! LAYUP by PHELION,TYLER [PNT]
	01:42			ASSIST by MAGRUDER,TASHA
TURNOVER by MCKEE,LAUREN	01:29			
	01:28			STEAL by STRAIN,LEAH
	01:26			FOUL by STRAIN,LEAH
	01:26			TURNOVER by STRAIN,LEAH
SUB IN: DOTSON,ASHLYN	01:26			
SUB OUT: JOHNSON,ALEXANDRA	01:26			
	01:26			SUB IN: MORRISON,GRETCHEN
	01:26			SUB OUT: TOWELLS,MORGAN
GOOD! 3PTR by COLLINS,NATALIE	01:04	47-33	H 14	
ASSIST by MCKEE,LAUREN	01:04			
	00:40	49-33	H 16	GOOD! LAYUP by STRAIN,LEAH [PNT]
MISSED 3PTR by COLLINS,NATALIE	00:31			
REBOUND (OFF) by DAVIS,ALISHA	00:31			
MISSED 3PTR by COLLINS,NATALIE	00:23			
	00:23			REBOUND (DEF) by PHELION,TYLER

Alabama A&M 33, Jacksonville State 49

Period 4-only	In Paint	Off T/O	2nd Chance	Fast Break	Bench	
AAMUWBB	10	7	4	0	8	Score tied - 0 times
JSU	6	0	0	0	9	Lead changed - 0 times

Alabama A&M vs Jacksonville State  
 12/12/2017; 7:00 pm at Jacksonville, Ala. (Pete Mathews Col.)  
 Scoring/Runs Reference



**Period 1**

Alabama A&M	VRun	Score	Margin	HRun	Jacksonville State
08:00 - COBB LAYUP [P]	-	2-0	-2		
		2-1	-1		JOHNSON FT - 07:17
		2-2	0	2-0	JOHNSON FT - 07:17
		2-4	2	4-0	PEARSON LAYUP [P] - 05:22
		2-7	5	7-0	JOHNSON 3PTR - 04:32
04:01 - DARK JUMPER	-	4-7	3		
		4-9	5		STRAIN LAYUP [P] - 03:43
03:21 - THARPE JUMPER [P]	-	6-9	3		
01:39 - DOTSON LAYUP [P]	4-0	8-9	1		
00:58 - JONES FT	5-0	9-9	0		
		9-10	1		PATTERSON FT - 00:47
		9-11	2	2-0	PATTERSON FT - 00:47
00:16 - MCKEE FT	-	10-11	1		

Alabama A&M vs Jacksonville State  
 12/12/2017; 7:00 pm at Jacksonville, Ala. (Pete Mathews Col.)  
 Scoring/Runs Reference



**Period 2**

Alabama A&M	VRun	Score	Margin	HRun	Jacksonville State
		10-14	4		WALKER 3PTR - 08:50
		10-16	6	NaN-0	MAGRUDER LAYUP [P] - 08:21
		10-19	9	NaN-0	MORRISON 3PTR - 06:49
04:04 - DARK FT	-	11-19	8		
04:04 - DARK FT	2-0	12-19	7		
		12-22	10		JOHNSON 3PTR - 03:44
		12-24	12	5-0	LONG LAYUP [P] - 02:56
02:16 - COLLINS FT	-	13-24	11		
02:16 - COLLINS FT	2-0	14-24	10		
		14-26	12		PERRY JUMPER - 00:44
00:07 - COBB FT	-	15-26	11		
00:07 - COBB FT	2-0	16-26	10		

**Alabama A&M vs Jacksonville State**  
**12/12/2017; 7:00 pm at Jacksonville, Ala. (Pete Mathews Col.)**  
**Scoring/Runs Reference**



**Period 3**

Alabama A&M	VRun	Score	Margin	HRun	Jacksonville State
		16-28	12		PEARSON JUMPER [P] - 09:43
		16-31	15	NaN-0	MORRISON 3PTR - 09:15
07:13 - DOTSON LAYUP [P]	-	18-31	13		
		18-33	15		PHELION LAYUP [P] - 05:09
03:52 - JONES JUMPER [P]	-	20-33	13		
		20-36	16		LAWRENCE 3PTR - 02:46
		20-38	18	5-0	MAGRUDER LAYUP [P] - 01:00
		20-40	20	7-0	LONG LAYUP [P] - 00:00



**Alabama A&M vs Jacksonville State**  
**12/12/2017; 7:00 pm at Jacksonville, Ala. (Pete Mathews Col.)**  
**Scoring/Runs Reference**

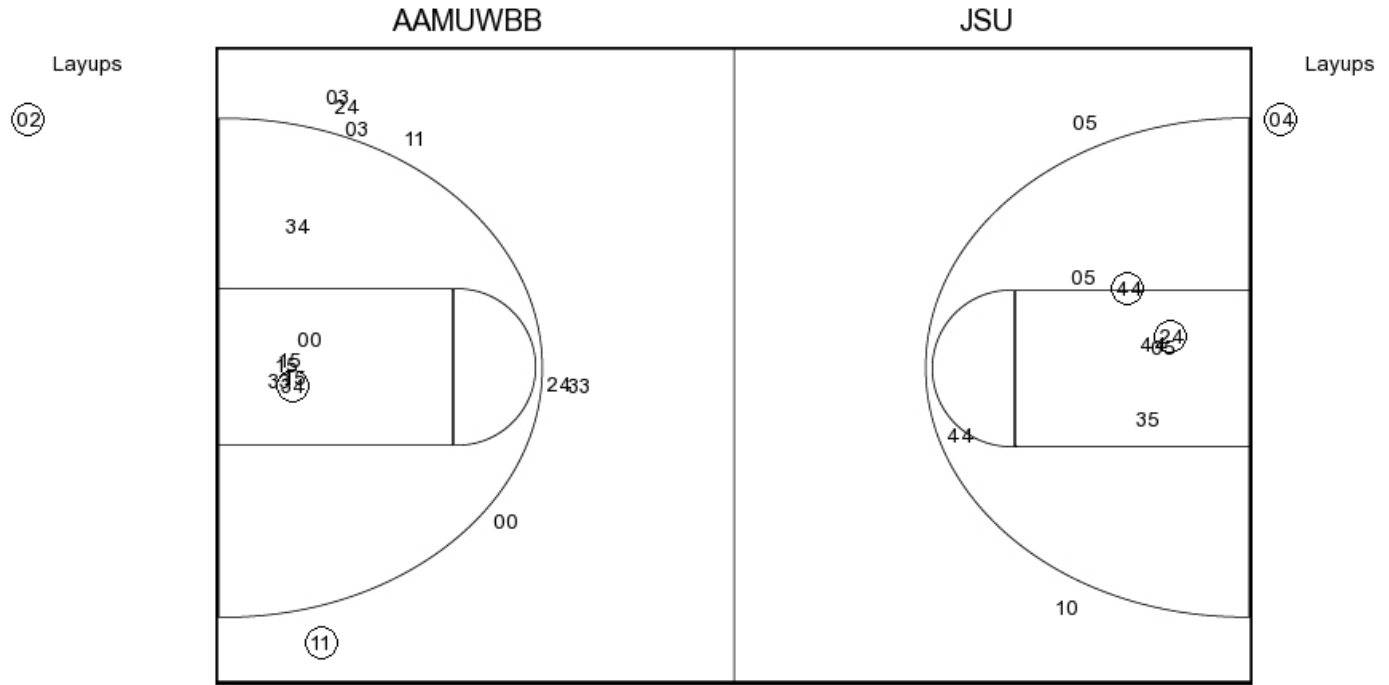


**Period 4**

Alabama A&M	VRun	Score	Margin	HRun	Jacksonville State
09:36 - DARK LAYUP [P]	-	22-40	18		
		22-42	20		PHELION LAYUP [P] - 08:57
08:15 - DARK JUMPER [P]	-	24-42	18		
07:34 - DARK JUMPER [P]	4-0	26-42	16		
		26-45	19		TOWELLS 3PTR - 05:57
05:10 - MCKEE LAYUP [P]	-	28-45	17		
02:03 - BONNER LAYUP [P]	4-0	30-45	15		
		30-47	17		PHELION LAYUP [P] - 01:42
01:04 - COLLINS 3PTR	-	33-47	14		
		33-49	16		STRAIN LAYUP [P] - 00:40



PERIOD 1



**AAMUWBB PERIOD 1**

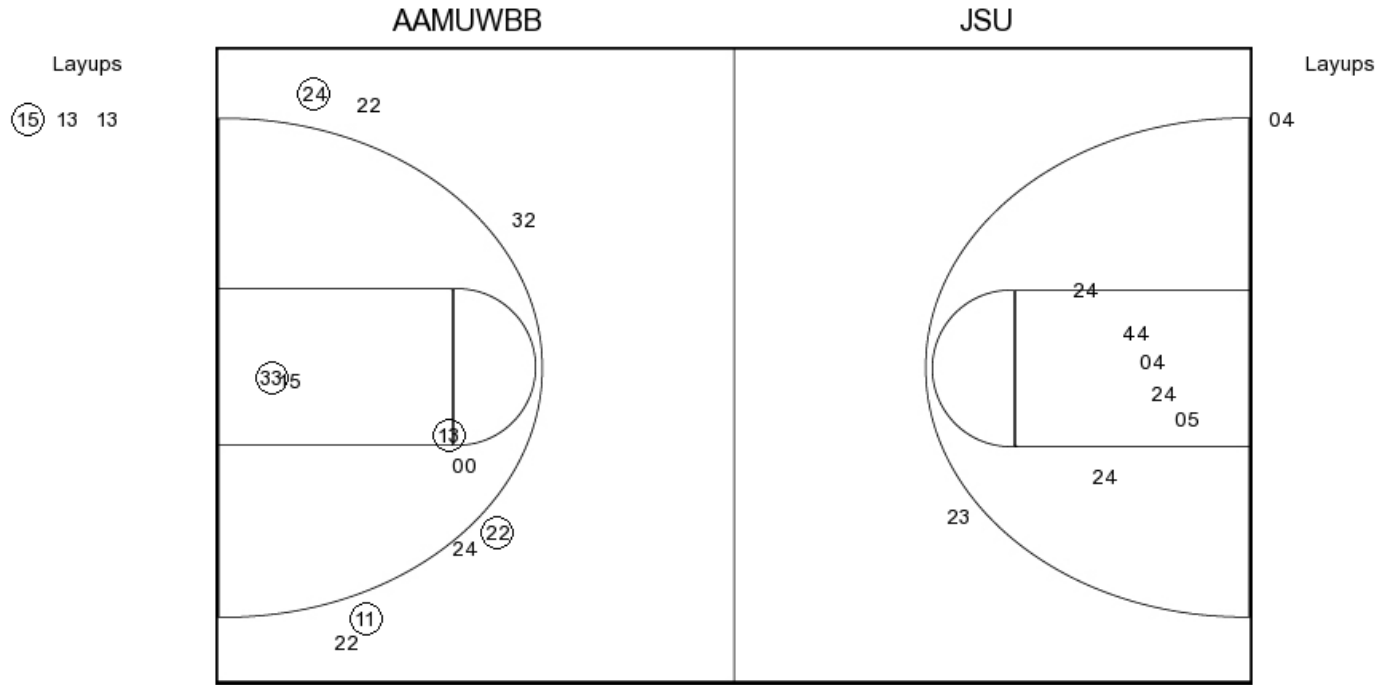
FG Made	4
FG Attempted	24
3PFG Made	0
3PFG Attempted	5

**JSU PERIOD 1**

FG Made	9
FG Attempted	32
3PFG Made	4
3PFG Attempted	16



**PERIOD 2**



**AAMUWBB PERIOD 2**

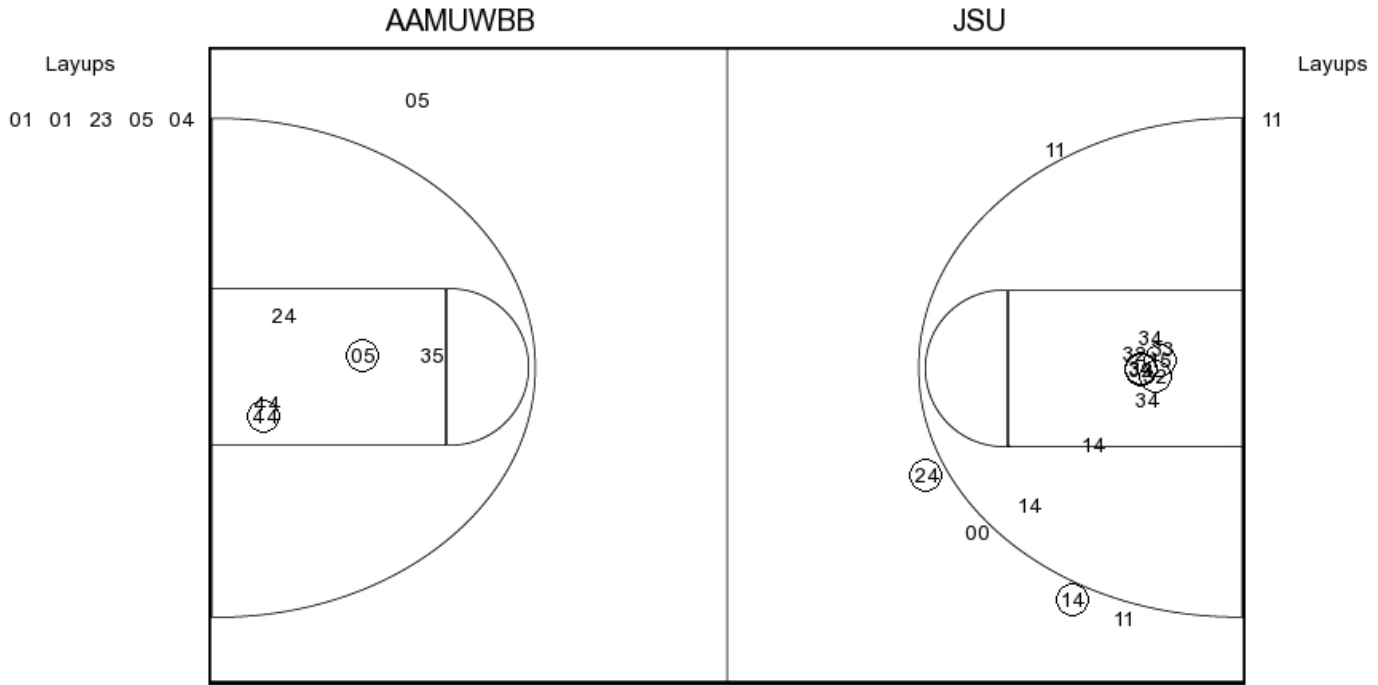
FG Made  
 FG Attempted  
 3PFG Made  
 3PFG Attempted

**JSU PERIOD 2**

FG Made  
 FG Attempted  
 3PFG Made  
 3PFG Attempted



**PERIOD 3**



**AAMUWBB PERIOD 3**

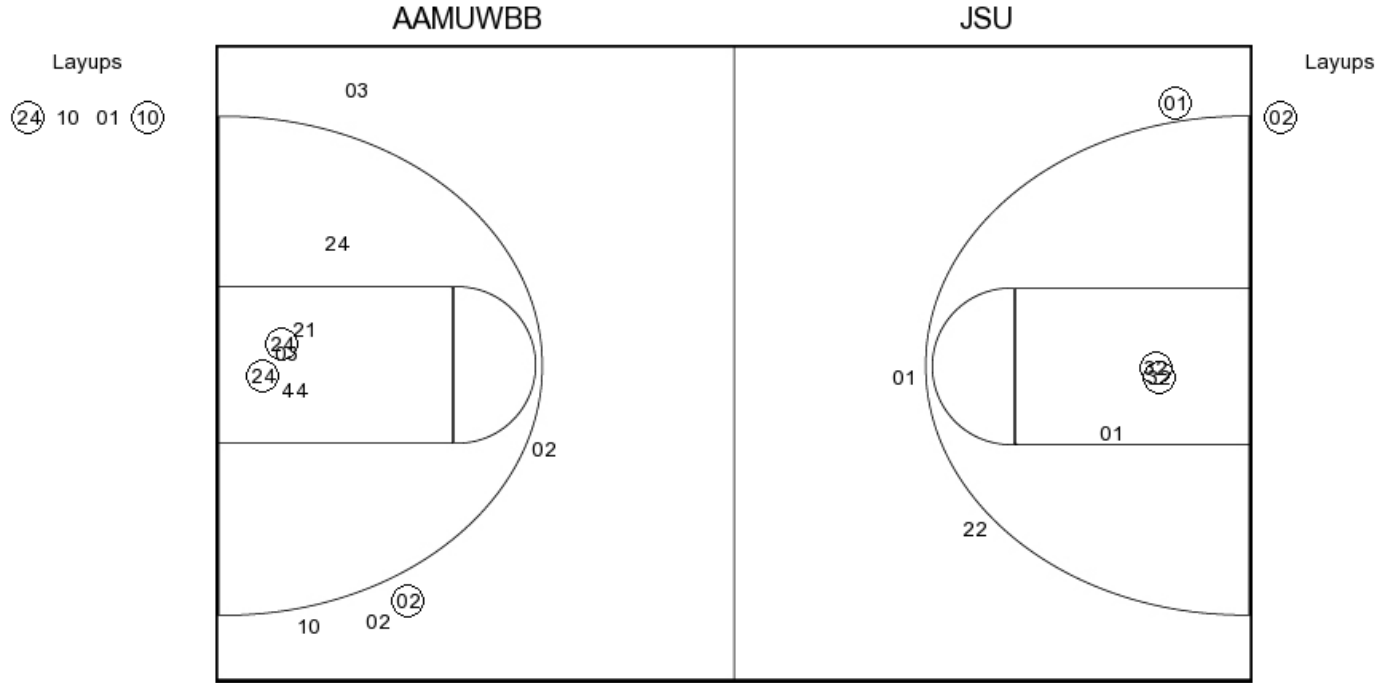
FG Made	8
FG Attempted	33
3PFG Made	1
3PFG Attempted	6

**JSU PERIOD 3**

FG Made	10
FG Attempted	26
3PFG Made	3
3PFG Attempted	8



**PERIOD 4**



**AAMUWBB PERIOD 4**

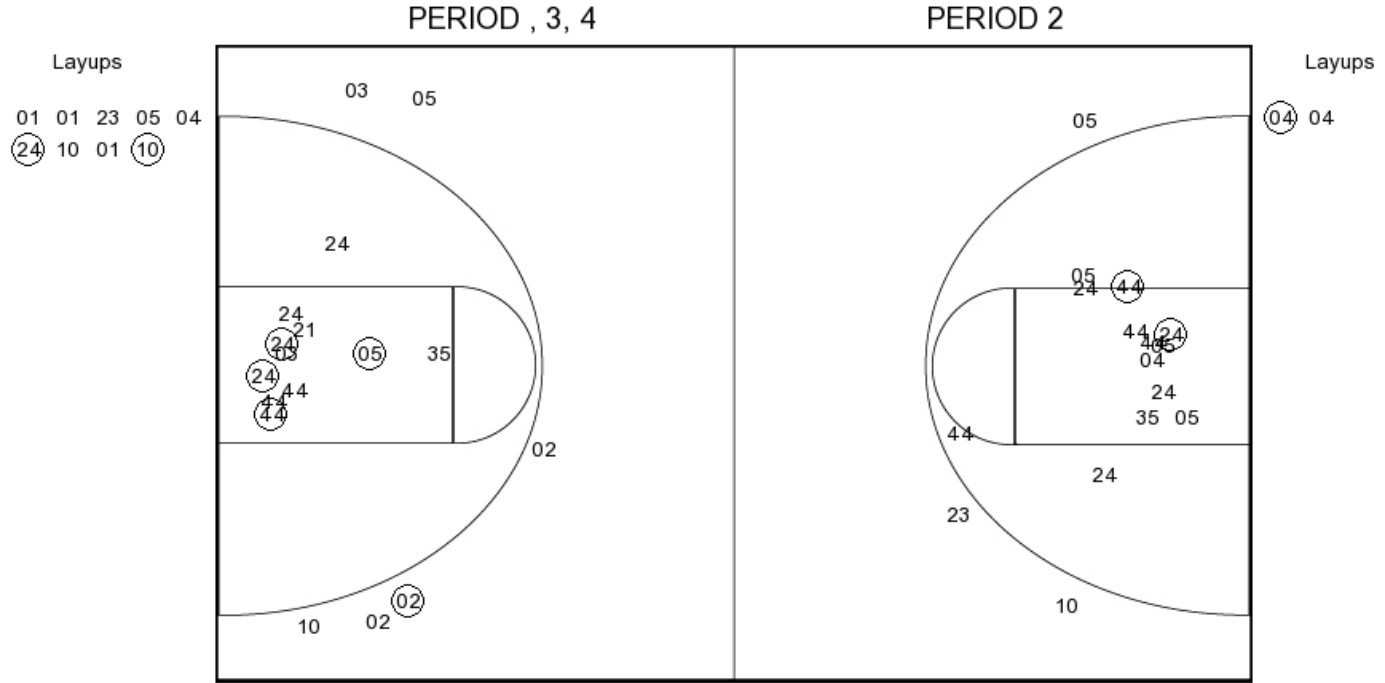
FG Made  
 FG Attempted  
 3PFG Made  
 3PFG Attempted

**JSU PERIOD 4**

FG Made  
 FG Attempted  
 3PFG Made  
 3PFG Attempted



Alabama A&M



**AAMUWBB PERIOD 1**

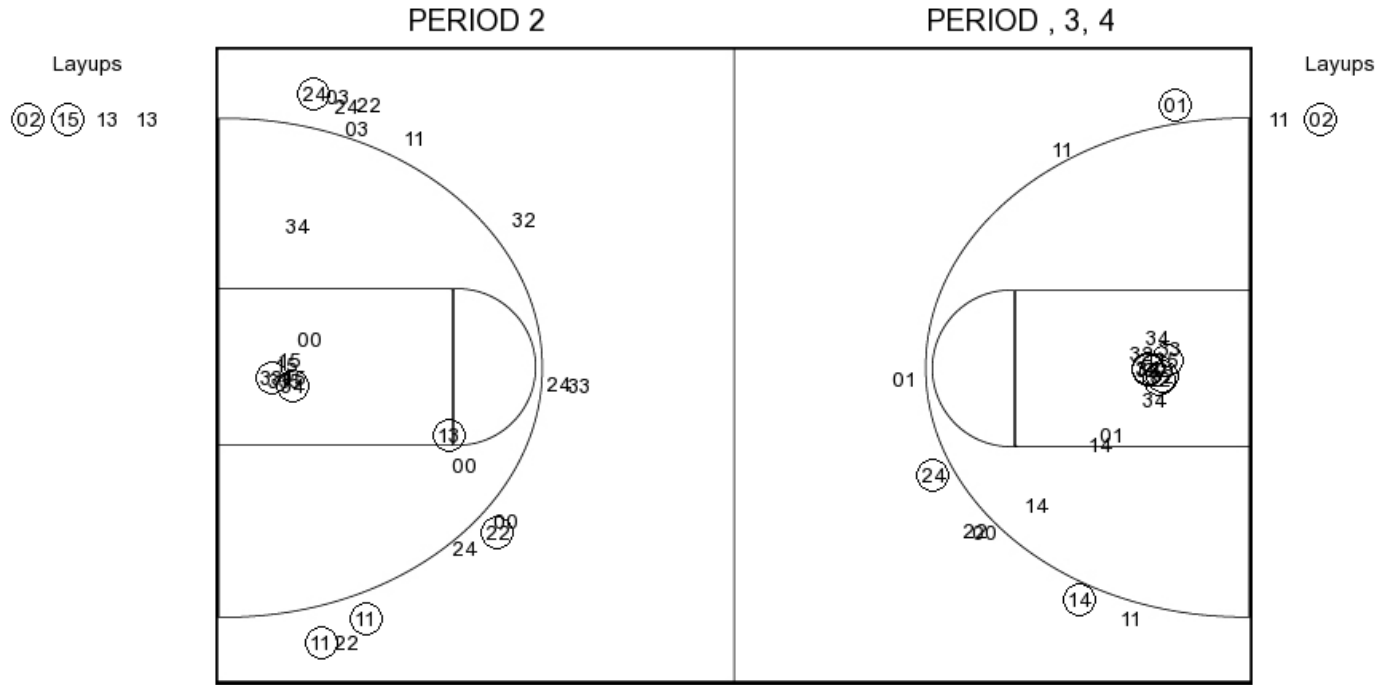
FG Made	4
FG Attempted	24
3PFG Made	0
3PFG Attempted	5

**AAMUWBB PERIOD 2**

FG Made	
FG Attempted	
3PFG Made	
3PFG Attempted	



**Jacksonville State**



**JSU PERIOD 1**

FG Made	9
FG Attempted	32
3PFG Made	4
3PFG Attempted	16

**JSU PERIOD 2**

FG Made	
FG Attempted	
3PFG Made	
3PFG Attempted	