

FINAL SCORE

Stillman

1-2

38



Jacksonville State

1-1

93

November 15, 2017 • Jacksonville, Ala.

FINAL STATISTICS

Official Basketball Box Score -- Game Totals -- Final Statistics
 Stillman vs Jacksonville State
 11/15/2017 7:00 PM at Jacksonville, Ala.



Stillman 38 - 1-2

| # | Player | * | Total | | 3-Ptr | Rebounds | | | PF | TP | A | TO | Blk | Stl | Min |
|--------|---------------------|---|--------|--------|--------|----------|-----|-----|----|----|---|----|-----|-----|-----|
| | | | FG-FGA | FG-FGA | FT-FTA | Off | Def | Tot | | | | | | | |
| 03 | LIKELY,KI'ONNA | * | 2-11 | 0-0 | 0-0 | 1 | 3 | 4 | 1 | 4 | 2 | 7 | 0 | 4 | 27 |
| 05 | COLLINS,MORGAN | * | 3-10 | 1-4 | 2-2 | 0 | 1 | 1 | 1 | 9 | 0 | 4 | 0 | 0 | 21 |
| 13 | ROBINSON,TABITHA | * | 0-1 | 0-1 | 0-0 | 0 | 2 | 2 | 1 | 0 | 1 | 0 | 0 | 0 | 11 |
| 30 | WORLD,ASHLEY | * | 0-3 | 0-1 | 0-0 | 1 | 0 | 1 | 1 | 0 | 0 | 3 | 0 | 0 | 17 |
| 44 | BAKER,COURTNEY | * | 1-3 | 0-0 | 0-0 | 2 | 2 | 4 | 2 | 2 | 0 | 0 | 0 | 2 | 17 |
| 04 | MOORE,NEIUNDR | | 0-2 | 0-0 | 1-2 | 0 | 0 | 0 | 2 | 1 | 0 | 1 | 0 | 0 | 9 |
| 12 | MORRIS,ASIJAH | | 0-0 | 0-0 | 0-0 | 0 | 0 | 0 | 1 | 0 | 0 | 0 | 0 | 0 | 2 |
| 20 | MILLIGAN-WILLIAMS,E | | 0-0 | 0-0 | 1-2 | 0 | 1 | 1 | 0 | 1 | 0 | 0 | 0 | 0 | 8 |
| 22 | HUNT,O'NESHA | | 2-4 | 0-0 | 0-0 | 0 | 0 | 0 | 1 | 4 | 0 | 1 | 0 | 0 | 17 |
| 23 | LOWERY,JALICYA | | 3-7 | 0-0 | 3-4 | 1 | 1 | 2 | 2 | 9 | 3 | 6 | 0 | 1 | 25 |
| 24 | BROWN,KHALADRIYAH | | 1-3 | 0-0 | 0-1 | 2 | 1 | 3 | 1 | 2 | 0 | 1 | 3 | 1 | 17 |
| 32 | SYPHOE,VICTORIA | | 0-1 | 0-0 | 0-2 | 0 | 0 | 0 | 1 | 0 | 1 | 1 | 0 | 0 | 11 |
| 34 | GINWRIGHT,KIAZHA | | 3-5 | 0-0 | 0-0 | 0 | 5 | 5 | 2 | 6 | 0 | 1 | 0 | 0 | 18 |
| TEAM | | | | | | 3 | 1 | 4 | 0 | | | 3 | | | |
| TOTALS | | | 15-50 | 1-6 | 7-13 | 10 | 17 | 27 | 16 | 38 | 7 | 28 | 3 | 8 | 200 |

Deadball Rebounds: 3,0

| | | | | | | | | | | | | | | |
|-------|----------------|--------|----------------|-------|---------------|-------|---------------|-------|--|--|--|--|--|--|
| FG % | 1st Half: 6-22 | 27.3% | 2nd Half: 9-28 | 32.1% | Game: 15-50 | 30.0% | | | | | | | | |
| | 1st Qtr: 4-11 | 36.4% | 2nd Qtr: 2-11 | 18.2% | 3rd Qtr: 6-15 | 40.0% | 4th Qtr: 3-13 | 23.1% | | | | | | |
| 3FG % | 1st Half: 1-3 | 33.3% | 2nd Half: 0-3 | 00.0% | Game: 1-6 | 16.7% | | | | | | | | |
| | 1st Qtr: 1-1 | 100.0% | 2nd Qtr: 0-2 | 00.0% | 3rd Qtr: 0-2 | 00.0% | 4th Qtr: 0-1 | 00.0% | | | | | | |
| FT % | 1st Half: 3-4 | 75.0% | 2nd Half: 4-9 | 44.4% | Game: 7-13 | 53.8% | | | | | | | | |
| | 1st Qtr: 3-4 | 75.0% | 2nd Qtr: 0-0 | 0% | 3rd Qtr: 4-7 | 57.1% | 4th Qtr: 0-2 | 00.0% | | | | | | |

Jacksonville State 93 - 1-1

| # | Player | * | Total | | 3-Ptr | Rebounds | | | PF | TP | A | TO | Blk | Stl | Min |
|--------|-------------------|---|--------|--------|--------|----------|-----|-----|----|----|----|----|-----|-----|-----|
| | | | FG-FGA | FG-FGA | FT-FTA | Off | Def | Tot | | | | | | | |
| 03 | PATTERSON,KI-KI | * | 3-7 | 3-5 | 2-2 | 1 | 2 | 3 | 0 | 11 | 2 | 1 | 0 | 0 | 13 |
| 13 | PERRY,BRIANNA | * | 1-3 | 0-2 | 0-0 | 1 | 0 | 1 | 3 | 2 | 1 | 0 | 0 | 0 | 13 |
| 24 | MORRISON,GRETCHEN | * | 4-10 | 4-9 | 0-0 | 0 | 1 | 1 | 0 | 12 | 0 | 0 | 0 | 2 | 15 |
| 32 | PHELION,TYLER | * | 6-8 | 0-0 | 1-1 | 3 | 3 | 6 | 3 | 13 | 1 | 2 | 0 | 2 | 20 |
| 33 | MAGRUDER,TASHA | * | 2-5 | 0-0 | 0-1 | 3 | 7 | 10 | 3 | 4 | 4 | 2 | 3 | 3 | 26 |
| 00 | HAWKS,TAYLOR | | 4-6 | 3-4 | 1-2 | 0 | 0 | 0 | 0 | 12 | 6 | 1 | 0 | 0 | 16 |
| 01 | TOWELLS,MORGAN | | 4-8 | 3-5 | 0-0 | 2 | 2 | 4 | 0 | 11 | 2 | 2 | 0 | 2 | 18 |
| 02 | STRAIN,LEAH | | 1-3 | 0-2 | 0-0 | 0 | 2 | 2 | 2 | 2 | 4 | 4 | 0 | 3 | 13 |
| 11 | JOHNSON,KIANA | | 1-5 | 0-0 | 0-0 | 1 | 0 | 1 | 2 | 2 | 1 | 2 | 0 | 2 | 8 |
| 14 | LAWRENCE,MCKENNA | | 3-6 | 2-4 | 0-0 | 1 | 1 | 2 | 3 | 8 | 0 | 1 | 0 | 0 | 14 |
| 15 | LONG,CHLOE | | 0-0 | 0-0 | 2-2 | 0 | 0 | 0 | 1 | 2 | 0 | 2 | 0 | 0 | 5 |
| 22 | WALKER,JAYLA | | 1-4 | 1-3 | 1-2 | 1 | 1 | 2 | 0 | 4 | 4 | 1 | 1 | 1 | 12 |
| 34 | PEARSON,RAYVEN | | 5-8 | 0-0 | 0-0 | 7 | 6 | 13 | 1 | 10 | 0 | 0 | 1 | 2 | 28 |
| TEAM | | | | | | 2 | 3 | 5 | 0 | | | 1 | | | |
| TOTALS | | | 35-73 | 16-34 | 7-10 | 22 | 28 | 50 | 18 | 93 | 25 | 19 | 5 | 17 | 201 |

Deadball Rebounds: 2,0

| | | | | | | | | | | | | | | |
|-------|-----------------|-------|-----------------|-------|---------------|-------|----------------|-------|--|--|--|--|--|--|
| FG % | 1st Half: 14-36 | 38.9% | 2nd Half: 21-37 | 56.8% | Game: 35-73 | 47.9% | | | | | | | | |
| | 1st Qtr: 9-21 | 42.9% | 2nd Qtr: 5-15 | 33.3% | 3rd Qtr: 9-19 | 47.4% | 4th Qtr: 12-18 | 66.7% | | | | | | |
| 3FG % | 1st Half: 3-15 | 20.0% | 2nd Half: 13-19 | 68.4% | Game: 16-34 | 47.1% | | | | | | | | |
| | 1st Qtr: 1-8 | 12.5% | 2nd Qtr: 2-7 | 28.6% | 3rd Qtr: 6-9 | 66.7% | 4th Qtr: 7-10 | 70.0% | | | | | | |
| FT % | 1st Half: 3-4 | 75.0% | 2nd Half: 4-6 | 66.7% | Game: 7-10 | 70.0% | | | | | | | | |
| | 1st Qtr: 0-0 | 0% | 2nd Qtr: 3-4 | 75.0% | 3rd Qtr: 3-4 | 75.0% | 4th Qtr: 1-2 | 50.0% | | | | | | |

Officials: David Jenkins, Neonta Williams, Kiesha Brown
 Technical Fouls: Stillman- None. Jacksonville State- None.

| Score by periods | 1st | 2nd | 3rd | 4th | Total Points | In Paint | Off T/O | 2nd Chance | Fast Break | Bench |
|--------------------|-----|-----|-----|-----|--------------|----------|---------|------------|------------|-------|
| Stillman | 12 | 4 | 16 | 6 | 38 | 22 | 10 | 4 | 4 | 23 |
| Jacksonville State | 19 | 15 | 27 | 32 | 93 | 32 | 32 | 4 | 2 | 51 |

Last FG - SC 4th-03:20, JSU 4th-00:41.
 Largest lead - Stillman by ; Jacksonville State by 55 4th-00:21
 SC led for 0:00. JSU led for 39:31. Game was tied for 0:29.

Score tied - 0 times; Lead changed - 0 times

Official Basketball Box Score -- Game Totals -- First Half Statistics
 Stillman vs Jacksonville State
 11/15/2017 7:00 PM at Jacksonville, Ala.



Stillman 16 • 1-2

| ## | Player | * | Total | | 3-Ptr | FT-FTA | Rebounds | | | PF | TP | A | TO | Blk | Stl | Min |
|--------|---------------------|------|--------|---------|--------|--------|----------|------|-------|----|----|----|----|-----|-----|-----|
| | | | FG-FGA | FG-FGA | FG-FGA | | Off | Def | Tot | | | | | | | |
| 03 | LIKELY,KI'ONNA | * | 2-8 | 0-0 | 0-0 | 1 | 1 | 2 | 1 | 4 | 2 | 5 | 0 | 4 | 19 | |
| 05 | COLLINS,MORGAN | * | 1-5 | 1-3 | 2-2 | 0 | 0 | 0 | 1 | 5 | 0 | 2 | 0 | 0 | 12 | |
| 13 | ROBINSON,TABITHA | * | 0-0 | 0-0 | 0-0 | 0 | 2 | 2 | 0 | 0 | 0 | 0 | 0 | 0 | 6 | |
| 30 | WORLD,ASHLEY | * | 0-1 | 0-0 | 0-0 | 0 | 0 | 0 | 0 | 0 | 0 | 2 | 0 | 0 | 11 | |
| 44 | BAKER,COURTNEY | * | 0-0 | 0-0 | 0-0 | 0 | 1 | 1 | 2 | 0 | 0 | 0 | 0 | 0 | 3 | |
| 04 | MOORE,NEIUNDRA | | 0-1 | 0-0 | 1-2 | 0 | 0 | 0 | 2 | 1 | 0 | 1 | 0 | 0 | 4 | |
| 12 | MORRIS,ASIYAH | | 0-0 | 0-0 | 0-0 | 0 | 0 | 0 | 0 | 0 | 0 | 0 | 0 | 0 | 0 | |
| 20 | MILLIGAN-WILLIAMS,E | | 0-0 | 0-0 | 0-0 | 0 | 1 | 1 | 0 | 0 | 0 | 0 | 0 | 0 | 2 | |
| 22 | HUNT,O'NESHA | | 0-1 | 0-0 | 0-0 | 0 | 0 | 0 | 1 | 0 | 0 | 1 | 0 | 0 | 11 | |
| 23 | LOWERY,JALICYA | | 2-3 | 0-0 | 0-0 | 0 | 1 | 1 | 1 | 4 | 1 | 4 | 0 | 1 | 12 | |
| 24 | BROWN,KHALADRIYAH | | 0-1 | 0-0 | 0-0 | 1 | 0 | 1 | 1 | 0 | 0 | 1 | 2 | 0 | 7 | |
| 32 | SYPHOE,VICTORIA | | 0-0 | 0-0 | 0-0 | 0 | 0 | 0 | 0 | 0 | 0 | 0 | 0 | 0 | 3 | |
| 34 | GINWRIGHT,KIAZHA | | 1-2 | 0-0 | 0-0 | 0 | 4 | 4 | 1 | 2 | 0 | 0 | 0 | 0 | 10 | |
| TEAM | | | | | | 2 | 0 | 2 | 0 | | | 3 | | | | |
| Totals | | | 6-22 | 1-3 | 3-4 | 4 | 10 | 14 | 10 | 16 | 3 | 19 | 2 | 5 | 100 | |
| FG % | 1st Qtr | 4-11 | 36.4% | 2nd Qtr | 2-11 | 18.2% | Half: | 6-22 | 27.3% | | | | | | | |
| 3FG % | 1st Qtr | 1-1 | 100.0% | 2nd Qtr | 0-2 | 00.0% | Half: | 1-3 | 33.3% | | | | | | | |
| FT % | 1st Qtr | 3-4 | 75.0% | 2nd Qtr | 0-0 | 0% | Half: | 3-4 | 75.0% | | | | | | | |

Jacksonville State 34 • 1-1

| ## | Player | * | Total | | 3-Ptr | FT-FTA | Rebounds | | | PF | TP | A | TO | Blk | Stl | Min |
|--------|-------------------|------|--------|---------|--------|--------|----------|-------|-------|----|----|----|----|-----|-----|-----|
| | | | FG-FGA | FG-FGA | FG-FGA | | Off | Def | Tot | | | | | | | |
| 03 | PATTERSON,KI-KI | * | 1-4 | 1-3 | 2-2 | 0 | 0 | 0 | 0 | 5 | 1 | 1 | 0 | 0 | 7 | |
| 13 | PERRY,BRIANNA | * | 1-1 | 0-0 | 0-0 | 0 | 0 | 0 | 1 | 2 | 0 | 0 | 0 | 0 | 9 | |
| 24 | MORRISON,GRETCHEN | * | 1-5 | 1-5 | 0-0 | 0 | 0 | 0 | 0 | 3 | 0 | 0 | 0 | 2 | 8 | |
| 32 | PHELION,TYLER | * | 3-3 | 0-0 | 0-0 | 2 | 3 | 5 | 1 | 6 | 1 | 2 | 0 | 2 | 10 | |
| 33 | MAGRUDER,TASHA | * | 1-3 | 0-0 | 0-0 | 2 | 4 | 6 | 2 | 2 | 2 | 2 | 2 | 1 | 13 | |
| 00 | HAWKS,TAYLOR | | 1-3 | 1-2 | 1-2 | 0 | 0 | 0 | 0 | 4 | 0 | 1 | 0 | 0 | 5 | |
| 01 | TOWELLS,MORGAN | | 0-3 | 0-2 | 0-0 | 0 | 0 | 0 | 0 | 0 | 1 | 1 | 0 | 2 | 8 | |
| 02 | STRAIN,LEAH | | 1-2 | 0-1 | 0-0 | 0 | 0 | 0 | 1 | 2 | 2 | 1 | 0 | 1 | 6 | |
| 11 | JOHNSON,KIANA | | 1-4 | 0-0 | 0-0 | 1 | 0 | 1 | 0 | 2 | 1 | 1 | 0 | 1 | 6 | |
| 14 | LAWRENCE,MCKENNA | | 1-2 | 0-1 | 0-0 | 0 | 0 | 0 | 0 | 2 | 0 | 1 | 0 | 0 | 7 | |
| 15 | LONG,CHLOE | | 0-0 | 0-0 | 0-0 | 0 | 0 | 0 | 0 | 0 | 0 | 1 | 0 | 0 | 2 | |
| 22 | WALKER,JAYLA | | 0-1 | 0-1 | 0-0 | 0 | 0 | 0 | 0 | 0 | 1 | 0 | 0 | 0 | 4 | |
| 34 | PEARSON,RAYVEN | | 3-5 | 0-0 | 0-0 | 5 | 5 | 10 | 0 | 6 | 0 | 0 | 0 | 1 | 15 | |
| TEAM | | | | | | 2 | 1 | 3 | 0 | | | 1 | | | | |
| Totals | | | 14-36 | 3-15 | 3-4 | 12 | 13 | 25 | 5 | 34 | 9 | 12 | 2 | 10 | 100 | |
| FG % | 1st Qtr | 9-21 | 42.9% | 2nd Qtr | 5-15 | 33.3% | Half: | 14-36 | 38.9% | | | | | | | |
| 3FG % | 1st Qtr | 1-8 | 12.5% | 2nd Qtr | 2-7 | 28.6% | Half: | 3-15 | 20.0% | | | | | | | |
| FT % | 1st Qtr | 0-0 | 0% | 2nd Qtr | 3-4 | 75.0% | Half: | 3-4 | 75.0% | | | | | | | |

Officials: David Jenkins, Neonta Williams, Kiesha Brown
 Technical Fouls: Stillman- None. Jacksonville State- None.

| Score by periods | 1st | 2nd | 3rd | 4th | Total Points | In Paint | Off T/O | 2nd Chance | Fast Break | Bench |
|--------------------|-----|-----|-----|-----|--------------|----------|---------|------------|------------|-------|
| Stillman | 12 | 4 | 16 | 6 | 38 SC | 8 | 4 | 0 | 4 | 7 |
| Jacksonville State | 19 | 15 | 27 | 32 | 93 | 18 | 18 | 10 | 2 | 16 |

Last FG - SC 2nd-03:41, JSU 2nd-01:05.
 SC led for 0:00. JSU led for 19:31. Game was tied for 0:29.

Score tied - 0 times
 Lead changed - 0 times

Stillman vs Jacksonville State
11/15/2017; 7:00 PM at Jacksonville, Ala.
Period 1 Play-By-Play



| VISITORS: Stillman | Time | Score | Margin | HOME: Jacksonville State |
|-------------------------------------|-------|-------|--------|--------------------------------------|
| | 10:00 | | | SUB IN: TOWELLS,MORGAN |
| | 09:47 | | | MISSED LAYUP by PATTERSON,KI-KI |
| | 09:47 | | | REBOUND (OFF) by PHELION,TYLER |
| TURNOVER by WORLD,ASHLEY | 09:32 | | | |
| | 09:31 | | | STEAL by PHELION,TYLER |
| | 09:31 | | | TURNOVER by TEAM |
| | 09:14 | 2-0 | H 2 | GOOD! JUMPER by PERRY,BRIANNA |
| MISSED JUMPER by LIKELY,KI'ONNA | 09:08 | | | |
| REBOUND (OFF) by LIKELY,KI'ONNA | 09:08 | | | |
| TURNOVER by LIKELY,KI'ONNA | 09:08 | | | |
| | 09:08 | | | STEAL by MORRISON,GRETCHEN |
| | 09:08 | | | MISSED 3PTR by PATTERSON,KI-KI |
| REBOUND (DEF) by BAKER,COURTNEY | 09:08 | | | |
| TURNOVER by WORLD,ASHLEY | 09:07 | | | |
| | 09:07 | | | STEAL by PHELION,TYLER |
| | 09:07 | | | TURNOVER by PHELION,TYLER |
| TURNOVER by TEAM | 07:33 | | | |
| FOUL by BAKER,COURTNEY | 07:09 | | | |
| | 07:08 | 4-0 | H 4 | GOOD! JUMPER by MAGRUDER,TASHA [PNT] |
| | 07:08 | | | ASSIST by PHELION,TYLER |
| MISSED JUMPER by HUNT,O'NESHA | 07:08 | | | |
| | 07:08 | | | REBOUND (DEF) by PHELION,TYLER |
| | 07:08 | | | MISSED 3PTR by PATTERSON,KI-KI |
| REBOUND (DEF) by ROBINSON,TABITHA | 07:08 | | | |
| SUB IN: HUNT,O'NESHA | 07:08 | | | |
| SUB OUT: BAKER,COURTNEY | 07:08 | | | |
| FOUL by BAKER,COURTNEY | 07:07 | | | |
| | 06:25 | | | FOUL by PHELION,TYLER |
| GOOD! FT by COLLINS,MORGAN | 06:25 | 4-1 | H 3 | |
| GOOD! FT by COLLINS,MORGAN | 06:25 | 4-2 | H 2 | |
| SUB IN: MOORE,NEIUNDRA | 06:25 | | | |
| SUB IN: LOWERY,JALICYA | 06:25 | | | |
| SUB OUT: COLLINS,MORGAN | 06:25 | | | |
| SUB OUT: ROBINSON,TABITHA | 06:25 | | | |
| | 06:23 | 6-2 | H 4 | GOOD! LAYUP by PHELION,TYLER [PNT] |
| | 06:23 | | | ASSIST by PATTERSON,KI-KI |
| GOOD! LAYUP by LOWERY,JALICYA [PNT] | 06:08 | 6-4 | H 2 | |
| | 05:57 | | | TURNOVER by PATTERSON,KI-KI |
| MISSED LAYUP by LIKELY,KI'ONNA | 05:47 | | | |
| | 05:47 | | | BLOCK by MAGRUDER,TASHA |
| REBOUND (OFF) by TEAM | 05:45 | | | |
| MISSED LAYUP by LOWERY,JALICYA | 05:38 | | | |
| | 05:38 | | | REBOUND (DEF) by PHELION,TYLER |
| | 05:38 | | | SUB IN: JOHNSON,KIANA |
| | 05:38 | | | SUB OUT: PATTERSON,KI-KI |
| | 05:35 | | | MISSED 3PTR by MORRISON,GRETCHEN |
| REBOUND (DEF) by LIKELY,KI'ONNA | 05:35 | | | |
| TURNOVER by LIKELY,KI'ONNA | 05:29 | | | |
| | 05:28 | | | STEAL by JOHNSON,KIANA |
| | 05:26 | | | MISSED JUMPER by JOHNSON,KIANA |
| | 05:26 | | | REBOUND (OFF) by TEAM |
| SUB IN: GINWRIGHT,KIAZHA | 05:20 | | | |
| SUB OUT: WORLD,ASHLEY | 05:20 | | | |
| | 05:20 | | | SUB IN: PEARSON,RAYVEN |
| | 05:20 | | | SUB OUT: PHELION,TYLER |
| | 05:12 | | | MISSED 3PTR by MORRISON,GRETCHEN |
| | 05:12 | | | REBOUND (OFF) by JOHNSON,KIANA |
| FOUL by MOORE,NEIUNDRA | 05:05 | | | |
| | 05:04 | | | MISSED 3PTR by MORRISON,GRETCHEN |
| | 05:04 | | | REBOUND (OFF) by PEARSON,RAYVEN |
| FOUL by HUNT,O'NESHA | 05:02 | | | |
| | 05:02 | | | MISSED JUMPER by JOHNSON,KIANA |
| REBOUND (DEF) by GINWRIGHT,KIAZHA | 05:02 | | | |
| | 04:33 | | | FOUL by PERRY,BRIANNA |
| TIMEOUT MEDIA | 04:33 | | | |
| GOOD! FT by MOORE,NEIUNDRA | 04:33 | 6-5 | H 1 | |
| MISSED FT by MOORE,NEIUNDRA | 04:33 | | | |
| | 04:33 | | | REBOUND (DEF) by MAGRUDER,TASHA |
| | 04:18 | 8-5 | H 3 | GOOD! LAYUP by JOHNSON,KIANA [PNT] |

| VISITORS: Stillman | Time | Score | Margin | HOME: Jacksonville State |
|--|-------|-------|--------|---------------------------------------|
| | 04:18 | | | ASSIST by MAGRUDER,TASHA |
| MISSED LAYUP by MOORE,NEIUNDRA | 03:55 | | | |
| | 03:55 | | | REBOUND (DEF) by MAGRUDER,TASHA |
| | 03:43 | | | MISSED JUMPER by PEARSON,RAYVEN |
| REBOUND (DEF) by GINWRIGHT,KIAZHA | 03:43 | | | |
| TURNOVER by LOWERY,JALICYA | 03:18 | | | |
| SUB IN: COLLINS,MORGAN | 03:17 | | | |
| SUB IN: WORLD,ASHLEY | 03:17 | | | |
| SUB OUT: MOORE,NEIUNDRA | 03:17 | | | |
| | 03:17 | | | SUB IN: STRAIN,LEAH |
| | 03:17 | | | SUB IN: LONG,CHLOE |
| | 03:17 | | | SUB OUT: PERRY,BRIANNA |
| | 03:17 | | | SUB OUT: MAGRUDER,TASHA |
| | 03:07 | 11-5 | H 6 | GOOD! 3PTR by MORRISON,GRETCHEN |
| | 03:07 | | | ASSIST by STRAIN,LEAH |
| GOOD! 3PTR by COLLINS,MORGAN | 02:50 | 11-8 | H 3 | |
| ASSIST by LIKELY,KI'ONNA | 02:50 | | | |
| | 02:31 | | | TURNOVER by JOHNSON,KIANA |
| SUB IN: ROBINSON,TABITHA | 02:20 | | | |
| SUB OUT: GINWRIGHT,KIAZHA | 02:20 | | | |
| | 02:20 | | | SUB IN: PERRY,BRIANNA |
| TURNOVER by COLLINS,MORGAN | 02:19 | | | |
| | 02:19 | | | STEAL by MORRISON,GRETCHEN |
| | 02:17 | | | MISSED 3PTR by MORRISON,GRETCHEN |
| | 02:17 | | | REBOUND (OFF) by PEARSON,RAYVEN |
| | 02:12 | 13-8 | H 5 | GOOD! LAYUP by PEARSON,RAYVEN [PNT] |
| | 02:04 | | | SUB OUT: MORRISON,GRETCHEN |
| TURNOVER by COLLINS,MORGAN | 01:52 | | | |
| | 01:51 | | | STEAL by TOWELLS,MORGAN |
| | 01:48 | | | TURNOVER by TOWELLS,MORGAN |
| STEAL by LIKELY,KI'ONNA | 01:48 | | | |
| GOOD! LAYUP by LIKELY,KI'ONNA [FB/PNT] | 01:44 | 13-10 | H 3 | |
| | 01:42 | | | SUB IN: PHELION,TYLER |
| | 01:42 | | | SUB OUT: LONG,CHLOE |
| | 01:41 | | | TURNOVER by LONG,CHLOE |
| MISSED JUMPER by COLLINS,MORGAN | 01:25 | | | |
| | 01:25 | | | REBOUND (DEF) by PEARSON,RAYVEN |
| | 01:17 | 15-10 | H 5 | GOOD! LAYUP by PHELION,TYLER [FB/PNT] |
| | 01:17 | | | ASSIST by STRAIN,LEAH |
| TURNOVER by LOWERY,JALICYA | 01:06 | | | |
| | 01:06 | | | STEAL by TOWELLS,MORGAN |
| | 01:05 | | | MISSED LAYUP by JOHNSON,KIANA |
| | 01:05 | | | REBOUND (OFF) by PEARSON,RAYVEN |
| | 01:03 | 17-10 | H 7 | GOOD! LAYUP by PEARSON,RAYVEN [PNT] |
| TIMEOUT 30SEC | 01:02 | | | |
| TURNOVER by TEAM | 01:02 | | | |
| SUB OUT: LOWERY,JALICYA | 01:02 | | | |
| | 00:59 | | | MISSED 3PTR by TOWELLS,MORGAN |
| REBOUND (DEF) by ROBINSON,TABITHA | 00:59 | | | |
| MISSED JUMPER by COLLINS,MORGAN | 00:36 | | | |
| | 00:36 | | | REBOUND (DEF) by PEARSON,RAYVEN |
| | 00:25 | 19-10 | H 9 | GOOD! LAYUP by PHELION,TYLER [PNT] |
| | 00:25 | | | ASSIST by JOHNSON,KIANA |
| TURNOVER by LIKELY,KI'ONNA | 00:11 | | | |
| | 00:10 | | | STEAL by STRAIN,LEAH |
| | 00:05 | | | FOUL by STRAIN,LEAH |
| | 00:05 | | | TURNOVER by STRAIN,LEAH |
| SUB IN: LOWERY,JALICYA | 00:05 | | | |
| SUB OUT: ROBINSON,TABITHA | 00:05 | | | |
| GOOD! LAYUP by LOWERY,JALICYA [FB/PNT] | 00:00 | 19-12 | H 7 | |
| ASSIST by LIKELY,KI'ONNA | 00:00 | | | |

Stillman 12, Jacksonville State 19

| Period 1-only | In Paint | Off T/O | 2nd Chance | Fast Break | Bench | |
|---------------|----------|---------|------------|------------|-------|------------------------|
| SC | 6 | 4 | 0 | 4 | 5 | Score tied - 0 times |
| JSU | 14 | 9 | 4 | 2 | 6 | Lead changed - 0 times |

Stillman vs Jacksonville State
11/15/2017; 7:00 PM at Jacksonville, Ala.
Period 2 Play-By-Play



| VISITORS: Stillman | Time | Score | Margin | HOME: Jacksonville State |
|---------------------------------------|-------|-------|--------|-------------------------------------|
| SUB IN: LOWERY,JALICYA | 10:00 | | | |
| SUB IN: HUNT,O'NESHA | 10:00 | | | |
| SUB OUT: ROBINSON,TABITHA | 10:00 | | | |
| SUB OUT: BAKER,COURTNEY | 10:00 | | | |
| | 10:00 | | | SUB IN: PEARSON,RAYVEN |
| | 10:00 | | | SUB IN: STRAIN,LEAH |
| | 10:00 | | | SUB IN: TOWELLS,MORGAN |
| | 10:00 | | | SUB IN: LAWRENCE,MCKENNA |
| | 10:00 | | | SUB OUT: PATTERSON,KI-KI |
| | 10:00 | | | SUB OUT: PERRY,BRIANNA |
| | 10:00 | | | SUB OUT: MORRISON,GRETCHEN |
| | 10:00 | | | SUB OUT: MAGRUDER,TASHA |
| FOUL by LOWERY,JALICYA | 09:44 | | | |
| TURNOVER by LOWERY,JALICYA | 09:44 | | | |
| | 09:29 | | | TURNOVER by PHELION,TYLER |
| STEAL by LIKELY,KI'ONNA | 09:29 | | | |
| FOUL by LIKELY,KI'ONNA | 09:25 | | | |
| TURNOVER by LIKELY,KI'ONNA | 09:25 | | | |
| | 09:13 | | | MISSED 3PTR by LAWRENCE,MCKENNA |
| | 09:13 | | | REBOUND (OFF) by PEARSON,RAYVEN |
| | 09:02 | 21-12 | H 9 | GOOD! LAYUP by STRAIN,LEAH [PNT] |
| MISSED JUMPER by LIKELY,KI'ONNA | 08:27 | | | |
| | 08:27 | | | REBOUND (DEF) by PEARSON,RAYVEN |
| | 08:15 | | | MISSED JUMPER by PEARSON,RAYVEN |
| REBOUND (DEF) by LOWERY,JALICYA | 08:15 | | | |
| SUB IN: MILLIGAN-WILLIAMS,E | 08:04 | | | |
| SUB IN: BROWN,KHALADRIYAH | 08:04 | | | |
| SUB OUT: LOWERY,JALICYA | 08:04 | | | |
| SUB OUT: HUNT,O'NESHA | 08:04 | | | |
| | 08:04 | | | SUB IN: MAGRUDER,TASHA |
| | 08:04 | | | SUB OUT: PHELION,TYLER |
| MISSED 3PTR by COLLINS,MORGAN | 07:47 | | | |
| REBOUND (OFF) by BROWN,KHALADRIYAH | 07:47 | | | |
| SUB IN: MOORE,NEIUNDRRA | 07:43 | | | |
| SUB OUT: COLLINS,MORGAN | 07:43 | | | |
| MISSED JUMPER by BROWN,KHALADRIYAH | 07:32 | | | |
| | 07:32 | | | REBOUND (DEF) by PEARSON,RAYVEN |
| | 07:11 | | | MISSED 3PTR by STRAIN,LEAH |
| | 07:11 | | | REBOUND (OFF) by MAGRUDER,TASHA |
| | 07:06 | | | MISSED LAYUP by MAGRUDER,TASHA |
| BLOCK by BROWN,KHALADRIYAH | 07:06 | | | |
| | 07:04 | | | REBOUND (OFF) by PEARSON,RAYVEN |
| | 07:03 | 23-12 | H 11 | GOOD! LAYUP by PEARSON,RAYVEN [PNT] |
| SUB IN: LOWERY,JALICYA | 06:47 | | | |
| SUB IN: GINWRIGHT,KIAZHA | 06:47 | | | |
| SUB OUT: MOORE,NEIUNDRRA | 06:47 | | | |
| SUB OUT: WORLD,ASHLEY | 06:47 | | | |
| | 06:47 | | | SUB IN: HAWKS,TAYLOR |
| | 06:47 | | | SUB OUT: STRAIN,LEAH |
| FOUL by MOORE,NEIUNDRRA | 06:46 | | | |
| TURNOVER by MOORE,NEIUNDRRA | 06:46 | | | |
| | 06:34 | | | MISSED 3PTR by TOWELLS,MORGAN |
| REBOUND (DEF) by MILLIGAN-WILLIAMS,E | 06:34 | | | |
| TURNOVER by TEAM | 06:25 | | | |
| | 06:13 | 25-12 | H 13 | GOOD! JUMPER by LAWRENCE,MCKENNA |
| | 06:13 | | | ASSIST by TOWELLS,MORGAN |
| GOOD! LAYUP by GINWRIGHT,KIAZHA [PNT] | 05:51 | 25-14 | H 11 | |
| SUB IN: SYPHOE,VICTORIA | 05:43 | | | |
| SUB OUT: MILLIGAN-WILLIAMS,E | 05:43 | | | |
| FOUL by BROWN,KHALADRIYAH | 05:42 | | | |
| | 05:31 | 28-14 | H 14 | GOOD! 3PTR by HAWKS,TAYLOR |
| | 05:31 | | | ASSIST by MAGRUDER,TASHA |
| TURNOVER by LOWERY,JALICYA | 05:14 | | | |
| | 05:14 | | | STEAL by MAGRUDER,TASHA |
| | 05:11 | | | TURNOVER by MAGRUDER,TASHA |
| STEAL by LOWERY,JALICYA | 05:11 | | | |
| MISSED JUMPER by LIKELY,KI'ONNA | 04:53 | | | |
| | 04:53 | | | REBOUND (DEF) by MAGRUDER,TASHA |
| | 04:36 | | | MISSED LAYUP by TOWELLS,MORGAN |

| VISITORS: Stillman | Time | Score | Margin | HOME: Jacksonville State |
|-----------------------------------|-------|-------|--------|---------------------------------|
| REBOUND (DEF) by GINWRIGHT,KIAZHA | 04:36 | | | |
| MISSED LAYUP by LIKELY,KI'ONNA | 04:25 | | | |
| | 04:25 | | | BLOCK by MAGRUDER,TASHA |
| | 04:23 | | | REBOUND (DEF) by MAGRUDER,TASHA |
| | 04:16 | | | TIMEOUT MEDIA |
| | 04:16 | | | MISSED LAYUP by HAWKS,TAYLOR |
| BLOCK by BROWN,KHALADRIYAH | 04:16 | | | |
| | 04:16 | | | SUB IN: WALKER,JAYLA |
| | 04:16 | | | SUB OUT: TOWELLS,MORGAN |
| | 04:15 | | | REBOUND (OFF) by TEAM |
| | 04:13 | | | MISSED 3PTR by HAWKS,TAYLOR |
| REBOUND (DEF) by GINWRIGHT,KIAZHA | 04:13 | | | |
| | 04:09 | | | FOUL by MAGRUDER,TASHA |
| GOOD! JUMPER by LIKELY,KI'ONNA | 03:41 | 28-16 | H 12 | |
| ASSIST by LOWERY,JALICYA | 03:41 | | | |
| | 03:14 | | | TURNOVER by LAWRENCE,MCKENNA |
| SUB IN: COLLINS,MORGAN | 03:13 | | | |
| SUB OUT: SYPHOE,VICTORIA | 03:13 | | | |
| MISSED 3PTR by COLLINS,MORGAN | 02:43 | | | |
| | 02:43 | | | REBOUND (DEF) by TEAM |
| | 02:42 | | | SUB IN: PATTERSON,KI-KI |
| | 02:42 | | | SUB OUT: LAWRENCE,MCKENNA |
| | 02:25 | | | MISSED LAYUP by MAGRUDER,TASHA |
| | 02:25 | | | REBOUND (OFF) by MAGRUDER,TASHA |
| | 02:21 | | | TURNOVER by MAGRUDER,TASHA |
| STEAL by LIKELY,KI'ONNA | 02:20 | | | |
| TURNOVER by BROWN,KHALADRIYAH | 02:13 | | | |
| | 02:12 | | | STEAL by PEARSON,RAYVEN |
| | 02:07 | | | TURNOVER by HAWKS,TAYLOR |
| STEAL by LIKELY,KI'ONNA | 02:06 | | | |
| MISSED LAYUP by LIKELY,KI'ONNA | 02:01 | | | |
| | 02:01 | | | REBOUND (DEF) by PEARSON,RAYVEN |
| FOUL by GINWRIGHT,KIAZHA | 01:53 | | | |
| | 01:53 | | | MISSED FT by HAWKS,TAYLOR |
| | 01:53 | | | REBOUND (DEADB) by TEAM |
| | 01:53 | 29-16 | H 13 | GOOD! FT by HAWKS,TAYLOR |
| SUB IN: HUNT,O'NESHA | 01:53 | | | |
| SUB IN: WORLD,ASHLEY | 01:53 | | | |
| SUB OUT: LOWERY,JALICYA | 01:53 | | | |
| SUB OUT: BROWN,KHALADRIYAH | 01:53 | | | |
| | 01:53 | | | SUB IN: PERRY,BRIANNA |
| | 01:53 | | | SUB IN: PHELION,TYLER |
| | 01:53 | | | SUB OUT: PEARSON,RAYVEN |
| | 01:53 | | | SUB OUT: HAWKS,TAYLOR |
| MISSED JUMPER by WORLD,ASHLEY | 01:47 | | | |
| REBOUND (OFF) by TEAM | 01:47 | | | |
| | 01:36 | | | FOUL by MAGRUDER,TASHA |
| TIMEOUT 30SEC | 01:36 | | | |
| | 01:36 | | | SUB IN: PEARSON,RAYVEN |
| | 01:36 | | | SUB OUT: MAGRUDER,TASHA |
| TURNOVER by LIKELY,KI'ONNA | 01:26 | | | |
| | 01:05 | 32-16 | H 16 | GOOD! 3PTR by PATTERSON,KI-KI |
| | 01:05 | | | ASSIST by WALKER,JAYLA |
| TURNOVER by HUNT,O'NESHA | 00:36 | | | |
| SUB IN: BROWN,KHALADRIYAH | 00:35 | | | |
| SUB OUT: LIKELY,KI'ONNA | 00:35 | | | |
| | 00:26 | | | MISSED 3PTR by WALKER,JAYLA |
| | 00:26 | | | REBOUND (OFF) by PHELION,TYLER |
| FOUL by COLLINS,MORGAN | 00:23 | | | |
| | 00:23 | 33-16 | H 17 | GOOD! FT by PATTERSON,KI-KI |
| | 00:23 | 34-16 | H 18 | GOOD! FT by PATTERSON,KI-KI |
| MISSED LAYUP by GINWRIGHT,KIAZHA | 00:01 | | | |
| | 00:01 | | | REBOUND (DEF) by PHELION,TYLER |

Stillman 16, Jacksonville State 34

| Period 2-only | In Paint | Off T/O | 2nd Chance | Fast Break | Bench | |
|---------------|----------|---------|------------|------------|-------|------------------------|
| SC | 2 | 0 | 0 | 0 | 2 | Score tied - 0 times |
| JSU | 4 | 9 | 6 | 0 | 10 | Lead changed - 0 times |

Official Basketball Box Score -- Game Totals -- Second Half Statistics
 Stillman vs Jacksonville State
 11/15/2017 7:00 PM at Jacksonville, Ala.



Stillman 22 • 1-2

| ## | Player | * | Total | | 3-Ptr | Rebounds | | | PF | TP | A | TO | Blk | Stl | Min |
|--------|---------------------|------|--------|---------|--------|----------|-------|------|-------|----|---|----|-----|-----|-----|
| | | | FG-FGA | FG-FGA | FT-FTA | Off | Def | Tot | | | | | | | |
| 03 | LIKELY,KI'ONNA | * | 0-3 | 0-0 | 0-0 | 0 | 2 | 2 | 0 | 0 | 0 | 2 | 0 | 0 | 8 |
| 05 | COLLINS,MORGAN | * | 2-5 | 0-1 | 0-0 | 0 | 1 | 1 | 0 | 4 | 0 | 2 | 0 | 0 | 9 |
| 13 | ROBINSON,TABITHA | * | 0-1 | 0-1 | 0-0 | 0 | 0 | 0 | 1 | 0 | 1 | 0 | 0 | 0 | 5 |
| 30 | WORLD,ASHLEY | * | 0-2 | 0-1 | 0-0 | 1 | 0 | 1 | 1 | 0 | 0 | 1 | 0 | 0 | 6 |
| 44 | BAKER,COURTNEY | * | 1-3 | 0-0 | 0-0 | 2 | 1 | 3 | 0 | 2 | 0 | 0 | 0 | 2 | 14 |
| 04 | MOORE,NEIUNDR | | 0-1 | 0-0 | 0-0 | 0 | 0 | 0 | 0 | 0 | 0 | 0 | 0 | 0 | 5 |
| 12 | MORRIS,ASIJAH | | 0-0 | 0-0 | 0-0 | 0 | 0 | 0 | 1 | 0 | 0 | 0 | 0 | 0 | 2 |
| 20 | MILLIGAN-WILLIAMS,E | | 0-0 | 0-0 | 1-2 | 0 | 0 | 0 | 0 | 1 | 0 | 0 | 0 | 0 | 6 |
| 22 | HUNT,O'NESHA | | 2-3 | 0-0 | 0-0 | 0 | 0 | 0 | 0 | 4 | 0 | 0 | 0 | 0 | 6 |
| 23 | LOWERY,JALICYA | | 1-4 | 0-0 | 3-4 | 1 | 0 | 1 | 1 | 5 | 2 | 2 | 0 | 0 | 13 |
| 24 | BROWN,KHALADRIYAH | | 1-2 | 0-0 | 0-1 | 1 | 1 | 2 | 0 | 2 | 0 | 0 | 1 | 1 | 10 |
| 32 | SYPHOE,VICTORIA | | 0-1 | 0-0 | 0-2 | 0 | 0 | 0 | 1 | 0 | 1 | 1 | 0 | 0 | 8 |
| 34 | GINWRIGHT,KIAZHA | | 2-3 | 0-0 | 0-0 | 0 | 1 | 1 | 1 | 4 | 0 | 1 | 0 | 0 | 8 |
| TEAM | | | | | | 1 | 1 | 2 | 0 | | 0 | | | | |
| Totals | | | 9-28 | 0-3 | 4-9 | 6 | 7 | 13 | 6 | 22 | 4 | 9 | 1 | 3 | 100 |
| FG % | 3rd Qtr | 6-15 | 40.0% | 4th Qtr | 3-13 | 23.1% | Half: | 9-28 | 32.1% | | | | | | |
| 3FG % | 3rd Qtr | 0-2 | 00.0% | 4th Qtr | 0-1 | 00.0% | Half: | 0-3 | 33.3% | | | | | | |
| FT % | 3rd Qtr | 4-7 | 57.1% | 4th Qtr | 0-2 | 00.0% | Half: | 4-9 | 44.4% | | | | | | |

Jacksonville State 59 • 1-1

| ## | Player | * | Total | | 3-Ptr | Rebounds | | | PF | TP | A | TO | Blk | Stl | Min |
|--------|------------------|------|--------|---------|--------|----------|-------|-------|-------|----|----|----|-----|-----|-----|
| | | | FG-FGA | FG-FGA | FT-FTA | Off | Def | Tot | | | | | | | |
| 03 | PATTERSON,KI-KI | * | 2-3 | 2-2 | 0-0 | 1 | 2 | 3 | 0 | 6 | 1 | 0 | 0 | 0 | 6 |
| 13 | PERRY,BRIANNA | * | 0-2 | 0-2 | 0-0 | 1 | 0 | 1 | 2 | 0 | 1 | 0 | 0 | 0 | 4 |
| 24 | MORRISON,GRETCHE | * | 3-5 | 3-4 | 0-0 | 0 | 1 | 1 | 0 | 9 | 0 | 0 | 0 | 0 | 7 |
| 32 | PHLION,TYLER | * | 3-5 | 0-0 | 1-1 | 1 | 0 | 1 | 2 | 7 | 0 | 0 | 0 | 0 | 10 |
| 33 | MAGRUDER,TASHA | * | 1-2 | 0-0 | 0-1 | 1 | 3 | 4 | 1 | 2 | 2 | 0 | 1 | 2 | 13 |
| 00 | HAWKS,TAYLOR | | 3-3 | 2-2 | 0-0 | 0 | 0 | 0 | 0 | 8 | 6 | 0 | 0 | 0 | 11 |
| 01 | TOWELLS,MORGAN | | 4-5 | 3-3 | 0-0 | 2 | 2 | 4 | 0 | 11 | 1 | 1 | 0 | 0 | 10 |
| 02 | STRAIN,LEAH | | 0-1 | 0-1 | 0-0 | 0 | 2 | 2 | 1 | 0 | 2 | 3 | 0 | 2 | 7 |
| 11 | JOHNSON,KIANA | | 0-1 | 0-0 | 0-0 | 0 | 0 | 0 | 2 | 0 | 0 | 1 | 0 | 1 | 2 |
| 14 | LAWRENCE,MCKENNA | | 2-4 | 2-3 | 0-0 | 1 | 1 | 2 | 3 | 6 | 0 | 0 | 0 | 0 | 7 |
| 15 | LONG,CHLOE | | 0-0 | 0-0 | 2-2 | 0 | 0 | 0 | 1 | 2 | 0 | 1 | 0 | 0 | 3 |
| 22 | WALKER,JAYLA | | 1-3 | 1-2 | 1-2 | 1 | 1 | 2 | 0 | 4 | 3 | 1 | 1 | 1 | 8 |
| 34 | PEARSON,RAYVEN | | 2-3 | 0-0 | 0-0 | 2 | 1 | 3 | 1 | 4 | 0 | 0 | 1 | 1 | 13 |
| TEAM | | | | | | 0 | 2 | 2 | 0 | | 0 | | | | |
| Totals | | | 21-37 | 13-19 | 4-6 | 10 | 15 | 25 | 13 | 59 | 16 | 7 | 3 | 7 | 101 |
| FG % | 3rd Qtr | 9-19 | 47.4% | 4th Qtr | 12-18 | 66.7% | Half: | 21-37 | 56.8% | | | | | | |
| 3FG % | 3rd Qtr | 6-9 | 66.7% | 4th Qtr | 7-10 | 70.0% | Half: | 13-19 | 20.0% | | | | | | |
| FT % | 3rd Qtr | 3-4 | 75.0% | 4th Qtr | 1-2 | 50.0% | Half: | 4-6 | 66.7% | | | | | | |

Officials: David Jenkins, Neonta Williams, Kiesha Brown
 Technical Fouls: Stillman- None. Jacksonville State- None.

| Score by periods | 1st | 2nd | 3rd | 4th | Total | Rebounds | In Paint | Off T/O | 2nd Chance | Fast Break | Bench |
|--------------------|-----|-----|-----|-----|-------|----------|----------|---------|------------|------------|-------|
| Stillman | 12 | 4 | 16 | 6 | 38 | SC | 14 | 6 | 4 | 0 | 16 |
| Jacksonville State | 19 | 15 | 27 | 32 | 93 | | 14 | 14 | 15 | 0 | 35 |

Last FG - SC 4th-03:20, JSU 4th-00:41.
 SC led for 0:00. JSU led for 20:00. Game was tied for 0:00.

Score tied - 0 times
 Lead changed - 0 times

Stillman vs Jacksonville State
11/15/2017; 7:00 PM at Jacksonville, Ala.
Period 3 Play-By-Play



| VISITORS: Stillman | Time | Score | Margin | HOME: Jacksonville State |
|---------------------------------------|-------|-------|--------|--------------------------------------|
| | 09:47 | | | MISSED LAYUP by PHELION, TYLER |
| | 09:47 | | | REBOUND (OFF) by PATTERSON, KI-KI |
| | 09:42 | 37-16 | H 21 | GOOD! 3PTR by MORRISON, GRETCHEN |
| | 09:42 | | | ASSIST by MAGRUDER, TASHA |
| MISSED 3PTR by ROBINSON, TABITHA | 09:06 | | | |
| | 09:06 | | | REBOUND (DEF) by PATTERSON, KI-KI |
| | 08:58 | 39-16 | H 23 | GOOD! LAYUP by PHELION, TYLER [PNT] |
| | 08:58 | | | ASSIST by PATTERSON, KI-KI |
| FOUL by WORLD, ASHLEY | 08:58 | | | |
| | 08:58 | 40-16 | H 24 | GOOD! FT by PHELION, TYLER |
| SUB IN: HUNT, O'NESHA | 08:58 | | | |
| SUB OUT: BAKER, COURTNEY | 08:58 | | | |
| | 08:53 | | | FOUL by PHELION, TYLER |
| | 08:45 | | | FOUL by PERRY, BRIANNA |
| GOOD! JUMPER by COLLINS, MORGAN [PNT] | 08:23 | 40-18 | H 22 | |
| | 08:04 | | | MISSED LAYUP by PATTERSON, KI-KI |
| REBOUND (DEF) by TEAM | 08:04 | | | |
| | 08:04 | | | SUB IN: PEARSON, RAYVEN |
| | 08:04 | | | SUB OUT: PHELION, TYLER |
| | 08:03 | | | FOUL by PHELION, TYLER |
| TURNOVER by COLLINS, MORGAN | 07:51 | | | |
| | 07:50 | | | STEAL by MAGRUDER, TASHA |
| | 07:48 | | | MISSED LAYUP by MAGRUDER, TASHA |
| | 07:48 | | | REBOUND (OFF) by PERRY, BRIANNA |
| | 07:44 | 43-18 | H 25 | GOOD! 3PTR by MORRISON, GRETCHEN |
| | 07:44 | | | ASSIST by PERRY, BRIANNA |
| TIMEOUT 30SEC | 07:35 | | | |
| TIMEOUT MEDIA | 07:35 | | | |
| SUB IN: LOWERY, JALICYA | 07:35 | | | |
| SUB IN: MOORE, NEIUNDRA | 07:35 | | | |
| SUB OUT: COLLINS, MORGAN | 07:35 | | | |
| SUB OUT: ROBINSON, TABITHA | 07:35 | | | |
| MISSED LAYUP by LOWERY, JALICYA | 07:31 | | | |
| | 07:31 | | | REBOUND (DEF) by MAGRUDER, TASHA |
| | 07:08 | | | MISSED LAYUP by MORRISON, GRETCHEN |
| | 07:08 | | | REBOUND (OFF) by PEARSON, RAYVEN |
| | 07:05 | | | MISSED 3PTR by PERRY, BRIANNA |
| | 07:05 | | | REBOUND (OFF) by MAGRUDER, TASHA |
| FOUL by LOWERY, JALICYA | 07:02 | 45-18 | H 27 | GOOD! LAYUP by MAGRUDER, TASHA [PNT] |
| | 07:01 | | | |
| | 07:00 | | | MISSED FT by MAGRUDER, TASHA |
| | 07:00 | | | REBOUND (OFF) by PEARSON, RAYVEN |
| SUB IN: GINWRIGHT, KIAZHA | 07:00 | | | |
| SUB IN: BROWN, KHALADRIYAH | 07:00 | | | |
| SUB OUT: LIKELY, KI'ONNA | 07:00 | | | |
| SUB OUT: WORLD, ASHLEY | 07:00 | | | |
| | 06:59 | 47-18 | H 29 | GOOD! LAYUP by PEARSON, RAYVEN [PNT] |
| SUB IN: LIKELY, KI'ONNA | 06:35 | | | |
| SUB OUT: BROWN, KHALADRIYAH | 06:35 | | | |
| MISSED LAYUP by LIKELY, KI'ONNA | 06:26 | | | |
| | 06:26 | | | BLOCK by MAGRUDER, TASHA |
| | 06:25 | | | REBOUND (DEF) by PATTERSON, KI-KI |
| | 06:20 | | | MISSED 3PTR by PERRY, BRIANNA |
| REBOUND (DEF) by LIKELY, KI'ONNA | 06:20 | | | |
| MISSED LAYUP by LIKELY, KI'ONNA | 06:12 | | | |
| | 06:12 | | | REBOUND (DEF) by MORRISON, GRETCHEN |
| | 06:00 | | | MISSED LAYUP by PEARSON, RAYVEN |
| REBOUND (DEF) by LIKELY, KI'ONNA | 06:00 | | | |
| SUB IN: BROWN, KHALADRIYAH | 05:41 | | | |
| SUB OUT: HUNT, O'NESHA | 05:41 | | | |
| | 05:41 | | | SUB IN: STRAIN, LEAH |
| | 05:41 | | | SUB OUT: PERRY, BRIANNA |
| | 05:40 | | | FOUL by PERRY, BRIANNA |
| MISSED JUMPER by LIKELY, KI'ONNA | 05:31 | | | |
| | 05:31 | | | REBOUND (DEF) by MAGRUDER, TASHA |
| | 05:23 | 50-18 | H 32 | GOOD! 3PTR by PATTERSON, KI-KI |
| | 05:23 | | | ASSIST by STRAIN, LEAH |
| TURNOVER by LIKELY, KI'ONNA | 05:03 | | | |
| | 05:03 | | | STEAL by STRAIN, LEAH |

| VISITORS: Stillman | Time | Score | Margin | HOME: Jacksonville State |
|--|-------|-------|--------|----------------------------------|
| | 04:59 | | | FOUL by STRAIN,LEAH |
| | 04:57 | | | TURNOVER by STRAIN,LEAH |
| TIMEOUT MEDIA | 04:55 | | | |
| SUB IN: MILLIGAN-WILLIAMS,E | 04:55 | | | |
| SUB OUT: LIKELY,KI'ONNA | 04:55 | | | |
| MISSED JUMPER by MOORE,NEIUNDRA | 04:35 | | | |
| | 04:35 | | | REBOUND (DEF) by PEARSON,RAYVEN |
| | 04:27 | 53-18 | H 35 | GOOD! 3PTR by PATTERSON,KI-KI |
| | 04:27 | | | ASSIST by STRAIN,LEAH |
| | 04:00 | | | FOUL by MAGRUDER,TASHA |
| MISSED FT by MILLIGAN-WILLIAMS,E | 03:57 | | | |
| REBOUND (DEADB) by TEAM | 03:57 | | | |
| GOOD! FT by MILLIGAN-WILLIAMS,E | 03:57 | 53-19 | H 34 | |
| | 03:57 | | | SUB IN: LONG,CHLOE |
| | 03:57 | | | SUB IN: JOHNSON,KIANA |
| | 03:57 | | | SUB OUT: PATTERSON,KI-KI |
| | 03:57 | | | SUB OUT: MAGRUDER,TASHA |
| | 03:33 | 56-19 | H 37 | GOOD! 3PTR by MORRISON,GRETCHEN |
| TURNOVER by LOWERY,JALICYA | 03:18 | | | |
| | 03:17 | | | STEAL by JOHNSON,KIANA |
| | 03:15 | | | TURNOVER by JOHNSON,KIANA |
| STEAL by BROWN,KHALADRIYAH | 03:14 | | | |
| GOOD! LAYUP by GINWRIGHT,KIAZHA [PNT] | 03:08 | 56-21 | H 35 | |
| | 03:00 | | | MISSED 3PTR by MORRISON,GRETCHEN |
| REBOUND (DEF) by GINWRIGHT,KIAZHA | 03:00 | | | |
| | 02:40 | | | FOUL by JOHNSON,KIANA |
| GOOD! FT by LOWERY,JALICYA | 02:39 | 56-22 | H 34 | |
| GOOD! FT by LOWERY,JALICYA | 02:39 | 56-23 | H 33 | |
| SUB IN: COLLINS,MORGAN | 02:39 | | | |
| SUB IN: BAKER,COURTNEY | 02:39 | | | |
| SUB OUT: MOORE,NEIUNDRA | 02:39 | | | |
| SUB OUT: MILLIGAN-WILLIAMS,E | 02:39 | | | |
| | 02:39 | | | SUB IN: TOWELLS,MORGAN |
| | 02:39 | | | SUB OUT: MORRISON,GRETCHEN |
| | 02:29 | | | MISSED JUMPER by JOHNSON,KIANA |
| REBOUND (DEF) by BROWN,KHALADRIYAH | 02:29 | | | |
| MISSED LAYUP by BROWN,KHALADRIYAH | 02:11 | | | |
| REBOUND (OFF) by BROWN,KHALADRIYAH | 02:11 | | | |
| GOOD! LAYUP by BROWN,KHALADRIYAH [PNT] | 02:09 | 56-25 | H 31 | |
| | 02:09 | | | FOUL by LONG,CHLOE |
| MISSED FT by BROWN,KHALADRIYAH | 02:11 | | | |
| | 02:11 | | | REBOUND (DEF) by TEAM |
| FOUL by GINWRIGHT,KIAZHA | 01:55 | | | |
| | 01:55 | 57-25 | H 32 | GOOD! FT by LONG,CHLOE |
| | 01:55 | 58-25 | H 33 | GOOD! FT by LONG,CHLOE |
| SUB IN: SYPHOE,VICTORIA | 01:55 | | | |
| SUB OUT: GINWRIGHT,KIAZHA | 01:55 | | | |
| | 01:43 | | | SUB IN: LAWRENCE,MCKENNA |
| | 01:43 | | | SUB OUT: JOHNSON,KIANA |
| | 01:42 | | | FOUL by JOHNSON,KIANA |
| MISSED FT by LOWERY,JALICYA | 01:43 | | | |
| REBOUND (DEADB) by TEAM | 01:43 | | | |
| GOOD! FT by LOWERY,JALICYA | 01:43 | 58-26 | H 32 | |
| | 01:36 | | | TURNOVER by STRAIN,LEAH |
| GOOD! LAYUP by LOWERY,JALICYA [PNT] | 01:36 | 58-28 | H 30 | |
| | 01:27 | | | TURNOVER by LONG,CHLOE |
| | 01:27 | | | SUB IN: MAGRUDER,TASHA |
| | 01:27 | | | SUB OUT: LONG,CHLOE |
| MISSED 3PTR by COLLINS,MORGAN | 01:14 | | | |
| REBOUND (OFF) by BAKER,COURTNEY | 01:14 | | | |
| MISSED LAYUP by SYPHOE,VICTORIA | 01:06 | | | |
| | 01:06 | | | REBOUND (DEF) by STRAIN,LEAH |
| | 00:58 | | | MISSED JUMPER by TOWELLS,MORGAN |
| REBOUND (DEF) by BAKER,COURTNEY | 00:58 | | | |
| GOOD! JUMPER by COLLINS,MORGAN | 00:48 | 58-30 | H 28 | |
| ASSIST by SYPHOE,VICTORIA | 00:48 | | | |
| | 00:39 | | | TURNOVER by STRAIN,LEAH |
| | 00:39 | | | SUB IN: HAWKS,TAYLOR |
| | 00:39 | | | SUB OUT: STRAIN,LEAH |
| GOOD! JUMPER by BAKER,COURTNEY | 00:18 | 58-32 | H 26 | |
| ASSIST by LOWERY,JALICYA | 00:18 | | | |
| | 00:04 | 61-32 | H 29 | GOOD! 3PTR by LAWRENCE,MCKENNA |
| | 00:04 | | | ASSIST by HAWKS,TAYLOR |

| Period 3-only | In Paint | Off T/O | 2nd Chance | Fast Break | Bench | |
|----------------------|---------------------|--------------------|-----------------------|-----------------------|--------------|------------------------|
| SC | 8 | 6 | 2 | 0 | 10 | Score tied - 0 times |
| JSU | 6 | 3 | 10 | 0 | 7 | Lead changed - 0 times |

Stillman vs Jacksonville State
11/15/2017; 7:00 PM at Jacksonville, Ala.
Period 4 Play-By-Play



| VISITORS: Stillman | Time | Score | Margin | HOME: Jacksonville State |
|------------------------------------|-------|-------|--------|------------------------------------|
| SUB IN: SYPHOE,VICTORIA | 10:00 | | | |
| SUB IN: LOWERY,JALICYA | 10:00 | | | |
| SUB IN: BROWN,KHALADRIYAH | 10:00 | | | |
| SUB OUT: LIKELY,KI'ONNA | 10:00 | | | |
| SUB OUT: ROBINSON,TABITHA | 10:00 | | | |
| SUB OUT: WORLD,ASHLEY | 10:00 | | | |
| | 10:00 | | | SUB IN: HAWKS,TAYLOR |
| | 10:00 | | | SUB IN: TOWELLS,MORGAN |
| | 10:00 | | | SUB IN: LAWRENCE,MCKENNA |
| | 10:00 | | | SUB OUT: PATTERSON,KI-KI |
| | 10:00 | | | SUB OUT: PERRY,BRIANNA |
| | 10:00 | | | SUB OUT: MORRISON,GRETCHEN |
| | 09:38 | | | FOUL by LAWRENCE,MCKENNA |
| MISSED FT by SYPHOE,VICTORIA | 09:38 | | | |
| REBOUND (DEADB) by TEAM | 09:38 | | | |
| MISSED FT by SYPHOE,VICTORIA | 09:38 | | | |
| | 09:38 | | | REBOUND (DEF) by MAGRUDER,TASHA |
| | 09:29 | | | MISSED JUMPER by PHELION,TYLER |
| | 09:29 | | | REBOUND (OFF) by LAWRENCE,MCKENNA |
| | 09:10 | | | MISSED 3PTR by LAWRENCE,MCKENNA |
| | 09:10 | | | REBOUND (OFF) by TOWELLS,MORGAN |
| | 09:03 | 64-32 | H 32 | GOOD! 3PTR by HAWKS,TAYLOR |
| | 09:03 | | | ASSIST by TOWELLS,MORGAN |
| MISSED LAYUP by LOWERY,JALICYA | 08:45 | | | |
| REBOUND (OFF) by BAKER,COURTNEY | 08:45 | | | |
| | 08:44 | | | FOUL by LAWRENCE,MCKENNA |
| SUB IN: WORLD,ASHLEY | 08:44 | | | |
| SUB IN: ROBINSON,TABITHA | 08:44 | | | |
| SUB OUT: COLLINS,MORGAN | 08:44 | | | |
| SUB OUT: BROWN,KHALADRIYAH | 08:44 | | | |
| MISSED JUMPER by BAKER,COURTNEY | 08:31 | | | |
| | 08:31 | | | REBOUND (DEF) by TOWELLS,MORGAN |
| | 08:15 | 67-32 | H 35 | GOOD! 3PTR by LAWRENCE,MCKENNA |
| | 08:15 | | | ASSIST by HAWKS,TAYLOR |
| MISSED 3PTR by WORLD,ASHLEY | 07:57 | | | |
| REBOUND (OFF) by TEAM | 07:57 | | | |
| SUB IN: HUNT,O'NESHA | 07:54 | | | |
| SUB OUT: LOWERY,JALICYA | 07:54 | | | |
| | 07:54 | | | SUB IN: WALKER,JAYLA |
| | 07:54 | | | SUB OUT: LAWRENCE,MCKENNA |
| GOOD! JUMPER by HUNT,O'NESHA [PNT] | 07:45 | 67-34 | H 33 | |
| | 07:30 | 70-34 | H 36 | GOOD! 3PTR by TOWELLS,MORGAN |
| | 07:30 | | | ASSIST by HAWKS,TAYLOR |
| GOOD! JUMPER by HUNT,O'NESHA [PNT] | 07:05 | 70-36 | H 34 | |
| ASSIST by ROBINSON,TABITHA | 07:05 | | | |
| | 06:52 | 72-36 | H 36 | GOOD! LAYUP by HAWKS,TAYLOR [PNT] |
| | 06:52 | | | ASSIST by WALKER,JAYLA |
| TURNOVER by SYPHOE,VICTORIA | 06:26 | | | |
| | 06:26 | | | STEAL by MAGRUDER,TASHA |
| SUB IN: MILLIGAN-WILLIAMS,E | 06:26 | | | |
| SUB OUT: SYPHOE,VICTORIA | 06:26 | | | |
| FOUL by SYPHOE,VICTORIA | 06:25 | | | |
| FOUL by ROBINSON,TABITHA | 06:16 | | | |
| | 06:12 | 75-36 | H 39 | GOOD! 3PTR by TOWELLS,MORGAN |
| | 06:12 | | | ASSIST by HAWKS,TAYLOR |
| MISSED JUMPER by HUNT,O'NESHA | 05:41 | | | |
| | 05:41 | | | REBOUND (DEF) by TOWELLS,MORGAN |
| | 05:32 | 77-36 | H 41 | GOOD! LAYUP by PHELION,TYLER [PNT] |
| | 05:32 | | | ASSIST by MAGRUDER,TASHA |
| MISSED LAYUP by WORLD,ASHLEY | 05:21 | | | |
| | 05:21 | | | BLOCK by WALKER,JAYLA |
| SUB IN: GINWRIGHT,KIAZHA | 05:21 | | | |
| SUB IN: LOWERY,JALICYA | 05:21 | | | |
| SUB IN: LIKELY,KI'ONNA | 05:21 | | | |
| SUB OUT: WORLD,ASHLEY | 05:21 | | | |
| SUB OUT: HUNT,O'NESHA | 05:21 | | | |
| SUB OUT: ROBINSON,TABITHA | 05:21 | | | |
| | 05:21 | | | SUB IN: PEARSON,RAYVEN |
| | 05:21 | | | SUB OUT: MAGRUDER,TASHA |

| VISITORS: Stillman | Time | Score | Margin | HOME: Jacksonville State |
|---------------------------------------|-------|-------|--------|-------------------------------------|
| REBOUND (OFF) by WORLD,ASHLEY | 05:20 | | | |
| TURNOVER by WORLD,ASHLEY | 05:21 | | | |
| | 05:16 | 80-36 | H 44 | GOOD! 3PTR by WALKER,JAYLA |
| | 05:16 | | | ASSIST by HAWKS,TAYLOR |
| TURNOVER by GINWRIGHT,KIAZHA | 04:56 | | | |
| | 04:45 | | | TIMEOUT MEDIA |
| | 04:34 | 82-36 | H 46 | GOOD! JUMPER by TOWELLS,MORGAN |
| TURNOVER by LIKELY,KI'ONNA | 04:20 | | | |
| | 04:19 | | | STEAL by WALKER,JAYLA |
| | 04:17 | | | MISSED LAYUP by WALKER,JAYLA |
| | 04:17 | | | REBOUND (OFF) by PHELION,TYLER |
| | 04:13 | 84-36 | H 48 | GOOD! LAYUP by PHELION,TYLER [PNT] |
| MISSED LAYUP by GINWRIGHT,KIAZHA | 03:55 | | | |
| | 03:55 | | | REBOUND (DEF) by WALKER,JAYLA |
| | 03:45 | 86-36 | H 50 | GOOD! LAYUP by PEARSON,RAYVEN [PNT] |
| | 03:45 | | | ASSIST by WALKER,JAYLA |
| GOOD! LAYUP by GINWRIGHT,KIAZHA [PNT] | 03:20 | 86-38 | H 48 | |
| ASSIST by LOWERY,JALICYA | 03:20 | | | |
| | 03:12 | 89-38 | H 51 | GOOD! 3PTR by TOWELLS,MORGAN |
| | 03:07 | | | ASSIST by HAWKS,TAYLOR |
| TURNOVER by LOWERY,JALICYA | 02:47 | | | |
| | 02:46 | | | STEAL by PEARSON,RAYVEN |
| | 02:41 | | | MISSED 3PTR by WALKER,JAYLA |
| | 02:41 | | | REBOUND (OFF) by TOWELLS,MORGAN |
| | 02:36 | | | TURNOVER by TOWELLS,MORGAN |
| STEAL by BAKER,COURTNEY | 02:35 | | | |
| MISSED LAYUP by LOWERY,JALICYA | 02:28 | | | |
| | 02:28 | | | BLOCK by PEARSON,RAYVEN |
| REBOUND (OFF) by LOWERY,JALICYA | 02:27 | | | |
| | 02:25 | | | TIMEOUT 20SEC |
| SUB IN: BROWN,KHALADRIYAH | 02:25 | | | |
| SUB IN: MORRIS,ASIJAH | 02:25 | | | |
| SUB IN: SYPHOE,VICTORIA | 02:25 | | | |
| SUB IN: COLLINS,MORGAN | 02:25 | | | |
| SUB OUT: MILLIGAN-WILLIAMS,E | 02:25 | | | |
| SUB OUT: GINWRIGHT,KIAZHA | 02:25 | | | |
| SUB OUT: LOWERY,JALICYA | 02:25 | | | |
| SUB OUT: LIKELY,KI'ONNA | 02:25 | | | |
| | 02:25 | | | SUB IN: STRAIN,LEAH |
| | 02:25 | | | SUB IN: LAWRENCE,MCKENNA |
| | 02:25 | | | SUB OUT: TOWELLS,MORGAN |
| | 02:25 | | | SUB OUT: PHELION,TYLER |
| | 02:21 | | | FOUL by PEARSON,RAYVEN |
| MISSED JUMPER by COLLINS,MORGAN | 02:23 | | | |
| | 02:23 | | | REBOUND (DEF) by STRAIN,LEAH |
| | 02:06 | | | MISSED 3PTR by STRAIN,LEAH |
| | 02:06 | | | REBOUND (OFF) by WALKER,JAYLA |
| | 01:55 | | | TURNOVER by WALKER,JAYLA |
| STEAL by BAKER,COURTNEY | 01:54 | | | |
| MISSED JUMPER by BAKER,COURTNEY | 01:36 | | | |
| | 01:36 | | | REBOUND (DEF) by LAWRENCE,MCKENNA |
| | 01:20 | | | MISSED JUMPER by LAWRENCE,MCKENNA |
| BLOCK by BROWN,KHALADRIYAH | 01:20 | | | |
| REBOUND (DEF) by COLLINS,MORGAN | 01:18 | | | |
| MISSED JUMPER by COLLINS,MORGAN | 01:01 | | | |
| | 01:01 | | | REBOUND (DEF) by TEAM |
| | 00:41 | 92-38 | H 54 | GOOD! 3PTR by HAWKS,TAYLOR |
| | 00:41 | | | ASSIST by WALKER,JAYLA |
| | 00:29 | | | FOUL by LAWRENCE,MCKENNA |
| TURNOVER by COLLINS,MORGAN | 00:26 | | | |
| | 00:25 | | | STEAL by STRAIN,LEAH |
| FOUL by MORRIS,ASIJAH | 00:21 | | | |
| | 00:21 | | | MISSED FT by WALKER,JAYLA |
| | 00:21 | | | REBOUND (DEADB) by TEAM |
| | 00:21 | 93-38 | H 55 | GOOD! FT by WALKER,JAYLA |

Stillman 38, Jacksonville State 93

| Period 4-only | In Paint | Off T/O | 2nd Chance | Fast Break | Bench | |
|---------------|----------|---------|------------|------------|-------|------------------------|
| SC | 6 | 0 | 2 | 0 | 6 | Score tied - 0 times |
| JSU | 8 | 11 | 5 | 0 | 28 | Lead changed - 0 times |

Stillman vs Jacksonville State
11/15/2017; 7:00 PM at Jacksonville, Ala.
Scoring/Runs Reference



Period 1

| Stillman | VRun | Score | Margin | HRun | Jacksonville State |
|------------------------------|------|-------|--------|-------|-------------------------------|
| | | 0-2 | 2 | | PERRY JUMPER - 09:14 |
| | | 0-4 | 4 | NaN-0 | MAGRUDER JUMPER [P] - 07:08 |
| 06:25 - COLLINS FT | - | 1-4 | 3 | | |
| 06:25 - COLLINS FT | 2-0 | 2-4 | 2 | | |
| | | 2-6 | 4 | | PHELION LAYUP [P] - 06:23 |
| 06:08 - LOWERY LAYUP [P] | - | 4-6 | 2 | | |
| 04:33 - MOORE FT | 3-0 | 5-6 | 1 | | |
| | | 5-8 | 3 | | JOHNSON LAYUP [P] - 04:18 |
| | | 5-11 | 6 | 5-0 | MORRISON 3PTR - 03:07 |
| 02:50 - COLLINS 3PTR | - | 8-11 | 3 | | |
| | | 8-13 | 5 | | PEARSON LAYUP [P] - 02:12 |
| 01:44 - LIKELY LAYUP [P] [F] | - | 10-13 | 3 | | |
| | | 10-15 | 5 | | PHELION LAYUP [P] [F] - 01:17 |
| | | 10-17 | 7 | 4-0 | PEARSON LAYUP [P] - 01:03 |
| | | 10-19 | 9 | 6-0 | PHELION LAYUP [P] - 00:25 |
| 00:00 - LOWERY LAYUP [P] [F] | - | 12-19 | 7 | | |

Stillman vs Jacksonville State
11/15/2017; 7:00 PM at Jacksonville, Ala.
Scoring/Runs Reference



Period 2

| Stillman | VRun | Score | Margin | HRun | Jacksonville State |
|-----------------------------|------|-------|--------|-------|---------------------------|
| | | 12-21 | 9 | | STRAIN LAYUP [P] - 09:02 |
| | | 12-23 | 11 | NaN-0 | PEARSON LAYUP [P] - 07:03 |
| | | 12-25 | 13 | NaN-0 | LAWRENCE JUMPER - 06:13 |
| 05:51 - GINWRIGHT LAYUP [P] | - | 14-25 | 11 | | |
| | | 14-28 | 14 | | HAWKS 3PTR - 05:31 |
| 03:41 - LIKELY JUMPER | - | 16-28 | 12 | | |
| | | 16-29 | 13 | | HAWKS FT - 01:53 |
| | | 16-32 | 16 | 4-0 | PATTERSON 3PTR - 01:05 |
| | | 16-33 | 17 | 5-0 | PATTERSON FT - 00:23 |
| | | 16-34 | 18 | 6-0 | PATTERSON FT - 00:23 |

Stillman vs Jacksonville State
11/15/2017; 7:00 PM at Jacksonville, Ala.
Scoring/Runs Reference



Period 3

| Stillman | VRun | Score | Margin | HRun | Jacksonville State |
|------------------------------|------|-------|--------|-------|----------------------------|
| | | 16-37 | 21 | | MORRISON 3PTR - 09:42 |
| | | 16-39 | 23 | NaN-0 | PHELION LAYUP [P] - 08:58 |
| | | 16-40 | 24 | NaN-0 | PHELION FT - 08:58 |
| 08:23 - COLLINS JUMPER [P] | - | 18-40 | 22 | | |
| | | 18-43 | 25 | | MORRISON 3PTR - 07:44 |
| | | 18-45 | 27 | 5-0 | MAGRUDER LAYUP [P] - 07:02 |
| | | 18-47 | 29 | 7-0 | PEARSON LAYUP [P] - 06:59 |
| | | 18-50 | 32 | 10-0 | PATTERSON 3PTR - 05:23 |
| | | 18-53 | 35 | 13-0 | PATTERSON 3PTR - 04:27 |
| 03:57 - MILLIGAN-WILLIAMS FT | - | 19-53 | 34 | | |
| | | 19-56 | 37 | | MORRISON 3PTR - 03:33 |
| 03:08 - GINWRIGHT LAYUP [P] | - | 21-56 | 35 | | |
| 02:39 - LOWERY FT | 3-0 | 22-56 | 34 | | |
| 02:39 - LOWERY FT | 4-0 | 23-56 | 33 | | |
| 02:09 - BROWN LAYUP [P] | 6-0 | 25-56 | 31 | | |
| | | 25-57 | 32 | | LONG FT - 01:55 |
| | | 25-58 | 33 | 2-0 | LONG FT - 01:55 |
| 01:43 - LOWERY FT | - | 26-58 | 32 | | |
| 01:36 - LOWERY LAYUP [P] | 3-0 | 28-58 | 30 | | |
| 00:48 - COLLINS JUMPER | 5-0 | 30-58 | 28 | | |
| 00:18 - BAKER JUMPER | 7-0 | 32-58 | 26 | | |
| | | 32-61 | 29 | | LAWRENCE 3PTR - 00:04 |

Stillman vs Jacksonville State
11/15/2017; 7:00 PM at Jacksonville, Ala.
Scoring/Runs Reference

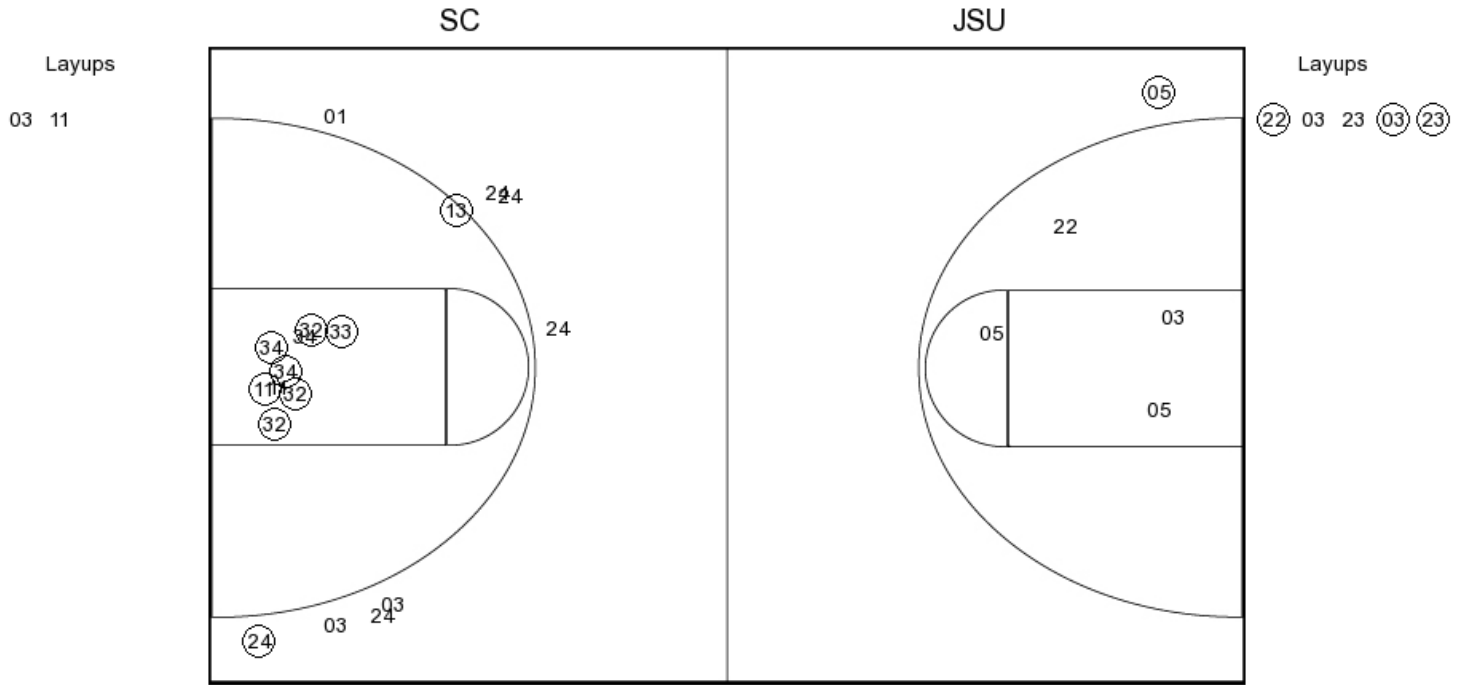


Period 4

| Stillman | VRun | Score | Margin | HRun | Jacksonville State |
|-----------------------------|------|-------|--------|-------|---------------------------|
| | | 32-64 | 32 | | HAWKS 3PTR - 09:03 |
| | | 32-67 | 35 | NaN-0 | LAWRENCE 3PTR - 08:15 |
| 07:45 - HUNT JUMPER [P] | - | 34-67 | 33 | | |
| | | 34-70 | 36 | | TOWELLS 3PTR - 07:30 |
| 07:05 - HUNT JUMPER [P] | - | 36-70 | 34 | | |
| | | 36-72 | 36 | | HAWKS LAYUP [P] - 06:52 |
| | | 36-75 | 39 | 5-0 | TOWELLS 3PTR - 06:12 |
| | | 36-77 | 41 | 7-0 | PHELION LAYUP [P] - 05:32 |
| | | 36-80 | 44 | 10-0 | WALKER 3PTR - 05:16 |
| | | 36-82 | 46 | 12-0 | TOWELLS JUMPER - 04:34 |
| | | 36-84 | 48 | 14-0 | PHELION LAYUP [P] - 04:13 |
| | | 36-86 | 50 | 16-0 | PEARSON LAYUP [P] - 03:45 |
| 03:20 - GINWRIGHT LAYUP [P] | - | 38-86 | 48 | | |
| | | 38-89 | 51 | | TOWELLS 3PTR - 03:12 |
| | | 38-92 | 54 | 6-0 | HAWKS 3PTR - 00:41 |
| | | 38-93 | 55 | 7-0 | WALKER FT - 00:21 |



PERIOD 1



SC PERIOD 1

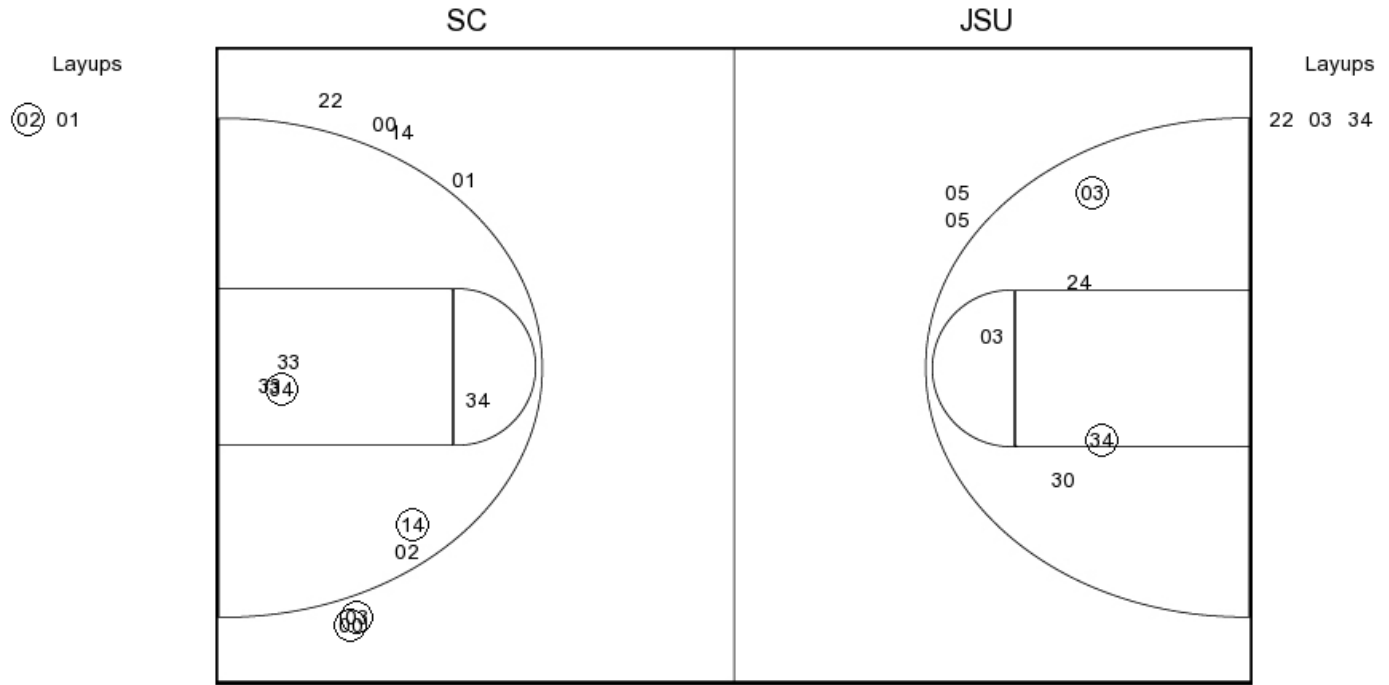
| | |
|----------------|----|
| FG Made | 6 |
| FG Attempted | 22 |
| 3PFG Made | 1 |
| 3PFG Attempted | 3 |

JSU PERIOD 1

| | |
|----------------|----|
| FG Made | 14 |
| FG Attempted | 36 |
| 3PFG Made | 3 |
| 3PFG Attempted | 15 |



PERIOD 2



SC PERIOD 2

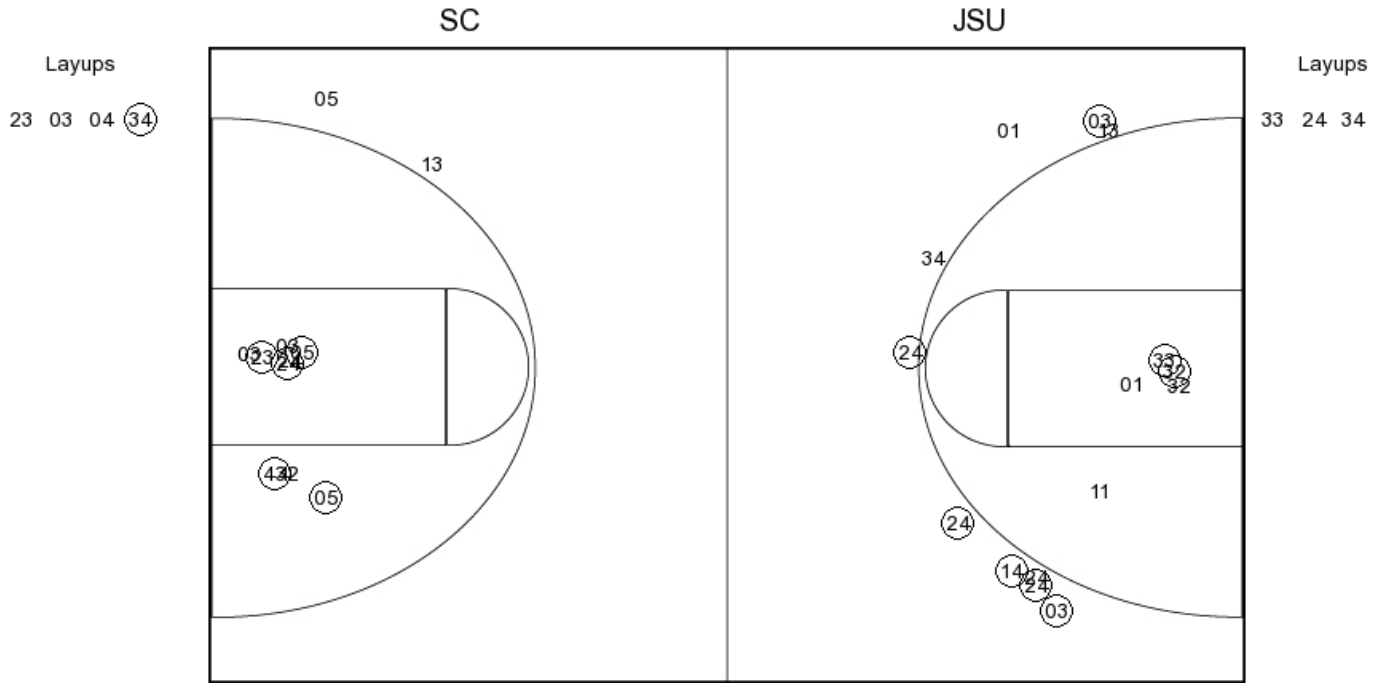
FG Made
 FG Attempted
 3PFG Made
 3PFG Attempted

JSU PERIOD 2

FG Made
 FG Attempted
 3PFG Made
 3PFG Attempted



PERIOD 3



SC PERIOD 3

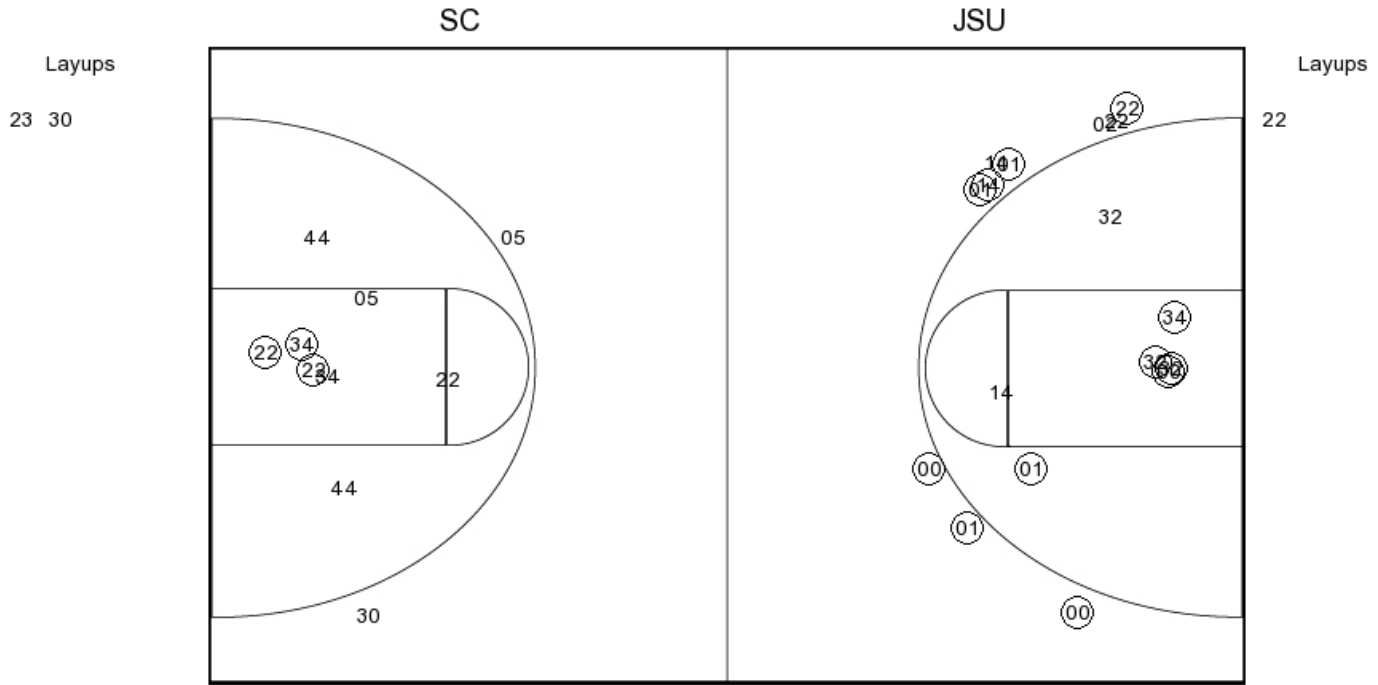
| | |
|----------------|----|
| FG Made | 9 |
| FG Attempted | 28 |
| 3PFG Made | 0 |
| 3PFG Attempted | 3 |

JSU PERIOD 3

| | |
|----------------|----|
| FG Made | 21 |
| FG Attempted | 37 |
| 3PFG Made | 13 |
| 3PFG Attempted | 19 |



PERIOD 4



SC PERIOD 4

FG Made
 FG Attempted
 3PFG Made
 3PFG Attempted

JSU PERIOD 4

FG Made
 FG Attempted
 3PFG Made
 3PFG Attempted

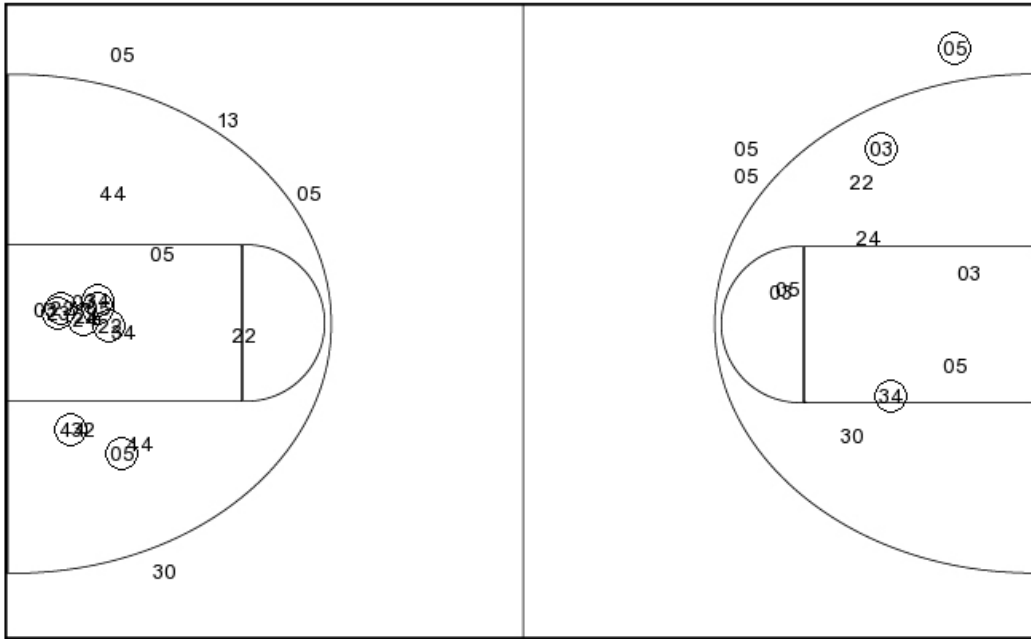


Stillman

PERIOD , 3, 4

PERIOD 2

Layups
 23 03 04 (34) 23
 30



Layups
 (22) 03 23 (03) (23)
 22 03 34

SC PERIOD 1

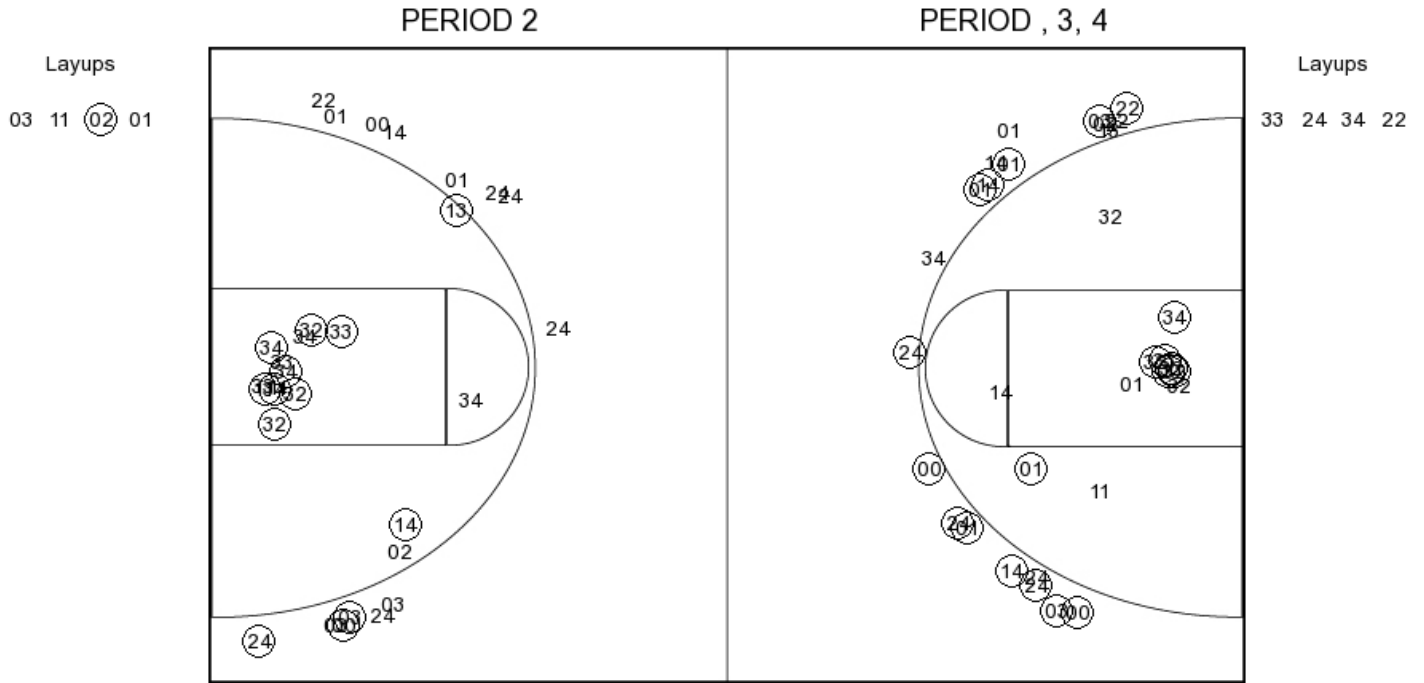
FG Made 6
 FG Attempted 22
 3PFG Made 1
 3PFG Attempted 3

SC PERIOD 2

FG Made
 FG Attempted
 3PFG Made
 3PFG Attempted



Jacksonville State



JSU PERIOD 1

| | |
|----------------|----|
| FG Made | 14 |
| FG Attempted | 36 |
| 3PFG Made | 3 |
| 3PFG Attempted | 15 |

JSU PERIOD 2

| | |
|----------------|--|
| FG Made | |
| FG Attempted | |
| 3PFG Made | |
| 3PFG Attempted | |