

FINAL SCORE



Brewton Parker

2-2

44



Jacksonville State

0-0

103

November 10, 2017 • Jacksonville, Ala.

FINAL STATISTICS

Official Basketball Box Score -- Game Totals -- Final Statistics
Brewton Parker vs Jacksonville State
11/10/2017 5:30 at Jacksonville, Ala.



Brewton Parker 44 - 2-2

#	Player	*	Total		3-Ptr	Rebounds			PF	TP	A	TO	Blk	Stl	Min
			FG-FGA	FG-FGA	FT-FTA	Off	Def	Tot							
03	KING,LATOYA	*	0-5	0-5	0-0	0	1	1	3	0	1	2	0	2	24
10	HUGHES,JOHNTA	*	1-2	1-1	0-0	0	0	0	2	3	2	4	0	0	16
12	GALLOWAY,ALEXIA	*	4-12	1-3	3-8	1	4	5	3	12	2	3	0	0	31
23	WALKER,BREANNA	*	1-5	0-0	0-0	0	2	2	1	2	0	0	0	1	15
30	SINGFIELD,SAMANTHA	*	0-1	0-0	0-0	0	1	1	1	0	0	1	0	0	14
00	BROWN,T EIRRA		0-0	0-0	0-0	0	0	0	0	0	0	0	0	1	2
04	YOUNG,DAYLON		0-4	0-2	2-2	0	5	5	3	2	1	3	0	0	21
05	RAINEY,NIDERICKA		1-5	0-0	2-2	1	1	2	3	4	1	2	0	1	14
11	GORDON,LAKEYRIA		3-7	0-0	1-1	2	9	11	5	7	0	4	1	1	16
22	HEAD,TRAKEIRRA		0-1	0-0	0-0	1	0	1	1	0	0	1	0	0	4
32	HALL,SOJOURNER		1-2	0-0	1-2	2	0	2	5	3	0	2	0	0	7
33	BROWN,KEONA		4-11	0-0	1-2	1	2	3	4	9	0	2	1	0	26
35	MAYO,DANIELA		1-4	0-0	0-0	0	1	1	2	2	0	4	0	0	13
	TEAM					1	3	4	0			0			
	TOTALS		16-59	2-11	10-17	9	29	38	33	44	7	28	2	6	203

Deadball Rebounds: 3,0

FG %	1st Half: 10-29 34.5%	2nd Half: 6-30 20.0%	Game: 16-59 27.1%		
	1st Qtr 5-15 33.3%	2nd Qtr 5-14 35.7%	3rd Qtr 3-13 23.1%	4th Qtr 3-17 17.6%	
3FG %	1st Half: 1-5 20.0%	2nd Half: 1-6 16.7%	Game: 2-11 18.2%		
	1st Qtr 1-3 33.3%	2nd Qtr 0-2 00.0%	3rd Qtr 1-3 33.3%	4th Qtr 0-3 00.0%	
FT %	1st Half: 5-10 50.0%	2nd Half: 5-7 71.4%	Game: 10-17 58.8%		
	1st Qtr 0-0 0%	2nd Qtr 5-10 50.0%	3rd Qtr 1-2 50.0%	4th Qtr 4-5 80.0%	

Jacksonville State 103 - 0-0

#	Player	*	Total		3-Ptr	Rebounds			PF	TP	A	TO	Blk	Stl	Min
			FG-FGA	FG-FGA	FT-FTA	Off	Def	Tot							
03	PATTERSON,KI-KI	*	3-11	1-6	0-0	0	1	1	1	7	4	0	0	0	21
13	PERRY,BRIANNA	*	5-11	0-3	4-4	0	3	3	1	14	2	3	0	2	18
24	MORRISON,GRETCHEEN	*	1-6	1-6	6-9	1	2	3	1	9	0	1	0	2	17
32	PHELION,TYLER	*	4-4	0-0	0-0	1	6	7	3	8	1	2	1	0	16
33	MAGRUDER,TASHA	*	3-3	0-0	0-0	4	5	9	1	6	4	1	2	2	22
01	TOWELLS,MORGAN		3-6	1-3	0-0	2	0	2	2	7	0	0	0	0	11
02	STRAIN,LEAH		0-2	0-2	3-5	2	1	3	0	3	2	2	0	0	15
05	NORRIS,JORDAN		0-0	0-0	0-0	0	0	0	0	0	0	1	0	0	0
10	HAWKS,TAYLOR		2-4	1-2	1-1	0	2	2	1	6	0	1	0	2	7
11	JOHNSON,KIANA		2-6	0-2	1-4	0	2	2	1	5	1	0	1	1	16
14	LAWRENCE,MCKENNA		4-6	3-5	0-0	0	2	2	2	11	0	0	0	0	11
15	LONG,CHLOE		5-7	0-0	2-4	1	2	3	2	12	1	2	2	0	15
22	WALKER,JAYLA		1-3	0-0	0-0	0	1	1	0	2	1	0	0	1	7
34	PEARSON,RAYVEN		4-8	0-0	5-6	5	7	12	2	13	2	1	2	2	24
	TEAM					2	3	5	0			0			
	TOTALS		37-77	7-29	22-33	18	37	55	17	103	18	14	8	12	200

Deadball Rebounds: 4,0

FG %	1st Half: 20-39 51.3%	2nd Half: 17-38 44.7%	Game: 37-77 48.1%		
	1st Qtr 11-19 57.9%	2nd Qtr 9-20 45.0%	3rd Qtr 8-15 53.3%	4th Qtr 9-23 39.1%	
3FG %	1st Half: 6-18 33.3%	2nd Half: 1-11 9.1%	Game: 7-29 24.1%		
	1st Qtr 0-4 00.0%	2nd Qtr 6-14 42.9%	3rd Qtr 0-3 00.0%	4th Qtr 1-8 12.5%	
FT %	1st Half: 15-19 78.9%	2nd Half: 7-14 50.0%	Game: 22-33 66.7%		
	1st Qtr 12-16 75.0%	2nd Qtr 3-3 100.0%	3rd Qtr 5-12 41.7%	4th Qtr 2-2 100.0%	

Officials: R-Courtney Walker, U1-Rashon Smith, U2-Molly McFadden
 Technical Fouls: Brewton Parker- None. Jacksonville State- None.

Score by periods	1st	2nd	3rd	4th	Total	Points	Off T/O	2nd Chance	Bench
Brewton Parker	11	15	8	10	44	BPC	4	3	27
Jacksonville State	34	27	21	21	103	JSU	33	3	59

Last FG - BPC 4th-03:48, JSU 4th-00:31.
 Largest lead - Brewton Parker by ; Jacksonville State by 59 4th-01:46
 BPC led for 0:00. JSU led for 39:19. Game was tied for 0:14.

Score tied - 0 times; Lead changed - 0 times

Official Basketball Box Score -- Game Totals -- First Half Statistics
 Brewton Parker vs Jacksonville State
 11/10/2017 5:30 at Jacksonville, Ala.



Brewton Parker 26 • 2-2

##	Player	*	Total		3-Ptr	FT-FTA	Rebounds			PF	TP	A	TO	Blk	Stl	Min
			FG-FGA	FG-FGA	FG-FGA		Off	Def	Tot							
03	KING,LATOYA	*	0-3	0-3	0-0	0-0	0	1	1	1	0	0	2	0	2	18
10	HUGHES,JOHNTA	*	1-2	1-1	0-0	0-0	0	0	0	1	3	1	2	0	0	11
12	GALLOWAY,ALEXIA	*	1-3	0-0	1-5	1-5	0	2	2	1	3	1	2	0	0	11
23	WALKER,BREANNA	*	0-3	0-0	0-0	0-0	0	1	1	0	0	0	0	0	0	4
30	SINGFIELD,SAMANTHA	*	0-0	0-0	0-0	0-0	0	1	1	0	0	0	0	0	0	8
00	BROWN,TEIRRA		0-0	0-0	0-0	0-0	0	0	0	0	0	0	0	0	0	0
04	YOUNG,DAYLON		0-2	0-1	2-2	2-2	0	3	3	3	2	1	2	0	0	9
05	RAINEY,NI'DERICKA		1-2	0-0	0-0	0-0	0	0	0	3	2	1	1	0	0	5
11	GORDON,LAKEYRIA		3-4	0-0	1-1	1-1	1	6	7	3	7	0	1	0	0	11
22	HEAD,TRAKEIRRA		0-1	0-0	0-0	0-0	0	0	0	1	0	0	1	0	0	2
32	HALL,SOJOURNER		1-2	0-0	0-0	0-0	1	0	1	2	2	0	0	0	0	5
33	BROWN,KEONA		3-5	0-0	1-2	1-2	0	0	0	1	7	0	0	0	0	11
35	MAYO,DANIELA		0-2	0-0	0-0	0-0	0	0	0	1	0	0	3	0	0	7
TEAM							0	1	1	0			0			
Totals			10-29	1-5	5-10	5-10	2	15	17	17	26	4	14	0	2	102
FG %	1st Qtr	5-15	33.3%	2nd Qtr	5-14	35.7%	Half:	10-29	34.5%							
3FG %	1st Qtr	1-3	33.3%	2nd Qtr	0-2	00.0%	Half:	1-5	20.0%							
FT %	1st Qtr	0-0	0%	2nd Qtr	5-10	50.0%	Half:	5-10	50.0%							

Jacksonville State 61 • 0-0

##	Player	*	Total		3-Ptr	FT-FTA	Rebounds			PF	TP	A	TO	Blk	Stl	Min
			FG-FGA	FG-FGA	FG-FGA		Off	Def	Tot							
03	PATTERSON,KI-KI	*	3-9	1-4	0-0	0-0	0	0	0	1	7	2	0	0	0	14
13	PERRY,BRIANNA	*	2-5	0-2	4-4	4-4	0	2	2	1	8	1	1	0	2	9
24	MORRISON,GRETCHEEN	*	1-6	1-6	3-5	3-5	1	1	2	1	6	0	1	0	1	13
32	PHILION,TYLER	*	2-2	0-0	0-0	0-0	1	3	4	1	4	0	1	0	0	7
33	MAGRUDER,TASHA	*	1-1	0-0	0-0	0-0	2	3	5	0	2	2	1	1	2	11
01	TOWELLS,MORGAN		2-3	1-2	0-0	0-0	1	0	1	1	5	0	0	0	0	4
02	STRAIN,LEAH		0-0	0-0	3-4	3-4	0	1	1	0	3	1	1	0	0	7
05	NORRIS,JORDAN		0-0	0-0	0-0	0-0	0	0	0	0	0	0	1	0	0	0
10	HAWKS,TAYLOR		1-1	1-1	0-0	0-0	0	1	1	0	3	0	1	0	0	0
11	JOHNSON,KIANA		0-1	0-0	1-1	1-1	0	1	1	0	1	1	0	1	0	7
14	LAWRENCE,MCKENNA		2-3	2-3	0-0	0-0	0	1	1	1	6	0	0	0	0	4
15	LONG,CHLOE		2-3	0-0	2-2	2-2	0	2	2	2	6	0	1	1	0	9
22	WALKER,JAYLA		1-1	0-0	0-0	0-0	0	0	0	0	2	1	0	0	1	3
34	PEARSON,RAYVEN		3-4	0-0	2-3	2-3	1	2	3	1	8	0	0	0	2	13
TEAM							1	1	2	0			0			
Totals			20-39	6-18	15-19	15-19	7	18	25	9	61	8	8	3	8	101
FG %	1st Qtr	11-19	57.9%	2nd Qtr	9-20	45.0%	Half:	20-39	51.3%							
3FG %	1st Qtr	0-4	00.0%	2nd Qtr	6-14	42.9%	Half:	6-18	33.3%							
FT %	1st Qtr	12-16	75.0%	2nd Qtr	3-3	100.0%	Half:	15-19	78.9%							

Officials: R-Courtney Walker, U1-Rashon Smith, U2-Molly McFadden
 Technical Fouls: Brewton Parker- None. Jacksonville State- None.

Score by periods	1st	2nd	3rd	4th	Total	Rebounds	Off T/O	2nd Chance	Bench
Brewton Parker	11	15	8	10	44	BPC	2	0	20
Jacksonville State	34	27	21	21	103		18	8	34

Last FG - BPC 2nd-03:21, JSU 2nd-00:01.
 BPC led for 0:00. JSU led for 19:19. Game was tied for 0:14.

Score tied - 0 times
 Lead changed - 0 times

Brewton Parker vs Jacksonville State
11/10/2017; 5:30 at Jacksonville, Ala.
Period 1 Play-By-Play



VISITORS: Brewton Parker	Time	Score	Margin	HOME: Jacksonville State
	09:46	2-0	H 2	GOOD! LAYUP by PATTERSON,KI-KI [PNT]
MISSED JUMPER by WALKER,BREANNA	09:33			
	09:33			REBOUND (DEF) by PHELION,TYLER
	09:20			MISSED 3PTR by MORRISON,GRETCHEN
REBOUND (DEF) by WALKER,BREANNA	09:20			
MISSED JUMPER by GALLOWAY,ALEXIA	08:56			
	08:56			REBOUND (DEF) by PHELION,TYLER
FOUL by HUGHES,JOHNTA	08:41			
MISSED JUMPER by WALKER,BREANNA	08:41			
	08:41			REBOUND (DEF) by TEAM
	08:41	4-0	H 4	GOOD! JUMPER by PERRY,BRIANNA
TURNOVER by HUGHES,JOHNTA	08:41			
	08:41			STEAL by MAGRUDER,TASHA
	08:41	6-0	H 6	GOOD! JUMPER by PATTERSON,KI-KI
TURNOVER by HUGHES,JOHNTA	08:41			
	08:41			STEAL by MAGRUDER,TASHA
	08:41	8-0	H 8	GOOD! JUMPER by MAGRUDER,TASHA
MISSED JUMPER by WALKER,BREANNA	08:41			
	08:41			REBOUND (DEF) by PERRY,BRIANNA
	08:41	10-0	H 10	GOOD! JUMPER by PHELION,TYLER
	08:41			ASSIST by PATTERSON,KI-KI
TIMEOUT MEDIA	08:41			
	08:41	11-0	H 11	GOOD! FT by PERRY,BRIANNA
	08:41	12-0	H 12	GOOD! FT by PERRY,BRIANNA
GOOD! JUMPER by GORDON,LAKEYRIA	08:34	12-2	H 10	
ASSIST by RAINEY,NI'DERICKA	08:34			
FOUL by HALL,SOJOURNER	08:26			
	08:26			TURNOVER by MAGRUDER,TASHA
MISSED JUMPER by MAYO,DANIELA	08:26			
	08:26			REBOUND (DEF) by PHELION,TYLER
SUB IN: MAYO,DANIELA	08:26			
SUB IN: HALL,SOJOURNER	08:26			
SUB IN: YOUNG,DAY'LON	08:26			
SUB IN: RAINEY,NI'DERICKA	08:26			
SUB IN: GORDON,LAKEYRIA	08:26			
SUB OUT: KING,LATOYA	08:26			
SUB OUT: HUGHES,JOHNTA	08:26			
SUB OUT: GALLOWAY,ALEXIA	08:26			
SUB OUT: WALKER,BREANNA	08:26			
SUB OUT: SINGFIELD,SAMANTHA	08:26			
	08:11			TURNOVER by PHELION,TYLER
	08:10			FOUL by PHELION,TYLER
TURNOVER by MAYO,DANIELA	07:54			
FOUL by MAYO,DANIELA	07:54			
	07:39			MISSED JUMPER by PATTERSON,KI-KI
	07:39			REBOUND (OFF) by PHELION,TYLER
	07:36	14-2	H 12	GOOD! LAYUP by PHELION,TYLER [PNT]
TURNOVER by YOUNG,DAY'LON	07:01			
	06:59			STEAL by MORRISON,GRETCHEN
FOUL by YOUNG,DAY'LON	06:56			
	06:56			MISSED FT by MORRISON,GRETCHEN
	06:56			REBOUND (OFF) by MORRISON,GRETCHEN
	06:56	15-2	H 13	GOOD! FT by MORRISON,GRETCHEN
	06:56	16-2	H 14	GOOD! FT by MORRISON,GRETCHEN
	06:56			MISSED 3PTR by MORRISON,GRETCHEN
REBOUND (DEF) by GORDON,LAKEYRIA	06:56			
	06:56			SUB IN: PEARSON,RAYVEN
	06:56			SUB IN: STRAIN,LEAH
	06:56			SUB OUT: PERRY,BRIANNA
	06:56			SUB OUT: PHELION,TYLER
GOOD! JUMPER by RAINEY,NI'DERICKA [FB/PNT]	06:49	16-4	H 12	
	06:37			MISSED LAYUP by PATTERSON,KI-KI
REBOUND (DEF) by YOUNG,DAY'LON	06:37			
TURNOVER by MAYO,DANIELA	06:32			
	06:30			STEAL by PEARSON,RAYVEN
	06:19			MISSED 3PTR by PATTERSON,KI-KI
	06:19			REBOUND (OFF) by PEARSON,RAYVEN
	06:14	18-4	H 14	GOOD! LAYUP by PEARSON,RAYVEN [PNT]
	05:56			FOUL by PEARSON,RAYVEN

VISITORS: Brewton Parker	Time	Score	Margin	HOME: Jacksonville State
SUB IN: KING,LATOYA	05:56			
SUB IN: BROWN,KEONA	05:56			
SUB OUT: MAYO,DANIELA	05:56			
SUB OUT: HALL,SOJOURNER	05:56			
	05:56			SUB IN: JOHNSON,KIANA
	05:56			SUB OUT: PATTERSON,KI-KI
MISSED 3PTR by YOUNG,DAY'LON	05:53			
REBOUND (OFF) by GORDON,LAKEYRIA	05:53			
MISSED LAYUP by BROWN,KEONA	05:41			
	05:41			BLOCK by MAGRUDER,TASHA
	05:38			REBOUND (DEF) by PEARSON,RAYVEN
FOUL by KING,LATOYA	05:31			
	05:23	19-4	H 15	GOOD! FT by MORRISON,GRETCHEN
	05:23			MISSED FT by MORRISON,GRETCHEN
REBOUND (DEF) by GORDON,LAKEYRIA	05:23			
GOOD! JUMPER by GORDON,LAKEYRIA	05:17	19-6	H 13	
ASSIST by YOUNG,DAY'LON	05:17			
FOUL by RAINEY,NI'DERICKA	04:57			
	04:45	20-6	H 14	GOOD! FT by STRAIN,LEAH
	04:45	21-6	H 15	GOOD! FT by STRAIN,LEAH
	04:45			SUB IN: LONG,CHLOE
	04:45			SUB OUT: MAGRUDER,TASHA
TURNOVER by RAINEY,NI'DERICKA	04:22			
SUB IN: HEAD,TRAKEIRRA	04:22			
SUB OUT: BROWN,KEONA	04:22			
	03:40			MISSED 3PTR by MORRISON,GRETCHEN
REBOUND (DEF) by GORDON,LAKEYRIA	03:40			
FOUL by RAINEY,NI'DERICKA	03:35			
	03:35			TURNOVER by NORRIS,JORDAN
SUB IN: HUGHES,JOHNTA	03:35			
SUB OUT: RAINEY,NI'DERICKA	03:35			
FOUL by HEAD,TRAKEIRRA	03:18			
	03:18	22-6	H 16	GOOD! FT by LONG,CHLOE
	03:18	23-6	H 17	GOOD! FT by LONG,CHLOE
MISSED LAYUP by HEAD,TRAKEIRRA	03:11			
	03:11			REBOUND (DEF) by LONG,CHLOE
	03:01			MISSED JUMPER by JOHNSON,KIANA
REBOUND (DEF) by GORDON,LAKEYRIA	03:01			
TURNOVER by HEAD,TRAKEIRRA	02:53			
	02:53			SUB IN: WALKER,JAYLA
	02:53			SUB OUT: MORRISON,GRETCHEN
	02:37			TURNOVER by STRAIN,LEAH
STEAL by KING,LATOYA	02:36			
MISSED 3PTR by KING,LATOYA	02:31			
	02:31			REBOUND (DEF) by JOHNSON,KIANA
	02:18	25-6	H 19	GOOD! LAYUP by PEARSON,RAYVEN [PNT]
	02:18			ASSIST by JOHNSON,KIANA
TURNOVER by KING,LATOYA	02:11			
	02:10			STEAL by WALKER,JAYLA
	02:08	27-6	H 21	GOOD! LAYUP by WALKER,JAYLA [PNT]
TURNOVER by GORDON,LAKEYRIA	02:03			
SUB IN: BROWN,KEONA	02:03			
SUB OUT: HEAD,TRAKEIRRA	02:03			
	01:55	29-6	H 23	GOOD! LAYUP by PEARSON,RAYVEN [PNT]
	01:55			ASSIST by WALKER,JAYLA
FOUL by GORDON,LAKEYRIA	01:55			
	01:55	30-6	H 24	GOOD! FT by PEARSON,RAYVEN
GOOD! 3PTR by HUGHES,JOHNTA	01:35	30-9	H 21	
FOUL by YOUNG,DAY'LON	01:17			
	01:17			MISSED FT by PEARSON,RAYVEN
	01:17			REBOUND (DEADB) by TEAM
	01:17	31-9	H 22	GOOD! FT by PEARSON,RAYVEN
MISSED JUMPER by YOUNG,DAY'LON	01:09			
	01:09			REBOUND (DEF) by STRAIN,LEAH
	00:58	33-9	H 24	GOOD! LAYUP by LONG,CHLOE [FB/PNT]
	00:58			ASSIST by STRAIN,LEAH
TURNOVER by YOUNG,DAY'LON	00:48			
FOUL by YOUNG,DAY'LON	00:48			
SUB IN: GALLOWAY,ALEXIA	00:48			
SUB OUT: YOUNG,DAY'LON	00:48			
FOUL by GORDON,LAKEYRIA	00:40			
	00:40	34-9	H 25	GOOD! FT by STRAIN,LEAH
	00:40			MISSED FT by STRAIN,LEAH
REBOUND (DEF) by GORDON,LAKEYRIA	00:40			
GOOD! JUMPER by GORDON,LAKEYRIA	00:16	34-11	H 23	

VISITORS: Brewton Parker	Time	Score	Margin	HOME: Jacksonville State
ASSIST by HUGHES,JOHNTA	00:16			
	00:06			MISSED LAYUP by LONG,CHLOE
REBOUND (DEF) by GORDON,LAKEYRIA	00:06			

Brewton Parker 11, Jacksonville State 34

Period 1-only	In Paint	Off T/O	2nd Chance	Fast Break	Bench	
BPC		0	0		8	Score tied - 0 times
JSU		16	6		17	Lead changed - 0 times

Brewton Parker vs Jacksonville State
11/10/2017; 5:30 at Jacksonville, Ala.
Period 2 Play-By-Play



VISITORS: Brewton Parker	Time	Score	Margin	HOME: Jacksonville State
GOOD! LAYUP by HALL,SOJOURNER [PNT]	10:00	34-13	H 21	
GOOD! JUMPER by BROWN,KEONA	10:00	34-15	H 19	
SUB IN: BROWN,KEONA	10:00			
SUB IN: GORDON,LAKEYRIA	10:00			
SUB OUT: WALKER,BREANNA	10:00			
SUB OUT: SINGFIELD,SAMANTHA	10:00			
	10:00			SUB IN: LONG,CHLOE
	10:00			SUB IN: TOWELLS,MORGAN
	10:00			SUB IN: LAWRENCE,MCKENNA
	10:00			SUB OUT: PERRY,BRIANNA
	10:00			SUB OUT: MORRISON,GRETCHEN
	10:00			SUB OUT: MAGRUDER,TASHA
	09:54			TURNOVER by LONG,CHLOE
STEAL by KING,LATOYA	09:53			
MISSED JUMPER by GORDON,LAKEYRIA	09:49			
	09:49			REBOUND (DEF) by LONG,CHLOE
	09:33	37-15	H 22	GOOD! 3PTR by TOWELLS,MORGAN
	09:11			FOUL by TOWELLS,MORGAN
FOUL by GALLOWAY,ALEXIA	09:00			
	08:52	38-15	H 23	GOOD! FT by JOHNSON,KIANA
GOOD! FT by GALLOWAY,ALEXIA	08:28	38-16	H 22	
GOOD! FT by GORDON,LAKEYRIA	08:11	38-17	H 21	
FOUL by HALL,SOJOURNER	08:00			
SUB IN: HALL,SOJOURNER	07:56			
SUB OUT: GORDON,LAKEYRIA	07:56			
	07:48			MISSED 3PTR by LAWRENCE,MCKENNA
	07:48			REBOUND (OFF) by TOWELLS,MORGAN
	07:36			MISSED 3PTR by TOWELLS,MORGAN
REBOUND (DEF) by KING,LATOYA	07:36			
MISSED JUMPER by GALLOWAY,ALEXIA	07:19			
REBOUND (OFF) by HALL,SOJOURNER	07:19			
MISSED LAYUP by HALL,SOJOURNER	07:16			
	07:16			BLOCK by LONG,CHLOE
	07:14			REBOUND (DEF) by LAWRENCE,MCKENNA
	07:10	40-17	H 23	GOOD! LAYUP by TOWELLS,MORGAN [PNT]
	06:59			FOUL by LAWRENCE,MCKENNA
GOOD! LAYUP by BROWN,KEONA [PNT]	06:26	40-19	H 21	
FOUL by BROWN,KEONA	06:07			
	06:07	43-19	H 24	GOOD! 3PTR by LAWRENCE,MCKENNA
MISSED 3PTR by KING,LATOYA	06:07			
	06:07			REBOUND (DEF) by HAWKS,TAYLOR
	06:07			TURNOVER by HAWKS,TAYLOR
GOOD! JUMPER by GALLOWAY,ALEXIA	06:07	43-21	H 22	
	06:07	45-21	H 24	GOOD! LAYUP by LONG,CHLOE [PNT]
	06:07			FOUL by LONG,CHLOE
MISSED FT by BROWN,KEONA	06:07			
REBOUND (DEADB) by TEAM	06:07			
GOOD! FT by BROWN,KEONA	06:07	45-22	H 23	
SUB IN: WALKER,BREANNA	06:07			
SUB IN: SINGFIELD,SAMANTHA	06:07			
SUB OUT: BROWN,KEONA	06:07			
SUB OUT: HALL,SOJOURNER	06:07			
	06:07			SUB IN: PEARSON,RAYVEN
	06:07			SUB IN: MAGRUDER,TASHA
	06:07			SUB OUT: PHELION,TYLER
	05:59	48-22	H 26	GOOD! 3PTR by LAWRENCE,MCKENNA
	05:59			ASSIST by MAGRUDER,TASHA
	05:49			FOUL by LONG,CHLOE
MISSED FT by GALLOWAY,ALEXIA	05:39			
REBOUND (DEADB) by TEAM	05:39			
MISSED FT by GALLOWAY,ALEXIA	05:39			
	05:39			REBOUND (DEF) by MAGRUDER,TASHA
	05:39			SUB IN: MORRISON,GRETCHEN
	05:39			SUB IN: PERRY,BRIANNA
	05:39			SUB OUT: TOWELLS,MORGAN
	05:39			SUB OUT: LAWRENCE,MCKENNA
	05:26	51-22	H 29	GOOD! 3PTR by MORRISON,GRETCHEN
	05:26			ASSIST by PATTERSON,KI-KI
MISSED JUMPER by RAINEY,N'DERICKA	05:11			

VISITORS: Brewton Parker	Time	Score	Margin	HOME: Jacksonville State
	05:11			REBOUND (DEF) by PEARSON,RAYVEN
	05:02			MISSED 3PTR by PATTERSON,KI-KI
	05:02			REBOUND (OFF) by MAGRUDER,TASHA
	04:57	53-22	H 31	GOOD! JUMPER by PERRY,BRIANNA
	04:57			ASSIST by MAGRUDER,TASHA
TURNOVER by GALLOWAY,ALEXIA	04:38			
	04:36			STEAL by PERRY,BRIANNA
FOUL by RAINEY,N'DERICKA	04:32			
	04:32			FOUL by MORRISON,GRETCHEN
SUB IN: GORDON,LAKEYRIA	04:28			
SUB IN: MAYO,DANIELA	04:28			
SUB OUT: HUGHES,JOHNTA	04:28			
SUB OUT: WALKER,BREANNA	04:28			
FOUL by GORDON,LAKEYRIA	04:09			
	03:54	54-22	H 32	GOOD! FT by PERRY,BRIANNA
	03:54	55-22	H 33	GOOD! FT by PERRY,BRIANNA
	03:34			MISSED 3PTR by MORRISON,GRETCHEN
REBOUND (DEF) by TEAM	03:34			
SUB IN: BROWN,KEONA	03:27			
SUB OUT: GORDON,LAKEYRIA	03:27			
GOOD! JUMPER by BROWN,KEONA	03:21	55-24	H 31	
ASSIST by GALLOWAY,ALEXIA	03:21			
	03:09	58-24	H 34	GOOD! 3PTR by PATTERSON,KI-KI
	03:09			ASSIST by PERRY,BRIANNA
	02:56			FOUL by PATTERSON,KI-KI
MISSED FT by GALLOWAY,ALEXIA	02:56			
REBOUND (DEADB) by TEAM	02:56			
MISSED FT by GALLOWAY,ALEXIA	02:56			
	02:56			REBOUND (DEF) by MAGRUDER,TASHA
	02:51			MISSED LAYUP by PERRY,BRIANNA
REBOUND (DEF) by SINGFIELD,SAMANTHA	02:51			
MISSED JUMPER by MAYO,DANIELA	02:22			
	02:22			REBOUND (DEF) by MAGRUDER,TASHA
	02:09			TURNOVER by MORRISON,GRETCHEN
TURNOVER by MAYO,DANIELA	01:49			
	01:37			MISSED 3PTR by MORRISON,GRETCHEN
REBOUND (DEF) by GALLOWAY,ALEXIA	01:37			
TURNOVER by GALLOWAY,ALEXIA	01:27			
	01:26			STEAL by PEARSON,RAYVEN
	01:20			MISSED 3PTR by PATTERSON,KI-KI
REBOUND (DEF) by GALLOWAY,ALEXIA	01:20			
MISSED 3PTR by KING,LATOYA	01:12			
	01:12			REBOUND (DEF) by PERRY,BRIANNA
	00:59			MISSED LAYUP by PEARSON,RAYVEN
	00:59			REBOUND (OFF) by MAGRUDER,TASHA
	00:53			TURNOVER by PERRY,BRIANNA
SUB IN: YOUNG,DAY'LON	00:53			
SUB OUT: GALLOWAY,ALEXIA	00:53			
TURNOVER by KING,LATOYA	00:52			
	00:46			STEAL by PERRY,BRIANNA
	00:44			MISSED 3PTR by PERRY,BRIANNA
REBOUND (DEF) by YOUNG,DAY'LON	00:44			
MISSED LAYUP by BROWN,KEONA	00:41			
	00:41			REBOUND (DEF) by MORRISON,GRETCHEN
	00:40			MISSED LAYUP by PATTERSON,KI-KI
	00:40			REBOUND (OFF) by TEAM
	00:34			FOUL by PERRY,BRIANNA
GOOD! FT by YOUNG,DAY'LON	00:30	58-25	H 33	
GOOD! FT by YOUNG,DAY'LON	00:30	58-26	H 32	
SUB IN: HUGHES,JOHNTA	00:30			
SUB OUT: KING,LATOYA	00:30			
	00:30			SUB IN: JOHNSON,KIANA
	00:30			SUB OUT: PATTERSON,KI-KI
	00:28			MISSED 3PTR by PERRY,BRIANNA
REBOUND (DEF) by YOUNG,DAY'LON	00:28			
MISSED JUMPER by HUGHES,JOHNTA	00:01			
	00:01			BLOCK by JOHNSON,KIANA
	00:01	61-26	H 35	GOOD! 3PTR by HAWKS,TAYLOR

Brewton Parker 26, Jacksonville State 61

Period 2-only	In Paint	Off T/O	2nd Chance	Fast Break	Bench	
BPC		2	0		12	Score tied - 0 times

Period 2-only	In Paint	Off T/O	2nd Chance	Fast Break	Bench	
JSU		2	2		17	Lead changed - 0 times

Official Basketball Box Score -- Game Totals -- Second Half Statistics
Brewton Parker vs Jacksonville State
11/10/2017 5:30 at Jacksonville, Ala.



Brewton Parker 18 • 2-2

##	Player	*	Total			3-Ptr			Rebounds			PF	TP	A	TO	Blk	Stl	Min
			FG-FGA	FG-FGA	FT-FTA	FG-FGA	FG-FGA	FT-FTA	Off	Def	Tot							
03	KING,LATOYA	*	0-2	0-2	0-0	0	0	0	2	0	1	0	0	0	0	6		
10	HUGHES,JOHNTA	*	0-0	0-0	0-0	0	0	0	1	0	1	2	0	0	5			
12	GALLOWAY,ALEXIA	*	3-9	1-3	2-3	1	2	3	2	9	1	1	0	0	20			
23	WALKER,BREANNA	*	1-2	0-0	0-0	0	1	1	1	2	0	0	0	1	11			
30	SINGFIELD,SAMANTHA	*	0-1	0-0	0-0	0	0	0	1	0	0	1	0	0	6			
00	BROWN,T EIRRA		0-0	0-0	0-0	0	0	0	0	0	0	0	0	1	2			
04	YOUNG,DAY'LON		0-2	0-1	0-0	0	2	2	0	0	0	1	0	0	12			
05	RAINEY,NI'DERICKA		0-3	0-0	2-2	1	1	2	0	2	0	1	0	1	9			
11	GORDON,LAKEYRIA		0-3	0-0	0-0	1	3	4	2	0	0	3	1	1	5			
22	HEAD,T RAKEIRRA		0-0	0-0	0-0	1	0	1	0	0	0	0	0	2				
32	HALL,SOJOURNER		0-0	0-0	1-2	1	0	1	3	1	0	2	0	2				
33	BROWN,KEONA		1-6	0-0	0-0	1	2	3	3	2	0	2	1	0	15			
35	MAYO,DANIELA		1-2	0-0	0-0	0	1	1	1	2	0	1	0	0	6			
TEAM						1	2	3	0		0							
Totals			6-30	1-6	5-7	7	14	21	16	18	3	14	2	4	101			
FG %	3rd Qtr	3-13	23.1%	4th Qtr	3-17	17.6%	Half:	6-30	20.0%									
3FG %	3rd Qtr	1-3	33.3%	4th Qtr	0-3	00.0%	Half:	1-6	20.0%									
FT %	3rd Qtr	1-2	50.0%	4th Qtr	4-5	80.0%	Half:	5-7	71.4%									

Jacksonville State 42 • 0-0

##	Player	*	Total			3-Ptr			Rebounds			PF	TP	A	TO	Blk	Stl	Min
			FG-FGA	FG-FGA	FT-FTA	FG-FGA	FG-FGA	FT-FTA	Off	Def	Tot							
03	PATTERSON,KI-KI	*	0-2	0-2	0-0	0	1	1	0	0	2	0	0	0	0	7		
13	PERRY,BRIANNA	*	3-6	0-1	0-0	0	1	1	0	6	1	2	0	0	9			
24	MORRISON,GRETCHEM	*	0-0	0-0	3-4	0	1	1	0	3	0	0	0	1	4			
32	PHELION,TYLER	*	2-2	0-0	0-0	0	3	3	2	4	1	1	1	0	9			
33	MAGRUDER,TASHA	*	2-2	0-0	0-0	2	2	4	1	4	2	0	1	0	11			
01	TOWELLS,MORGAN		1-3	0-1	0-0	1	0	1	1	2	0	0	0	0	7			
02	STRAIN,LEAH		0-2	0-2	0-1	2	0	2	0	0	1	1	0	0	8			
05	NORRIS,JORDAN		0-0	0-0	0-0	0	0	0	0	0	0	0	0	0	0			
10	HAWKS,TAYLOR		1-3	0-1	1-1	0	1	1	1	3	0	0	0	2	7			
11	JOHNSON,KIANA		2-5	0-2	0-3	0	1	1	1	4	0	0	0	1	9			
14	LAWRENCE,MCKENNA		2-3	1-2	0-0	0	1	1	1	5	0	0	0	0	7			
15	LONG,CHLOE		3-4	0-0	0-2	1	0	1	0	6	1	1	1	0	6			
22	WALKER,JAYLA		0-2	0-0	0-0	0	1	1	0	0	0	0	0	0	4			
34	PEARSON,RAYVEN		1-4	0-0	3-3	4	5	9	1	5	2	1	2	0	11			
TEAM						1	2	3	0		0							
Totals			17-38	1-11	7-14	11	19	30	8	42	10	6	5	4	99			
FG %	3rd Qtr	8-15	53.3%	4th Qtr	9-23	39.1%	Half:	17-38	44.7%									
3FG %	3rd Qtr	0-3	00.0%	4th Qtr	1-8	12.5%	Half:	1-11	33.3%									
FT %	3rd Qtr	5-12	41.7%	4th Qtr	2-2	100.0%	Half:	7-14	50.0%									

Officials: R-Courtney Walker, U1-Rashon Smith, U2-Molly McFadden
 Technical Fouls: Brewton Parker- None. Jacksonville State- None.

Score by periods	1st	2nd	3rd	4th	Total	Rebounds	Off T/O	2nd Chance	Bench
Brewton Parker	11	15	8	10	44	BPC	2	3	7
Jacksonville State	34	27	21	21	103		15	11	25

Last FG - BPC 4th-03:48, JSU 4th-00:31.
 BPC led for 0:00. JSU led for 20:00. Game was tied for 0:00.

Score tied - 0 times
 Lead changed - 0 times

Brewton Parker vs Jacksonville State
11/10/2017; 5:30 at Jacksonville, Ala.
Period 3 Play-By-Play



VISITORS: Brewton Parker	Time	Score	Margin	HOME: Jacksonville State
	09:49	63-26	H 37	GOOD! LAYUP by PHELION, TYLER [PNT]
	09:49			ASSIST by PATTERSON, KI-KI
GOOD! JUMPER by WALKER, BREANNA [PNT]	09:25	63-28	H 35	
ASSIST by KING, LATOYA	09:25			
	09:10	65-28	H 37	GOOD! LAYUP by PERRY, BRIANNA [PNT]
TURNOVER by HUGHES, JOHNTA	08:52			
	08:51			STEAL by MORRISON, GRETCHEN
	08:41	67-28	H 39	GOOD! LAYUP by PERRY, BRIANNA [PNT]
TURNOVER by SINGFIELD, SAMANTHA	08:23			
SUB IN: GORDON, LAKEYRIA	08:23			
SUB IN: MAYO, DANIELA	08:23			
SUB OUT: HUGHES, JOHNTA	08:23			
SUB OUT: SINGFIELD, SAMANTHA	08:23			
	08:11			TURNOVER by PERRY, BRIANNA
STEAL by GORDON, LAKEYRIA	08:10			
MISSED LAYUP by GORDON, LAKEYRIA	08:07			
	08:07			BLOCK by MAGRUDER, TASHA
	08:06			REBOUND (DEF) by PERRY, BRIANNA
FOUL by KING, LATOYA	08:00			
FOUL by MAYO, DANIELA	07:59			
	07:44			MISSED 3PTR by PATTERSON, KI-KI
REBOUND (DEF) by GORDON, LAKEYRIA	07:44			
MISSED 3PTR by KING, LATOYA	07:32			
	07:32			REBOUND (DEF) by PATTERSON, KI-KI
FOUL by GORDON, LAKEYRIA	07:29			
SUB IN: HALL, SOJOURNER	07:29			
SUB OUT: GORDON, LAKEYRIA	07:29			
	07:20	69-28	H 41	GOOD! JUMPER by PERRY, BRIANNA
FOUL by HALL, SOJOURNER	07:07			
TURNOVER by HALL, SOJOURNER	07:07			
	06:57	71-28	H 43	GOOD! LAYUP by MAGRUDER, TASHA [PNT]
	06:57			ASSIST by PATTERSON, KI-KI
MISSED 3PTR by KING, LATOYA	06:34			
	06:34			REBOUND (DEF) by MORRISON, GRETCHEN
FOUL by GALLOWAY, ALEXIA	06:23			
	06:23	72-28	H 44	GOOD! FT by MORRISON, GRETCHEN
	06:23	73-28	H 45	GOOD! FT by MORRISON, GRETCHEN
MISSED JUMPER by MAYO, DANIELA	06:05			
	06:05			BLOCK by PHELION, TYLER
REBOUND (OFF) by HALL, SOJOURNER	06:02			
	06:02			FOUL by PHELION, TYLER
GOOD! FT by HALL, SOJOURNER	06:02	73-29	H 44	
MISSED FT by HALL, SOJOURNER	06:02			
	06:02			REBOUND (DEF) by PHELION, TYLER
FOUL by HALL, SOJOURNER	05:47			
	05:47	74-29	H 45	GOOD! FT by MORRISON, GRETCHEN
	05:47			MISSED FT by MORRISON, GRETCHEN
REBOUND (DEF) by WALKER, BREANNA	05:47			
	05:47			FOUL by PHELION, TYLER
SUB IN: HEAD, TRAKEIRRA	05:47			
SUB OUT: HALL, SOJOURNER	05:47			
	05:47			SUB IN: JOHNSON, KIANA
	05:47			SUB IN: PEARSON, RAYVEN
	05:47			SUB OUT: MORRISON, GRETCHEN
	05:47			SUB OUT: PHELION, TYLER
TURNOVER by MAYO, DANIELA	05:36			
	05:16			MISSED JUMPER by PERRY, BRIANNA
	05:16			REBOUND (OFF) by PEARSON, RAYVEN
FOUL by KING, LATOYA	05:12			
	05:12	75-29	H 46	GOOD! FT by PEARSON, RAYVEN
	05:12	76-29	H 47	GOOD! FT by PEARSON, RAYVEN
SUB IN: YOUNG, DAY'LON	05:12			
SUB IN: BROWN, KEONA	05:12			
SUB OUT: KING, LATOYA	05:12			
SUB OUT: WALKER, BREANNA	05:12			
MISSED LAYUP by BROWN, KEONA	05:02			
	05:02			BLOCK by PEARSON, RAYVEN
REBOUND (OFF) by HEAD, TRAKEIRRA	05:00			
MISSED LAYUP by GALLOWAY, ALEXIA	04:57			

VISITORS: Brewton Parker	Time	Score	Margin	HOME: Jacksonville State
	04:57			REBOUND (DEF) by JOHNSON,KIANA
	04:48	78-29	H 49	GOOD! JUMPER by MAGRUDER,TASHA
	04:48			ASSIST by PERRY,BRIANNA
MISSED JUMPER by GALLOWAY,ALEXIA	04:26			
	04:26			REBOUND (DEF) by TEAM
	04:24			TIMEOUT TEAM
	04:16			SUB IN: STRAIN,LEAH
	04:16			SUB OUT: PERRY,BRIANNA
	04:13			MISSED LAYUP by PEARSON,RAYVEN
REBOUND (DEF) by YOUNG,DAY'LON	04:13			
TURNOVER by YOUNG,DAY'LON	04:07			
	04:06			STEAL by JOHNSON,KIANA
	03:53			MISSED 3PTR by PATTERSON,KI-KI
REBOUND (DEF) by MAYO,DANIELA	03:53			
GOOD! LAYUP by MAYO,DANIELA [PNT]	03:44	78-31	H 47	
	03:27	80-31	H 49	GOOD! LAYUP by JOHNSON,KIANA [PNT]
	03:27			ASSIST by MAGRUDER,TASHA
TIMEOUT TEAM	03:20			
SUB IN: GORDON,LAKEYRIA	03:20			
SUB OUT: HEAD,TRAKEIRRA	03:20			
	03:20			SUB IN: WALKER,JAYLA
	03:20			SUB IN: LONG,CHLOE
	03:20			SUB OUT: PATTERSON,KI-KI
	03:20			SUB OUT: MAGRUDER,TASHA
	03:11			FOUL by PEARSON,RAYVEN
MISSED JUMPER by YOUNG,DAY'LON	03:03			
	03:03			REBOUND (DEF) by PEARSON,RAYVEN
FOUL by BROWN,KEONA	02:45			
	02:29			MISSED FT by LONG,CHLOE
	02:29			REBOUND (DEADB) by TEAM
	02:25			MISSED FT by LONG,CHLOE
	02:25			REBOUND (OFF) by PEARSON,RAYVEN
	02:25			MISSED LAYUP by PEARSON,RAYVEN
BLOCK by GORDON,LAKEYRIA	02:25			
REBOUND (DEF) by BROWN,KEONA	02:25			
SUB IN: HUGHES,JOHNTA	02:17			
SUB OUT: MAYO,DANIELA	02:17			
TURNOVER by GORDON,LAKEYRIA	02:13			
FOUL by GALLOWAY,ALEXIA	02:13			
FOUL by BROWN,KEONA	02:06			
	02:06			MISSED FT by JOHNSON,KIANA
	02:06			REBOUND (DEADB) by TEAM
	02:06			MISSED FT by JOHNSON,KIANA
REBOUND (DEF) by GORDON,LAKEYRIA	02:06			
GOOD! 3PTR by GALLOWAY,ALEXIA	02:02	80-34	H 46	
ASSIST by HUGHES,JOHNTA	02:02			
FOUL by HUGHES,JOHNTA	01:44			
	01:44			MISSED FT by STRAIN,LEAH
	01:44			REBOUND (DEADB) by TEAM
	01:44			MISSED FT by JOHNSON,KIANA
REBOUND (DEF) by GORDON,LAKEYRIA	01:44			
TURNOVER by GALLOWAY,ALEXIA	01:18			
	00:53	82-34	H 48	GOOD! LAYUP by LONG,CHLOE [PNT]
	00:53			ASSIST by PEARSON,RAYVEN
MISSED JUMPER by GORDON,LAKEYRIA	00:38			
	00:38			REBOUND (DEF) by WALKER,JAYLA
	00:30			MISSED LAYUP by WALKER,JAYLA
	00:30			REBOUND (OFF) by PEARSON,RAYVEN
	00:22			MISSED 3PTR by JOHNSON,KIANA
REBOUND (DEF) by TEAM	00:22			
MISSED JUMPER by GORDON,LAKEYRIA	00:17			
REBOUND (OFF) by GORDON,LAKEYRIA	00:17			
TURNOVER by GORDON,LAKEYRIA	00:00			

Brewton Parker 44, Jacksonville State 103

Period 3-only	In Paint	Off T/O	2nd Chance	Fast Break	Bench	
BPC		0	1		3	Score tied - 0 times
JSU		8	2		6	Lead changed - 0 times

Brewton Parker vs Jacksonville State
11/10/2017; 5:30 at Jacksonville, Ala.
Period 4 Play-By-Play



VISITORS: Brewton Parker	Time	Score	Margin	HOME: Jacksonville State
SUB IN: YOUNG, DAY'LON	10:00			
SUB IN: BROWN, KEONA	10:00			
SUB IN: GORDON, LAKEYRIA	10:00			
SUB OUT: KING, LATOYA	10:00			
SUB OUT: WALKER, BREANNA	10:00			
SUB OUT: SINGFIELD, SAMANTHA	10:00			
	10:00			SUB IN: LONG, CHLOE
	10:00			SUB IN: JOHNSON, KIANA
	10:00			SUB IN: HAWKS, TAYLOR
	10:00			SUB IN: WALKER, JAYLA
	10:00			SUB OUT: PATTERSON, KI-KI
	10:00			SUB OUT: PERRY, BRIANNA
	10:00			SUB OUT: MORRISON, GRETCHEN
	10:00			SUB OUT: MAGRUDER, TASHA
	09:50			MISSED JUMPER by WALKER, JAYLA
REBOUND (DEF) by BROWN, KEONA	09:50			
TURNOVER by HUGHES, JOHNTA	09:38			
	09:37			STEAL by HAWKS, TAYLOR
	09:34			MISSED LAYUP by JOHNSON, KIANA
	09:34			REBOUND (OFF) by LONG, CHLOE
	09:31	84-34	H 50	GOOD! LAYUP by LONG, CHLOE [PNT]
FOUL by GORDON, LAKEYRIA	09:12			
TURNOVER by GORDON, LAKEYRIA	09:12			
SUB IN: SINGFIELD, SAMANTHA	09:12			
SUB IN: RAINEY, NI'DERICKA	09:12			
SUB OUT: HUGHES, JOHNTA	09:12			
SUB OUT: GORDON, LAKEYRIA	09:12			
	08:55			TURNOVER by LONG, CHLOE
MISSED JUMPER by BROWN, KEONA	08:44			
	08:44			REBOUND (DEF) by TEAM
TURNOVER by BROWN, KEONA	08:40			
SUB IN: KING, LATOYA	08:40			
SUB OUT: YOUNG, DAY'LON	08:40			
	08:40			SUB IN: TOWELLS, MORGAN
	08:40			SUB IN: LAWRENCE, MCKENNA
	08:40			SUB OUT: JOHNSON, KIANA
	08:40			SUB OUT: WALKER, JAYLA
	08:34			MISSED 3PTR by LAWRENCE, MCKENNA
	08:34			REBOUND (OFF) by TOWELLS, MORGAN
	08:25			MISSED JUMPER by LONG, CHLOE
REBOUND (DEF) by GALLOWAY, ALEXIA	08:25			
GOOD! JUMPER by GALLOWAY, ALEXIA [FB/PNT]	08:17	84-36	H 48	
	08:01	87-36	H 51	GOOD! 3PTR by LAWRENCE, MCKENNA
	08:01			ASSIST by LONG, CHLOE
TURNOVER by RAINEY, NI'DERICKA	07:42			
	07:40			STEAL by HAWKS, TAYLOR
	07:30	89-36	H 53	GOOD! LAYUP by LAWRENCE, MCKENNA [PNT]
MISSED LAYUP by SINGFIELD, SAMANTHA	07:14			
	07:14			BLOCK by LONG, CHLOE
REBOUND (OFF) by TEAM	07:12			
TIMEOUT 30SEC	07:11			
SUB IN: YOUNG, DAY'LON	07:11			
SUB OUT: KING, LATOYA	07:11			
MISSED 3PTR by YOUNG, DAY'LON	07:07			
	07:07			REBOUND (DEF) by HAWKS, TAYLOR
	06:49	91-36	H 55	GOOD! LAYUP by LONG, CHLOE [PNT]
	06:49			ASSIST by PHELION, TYLER
	06:39			FOUL by HAWKS, TAYLOR
GOOD! FT by RAINEY, NI'DERICKA	06:39	91-37	H 54	
GOOD! FT by RAINEY, NI'DERICKA	06:39	91-38	H 53	
	06:39			SUB IN: MAGRUDER, TASHA
	06:39			SUB OUT: LONG, CHLOE
	06:22			MISSED 3PTR by TOWELLS, MORGAN
	06:22			REBOUND (OFF) by MAGRUDER, TASHA
	06:17	93-38	H 55	GOOD! LAYUP by PHELION, TYLER [PNT]
	06:17			ASSIST by MAGRUDER, TASHA
TURNOVER by BROWN, KEONA	05:46			
	05:37	95-38	H 57	GOOD! LAYUP by HAWKS, TAYLOR [PNT]
FOUL by SINGFIELD, SAMANTHA	05:37			

VISITORS: Brewton Parker	Time	Score	Margin	HOME: Jacksonville State
	05:37	96-38	H 58	GOOD! FT by HAWKS,TAYLOR
SUB IN: HALL,SOJOURNER	05:37			
SUB OUT: SINGFIELD,SAMANTHA	05:37			
TURNOVER by HALL,SOJOURNER	05:31			
FOUL by HALL,SOJOURNER	05:31			
SUB IN: WALKER,BREANNA	05:31			
SUB OUT: HALL,SOJOURNER	05:31			
	05:16			TURNOVER by PHELION,TYLER
MISSED LAYUP by BROWN,KEONA	05:01			
	05:01			REBOUND (DEF) by PHELION,TYLER
	04:52			MISSED 3PTR by HAWKS,TAYLOR
REBOUND (DEF) by GALLOWAY,ALEXIA	04:52			
GOOD! LAYUP by GALLOWAY,ALEXIA [PNT]	04:43	96-40	H 56	
	04:43			FOUL by LAWRENCE,MCKENNA
MISSED FT by GALLOWAY,ALEXIA	04:43			
	04:43			REBOUND (DEF) by PHELION,TYLER
	04:38			MISSED JUMPER by HAWKS,TAYLOR
REBOUND (DEF) by YOUNG,DAY'LON	04:38			
	04:35			FOUL by MAGRUDER,TASHA
	04:35			SUB IN: PEARSON,RAYVEN
	04:35			SUB OUT: PHELION,TYLER
MISSED JUMPER by WALKER,BREANNA	04:26			
REBOUND (OFF) by RAINEY,NI'DERICKA	04:26			
MISSED LAYUP by RAINEY,NI'DERICKA	04:23			
	04:23			REBOUND (DEF) by PEARSON,RAYVEN
	04:16	98-40	H 58	GOOD! LAYUP by TOWELLS,MORGAN [FB/PNT]
	04:16			ASSIST by PEARSON,RAYVEN
	03:55			FOUL by TOWELLS,MORGAN
	03:55			SUB IN: PERRY,BRIANNA
	03:55			SUB IN: STRAIN,LEAH
	03:55			SUB OUT: HAWKS,TAYLOR
	03:55			SUB OUT: LAWRENCE,MCKENNA
GOOD! JUMPER by BROWN,KEONA	03:48	98-42	H 56	
ASSIST by GALLOWAY,ALEXIA	03:48			
	03:27			MISSED 3PTR by PERRY,BRIANNA
	03:27			REBOUND (OFF) by MAGRUDER,TASHA
	03:22			MISSED 3PTR by STRAIN,LEAH
REBOUND (DEF) by RAINEY,NI'DERICKA	03:22			
MISSED JUMPER by GALLOWAY,ALEXIA	03:12			
	03:12			REBOUND (DEF) by MAGRUDER,TASHA
	03:03			TURNOVER by STRAIN,LEAH
STEAL by WALKER,BREANNA	03:01			
MISSED JUMPER by GALLOWAY,ALEXIA	02:57			
	02:57			REBOUND (DEF) by MAGRUDER,TASHA
	02:49			MISSED JUMPER by PERRY,BRIANNA
	02:49			REBOUND (OFF) by STRAIN,LEAH
	02:44			MISSED JUMPER by TOWELLS,MORGAN
REBOUND (DEF) by TEAM	02:44			
MISSED 3PTR by GALLOWAY,ALEXIA	02:42			
	02:42			REBOUND (DEF) by PEARSON,RAYVEN
	02:40			TURNOVER by PEARSON,RAYVEN
STEAL by RAINEY,NI'DERICKA	02:39			
MISSED JUMPER by BROWN,KEONA	02:34			
	02:34			REBOUND (DEF) by PEARSON,RAYVEN
FOUL by WALKER,BREANNA	02:28			
	02:28			SUB IN: LAWRENCE,MCKENNA
	02:28			SUB OUT: MAGRUDER,TASHA
	02:13			MISSED 3PTR by STRAIN,LEAH
	02:13			REBOUND (OFF) by TEAM
	01:50			MISSED LAYUP by PEARSON,RAYVEN
BLOCK by BROWN,KEONA	01:50			
	01:49			REBOUND (OFF) by PEARSON,RAYVEN
	01:46	100-42	H 58	GOOD! LAYUP by PEARSON,RAYVEN [PNT]
FOUL by BROWN,KEONA	01:46			
	01:46	101-42	H 59	GOOD! FT by PEARSON,RAYVEN
SUB IN: BROWN,TEIRRA	01:46			
SUB OUT: YOUNG,DAY'LON	01:46			
	01:46			SUB IN: JOHNSON,KIANA
	01:46			SUB OUT: TOWELLS,MORGAN
MISSED LAYUP by BROWN,KEONA	01:35			
	01:35			BLOCK by PEARSON,RAYVEN
REBOUND (OFF) by BROWN,KEONA	01:33			
MISSED 3PTR by GALLOWAY,ALEXIA	01:29			
	01:29			REBOUND (DEF) by PEARSON,RAYVEN
	01:08			TURNOVER by PERRY,BRIANNA

VISITORS: Brewton Parker	Time	Score	Margin	HOME: Jacksonville State
STEAL by BROWN,TEIRRA	01:07			
MISSED JUMPER by RAINEY,NI'DERICKA	01:03			
REBOUND (OFF) by GALLOWAY,ALEXIA	01:03			
	00:58			FOUL by JOHNSON,KIANA
GOOD! FT by GALLOWAY,ALEXIA	00:58	101-43	H 58	
GOOD! FT by GALLOWAY,ALEXIA	00:58	101-44	H 57	
	00:58			SUB IN: HAWKS,TAYLOR
	00:58			SUB OUT: PERRY,BRIANNA
	00:44			MISSED 3PTR by JOHNSON,KIANA
	00:44			REBOUND (OFF) by STRAIN,LEAH
	00:31	103-44	H 59	GOOD! JUMPER by JOHNSON,KIANA
	00:31			ASSIST by STRAIN,LEAH
MISSED LAYUP by RAINEY,NI'DERICKA	00:18			
	00:18			REBOUND (DEF) by LAWRENCE,MCKENNA

Brewton Parker 44, Jacksonville State 103

Period 4-only	In Paint	Off T/O	2nd Chance	Fast Break	Bench	
BPC		2	2		4	Score tied - 0 times
JSU		7	9		19	Lead changed - 0 times

Brewton Parker vs Jacksonville State
11/10/2017; 5:30 at Jacksonville, Ala.
Scoring/Runs Reference



Period 1

Brewton Parker	VRun	Score	Margin	HRun	Jacksonville State
		0-2	2		PATTERSON LAYUP [P] - 09:46
		0-4	4	NaN-0	PERRY JUMPER - 08:41
		0-6	6	NaN-0	PATTERSON JUMPER - 08:41
		0-8	8	NaN-0	MAGRUDER JUMPER - 08:41
		0-10	10	NaN-0	PHELION JUMPER - 08:41
		0-11	11	NaN-0	PERRY FT - 08:41
		0-12	12	NaN-0	PERRY FT - 08:41
08:34 - GORDON JUMPER	-	2-12	10		
		2-14	12		PHELION LAYUP [P] - 07:36
		2-15	13	3-0	MORRISON FT - 06:56
		2-16	14	4-0	MORRISON FT - 06:56
06:49 - RAINEY JUMPER [P] [F]	-	4-16	12		
		4-18	14		PEARSON LAYUP [P] - 06:14
		4-19	15	3-0	MORRISON FT - 05:23
05:17 - GORDON JUMPER	-	6-19	13		
		6-20	14		STRAIN FT - 04:45
		6-21	15	2-0	STRAIN FT - 04:45
		6-22	16	3-0	LONG FT - 03:18
		6-23	17	4-0	LONG FT - 03:18
		6-25	19	6-0	PEARSON LAYUP [P] - 02:18
		6-27	21	8-0	WALKER LAYUP [P] - 02:08
		6-29	23	10-0	PEARSON LAYUP [P] - 01:55
		6-30	24	11-0	PEARSON FT - 01:55
01:35 - HUGHES 3PTR	-	9-30	21		
		9-31	22		PEARSON FT - 01:17
		9-33	24	3-0	LONG LAYUP [P] [F] - 00:58
		9-34	25	4-0	STRAIN FT - 00:40
00:16 - GORDON JUMPER	-	11-34	23		

Brewton Parker vs Jacksonville State
11/10/2017; 5:30 at Jacksonville, Ala.
Scoring/Runs Reference



Period 2

Brewton Parker	VRun	Score	Margin	HRun	Jacksonville State
10:00 - HALL LAYUP [P]	-	13-34	21		
10:00 - BROWN JUMPER	NaN-0	15-34	19		
		15-37	22		TOWELLS 3PTR - 09:33
		15-38	23	4-0	JOHNSON FT - 08:52
08:28 - GALLOWAY FT	-	16-38	22		
08:11 - GORDON FT	2-0	17-38	21		
		17-40	23		TOWELLS LAYUP [P] - 07:10
06:26 - BROWN LAYUP [P]	-	19-40	21		
		19-43	24		LAWRENCE 3PTR - 06:07
06:07 - GALLOWAY JUMPER	-	21-43	22		
		21-45	24		LONG LAYUP [P] - 06:07
06:07 - BROWN FT	-	22-45	23		
		22-48	26		LAWRENCE 3PTR - 05:59
		22-51	29	6-0	MORRISON 3PTR - 05:26
		22-53	31	8-0	PERRY JUMPER - 04:57
		22-54	32	9-0	PERRY FT - 03:54
		22-55	33	10-0	PERRY FT - 03:54
03:21 - BROWN JUMPER	-	24-55	31		
		24-58	34		PATTERSON 3PTR - 03:09
00:30 - YOUNG FT	-	25-58	33		
00:30 - YOUNG FT	2-0	26-58	32		
		26-61	35		HAWKS 3PTR - 00:01

Brewton Parker vs Jacksonville State
11/10/2017; 5:30 at Jacksonville, Ala.
Scoring/Runs Reference



Period 3

Brewton Parker	VRun	Score	Margin	HRun	Jacksonville State
		26-63	37		PHELION LAYUP [P] - 09:49
09:25 - WALKER JUMPER [P]	-	28-63	35		
		28-65	37		PERRY LAYUP [P] - 09:10
		28-67	39	4-0	PERRY LAYUP [P] - 08:41
		28-69	41	6-0	PERRY JUMPER - 07:20
		28-71	43	8-0	MAGRUDER LAYUP [P] - 06:57
		28-72	44	9-0	MORRISON FT - 06:23
		28-73	45	10-0	MORRISON FT - 06:23
06:02 - HALL FT	-	29-73	44		
		29-74	45		MORRISON FT - 05:47
		29-75	46	2-0	PEARSON FT - 05:12
		29-76	47	3-0	PEARSON FT - 05:12
		29-78	49	5-0	MAGRUDER JUMPER - 04:48
03:44 - MAYO LAYUP [P]	-	31-78	47		
		31-80	49		JOHNSON LAYUP [P] - 03:27
02:02 - GALLOWAY 3PTR	-	34-80	46		
		34-82	48		LONG LAYUP [P] - 00:53

Brewton Parker vs Jacksonville State
11/10/2017; 5:30 at Jacksonville, Ala.
Scoring/Runs Reference

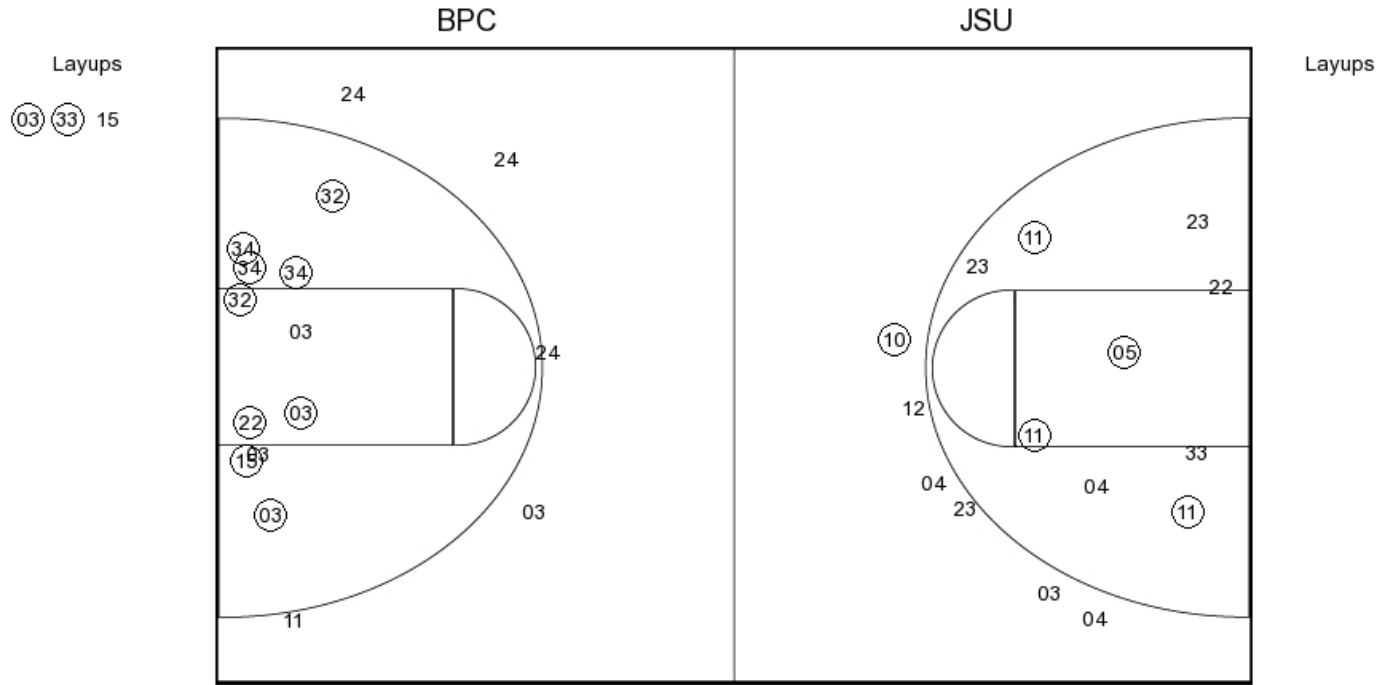


Period 4

Brewton Parker	VRun	Score	Margin	HRun	Jacksonville State
		34-84	50		LONG LAYUP [P] - 09:31
08:17 - GALLOWAY JUMPER [P] [F]	-	36-84	48		
		36-87	51		LAWRENCE 3PTR - 08:01
		36-89	53	5-0	LAWRENCE LAYUP [P] - 07:30
		36-91	55	7-0	LONG LAYUP [P] - 06:49
06:39 - RAINEY FT	-	37-91	54		
06:39 - RAINEY FT	2-0	38-91	53		
		38-93	55		PHELION LAYUP [P] - 06:17
		38-95	57	4-0	HAWKS LAYUP [P] - 05:37
		38-96	58	5-0	HAWKS FT - 05:37
04:43 - GALLOWAY LAYUP [P]	-	40-96	56		
		40-98	58		TOWELLS LAYUP [P] [F] - 04:16
03:48 - BROWN JUMPER	-	42-98	56		
		42-100	58		PEARSON LAYUP [P] - 01:46
		42-101	59	3-0	PEARSON FT - 01:46
00:58 - GALLOWAY FT	-	43-101	58		
00:58 - GALLOWAY FT	2-0	44-101	57		
		44-103	59		JOHNSON JUMPER - 00:31



PERIOD 1



BPC PERIOD 1

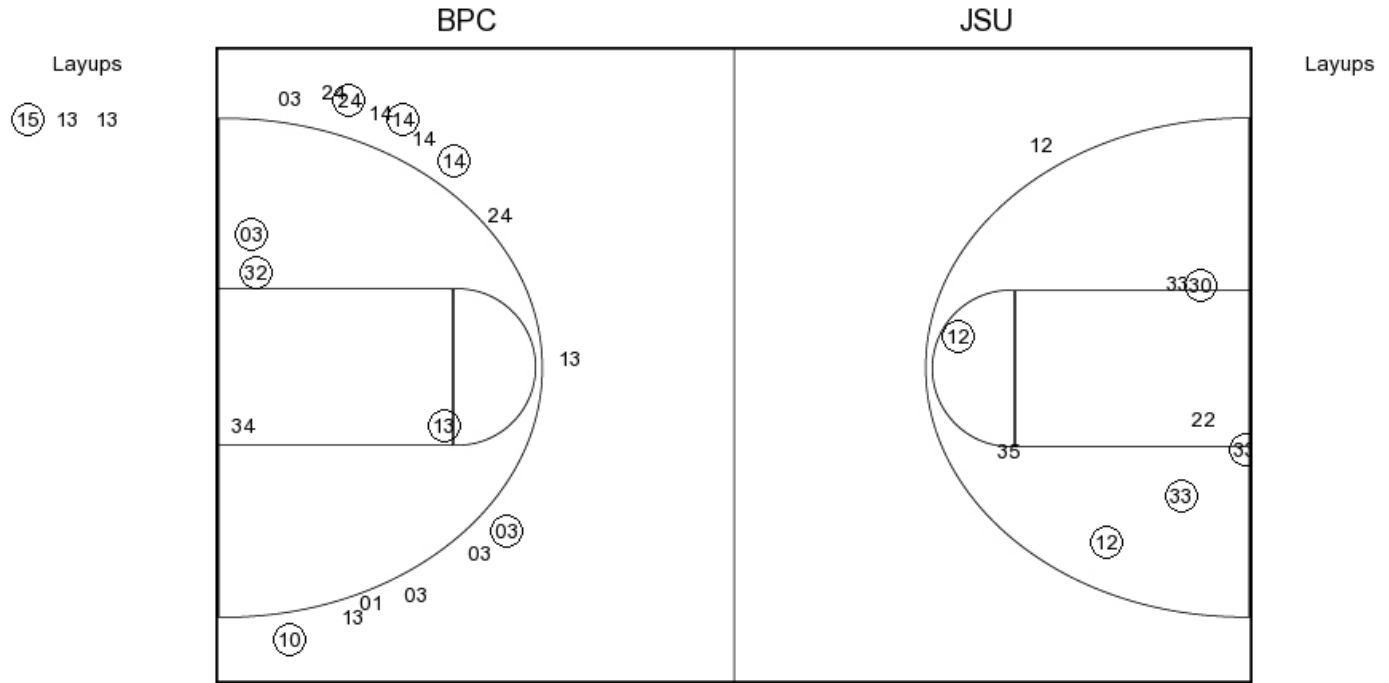
FG Made	10
FG Attempted	29
3PFG Made	1
3PFG Attempted	5

JSU PERIOD 1

FG Made	20
FG Attempted	39
3PFG Made	6
3PFG Attempted	18



PERIOD 2



BPC PERIOD 2

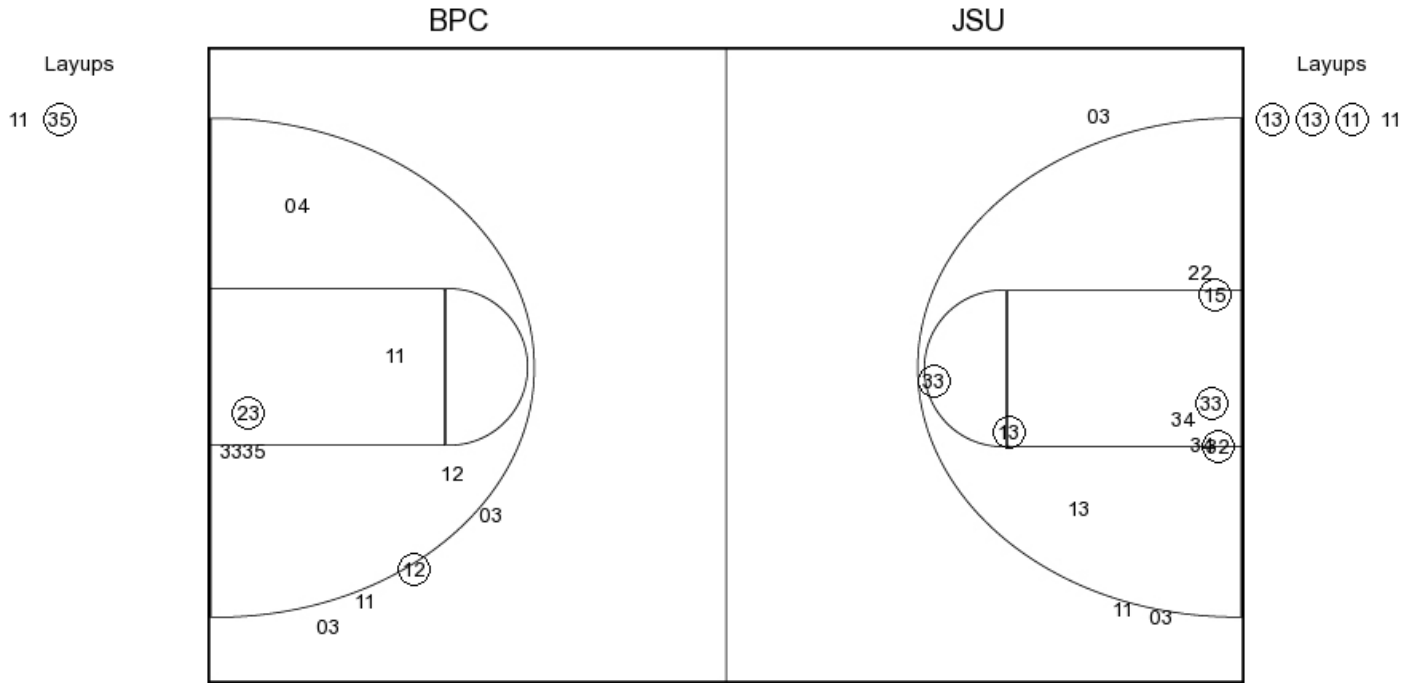
FG Made
 FG Attempted
 3PFG Made
 3PFG Attempted

JSU PERIOD 2

FG Made
 FG Attempted
 3PFG Made
 3PFG Attempted



PERIOD 3



BPC PERIOD 3

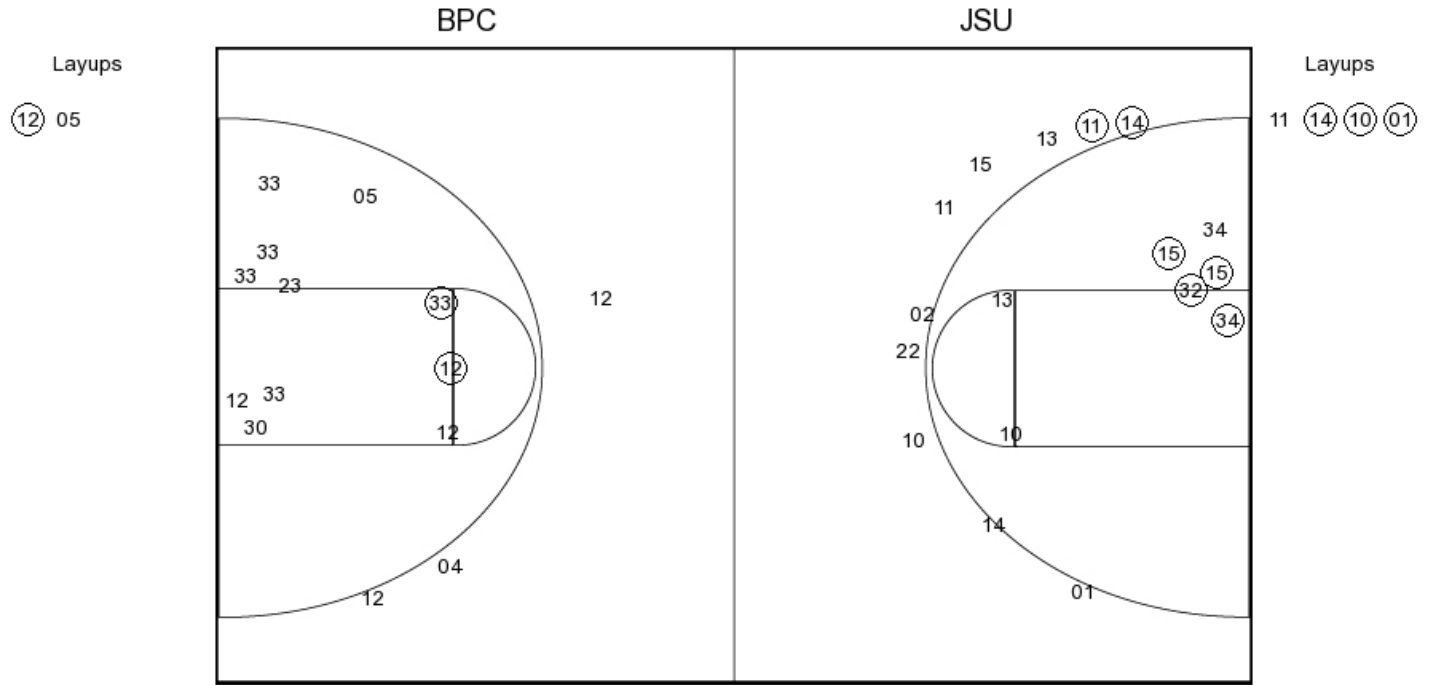
FG Made	6
FG Attempted	30
3PFG Made	1
3PFG Attempted	6

JSU PERIOD 3

FG Made	17
FG Attempted	38
3PFG Made	1
3PFG Attempted	11



PERIOD 4



BPC PERIOD 4

FG Made
 FG Attempted
 3PFG Made
 3PFG Attempted

JSU PERIOD 4

FG Made
 FG Attempted
 3PFG Made
 3PFG Attempted



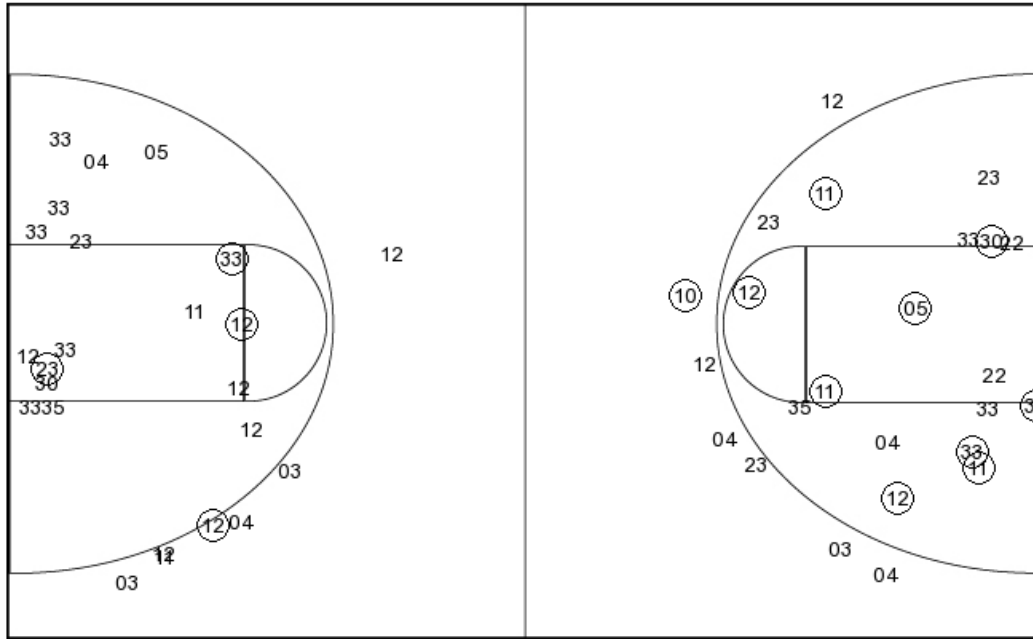
Brewton Parker

PERIOD , 3, 4

PERIOD 2

Layups
 11 (35) (12) 05

Layups



BPC PERIOD 1

FG Made	10
FG Attempted	29
3PFG Made	1
3PFG Attempted	5

BPC PERIOD 2

FG Made	
FG Attempted	
3PFG Made	
3PFG Attempted	

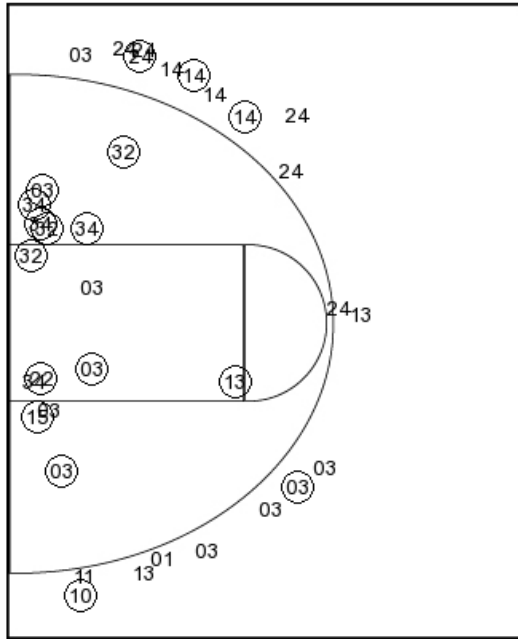


Jacksonville State

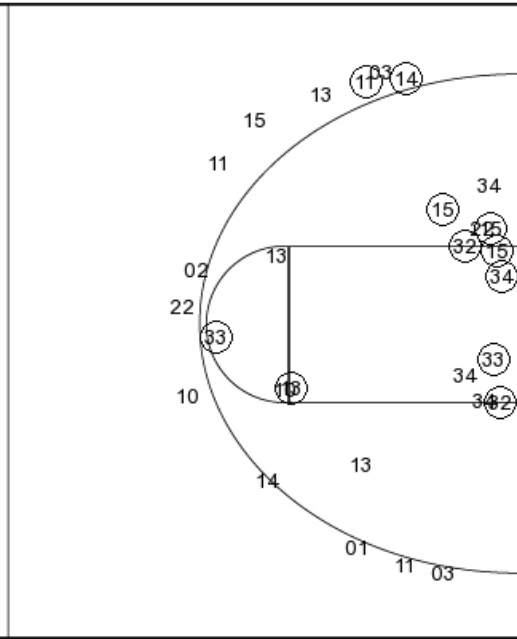
PERIOD 2

PERIOD , 3, 4

Layups
 (03) (33) 15 (15) 13
 13



Layups
 (13) (13) (11) 11 11
 (14) (10) (01)



JSU PERIOD 1

FG Made	20
FG Attempted	39
3PFG Made	6
3PFG Attempted	18

JSU PERIOD 2

FG Made	
FG Attempted	
3PFG Made	
3PFG Attempted	