

## FINAL SCORE



**Oklahoma State**

13-7 (3-5 B12)

**70**



**Texas Tech**

16-4 (5-3 B12)

**75**

January 23, 2018 • Lubbock, TX (United Supermarkets Arena)

## FINAL STATISTICS

Official Basketball Box Score -- Game Totals -- Final Statistics  
 Oklahoma State vs Texas Tech  
 1/23/2018 6:01 p.m. at Lubbock, TX (United Supermarkets Arena)



Oklahoma State 70 - 13-7 (3-5 B12)

##	Player	g	Total		3-Ptr	Rebounds			PF	TP	A	TO	Blk	Stl	Min
			FG-FGA	FG-FGA	FG-FGA	Off	Def	Tot							
00	AVERETT, BRANDON		2-8	1-4	2-2	0	3	3	5	7	3	2	0	0	26
05	SHINE, TAVARIUS		2-7	0-2	0-0	0	3	3	5	4	1	1	0	2	22
30	CARROLL, JEFFREY		5-10	2-4	4-5	0	3	3	3	16	0	4	0	1	30
35	SIMA, YANKUBA		2-4	0-0	1-5	2	1	3	2	5	2	2	3	1	23
41	SOLOMON, MITCHELL		1-2	0-0	0-0	1	2	3	5	2	1	2	2	1	25
01	SMITH, KENDALL		5-11	1-1	0-0	1	2	3	1	11	1	1	0	1	24
04	DZIAGWA, THOMAS		2-3	2-3	2-2	0	0	0	0	8	0	0	0	0	9
12	MCGRIFF, CAMERON		2-3	0-0	3-4	3	2	5	5	7	1	5	0	0	16
14	N'GUESSAN, LUCAS		0-0	0-0	0-0	0	1	1	0	0	0	0	0	0	1
21	WATERS, LINDY		4-6	1-3	1-1	1	2	3	3	10	1	2	1	0	24
TEAM						3	1	4	0		1				
TOTALS			25-54	7-17	13-19	11	20	31	29	70	10	20	6	6	200

Deadball Rebounds: 6,0

FG %	1st Half:	15-32	46.9%	2nd Half:	10-22	45.5%	Game:	25-54	46.3%
3FG %	1st Half:	5-10	50.0%	2nd Half:	2-7	28.6%	Game:	7-17	41.2%
FT %	1st Half:	2-3	66.7%	2nd Half:	11-16	68.8%	Game:	13-19	68.4%

Texas Tech 75 - 16-4 (5-3 B12)

##	Player	g	Total		3-Ptr	Rebounds			PF	TP	A	TO	Blk	Stl	Min
			FG-FGA	FG-FGA	FG-FGA	Off	Def	Tot							
02	SMITH, ZHAIRE		1-9	0-2	0-0	3	1	4	1	2	1	2	0	1	31
05	GRAY, JUSTIN		1-3	0-1	2-2	2	2	4	3	4	3	0	2	0	23
12	EVANS, KEENAN		7-13	3-4	9-12	1	2	3	4	26	5	1	0	3	37
23	CULVER, JARRETT		8-15	4-7	5-8	2	6	8	2	25	1	2	0	2	31
32	ODIASE, NORENSE		0-1	0-0	0-1	2	1	3	3	0	0	2	1	1	16
00	HAMILTON IV, TOMMY		1-1	1-1	0-0	0	0	0	1	3	0	2	0	0	13
01	FRANCIS, BRANDONE		3-7	2-4	1-4	0	2	2	2	9	2	3	0	1	21
03	WEBSTER, JOSH		0-0	0-0	0-0	0	0	0	0	0	0	0	0	0	1
10	STEVENSON, NIEM		1-2	0-0	4-6	1	1	2	1	6	0	1	0	1	18
21	ONDIGO, MALIK		0-0	0-0	0-0	0	0	0	0	0	0	0	0	0	5
25	MORETTI, DAVIDE		0-1	0-0	0-0	0	1	1	2	0	1	1	0	0	4
TEAM						2	2	4	0		1				
TOTALS			22-52	10-19	21-33	13	18	31	19	75	13	15	3	9	200

Deadball Rebounds: 9,0

FG %	1st Half:	7-24	29.2%	2nd Half:	15-28	53.6%	Game:	22-52	42.3%
3FG %	1st Half:	4-10	40.0%	2nd Half:	6-9	66.7%	Game:	10-19	52.6%
FT %	1st Half:	7-12	58.3%	2nd Half:	14-21	66.7%	Game:	21-33	63.6%

Officials: Doug Sirmons, Gerry Pollard, Tony Padilla  
 Technical Fouls: Oklahoma State- None. Texas Tech- None.  
 Attendance: 12585

Score by periods	1st	2nd	Total
Oklahoma State	37	33	70
Texas Tech	25	50	75

Points	In Paint	Off T/O	2nd Chance	Fast Break	Bench
OSU	24	16	16	2	36
TTU	22	23	16	4	18

Last FG - OSU 2nd-00:08, TTU 2nd-02:30.  
 Largest lead - Oklahoma State by 15 2nd-18:39; Texas Tech by 9 2nd-00:40  
 OSU led for 25:01. TTU led for 13:58. Game was tied for 1:01.

Score tied - 1 times; Lead changed - 8 times

Official Basketball Box Score -- Game Totals -- First Half Statistics  
 Oklahoma State vs Texas Tech  
 1/23/2018 6:01 p.m. at Lubbock, TX (United Supermarkets Arena)



Oklahoma State 37 • 13-7 (3-5 B12)

##	Player	g	Total			3-Ptr			Rebounds			PF	TP	A	TO	Blk	Stl	Min
			FG-FGA	FG-FGA	FT-FTA	FG-FGA	FG-FGA	FT-FTA	Off	Def	Tot							
00	AVERETT E,BRANDON		2-7	1-3	0-0	0	2	2	0	5	2	0	0	0	16			
05	SHINE,TAVARIUS		1-4	0-1	0-0	0	2	2	2	2	1	0	0	12				
30	CARROLL,JEFFREY		3-5	1-2	0-0	0	2	2	2	7	0	2	0	12				
35	SIMA,YANKUBA		2-3	0-0	0-1	2	1	3	1	4	0	1	2	12				
41	SOLOMON,MITCHELL		1-2	0-0	0-0	1	2	3	2	2	1	2	1	13				
01	SMITH,KENDALL		2-5	1-1	0-0	1	2	3	0	5	0	1	0	11				
04	DZIAGWA,THOMAS		2-2	2-2	0-0	0	0	0	0	6	0	0	0	6				
12	MCGRIFF,CAMERON		1-2	0-0	2-2	1	1	2	2	4	1	3	0	7				
14	N'GUESSAN,LUCAS		0-0	0-0	0-0	0	1	1	0	0	0	0	0	1				
21	WATERS,LINDY		1-2	0-1	0-0	1	0	1	2	2	0	0	0	10				
TEAM						1	1	2	0		0							
Totals			15-32	5-10	2-3	7	14	21	11	37	5	9	3	4	100			

FG % Half: 15-32 46.9%  
 3FG % Half: 5-10 50.0%  
 FT % Half: 2-3 66.7%

Texas Tech 25 • 16-4 (5-3 B12)

##	Player	g	Total			3-Ptr			Rebounds			PF	TP	A	TO	Blk	Stl	Min
			FG-FGA	FG-FGA	FT-FTA	FG-FGA	FG-FGA	FT-FTA	Off	Def	Tot							
02	SMITH,ZHAIRE		0-6	0-2	0-0	2	1	3	0	0	1	1	0	0	16			
05	GRAY,JUSTIN		1-3	0-1	0-0	1	1	2	0	2	1	0	1	0	11			
12	EVANS,KEENAN		1-4	1-2	1-2	0	0	0	1	4	1	1	0	1	18			
23	CULVER,JARRETT		4-7	2-3	4-6	0	4	4	1	14	0	2	0	2	16			
32	ODIASE,NORENSE		0-0	0-0	0-0	0	0	0	2	0	0	2	0	1	4			
00	HAMILTON IV,TOMMY		1-1	1-1	0-0	0	0	0	1	3	0	2	0	0	10			
01	FRANCIS,BRANDONE		0-2	0-1	1-2	0	2	2	0	1	1	1	0	0	10			
03	WEBSTER,JOSH		0-0	0-0	0-0	0	0	0	0	0	0	0	0	0	1			
10	STEVENSON,NIEM		0-0	0-0	1-2	0	1	1	0	1	0	0	0	0	5			
21	ONDIGO,MALIK		0-0	0-0	0-0	0	0	0	0	0	0	0	0	0	5			
25	MORETTI,DAVIDE		0-1	0-0	0-0	0	1	1	2	0	1	1	0	0	4			
TEAM						0	1	1	0		1							
Totals			7-24	4-10	7-12	3	11	14	7	25	5	11	1	4	100			

FG % Half: 7-24 29.2%  
 3FG % Half: 4-10 40.0%  
 FT % Half: 7-12 58.3%

Officials: Doug Sirmons, Gerry Pollard, Tony Padilla  
 Technical Fouls: Oklahoma State- None. Texas Tech- None.

Score by periods	1st	2nd	Total
Oklahoma State	37	33	70
Texas Tech	25	50	75

Points	In Paint	Off T/O	2nd Chance	Fast Break	Bench
OSU	12	13	14	2	17
TTU	4	6	0	0	5

Last FG - OSU 1st-01:19, TTU 1st-06:06.  
 OSU led for 9:18. TTU led for 9:41. Game was tied for 1:01.

Score tied - 1 times  
 Lead changed - 5 times

Oklahoma State vs Texas Tech  
 1/23/2018; 6:01 p.m. at Lubbock, TX (United Supermarkets Arena)  
 Period 1 Play-By-Play



VISITORS: Oklahoma State	Time	Score	Margin	HOME: Texas Tech
FOUL by SOLOMON,MITCHELL	19:51			
TURNOVER by SOLOMON,MITCHELL	19:51			
	19:41			FOUL by ODIASE,NORENSE
	19:41			TURNOVER by ODIASE,NORENSE
TURNOVER by CARROLL,JEFFREY	19:30			
	19:30			STEAL by ODIASE,NORENSE
	19:13	2-0	H 2	GOOD! LAYUP by CULVER,JARRETT [PNT]
	19:13			ASSIST by GRAY,JUSTIN
MISSED JUMPER by CARROLL,JEFFREY	18:57			
	18:57			REBOUND (DEF) by CULVER,JARRETT
	18:50			MISSED LAYUP by SMITH,ZHAIRE
BLOCK by SIMA,YANKUBA	18:50			
REBOUND (DEF) by AVERETTE,BRANDON	18:47			
MISSED JUMPER by SHINE,TAVARIUS	18:31			
REBOUND (OFF) by SIMA,YANKUBA	18:31			
MISSED JUMPER by AVERETTE,BRANDON	18:13			
	18:13			REBOUND (DEF) by GRAY,JUSTIN
FOUL by SIMA,YANKUBA	17:59			
	17:59			SUB IN: HAMILTON IV,TOMMY
	17:59			SUB OUT: ODIASE,NORENSE
	17:36	5-0	H 5	GOOD! 3PTR by EVANS,KEENAN
MISSED LAYUP by SOLOMON,MITCHELL	17:24			
	17:24			BLOCK by GRAY,JUSTIN
REBOUND (OFF) by SOLOMON,MITCHELL	17:21			
GOOD! LAYUP by SOLOMON,MITCHELL [PNT]	17:20	5-2	H 3	
	17:06			MISSED 3PTR by SMITH,ZHAIRE
REBOUND (DEF) by SHINE,TAVARIUS	17:06			
TURNOVER by SIMA,YANKUBA	16:56			
	16:54			STEAL by CULVER,JARRETT
FOUL by CARROLL,JEFFREY	16:42			
	16:42	6-2	H 4	GOOD! FT by CULVER,JARRETT
	16:42			MISSED FT by CULVER,JARRETT
REBOUND (DEF) by CARROLL,JEFFREY	16:42			
	16:42			SUB IN: FRANCIS,BRANDONE
	16:42			SUB OUT: SMITH,ZHAIRE
MISSED LAYUP by SIMA,YANKUBA	16:27			
	16:27			REBOUND (DEF) by FRANCIS,BRANDONE
	16:21	9-2	H 7	GOOD! 3PTR by CULVER,JARRETT
	16:21			ASSIST by FRANCIS,BRANDONE
GOOD! LAYUP by SHINE,TAVARIUS [PNT]	16:04	9-4	H 5	
ASSIST by SOLOMON,MITCHELL	16:04			
	15:40			TURNOVER by FRANCIS,BRANDONE
TIMEOUT MEDIA	15:40			
SUB IN: MCGRIFF,CAMERON	15:40			
SUB IN: SMITH,KENDALL	15:40			
SUB OUT: AVERETTE,BRANDON	15:40			
SUB OUT: SIMA,YANKUBA	15:40			
	15:40			SUB IN: MORETTI,DAVIDE
	15:40			SUB IN: SMITH,ZHAIRE
	15:40			SUB OUT: GRAY,JUSTIN
	15:40			SUB OUT: CULVER,JARRETT
GOOD! JUMPER by MCGRIFF,CAMERON	15:14	9-6	H 3	
	14:56	12-6	H 6	GOOD! 3PTR by HAMILTON IV,TOMMY
	14:56			ASSIST by MORETTI,DAVIDE
MISSED JUMPER by MCGRIFF,CAMERON	14:39			
	14:39			REBOUND (DEF) by TEAM
	14:21			TURNOVER by SMITH,ZHAIRE
STEAL by SMITH,KENDALL	14:19			
	14:12			FOUL by HAMILTON IV,TOMMY
GOOD! FT by MCGRIFF,CAMERON	14:12	12-7	H 5	
GOOD! FT by MCGRIFF,CAMERON	14:12	12-8	H 4	
SUB IN: WATERS,LINDY	14:12			
SUB OUT: SOLOMON,MITCHELL	14:12			
	14:12			SUB IN: ODIASE,NORENSE
	14:12			SUB IN: CULVER,JARRETT
	14:12			SUB OUT: EVANS,KEENAN
	14:12			SUB OUT: HAMILTON IV,TOMMY
	13:46			MISSED LAYUP by SMITH,ZHAIRE
REBOUND (DEF) by TEAM	13:46			

VISITORS: Oklahoma State	Time	Score	Margin	HOME: Texas Tech
MISSED 3PTR by CARROLL,JEFFREY	13:27			
REBOUND (OFF) by MCGRIFF,CAMERON	13:27			
GOOD! 3PTR by SMITH,KENDALL	13:16	12-11	H 1	
ASSIST by SHINE,TAVARIUS	13:16			
	12:57			MISSED JUMPER by MORETTI,DAVIDE
	12:57			REBOUND (OFF) by SMITH,ZHAIRE
	12:54			MISSED JUMPER by SMITH,ZHAIRE
	12:54			REBOUND (OFF) by SMITH,ZHAIRE
	12:41			TURNOVER by CULVER,JARRETT
	12:41			FOUL by MORETTI,DAVIDE
	12:41			SUB IN: EVANS,KEENAN
	12:41			SUB IN: STEVENSON,NIEM
	12:41			SUB OUT: FRANCIS,BRANDONE
	12:41			SUB OUT: MORETTI,DAVIDE
GOOD! LAYUP by CARROLL,JEFFREY [PNT]	12:23	12-13	V 1	
ASSIST by MCGRIFF,CAMERON	12:23			
	12:07			FOUL by ODIASE,NORENSE
	12:07			TURNOVER by ODIASE,NORENSE
	12:07			SUB IN: GRAY,JUSTIN
	12:07			SUB IN: HAMILTON IV,TOMMY
	12:07			SUB OUT: ODIASE,NORENSE
	12:07			SUB OUT: SMITH,ZHAIRE
FOUL by MCGRIFF,CAMERON	11:57			
TURNOVER by MCGRIFF,CAMERON	11:57			
	11:57			TIMEOUT MEDIA
	11:42			MISSED 3PTR by CULVER,JARRETT
REBOUND (DEF) by SHINE,TAVARIUS	11:42			
MISSED 3PTR by SHINE,TAVARIUS	11:33			
	11:33			REBOUND (DEF) by CULVER,JARRETT
	11:26	14-13	H 1	GOOD! LAYUP by CULVER,JARRETT [PNT]
TURNOVER by MCGRIFF,CAMERON	11:09			
	11:08			STEAL by CULVER,JARRETT
FOUL by SHINE,TAVARIUS	11:06			
	11:06			MISSED FT by STEVENSON,NIEM
	11:06			REBOUND (DEADB) by TEAM
	11:06	15-13	H 2	GOOD! FT by STEVENSON,NIEM
SUB IN: SIMA,YANKUBA	11:06			
SUB IN: AVERETTE,BRANDON	11:06			
SUB OUT: SHINE,TAVARIUS	11:06			
SUB OUT: CARROLL,JEFFREY	11:06			
GOOD! JUMPER by AVERETTE,BRANDON [PNT]	10:40	15-15	T	
	10:26	18-15	H 3	GOOD! 3PTR by CULVER,JARRETT
	10:26			ASSIST by EVANS,KEENAN
MISSED JUMPER by SMITH,KENDALL	10:01			
REBOUND (OFF) by TEAM	10:01			
	10:00			SUB IN: SMITH,ZHAIRE
	10:00			SUB OUT: GRAY,JUSTIN
GOOD! JUMPER by SMITH,KENDALL	09:58	18-17	H 1	
	09:39			MISSED 3PTR by EVANS,KEENAN
REBOUND (DEF) by SMITH,KENDALL	09:39			
MISSED 3PTR by WATERS,LINDY	09:16			
	09:16			REBOUND (DEF) by STEVENSON,NIEM
	09:04			TURNOVER by HAMILTON IV,TOMMY
SUB IN: SOLOMON,MITCHELL	09:03			
SUB IN: DZIAGWA,THOMAS	09:03			
SUB OUT: MCGRIFF,CAMERON	09:03			
SUB OUT: SMITH,KENDALL	09:03			
	09:03			SUB IN: ONDIGO,MALIK
	09:03			SUB IN: FRANCIS,BRANDONE
	09:03			SUB IN: GRAY,JUSTIN
	09:03			SUB OUT: STEVENSON,NIEM
	09:03			SUB OUT: HAMILTON IV,TOMMY
	09:03			SUB OUT: CULVER,JARRETT
MISSED JUMPER by AVERETTE,BRANDON	08:41			
REBOUND (OFF) by WATERS,LINDY	08:41			
GOOD! JUMPER by WATERS,LINDY	08:37	18-19	V 1	
	08:12			MISSED JUMPER by EVANS,KEENAN
REBOUND (DEF) by SIMA,YANKUBA	08:12			
MISSED 3PTR by AVERETTE,BRANDON	07:48			
	07:48			REBOUND (DEF) by FRANCIS,BRANDONE
	07:37			MISSED JUMPER by FRANCIS,BRANDONE
	07:37			REBOUND (DEADB) by TEAM
FOUL by WATERS,LINDY	07:32			
	07:32			TIMEOUT media
SUB IN: CARROLL,JEFFREY	07:32			

VISITORS: Oklahoma State	Time	Score	Margin	HOME: Texas Tech
SUB IN: SHINE,TAVARIUS	07:32			
SUB OUT: SIMA,YANKUBA	07:32			
SUB OUT: WATERS,LINDY	07:32			
	07:22			MISSED JUMPER by SMITH,ZHAIRE
	07:22			REBOUND (OFF) by GRAY,JUSTIN
	07:19			MISSED 3PTR by FRANCIS,BRANDONE
REBOUND (DEF) by SOLOMON,MITCHELL	07:19			
TURNOVER by SOLOMON,MITCHELL	06:54			
	06:54			SUB IN: CULVER,JARRETT
	06:54			SUB OUT: FRANCIS,BRANDONE
	06:44			TURNOVER by EVANS,KEENAN
STEAL by SHINE,TAVARIUS	06:43			
MISSED JUMPER by AVERETTE,BRANDON	06:23			
	06:23			REBOUND (DEF) by SMITH,ZHAIRE
	06:06	20-19	H 1	GOOD! JUMPER by GRAY,JUSTIN
	06:06			ASSIST by SMITH,ZHAIRE
GOOD! JUMPER by CARROLL,JEFFREY	05:50	20-21	V 1	
	05:43			MISSED 3PTR by GRAY,JUSTIN
REBOUND (DEF) by AVERETTE,BRANDON	05:43			
GOOD! 3PTR by DZIAGWA,THOMAS	05:36	20-24	V 4	
ASSIST by AVERETTE,BRANDON	05:36			
	05:19			MISSED 3PTR by SMITH,ZHAIRE
REBOUND (DEF) by CARROLL,JEFFREY	05:19			
GOOD! 3PTR by CARROLL,JEFFREY	05:14	20-27	V 7	
	05:12			TIMEOUT 30SEC
	05:12			SUB IN: HAMILTON IV,TOMMY
	05:12			SUB OUT: ONDIGO,MALIK
SUB IN: WATERS,LINDY	05:04			
SUB OUT: SHINE,TAVARIUS	05:04			
	05:04			SUB IN: MORETTI,DAVIDE
	05:04			SUB OUT: GRAY,JUSTIN
	05:02			FOUL by CULVER,JARRETT
	05:02			TURNOVER by CULVER,JARRETT
TURNOVER by CARROLL,JEFFREY	04:43			
	04:42			STEAL by EVANS,KEENAN
	04:38			MISSED LAYUP by CULVER,JARRETT
BLOCK by SOLOMON,MITCHELL	04:38			
REBOUND (DEF) by MCGRIFF,CAMERON	04:36			
	04:33			FOUL by EVANS,KEENAN
FOUL by MCGRIFF,CAMERON	04:33			
TURNOVER by MCGRIFF,CAMERON	04:33			
SUB IN: SIMA,YANKUBA	04:33			
SUB IN: SMITH,KENDALL	04:33			
SUB OUT: SOLOMON,MITCHELL	04:33			
SUB OUT: AVERETTE,BRANDON	04:33			
	04:33			SUB IN: FRANCIS,BRANDONE
	04:33			SUB OUT: HAMILTON IV,TOMMY
FOUL by CARROLL,JEFFREY	04:19			
	04:19	21-27	V 6	GOOD! FT by CULVER,JARRETT
	04:19	22-27	V 5	GOOD! FT by CULVER,JARRETT
SUB IN: AVERETTE,BRANDON	04:19			
SUB IN: SHINE,TAVARIUS	04:19			
SUB OUT: CARROLL,JEFFREY	04:19			
SUB OUT: DZIAGWA,THOMAS	04:19			
	04:19			SUB IN: SORRELLS,ANDREW
	04:19			SUB IN: HAMILTON IV,TOMMY
	04:19			SUB IN: GRAY,JUSTIN
	04:19			SUB OUT: SMITH,ZHAIRE
MISSED JUMPER by SHINE,TAVARIUS	04:02			
	04:02			REBOUND (DEF) by MORETTI,DAVIDE
	03:53			TURNOVER by MORETTI,DAVIDE
STEAL by SIMA,YANKUBA	03:52			
GOOD! LAYUP by SIMA,YANKUBA [FB/PNT]	03:50	22-29	V 7	
	03:49			FOUL by MORETTI,DAVIDE
MISSED FT by SIMA,YANKUBA	03:49			
	03:49			REBOUND (DEF) by CULVER,JARRETT
	03:49			SUB IN: WEBSTER,JOSH
	03:49			SUB OUT: MORETTI,DAVIDE
	03:26			MISSED JUMPER by EVANS,KEENAN
	03:26			REBOUND (DEADB) by TEAM
FOUL by SHINE,TAVARIUS	03:19			
	03:19	23-29	V 6	GOOD! FT by FRANCIS,BRANDONE
	03:19			MISSED FT by FRANCIS,BRANDONE
REBOUND (DEF) by SOLOMON,MITCHELL	03:19			
SUB IN: SOLOMON,MITCHELL	03:19			

<b>VISITORS: Oklahoma State</b>	<b>Time</b>	<b>Score</b>	<b>Margin</b>	<b>HOME: Texas Tech</b>
SUB OUT: SHINE,TAVARIUS	03:19			
	03:19			SUB IN: SMITH,ZHAIRE
	03:19			SUB OUT: WEBSTER,JOSH
MISSED JUMPER by SMITH,KENDALL	03:04			
REBOUND (OFF) by SIMA,YANKUBA	03:04			
GOOD! JUMPER by SIMA,YANKUBA [PNT]	02:43	23-31	V 8	
	02:28			MISSED JUMPER by CULVER,JARRETT
REBOUND (DEF) by SMITH,KENDALL	02:28			
TURNOVER by SMITH,KENDALL	02:20			
	01:57			TURNOVER by HAMILTON IV,TOMMY
STEAL by SOLOMON,MITCHELL	01:55			
MISSED JUMPER by SMITH,KENDALL	01:52			
REBOUND (OFF) by SMITH,KENDALL	01:52			
GOOD! 3PTR by AVERETTE,BRANDON	01:49	23-34	V 11	
FOUL by WATERS,LINDY	01:32			
	01:32			MISSED FT by EVANS,KEENAN
	01:32			REBOUND (DEADB) by TEAM
	01:32	24-34	V 10	GOOD! FT by EVANS,KEENAN
SUB IN: DZIAGWA,THOMAS	01:32			
SUB OUT: WATERS,LINDY	01:32			
	01:32			SUB IN: STEVENSON,NIEM
	01:32			SUB OUT: HAMILTON IV,TOMMY
GOOD! 3PTR by DZIAGWA,THOMAS	01:19	24-37	V 13	
ASSIST by AVERETTE,BRANDON	01:19			
FOUL by SOLOMON,MITCHELL	01:03			
	01:03	25-37	V 12	GOOD! FT by CULVER,JARRETT
	01:03			MISSED FT by CULVER,JARRETT
REBOUND (DEF) by N'GUESSAN,LUCAS	01:03			
SUB IN: N'GUESSAN,LUCAS	01:03			
SUB OUT: SOLOMON,MITCHELL	01:03			
TIMEOUT 30SEC	00:39			
	00:39			SUB IN: ONDIGO,MALIK
	00:39			SUB OUT: FRANCIS,BRANDONE
	00:39			SUB OUT: EVANS,KEENAN
MISSED 3PTR by AVERETTE,BRANDON	00:35			
	00:35			REBOUND (DEF) by CULVER,JARRETT
	00:04			MISSED LAYUP by GRAY,JUSTIN
BLOCK by SIMA,YANKUBA	00:04			
	00:03			REBOUND (DEADB) by TEAM
	00:02			TURNOVER by TEAM

Oklahoma State 37, Texas Tech 25

<b>Period 1-only</b>	<b>In Paint</b>	<b>Off T/O</b>	<b>2nd Chance</b>	<b>Fast Break</b>	<b>Bench</b>	
OSU	12	13	14	2	17	Score tied - 2 times
TTU	4	6	0	0	5	Lead changed - 6 times

Official Basketball Box Score -- Game Totals -- Second Half Statistics  
 Oklahoma State vs Texas Tech  
 1/23/2018 6:01 p.m. at Lubbock, TX (United Supermarkets Arena)



Oklahoma State 33 • 13-7 (3-5 B12)

##	Player	g	Total			3-Ptr			Rebounds			PF	TP	A	TO	Blk	Stl	Min
			FG-FGA	FG-FGA	FT-FTA	FG-FGA	FG-FGA	FT-FTA	Off	Def	Tot							
00	AVERETTE, BRANDON	g	0-1	0-1	2-2	0	1	1	5	2	1	2	0	0	0	0	10	
05	SHINE, TAVARIUS	g	1-3	0-1	0-0	0	1	1	3	2	0	1	0	0	1	10		
30	CARROLL, JEFFREY	g	2-5	1-2	4-5	0	1	1	1	9	0	2	0	1	18			
35	SIMA, YANKUBA	f	0-1	0-0	1-4	0	0	0	1	1	2	1	1	0	11			
41	SOLOMON, MITCHELL	f	0-0	0-0	0-0	0	0	0	3	0	0	0	1	0	12			
01	SMITH, KENDALL		3-6	0-0	0-0	0	0	0	1	6	1	0	0	0	13			
04	DZIAGWA, THOMAS		0-1	0-1	2-2	0	0	0	0	2	0	0	0	0	3			
12	MCGRIFF, CAMERON		1-1	0-0	1-2	2	1	3	3	3	0	2	0	0	9			
14	N'GUESSAN, LUCAS		0-0	0-0	0-0	0	0	0	0	0	0	0	0	0	0			
21	WATERS, LINDY		3-4	1-2	1-1	0	2	2	1	8	1	2	1	0	14			
TEAM						2	0	2	0				1					
Totals			10-22	2-7	11-16	4	6	10	18	33	5	11	3	2	100			

FG %	Half:	10-22	45.5%
3FG %	Half:	2-7	50.0%
FT %	Half:	11-16	68.8%

Texas Tech 50 • 16-4 (5-3 B12)

##	Player	g	Total			3-Ptr			Rebounds			PF	TP	A	TO	Blk	Stl	Min
			FG-FGA	FG-FGA	FT-FTA	FG-FGA	FG-FGA	FT-FTA	Off	Def	Tot							
02	SMITH, ZHAIRE	g	1-3	0-0	0-0	1	0	1	1	2	0	1	0	1	15			
05	GRAY, JUSTIN	g	0-0	0-0	2-2	1	1	2	3	2	2	0	1	0	12			
12	EVANS, KEENAN	g	6-9	2-2	8-10	1	2	3	3	22	4	0	0	2	19			
23	CULVER, JARRETT	g	4-8	2-4	1-2	2	2	4	1	11	1	0	0	0	15			
32	ODIASE, NORENSE	c	0-1	0-0	0-1	2	1	3	1	0	0	0	1	0	12			
00	HAMILTON IV, TOMMY		0-0	0-0	0-0	0	0	0	0	0	0	0	0	0	3			
01	FRANCIS, BRANDONE		3-5	2-3	0-2	0	0	0	2	8	1	2	0	1	11			
03	WEBSTER, JOSH		0-0	0-0	0-0	0	0	0	0	0	0	0	0	0	0			
10	STEVENSON, NIEM		1-2	0-0	3-4	1	0	1	1	5	0	1	0	1	13			
21	ONDIGO, MALIK		0-0	0-0	0-0	0	0	0	0	0	0	0	0	0	0			
25	MORETTI, DAVIDE		0-0	0-0	0-0	0	0	0	0	0	0	0	0	0	0			
TEAM						2	1	3	0				0					
Totals			15-28	6-9	14-21	10	7	17	12	50	8	4	2	5	100			

FG %	Half:	15-28	53.6%
3FG %	Half:	6-9	40.0%
FT %	Half:	14-21	66.7%

Officials: Doug Simons, Gerry Pollard, Tony Padilla  
 Technical Fouls: Oklahoma State- None. Texas Tech- None.

Score by periods	1st	2nd	Total
Oklahoma State	37	33	70
Texas Tech	25	50	75

Points	In Paint	Off T/O	2nd Chance	Fast Break	Bench
OSU	12	3	2	0	19
TTU	18	17	13	4	13

Last FG - OSU 2nd-00:08, TTU 2nd-02:30.  
 OSU led for 15:43. TTU led for 4:17. Game was tied for 0:00.

Score tied - 0 times  
 Lead changed - 3 times



Oklahoma State vs Texas Tech  
 1/23/2018; 6:01 p.m. at Lubbock, TX (United Supermarkets Arena)  
 Period 2 Play-By-Play



VISITORS: Oklahoma State	Time	Score	Margin	HOME: Texas Tech
	20:00			SUB IN: STEVENSON,NIEM
	20:00			SUB OUT: SMITH,ZHAIRE
GOOD! LAYUP by SHINE,TAVARIUS [PNT]	19:33	25-39	V 14	
ASSIST by SIMA,YANKUBA	19:33			
FOUL by SHINE,TAVARIUS	19:14			
	18:57			MISSED JUMPER by STEVENSON,NIEM
	18:57			REBOUND (OFF) by ODIASE,NORENSE
FOUL by SIMA,YANKUBA	18:53			
	18:53	26-39	V 13	GOOD! FT by CULVER,JARRETT
	18:53			MISSED FT by CULVER,JARRETT
REBOUND (DEF) by AVERETTE,BRANDON	18:53			
GOOD! JUMPER by CARROLL,JEFFREY [PNT]	18:39	26-41	V 15	
	18:17	28-41	V 13	GOOD! LAYUP by EVANS,KEENAN [PNT]
	18:08			FOUL by GRAY,JUSTIN
MISSED FT by SIMA,YANKUBA	18:08			
REBOUND (DEADB) by TEAM	18:08			
GOOD! FT by SIMA,YANKUBA	18:08	28-42	V 14	
	18:08			SUB IN: SMITH,ZHAIRE
	18:08			SUB OUT: GRAY,JUSTIN
	17:47	31-42	V 11	GOOD! 3PTR by EVANS,KEENAN
	17:47			ASSIST by CULVER,JARRETT
FOUL by AVERETTE,BRANDON	17:36			
TURNOVER by AVERETTE,BRANDON	17:36			
	17:36			SUB IN: HAMILTON IV,TOMMY
	17:36			SUB OUT: ODIASE,NORENSE
	17:25			TURNOVER by STEVENSON,NIEM
STEAL by SHINE,TAVARIUS	17:24			
	17:03			FOUL by CULVER,JARRETT
SUB IN: SMITH,KENDALL	16:47			
SUB OUT: AVERETTE,BRANDON	16:47			
	16:47			SUB IN: ODIASE,NORENSE
	16:47			SUB IN: FRANCIS,BRANDONE
	16:47			SUB OUT: STEVENSON,NIEM
	16:47			SUB OUT: HAMILTON IV,TOMMY
	16:25			FOUL by ODIASE,NORENSE
GOOD! FT by CARROLL,JEFFREY	16:25	31-43	V 12	
GOOD! FT by CARROLL,JEFFREY	16:25	31-44	V 13	
GOOD! FT by CARROLL,JEFFREY	16:25	31-45	V 14	
SUB IN: WATERS,LINDY	16:25			
SUB OUT: SOLOMON,MITCHELL	16:25			
	16:25			SUB IN: HAMILTON IV,TOMMY
	16:25			SUB OUT: ODIASE,NORENSE
	16:10			FOUL by FRANCIS,BRANDONE
	16:10			TURNOVER by FRANCIS,BRANDONE
SUB IN: MCGRUFF,CAMERON	16:10			
SUB OUT: SHINE,TAVARIUS	16:10			
MISSED 3PTR by CARROLL,JEFFREY	15:54			
REBOUND (DEADB) by TEAM	15:54			
	15:52			FOUL by SMITH,ZHAIRE
TIMEOUT MEDIA	15:52			
	15:52			SUB IN: STEVENSON,NIEM
	15:52			SUB OUT: CULVER,JARRETT
MISSED JUMPER by SMITH,KENDALL	15:41			
	15:41			REBOUND (DEF) by EVANS,KEENAN
	15:28	34-45	V 11	GOOD! 3PTR by FRANCIS,BRANDONE
	15:28			ASSIST by EVANS,KEENAN
GOOD! 3PTR by WATERS,LINDY	15:05	34-48	V 14	
ASSIST by SMITH,KENDALL	15:05			
	14:46	36-48	V 12	GOOD! LAYUP by FRANCIS,BRANDONE [PNT]
TURNOVER by SIMA,YANKUBA	14:16			
	14:16			SUB IN: CULVER,JARRETT
	14:16			SUB IN: GRAY,JUSTIN
	14:16			SUB OUT: SMITH,ZHAIRE
	14:16			SUB OUT: EVANS,KEENAN
	14:06	38-48	V 10	GOOD! DUNK by STEVENSON,NIEM [PNT]
MISSED 3PTR by WATERS,LINDY	13:43			
REBOUND (OFF) by MCGRUFF,CAMERON	13:43			
GOOD! LAYUP by MCGRUFF,CAMERON [PNT]	13:38	38-50	V 12	
	13:17			FOUL by FRANCIS,BRANDONE

VISITORS: Oklahoma State	Time	Score	Margin	HOME: Texas Tech
	13:17			TURNOVER by FRANCIS, BRANDONE
SUB IN: SHINE, TAVARIUS	13:17			
SUB IN: AVERETTE, BRANDON	13:17			
SUB IN: SOLOMON, MITCHELL	13:17			
SUB OUT: CARROLL, JEFFREY	13:17			
SUB OUT: SIMA, YANKUBA	13:17			
SUB OUT: WATERS, LINDY	13:17			
	13:17			SUB IN: ODIASE, NORENSE
	13:17			SUB IN: EVANS, KEENAN
	13:17			SUB OUT: HAMILTON IV, TOMMY
	13:17			SUB OUT: STEVENSON, NIEM
FOUL by MCGRIFF, CAMERON	13:06			
TURNOVER by MCGRIFF, CAMERON	13:06			
	12:51	40-50	V 10	GOOD! LAYUP by EVANS, KEENAN [PNT]
	12:51			ASSIST by GRAY, JUSTIN
MISSED JUMPER by SMITH, KENDALL	12:19			
	12:19			BLOCK by ODIASE, NORENSE
REBOUND (OFF) by TEAM	12:19			
MISSED JUMPER by SIMA, YANKUBA	12:16			
REBOUND (DEADB) by TEAM	12:16			
TURNOVER by TEAM	12:16			
TIMEOUT 30SEC	12:16			
SUB IN: SIMA, YANKUBA	12:16			
SUB OUT: SOLOMON, MITCHELL	12:16			
	12:16			SUB IN: SMITH, ZHAIRE
	12:16			SUB OUT: FRANCIS, BRANDONE
	11:58			MISSED LAYUP by CULVER, JARRETT
	11:58			REBOUND (OFF) by CULVER, JARRETT
	11:40			MISSED LAYUP by ODIASE, NORENSE
BLOCK by SIMA, YANKUBA	11:40			
REBOUND (DEF) by SHINE, TAVARIUS	11:34			
MISSED 3PTR by AVERETTE, BRANDON	11:10			
REBOUND (OFF) by MCGRIFF, CAMERON	11:10			
TURNOVER by MCGRIFF, CAMERON	11:04			
	11:03			STEAL by EVANS, KEENAN
	11:00			MISSED LAYUP by EVANS, KEENAN
	11:00			REBOUND (OFF) by SMITH, ZHAIRE
	10:58			MISSED TIPIN by SMITH, ZHAIRE
	10:58			REBOUND (OFF) by ODIASE, NORENSE
FOUL by MCGRIFF, CAMERON	10:57			
	10:57			TIMEOUT MEDIA
SUB IN: SOLOMON, MITCHELL	10:57			
SUB IN: WATERS, LINDY	10:57			
SUB IN: DZIAGWA, THOMAS	10:57			
SUB IN: CARROLL, JEFFREY	10:57			
SUB OUT: SMITH, KENDALL	10:57			
SUB OUT: MCGRIFF, CAMERON	10:57			
SUB OUT: SHINE, TAVARIUS	10:57			
SUB OUT: SIMA, YANKUBA	10:57			
	10:47	42-50	V 8	GOOD! JUMPER by SMITH, ZHAIRE [PNT]
	10:47			ASSIST by EVANS, KEENAN
TURNOVER by CARROLL, JEFFREY	10:31			
	10:29			STEAL by EVANS, KEENAN
	10:28	44-50	V 6	GOOD! LAYUP by EVANS, KEENAN [FB/PNT]
	10:09			FOUL by EVANS, KEENAN
GOOD! FT by DZIAGWA, THOMAS	10:09	44-51	V 7	
GOOD! FT by DZIAGWA, THOMAS	10:09	44-52	V 8	
	10:09			SUB IN: STEVENSON, NIEM
	10:09			SUB IN: FRANCIS, BRANDONE
	10:09			SUB OUT: GRAY, JUSTIN
	10:09			SUB OUT: SMITH, ZHAIRE
	09:48	47-52	V 5	GOOD! 3PTR by CULVER, JARRETT
	09:48			ASSIST by FRANCIS, BRANDONE
MISSED 3PTR by DZIAGWA, THOMAS	09:29			
	09:29			REBOUND (DEF) by CULVER, JARRETT
FOUL by AVERETTE, BRANDON	09:18			
	09:09			MISSED JUMPER by EVANS, KEENAN
	09:09			REBOUND (OFF) by EVANS, KEENAN
	09:05			MISSED LAYUP by EVANS, KEENAN
BLOCK by WATERS, LINDY	09:05			
	09:05			REBOUND (DEADB) by TEAM
FOUL by AVERETTE, BRANDON	09:05			
	09:05			MISSED FT by ODIASE, NORENSE
REBOUND (DEF) by CARROLL, JEFFREY	09:05			
	09:01			SUB IN: SMITH, ZHAIRE

VISITORS: Oklahoma State	Time	Score	Margin	HOME: Texas Tech
	09:01			SUB OUT: EVANS,KEENAN
TURNOVER by AVERETTE,BRANDON	08:56			
	08:54			STEAL by SMITH,ZHAIRE
	08:43			MISSED 3PTR by CULVER,JARRETT
	08:43			REBOUND (OFF) by STEVENSON,NIEM
SUB IN: SHINE,TAVARIUS	08:33			
SUB IN: SMITH,KENDALL	08:33			
SUB OUT: DZIAGWA,THOMAS	08:33			
SUB OUT: AVERETTE,BRANDON	08:33			
	08:33			SUB IN: GRAY,JUSTIN
	08:33			SUB IN: EVANS,KEENAN
	08:33			SUB OUT: ODIASE,NORENSE
	08:33			SUB OUT: CULVER,JARRETT
	08:18			MISSED 3PTR by FRANCIS,BRANDONE
	08:18			REBOUND (OFF) by TEAM
FOUL by SOLOMON,MITCHELL	08:08			
	08:08	48-52	V 4	GOOD! FT by STEVENSON,NIEM
	08:08	49-52	V 3	GOOD! FT by STEVENSON,NIEM
	08:08			SUB IN: ODIASE,NORENSE
	08:08			SUB OUT: FRANCIS,BRANDONE
GOOD! 3PTR by CARROLL,JEFFREY	07:50	49-55	V 6	
ASSIST by WATERS,LINDY	07:50			
	07:30	51-55	V 4	GOOD! LAYUP by EVANS,KEENAN [PNT]
FOUL by SHINE,TAVARIUS	07:02			
TURNOVER by SHINE,TAVARIUS	07:02			
	07:02			TIMEOUT media
SUB IN: MCGRIFF,CAMERON	07:02			
SUB OUT: SHINE,TAVARIUS	07:02			
	07:02			SUB IN: CULVER,JARRETT
	07:02			SUB OUT: STEVENSON,NIEM
	06:47			MISSED LAYUP by SMITH,ZHAIRE
REBOUND (DEF) by MCGRIFF,CAMERON	06:47			
TURNOVER by WATERS,LINDY	06:29			
	06:27			STEAL by FRANCIS,BRANDONE
	06:25			MISSED 3PTR by CULVER,JARRETT
	06:25			REBOUND (OFF) by GRAY,JUSTIN
	06:20	54-55	V 1	GOOD! 3PTR by FRANCIS,BRANDONE
	06:20			ASSIST by GRAY,JUSTIN
	06:00			SUB IN: STEVENSON,NIEM
	06:00			SUB OUT: GRAY,JUSTIN
GOOD! JUMPER by SMITH,KENDALL	05:52	54-57	V 3	
FOUL by SOLOMON,MITCHELL	05:30			
	05:30	55-57	V 2	GOOD! FT by EVANS,KEENAN
	05:30			MISSED FT by EVANS,KEENAN
REBOUND (DEF) by WATERS,LINDY	05:30			
SUB IN: SIMA,YANKUBA	05:30			
SUB OUT: SOLOMON,MITCHELL	05:30			
	05:30			SUB IN: GRAY,JUSTIN
	05:30			SUB OUT: SMITH,ZHAIRE
	05:07			FOUL by EVANS,KEENAN
GOOD! FT by MCGRIFF,CAMERON	05:07	55-58	V 3	
MISSED FT by MCGRIFF,CAMERON	05:07			
	05:07			REBOUND (DEF) by CULVER,JARRETT
	05:07			SUB IN: FRANCIS,BRANDONE
	05:07			SUB IN: SMITH,ZHAIRE
	05:07			SUB OUT: GRAY,JUSTIN
	05:07			SUB OUT: ODIASE,NORENSE
	04:53			MISSED LAYUP by CULVER,JARRETT
	04:53			REBOUND (OFF) by CULVER,JARRETT
	04:46	57-58	V 1	GOOD! LAYUP by CULVER,JARRETT [PNT]
MISSED JUMPER by SMITH,KENDALL	04:38			
	04:38			REBOUND (DEF) by EVANS,KEENAN
	04:32	59-58	H 1	GOOD! DUNK by CULVER,JARRETT [FB/PNT]
	04:32			ASSIST by EVANS,KEENAN
GOOD! JUMPER by WATERS,LINDY	04:07	59-60	V 1	
	03:52	62-60	H 2	GOOD! 3PTR by EVANS,KEENAN
MISSED LAYUP by CARROLL,JEFFREY	03:23			
REBOUND (DEADB) by TEAM	03:23			
FOUL by MCGRIFF,CAMERON	03:20			
	03:20			TIMEOUT MEDIA
	03:20			MISSED FT by FRANCIS,BRANDONE
	03:20			REBOUND (DEADB) by TEAM
	03:20			MISSED FT by FRANCIS,BRANDONE
REBOUND (DEF) by WATERS,LINDY	03:20			
SUB IN: AVERETTE,BRANDON	03:20			

VISITORS: Oklahoma State	Time	Score	Margin	HOME: Texas Tech
SUB IN: SOLOMON,MITCHELL	03:20			
SUB OUT: SIMA,YANKUBA	03:20			
SUB OUT: MCGRIFF,CAMERON	03:20			
	03:20			SUB IN: GRAY,JUSTIN
	03:20			SUB OUT: CULVER,JARRETT
FOUL by CARROLL,JEFFREY	02:50			
TURNOVER by CARROLL,JEFFREY	02:50			
SUB IN: SHINE,TAVARIUS	02:50			
SUB OUT: SMITH,KENDALL	02:50			
	02:50			SUB IN: CULVER,JARRETT
	02:50			SUB OUT: GRAY,JUSTIN
	02:39			MISSED LAYUP by FRANCIS,BRANDONE
BLOCK by SOLOMON,MITCHELL	02:39			
	02:39			REBOUND (OFF) by TEAM
	02:30	65-60	H 5	GOOD! 3PTR by CULVER,JARRETT
	02:30			ASSIST by EVANS,KEENAN
	02:23			TIMEOUT 30SEC
	02:23			SUB IN: GRAY,JUSTIN
	02:23			SUB IN: ODIASE,NORENSE
	02:23			SUB OUT: STEVENSON,NIEM
	02:23			SUB OUT: CULVER,JARRETT
MISSED JUMPER by SHINE,TAVARIUS	01:54			
	01:54			BLOCK by GRAY,JUSTIN
	01:52			REBOUND (DEF) by GRAY,JUSTIN
FOUL by SOLOMON,MITCHELL	01:33			
	01:33	66-60	H 6	GOOD! FT by EVANS,KEENAN
	01:33	67-60	H 7	GOOD! FT by EVANS,KEENAN
SUB IN: SMITH,KENDALL	01:33			
SUB IN: SIMA,YANKUBA	01:33			
SUB OUT: AVERETTE,BRANDON	01:33			
SUB OUT: SOLOMON,MITCHELL	01:33			
	01:20			FOUL by GRAY,JUSTIN
GOOD! FT by CARROLL,JEFFREY	01:20	67-61	H 6	
MISSED FT by CARROLL,JEFFREY	01:20			
REBOUND (OFF) by TEAM	01:20			
	01:20			SUB IN: CULVER,JARRETT
	01:20			SUB OUT: GRAY,JUSTIN
	01:19			SUB IN: GRAY,JUSTIN
	01:19			SUB OUT: CULVER,JARRETT
MISSED JUMPER by CARROLL,JEFFREY	01:13			
REBOUND (DEADB) by TEAM	01:13			
	01:12			FOUL by EVANS,KEENAN
MISSED FT by SIMA,YANKUBA	01:12			
REBOUND (DEADB) by TEAM	01:12			
MISSED FT by SIMA,YANKUBA	01:12			
	01:12			REBOUND (DEF) by ODIASE,NORENSE
	01:12			SUB IN: CULVER,JARRETT
	01:12			SUB OUT: FRANCIS,BRANDONE
	01:00			TURNOVER by SMITH,ZHAIRE
STEAL by CARROLL,JEFFREY	00:58			
MISSED 3PTR by SHINE,TAVARIUS	00:56			
	00:56			REBOUND (DEF) by TEAM
FOUL by SMITH,KENDALL	00:54			
	00:54	68-61	H 7	GOOD! FT by EVANS,KEENAN
	00:54	69-61	H 8	GOOD! FT by EVANS,KEENAN
SUB IN: AVERETTE,BRANDON	00:54			
SUB OUT: SIMA,YANKUBA	00:54			
	00:54			SUB IN: STEVENSON,NIEM
	00:54			SUB IN: FRANCIS,BRANDONE
	00:54			SUB OUT: ODIASE,NORENSE
TURNOVER by WATERS,LINDY	00:43			
	00:41			STEAL by STEVENSON,NIEM
FOUL by SHINE,TAVARIUS	00:40			
	00:40			MISSED FT by STEVENSON,NIEM
	00:40			REBOUND (DEADB) by TEAM
	00:40	70-61	H 9	GOOD! FT by STEVENSON,NIEM
SUB IN: DZIAGWA,THOMAS	00:40			
SUB OUT: SHINE,TAVARIUS	00:40			
GOOD! LAYUP by WATERS,LINDY [PNT]	00:33	70-63	H 7	
ASSIST by AVERETTE,BRANDON	00:33			
	00:33			FOUL by GRAY,JUSTIN
GOOD! FT by WATERS,LINDY	00:33	70-64	H 6	
SUB IN: SIMA,YANKUBA	00:33			
SUB OUT: DZIAGWA,THOMAS	00:33			
FOUL by WATERS,LINDY	00:32			

<b>VISITORS: Oklahoma State</b>	<b>Time</b>	<b>Score</b>	<b>Margin</b>	<b>HOME: Texas Tech</b>
	00:32	71-64	H 7	GOOD! FT by GRAY,JUSTIN
	00:32	72-64	H 8	GOOD! FT by GRAY,JUSTIN
	00:32			TIMEOUT 30SEC
SUB IN: DZIAGWA,THOMAS	00:32			
SUB OUT: SIMA,YANKUBA	00:32			
	00:32			SUB OUT: CULVER,JARRETT
	00:27			FOUL by STEVENSON,NIEM
GOOD! FT by AVERETTE,BRANDON	00:27	72-65	H 7	
GOOD! FT by AVERETTE,BRANDON	00:27	72-66	H 6	
SUB IN: SIMA,YANKUBA	00:27			
SUB OUT: DZIAGWA,THOMAS	00:27			
FOUL by AVERETTE,BRANDON	00:25			
	00:25			MISSED FT by EVANS,KEENAN
	00:25			REBOUND (DEADB) by TEAM
	00:25	73-66	H 7	GOOD! FT by EVANS,KEENAN
SUB IN: DZIAGWA,THOMAS	00:25			
SUB OUT: SIMA,YANKUBA	00:25			
	00:25			SUB IN: CULVER,JARRETT
	00:25			SUB OUT: STEVENSON,NIEM
GOOD! DUNK by SMITH,KENDALL [PNT]	00:17	73-68	H 5	
TIMEOUT TEAM	00:16			
SUB IN: SIMA,YANKUBA	00:16			
SUB OUT: DZIAGWA,THOMAS	00:16			
	00:16			SUB IN: STEVENSON,NIEM
	00:16			SUB OUT: CULVER,JARRETT
FOUL by AVERETTE,BRANDON	00:15			
	00:15	74-68	H 6	GOOD! FT by EVANS,KEENAN
	00:15	75-68	H 7	GOOD! FT by EVANS,KEENAN
SUB IN: DZIAGWA,THOMAS	00:15			
SUB OUT: AVERETTE,BRANDON	00:15			
	00:15			SUB IN: CULVER,JARRETT
	00:15			SUB OUT: FRANCIS,BRANDONE
GOOD! LAYUP by SMITH,KENDALL [PNT]	00:08	75-70	H 5	
ASSIST by SIMA,YANKUBA	00:08			

Oklahoma State 70, Texas Tech 75

<b>Period 2-only</b>	<b>In Paint</b>	<b>Off T/O</b>	<b>2nd Chance</b>	<b>Fast Break</b>	<b>Bench</b>	
OSU	12	3	2	0	19	Score tied - 0 times
TTU	18	17	13	4	13	Lead changed - 2 times

Oklahoma State vs Texas Tech  
 1/23/2018; 6:01 p.m. at Lubbock, TX (United Supermarkets Arena)  
 Scoring/Runs Reference



Period 1

Oklahoma State	VRun	Score	Margin	HRun	Texas Tech
		0-2	2		CULVER LAYUP [P] - 19:13
		0-5	5	NaN-0	EVANS 3PTR - 17:36
17:20 - SOLOMON LAYUP [P]	-	2-5	3		
		2-6	4		CULVER FT - 16:42
		2-9	7	4-0	CULVER 3PTR - 16:21
16:04 - SHINE LAYUP [P]	-	4-9	5		
15:14 - MCGRIFF JUMPER	4-0	6-9	3		
		6-12	6		HAMILTON IV 3PTR - 14:56
14:12 - MCGRIFF FT	-	7-12	5		
14:12 - MCGRIFF FT	2-0	8-12	4		
13:16 - SMITH 3PTR	5-0	11-12	1		
12:23 - CARROLL LAYUP [P]	7-0	13-12	-1		
		13-14	1		CULVER LAYUP [P] - 11:26
		13-15	2	3-0	STEVENSON FT - 11:06
10:40 - AVERETTE JUMPER [P]	-	15-15	0		
		15-18	3		CULVER 3PTR - 10:26
09:58 - SMITH JUMPER	-	17-18	1		
08:37 - WATERS JUMPER	4-0	19-18	-1		
		19-20	1		GRAY JUMPER - 06:06
05:50 - CARROLL JUMPER	-	21-20	-1		
05:36 - DZIAGWA 3PTR	5-0	24-20	-4		
05:14 - CARROLL 3PTR	8-0	27-20	-7		
		27-21	-6		CULVER FT - 04:19
		27-22	-5	2-0	CULVER FT - 04:19
03:50 - SIMA LAYUP [P] [F]	-	29-22	-7		
		29-23	-6		FRANCIS FT - 03:19
02:43 - SIMA JUMPER [P]	-	31-23	-8		
01:49 - AVERETTE 3PTR	5-0	34-23	-11		
		34-24	-10		EVANS FT - 01:32
01:19 - DZIAGWA 3PTR	-	37-24	-13		
		37-25	-12		CULVER FT - 01:03

Oklahoma State vs Texas Tech  
 1/23/2018; 6:01 p.m. at Lubbock, TX (United Supermarkets Arena)  
 Scoring/Runs Reference

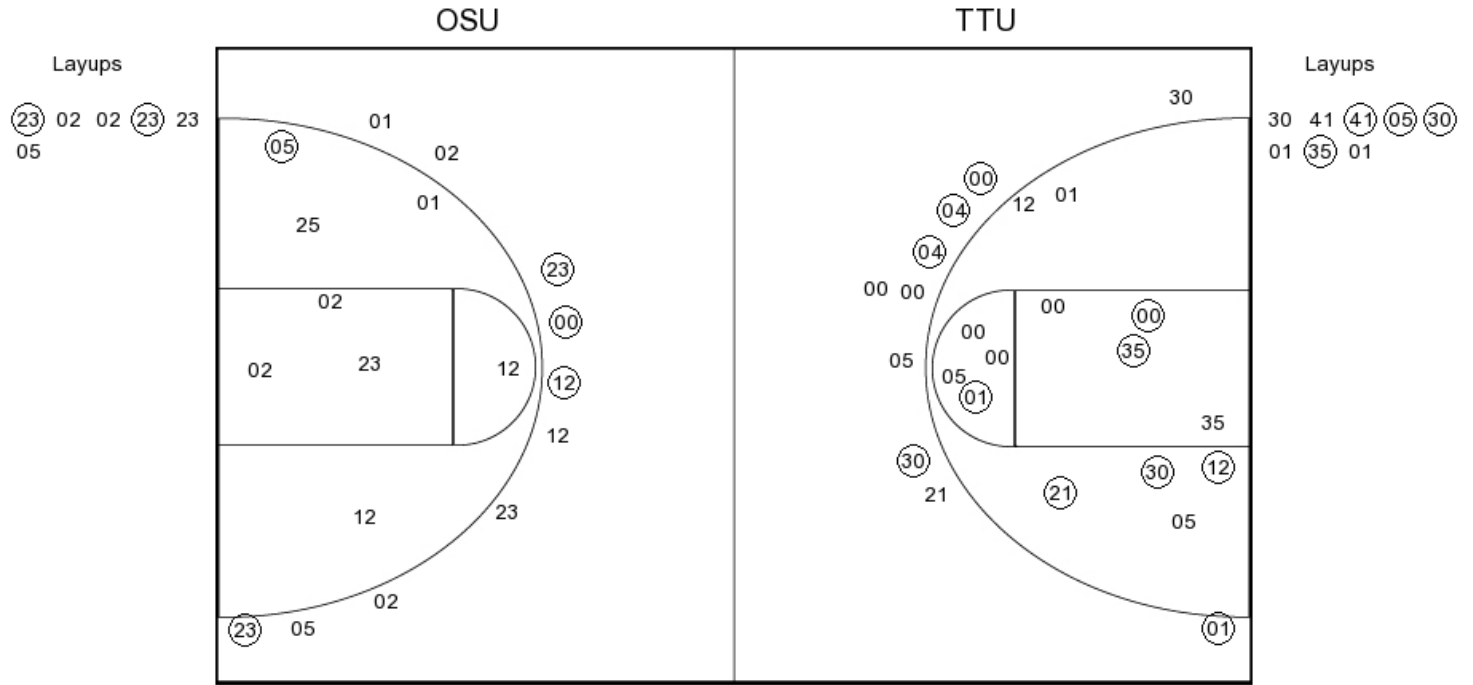


Period 2

Oklahoma State	VRun	Score	Margin	HRun	Texas Tech
19:33 - SHINE LAYUP [P]	-	39-25	-14		
		39-26	-13		CULVER FT - 18:53
18:39 - CARROLL JUMPER [P]	-	41-26	-15		
		41-28	-13		EVANS LAYUP [P] - 18:17
18:08 - SIMA FT	-	42-28	-14		
		42-31	-11		EVANS 3PTR - 17:47
16:25 - CARROLL FT	-	43-31	-12		
16:25 - CARROLL FT	2-0	44-31	-13		
16:25 - CARROLL FT	3-0	45-31	-14		
		45-34	-11		FRANCIS 3PTR - 15:28
15:05 - WATERS 3PTR	-	48-34	-14		
		48-36	-12		FRANCIS LAYUP [P] - 14:46
		48-38	-10	4-0	STEVENSON DUNK [P] - 14:06
13:38 - MCGRIFF LAYUP [P]	-	50-38	-12		
		50-40	-10		EVANS LAYUP [P] - 12:51
		50-42	-8	4-0	SMITH JUMPER [P] - 10:47
		50-44	-6	6-0	EVANS LAYUP [P] [F] - 10:28
10:09 - DZIAGWA FT	-	51-44	-7		
10:09 - DZIAGWA FT	2-0	52-44	-8		
		52-47	-5		CULVER 3PTR - 09:48
		52-48	-4	4-0	STEVENSON FT - 08:08
		52-49	-3	5-0	STEVENSON FT - 08:08
07:50 - CARROLL 3PTR	-	55-49	-6		
		55-51	-4		EVANS LAYUP [P] - 07:30
		55-54	-1	5-0	FRANCIS 3PTR - 06:20
05:52 - SMITH JUMPER	-	57-54	-3		
		57-55	-2		EVANS FT - 05:30
05:07 - MCGRIFF FT	-	58-55	-3		
		58-57	-1		CULVER LAYUP [P] - 04:46
		58-59	1	4-0	CULVER DUNK [P] [F] - 04:32
04:07 - WATERS JUMPER	-	60-59	-1		
		60-62	2		EVANS 3PTR - 03:52
		60-65	5	6-0	CULVER 3PTR - 02:30
		60-66	6	7-0	EVANS FT - 01:33
		60-67	7	8-0	EVANS FT - 01:33
01:20 - CARROLL FT	-	61-67	6		
		61-68	7		EVANS FT - 00:54
		61-69	8	2-0	EVANS FT - 00:54
		61-70	9	3-0	STEVENSON FT - 00:40
00:33 - WATERS LAYUP [P]	-	63-70	7		
00:33 - WATERS FT	3-0	64-70	6		
		64-71	7		GRAY FT - 00:32
		64-72	8	2-0	GRAY FT - 00:32
00:27 - AVERETTE FT	-	65-72	7		
00:27 - AVERETTE FT	2-0	66-72	6		
		66-73	7		EVANS FT - 00:25
00:17 - SMITH DUNK [P]	-	68-73	5		
		68-74	6		EVANS FT - 00:15
		68-75	7	2-0	EVANS FT - 00:15
00:08 - SMITH LAYUP [P]	-	70-75	5		



**PERIOD 1**



**OSU PERIOD 1**

FG Made	15
FG Attempted	32
3PFG Made	5
3PFG Attempted	10

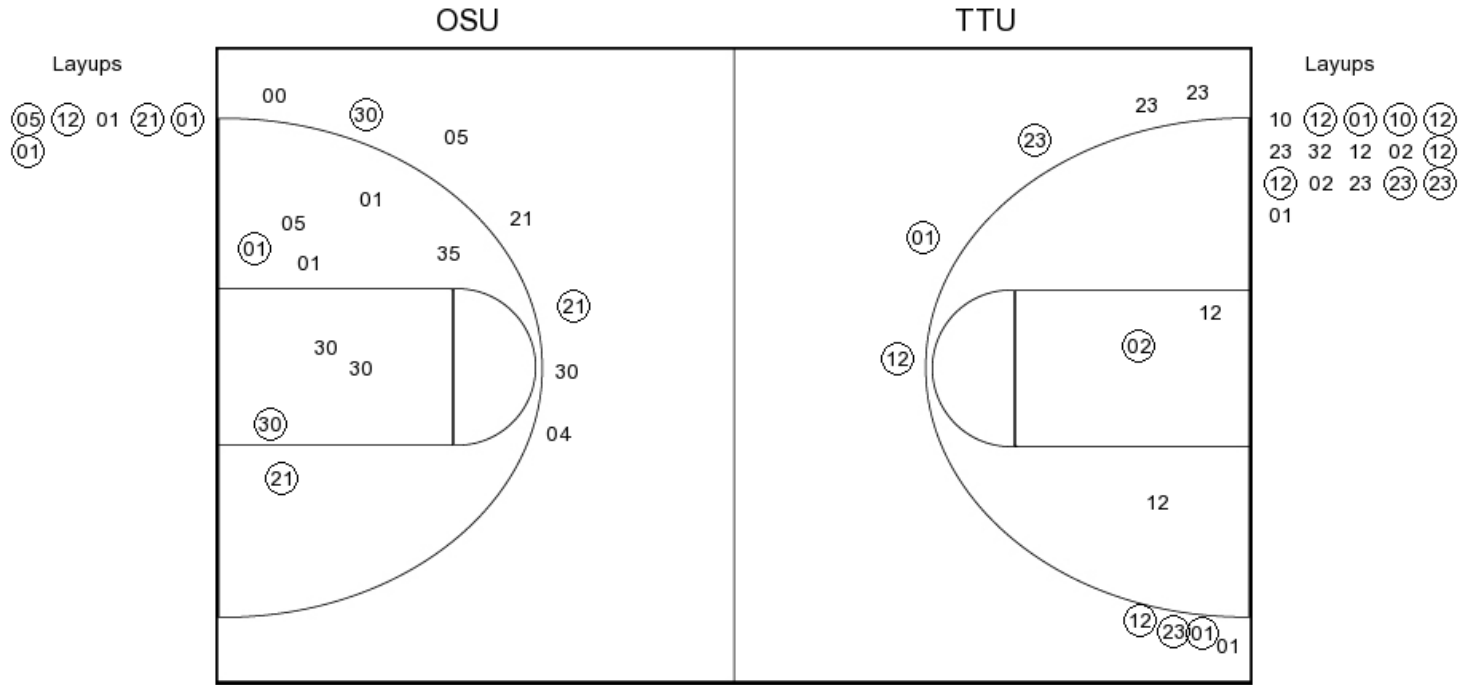
**TTU PERIOD 1**

FG Made	7
FG Attempted	24
3PFG Made	4
3PFG Attempted	10





**PERIOD 2**



**OSU PERIOD 2**

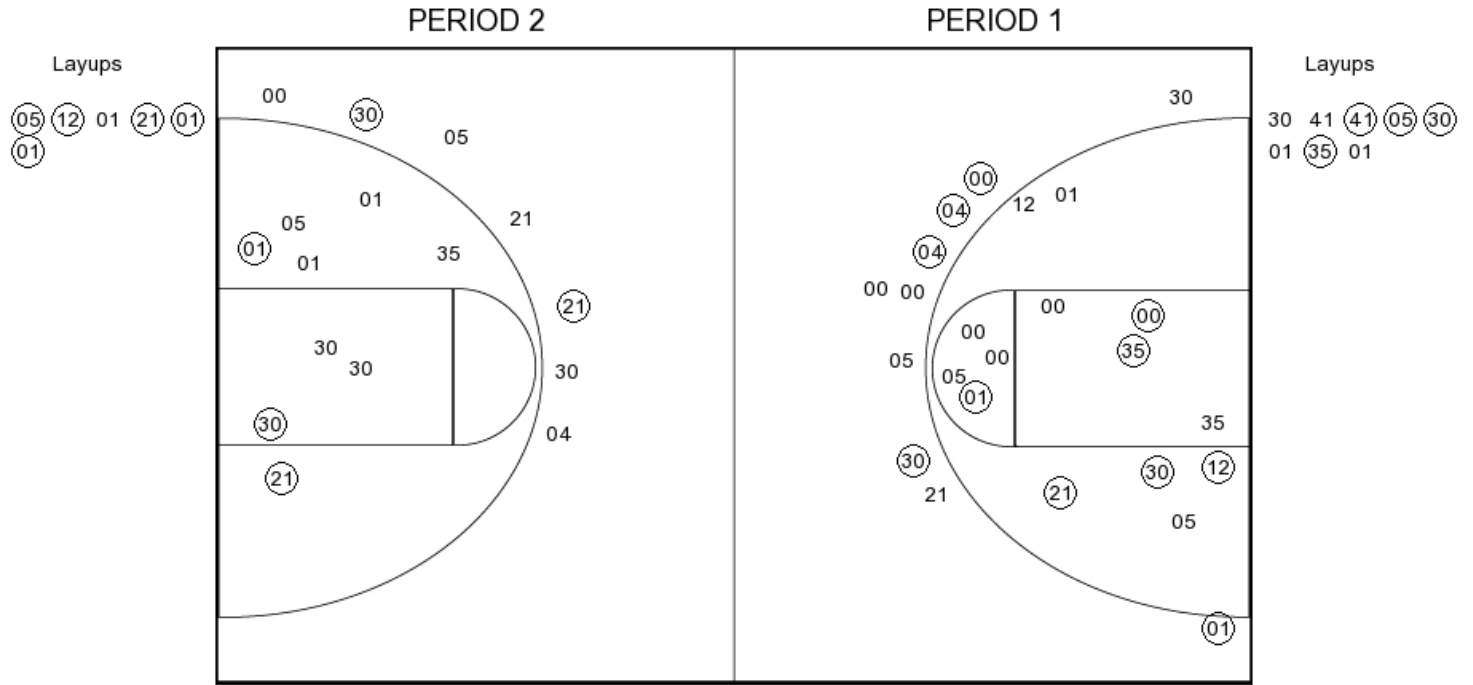
FG Made	10
FG Attempted	22
3PFG Made	2
3PFG Attempted	7

**TTU PERIOD 2**

FG Made	15
FG Attempted	28
3PFG Made	6
3PFG Attempted	9



Oklahoma State



**OSU PERIOD 1**

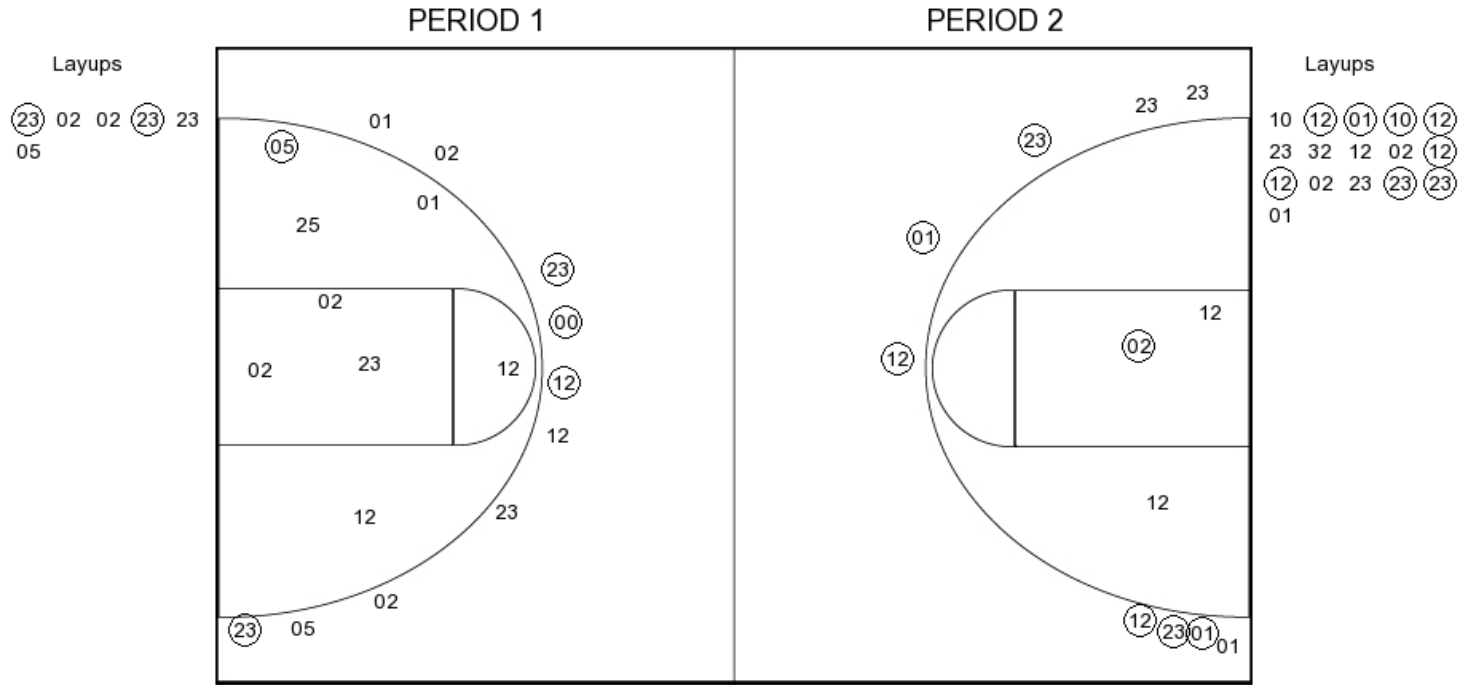
FG Made	15
FG Attempted	32
3PFG Made	5
3PFG Attempted	10

**OSU PERIOD 2**

FG Made	10
FG Attempted	22
3PFG Made	2
3PFG Attempted	7



Texas Tech



**TTU PERIOD 1**

FG Made	7
FG Attempted	24
3PFG Made	4
3PFG Attempted	10

**TTU PERIOD 2**

FG Made	15
FG Attempted	28
3PFG Made	6
3PFG Attempted	9