

## FINAL SCORE



**Kansas State**

11-4 (1-2 B12)

**58**



**Texas Tech**

14-1 (3-0 B12)

**74**

**January 06, 2018 • Lubbock, TX (United Supermarkets Arena)**

## FINAL STATISTICS

**Official Basketball Box Score -- Game Totals -- Final Statistics**  
**Kansas State vs Texas Tech**  
**1/6/2018 3:05 p.m. at Lubbock, TX (United Supermarkets Arena)**



**Kansas State 58 - 11-4 (1-2 B12)**

##	Player		Total		3-Ptr		FT-FTA		Rebounds			PF	TP	A	TO	Blk	Stl	Min
			FG	FGA	FG	FGA	FT	FTA	Off	Def	Tot							
03	STOKES,KAMAU	g	1-1		0-0		0-0		0	1	1	1	2	0	2	0	1	15
05	BROWN,BARRY	g	6-12		2-5		10-13		0	0	0	3	24	1	3	0	1	39
14	MAWIEN,MAKOL	f	1-1		0-0		0-0		0	4	4	1	2	0	1	0	0	11
20	SNEED,XAVIER	f	1-10		0-4		1-2		1	1	2	3	3	2	2	0	5	38
32	WADE,DEAN	f	7-12		0-1		0-1		4	1	5	5	14	1	3	0	1	24
01	SALLAH,MAWDO		1-1		0-0		0-3		0	1	1	3	2	0	0	1	1	8
02	DIARRA,CARTIER		3-5		2-3		3-4		0	1	1	2	11	2	3	0	0	30
11	PATRICK,BRIAN		0-0		0-0		0-0		0	0	0	0	0	0	0	0	0	5
23	WAINRIGHT ,AMAAD		0-0		0-0		0-0		0	4	4	4	0	1	1	0	0	21
34	STOCKARD III,LEVI		0-0		0-0		0-0		0	0	0	0	0	0	0	0	0	3
45	SHADD,NIGEL		0-0		0-0		0-0		0	0	0	0	0	0	0	0	0	6
TEAM									1	0	1	0			1			
TOTALS			20-42		4-13		14-23		6	13	19	22	58	7	16	1	9	200

Deadball Rebounds: 2,0

FG %	1st Half:	8-20	40.0%	2nd Half:	12-22	54.5%	Game:	20-42	47.6%
3FG %	1st Half:	3-7	42.9%	2nd Half:	1-6	16.7%	Game:	4-13	30.8%
FT %	1st Half:	3-6	50.0%	2nd Half:	11-17	64.7%	Game:	14-23	60.9%

**Texas Tech 74 - 14-1 (3-0 B12)**

##	Player		Total		3-Ptr		FT-FTA		Rebounds			PF	TP	A	TO	Blk	Stl	Min
			FG	FGA	FG	FGA	FT	FTA	Off	Def	Tot							
05	GRAY,JUSTIN	g	1-1		1-1		0-0		0	2	2	1	3	2	0	1	1	25
10	STEVENSON,NIEM	g	0-1		0-1		2-4		0	2	2	2	2	0	0	0	1	17
11	SMITH,ZACH	f	3-5		0-1		0-2		1	4	5	2	6	1	1	1	1	19
12	EVANS,KEENAN	g	7-11		0-3		13-14		0	2	2	2	27	4	1	0	2	31
32	ODIASE,NORENSE	c	1-1		0-0		0-0		1	4	5	1	2	1	1	1	2	20
00	HAMILTON IV,TOMMY		1-1		0-0		0-0		1	0	1	2	2	0	2	0	0	10
01	FRANCIS,BRANDONE		2-2		1-1		2-2		0	2	2	3	7	1	3	0	2	14
02	SMITH,ZHAIRE		4-7		1-1		2-2		2	4	6	3	11	1	1	0	1	25
23	CULVER,JARRETT		3-9		1-6		1-2		0	2	2	4	8	1	2	0	1	24
25	MORETTI,DAVIDE		2-3		2-3		0-0		0	0	0	1	6	1	3	0	0	15
TEAM									1	1	2	0			1			
TOTALS			24-41		6-17		20-26		6	23	29	21	74	12	15	3	11	200

Deadball Rebounds: 4,0

FG %	1st Half:	16-23	69.6%	2nd Half:	8-18	44.4%	Game:	24-41	58.5%
3FG %	1st Half:	4-10	40.0%	2nd Half:	2-7	28.6%	Game:	6-17	35.3%
FT %	1st Half:	4-8	50.0%	2nd Half:	16-18	88.9%	Game:	20-26	76.9%

Officials: Tom Eades, Chris Rastatter, Chance Moore  
 Technical Fouls: Kansas State- None. Texas Tech- None.  
 Attendance: 12531

Score by periods	1st	2nd	Total
Kansas State	22	36	58
Texas Tech	40	34	74

Points	In	Off	2nd	Fast	Bench
	Paint	T/O	Chance	Break	
KS	30	13	6	2	13
TTU	26	21	6	10	34

Last FG - KS 2nd-02:33, TTU 2nd-00:37.  
 Largest lead - Kansas State by ; Texas Tech by 21 1st-04:55  
 KS led for 0:00. TTU led for 38:09. Game was tied for 1:51.

Score tied - 0 times; Lead changed - 0 times

Official Basketball Box Score -- Game Totals -- First Half Statistics  
 Kansas State vs Texas Tech  
 1/6/2018 3:05 p.m. at Lubbock, TX (United Supermarkets Arena)



**Kansas State 22 • 11-4 (1-2 B12)**

##	Player		Total		3-Ptr		Rebounds			PF	TP	A	TO	Blk	Stl	Min
			FG	FGA	FG	FGA	FT	FTA	Off	Def	Tot					
03	STOKES,KAMAU	g	1	1	0	0	0	0	0	1	1	1	2	0	2	1
05	BROWN,BARRY	g	3	5	1	1	3	6	0	0	0	2	10	1	2	0
14	MAWIEN,MAKOL	f	1	1	0	0	0	0	0	3	3	1	2	0	1	0
20	SNEED,XAVIER	f	0	7	0	3	0	0	0	0	0	0	0	0	0	1
32	WADE,DEAN	f	1	4	0	1	0	0	0	0	0	2	2	0	1	0
01	SALLAH,MAWDO		0	0	0	0	0	0	0	0	0	0	0	0	0	0
02	DIARRA,CARTIER		2	2	2	2	0	0	0	0	0	1	6	1	1	0
11	PATRICK,BRIAN		0	0	0	0	0	0	0	0	0	0	0	0	0	0
23	WAINRIGHT,AMAAD		0	0	0	0	0	0	0	2	2	1	0	1	1	0
34	STOCKARD III,LEVI		0	0	0	0	0	0	0	0	0	0	0	0	0	0
45	SHADD,NIGEL		0	0	0	0	0	0	0	0	0	0	0	0	0	0
TEAM									0	0	0	0		0		
Totals			8	20	3	7	3	6	0	6	6	8	22	3	8	0

FG % Half: 8-20 40.0%  
 3FG % Half: 3-7 42.9%  
 FT % Half: 3-6 50.0%

**Texas Tech 40 • 14-1 (3-0 B12)**

##	Player		Total		3-Ptr		Rebounds			PF	TP	A	TO	Blk	Stl	Min
			FG	FGA	FG	FGA	FT	FTA	Off	Def	Tot					
05	GRAY,JUSTIN	g	1	1	1	1	0	0	0	2	2	1	3	0	0	1
10	STEVENSON,NIEM	g	0	0	0	0	1	2	0	0	0	2	1	0	0	1
11	SMITH,ZACH	f	2	4	0	1	0	2	0	4	4	0	4	1	1	1
12	EVANS,KEENAN	g	4	5	0	1	3	4	0	1	1	0	11	2	1	0
32	ODIASE,NORENSE	c	1	1	0	0	0	0	0	3	3	0	2	1	0	1
00	HAMILTON IV,TOMMY		1	1	0	0	0	0	0	0	0	1	2	0	1	0
01	FRANCIS,BRANDONE		1	1	1	1	0	0	0	2	2	1	3	0	2	0
02	SMITH,ZHAIRE		2	2	0	0	0	0	1	0	1	2	4	1	0	0
23	CULVER,JARRETT		3	6	1	4	0	0	0	1	1	2	7	1	1	0
25	MORETTI,DAVIDE		1	2	1	2	0	0	0	0	0	0	3	1	0	0
TEAM									1	1	2	0		1		
Totals			16	23	4	10	4	8	2	14	16	9	40	7	7	3

FG % Half: 16-23 69.6%  
 3FG % Half: 4-10 40.0%  
 FT % Half: 4-8 50.0%

Officials: Tom Eades, Chris Rastatter, Chance Moore  
 Technical Fouls: Kansas State- None. Texas Tech- None.

Score by periods	1st	2nd	Total
Kansas State	22	36	58
Texas Tech	40	34	74

Points	In	Off	2nd	Fast	Bench
	Paint	T/O	Chance	Break	
KS	8	4	0	0	6
TTU	16	11	4	6	19

Last FG - KS 1st-00:27, TTU 1st-00:50.  
 KS led for 0:00. TTU led for 18:09. Game was tied for 1:51.

Score tied - 0 times  
 Lead changed - 0 times

**Kansas State vs Texas Tech**  
**1/6/2018; 3:05 p.m. at Lubbock, TX (United Supermarkets Arena)**  
**Period 1 Play-By-Play**



VISITORS: Kansas State	Time	Score	Margin	HOME: Texas Tech
FOUL by MAWIEN,MAKOL	19:32			
	19:32			MISSED FT by SMITH,ZACH
	19:32			REBOUND (DEADB) by TEAM
	19:32			MISSED FT by SMITH,ZACH
REBOUND (DEF) by MAWIEN,MAKOL	19:32			
MISSED 3PTR by WADE,DEAN	19:02			
	19:02			REBOUND (DEF) by SMITH,ZACH
	18:31			MISSED JUMPER by SMITH,ZACH
REBOUND (DEF) by MAWIEN,MAKOL	18:31			
TURNOVER by MAWIEN,MAKOL	18:13			
	18:11			STEAL by ODIASE,NORENSE
	18:09	2-0	H 2	GOOD! DUNK by ODIASE,NORENSE [FB/PNT]
MISSED JUMPER by WADE,DEAN	17:53			
	17:53			REBOUND (DEF) by ODIASE,NORENSE
	17:41	4-0	H 4	GOOD! JUMPER by EVANS,KEENAN
MISSED JUMPER by BROWN,BARRY	17:23			
	17:23			REBOUND (DEF) by EVANS,KEENAN
	16:58			MISSED 3PTR by EVANS,KEENAN
REBOUND (DEF) by STOKES,KAMAU	16:58			
MISSED 3PTR by SNEED,XAVIER	16:44			
	16:44			REBOUND (DEF) by ODIASE,NORENSE
FOUL by BROWN,BARRY	16:41			
SUB IN: STOCKARD III,LEVI	16:41			
SUB OUT: MAWIEN,MAKOL	16:41			
	16:41			SUB IN: CULVER,JARRETT
	16:41			SUB IN: SMITH,ZHAIRE
	16:41			SUB IN: HAMILTON IV,TOMMY
	16:41			SUB OUT: STEVENSON,NIEM
	16:41			SUB OUT: SMITH,ZACH
	16:41			SUB OUT: ODIASE,NORENSE
	16:29			TURNOVER by EVANS,KEENAN
STEAL by WADE,DEAN	16:27			
MISSED LAYUP by WADE,DEAN	16:24			
	16:24			BLOCK by GRAY,JUSTIN
	16:24			REBOUND (DEF) by TEAM
	16:24			SUB IN: MORETTI,DAVIDE
	16:24			SUB IN: FRANCIS,BRANDONE
	16:24			SUB OUT: GRAY,JUSTIN
	16:24			SUB OUT: EVANS,KEENAN
	16:08	6-0	H 6	GOOD! JUMPER by HAMILTON IV,TOMMY
GOOD! JUMPER by STOKES,KAMAU	15:56	6-2	H 4	
FOUL by STOKES,KAMAU	15:39			
	15:39			TIMEOUT MEDIA
	15:26	9-2	H 7	GOOD! 3PTR by FRANCIS,BRANDONE
MISSED JUMPER by SNEED,XAVIER	15:10			
	15:10			REBOUND (DEF) by FRANCIS,BRANDONE
	14:42			TURNOVER by FRANCIS,BRANDONE
	14:42			SUB IN: EVANS,KEENAN
	14:42			SUB IN: ODIASE,NORENSE
	14:42			SUB OUT: MORETTI,DAVIDE
	14:42			SUB OUT: HAMILTON IV,TOMMY
TURNOVER by STOKES,KAMAU	14:25			
	14:24			STEAL by EVANS,KEENAN
	14:20	12-2	H 10	GOOD! 3PTR by CULVER,JARRETT
	14:20			ASSIST by EVANS,KEENAN
	13:58			FOUL by CULVER,JARRETT
SUB IN: WAINRIGHT,AMAAD	13:58			
SUB OUT: STOCKARD III,LEVI	13:58			
	13:58			SUB IN: SMITH,ZACH
	13:58			SUB OUT: FRANCIS,BRANDONE
	13:48			FOUL by SMITH,ZHAIRE
	13:48			SUB IN: STEVENSON,NIEM
	13:48			SUB OUT: CULVER,JARRETT
MISSED 3PTR by SNEED,XAVIER	13:43			
	13:43			REBOUND (DEF) by SMITH,ZACH
FOUL by WADE,DEAN	13:31			
	13:31			MISSED FT by STEVENSON,NIEM
	13:31			REBOUND (DEADB) by TEAM
	13:31	13-2	H 11	GOOD! FT by STEVENSON,NIEM

VISITORS: Kansas State	Time	Score	Margin	HOME: Texas Tech
	13:31			SUB IN: CULVER,JARRETT
	13:31			SUB OUT: SMITH,ZHAIRE
TURNOVER by STOKES,KAMAU	13:05			
	13:03			STEAL by STEVENSON,NIEM
	12:58	15-2	H 13	GOOD! DUNK by SMITH,ZACH [PNT]
	12:58			ASSIST by CULVER,JARRETT
TIMEOUT 30SEC	12:56			
	12:47			FOUL by STEVENSON,NIEM
SUB IN: DIARRA,CARTIER	12:47			
SUB OUT: STOKES,KAMAU	12:47			
GOOD! LAYUP by WADE,DEAN [PNT]	12:45	15-4	H 11	
ASSIST by DIARRA,CARTIER	12:45			
FOUL by BROWN,BARRY	12:22			
SUB IN: STOKES,KAMAU	12:22			
SUB OUT: BROWN,BARRY	12:22			
	12:02			MISSED 3PTR by SMITH,ZACH
REBOUND (DEF) by WAINRIGHT,AMAAD	12:02			
MISSED LAYUP by SNEED,XAVIER	11:46			
	11:46			BLOCK by ODIASE,NORENSE
	11:45			REBOUND (DEF) by ODIASE,NORENSE
	11:41	17-4	H 13	GOOD! DUNK by CULVER,JARRETT [FB/PNT]
	11:41			ASSIST by EVANS,KEENAN
	11:24			FOUL by STEVENSON,NIEM
TIMEOUT MEDIA	11:24			
SUB IN: MAWIEN,MAKOL	11:24			
SUB OUT: SNEED,XAVIER	11:24			
	11:24			SUB IN: MORETTI,DAVIDE
	11:24			SUB IN: GRAY,JUSTIN
	11:24			SUB IN: SMITH,ZHAIRE
	11:24			SUB IN: HAMILTON IV,TOMMY
	11:24			SUB OUT: EVANS,KEENAN
	11:24			SUB OUT: STEVENSON,NIEM
	11:24			SUB OUT: SMITH,ZACH
	11:24			SUB OUT: ODIASE,NORENSE
FOUL by WADE,DEAN	11:06			
TURNOVER by WADE,DEAN	11:06			
SUB IN: SNEED,XAVIER	11:06			
SUB IN: BROWN,BARRY	11:06			
SUB OUT: WAINRIGHT,AMAAD	11:06			
SUB OUT: WADE,DEAN	11:06			
	10:54			MISSED 3PTR by CULVER,JARRETT
REBOUND (DEF) by MAWIEN,MAKOL	10:54			
MISSED JUMPER by BROWN,BARRY	10:42			
	10:42			REBOUND (DEF) by GRAY,JUSTIN
	10:23	20-4	H 16	GOOD! 3PTR by MORETTI,DAVIDE
	10:23			ASSIST by SMITH,ZHAIRE
GOOD! LAYUP by BROWN,BARRY [PNT]	09:51	20-6	H 14	
	09:34	22-6	H 16	GOOD! LAYUP by SMITH,ZHAIRE [PNT]
TURNOVER by BROWN,BARRY	09:04			
TIMEOUT 30SEC	09:04			
	09:04			SUB IN: EVANS,KEENAN
	09:04			SUB IN: FRANCIS,BRANDONE
	09:04			SUB IN: SMITH,ZACH
	09:04			SUB OUT: GRAY,JUSTIN
	09:04			SUB OUT: CULVER,JARRETT
	09:04			SUB OUT: SMITH,ZHAIRE
	08:45			TURNOVER by HAMILTON IV,TOMMY
STEAL by STOKES,KAMAU	08:43			
MISSED LAYUP by SNEED,XAVIER	08:31			
	08:31			REBOUND (DEF) by SMITH,ZACH
	08:14			MISSED 3PTR by MORETTI,DAVIDE
	08:14			REBOUND (OFF) by TEAM
FOUL by DIARRA,CARTIER	07:53			
	07:53			TIMEOUT MEDIA
	07:53	23-6	H 17	GOOD! FT by EVANS,KEENAN
	07:53	24-6	H 18	GOOD! FT by EVANS,KEENAN
	07:53			SUB IN: ODIASE,NORENSE
	07:53			SUB IN: CULVER,JARRETT
	07:53			SUB OUT: MORETTI,DAVIDE
	07:53			SUB OUT: HAMILTON IV,TOMMY
TURNOVER by BROWN,BARRY	07:40			
	07:28			FOUL by FRANCIS,BRANDONE
	07:28			TURNOVER by FRANCIS,BRANDONE
GOOD! 3PTR by DIARRA,CARTIER	07:10	24-9	H 15	
ASSIST by BROWN,BARRY	07:10			

VISITORS: Kansas State	Time	Score	Margin	HOME: Texas Tech
	06:39	26-9	H 17	GOOD! DUNK by SMITH,ZACH [PNT]
	06:39			ASSIST by ODIASE,NORENSE
GOOD! LAYUP by MAWIEN,MAKOL [PNT]	06:17	26-11	H 15	
SUB IN: SHADD,NIGEL	06:17			
SUB OUT: MAWIEN,MAKOL	06:17			
	06:17			SUB IN: SMITH,ZHAIRE
	06:17			SUB OUT: FRANCIS,BRANDONE
	05:53	28-11	H 17	GOOD! JUMPER by EVANS,KEENAN
TURNOVER by WAINRIGHT,AMAAD	05:36			
	05:33			STEAL by SMITH,ZACH
	05:31	30-11	H 19	GOOD! LAYUP by CULVER,JARRETT [FB/PNT]
	05:31			ASSIST by SMITH,ZACH
TURNOVER by DIARRA,CARTIER	05:10			
	05:09			STEAL by ODIASE,NORENSE
	05:00			MISSED 3PTR by CULVER,JARRETT
	05:00			REBOUND (OFF) by SMITH,ZHAIRE
	04:55	32-11	H 21	GOOD! LAYUP by SMITH,ZHAIRE [PNT]
GOOD! 3PTR by BROWN,BARRY	04:41	32-14	H 18	
	04:13			TURNOVER by SMITH,ZACH
STEAL by SNEED,XAVIER	04:12			
	04:06			FOUL by SMITH,ZHAIRE
MISSED FT by BROWN,BARRY	04:06			
REBOUND (DEADB) by TEAM	04:06			
GOOD! FT by BROWN,BARRY	04:06	32-15	H 17	
SUB IN: WADE,DEAN	04:06			
SUB IN: WAINRIGHT,AMAAD	04:06			
SUB OUT: STOKES,KAMAU	04:06			
SUB OUT: SNEED,XAVIER	04:06			
	04:06			SUB IN: MORETTI,DAVIDE
	04:06			SUB IN: HAMILTON IV,TOMMY
	04:06			SUB IN: GRAY,JUSTIN
	04:06			SUB IN: FRANCIS,BRANDONE
	04:06			SUB OUT: ODIASE,NORENSE
	04:06			SUB OUT: EVANS,KEENAN
	04:06			SUB OUT: SMITH,ZACH
	04:06			SUB OUT: CULVER,JARRETT
	03:44	35-15	H 20	GOOD! 3PTR by GRAY,JUSTIN
	03:44			ASSIST by MORETTI,DAVIDE
	03:13			FOUL by HAMILTON IV,TOMMY
TIMEOUT MEDIA	03:13			
GOOD! FT by BROWN,BARRY	03:13	35-16	H 19	
MISSED FT by BROWN,BARRY	03:13			
	03:13			REBOUND (DEF) by CULVER,JARRETT
SUB IN: SNEED,XAVIER	03:13			
SUB OUT: WADE,DEAN	03:13			
	03:13			SUB IN: EVANS,KEENAN
	03:13			SUB IN: CULVER,JARRETT
	03:13			SUB OUT: SMITH,ZHAIRE
	03:13			SUB OUT: FRANCIS,BRANDONE
	02:43			MISSED 3PTR by CULVER,JARRETT
	02:43			REBOUND (DEADB) by TEAM
	02:42			TURNOVER by TEAM
MISSED LAYUP by SNEED,XAVIER	02:24			
	02:24			REBOUND (DEF) by GRAY,JUSTIN
FOUL by WAINRIGHT,AMAAD	02:16			
	02:16	36-16	H 20	GOOD! FT by EVANS,KEENAN
	02:16			MISSED FT by EVANS,KEENAN
REBOUND (DEF) by WAINRIGHT,AMAAD	02:16			
	02:16			SUB IN: ODIASE,NORENSE
	02:16			SUB IN: SMITH,ZACH
	02:16			SUB OUT: MORETTI,DAVIDE
	02:16			SUB OUT: HAMILTON IV,TOMMY
GOOD! 3PTR by DIARRA,CARTIER	02:00	36-19	H 17	
ASSIST by WAINRIGHT,AMAAD	02:00			
	01:29	38-19	H 19	GOOD! JUMPER by EVANS,KEENAN
	01:03			FOUL by GRAY,JUSTIN
GOOD! FT by BROWN,BARRY	01:03	38-20	H 18	
MISSED FT by BROWN,BARRY	01:03			
	01:03			REBOUND (DEF) by FRANCIS,BRANDONE
	01:03			SUB IN: FRANCIS,BRANDONE
	01:03			SUB OUT: GRAY,JUSTIN
	00:50	40-20	H 20	GOOD! LAYUP by EVANS,KEENAN [PNT]
GOOD! JUMPER by BROWN,BARRY [PNT]	00:27	40-22	H 18	
	00:05			FOUL by CULVER,JARRETT
	00:05			TURNOVER by CULVER,JARRETT

VISITORS: Kansas State	Time	Score	Margin	HOME: Texas Tech
SUB IN: PATRICK,BRIAN	00:05			
SUB OUT: SHADD,NIGEL	00:05			
	00:05			SUB IN: GRAY,JUSTIN
	00:05			SUB OUT: CULVER,JARRETT
MISSED 3PTR by SNEED,XAVIER	00:01			
	00:01			BLOCK by SMITH,ZACH
	00:01			REBOUND (DEF) by SMITH,ZACH

Kansas State 22, Texas Tech 40

Period 1-only	In Paint	Off T/O	2nd Chance	Fast Break	Bench	
KS	8	4	0	0	6	Score tied - 0 times
TTU	16	11	4	6	19	Lead changed - 0 times

Official Basketball Box Score -- Game Totals -- Second Half Statistics  
 Kansas State vs Texas Tech  
 1/6/2018 3:05 p.m. at Lubbock, TX (United Supermarkets Arena)



**Kansas State 36 • 11-4 (1-2 B12)**

##	Player		Total	3-Ptr	Rebounds			PF	TP	A	TO	Blk	Stl	Min
			FG-FGA	FG-FGA	FT-FTA	Off	Def	Tot						
03	STOKES,KAMAU	g	0-0	0-0	0-0	0	0	0	0	0	0	0	0	0
05	BROWN,BARRY	g	3-7	1-4	7-7	0	0	0	1	14	0	1	0	20
14	MAWIEN,MAKOL	f	0-0	0-0	0-0	0	1	1	0	0	0	0	0	3
20	SNEED,XAVIER	f	1-3	0-1	1-2	1	1	2	3	3	2	2	0	19
32	WADE,DEAN	f	6-8	0-0	0-1	4	1	5	3	12	1	2	0	14
01	SALLAH,MAWDO		1-1	0-0	0-3	0	1	1	3	2	0	0	1	8
02	DIARRA,CARTIER		1-3	0-1	3-4	0	1	1	1	5	1	2	0	17
11	PATRICK,BRIAN		0-0	0-0	0-0	0	0	0	0	0	0	0	0	5
23	WAINRIGHT,AMAAD		0-0	0-0	0-0	0	2	2	3	0	0	0	0	14
34	STOCKARD III,LEVI		0-0	0-0	0-0	0	0	0	0	0	0	0	0	0
45	SHADD,NIGEL		0-0	0-0	0-0	0	0	0	0	0	0	0	0	0
	TEAM					1	0	1	0		1			
Totals			12-22	1-6	11-17	6	7	13	14	36	4	8	1	100
FG %	Half:		12-22	54.5%										
3FG %	Half:		1-6	42.9%										
FT %	Half:		11-17	64.7%										

**Texas Tech 34 • 14-1 (3-0 B12)**

##	Player		Total	3-Ptr	Rebounds			PF	TP	A	TO	Blk	Stl	Min
			FG-FGA	FG-FGA	FT-FTA	Off	Def	Tot						
05	GRAY,JUSTIN	g	0-0	0-0	0-0	0	0	0	0	0	2	0	0	16
10	STEVENSON,NIEM	g	0-1	0-1	1-2	0	2	2	0	1	0	0	0	11
11	SMITH,ZACH	f	1-1	0-0	0-0	1	0	1	2	2	0	0	0	6
12	EVANS,KEENAN	g	3-6	0-2	10-10	0	1	1	2	16	2	0	0	16
32	ODIASE,NORENSE	c	0-0	0-0	0-0	1	1	2	1	0	0	1	0	7
00	HAMILTON IV,TOMMY		0-0	0-0	0-0	1	0	1	1	0	0	1	0	3
01	FRANCIS,BRANDONE		1-1	0-0	2-2	0	0	0	2	4	1	1	0	7
02	SMITH,ZHAIRE		2-5	1-1	2-2	1	4	5	1	7	0	1	0	16
23	CULVER,JARRETT		0-3	0-2	1-2	0	1	1	2	1	0	1	0	10
25	MORETTI,DAVIDE		1-1	1-1	0-0	0	0	0	1	3	0	3	0	8
	TEAM					0	0	0	0		0			
Totals			8-18	2-7	16-18	4	9	13	12	34	5	8	0	100
FG %	Half:		8-18	44.4%										
3FG %	Half:		2-7	40.0%										
FT %	Half:		16-18	88.9%										

Officials: Tom Eades, Chris Rastatter, Chance Moore  
 Technical Fouls: Kansas State- None. Texas Tech- None.

Score by periods	1st	2nd	Total
Kansas State	22	36	58
Texas Tech	40	34	74

Points	In	Off	2nd	Fast	Bench
	Paint	T/O	Chance	Break	
KS	22	9	6	2	7
TTU	10	10	0	4	15

Last FG - KS 2nd-02:33, TTU 2nd-00:37.  
 KS led for 0:00. TTU led for 20:00. Game was tied for 0:00.

Score tied - 0 times  
 Lead changed - 0 times



**Kansas State vs Texas Tech**  
**1/6/2018; 3:05 p.m. at Lubbock, TX (United Supermarkets Arena)**  
**Period 2 Play-By-Play**



VISITORS: Kansas State	Time	Score	Margin	HOME: Texas Tech
SUB IN: SALLAH,MAWDO	20:00			
SUB IN: DIARRA,CARTIER	20:00			
	19:46			FOUL by SMITH,ZACH
MISSED FT by SALLAH,MAWDO	19:46			
REBOUND (DEADB) by TEAM	19:46			
MISSED FT by SALLAH,MAWDO	19:46			
REBOUND (OFF) by SNEED,XAVIER	19:46			
GOOD! TIPIN by SNEED,XAVIER [PNT]	19:45	40-24	H 16	
FOUL by SALLAH,MAWDO	19:28			
	19:12			TURNOVER by ODIASE,NORENSE
MISSED 3PTR by DIARRA,CARTIER	18:48			
REBOUND (OFF) by WADE,DEAN	18:48			
TURNOVER by TEAM	18:41			
	18:41			SUB IN: HAMILTON IV,TOMMY
	18:41			SUB OUT: ODIASE,NORENSE
	18:21			MISSED JUMPER by EVANS,KEENAN
	18:21			REBOUND (OFF) by HAMILTON IV,TOMMY
	18:12			MISSED 3PTR by EVANS,KEENAN
BLOCK by SALLAH,MAWDO	18:12			
REBOUND (DEF) by DIARRA,CARTIER	18:10			
GOOD! LAYUP by WADE,DEAN [PNT]	17:56	40-26	H 14	
	17:48			TIMEOUT 30SEC
	17:48			SUB IN: SMITH,ZHAIRE
	17:48			SUB IN: CULVER,JARRETT
	17:48			SUB OUT: GRAY,JUSTIN
	17:48			SUB OUT: STEVENSON,NIEM
	17:24			MISSED JUMPER by SMITH,ZHAIRE
REBOUND (DEF) by SALLAH,MAWDO	17:24			
GOOD! LAYUP by WADE,DEAN [PNT]	16:54	40-28	H 12	
ASSIST by DIARRA,CARTIER	16:54			
	16:31	42-28	H 14	GOOD! LAYUP by SMITH,ZACH [PNT]
	16:31			ASSIST by EVANS,KEENAN
GOOD! LAYUP by SALLAH,MAWDO [PNT]	16:15	42-30	H 12	
ASSIST by SNEED,XAVIER	16:15			
	15:45			FOUL by HAMILTON IV,TOMMY
	15:45			TURNOVER by HAMILTON IV,TOMMY
TIMEOUT MEDIA	15:45			
	15:45			SUB IN: ODIASE,NORENSE
	15:45			SUB OUT: HAMILTON IV,TOMMY
	15:30			FOUL by SMITH,ZACH
GOOD! LAYUP by DIARRA,CARTIER [PNT]	15:22	42-32	H 10	
	14:56			SUB IN: STEVENSON,NIEM
	14:56			SUB IN: GRAY,JUSTIN
	14:56			SUB OUT: SMITH,ZHAIRE
	14:56			SUB OUT: ODIASE,NORENSE
	14:48			MISSED JUMPER by CULVER,JARRETT
	14:48			REBOUND (OFF) by SMITH,ZACH
FOUL by SALLAH,MAWDO	14:47			
SUB IN: WAINRIGHT,AMAAD	14:47			
SUB OUT: SALLAH,MAWDO	14:47			
	14:47			SUB IN: FRANCIS,BRANDONE
	14:47			SUB OUT: SMITH,ZACH
	14:35			TURNOVER by CULVER,JARRETT
STEAL by BROWN,BARRY	14:34			
GOOD! LAYUP by BROWN,BARRY [FB/PNT]	14:31	42-34	H 8	
	14:31			FOUL by FRANCIS,BRANDONE
GOOD! FT by BROWN,BARRY	14:31	42-35	H 7	
	14:31			SUB IN: SMITH,ZHAIRE
	14:31			SUB OUT: CULVER,JARRETT
FOUL by SNEED,XAVIER	14:08			
	14:08	43-35	H 8	GOOD! FT by STEVENSON,NIEM
	14:08			MISSED FT by STEVENSON,NIEM
REBOUND (DEF) by SNEED,XAVIER	14:08			
	14:08			SUB IN: MORETTI,DAVIDE
	14:08			SUB OUT: EVANS,KEENAN
FOUL by WADE,DEAN	13:49			
TURNOVER by WADE,DEAN	13:49			
	13:49			SUB IN: SMITH,ZACH
	13:49			SUB OUT: FRANCIS,BRANDONE

VISITORS: Kansas State	Time	Score	Margin	HOME: Texas Tech
	13:30	46-35	H 11	GOOD! 3PTR by MORETTI,DAVIDE
	13:30			ASSIST by GRAY,JUSTIN
GOOD! LAYUP by WADE,DEAN [PNT]	13:04	46-37	H 9	
	13:04			FOUL by SMITH,ZHAIRE
MISSED FT by WADE,DEAN	13:04			
	13:04			REBOUND (DEF) by STEVENSON,NIEM
	13:04			SUB IN: FRANCIS,BRANDONE
	13:04			SUB OUT: SMITH,ZACH
	12:44	48-37	H 11	GOOD! JUMPER by FRANCIS,BRANDONE
GOOD! LAYUP by WADE,DEAN [PNT]	12:25	48-39	H 9	
FOUL by WADE,DEAN	12:08			
SUB IN: SALLAH,MAWDO	12:08			
SUB OUT: WADE,DEAN	12:08			
	12:08			SUB IN: EVANS,KEENAN
	12:08			SUB IN: CULVER,JARRETT
	12:08			SUB OUT: STEVENSON,NIEM
	12:08			SUB OUT: SMITH,ZHAIRE
FOUL by WAINRIGHT,AMAAD	12:01			
	11:50			TURNOVER by MORETTI,DAVIDE
STEAL by SALLAH,MAWDO	11:49			
	11:43			FOUL by FRANCIS,BRANDONE
TIMEOUT MEDIA	11:43			
GOOD! FT by DIARRA,CARTIER	11:43	48-40	H 8	
MISSED FT by DIARRA,CARTIER	11:43			
	11:43			REBOUND (DEF) by CULVER,JARRETT
	11:30	50-40	H 10	GOOD! LAYUP by EVANS,KEENAN [PNT]
TURNOVER by SNEED,XAVIER	11:20			
	11:19			STEAL by FRANCIS,BRANDONE
	11:16	52-40	H 12	GOOD! LAYUP by EVANS,KEENAN [FB/PNT]
	11:16			ASSIST by FRANCIS,BRANDONE
TURNOVER by SNEED,XAVIER	10:55			
	10:53			STEAL by FRANCIS,BRANDONE
FOUL by WAINRIGHT,AMAAD	10:52			
TIMEOUT 30SEC	10:52			
	10:52	53-40	H 13	GOOD! FT by FRANCIS,BRANDONE
	10:52	54-40	H 14	GOOD! FT by FRANCIS,BRANDONE
	10:52			SUB IN: SMITH,ZHAIRE
	10:52			SUB OUT: MORETTI,DAVIDE
	10:36			FOUL by CULVER,JARRETT
GOOD! FT by BROWN,BARRY	10:36	54-41	H 13	
GOOD! FT by BROWN,BARRY	10:36	54-42	H 12	
	10:26	57-42	H 15	GOOD! 3PTR by SMITH,ZHAIRE
	10:26			ASSIST by EVANS,KEENAN
MISSED 3PTR by BROWN,BARRY	10:01			
REBOUND (OFF) by TEAM	10:01			
TURNOVER by DIARRA,CARTIER	09:41			
	09:40			STEAL by EVANS,KEENAN
FOUL by SALLAH,MAWDO	09:39			
	09:39	58-42	H 16	GOOD! FT by EVANS,KEENAN
	09:39	59-42	H 17	GOOD! FT by EVANS,KEENAN
SUB IN: WADE,DEAN	09:38			
SUB OUT: SALLAH,MAWDO	09:38			
	09:38			SUB IN: STEVENSON,NIEM
	09:38			SUB IN: ODIASE,NORENSE
	09:38			SUB OUT: CULVER,JARRETT
	09:38			SUB OUT: GRAY,JUSTIN
GOOD! LAYUP by BROWN,BARRY [PNT]	09:24	59-44	H 15	
ASSIST by WADE,DEAN	09:24			
	09:01			TURNOVER by SMITH,ZHAIRE
STEAL by SNEED,XAVIER	09:00			
	09:00			FOUL by EVANS,KEENAN
GOOD! FT by SNEED,XAVIER	09:00	59-45	H 14	
MISSED FT by SNEED,XAVIER	09:00			
	09:00			REBOUND (DEF) by STEVENSON,NIEM
SUB IN: SALLAH,MAWDO	09:00			
SUB OUT: WADE,DEAN	09:00			
	09:00			SUB IN: MORETTI,DAVIDE
	09:00			SUB IN: CULVER,JARRETT
	09:00			SUB OUT: EVANS,KEENAN
	09:00			SUB OUT: FRANCIS,BRANDONE
	08:37			MISSED 3PTR by STEVENSON,NIEM
	08:37			REBOUND (DEADB) by TEAM
	08:35			FOUL by ODIASE,NORENSE
MISSED FT by SALLAH,MAWDO	08:35			
	08:35			REBOUND (DEF) by ODIASE,NORENSE

VISITORS: Kansas State	Time	Score	Margin	HOME: Texas Tech
FOUL by SNEED,XAVIER	08:20			
	08:20	60-45	H 15	GOOD! FT by SMITH,ZHAIRE
	08:20	61-45	H 16	GOOD! FT by SMITH,ZHAIRE
SUB IN: PATRICK,BRIAN	08:20			
SUB IN: WADE,DEAN	08:20			
SUB OUT: SNEED,XAVIER	08:20			
SUB OUT: SALLAH,MAWDO	08:20			
	08:20			SUB IN: GRAY,JUSTIN
	08:20			SUB OUT: ODIASE,NORENSE
TURNOVER by WADE,DEAN	07:59			
	07:58			STEAL by SMITH,ZHAIRE
	07:40			MISSED 3PTR by CULVER,JARRETT
REBOUND (DEF) by WADE,DEAN	07:40			
TURNOVER by DIARRA,CARTIER	07:11			
	07:10			STEAL by CULVER,JARRETT
FOUL by DIARRA,CARTIER	07:02			
	07:02			TIMEOUT MEDIA
	07:02	62-45	H 17	GOOD! FT by CULVER,JARRETT
	07:02			MISSED FT by CULVER,JARRETT
REBOUND (DEF) by WAINRIGHT,AMAAD	07:02			
SUB IN: SNEED,XAVIER	07:02			
SUB OUT: DIARRA,CARTIER	07:02			
	07:02			SUB IN: EVANS,KEENAN
	07:02			SUB OUT: MORETTI,DAVIDE
MISSED 3PTR by SNEED,XAVIER	06:45			
	06:45			REBOUND (DEF) by SMITH,ZHAIRE
FOUL by WAINRIGHT,AMAAD	06:25			
	06:25	63-45	H 18	GOOD! FT by EVANS,KEENAN
	06:25	64-45	H 19	GOOD! FT by EVANS,KEENAN
GOOD! 3PTR by BROWN,BARRY	06:06	64-48	H 16	
ASSIST by SNEED,XAVIER	06:06			
FOUL by BROWN,BARRY	05:47			
	05:47	65-48	H 17	GOOD! FT by EVANS,KEENAN
	05:47	66-48	H 18	GOOD! FT by EVANS,KEENAN
TURNOVER by BROWN,BARRY	05:35			
	05:33			STEAL by GRAY,JUSTIN
	05:22			MISSED 3PTR by CULVER,JARRETT
REBOUND (DEF) by WAINRIGHT,AMAAD	05:22			
	04:57			FOUL by CULVER,JARRETT
GOOD! FT by BROWN,BARRY	04:57	66-49	H 17	
GOOD! FT by BROWN,BARRY	04:57	66-50	H 16	
SUB IN: SALLAH,MAWDO	04:57			
SUB OUT: WADE,DEAN	04:57			
	04:57			SUB IN: FRANCIS,BRANDONE
	04:57			SUB OUT: CULVER,JARRETT
FOUL by SNEED,XAVIER	04:40			
	04:40	67-50	H 17	GOOD! FT by EVANS,KEENAN
	04:40	68-50	H 18	GOOD! FT by EVANS,KEENAN
SUB IN: WADE,DEAN	04:40			
SUB OUT: SALLAH,MAWDO	04:40			
MISSED LAYUP by WADE,DEAN	04:20			
REBOUND (OFF) by WADE,DEAN	04:20			
MISSED LAYUP by WADE,DEAN	04:17			
REBOUND (OFF) by WADE,DEAN	04:17			
GOOD! LAYUP by WADE,DEAN [PNT]	04:14	68-52	H 16	
	03:56	70-52	H 18	GOOD! LAYUP by EVANS,KEENAN [PNT]
	03:56			ASSIST by GRAY,JUSTIN
	03:36			FOUL by EVANS,KEENAN
TIMEOUT MEDIA	03:36			
GOOD! FT by BROWN,BARRY	03:36	70-53	H 17	
GOOD! FT by BROWN,BARRY	03:36	70-54	H 16	
SUB IN: DIARRA,CARTIER	03:36			
SUB OUT: PATRICK,BRIAN	03:36			
SUB OUT: WADE,DEAN	03:36			
	03:36			SUB IN: ODIASE,NORENSE
	03:36			SUB OUT: STEVENSON,NIEM
	03:28			TURNOVER by FRANCIS,BRANDONE
STEAL by SNEED,XAVIER	03:27			
SUB IN: WADE,DEAN	03:04			
SUB OUT: MAWIEN,MAKOL	03:04			
	03:04			SUB IN: MORETTI,DAVIDE
	03:04			SUB OUT: FRANCIS,BRANDONE
MISSED 3PTR by BROWN,BARRY	03:03			
	03:03			REBOUND (DEF) by EVANS,KEENAN
	02:41			TURNOVER by MORETTI,DAVIDE

VISITORS: Kansas State	Time	Score	Margin	HOME: Texas Tech
STEAL by SNEED,XAVIER	02:40			
MISSED LAYUP by SNEED,XAVIER	02:36			
REBOUND (OFF) by WADE,DEAN	02:36			
GOOD! DUNK by WADE,DEAN [PNT]	02:33	70-56	H 14	
FOUL by WADE,DEAN	02:20			
	02:20	71-56	H 15	GOOD! FT by EVANS,KEENAN
	02:20	72-56	H 16	GOOD! FT by EVANS,KEENAN
SUB IN: MAWIEN,MAKOL	02:20			
SUB IN: PATRICK,BRIAN	02:20			
SUB OUT: WADE,DEAN	02:20			
SUB OUT: WAINRIGHT,AMAAD	02:20			
	01:57			FOUL by MORETTI,DAVIDE
GOOD! FT by DIARRA,CARTIER	01:57	72-57	H 15	
GOOD! FT by DIARRA,CARTIER	01:57	72-58	H 14	
SUB IN: WAINRIGHT,AMAAD	01:57			
SUB OUT: PATRICK,BRIAN	01:57			
	01:32			TURNOVER by MORETTI,DAVIDE
STEAL by SNEED,XAVIER	01:28			
MISSED LAYUP by DIARRA,CARTIER	01:24			
	01:24			REBOUND (DEF) by SMITH,ZHAIRE
	01:04			MISSED 3PTR by EVANS,KEENAN
	01:04			REBOUND (OFF) by SMITH,ZHAIRE
	01:00			MISSED TIPIN by SMITH,ZHAIRE
	01:00			REBOUND (OFF) by ODIASE,NORENSE
	00:56			MISSED JUMPER by SMITH,ZHAIRE
REBOUND (DEF) by MAWIEN,MAKOL	00:56			
MISSED JUMPER by BROWN,BARRY	00:39			
	00:39			REBOUND (DEF) by SMITH,ZHAIRE
	00:37	74-58	H 16	GOOD! DUNK by SMITH,ZHAIRE [FB/PNT]
MISSED 3PTR by BROWN,BARRY	00:29			
	00:29			REBOUND (DEF) by SMITH,ZHAIRE

Kansas State 58, Texas Tech 74

Period 2-only	In Paint	Off T/O	2nd Chance	Fast Break	Bench	
KS	22	9	6	2	7	Score tied - 0 times
TTU	10	10	0	4	15	Lead changed - 0 times

**Kansas State vs Texas Tech**  
**1/6/2018; 3:05 p.m. at Lubbock, TX (United Supermarkets Arena)**  
**Scoring/Runs Reference**



**Period 1**

Kansas State	VRun	Score	Margin	HRun	Texas Tech
		0-2	2		ODIASE DUNK [P] [F] - 18:09
		0-4	4	NaN-0	EVANS JUMPER - 17:41
		0-6	6	NaN-0	HAMILTON IV JUMPER - 16:08
15:56 - STOKES JUMPER	-	2-6	4		
		2-9	7		FRANCIS 3PTR - 15:26
		2-12	10	6-0	CULVER 3PTR - 14:20
		2-13	11	7-0	STEVENSON FT - 13:31
		2-15	13	9-0	SMITH DUNK [P] - 12:58
12:45 - WADE LAYUP [P]	-	4-15	11		
		4-17	13		CULVER DUNK [P] [F] - 11:41
		4-20	16	5-0	MORETTI 3PTR - 10:23
09:51 - BROWN LAYUP [P]	-	6-20	14		
		6-22	16		SMITH LAYUP [P] - 09:34
		6-23	17	3-0	EVANS FT - 07:53
		6-24	18	4-0	EVANS FT - 07:53
07:10 - DIARRA 3PTR	-	9-24	15		
		9-26	17		SMITH DUNK [P] - 06:39
06:17 - MAWIEN LAYUP [P]	-	11-26	15		
		11-28	17		EVANS JUMPER - 05:53
		11-30	19	4-0	CULVER LAYUP [P] [F] - 05:31
		11-32	21	6-0	SMITH LAYUP [P] - 04:55
04:41 - BROWN 3PTR	-	14-32	18		
04:06 - BROWN FT	4-0	15-32	17		
		15-35	20		GRAY 3PTR - 03:44
03:13 - BROWN FT	-	16-35	19		
		16-36	20		EVANS FT - 02:16
02:00 - DIARRA 3PTR	-	19-36	17		
		19-38	19		EVANS JUMPER - 01:29
01:03 - BROWN FT	-	20-38	18		
		20-40	20		EVANS LAYUP [P] - 00:50
00:27 - BROWN JUMPER [P]	-	22-40	18		

**Kansas State vs Texas Tech**  
**1/6/2018; 3:05 p.m. at Lubbock, TX (United Supermarkets Arena)**  
**Scoring/Runs Reference**

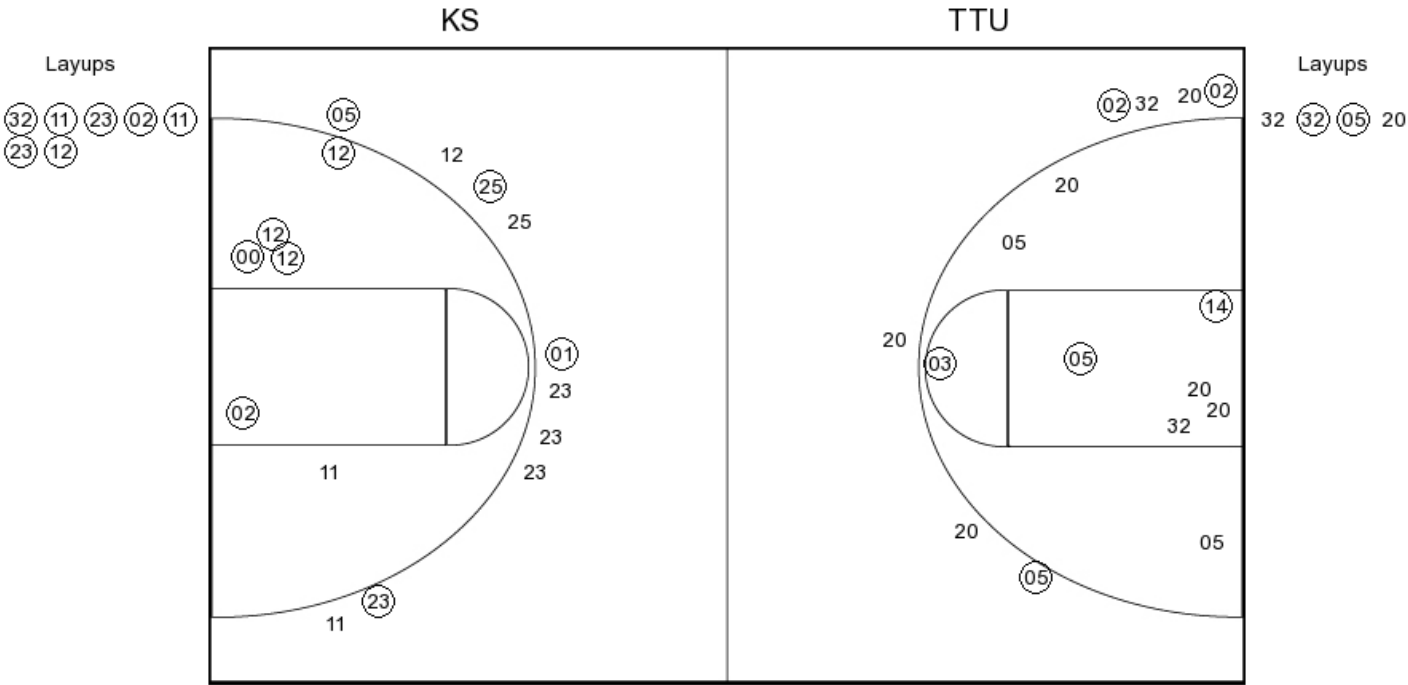


**Period 2**

Kansas State	VRun	Score	Margin	HRun	Texas Tech
19:45 - SNEED TIPIN [P]	-	24-40	16		
17:56 - WADE LAYUP [P]	NaN-0	26-40	14		
16:54 - WADE LAYUP [P]	NaN-0	28-40	12		
		28-42	14		SMITH LAYUP [P] - 16:31
16:15 - SALLAH LAYUP [P]	-	30-42	12		
15:22 - DIARRA LAYUP [P]	4-0	32-42	10		
14:31 - BROWN LAYUP [P] [F]	6-0	34-42	8		
14:31 - BROWN FT	7-0	35-42	7		
		35-43	8		STEVENSON FT - 14:08
		35-46	11	4-0	MORETTI 3PTR - 13:30
13:04 - WADE LAYUP [P]	-	37-46	9		
		37-48	11		FRANCIS JUMPER - 12:44
12:25 - WADE LAYUP [P]	-	39-48	9		
11:43 - DIARRA FT	3-0	40-48	8		
		40-50	10		EVANS LAYUP [P] - 11:30
		40-52	12	4-0	EVANS LAYUP [P] [F] - 11:16
		40-53	13	5-0	FRANCIS FT - 10:52
		40-54	14	6-0	FRANCIS FT - 10:52
10:36 - BROWN FT	-	41-54	13		
10:36 - BROWN FT	2-0	42-54	12		
		42-57	15		SMITH 3PTR - 10:26
		42-58	16	4-0	EVANS FT - 09:39
		42-59	17	5-0	EVANS FT - 09:39
09:24 - BROWN LAYUP [P]	-	44-59	15		
09:00 - SNEED FT	3-0	45-59	14		
		45-60	15		SMITH FT - 08:20
		45-61	16	2-0	SMITH FT - 08:20
		45-62	17	3-0	CULVER FT - 07:02
		45-63	18	4-0	EVANS FT - 06:25
		45-64	19	5-0	EVANS FT - 06:25
06:06 - BROWN 3PTR	-	48-64	16		
		48-65	17		EVANS FT - 05:47
		48-66	18	2-0	EVANS FT - 05:47
04:57 - BROWN FT	-	49-66	17		
04:57 - BROWN FT	2-0	50-66	16		
		50-67	17		EVANS FT - 04:40
		50-68	18	2-0	EVANS FT - 04:40
04:14 - WADE LAYUP [P]	-	52-68	16		
		52-70	18		EVANS LAYUP [P] - 03:56
03:36 - BROWN FT	-	53-70	17		
03:36 - BROWN FT	2-0	54-70	16		
02:33 - WADE DUNK [P]	4-0	56-70	14		
		56-71	15		EVANS FT - 02:20
		56-72	16	2-0	EVANS FT - 02:20
01:57 - DIARRA FT	-	57-72	15		
01:57 - DIARRA FT	2-0	58-72	14		
		58-74	16		SMITH DUNK [P] [F] - 00:37



PERIOD 1



**KS PERIOD 1**

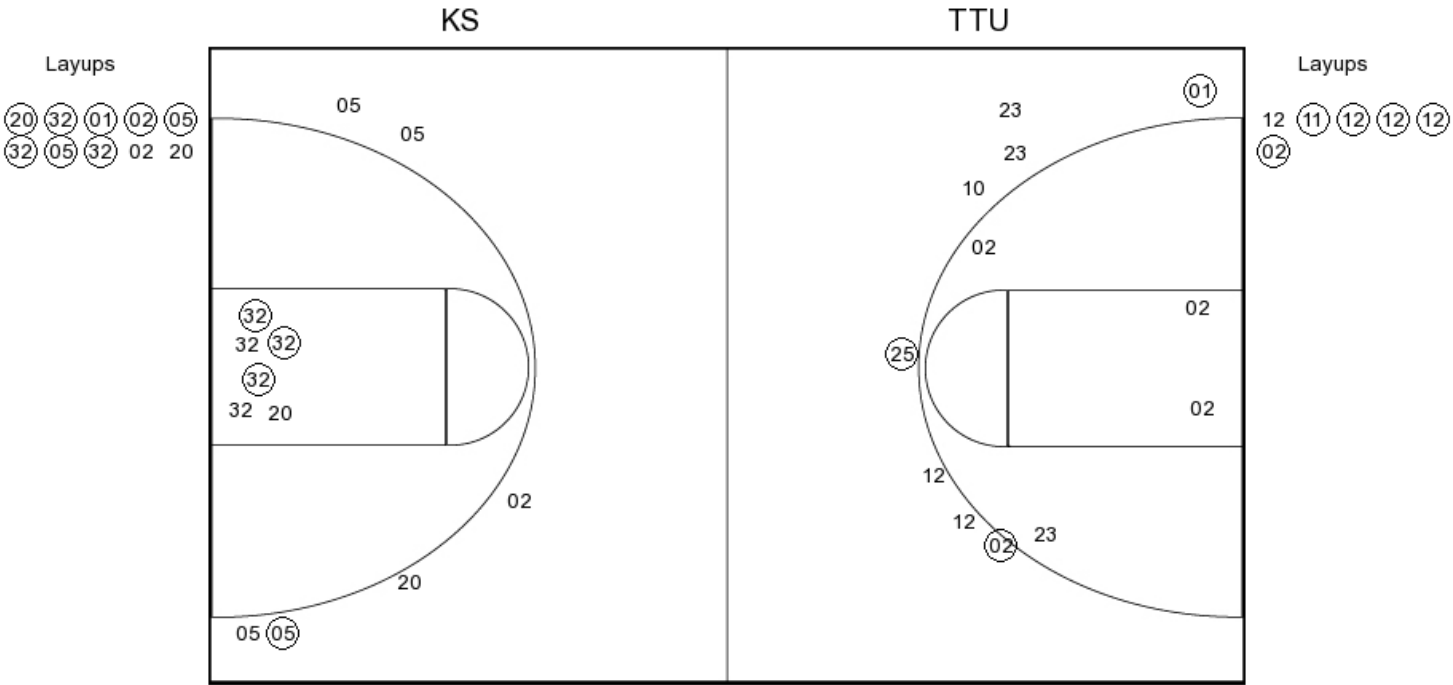
FG Made	8
FG Attempted	20
3PFG Made	3
3PFG Attempted	7

**TTU PERIOD 1**

FG Made	16
FG Attempted	23
3PFG Made	4
3PFG Attempted	10



PERIOD 2



**KS PERIOD 2**

FG Made	12
FG Attempted	22
3PFG Made	1
3PFG Attempted	6

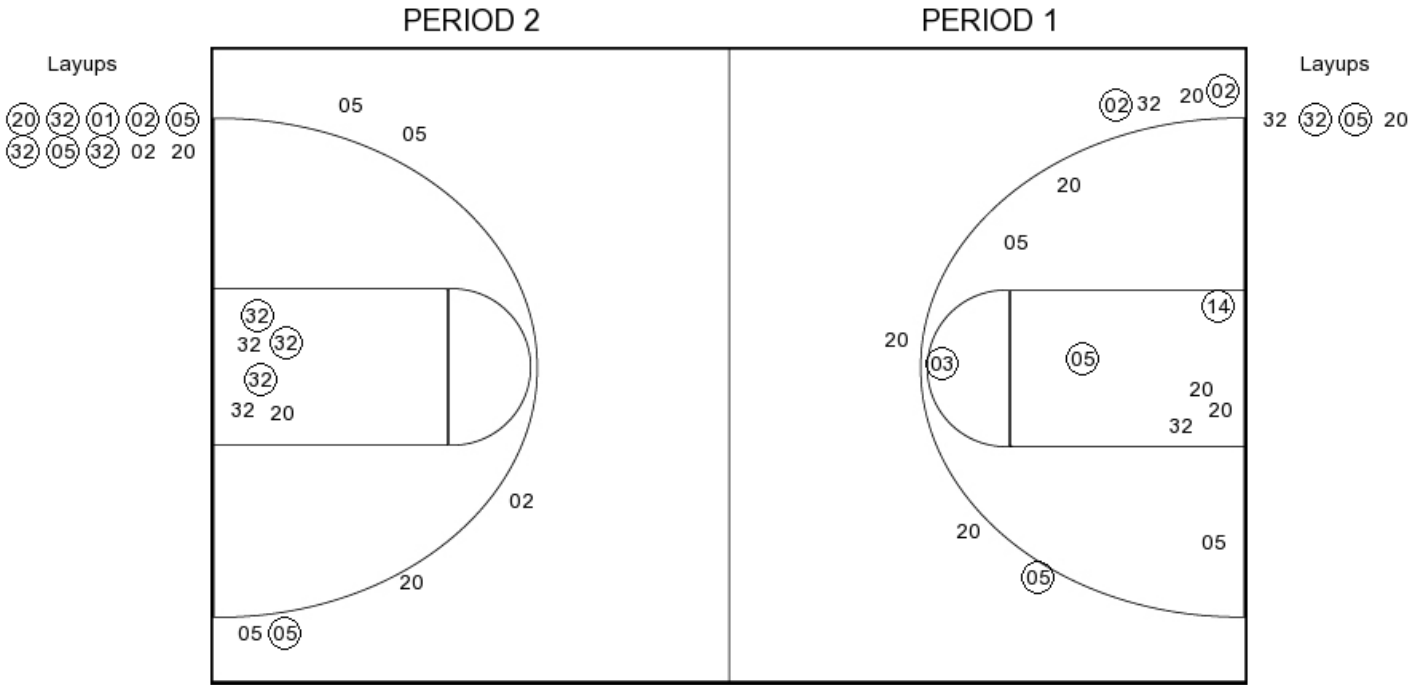
**TTU PERIOD 2**

FG Made	8
FG Attempted	18
3PFG Made	2
3PFG Attempted	7





Kansas State



**KS PERIOD 1**

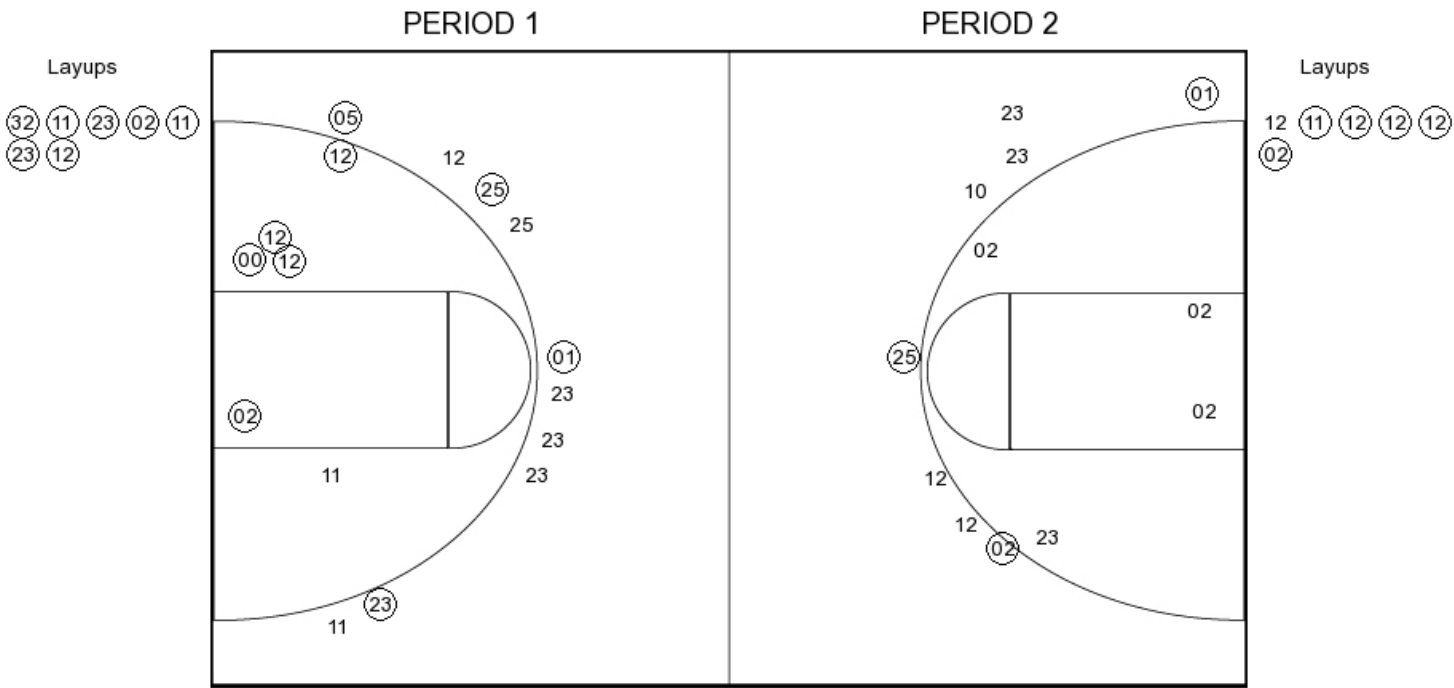
FG Made	8
FG Attempted	20
3PFG Made	3
3PFG Attempted	7

**KS PERIOD 2**

FG Made	12
FG Attempted	22
3PFG Made	1
3PFG Attempted	6



Texas Tech



TTU PERIOD 1

FG Made	16
FG Attempted	23
3PFG Made	4
3PFG Attempted	10

TTU PERIOD 2

FG Made	8
FG Attempted	18
3PFG Made	2
3PFG Attempted	7