

FINAL SCORE

Baylor

21-1, 11-0 Big12

90

Texas Tech

7-15, 1-10 Big12

44

February 03, 2018 • United Supermarkets Arena (Lubbock, TX)

FINAL STATISTICS

Official Basketball Box Score -- Game Totals -- Final Statistics
Baylor vs Texas Tech
2/3/2018 2 p.m. at United Supermarkets Arena (Lubbock, TX)

Baylor 90 - 21-1, 11-0 Big12

##	Player		Total		3-Ptr		FT-FTA		Rebounds			PF	TP	A	TO	Blk	Stl	Min
			FG-FGA		FG-FGA		FT-FTA		Off	Def	Tot							
01	COHEN,DEKEIYA	f	6-11		0-0		7-7		4	3	7	1	19	1	4	1	1	33
04	WALLACE,KRISTY	g	7-13		2-5		0-0		0	11	11	2	16	6	2	0	1	35
15	COX,LAUREN	f	5-13		0-1		2-2		3	4	7	0	12	2	1	1	2	26
20	LANDRUM,JUICY	g	8-10		4-6		0-0		0	9	9	2	20	4	0	0	1	33
21	BROWN,KALANI	c	5-10		0-0		1-1		0	7	7	3	11	0	2	0	0	27
11	MORRIS,ALEXIS		2-6		1-2		0-0		1	6	7	2	5	2	5	0	1	29
12	URSIN,MOON		2-5		1-1		2-4		1	2	3	1	7	0	1	0	0	17
TEAM									1	2	3	0		0				
TOTALS			35-68		8-15		12-14		10	44	54	11	90	15	15	2	6	200

Deadball Rebounds: 1,0

FG %	1st Half:	16-29	55.2%	2nd Half:	19-39	48.7%	Game:	35-68	51.5%			
	1st Qtr	7-15	46.7%	2nd Qtr	9-14	64.3%	3rd Qtr	13-24	54.2%	4th Qtr	6-15	40.0%
3FG %	1st Half:	3-4	75.0%	2nd Half:	5-11	45.5%	Game:	8-15	53.3%			
	1st Qtr	2-2	100.0%	2nd Qtr	1-2	50.0%	3rd Qtr	2-4	50.0%	4th Qtr	3-7	42.9%
FT %	1st Half:	7-7	100.0%	2nd Half:	5-7	71.4%	Game:	12-14	85.7%			
	1st Qtr	5-5	100.0%	2nd Qtr	2-2	100.0%	3rd Qtr	1-2	50.0%	4th Qtr	4-5	80.0%

Texas Tech 44 - 7-15, 1-10 Big12

##	Player		Total		3-Ptr		FT-FTA		Rebounds			PF	TP	A	TO	Blk	Stl	Min
			FG-FGA		FG-FGA		FT-FTA		Off	Def	Tot							
10	BRIGHT,GRAYSON	g	3-4		2-3		0-2		0	1	1	2	8	2	3	0	2	32
12	TERRY,JADA	c	5-12		0-0		0-0		2	4	6	3	10	0	3	0	1	27
20	BREWER,BRITTANY	f	2-16		0-0		0-0		0	4	4	2	4	2	3	2	0	27
23	HAYDEN,ANGEL	g	1-6		0-0		0-0		1	5	6	2	2	0	0	0	1	36
30	SANDERS,ZURI	f	2-8		0-2		0-2		5	4	9	1	4	2	2	0	1	27
00	BLAIRE,BRIELLE		3-8		1-2		0-0		1	3	4	1	7	1	1	0	0	13
01	DEGRATE,ERIN		2-6		0-0		3-8		1	1	2	0	7	1	3	0	0	17
03	WHILBY,LYNDSEY		0-3		0-3		0-0		0	0	0	2	0	0	0	0	0	7
14	HARRISON,LAUREN		1-2		0-0		0-0		1	1	2	0	2	0	0	0	0	2
24	BRUEDIGAM,HALEY		0-1		0-0		0-0		0	0	0	0	0	2	0	0	2	5
32	OLABODE,DAYO		0-4		0-4		0-0		0	1	1	1	0	0	1	0	0	7
TEAM									1	0	1	0		0				
TOTALS			19-70		3-14		3-12		12	24	36	14	44	10	16	2	7	200

Deadball Rebounds: 4,0

FG %	1st Half:	11-36	30.6%	2nd Half:	8-34	23.5%	Game:	19-70	27.1%	4th Qtr	5-16	31.3%
	1st Qtr	3-18	16.7%	2nd Qtr	8-18	44.4%	3rd Qtr	3-18	16.7%			
3FG %	1st Half:	1-3	33.3%	2nd Half:	2-11	18.2%	Game:	3-14	21.4%	4th Qtr	2-7	28.6%
	1st Qtr	0-1	00.0%	2nd Qtr	1-2	50.0%	3rd Qtr	0-4	00.0%			
FT %	1st Half:	0-2	00.0%	2nd Half:	3-10	30.0%	Game:	3-12	25.0%	4th Qtr	2-6	33.3%
	1st Qtr	0-2	00.0%	2nd Qtr	0-0	0%	3rd Qtr	1-4	25.0%			

Officials: Dee Kantner, Mark Zentz, Amy Bonner
 Technical Fouls: Baylor- None. Texas Tech- None.
 Attendance: 3207

Score by periods	1st	2nd	3rd	4th	Total
Baylor	21	21	29	19	90
Texas Tech	6	17	7	14	44

Points	In Paint	Off T/O	2nd Chance	Fast Break	Bench
BU	32	22	14	8	12
TTU	22	5	10	0	16

Last FG - BU 4th-02:13, TTU 4th-01:23.
 Largest lead - Baylor by 52 4th-04:07; Texas Tech by 2 1st-09:47
 BU led for 36:22. TTU led for 2:55. Game was tied for 0:26.

Score tied - 2 times; Lead changed - 3 times

Official Basketball Box Score -- Game Totals -- First Half Statistics
Baylor vs Texas Tech
2/3/2018 2 p.m. at United Supermarkets Arena (Lubbock, TX)

Baylor 42 • 21-1, 11-0 Big12

##	Player		Total		3-Ptr		FT-FTA		Rebounds			PF	TP	A	TO	Blk	Stl	Min
			FG	FGA	FG	FGA	FT	FTA	Off	Def	Tot							
01	COHEN,DEKEIYA	f	2	3	0	0	4	4	1	2	3	0	8	1	2	0	1	13
04	WALLACE,KRISTY	g	3	6	1	2	0	0	0	7	7	1	7	3	2	0	0	17
15	COX,LAUREN	f	2	5	0	0	2	2	0	2	2	0	6	2	1	1	2	18
20	LANDRUM,JUICY	g	4	4	2	2	0	0	0	2	2	1	10	0	0	0	1	13
21	BROWN,KALANI	c	5	8	0	0	1	1	0	4	4	1	11	0	2	0	0	20
11	MORRIS,ALEXIS		0	2	0	0	0	0	0	1	1	1	0	2	2	0	0	15
12	URSIN,MOON		0	1	0	0	0	0	0	0	0	1	0	0	0	0	0	4
TEAM									0	0	0	0		0				
Totals			16	29	3	4	7	7	1	18	19	5	42	8	9	1	4	100
FG %	1st Qtr	7-15	46.7%	2nd Qtr	9-14	64.3%	Half:	16-29	55.2%									
3FG %	1st Qtr	2-2	100.0%	2nd Qtr	1-2	50.0%	Half:	3-4	75.0%									
FT %	1st Qtr	5-5	100.0%	2nd Qtr	2-2	100.0%	Half:	7-7	100.0%									

Texas Tech 23 • 7-15, 1-10 Big12

##	Player		Total		3-Ptr		FT-FTA		Rebounds			PF	TP	A	TO	Blk	Stl	Min
			FG	FGA	FG	FGA	FT	FTA	Off	Def	Tot							
10	BRIGHT,GRAYSON	g	0	0	0	0	0	2	0	0	0	0	0	2	2	0	2	14
12	TERRY,JADA	c	3	8	0	0	0	0	2	2	4	1	6	0	3	0	1	15
20	BREWER,BRITTANY	f	2	10	0	0	0	0	0	2	2	2	4	1	2	2	0	13
23	HAYDEN,ANGEL	g	0	3	0	0	0	0	1	2	3	0	0	0	0	0	0	19
30	SANDERS,ZURI	f	2	4	0	1	0	0	4	4	8	1	4	2	2	0	1	17
00	BLAIRE,BRIELLE		3	5	1	1	0	0	0	2	2	0	7	1	0	0	0	8
01	DEGRATE,ERIN		1	5	0	0	0	0	0	0	0	0	2	0	2	0	0	5
03	WHILBY,LYNDSEY		0	0	0	0	0	0	0	0	0	1	0	0	0	0	0	5
14	HARRISON,LAUREN		0	0	0	0	0	0	0	0	0	0	0	0	0	0	0	0
24	BRUEDIGAM,HALEY		0	0	0	0	0	0	0	0	0	0	0	0	0	0	0	1
32	OLABODE,DAYO		0	1	0	1	0	0	0	0	0	1	0	0	1	0	0	3
TEAM									1	0	1	0		0				
Totals			11	36	1	3	0	2	8	12	20	6	23	6	12	2	4	100
FG %	1st Qtr	3-18	16.7%	2nd Qtr	8-18	44.4%	Half:	11-36	30.6%									
3FG %	1st Qtr	0-1	00.0%	2nd Qtr	1-2	50.0%	Half:	1-3	33.3%									
FT %	1st Qtr	0-2	00.0%	2nd Qtr	0-0	0%	Half:	0-2	00.0%									

Officials: Dee Kantner, Mark Zentz, Amy Bonner
Technical Fouls: Baylor- None. Texas Tech- None.

Score by periods	1st	2nd	3rd	4th	Total
Baylor	21	21	29	19	90
Texas Tech	6	17	7	14	44

Points	In	Off	2nd	Fast	Bench
	Paint	T/O	Chance	Break	
BU	16	16	2	2	0
	12	5	6	0	9

Last FG - BU 2nd-00:30, TTU 2nd-00:11.
BU led for 16:22. TTU led for 2:55. Game was tied for 0:26.

Score tied - 2 times
Lead changed - 3 times

Baylor vs Texas Tech
2/3/2018; 2 p.m. at United Supermarkets Arena (Lubbock, TX)
Period 1 Play-By-Play

VISITORS: Baylor	Time	Score	Margin	HOME: Texas Tech
	09:47	2-0	H 2	GOOD! JUMPER by BREWER,BRITTANY [PNT]
TURNOVER by BROWN,KALANI	09:34			
	09:33			STEAL by BRIGHT,GRAYSON
	09:28			TURNOVER by BRIGHT,GRAYSON
STEAL by COHEN,DEKEIYA	09:26			
MISSED JUMPER by COX,LAUREN	09:21			
	09:21			BLOCK by BREWER,BRITTANY
	09:19			REBOUND (DEF) by TERRY,JADA
	09:06			MISSED JUMPER by BREWER,BRITTANY
REBOUND (DEF) by LANDRUM,JUICY	09:06			
MISSED JUMPER by BROWN,KALANI	08:57			
	08:57			REBOUND (DEF) by SANDERS,ZURI
	08:36			TURNOVER by TERRY,JADA
SUB IN: MORRIS,ALEXIS	08:36			
SUB OUT: COX,LAUREN	08:36			
GOOD! JUMPER by BROWN,KALANI	08:25	2-2	T	
	08:25			FOUL by BREWER,BRITTANY
	08:25			ASSIST by BREWER,BRITTANY
GOOD! FT by BROWN,KALANI	08:25	2-3	V 1	
	08:09			MISSED JUMPER by TERRY,JADA
	08:09			REBOUND (OFF) by SANDERS,ZURI
FOUL by BROWN,KALANI	07:59			
	07:59			MISSED FT by BRIGHT,GRAYSON
	07:59			REBOUND (DEADB) by TEAM
	07:59			MISSED FT by BRIGHT,GRAYSON
REBOUND (DEF) by WALLACE,KRISTY	07:59			
TURNOVER by WALLACE,KRISTY	07:54			
	07:38			MISSED JUMPER by BREWER,BRITTANY
	07:38			REBOUND (OFF) by SANDERS,ZURI
	07:35			MISSED JUMPER by SANDERS,ZURI
REBOUND (DEF) by COHEN,DEKEIYA	07:35			
MISSED JUMPER by BROWN,KALANI	07:23			
	07:23			BLOCK by BREWER,BRITTANY
	07:21			REBOUND (DEF) by BREWER,BRITTANY
	07:11			MISSED JUMPER by HAYDEN,ANGEL
	07:11			REBOUND (OFF) by TERRY,JADA
	07:09	4-3	H 1	GOOD! JUMPER by TERRY,JADA [PNT]
TURNOVER by COHEN,DEKEIYA	07:00			
	06:58			STEAL by SANDERS,ZURI
	06:52			MISSED JUMPER by HAYDEN,ANGEL
REBOUND (DEF) by BROWN,KALANI	06:52			
TURNOVER by MORRIS,ALEXIS	06:44			
FOUL by MORRIS,ALEXIS	06:44			
SUB IN: COX,LAUREN	06:44			
SUB OUT: LANDRUM,JUICY	06:44			
	06:22			TURNOVER by SANDERS,ZURI
STEAL by COX,LAUREN	06:21			
MISSED JUMPER by WALLACE,KRISTY	06:18			
	06:18			REBOUND (DEF) by SANDERS,ZURI
	06:07			TURNOVER by TERRY,JADA
STEAL by COX,LAUREN	06:06			
TURNOVER by COX,LAUREN	06:00			
	05:43			MISSED JUMPER by TERRY,JADA
REBOUND (DEF) by WALLACE,KRISTY	05:43			
GOOD! 3PTR by WALLACE,KRISTY	05:36	4-6	V 2	
	05:18			SUB IN: DEGRATE,ERIN
	05:18			SUB IN: WHILBY,LYNDSEY
	05:18			SUB OUT: BRIGHT,GRAYSON
	05:18			SUB OUT: TERRY,JADA
	05:06	6-6	T	GOOD! JUMPER by SANDERS,ZURI
GOOD! LAYUP by COX,LAUREN [PNT]	04:53	6-8	V 2	
ASSIST by MORRIS,ALEXIS	04:53			
	04:38			MISSED LAYUP by DEGRATE,ERIN
REBOUND (DEF) by BROWN,KALANI	04:38			
	04:32			FOUL by BREWER,BRITTANY
TIMEOUT MEDIA	04:32			
GOOD! FT by COHEN,DEKEIYA	04:32	6-9	V 3	
GOOD! FT by COHEN,DEKEIYA	04:32	6-10	V 4	
	04:32			SUB IN: OLABODE,DAYO

VISITORS: Baylor	Time	Score	Margin	HOME: Texas Tech
	04:32			SUB OUT: BREWER,BRITTANY
	04:12			TURNOVER by DEGRATE,ERIN
MISSED JUMPER by COX,LAUREN	04:04			
	04:04			REBOUND (DEF) by HAYDEN,ANGEL
	03:54			MISSED 3PTR by OLABODE,DAYO
REBOUND (DEF) by WALLACE,KRISTY	03:54			
MISSED JUMPER by COX,LAUREN	03:46			
	03:46			REBOUND (DEF) by SANDERS,ZURI
	03:27			TURNOVER by OLABODE,DAYO
	03:27			SUB IN: TERRY,JADA
	03:27			SUB OUT: SANDERS,ZURI
MISSED JUMPER by MORRIS,ALEXIS	03:13			
	03:13			REBOUND (DEF) by TERRY,JADA
	02:58			TURNOVER by DEGRATE,ERIN
	02:58			SUB IN: BREWER,BRITTANY
	02:58			SUB OUT: DEGRATE,ERIN
GOOD! LAYUP by BROWN,KALANI [PNT]	02:49	6-12	V 6	
ASSIST by WALLACE,KRISTY	02:49			
	02:37			MISSED JUMPER by BREWER,BRITTANY
REBOUND (DEF) by COHEN,DEKEIYA	02:37			
TURNOVER by COHEN,DEKEIYA	02:34			
SUB IN: LANDRUM,JUICY	02:34			
SUB OUT: COHEN,DEKEIYA	02:34			
	02:34			SUB IN: SANDERS,ZURI
	02:34			SUB OUT: OLABODE,DAYO
	02:12			TURNOVER by TERRY,JADA
	02:00			FOUL by TERRY,JADA
GOOD! FT by COX,LAUREN	02:00	6-13	V 7	
GOOD! FT by COX,LAUREN	02:00	6-14	V 8	
	02:00			SUB IN: BRIGHT,GRAYSON
	02:00			SUB IN: DEGRATE,ERIN
	02:00			SUB OUT: WHILBY,LYNDSEY
	02:00			SUB OUT: TERRY,JADA
	01:45			MISSED JUMPER by BREWER,BRITTANY
REBOUND (DEF) by BROWN,KALANI	01:45			
MISSED JUMPER by BROWN,KALANI	01:34			
	01:34			REBOUND (DEF) by BREWER,BRITTANY
	01:18			MISSED JUMPER by BREWER,BRITTANY
REBOUND (DEF) by LANDRUM,JUICY	01:18			
GOOD! JUMPER by WALLACE,KRISTY	01:03	6-16	V 10	
	00:43			MISSED JUMPER by DEGRATE,ERIN
	00:43			REBOUND (OFF) by SANDERS,ZURI
	00:34			MISSED JUMPER by DEGRATE,ERIN
REBOUND (DEF) by COX,LAUREN	00:34			
GOOD! LAYUP by BROWN,KALANI [PNT]	00:28	6-18	V 12	
ASSIST by MORRIS,ALEXIS	00:28			
	00:11			MISSED JUMPER by DEGRATE,ERIN
REBOUND (DEF) by WALLACE,KRISTY	00:11			
GOOD! 3PTR by LANDRUM,JUICY	00:02	6-21	V 15	
ASSIST by WALLACE,KRISTY	00:02			
	00:00			SUB IN: BLAIRE,BRIELLE
	00:00			SUB IN: TERRY,JADA
	00:00			SUB OUT: BREWER,BRITTANY
	00:00			SUB OUT: DEGRATE,ERIN

Baylor 21, Texas Tech 6

Period 1-only	In Paint	Off T/O	2nd Chance	Fast Break	Bench	
BU	6	7	0	0	0	Score tied - 2 times
TTU	4	0	2	0	0	Lead changed - 4 times

Baylor vs Texas Tech
2/3/2018; 2 p.m. at United Supermarkets Arena (Lubbock, TX)
Period 2 Play-By-Play

VISITORS: Baylor	Time	Score	Margin	HOME: Texas Tech
	09:58			SUB IN: BLAIRE,BRIELLE
	09:58			SUB OUT: BREWER,BRITTANY
	09:53	8-21	V 13	GOOD! JUMPER by BLAIRE,BRIELLE [PNT]
GOOD! JUMPER by BROWN,KALANI [PNT]	09:27	8-23	V 15	
ASSIST by COX,LAUREN	09:27			
SUB IN: MORRIS,ALEXIS	09:21			
SUB IN: URSIN,MOON	09:21			
SUB OUT: COHEN,DEKEIYA	09:21			
SUB OUT: LANDRUM,JUICY	09:21			
	09:12			MISSED 3PTR by SANDERS,ZURI
	09:12			REBOUND (OFF) by TERRY,JADA
FOUL by URSIN,MOON	09:12			
	09:10	10-23	V 13	GOOD! JUMPER by TERRY,JADA
	09:10			ASSIST by BRIGHT,GRAYSON
TURNOVER by WALLACE,KRISTY	09:04			
	09:04			STEAL by BRIGHT,GRAYSON
FOUL by WALLACE,KRISTY	09:04			
	08:47	13-23	V 10	GOOD! 3PTR by BLAIRE,BRIELLE
	08:47			ASSIST by BRIGHT,GRAYSON
MISSED 3PTR by WALLACE,KRISTY	08:33			
	08:33			REBOUND (DEF) by BLAIRE,BRIELLE
	08:25			MISSED LAYUP by BLAIRE,BRIELLE
REBOUND (DEF) by MORRIS,ALEXIS	08:25			
MISSED JUMPER by MORRIS,ALEXIS	08:14			
	08:14			REBOUND (DEF) by SANDERS,ZURI
	08:00			MISSED JUMPER by TERRY,JADA
REBOUND (DEF) by WALLACE,KRISTY	08:00			
MISSED JUMPER by URSIN,MOON	07:42			
	07:42			REBOUND (DEF) by BLAIRE,BRIELLE
	07:34	15-23	V 8	GOOD! JUMPER by SANDERS,ZURI
	07:34			ASSIST by BLAIRE,BRIELLE
TURNOVER by BROWN,KALANI	07:10			
	07:09			STEAL by TERRY,JADA
	06:49	17-23	V 6	GOOD! LAYUP by BLAIRE,BRIELLE [PNT]
GOOD! LAYUP by COX,LAUREN [PNT]	06:35	17-25	V 8	
ASSIST by WALLACE,KRISTY	06:35			
	06:21	19-25	V 6	GOOD! LAYUP by TERRY,JADA [PNT]
TURNOVER by MORRIS,ALEXIS	06:01			
SUB IN: LANDRUM,JUICY	06:01			
SUB IN: COHEN,DEKEIYA	06:01			
SUB OUT: MORRIS,ALEXIS	06:01			
SUB OUT: URSIN,MOON	06:01			
	06:01			SUB IN: BREWER,BRITTANY
	06:01			SUB OUT: SANDERS,ZURI
	05:44			MISSED JUMPER by TERRY,JADA
REBOUND (DEF) by WALLACE,KRISTY	05:44			
MISSED JUMPER by COHEN,DEKEIYA	05:35			
REBOUND (OFF) by COHEN,DEKEIYA	05:35			
GOOD! JUMPER by COHEN,DEKEIYA [PNT]	05:24	19-27	V 8	
	05:10			MISSED JUMPER by BREWER,BRITTANY
REBOUND (DEF) by COX,LAUREN	05:10			
	05:01			FOUL by OLABODE,DAYO
TIMEOUT media	04:57			
	04:57			SUB IN: OLABODE,DAYO
	04:57			SUB IN: SANDERS,ZURI
	04:57			SUB IN: BRUEDIGAM,HALEY
	04:57			SUB OUT: TERRY,JADA
	04:57			SUB OUT: HAYDEN,ANGEL
	04:57			SUB OUT: BREWER,BRITTANY
GOOD! JUMPER by WALLACE,KRISTY	04:53	19-29	V 10	
ASSIST by COX,LAUREN	04:53			
	04:34			MISSED JUMPER by BLAIRE,BRIELLE
REBOUND (DEF) by WALLACE,KRISTY	04:34			
GOOD! JUMPER by BROWN,KALANI [PNT]	04:24	19-31	V 12	
ASSIST by COHEN,DEKEIYA	04:24			
	04:07			TURNOVER by SANDERS,ZURI
	04:07			FOUL by SANDERS,ZURI
	04:07			SUB IN: BREWER,BRITTANY
	04:07			SUB IN: HAYDEN,ANGEL

VISITORS: Baylor	Time	Score	Margin	HOME: Texas Tech
	04:07			SUB IN: TERRY,JADA
	04:07			SUB OUT: OLABODE,DAYO
	04:07			SUB OUT: SANDERS,ZURI
	04:07			SUB OUT: BRUEDIGAM,HALEY
GOOD! JUMPER by LANDRUM,JUICY	03:44	19-33	V 14	
	03:14			TURNOVER by BRIGHT,GRAYSON
	03:14			SUB IN: SANDERS,ZURI
	03:14			SUB OUT: BRIGHT,GRAYSON
GOOD! 3PTR by LANDRUM,JUICY	03:00	19-36	V 17	
	02:48			MISSED JUMPER by BREWER,BRITTANY
BLOCK by COX,LAUREN	02:48			
	02:48			REBOUND (OFF) by TEAM
	02:46	21-36	V 15	GOOD! JUMPER by BREWER,BRITTANY
	02:46			ASSIST by SANDERS,ZURI
MISSED JUMPER by WALLACE,KRISTY	02:27			
	02:27			REBOUND (DEF) by HAYDEN,ANGEL
FOUL by LANDRUM,JUICY	02:14			
SUB IN: MORRIS,ALEXIS	02:14			
SUB OUT: WALLACE,KRISTY	02:14			
	02:14			SUB IN: WHILBY,LYNDSEY
	02:14			SUB OUT: BLAIRE,BRIELLE
	02:02			MISSED JUMPER by BREWER,BRITTANY
	02:02			REBOUND (OFF) by SANDERS,ZURI
	01:52			MISSED JUMPER by TERRY,JADA
	01:52			REBOUND (OFF) by HAYDEN,ANGEL
	01:45			MISSED JUMPER by HAYDEN,ANGEL
REBOUND (DEF) by BROWN,KALANI	01:45			
	01:39			FOUL by WHILBY,LYNDSEY
GOOD! FT by COHEN,DEKEIYA	01:39	21-37	V 16	
GOOD! FT by COHEN,DEKEIYA	01:39	21-38	V 17	
	01:16			TURNOVER by BREWER,BRITTANY
GOOD! JUMPER by COHEN,DEKEIYA	00:59	21-40	V 19	
	00:36			TURNOVER by BREWER,BRITTANY
STEAL by LANDRUM,JUICY	00:35			
GOOD! LAYUP by LANDRUM,JUICY [FB/PNT]	00:30	21-42	V 21	
	00:28			TIMEOUT 30SEC
SUB IN: URSIN,MOON	00:28			
SUB OUT: BROWN,KALANI	00:28			
	00:11	23-42	V 19	GOOD! JUMPER by DEGRATE,ERIN [PNT]
	00:11			ASSIST by SANDERS,ZURI

Baylor 42, Texas Tech 23

Period 2-only	In Paint	Off T/O	2nd Chance	Fast Break	Bench	
BU	10	9	2	2	0	Score tied - 0 times
TTU	8	5	4	0	9	Lead changed - 0 times

Official Basketball Box Score -- Game Totals -- Second Half Statistics
Baylor vs Texas Tech
2/3/2018 2 p.m. at United Supermarkets Arena (Lubbock, TX)

Baylor 48 • 21-1, 11-0 Big12

##	Player		Total		3-Ptr		FT-FTA	Rebounds			PF	TP	A	TO	Blk	Stl	Min
			FG-FGA		FG-FGA			Off	Def	Tot							
01	COHEN,DEKEIYA	f	4-8		0-0		3-3	3	1	4	1	11	0	2	1	0	20
04	WALLACE,KRISTY	g	4-7		1-3		0-0	0	4	4	1	9	3	0	0	1	18
15	COX,LAUREN	f	3-8		0-1		0-0	3	2	5	0	6	0	0	0	0	8
20	LANDRUM,JUICY	g	4-6		2-4		0-0	0	7	7	1	10	4	0	0	0	20
21	BROWN,KALANI	c	0-2		0-0		0-0	0	3	3	2	0	0	0	0	0	7
11	MORRIS,ALEXIS		2-4		1-2		0-0	1	5	6	1	5	0	3	0	1	14
12	URSIN,MOON		2-4		1-1		2-4	1	2	3	0	7	0	1	0	0	13
TEAM								1	2	3	0			0			
Totals			19-39		5-11		5-7	9	26	35	6	48	7	6	1	2	100
FG %	3rd Qtr	13-24	54.2%	4th Qtr	6-15	40.0%	Half:	19-39	48.7%								
3FG %	3rd Qtr	2-4	50.0%	4th Qtr	3-7	42.9%	Half:	5-11	75.0%								
FT %	3rd Qtr	1-2	50.0%	4th Qtr	4-5	80.0%	Half:	5-7	71.4%								

Texas Tech 21 • 7-15, 1-10 Big12

##	Player		Total		3-Ptr		FT-FTA	Rebounds			PF	TP	A	TO	Blk	Stl	Min
			FG-FGA		FG-FGA			Off	Def	Tot							
10	BRIGHT,GRAYSON	g	3-4		2-3		0-0	0	1	1	2	8	0	1	0	0	18
12	TERRY,JADA	c	2-4		0-0		0-0	0	2	2	2	4	0	0	0	0	12
20	BREWER,BRITTANY	f	0-6		0-0		0-0	0	2	2	0	0	1	1	0	0	14
23	HAYDEN,ANGEL	g	1-3		0-0		0-0	0	3	3	2	2	0	0	0	1	17
30	SANDERS,ZURI	f	0-4		0-1		0-2	1	0	1	0	0	0	0	0	0	10
00	BLAIRE,BRIELLE		0-3		0-1		0-0	1	1	2	1	0	0	1	0	0	5
01	DEGRATE,ERIN		1-1		0-0		3-8	1	1	2	0	5	1	1	0	0	12
03	WHILBY,LYNDSEY		0-3		0-3		0-0	0	0	0	1	0	0	0	0	0	2
14	HARRISON,LAUREN		1-2		0-0		0-0	1	1	2	0	2	0	0	0	0	2
24	BRUEDIGAM,HALEY		0-1		0-0		0-0	0	0	0	0	0	2	0	0	2	4
32	OLABODE,DAYO		0-3		0-3		0-0	0	1	1	0	0	0	0	0	0	4
TEAM								0	0	0	0			0			
Totals			8-34		2-11		3-10	4	12	16	8	21	4	4	0	3	100
FG %	3rd Qtr	3-18	16.7%	4th Qtr	5-16	31.3%	Half:	8-34	23.5%								
3FG %	3rd Qtr	0-4	00.0%	4th Qtr	2-7	28.6%	Half:	2-11	33.3%								
FT %	3rd Qtr	1-4	25.0%	4th Qtr	2-6	33.3%	Half:	3-10	30.0%								

Officials: Dee Kantner, Mark Zentz, Amy Bonner
Technical Fouls: Baylor- None. Texas Tech- None.

Score by periods	1st	2nd	3rd	4th	Total
Baylor	21	21	29	19	90
Texas Tech	6	17	7	14	44

Last FG - BU 4th-02:13, TTU 4th-01:23.
BU led for 20:00. TTU led for 0:00. Game was tied for 0:00.

Points	In	Off	2nd	Fast	Bench
	Paint	T/O	Chance	Break	
BU	16	6	12	6	12
	10	0	4	0	7

Score tied - 0 times
Lead changed - 0 times

Baylor vs Texas Tech
2/3/2018; 2 p.m. at United Supermarkets Arena (Lubbock, TX)
Period 3 Play-By-Play

VISITORS: Baylor	Time	Score	Margin	HOME: Texas Tech
MISSED JUMPER by COX,LAUREN	09:44			
	09:44			REBOUND (DEF) by TERRY,JADA
	09:30			MISSED JUMPER by SANDERS,ZURI
REBOUND (DEF) by BROWN,KALANI	09:30			
	09:30			FOUL by TERRY,JADA
GOOD! JUMPER by WALLACE,KRISTY	09:17	23-44	V 21	
	08:51			MISSED JUMPER by TERRY,JADA
REBOUND (DEF) by WALLACE,KRISTY	08:51			
GOOD! LAYUP by COX,LAUREN [FB/PNT]	08:45	23-46	V 23	
ASSIST by LANDRUM,JUICY	08:45			
	08:26			MISSED JUMPER by BREWER,BRITTANY
REBOUND (DEF) by LANDRUM,JUICY	08:26			
GOOD! JUMPER by LANDRUM,JUICY [PNT]	08:19	23-48	V 25	
ASSIST by WALLACE,KRISTY	08:18			
	08:15			TIMEOUT 30SEC
	08:15			SUB IN: DEGRATE,ERIN
	08:15			SUB OUT: BREWER,BRITTANY
FOUL by BROWN,KALANI	08:02			
	08:02	24-48	V 24	GOOD! FT by DEGRATE,ERIN
	08:02			MISSED FT by DEGRATE,ERIN
REBOUND (DEF) by BROWN,KALANI	08:02			
MISSED JUMPER by COHEN,DEKEIYA	07:54			
REBOUND (OFF) by COHEN,DEKEIYA	07:54			
GOOD! JUMPER by COHEN,DEKEIYA	07:48	24-50	V 26	
	07:38			MISSED JUMPER by SANDERS,ZURI
REBOUND (DEF) by TEAM	07:38			
GOOD! JUMPER by COHEN,DEKEIYA	07:29	24-52	V 28	
	07:05	26-52	V 26	GOOD! LAYUP by DEGRATE,ERIN [PNT]
MISSED 3PTR by WALLACE,KRISTY	06:52			
	06:52			REBOUND (DEF) by HAYDEN,ANGEL
	06:40			MISSED LAYUP by SANDERS,ZURI
REBOUND (DEF) by BROWN,KALANI	06:40			
MISSED JUMPER by COHEN,DEKEIYA	06:31			
REBOUND (OFF) by COX,LAUREN	06:31			
MISSED JUMPER by COX,LAUREN	06:29			
	06:29			REBOUND (DEF) by DEGRATE,ERIN
	06:01			MISSED 3PTR by BRIGHT,GRAYSON
REBOUND (DEF) by COX,LAUREN	06:01			
MISSED JUMPER by BROWN,KALANI	05:48			
	05:48			REBOUND (DEF) by TERRY,JADA
	05:34	28-52	V 24	GOOD! LAYUP by BRIGHT,GRAYSON [PNT]
MISSED JUMPER by WALLACE,KRISTY	05:27			
REBOUND (OFF) by COX,LAUREN	05:27			
GOOD! JUMPER by COX,LAUREN [PNT]	05:25	28-54	V 26	
	04:54	30-54	V 24	GOOD! JUMPER by TERRY,JADA [PNT]
MISSED JUMPER by BROWN,KALANI	04:39			
REBOUND (OFF) by COX,LAUREN	04:39			
GOOD! JUMPER by COX,LAUREN	04:37	30-56	V 26	
	04:30			TIMEOUT 30SEC
	04:30			SUB IN: BLAIRE,BRIELLE
	04:30			SUB IN: BREWER,BRITTANY
	04:30			SUB IN: OLABODE,DAYO
	04:30			SUB OUT: TERRY,JADA
	04:30			SUB OUT: DEGRATE,ERIN
	04:30			SUB OUT: SANDERS,ZURI
SUB IN: MORRIS,ALEXIS	04:26			
SUB OUT: BROWN,KALANI	04:26			
	04:08			MISSED JUMPER by BREWER,BRITTANY
REBOUND (DEF) by MORRIS,ALEXIS	04:08			
MISSED JUMPER by COX,LAUREN	04:02			
	04:02			REBOUND (DEF) by HAYDEN,ANGEL
	03:50			MISSED 3PTR by OLABODE,DAYO
REBOUND (DEF) by LANDRUM,JUICY	03:50			
MISSED 3PTR by COX,LAUREN	03:37			
	03:37			REBOUND (DEF) by BLAIRE,BRIELLE
	03:19			MISSED JUMPER by BREWER,BRITTANY
REBOUND (DEF) by MORRIS,ALEXIS	03:19			
GOOD! JUMPER by LANDRUM,JUICY	03:06	30-58	V 28	
	02:46			MISSED JUMPER by BLAIRE,BRIELLE

VISITORS: Baylor	Time	Score	Margin	HOME: Texas Tech
REBOUND (DEF) by TEAM	02:46			
	02:45			FOUL by HAYDEN,ANGEL
SUB IN: BROWN,KALANI	02:45			
SUB IN: URSIN,MOON	02:45			
SUB OUT: WALLACE,KRISTY	02:45			
SUB OUT: COX,LAUREN	02:45			
	02:45			SUB IN: TERRY,JADA
	02:45			SUB OUT: BRIGHT,GRAYSON
GOOD! 3PTR by LANDRUM,JUICY	02:38	30-61	V 31	
	02:16			TURNOVER by BLAIRE,BRIELLE
	02:16			FOUL by BLAIRE,BRIELLE
	02:16			SUB IN: SANDERS,ZURI
	02:16			SUB OUT: OLABODE,DAYO
GOOD! 3PTR by MORRIS,ALEXIS	02:06	30-64	V 34	
ASSIST by LANDRUM,JUICY	02:06			
	01:48			MISSED 3PTR by SANDERS,ZURI
	01:48			REBOUND (OFF) by BLAIRE,BRIELLE
	01:44			MISSED JUMPER by BLAIRE,BRIELLE
	01:44			REBOUND (OFF) by SANDERS,ZURI
FOUL by BROWN,KALANI	01:41			
	01:41			MISSED FT by SANDERS,ZURI
	01:41			REBOUND (DEADB) by TEAM
	01:41			MISSED FT by SANDERS,ZURI
REBOUND (DEF) by COX,LAUREN	01:41			
SUB IN: COX,LAUREN	01:41			
SUB OUT: BROWN,KALANI	01:41			
MISSED JUMPER by COX,LAUREN	01:24			
	01:24			REBOUND (DEF) by BREWER,BRITTANY
	01:15			MISSED JUMPER by TERRY,JADA
REBOUND (DEF) by LANDRUM,JUICY	01:15			
	01:03			FOUL by HAYDEN,ANGEL
GOOD! FT by URSIN,MOON	01:03	30-65	V 35	
MISSED FT by URSIN,MOON	01:03			
REBOUND (OFF) by TEAM	01:03			
SUB IN: WALLACE,KRISTY	01:03			
SUB OUT: COX,LAUREN	01:03			
	01:03			SUB IN: BRIGHT,GRAYSON
	01:03			SUB OUT: HAYDEN,ANGEL
GOOD! JUMPER by WALLACE,KRISTY	00:56	30-67	V 37	
	00:39			MISSED JUMPER by BREWER,BRITTANY
REBOUND (DEF) by WALLACE,KRISTY	00:39			
GOOD! LAYUP by URSIN,MOON [FB/PNT]	00:32	30-69	V 39	
ASSIST by WALLACE,KRISTY	00:32			
	00:07			MISSED 3PTR by BLAIRE,BRIELLE
REBOUND (DEF) by MORRIS,ALEXIS	00:07			
GOOD! LAYUP by MORRIS,ALEXIS [FB/PNT]	00:00	30-71	V 41	
ASSIST by LANDRUM,JUICY	00:00			

Baylor 71, Texas Tech 30

Period 3-only	In Paint	Off T/O	2nd Chance	Fast Break	Bench	
BU	10	3	8	6	8	Score tied - 0 times
TTU	6	0	0	0	3	Lead changed - 0 times

Baylor vs Texas Tech
2/3/2018; 2 p.m. at United Supermarkets Arena (Lubbock, TX)
Period 4 Play-By-Play

VISITORS: Baylor	Time	Score	Margin	HOME: Texas Tech
SUB IN: MORRIS,ALEXIS	10:00			
SUB IN: URSIN,MOON	10:00			
SUB OUT: COX,LAUREN	10:00			
SUB OUT: BROWN,KALANI	10:00			
	09:57			TURNOVER by BRIGHT,GRAYSON
STEAL by WALLACE,KRISTY	09:56			
GOOD! JUMPER by WALLACE,KRISTY [PNT]	09:54	30-73	V 43	
	09:39	32-73	V 41	GOOD! JUMPER by TERRY,JADA [PNT]
MISSED JUMPER by URSIN,MOON	09:19			
REBOUND (OFF) by COHEN,DEKEIYA	09:19			
	09:19			FOUL by TERRY,JADA
GOOD! FT by COHEN,DEKEIYA	09:19	32-74	V 42	
GOOD! FT by COHEN,DEKEIYA	09:19	32-75	V 43	
	08:58	34-75	V 41	GOOD! JUMPER by HAYDEN,ANGEL
	08:58			ASSIST by BREWER,BRITTANY
GOOD! 3PTR by LANDRUM,JUICY	08:45	34-78	V 44	
ASSIST by WALLACE,KRISTY	08:45			
	08:26			MISSED JUMPER by HAYDEN,ANGEL
REBOUND (DEF) by WALLACE,KRISTY	08:26			
TURNOVER by MORRIS,ALEXIS	08:22			
FOUL by MORRIS,ALEXIS	08:22			
	08:22			SUB IN: OLABODE,DAYO
	08:22			SUB OUT: SANDERS,ZURI
	08:02			MISSED JUMPER by BREWER,BRITTANY
REBOUND (DEF) by WALLACE,KRISTY	08:02			
MISSED JUMPER by MORRIS,ALEXIS	07:58			
REBOUND (OFF) by MORRIS,ALEXIS	07:58			
TURNOVER by MORRIS,ALEXIS	07:55			
	07:55			SUB IN: DEGRATE,ERIN
	07:55			SUB OUT: TERRY,JADA
	07:42			MISSED 3PTR by OLABODE,DAYO
REBOUND (DEF) by COHEN,DEKEIYA	07:42			
MISSED 3PTR by LANDRUM,JUICY	07:27			
	07:27			REBOUND (DEF) by OLABODE,DAYO
	07:16			MISSED 3PTR by OLABODE,DAYO
REBOUND (DEF) by URSIN,MOON	07:16			
TURNOVER by MORRIS,ALEXIS	06:58			
	06:58			STEAL by HAYDEN,ANGEL
	06:45			MISSED JUMPER by HAYDEN,ANGEL
REBOUND (DEF) by LANDRUM,JUICY	06:45			
GOOD! 3PTR by WALLACE,KRISTY	06:29	34-81	V 47	
FOUL by LANDRUM,JUICY	06:15			
	06:15			MISSED FT by DEGRATE,ERIN
	06:15			REBOUND (DEADB) by TEAM
	06:15			MISSED FT by DEGRATE,ERIN
REBOUND (DEF) by URSIN,MOON	06:15			
	06:15			SUB IN: WHILBY,LYNDSEY
	06:15			SUB OUT: OLABODE,DAYO
MISSED JUMPER by COHEN,DEKEIYA	06:03			
	06:03			REBOUND (DEF) by HAYDEN,ANGEL
	05:53			MISSED 3PTR by WHILBY,LYNDSEY
REBOUND (DEF) by LANDRUM,JUICY	05:53			
GOOD! 3PTR by URSIN,MOON	05:43	34-84	V 50	
ASSIST by LANDRUM,JUICY	05:43			
FOUL by COHEN,DEKEIYA	05:24			
	05:24	35-84	V 49	GOOD! FT by DEGRATE,ERIN
	05:24			MISSED FT by DEGRATE,ERIN
REBOUND (DEF) by LANDRUM,JUICY	05:24			
	05:24			SUB IN: TERRY,JADA
	05:24			SUB OUT: BREWER,BRITTANY
MISSED 3PTR by WALLACE,KRISTY	05:06			
REBOUND (OFF) by URSIN,MOON	05:06			
TURNOVER by URSIN,MOON	05:00			
	05:00			TIMEOUT MEDIA
	04:42			MISSED 3PTR by WHILBY,LYNDSEY
REBOUND (DEF) by MORRIS,ALEXIS	04:42			
	04:40			FOUL by WHILBY,LYNDSEY
MISSED JUMPER by URSIN,MOON	04:29			
	04:29			REBOUND (DEF) by BRIGHT,GRAYSON

VISITORS: Baylor	Time	Score	Margin	HOME: Texas Tech
	04:15			MISSED 3PTR by WHILBY,LYNDSEY
REBOUND (DEF) by MORRIS,ALEXIS	04:15			
GOOD! JUMPER by COHEN,DEKEIYA [PNT]	04:07	35-86	V 51	
	04:07			FOUL by BRIGHT,GRAYSON
GOOD! FT by COHEN,DEKEIYA	04:07	35-87	V 52	
	04:07			SUB IN: BRUEDIGAM,HALEY
	04:07			SUB OUT: WHILBY,LYNDSEY
	03:48	38-87	V 49	GOOD! 3PTR by BRIGHT,GRAYSON
	03:48			ASSIST by BRUEDIGAM,HALEY
TURNOVER by COHEN,DEKEIYA	03:33			
	03:32			STEAL by BRUEDIGAM,HALEY
	03:09			TURNOVER by DEGRATE,ERIN
	03:09			SUB IN: BREWER,BRITTANY
	03:09			SUB OUT: TERRY,JADA
MISSED JUMPER by COHEN,DEKEIYA	02:44			
	02:44			REBOUND (DEF) by BREWER,BRITTANY
	02:24			MISSED JUMPER by BRUEDIGAM,HALEY
BLOCK by COHEN,DEKEIYA	02:24			
REBOUND (DEF) by LANDRUM,JUICY	02:22			
MISSED 3PTR by MORRIS,ALEXIS	02:18			
REBOUND (OFF) by COHEN,DEKEIYA	02:18			
GOOD! JUMPER by COHEN,DEKEIYA [PNT]	02:13	38-89	V 51	
	02:08			TIMEOUT TEAM
	02:08			SUB IN: HARRISON,LAUREN
	02:08			SUB OUT: HAYDEN,ANGEL
	01:56	40-89	V 49	GOOD! LAYUP by HARRISON,LAUREN [PNT]
	01:56			ASSIST by DEGRATE,ERIN
MISSED 3PTR by LANDRUM,JUICY	01:46			
	01:46			REBOUND (DEF) by HARRISON,LAUREN
	01:27			MISSED JUMPER by HARRISON,LAUREN
	01:27			REBOUND (OFF) by HARRISON,LAUREN
	01:23	43-89	V 46	GOOD! 3PTR by BRIGHT,GRAYSON
	01:23			ASSIST by BRUEDIGAM,HALEY
TURNOVER by COHEN,DEKEIYA	01:01			
	01:00			STEAL by BRUEDIGAM,HALEY
	00:47			TURNOVER by BREWER,BRITTANY
STEAL by MORRIS,ALEXIS	00:47			
	00:45			FOUL by BRIGHT,GRAYSON
MISSED FT by URSIN,MOON	00:45			
REBOUND (DEADB) by TEAM	00:45			
GOOD! FT by URSIN,MOON	00:45	43-90	V 47	
	00:27			MISSED JUMPER by BREWER,BRITTANY
	00:27			REBOUND (OFF) by DEGRATE,ERIN
FOUL by WALLACE,KRISTY	00:25			
	00:25			MISSED FT by DEGRATE,ERIN
	00:25			REBOUND (DEADB) by TEAM
	00:25	44-90	V 46	GOOD! FT by DEGRATE,ERIN

Baylor 90, Texas Tech 44

Period 4-only	In Paint	Off T/O	2nd Chance	Fast Break	Bench	
BU	6	3	4	0	4	Score tied - 0 times
TTU	4	0	4	0	4	Lead changed - 0 times

Baylor vs Texas Tech
2/3/2018; 2 p.m. at United Supermarkets Arena (Lubbock, TX)
Scoring/Runs Reference

Period 1

Baylor	VRun	Score	Margin	HRun	Texas Tech
		0-2	2		BREWER JUMPER [P] - 09:47
08:25 - BROWN JUMPER	-	2-2	0		
08:25 - BROWN FT	3-0	3-2	-1		
		3-4	1		TERRY JUMPER [P] - 07:09
05:36 - WALLACE 3PTR	-	6-4	-2		
		6-6	0		SANDERS JUMPER - 05:06
04:53 - COX LAYUP [P]	-	8-6	-2		
04:32 - COHEN FT	3-0	9-6	-3		
04:32 - COHEN FT	4-0	10-6	-4		
02:49 - BROWN LAYUP [P]	6-0	12-6	-6		
02:00 - COX FT	7-0	13-6	-7		
02:00 - COX FT	8-0	14-6	-8		
01:03 - WALLACE JUMPER	10-0	16-6	-10		
00:28 - BROWN LAYUP [P]	12-0	18-6	-12		
00:02 - LANDRUM 3PTR	15-0	21-6	-15		

Baylor vs Texas Tech
2/3/2018; 2 p.m. at United Supermarkets Arena (Lubbock, TX)
Scoring/Runs Reference

Period 2

Baylor	VRun	Score	Margin	HRun	Texas Tech
		21-8	-13		BLAIRE JUMPER [P] - 09:53
09:27 - BROWN JUMPER [P]	-	23-8	-15		
		23-10	-13		TERRY JUMPER - 09:10
		23-13	-10	5-0	BLAIRE 3PTR - 08:47
		23-15	-8	7-0	SANDERS JUMPER - 07:34
		23-17	-6	9-0	BLAIRE LAYUP [P] - 06:49
06:35 - COX LAYUP [P]	-	25-17	-8		
		25-19	-6		TERRY LAYUP [P] - 06:21
05:24 - COHEN JUMPER [P]	-	27-19	-8		
04:53 - WALLACE JUMPER	4-0	29-19	-10		
04:24 - BROWN JUMPER [P]	6-0	31-19	-12		
03:44 - LANDRUM JUMPER	8-0	33-19	-14		
03:00 - LANDRUM 3PTR	11-0	36-19	-17		
		36-21	-15		BREWER JUMPER - 02:46
01:39 - COHEN FT	-	37-21	-16		
01:39 - COHEN FT	2-0	38-21	-17		
00:59 - COHEN JUMPER	4-0	40-21	-19		
00:30 - LANDRUM LAYUP [P] [F]	6-0	42-21	-21		
		42-23	-19		DEGRATE JUMPER [P] - 00:11

Baylor vs Texas Tech
2/3/2018; 2 p.m. at United Supermarkets Arena (Lubbock, TX)
Scoring/Runs Reference

Period 3

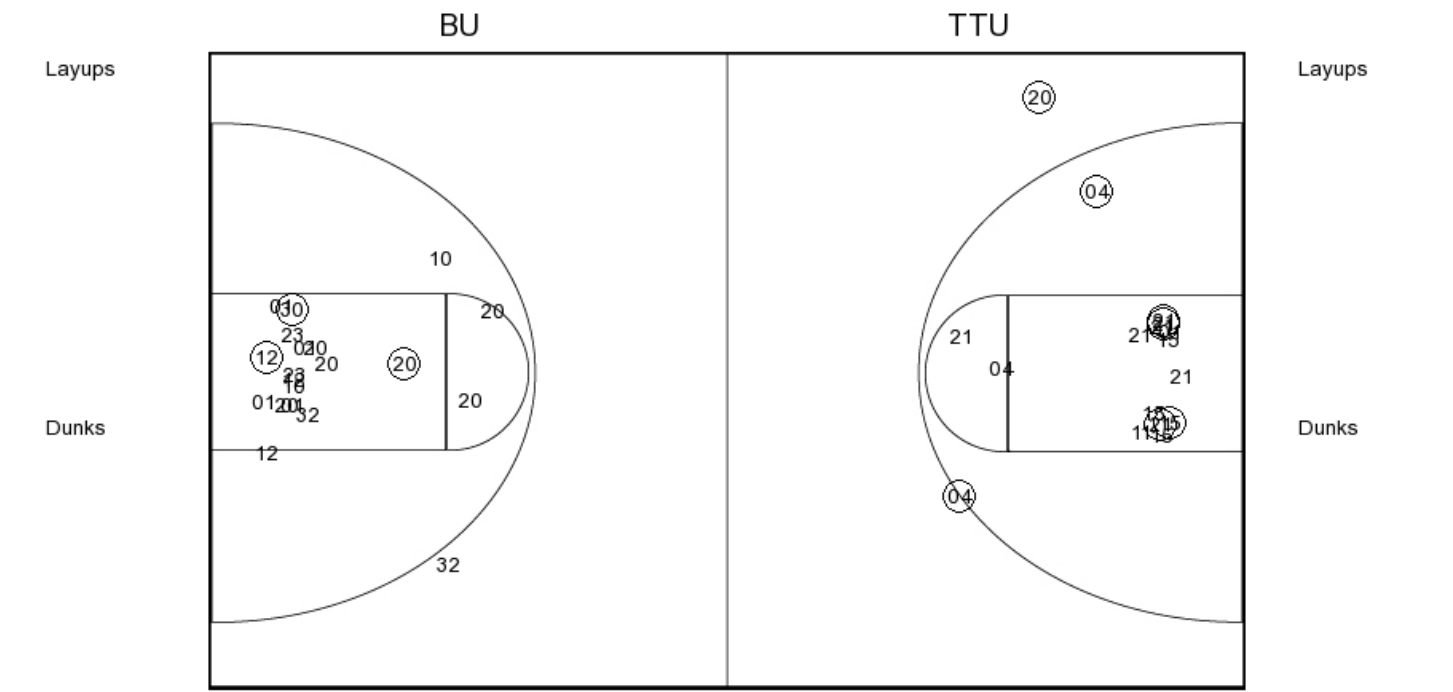
Baylor	VRun	Score	Margin	HRun	Texas Tech
09:17 - WALLACE JUMPER	-	44-23	-21		
08:45 - COX LAYUP [P] [F]	NaN-0	46-23	-23		
08:19 - LANDRUM JUMPER [P]	NaN-0	48-23	-25		
		48-24	-24		DEGRATE FT - 08:02
07:48 - COHEN JUMPER	-	50-24	-26		
07:29 - COHEN JUMPER	4-0	52-24	-28		
		52-26	-26		DEGRATE LAYUP [P] - 07:05
		52-28	-24	4-0	BRIGHT LAYUP [P] - 05:34
05:25 - COX JUMPER [P]	-	54-28	-26		
		54-30	-24		TERRY JUMPER [P] - 04:54
04:37 - COX JUMPER	-	56-30	-26		
03:06 - LANDRUM JUMPER	4-0	58-30	-28		
02:38 - LANDRUM 3PTR	7-0	61-30	-31		
02:06 - MORRIS 3PTR	10-0	64-30	-34		
01:03 - URSIN FT	11-0	65-30	-35		
00:56 - WALLACE JUMPER	13-0	67-30	-37		
00:32 - URSIN LAYUP [P] [F]	15-0	69-30	-39		
00:00 - MORRIS LAYUP [P] [F]	17-0	71-30	-41		

Baylor vs Texas Tech
2/3/2018; 2 p.m. at United Supermarkets Arena (Lubbock, TX)
Scoring/Runs Reference

Period 4

Baylor	VRun	Score	Margin	HRun	Texas Tech
09:54 - WALLACE JUMPER [P]	-	73-30	-43		
		73-32	-41		TERRY JUMPER [P] - 09:39
09:19 - COHEN FT	-	74-32	-42		
09:19 - COHEN FT	2-0	75-32	-43		
		75-34	-41		HAYDEN JUMPER - 08:58
08:45 - LANDRUM 3PTR	-	78-34	-44		
06:29 - WALLACE 3PTR	6-0	81-34	-47		
05:43 - URSIN 3PTR	9-0	84-34	-50		
		84-35	-49		DEGRATE FT - 05:24
04:07 - COHEN JUMPER [P]	-	86-35	-51		
04:07 - COHEN FT	3-0	87-35	-52		
		87-38	-49		BRIGHT 3PTR - 03:48
02:13 - COHEN JUMPER [P]	-	89-38	-51		
		89-40	-49		HARRISON LAYUP [P] - 01:56
		89-43	-46	5-0	BRIGHT 3PTR - 01:23
00:45 - URSIN FT	-	90-43	-47		
		90-44	-46		DEGRATE FT - 00:25

PERIOD 1



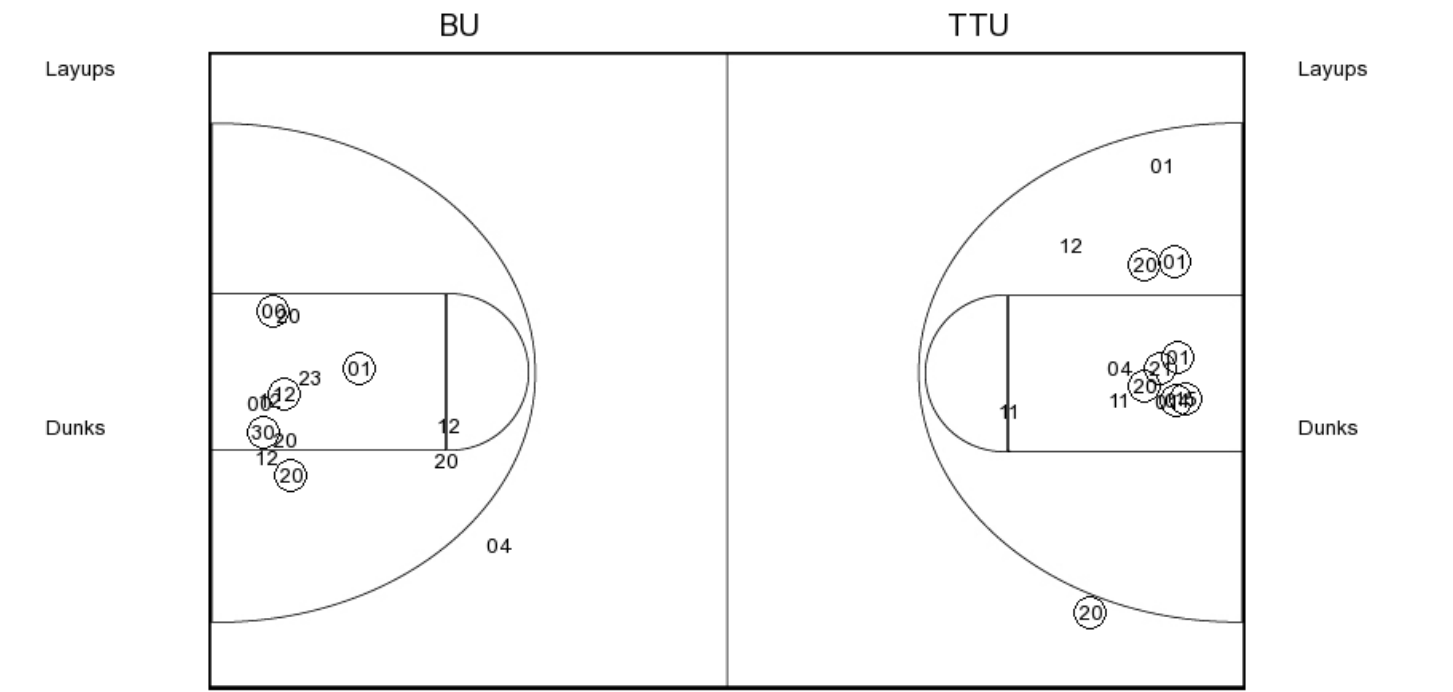
BU PERIOD 1

FG Made	16
FG Attempted	29
3PFG Made	3
3PFG Attempted	4

TTU PERIOD 1

FG Made	11
FG Attempted	36
3PFG Made	1
3PFG Attempted	3

PERIOD 2



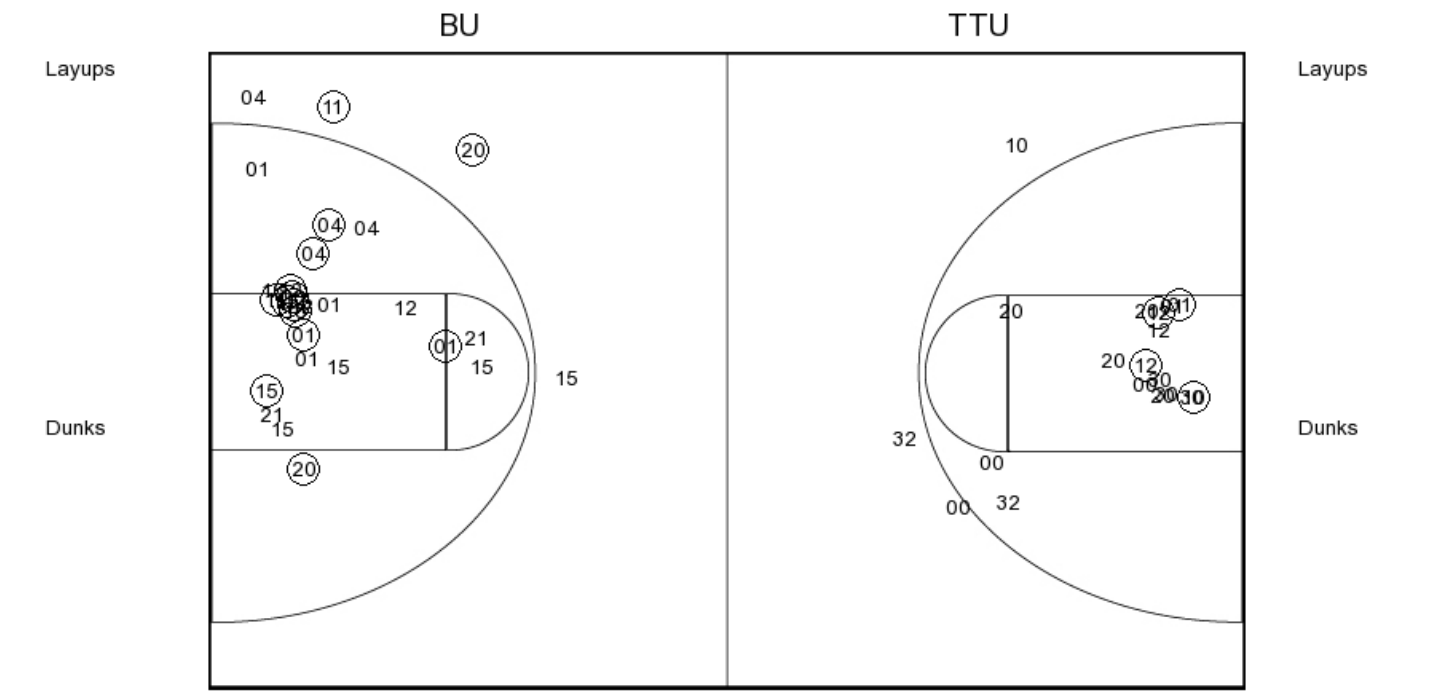
BU PERIOD 2

FG Made
FG Attempted
3PFG Made
3PFG Attempted

TTU PERIOD 2

FG Made
FG Attempted
3PFG Made
3PFG Attempted

PERIOD 3



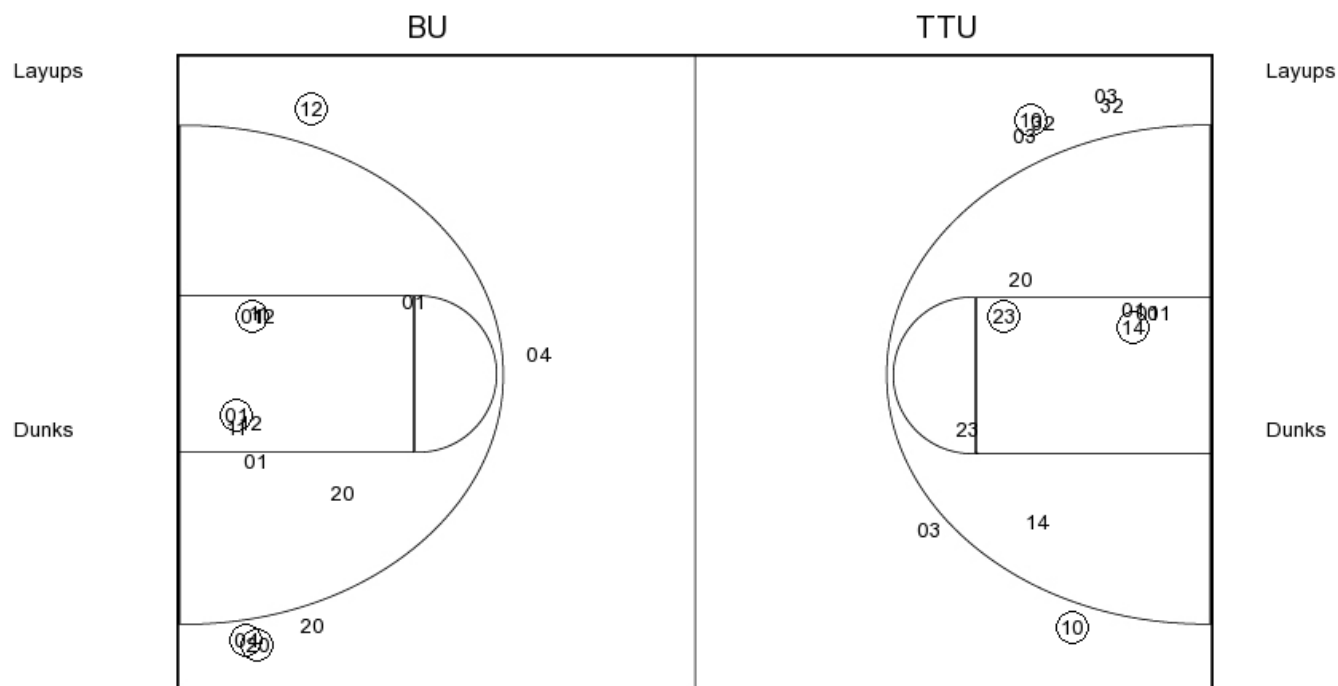
BU PERIOD 3

FG Made	19
FG Attempted	39
3PFG Made	5
3PFG Attempted	11

TTU PERIOD 3

FG Made	8
FG Attempted	34
3PFG Made	2
3PFG Attempted	11

PERIOD 4



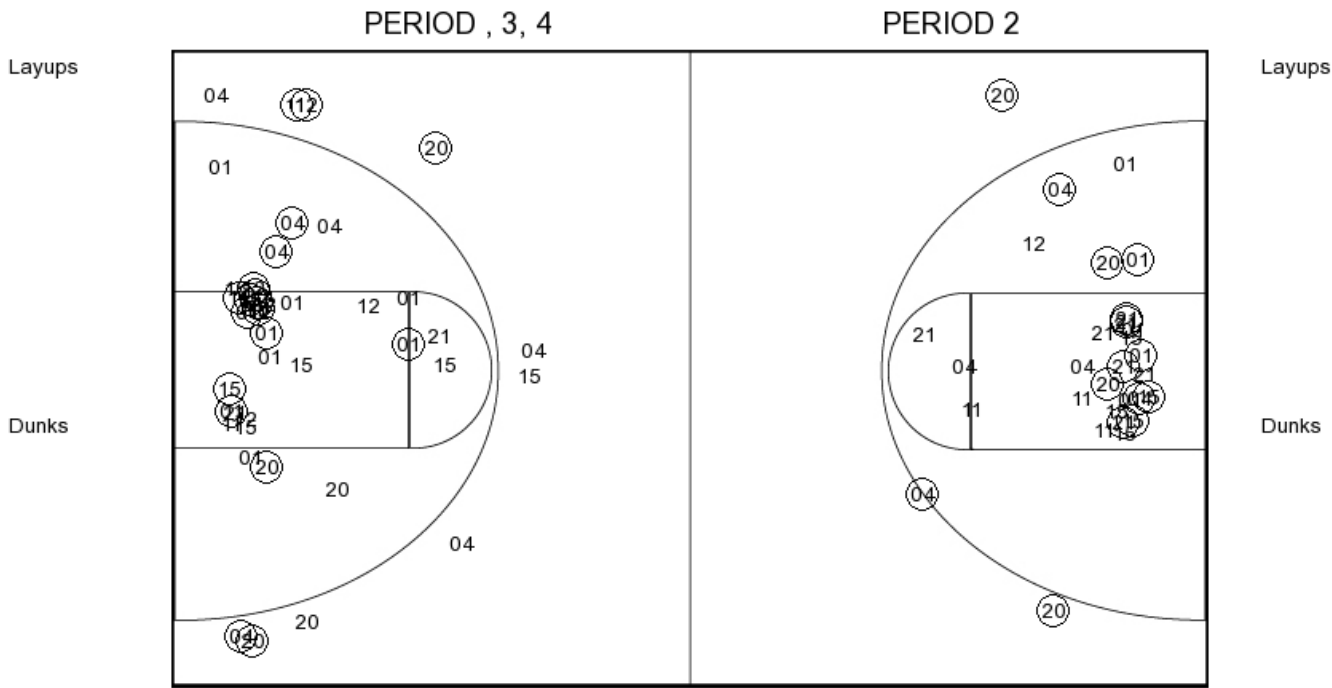
BU PERIOD 4

FG Made
FG Attempted
3PFG Made
3PFG Attempted

TTU PERIOD 4

FG Made
FG Attempted
3PFG Made
3PFG Attempted

Baylor



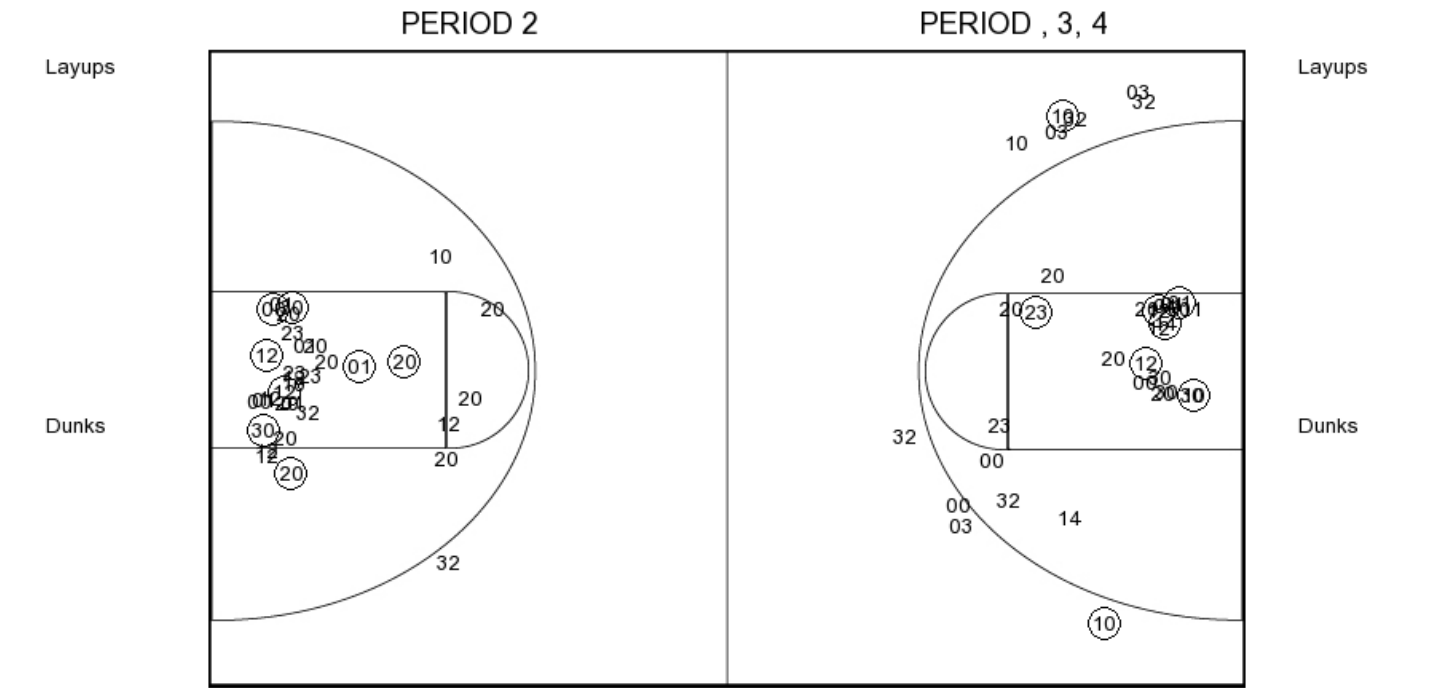
BU PERIOD 1

FG Made	16
FG Attempted	29
3PFG Made	3
3PFG Attempted	4

BU PERIOD 2

FG Made	
FG Attempted	
3PFG Made	
3PFG Attempted	

Texas Tech



TTU PERIOD 1

FG Made	11
FG Attempted	36
3PFG Made	1
3PFG Attempted	3

TTU PERIOD 2

FG Made	
FG Attempted	
3PFG Made	
3PFG Attempted	