

FINAL SCORE

Oklahoma

8-8, 3-2 BIG 12

73

Texas Tech

6-10, 0-4 BIG 12

52

January 10, 2018 • United Supermarkets Arena (Lubbock, TX)

FINAL STATISTICS

Official Basketball Box Score -- Game Totals -- Final Statistics
Oklahoma vs Texas Tech
1/10/2018 6:00 p.m. at United Supermarkets Arena (Lubbock, TX)

Oklahoma 73 - 8-8, 3-2 BIG 12

| ## | Player | c/g | Total | | | 3-Ptr | | | Rebounds | | | PF | TP | A | TO | Blk | Stl | Min |
|--------|-----------------------|-----|-------|------|-----|-------|----|-----|----------|-----|-----|----|----|----|----|-----|-----|-----|
| | | | FG | F-GA | FGA | FGA | FT | FTA | Off | Def | Tot | | | | | | | |
| 00 | PIERRE-LOUIS, VIONISE | c | 10 | 13 | 0 | 0 | 2 | 3 | 2 | 6 | 8 | 4 | 22 | 1 | 3 | 0 | 0 | 28 |
| 14 | PELLINGTON, SHAINA | g | 3 | 6 | 0 | 0 | 2 | 4 | 1 | 0 | 1 | 2 | 8 | 1 | 2 | 0 | 0 | 31 |
| 21 | ORTIZ, GABBI | g | 2 | 12 | 1 | 9 | 2 | 2 | 2 | 2 | 4 | 2 | 7 | 5 | 0 | 0 | 3 | 29 |
| 22 | LLANUSA, ANA | g | 4 | 9 | 1 | 5 | 3 | 4 | 1 | 3 | 4 | 3 | 12 | 0 | 6 | 0 | 2 | 26 |
| 23 | MANNING, MADDIE | g | 3 | 11 | 2 | 7 | 1 | 2 | 4 | 6 | 10 | 3 | 9 | 1 | 3 | 0 | 8 | 32 |
| 01 | WILLIAMS, LANESIA | | 3 | 8 | 0 | 2 | 0 | 0 | 1 | 3 | 4 | 2 | 6 | 3 | 0 | 0 | 0 | 25 |
| 03 | SIMPSON, MANDY | | 4 | 6 | 0 | 0 | 0 | 0 | 0 | 2 | 2 | 1 | 8 | 0 | 3 | 0 | 0 | 14 |
| 12 | PENZO, GILEYSA | | 0 | 1 | 0 | 0 | 0 | 0 | 0 | 0 | 0 | 1 | 0 | 1 | 3 | 0 | 2 | 11 |
| 24 | ODIMGBE, IJEOMA | | 0 | 0 | 0 | 0 | 1 | 2 | 2 | 2 | 4 | 4 | 1 | 0 | 1 | 0 | 0 | 4 |
| TEAM | | | | | | | | | 3 | 1 | 4 | 0 | | 0 | | | | |
| TOTALS | | | 29 | 66 | 4 | 23 | 11 | 17 | 16 | 25 | 41 | 22 | 73 | 12 | 21 | 0 | 15 | 200 |

Deadball Rebounds: 4,0

| | | | | | | | | | | | | | | | | | | |
|-------|-----------|-------|-------|-----------|-------|--------|---------|-------|-------|--|--|---------|------|-------|--|--|--|--|
| FG % | 1st Half: | 16-34 | 47.1% | 2nd Half: | 13-32 | 40.6% | Game: | 29-66 | 43.9% | | | | | | | | | |
| | 1st Qtr | 7-18 | 38.9% | 2nd Qtr | 9-16 | 56.3% | 3rd Qtr | 8-19 | 42.1% | | | 4th Qtr | 5-13 | 38.5% | | | | |
| 3FG % | 1st Half: | 3-12 | 25.0% | 2nd Half: | 1-11 | 09.1% | Game: | 4-23 | 17.4% | | | | | | | | | |
| | 1st Qtr | 3-7 | 42.9% | 2nd Qtr | 0-5 | 00.0% | 3rd Qtr | 1-9 | 11.1% | | | 4th Qtr | 0-2 | 00.0% | | | | |
| FT % | 1st Half: | 4-6 | 66.7% | 2nd Half: | 7-11 | 63.6% | Game: | 11-17 | 64.7% | | | | | | | | | |
| | 1st Qtr | 2-4 | 50.0% | 2nd Qtr | 2-2 | 100.0% | 3rd Qtr | 4-7 | 57.1% | | | 4th Qtr | 3-4 | 75.0% | | | | |

Texas Tech 52 - 6-10, 0-4 BIG 12

| ## | Player | c/g | Total | | | 3-Ptr | | | Rebounds | | | PF | TP | A | TO | Blk | Stl | Min |
|--------|-------------------|-----|-------|------|-----|-------|----|-----|----------|-----|-----|----|----|---|----|-----|-----|-----|
| | | | FG | F-GA | FGA | FGA | FT | FTA | Off | Def | Tot | | | | | | | |
| 00 | BLAIRE, BRIELLE | f | 3 | 10 | 1 | 4 | 1 | 2 | 1 | 5 | 6 | 2 | 8 | 0 | 1 | 0 | 1 | 21 |
| 03 | WHILBY, LYN DSEY | g | 1 | 5 | 0 | 4 | 1 | 2 | 2 | 2 | 4 | 0 | 3 | 3 | 4 | 0 | 1 | 33 |
| 10 | BRIGHT, GRAYSON | g | 2 | 6 | 0 | 1 | 1 | 1 | 0 | 2 | 2 | 5 | 5 | 3 | 2 | 1 | 0 | 32 |
| 12 | TERRY, JADA | c | 6 | 11 | 0 | 0 | 6 | 13 | 4 | 6 | 10 | 3 | 18 | 0 | 4 | 0 | 2 | 24 |
| 30 | SANDERS, ZURI | f | 3 | 5 | 0 | 1 | 0 | 2 | 2 | 2 | 4 | 0 | 6 | 1 | 4 | 0 | 0 | 25 |
| 01 | DEGRATE, ERIN | | 1 | 4 | 0 | 0 | 1 | 2 | 0 | 1 | 1 | 0 | 3 | 0 | 3 | 0 | 0 | 11 |
| 13 | CALVERT, MCKENZIE | | 1 | 5 | 1 | 1 | 0 | 0 | 1 | 2 | 3 | 4 | 3 | 2 | 3 | 0 | 0 | 25 |
| 14 | HARRISON, LAUREN | | 0 | 0 | 0 | 0 | 0 | 0 | 0 | 1 | 1 | 0 | 0 | 0 | 0 | 0 | 0 | 1 |
| 20 | BREWER, BRIT TANY | | 2 | 3 | 0 | 0 | 1 | 1 | 0 | 0 | 0 | 0 | 5 | 0 | 0 | 0 | 0 | 8 |
| 23 | HAYDEN, ANGEL | | 0 | 0 | 0 | 0 | 0 | 0 | 0 | 0 | 0 | 1 | 0 | 0 | 1 | 0 | 0 | 4 |
| 32 | OLABODE, DAYO | | 0 | 0 | 0 | 0 | 1 | 2 | 1 | 1 | 2 | 0 | 1 | 0 | 5 | 0 | 0 | 10 |
| 42 | MCKENZIE, IONNA | | 0 | 0 | 0 | 0 | 0 | 0 | 0 | 0 | 0 | 0 | 0 | 0 | 0 | 1 | 1 | 6 |
| TEAM | | | | | | | | | 0 | 1 | 1 | 0 | | 0 | | | | |
| TOTALS | | | 19 | 49 | 2 | 11 | 12 | 25 | 11 | 23 | 34 | 15 | 52 | 9 | 27 | 2 | 5 | 200 |

Deadball Rebounds: 7,0

| | | | | | | | | | | | | | | | | | | |
|-------|-----------|-------|--------|-----------|------|-------|---------|-------|-------|--|--|---------|------|-------|--|--|--|--|
| FG % | 1st Half: | 12-29 | 41.4% | 2nd Half: | 7-20 | 35.0% | Game: | 19-49 | 38.8% | | | | | | | | | |
| | 1st Qtr | 7-13 | 53.8% | 2nd Qtr | 5-16 | 31.3% | 3rd Qtr | 2-11 | 18.2% | | | 4th Qtr | 5-9 | 55.6% | | | | |
| 3FG % | 1st Half: | 1-7 | 14.3% | 2nd Half: | 1-4 | 25.0% | Game: | 2-11 | 18.2% | | | | | | | | | |
| | 1st Qtr | 1-2 | 50.0% | 2nd Qtr | 0-5 | 00.0% | 3rd Qtr | 1-4 | 25.0% | | | 4th Qtr | 0-0 | 0% | | | | |
| FT % | 1st Half: | 4-9 | 44.4% | 2nd Half: | 8-16 | 50.0% | Game: | 12-25 | 48.0% | | | | | | | | | |
| | 1st Qtr | 1-1 | 100.0% | 2nd Qtr | 3-8 | 37.5% | 3rd Qtr | 3-6 | 50.0% | | | 4th Qtr | 5-10 | 50.0% | | | | |

Officials: Scott Yarbrough, Beverly Roberts, Amy Bonner
 Technical Fouls: Oklahoma- None. Texas Tech- None.
 Attendance: 4352

| Score by periods | 1st | 2nd | 3rd | 4th | Total |
|------------------|-----|-----|-----|-----|-------|
| Oklahoma | 19 | 20 | 21 | 13 | 73 |
| Texas Tech | 16 | 13 | 8 | 15 | 52 |

| Points | In Paint | Off T/O | 2nd Chance | Fast Break | Bench |
|--------|----------|---------|------------|------------|-------|
| OU | 48 | 27 | 13 | 4 | 15 |
| TTU | 32 | 18 | 7 | 2 | 12 |

Last FG - OU 4th-01:47, TTU 4th-00:45.
 Largest lead - Oklahoma by 31 4th-07:29; Texas Tech by 7 1st-08:02
 OU led for 35:01. TTU led for 3:41. Game was tied for 1:18.

Score tied - 1 times; Lead changed - 5 times

Official Basketball Box Score -- Game Totals -- First Half Statistics
Oklahoma vs Texas Tech
1/10/2018 6:00 p.m. at United Supermarkets Arena (Lubbock, TX)

Oklahoma 39 • 8-8, 3-2 BIG 12

| ## | Player | c | Total | | 3-Ptr | FT-FTA | Rebounds | | | PF | TP | A | TO | Blk | Stl | Min |
|--------|----------------------|---|--------|--------|--------|--------|----------|-----|-----|----|----|----|----|-----|-----|-----|
| | | | FG-FGA | FG-FGA | FG-FGA | | Off | Def | Tot | | | | | | | |
| 00 | PIERRE-LOUIS,VIONISE | c | 4-7 | 0-0 | 1-2 | 2 | 5 | 7 | 1 | 9 | 0 | 2 | 0 | 0 | 14 | |
| 14 | PELLINGTON,SHAINA | g | 2-3 | 0-0 | 0-0 | 0 | 0 | 0 | 1 | 4 | 1 | 1 | 0 | 0 | 13 | |
| 21 | ORTIZ,GABBI | g | 1-7 | 1-5 | 2-2 | 1 | 1 | 2 | 1 | 5 | 3 | 0 | 0 | 1 | 18 | |
| 22 | LLANUSA,ANA | g | 1-4 | 0-2 | 1-2 | 0 | 0 | 0 | 2 | 3 | 0 | 1 | 0 | 1 | 9 | |
| 23 | MANNING,MADDIE | g | 2-3 | 2-3 | 0-0 | 1 | 1 | 2 | 2 | 6 | 0 | 2 | 0 | 5 | 12 | |
| 01 | WILLIAMS,LANESIA | | 2-5 | 0-2 | 0-0 | 1 | 2 | 3 | 0 | 4 | 2 | 0 | 0 | 0 | 13 | |
| 03 | SIMPSON,MANDY | | 4-4 | 0-0 | 0-0 | 0 | 2 | 2 | 1 | 8 | 0 | 1 | 0 | 0 | 9 | |
| 12 | PENZO,GILEYSA | | 0-1 | 0-0 | 0-0 | 0 | 0 | 0 | 0 | 0 | 1 | 2 | 0 | 2 | 9 | |
| 24 | ODIMGBE,IJEOMA | | 0-0 | 0-0 | 0-0 | 0 | 1 | 1 | 2 | 0 | 0 | 1 | 0 | 0 | 3 | |
| TEAM | | | | | | 1 | 0 | 1 | 0 | | 0 | | | | | |
| Totals | | | 16-34 | 3-12 | 4-6 | 6 | 12 | 18 | 10 | 39 | 7 | 10 | 0 | 9 | 100 | |

| | | | | | | | | | |
|-------|---------|------|-------|---------|------|--------|-------|-------|-------|
| FG % | 1st Qtr | 7-18 | 38.9% | 2nd Qtr | 9-16 | 56.3% | Half: | 16-34 | 47.1% |
| 3FG % | 1st Qtr | 3-7 | 42.9% | 2nd Qtr | 0-5 | 00.0% | Half: | 3-12 | 25.0% |
| FT % | 1st Qtr | 2-4 | 50.0% | 2nd Qtr | 2-2 | 100.0% | Half: | 4-6 | 66.7% |

Texas Tech 29 • 6-10, 0-4 BIG 12

| ## | Player | f | Total | | 3-Ptr | FT-FTA | Rebounds | | | PF | TP | A | TO | Blk | Stl | Min |
|--------|------------------|---|--------|--------|--------|--------|----------|-----|-----|----|----|----|----|-----|-----|-----|
| | | | FG-FGA | FG-FGA | FG-FGA | | Off | Def | Tot | | | | | | | |
| 00 | BLAIRE,BRIELLE | f | 3-6 | 1-3 | 0-0 | 1 | 4 | 5 | 0 | 7 | 0 | 0 | 0 | 0 | 12 | |
| 03 | WHILBY,LYNDSEY | g | 0-3 | 0-3 | 0-0 | 1 | 0 | 1 | 0 | 0 | 2 | 3 | 0 | 0 | 18 | |
| 10 | BRIGHT,GRAYSON | g | 2-3 | 0-0 | 1-1 | 0 | 2 | 2 | 1 | 5 | 2 | 2 | 1 | 0 | 19 | |
| 12 | TERRY,JADA | c | 4-8 | 0-0 | 0-3 | 3 | 2 | 5 | 2 | 8 | 0 | 2 | 0 | 0 | 11 | |
| 30 | SANDERS,ZURI | f | 1-3 | 0-1 | 0-0 | 2 | 1 | 3 | 0 | 2 | 1 | 1 | 0 | 0 | 12 | |
| 01 | DEGRATE,ERIN | | 1-3 | 0-0 | 1-2 | 0 | 1 | 1 | 0 | 3 | 0 | 2 | 0 | 0 | 8 | |
| 13 | CALVERT,MCKENZIE | | 0-1 | 0-0 | 0-0 | 0 | 1 | 1 | 2 | 0 | 1 | 2 | 0 | 0 | 9 | |
| 14 | HARRISON,LAUREN | | 0-0 | 0-0 | 0-0 | 0 | 0 | 0 | 0 | 0 | 0 | 0 | 0 | 0 | 0 | |
| 20 | BREWER,BRITTANY | | 1-2 | 0-0 | 1-1 | 0 | 0 | 0 | 0 | 3 | 0 | 0 | 0 | 0 | 4 | |
| 23 | HAYDEN,ANGEL | | 0-0 | 0-0 | 0-0 | 0 | 0 | 0 | 1 | 0 | 0 | 0 | 0 | 0 | 2 | |
| 32 | OLABODE,DAYO | | 0-0 | 0-0 | 1-2 | 1 | 0 | 1 | 0 | 1 | 0 | 3 | 0 | 0 | 5 | |
| 42 | MCKENZIE,IONNA | | 0-0 | 0-0 | 0-0 | 0 | 0 | 0 | 0 | 0 | 0 | 0 | 0 | 0 | 0 | |
| TEAM | | | | | | 0 | 0 | 0 | 0 | | 0 | | | | | |
| Totals | | | 12-29 | 1-7 | 4-9 | 8 | 11 | 19 | 6 | 29 | 6 | 15 | 1 | 0 | 100 | |

| | | | | | | | | | |
|-------|---------|------|--------|---------|------|-------|-------|-------|-------|
| FG % | 1st Qtr | 7-13 | 53.8% | 2nd Qtr | 5-16 | 31.3% | Half: | 12-29 | 41.4% |
| 3FG % | 1st Qtr | 1-2 | 50.0% | 2nd Qtr | 0-5 | 00.0% | Half: | 1-7 | 14.3% |
| FT % | 1st Qtr | 1-1 | 100.0% | 2nd Qtr | 3-8 | 37.5% | Half: | 4-9 | 44.4% |

Officials: Scott Yarbrough, Beverly Roberts, Amy Bonner
 Technical Fouls: Oklahoma- None. Texas Tech- None.

| Score by periods | 1st | 2nd | 3rd | 4th | Total |
|------------------|-----|-----|-----|-----|-----------|
| Oklahoma | 19 | 20 | 21 | 13 | 73 |
| Texas Tech | 16 | 13 | 8 | 15 | 52 |

| Points | In Paint | Off T/O | 2nd Chance | Fast Break | Bench |
|--------|----------|---------|------------|------------|-------|
| OU | 26 | 18 | 4 | 2 | 12 |
| | 22 | 8 | 5 | 2 | 7 |

Last FG - OU 2nd-01:12, TTU 2nd-01:33.
 OU led for 15:01. TTU led for 3:41. Game was tied for 1:18.

Score tied - 1 times
 Lead changed - 5 times

Oklahoma vs Texas Tech
1/10/2018; 6:00 p.m. at United Supermarkets Arena (Lubbock, TX)
Period 1 Play-By-Play

| VISITORS: Oklahoma | Time | Score | Margin | HOME: Texas Tech |
|---|-------|-------|--------|--|
| MISSED JUMPER by ORTIZ,GABBI | 09:47 | | | |
| REBOUND (OFF) by ORTIZ,GABBI | 09:47 | | | |
| MISSED 3PTR by ORTIZ,GABBI | 09:40 | | | |
| REBOUND (OFF) by MANNING,MADDIE | 09:40 | | | |
| MISSED 3PTR by LLANUSA,ANA | 09:23 | | | |
| | 09:23 | | | REBOUND (DEF) by BLAIRE,BRIELLE |
| | 09:09 | 2-0 | H 2 | GOOD! LAYUP by TERRY,JADA [PNT] |
| TURNOVER by LLANUSA,ANA | 08:50 | | | |
| | 08:36 | 4-0 | H 4 | GOOD! LAYUP by BLAIRE,BRIELLE [PNT] |
| MISSED JUMPER by PELLINGTON,SHAINA | 08:17 | | | |
| | 08:17 | | | REBOUND (DEF) by TERRY,JADA |
| | 08:02 | 6-0 | H 6 | GOOD! LAYUP by BRIGHT,GRAYSON [PNT] |
| FOUL by LLANUSA,ANA | 08:02 | | | |
| | 08:02 | 7-0 | H 7 | GOOD! FT by BRIGHT,GRAYSON |
| GOOD! LAYUP by PIERRE-LOUIS,VIONISE [PNT] | 07:51 | 7-2 | H 5 | |
| ASSIST by PELLINGTON,SHAINA | 07:51 | | | |
| | 07:37 | | | TURNOVER by BRIGHT,GRAYSON |
| GOOD! LAYUP by PELLINGTON,SHAINA [PNT] | 07:29 | 7-4 | H 3 | |
| | 07:13 | | | TURNOVER by SANDERS,ZURI |
| | 07:00 | | | FOUL by TERRY,JADA |
| MISSED FT by PIERRE-LOUIS,VIONISE | 07:00 | | | |
| REBOUND (DEADB) by TEAM | 07:00 | | | |
| GOOD! FT by PIERRE-LOUIS,VIONISE | 07:00 | 7-5 | H 2 | |
| | 06:56 | | | TIMEOUT 30SEC |
| | 06:44 | | | TURNOVER by WHILBY,LYNDSEY |
| STEAL by MANNING,MADDIE | 06:43 | | | |
| GOOD! 3PTR by MANNING,MADDIE | 06:35 | 7-8 | V 1 | |
| ASSIST by ORTIZ,GABBI | 06:35 | | | |
| | 06:15 | 10-8 | H 2 | GOOD! 3PTR by BLAIRE,BRIELLE |
| | 06:15 | | | ASSIST by BRIGHT,GRAYSON |
| MISSED JUMPER by LLANUSA,ANA | 05:48 | | | |
| | 05:48 | | | REBOUND (DEF) by BLAIRE,BRIELLE |
| | 05:37 | | | TURNOVER by TERRY,JADA |
| STEAL by MANNING,MADDIE | 05:36 | | | |
| GOOD! 3PTR by MANNING,MADDIE | 05:23 | 10-11 | V 1 | |
| ASSIST by ORTIZ,GABBI | 05:23 | | | |
| | 05:04 | | | MISSED LAYUP by TERRY,JADA |
| | 05:04 | | | REBOUND (OFF) by TERRY,JADA |
| | 05:02 | | | MISSED LAYUP by TERRY,JADA |
| REBOUND (DEF) by PIERRE-LOUIS,VIONISE | 05:02 | | | |
| MISSED LAYUP by PIERRE-LOUIS,VIONISE | 04:41 | | | |
| REBOUND (OFF) by PIERRE-LOUIS,VIONISE | 04:41 | | | |
| MISSED LAYUP by PIERRE-LOUIS,VIONISE | 04:37 | | | |
| | 04:37 | | | REBOUND (DEF) by BLAIRE,BRIELLE |
| SUB IN: PENZO,GILEYSA | 04:37 | | | |
| SUB IN: SIMPSON,MANDY | 04:37 | | | |
| SUB OUT: PIERRE-LOUIS,VIONISE | 04:37 | | | |
| SUB OUT: PELLINGTON,SHAINA | 04:37 | | | |
| | 04:37 | | | SUB IN: OLABODE,DAYO |
| | 04:37 | | | SUB IN: DEGRATE,ERIN |
| | 04:37 | | | SUB IN: CALVERT,MCKENZIE |
| | 04:37 | | | SUB OUT: WHILBY,LYNDSEY |
| | 04:37 | | | SUB OUT: TERRY,JADA |
| | 04:37 | | | SUB OUT: SANDERS,ZURI |
| | 04:32 | | | TURNOVER by CALVERT,MCKENZIE |
| STEAL by ORTIZ,GABBI | 04:30 | | | |
| MISSED 3PTR by MANNING,MADDIE | 04:27 | | | |
| | 04:27 | | | REBOUND (DEF) by CALVERT,MCKENZIE |
| | 04:18 | 12-11 | H 1 | GOOD! LAYUP by BLAIRE,BRIELLE [FB/PNT] |
| GOOD! 3PTR by ORTIZ,GABBI | 04:03 | 12-14 | V 2 | |
| | 03:47 | | | TURNOVER by CALVERT,MCKENZIE |
| STEAL by MANNING,MADDIE | 03:46 | | | |
| TURNOVER by PENZO,GILEYSA | 03:43 | | | |
| | 03:43 | | | SUB IN: WHILBY,LYNDSEY |
| | 03:43 | | | SUB OUT: BLAIRE,BRIELLE |
| | 03:27 | | | TURNOVER by OLABODE,DAYO |
| STEAL by PENZO,GILEYSA | 03:26 | | | |
| MISSED LAYUP by PENZO,GILEYSA | 03:23 | | | |
| | 03:23 | | | REBOUND (DEF) by BRIGHT,GRAYSON |

| VISITORS: Oklahoma | Time | Score | Margin | HOME: Texas Tech |
|--|-------|-------|--------|-----------------------------------|
| | 03:14 | | | MISSED 3PTR by WHILBY,LYNDSEY |
| REBOUND (DEF) by SIMPSON,MANDY | 03:14 | | | |
| TURNOVER by PENZO,GILEYSA | 03:08 | | | |
| SUB IN: PELLINGTON,SHAINA | 03:08 | | | |
| SUB OUT: PENZO,GILEYSA | 03:08 | | | |
| | 03:08 | | | SUB IN: HAYDEN,ANGEL |
| | 03:08 | | | SUB OUT: BRIGHT,GRAYSON |
| | 02:55 | | | TURNOVER by OLABODE,DAYO |
| | 02:44 | | | FOUL by CALVERT,MCKENZIE |
| MISSED FT by LLANUSA,ANA | 02:44 | | | |
| REBOUND (DEADB) by TEAM | 02:44 | | | |
| GOOD! FT by LLANUSA,ANA | 02:44 | 12-15 | V 3 | |
| SUB IN: WILLIAMS,LANESIA | 02:44 | | | |
| SUB OUT: LLANUSA,ANA | 02:44 | | | |
| FOUL by ORTIZ,GABBI | 02:43 | | | |
| | 02:40 | | | TURNOVER by OLABODE,DAYO |
| STEAL by MANNING,MADDIE | 02:39 | | | |
| GOOD! JUMPER by WILLIAMS,LANESIA [PNT] | 02:34 | 12-17 | V 5 | |
| ASSIST by ORTIZ,GABBI | 02:34 | | | |
| | 02:08 | 14-17 | V 3 | GOOD! LAYUP by DEGRATE,ERIN [PNT] |
| | 02:08 | | | ASSIST by WHILBY,LYNDSEY |
| | 01:58 | | | FOUL by HAYDEN,ANGEL |
| | 01:58 | | | SUB IN: SANDERS,ZURI |
| | 01:58 | | | SUB IN: BRIGHT,GRAYSON |
| | 01:58 | | | SUB OUT: OLABODE,DAYO |
| | 01:58 | | | SUB OUT: HAYDEN,ANGEL |
| MISSED 3PTR by ORTIZ,GABBI | 01:56 | | | |
| | 01:56 | | | REBOUND (DEF) by DEGRATE,ERIN |
| | 01:49 | | | TURNOVER by WHILBY,LYNDSEY |
| SUB IN: PIERRE-LOUIS,VIONISE | 01:49 | | | |
| SUB OUT: SIMPSON,MANDY | 01:49 | | | |
| TURNOVER by MANNING,MADDIE | 01:39 | | | |
| FOUL by MANNING,MADDIE | 01:39 | | | |
| | 01:28 | | | TURNOVER by DEGRATE,ERIN |
| STEAL by MANNING,MADDIE | 01:27 | | | |
| TURNOVER by MANNING,MADDIE | 01:16 | | | |
| FOUL by PELLINGTON,SHAINA | 01:13 | | | |
| | 01:08 | | | MISSED JUMPER by CALVERT,MCKENZIE |
| REBOUND (DEF) by MANNING,MADDIE | 01:08 | | | |
| GOOD! JUMPER by PIERRE-LOUIS,VIONISE [PNT] | 00:57 | 14-19 | V 5 | |
| | 00:40 | | | MISSED JUMPER by DEGRATE,ERIN |
| | 00:40 | | | REBOUND (OFF) by SANDERS,ZURI |
| | 00:37 | | | MISSED JUMPER by SANDERS,ZURI |
| | 00:37 | | | REBOUND (OFF) by WHILBY,LYNDSEY |
| | 00:32 | 16-19 | V 3 | GOOD! LAYUP by SANDERS,ZURI [PNT] |
| | 00:28 | | | ASSIST by WHILBY,LYNDSEY |
| MISSED LAYUP by PIERRE-LOUIS,VIONISE | 00:02 | | | |
| | 00:02 | | | REBOUND (DEF) by BRIGHT,GRAYSON |

Oklahoma 19, Texas Tech 16

| Period 1-only | In Paint | Off T/O | 2nd Chance | Fast Break | Bench | |
|---------------|----------|---------|------------|------------|-------|------------------------|
| OU | 8 | 12 | 0 | 0 | 2 | Score tied - 0 times |
| TTU | 12 | 2 | 2 | 2 | 2 | Lead changed - 6 times |

Oklahoma vs Texas Tech
1/10/2018; 6:00 p.m. at United Supermarkets Arena (Lubbock, TX)
Period 2 Play-By-Play

| VISITORS: Oklahoma | Time | Score | Margin | HOME: Texas Tech |
|---|-------|-------|--------|---------------------------------------|
| SUB IN: WILLIAMS,LANESIA | 10:00 | | | |
| SUB OUT: LLANUSA,ANA | 10:00 | | | |
| | 10:00 | | | SUB IN: DEGRATE,ERIN |
| | 10:00 | | | SUB OUT: TERRY,JADA |
| TURNOVER by PIERRE-LOUIS,VIONISE | 09:52 | | | |
| FOUL by MANNING,MADDIE | 09:40 | | | |
| | 09:40 | 17-19 | V 2 | GOOD! FT by DEGRATE,ERIN |
| | 09:40 | | | MISSED FT by DEGRATE,ERIN |
| | 09:40 | | | REBOUND (OFF) by SANDERS,ZURI |
| | 09:35 | | | MISSED 3PTR by SANDERS,ZURI |
| REBOUND (DEF) by ORTIZ,GABBI | 09:35 | | | |
| MISSED 3PTR by ORTIZ,GABBI | 09:23 | | | |
| | 09:23 | | | REBOUND (DEF) by BLAIRE,BRIELLE |
| | 09:08 | 19-19 | T | GOOD! LAYUP by BRIGHT,GRAYSON [PNT] |
| | 09:08 | | | ASSIST by SANDERS,ZURI |
| GOOD! JUMPER by PELLINGTON,SHAINA [PNT] | 08:41 | 19-21 | V 2 | |
| | 08:16 | | | MISSED JUMPER by BLAIRE,BRIELLE |
| REBOUND (DEF) by PIERRE-LOUIS,VIONISE | 08:16 | | | |
| | 08:10 | | | FOUL by BRIGHT,GRAYSON |
| GOOD! FT by ORTIZ,GABBI | 08:10 | 19-22 | V 3 | |
| GOOD! FT by ORTIZ,GABBI | 08:10 | 19-23 | V 4 | |
| SUB IN: LLANUSA,ANA | 08:10 | | | |
| SUB IN: PENZO,GILEYSA | 08:10 | | | |
| SUB OUT: ORTIZ,GABBI | 08:10 | | | |
| SUB OUT: MANNING,MADDIE | 08:10 | | | |
| | 08:10 | | | SUB IN: BREWER,BRITTANY |
| | 08:10 | | | SUB OUT: DEGRATE,ERIN |
| | 08:02 | | | MISSED 3PTR by BLAIRE,BRIELLE |
| REBOUND (DEF) by WILLIAMS,LANESIA | 08:02 | | | |
| MISSED 3PTR by WILLIAMS,LANESIA | 07:39 | | | |
| | 07:39 | | | REBOUND (DEF) by SANDERS,ZURI |
| | 07:23 | | | TURNOVER by WHILBY,LYNDSEY |
| GOOD! LAYUP by PIERRE-LOUIS,VIONISE [PNT] | 07:01 | 19-25 | V 6 | |
| | 06:46 | | | MISSED 3PTR by WHILBY,LYNDSEY |
| | 06:46 | | | REBOUND (OFF) by BLAIRE,BRIELLE |
| SUB IN: ODIMGBE,IJEOMA | 06:44 | | | |
| SUB OUT: PIERRE-LOUIS,VIONISE | 06:44 | | | |
| | 06:39 | | | TURNOVER by BRIGHT,GRAYSON |
| STEAL by LLANUSA,ANA | 06:38 | | | |
| GOOD! LAYUP by LLANUSA,ANA [FB/PNT] | 06:37 | 19-27 | V 8 | |
| | 06:20 | 21-27 | V 6 | GOOD! JUMPER by BREWER,BRITTANY [PNT] |
| FOUL by LLANUSA,ANA | 06:20 | | | |
| | 06:20 | 22-27 | V 5 | GOOD! FT by BREWER,BRITTANY |
| | 06:20 | | | SUB IN: TERRY,JADA |
| | 06:20 | | | SUB OUT: SANDERS,ZURI |
| SUB IN: ORTIZ,GABBI | 06:15 | | | |
| SUB OUT: LLANUSA,ANA | 06:15 | | | |
| TURNOVER by PELLINGTON,SHAINA | 06:12 | | | |
| SUB IN: SIMPSON,MANDY | 06:12 | | | |
| SUB OUT: PELLINGTON,SHAINA | 06:12 | | | |
| | 05:53 | 24-27 | V 3 | GOOD! LAYUP by TERRY,JADA [PNT] |
| | 05:53 | | | ASSIST by BRIGHT,GRAYSON |
| MISSED 3PTR by ORTIZ,GABBI | 05:41 | | | |
| | 05:41 | | | REBOUND (DEF) by TERRY,JADA |
| FOUL by ODIMGBE,IJEOMA | 05:39 | | | |
| | 05:21 | | | MISSED LAYUP by TERRY,JADA |
| REBOUND (DEF) by SIMPSON,MANDY | 05:21 | | | |
| GOOD! JUMPER by SIMPSON,MANDY [PNT] | 05:08 | 24-29 | V 5 | |
| | 04:51 | | | MISSED 3PTR by BLAIRE,BRIELLE |
| | 04:51 | | | REBOUND (OFF) by TERRY,JADA |
| | 04:49 | | | TURNOVER by TERRY,JADA |
| TIMEOUT media | 04:49 | | | |
| | 04:49 | | | SUB IN: CALVERT,MCKENZIE |
| | 04:49 | | | SUB OUT: BLAIRE,BRIELLE |
| TURNOVER by ODIMGBE,IJEOMA | 04:38 | | | |
| | 04:19 | | | MISSED JUMPER by BREWER,BRITTANY |
| REBOUND (DEF) by ODIMGBE,IJEOMA | 04:19 | | | |
| GOOD! LAYUP by SIMPSON,MANDY [PNT] | 04:10 | 24-31 | V 7 | |
| ASSIST by PENZO,GILEYSA | 04:10 | | | |

| VISITORS: Oklahoma | Time | Score | Margin | HOME: Texas Tech |
|--|-------|-------|--------|----------------------------------|
| FOUL by ODIMGBE,IJEOMA | 03:56 | | | |
| | 03:56 | | | MISSED FT by TERRY,JADA |
| | 03:56 | | | REBOUND (DEADB) by TEAM |
| | 03:56 | | | MISSED FT by TERRY,JADA |
| REBOUND (DEF) by WILLIAMS,LANESIA | 03:56 | | | |
| SUB IN: PIERRE-LOUIS,VIONISE | 03:56 | | | |
| SUB OUT: ODIMGBE,IJEOMA | 03:56 | | | |
| | 03:56 | | | SUB IN: DEGRATE,ERIN |
| | 03:56 | | | SUB OUT: BREWER,BRITTANY |
| GOOD! LAYUP by SIMPSON,MANDY [PNT] | 03:49 | 24-33 | V 9 | |
| ASSIST by WILLIAMS,LANESIA | 03:49 | | | |
| | 03:23 | | | TURNOVER by DEGRATE,ERIN |
| STEAL by PENZO,GILEYSA | 03:22 | | | |
| MISSED 3PTR by WILLIAMS,LANESIA | 03:12 | | | |
| REBOUND (OFF) by PIERRE-LOUIS,VIONISE | 03:12 | | | |
| GOOD! JUMPER by PIERRE-LOUIS,VIONISE [PNT] | 03:08 | 24-35 | V 11 | |
| | 03:01 | | | TIMEOUT 30SEC |
| | 03:01 | | | SUB IN: OLABODE,DAYO |
| | 03:01 | | | SUB OUT: DEGRATE,ERIN |
| | 02:34 | | | MISSED 3PTR by WHILBY,LYNDSEY |
| REBOUND (DEF) by PIERRE-LOUIS,VIONISE | 02:34 | | | |
| TURNOVER by PIERRE-LOUIS,VIONISE | 02:25 | | | |
| | 02:11 | | | MISSED JUMPER by TERRY,JADA |
| | 02:11 | | | REBOUND (OFF) by TERRY,JADA |
| | 02:10 | 26-35 | V 9 | GOOD! JUMPER by TERRY,JADA [PNT] |
| FOUL by PIERRE-LOUIS,VIONISE | 02:10 | | | |
| | 02:10 | | | MISSED FT by TERRY,JADA |
| | 02:10 | | | REBOUND (OFF) by OLABODE,DAYO |
| FOUL by SIMPSON,MANDY | 02:09 | | | |
| | 02:09 | | | MISSED FT by OLABODE,DAYO |
| | 02:09 | | | REBOUND (DEADB) by TEAM |
| | 02:09 | 27-35 | V 8 | GOOD! FT by OLABODE,DAYO |
| GOOD! LAYUP by SIMPSON,MANDY [PNT] | 01:53 | 27-37 | V 10 | |
| ASSIST by WILLIAMS,LANESIA | 01:53 | | | |
| | 01:33 | 29-37 | V 8 | GOOD! JUMPER by TERRY,JADA [PNT] |
| | 01:33 | | | ASSIST by CALVERT,MCKENZIE |
| | 01:19 | | | FOUL by TERRY,JADA |
| | 01:19 | | | SUB IN: SANDERS,ZURI |
| | 01:19 | | | SUB OUT: OLABODE,DAYO |
| MISSED JUMPER by WILLIAMS,LANESIA | 01:16 | | | |
| REBOUND (OFF) by WILLIAMS,LANESIA | 01:16 | | | |
| GOOD! JUMPER by WILLIAMS,LANESIA [PNT] | 01:12 | 29-39 | V 10 | |
| | 00:47 | | | MISSED JUMPER by BRIGHT,GRAYSON |
| REBOUND (DEF) by PIERRE-LOUIS,VIONISE | 00:47 | | | |
| | 00:41 | | | FOUL by CALVERT,MCKENZIE |
| | 00:41 | | | SUB IN: DEGRATE,ERIN |
| | 00:41 | | | SUB IN: BLAIRE,BRIELLE |
| | 00:41 | | | SUB IN: HAYDEN,ANGEL |
| | 00:41 | | | SUB OUT: CALVERT,MCKENZIE |
| | 00:41 | | | SUB OUT: WHILBY,LYNDSEY |
| | 00:41 | | | SUB OUT: TERRY,JADA |
| TURNOVER by SIMPSON,MANDY | 00:33 | | | |
| | 00:07 | | | MISSED JUMPER by DEGRATE,ERIN |
| REBOUND (DEF) by PIERRE-LOUIS,VIONISE | 00:07 | | | |
| MISSED JUMPER by ORTIZ,GABBI | 00:02 | | | |
| | 00:02 | | | BLOCK by BRIGHT,GRAYSON |
| REBOUND (OFF) by TEAM | 00:02 | | | |
| SUB IN: LLANUSA,ANA | 00:02 | | | |
| SUB IN: MANNING,MADDIE | 00:02 | | | |
| SUB OUT: WILLIAMS,LANESIA | 00:02 | | | |
| SUB OUT: PENZO,GILEYSA | 00:02 | | | |
| MISSED 3PTR by LLANUSA,ANA | 00:00 | | | |
| REBOUND (DEADB) by TEAM | 00:00 | | | |

Oklahoma 39, Texas Tech 29

| Period 2-only | In Paint | Off T/O | 2nd Chance | Fast Break | Bench | |
|---------------|----------|---------|------------|------------|-------|------------------------|
| OU | 18 | 6 | 4 | 2 | 10 | Score tied - 0 times |
| TTU | 10 | 6 | 3 | 0 | 5 | Lead changed - 0 times |

Oklahoma vs Texas Tech
1/10/2018; 6:00 p.m. at United Supermarkets Arena (Lubbock, TX)
Period 3 Play-By-Play

| VISITORS: Oklahoma | Time | Score | Margin | HOME: Texas Tech |
|--|-------|-------|--------|-----------------------------------|
| GOOD! JUMPER by PIERRE-LOUIS,VIONISE [PNT] | 09:51 | 29-41 | V 12 | |
| | 09:51 | | | FOUL by TERRY,JADA |
| GOOD! FT by PIERRE-LOUIS,VIONISE | 09:51 | 29-42 | V 13 | |
| | 09:48 | | | TURNOVER by SANDERS,ZURI |
| STEAL by ORTIZ,GABBI | 09:47 | | | |
| MISSED JUMPER by MANNING,MADDIE | 09:41 | | | |
| REBOUND (OFF) by MANNING,MADDIE | 09:41 | | | |
| MISSED 3PTR by MANNING,MADDIE | 09:21 | | | |
| REBOUND (OFF) by PELLINGTON,SHAINA | 09:21 | | | |
| GOOD! LAYUP by PIERRE-LOUIS,VIONISE [PNT] | 09:08 | 29-44 | V 15 | |
| | 08:50 | | | MISSED JUMPER by TERRY,JADA |
| | 08:50 | | | REBOUND (OFF) by WHILBY,LYNDSEY |
| | 08:49 | | | SUB IN: CALVERT,MCKENZIE |
| | 08:49 | | | SUB IN: DEGRATE,ERIN |
| | 08:49 | | | SUB IN: HAYDEN,ANGEL |
| | 08:49 | | | SUB OUT: WHILBY,LYNDSEY |
| | 08:49 | | | SUB OUT: TERRY,JADA |
| | 08:49 | | | SUB OUT: SANDERS,ZURI |
| | 08:40 | | | TURNOVER by SANDERS,ZURI |
| STEAL by ORTIZ,GABBI | 08:39 | | | |
| GOOD! LAYUP by ORTIZ,GABBI [FB/PNT] | 08:37 | 29-46 | V 17 | |
| | 08:20 | | | MISSED JUMPER by BLAIRE,BRIELLE |
| REBOUND (DEF) by MANNING,MADDIE | 08:20 | | | |
| MISSED 3PTR by MANNING,MADDIE | 08:08 | | | |
| REBOUND (OFF) by ORTIZ,GABBI | 08:08 | | | |
| MISSED JUMPER by PELLINGTON,SHAINA | 07:54 | | | |
| REBOUND (OFF) by MANNING,MADDIE | 07:54 | | | |
| GOOD! LAYUP by PELLINGTON,SHAINA [PNT] | 07:49 | 29-48 | V 19 | |
| ASSIST by ORTIZ,GABBI | 07:49 | | | |
| | 07:47 | | | TIMEOUT 30SEC |
| | 07:47 | | | SUB IN: OLABODE,DAYO |
| | 07:47 | | | SUB OUT: BLAIRE,BRIELLE |
| FOUL by PELLINGTON,SHAINA | 07:30 | | | |
| | 07:30 | | | SUB IN: SANDERS,ZURI |
| | 07:30 | | | SUB OUT: HAYDEN,ANGEL |
| | 07:13 | | | MISSED JUMPER by DEGRATE,ERIN |
| | 07:13 | | | REBOUND (OFF) by CALVERT,MCKENZIE |
| | 07:06 | | | MISSED JUMPER by CALVERT,MCKENZIE |
| REBOUND (DEF) by MANNING,MADDIE | 07:06 | | | |
| MISSED 3PTR by ORTIZ,GABBI | 07:01 | | | |
| REBOUND (OFF) by TEAM | 07:01 | | | |
| | 06:58 | | | SUB IN: BREWER,BRITTANY |
| | 06:58 | | | SUB OUT: DEGRATE,ERIN |
| GOOD! JUMPER by PIERRE-LOUIS,VIONISE [PNT] | 06:50 | 29-50 | V 21 | |
| | 06:17 | 32-50 | V 18 | GOOD! 3PTR by CALVERT,MCKENZIE |
| | 06:17 | | | ASSIST by BRIGHT,GRAYSON |
| TURNOVER by PIERRE-LOUIS,VIONISE | 06:02 | | | |
| | 06:02 | | | SUB IN: BLAIRE,BRIELLE |
| | 06:02 | | | SUB OUT: SANDERS,ZURI |
| | 05:51 | | | TURNOVER by OLABODE,DAYO |
| TURNOVER by PELLINGTON,SHAINA | 05:41 | | | |
| | 05:34 | | | MISSED JUMPER by CALVERT,MCKENZIE |
| REBOUND (DEF) by ORTIZ,GABBI | 05:34 | | | |
| GOOD! LAYUP by LLANUSA,ANA [PNT] | 05:28 | 32-52 | V 20 | |
| ASSIST by ORTIZ,GABBI | 05:28 | | | |
| | 05:14 | | | MISSED 3PTR by BLAIRE,BRIELLE |
| REBOUND (DEF) by LLANUSA,ANA | 05:14 | | | |
| SUB IN: ODIMGBE,IJEOMA | 05:06 | | | |
| SUB OUT: PIERRE-LOUIS,VIONISE | 05:06 | | | |
| | 05:06 | | | SUB IN: WHILBY,LYNDSEY |
| | 05:06 | | | SUB OUT: BLAIRE,BRIELLE |
| MISSED 3PTR by ORTIZ,GABBI | 05:01 | | | |
| REBOUND (OFF) by ODIMGBE,IJEOMA | 05:01 | | | |
| | 05:00 | | | FOUL by BRIGHT,GRAYSON |
| TIMEOUT MEDIA | 05:00 | | | |
| GOOD! FT by ODIMGBE,IJEOMA | 05:00 | 32-53 | V 21 | |
| MISSED FT by ODIMGBE,IJEOMA | 05:00 | | | |
| | 05:00 | | | REBOUND (DEF) by WHILBY,LYNDSEY |
| | 05:00 | | | SUB IN: TERRY,JADA |

| VISITORS: Oklahoma | Time | Score | Margin | HOME: Texas Tech |
|---|-------|-------|--------|---------------------------------------|
| | 05:00 | | | SUB OUT: BREWER,BRITTANY |
| FOUL by ORTIZ,GABBI | 04:46 | | | |
| | 04:46 | | | MISSED FT by TERRY,JADA |
| | 04:46 | | | REBOUND (DEADB) by TEAM |
| | 04:46 | | | MISSED FT by TERRY,JADA |
| REBOUND (DEF) by ODIMGBE,IJEOMA | 04:46 | | | |
| MISSED 3PTR by MANNING,MADDIE | 04:21 | | | |
| REBOUND (OFF) by ODIMGBE,IJEOMA | 04:21 | | | |
| MISSED JUMPER by PELLINGTON,SHAINA | 04:17 | | | |
| | 04:17 | | | REBOUND (DEF) by OLABODE,DAYO |
| FOUL by ODIMGBE,IJEOMA | 04:15 | | | |
| FOUL by ODIMGBE,IJEOMA | 04:03 | | | |
| | 04:03 | | | MISSED FT by TERRY,JADA |
| | 04:03 | | | REBOUND (DEADB) by TEAM |
| | 04:03 | 33-53 | V 20 | GOOD! FT by TERRY,JADA |
| SUB IN: PIERRE-LOUIS,VIONISE | 04:03 | | | |
| SUB OUT: ODIMGBE,IJEOMA | 04:03 | | | |
| GOOD! 3PTR by LLANUSA,ANA | 03:52 | 33-56 | V 23 | |
| ASSIST by PIERRE-LOUIS,VIONISE | 03:52 | | | |
| | 03:31 | | | MISSED 3PTR by WHILBY,LYNDSEY |
| REBOUND (DEF) by LLANUSA,ANA | 03:31 | | | |
| MISSED 3PTR by ORTIZ,GABBI | 03:21 | | | |
| REBOUND (OFF) by MANNING,MADDIE | 03:21 | | | |
| | 03:19 | | | FOUL by BRIGHT,GRAYSON |
| MISSED 3PTR by LLANUSA,ANA | 03:12 | | | |
| | 03:12 | | | REBOUND (DEF) by CALVERT,MCKENZIE |
| | 03:00 | | | TURNOVER by OLABODE,DAYO |
| | 03:00 | | | SUB IN: SANDERS,ZURI |
| | 03:00 | | | SUB OUT: OLABODE,DAYO |
| TURNOVER by LLANUSA,ANA | 02:41 | | | |
| | 02:40 | | | STEAL by TERRY,JADA |
| FOUL by LLANUSA,ANA | 02:38 | | | |
| | 02:38 | 34-56 | V 22 | GOOD! FT by TERRY,JADA |
| | 02:38 | 35-56 | V 21 | GOOD! FT by TERRY,JADA |
| | 02:30 | | | FOUL by CALVERT,MCKENZIE |
| GOOD! FT by PELLINGTON,SHAINA | 02:30 | 35-57 | V 22 | |
| GOOD! FT by PELLINGTON,SHAINA | 02:30 | 35-58 | V 23 | |
| | 02:14 | | | TURNOVER by TERRY,JADA |
| STEAL by MANNING,MADDIE | 02:13 | | | |
| TURNOVER by LLANUSA,ANA | 02:06 | | | |
| SUB IN: WILLIAMS,LANESIA | 02:06 | | | |
| SUB OUT: LLANUSA,ANA | 02:06 | | | |
| | 02:06 | | | SUB IN: DEGRATE,ERIN |
| | 02:06 | | | SUB OUT: TERRY,JADA |
| | 01:46 | | | TURNOVER by DEGRATE,ERIN |
| TURNOVER by MANNING,MADDIE | 01:26 | | | |
| | 01:14 | | | MISSED 3PTR by BRIGHT,GRAYSON |
| REBOUND (DEF) by MANNING,MADDIE | 01:14 | | | |
| GOOD! LAYUP by PIERRE-LOUIS,VIONISE [PNT] | 01:05 | 35-60 | V 25 | |
| ASSIST by WILLIAMS,LANESIA | 01:05 | | | |
| | 00:53 | | | MISSED JUMPER by CALVERT,MCKENZIE |
| REBOUND (DEF) by MANNING,MADDIE | 00:53 | | | |
| | 00:46 | | | FOUL by BRIGHT,GRAYSON |
| MISSED FT by PELLINGTON,SHAINA | 00:46 | | | |
| REBOUND (DEADB) by TEAM | 00:46 | | | |
| MISSED FT by PELLINGTON,SHAINA | 00:46 | | | |
| | 00:46 | | | REBOUND (DEF) by HARRISON,LAUREN |
| | 00:46 | | | SUB IN: BREWER,BRITTANY |
| | 00:46 | | | SUB IN: HAYDEN,ANGEL |
| | 00:46 | | | SUB IN: TERRY,JADA |
| | 00:46 | | | SUB IN: HARRISON,LAUREN |
| | 00:46 | | | SUB OUT: CALVERT,MCKENZIE |
| | 00:46 | | | SUB OUT: BRIGHT,GRAYSON |
| | 00:46 | | | SUB OUT: DEGRATE,ERIN |
| | 00:41 | | | TURNOVER by HAYDEN,ANGEL |
| MISSED 3PTR by ORTIZ,GABBI | 00:26 | | | |
| | 00:26 | | | REBOUND (DEF) by SANDERS,ZURI |
| | 00:06 | 37-60 | V 23 | GOOD! JUMPER by BREWER,BRITTANY [PNT] |
| | 00:06 | | | ASSIST by WHILBY,LYNDSEY |

Oklahoma 60, Texas Tech 37

| Period 3-only | In Paint | Off T/O | 2nd Chance | Fast Break | Bench |
|---------------|----------|---------|------------|------------|-------|
|---------------|----------|---------|------------|------------|-------|

| Period 3-only | In Paint | Off T/O | 2nd Chance | Fast Break | Bench | |
|----------------------|---------------------|--------------------|-----------------------|-----------------------|--------------|------------------------|
| OU | 14 | 4 | 7 | 2 | 1 | Score tied - 0 times |
| TTU | 2 | 2 | 0 | 0 | 5 | Lead changed - 0 times |

Oklahoma vs Texas Tech
1/10/2018; 6:00 p.m. at United Supermarkets Arena (Lubbock, TX)
Period 4 Play-By-Play

| VISITORS: Oklahoma | Time | Score | Margin | HOME: Texas Tech |
|---|-------|-------|--------|-----------------------------------|
| SUB IN: WILLIAMS,LANESIA | 10:00 | | | |
| SUB OUT: LLANUSA,ANA | 10:00 | | | |
| | 10:00 | | | SUB IN: BREWER,BRITTANY |
| | 10:00 | | | SUB IN: CALVERT,MCKENZIE |
| | 10:00 | | | SUB OUT: BRIGHT,GRAYSON |
| | 10:00 | | | SUB OUT: TERRY,JADA |
| GOOD! LAYUP by PIERRE-LOUIS,VIONISE [PNT] | 09:46 | 37-62 | V 25 | |
| | 09:28 | | | MISSED JUMPER by BLAIRE,BRIELLE |
| REBOUND (DEF) by PIERRE-LOUIS,VIONISE | 09:28 | | | |
| GOOD! LAYUP by PIERRE-LOUIS,VIONISE [PNT] | 09:17 | 37-64 | V 27 | |
| ASSIST by MANNING,MADDIE | 09:17 | | | |
| | 09:00 | 39-64 | V 25 | GOOD! LAYUP by SANDERS,ZURI [PNT] |
| | 09:00 | | | ASSIST by CALVERT,MCKENZIE |
| SUB IN: LLANUSA,ANA | 08:45 | | | |
| SUB OUT: ORTIZ,GABBI | 08:45 | | | |
| | 08:45 | | | SUB IN: TERRY,JADA |
| | 08:45 | | | SUB OUT: BREWER,BRITTANY |
| MISSED 3PTR by MANNING,MADDIE | 08:41 | | | |
| REBOUND (OFF) by LLANUSA,ANA | 08:41 | | | |
| GOOD! JUMPER by WILLIAMS,LANESIA [PNT] | 08:34 | 39-66 | V 27 | |
| FOUL by PIERRE-LOUIS,VIONISE | 08:19 | | | |
| | 08:15 | | | TURNOVER by BLAIRE,BRIELLE |
| STEAL by LLANUSA,ANA | 08:14 | | | |
| | 08:13 | | | FOUL by BLAIRE,BRIELLE |
| GOOD! FT by LLANUSA,ANA | 08:13 | 39-67 | V 28 | |
| GOOD! FT by LLANUSA,ANA | 08:13 | 39-68 | V 29 | |
| | 08:13 | | | SUB IN: BRIGHT,GRAYSON |
| | 08:13 | | | SUB OUT: WHILBY,LYNDSEY |
| FOUL by PIERRE-LOUIS,VIONISE | 08:01 | | | |
| SUB IN: SIMPSON,MANDY | 08:01 | | | |
| SUB OUT: PIERRE-LOUIS,VIONISE | 08:01 | | | |
| FOUL by WILLIAMS,LANESIA | 08:00 | | | |
| | 08:00 | | | MISSED FT by SANDERS,ZURI |
| | 08:00 | | | REBOUND (DEADB) by TEAM |
| | 08:00 | | | MISSED FT by SANDERS,ZURI |
| REBOUND (DEF) by TEAM | 08:00 | | | |
| MISSED JUMPER by SIMPSON,MANDY | 07:47 | | | |
| | 07:47 | | | REBOUND (DEF) by BLAIRE,BRIELLE |
| | 07:35 | | | MISSED JUMPER by BRIGHT,GRAYSON |
| REBOUND (DEF) by WILLIAMS,LANESIA | 07:35 | | | |
| GOOD! JUMPER by MANNING,MADDIE | 07:29 | 39-70 | V 31 | |
| FOUL by MANNING,MADDIE | 07:12 | | | |
| | 07:12 | 40-70 | V 30 | GOOD! FT by TERRY,JADA |
| | 07:12 | 41-70 | V 29 | GOOD! FT by TERRY,JADA |
| SUB IN: PENZO,GILEYSA | 07:12 | | | |
| SUB OUT: PELLINGTON,SHAINA | 07:12 | | | |
| | 07:12 | | | SUB IN: WHILBY,LYNDSEY |
| | 07:12 | | | SUB OUT: CALVERT,MCKENZIE |
| MISSED JUMPER by SIMPSON,MANDY | 07:00 | | | |
| | 07:00 | | | REBOUND (DEF) by WHILBY,LYNDSEY |
| | 06:36 | | | MISSED JUMPER by BRIGHT,GRAYSON |
| | 06:36 | | | REBOUND (OFF) by TERRY,JADA |
| | 06:33 | 43-70 | V 27 | GOOD! JUMPER by TERRY,JADA [PNT] |
| TURNOVER by PENZO,GILEYSA | 06:20 | | | |
| | 06:19 | | | STEAL by TERRY,JADA |
| | 06:00 | 45-70 | V 25 | GOOD! LAYUP by SANDERS,ZURI [PNT] |
| TIMEOUT 30SEC | 05:52 | | | |
| | 05:52 | | | SUB IN: MCKENZIE,IONNA |
| | 05:52 | | | SUB OUT: SANDERS,ZURI |
| MISSED 3PTR by LLANUSA,ANA | 05:40 | | | |
| | 05:40 | | | REBOUND (DEF) by TEAM |
| | 05:12 | | | TURNOVER by WHILBY,LYNDSEY |
| TURNOVER by LLANUSA,ANA | 04:53 | | | |
| | 04:51 | | | STEAL by WHILBY,LYNDSEY |
| FOUL by PENZO,GILEYSA | 04:49 | | | |
| | 04:49 | | | MISSED FT by WHILBY,LYNDSEY |
| | 04:49 | | | REBOUND (DEADB) by TEAM |
| | 04:49 | 46-70 | V 24 | GOOD! FT by WHILBY,LYNDSEY |
| SUB IN: PELLINGTON,SHAINA | 04:49 | | | |

| VISITORS: Oklahoma | Time | Score | Margin | HOME: Texas Tech |
|-----------------------------------|-------|-------|--------|---------------------------------|
| SUB OUT: PENZO,GILEYSA | 04:49 | | | |
| | 04:49 | | | SUB IN: CALVERT,MCKENZIE |
| | 04:49 | | | SUB OUT: BLAIRE,BRIELLE |
| MISSED JUMPER by WILLIAMS,LANESIA | 04:30 | | | |
| | 04:30 | | | BLOCK by MCKENZIE,IONNA |
| REBOUND (OFF) by TEAM | 04:29 | | | |
| TURNOVER by SIMPSON,MANDY | 04:25 | | | |
| | 04:12 | 48-70 | V 22 | GOOD! JUMPER by WHILBY,LYNDSEY |
| | 03:56 | | | FOUL by BRIGHT,GRAYSON |
| | 03:56 | | | SUB IN: BLAIRE,BRIELLE |
| | 03:56 | | | SUB OUT: BRIGHT,GRAYSON |
| MISSED JUMPER by MANNING,MADDIE | 03:46 | | | |
| | 03:46 | | | REBOUND (DEF) by TERRY,JADA |
| | 03:22 | | | MISSED JUMPER by BLAIRE,BRIELLE |
| REBOUND (DEF) by LLANUSA,ANA | 03:22 | | | |
| | 03:20 | | | FOUL by BLAIRE,BRIELLE |
| TURNOVER by SIMPSON,MANDY | 03:08 | | | |
| | 03:07 | | | STEAL by BLAIRE,BRIELLE |
| FOUL by WILLIAMS,LANESIA | 03:03 | | | |
| | 03:03 | | | MISSED FT by BLAIRE,BRIELLE |
| | 03:03 | | | REBOUND (DEADB) by TEAM |
| | 03:03 | 49-70 | V 21 | GOOD! FT by BLAIRE,BRIELLE |
| SUB IN: PIERRE-LOUIS,VIONISE | 03:03 | | | |
| SUB OUT: SIMPSON,MANDY | 03:03 | | | |
| | 03:03 | | | SUB IN: SANDERS,ZURI |
| | 03:03 | | | SUB OUT: BLAIRE,BRIELLE |
| MISSED JUMPER by MANNING,MADDIE | 02:44 | | | |
| | 02:44 | | | REBOUND (DEF) by TERRY,JADA |
| | 02:33 | | | TIMEOUT TEAM |
| | 02:18 | | | TURNOVER by SANDERS,ZURI |
| MISSED JUMPER by WILLIAMS,LANESIA | 02:06 | | | |
| | 02:06 | | | REBOUND (DEF) by TERRY,JADA |
| | 01:52 | | | TURNOVER by TERRY,JADA |
| STEAL by MANNING,MADDIE | 01:50 | | | |
| GOOD! JUMPER by LLANUSA,ANA [PNT] | 01:47 | 49-72 | V 23 | |
| FOUL by PIERRE-LOUIS,VIONISE | 01:37 | | | |
| | 01:37 | 50-72 | V 22 | GOOD! FT by TERRY,JADA |
| | 01:37 | | | MISSED FT by TERRY,JADA |
| REBOUND (DEF) by MANNING,MADDIE | 01:37 | | | |
| TURNOVER by LLANUSA,ANA | 01:12 | | | |
| | 00:45 | 52-72 | V 20 | GOOD! LAYUP by TERRY,JADA [PNT] |
| TURNOVER by LLANUSA,ANA | 00:19 | | | |
| | 00:18 | | | STEAL by MCKENZIE,IONNA |
| | 00:05 | | | TURNOVER by CALVERT,MCKENZIE |
| STEAL by MANNING,MADDIE | 00:04 | | | |
| | 00:03 | | | FOUL by CALVERT,MCKENZIE |
| GOOD! FT by MANNING,MADDIE | 00:03 | 52-73 | V 21 | |
| MISSED FT by MANNING,MADDIE | 00:03 | | | |
| | 00:03 | | | REBOUND (DEF) by TERRY,JADA |

Oklahoma 73, Texas Tech 52

| Period 4-only | In Paint | Off T/O | 2nd Chance | Fast Break | Bench | |
|---------------|-------------|------------|---------------|---------------|-------|------------------------|
| OU | 8 | 5 | 2 | 0 | 2 | Score tied - 0 times |
| TTU | 8 | 8 | 2 | 0 | 0 | Lead changed - 0 times |

Oklahoma vs Texas Tech
1/10/2018; 6:00 p.m. at United Supermarkets Arena (Lubbock, TX)
Scoring/Runs Reference

Period 1

| Oklahoma | VRun | Score | Margin | HRun | Texas Tech |
|---------------------------------|------|-------|--------|-------|------------------------------|
| | | 0-2 | 2 | | TERRY LAYUP [P] - 09:09 |
| | | 0-4 | 4 | NaN-0 | BLAIRE LAYUP [P] - 08:36 |
| | | 0-6 | 6 | NaN-0 | BRIGHT LAYUP [P] - 08:02 |
| | | 0-7 | 7 | NaN-0 | BRIGHT FT - 08:02 |
| 07:51 - PIERRE-LOUIS LAYUP [P] | - | 2-7 | 5 | | |
| 07:29 - PELLINGTON LAYUP [P] | 4-0 | 4-7 | 3 | | |
| 07:00 - PIERRE-LOUIS FT | 5-0 | 5-7 | 2 | | |
| 06:35 - MANNING 3PTR | 8-0 | 8-7 | -1 | | |
| | | 8-10 | 2 | | BLAIRE 3PTR - 06:15 |
| 05:23 - MANNING 3PTR | - | 11-10 | -1 | | |
| | | 11-12 | 1 | | BLAIRE LAYUP [P] [F] - 04:18 |
| 04:03 - ORTIZ 3PTR | - | 14-12 | -2 | | |
| 02:44 - LLANUSA FT | 4-0 | 15-12 | -3 | | |
| 02:34 - WILLIAMS JUMPER [P] | 6-0 | 17-12 | -5 | | |
| | | 17-14 | -3 | | DEGRATE LAYUP [P] - 02:08 |
| 00:57 - PIERRE-LOUIS JUMPER [P] | - | 19-14 | -5 | | |
| | | 19-16 | -3 | | SANDERS LAYUP [P] - 00:32 |

Oklahoma vs Texas Tech
1/10/2018; 6:00 p.m. at United Supermarkets Arena (Lubbock, TX)
Scoring/Runs Reference

Period 2

| Oklahoma | VRun | Score | Margin | HRun | Texas Tech |
|---------------------------------|------|-------|--------|-------|---------------------------|
| | | 19-17 | -2 | | DEGRATE FT - 09:40 |
| | | 19-19 | 0 | NaN-0 | BRIGHT LAYUP [P] - 09:08 |
| 08:41 - PELLINGTON JUMPER [P] | - | 21-19 | -2 | | |
| 08:10 - ORTIZ FT | 3-0 | 22-19 | -3 | | |
| 08:10 - ORTIZ FT | 4-0 | 23-19 | -4 | | |
| 07:01 - PIERRE-LOUIS LAYUP [P] | 6-0 | 25-19 | -6 | | |
| 06:37 - LLANUSA LAYUP [P] [F] | 8-0 | 27-19 | -8 | | |
| | | 27-21 | -6 | | BREWER JUMPER [P] - 06:20 |
| | | 27-22 | -5 | 3-0 | BREWER FT - 06:20 |
| | | 27-24 | -3 | 5-0 | TERRY LAYUP [P] - 05:53 |
| 05:08 - SIMPSON JUMPER [P] | - | 29-24 | -5 | | |
| 04:10 - SIMPSON LAYUP [P] | 4-0 | 31-24 | -7 | | |
| 03:49 - SIMPSON LAYUP [P] | 6-0 | 33-24 | -9 | | |
| 03:08 - PIERRE-LOUIS JUMPER [P] | 8-0 | 35-24 | -11 | | |
| | | 35-26 | -9 | | TERRY JUMPER [P] - 02:10 |
| | | 35-27 | -8 | 3-0 | OLABODE FT - 02:09 |
| 01:53 - SIMPSON LAYUP [P] | - | 37-27 | -10 | | |
| | | 37-29 | -8 | | TERRY JUMPER [P] - 01:33 |
| 01:12 - WILLIAMS JUMPER [P] | - | 39-29 | -10 | | |

Oklahoma vs Texas Tech
1/10/2018; 6:00 p.m. at United Supermarkets Arena (Lubbock, TX)
Scoring/Runs Reference

Period 3

| Oklahoma | VRun | Score | Margin | HRun | Texas Tech |
|---------------------------------|-------|-------|--------|------|---------------------------|
| 09:51 - PIERRE-LOUIS JUMPER [P] | - | 41-29 | -12 | | |
| 09:51 - PIERRE-LOUIS FT | NaN-0 | 42-29 | -13 | | |
| 09:08 - PIERRE-LOUIS LAYUP [P] | NaN-0 | 44-29 | -15 | | |
| 08:37 - ORTIZ LAYUP [P] [F] | NaN-0 | 46-29 | -17 | | |
| 07:49 - PELLINGTON LAYUP [P] | NaN-0 | 48-29 | -19 | | |
| 06:50 - PIERRE-LOUIS JUMPER [P] | NaN-0 | 50-29 | -21 | | |
| | | 50-32 | -18 | | CALVERT 3PTR - 06:17 |
| 05:28 - LLANUSA LAYUP [P] | - | 52-32 | -20 | | |
| 05:00 - ODIMGBE FT | 3-0 | 53-32 | -21 | | |
| | | 53-33 | -20 | | TERRY FT - 04:03 |
| 03:52 - LLANUSA 3PTR | - | 56-33 | -23 | | |
| | | 56-34 | -22 | | TERRY FT - 02:38 |
| | | 56-35 | -21 | 2-0 | TERRY FT - 02:38 |
| 02:30 - PELLINGTON FT | - | 57-35 | -22 | | |
| 02:30 - PELLINGTON FT | 2-0 | 58-35 | -23 | | |
| 01:05 - PIERRE-LOUIS LAYUP [P] | 4-0 | 60-35 | -25 | | |
| | | 60-37 | -23 | | BREWER JUMPER [P] - 00:06 |

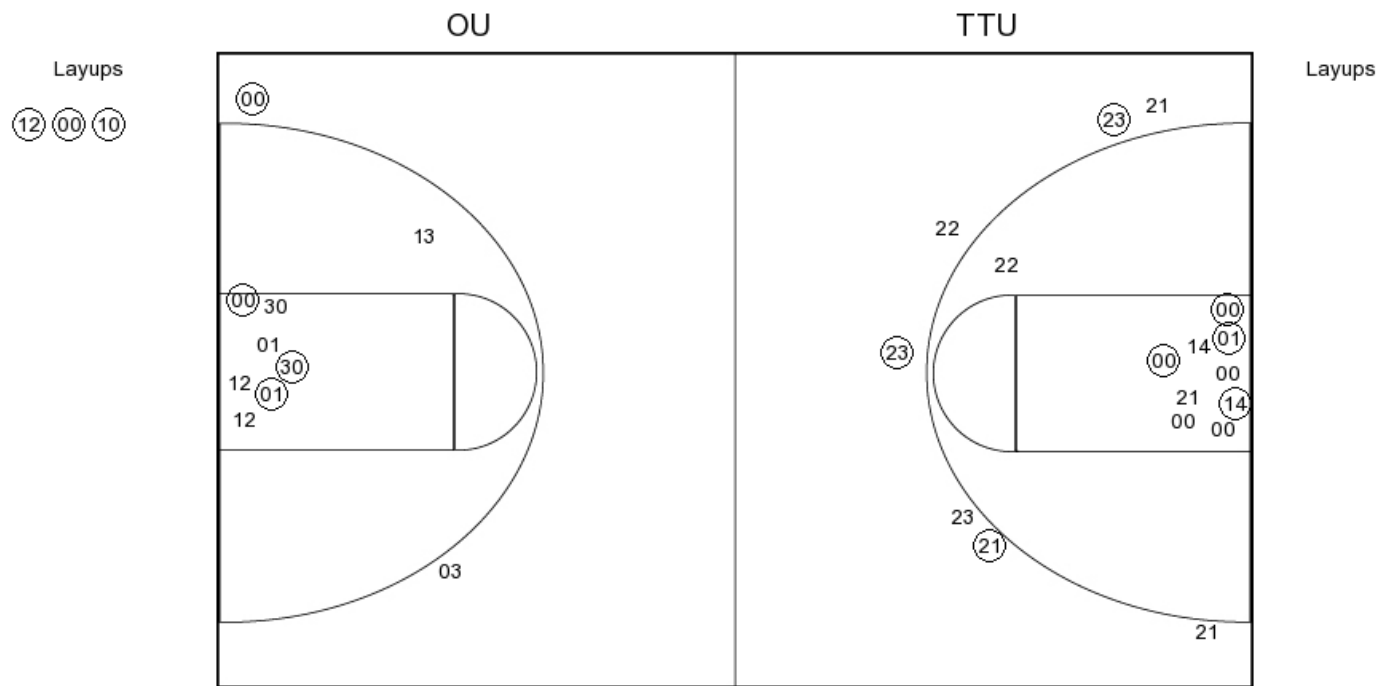
Oklahoma vs Texas Tech
1/10/2018; 6:00 p.m. at United Supermarkets Arena (Lubbock, TX)
Scoring/Runs Reference

Period 4

| Oklahoma | VRun | Score | Margin | HRun | Texas Tech |
|--------------------------------|-------|-------|--------|------|---------------------------|
| 09:46 - PIERRE-LOUIS LAYUP [P] | - | 62-37 | -25 | | |
| 09:17 - PIERRE-LOUIS LAYUP [P] | NaN-0 | 64-37 | -27 | | |
| | | 64-39 | -25 | | SANDERS LAYUP [P] - 09:00 |
| 08:34 - WILLIAMS JUMPER [P] | - | 66-39 | -27 | | |
| 08:13 - LLANUSA FT | 3-0 | 67-39 | -28 | | |
| 08:13 - LLANUSA FT | 4-0 | 68-39 | -29 | | |
| 07:29 - MANNING JUMPER | 6-0 | 70-39 | -31 | | |
| | | 70-40 | -30 | | TERRY FT - 07:12 |
| | | 70-41 | -29 | 2-0 | TERRY FT - 07:12 |
| | | 70-43 | -27 | 4-0 | TERRY JUMPER [P] - 06:33 |
| | | 70-45 | -25 | 6-0 | SANDERS LAYUP [P] - 06:00 |
| | | 70-46 | -24 | 7-0 | WHILBY FT - 04:49 |
| | | 70-48 | -22 | 9-0 | WHILBY JUMPER - 04:12 |
| | | 70-49 | -21 | 10-0 | BLAIRE FT - 03:03 |
| 01:47 - LLANUSA JUMPER [P] | - | 72-49 | -23 | | |
| | | 72-50 | -22 | | TERRY FT - 01:37 |
| | | 72-52 | -20 | 3-0 | TERRY LAYUP [P] - 00:45 |
| 00:03 - MANNING FT | - | 73-52 | -21 | | |

Oklahoma vs Texas Tech
 OFFICIAL SHOT CHART
 1/10/2018 at United Supermarkets Arena (Lubbock, TX)

PERIOD 1



OU PERIOD 1

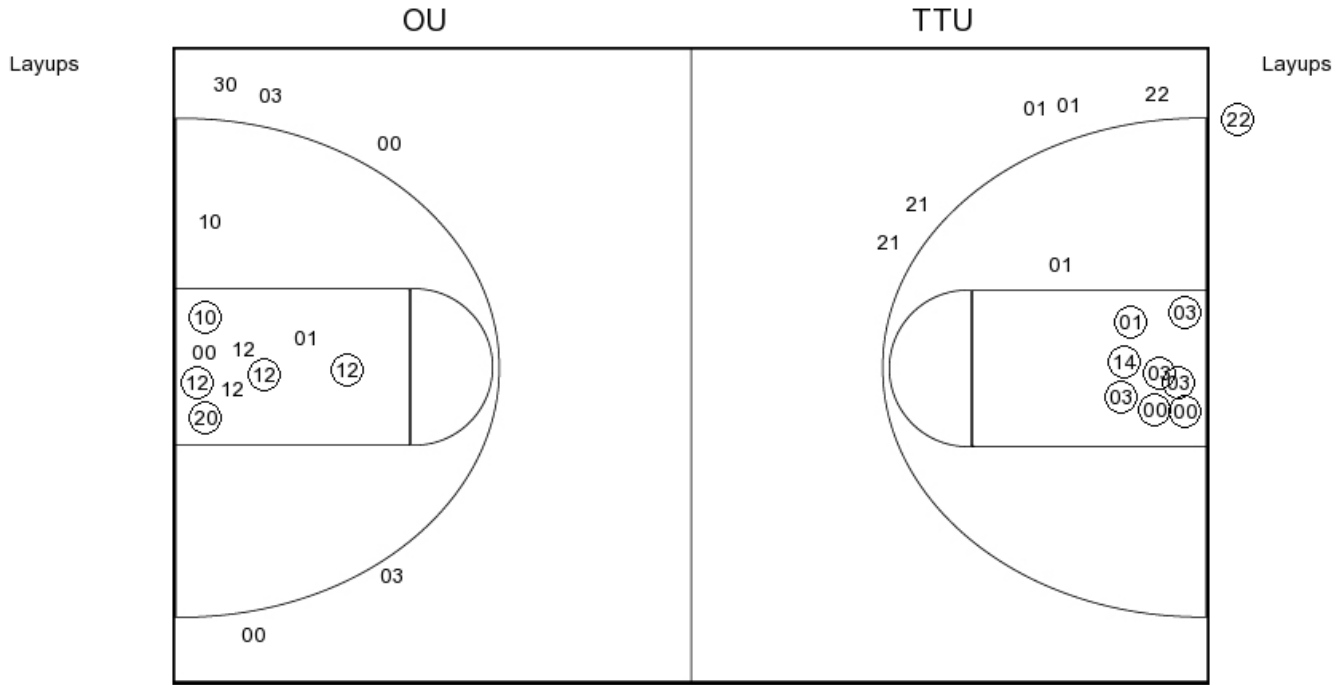
| | |
|----------------|----|
| FG Made | 16 |
| FG Attempted | 34 |
| 3PFG Made | 3 |
| 3PFG Attempted | 12 |

TTU PERIOD 1

| | |
|----------------|----|
| FG Made | 12 |
| FG Attempted | 29 |
| 3PFG Made | 1 |
| 3PFG Attempted | 7 |

Oklahoma vs Texas Tech
 OFFICIAL SHOT CHART
 1/10/2018 at United Supermarkets Arena (Lubbock, TX)

PERIOD 2



OU PERIOD 2

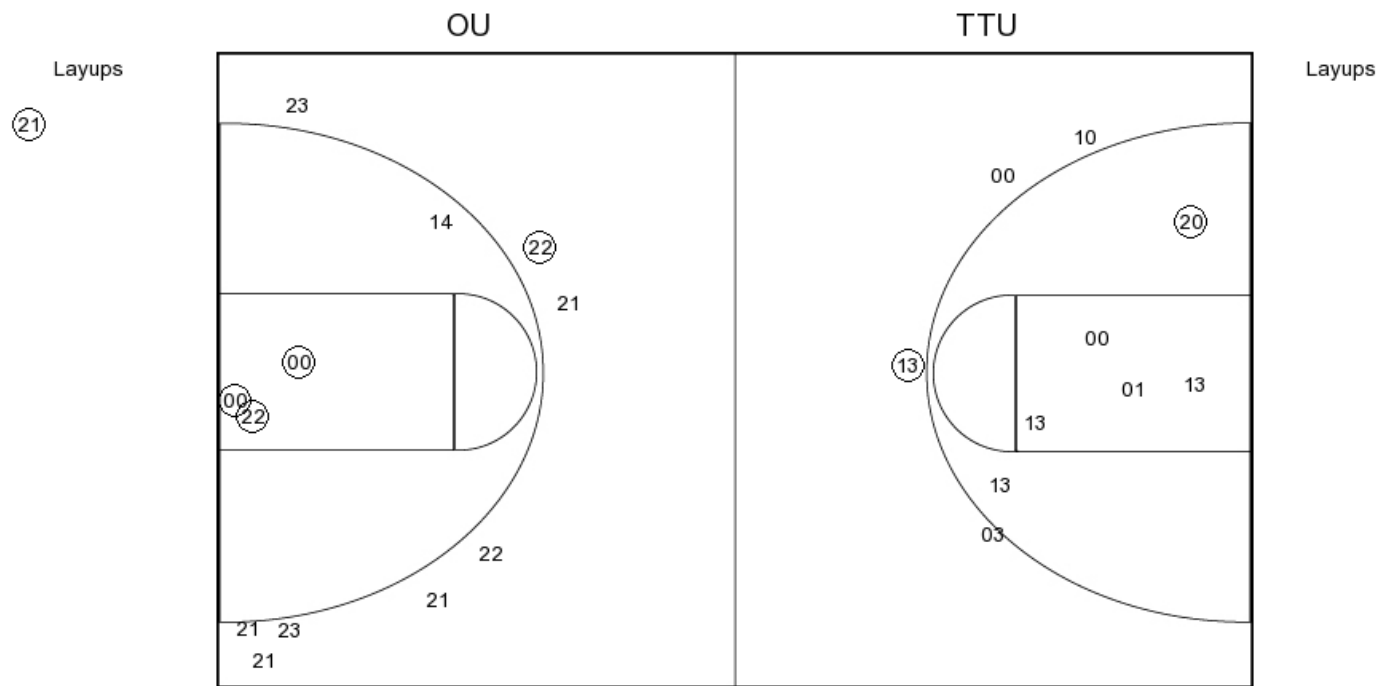
FG Made
 FG Attempted
 3PFG Made
 3PFG Attempted

TTU PERIOD 2

FG Made
 FG Attempted
 3PFG Made
 3PFG Attempted

Oklahoma vs Texas Tech
 OFFICIAL SHOT CHART
 1/10/2018 at United Supermarkets Arena (Lubbock, TX)

PERIOD 3



OU PERIOD 3

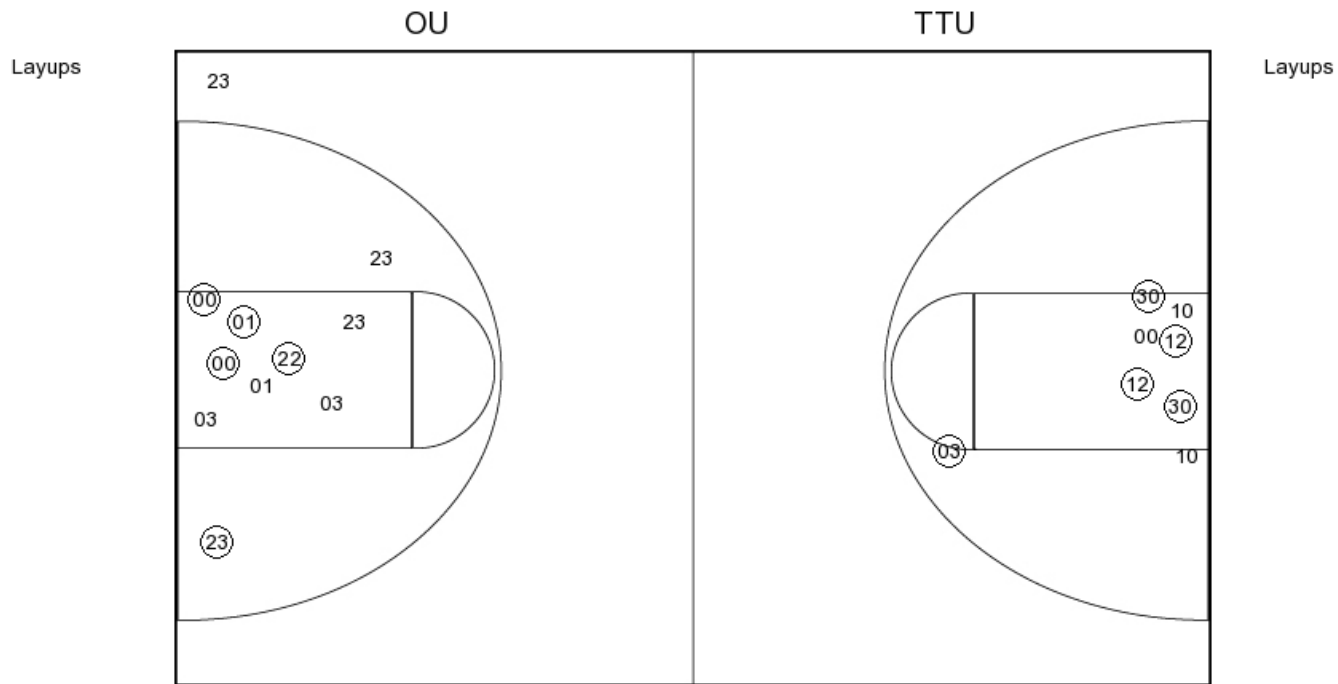
| | |
|----------------|----|
| FG Made | 13 |
| FG Attempted | 32 |
| 3PFG Made | 1 |
| 3PFG Attempted | 11 |

TTU PERIOD 3

| | |
|----------------|----|
| FG Made | 7 |
| FG Attempted | 20 |
| 3PFG Made | 1 |
| 3PFG Attempted | 4 |

Oklahoma vs Texas Tech
 OFFICIAL SHOT CHART
 1/10/2018 at United Supermarkets Arena (Lubbock, TX)

PERIOD 4



OU PERIOD 4

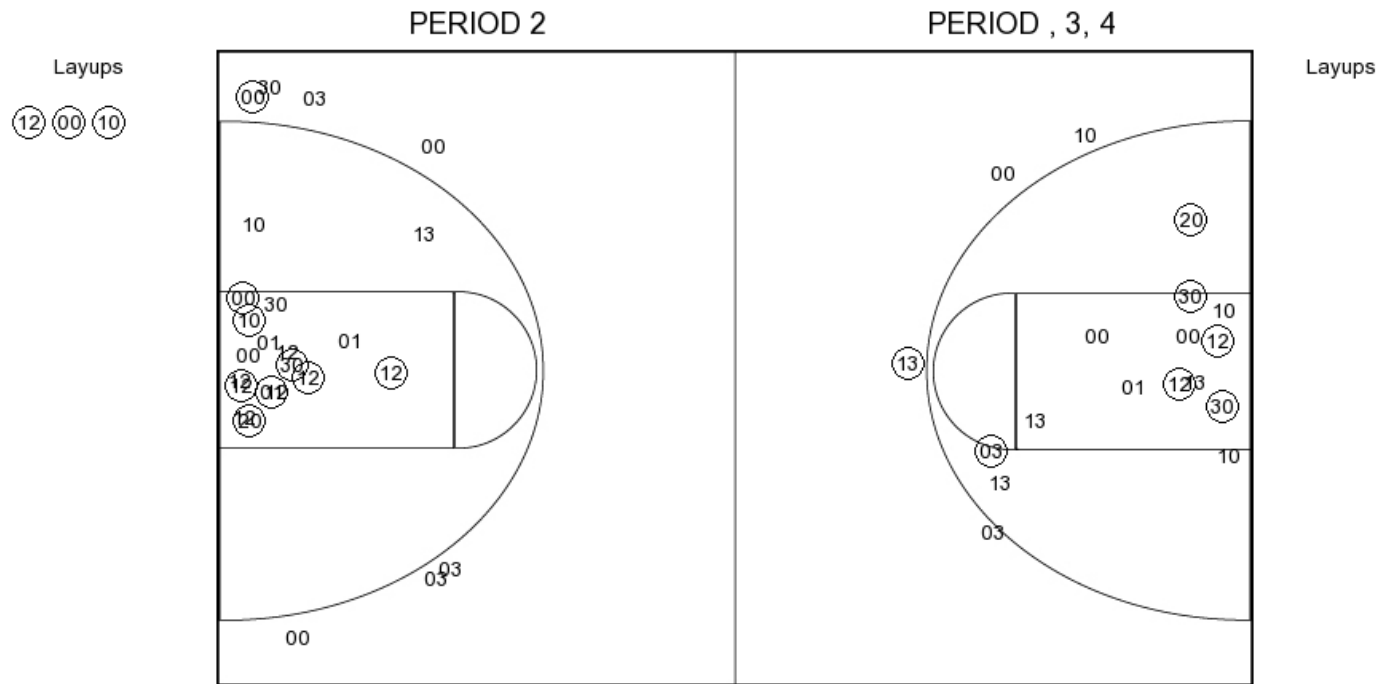
FG Made
 FG Attempted
 3PFG Made
 3PFG Attempted

TTU PERIOD 4

FG Made
 FG Attempted
 3PFG Made
 3PFG Attempted

Oklahoma vs Texas Tech
 OFFICIAL SHOT CHART
 1/10/2018 at United Supermarkets Arena (Lubbock, TX)

Texas Tech



TTU PERIOD 1

| | |
|----------------|----|
| FG Made | 12 |
| FG Attempted | 29 |
| 3PFG Made | 1 |
| 3PFG Attempted | 7 |

TTU PERIOD 2

| | |
|----------------|--|
| FG Made | |
| FG Attempted | |
| 3PFG Made | |
| 3PFG Attempted | |