

FINAL SCORE

Mississippi State

27-0, 13-0 SEC

95

Vanderbilt

6-21, 2-11

50

February 15, 2018 • Nashville, Tenn. (Memorial Gym)

FINAL STATISTICS

Official Basketball Box Score -- Game Totals -- Final Statistics
Mississippi State vs Vanderbilt
2/15/2018 7:30 PM at Nashville, Tenn. (Memorial Gym)

Mississippi State 95 - 27-0, 13-0 SEC

##	Player	g	Total			3-Ptr			Rebounds			PF	TP	A	TO	Blk	Stl	Min
			FG-FGA	FG-FGA	FT-FTA	FG-FGA	FG-FGA	FT-FTA	Off	Def	Tot							
01	SCHAEFER,BLAIR		4-7	4-7	0-0	0	1	1	0	12	0	0	0	0	0	0	25	
02	WILLIAM,MORGAN		1-5	0-1	2-2	3	0	3	1	4	9	1	0	0	0	25		
11	JOHNSON,ROSHUNDA		4-8	3-7	2-2	2	3	5	0	13	3	1	0	5	0	28		
15	MCCOWAN,TEAIRA	c	8-12	0-0	3-4	7	4	11	0	19	0	1	0	0	0	24		
35	VIVIANS,VICTORIA		8-16	2-6	1-1	1	3	4	1	19	2	3	0	1	0	31		
10	HOLMES,JAZZMUN		3-4	0-0	0-0	0	1	1	2	6	1	1	0	5	0	14		
20	TATE,NYAH		0-0	0-0	0-0	0	0	0	1	0	0	0	0	1	0	2		
23	SCOTT,BRE'AMBER		1-2	0-1	0-0	1	0	1	1	2	0	2	0	1	0	6		
24	DANBERRY,JORDAN		5-8	0-0	0-1	1	0	1	1	10	1	0	0	1	0	13		
25	CAMPBELL,ZION		0-0	0-0	1-2	0	3	3	1	1	0	1	1	2	0	15		
55	BIBBY,CHLOE		3-6	1-3	2-2	1	1	2	0	9	0	0	0	0	0	17		
	TEAM					1	1	2	0									
TOTALS			37-68	10-25	11-14	17	17	34	8	95	16	10	1	16		200		

Deadball Rebounds: 2,0

FG %	1st Half:	19-37	51.4%	2nd Half:	18-31	58.1%	Game:	37-68	54.4%				
	1st Qtr	10-17	58.8%	2nd Qtr	9-20	45.0%	3rd Qtr	10-15	66.7%	4th Qtr	8-16	50.0%	
3FG %	1st Half:	8-16	50.0%	2nd Half:	2-9	22.2%	Game:	10-25	40.0%				
	1st Qtr	4-6	66.7%	2nd Qtr	4-10	40.0%	3rd Qtr	2-6	33.3%	4th Qtr	0-3	00.0%	
FT %	1st Half:	4-5	80.0%	2nd Half:	7-9	77.8%	Game:	11-14	78.6%				
	1st Qtr	2-3	66.7%	2nd Qtr	2-2	100.0%	3rd Qtr	4-4	100.0%	4th Qtr	3-5	60.0%	

Vanderbilt 50 - 6-21, 2-11

##	Player	g	Total			3-Ptr			Rebounds			PF	TP	A	TO	Blk	Stl	Min
			FG-FGA	FG-FGA	FT-FTA	FG-FGA	FG-FGA	FT-FTA	Off	Def	Tot							
00	OVERBECK,KAYLA		6-7	0-0	0-0	0	3	3	3	12	0	1	2	0	0	24		
02	HALL,CHELSIE		3-8	0-0	0-2	1	1	2	2	6	4	5	0	1	0	30		
10	WALKER,CIERRA		1-3	1-2	2-2	0	3	3	1	5	2	3	0	0	0	25		
24	NEWBY,AUTUMN	f	1-2	0-0	0-0	1	1	2	2	2	2	2	0	0	0	27		
33	REED,CHRISTA		6-8	2-3	0-0	1	3	4	4	14	1	2	0	2	0	34		
03	BELL,RACHEL		2-5	1-3	0-0	0	0	0	0	5	0	1	0	0	0	12		
21	WHALEN,ERIN		2-8	0-4	0-0	1	1	2	2	4	1	3	1	0	0	17		
22	HORROCKS,BREE		0-0	0-0	0-0	0	0	0	0	0	0	0	0	0	0	3		
31	EJIOFOR,BLESSING		0-0	0-0	0-0	1	0	1	0	0	0	0	0	0	0	2		
35	CLEMONS-GREEN,K		1-2	0-0	0-0	0	2	2	2	2	4	8	0	0	0	22		
41	WARREN,PAIGE		0-0	0-0	0-0	0	0	0	0	0	0	0	0	0	0	4		
	TEAM					0	1	1	0									
TOTALS			22-43	4-12	2-4	5	15	20	16	50	14	26	3	3		200		

Deadball Rebounds: 1,0

FG %	1st Half:	11-21	52.4%	2nd Half:	11-22	50.0%	Game:	22-43	51.2%				
	1st Qtr	5-11	45.5%	2nd Qtr	6-10	60.0%	3rd Qtr	6-10	60.0%	4th Qtr	5-12	41.7%	
3FG %	1st Half:	4-8	50.0%	2nd Half:	0-4	00.0%	Game:	4-12	33.3%				
	1st Qtr	1-4	25.0%	2nd Qtr	3-4	75.0%	3rd Qtr	0-0	0%	4th Qtr	0-4	00.0%	
FT %	1st Half:	0-0	0%	2nd Half:	2-4	50.0%	Game:	2-4	50.0%				
	1st Qtr	0-0	0%	2nd Qtr	0-0	0%	3rd Qtr	0-0	0%	4th Qtr	2-4	50.0%	

Officials: R:Beverly Roberts; U1:Scott Yarbrough, U2:Douglas Knight
 Technical Fouls: Mississippi State- None. Vanderbilt- None.
 Attendance: 2876

Score by periods	1st	2nd	3rd	4th	Total
Mississippi State	26	24	26	19	95
Vanderbilt	11	15	12	12	50

	In	Off	2nd	Fast	
Points	Paint	T/O	Chance	Break	Bench
MS	44	34	16	6	28
VANDY	30	8	2	6	11

Last FG - MS 4th-00:17, VANDY 4th-01:49.

Largest lead - Mississippi State by 45 4th-00:17; Vanderbilt by MS led for 38:36. VANDY led for 0:00. Game was tied for 1:24.

Score tied - 1 times; Lead changed - 0 times

Official Basketball Box Score -- Game Totals -- First Half Statistics
Mississippi State vs Vanderbilt
2/15/2018 7:30 PM at Nashville, Tenn. (Memorial Gym)

Mississippi State 50 • 27-0, 13-0 SEC

##	Player	g	Total		3-Ptr	FT-FTA	Rebounds			PF	TP	A	TO	Blk	Stl	Min
			FG-FGA	FG-FGA	FG-FGA		Off	Def	Tot							
01	SCHAEFER,BLAIR	g	3-4	3-4	0-0	0	0	0	0	9	0	0	0	0	18	
02	WILLIAM,MORGAN	g	0-2	0-0	2-2	2	0	2	1	2	5	0	0	0	15	
11	JOHNSON,ROSHUNDA	g	4-7	3-6	0-0	1	3	4	0	11	3	1	0	3	18	
15	MCCOWAN,TEAIRA	c	4-8	0-0	1-2	5	3	8	0	9	0	1	0	0	17	
35	VIVIANS,VICTORIA	g	6-14	2-6	1-1	1	2	3	0	15	2	1	0	1	20	
10	HOLMES,JAZZMUN		1-1	0-0	0-0	0	0	0	1	2	0	1	0	1	5	
20	TATE,NYAH		0-0	0-0	0-0	0	0	0	0	0	0	0	0	0	0	
23	SCOTT,BREAMBER		0-0	0-0	0-0	0	0	0	0	0	0	0	0	0	0	
24	DANBERRY,JORDAN		0-0	0-0	0-0	0	0	0	0	0	0	0	0	0	0	
25	CAMPBELL,ZION		0-0	0-0	0-0	0	1	1	0	0	0	0	0	0	3	
55	BIBBY,CHLOE		1-1	0-0	0-0	0	0	0	0	2	0	0	0	0	4	
TEAM						1	0	1	0		0					
Totals			19-37	8-16	4-5	10	9	19	2	50	10	4	0	5	100	

FG % 1st Qtr 10-17 58.8% 2nd Qtr 9-20 45.0% Half: 19-37 51.4%
 3FG % 1st Qtr 4-6 66.7% 2nd Qtr 4-10 40.0% Half: 8-16 50.0%
 FT % 1st Qtr 2-3 66.7% 2nd Qtr 2-2 100.0% Half: 4-5 80.0%

Vanderbilt 26 • 6-21, 2-11

##	Player	g	Total		3-Ptr	FT-FTA	Rebounds			PF	TP	A	TO	Blk	Stl	Min
			FG-FGA	FG-FGA	FG-FGA		Off	Def	Tot							
00	OVERBECK,KAYLA	g	2-3	0-0	0-0	0	1	1	2	4	0	1	1	0	10	
02	HALL,CHELSIE	g	2-5	0-0	0-0	1	0	1	2	4	2	3	0	1	17	
10	WALKER,CIERRA	g	1-2	1-2	0-0	0	3	3	0	3	1	2	0	0	15	
24	NEWBY,AUT UMN	f	0-0	0-0	0-0	0	0	0	1	0	2	0	0	0	15	
33	REED,CHRISTA	g	5-6	2-2	0-0	0	1	1	2	12	0	1	0	0	20	
03	BELL,RACHEL		1-3	1-2	0-0	0	0	0	0	3	0	1	0	0	5	
21	WHALEN,ERIN		0-2	0-2	0-0	0	1	1	1	0	1	1	1	0	7	
22	HORROCKS,BREE		0-0	0-0	0-0	0	0	0	0	0	0	0	0	0	3	
31	EJIOFOR,BLESSING		0-0	0-0	0-0	0	0	0	0	0	0	0	0	0	0	
35	CLEMONS-GREEN,K		0-0	0-0	0-0	0	2	2	0	0	3	2	0	0	8	
41	WARREN,PAIGE		0-0	0-0	0-0	0	0	0	0	0	0	0	0	0	0	
TEAM						0	0	0	0		1					
Totals			11-21	4-8	0-0	1	8	9	8	26	9	12	2	1	100	

FG % 1st Qtr 5-11 45.5% 2nd Qtr 6-10 60.0% Half: 11-21 52.4%
 3FG % 1st Qtr 1-4 25.0% 2nd Qtr 3-4 75.0% Half: 4-8 50.0%
 FT % 1st Qtr 0-0 0% 2nd Qtr 0-0 0% Half: 0-0 0%

Officials: R:Beverly Roberts: U1:Scott Yarbrough, U2:Douglas Knight
 Technical Fouls: Mississippi State- None. Vanderbilt- None.

Score by periods	1st	2nd	3rd	4th	Total
Mississippi State	26	24	26	19	95
Vanderbilt	11	15	12	12	50

Points	In Paint	Off T/O	2nd Chance	Fast Break	Bench
MS	18	15	10	0	4
	14	4	0	2	3

Last FG - MS 2nd-00:52, VANDY 2nd-01:44.
 MS led for 18:36. VANDY led for 0:00. Game was tied for 1:24.

Score tied - 1 times
 Lead changed - 0 times

Mississippi State vs Vanderbilt
2/15/2018; 7:30 PM at Nashville, Tenn. (Memorial Gym)
Period 1 Play-By-Play

VISITORS: Mississippi State	Time	Score	Margin	HOME: Vanderbilt
GOOD! 3PTR by JOHNSON,ROSHUNDA	09:51	0-3	V 3	
ASSIST by WILLIAM,MORGAN	09:51			
	09:24	3-3	T	GOOD! 3PTR by WALKER,CIERRA
	09:24			ASSIST by HALL,CHELSIE
MISSED JUMPER by MCCOWAN,TEAIRA	09:06			
	09:06			REBOUND (DEF) by WALKER,CIERRA
	08:52			MISSED JUMPER by OVERBECK,KAYLA
REBOUND (DEF) by MCCOWAN,TEAIRA	08:52			
MISSED 3PTR by VIVIAN,VICTORIA	08:40			
REBOUND (OFF) by WILLIAM,MORGAN	08:40			
	08:17			FOUL by HALL,CHELSIE
MISSED JUMPER by VIVIAN,VICTORIA	08:11			
REBOUND (OFF) by MCCOWAN,TEAIRA	08:11			
	08:09			FOUL by OVERBECK,KAYLA
GOOD! FT by MCCOWAN,TEAIRA	08:09	3-4	V 1	
MISSED FT by MCCOWAN,TEAIRA	08:09			
	08:09			REBOUND (DEF) by WALKER,CIERRA
	07:45			MISSED 3PTR by WALKER,CIERRA
REBOUND (DEF) by JOHNSON,ROSHUNDA	07:45			
MISSED JUMPER by MCCOWAN,TEAIRA	07:31			
REBOUND (OFF) by MCCOWAN,TEAIRA	07:31			
GOOD! JUMPER by VIVIAN,VICTORIA	07:25	3-6	V 3	
	06:53			TURNOVER by OVERBECK,KAYLA
STEAL by JOHNSON,ROSHUNDA	06:52			
TURNOVER by VIVIAN,VICTORIA	06:48			
	06:46			STEAL by HALL,CHELSIE
	06:28	5-6	V 1	GOOD! LAYUP by REED,CHRISTA [PNT]
	06:28			ASSIST by NEWBY,AUTUMN
MISSED 3PTR by SCHAEFER,BLAIR	06:11			
	06:11			REBOUND (DEF) by WALKER,CIERRA
	05:56			TURNOVER by HALL,CHELSIE
GOOD! 3PTR by JOHNSON,ROSHUNDA	05:47	5-9	V 4	
ASSIST by WILLIAM,MORGAN	05:47			
FOUL by WILLIAM,MORGAN	05:31			
	05:28			MISSED JUMPER by REED,CHRISTA
	05:28			REBOUND (OFF) by HALL,CHELSIE
	05:16			MISSED LAYUP by HALL,CHELSIE
REBOUND (DEF) by MCCOWAN,TEAIRA	05:16			
GOOD! JUMPER by VIVIAN,VICTORIA [PNT]	05:09	5-11	V 6	
ASSIST by WILLIAM,MORGAN	05:09			
	05:09			FOUL by OVERBECK,KAYLA
GOOD! FT by VIVIAN,VICTORIA	05:09	5-12	V 7	
	05:09			SUB IN: HORROCKS,BREE
	05:09			SUB OUT: OVERBECK,KAYLA
	04:57	7-12	V 5	GOOD! LAYUP by REED,CHRISTA [PNT]
	04:57			ASSIST by NEWBY,AUTUMN
	04:33			FOUL by NEWBY,AUTUMN
TIMEOUT media	04:33			
GOOD! 3PTR by SCHAEFER,BLAIR	04:23	7-15	V 8	
ASSIST by JOHNSON,ROSHUNDA	04:23			
	03:50	9-15	V 6	GOOD! LAYUP by HALL,CHELSIE [PNT]
GOOD! LAYUP by MCCOWAN,TEAIRA [PNT]	03:29	9-17	V 8	
	03:18			TURNOVER by HALL,CHELSIE
STEAL by JOHNSON,ROSHUNDA	03:17			
TURNOVER by JOHNSON,ROSHUNDA	03:11			
SUB IN: HOLMES,JAZZMUN	03:11			
SUB OUT: WILLIAM,MORGAN	03:11			
	02:49			TURNOVER by HALL,CHELSIE
STEAL by HOLMES,JAZZMUN	02:48			
GOOD! 3PTR by JOHNSON,ROSHUNDA	02:42	9-20	V 11	
ASSIST by VIVIAN,VICTORIA	02:42			
	02:34			TIMEOUT 30SEC
	02:33			TURNOVER by WALKER,CIERRA
STEAL by JOHNSON,ROSHUNDA	02:31			
TURNOVER by MCCOWAN,TEAIRA	02:26			
	02:13	11-20	V 9	GOOD! LAYUP by HALL,CHELSIE [PNT]
GOOD! LAYUP by VIVIAN,VICTORIA [PNT]	01:55	11-22	V 11	
	01:44			TURNOVER by TEAM
SUB IN: CAMPBELL,ZION	01:44			

VISITORS: Mississippi State	Time	Score	Margin	HOME: Vanderbilt
SUB OUT: MCCOWAN,TEAIRA	01:44			
	01:44			SUB IN: WHALEN,ERIN
	01:44			SUB OUT: HORROCKS,BREE
GOOD! JUMPER by HOLMES,JAZZMUN	01:38	11-24	V 13	
	01:20			TURNOVER by WALKER,CIERRA
STEAL by VIVIAN, VICTORIA	01:18			
MISSED JUMPER by VIVIAN, VICTORIA	01:15			
REBOUND (OFF) by TEAM	01:15			
MISSED LAYUP by VIVIAN, VICTORIA	01:13			
	01:13			BLOCK by WHALEN,ERIN
	01:09			REBOUND (DEF) by WHALEN,ERIN
	00:52			MISSED 3PTR by WHALEN,ERIN
REBOUND (DEF) by CAMPBELL,ZION	00:52			
FOUL by HOLMES,JAZZMUN	00:35			
TURNOVER by HOLMES,JAZZMUN	00:35			
	00:25			MISSED 3PTR by WHALEN,ERIN
REBOUND (DEF) by JOHNSON,ROSHUNDA	00:25			
GOOD! LAYUP by JOHNSON,ROSHUNDA [PNT]	00:05	11-26	V 15	

Mississippi State 26, Vanderbilt 11

Period 1-only	In Paint	Off T/O	2nd Chance	Fast Break	Bench	
MS	8	8	3	0	2	Score tied - 0 times
VANDY	8	4	0	0	0	Lead changed - 0 times

Mississippi State vs Vanderbilt
2/15/2018; 7:30 PM at Nashville, Tenn. (Memorial Gym)
Period 2 Play-By-Play

VISITORS: Mississippi State	Time	Score	Margin	HOME: Vanderbilt
SUB IN: HOLMES,JAZZMUN	10:00			
SUB OUT: WILLIAM,MORGAN	10:00			
	10:00			SUB IN: WHALEN,ERIN
	10:00			SUB OUT: OVERBECK,KAYLA
	09:43	13-26	V 13	GOOD! LAYUP by REED,CHRISTA [PNT]
	09:43			ASSIST by WHALEN,ERIN
MISSED JUMPER by MCCOWAN,TEAIRA	09:19			
REBOUND (OFF) by MCCOWAN,TEAIRA	09:19			
GOOD! JUMPER by MCCOWAN,TEAIRA [PNT]	09:13	13-28	V 15	
	08:49	16-28	V 12	GOOD! 3PTR by REED,CHRISTA
	08:49			ASSIST by WALKER,CIERRA
MISSED 3PTR by VIVIAN, VICTORIA	08:33			
	08:33			REBOUND (DEF) by REED,CHRISTA
	08:21			MISSED JUMPER by HALL,CHELSIE
REBOUND (DEF) by VIVIAN, VICTORIA	08:21			
MISSED 3PTR by JOHNSON,ROSHUNDA	08:10			
REBOUND (OFF) by VIVIAN, VICTORIA	08:10			
SUB IN: WILLIAM,MORGAN	08:06			
SUB OUT: HOLMES,JAZZMUN	08:06			
	08:06			SUB IN: CLEMONS-GREEN,K
	08:06			SUB OUT: WALKER,CIERRA
MISSED 3PTR by VIVIAN, VICTORIA	08:01			
REBOUND (OFF) by MCCOWAN,TEAIRA	08:01			
	07:59			FOUL by WHALEN,ERIN
	07:55			FOUL by REED,CHRISTA
MISSED 3PTR by JOHNSON,ROSHUNDA	07:40			
REBOUND (OFF) by JOHNSON,ROSHUNDA	07:40			
GOOD! 3PTR by SCHAEFER,BLAIR	07:24	16-31	V 15	
ASSIST by JOHNSON,ROSHUNDA	07:24			
	07:03			TURNOVER by REED,CHRISTA
GOOD! LAYUP by MCCOWAN,TEAIRA [PNT]	06:49	16-33	V 17	
	06:26	19-33	V 14	GOOD! 3PTR by REED,CHRISTA
	06:26			ASSIST by HALL,CHELSIE
GOOD! 3PTR by VIVIAN, VICTORIA	06:08	19-36	V 17	
ASSIST by JOHNSON,ROSHUNDA	06:08			
	05:44			MISSED LAYUP by HALL,CHELSIE
REBOUND (DEF) by JOHNSON,ROSHUNDA	05:44			
MISSED LAYUP by MCCOWAN,TEAIRA	05:26			
REBOUND (OFF) by MCCOWAN,TEAIRA	05:26			
GOOD! JUMPER by MCCOWAN,TEAIRA [PNT]	05:23	19-38	V 19	
	04:57			TURNOVER by WHALEN,ERIN
TIMEOUT MEDIA	04:57			
	04:57			SUB IN: BELL,RACHEL
	04:57			SUB IN: OVERBECK,KAYLA
	04:57			SUB OUT: WHALEN,ERIN
	04:57			SUB OUT: NEWBY,AUTUMN
MISSED 3PTR by JOHNSON,ROSHUNDA	04:43			
	04:43			REBOUND (DEF) by CLEMONS-GREEN,K
	04:21			MISSED 3PTR by BELL,RACHEL
REBOUND (DEF) by VIVIAN, VICTORIA	04:21			
MISSED LAYUP by VIVIAN, VICTORIA	04:01			
	04:01			REBOUND (DEF) by OVERBECK,KAYLA
	03:38			MISSED JUMPER by BELL,RACHEL
REBOUND (DEF) by MCCOWAN,TEAIRA	03:38			
	03:30			FOUL by HALL,CHELSIE
GOOD! FT by WILLIAM,MORGAN	03:30	19-39	V 20	
GOOD! FT by WILLIAM,MORGAN	03:30	19-40	V 21	
SUB IN: BIBBY,CHLOE	03:30			
SUB OUT: JOHNSON,ROSHUNDA	03:30			
	03:30			SUB IN: WALKER,CIERRA
	03:30			SUB OUT: HALL,CHELSIE
	03:28	21-40	V 19	GOOD! LAYUP by OVERBECK,KAYLA [FB/PNT]
	03:28			ASSIST by CLEMONS-GREEN,K
GOOD! LAYUP by BIBBY,CHLOE [PNT]	03:08	21-42	V 21	
	02:44	24-42	V 18	GOOD! 3PTR by BELL,RACHEL
	02:44			ASSIST by CLEMONS-GREEN,K
MISSED JUMPER by WILLIAM,MORGAN	02:24			
	02:24			REBOUND (DEF) by CLEMONS-GREEN,K
	02:18			TURNOVER by BELL,RACHEL

VISITORS: Mississippi State	Time	Score	Margin	HOME: Vanderbilt
GOOD! 3PTR by VIVIAN, VICTORIA	02:08	24-45	V 21	
ASSIST by WILLIAM, MORGAN	02:08			
	01:44	26-45	V 19	GOOD! JUMPER by OVERBECK, KAYLA [PNT]
	01:44			ASSIST by CLEMONS-GREEN, K
GOOD! 3PTR by SCHAEFER, BLAIR	01:21	26-48	V 22	
ASSIST by VIVIAN, VICTORIA	01:21			
	01:02			TURNOVER by CLEMONS-GREEN, K
SUB IN: CAMPBELL, ZION	01:02			
SUB IN: JOHNSON, ROSHUNDA	01:02			
SUB OUT: SCHAEFER, BLAIR	01:02			
SUB OUT: MCCOWAN, TEAIRA	01:02			
GOOD! LAYUP by VIVIAN, VICTORIA [PNT]	00:52	26-50	V 24	
ASSIST by WILLIAM, MORGAN	00:52			
	00:34			TURNOVER by CLEMONS-GREEN, K
MISSED JUMPER by WILLIAM, MORGAN	00:06			
	00:06			BLOCK by OVERBECK, KAYLA
REBOUND (OFF) by WILLIAM, MORGAN	00:04			
SUB IN: HOLMES, JAZZMUN	00:03			
SUB OUT: WILLIAM, MORGAN	00:03			
	00:01			FOUL by REED, CHRISTA
MISSED 3PTR by VIVIAN, VICTORIA	00:00			
REBOUND (DEADB) by TEAM	00:00			

Mississippi State 50, Vanderbilt 26

Period 2-only	In Paint	Off T/O	2nd Chance	Fast Break	Bench	
MS	10	7	7	0	2	Score tied - 0 times
VANDY	6	0	0	2	3	Lead changed - 0 times

Official Basketball Box Score -- Game Totals -- Second Half Statistics
Mississippi State vs Vanderbilt
2/15/2018 7:30 PM at Nashville, Tenn. (Memorial Gym)

Mississippi State 45 • 27-0, 13-0 SEC

##	Player		Total		3-Ptr	Rebounds			PF	TP	A	TO	Blk	Stl	Min
			FG-FGA	FG-FGA	FT-FTA	Off	Def	Tot							
01	SCHAEFER,BLAIR	g	1-3	1-3	0-0	0	1	1	0	3	0	0	0	0	7
02	WILLIAM,MORGAN	g	1-3	0-1	0-0	1	0	1	0	2	4	1	0	0	10
11	JOHNSON,ROSHUNDA	g	0-1	0-1	2-2	1	0	1	0	2	0	0	0	2	10
15	MCCOWAN,TEAIRA	c	4-4	0-0	2-2	2	1	3	0	10	0	0	0	0	7
35	VIVIANS,VICTORIA	g	2-2	0-0	0-0	0	1	1	1	4	0	2	0	0	11
10	HOLMES,JAZZMUN		2-3	0-0	0-0	0	1	1	1	4	1	0	0	4	9
20	TATE,NYAH		0-0	0-0	0-0	0	0	0	1	0	0	0	0	1	2
23	SCOTT,BREAMBER		1-2	0-1	0-0	1	0	1	1	2	0	2	0	1	6
24	DANBERRY,JORDAN		5-8	0-0	0-1	1	0	1	1	10	1	0	0	1	13
25	CAMPBELL,ZION		0-0	0-0	1-2	0	2	2	1	1	0	1	1	2	12
55	BIBBY,CHLOE		2-5	1-3	2-2	1	1	2	0	7	0	0	0	0	13
TEAM						0	1	1	0		0				
Totals			18-31	2-9	7-9	7	8	15	6	45	6	6	1	11	100
FG %	3rd Qtr	10-15	66.7%	4th Qtr	8-16	50.0%	Half:	18-31	58.1%						
3FG %	3rd Qtr	2-6	33.3%	4th Qtr	0-3	00.0%	Half:	2-9	50.0%						
FT %	3rd Qtr	4-4	100.0%	4th Qtr	3-5	60.0%	Half:	7-9	77.8%						

Vanderbilt 24 • 6-21, 2-11

##	Player		Total		3-Ptr	Rebounds			PF	TP	A	TO	Blk	Stl	Min
			FG-FGA	FG-FGA	FT-FTA	Off	Def	Tot							
00	OVERBECK,KAYLA	g	4-4	0-0	0-0	0	2	2	1	8	0	0	1	0	14
02	HALL,CHELSIE	g	1-3	0-0	0-2	0	1	1	0	2	2	2	0	0	13
10	WALKER,CIERRA	g	0-1	0-0	2-2	0	0	0	1	2	1	1	0	0	10
24	NEWBY,AUTUMN	f	1-2	0-0	0-0	1	1	2	1	2	0	2	0	0	12
33	REED,CHRISTA	g	1-2	0-1	0-0	1	2	3	2	2	1	1	0	2	14
03	BELL,RACHEL		1-2	0-1	0-0	0	0	0	0	2	0	0	0	0	7
21	WHALEN,ERIN		2-6	0-2	0-0	1	0	1	1	4	0	2	0	0	10
22	HORROCKS,BREE		0-0	0-0	0-0	0	0	0	0	0	0	0	0	0	0
31	EJIOFOR,BLESSING		0-0	0-0	0-0	1	0	1	0	0	0	0	0	0	2
35	CLEMONS-GREEN,K		1-2	0-0	0-0	0	0	0	2	2	1	6	0	0	14
41	WARREN,PAIGE		0-0	0-0	0-0	0	0	0	0	0	0	0	0	0	4
TEAM						0	1	1	0		0				
Totals			11-22	0-4	2-4	4	7	11	8	24	5	14	1	2	100
FG %	3rd Qtr	6-10	60.0%	4th Qtr	5-12	41.7%	Half:	11-22	50.0%						
3FG %	3rd Qtr	0-0	0%	4th Qtr	0-4	00.0%	Half:	0-4	50.0%						
FT %	3rd Qtr	0-0	0%	4th Qtr	2-4	50.0%	Half:	2-4	50.0%						

Officials: R:Beverly Roberts; U1:Scott Yarbrough, U2:Douglas Knight
 Technical Fouls: Mississippi State- None. Vanderbilt- None.

Score by periods	1st	2nd	3rd	4th	Total
Mississippi State	26	24	26	19	95
Vanderbilt	11	15	12	12	50

Points	In Paint	Off T/O	2nd Chance	Fast Break	Bench
MS	26	19	6	6	24
	16	4	2	4	8

Last FG - MS 4th-00:17, VANDY 4th-01:49.
 MS led for 20:00. VANDY led for 0:00. Game was tied for 0:00.

Score tied - 0 times
 Lead changed - 0 times

Mississippi State vs Vanderbilt
2/15/2018; 7:30 PM at Nashville, Tenn. (Memorial Gym)
Period 3 Play-By-Play

VISITORS: Mississippi State	Time	Score	Margin	HOME: Vanderbilt
FOUL by VIVIAN, VICTORIA	09:49			
	09:36			MISSED JUMPER by WALKER, CIERRA
REBOUND (DEF) by TEAM	09:36			
GOOD! LAYUP by MCCOWAN, TEAIRA [PNT]	09:23	26-52	V 26	
ASSIST by WILLIAM, MORGAN	09:23			
	09:11	28-52	V 24	GOOD! LAYUP by NEWBY, AUTUMN [PNT]
	09:11			ASSIST by HALL, CHELSIE
GOOD! JUMPER by MCCOWAN, TEAIRA [PNT]	08:53	28-54	V 26	
ASSIST by WILLIAM, MORGAN	08:53			
	08:22	30-54	V 24	GOOD! JUMPER by OVERBECK, KAYLA
	08:22			ASSIST by WALKER, CIERRA
MISSED 3PTR by SCHAEFER, BLAIR	08:09			
REBOUND (OFF) by JOHNSON, ROSHUNDA	08:09			
	07:54			FOUL by NEWBY, AUTUMN
GOOD! FT by MCCOWAN, TEAIRA	07:54	30-55	V 25	
GOOD! FT by MCCOWAN, TEAIRA	07:54	30-56	V 26	
	07:54			SUB IN: CLEMONS-GREEN, K
	07:54			SUB OUT: HALL, CHELSIE
	07:32			MISSED LAYUP by NEWBY, AUTUMN
REBOUND (DEF) by MCCOWAN, TEAIRA	07:32			
GOOD! JUMPER by VIVIAN, VICTORIA	07:07	30-58	V 28	
	06:50	32-58	V 26	GOOD! JUMPER by CLEMONS-GREEN, K [PNT]
MISSED 3PTR by SCHAEFER, BLAIR	06:26			
REBOUND (OFF) by WILLIAM, MORGAN	06:26			
TURNOVER by WILLIAM, MORGAN	06:12			
	06:11			STEAL by REED, CHRISTA
	05:53			TURNOVER by WALKER, CIERRA
STEAL by JOHNSON, ROSHUNDA	05:52			
	05:50			FOUL by WALKER, CIERRA
GOOD! FT by JOHNSON, ROSHUNDA	05:50	32-59	V 27	
GOOD! FT by JOHNSON, ROSHUNDA	05:50	32-60	V 28	
	05:50			SUB IN: WHALEN, ERIN
	05:50			SUB IN: HALL, CHELSIE
	05:50			SUB OUT: WALKER, CIERRA
	05:50			SUB OUT: NEWBY, AUTUMN
	05:33			TURNOVER by HALL, CHELSIE
GOOD! 3PTR by SCHAEFER, BLAIR	05:12	32-63	V 31	
ASSIST by WILLIAM, MORGAN	05:12			
	05:04			TURNOVER by CLEMONS-GREEN, K
STEAL by JOHNSON, ROSHUNDA	05:02			
MISSED JUMPER by WILLIAM, MORGAN	04:59			
REBOUND (OFF) by MCCOWAN, TEAIRA	04:59			
	04:58			FOUL by REED, CHRISTA
MISSED 3PTR by JOHNSON, ROSHUNDA	04:44			
REBOUND (OFF) by MCCOWAN, TEAIRA	04:44			
GOOD! LAYUP by MCCOWAN, TEAIRA [PNT]	04:42	32-65	V 33	
	04:20	34-65	V 31	GOOD! JUMPER by HALL, CHELSIE [PNT]
GOOD! LAYUP by MCCOWAN, TEAIRA [PNT]	03:51	34-67	V 33	
	03:34			MISSED JUMPER by CLEMONS-GREEN, K
REBOUND (DEF) by SCHAEFER, BLAIR	03:34			
MISSED 3PTR by WILLIAM, MORGAN	03:14			
	03:14			REBOUND (DEF) by HALL, CHELSIE
	03:06			FOUL by REED, CHRISTA
	03:06			TURNOVER by REED, CHRISTA
	03:06			SUB IN: NEWBY, AUTUMN
	03:06			SUB IN: BELL, RACHEL
	03:06			SUB OUT: WHALEN, ERIN
	03:06			SUB OUT: REED, CHRISTA
SUB IN: CAMPBELL, ZION	03:04			
SUB OUT: MCCOWAN, TEAIRA	03:04			
TURNOVER by VIVIAN, VICTORIA	02:53			
SUB IN: BIBBY, CHLOE	02:53			
SUB OUT: VIVIAN, VICTORIA	02:53			
	02:32	36-67	V 31	GOOD! JUMPER by OVERBECK, KAYLA [PNT]
	02:32			ASSIST by HALL, CHELSIE
SUB IN: DANBERRY, JORDAN	02:30			
SUB OUT: SCHAEFER, BLAIR	02:30			
GOOD! LAYUP by WILLIAM, MORGAN [PNT]	02:10	36-69	V 33	
	01:55			FOUL by CLEMONS-GREEN, K

VISITORS: Mississippi State	Time	Score	Margin	HOME: Vanderbilt
	01:55			TURNOVER by CLEMONS-GREEN,K
GOOD! LAYUP by DANBERRY,JORDAN [PNT]	01:32	36-71	V 35	
	01:22	38-71	V 33	GOOD! JUMPER by BELL,RACHEL [FB]
SUB IN: VIVIAN,S,VICTORIA	00:55			
SUB OUT: JOHNSON,ROSHUNDA	00:55			
	00:55			SUB IN: EJIOFOR,BLESSING
	00:55			SUB OUT: OVERBECK,KAYLA
GOOD! JUMPER by BIBBY,CHLOE	00:52	38-73	V 35	
ASSIST by WILLIAM,MORGAN	00:52			
	00:44			MISSED LAYUP by HALL,CHELSIE
REBOUND (DEF) by VIVIAN,S,VICTORIA	00:44			
GOOD! 3PTR by BIBBY,CHLOE	00:21	38-76	V 38	
ASSIST by DANBERRY,JORDAN	00:21			

Mississippi State 76, Vanderbilt 38

Period 3-only	In Paint	Off T/O	2nd Chance	Fast Break	Bench	
MS	12	9	4	0	7	Score tied - 0 times
VANDY	8	2	0	2	4	Lead changed - 0 times

Mississippi State vs Vanderbilt
2/15/2018; 7:30 PM at Nashville, Tenn. (Memorial Gym)
Period 4 Play-By-Play

VISITORS: Mississippi State	Time	Score	Margin	HOME: Vanderbilt
SUB IN: BIBBY,CHLOE	10:00			
SUB IN: DANBERRY,JORDAN	10:00			
SUB IN: CAMPBELL,ZION	10:00			
SUB IN: HOLMES,JAZZMUN	10:00			
SUB OUT: SCHAEFER,BLAIR	10:00			
SUB OUT: WILLIAM,MORGAN	10:00			
SUB OUT: JOHNSON,ROSHUNDA	10:00			
SUB OUT: MCCOWAN,TEAIRA	10:00			
	10:00			SUB IN: CLEMONS-GREEN,K
	10:00			SUB IN: EJIOFOR,BLESSING
	10:00			SUB IN: BELL,RACHEL
	10:00			SUB OUT: OVERBECK,KAYLA
	10:00			SUB OUT: WALKER,CIERRA
	10:00			SUB OUT: REED,CHRISTA
GOOD! JUMPER by VIVIAN, VICTORIA	09:45	38-78	V 40	
	09:21			MISSED 3PTR by BELL, RACHEL
	09:21			REBOUND (OFF) by EJIOFOR, BLESSING
FOUL by CAMPBELL, ZION	09:19			
	09:19			SUB IN: WALKER, CIERRA
	09:19			SUB OUT: BELL, RACHEL
	08:58			MISSED JUMPER by HALL, CHELSIE
REBOUND (DEF) by CAMPBELL, ZION	08:58			
GOOD! LAYUP by DANBERRY, JORDAN [PNT]	08:46	38-80	V 42	
	08:46			FOUL by CLEMONS-GREEN, K
MISSED FT by DANBERRY, JORDAN	08:46			
	08:46			REBOUND (DEF) by NEWBY, AUTUMN
	08:46			SUB IN: REED, CHRISTA
	08:46			SUB IN: OVERBECK, KAYLA
	08:46			SUB OUT: HALL, CHELSIE
	08:46			SUB OUT: EJIOFOR, BLESSING
	08:23	40-80	V 40	GOOD! LAYUP by OVERBECK, KAYLA [PNT]
	08:23			ASSIST by CLEMONS-GREEN, K
MISSED 3PTR by BIBBY, CHLOE	08:08			
	08:08			REBOUND (DEF) by REED, CHRISTA
	08:00	42-80	V 38	GOOD! JUMPER by REED, CHRISTA [FB/PNT]
TURNOVER by VIVIAN, VICTORIA	07:39			
	07:14			TURNOVER by CLEMONS-GREEN, K
STEAL by DANBERRY, JORDAN	07:12			
GOOD! LAYUP by DANBERRY, JORDAN [FB/PNT]	07:07	42-82	V 40	
	06:44			TIMEOUT 30SEC
SUB IN: JOHNSON, ROSHUNDA	06:44			
SUB OUT: VIVIAN, VICTORIA	06:44			
	06:44			SUB IN: WHALEN, ERIN
	06:44			SUB OUT: NEWBY, AUTUMN
	06:40			TURNOVER by CLEMONS-GREEN, K
STEAL by CAMPBELL, ZION	06:40			
MISSED LAYUP by DANBERRY, JORDAN	06:26			
	06:26			BLOCK by OVERBECK, KAYLA
	06:25			REBOUND (DEF) by REED, CHRISTA
	06:17	44-82	V 38	GOOD! LAYUP by OVERBECK, KAYLA [PNT]
	05:59			FOUL by OVERBECK, KAYLA
MISSED FT by CAMPBELL, ZION	05:59			
REBOUND (DEADB) by TEAM	05:59			
GOOD! FT by CAMPBELL, ZION	05:59	44-83	V 39	
SUB IN: SCOTT, BRE'AMBER	05:59			
SUB OUT: JOHNSON, ROSHUNDA	05:59			
	05:47			MISSED 3PTR by WHALEN, ERIN
REBOUND (DEF) by HOLMES, JAZZMUN	05:47			
MISSED 3PTR by SCOTT, BRE'AMBER	05:34			
REBOUND (OFF) by DANBERRY, JORDAN	05:34			
MISSED JUMPER by DANBERRY, JORDAN	05:31			
	05:31			REBOUND (DEF) by OVERBECK, KAYLA
	05:22			TURNOVER by CLEMONS-GREEN, K
STEAL by HOLMES, JAZZMUN	05:20			
MISSED LAYUP by HOLMES, JAZZMUN	05:19			
	05:19			REBOUND (DEF) by OVERBECK, KAYLA
FOUL by DANBERRY, JORDAN	05:03			
	05:00			TURNOVER by CLEMONS-GREEN, K
STEAL by SCOTT, BRE'AMBER	04:59			

VISITORS: Mississippi State	Time	Score	Margin	HOME: Vanderbilt
GOOD! JUMPER by HOLMES,JAZZMUN [PNT]	04:43	44-85	V 41	
	04:22			MISSED LAYUP by WHALEN,ERIN
	04:22			REBOUND (OFF) by REED,CHRISTA
	04:17	46-85	V 39	GOOD! JUMPER by WHALEN,ERIN [PNT]
	04:17			ASSIST by REED,CHRISTA
GOOD! LAYUP by SCOTT,BRE'AMBER [PNT]	04:03	46-87	V 41	
FOUL by HOLMES,JAZZMUN	03:55			
	03:55			TIMEOUT MEDIA
	03:55	47-87	V 40	GOOD! FT by WALKER,CIERRA
	03:55	48-87	V 39	GOOD! FT by WALKER,CIERRA
	03:55			SUB IN: HALL,CHELSIE
	03:55			SUB OUT: CLEMONS-GREEN,K
MISSED 3PTR by BIBBY,CHLOE	03:36			
REBOUND (OFF) by SCOTT,BRE'AMBER	03:36			
TURNOVER by SCOTT,BRE'AMBER	03:33			
	03:33			SUB IN: WARREN,PAIGE
	03:33			SUB IN: BELL,RACHEL
	03:33			SUB OUT: OVERBECK,KAYLA
	03:33			SUB OUT: WALKER,CIERRA
	03:23			TURNOVER by HALL,CHELSIE
STEAL by HOLMES,JAZZMUN	03:23			
TURNOVER by SCOTT,BRE'AMBER	03:12			
	03:10			STEAL by REED,CHRISTA
	03:01			TURNOVER by WHALEN,ERIN
STEAL by CAMPBELL,ZION	03:00			
GOOD! LAYUP by DANBERRY,JORDAN [FB/PNT]	02:58	48-89	V 41	
ASSIST by HOLMES,JAZZMUN	02:58			
	02:35			MISSED 3PTR by REED,CHRISTA
	02:35			REBOUND (OFF) by WHALEN,ERIN
	02:31			MISSED JUMPER by WHALEN,ERIN
BLOCK by CAMPBELL,ZION	02:31			
REBOUND (DEF) by CAMPBELL,ZION	02:30			
TURNOVER by CAMPBELL,ZION	02:04			
SUB IN: TATE,NYAH	02:04			
SUB OUT: HOLMES,JAZZMUN	02:04			
	02:04			SUB IN: NEWBY,AUTUMN
	02:04			SUB OUT: REED,CHRISTA
	01:49	50-89	V 39	GOOD! JUMPER by WHALEN,ERIN
MISSED JUMPER by BIBBY,CHLOE	01:27			
REBOUND (OFF) by BIBBY,CHLOE	01:27			
	01:24			FOUL by WHALEN,ERIN
GOOD! FT by BIBBY,CHLOE	01:23	50-90	V 40	
GOOD! FT by BIBBY,CHLOE	01:23	50-91	V 41	
SUB IN: HOLMES,JAZZMUN	01:23			
SUB OUT: CAMPBELL,ZION	01:23			
	01:14			TURNOVER by NEWBY,AUTUMN
STEAL by HOLMES,JAZZMUN	01:11			
MISSED LAYUP by DANBERRY,JORDAN	01:09			
	01:09			REBOUND (DEF) by TEAM
FOUL by TATE,NYAH	00:58			
	00:55			TURNOVER by NEWBY,AUTUMN
STEAL by TATE,NYAH	00:52			
GOOD! LAYUP by DANBERRY,JORDAN [PNT]	00:48	50-93	V 43	
	00:26			MISSED 3PTR by WHALEN,ERIN
	00:26			REBOUND (OFF) by NEWBY,AUTUMN
	00:20			TURNOVER by WHALEN,ERIN
STEAL by HOLMES,JAZZMUN	00:19			
GOOD! LAYUP by HOLMES,JAZZMUN [FB/PNT]	00:17	50-95	V 45	
FOUL by SCOTT,BRE'AMBER	00:02			
	00:02			MISSED FT by HALL,CHELSIE
	00:02			REBOUND (DEADB) by TEAM
	00:02			MISSED FT by HALL,CHELSIE
REBOUND (DEF) by BIBBY,CHLOE	00:02			

Mississippi State 95, Vanderbilt 50

Period 4-only	In Paint	Off T/O	2nd Chance	Fast Break	Bench	
MS	14	10	2	6	17	Score tied - 0 times
VANDY	8	2	2	2	4	Lead changed - 0 times

Mississippi State vs Vanderbilt
2/15/2018; 7:30 PM at Nashville, Tenn. (Memorial Gym)
Scoring/Runs Reference

Period 1

Mississippi State	VRun	Score	Margin	HRun	Vanderbilt
09:51 - JOHNSON 3PTR	-	3-0	-3		
		3-3	0		WALKER 3PTR - 09:24
08:09 - MCCOWAN FT	-	4-3	-1		
07:25 - VIVIAN'S JUMPER	3-0	6-3	-3		
		6-5	-1		REED LAYUP [P] - 06:28
05:47 - JOHNSON 3PTR	-	9-5	-4		
05:09 - VIVIAN'S JUMPER [P]	5-0	11-5	-6		
05:09 - VIVIAN'S FT	6-0	12-5	-7		
		12-7	-5		REED LAYUP [P] - 04:57
04:23 - SCHAEFER 3PTR	-	15-7	-8		
		15-9	-6		HALL LAYUP [P] - 03:50
03:29 - MCCOWAN LAYUP [P]	-	17-9	-8		
02:42 - JOHNSON 3PTR	5-0	20-9	-11		
		20-11	-9		HALL LAYUP [P] - 02:13
01:55 - VIVIAN'S LAYUP [P]	-	22-11	-11		
01:38 - HOLMES JUMPER	4-0	24-11	-13		
00:05 - JOHNSON LAYUP [P]	6-0	26-11	-15		

Mississippi State vs Vanderbilt
2/15/2018; 7:30 PM at Nashville, Tenn. (Memorial Gym)
Scoring/Runs Reference

Period 2

Mississippi State	VRun	Score	Margin	HRun	Vanderbilt
		26-13	-13		REED LAYUP [P] - 09:43
09:13 - MCCOWAN JUMPER [P]	-	28-13	-15		
		28-16	-12		REED 3PTR - 08:49
07:24 - SCHAEFER 3PTR	-	31-16	-15		
06:49 - MCCOWAN LAYUP [P]	5-0	33-16	-17		
		33-19	-14		REED 3PTR - 06:26
06:08 - VIVIAN'S 3PTR	-	36-19	-17		
05:23 - MCCOWAN JUMPER [P]	5-0	38-19	-19		
03:30 - WILLIAM FT	6-0	39-19	-20		
03:30 - WILLIAM FT	7-0	40-19	-21		
		40-21	-19		OVERBECK LAYUP [P] [F] - 03:28
03:08 - BIBBY LAYUP [P]	-	42-21	-21		
		42-24	-18		BELL 3PTR - 02:44
02:08 - VIVIAN'S 3PTR	-	45-24	-21		
		45-26	-19		OVERBECK JUMPER [P] - 01:44
01:21 - SCHAEFER 3PTR	-	48-26	-22		
00:52 - VIVIAN'S LAYUP [P]	5-0	50-26	-24		

Mississippi State vs Vanderbilt
2/15/2018; 7:30 PM at Nashville, Tenn. (Memorial Gym)
Scoring/Runs Reference

Period 3

Mississippi State	VRun	Score	Margin	HRun	Vanderbilt
09:23 - MCCOWAN LAYUP [P]	-	52-26	-26		
		52-28	-24		NEWBY LAYUP [P] - 09:11
08:53 - MCCOWAN JUMPER [P]	-	54-28	-26		
		54-30	-24		OVERBECK JUMPER - 08:22
07:54 - MCCOWAN FT	-	55-30	-25		
07:54 - MCCOWAN FT	2-0	56-30	-26		
07:07 - VIVIAN'S JUMPER	4-0	58-30	-28		
		58-32	-26		CLEMONS-GREEN JUMPER [P] - 06:50
05:50 - JOHNSON FT	-	59-32	-27		
05:50 - JOHNSON FT	2-0	60-32	-28		
05:12 - SCHAEFER 3PTR	5-0	63-32	-31		
04:42 - MCCOWAN LAYUP [P]	7-0	65-32	-33		
		65-34	-31		HALL JUMPER [P] - 04:20
03:51 - MCCOWAN LAYUP [P]	-	67-34	-33		
		67-36	-31		OVERBECK JUMPER [P] - 02:32
02:10 - WILLIAM LAYUP [P]	-	69-36	-33		
01:32 - DANBERRY LAYUP [P]	4-0	71-36	-35		
		71-38	-33		BELL JUMPER [F] - 01:22
00:52 - BIBBY JUMPER	-	73-38	-35		
00:21 - BIBBY 3PTR	5-0	76-38	-38		

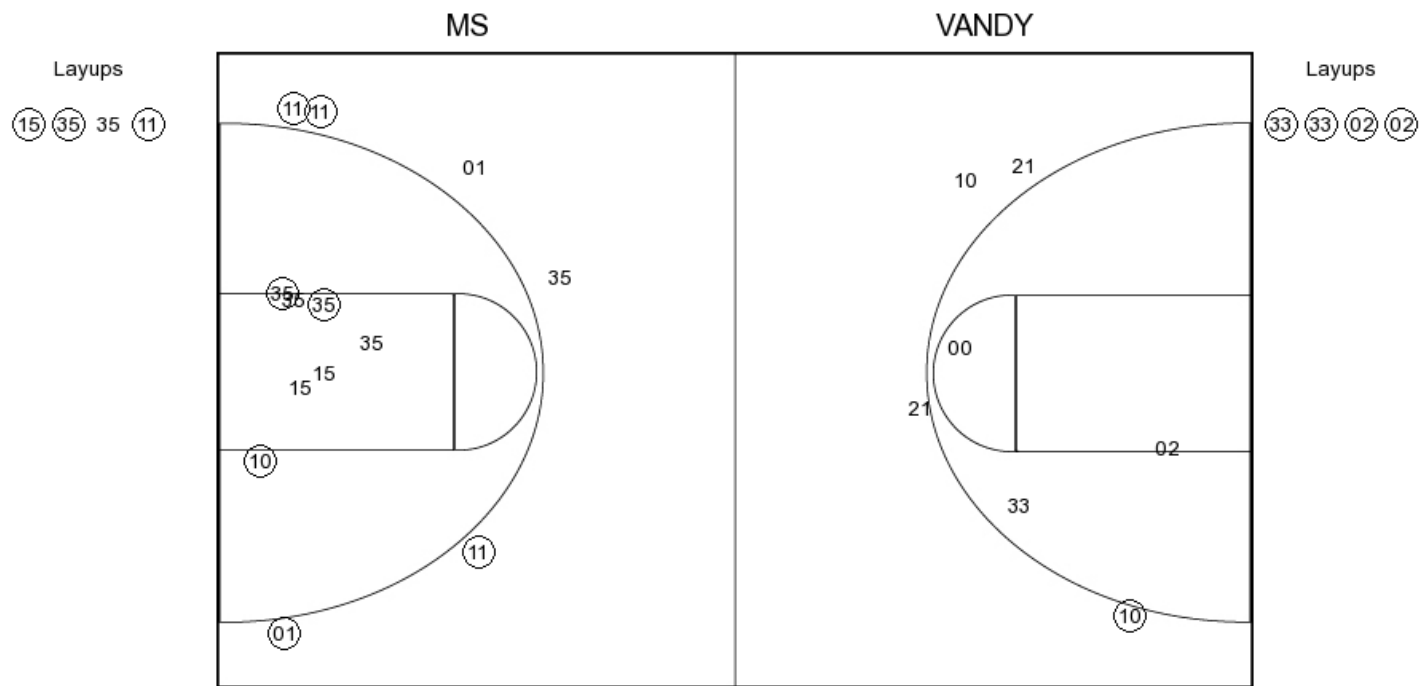
Mississippi State vs Vanderbilt
2/15/2018; 7:30 PM at Nashville, Tenn. (Memorial Gym)
Scoring/Runs Reference

Period 4

Mississippi State	VRun	Score	Margin	HRun	Vanderbilt
09:45 - VIVIAN'S JUMPER	-	78-38	-40		
08:46 - DANBERRY LAYUP [P]	NaN-0	80-38	-42		
		80-40	-40		OVERBECK LAYUP [P] - 08:23
		80-42	-38	4-0	REED JUMPER [P] [F] - 08:00
07:07 - DANBERRY LAYUP [P] [F]	-	82-42	-40		
		82-44	-38		OVERBECK LAYUP [P] - 06:17
05:59 - CAMPBELL FT	-	83-44	-39		
04:43 - HOLMES JUMPER [P]	3-0	85-44	-41		
		85-46	-39		WHALEN JUMPER [P] - 04:17
04:03 - SCOTT LAYUP [P]	-	87-46	-41		
		87-47	-40		WALKER FT - 03:55
		87-48	-39	2-0	WALKER FT - 03:55
02:58 - DANBERRY LAYUP [P] [F]	-	89-48	-41		
		89-50	-39		WHALEN JUMPER - 01:49
01:23 - BIBBY FT	-	90-50	-40		
01:23 - BIBBY FT	2-0	91-50	-41		
00:48 - DANBERRY LAYUP [P]	4-0	93-50	-43		
00:17 - HOLMES LAYUP [P] [F]	6-0	95-50	-45		

Mississippi State vs Vanderbilt
 OFFICIAL SHOT CHART
 2/15/2018 at Nashville, Tenn. (Memorial Gym)

PERIOD 1



MS PERIOD 1

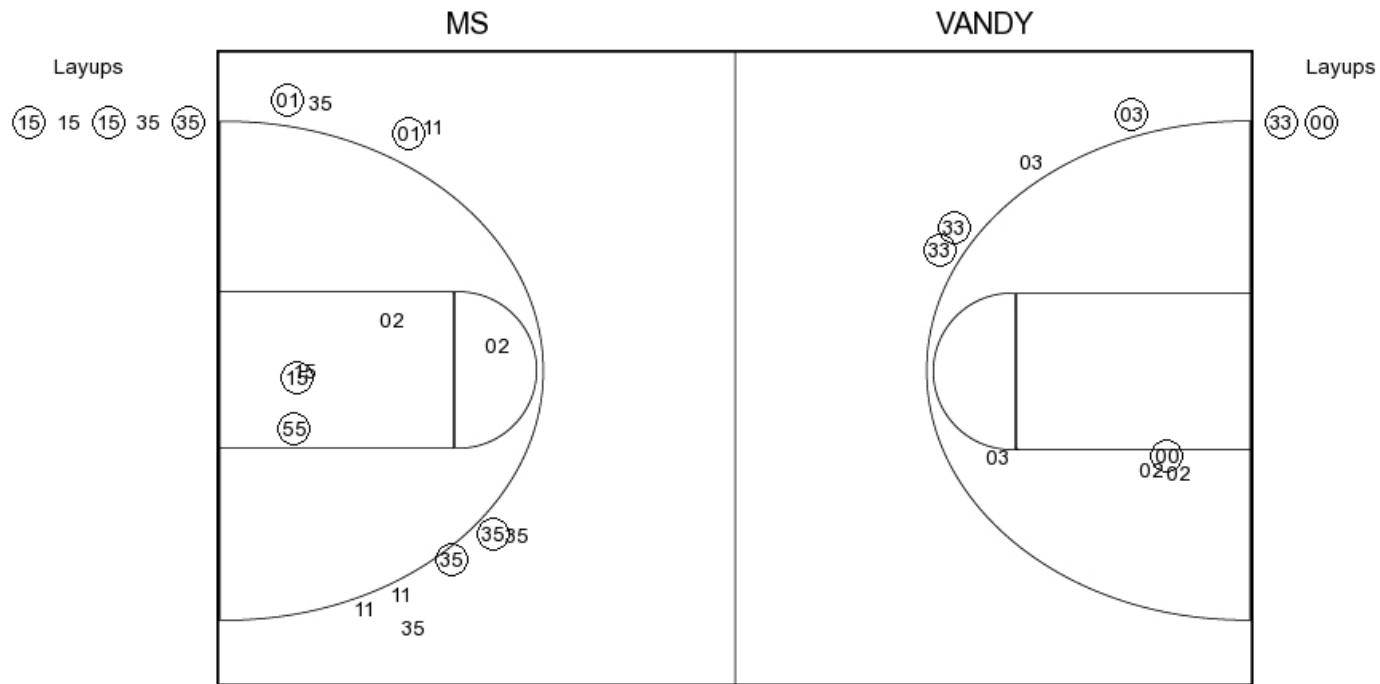
FG Made	19
FG Attempted	37
3PFG Made	8
3PFG Attempted	16

VANDY PERIOD 1

FG Made	11
FG Attempted	21
3PFG Made	4
3PFG Attempted	8

Mississippi State vs Vanderbilt
 OFFICIAL SHOT CHART
 2/15/2018 at Nashville, Tenn. (Memorial Gym)

PERIOD 2



MS PERIOD 2

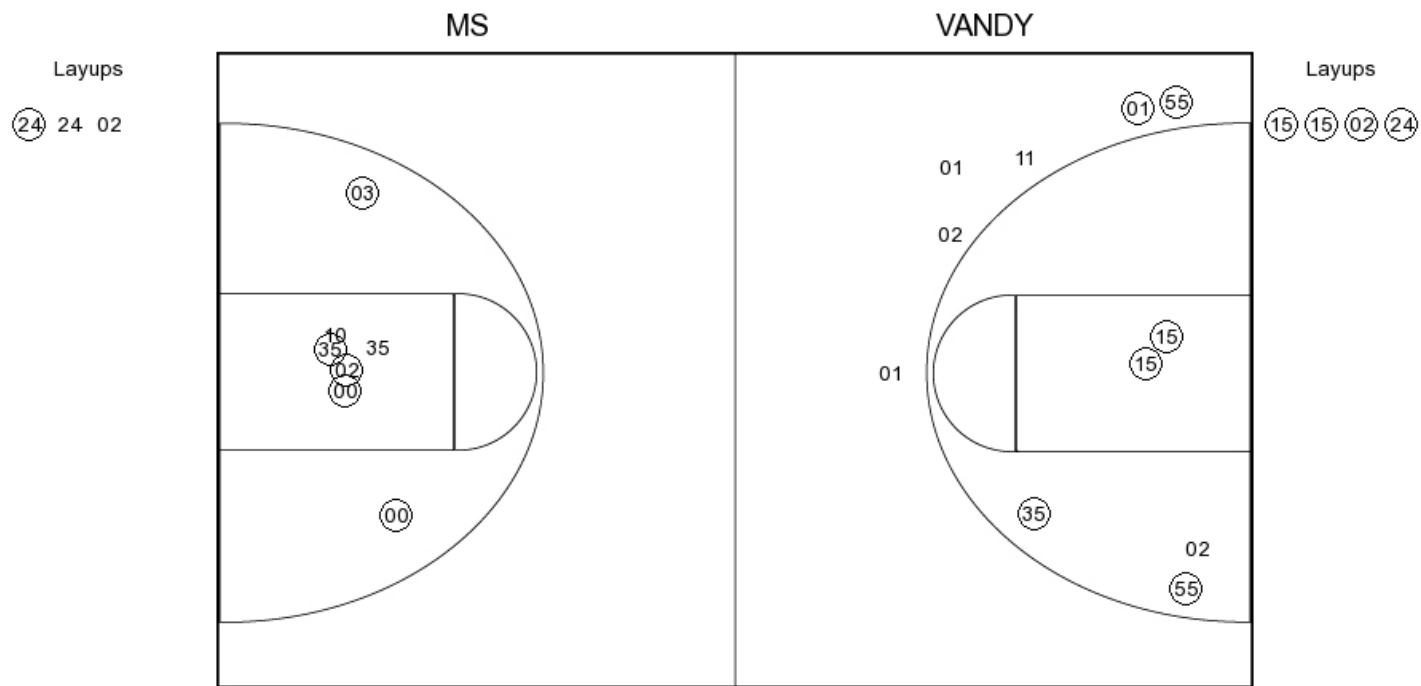
FG Made
 FG Attempted
 3PFG Made
 3PFG Attempted

VANDY PERIOD 2

FG Made
 FG Attempted
 3PFG Made
 3PFG Attempted

Mississippi State vs Vanderbilt
 OFFICIAL SHOT CHART
 2/15/2018 at Nashville, Tenn. (Memorial Gym)

PERIOD 3



MS PERIOD 3

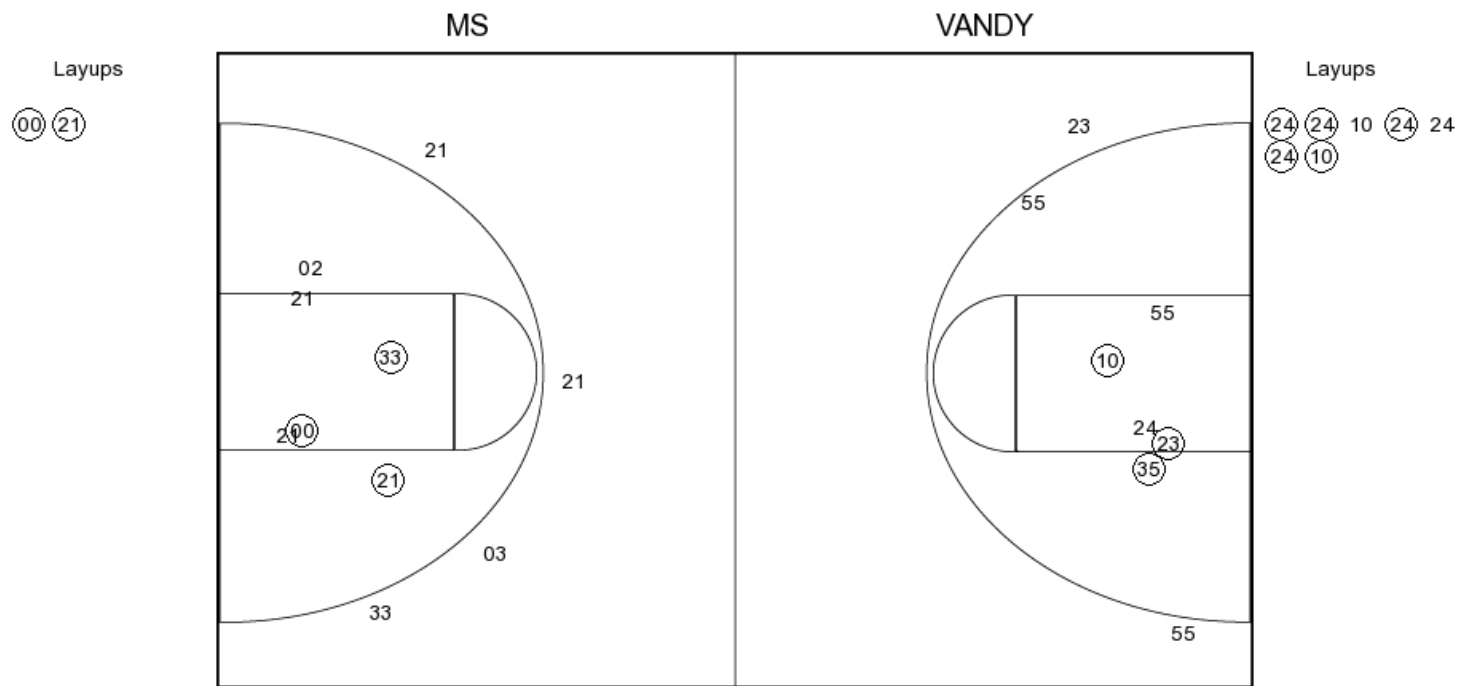
FG Made	18
FG Attempted	31
3PFG Made	2
3PFG Attempted	9

VANDY PERIOD 3

FG Made	11
FG Attempted	22
3PFG Made	0
3PFG Attempted	4

Mississippi State vs Vanderbilt
 OFFICIAL SHOT CHART
 2/15/2018 at Nashville, Tenn. (Memorial Gym)

PERIOD 4



MS PERIOD 4

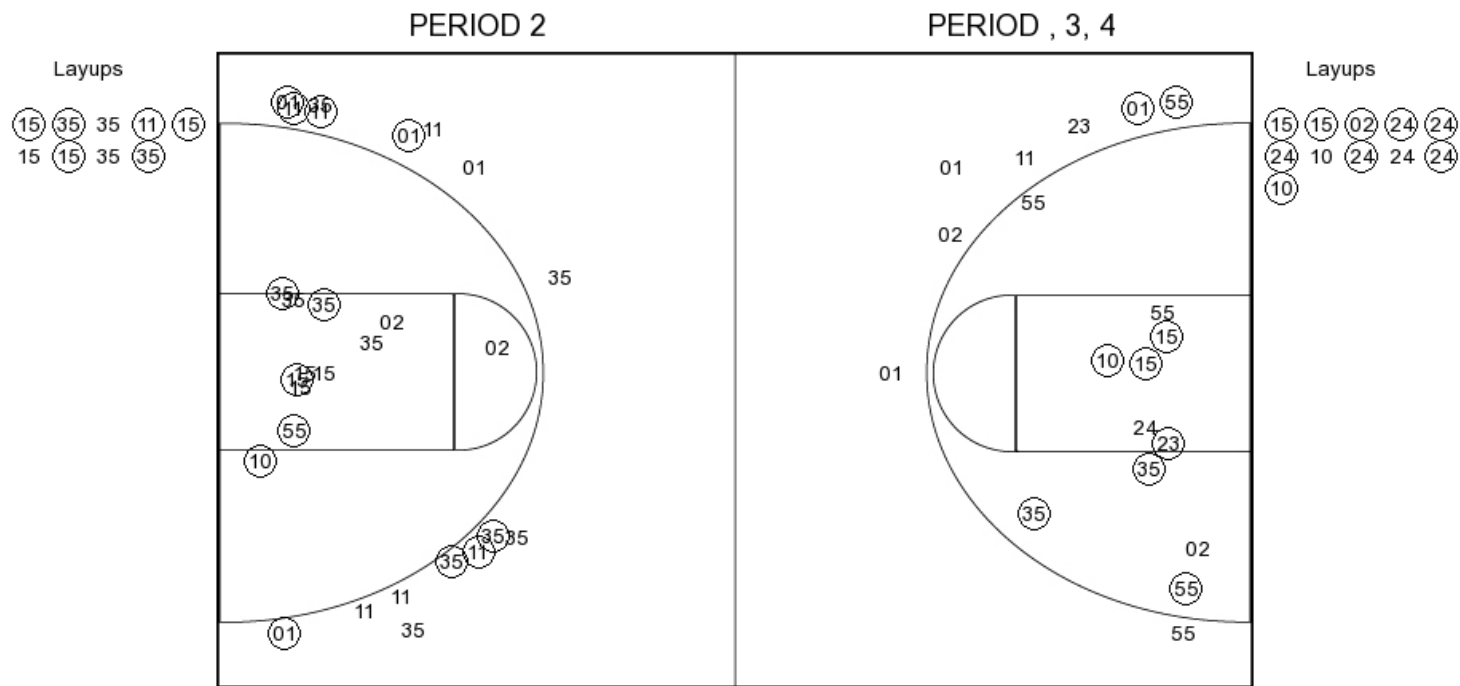
FG Made
 FG Attempted
 3PFG Made
 3PFG Attempted

VANDY PERIOD 4

FG Made
 FG Attempted
 3PFG Made
 3PFG Attempted

Mississippi State vs Vanderbilt
 OFFICIAL SHOT CHART
 2/15/2018 at Nashville, Tenn. (Memorial Gym)

Mississippi State



MS PERIOD 1

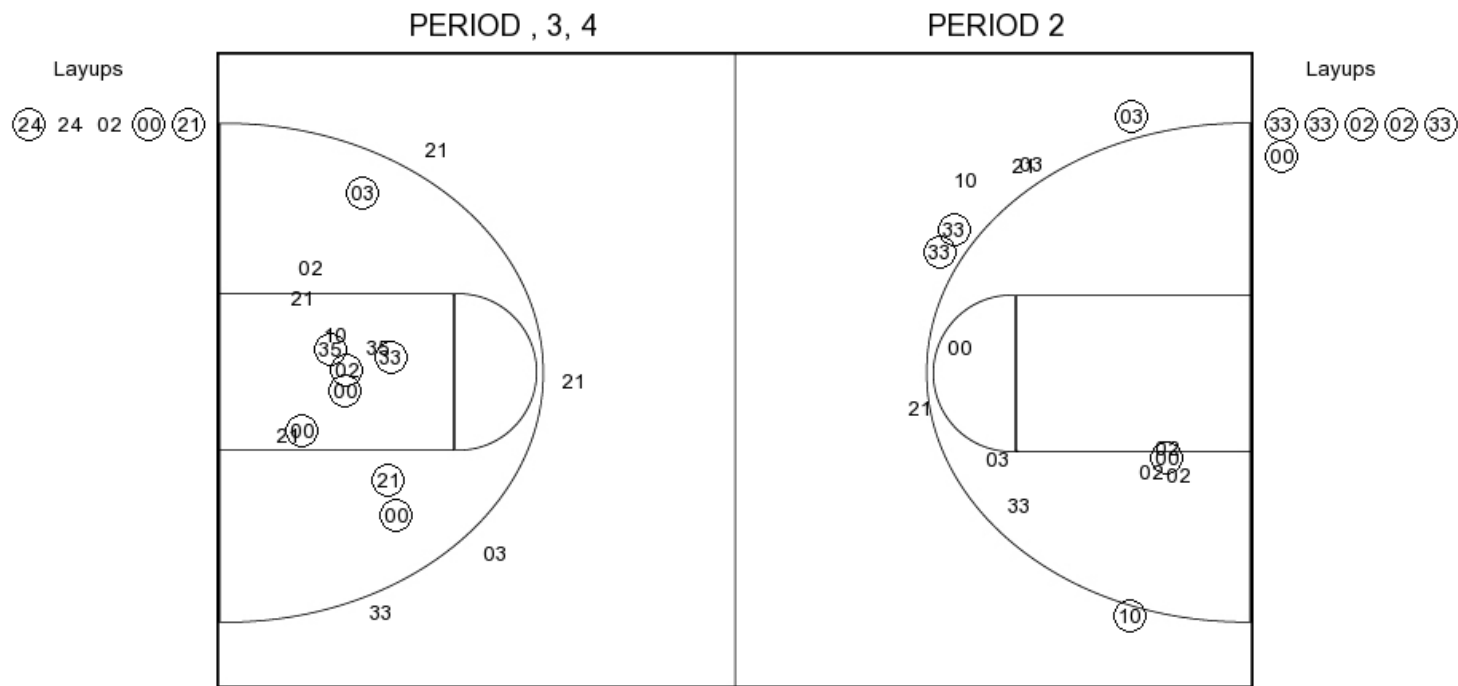
FG Made	19
FG Attempted	37
3PFG Made	8
3PFG Attempted	16

MS PERIOD 2

FG Made	
FG Attempted	
3PFG Made	
3PFG Attempted	

Mississippi State vs Vanderbilt
 OFFICIAL SHOT CHART
 2/15/2018 at Nashville, Tenn. (Memorial Gym)

Vanderbilt



VANDY PERIOD 1

FG Made	11
FG Attempted	21
3PFG Made	4
3PFG Attempted	8

VANDY PERIOD 2

FG Made	
FG Attempted	
3PFG Made	
3PFG Attempted	