

## FINAL SCORE

**Texas A&M**

17-5, 6-2 SEC

**91**

**Vanderbilt**

5-17, 1-7 SEC

**67**

January 28, 2015 • Nashville, Tenn. (Memorial Gym)

## FINAL STATISTICS

**Official Basketball Box Score -- Game Totals -- Final Statistics**  
**Texas A&M vs Vanderbilt**  
**1/28/2015 2 PM at Nashville, Tenn. (Memorial Gym)**

**Texas A&M 91 - 17-5, 6-2 SEC**

##	Player	c	Total		3-Ptr		Rebounds			PF	TP	A	TO	Blk	Stl	Min
			FG-FGA	FG-FGA	FT-FTA	Off	Def	Tot								
00	HILLSMAN,KHAALIA	c	6-12	0-0	4-4	4	3	7	4	16	0	3	1	0	23	
03	CARTER,CHENNEDY	g	11-21	1-6	5-6	4	1	5	2	28	5	2	0	3	30	
05	HOWARD,ANRIEL	f	3-9	0-1	6-7	2	6	8	2	12	1	0	0	0	24	
12	WILLIAMS,DANNI	g	7-12	2-3	2-2	0	4	4	0	18	0	2	0	2	34	
21	LUMPKIN,JASMINE	f	3-8	0-0	0-0	5	8	13	4	6	2	2	0	1	31	
04	MCKINNEY,LULU		0-2	0-1	2-2	0	0	0	1	2	3	0	0	1	10	
11	WELLS,KAYLA		2-2	0-0	3-3	3	0	3	1	7	1	4	0	0	17	
14	WALTON,JADA		1-1	0-0	0-0	0	0	0	2	2	0	0	1	0	6	
30	NICHOLS,EMER		0-0	0-0	0-0	1	0	1	1	0	0	2	0	1	5	
31	JONES,N'DEA		0-1	0-0	0-0	0	0	0	1	0	0	0	0	1	7	
34	MARTIN,CAYLINNE		0-1	0-0	0-0	0	1	1	1	0	0	0	1	1	13	
TEAM						0	1	1	0		0					
TOTALS			33-69	3-11	22-24	19	24	43	19	91	12	15	3	10	200	

Deadball Rebounds: 2,0

FG %	1st Half: 16-30 53.3%	2nd Half: 17-39 43.6%	Game: 33-69 47.8%
	1st Qtr 6-14 42.9%	2nd Qtr 10-16 62.5%	3rd Qtr 9-25 36.0%
3FG %	1st Half: 3-8 37.5%	2nd Half: 0-3 00.0%	Game: 3-11 27.3%
	1st Qtr 1-3 33.3%	2nd Qtr 2-5 40.0%	3rd Qtr 0-1 00.0%
FT %	1st Half: 7-7 100.0%	2nd Half: 15-17 88.2%	Game: 22-24 91.7%
	1st Qtr 4-4 100.0%	2nd Qtr 3-3 100.0%	3rd Qtr 14-16 87.5%
			4th Qtr 8-14 57.1%
			4th Qtr 0-2 00.0%
			4th Qtr 1-1 100.0%

**Vanderbilt 67 - 5-17, 1-7 SEC**

##	Player	g	Total		3-Ptr		Rebounds			PF	TP	A	TO	Blk	Stl	Min
			FG-FGA	FG-FGA	FT-FTA	Off	Def	Tot								
02	HALL,CHELSIE	g	7-11	0-2	2-2	1	4	5	1	16	3	6	0	0	37	
10	WALKER,CIERRA	g	2-2	2-2	0-0	0	2	2	2	6	0	0	0	0	28	
21	WHALEN,ERIN	f	0-4	0-2	0-0	0	0	0	3	0	1	1	0	0	12	
24	NEWBY,AUTUMN	f	3-5	0-0	2-3	2	1	3	4	8	2	1	0	0	14	
33	REED,CHRISTA	g	4-10	3-6	2-2	3	3	6	3	13	2	1	0	0	36	
00	OVERBECK,KAYLA		7-11	0-0	0-2	0	2	2	3	14	1	3	0	1	27	
03	BELL,RACHEL		0-4	0-2	0-0	0	1	1	0	0	0	0	0	0	5	
22	HORROCKS,BREE		1-2	0-0	0-0	0	1	1	2	2	0	1	0	0	2	
30	CARTER,LEALEA		1-2	0-0	2-3	0	0	0	1	4	2	2	0	0	17	
31	EJIOFOR,BLESSING		1-2	0-0	0-0	0	0	0	0	2	0	1	0	2	11	
35	CLEMONS-GREEN,K		1-3	0-2	0-0	0	1	1	2	2	1	3	0	0	11	
TEAM						2	1	3	0		1					
TOTALS			27-56	5-16	8-12	8	16	24	21	67	12	20	0	3	200	

Deadball Rebounds: 1,1

FG %	1st Half: 13-28 46.4%	2nd Half: 14-28 50.0%	Game: 27-56 48.2%
	1st Qtr 7-18 38.9%	2nd Qtr 6-10 60.0%	3rd Qtr 6-16 37.5%
3FG %	1st Half: 0-6 00.0%	2nd Half: 5-10 50.0%	Game: 5-16 31.3%
	1st Qtr 0-5 00.0%	2nd Qtr 0-1 00.0%	3rd Qtr 3-7 42.9%
FT %	1st Half: 2-4 50.0%	2nd Half: 6-8 75.0%	Game: 8-12 66.7%
	1st Qtr 0-0 0%	2nd Qtr 2-4 50.0%	3rd Qtr 4-5 80.0%
			4th Qtr 8-12 66.7%
			4th Qtr 2-3 66.7%
			4th Qtr 2-3 66.7%

Officials: R:Eric Brewton, U1:Metta Robinson, U2:Bill Larence  
 Technical Fouls: Texas A&M- None. Vanderbilt- None.  
 Attendance: 3009

We Back Pat Game

Score by periods	1st	2nd	3rd	4th	Total
Texas A&M	17	25	32	17	91
Vanderbilt	14	14	19	20	67

Points	In Paint	Off T/O	2nd Chance	Fast Break	Bench
TAMU	52	26	19	12	11
VANDY	40	11	10	0	24

Last FG - TAMU 4th-01:54, VANDY 4th-00:57.  
 Largest lead - Texas A&M by 33 4th-06:02; Vanderbilt by 2 1st-08:15  
 TAMU led for 37:05. VANDY led for 0:19. Game was tied for 2:35.

Score tied - 1 times; Lead changed - 1 times

**Official Basketball Box Score -- Game Totals -- First Half Statistics**  
**Texas A&M vs Vanderbilt**  
**1/28/2015 2 PM at Nashville, Tenn. (Memorial Gym)**

**Texas A&M 42 • 17-5, 6-2 SEC**

##	Player	c	Total FG-FGA	3-Ptr FG-FGA	FT-FTA	Rebounds			PF	TP	A	TO	Blk	Stl	Min
						Off	Def	Tot							
00	HILLSMAN,KHAALIA	c	2-2	0-0	0-0	0	1	1	2	4	0	2	0	0	7
03	CARTER,CHENNEDY	g	7-12	1-5	2-2	0	0	0	2	17	1	1	0	1	15
05	HOWARD,ANRIEL	f	0-2	0-0	2-2	0	3	3	2	2	1	0	0	0	9
12	WILLIAMS,DANNI	g	4-6	2-2	0-0	0	4	4	0	10	0	2	0	0	20
21	LUMPKIN,JASMINE	f	1-4	0-0	0-0	2	4	6	0	2	1	2	0	1	20
04	MCKINNEY,LULU		0-1	0-1	2-2	0	0	0	0	2	0	0	0	0	3
11	WELLS,KAYLA		2-2	0-0	1-1	2	0	2	1	5	0	2	0	0	8
14	WALTON,JADA		0-0	0-0	0-0	0	0	0	1	0	0	0	0	0	2
30	NICHOLS,EMER		0-0	0-0	0-0	0	0	0	0	0	0	0	0	0	0
31	JONES,N'DEA		0-0	0-0	0-0	0	0	0	0	0	0	0	0	0	3
34	MARTIN,CAYLINNE		0-1	0-0	0-0	0	1	1	1	0	0	0	1	1	13
TEAM						0	0	0	0		0				
Totals			16-30	3-8	7-7	4	13	17	9	42	3	9	1	3	100

FG % 1st Qtr 6-14 42.9% 2nd Qtr 10-16 62.5% Half: 16-30 53.3%  
 3FG % 1st Qtr 1-3 33.3% 2nd Qtr 2-5 40.0% Half: 3-8 37.5%  
 FT % 1st Qtr 4-4 100.0% 2nd Qtr 3-3 100.0% Half: 7-7 100.0%

**Vanderbilt 28 • 5-17, 1-7 SEC**

##	Player	g	Total FG-FGA	3-Ptr FG-FGA	FT-FTA	Rebounds			PF	TP	A	TO	Blk	Stl	Min
						Off	Def	Tot							
02	HALL,CHELSIE	g	4-5	0-0	0-0	1	2	3	1	8	1	4	0	0	18
10	WALKER,CIERRA	g	0-0	0-0	0-0	0	1	1	0	0	0	0	0	0	17
21	WHALEN,ERIN	f	0-3	0-1	0-0	0	0	0	1	0	1	1	0	0	10
24	NEWBY,AUTUMN	f	1-1	0-0	0-0	0	0	0	2	2	0	0	0	0	3
33	REED,CHRISTA	g	1-4	0-2	2-2	1	1	2	1	4	1	1	0	0	19
00	OVERBECK,KAYLA		6-9	0-0	0-2	0	1	1	2	12	0	1	0	1	17
03	BELL,RACHEL		0-4	0-2	0-0	0	1	1	0	0	0	0	0	0	5
22	HORROCKS,BREE		0-0	0-0	0-0	0	0	0	0	0	0	0	0	0	0
30	CARTER,LEALEA		0-0	0-0	0-0	0	0	0	0	0	0	0	0	0	0
31	EJIOFOR,BLESSING		0-0	0-0	0-0	0	0	0	0	0	0	0	0	0	1
35	CLEMONS-GREEN,K		1-2	0-1	0-0	0	1	1	1	2	1	2	0	0	10
TEAM						1	1	2	0		1				
Totals			13-28	0-6	2-4	3	8	11	8	28	4	10	0	1	100

FG % 1st Qtr 7-18 38.9% 2nd Qtr 6-10 60.0% Half: 13-28 46.4%  
 3FG % 1st Qtr 0-5 00.0% 2nd Qtr 0-1 00.0% Half: 0-6 00.0%  
 FT % 1st Qtr 0-0 0% 2nd Qtr 2-4 50.0% Half: 2-4 50.0%

Officials: R:Eric Brewton, U1:Metta Robinson, U2:Bill Larence  
 Technical Fouls: Texas A&M- None. Vanderbilt- None.  
 We Back Pat Game

Score by periods	1st	2nd	3rd	4th	Total
Texas A&M	17	25	32	17	<b>91</b>
Vanderbilt	14	14	19	20	<b>67</b>

Points	In Paint	Off T/O	2nd Chance	Fast Break	Bench
TAMU	22	15	7	4	7
VANDY	26	4	4	0	14

Last FG - TAMU 2nd-00:38, VANDY 2nd-00:34.  
 TAMU led for 17:06. VANDY led for 0:19. Game was tied for 2:35.

Score tied - 1 times  
 Lead changed - 1 times

**Texas A&M vs Vanderbilt**  
**1/28/2015; 2 PM at Nashville, Tenn. (Memorial Gym)**  
**Period 1 Play-By-Play**

VISITORS: Texas A&M	Time	Score	Margin	HOME: Vanderbilt
TURNOVER by WILLIAMS,DANNI	09:42			
	09:20			MISSED JUMPER by WHALEN,ERIN
REBOUND (DEF) by LUMPKIN,JASMINE	09:20			
MISSED 3PTR by CARTER,CHENNEDY	09:11			
	09:11			REBOUND (DEADB) by TEAM
FOUL by HOWARD,ANRIEL	09:09			
	08:51			MISSED JUMPER by HALL,CHELSIE
REBOUND (DEF) by WILLIAMS,DANNI	08:51			
MISSED JUMPER by WILLIAMS,DANNI	08:28			
	08:28			REBOUND (DEF) by HALL,CHELSIE
	08:15	2-0	H 2	GOOD! LAYUP by NEWBY,AUTUMN [PNT]
	08:15			ASSIST by WHALEN,ERIN
	07:56			FOUL by NEWBY,AUTUMN
GOOD! FT by CARTER,CHENNEDY	07:56	2-1	H 1	
GOOD! FT by CARTER,CHENNEDY	07:56	2-2	T	
	07:48			MISSED 3PTR by WHALEN,ERIN
REBOUND (DEF) by HOWARD,ANRIEL	07:48			
MISSED JUMPER by HOWARD,ANRIEL	07:32			
	07:32			REBOUND (DEF) by HALL,CHELSIE
	07:21			TURNOVER by HALL,CHELSIE
	07:09			FOUL by NEWBY,AUTUMN
	07:09			SUB IN: OVERBECK,KAYLA
	07:09			SUB OUT: NEWBY,AUTUMN
	07:06			FOUL by OVERBECK,KAYLA
GOOD! FT by HOWARD,ANRIEL	07:06	2-3	V 1	
GOOD! FT by HOWARD,ANRIEL	07:06	2-4	V 2	
	06:55			TURNOVER by OVERBECK,KAYLA
STEAL by LUMPKIN,JASMINE	06:53			
TURNOVER by LUMPKIN,JASMINE	06:53			
	06:45			MISSED LAYUP by OVERBECK,KAYLA
REBOUND (DEF) by LUMPKIN,JASMINE	06:45			
FOUL by HILLSMAN,KHAALIA	06:35			
TURNOVER by HILLSMAN,KHAALIA	06:35			
	06:19			MISSED 3PTR by REED,CHRISTA
REBOUND (DEF) by WILLIAMS,DANNI	06:19			
GOOD! LAYUP by CARTER,CHENNEDY [FB/PNT]	06:12	2-6	V 4	
	05:52			TURNOVER by WHALEN,ERIN
GOOD! LAYUP by HILLSMAN,KHAALIA [PNT]	05:41	2-8	V 6	
ASSIST by LUMPKIN,JASMINE	05:41			
	05:24			SUB IN: BELL,RACHEL
	05:24			SUB IN: CLEMONS-GREEN,K
	05:24			SUB OUT: HALL,CHELSIE
	05:24			SUB OUT: WHALEN,ERIN
	05:10			MISSED JUMPER by REED,CHRISTA
REBOUND (DEF) by HOWARD,ANRIEL	05:10			
MISSED JUMPER by LUMPKIN,JASMINE	04:59			
	04:59			REBOUND (DEF) by OVERBECK,KAYLA
	04:43	4-8	V 4	GOOD! LAYUP by OVERBECK,KAYLA [PNT]
GOOD! 3PTR by CARTER,CHENNEDY	04:28	4-11	V 7	
	04:12			MISSED 3PTR by BELL,RACHEL
	04:12			REBOUND (OFF) by TEAM
	04:09			TIMEOUT MEDIA
	03:50			MISSED JUMPER by BELL,RACHEL
REBOUND (DEF) by HOWARD,ANRIEL	03:49			
MISSED JUMPER by HOWARD,ANRIEL	03:42			
REBOUND (OFF) by LUMPKIN,JASMINE	03:41			
	03:41			FOUL by CLEMONS-GREEN,K
	03:41			SUB IN: HALL,CHELSIE
	03:41			SUB OUT: WALKER,CIERRA
GOOD! LAYUP by HILLSMAN,KHAALIA [PNT]	03:31	4-13	V 9	
ASSIST by HOWARD,ANRIEL	03:31			
	03:23			MISSED 3PTR by BELL,RACHEL
REBOUND (DEF) by HILLSMAN,KHAALIA	03:23			
GOOD! JUMPER by CARTER,CHENNEDY	03:10	4-15	V 11	
	02:47	6-15	V 9	GOOD! JUMPER by HALL,CHELSIE [PNT]
FOUL by HILLSMAN,KHAALIA	02:43			
TURNOVER by HILLSMAN,KHAALIA	02:43			
SUB IN: MARTIN,CAYLINNE	02:43			
SUB OUT: HILLSMAN,KHAALIA	02:43			

VISITORS: Texas A&M	Time	Score	Margin	HOME: Vanderbilt
	02:42			TURNOVER by CLEMONS-GREEN,K
STEAL by MARTIN,CAYLINNE	02:40			
TURNOVER by LUMPKIN,JASMINE	02:20			
	02:04			MISSED 3PTR by CLEMONS-GREEN,K
	02:04			REBOUND (OFF) by HALL,CHELSIE
	01:52	8-15	V 7	GOOD! LAYUP by OVERBECK,KAYLA [PNT]
MISSED 3PTR by CARTER,CHENNEDY	01:38			
	01:38			REBOUND (DEF) by CLEMONS-GREEN,K
	01:29	10-15	V 5	GOOD! LAYUP by CLEMONS-GREEN,K [PNT]
GOOD! JUMPER by CARTER,CHENNEDY	01:05	10-17	V 7	
	00:54			MISSED JUMPER by BELL,RACHEL
	00:54			REBOUND (OFF) by REED,CHRISTA
	00:50	12-17	V 5	GOOD! LAYUP by REED,CHRISTA [PNT]
MISSED JUMPER by LUMPKIN,JASMINE	00:35			
	00:35			REBOUND (DEF) by BELL,RACHEL
FOUL by HOWARD,ANRIEL	00:33			
SUB IN: JONES,N'DEA	00:33			
SUB OUT: HOWARD,ANRIEL	00:33			
	00:33			SUB IN: WALKER,CIERRA
	00:33			SUB OUT: BELL,RACHEL
	00:21	14-17	V 3	GOOD! LAYUP by HALL,CHELSIE [PNT]
MISSED JUMPER by CARTER,CHENNEDY	00:04			
	00:04			REBOUND (DEF) by WALKER,CIERRA

Texas A&M 17, Vanderbilt 14

Period 1-only	In Paint	Off T/O	2nd Chance	Fast Break	Bench	
TAMU	6	4	2	2	0	Score tied - 2 times
VANDY	14	2	4	0	6	Lead changed - 2 times

**Texas A&M vs Vanderbilt**  
**1/28/2015; 2 PM at Nashville, Tenn. (Memorial Gym)**  
**Period 2 Play-By-Play**

VISITORS: Texas A&M	Time	Score	Margin	HOME: Vanderbilt
SUB IN: MARTIN,CAYLINNE	10:00			
SUB IN: JONES,N'DEA	10:00			
SUB OUT: HILLSMAN,KHAALIA	10:00			
SUB OUT: HOWARD,ANRIEL	10:00			
	10:00			SUB IN: CLEMONS-GREEN,K
	10:00			SUB IN: OVERBECK,KAYLA
	10:00			SUB OUT: WHALEN,ERIN
	10:00			SUB OUT: NEWBY,AUTUMN
	09:44			TURNOVER by CLEMONS-GREEN,K
STEAL by CARTER,CHENNEDY	09:43			
GOOD! LAYUP by CARTER,CHENNEDY [FB/PNT]	09:41	14-19	V 5	
	09:31			TURNOVER by HALL,CHELSIE
GOOD! LAYUP by WILLIAMS,DANNI [PNT]	09:30	14-21	V 7	
ASSIST by CARTER,CHENNEDY	09:30			
FOUL by CARTER,CHENNEDY	09:15			
	09:15	15-21	V 6	GOOD! FT by REED,CHRISTA
	09:15	16-21	V 5	GOOD! FT by REED,CHRISTA
TURNOVER by CARTER,CHENNEDY	09:06			
	08:50			MISSED LAYUP by OVERBECK,KAYLA
BLOCK by MARTIN,CAYLINNE	08:50			
REBOUND (DEF) by LUMPKIN,JASMINE	08:49			
MISSED JUMPER by WILLIAMS,DANNI	08:39			
	08:39			REBOUND (DEF) by REED,CHRISTA
	08:28			TURNOVER by HALL,CHELSIE
	08:28			SUB IN: EJIOFOR,BLESSING
	08:28			SUB IN: WHALEN,ERIN
	08:28			SUB OUT: CLEMONS-GREEN,K
	08:28			SUB OUT: REED,CHRISTA
GOOD! LAYUP by CARTER,CHENNEDY [PNT]	08:18	16-23	V 7	
FOUL by CARTER,CHENNEDY	07:56			
	07:55			TURNOVER by TEAM
SUB IN: MCKINNEY,LULU	07:55			
SUB IN: WELLS,KAYLA	07:55			
SUB OUT: CARTER,CHENNEDY	07:55			
SUB OUT: JONES,N'DEA	07:55			
GOOD! LAYUP by LUMPKIN,JASMINE [PNT]	07:42	16-25	V 9	
	07:41			TIMEOUT 30SEC
	07:41			TIMEOUT media
	07:41			SUB IN: REED,CHRISTA
	07:41			SUB OUT: EJIOFOR,BLESSING
	07:25			TURNOVER by REED,CHRISTA
MISSED 3PTR by MCKINNEY,LULU	07:07			
	07:07			REBOUND (DEF) by TEAM
FOUL by WELLS,KAYLA	06:52			
	06:42	18-25	V 7	GOOD! LAYUP by HALL,CHELSIE [PNT]
TURNOVER by WILLIAMS,DANNI	06:15			
	05:49			MISSED JUMPER by OVERBECK,KAYLA
REBOUND (DEF) by MARTIN,CAYLINNE	05:49			
	05:38			FOUL by HALL,CHELSIE
	05:24			FOUL by REED,CHRISTA
GOOD! FT by MCKINNEY,LULU	05:24	18-26	V 8	
GOOD! FT by MCKINNEY,LULU	05:24	18-27	V 9	
SUB IN: WALTON,JADA	05:24			
SUB OUT: MCKINNEY,LULU	05:24			
FOUL by WALTON,JADA	05:19			
	05:09			MISSED 3PTR by REED,CHRISTA
REBOUND (DEF) by WILLIAMS,DANNI	05:09			
TURNOVER by WELLS,KAYLA	04:55			
	04:35			TURNOVER by HALL,CHELSIE
GOOD! LAYUP by WELLS,KAYLA [PNT]	04:24	18-29	V 11	
	04:24			FOUL by OVERBECK,KAYLA
GOOD! FT by WELLS,KAYLA	04:24	18-30	V 12	
	04:06	20-30	V 10	GOOD! LAYUP by OVERBECK,KAYLA [PNT]
	04:06			ASSIST by REED,CHRISTA
GOOD! 3PTR by WILLIAMS,DANNI	03:46	20-33	V 13	
	03:33			MISSED LAYUP by WHALEN,ERIN
REBOUND (DEF) by LUMPKIN,JASMINE	03:33			
	03:31			FOUL by WHALEN,ERIN
SUB IN: CARTER,CHENNEDY	03:31			

VISITORS: Texas A&M	Time	Score	Margin	HOME: Vanderbilt
SUB OUT: WALTON,JADA	03:31			
	03:31			SUB IN: CLEMONS-GREEN,K
	03:31			SUB OUT: WHALEN,ERIN
MISSED JUMPER by MARTIN,CAYLINNE	03:19			
REBOUND (OFF) by WELLS,KAYLA	03:19			
GOOD! 3PTR by WILLIAMS,DANNI	03:07	20-36	V 16	
	02:50	22-36	V 14	GOOD! JUMPER by OVERBECK,KAYLA [PNT]
	02:50			ASSIST by HALL,CHELSIE
GOOD! LAYUP by CARTER,CHENNEDY [PNT]	02:32	22-38	V 16	
	02:21	24-38	V 14	GOOD! LAYUP by OVERBECK,KAYLA [PNT]
	02:21			ASSIST by CLEMONS-GREEN,K
GOOD! LAYUP by WILLIAMS,DANNI [PNT]	02:01	24-40	V 16	
FOUL by MARTIN,CAYLINNE	01:44			
	01:44			MISSED FT by OVERBECK,KAYLA
	01:44			REBOUND (DEADB) by TEAM
	01:44			MISSED FT by OVERBECK,KAYLA
REBOUND (DEF) by WILLIAMS,DANNI	01:44			
TURNOVER by WELLS,KAYLA	01:25			
	01:23			STEAL by OVERBECK,KAYLA
	01:11	26-40	V 14	GOOD! LAYUP by OVERBECK,KAYLA [PNT]
MISSED 3PTR by CARTER,CHENNEDY	00:48			
REBOUND (OFF) by WELLS,KAYLA	00:38			
GOOD! LAYUP by WELLS,KAYLA [PNT]	00:38	26-42	V 16	
	00:34	28-42	V 14	GOOD! LAYUP by HALL,CHELSIE [PNT]
MISSED 3PTR by CARTER,CHENNEDY	00:03			
REBOUND (OFF) by LUMPKIN,JASMINE	00:03			
MISSED JUMPER by LUMPKIN,JASMINE	00:00			
REBOUND (DEADB) by TEAM	00:00			

Texas A&M 42, Vanderbilt 28

Period 2-only	In Paint	Off T/O	2nd Chance	Fast Break	Bench	
TAMU	16	11	5	2	7	Score tied - 0 times
VANDY	12	2	0	0	8	Lead changed - 0 times

**Official Basketball Box Score -- Game Totals -- Second Half Statistics**  
**Texas A&M vs Vanderbilt**  
**1/28/2015 2 PM at Nashville, Tenn. (Memorial Gym)**

**Texas A&M 49 • 17-5, 6-2 SEC**

##	Player	c	Total		3-Ptr	Rebounds			PF	TP	A	TO	Blk	Stl	Min
			FG-FGA	FG-FGA	FT-FTA	Off	Def	Tot							
00	HILLSMAN,KHAALIA	c	4-10	0-0	4-4	4	2	6	2	12	0	1	1	0	16
03	CARTER,CHENNEDY	g	4-9	0-1	3-4	4	1	5	0	11	4	1	0	2	15
05	HOWARD,ANRIEL	f	3-7	0-1	4-5	2	3	5	0	10	0	0	0	0	15
12	WILLIAMS,DANNI	g	3-6	0-1	2-2	0	0	0	0	8	0	0	0	2	14
21	LUMPKIN,JASMINE	f	2-4	0-0	0-0	3	4	7	4	4	1	0	0	0	11
04	MCKINNEY,LULU		0-1	0-0	0-0	0	0	0	1	0	3	0	0	1	7
11	WELLS,KAYLA		0-0	0-0	2-2	1	0	1	0	2	1	2	0	0	9
14	WALTON,JADA		1-1	0-0	0-0	0	0	0	1	2	0	0	1	0	4
30	NICHOLS,EMER		0-0	0-0	0-0	1	0	1	1	0	0	2	0	1	5
31	JONES,N'DEA		0-1	0-0	0-0	0	0	0	1	0	0	0	0	1	4
34	MARTIN,CAYLINNE		0-0	0-0	0-0	0	0	0	0	0	0	0	0	0	0
TEAM						0	1	1	0			0			
Totals			17-39	0-3	15-17	15	11	26	10	49	9	6	2	7	100
FG %	3rd Qtr	9-25	36.0%	4th Qtr	8-14	57.1%	Half:	17-39	43.6%						
3FG %	3rd Qtr	0-1	00.0%	4th Qtr	0-2	00.0%	Half:	0-3	37.5%						
FT %	3rd Qtr	14-16	87.5%	4th Qtr	1-1	100.0%	Half:	15-17	88.2%						

**Vanderbilt 39 • 5-17, 1-7 SEC**

##	Player	g	Total		3-Ptr	Rebounds			PF	TP	A	TO	Blk	Stl	Min
			FG-FGA	FG-FGA	FT-FTA	Off	Def	Tot							
02	HALL,CHELSIE	g	3-6	0-2	2-2	0	2	2	0	8	2	2	0	0	19
10	WALKER,CIERRA	g	2-2	2-2	0-0	0	1	1	2	6	0	0	0	0	11
21	WHALEN,ERIN	f	0-1	0-1	0-0	0	0	0	2	0	0	0	0	0	2
24	NEWBY,AUTUMN	f	2-4	0-0	2-3	2	1	3	2	6	2	1	0	0	11
33	REED,CHRISTA	g	3-6	3-4	0-0	2	2	4	2	9	1	0	0	0	17
00	OVERBECK,KAYLA		1-2	0-0	0-0	0	1	1	1	2	1	2	0	0	10
03	BELL,RACHEL		0-0	0-0	0-0	0	0	0	0	0	0	0	0	0	0
22	HORROCKS,BREE		1-2	0-0	0-0	0	1	1	2	2	0	1	0	0	2
30	CARTER,LEALEA		1-2	0-0	2-3	0	0	0	1	4	2	2	0	0	17
31	EJIOFOR,BLESSING		1-2	0-0	0-0	0	0	0	0	2	0	1	0	2	10
35	CLEMONS-GREEN,K		0-1	0-1	0-0	0	0	0	1	0	0	1	0	0	1
TEAM						1	0	1	0			0			
Totals			14-28	5-10	6-8	5	8	13	13	39	8	10	0	2	100
FG %	3rd Qtr	6-16	37.5%	4th Qtr	8-12	66.7%	Half:	14-28	50.0%						
3FG %	3rd Qtr	3-7	42.9%	4th Qtr	2-3	66.7%	Half:	5-10	00.0%						
FT %	3rd Qtr	4-5	80.0%	4th Qtr	2-3	66.7%	Half:	6-8	75.0%						

Officials: R:Eric Brewton, U1:Metta Robinson, U2:Bill Larence  
 Technical Fouls: Texas A&M- None. Vanderbilt- None.  
 We Back Pat Game

Score by periods	1st	2nd	3rd	4th	Total
Texas A&M	17	25	32	17	<b>91</b>
Vanderbilt	14	14	19	20	<b>67</b>

Points	In Paint	Off T/O	2nd Chance	Fast Break	Bench
TAMU	30	11	12	8	4
	14	7	6	0	10

Last FG - TAMU 4th-01:54, VANDY 4th-00:57.  
 TAMU led for 19:59. VANDY led for 0:00. Game was tied for 0:00.

Score tied - 0 times  
 Lead changed - 0 times



**Texas A&M vs Vanderbilt**  
**1/28/2015; 2 PM at Nashville, Tenn. (Memorial Gym)**  
**Period 3 Play-By-Play**

VISITORS: Texas A&M	Time	Score	Margin	HOME: Vanderbilt
	10:00			SUB IN: OVERBECK,KAYLA
	10:00			SUB OUT: WHALEN,ERIN
	09:45			FOUL by REED,CHRISTA
GOOD! FT by HOWARD,ANRIEL	09:45	28-43	V 15	
GOOD! FT by HOWARD,ANRIEL	09:45	28-44	V 16	
	09:24	30-44	V 14	GOOD! LAYUP by OVERBECK,KAYLA [PNT]
	09:24			ASSIST by NEWBY,AUTUMN
MISSED JUMPER by HOWARD,ANRIEL	09:03			
REBOUND (OFF) by HILLSMAN,KHAALIA	09:03			
MISSED LAYUP by HILLSMAN,KHAALIA	09:00			
REBOUND (OFF) by CARTER,CHENNEDY	09:00			
MISSED JUMPER by CARTER,CHENNEDY	08:55			
REBOUND (OFF) by LUMPKIN,JASMINE	08:55			
GOOD! LAYUP by HOWARD,ANRIEL [PNT]	08:50	30-46	V 16	
ASSIST by LUMPKIN,JASMINE	08:50			
	08:49			FOUL by NEWBY,AUTUMN
MISSED FT by HOWARD,ANRIEL	08:49			
	08:49			REBOUND (DEF) by HALL,CHELSIE
	08:36			MISSED LAYUP by NEWBY,AUTUMN
	08:36			REBOUND (OFF) by NEWBY,AUTUMN
FOUL by LUMPKIN,JASMINE	08:34			
	08:34	31-46	V 15	GOOD! FT by NEWBY,AUTUMN
	08:34			MISSED FT by NEWBY,AUTUMN
REBOUND (DEF) by LUMPKIN,JASMINE	08:34			
MISSED 3PTR by WILLIAMS,DANNI	08:27			
REBOUND (OFF) by LUMPKIN,JASMINE	08:27			
MISSED JUMPER by WILLIAMS,DANNI	08:20			
	08:20			REBOUND (DEF) by OVERBECK,KAYLA
	08:11	34-46	V 12	GOOD! 3PTR by WALKER,CIERRA
MISSED LAYUP by LUMPKIN,JASMINE	07:52			
	07:52			REBOUND (DEF) by REED,CHRISTA
	07:31			MISSED 3PTR by HALL,CHELSIE
REBOUND (DEF) by HILLSMAN,KHAALIA	07:31			
	07:24			FOUL by WALKER,CIERRA
MISSED FT by CARTER,CHENNEDY	07:24			
REBOUND (DEADB) by TEAM	07:24			
GOOD! FT by CARTER,CHENNEDY	07:24	34-47	V 13	
	07:24			SUB IN: CARTER,LEALEA
	07:24			SUB OUT: NEWBY,AUTUMN
	07:10			TURNOVER by HALL,CHELSIE
STEAL by WILLIAMS,DANNI	07:10			
	07:09			FOUL by WALKER,CIERRA
	07:01			FOUL by OVERBECK,KAYLA
GOOD! FT by HILLSMAN,KHAALIA	07:01	34-48	V 14	
GOOD! FT by HILLSMAN,KHAALIA	07:01	34-49	V 15	
	06:47			MISSED JUMPER by HALL,CHELSIE
REBOUND (DEF) by LUMPKIN,JASMINE	06:47			
GOOD! JUMPER by WILLIAMS,DANNI	06:38	34-51	V 17	
FOUL by LUMPKIN,JASMINE	06:26			
	06:26			SUB IN: HORROCKS,BREE
	06:26			SUB OUT: OVERBECK,KAYLA
	06:19			MISSED JUMPER by HORROCKS,BREE
REBOUND (DEF) by LUMPKIN,JASMINE	06:19			
MISSED LAYUP by HILLSMAN,KHAALIA	06:06			
REBOUND (OFF) by HOWARD,ANRIEL	06:06			
MISSED LAYUP by HOWARD,ANRIEL	06:02			
	06:02			REBOUND (DEF) by HORROCKS,BREE
	05:40	36-51	V 15	GOOD! JUMPER by HORROCKS,BREE [PNT]
	05:40			ASSIST by HALL,CHELSIE
	05:21			FOUL by HORROCKS,BREE
GOOD! FT by HILLSMAN,KHAALIA	05:21	36-52	V 16	
GOOD! FT by HILLSMAN,KHAALIA	05:21	36-53	V 17	
	05:12			FOUL by HORROCKS,BREE
	05:12			TURNOVER by HORROCKS,BREE
MISSED LAYUP by HILLSMAN,KHAALIA	04:59			
REBOUND (OFF) by HOWARD,ANRIEL	04:59			
GOOD! LAYUP by HOWARD,ANRIEL [PNT]	04:56	36-55	V 19	
	04:49			TIMEOUT 30SEC
	04:49			SUB IN: NEWBY,AUTUMN

VISITORS: Texas A&M	Time	Score	Margin	HOME: Vanderbilt
	04:49			SUB OUT: HORROCKS,BREE
	04:33			TURNOVER by NEWBY,AUTUMN
GOOD! LAYUP by HOWARD,ANRIEL [FB/PNT]	04:30	36-57	V 21	
ASSIST by CARTER,CHENNEDY	04:30			
	04:15	38-57	V 19	GOOD! LAYUP by CARTER,LEALEA [PNT]
FOUL by LUMPKIN,JASMINE	04:15			
	04:15	39-57	V 18	GOOD! FT by CARTER,LEALEA
MISSED JUMPER by CARTER,CHENNEDY	04:09			
REBOUND (OFF) by CARTER,CHENNEDY	04:09			
MISSED LAYUP by CARTER,CHENNEDY	04:06			
	04:06			REBOUND (DEF) by NEWBY,AUTUMN
	03:59	42-57	V 15	GOOD! 3PTR by WALKER,CIERRA
	03:59			ASSIST by CARTER,LEALEA
GOOD! LAYUP by HILLSMAN,KHAALIA [FB/PNT]	03:43	42-59	V 17	
ASSIST by WELLS,KAYLA	03:43			
SUB IN: WELLS,KAYLA	03:35			
SUB OUT: LUMPKIN,JASMINE	03:35			
	03:30			MISSED JUMPER by CARTER,LEALEA
REBOUND (DEF) by HILLSMAN,KHAALIA	03:30			
MISSED JUMPER by CARTER,CHENNEDY	03:17			
REBOUND (OFF) by WELLS,KAYLA	03:17			
	03:10			FOUL by NEWBY,AUTUMN
GOOD! FT by WELLS,KAYLA	03:10	42-60	V 18	
GOOD! FT by WELLS,KAYLA	03:10	42-61	V 19	
	03:10			SUB IN: OVERBECK,KAYLA
	03:10			SUB IN: WHALEN,ERIN
	03:10			SUB OUT: WALKER,CIERRA
	03:10			SUB OUT: NEWBY,AUTUMN
	02:56			MISSED JUMPER by REED,CHRISTA
REBOUND (DEF) by HOWARD,ANRIEL	02:56			
GOOD! LAYUP by HILLSMAN,KHAALIA [FB/PNT]	02:49	42-63	V 21	
ASSIST by CARTER,CHENNEDY	02:49			
	02:40			SUB IN: CLEMONS-GREEN,K
	02:40			SUB OUT: HALL,CHELSIE
	02:29	45-63	V 18	GOOD! 3PTR by REED,CHRISTA
	02:29			ASSIST by OVERBECK,KAYLA
GOOD! LAYUP by WILLIAMS,DANNI [PNT]	02:10	45-65	V 20	
	02:10			FOUL by WHALEN,ERIN
GOOD! FT by WILLIAMS,DANNI	02:10	45-66	V 21	
	01:55			MISSED 3PTR by CLEMONS-GREEN,K
	01:55			REBOUND (OFF) by REED,CHRISTA
	01:50			MISSED 3PTR by WHALEN,ERIN
REBOUND (DEF) by HOWARD,ANRIEL	01:50			
	01:46			FOUL by CLEMONS-GREEN,K
GOOD! FT by HOWARD,ANRIEL	01:46	45-67	V 22	
GOOD! FT by HOWARD,ANRIEL	01:46	45-68	V 23	
SUB IN: MCKINNEY,LULU	01:46			
SUB OUT: WILLIAMS,DANNI	01:46			
	01:23			TURNOVER by CLEMONS-GREEN,K
STEAL by CARTER,CHENNEDY	01:21			
	01:21			FOUL by WHALEN,ERIN
GOOD! FT by CARTER,CHENNEDY	01:21	45-69	V 24	
GOOD! FT by CARTER,CHENNEDY	01:21	45-70	V 25	
SUB IN: JONES,N'DEA	01:21			
SUB OUT: HOWARD,ANRIEL	01:21			
	01:21			SUB IN: WALKER,CIERRA
	01:21			SUB IN: HALL,CHELSIE
	01:21			SUB OUT: CLEMONS-GREEN,K
	01:21			SUB OUT: WHALEN,ERIN
	01:12			MISSED 3PTR by REED,CHRISTA
REBOUND (DEF) by TEAM	01:12			
MISSED LAYUP by HILLSMAN,KHAALIA	00:55			
REBOUND (OFF) by CARTER,CHENNEDY	00:55			
GOOD! LAYUP by CARTER,CHENNEDY [PNT]	00:49	45-72	V 27	
FOUL by JONES,N'DEA	00:43			
	00:35			MISSED JUMPER by REED,CHRISTA
BLOCK by HILLSMAN,KHAALIA	00:35			
	00:35			REBOUND (OFF) by TEAM
FOUL by MCKINNEY,LULU	00:34			
	00:34	46-72	V 26	GOOD! FT by HALL,CHELSIE
	00:34	47-72	V 25	GOOD! FT by HALL,CHELSIE
MISSED JUMPER by MCKINNEY,LULU	00:07			
REBOUND (OFF) by HILLSMAN,KHAALIA	00:07			
MISSED JUMPER by HILLSMAN,KHAALIA	00:04			
REBOUND (OFF) by HILLSMAN,KHAALIA	00:04			

<b>VISITORS: Texas A&amp;M</b>	<b>Time</b>	<b>Score</b>	<b>Margin</b>	<b>HOME: Vanderbilt</b>
MISSED LAYUP by HILLSMAN,KHAALIA	00:02			
REBOUND (OFF) by HILLSMAN,KHAALIA	00:02			
GOOD! LAYUP by CARTER,CHENNEDY [PNT]	00:01	47-74	V 27	
ASSIST by MCKINNEY,LULU	00:01			

Texas A&M 74, Vanderbilt 47

<b>Period 3-only</b>	<b>In Paint</b>	<b>Off T/O</b>	<b>2nd Chance</b>	<b>Fast Break</b>	<b>Bench</b>	
TAMU	16	8	10	6	2	Score tied - 0 times
VANDY	6	0	3	0	7	Lead changed - 0 times

**Texas A&M vs Vanderbilt**  
**1/28/2015; 2 PM at Nashville, Tenn. (Memorial Gym)**  
**Period 4 Play-By-Play**

VISITORS: Texas A&M	Time	Score	Margin	HOME: Vanderbilt
	10:00			SUB OUT: WHALEN,ERIN
	10:00			SUB OUT: NEWBY,AUTUMN
	10:00			SUB OUT: REED,CHRISTA
	00:00			SUB OUT: HALL,CHELSIE
	00:00			SUB OUT: WALKER,CIERRA
	10:00			SUB IN: EJIOFOR,BLESSING
	10:00			SUB IN: CARTER,LEALEA
	10:00			SUB IN: OVERBECK,KAYLA
	09:45	49-74	V 25	GOOD! JUMPER by HALL,CHELSIE
SUB IN: MCKINNEY,LULU	09:41			
SUB IN: WELLS,KAYLA	09:41			
SUB IN: JONES,N'DEA	09:41			
SUB OUT: HOWARD,ANRIEL	09:41			
SUB OUT: WILLIAMS,DANNI	09:41			
SUB OUT: LUMPKIN,JASMINE	09:41			
MISSED 3PTR by CARTER,CHENNEDY	09:39			
	09:39			REBOUND (DEF) by WALKER,CIERRA
	09:28			TURNOVER by CARTER,LEALEA
TURNOVER by CARTER,CHENNEDY	09:11			
	08:59			TURNOVER by OVERBECK,KAYLA
STEAL by JONES,N'DEA	08:57			
TURNOVER by WELLS,KAYLA	08:54			
SUB IN: LUMPKIN,JASMINE	08:54			
SUB IN: HOWARD,ANRIEL	08:54			
SUB IN: WILLIAMS,DANNI	08:54			
SUB OUT: MCKINNEY,LULU	08:54			
SUB OUT: WELLS,KAYLA	08:54			
SUB OUT: JONES,N'DEA	08:54			
	08:40	51-74	V 23	GOOD! JUMPER by HALL,CHELSIE
GOOD! LAYUP by CARTER,CHENNEDY [PNT]	08:18	51-76	V 25	
FOUL by HILLSMAN,KHAALIA	08:01			
	08:01	52-76	V 24	GOOD! FT by CARTER,LEALEA
	08:01			MISSED FT by CARTER,LEALEA
REBOUND (DEF) by HOWARD,ANRIEL	08:01			
MISSED 3PTR by HOWARD,ANRIEL	07:47			
REBOUND (OFF) by CARTER,CHENNEDY	07:47			
GOOD! LAYUP by LUMPKIN,JASMINE [PNT]	07:37	52-78	V 26	
ASSIST by CARTER,CHENNEDY	07:37			
	07:13			MISSED JUMPER by OVERBECK,KAYLA
REBOUND (DEF) by CARTER,CHENNEDY	07:13			
	07:10			SUB IN: REED,CHRISTA
GOOD! LAYUP by LUMPKIN,JASMINE [PNT]	07:03	52-80	V 28	
	06:47			TURNOVER by OVERBECK,KAYLA
STEAL by WILLIAMS,DANNI	06:46			
GOOD! LAYUP by WILLIAMS,DANNI [FB/PNT]	06:43	52-82	V 30	
	06:43			FOUL by REED,CHRISTA
GOOD! FT by WILLIAMS,DANNI	06:43	52-83	V 31	
	06:43			SUB IN: NEWBY,AUTUMN
	06:43			SUB OUT: OVERBECK,KAYLA
	06:27			MISSED 3PTR by HALL,CHELSIE
	06:27			REBOUND (OFF) by REED,CHRISTA
	06:18			TIMEOUT 30SEC
	06:18			TIMEOUT MEDIA
	06:10			MISSED LAYUP by EJIOFOR,BLESSING
REBOUND (DEF) by LUMPKIN,JASMINE	06:10			
GOOD! JUMPER by CARTER,CHENNEDY [PNT]	06:02	52-85	V 33	
	05:41	54-85	V 31	GOOD! JUMPER by EJIOFOR,BLESSING [PNT]
	05:41			ASSIST by CARTER,LEALEA
GOOD! LAYUP by HILLSMAN,KHAALIA [PNT]	05:16	54-87	V 33	
ASSIST by CARTER,CHENNEDY	05:16			
	05:01			TURNOVER by CARTER,LEALEA
STEAL by CARTER,CHENNEDY	05:00			
MISSED LAYUP by WILLIAMS,DANNI	04:57			
REBOUND (OFF) by LUMPKIN,JASMINE	04:57			
MISSED LAYUP by LUMPKIN,JASMINE	04:54			
	04:54			REBOUND (DEF) by REED,CHRISTA
FOUL by LUMPKIN,JASMINE	04:51			
SUB IN: NICHOLS,EMER	04:51			
SUB IN: MCKINNEY,LULU	04:51			

<b>VISITORS: Texas A&amp;M</b>	<b>Time</b>	<b>Score</b>	<b>Margin</b>	<b>HOME: Vanderbilt</b>
SUB OUT: CARTER,CHENNEDY	04:51			
SUB OUT: HOWARD,ANRIEL	04:51			
	04:40	57-87	V 30	GOOD! 3PTR by REED,CHRISTA
	04:40			ASSIST by NEWBY,AUTUMN
GOOD! LAYUP by HILLSMAN,KHAALIA [PNT]	04:27	57-89	V 32	
ASSIST by MCKINNEY,LULU	04:27			
	04:10	59-89	V 30	GOOD! LAYUP by HALL,CHELSIE [PNT]
FOUL by HILLSMAN,KHAALIA	03:54			
TURNOVER by HILLSMAN,KHAALIA	03:54			
SUB IN: HOWARD,ANRIEL	03:54			
SUB IN: WELLS,KAYLA	03:54			
SUB OUT: HILLSMAN,KHAALIA	03:54			
SUB OUT: LUMPKIN,JASMINE	03:54			
SUB IN: WALTON,JADA	03:43			
SUB OUT: WILLIAMS,DANNI	03:43			
MISSED LAYUP by JONES,N'DEA	03:39			
	03:39			REBOUND (DEF) by HALL,CHELSIE
FOUL by WALTON,JADA	03:36			
	03:23			TURNOVER by HALL,CHELSIE
STEAL by NICHOLS,EMER	03:22			
	03:04			FOUL by CARTER,LEALEA
MISSED JUMPER by HOWARD,ANRIEL	02:45			
REBOUND (OFF) by NICHOLS,EMER	02:45			
TURNOVER by NICHOLS,EMER	02:40			
	02:39			STEAL by EJIOFOR,BLESSING
	02:16	61-89	V 28	GOOD! LAYUP by NEWBY,AUTUMN [PNT]
	02:16			ASSIST by REED,CHRISTA
SUB IN: JONES,N'DEA	02:12			
SUB OUT: HOWARD,ANRIEL	02:12			
TIMEOUT 30SEC	02:09			
GOOD! JUMPER by WALTON,JADA	01:54	61-91	V 30	
ASSIST by MCKINNEY,LULU	01:54			
	01:36	64-91	V 27	GOOD! 3PTR by REED,CHRISTA
	01:36			ASSIST by HALL,CHELSIE
TURNOVER by WELLS,KAYLA	01:06			
	01:05			STEAL by EJIOFOR,BLESSING
	00:59			MISSED LAYUP by NEWBY,AUTUMN
BLOCK by WALTON,JADA	00:59			
	00:57			REBOUND (OFF) by NEWBY,AUTUMN
	00:57	66-91	V 25	GOOD! LAYUP by NEWBY,AUTUMN [PNT]
FOUL by NICHOLS,EMER	00:57			
	00:57	67-91	V 24	GOOD! FT by NEWBY,AUTUMN
TURNOVER by NICHOLS,EMER	00:44			
	00:23			TURNOVER by EJIOFOR,BLESSING
STEAL by MCKINNEY,LULU	00:22			

Texas A&M 91, Vanderbilt 67

<b>Period 4-only</b>	<b>In Paint</b>	<b>Off T/O</b>	<b>2nd Chance</b>	<b>Fast Break</b>	<b>Bench</b>	
TAMU	14	3	2	2	2	Score tied - 0 times
VANDY	8	7	3	0	3	Lead changed - 0 times

**Texas A&M vs Vanderbilt**  
**1/28/2015; 2 PM at Nashville, Tenn. (Memorial Gym)**  
**Scoring/Runs Reference**

**Period 1**

Texas A&M	VRun	Score	Margin	HRun	Vanderbilt
		0-2	2		NEWBY LAYUP [P] - 08:15
07:56 - CARTER FT	-	1-2	1		
07:56 - CARTER FT	2-0	2-2	0		
07:06 - HOWARD FT	3-0	3-2	-1		
07:06 - HOWARD FT	4-0	4-2	-2		
06:12 - CARTER LAYUP [P] [F]	6-0	6-2	-4		
05:41 - HILLSMAN LAYUP [P]	8-0	8-2	-6		
		8-4	-4		OVERBECK LAYUP [P] - 04:43
04:28 - CARTER 3PTR	-	11-4	-7		
03:31 - HILLSMAN LAYUP [P]	5-0	13-4	-9		
03:10 - CARTER JUMPER	7-0	15-4	-11		
		15-6	-9		HALL JUMPER [P] - 02:47
		15-8	-7	4-0	OVERBECK LAYUP [P] - 01:52
		15-10	-5	6-0	CLEMONS-GREEN LAYUP [P] - 01:29
01:05 - CARTER JUMPER	-	17-10	-7		
		17-12	-5		REED LAYUP [P] - 00:50
		17-14	-3	4-0	HALL LAYUP [P] - 00:21

**Texas A&M vs Vanderbilt**  
**1/28/2015; 2 PM at Nashville, Tenn. (Memorial Gym)**  
**Scoring/Runs Reference**

**Period 2**

Texas A&M	VRun	Score	Margin	HRun	Vanderbilt
09:41 - CARTER LAYUP [P] [F]	-	19-14	-5		
09:30 - WILLIAMS LAYUP [P]	NaN-0	21-14	-7		
		21-15	-6		REED FT - 09:15
		21-16	-5	2-0	REED FT - 09:15
08:18 - CARTER LAYUP [P]	-	23-16	-7		
07:42 - LUMPKIN LAYUP [P]	4-0	25-16	-9		
		25-18	-7		HALL LAYUP [P] - 06:42
05:24 - MCKINNEY FT	-	26-18	-8		
05:24 - MCKINNEY FT	2-0	27-18	-9		
04:24 - WELLS LAYUP [P]	4-0	29-18	-11		
04:24 - WELLS FT	5-0	30-18	-12		
		30-20	-10		OVERBECK LAYUP [P] - 04:06
03:46 - WILLIAMS 3PTR	-	33-20	-13		
03:07 - WILLIAMS 3PTR	6-0	36-20	-16		
		36-22	-14		OVERBECK JUMPER [P] - 02:50
02:32 - CARTER LAYUP [P]	-	38-22	-16		
		38-24	-14		OVERBECK LAYUP [P] - 02:21
02:01 - WILLIAMS LAYUP [P]	-	40-24	-16		
		40-26	-14		OVERBECK LAYUP [P] - 01:11
00:38 - WELLS LAYUP [P]	-	42-26	-16		
		42-28	-14		HALL LAYUP [P] - 00:34

**Texas A&M vs Vanderbilt**  
**1/28/2015; 2 PM at Nashville, Tenn. (Memorial Gym)**  
**Scoring/Runs Reference**

**Period 3**

Texas A&M	VRun	Score	Margin	HRun	Vanderbilt
09:45 - HOWARD FT	-	43-28	-15		
09:45 - HOWARD FT	NaN-0	44-28	-16		
		44-30	-14		OVERBECK LAYUP [P] - 09:24
08:50 - HOWARD LAYUP [P]	-	46-30	-16		
		46-31	-15		NEWBY FT - 08:34
		46-34	-12	4-0	WALKER 3PTR - 08:11
07:24 - CARTER FT	-	47-34	-13		
07:01 - HILLSMAN FT	2-0	48-34	-14		
07:01 - HILLSMAN FT	3-0	49-34	-15		
06:38 - WILLIAMS JUMPER	5-0	51-34	-17		
		51-36	-15		HORROCKS JUMPER [P] - 05:40
05:21 - HILLSMAN FT	-	52-36	-16		
05:21 - HILLSMAN FT	2-0	53-36	-17		
04:56 - HOWARD LAYUP [P]	4-0	55-36	-19		
04:30 - HOWARD LAYUP [P] [F]	6-0	57-36	-21		
		57-38	-19		CARTER LAYUP [P] - 04:15
		57-39	-18	3-0	CARTER FT - 04:15
		57-42	-15	6-0	WALKER 3PTR - 03:59
03:43 - HILLSMAN LAYUP [P] [F]	-	59-42	-17		
03:10 - WELLS FT	3-0	60-42	-18		
03:10 - WELLS FT	4-0	61-42	-19		
02:49 - HILLSMAN LAYUP [P] [F]	6-0	63-42	-21		
		63-45	-18		REED 3PTR - 02:29
02:10 - WILLIAMS LAYUP [P]	-	65-45	-20		
02:10 - WILLIAMS FT	3-0	66-45	-21		
01:46 - HOWARD FT	4-0	67-45	-22		
01:46 - HOWARD FT	5-0	68-45	-23		
01:21 - CARTER FT	6-0	69-45	-24		
01:21 - CARTER FT	7-0	70-45	-25		
00:49 - CARTER LAYUP [P]	9-0	72-45	-27		
		72-46	-26		HALL FT - 00:34
		72-47	-25	2-0	HALL FT - 00:34
00:01 - CARTER LAYUP [P]	-	74-47	-27		



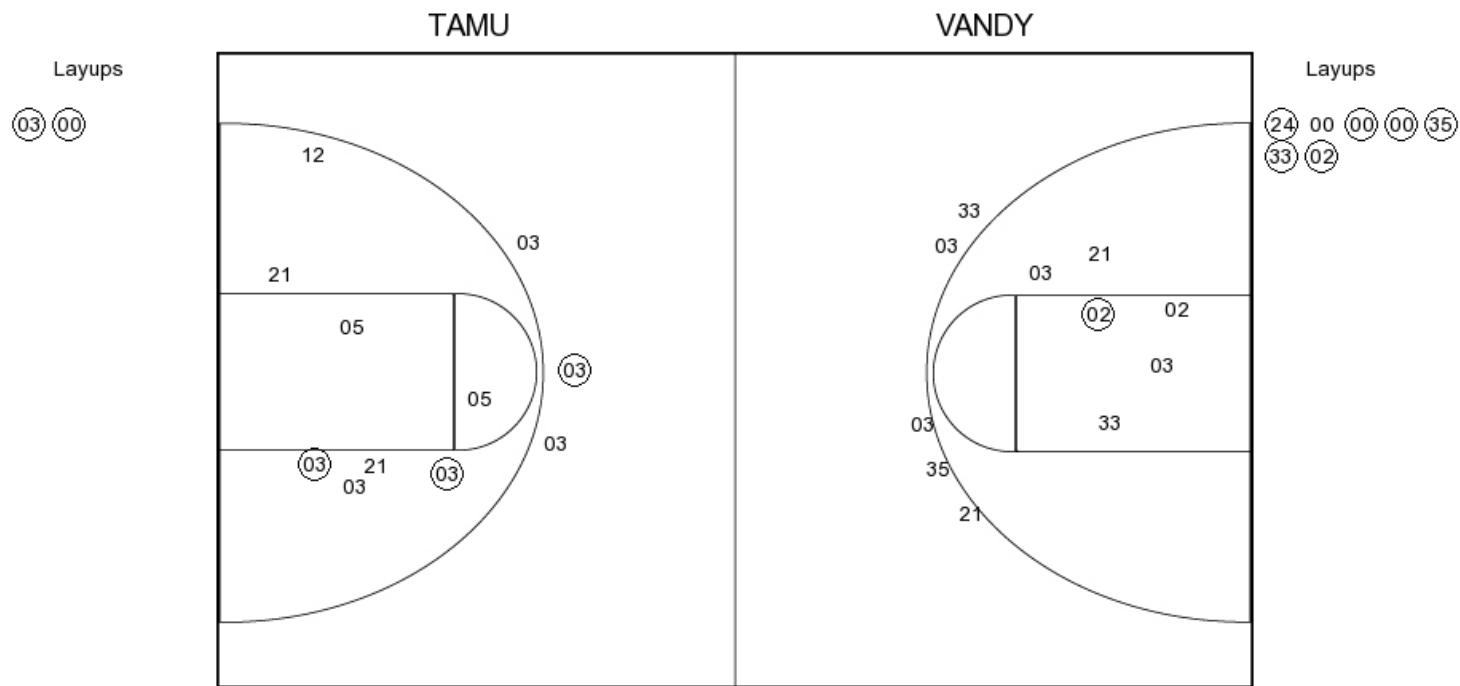
**Texas A&M vs Vanderbilt**  
**1/28/2015; 2 PM at Nashville, Tenn. (Memorial Gym)**  
**Scoring/Runs Reference**

**Period 4**

Texas A&M	VRun	Score	Margin	HRun	Vanderbilt
		74-49	-25		HALL JUMPER - 09:45
		74-51	-23	NaN-0	HALL JUMPER - 08:40
08:18 - CARTER LAYUP [P]	-	76-51	-25		
		76-52	-24		CARTER FT - 08:01
07:37 - LUMPKIN LAYUP [P]	-	78-52	-26		
07:03 - LUMPKIN LAYUP [P]	4-0	80-52	-28		
06:43 - WILLIAMS LAYUP [P] [F]	6-0	82-52	-30		
06:43 - WILLIAMS FT	7-0	83-52	-31		
06:02 - CARTER JUMPER [P]	9-0	85-52	-33		
		85-54	-31		EJIOFOR JUMPER [P] - 05:41
05:16 - HILLSMAN LAYUP [P]	-	87-54	-33		
		87-57	-30		REED 3PTR - 04:40
04:27 - HILLSMAN LAYUP [P]	-	89-57	-32		
		89-59	-30		HALL LAYUP [P] - 04:10
		89-61	-28	4-0	NEWBY LAYUP [P] - 02:16
01:54 - WALTON JUMPER	-	91-61	-30		
		91-64	-27		REED 3PTR - 01:36
		91-66	-25	5-0	NEWBY LAYUP [P] - 00:57
		91-67	-24	6-0	NEWBY FT - 00:57

Texas A&M vs Vanderbilt  
 OFFICIAL SHOT CHART  
 1/28/2015 at Nashville, Tenn. (Memorial Gym)

PERIOD 1



**TAMU PERIOD 1**

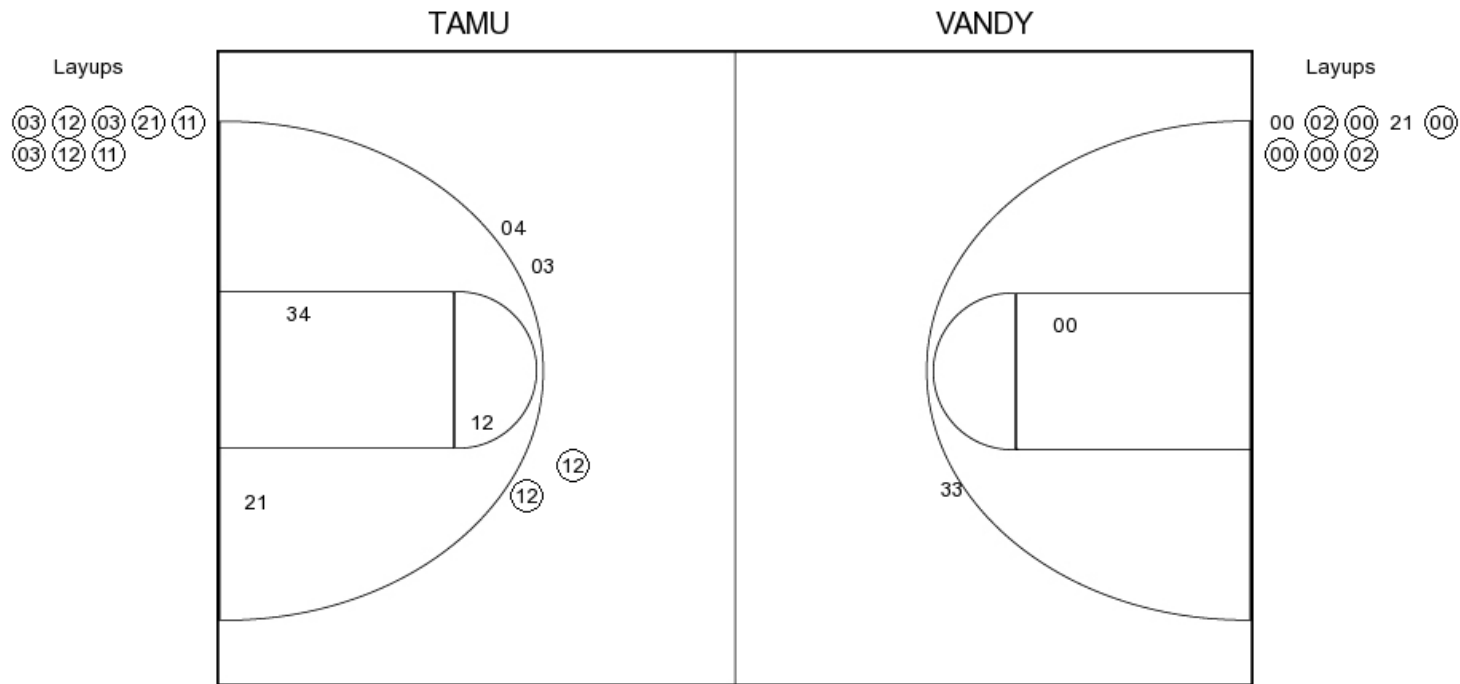
FG Made	16
FG Attempted	30
3PFG Made	3
3PFG Attempted	8

**VANDY PERIOD 1**

FG Made	13
FG Attempted	28
3PFG Made	0
3PFG Attempted	6

Texas A&M vs Vanderbilt  
 OFFICIAL SHOT CHART  
 1/28/2015 at Nashville, Tenn. (Memorial Gym)

**PERIOD 2**



**TAMU PERIOD 2**

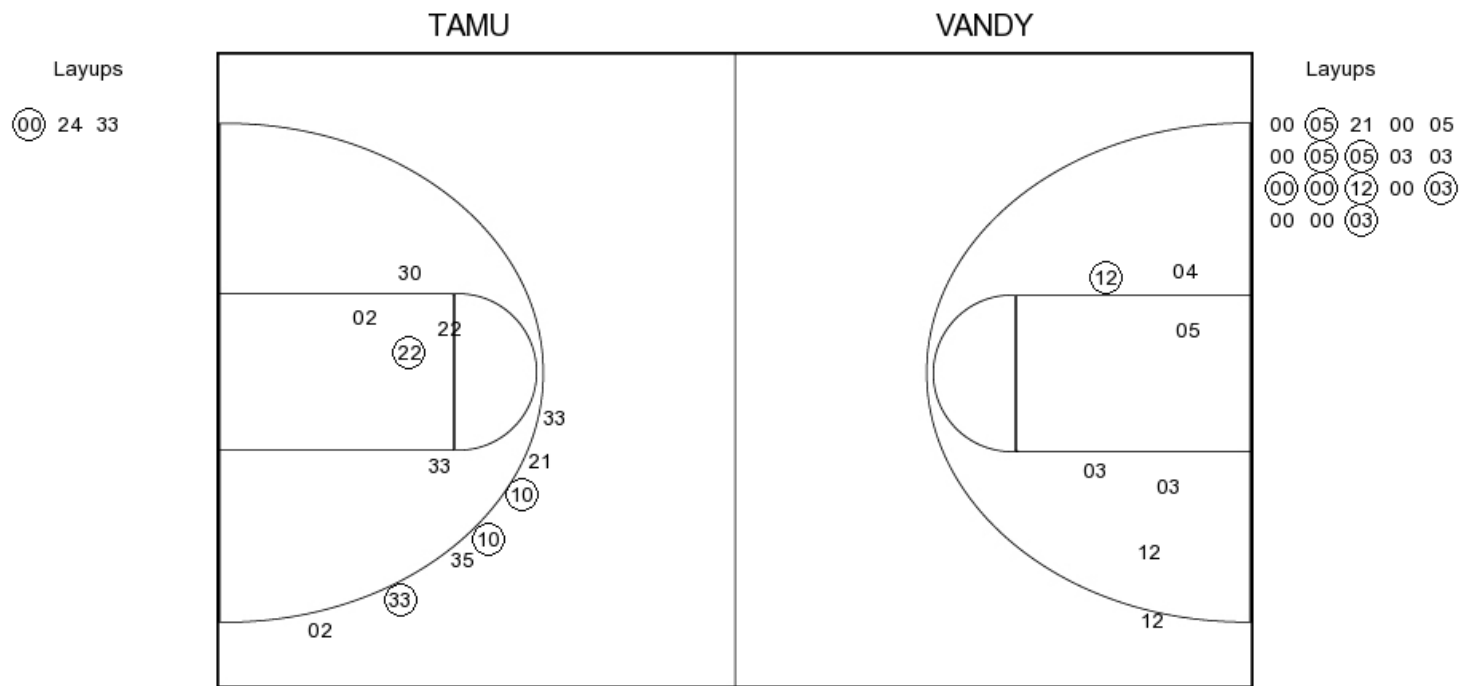
FG Made  
 FG Attempted  
 3PFG Made  
 3PFG Attempted

**VANDY PERIOD 2**

FG Made  
 FG Attempted  
 3PFG Made  
 3PFG Attempted

Texas A&M vs Vanderbilt  
 OFFICIAL SHOT CHART  
 1/28/2015 at Nashville, Tenn. (Memorial Gym)

**PERIOD 3**



**TAMU PERIOD 3**

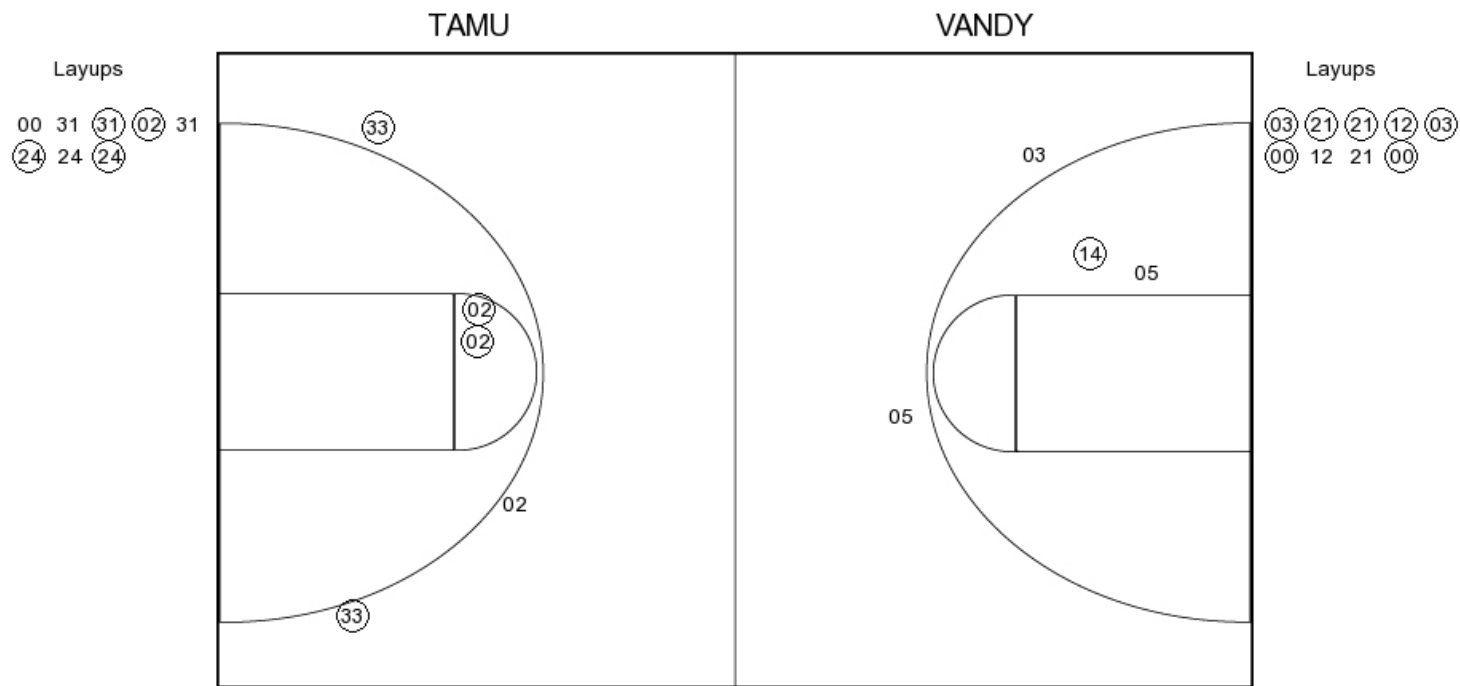
FG Made	17
FG Attempted	39
3PFG Made	0
3PFG Attempted	3

**VANDY PERIOD 3**

FG Made	14
FG Attempted	28
3PFG Made	5
3PFG Attempted	10

Texas A&M vs Vanderbilt  
 OFFICIAL SHOT CHART  
 1/28/2015 at Nashville, Tenn. (Memorial Gym)

PERIOD 4



**TAMU PERIOD 4**

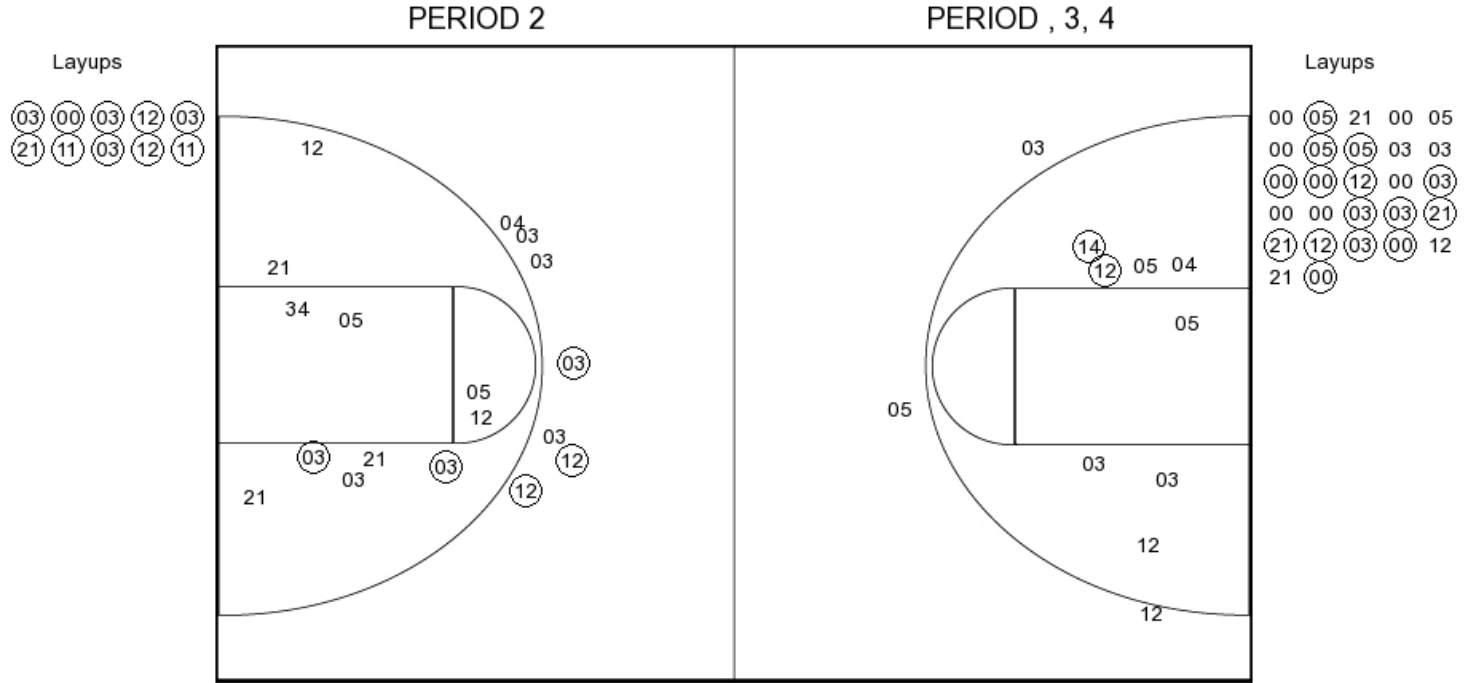
FG Made  
 FG Attempted  
 3PFG Made  
 3PFG Attempted

**VANDY PERIOD 4**

FG Made  
 FG Attempted  
 3PFG Made  
 3PFG Attempted

Texas A&M vs Vanderbilt  
 OFFICIAL SHOT CHART  
 1/28/2015 at Nashville, Tenn. (Memorial Gym)

Texas A&M



**TAMU PERIOD 1**

FG Made	16
FG Attempted	30
3PFG Made	3
3PFG Attempted	8

**TAMU PERIOD 2**

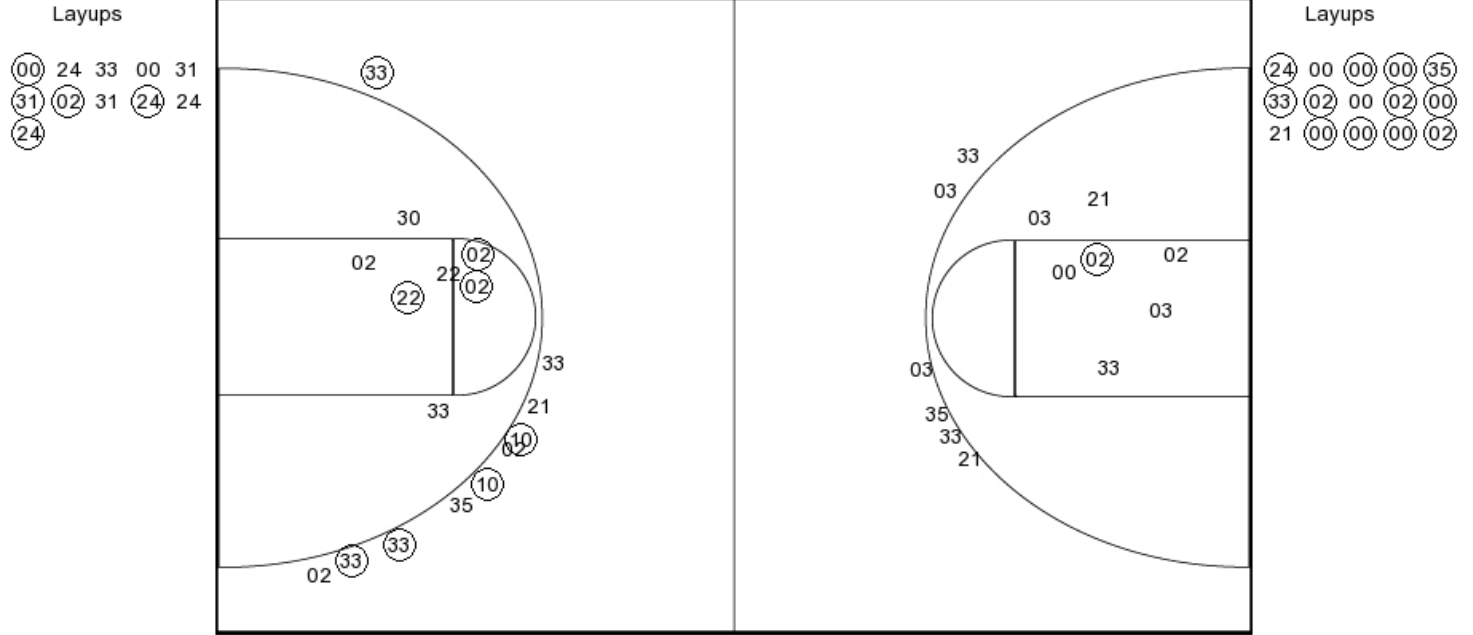
FG Made	
FG Attempted	
3PFG Made	
3PFG Attempted	

Texas A&M vs Vanderbilt  
 OFFICIAL SHOT CHART  
 1/28/2015 at Nashville, Tenn. (Memorial Gym)

Vanderbilt

PERIOD , 3, 4

PERIOD 2



**VANDY PERIOD 1**

FG Made	13
FG Attempted	28
3PFG Made	0
3PFG Attempted	6

**VANDY PERIOD 2**

FG Made	
FG Attempted	
3PFG Made	
3PFG Attempted	6