

FINAL SCORE

Missouri

14-2, 2-1 SEC

81

Vanderbilt

4-13, 0-3 SEC

70

January 11, 2018 • Nashville, Tenn. (Memorial Gym)

FINAL STATISTICS

Official Basketball Box Score -- Game Totals -- Final Statistics
Missouri vs Vanderbilt
1/11/2018 7 PM at Nashville,Tenn. (Memorial Gym)

Missouri 81 - 14-2, 2-1 SEC

##	Player		Total		3-Ptr		FT-FTA		Rebounds			PF	TP	A	TO	Blk	Stl	Min
			FG	F-GA	FG	F-GA	FT	FTA	Off	Def	Tot							
03	CUNNINGHAM,SOPHIE	g	2	9	1	6	0	0	0	3	3	3	5	2	3	0	0	33
05	ALDRIDGE,LAUREN	g	3	4	1	2	1	1	0	1	1	1	8	6	0	0	0	28
21	PORTER,CIERRA	f	3	7	0	0	3	4	3	4	7	2	9	1	4	0	3	15
22	FRERICKS,JORDAN	f	5	7	0	0	0	0	3	5	8	2	10	6	2	0	0	18
23	SMITH,AMBER	g	7	15	2	4	2	2	1	3	4	2	18	1	0	1	2	27
01	WINFREY,KELSEY		0	0	0	0	0	0	0	0	0	0	0	0	0	0	0	2
02	ROUNDTREE,JORDAN		1	2	1	2	1	2	2	1	3	0	4	1	1	0	1	18
10	GREEN,NADIA		1	1	0	0	0	0	0	0	0	1	2	0	0	0	0	5
12	BROWN,ELLE		0	0	0	0	0	0	0	0	0	0	0	0	0	0	0	2
13	SCHUCHTS,HANNAH		1	1	0	0	0	0	0	0	0	1	2	0	2	0	0	5
20	MICHAEL,KAYLA		2	6	0	1	1	2	0	4	4	1	5	2	0	0	1	16
24	CHAVIS,JORDAN		6	8	6	8	0	0	0	2	2	1	18	3	1	0	0	30
34	TAHANE,EMMANUELLE		0	0	0	0	0	0	0	0	0	0	0	0	0	0	0	1
TEAM									1	2	3	0			1			
TOTALS			31	60	11	23	8	11	10	25	35	14	81	22	14	1	7	200

Deadball Rebounds: 2,0

FG %	1st Half:	17-30	56.7%	2nd Half:	14-30	46.7%	Game:	31-60	51.7%									
	1st Qtr	9-17	52.9%	2nd Qtr	8-13	61.5%	3rd Qtr	10-16	62.5%	4th Qtr	4-14	28.6%						
3FG %	1st Half:	9-15	60.0%	2nd Half:	2-8	25.0%	Game:	11-23	47.8%									
	1st Qtr	4-8	50.0%	2nd Qtr	5-7	71.4%	3rd Qtr	1-4	25.0%	4th Qtr	1-4	25.0%						
FT %	1st Half:	5-6	83.3%	2nd Half:	3-5	60.0%	Game:	8-11	72.7%									
	1st Qtr	3-4	75.0%	2nd Qtr	2-2	100.0%	3rd Qtr	3-5	60.0%	4th Qtr	0-0	0%						

Vanderbilt 70 - 4-13, 0-3 SEC

##	Player		Total		3-Ptr		FT-FTA		Rebounds			PF	TP	A	TO	Blk	Stl	Min
			FG	F-GA	FG	F-GA	FT	FTA	Off	Def	Tot							
02	HALL,CHELSIE	g	4	9	1	1	1	2	1	1	2	1	10	2	2	0	1	26
03	BELL,RACHEL	g	4	9	1	3	0	0	0	1	1	0	9	1	1	0	1	16
10	WALKER,CIERRA	g	6	11	4	5	1	1	0	0	0	0	17	3	1	0	1	40
24	NEWBY,AUTUMN	f	1	3	0	0	1	4	2	8	10	2	3	2	4	0	1	29
33	REED,CHRISTA	*	2	2	0	0	0	0	0	2	2	4	4	0	1	0	0	8
00	OVERBECK,KAYLA		4	4	0	0	4	4	1	1	2	4	12	0	3	0	1	27
21	WHALEN,ERIN		6	15	3	7	0	0	2	4	6	2	15	0	0	0	0	25
30	CARTER,LEALEA		0	2	0	1	0	0	0	0	0	1	0	0	0	0	0	5
31	EJIOFOR,BLESSING		0	3	0	0	0	0	2	1	3	0	0	0	1	0	0	2
35	CLEMONS-GREEN,K		0	2	0	2	0	0	1	1	2	3	0	5	1	0	0	22
TEAM									1	1	2	0			0			
TOTALS			27	60	9	19	7	11	10	20	30	17	70	13	14	0	5	200

Deadball Rebounds: 2,0

FG %	1st Half:	14-29	48.3%	2nd Half:	13-31	41.9%	Game:	27-60	45.0%									
	1st Qtr	6-14	42.9%	2nd Qtr	8-15	53.3%	3rd Qtr	4-15	26.7%	4th Qtr	9-16	56.3%						
3FG %	1st Half:	4-9	44.4%	2nd Half:	5-10	50.0%	Game:	9-19	47.4%									
	1st Qtr	2-7	28.6%	2nd Qtr	2-2	100.0%	3rd Qtr	1-3	33.3%	4th Qtr	4-7	57.1%						
FT %	1st Half:	5-7	71.4%	2nd Half:	2-4	50.0%	Game:	7-11	63.6%									
	1st Qtr	1-2	50.0%	2nd Qtr	4-5	80.0%	3rd Qtr	1-3	33.3%	4th Qtr	1-1	100.0%						

Officials: R:Bob Trammell,U1:Gina Cross, U2:Douglas Knight
 Technical Fouls: Missouri- None. Vanderbilt- None.
 Attendance: 2112

Score by periods	1st	2nd	3rd	4th	Total
Missouri	25	23	24	9	81
Vanderbilt	15	22	10	23	70

Points	In Paint	Off T/O	2nd Chance	Fast Break	Bench
MU-W	32	18	9	10	31
VANDY	24	15	15	0	27

Last FG - MU-W 4th-02:35, VANDY 4th-00:01.
 Largest lead - Missouri by 28 4th-08:25; Vanderbilt by 3 1st-08:31
 MU-W led for 36:52. VANDY led for 1:36. Game was tied for 1:32.

Score tied - 2 times; Lead changed - 1 times

Official Basketball Box Score -- Game Totals -- First Half Statistics
Missouri vs Vanderbilt
1/11/2018 7 PM at Nashville,Tenn. (Memorial Gym)

Missouri 48 • 14-2, 2-1 SEC

##	Player		Total		3-Ptr	FT-FTA	Rebounds			PF	TP	A	TO	Blk	Stl	Min
			FG-FGA		FG-FGA		Off	Def	Tot							
03	CUNNINGHAM,SOPHIE	g	0-2		0-2	0-0	0	1	1	1	0	1	2	0	0	16
05	ALDRIDGE,LAUREN	g	2-3		1-2	0-0	0	1	1	0	5	4	0	0	0	18
21	PORTER,CIERRA	f	1-4		0-0	2-2	3	4	7	2	4	1	3	0	2	10
22	FRERICKS,JORDAN	f	0-0		0-0	0-0	1	2	3	2	0	4	2	0	0	7
23	SMITH,AMBER	g	6-9		2-3	2-2	1	1	2	2	16	0	0	0	1	13
01	WINFREY,KELSEY		0-0		0-0	0-0	0	0	0	0	0	0	0	0	0	0
02	ROUNDTRIEE,JORDAN		1-1		1-1	0-0	1	1	2	0	3	1	1	0	0	8
10	GREEN,NADIA		0-0		0-0	0-0	0	0	0	0	0	0	0	0	0	0
12	BROWN,ELLE		0-0		0-0	0-0	0	0	0	0	0	0	0	0	0	0
13	SCHUCHTS,HANNAH		1-1		0-0	0-0	0	0	0	1	2	0	2	0	0	3
20	MICHAEL,KAYLA		1-3		0-0	1-2	0	3	3	0	3	1	0	0	1	9
24	CHAVIS,JORDAN		5-7		5-7	0-0	0	1	1	0	15	1	1	0	0	15
34	TAHANE,EMMANUELLE		0-0		0-0	0-0	0	0	0	0	0	0	0	0	0	1
TEAM							0	0	0	0			0			
Totals			17-30		9-15	5-6	6	14	20	8	48	13	11	0	4	100
FG %	1st Qtr	9-17	52.9%	2nd Qtr	8-13	61.5%	Half:	17-30	56.7%							
3FG %	1st Qtr	4-8	50.0%	2nd Qtr	5-7	71.4%	Half:	9-15	60.0%							
FT %	1st Qtr	3-4	75.0%	2nd Qtr	2-2	100.0%	Half:	5-6	83.3%							

Vanderbilt 37 • 4-13, 0-3 SEC

##	Player		Total		3-Ptr	FT-FTA	Rebounds			PF	TP	A	TO	Blk	Stl	Min
			FG-FGA		FG-FGA		Off	Def	Tot							
02	HALL,CHELSIE	g	3-7		1-1	0-1	1	1	2	0	7	2	1	0	1	17
03	BELL,RACHEL	g	4-8		1-3	0-0	0	1	1	0	9	1	0	0	1	14
10	WALKER,CIERRA	g	4-6		2-3	1-1	0	0	0	0	11	2	1	0	1	20
24	NEWBY,AUTUMN	f	0-1		0-0	1-2	0	1	1	2	1	0	3	0	1	12
33	REED,CHRISTA	*	1-1		0-0	0-0	0	2	2	3	2	0	1	0	0	5
00	OVERBECK,KAYLA		2-2		0-0	3-3	1	0	1	1	7	0	0	0	1	15
21	WHALEN,ERIN		0-4		0-2	0-0	0	1	1	1	0	0	0	0	0	8
30	CARTER,LEALEA		0-0		0-0	0-0	0	0	0	0	0	0	0	0	0	0
31	EJIOFOR,BLESSING		0-0		0-0	0-0	0	0	0	0	0	0	0	0	0	0
35	CLEMONS-GREEN,K		0-0		0-0	0-0	0	0	0	1	0	0	1	0	0	9
TEAM							0	1	1	0			0			
Totals			14-29		4-9	5-7	2	7	9	8	37	5	7	0	5	100
FG %	1st Qtr	6-14	42.9%	2nd Qtr	8-15	53.3%	Half:	14-29	48.3%							
3FG %	1st Qtr	2-7	28.6%	2nd Qtr	2-2	100.0%	Half:	4-9	44.4%							
FT %	1st Qtr	1-2	50.0%	2nd Qtr	4-5	80.0%	Half:	5-7	71.4%							

Officials: R:Bob Trammell,U1:Gina Cross, U2:Douglas Knight
Technical Fouls: Missouri- None. Vanderbilt- None.

Score by periods	1st	2nd	3rd	4th	Total
Missouri	25	23	24	9	81
Vanderbilt	15	22	10	23	70

Last FG - MU-W 2nd-02:02, VANDY 2nd-00:00.
MU-W led for 16:52. VANDY led for 1:36. Game was tied for 1:32.

Points	In	Off	2nd	Fast	Bench
	Paint	T/O	Chance	Break	
MU-W	10	8	4	2	23
	12	15	5	0	7

Score tied - 2 times
Lead changed - 1 times

Missouri vs Vanderbilt
1/11/2018; 7 PM at Nashville,Tenn. (Memorial Gym)
Period 1 Play-By-Play

VISITORS: Missouri	Time	Score	Margin	HOME: Vanderbilt
MISSED 3PTR by CUNNINGHAM,SOPHIE	09:50			
	09:50			REBOUND (DEF) by BELL,RACHEL
	09:43	2-0	H 2	GOOD! LAYUP by WALKER,CIERRA [PNT]
	09:43			ASSIST by BELL,RACHEL
MISSED 3PTR by ALDRIDGE,LAUREN	09:28			
REBOUND (OFF) by PORTER,CIERRA	09:28			
MISSED LAYUP by PORTER,CIERRA	09:23			
	09:23			REBOUND (DEF) by REED,CHRISTA
	09:13			TURNOVER by WALKER,CIERRA
SUB IN: MICHAEL,KAYLA	09:13			
SUB OUT: PORTER,CIERRA	09:13			
	08:59			FOUL by REED,CHRISTA
GOOD! JUMPER by MICHAEL,KAYLA [PNT]	08:41	2-2	T	
ASSIST by FRERICKS,JORDAN	08:41			
	08:31	5-2	H 3	GOOD! 3PTR by WALKER,CIERRA
	08:31			ASSIST by HALL,CHELSIE
	08:11			FOUL by REED,CHRISTA
	08:11			SUB IN: OVERBECK,KAYLA
	08:11			SUB OUT: REED,CHRISTA
GOOD! 3PTR by SMITH,AMBER	07:57	5-5	T	
ASSIST by FRERICKS,JORDAN	07:57			
	07:44			FOUL by NEWBY,AUTUMN
	07:44			TURNOVER by NEWBY,AUTUMN
TURNOVER by CUNNINGHAM,SOPHIE	07:20			
	07:18			STEAL by NEWBY,AUTUMN
	07:05			MISSED 3PTR by BELL,RACHEL
REBOUND (DEF) by SMITH,AMBER	07:05			
GOOD! 3PTR by SMITH,AMBER	06:52	5-8	V 3	
ASSIST by FRERICKS,JORDAN	06:52			
	06:28			TURNOVER by NEWBY,AUTUMN
STEAL by MICHAEL,KAYLA	06:25			
	06:14			FOUL by NEWBY,AUTUMN
MISSED FT by MICHAEL,KAYLA	06:14			
REBOUND (DEADB) by TEAM	06:14			
GOOD! FT by MICHAEL,KAYLA	06:14	5-9	V 4	
SUB IN: PORTER,CIERRA	06:14			
SUB OUT: FRERICKS,JORDAN	06:14			
	06:14			SUB IN: WHALEN,ERIN
	06:14			SUB OUT: NEWBY,AUTUMN
	06:01			MISSED 3PTR by BELL,RACHEL
REBOUND (DEF) by MICHAEL,KAYLA	06:01			
GOOD! 3PTR by ALDRIDGE,LAUREN	05:48	5-12	V 7	
ASSIST by PORTER,CIERRA	05:48			
	05:46			TIMEOUT 30SEC
	05:46			TIMEOUT MEDIA
	05:46			SUB IN: CLEMONS-GREEN,K
	05:46			SUB OUT: BELL,RACHEL
	05:31	7-12	V 5	GOOD! LAYUP by HALL,CHELSIE [PNT]
FOUL by PORTER,CIERRA	05:31			
	05:31			MISSED FT by HALL,CHELSIE
REBOUND (DEF) by FRERICKS,JORDAN	05:31			
SUB IN: FRERICKS,JORDAN	05:31			
SUB OUT: MICHAEL,KAYLA	05:31			
GOOD! LAYUP by SMITH,AMBER [PNT]	05:13	7-14	V 7	
ASSIST by FRERICKS,JORDAN	05:13			
	05:01			MISSED JUMPER by HALL,CHELSIE
REBOUND (DEF) by PORTER,CIERRA	05:01			
MISSED 3PTR by SMITH,AMBER	04:50			
REBOUND (OFF) by FRERICKS,JORDAN	04:50			
	04:34			FOUL by WHALEN,ERIN
GOOD! FT by PORTER,CIERRA	04:34	7-15	V 8	
GOOD! FT by PORTER,CIERRA	04:34	7-16	V 9	
SUB IN: CHAVIS,JORDAN	04:34			
SUB OUT: SMITH,AMBER	04:34			
	04:13			MISSED 3PTR by WHALEN,ERIN
REBOUND (DEF) by FRERICKS,JORDAN	04:13			
MISSED 3PTR by CUNNINGHAM,SOPHIE	04:03			
	04:03			REBOUND (DEF) by HALL,CHELSIE
	03:55			MISSED LAYUP by HALL,CHELSIE

VISITORS: Missouri	Time	Score	Margin	HOME: Vanderbilt
REBOUND (DEF) by ALDRIDGE,LAUREN	03:55			
FOUL by FRERICKS,JORDAN	03:46			
TURNOVER by FRERICKS,JORDAN	03:46			
SUB IN: SMITH,AMBER	03:46			
SUB IN: ROUNDTREE,JORDAN	03:46			
SUB OUT: CUNNINGHAM,SOPHIE	03:46			
SUB OUT: ALDRIDGE,LAUREN	03:46			
	03:30			MISSED 3PTR by WHALEN,ERIN
REBOUND (DEF) by ROUNDTREE,JORDAN	03:30			
MISSED JUMPER by PORTER,CIERRA	03:08			
REBOUND (OFF) by PORTER,CIERRA	03:08			
MISSED LAYUP by PORTER,CIERRA	03:06			
	03:06			REBOUND (DEF) by TEAM
	02:53			TURNOVER by HALL,CHELSIE
STEAL by SMITH,AMBER	02:51			
GOOD! LAYUP by SMITH,AMBER [FB/PNT]	02:49	7-18	V 11	
	02:36			MISSED 3PTR by WALKER,CIERRA
REBOUND (DEF) by PORTER,CIERRA	02:36			
TURNOVER by FRERICKS,JORDAN	02:19			
	02:09	10-18	V 8	GOOD! 3PTR by WALKER,CIERRA
	02:09			ASSIST by HALL,CHELSIE
FOUL by FRERICKS,JORDAN	02:09			
	02:09	11-18	V 7	GOOD! FT by WALKER,CIERRA
SUB IN: MICHAEL,KAYLA	02:09			
SUB IN: ALDRIDGE,LAUREN	02:09			
SUB IN: CUNNINGHAM,SOPHIE	02:09			
SUB OUT: ROUNDTREE,JORDAN	02:09			
SUB OUT: FRERICKS,JORDAN	02:09			
SUB OUT: PORTER,CIERRA	02:09			
	02:09			SUB IN: BELL,RACHEL
	02:09			SUB OUT: CLEMONS-GREEN,K
GOOD! JUMPER by SMITH,AMBER	01:50	11-20	V 9	
	01:15			MISSED JUMPER by WHALEN,ERIN
	01:15			REBOUND (OFF) by HALL,CHELSIE
	01:15	13-20	V 7	GOOD! JUMPER by HALL,CHELSIE
GOOD! JUMPER by ALDRIDGE,LAUREN	01:04	13-22	V 9	
GOOD! 3PTR by CHAVIS,JORDAN	00:38	13-25	V 12	
ASSIST by MICHAEL,KAYLA	00:38			
	00:26	15-25	V 10	GOOD! JUMPER by BELL,RACHEL
MISSED JUMPER by SMITH,AMBER	00:08			
	00:08			REBOUND (DEF) by WHALEN,ERIN

Missouri 25, Vanderbilt 15

Period 1-only	In Paint	Off T/O	2nd Chance	Fast Break	Bench	
MU- W	6	5	2	2	6	Score tied - 4 times
VANDY	4	4	2	0	0	Lead changed - 2 times

Missouri vs Vanderbilt
1/11/2018; 7 PM at Nashville,Tenn. (Memorial Gym)
Period 2 Play-By-Play

VISITORS: Missouri	Time	Score	Margin	HOME: Vanderbilt
SUB IN: SCHUCHTS,HANNAH	10:00			
SUB OUT: SMITH,AMBER	10:00			
	10:00			SUB IN: CLEMONS-GREEN,K
	10:00			SUB OUT: HALL,CHELSIE
	09:40	18-25	V 7	GOOD! 3PTR by BELL,RACHEL
	09:40			ASSIST by WALKER,CIERRA
GOOD! JUMPER by PORTER,CIERRA [PNT]	09:14	18-27	V 9	
ASSIST by ALDRIDGE,LAUREN	09:14			
	09:00			MISSED JUMPER by WHALEN,ERIN
REBOUND (DEF) by CUNNINGHAM,SOPHIE	09:00			
GOOD! JUMPER by SCHUCHTS,HANNAH [PNT]	08:49	18-29	V 11	
ASSIST by CHAVIS,JORDAN	08:49			
SUB IN: SMITH,AMBER	08:45			
SUB OUT: SCHUCHTS,HANNAH	08:45			
	08:22	20-29	V 9	GOOD! LAYUP by REED,CHRISTA [PNT]
	08:03			FOUL by CLEMONS-GREEN,K
GOOD! JUMPER by SMITH,AMBER	08:00	20-31	V 11	
ASSIST by ALDRIDGE,LAUREN	08:00			
	07:43			TURNOVER by REED,CHRISTA
MISSED 3PTR by CHAVIS,JORDAN	07:29			
	07:29			REBOUND (DEF) by REED,CHRISTA
	07:20	22-31	V 9	GOOD! JUMPER by BELL,RACHEL
MISSED LAYUP by SMITH,AMBER	07:00			
REBOUND (OFF) by SMITH,AMBER	07:00			
	06:57			FOUL by REED,CHRISTA
GOOD! FT by SMITH,AMBER	06:57	22-32	V 10	
GOOD! FT by SMITH,AMBER	06:57	22-33	V 11	
	06:57			SUB IN: HALL,CHELSIE
	06:57			SUB IN: OVERBECK,KAYLA
	06:57			SUB OUT: REED,CHRISTA
	06:57			SUB OUT: BELL,RACHEL
	06:48			MISSED LAYUP by HALL,CHELSIE
REBOUND (DEF) by PORTER,CIERRA	06:48			
SUB IN: ROUNDTREE,JORDAN	06:41			
SUB OUT: SMITH,AMBER	06:41			
TURNOVER by PORTER,CIERRA	06:35			
	06:19			TURNOVER by NEWBY,AUTUMN
STEAL by PORTER,CIERRA	06:17			
TURNOVER by PORTER,CIERRA	06:10			
	05:57			TURNOVER by CLEMONS-GREEN,K
STEAL by PORTER,CIERRA	05:55			
GOOD! 3PTR by CHAVIS,JORDAN	05:49	22-36	V 14	
ASSIST by CUNNINGHAM,SOPHIE	05:49			
	05:32			MISSED JUMPER by NEWBY,AUTUMN
REBOUND (DEF) by PORTER,CIERRA	05:32			
GOOD! 3PTR by ROUNDTREE,JORDAN	05:26	22-39	V 17	
ASSIST by ALDRIDGE,LAUREN	05:26			
	05:24			TIMEOUT 30SEC
	05:24			TIMEOUT MEDIA
SUB IN: MICHAEL,KAYLA	05:24			
SUB IN: SMITH,AMBER	05:24			
SUB OUT: CUNNINGHAM,SOPHIE	05:24			
SUB OUT: PORTER,CIERRA	05:24			
	05:24			SUB IN: BELL,RACHEL
	05:24			SUB OUT: CLEMONS-GREEN,K
	05:12			FOUL by OVERBECK,KAYLA
	05:10			MISSED LAYUP by HALL,CHELSIE
REBOUND (DEF) by MICHAEL,KAYLA	05:10			
TURNOVER by ROUNDTREE,JORDAN	05:10			
	05:10			STEAL by HALL,CHELSIE
GOOD! 3PTR by CHAVIS,JORDAN	04:31	22-42	V 20	
	04:23			MISSED JUMPER by BELL,RACHEL
REBOUND (DEF) by MICHAEL,KAYLA	04:23			
TURNOVER by CHAVIS,JORDAN	04:12			
	04:09			STEAL by WALKER,CIERRA
FOUL by SMITH,AMBER	04:00			
	04:00			MISSED FT by NEWBY,AUTUMN
	04:00			REBOUND (DEADB) by TEAM
	04:00	23-42	V 19	GOOD! FT by NEWBY,AUTUMN

VISITORS: Missouri	Time	Score	Margin	HOME: Vanderbilt
SUB IN: CUNNINGHAM,SOPHIE	04:00			
SUB OUT: SMITH,AMBER	04:00			
GOOD! 3PTR by CHAVIS,JORDAN	03:42	23-45	V 22	
ASSIST by ROUNDTREE,JORDAN	03:42			
	03:27	25-45	V 20	GOOD! JUMPER by BELL,RACHEL
FOUL by CUNNINGHAM,SOPHIE	03:19			
TURNOVER by CUNNINGHAM,SOPHIE	03:19			
SUB IN: SMITH,AMBER	03:19			
SUB OUT: CUNNINGHAM,SOPHIE	03:19			
	02:59			MISSED LAYUP by WALKER,CIERRA
	02:59			REBOUND (OFF) by OVERBECK,KAYLA
	02:56	27-45	V 18	GOOD! LAYUP by OVERBECK,KAYLA [PNT]
FOUL by SMITH,AMBER	02:56			
	02:56	28-45	V 17	GOOD! FT by OVERBECK,KAYLA
SUB IN: PORTER,CIERRA	02:56			
SUB OUT: SMITH,AMBER	02:56			
MISSED JUMPER by MICHAEL,KAYLA	02:34			
REBOUND (OFF) by PORTER,CIERRA	02:34			
MISSED LAYUP by MICHAEL,KAYLA	02:29			
REBOUND (OFF) by ROUNDTREE,JORDAN	02:29			
FOUL by PORTER,CIERRA	02:26			
TURNOVER by PORTER,CIERRA	02:26			
SUB IN: SCHUCHTS,HANNAH	02:26			
SUB IN: CUNNINGHAM,SOPHIE	02:26			
SUB OUT: MICHAEL,KAYLA	02:26			
SUB OUT: PORTER,CIERRA	02:26			
	02:14	30-45	V 15	GOOD! LAYUP by OVERBECK,KAYLA [PNT]
GOOD! 3PTR by CHAVIS,JORDAN	02:02	30-48	V 18	
ASSIST by ALDRIDGE,LAUREN	02:02			
	01:44			MISSED JUMPER by BELL,RACHEL
REBOUND (DEF) by CHAVIS,JORDAN	01:44			
TURNOVER by SCHUCHTS,HANNAH	01:19			
	01:19			STEAL by BELL,RACHEL
	00:55	33-48	V 15	GOOD! 3PTR by HALL,CHELSIE
	00:55			ASSIST by WALKER,CIERRA
TURNOVER by SCHUCHTS,HANNAH	00:41			
	00:41			STEAL by OVERBECK,KAYLA
FOUL by SCHUCHTS,HANNAH	00:41			
	00:41	34-48	V 14	GOOD! FT by OVERBECK,KAYLA
	00:41	35-48	V 13	GOOD! FT by OVERBECK,KAYLA
SUB IN: TAHANE,EMMANUELLE	00:41			
SUB OUT: SCHUCHTS,HANNAH	00:41			
MISSED 3PTR by CHAVIS,JORDAN	00:16			
	00:16			REBOUND (DEF) by NEWBY,AUTUMN
	00:00	37-48	V 11	GOOD! JUMPER by WALKER,CIERRA [PNT]

Missouri 48, Vanderbilt 37

Period 2-only	In Paint	Off T/O	2nd Chance	Fast Break	Bench	
MU-W	4	3	2	0	17	Score tied - 0 times
VANDY	8	11	3	0	7	Lead changed - 0 times

Official Basketball Box Score -- Game Totals -- Second Half Statistics
Missouri vs Vanderbilt
1/11/2018 7 PM at Nashville,Tenn. (Memorial Gym)

Missouri 33 • 14-2, 2-1 SEC

##	Player		Total		3-Ptr		FT-FTA	Rebounds			PF	TP	A	TO	Blk	Stl	Min
			FG	FGA	FG	FGA		Off	Def	Tot							
03	CUNNINGHAM,SOPHIE	g	2	7	1	4	0	0	2	2	2	5	1	1	0	0	17
05	ALDRIDGE,LAUREN	g	1	1	0	0	1	0	0	0	1	3	2	0	0	0	10
21	PORTER,CIERRA	f	2	3	0	0	1	0	0	0	0	5	0	1	0	1	5
22	FRERICKS,JORDAN	f	5	7	0	0	0	2	3	5	0	10	2	0	0	0	11
23	SMITH,AMBER	g	1	6	0	1	0	0	2	2	0	2	1	0	1	1	14
01	WINFREY,KELSEY		0	0	0	0	0	0	0	0	0	0	0	0	0	0	2
02	ROUNDTRREE,JORDAN		0	1	0	1	1	1	0	1	0	1	0	0	0	1	10
10	GREEN,NADIA		1	1	0	0	0	0	0	0	1	2	0	0	0	0	5
12	BROWN,ELLE		0	0	0	0	0	0	0	0	0	0	0	0	0	0	2
13	SCHUCHTS,HANNAH		0	0	0	0	0	0	0	0	0	0	0	0	0	0	2
20	MICHAEL,KAYLA		1	3	0	1	0	0	1	1	1	2	1	0	0	0	7
24	CHAVIS,JORDAN		1	1	1	1	0	0	1	1	1	3	2	0	0	0	15
34	TAHANE,EMMANUELLE		0	0	0	0	0	0	0	0	0	0	0	0	0	0	0
TEAM								1	2	3	0			1			
Totals			14	30	2	8	3	4	11	15	6	33	9	3	1	3	100

FG % 3rd Qtr 10-16 62.5% 4th Qtr 4-14 28.6% Half: 14-30 46.7%
 3FG % 3rd Qtr 1-4 25.0% 4th Qtr 1-4 25.0% Half: 2-8 60.0%
 FT % 3rd Qtr 3-5 60.0% 4th Qtr 0-0 0% Half: 3-5 60.0%

Vanderbilt 33 • 4-13, 0-3 SEC

##	Player		Total		3-Ptr		FT-FTA	Rebounds			PF	TP	A	TO	Blk	Stl	Min
			FG	FGA	FG	FGA		Off	Def	Tot							
02	HALL,CHELSEIE	g	1	2	0	0	1	0	0	0	1	3	0	1	0	0	9
03	BELL,RACHEL	g	0	1	0	0	0	0	0	0	0	0	0	1	0	0	2
10	WALKER,CIERRA	g	2	5	2	2	0	0	0	0	0	6	1	0	0	0	20
24	NEWBY,AUTUMN	f	1	2	0	0	0	2	7	9	0	2	2	1	0	0	17
33	REED,CHRISTA	*	1	1	0	0	0	0	0	0	1	2	0	0	0	0	3
00	OVERBECK,KAYLA		2	2	0	0	1	0	1	1	3	5	0	3	0	0	12
21	WHALEN,ERIN		6	11	3	5	0	2	3	5	1	15	0	0	0	0	17
30	CARTER,LEALEA		0	2	0	1	0	0	0	0	1	0	0	0	0	0	5
31	EJIOFOR,BLESSING		0	3	0	0	0	2	1	3	0	0	0	1	0	0	2
35	CLEMONS-GREEN,K		0	2	0	2	0	1	1	2	2	0	5	0	0	0	13
TEAM								1	0	1	0			0			
Totals			13	31	5	10	2	8	13	21	9	33	8	7	0	0	100

FG % 3rd Qtr 4-15 26.7% 4th Qtr 9-16 56.3% Half: 13-31 41.9%
 3FG % 3rd Qtr 1-3 33.3% 4th Qtr 4-7 57.1% Half: 5-10 44.4%
 FT % 3rd Qtr 1-3 33.3% 4th Qtr 1-1 100.0% Half: 2-4 50.0%

Officials: R:Bob Trammell,U1:Gina Cross, U2:Douglas Knight
 Technical Fouls: Missouri- None. Vanderbilt- None.

Score by periods	1st	2nd	3rd	4th	Total
Missouri	25	23	24	9	81
Vanderbilt	15	22	10	23	70

Points	In	Off	2nd	Fast	Bench
	Paint	T/O	Chance	Break	
MU-W	22	10	5	8	8
	12	0	10	0	20

Last FG - MU-W 4th-02:35, VANDY 4th-00:01.
 MU-W led for 20:00. VANDY led for 0:00. Game was tied for 0:00.

Score tied - 0 times
 Lead changed - 0 times

Missouri vs Vanderbilt
1/11/2018; 7 PM at Nashville,Tenn. (Memorial Gym)
Period 3 Play-By-Play

VISITORS: Missouri	Time	Score	Margin	HOME: Vanderbilt
GOOD! LAYUP by PORTER,CIERRA [PNT]	09:51	37-50	V 13	
ASSIST by FRERICKS,JORDAN	09:51			
	09:31	39-50	V 11	GOOD! JUMPER by HALL,CHELSIE [PNT]
FOUL by ALDRIDGE,LAUREN	09:31			
	09:31	40-50	V 10	GOOD! FT by HALL,CHELSIE
	09:20			FOUL by REED,CHRISTA
	09:20			SUB IN: OVERBECK,KAYLA
	09:20			SUB OUT: REED,CHRISTA
GOOD! JUMPER by SMITH,AMBER [PNT]	09:05	40-52	V 12	
	08:54			MISSED JUMPER by BELL,RACHEL
REBOUND (DEF) by CUNNINGHAM,SOPHIE	08:54			
GOOD! JUMPER by PORTER,CIERRA	08:32	40-54	V 14	
ASSIST by FRERICKS,JORDAN	08:32			
	08:01			TURNOVER by BELL,RACHEL
STEAL by PORTER,CIERRA	08:00			
GOOD! LAYUP by FRERICKS,JORDAN [FB/PNT]	07:54	40-56	V 16	
ASSIST by SMITH,AMBER	07:54			
FOUL by CUNNINGHAM,SOPHIE	07:31			
	07:31			MISSED FT by NEWBY,AUTUMN
	07:31			REBOUND (DEADB) by TEAM
	07:31			MISSED FT by NEWBY,AUTUMN
REBOUND (DEF) by FRERICKS,JORDAN	07:31			
	07:31			SUB IN: CLEMONS-GREEN,K
	07:31			SUB OUT: BELL,RACHEL
	07:14			FOUL by OVERBECK,KAYLA
TURNOVER by CUNNINGHAM,SOPHIE	07:11			
	06:53			TURNOVER by NEWBY,AUTUMN
STEAL by SMITH,AMBER	06:50			
	06:46			FOUL by OVERBECK,KAYLA
MISSED FT by PORTER,CIERRA	06:46			
REBOUND (DEADB) by TEAM	06:46			
GOOD! FT by PORTER,CIERRA	06:46	40-57	V 17	
SUB IN: CHAVIS,JORDAN	06:46			
SUB OUT: PORTER,CIERRA	06:46			
	06:46			SUB IN: EJIOFOR,BLESSING
	06:46			SUB IN: WHALEN,ERIN
	06:46			SUB OUT: NEWBY,AUTUMN
	06:46			SUB OUT: OVERBECK,KAYLA
	06:33			TURNOVER by EJIOFOR,BLESSING
GOOD! 3PTR by CUNNINGHAM,SOPHIE	06:14	40-60	V 20	
ASSIST by CHAVIS,JORDAN	06:14			
	05:57			MISSED JUMPER by EJIOFOR,BLESSING
REBOUND (DEF) by FRERICKS,JORDAN	05:57			
MISSED 3PTR by SMITH,AMBER	05:45			
	05:45			REBOUND (DEF) by EJIOFOR,BLESSING
	05:25			MISSED LAYUP by HALL,CHELSIE
	05:25			REBOUND (OFF) by EJIOFOR,BLESSING
	05:22			MISSED LAYUP by EJIOFOR,BLESSING
	05:22			REBOUND (OFF) by EJIOFOR,BLESSING
	05:20			MISSED JUMPER by EJIOFOR,BLESSING
REBOUND (DEF) by SMITH,AMBER	05:20			
GOOD! LAYUP by FRERICKS,JORDAN [FB/PNT]	05:12	40-62	V 22	
ASSIST by ALDRIDGE,LAUREN	05:12			
	05:11			TIMEOUT 30SEC
	05:11			TIMEOUT media
SUB IN: PORTER,CIERRA	05:11			
SUB OUT: FRERICKS,JORDAN	05:11			
	05:11			SUB IN: OVERBECK,KAYLA
	05:11			SUB IN: CARTER,LEALEA
	05:11			SUB OUT: CLEMONS-GREEN,K
	05:11			SUB OUT: EJIOFOR,BLESSING
	04:57			TIMEOUT MEDIA
SUB IN: FRERICKS,JORDAN	04:57			
SUB OUT: PORTER,CIERRA	04:57			
	04:45			TURNOVER by OVERBECK,KAYLA
	04:38			FOUL by CARTER,LEALEA
GOOD! LAYUP by FRERICKS,JORDAN [PNT]	04:29	40-64	V 24	
	04:10			MISSED LAYUP by CARTER,LEALEA
REBOUND (DEF) by FRERICKS,JORDAN	04:10			

VISITORS: Missouri	Time	Score	Margin	HOME: Vanderbilt
MISSED LAYUP by SMITH,AMBER	04:00			
REBOUND (OFF) by TEAM	04:00			
	03:57			SUB IN: NEWBY,AUTUMN
	03:57			SUB OUT: OVERBECK,KAYLA
SUB IN: ROUNDTREE,JORDAN	03:54			
SUB OUT: SMITH,AMBER	03:54			
GOOD! LAYUP by FRERICKS,JORDAN [PNT]	03:45	40-66	V 26	
	03:30	42-66	V 24	GOOD! JUMPER by NEWBY,AUTUMN [PNT]
MISSED 3PTR by CUNNINGHAM,SOPHIE	03:01			
	03:01			REBOUND (DEF) by NEWBY,AUTUMN
	02:51			MISSED LAYUP by WHALEN,ERIN
	02:51			REBOUND (OFF) by NEWBY,AUTUMN
	02:45			MISSED JUMPER by WHALEN,ERIN
	02:45			REBOUND (OFF) by WHALEN,ERIN
	02:42	44-66	V 22	GOOD! LAYUP by WHALEN,ERIN [PNT]
MISSED JUMPER by FRERICKS,JORDAN	02:22			
REBOUND (OFF) by ROUNDTREE,JORDAN	02:22			
	02:20			FOUL by HALL,CHELSIE
GOOD! FT by ROUNDTREE,JORDAN	02:20	44-67	V 23	
MISSED FT by ROUNDTREE,JORDAN	02:20			
	02:20			REBOUND (DEF) by WHALEN,ERIN
SUB IN: PORTER,CIERRA	02:20			
SUB OUT: FRERICKS,JORDAN	02:20			
	02:14			TURNOVER by HALL,CHELSIE
STEAL by ROUNDTREE,JORDAN	02:12			
MISSED 3PTR by CUNNINGHAM,SOPHIE	01:59			
	01:59			REBOUND (DEF) by NEWBY,AUTUMN
	01:44	47-67	V 20	GOOD! 3PTR by WHALEN,ERIN
	01:44			ASSIST by NEWBY,AUTUMN
MISSED JUMPER by PORTER,CIERRA	01:14			
	01:14			REBOUND (DEF) by WHALEN,ERIN
	01:01			MISSED JUMPER by WALKER,CIERRA
REBOUND (DEF) by CHAVIS,JORDAN	01:01			
GOOD! LAYUP by ALDRIDGE,LAUREN [FB/PNT]	00:54	47-69	V 22	
ASSIST by CHAVIS,JORDAN	00:54			
	00:54			FOUL by WHALEN,ERIN
GOOD! FT by ALDRIDGE,LAUREN	00:54	47-70	V 23	
SUB IN: GREEN,NADIA	00:54			
SUB IN: MICHAEL,KAYLA	00:54			
SUB IN: SMITH,AMBER	00:54			
SUB OUT: CUNNINGHAM,SOPHIE	00:54			
SUB OUT: PORTER,CIERRA	00:54			
SUB OUT: ROUNDTREE,JORDAN	00:54			
	00:54			SUB IN: CLEMONS-GREEN,K
	00:54			SUB OUT: HALL,CHELSIE
	00:38			MISSED 3PTR by CARTER,LEALEA
REBOUND (DEF) by MICHAEL,KAYLA	00:38			
GOOD! LAYUP by GREEN,NADIA [FB/PNT]	00:31	47-72	V 25	
ASSIST by ALDRIDGE,LAUREN	00:31			
	00:05			MISSED 3PTR by WHALEN,ERIN
BLOCK by SMITH,AMBER	00:05			
REBOUND (DEF) by TEAM	00:02			

Missouri 72, Vanderbilt 47

Period 3-only	In Paint	Off T/O	2nd Chance	Fast Break	Bench	
MU-W	16	8	3	8	3	Score tied - 0 times
VANDY	6	0	2	0	5	Lead changed - 0 times

Missouri vs Vanderbilt
1/11/2018; 7 PM at Nashville,Tenn. (Memorial Gym)
Period 4 Play-By-Play

VISITORS: Missouri	Time	Score	Margin	HOME: Vanderbilt
SUB IN: CHAVIS,JORDAN	10:00			
SUB IN: GREEN,NADIA	10:00			
SUB OUT: ALDRIDGE,LAUREN	10:00			
SUB OUT: PORTER,CIERRA	10:00			
	10:00			SUB IN: WHALEN,ERIN
	10:00			SUB IN: CLEMONS-GREEN,K
	10:00			SUB IN: OVERBECK,KAYLA
	10:00			SUB OUT: HALL,CHELSIE
	10:00			SUB OUT: BELL,RACHEL
	10:00			SUB OUT: REED,CHRISTA
	09:47			FOUL by CLEMONS-GREEN,K
MISSED 3PTR by CUNNINGHAM,SOPHIE	09:41			
	09:41			REBOUND (DEF) by NEWBY,AUTUMN
	09:25			TURNOVER by OVERBECK,KAYLA
MISSED JUMPER by SMITH,AMBER	08:59			
	08:59			REBOUND (DEF) by OVERBECK,KAYLA
	08:52			MISSED JUMPER by WHALEN,ERIN
REBOUND (DEF) by CUNNINGHAM,SOPHIE	08:52			
GOOD! 3PTR by CHAVIS,JORDAN	08:25	47-75	V 28	
FOUL by CHAVIS,JORDAN	08:11			
SUB IN: MICHAEL,KAYLA	08:11			
SUB OUT: FRERICKS,JORDAN	08:11			
	08:06			MISSED JUMPER by WALKER,CIERRA
	08:06			REBOUND (OFF) by CLEMONS-GREEN,K
	07:58	50-75	V 25	GOOD! 3PTR by WALKER,CIERRA
	07:58			ASSIST by CLEMONS-GREEN,K
TURNOVER by TEAM	07:21			
	07:05			MISSED JUMPER by NEWBY,AUTUMN
REBOUND (DEF) by TEAM	07:05			
SUB IN: ROUNDTREE,JORDAN	07:02			
SUB OUT: SMITH,AMBER	07:02			
MISSED 3PTR by MICHAEL,KAYLA	06:38			
	06:38			REBOUND (DEF) by NEWBY,AUTUMN
	06:28	52-75	V 23	GOOD! LAYUP by OVERBECK,KAYLA [PNT]
	06:28			ASSIST by CLEMONS-GREEN,K
FOUL by GREEN,NADIA	06:28			
	06:28	53-75	V 22	GOOD! FT by OVERBECK,KAYLA
SUB IN: SCHUCHTS,HANNAH	06:28			
SUB OUT: GREEN,NADIA	06:28			
MISSED JUMPER by CUNNINGHAM,SOPHIE	06:11			
	06:11			REBOUND (DEF) by CLEMONS-GREEN,K
	06:02	56-75	V 19	GOOD! 3PTR by WALKER,CIERRA
	06:02			ASSIST by CLEMONS-GREEN,K
TIMEOUT 30SEC	05:56			
TIMEOUT MEDIA	05:56			
SUB IN: PORTER,CIERRA	05:56			
SUB IN: SMITH,AMBER	05:56			
SUB OUT: SCHUCHTS,HANNAH	05:56			
SUB OUT: MICHAEL,KAYLA	05:56			
TURNOVER by PORTER,CIERRA	05:41			
SUB IN: FRERICKS,JORDAN	05:41			
SUB OUT: PORTER,CIERRA	05:41			
	05:31			MISSED JUMPER by WALKER,CIERRA
	05:31			REBOUND (OFF) by TEAM
	05:24			MISSED 3PTR by CLEMONS-GREEN,K
REBOUND (DEF) by SMITH,AMBER	05:24			
	05:16			FOUL by CLEMONS-GREEN,K
MISSED JUMPER by SMITH,AMBER	04:58			
	04:58			REBOUND (DEF) by NEWBY,AUTUMN
FOUL by CUNNINGHAM,SOPHIE	04:48			
	04:33	58-75	V 17	GOOD! LAYUP by OVERBECK,KAYLA [PNT]
	04:33			ASSIST by CLEMONS-GREEN,K
MISSED LAYUP by CUNNINGHAM,SOPHIE	04:07			
REBOUND (OFF) by FRERICKS,JORDAN	04:07			
MISSED LAYUP by FRERICKS,JORDAN	04:03			
REBOUND (OFF) by FRERICKS,JORDAN	04:03			
GOOD! LAYUP by FRERICKS,JORDAN [PNT]	04:00	58-77	V 19	
	03:49			FOUL by OVERBECK,KAYLA
	03:49			TURNOVER by OVERBECK,KAYLA

VISITORS: Missouri	Time	Score	Margin	HOME: Vanderbilt
SUB IN: MICHAEL,KAYLA	03:49			
SUB OUT: FRERICKS,JORDAN	03:49			
GOOD! LAYUP by CUNNINGHAM,SOPHIE [PNT]	03:31	58-79	V 21	
ASSIST by MICHAEL,KAYLA	03:31			
	03:07			MISSED 3PTR by WHALEN,ERIN
	03:07			REBOUND (OFF) by NEWBY,AUTUMN
	03:00	60-79	V 19	GOOD! JUMPER by WHALEN,ERIN
GOOD! LAYUP by MICHAEL,KAYLA [PNT]	02:35	60-81	V 21	
ASSIST by CUNNINGHAM,SOPHIE	02:35			
	02:19	63-81	V 18	GOOD! 3PTR by WHALEN,ERIN
	02:19			ASSIST by NEWBY,AUTUMN
MISSED JUMPER by SMITH,AMBER	01:50			
	01:50			REBOUND (DEF) by NEWBY,AUTUMN
FOUL by MICHAEL,KAYLA	01:39			
SUB IN: SCHUCHTS,HANNAH	01:39			
SUB IN: WINFREY,KELSEY	01:39			
SUB IN: BROWN,ELLE	01:39			
SUB OUT: CUNNINGHAM,SOPHIE	01:39			
SUB OUT: CHAVIS,JORDAN	01:39			
SUB OUT: SMITH,AMBER	01:39			
	01:39			SUB IN: REED,CHRISTA
	01:39			SUB OUT: OVERBECK,KAYLA
	01:36	65-81	V 16	GOOD! JUMPER by WHALEN,ERIN
	01:36			ASSIST by WALKER,CIERRA
MISSED 3PTR by ROUNDTREE,JORDAN	01:05			
	01:05			REBOUND (DEF) by NEWBY,AUTUMN
	00:53	67-81	V 14	GOOD! LAYUP by REED,CHRISTA [PNT]
MISSED JUMPER by MICHAEL,KAYLA	00:24			
	00:24			REBOUND (DEF) by WHALEN,ERIN
	00:08			MISSED 3PTR by CLEMONS-GREEN,K
	00:08			REBOUND (OFF) by WHALEN,ERIN
	00:01	70-81	V 11	GOOD! 3PTR by WHALEN,ERIN
	00:01			ASSIST by CLEMONS-GREEN,K
Missouri 81, Vanderbilt 70				

Period 4-only	In Paint	Off T/O	2nd Chance	Fast Break	Bench	
MU- W	6	2	2	0	5	Score tied - 0 times
VANDY	6	0	8	0	15	Lead changed - 0 times

Missouri vs Vanderbilt
1/11/2018; 7 PM at Nashville,Tenn. (Memorial Gym)
Scoring/Runs Reference

Period 1

Missouri	VRun	Score	Margin	HRun	Vanderbilt
		0-2	2		WALKER LAYUP [P] - 09:43
08:41 - MICHAEL JUMPER [P]	-	2-2	0		
		2-5	3		WALKER 3PTR - 08:31
07:57 - SMITH 3PTR	-	5-5	0		
06:52 - SMITH 3PTR	6-0	8-5	-3		
06:14 - MICHAEL FT	7-0	9-5	-4		
05:48 - ALDRIDGE 3PTR	10-0	12-5	-7		
		12-7	-5		HALL LAYUP [P] - 05:31
05:13 - SMITH LAYUP [P]	-	14-7	-7		
04:34 - PORTER FT	3-0	15-7	-8		
04:34 - PORTER FT	4-0	16-7	-9		
02:49 - SMITH LAYUP [P] [F]	6-0	18-7	-11		
		18-10	-8		WALKER 3PTR - 02:09
		18-11	-7	4-0	WALKER FT - 02:09
01:50 - SMITH JUMPER	-	20-11	-9		
		20-13	-7		HALL JUMPER - 01:15
01:04 - ALDRIDGE JUMPER	-	22-13	-9		
00:38 - CHAVIS 3PTR	5-0	25-13	-12		
		25-15	-10		BELL JUMPER - 00:26

Missouri vs Vanderbilt
1/11/2018; 7 PM at Nashville,Tenn. (Memorial Gym)
Scoring/Runs Reference

Period 2

Missouri	VRun	Score	Margin	HRun	Vanderbilt
		25-18	-7		BELL 3PTR - 09:40
09:14 - PORTER JUMPER [P]	-	27-18	-9		
08:49 - SCHUCHTS JUMPER [P]	4-0	29-18	-11		
		29-20	-9		REED LAYUP [P] - 08:22
08:00 - SMITH JUMPER	-	31-20	-11		
		31-22	-9		BELL JUMPER - 07:20
06:57 - SMITH FT	-	32-22	-10		
06:57 - SMITH FT	2-0	33-22	-11		
05:49 - CHAVIS 3PTR	5-0	36-22	-14		
05:26 - ROUNDTREE 3PTR	8-0	39-22	-17		
04:31 - CHAVIS 3PTR	11-0	42-22	-20		
		42-23	-19		NEWBY FT - 04:00
03:42 - CHAVIS 3PTR	-	45-23	-22		
		45-25	-20		BELL JUMPER - 03:27
		45-27	-18	4-0	OVERBECK LAYUP [P] - 02:56
		45-28	-17	5-0	OVERBECK FT - 02:56
		45-30	-15	7-0	OVERBECK LAYUP [P] - 02:14
02:02 - CHAVIS 3PTR	-	48-30	-18		
		48-33	-15		HALL 3PTR - 00:55
		48-34	-14	4-0	OVERBECK FT - 00:41
		48-35	-13	5-0	OVERBECK FT - 00:41
		48-37	-11	7-0	WALKER JUMPER [P] - 00:00

Missouri vs Vanderbilt
1/11/2018; 7 PM at Nashville,Tenn. (Memorial Gym)
Scoring/Runs Reference

Period 3

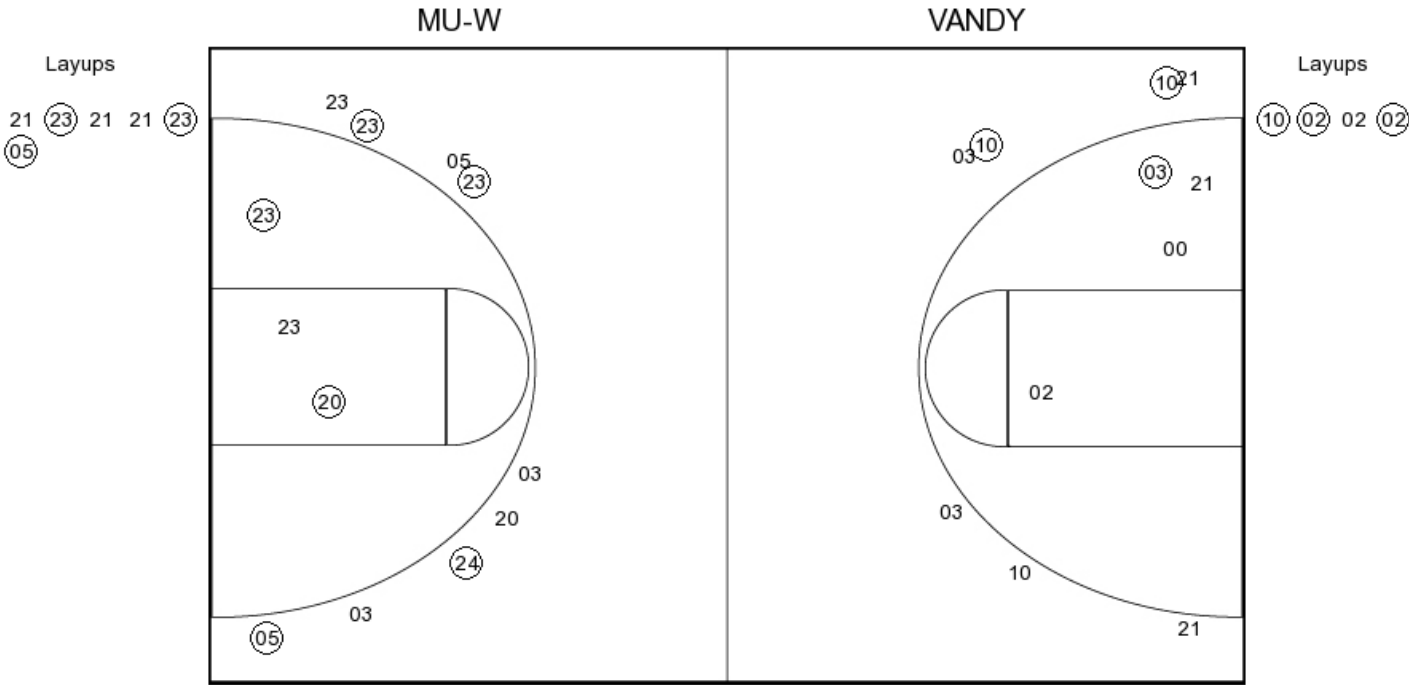
Missouri	VRun	Score	Margin	HRun	Vanderbilt
09:51 - PORTER LAYUP [P]	-	50-37	-13		
		50-39	-11		HALL JUMPER [P] - 09:31
		50-40	-10	3-0	HALL FT - 09:31
09:05 - SMITH JUMPER [P]	-	52-40	-12		
08:32 - PORTER JUMPER	4-0	54-40	-14		
07:54 - FRERICKS LAYUP [P] [F]	6-0	56-40	-16		
06:46 - PORTER FT	7-0	57-40	-17		
06:14 - CUNNINGHAM 3PTR	10-0	60-40	-20		
05:12 - FRERICKS LAYUP [P] [F]	12-0	62-40	-22		
04:29 - FRERICKS LAYUP [P]	14-0	64-40	-24		
03:45 - FRERICKS LAYUP [P]	16-0	66-40	-26		
		66-42	-24		NEWBY JUMPER [P] - 03:30
		66-44	-22	4-0	WHALEN LAYUP [P] - 02:42
02:20 - ROUNDTREE FT	-	67-44	-23		
		67-47	-20		WHALEN 3PTR - 01:44
00:54 - ALDRIDGE LAYUP [P] [F]	-	69-47	-22		
00:54 - ALDRIDGE FT	3-0	70-47	-23		
00:31 - GREEN LAYUP [P] [F]	5-0	72-47	-25		

Missouri vs Vanderbilt
1/11/2018; 7 PM at Nashville,Tenn. (Memorial Gym)
Scoring/Runs Reference

Period 4

Missouri	VRun	Score	Margin	HRun	Vanderbilt
08:25 - CHAVIS 3PTR	-	75-47	-28		
		75-50	-25		WALKER 3PTR - 07:58
		75-52	-23	5-0	OVERBECK LAYUP [P] - 06:28
		75-53	-22	6-0	OVERBECK FT - 06:28
		75-56	-19	9-0	WALKER 3PTR - 06:02
		75-58	-17	11-0	OVERBECK LAYUP [P] - 04:33
04:00 - FRERICKS LAYUP [P]	-	77-58	-19		
03:31 - CUNNINGHAM LAYUP [P]	4-0	79-58	-21		
		79-60	-19		WHALEN JUMPER - 03:00
02:35 - MICHAEL LAYUP [P]	-	81-60	-21		
		81-63	-18		WHALEN 3PTR - 02:19
		81-65	-16	5-0	WHALEN JUMPER - 01:36
		81-67	-14	7-0	REED LAYUP [P] - 00:53
		81-70	-11	10-0	WHALEN 3PTR - 00:01

PERIOD 1



MU-W PERIOD 1

FG Made	17
FG Attempted	30
3PFG Made	9
3PFG Attempted	15

VANDY PERIOD 1

FG Made	14
FG Attempted	29
3PFG Made	4
3PFG Attempted	9

PERIOD 2

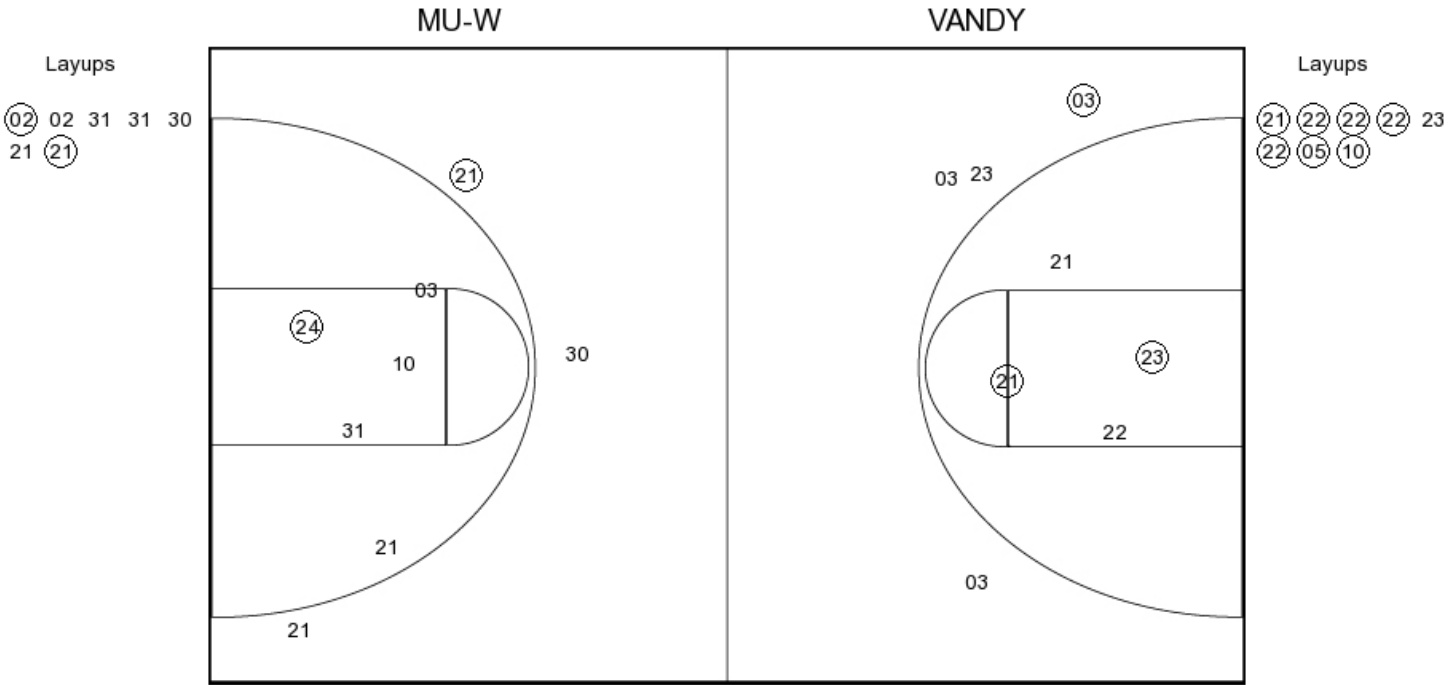


	FG Made	FG Attempted	3PFG Made	3PFG Attempted
1st Half	10	16	7	19
2nd Half	18	25	10	25
Total	28	41	17	44



FG Made
FG Attempted
3PFG Made
3PFG Attempted

PERIOD 3



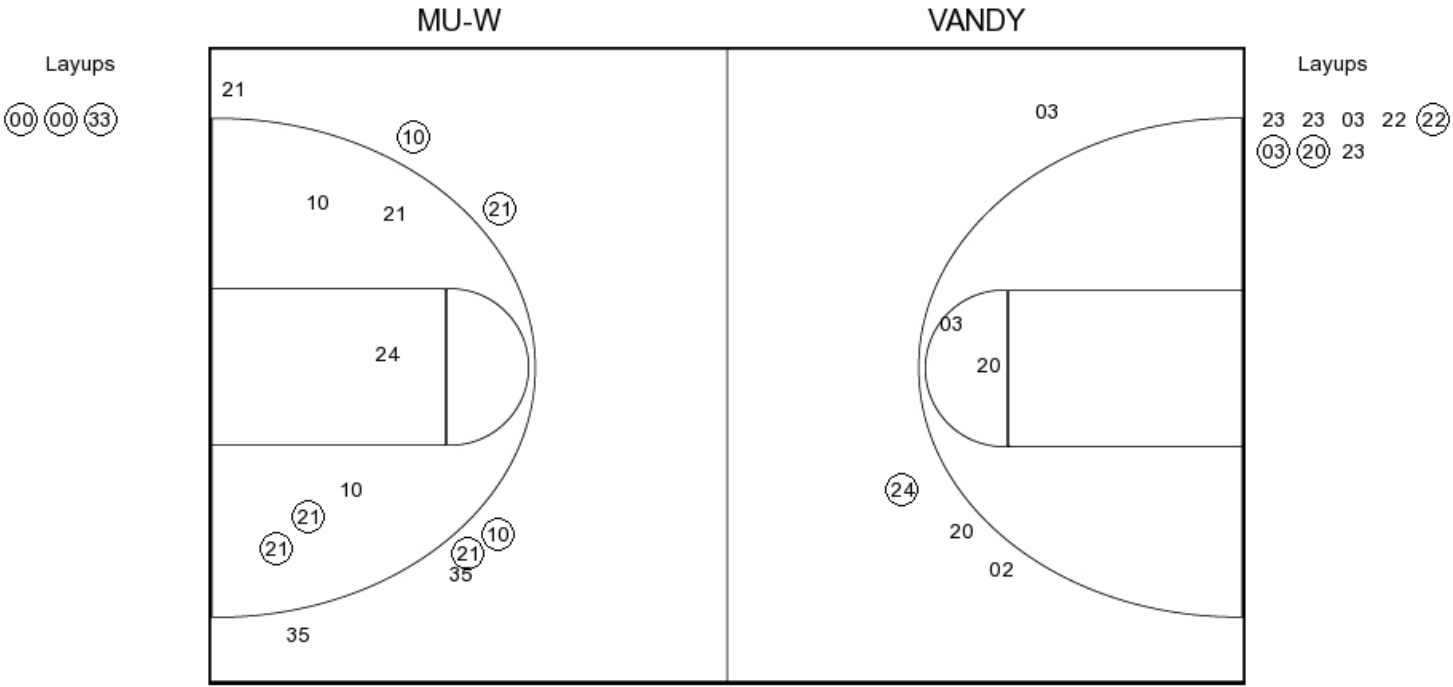
MU-W PERIOD 3

FG Made	14
FG Attempted	30
3PFG Made	2
3PFG Attempted	8

VANDY PERIOD 3

FG Made	13
FG Attempted	31
3PFG Made	5
3PFG Attempted	10

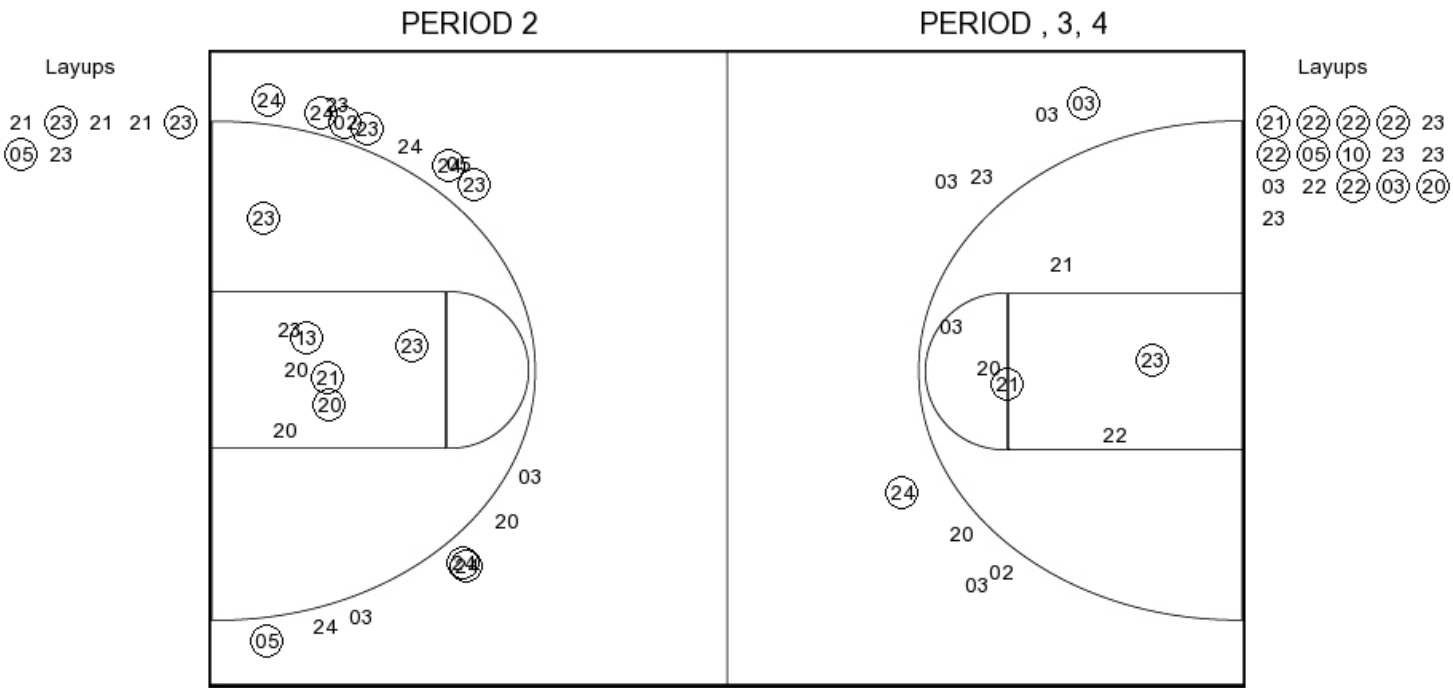
PERIOD 4



MU-W PERIOD 4
FG Made
FG Attempted
3PFG Made
3PFG Attempted

VANDY PERIOD 4
FG Made
FG Attempted
3PFG Made
3PFG Attempted

Missouri



MU-W PERIOD 1	
FG Made	17
FG Attempted	30
3PFG Made	9
3PFG Attempted	15

MU-W PERIOD 2	
FG Made	
FG Attempted	
3PFG Made	
3PFG Attempted	

Vanderbilt

