

FINAL SCORE



Lipscomb

3-11

82



Vanderbilt

4-10

92

December 28, 2017 • Nashville, Tenn. (Memorial Gym)

FINAL STATISTICS

Official Basketball Box Score -- Game Totals -- Final Statistics
Lipscomb vs Vanderbilt
12/28/2017 7 PM at Nashville, Tenn. (Memorial Gym)



Lipscomb 82 - 3-11

##	Player	g	Total		3-Ptr	Rebounds			PF	TP	A	TO	Blk	Stl	Min
			FG-FGA	FG-FGA	FT-FTA	Off	Def	Tot							
02	POTTS,KENNEDY		5-7	5-7	0-0	0	4	4	4	15	0	1	0	0	36
04	KMEC,EMILY		6-13	5-11	0-0	1	2	3	1	17	0	2	3	3	30
15	RAU,LAUREN		3-12	1-3	5-6	0	2	2	5	12	9	6	0	0	35
20	CLARK,TAYLOR		1-3	0-0	1-2	4	2	6	4	3	0	1	0	0	21
22	CAGLE,LOREN		9-20	4-8	4-5	0	3	3	3	26	7	1	1	1	40
00	JONES,LOSHAVEON		3-5	0-0	2-2	4	1	5	3	8	0	0	1	1	19
03	LOVELADY,MEREDITH H		0-3	0-3	0-0	3	0	3	1	0	0	1	0	1	10
05	SHORT,CARLEIGH		0-0	0-0	1-2	0	1	1	1	1	0	1	0	1	5
12	BROUGHT ON,AURIANA		0-1	0-1	0-0	0	0	0	1	0	0	0	0	0	4
TEAM						1	1	2	0		0				
TOTALS			27-64	15-33	13-17	13	16	29	23	82	16	13	5	7	200

Deadball Rebounds: 2,0

FG %	1st Half:	15-34	44.1%	2nd Half:	12-30	40.0%	Game:	27-64	42.2%					
	1st Qtr	9-17	52.9%	2nd Qtr	6-17	35.3%	3rd Qtr	4-14	28.6%	4th Qtr	8-16	50.0%		
3FG %	1st Half:	10-20	50.0%	2nd Half:	5-13	38.5%	Game:	15-33	45.5%					
	1st Qtr	7-12	58.3%	2nd Qtr	3-8	37.5%	3rd Qtr	2-7	28.6%	4th Qtr	3-6	50.0%		
FT %	1st Half:	5-6	83.3%	2nd Half:	8-11	72.7%	Game:	13-17	76.5%					
	1st Qtr	2-2	100.0%	2nd Qtr	3-4	75.0%	3rd Qtr	5-7	71.4%	4th Qtr	3-4	75.0%		

Vanderbilt 92 - 4-10

##	Player	g	Total		3-Ptr	Rebounds			PF	TP	A	TO	Blk	Stl	Min
			FG-FGA	FG-FGA	FT-FTA	Off	Def	Tot							
00	OVERBECK,KAYLA		6-11	0-0	3-3	4	9	13	1	15	1	2	1	2	27
02	HALL,CHELSIE		7-18	0-1	3-4	1	3	4	3	17	3	2	0	0	36
03	BELL,RACHEL		4-5	2-3	0-0	1	1	2	1	10	1	2	0	0	14
24	NEWBY,AUTUMN		5-5	0-0	6-9	2	5	7	3	16	5	2	2	0	25
33	REED,CHRISTA		4-6	2-2	5-6	1	0	1	2	15	1	3	3	1	37
10	WALKER,CIERRA		0-3	0-1	3-4	0	1	1	0	3	3	1	0	2	21
12	DANCY,MYKA		1-1	0-0	0-0	0	0	0	0	2	0	0	0	0	11
21	WHALEN,ERIN		3-7	2-3	2-2	1	1	2	0	10	1	0	0	1	13
30	CARTER,LEALEA		1-3	0-0	0-0	0	2	2	1	2	4	2	0	0	10
31	EJIOFOR,BLESSING		1-4	0-0	0-0	4	1	5	2	2	0	1	0	0	6
TEAM						4	3	7	0		0				
TOTALS			32-63	6-10	22-28	18	26	44	13	92	19	15	6	6	200

Deadball Rebounds: 3,0

FG %	1st Half:	16-34	47.1%	2nd Half:	16-29	55.2%	Game:	32-63	50.8%					
	1st Qtr	8-20	40.0%	2nd Qtr	8-14	57.1%	3rd Qtr	9-14	64.3%	4th Qtr	7-15	46.7%		
3FG %	1st Half:	3-5	60.0%	2nd Half:	3-5	60.0%	Game:	6-10	60.0%					
	1st Qtr	1-1	100.0%	2nd Qtr	2-4	50.0%	3rd Qtr	3-4	75.0%	4th Qtr	0-1	00.0%		
FT %	1st Half:	6-7	85.7%	2nd Half:	16-21	76.2%	Game:	22-28	78.6%					
	1st Qtr	0-1	00.0%	2nd Qtr	6-6	100.0%	3rd Qtr	5-6	83.3%	4th Qtr	11-15	73.3%		

Officials: R:Meadow Overstreet, U1:Eric Baker, U2:Katie Lukanich
 Technical Fouls: Lipscomb- None. Vanderbilt- None.
 Attendance: 2330

Score by periods	1st	2nd	3rd	4th	Total
Lipscomb	27	18	15	22	82
Vanderbilt	17	24	26	25	92

Points	In Paint	Off T/O	2nd Chance	Fast Break	Bench
LIP	22	15	16	2	9
VANDY	42	18	16	8	19

Last FG - LIP 4th-00:46, VANDY 4th-03:05.

Largest lead - Lipscomb by 14 2nd-08:21; Vanderbilt by 12 4th-02:13
 LIP led for 21:45. VANDY led for 17:33. Game was tied for 0:41.

Score tied - 2 times; Lead changed - 4 times

Official Basketball Box Score -- Game Totals -- First Half Statistics
 Lipscomb vs Vanderbilt
 12/28/2017 7 PM at Nashville, Tenn. (Memorial Gym)



Lipscomb 45 • 3-11

##	Player		Total		3-Ptr	FT-FTA	Rebounds			PF	TP	A	TO	Blk	Stl	Min
			FG-FGA	FG-FGA	FG-FGA		Off	Def	Tot							
02	POTTS,KENNEDY	g	4-6	4-6	0-0	0-0	0	4	4	0	12	0	1	0	0	19
04	KMEC,EMILY	f	4-6	3-5	0-0	0-0	0	0	0	0	11	0	0	2	2	14
15	RAU,LAUREN	g	1-4	0-2	3-4	0-0	0	1	1	1	5	6	3	0	0	19
20	CLARK,TAYLOR	g	0-1	0-0	0-0	0-0	1	1	2	2	0	0	0	0	0	10
22	CAGLE,LOREN	g	5-13	3-5	0-0	0-0	0	1	1	2	13	4	1	1	1	20
00	JONES,LOSHAVEON		1-2	0-0	2-2	0-0	3	1	4	2	4	0	0	1	1	10
03	LOVELADY,MEREDITH		0-2	0-2	0-0	0-0	1	0	1	0	0	0	0	0	0	6
05	SHORT,CARLEIGH		0-0	0-0	0-0	0-0	0	1	1	1	0	0	0	0	0	1
12	BROUGHTON,AURIANA		0-0	0-0	0-0	0-0	0	0	0	0	0	0	0	0	0	1
TEAM							1	1	2	0		0				
Totals			15-34	10-20	5-6		6	10	16	8	45	10	5	4	4	100

FG %	1st Qtr	9-17	52.9%	2nd Qtr	6-17	35.3%	Half:	15-34	44.1%
3FG %	1st Qtr	7-12	58.3%	2nd Qtr	3-8	37.5%	Half:	10-20	50.0%
FT %	1st Qtr	2-2	100.0%	2nd Qtr	3-4	75.0%	Half:	5-6	83.3%

Vanderbilt 41 • 4-10

##	Player		Total		3-Ptr	FT-FTA	Rebounds			PF	TP	A	TO	Blk	Stl	Min
			FG-FGA	FG-FGA	FG-FGA		Off	Def	Tot							
00	OVERBECK,KAYLA	g	1-3	0-0	0-0	0-0	0	6	6	1	2	1	1	0	0	10
02	HALL,CHELISIE	g	4-10	0-0	0-1	0-1	0	1	1	1	8	1	1	0	0	18
03	BELL,RACHEL	g	3-4	2-3	0-0	0-0	1	1	2	0	8	1	1	0	0	9
24	NEWBY,AUTUMN	f	3-3	0-0	4-4	0-0	2	2	4	0	10	2	1	1	0	11
33	REED,CHRISTA	g	1-2	1-1	0-0	0-0	0	0	0	1	3	0	0	0	1	17
10	WALKER,CIERRA		0-1	0-0	0-0	0-0	0	0	0	0	0	0	1	0	0	7
12	DANCY,MYKA		1-1	0-0	0-0	0-0	0	0	0	0	2	0	0	0	0	11
21	WHALEN,ERIN		1-3	0-1	2-2	0-0	1	1	2	0	4	1	0	0	1	5
30	CARTER,LEALEA		1-3	0-0	0-0	0-0	0	1	1	0	2	3	2	0	0	6
31	EJIOFOR,BLESSING		1-4	0-0	0-0	0-0	4	1	5	2	2	0	1	0	0	6
TEAM							1	1	2	0		0				
Totals			16-34	3-5	6-7		9	14	23	5	41	9	8	1	2	100

FG %	1st Qtr	8-20	40.0%	2nd Qtr	8-14	57.1%	Half:	16-34	47.1%
3FG %	1st Qtr	1-1	100.0%	2nd Qtr	2-4	50.0%	Half:	3-5	60.0%
FT %	1st Qtr	0-1	00.0%	2nd Qtr	6-6	100.0%	Half:	6-7	85.7%

Officials: R:Meadow Overstreet, U1:Eric Baker, U2:Katie Lukanich
 Technical Fouls: Lipscomb- None. Vanderbilt- None.

Score by periods	1st	2nd	3rd	4th	Total
Lipscomb	27	18	15	22	82
Vanderbilt	17	24	26	25	92

Points	In Paint	Off T/O	2nd Chance	Fast Break	Bench
LIP	8	9	9	0	4
	20	4	8	8	10

Last FG - LIP 2nd-03:43, VANDY 2nd-00:52.
 LIP led for 17:31. VANDY led for 2:00. Game was tied for 0:28.

Score tied - 1 times
 Lead changed - 3 times

Lipscomb vs Vanderbilt
12/28/2017; 7 PM at Nashville, Tenn. (Memorial Gym)
Period 1 Play-By-Play



VISITORS: Lipscomb	Time	Score	Margin	HOME: Vanderbilt
	09:46	2-0	H 2	GOOD! LAYUP by NEWBY,AUTUMN [PNT]
	09:46			ASSIST by OVERBECK,KAYLA
TURNOVER by RAU,LAUREN	09:22			
	08:58			MISSED JUMPER by HALL,CHELSIE
REBOUND (DEF) by POTTS,KENNEDY	08:58			
GOOD! LAYUP by CAGLE,LOREN [PNT]	08:49	2-2	T	
	08:35	4-2	H 2	GOOD! JUMPER by BELL,RACHEL
GOOD! 3PTR by CAGLE,LOREN	08:11	4-5	V 1	
ASSIST by RAU,LAUREN	08:11			
	07:48	7-5	H 2	GOOD! 3PTR by REED,CHRISTA
	07:48			ASSIST by NEWBY,AUTUMN
MISSED 3PTR by KMEC,EMILY	07:38			
REBOUND (OFF) by TEAM	07:38			
	07:36			SUB IN: WALKER,CIERRA
	07:36			SUB OUT: BELL,RACHEL
MISSED JUMPER by RAU,LAUREN	07:32			
	07:32			REBOUND (DEF) by TEAM
	07:18			MISSED JUMPER by OVERBECK,KAYLA
BLOCK by KMEC,EMILY	07:18			
REBOUND (DEF) by CAGLE,LOREN	07:16			
GOOD! 3PTR by POTTS,KENNEDY	07:09	7-8	V 1	
ASSIST by CAGLE,LOREN	07:09			
	06:55			MISSED JUMPER by HALL,CHELSIE
REBOUND (DEF) by CLARK,TAYLOR	06:55			
MISSED 3PTR by POTTS,KENNEDY	06:49			
REBOUND (OFF) by CLARK,TAYLOR	06:49			
GOOD! JUMPER by KMEC,EMILY	06:35	7-10	V 3	
	06:15			TURNOVER by WALKER,CIERRA
STEAL by KMEC,EMILY	06:14			
GOOD! 3PTR by KMEC,EMILY	06:06	7-13	V 6	
ASSIST by RAU,LAUREN	06:06			
	05:43			MISSED JUMPER by WALKER,CIERRA
REBOUND (DEF) by POTTS,KENNEDY	05:43			
GOOD! 3PTR by KMEC,EMILY	05:34	7-16	V 9	
ASSIST by RAU,LAUREN	05:34			
	05:31			TIMEOUT 30SEC
	05:31			TIMEOUT media
SUB IN: JONES,LOSHAVEON	05:31			
SUB OUT: CLARK,TAYLOR	05:31			
	05:31			SUB IN: EJIOFOR,BLESSING
	05:31			SUB IN: DANCY,MYKA
	05:31			SUB IN: CARTER,LEALEA
	05:31			SUB OUT: OVERBECK,KAYLA
	05:31			SUB OUT: WALKER,CIERRA
	05:31			SUB OUT: NEWBY,AUTUMN
	05:19			MISSED LAYUP by EJIOFOR,BLESSING
	05:19			REBOUND (OFF) by EJIOFOR,BLESSING
GOOD! 3PTR by KMEC,EMILY	05:05	9-16	V 7	GOOD! JUMPER by CARTER,LEALEA [PNT]
ASSIST by RAU,LAUREN	04:38	9-19	V 10	
	04:38			
	04:25			FOUL by EJIOFOR,BLESSING
	04:25			TURNOVER by EJIOFOR,BLESSING
SUB IN: LOVELADY,MEREDITH	04:25			
SUB OUT: KMEC,EMILY	04:25			
GOOD! 3PTR by POTTS,KENNEDY	04:18	9-22	V 13	
ASSIST by CAGLE,LOREN	04:18			
	03:54			MISSED JUMPER by HALL,CHELSIE
	03:54			REBOUND (OFF) by EJIOFOR,BLESSING
	03:51			MISSED JUMPER by EJIOFOR,BLESSING
REBOUND (DEF) by JONES,LOSHAVEON	03:51			
MISSED 3PTR by LOVELADY,MEREDITH	03:28			
REBOUND (OFF) by JONES,LOSHAVEON	03:28			
MISSED 3PTR by RAU,LAUREN	03:15			
	03:15			REBOUND (DEF) by EJIOFOR,BLESSING
	03:01			MISSED LAYUP by HALL,CHELSIE
	03:01			REBOUND (OFF) by EJIOFOR,BLESSING
	02:59			MISSED JUMPER by EJIOFOR,BLESSING
	02:59			REBOUND (OFF) by EJIOFOR,BLESSING
	02:56	11-22	V 11	GOOD! JUMPER by EJIOFOR,BLESSING

VISITORS: Lipscomb	Time	Score	Margin	HOME: Vanderbilt
	02:48			FOUL by EJIOFOR,BLESSING
GOOD! FT by RAU,LAUREN	02:48	11-23	V 12	
GOOD! FT by RAU,LAUREN	02:48	11-24	V 13	
SUB IN: SHORT,CARLEIGH	02:48			
SUB IN: BROUGHTON,AURIANA	02:48			
SUB OUT: POTTS,KENNEDY	02:48			
SUB OUT: RAU,LAUREN	02:48			
	02:48			SUB IN: OVERBECK,KAYLA
	02:48			SUB OUT: CARTER,LEALEA
	02:39			MISSED JUMPER by CARTER,LEALEA
BLOCK by JONES,LOSHAVEON	02:39			
	02:36			REBOUND (OFF) by TEAM
	02:31			MISSED JUMPER by HALL,CHELSIE
REBOUND (DEF) by SHORT,CARLEIGH	02:31			
MISSED JUMPER by CAGLE,LOREN	02:05			
	02:05			REBOUND (DEF) by CARTER,LEALEA
	01:54			TURNOVER by CARTER,LEALEA
STEAL by CAGLE,LOREN	01:54			
TURNOVER by CAGLE,LOREN	01:45			
	01:44			STEAL by REED,CHRISTA
	01:38	13-24	V 11	GOOD! JUMPER by DANCY,MYKA
	01:38			ASSIST by CARTER,LEALEA
MISSED LAYUP by CAGLE,LOREN	01:25			
	01:25			REBOUND (DEF) by OVERBECK,KAYLA
	01:20	15-24	V 9	GOOD! LAYUP by HALL,CHELSIE [FB/PNT]
	01:20			ASSIST by CARTER,LEALEA
FOUL by SHORT,CARLEIGH	01:20			
	01:20			MISSED FT by HALL,CHELSIE
REBOUND (DEF) by POTTS,KENNEDY	01:20			
SUB IN: KMEC,EMILY	01:20			
SUB IN: POTTS,KENNEDY	01:20			
SUB IN: RAU,LAUREN	01:20			
SUB IN: CLARK,TAYLOR	01:20			
SUB OUT: SHORT,CARLEIGH	01:20			
SUB OUT: LOVELADY,MEREDITH	01:20			
SUB OUT: BROUGHTON,AURIANA	01:20			
SUB OUT: JONES,LOSHAVEON	01:20			
GOOD! 3PTR by POTTS,KENNEDY	01:01	15-27	V 12	
ASSIST by CAGLE,LOREN	01:01			
	00:46			MISSED LAYUP by OVERBECK,KAYLA
REBOUND (DEF) by RAU,LAUREN	00:46			
MISSED 3PTR by POTTS,KENNEDY	00:37			
	00:37			REBOUND (DEF) by OVERBECK,KAYLA
FOUL by CLARK,TAYLOR	00:34			
	00:07	17-27	V 10	GOOD! JUMPER by HALL,CHELSIE [PNT]

Lipscomb 27, Vanderbilt 17

Period 1-only	In Paint	Off T/O	2nd Chance	Fast Break	Bench	
LIP	2	6	2	0	0	Score tied - 2 times
VANDY	8	2	4	2	6	Lead changed - 4 times

Lipscomb vs Vanderbilt
12/28/2017; 7 PM at Nashville, Tenn. (Memorial Gym)
Period 2 Play-By-Play



VISITORS: Lipscomb	Time	Score	Margin	HOME: Vanderbilt
	10:00			SUB IN: CARTER,LEALEA
MISSED LAYUP by CLARK,TAYLOR	09:46			
	09:46			REBOUND (DEF) by OVERBECK,KAYLA
	09:35			MISSED JUMPER by CARTER,LEALEA
BLOCK by KMEC,EMILY	09:35			
REBOUND (DEF) by TEAM	09:31			
GOOD! 3PTR by CAGLE,LOREN	09:19	17-30	V 13	
ASSIST by RAU,LAUREN	09:19			
	09:03			TURNOVER by HALL,CHELSIE
MISSED 3PTR by KMEC,EMILY	08:46			
	08:46			REBOUND (DEF) by OVERBECK,KAYLA
FOUL by CLARK,TAYLOR	08:43			
SUB IN: JONES,LOSHAVEON	08:43			
SUB OUT: CLARK,TAYLOR	08:43			
	08:34			FOUL by OVERBECK,KAYLA
	08:34			TURNOVER by OVERBECK,KAYLA
	08:21			FOUL by HALL,CHELSIE
GOOD! FT by RAU,LAUREN	08:21	17-31	V 14	
MISSED FT by RAU,LAUREN	08:21			
	08:15	19-31	V 12	REBOUND (DEF) by HALL,CHELSIE
MISSED JUMPER by JONES,LOSHAVEON	07:59			GOOD! LAYUP by HALL,CHELSIE [FB/PNT]
	07:59			REBOUND (DEF) by OVERBECK,KAYLA
FOUL by RAU,LAUREN	07:43			
	07:35			TURNOVER by CARTER,LEALEA
STEAL by JONES,LOSHAVEON	07:29			
GOOD! LAYUP by CAGLE,LOREN [PNT]	07:26	19-33	V 14	
	07:02	21-33	V 12	GOOD! LAYUP by OVERBECK,KAYLA [PNT]
	07:02			ASSIST by CARTER,LEALEA
MISSED 3PTR by CAGLE,LOREN	06:45			
	06:45			REBOUND (DEF) by OVERBECK,KAYLA
SUB IN: LOVELADY,MEREDITH	06:34			
SUB OUT: RAU,LAUREN	06:34			
	06:34			SUB OUT: OVERBECK,KAYLA
FOUL by JONES,LOSHAVEON	06:32			
	06:32	22-33	V 11	GOOD! FT by NEWBY,AUTUMN
	06:32	23-33	V 10	GOOD! FT by NEWBY,AUTUMN
SUB IN: RAU,LAUREN	06:32			
SUB OUT: KMEC,EMILY	06:32			
	06:32			SUB OUT: CARTER,LEALEA
MISSED 3PTR by LOVELADY,MEREDITH	06:21			
REBOUND (OFF) by JONES,LOSHAVEON	06:21			
GOOD! 3PTR by CAGLE,LOREN	05:54	23-36	V 13	
ASSIST by RAU,LAUREN	05:54			
	05:36			MISSED LAYUP by REED,CHRISTA
BLOCK by CAGLE,LOREN	05:36			
	05:34			REBOUND (OFF) by NEWBY,AUTUMN
	05:32	25-36	V 11	GOOD! JUMPER by NEWBY,AUTUMN [PNT]
GOOD! 3PTR by POTTS,KENNEDY	05:24	25-39	V 14	
ASSIST by CAGLE,LOREN	05:24			
	05:12	28-39	V 11	GOOD! 3PTR by BELL,RACHEL
	05:12			ASSIST by NEWBY,AUTUMN
MISSED JUMPER by CAGLE,LOREN	05:03			
REBOUND (OFF) by JONES,LOSHAVEON	05:03			
GOOD! LAYUP by JONES,LOSHAVEON [PNT]	05:01	28-41	V 13	
	04:50	31-41	V 10	GOOD! 3PTR by BELL,RACHEL
	04:50			ASSIST by HALL,CHELSIE
TIMEOUT 30SEC	04:48			
TIMEOUT media	04:48			
	04:48			SUB IN: WHALEN,ERIN
	04:48			SUB IN: WALKER,CIERRA
	04:48			SUB OUT: HALL,CHELSIE
MISSED LAYUP by CAGLE,LOREN	04:33			
	04:33			BLOCK by NEWBY,AUTUMN
	04:31			REBOUND (DEF) by NEWBY,AUTUMN
	04:27			MISSED 3PTR by WHALEN,ERIN
	04:27			REBOUND (OFF) by BELL,RACHEL
FOUL by CAGLE,LOREN	04:19			
	04:17			MISSED JUMPER by WHALEN,ERIN

VISITORS: Lipscomb	Time	Score	Margin	HOME: Vanderbilt
REBOUND (DEF) by POTTS,KENNEDY	04:17			
MISSED 3PTR by CAGLE,LOREN	04:00			
REBOUND (OFF) by LOVELADY,MEREDITH	04:00			
GOOD! JUMPER by RAU,LAUREN [PNT]	03:43	31-43	V 12	
	03:30			TURNOVER by BELL,RACHEL
SUB IN: KMEC,EMILY	03:30			
SUB OUT: LOVELADY,MEREDITH	03:30			
TURNOVER by RAU,LAUREN	03:14			
	03:00			MISSED 3PTR by BELL,RACHEL
	03:00			REBOUND (OFF) by WHALEN,ERIN
	02:55	33-43	V 10	GOOD! JUMPER by NEWBY,AUTUMN [PNT]
	02:55			ASSIST by WHALEN,ERIN
	02:35			FOUL by REED,CHRISTA
GOOD! FT by JONES,LOSHAVEON	02:35	33-44	V 11	
GOOD! FT by JONES,LOSHAVEON	02:35	33-45	V 12	
	02:35			SUB IN: HALL,CHELSIE
	02:35			SUB OUT: REED,CHRISTA
FOUL by JONES,LOSHAVEON	02:22			
	02:22	34-45	V 11	GOOD! FT by NEWBY,AUTUMN
	02:22	35-45	V 10	GOOD! FT by NEWBY,AUTUMN
SUB IN: CLARK,TAYLOR	02:22			
SUB OUT: JONES,LOSHAVEON	02:22			
MISSED JUMPER by CAGLE,LOREN	02:08			
	02:08			REBOUND (DEF) by NEWBY,AUTUMN
	02:00	37-45	V 8	GOOD! LAYUP by HALL,CHELSIE [FB/PNT]
MISSED 3PTR by RAU,LAUREN	01:28			
	01:28			REBOUND (DEF) by WHALEN,ERIN
FOUL by CAGLE,LOREN	01:19			
	01:19	38-45	V 7	GOOD! FT by WHALEN,ERIN
	01:19	39-45	V 6	GOOD! FT by WHALEN,ERIN
MISSED JUMPER by CAGLE,LOREN	00:58			
	00:58			REBOUND (DEF) by BELL,RACHEL
	00:52	41-45	V 4	GOOD! JUMPER by WHALEN,ERIN [FB/PNT]
	00:52			ASSIST by BELL,RACHEL
TURNOVER by RAU,LAUREN	00:40			
	00:34			MISSED LAYUP by HALL,CHELSIE
	00:34			REBOUND (OFF) by NEWBY,AUTUMN
	00:29			TURNOVER by NEWBY,AUTUMN
STEAL by KMEC,EMILY	00:29			
TURNOVER by POTTS,KENNEDY	00:04			
	00:03			STEAL by WHALEN,ERIN

Lipscomb 45, Vanderbilt 41

Period 2-only	In Paint	Off T/O	2nd Chance	Fast Break	Bench	
LIP	6	3	7	0	4	Score tied - 0 times
VANDY	12	2	4	6	4	Lead changed - 0 times

Official Basketball Box Score -- Game Totals -- Second Half Statistics
 Lipscomb vs Vanderbilt
 12/28/2017 7 PM at Nashville, Tenn. (Memorial Gym)



Lipscomb 37 • 3-11

##	Player	g	Total		3-Ptr	Rebounds			PF	TP	A	TO	Blk	Stl	Min
			FG-FGA	FG-FGA	FT-FTA	Off	Def	Tot							
02	POTT S,KENNEDY		1-1	1-1	0-0	0	0	0	4	3	0	0	0	0	17
04	KMEC,EMILY	f	2-7	2-6	0-0	1	2	3	1	6	0	2	1	1	16
15	RAU,LAUREN	g	2-8	1-1	2-2	0	1	1	4	7	3	3	0	0	16
20	CLARK,TAYLOR	g	1-2	0-0	1-2	3	1	4	2	3	0	1	0	0	11
22	CAGLE,LOREN	g	4-7	1-3	4-5	0	2	2	1	13	3	0	0	0	20
00	JONES,LOSHAVEON		2-3	0-0	0-0	1	0	1	1	4	0	0	0	0	9
03	LOVELADY,MEREDITH H		0-1	0-1	0-0	2	0	2	1	0	0	1	0	1	4
05	SHORT,CARLEIGH		0-0	0-0	1-2	0	0	0	0	1	0	1	0	1	4
12	BROUGHTON,AURIANA		0-1	0-1	0-0	0	0	0	1	0	0	0	0	0	3
TEAM						0	0	0	0		0				
Totals			12-30	5-13	8-11	7	6	13	15	37	6	8	1	3	100

FG % 3rd Qtr 4-14 28.6% 4th Qtr 8-16 50.0% Half: 12-30 40.0%
 3FG % 3rd Qtr 2-7 28.6% 4th Qtr 3-6 50.0% Half: 5-13 50.0%
 FT % 3rd Qtr 5-7 71.4% 4th Qtr 3-4 75.0% Half: 8-11 72.7%

Vanderbilt 51 • 4-10

##	Player	g	Total		3-Ptr	Rebounds			PF	TP	A	TO	Blk	Stl	Min
			FG-FGA	FG-FGA	FT-FTA	Off	Def	Tot							
00	OVERBECK,KAYLA		5-8	0-0	3-3	4	3	7	0	13	0	1	1	2	17
02	HALL,CHELSIE	g	3-8	0-1	3-3	1	2	3	2	9	2	1	0	0	18
03	BELL,RACHEL	g	1-1	0-0	0-0	0	0	0	1	2	0	1	0	0	5
24	NEWBY,AUT UMN	f	2-2	0-0	2-5	0	3	3	3	6	3	1	1	0	14
33	REED,CHRISTA	g	3-4	1-1	5-6	1	0	1	1	12	1	3	3	0	20
10	WALKER,CIERRA		0-2	0-1	3-4	0	1	1	0	3	3	0	0	2	14
12	DANCY,MYKA		0-0	0-0	0-0	0	0	0	0	0	0	0	0	0	0
21	WHALEN,ERIN		2-4	2-2	0-0	0	0	0	0	6	0	0	0	0	8
30	CARTER,LEALEA		0-0	0-0	0-0	0	1	1	1	0	1	0	0	0	4
31	EJIOFOR,BLESSING		0-0	0-0	0-0	0	0	0	0	0	0	0	0	0	0
TEAM						3	2	5	0		0				
Totals			16-29	3-5	16-21	9	12	21	8	51	10	7	5	4	100

FG % 3rd Qtr 9-14 64.3% 4th Qtr 7-15 46.7% Half: 16-29 55.2%
 3FG % 3rd Qtr 3-4 75.0% 4th Qtr 0-1 00.0% Half: 3-5 60.0%
 FT % 3rd Qtr 5-6 83.3% 4th Qtr 11-15 73.3% Half: 16-21 76.2%

Officials: R:Meadow Overstreet, U1:Eric Baker, U2:Katie Lukanich
 Technical Fouls: Lipscomb- None. Vanderbilt- None.

Score by periods	1st	2nd	3rd	4th	Total
Lipscomb	27	18	15	22	82
Vanderbilt	17	24	26	25	92

Points	In Paint	Off T/O	2nd Chance	Fast Break	Bench
LIP	14	6	7	2	5
VANDY	22	14	17	0	9

Last FG - LIP 4th-00:46, VANDY 4th-03:05.
 LIP led for 4:14. VANDY led for 15:33. Game was tied for 0:13.

Score tied - 1 times
 Lead changed - 1 times

Lipscomb vs Vanderbilt
12/28/2017; 7 PM at Nashville, Tenn. (Memorial Gym)
Period 3 Play-By-Play



VISITORS: Lipscomb	Time	Score	Margin	HOME: Vanderbilt
	09:51			TURNOVER by REED,CHRISTA
STEAL by KMEC,EMILY	09:50			
GOOD! LAYUP by RAU,LAUREN [PNT]	09:38	41-47	V 6	
	09:21			MISSED 3PTR by HALL,CHELSIE
	09:21			REBOUND (OFF) by TEAM
	09:10	43-47	V 4	GOOD! LAYUP by REED,CHRISTA [PNT]
MISSED JUMPER by RAU,LAUREN	08:44			
	08:44			REBOUND (DEF) by NEWBY,AUTUMN
	08:35	45-47	V 2	GOOD! JUMPER by HALL,CHELSIE [PNT]
	08:18			SUB IN: CARTER,LEALEA
	08:18			SUB OUT: BELL,RACHEL
GOOD! 3PTR by CAGLE,LOREN	08:13	45-50	V 5	
ASSIST by RAU,LAUREN	08:13			
	07:53			TURNOVER by OVERBECK,KAYLA
MISSED JUMPER by CLARK,TAYLOR	07:37			
	07:37			BLOCK by REED,CHRISTA
	07:35			REBOUND (DEF) by NEWBY,AUTUMN
FOUL by CAGLE,LOREN	07:31			
SUB IN: JONES,LOSHAVEON	07:31			
SUB OUT: CLARK,TAYLOR	07:31			
	07:29	47-50	V 3	GOOD! JUMPER by HALL,CHELSIE
	07:29			ASSIST by REED,CHRISTA
MISSED 3PTR by KMEC,EMILY	07:04			
REBOUND (OFF) by JONES,LOSHAVEON	07:04			
TURNOVER by RAU,LAUREN	06:52			
	06:50			STEAL by OVERBECK,KAYLA
FOUL by KMEC,EMILY	06:44			
	06:44	48-50	V 2	GOOD! FT by OVERBECK,KAYLA
	06:44	49-50	V 1	GOOD! FT by OVERBECK,KAYLA
MISSED 3PTR by CAGLE,LOREN	06:32			
	06:32			REBOUND (DEF) by TEAM
	06:16			TURNOVER by REED,CHRISTA
SUB IN: LOVELADY,MEREDITH	06:16			
SUB IN: BROUGHTON,AURIANA	06:16			
SUB OUT: POTTS,KENNEDY	06:16			
SUB OUT: KMEC,EMILY	06:16			
STEAL by LOVELADY,MEREDITH	06:15			
	06:05			FOUL by CARTER,LEALEA
MISSED 3PTR by BROUGHTON,AURIANA	05:59			
	05:59			REBOUND (DEF) by HALL,CHELSIE
	05:46	51-50	H 1	GOOD! LAYUP by NEWBY,AUTUMN [PNT]
	05:46			ASSIST by CARTER,LEALEA
FOUL by RAU,LAUREN	05:46			
	05:46			MISSED FT by NEWBY,AUTUMN
REBOUND (DEF) by CLARK,TAYLOR	05:46			
SUB IN: CLARK,TAYLOR	05:46			
SUB IN: SHORT,CARLEIGH	05:46			
SUB OUT: RAU,LAUREN	05:46			
SUB OUT: JONES,LOSHAVEON	05:46			
MISSED 3PTR by LOVELADY,MEREDITH	05:35			
REBOUND (OFF) by LOVELADY,MEREDITH	05:35			
	05:15			FOUL by NEWBY,AUTUMN
MISSED FT by CAGLE,LOREN	05:15			
REBOUND (DEADB) by TEAM	05:15			
GOOD! FT by CAGLE,LOREN	05:15	51-51	T	
	05:15			SUB IN: WALKER,CIERRA
	05:15			SUB OUT: OVERBECK,KAYLA
FOUL by BROUGHTON,AURIANA	05:02			
	05:02	52-51	H 1	GOOD! FT by HALL,CHELSIE
	05:02	53-51	H 2	GOOD! FT by HALL,CHELSIE
MISSED LAYUP by CAGLE,LOREN	04:53			
	04:53			BLOCK by NEWBY,AUTUMN
	04:51			REBOUND (DEF) by CARTER,LEALEA
	04:45			MISSED JUMPER by WALKER,CIERRA
REBOUND (DEF) by CAGLE,LOREN	04:45			
TURNOVER by LOVELADY,MEREDITH	04:28			
	04:28			STEAL by WALKER,CIERRA
	04:28			TIMEOUT media
	04:28			SUB IN: WHALEN,ERIN

VISITORS: Lipscomb	Time	Score	Margin	HOME: Vanderbilt
	04:28			SUB OUT: CARTER,LEALEA
	04:13			MISSED LAYUP by HALL,CHELSIE
	04:13			REBOUND (OFF) by TEAM
SUB IN: RAU,LAUREN	04:11			
SUB IN: KMEC,EMILY	04:11			
SUB IN: POTTS,KENNEDY	04:11			
SUB OUT: LOVELADY,MEREDITH	04:11			
SUB OUT: BROUGHTON,AURIANA	04:11			
SUB OUT: SHORT,CARLEIGH	04:11			
	04:09	56-51	H 5	GOOD! 3PTR by WHALEN,ERIN
	04:09			ASSIST by WALKER,CIERRA
	03:39			FOUL by NEWBY,AUTUMN
GOOD! FT by CAGLE,LOREN	03:39	56-52	H 4	
GOOD! LAYUP by CAGLE,LOREN [PNT]	03:39	56-54	H 2	
	03:27	59-54	H 5	GOOD! 3PTR by WHALEN,ERIN
	03:27			ASSIST by NEWBY,AUTUMN
GOOD! 3PTR by KMEC,EMILY	03:01	59-57	H 2	
ASSIST by CAGLE,LOREN	03:01			
	02:46			MISSED JUMPER by WHALEN,ERIN
REBOUND (DEF) by KMEC,EMILY	02:46			
MISSED 3PTR by KMEC,EMILY	02:36			
REBOUND (OFF) by CLARK,TAYLOR	02:36			
	02:17			SUB IN: OVERBECK,KAYLA
	02:17			SUB OUT: NEWBY,AUTUMN
TURNOVER by CLARK,TAYLOR	02:03			
	01:49	61-57	H 4	GOOD! LAYUP by OVERBECK,KAYLA [PNT]
	01:49			ASSIST by WALKER,CIERRA
MISSED JUMPER by RAU,LAUREN	01:32			
REBOUND (OFF) by KMEC,EMILY	01:32			
MISSED JUMPER by RAU,LAUREN	01:23			
	01:23			BLOCK by REED,CHRISTA
	01:21			REBOUND (DEF) by WALKER,CIERRA
	01:14	64-57	H 7	GOOD! 3PTR by REED,CHRISTA
	01:14			ASSIST by WALKER,CIERRA
	01:06			FOUL by HALL,CHELSIE
GOOD! FT by CAGLE,LOREN	01:06	64-58	H 6	
GOOD! FT by CAGLE,LOREN	01:06	64-59	H 5	
SUB IN: JONES,LOSHAVEON	01:06			
SUB IN: SHORT,CARLEIGH	01:06			
SUB OUT: RAU,LAUREN	01:06			
SUB OUT: CLARK,TAYLOR	01:06			
	00:57			MISSED JUMPER by HALL,CHELSIE
REBOUND (DEF) by KMEC,EMILY	00:57			
TURNOVER by KMEC,EMILY	00:26			
	00:05	66-59	H 7	GOOD! LAYUP by HALL,CHELSIE [PNT]
FOUL by POTTS,KENNEDY	00:05			
	00:05	67-59	H 8	GOOD! FT by HALL,CHELSIE
	00:02			FOUL by HALL,CHELSIE
GOOD! FT by SHORT,CARLEIGH	00:02	67-60	H 7	
MISSED FT by SHORT,CARLEIGH	00:02			
	00:02			REBOUND (DEF) by HALL,CHELSIE

Lipscomb 82, Vanderbilt 92

Period 3-only	In Paint	Off T/O	2nd Chance	Fast Break	Bench	
LIP	4	2	1	0	1	Score tied - 2 times
VANDY	10	10	5	0	6	Lead changed - 0 times

Lipscomb vs Vanderbilt
12/28/2017; 7 PM at Nashville, Tenn. (Memorial Gym)
Period 4 Play-By-Play



VISITORS: Lipscomb	Time	Score	Margin	HOME: Vanderbilt
SUB IN: SHORT,CARLEIGH	10:00			
SUB IN: JONES,LOSHAVEON	10:00			
SUB OUT: RAU,LAUREN	10:00			
SUB OUT: CLARK,TAYLOR	10:00			
	10:00			SUB IN: WHALEN,ERIN
	10:00			SUB IN: WALKER,CIERRA
	10:00			SUB OUT: BELL,RACHEL
	10:00			SUB OUT: NEWBY,AUTUMN
TURNOVER by SHORT,CARLEIGH	09:52			
	09:51			STEAL by WALKER,CIERRA
	09:39			TURNOVER by HALL,CHELSIE
STEAL by SHORT,CARLEIGH	09:38			
GOOD! LAYUP by CAGLE,LOREN [PNT]	09:29	67-62	H 5	
	09:09	69-62	H 7	GOOD! JUMPER by REED,CHRISTA [PNT]
TURNOVER by KMEC,EMILY	08:58			
SUB IN: RAU,LAUREN	08:58			
SUB OUT: SHORT,CARLEIGH	08:58			
	08:58			SUB IN: BELL,RACHEL
	08:58			SUB OUT: HALL,CHELSIE
	08:47			FOUL by REED,CHRISTA
	08:47			TURNOVER by REED,CHRISTA
MISSED JUMPER by JONES,LOSHAVEON	08:34			
	08:34			BLOCK by OVERBECK,KAYLA
	08:34			REBOUND (DEF) by OVERBECK,KAYLA
	08:26			TURNOVER by BELL,RACHEL
MISSED JUMPER by KMEC,EMILY	08:14			
	08:14			REBOUND (DEF) by TEAM
FOUL by POTTS,KENNEDY	08:06			
SUB IN: LOVELADY,MEREDITH	08:06			
SUB OUT: KMEC,EMILY	08:06			
	08:03			MISSED JUMPER by WHALEN,ERIN
	08:03			REBOUND (OFF) by OVERBECK,KAYLA
GOOD! JUMPER by JONES,LOSHAVEON [PNT]	07:32	71-62	H 9	GOOD! JUMPER by OVERBECK,KAYLA [PNT]
FOUL by POTTS,KENNEDY	07:20	71-64	H 7	
	07:20			MISSED FT by REED,CHRISTA
	07:20			REBOUND (DEADB) by TEAM
	07:20	72-64	H 8	GOOD! FT by REED,CHRISTA
	07:15			FOUL by BELL,RACHEL
GOOD! FT by RAU,LAUREN	07:15	72-65	H 7	
GOOD! FT by RAU,LAUREN	07:15	72-66	H 6	
	07:15			SUB IN: HALL,CHELSIE
	07:15			SUB OUT: WALKER,CIERRA
	07:04			MISSED LAYUP by OVERBECK,KAYLA
	07:04			REBOUND (OFF) by REED,CHRISTA
FOUL by LOVELADY,MEREDITH	07:03			
	07:00	74-66	H 8	GOOD! JUMPER by BELL,RACHEL
	07:00			ASSIST by HALL,CHELSIE
MISSED JUMPER by RAU,LAUREN	06:45			
REBOUND (OFF) by LOVELADY,MEREDITH	06:45			
TIMEOUT 30SEC	06:39			
TIMEOUT MEDIA	06:39			
GOOD! 3PTR by POTTS,KENNEDY	06:16	74-69	H 5	
ASSIST by CAGLE,LOREN	06:16			
	06:05			SUB IN: WALKER,CIERRA
	06:05			SUB OUT: BELL,RACHEL
	06:03			MISSED JUMPER by HALL,CHELSIE
	06:03			REBOUND (OFF) by OVERBECK,KAYLA
	05:59			MISSED JUMPER by OVERBECK,KAYLA
REBOUND (DEF) by RAU,LAUREN	05:59			
GOOD! LAYUP by JONES,LOSHAVEON [PNT]	05:49	74-71	H 3	
ASSIST by RAU,LAUREN	05:49			
	05:44			TIMEOUT 30SEC
	05:44			TIMEOUT MEDIA
SUB IN: KMEC,EMILY	05:44			
SUB OUT: LOVELADY,MEREDITH	05:44			
	05:44			SUB IN: NEWBY,AUTUMN
	05:44			SUB OUT: WHALEN,ERIN
	05:35	76-71	H 5	GOOD! LAYUP by OVERBECK,KAYLA [PNT]

VISITORS: Lipscomb	Time	Score	Margin	HOME: Vanderbilt
	05:35			ASSIST by NEWBY,AUTUMN
FOUL by JONES,LOSHAVEON	05:35			
	05:35	77-71	H 6	GOOD! FT by OVERBECK,KAYLA
MISSED 3PTR by CAGLE,LOREN	05:24			
	05:24			REBOUND (DEF) by OVERBECK,KAYLA
SUB IN: CLARK,TAYLOR	05:14			
SUB OUT: JONES,LOSHAVEON	05:14			
	04:59			MISSED JUMPER by OVERBECK,KAYLA
	04:59			REBOUND (OFF) by TEAM
FOUL by POTTS,KENNEDY	04:58			
	04:58	78-71	H 7	GOOD! FT by REED,CHRISTA
	04:58	79-71	H 8	GOOD! FT by REED,CHRISTA
	04:45			FOUL by NEWBY,AUTUMN
MISSED FT by CLARK,TAYLOR	04:45			
REBOUND (DEADB) by TEAM	04:45			
GOOD! FT by CLARK,TAYLOR	04:45	79-72	H 7	
	04:20			MISSED JUMPER by REED,CHRISTA
	04:20			REBOUND (OFF) by OVERBECK,KAYLA
	04:16	81-72	H 9	GOOD! LAYUP by OVERBECK,KAYLA [PNT]
MISSED JUMPER by RAU,LAUREN	04:07			
	04:07			REBOUND (DEF) by OVERBECK,KAYLA
SUB IN: JONES,LOSHAVEON	03:57			
SUB OUT: CLARK,TAYLOR	03:57			
	03:53			MISSED 3PTR by WALKER,CIERRA
	03:53			REBOUND (OFF) by OVERBECK,KAYLA
	03:33	83-72	H 11	GOOD! LAYUP by NEWBY,AUTUMN [PNT]
	03:33			ASSIST by HALL,CHELSIE
GOOD! 3PTR by KMEC,EMILY	03:24	83-75	H 8	
ASSIST by RAU,LAUREN	03:24			
TIMEOUT 30SEC	03:22			
	03:05	85-75	H 10	GOOD! JUMPER by OVERBECK,KAYLA [PNT]
	03:05			ASSIST by NEWBY,AUTUMN
SUB IN: CLARK,TAYLOR	02:54			
SUB OUT: JONES,LOSHAVEON	02:54			
MISSED 3PTR by KMEC,EMILY	02:38			
	02:38			BLOCK by REED,CHRISTA
REBOUND (OFF) by CLARK,TAYLOR	02:35			
MISSED LAYUP by RAU,LAUREN	02:32			
	02:32			REBOUND (DEF) by NEWBY,AUTUMN
FOUL by CLARK,TAYLOR	02:13			
	02:13	86-75	H 11	GOOD! FT by NEWBY,AUTUMN
	02:13	87-75	H 12	GOOD! FT by NEWBY,AUTUMN
GOOD! LAYUP by CAGLE,LOREN [FB/PNT]	02:06	87-77	H 10	
	01:48			TURNOVER by NEWBY,AUTUMN
GOOD! LAYUP by CLARK,TAYLOR [PNT]	01:39	87-79	H 8	
	01:23			TIMEOUT 30SEC
SUB IN: BROUGHTON,AURIANA	01:23			
SUB OUT: POTTS,KENNEDY	01:23			
	01:16			MISSED JUMPER by HALL,CHELSIE
BLOCK by KMEC,EMILY	01:16			
REBOUND (DEF) by CAGLE,LOREN	01:12			
MISSED 3PTR by KMEC,EMILY	01:09			
REBOUND (OFF) by CLARK,TAYLOR	01:09			
GOOD! 3PTR by RAU,LAUREN	00:46	87-82	H 5	
ASSIST by CAGLE,LOREN	00:46			
FOUL by RAU,LAUREN	00:30			
	00:30			MISSED FT by WALKER,CIERRA
	00:30			REBOUND (DEADB) by TEAM
	00:30	88-82	H 6	GOOD! FT by WALKER,CIERRA
SUB IN: POTTS,KENNEDY	00:30			
SUB OUT: BROUGHTON,AURIANA	00:30			
TURNOVER by RAU,LAUREN	00:18			
FOUL by RAU,LAUREN	00:17			
	00:17	89-82	H 7	GOOD! FT by REED,CHRISTA
	00:17	90-82	H 8	GOOD! FT by REED,CHRISTA
TIMEOUT TEAM	00:17			
TURNOVER by RAU,LAUREN	00:11			
	00:10			STEAL by OVERBECK,KAYLA
FOUL by RAU,LAUREN	00:10			
	00:10			MISSED FT by NEWBY,AUTUMN
	00:10			REBOUND (DEADB) by TEAM
	00:10			MISSED FT by NEWBY,AUTUMN
	00:10			REBOUND (OFF) by HALL,CHELSIE
SUB IN: BROUGHTON,AURIANA	00:10			
SUB IN: SHORT,CARLEIGH	00:10			

VISITORS: Lipscomb	Time	Score	Margin	HOME: Vanderbilt
SUB OUT: RAU,LAUREN	00:10			
SUB OUT: CAGLE,LOREN	00:10			
FOUL by CLARK,TAYLOR	00:07			
	00:07	91-82	H 9	GOOD! FT by WALKER,CIERRA
	00:07	92-82	H 10	GOOD! FT by WALKER,CIERRA

Lipscomb 82, Vanderbilt 92

Period 4-only	In Paint	Off T/O	2nd Chance	Fast Break	Bench	
LIP	10	4	6	2	4	Score tied - 0 times
VANDY	12	4	12	0	3	Lead changed - 0 times

Lipscomb vs Vanderbilt
12/28/2017; 7 PM at Nashville, Tenn. (Memorial Gym)
Scoring/Runs Reference



Period 1

Lipscomb	VRun	Score	Margin	HRun	Vanderbilt
		0-2	2		NEWBY LAYUP [P] - 09:46
08:49 - CAGLE LAYUP [P]	-	2-2	0		
		2-4	2		BELL JUMPER - 08:35
08:11 - CAGLE 3PTR	-	5-4	-1		
		5-7	2		REED 3PTR - 07:48
07:09 - POTTS 3PTR	-	8-7	-1		
06:35 - KMEC JUMPER	5-0	10-7	-3		
06:06 - KMEC 3PTR	8-0	13-7	-6		
05:34 - KMEC 3PTR	11-0	16-7	-9		
		16-9	-7		CARTER JUMPER [P] - 05:05
04:38 - KMEC 3PTR	-	19-9	-10		
04:18 - POTTS 3PTR	6-0	22-9	-13		
		22-11	-11		EJIOFOR JUMPER - 02:56
02:48 - RAU FT	-	23-11	-12		
02:48 - RAU FT	2-0	24-11	-13		
		24-13	-11		DANCY JUMPER - 01:38
		24-15	-9	4-0	HALL LAYUP [P] [F] - 01:20
01:01 - POTTS 3PTR	-	27-15	-12		
		27-17	-10		HALL JUMPER [P] - 00:07

Lipscomb vs Vanderbilt
12/28/2017; 7 PM at Nashville, Tenn. (Memorial Gym)
Scoring/Runs Reference



Period 2

Lipscomb	VRun	Score	Margin	HRun	Vanderbilt
09:19 - CAGLE 3PTR	-	30-17	-13		
08:21 - RAU FT	NaN-0	31-17	-14		
		31-19	-12		HALL LAYUP [P] [F] - 08:15
07:26 - CAGLE LAYUP [P]	-	33-19	-14		
		33-21	-12		OVERBECK LAYUP [P] - 07:02
		33-22	-11	3-0	NEWBY FT - 06:32
		33-23	-10	4-0	NEWBY FT - 06:32
05:54 - CAGLE 3PTR	-	36-23	-13		
		36-25	-11		NEWBY JUMPER [P] - 05:32
05:24 - POTTS 3PTR	-	39-25	-14		
		39-28	-11		BELL 3PTR - 05:12
05:01 - JONES LAYUP [P]	-	41-28	-13		
		41-31	-10		BELL 3PTR - 04:50
03:43 - RAU JUMPER [P]	-	43-31	-12		
		43-33	-10		NEWBY JUMPER [P] - 02:55
02:35 - JONES FT	-	44-33	-11		
02:35 - JONES FT	2-0	45-33	-12		
		45-34	-11		NEWBY FT - 02:22
		45-35	-10	2-0	NEWBY FT - 02:22
		45-37	-8	4-0	HALL LAYUP [P] [F] - 02:00
		45-38	-7	5-0	WHALEN FT - 01:19
		45-39	-6	6-0	WHALEN FT - 01:19
		45-41	-4	8-0	WHALEN JUMPER [P] [F] - 00:52

Lipscomb vs Vanderbilt
12/28/2017; 7 PM at Nashville, Tenn. (Memorial Gym)
Scoring/Runs Reference



Period 3

Lipscomb	VRun	Score	Margin	HRun	Vanderbilt
09:38 - RAU LAYUP [P]	-	47-41	-6		
		47-43	-4		REED LAYUP [P] - 09:10
		47-45	-2	4-0	HALL JUMPER [P] - 08:35
08:13 - CAGLE 3PTR	-	50-45	-5		
		50-47	-3		HALL JUMPER - 07:29
		50-48	-2	3-0	OVERBECK FT - 06:44
		50-49	-1	4-0	OVERBECK FT - 06:44
		50-51	1	6-0	NEWBY LAYUP [P] - 05:46
05:15 - CAGLE FT	-	51-51	0		
		51-52	1		HALL FT - 05:02
		51-53	2	2-0	HALL FT - 05:02
		51-56	5	5-0	WHALEN 3PTR - 04:09
03:39 - CAGLE FT	-	52-56	4		
03:39 - CAGLE LAYUP [P]	3-0	54-56	2		
		54-59	5		WHALEN 3PTR - 03:27
03:01 - KMEC 3PTR	-	57-59	2		
		57-61	4		OVERBECK LAYUP [P] - 01:49
		57-64	7	5-0	REED 3PTR - 01:14
01:06 - CAGLE FT	-	58-64	6		
01:06 - CAGLE FT	2-0	59-64	5		
		59-66	7		HALL LAYUP [P] - 00:05
		59-67	8	3-0	HALL FT - 00:05
00:02 - SHORT FT	-	60-67	7		

Lipscomb vs Vanderbilt
12/28/2017; 7 PM at Nashville, Tenn. (Memorial Gym)
Scoring/Runs Reference

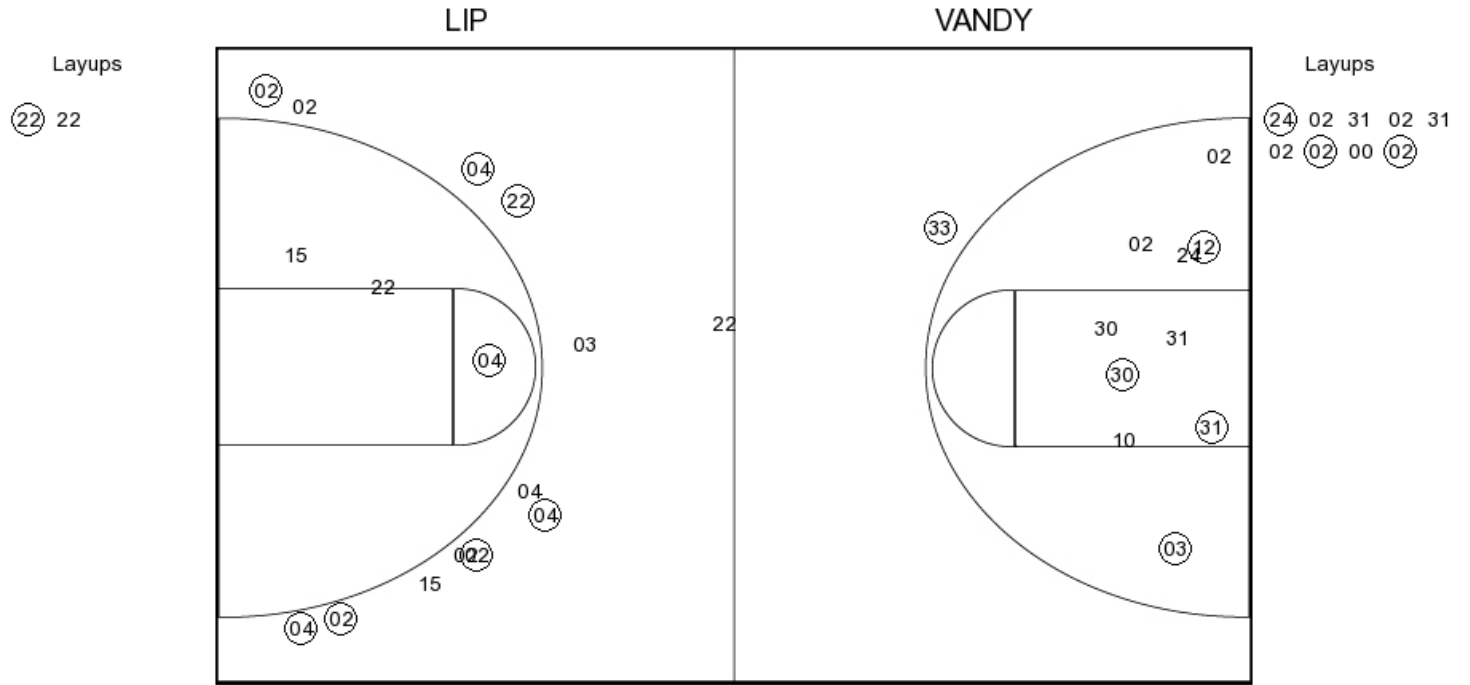


Period 4

Lipscomb	VRun	Score	Margin	HRun	Vanderbilt
09:29 - CAGLE LAYUP [P]	-	62-67	5		
		62-69	7		REED JUMPER [P] - 09:09
		62-71	9	4-0	OVERBECK JUMPER [P] - 08:00
07:32 - JONES JUMPER [P]	-	64-71	7		
		64-72	8		REED FT - 07:20
07:15 - RAU FT	-	65-72	7		
07:15 - RAU FT	2-0	66-72	6		
		66-74	8		BELL JUMPER - 07:00
06:16 - POTTS 3PTR	-	69-74	5		
05:49 - JONES LAYUP [P]	5-0	71-74	3		
		71-76	5		OVERBECK LAYUP [P] - 05:35
		71-77	6	3-0	OVERBECK FT - 05:35
		71-78	7	4-0	REED FT - 04:58
		71-79	8	5-0	REED FT - 04:58
04:45 - CLARK FT	-	72-79	7		
		72-81	9		OVERBECK LAYUP [P] - 04:16
		72-83	11	4-0	NEWBY LAYUP [P] - 03:33
03:24 - KMEC 3PTR	-	75-83	8		
		75-85	10		OVERBECK JUMPER [P] - 03:05
		75-86	11	3-0	NEWBY FT - 02:13
		75-87	12	4-0	NEWBY FT - 02:13
02:06 - CAGLE LAYUP [P] [F]	-	77-87	10		
01:39 - CLARK LAYUP [P]	4-0	79-87	8		
00:46 - RAU 3PTR	7-0	82-87	5		
		82-88	6		WALKER FT - 00:30
		82-89	7	2-0	REED FT - 00:17
		82-90	8	3-0	REED FT - 00:17
		82-91	9	4-0	WALKER FT - 00:07
		82-92	10	5-0	WALKER FT - 00:07



PERIOD 1



LIP PERIOD 1

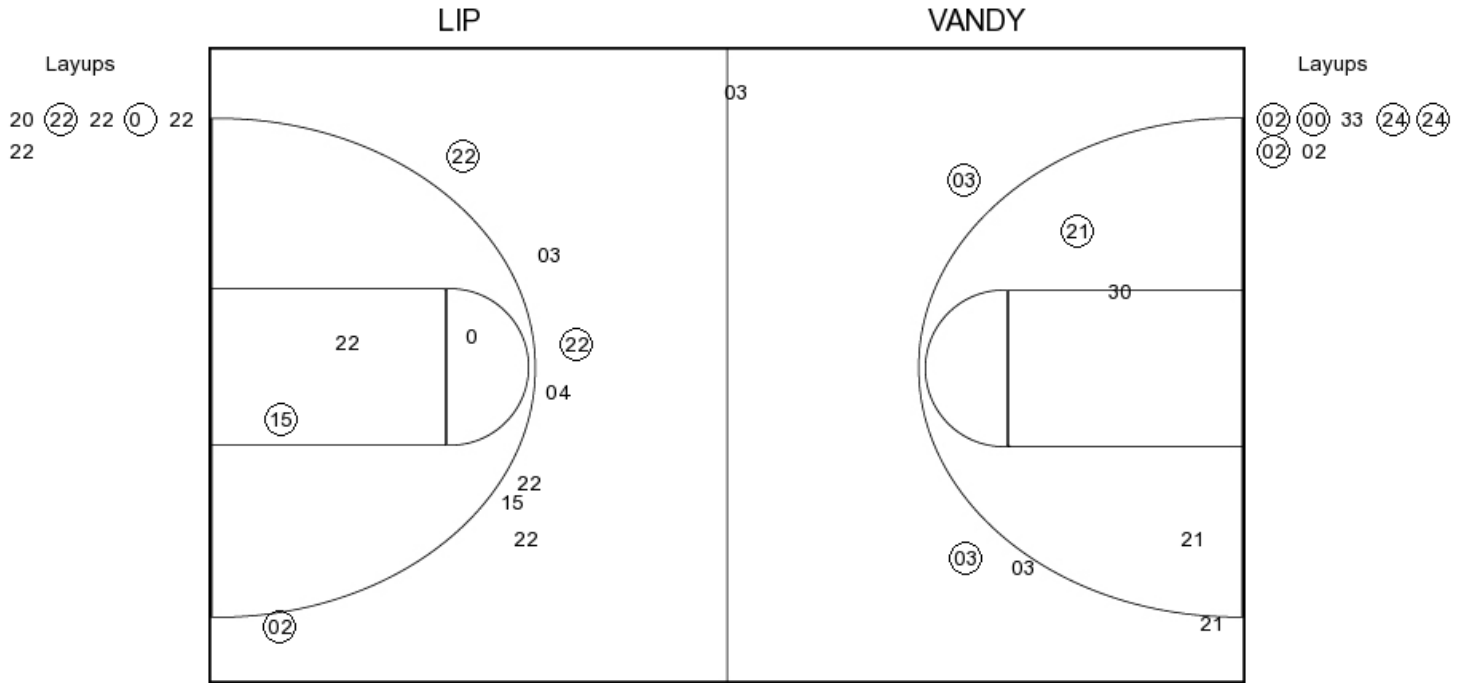
FG Made	15
FG Attempted	34
3PFG Made	10
3PFG Attempted	20

VANDY PERIOD 1

FG Made	16
FG Attempted	34
3PFG Made	3
3PFG Attempted	5



PERIOD 2



LIP PERIOD 2

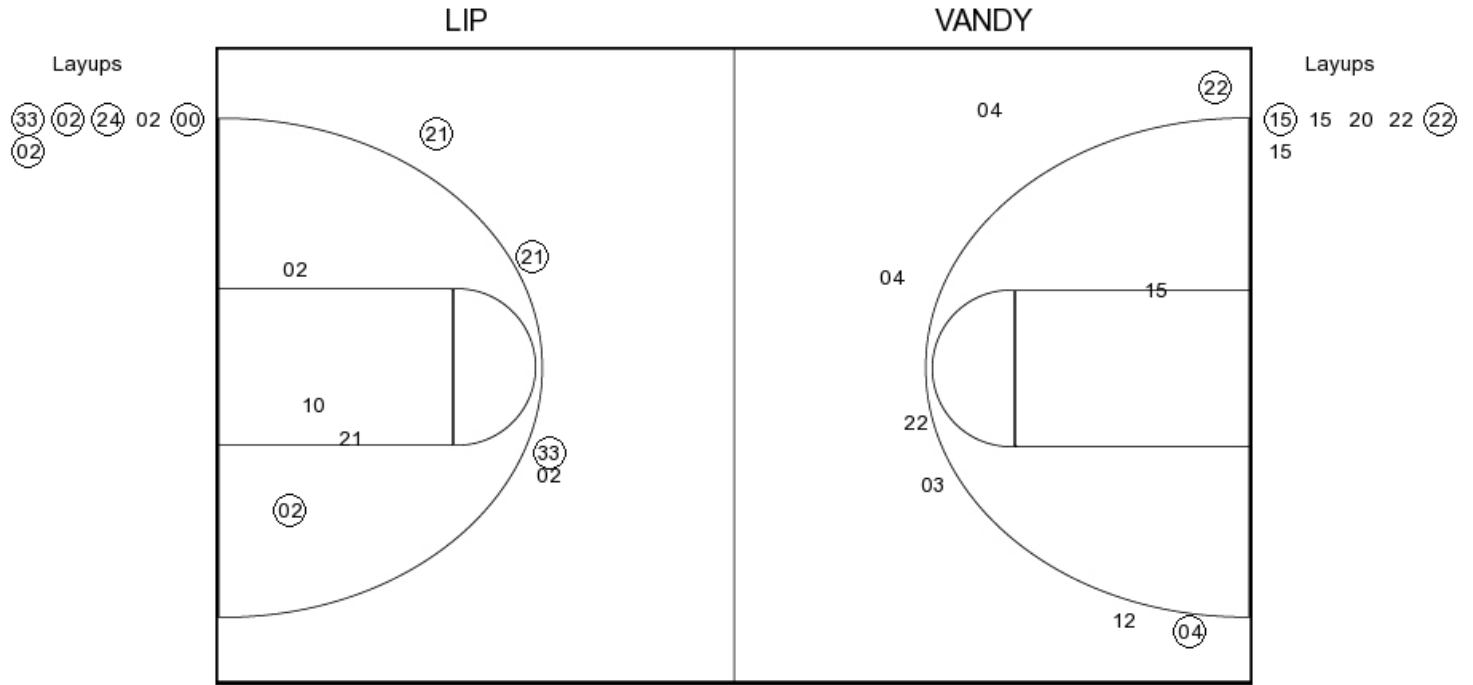
FG Made
 FG Attempted
 3PFG Made
 3PFG Attempted

VANDY PERIOD 2

FG Made
 FG Attempted
 3PFG Made
 3PFG Attempted



PERIOD 3



LIP PERIOD 3

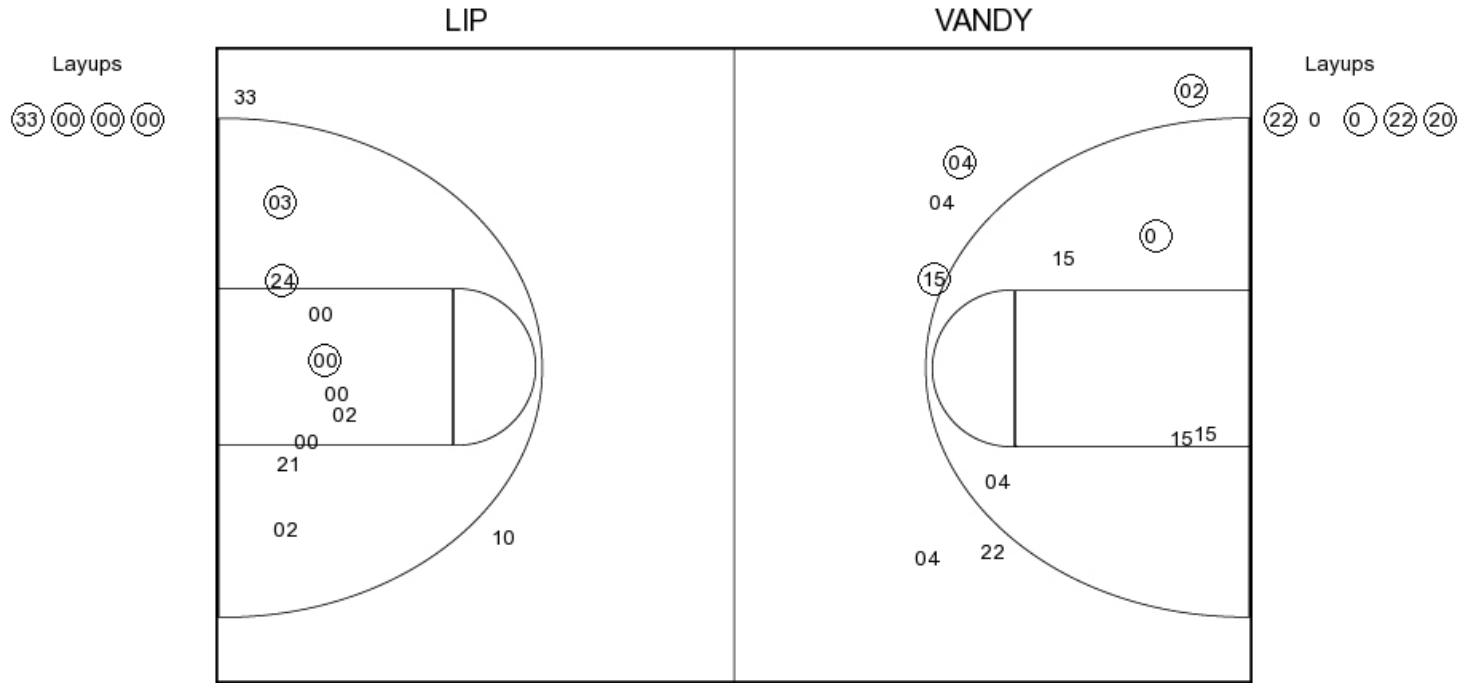
FG Made	12
FG Attempted	30
3PFG Made	5
3PFG Attempted	13

VANDY PERIOD 3

FG Made	16
FG Attempted	29
3PFG Made	3
3PFG Attempted	5



PERIOD 4



LIP PERIOD 4

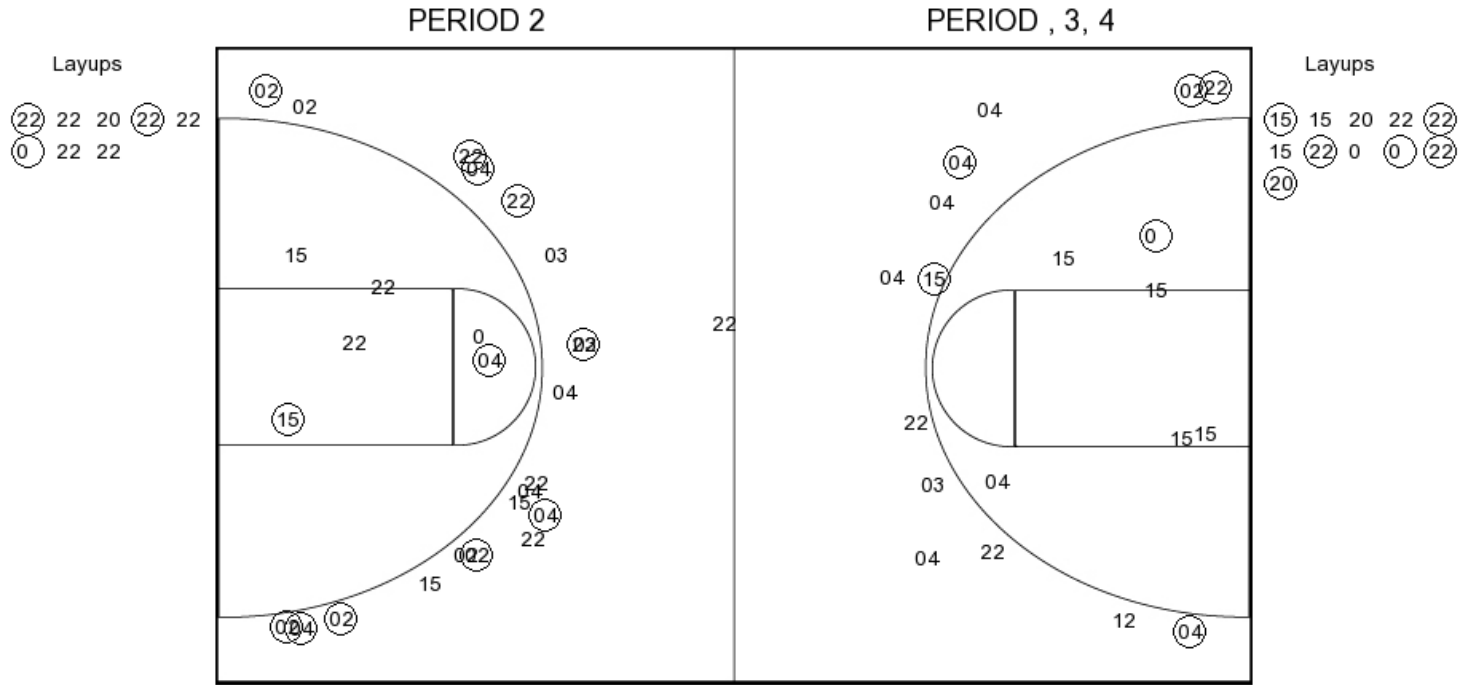
FG Made
 FG Attempted
 3PFG Made
 3PFG Attempted

VANDY PERIOD 4

FG Made
 FG Attempted
 3PFG Made
 3PFG Attempted



Lipscomb



LIP PERIOD 1

FG Made	15
FG Attempted	34
3PFG Made	10
3PFG Attempted	20

LIP PERIOD 2

FG Made	
FG Attempted	
3PFG Made	
3PFG Attempted	

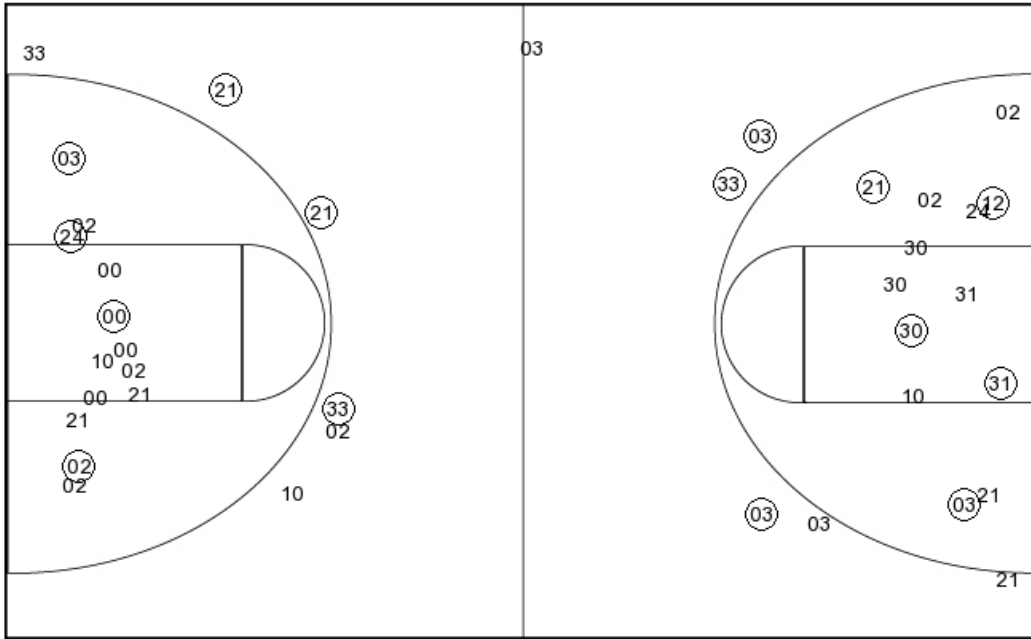


Vanderbilt

PERIOD , 3, 4

PERIOD 2

Layups
 (33) (02) (24) 02 (00)
 (02) (33) (00) (00) (00)



Layups
 (24) 02 31 02 31
 02 (02) 00 (02) (02)
 (00) 33 (24) (24) (02)
 02

VANDY PERIOD 1

FG Made	16
FG Attempted	34
3PFG Made	3
3PFG Attempted	5

VANDY PERIOD 2

FG Made	
FG Attempted	
3PFG Made	
3PFG Attempted	