

FINAL SCORE



Memphis

3-8

79



Vanderbilt

3-8

62

December 16, 2017 • Nashville, Tenn. (Memorial Gym)

FINAL STATISTICS

Official Basketball Box Score -- Game Totals -- Final Statistics
Memphis vs Vanderbilt
12/16/2017 6:00 PM at Nashville, Tenn. (Memorial Gym)



Memphis 79 - 3-8

##	Player		Total		3-Ptr		FT-FTA		Rebounds			PF	TP	A	TO	Blk	Stl	Min
			FG	F-GA	FG	F-GA	FT	F-TA	Off	Def	Tot							
01	WILDER-COCHRAN,B	g	0-5		0-1		2-4		9	5	14	3	2	4	2	0	4	23
05	ELMORE,BREA	g	8-15		3-7		4-6		2	3	5	1	23	1	2	0	2	30
10	CREIGHTON,CHEYENNE	f	7-16		1-1		2-2		2	11	13	4	17	1	7	0	0	30
15	BARNES,TAYLOR	g	7-16		1-7		5-8		2	1	3	1	20	2	1	0	1	27
25	PORTER,BRIANNA	f	7-8		0-0		0-0		5	0	5	4	14	2	4	0	0	26
00	STINSON,JADA		1-4		1-3		0-0		0	2	2	0	3	2	2	0	2	20
33	DAVIS,ALANA		0-1		0-0		0-0		0	1	1	1	0	0	0	0	0	5
35	JAMES,JASMINE		0-1		0-0		0-0		2	0	2	2	0	0	2	0	0	5
40	MILLER,DAMONIQUE		0-0		0-0		0-0		0	0	0	0	0	0	0	0	0	0
TEAM									0	3	3	0		1				
TOTALS			30-66		6-19		13-20		22	26	48	16	79	12	21	0	9	166

Deadball Rebounds: 3,0

FG %	1st Half: 16-38	42.1%	2nd Half: 14-28	50.0%	Game: 30-66	45.5%												
	1st Qtr 8-22	36.4%	2nd Qtr 8-16	50.0%	3rd Qtr 9-14	64.3%	4th Qtr 5-14	35.7%										
3FG %	1st Half: 3-11	27.3%	2nd Half: 3-8	37.5%	Game: 6-19	31.6%												
	1st Qtr 1-7	14.3%	2nd Qtr 2-4	50.0%	3rd Qtr 3-4	75.0%	4th Qtr 0-4	00.0%										
FT %	1st Half: 1-2	50.0%	2nd Half: 12-18	66.7%	Game: 13-20	65.0%												
	1st Qtr 0-0	0%	2nd Qtr 1-2	50.0%	3rd Qtr 3-4	75.0%	4th Qtr 9-14	64.3%										

Vanderbilt 62 - 3-8

##	Player		Total		3-Ptr		FT-FTA		Rebounds			PF	TP	A	TO	Blk	Stl	Min
			FG	F-GA	FG	F-GA	FT	F-TA	Off	Def	Tot							
00	OVERBECK,KAYLA	g	1-5		0-1		3-4		1	2	3	3	5	4	2	1	1	30
02	HALL,CHELSIE	g	3-8		0-0		0-0		0	1	1	4	6	2	3	0	2	31
03	BELL,RACHEL	g	4-7		2-4		1-2		1	0	1	1	11	0	2	0	1	27
33	REED,CHRISTA	g	5-11		3-4		0-0		3	3	6	4	13	1	5	0	0	26
35	CLEMONS-GREEN,K	g	2-5		1-2		0-0		1	3	4	1	5	2	1	0	0	23
10	WALKER,CIERRA		2-7		1-5		0-0		0	3	3	2	5	4	0	0	4	23
21	WHALEN,ERIN		5-9		1-4		2-2		0	1	1	5	13	2	3	0	1	7
22	HORROCKS,BREE		1-2		0-0		2-2		0	2	2	2	4	0	1	0	1	7
30	CARTER,LEALEA		0-0		0-0		0-0		0	0	0	2	0	0	3	0	0	-8
41	WARREN,PAIGE		0-0		0-0		0-0		0	0	0	0	0	0	1	0	0	1
TEAM									1	3	4	0		0				
TOTALS			23-54		8-20		8-10		7	18	25	24	62	15	21	1	10	167

Deadball Rebounds: 0,0

FG %	1st Half: 12-30	40.0%	2nd Half: 11-24	45.8%	Game: 23-54	42.6%												
	1st Qtr 6-16	37.5%	2nd Qtr 6-14	42.9%	3rd Qtr 6-12	50.0%	4th Qtr 5-12	41.7%										
3FG %	1st Half: 5-12	41.7%	2nd Half: 3-8	37.5%	Game: 8-20	40.0%												
	1st Qtr 3-6	50.0%	2nd Qtr 2-6	33.3%	3rd Qtr 2-3	66.7%	4th Qtr 1-5	20.0%										
FT %	1st Half: 2-4	50.0%	2nd Half: 6-6	100.0%	Game: 8-10	80.0%												
	1st Qtr 2-4	50.0%	2nd Qtr 0-0	0%	3rd Qtr 2-2	100.0%	4th Qtr 4-4	100.0%										

Officials: R: Beverly Roberts, U1:Brian Garland, U2:Eric Brewton
 Technical Fouls: Memphis- None. Vanderbilt- None.
 Attendance: 2495

Score by periods	1st	2nd	3rd	4th	Total	Points	In Paint	Off T/O	2nd Chance	Fast Break	Bench
Memphis	9	27	24	19	79	MEM	42	16	29	0	3
Vanderbilt	15	16	16	15	62	VANDY	26	11	29	0	22

Last FG - MEM 4th-01:32, VANDY 4th-00:03.

Largest lead - Memphis by 20 4th-00:27; Vanderbilt by MEM led for 36:17. VANDY led for 0:00. Game was tied for 3:43.

Score tied - 1 times; Lead changed - 0 times

Official Basketball Box Score -- Game Totals -- First Half Statistics
 Memphis vs Vanderbilt
 12/16/2017 6:00 PM at Nashville, Tenn. (Memorial Gym)



Memphis 36 • 3-8

##	Player		Total		3-Ptr		FT-FTA		Rebounds			PF	TP	A	TO	Blk	Stl	Min
			FG	FGA	FG	FGA	FT	FTA	Off	Def	Tot							
01	WILDER-COCHRAN,B	g	0-3		0-1		0-0		2	4	6	2	0	1	1	0	3	8
05	ELMORE,BREA	g	5-10		2-5		1-2		2	2	4	0	13	0	1	0	1	11
10	CREIGHTON,CHEYENNE	f	4-10		0-0		0-0		0	8	8	2	8	0	4	0	0	10
15	BARNES,TAYLOR	g	4-10		0-4		0-0		2	0	2	1	8	1	1	0	0	10
25	PORTER,BRIANNA	f	2-2		0-0		0-0		1	0	1	1	4	2	1	0	0	7
00	STINSON,JADA		1-2		1-1		0-0		0	1	1	0	3	2	1	0	2	11
33	DAVIS,ALANA		0-1		0-0		0-0		0	1	1	1	0	0	0	0	0	5
35	JAMES,JASMINE		0-0		0-0		0-0		2	0	2	1	0	0	1	0	0	4
40	MILLER,DAMONIQUE		0-0		0-0		0-0		0	0	0	0	0	0	0	0	0	0
TEAM									0	0	0	0			1			
Totals			16-38		3-11		1-2		9	16	25	8	36	6	11	0	6	66

FG % 1st Qtr 8-22 36.4% 2nd Qtr 8-16 50.0% Half: 16-38 42.1%
 3FG % 1st Qtr 1-7 14.3% 2nd Qtr 2-4 50.0% Half: 3-11 27.3%
 FT % 1st Qtr 0-0 0% 2nd Qtr 1-2 50.0% Half: 1-2 50.0%

Vanderbilt 31 • 3-8

##	Player		Total		3-Ptr		FT-FTA		Rebounds			PF	TP	A	TO	Blk	Stl	Min
			FG	FGA	FG	FGA	FT	FTA	Off	Def	Tot							
00	OVERBECK,KAYLA	g	0-3		0-1		1-2		0	1	1	1	1	3	2	0	0	19
02	HALL,CHELSIE	g	2-5		0-0		0-0		0	1	1	1	4	1	2	0	1	17
03	BELL,RACHEL	g	2-3		2-2		1-2		1	0	1	0	7	0	0	0	1	16
33	REED,CHRISTA	g	4-9		2-3		0-0		2	1	3	2	10	1	2	0	0	11
35	CLEMONS-GREEN,K	g	0-1		0-0		0-0		1	3	4	1	0	2	0	0	0	11
10	WALKER,CIERRA		1-4		0-3		0-0		0	3	3	0	2	3	0	0	3	7
21	WHALEN,ERIN		3-5		1-3		0-0		0	1	1	0	7	0	2	0	1	-1
22	HORROCKS,BREE		0-0		0-0		0-0		0	1	1	1	0	0	0	0	0	-7
30	CARTER,LEALEA		0-0		0-0		0-0		0	0	0	2	0	0	3	0	0	-8
41	WARREN,PAIGE		0-0		0-0		0-0		0	0	0	0	0	0	1	0	0	1
TEAM									0	2	2	0			0			
Totals			12-30		5-12		2-4		4	13	17	8	31	10	12	0	6	66

FG % 1st Qtr 6-16 37.5% 2nd Qtr 6-14 42.9% Half: 12-30 40.0%
 3FG % 1st Qtr 3-6 50.0% 2nd Qtr 2-6 33.3% Half: 5-12 41.7%
 FT % 1st Qtr 2-4 50.0% 2nd Qtr 0-0 0% Half: 2-4 50.0%

Officials: R: Beverly Roberts, U1:Brian Garland, U2:Eric Brewton
 Technical Fouls: Memphis- None. Vanderbilt- None.

Score by periods	1st	2nd	3rd	4th	Total Points	In Paint	Off T/O	2nd Chance	Fast Break	Bench
Memphis	9	27	24	19	79 MEM	24	7	13	0	3
Vanderbilt	15	16	16	15	62	10	5	3	0	9

Last FG - MEM 2nd-00:11, VANDY 2nd-01:32.
 MEM led for 16:17. VANDY led for 0:00. Game was tied for 3:43.

Score tied - 1 times
 Lead changed - 0 times

Memphis vs Vanderbilt
12/16/2017; 6:00 PM at Nashville, Tenn. (Memorial Gym)
Period 1 Play-By-Play



VISITORS: Memphis	Time	Score	Margin	HOME: Vanderbilt
MISSED 3PTR by ELMORE,BREA	09:50			
	09:50			REBOUND (DEF) by TEAM
MISSED 3PTR by BARNES,TAYLOR	09:32			
REBOUND (OFF) by ELMORE,BREA	09:32			
GOOD! LAYUP by ELMORE,BREA [PNT]	09:30	0-2	V 2	
	09:27			MISSED JUMPER by OVERBECK,KAYLA
REBOUND (DEF) by CREIGHTON,CHEYENNE	09:27			
	09:15			FOUL by OVERBECK,KAYLA
	09:08			TURNOVER by WHALEN,ERIN
STEAL by WILDER-COCHRAN,B	09:07			
MISSED 3PTR by WILDER-COCHRAN,B	09:03			
	09:03			REBOUND (DEF) by CLEMONS-GREEN,K
TURNOVER by CREIGHTON,CHEYENNE	09:02			
	09:01			STEAL by WALKER,CIERRA
	08:58			FOUL by CARTER,LEALEA
	08:58			TURNOVER by CARTER,LEALEA
	08:58			SUB OUT: REED,CHRISTA
	08:47			MISSED 3PTR by REED,CHRISTA
REBOUND (DEF) by WILDER-COCHRAN,B	08:47			
GOOD! LAYUP by CREIGHTON,CHEYENNE [PNT]	08:43	0-4	V 4	
ASSIST by PORTER,BRIANNA	08:43			
	08:31	2-4	V 2	GOOD! JUMPER by WHALEN,ERIN
	08:31			ASSIST by WALKER,CIERRA
GOOD! LAYUP by ELMORE,BREA [PNT]	08:28	2-6	V 4	
MISSED 3PTR by BARNES,TAYLOR	08:13			
	08:13			REBOUND (DEF) by WALKER,CIERRA
	08:03	5-6	V 1	GOOD! 3PTR by REED,CHRISTA
	08:03			ASSIST by CLEMONS-GREEN,K
	07:58			MISSED 3PTR by WHALEN,ERIN
REBOUND (DEF) by CREIGHTON,CHEYENNE	07:58			
GOOD! 3PTR by ELMORE,BREA	07:36	5-9	V 4	
ASSIST by WILDER-COCHRAN,B	07:36			
MISSED JUMPER by CREIGHTON,CHEYENNE	07:31			
REBOUND (OFF) by BARNES,TAYLOR	07:31			
GOOD! LAYUP by BARNES,TAYLOR [PNT]	07:28	5-11	V 6	
	07:19			MISSED 3PTR by WALKER,CIERRA
REBOUND (DEF) by WILDER-COCHRAN,B	07:19			
	07:10	7-11	V 4	GOOD! LAYUP by HALL,CHELSIE [PNT]
	07:10			ASSIST by OVERBECK,KAYLA
GOOD! LAYUP by CREIGHTON,CHEYENNE [PNT]	06:56	7-13	V 6	
MISSED 3PTR by ELMORE,BREA	06:56			
	06:56			REBOUND (DEF) by CLEMONS-GREEN,K
FOUL by PORTER,BRIANNA	06:54			
SUB IN: JAMES,JASMINE	06:54			
SUB OUT: PORTER,BRIANNA	06:54			
	06:54			SUB IN: WALKER,CIERRA
	06:54			SUB OUT: CLEMONS-GREEN,K
	06:51			TIMEOUT 30SEC
	06:51			TIMEOUT MEDIA
	06:42			TURNOVER by REED,CHRISTA
STEAL by WILDER-COCHRAN,B	06:40			
MISSED LAYUP by WILDER-COCHRAN,B	06:37			
	06:37			REBOUND (DEF) by REED,CHRISTA
	06:30			MISSED LAYUP by HALL,CHELSIE
REBOUND (DEF) by CREIGHTON,CHEYENNE	06:30			
	06:10			FOUL by HALL,CHELSIE
MISSED JUMPER by CREIGHTON,CHEYENNE	05:57			
REBOUND (OFF) by JAMES,JASMINE	05:57			
TURNOVER by JAMES,JASMINE	05:53			
	05:47			TURNOVER by HALL,CHELSIE
STEAL by ELMORE,BREA	05:46			
TURNOVER by ELMORE,BREA	05:45			
	05:44			STEAL by HALL,CHELSIE
FOUL by JAMES,JASMINE	05:25			
	05:25	8-13	V 5	GOOD! FT by BELL,RACHEL
	05:25			MISSED FT by BELL,RACHEL
REBOUND (DEF) by CREIGHTON,CHEYENNE	05:25			
SUB IN: DAVIS,ALANA	05:25			
SUB OUT: JAMES,JASMINE	05:25			

VISITORS: Memphis	Time	Score	Margin	HOME: Vanderbilt
FOUL by CREIGHTON,CHEYENNE	05:16			
TURNOVER by CREIGHTON,CHEYENNE	05:16			
	05:03	10-13	V 3	GOOD! LAYUP by HALL,CHELSIE [PNT]
GOOD! JUMPER by BARNES,TAYLOR	04:46	10-15	V 5	
	04:17	13-15	V 2	GOOD! 3PTR by REED,CHRISTA
	04:17			ASSIST by WALKER,CIERRA
GOOD! JUMPER by BARNES,TAYLOR [PNT]	03:58	13-17	V 4	
	03:41	16-17	V 1	GOOD! 3PTR by BELL,RACHEL
	03:41			ASSIST by HALL,CHELSIE
TURNOVER by BARNES,TAYLOR	03:24			
	03:24			TIMEOUT MEDIA
FOUL by DAVIS,ALANA	03:14			
	03:10			MISSED LAYUP by OVERBECK,KAYLA
	03:10			REBOUND (OFF) by BELL,RACHEL
	03:07			MISSED LAYUP by BELL,RACHEL
REBOUND (DEF) by DAVIS,ALANA	03:07			
SUB IN: STINSON,JADA	03:04			
SUB OUT: WILDER-COCHRAN,B	03:04			
MISSED JUMPER by ELMORE,BREA	02:58			
	02:58			REBOUND (DEF) by HALL,CHELSIE
FOUL by BARNES,TAYLOR	02:43			
	02:43	17-17	T	GOOD! FT by OVERBECK,KAYLA
	02:43			MISSED FT by OVERBECK,KAYLA
REBOUND (DEF) by ELMORE,BREA	02:43			
SUB IN: WILDER-COCHRAN,B	02:43			
SUB OUT: BARNES,TAYLOR	02:43			
	02:43			SUB IN: WHALEN,ERIN
	02:43			SUB OUT: BELL,RACHEL
MISSED JUMPER by DAVIS,ALANA	02:20			
	02:20			REBOUND (DEF) by WHALEN,ERIN
	02:06			TURNOVER by HALL,CHELSIE
MISSED 3PTR by ELMORE,BREA	01:56			
	01:56			REBOUND (DEF) by OVERBECK,KAYLA
	01:34			TURNOVER by OVERBECK,KAYLA
	01:34			SUB IN: HORROCKS,BREE
	01:34			SUB OUT: OVERBECK,KAYLA
MISSED JUMPER by CREIGHTON,CHEYENNE	01:18			
REBOUND (OFF) by WILDER-COCHRAN,B	01:18			
TURNOVER by WILDER-COCHRAN,B	01:13			
	01:12			STEAL by WHALEN,ERIN
	00:58			MISSED JUMPER by REED,CHRISTA
REBOUND (DEF) by ELMORE,BREA	00:58			
MISSED JUMPER by CREIGHTON,CHEYENNE	00:48			
	00:48			REBOUND (DEF) by WALKER,CIERRA
	00:28			MISSED JUMPER by REED,CHRISTA
REBOUND (DEF) by WILDER-COCHRAN,B	00:28			
MISSED JUMPER by CREIGHTON,CHEYENNE	00:19			
	00:19			REBOUND (DEF) by HORROCKS,BREE
	00:01			MISSED JUMPER by HALL,CHELSIE
REBOUND (DEF) by CREIGHTON,CHEYENNE	00:01			
	00:01			FOUL by HORROCKS,BREE
SUB IN: BARNES,TAYLOR	00:00			
SUB IN: PORTER,BRIANNA	00:00			
SUB OUT: STINSON,JADA	00:00			
SUB OUT: DAVIS,ALANA	00:00			
	00:00			SUB IN: CARTER,LEALEA
	00:00			SUB OUT: HALL,CHELSIE

Memphis 9, Vanderbilt 15

Period 1-only	In Paint	Off T/O	2nd Chance	Fast Break	Bench	
MEM	12	0	4	0	0	Score tied - 0 times
VANDY	4	3	0	0	2	Lead changed - 0 times

Memphis vs Vanderbilt
12/16/2017; 6:00 PM at Nashville, Tenn. (Memorial Gym)
Period 2 Play-By-Play



VISITORS: Memphis	Time	Score	Margin	HOME: Vanderbilt
	10:00	15-9	H 6	TIMEOUT 30SEC
	09:53			TURNOVER by CARTER,LEALEA
MISSED 3PTR by BARNES,TAYLOR	09:32			
REBOUND (OFF) by ELMORE,BREA	09:32			
GOOD! LAYUP by ELMORE,BREA [PNT]	09:30	15-11	H 4	
	09:08			TURNOVER by WHALEN,ERIN
STEAL by WILDER-COCHRAN,B	09:07			
TURNOVER by CREIGHTON,CHEYENNE	09:02			
	09:01			STEAL by WALKER,CIERRA
	08:58			TURNOVER by CARTER,LEALEA
	08:58			FOUL by CARTER,LEALEA
GOOD! LAYUP by CREIGHTON,CHEYENNE [PNT]	08:43	15-13	H 2	
ASSIST by PORTER,BRIANNA	08:43			
	08:31	17-13	H 4	GOOD! JUMPER by WHALEN,ERIN
	08:31			ASSIST by WALKER,CIERRA
MISSED 3PTR by BARNES,TAYLOR	08:13			
	08:13			REBOUND (DEF) by WALKER,CIERRA
	07:58			MISSED 3PTR by WHALEN,ERIN
REBOUND (DEF) by CREIGHTON,CHEYENNE	07:58			
MISSED JUMPER by CREIGHTON,CHEYENNE	07:31			
REBOUND (OFF) by BARNES,TAYLOR	07:31			
GOOD! LAYUP by BARNES,TAYLOR [PNT]	07:28	17-15	H 2	
	07:19			MISSED 3PTR by WALKER,CIERRA
REBOUND (DEF) by WILDER-COCHRAN,B	07:19			
GOOD! LAYUP by CREIGHTON,CHEYENNE [PNT]	06:56	17-17	T	
SUB IN: STINSON,JADA	06:52			
SUB OUT: ELMORE,BREA	06:52			
	06:52			SUB IN: WALKER,CIERRA
	06:52			SUB OUT: CLEMONS-GREEN,K
	06:35	19-17	H 2	GOOD! JUMPER by WALKER,CIERRA [PNT]
MISSED JUMPER by BARNES,TAYLOR	06:10			
REBOUND (OFF) by WILDER-COCHRAN,B	06:10			
	06:07			FOUL by REED,CHRISTA
GOOD! 3PTR by STINSON,JADA	06:00	19-20	V 1	
ASSIST by BARNES,TAYLOR	06:00			
	05:46	21-20	H 1	GOOD! LAYUP by REED,CHRISTA [PNT]
	05:46			ASSIST by OVERBECK,KAYLA
TURNOVER by PORTER,BRIANNA	05:28			
FOUL by WILDER-COCHRAN,B	05:07			
	05:02			MISSED JUMPER by REED,CHRISTA
REBOUND (DEF) by CREIGHTON,CHEYENNE	05:02			
GOOD! JUMPER by PORTER,BRIANNA [PNT]	04:53	21-22	V 1	
ASSIST by STINSON,JADA	04:53			
	04:41			MISSED LAYUP by HALL,CHELSIE
	04:41			REBOUND (OFF) by REED,CHRISTA
FOUL by WILDER-COCHRAN,B	04:41			
FOUL by CREIGHTON,CHEYENNE	04:41			
SUB IN: ELMORE,BREA	04:41			
SUB OUT: WILDER-COCHRAN,B	04:41			
	04:41			SUB IN: CLEMONS-GREEN,K
	04:41			SUB OUT: HALL,CHELSIE
	04:27			TURNOVER by OVERBECK,KAYLA
STEAL by STINSON,JADA	04:26			
TURNOVER by STINSON,JADA	04:24			
	04:23			STEAL by BELL,RACHEL
	04:19			MISSED 3PTR by OVERBECK,KAYLA
REBOUND (DEF) by CREIGHTON,CHEYENNE	04:19			
MISSED JUMPER by ELMORE,BREA	04:10			
	04:10			REBOUND (DEF) by CLEMONS-GREEN,K
	03:55			MISSED JUMPER by CLEMONS-GREEN,K
	03:55			REBOUND (OFF) by CLEMONS-GREEN,K
	03:49	24-22	H 2	GOOD! 3PTR by BELL,RACHEL
	03:49			ASSIST by OVERBECK,KAYLA
TURNOVER by CREIGHTON,CHEYENNE	03:18			
	03:18			STEAL by WALKER,CIERRA
SUB IN: JAMES,JASMINE	03:18			
SUB OUT: CREIGHTON,CHEYENNE	03:18			
	03:18			SUB IN: WHALEN,ERIN
	03:18			SUB OUT: BELL,RACHEL

VISITORS: Memphis	Time	Score	Margin	HOME: Vanderbilt
	03:07	26-22	H 4	GOOD! LAYUP by REED,CHRISTA [PNT]
	03:07			ASSIST by CLEMONS-GREEN,K
	02:42			FOUL by CLEMONS-GREEN,K
MISSED FT by ELMORE,BREA	02:42			
REBOUND (DEADB) by TEAM	02:42			
GOOD! FT by ELMORE,BREA	02:42	26-23	H 3	
	02:28			MISSED 3PTR by WALKER,CIERRA
	02:28			REBOUND (OFF) by REED,CHRISTA
	02:24			MISSED LAYUP by REED,CHRISTA
REBOUND (DEF) by STINSON,JADA	02:24			
MISSED JUMPER by STINSON,JADA	02:06			
REBOUND (OFF) by JAMES,JASMINE	02:06			
MISSED LAYUP by BARNES,TAYLOR	01:52			
REBOUND (OFF) by PORTER,BRIANNA	01:52			
GOOD! JUMPER by PORTER,BRIANNA [PNT]	01:48	26-25	H 1	
	01:32	29-25	H 4	GOOD! 3PTR by WHALEN,ERIN
	01:32			ASSIST by REED,CHRISTA
TURNOVER by TEAM	00:58			
	00:58			SUB IN: WARREN,PAIGE
	00:58			SUB OUT: OVERBECK,KAYLA
	00:39			TURNOVER by WARREN,PAIGE
STEAL by STINSON,JADA	00:38			
GOOD! 3PTR by ELMORE,BREA	00:11	29-28	H 1	
ASSIST by STINSON,JADA	00:11			
	00:06			FOUL by REED,CHRISTA
	00:06			TURNOVER by REED,CHRISTA
SUB IN: CREIGHTON,CHEYENNE	00:06			
SUB IN: WILDER-COCHRAN,B	00:06			
SUB OUT: STINSON,JADA	00:06			
SUB OUT: JAMES,JASMINE	00:06			
MISSED JUMPER by WILDER-COCHRAN,B	00:00			
	00:00			REBOUND (DEF) by TEAM
Memphis 36, Vanderbilt 31				

Period 2-only	In Paint	Off T/O	2nd Chance	Fast Break	Bench	
MEM	12	7	9	0	3	Score tied - 0 times
VANDY	6	2	3	0	7	Lead changed - 0 times

Official Basketball Box Score -- Game Totals -- Second Half Statistics
 Memphis vs Vanderbilt
 12/16/2017 6:00 PM at Nashville, Tenn. (Memorial Gym)



Memphis 43 • 3-8

##	Player		Total		3-Ptr		Rebounds			PF	TP	A	TO	Blk	Stl	Min
			FG-FGA		FG-FGA		Off	Def	Tot							
01	WILDER-COCHRAN,B	g	0-2		0-0		7	1	8	1	2	3	1	0	1	15
05	ELMORE,BREA	g	3-5		1-2		0	1	1	1	10	1	1	0	1	19
10	CREIGHTON,CHEYENNE	f	3-6		1-1		2	3	5	2	9	1	3	0	0	20
15	BARNES,TAYLOR	g	3-6		1-3		0	1	1	0	12	1	0	0	1	17
25	PORTER,BRIANNA	f	5-6		0-0		4	0	4	3	10	0	3	0	0	19
00	STINSON,JADA		0-2		0-2		0	1	1	0	0	0	1	0	0	9
33	DAVIS,ALANA		0-0		0-0		0	0	0	0	0	0	0	0	0	0
35	JAMES,JASMINE		0-1		0-0		0	0	0	1	0	0	1	0	0	1
40	MILLER,DAMONIQUE		0-0		0-0		0	0	0	0	0	0	0	0	0	0
TEAM							0	3	3	0			0			
Totals			14-28		3-8		13	10	23	8	43	6	10	0	3	100

FG % 3rd Qtr 9-14 64.3% 4th Qtr 5-14 35.7% Half: 14-28 50.0%
 3FG % 3rd Qtr 3-4 75.0% 4th Qtr 0-4 00.0% Half: 3-8 27.3%
 FT % 3rd Qtr 3-4 75.0% 4th Qtr 9-14 64.3% Half: 12-18 66.7%

Vanderbilt 31 • 3-8

##	Player		Total		3-Ptr		Rebounds			PF	TP	A	TO	Blk	Stl	Min
			FG-FGA		FG-FGA		Off	Def	Tot							
00	OVERBECK,KAYLA	g	1-2		0-0		1	1	2	2	4	1	0	1	1	11
02	HALL,CHELSEIE	g	1-3		0-0		0	0	0	3	2	1	1	0	1	14
03	BELL,RACHEL	g	2-4		0-2		0	0	0	1	4	0	2	0	0	11
33	REED,CHRISTA	g	1-2		1-1		1	2	3	2	3	0	3	0	0	15
35	CLEMONS-GREEN,K	g	2-4		1-2		0	0	0	0	5	0	1	0	0	12
10	WALKER,CIERRA		1-3		1-2		0	0	0	2	3	1	0	0	1	16
21	WHALEN,ERIN		2-4		0-1		0	0	0	5	6	2	1	0	0	8
22	HORROCKS,BREE		1-2		0-0		0	1	1	1	4	0	1	0	1	14
30	CARTER,LEALEA		0-0		0-0		0	0	0	0	0	0	0	0	0	0
41	WARREN,PAIGE		0-0		0-0		0	0	0	0	0	0	0	0	0	0
TEAM							1	1	2	0			0			
Totals			11-24		3-8		3	5	8	16	31	5	9	1	4	101

FG % 3rd Qtr 6-12 50.0% 4th Qtr 5-12 41.7% Half: 11-24 45.8%
 3FG % 3rd Qtr 2-3 66.7% 4th Qtr 1-5 20.0% Half: 3-8 41.7%
 FT % 3rd Qtr 2-2 100.0% 4th Qtr 4-4 100.0% Half: 6-6 100.0%

Officials: R: Beverly Roberts, U1:Brian Garland, U2:Eric Brewton
 Technical Fouls: Memphis- None. Vanderbilt- None.

Score by periods	1st	2nd	3rd	4th	Total	Rebounds	In Paint	Off T/O	2nd Chance	Fast Break	Bench
Memphis	9	27	24	19	79	MEM	18	9	16	0	0
Vanderbilt	15	16	16	15	62	VANDY	16	6	2	0	13

Last FG - MEM 4th-01:32, VANDY 4th-00:03.
 MEM led for 20:00. VANDY led for 0:00. Game was tied for 0:00.

Score tied - 0 times
 Lead changed - 0 times

Memphis vs Vanderbilt
12/16/2017; 6:00 PM at Nashville, Tenn. (Memorial Gym)
Period 3 Play-By-Play



VISITORS: Memphis	Time	Score	Margin	HOME: Vanderbilt
GOOD! LAYUP by CREIGHTON,CHEYENNE [PNT]	09:43	31-38	V 7	
ASSIST by WILDER-COCHRAN,B	09:43			
	09:27	34-38	V 4	GOOD! 3PTR by CLEMONS-GREEN,K
MISSED LAYUP by CREIGHTON,CHEYENNE	09:12			
REBOUND (OFF) by WILDER-COCHRAN,B	09:12			
MISSED JUMPER by PORTER,BRIANNA	09:09			
	09:09			REBOUND (DEF) by OVERBECK,KAYLA
	09:01			MISSED 3PTR by BELL,RACHEL
REBOUND (DEF) by CREIGHTON,CHEYENNE	09:01			
MISSED JUMPER by BARNES,TAYLOR	08:38			
	08:38			BLOCK by OVERBECK,KAYLA
REBOUND (OFF) by WILDER-COCHRAN,B	08:37			
GOOD! 3PTR by BARNES,TAYLOR	08:30	34-41	V 7	
ASSIST by WILDER-COCHRAN,B	08:30			
FOUL by WILDER-COCHRAN,B	08:22			
	08:22	35-41	V 6	GOOD! FT by OVERBECK,KAYLA
	08:22	36-41	V 5	GOOD! FT by OVERBECK,KAYLA
SUB IN: STINSON,JADA	08:22			
SUB OUT: WILDER-COCHRAN,B	08:22			
GOOD! JUMPER by PORTER,BRIANNA [PNT]	08:04	36-43	V 7	
	07:51			MISSED LAYUP by CLEMONS-GREEN,K
REBOUND (DEF) by TEAM	07:51			
GOOD! LAYUP by CREIGHTON,CHEYENNE [PNT]	07:29	36-45	V 9	
ASSIST by BARNES,TAYLOR	07:29			
	07:18	38-45	V 7	GOOD! LAYUP by OVERBECK,KAYLA [PNT]
TURNOVER by PORTER,BRIANNA	07:01			
	07:01			STEAL by HALL,CHELSIE
FOUL by PORTER,BRIANNA	07:01			
	06:50			FOUL by REED,CHRISTA
	06:50			TURNOVER by REED,CHRISTA
	06:30			FOUL by OVERBECK,KAYLA
	06:30			SUB IN: HORROCKS,BREE
	06:30			SUB OUT: REED,CHRISTA
GOOD! JUMPER by ELMORE,BREA [PNT]	06:25	38-47	V 9	
	06:10			SUB IN: WALKER,CIERRA
	06:10			SUB OUT: BELL,RACHEL
	06:02			TURNOVER by CLEMONS-GREEN,K
GOOD! JUMPER by ELMORE,BREA	05:42	38-49	V 11	
	05:07			MISSED JUMPER by WALKER,CIERRA
	05:07			REBOUND (OFF) by OVERBECK,KAYLA
	05:04			MISSED JUMPER by OVERBECK,KAYLA
REBOUND (DEF) by TEAM	05:04			
GOOD! JUMPER by BARNES,TAYLOR	04:34	38-51	V 13	
	04:09			FOUL by HORROCKS,BREE
	04:09			TURNOVER by HORROCKS,BREE
TIMEOUT MEDIA	04:09			
SUB IN: JAMES,JASMINE	04:09			
SUB OUT: PORTER,BRIANNA	04:09			
	04:09			SUB IN: WHALEN,ERIN
	04:09			SUB OUT: HALL,CHELSIE
MISSED 3PTR by STINSON,JADA	03:51			
	03:51			REBOUND (DEF) by TEAM
	03:36	41-51	V 10	GOOD! 3PTR by WALKER,CIERRA
	03:36			ASSIST by WHALEN,ERIN
TURNOVER by STINSON,JADA	03:17			
	03:17			STEAL by HORROCKS,BREE
	03:12			MISSED JUMPER by WHALEN,ERIN
REBOUND (DEF) by CREIGHTON,CHEYENNE	03:12			
	03:09			FOUL by WHALEN,ERIN
SUB IN: WILDER-COCHRAN,B	03:09			
SUB OUT: STINSON,JADA	03:09			
MISSED JUMPER by JAMES,JASMINE	02:46			
	02:46			REBOUND (DEF) by HORROCKS,BREE
FOUL by JAMES,JASMINE	02:45			
SUB IN: PORTER,BRIANNA	02:45			
SUB OUT: JAMES,JASMINE	02:45			
	02:29			MISSED JUMPER by HORROCKS,BREE
REBOUND (DEF) by BARNES,TAYLOR	02:29			
	02:29			FOUL by WHALEN,ERIN

VISITORS: Memphis	Time	Score	Margin	HOME: Vanderbilt
GOOD! FT by ELMORE,BREA	02:29	41-52	V 11	
GOOD! FT by ELMORE,BREA	02:29	41-53	V 12	
	02:04	43-53	V 10	GOOD! LAYUP by HORROCKS,BREE [PNT]
	02:04			ASSIST by OVERBECK,KAYLA
	01:42			FOUL by OVERBECK,KAYLA
MISSED FT by BARNES,TAYLOR	01:42			
REBOUND (DEADB) by TEAM	01:42			
GOOD! FT by BARNES,TAYLOR	01:42	43-54	V 11	
	01:42			SUB IN: REED,CHRISTA
	01:42			SUB OUT: OVERBECK,KAYLA
	01:16	45-54	V 9	GOOD! JUMPER by CLEMONS-GREEN,K [PNT]
	01:16			ASSIST by WALKER,CIERRA
GOOD! 3PTR by ELMORE,BREA	00:51	45-57	V 12	
ASSIST by WILDER-COCHRAN,B	00:51			
	00:30	47-57	V 10	GOOD! JUMPER by WHALEN,ERIN [PNT]
GOOD! 3PTR by CREIGHTON,CHEYENNE	00:02	47-60	V 13	
ASSIST by ELMORE,BREA	00:02			

Memphis 79, Vanderbilt 62

Period 3-only	In Paint	Off T/O	2nd Chance	Fast Break	Bench	
MEM	8	4	3	0	0	Score tied - 0 times
VANDY	8	0	0	0	7	Lead changed - 0 times

Memphis vs Vanderbilt
12/16/2017; 6:00 PM at Nashville, Tenn. (Memorial Gym)
Period 4 Play-By-Play



VISITORS: Memphis	Time	Score	Margin	HOME: Vanderbilt
	10:00			SUB IN: HORROCKS,BREE
	10:00			SUB IN: WHALEN,ERIN
	10:00			SUB IN: WALKER,CIERRA
	10:00			SUB OUT: OVERBECK,KAYLA
	10:00			SUB OUT: HALL,CHELSIE
	10:00			SUB OUT: BELL,RACHEL
	09:43			TURNOVER by WHALEN,ERIN
STEAL by ELMORE,BREA	09:43			
	09:43			SUB IN: HALL,CHELSIE
	09:43			SUB OUT: WHALEN,ERIN
FOUL by PORTER,BRIANNA	09:20			
TURNOVER by PORTER,BRIANNA	09:20			
	08:52			MISSED 3PTR by WALKER,CIERRA
	08:52			REBOUND (OFF) by REED,CHRISTA
	08:46			MISSED 3PTR by CLEMONS-GREEN,K
REBOUND (DEF) by TEAM	08:46			
MISSED 3PTR by ELMORE,BREA	08:29			
REBOUND (OFF) by CREIGHTON,CHEYENNE	08:29			
MISSED JUMPER by ELMORE,BREA	08:10			
REBOUND (OFF) by PORTER,BRIANNA	08:10			
GOOD! LAYUP by PORTER,BRIANNA [PNT]	08:07	47-62	V 15	
	07:51			TURNOVER by HALL,CHELSIE
	07:51			SUB IN: BELL,RACHEL
	07:51			SUB IN: OVERBECK,KAYLA
	07:51			SUB OUT: HORROCKS,BREE
	07:51			SUB OUT: CLEMONS-GREEN,K
MISSED JUMPER by CREIGHTON,CHEYENNE	07:26			
REBOUND (OFF) by WILDER-COCHRAN,B	07:26			
GOOD! LAYUP by BARNES,TAYLOR [PNT]	07:06	47-64	V 17	
	06:46			MISSED LAYUP by HALL,CHELSIE
REBOUND (DEF) by ELMORE,BREA	06:46			
TURNOVER by ELMORE,BREA	06:45			
	06:41			MISSED JUMPER by REED,CHRISTA
	06:41			REBOUND (OFF) by TEAM
SUB IN: STINSON,JADA	06:40			
SUB OUT: ELMORE,BREA	06:40			
	06:35	49-64	V 15	GOOD! JUMPER by BELL,RACHEL [PNT]
MISSED 3PTR by BARNES,TAYLOR	06:04			
REBOUND (OFF) by WILDER-COCHRAN,B	06:04			
MISSED LAYUP by WILDER-COCHRAN,B	06:00			
REBOUND (OFF) by PORTER,BRIANNA	06:00			
	06:00			FOUL by HALL,CHELSIE
TURNOVER by CREIGHTON,CHEYENNE	05:46			
	05:46			STEAL by OVERBECK,KAYLA
	05:34			TURNOVER by REED,CHRISTA
SUB IN: ELMORE,BREA	05:34			
SUB OUT: BARNES,TAYLOR	05:34			
TIMEOUT 30SEC	05:09			
TIMEOUT MEDIA	05:09			
	05:09			SUB IN: HORROCKS,BREE
	05:09			SUB OUT: OVERBECK,KAYLA
MISSED LAYUP by WILDER-COCHRAN,B	05:05			
REBOUND (OFF) by WILDER-COCHRAN,B	05:05			
FOUL by CREIGHTON,CHEYENNE	04:52			
TURNOVER by CREIGHTON,CHEYENNE	04:52			
	04:52			TIMEOUT media
	04:41			MISSED 3PTR by BELL,RACHEL
REBOUND (DEF) by CREIGHTON,CHEYENNE	04:41			
TURNOVER by CREIGHTON,CHEYENNE	04:38			
	04:28			MISSED JUMPER by HALL,CHELSIE
REBOUND (DEF) by STINSON,JADA	04:28			
MISSED 3PTR by STINSON,JADA	04:14			
REBOUND (OFF) by WILDER-COCHRAN,B	04:14			
	04:01			FOUL by REED,CHRISTA
GOOD! FT by CREIGHTON,CHEYENNE	04:01	49-65	V 16	
GOOD! FT by CREIGHTON,CHEYENNE	04:01	49-66	V 17	
	04:01			SUB IN: WHALEN,ERIN
	04:01			SUB OUT: HALL,CHELSIE
	03:43			MISSED 3PTR by WHALEN,ERIN

VISITORS: Memphis	Time	Score	Margin	HOME: Vanderbilt
REBOUND (DEF) by WILDER-COCHRAN,B	03:43			
TURNOVER by PORTER,BRIANNA	03:32			
FOUL by CREIGHTON,CHEYENNE	03:20			
	03:20	50-66	V 16	GOOD! FT by WHALEN,ERIN
	03:20	51-66	V 15	GOOD! FT by WHALEN,ERIN
MISSED JUMPER by CREIGHTON,CHEYENNE	03:05			
REBOUND (OFF) by PORTER,BRIANNA	03:05			
GOOD! JUMPER by PORTER,BRIANNA [PNT]	03:02	51-68	V 17	
	02:49	54-68	V 14	GOOD! 3PTR by REED,CHRISTA
	02:49			ASSIST by WHALEN,ERIN
SUB IN: BARNES,TAYLOR	02:31			
SUB OUT: STINSON,JADA	02:31			
GOOD! JUMPER by PORTER,BRIANNA [PNT]	02:20	54-70	V 16	
ASSIST by CREIGHTON,CHEYENNE	02:20			
	02:09			TURNOVER by BELL,RACHEL
STEAL by BARNES,TAYLOR	02:08			
	02:07			FOUL by WHALEN,ERIN
	02:07			SUB IN: HALL,CHELSIE
	02:07			SUB OUT: BELL,RACHEL
MISSED 3PTR by BARNES,TAYLOR	01:37			
REBOUND (OFF) by PORTER,BRIANNA	01:37			
GOOD! JUMPER by PORTER,BRIANNA [PNT]	01:32	54-72	V 18	
	01:25			TIMEOUT TEAM
	01:20			TURNOVER by REED,CHRISTA
	01:18			FOUL by WHALEN,ERIN
	01:16			FOUL by HALL,CHELSIE
MISSED FT by WILDER-COCHRAN,B	01:16			
REBOUND (DEADB) by TEAM	01:16			
GOOD! FT by WILDER-COCHRAN,B	01:16	54-73	V 19	
	01:09	56-73	V 17	GOOD! JUMPER by WHALEN,ERIN [PNT]
	01:09			ASSIST by HALL,CHELSIE
	01:06			FOUL by HALL,CHELSIE
GOOD! FT by WILDER-COCHRAN,B	01:06	56-74	V 18	
MISSED FT by WILDER-COCHRAN,B	01:06			
REBOUND (OFF) by WILDER-COCHRAN,B	01:04			
	00:48			FOUL by WHALEN,ERIN
GOOD! FT by ELMORE,BREA	00:48	56-75	V 19	
MISSED FT by ELMORE,BREA	00:48			
	00:48			REBOUND (DEF) by REED,CHRISTA
	00:48			SUB IN: BELL,RACHEL
	00:48			SUB OUT: WHALEN,ERIN
FOUL by ELMORE,BREA	00:39			
FOUL by PORTER,BRIANNA	00:34			
	00:34	57-75	V 18	GOOD! FT by HORROCKS,BREE
	00:34	58-75	V 17	GOOD! FT by HORROCKS,BREE
	00:32			FOUL by WALKER,CIERRA
GOOD! FT by BARNES,TAYLOR	00:32	58-76	V 18	
MISSED FT by BARNES,TAYLOR	00:32			
REBOUND (OFF) by CREIGHTON,CHEYENNE	00:32			
	00:27			FOUL by BELL,RACHEL
GOOD! FT by BARNES,TAYLOR	00:27	58-77	V 19	
GOOD! FT by BARNES,TAYLOR	00:27	58-78	V 20	
	00:27			TIMEOUT 30SEC
SUB IN: MILLER,DAMONIQUE	00:27			
SUB OUT: PORTER,BRIANNA	00:27			
	00:20			TURNOVER by BELL,RACHEL
STEAL by WILDER-COCHRAN,B	00:20			
TURNOVER by WILDER-COCHRAN,B	00:20			
	00:14	60-78	V 18	GOOD! LAYUP by HALL,CHELSIE [PNT]
	00:13			FOUL by WALKER,CIERRA
GOOD! FT by BARNES,TAYLOR	00:13	60-79	V 19	
MISSED FT by BARNES,TAYLOR	00:13			
	00:13			REBOUND (DEF) by REED,CHRISTA
SUB IN: JAMES,JASMINE	00:13			
SUB IN: STINSON,JADA	00:13			
SUB OUT: WILDER-COCHRAN,B	00:13			
SUB OUT: CREIGHTON,CHEYENNE	00:13			
	00:03	62-79	V 17	GOOD! JUMPER by BELL,RACHEL [PNT]
TURNOVER by JAMES,JASMINE	00:01			
	00:01			STEAL by WALKER,CIERRA

	Period 4-only	In Paint	Off T/O	2nd Chance	Fast Break	Bench	
MEM	Period 4-only	10	5	13	0	0	Score tied - 0 times
VANDY		8	6	2	0	6	Lead changed - 0 times

Memphis vs Vanderbilt
12/16/2017; 6:00 PM at Nashville, Tenn. (Memorial Gym)
Scoring/Runs Reference



Period 1

Memphis	VRun	Score	Margin	HRun	Vanderbilt
09:30 - ELMORE LAYUP [P]	-	2-0	-2		
08:43 - CREIGHTON LAYUP [P]	NaN-0	4-0	-4		
		4-2	-2		WHALEN JUMPER - 08:31
08:28 - ELMORE LAYUP [P]	-	6-2	-4		
		6-5	-1		REED 3PTR - 08:03
07:36 - ELMORE 3PTR	-	9-5	-4		
07:28 - BARNES LAYUP [P]	5-0	11-5	-6		
		11-7	-4		HALL LAYUP [P] - 07:10
06:56 - CREIGHTON LAYUP [P]	-	13-7	-6		
		13-8	-5		BELL FT - 05:25
		13-10	-3	3-0	HALL LAYUP [P] - 05:03
04:46 - BARNES JUMPER	-	15-10	-5		
		15-13	-2		REED 3PTR - 04:17
03:58 - BARNES JUMPER [P]	-	17-13	-4		
		17-16	-1		BELL 3PTR - 03:41
		17-17	0	4-0	OVERBECK FT - 02:43

Memphis vs Vanderbilt
12/16/2017; 6:00 PM at Nashville, Tenn. (Memorial Gym)
Scoring/Runs Reference



Period 2

Memphis	VRun	Score	Margin	HRun	Vanderbilt
09:30 - ELMORE LAYUP [P]	-	11-15	4		
08:43 - CREIGHTON LAYUP [P]	NaN-0	13-15	2		
		13-17	4		WHALEN JUMPER - 08:31
07:28 - BARNES LAYUP [P]	-	15-17	2		
06:56 - CREIGHTON LAYUP [P]	4-0	17-17	0		
		17-19	2		WALKER JUMPER [P] - 06:35
06:00 - STINSON 3PTR	-	20-19	-1		
		20-21	1		REED LAYUP [P] - 05:46
04:53 - PORTER JUMPER [P]	-	22-21	-1		
		22-24	2		BELL 3PTR - 03:49
		22-26	4	5-0	REED LAYUP [P] - 03:07
02:42 - ELMORE FT	-	23-26	3		
01:48 - PORTER JUMPER [P]	3-0	25-26	1		
		25-29	4		WHALEN 3PTR - 01:32
00:11 - ELMORE 3PTR	-	28-29	1		

Memphis vs Vanderbilt
12/16/2017; 6:00 PM at Nashville, Tenn. (Memorial Gym)
Scoring/Runs Reference



Period 3

Memphis	VRun	Score	Margin	HRun	Vanderbilt
09:43 - CREIGHTON LAYUP [P]	-	38-31	-7		
		38-34	-4		CLEMONS-GREEN 3PTR - 09:27
08:30 - BARNES 3PTR	-	41-34	-7		
		41-35	-6		OVERBECK FT - 08:22
		41-36	-5	2-0	OVERBECK FT - 08:22
08:04 - PORTER JUMPER [P]	-	43-36	-7		
07:29 - CREIGHTON LAYUP [P]	4-0	45-36	-9		
		45-38	-7		OVERBECK LAYUP [P] - 07:18
06:25 - ELMORE JUMPER [P]	-	47-38	-9		
05:42 - ELMORE JUMPER	4-0	49-38	-11		
04:34 - BARNES JUMPER	6-0	51-38	-13		
		51-41	-10		WALKER 3PTR - 03:36
02:29 - ELMORE FT	-	52-41	-11		
02:29 - ELMORE FT	2-0	53-41	-12		
		53-43	-10		HORROCKS LAYUP [P] - 02:04
01:42 - BARNES FT	-	54-43	-11		
		54-45	-9		CLEMONS-GREEN JUMPER [P] - 01:16
00:51 - ELMORE 3PTR	-	57-45	-12		
		57-47	-10		WHALEN JUMPER [P] - 00:30
00:02 - CREIGHTON 3PTR	-	60-47	-13		

Memphis vs Vanderbilt
12/16/2017; 6:00 PM at Nashville, Tenn. (Memorial Gym)
Scoring/Runs Reference

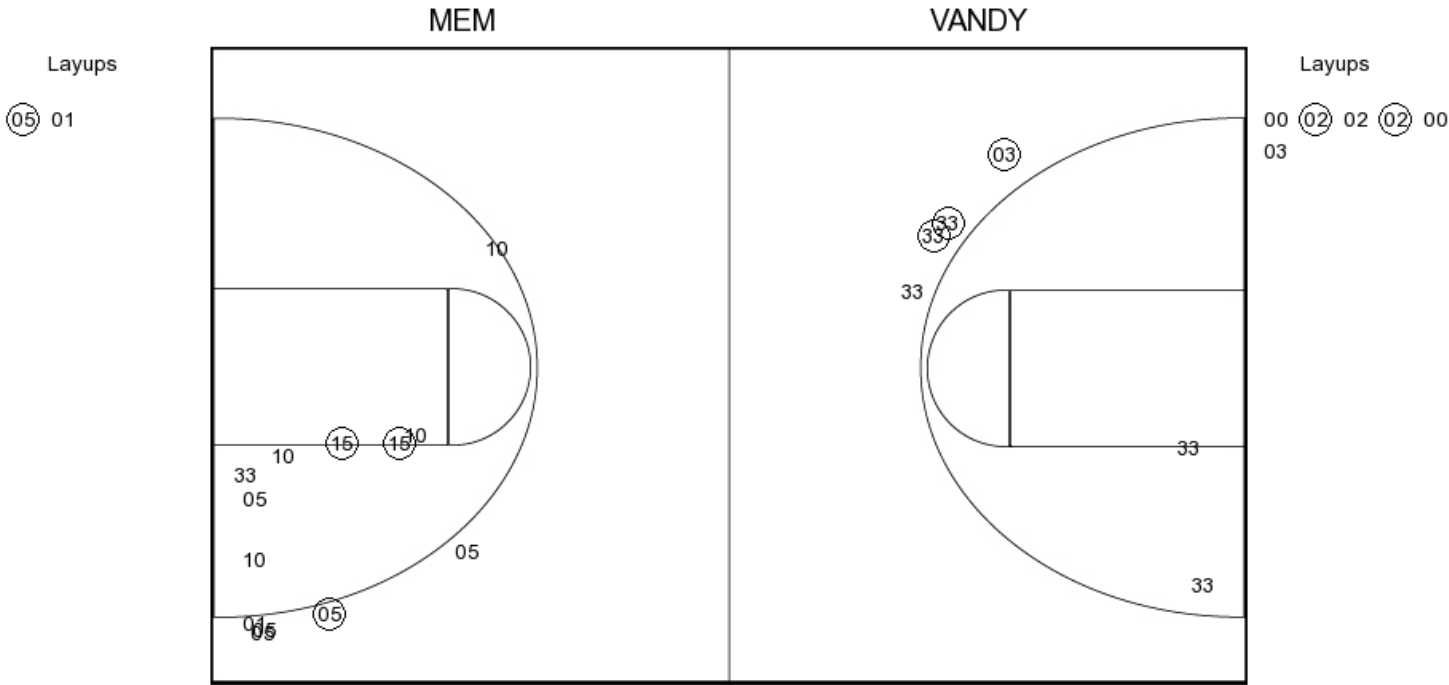


Period 4

Memphis	VRun	Score	Margin	HRun	Vanderbilt
08:07 - PORTER LAYUP [P]	-	62-47	-15		
07:06 - BARNES LAYUP [P]	NaN-0	64-47	-17		
		64-49	-15		BELL JUMPER [P] - 06:35
04:01 - CREIGHTON FT	-	65-49	-16		
04:01 - CREIGHTON FT	2-0	66-49	-17		
		66-50	-16		WHALEN FT - 03:20
		66-51	-15	2-0	WHALEN FT - 03:20
03:02 - PORTER JUMPER [P]	-	68-51	-17		
		68-54	-14		REED 3PTR - 02:49
02:20 - PORTER JUMPER [P]	-	70-54	-16		
01:32 - PORTER JUMPER [P]	4-0	72-54	-18		
01:16 - WILDER-COCHRAN FT	5-0	73-54	-19		
		73-56	-17		WHALEN JUMPER [P] - 01:09
01:06 - WILDER-COCHRAN FT	-	74-56	-18		
00:48 - ELMORE FT	2-0	75-56	-19		
		75-57	-18		HORROCKS FT - 00:34
		75-58	-17	2-0	HORROCKS FT - 00:34
00:32 - BARNES FT	-	76-58	-18		
00:27 - BARNES FT	2-0	77-58	-19		
00:27 - BARNES FT	3-0	78-58	-20		
		78-60	-18		HALL LAYUP [P] - 00:14
00:13 - BARNES FT	-	79-60	-19		
		79-62	-17		BELL JUMPER [P] - 00:03



PERIOD 1



MEM PERIOD 1

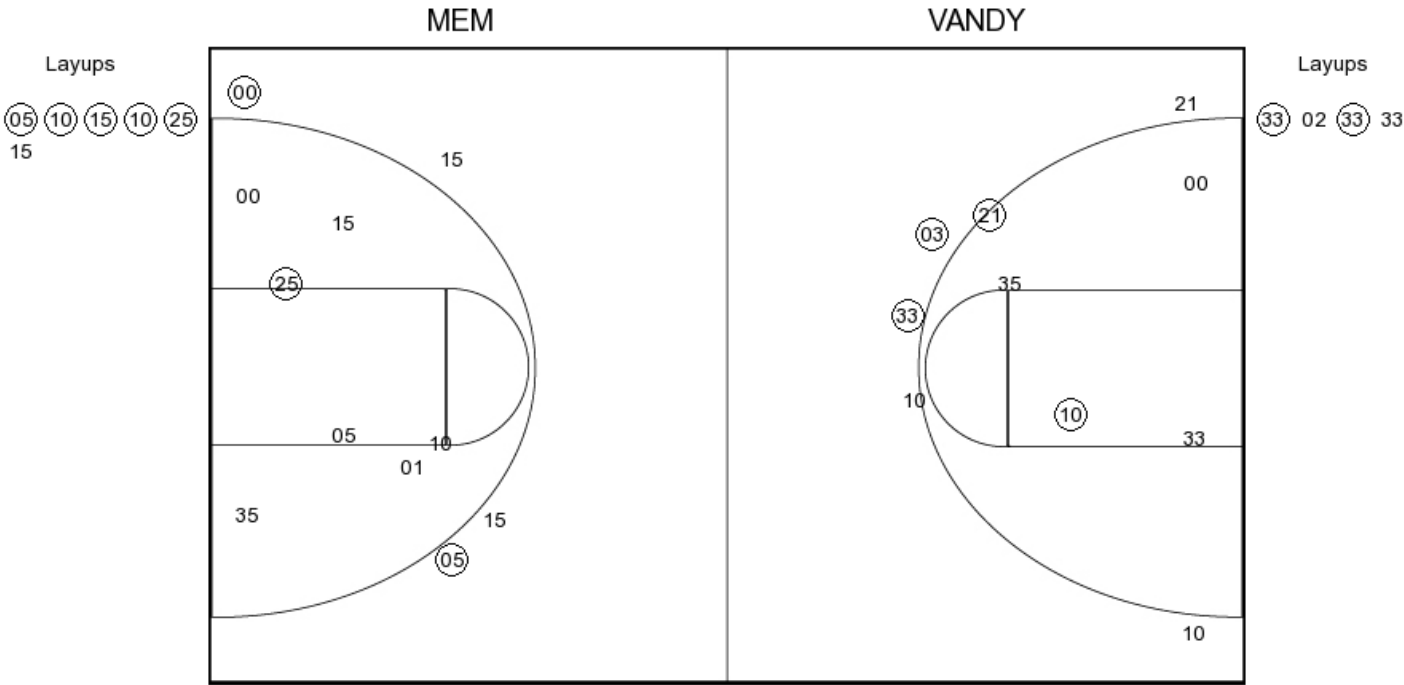
FG Made	16
FG Attempted	38
3PFG Made	3
3PFG Attempted	11

VANDY PERIOD 1

FG Made	12
FG Attempted	30
3PFG Made	5
3PFG Attempted	12



PERIOD 2



MEM PERIOD 2

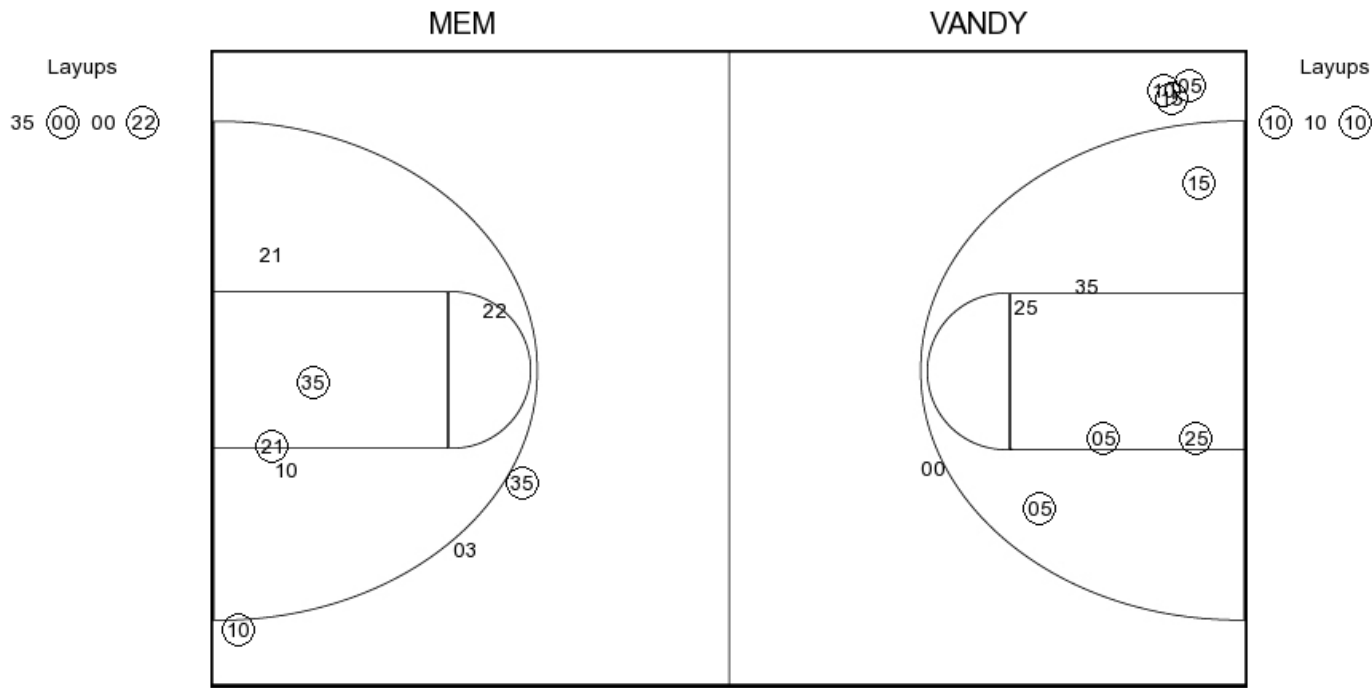
FG Made
FG Attempted
3PFG Made
3PFG Attempted

VANDY PERIOD 2

FG Made
FG Attempted
3PFG Made
3PFG Attempted



PERIOD 3



MEM PERIOD 3

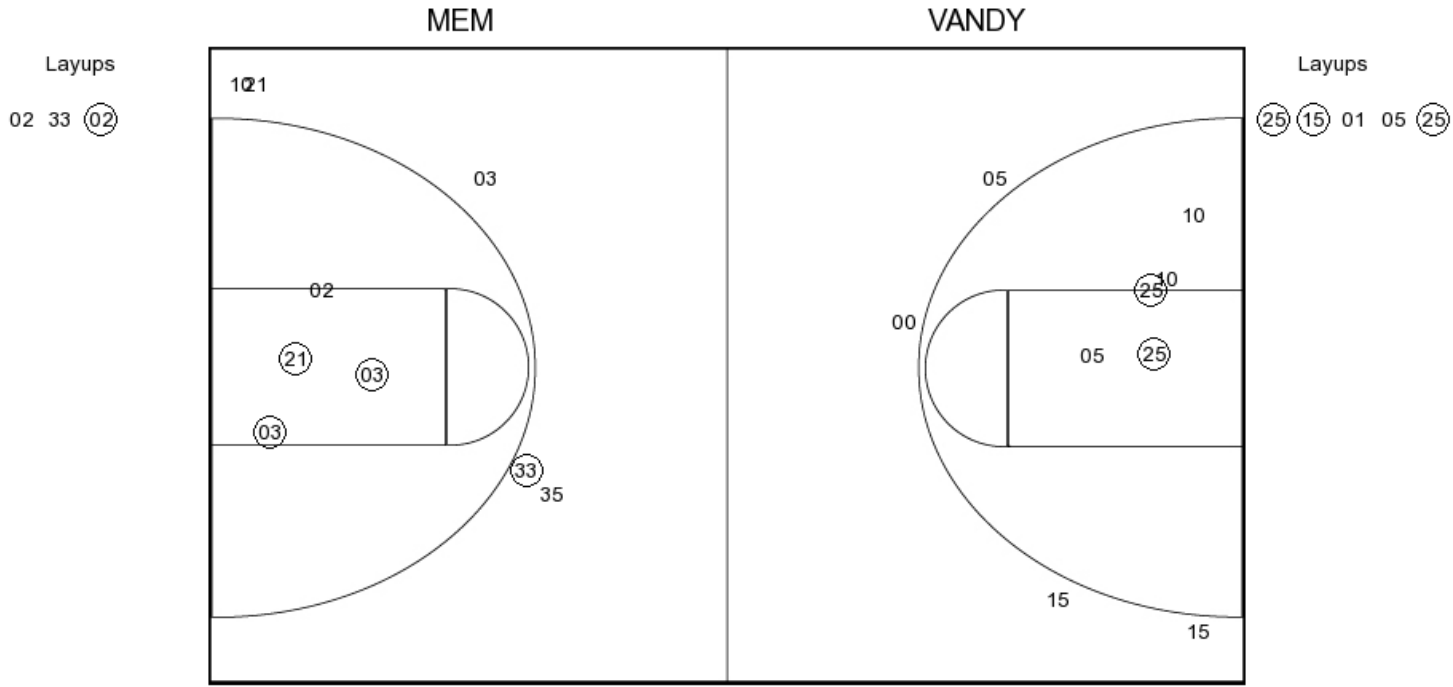
FG Made	14
FG Attempted	28
3PFG Made	3
3PFG Attempted	8

VANDY PERIOD 3

FG Made	11
FG Attempted	24
3PFG Made	3
3PFG Attempted	8



PERIOD 4

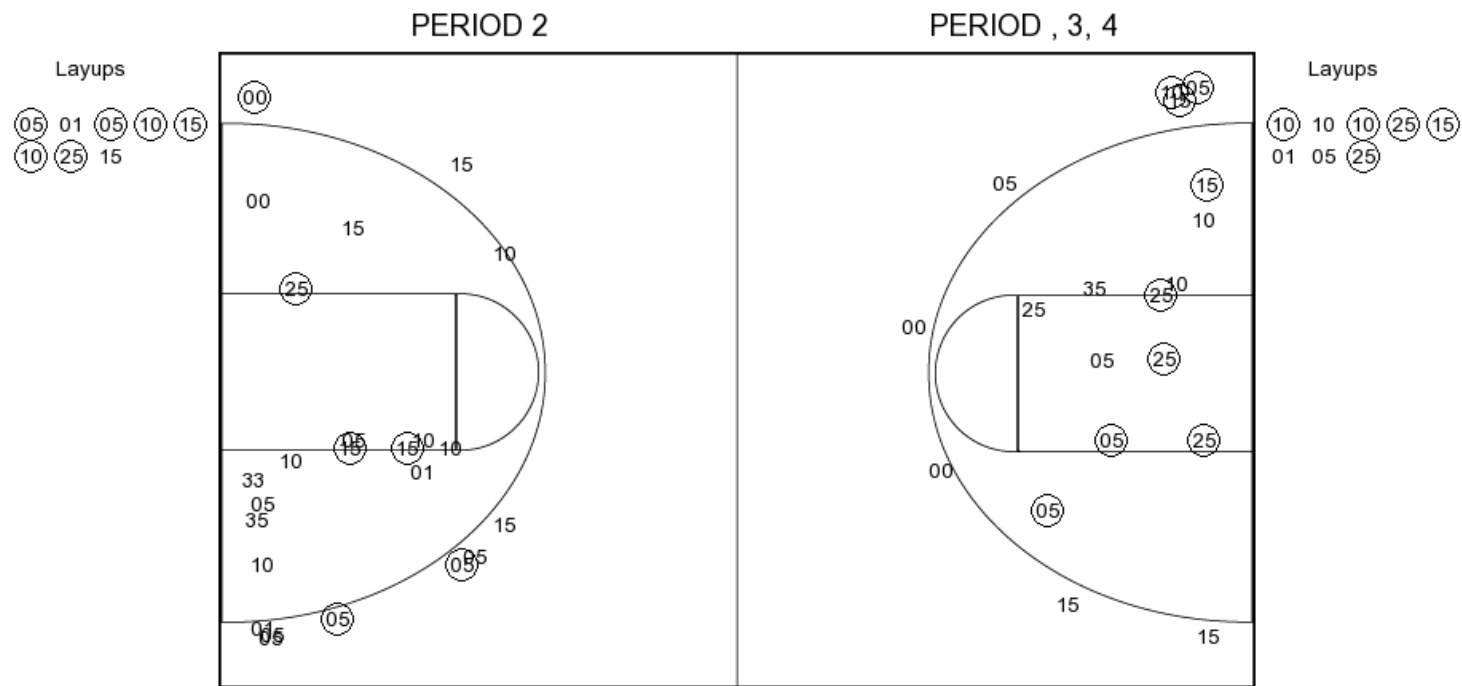


MEM PERIOD 4

FG Made
FG Attempted
3PFG Made
3PFG Attempted

VANDY PERIOD 4

FG Made
FG Attempted
3PFG Made
3PFG Attempted

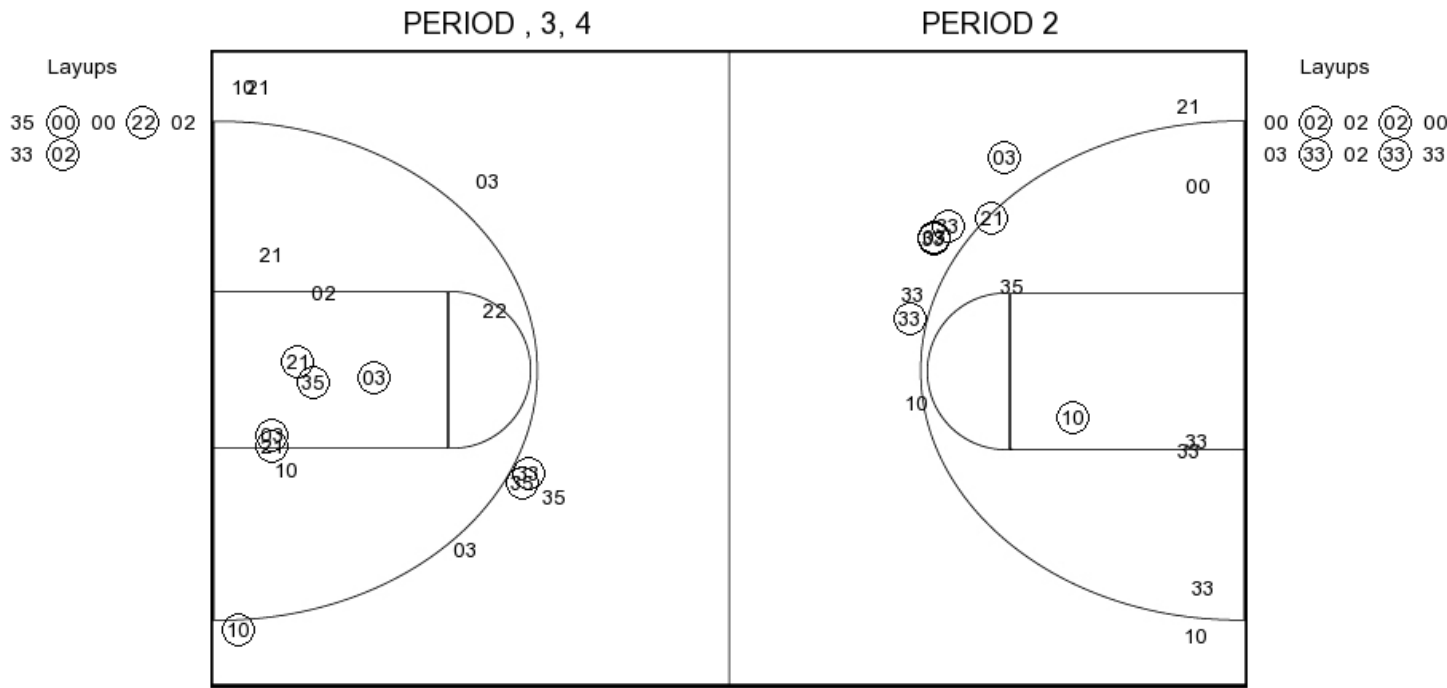


FG Made	16
FG Attempted	38
3PFG Made	3
3PFG Attempted	11

FG Made
FG Attempted
3PFG Made
3PFG Attempted



Vanderbilt



VANDY PERIOD 1	
FG Made	12
FG Attempted	30
3PFG Made	5
3PFG Attempted	12

VANDY PERIOD 2	
FG Made	
FG Attempted	
3PFG Made	
3PFG Attempted	