

FINAL SCORE

BALL STATE

3-0

88

Vanderbilt

0-3

79

November 20, 2017 • Nashville, Tenn. (Memorial Gym)

FINAL STATISTICS

Official Basketball Box Score -- Game Totals -- Final Statistics
BALL STATE vs Vanderbilt
11/20/2017 12 PM at Nashville, Tenn. (Memorial Gym)

BALL STATE 88 - 3-0

##	Player	g	Total		3-Ptr	Rebounds			PF	TP	A	TO	Blk	Stl	Min
			FG-FGA	FG-FGA	FT-FTA	Off	Def	Tot							
03	GRANDE,CARMEN		7-15	1-4	6-8	0	0	0	4	21	13	3	0	4	34
24	SAMZ,JASMIN		6-9	1-3	3-4	0	4	4	4	16	1	2	0	0	35
31	PENNY,NAKEYA		0-1	0-1	0-0	0	1	1	1	0	0	0	1	0	6
33	MONACO,MORIAH		8-18	5-9	5-6	0	3	3	3	26	0	2	1	2	34
34	WALKER,ALIYAH		2-3	0-0	1-2	3	4	7	3	5	0	4	0	0	18
05	HOWARD-BASS,MALIAH		1-2	1-2	0-0	0	2	2	2	3	0	0	0	0	12
20	FRAZIER,FRANNIE		3-4	0-0	2-2	1	3	4	3	8	3	8	0	1	28
32	BROWN,OSHLYNN		2-4	0-0	5-11	9	7	16	3	9	0	1	0	1	33
TEAM						3	3	6	0		1				
TOTALS			29-56	8-19	22-33	16	27	43	23	88	17	21	2	8	200

Deadball Rebounds: 7,0

FG %	1st Half:	15-32	46.9%	2nd Half:	14-24	58.3%	Game:	29-56	51.8%					
	1st Qtr	8-18	44.4%	2nd Qtr	7-14	50.0%	3rd Qtr	6-10	60.0%	4th Qtr	8-14	57.1%		
3FG %	1st Half:	4-14	28.6%	2nd Half:	4-5	80.0%	Game:	8-19	42.1%					
	1st Qtr	1-7	14.3%	2nd Qtr	3-7	42.9%	3rd Qtr	2-2	100.0%	4th Qtr	2-3	66.7%		
FT %	1st Half:	2-5	40.0%	2nd Half:	20-28	71.4%	Game:	22-33	66.7%					
	1st Qtr	0-0	0%	2nd Qtr	2-5	40.0%	3rd Qtr	6-8	75.0%	4th Qtr	14-20	70.0%		

Vanderbilt 79 - 0-3

##	Player	g	Total		3-Ptr	Rebounds			PF	TP	A	TO	Blk	Stl	Min
			FG-FGA	FG-FGA	FT-FTA	Off	Def	Tot							
02	HALL,CHELSIE		10-14	0-1	5-7	2	3	5	4	25	2	4	0	2	35
03	BELL,RACHEL		5-15	2-7	0-1	1	0	1	5	12	3	2	0	0	30
24	NEWBY,AUTUMN		1-2	0-0	1-2	1	3	4	4	3	1	1	0	1	23
33	REED,CHRISTA		1-6	1-5	2-2	2	2	4	5	5	0	2	1	0	37
35	CLEMONS-GREEN,K		3-6	2-5	0-0	1	2	3	2	8	2	2	0	1	21
00	OVERBECK,KAYLA		1-4	0-0	1-2	2	0	2	5	3	2	4	0	0	12
10	WALKER,CIERRA		4-9	3-7	4-4	0	2	2	2	15	3	1	0	0	24
12	DANCY,MYKA		0-0	0-0	0-0	0	0	0	0	0	0	0	0	0	3
21	WHALEN,ERIN		1-4	1-3	0-0	1	1	2	2	3	0	1	1	0	9
31	EJIOFOR,BLESSING		2-2	0-0	1-2	1	1	2	3	5	0	2	0	0	6
TEAM						1	1	2	0		0				
TOTALS			28-62	9-28	14-20	12	15	27	32	79	13	19	2	4	200

Deadball Rebounds: 1,0

FG %	1st Half:	11-30	36.7%	2nd Half:	17-32	53.1%	Game:	28-62	45.2%					
	1st Qtr	4-15	26.7%	2nd Qtr	7-15	46.7%	3rd Qtr	8-15	53.3%	4th Qtr	9-17	52.9%		
3FG %	1st Half:	5-15	33.3%	2nd Half:	4-13	30.8%	Game:	9-28	32.1%					
	1st Qtr	3-9	33.3%	2nd Qtr	2-6	33.3%	3rd Qtr	2-6	33.3%	4th Qtr	2-7	28.6%		
FT %	1st Half:	2-4	50.0%	2nd Half:	12-16	75.0%	Game:	14-20	70.0%					
	1st Qtr	0-0	0%	2nd Qtr	2-4	50.0%	3rd Qtr	3-7	42.9%	4th Qtr	9-9	100.0%		

Officials: R:Tina Napier U1:Jesse Dickerson U2: Frank Steratore
 Technical Fouls: BALL STATE- None. Vanderbilt- None.

Score by periods	1st	2nd	3rd	4th	Total
BALL STATE	17	19	20	32	88
Vanderbilt	11	18	21	29	79

Points	In Paint	Off T/O	2nd Chance	Fast Break	Bench
BALLST	36	22	14	10	20
VANDY	30	22	11	4	26

Last FG - BALLST 4th-00:24, VANDY 4th-00:38.

Largest lead - BALL STATE by 13 4th-02:37; Vanderbilt by BALLST led for 39:24. VANDY led for 0:00. Game was tied for 0:36.

Score tied - 1 times; Lead changed - 0 times

Official Basketball Box Score -- Game Totals -- First Half Statistics
BALL STATE vs Vanderbilt
11/20/2017 12 PM at Nashville, Tenn. (Memorial Gym)

BALL STATE 36 • 3-0

##	Player	g	Total		3-Ptr	FT-FTA	Rebounds			PF	TP	A	TO	Blk	Stl	Min
			FG-FGA	FG-FGA	FG-FGA		Off	Def	Tot							
03	GRANDE,CARMEN	g	3-10	1-4	0-0	0	0	0	1	7	7	1	0	3	17	
24	SAMZ,JASMIN	g	5-7	1-3	0-0	0	3	3	1	11	0	2	0	0	17	
31	PENNY,NAKEYA	g	0-1	0-1	0-0	0	1	1	1	0	0	0	1	0	5	
33	MONACO,MORIAH	f	4-9	2-5	0-0	0	1	1	2	10	0	2	0	0	14	
34	WALKER,ALIYAH	f	0-1	0-0	1-2	3	2	5	2	1	0	3	0	0	10	
05	HOWARD-BASS,MALIAH		0-1	0-1	0-0	0	0	0	0	0	0	0	0	0	6	
20	FRAZIER,FRANNIE		2-2	0-0	0-0	1	1	2	2	4	2	6	0	1	14	
32	BROWN,OSHLYNN		1-1	0-0	1-3	5	4	9	1	3	0	0	0	1	17	
TEAM						1	3	4	0		0					
Totals			15-32	4-14	2-5	10	15	25	10	36	9	14	1	5	100	

FG % 1st Qtr 8-18 44.4% 2nd Qtr 7-14 50.0% Half: 15-32 46.9%
 3FG % 1st Qtr 1-7 14.3% 2nd Qtr 3-7 42.9% Half: 4-14 28.6%
 FT % 1st Qtr 0-0 0% 2nd Qtr 2-5 40.0% Half: 2-5 40.0%

Vanderbilt 29 • 0-3

##	Player	g	Total		3-Ptr	FT-FTA	Rebounds			PF	TP	A	TO	Blk	Stl	Min
			FG-FGA	FG-FGA	FG-FGA		Off	Def	Tot							
02	HALL,CHELISIE	g	4-7	0-1	1-2	1	1	2	2	9	1	3	0	1	17	
03	BELL,RACHEL	g	2-8	1-4	0-0	1	0	1	1	5	1	0	0	0	13	
24	NEWBY,AUT UMN	f	0-1	0-0	0-0	0	2	2	2	0	0	0	0	1	12	
33	REED,CHRISTA	g	1-3	1-3	0-0	0	1	1	1	3	0	2	0	0	19	
35	CLEMONS-GREEN,K	g	1-1	1-1	0-0	0	2	2	2	3	1	1	0	1	9	
00	OVERBECK,KAYLA		1-3	0-0	1-2	2	0	2	3	3	2	3	0	0	11	
10	WALKER,CIERRA		2-4	2-4	0-0	0	0	0	1	6	1	1	0	0	11	
12	DANCY,MYKA		0-0	0-0	0-0	0	0	0	0	0	0	0	0	0	3	
21	WHALEN,ERIN		0-3	0-2	0-0	1	0	1	0	0	0	1	0	0	5	
31	EJIOFOR,BLESSING		0-0	0-0	0-0	0	0	0	0	0	0	0	0	0	0	
TEAM						1	1	2	0		0					
Totals			11-30	5-15	2-4	6	7	13	12	29	6	11	0	3	100	

FG % 1st Qtr 4-15 26.7% 2nd Qtr 7-15 46.7% Half: 11-30 36.7%
 3FG % 1st Qtr 3-9 33.3% 2nd Qtr 2-6 33.3% Half: 5-15 33.3%
 FT % 1st Qtr 0-0 0% 2nd Qtr 2-4 50.0% Half: 2-4 50.0%

Officials: R:Tina Napier U1:Jesse Dickerson U2: Frank Steratore
 Technical Fouls: BALL STATE- None. Vanderbilt- None.

Score by periods	1st	2nd	3rd	4th	Total
BALL STATE	17	19	20	32	88
Vanderbilt	11	18	21	29	79

Points	In Paint	Off T/O	2nd Chance	Fast Break	Bench
BALLST	16	12	8	6	7
	6	13	1	2	9

Last FG - BALLST 2nd-00:36, VANDY 2nd-00:29.
 BALLST led for 19:24. VANDY led for 0:00. Game was tied for 0:36.

Score tied - 1 times
 Lead changed - 0 times

BALL STATE vs Vanderbilt
11/20/2017; 12 PM at Nashville, Tenn. (Memorial Gym)
Period 1 Play-By-Play

VISITORS: BALL STATE	Time	Score	Margin	HOME: Vanderbilt
GOOD! JUMPER by SAMZ,JASMIN	09:49	0-2	V 2	
	09:32			TURNOVER by HALL,CHELSIE
STEAL by GRANDE,CARMEN	09:30			
	09:26			FOUL by CLEMONS-GREEN,K
MISSED 3PTR by SAMZ,JASMIN	09:25			
	09:25			REBOUND (DEF) by HALL,CHELSIE
FOUL by PENNY,NAKEYA	09:22			
	09:13			MISSED LAYUP by HALL,CHELSIE
REBOUND (DEF) by WALKER,ALIYAH	09:13			
MISSED LAYUP by GRANDE,CARMEN	09:06			
REBOUND (OFF) by TEAM	09:06			
MISSED 3PTR by PENNY,NAKEYA	08:58			
	08:58			REBOUND (DEF) by CLEMONS-GREEN,K
	08:48			MISSED 3PTR by BELL,RACHEL
REBOUND (DEF) by SAMZ,JASMIN	08:48			
MISSED 3PTR by MONACO,MORIAH	08:42			
	08:42			REBOUND (DEF) by TEAM
FOUL by MONACO,MORIAH	08:26			
	08:13			MISSED JUMPER by BELL,RACHEL
REBOUND (DEF) by SAMZ,JASMIN	08:13			
	07:58			FOUL by BELL,RACHEL
GOOD! LAYUP by GRANDE,CARMEN [PNT]	07:51	0-4	V 4	
	07:30			MISSED JUMPER by BELL,RACHEL
	07:30			REBOUND (OFF) by HALL,CHELSIE
	07:26			MISSED 3PTR by REED,CHRISTA
REBOUND (DEF) by PENNY,NAKEYA	07:26			
	07:22			FOUL by NEWBY,AUTUMN
TURNOVER by SAMZ,JASMIN	07:11			
	07:10			STEAL by CLEMONS-GREEN,K
	07:04			MISSED LAYUP by HALL,CHELSIE
REBOUND (DEF) by WALKER,ALIYAH	07:04			
MISSED LAYUP by GRANDE,CARMEN	06:56			
REBOUND (OFF) by WALKER,ALIYAH	06:56			
TURNOVER by WALKER,ALIYAH	06:54			
SUB IN: BROWN,OSHLYNN	06:54			
SUB OUT: WALKER,ALIYAH	06:54			
	06:44	3-4	V 1	GOOD! 3PTR by REED,CHRISTA
	06:44			ASSIST by CLEMONS-GREEN,K
MISSED 3PTR by MONACO,MORIAH	06:26			
	06:26			REBOUND (DEF) by CLEMONS-GREEN,K
	06:13			TURNOVER by REED,CHRISTA
SUB IN: FRAZIER,FRANNIE	06:13			
SUB OUT: PENNY,NAKEYA	06:13			
TURNOVER by FRAZIER,FRANNIE	06:01			
	05:39			TURNOVER by HALL,CHELSIE
STEAL by BROWN,OSHLYNN	05:37			
GOOD! LAYUP by SAMZ,JASMIN [FB/PNT]	05:30	3-6	V 3	
ASSIST by GRANDE,CARMEN	05:30			
	05:14			MISSED 3PTR by HALL,CHELSIE
REBOUND (DEF) by TEAM	05:14			
	05:11			SUB IN: WALKER,CIERRA
	05:11			SUB OUT: CLEMONS-GREEN,K
TURNOVER by MONACO,MORIAH	04:42			
	04:41			STEAL by HALL,CHELSIE
	04:39	5-6	V 1	GOOD! LAYUP by HALL,CHELSIE [FB/PNT]
GOOD! LAYUP by FRAZIER,FRANNIE [PNT]	04:23	5-8	V 3	
	04:03			MISSED 3PTR by WALKER,CIERRA
REBOUND (DEF) by SAMZ,JASMIN	04:03			
GOOD! JUMPER by MONACO,MORIAH [FB]	03:55	5-10	V 5	
ASSIST by GRANDE,CARMEN	03:55			
	03:36			MISSED 3PTR by WALKER,CIERRA
REBOUND (DEF) by BROWN,OSHLYNN	03:36			
MISSED 3PTR by MONACO,MORIAH	03:13			
REBOUND (OFF) by FRAZIER,FRANNIE	03:13			
MISSED JUMPER by GRANDE,CARMEN	02:57			
REBOUND (OFF) by BROWN,OSHLYNN	02:57			
	02:52			FOUL by WALKER,CIERRA
	02:52			SUB IN: OVERBECK,KAYLA
	02:52			SUB OUT: NEWBY,AUTUMN

VISITORS: BALL STATE	Time	Score	Margin	HOME: Vanderbilt
GOOD! LAYUP by FRAZIER,FRANNIE [PNT]	02:50	5-12	V 7	
ASSIST by GRANDE,CARMEN	02:50			
	02:29			TURNOVER by REED,CHRISTA
MISSED 3PTR by GRANDE,CARMEN	02:18			
	02:18			REBOUND (DEF) by REED,CHRISTA
FOUL by BROWN,OSHLYNN	02:16			
	02:16			SUB IN: WHALEN,ERIN
	02:16			SUB OUT: BELL,RACHEL
	02:00	8-12	V 4	GOOD! 3PTR by WALKER,CIERRA
	02:00			ASSIST by OVERBECK,KAYLA
MISSED JUMPER by MONACO,MORIAH	01:41			
REBOUND (OFF) by BROWN,OSHLYNN	01:41			
TURNOVER by FRAZIER,FRANNIE	01:37			
SUB IN: HOWARD-BASS,MALIAH	01:37			
SUB OUT: SAMZ,JASMIN	01:37			
	01:37			SUB IN: CLEMONS-GREEN,K
	01:37			SUB OUT: HALL,CHELSIE
	01:19	11-12	V 1	GOOD! 3PTR by WALKER,CIERRA
	01:19			ASSIST by OVERBECK,KAYLA
GOOD! 3PTR by MONACO,MORIAH	01:06	11-15	V 4	
ASSIST by GRANDE,CARMEN	01:06			
	00:40			MISSED 3PTR by REED,CHRISTA
	00:40			REBOUND (OFF) by OVERBECK,KAYLA
	00:36			MISSED LAYUP by OVERBECK,KAYLA
REBOUND (DEF) by TEAM	00:36			
GOOD! LAYUP by MONACO,MORIAH [PNT]	00:22	11-17	V 6	
ASSIST by GRANDE,CARMEN	00:22			
	00:02			TURNOVER by WHALEN,ERIN
STEAL by FRAZIER,FRANNIE	00:02			

BALL STATE 17, Vanderbilt 11

Period 1-only	In Paint	Off T/O	2nd Chance	Fast Break	Bench	
BALLST	10	2	2	4	4	Score tied - 0 times
VANDY	2	8	0	2	6	Lead changed - 0 times

BALL STATE vs Vanderbilt
11/20/2017; 12 PM at Nashville, Tenn. (Memorial Gym)
Period 2 Play-By-Play

VISITORS: BALL STATE	Time	Score	Margin	HOME: Vanderbilt
SUB IN: BROWN,OSHLYNN	10:00			
SUB IN: HOWARD-BASS,MALIAH	10:00			
SUB OUT: GRANDE,CARMEN	10:00			
SUB OUT: PENNY,NAKEYA	10:00			
	10:00			SUB IN: WALKER,CIERRA
	10:00			SUB IN: OVERBECK,KAYLA
	10:00			SUB OUT: HALL,CHELSIE
	10:00			SUB OUT: BELL,RACHEL
MISSED JUMPER by MONACO,MORIAH	09:42			
REBOUND (OFF) by WALKER,ALIYAH	09:42			
MISSED LAYUP by WALKER,ALIYAH	09:38			
	09:38			REBOUND (DEF) by NEWBY,AUTUMN
FOUL by MONACO,MORIAH	09:37			
SUB IN: FRAZIER,FRANNIE	09:37			
SUB OUT: MONACO,MORIAH	09:37			
	09:22	14-17	V 3	GOOD! 3PTR by CLEMONS-GREEN,K
TURNOVER by WALKER,ALIYAH	09:06			
	08:37			FOUL by CLEMONS-GREEN,K
	08:37			TURNOVER by CLEMONS-GREEN,K
MISSED 3PTR by HOWARD-BASS,MALIAH	08:22			
REBOUND (OFF) by BROWN,OSHLYNN	08:22			
	08:20			FOUL by NEWBY,AUTUMN
	08:20			SUB IN: WHALEN,ERIN
	08:20			SUB OUT: REED,CHRISTA
TURNOVER by FRAZIER,FRANNIE	08:17			
	08:02			TURNOVER by OVERBECK,KAYLA
GOOD! JUMPER by SAMZ,JASMIN	07:48	14-19	V 5	
	07:37			MISSED 3PTR by WHALEN,ERIN
	07:37			REBOUND (OFF) by TEAM
SUB IN: GRANDE,CARMEN	07:35			
SUB OUT: HOWARD-BASS,MALIAH	07:35			
	07:35			SUB IN: HALL,CHELSIE
	07:35			SUB OUT: CLEMONS-GREEN,K
	07:33			MISSED LAYUP by OVERBECK,KAYLA
	07:33			REBOUND (OFF) by OVERBECK,KAYLA
FOUL by WALKER,ALIYAH	07:30			
	07:30	15-19	V 4	GOOD! FT by OVERBECK,KAYLA
	07:30			MISSED FT by OVERBECK,KAYLA
REBOUND (DEF) by BROWN,OSHLYNN	07:30			
TURNOVER by SAMZ,JASMIN	07:22			
	07:21			STEAL by NEWBY,AUTUMN
	07:15			SUB IN: REED,CHRISTA
	07:15			SUB OUT: NEWBY,AUTUMN
	07:01	17-19	V 2	GOOD! LAYUP by OVERBECK,KAYLA [PNT]
TURNOVER by WALKER,ALIYAH	06:42			
SUB IN: MONACO,MORIAH	06:42			
SUB OUT: WALKER,ALIYAH	06:42			
FOUL by SAMZ,JASMIN	06:32			
	06:30	19-19	T	GOOD! JUMPER by HALL,CHELSIE
	06:30			ASSIST by WALKER,CIERRA
MISSED 3PTR by GRANDE,CARMEN	06:14			
REBOUND (OFF) by BROWN,OSHLYNN	06:14			
	06:11			FOUL by REED,CHRISTA
GOOD! 3PTR by MONACO,MORIAH	06:05	19-22	V 3	
ASSIST by FRAZIER,FRANNIE	06:05			
	05:53			FOUL by HALL,CHELSIE
	05:53			TURNOVER by HALL,CHELSIE
SUB IN: HOWARD-BASS,MALIAH	05:53			
SUB OUT: SAMZ,JASMIN	05:53			
GOOD! LAYUP by GRANDE,CARMEN [PNT]	05:38	19-24	V 5	
	05:21			MISSED 3PTR by WHALEN,ERIN
	05:21			REBOUND (OFF) by WHALEN,ERIN
	05:17			MISSED JUMPER by WHALEN,ERIN
REBOUND (DEF) by BROWN,OSHLYNN	05:17			
	05:16			FOUL by OVERBECK,KAYLA
MISSED FT by BROWN,OSHLYNN	05:16			
REBOUND (DEADB) by TEAM	05:16			
GOOD! FT by BROWN,OSHLYNN	05:16	19-25	V 6	
SUB IN: WALKER,ALIYAH	05:16			

VISITORS: BALL STATE	Time	Score	Margin	HOME: Vanderbilt
SUB OUT: MONACO,MORIAH	05:16			
	05:16			SUB IN: BELL,RACHEL
	05:16			SUB OUT: WHALEN,ERIN
	05:00	21-25	V 4	GOOD! LAYUP by HALL,CHELSIE [PNT]
	05:00			ASSIST by BELL,RACHEL
FOUL by FRAZIER,FRANNIE	04:55			
TURNOVER by FRAZIER,FRANNIE	04:55			
	04:55			TIMEOUT media
FOUL by WALKER,ALIYAH	04:40			
	04:40	22-25	V 3	GOOD! FT by HALL,CHELSIE
	04:40			MISSED FT by HALL,CHELSIE
REBOUND (DEF) by MONACO,MORIAH	04:40			
SUB IN: MONACO,MORIAH	04:40			
SUB IN: SAMZ,JASMIN	04:40			
SUB OUT: HOWARD-BASS,MALIAH	04:40			
SUB OUT: WALKER,ALIYAH	04:40			
TURNOVER by MONACO,MORIAH	04:29			
	04:11			MISSED LAYUP by BELL,RACHEL
REBOUND (DEF) by FRAZIER,FRANNIE	04:11			
GOOD! 3PTR by GRANDE,CARMEN	04:03	22-28	V 6	
ASSIST by FRAZIER,FRANNIE	04:03			
	03:54			MISSED 3PTR by BELL,RACHEL
	03:54			REBOUND (OFF) by BELL,RACHEL
	03:46			TURNOVER by WALKER,CIERRA
STEAL by GRANDE,CARMEN	03:44			
GOOD! LAYUP by SAMZ,JASMIN [FB/PNT]	03:42	22-30	V 8	
ASSIST by GRANDE,CARMEN	03:42			
	03:40			TIMEOUT 20SEC
	03:40			SUB IN: CLEMONS-GREEN,K
	03:40			SUB OUT: WALKER,CIERRA
	03:12	24-30	V 6	GOOD! JUMPER by HALL,CHELSIE
TURNOVER by FRAZIER,FRANNIE	02:56			
SUB IN: WALKER,ALIYAH	02:56			
SUB OUT: FRAZIER,FRANNIE	02:56			
	02:56			SUB IN: DANCY,MYKA
	02:56			SUB OUT: CLEMONS-GREEN,K
SUB IN: FRAZIER,FRANNIE	02:51			
SUB OUT: MONACO,MORIAH	02:51			
	02:47			FOUL by OVERBECK,KAYLA
	02:47			TURNOVER by OVERBECK,KAYLA
GOOD! 3PTR by SAMZ,JASMIN	02:30	24-33	V 9	
ASSIST by GRANDE,CARMEN	02:30			
	02:14			TURNOVER by OVERBECK,KAYLA
STEAL by GRANDE,CARMEN	02:14			
MISSED JUMPER by GRANDE,CARMEN	02:03			
REBOUND (OFF) by WALKER,ALIYAH	02:03			
	01:58			FOUL by OVERBECK,KAYLA
MISSED FT by WALKER,ALIYAH	01:58			
REBOUND (DEADB) by TEAM	01:58			
GOOD! FT by WALKER,ALIYAH	01:58	24-34	V 10	
	01:58			SUB IN: NEWBY,AUTUMN
	01:58			SUB OUT: OVERBECK,KAYLA
	01:44	27-34	V 7	GOOD! 3PTR by BELL,RACHEL
	01:44			ASSIST by HALL,CHELSIE
FOUL by FRAZIER,FRANNIE	01:26			
TURNOVER by FRAZIER,FRANNIE	01:26			
	01:11			MISSED 3PTR by BELL,RACHEL
REBOUND (DEF) by BROWN,OSHLYNN	01:11			
FOUL by GRANDE,CARMEN	01:03			
TURNOVER by GRANDE,CARMEN	01:03			
SUB IN: PENNY,NAKEYA	01:03			
SUB OUT: FRAZIER,FRANNIE	01:03			
	00:49			MISSED LAYUP by NEWBY,AUTUMN
BLOCK by PENNY,NAKEYA	00:49			
REBOUND (DEF) by TEAM	00:48			
MISSED 3PTR by SAMZ,JASMIN	00:40			
REBOUND (OFF) by BROWN,OSHLYNN	00:40			
GOOD! LAYUP by BROWN,OSHLYNN [PNT]	00:36	27-36	V 9	
	00:36			FOUL by HALL,CHELSIE
MISSED FT by BROWN,OSHLYNN	00:36			
	00:36			REBOUND (DEF) by NEWBY,AUTUMN
	00:29	29-36	V 7	GOOD! JUMPER by BELL,RACHEL
MISSED 3PTR by GRANDE,CARMEN	00:01			
REBOUND (DEADB) by TEAM	00:00			

Period 2-only	In Paint	Off T/O	2nd Chance	Fast Break	Bench	
BALLST	6	10	6	2	3	Score tied - 0 times
VANDY	4	5	1	0	3	Lead changed - 0 times

Official Basketball Box Score -- Game Totals -- Second Half Statistics
BALL STATE vs Vanderbilt
11/20/2017 12 PM at Nashville, Tenn. (Memorial Gym)

BALL STATE 52 • 3-0

##	Player		Total		3-Ptr	Rebounds			PF	TP	A	TO	Blk	Stl	Min
			FG-FGA	FG-FGA	FT-FTA	Off	Def	Tot							
03	GRANDE,CARMEN	g	4-5	0-0	6-8	0	0	0	3	14	6	2	0	1	17
24	SAMZ,JASMIN	g	1-2	0-0	3-4	0	1	1	3	5	1	0	0	0	18
31	PENNY,NAKEYA	g	0-0	0-0	0-0	0	0	0	0	0	0	0	0	0	1
33	MONACO,MORIAH	f	4-9	3-4	5-6	0	2	2	1	16	0	0	1	2	20
34	WALKER,ALIYAH	f	2-2	0-0	0-0	0	2	2	1	4	0	1	0	0	8
05	HOWARD-BASS,MALIAH		1-1	1-1	0-0	0	2	2	2	3	0	0	0	0	6
20	FRAZIER,FRANNIE		1-2	0-0	2-2	0	2	2	1	4	1	2	0	0	14
32	BROWN,OSHLYNN		1-3	0-0	4-8	4	3	7	2	6	0	1	0	0	16
TEAM						2	0	2	0		1				
Totals			14-24	4-5	20-28	6	12	18	13	52	8	7	1	3	100
FG %	3rd Qtr	6-10	60.0%	4th Qtr	8-14	57.1%	Half:	14-24	58.3%						
3FG %	3rd Qtr	2-2	100.0%	4th Qtr	2-3	66.7%	Half:	4-5	28.6%						
FT %	3rd Qtr	6-8	75.0%	4th Qtr	14-20	70.0%	Half:	20-28	71.4%						

Vanderbilt 50 • 0-3

##	Player		Total		3-Ptr	Rebounds			PF	TP	A	TO	Blk	Stl	Min
			FG-FGA	FG-FGA	FT-FTA	Off	Def	Tot							
02	HALL,CHELSIE	g	6-7	0-0	4-5	1	2	3	2	16	1	1	0	1	18
03	BELL,RACHEL	g	3-7	1-3	0-1	0	0	0	4	7	2	2	0	0	17
24	NEWBY,AUT UMN	f	1-1	0-0	1-2	1	1	2	2	3	1	1	0	0	11
33	REED,CHRISTA	g	0-3	0-2	2-2	2	1	3	4	2	0	0	1	0	18
35	CLEMONS-GREEN,K	g	2-5	1-4	0-0	1	0	1	0	5	1	1	0	0	12
00	OVERBECK,KAYLA		0-1	0-0	0-0	0	0	0	2	0	0	1	0	0	1
10	WALKER,CIERRA		2-5	1-3	4-4	0	2	2	1	9	2	0	0	0	13
12	DANCY,MYKA		0-0	0-0	0-0	0	0	0	0	0	0	0	0	0	0
21	WHALEN,ERIN		1-1	1-1	0-0	0	1	1	2	3	0	0	1	0	4
31	EJIOFOR,BLESSING		2-2	0-0	1-2	1	1	2	3	5	0	2	0	0	6
TEAM						0	0	0	0		0				
Totals			17-32	4-13	12-16	6	8	14	20	50	7	8	2	1	100
FG %	3rd Qtr	8-15	53.3%	4th Qtr	9-17	52.9%	Half:	17-32	53.1%						
3FG %	3rd Qtr	2-6	33.3%	4th Qtr	2-7	28.6%	Half:	4-13	33.3%						
FT %	3rd Qtr	3-7	42.9%	4th Qtr	9-9	100.0%	Half:	12-16	75.0%						

Officials: R:Tina Napier U1:Jesse Dickerson U2: Frank Steratore
 Technical Fouls: BALL STATE- None. Vanderbilt- None.

Score by periods	1st	2nd	3rd	4th	Total
BALL STATE	17	19	20	32	88
Vanderbilt	11	18	21	29	79

Points	In Paint	Off T/O	2nd Chance	Fast Break	Bench
BALLST	20	10	6	4	13
	24	9	10	2	17

Last FG - BALLST 4th-00:24, VANDY 4th-00:38.
 BALLST led for 20:00. VANDY led for 0:00. Game was tied for 0:00.

Score tied - 0 times
 Lead changed - 0 times

BALL STATE vs Vanderbilt
11/20/2017; 12 PM at Nashville, Tenn. (Memorial Gym)
Period 3 Play-By-Play

VISITORS: BALL STATE	Time	Score	Margin	HOME: Vanderbilt
SUB IN: BROWN,OSHLYNN	10:00			
SUB OUT: PENNY,NAKEYA	10:00			
	09:50	31-36	V 5	GOOD! JUMPER by HALL,CHELSIE
	09:50			ASSIST by BELL,RACHEL
GOOD! JUMPER by BROWN,OSHLYNN [PNT]	09:39	31-38	V 7	
ASSIST by GRANDE,CARMEN	09:39			
	09:23			TURNOVER by BELL,RACHEL
TURNOVER by WALKER,ALIYAH	09:05			
	08:44			MISSED 3PTR by REED,CHRISTA
	08:44			REBOUND (OFF) by NEWBY,AUTUMN
	08:40	33-38	V 5	GOOD! LAYUP by NEWBY,AUTUMN [PNT]
GOOD! LAYUP by SAMZ,JASMIN [PNT]	08:27	33-40	V 7	
	08:11			TURNOVER by CLEMONS-GREEN,K
STEAL by GRANDE,CARMEN	08:10			
FOUL by GRANDE,CARMEN	08:08			
TURNOVER by GRANDE,CARMEN	08:08			
	07:58	36-40	V 4	GOOD! 3PTR by CLEMONS-GREEN,K
TURNOVER by GRANDE,CARMEN	07:42			
	07:26			MISSED 3PTR by CLEMONS-GREEN,K
	07:26			REBOUND (OFF) by REED,CHRISTA
	07:17	38-40	V 2	GOOD! LAYUP by HALL,CHELSIE [PNT]
GOOD! 3PTR by MONACO,MORIAH	07:02	38-43	V 5	
ASSIST by GRANDE,CARMEN	07:02			
	06:42	40-43	V 3	GOOD! LAYUP by BELL,RACHEL [PNT]
FOUL by GRANDE,CARMEN	06:42			
	06:42			MISSED FT by BELL,RACHEL
REBOUND (DEF) by BROWN,OSHLYNN	06:42			
SUB IN: FRAZIER,FRANNIE	06:42			
SUB IN: HOWARD-BASS,MALIAH	06:42			
SUB OUT: GRANDE,CARMEN	06:42			
SUB OUT: WALKER,ALIYAH	06:42			
TURNOVER by FRAZIER,FRANNIE	06:24			
	06:22			STEAL by HALL,CHELSIE
	06:20	42-43	V 1	GOOD! LAYUP by HALL,CHELSIE [FB/PNT]
TIMEOUT 20SEC	06:18			
TURNOVER by FRAZIER,FRANNIE	05:58			
	05:38			MISSED 3PTR by CLEMONS-GREEN,K
REBOUND (DEF) by FRAZIER,FRANNIE	05:38			
	05:36			FOUL by BELL,RACHEL
	05:12			FOUL by NEWBY,AUTUMN
MISSED JUMPER by MONACO,MORIAH	05:06			
	05:06			BLOCK by REED,CHRISTA
	05:03			REBOUND (DEF) by NEWBY,AUTUMN
FOUL by SAMZ,JASMIN	04:48			
	04:48			TIMEOUT MEDIA
SUB IN: GRANDE,CARMEN	04:48			
SUB IN: WALKER,ALIYAH	04:48			
SUB OUT: FRAZIER,FRANNIE	04:48			
SUB OUT: BROWN,OSHLYNN	04:48			
	04:44			FOUL by NEWBY,AUTUMN
	04:44			TURNOVER by NEWBY,AUTUMN
GOOD! LAYUP by WALKER,ALIYAH [PNT]	04:18	42-45	V 3	
ASSIST by GRANDE,CARMEN	04:18			
FOUL by HOWARD-BASS,MALIAH	04:00			
	04:00			MISSED FT by NEWBY,AUTUMN
	04:00			REBOUND (DEADB) by TEAM
	04:00	43-45	V 2	GOOD! FT by NEWBY,AUTUMN
	04:00			SUB IN: OVERBECK,KAYLA
	04:00			SUB OUT: NEWBY,AUTUMN
MISSED LAYUP by GRANDE,CARMEN	03:48			
	03:48			REBOUND (DEF) by HALL,CHELSIE
	03:40			MISSED JUMPER by OVERBECK,KAYLA
REBOUND (DEF) by MONACO,MORIAH	03:40			
	03:29			FOUL by OVERBECK,KAYLA
GOOD! FT by GRANDE,CARMEN	03:29	43-46	V 3	
GOOD! FT by GRANDE,CARMEN	03:29	43-47	V 4	
	03:29			SUB IN: EJIOFOR,BLESSING
	03:29			SUB IN: WALKER,CIERRA
	03:29			SUB OUT: OVERBECK,KAYLA

VISITORS: BALL STATE	Time	Score	Margin	HOME: Vanderbilt
	03:29			SUB OUT: CLEMONS-GREEN,K
	03:08			TURNOVER by BELL,RACHEL
STEAL by MONACO,MORIAH	03:07			
GOOD! LAYUP by GRANDE,CARMEN [FB/PNT]	03:06	43-49	V 6	
	02:55			MISSED JUMPER by BELL,RACHEL
BLOCK by MONACO,MORIAH	02:55			
	02:53			REBOUND (OFF) by REED,CHRISTA
FOUL by HOWARD-BASS,MALIAH	02:48			
	02:48	44-49	V 5	GOOD! FT by HALL,CHELSIE
	02:48			MISSED FT by HALL,CHELSIE
	02:48			REBOUND (OFF) by HALL,CHELSIE
SUB IN: FRAZIER,FRANNIE	02:48			
SUB OUT: HOWARD-BASS,MALIAH	02:48			
	02:48			SUB IN: WHALEN,ERIN
	02:48			SUB OUT: BELL,RACHEL
FOUL by WALKER,ALIYAH	02:36			
	02:36	45-49	V 4	GOOD! FT by EJIOFOR,BLESSING
	02:36			MISSED FT by EJIOFOR,BLESSING
REBOUND (DEF) by WALKER,ALIYAH	02:36			
	02:27			FOUL by HALL,CHELSIE
GOOD! FT by MONACO,MORIAH	02:27	45-50	V 5	
GOOD! FT by MONACO,MORIAH	02:27	45-51	V 6	
SUB IN: BROWN,OSHLYNN	02:27			
SUB OUT: WALKER,ALIYAH	02:27			
	02:11			TURNOVER by EJIOFOR,BLESSING
GOOD! 3PTR by MONACO,MORIAH	01:55	45-54	V 9	
ASSIST by FRAZIER,FRANNIE	01:55			
	01:37			MISSED JUMPER by REED,CHRISTA
REBOUND (DEF) by BROWN,OSHLYNN	01:37			
MISSED JUMPER by BROWN,OSHLYNN	01:24			
	01:24			BLOCK by WHALEN,ERIN
	01:22			REBOUND (DEF) by EJIOFOR,BLESSING
	01:08	47-54	V 7	GOOD! LAYUP by EJIOFOR,BLESSING [PNT]
	01:08			ASSIST by WALKER,CIERRA
MISSED JUMPER by MONACO,MORIAH	00:51			
REBOUND (OFF) by BROWN,OSHLYNN	00:51			
	00:47			FOUL by EJIOFOR,BLESSING
GOOD! FT by BROWN,OSHLYNN	00:47	47-55	V 8	
MISSED FT by BROWN,OSHLYNN	00:47			
	00:47			REBOUND (DEF) by REED,CHRISTA
	00:47			SUB IN: BELL,RACHEL
	00:47			SUB OUT: WHALEN,ERIN
	00:41	50-55	V 5	GOOD! 3PTR by BELL,RACHEL
	00:41			ASSIST by WALKER,CIERRA
	00:30			FOUL by REED,CHRISTA
MISSED FT by BROWN,OSHLYNN	00:30			
REBOUND (DEADB) by TEAM	00:30			
GOOD! FT by BROWN,OSHLYNN	00:30	50-56	V 6	
SUB IN: HOWARD-BASS,MALIAH	00:30			
SUB OUT: GRANDE,CARMEN	00:30			
	00:04			MISSED 3PTR by BELL,RACHEL
REBOUND (DEF) by BROWN,OSHLYNN	00:04			

BALL STATE 56, Vanderbilt 50

Period 3-only	In Paint	Off T/O	2nd Chance	Fast Break	Bench	
BALLST	8	7	1	2	4	Score tied - 0 times
VANDY	10	9	6	2	3	Lead changed - 0 times

BALL STATE vs Vanderbilt
11/20/2017; 12 PM at Nashville, Tenn. (Memorial Gym)
Period 4 Play-By-Play

VISITORS: BALL STATE	Time	Score	Margin	HOME: Vanderbilt
SUB IN: FRAZIER,FRANNIE	10:00			
SUB OUT: PENNY,NAKEYA	10:00			
	10:00			SUB IN: WALKER,CIERRA
	10:00			SUB OUT: NEWBY,AUTUMN
	09:52	52-56	V 4	GOOD! JUMPER by CLEMONS-GREEN,K [PNT]
	09:52			ASSIST by BELL,RACHEL
GOOD! LAYUP by GRANDE,CARMEN [PNT]	09:42	52-58	V 6	
	09:29	54-58	V 4	GOOD! JUMPER by BELL,RACHEL [PNT]
SUB IN: BROWN,OSHLYNN	09:10			
SUB OUT: MONACO,MORIAH	09:10			
MISSED JUMPER by FRAZIER,FRANNIE	09:04			
REBOUND (OFF) by BROWN,OSHLYNN	09:04			
TURNOVER by TEAM	08:57			
SUB IN: MONACO,MORIAH	08:45			
SUB OUT: WALKER,ALIYAH	08:45			
	08:42			TURNOVER by OVERBECK,KAYLA
	08:09			FOUL by OVERBECK,KAYLA
GOOD! FT by MONACO,MORIAH	08:09	54-59	V 5	
MISSED FT by MONACO,MORIAH	08:09			
REBOUND (OFF) by TEAM	08:09			
	08:09			SUB IN: OVERBECK,KAYLA
	08:09			SUB IN: NEWBY,AUTUMN
	08:09			SUB OUT: HALL,CHELSIE
FOUL by BROWN,OSHLYNN	07:59			
TURNOVER by BROWN,OSHLYNN	07:59			
	07:59			SUB IN: EJIOFOR,BLESSING
	07:59			SUB OUT: NEWBY,AUTUMN
	07:38			FOUL by EJIOFOR,BLESSING
	07:38			TURNOVER by EJIOFOR,BLESSING
MISSED 3PTR by MONACO,MORIAH	07:09			
REBOUND (OFF) by TEAM	07:09			
MISSED JUMPER by MONACO,MORIAH	06:51			
	06:51			REBOUND (DEF) by WALKER,CIERRA
	06:45			MISSED 3PTR by CLEMONS-GREEN,K
	06:45			REBOUND (OFF) by EJIOFOR,BLESSING
	06:40	56-59	V 3	GOOD! JUMPER by EJIOFOR,BLESSING [PNT]
MISSED JUMPER by SAMZ,JASMIN	06:21			
REBOUND (OFF) by BROWN,OSHLYNN	06:21			
	06:20			FOUL by BELL,RACHEL
GOOD! 3PTR by MONACO,MORIAH	06:11	56-62	V 6	
ASSIST by SAMZ,JASMIN	06:11			
	05:55	58-62	V 4	GOOD! JUMPER by WALKER,CIERRA [PNT]
	05:48			FOUL by EJIOFOR,BLESSING
SUB IN: PENNY,NAKEYA	05:48			
SUB IN: WALKER,ALIYAH	05:48			
SUB OUT: FRAZIER,FRANNIE	05:48			
SUB OUT: BROWN,OSHLYNN	05:48			
	05:48			SUB IN: HALL,CHELSIE
	05:48			SUB OUT: CLEMONS-GREEN,K
GOOD! LAYUP by GRANDE,CARMEN [PNT]	05:43	58-64	V 6	
	05:30			MISSED JUMPER by BELL,RACHEL
REBOUND (DEF) by SAMZ,JASMIN	05:30			
GOOD! LAYUP by WALKER,ALIYAH [PNT]	05:13	58-66	V 8	
ASSIST by GRANDE,CARMEN	05:13			
	05:08			TIMEOUT 20SEC
	05:08			TIMEOUT MEDIA
	05:08			SUB IN: NEWBY,AUTUMN
	05:08			SUB OUT: EJIOFOR,BLESSING
FOUL by SAMZ,JASMIN	05:03			
	05:03	59-66	V 7	GOOD! FT by HALL,CHELSIE
	05:03	60-66	V 6	GOOD! FT by HALL,CHELSIE
SUB IN: FRAZIER,FRANNIE	05:03			
SUB OUT: PENNY,NAKEYA	05:03			
	04:55			FOUL by REED,CHRISTA
GOOD! FT by MONACO,MORIAH	04:55	60-67	V 7	
GOOD! FT by MONACO,MORIAH	04:55	60-68	V 8	
	04:46			MISSED JUMPER by WALKER,CIERRA
REBOUND (DEF) by WALKER,ALIYAH	04:46			
	04:43			FOUL by HALL,CHELSIE

VISITORS: BALL STATE	Time	Score	Margin	HOME: Vanderbilt
MISSED FT by GRANDE,CARMEN	04:43			
REBOUND (DEADB) by TEAM	04:43			
GOOD! FT by GRANDE,CARMEN	04:43	60-69	V 9	
SUB IN: BROWN,OSHLYNN	04:43			
SUB OUT: WALKER,ALIYAH	04:43			
FOUL by BROWN,OSHLYNN	04:35	62-69	V 7	GOOD! JUMPER by HALL,CHELSIE [PNT]
	04:35	63-69	V 6	GOOD! FT by HALL,CHELSIE
GOOD! LAYUP by FRAZIER,FRANNIE [PNT]	04:29	63-71	V 8	
ASSIST by GRANDE,CARMEN	04:29			
FOUL by MONACO,MORIAH	04:18			
FOUL by SAMZ,JASMIN	04:18			
	04:18	64-71	V 7	GOOD! FT by REED,CHRISTA
	04:18	65-71	V 6	GOOD! FT by REED,CHRISTA
SUB IN: HOWARD-BASS,MALIAH	04:18			
SUB OUT: SAMZ,JASMIN	04:18			
TIMEOUT 20SEC	04:06			
MISSED JUMPER by MONACO,MORIAH	03:53			
REBOUND (OFF) by BROWN,OSHLYNN	03:53			
	03:50			FOUL by BELL,RACHEL
GOOD! FT by BROWN,OSHLYNN	03:50	65-72	V 7	
GOOD! FT by BROWN,OSHLYNN	03:50	65-73	V 8	
	03:41			MISSED 3PTR by WALKER,CIERRA
REBOUND (DEF) by HOWARD-BASS,MALIAH	03:41			
GOOD! 3PTR by HOWARD-BASS,MALIAH	03:18	65-76	V 11	
ASSIST by GRANDE,CARMEN	03:18			
	03:02			MISSED 3PTR by REED,CHRISTA
REBOUND (DEF) by HOWARD-BASS,MALIAH	03:02			
GOOD! LAYUP by GRANDE,CARMEN [PNT]	02:37	65-78	V 13	
	02:30			TIMEOUT 20SEC
	02:27	68-78	V 10	GOOD! 3PTR by WALKER,CIERRA
	02:27			ASSIST by NEWBY,AUTUMN
MISSED JUMPER by BROWN,OSHLYNN	01:58			
	01:58			REBOUND (DEF) by WALKER,CIERRA
FOUL by FRAZIER,FRANNIE	01:56			
	01:56	69-78	V 9	GOOD! FT by WALKER,CIERRA
	01:56	70-78	V 8	GOOD! FT by WALKER,CIERRA
	01:56			FOUL by REED,CHRISTA
MISSED FT by BROWN,OSHLYNN	01:56			
REBOUND (DEADB) by TEAM	01:56			
MISSED FT by BROWN,OSHLYNN	01:56			
	01:56			REBOUND (DEF) by HALL,CHELSIE
SUB IN: SAMZ,JASMIN	01:56			
SUB OUT: HOWARD-BASS,MALIAH	01:56			
	01:48			MISSED 3PTR by BELL,RACHEL
REBOUND (DEF) by MONACO,MORIAH	01:48			
	01:40			FOUL by REED,CHRISTA
GOOD! FT by GRANDE,CARMEN	01:40	70-79	V 9	
GOOD! FT by GRANDE,CARMEN	01:40	70-80	V 10	
	01:40			SUB IN: WHALEN,ERIN
	01:40			SUB OUT: REED,CHRISTA
	01:36	72-80	V 8	GOOD! LAYUP by HALL,CHELSIE [PNT]
	01:24			FOUL by WHALEN,ERIN
GOOD! FT by SAMZ,JASMIN	01:24	72-81	V 9	
MISSED FT by SAMZ,JASMIN	01:24			
	01:24			REBOUND (DEF) by WHALEN,ERIN
	01:18			MISSED JUMPER by HALL,CHELSIE
REBOUND (DEF) by FRAZIER,FRANNIE	01:18			
	01:14			FOUL by BELL,RACHEL
GOOD! FT by FRAZIER,FRANNIE	01:14	72-82	V 10	
GOOD! FT by FRAZIER,FRANNIE	01:14	72-83	V 11	
	01:14			SUB IN: CLEMONS-GREEN,K
	01:14			SUB OUT: BELL,RACHEL
	01:01	75-83	V 8	GOOD! 3PTR by WHALEN,ERIN
	01:01			ASSIST by HALL,CHELSIE
	00:55			FOUL by WALKER,CIERRA
MISSED FT by GRANDE,CARMEN	00:55			
REBOUND (DEADB) by TEAM	00:55			
GOOD! FT by GRANDE,CARMEN	00:55	75-84	V 9	
	00:45			MISSED 3PTR by WALKER,CIERRA
	00:45			REBOUND (OFF) by CLEMONS-GREEN,K
	00:38	77-84	V 7	GOOD! LAYUP by HALL,CHELSIE [PNT]
	00:38			ASSIST by CLEMONS-GREEN,K
	00:28			FOUL by WHALEN,ERIN
GOOD! FT by SAMZ,JASMIN	00:28	77-85	V 8	

VISITORS: BALL STATE	Time	Score	Margin	HOME: Vanderbilt
GOOD! FT by SAMZ,JASMIN	00:28	77-86	V 9	
	00:28			TIMEOUT 30SEC
	00:27			TURNOVER by HALL,CHELSIE
STEAL by MONACO,MORIAH	00:26			
GOOD! LAYUP by MONACO,MORIAH [FB/PNT]	00:24	77-88	V 11	
FOUL by GRANDE,CARMEN	00:13			
	00:13	78-88	V 10	GOOD! FT by WALKER,CIERRA
	00:13	79-88	V 9	GOOD! FT by WALKER,CIERRA

BALL STATE 88, Vanderbilt 79

Period 4-only	In Paint	Off T/O	2nd Chance	Fast Break	Bench	
BALLST	12	3	5	2	9	Score tied - 0 times
VANDY	14	0	4	0	14	Lead changed - 0 times

BALL STATE vs Vanderbilt
11/20/2017; 12 PM at Nashville, Tenn. (Memorial Gym)
Scoring/Runs Reference

Period 1

BALL STATE	VRun	Score	Margin	HRun	Vanderbilt
09:49 - SAMZ JUMPER	-	2-0	-2		
07:51 - GRANDE LAYUP [P]	NaN-0	4-0	-4		
		4-3	-1		REED 3PTR - 06:44
05:30 - SAMZ LAYUP [P] [F]	-	6-3	-3		
		6-5	-1		HALL LAYUP [P] [F] - 04:39
04:23 - FRAZIER LAYUP [P]	-	8-5	-3		
03:55 - MONACO JUMPER [F]	4-0	10-5	-5		
02:50 - FRAZIER LAYUP [P]	6-0	12-5	-7		
		12-8	-4		WALKER 3PTR - 02:00
		12-11	-1	6-0	WALKER 3PTR - 01:19
01:06 - MONACO 3PTR	-	15-11	-4		
00:22 - MONACO LAYUP [P]	5-0	17-11	-6		

BALL STATE vs Vanderbilt
11/20/2017; 12 PM at Nashville, Tenn. (Memorial Gym)
Scoring/Runs Reference

Period 2

BALL STATE	VRun	Score	Margin	HRun	Vanderbilt
		17-14	-3		CLEMONS-GREEN 3PTR - 09:22
07:48 - SAMZ JUMPER	-	19-14	-5		
		19-15	-4		OVERBECK FT - 07:30
		19-17	-2	3-0	OVERBECK LAYUP [P] - 07:01
		19-19	0	5-0	HALL JUMPER - 06:30
06:05 - MONACO 3PTR	-	22-19	-3		
05:38 - GRANDE LAYUP [P]	5-0	24-19	-5		
05:16 - BROWN FT	6-0	25-19	-6		
		25-21	-4		HALL LAYUP [P] - 05:00
		25-22	-3	3-0	HALL FT - 04:40
04:03 - GRANDE 3PTR	-	28-22	-6		
03:42 - SAMZ LAYUP [P] [F]	5-0	30-22	-8		
		30-24	-6		HALL JUMPER - 03:12
02:30 - SAMZ 3PTR	-	33-24	-9		
01:58 - WALKER FT	4-0	34-24	-10		
		34-27	-7		BELL 3PTR - 01:44
00:36 - BROWN LAYUP [P]	-	36-27	-9		
		36-29	-7		BELL JUMPER - 00:29

BALL STATE vs Vanderbilt
11/20/2017; 12 PM at Nashville, Tenn. (Memorial Gym)
Scoring/Runs Reference

Period 3

BALL STATE	VRun	Score	Margin	HRun	Vanderbilt
		36-31	-5		HALL JUMPER - 09:50
09:39 - BROWN JUMPER [P]	-	38-31	-7		
		38-33	-5		NEWBY LAYUP [P] - 08:40
08:27 - SAMZ LAYUP [P]	-	40-33	-7		
		40-36	-4		CLEMONS-GREEN 3PTR - 07:58
		40-38	-2	5-0	HALL LAYUP [P] - 07:17
07:02 - MONACO 3PTR	-	43-38	-5		
		43-40	-3		BELL LAYUP [P] - 06:42
		43-42	-1	4-0	HALL LAYUP [P] [F] - 06:20
04:18 - WALKER LAYUP [P]	-	45-42	-3		
		45-43	-2		NEWBY FT - 04:00
03:29 - GRANDE FT	-	46-43	-3		
03:29 - GRANDE FT	2-0	47-43	-4		
03:06 - GRANDE LAYUP [P] [F]	4-0	49-43	-6		
		49-44	-5		HALL FT - 02:48
		49-45	-4	2-0	EJIOFOR FT - 02:36
02:27 - MONACO FT	-	50-45	-5		
02:27 - MONACO FT	2-0	51-45	-6		
01:55 - MONACO 3PTR	5-0	54-45	-9		
		54-47	-7		EJIOFOR LAYUP [P] - 01:08
00:47 - BROWN FT	-	55-47	-8		
		55-50	-5		BELL 3PTR - 00:41
00:30 - BROWN FT	-	56-50	-6		

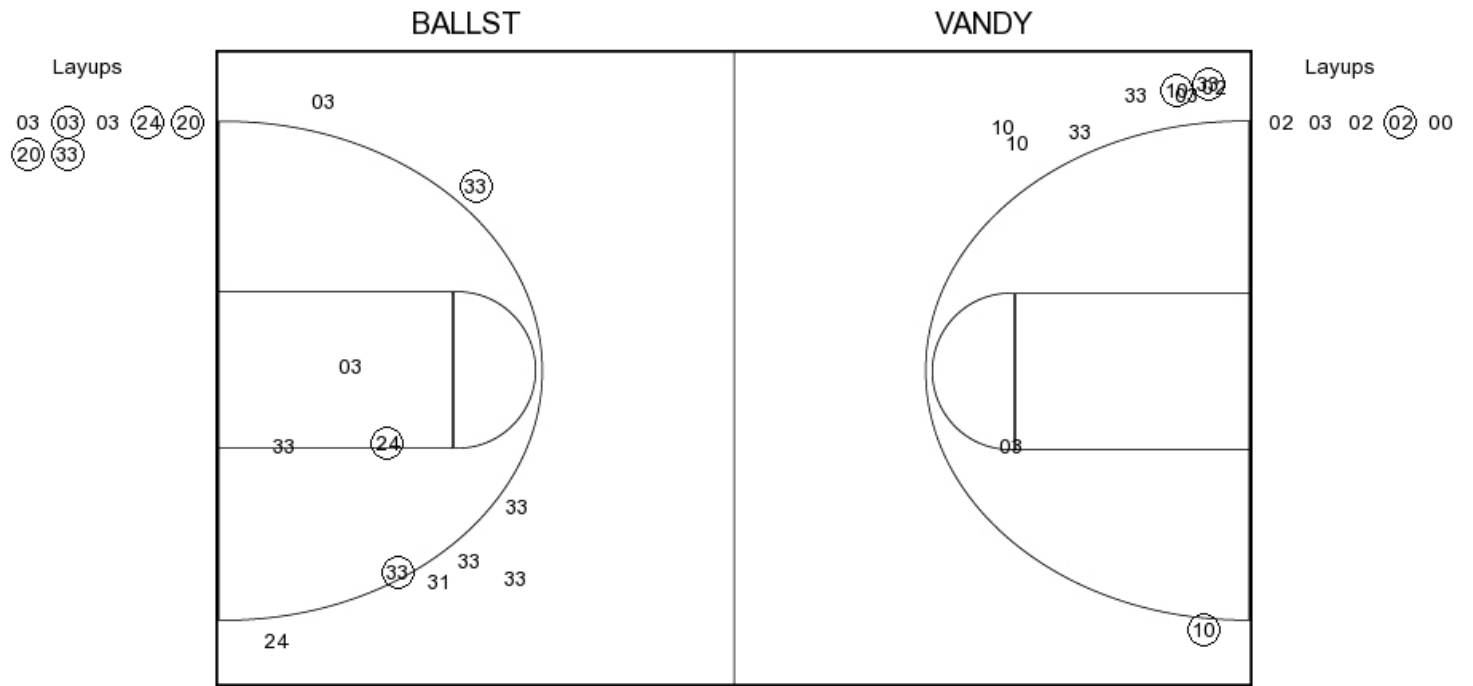
BALL STATE vs Vanderbilt
11/20/2017; 12 PM at Nashville, Tenn. (Memorial Gym)
Scoring/Runs Reference

Period 4

BALL STATE	VRun	Score	Margin	HRun	Vanderbilt
		56-52	-4		CLEMONS-GREEN JUMPER [P] - 09:52
09:42 - GRANDE LAYUP [P]	-	58-52	-6		
		58-54	-4		BELL JUMPER [P] - 09:29
08:09 - MONACO FT	-	59-54	-5		
		59-56	-3		EJIOFOR JUMPER [P] - 06:40
06:11 - MONACO 3PTR	-	62-56	-6		
		62-58	-4		WALKER JUMPER [P] - 05:55
05:43 - GRANDE LAYUP [P]	-	64-58	-6		
05:13 - WALKER LAYUP [P]	4-0	66-58	-8		
		66-59	-7		HALL FT - 05:03
		66-60	-6	2-0	HALL FT - 05:03
04:55 - MONACO FT	-	67-60	-7		
04:55 - MONACO FT	2-0	68-60	-8		
04:43 - GRANDE FT	3-0	69-60	-9		
		69-62	-7		HALL JUMPER [P] - 04:35
		69-63	-6	3-0	HALL FT - 04:35
04:29 - FRAZIER LAYUP [P]	-	71-63	-8		
		71-64	-7		REED FT - 04:18
		71-65	-6	2-0	REED FT - 04:18
03:50 - BROWN FT	-	72-65	-7		
03:50 - BROWN FT	2-0	73-65	-8		
03:18 - HOWARD-BASS 3PTR	5-0	76-65	-11		
02:37 - GRANDE LAYUP [P]	7-0	78-65	-13		
		78-68	-10		WALKER 3PTR - 02:27
		78-69	-9	4-0	WALKER FT - 01:56
		78-70	-8	5-0	WALKER FT - 01:56
01:40 - GRANDE FT	-	79-70	-9		
01:40 - GRANDE FT	2-0	80-70	-10		
		80-72	-8		HALL LAYUP [P] - 01:36
01:24 - SAMZ FT	-	81-72	-9		
01:14 - FRAZIER FT	2-0	82-72	-10		
01:14 - FRAZIER FT	3-0	83-72	-11		
		83-75	-8		WHALEN 3PTR - 01:01
00:55 - GRANDE FT	-	84-75	-9		
		84-77	-7		HALL LAYUP [P] - 00:38
00:28 - SAMZ FT	-	85-77	-8		
00:28 - SAMZ FT	2-0	86-77	-9		
00:24 - MONACO LAYUP [P] [F]	4-0	88-77	-11		
		88-78	-10		WALKER FT - 00:13
		88-79	-9	2-0	WALKER FT - 00:13

BALL STATE vs Vanderbilt
OFFICIAL SHOT CHART
11/20/2017 at Nashville, Tenn. (Memorial Gym)

PERIOD 1



BALLST PERIOD 1

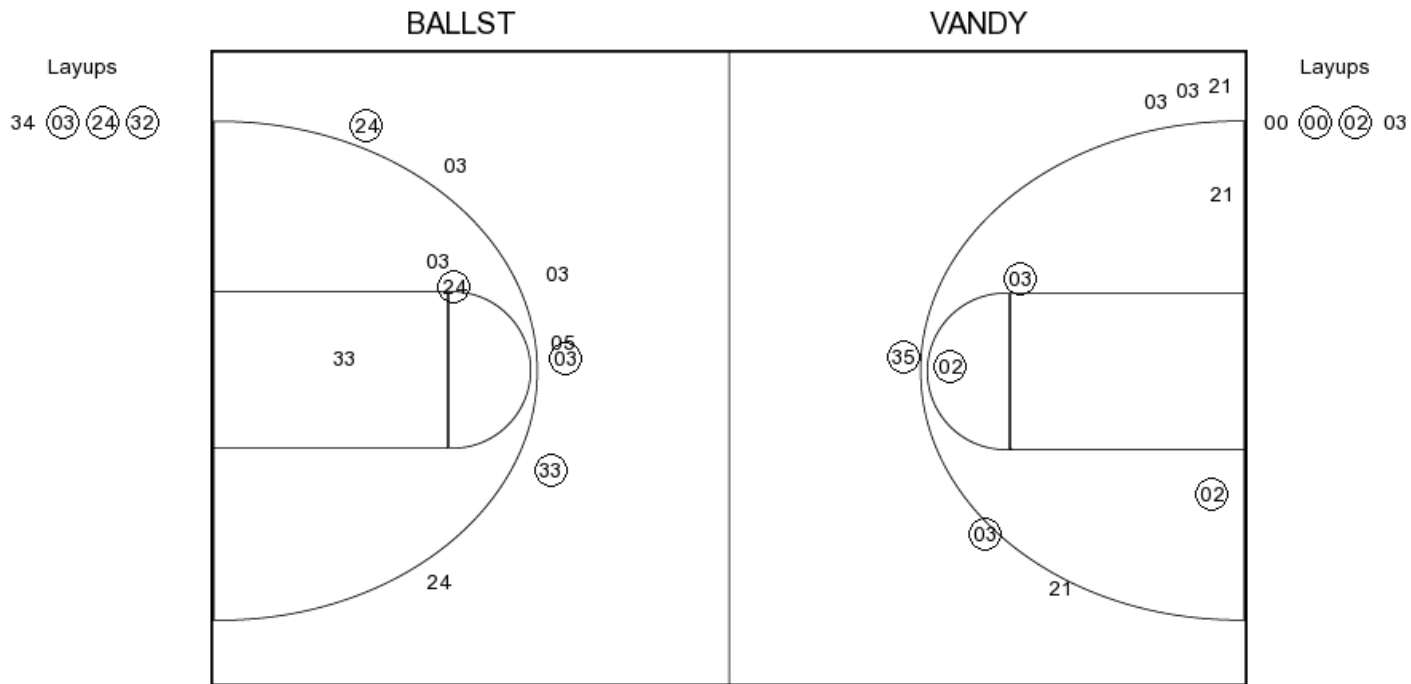
FG Made	15
FG Attempted	32
3PFG Made	4
3PFG Attempted	14

VANDY PERIOD 1

FG Made	11
FG Attempted	30
3PFG Made	5
3PFG Attempted	15

BALL STATE vs Vanderbilt
OFFICIAL SHOT CHART
11/20/2017 at Nashville, Tenn. (Memorial Gym)

PERIOD 2



BALLST PERIOD 2

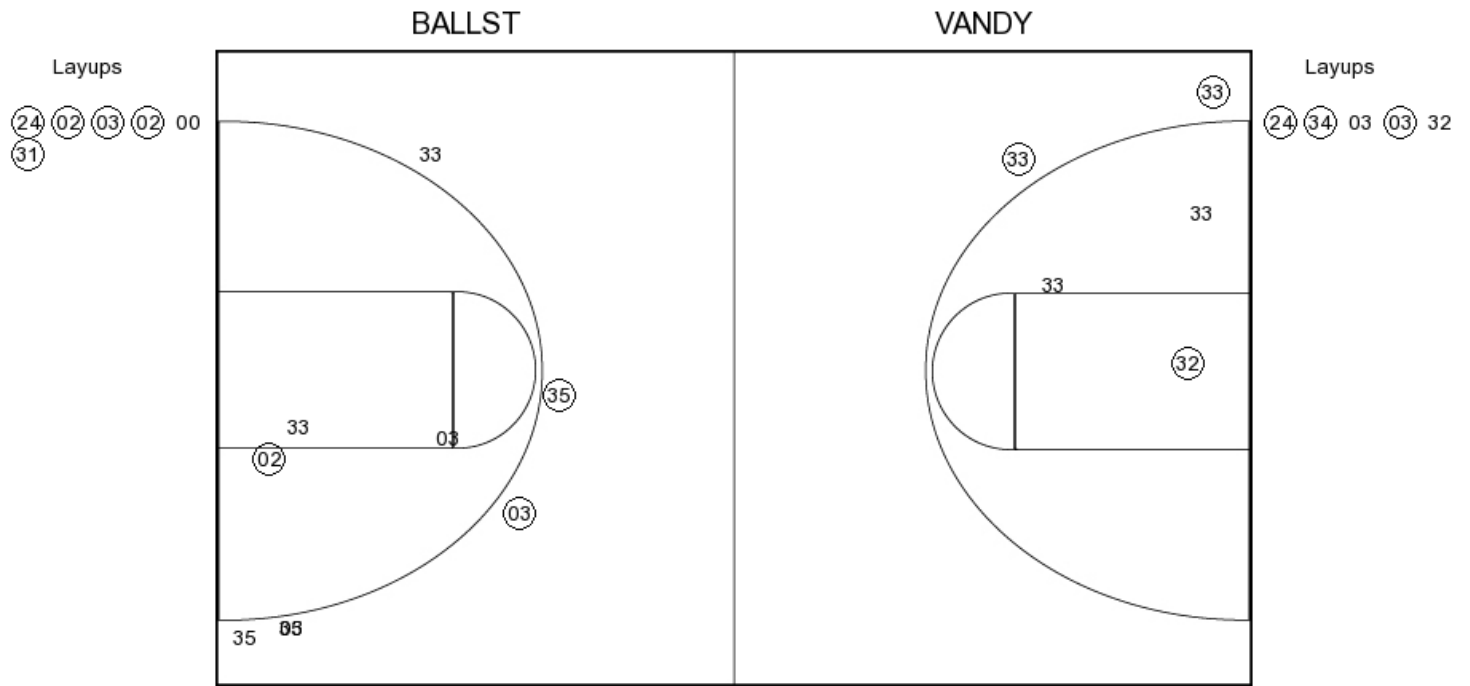
FG Made
 FG Attempted
 3PFG Made
 3PFG Attempted

VANDY PERIOD 2

FG Made
 FG Attempted
 3PFG Made
 3PFG Attempted

BALL STATE vs Vanderbilt
OFFICIAL SHOT CHART
11/20/2017 at Nashville, Tenn. (Memorial Gym)

PERIOD 3



BALLST PERIOD 3

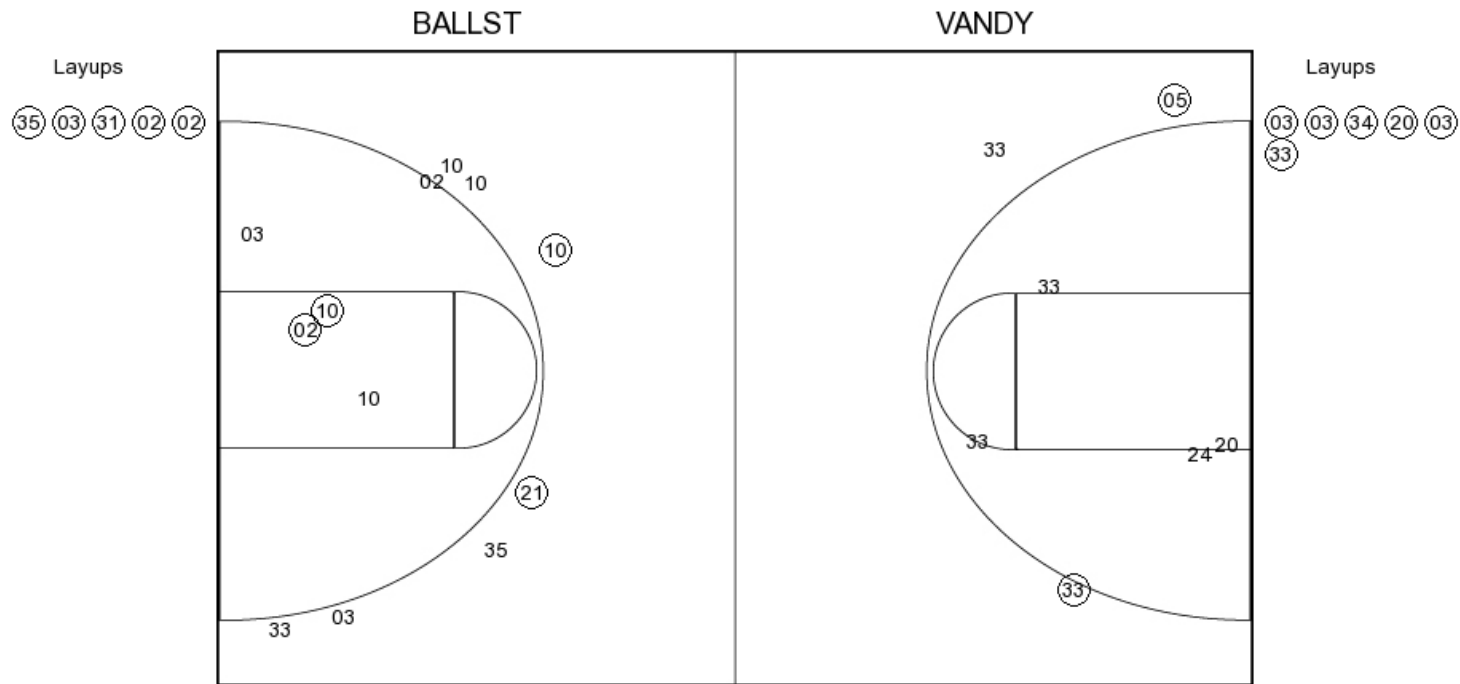
FG Made	14
FG Attempted	24
3PFG Made	4
3PFG Attempted	5

VANDY PERIOD 3

FG Made	17
FG Attempted	32
3PFG Made	4
3PFG Attempted	13

BALL STATE vs Vanderbilt
OFFICIAL SHOT CHART
 11/20/2017 at Nashville, Tenn. (Memorial Gym)

PERIOD 4



BALLST PERIOD 4

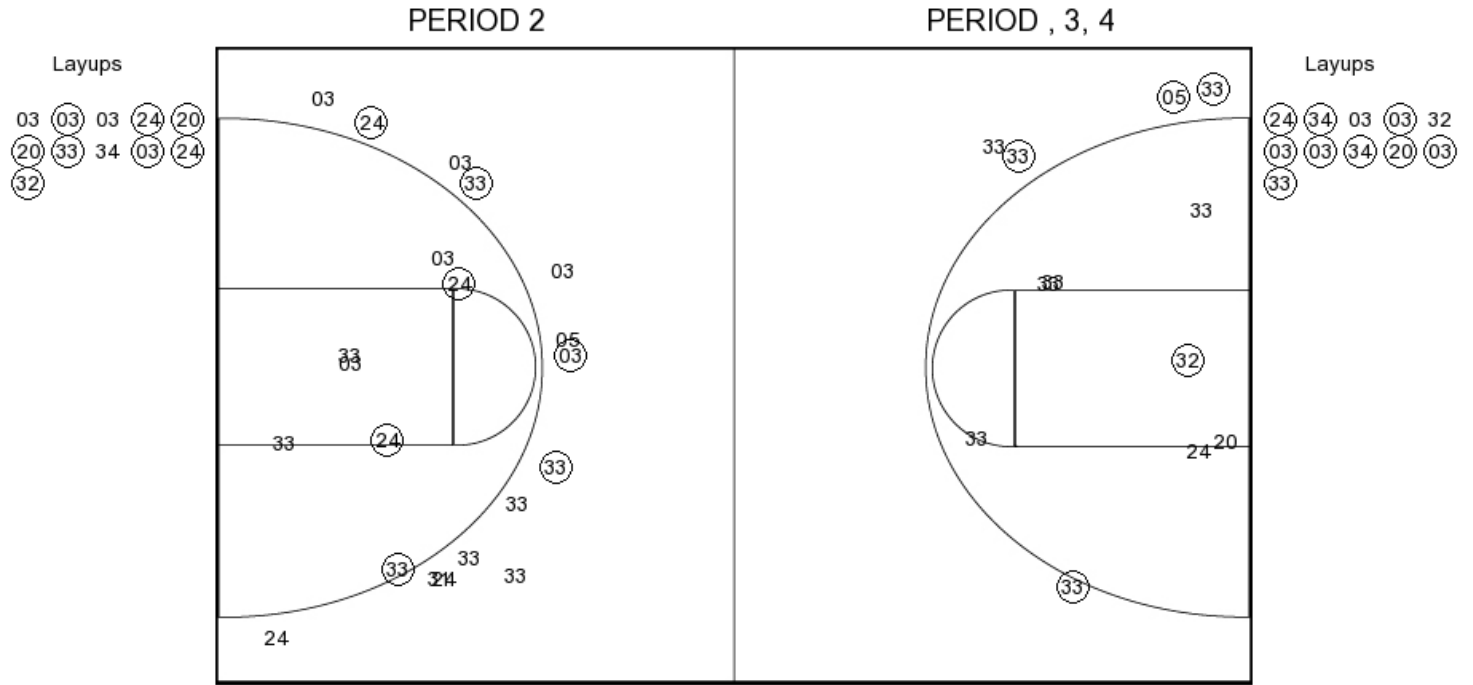
FG Made
 FG Attempted
 3PFG Made
 3PFG Attempted

VANDY PERIOD 4

FG Made
 FG Attempted
 3PFG Made
 3PFG Attempted

BALL STATE vs Vanderbilt
OFFICIAL SHOT CHART
 11/20/2017 at Nashville, Tenn. (Memorial Gym)

BALL STATE



BALLST PERIOD 1

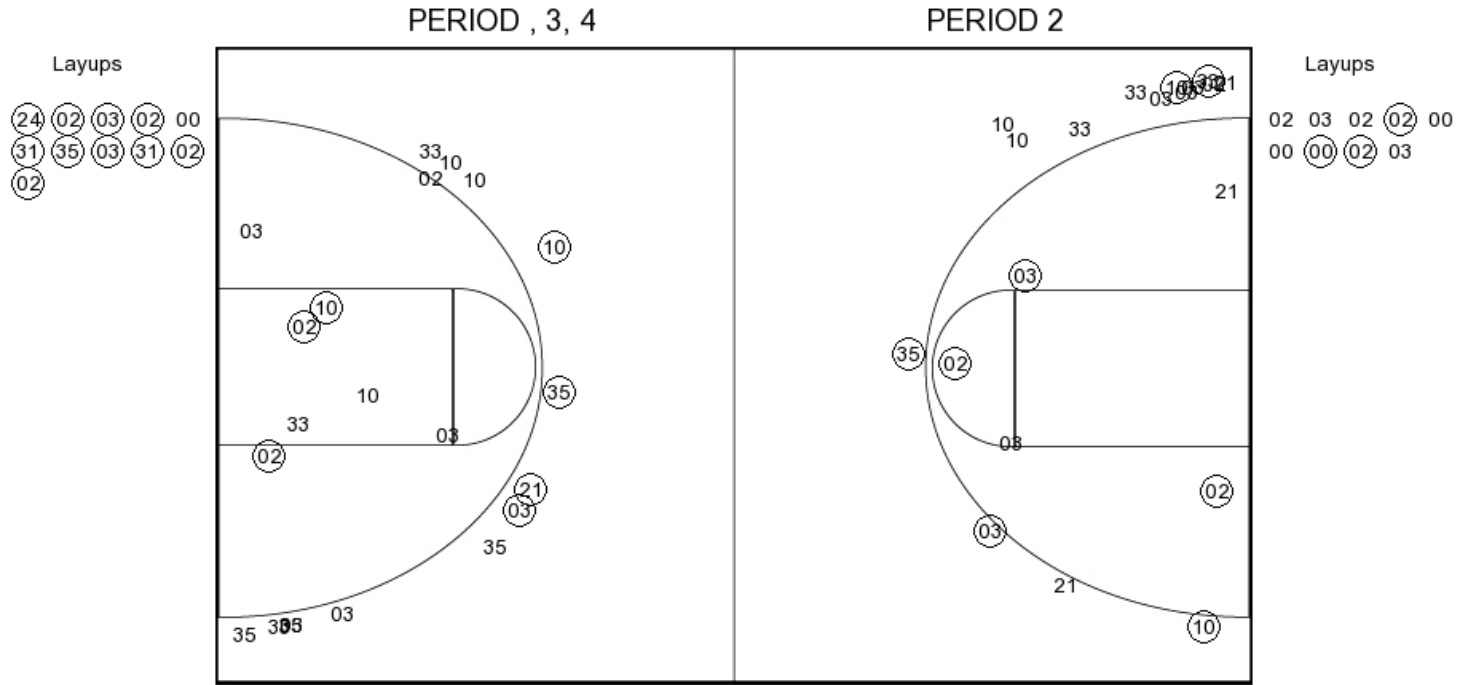
FG Made	15
FG Attempted	32
3PFG Made	4
3PFG Attempted	14

BALLST PERIOD 2

FG Made	
FG Attempted	
3PFG Made	
3PFG Attempted	

BALL STATE vs Vanderbilt
OFFICIAL SHOT CHART
 11/20/2017 at Nashville, Tenn. (Memorial Gym)

Vanderbilt



VANDY PERIOD 1

FG Made	11
FG Attempted	30
3PFG Made	5
3PFG Attempted	15

VANDY PERIOD 2

FG Made	
FG Attempted	
3PFG Made	
3PFG Attempted	