

FINAL SCORE

Middle Tennessee

0-0

65

Vanderbilt

0-0

54

November 10, 2017 • Nashville, Tenn. (Memorial Gym)

FINAL STATISTICS

Official Basketball Box Score -- Game Totals -- Final Statistics
Middle Tennessee vs Vanderbilt
11/10/2017 6:00 PM at Nashville, Tenn. (Memorial Gym)

Middle Tennessee 65 - 0-0

##	Player	f	Total		3-Ptr	Rebounds			PF	TP	A	TO	Blk	Stl	Min
			FG-FGA	FG-FGA	FT-FTA	Off	Def	Tot							
00	JOHNSON,ALEX	f	1-1	0-0	2-2	0	1	1	0	4	0	0	0	0	5
05	SISSOM,ABBEY	g	1-5	1-4	5-6	0	3	3	0	8	5	2	0	1	35
12	LOURO,JESS	g	4-14	4-12	4-4	0	6	6	3	16	1	3	0	2	40
14	COLLIER,KATIE	g	1-3	0-0	6-6	1	2	3	3	8	1	0	0	1	26
23	LYON,GABBY	f	4-6	0-0	2-5	2	8	10	4	10	0	0	1	2	34
02	CANBAZ,ZEYNEP		0-1	0-0	0-0	0	0	0	0	0	1	1	0	0	3
03	ALLISON,KYLA		1-3	1-2	3-4	0	0	0	0	6	2	1	0	0	11
13	MAJORS,JORDAN		1-5	0-0	0-2	0	2	2	3	2	0	1	0	0	13
15	JONES,ANNA		1-2	0-0	0-0	0	0	0	3	2	0	2	0	1	5
21	EDWARDS,LASONJA		1-2	0-0	0-0	0	2	2	2	2	0	5	1	1	9
24	REUTER,REBECCA		2-5	1-3	2-2	3	3	6	5	7	1	2	1	1	19
TEAM						3	0	3	0						
TOTALS			17-47	7-21	24-31	9	27	36	23	65	11	17	3	9	200

Deadball Rebounds: 5,0

FG %	1st Half:	10-30	33.3%	2nd Half:	7-17	41.2%	Game:	17-47	36.2%					
	1st Qtr:	7-16	43.8%	2nd Qtr:	3-14	21.4%	3rd Qtr:	5-9	55.6%	4th Qtr:	2-8	25.0%		
3FG %	1st Half:	3-13	23.1%	2nd Half:	4-8	50.0%	Game:	7-21	33.3%					
	1st Qtr:	2-7	28.6%	2nd Qtr:	1-6	16.7%	3rd Qtr:	4-6	66.7%	4th Qtr:	0-2	00.0%		
FT %	1st Half:	7-7	100.0%	2nd Half:	17-24	70.8%	Game:	24-31	77.4%					
	1st Qtr:	6-6	100.0%	2nd Qtr:	1-1	100.0%	3rd Qtr:	5-8	62.5%	4th Qtr:	12-16	75.0%		

Vanderbilt 54 - 0-0

##	Player	g	Total		3-Ptr	Rebounds			PF	TP	A	TO	Blk	Stl	Min
			FG-FGA	FG-FGA	FT-FTA	Off	Def	Tot							
02	HALL,CHELSIE	g	4-9	0-1	1-2	1	2	3	2	9	3	6	0	1	33
03	BELL,RACHEL	g	2-11	2-4	3-4	1	1	2	0	9	2	2	0	0	24
21	WHALEN,ERIN	f	1-8	0-2	0-0	0	4	4	4	2	1	2	0	0	24
22	HORROCKS,BREE	c	1-2	0-0	0-0	0	2	2	4	2	0	2	0	0	14
33	REED,CHRISTA	g	5-9	1-3	3-4	1	3	4	5	14	1	2	2	0	31
00	OVERBECK,KAYLA		4-5	0-0	2-2	2	1	3	5	10	2	1	0	1	16
10	WALKER,CIERRA		1-5	1-4	0-0	1	1	2	1	3	1	0	0	0	27
31	EJIOFOR,BLESSING		0-0	0-0	2-4	0	2	2	4	2	0	2	0	0	5
35	CLEMONS-GREEN,K		0-1	0-1	3-4	1	1	2	4	3	2	2	0	2	26
TEAM						1	6	7	0						
TOTALS			18-50	4-15	14-20	8	23	31	29	54	12	19	2	4	200

Deadball Rebounds: 3,0

FG %	1st Half:	9-23	39.1%	2nd Half:	9-27	33.3%	Game:	18-50	36.0%					
	1st Qtr:	4-11	36.4%	2nd Qtr:	5-12	41.7%	3rd Qtr:	5-14	35.7%	4th Qtr:	4-13	30.8%		
3FG %	1st Half:	3-6	50.0%	2nd Half:	1-9	11.1%	Game:	4-15	26.7%					
	1st Qtr:	2-3	66.7%	2nd Qtr:	1-3	33.3%	3rd Qtr:	1-4	25.0%	4th Qtr:	0-5	00.0%		
FT %	1st Half:	5-6	83.3%	2nd Half:	9-14	64.3%	Game:	14-20	70.0%					
	1st Qtr:	4-4	100.0%	2nd Qtr:	1-2	50.0%	3rd Qtr:	2-4	50.0%	4th Qtr:	7-10	70.0%		

Officials: R:Lisa Mattingly; U1: Beverley Roberts; U2:Eric Koch
 Technical Fouls: Middle Tennessee- None. Vanderbilt- None.
 Attendance: 2866

Score by periods	1st	2nd	3rd	4th	Total
Middle Tennessee	22	8	19	16	65
Vanderbilt	14	12	13	15	54

Points	In Paint	Off T/O	2nd Chance	Fast Break	Bench
MT	20	9	4	0	19
VANDY	24	11	7	2	18

Last FG - MT 4th-01:33, VANDY 4th-00:58.
 Largest lead - Middle Tennessee by 14 3rd-07:13; Vanderbilt by 1 2nd-06:34
 MT led for 39:07. VANDY led for 0:20. Game was tied for 0:33.

Score tied - 1 times; Lead changed - 2 times

Official Basketball Box Score -- Game Totals -- First Half Statistics
Middle Tennessee vs Vanderbilt
11/10/2017 6:00 PM at Nashville, Tenn. (Memorial Gym)

Middle Tennessee 30 • 0-0

##	Player	f	Total FG-FGA	3-Ptr FG-FGA	FT-FTA	Rebounds			PF	TP	A	TO	Blk	Stl	Min
						Off	Def	Tot							
00	JOHNSON,ALEX	f	1-1	0-0	2-2	0	1	1	0	4	0	0	0	0	5
05	SISSOM,ABBEY	g	0-3	0-3	0-0	0	2	2	0	0	2	0	0	0	18
12	LOURO,JESS	g	2-8	2-7	0-0	0	1	1	1	6	0	2	0	2	20
14	COLLIER,KATIE	g	1-3	0-0	0-0	1	1	2	1	2	0	0	0	0	13
23	LYON,GABBY	f	2-2	0-0	1-1	0	3	3	2	5	0	0	0	0	14
02	CANBAZ,ZEYNEP		0-1	0-0	0-0	0	0	0	0	0	1	1	0	0	3
03	ALLISON,KYLA		0-0	0-0	2-2	0	0	0	0	2	1	0	0	0	4
13	MAJORS,JORDAN		0-3	0-0	0-0	0	0	0	0	0	0	0	0	0	3
15	JONES,ANNA		1-2	0-0	0-0	0	0	0	3	2	0	1	0	0	2
21	EDWARDS,LASONJA		1-2	0-0	0-0	0	1	1	1	2	0	2	1	1	5
24	REUTER,REBECCA		2-5	1-3	2-2	3	3	6	1	7	1	1	1	1	13
TEAM						3	0	3	0		0				
Totals			10-30	3-13	7-7	7	12	19	9	30	5	7	2	4	100

FG % 1st Qtr 7-16 43.8% 2nd Qtr 3-14 21.4% Half: 10-30 33.3%
 3FG % 1st Qtr 2-7 28.6% 2nd Qtr 1-6 16.7% Half: 3-13 23.1%
 FT % 1st Qtr 6-6 100.0% 2nd Qtr 1-1 100.0% Half: 7-7 100.0%

Vanderbilt 26 • 0-0

##	Player	g	Total FG-FGA	3-Ptr FG-FGA	FT-FTA	Rebounds			PF	TP	A	TO	Blk	Stl	Min
						Off	Def	Tot							
02	HALL,CHELSIE	g	2-6	0-0	0-0	0	1	1	0	4	2	3	0	0	15
03	BELL,RACHEL	g	2-6	2-3	2-2	1	1	2	0	8	1	1	0	0	15
21	WHALEN,ERIN	f	0-2	0-0	0-0	0	1	1	1	0	0	0	0	0	12
22	HORROCKS,BREE	c	0-1	0-0	0-0	0	1	1	1	0	0	1	0	0	8
33	REED,CHRISTA	g	1-2	0-0	0-0	0	2	2	1	2	1	1	2	0	14
00	OVERBECK,KAYLA		3-3	0-0	2-2	2	1	3	2	8	2	0	0	1	12
10	WALKER,CIERRA		1-3	1-3	0-0	0	0	0	0	3	0	0	0	0	13
31	EJIOFOR,BLESSING		0-0	0-0	1-2	0	2	2	3	1	0	2	0	0	4
35	CLEMONS-GREEN,K		0-0	0-0	0-0	0	0	0	1	0	1	1	0	0	7
TEAM						0	4	4	0		0				
Totals			9-23	3-6	5-6	3	13	16	9	26	7	9	2	1	100

FG % 1st Qtr 4-11 36.4% 2nd Qtr 5-12 41.7% Half: 9-23 39.1%
 3FG % 1st Qtr 2-3 66.7% 2nd Qtr 1-3 33.3% Half: 3-6 50.0%
 FT % 1st Qtr 4-4 100.0% 2nd Qtr 1-2 50.0% Half: 5-6 83.3%

Officials: R:Lisa Mattingly; U1: Beverley Roberts; U2:Eric Koch
 Technical Fouls: Middle Tennessee- None. Vanderbilt- None.

Score by periods	1st	2nd	3rd	4th	Total
Middle Tennessee	22	8	19	16	65
Vanderbilt	14	12	13	15	54

Points	In Paint	Off T/O	2nd Chance	Fast Break	Bench
MT	14	5	2	0	13
	10	8	4	0	12

Last FG - MT 2nd-01:57, VANDY 2nd-03:17.
 MT led for 19:07. VANDY led for 0:20. Game was tied for 0:33.

Score tied - 1 times
 Lead changed - 2 times

Middle Tennessee vs Vanderbilt
11/10/2017; 6:00 PM at Nashville, Tenn. (Memorial Gym)
Period 1 Play-By-Play

VISITORS: Middle Tennessee	Time	Score	Margin	HOME: Vanderbilt
GOOD! LAYUP by LYON,GABBY [PNT]	09:42	0-2	V 2	
	09:32			MISSED JUMPER by BELL,RACHEL
REBOUND (DEF) by LYON,GABBY	09:32			
GOOD! JUMPER by COLLIER,KATIE [PNT]	09:17	0-4	V 4	
	08:53	2-4	V 2	GOOD! LAYUP by HALL,CHELSIE [PNT]
GOOD! 3PTR by LOURO,JESS	08:24	2-7	V 5	
ASSIST by SISSOM,ABBEY	08:24			
	08:03			MISSED LAYUP by HORROCKS,BREE
	08:03			REBOUND (OFF) by BELL,RACHEL
FOUL by LYON,GABBY	08:01			
	07:43			MISSED JUMPER by BELL,RACHEL
REBOUND (DEF) by LYON,GABBY	07:43			
	07:22			FOUL by HORROCKS,BREE
GOOD! FT by JOHNSON,ALEX	07:22	2-8	V 6	
GOOD! FT by JOHNSON,ALEX	07:22	2-9	V 7	
	07:22			SUB IN: OVERBECK,KAYLA
	07:22			SUB IN: WALKER,CIERRA
	07:22			SUB OUT: BELL,RACHEL
	07:22			SUB OUT: HORROCKS,BREE
	07:10			MISSED JUMPER by WHALEN,ERIN
	07:10			REBOUND (OFF) by OVERBECK,KAYLA
FOUL by LYON,GABBY	07:06			
	07:06	3-9	V 6	GOOD! FT by OVERBECK,KAYLA
	07:06	4-9	V 5	GOOD! FT by OVERBECK,KAYLA
SUB IN: REUTER,REBECCA	07:06			
SUB OUT: LYON,GABBY	07:06			
GOOD! LAYUP by JOHNSON,ALEX [PNT]	06:49	4-11	V 7	
	06:44			TURNOVER by HALL,CHELSIE
STEAL by LOURO,JESS	06:42			
MISSED 3PTR by LOURO,JESS	06:30			
	06:30			REBOUND (DEF) by REED,CHRISTA
FOUL by REUTER,REBECCA	06:27			
	06:16			MISSED LAYUP by HALL,CHELSIE
REBOUND (DEF) by JOHNSON,ALEX	06:16			
MISSED 3PTR by SISSOM,ABBEY	06:07			
	06:07			REBOUND (DEF) by TEAM
	05:50			MISSED 3PTR by WALKER,CIERRA
REBOUND (DEF) by REUTER,REBECCA	05:50			
SUB IN: MAJORS,JORDAN	05:43			
SUB OUT: JOHNSON,ALEX	05:43			
MISSED 3PTR by LOURO,JESS	05:24			
REBOUND (OFF) by REUTER,REBECCA	05:24			
MISSED LAYUP by MAJORS,JORDAN	05:18			
	05:18			BLOCK by REED,CHRISTA
REBOUND (OFF) by TEAM	05:18			
	05:18			SUB IN: EJIOFOR,BLESSING
	05:18			SUB OUT: WHALEN,ERIN
MISSED JUMPER by COLLIER,KATIE	05:06			
	05:06			REBOUND (DEF) by EJIOFOR,BLESSING
	04:56			TURNOVER by REED,CHRISTA
STEAL by LOURO,JESS	04:55			
	04:51			FOUL by EJIOFOR,BLESSING
TIMEOUT MEDIA	04:51			
TURNOVER by REUTER,REBECCA	04:29			
	04:17	6-11	V 5	GOOD! LAYUP by HALL,CHELSIE [PNT]
	04:17			ASSIST by OVERBECK,KAYLA
	03:52			FOUL by OVERBECK,KAYLA
MISSED LAYUP by MAJORS,JORDAN	03:51			
REBOUND (OFF) by TEAM	03:51			
MISSED JUMPER by MAJORS,JORDAN	03:33			
REBOUND (OFF) by REUTER,REBECCA	03:33			
GOOD! LAYUP by REUTER,REBECCA [PNT]	03:30	6-13	V 7	
	03:12			FOUL by EJIOFOR,BLESSING
	03:12			TURNOVER by EJIOFOR,BLESSING
	03:12			SUB IN: HORROCKS,BREE
	03:12			SUB OUT: EJIOFOR,BLESSING
MISSED 3PTR by LOURO,JESS	02:56			
	02:56			REBOUND (DEF) by OVERBECK,KAYLA
	02:41			TURNOVER by HALL,CHELSIE

VISITORS: Middle Tennessee	Time	Score	Margin	HOME: Vanderbilt
STEAL by REUTER,REBECCA	02:41			
SUB IN: EDWARDS,LASONJA	02:41			
SUB OUT: MAJORS,JORDAN	02:41			
	02:41			SUB IN: BELL,RACHEL
	02:41			SUB OUT: REED,CHRISTA
GOOD! LAYUP by EDWARDS,LASONJA [PNT]	02:27	6-15	V 9	
ASSIST by SISSOM,ABBEY	02:27			
	02:11			MISSED JUMPER by HALL,CHELSIE
BLOCK by REUTER,REBECCA	02:11			
REBOUND (DEF) by COLLIER,KATIE	02:08			
FOUL by EDWARDS,LASONJA	01:54			
TURNOVER by EDWARDS,LASONJA	01:54			
	01:54			SUB IN: CLEMONS-GREEN,K
	01:54			SUB OUT: HALL,CHELSIE
	01:35	9-15	V 6	GOOD! 3PTR by BELL,RACHEL
	01:35			ASSIST by OVERBECK,KAYLA
	01:21			FOUL by OVERBECK,KAYLA
GOOD! FT by REUTER,REBECCA	01:21	9-16	V 7	
GOOD! FT by REUTER,REBECCA	01:21	9-17	V 8	
SUB IN: LYON,GABBY	01:21			
SUB OUT: EDWARDS,LASONJA	01:21			
	01:21			SUB IN: REED,CHRISTA
	01:21			SUB OUT: OVERBECK,KAYLA
FOUL by LOURO,JESS	01:10			
	01:10	10-17	V 7	GOOD! FT by BELL,RACHEL
	01:10	11-17	V 6	GOOD! FT by BELL,RACHEL
SUB IN: ALLISON,KYLA	01:10			
SUB OUT: SISSOM,ABBEY	01:10			
	00:43			FOUL by REED,CHRISTA
GOOD! FT by ALLISON,KYLA	00:43	11-18	V 7	
GOOD! FT by ALLISON,KYLA	00:43	11-19	V 8	
SUB IN: SISSOM,ABBEY	00:43			
SUB OUT: COLLIER,KATIE	00:43			
	00:31	14-19	V 5	GOOD! 3PTR by WALKER,CIERRA
	00:31			ASSIST by CLEMONS-GREEN,K
MISSED 3PTR by LOURO,JESS	00:15			
	00:15			REBOUND (DEF) by TEAM
	00:02			TURNOVER by CLEMONS-GREEN,K
GOOD! 3PTR by REUTER,REBECCA	00:00	14-22	V 8	
ASSIST by ALLISON,KYLA	00:00			

Middle Tennessee 22, Vanderbilt 14

Period 1-only	In Paint	Off T/O	2nd Chance	Fast Break	Bench	
MT	10	5	2	0	11	Score tied - 0 times
VANDY	4	5	2	0	5	Lead changed - 0 times

Middle Tennessee vs Vanderbilt
11/10/2017; 6:00 PM at Nashville, Tenn. (Memorial Gym)
Period 2 Play-By-Play

VISITORS: Middle Tennessee	Time	Score	Margin	HOME: Vanderbilt
SUB IN: REUTER,REBECCA	10:00			
SUB IN: ALLISON,KYLA	10:00			
SUB OUT: JOHNSON,ALEX	10:00			
SUB OUT: COLLIER,KATIE	10:00			
	10:00			SUB IN: WALKER,CIERRA
	10:00			SUB IN: CLEMONS-GREEN,K
	10:00			SUB OUT: HALL,CHELSIE
	10:00			SUB OUT: WHALEN,ERIN
	09:44	17-22	V 5	GOOD! 3PTR by BELL,RACHEL
	09:44			ASSIST by REED,CHRISTA
TURNOVER by LOURO,JESS	09:16			
SUB IN: COLLIER,KATIE	09:16			
SUB OUT: ALLISON,KYLA	09:16			
	09:16			SUB IN: HALL,CHELSIE
	09:16			SUB OUT: WALKER,CIERRA
	09:01	19-22	V 3	GOOD! JUMPER by REED,CHRISTA
	09:01			ASSIST by HALL,CHELSIE
	08:33			FOUL by CLEMONS-GREEN,K
	08:33			SUB IN: OVERBECK,KAYLA
	08:33			SUB OUT: HORROCKS,BREE
MISSED 3PTR by REUTER,REBECCA	08:20			
REBOUND (OFF) by COLLIER,KATIE	08:20			
MISSED 3PTR by SISSOM,ABBEY	07:58			
	07:58			REBOUND (DEF) by REED,CHRISTA
	07:46	21-22	V 1	GOOD! LAYUP by OVERBECK,KAYLA [PNT]
	07:46			ASSIST by BELL,RACHEL
	07:19			SUB IN: WHALEN,ERIN
	07:19			SUB IN: WALKER,CIERRA
	07:19			SUB OUT: CLEMONS-GREEN,K
	07:19			SUB OUT: REED,CHRISTA
TURNOVER by LOURO,JESS	07:14			
	07:12			STEAL by OVERBECK,KAYLA
FOUL by COLLIER,KATIE	07:10			
	07:09			MISSED JUMPER by WHALEN,ERIN
REBOUND (DEF) by REUTER,REBECCA	07:09			
MISSED 3PTR by REUTER,REBECCA	06:45			
	06:45			REBOUND (DEF) by WHALEN,ERIN
	06:34	23-22	H 1	GOOD! LAYUP by OVERBECK,KAYLA [PNT]
	06:34			ASSIST by HALL,CHELSIE
GOOD! LAYUP by LYON,GABBY [PNT]	06:14	23-24	V 1	
ASSIST by REUTER,REBECCA	06:14			
	06:14			FOUL by WHALEN,ERIN
GOOD! FT by LYON,GABBY	06:14	23-25	V 2	
SUB IN: EDWARDS,LASONJA	06:14			
SUB OUT: REUTER,REBECCA	06:14			
	06:08			MISSED LAYUP by HALL,CHELSIE
BLOCK by EDWARDS,LASONJA	06:08			
REBOUND (DEF) by SISSOM,ABBEY	06:06			
MISSED JUMPER by COLLIER,KATIE	05:45			
	05:45			REBOUND (DEF) by HALL,CHELSIE
	05:38			MISSED 3PTR by WALKER,CIERRA
REBOUND (DEF) by EDWARDS,LASONJA	05:38			
TURNOVER by EDWARDS,LASONJA	05:21			
TIMEOUT 30SEC	05:21			
	05:21			TIMEOUT media
SUB IN: CANBAZ,ZEYNEP	05:21			
SUB OUT: COLLIER,KATIE	05:21			
	05:07			TURNOVER by BELL,RACHEL
MISSED JUMPER by CANBAZ,ZEYNEP	04:44			
	04:44			REBOUND (DEF) by TEAM
	04:24			TURNOVER by HALL,CHELSIE
STEAL by EDWARDS,LASONJA	04:23			
MISSED 3PTR by SISSOM,ABBEY	04:05			
	04:05			REBOUND (DEF) by TEAM
	03:44			MISSED LAYUP by HALL,CHELSIE
REBOUND (DEF) by SISSOM,ABBEY	03:44			
MISSED LAYUP by EDWARDS,LASONJA	03:27			
	03:27			REBOUND (DEF) by BELL,RACHEL
	03:19			MISSED LAYUP by BELL,RACHEL

VISITORS: Middle Tennessee	Time	Score	Margin	HOME: Vanderbilt
	03:19			REBOUND (OFF) by OVERBECK,KAYLA
	03:17	25-25	T	GOOD! LAYUP by OVERBECK,KAYLA [PNT]
GOOD! 3PTR by LOURO,JESS	03:02	25-28	V 3	
ASSIST by CANBAZ,ZEYNEP	03:02			
	02:44			MISSED 3PTR by BELL,RACHEL
REBOUND (DEF) by LYON,GABBY	02:44			
TURNOVER by CANBAZ,ZEYNEP	02:29			
SUB IN: ALLISON,KYLA	02:29			
SUB IN: REUTER,REBECCA	02:29			
SUB IN: JONES,ANNA	02:29			
SUB OUT: EDWARDS,LASONJA	02:29			
SUB OUT: SISSOM,ABBEY	02:29			
SUB OUT: CANBAZ,ZEYNEP	02:29			
	02:29			SUB IN: CLEMONS-GREEN,K
	02:29			SUB IN: REED,CHRISTA
	02:29			SUB IN: EJIOFOR,BLESSING
	02:29			SUB OUT: HALL,CHELSIE
	02:29			SUB OUT: OVERBECK,KAYLA
	02:29			SUB OUT: WALKER,CIERRA
FOUL by JONES,ANNA	02:12			
	02:12	26-28	V 2	GOOD! FT by EJIOFOR,BLESSING
	02:12			MISSED FT by EJIOFOR,BLESSING
REBOUND (DEF) by LOURO,JESS	02:12			
GOOD! LAYUP by JONES,ANNA [PNT]	01:57	26-30	V 4	
FOUL by JONES,ANNA	01:42			
	01:38			TURNOVER by EJIOFOR,BLESSING
MISSED JUMPER by LOURO,JESS	01:16			
	01:16			REBOUND (DEF) by EJIOFOR,BLESSING
	01:03			MISSED JUMPER by REED,CHRISTA
REBOUND (DEF) by REUTER,REBECCA	01:03			
	00:41			FOUL by EJIOFOR,BLESSING
	00:41			SUB IN: HALL,CHELSIE
	00:41			SUB OUT: WHALEN,ERIN
FOUL by JONES,ANNA	00:36			
TURNOVER by JONES,ANNA	00:36			
	00:36			SUB IN: HORROCKS,BREE
	00:36			SUB OUT: EJIOFOR,BLESSING
	00:28			TURNOVER by HORROCKS,BREE
MISSED JUMPER by JONES,ANNA	00:15			
	00:15			BLOCK by REED,CHRISTA
REBOUND (OFF) by TEAM	00:13			
SUB IN: COLLIER,KATIE	00:13			
SUB IN: SISSOM,ABBEY	00:13			
SUB OUT: ALLISON,KYLA	00:13			
SUB OUT: JONES,ANNA	00:13			
MISSED 3PTR by LOURO,JESS	00:01			
REBOUND (OFF) by REUTER,REBECCA	00:01			
MISSED LAYUP by REUTER,REBECCA	00:00			
	00:00			REBOUND (DEF) by HORROCKS,BREE

Middle Tennessee 30, Vanderbilt 26

Period 2-only	In Paint	Off T/O	2nd Chance	Fast Break	Bench	
MT	4	0	0	0	2	Score tied - 0 times
VANDY	6	3	2	0	7	Lead changed - 2 times

Official Basketball Box Score -- Game Totals -- Second Half Statistics
Middle Tennessee vs Vanderbilt
11/10/2017 6:00 PM at Nashville, Tenn. (Memorial Gym)

Middle Tennessee 35 • 0-0

##	Player	f	Total		3-Ptr	Rebounds			PF	TP	A	TO	Blk	Stl	Min
			FG-FGA	FG-FGA	FT-FTA	Off	Def	Tot							
00	JOHNSON,ALEX	f	0-0	0-0	0-0	0	0	0	0	0	0	0	0	0	0
05	SISSOM,ABBEY	g	1-2	1-1	5-6	0	1	1	0	8	3	2	0	1	17
12	LOURO,JESS	g	2-6	2-5	4-4	0	5	5	2	10	1	1	0	0	20
14	COLLIER,KATIE	g	0-0	0-0	6-6	0	1	1	2	6	1	0	0	1	13
23	LYON,GABBY	f	2-4	0-0	1-4	2	5	7	2	5	0	0	1	2	20
02	CANBAZ,ZEYNEP		0-0	0-0	0-0	0	0	0	0	0	0	0	0	0	0
03	ALLISON,KYLA		1-3	1-2	1-2	0	0	0	0	4	1	1	0	0	7
13	MAJORS,JORDAN		1-2	0-0	0-2	0	2	2	3	2	0	1	0	0	10
15	JONES,ANNA		0-0	0-0	0-0	0	0	0	0	0	0	1	0	1	3
21	EDWARDS,LASONJA		0-0	0-0	0-0	0	1	1	1	0	0	3	0	0	4
24	REUTER,REBECCA		0-0	0-0	0-0	0	0	0	4	0	0	1	0	0	6
TEAM						0	0	0	0		0				
Totals			7-17	4-8	17-24	2	15	17	14	35	6	10	1	5	100
FG %	3rd Qtr	5-9	55.6%	4th Qtr	2-8	25.0%	Half:	7-17	41.2%						
3FG %	3rd Qtr	4-6	66.7%	4th Qtr	0-2	00.0%	Half:	4-8	23.1%						
FT %	3rd Qtr	5-8	62.5%	4th Qtr	12-16	75.0%	Half:	17-24	70.8%						

Vanderbilt 28 • 0-0

##	Player	g	Total		3-Ptr	Rebounds			PF	TP	A	TO	Blk	Stl	Min
			FG-FGA	FG-FGA	FT-FTA	Off	Def	Tot							
02	HALL,CHELSIE	g	2-3	0-1	1-2	1	1	2	2	5	1	3	0	1	18
03	BELL,RACHEL	g	0-5	0-1	1-2	0	0	0	0	1	1	1	0	0	9
21	WHALEN,ERIN	f	1-6	0-2	0-0	0	3	3	3	2	1	2	0	0	12
22	HORROCKS,BREE	c	1-1	0-0	0-0	0	1	1	3	2	0	1	0	0	6
33	REED,CHRISTA	g	4-7	1-3	3-4	1	1	2	4	12	0	1	0	0	17
00	OVERBECK,KAYLA		1-2	0-0	0-0	0	0	0	3	2	0	1	0	0	4
10	WALKER,CIERRA		0-2	0-1	0-0	1	1	2	1	0	1	0	0	0	14
31	EJIOFOR,BLESSING		0-0	0-0	1-2	0	0	0	1	1	0	0	0	0	1
35	CLEMONS-GREEN,K		0-1	0-1	3-4	1	1	2	3	3	1	1	0	2	19
TEAM						1	2	3	0		0				
Totals			9-27	1-9	9-14	5	10	15	20	28	5	10	0	3	100
FG %	3rd Qtr	5-14	35.7%	4th Qtr	4-13	30.8%	Half:	9-27	33.3%						
3FG %	3rd Qtr	1-4	25.0%	4th Qtr	0-5	00.0%	Half:	1-9	50.0%						
FT %	3rd Qtr	2-4	50.0%	4th Qtr	7-10	70.0%	Half:	9-14	64.3%						

Officials: R:Lisa Mattingly; U1: Beverley Roberts; U2:Eric Koch
 Technical Fouls: Middle Tennessee- None. Vanderbilt- None.

Score by periods	1st	2nd	3rd	4th	Total
Middle Tennessee	22	8	19	16	65
Vanderbilt	14	12	13	15	54

Points	In Paint	Off T/O	2nd Chance	Fast Break	Bench
MT	6	4	2	0	6
	14	3	3	2	6

Last FG - MT 4th-01:33, VANDY 4th-00:58.
 MT led for 20:00. VANDY led for 0:00. Game was tied for 0:00.

Score tied - 0 times
 Lead changed - 0 times

Middle Tennessee vs Vanderbilt
11/10/2017; 6:00 PM at Nashville, Tenn. (Memorial Gym)
Period 3 Play-By-Play

VISITORS: Middle Tennessee	Time	Score	Margin	HOME: Vanderbilt
SUB IN: REUTER,REBECCA	10:00			
SUB IN: ALLISON,KYLA	10:00			
SUB OUT: JOHNSON,ALEX	10:00			
SUB OUT: COLLIER,KATIE	10:00			
	09:46			MISSED JUMPER by BELL,RACHEL
REBOUND (DEF) by LYON,GABBY	09:46			
GOOD! 3PTR by ALLISON,KYLA	09:30	26-33	V 7	
ASSIST by SISSOM,ABBEY	09:30			
	09:17			MISSED 3PTR by BELL,RACHEL
REBOUND (DEF) by LYON,GABBY	09:17			
GOOD! 3PTR by LOURO,JESS	08:46	26-36	V 10	
ASSIST by ALLISON,KYLA	08:46			
	08:36			TIMEOUT 30SEC
	08:36			TIMEOUT MEDIA
	08:36			SUB IN: CLEMONS-GREEN,K
	08:36			SUB IN: OVERBECK,KAYLA
	08:36			SUB IN: WALKER,CIERRA
	08:36			SUB OUT: BELL,RACHEL
	08:36			SUB OUT: WHALEN,ERIN
	08:36			SUB OUT: HORROCKS,BREE
	08:32			TURNOVER by HALL,CHELSIE
	08:15			FOUL by HALL,CHELSIE
	08:08			FOUL by OVERBECK,KAYLA
MISSED FT by ALLISON,KYLA	08:08			
REBOUND (DEADB) by TEAM	08:08			
GOOD! FT by ALLISON,KYLA	08:08	26-37	V 11	
	08:08			SUB IN: WHALEN,ERIN
	08:08			SUB OUT: REED,CHRISTA
	07:40			MISSED JUMPER by OVERBECK,KAYLA
	07:40			REBOUND (OFF) by HALL,CHELSIE
	07:34			MISSED 3PTR by WHALEN,ERIN
REBOUND (DEF) by LYON,GABBY	07:34			
GOOD! 3PTR by SISSOM,ABBEY	07:13	26-40	V 14	
ASSIST by LOURO,JESS	07:13			
	07:04	28-40	V 12	GOOD! LAYUP by OVERBECK,KAYLA [FB/PNT]
	07:04			ASSIST by WALKER,CIERRA
	06:49			FOUL by CLEMONS-GREEN,K
	06:49			SUB IN: BELL,RACHEL
	06:49			SUB OUT: HALL,CHELSIE
MISSED LAYUP by LYON,GABBY	06:33			
	06:33			REBOUND (DEF) by WHALEN,ERIN
FOUL by REUTER,REBECCA	06:24			
	06:24	29-40	V 11	GOOD! FT by BELL,RACHEL
	06:24			MISSED FT by BELL,RACHEL
REBOUND (DEF) by LOURO,JESS	06:24			
	06:16			FOUL by CLEMONS-GREEN,K
MISSED 3PTR by LOURO,JESS	05:59			
REBOUND (OFF) by LYON,GABBY	05:59			
TURNOVER by SISSOM,ABBEY	05:47			
	05:46			STEAL by CLEMONS-GREEN,K
	05:42			MISSED LAYUP by WHALEN,ERIN
	05:42			REBOUND (OFF) by WALKER,CIERRA
	05:40			MISSED JUMPER by WALKER,CIERRA
BLOCK by LYON,GABBY	05:40			
	05:38			REBOUND (OFF) by CLEMONS-GREEN,K
	05:37			TURNOVER by CLEMONS-GREEN,K
SUB IN: COLLIER,KATIE	05:37			
SUB OUT: ALLISON,KYLA	05:37			
	05:37			SUB IN: REED,CHRISTA
	05:37			SUB OUT: WHALEN,ERIN
TURNOVER by LOURO,JESS	05:23			
FOUL by REUTER,REBECCA	05:12			
SUB IN: EDWARDS,LASONJA	05:10			
SUB OUT: REUTER,REBECCA	05:10			
	05:05			TURNOVER by BELL,RACHEL
STEAL by SISSOM,ABBEY	05:04			
MISSED JUMPER by SISSOM,ABBEY	04:52			
	04:52			REBOUND (DEF) by TEAM
	04:50			TIMEOUT MEDIA

VISITORS: Middle Tennessee	Time	Score	Margin	HOME: Vanderbilt
SUB IN: JONES,ANNA	04:50			
SUB OUT: SISSOM,ABBEY	04:50			
	04:33			MISSED JUMPER by BELL,RACHEL
REBOUND (DEF) by LYON,GABBY	04:33			
TURNOVER by EDWARDS,LASONJA	04:19			
SUB IN: MAJORS,JORDAN	04:19			
SUB OUT: EDWARDS,LASONJA	04:19			
	04:19			SUB IN: HALL,CHELSIE
	04:19			SUB OUT: BELL,RACHEL
	04:11			FOUL by OVERBECK,KAYLA
	04:11			TURNOVER by OVERBECK,KAYLA
	03:59			FOUL by OVERBECK,KAYLA
MISSED FT by MAJORS,JORDAN	03:59			
REBOUND (DEADB) by TEAM	03:59			
MISSED FT by MAJORS,JORDAN	03:59			
	03:59			REBOUND (DEF) by HALL,CHELSIE
	03:59			SUB IN: HORROCKS,BREE
	03:59			SUB OUT: OVERBECK,KAYLA
FOUL by COLLIER,KATIE	03:49			
	03:46			MISSED JUMPER by REED,CHRISTA
REBOUND (DEF) by COLLIER,KATIE	03:46			
	03:36			FOUL by HORROCKS,BREE
GOOD! FT by LOURO,JESS	03:36	29-41	V 12	
GOOD! FT by LOURO,JESS	03:36	29-42	V 13	
FOUL by MAJORS,JORDAN	03:29			
SUB IN: EDWARDS,LASONJA	03:29			
SUB OUT: MAJORS,JORDAN	03:29			
	03:25	31-42	V 11	GOOD! LAYUP by REED,CHRISTA [PNT]
MISSED 3PTR by LOURO,JESS	03:04			
	03:04			REBOUND (DEF) by HORROCKS,BREE
	02:50			FOUL by HORROCKS,BREE
	02:50			TURNOVER by HORROCKS,BREE
	02:50			SUB IN: EJIOFOR,BLESSING
	02:50			SUB OUT: HORROCKS,BREE
TURNOVER by EDWARDS,LASONJA	02:40			
SUB IN: REUTER,REBECCA	02:40			
SUB OUT: EDWARDS,LASONJA	02:40			
	02:24			TURNOVER by HALL,CHELSIE
STEAL by JONES,ANNA	02:23			
TURNOVER by JONES,ANNA	02:21			
	02:20			STEAL by HALL,CHELSIE
	02:14			MISSED 3PTR by REED,CHRISTA
	02:14			REBOUND (OFF) by TEAM
FOUL by REUTER,REBECCA	02:13			
	02:13			MISSED FT by EJIOFOR,BLESSING
	02:13			REBOUND (DEADB) by TEAM
	02:13	32-42	V 10	GOOD! FT by EJIOFOR,BLESSING
SUB IN: EDWARDS,LASONJA	02:13			
SUB OUT: REUTER,REBECCA	02:13			
	01:43			FOUL by EJIOFOR,BLESSING
GOOD! FT by COLLIER,KATIE	01:43	32-43	V 11	
GOOD! FT by COLLIER,KATIE	01:43	32-44	V 12	
SUB IN: MAJORS,JORDAN	01:43			
SUB OUT: EDWARDS,LASONJA	01:43			
	01:43			SUB IN: HORROCKS,BREE
	01:43			SUB OUT: EJIOFOR,BLESSING
SUB IN: SISSOM,ABBEY	01:36			
SUB OUT: JONES,ANNA	01:36			
	01:29	35-44	V 9	GOOD! 3PTR by REED,CHRISTA
	01:29			ASSIST by HALL,CHELSIE
GOOD! 3PTR by LOURO,JESS	01:12	35-47	V 12	
ASSIST by SISSOM,ABBEY	01:12			
	01:01	37-47	V 10	GOOD! JUMPER by HORROCKS,BREE
	01:01			ASSIST by CLEMONS-GREEN,K
GOOD! LAYUP by MAJORS,JORDAN [PNT]	00:33	37-49	V 12	
ASSIST by COLLIER,KATIE	00:33			
	00:04	39-49	V 10	GOOD! LAYUP by HALL,CHELSIE [PNT]

Middle Tennessee 49, Vanderbilt 39

Period 3-only	In Paint	Off T/O	2nd Chance	Fast Break	Bench	
MT	2	1	0	0	6	Score tied - 0 times
VANDY	6	1	1	2	3	Lead changed - 0 times

Middle Tennessee vs Vanderbilt
11/10/2017; 6:00 PM at Nashville, Tenn. (Memorial Gym)
Period 4 Play-By-Play

VISITORS: Middle Tennessee	Time	Score	Margin	HOME: Vanderbilt
SUB IN: MAJORS,JORDAN	10:00			
SUB OUT: JOHNSON,ALEX	10:00			
	10:00			SUB IN: WALKER,CIERRA
	10:00			SUB IN: CLEMONS-GREEN,K
	10:00			SUB OUT: BELL,RACHEL
	10:00			SUB OUT: WHALEN,ERIN
	09:48			MISSED 3PTR by REED,CHRISTA
REBOUND (DEF) by LOURO,JESS	09:48			
MISSED 3PTR by LOURO,JESS	09:13			
	09:13			REBOUND (DEF) by WALKER,CIERRA
FOUL by MAJORS,JORDAN	09:07			
	09:07	40-49	V 9	GOOD! FT by REED,CHRISTA
	09:07	41-49	V 8	GOOD! FT by REED,CHRISTA
SUB IN: ALLISON,KYLA	09:07			
SUB OUT: COLLIER,KATIE	09:07			
	08:48			FOUL by HORROCKS,BREE
GOOD! FT by SISSOM,ABBEY	08:48	41-50	V 9	
GOOD! FT by SISSOM,ABBEY	08:48	41-51	V 10	
	08:27			MISSED 3PTR by WALKER,CIERRA
	08:27			REBOUND (OFF) by REED,CHRISTA
FOUL by LYON,GABBY	08:23			
SUB IN: REUTER,REBECCA	08:23			
SUB OUT: MAJORS,JORDAN	08:23			
	08:23			SUB IN: WHALEN,ERIN
	08:23			SUB OUT: HORROCKS,BREE
	08:16	43-51	V 8	GOOD! LAYUP by HALL,CHELSIE [PNT]
MISSED JUMPER by ALLISON,KYLA	07:53			
	07:53			REBOUND (DEF) by TEAM
	07:43	45-51	V 6	GOOD! LAYUP by WHALEN,ERIN [PNT]
FOUL by REUTER,REBECCA	07:21			
TURNOVER by REUTER,REBECCA	07:21			
SUB IN: MAJORS,JORDAN	07:21			
SUB OUT: REUTER,REBECCA	07:21			
	07:06			MISSED 3PTR by CLEMONS-GREEN,K
REBOUND (DEF) by LOURO,JESS	07:06			
	06:52			FOUL by REED,CHRISTA
TIMEOUT 30SEC	06:52			
TIMEOUT media	06:52			
TURNOVER by ALLISON,KYLA	06:37			
	06:29			FOUL by REED,CHRISTA
	06:29			TURNOVER by REED,CHRISTA
MISSED JUMPER by MAJORS,JORDAN	06:17			
	06:17			REBOUND (DEF) by WHALEN,ERIN
	06:07			MISSED 3PTR by HALL,CHELSIE
REBOUND (DEF) by SISSOM,ABBEY	06:07			
MISSED 3PTR by ALLISON,KYLA	05:47			
	05:47			REBOUND (DEF) by REED,CHRISTA
FOUL by LOURO,JESS	05:38			
SUB IN: EDWARDS,LASONJA	05:38			
SUB IN: COLLIER,KATIE	05:38			
SUB OUT: MAJORS,JORDAN	05:38			
SUB OUT: ALLISON,KYLA	05:38			
FOUL by LOURO,JESS	05:34			
	05:34			MISSED FT by CLEMONS-GREEN,K
	05:34			REBOUND (DEADB) by TEAM
	05:34	46-51	V 5	GOOD! FT by CLEMONS-GREEN,K
	05:20			FOUL by WHALEN,ERIN
	05:01			FOUL by WHALEN,ERIN
GOOD! FT by SISSOM,ABBEY	05:01	46-52	V 6	
GOOD! FT by SISSOM,ABBEY	05:01	46-53	V 7	
	05:01			SUB IN: BELL,RACHEL
	05:01			SUB OUT: WALKER,CIERRA
FOUL by COLLIER,KATIE	04:53			
	04:53	47-53	V 6	GOOD! FT by HALL,CHELSIE
	04:53			MISSED FT by HALL,CHELSIE
REBOUND (DEF) by EDWARDS,LASONJA	04:53			
	04:31			FOUL by HALL,CHELSIE
GOOD! FT by COLLIER,KATIE	04:31	47-54	V 7	
GOOD! FT by COLLIER,KATIE	04:31	47-55	V 8	

VISITORS: Middle Tennessee	Time	Score	Margin	HOME: Vanderbilt
	04:24			MISSED 3PTR by WHALEN,ERIN
REBOUND (DEF) by LOURO,JESS	04:24			
FOUL by EDWARDS,LASONJA	04:04			
TURNOVER by EDWARDS,LASONJA	04:04			
	03:51	49-55	V 6	GOOD! LAYUP by REED,CHRISTA [PNT]
	03:51			ASSIST by WHALEN,ERIN
SUB IN: MAJORS,JORDAN	03:33			
SUB OUT: EDWARDS,LASONJA	03:33			
GOOD! LAYUP by LYON,GABBY [PNT]	03:20	49-57	V 8	
ASSIST by SISSOM,ABBEY	03:20			
	03:09			TURNOVER by WHALEN,ERIN
STEAL by LYON,GABBY	03:09			
MISSED LAYUP by LYON,GABBY	02:42			
	02:42			REBOUND (DEF) by WHALEN,ERIN
FOUL by MAJORS,JORDAN	02:34			
	02:34	50-57	V 7	GOOD! FT by CLEMONS-GREEN,K
	02:34	51-57	V 6	GOOD! FT by CLEMONS-GREEN,K
TURNOVER by MAJORS,JORDAN	02:14			
	02:13			STEAL by CLEMONS-GREEN,K
	02:10			TURNOVER by WHALEN,ERIN
STEAL by COLLIER,KATIE	02:09			
MISSED LAYUP by LOURO,JESS	01:36			
REBOUND (OFF) by LYON,GABBY	01:36			
GOOD! LAYUP by LYON,GABBY [PNT]	01:33	51-59	V 8	
	01:25			MISSED LAYUP by BELL,RACHEL
REBOUND (DEF) by LYON,GABBY	01:25			
	01:23			FOUL by REED,CHRISTA
MISSED FT by LYON,GABBY	01:23			
REBOUND (DEADB) by TEAM	01:23			
MISSED FT by LYON,GABBY	01:23			
	01:23			REBOUND (DEF) by CLEMONS-GREEN,K
	01:19			TIMEOUT 30SEC
	01:12			TURNOVER by HALL,CHELSIE
STEAL by LYON,GABBY	01:12			
	01:12			FOUL by WHALEN,ERIN
MISSED FT by LYON,GABBY	01:12			
REBOUND (DEADB) by TEAM	01:12			
GOOD! FT by LYON,GABBY	01:12	51-60	V 9	
	00:58	53-60	V 7	GOOD! LAYUP by REED,CHRISTA [PNT]
	00:58			ASSIST by BELL,RACHEL
	00:48			FOUL by CLEMONS-GREEN,K
MISSED FT by SISSOM,ABBEY	00:48			
REBOUND (DEADB) by TEAM	00:48			
GOOD! FT by SISSOM,ABBEY	00:48	53-61	V 8	
	00:48			TIMEOUT TEAM
	00:48			SUB IN: WALKER,CIERRA
	00:48			SUB OUT: HALL,CHELSIE
FOUL by LYON,GABBY	00:42			
	00:42			MISSED FT by REED,CHRISTA
	00:42			REBOUND (DEADB) by TEAM
	00:42	54-61	V 7	GOOD! FT by REED,CHRISTA
	00:41			FOUL by WALKER,CIERRA
GOOD! FT by COLLIER,KATIE	00:41	54-62	V 8	
GOOD! FT by COLLIER,KATIE	00:41	54-63	V 9	
	00:30			MISSED JUMPER by WHALEN,ERIN
REBOUND (DEF) by LOURO,JESS	00:30			
	00:27			FOUL by REED,CHRISTA
GOOD! FT by LOURO,JESS	00:27	54-64	V 10	
GOOD! FT by LOURO,JESS	00:27	54-65	V 11	
	00:27			TIMEOUT 30SEC
	00:27			SUB IN: HALL,CHELSIE
	00:27			SUB OUT: REED,CHRISTA
	00:20			MISSED LAYUP by WHALEN,ERIN
REBOUND (DEF) by MAJORS,JORDAN	00:20			
TURNOVER by SISSOM,ABBEY	00:13			
	00:06			MISSED LAYUP by BELL,RACHEL
REBOUND (DEF) by MAJORS,JORDAN	00:06			

Middle Tennessee 65, Vanderbilt 54

Period 4-only	In Paint	Off T/O	2nd Chance	Fast Break	Bench	
MT	4	3	2	0	0	Score tied - 0 times
VANDY	8	2	2	0	3	Lead changed - 0 times

Middle Tennessee vs Vanderbilt
11/10/2017; 6:00 PM at Nashville, Tenn. (Memorial Gym)
Scoring/Runs Reference

Period 1

Middle Tennessee	VRun	Score	Margin	HRun	Vanderbilt
09:42 - LYON LAYUP [P]	-	2-0	-2		
09:17 - COLLIER JUMPER [P]	NaN-0	4-0	-4		
		4-2	-2		HALL LAYUP [P] - 08:53
08:24 - LOURO 3PTR	-	7-2	-5		
07:22 - JOHNSON FT	4-0	8-2	-6		
07:22 - JOHNSON FT	5-0	9-2	-7		
		9-3	-6		OVERBECK FT - 07:06
		9-4	-5	2-0	OVERBECK FT - 07:06
06:49 - JOHNSON LAYUP [P]	-	11-4	-7		
		11-6	-5		HALL LAYUP [P] - 04:17
03:30 - REUTER LAYUP [P]	-	13-6	-7		
02:27 - EDWARDS LAYUP [P]	4-0	15-6	-9		
		15-9	-6		BELL 3PTR - 01:35
01:21 - REUTER FT	-	16-9	-7		
01:21 - REUTER FT	2-0	17-9	-8		
		17-10	-7		BELL FT - 01:10
		17-11	-6	2-0	BELL FT - 01:10
00:43 - ALLISON FT	-	18-11	-7		
00:43 - ALLISON FT	2-0	19-11	-8		
		19-14	-5		WALKER 3PTR - 00:31
00:00 - REUTER 3PTR	-	22-14	-8		

Middle Tennessee vs Vanderbilt
11/10/2017; 6:00 PM at Nashville, Tenn. (Memorial Gym)
Scoring/Runs Reference

Period 2

Middle Tennessee	VRun	Score	Margin	HRun	Vanderbilt
		22-17	-5		BELL 3PTR - 09:44
		22-19	-3	NaN-0	REED JUMPER - 09:01
		22-21	-1	NaN-0	OVERBECK LAYUP [P] - 07:46
		22-23	1	NaN-0	OVERBECK LAYUP [P] - 06:34
06:14 - LYON LAYUP [P]	-	24-23	-1		
06:14 - LYON FT	3-0	25-23	-2		
		25-25	0		OVERBECK LAYUP [P] - 03:17
03:02 - LOURO 3PTR	-	28-25	-3		
		28-26	-2		EJIOFOR FT - 02:12
01:57 - JONES LAYUP [P]	-	30-26	-4		

Middle Tennessee vs Vanderbilt
11/10/2017; 6:00 PM at Nashville, Tenn. (Memorial Gym)
Scoring/Runs Reference

Period 3

Middle Tennessee	VRun	Score	Margin	HRun	Vanderbilt
09:30 - ALLISON 3PTR	-	33-26	-7		
08:46 - LOURO 3PTR	NaN-0	36-26	-10		
08:08 - ALLISON FT	NaN-0	37-26	-11		
07:13 - SISSOM 3PTR	NaN-0	40-26	-14		
		40-28	-12		OVERBECK LAYUP [P] [F] - 07:04
		40-29	-11	3-0	BELL FT - 06:24
03:36 - LOURO FT	-	41-29	-12		
03:36 - LOURO FT	2-0	42-29	-13		
		42-31	-11		REED LAYUP [P] - 03:25
		42-32	-10	3-0	EJIOFOR FT - 02:13
01:43 - COLLIER FT	-	43-32	-11		
01:43 - COLLIER FT	2-0	44-32	-12		
		44-35	-9		REED 3PTR - 01:29
01:12 - LOURO 3PTR	-	47-35	-12		
		47-37	-10		HORROCKS JUMPER - 01:01
00:33 - MAJORS LAYUP [P]	-	49-37	-12		
		49-39	-10		HALL LAYUP [P] - 00:04

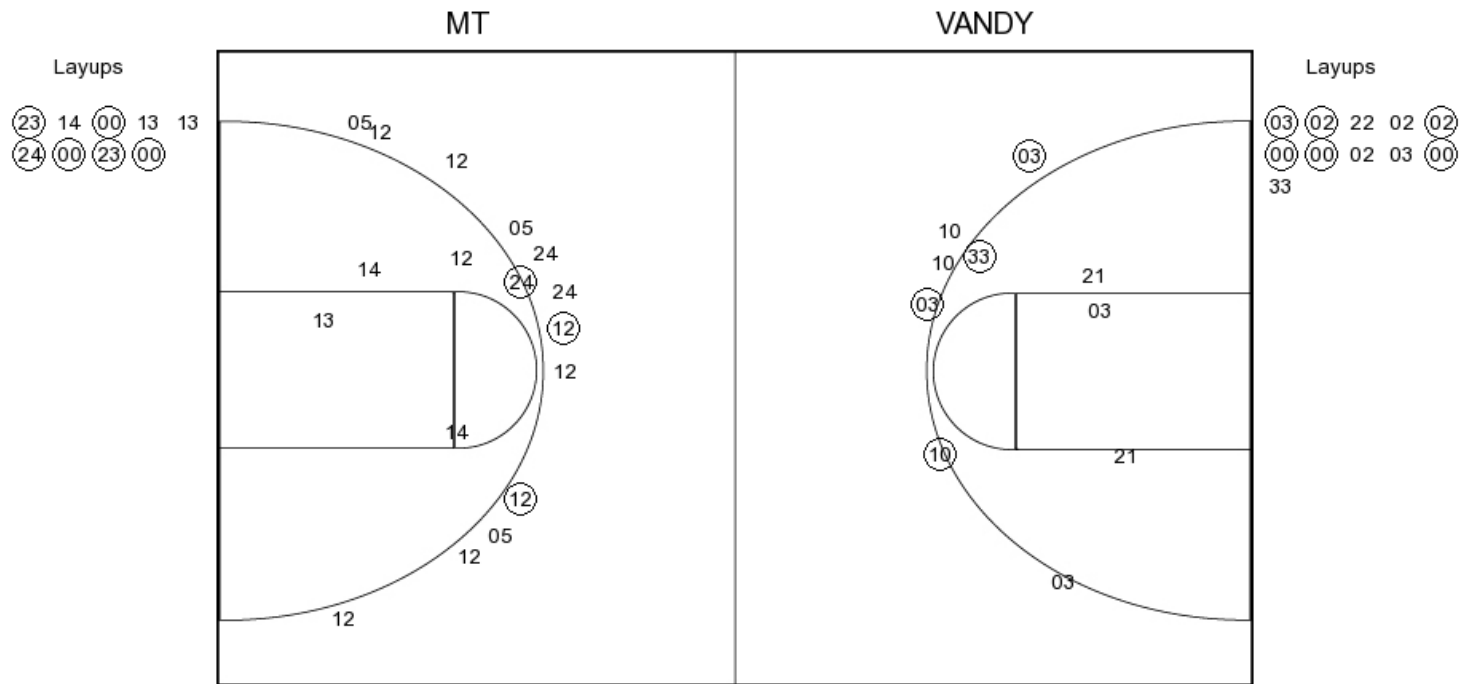
Middle Tennessee vs Vanderbilt
11/10/2017; 6:00 PM at Nashville, Tenn. (Memorial Gym)
Scoring/Runs Reference

Period 4

Middle Tennessee	VRun	Score	Margin	HRun	Vanderbilt
		49-40	-9		REED FT - 09:07
		49-41	-8	NaN-0	REED FT - 09:07
08:48 - SISSOM FT	-	50-41	-9		
08:48 - SISSOM FT	2-0	51-41	-10		
		51-43	-8		HALL LAYUP [P] - 08:16
		51-45	-6	4-0	WHALEN LAYUP [P] - 07:43
		51-46	-5	5-0	CLEMONS-GREEN FT - 05:34
05:01 - SISSOM FT	-	52-46	-6		
05:01 - SISSOM FT	2-0	53-46	-7		
		53-47	-6		HALL FT - 04:53
04:31 - COLLIER FT	-	54-47	-7		
04:31 - COLLIER FT	2-0	55-47	-8		
		55-49	-6		REED LAYUP [P] - 03:51
03:20 - LYON LAYUP [P]	-	57-49	-8		
		57-50	-7		CLEMONS-GREEN FT - 02:34
		57-51	-6	2-0	CLEMONS-GREEN FT - 02:34
01:33 - LYON LAYUP [P]	-	59-51	-8		
01:12 - LYON FT	3-0	60-51	-9		
		60-53	-7		REED LAYUP [P] - 00:58
00:48 - SISSOM FT	-	61-53	-8		
		61-54	-7		REED FT - 00:42
00:41 - COLLIER FT	-	62-54	-8		
00:41 - COLLIER FT	2-0	63-54	-9		
00:27 - LOURO FT	3-0	64-54	-10		
00:27 - LOURO FT	4-0	65-54	-11		

Middle Tennessee vs Vanderbilt
OFFICIAL SHOT CHART
 11/10/2017 at Nashville, Tenn. (Memorial Gym)

PERIOD 1



MT PERIOD 1

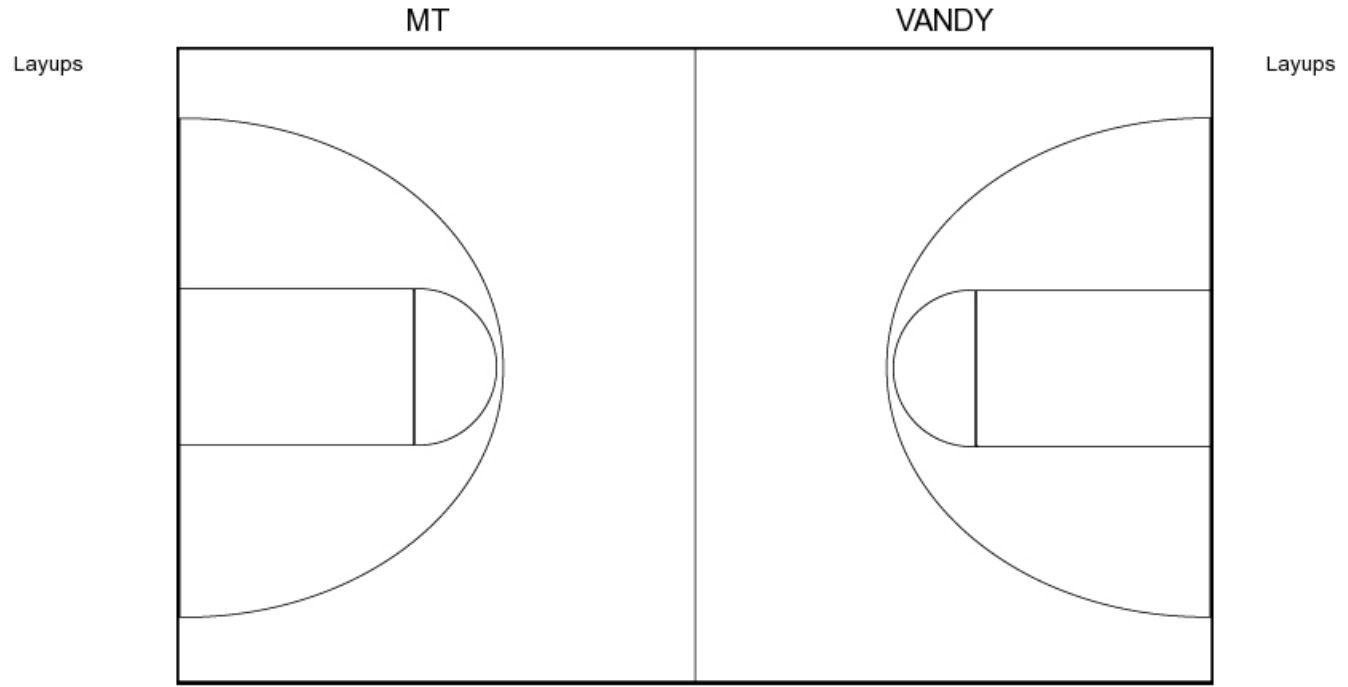
FG Made	10
FG Attempted	30
3PFG Made	3
3PFG Attempted	13

VANDY PERIOD 1

FG Made	9
FG Attempted	23
3PFG Made	3
3PFG Attempted	6

**Middle Tennessee vs Vanderbilt
OFFICIAL SHOT CHART
11/10/2017 at Nashville, Tenn. (Memorial Gym)**

PERIOD 2



MT PERIOD 2

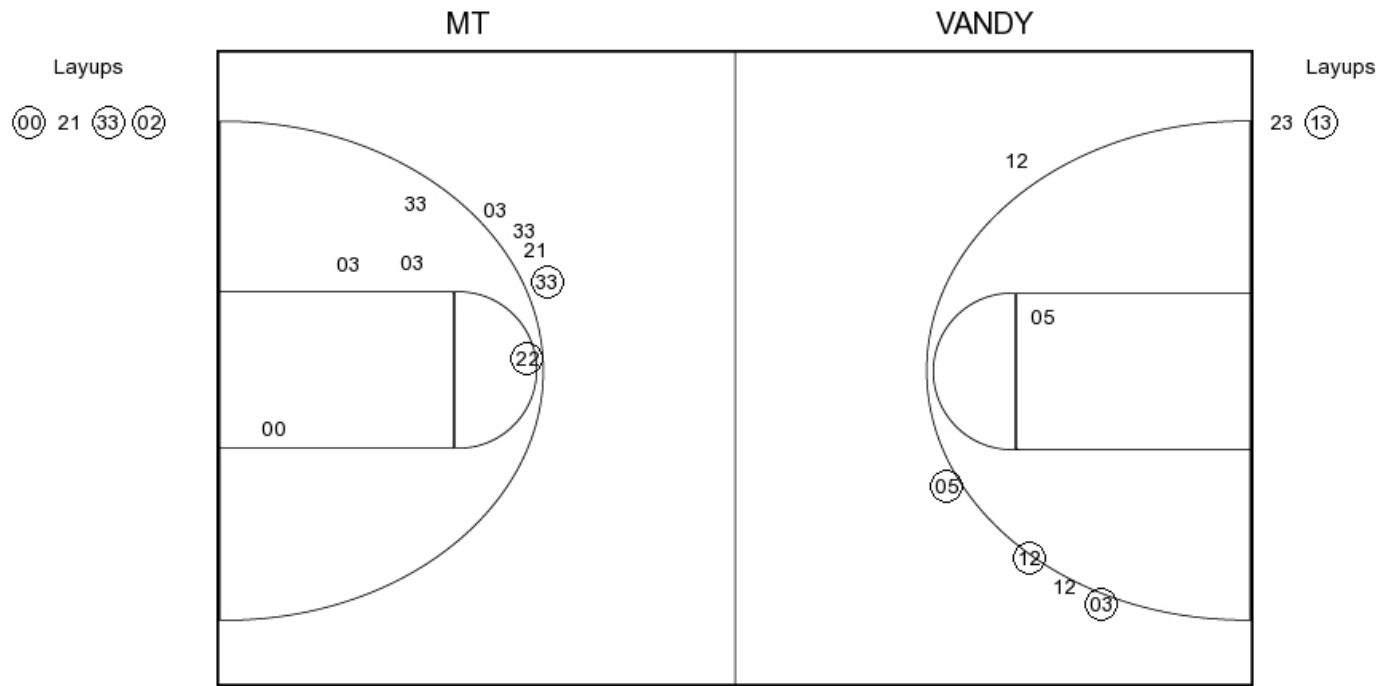
FG Made
FG Attempted
3PFG Made
3PFG Attempted

VANDY PERIOD 2

FG Made
FG Attempted
3PFG Made
3PFG Attempted

Middle Tennessee vs Vanderbilt
OFFICIAL SHOT CHART
 11/10/2017 at Nashville, Tenn. (Memorial Gym)

PERIOD 3



MT PERIOD 3

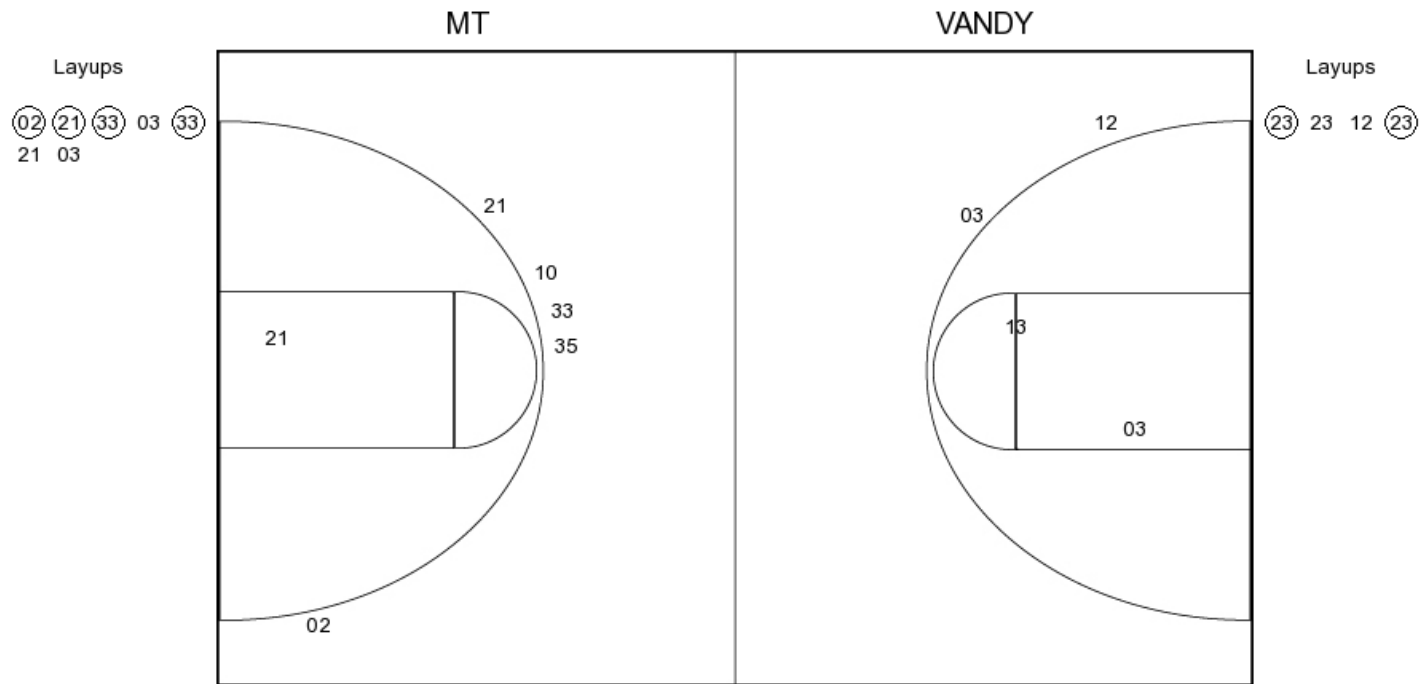
FG Made	7
FG Attempted	17
3PFG Made	4
3PFG Attempted	8

VANDY PERIOD 3

FG Made	9
FG Attempted	27
3PFG Made	1
3PFG Attempted	9

Middle Tennessee vs Vanderbilt
OFFICIAL SHOT CHART
 11/10/2017 at Nashville, Tenn. (Memorial Gym)

PERIOD 4



MT PERIOD 4

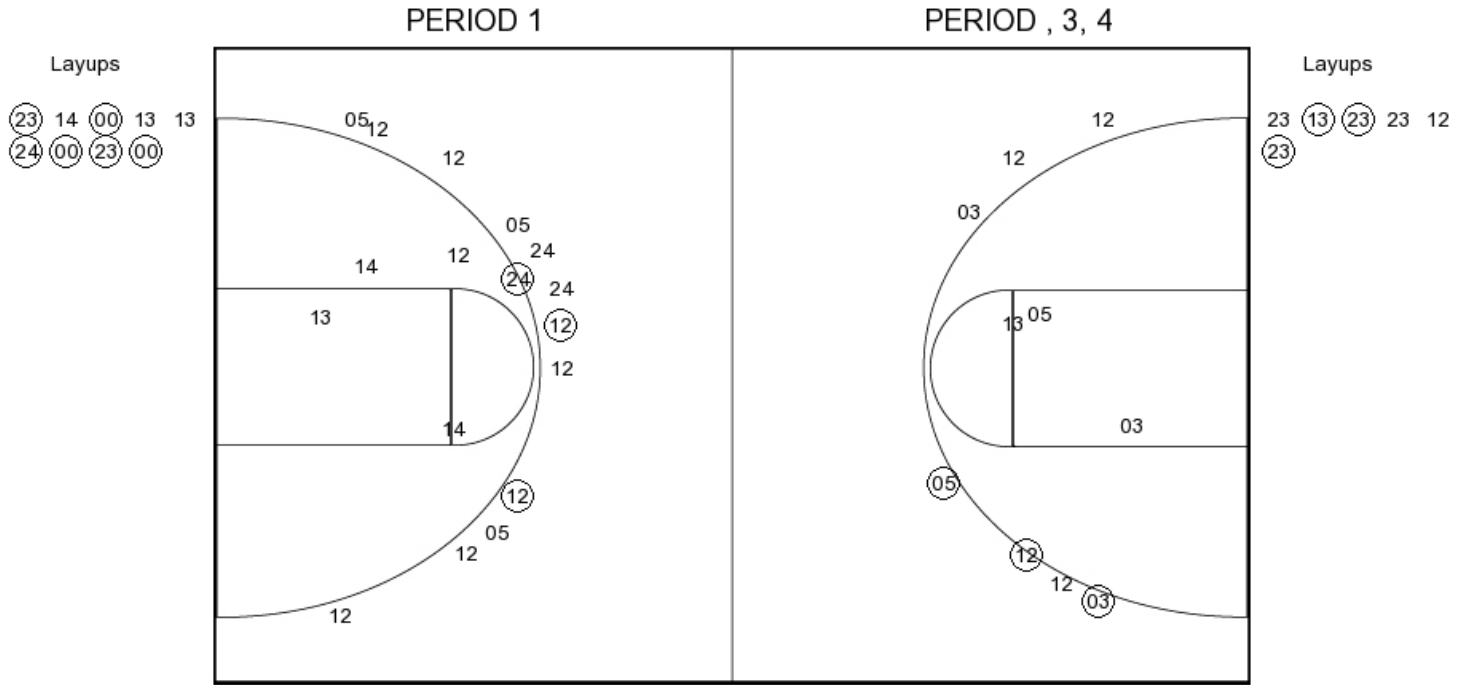
FG Made
 FG Attempted
 3PFG Made
 3PFG Attempted

VANDY PERIOD 4

FG Made
 FG Attempted
 3PFG Made
 3PFG Attempted

Middle Tennessee vs Vanderbilt
OFFICIAL SHOT CHART
 11/10/2017 at Nashville, Tenn. (Memorial Gym)

Middle Tennessee



MT PERIOD 1

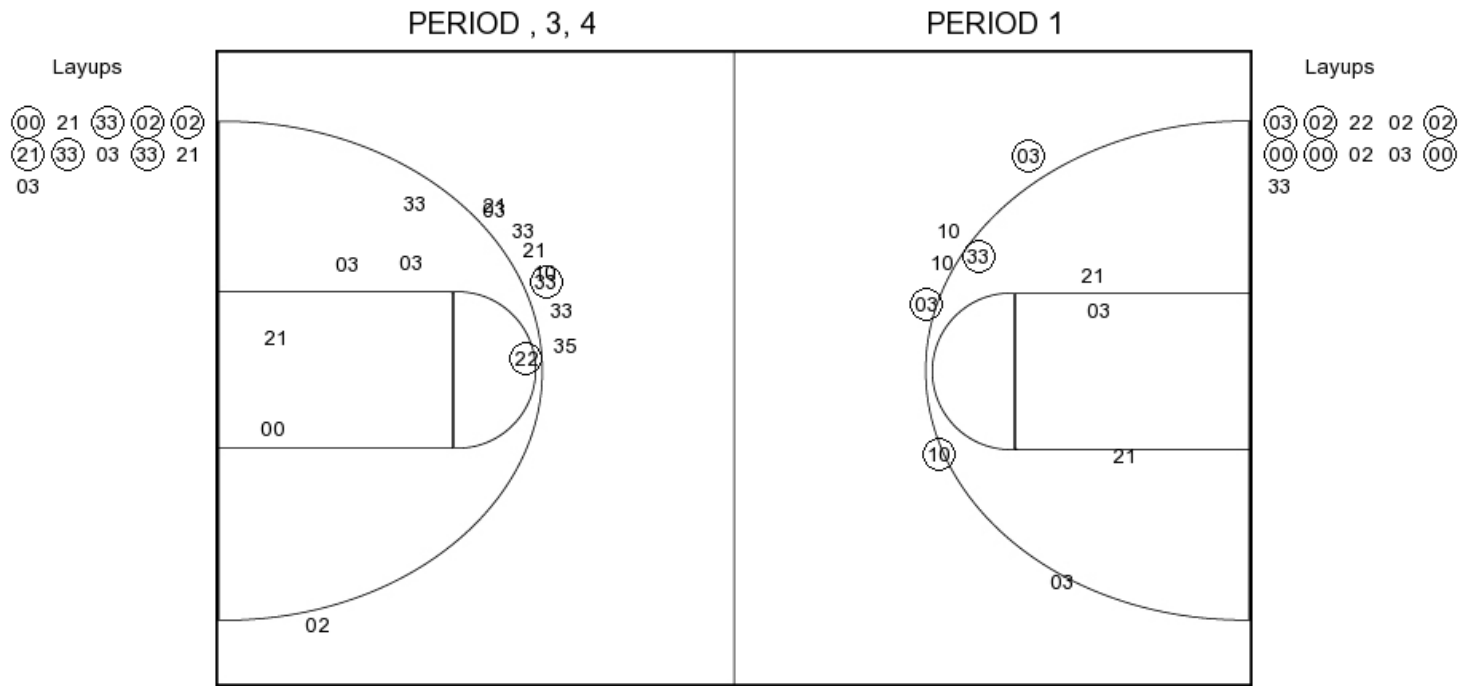
FG Made	10
FG Attempted	30
3PFG Made	3
3PFG Attempted	13

MT PERIOD 2

FG Made	
FG Attempted	
3PFG Made	
3PFG Attempted	

Middle Tennessee vs Vanderbilt
OFFICIAL SHOT CHART
 11/10/2017 at Nashville, Tenn. (Memorial Gym)

Vanderbilt



VANDY PERIOD 1

FG Made	9
FG Attempted	23
3PFG Made	3
3PFG Attempted	6

VANDY PERIOD 2

FG Made	
FG Attempted	
3PFG Made	
3PFG Attempted	