

FINAL SCORE

Marion

0-0

78

Vanderbilt

0-0

90

October 29, 2017 • Nashville, Tenn. (Memorial Gym)

FINAL STATISTICS

Official Basketball Box Score -- Game Totals -- Final Statistics
Marion vs Vanderbilt
10/29/2017 2 PM at Nashville, Tenn. (Memorial Gym)

Marion 78 - 0-0

##	Player	g	Total			3-Ptr			Rebounds			PF	TP	A	TO	Blk	Stl	Min
			FG-FGA	FG-FGA	FT-FTA	FG-FGA	FG-FGA	FT-FTA	Off	Def	Tot							
11	SOEIRO,JOANA		3-6	1-3	3-4	0	4	4	1	10	7	5	0	2			23	
12	KIRKHOFF,KELLIE		3-9	0-3	5-6	0	2	2	3	11	2	0	0	1			22	
15	TITZER,RACHEL		6-10	4-7	0-0	1	1	2	1	16	1	1	0	0			25	
23	JONES,KAREN		0-5	0-1	4-4	3	9	12	2	4	2	3	0	0			21	
34	CYRUS,DEJAH		3-6	0-0	0-0	1	3	4	3	6	0	2	0	0			22	
03	DOWNARD,ABBY		3-6	1-3	3-4	0	4	4	3	10	3	4	0	1			27	
14	WILLIAMS,ELLE		0-2	0-1	4-4	0	2	2	5	4	0	1	0	1			17	
32	WILLOUGHBY,MACY		4-14	2-10	1-2	0	0	0	3	11	1	1	0	0			23	
33	CORBIN,SARAH		1-4	0-2	4-4	2	3	5	4	6	0	2	0	0			20	
TEAM						3	1	4	0		1							
TOTALS			23-62	8-30	24-28	10	29	39	25	78	16	20	0	5			200	

Deadball Rebounds: 3,1

FG %	1st Half:	10-28	35.7%	2nd Half:	13-34	38.2%	Game:	23-62	37.1%								
	1st Qtr	4-13	30.8%	2nd Qtr	6-15	40.0%	3rd Qtr	4-18	22.2%	4th Qtr	9-16	56.3%					
3FG %	1st Half:	4-17	23.5%	2nd Half:	4-13	30.8%	Game:	8-30	26.7%								
	1st Qtr	2-9	22.2%	2nd Qtr	2-8	25.0%	3rd Qtr	0-6	00.0%	4th Qtr	4-7	57.1%					
FT %	1st Half:	13-15	86.7%	2nd Half:	11-13	84.6%	Game:	24-28	85.7%								
	1st Qtr	6-8	75.0%	2nd Qtr	7-7	100.0%	3rd Qtr	9-10	90.0%	4th Qtr	2-3	66.7%					

Vanderbilt 90 - 0-0

##	Player	g	Total			3-Ptr			Rebounds			PF	TP	A	TO	Blk	Stl	Min
			FG-FGA	FG-FGA	FT-FTA	FG-FGA	FG-FGA	FT-FTA	Off	Def	Tot							
02	HALL,CHELSIE		4-9	0-1	3-4	0	0	0	4	11	2	2	0	2			23	
03	BELL,RACHEL		6-15	1-3	4-4	1	5	6	3	17	5	1	0	2			26	
21	WHALEN,ERIN		5-13	2-5	4-4	3	4	7	3	16	8	4	1	1			28	
22	HORROCKS,BREE		3-5	0-0	2-2	0	3	3	4	8	0	1	2	0			19	
33	REED,CHRISTA		6-9	0-2	1-1	2	0	2	2	13	2	2	0	2			29	
10	WALKER,CIERRA		2-9	2-8	2-2	0	3	3	2	8	0	3	0	0			30	
12	DANCY,MYKA		1-2	0-1	1-3	0	1	1	0	3	1	0	0	0			14	
24	NEWBY,AUTUMN		3-4	0-0	4-5	1	8	9	4	10	0	2	0	2			20	
31	EJIOFOR,BLESSING		2-3	0-0	0-0	1	4	5	3	4	0	2	1	0			11	
TEAM						1	2	3	0		0							
TOTALS			32-69	5-20	21-25	9	30	39	25	90	18	17	4	9			200	

Deadball Rebounds: 2,0

FG %	1st Half:	20-40	50.0%	2nd Half:	12-29	41.4%	Game:	32-69	46.4%								
	1st Qtr	11-21	52.4%	2nd Qtr	9-19	47.4%	3rd Qtr	6-15	40.0%	4th Qtr	6-14	42.9%					
3FG %	1st Half:	2-9	22.2%	2nd Half:	3-11	27.3%	Game:	5-20	25.0%								
	1st Qtr	1-6	16.7%	2nd Qtr	1-3	33.3%	3rd Qtr	2-6	33.3%	4th Qtr	1-5	20.0%					
FT %	1st Half:	9-12	75.0%	2nd Half:	12-13	92.3%	Game:	21-25	84.0%								
	1st Qtr	3-3	100.0%	2nd Qtr	6-9	66.7%	3rd Qtr	9-10	90.0%	4th Qtr	3-3	100.0%					

Officials: R: Michael Koch, U1: Eric Koch, U2;D'Lynn Schertz
 Technical Fouls: Marion- None. Vanderbilt- None.

Exhibition

Score by periods	1st	2nd	3rd	4th	Total
Marion	16	21	17	24	78
Vanderbilt	26	25	23	16	90

Points	In Paint	Off T/O	2nd Chance	Fast Break	Bench
MU	22	18	4	8	31
VANDY	36	28	6	14	25

Last FG - MU 4th-00:02, VANDY 4th-00:40.
 Largest lead - Marion by 2 1st-09:49; Vanderbilt by 22 3rd-01:42
 MU led for 1:02. VANDY led for 38:21. Game was tied for 0:30.

Score tied - 1 times; Lead changed - 1 times

Official Basketball Box Score -- Game Totals -- First Half Statistics
Marion vs Vanderbilt
10/29/2017 2 PM at Nashville, Tenn. (Memorial Gym)

Marion 37 • 0-0

##	Player	g	Total		3-Ptr		FT-FTA		Rebounds			PF	TP	A	TO	Blk	Stl	Min
			FG-FGA	FG-FGA	FG-FGA	FT-FTA	Off	Def	Tot									
11	SOEIRO,JOANA	g	2-5	1-3	3-4	0	2	2	0	8	2	3	0	1				13
12	KIRKHOFF,KELLIE	g	2-4	0-2	3-4	0	1	1	2	7	1	0	0	1				13
15	TITZER,RACHEL	g	0-2	0-2	0-0	0	0	0	1	0	1	0	0	0				10
23	JONES,KAREN	f	0-1	0-0	0-0	0	3	3	0	0	1	0	0	0				9
34	CYRUS,DEJAH	f	1-1	0-0	0-0	0	0	0	3	2	0	2	0	0				9
03	DOWNARD,ABBY		2-5	1-3	2-2	0	2	2	3	7	1	2	0	0				13
14	WILLIAMS,ELLE		0-2	0-1	4-4	0	2	2	2	4	0	0	0	1				12
32	WILLOUGHBY,MACY		3-7	2-6	1-1	0	0	0	1	9	0	1	0	0				11
33	CORBIN,SARAH		0-1	0-0	0-0	1	3	4	0	0	0	1	0	0				10
TEAM						2	0	2	0					1				
Totals			10-28	4-17	13-15	3	13	16	12	37	6	10	0	3				100

FG % 1st Qtr 4-13 30.8% 2nd Qtr 6-15 40.0% Half: 10-28 35.7%
 3FG % 1st Qtr 2-9 22.2% 2nd Qtr 2-8 25.0% Half: 4-17 23.5%
 FT % 1st Qtr 6-8 75.0% 2nd Qtr 7-7 100.0% Half: 13-15 86.7%

Vanderbilt 51 • 0-0

##	Player	g	Total		3-Ptr		FT-FTA		Rebounds			PF	TP	A	TO	Blk	Stl	Min
			FG-FGA	FG-FGA	FG-FGA	FT-FTA	Off	Def	Tot									
02	HALL,CHELSIE	g	3-5	0-1	1-1	0	0	0	3	7	1	1	0	2				12
03	BELL,RACHEL	g	5-11	0-1	2-2	1	3	4	2	12	3	1	0	1				14
21	WHALEN,ERIN	f	2-8	1-3	0-0	1	2	3	1	5	5	2	0	1				12
22	HORROCKS,BREE	c	1-2	0-0	1-1	0	1	1	1	3	0	0	1	0				11
33	REED,CHRISTA	g	3-5	0-1	0-0	2	0	2	1	6	1	0	0	1				13
10	WALKER,CIERRA		1-4	1-3	2-2	0	1	1	2	5	0	0	0	0				15
12	DANCY,MYKA		1-1	0-0	1-3	0	1	1	0	3	1	0	0	0				6
24	NEWBY,AUTUMN		2-2	0-0	2-3	1	6	7	2	6	0	1	0	0				13
31	EJIOFOR,BLESSING		2-2	0-0	0-0	1	1	2	0	4	0	0	0	0				4
TEAM						1	0	1	0					0				
Totals			20-40	2-9	9-12	7	15	22	12	51	11	5	1	5				100

FG % 1st Qtr 11-21 52.4% 2nd Qtr 9-19 47.4% Half: 20-40 50.0%
 3FG % 1st Qtr 1-6 16.7% 2nd Qtr 1-3 33.3% Half: 2-9 22.2%
 FT % 1st Qtr 3-3 100.0% 2nd Qtr 6-9 66.7% Half: 9-12 75.0%

Officials: R: Michael Koch, U1: Eric Koch, U2:D'Lynn Schertz
 Technical Fouls: Marion- None. Vanderbilt- None.
 Exhibition

Score by periods	1st	2nd	3rd	4th	Total
Marion	16	21	17	24	78
Vanderbilt	26	25	23	16	90

Points	In Paint	Off T/O	2nd Chance	Fast Break	Bench
MU	6	5	2	2	20
	20	17	6	12	18

Last FG - MU 2nd-01:20, VANDY 2nd-00:22.
 MU led for 1:02. VANDY led for 18:21. Game was tied for 0:30.

Score tied - 1 times
 Lead changed - 1 times

Marion vs Vanderbilt
10/29/2017; 2 PM at Nashville, Tenn. (Memorial Gym)
Period 1 Play-By-Play

VISITORS: Marion	Time	Score	Margin	HOME: Vanderbilt
	09:55			MISSED LAYUP by HALL,CHELSIE
REBOUND (DEF) by SOEIRO,JOANA	09:55			
GOOD! LAYUP by KIRKHOFF,KELLIE [FB/PNT]	09:49	0-2	V 2	
ASSIST by SOEIRO,JOANA	09:49			
	09:41			MISSED 3PTR by WHALEN,ERIN
	09:41			REBOUND (OFF) by TEAM
	09:32			MISSED JUMPER by BELL,RACHEL
REBOUND (DEF) by JONES,KAREN	09:32			
TURNOVER by SOEIRO,JOANA	09:24			
	09:23			STEAL by HALL,CHELSIE
	09:21			MISSED LAYUP by WHALEN,ERIN
REBOUND (DEF) by KIRKHOFF,KELLIE	09:21			
TURNOVER by CYRUS,DEJAH	08:56			
	08:54			STEAL by BELL,RACHEL
	08:51	2-2	T	GOOD! JUMPER by BELL,RACHEL [FB]
	08:51			ASSIST by WHALEN,ERIN
	08:32			FOUL by BELL,RACHEL
MISSED FT by KIRKHOFF,KELLIE	08:32			
REBOUND (DEADB) by TEAM	08:32			
GOOD! FT by KIRKHOFF,KELLIE	08:32	2-3	V 1	
	08:28	4-3	H 1	GOOD! JUMPER by BELL,RACHEL
	08:28			ASSIST by WHALEN,ERIN
TIMEOUT 30SEC	08:24			
TIMEOUT media	08:24			
MISSED 3PTR by SOEIRO,JOANA	08:03			
	08:03			REBOUND (DEF) by WHALEN,ERIN
FOUL by CYRUS,DEJAH	07:46			
	07:45	6-3	H 3	GOOD! JUMPER by BELL,RACHEL
	07:45			ASSIST by HALL,CHELSIE
MISSED JUMPER by SOEIRO,JOANA	07:35			
	07:35			BLOCK by HORROCKS,BREE
REBOUND (OFF) by TEAM	07:35			
GOOD! JUMPER by KIRKHOFF,KELLIE	07:31	6-5	H 1	
ASSIST by TITZER,RACHEL	07:31			
	07:23			TURNOVER by WHALEN,ERIN
MISSED 3PTR by TITZER,RACHEL	07:18			
	07:18			REBOUND (DEF) by BELL,RACHEL
	07:07			MISSED 3PTR by HALL,CHELSIE
REBOUND (DEF) by JONES,KAREN	07:07			
TURNOVER by CYRUS,DEJAH	06:55			
	06:49	8-5	H 3	GOOD! LAYUP by HALL,CHELSIE [FB/PNT]
	06:49			ASSIST by REED,CHRISTA
	06:20			FOUL by REED,CHRISTA
GOOD! FT by SOEIRO,JOANA	06:20	8-6	H 2	
GOOD! FT by SOEIRO,JOANA	06:20	8-7	H 1	
SUB IN: DOWNARD,ABBY	06:20			
SUB OUT: TITZER,RACHEL	06:20			
	06:20			SUB IN: NEWBY,AUTUMN
	06:20			SUB IN: WALKER,CIERRA
	06:20			SUB OUT: WHALEN,ERIN
	06:20			SUB OUT: HORROCKS,BREE
	06:15			MISSED JUMPER by BELL,RACHEL
REBOUND (DEF) by JONES,KAREN	06:15			
TURNOVER by SOEIRO,JOANA	05:53			
	05:52			STEAL by HALL,CHELSIE
	05:45	10-7	H 3	GOOD! JUMPER by BELL,RACHEL
MISSED 3PTR by KIRKHOFF,KELLIE	05:31			
	05:31			REBOUND (DEF) by NEWBY,AUTUMN
FOUL by CYRUS,DEJAH	05:25			
	05:20	12-7	H 5	GOOD! JUMPER by HALL,CHELSIE
FOUL by KIRKHOFF,KELLIE	05:19			
	05:19	13-7	H 6	GOOD! FT by HALL,CHELSIE
SUB IN: WILLIAMS,ELLE	05:19			
SUB IN: CORBIN,SARAH	05:19			
SUB OUT: JONES,KAREN	05:19			
SUB OUT: CYRUS,DEJAH	05:19			
	05:02			FOUL by WALKER,CIERRA
	05:02			FOUL by HALL,CHELSIE
SUB IN: WILLOUGHBY,MACY	05:02			

VISITORS: Marion	Time	Score	Margin	HOME: Vanderbilt
SUB OUT: KIRKHOFF,KELLIE	05:02			
	05:02			SUB IN: EJIOFOR,BLESSING
	05:02			SUB OUT: REED,CHRISTA
MISSED 3PTR by SOEIRO,JOANA	04:47			
	04:47			REBOUND (DEF) by NEWBY,AUTUMN
	04:28			MISSED 3PTR by BELL,RACHEL
REBOUND (DEF) by DOWNARD,ABBY	04:28			
GOOD! 3PTR by SOEIRO,JOANA	04:07	13-10	H 3	
	03:57	15-10	H 5	GOOD! JUMPER by HALL,CHELSIE
MISSED 3PTR by DOWNARD,ABBY	03:33			
	03:33			REBOUND (DEF) by BELL,RACHEL
	03:20	17-10	H 7	GOOD! LAYUP by NEWBY,AUTUMN [PNT]
	03:20			ASSIST by BELL,RACHEL
	02:58			FOUL by HALL,CHELSIE
MISSED FT by SOEIRO,JOANA	02:58			
REBOUND (DEADB) by TEAM	02:58			
GOOD! FT by SOEIRO,JOANA	02:58	17-11	H 6	
SUB IN: TITZER,RACHEL	02:58			
SUB OUT: SOEIRO,JOANA	02:58			
	02:58			SUB IN: WHALEN,ERIN
	02:58			SUB IN: DANCY,MYKA
	02:58			SUB OUT: HALL,CHELSIE
	02:58			SUB OUT: BELL,RACHEL
	02:46			MISSED JUMPER by WHALEN,ERIN
	02:46			REBOUND (OFF) by EJIOFOR,BLESSING
	02:41	19-11	H 8	GOOD! JUMPER by EJIOFOR,BLESSING
MISSED 3PTR by WILLOUGHBY,MACY	02:27			
	02:27			REBOUND (DEF) by DANCY,MYKA
	02:22			MISSED 3PTR by WALKER,CIERRA
REBOUND (DEF) by CORBIN,SARAH	02:22			
	02:08			FOUL by WHALEN,ERIN
GOOD! FT by DOWNARD,ABBY	02:08	19-12	H 7	
GOOD! FT by DOWNARD,ABBY	02:08	19-13	H 6	
	02:08			SUB IN: HORROCKS,BREE
	02:08			SUB OUT: EJIOFOR,BLESSING
	01:53			TURNOVER by NEWBY,AUTUMN
STEAL by WILLIAMS,ELLE	01:47			
MISSED 3PTR by WILLIAMS,ELLE	01:42			
	01:42			REBOUND (DEF) by NEWBY,AUTUMN
	01:29			MISSED 3PTR by WHALEN,ERIN
REBOUND (DEF) by CORBIN,SARAH	01:29			
SUB IN: JONES,KAREN	01:19			
SUB OUT: CORBIN,SARAH	01:19			
TURNOVER by CORBIN,SARAH	01:18			
FOUL by WILLIAMS,ELLE	01:07			
	01:04	22-13	H 9	GOOD! 3PTR by WALKER,CIERRA
	01:04			ASSIST by WHALEN,ERIN
MISSED JUMPER by JONES,KAREN	00:52			
	00:52			REBOUND (DEF) by WHALEN,ERIN
FOUL by WILLOUGHBY,MACY	00:43			
	00:43	23-13	H 10	GOOD! FT by WALKER,CIERRA
	00:43	24-13	H 11	GOOD! FT by WALKER,CIERRA
SUB IN: KIRKHOFF,KELLIE	00:43			
SUB OUT: TITZER,RACHEL	00:43			
GOOD! 3PTR by DOWNARD,ABBY	00:24	24-16	H 8	
ASSIST by JONES,KAREN	00:24			
	00:15	26-16	H 10	GOOD! JUMPER by WHALEN,ERIN [FB/PNT]
	00:15			ASSIST by DANCY,MYKA
TURNOVER by DOWNARD,ABBY	00:00			

Marion 16, Vanderbilt 26

Period 1-only	In Paint	Off T/O	2nd Chance	Fast Break	Bench	
MU	2	0	2	2	5	Score tied - 0 times
VANDY	6	9	2	6	9	Lead changed - 0 times

Marion vs Vanderbilt
10/29/2017; 2 PM at Nashville, Tenn. (Memorial Gym)
Period 2 Play-By-Play

VISITORS: Marion	Time	Score	Margin	HOME: Vanderbilt
SUB IN: WILLOUGHBY,MACY	10:00			
SUB IN: DOWNARD,ABBY	10:00			
SUB IN: WILLIAMS,ELLE	10:00			
SUB OUT: SOEIRO,JOANA	10:00			
SUB OUT: TITZER,RACHEL	10:00			
SUB OUT: JONES,KAREN	10:00			
	10:00			SUB IN: NEWBY,AUTUMN
	10:00			SUB IN: WALKER,CIERRA
	10:00			SUB IN: DANCY,MYKA
	10:00			SUB OUT: HALL,CHELSIE
	10:00			SUB OUT: BELL,RACHEL
	10:00			SUB OUT: REED,CHRISTA
MISSED 3PTR by WILLOUGHBY,MACY	09:41			
	09:41			REBOUND (DEF) by NEWBY,AUTUMN
	09:20	28-16	H 12	GOOD! JUMPER by HORROCKS,BREE
	09:20			ASSIST by WHALEN,ERIN
FOUL by KIRKHOFF,KELLIE	09:20			
	09:20	29-16	H 13	GOOD! FT by HORROCKS,BREE
GOOD! JUMPER by CYRUS,DEJAH [PNT]	09:00	29-18	H 11	
ASSIST by KIRKHOFF,KELLIE	09:00			
	08:50	31-18	H 13	GOOD! LAYUP by NEWBY,AUTUMN [FB/PNT]
	08:50			ASSIST by WHALEN,ERIN
FOUL by CYRUS,DEJAH	08:50			
	08:50	32-18	H 14	GOOD! FT by NEWBY,AUTUMN
GOOD! JUMPER by DOWNARD,ABBY	08:27	32-20	H 12	
	08:14			MISSED JUMPER by HORROCKS,BREE
REBOUND (DEF) by DOWNARD,ABBY	08:14			
GOOD! 3PTR by WILLOUGHBY,MACY	08:05	32-23	H 9	
ASSIST by DOWNARD,ABBY	08:05			
	08:02			TIMEOUT 30SEC
	08:02			TIMEOUT MEDIA
SUB IN: CORBIN,SARAH	08:02			
SUB IN: SOEIRO,JOANA	08:02			
SUB IN: TITZER,RACHEL	08:02			
SUB OUT: WILLOUGHBY,MACY	08:02			
SUB OUT: DOWNARD,ABBY	08:02			
SUB OUT: CYRUS,DEJAH	08:02			
	08:02			SUB IN: REED,CHRISTA
	08:02			SUB IN: HALL,CHELSIE
	08:02			SUB OUT: WHALEN,ERIN
	08:02			SUB OUT: DANCY,MYKA
	07:45			MISSED 3PTR by REED,CHRISTA
REBOUND (DEF) by CORBIN,SARAH	07:45			
	07:26			FOUL by HORROCKS,BREE
MISSED JUMPER by WILLIAMS,ELLE	07:22			
	07:22			REBOUND (DEF) by WALKER,CIERRA
	07:02			TURNOVER by HALL,CHELSIE
STEAL by KIRKHOFF,KELLIE	07:01			
	06:43			FOUL by NEWBY,AUTUMN
GOOD! FT by KIRKHOFF,KELLIE	06:43	32-24	H 8	
GOOD! FT by KIRKHOFF,KELLIE	06:43	32-25	H 7	
SUB IN: JONES,KAREN	06:43			
SUB OUT: WILLIAMS,ELLE	06:43			
	06:43			SUB IN: BELL,RACHEL
	06:43			SUB OUT: NEWBY,AUTUMN
	06:33			MISSED JUMPER by WALKER,CIERRA
	06:33			REBOUND (OFF) by REED,CHRISTA
	06:28	34-25	H 9	GOOD! JUMPER by REED,CHRISTA [PNT]
MISSED 3PTR by TITZER,RACHEL	06:03			
	06:03			REBOUND (DEF) by BELL,RACHEL
	05:56			TURNOVER by BELL,RACHEL
STEAL by SOEIRO,JOANA	05:54			
MISSED 3PTR by KIRKHOFF,KELLIE	05:41			
	05:41			REBOUND (DEF) by HORROCKS,BREE
	05:24			SUB IN: EJIOFOR,BLESSING
	05:24			SUB OUT: HORROCKS,BREE
	05:21	36-25	H 11	GOOD! JUMPER by EJIOFOR,BLESSING [PNT]
TIMEOUT 30SEC	05:00			
SUB IN: DOWNARD,ABBY	05:00			

VISITORS: Marion	Time	Score	Margin	HOME: Vanderbilt
SUB OUT: TITZER,RACHEL	05:00			
GOOD! JUMPER by SOEIRO,JOANA	04:43	36-27	H 9	
	04:37			MISSED JUMPER by BELL,RACHEL
	04:37			REBOUND (OFF) by REED,CHRISTA
	04:33	38-27	H 11	GOOD! LAYUP by REED,CHRISTA [PNT]
MISSED 3PTR by DOWNARD,ABBY	04:15			
REBOUND (OFF) by CORBIN,SARAH	04:15			
MISSED JUMPER by CORBIN,SARAH	04:09			
	04:09			REBOUND (DEF) by EJIOFOR,BLESSING
FOUL by DOWNARD,ABBY	04:00			
	04:00	39-27	H 12	GOOD! FT by BELL,RACHEL
	04:00	40-27	H 13	GOOD! FT by BELL,RACHEL
SUB IN: CYRUS,DEJAH	04:00			
SUB IN: WILLOUGHBY,MACY	04:00			
SUB IN: WILLIAMS,ELLE	04:00			
SUB OUT: CORBIN,SARAH	04:00			
SUB OUT: SOEIRO,JOANA	04:00			
SUB OUT: JONES,KAREN	04:00			
	04:00			SUB IN: NEWBY,AUTUMN
	04:00			SUB IN: WHALEN,ERIN
	04:00			SUB OUT: WALKER,CIERRA
	04:00			SUB OUT: EJIOFOR,BLESSING
TURNOVER by TEAM	03:26			
	03:15	43-27	H 16	GOOD! 3PTR by WHALEN,ERIN
	03:15			ASSIST by BELL,RACHEL
	03:05			FOUL by HALL,CHELSIE
	03:05			SUB IN: WALKER,CIERRA
	03:05			SUB OUT: HALL,CHELSIE
MISSED JUMPER by DOWNARD,ABBY	03:03			
REBOUND (OFF) by TEAM	03:03			
TURNOVER by WILLOUGHBY,MACY	02:55			
	02:54			STEAL by REED,CHRISTA
	02:51	45-27	H 18	GOOD! LAYUP by REED,CHRISTA [FB/PNT]
MISSED 3PTR by WILLOUGHBY,MACY	02:43			
	02:43			REBOUND (DEF) by NEWBY,AUTUMN
	02:33			TURNOVER by WHALEN,ERIN
SUB IN: SOEIRO,JOANA	02:33			
SUB OUT: KIRKHOFF,KELLIE	02:33			
GOOD! LAYUP by WILLOUGHBY,MACY [PNT]	02:18	45-29	H 16	
	02:18			FOUL by BELL,RACHEL
GOOD! FT by WILLOUGHBY,MACY	02:18	45-30	H 15	
	02:11			MISSED JUMPER by REED,CHRISTA
REBOUND (DEF) by SOEIRO,JOANA	02:11			
TURNOVER by SOEIRO,JOANA	01:58			
	01:57			STEAL by WHALEN,ERIN
FOUL by DOWNARD,ABBY	01:55			
SUB IN: CORBIN,SARAH	01:55			
SUB OUT: CYRUS,DEJAH	01:55			
	01:45			MISSED JUMPER by WHALEN,ERIN
	01:45			REBOUND (OFF) by WHALEN,ERIN
	01:42			MISSED LAYUP by WHALEN,ERIN
REBOUND (DEF) by WILLIAMS,ELLE	01:42			
GOOD! 3PTR by WILLOUGHBY,MACY	01:20	45-33	H 12	
ASSIST by SOEIRO,JOANA	01:20			
	01:10			MISSED JUMPER by BELL,RACHEL
	01:05			REBOUND (OFF) by NEWBY,AUTUMN
	01:03			MISSED 3PTR by WALKER,CIERRA
REBOUND (DEADB) by TEAM	01:03			
	01:02			FOUL by NEWBY,AUTUMN
GOOD! FT by WILLIAMS,ELLE	01:02	45-34	H 11	
GOOD! FT by WILLIAMS,ELLE	01:02	45-35	H 10	
	01:02			SUB IN: DANCY,MYKA
	01:02			SUB OUT: WHALEN,ERIN
FOUL by WILLIAMS,ELLE	00:55			
	00:55	46-35	H 11	GOOD! FT by NEWBY,AUTUMN
	00:55			MISSED FT by NEWBY,AUTUMN
REBOUND (DEF) by WILLIAMS,ELLE	00:55			
	00:45			FOUL by WALKER,CIERRA
GOOD! FT by WILLIAMS,ELLE	00:45	46-36	H 10	
GOOD! FT by WILLIAMS,ELLE	00:45	46-37	H 9	
SUB IN: TITZER,RACHEL	00:45			
SUB OUT: SOEIRO,JOANA	00:45			
	00:40	48-37	H 11	GOOD! LAYUP by BELL,RACHEL [PNT]
TURNOVER by DOWNARD,ABBY	00:25			
	00:22	50-37	H 13	GOOD! LAYUP by DANCY,MYKA [FB/PNT]

VISITORS: Marion	Time	Score	Margin	HOME: Vanderbilt
	00:22			ASSIST by BELL,RACHEL
FOUL by DOWNARD,ABBY	00:22			
	00:22	51-37	H 14	GOOD! FT by DANCY,MYKA
MISSED 3PTR by WILLOUGHBY,MACY	00:08			
	00:08			REBOUND (DEF) by NEWBY,AUTUMN
FOUL by TITZER,RACHEL	00:04			
	00:04			MISSED FT by DANCY,MYKA
	00:04			REBOUND (DEADB) by TEAM
	00:04			MISSED FT by DANCY,MYKA
	00:04			REBOUND (OFF) by BELL,RACHEL
	00:01			MISSED LAYUP by BELL,RACHEL
	00:01			REBOUND (DEADB) by TEAM

Marion 37, Vanderbilt 51

Period 2-only	In Paint	Off T/O	2nd Chance	Fast Break	Bench	
MU	4	5	0	0	15	Score tied - 0 times
VANDY	14	8	4	6	9	Lead changed - 0 times

Official Basketball Box Score -- Game Totals -- Second Half Statistics
Marion vs Vanderbilt
10/29/2017 2 PM at Nashville, Tenn. (Memorial Gym)

Marion 41 • 0-0

##	Player		Total		3-Ptr	Rebounds			PF	TP	A	TO	Blk	Stl	Min
			FG-FGA	FG-FGA	FT-FTA	Off	Def	Tot							
11	SOEIRO,JOANA	g	1-1	0-0	0-0	0	2	2	1	2	5	2	0	1	10
12	KIRKHOFF,KELLIE	g	1-5	0-1	2-2	0	1	1	1	4	1	0	0	0	9
15	TITZER,RACHEL	g	6-8	4-5	0-0	1	1	2	0	16	0	1	0	0	15
23	JONES,KAREN	f	0-4	0-1	4-4	3	6	9	2	4	1	3	0	0	12
34	CYRUS,DEJAH	f	2-5	0-0	0-0	1	3	4	0	4	0	0	0	0	13
03	DOWNARD,ABBY		1-1	0-0	1-2	0	2	2	0	3	2	2	0	1	14
14	WILLIAMS,ELLE		0-0	0-0	0-0	0	0	0	3	0	0	1	0	0	5
32	WILLOUGHBY,MACY		1-7	0-4	0-1	0	0	0	2	2	1	0	0	0	12
33	CORBIN,SARAH		1-3	0-2	4-4	1	0	1	4	6	0	1	0	0	10
TEAM						1	1	2	0		0				
Totals			13-34	4-13	11-13	7	16	23	13	41	10	10	0	2	100

FG % 3rd Qtr 4-18 22.2% 4th Qtr 9-16 56.3% Half: 13-34 38.2%
 3FG % 3rd Qtr 0-6 00.0% 4th Qtr 4-7 57.1% Half: 4-13 23.5%
 FT % 3rd Qtr 9-10 90.0% 4th Qtr 2-3 66.7% Half: 11-13 84.6%

Vanderbilt 39 • 0-0

##	Player		Total		3-Ptr	Rebounds			PF	TP	A	TO	Blk	Stl	Min
			FG-FGA	FG-FGA	FT-FTA	Off	Def	Tot							
02	HALL,CHELSIE	g	1-4	0-0	2-3	0	0	0	1	4	1	1	0	0	11
03	BELL,RACHEL	g	1-4	1-2	2-2	0	2	2	1	5	2	0	0	1	12
21	WHALEN,ERIN	f	3-5	1-2	4-4	2	2	4	2	11	3	2	1	0	16
22	HORROCKS,BREE	c	2-3	0-0	1-1	0	2	2	3	5	0	1	1	0	8
33	REED,CHRISTA	g	3-4	0-1	1-1	0	0	0	1	7	1	2	0	1	16
10	WALKER,CIERRA		1-5	1-5	0-0	0	2	2	0	3	0	3	0	0	15
12	DANCY,MYKA		0-1	0-1	0-0	0	0	0	0	0	0	0	0	0	8
24	NEWBY,AUTUMN		1-2	0-0	2-2	0	2	2	2	4	0	1	0	2	7
31	EJIOFOR,BLESSING		0-1	0-0	0-0	0	3	3	3	0	0	2	1	0	7
TEAM						0	2	2	0		0				
Totals			12-29	3-11	12-13	2	15	17	13	39	7	12	3	4	100

FG % 3rd Qtr 6-15 40.0% 4th Qtr 6-14 42.9% Half: 12-29 41.4%
 3FG % 3rd Qtr 2-6 33.3% 4th Qtr 1-5 20.0% Half: 3-11 22.2%
 FT % 3rd Qtr 9-10 90.0% 4th Qtr 3-3 100.0% Half: 12-13 92.3%

Officials: R: Michael Koch, U1: Eric Koch, U2:D'Lynn Schertz
 Technical Fouls: Marion- None. Vanderbilt- None.
 Exhibition

Score by periods	1st	2nd	3rd	4th	Total
Marion	16	21	17	24	78
Vanderbilt	26	25	23	16	90

Points	In	Off	2nd	Fast	Bench
	Paint	T/O	Chance	Break	
MU	16	13	2	6	11
	16	11	0	2	7

Last FG - MU 4th-00:02, VANDY 4th-00:40.
 MU led for 0:00. VANDY led for 20:00. Game was tied for 0:00.

Score tied - 0 times
 Lead changed - 0 times

Marion vs Vanderbilt
10/29/2017; 2 PM at Nashville, Tenn. (Memorial Gym)
Period 3 Play-By-Play

VISITORS: Marion	Time	Score	Margin	HOME: Vanderbilt
	09:51	53-37	H 16	GOOD! JUMPER by HORROCKS,BREE [PNT]
	09:51			ASSIST by REED,CHRISTA
TURNOVER by JONES,KAREN	09:35			
	09:33			STEAL by BELL,RACHEL
	09:31			MISSED JUMPER by BELL,RACHEL
REBOUND (DEF) by JONES,KAREN	09:31			
GOOD! LAYUP by CYRUS,DEJAH [FB/PNT]	09:22	53-39	H 14	
ASSIST by JONES,KAREN	09:22			
	09:12			FOUL by REED,CHRISTA
	09:12			TURNOVER by REED,CHRISTA
MISSED 3PTR by KIRKHOFF,KELLIE	08:55			
	08:55			REBOUND (DEF) by HORROCKS,BREE
	08:48			TURNOVER by HORROCKS,BREE
	08:48			SUB IN: WALKER,CIERRA
	08:48			SUB OUT: HALL,CHELSIE
MISSED LAYUP by CYRUS,DEJAH	08:41			
	08:41			REBOUND (DEF) by WHALEN,ERIN
	08:32			MISSED JUMPER by BELL,RACHEL
	08:32			REBOUND (OFF) by WHALEN,ERIN
	08:19			MISSED 3PTR by WALKER,CIERRA
REBOUND (DEF) by CYRUS,DEJAH	08:19			
MISSED 3PTR by TITZER,RACHEL	08:08			
	08:08			REBOUND (DEF) by WALKER,CIERRA
	07:56			TURNOVER by WALKER,CIERRA
STEAL by SOEIRO,JOANA	07:55			
GOOD! JUMPER by SOEIRO,JOANA [FB/PNT]	07:51	53-41	H 12	
	07:35	55-41	H 14	GOOD! LAYUP by WHALEN,ERIN [PNT]
MISSED LAYUP by TITZER,RACHEL	07:08			
REBOUND (OFF) by JONES,KAREN	07:08			
MISSED JUMPER by JONES,KAREN	07:06			
REBOUND (OFF) by JONES,KAREN	07:06			
MISSED JUMPER by JONES,KAREN	07:05			
	07:05			BLOCK by HORROCKS,BREE
REBOUND (OFF) by TEAM	07:05			
	07:05			SUB IN: NEWBY,AUTUMN
	07:05			SUB IN: DANCY,MYKA
	07:05			SUB IN: HALL,CHELSIE
	07:05			SUB OUT: BELL,RACHEL
	07:05			SUB OUT: WHALEN,ERIN
	07:05			SUB OUT: HORROCKS,BREE
TURNOVER by JONES,KAREN	07:01			
	06:54	58-41	H 17	GOOD! 3PTR by WALKER,CIERRA
	06:54			ASSIST by HALL,CHELSIE
GOOD! LAYUP by KIRKHOFF,KELLIE [PNT]	06:33	58-43	H 15	
ASSIST by SOEIRO,JOANA	06:33			
	06:11			MISSED LAYUP by NEWBY,AUTUMN
REBOUND (DEF) by SOEIRO,JOANA	06:11			
	05:59			FOUL by NEWBY,AUTUMN
GOOD! FT by JONES,KAREN	05:59	58-44	H 14	
GOOD! FT by JONES,KAREN	05:59	58-45	H 13	
SUB IN: DOWNARD,ABBY	05:59			
SUB IN: WILLOUGHBY,MACY	05:59			
SUB IN: WILLIAMS,ELLE	05:59			
SUB OUT: KIRKHOFF,KELLIE	05:59			
SUB OUT: TITZER,RACHEL	05:59			
SUB OUT: JONES,KAREN	05:59			
	05:59			SUB IN: WHALEN,ERIN
	05:59			SUB OUT: REED,CHRISTA
	05:47			FOUL by NEWBY,AUTUMN
	05:47			TURNOVER by NEWBY,AUTUMN
	05:47			SUB IN: EJIOFOR,BLESSING
	05:47			SUB OUT: NEWBY,AUTUMN
GOOD! JUMPER by CYRUS,DEJAH	05:36	58-47	H 11	
ASSIST by WILLOUGHBY,MACY	05:36			
	05:27	60-47	H 13	GOOD! JUMPER by HALL,CHELSIE [PNT]
FOUL by SOEIRO,JOANA	05:27			
	05:27			MISSED FT by HALL,CHELSIE
	05:27			REBOUND (OFF) by WHALEN,ERIN
	05:25			MISSED JUMPER by WHALEN,ERIN

VISITORS: Marion	Time	Score	Margin	HOME: Vanderbilt
REBOUND (DEF) by SOEIRO,JOANA	05:25			
FOUL by WILLIAMS,ELLE	05:08			
TURNOVER by WILLIAMS,ELLE	05:08			
	04:51			TURNOVER by WHALEN,ERIN
TIMEOUT media	04:47			
TURNOVER by SOEIRO,JOANA	04:35			
	04:29			MISSED 3PTR by DANCY,MYKA
REBOUND (DEF) by DOWNARD,ABBY	04:29			
MISSED 3PTR by WILLOUGHBY,MACY	04:18			
	04:18			REBOUND (DEF) by EJIOFOR,BLESSING
SUB IN: CORBIN,SARAH	04:09			
SUB IN: KIRKHOFF,KELLIE	04:09			
SUB OUT: SOEIRO,JOANA	04:09			
SUB OUT: CYRUS,DEJAH	04:09			
	04:09			SUB IN: HORROCKS,BREE
	04:09			SUB IN: BELL,RACHEL
	04:09			SUB OUT: WALKER,CIERRA
	04:09			SUB OUT: DANCY,MYKA
	03:59	62-47	H 15	GOOD! JUMPER by HORROCKS,BREE [PNT]
	03:59			ASSIST by WHALEN,ERIN
FOUL by CORBIN,SARAH	03:58			
	03:58	63-47	H 16	GOOD! FT by HORROCKS,BREE
MISSED 3PTR by CORBIN,SARAH	03:48			
	03:44			REBOUND (DEF) by EJIOFOR,BLESSING
FOUL by WILLIAMS,ELLE	03:34			
	03:34	64-47	H 17	GOOD! FT by HALL,CHELSIE
	03:34	65-47	H 18	GOOD! FT by HALL,CHELSIE
SUB IN: JONES,KAREN	03:34			
SUB OUT: WILLIAMS,ELLE	03:34			
	03:17			FOUL by HALL,CHELSIE
	03:17			SUB IN: WALKER,CIERRA
	03:17			SUB OUT: HALL,CHELSIE
MISSED LAYUP by KIRKHOFF,KELLIE	03:11			
	03:11			BLOCK by EJIOFOR,BLESSING
	03:09			REBOUND (DEF) by EJIOFOR,BLESSING
FOUL by WILLOUGHBY,MACY	03:02			
	03:02	66-47	H 19	GOOD! FT by WHALEN,ERIN
	03:02	67-47	H 20	GOOD! FT by WHALEN,ERIN
MISSED JUMPER by KIRKHOFF,KELLIE	02:50			
	02:50			REBOUND (DEF) by WHALEN,ERIN
	02:39			MISSED JUMPER by EJIOFOR,BLESSING
REBOUND (DEF) by JONES,KAREN	02:39			
	02:37			FOUL by HORROCKS,BREE
GOOD! FT by JONES,KAREN	02:37	67-48	H 19	
GOOD! FT by JONES,KAREN	02:37	67-49	H 18	
	02:23	70-49	H 21	GOOD! 3PTR by WHALEN,ERIN
	02:23			ASSIST by BELL,RACHEL
MISSED LAYUP by WILLOUGHBY,MACY	02:09			
REBOUND (OFF) by CORBIN,SARAH	02:09			
	02:08			FOUL by EJIOFOR,BLESSING
GOOD! FT by CORBIN,SARAH	02:08	70-50	H 20	
GOOD! FT by CORBIN,SARAH	02:08	70-51	H 19	
FOUL by WILLOUGHBY,MACY	02:03			
	02:03	71-51	H 20	GOOD! FT by WHALEN,ERIN
	02:03	72-51	H 21	GOOD! FT by WHALEN,ERIN
	01:50			FOUL by EJIOFOR,BLESSING
MISSED FT by DOWNARD,ABBY	01:50			
REBOUND (DEADB) by TEAM	01:50			
GOOD! FT by DOWNARD,ABBY	01:50	72-52	H 20	
	01:50			SUB IN: REED,CHRISTA
	01:50			SUB OUT: WHALEN,ERIN
FOUL by KIRKHOFF,KELLIE	01:42			
	01:42	73-52	H 21	GOOD! FT by BELL,RACHEL
	01:42	74-52	H 22	GOOD! FT by BELL,RACHEL
MISSED 3PTR by JONES,KAREN	01:28			
	01:28			REBOUND (DEF) by WALKER,CIERRA
	01:19			MISSED 3PTR by BELL,RACHEL
REBOUND (DEF) by JONES,KAREN	01:19			
	00:55			FOUL by BELL,RACHEL
GOOD! FT by CORBIN,SARAH	00:55	74-53	H 21	
GOOD! FT by CORBIN,SARAH	00:55	74-54	H 20	
SUB IN: TITZER,RACHEL	00:55			
SUB OUT: KIRKHOFF,KELLIE	00:55			
	00:55			SUB IN: WHALEN,ERIN
	00:55			SUB IN: DANCY,MYKA

VISITORS: Marion	Time	Score	Margin	HOME: Vanderbilt
	00:55			SUB OUT: HORROCKS,BREE
	00:55			SUB OUT: BELL,RACHEL
	00:44			FOUL by WHALEN,ERIN
	00:44			TURNOVER by WHALEN,ERIN
MISSED 3PTR by WILLOUGHBY,MACY	00:26			
REBOUND (OFF) by JONES,KAREN	00:26			
MISSED JUMPER by JONES,KAREN	00:21			
	00:21			BLOCK by WHALEN,ERIN
	00:21			REBOUND (DEF) by TEAM
	00:03			MISSED 3PTR by WHALEN,ERIN
REBOUND (DEF) by TEAM	00:03			

Marion 54, Vanderbilt 74

Period 3-only	In Paint	Off T/O	2nd Chance	Fast Break	Bench	
MU	6	4	2	4	5	Score tied - 0 times
VANDY	8	3	0	0	3	Lead changed - 0 times

Marion vs Vanderbilt
10/29/2017; 2 PM at Nashville, Tenn. (Memorial Gym)
Period 4 Play-By-Play

VISITORS: Marion	Time	Score	Margin	HOME: Vanderbilt
SUB IN: DOWNARD,ABBY	10:00			
SUB IN: CORBIN,SARAH	10:00			
SUB OUT: KIRKHOFF,KELLIE	10:00			
SUB OUT: JONES,KAREN	10:00			
	10:00			SUB IN: EJIOFOR,BLESSING
	10:00			SUB IN: DANCY,MYKA
	10:00			SUB IN: WALKER,CIERRA
	10:00			SUB OUT: HALL,CHELSIE
	10:00			SUB OUT: BELL,RACHEL
	10:00			SUB OUT: HORROCKS,BREE
	09:45			TURNOVER by EJIOFOR,BLESSING
GOOD! 3PTR by TITZER,RACHEL	09:33	74-57	H 17	
ASSIST by SOEIRO,JOANA	09:33			
	09:20			MISSED 3PTR by REED,CHRISTA
REBOUND (DEF) by DOWNARD,ABBY	09:20			
GOOD! 3PTR by TITZER,RACHEL	09:04	74-60	H 14	
ASSIST by SOEIRO,JOANA	09:04			
	08:53			FOUL by EJIOFOR,BLESSING
	08:53			TURNOVER by EJIOFOR,BLESSING
	08:53			SUB IN: NEWBY,AUTUMN
	08:53			SUB OUT: EJIOFOR,BLESSING
MISSED 3PTR by CORBIN,SARAH	08:42			
	08:42			REBOUND (DEF) by TEAM
	08:27			MISSED 3PTR by WALKER,CIERRA
REBOUND (DEF) by CYRUS,DEJAH	08:27			
FOUL by CORBIN,SARAH	08:18			
TURNOVER by CORBIN,SARAH	08:18			
SUB IN: WILLIAMS,ELLE	08:18			
SUB OUT: CORBIN,SARAH	08:18			
	08:18			SUB IN: HALL,CHELSIE
	08:18			SUB OUT: DANCY,MYKA
	08:04	76-60	H 16	GOOD! LAYUP by REED,CHRISTA [PNT]
	08:04			ASSIST by WHALEN,ERIN
TURNOVER by DOWNARD,ABBY	07:47			
SUB IN: WILLOUGHBY,MACY	07:47			
SUB OUT: DOWNARD,ABBY	07:47			
	07:39	78-60	H 18	GOOD! LAYUP by NEWBY,AUTUMN [PNT]
GOOD! 3PTR by TITZER,RACHEL	07:24	78-63	H 15	
ASSIST by SOEIRO,JOANA	07:24			
	07:13			TIMEOUT 30SEC
	07:13			TIMEOUT MEDIA
	06:56			MISSED LAYUP by HALL,CHELSIE
REBOUND (DEF) by CYRUS,DEJAH	06:56			
GOOD! 3PTR by TITZER,RACHEL	06:42	78-66	H 12	
ASSIST by SOEIRO,JOANA	06:42			
	06:32			MISSED LAYUP by HALL,CHELSIE
REBOUND (DEF) by TITZER,RACHEL	06:32			
MISSED 3PTR by WILLOUGHBY,MACY	06:16			
REBOUND (OFF) by TITZER,RACHEL	06:16			
TURNOVER by SOEIRO,JOANA	05:58			
	05:57			STEAL by REED,CHRISTA
SUB IN: KIRKHOFF,KELLIE	05:52			
SUB OUT: SOEIRO,JOANA	05:52			
	05:52			SUB IN: HORROCKS,BREE
	05:52			SUB IN: BELL,RACHEL
	05:52			SUB OUT: NEWBY,AUTUMN
	05:52			SUB OUT: WHALEN,ERIN
	05:51			TURNOVER by WALKER,CIERRA
GOOD! LAYUP by TITZER,RACHEL [PNT]	05:39	78-68	H 10	
ASSIST by KIRKHOFF,KELLIE	05:39			
FOUL by WILLIAMS,ELLE	05:23			
SUB IN: DOWNARD,ABBY	05:23			
SUB IN: JONES,KAREN	05:23			
SUB OUT: WILLOUGHBY,MACY	05:23			
SUB OUT: WILLIAMS,ELLE	05:23			
	05:23			SUB IN: DANCY,MYKA
	05:23			SUB OUT: HALL,CHELSIE
	05:21	80-68	H 12	GOOD! LAYUP by REED,CHRISTA [PNT]
MISSED JUMPER by CYRUS,DEJAH	05:12			

VISITORS: Marion	Time	Score	Margin	HOME: Vanderbilt
	05:12			REBOUND (DEF) by BELL,RACHEL
	04:54			MISSED 3PTR by WALKER,CIERRA
REBOUND (DEF) by JONES,KAREN	04:54			
	04:53			FOUL by HORROCKS,BREE
MISSED LAYUP by KIRKHOFF,KELLIE	04:40			
REBOUND (OFF) by CYRUS,DEJAH	04:40			
MISSED JUMPER by CYRUS,DEJAH	04:35			
	04:35			REBOUND (DEF) by HORROCKS,BREE
	04:30			MISSED 3PTR by WALKER,CIERRA
REBOUND (DEF) by JONES,KAREN	04:30			
	04:22			FOUL by HORROCKS,BREE
GOOD! FT by KIRKHOFF,KELLIE	04:22	80-69	H 11	
GOOD! FT by KIRKHOFF,KELLIE	04:22	80-70	H 10	
SUB IN: CORBIN,SARAH	04:22			
SUB OUT: CYRUS,DEJAH	04:22			
	04:10			MISSED JUMPER by HORROCKS,BREE
REBOUND (DEF) by KIRKHOFF,KELLIE	04:10			
GOOD! LAYUP by DOWNARD,ABBY [PNT]	03:57	80-72	H 8	
	03:38			TURNOVER by WALKER,CIERRA
STEAL by DOWNARD,ABBY	03:38			
GOOD! LAYUP by TITZER,RACHEL [FB/PNT]	03:36	80-74	H 6	
ASSIST by DOWNARD,ABBY	03:36			
	03:25			TIMEOUT 30SEC
SUB IN: WILLOUGHBY,MACY	03:25			
SUB OUT: KIRKHOFF,KELLIE	03:25			
	03:25			SUB IN: WHALEN,ERIN
	03:25			SUB IN: NEWBY,AUTUMN
	03:25			SUB IN: HALL,CHELSIE
	03:25			SUB OUT: HORROCKS,BREE
	03:25			SUB OUT: DANCY,MYKA
	03:25			SUB OUT: WALKER,CIERRA
	03:21			TURNOVER by REED,CHRISTA
TURNOVER by DOWNARD,ABBY	03:08			
	03:07			STEAL by NEWBY,AUTUMN
FOUL by JONES,KAREN	03:07			
FOUL by CORBIN,SARAH	03:01			
FOUL by JONES,KAREN	02:55			
	02:54	81-74	H 7	GOOD! FT by NEWBY,AUTUMN
	02:54	82-74	H 8	GOOD! FT by NEWBY,AUTUMN
TURNOVER by TITZER,RACHEL	02:37			
	02:35			STEAL by NEWBY,AUTUMN
	02:28			MISSED JUMPER by HALL,CHELSIE
REBOUND (DEF) by JONES,KAREN	02:28			
GOOD! LAYUP by WILLOUGHBY,MACY [PNT]	02:06	82-76	H 6	
	02:05			FOUL by WHALEN,ERIN
MISSED FT by WILLOUGHBY,MACY	02:05			
	02:05			REBOUND (DEF) by NEWBY,AUTUMN
	01:50	85-76	H 9	GOOD! 3PTR by BELL,RACHEL
	01:50			ASSIST by WHALEN,ERIN
TURNOVER by JONES,KAREN	01:23			
	01:21	87-76	H 11	GOOD! LAYUP by WHALEN,ERIN [FB/PNT]
	01:21			ASSIST by BELL,RACHEL
SUB IN: CYRUS,DEJAH	01:20			
SUB OUT: JONES,KAREN	01:20			
MISSED 3PTR by WILLOUGHBY,MACY	01:05			
	01:05			REBOUND (DEF) by NEWBY,AUTUMN
	00:40	89-76	H 13	GOOD! JUMPER by REED,CHRISTA
FOUL by CORBIN,SARAH	00:40			
	00:40	90-76	H 14	GOOD! FT by REED,CHRISTA
MISSED LAYUP by WILLOUGHBY,MACY	00:34			
	00:34			REBOUND (DEF) by BELL,RACHEL
	00:10			TURNOVER by HALL,CHELSIE
GOOD! LAYUP by CORBIN,SARAH [PNT]	00:02	90-78	H 12	
ASSIST by DOWNARD,ABBY	00:02			

Marion 78, Vanderbilt 90

Period 4-only	In Paint	Off T/O	2nd Chance	Fast Break	Bench	
MU	10	9	0	2	6	Score tied - 0 times
VANDY	8	8	0	2	4	Lead changed - 0 times

Marion vs Vanderbilt
10/29/2017; 2 PM at Nashville, Tenn. (Memorial Gym)
Scoring/Runs Reference

Period 1

Marion	VRun	Score	Margin	HRun	Vanderbilt
09:49 - KIRKHOFF LAYUP [P] [F]	-	2-0	-2		
		2-2	0		BELL JUMPER [F] - 08:51
08:32 - KIRKHOFF FT	-	3-2	-1		
		3-4	1		BELL JUMPER - 08:28
		3-6	3	4-0	BELL JUMPER - 07:45
07:31 - KIRKHOFF JUMPER	-	5-6	1		
		5-8	3		HALL LAYUP [P] [F] - 06:49
06:20 - SOEIRO FT	-	6-8	2		
06:20 - SOEIRO FT	2-0	7-8	1		
		7-10	3		BELL JUMPER - 05:45
		7-12	5	4-0	HALL JUMPER - 05:20
		7-13	6	5-0	HALL FT - 05:19
04:07 - SOEIRO 3PTR	-	10-13	3		
		10-15	5		HALL JUMPER - 03:57
		10-17	7	4-0	NEWBY LAYUP [P] - 03:20
02:58 - SOEIRO FT	-	11-17	6		
		11-19	8		EJIOFOR JUMPER - 02:41
02:08 - DOWNARD FT	-	12-19	7		
02:08 - DOWNARD FT	2-0	13-19	6		
		13-22	9		WALKER 3PTR - 01:04
		13-23	10	4-0	WALKER FT - 00:43
		13-24	11	5-0	WALKER FT - 00:43
00:24 - DOWNARD 3PTR	-	16-24	8		
		16-26	10		WHALEN JUMPER [P] [F] - 00:15

Marion vs Vanderbilt
10/29/2017; 2 PM at Nashville, Tenn. (Memorial Gym)
Scoring/Runs Reference

Period 2

Marion	VRun	Score	Margin	HRun	Vanderbilt
		16-28	12		HORROCKS JUMPER - 09:20
		16-29	13	NaN-0	HORROCKS FT - 09:20
09:00 - CYRUS JUMPER [P]	-	18-29	11		
		18-31	13		NEWBY LAYUP [P] [F] - 08:50
		18-32	14	3-0	NEWBY FT - 08:50
08:27 - DOWNARD JUMPER	-	20-32	12		
08:05 - WILLOUGHBY 3PTR	5-0	23-32	9		
06:43 - KIRKHOFF FT	6-0	24-32	8		
06:43 - KIRKHOFF FT	7-0	25-32	7		
		25-34	9		REED JUMPER [P] - 06:28
		25-36	11	4-0	EJIOFOR JUMPER [P] - 05:21
04:43 - SOEIRO JUMPER	-	27-36	9		
		27-38	11		REED LAYUP [P] - 04:33
		27-39	12	3-0	BELL FT - 04:00
		27-40	13	4-0	BELL FT - 04:00
		27-43	16	7-0	WHALEN 3PTR - 03:15
		27-45	18	9-0	REED LAYUP [P] [F] - 02:51
02:18 - WILLOUGHBY LAYUP [P]	-	29-45	16		
02:18 - WILLOUGHBY FT	3-0	30-45	15		
01:20 - WILLOUGHBY 3PTR	6-0	33-45	12		
01:02 - WILLIAMS FT	7-0	34-45	11		
01:02 - WILLIAMS FT	8-0	35-45	10		
		35-46	11		NEWBY FT - 00:55
00:45 - WILLIAMS FT	-	36-46	10		
00:45 - WILLIAMS FT	2-0	37-46	9		
		37-48	11		BELL LAYUP [P] - 00:40
		37-50	13	4-0	DANCY LAYUP [P] [F] - 00:22
		37-51	14	5-0	DANCY FT - 00:22

Marion vs Vanderbilt
10/29/2017; 2 PM at Nashville, Tenn. (Memorial Gym)
Scoring/Runs Reference

Period 3

Marion	VRun	Score	Margin	HRun	Vanderbilt
		37-53	16		HORROCKS JUMPER [P] - 09:51
09:22 - CYRUS LAYUP [P] [F]	-	39-53	14		
07:51 - SOEIRO JUMPER [P] [F]	4-0	41-53	12		
		41-55	14		WHALEN LAYUP [P] - 07:35
		41-58	17	5-0	WALKER 3PTR - 06:54
06:33 - KIRKHOFF LAYUP [P]	-	43-58	15		
05:59 - JONES FT	3-0	44-58	14		
05:59 - JONES FT	4-0	45-58	13		
05:36 - CYRUS JUMPER	6-0	47-58	11		
		47-60	13		HALL JUMPER [P] - 05:27
		47-62	15	4-0	HORROCKS JUMPER [P] - 03:59
		47-63	16	5-0	HORROCKS FT - 03:58
		47-64	17	6-0	HALL FT - 03:34
		47-65	18	7-0	HALL FT - 03:34
		47-66	19	8-0	WHALEN FT - 03:02
		47-67	20	9-0	WHALEN FT - 03:02
02:37 - JONES FT	-	48-67	19		
02:37 - JONES FT	2-0	49-67	18		
		49-70	21		WHALEN 3PTR - 02:23
02:08 - CORBIN FT	-	50-70	20		
02:08 - CORBIN FT	2-0	51-70	19		
		51-71	20		WHALEN FT - 02:03
		51-72	21	2-0	WHALEN FT - 02:03
01:50 - DOWNARD FT	-	52-72	20		
		52-73	21		BELL FT - 01:42
		52-74	22	2-0	BELL FT - 01:42
00:55 - CORBIN FT	-	53-74	21		
00:55 - CORBIN FT	2-0	54-74	20		

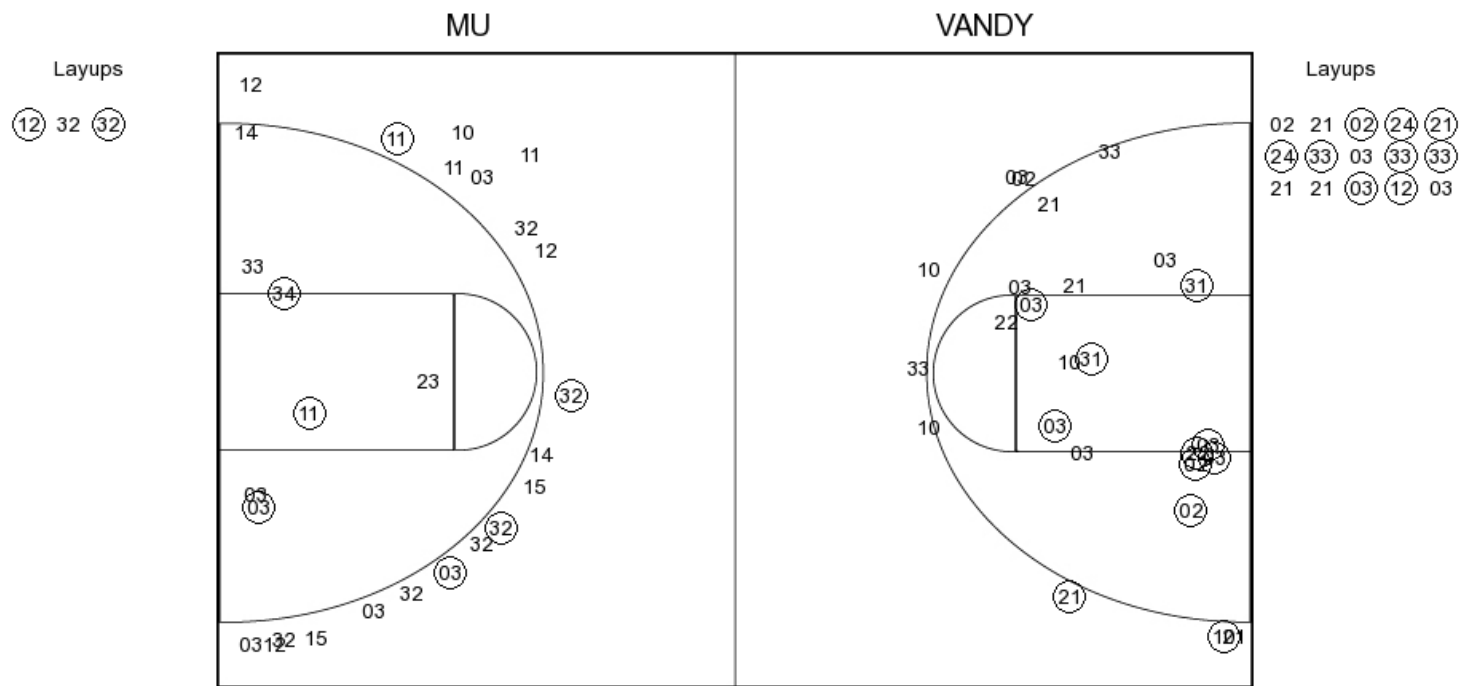
Marion vs Vanderbilt
10/29/2017; 2 PM at Nashville, Tenn. (Memorial Gym)
Scoring/Runs Reference

Period 4

Marion	VRun	Score	Margin	HRun	Vanderbilt
09:33 - TITZER 3PTR	-	57-74	17		
09:04 - TITZER 3PTR	NaN-0	60-74	14		
		60-76	16		REED LAYUP [P] - 08:04
		60-78	18	4-0	NEWBY LAYUP [P] - 07:39
07:24 - TITZER 3PTR	-	63-78	15		
06:42 - TITZER 3PTR	6-0	66-78	12		
05:39 - TITZER LAYUP [P]	8-0	68-78	10		
		68-80	12		REED LAYUP [P] - 05:21
04:22 - KIRKHOFF FT	-	69-80	11		
04:22 - KIRKHOFF FT	2-0	70-80	10		
03:57 - DOWNARD LAYUP [P]	4-0	72-80	8		
03:36 - TITZER LAYUP [P] [F]	6-0	74-80	6		
		74-81	7		NEWBY FT - 02:54
		74-82	8	2-0	NEWBY FT - 02:54
02:06 - WILLOUGHBY LAYUP [P]	-	76-82	6		
		76-85	9		BELL 3PTR - 01:50
		76-87	11	5-0	WHALEN LAYUP [P] [F] - 01:21
		76-89	13	7-0	REED JUMPER - 00:40
		76-90	14	8-0	REED FT - 00:40
00:02 - CORBIN LAYUP [P]	-	78-90	12		

Marion vs Vanderbilt
 OFFICIAL SHOT CHART
 10/29/2017 at Nashville, Tenn. (Memorial Gym)

PERIOD 1



MU PERIOD 1

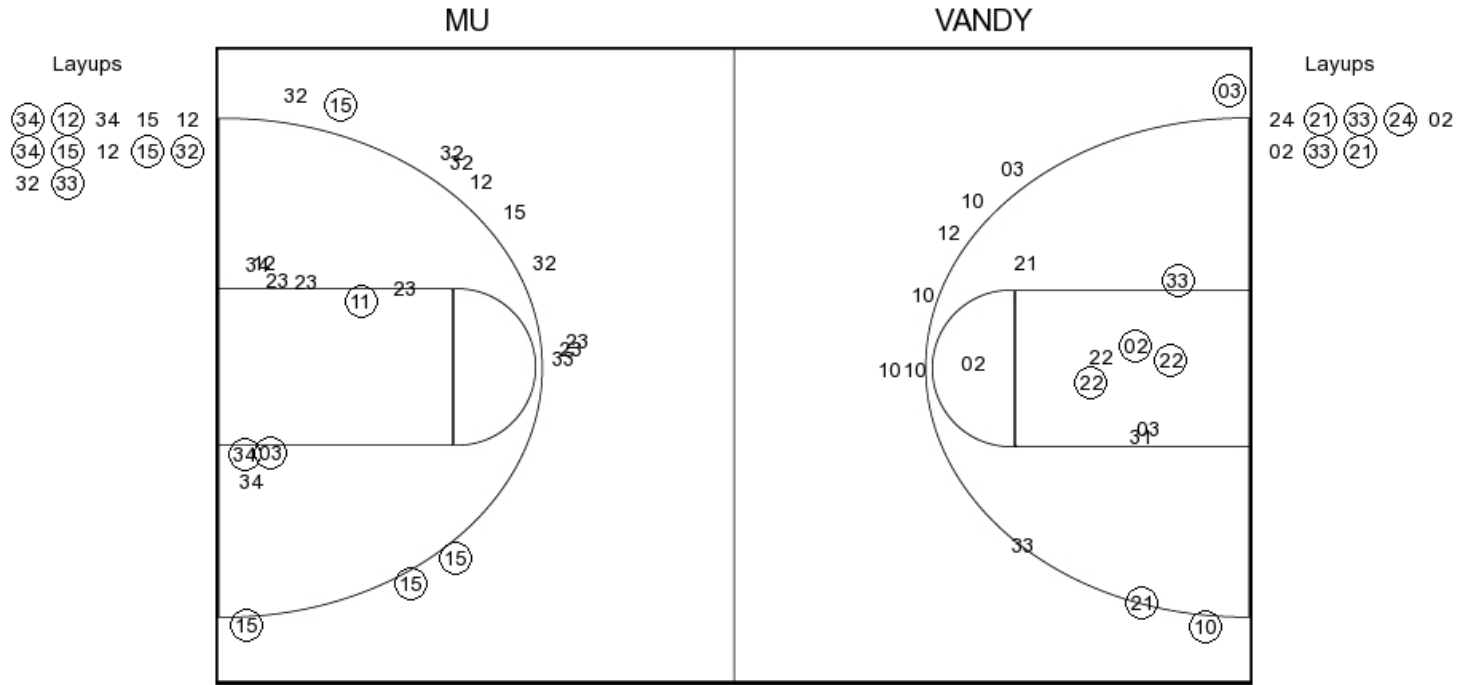
FG Made	10
FG Attempted	28
3PFG Made	4
3PFG Attempted	17

VANDY PERIOD 1

FG Made	20
FG Attempted	40
3PFG Made	2
3PFG Attempted	9

Marion vs Vanderbilt
 OFFICIAL SHOT CHART
 10/29/2017 at Nashville, Tenn. (Memorial Gym)

PERIOD 2



MU PERIOD 2

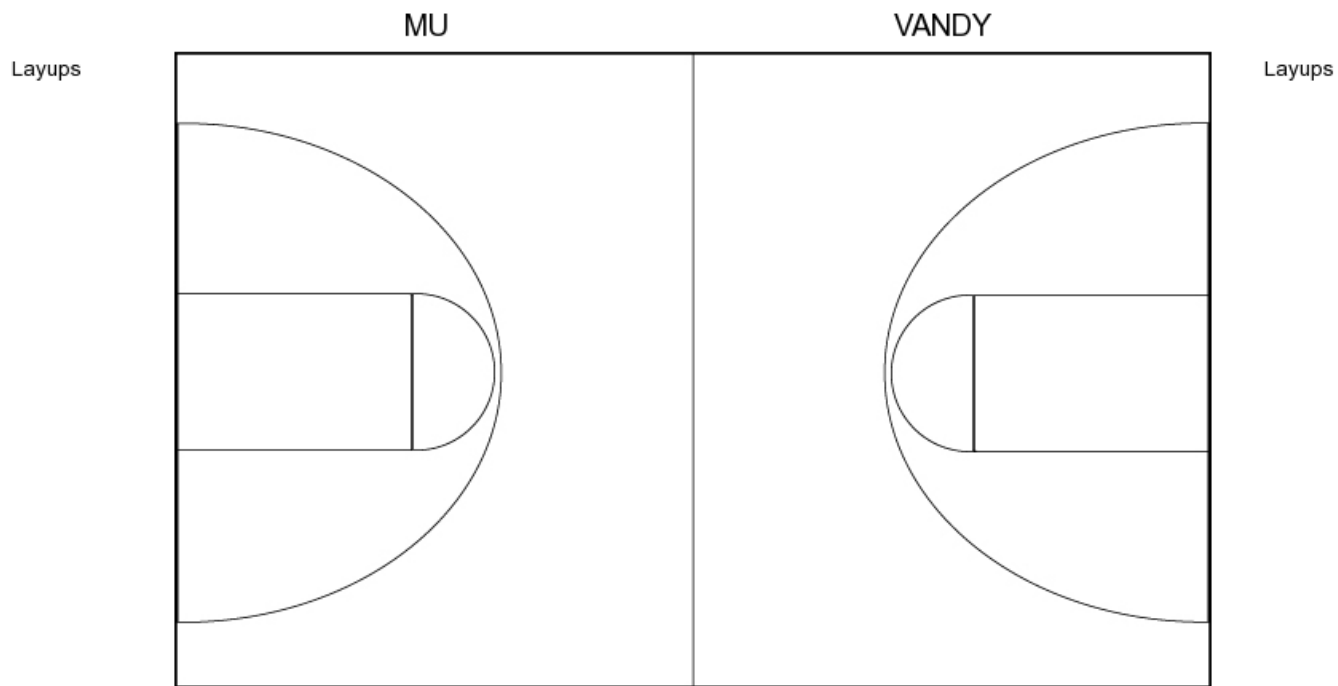
FG Made
 FG Attempted
 3PFG Made
 3PFG Attempted

VANDY PERIOD 2

FG Made
 FG Attempted
 3PFG Made
 3PFG Attempted

Marion vs Vanderbilt
OFFICIAL SHOT CHART
10/29/2017 at Nashville, Tenn. (Memorial Gym)

PERIOD 3



MU PERIOD 3

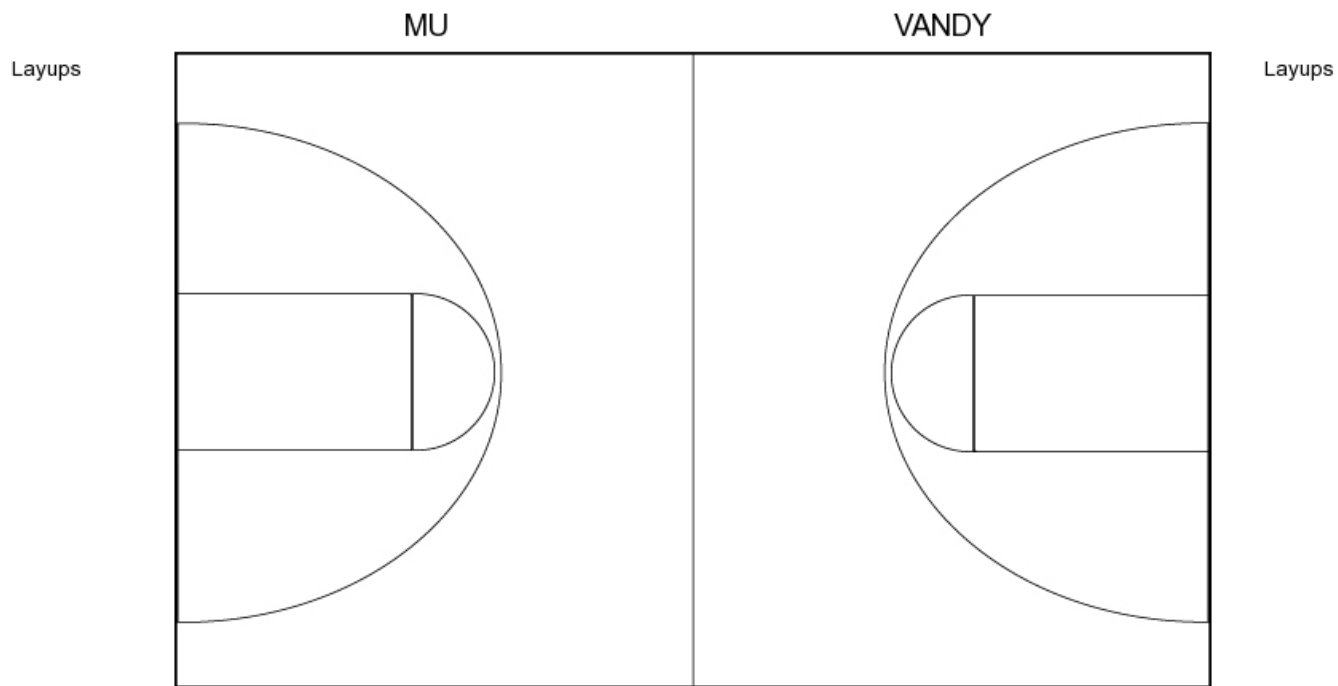
FG Made	13
FG Attempted	34
3PFG Made	4
3PFG Attempted	13

VANDY PERIOD 3

FG Made	12
FG Attempted	29
3PFG Made	3
3PFG Attempted	11

Marion vs Vanderbilt
OFFICIAL SHOT CHART
10/29/2017 at Nashville, Tenn. (Memorial Gym)

PERIOD 4



MU PERIOD 4

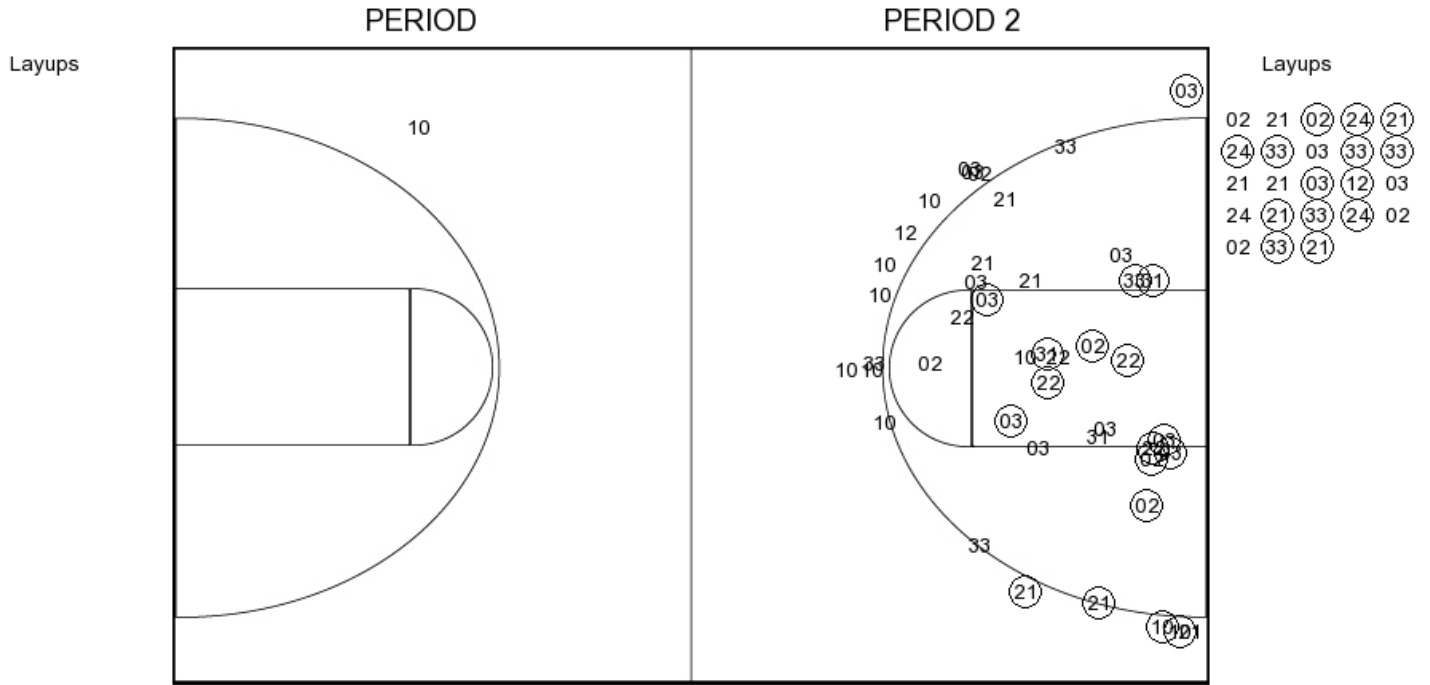
FG Made
FG Attempted
3PFG Made
3PFG Attempted

VANDY PERIOD 4

FG Made
FG Attempted
3PFG Made
3PFG Attempted

Marion vs Vanderbilt
 OFFICIAL SHOT CHART
 10/29/2017 at Nashville, Tenn. (Memorial Gym)

Vanderbilt



VANDY PERIOD 1

FG Made	20
FG Attempted	40
3PFG Made	2
3PFG Attempted	9

VANDY PERIOD 2

FG Made	
FG Attempted	
3PFG Made	
3PFG Attempted	