

FINAL SCORE



Penn State

15-12, 6-8

51



Nebraska

19-8, 10-4

59

February 22, 1928 • Pinnacle Bank Arena (Lincoln, Neb.)

FINAL STATISTICS

Official Basketball Box Score -- Game Totals -- Final Statistics
 Penn State vs Nebraska
 2/22/1928 7:02 p.m at Pinnacle Bank Arena (Lincoln, Neb.)



Penn State 51 - 15-12, 6-8

##	Player	f/g	Total		3-Ptr		Rebounds			PF	TP	A	TO	Blk	Stl	Min
			FG-FGA	FG-FGA	FT-FTA	Off	Def	Tot								
01	SMITH,ALISIA	f	0-2	0-0	2-2	4	3	7	2	2	0	0	1	0	13	
02	CARTER,AMARI	g	5-14	2-5	2-2	1	0	1	1	14	1	0	2	4	34	
11	PAGE,TENIYA	g	4-18	0-4	2-5	0	3	3	3	10	2	0	0	1	35	
31	TRAVASCIO-GREEN,J	g	0-2	0-2	0-0	0	1	1	4	0	0	0	1	0	15	
35	BOYKIN,DE'JANAE	f	1-4	0-0	0-0	1	3	4	2	2	0	2	2	0	19	
04	FRAZIER,SIYEH		5-12	0-1	1-2	1	4	5	3	11	4	2	1	5	25	
05	MCDANIEL,KAMARIA		2-9	2-8	4-7	0	3	3	1	10	1	1	0	1	28	
23	WILLIAMS,JAYLEN		0-1	0-0	0-0	1	3	4	4	0	1	0	1	1	25	
24	BREEN,SAM		1-2	0-1	0-0	0	1	1	1	2	1	1	1	0	6	
TEAM						1	1	2	0		0					
TOTALS			18-64	4-21	11-18	9	22	31	21	51	10	6	9	12	200	

Deadball Rebounds: 4,0

FG %	1st Half: 7-35 20.0%	2nd Half: 11-29 37.9%	Game: 18-64 28.1%	4th Qtr	5-14 35.7%
3FG %	1st Qtr 4-17 23.5%	2nd Qtr 3-18 16.7%	3rd Qtr 6-15 40.0%	4th Qtr	0-3 00.0%
FT %	1st Half: 3-13 23.1%	2nd Half: 1-8 12.5%	Game: 4-21 19.0%	4th Qtr	4-7 57.1%
	1st Qtr 1-5 20.0%	2nd Qtr 2-8 25.0%	3rd Qtr 1-5 20.0%		
	1st Half: 7-9 77.8%	2nd Half: 4-9 44.4%	Game: 11-18 61.1%		
	1st Qtr 2-2 100.0%	2nd Qtr 5-7 71.4%	3rd Qtr 0-2 00.0%		

Nebraska 59 - 19-8, 10-4

##	Player	f/g	Total		3-Ptr		Rebounds			PF	TP	A	TO	Blk	Stl	Min
			FG-FGA	FG-FGA	FT-FTA	Off	Def	Tot								
03	WHITISH,HANNAH	g	4-11	0-4	1-2	0	8	8	2	9	5	6	0	0	34	
05	ELIELY,NICEA	g	0-7	0-2	0-0	1	1	2	4	0	0	2	0	0	22	
24	SIMON,MADDIE	f	5-12	0-1	6-8	2	4	6	2	16	0	2	0	1	26	
31	CAIN,KATE	c	6-8	0-0	2-2	8	12	20	0	14	1	1	3	0	30	
34	CINCORE,JASMINE	g	0-3	0-1	3-4	2	5	7	4	3	0	1	0	1	27	
12	WOOD,EMILY		0-2	0-2	0-0	0	0	0	0	0	0	0	0	0	7	
13	MORTON,JANAY		1-6	1-4	6-7	0	4	4	2	9	0	2	0	0	18	
14	MITCHELL,GRACE		0-0	0-0	0-0	0	0	0	0	0	0	0	0	0	2	
33	KISSINGER,TAYLOR		3-11	1-6	1-2	4	3	7	2	8	0	0	0	0	24	
43	BLACKBURN,RACHEL		0-0	0-0	0-0	0	0	0	0	0	1	0	0	0	3	
50	WASHINGTON,DARRIEN		0-0	0-0	0-0	1	1	2	2	0	1	1	0	0	7	
TEAM						2	2	4	0		2					
TOTALS			19-60	2-20	19-25	20	40	60	18	59	8	17	3	2	200	

Deadball Rebounds: 5,0

FG %	1st Half: 10-30 33.3%	2nd Half: 9-30 30.0%	Game: 19-60 31.7%	4th Qtr	4-13 30.8%
3FG %	1st Qtr 5-17 29.4%	2nd Qtr 5-13 38.5%	3rd Qtr 5-17 29.4%	4th Qtr	0-1 00.0%
FT %	1st Half: 2-13 15.4%	2nd Half: 0-7 00.0%	Game: 2-20 10.0%	4th Qtr	6-9 66.7%
	1st Qtr 2-8 25.0%	2nd Qtr 0-5 00.0%	3rd Qtr 0-6 00.0%		
	1st Half: 10-12 83.3%	2nd Half: 9-13 69.2%	Game: 19-25 76.0%		
	1st Qtr 4-4 100.0%	2nd Qtr 6-8 75.0%	3rd Qtr 3-4 75.0%		

Officials: Beverly Roberts, Gina Cross, Amy Bonner
 Technical Fouls: Penn State- None. Nebraska- None.
 Attendance: 5757

Score by periods	1st	2nd	3rd	4th	Total
Penn State	11	13	13	14	51
Nebraska	16	16	13	14	59

Points	In Paint	Off T/O	2nd Chance	Fast Break	Bench
PSU	20	12	7	8	23
NEB	34	2	7	2	17

Last FG - PSU 4th-00:20, NEB 4th-00:33.
 Largest lead - Penn State by ; Nebraska by 12 3rd-08:13
 PSU led for 0:00. NEB led for 39:39. Game was tied for 0:21.

Score tied - 0 times; Lead changed - 0 times

Official Basketball Box Score -- Game Totals -- First Half Statistics
 Penn State vs Nebraska
 2/22/1928 7:02 p.m at Pinnacle Bank Arena (Lincoln, Neb.)



Penn State 24 • 15-12, 6-8

##	Player		Total		3-Ptr	Rebounds			PF	TP	A	TO	Blk	Stl	Min
			FG-FGA	FG-FGA	FT-FTA	Off	Def	Tot							
01	SMITH,ALISIA	f	0-2	0-0	2-2	4	2	6	2	2	0	0	1	0	7
02	CARTER,AMARI	g	2-5	1-1	2-2	1	0	1	0	7	0	0	1	1	16
11	PAGE,TENIYA	g	0-10	0-3	0-0	0	0	0	2	0	2	0	0	0	17
31	TRAVASCIO-GREEN,J	g	0-1	0-1	0-0	0	0	0	2	0	0	0	0	0	4
35	BOYKIN,DE'JANAE	f	1-3	0-0	0-0	1	3	4	1	2	0	2	2	0	15
04	FRAZIER,SIYEH		1-5	0-1	0-0	0	2	2	1	2	1	0	1	2	11
05	MCDANIEL,KAMARIA		2-7	2-6	3-5	0	1	1	1	9	1	1	0	1	12
23	WILLIAMS,JAYLEN		0-0	0-0	0-0	1	2	3	0	0	1	0	1	1	13
24	BREEN,SAM		1-2	0-1	0-0	0	1	1	1	2	1	1	1	0	5
TEAM						1	1	2	0		0				
Totals			7-35	3-13	7-9	8	12	20	10	24	6	4	7	5	100

FG % 1st Qtr 4-17 23.5% 2nd Qtr 3-18 16.7% Half: 7-35 20.0%
 3FG % 1st Qtr 1-5 20.0% 2nd Qtr 2-8 25.0% Half: 3-13 23.1%
 FT % 1st Qtr 2-2 100.0% 2nd Qtr 5-7 71.4% Half: 7-9 77.8%

Nebraska 32 • 19-8, 10-4

##	Player		Total		3-Ptr	Rebounds			PF	TP	A	TO	Blk	Stl	Min
			FG-FGA	FG-FGA	FT-FTA	Off	Def	Tot							
03	WHITISH,HANNAH	g	2-6	0-3	0-0	0	4	4	1	4	3	4	0	0	19
05	ELIELY,NICEA	g	0-3	0-1	0-0	1	0	1	2	0	0	1	0	0	10
24	SIMON,MADDIE	f	3-6	0-1	3-4	0	3	3	0	9	0	0	0	1	13
31	CAIN,KATE	c	3-3	0-0	2-2	3	6	9	0	8	1	0	1	0	15
34	CINCORE,JASMINE	g	0-1	0-0	3-4	1	4	5	1	3	0	0	0	1	14
12	WOOD,EMILY		0-0	0-0	0-0	0	0	0	0	0	0	0	0	0	2
13	MORTON,JANAY		1-5	1-4	2-2	0	2	2	2	5	0	1	0	0	9
14	MITCHELL,GRACE		0-0	0-0	0-0	0	0	0	0	0	0	0	0	0	0
33	KISSINGER,TAYLOR		1-6	1-4	0-0	2	0	2	0	3	0	0	0	0	13
43	BLACKBURN,RACHEL		0-0	0-0	0-0	0	0	0	0	0	0	0	0	0	0
50	WASHINGTON,DARRIEN		0-0	0-0	0-0	0	1	1	2	0	1	0	0	0	5
TEAM						2	2	4	0		1				
Totals			10-30	2-13	10-12	9	22	31	8	32	5	7	1	2	100

FG % 1st Qtr 5-17 29.4% 2nd Qtr 5-13 38.5% Half: 10-30 33.3%
 3FG % 1st Qtr 2-8 25.0% 2nd Qtr 0-5 00.0% Half: 2-13 15.4%
 FT % 1st Qtr 4-4 100.0% 2nd Qtr 6-8 75.0% Half: 10-12 83.3%

Officials: Beverly Roberts, Gina Cross, Amy Bonner
 Technical Fouls: Penn State- None. Nebraska- None.

Score by periods	1st	2nd	3rd	4th	Total
Penn State	11	13	13	14	51
Nebraska	16	16	13	14	59

Points	In Paint	Off T/O	2nd Chance	Fast Break	Bench
PSU	8	3	6	0	13
	16	2	6	0	8

Last FG - PSU 2nd-05:50, NEB 2nd-00:50.
 PSU led for 0:00. NEB led for 19:39. Game was tied for 0:21.

Score tied - 0 times
 Lead changed - 0 times

Penn State vs Nebraska
2/22/1928; 7:02 p.m at Pinnacle Bank Arena (Lincoln, Neb.)
Period 1 Play-By-Play



VISITORS: Penn State	Time	Score	Margin	HOME: Nebraska
	09:39	2-0	H 2	GOOD! JUMPER by CAIN,KATE [PNT]
	09:39			ASSIST by WHITISH,HANNAH
MISSED LAYUP by SMITH,ALISIA	09:23			
	09:23			REBOUND (DEF) by CAIN,KATE
	09:06			MISSED JUMPER by SIMON,MADDIE
BLOCK by BOYKIN,DE'JANAE	09:06			
REBOUND (DEF) by SMITH,ALISIA	09:05			
MISSED 3PTR by PAGE,TENIYA	09:02			
	09:02			REBOUND (DEF) by CAIN,KATE
FOUL by TRAVASCIO-GREEN,J	08:40			
	08:40	3-0	H 3	GOOD! FT by SIMON,MADDIE
	08:40	4-0	H 4	GOOD! FT by SIMON,MADDIE
SUB IN: FRAZIER,SIYEH	08:40			
SUB OUT: TRAVASCIO-GREEN,J	08:40			
TURNOVER by BOYKIN,DE'JANAE	08:21			
	08:20			STEAL by CINCORE,JASMINE
	07:58			TURNOVER by WHITISH,HANNAH
SUB IN: TRAVASCIO-GREEN,J	07:58			
SUB OUT: PAGE,TENIYA	07:58			
MISSED JUMPER by CARTER,AMARI	07:36			
	07:36			REBOUND (DEF) by CINCORE,JASMINE
FOUL by SMITH,ALISIA	07:32			
SUB IN: WILLIAMS,JAYLEN	07:32			
SUB OUT: SMITH,ALISIA	07:32			
	07:22			MISSED 3PTR by ELIELY,NICEA
REBOUND (DEF) by WILLIAMS,JAYLEN	07:22			
	07:15			FOUL by CINCORE,JASMINE
MISSED JUMPER by BOYKIN,DE'JANAE	07:07			
	07:07			REBOUND (DEF) by CAIN,KATE
	06:57			TURNOVER by ELIELY,NICEA
STEAL by FRAZIER,SIYEH	06:55			
MISSED 3PTR by TRAVASCIO-GREEN,J	06:34			
	06:34			REBOUND (DEF) by CINCORE,JASMINE
	06:14			MISSED JUMPER by SIMON,MADDIE
	06:14			REBOUND (OFF) by ELIELY,NICEA
	06:11			MISSED JUMPER by ELIELY,NICEA
REBOUND (DEF) by WILLIAMS,JAYLEN	06:11			
GOOD! LAYUP by CARTER,AMARI [PNT]	06:03	4-2	H 2	
	05:37	6-2	H 4	GOOD! JUMPER by WHITISH,HANNAH [PNT]
	05:29			FOUL by ELIELY,NICEA
SUB IN: PAGE,TENIYA	05:29			
SUB IN: MCDANIEL,KAMARIA	05:29			
SUB OUT: CARTER,AMARI	05:29			
SUB OUT: FRAZIER,SIYEH	05:29			
	05:29			SUB IN: MORTON,JANAY
	05:29			SUB IN: KISSINGER,TAYLOR
	05:29			SUB OUT: ELIELY,NICEA
	05:29			SUB OUT: SIMON,MADDIE
MISSED 3PTR by PAGE,TENIYA	05:23			
	05:23			REBOUND (DEF) by CINCORE,JASMINE
FOUL by TRAVASCIO-GREEN,J	05:07			
	05:07	7-2	H 5	GOOD! FT by MORTON,JANAY
	05:07	8-2	H 6	GOOD! FT by MORTON,JANAY
SUB IN: CARTER,AMARI	05:07			
SUB OUT: TRAVASCIO-GREEN,J	05:07			
MISSED JUMPER by PAGE,TENIYA	04:56			
REBOUND (OFF) by BOYKIN,DE'JANAE	04:56			
GOOD! JUMPER by BOYKIN,DE'JANAE [PNT]	04:50	8-4	H 4	
ASSIST by PAGE,TENIYA	04:50			
	04:38			MISSED 3PTR by WHITISH,HANNAH
REBOUND (DEF) by BOYKIN,DE'JANAE	04:38			
GOOD! 3PTR by CARTER,AMARI	04:17	8-7	H 1	
ASSIST by WILLIAMS,JAYLEN	04:17			
	04:03			MISSED JUMPER by WHITISH,HANNAH
	04:03			REBOUND (OFF) by CAIN,KATE
	04:00	10-7	H 3	GOOD! JUMPER by CAIN,KATE [PNT]
MISSED JUMPER by CARTER,AMARI	03:42			
	03:42			REBOUND (DEF) by WHITISH,HANNAH
	03:24			MISSED 3PTR by MORTON,JANAY

VISITORS: Penn State	Time	Score	Margin	HOME: Nebraska
BLOCK by CARTER,AMARI	03:24			
REBOUND (DEF) by BOYKIN,DE'JANAE	03:22			
MISSED JUMPER by PAGE,TENIYA	03:19			
	03:19			REBOUND (DEF) by CAIN,KATE
	02:58	13-7	H 6	GOOD! 3PTR by KISSINGER,TAYLOR
	02:58			ASSIST by WHITISH,HANNAH
MISSED 3PTR by MCDANIEL,KAMARIA	02:33			
	02:33			REBOUND (DEF) by MORTON,JANAY
	02:26			MISSED 3PTR by KISSINGER,TAYLOR
REBOUND (DEF) by MCDANIEL,KAMARIA	02:26			
MISSED JUMPER by BOYKIN,DE'JANAE	01:58			
	01:58			BLOCK by CAIN,KATE
REBOUND (OFF) by TEAM	01:58			
TIMEOUT MEDIA	01:58			
	01:58			FOUL by MORTON,JANAY
GOOD! FT by CARTER,AMARI	01:58	13-8	H 5	
GOOD! FT by CARTER,AMARI	01:58	13-9	H 4	
SUB IN: FRAZIER,SIYEH	01:58			
SUB IN: BREEN,SAM	01:58			
SUB OUT: MCDANIEL,KAMARIA	01:58			
SUB OUT: BOYKIN,DE'JANAE	01:58			
	01:58			SUB IN: WASHINGTON,DARRIEN
	01:58			SUB IN: WOOD,EMILY
	01:58			SUB IN: SIMON,MADDIE
	01:58			SUB OUT: WHITISH,HANNAH
	01:58			SUB OUT: CAIN,KATE
	01:58			SUB OUT: CINCORE,JASMINE
	01:35	16-9	H 7	GOOD! 3PTR by MORTON,JANAY
MISSED JUMPER by FRAZIER,SIYEH	01:09			
	01:09			REBOUND (DEF) by SIMON,MADDIE
	00:58			MISSED 3PTR by MORTON,JANAY
	00:58			REBOUND (OFF) by KISSINGER,TAYLOR
	00:55			MISSED 3PTR by SIMON,MADDIE
REBOUND (DEF) by TEAM	00:55			
	00:37			FOUL by WASHINGTON,DARRIEN
GOOD! JUMPER by BREEN,SAM [PNT]	00:37	16-11	H 5	
ASSIST by PAGE,TENIYA	00:37			
	00:24			MISSED LAYUP by MORTON,JANAY
	00:24			REBOUND (OFF) by KISSINGER,TAYLOR
	00:20			MISSED JUMPER by KISSINGER,TAYLOR
BLOCK by BREEN,SAM	00:20			
	00:18			REBOUND (OFF) by TEAM
	00:12			SUB IN: CAIN,KATE
	00:12			SUB IN: WHITISH,HANNAH
	00:12			SUB OUT: WASHINGTON,DARRIEN
	00:12			SUB OUT: WOOD,EMILY
	00:04			TURNOVER by TEAM
MISSED JUMPER by CARTER,AMARI	00:00			
	00:00			REBOUND (DEF) by CAIN,KATE

Penn State 11, Nebraska 16

Period 1-only	In Paint	Off T/O	2nd Chance	Fast Break	Bench	
PSU	6	0	4	0	2	Score tied - 0 times
NEB	6	0	2	0	8	Lead changed - 0 times

Penn State vs Nebraska
2/22/1928; 7:02 p.m at Pinnacle Bank Arena (Lincoln, Neb.)
Period 2 Play-By-Play



VISITORS: Penn State	Time	Score	Margin	HOME: Nebraska
SUB IN: MCDANIEL,KAMARIA	10:00			
SUB IN: FRAZIER,SIYEH	10:00			
SUB OUT: CARTER,AMARI	10:00			
SUB OUT: TRAVASCIO-GREEN,J	10:00			
	10:00			SUB IN: KISSINGER,TAYLOR
	10:00			SUB OUT: CINCORE,JASMINE
GOOD! 3PTR by MCDANIEL,KAMARIA	09:41	16-14	H 2	
ASSIST by FRAZIER,SIYEH	09:41			
FOUL by PAGE,TENIYA	09:17			
	09:17	17-14	H 3	GOOD! FT by CAIN,KATE
	09:17	18-14	H 4	GOOD! FT by CAIN,KATE
	09:17			SUB IN: CINCORE,JASMINE
	09:17			SUB OUT: SIMON,MADDIE
MISSED 3PTR by FRAZIER,SIYEH	09:03			
REBOUND (OFF) by SMITH,ALISIA	09:03			
MISSED JUMPER by PAGE,TENIYA	08:46			
REBOUND (OFF) by SMITH,ALISIA	08:46			
FOUL by BOYKIN,DE'JANAE	08:29			
TURNOVER by BOYKIN,DE'JANAE	08:29			
	08:03			MISSED JUMPER by CINCORE,JASMINE
BLOCK by SMITH,ALISIA	08:03			
REBOUND (DEF) by FRAZIER,SIYEH	08:02			
GOOD! LAYUP by FRAZIER,SIYEH [PNT]	07:57	18-16	H 2	
ASSIST by MCDANIEL,KAMARIA	07:57			
	07:30			MISSED 3PTR by KISSINGER,TAYLOR
	07:30			REBOUND (OFF) by CINCORE,JASMINE
	07:27			MISSED 3PTR by WHITISH,HANNAH
BLOCK by FRAZIER,SIYEH	07:27			
	07:24			REBOUND (OFF) by CAIN,KATE
	07:22	20-16	H 4	GOOD! JUMPER by WHITISH,HANNAH [PNT]
	07:22			ASSIST by CAIN,KATE
MISSED 3PTR by MCDANIEL,KAMARIA	06:54			
	06:54			REBOUND (DEF) by CINCORE,JASMINE
	06:47			MISSED LAYUP by KISSINGER,TAYLOR
BLOCK by BOYKIN,DE'JANAE	06:47			
REBOUND (DEF) by SMITH,ALISIA	06:45			
MISSED JUMPER by MCDANIEL,KAMARIA	06:21			
	06:21			REBOUND (DEF) by WHITISH,HANNAH
FOUL by FRAZIER,SIYEH	06:15			
SUB IN: WILLIAMS,JAYLEN	06:15			
SUB IN: BREEN,SAM	06:15			
SUB IN: CARTER,AMARI	06:15			
SUB OUT: SMITH,ALISIA	06:15			
SUB OUT: FRAZIER,SIYEH	06:15			
SUB OUT: BOYKIN,DE'JANAE	06:15			
	06:15			SUB IN: MORTON,JANAY
	06:15			SUB IN: SIMON,MADDIE
	06:15			SUB OUT: CINCORE,JASMINE
	06:15			SUB OUT: KISSINGER,TAYLOR
	06:04	22-16	H 6	GOOD! JUMPER by CAIN,KATE [PNT]
	06:04			ASSIST by WHITISH,HANNAH
GOOD! 3PTR by MCDANIEL,KAMARIA	05:50	22-19	H 3	
ASSIST by BREEN,SAM	05:50			
	05:37			TURNOVER by WHITISH,HANNAH
STEAL by WILLIAMS,JAYLEN	05:35			
MISSED 3PTR by BREEN,SAM	05:28			
	05:28			REBOUND (DEF) by TEAM
	05:04			MISSED JUMPER by ELIELY,NICEA
BLOCK by WILLIAMS,JAYLEN	05:04			
	05:04			REBOUND (OFF) by TEAM
	05:04			MISSED 3PTR by MORTON,JANAY
REBOUND (DEF) by BREEN,SAM	05:04			
MISSED 3PTR by PAGE,TENIYA	05:04			
	05:04			REBOUND (DEF) by MORTON,JANAY
	04:57			TURNOVER by MORTON,JANAY
STEAL by CARTER,AMARI	04:55			
	04:50			FOUL by ELIELY,NICEA
TIMEOUT MEDIA	04:40			
GOOD! FT by MCDANIEL,KAMARIA	04:40	22-20	H 2	

VISITORS: Penn State	Time	Score	Margin	HOME: Nebraska
GOOD! FT by MCDANIEL,KAMARIA	04:40	22-21	H 1	
MISSED FT by MCDANIEL,KAMARIA	04:40			
	04:40			REBOUND (DEF) by CAIN,KATE
SUB IN: FRAZIER,SIYEH	04:40			
SUB OUT: PAGE,TENIYA	04:40			
	04:40			SUB IN: CINCORE,JASMINE
	04:40			SUB IN: KISSINGER,TAYLOR
	04:40			SUB OUT: ELIELY,NICEA
	04:40			SUB OUT: MORTON,JANAY
	04:20			TURNOVER by WHITISH,HANNAH
STEAL by FRAZIER,SIYEH	04:19			
TURNOVER by BREEN,SAM	04:13			
	04:12			STEAL by SIMON,MADDIE
FOUL by BREEN,SAM	04:12			
	03:59	24-21	H 3	GOOD! LAYUP by SIMON,MADDIE [PNT]
MISSED JUMPER by FRAZIER,SIYEH	03:39			
	03:39			REBOUND (DEF) by WHITISH,HANNAH
	03:30			MISSED 3PTR by KISSINGER,TAYLOR
	03:30			REBOUND (OFF) by CAIN,KATE
SUB IN: PAGE,TENIYA	03:27			
SUB IN: SMITH,ALISIA	03:27			
SUB IN: BOYKIN,DE'JANAE	03:27			
SUB OUT: WILLIAMS,JAYLEN	03:27			
SUB OUT: MCDANIEL,KAMARIA	03:27			
SUB OUT: BREEN,SAM	03:27			
	03:10	26-21	H 5	GOOD! LAYUP by SIMON,MADDIE [PNT]
TIMEOUT 30SEC	03:07			
	03:07			SUB IN: WASHINGTON,DARRIEN
	03:07			SUB OUT: CAIN,KATE
MISSED JUMPER by FRAZIER,SIYEH	02:47			
REBOUND (OFF) by SMITH,ALISIA	02:47			
MISSED JUMPER by SMITH,ALISIA	02:43			
	02:43			REBOUND (DEF) by WASHINGTON,DARRIEN
	02:25			MISSED 3PTR by WHITISH,HANNAH
REBOUND (DEF) by FRAZIER,SIYEH	02:25			
MISSED JUMPER by PAGE,TENIYA	02:17			
REBOUND (OFF) by SMITH,ALISIA	02:17			
	02:15			FOUL by WASHINGTON,DARRIEN
GOOD! FT by SMITH,ALISIA	02:15	26-22	H 4	
GOOD! FT by SMITH,ALISIA	02:15	26-23	H 3	
SUB IN: MCDANIEL,KAMARIA	02:15			
SUB OUT: FRAZIER,SIYEH	02:15			
FOUL by SMITH,ALISIA	01:58			
	01:58			MISSED FT by CINCORE,JASMINE
	01:58			REBOUND (DEADB) by TEAM
	01:58	27-23	H 4	GOOD! FT by CINCORE,JASMINE
SUB IN: WILLIAMS,JAYLEN	01:58			
SUB OUT: SMITH,ALISIA	01:58			
	01:58			SUB IN: MORTON,JANAY
	01:58			SUB OUT: CINCORE,JASMINE
TURNOVER by MCDANIEL,KAMARIA	01:50			
	01:50			TURNOVER by WHITISH,HANNAH
STEAL by MCDANIEL,KAMARIA	01:50			
	01:47			FOUL by WHITISH,HANNAH
GOOD! FT by MCDANIEL,KAMARIA	01:45	27-24	H 3	
MISSED FT by MCDANIEL,KAMARIA	01:45			
	01:45			REBOUND (DEF) by SIMON,MADDIE
FOUL by PAGE,TENIYA	01:30			
	01:30	28-24	H 4	GOOD! FT by SIMON,MADDIE
	01:30			MISSED FT by SIMON,MADDIE
REBOUND (DEF) by BOYKIN,DE'JANAE	01:30			
MISSED JUMPER by PAGE,TENIYA	01:09			
REBOUND (OFF) by CARTER,AMARI	01:09			
MISSED JUMPER by PAGE,TENIYA	01:03			
	01:03			REBOUND (DEF) by WHITISH,HANNAH
	00:50	30-24	H 6	GOOD! LAYUP by SIMON,MADDIE [PNT]
	00:50			ASSIST by WASHINGTON,DARRIEN
MISSED 3PTR by MCDANIEL,KAMARIA	00:36			
REBOUND (OFF) by WILLIAMS,JAYLEN	00:36			
	00:36			FOUL by MORTON,JANAY
	00:36			SUB IN: CINCORE,JASMINE
	00:36			SUB OUT: KISSINGER,TAYLOR
MISSED LAYUP by PAGE,TENIYA	00:12			
	00:12			REBOUND (DEF) by SIMON,MADDIE
FOUL by MCDANIEL,KAMARIA	00:08			

VISITORS: Penn State

Time Score Margin

HOME: Nebraska

00:08 31-24 H 7

GOOD! FT by CINCORE,JASMINE

00:08 32-24 H 8

GOOD! FT by CINCORE,JASMINE

MISSED 3PTR by MCDANIEL,KAMARIA

00:00

00:00

REBOUND (DEF) by TEAM

Penn State 24, Nebraska 32

Period 2-only	In Paint	Off T/O	2nd Chance	Fast Break	Bench	
PSU	2	3	2	0	11	Score tied - 0 times
NEB	10	2	4	0	0	Lead changed - 0 times

Official Basketball Box Score -- Game Totals -- Second Half Statistics
 Penn State vs Nebraska
 2/22/1928 7:02 p.m at Pinnacle Bank Arena (Lincoln, Neb.)



Penn State 27 • 15-12, 6-8

##	Player		Total		3-Ptr	Rebounds			PF	TP	A	TO	Blk	Stl	Min
			FG-FGA	FG-FGA	FT-FTA	Off	Def	Tot							
01	SMITH,ALISIA	f	0-0	0-0	0-0	0	1	1	0	0	0	0	0	0	6
02	CARTER,AMARI	g	3-9	1-4	0-0	0	0	0	1	7	1	0	1	3	18
11	PAGE,TENIYA	g	4-8	0-1	2-5	0	3	3	1	10	0	0	0	1	18
31	TRAVASCIO-GREEN,J	g	0-1	0-1	0-0	0	1	1	2	0	0	0	1	0	11
35	BOYKIN,DE'JANAE	f	0-1	0-0	0-0	0	0	0	1	0	0	0	0	0	4
04	FRAZIER,SIYEH		4-7	0-0	1-2	1	2	3	2	9	3	2	0	3	14
05	MCDANIEL,KAMARIA		0-2	0-2	1-2	0	2	2	0	1	0	0	0	0	16
23	WILLIAMS,JAYLEN		0-1	0-0	0-0	0	1	1	4	0	0	0	0	0	12
24	BREEN,SAM		0-0	0-0	0-0	0	0	0	0	0	0	0	0	0	1
TEAM						0	0	0	0		0				
Totals			11-29	1-8	4-9	1	10	11	11	27	4	2	2	7	100

FG % 3rd Qtr 6-15 40.0% 4th Qtr 5-14 35.7% Half: 11-29 37.9%
 3FG % 3rd Qtr 1-5 20.0% 4th Qtr 0-3 00.0% Half: 1-8 23.1%
 FT % 3rd Qtr 0-2 00.0% 4th Qtr 4-7 57.1% Half: 4-9 44.4%

Nebraska 27 • 19-8, 10-4

##	Player		Total		3-Ptr	Rebounds			PF	TP	A	TO	Blk	Stl	Min
			FG-FGA	FG-FGA	FT-FTA	Off	Def	Tot							
03	WHITISH,HANNAH	g	2-5	0-1	1-2	0	4	4	1	5	2	2	0	0	15
05	ELIELY,NICEA	g	0-4	0-1	0-0	0	1	1	2	0	0	1	0	0	12
24	SIMON,MADDIE	f	2-6	0-0	3-4	2	1	3	2	7	0	2	0	0	13
31	CAIN,KATE	c	3-5	0-0	0-0	5	6	11	0	6	0	1	2	0	15
34	CINCORE,JASMINE	g	0-2	0-1	0-0	1	1	2	3	0	0	1	0	0	13
12	WOOD,EMILY		0-2	0-2	0-0	0	0	0	0	0	0	0	0	0	5
13	MORTON,JANAY		0-1	0-0	4-5	0	2	2	0	4	0	1	0	0	9
14	MITCHELL,GRACE		0-0	0-0	0-0	0	0	0	0	0	0	0	0	0	2
33	KISSINGER,TAYLOR		2-5	0-2	1-2	2	3	5	2	5	0	0	0	0	11
43	BLACKBURN,RACHEL		0-0	0-0	0-0	0	0	0	0	0	1	0	0	0	3
50	WASHINGTON,DARRIEN		0-0	0-0	0-0	1	0	1	0	0	0	1	0	0	2
TEAM						0	0	0	0		1				
Totals			9-30	0-7	9-13	11	18	29	10	27	3	10	2	0	100

FG % 3rd Qtr 5-17 29.4% 4th Qtr 4-13 30.8% Half: 9-30 30.0%
 3FG % 3rd Qtr 0-6 00.0% 4th Qtr 0-1 00.0% Half: 0-7 15.4%
 FT % 3rd Qtr 3-4 75.0% 4th Qtr 6-9 66.7% Half: 9-13 69.2%

Officials: Beverly Roberts, Gina Cross, Amy Bonner
 Technical Fouls: Penn State- None. Nebraska- None.

Score by periods	1st	2nd	3rd	4th	Total
Penn State	11	13	13	14	51
Nebraska	16	16	13	14	59

Points	In Paint	Off T/O	2nd Chance	Fast Break	Bench
PSU	12	9	1	8	10
NEB	18	0	11	2	9

Last FG - PSU 4th-00:20, NEB 4th-00:33.
 PSU led for 0:00. NEB led for 20:00. Game was tied for 0:00.

Score tied - 0 times
 Lead changed - 0 times

Penn State vs Nebraska
2/22/1928; 7:02 p.m at Pinnacle Bank Arena (Lincoln, Neb.)
Period 3 Play-By-Play



VISITORS: Penn State	Time	Score	Margin	HOME: Nebraska
SUB IN: WILLIAMS,JAYLEN	10:00			
SUB OUT: SMITH,ALISIA	10:00			
	09:44			MISSED JUMPER by CINCORE,JASMINE
REBOUND (DEF) by TRAVASCIO-GREEN,J	09:44			
MISSED JUMPER by BOYKIN,DE'JANAE	09:25			
	09:25			REBOUND (DEF) by SIMON,MADDIE
FOUL by TRAVASCIO-GREEN,J	09:05			
SUB IN: FRAZIER,SIYEH	09:05			
SUB OUT: TRAVASCIO-GREEN,J	09:05			
	08:51	34-24	H 10	GOOD! JUMPER by SIMON,MADDIE [PNT]
MISSED JUMPER by PAGE,TENIYA	08:46			
	08:46			REBOUND (DEF) by WHITISH,HANNAH
FOUL by WILLIAMS,JAYLEN	08:45			
SUB IN: BREEN,SAM	08:45			
SUB OUT: BOYKIN,DE'JANAE	08:45			
	08:35			TURNOVER by WHITISH,HANNAH
STEAL by CARTER,AMARI	08:34			
	08:30			FOUL by SIMON,MADDIE
MISSED JUMPER by FRAZIER,SIYEH	08:25			
	08:25			REBOUND (DEF) by CAIN,KATE
	08:16			MISSED JUMPER by SIMON,MADDIE
	08:16			REBOUND (OFF) by CAIN,KATE
	08:13	36-24	H 12	GOOD! JUMPER by CAIN,KATE [PNT]
SUB IN: MCDANIEL,KAMARIA	08:13			
SUB IN: SMITH,ALISIA	08:13			
SUB OUT: WILLIAMS,JAYLEN	08:13			
SUB OUT: BREEN,SAM	08:13			
GOOD! JUMPER by PAGE,TENIYA [PNT]	07:49	36-26	H 10	
	07:31			TURNOVER by SIMON,MADDIE
STEAL by FRAZIER,SIYEH	07:29			
GOOD! LAYUP by FRAZIER,SIYEH [FB/PNT]	07:25	36-28	H 8	
	06:58			MISSED JUMPER by CAIN,KATE
REBOUND (DEF) by PAGE,TENIYA	06:58			
	06:53			SUB IN: MORTON,JANAY
	06:53			SUB IN: KISSINGER,TAYLOR
	06:53			SUB OUT: ELIELY,NICEA
	06:53			SUB OUT: SIMON,MADDIE
MISSED 3PTR by CARTER,AMARI	06:29			
	06:29			REBOUND (DEF) by CAIN,KATE
	06:18			MISSED LAYUP by WHITISH,HANNAH
REBOUND (DEF) by SMITH,ALISIA	06:18			
GOOD! 3PTR by CARTER,AMARI	06:06	36-31	H 5	
ASSIST by FRAZIER,SIYEH	06:06			
	05:54			TURNOVER by MORTON,JANAY
STEAL by PAGE,TENIYA	05:53			
MISSED 3PTR by MCDANIEL,KAMARIA	05:49			
	05:49			REBOUND (DEF) by WHITISH,HANNAH
FOUL by FRAZIER,SIYEH	05:29			
	05:19	37-31	H 6	GOOD! FT by MORTON,JANAY
	05:19	38-31	H 7	GOOD! FT by MORTON,JANAY
SUB IN: TRAVASCIO-GREEN,J	05:19			
SUB OUT: FRAZIER,SIYEH	05:19			
	05:19			SUB IN: WASHINGTON,DARRIEN
	05:19			SUB IN: WOOD,EMILY
	05:19			SUB OUT: WHITISH,HANNAH
	05:19			SUB OUT: CAIN,KATE
GOOD! JUMPER by PAGE,TENIYA	04:57	38-33	H 5	
ASSIST by CARTER,AMARI	04:57			
	04:33			MISSED JUMPER by KISSINGER,TAYLOR
	04:33			REBOUND (OFF) by KISSINGER,TAYLOR
	04:31	40-33	H 7	GOOD! JUMPER by KISSINGER,TAYLOR [PNT]
MISSED LAYUP by PAGE,TENIYA	04:23			
	04:23			REBOUND (DEF) by CINCORE,JASMINE
FOUL by PAGE,TENIYA	04:20			
	04:20			TIMEOUT MEDIA
	03:59			MISSED 3PTR by CINCORE,JASMINE
	03:59			REBOUND (OFF) by WASHINGTON,DARRIEN
	03:50			TURNOVER by WASHINGTON,DARRIEN
STEAL by CARTER,AMARI	03:49			

VISITORS: Penn State	Time	Score	Margin	HOME: Nebraska
MISSED 3PTR by TRAVASCIO-GREEN,J	03:44			
	03:44			REBOUND (DEF) by KISSINGER,TAYLOR
SUB IN: WILLIAMS,JAYLEN	03:41			
SUB IN: FRAZIER,SIYEH	03:41			
SUB OUT: CARTER,AMARI	03:41			
SUB OUT: SMITH,ALISIA	03:41			
	03:41			SUB IN: CAIN,KATE
	03:41			SUB OUT: WASHINGTON,DARRIEN
	03:23			MISSED 3PTR by KISSINGER,TAYLOR
	03:23			REBOUND (OFF) by CAIN,KATE
	03:20	42-33	H 9	GOOD! JUMPER by CAIN,KATE [PNT]
GOOD! JUMPER by FRAZIER,SIYEH	03:05	42-35	H 7	
	02:46			MISSED 3PTR by WOOD,EMILY
	02:46			REBOUND (OFF) by CINCORE,JASMINE
	02:42			MISSED 3PTR by WOOD,EMILY
REBOUND (DEF) by PAGE,TENIYA	02:42			
	02:33			FOUL by CINCORE,JASMINE
MISSED FT by PAGE,TENIYA	02:33			
REBOUND (DEADB) by TEAM	02:33			
MISSED FT by PAGE,TENIYA	02:33			
	02:33			REBOUND (DEF) by CAIN,KATE
	02:33			SUB IN: SIMON,MADDIE
	02:33			SUB IN: ELIELY,NICEA
	02:33			SUB IN: WHITISH,HANNAH
	02:33			SUB OUT: MORTON,JANAY
	02:33			SUB OUT: WOOD,EMILY
	02:33			SUB OUT: CINCORE,JASMINE
	02:27			MISSED 3PTR by ELIELY,NICEA
	02:27			REBOUND (OFF) by KISSINGER,TAYLOR
	02:20	44-35	H 9	GOOD! JUMPER by KISSINGER,TAYLOR [PNT]
TIMEOUT 30SEC	02:18			
TIMEOUT MEDIA	02:18			
SUB IN: CARTER,AMARI	02:18			
SUB OUT: PAGE,TENIYA	02:18			
GOOD! JUMPER by FRAZIER,SIYEH	01:57	44-37	H 7	
	01:41			MISSED 3PTR by KISSINGER,TAYLOR
REBOUND (DEF) by MCDANIEL,KAMARIA	01:41			
MISSED JUMPER by CARTER,AMARI	01:28			
	01:28			REBOUND (DEF) by KISSINGER,TAYLOR
FOUL by WILLIAMS,JAYLEN	01:03			
	01:03			MISSED FT by KISSINGER,TAYLOR
	01:03			REBOUND (DEADB) by TEAM
	01:03	45-37	H 8	GOOD! FT by KISSINGER,TAYLOR
	00:45			FOUL by WHITISH,HANNAH
	00:41			FOUL by KISSINGER,TAYLOR
MISSED 3PTR by CARTER,AMARI	00:26			
	00:26			REBOUND (DEF) by CAIN,KATE
	00:00			MISSED JUMPER by ELIELY,NICEA
BLOCK by TRAVASCIO-GREEN,J	00:00			
REBOUND (DEF) by WILLIAMS,JAYLEN	00:00			

Penn State 51, Nebraska 59

Period 3-only	In Paint	Off T/O	2nd Chance	Fast Break	Bench	
PSU	4	2	0	2	6	Score tied - 0 times
NEB	10	0	8	0	7	Lead changed - 0 times

Penn State vs Nebraska
2/22/1928; 7:02 p.m at Pinnacle Bank Arena (Lincoln, Neb.)
Period 4 Play-By-Play



VISITORS: Penn State	Time	Score	Margin	HOME: Nebraska
SUB IN: FRAZIER,SIYEH	10:00			
SUB OUT: CARTER,AMARI	10:00			
	09:57			SUB IN: KISSINGER,TAYLOR
	09:57			SUB OUT: CINCORE,JASMINE
	09:47			TIMEOUT 30SEC
TIMEOUT MEDIA	09:47			
	09:34			MISSED JUMPER by SIMON,MADDIE
	09:34			REBOUND (OFF) by CAIN,KATE
	09:31			MISSED JUMPER by CAIN,KATE
REBOUND (DEF) by PAGE,TENIYA	09:31			
MISSED LAYUP by PAGE,TENIYA	09:20			
	09:20			BLOCK by CAIN,KATE
	09:18			REBOUND (DEF) by WHITISH,HANNAH
	09:12	47-37	H 10	GOOD! LAYUP by SIMON,MADDIE [FB/PNT]
	09:12			ASSIST by WHITISH,HANNAH
GOOD! JUMPER by PAGE,TENIYA [PNT]	08:57	47-39	H 8	
	08:57			FOUL by ELIELY,NICEA
GOOD! FT by PAGE,TENIYA	08:57	47-40	H 7	
SUB IN: MCDANIEL,KAMARIA	08:57			
SUB IN: WILLIAMS,JAYLEN	08:57			
SUB IN: CARTER,AMARI	08:57			
SUB OUT: SMITH,ALISIA	08:57			
SUB OUT: TRAVASCIO-GREEN,J	08:57			
SUB OUT: BOYKIN,DE'JANAE	08:57			
	08:57			SUB IN: CINCORE,JASMINE
	08:57			SUB OUT: ELIELY,NICEA
	08:48			MISSED 3PTR by WHITISH,HANNAH
REBOUND (DEF) by FRAZIER,SIYEH	08:48			
MISSED JUMPER by FRAZIER,SIYEH	08:25			
	08:25			REBOUND (DEF) by KISSINGER,TAYLOR
	08:06			TURNOVER by SIMON,MADDIE
STEAL by FRAZIER,SIYEH	08:05			
GOOD! LAYUP by CARTER,AMARI [FB/PNT]	08:01	47-42	H 5	
ASSIST by FRAZIER,SIYEH	08:01			
	07:31	49-42	H 7	GOOD! JUMPER by CAIN,KATE [PNT]
	07:31			ASSIST by WHITISH,HANNAH
	07:12			FOUL by KISSINGER,TAYLOR
MISSED FT by MCDANIEL,KAMARIA	07:12			
REBOUND (DEADB) by TEAM	07:12			
GOOD! FT by MCDANIEL,KAMARIA	07:12	49-43	H 6	
	07:12			SUB IN: BLACKBURN,RACHEL
	07:12			SUB IN: MORTON,JANAY
	07:12			SUB IN: MITCHELL,GRACE
	07:12			SUB OUT: SIMON,MADDIE
	07:12			SUB OUT: CAIN,KATE
	07:12			SUB OUT: KISSINGER,TAYLOR
	07:03	51-43	H 8	GOOD! LAYUP by WHITISH,HANNAH [PNT]
	07:03			ASSIST by BLACKBURN,RACHEL
MISSED JUMPER by CARTER,AMARI	06:41			
	06:41			REBOUND (DEF) by MORTON,JANAY
	06:23			TURNOVER by WHITISH,HANNAH
SUB IN: BOYKIN,DE'JANAE	06:23			
SUB OUT: WILLIAMS,JAYLEN	06:23			
TURNOVER by FRAZIER,SIYEH	06:07			
FOUL by BOYKIN,DE'JANAE	05:50			
	05:48			TURNOVER by TEAM
MISSED JUMPER by CARTER,AMARI	05:33			
	05:33			REBOUND (DEF) by WHITISH,HANNAH
FOUL by CARTER,AMARI	05:26			
	05:26	52-43	H 9	GOOD! FT by MORTON,JANAY
	05:26			MISSED FT by MORTON,JANAY
	05:26			REBOUND (DEADB) by TEAM
	05:26	53-43	H 10	GOOD! FT by MORTON,JANAY
SUB IN: TRAVASCIO-GREEN,J	05:26			
SUB OUT: CARTER,AMARI	05:26			
	05:26			SUB IN: ELIELY,NICEA
	05:26			SUB IN: WOOD,EMILY
	05:26			SUB OUT: WHITISH,HANNAH
	05:26			SUB OUT: MITCHELL,GRACE

VISITORS: Penn State	Time	Score	Margin	HOME: Nebraska
TURNOVER by FRAZIER,SIYEH	05:06			
SUB IN: CARTER,AMARI	05:06			
SUB OUT: FRAZIER,SIYEH	05:06			
	04:47			FOUL by CINCORE,JASMINE
	04:47			TURNOVER by CINCORE,JASMINE
	04:30			FOUL by CINCORE,JASMINE
SUB IN: WILLIAMS,JAYLEN	04:30			
SUB OUT: BOYKIN,DE'JANAE	04:30			
	04:30			SUB IN: SIMON,MADDIE
	04:30			SUB IN: CAIN,KATE
	04:30			SUB OUT: CINCORE,JASMINE
	04:30			SUB OUT: BLACKBURN,RACHEL
GOOD! JUMPER by CARTER,AMARI	04:08	53-45	H 8	
	03:50			MISSED JUMPER by SIMON,MADDIE
	03:50			REBOUND (OFF) by SIMON,MADDIE
FOUL by WILLIAMS,JAYLEN	03:49			
	03:49	54-45	H 9	GOOD! FT by SIMON,MADDIE
	03:49	55-45	H 10	GOOD! FT by SIMON,MADDIE
	03:49			SUB IN: WHITISH,HANNAH
	03:49			SUB OUT: WOOD,EMILY
	03:34			FOUL by ELIELY,NICEA
MISSED FT by PAGE,TENIYA	03:34			
REBOUND (DEADB) by TEAM	03:34			
GOOD! FT by PAGE,TENIYA	03:34	55-46	H 9	
	03:14			MISSED JUMPER by MORTON,JANAY
	03:14			REBOUND (OFF) by CAIN,KATE
FOUL by WILLIAMS,JAYLEN	03:11			
FOUL by TRAVASCIO-GREEN,J	03:11			
	03:11			MISSED FT by SIMON,MADDIE
	03:11			REBOUND (DEADB) by TEAM
	03:11	56-46	H 10	GOOD! FT by SIMON,MADDIE
SUB IN: FRAZIER,SIYEH	03:11			
SUB OUT: TRAVASCIO-GREEN,J	03:11			
MISSED JUMPER by WILLIAMS,JAYLEN	02:53			
	02:53			BLOCK by CAIN,KATE
	02:51			REBOUND (DEF) by CAIN,KATE
	02:37			MISSED JUMPER by ELIELY,NICEA
	02:37			REBOUND (OFF) by CAIN,KATE
	02:30			TURNOVER by CAIN,KATE
STEAL by CARTER,AMARI	02:29			
MISSED JUMPER by FRAZIER,SIYEH	02:25			
REBOUND (OFF) by FRAZIER,SIYEH	02:25			
	02:23			FOUL by SIMON,MADDIE
MISSED FT by FRAZIER,SIYEH	02:23			
REBOUND (DEADB) by TEAM	02:23			
GOOD! FT by FRAZIER,SIYEH	02:23	56-47	H 9	
	02:23			SUB IN: KISSINGER,TAYLOR
	02:23			SUB OUT: MORTON,JANAY
	02:05			MISSED JUMPER by WHITISH,HANNAH
	02:05			REBOUND (OFF) by SIMON,MADDIE
	02:00			MISSED JUMPER by SIMON,MADDIE
REBOUND (DEF) by FRAZIER,SIYEH	02:00			
GOOD! LAYUP by PAGE,TENIYA [FB/PNT]	01:54	56-49	H 7	
ASSIST by FRAZIER,SIYEH	01:54			
FOUL by FRAZIER,SIYEH	01:36			
	01:36			MISSED FT by WHITISH,HANNAH
	01:36			REBOUND (DEADB) by TEAM
	01:36	57-49	H 8	GOOD! FT by WHITISH,HANNAH
SUB IN: TRAVASCIO-GREEN,J	01:36			
SUB OUT: FRAZIER,SIYEH	01:36			
	01:36			SUB IN: CINCORE,JASMINE
	01:36			SUB OUT: KISSINGER,TAYLOR
MISSED 3PTR by PAGE,TENIYA	01:21			
	01:21			REBOUND (DEF) by ELIELY,NICEA
	00:57			MISSED JUMPER by ELIELY,NICEA
BLOCK by CARTER,AMARI	00:57			
REBOUND (DEF) by MCDANIEL,KAMARIA	00:56			
MISSED 3PTR by MCDANIEL,KAMARIA	00:50			
	00:50			REBOUND (DEF) by CAIN,KATE
	00:33	59-49	H 10	GOOD! LAYUP by WHITISH,HANNAH [PNT]
TIMEOUT 30SEC	00:31			
SUB IN: FRAZIER,SIYEH	00:31			
SUB OUT: MCDANIEL,KAMARIA	00:31			
	00:31			SUB IN: MORTON,JANAY
	00:31			SUB OUT: WHITISH,HANNAH

VISITORS: Penn State	Time	Score	Margin	HOME: Nebraska
MISSED 3PTR by CARTER,AMARI	00:29			
	00:29			REBOUND (DEF) by MORTON,JANAY
	00:26			TIMEOUT 30SEC
	00:24			TURNOVER by ELIELY,NICEA
STEAL by FRAZIER,SIYEH	00:23			
GOOD! LAYUP by FRAZIER,SIYEH [FB/PNT]	00:20	59-51	H 8	
Penn State 51, Nebraska 59				

Period 4-only	In Paint	Off T/O	2nd Chance	Fast Break	Bench	
PSU	8	7	1	6	4	Score tied - 0 times
NEB	8	0	3	2	2	Lead changed - 0 times

Penn State vs Nebraska
2/22/1928; 7:02 p.m at Pinnacle Bank Arena (Lincoln, Neb.)
Scoring/Runs Reference



Period 1

Penn State	VRun	Score	Margin	HRun	Nebraska
		0-2	2		CAIN JUMPER [P] - 09:39
		0-3	3	NaN-0	SIMON FT - 08:40
		0-4	4	NaN-0	SIMON FT - 08:40
06:03 - CARTER LAYUP [P]	-	2-4	2		
		2-6	4		WHITISH JUMPER [P] - 05:37
		2-7	5	3-0	MORTON FT - 05:07
		2-8	6	4-0	MORTON FT - 05:07
04:50 - BOYKIN JUMPER [P]	-	4-8	4		
04:17 - CARTER 3PTR	5-0	7-8	1		
		7-10	3		CAIN JUMPER [P] - 04:00
		7-13	6	5-0	KISSINGER 3PTR - 02:58
01:58 - CARTER FT	-	8-13	5		
01:58 - CARTER FT	2-0	9-13	4		
		9-16	7		MORTON 3PTR - 01:35
00:37 - BREEN JUMPER [P]	-	11-16	5		

Penn State vs Nebraska
2/22/1928; 7:02 p.m at Pinnacle Bank Arena (Lincoln, Neb.)
Scoring/Runs Reference



Period 2

Penn State	VRun	Score	Margin	HRun	Nebraska
09:41 - MCDANIEL 3PTR	-	14-16	2		
		14-17	3		CAIN FT - 09:17
		14-18	4	2-0	CAIN FT - 09:17
07:57 - FRAZIER LAYUP [P]	-	16-18	2		
		16-20	4		WHITISH JUMPER [P] - 07:22
		16-22	6	4-0	CAIN JUMPER [P] - 06:04
05:50 - MCDANIEL 3PTR	-	19-22	3		
04:40 - MCDANIEL FT	4-0	20-22	2		
04:40 - MCDANIEL FT	5-0	21-22	1		
		21-24	3		SIMON LAYUP [P] - 03:59
		21-26	5	4-0	SIMON LAYUP [P] - 03:10
02:15 - SMITH FT	-	22-26	4		
02:15 - SMITH FT	2-0	23-26	3		
		23-27	4		CINCORE FT - 01:58
01:45 - MCDANIEL FT	-	24-27	3		
		24-28	4		SIMON FT - 01:30
		24-30	6	3-0	SIMON LAYUP [P] - 00:50
		24-31	7	4-0	CINCORE FT - 00:08
		24-32	8	5-0	CINCORE FT - 00:08

Penn State vs Nebraska
2/22/1928; 7:02 p.m at Pinnacle Bank Arena (Lincoln, Neb.)
Scoring/Runs Reference



Period 3

Penn State	VRun	Score	Margin	HRun	Nebraska
		24-34	10		SIMON JUMPER [P] - 08:51
		24-36	12	NaN-0	CAIN JUMPER [P] - 08:13
07:49 - PAGE JUMPER [P]	-	26-36	10		
07:25 - FRAZIER LAYUP [P] [F]	4-0	28-36	8		
06:06 - CARTER 3PTR	7-0	31-36	5		
		31-37	6		MORTON FT - 05:19
		31-38	7	2-0	MORTON FT - 05:19
04:57 - PAGE JUMPER	-	33-38	5		
		33-40	7		KISSINGER JUMPER [P] - 04:31
		33-42	9	4-0	CAIN JUMPER [P] - 03:20
03:05 - FRAZIER JUMPER	-	35-42	7		
		35-44	9		KISSINGER JUMPER [P] - 02:20
01:57 - FRAZIER JUMPER	-	37-44	7		
		37-45	8		KISSINGER FT - 01:03

Penn State vs Nebraska
2/22/1928; 7:02 p.m at Pinnacle Bank Arena (Lincoln, Neb.)
Scoring/Runs Reference

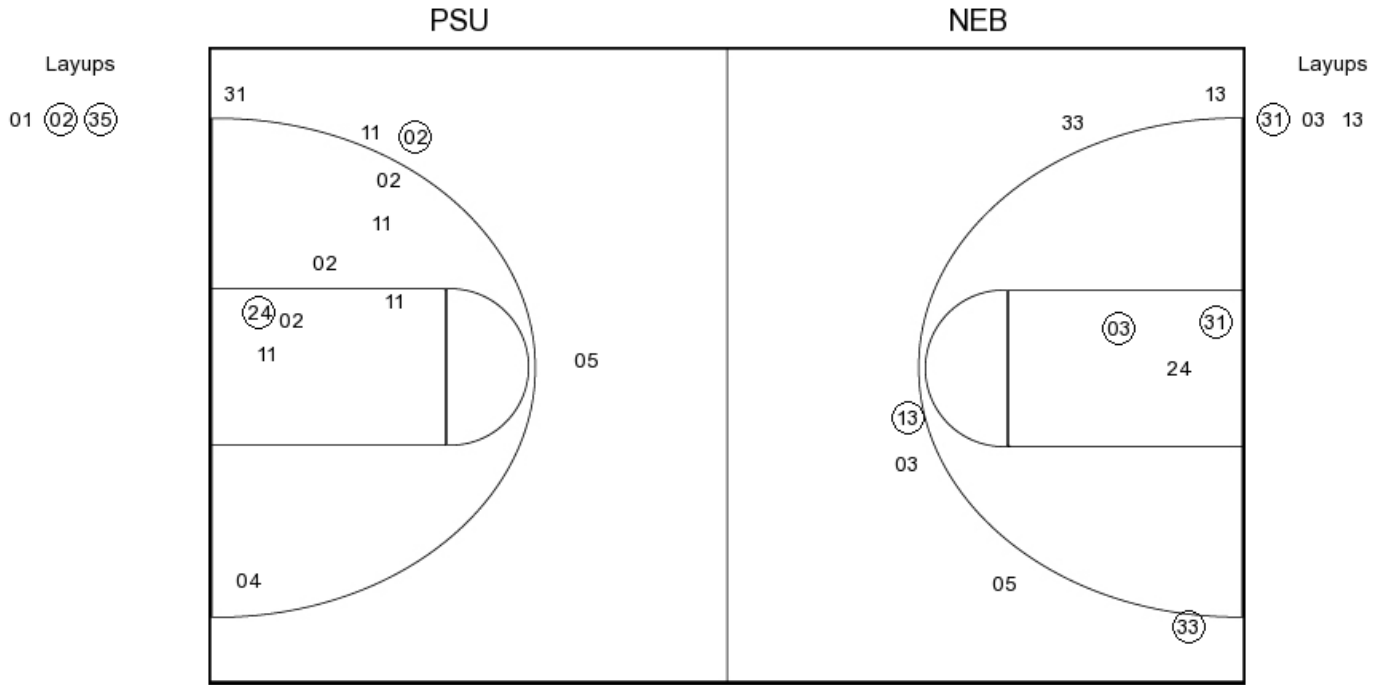


Period 4

Penn State	VRun	Score	Margin	HRun	Nebraska
		37-47	10		SIMON LAYUP [P] [F] - 09:12
08:57 - PAGE JUMPER [P]	-	39-47	8		
08:57 - PAGE FT	3-0	40-47	7		
08:01 - CARTER LAYUP [P] [F]	5-0	42-47	5		
		42-49	7		CAIN JUMPER [P] - 07:31
07:12 - MCDANIEL FT	-	43-49	6		
		43-51	8		WHITISH LAYUP [P] - 07:03
		43-52	9	3-0	MORTON FT - 05:26
		43-53	10	4-0	MORTON FT - 05:26
04:08 - CARTER JUMPER	-	45-53	8		
		45-54	9		SIMON FT - 03:49
		45-55	10	2-0	SIMON FT - 03:49
03:34 - PAGE FT	-	46-55	9		
		46-56	10		SIMON FT - 03:11
02:23 - FRAZIER FT	-	47-56	9		
01:54 - PAGE LAYUP [P] [F]	3-0	49-56	7		
		49-57	8		WHITISH FT - 01:36
		49-59	10	3-0	WHITISH LAYUP [P] - 00:33
00:20 - FRAZIER LAYUP [P] [F]	-	51-59	8		



PERIOD 1



PSU PERIOD 1

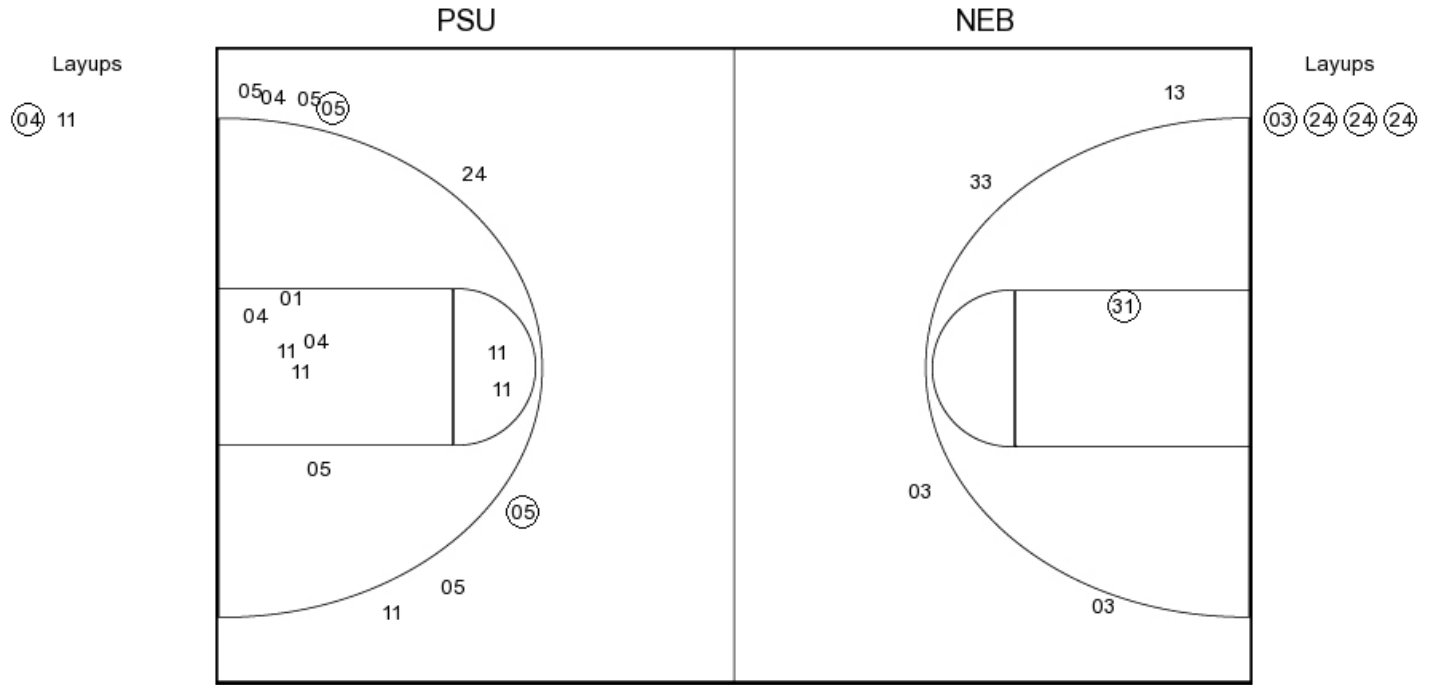
FG Made	7
FG Attempted	35
3PFG Made	3
3PFG Attempted	13

NEB PERIOD 1

FG Made	10
FG Attempted	30
3PFG Made	2
3PFG Attempted	13



PERIOD 2



PSU PERIOD 2

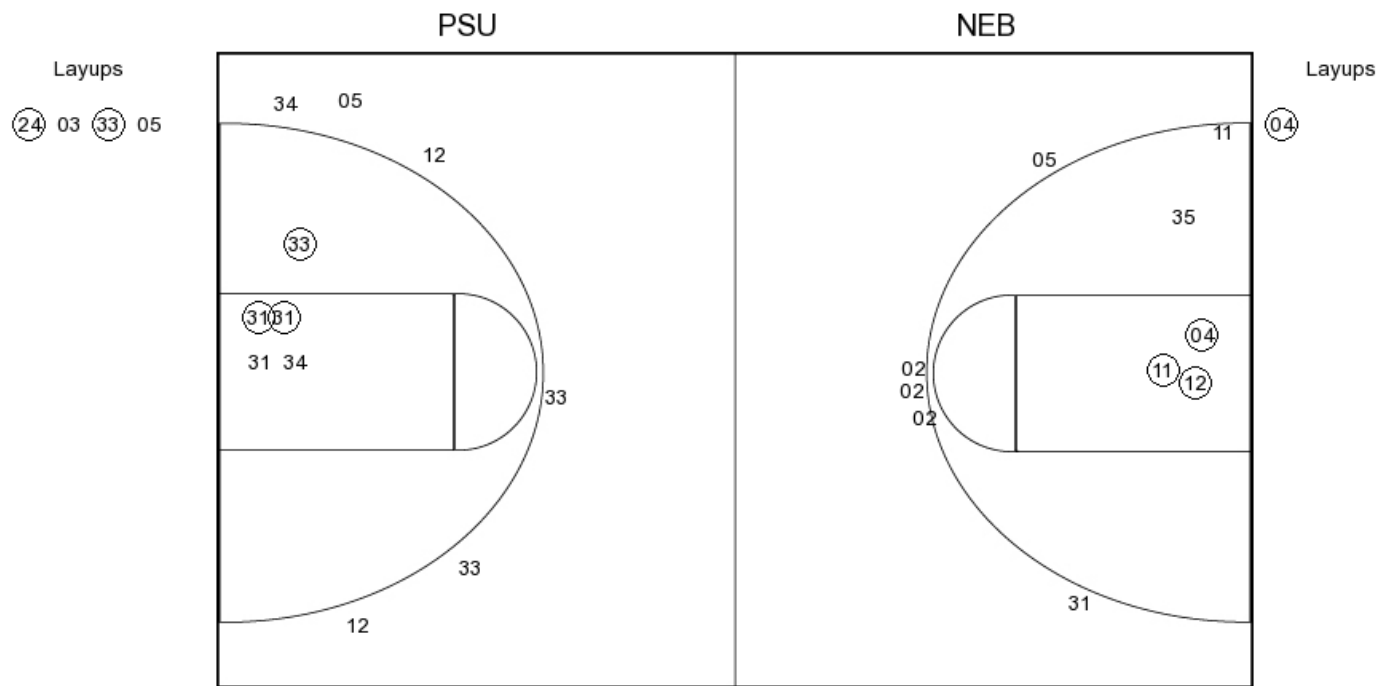
FG Made
 FG Attempted
 3PFG Made
 3PFG Attempted

NEB PERIOD 2

FG Made
 FG Attempted
 3PFG Made
 3PFG Attempted



PERIOD 3



PSU PERIOD 3

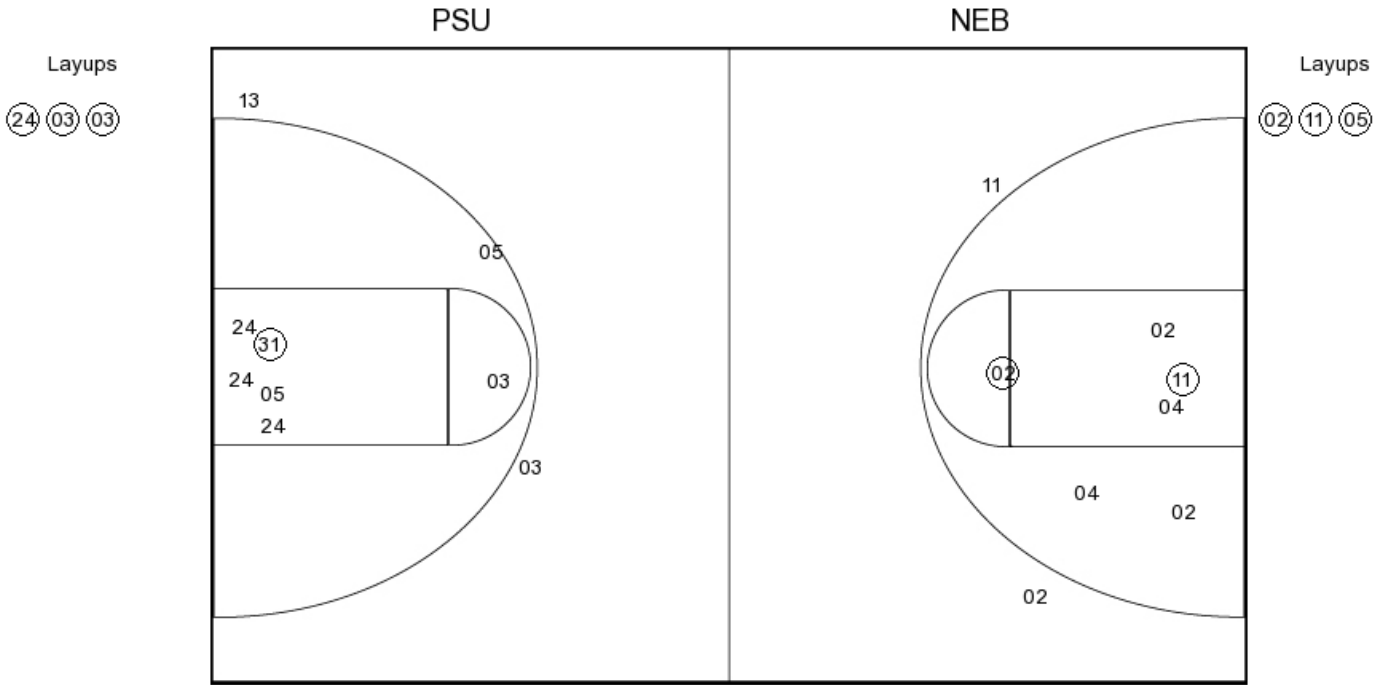
FG Made	11
FG Attempted	29
3PFG Made	1
3PFG Attempted	8

NEB PERIOD 3

FG Made	9
FG Attempted	30
3PFG Made	0
3PFG Attempted	7



PERIOD 4



PSU PERIOD 4

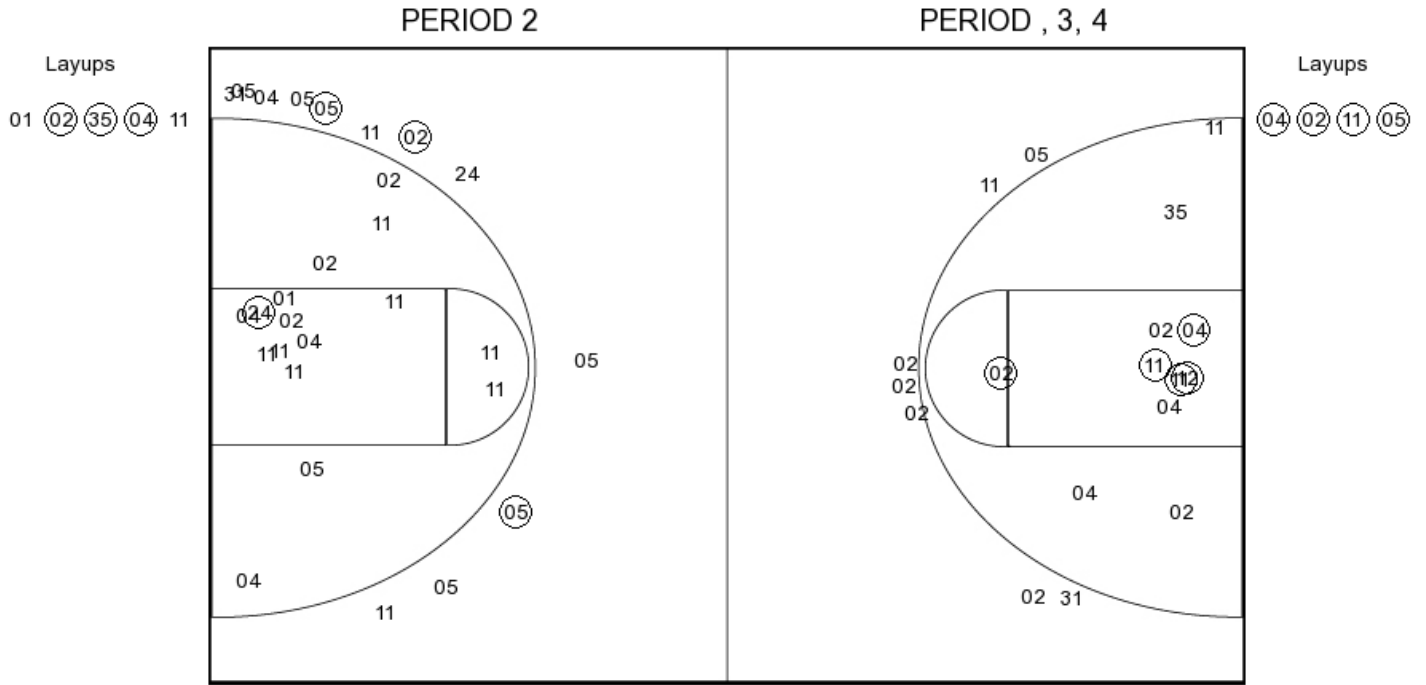
FG Made
 FG Attempted
 3PFG Made
 3PFG Attempted

NEB PERIOD 4

FG Made
 FG Attempted
 3PFG Made
 3PFG Attempted



Penn State



PSU PERIOD 1

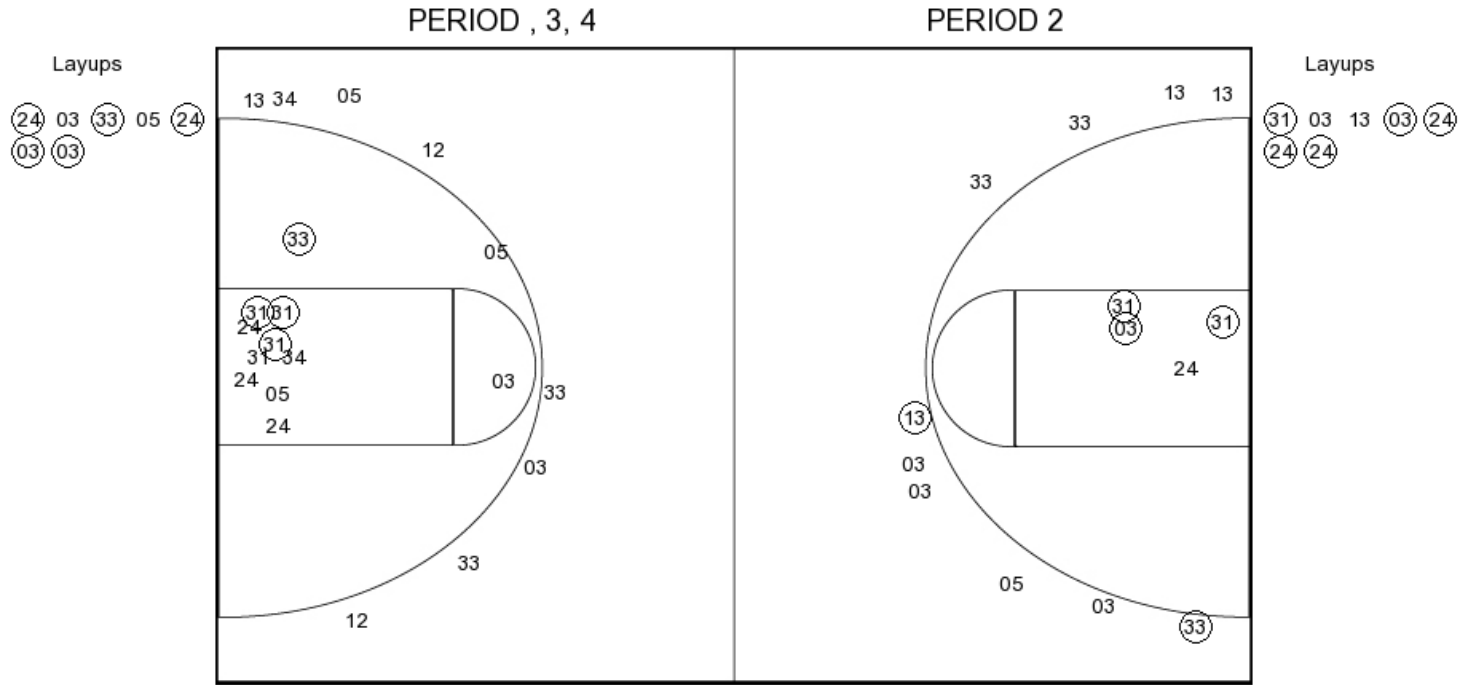
FG Made	7
FG Attempted	35
3PFG Made	3
3PFG Attempted	13

PSU PERIOD 2

FG Made	
FG Attempted	
3PFG Made	
3PFG Attempted	



Nebraska



NEB PERIOD 1

FG Made	10
FG Attempted	30
3PFG Made	2
3PFG Attempted	13

NEB PERIOD 2

FG Made	
FG Attempted	
3PFG Made	
3PFG Attempted	