

FINAL SCORE

Iowa

15-4, 3-3

65

Nebraska

13-6, 4-2

74

January 16, 2018 • Pinnacle Bank Arena (Lincoln, Neb.)

FINAL STATISTICS

Official Basketball Box Score -- Game Totals -- Final Statistics
Iowa vs Nebraska
1/16/2018 7:06 p.m. at Pinnacle Bank Arena (Lincoln, Neb.)

Iowa 65 - 15-4, 3-3

##	Player	f	Total			Rebounds			PF	TP	A	TO	Blk	Stl	Min
			FG-FGA	3-Ptr FG-FGA	FT-FTA	Off	Def	Tot							
04	COLEY,CHASE	f	3-8	0-0	2-2	3	6	9	4	8	1	2	0	0	25
05	SEVILLIAN,ALEXIS	g	0-4	0-2	0-0	0	2	2	2	0	2	5	0	0	37
10	GUSTAFSON,MEGAN	f	13-23	0-0	3-5	3	15	18	5	29	1	2	2	1	36
22	DOYLE,KATHLEEN	g	2-11	0-4	4-6	0	4	4	4	8	5	2	1	2	40
34	MOHNS,CARLY	f	1-5	0-0	0-0	0	2	2	1	2	1	0	0	0	19
21	STEWART ,HANNAH		2-10	0-1	2-4	4	1	5	4	6	2	2	0	0	19
24	SANDERS,ZION		0-0	0-0	0-0	0	0	0	1	0	0	0	0	0	3
43	OLLINGER,AMANDA		6-8	0-0	0-0	4	4	8	5	12	0	1	1	1	21
TEAM						3	2	5	0		1				
TOTALS			27-69	0-7	11-17	17	36	53	26	65	12	15	4	4	200

Deadball Rebounds: 4.0

FG %	1st Half:	12-36	33.3%	2nd Half:	15-33	45.5%	Game:	27-69	39.1%				
	1st Qtr	6-18	33.3%	2nd Qtr	6-18	33.3%	3rd Qtr	8-16	50.0%	4th Qtr	7-17	41.2%	
3FG %	1st Half:	0-3	00.0%	2nd Half:	0-4	00.0%	Game:	0-7	00.0%				
	1st Qtr	0-1	00.0%	2nd Qtr	0-2	00.0%	3rd Qtr	0-0	0%	4th Qtr	0-4	00.0%	
FT %	1st Half:	4-6	66.7%	2nd Half:	7-11	63.6%	Game:	11-17	64.7%				
	1st Qtr	2-2	100.0%	2nd Qtr	2-4	50.0%	3rd Qtr	3-4	75.0%	4th Qtr	4-7	57.1%	

Nebraska 74 - 13-6, 4-2

##	Player	g	Total			Rebounds			PF	TP	A	TO	Blk	Stl	Min
			FG-FGA	3-Ptr FG-FGA	FT-FTA	Off	Def	Tot							
03	WHITISH,HANNAH	g	7-12	2-4	2-6	1	3	4	1	18	5	1	1	2	35
05	ELIELY,NICEA	g	1-4	0-0	4-8	1	3	4	0	6	1	0	1	1	27
24	SIMON,MADDIE	f	6-13	3-4	4-6	1	3	4	3	19	1	2	0	0	26
31	CAIN,KATE	c	2-5	0-0	2-3	1	2	3	5	6	0	0	5	1	24
34	CINCORE,JASMINE	g	1-4	0-1	1-5	2	2	4	3	3	0	2	0	0	18
12	WOOD,EMILY		1-4	1-4	0-0	0	3	3	0	3	1	0	0	0	13
13	MORTON,JANAY		3-8	1-5	0-1	0	1	1	1	7	0	0	0	2	12
14	MITCHELL,GRACE		0-1	0-0	0-0	0	1	1	0	0	1	1	0	0	5
15	STALLWORTH H,BRIA		0-0	0-0	0-0	0	1	1	0	0	1	0	0	0	2
33	KISSINGER,TAYLOR		3-11	2-7	4-6	3	5	8	0	12	2	2	1	0	24
43	BLACKBURN,RACHEL		0-1	0-0	0-0	0	2	2	0	0	0	0	0	0	3
50	WASHINGTON,DARRIEN		0-0	0-0	0-0	1	1	2	2	0	2	0	0	0	11
TEAM						3	0	3	0		0				
TOTALS			24-63	9-25	17-35	13	27	40	15	74	14	8	8	6	200

Deadball Rebounds: 8.0

FG %	1st Half:	13-35	37.1%	2nd Half:	11-28	39.3%	Game:	24-63	38.1%				
	1st Qtr	4-15	26.7%	2nd Qtr	9-20	45.0%	3rd Qtr	6-18	33.3%	4th Qtr	5-10	50.0%	
3FG %	1st Half:	6-15	40.0%	2nd Half:	3-10	30.0%	Game:	9-25	36.0%				
	1st Qtr	1-6	16.7%	2nd Qtr	5-9	55.6%	3rd Qtr	0-5	00.0%	4th Qtr	3-5	60.0%	
FT %	1st Half:	5-8	62.5%	2nd Half:	12-27	44.4%	Game:	17-35	48.6%				
	1st Qtr	5-8	62.5%	2nd Qtr	0-0	0%	3rd Qtr	4-7	57.1%	4th Qtr	8-20	40.0%	

Officials: Beverly Roberts, Bryan Enterline, Julie Krommenhoek
 Technical Fouls: Iowa- None. Nebraska- None.
 Attendance: 3667

Score by periods	1st	2nd	3rd	4th	Total
Iowa	14	14	19	18	65
Nebraska	14	23	16	21	74

Points	In Paint	Off T/O	2nd Chance	Fast Break	Bench
IOWA	46	12	20	6	18
NEB	26	23	13	4	22

Last FG - IOWA 4th-00:59, NEB 4th-01:21.
 Largest lead - Iowa by 7 1st-07:00; Nebraska by 15 3rd-05:36
 IOWA led for 10:10. NEB led for 27:03. Game was tied for 2:47.

Score tied - 4 times; Lead changed - 10 times

Official Basketball Box Score -- Game Totals -- First Half Statistics
Iowa vs Nebraska
1/16/2018 7:06 p.m. at Pinnacle Bank Arena (Lincoln, Neb.)

Iowa 28 • 15-4, 3-3

##	Player	f	Total			Rebounds			PF	TP	A	TO	Blk	Stl	Min
			FG-FGA	3-Ptr FG-FGA	FT-FTA	Off	Def	Tot							
04	COLEY,CHASE	f	1-2	0-0	0-0	0	1	1	2	2	1	1	0	0	9
05	SEVILLIAN,ALEXIS	g	0-2	0-1	0-0	0	0	0	0	0	0	1	0	0	17
10	GUSTAFSON,MEGAN	f	6-14	0-0	2-2	2	7	9	1	14	0	1	1	0	18
22	DOYLE,KATHLEEN	g	1-3	0-2	2-2	0	4	4	1	4	1	0	1	1	20
34	MOHNS,CARLY	f	1-5	0-0	0-0	0	2	2	0	2	1	0	0	0	12
21	STEWART,HANNAH		1-7	0-0	0-2	2	1	3	1	2	2	1	0	0	13
24	SANDERS,ZION		0-0	0-0	0-0	0	0	0	1	0	0	0	0	0	3
43	OLLINGER,AMANDA		2-3	0-0	0-0	2	2	4	1	4	0	0	0	0	8
TEAM						2	0	2	0		1				
Totals			12-36	0-3	4-6	8	17	25	7	28	5	5	2	1	100
FG %	1st Qtr	6-18	33.3%	2nd Qtr	6-18	33.3%	Half:	12-36	33.3%						
3FG %	1st Qtr	0-1	00.0%	2nd Qtr	0-2	00.0%	Half:	0-3	00.0%						
FT %	1st Qtr	2-2	100.0%	2nd Qtr	2-4	50.0%	Half:	4-6	66.7%						

Nebraska 37 • 13-6, 4-2

##	Player	g	Total			Rebounds			PF	TP	A	TO	Blk	Stl	Min
			FG-FGA	3-Ptr FG-FGA	FT-FTA	Off	Def	Tot							
03	WHITISH,HANNAH	g	5-8	1-2	1-2	1	2	3	1	12	1	0	0	0	15
05	ELIELY,NICEA	g	0-2	0-0	2-4	1	2	3	0	2	0	0	1	0	14
24	SIMON,MADDIE	f	2-5	1-2	0-0	0	0	0	1	5	1	0	0	0	12
31	CAIN,KATE	c	1-3	0-0	2-2	1	1	2	2	4	0	0	3	1	13
34	CINCORE,JASMINE	g	0-2	0-0	0-0	1	2	3	2	0	0	1	0	0	6
12	WOOD,EMILY		1-4	1-4	0-0	0	3	3	0	3	1	0	0	0	9
13	MORTON,JANAY		2-5	1-4	0-0	0	1	1	0	5	0	0	0	1	6
14	MITCHELL,GRACE		0-1	0-0	0-0	0	1	1	0	0	1	1	0	0	5
15	STALLWORTH,BRIA		0-0	0-0	0-0	0	1	1	0	0	1	0	0	0	2
33	KISSINGER,TAYLOR		2-4	2-3	0-0	1	2	3	0	6	1	2	1	0	11
43	BLACKBURN,RACHEL		0-1	0-0	0-0	0	2	2	0	0	0	0	0	0	3
50	WASHINGTON,DARRIEN		0-0	0-0	0-0	0	0	0	1	0	2	0	0	0	4
TEAM						2	0	2	0		0				
Totals			13-35	6-15	5-8	7	17	24	7	37	8	4	5	2	100
FG %	1st Qtr	4-15	26.7%	2nd Qtr	9-20	45.0%	Half:	13-35	37.1%						
3FG %	1st Qtr	1-6	16.7%	2nd Qtr	5-9	55.6%	Half:	6-15	40.0%						
FT %	1st Qtr	5-8	62.5%	2nd Qtr	0-0	0%	Half:	5-8	62.5%						

Officials: Beverly Roberts, Bryan Enterline, Julie Krommenhoek
 Technical Fouls: Iowa- None. Nebraska- None.

Score by periods	1st	2nd	3rd	4th	Total
Iowa	14	14	19	18	65
Nebraska	14	23	16	21	74

Points	In Paint	Off T/O	2nd Chance	Fast Break	Bench
IOWA	20	6	8	0	6
	10	8	6	0	14

Last FG - IOWA 2nd-01:19, NEB 2nd-01:08.
 IOWA led for 10:10. NEB led for 7:03. Game was tied for 2:47.

Score tied - 4 times
 Lead changed - 10 times

Iowa vs Nebraska
1/16/2018; 7:06 p.m. at Pinnacle Bank Arena (Lincoln, Neb.)
Period 1 Play-By-Play

VISITORS: Iowa	Time	Score	Margin	HOME: Nebraska
MISSED JUMPER by GUSTAFSON,MEGAN	09:28			
	09:28			BLOCK by CAIN,KATE
REBOUND (OFF) by TEAM	09:28			
TURNOVER by TEAM	09:12			
FOUL by DOYLE,KATHLEEN	09:12			
	09:12			MISSED FT by ELIELY,NICEA
	09:12			REBOUND (DEADB) by TEAM
	09:12	1-0	H 1	GOOD! FT by ELIELY,NICEA
MISSED JUMPER by GUSTAFSON,MEGAN	09:05			
	09:05			BLOCK by CAIN,KATE
	09:03			REBOUND (DEF) by CINCORE,JASMINE
	08:48			MISSED JUMPER by SIMON,MADDIE
REBOUND (DEF) by MOHNS,CARLY	08:48			
GOOD! JUMPER by GUSTAFSON,MEGAN [PNT]	08:37	1-2	V 1	
	08:15			MISSED 3PTR by SIMON,MADDIE
REBOUND (DEF) by DOYLE,KATHLEEN	08:15			
GOOD! LAYUP by DOYLE,KATHLEEN [PNT]	08:07	1-4	V 3	
FOUL by GUSTAFSON,MEGAN	07:53			
	07:45			MISSED 3PTR by WHITISH,HANNAH
REBOUND (DEF) by GUSTAFSON,MEGAN	07:45			
GOOD! JUMPER by COLEY,CHASE	07:35	1-6	V 5	
ASSIST by MOHNS,CARLY	07:35			
	07:07			MISSED LAYUP by SIMON,MADDIE
REBOUND (DEF) by COLEY,CHASE	07:07			
GOOD! LAYUP by GUSTAFSON,MEGAN [PNT]	07:00	1-8	V 7	
ASSIST by DOYLE,KATHLEEN	07:00			
	07:00			TIMEOUT 30SEC
	07:00			TIMEOUT MEDIA
	07:00			SUB IN: BLACKBURN,RACHEL
	07:00			SUB OUT: CAIN,KATE
	06:48			MISSED LAYUP by CINCORE,JASMINE
BLOCK by GUSTAFSON,MEGAN	06:48			
REBOUND (DEF) by GUSTAFSON,MEGAN	06:46			
MISSED JUMPER by MOHNS,CARLY	06:38			
	06:38			REBOUND (DEF) by ELIELY,NICEA
FOUL by COLEY,CHASE	06:31			
	06:31			SUB IN: KISSINGER,TAYLOR
	06:31			SUB OUT: SIMON,MADDIE
	06:27			MISSED 3PTR by KISSINGER,TAYLOR
REBOUND (DEF) by DOYLE,KATHLEEN	06:27			
MISSED JUMPER by COLEY,CHASE	06:17			
	06:17			REBOUND (DEF) by ELIELY,NICEA
	06:02			MISSED LAYUP by WHITISH,HANNAH
	06:02			REBOUND (OFF) by CINCORE,JASMINE
	05:59			MISSED JUMPER by CINCORE,JASMINE
	05:59			REBOUND (OFF) by WHITISH,HANNAH
	05:40	4-8	V 4	GOOD! 3PTR by KISSINGER,TAYLOR
MISSED JUMPER by GUSTAFSON,MEGAN	05:25			
	05:25			REBOUND (DEF) by BLACKBURN,RACHEL
	05:04			FOUL by CINCORE,JASMINE
	05:04			TURNOVER by CINCORE,JASMINE
SUB IN: OLLINGER,AMANDA	05:04			
SUB IN: STEWART,HANNAH	05:04			
SUB OUT: GUSTAFSON,MEGAN	05:04			
SUB OUT: MOHNS,CARLY	05:04			
	04:55			SUB IN: CAIN,KATE
	04:55			SUB OUT: BLACKBURN,RACHEL
MISSED 3PTR by SEVILLIAN,ALEXIS	04:48			
	04:48			BLOCK by ELIELY,NICEA
REBOUND (OFF) by TEAM	04:48			
TURNOVER by STEWART,HANNAH	04:43			
	04:32	6-8	V 2	GOOD! LAYUP by CAIN,KATE [PNT]
	04:32			ASSIST by KISSINGER,TAYLOR
MISSED JUMPER by STEWART,HANNAH	04:20			
	04:20			REBOUND (DEF) by CINCORE,JASMINE
FOUL by STEWART,HANNAH	03:57			
	03:57	7-8	V 1	GOOD! FT by CAIN,KATE
	03:57	8-8	T	GOOD! FT by CAIN,KATE
SUB IN: GUSTAFSON,MEGAN	03:57			

VISITORS: Iowa	Time	Score	Margin	HOME: Nebraska
SUB IN: SANDERS,ZION	03:57			
SUB OUT: COLEY,CHASE	03:57			
SUB OUT: SEVILLIAN,ALEXIS	03:57			
	03:57			SUB IN: MORTON,JANAY
	03:57			SUB OUT: ELIELY,NICEA
	03:38			FOUL by CINCORE,JASMINE
	03:38			SUB IN: SIMON,MADDIE
	03:38			SUB OUT: CINCORE,JASMINE
GOOD! LAYUP by GUSTAFSON,MEGAN [PNT]	03:27	8-10	V 2	
ASSIST by STEWART,HANNAH	03:27			
FOUL by SANDERS,ZION	03:13			
	03:13	9-10	V 1	GOOD! FT by WHITISH,HANNAH
	03:13			MISSED FT by WHITISH,HANNAH
REBOUND (DEF) by OLLINGER,AMANDA	03:13			
MISSED JUMPER by STEWART,HANNAH	02:57			
REBOUND (OFF) by STEWART,HANNAH	02:57			
MISSED JUMPER by STEWART,HANNAH	02:52			
	02:52			REBOUND (DEF) by MORTON,JANAY
SUB IN: MOHNS,CARLY	02:51			
SUB IN: SEVILLIAN,ALEXIS	02:51			
SUB OUT: SANDERS,ZION	02:51			
SUB OUT: OLLINGER,AMANDA	02:51			
	02:34	11-10	H 1	GOOD! JUMPER by WHITISH,HANNAH
MISSED JUMPER by MOHNS,CARLY	02:15			
	02:15			REBOUND (DEF) by KISSINGER,TAYLOR
	02:06			TURNOVER by KISSINGER,TAYLOR
STEAL by DOYLE,KATHLEEN	02:04			
	02:04			FOUL by WHITISH,HANNAH
GOOD! FT by DOYLE,KATHLEEN	02:04	11-11	T	
GOOD! FT by DOYLE,KATHLEEN	02:04	11-12	V 1	
	02:04			SUB IN: STALLWORTH,BRIA
	02:04			SUB OUT: WHITISH,HANNAH
	01:38			MISSED 3PTR by MORTON,JANAY
REBOUND (DEF) by STEWART,HANNAH	01:38			
MISSED JUMPER by GUSTAFSON,MEGAN	01:29			
REBOUND (OFF) by GUSTAFSON,MEGAN	01:29			
GOOD! JUMPER by GUSTAFSON,MEGAN [PNT]	01:26	11-14	V 3	
	01:10			MISSED 3PTR by MORTON,JANAY
	01:10			REBOUND (OFF) by CAIN,KATE
	00:54	13-14	V 1	GOOD! JUMPER by SIMON,MADDIE
	00:54			ASSIST by STALLWORTH,BRIA
	00:41			FOUL by CAIN,KATE
SUB IN: COLEY,CHASE	00:41			
SUB IN: OLLINGER,AMANDA	00:41			
SUB IN: SANDERS,ZION	00:41			
SUB OUT: MOHNS,CARLY	00:41			
SUB OUT: DOYLE,KATHLEEN	00:41			
SUB OUT: STEWART,HANNAH	00:41			
	00:41			SUB IN: ELIELY,NICEA
	00:41			SUB IN: WASHINGTON,DARRIEN
	00:41			SUB OUT: MORTON,JANAY
	00:41			SUB OUT: CAIN,KATE
MISSED LAYUP by GUSTAFSON,MEGAN	00:39			
	00:39			REBOUND (DEF) by STALLWORTH,BRIA
	00:33			MISSED JUMPER by ELIELY,NICEA
	00:33			REBOUND (OFF) by ELIELY,NICEA
FOUL by COLEY,CHASE	00:30			
	00:30	14-14	T	GOOD! FT by ELIELY,NICEA
	00:30			MISSED FT by ELIELY,NICEA
REBOUND (DEF) by GUSTAFSON,MEGAN	00:30			
SUB IN: STEWART,HANNAH	00:30			
SUB IN: DOYLE,KATHLEEN	00:30			
SUB OUT: COLEY,CHASE	00:30			
SUB OUT: SANDERS,ZION	00:30			
TURNOVER by GUSTAFSON,MEGAN	00:04			
SUB IN: SANDERS,ZION	00:04			
SUB OUT: DOYLE,KATHLEEN	00:04			

Iowa 14, Nebraska 14

Period 1-only	In Paint	Off T/O	2nd Chance	Fast Break	Bench	
IOWA	10	2	2	0	0	Score tied - 2 times
NEB	2	3	6	0	3	Lead changed - 4 times

Iowa vs Nebraska
1/16/2018; 7:06 p.m. at Pinnacle Bank Arena (Lincoln, Neb.)
Period 2 Play-By-Play

VISITORS: Iowa	Time	Score	Margin	HOME: Nebraska
SUB IN: OLLINGER,AMANDA	10:00			
SUB IN: STEWART,HANNAH	10:00			
SUB OUT: COLEY,CHASE	10:00			
SUB OUT: MOHNS,CARLY	10:00			
	10:00			SUB IN: WASHINGTON,DARRIEN
	10:00			SUB IN: KISSINGER,TAYLOR
	10:00			SUB OUT: CAIN,KATE
	10:00			SUB OUT: CINCORE,JASMINE
	09:55			TURNOVER by KISSINGER,TAYLOR
	09:45			FOUL by WASHINGTON,DARRIEN
GOOD! FT by GUSTAFSON,MEGAN	09:45	14-15	V 1	
GOOD! FT by GUSTAFSON,MEGAN	09:45	14-16	V 2	
	09:27	17-16	H 1	GOOD! 3PTR by SIMON,MADDIE
	09:27			ASSIST by WASHINGTON,DARRIEN
MISSED JUMPER by STEWART,HANNAH	09:14			
REBOUND (OFF) by OLLINGER,AMANDA	09:14			
GOOD! JUMPER by OLLINGER,AMANDA [PNT]	09:11	17-18	V 1	
	08:54	19-18	H 1	GOOD! LAYUP by WHITISH,HANNAH [PNT]
	08:54			ASSIST by WASHINGTON,DARRIEN
	08:46			FOUL by SIMON,MADDIE
MISSED FT by STEWART,HANNAH	08:46			
REBOUND (DEADB) by TEAM	08:46			
MISSED FT by STEWART,HANNAH	08:46			
REBOUND (OFF) by GUSTAFSON,MEGAN	08:46			
	08:46			SUB IN: WOOD,EMILY
	08:46			SUB OUT: KISSINGER,TAYLOR
GOOD! JUMPER by GUSTAFSON,MEGAN [PNT]	08:43	19-20	V 1	
	08:21	21-20	H 1	GOOD! LAYUP by WHITISH,HANNAH [PNT]
MISSED LAYUP by OLLINGER,AMANDA	08:09			
	08:09			REBOUND (DEF) by WOOD,EMILY
	08:02			MISSED LAYUP by WHITISH,HANNAH
BLOCK by DOYLE,KATHLEEN	08:02			
	08:02			REBOUND (OFF) by TEAM
SUB IN: MOHNS,CARLY	08:02			
SUB OUT: OLLINGER,AMANDA	08:02			
	08:02			SUB IN: CAIN,KATE
	08:02			SUB IN: MITCHELL,GRACE
	08:02			SUB OUT: SIMON,MADDIE
	08:02			SUB OUT: WASHINGTON,DARRIEN
	07:54			MISSED JUMPER by CAIN,KATE
REBOUND (DEF) by GUSTAFSON,MEGAN	07:54			
GOOD! JUMPER by MOHNS,CARLY	07:29	21-22	V 1	
ASSIST by STEWART,HANNAH	07:29			
	07:12			MISSED 3PTR by WOOD,EMILY
	07:12			REBOUND (OFF) by TEAM
	07:08			MISSED JUMPER by CAIN,KATE
REBOUND (DEF) by GUSTAFSON,MEGAN	07:08			
GOOD! LAYUP by STEWART,HANNAH [PNT]	06:54	21-24	V 3	
	06:35			MISSED 3PTR by WOOD,EMILY
REBOUND (DEF) by DOYLE,KATHLEEN	06:35			
MISSED JUMPER by GUSTAFSON,MEGAN	06:27			
	06:27			BLOCK by CAIN,KATE
	06:25			REBOUND (DEF) by MITCHELL,GRACE
	06:19			MISSED LAYUP by ELIELY,NICEA
REBOUND (DEF) by GUSTAFSON,MEGAN	06:19			
MISSED JUMPER by MOHNS,CARLY	06:06			
	06:06			REBOUND (DEF) by WHITISH,HANNAH
	05:47			MISSED JUMPER by MITCHELL,GRACE
REBOUND (DEF) by GUSTAFSON,MEGAN	05:47			
TURNOVER by SEVILLIAN,ALEXIS	05:32			
	05:30			STEAL by CAIN,KATE
	05:23	24-24	T	GOOD! 3PTR by WOOD,EMILY
	05:23			ASSIST by WHITISH,HANNAH
MISSED JUMPER by GUSTAFSON,MEGAN	05:03			
	05:03			REBOUND (DEF) by WHITISH,HANNAH
	04:39	27-24	H 3	GOOD! 3PTR by WHITISH,HANNAH
	04:39			ASSIST by MITCHELL,GRACE
MISSED 3PTR by DOYLE,KATHLEEN	04:13			
	04:13			REBOUND (DEF) by CAIN,KATE

VISITORS: Iowa	Time	Score	Margin	HOME: Nebraska
	03:52			MISSED 3PTR by WOOD,EMILY
REBOUND (DEF) by MOHNS,CARLY	03:52			
MISSED JUMPER by MOHNS,CARLY	03:35			
	03:35			REBOUND (DEF) by WOOD,EMILY
	03:27	29-24	H 5	GOOD! LAYUP by WHITISH,HANNAH [PNT]
MISSED JUMPER by SEVILLIAN,ALEXIS	03:21			
	03:21			REBOUND (DEF) by WOOD,EMILY
	02:57			TURNOVER by MITCHELL,GRACE
TIMEOUT MEDIA	02:57			
SUB IN: COLEY,CHASE	02:57			
SUB IN: OLLINGER,AMANDA	02:57			
SUB IN: SANDERS,ZION	02:57			
SUB OUT: MOHNS,CARLY	02:57			
SUB OUT: SEVILLIAN,ALEXIS	02:57			
SUB OUT: GUSTAFSON,MEGAN	02:57			
	02:57			SUB IN: MORTON,JANAY
	02:57			SUB IN: KISSINGER,TAYLOR
	02:57			SUB IN: SIMON,MADDIE
	02:57			SUB IN: WASHINGTON,DARRIEN
	02:57			SUB OUT: WHITISH,HANNAH
	02:57			SUB OUT: ELIELY,NICEA
	02:57			SUB OUT: CAIN,KATE
	02:57			SUB OUT: MITCHELL,GRACE
MISSED 3PTR by DOYLE,KATHLEEN	02:39			
REBOUND (OFF) by STEWART,HANNAH	02:39			
MISSED JUMPER by STEWART,HANNAH	02:33			
REBOUND (OFF) by OLLINGER,AMANDA	02:33			
GOOD! JUMPER by OLLINGER,AMANDA [PNT]	02:31	29-26	H 3	
	02:08			MISSED 3PTR by MORTON,JANAY
REBOUND (DEF) by DOYLE,KATHLEEN	02:08			
TURNOVER by COLEY,CHASE	02:05			
	02:04			STEAL by MORTON,JANAY
	02:03	31-26	H 5	GOOD! LAYUP by MORTON,JANAY [PNT]
MISSED JUMPER by STEWART,HANNAH	01:46			
	01:46			REBOUND (DEF) by KISSINGER,TAYLOR
FOUL by OLLINGER,AMANDA	01:43			
SUB IN: GUSTAFSON,MEGAN	01:43			
SUB OUT: STEWART,HANNAH	01:43			
	01:43			SUB IN: CAIN,KATE
	01:43			SUB OUT: WASHINGTON,DARRIEN
	01:31	34-26	H 8	GOOD! 3PTR by KISSINGER,TAYLOR
	01:31			ASSIST by SIMON,MADDIE
GOOD! JUMPER by GUSTAFSON,MEGAN [PNT]	01:19	34-28	H 6	
ASSIST by COLEY,CHASE	01:19			
	01:08	37-28	H 9	GOOD! 3PTR by MORTON,JANAY
	01:08			ASSIST by WOOD,EMILY
	00:51			FOUL by CAIN,KATE
SUB IN: SEVILLIAN,ALEXIS	00:51			
SUB OUT: SANDERS,ZION	00:51			
	00:51			SUB IN: BLACKBURN,RACHEL
	00:51			SUB OUT: CAIN,KATE
MISSED JUMPER by GUSTAFSON,MEGAN	00:39			
	00:39			BLOCK by KISSINGER,TAYLOR
	00:36			REBOUND (DEF) by BLACKBURN,RACHEL
	00:06			MISSED JUMPER by BLACKBURN,RACHEL
	00:06			REBOUND (OFF) by KISSINGER,TAYLOR
	00:02			MISSED JUMPER by KISSINGER,TAYLOR
REBOUND (DEF) by OLLINGER,AMANDA	00:02			

Iowa 28, Nebraska 37

Period 2-only	In Paint	Off T/O	2nd Chance	Fast Break	Bench	
IOWA	10	4	6	0	6	Score tied - 0 times
NEB	8	5	0	0	11	Lead changed - 6 times

Iowa vs Nebraska
1/16/2018; 7:06 p.m. at Pinnacle Bank Arena (Lincoln, Neb.)
Period 3 Play-By-Play

VISITORS: Iowa	Time	Score	Margin	HOME: Nebraska
	09:50			TURNOVER by CINCORE,JASMINE
STEAL by GUSTAFSON,MEGAN	09:48			
TURNOVER by DOYLE,KATHLEEN	09:43			
	09:42			STEAL by ELIELY,NICEA
	09:34	39-28	H 11	GOOD! LAYUP by ELIELY,NICEA [PNT]
MISSED JUMPER by COLEY,CHASE	09:21			
	09:21			REBOUND (DEF) by SIMON,MADDIE
	08:58			MISSED LAYUP by SIMON,MADDIE
REBOUND (DEF) by GUSTAFSON,MEGAN	08:58			
MISSED JUMPER by GUSTAFSON,MEGAN	08:36			
	08:36			REBOUND (DEF) by CAIN,KATE
	08:19			MISSED JUMPER by WHITISH,HANNAH
	08:19			REBOUND (OFF) by SIMON,MADDIE
	08:18	41-28	H 13	GOOD! JUMPER by SIMON,MADDIE [PNT]
GOOD! LAYUP by GUSTAFSON,MEGAN [FB/PNT]	08:10	41-30	H 11	
ASSIST by DOYLE,KATHLEEN	08:10			
FOUL by MOHNS,CARLY	07:48			
	07:48			MISSED FT by CINCORE,JASMINE
	07:48			REBOUND (DEADB) by TEAM
	07:48			MISSED FT by CINCORE,JASMINE
REBOUND (DEF) by GUSTAFSON,MEGAN	07:48			
MISSED JUMPER by DOYLE,KATHLEEN	07:27			
	07:27			REBOUND (DEF) by ELIELY,NICEA
	07:06			MISSED JUMPER by ELIELY,NICEA
REBOUND (DEF) by COLEY,CHASE	07:06			
GOOD! JUMPER by GUSTAFSON,MEGAN [PNT]	06:55	41-32	H 9	
ASSIST by DOYLE,KATHLEEN	06:55			
	06:40	43-32	H 11	GOOD! JUMPER by WHITISH,HANNAH [PNT]
TURNOVER by SEVILLIAN,ALEXIS	06:31			
SUB IN: OLLINGER,AMANDA	06:31			
SUB OUT: MOHNS,CARLY	06:31			
	06:31			SUB IN: KISSINGER,TAYLOR
	06:31			SUB IN: MORTON,JANAY
	06:31			SUB OUT: ELIELY,NICEA
	06:31			SUB OUT: SIMON,MADDIE
	06:19			MISSED 3PTR by KISSINGER,TAYLOR
REBOUND (DEF) by TEAM	06:19			
	05:59			FOUL by MORTON,JANAY
TURNOVER by SEVILLIAN,ALEXIS	05:55			
	05:54			STEAL by MORTON,JANAY
	05:52	45-32	H 13	GOOD! LAYUP by MORTON,JANAY [FB/PNT]
FOUL by DOYLE,KATHLEEN	05:52			
	05:52			MISSED FT by MORTON,JANAY
	05:52			REBOUND (OFF) by CINCORE,JASMINE
	05:40			MISSED JUMPER by CAIN,KATE
	05:40			REBOUND (OFF) by KISSINGER,TAYLOR
	05:36	47-32	H 15	GOOD! JUMPER by KISSINGER,TAYLOR [PNT]
GOOD! JUMPER by COLEY,CHASE	05:22	47-34	H 13	
	05:01			MISSED LAYUP by MORTON,JANAY
BLOCK by OLLINGER,AMANDA	05:01			
	05:01			REBOUND (OFF) by TEAM
SUB IN: STEWART,HANNAH	05:01			
SUB OUT: COLEY,CHASE	05:01			
FOUL by OLLINGER,AMANDA	04:55			
	04:55			TIMEOUT MEDIA
	04:45			MISSED 3PTR by KISSINGER,TAYLOR
REBOUND (DEF) by GUSTAFSON,MEGAN	04:45			
GOOD! LAYUP by OLLINGER,AMANDA [PNT]	04:24	47-36	H 11	
ASSIST by GUSTAFSON,MEGAN	04:24			
	03:59			MISSED JUMPER by KISSINGER,TAYLOR
BLOCK by GUSTAFSON,MEGAN	03:59			
REBOUND (DEF) by GUSTAFSON,MEGAN	03:58			
MISSED JUMPER by DOYLE,KATHLEEN	03:53			
REBOUND (OFF) by STEWART,HANNAH	03:53			
	03:52			FOUL by CINCORE,JASMINE
GOOD! FT by STEWART,HANNAH	03:52	47-37	H 10	
GOOD! FT by STEWART,HANNAH	03:52	47-38	H 9	
	03:52			SUB IN: SIMON,MADDIE
	03:52			SUB IN: WOOD,EMILY

VISITORS: Iowa	Time	Score	Margin	HOME: Nebraska
	03:52			SUB OUT: MORTON,JANAY
	03:52			SUB OUT: CINCORE,JASMINE
	03:30			MISSED 3PTR by KISSINGER,TAYLOR
REBOUND (DEF) by SEVILLIAN,ALEXIS	03:30			
GOOD! LAYUP by OLLINGER,AMANDA [FB/PNT]	03:23	47-40	H 7	
ASSIST by SEVILLIAN,ALEXIS	03:23			
	03:05			MISSED 3PTR by WHITISH,HANNAH
	03:05			REBOUND (OFF) by KISSINGER,TAYLOR
	03:02			MISSED 3PTR by KISSINGER,TAYLOR
REBOUND (DEF) by GUSTAFSON,MEGAN	03:02			
MISSED LAYUP by SEVILLIAN,ALEXIS	02:47			
	02:47			BLOCK by CAIN,KATE
REBOUND (OFF) by TEAM	02:46			
	02:46			SUB IN: ELIELY,NICEA
	02:46			SUB OUT: KISSINGER,TAYLOR
MISSED JUMPER by STEWART,HANNAH	02:40			
REBOUND (OFF) by GUSTAFSON,MEGAN	02:40			
GOOD! JUMPER by GUSTAFSON,MEGAN [PNT]	02:37	47-42	H 5	
	02:16			MISSED LAYUP by SIMON,MADDIE
REBOUND (DEF) by OLLINGER,AMANDA	02:16			
FOUL by OLLINGER,AMANDA	02:05			
TURNOVER by OLLINGER,AMANDA	02:05			
FOUL by SEVILLIAN,ALEXIS	01:57			
	01:57	48-42	H 6	GOOD! FT by SIMON,MADDIE
	01:57	49-42	H 7	GOOD! FT by SIMON,MADDIE
SUB IN: MOHNS,CARLY	01:57			
SUB OUT: OLLINGER,AMANDA	01:57			
	01:50			FOUL by CAIN,KATE
MISSED FT by GUSTAFSON,MEGAN	01:50			
REBOUND (DEADB) by TEAM	01:50			
GOOD! FT by GUSTAFSON,MEGAN	01:50	49-43	H 6	
FOUL by STEWART,HANNAH	01:29			
	01:29	50-43	H 7	GOOD! FT by SIMON,MADDIE
	01:29	51-43	H 8	GOOD! FT by SIMON,MADDIE
SUB IN: COLEY,CHASE	01:29			
SUB OUT: STEWART,HANNAH	01:29			
	01:29			SUB IN: WASHINGTON,DARRIEN
	01:29			SUB OUT: CAIN,KATE
MISSED JUMPER by DOYLE,KATHLEEN	01:08			
REBOUND (OFF) by COLEY,CHASE	01:08			
	01:04			FOUL by SIMON,MADDIE
GOOD! JUMPER by GUSTAFSON,MEGAN [PNT]	01:01	51-45	H 6	
	00:30	53-45	H 8	GOOD! LAYUP by SIMON,MADDIE [PNT]
	00:30			ASSIST by WHITISH,HANNAH
MISSED LAYUP by COLEY,CHASE	00:06			
REBOUND (OFF) by COLEY,CHASE	00:06			
GOOD! JUMPER by COLEY,CHASE [PNT]	00:03	53-47	H 6	

Iowa 47, Nebraska 53

Period 3-only	In Paint	Off T/O	2nd Chance	Fast Break	Bench	
IOWA	14	0	8	4	6	Score tied - 0 times
NEB	12	8	4	2	4	Lead changed - 0 times

Iowa vs Nebraska
1/16/2018; 7:06 p.m. at Pinnacle Bank Arena (Lincoln, Neb.)
Period 4 Play-By-Play

VISITORS: Iowa	Time	Score	Margin	HOME: Nebraska
	10:00			SUB IN: MORTON,JANAY
	10:00			SUB OUT: ELIELY,NICEA
MISSED JUMPER by GUSTAFSON,MEGAN	09:49			
	09:49			BLOCK by CAIN,KATE
	09:47			REBOUND (DEF) by WHITISH,HANNAH
	09:17			MISSED 3PTR by MORTON,JANAY
REBOUND (DEF) by SEVILLIAN,ALEXIS	09:17			
	08:56			FOUL by CAIN,KATE
MISSED FT by DOYLE,KATHLEEN	08:56			
REBOUND (DEADB) by TEAM	08:56			
GOOD! FT by DOYLE,KATHLEEN	08:56	53-48	H 5	
	08:56			SUB IN: WASHINGTON,DARRIEN
	08:56			SUB IN: KISSINGER,TAYLOR
	08:56			SUB OUT: SIMON,MADDIE
	08:56			SUB OUT: CAIN,KATE
	08:42	56-48	H 8	GOOD! 3PTR by WHITISH,HANNAH
	08:42			ASSIST by KISSINGER,TAYLOR
GOOD! LAYUP by GUSTAFSON,MEGAN [PNT]	08:28	56-50	H 6	
FOUL by GUSTAFSON,MEGAN	08:10			
	08:10			MISSED FT by CINCORE,JASMINE
	08:10			REBOUND (DEADB) by TEAM
	08:10			MISSED FT by CINCORE,JASMINE
REBOUND (DEF) by GUSTAFSON,MEGAN	08:10			
SUB IN: OLLINGER,AMANDA	08:10			
SUB OUT: MOHNS,CARLY	08:10			
FOUL by COLEY,CHASE	08:02			
TURNOVER by COLEY,CHASE	08:02			
	07:44			MISSED 3PTR by CINCORE,JASMINE
REBOUND (DEF) by TEAM	07:44			
	07:21			FOUL by WASHINGTON,DARRIEN
MISSED FT by DOYLE,KATHLEEN	07:21			
REBOUND (DEADB) by TEAM	07:21			
GOOD! FT by DOYLE,KATHLEEN	07:21	56-51	H 5	
	07:21			SUB IN: SIMON,MADDIE
	07:21			SUB IN: ELIELY,NICEA
	07:21			SUB OUT: MORTON,JANAY
	07:21			SUB OUT: CINCORE,JASMINE
	07:09			MISSED JUMPER by SIMON,MADDIE
REBOUND (DEF) by COLEY,CHASE	07:09			
MISSED JUMPER by COLEY,CHASE	06:56			
	06:56			REBOUND (DEF) by SIMON,MADDIE
	06:52			TURNOVER by SIMON,MADDIE
GOOD! JUMPER by GUSTAFSON,MEGAN	06:24	56-53	H 3	
ASSIST by SEVILLIAN,ALEXIS	06:24			
FOUL by GUSTAFSON,MEGAN	06:05			
	06:05			MISSED FT by SIMON,MADDIE
	06:05			REBOUND (DEADB) by TEAM
	06:05			MISSED FT by SIMON,MADDIE
	06:05			REBOUND (OFF) by WASHINGTON,DARRIEN
SUB IN: STEWART,HANNAH	06:05			
SUB OUT: GUSTAFSON,MEGAN	06:05			
FOUL by STEWART,HANNAH	06:03			
	05:50	59-53	H 6	GOOD! 3PTR by SIMON,MADDIE
	05:50			ASSIST by WHITISH,HANNAH
TURNOVER by SEVILLIAN,ALEXIS	05:35			
	05:34			STEAL by WHITISH,HANNAH
	05:34			TIMEOUT 30SEC
	05:34			TIMEOUT MEDIA
FOUL by SEVILLIAN,ALEXIS	05:10			
	05:10	60-53	H 7	GOOD! FT by ELIELY,NICEA
	05:10	61-53	H 8	GOOD! FT by ELIELY,NICEA
SUB IN: GUSTAFSON,MEGAN	05:10			
SUB OUT: STEWART,HANNAH	05:10			
TURNOVER by GUSTAFSON,MEGAN	05:02			
	04:44	64-53	H 11	GOOD! 3PTR by SIMON,MADDIE
	04:44			ASSIST by WHITISH,HANNAH
TIMEOUT MEDIA	04:37			
MISSED LAYUP by DOYLE,KATHLEEN	04:34			
REBOUND (OFF) by OLLINGER,AMANDA	04:34			

VISITORS: Iowa	Time	Score	Margin	HOME: Nebraska
GOOD! JUMPER by OLLINGER,AMANDA [PNT]	04:31	64-55	H 9	
	04:05			TURNOVER by SIMON,MADDIE
STEAL by OLLINGER,AMANDA	04:04			
GOOD! LAYUP by OLLINGER,AMANDA [FB/PNT]	04:02	64-57	H 7	
	03:33			MISSED JUMPER by SIMON,MADDIE
REBOUND (DEF) by COLEY,CHASE	03:33			
MISSED JUMPER by COLEY,CHASE	03:16			
REBOUND (OFF) by OLLINGER,AMANDA	03:16			
MISSED JUMPER by OLLINGER,AMANDA	03:11			
REBOUND (OFF) by COLEY,CHASE	03:11			
	03:09			FOUL by SIMON,MADDIE
GOOD! FT by COLEY,CHASE	03:09	64-58	H 6	
GOOD! FT by COLEY,CHASE	03:09	64-59	H 5	
	03:09			SUB IN: CINCORE,JASMINE
	03:09			SUB IN: CAIN,KATE
	03:09			SUB OUT: SIMON,MADDIE
	03:09			SUB OUT: WASHINGTON,DARRIEN
	02:40			MISSED JUMPER by KISSINGER,TAYLOR
REBOUND (DEF) by GUSTAFSON,MEGAN	02:40			
TURNOVER by SEVILLIAN,ALEXIS	02:31			
	02:30			STEAL by WHITISH,HANNAH
	02:11	66-59	H 7	GOOD! LAYUP by CAIN,KATE [PNT]
	02:11			ASSIST by ELIELY,NICEA
FOUL by GUSTAFSON,MEGAN	02:11			
	02:11			MISSED FT by CAIN,KATE
REBOUND (DEF) by COLEY,CHASE	02:11			
GOOD! JUMPER by GUSTAFSON,MEGAN [PNT]	02:02	66-61	H 5	
ASSIST by DOYLE,KATHLEEN	02:02			
	02:02			FOUL by CAIN,KATE
MISSED FT by GUSTAFSON,MEGAN	02:02			
	02:02			REBOUND (DEF) by WASHINGTON,DARRIEN
	02:02			SUB IN: WASHINGTON,DARRIEN
	02:02			SUB IN: MORTON,JANAY
	02:02			SUB OUT: CAIN,KATE
	02:02			SUB OUT: KISSINGER,TAYLOR
FOUL by DOYLE,KATHLEEN	01:47			
	01:47	67-61	H 6	GOOD! FT by WHITISH,HANNAH
	01:47			MISSED FT by WHITISH,HANNAH
REBOUND (DEF) by GUSTAFSON,MEGAN	01:47			
TURNOVER by DOYLE,KATHLEEN	01:43			
	01:43			SUB IN: KISSINGER,TAYLOR
	01:43			SUB OUT: MORTON,JANAY
	01:31			TURNOVER by WHITISH,HANNAH
STEAL by DOYLE,KATHLEEN	01:31			
GOOD! JUMPER by DOYLE,KATHLEEN [PNT]	01:26	67-63	H 4	
TIMEOUT 30SEC	01:24			
	01:24			SUB IN: SIMON,MADDIE
	01:24			SUB OUT: WASHINGTON,DARRIEN
	01:21	69-63	H 6	GOOD! LAYUP by CINCORE,JASMINE [FB/PNT]
	01:21			ASSIST by WHITISH,HANNAH
FOUL by GUSTAFSON,MEGAN	01:21			
	01:21	70-63	H 7	GOOD! FT by CINCORE,JASMINE
SUB IN: STEWART,HANNAH	01:21			
SUB OUT: GUSTAFSON,MEGAN	01:21			
GOOD! LAYUP by STEWART,HANNAH [PNT]	00:59	70-65	H 5	
ASSIST by DOYLE,KATHLEEN	00:59			
TIMEOUT 30SEC	00:55			
FOUL by DOYLE,KATHLEEN	00:44			
	00:44			MISSED FT by WHITISH,HANNAH
	00:44			REBOUND (DEADB) by TEAM
	00:44			MISSED FT by WHITISH,HANNAH
REBOUND (DEF) by COLEY,CHASE	00:44			
TIMEOUT 30SEC	00:43			
MISSED 3PTR by DOYLE,KATHLEEN	00:41			
REBOUND (OFF) by STEWART,HANNAH	00:41			
TURNOVER by STEWART,HANNAH	00:39			
	00:39			TIMEOUT 30SEC
SUB IN: SANDERS,ZION	00:39			
SUB OUT: DOYLE,KATHLEEN	00:39			
FOUL by OLLINGER,AMANDA	00:38			
	00:38			MISSED FT by ELIELY,NICEA
	00:38			REBOUND (DEADB) by TEAM
	00:38			MISSED FT by ELIELY,NICEA
REBOUND (DEF) by OLLINGER,AMANDA	00:38			
SUB IN: DOYLE,KATHLEEN	00:38			

VISITORS: Iowa	Time	Score	Margin	HOME: Nebraska
SUB OUT: SANDERS,ZION	00:38			
MISSED LAYUP by DOYLE,KATHLEEN	00:28			
	00:28			REBOUND (DEF) by KISSINGER,TAYLOR
FOUL by OLLINGER,AMANDA	00:25			
	00:25			MISSED FT by KISSINGER,TAYLOR
	00:25			REBOUND (DEADB) by TEAM
	00:25	71-65	H 6	GOOD! FT by KISSINGER,TAYLOR
TIMEOUT TEAM	00:25			
SUB IN: MOHNS,CARLY	00:25			
SUB OUT: OLLINGER,AMANDA	00:25			
MISSED 3PTR by STEWART,HANNAH	00:18			
	00:18			REBOUND (DEF) by KISSINGER,TAYLOR
FOUL by COLEY,CHASE	00:14			
	00:14			MISSED FT by KISSINGER,TAYLOR
	00:14			REBOUND (DEADB) by TEAM
	00:14	72-65	H 7	GOOD! FT by KISSINGER,TAYLOR
MISSED 3PTR by SEVILLIAN,ALEXIS	00:11			
	00:11			BLOCK by WHITISH,HANNAH
	00:08			REBOUND (DEF) by KISSINGER,TAYLOR
FOUL by STEWART,HANNAH	00:02			
	00:02	73-65	H 8	GOOD! FT by KISSINGER,TAYLOR
	00:02	74-65	H 9	GOOD! FT by KISSINGER,TAYLOR
MISSED 3PTR by DOYLE,KATHLEEN	00:02			
	00:02			REBOUND (DEF) by SIMON,MADDIE

Iowa 65, Nebraska 74

Period 4-only	In Paint	Off T/O	2nd Chance	Fast Break	Bench	
IOWA	12	6	4	2	6	Score tied - 0 times
NEB	4	7	3	2	4	Lead changed - 0 times

Iowa vs Nebraska
1/16/2018; 7:06 p.m. at Pinnacle Bank Arena (Lincoln, Neb.)
Scoring/Runs Reference

Period 1

Iowa	VRun	Score	Margin	HRun	Nebraska
		0-1	1		ELIELY FT - 09:12
08:37 - GUSTAFSON JUMPER [P]	-	2-1	-1		
08:07 - DOYLE LAYUP [P]	4-0	4-1	-3		
07:35 - COLEY JUMPER	6-0	6-1	-5		
07:00 - GUSTAFSON LAYUP [P]	8-0	8-1	-7		
		8-4	-4		KISSINGER 3PTR - 05:40
		8-6	-2	5-0	CAIN LAYUP [P] - 04:32
		8-7	-1	6-0	CAIN FT - 03:57
		8-8	0	7-0	CAIN FT - 03:57
03:27 - GUSTAFSON LAYUP [P]	-	10-8	-2		
		10-9	-1		WHITISH FT - 03:13
		10-11	1	3-0	WHITISH JUMPER - 02:34
02:04 - DOYLE FT	-	11-11	0		
02:04 - DOYLE FT	2-0	12-11	-1		
01:26 - GUSTAFSON JUMPER [P]	4-0	14-11	-3		
		14-13	-1		SIMON JUMPER - 00:54
		14-14	0	3-0	ELIELY FT - 00:30

Iowa vs Nebraska
1/16/2018; 7:06 p.m. at Pinnacle Bank Arena (Lincoln, Neb.)
Scoring/Runs Reference

Period 2

Iowa	VRun	Score	Margin	HRun	Nebraska
09:45 - GUSTAFSON FT	-	15-14	-1		
09:45 - GUSTAFSON FT	NaN-0	16-14	-2		
		16-17	1		SIMON 3PTR - 09:27
09:11 - OLLINGER JUMPER [P]	-	18-17	-1		
		18-19	1		WHITISH LAYUP [P] - 08:54
08:43 - GUSTAFSON JUMPER [P]	-	20-19	-1		
		20-21	1		WHITISH LAYUP [P] - 08:21
07:29 - MOHNS JUMPER	-	22-21	-1		
06:54 - STEWART LAYUP [P]	4-0	24-21	-3		
		24-24	0		WOOD 3PTR - 05:23
		24-27	3	6-0	WHITISH 3PTR - 04:39
		24-29	5	8-0	WHITISH LAYUP [P] - 03:27
02:31 - OLLINGER JUMPER [P]	-	26-29	3		
		26-31	5		MORTON LAYUP [P] - 02:03
		26-34	8	5-0	KISSINGER 3PTR - 01:31
01:19 - GUSTAFSON JUMPER [P]	-	28-34	6		
		28-37	9		MORTON 3PTR - 01:08

Iowa vs Nebraska
1/16/2018; 7:06 p.m. at Pinnacle Bank Arena (Lincoln, Neb.)
Scoring/Runs Reference

Period 3

Iowa	VRun	Score	Margin	HRun	Nebraska
		28-39	11		ELIELY LAYUP [P] - 09:34
		28-41	13	NaN-0	SIMON JUMPER [P] - 08:18
08:10 - GUSTAFSON LAYUP [P] [F]	-	30-41	11		
06:55 - GUSTAFSON JUMPER [P]	4-0	32-41	9		
		32-43	11		WHITISH JUMPER [P] - 06:40
		32-45	13	4-0	MORTON LAYUP [P] [F] - 05:52
		32-47	15	6-0	KISSINGER JUMPER [P] - 05:36
05:22 - COLEY JUMPER	-	34-47	13		
04:24 - OLLINGER LAYUP [P]	4-0	36-47	11		
03:52 - STEWART FT	5-0	37-47	10		
03:52 - STEWART FT	6-0	38-47	9		
03:23 - OLLINGER LAYUP [P] [F]	8-0	40-47	7		
02:37 - GUSTAFSON JUMPER [P]	10-0	42-47	5		
		42-48	6		SIMON FT - 01:57
		42-49	7	2-0	SIMON FT - 01:57
01:50 - GUSTAFSON FT	-	43-49	6		
		43-50	7		SIMON FT - 01:29
		43-51	8	2-0	SIMON FT - 01:29
01:01 - GUSTAFSON JUMPER [P]	-	45-51	6		
		45-53	8		SIMON LAYUP [P] - 00:30
00:03 - COLEY JUMPER [P]	-	47-53	6		

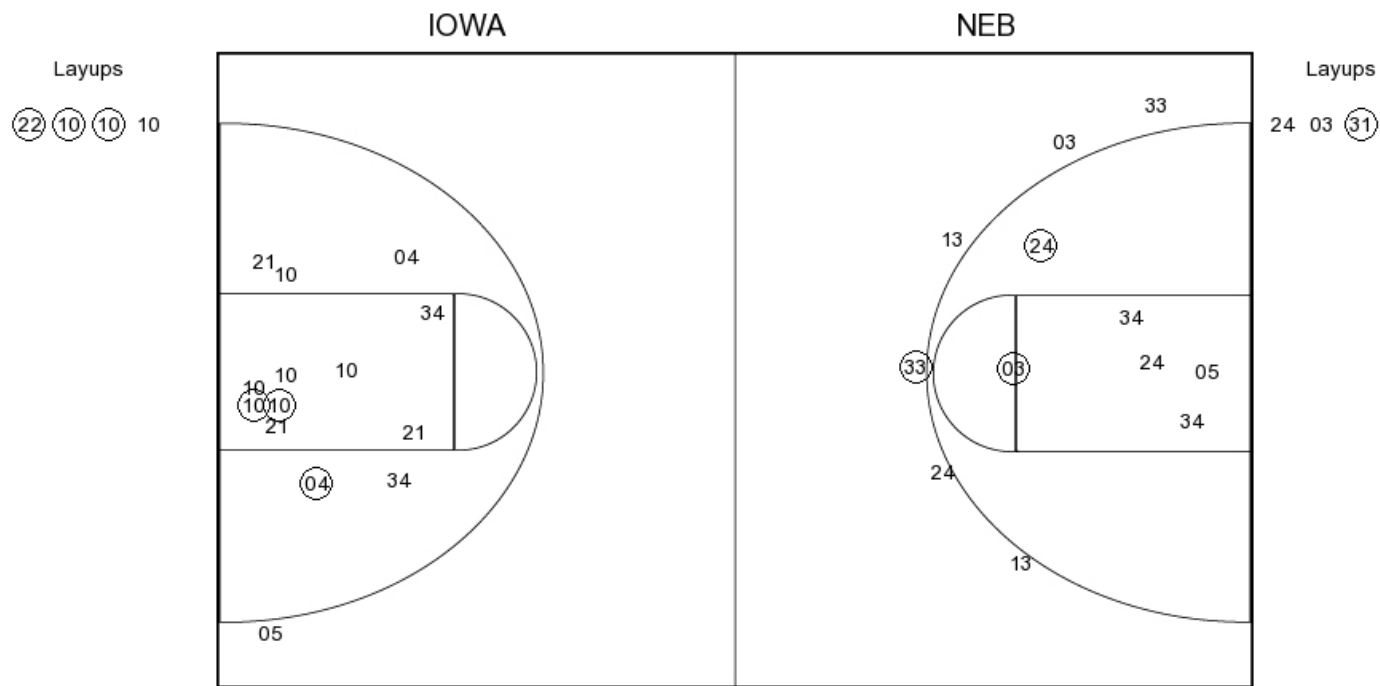
Iowa vs Nebraska
1/16/2018; 7:06 p.m. at Pinnacle Bank Arena (Lincoln, Neb.)
Scoring/Runs Reference

Period 4

Iowa	VRun	Score	Margin	HRun	Nebraska
08:56 - DOYLE FT	-	48-53	5		
		48-56	8		WHITISH 3PTR - 08:42
08:28 - GUSTAFSON LAYUP [P]	-	50-56	6		
07:21 - DOYLE FT	3-0	51-56	5		
06:24 - GUSTAFSON JUMPER	5-0	53-56	3		
		53-59	6		SIMON 3PTR - 05:50
		53-60	7	4-0	ELIELY FT - 05:10
		53-61	8	5-0	ELIELY FT - 05:10
		53-64	11	8-0	SIMON 3PTR - 04:44
04:31 - OLLINGER JUMPER [P]	-	55-64	9		
04:02 - OLLINGER LAYUP [P] [F]	4-0	57-64	7		
03:09 - COLEY FT	5-0	58-64	6		
03:09 - COLEY FT	6-0	59-64	5		
		59-66	7		CAIN LAYUP [P] - 02:11
02:02 - GUSTAFSON JUMPER [P]	-	61-66	5		
		61-67	6		WHITISH FT - 01:47
01:26 - DOYLE JUMPER [P]	-	63-67	4		
		63-69	6		CINCORE LAYUP [P] [F] - 01:21
		63-70	7	3-0	CINCORE FT - 01:21
00:59 - STEWART LAYUP [P]	-	65-70	5		
		65-71	6		KISSINGER FT - 00:25
		65-72	7	2-0	KISSINGER FT - 00:14
		65-73	8	3-0	KISSINGER FT - 00:02
		65-74	9	4-0	KISSINGER FT - 00:02

Iowa vs Nebraska
 OFFICIAL SHOT CHART
 1/16/2018 at Pinnacle Bank Arena (Lincoln, Neb.)

PERIOD 1



IOWA PERIOD 1

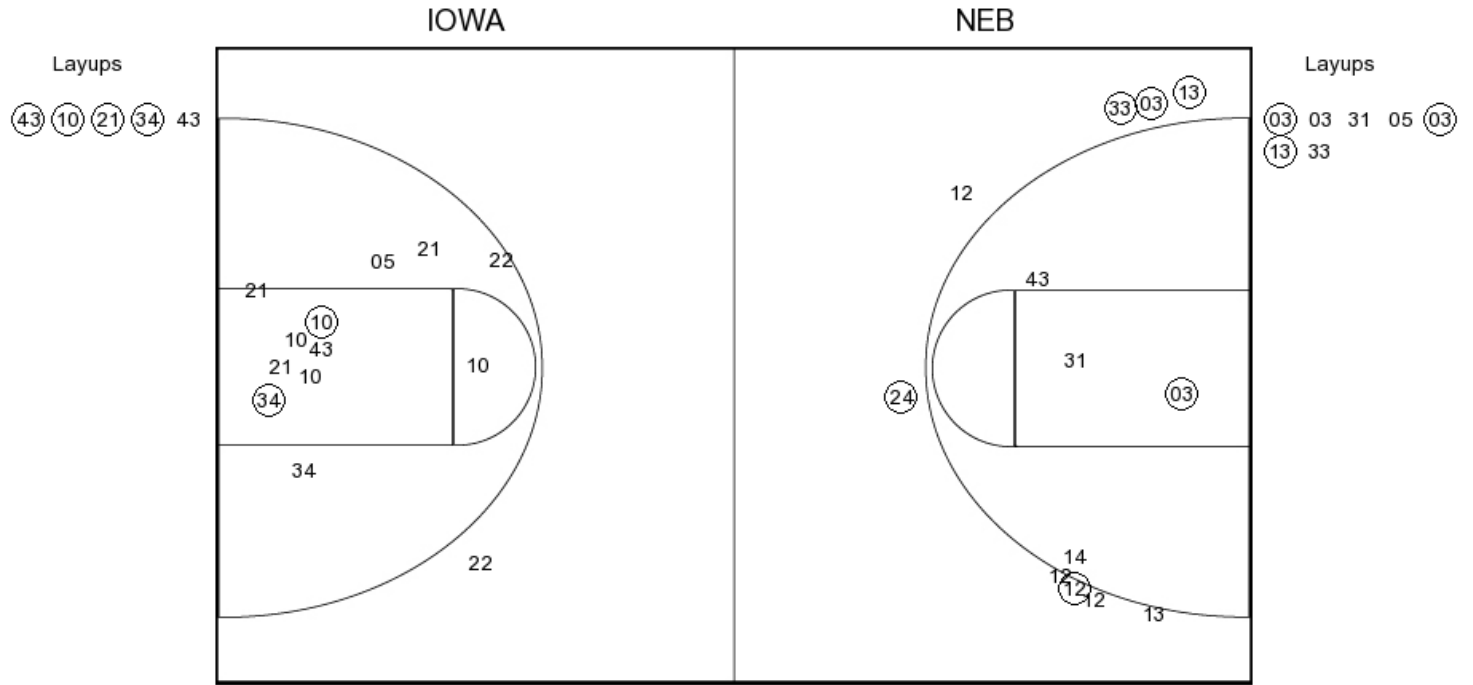
FG Made	12
FG Attempted	36
3PFG Made	0
3PFG Attempted	3

NEB PERIOD 1

FG Made	13
FG Attempted	35
3PFG Made	6
3PFG Attempted	15

Iowa vs Nebraska
 OFFICIAL SHOT CHART
 1/16/2018 at Pinnacle Bank Arena (Lincoln, Neb.)

PERIOD 2



IOWA PERIOD 2

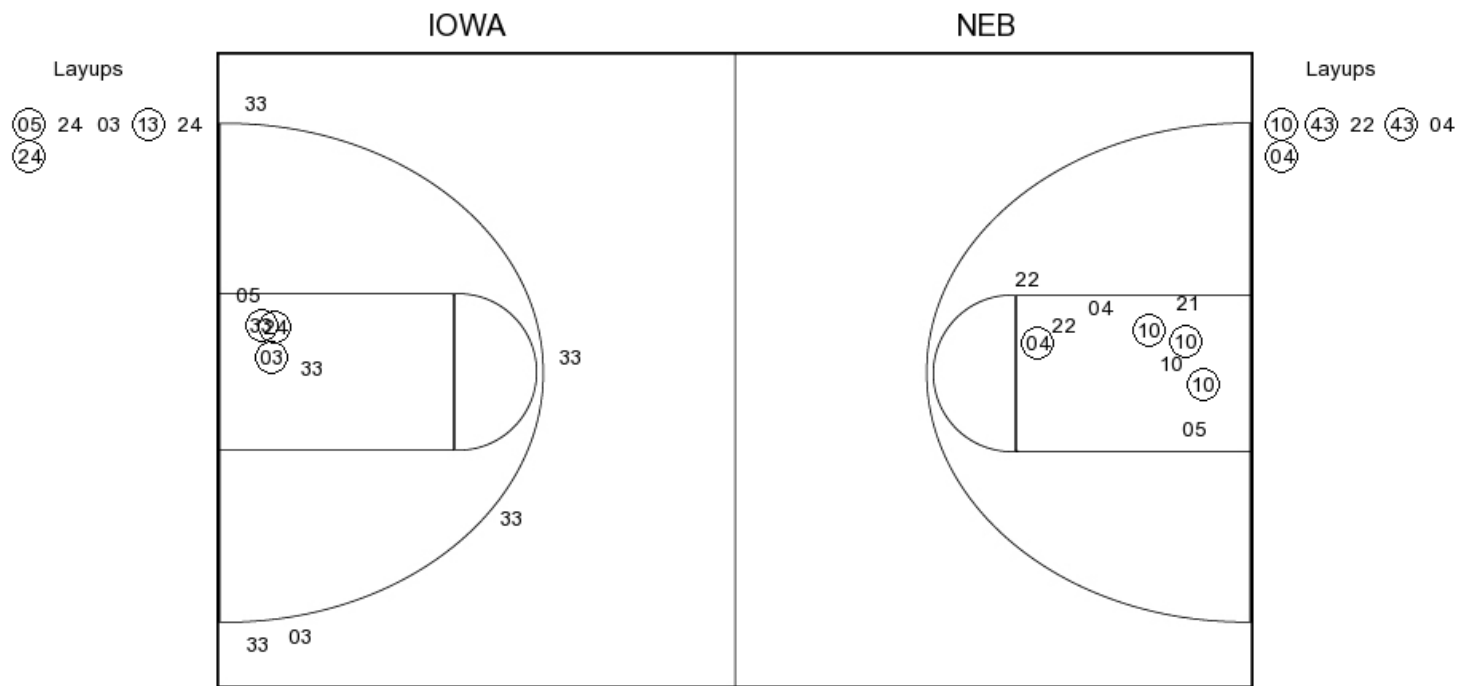
FG Made
 FG Attempted
 3PFG Made
 3PFG Attempted

NEB PERIOD 2

FG Made
 FG Attempted
 3PFG Made
 3PFG Attempted

Iowa vs Nebraska
 OFFICIAL SHOT CHART
 1/16/2018 at Pinnacle Bank Arena (Lincoln, Neb.)

PERIOD 3



IOWA PERIOD 3

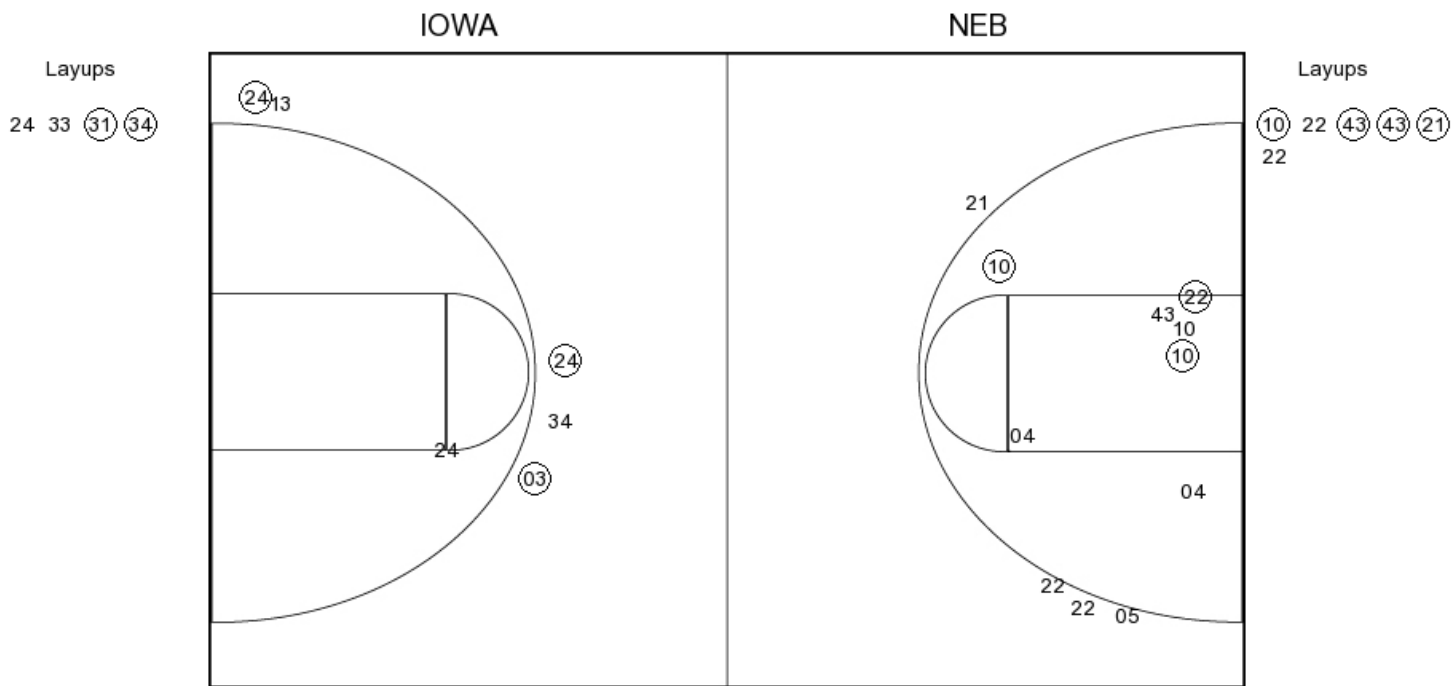
FG Made	15
FG Attempted	33
3PFG Made	0
3PFG Attempted	4

NEB PERIOD 3

FG Made	11
FG Attempted	28
3PFG Made	3
3PFG Attempted	10

Iowa vs Nebraska
 OFFICIAL SHOT CHART
 1/16/2018 at Pinnacle Bank Arena (Lincoln, Neb.)

PERIOD 4



IOWA PERIOD 4

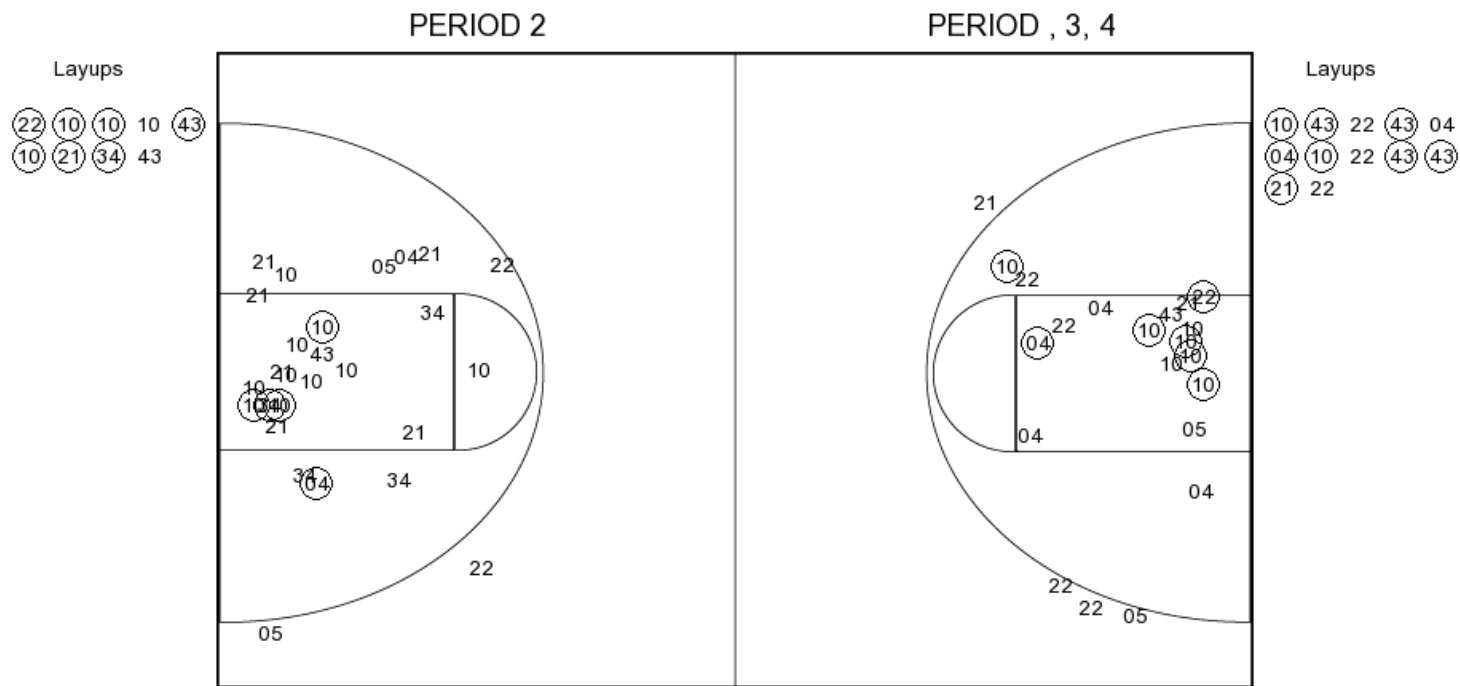
FG Made
 FG Attempted
 3PFG Made
 3PFG Attempted

NEB PERIOD 4

FG Made
 FG Attempted
 3PFG Made
 3PFG Attempted

Iowa vs Nebraska
 OFFICIAL SHOT CHART
 1/16/2018 at Pinnacle Bank Arena (Lincoln, Neb.)

Iowa



IOWA PERIOD 1

FG Made	12
FG Attempted	36
3PFG Made	0
3PFG Attempted	3

IOWA PERIOD 2

FG Made	
FG Attempted	
3PFG Made	
3PFG Attempted	

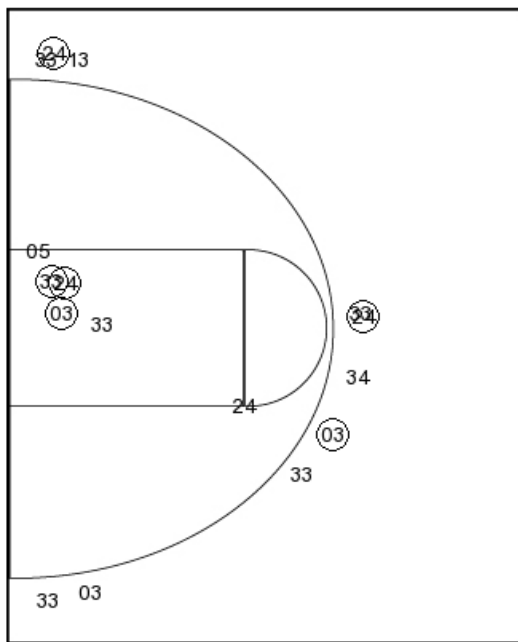
Iowa vs Nebraska
 OFFICIAL SHOT CHART
 1/16/2018 at Pinnacle Bank Arena (Lincoln, Neb.)

Nebraska

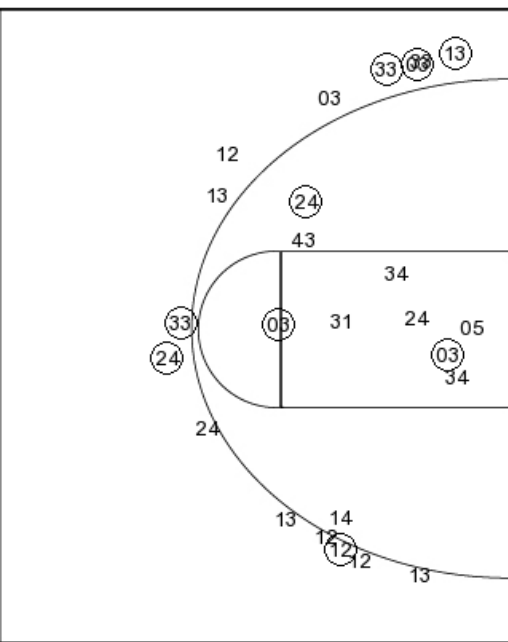
PERIOD , 3, 4

PERIOD 2

Layups
 (05) 24 03 (13) 24
 (24) 24 33 (31) (34)



Layups
 24 03 (31) (03) 03
 31 05 (03) (13) 33



NEB PERIOD 1

FG Made	13
FG Attempted	35
3PFG Made	6
3PFG Attempted	15

NEB PERIOD 2

FG Made	
FG Attempted	
3PFG Made	
3PFG Attempted	