

## FINAL SCORE



**Creighton Bluejays**

1-1

**64**



**Nebraska**

3-0

**49**

November 19, 2017 • Pinnacle Bank Arena (Lincoln, Neb.)

## FINAL STATISTICS

Official Basketball Box Score -- Game Totals -- Final Statistics  
 Creighton Bluejays vs Nebraska  
 11/19/2017 7:06 p.m. at Pinnacle Bank Arena (Lincoln, Neb.)



Creighton Bluejays 64 - 1-1

#	Player	*	Total			3-Ptr			Rebounds			PF	TP	A	TO	Blk	Stl	Min				
			FG	FGA	FG%	FG	FGA	FG%	FT	FTA	FT%								Off	Def	Tot	
02	MELLMAN,MYAH	*	1	3	33.3%	0	1	0.0%	0	0	0.0%	1	2	3	0	2	0	0	0	14		
05	AGNEW,JAYLYN	*	7	11	63.6%	6	9	66.7%	0	0	0.0%	2	7	9	2	20	0	0	3	1	35	
14	LAMBERTY,SYDNEY	*	3	9	33.3%	1	1	100.0%	0	0	0.0%	1	0	1	2	7	4	2	0	2	35	
40	GREENE,ALI	*	1	3	33.3%	0	0	0.0%	0	0	0.0%	4	1	5	2	2	0	2	0	0	16	
45	FABER,AUDREY	*	5	15	33.3%	2	6	33.3%	2	2	100.0%	0	7	7	1	14	8	2	0	0	34	
15	REMBAO,TATUM		3	5	60.0%	1	2	50.0%	0	0	0.0%	1	4	5	0	7	1	2	0	1	14	
22	KISSINGER,BROOKE		0	3	0.0%	0	2	0.0%	0	0	0.0%	1	0	1	2	0	1	1	0	0	13	
24	CARDA,TEMI		3	9	33.3%	1	6	16.7%	1	1	100.0%	0	3	3	3	8	1	0	0	0	28	
33	BROWN,KYLIE		2	4	50.0%	0	0	0.0%	0	0	0.0%	0	0	0	3	4	1	0	1	0	11	
TEAM												4	1	5	0		2					
TOTALS			25	62	40.3%	11	27	40.7%	3	3	100.0%	14	25	39	15	64	16	11	4	4		200

Deadball Rebounds: 0,0

FG %	1st Half: 13-36	36.1%	2nd Half: 12-26	46.2%	Game: 25-62	40.3%			
	1st Qtr: 7-17	41.2%	2nd Qtr: 6-19	31.6%	3rd Qtr: 6-16	37.5%	4th Qtr: 6-10	60.0%	
3FG %	1st Half: 4-12	33.3%	2nd Half: 7-15	46.7%	Game: 11-27	40.7%			
	1st Qtr: 1-6	16.7%	2nd Qtr: 3-6	50.0%	3rd Qtr: 5-12	41.7%	4th Qtr: 2-3	66.7%	
FT %	1st Half: 2-2	100.0%	2nd Half: 1-1	100.0%	Game: 3-3	100.0%			
	1st Qtr: 0-0	0%	2nd Qtr: 2-2	100.0%	3rd Qtr: 1-1	100.0%	4th Qtr: 0-0	0%	

Nebraska 49 - 3-0

#	Player	*	Total			3-Ptr			Rebounds			PF	TP	A	TO	Blk	Stl	Min				
			FG	FGA	FG%	FG	FGA	FG%	FT	FTA	FT%								Off	Def	Tot	
03	WHITISH,HANNAH	*	5	10	50.0%	2	3	66.7%	2	4	50.0%	0	3	3	1	14	1	3	0	1	30	
14	MITCHELL,GRACE	*	3	6	50.0%	0	0	0.0%	1	2	50.0%	2	3	5	0	7	0	0	0	0	20	
31	CAIN,KATE	*	3	7	42.9%	0	0	0.0%	0	0	0.0%	2	2	4	2	6	2	1	1	0	16	
33	KISSINGER,TAYLOR	*	2	9	22.2%	1	3	33.3%	0	0	0.0%	1	2	3	0	5	3	1	2	1	32	
34	CINCORE,JASMINE	*	1	7	14.3%	0	3	0.0%	1	2	50.0%	0	1	1	2	3	1	0	0	2	29	
05	ELIELY,NICEA		1	7	14.3%	0	1	0.0%	2	2	100.0%	2	3	5	1	4	0	2	3	1	15	
12	WOOD,EMILY		1	2	50.0%	1	1	100.0%	0	0	0.0%	0	3	3	0	3	3	0	0	3	21	
15	STALLWORTH,H,BRIA		0	4	0.0%	0	1	0.0%	0	0	0.0%	0	3	3	0	0	1	1	0	0	18	
43	BLACKBURN,RACHEL		1	1	100.0%	0	0	0.0%	1	2	50.0%	3	4	3	3	4	0	2	0	0	11	
50	WASHINGTON,DARRIEN		1	2	50.0%	0	0	0.0%	1	2	50.0%	3	1	4	2	3	0	3	0	1	9	
TEAM									4	0	4	0			0							
TOTALS			18	55	32.7%	4	12	33.3%	9	16	56.3%	15	23	38	11	49	11	13	6	9		201

Deadball Rebounds: 4,0

FG %	1st Half: 7-28	25.0%	2nd Half: 11-27	40.7%	Game: 18-55	32.7%			
	1st Qtr: 4-14	28.6%	2nd Qtr: 3-14	21.4%	3rd Qtr: 5-12	41.7%	4th Qtr: 6-15	40.0%	
3FG %	1st Half: 2-7	28.6%	2nd Half: 2-5	40.0%	Game: 4-12	33.3%			
	1st Qtr: 1-5	20.0%	2nd Qtr: 1-2	50.0%	3rd Qtr: 1-4	25.0%	4th Qtr: 1-1	100.0%	
FT %	1st Half: 2-8	25.0%	2nd Half: 7-8	87.5%	Game: 9-16	56.3%			
	1st Qtr: 1-2	50.0%	2nd Qtr: 1-6	16.7%	3rd Qtr: 6-6	100.0%	4th Qtr: 1-2	50.0%	

Officials: Lisa Mattingly, Barb Smith, Mark Resch  
 Technical Fouls: Creighton Bluejays- None. Nebraska- None.  
 Attendance: 4324

Score by periods	1st	2nd	3rd	4th	Total	In	Off	2nd	Fast		
					Points	Paint	T/O	Chance	Break	Bench	
Creighton Bluejays	15	17	18	14	64	CU	20	12	13	0	19
Nebraska	10	8	17	14	49	NEB	20	16	13	4	14

Last FG - CU 4th-02:04, NEB 4th-00:27.  
 Largest lead - Creighton Bluejays by 19 4th-04:27; Nebraska by CU led for 37:03. NEB led for 0:00. Game was tied for 2:57.  
 Score tied - 2 times; Lead changed - 0 times

Official Basketball Box Score -- Game Totals -- First Half Statistics  
 Creighton Bluejays vs Nebraska  
 11/19/2017 7:06 p.m. at Pinnacle Bank Arena (Lincoln, Neb.)



Creighton Bluejays 32 • 1-1

##	Player	Total FG-FGA	3-Ptr FG-FGA	FT-FTA	Rebounds			PF	TP	A	TO	Blk	Stl	Min
					Off	Def	Tot							
02	MELLMAN,MYAH *	0-1	0-0	0-0	0	1	1	0	0	0	0	0	0	8
05	AGNEW,JAYLYN *	4-7	3-5	0-0	1	6	7	1	11	0	0	0	0	18
14	LAMBERTY,SYDNEY *	2-6	0-0	0-0	0	0	0	2	4	2	0	0	1	18
40	GREENE,ALI *	1-2	0-0	0-0	3	0	3	2	2	0	1	0	0	11
45	FABER,AUDREY *	3-9	1-3	2-2	0	6	6	0	9	5	0	0	0	17
15	REMBAO,T ATUM	0-1	0-1	0-0	0	1	1	0	0	1	1	0	1	4
22	KISSINGER,BROOKE	0-1	0-0	0-0	1	0	1	1	0	1	1	0	0	7
24	CARDA,TEMI	1-5	0-3	0-0	0	2	2	1	2	0	0	0	0	11
33	BROWN,KYLIE	2-4	0-0	0-0	0	0	0	1	4	0	0	0	0	6
TEAM					3	0	3	0		0				
Totals		13-36	4-12	2-2	8	16	24	8	32	9	3	0	2	100

FG %	1st Qtr	7-17	41.2%	2nd Qtr	6-19	31.6%	Half:	13-36	36.1%
3FG %	1st Qtr	1-6	16.7%	2nd Qtr	3-6	50.0%	Half:	4-12	33.3%
FT %	1st Qtr	0-0	0%	2nd Qtr	2-2	100.0%	Half:	2-2	100.0%

Nebraska 18 • 3-0

##	Player	Total FG-FGA	3-Ptr FG-FGA	FT-FTA	Rebounds			PF	TP	A	TO	Blk	Stl	Min
					Off	Def	Tot							
03	WHITISH,HANNAH *	1-3	0-1	0-2	0	3	3	1	2	0	2	0	0	13
14	MITCHELL,GRACE *	2-4	0-0	0-0	1	2	3	0	4	0	0	0	0	11
31	CAIN,KATE *	0-2	0-0	0-0	2	1	3	2	0	2	1	1	0	8
33	KISSINGER,TAYLOR *	1-5	1-2	0-0	0	1	1	0	3	1	1	1	0	15
34	CINCORE,JASMINE *	1-3	0-2	1-2	0	1	1	1	3	0	0	0	0	15
05	ELIELY,NICEA	1-6	0-1	0-0	1	1	2	1	2	0	2	3	1	8
12	WOOD,EMILY	1-2	1-1	0-0	0	1	1	0	3	0	0	0	1	8
15	STALLWORTH,BRIA	0-2	0-0	0-0	0	2	2	0	0	1	0	0	0	11
43	BLACKBURN,RACHEL	0-0	0-0	0-2	0	2	2	1	0	0	2	0	0	5
50	WASHINGTON,DARRIEN	0-1	0-0	1-2	3	1	4	1	1	0	1	0	1	6
TEAM					1	0	1	0		0				
Totals		7-28	2-7	2-8	8	15	23	7	18	4	9	5	3	100

FG %	1st Qtr	4-14	28.6%	2nd Qtr	3-14	21.4%	Half:	7-28	25.0%
3FG %	1st Qtr	1-5	20.0%	2nd Qtr	1-2	50.0%	Half:	2-7	28.6%
FT %	1st Qtr	1-2	50.0%	2nd Qtr	1-6	16.7%	Half:	2-8	25.0%

Officials: Lisa Mattingly, Barb Smith, Mark Resch  
 Technical Fouls: Creighton Bluejays- None. Nebraska- None.

Score by periods	1st	2nd	3rd	4th	Total Points	In Paint	Off T/O	2nd Chance	Fast Break	Bench
Creighton Bluejays	15	17	18	14	64 CU	12	10	5	0	6
Nebraska	10	8	17	14	49	4	6	3	2	6

Last FG - CU 2nd-00:11, NEB 2nd-03:36.  
 CU led for 17:03. NEB led for 0:00. Game was tied for 2:57.

Score tied - 2 times  
 Lead changed - 0 times

**Creighton Bluejays vs Nebraska**  
**11/19/2017; 7:06 p.m. at Pinnacle Bank Arena (Lincoln, Neb.)**  
**Period 1 Play-By-Play**



VISITORS: Creighton Bluejays	Time	Score	Margin	HOME: Nebraska
	09:35			MISSED JUMPER by MITCHELL,GRACE
REBOUND (DEF) by MELLMAN,MYAH	09:35			
MISSED 3PTR by AGNEW,JAYLYN	09:19			
REBOUND (OFF) by GREENE,ALI	09:19			
GOOD! JUMPER by GREENE,ALI	09:07	0-2	V 2	
ASSIST by FABER,AUDREY	09:07			
	08:44	2-2	T	GOOD! JUMPER by MITCHELL,GRACE [PNT]
	08:44			ASSIST by CAIN,KATE
MISSED 3PTR by FABER,AUDREY	08:27			
REBOUND (OFF) by GREENE,ALI	08:27			
MISSED JUMPER by MELLMAN,MYAH	08:14			
	08:14			BLOCK by KISSINGER,TAYLOR
REBOUND (OFF) by TEAM	08:12			
	08:12			SUB IN: WASHINGTON,DARRIEN
MISSED 3PTR by FABER,AUDREY	08:07			
	08:07			REBOUND (DEF) by CINCORE,JASMINE
	07:49			MISSED 3PTR by WHITISH,HANNAH
	07:49			REBOUND (OFF) by WASHINGTON,DARRIEN
	07:31			MISSED 3PTR by CINCORE,JASMINE
REBOUND (DEF) by FABER,AUDREY	07:31			
GOOD! JUMPER by LAMBERTY,SYDNEY [PNT]	07:02	2-4	V 2	
FOUL by GREENE,ALI	06:54			
SUB IN: BROWN,KYLIE	06:54			
SUB IN: KISSINGER,BROOKE	06:54			
SUB OUT: MELLMAN,MYAH	06:54			
SUB OUT: GREENE,ALI	06:54			
	06:51			MISSED 3PTR by CINCORE,JASMINE
REBOUND (DEF) by AGNEW,JAYLYN	06:51			
TURNOVER by KISSINGER,BROOKE	06:41			
	06:40			STEAL by WASHINGTON,DARRIEN
	06:25	4-4	T	GOOD! JUMPER by WHITISH,HANNAH
GOOD! JUMPER by BROWN,KYLIE	06:03	4-6	V 2	
ASSIST by FABER,AUDREY	06:03			
	05:50			MISSED JUMPER by MITCHELL,GRACE
REBOUND (DEF) by AGNEW,JAYLYN	05:50			
GOOD! JUMPER by FABER,AUDREY [PNT]	05:39	4-8	V 4	
	05:29			MISSED JUMPER by KISSINGER,TAYLOR
REBOUND (DEF) by AGNEW,JAYLYN	05:29			
GOOD! JUMPER by BROWN,KYLIE	05:11	4-10	V 6	
ASSIST by KISSINGER,BROOKE	05:11			
	04:59			TURNOVER by WHITISH,HANNAH
STEAL by LAMBERTY,SYDNEY	04:58			
GOOD! 3PTR by AGNEW,JAYLYN	04:43	4-13	V 9	
ASSIST by FABER,AUDREY	04:43			
	04:38			TIMEOUT TEAM
SUB IN: REMBAO,TATUM	04:38			
SUB IN: CARDA,TEMI	04:38			
SUB OUT: AGNEW,JAYLYN	04:38			
SUB OUT: LAMBERTY,SYDNEY	04:38			
	04:38			SUB IN: STALLWORTH,BRIA
	04:38			SUB IN: BLACKBURN,RACHEL
	04:38			SUB IN: ELIELY,NICEA
	04:38			SUB IN: WOOD,EMILY
	04:38			SUB OUT: WHITISH,HANNAH
	04:38			SUB OUT: MITCHELL,GRACE
	04:38			SUB OUT: KISSINGER,TAYLOR
	04:38			SUB OUT: WASHINGTON,DARRIEN
	04:29			MISSED JUMPER by ELIELY,NICEA
REBOUND (DEF) by CARDA,TEMI	04:29			
GOOD! LAYUP by CARDA,TEMI [PNT]	04:20	4-15	V 11	
ASSIST by REMBAO,TATUM	04:20			
	04:07			MISSED JUMPER by STALLWORTH,BRIA
REBOUND (DEF) by FABER,AUDREY	04:07			
MISSED 3PTR by REMBAO,TATUM	03:44			
REBOUND (OFF) by KISSINGER,BROOKE	03:44			
SUB IN: MELLMAN,MYAH	03:40			
SUB IN: GREENE,ALI	03:40			
SUB OUT: BROWN,KYLIE	03:40			
SUB OUT: KISSINGER,BROOKE	03:40			

<b>VISITORS: Creighton Bluejays</b>	<b>Time</b>	<b>Score</b>	<b>Margin</b>	<b>HOME: Nebraska</b>
TURNOVER by REMBAO,TATUM	03:32			
	03:32			STEAL by WOOD,EMILY
SUB IN: LAMBERTY,SYDNEY	03:32			
SUB OUT: REMBAO,TATUM	03:32			
FOUL by LAMBERTY,SYDNEY	03:02			
	03:02	5-15	V 10	GOOD! FT by CINCORE,JASMINE
	03:02			MISSED FT by CINCORE,JASMINE
REBOUND (DEF) by AGNEW,JAYLYN	03:02			
SUB IN: AGNEW,JAYLYN	03:02			
SUB OUT: FABER,AUDREY	03:02			
MISSED JUMPER by LAMBERTY,SYDNEY	02:51			
	02:51			BLOCK by ELIELY,NICEA
	02:50			REBOUND (DEF) by ELIELY,NICEA
	02:47	7-15	V 8	GOOD! LAYUP by ELIELY,NICEA [FB/PNT]
TURNOVER by GREENE,ALI	02:23			
	02:23			STEAL by ELIELY,NICEA
FOUL by LAMBERTY,SYDNEY	02:23			
	02:23			SUB IN: MITCHELL,GRACE
	02:23			SUB OUT: BLACKBURN,RACHEL
	02:23			SUB OUT: CINCORE,JASMINE
	02:19	10-15	V 5	GOOD! 3PTR by WOOD,EMILY
	01:51			FOUL by CAIN,KATE
	01:51			SUB IN: KISSINGER,TAYLOR
	01:51			SUB IN: WHITISH,HANNAH
	01:51			SUB OUT: STALLWORTH,BRIA
	01:51			SUB OUT: WOOD,EMILY
MISSED 3PTR by CARDA,TEMI	01:41			
REBOUND (OFF) by GREENE,ALI	01:41			
MISSED JUMPER by LAMBERTY,SYDNEY	01:22			
	01:22			BLOCK by CAIN,KATE
	01:21			REBOUND (DEF) by MITCHELL,GRACE
	01:02			MISSED 3PTR by ELIELY,NICEA
REBOUND (DEF) by AGNEW,JAYLYN	01:02			
	00:48			FOUL by ELIELY,NICEA
SUB IN: FABER,AUDREY	00:48			
SUB IN: REMBAO,TATUM	00:48			
SUB OUT: MELLMAN,MYAH	00:48			
SUB OUT: LAMBERTY,SYDNEY	00:48			
	00:48			SUB IN: WOOD,EMILY
	00:48			SUB OUT: ELIELY,NICEA
MISSED JUMPER by FABER,AUDREY	00:43			
	00:43			REBOUND (DEF) by KISSINGER,TAYLOR
	00:24			MISSED JUMPER by WOOD,EMILY
REBOUND (DEF) by FABER,AUDREY	00:24			
MISSED JUMPER by FABER,AUDREY	00:00			
REBOUND (OFF) by TEAM	00:00			

Creighton Bluejays 15, Nebraska 10

<b>Period 1-only</b>	<b>In Paint</b>	<b>Off T/O</b>	<b>2nd Chance</b>	<b>Fast Break</b>	<b>Bench</b>	
CU	6	3	2	0	6	Score tied - 0 times
NEB	4	6	0	2	5	Lead changed - 0 times

**Creighton Bluejays vs Nebraska**  
**11/19/2017; 7:06 p.m. at Pinnacle Bank Arena (Lincoln, Neb.)**  
**Period 2 Play-By-Play**



VISITORS: Creighton Bluejays	Time	Score	Margin	HOME: Nebraska
SUB IN: CARDA,TEMI	10:00			
SUB OUT: MELLMAN,MYAH	10:00			
	10:00			SUB IN: WOOD,EMILY
	10:00			SUB OUT: CINCORE,JASMINE
MISSED 3PTR by AGNEW,JAYLYN	09:51			
	09:51			REBOUND (DEF) by MITCHELL,GRACE
FOUL by AGNEW,JAYLYN	09:47			
	09:34			MISSED JUMPER by KISSINGER,TAYLOR
	09:34			REBOUND (OFF) by MITCHELL,GRACE
	09:20			MISSED JUMPER by WHITISH,HANNAH
	09:20			REBOUND (OFF) by TEAM
	09:09	12-15	V 3	GOOD! JUMPER by MITCHELL,GRACE
	09:09			ASSIST by CAIN,KATE
GOOD! JUMPER by FABER,AUDREY [PNT]	08:53	12-17	V 5	
	08:35			TURNOVER by KISSINGER,TAYLOR
	08:35			SUB IN: CINCORE,JASMINE
	08:35			SUB OUT: MITCHELL,GRACE
GOOD! LAYUP by AGNEW,JAYLYN [PNT]	08:15	12-19	V 7	
ASSIST by FABER,AUDREY	08:15			
	08:00			MISSED JUMPER by KISSINGER,TAYLOR
REBOUND (DEF) by FABER,AUDREY	08:00			
SUB IN: BROWN,KYLIE	07:58			
SUB OUT: GREENE,ALI	07:58			
	07:58			SUB IN: STALLWORTH,BRIA
	07:58			SUB IN: ELIELY,NICEA
	07:58			SUB OUT: WHITISH,HANNAH
	07:58			SUB OUT: WOOD,EMILY
MISSED JUMPER by BROWN,KYLIE	07:40			
	07:40			REBOUND (DEF) by CAIN,KATE
	07:22			MISSED JUMPER by ELIELY,NICEA
	07:22			REBOUND (OFF) by CAIN,KATE
	07:20			MISSED JUMPER by CAIN,KATE
	07:20			REBOUND (OFF) by CAIN,KATE
	07:18			MISSED JUMPER by CAIN,KATE
REBOUND (DEF) by FABER,AUDREY	07:18			
MISSED 3PTR by CARDA,TEMI	07:11			
	07:11			REBOUND (DEF) by STALLWORTH,BRIA
	07:02	15-19	V 4	GOOD! 3PTR by KISSINGER,TAYLOR
	07:02			ASSIST by STALLWORTH,BRIA
	06:29			FOUL by CAIN,KATE
SUB IN: KISSINGER,BROOKE	06:29			
SUB OUT: CARDA,TEMI	06:29			
	06:29			SUB IN: WASHINGTON,DARRIEN
	06:29			SUB OUT: CAIN,KATE
MISSED JUMPER by BROWN,KYLIE	06:16			
	06:16			REBOUND (DEF) by WASHINGTON,DARRIEN
	05:59			MISSED JUMPER by ELIELY,NICEA
	05:59			REBOUND (OFF) by WASHINGTON,DARRIEN
	05:56			MISSED JUMPER by WASHINGTON,DARRIEN
	05:56			REBOUND (OFF) by WASHINGTON,DARRIEN
FOUL by BROWN,KYLIE	05:52			
	05:52			MISSED FT by WASHINGTON,DARRIEN
	05:52			REBOUND (DEADB) by TEAM
	05:52	16-19	V 3	GOOD! FT by WASHINGTON,DARRIEN
GOOD! JUMPER by LAMBERTY,SYDNEY [PNT]	05:36	16-21	V 5	
ASSIST by FABER,AUDREY	05:36			
	05:23			MISSED 3PTR by KISSINGER,TAYLOR
	05:23			REBOUND (OFF) by ELIELY,NICEA
	05:06			FOUL by WASHINGTON,DARRIEN
	05:06			TURNOVER by WASHINGTON,DARRIEN
	05:06			SUB IN: WHITISH,HANNAH
	05:06			SUB OUT: ELIELY,NICEA
MISSED JUMPER by LAMBERTY,SYDNEY	04:57			
	04:57			REBOUND (DEF) by WHITISH,HANNAH
FOUL by KISSINGER,BROOKE	04:55			
	04:55			TIMEOUT TEAM
SUB IN: GREENE,ALI	04:55			
SUB OUT: BROWN,KYLIE	04:55			
	04:55			SUB IN: BLACKBURN,RACHEL

VISITORS: Creighton Bluejays	Time	Score	Margin	HOME: Nebraska
	04:55			SUB OUT: WASHINGTON,DARRIEN
	04:34			TURNOVER by BLACKBURN,RACHEL
MISSED JUMPER by FABER,AUDREY	04:17			
	04:17			REBOUND (DEF) by BLACKBURN,RACHEL
	04:06			FOUL by WHITISH,HANNAH
	04:06			TURNOVER by WHITISH,HANNAH
SUB IN: CARDA,TEMI	04:06			
SUB OUT: FABER,AUDREY	04:06			
MISSED JUMPER by KISSINGER,BROOKE	03:46			
	03:46			REBOUND (DEF) by WHITISH,HANNAH
	03:36	18-21	V 3	GOOD! JUMPER by CINCORE,JASMINE
	03:36			ASSIST by KISSINGER,TAYLOR
MISSED JUMPER by GREENE,ALI	03:05			
	03:05			REBOUND (DEF) by STALLWORTH,BRIA
FOUL by GREENE,ALI	02:54			
	02:54			MISSED FT by WHITISH,HANNAH
	02:54			REBOUND (DEADB) by TEAM
	02:54			MISSED FT by WHITISH,HANNAH
REBOUND (DEF) by FABER,AUDREY	02:54			
SUB IN: FABER,AUDREY	02:54			
SUB OUT: GREENE,ALI	02:54			
MISSED 3PTR by CARDA,TEMI	02:44			
	02:44			REBOUND (DEF) by BLACKBURN,RACHEL
	02:29			FOUL by BLACKBURN,RACHEL
	02:29			TURNOVER by BLACKBURN,RACHEL
SUB IN: MELLMAN,MYAH	02:29			
SUB OUT: KISSINGER,BROOKE	02:29			
	02:29			SUB IN: ELIELY,NICEA
	02:29			SUB OUT: KISSINGER,TAYLOR
	02:21			FOUL by CINCORE,JASMINE
GOOD! FT by FABER,AUDREY	02:21	18-22	V 4	
GOOD! FT by FABER,AUDREY	02:21	18-23	V 5	
	02:10			MISSED JUMPER by ELIELY,NICEA
REBOUND (DEF) by CARDA,TEMI	02:10			
MISSED JUMPER by CARDA,TEMI	02:02			
	02:02			REBOUND (DEF) by WHITISH,HANNAH
FOUL by CARDA,TEMI	01:51			
	01:51			MISSED FT by BLACKBURN,RACHEL
	01:51			REBOUND (DEADB) by TEAM
	01:51			MISSED FT by BLACKBURN,RACHEL
REBOUND (DEF) by REMBAO,TATUM	01:51			
SUB IN: REMBAO,TATUM	01:51			
SUB OUT: CARDA,TEMI	01:51			
	01:51			SUB IN: MITCHELL,GRACE
	01:51			SUB IN: WOOD,EMILY
	01:51			SUB OUT: CINCORE,JASMINE
	01:51			SUB OUT: WHITISH,HANNAH
MISSED JUMPER by FABER,AUDREY	01:40			
	01:40			BLOCK by ELIELY,NICEA
REBOUND (OFF) by TEAM	01:39			
	01:38			SUB IN: CAIN,KATE
	01:38			SUB OUT: BLACKBURN,RACHEL
GOOD! 3PTR by AGNEW,JAYLYN	01:37	18-26	V 8	
ASSIST by LAMBERTY,SYDNEY	01:37			
	01:21			TURNOVER by CAIN,KATE
GOOD! 3PTR by AGNEW,JAYLYN	01:16	18-29	V 11	
ASSIST by LAMBERTY,SYDNEY	01:16			
	00:52			TURNOVER by ELIELY,NICEA
STEAL by REMBAO,TATUM	00:50			
MISSED LAYUP by LAMBERTY,SYDNEY	00:48			
	00:48			BLOCK by ELIELY,NICEA
REBOUND (OFF) by AGNEW,JAYLYN	00:46			
MISSED JUMPER by AGNEW,JAYLYN	00:44			
	00:44			REBOUND (DEF) by WOOD,EMILY
SUB IN: CARDA,TEMI	00:43			
SUB OUT: MELLMAN,MYAH	00:43			
	00:43			SUB IN: CINCORE,JASMINE
	00:43			SUB OUT: CAIN,KATE
	00:22			MISSED JUMPER by STALLWORTH,BRIA
REBOUND (DEF) by AGNEW,JAYLYN	00:22			
GOOD! 3PTR by FABER,AUDREY	00:11	18-32	V 14	
	00:01			TURNOVER by ELIELY,NICEA

<b>Period 2-only</b>	<b>In Paint</b>	<b>Off T/O</b>	<b>2nd Chance</b>	<b>Fast Break</b>	<b>Bench</b>	
CU	6	7	3	0	0	Score tied - 0 times
NEB	0	0	3	0	1	Lead changed - 0 times



Official Basketball Box Score -- Game Totals -- Second Half Statistics  
 Creighton Bluejays vs Nebraska  
 11/19/2017 7:06 p.m. at Pinnacle Bank Arena (Lincoln, Neb.)



Creighton Bluejays 32 • 1-1

##	Player	*	Total		3-Ptr	Rebounds			PF	TP	A	TO	Blk	Stl	Min
			FG-FGA	FG-FGA	FT-FTA	Off	Def	Tot							
02	MELLMAN,MYAH	*	1-2	0-1	0-0	1	1	2	0	2	0	0	0	0	6
05	AGNEW,JAYLYN	*	3-4	3-4	0-0	1	1	2	1	9	0	0	3	1	17
14	LAMBERTY,SYDNEY	*	1-3	1-1	0-0	1	0	1	0	3	2	2	0	1	17
40	GREENE,ALI	*	0-1	0-0	0-0	1	1	2	0	0	0	1	0	0	5
45	FABER,AUDREY	*	2-6	1-3	0-0	0	1	1	1	5	3	2	0	0	17
15	REMBAO,TATUM		3-4	1-1	0-0	1	3	4	0	7	0	1	0	0	10
22	KISSINGER,BROOKE		0-2	0-2	0-0	0	0	0	1	0	0	0	0	0	6
24	CARDA,TEMI		2-4	1-3	1-1	0	1	1	2	6	1	0	0	0	17
33	BROWN,KYLIE		0-0	0-0	0-0	0	0	0	2	0	1	0	1	0	5
TEAM						1	1	2	0			2			
Totals			12-26	7-15	1-1	6	9	15	7	32	7	8	4	2	100

FG % 3rd Qtr 6-16 37.5% 4th Qtr 6-10 60.0% Half: 12-26 46.2%  
 3FG % 3rd Qtr 5-12 41.7% 4th Qtr 2-3 66.7% Half: 7-15 33.3%  
 FT % 3rd Qtr 1-1 100.0% 4th Qtr 0-0 0% Half: 1-1 100.0%

Nebraska 31 • 3-0

##	Player	*	Total		3-Ptr	Rebounds			PF	TP	A	TO	Blk	Stl	Min
			FG-FGA	FG-FGA	FT-FTA	Off	Def	Tot							
03	WHITISH,HANNAH	*	4-7	2-2	2-2	0	0	0	0	12	1	1	0	1	17
14	MITCHELL,GRACE	*	1-2	0-0	1-2	1	1	2	0	3	0	0	0	0	9
31	CAIN,KATE	*	3-5	0-0	0-0	0	1	1	0	6	0	0	0	0	8
33	KISSINGER,TAYLOR	*	1-4	0-1	0-0	1	1	2	0	2	2	0	1	1	17
34	CINCORE,JASMINE	*	0-4	0-1	0-0	0	0	0	1	0	1	0	0	2	14
05	ELIELY,NICEA		0-1	0-0	2-2	1	2	3	0	2	0	0	0	0	7
12	WOOD,EMILY		0-0	0-0	0-0	0	2	2	0	0	3	0	0	2	13
15	STALLWORTH,BRIA		0-2	0-1	0-0	0	1	1	0	0	0	1	0	0	7
43	BLACKBURN,RACHEL		1-1	0-0	2-2	1	0	1	2	4	0	0	0	0	6
50	WASHINGTON,DARRIEN		1-1	0-0	0-0	0	0	0	1	2	0	2	0	0	3
TEAM						3	0	3	0			0			
Totals			11-27	2-5	7-8	7	8	15	4	31	7	4	1	6	101

FG % 3rd Qtr 5-12 41.7% 4th Qtr 6-15 40.0% Half: 11-27 40.7%  
 3FG % 3rd Qtr 1-4 25.0% 4th Qtr 1-1 100.0% Half: 2-5 28.6%  
 FT % 3rd Qtr 6-6 100.0% 4th Qtr 1-2 50.0% Half: 7-8 87.5%

Officials: Lisa Mattingly, Barb Smith, Mark Resch  
 Technical Fouls: Creighton Bluejays- None. Nebraska- None.

Score by periods	1st	2nd	3rd	4th	Total	Rebounds	In Paint	Off T/O	2nd Chance	Fast Break	Bench
Creighton Bluejays	15	17	18	14	64	CU	8	2	8	0	13
Nebraska	10	8	17	14	49		16	10	2	2	8

Last FG - CU 4th-02:04, NEB 4th-00:27.  
 CU led for 20:00. NEB led for 0:00. Game was tied for 0:00.

Score tied - 0 times  
 Lead changed - 0 times

**Creighton Bluejays vs Nebraska**  
**11/19/2017; 7:06 p.m. at Pinnacle Bank Arena (Lincoln, Neb.)**  
**Period 3 Play-By-Play**



VISITORS: Creighton Bluejays	Time	Score	Margin	HOME: Nebraska
MISSED 3PTR by MELLMAN,MYAH	09:42			
REBOUND (OFF) by MELLMAN,MYAH	09:42			
	09:38			SUB IN: STALLWORTH,BRIA
	09:38			SUB OUT: MITCHELL,GRACE
GOOD! 3PTR by AGNEW,JAYLYN	09:35	18-35	V 17	
ASSIST by FABER,AUDREY	09:35			
	09:17			TURNOVER by STALLWORTH,BRIA
STEAL by LAMBERTY,SYDNEY	09:14			
MISSED 3PTR by AGNEW,JAYLYN	09:11			
	09:11			REBOUND (DEF) by KISSINGER,TAYLOR
	09:03	20-35	V 15	GOOD! LAYUP by WHITISH,HANNAH [FB/PNT]
	09:03			ASSIST by KISSINGER,TAYLOR
MISSED JUMPER by LAMBERTY,SYDNEY	08:37			
	08:37			REBOUND (DEF) by STALLWORTH,BRIA
	08:26			MISSED 3PTR by KISSINGER,TAYLOR
REBOUND (DEF) by GREENE,ALI	08:26			
TURNOVER by TEAM	07:51			
SUB IN: CARDA,TEMI	07:51			
SUB OUT: MELLMAN,MYAH	07:51			
	07:35	22-35	V 13	GOOD! JUMPER by CAIN,KATE [PNT]
	07:35			ASSIST by CINCORE,JASMINE
MISSED 3PTR by CARDA,TEMI	07:05			
REBOUND (OFF) by AGNEW,JAYLYN	07:05			
GOOD! 3PTR by AGNEW,JAYLYN	06:51	22-38	V 16	
ASSIST by FABER,AUDREY	06:51			
	06:21	24-38	V 14	GOOD! JUMPER by CAIN,KATE
SUB IN: BROWN,KYLIE	06:09			
SUB OUT: GREENE,ALI	06:09			
	06:09			SUB IN: ELIELY,NICEA
	06:09			SUB IN: BLACKBURN,RACHEL
	06:09			SUB OUT: STALLWORTH,BRIA
	06:09			SUB OUT: CAIN,KATE
MISSED 3PTR by FABER,AUDREY	05:50			
	05:50			REBOUND (DEF) by ELIELY,NICEA
	05:32			MISSED JUMPER by KISSINGER,TAYLOR
	05:32			REBOUND (OFF) by ELIELY,NICEA
	05:29			MISSED 3PTR by CINCORE,JASMINE
REBOUND (DEF) by TEAM	05:29			
SUB IN: KISSINGER,BROOKE	05:26			
SUB IN: REMBAO,TATUM	05:26			
SUB OUT: LAMBERTY,SYDNEY	05:26			
SUB OUT: FABER,AUDREY	05:26			
GOOD! 3PTR by REMBAO,TATUM	05:06	24-41	V 17	
ASSIST by BROWN,KYLIE	05:06			
FOUL by BROWN,KYLIE	04:56			
	04:56			TIMEOUT TEAM
	04:56	25-41	V 16	GOOD! FT by ELIELY,NICEA
	04:56	26-41	V 15	GOOD! FT by ELIELY,NICEA
	04:56			SUB IN: WOOD,EMILY
	04:56			SUB IN: MITCHELL,GRACE
	04:56			SUB IN: STALLWORTH,BRIA
	04:56			SUB OUT: WHITISH,HANNAH
	04:56			SUB OUT: KISSINGER,TAYLOR
	04:56			SUB OUT: CINCORE,JASMINE
MISSED 3PTR by KISSINGER,BROOKE	04:37			
	04:37			REBOUND (DEF) by ELIELY,NICEA
	04:10			MISSED 3PTR by STALLWORTH,BRIA
REBOUND (DEF) by REMBAO,TATUM	04:10			
MISSED JUMPER by REMBAO,TATUM	03:48			
	03:48			REBOUND (DEF) by WOOD,EMILY
	03:34			MISSED JUMPER by ELIELY,NICEA
BLOCK by BROWN,KYLIE	03:34			
	03:32			REBOUND (OFF) by BLACKBURN,RACHEL
	03:24			MISSED JUMPER by STALLWORTH,BRIA
REBOUND (DEF) by CARDA,TEMI	03:24			
GOOD! LAYUP by CARDA,TEMI [PNT]	03:14	26-43	V 17	
	03:14			FOUL by BLACKBURN,RACHEL
GOOD! FT by CARDA,TEMI	03:14	26-44	V 18	
SUB IN: FABER,AUDREY	03:14			

VISITORS: Creighton Bluejays	Time	Score	Margin	HOME: Nebraska
SUB IN: LAMBERTY,SYDNEY	03:14			
SUB OUT: AGNEW,JAYLYN	03:14			
SUB OUT: REMBAO,TATUM	03:14			
	03:14			SUB IN: CINCORE,JASMINE
	03:14			SUB IN: KISSINGER,TAYLOR
	03:14			SUB IN: WHITISH,HANNAH
	03:14			SUB OUT: ELIELY,NICEA
	03:14			SUB OUT: MITCHELL,GRACE
	03:14			SUB OUT: STALLWORTH,BRIA
	02:59	28-44	V 16	GOOD! JUMPER by BLACKBURN,RACHEL (PNT)
	02:59			ASSIST by WOOD,EMILY
MISSED 3PTR by FABER,AUDREY	02:40			
REBOUND (OFF) by LAMBERTY,SYDNEY	02:40			
TURNOVER by LAMBERTY,SYDNEY	02:34			
	02:33			STEAL by WOOD,EMILY
FOUL by BROWN,KYLIE	02:13			
	02:13	29-44	V 15	GOOD! FT by BLACKBURN,RACHEL
	02:13	30-44	V 14	GOOD! FT by BLACKBURN,RACHEL
SUB IN: GREENE,ALI	02:13			
SUB OUT: BROWN,KYLIE	02:13			
	02:13			SUB IN: WASHINGTON,DARRIEN
	02:13			SUB OUT: BLACKBURN,RACHEL
MISSED 3PTR by KISSINGER,BROOKE	01:57			
REBOUND (OFF) by GREENE,ALI	01:57			
MISSED JUMPER by GREENE,ALI	01:52			
	01:52			BLOCK by KISSINGER,TAYLOR
REBOUND (OFF) by TEAM	01:52			
TURNOVER by GREENE,ALI	01:41			
	01:40			STEAL by KISSINGER,TAYLOR
	01:23	33-44	V 11	GOOD! 3PTR by WHITISH,HANNAH
	01:23			ASSIST by WOOD,EMILY
GOOD! 3PTR by FABER,AUDREY	01:06	33-47	V 14	
ASSIST by LAMBERTY,SYDNEY	01:06			
FOUL by KISSINGER,BROOKE	00:38			
	00:38	34-47	V 13	GOOD! FT by WHITISH,HANNAH
	00:38	35-47	V 12	GOOD! FT by WHITISH,HANNAH
SUB IN: AGNEW,JAYLYN	00:38			
SUB IN: MELLMAN,MYAH	00:38			
SUB OUT: KISSINGER,BROOKE	00:38			
SUB OUT: GREENE,ALI	00:38			
	00:38			SUB IN: ELIELY,NICEA
	00:38			SUB OUT: KISSINGER,TAYLOR
GOOD! 3PTR by LAMBERTY,SYDNEY	00:14	35-50	V 15	
ASSIST by FABER,AUDREY	00:14			
	00:00			MISSED JUMPER by CINCORE,JASMINE
	00:00			REBOUND (OFF) by TEAM

Creighton Bluejays 64, Nebraska 49

Period 3-only	In Paint	Off T/O	2nd Chance	Fast Break	Bench	
CU	2	0	6	0	6	Score tied - 0 times
NEB	6	7	0	2	6	Lead changed - 0 times

**Creighton Bluejays vs Nebraska**  
**11/19/2017; 7:06 p.m. at Pinnacle Bank Arena (Lincoln, Neb.)**  
**Period 4 Play-By-Play**



VISITORS: Creighton Bluejays	Time	Score	Margin	HOME: Nebraska
SUB IN: CARDA,TEMI	10:00			
SUB OUT: GREENE,ALI	10:00			
	10:00			SUB IN: WOOD,EMILY
	10:00			SUB IN: ELIELY,NICEA
	10:00			SUB OUT: MITCHELL,GRACE
	10:00			SUB OUT: KISSINGER,TAYLOR
FOUL by CARDA,TEMI	09:47			
	09:34			MISSED JUMPER by WHITISH,HANNAH
BLOCK by AGNEW,JAYLYN	09:34			
REBOUND (DEF) by MELLMAN,MYAH	09:32			
GOOD! 3PTR by AGNEW,JAYLYN	09:17	35-53	V 18	
ASSIST by CARDA,TEMI	09:17			
	09:00	37-53	V 16	GOOD! JUMPER by CAIN,KATE [PNT]
	09:00			ASSIST by WHITISH,HANNAH
GOOD! JUMPER by MELLMAN,MYAH	08:48	37-55	V 18	
	08:34			MISSED JUMPER by CINCORE,JASMINE
BLOCK by AGNEW,JAYLYN	08:33			
	08:32			REBOUND (OFF) by TEAM
	08:31			SUB IN: KISSINGER,TAYLOR
	08:31			SUB IN: STALLWORTH,BRIA
	08:31			SUB IN: MITCHELL,GRACE
	08:31			SUB OUT: WOOD,EMILY
	08:31			SUB OUT: ELIELY,NICEA
	08:31			SUB OUT: CINCORE,JASMINE
	08:18			MISSED JUMPER by CAIN,KATE
	08:18			REBOUND (OFF) by KISSINGER,TAYLOR
	08:16	39-55	V 16	GOOD! JUMPER by KISSINGER,TAYLOR [PNT]
MISSED JUMPER by LAMBERTY,SYDNEY	07:58			
	07:58			REBOUND (DEF) by CAIN,KATE
FOUL by CARDA,TEMI	07:56			
SUB IN: REMBAO,TATUM	07:56			
SUB OUT: MELLMAN,MYAH	07:56			
	07:38			MISSED JUMPER by CAIN,KATE
REBOUND (DEF) by REMBAO,TATUM	07:38			
MISSED JUMPER by FABER,AUDREY	07:08			
REBOUND (OFF) by REMBAO,TATUM	07:08			
GOOD! JUMPER by REMBAO,TATUM [PNT]	07:04	39-57	V 18	
	06:50			TIMEOUT TEAM
	06:45	42-57	V 15	GOOD! 3PTR by WHITISH,HANNAH
	06:45			ASSIST by KISSINGER,TAYLOR
	06:21			FOUL by BLACKBURN,RACHEL
	06:21			SUB IN: BLACKBURN,RACHEL
	06:21			SUB IN: WOOD,EMILY
	06:21			SUB OUT: CAIN,KATE
	06:21			SUB OUT: STALLWORTH,BRIA
MISSED JUMPER by FABER,AUDREY	05:57			
	05:57			REBOUND (DEF) by MITCHELL,GRACE
	05:40			MISSED JUMPER by KISSINGER,TAYLOR
	05:40			REBOUND (OFF) by MITCHELL,GRACE
	05:37			MISSED JUMPER by MITCHELL,GRACE
REBOUND (DEF) by FABER,AUDREY	05:37			
GOOD! JUMPER by FABER,AUDREY [PNT]	05:17	42-59	V 17	
	05:02			MISSED JUMPER by WHITISH,HANNAH
REBOUND (DEF) by REMBAO,TATUM	05:02			
TURNOVER by REMBAO,TATUM	04:55			
	04:54			STEAL by WHITISH,HANNAH
	04:51			MISSED JUMPER by WHITISH,HANNAH
BLOCK by AGNEW,JAYLYN	04:51			
	04:51			REBOUND (OFF) by TEAM
	04:51			TIMEOUT TEAM
	04:51			SUB IN: WASHINGTON,DARRIEN
	04:51			SUB IN: CINCORE,JASMINE
	04:51			SUB OUT: BLACKBURN,RACHEL
	04:51			SUB OUT: MITCHELL,GRACE
	04:44			TURNOVER by WASHINGTON,DARRIEN
STEAL by AGNEW,JAYLYN	04:43			
GOOD! LAYUP by REMBAO,TATUM [PNT]	04:27	42-61	V 19	
	04:13			FOUL by WASHINGTON,DARRIEN
	04:13			TURNOVER by WASHINGTON,DARRIEN

VISITORS: Creighton Bluejays	Time	Score	Margin	HOME: Nebraska
MISSED 3PTR by CARDA,TEMI	03:49			
	03:49			REBOUND (DEF) by WOOD,EMILY
	03:42	44-61	V 17	GOOD! JUMPER by WASHINGTON,DARRIEN [PNT]
	03:42			ASSIST by WOOD,EMILY
TURNOVER by FABER,AUDREY	03:23			
	03:23			STEAL by CINCORE,JASMINE
	03:23			SUB IN: MITCHELL,GRACE
	03:23			SUB OUT: WASHINGTON,DARRIEN
FOUL by FABER,AUDREY	03:09			
	03:09			MISSED FT by MITCHELL,GRACE
	03:09			REBOUND (DEADB) by TEAM
	03:09	45-61	V 16	GOOD! FT by MITCHELL,GRACE
TURNOVER by LAMBERTY,SYDNEY	02:52			
	02:50			STEAL by WOOD,EMILY
	02:47			TURNOVER by WHITISH,HANNAH
TURNOVER by FABER,AUDREY	02:37			
	02:36			STEAL by CINCORE,JASMINE
	02:31			MISSED JUMPER by CINCORE,JASMINE
REBOUND (DEF) by AGNEW,JAYLYN	02:31			
TIMEOUT 30SEC	02:28			
GOOD! 3PTR by CARDA,TEMI	02:04	45-64	V 19	
ASSIST by LAMBERTY,SYDNEY	02:04			
	01:37	47-64	V 17	GOOD! JUMPER by WHITISH,HANNAH [PNT]
	01:16			FOUL by CINCORE,JASMINE
SUB IN: MELLMAN,MYAH	01:16			
SUB IN: KISSINGER,BROOKE	01:16			
SUB OUT: LAMBERTY,SYDNEY	01:16			
SUB OUT: CARDA,TEMI	01:16			
	01:16			SUB IN: ELIELY,NICEA
	01:16			SUB OUT: WHITISH,HANNAH
SUB IN: BROWN,KYLIE	01:09			
SUB OUT: FABER,AUDREY	01:09			
TURNOVER by TEAM	00:44			
FOUL by AGNEW,JAYLYN	00:31			
	00:27	49-64	V 15	GOOD! JUMPER by MITCHELL,GRACE [PNT]

Creighton Bluejays 64, Nebraska 49

Period 4-only	In Paint	Off T/O	2nd Chance	Fast Break	Bench	
CU	6	2	2	0	7	Score tied - 0 times
NEB	10	3	2	0	2	Lead changed - 0 times

**Creighton Bluejays vs Nebraska**  
**11/19/2017; 7:06 p.m. at Pinnacle Bank Arena (Lincoln, Neb.)**  
**Scoring/Runs Reference**



**Period 1**

Creighton Bluejays	VRun	Score	Margin	HRun	Nebraska
09:07 - GREENE JUMPER	-	2-0	-2		
		2-2	0		MITCHELL JUMPER [P] - 08:44
07:02 - LAMBERTY JUMPER [P]	-	4-2	-2		
		4-4	0		WHITISH JUMPER - 06:25
06:03 - BROWN JUMPER	-	6-4	-2		
05:39 - FABER JUMPER [P]	4-0	8-4	-4		
05:11 - BROWN JUMPER	6-0	10-4	-6		
04:43 - AGNEW 3PTR	9-0	13-4	-9		
04:20 - CARDA LAYUP [P]	11-0	15-4	-11		
		15-5	-10		CINCORE FT - 03:02
		15-7	-8	3-0	ELIELY LAYUP [P] [F] - 02:47
		15-10	-5	6-0	WOOD 3PTR - 02:19

**Creighton Bluejays vs Nebraska**  
**11/19/2017; 7:06 p.m. at Pinnacle Bank Arena (Lincoln, Neb.)**  
**Scoring/Runs Reference**



**Period 2**

Creighton Bluejays	VRun	Score	Margin	HRun	Nebraska
		15-12	-3		MITCHELL JUMPER - 09:09
08:53 - FABER JUMPER [P]	-	17-12	-5		
08:15 - AGNEW LAYUP [P]	4-0	19-12	-7		
		19-15	-4		KISSINGER 3PTR - 07:02
		19-16	-3	4-0	WASHINGTON FT - 05:52
05:36 - LAMBERTY JUMPER [P]	-	21-16	-5		
		21-18	-3		CINCORE JUMPER - 03:36
02:21 - FABER FT	-	22-18	-4		
02:21 - FABER FT	2-0	23-18	-5		
01:37 - AGNEW 3PTR	5-0	26-18	-8		
01:16 - AGNEW 3PTR	8-0	29-18	-11		
00:11 - FABER 3PTR	11-0	32-18	-14		

**Creighton Bluejays vs Nebraska**  
**11/19/2017; 7:06 p.m. at Pinnacle Bank Arena (Lincoln, Neb.)**  
**Scoring/Runs Reference**



**Period 3**

Creighton Bluejays	VRun	Score	Margin	HRun	Nebraska
09:35 - AGNEW 3PTR	-	35-18	-17		
		35-20	-15		WHITISH LAYUP [P] [F] - 09:03
		35-22	-13	4-0	CAIN JUMPER [P] - 07:35
06:51 - AGNEW 3PTR	-	38-22	-16		
		38-24	-14		CAIN JUMPER - 06:21
05:06 - REMBAO 3PTR	-	41-24	-17		
		41-25	-16		ELIELY FT - 04:56
		41-26	-15	2-0	ELIELY FT - 04:56
03:14 - CARDA LAYUP [P]	-	43-26	-17		
03:14 - CARDA FT	3-0	44-26	-18		
		44-28	-16		BLACKBURN JUMPER [P] - 02:59
		44-29	-15	3-0	BLACKBURN FT - 02:13
		44-30	-14	4-0	BLACKBURN FT - 02:13
		44-33	-11	7-0	WHITISH 3PTR - 01:23
01:06 - FABER 3PTR	-	47-33	-14		
		47-34	-13		WHITISH FT - 00:38
		47-35	-12	2-0	WHITISH FT - 00:38
00:14 - LAMBERTY 3PTR	-	50-35	-15		



**Creighton Bluejays vs Nebraska**  
**11/19/2017; 7:06 p.m. at Pinnacle Bank Arena (Lincoln, Neb.)**  
**Scoring/Runs Reference**

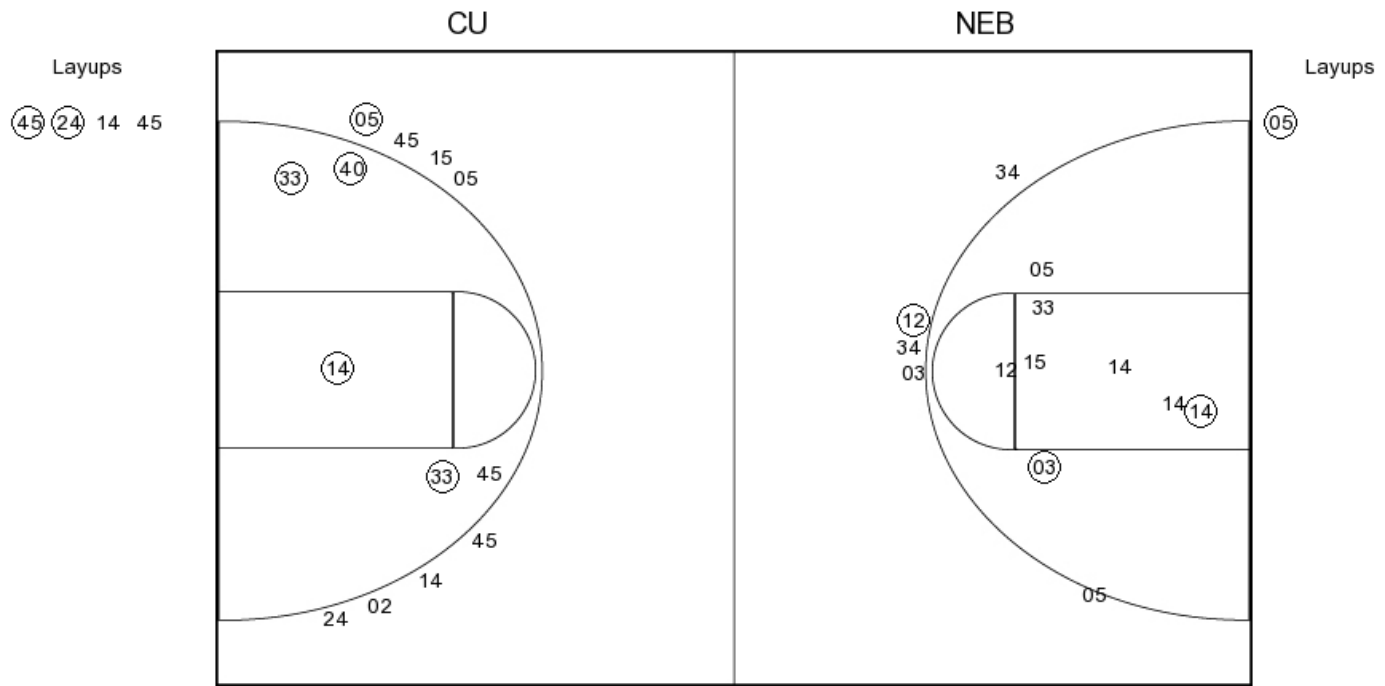


**Period 4**

Creighton Bluejays	VRun	Score	Margin	HRun	Nebraska
09:17 - AGNEW 3PTR	-	53-35	-18		
		53-37	-16		CAIN JUMPER [P] - 09:00
08:48 - MELLMAN JUMPER	-	55-37	-18		
		55-39	-16		KISSINGER JUMPER [P] - 08:16
07:04 - REMBAO JUMPER [P]	-	57-39	-18		
		57-42	-15		WHITISH 3PTR - 06:45
05:17 - FABER JUMPER [P]	-	59-42	-17		
04:27 - REMBAO LAYUP [P]	4-0	61-42	-19		
		61-44	-17		WASHINGTON JUMPER [P] - 03:42
		61-45	-16	3-0	MITCHELL FT - 03:09
02:04 - CARDA 3PTR	-	64-45	-19		
		64-47	-17		WHITISH JUMPER [P] - 01:37
		64-49	-15	4-0	MITCHELL JUMPER [P] - 00:27



**PERIOD 1**



**CU PERIOD 1**

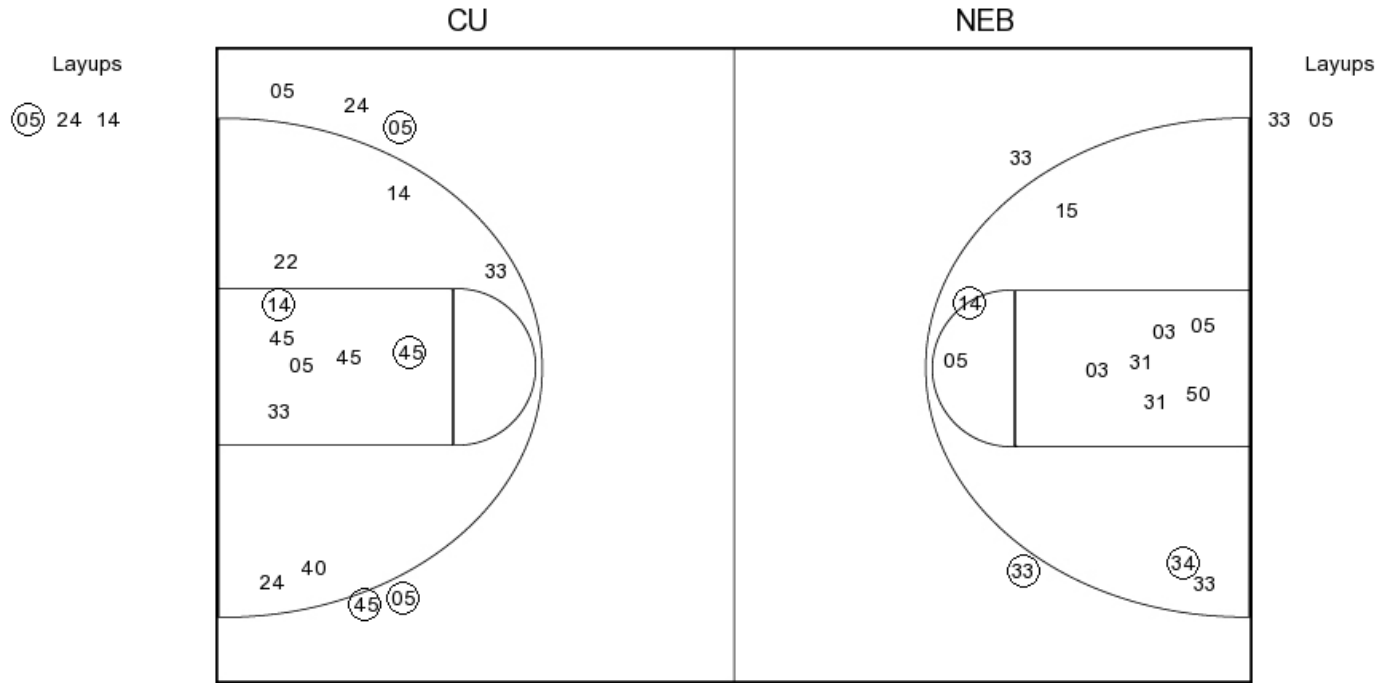
FG Made	13
FG Attempted	36
3PFG Made	4
3PFG Attempted	12

**NEB PERIOD 1**

FG Made	7
FG Attempted	28
3PFG Made	2
3PFG Attempted	7



**PERIOD 2**



**CU PERIOD 2**

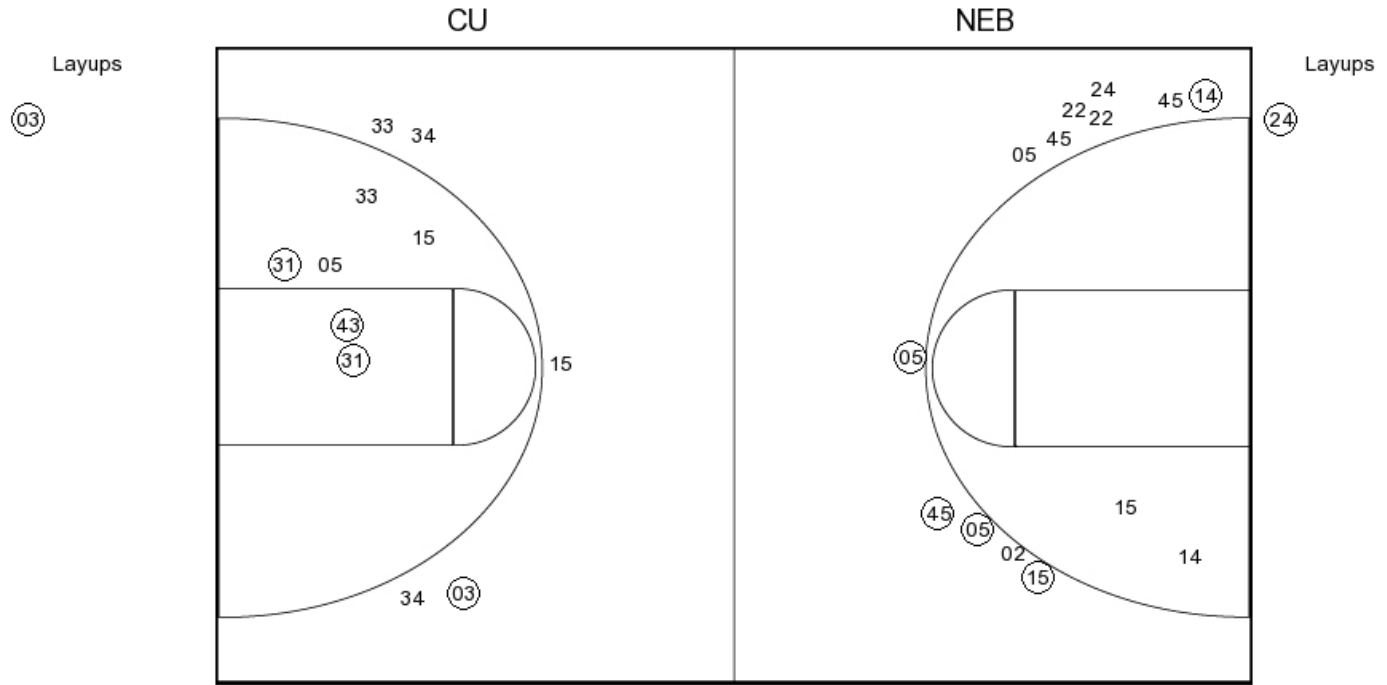
FG Made  
 FG Attempted  
 3PFG Made  
 3PFG Attempted

**NEB PERIOD 2**

FG Made  
 FG Attempted  
 3PFG Made  
 3PFG Attempted



**PERIOD 3**



**CU PERIOD 3**

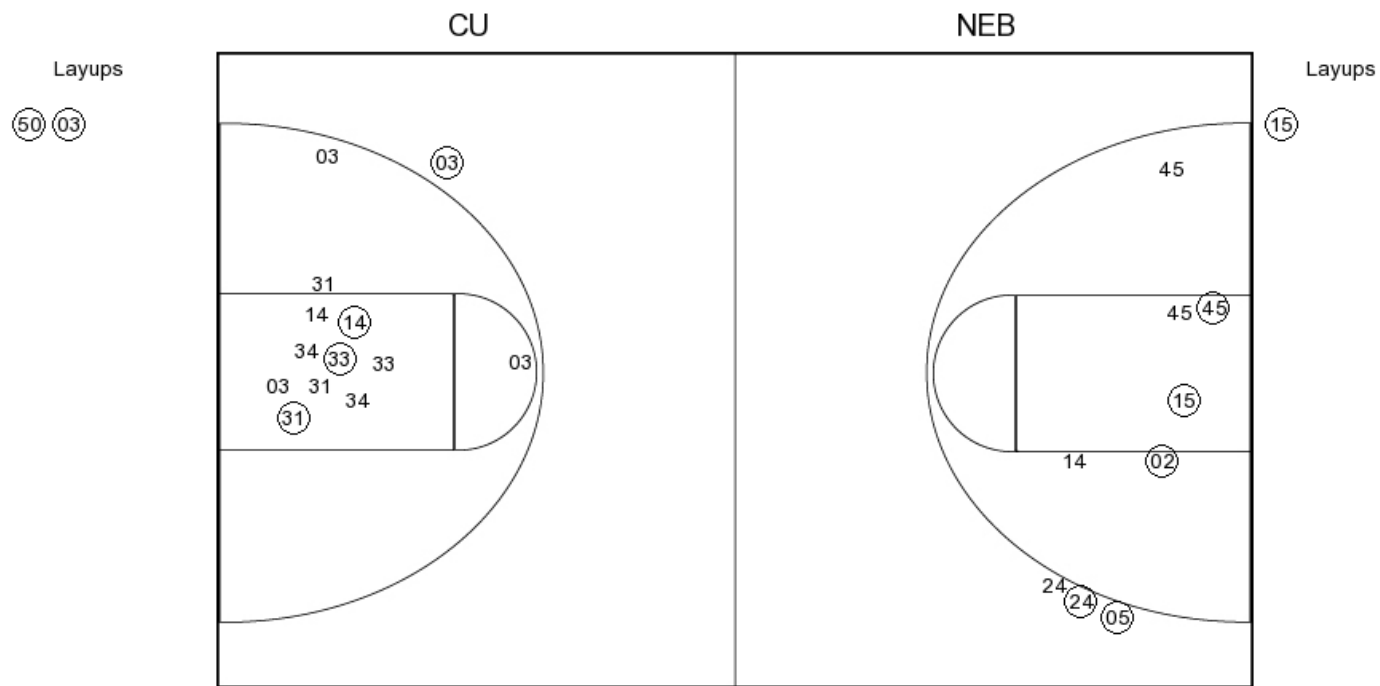
FG Made	12
FG Attempted	26
3PFG Made	7
3PFG Attempted	15

**NEB PERIOD 3**

FG Made	11
FG Attempted	27
3PFG Made	2
3PFG Attempted	5



**PERIOD 4**



**CU PERIOD 4**

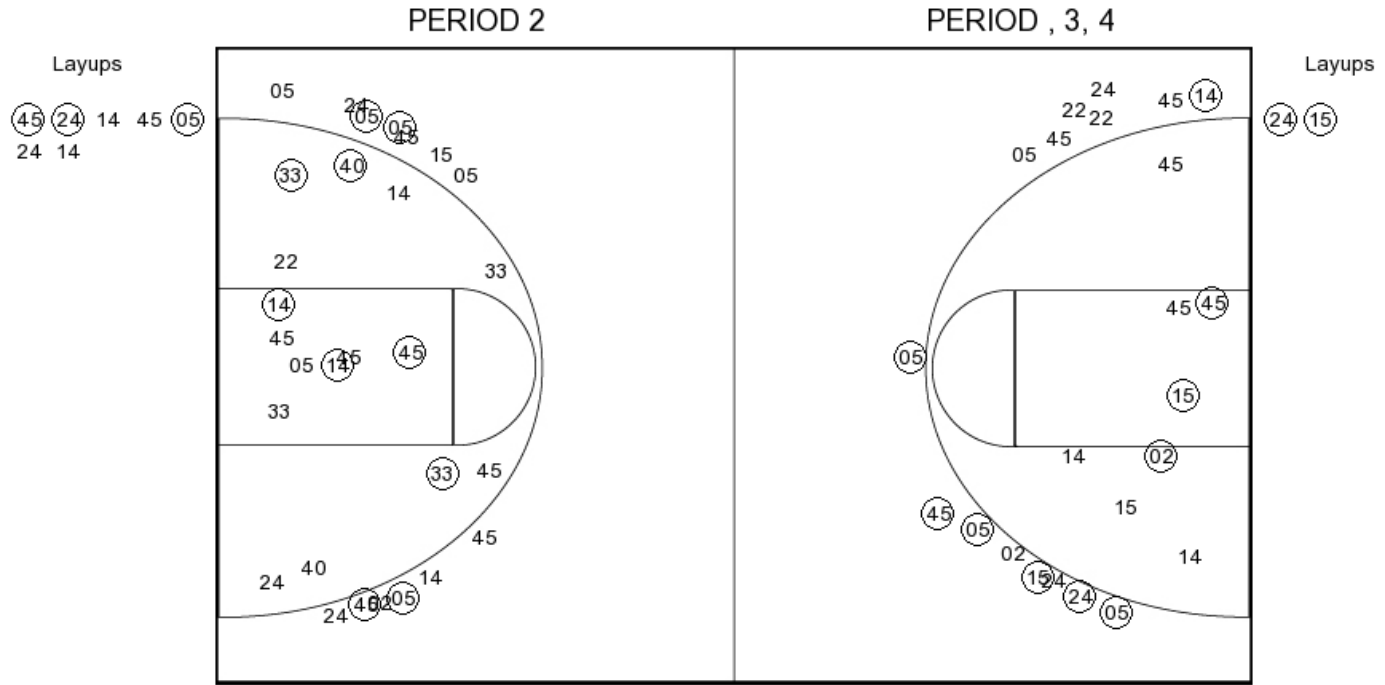
FG Made  
 FG Attempted  
 3PFG Made  
 3PFG Attempted

**NEB PERIOD 4**

FG Made  
 FG Attempted  
 3PFG Made  
 3PFG Attempted



Creighton Bluejays



**CU PERIOD 1**

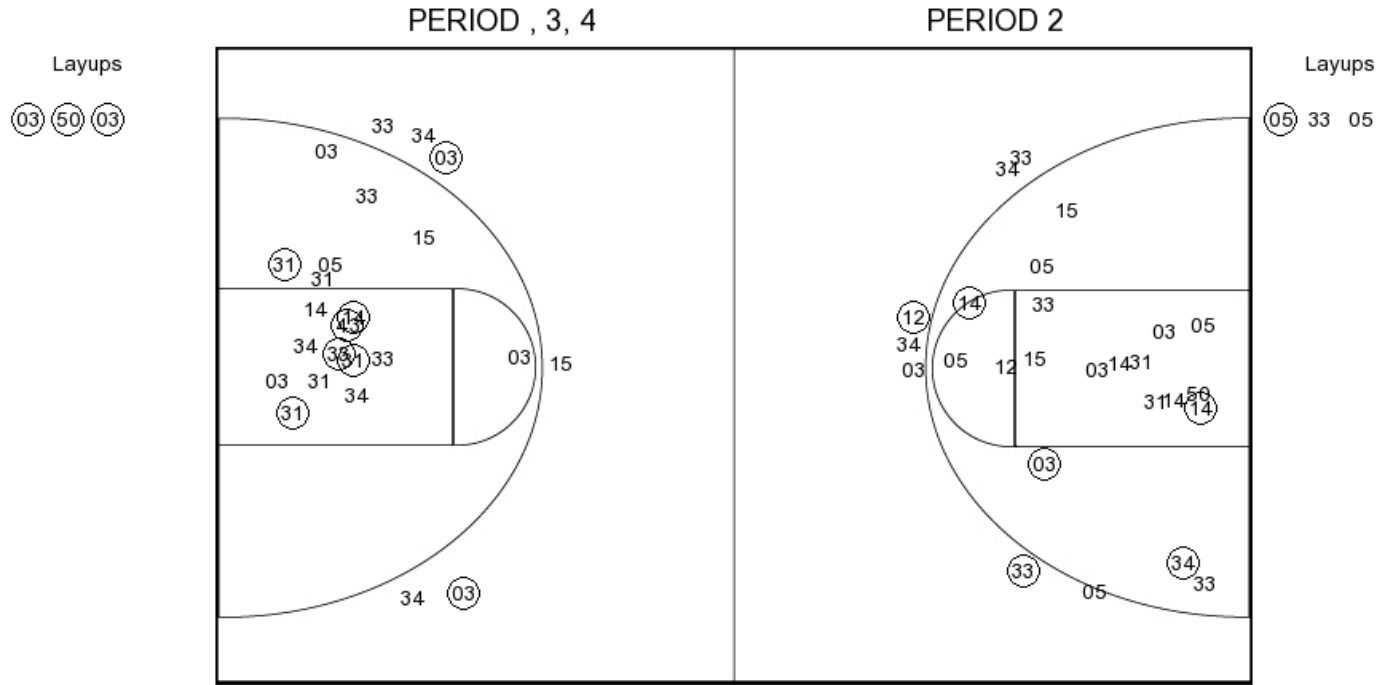
FG Made	13
FG Attempted	36
3PFG Made	4
3PFG Attempted	12

**CU PERIOD 2**

FG Made	
FG Attempted	
3PFG Made	
3PFG Attempted	



Nebraska



**NEB PERIOD 1**

FG Made	7
FG Attempted	28
3PFG Made	2
3PFG Attempted	7

**NEB PERIOD 2**

FG Made	
FG Attempted	
3PFG Made	
3PFG Attempted	