

## FINAL SCORE



**Minnesota State - Ma 55**

0-0



**Nebraska 88**

0-0

**November 05, 2017 • Pinnacle Bank Arena (Lincoln, Neb.)**

## FINAL STATISTICS

**Official Basketball Box Score -- Game Totals -- Final Statistics**  
**Minnesota State - Ma vs Nebraska**  
**11/5/2017 2:06 p.m. at Pinnacle Bank Arena (Lincoln, Neb.)**



**Minnesota State - Ma 55 - 0-0**

Minnesota State - MNU 55 - 5-5

##	Player		Total	3-Ptr	FT-FTA	Rebounds			PF	TP	A	TO	Blk	Stl	Min
			FG-FGA	FG-FGA		Off	Def	Tot							
03	MUTH,H,MONICA	g	4-9	2-5	3-3	1	4	5	2	13	4	3	0	0	29
13	KLUG,TAYLOR	g	4-14	2-6	0-0	0	1	1	2	10	1	3	0	3	24
22	JORDAN,CLAIRE	g	0-3	0-2	0-0	2	0	2	3	0	1	3	0	0	19
30	DROST,TAYLOR	f	6-17	2-5	0-0	1	8	9	2	14	0	2	1	1	35
44	ZIEGLER,CLAIRE	f	2-10	1-2	1-1	1	2	3	3	6	2	3	0	1	26
04	KLITZKE,KIRSTIN		0-2	0-1	0-0	0	0	0	0	0	2	2	0	0	10
12	ANDERSON,LOGAN		0-3	0-1	2-2	1	0	1	2	2	0	3	0	2	18
23	STUTTLEY,TAYLA		2-3	2-2	0-0	1	1	2	1	6	0	1	0	0	7
33	REED,ASHLEY		0-2	0-2	0-0	1	1	2	1	0	1	0	0	0	8
40	CAP,HEIDI		0-2	0-0	0-0	1	0	1	1	0	0	0	1	0	10
42	TONSFELDT,BROOKE		1-1	1-1	1-2	0	6	6	0	4	0	2	1	1	14
TEAM						5	2	7	0		0				
TOTALS			19-66	10-27	7-8	14	25	39	17	55	11	22	3	8	200

Deadball Rebounds: 0,0

FG %	1st Half: 10-35	28.6%	2nd Half: 9-31	29.0%	Game: 19-66	28.8%												
	1st Qtr 4-17	23.5%	2nd Qtr 6-18	33.3%	3rd Qtr 4-13	30.8%	4th Qtr 5-18	27.8%										
3FG %	1st Half: 7-15	46.7%	2nd Half: 3-12	25.0%	Game: 10-27	37.0%												
	1st Qtr 2-7	28.6%	2nd Qtr 5-8	62.5%	3rd Qtr 1-7	14.3%	4th Qtr 2-5	40.0%										
FT %	1st Half: 0-0	0%	2nd Half: 7-8	87.5%	Game: 7-8	87.5%												
	1st Qtr 0-0	0%	2nd Qtr 0-0	0%	3rd Qtr 4-5	80.0%	4th Qtr 3-3	100.0%										

**Nebraska 88 - 0-0**

Nebraska 66-9-9

##	Player		Total	3-Ptr	FT-FTA	Rebounds			PF	TP	A	TO	Blk	Stl	Min
			FG-FGA	FG-FGA		Off	Def	Tot							
03	WHITISH,HANNAH	g	5-11	3-6	2-2	1	4	5	0	15	5	0	1	1	27
24	SIMON,MADDIE	f	5-7	1-2	0-0	0	5	5	0	11	1	1	0	2	20
33	KISSINGER,TAYLOR	g	7-15	4-12	4-4	2	0	2	1	22	0	0	2	1	22
34	CINCORE,JASMINE	g	3-6	0-0	2-4	2	6	8	0	8	3	2	1	7	28
50	WASHINGTON,DARRIEN	f	0-1	0-0	1-2	2	4	6	2	1	2	3	0	0	13
12	WOOD,EMILY		2-5	2-5	0-0	1	1	2	2	6	4	2	0	0	25
14	MITCHELL,GRACE		1-6	0-0	1-2	6	2	8	2	3	2	2	0	1	21
15	STALLWORTH,BRIA		6-11	1-3	2-2	0	2	2	2	15	3	2	0	0	17
31	CAIN,KATE		2-4	0-0	1-2	1	6	7	4	5	0	2	3	0	14
43	BLACKBURN,RACHEL		1-3	0-0	0-0	0	3	3	1	2	0	1	0	0	13
TEAM						1	1	2	0		0				
TOTALS			32-69	11-28	13-18	16	34	50	14	88	20	15	7	12	200

Deadball Rebounds: 1,0

FG %	1st Half: 15-30	50.0%	2nd Half: 17-39	43.6%	Game: 32-69	46.4%												
	1st Qtr 7-18	38.9%	2nd Qtr 8-12	66.7%	3rd Qtr 8-19	42.1%	4th Qtr 9-20	45.0%										
3FG %	1st Half: 4-11	36.4%	2nd Half: 7-17	41.2%	Game: 11-28	39.3%												
	1st Qtr 1-7	14.3%	2nd Qtr 3-4	75.0%	3rd Qtr 4-11	36.4%	4th Qtr 3-6	50.0%										
FT %	1st Half: 7-9	77.8%	2nd Half: 6-9	66.7%	Game: 13-18	72.2%												
	1st Qtr 5-7	71.4%	2nd Qtr 2-2	100.0%	3rd Qtr 3-6	50.0%	4th Qtr 3-3	100.0%										

Officials: Ann Schroeder, Jeremy McHugh, Bryan Rump  
 Technical Fouls: Minnesota State - Ma- None. Nebraska- None.  
 Attendance: 3647

Exhibition Game

Score by periods	1st	2nd	3rd	4th	Total	Points	In Paint	Off T/O	2nd Chance	Fast Break	Bench
Minnesota State - Ma	10	17	13	15	55	MSU	17	15	16	5	12
Nebraska	20	21	23	24	88	NEB	38	24	16	12	31

Last FG - MSU 4th-03:40, NEB 4th-00:25.

Largest lead - Minnesota State - Ma by 2 1st-09:47; Nebraska by 33 4th-00:25

MSU led for 2:15. NEB led for 37:32. Game was tied for 0:13.

Score tied - 1 times; Lead changed - 3 times



**Official Basketball Box Score -- Game Totals -- First Half Statistics**  
**Minnesota State - Ma vs Nebraska**  
**11/5/2017 2:06 p.m. at Pinnacle Bank Arena (Lincoln, Neb.)**



**Minnesota State - Ma 27 • 0-0**

##	Player		Total		3-Ptr		FT-FTA		Rebounds			PF	TP	A	TO	Blk	Stl	Min
			FG	F-GA	FG	F-GA	FT	FTA	Off	Def	Tot							
03	MUTH, MONICA	g	2	6	1	4	0	0	0	0	0	1	5	4	0	0	0	12
13	KLUG, TAYLOR	g	2	7	2	3	0	0	0	0	0	1	6	0	1	0	1	12
22	JORDAN, CLAIRE	g	0	1	0	1	0	0	0	0	0	1	0	0	2	0	0	11
30	DROST, TAYLOR	f	3	10	1	2	0	0	1	5	6	0	7	0	1	1	1	18
44	ZIEGLER, CLAIRE	f	1	5	1	1	0	0	0	2	2	1	3	2	1	0	0	14
04	KLITZKE, KIRSTIN		0	1	0	1	0	0	0	0	0	0	0	1	1	0	0	8
12	ANDERSON, LOGAN		0	2	0	1	0	0	0	0	0	2	0	0	2	0	2	10
23	STUTTLEY, TAYLA		1	1	1	1	0	0	0	0	0	0	3	0	0	0	0	2
33	REED, ASHLEY		0	0	0	0	0	0	1	0	1	0	0	1	0	0	0	6
40	CAP, HEIDI		0	1	0	0	0	0	0	0	0	1	0	0	0	0	0	2
42	TONSFELDT, BROOKE		1	1	1	1	0	0	0	3	3	0	3	0	1	0	0	5
TEAM									3	2	5	0			0			
Totals			10	35	7	15	0	0	5	12	17	7	27	8	9	1	4	100

FG % 1st Qtr 4-17 23.5% 2nd Qtr 6-18 33.3% Half: 10-35 28.6%  
 3FG % 1st Qtr 2-7 28.6% 2nd Qtr 5-8 62.5% Half: 7-15 46.7%  
 FT % 1st Qtr 0-0 0% 2nd Qtr 0-0 0% Half: 0-0 0%

**Nebraska 41 • 0-0**

##	Player		Total		3-Ptr		FT-FTA		Rebounds			PF	TP	A	TO	Blk	Stl	Min
			FG	F-GA	FG	F-GA	FT	FTA	Off	Def	Tot							
03	WHITISH, HANNAH	g	1	3	1	2	2	2	0	2	2	0	5	4	0	1	0	15
24	SIMON, MADDIE	f	2	2	0	0	0	0	0	3	3	0	4	0	1	0	0	13
33	KISSINGER, TAYLOR	g	3	7	1	5	3	3	1	0	1	0	10	0	0	1	0	11
34	CINCORE, JASMINE	g	0	1	0	0	1	2	1	4	5	0	1	2	2	1	2	12
50	WASHINGTON, DARRIEN	f	0	1	0	0	0	0	1	1	2	1	0	1	1	0	0	6
12	WOOD, EMILY		2	3	2	3	0	0	0	1	1	1	6	1	1	0	0	12
14	MITCHELL, GRACE		0	2	0	0	0	0	2	1	3	0	0	1	1	0	0	9
15	STALLWORTH, BRIA		4	7	0	1	0	0	0	1	1	0	8	1	1	0	0	9
31	CAIN, KATE		2	2	0	0	1	2	0	4	4	1	5	0	2	2	0	7
43	BLACKBURN, RACHEL		1	2	0	0	0	0	0	2	2	1	2	0	0	0	0	6
TEAM									0	1	1	0			0			
Totals			15	30	4	11	7	9	5	20	25	4	41	10	9	5	2	100

FG % 1st Qtr 7-18 38.9% 2nd Qtr 8-12 66.7% Half: 15-30 50.0%  
 3FG % 1st Qtr 1-7 14.3% 2nd Qtr 3-4 75.0% Half: 4-11 36.4%  
 FT % 1st Qtr 5-7 71.4% 2nd Qtr 2-2 100.0% Half: 7-9 77.8%

Officials: Ann Schroeder, Jeremy McHugh, Bryan Rump  
 Technical Fouls: Minnesota State - Ma- None. Nebraska- None.  
 Exhibition Game

Score by periods	1st	2nd	3rd	4th	Total Points	In Paint	Off T/O	2nd Chance	Fast Break	Bench
Minnesota State - Ma	10	17	13	15	55 MSU	7	8	5	3	6
Nebraska	20	21	23	24	88	20	8	2	2	21

Last FG - MSU 2nd-01:03, NEB 2nd-00:05.  
 MSU led for 2:15. NEB led for 17:32. Game was tied for 0:13.

Score tied - 1 times  
 Lead changed - 3 times

**Minnesota State - Ma vs Nebraska**  
**11/5/2017; 2:06 p.m. at Pinnacle Bank Arena (Lincoln, Neb.)**  
**Period 1 Play-By-Play**



VISITORS: Minnesota State - Ma	Time	Score	Margin	HOME: Nebraska
GOOD! JUMPER by DROST,TAYLOR [PNT]	09:47	0-2	V 2	
	09:31			FOUL by WASHINGTON,DARRIEN
	09:31			TURNOVER by WASHINGTON,DARRIEN
TURNOVER by JORDAN,CLAIRE	09:22			
	09:21			STEAL by CINCORE,JASMINE
FOUL by JORDAN,CLAIRE	09:18			
	09:18	1-2	V 1	GOOD! FT by CINCORE,JASMINE
	09:18			MISSED FT by CINCORE,JASMINE
REBOUND (DEF) by DROST,TAYLOR	09:18			
TURNOVER by ZIEGLER,CLAIRE	09:10			
	08:46			MISSED JUMPER by WHITISH,HANNAH
	08:46			REBOUND (OFF) by KISSINGER,TAYLOR
FOUL by KLUG,TAYLOR	08:45			
	08:27			MISSED JUMPER by WASHINGTON,DARRIEN
	08:27			REBOUND (OFF) by WASHINGTON,DARRIEN
	08:12			MISSED 3PTR by KISSINGER,TAYLOR
REBOUND (DEF) by DROST,TAYLOR	08:12			
MISSED 3PTR by DROST,TAYLOR	08:01			
	08:01			REBOUND (DEF) by WHITISH,HANNAH
	07:52	3-2	H 1	GOOD! LAYUP by SIMON,MADDIE [PNT]
	07:52			ASSIST by WHITISH,HANNAH
GOOD! JUMPER by MUTH,MONICA	07:36	3-4	V 1	
FOUL by ZIEGLER,CLAIRE	07:16			
	07:16	4-4	T	GOOD! FT by KISSINGER,TAYLOR
	07:16	5-4	H 1	GOOD! FT by KISSINGER,TAYLOR
SUB IN: REED,ASHLEY	07:16			
SUB IN: ANDERSON,LOGAN	07:16			
SUB OUT: JORDAN,CLAIRE	07:16			
SUB OUT: ZIEGLER,CLAIRE	07:16			
MISSED 3PTR by MUTH,MONICA	07:00			
	07:00			REBOUND (DEF) by CINCORE,JASMINE
	06:53	8-4	H 4	GOOD! 3PTR by KISSINGER,TAYLOR
	06:53			ASSIST by WHITISH,HANNAH
MISSED LAYUP by MUTH,MONICA	06:39			
	06:39			BLOCK by CINCORE,JASMINE
REBOUND (OFF) by TEAM	06:39			
SUB IN: KLITZKE,KIRSTIN	06:39			
SUB OUT: MUTH,MONICA	06:39			
	06:39			SUB IN: BLACKBURN,RACHEL
	06:39			SUB IN: STALLWORTH,BRIA
	06:39			SUB OUT: CINCORE,JASMINE
	06:39			SUB OUT: WASHINGTON,DARRIEN
MISSED JUMPER by DROST,TAYLOR	06:35			
	06:35			BLOCK by KISSINGER,TAYLOR
REBOUND (OFF) by TEAM	06:35			
MISSED LAYUP by KLUG,TAYLOR	06:29			
	06:29			REBOUND (DEF) by SIMON,MADDIE
	06:21			MISSED 3PTR by KISSINGER,TAYLOR
REBOUND (DEF) by TEAM	06:21			
	06:02			FOUL by BLACKBURN,RACHEL
GOOD! 3PTR by KLUG,TAYLOR	05:58	8-7	H 1	
ASSIST by KLITZKE,KIRSTIN	05:58			
	05:47	10-7	H 3	GOOD! LAYUP by STALLWORTH,BRIA [FB/PNT]
TURNOVER by ANDERSON,LOGAN	05:35			
	05:35			SUB IN: MITCHELL,GRACE
	05:35			SUB OUT: SIMON,MADDIE
	05:20	12-7	H 5	GOOD! LAYUP by KISSINGER,TAYLOR [PNT]
FOUL by ANDERSON,LOGAN	05:20			
	05:20	13-7	H 6	GOOD! FT by KISSINGER,TAYLOR
	05:20			SUB IN: WOOD,EMILY
	05:20			SUB IN: CINCORE,JASMINE
	05:20			SUB OUT: WHITISH,HANNAH
	05:20			SUB OUT: KISSINGER,TAYLOR
TURNOVER by KLUG,TAYLOR	05:09			
	05:07			STEAL by CINCORE,JASMINE
	05:00			MISSED JUMPER by BLACKBURN,RACHEL
BLOCK by DROST,TAYLOR	05:00			
	04:59			REBOUND (OFF) by MITCHELL,GRACE
	04:56			MISSED JUMPER by MITCHELL,GRACE

VISITORS: Minnesota State - Ma	Time	Score	Margin	HOME: Nebraska
	04:56			REBOUND (OFF) by MITCHELL,GRACE
	04:55			TIMEOUT media
SUB IN: JORDAN,CLAIRE	04:55			
SUB OUT: KLUG,TAYLOR	04:55			
	04:53	15-7	H 8	GOOD! JUMPER by BLACKBURN,RACHEL [PNT]
	04:53			ASSIST by MITCHELL,GRACE
MISSED JUMPER by DROST,TAYLOR	04:37			
	04:37			REBOUND (DEF) by BLACKBURN,RACHEL
	04:22			TURNOVER by STALLWORTH,BRIA
STEAL by ANDERSON,LOGAN	04:21			
MISSED 3PTR by JORDAN,CLAIRE	04:12			
	04:12			REBOUND (DEF) by MITCHELL,GRACE
	03:45			MISSED JUMPER by STALLWORTH,BRIA
REBOUND (DEF) by DROST,TAYLOR	03:45			
MISSED 3PTR by KLITZKE,KIRSTIN	03:33			
	03:33			REBOUND (DEF) by BLACKBURN,RACHEL
	03:21			MISSED 3PTR by STALLWORTH,BRIA
	03:21			REBOUND (OFF) by CINCORE,JASMINE
	03:18			TURNOVER by CINCORE,JASMINE
SUB IN: CAP,HEIDI	03:18			
SUB IN: ZIEGLER,CLAIRE	03:18			
SUB OUT: REED,ASHLEY	03:18			
SUB OUT: DROST,TAYLOR	03:18			
	03:18			SUB IN: CAIN,KATE
	03:18			SUB IN: SIMON,MADDIE
	03:18			SUB OUT: MITCHELL,GRACE
	03:18			SUB OUT: BLACKBURN,RACHEL
	03:04			FOUL by CAIN,KATE
MISSED LAYUP by ANDERSON,LOGAN	02:41			
	02:41			BLOCK by CAIN,KATE
	02:40			REBOUND (DEF) by CINCORE,JASMINE
	02:33	17-7	H 10	GOOD! JUMPER by STALLWORTH,BRIA
	02:33			ASSIST by CINCORE,JASMINE
TURNOVER by JORDAN,CLAIRE	02:27			
SUB IN: TONSFELDT,BROOKE	02:27			
SUB OUT: ANDERSON,LOGAN	02:27			
	02:27			SUB IN: WHITISH,HANNAH
	02:27			SUB OUT: STALLWORTH,BRIA
	02:14			TURNOVER by CAIN,KATE
TURNOVER by KLITZKE,KIRSTIN	02:05			
	01:53			MISSED 3PTR by WOOD,EMILY
REBOUND (DEF) by ZIEGLER,CLAIRE	01:53			
SUB IN: MUTH,MONICA	01:51			
SUB OUT: KLITZKE,KIRSTIN	01:51			
MISSED JUMPER by CAP,HEIDI	01:38			
	01:38			REBOUND (DEF) by CINCORE,JASMINE
	01:35			TURNOVER by CINCORE,JASMINE
	01:35			SUB IN: KISSINGER,TAYLOR
	01:35			SUB OUT: CINCORE,JASMINE
MISSED LAYUP by ZIEGLER,CLAIRE	01:29			
	01:29			REBOUND (DEF) by CAIN,KATE
FOUL by CAP,HEIDI	01:28			
	01:28	18-7	H 11	GOOD! FT by CAIN,KATE
	01:28			MISSED FT by CAIN,KATE
REBOUND (DEF) by TONSFELDT,BROOKE	01:28			
MISSED 3PTR by MUTH,MONICA	01:15			
	01:15			REBOUND (DEF) by CAIN,KATE
	01:05	20-7	H 13	GOOD! LAYUP by SIMON,MADDIE [PNT]
	01:05			ASSIST by WHITISH,HANNAH
TURNOVER by TONSFELDT,BROOKE	00:50			
SUB IN: DROST,TAYLOR	00:50			
SUB OUT: CAP,HEIDI	00:50			
	00:36			MISSED 3PTR by KISSINGER,TAYLOR
REBOUND (DEF) by TONSFELDT,BROOKE	00:36			
MISSED JUMPER by DROST,TAYLOR	00:25			
	00:25			REBOUND (DEF) by SIMON,MADDIE
	00:16			MISSED 3PTR by KISSINGER,TAYLOR
REBOUND (DEF) by TONSFELDT,BROOKE	00:16			
GOOD! 3PTR by TONSFELDT,BROOKE	00:02	20-10	H 10	
ASSIST by MUTH,MONICA	00:02			

Minnesota State - Ma 10, Nebraska 20

	Period 1-only	In Paint	Off T/O	2nd Chance	Fast Break	Bench	
MSU	Period 1-only	2	0	0	0	3	Score tied - 0 times
NEB		10	6	2	2	7	Lead changed - 2 times

**Minnesota State - Ma vs Nebraska**  
**11/5/2017; 2:06 p.m. at Pinnacle Bank Arena (Lincoln, Neb.)**  
**Period 2 Play-By-Play**



VISITORS: Minnesota State - Ma	Time	Score	Margin	HOME: Nebraska
SUB IN: TONSFELDT,BROOKE	10:00			
SUB OUT: KLUG,TAYLOR	10:00			
	10:00			SUB IN: STALLWORTH,BRIA
	10:00			SUB OUT: CINCORE,JASMINE
MISSED LAYUP by ZIEGLER,CLAIRE	09:50			
	09:50			BLOCK by WHITISH,HANNAH
REBOUND (OFF) by TEAM	09:50			
GOOD! 3PTR by MUTH,MONICA	09:41	20-13	H 7	
ASSIST by ZIEGLER,CLAIRE	09:41			
	09:23			TURNOVER by SIMON,MADDIE
STEAL by DROST,TAYLOR	09:22			
GOOD! 3PTR by DROST,TAYLOR	09:12	20-16	H 4	
ASSIST by MUTH,MONICA	09:12			
	08:48	22-16	H 6	GOOD! LAYUP by STALLWORTH,BRIA [PNT]
MISSED JUMPER by DROST,TAYLOR	08:37			
	08:37			REBOUND (DEF) by WASHINGTON,DARRIEN
	08:25	24-16	H 8	GOOD! LAYUP by KISSINGER,TAYLOR [PNT]
	08:25			ASSIST by WASHINGTON,DARRIEN
MISSED JUMPER by DROST,TAYLOR	08:03			
	08:03			REBOUND (DEF) by SIMON,MADDIE
	07:50	26-16	H 10	GOOD! JUMPER by STALLWORTH,BRIA [PNT]
SUB IN: ANDERSON,LOGAN	07:26			
SUB IN: KLUG,TAYLOR	07:26			
SUB OUT: TONSFELDT,BROOKE	07:26			
SUB OUT: JORDAN,CLAIRE	07:26			
	07:26			SUB IN: CINCORE,JASMINE
	07:26			SUB IN: MITCHELL,GRACE
	07:26			SUB IN: WOOD,EMILY
	07:26			SUB OUT: SIMON,MADDIE
	07:26			SUB OUT: KISSINGER,TAYLOR
	07:26			SUB OUT: STALLWORTH,BRIA
MISSED JUMPER by KLUG,TAYLOR	07:12			
	07:12			REBOUND (DEF) by WOOD,EMILY
	07:06			TURNOVER by WOOD,EMILY
SUB IN: REED,ASHLEY	07:06			
SUB OUT: ZIEGLER,CLAIRE	07:06			
	06:55			FOUL by WOOD,EMILY
	06:55			SUB IN: BLACKBURN,RACHEL
	06:55			SUB OUT: WASHINGTON,DARRIEN
MISSED 3PTR by ANDERSON,LOGAN	06:45			
REBOUND (OFF) by REED,ASHLEY	06:45			
GOOD! JUMPER by DROST,TAYLOR [PNT]	06:30	26-18	H 8	
ASSIST by REED,ASHLEY	06:30			
	06:12			MISSED LAYUP by CINCORE,JASMINE
REBOUND (DEF) by DROST,TAYLOR	06:12			
TURNOVER by DROST,TAYLOR	06:01			
	05:35			MISSED 3PTR by WHITISH,HANNAH
REBOUND (DEF) by DROST,TAYLOR	05:35			
MISSED 3PTR by MUTH,MONICA	05:20			
	05:20			REBOUND (DEF) by CINCORE,JASMINE
	05:00	29-18	H 11	GOOD! 3PTR by WOOD,EMILY
	05:00			ASSIST by CINCORE,JASMINE
MISSED JUMPER by KLUG,TAYLOR	04:42			
	04:42			REBOUND (DEF) by TEAM
	04:40			TIMEOUT MEDIA
SUB IN: KLITZKE,KIRSTIN	04:40			
SUB IN: ZIEGLER,CLAIRE	04:40			
SUB OUT: MUTH,MONICA	04:40			
SUB OUT: REED,ASHLEY	04:40			
	04:40			SUB IN: STALLWORTH,BRIA
	04:40			SUB IN: KISSINGER,TAYLOR
	04:40			SUB OUT: WHITISH,HANNAH
	04:40			SUB OUT: CINCORE,JASMINE
	04:23			MISSED JUMPER by STALLWORTH,BRIA
REBOUND (DEF) by TEAM	04:23			
FOUL by ANDERSON,LOGAN	04:07			
TURNOVER by ANDERSON,LOGAN	04:07			
	04:07			SUB IN: CAIN,KATE
	04:07			SUB OUT: BLACKBURN,RACHEL



VISITORS: Minnesota State - Ma	Time	Score	Margin	HOME: Nebraska
	03:37	31-18	H 13	GOOD! LAYUP by CAIN,KATE [PNT]
	03:37			ASSIST by STALLWORTH,BRIA
MISSED 3PTR by KLUG,TAYLOR	03:25			
REBOUND (OFF) by DROST,TAYLOR	03:25			
MISSED LAYUP by ZIEGLER,CLAIRE	03:17			
	03:17			REBOUND (DEF) by STALLWORTH,BRIA
	03:06			MISSED JUMPER by MITCHELL,GRACE
REBOUND (DEF) by ZIEGLER,CLAIRE	03:06			
GOOD! 3PTR by KLUG,TAYLOR [FB/PNT]	03:01	31-21	H 10	
ASSIST by ZIEGLER,CLAIRE	03:01			
	02:39			TURNOVER by CAIN,KATE
STEAL by KLUG,TAYLOR	02:39			
MISSED JUMPER by KLUG,TAYLOR	02:36			
	02:36			REBOUND (DEF) by CAIN,KATE
	02:05			TURNOVER by MITCHELL,GRACE
STEAL by ANDERSON,LOGAN	02:04			
SUB IN: MUTH,MONICA	02:02			
SUB IN: STUTTLEY,TAYLA	02:02			
SUB OUT: KLITZKE,KIRSTIN	02:02			
SUB OUT: ANDERSON,LOGAN	02:02			
	02:02			SUB IN: SIMON,MADDIE
	02:02			SUB IN: WHITISH,HANNAH
	02:02			SUB IN: CINCORE,JASMINE
	02:02			SUB OUT: STALLWORTH,BRIA
	02:02			SUB OUT: KISSINGER,TAYLOR
	02:02			SUB OUT: MITCHELL,GRACE
GOOD! 3PTR by STUTTLEY,TAYLA	01:56	31-24	H 7	
ASSIST by MUTH,MONICA	01:56			
	01:39	34-24	H 10	GOOD! 3PTR by WHITISH,HANNAH
	01:39			ASSIST by WOOD,EMILY
MISSED JUMPER by DROST,TAYLOR	01:27			
	01:27			REBOUND (DEF) by WHITISH,HANNAH
FOUL by MUTH,MONICA	01:18			
	01:18	35-24	H 11	GOOD! FT by WHITISH,HANNAH
	01:18	36-24	H 12	GOOD! FT by WHITISH,HANNAH
GOOD! 3PTR by ZIEGLER,CLAIRE	01:03	36-27	H 9	
ASSIST by MUTH,MONICA	01:03			
	00:43	39-27	H 12	GOOD! 3PTR by WOOD,EMILY
MISSED JUMPER by ZIEGLER,CLAIRE	00:30			
	00:30			BLOCK by CAIN,KATE
	00:29			REBOUND (DEF) by CAIN,KATE
	00:05	41-27	H 14	GOOD! LAYUP by CAIN,KATE [PNT]
	00:05			ASSIST by WHITISH,HANNAH

Minnesota State - Ma 27, Nebraska 41

Period 2-only	In Paint	Off T/O	2nd Chance	Fast Break	Bench	
MSU	5	8	5	3	3	Score tied - 0 times
NEB	10	2	0	0	14	Lead changed - 0 times

**Official Basketball Box Score -- Game Totals -- Second Half Statistics**  
**Minnesota State - Ma vs Nebraska**  
**11/5/2017 2:06 p.m. at Pinnacle Bank Arena (Lincoln, Neb.)**



**Minnesota State - Ma 28 • 0-0**

##	Player		Total		3-Ptr		FT-FTA		Rebounds			PF	TP	A	TO	Blk	Stl	Min
			FG	FGA	FG	FGA	FT	FTA	Off	Def	Tot							
03	MUTH,MONICA	g	2	3	1	1	3	3	1	4	5	1	8	0	3	0	0	17
13	KLUG,TAYLOR	g	2	7	0	3	0	0	0	1	1	1	4	1	2	0	2	12
22	JORDAN,CLAIRE	g	0	2	0	1	0	0	2	0	2	2	0	1	1	0	0	8
30	DROST,TAYLOR	f	3	7	1	3	0	0	0	3	3	2	7	0	1	0	0	17
44	ZIEGLER,CLAIRE	f	1	5	0	1	1	1	1	0	1	2	3	0	2	0	1	12
04	KLITZKE,KIRSTIN		0	1	0	0	0	0	0	0	0	0	0	1	1	0	0	2
12	ANDERSON,LOGAN		0	1	0	0	2	2	1	0	1	0	2	0	1	0	0	8
23	STUTTLEY,TAYLA		1	2	1	1	0	0	1	1	2	1	3	0	1	0	0	5
33	REED,ASHLEY		0	2	0	2	0	0	0	1	1	1	0	0	0	0	0	2
40	CAP,HEIDI		0	1	0	0	0	0	1	0	1	0	0	0	0	1	0	8
42	TONSFELDT,BROOKE		0	0	0	0	1	2	0	3	3	0	1	0	1	1	1	9
TEAM									2	0	2	0			0			
Totals			9	31	3	12	7	8	9	13	22	10	28	3	13	2	4	100
FG %	3rd Qtr	4-13	30.8%	4th Qtr	5-18	27.8%	Half:	9-31	29.0%									
3FG %	3rd Qtr	1-7	14.3%	4th Qtr	2-5	40.0%	Half:	3-12	46.7%									
FT %	3rd Qtr	4-5	80.0%	4th Qtr	3-3	100.0%	Half:	7-8	87.5%									

**Nebraska 47 • 0-0**

##	Player		Total		3-Ptr		FT-FTA		Rebounds			PF	TP	A	TO	Blk	Stl	Min
			FG	FGA	FG	FGA	FT	FTA	Off	Def	Tot							
03	WHITISH,HANNAH	g	4	8	2	4	0	0	1	2	3	0	10	1	0	0	1	12
24	SIMON,MADDIE	f	3	5	1	2	0	0	0	2	2	0	7	1	0	0	2	7
33	KISSINGER,TAYLOR	g	4	8	3	7	1	1	1	0	1	1	12	0	0	1	1	11
34	CINCORE,JASMINE	g	3	5	0	0	1	2	1	2	3	0	7	1	0	0	5	16
50	WASHINGTON,DARRIEN	f	0	0	0	0	1	2	1	3	4	1	1	1	2	0	0	7
12	WOOD,EMILY		0	2	0	2	0	0	1	0	1	1	0	3	1	0	0	13
14	MITCHELL,GRACE		1	4	0	0	1	2	4	1	5	2	3	1	1	0	1	12
15	STALLWORTH,BRIA		2	4	1	2	2	2	0	1	1	2	7	2	1	0	0	8
31	CAIN,KATE		0	2	0	0	0	0	1	2	3	3	0	0	0	1	0	7
43	BLACKBURN,RACHEL		0	1	0	0	0	0	0	1	1	0	0	0	1	0	0	7
TEAM									1	0	1	0			0			
Totals			17	39	7	17	6	9	11	14	25	10	47	10	6	2	10	100
FG %	3rd Qtr	8-19	42.1%	4th Qtr	9-20	45.0%	Half:	17-39	43.6%									
3FG %	3rd Qtr	4-11	36.4%	4th Qtr	3-6	50.0%	Half:	7-17	36.4%									
FT %	3rd Qtr	3-6	50.0%	4th Qtr	3-3	100.0%	Half:	6-9	66.7%									

Officials: Ann Schroeder, Jeremy McHugh, Bryan Rump  
 Technical Fouls: Minnesota State - Ma- None. Nebraska- None.  
 Exhibition Game

Score by periods	1st	2nd	3rd	4th	Total	Points	In Paint	Off T/O	2nd Chance	Fast Break	Bench
Minnesota State - Ma	10	17	13	15	55	MSU	10	7	11	2	6
Nebraska	20	21	23	24	88		18	16	5	10	10

Last FG - MSU 4th-03:40, NEB 4th-00:25.  
 MSU led for 0:00. NEB led for 20:00. Game was tied for 0:00.

Score tied - 0 times  
 Lead changed - 0 times

**Minnesota State - Ma vs Nebraska**  
**11/5/2017; 2:06 p.m. at Pinnacle Bank Arena (Lincoln, Neb.)**  
**Period 3 Play-By-Play**



VISITORS: Minnesota State - Ma	Time	Score	Margin	HOME: Nebraska
	09:45			TURNOVER by WASHINGTON,DARRIEN
TURNOVER by ZIEGLER,CLAIRE	09:43			
	09:43			STEAL by WHITISH,HANNAH
	09:41			MISSED LAYUP by WHITISH,HANNAH
REBOUND (DEF) by DROST,TAYLOR	09:41			
	09:24			FOUL by WASHINGTON,DARRIEN
GOOD! JUMPER by KLUG,TAYLOR	09:14	41-29	H 12	
	08:54			MISSED JUMPER by CINCORE,JASMINE
	08:54			REBOUND (OFF) by KISSINGER,TAYLOR
	08:49			MISSED 3PTR by KISSINGER,TAYLOR
REBOUND (DEF) by KLUG,TAYLOR	08:49			
TURNOVER by JORDAN,CLAIRE	08:39			
	08:38			STEAL by KISSINGER,TAYLOR
	08:34	43-29	H 14	GOOD! LAYUP by WHITISH,HANNAH [FB/PNT]
MISSED 3PTR by ZIEGLER,CLAIRE	08:14			
	08:14			REBOUND (DEF) by WHITISH,HANNAH
FOUL by ZIEGLER,CLAIRE	08:12			
	08:12			SUB IN: MITCHELL,GRACE
	08:12			SUB OUT: SIMON,MADDIE
	07:45	45-29	H 16	GOOD! JUMPER by CINCORE,JASMINE [PNT]
MISSED 3PTR by KLUG,TAYLOR	07:28			
	07:28			REBOUND (DEF) by WASHINGTON,DARRIEN
FOUL by DROST,TAYLOR	07:20			
	07:20			MISSED FT by MITCHELL,GRACE
	07:20			REBOUND (DEADB) by TEAM
	07:20	46-29	H 17	GOOD! FT by MITCHELL,GRACE
SUB IN: ANDERSON,LOGAN	07:20			
SUB OUT: JORDAN,CLAIRE	07:20			
TURNOVER by KLUG,TAYLOR	07:07			
	07:05			STEAL by MITCHELL,GRACE
	07:00			MISSED 3PTR by KISSINGER,TAYLOR
	07:00			REBOUND (OFF) by WASHINGTON,DARRIEN
	06:57	48-29	H 19	GOOD! LAYUP by WHITISH,HANNAH [PNT]
	06:57			ASSIST by WASHINGTON,DARRIEN
TURNOVER by KLUG,TAYLOR	06:33			
	06:32			STEAL by CINCORE,JASMINE
FOUL by DROST,TAYLOR	06:29			
	06:25	49-29	H 20	GOOD! FT by CINCORE,JASMINE
	06:25			MISSED FT by CINCORE,JASMINE
	06:25			REBOUND (OFF) by MITCHELL,GRACE
SUB IN: REED,ASHLEY	06:25			
SUB OUT: ZIEGLER,CLAIRE	06:25			
	06:25			SUB IN: STALLWORTH,BRIA
	06:25			SUB OUT: WHITISH,HANNAH
	06:23			MISSED JUMPER by MITCHELL,GRACE
REBOUND (DEF) by DROST,TAYLOR	06:23			
MISSED 3PTR by KLUG,TAYLOR	06:15			
	06:15			REBOUND (DEF) by WASHINGTON,DARRIEN
	06:03	52-29	H 23	GOOD! 3PTR by KISSINGER,TAYLOR
	06:03			ASSIST by CINCORE,JASMINE
TURNOVER by MUTH,MONICA	05:45			
	05:43			STEAL by CINCORE,JASMINE
FOUL by REED,ASHLEY	05:33			
	05:33	53-29	H 24	GOOD! FT by WASHINGTON,DARRIEN
	05:33			MISSED FT by WASHINGTON,DARRIEN
REBOUND (DEF) by REED,ASHLEY	05:33			
	05:33			SUB IN: WOOD,EMILY
	05:33			SUB OUT: CINCORE,JASMINE
	05:26			SUB IN: CAIN,KATE
	05:26			SUB OUT: WASHINGTON,DARRIEN
	05:25			FOUL by MITCHELL,GRACE
MISSED JUMPER by DROST,TAYLOR	05:12			
	05:12			REBOUND (DEF) by CAIN,KATE
	05:04	55-29	H 26	GOOD! LAYUP by MITCHELL,GRACE [PNT]
	05:04			ASSIST by STALLWORTH,BRIA
TIMEOUT TEAM	05:01			
TIMEOUT MEDIA	05:01			
MISSED 3PTR by REED,ASHLEY	04:46			
REBOUND (OFF) by ANDERSON,LOGAN	04:46			

VISITORS: Minnesota State - Ma	Time	Score	Margin	HOME: Nebraska
MISSED 3PTR by REED,ASHLEY	04:41			
REBOUND (OFF) by MUTH,MONICA	04:41			
	04:37			FOUL by CAIN,KATE
TIMEOUT MEDIA	04:37			
SUB IN: TONSFELDT,BROOKE	04:37			
SUB IN: CAP,HEIDI	04:37			
SUB OUT: KLUG,TAYLOR	04:37			
SUB OUT: REED,ASHLEY	04:37			
GOOD! JUMPER by DROST,TAYLOR [PNT]	04:29	55-31	H 24	
	04:17	58-31	H 27	GOOD! 3PTR by KISSINGER,TAYLOR
	04:17			ASSIST by WOOD,EMILY
MISSED 3PTR by DROST,TAYLOR	04:04			
	04:04			REBOUND (DEF) by MITCHELL,GRACE
	03:48			MISSED 3PTR by STALLWORTH,BRIA
REBOUND (DEF) by TONSFELDT,BROOKE	03:48			
MISSED JUMPER by ANDERSON,LOGAN	03:40			
	03:40			BLOCK by KISSINGER,TAYLOR
REBOUND (OFF) by TEAM	03:40			
SUB IN: ZIEGLER,CLAIRE	03:40			
SUB IN: STUTTLEY,TAYLA	03:40			
SUB OUT: ANDERSON,LOGAN	03:40			
SUB OUT: DROST,TAYLOR	03:40			
GOOD! JUMPER by MUTH,MONICA [PNT]	03:33	58-33	H 25	
	03:33			FOUL by STALLWORTH,BRIA
GOOD! FT by MUTH,MONICA	03:33	58-34	H 24	
	03:33			SUB IN: WHITISH,HANNAH
	03:33			SUB OUT: STALLWORTH,BRIA
	03:13	61-34	H 27	GOOD! 3PTR by WHITISH,HANNAH
	03:13			ASSIST by WOOD,EMILY
FOUL by STUTTLEY,TAYLA	02:56			
TURNOVER by STUTTLEY,TAYLA	02:56			
	02:56			SUB IN: BLACKBURN,RACHEL
	02:56			SUB OUT: CAIN,KATE
	02:43	64-34	H 30	GOOD! 3PTR by WHITISH,HANNAH
	02:31			FOUL by KISSINGER,TAYLOR
GOOD! FT by MUTH,MONICA	02:31	64-35	H 29	
GOOD! FT by MUTH,MONICA	02:31	64-36	H 28	
	02:15			MISSED 3PTR by WOOD,EMILY
REBOUND (DEF) by TONSFELDT,BROOKE	02:15			
	02:11			SUB IN: CINCORE,JASMINE
	02:11			SUB OUT: KISSINGER,TAYLOR
TURNOVER by MUTH,MONICA	01:55			
	01:54			STEAL by CINCORE,JASMINE
	01:39			MISSED JUMPER by MITCHELL,GRACE
BLOCK by CAP,HEIDI	01:39			
REBOUND (DEF) by MUTH,MONICA	01:34			
	01:26			FOUL by WOOD,EMILY
GOOD! FT by TONSFELDT,BROOKE	01:26	64-37	H 27	
MISSED FT by TONSFELDT,BROOKE	01:26			
	01:26			REBOUND (DEF) by BLACKBURN,RACHEL
SUB IN: KLITZKE,KIRSTIN	01:26			
SUB OUT: MUTH,MONICA	01:26			
	01:26			SUB IN: SIMON,MADDIE
	01:26			SUB OUT: MITCHELL,GRACE
	01:22			TURNOVER by BLACKBURN,RACHEL
STEAL by TONSFELDT,BROOKE	01:21			
MISSED JUMPER by ZIEGLER,CLAIRE	01:07			
	01:07			REBOUND (DEF) by SIMON,MADDIE
SUB IN: DROST,TAYLOR	00:55			
SUB OUT: ZIEGLER,CLAIRE	00:55			
	00:43			MISSED 3PTR by WHITISH,HANNAH
REBOUND (DEF) by STUTTLEY,TAYLA	00:43			
TURNOVER by DROST,TAYLOR	00:30			
	00:29			STEAL by SIMON,MADDIE
	00:22			MISSED 3PTR by SIMON,MADDIE
REBOUND (DEF) by TONSFELDT,BROOKE	00:22			
GOOD! 3PTR by STUTTLEY,TAYLA	00:07	64-40	H 24	
ASSIST by KLITZKE,KIRSTIN	00:07			
	00:00			MISSED 3PTR by WHITISH,HANNAH
BLOCK by TONSFELDT,BROOKE	00:00			
	00:00			REBOUND (OFF) by TEAM

	Period 3-only	In Paint	Off T/O	2nd Chance	East Break	Bench	
MSU		4	6	5	0	4	Score tied - 0 times
NEB		8	9	2	2	3	Lead changed - 0 times

**Minnesota State - Ma vs Nebraska**  
**11/5/2017; 2:06 p.m. at Pinnacle Bank Arena (Lincoln, Neb.)**  
**Period 4 Play-By-Play**



VISITORS: Minnesota State - Ma	Time	Score	Margin	HOME: Nebraska
SUB IN: TONSFELDT,BROOKE	10:00			
SUB IN: STUTTLEY,TAYLA	10:00			
SUB IN: KLITZKE,KIRSTIN	10:00			
SUB IN: CAP,HEIDI	10:00			
SUB OUT: MUTH,MONICA	10:00			
SUB OUT: KLUG,TAYLOR	10:00			
SUB OUT: JORDAN,CLAIRE	10:00			
SUB OUT: ZIEGLER,CLAIRE	10:00			
	10:00			SUB IN: WOOD,EMILY
	10:00			SUB IN: BLACKBURN,RACHEL
	10:00			SUB OUT: KISSINGER,TAYLOR
	10:00			SUB OUT: WASHINGTON,DARRIEN
	09:45	66-40	H 26	GOOD! JUMPER by CINCORE,JASMINE
	09:45			ASSIST by SIMON,MADDIE
TURNOVER by KLITZKE,KIRSTIN	09:28			
	09:25			MISSED JUMPER by BLACKBURN,RACHEL
REBOUND (DEF) by DROST,TAYLOR	09:25			
TURNOVER by TONSFELDT,BROOKE	09:14			
	09:12			STEAL by SIMON,MADDIE
	09:09	68-40	H 28	GOOD! LAYUP by SIMON,MADDIE [FB/PNT]
MISSED JUMPER by KLITZKE,KIRSTIN	08:55			
REBOUND (OFF) by STUTTLEY,TAYLA	08:55			
MISSED JUMPER by STUTTLEY,TAYLA	08:52			
	08:52			REBOUND (DEF) by WHITISH,HANNAH
	08:46	70-40	H 30	GOOD! LAYUP by SIMON,MADDIE [FB/PNT]
	08:46			ASSIST by WHITISH,HANNAH
TIMEOUT 30SEC	08:43			
TIMEOUT media	08:43			
SUB IN: MUTH,MONICA	08:43			
SUB IN: JORDAN,CLAIRE	08:43			
SUB IN: KLUG,TAYLOR	08:43			
SUB IN: ZIEGLER,CLAIRE	08:43			
SUB OUT: TONSFELDT,BROOKE	08:43			
SUB OUT: STUTTLEY,TAYLA	08:43			
SUB OUT: KLITZKE,KIRSTIN	08:43			
SUB OUT: CAP,HEIDI	08:43			
MISSED JUMPER by DROST,TAYLOR	08:39			
REBOUND (OFF) by JORDAN,CLAIRE	08:39			
MISSED LAYUP by ZIEGLER,CLAIRE	08:30			
	08:30			REBOUND (DEF) by WASHINGTON,DARRIEN
	08:15			MISSED 3PTR by KISSINGER,TAYLOR
REBOUND (DEF) by MUTH,MONICA	08:15			
MISSED JUMPER by KLUG,TAYLOR	08:05			
REBOUND (OFF) by ZIEGLER,CLAIRE	08:05			
GOOD! 3PTR by MUTH,MONICA	08:00	70-43	H 27	
ASSIST by KLUG,TAYLOR	08:00			
	07:56			TIMEOUT 30SEC
	07:56			SUB IN: STALLWORTH,BRIA
	07:56			SUB IN: KISSINGER,TAYLOR
	07:56			SUB IN: WASHINGTON,DARRIEN
	07:56			SUB OUT: WHITISH,HANNAH
	07:56			SUB OUT: WOOD,EMILY
	07:56			SUB OUT: BLACKBURN,RACHEL
	07:33	73-43	H 30	GOOD! 3PTR by SIMON,MADDIE
	07:33			ASSIST by STALLWORTH,BRIA
MISSED JUMPER by KLUG,TAYLOR	07:09			
	07:09			REBOUND (DEF) by SIMON,MADDIE
	06:46			TURNOVER by WASHINGTON,DARRIEN
STEAL by ZIEGLER,CLAIRE	06:45			
GOOD! JUMPER by DROST,TAYLOR [PNT]	06:38	73-45	H 28	
ASSIST by JORDAN,CLAIRE	06:38			
	06:29			TURNOVER by STALLWORTH,BRIA
STEAL by KLUG,TAYLOR	06:28			
GOOD! LAYUP by KLUG,TAYLOR [FB/PNT]	06:25	73-47	H 26	
	06:12			MISSED JUMPER by SIMON,MADDIE
REBOUND (DEF) by MUTH,MONICA	06:12			
TURNOVER by ZIEGLER,CLAIRE	06:05			
	06:05			SUB IN: CAIN,KATE
	06:05			SUB IN: MITCHELL,GRACE

VISITORS: Minnesota State - Ma	Time	Score	Margin	HOME: Nebraska
	06:05			SUB IN: WHITISH,HANNAH
	06:05			SUB IN: WOOD,EMILY
	06:05			SUB OUT: STALLWORTH,BRIA
	06:05			SUB OUT: SIMON,MADDIE
	06:05			SUB OUT: CINCORE,JASMINE
	06:05			SUB OUT: WASHINGTON,DARRIEN
	05:52	76-47	H 29	GOOD! 3PTR by KISSINGER,TAYLOR
	05:52			ASSIST by WOOD,EMILY
MISSED 3PTR by JORDAN,CLAIRE	05:34			
REBOUND (OFF) by TEAM	05:34			
GOOD! 3PTR by DROST,TAYLOR	05:27	76-50	H 26	
	05:07			MISSED 3PTR by KISSINGER,TAYLOR
	05:07			REBOUND (OFF) by MITCHELL,GRACE
FOUL by JORDAN,CLAIRE	05:07			
	05:01			MISSED JUMPER by CAIN,KATE
REBOUND (DEF) by MUTH,MONICA	05:01			
MISSED 3PTR by KLUG,TAYLOR	04:53			
	04:51			REBOUND (DEF) by CAIN,KATE
	04:43	78-50	H 28	GOOD! JUMPER by KISSINGER,TAYLOR [PNT]
FOUL by KLUG,TAYLOR	04:43			
	04:43	79-50	H 29	GOOD! FT by KISSINGER,TAYLOR
	04:43			SUB IN: CINCORE,JASMINE
	04:43			SUB OUT: KISSINGER,TAYLOR
MISSED LAYUP by JORDAN,CLAIRE	04:25			
REBOUND (OFF) by JORDAN,CLAIRE	04:25			
TURNOVER by MUTH,MONICA	04:09			
	04:08			STEAL by CINCORE,JASMINE
	04:02			MISSED JUMPER by MITCHELL,GRACE
	04:02			REBOUND (OFF) by MITCHELL,GRACE
FOUL by JORDAN,CLAIRE	03:59			
SUB IN: ANDERSON,LOGAN	03:59			
SUB OUT: JORDAN,CLAIRE	03:59			
	03:57			TURNOVER by WOOD,EMILY
STEAL by KLUG,TAYLOR	03:55			
GOOD! JUMPER by ZIEGLER,CLAIRE [PNT]	03:40	79-52	H 27	
	03:40			FOUL by CAIN,KATE
GOOD! FT by ZIEGLER,CLAIRE	03:40	79-53	H 26	
	03:28			MISSED 3PTR by WOOD,EMILY
	03:28			REBOUND (OFF) by CINCORE,JASMINE
	03:17			MISSED LAYUP by WHITISH,HANNAH
	03:17			REBOUND (OFF) by CAIN,KATE
	03:14			MISSED JUMPER by CAIN,KATE
	03:14			REBOUND (OFF) by WHITISH,HANNAH
FOUL by ZIEGLER,CLAIRE	03:05			
	02:54			MISSED JUMPER by CINCORE,JASMINE
	02:54			REBOUND (OFF) by MITCHELL,GRACE
	02:52			FOUL by MITCHELL,GRACE
	02:52			TURNOVER by MITCHELL,GRACE
	02:52			SUB IN: STALLWORTH,BRIA
	02:52			SUB OUT: WHITISH,HANNAH
	02:43			FOUL by STALLWORTH,BRIA
MISSED JUMPER by ZIEGLER,CLAIRE	02:33			
	02:33			BLOCK by CAIN,KATE
	02:31			REBOUND (DEF) by STALLWORTH,BRIA
	02:26	81-53	H 28	GOOD! LAYUP by STALLWORTH,BRIA [FB/PNT]
	02:19			FOUL by CAIN,KATE
GOOD! FT by ANDERSON,LOGAN	02:19	81-54	H 27	
GOOD! FT by ANDERSON,LOGAN	02:19	81-55	H 26	
SUB IN: TONSFELDT,BROOKE	02:19			
SUB OUT: ZIEGLER,CLAIRE	02:19			
	02:19			SUB IN: BLACKBURN,RACHEL
	02:19			SUB OUT: CAIN,KATE
FOUL by MUTH,MONICA	02:00			
	02:00	82-55	H 27	GOOD! FT by STALLWORTH,BRIA
	02:00	83-55	H 28	GOOD! FT by STALLWORTH,BRIA
TURNOVER by ANDERSON,LOGAN	01:42			
	01:41			STEAL by CINCORE,JASMINE
	01:36	85-55	H 30	GOOD! LAYUP by CINCORE,JASMINE [FB/PNT]
TIMEOUT 30SEC	01:29			
SUB IN: CAP,HEIDI	01:29			
SUB OUT: KLUG,TAYLOR	01:29			
MISSED JUMPER by MUTH,MONICA	01:23			
REBOUND (OFF) by CAP,HEIDI	01:23			
MISSED JUMPER by CAP,HEIDI	01:15			
	01:15			REBOUND (DEF) by CINCORE,JASMINE

VISITORS: Minnesota State - Ma	Time	Score	Margin	HOME: Nebraska
	00:43			MISSED JUMPER by STALLWORTH,BRIA
	00:43			REBOUND (OFF) by WOOD,EMILY
	00:25	88-55	H 33	GOOD! 3PTR by STALLWORTH,BRIA
	00:25			ASSIST by MITCHELL,GRACE
MISSED 3PTR by DROST,TAYLOR	00:10			
	00:10			REBOUND (DEF) by CINCORE,JASMINE

Minnesota State - Ma 55, Nebraska 88

Period 4-only	In Paint	Off T/O	2nd Chance	Fast Break	Bench	
MSU	6	7	6	2	2	Score tied - 0 times
NEB	10	7	3	8	7	Lead changed - 0 times



**Minnesota State - Ma vs Nebraska**  
**11/5/2017; 2:06 p.m. at Pinnacle Bank Arena (Lincoln, Neb.)**  
**Scoring/Runs Reference**



**Period 1**

Minnesota State - Ma	VRun	Score	Margin	HRun	Nebraska
09:47 - DROST JUMPER [P]	-	2-0	-2		
		2-1	-1		CINCORE FT - 09:18
		2-3	1	3-0	SIMON LAYUP [P] - 07:52
07:36 - MUTH JUMPER	-	4-3	-1		
		4-4	0		KISSINGER FT - 07:16
		4-5	1	2-0	KISSINGER FT - 07:16
		4-8	4	5-0	KISSINGER 3PTR - 06:53
05:58 - KLUG 3PTR	-	7-8	1		
		7-10	3		STALLWORTH LAYUP [P] [F] - 05:47
		7-12	5	4-0	KISSINGER LAYUP [P] - 05:20
		7-13	6	5-0	KISSINGER FT - 05:20
		7-15	8	7-0	BLACKBURN JUMPER [P] - 04:53
		7-17	10	9-0	STALLWORTH JUMPER - 02:33
		7-18	11	10-0	CAIN FT - 01:28
		7-20	13	12-0	SIMON LAYUP [P] - 01:05
00:02 - TONSFELDT 3PTR	-	10-20	10		

**Minnesota State - Ma vs Nebraska**  
**11/5/2017; 2:06 p.m. at Pinnacle Bank Arena (Lincoln, Neb.)**  
**Scoring/Runs Reference**



**Period 2**

Minnesota State - Ma	VRun	Score	Margin	HRun	Nebraska
09:41 - MUTH 3PTR	-	13-20	7		
09:12 - DROST 3PTR	NaN-0	16-20	4		
		16-22	6		STALLWORTH LAYUP [P] - 08:48
		16-24	8	4-0	KISSINGER LAYUP [P] - 08:25
		16-26	10	6-0	STALLWORTH JUMPER [P] - 07:50
06:30 - DROST JUMPER [P]	-	18-26	8		
		18-29	11		WOOD 3PTR - 05:00
		18-31	13	5-0	CAIN LAYUP [P] - 03:37
03:01 - KLUG 3PTR [P] [F]	-	21-31	10		
01:56 - STUTTLEY 3PTR	6-0	24-31	7		
		24-34	10		WHITISH 3PTR - 01:39
		24-35	11	4-0	WHITISH FT - 01:18
		24-36	12	5-0	WHITISH FT - 01:18
01:03 - ZIEGLER 3PTR	-	27-36	9		
		27-39	12		WOOD 3PTR - 00:43
		27-41	14	5-0	CAIN LAYUP [P] - 00:05

**Minnesota State - Ma vs Nebraska**  
**11/5/2017; 2:06 p.m. at Pinnacle Bank Arena (Lincoln, Neb.)**  
**Scoring/Runs Reference**



**Period 3**

Minnesota State - Ma	VRun	Score	Margin	HRun	Nebraska
09:14 - KLUG JUMPER	-	29-41	12		
		29-43	14		WHITISH LAYUP [P] [F] - 08:34
		29-45	16	4-0	CINCORE JUMPER [P] - 07:45
		29-46	17	5-0	MITCHELL FT - 07:20
		29-48	19	7-0	WHITISH LAYUP [P] - 06:57
		29-49	20	8-0	CINCORE FT - 06:25
		29-52	23	11-0	KISSINGER 3PTR - 06:03
		29-53	24	12-0	WASHINGTON FT - 05:33
		29-55	26	14-0	MITCHELL LAYUP [P] - 05:04
04:29 - DROST JUMPER [P]	-	31-55	24		
		31-58	27		KISSINGER 3PTR - 04:17
03:33 - MUTH JUMPER [P]	-	33-58	25		
03:33 - MUTH FT	3-0	34-58	24		
		34-61	27		WHITISH 3PTR - 03:13
		34-64	30	6-0	WHITISH 3PTR - 02:43
02:31 - MUTH FT	-	35-64	29		
02:31 - MUTH FT	2-0	36-64	28		
01:26 - TONSFELDT FT	3-0	37-64	27		
00:07 - STUTTLEY 3PTR	6-0	40-64	24		

**Minnesota State - Ma vs Nebraska**  
**11/5/2017; 2:06 p.m. at Pinnacle Bank Arena (Lincoln, Neb.)**  
**Scoring/Runs Reference**

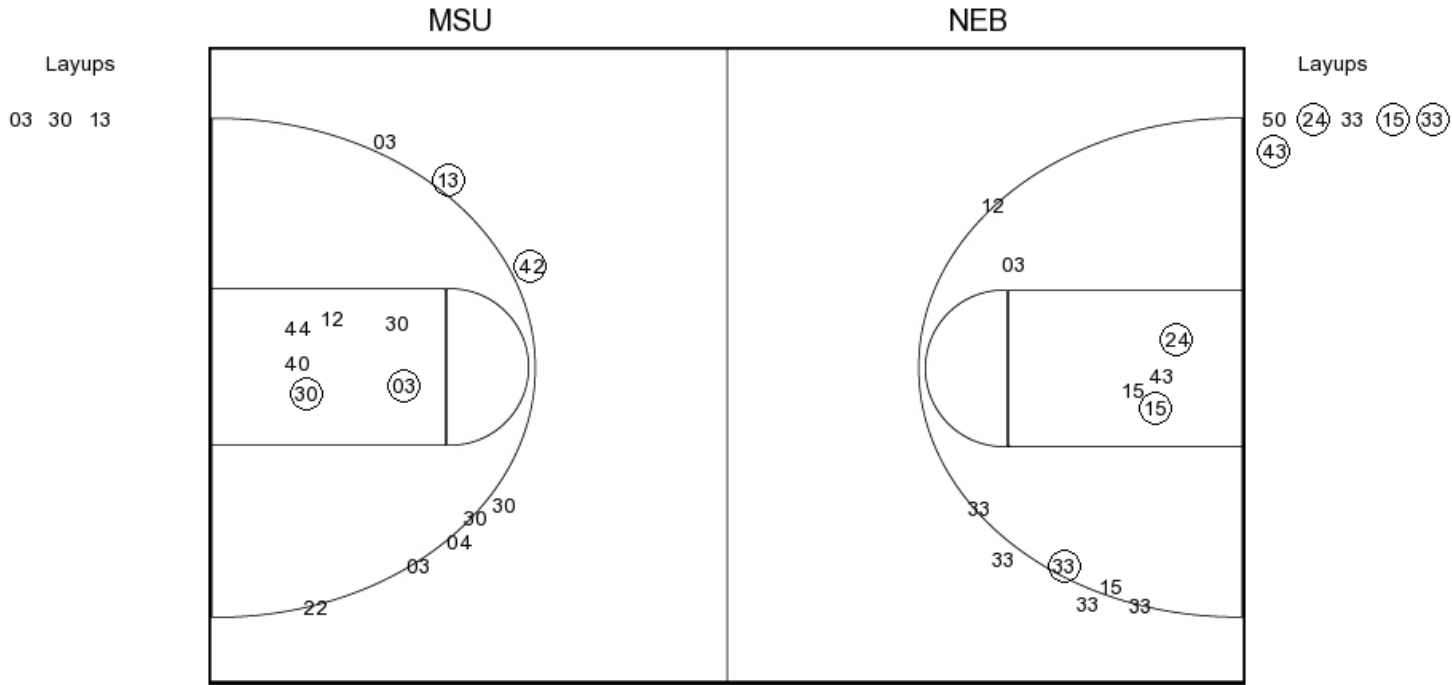


**Period 4**

Minnesota State - Ma	VRun	Score	Margin	HRun	Nebraska
		40-66	26		CINCORE JUMPER - 09:45
		40-68	28	NaN-0	SIMON LAYUP [P] [F] - 09:09
		40-70	30	NaN-0	SIMON LAYUP [P] [F] - 08:46
08:00 - MUTH 3PTR	-	43-70	27		
		43-73	30		SIMON 3PTR - 07:33
06:38 - DROST JUMPER [P]	-	45-73	28		
06:25 - KLUG LAYUP [P] [F]	4-0	47-73	26		
		47-76	29		KISSINGER 3PTR - 05:52
05:27 - DROST 3PTR	-	50-76	26		
		50-78	28		KISSINGER JUMPER [P] - 04:43
		50-79	29	3-0	KISSINGER FT - 04:43
03:40 - ZIEGLER JUMPER [P]	-	52-79	27		
03:40 - ZIEGLER FT	3-0	53-79	26		
		53-81	28		STALLWORTH LAYUP [P] [F] - 02:26
02:19 - ANDERSON FT	-	54-81	27		
02:19 - ANDERSON FT	2-0	55-81	26		
		55-82	27		STALLWORTH FT - 02:00
		55-83	28	2-0	STALLWORTH FT - 02:00
		55-85	30	4-0	CINCORE LAYUP [P] [F] - 01:36
		55-88	33	7-0	STALLWORTH 3PTR - 00:25



PERIOD 1



MSU PERIOD 1

FG Made	10
FG Attempted	35
3PFG Made	7
3PFG Attempted	15

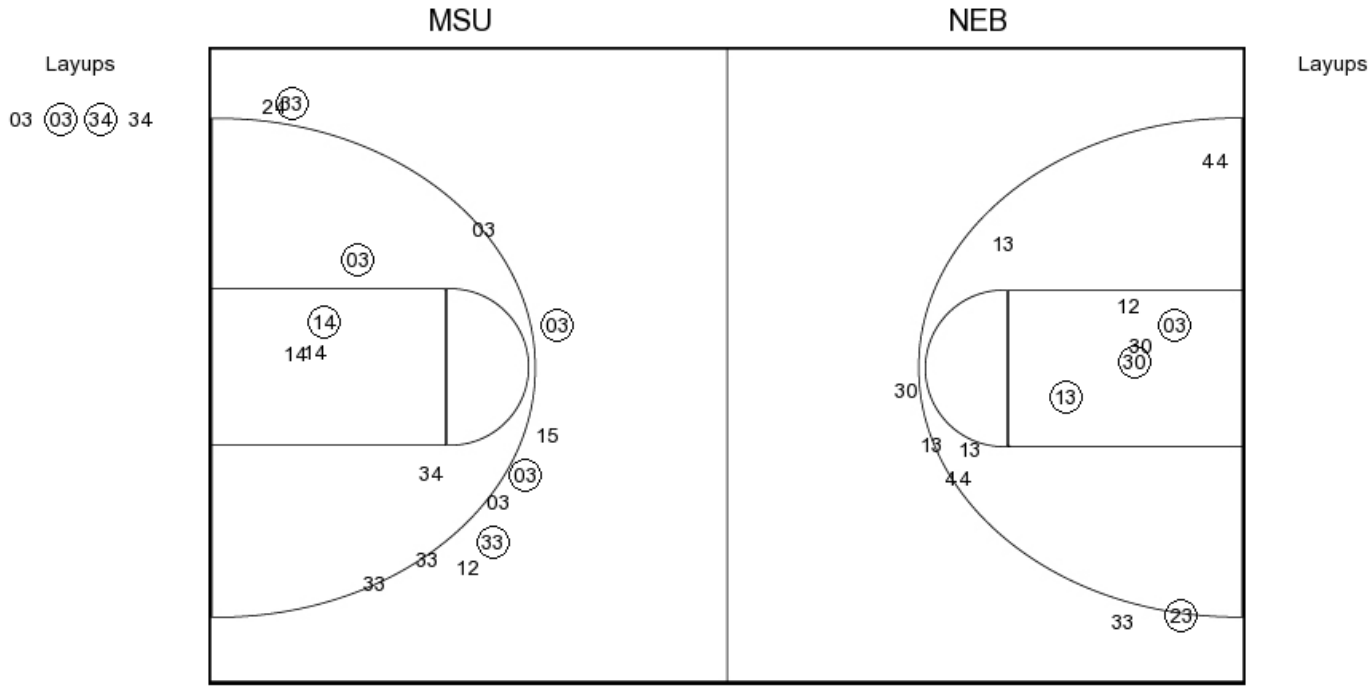
NEB PERIOD 1

FG Made	15
FG Attempted	30
3PFG Made	4
3PFG Attempted	11

FG Made  
FG Attempted  
3PFG Made  
3PFG Attempted



PERIOD 3



MSU PERIOD 3

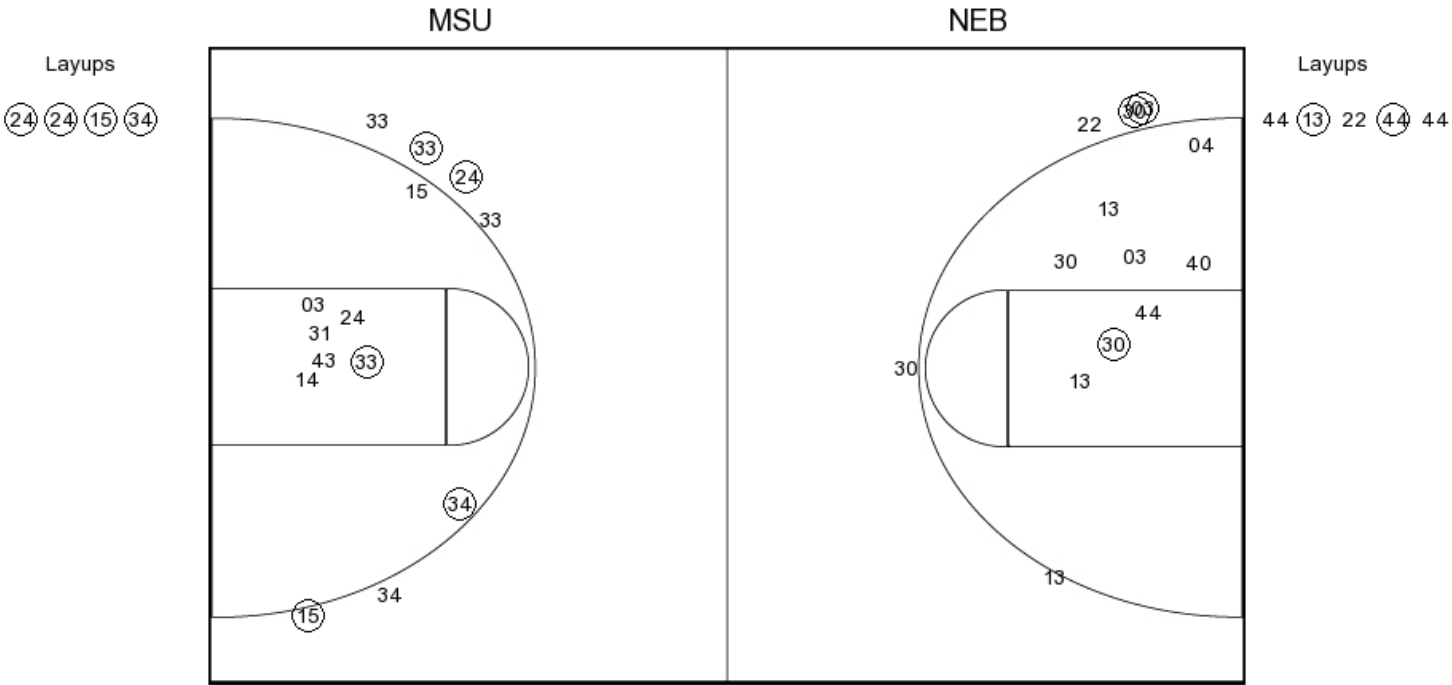
FG Made	9
FG Attempted	31
3PFG Made	3
3PFG Attempted	12

NEB PERIOD 3

FG Made	17
FG Attempted	39
3PFG Made	7
3PFG Attempted	17



PERIOD 4



**MSU PERIOD 4**

FG Made  
FG Attempted  
3PFG Made  
3PFG Attempted

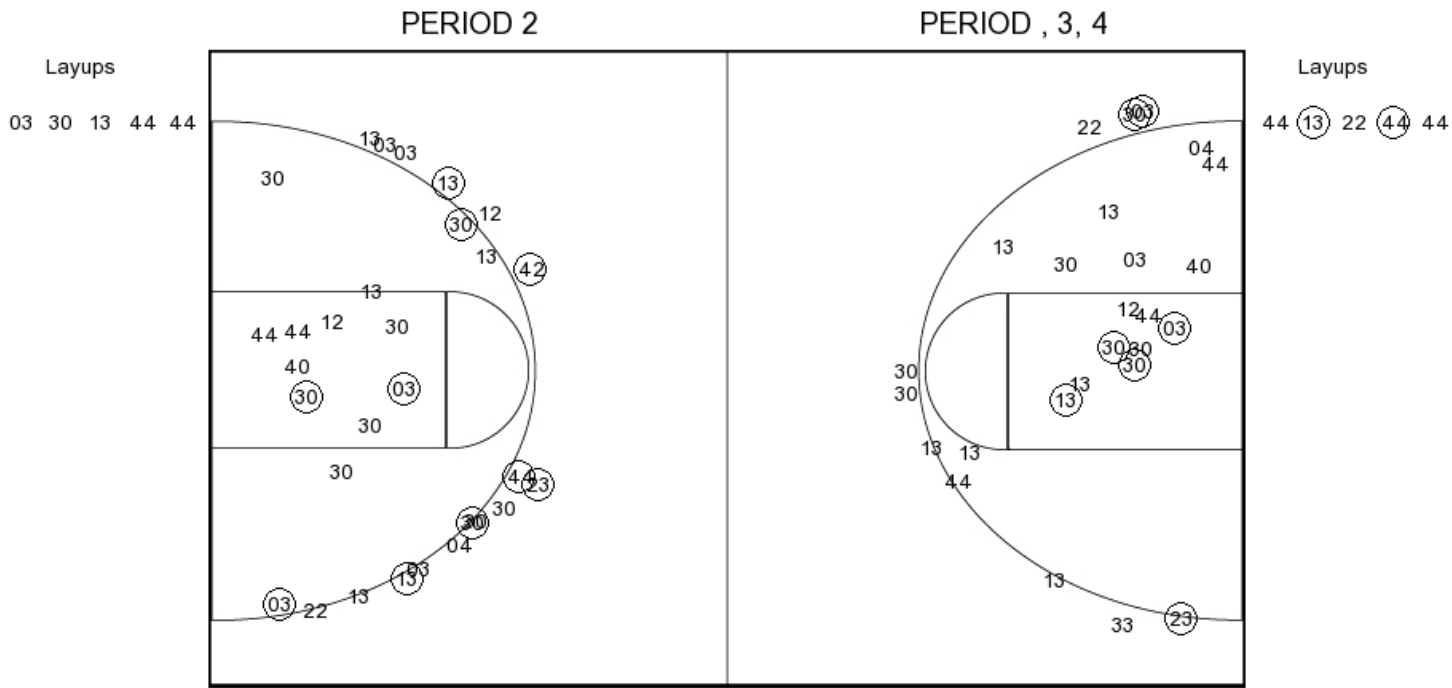
**NEB PERIOD 4**

FG Made  
FG Attempted  
3PFG Made  
3PFG Attempted





Minnesota State - Ma



<b>MSU PERIOD 1</b>	
FG Made	10
FG Attempted	35
3PFG Made	7
3PFG Attempted	15

<b>MSU PERIOD 2</b>	
FG Made	
FG Attempted	
3PFG Made	
3PFG Attempted	

FG Made  
FG Attempted  
3PFG Made  
3PFG Attempted