

FINAL SCORE



Wisconsin

9-9, 2-3

59



Nebraska

12-6, 3-2

63

January 09, 2018 • Pinnacle Bank Arena (Lincoln, Neb.)

FINAL STATISTICS

Official Basketball Box Score -- Game Totals -- Final Statistics
Wisconsin vs Nebraska
1/9/2018 7:42 p.m. at Pinnacle Bank Arena (Lincoln, Neb.)



Wisconsin 59 - 9-9, 2-3

##	Player		Total		3-Ptr		FT-FTA		Rebounds			PF	TP	A	TO	Blk	Stl	Min
			FG	F-GA	FG	F-GA	FT	FTA	Off	Def	Tot							
01	PRITZL,BREVIN	g	4	8	1	5	1	2	1	6	7	3	10	1	1	0	0	38
21	IVERSON,KHALIL	f	2	5	0	1	0	0	3	4	7	0	4	0	0	1	1	32
22	HAPP,ETHAN	f	9	15	0	0	1	6	4	7	11	5	19	2	2	0	4	35
34	DAVISON,BRAD	g	5	15	3	8	2	2	0	5	5	4	15	5	2	0	0	36
35	REUVERS,NATE	f	4	9	0	2	0	0	0	0	0	3	8	1	1	2	0	22
02	FORD,ALEEM		1	7	1	3	0	0	0	1	1	4	3	1	0	1	0	26
03	MCGRORY,WALT		0	0	0	0	0	0	0	0	0	0	0	1	0	0	0	5
05	MOESCH,AARON		0	0	0	0	0	0	0	0	0	0	0	0	0	0	0	3
15	THOMAS,CHARLES		0	0	0	0	0	0	0	0	0	2	0	0	1	0	0	1
20	SCHLUNDT,TJ		0	0	0	0	0	0	0	0	0	0	0	0	0	0	0	2
TEAM									1	0	1	0			3			
TOTALS			25	59	5	19	4	10	9	23	32	21	59	11	10	4	5	200

Deadball Rebounds: 3,0

FG %	1st Half:	9-27	33.3%	2nd Half:	16-32	50.0%	Game:	25-59	42.4%
3FG %	1st Half:	3-11	27.3%	2nd Half:	2-8	25.0%	Game:	5-19	26.3%
FT %	1st Half:	1-2	50.0%	2nd Half:	3-8	37.5%	Game:	4-10	40.0%

Nebraska 63 - 12-6, 3-2

##	Player		Total		3-Ptr		FT-FTA		Rebounds			PF	TP	A	TO	Blk	Stl	Min
			FG	F-GA	FG	F-GA	FT	FTA	Off	Def	Tot							
05	WATSON JR.,GLYNN	g	0	6	0	2	3	4	1	4	5	2	3	3	3	0	0	28
11	TAYLOR,EVAN	g	0	1	0	0	1	2	0	3	3	4	1	1	2	0	0	28
14	COPELAND,ISAAC	f	5	10	0	3	2	3	0	6	6	2	12	0	1	3	1	32
24	PALMER JR.,JAMES	g	5	11	0	3	8	9	1	4	5	1	18	2	4	2	0	27
32	T SHIMANGA,JORDY	c	3	5	0	0	3	4	2	4	6	5	9	0	1	0	0	18
00	OKEKE,DUBY		0	1	0	0	0	0	0	0	0	0	0	0	0	0	1	5
12	ALLEN,THOMAS		3	5	0	1	2	2	0	0	0	0	8	0	0	0	0	15
13	GILL,ANTON		3	6	2	5	0	0	0	1	1	1	8	0	1	0	0	23
15	ROBY,ISAIAH		1	2	0	0	2	4	2	6	8	2	4	2	1	1	0	18
20	BORCHARDT,TANNER		0	0	0	0	0	0	0	0	0	0	0	0	0	0	0	6
TEAM									0	0	0	0			0			
TOTALS			20	47	2	14	21	28	6	28	34	17	63	8	13	6	2	200

Deadball Rebounds: 5,0

FG %	1st Half:	11-24	45.8%	2nd Half:	9-23	39.1%	Game:	20-47	42.6%
3FG %	1st Half:	1-7	14.3%	2nd Half:	1-7	14.3%	Game:	2-14	14.3%
FT %	1st Half:	3-4	75.0%	2nd Half:	18-24	75.0%	Game:	21-28	75.0%

Officials: Terry Wymer, Tom Eades, Rob Riley
 Technical Fouls: Wisconsin- TEAM; Nebraska- None.
 Attendance: 15643

Actual Attendance:13,497
 Technical fouls: Wisconsin - 1

Score by periods	1st	2nd	Total
Wisconsin	22	37	59
Nebraska	26	37	63

Points	In Paint	Off T/O	2nd Chance	Fast Break	Bench
WIS	38	23	3	4	3
NEB	24	11	3	0	20

Last FG - WIS 2nd-00:01, NEB 2nd-03:14.
 Largest lead - Wisconsin by 1 1st-15:22; Nebraska by 13 2nd-13:55
 WIS led for 0:57. NEB led for 38:27. Game was tied for 0:36.

Score tied - 1 times; Lead changed - 2 times

Wisconsin vs Nebraska
1/9/2018; 7:42 p.m. at Pinnacle Bank Arena (Lincoln, Neb.)
Period 1 Play-By-Play



VISITORS: Wisconsin	Time	Score	Margin	HOME: Nebraska
	19:45	2-0	H 2	GOOD! JUMPER by COPELAND,ISAAC [PNT]
MISSED 3PTR by PRITZL,BREVIN	19:13			
REBOUND (OFF) by HAPP,ETHAN	19:13			
MISSED JUMPER by HAPP,ETHAN	19:02			
	19:02			REBOUND (DEF) by PALMER JR.,JAMES
FOUL by REUVERS,NATE	18:46			
	18:38			MISSED JUMPER by WATSON JR.,GLYNN
	18:38			REBOUND (OFF) by WATSON JR.,GLYNN
	18:14	4-0	H 4	GOOD! JUMPER by COPELAND,ISAAC
	18:03			ASSIST by TAYLOR,EVAN
GOOD! LAYUP by DAVISON,BRAD [PNT]	17:52	4-2	H 2	
	17:28			MISSED JUMPER by TSHIMANGA,JORDY
BLOCK by REUVERS,NATE	17:28			
REBOUND (DEF) by HAPP,ETHAN	17:26			
	17:12			FOUL by TSHIMANGA,JORDY
MISSED 3PTR by DAVISON,BRAD	17:08			
	17:08			REBOUND (DEF) by TSHIMANGA,JORDY
FOUL by PRITZL,BREVIN	17:03			
	17:03			MISSED FT by PALMER JR.,JAMES
	17:03			REBOUND (DEADB) by TEAM
	17:03	5-2	H 3	GOOD! FT by PALMER JR.,JAMES
TURNOVER by REUVERS,NATE	16:38			
	16:22			FOUL by TSHIMANGA,JORDY
	16:22			TURNOVER by TSHIMANGA,JORDY
SUB IN: FORD,ALEEM	16:22			
SUB OUT: REUVERS,NATE	16:22			
	16:22			SUB IN: OKEKE,DUBY
	16:22			SUB OUT: TSHIMANGA,JORDY
	16:12			FOUL by TAYLOR,EVAN
GOOD! 3PTR by FORD,ALEEM	16:03	5-5	T	
ASSIST by HAPP,ETHAN	16:03			
	15:42	7-5	H 2	GOOD! JUMPER by PALMER JR.,JAMES
	15:32			ASSIST by WATSON JR.,GLYNN
GOOD! 3PTR by DAVISON,BRAD	15:22	7-8	V 1	
ASSIST by PRITZL,BREVIN	15:22			
	14:58			MISSED JUMPER by OKEKE,DUBY
REBOUND (DEF) by DAVISON,BRAD	14:58			
	14:47			FOUL by WATSON JR.,GLYNN
TIMEOUT MEDIA	14:47			
SUB IN: REUVERS,NATE	14:47			
SUB OUT: HAPP,ETHAN	14:47			
	14:47			SUB IN: GILL,ANTON
	14:47			SUB OUT: WATSON JR.,GLYNN
MISSED 3PTR by FORD,ALEEM	14:42			
	14:42			REBOUND (DEF) by PALMER JR.,JAMES
	14:25	9-8	H 1	GOOD! LAYUP by COPELAND,ISAAC [PNT]
	14:25			ASSIST by PALMER JR.,JAMES
MISSED JUMPER by IVERSON,KHALIL	13:58			
	13:58			BLOCK by PALMER JR.,JAMES
	13:57			REBOUND (DEF) by PALMER JR.,JAMES
	13:55	12-8	H 4	GOOD! 3PTR by GILL,ANTON
	13:55			ASSIST by PALMER JR.,JAMES
MISSED LAYUP by DAVISON,BRAD	13:24			
	13:24			REBOUND (DEF) by COPELAND,ISAAC
	13:12			TURNOVER by PALMER JR.,JAMES
SUB IN: HAPP,ETHAN	13:12			
SUB OUT: IVERSON,KHALIL	13:12			
	13:12			SUB IN: ALLEN,THOMAS
	13:12			SUB IN: ROBY,ISIAH
	13:12			SUB OUT: GILL,ANTON
	13:12			SUB OUT: TAYLOR,EVAN
	13:06			SUB IN: GILL,ANTON
	13:06			SUB OUT: COPELAND,ISAAC
GOOD! JUMPER by REUVERS,NATE [PNT]	13:01	12-10	H 2	
ASSIST by DAVISON,BRAD	13:01			
	12:38			MISSED 3PTR by PALMER JR.,JAMES
REBOUND (DEF) by HAPP,ETHAN	12:38			
TURNOVER by HAPP,ETHAN	12:20			
	12:19			STEAL by OKEKE,DUBY

VISITORS: Wisconsin	Time	Score	Margin	HOME: Nebraska
	12:16			MISSED 3PTR by GILL,ANTON
REBOUND (DEF) by DAVISON,BRAD	12:16			
MISSED 3PTR by FORD,ALEEM	11:56			
	11:56			REBOUND (DEF) by ROBY,ISAIAH
FOUL by FORD,ALEEM	11:39			
	11:39			TIMEOUT MEDIA
	11:39	13-10	H 3	GOOD! FT by PALMER JR.,JAMES
	11:39	14-10	H 4	GOOD! FT by PALMER JR.,JAMES
SUB IN: MCGRORY,WALT	11:39			
SUB IN: FERRIS,MATT	11:39			
SUB OUT: DAVISON,BRAD	11:39			
SUB OUT: FORD,ALEEM	11:39			
	11:39			SUB IN: BORCHARDT,TANNER
	11:39			SUB IN: WATSON JR.,GLYNN
	11:39			SUB OUT: PALMER JR.,JAMES
	11:39			SUB OUT: OKEKE,DUBY
MISSED JUMPER by REUVERS,NATE	11:10			
	11:10			REBOUND (DEF) by ROBY,ISAIAH
	10:52			MISSED JUMPER by WATSON JR.,GLYNN
REBOUND (DEF) by HAPP,ETHAN	10:52			
GOOD! JUMPER by HAPP,ETHAN [PNT]	10:30	14-12	H 2	
ASSIST by MCGRORY,WALT	10:30			
	10:02	16-12	H 4	GOOD! LAYUP by ALLEN,THOMAS [PNT]
GOOD! JUMPER by REUVERS,NATE	09:30	16-14	H 2	
	09:15	18-14	H 4	GOOD! JUMPER by GILL,ANTON
	09:15			ASSIST by ROBY,ISAIAH
MISSED 3PTR by REUVERS,NATE	08:56			
	08:56			REBOUND (DEF) by WATSON JR.,GLYNN
	08:45			MISSED 3PTR by GILL,ANTON
REBOUND (DEF) by PRITZL,BREVIN	08:45			
MISSED JUMPER by REUVERS,NATE	08:28			
	08:28			REBOUND (DEF) by ROBY,ISAIAH
	08:16	20-14	H 6	GOOD! JUMPER by ALLEN,THOMAS [PNT]
TIMEOUT 30SEC	08:14			
TIMEOUT MEDIA	08:14			
SUB IN: THOMAS,CHARLES	08:14			
SUB IN: DAVISON,BRAD	08:14			
SUB IN: FORD,ALEEM	08:14			
SUB IN: IVERSON,KHALIL	08:14			
SUB OUT: HAPP,ETHAN	08:14			
SUB OUT: REUVERS,NATE	08:14			
SUB OUT: MCGRORY,WALT	08:14			
SUB OUT: FERRIS,MATT	08:14			
	08:14			SUB IN: TAYLOR,EVAN
	08:14			SUB IN: COPELAND,ISAAC
	08:14			SUB OUT: GILL,ANTON
	08:14			SUB OUT: BORCHARDT,TANNER
TURNOVER by TEAM	07:47			
SUB IN: HAPP,ETHAN	07:47			
SUB OUT: THOMAS,CHARLES	07:47			
	07:34			MISSED JUMPER by ROBY,ISAIAH
BLOCK by FORD,ALEEM	07:34			
REBOUND (DEF) by HAPP,ETHAN	07:33			
	07:33			FOUL by ROBY,ISAIAH
MISSED JUMPER by HAPP,ETHAN	07:23			
	07:23			REBOUND (DEF) by COPELAND,ISAAC
	06:58			MISSED JUMPER by WATSON JR.,GLYNN
BLOCK by IVERSON,KHALIL	06:58			
REBOUND (DEF) by HAPP,ETHAN	06:56			
MISSED JUMPER by FORD,ALEEM	06:31			
	06:31			REBOUND (DEF) by WATSON JR.,GLYNN
	06:28			SUB IN: PALMER JR.,JAMES
	06:28			SUB IN: TSHIMANGA,JORDY
	06:28			SUB OUT: ALLEN,THOMAS
	06:28			SUB OUT: ROBY,ISAIAH
	06:11	22-14	H 8	GOOD! LAYUP by PALMER JR.,JAMES [PNT]
TURNOVER by HAPP,ETHAN	05:46			
SUB IN: REUVERS,NATE	05:46			
SUB OUT: HAPP,ETHAN	05:46			
	05:28	24-14	H 10	GOOD! DUNK by TSHIMANGA,JORDY [PNT]
	05:28			ASSIST by WATSON JR.,GLYNN
TURNOVER by DAVISON,BRAD	05:04			
	04:50			TURNOVER by WATSON JR.,GLYNN
SUB IN: HAPP,ETHAN	04:50			
SUB OUT: FORD,ALEEM	04:50			

VISITORS: Wisconsin	Time	Score	Margin	HOME: Nebraska
	04:50			SUB IN: GILL,ANTON
	04:50			SUB OUT: WATSON JR.,GLYNN
GOOD! 3PTR by DAVISON,BRAD	04:25	24-17	H 7	
	04:10			MISSED LAYUP by TSHIMANGA,JORDY
REBOUND (DEF) by DAVISON,BRAD	04:10			
MISSED JUMPER by HAPP,ETHAN	03:53			
	03:53			REBOUND (DEF) by COPELAND,ISAAC
	03:48			TURNOVER by COPELAND,ISAAC
STEAL by IVERSON,KHALIL	03:47			
GOOD! LAYUP by IVERSON,KHALIL [PNT]	03:46	24-19	H 5	
	03:32			MISSED 3PTR by COPELAND,ISAAC
REBOUND (DEF) by PRITZL,BREVIN	03:32			
MISSED 3PTR by PRITZL,BREVIN	03:19			
	03:19			REBOUND (DEF) by GILL,ANTON
	03:09			MISSED 3PTR by PALMER JR.,JAMES
REBOUND (DEF) by PRITZL,BREVIN	03:09			
MISSED 3PTR by REUVERS,NATE	02:50			
	02:50			REBOUND (DEF) by TAYLOR,EVAN
	02:45			FOUL by TAYLOR,EVAN
	02:45			TURNOVER by TAYLOR,EVAN
TIMEOUT MEDIA	02:45			
SUB IN: FORD,ALEEM	02:45			
SUB OUT: REUVERS,NATE	02:45			
	02:45			SUB IN: BORCHARDT,TANNER
	02:45			SUB IN: ALLEN,THOMAS
	02:45			SUB OUT: PALMER JR.,JAMES
	02:45			SUB OUT: TSHIMANGA,JORDY
MISSED JUMPER by FORD,ALEEM	02:27			
	02:27			BLOCK by COPELAND,ISAAC
	02:26			REBOUND (DEF) by TAYLOR,EVAN
FOUL by HAPP,ETHAN	02:08			
	02:08			SUB IN: ROBY,ISIAAH
	02:08			SUB IN: WATSON JR.,GLYNN
	02:08			SUB OUT: BORCHARDT,TANNER
	02:08			SUB OUT: TAYLOR,EVAN
	02:06			TURNOVER by WATSON JR.,GLYNN
STEAL by HAPP,ETHAN	02:04			
GOOD! DUNK by HAPP,ETHAN [FB/PNT]	02:02	24-21	H 3	
	01:44			MISSED 3PTR by WATSON JR.,GLYNN
	01:44			REBOUND (OFF) by ROBY,ISIAAH
FOUL by PRITZL,BREVIN	01:44			
	01:14	26-21	H 5	GOOD! JUMPER by ROBY,ISIAAH
MISSED JUMPER by FORD,ALEEM	00:48			
REBOUND (OFF) by IVERSON,KHALIL	00:48			
	00:29			FOUL by COPELAND,ISAAC
MISSED FT by PRITZL,BREVIN	00:29			
REBOUND (DEADB) by TEAM	00:29			
GOOD! FT by PRITZL,BREVIN	00:29	26-22	H 4	
	00:29			TIMEOUT 30SEC
SUB IN: SCHLUNDT,TJ	00:29			
SUB OUT: PRITZL,BREVIN	00:29			
	00:06			FOUL by WATSON JR.,GLYNN
	00:06			TURNOVER by WATSON JR.,GLYNN
SUB IN: PRITZL,BREVIN	00:06			
SUB OUT: SCHLUNDT,TJ	00:06			
	00:06			SUB IN: PALMER JR.,JAMES
	00:06			SUB OUT: WATSON JR.,GLYNN
MISSED 3PTR by DAVISON,BRAD	00:00			
	00:00			BLOCK by ROBY,ISIAAH
REBOUND (OFF) by HAPP,ETHAN	00:00			

Wisconsin 22, Nebraska 26

Period 1-only	In Paint	Off T/O	2nd Chance	Fast Break	Bench	
WIS	10	12	1	2	3	Score tied - 2 times
NEB	12	2	4	0	11	Lead changed - 2 times

Official Basketball Box Score -- Game Totals -- Second Half Statistics
Wisconsin vs Nebraska
1/9/2018 7:42 p.m. at Pinnacle Bank Arena (Lincoln, Neb.)



Wisconsin 37 • 9-9, 2-3

##	Player		Total		3-Ptr		FT-FTA	Rebounds			PF	TP	A	TO	Blk	Stl	Min
			FG-FGA		FG-FGA			Off	Def	Tot							
01	PRITZL,BREVIN	g	4-6		1-3		0-0	1	3	4	1	9	0	1	0	0	18
21	IVERSON,KHALIL	f	1-3		0-1		0-0	2	4	6	0	2	0	0	0	0	17
22	HAPP,ETHAN	f	7-10		0-0		1-6	2	2	4	4	15	1	0	0	3	18
34	DAVISON,BRAD	g	2-9		1-4		2-2	0	2	2	4	7	4	1	0	0	19
35	REUVERS,NATE	f	2-3		0-0		0-0	0	0	0	2	4	1	0	1	0	9
02	FORD,ALEEM		0-1		0-0		0-0	0	1	1	3	0	1	0	0	0	15
03	MCGRORY,WALT		0-0		0-0		0-0	0	0	0	0	0	0	0	0	0	1
05	MOESCH,AARON		0-0		0-0		0-0	0	0	0	0	0	0	0	0	0	0
15	THOMAS,CHARLES		0-0		0-0		0-0	0	0	0	2	0	0	1	0	0	1
20	SCHLUNDT,TJ		0-0		0-0		0-0	0	0	0	0	0	0	0	0	0	2
TEAM								1	0	1	0			2			
Totals			16-32		2-8		3-8	6	12	18	16	37	7	5	1	3	100

FG % Half: 16-32 50.0%
 3FG % Half: 2-8 27.3%
 FT % Half: 3-8 37.5%

Nebraska 37 • 12-6, 3-2

##	Player		Total		3-Ptr		FT-FTA	Rebounds			PF	TP	A	TO	Blk	Stl	Min
			FG-FGA		FG-FGA			Off	Def	Tot							
05	WATSON JR.,GLYNN	g	0-2		0-1		3-4	0	2	2	0	3	1	0	0	0	13
11	TAYLOR,EVAN	g	0-1		0-0		1-2	0	1	1	2	1	0	1	0	0	15
14	COPELAND,ISAAC	f	2-6		0-2		2-3	0	3	3	1	6	0	0	2	1	17
24	PALMER JR.,JAMES	g	3-7		0-1		5-5	1	1	2	1	11	0	3	1	0	15
32	TSHIMANGA,JORDY	c	2-2		0-0		3-4	2	3	5	3	7	0	0	0	0	11
00	OKEKE,DUBY		0-0		0-0		0-0	0	0	0	0	0	0	0	0	0	0
12	ALLEN,TOMAS		1-3		0-1		2-2	0	0	0	0	4	0	0	0	0	6
13	GILL,ANTON		1-2		1-2		0-0	0	0	0	1	3	0	1	0	0	12
15	ROBY,ISAIAH		0-0		0-0		2-4	1	3	4	1	2	1	1	0	0	9
20	BORCHARDT,TANNER		0-0		0-0		0-0	0	0	0	0	0	0	0	0	0	2
TEAM								0	0	0	0			0			
Totals			9-23		1-7		18-24	4	13	17	9	37	2	6	3	1	100

FG % Half: 9-23 39.1%
 3FG % Half: 1-7 14.3%
 FT % Half: 18-24 75.0%

Officials: Terry Wymer, Tom Eades, Rob Riley
 Technical Fouls: Wisconsin- TEAM; Nebraska- None.
 Actual Attendance:13,497
 Technical fouls: Wisconsin - 1

Score by periods	1st	2nd	Total
Wisconsin	22	37	59
Nebraska	26	37	63

	In	Off	2nd	Fast	
Points	Paint	T/O	Chance	Break	Bench
WIS	28	11	2	2	0
NEB	12	9	8	0	9

Last FG - WIS 2nd-00:01, NEB 2nd-03:14.
 WIS led for 0:00. NEB led for 20:00. Game was tied for 0:00.

Score tied - 0 times
 Lead changed - 0 times

Wisconsin vs Nebraska
1/9/2018; 7:42 p.m. at Pinnacle Bank Arena (Lincoln, Neb.)
Period 2 Play-By-Play



VISITORS: Wisconsin	Time	Score	Margin	HOME: Nebraska
GOOD! JUMPER by HAPP,ETHAN [PNT]	19:38	26-24	H 2	
ASSIST by DAVISON,BRAD	19:38			
	19:23	28-24	H 4	GOOD! JUMPER by COPELAND,ISAAC
	19:23			ASSIST by WATSON JR.,GLYNN
GOOD! DUNK by IVERSON,KHALIL [PNT]	19:03	28-26	H 2	
ASSIST by DAVISON,BRAD	19:03			
FOUL by HAPP,ETHAN	18:49			
FOUL by REUVERS,NATE	18:38			
	18:30			MISSED JUMPER by COPELAND,ISAAC
REBOUND (DEF) by PRITZL,BREVIN	18:30			
TURNOVER by PRITZL,BREVIN	18:10			
	18:09			STEAL by COPELAND,ISAAC
FOUL by PRITZL,BREVIN	17:56			
	17:56	29-26	H 3	GOOD! FT by PALMER JR.,JAMES
	17:56	30-26	H 4	GOOD! FT by PALMER JR.,JAMES
SUB IN: SCHLUNDT,TJ	17:56			
SUB OUT: PRITZL,BREVIN	17:56			
MISSED JUMPER by HAPP,ETHAN	17:33			
	17:33			BLOCK by COPELAND,ISAAC
REBOUND (OFF) by HAPP,ETHAN	17:32			
TURNOVER by TEAM	17:24			
	17:07			MISSED 3PTR by COPELAND,ISAAC
	17:07			REBOUND (OFF) by TSHIMANGA,JORDY
FOUL by REUVERS,NATE	17:03			
SUB IN: FORD,ALEEM	17:03			
SUB OUT: REUVERS,NATE	17:03			
	16:47			MISSED JUMPER by TAYLOR,EVAN
	16:47			REBOUND (OFF) by TSHIMANGA,JORDY
	16:45	32-26	H 6	GOOD! JUMPER by TSHIMANGA,JORDY [PNT]
MISSED 3PTR by DAVISON,BRAD	16:26			
	16:26			REBOUND (DEF) by TSHIMANGA,JORDY
	16:18			MISSED 3PTR by COPELAND,ISAAC
REBOUND (DEF) by FORD,ALEEM	16:18			
	16:04			FOUL by PALMER JR.,JAMES
TURNOVER by DAVISON,BRAD	15:46			
	15:46			TIMEOUT MEDIA
SUB IN: THOMAS,CHARLES	15:46			
SUB OUT: HAPP,ETHAN	15:46			
FOUL by THOMAS,CHARLES	15:37			
	15:37			MISSED FT by TSHIMANGA,JORDY
	15:37			REBOUND (DEADB) by TEAM
	15:37	33-26	H 7	GOOD! FT by TSHIMANGA,JORDY
SUB IN: PRITZL,BREVIN	15:37			
SUB OUT: SCHLUNDT,TJ	15:37			
FOUL by THOMAS,CHARLES	15:27			
TURNOVER by THOMAS,CHARLES	15:27			
	15:10	35-26	H 9	GOOD! JUMPER by PALMER JR.,JAMES [PNT]
TIMEOUT 30SEC	14:56			
TIMEOUT media	14:56			
SUB IN: HAPP,ETHAN	14:56			
SUB OUT: THOMAS,CHARLES	14:56			
MISSED JUMPER by HAPP,ETHAN	14:42			
	14:42			BLOCK by COPELAND,ISAAC
	14:40			REBOUND (DEF) by WATSON JR.,GLYNN
	14:34			MISSED JUMPER by PALMER JR.,JAMES
	14:34			REBOUND (OFF) by PALMER JR.,JAMES
	14:29	37-26	H 11	GOOD! LAYUP by COPELAND,ISAAC [PNT]
FOUL by FORD,ALEEM	14:29			
	14:29	38-26	H 12	GOOD! FT by COPELAND,ISAAC
	14:29			SUB IN: ROBY,ISIAH
	14:29			SUB IN: GILL,ANTON
	14:29			SUB OUT: TAYLOR,EVAN
	14:29			SUB OUT: TSHIMANGA,JORDY
GOOD! LAYUP by PRITZL,BREVIN [PNT]	14:11	38-28	H 10	
	13:55	40-28	H 12	GOOD! LAYUP by PALMER JR.,JAMES [PNT]
FOUL by FORD,ALEEM	13:55			
	13:55	41-28	H 13	GOOD! FT by PALMER JR.,JAMES
MISSED 3PTR by IVERSON,KHALIL	13:33			
	13:33			REBOUND (DEF) by ROBY,ISIAH

VISITORS: Wisconsin	Time	Score	Margin	HOME: Nebraska
SUB IN: REUVERS,NATE	13:32			
SUB OUT: FORD,ALEEM	13:32			
	13:22			MISSED JUMPER by PALMER JR.,JAMES
BLOCK by REUVERS,NATE	13:22			
REBOUND (DEF) by IVERSON,KHALIL	13:21			
	13:12			FOUL by ROBY,ISAIAH
MISSED 3PTR by PRITZL,BREVIN	12:57			
REBOUND (OFF) by IVERSON,KHALIL	12:57			
MISSED 3PTR by DAVISON,BRAD	12:54			
REBOUND (OFF) by PRITZL,BREVIN	12:54			
GOOD! JUMPER by PRITZL,BREVIN [PNT]	12:51	41-30	H 11	
	12:41			MISSED 3PTR by WATSON JR.,GLYNN
REBOUND (DEF) by IVERSON,KHALIL	12:41			
GOOD! LAYUP by HAPP,ETHAN [PNT]	12:22	41-32	H 9	
ASSIST by REUVERS,NATE	12:22			
	11:59			MISSED JUMPER by PALMER JR.,JAMES
REBOUND (DEF) by DAVISON,BRAD	11:59			
MISSED JUMPER by DAVISON,BRAD	11:34			
	11:34			BLOCK by PALMER JR.,JAMES
REBOUND (OFF) by TEAM	11:32			
TIMEOUT MEDIA	11:31			
SUB IN: FORD,ALEEM	11:31			
SUB OUT: IVERSON,KHALIL	11:31			
	11:31			SUB IN: ALLEN,THOMAS
	11:31			SUB IN: TSHIMANGA,JORDY
	11:31			SUB OUT: WATSON JR.,GLYNN
	11:31			SUB OUT: COPELAND,ISAAC
TURNOVER by TEAM	11:28			
	11:02	43-32	H 11	GOOD! LAYUP by ALLEN,THOMAS [PNT]
GOOD! JUMPER by PRITZL,BREVIN [PNT]	10:46	43-34	H 9	
	10:36			TURNOVER by ROBY,ISAIAH
STEAL by HAPP,ETHAN	10:35			
	10:33			SUB IN: BORCHARDT,TANNER
	10:33			SUB OUT: TSHIMANGA,JORDY
GOOD! JUMPER by REUVERS,NATE [PNT]	10:16	43-36	H 7	
	10:03			TURNOVER by PALMER JR.,JAMES
	10:03			SUB IN: TAYLOR,EVAN
	10:03			SUB OUT: PALMER JR.,JAMES
GOOD! LAYUP by REUVERS,NATE [PNT]	09:42	43-38	H 5	
ASSIST by HAPP,ETHAN	09:42			
	09:17			MISSED JUMPER by ALLEN,THOMAS
REBOUND (DEF) by PRITZL,BREVIN	09:17			
MISSED JUMPER by HAPP,ETHAN	08:51			
	08:51			REBOUND (DEF) by ROBY,ISAIAH
	08:46			MISSED 3PTR by GILL,ANTON
	08:46			REBOUND (OFF) by ROBY,ISAIAH
	08:40	46-38	H 8	GOOD! 3PTR by GILL,ANTON
	08:40			ASSIST by ROBY,ISAIAH
SUB IN: IVERSON,KHALIL	08:35			
SUB OUT: REUVERS,NATE	08:35			
	08:35			SUB IN: COPELAND,ISAAC
	08:35			SUB OUT: ROBY,ISAIAH
	08:22			FOUL by TAYLOR,EVAN
	08:18			FOUL by GILL,ANTON
GOOD! FT by DAVISON,BRAD	08:18	46-39	H 7	
GOOD! FT by DAVISON,BRAD	08:18	46-40	H 6	
SUB IN: MCGRORY,WALT	08:18			
SUB OUT: DAVISON,BRAD	08:18			
	08:18			SUB IN: TSHIMANGA,JORDY
	08:18			SUB OUT: BORCHARDT,TANNER
	07:57	48-40	H 8	GOOD! JUMPER by TSHIMANGA,JORDY [PNT]
	07:43			FOUL by TSHIMANGA,JORDY
TIMEOUT media	07:43			
MISSED FT by HAPP,ETHAN	07:43			
REBOUND (DEADB) by TEAM	07:43			
MISSED FT by HAPP,ETHAN	07:43			
	07:43			REBOUND (DEF) by TAYLOR,EVAN
SUB IN: DAVISON,BRAD	07:43			
SUB OUT: MCGRORY,WALT	07:43			
	07:27			TURNOVER by GILL,ANTON
STEAL by HAPP,ETHAN	07:26			
MISSED JUMPER by DAVISON,BRAD	07:21			
	07:21			REBOUND (DEF) by TSHIMANGA,JORDY
FOUL (TECH) by TEAM	07:20			
	07:20	49-40	H 9	GOOD! FT by ALLEN,THOMAS

VISITORS: Wisconsin	Time	Score	Margin	HOME: Nebraska
	07:20	50-40	H 10	GOOD! FT by ALLEN,THOMAS
	07:20			SUB IN: WATSON JR.,GLYNN
	07:20			SUB OUT: GILL,ANTON
	06:56			MISSED JUMPER by COPELAND,ISAAC
REBOUND (DEF) by HAPP,ETHAN	06:56			
	06:56			FOUL by TSHIMANGA,JORDY
	06:56			SUB IN: ROBY,ISAIAH
	06:56			SUB OUT: TSHIMANGA,JORDY
GOOD! LAYUP by HAPP,ETHAN [PNT]	06:43	50-42	H 8	
ASSIST by DAVISON,BRAD	06:43			
	06:19			MISSED 3PTR by ALLEN,THOMAS
REBOUND (DEF) by IVERSON,KHALIL	06:19			
GOOD! JUMPER by HAPP,ETHAN [PNT]	06:01	50-44	H 6	
	05:32			MISSED JUMPER by WATSON JR.,GLYNN
REBOUND (DEF) by IVERSON,KHALIL	05:32			
	05:16			FOUL by COPELAND,ISAAC
GOOD! FT by HAPP,ETHAN	05:16	50-45	H 5	
MISSED FT by HAPP,ETHAN	05:16			
	05:16			REBOUND (DEF) by ROBY,ISAIAH
	05:16			SUB IN: GILL,ANTON
	05:16			SUB IN: PALMER JR.,JAMES
	05:16			SUB OUT: ALLEN,THOMAS
	05:16			SUB OUT: TAYLOR,EVAN
FOUL by DAVISON,BRAD	05:03			
	05:03			MISSED FT by ROBY,ISAIAH
	05:03			REBOUND (DEADB) by TEAM
	05:03	51-45	H 6	GOOD! FT by ROBY,ISAIAH
GOOD! LAYUP by HAPP,ETHAN [PNT]	04:45	51-47	H 4	
FOUL by DAVISON,BRAD	04:25			
	04:25			MISSED FT by ROBY,ISAIAH
	04:25			REBOUND (DEADB) by TEAM
	04:25	52-47	H 5	GOOD! FT by ROBY,ISAIAH
	04:25			SUB IN: TAYLOR,EVAN
	04:25			SUB IN: TSHIMANGA,JORDY
	04:25			SUB OUT: ROBY,ISAIAH
	04:25			SUB OUT: WATSON JR.,GLYNN
MISSED 3PTR by DAVISON,BRAD	04:07			
	04:07			REBOUND (DEF) by TSHIMANGA,JORDY
FOUL by HAPP,ETHAN	04:05			
	04:05	53-47	H 6	GOOD! FT by TSHIMANGA,JORDY
	04:05	54-47	H 7	GOOD! FT by TSHIMANGA,JORDY
SUB IN: REUVERS,NATE	04:05			
SUB OUT: HAPP,ETHAN	04:05			
MISSED JUMPER by REUVERS,NATE	03:40			
REBOUND (OFF) by IVERSON,KHALIL	03:40			
MISSED JUMPER by IVERSON,KHALIL	03:37			
	03:37			REBOUND (DEF) by COPELAND,ISAAC
	03:20			TIMEOUT media
SUB IN: HAPP,ETHAN	03:20			
SUB OUT: REUVERS,NATE	03:20			
	03:14	56-47	H 9	GOOD! JUMPER by PALMER JR.,JAMES
MISSED LAYUP by FORD,ALEEM	02:57			
	02:57			REBOUND (DEF) by COPELAND,ISAAC
	02:29			FOUL by TAYLOR,EVAN
	02:29			TURNOVER by TAYLOR,EVAN
GOOD! JUMPER by HAPP,ETHAN [PNT]	02:08	56-49	H 7	
	01:48			MISSED 3PTR by PALMER JR.,JAMES
REBOUND (DEF) by PRITZL,BREVIN	01:48			
MISSED JUMPER by DAVISON,BRAD	01:24			
REBOUND (OFF) by HAPP,ETHAN	01:24			
	01:18			FOUL by TSHIMANGA,JORDY
MISSED FT by HAPP,ETHAN	01:18			
REBOUND (DEADB) by TEAM	01:18			
MISSED FT by HAPP,ETHAN	01:18			
	01:18			REBOUND (DEF) by PALMER JR.,JAMES
	01:18			SUB IN: ROBY,ISAIAH
	01:18			SUB OUT: TSHIMANGA,JORDY
	00:56			TURNOVER by PALMER JR.,JAMES
STEAL by HAPP,ETHAN	00:55			
GOOD! LAYUP by HAPP,ETHAN [FB/PNT]	00:51	56-51	H 5	
ASSIST by FORD,ALEEM	00:51			
TIMEOUT TEAM	00:48			
	00:48			SUB IN: WATSON JR.,GLYNN
	00:48			SUB OUT: ROBY,ISAIAH
FOUL by DAVISON,BRAD	00:47			

VISITORS: Wisconsin	Time	Score	Margin	HOME: Nebraska
	00:47	57-51	H 6	GOOD! FT by WATSON JR.,GLYNN
	00:47	58-51	H 7	GOOD! FT by WATSON JR.,GLYNN
MISSED 3PTR by PRITZL,BREVIN	00:40			
	00:40			REBOUND (DEF) by WATSON JR.,GLYNN
FOUL by DAVISON,BRAD	00:36			
	00:36	59-51	H 8	GOOD! FT by WATSON JR.,GLYNN
	00:36			MISSED FT by WATSON JR.,GLYNN
REBOUND (DEF) by HAPP,ETHAN	00:36			
GOOD! LAYUP by DAVISON,BRAD [PNT]	00:26	59-53	H 6	
TIMEOUT 30SEC	00:25			
FOUL by HAPP,ETHAN	00:23			
	00:23	60-53	H 7	GOOD! FT by PALMER JR.,JAMES
	00:23	61-53	H 8	GOOD! FT by PALMER JR.,JAMES
MISSED LAYUP by DAVISON,BRAD	00:18			
	00:18			REBOUND (DEF) by COPELAND,ISAAC
FOUL by FORD,ALEEM	00:11			
	00:11	62-53	H 9	GOOD! FT by COPELAND,ISAAC
	00:11			MISSED FT by COPELAND,ISAAC
REBOUND (DEF) by DAVISON,BRAD	00:11			
GOOD! 3PTR by PRITZL,BREVIN	00:02	62-56	H 6	
ASSIST by DAVISON,BRAD	00:02			
	00:01			TURNOVER by PALMER JR.,JAMES
GOOD! 3PTR by DAVISON,BRAD	00:01	62-59	H 3	
FOUL by HAPP,ETHAN	00:01			
	00:01			MISSED FT by TAYLOR,EVAN
	00:01			REBOUND (DEADB) by TEAM
	00:01	63-59	H 4	GOOD! FT by TAYLOR,EVAN
SUB IN: SCHLUNDT,TJ	00:01			
SUB OUT: HAPP,ETHAN	00:01			

Wisconsin 59, Nebraska 63

Period 2-only	In Paint	Off T/O	2nd Chance	Fast Break	Bench	
WIS	28	11	2	2	0	Score tied - 0 times
NEB	12	9	8	0	9	Lead changed - 0 times

Wisconsin vs Nebraska
1/9/2018; 7:42 p.m. at Pinnacle Bank Arena (Lincoln, Neb.)
Scoring/Runs Reference



Period 1

Wisconsin	VRun	Score	Margin	HRun	Nebraska
		0-2	2		COPELAND JUMPER [P] - 19:45
		0-4	4	NaN-0	COPELAND JUMPER - 18:14
17:52 - DAVISON LAYUP [P]	-	2-4	2		
		2-5	3		PALMER JR. FT - 17:03
16:03 - FORD 3PTR	-	5-5	0		
		5-7	2		PALMER JR. JUMPER - 15:42
15:22 - DAVISON 3PTR	-	8-7	-1		
		8-9	1		COPELAND LAYUP [P] - 14:25
		8-12	4	5-0	GILL 3PTR - 13:55
13:01 - REUVERS JUMPER [P]	-	10-12	2		
		10-13	3		PALMER JR. FT - 11:39
		10-14	4	2-0	PALMER JR. FT - 11:39
10:30 - HAPP JUMPER [P]	-	12-14	2		
		12-16	4		ALLEN LAYUP [P] - 10:02
09:30 - REUVERS JUMPER	-	14-16	2		
		14-18	4		GILL JUMPER - 09:15
		14-20	6	4-0	ALLEN JUMPER [P] - 08:16
		14-22	8	6-0	PALMER JR. LAYUP [P] - 06:11
		14-24	10	8-0	TSHIMANGA DUNK [P] - 05:28
04:25 - DAVISON 3PTR	-	17-24	7		
03:46 - IVERSON LAYUP [P]	5-0	19-24	5		
02:02 - HAPP DUNK [P] [F]	7-0	21-24	3		
		21-26	5		ROBY JUMPER - 01:14
00:29 - PRITZL FT	-	22-26	4		

Wisconsin vs Nebraska
1/9/2018; 7:42 p.m. at Pinnacle Bank Arena (Lincoln, Neb.)
Scoring/Runs Reference

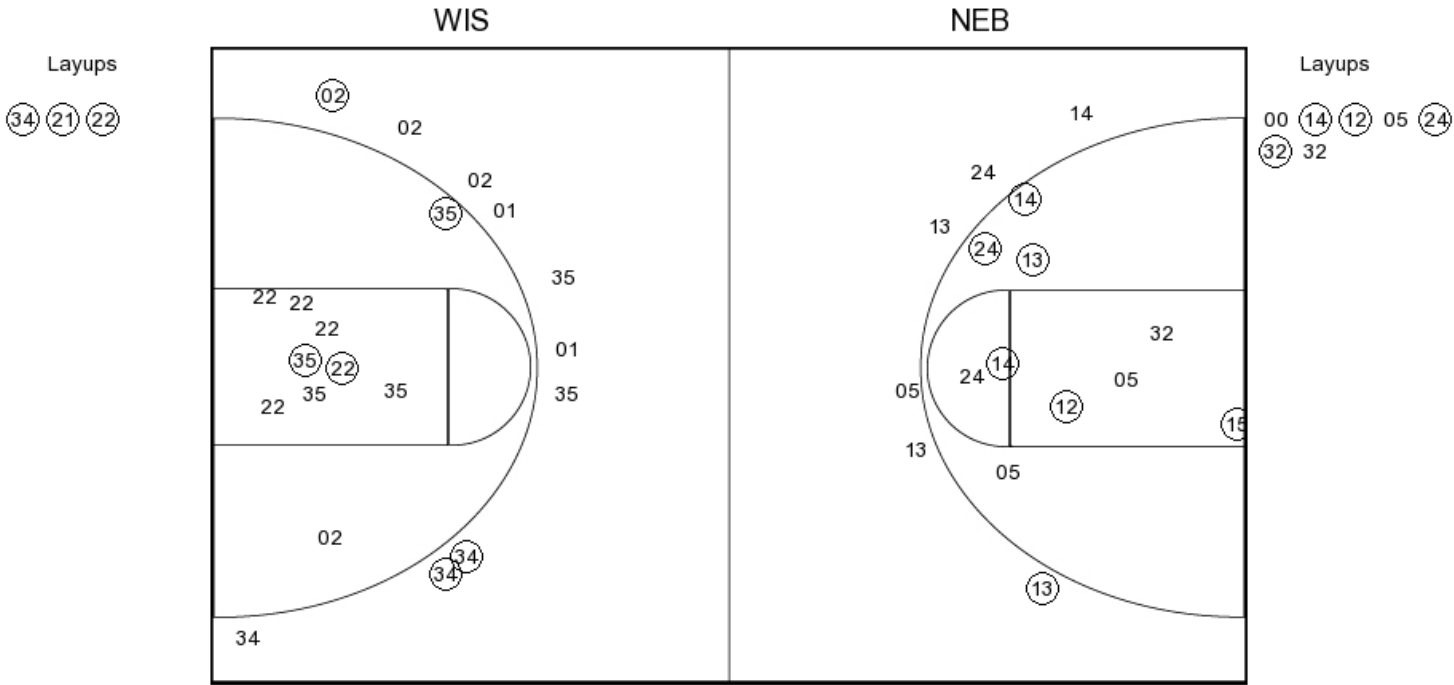


Period 2

Wisconsin	VRun	Score	Margin	HRun	Nebraska
19:38 - HAPP JUMPER [P]	-	24-26	2		
		24-28	4		COPELAND JUMPER - 19:23
19:03 - IVERSON DUNK [P]	-	26-28	2		
		26-29	3		PALMER JR. FT - 17:56
		26-30	4	2-0	PALMER JR. FT - 17:56
		26-32	6	4-0	TSHIMANGA JUMPER [P] - 16:45
		26-33	7	5-0	TSHIMANGA FT - 15:37
		26-35	9	7-0	PALMER JR. JUMPER [P] - 15:10
		26-37	11	9-0	COPELAND LAYUP [P] - 14:29
		26-38	12	10-0	COPELAND FT - 14:29
14:11 - PRITZL LAYUP [P]	-	28-38	10		
		28-40	12		PALMER JR. LAYUP [P] - 13:55
		28-41	13	3-0	PALMER JR. FT - 13:55
12:51 - PRITZL JUMPER [P]	-	30-41	11		
12:22 - HAPP LAYUP [P]	4-0	32-41	9		
		32-43	11		ALLEN LAYUP [P] - 11:02
10:46 - PRITZL JUMPER [P]	-	34-43	9		
10:16 - REUVERS JUMPER [P]	4-0	36-43	7		
09:42 - REUVERS LAYUP [P]	6-0	38-43	5		
		38-46	8		GILL 3PTR - 08:40
08:18 - DAVISON FT	-	39-46	7		
08:18 - DAVISON FT	2-0	40-46	6		
		40-48	8		TSHIMANGA JUMPER [P] - 07:57
		40-49	9	3-0	ALLEN FT - 07:20
		40-50	10	4-0	ALLEN FT - 07:20
06:43 - HAPP LAYUP [P]	-	42-50	8		
06:01 - HAPP JUMPER [P]	4-0	44-50	6		
05:16 - HAPP FT	5-0	45-50	5		
		45-51	6		ROBY FT - 05:03
04:45 - HAPP LAYUP [P]	-	47-51	4		
		47-52	5		ROBY FT - 04:25
		47-53	6	2-0	TSHIMANGA FT - 04:05
		47-54	7	3-0	TSHIMANGA FT - 04:05
		47-56	9	5-0	PALMER JR. JUMPER - 03:14
02:08 - HAPP JUMPER [P]	-	49-56	7		
00:51 - HAPP LAYUP [P] [F]	4-0	51-56	5		
		51-57	6		WATSON JR. FT - 00:47
		51-58	7	2-0	WATSON JR. FT - 00:47
		51-59	8	3-0	WATSON JR. FT - 00:36
00:26 - DAVISON LAYUP [P]	-	53-59	6		
		53-60	7		PALMER JR. FT - 00:23
		53-61	8	2-0	PALMER JR. FT - 00:23
		53-62	9	3-0	COPELAND FT - 00:11
00:02 - PRITZL 3PTR	-	56-62	6		
00:01 - DAVISON 3PTR	6-0	59-62	3		
		59-63	4		TAYLOR FT - 00:01



PERIOD 1



WIS PERIOD 1

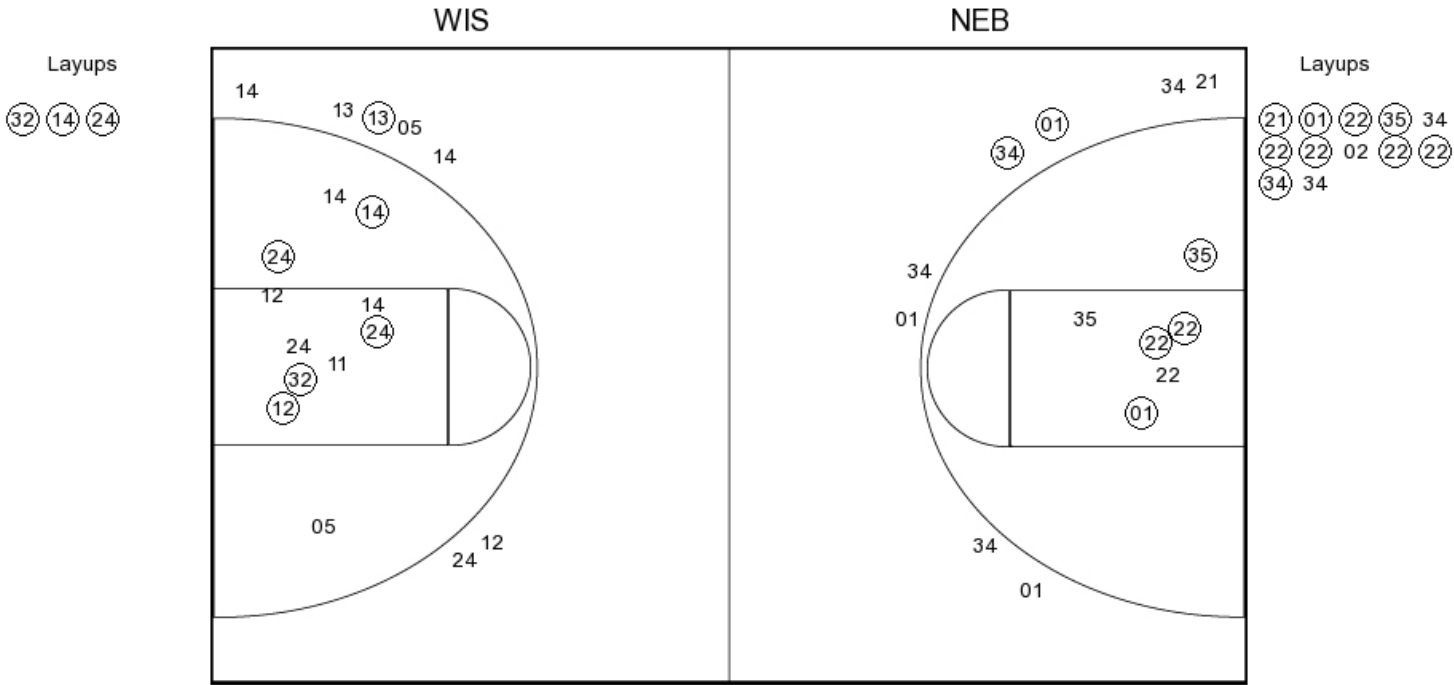
FG Made	9
FG Attempted	27
3PFG Made	3
3PFG Attempted	11

NEB PERIOD 1

FG Made	11
FG Attempted	24
3PFG Made	1
3PFG Attempted	7



PERIOD 2



WIS PERIOD 2

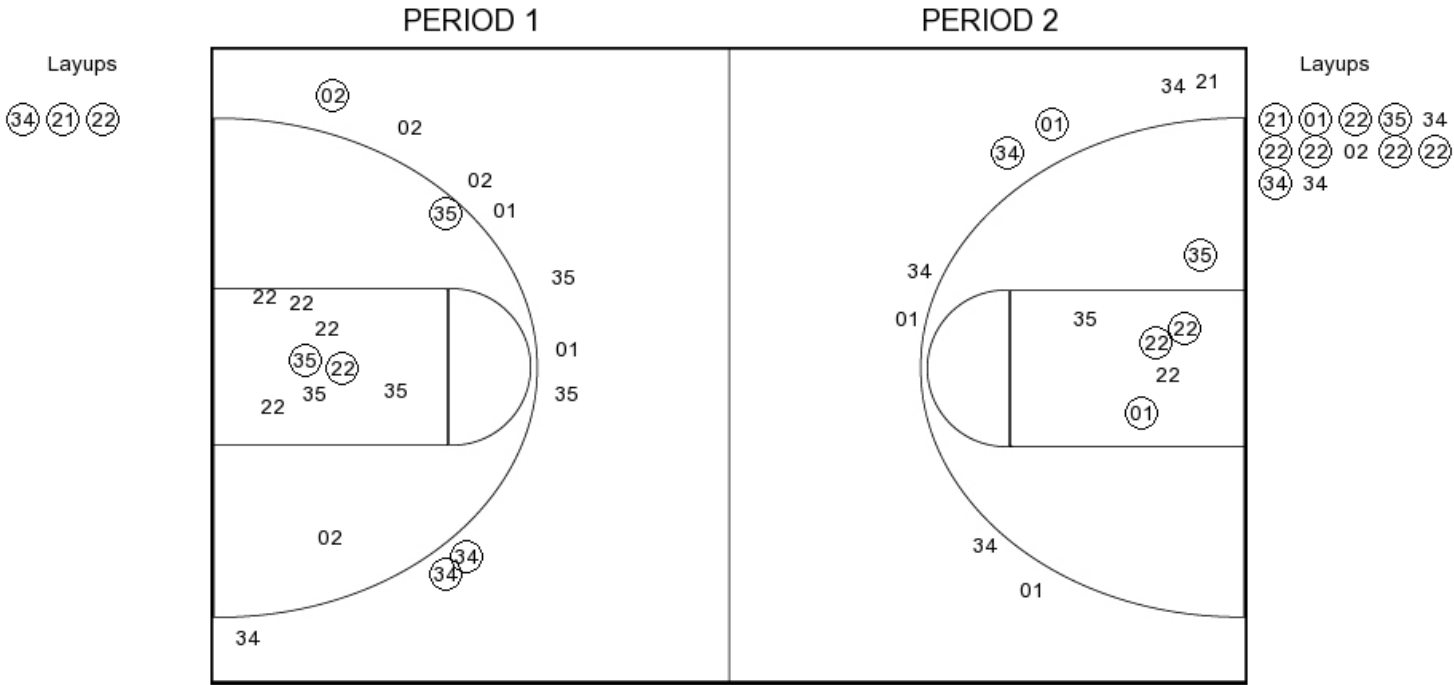
FG Made	16
FG Attempted	32
3PFG Made	2
3PFG Attempted	8

NEB PERIOD 2

FG Made	9
FG Attempted	23
3PFG Made	1
3PFG Attempted	7



Wisconsin



WIS PERIOD 1

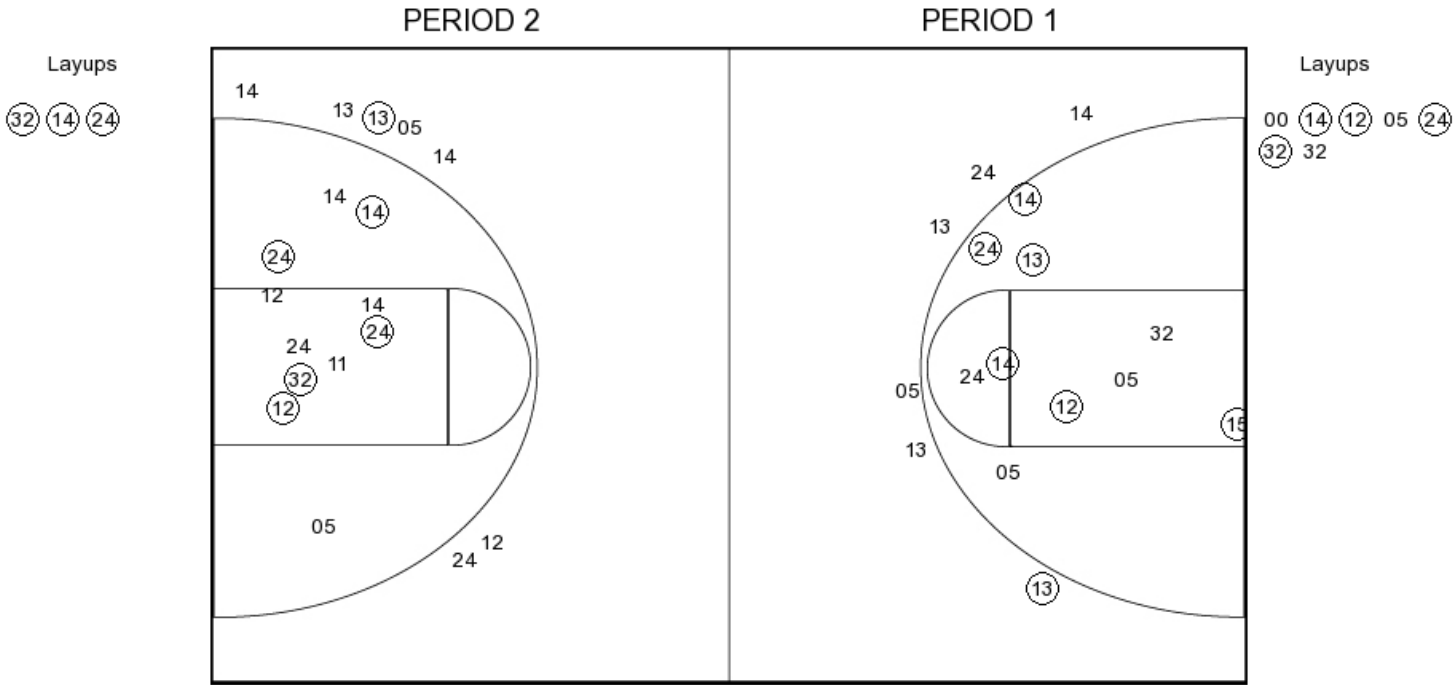
FG Made	9
FG Attempted	27
3PFG Made	3
3PFG Attempted	11

WIS PERIOD 2

FG Made	16
FG Attempted	32
3PFG Made	2
3PFG Attempted	8



Nebraska



NEB PERIOD 1

FG Made	11
FG Attempted	24
3PFG Made	1
3PFG Attempted	7

NEB PERIOD 2

FG Made	9
FG Attempted	23
3PFG Made	1
3PFG Attempted	7