

FINAL SCORE



Kansas

8-2

73



Nebraska

7-5

72

December 16, 2017 • Pinnacle Bank Arena (Lincoln, Neb.)

FINAL STATISTICS

Official Basketball Box Score -- Game Totals -- Final Statistics
Kansas vs Nebraska
12/16/2017 7:01 p.m. at Pinnacle Bank Arena (Lincoln, Neb.)



Kansas 73 - 8-2

#	Player	g	Total		3-Ptr	Rebounds			PF	TP	A	TO	Blk	Stl	Min
			FG-FGA	FG-FGA	FT-FTA	Off	Def	Tot							
02	VICK,LAGERALD		4-9	1-3	0-0	1	4	5	1	9	3	2	1	3	37
04	GRAHAM,DEVONTE'		5-11	4-7	4-4	0	2	2	4	18	8	3	0	0	38
10	MYKHAILIUK,SVI		6-16	2-7	0-0	1	2	3	3	14	3	2	0	0	36
14	NEWMAN,MALIK		0-6	0-3	0-0	1	5	6	2	0	2	2	0	1	31
35	AZUBUIKE,UDOKA	c	13-17	0-0	0-0	5	5	10	3	26	1	0	1	1	26
00	GARRETT,MARCUS		0-4	0-2	0-0	1	2	3	0	0	1	0	0	2	16
03	CUNLIFFE,SAM		0-0	0-0	0-0	0	0	0	0	0	0	0	0	0	2
44	LIGHTFOOT,MITCH		1-2	0-0	4-4	2	2	4	0	6	1	1	1	1	14
TEAM						0	0	0	0		2				
TOTALS			29-65	7-22	8-8	11	22	33	13	73	19	12	3	8	200

Deadball Rebounds: 0,0

FG %	1st Half:	14-32	43.8%	2nd Half:	15-33	45.5%	Game:	29-65	44.6%
3FG %	1st Half:	4-9	44.4%	2nd Half:	3-13	23.1%	Game:	7-22	31.8%
FT %	1st Half:	4-4	100.0%	2nd Half:	4-4	100.0%	Game:	8-8	100.0%

Nebraska 72 - 7-5

#	Player	g	Total		3-Ptr	Rebounds			PF	TP	A	TO	Blk	Stl	Min
			FG-FGA	FG-FGA	FT-FTA	Off	Def	Tot							
05	WATSON JR.,GLYNN		5-10	1-2	0-0	0	1	1	3	11	3	2	0	0	24
11	TAYLOR,EVAN		3-5	0-2	0-0	1	2	3	2	6	4	1	0	0	24
14	COPELAND,ISAAC	f	5-9	2-4	0-0	1	8	9	0	12	1	1	0	1	34
24	PALMER JR.,JAMES		4-9	2-2	4-6	3	5	8	1	14	1	2	1	2	30
32	T SHIMANGA,JORDY	c	1-2	0-0	0-0	0	0	0	4	2	1	0	0	0	10
00	OKEKE,DUBY		0-0	0-0	0-0	1	0	1	1	0	0	1	2	0	7
12	ALLEN,THOMAS		5-7	3-4	0-0	0	2	2	0	13	0	3	0	0	14
13	GILL,ANTON		2-8	0-4	2-2	0	1	1	1	6	1	1	0	0	27
15	ROBY,ISAIAH		4-9	0-4	0-0	1	5	6	3	8	3	3	4	0	30
TEAM						1	1	2	0		0				
TOTALS			29-59	8-22	6-8	8	25	33	15	72	14	14	7	3	200

Deadball Rebounds: 2,0

FG %	1st Half:	14-30	46.7%	2nd Half:	15-29	51.7%	Game:	29-59	49.2%
3FG %	1st Half:	3-12	25.0%	2nd Half:	5-10	50.0%	Game:	8-22	36.4%
FT %	1st Half:	2-4	50.0%	2nd Half:	4-4	100.0%	Game:	6-8	75.0%

Officials: Mike Eades, Tom Eades, Brooks Wells
 Technical Fouls: Kansas- None. Nebraska- None.
 Attendance: 15596

ACTUAL ATTENDANCE: 15,207

Score by periods	1st	2nd	Total
Kansas	36	37	73
Nebraska	33	39	72

Points	In Paint	Off T/O	2nd Chance	Fast Break	Bench
KU	40	15	10	4	6
NEB	28	15	10	2	27

Last FG - KU 2nd-00:21, NEB 2nd-00:41.

Largest lead - Kansas by 8 1st-13:01; Nebraska by 4 1st-18:58
 KU led for 33:27. NEB led for 2:20. Game was tied for 4:13.

Score tied - 5 times; Lead changed - 5 times

Official Basketball Box Score -- Game Totals -- First Half Statistics
 Kansas vs Nebraska
 12/16/2017 7:01 p.m. at Pinnacle Bank Arena (Lincoln, Neb.)



Kansas 36 • 8-2

##	Player	g	Total			3-Ptr			Rebounds			PF	TP	A	TO	Blk	Stl	Min
			FG-FGA	FT-FTA	3P-FGA	Off	Def	Tot										
02	VICK,LAGERALD	g	2-5	0-0	1-2	1	2	3	1	5	3	0	0	1	19			
04	GRAHAM,DEVONTE'	g	4-7	0-0	3-4	0	2	2	1	11	1	3	0	0	18			
10	MYKHAILIUK,SVI	g	1-5	0-0	0-2	0	0	0	1	2	1	1	0	0	17			
14	NEWMAN,MALIK	g	0-3	0-0	0-1	1	4	5	0	0	1	2	0	1	15			
35	AZUBUIKE,UDOKA	c	7-10	0-0	0-0	2	2	4	2	14	0	0	0	0	11			
00	GARRETT,MARCUS		0-1	0-0	0-0	0	1	1	0	0	1	0	0	1	9			
03	CUNLIFFE,SAM		0-0	0-0	0-0	0	0	0	0	0	0	0	0	2				
44	LIGHTFOOT,MITCH		0-1	4-4	0-0	2	1	3	0	4	1	0	1	1	9			
TEAM						0	0	0	0		1							
Totals			14-32	4-4	4-9	6	12	18	5	36	8	7	1	4	100			

FG % Half: 14-32 43.8%
 3FG % Half: 4-9 44.4%
 FT % Half: 4-4 100.0%

Nebraska 33 • 7-5

##	Player	g	Total			3-Ptr			Rebounds			PF	TP	A	TO	Blk	Stl	Min
			FG-FGA	FT-FTA	3P-FGA	Off	Def	Tot										
05	WATSON JR.,GLYNN	g	2-5	0-0	0-1	0	0	0	2	4	0	1	0	0	8			
11	TAYLOR,EVAN	g	2-4	0-0	0-2	0	0	0	1	4	1	0	0	0	13			
14	COPELAND,ISAAC	f	1-3	0-0	0-1	1	5	6	0	2	1	0	0	0	16			
24	PALMER JR.,JAMES	g	2-3	2-4	1-1	0	2	2	0	7	1	0	0	1	15			
32	T SHIMANGA,JORDY	c	0-1	0-0	0-0	0	0	0	2	0	1	0	0	0	7			
00	OKEKE,DUBY		0-0	0-0	0-0	1	0	1	1	0	0	1	2	0	6			
12	ALLEN,T THOMAS		4-6	0-0	2-3	0	1	1	0	10	0	3	0	0	8			
13	GILL,ANTON		2-5	0-0	0-2	0	0	0	1	4	1	0	0	0	14			
15	ROBY,ISAIAH		1-3	0-0	0-2	1	3	4	1	2	1	1	2	0	13			
TEAM						1	1	2	0		0							
Totals			14-30	2-4	3-12	4	12	16	8	33	6	6	4	1	100			

FG % Half: 14-30 46.7%
 3FG % Half: 3-12 25.0%
 FT % Half: 2-4 50.0%

Officials: Mike Eades, Tom Eades, Brooks Wells
 Technical Fouls: Kansas- None, Nebraska- None.
 ACTUAL ATTENDANCE: 15,207

Score by periods	1st	2nd	Total
Kansas	36	37	73
Nebraska	33	39	72

Points	In Paint	Off T/O	2nd Chance	Fast Break	Bench
KU	16	7	6	0	4
NEB	16	10	5	2	16

Last FG - KU 1st-02:06, NEB 1st-01:39.
 KU led for 18:11. NEB led for 0:57. Game was tied for 0:52.

Score tied - 1 times
 Lead changed - 1 times

Kansas vs Nebraska
12/16/2017; 7:01 p.m. at Pinnacle Bank Arena (Lincoln, Neb.)
Period 1 Play-By-Play



VISITORS: Kansas	Time	Score	Margin	HOME: Nebraska
TURNOVER by GRAHAM,DEVONTE'	19:45			
	19:25	3-0	H 3	GOOD! 3PTR by PALMER JR.,JAMES
	19:25			ASSIST by TSHIMANGA,JORDY
MISSED JUMPER by AZUBUIKE,UDOKA	19:07			
	19:07			REBOUND (DEF) by COPELAND,ISAAC
FOUL by AZUBUIKE,UDOKA	18:58			
	18:58			MISSED FT by PALMER JR.,JAMES
	18:58			REBOUND (DEADB) by TEAM
	18:58	4-0	H 4	GOOD! FT by PALMER JR.,JAMES
GOOD! DUNK by AZUBUIKE,UDOKA [PNT]	18:56	4-2	H 2	
ASSIST by VICK,LAGERALD	18:56			
	18:33			MISSED JUMPER by TSHIMANGA,JORDY
REBOUND (DEF) by NEWMAN,MALIK	18:33			
GOOD! 3PTR by GRAHAM,DEVONTE'	18:28	4-5	V 1	
ASSIST by NEWMAN,MALIK	18:28			
	18:02			MISSED JUMPER by COPELAND,ISAAC
REBOUND (DEF) by NEWMAN,MALIK	18:02			
	17:49			FOUL by TSHIMANGA,JORDY
GOOD! DUNK by AZUBUIKE,UDOKA [PNT]	17:11	4-7	V 3	
ASSIST by VICK,LAGERALD	17:11			
	17:05			MISSED JUMPER by WATSON JR.,GLYNN
REBOUND (DEF) by VICK,LAGERALD	17:05			
	17:00			FOUL by WATSON JR.,GLYNN
MISSED JUMPER by AZUBUIKE,UDOKA	16:39			
REBOUND (OFF) by AZUBUIKE,UDOKA	16:39			
GOOD! JUMPER by AZUBUIKE,UDOKA [PNT]	16:38	4-9	V 5	
SUB IN: LIGHTFOOT,MITCH	16:27			
SUB OUT: AZUBUIKE,UDOKA	16:27			
	16:27			SUB IN: OKEKE,DUBY
	16:27			SUB OUT: TSHIMANGA,JORDY
	16:09	6-9	V 3	GOOD! JUMPER by PALMER JR.,JAMES [PNT]
	15:57			FOUL by TAYLOR,EVAN
TIMEOUT media	15:57			
GOOD! FT by LIGHTFOOT,MITCH	15:57	6-10	V 4	
GOOD! FT by LIGHTFOOT,MITCH	15:57	6-11	V 5	
	15:36	8-11	V 3	GOOD! JUMPER by WATSON JR.,GLYNN
MISSED JUMPER by MYKHAILIUK,SVI	15:14			
	15:14			BLOCK by OKEKE,DUBY
REBOUND (OFF) by NEWMAN,MALIK	15:12			
MISSED LAYUP by NEWMAN,MALIK	15:05			
	15:05			REBOUND (DEF) by COPELAND,ISAAC
	14:59			FOUL by WATSON JR.,GLYNN
	14:59			TURNOVER by WATSON JR.,GLYNN
SUB IN: GARRETT,MARCUS	14:59			
SUB OUT: NEWMAN,MALIK	14:59			
	14:59			SUB IN: ALLEN,THOMAS
	14:59			SUB IN: GILL,ANTON
	14:59			SUB OUT: WATSON JR.,GLYNN
	14:59			SUB OUT: TAYLOR,EVAN
GOOD! JUMPER by GRAHAM,DEVONTE'	14:47	8-13	V 5	
	14:20			MISSED 3PTR by GILL,ANTON
	14:20			REBOUND (OFF) by OKEKE,DUBY
	14:14	11-13	V 2	GOOD! 3PTR by ALLEN,THOMAS
	14:14			ASSIST by COPELAND,ISAAC
MISSED 3PTR by MYKHAILIUK,SVI	13:49			
	13:49			REBOUND (DEF) by COPELAND,ISAAC
	13:34			MISSED JUMPER by PALMER JR.,JAMES
REBOUND (DEF) by LIGHTFOOT,MITCH	13:34			
GOOD! 3PTR by GRAHAM,DEVONTE'	13:30	11-16	V 5	
SUB IN: NEWMAN,MALIK	13:19			
SUB IN: AZUBUIKE,UDOKA	13:19			
SUB OUT: MYKHAILIUK,SVI	13:19			
SUB OUT: LIGHTFOOT,MITCH	13:19			
	13:19			SUB IN: TAYLOR,EVAN
	13:19			SUB IN: ROBY,ISIAH
	13:19			SUB OUT: COPELAND,ISAAC
	13:19			SUB OUT: PALMER JR.,JAMES
	13:05			TURNOVER by ALLEN,THOMAS
STEAL by VICK,LAGERALD	13:03			

VISITORS: Kansas	Time	Score	Margin	HOME: Nebraska
GOOD! 3PTR by GRAHAM,DEVONTE'	13:01	11-19	V 8	
ASSIST by VICK,LAGERALD	13:01			
	12:32			MISSED 3PTR by TAYLOR,EVAN
REBOUND (DEF) by GRAHAM,DEVONTE'	12:32			
	12:23			FOUL by GILL,ANTON
SUB IN: MYKHAILIUK,SVI	12:23			
SUB OUT: VICK,LAGERALD	12:23			
	12:23			SUB IN: TSHIMANGA,JORDY
	12:23			SUB OUT: OKEKE,DUBY
TURNOVER by NEWMAN,MALIK	12:17			
	12:06	13-19	V 6	GOOD! JUMPER by TAYLOR,EVAN
	12:06			ASSIST by GILL,ANTON
GOOD! JUMPER by AZUBUIKE,UDOKA [PNT]	11:42	13-21	V 8	
ASSIST by GARRETT,MARCUS	11:42			
	11:30	15-21	V 6	GOOD! JUMPER by ALLEN,THOMAS
TURNOVER by MYKHAILIUK,SVI	11:09			
	11:09			TIMEOUT MEDIA
SUB IN: VICK,LAGERALD	11:09			
SUB OUT: GARRETT,MARCUS	11:09			
	10:52	18-21	V 3	GOOD! 3PTR by ALLEN,THOMAS
	10:52			ASSIST by TAYLOR,EVAN
MISSED 3PTR by GRAHAM,DEVONTE'	10:33			
REBOUND (OFF) by AZUBUIKE,UDOKA	10:33			
GOOD! JUMPER by AZUBUIKE,UDOKA [PNT]	10:31	18-23	V 5	
	10:10			MISSED 3PTR by ALLEN,THOMAS
REBOUND (DEF) by NEWMAN,MALIK	10:10			
TURNOVER by NEWMAN,MALIK	10:02			
	10:02			SUB IN: PALMER JR.,JAMES
	10:02			SUB IN: WATSON JR.,GLYNN
	10:02			SUB OUT: GILL,ANTON
	10:02			SUB OUT: TAYLOR,EVAN
	09:45			TURNOVER by ALLEN,THOMAS
STEAL by NEWMAN,MALIK	09:44			
GOOD! JUMPER by AZUBUIKE,UDOKA [PNT]	09:31	18-25	V 7	
ASSIST by GRAHAM,DEVONTE'	09:31			
	09:06			MISSED 3PTR by WATSON JR.,GLYNN
REBOUND (DEF) by AZUBUIKE,UDOKA	09:06			
	09:05			FOUL by TSHIMANGA,JORDY
SUB IN: GARRETT,MARCUS	09:05			
SUB IN: LIGHTFOOT,MITCH	09:05			
SUB OUT: GRAHAM,DEVONTE'	09:05			
SUB OUT: AZUBUIKE,UDOKA	09:05			
	09:05			SUB IN: COPELAND,ISAAC
	09:05			SUB OUT: TSHIMANGA,JORDY
MISSED JUMPER by GARRETT,MARCUS	08:50			
	08:50			BLOCK by ROBY,ISIAAH
	08:47			REBOUND (DEF) by ALLEN,THOMAS
	08:44			MISSED JUMPER by ALLEN,THOMAS
BLOCK by LIGHTFOOT,MITCH	08:44			
	08:44			REBOUND (OFF) by TEAM
	08:44			SUB IN: GILL,ANTON
	08:44			SUB OUT: ALLEN,THOMAS
	08:29			MISSED JUMPER by WATSON JR.,GLYNN
	08:29			REBOUND (OFF) by COPELAND,ISAAC
	08:26	20-25	V 5	GOOD! DUNK by COPELAND,ISAAC [PNT]
MISSED JUMPER by LIGHTFOOT,MITCH	08:14			
	08:14			REBOUND (DEF) by ROBY,ISIAAH
	08:07	22-25	V 3	GOOD! LAYUP by GILL,ANTON [FB/PNT]
GOOD! 3PTR by VICK,LAGERALD	07:49	22-28	V 6	
ASSIST by LIGHTFOOT,MITCH	07:49			
	07:30	24-28	V 4	GOOD! JUMPER by WATSON JR.,GLYNN [PNT]
MISSED 3PTR by NEWMAN,MALIK	07:08			
	07:08			REBOUND (DEF) by ROBY,ISIAAH
	06:59			MISSED 3PTR by GILL,ANTON
REBOUND (DEF) by NEWMAN,MALIK	06:59			
TIMEOUT MEDIA	06:38			
SUB IN: CUNLIFFE,SAM	06:38			
SUB IN: GRAHAM,DEVONTE'	06:38			
SUB IN: AZUBUIKE,UDOKA	06:38			
SUB OUT: MYKHAILIUK,SVI	06:38			
SUB OUT: NEWMAN,MALIK	06:38			
SUB OUT: LIGHTFOOT,MITCH	06:38			
	06:38			SUB IN: TAYLOR,EVAN
	06:38			SUB IN: OKEKE,DUBY
	06:38			SUB OUT: PALMER JR.,JAMES

VISITORS: Kansas	Time	Score	Margin	HOME: Nebraska
	06:38			SUB OUT: WATSON JR.,GLYNN
TURNOVER by GRAHAM,DEVONTE'	06:33			
	06:22	26-28	V 2	GOOD! LAYUP by TAYLOR,EVAN [PNT]
GOOD! LAYUP by VICK,LAGERALD [PNT]	06:05	26-30	V 4	
	05:49	28-30	V 2	GOOD! LAYUP by GILL,ANTON [PNT]
TURNOVER by TEAM	05:24			
	04:59			MISSED JUMPER by GILL,ANTON
REBOUND (DEF) by GARRETT,MARCUS	04:59			
MISSED DUNK by AZUBUIKE,UDOKA	04:50			
	04:50			BLOCK by OKEKE,DUBY
	04:48			REBOUND (DEF) by ROBY,ISIAIAH
	04:45			MISSED 3PTR by TAYLOR,EVAN
	04:45			REBOUND (OFF) by ROBY,ISIAIAH
SUB IN: MYKHAILIUK,SVI	04:41			
SUB IN: LIGHTFOOT,MITCH	04:41			
SUB OUT: CUNLIFFE,SAM	04:41			
SUB OUT: AZUBUIKE,UDOKA	04:41			
	04:41			SUB IN: PALMER JR.,JAMES
	04:41			SUB IN: ALLEN,THOMAS
	04:41			SUB OUT: GILL,ANTON
	04:41			SUB OUT: TAYLOR,EVAN
	04:38			FOUL by OKEKE,DUBY
	04:38			TURNOVER by OKEKE,DUBY
	04:38			SUB IN: GILL,ANTON
	04:38			SUB OUT: OKEKE,DUBY
MISSED JUMPER by GRAHAM,DEVONTE'	04:27			
REBOUND (OFF) by LIGHTFOOT,MITCH	04:27			
MISSED 3PTR by MYKHAILIUK,SVI	04:14			
	04:14			REBOUND (DEF) by PALMER JR.,JAMES
	03:59	30-30	T	GOOD! JUMPER by ALLEN,THOMAS [PNT]
	03:59			ASSIST by ROBY,ISIAIAH
GOOD! JUMPER by MYKHAILIUK,SVI	03:42	30-32	V 2	
	03:31			TURNOVER by ALLEN,THOMAS
STEAL by GARRETT,MARCUS	03:30			
MISSED JUMPER by MYKHAILIUK,SVI	03:24			
	03:24			BLOCK by ROBY,ISIAIAH
	03:23			REBOUND (DEF) by COPELAND,ISAAC
FOUL by MYKHAILIUK,SVI	03:17			
	03:17			TIMEOUT media
	03:17			MISSED FT by PALMER JR.,JAMES
	03:17			REBOUND (DEADB) by TEAM
	03:17	31-32	V 1	GOOD! FT by PALMER JR.,JAMES
SUB IN: NEWMAN,MALIK	03:17			
SUB IN: AZUBUIKE,UDOKA	03:17			
SUB OUT: GARRETT,MARCUS	03:17			
SUB OUT: LIGHTFOOT,MITCH	03:17			
	03:17			SUB IN: TAYLOR,EVAN
	03:17			SUB OUT: ALLEN,THOMAS
TURNOVER by GRAHAM,DEVONTE'	03:04			
	03:03			STEAL by PALMER JR.,JAMES
	02:42			MISSED 3PTR by COPELAND,ISAAC
REBOUND (DEF) by VICK,LAGERALD	02:42			
MISSED LAYUP by VICK,LAGERALD	02:36			
	02:36			REBOUND (DEF) by COPELAND,ISAAC
FOUL by GRAHAM,DEVONTE'	02:31			
	02:24			MISSED 3PTR by ROBY,ISIAIAH
REBOUND (DEF) by AZUBUIKE,UDOKA	02:24			
GOOD! DUNK by AZUBUIKE,UDOKA [PNT]	02:06	31-34	V 3	
ASSIST by MYKHAILIUK,SVI	02:06			
FOUL by AZUBUIKE,UDOKA	01:46			
SUB IN: LIGHTFOOT,MITCH	01:46			
SUB OUT: AZUBUIKE,UDOKA	01:46			
	01:39	33-34	V 1	GOOD! JUMPER by ROBY,ISIAIAH [PNT]
	01:39			ASSIST by PALMER JR.,JAMES
MISSED 3PTR by VICK,LAGERALD	01:24			
REBOUND (OFF) by LIGHTFOOT,MITCH	01:24			
	01:23			FOUL by ROBY,ISIAIAH
GOOD! FT by LIGHTFOOT,MITCH	01:23	33-35	V 2	
GOOD! FT by LIGHTFOOT,MITCH	01:23	33-36	V 3	
	01:06			TIMEOUT 30SEC
	01:03			MISSED 3PTR by ROBY,ISIAIAH
REBOUND (DEF) by GRAHAM,DEVONTE'	01:03			
MISSED LAYUP by GRAHAM,DEVONTE'	00:41			
REBOUND (OFF) by VICK,LAGERALD	00:41			
MISSED JUMPER by VICK,LAGERALD	00:39			

VISITORS: Kansas	Time	Score	Margin	HOME: Nebraska
	00:39			REBOUND (DEF) by TEAM
FOUL by VICK,LAGERALD	00:29			
	00:25			TURNOVER by ROBY,ISIAAH
STEAL by LIGHTFOOT,MITCH	00:24			
TIMEOUT 30SEC	00:18			
MISSED JUMPER by NEWMAN,MALIK	00:01			
	00:01			REBOUND (DEF) by PALMER JR.,JAMES

Kansas 36, Nebraska 33

Period 1-only	In Paint	Off T/O	2nd Chance	Fast Break	Bench	
KU	16	7	6	0	4	Score tied - 0 times
NEB	16	10	5	2	16	Lead changed - 2 times

Official Basketball Box Score -- Game Totals -- Second Half Statistics
 Kansas vs Nebraska
 12/16/2017 7:01 p.m. at Pinnacle Bank Arena (Lincoln, Neb.)



Kansas 37 • 8-2

##	Player		Total		3-Ptr	Rebounds			PF	TP	A	TO	Blk	Stl	Min
			FG-FGA	FG-FGA	FT-FTA	Off	Def	Tot							
02	VICK,LAGERALD	g	2-4	0-1	0-0	0	2	2	0	4	0	2	1	2	18
04	GRAHAM,DEVONTE'	g	1-4	1-3	4-4	0	0	0	3	7	7	0	0	0	20
10	MYKHAILIUK,SVI	g	5-11	2-5	0-0	1	2	3	2	12	2	1	0	0	19
14	NEWMAN,MALIK	g	0-3	0-2	0-0	0	1	1	2	0	1	0	0	0	16
35	AZUBUIKE,UDOKA	c	6-7	0-0	0-0	3	3	6	1	12	1	0	1	1	15
00	GARRETT ,MARCUS		0-3	0-2	0-0	1	1	2	0	0	0	0	0	1	7
03	CUNLIFFE,SAM		0-0	0-0	0-0	0	0	0	0	0	0	0	0	0	0
44	LIGHTFOOT ,MITCH		1-1	0-0	0-0	0	1	1	0	2	0	1	0	0	5
TEAM						0	0	0	0		1				
Totals			15-33	3-13	4-4	5	10	15	8	37	11	5	2	4	100

FG % Half: 15-33 45.5%
 3FG % Half: 3-13 44.4%
 FT % Half: 4-4 100.0%

Nebraska 39 • 7-5

##	Player		Total		3-Ptr	Rebounds			PF	TP	A	TO	Blk	Stl	Min
			FG-FGA	FG-FGA	FT-FTA	Off	Def	Tot							
05	WATSON JR.,GLYNN	g	3-5	1-1	0-0	0	1	1	1	7	3	1	0	0	16
11	TAYLOR,EVAN	g	1-1	0-0	0-0	1	2	3	1	2	3	1	0	0	11
14	COPELAND,ISAAC	f	4-6	2-3	0-0	0	3	3	0	10	0	1	0	1	18
24	PALMER JR.,JAMES	g	2-6	1-1	2-2	3	3	6	1	7	0	2	1	1	15
32	T SHIMANGA,JORDY	c	1-1	0-0	0-0	0	0	0	2	2	0	0	0	0	3
00	OKEKE,DUBY		0-0	0-0	0-0	0	0	0	0	0	0	0	0	0	1
12	ALLEN,T HOMAS		1-1	1-1	0-0	0	1	1	0	3	0	0	0	0	6
13	GILL,ANTON		0-3	0-2	2-2	0	1	1	0	2	0	1	0	0	13
15	ROBY,ISAIAH		3-6	0-2	0-0	0	2	2	2	6	2	2	2	0	17
TEAM						0	0	0	0		0				
Totals			15-29	5-10	4-4	4	13	17	7	39	8	8	3	2	100

FG % Half: 15-29 51.7%
 3FG % Half: 5-10 25.0%
 FT % Half: 4-4 100.0%

Officials: Mike Eades, Tom Eades, Brooks Wells
 Technical Fouls: Kansas- None. Nebraska- None.
 ACTUAL ATTENDANCE: 15,207

Score by periods	1st	2nd	Total
Kansas	36	37	73
Nebraska	33	39	72

Points	In Paint	Off T/O	2nd Chance	Fast Break	Bench
KU	24	8	4	4	2
NEB	12	5	4	0	11

Last FG - KU 2nd-00:21, NEB 2nd-00:41.
 KU led for 15:16. NEB led for 1:23. Game was tied for 3:21.

Score tied - 4 times
 Lead changed - 4 times

Kansas vs Nebraska
12/16/2017; 7:01 p.m. at Pinnacle Bank Arena (Lincoln, Neb.)
Period 2 Play-By-Play



VISITORS: Kansas	Time	Score	Margin	HOME: Nebraska
GOOD! LAYUP by MYKHAILIUK,SVI [PNT]	19:50	33-38	V 5	
ASSIST by AZUBUIKE,UDOKA	19:50			
	19:30	35-38	V 3	GOOD! JUMPER by COPELAND,ISAAC
	19:30			ASSIST by TAYLOR,EVAN
MISSED 3PTR by NEWMAN,MALIK	19:10			
	19:10			REBOUND (DEF) by COPELAND,ISAAC
	19:02			TURNOVER by WATSON JR.,GLYNN
STEAL by VICK,LAGERALD	19:01			
MISSED JUMPER by MYKHAILIUK,SVI	18:54			
REBOUND (OFF) by AZUBUIKE,UDOKA	18:54			
	18:52			FOUL by TSHIMANGA,JORDY
	18:52			SUB IN: ROBY,ISIAIAH
	18:52			SUB OUT: COPELAND,ISAAC
MISSED JUMPER by GRAHAM,DEVONTE'	18:47			
REBOUND (OFF) by AZUBUIKE,UDOKA	18:47			
GOOD! JUMPER by AZUBUIKE,UDOKA [PNT]	18:43	35-40	V 5	
	18:20	37-40	V 3	GOOD! LAYUP by WATSON JR.,GLYNN [PNT]
GOOD! 3PTR by GRAHAM,DEVONTE'	18:08	37-43	V 6	
ASSIST by MYKHAILIUK,SVI	18:08			
	17:54	39-43	V 4	GOOD! JUMPER by TSHIMANGA,JORDY [PNT]
	17:54			ASSIST by WATSON JR.,GLYNN
	17:39			SUB IN: COPELAND,ISAAC
	17:39			SUB IN: GILL,ANTON
	17:39			SUB OUT: TSHIMANGA,JORDY
	17:39			SUB OUT: PALMER JR.,JAMES
MISSED 3PTR by NEWMAN,MALIK	17:22			
	17:22			REBOUND (DEF) by TAYLOR,EVAN
	17:12	41-43	V 2	GOOD! JUMPER by COPELAND,ISAAC
	17:12			ASSIST by ROBY,ISIAIAH
GOOD! JUMPER by AZUBUIKE,UDOKA [PNT]	16:46	41-45	V 4	
ASSIST by GRAHAM,DEVONTE'	16:46			
	16:22			MISSED 3PTR by GILL,ANTON
	16:22			REBOUND (OFF) by TAYLOR,EVAN
	16:18	43-45	V 2	GOOD! JUMPER by TAYLOR,EVAN [PNT]
GOOD! JUMPER by AZUBUIKE,UDOKA [PNT]	16:00	43-47	V 4	
ASSIST by MYKHAILIUK,SVI	16:00			
FOUL by GRAHAM,DEVONTE'	15:44			
	15:44			TIMEOUT MEDIA
SUB IN: GARRETT,MARCUS	15:44			
SUB OUT: NEWMAN,MALIK	15:44			
	15:44			SUB IN: PALMER JR.,JAMES
	15:44			SUB OUT: TAYLOR,EVAN
	15:41			TURNOVER by PALMER JR.,JAMES
STEAL by GARRETT,MARCUS	15:39			
MISSED LAYUP by GARRETT,MARCUS	15:36			
	15:36			BLOCK by PALMER JR.,JAMES
REBOUND (OFF) by MYKHAILIUK,SVI	15:34			
MISSED 3PTR by GARRETT,MARCUS	15:19			
	15:19			REBOUND (DEF) by GILL,ANTON
FOUL by GRAHAM,DEVONTE'	15:14			
SUB IN: LIGHTFOOT,MITCH	15:14			
SUB OUT: AZUBUIKE,UDOKA	15:14			
	15:09			MISSED JUMPER by GILL,ANTON
REBOUND (DEF) by GARRETT,MARCUS	15:09			
TURNOVER by LIGHTFOOT,MITCH	14:39			
	14:37			STEAL by PALMER JR.,JAMES
FOUL by MYKHAILIUK,SVI	14:34			
	14:34			SUB IN: TAYLOR,EVAN
	14:34			SUB IN: ALLEN,THOMAS
	14:34			SUB OUT: WATSON JR.,GLYNN
	14:34			SUB OUT: GILL,ANTON
	14:31			TURNOVER by ROBY,ISIAIAH
STEAL by VICK,LAGERALD	14:28			
GOOD! LAYUP by VICK,LAGERALD [FB/PNT]	14:27	43-49	V 6	
	14:09			TURNOVER by ROBY,ISIAIAH
	14:09			FOUL by ROBY,ISIAIAH
TURNOVER by MYKHAILIUK,SVI	13:51			
	13:50			STEAL by COPELAND,ISAAC
	13:42	46-49	V 3	GOOD! 3PTR by COPELAND,ISAAC

VISITORS: Kansas	Time	Score	Margin	HOME: Nebraska
	13:42			ASSIST by TAYLOR, EVAN
	13:25			FOUL by TAYLOR, EVAN
GOOD! FT by GRAHAM, DEVONTE'	13:25	46-50	V 4	
GOOD! FT by GRAHAM, DEVONTE'	13:25	46-51	V 5	
SUB IN: AZUBUIKE, UDOKA	13:25			
SUB IN: NEWMAN, MALIK	13:25			
SUB OUT: MYKHAILIUK, SVI	13:25			
SUB OUT: LIGHTFOOT, MITCH	13:25			
	13:04			MISSED JUMPER by PALMER JR., JAMES
REBOUND (DEF) by VICK, LAGERALD	13:04			
TURNOVER by VICK, LAGERALD	13:01			
	12:49			TURNOVER by COPELAND, ISAAC
STEAL by AZUBUIKE, UDOKA	12:48			
MISSED 3PTR by GARRETT, MARCUS	12:43			
	12:43			REBOUND (DEF) by ALLEN, THOMAS
	12:32	48-51	V 3	GOOD! JUMPER by ROBY, ISIAIAH [PNT]
MISSED 3PTR by GRAHAM, DEVONTE'	12:11			
	12:11			REBOUND (DEF) by TAYLOR, EVAN
	12:02	51-51	T	GOOD! 3PTR by ALLEN, THOMAS
	12:02			ASSIST by TAYLOR, EVAN
TIMEOUT TEAM	12:00			
TIMEOUT MEDIA	12:00			
SUB IN: MYKHAILIUK, SVI	12:00			
SUB OUT: GRAHAM, DEVONTE'	12:00			
TURNOVER by TEAM	11:33			
	11:33			TIMEOUT MEDIA
SUB IN: GRAHAM, DEVONTE'	11:33			
SUB OUT: NEWMAN, MALIK	11:33			
FOUL by AZUBUIKE, UDOKA	11:19			
	11:10			MISSED JUMPER by PALMER JR., JAMES
BLOCK by VICK, LAGERALD	11:10			
	11:09			REBOUND (OFF) by PALMER JR., JAMES
	11:08			MISSED JUMPER by PALMER JR., JAMES
REBOUND (DEF) by VICK, LAGERALD	11:08			
MISSED 3PTR by VICK, LAGERALD	10:48			
REBOUND (OFF) by GARRETT, MARCUS	10:48			
MISSED 3PTR by MYKHAILIUK, SVI	10:40			
	10:40			REBOUND (DEF) by COPELAND, ISAAC
	10:26			TURNOVER by TAYLOR, EVAN
	10:26			SUB IN: WATSON JR., GLYNN
	10:26			SUB OUT: TAYLOR, EVAN
MISSED LAYUP by VICK, LAGERALD	10:14			
	10:14			BLOCK by ROBY, ISIAIAH
	10:12			REBOUND (DEF) by PALMER JR., JAMES
	10:09			FOUL by PALMER JR., JAMES
	10:09			TURNOVER by PALMER JR., JAMES
SUB IN: LIGHTFOOT, MITCH	10:09			
SUB OUT: AZUBUIKE, UDOKA	10:09			
	10:09			SUB IN: GILL, ANTON
	10:09			SUB OUT: PALMER JR., JAMES
GOOD! DUNK by MYKHAILIUK, SVI [PNT]	09:56	51-53	V 2	
	09:44	54-53	H 1	GOOD! 3PTR by WATSON JR., GLYNN
	09:28			FOUL by ROBY, ISIAIAH
SUB IN: NEWMAN, MALIK	09:28			
SUB IN: AZUBUIKE, UDOKA	09:28			
SUB OUT: LIGHTFOOT, MITCH	09:28			
SUB OUT: GARRETT, MARCUS	09:28			
	09:28			SUB IN: TAYLOR, EVAN
	09:28			SUB IN: TSHIMANGA, JORDY
	09:28			SUB OUT: COPELAND, ISAAC
	09:28			SUB OUT: ROBY, ISIAIAH
	09:16			FOUL by WATSON JR., GLYNN
GOOD! DUNK by AZUBUIKE, UDOKA [PNT]	09:16	54-55	V 1	
ASSIST by GRAHAM, DEVONTE'	09:16			
	09:01			TURNOVER by GILL, ANTON
	08:49			FOUL by TSHIMANGA, JORDY
GOOD! FT by GRAHAM, DEVONTE'	08:49	54-56	V 2	
GOOD! FT by GRAHAM, DEVONTE'	08:49	54-57	V 3	
SUB IN: GARRETT, MARCUS	08:49			
SUB IN: LIGHTFOOT, MITCH	08:49			
SUB OUT: VICK, LAGERALD	08:49			
SUB OUT: AZUBUIKE, UDOKA	08:49			
	08:49			SUB IN: OKEKE, DUBY
	08:49			SUB IN: COPELAND, ISAAC
	08:49			SUB OUT: ALLEN, THOMAS

VISITORS: Kansas	Time	Score	Margin	HOME: Nebraska
	08:49			SUB OUT: TSHIMANGA,JORDY
	08:32	57-57	T	GOOD! 3PTR by COPELAND,ISAAC
	08:32			ASSIST by WATSON JR.,GLYNN
GOOD! 3PTR by MYKHAILIUK,SVI	08:11	57-60	V 3	
ASSIST by NEWMAN,MALIK	08:11			
	07:42			MISSED JUMPER by WATSON JR.,GLYNN
REBOUND (DEF) by MYKHAILIUK,SVI	07:42			
GOOD! JUMPER by LIGHTFOOT,MITCH [PNT]	07:21	57-62	V 5	
ASSIST by GRAHAM,DEVONTE'	07:21			
	07:12			TIMEOUT 30SEC
	07:12			TIMEOUT MEDIA
SUB IN: VICK,LAGERALD	07:12			
SUB OUT: GARRETT,MARCUS	07:12			
	07:12			SUB IN: ROBY,ISIAIAH
	07:12			SUB IN: PALMER JR.,JAMES
	07:12			SUB OUT: GILL,ANTON
	07:12			SUB OUT: OKEKE,DUBY
	07:04			MISSED JUMPER by COPELAND,ISAAC
REBOUND (DEF) by LIGHTFOOT,MITCH	07:04			
MISSED LAYUP by MYKHAILIUK,SVI	06:43			
	06:43			REBOUND (DEF) by COPELAND,ISAAC
FOUL by NEWMAN,MALIK	06:39			
SUB IN: AZUBUIKE,UDOKA	06:39			
SUB OUT: LIGHTFOOT,MITCH	06:39			
	06:39			SUB IN: GILL,ANTON
	06:39			SUB OUT: TAYLOR,EVAN
GOOD! DUNK by AZUBUIKE,UDOKA [PNT]	06:29	59-62	V 3	GOOD! JUMPER by ROBY,ISIAIAH
ASSIST by GRAHAM,DEVONTE'	06:00	59-64	V 5	
	06:00			
	05:45			MISSED LAYUP by WATSON JR.,GLYNN
REBOUND (DEF) by AZUBUIKE,UDOKA	05:45			
GOOD! LAYUP by MYKHAILIUK,SVI [FB/PNT]	05:39	59-66	V 7	
ASSIST by GRAHAM,DEVONTE'	05:39			
	05:14			MISSED 3PTR by ROBY,ISIAIAH
REBOUND (DEF) by MYKHAILIUK,SVI	05:14			
MISSED 3PTR by GRAHAM,DEVONTE'	04:48			
	04:48			REBOUND (DEF) by ROBY,ISIAIAH
FOUL by MYKHAILIUK,SVI	04:45			
	04:34	61-66	V 5	GOOD! JUMPER by WATSON JR.,GLYNN
	04:34			ASSIST by ROBY,ISIAIAH
MISSED 3PTR by MYKHAILIUK,SVI	04:14			
	04:14			REBOUND (DEF) by PALMER JR.,JAMES
	04:06			MISSED 3PTR by COPELAND,ISAAC
	04:06			REBOUND (OFF) by PALMER JR.,JAMES
FOUL by NEWMAN,MALIK	04:03			
	04:03	62-66	V 4	GOOD! FT by PALMER JR.,JAMES
	04:03	63-66	V 3	GOOD! FT by PALMER JR.,JAMES
MISSED JUMPER by AZUBUIKE,UDOKA	03:41			
	03:41			BLOCK by ROBY,ISIAIAH
	03:41			REBOUND (DEF) by ROBY,ISIAIAH
	03:41			TIMEOUT MEDIA
	03:27			MISSED JUMPER by ROBY,ISIAIAH
REBOUND (DEF) by AZUBUIKE,UDOKA	03:27			
TURNOVER by VICK,LAGERALD	03:10			
	02:57	65-66	V 1	GOOD! JUMPER by ROBY,ISIAIAH [PNT]
	02:57			ASSIST by WATSON JR.,GLYNN
MISSED 3PTR by MYKHAILIUK,SVI	02:42			
	02:42			REBOUND (DEF) by WATSON JR.,GLYNN
	02:26	68-66	H 2	GOOD! 3PTR by PALMER JR.,JAMES
TIMEOUT 30SEC	02:24			
GOOD! DUNK by VICK,LAGERALD [PNT]	02:17	68-68	T	
ASSIST by GRAHAM,DEVONTE'	02:17			
FOUL by GRAHAM,DEVONTE'	01:52			
	01:52	69-68	H 1	GOOD! FT by GILL,ANTON
	01:52	70-68	H 2	GOOD! FT by GILL,ANTON
MISSED LAYUP by MYKHAILIUK,SVI	01:33			
	01:33			REBOUND (DEF) by PALMER JR.,JAMES
	01:14			MISSED 3PTR by ROBY,ISIAIAH
REBOUND (DEF) by NEWMAN,MALIK	01:14			
MISSED LAYUP by NEWMAN,MALIK	01:06			
REBOUND (OFF) by AZUBUIKE,UDOKA	01:06			
GOOD! JUMPER by AZUBUIKE,UDOKA [PNT]	01:03	70-70	T	
	00:41	72-70	H 2	GOOD! LAYUP by PALMER JR.,JAMES [PNT]
TIMEOUT 30SEC	00:37			
TIMEOUT MEDIA	00:37			

VISITORS: Kansas	Time	Score	Margin	HOME: Nebraska
GOOD! 3PTR by MYKHAILIUK,SVI	00:21	72-73	V 1	
ASSIST by GRAHAM,DEVONTE'	00:21			
	00:07			MISSED 3PTR by GILL,ANTON
	00:07			REBOUND (OFF) by PALMER JR.,JAMES
	00:03			MISSED JUMPER by PALMER JR.,JAMES
BLOCK by AZUBUIKE,UDOKA	00:03			
REBOUND (DEF) by AZUBUIKE,UDOKA	00:03			

Kansas 73, Nebraska 72

Period 2-only	In Paint	Off T/O	2nd Chance	Fast Break	Bench	
KU	24	8	4	4	2	Score tied - 4 times
NEB	12	5	4	0	11	Lead changed - 4 times

Kansas vs Nebraska
12/16/2017; 7:01 p.m. at Pinnacle Bank Arena (Lincoln, Neb.)
Scoring/Runs Reference



Period 1

Kansas	VRun	Score	Margin	HRun	Nebraska
		0-3	3		PALMER JR. 3PTR - 19:25
		0-4	4	NaN-0	PALMER JR. FT - 18:58
18:56 - AZUBUIKE DUNK [P]	-	2-4	2		
18:28 - GRAHAM 3PTR	5-0	5-4	-1		
17:11 - AZUBUIKE DUNK [P]	7-0	7-4	-3		
16:38 - AZUBUIKE JUMPER [P]	9-0	9-4	-5		
		9-6	-3		PALMER JR. JUMPER [P] - 16:09
15:57 - LIGHTFOOT FT	-	10-6	-4		
15:57 - LIGHTFOOT FT	2-0	11-6	-5		
		11-8	-3		WATSON JR. JUMPER - 15:36
14:47 - GRAHAM JUMPER	-	13-8	-5		
		13-11	-2		ALLEN 3PTR - 14:14
13:30 - GRAHAM 3PTR	-	16-11	-5		
13:01 - GRAHAM 3PTR	6-0	19-11	-8		
		19-13	-6		TAYLOR JUMPER - 12:06
11:42 - AZUBUIKE JUMPER [P]	-	21-13	-8		
		21-15	-6		ALLEN JUMPER - 11:30
		21-18	-3	5-0	ALLEN 3PTR - 10:52
10:31 - AZUBUIKE JUMPER [P]	-	23-18	-5		
09:31 - AZUBUIKE JUMPER [P]	4-0	25-18	-7		
		25-20	-5		COPELAND DUNK [P] - 08:26
		25-22	-3	4-0	GILL LAYUP [P] [F] - 08:07
07:49 - VICK 3PTR	-	28-22	-6		
		28-24	-4		WATSON JR. JUMPER [P] - 07:30
		28-26	-2	4-0	TAYLOR LAYUP [P] - 06:22
06:05 - VICK LAYUP [P]	-	30-26	-4		
		30-28	-2		GILL LAYUP [P] - 05:49
		30-30	0	4-0	ALLEN JUMPER [P] - 03:59
03:42 - MYKHAILIUK JUMPER	-	32-30	-2		
		32-31	-1		PALMER JR. FT - 03:17
02:06 - AZUBUIKE DUNK [P]	-	34-31	-3		
		34-33	-1		ROBY JUMPER [P] - 01:39
01:23 - LIGHTFOOT FT	-	35-33	-2		
01:23 - LIGHTFOOT FT	2-0	36-33	-3		

Kansas vs Nebraska
12/16/2017; 7:01 p.m. at Pinnacle Bank Arena (Lincoln, Neb.)
Scoring/Runs Reference

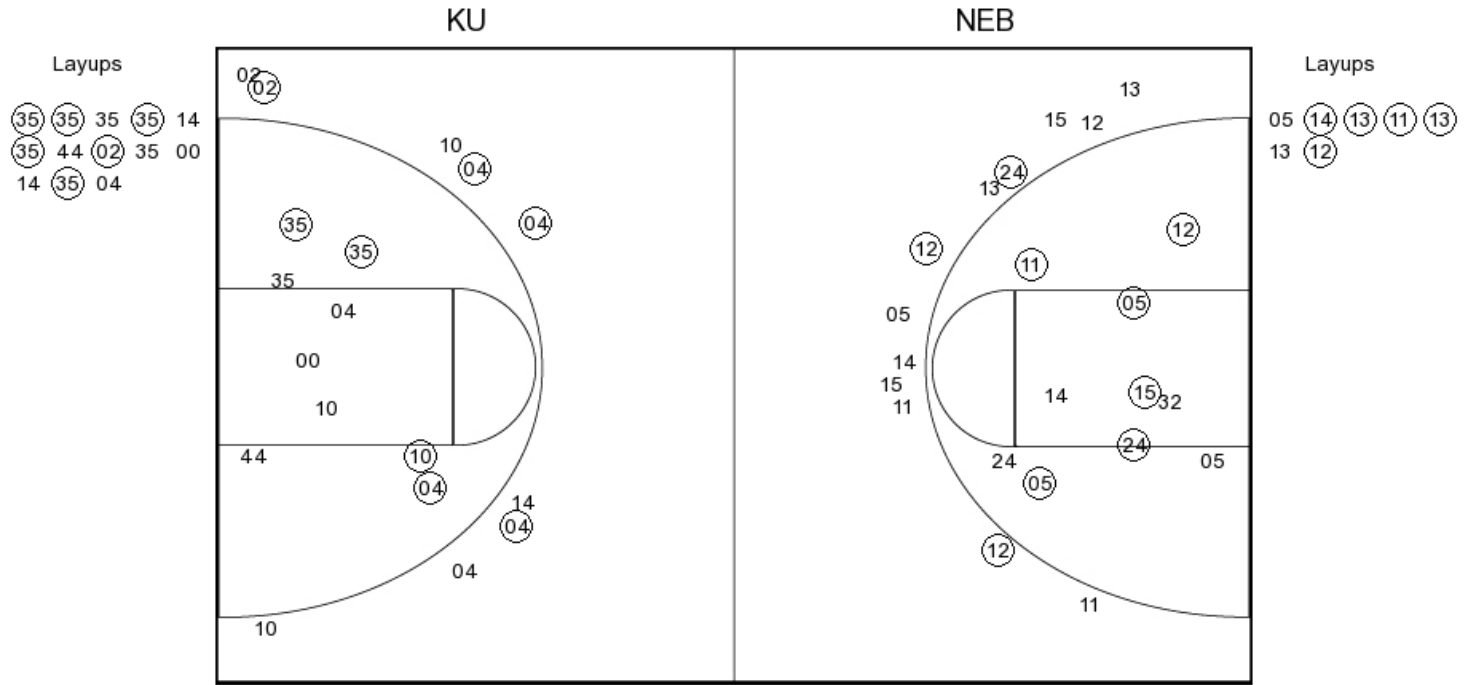


Period 2

Kansas	VRun	Score	Margin	HRun	Nebraska
19:50 - MYKHAILIUK LAYUP [P]	-	38-33	-5		
		38-35	-3		COPELAND JUMPER - 19:30
18:43 - AZUBUIKE JUMPER [P]	-	40-35	-5		
		40-37	-3		WATSON JR. LAYUP [P] - 18:20
18:08 - GRAHAM 3PTR	-	43-37	-6		
		43-39	-4		TSHIMANGA JUMPER [P] - 17:54
		43-41	-2	4-0	COPELAND JUMPER - 17:12
16:46 - AZUBUIKE JUMPER [P]	-	45-41	-4		
		45-43	-2		TAYLOR JUMPER [P] - 16:18
16:00 - AZUBUIKE JUMPER [P]	-	47-43	-4		
14:27 - VICK LAYUP [P] [F]	4-0	49-43	-6		
		49-46	-3		COPELAND 3PTR - 13:42
13:25 - GRAHAM FT	-	50-46	-4		
13:25 - GRAHAM FT	2-0	51-46	-5		
		51-48	-3		ROBY JUMPER [P] - 12:32
		51-51	0	5-0	ALLEN 3PTR - 12:02
09:56 - MYKHAILIUK DUNK [P]	-	53-51	-2		
		53-54	1		WATSON JR. 3PTR - 09:44
09:16 - AZUBUIKE DUNK [P]	-	55-54	-1		
08:49 - GRAHAM FT	3-0	56-54	-2		
08:49 - GRAHAM FT	4-0	57-54	-3		
		57-57	0		COPELAND 3PTR - 08:32
08:11 - MYKHAILIUK 3PTR	-	60-57	-3		
07:21 - LIGHTFOOT JUMPER [P]	5-0	62-57	-5		
		62-59	-3		ROBY JUMPER - 06:29
06:00 - AZUBUIKE DUNK [P]	-	64-59	-5		
05:39 - MYKHAILIUK LAYUP [P] [F]	4-0	66-59	-7		
		66-61	-5		WATSON JR. JUMPER - 04:34
		66-62	-4	3-0	PALMER JR. FT - 04:03
		66-63	-3	4-0	PALMER JR. FT - 04:03
		66-65	-1	6-0	ROBY JUMPER [P] - 02:57
		66-68	2	9-0	PALMER JR. 3PTR - 02:26
02:17 - VICK DUNK [P]	-	68-68	0		
		68-69	1		GILL FT - 01:52
		68-70	2	2-0	GILL FT - 01:52
01:03 - AZUBUIKE JUMPER [P]	-	70-70	0		
		70-72	2		PALMER JR. LAYUP [P] - 00:41
00:21 - MYKHAILIUK 3PTR	-	73-72	-1		



PERIOD 1



KU PERIOD 1

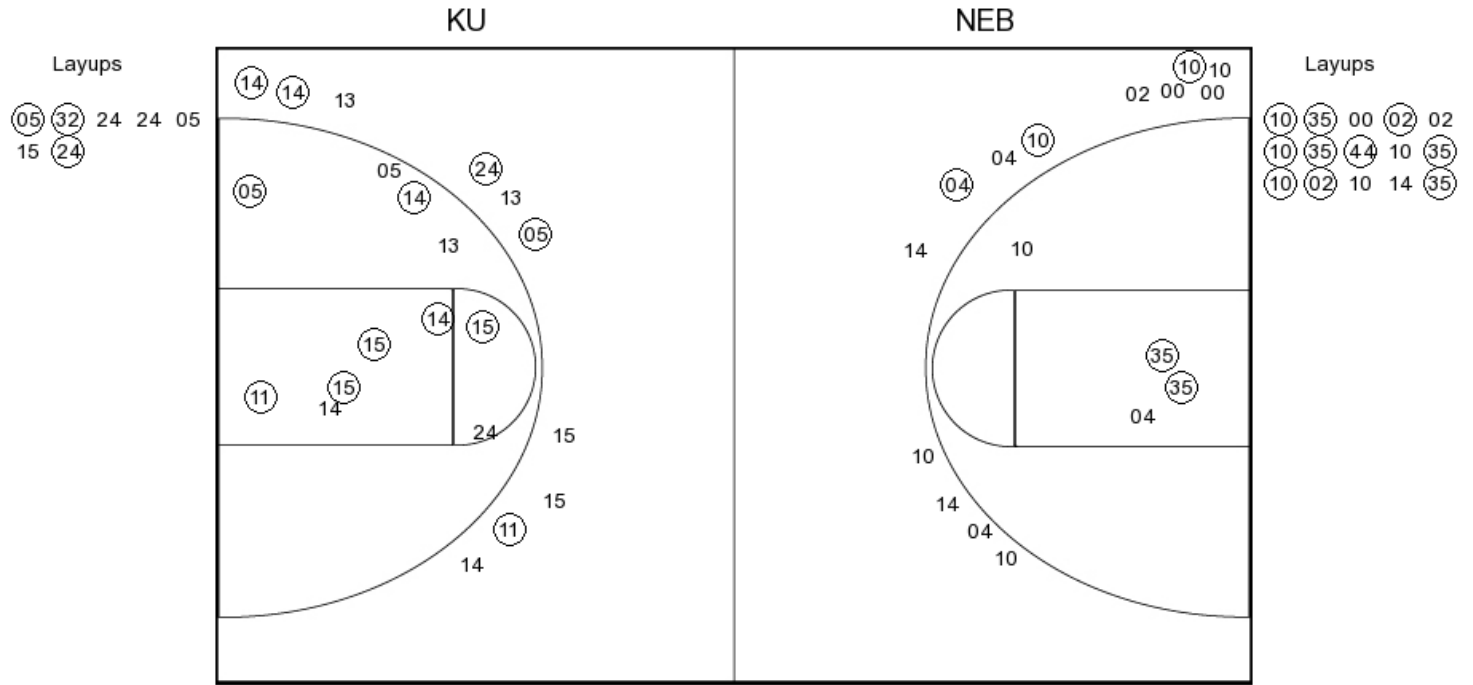
FG Made	14
FG Attempted	32
3PFG Made	4
3PFG Attempted	9

NEB PERIOD 1

FG Made	14
FG Attempted	30
3PFG Made	3
3PFG Attempted	12



PERIOD 2



KU PERIOD 2

FG Made	15
FG Attempted	33
3PFG Made	3
3PFG Attempted	13

NEB PERIOD 2

FG Made	15
FG Attempted	29
3PFG Made	5
3PFG Attempted	10

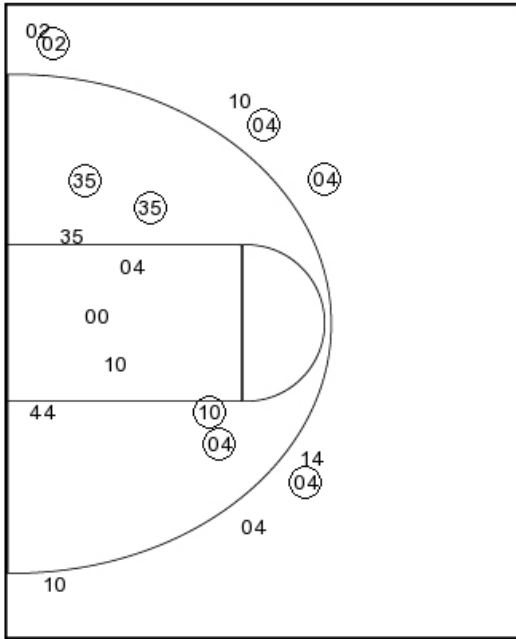


Kansas

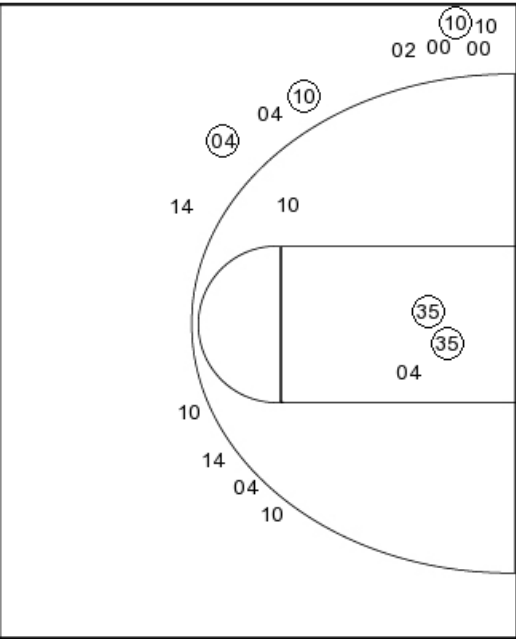
PERIOD 1

PERIOD 2

Layups
 (35) (35) 35 (35) 14
 (35) 44 (02) 35 00
 14 (35) 04



Layups
 (10) (35) 00 (02) 02
 (10) (35) (44) 10 (35)
 (10) (02) 10 14 (35)



KU PERIOD 1

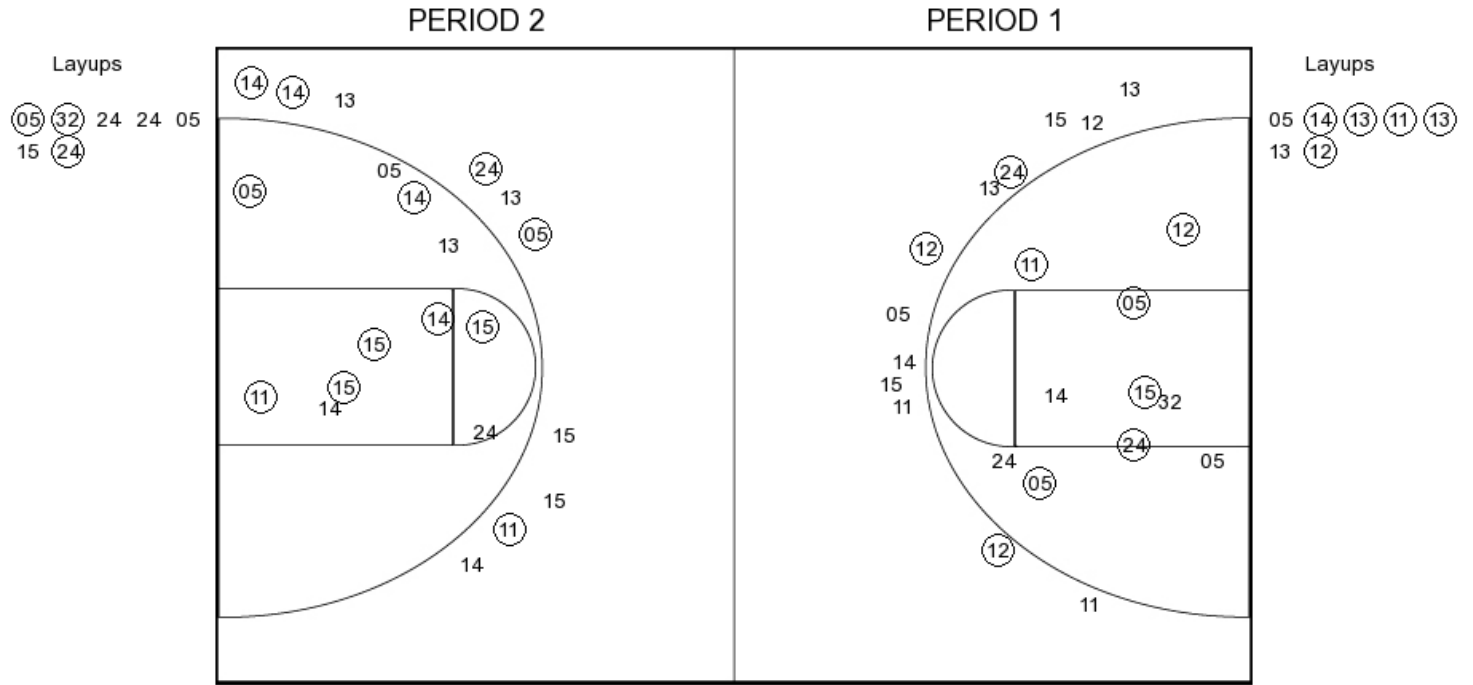
FG Made	14
FG Attempted	32
3PFG Made	4
3PFG Attempted	9

KU PERIOD 2

FG Made	15
FG Attempted	33
3PFG Made	3
3PFG Attempted	13



Nebraska



NEB PERIOD 1

FG Made	14
FG Attempted	30
3PFG Made	3
3PFG Attempted	12

NEB PERIOD 2

FG Made	15
FG Attempted	29
3PFG Made	5
3PFG Attempted	10