

## FINAL SCORE

**Northwood**

0-0

**62**



**Nebraska**

0-0

**80**

**November 07, 2017 • Pinnacle Bank Arena (Lincoln, Neb.)**

## FINAL STATISTICS

**Official Basketball Box Score -- Game Totals -- Final Statistics**  
**Northwood vs Nebraska**  
**11/7/2017 7:05 p.m. at Pinnacle Bank Arena (Lincoln, Neb.)**



**Northwood 62 - 0-0**

##	Player		Total		3-Ptr		FT-FTA		Rebounds			PF	TP	A	TO	Blk	Stl	Min
			FG	FGA	FG	FGA	FT	FTA	Off	Def	Tot							
03	SPITZLEY,NICK	g	0-4		0-4		0-0		0	1	1	0	0	0	2	0	0	13
05	GEORGETON,NATE	g	1-3		1-1		0-0		0	2	2	3	3	1	1	0	1	20
13	JELINEK,DAVID	f	3-8		0-0		0-0		0	1	1	5	6	1	2	0	0	8
15	SCHAUB,BRAD	f	4-10		2-5		0-1		4	4	8	2	10	2	3	0	2	34
21	ALLREAD,ZACH	f	1-4		1-2		1-2		0	2	2	1	4	0	3	0	0	21
01	MARTIN,DEMITRI		0-0		0-0		0-0		0	0	0	0	0	0	0	0	0	2
02	MCBRIDE,TREY		2-13		0-3		3-4		5	5	10	3	7	2	2	0	0	29
14	SOLOMUN,BRUNO		3-11		1-7		2-2		5	3	8	3	9	1	3	0	2	19
22	MARTY,ALEC		2-9		2-3		0-1		0	1	1	0	6	0	0	0	0	22
33	CALHOUN II, KELVIN CALHOUN		3-5		0-0		2-3		3	1	4	3	8	0	2	1	0	14
34	RYAN,CHARLIE		1-3		0-0		0-0		1	0	1	2	2	1	0	0	0	6
44	WELCH,NICK		2-3		1-1		2-2		4	3	7	3	7	0	1	1	1	12
TEAM									2	3	5	0			0			
TOTALS			22-73		8-26		10-15		24	26	50	25	62	8	19	2	6	200

Deadball Rebounds: 1,0

FG %	1st Half:	12-32	37.5%	2nd Half:	10-41	24.4%	Game:	22-73	30.1%
3FG %	1st Half:	6-13	46.2%	2nd Half:	2-13	15.4%	Game:	8-26	30.8%
FT %	1st Half:	3-5	60.0%	2nd Half:	7-10	70.0%	Game:	10-15	66.7%

**Nebraska 80 - 0-0**

##	Player		Total		3-Ptr		FT-FTA		Rebounds			PF	TP	A	TO	Blk	Stl	Min
			FG	FGA	FG	FGA	FT	FTA	Off	Def	Tot							
11	TAYLOR,EVAN	g	3-6		0-1		2-2		0	6	6	3	8	3	2	0	0	26
12	ALLEN,THOMAS	g	5-7		2-4		6-6		0	2	2	2	18	4	3	0	1	31
14	COPELAND,ISAAC	f	5-12		0-4		2-3		2	2	4	1	12	0	0	1	3	27
24	PALMER JR.,JAMES	g	9-14		2-4		7-8		0	1	1	4	27	4	3	0	2	32
32	TSHIMANGA,JORDY	c	2-7		0-0		1-2		2	5	7	2	5	0	3	3	1	15
00	OKEKE,DUBY		1-2		0-0		0-0		1	0	1	1	2	0	0	0	0	10
03	LAWS,MALCOLM		0-0		0-0		0-0		0	0	0	0	0	0	0	0	0	2
04	TRUEBLOOD,JOHNNY		0-0		0-0		0-0		0	0	0	0	0	0	0	0	0	1
10	MCVEIGH,JACK		1-3		1-2		0-1		0	6	6	2	3	3	0	0	1	23
20	BORCHARDT,TANNER		2-3		0-0		1-2		3	2	5	1	5	0	1	0	0	10
25	AKENTEN,NANA		0-2		0-2		0-0		0	4	4	1	0	0	0	0	0	13
34	THORBJARNARSON,THOR		0-2		0-1		0-0		0	2	2	1	0	0	3	1	0	10
TEAM									1	1	2	0			0			
TOTALS			28-58		5-18		19-24		9	31	40	18	80	14	15	5	8	200

Deadball Rebounds: 0,0

FG %	1st Half:	12-29	41.4%	2nd Half:	16-29	55.2%	Game:	28-58	48.3%
3FG %	1st Half:	2-10	20.0%	2nd Half:	3-8	37.5%	Game:	5-18	27.8%
FT %	1st Half:	9-11	81.8%	2nd Half:	10-13	76.9%	Game:	19-24	79.2%

Officials: Bo Boroski, Brooks Wells, Mark Riggs  
 Technical Fouls: Northwood- None. Nebraska- None.  
 Attendance: 15044

Actual Attendance: 7,294  
 Exhibition Game

Score by periods	1st	2nd	Total
Northwood	33	29	62
Nebraska	35	45	80

Points	In	Off	2nd	Fast	Bench
	Paint	T/O	Chance	Break	
NU	24	23	31	2	39
NEB	44	11	31	8	10

Last FG - NU 2nd-02:25, NEB 2nd-01:23.  
 Largest lead - Northwood by 6 1st-06:45; Nebraska by 19 2nd-04:26  
 NU led for 9:22. NEB led for 27:22. Game was tied for 3:16.

Score tied - 6 times; Lead changed - 2 times

**Official Basketball Box Score -- Game Totals -- First Half Statistics**  
**Northwood vs Nebraska**  
**11/7/2017 7:05 p.m. at Pinnacle Bank Arena (Lincoln, Neb.)**



**Northwood 33 • 0-0**

##	Player		Total		3-Ptr	Rebounds			PF	TP	A	TO	Blk	Stl	Min
			FG-FGA	FG-FGA	FT-FTA	Off	Def	Tot							
03	SPITZLEY,NICK	g	0-1	0-1	0-0	0	1	1	0	0	0	2	0	0	8
05	GEORGETON,NATE	g	1-1	1-1	0-0	0	1	1	2	3	1	1	0	1	9
13	JELINEK,DAVID	f	1-5	0-0	0-0	0	1	1	3	2	1	1	0	0	4
15	SCHAUB,BRAD	f	2-3	1-2	0-0	3	2	5	1	5	2	3	0	0	14
21	ALLREAD,ZACH	f	1-3	1-2	0-0	0	2	2	1	3	0	2	0	0	16
01	MARTIN,DEMITRI		0-0	0-0	0-0	0	0	0	0	0	0	0	0	0	2
02	MCBRIDE,TREY		0-5	0-2	1-2	0	2	2	2	1	1	1	0	0	14
14	SOLOMUN,BRUNO		2-5	1-3	2-2	3	2	5	1	7	0	1	0	1	8
22	MARTY,ALEC		2-4	2-2	0-0	0	1	1	0	6	0	0	0	0	13
33	CALHOUN II, KELVIN CALHC		2-3	0-0	0-1	2	1	3	1	4	0	1	0	0	9
34	RYAN,CHARLIE		1-2	0-0	0-0	1	0	1	0	2	0	0	0	0	3
44	WELCH,NICK		0-0	0-0	0-0	0	0	0	0	0	0	0	0	0	0
TEAM						0	2	2	0		0				
Totals			12-32	6-13	3-5	9	15	24	11	33	5	12	0	2	100

FG % Half: 12-32 37.5%  
 3FG % Half: 6-13 46.2%  
 FT % Half: 3-5 60.0%

**Nebraska 35 • 0-0**

##	Player		Total		3-Ptr	Rebounds			PF	TP	A	TO	Blk	Stl	Min
			FG-FGA	FG-FGA	FT-FTA	Off	Def	Tot							
11	TAYLOR,EVAN	g	2-3	0-1	2-2	0	5	5	1	6	1	1	0	0	18
12	ALLEN,THOMAS	g	2-3	2-3	2-2	0	1	1	1	8	1	3	0	0	16
14	COPELAND,ISAAC	f	3-8	0-2	0-1	1	1	2	1	6	0	0	1	2	14
24	PALMER JR.,JAMES	g	3-7	0-2	4-4	0	0	0	1	10	1	1	0	1	16
32	TSHIMANGA,JORDY	c	1-4	0-0	1-2	0	2	2	1	3	0	1	1	1	8
00	OKEKE,DUBY		0-1	0-0	0-0	0	0	0	1	0	0	0	0	0	5
03	LAWS,MALCOLM		0-0	0-0	0-0	0	0	0	0	0	0	0	0	0	0
04	TRUEBLOOD,JOHNNY		0-0	0-0	0-0	0	0	0	0	0	0	0	0	0	0
10	MCVEIGH,JACK		0-1	0-1	0-0	0	2	2	1	0	1	0	0	1	12
20	BORCHARDT,TANNER		1-1	0-0	0-0	3	0	3	0	2	0	0	0	0	4
25	AKENTEN,NANA		0-0	0-0	0-0	0	0	0	0	0	0	0	0	0	4
34	THORBJARNARSON,THOR		0-1	0-1	0-0	0	1	1	0	0	0	3	0	0	3
TEAM						0	1	1	0		0				
Totals			12-29	2-10	9-11	4	13	17	7	35	4	9	2	5	100

FG % Half: 12-29 41.4%  
 3FG % Half: 2-10 20.0%  
 FT % Half: 9-11 81.8%

Officials: Bo Boroski, Brooks Wells, Mark Riggs  
 Technical Fouls: Northwood- None. Nebraska- None.  
 Actual Attendance: 7,294  
 Exhibition Game

Score by periods	1st	2nd	Total
Northwood	33	29	62
Nebraska	35	45	80

	In	Off	2nd	Fast	
Points	Paint	T/O	Chance	Break	Bench
NU	8	15	11	0	20
NEB	20	7	2	2	2

Last FG - NU 1st-00:09, NEB 1st-00:37.  
 NU led for 9:22. NEB led for 7:56. Game was tied for 2:42.

Score tied - 5 times  
 Lead changed - 2 times

**Northwood vs Nebraska**  
**11/7/2017; 7:05 p.m. at Pinnacle Bank Arena (Lincoln, Neb.)**  
**Period 1 Play-By-Play**



VISITORS: Northwood	Time	Score	Margin	HOME: Nebraska
	19:48			MISSED JUMPER by TSHIMANGA,JORDY
REBOUND (DEF) by SCHAUB,BRAD	19:48			
MISSED JUMPER by JELINEK,DAVID	19:23			
	19:23			REBOUND (DEF) by COPELAND,ISAAC
	19:16	2-0	H 2	GOOD! LAYUP by PALMER JR.,JAMES [FB/PNT]
GOOD! JUMPER by JELINEK,DAVID [PNT]	18:55	2-2	T	
	18:33	5-2	H 3	GOOD! 3PTR by ALLEN,THOMAS
	18:33			ASSIST by PALMER JR.,JAMES
FOUL by JELINEK,DAVID	18:12			
TURNOVER by JELINEK,DAVID	18:12			
	17:58	7-2	H 5	GOOD! JUMPER by TSHIMANGA,JORDY [PNT]
MISSED JUMPER by JELINEK,DAVID	17:38			
	17:38			REBOUND (DEF) by ALLEN,THOMAS
	17:27	10-2	H 8	GOOD! 3PTR by ALLEN,THOMAS
	17:27			ASSIST by TAYLOR,EVAN
TURNOVER by SCHAUB,BRAD	17:09			
SUB OUT: SPITZLEY,NICK	17:09			
	16:58			TURNOVER by ALLEN,THOMAS
GOOD! 3PTR by GEORGETON,NATE	16:48	10-5	H 5	
ASSIST by JELINEK,DAVID	16:48			
	16:32	12-5	H 7	GOOD! JUMPER by COPELAND,ISAAC [PNT]
	16:22			FOUL by TAYLOR,EVAN
SUB IN: CALHOUN II, KELVIN CALHOUN	16:22			
SUB OUT: JELINEK,DAVID	16:22			
	16:22			SUB IN: OKEKE,DUBY
	16:22			SUB IN: MCVEIGH,JACK
	16:22			SUB OUT: COPELAND,ISAAC
	16:22			SUB OUT: TSHIMANGA,JORDY
TURNOVER by SCHAUB,BRAD	16:18			
SUB IN: SOLOMUN,BRUNO	16:18			
SUB OUT: SCHAUB,BRAD	16:18			
	16:11			MISSED 3PTR by PALMER JR.,JAMES
REBOUND (DEF) by ALLREAD,ZACH	16:11			
GOOD! JUMPER by SOLOMUN,BRUNO	15:59	12-7	H 5	
	15:59			TIMEOUT TEAM
SUB IN: MARTY,ALEC	15:59			
SUB OUT: GEORGETON,NATE	15:59			
	15:41			MISSED JUMPER by OKEKE,DUBY
REBOUND (DEF) by SOLOMUN,BRUNO	15:41			
TURNOVER by MCBRIDE,TREY	15:19			
	15:19			SUB IN: THORBJARNARSON,THOR
	15:19			SUB OUT: ALLEN,THOMAS
	15:06			TURNOVER by TAYLOR,EVAN
MISSED 3PTR by ALLREAD,ZACH	14:50			
REBOUND (OFF) by SOLOMUN,BRUNO	14:50			
GOOD! 3PTR by SOLOMUN,BRUNO	14:46	12-10	H 2	
	14:30			TURNOVER by THORBJARNARSON,THOR
MISSED JUMPER by MARTY,ALEC	14:13			
REBOUND (OFF) by SOLOMUN,BRUNO	14:13			
MISSED JUMPER by SOLOMUN,BRUNO	14:11			
	14:11			REBOUND (DEF) by THORBJARNARSON,THOR
	14:06			TURNOVER by THORBJARNARSON,THOR
STEAL by SOLOMUN,BRUNO	14:05			
MISSED JUMPER by MCBRIDE,TREY	14:00			
REBOUND (OFF) by CALHOUN II, KELVIN CALHOUN	14:00			
GOOD! JUMPER by CALHOUN II, KELVIN CALHOUN	13:57	12-12	T	
SUB IN: SCHAUB,BRAD	13:56			
SUB OUT: ALLREAD,ZACH	13:56			
	13:38	14-12	H 2	GOOD! JUMPER by PALMER JR.,JAMES [PNT]
	13:38			ASSIST by MCVEIGH,JACK
FOUL by MCBRIDE,TREY	13:38			
	13:38	15-12	H 3	GOOD! FT by PALMER JR.,JAMES
	13:38			SUB IN: COPELAND,ISAAC
	13:38			SUB IN: BORCHARDT,TANNER
	13:38			SUB OUT: OKEKE,DUBY
	13:38			SUB OUT: PALMER JR.,JAMES
GOOD! 3PTR by MARTY,ALEC	13:17	15-15	T	
	12:59			MISSED 3PTR by THORBJARNARSON,THOR
	12:59			REBOUND (OFF) by COPELAND,ISAAC

VISITORS: Northwood	Time	Score	Margin	HOME: Nebraska
	12:56			SUB IN: ALLEN,THOMAS
	12:56			SUB OUT: TAYLOR,EVAN
	12:53			MISSED 3PTR by MCVEIGH,JACK
	12:53			REBOUND (OFF) by BORCHARDT,TANNER
	12:40			TURNOVER by THORBJARNARSON,THOR
GOOD! JUMPER by CALHOUN II, KELVIN CALHOUN [PNT]	12:31	15-17	V 2	
ASSIST by SCHAUB,BRAD	12:31			
FOUL by SCHAUB,BRAD	12:20			
	12:20			SUB IN: AKENTEN,NANA
	12:20			SUB OUT: THORBJARNARSON,THOR
	12:08	17-17	T	GOOD! LAYUP by COPELAND,ISAAC [PNT]
	12:08			ASSIST by ALLEN,THOMAS
GOOD! 3PTR by SCHAUB,BRAD	11:54	17-20	V 3	
ASSIST by MCBRIDE,TREY	11:54			
	11:45			TURNOVER by ALLEN,THOMAS
TIMEOUT TEAM	11:45			
MISSED JUMPER by MCBRIDE,TREY	11:32			
REBOUND (OFF) by SOLOMUN,BRUNO	11:32			
	11:29			FOUL by COPELAND,ISAAC
GOOD! FT by SOLOMUN,BRUNO	11:29	17-21	V 4	
GOOD! FT by SOLOMUN,BRUNO	11:29	17-22	V 5	
	11:14			MISSED JUMPER by COPELAND,ISAAC
	11:14			REBOUND (OFF) by BORCHARDT,TANNER
	11:03			MISSED 3PTR by COPELAND,ISAAC
	11:03			REBOUND (OFF) by BORCHARDT,TANNER
	11:00	19-22	V 3	GOOD! JUMPER by BORCHARDT,TANNER [PNT]
TURNOVER by SCHAUB,BRAD	10:44			
SUB IN: JELINEK,DAVID	10:44			
SUB OUT: CALHOUN II, KELVIN CALHOUN	10:44			
	10:29			MISSED JUMPER by COPELAND,ISAAC
REBOUND (DEF) by MCBRIDE,TREY	10:29			
MISSED 3PTR by SOLOMUN,BRUNO	10:17			
REBOUND (OFF) by SCHAUB,BRAD	10:17			
MISSED JUMPER by MCBRIDE,TREY	10:08			
	10:08			REBOUND (DEF) by MCVEIGH,JACK
SUB IN: SPITZLEY,NICK	10:04			
SUB IN: GEORGETON,NATE	10:04			
SUB OUT: JELINEK,DAVID	10:04			
SUB OUT: SCHAUB,BRAD	10:04			
	10:04			SUB IN: PALMER JR.,JAMES
	10:04			SUB IN: TSHIMANGA,JORDY
	10:04			SUB IN: TAYLOR,EVAN
	10:04			SUB OUT: ALLEN,THOMAS
	10:04			SUB OUT: BORCHARDT,TANNER
	10:04			SUB OUT: MCVEIGH,JACK
FOUL by GEORGETON,NATE	09:54			
SUB IN: ALLREAD,ZACH	09:54			
SUB OUT: SOLOMUN,BRUNO	09:54			
	09:36			MISSED 3PTR by PALMER JR.,JAMES
REBOUND (DEF) by SPITZLEY,NICK	09:36			
TURNOVER by SPITZLEY,NICK	09:20			
	09:19			STEAL by TSHIMANGA,JORDY
	09:16			FOUL by PALMER JR.,JAMES
	09:16			TURNOVER by PALMER JR.,JAMES
MISSED JUMPER by ALLREAD,ZACH	09:07			
	09:07			REBOUND (DEF) by TSHIMANGA,JORDY
FOUL by JELINEK,DAVID	09:06			
	08:54			MISSED JUMPER by TSHIMANGA,JORDY
REBOUND (DEF) by GEORGETON,NATE	08:54			
MISSED JUMPER by JELINEK,DAVID	08:42			
	08:42			BLOCK by TSHIMANGA,JORDY
	08:41			REBOUND (DEF) by TSHIMANGA,JORDY
	08:25			MISSED JUMPER by TSHIMANGA,JORDY
REBOUND (DEF) by JELINEK,DAVID	08:25			
	08:04			FOUL by TSHIMANGA,JORDY
MISSED JUMPER by JELINEK,DAVID	08:04			
REBOUND (OFF) by SCHAUB,BRAD	07:59			
GOOD! JUMPER by SCHAUB,BRAD [PNT]	07:51	19-24	V 5	
FOUL by JELINEK,DAVID	07:51			
TIMEOUT TEAM	07:51			
	07:51	20-24	V 4	GOOD! FT by PALMER JR.,JAMES
	07:51	21-24	V 3	GOOD! FT by PALMER JR.,JAMES
SUB IN: SCHAUB,BRAD	07:51			
SUB IN: CALHOUN II, KELVIN CALHOUN	07:51			
SUB OUT: MARTY,ALEC	07:51			

VISITORS: Northwood	Time	Score	Margin	HOME: Nebraska
	07:51			SUB IN: ALLEN,THOMAS
	07:51			SUB OUT: AKENTEN,NANA
MISSED 3PTR by SPITZLEY,NICK	07:41			
	07:41			REBOUND (DEF) by TAYLOR,EVAN
	07:31			MISSED JUMPER by PALMER JR.,JAMES
REBOUND (DEF) by SCHAUB,BRAD	07:31			
TURNOVER by CALHOUN II, KELVIN CALHOUN	07:02			
	07:01			STEAL by COPELAND,ISAAC
	06:53			TURNOVER by TSHIMANGA,JORDY
STEAL by GEORGETON,NATE	06:51			
GOOD! 3PTR by ALLREAD,ZACH	06:45	21-27	V 6	
ASSIST by GEORGETON,NATE	06:45			
	06:29			MISSED 3PTR by COPELAND,ISAAC
REBOUND (DEF) by TEAM	06:29			
SUB IN: SOLOMUN,BRUNO	06:26			
SUB IN: MARTIN,DEMITRI	06:26			
SUB OUT: SCHAUB,BRAD	06:26			
SUB OUT: CALHOUN II, KELVIN CALHOUN	06:26			
MISSED 3PTR by SOLOMUN,BRUNO	06:06			
	06:06			REBOUND (DEF) by TAYLOR,EVAN
	05:53			TURNOVER by ALLEN,THOMAS
TURNOVER by GEORGETON,NATE	05:45			
	05:43			STEAL by PALMER JR.,JAMES
FOUL by SOLOMUN,BRUNO	05:37			
	05:37	22-27	V 5	GOOD! FT by TSHIMANGA,JORDY
	05:37			MISSED FT by TSHIMANGA,JORDY
REBOUND (DEF) by SOLOMUN,BRUNO	05:37			
TURNOVER by SOLOMUN,BRUNO	05:16			
	05:16			SUB IN: MCVEIGH,JACK
	05:16			SUB OUT: TSHIMANGA,JORDY
	05:06	24-27	V 3	GOOD! JUMPER by COPELAND,ISAAC [PNT]
TURNOVER by SPITZLEY,NICK	04:44			
	04:42			STEAL by MCVEIGH,JACK
FOUL by GEORGETON,NATE	04:39			
	04:39	25-27	V 2	GOOD! FT by TAYLOR,EVAN
	04:39	26-27	V 1	GOOD! FT by TAYLOR,EVAN
SUB IN: RYAN,CHARLIE	04:39			
SUB IN: MARTY,ALEC	04:39			
SUB IN: SCHAUB,BRAD	04:39			
SUB IN: MCBRIDE,TREY	04:39			
SUB OUT: SPITZLEY,NICK	04:39			
SUB OUT: SOLOMUN,BRUNO	04:39			
SUB OUT: GEORGETON,NATE	04:39			
SUB OUT: MARTIN,DEMITRI	04:39			
	04:24			FOUL by MCVEIGH,JACK
TURNOVER by ALLREAD,ZACH	04:05			
	04:02			STEAL by COPELAND,ISAAC
	03:56			MISSED JUMPER by PALMER JR.,JAMES
REBOUND (DEF) by ALLREAD,ZACH	03:55			
MISSED JUMPER by RYAN,CHARLIE	03:42			
	03:42			REBOUND (DEF) by TAYLOR,EVAN
FOUL by ALLREAD,ZACH	03:36			
	03:36			MISSED FT by COPELAND,ISAAC
REBOUND (DEF) by MCBRIDE,TREY	03:36			
MISSED 3PTR by SCHAUB,BRAD	03:29			
	03:29			REBOUND (DEF) by MCVEIGH,JACK
	03:15			MISSED JUMPER by COPELAND,ISAAC
REBOUND (DEF) by MARTY,ALEC	03:15			
MISSED JUMPER by MARTY,ALEC	03:01			
	03:01			BLOCK by COPELAND,ISAAC
	02:59			REBOUND (DEF) by TAYLOR,EVAN
	02:55	28-27	H 1	GOOD! JUMPER by PALMER JR.,JAMES [PNT]
FOUL by MCBRIDE,TREY	02:55			
	02:55	29-27	H 2	GOOD! FT by PALMER JR.,JAMES
	02:55			SUB IN: OKEKE,DUBY
	02:55			SUB OUT: COPELAND,ISAAC
MISSED 3PTR by MCBRIDE,TREY	02:45			
REBOUND (OFF) by SCHAUB,BRAD	02:45			
GOOD! JUMPER by RYAN,CHARLIE [PNT]	02:38	29-29	T	
ASSIST by SCHAUB,BRAD	02:34			
	02:21	31-29	H 2	GOOD! LAYUP by TAYLOR,EVAN [PNT]
	01:49			FOUL by ALLEN,THOMAS
GOOD! FT by MCBRIDE,TREY	01:49	31-30	H 1	
MISSED FT by MCBRIDE,TREY	01:49			
REBOUND (OFF) by RYAN,CHARLIE	01:49			

VISITORS: Northwood	Time	Score	Margin	HOME: Nebraska
SUB IN: CALHOUN II, KELVIN CALHOUN	01:45			
SUB OUT: RYAN,CHARLIE	01:45			
TURNOVER by ALLREAD,ZACH	01:44			
	01:39			MISSED 3PTR by ALLEN,THOMAS
REBOUND (DEF) by CALHOUN II, KELVIN CALHOUN	01:39			
MISSED JUMPER by CALHOUN II, KELVIN CALHOUN	01:21			
	01:21			REBOUND (DEF) by TAYLOR,EVAN
FOUL by CALHOUN II, KELVIN CALHOUN	01:12			
	01:12	32-30	H 2	GOOD! FT by ALLEN,THOMAS
	01:12	33-30	H 3	GOOD! FT by ALLEN,THOMAS
MISSED 3PTR by MCBRIDE,TREY	00:52			
REBOUND (OFF) by CALHOUN II, KELVIN CALHOUN	00:52			
	00:48			FOUL by OKEKE,DUBY
MISSED FT by CALHOUN II, KELVIN CALHOUN	00:48			
	00:48			REBOUND (DEF) by TEAM
	00:48			SUB IN: BORCHARDT,TANNER
	00:48			SUB OUT: OKEKE,DUBY
	00:37	35-30	H 5	GOOD! JUMPER by TAYLOR,EVAN [PNT]
GOOD! 3PTR by MARTY,ALEC	00:09	35-33	H 2	
	00:01			MISSED 3PTR by TAYLOR,EVAN
REBOUND (DEF) by TEAM	00:01			

Northwood 33, Nebraska 35

Period 1-only	In Paint	Off T/O	2nd Chance	Fast Break	Bench	
NU	8	15	11	0	20	Score tied - 8 times
NEB	20	7	2	2	2	Lead changed - 2 times

Official Basketball Box Score -- Game Totals -- Second Half Statistics  
 Northwood vs Nebraska  
 11/7/2017 7:05 p.m. at Pinnacle Bank Arena (Lincoln, Neb.)



Northwood 29 • 0-0

##	Player		Total		3-Ptr	FT-FTA	Rebounds			PF	TP	A	TO	Blk	Stl	Min
			FG-FGA	FG-FGA	FG-FGA		Off	Def	Tot							
03	SPITZLEY,NICK	g	0-3	0-3	0-0	0-0	0	0	0	0	0	0	0	0	0	5
05	GEORGETON,NATE	g	0-2	0-0	0-0	0-0	0	1	1	1	0	0	0	0	0	11
13	JELINEK,DAVID	f	2-3	0-0	0-0	0-0	0	0	0	2	4	0	1	0	0	4
15	SCHAUB,BRAD	f	2-7	1-3	0-1	0-1	1	2	3	1	5	0	0	0	2	20
21	ALLREAD,ZACH	f	0-1	0-0	1-2	0-0	0	0	0	0	1	0	1	0	0	5
01	MARTIN,DEMITRI		0-0	0-0	0-0	0-0	0	0	0	0	0	0	0	0	0	0
02	MCBRIDE,TREY		2-8	0-1	2-2	0-0	5	3	8	1	6	1	1	0	0	15
14	SOLOMUN,BRUNO		1-6	0-4	0-0	0-0	2	1	3	2	2	1	2	0	1	11
22	MARTY,ALEC		0-5	0-1	0-1	0-0	0	0	0	0	0	0	0	0	0	9
33	CALHOUN II, KELVIN CALHC		1-2	0-0	2-2	0-0	1	0	1	2	4	0	1	1	0	5
34	RYAN,CHARLIE		0-1	0-0	0-0	0-0	0	0	0	2	0	1	0	0	0	3
44	WELCH,NICK		2-3	1-1	2-2	0-0	4	3	7	3	7	0	1	1	1	12
TEAM							2	1	3	0			0			
Totals			10-41	2-13	7-10		15	11	26	14	29	3	7	2	4	100

FG % Half: 10-41 24.4%  
 3FG % Half: 2-13 46.2%  
 FT % Half: 7-10 70.0%

Nebraska 45 • 0-0

##	Player		Total		3-Ptr	FT-FTA	Rebounds			PF	TP	A	TO	Blk	Stl	Min
			FG-FGA	FG-FGA	FG-FGA		Off	Def	Tot							
11	TAYLOR,EVAN	g	1-3	0-0	0-0	0-0	0	1	1	2	2	2	1	0	0	8
12	ALLEN,THOMAS	g	3-4	0-1	4-4	0-0	0	1	1	1	10	3	0	0	1	15
14	COPELAND,ISAAC	f	2-4	0-2	2-2	0-0	1	1	2	0	6	0	0	0	1	13
24	PALMER JR.,JAMES	g	6-7	2-2	3-4	0-0	0	1	1	3	17	3	2	0	1	16
32	T SHIMANGA,JORDY	c	1-3	0-0	0-0	0-0	2	3	5	1	2	0	2	2	0	7
00	OKEKE,DUBY		1-1	0-0	0-0	0-0	1	0	1	0	2	0	0	0	0	5
03	LAWS,MALCOLM		0-0	0-0	0-0	0-0	0	0	0	0	0	0	0	0	0	2
04	TRUEBLOOD,JOHNNY		0-0	0-0	0-0	0-0	0	0	0	0	0	0	0	0	0	1
10	MCVEIGH,JACK		1-2	1-1	0-1	0-0	0	4	4	1	3	2	0	0	0	11
20	BORCHARDT,TANNER		1-2	0-0	1-2	0-0	0	2	2	1	3	0	1	0	0	6
25	AKENTEN,NANA		0-2	0-2	0-0	0-0	0	4	4	1	0	0	0	0	0	9
34	THORBJARNARSON,THOR		0-1	0-0	0-0	0-0	0	1	1	1	0	0	0	1	0	7
TEAM							1	0	1	0			0			
Totals			16-29	3-8	10-13		5	18	23	11	45	10	6	3	3	100

FG % Half: 16-29 55.2%  
 3FG % Half: 3-8 20.0%  
 FT % Half: 10-13 76.9%

Officials: Bo Boroski, Brooks Wells, Mark Riggs  
 Technical Fouls: Northwood- None. Nebraska- None.  
 Actual Attendance: 7,294  
 Exhibition Game

Score by periods	1st	2nd	Total
Northwood	33	29	62
Nebraska	35	45	80

Points	In	Off	2nd	Fast	Bench
	Paint	T/O	Chance	Break	
NU	16	8	20	2	19
NEB	24	4	2	6	8

Last FG - NU 2nd-02:25, NEB 2nd-01:23.  
 NU led for 0:00. NEB led for 19:26. Game was tied for 0:34.

Score tied - 1 times  
 Lead changed - 0 times



**Northwood vs Nebraska**  
**11/7/2017; 7:05 p.m. at Pinnacle Bank Arena (Lincoln, Neb.)**  
**Period 2 Play-By-Play**



VISITORS: Northwood	Time	Score	Margin	HOME: Nebraska
	20:00			SUB OUT: TSHIMANGA,JORDY
GOOD! JUMPER by JELINEK,DAVID [PNT]	19:45	35-35	T	
	19:29			TURNOVER by BORCHARDT,TANNER
FOUL by JELINEK,DAVID	19:19			
TURNOVER by JELINEK,DAVID	19:19			
SUB IN: CALHOUN II, KELVIN CALHOUN	19:19			
SUB OUT: JELINEK,DAVID	19:19			
	19:11	37-35	H 2	GOOD! LAYUP by TAYLOR,EVAN [PNT]
	19:11			ASSIST by PALMER JR.,JAMES
	18:55			FOUL by TAYLOR,EVAN
MISSED JUMPER by ALLREAD,ZACH	18:39			
	18:39			REBOUND (DEF) by COPELAND,ISAAC
	18:31	39-35	H 4	GOOD! DUNK by PALMER JR.,JAMES [FB/PNT]
	18:31			ASSIST by TAYLOR,EVAN
MISSED JUMPER by SCHAUB,BRAD	18:15			
	18:15			REBOUND (DEF) by BORCHARDT,TANNER
	18:07			MISSED 3PTR by COPELAND,ISAAC
REBOUND (DEF) by SCHAUB,BRAD	18:07			
MISSED JUMPER by SCHAUB,BRAD	17:53			
	17:53			REBOUND (DEF) by ALLEN,THOMAS
	17:47	41-35	H 6	GOOD! LAYUP by ALLEN,THOMAS [FB/PNT]
TIMEOUT TEAM	17:45			
TURNOVER by ALLREAD,ZACH	17:45			
	17:44			STEAL by PALMER JR.,JAMES
	17:30			MISSED JUMPER by BORCHARDT,TANNER
BLOCK by CALHOUN II, KELVIN CALHOUN	17:30			
REBOUND (DEF) by SCHAUB,BRAD	17:28			
MISSED 3PTR by SPITZLEY,NICK	17:10			
REBOUND (OFF) by TEAM	17:10			
GOOD! JUMPER by CALHOUN II, KELVIN CALHOUN [PNT]	17:06	41-37	H 4	
FOUL by CALHOUN II, KELVIN CALHOUN	16:56			
SUB IN: SOLOMUN,BRUNO	16:56			
SUB OUT: ALLREAD,ZACH	16:56			
	16:56			SUB IN: MCVEIGH,JACK
	16:56			SUB IN: TSHIMANGA,JORDY
	16:56			SUB OUT: COPELAND,ISAAC
	16:51			MISSED LAYUP by TAYLOR,EVAN
	16:51			REBOUND (OFF) by TSHIMANGA,JORDY
	16:49			MISSED JUMPER by TSHIMANGA,JORDY
REBOUND (DEF) by GEORGETON,NATE	16:49			
MISSED 3PTR by SPITZLEY,NICK	16:43			
	16:43			REBOUND (DEF) by TAYLOR,EVAN
	16:35	43-37	H 6	GOOD! LAYUP by PALMER JR.,JAMES [FB/PNT]
	16:35			ASSIST by ALLEN,THOMAS
MISSED JUMPER by CALHOUN II, KELVIN CALHOUN	16:09			
	16:09			BLOCK by TSHIMANGA,JORDY
	16:07			REBOUND (DEF) by MCVEIGH,JACK
	15:52	45-37	H 8	GOOD! JUMPER by TSHIMANGA,JORDY [PNT]
	15:52			ASSIST by MCVEIGH,JACK
MISSED 3PTR by SPITZLEY,NICK	15:32			
REBOUND (OFF) by SOLOMUN,BRUNO	15:32			
	15:29			FOUL by MCVEIGH,JACK
TIMEOUT TEAM	15:29			
TURNOVER by MCBRIDE,TREY	15:29			
SUB IN: MCBRIDE,TREY	15:29			
SUB IN: MARTY,ALEC	15:29			
SUB OUT: SPITZLEY,NICK	15:29			
SUB OUT: GEORGETON,NATE	15:29			
	15:29			SUB IN: COPELAND,ISAAC
	15:29			SUB OUT: TAYLOR,EVAN
	15:28			STEAL by ALLEN,THOMAS
	15:21			TURNOVER by TSHIMANGA,JORDY
STEAL by SOLOMUN,BRUNO	15:19			
MISSED 3PTR by SOLOMUN,BRUNO	15:05			
REBOUND (OFF) by MCBRIDE,TREY	15:05			
	15:02			FOUL by PALMER JR.,JAMES
MISSED 3PTR by SOLOMUN,BRUNO	14:54			
REBOUND (OFF) by CALHOUN II, KELVIN CALHOUN	14:54			
	14:50			FOUL by TSHIMANGA,JORDY

VISITORS: Northwood	Time	Score	Margin	HOME: Nebraska
GOOD! FT by CALHOUN II, KELVIN CALHOUN	14:50	45-38	H 7	
GOOD! FT by CALHOUN II, KELVIN CALHOUN	14:50	45-39	H 6	
	14:42	47-39	H 8	GOOD! LAYUP by ALLEN,THOMAS [PNT]
TURNOVER by CALHOUN II, KELVIN CALHOUN	14:26			
FOUL by CALHOUN II, KELVIN CALHOUN	14:26			
	14:26			STEAL by COPELAND,ISAAC
	14:16	49-39	H 10	GOOD! JUMPER by COPELAND,ISAAC [PNT]
	14:15			ASSIST by PALMER JR.,JAMES
TURNOVER by SOLOMUN,BRUNO	14:00			
SUB IN: WELCH,NICK	14:00			
SUB OUT: CALHOUN II, KELVIN CALHOUN	14:00			
FOUL by WELCH,NICK	13:57			
	13:45			MISSED JUMPER by PALMER JR.,JAMES
BLOCK by WELCH,NICK	13:45			
	13:44			REBOUND (OFF) by TEAM
	13:37			MISSED JUMPER by MCVEIGH,JACK
REBOUND (DEF) by MCBRIDE,TREY	13:37			
MISSED JUMPER by MCBRIDE,TREY	13:37			
	13:37			SUB IN: TAYLOR,EVAN
	13:37			SUB OUT: ALLEN,THOMAS
	13:21			BLOCK by TSHIMANGA,JORDY
	13:20			REBOUND (DEF) by MCVEIGH,JACK
FOUL by SOLOMUN,BRUNO	13:11			
	13:09	52-39	H 13	GOOD! 3PTR by PALMER JR.,JAMES
	12:45			FOUL by PALMER JR.,JAMES
	12:45			SUB IN: AKENTEN,NANA
	12:45			SUB OUT: PALMER JR.,JAMES
MISSED JUMPER by MARTY,ALEC	12:31			
	12:31			REBOUND (DEF) by TSHIMANGA,JORDY
FOUL by MCBRIDE,TREY	12:28			
	12:05			MISSED JUMPER by TAYLOR,EVAN
REBOUND (DEF) by MCBRIDE,TREY	12:05			
MISSED 3PTR by MARTY,ALEC	11:56			
REBOUND (OFF) by WELCH,NICK	11:56			
GOOD! LAYUP by SCHAUB,BRAD [PNT]	11:47	52-41	H 11	
	11:46			FOUL by AKENTEN,NANA
TIMEOUT TEAM	11:46			
MISSED FT by SCHAUB,BRAD	11:46			
REBOUND (OFF) by MCBRIDE,TREY	11:46			
	11:46			SUB IN: OKEKE,DUBY
	11:46			SUB IN: PALMER JR.,JAMES
	11:46			SUB OUT: MCVEIGH,JACK
	11:46			SUB OUT: TSHIMANGA,JORDY
MISSED JUMPER by MARTY,ALEC	11:31			
REBOUND (OFF) by MCBRIDE,TREY	11:31			
GOOD! DUNK by MCBRIDE,TREY [PNT]	11:27	52-43	H 9	
	11:12			SUB IN: MCVEIGH,JACK
	11:12			SUB OUT: COPELAND,ISAAC
	11:02	55-43	H 12	GOOD! 3PTR by PALMER JR.,JAMES
	11:02			ASSIST by TAYLOR,EVAN
MISSED 3PTR by SOLOMUN,BRUNO	10:49			
	10:49			REBOUND (DEF) by AKENTEN,NANA
	10:33			MISSED 3PTR by AKENTEN,NANA
REBOUND (DEF) by TEAM	10:33			
SUB IN: JELINEK,DAVID	10:30			
SUB OUT: SOLOMUN,BRUNO	10:30			
MISSED JUMPER by MARTY,ALEC	10:17			
REBOUND (OFF) by SCHAUB,BRAD	10:17			
MISSED JUMPER by SCHAUB,BRAD	10:13			
	10:13			REBOUND (DEF) by PALMER JR.,JAMES
	10:02			FOUL by TAYLOR,EVAN
	10:02			TURNOVER by TAYLOR,EVAN
	10:02			SUB IN: ALLEN,THOMAS
	10:02			SUB OUT: TAYLOR,EVAN
MISSED JUMPER by JELINEK,DAVID	09:50			
	09:50			REBOUND (DEF) by AKENTEN,NANA
	09:33	57-43	H 14	GOOD! JUMPER by PALMER JR.,JAMES
	09:33			ASSIST by MCVEIGH,JACK
	09:19			FOUL by ALLEN,THOMAS
MISSED FT by MARTY,ALEC	09:19			
	09:19			REBOUND (DEF) by MCVEIGH,JACK
FOUL by WELCH,NICK	09:19			
	09:19			MISSED FT by MCVEIGH,JACK
REBOUND (DEF) by WELCH,NICK	09:19			
SUB IN: GEORGETON,NATE	09:19			

VISITORS: Northwood	Time	Score	Margin	HOME: Nebraska
SUB OUT: MARTY,ALEC	09:19			
MISSED JUMPER by MCBRIDE,TREY	08:57			
REBOUND (OFF) by WELCH,NICK	08:57			
MISSED 3PTR by SCHAUB,BRAD	08:51			
	08:51			REBOUND (DEF) by MCVEIGH,JACK
FOUL by GEORGETON,NATE	08:42			
	08:42	58-43	H 15	GOOD! FT by PALMER JR.,JAMES
	08:42			MISSED FT by PALMER JR.,JAMES
	08:42			REBOUND (OFF) by OKEKE,DUBY
	08:42			SUB IN: COPELAND,ISAAC
	08:42			SUB OUT: MCVEIGH,JACK
	08:28			TURNOVER by PALMER JR.,JAMES
STEAL by SCHAUB,BRAD	08:26			
MISSED LAYUP by MCBRIDE,TREY	08:22			
REBOUND (OFF) by WELCH,NICK	08:22			
GOOD! JUMPER by WELCH,NICK [PNT]	08:21	58-45	H 13	
	08:01	60-45	H 15	GOOD! JUMPER by OKEKE,DUBY [PNT]
	08:01			ASSIST by PALMER JR.,JAMES
GOOD! JUMPER by JELINEK,DAVID [PNT]	07:44	60-47	H 13	
FOUL by JELINEK,DAVID	07:28			
	07:28			TIMEOUT TEAM
	07:28	61-47	H 14	GOOD! FT by ALLEN,THOMAS
	07:28	62-47	H 15	GOOD! FT by ALLEN,THOMAS
SUB IN: SOLOMUN,BRUNO	07:28			
SUB OUT: JELINEK,DAVID	07:28			
	07:28			SUB IN: TSHIMANGA,JORDY
	07:28			SUB OUT: OKEKE,DUBY
MISSED 3PTR by SOLOMUN,BRUNO	07:17			
REBOUND (OFF) by MCBRIDE,TREY	07:17			
MISSED 3PTR by SCHAUB,BRAD	06:54			
	06:54			REBOUND (DEF) by TSHIMANGA,JORDY
FOUL by WELCH,NICK	06:44			
	06:43	63-47	H 16	GOOD! FT by COPELAND,ISAAC
	06:43	64-47	H 17	GOOD! FT by COPELAND,ISAAC
SUB IN: ALLREAD,ZACH	06:43			
SUB OUT: WELCH,NICK	06:43			
	06:43			SUB IN: THORBJARNARSON,THOR
	06:43			SUB OUT: AKENTEN,NANA
MISSED JUMPER by SOLOMUN,BRUNO	06:32			
	06:32			REBOUND (DEF) by TSHIMANGA,JORDY
	06:23			MISSED 3PTR by COPELAND,ISAAC
	06:23			REBOUND (OFF) by TSHIMANGA,JORDY
	06:19			TURNOVER by TSHIMANGA,JORDY
STEAL by SCHAUB,BRAD	06:18			
GOOD! LAYUP by MCBRIDE,TREY [FB/PNT]	06:15	64-49	H 15	
ASSIST by SOLOMUN,BRUNO	06:15			
	05:47			MISSED LAYUP by TSHIMANGA,JORDY
REBOUND (DEF) by SOLOMUN,BRUNO	05:47			
MISSED LAYUP by GEORGETON,NATE	05:40			
	05:40			REBOUND (DEF) by THORBJARNARSON,THOR
	05:38			SUB IN: MCVEIGH,JACK
	05:38			SUB OUT: TSHIMANGA,JORDY
FOUL by SCHAUB,BRAD	05:24			
	05:24	65-49	H 16	GOOD! FT by PALMER JR.,JAMES
	05:24	66-49	H 17	GOOD! FT by PALMER JR.,JAMES
MISSED LAYUP by GEORGETON,NATE	05:17			
REBOUND (OFF) by MCBRIDE,TREY	05:17			
	05:15			FOUL by THORBJARNARSON,THOR
GOOD! FT by MCBRIDE,TREY	05:15	66-50	H 16	
GOOD! FT by MCBRIDE,TREY	05:15	66-51	H 15	
	04:59			MISSED 3PTR by ALLEN,THOMAS
	04:59			REBOUND (OFF) by COPELAND,ISAAC
	04:55	68-51	H 17	GOOD! JUMPER by COPELAND,ISAAC [PNT]
	04:33			FOUL by PALMER JR.,JAMES
MISSED FT by ALLREAD,ZACH	04:33			
REBOUND (DEADB) by TEAM	04:33			
GOOD! FT by ALLREAD,ZACH	04:33	68-52	H 16	
SUB IN: WELCH,NICK	04:33			
SUB OUT: ALLREAD,ZACH	04:33			
	04:26	71-52	H 19	GOOD! 3PTR by MCVEIGH,JACK
	04:26			ASSIST by ALLEN,THOMAS
FOUL by SOLOMUN,BRUNO	04:14			
TURNOVER by SOLOMUN,BRUNO	04:14			
	04:14			TURNOVER by PALMER JR.,JAMES
STEAL by WELCH,NICK	04:13			

VISITORS: Northwood	Time	Score	Margin	HOME: Nebraska
MISSED LAYUP by MCBRIDE,TREY	03:57			
REBOUND (OFF) by SOLOMUN,BRUNO	03:56			
GOOD! JUMPER by SOLOMUN,BRUNO [PNT]	03:55	71-54	H 17	
	03:42	73-54	H 19	GOOD! DUNK by PALMER JR.,JAMES [PNT]
MISSED 3PTR by MCBRIDE,TREY	03:17			
REBOUND (OFF) by WELCH,NICK	03:17			
TIMEOUT TEAM	03:12			
SUB IN: RYAN,CHARLIE	03:12			
SUB OUT: SOLOMUN,BRUNO	03:12			
	03:12			SUB IN: AKENTEN,NANA
	03:12			SUB OUT: PALMER JR.,JAMES
GOOD! 3PTR by WELCH,NICK	03:11	73-57	H 16	
ASSIST by RYAN,CHARLIE	03:11			
	02:57	75-57	H 18	GOOD! LAYUP by ALLEN,THOMAS [PNT]
MISSED JUMPER by MCBRIDE,TREY	02:43			
	02:43			BLOCK by THORBJARNARSON,THOR
REBOUND (OFF) by TEAM	02:42			
SUB IN: MARTY,ALEC	02:42			
SUB OUT: GEORGETON,NATE	02:42			
	02:42			SUB IN: BORCHARDT,TANNER
	02:42			SUB OUT: COPELAND,ISAAC
GOOD! 3PTR by SCHAUB,BRAD	02:25	75-60	H 15	
ASSIST by MCBRIDE,TREY	02:25			
	02:16			SUB IN: LAWS,MALCOLM
	02:16			SUB OUT: MCVEIGH,JACK
FOUL by RYAN,CHARLIE	01:52			
	01:52	76-60	H 16	GOOD! FT by ALLEN,THOMAS
	01:52	77-60	H 17	GOOD! FT by ALLEN,THOMAS
MISSED JUMPER by RYAN,CHARLIE	01:34			
	01:34			REBOUND (DEF) by AKENTEN,NANA
	01:23	79-60	H 19	GOOD! JUMPER by BORCHARDT,TANNER [PNT]
	01:23			ASSIST by ALLEN,THOMAS
	01:22			SUB IN: TRUEBLOOD,JOHNNY
	01:22			SUB OUT: ALLEN,THOMAS
	01:08			FOUL by BORCHARDT,TANNER
GOOD! FT by WELCH,NICK	01:08	79-61	H 18	
GOOD! FT by WELCH,NICK	01:08	79-62	H 17	
	01:01			MISSED 3PTR by AKENTEN,NANA
REBOUND (DEF) by WELCH,NICK	01:01			
TURNOVER by WELCH,NICK	00:41			
	00:28			MISSED LAYUP by THORBJARNARSON,THOR
REBOUND (DEF) by WELCH,NICK	00:28			
MISSED JUMPER by MARTY,ALEC	00:21			
	00:21			REBOUND (DEF) by BORCHARDT,TANNER
FOUL by RYAN,CHARLIE	00:20			
	00:20	80-62	H 18	GOOD! FT by BORCHARDT,TANNER
	00:20			MISSED FT by BORCHARDT,TANNER
REBOUND (DEF) by MCBRIDE,TREY	00:20			
MISSED JUMPER by WELCH,NICK	00:04			
	00:04			REBOUND (DEF) by AKENTEN,NANA
Northwood 62, Nebraska 80				

Period 2-only	In Paint	Off T/O	2nd Chance	Fast Break	Bench	
NU	16	8	20	2	19	Score tied - 2 times
NEB	24	4	2	6	8	Lead changed - 0 times

**Northwood vs Nebraska**  
**11/7/2017; 7:05 p.m. at Pinnacle Bank Arena (Lincoln, Neb.)**  
**Scoring/Runs Reference**



**Period 1**

Northwood	VRun	Score	Margin	HRun	Nebraska
		0-2	2		PALMER JR. LAYUP [P] - 19:16
18:55 - JELINEK JUMPER [P]	-	2-2	0		
		2-5	3		ALLEN 3PTR - 18:33
		2-7	5	5-0	TSHIMANGA JUMPER [P] - 17:58
		2-10	8	8-0	ALLEN 3PTR - 17:27
16:48 - GEORGETON 3PTR	-	5-10	5		
		5-12	7		COPELAND JUMPER [P] - 16:32
15:59 - SOLOMUN JUMPER	-	7-12	5		
14:46 - SOLOMUN 3PTR	5-0	10-12	2		
13:57 - CALHOUN II JUMPER	7-0	12-12	0		
		12-14	2		PALMER JR. JUMPER [P] - 13:38
		12-15	3	3-0	PALMER JR. FT - 13:38
13:17 - MARTY 3PTR	-	15-15	0		
12:31 - CALHOUN II JUMPER [P]	5-0	17-15	-2		
		17-17	0		COPELAND LAYUP [P] - 12:08
11:54 - SCHAUB 3PTR	-	20-17	-3		
11:29 - SOLOMUN FT	4-0	21-17	-4		
11:29 - SOLOMUN FT	5-0	22-17	-5		
		22-19	-3		BORCHARDT JUMPER [P] - 11:00
07:51 - SCHAUB JUMPER [P]	-	24-19	-5		
		24-20	-4		PALMER JR. FT - 07:51
		24-21	-3	2-0	PALMER JR. FT - 07:51
06:45 - ALLREAD 3PTR	-	27-21	-6		
		27-22	-5		TSHIMANGA FT - 05:37
		27-24	-3	3-0	COPELAND JUMPER [P] - 05:06
		27-25	-2	4-0	TAYLOR FT - 04:39
		27-26	-1	5-0	TAYLOR FT - 04:39
		27-28	1	7-0	PALMER JR. JUMPER [P] - 02:55
		27-29	2	8-0	PALMER JR. FT - 02:55
02:38 - RYAN JUMPER [P]	-	29-29	0		
		29-31	2		TAYLOR LAYUP [P] - 02:21
01:49 - MCBRIDE FT	-	30-31	1		
		30-32	2		ALLEN FT - 01:12
		30-33	3	2-0	ALLEN FT - 01:12
		30-35	5	4-0	TAYLOR JUMPER [P] - 00:37
00:09 - MARTY 3PTR	-	33-35	2		

**Northwood vs Nebraska**  
**11/7/2017; 7:05 p.m. at Pinnacle Bank Arena (Lincoln, Neb.)**  
**Scoring/Runs Reference**

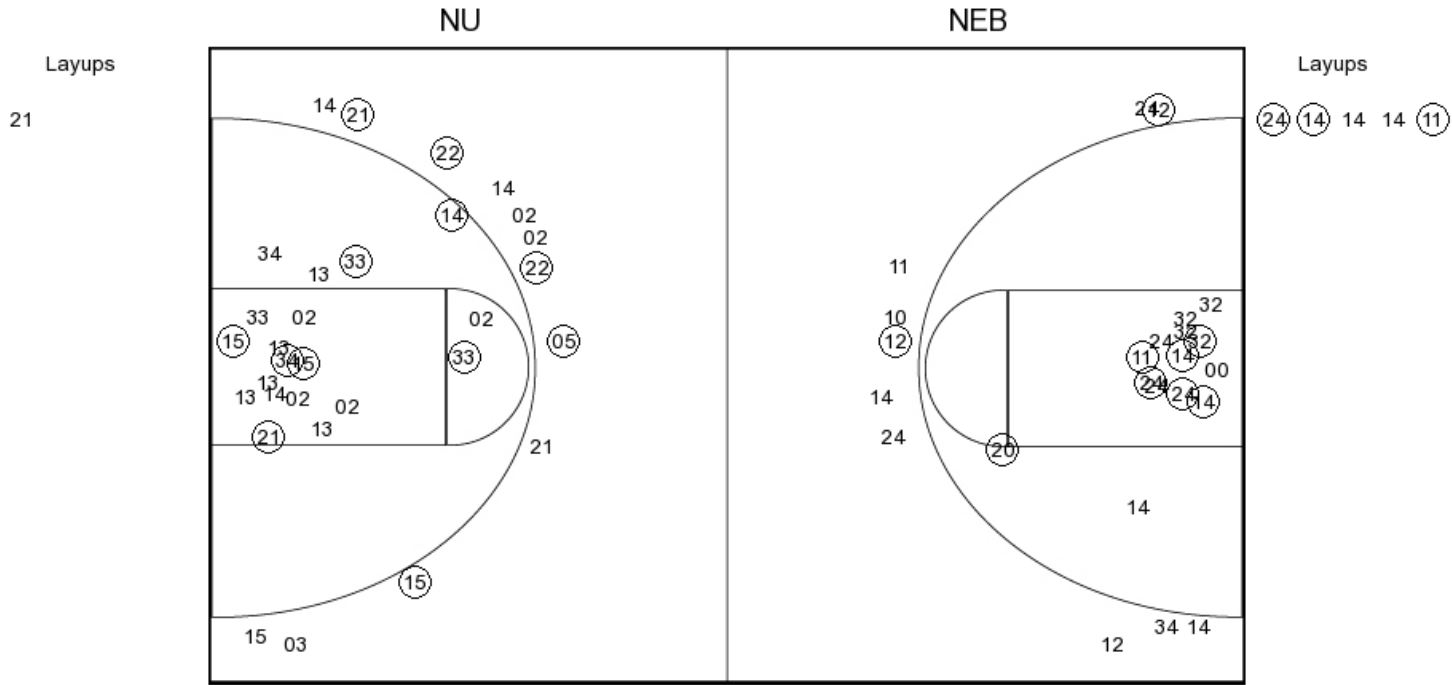


**Period 2**

Northwood	VRun	Score	Margin	HRun	Nebraska
19:45 - JELINEK JUMPER [P]	-	35-35	0		
		35-37	2		TAYLOR LAYUP [P] - 19:11
		35-39	4	4-0	PALMER JR. DUNK [P] [F] - 18:31
		35-41	6	6-0	ALLEN LAYUP [P] [F] - 17:47
17:06 - CALHOUN II JUMPER [P]	-	37-41	4		
		37-43	6		PALMER JR. LAYUP [P] [F] - 16:35
		37-45	8	4-0	TSHIMANGA JUMPER [P] - 15:52
14:50 - CALHOUN II FT	-	38-45	7		
14:50 - CALHOUN II FT	2-0	39-45	6		
		39-47	8		ALLEN LAYUP [P] - 14:42
		39-49	10	4-0	COPELAND JUMPER [P] - 14:16
		39-52	13	7-0	PALMER JR. 3PTR - 13:09
11:47 - SCHAUB LAYUP [P]	-	41-52	11		
11:27 - MCBRIDE DUNK [P]	4-0	43-52	9		
		43-55	12		PALMER JR. 3PTR - 11:02
		43-57	14	5-0	PALMER JR. JUMPER - 09:33
		43-58	15	6-0	PALMER JR. FT - 08:42
08:21 - WELCH JUMPER [P]	-	45-58	13		
		45-60	15		OKEKE JUMPER [P] - 08:01
07:44 - JELINEK JUMPER [P]	-	47-60	13		
		47-61	14		ALLEN FT - 07:28
		47-62	15	2-0	ALLEN FT - 07:28
		47-63	16	3-0	COPELAND FT - 06:43
		47-64	17	4-0	COPELAND FT - 06:43
06:15 - MCBRIDE LAYUP [P] [F]	-	49-64	15		
		49-65	16		PALMER JR. FT - 05:24
		49-66	17	2-0	PALMER JR. FT - 05:24
05:15 - MCBRIDE FT	-	50-66	16		
05:15 - MCBRIDE FT	2-0	51-66	15		
		51-68	17		COPELAND JUMPER [P] - 04:55
04:33 - ALLREAD FT	-	52-68	16		
		52-71	19		MCVEIGH 3PTR - 04:26
03:55 - SOLOMUN JUMPER [P]	-	54-71	17		
		54-73	19		PALMER JR. DUNK [P] - 03:42
03:11 - WELCH 3PTR	-	57-73	16		
		57-75	18		ALLEN LAYUP [P] - 02:57
02:25 - SCHAUB 3PTR	-	60-75	15		
		60-76	16		ALLEN FT - 01:52
		60-77	17	2-0	ALLEN FT - 01:52
		60-79	19	4-0	BORCHARDT JUMPER [P] - 01:23
01:08 - WELCH FT	-	61-79	18		
01:08 - WELCH FT	2-0	62-79	17		
		62-80	18		BORCHARDT FT - 00:20



PERIOD 1



**NU PERIOD 1**

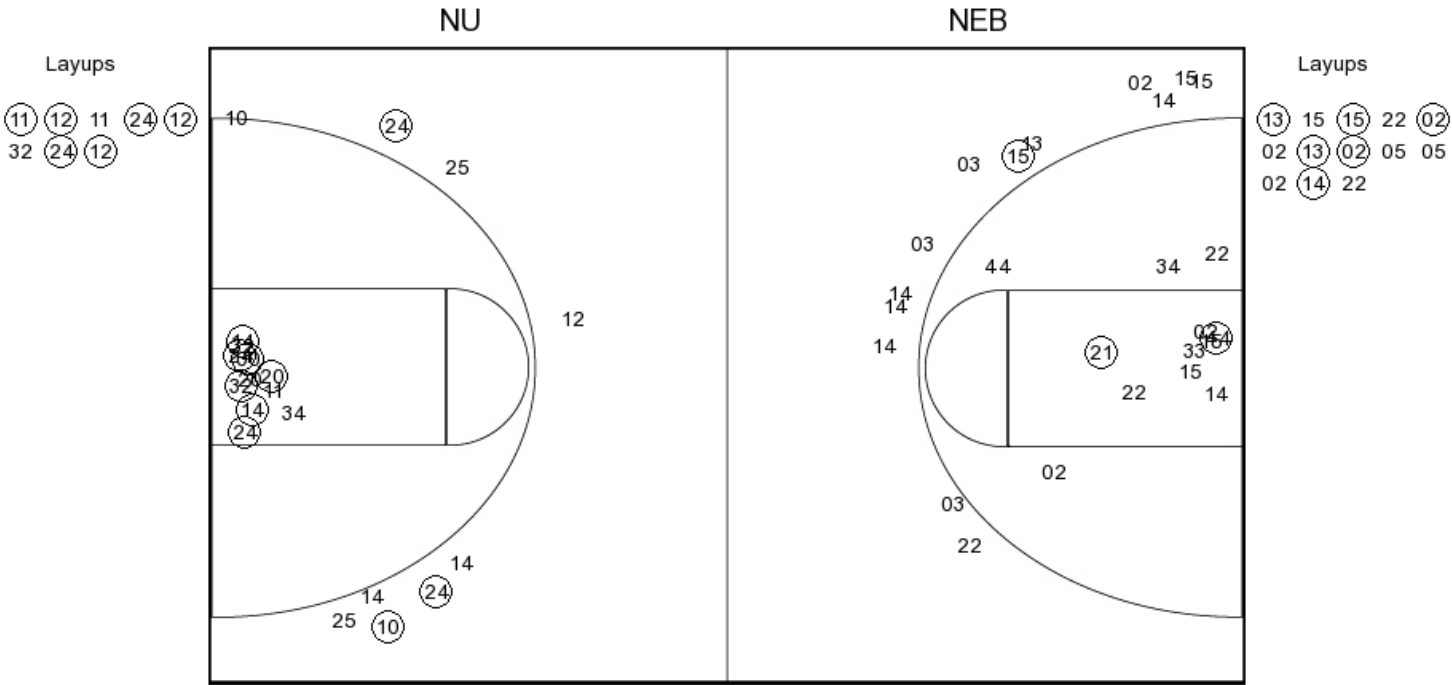
FG Made	12
FG Attempted	32
3PFG Made	6
3PFG Attempted	13

**NEB PERIOD 1**

FG Made	12
FG Attempted	29
3PFG Made	2
3PFG Attempted	10



PERIOD 2



**NU PERIOD 2**

FG Made	10
FG Attempted	41
3PFG Made	2
3PFG Attempted	13

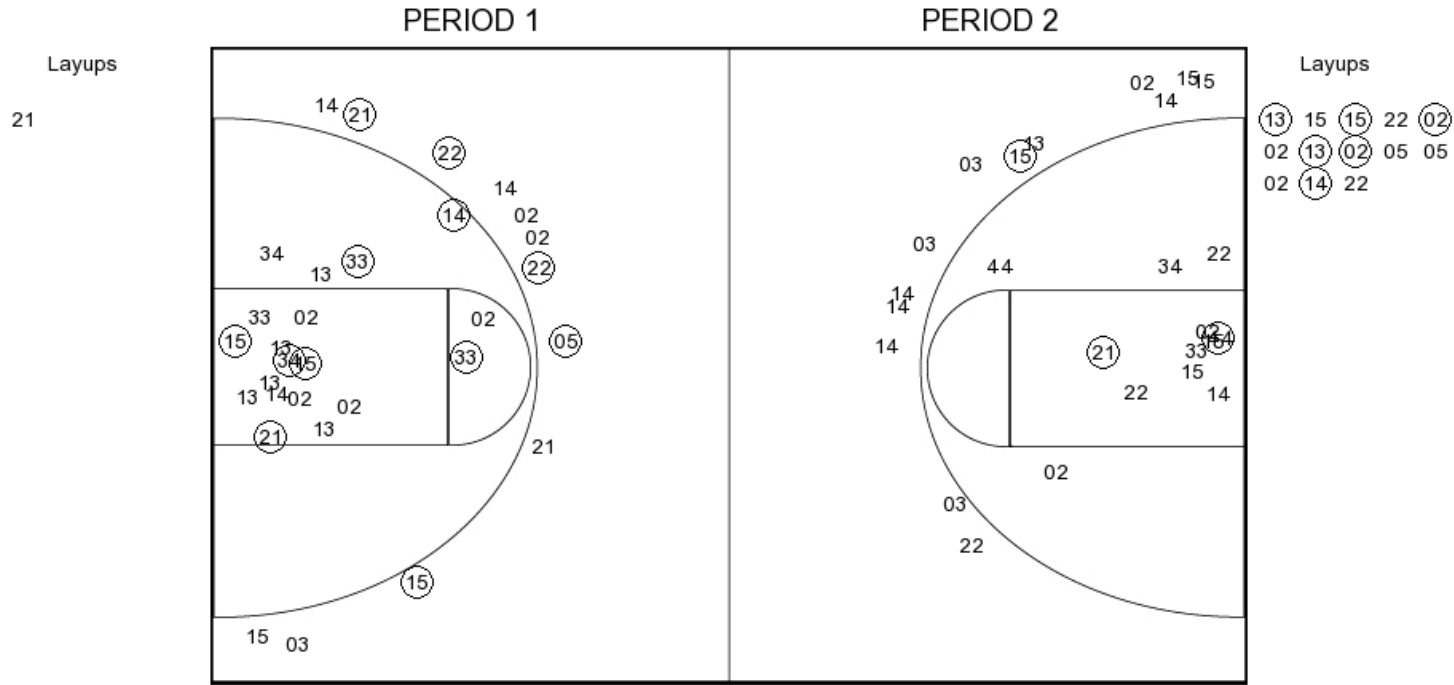
**NEB PERIOD 2**

FG Made	16
FG Attempted	29
3PFG Made	3
3PFG Attempted	8





Northwood



**NU PERIOD 1**

FG Made	12
FG Attempted	32
3PFG Made	6
3PFG Attempted	13

**NU PERIOD 2**

FG Made	10
FG Attempted	41
3PFG Made	2
3PFG Attempted	13

FG Made	16
FG Attempted	29
3PFG Made	3
3PFG Attempted	8