

FINAL SCORE

Longwood

3-9

61

Arizona State

11-0

95

December 19, 2017 • Ned Wulk Court/Wells Fargo Arena-Tempe

FINAL STATISTICS

Official Basketball Box Score -- Game Totals -- Final Statistics
Longwood vs Arizona State
12/19/2017 7 p.m. MT at Ned Wulk Court/Wells Fargo Arena-Tempe

Longwood 61 - 3-9

##	Player	g	Total	3-Ptr	FT-FTA	Rebounds			PF	TP	A	TO	Blk	Stl	Min
			FG-FGA	FG-FGA		Off	Def	Tot							
02	ASHE,BK		4-14	3-7	3-4	0	6	6	4	14	1	5	0	1	34
03	CHAPMAN,KAMIL		5-8	5-7	1-2	0	2	2	3	16	1	3	0	3	25
21	SMITH,H,JASHAUN	f	2-9	1-4	0-1	0	2	2	4	5	0	1	1	0	29
24	GETER,DAMARION	f	3-6	0-1	1-3	2	6	8	4	7	4	6	2	1	36
30	SHIELDS,CHRIS	f	3-9	0-2	1-2	2	3	5	2	7	0	4	0	1	24
00	EZEANI,DOMINIC		0-0	0-0	0-0	0	0	0	0	0	1	0	0	0	1
11	MONTAGUE,JAHLEEM		1-4	0-0	0-0	1	2	3	2	2	0	1	0	0	9
13	FRANKLIN,SPENCER		2-5	0-0	3-4	4	1	5	3	7	1	1	0	0	20
20	CINTRON,JORDAN		1-2	0-0	1-4	1	3	4	3	3	3	5	0	1	22
TEAM						1	4	5	0		0				
TOTALS			21-57	9-21	10-20	11	29	40	25	61	11	26	3	7	200

Deadball Rebounds: 5,0

FG %	1st Half:	12-31	38.7%	2nd Half:	9-26	34.6%	Game:	21-57	36.8%
3FG %	1st Half:	3-9	33.3%	2nd Half:	6-12	50.0%	Game:	9-21	42.9%
FT %	1st Half:	3-5	60.0%	2nd Half:	7-15	46.7%	Game:	10-20	50.0%

Arizona State 95 - 11-0

##	Player	g	Total	3-Ptr	FT-FTA	Rebounds			PF	TP	A	TO	Blk	Stl	Min
			FG-FGA	FG-FGA		Off	Def	Tot							
00	HOLDER,TRA		6-14	3-7	5-7	1	4	5	1	20	6	6	0	6	32
10	SHIBEL,VITALIY	f	1-2	0-0	0-0	1	2	3	2	2	0	0	0	0	7
11	EVANS II,SHANNON	g	2-14	2-13	1-2	0	2	2	0	7	2	0	0	1	31
23	WHITE,ROMELLO	f	3-5	0-0	1-3	2	4	6	2	7	1	1	0	0	20
44	JUSTICE,KODI	g	7-16	4-11	0-0	0	3	3	3	18	3	0	1	3	33
01	MARTIN,REMY		5-7	1-2	2-4	3	4	7	2	13	9	1	0	1	28
03	MITCHELL,MICKEY		3-4	0-0	6-8	3	2	5	2	12	1	3	2	2	27
22	WITHERILL,AUSTIN		0-1	0-1	0-0	0	0	0	0	0	0	0	0	0	2
24	SALZMAN,JORDAN		0-0	0-0	0-0	0	0	0	0	0	0	0	0	0	1
25	FOGERTY,GRANT		0-0	0-0	0-0	0	0	0	0	0	0	0	0	0	1
35	LAKE,DE'QUON		4-6	0-0	8-12	3	6	9	4	16	0	0	0	0	18
TEAM						2	3	5	0		0				
TOTALS			31-69	10-34	23-36	15	30	45	16	95	22	11	3	13	200

Deadball Rebounds: 7,0

FG %	1st Half:	10-30	33.3%	2nd Half:	21-39	53.8%	Game:	31-69	44.9%
3FG %	1st Half:	4-15	26.7%	2nd Half:	6-19	31.6%	Game:	10-34	29.4%
FT %	1st Half:	11-16	68.8%	2nd Half:	12-20	60.0%	Game:	23-36	63.9%

Officials: Bob Staffen, Tom Nally, D.G. Nelson
 Technical Fouls: Longwood- None. Arizona State- None.
 Attendance: 9308

ASU enters game ranked third in AP Poll
 10-0 record entering game is best start in ASU history.

Score by periods	1st	2nd	Total
Longwood	30	31	61
Arizona State	35	60	95

Points	In	Off	2nd	Fast	Bench
	Paint	T/O	Chance	Break	
LWU	22	14	6	3	12
ASU	36	26	10	14	41

Last FG - LWU 2nd-00:17, ASU 2nd-00:38.
 Largest lead - Longwood by 3 1st-17:47; Arizona State by 37 2nd-00:28
 LWU led for 2:02. ASU led for 34:31. Game was tied for 3:27.

Score tied - 4 times; Lead changed - 2 times

Official Basketball Box Score -- Game Totals -- First Half Statistics
Longwood vs Arizona State
12/19/2017 7 p.m. MT at Ned Wulk Court/Wells Fargo Arena-Tempe

Longwood 30 • 3-9

##	Player		Total			3-Ptr			Rebounds			PF	TP	A	TO	Blk	Stl	Min	
			FG	FGA		FG	FGA	FT	FTA	Off	Def								Tot
02	ASHE,BK	g	4	7		3	4	1	2	0	3	3	2	12	0	2	0	0	17
03	CHAPMAN,KAMIL	g	0	3		0	2	0	0	0	1	1	2	0	1	1	0	1	10
21	SMITH,JASHAUN	f	0	4		0	2	0	0	0	2	2	2	0	0	0	1	0	17
24	GETER,DAMARION	f	2	4		0	0	1	1	1	4	5	1	5	3	3	1	0	19
30	SHIELDS,CHRIS	f	3	6		0	1	0	0	2	2	4	1	6	0	2	0	1	11
00	EZEANI,DOMINIC		0	0		0	0	0	0	0	0	0	0	0	0	0	0	0	0
11	MONTAGUE,JAHLEEM		1	3		0	0	0	0	1	2	3	2	2	0	1	0	0	8
13	FRANKLIN,SPENCER		2	4		0	0	1	2	4	0	4	2	5	0	1	0	0	8
20	CINTRON,JORDAN		0	0		0	0	0	0	0	1	1	0	0	0	1	0	0	10
TEAM										0	1	1	0		0				
Totals			12	31		3	9	3	5	8	16	24	12	30	4	11	2	2	100

FG %	Half:	12-31	38.7%
3FG %	Half:	3-9	33.3%
FT %	Half:	3-5	60.0%

Arizona State 35 • 11-0

##	Player		Total			3-Ptr			Rebounds			PF	TP	A	TO	Blk	Stl	Min	
			FG	FGA		FG	FGA	FT	FTA	Off	Def								Tot
00	HOLDER,TRA	g	3	6		2	3	2	4	0	3	3	0	10	2	3	0	0	17
10	SHIBEL,VITALIY	f	0	1		0	0	0	0	1	2	3	2	0	0	0	0	0	5
11	EVANS II,SHANNON	g	2	8		2	7	1	2	0	1	1	0	7	2	0	0	1	17
23	WHITE,ROMELLO	f	0	1		0	0	0	0	0	2	2	0	0	0	1	0	0	8
44	JUSTICE,KODI	g	3	10		0	5	0	0	0	0	0	1	6	0	0	1	0	19
01	MARTIN,REMY		0	0		0	0	0	0	1	1	2	0	0	5	1	0	0	14
03	MITCHELL,MICKEY		1	2		0	0	3	4	1	0	1	2	5	0	1	1	2	12
22	WITHERILL,AUSTIN		0	0		0	0	0	0	0	0	0	0	0	0	0	0	0	0
24	SALZMAN,JORDAN		0	0		0	0	0	0	0	0	0	0	0	0	0	0	0	0
25	FOGERTY,GRANT		0	0		0	0	0	0	0	0	0	0	0	0	0	0	0	0
35	LAKE,DE'QUON		1	2		0	0	5	6	2	3	5	1	7	0	0	0	0	8
TEAM										2	1	3	0		0				
Totals			10	30		4	15	11	16	7	13	20	6	35	9	6	2	3	100

FG %	Half:	10-30	33.3%
3FG %	Half:	4-15	26.7%
FT %	Half:	11-16	68.8%

Officials: Bob Staffen, Tom Nally, D.G. Nelson
 Technical Fouls: Longwood- None. Arizona State- None.
 ASU enters game ranked third in AP Poll
 10-0 record entering game is best start in ASU history.

Score by periods	1st	2nd	Total
Longwood	30	31	61
Arizona State	35	60	95

Points	In	Off	2nd	Fast	Bench
	Paint	T/O	Chance	Break	
LWU	16	9	6	0	7
ASU	10	9	3	6	12

Last FG - LWU 1st-02:27, ASU 1st-01:03.
 LWU led for 2:02. ASU led for 14:31. Game was tied for 3:27.

Score tied - 4 times
 Lead changed - 2 times

Longwood vs Arizona State
12/19/2017; 7 p.m. MT at Ned Wulk Court/Wells Fargo Arena-Tempe
Period 1 Play-By-Play

VISITORS: Longwood	Time	Score	Margin	HOME: Arizona State
	19:47			MISSED 3PTR by JUSTICE,KODI
	19:47			REBOUND (OFF) by SHIBEL,VITALIY
	19:42			MISSED LAYUP by SHIBEL,VITALIY
BLOCK by SMITH,JASHAUN	19:42			
REBOUND (DEF) by SHIELDS,CHRIS	19:40			
MISSED 3PTR by CHAPMAN,KAMIL	19:14			
	19:14			REBOUND (DEF) by SHIBEL,VITALIY
	19:04	2-0	H 2	GOOD! LAYUP by JUSTICE,KODI [FB/PNT]
	19:04			ASSIST by HOLDER,TRA
GOOD! LAYUP by SHIELDS,CHRIS [PNT]	18:43	2-2	T	
ASSIST by GETER,DAMARION	18:43			
	18:36			MISSED 3PTR by EVANS II,SHANNON
REBOUND (DEF) by SMITH,JASHAUN	18:36			
TURNOVER by SHIELDS,CHRIS	18:16			
	18:16			SUB IN: MITCHELL,MICKEY
	18:16			SUB OUT: SHIBEL,VITALIY
	18:02			MISSED JUMPER by JUSTICE,KODI
REBOUND (DEF) by CHAPMAN,KAMIL	18:02			
GOOD! 3PTR by ASHE,BK	17:47	2-5	V 3	
ASSIST by CHAPMAN,KAMIL	17:47			
	17:36	5-5	T	GOOD! 3PTR by HOLDER,TRA
	17:36			ASSIST by EVANS II,SHANNON
TURNOVER by GETER,DAMARION	17:29			
	17:26			STEAL by EVANS II,SHANNON
	17:25			MISSED 3PTR by EVANS II,SHANNON
REBOUND (DEF) by GETER,DAMARION	17:25			
MISSED 3PTR by SMITH,JASHAUN	17:19			
	17:19			REBOUND (DEF) by TEAM
	17:01			TURNOVER by HOLDER,TRA
	16:37			FOUL by JUSTICE,KODI
GOOD! FT by ASHE,BK	16:37	5-6	V 1	
MISSED FT by ASHE,BK	16:37			
	16:37			REBOUND (DEF) by WHITE,ROMELLO
	16:37			SUB IN: MARTIN,REMY
	16:37			SUB OUT: EVANS II,SHANNON
	16:30			MISSED 3PTR by JUSTICE,KODI
	16:30			REBOUND (OFF) by MARTIN,REMY
	16:18			TURNOVER by WHITE,ROMELLO
STEAL by SHIELDS,CHRIS	16:16			
GOOD! JUMPER by GETER,DAMARION	16:01	5-8	V 3	
FOUL by GETER,DAMARION	15:44			
	15:44			TIMEOUT MEDIA
	15:44	6-8	V 2	GOOD! FT by MITCHELL,MICKEY
	15:44	7-8	V 1	GOOD! FT by MITCHELL,MICKEY
	15:44			SUB IN: EVANS II,SHANNON
	15:44			SUB OUT: JUSTICE,KODI
MISSED JUMPER by CHAPMAN,KAMIL	15:13			
	15:13			REBOUND (DEF) by WHITE,ROMELLO
	15:05			MISSED LAYUP by MITCHELL,MICKEY
REBOUND (DEF) by GETER,DAMARION	15:05			
MISSED 3PTR by SHIELDS,CHRIS	14:58			
	14:58			REBOUND (DEF) by EVANS II,SHANNON
	14:46	10-8	H 2	GOOD! 3PTR by EVANS II,SHANNON
	14:46			ASSIST by HOLDER,TRA
FOUL by CHAPMAN,KAMIL	14:28			
TURNOVER by CHAPMAN,KAMIL	14:28			
SUB IN: MONTAGUE,JAHLEEM	14:28			
SUB IN: CINTRON,JORDAN	14:28			
SUB OUT: CHAPMAN,KAMIL	14:28			
SUB OUT: SHIELDS,CHRIS	14:28			
	14:28			SUB IN: LAKE,DE'QUON
	14:28			SUB OUT: WHITE,ROMELLO
	14:17			TURNOVER by HOLDER,TRA
	14:17			SUB IN: JUSTICE,KODI
	14:17			SUB OUT: HOLDER,TRA
GOOD! LAYUP by ASHE,BK [PNT]	14:01	10-10	T	
FOUL by ASHE,BK	13:36			
	13:36	11-10	H 1	GOOD! FT by LAKE,DE'QUON
	13:36	12-10	H 2	GOOD! FT by LAKE,DE'QUON

VISITORS: Longwood	Time	Score	Margin	HOME: Arizona State
TURNOVER by ASHE,BK	13:29			
	13:27			STEAL by MITCHELL,MICKEY
	13:23			MISSED 3PTR by JUSTICE,KODI
REBOUND (DEF) by ASHE,BK	13:23			
MISSED LAYUP by ASHE,BK	13:12			
	13:12			REBOUND (DEF) by MARTIN,REMY
	13:08	14-10	H 4	GOOD! DUNK by MITCHELL,MICKEY [FB/PNT]
	13:08			ASSIST by MARTIN,REMY
TURNOVER by CINTRON,JORDAN	12:53			
	12:41			MISSED 3PTR by EVANS II,SHANNON
REBOUND (DEF) by ASHE,BK	12:41			
	12:29			FOUL by LAKE,DE'QUON
GOOD! 3PTR by ASHE,BK	12:11	14-13	H 1	
	11:57			MISSED 3PTR by EVANS II,SHANNON
	11:57			REBOUND (OFF) by MITCHELL,MICKEY
	11:45			MISSED LAYUP by LAKE,DE'QUON
REBOUND (DEF) by MONTAGUE,JAHLEEM	11:45			
TURNOVER by GETER,DAMARION	11:27			
	11:26			STEAL by MITCHELL,MICKEY
	11:22			MISSED JUMPER by EVANS II,SHANNON
REBOUND (DEF) by SMITH,JASHAUN	11:22			
FOUL by ASHE,BK	11:07			
TURNOVER by ASHE,BK	11:07			
	11:07			TIMEOUT MEDIA
SUB IN: CHAPMAN,KAMIL	11:07			
SUB IN: FRANKLIN,SPENCER	11:07			
SUB OUT: ASHE,BK	11:07			
SUB OUT: GETER,DAMARION	11:07			
	11:07			SUB IN: WHITE,ROMELLO
	11:07			SUB IN: HOLDER,TRA
	11:07			SUB OUT: LAKE,DE'QUON
	11:07			SUB OUT: EVANS II,SHANNON
	10:57			MISSED JUMPER by HOLDER,TRA
REBOUND (DEF) by CINTRON,JORDAN	10:57			
FOUL by FRANKLIN,SPENCER	10:34			
TURNOVER by FRANKLIN,SPENCER	10:34			
	10:26	17-13	H 4	GOOD! 3PTR by HOLDER,TRA
	10:26			ASSIST by MARTIN,REMY
MISSED JUMPER by MONTAGUE,JAHLEEM	10:04			
REBOUND (OFF) by FRANKLIN,SPENCER	10:04			
MISSED LAYUP by FRANKLIN,SPENCER	10:00			
REBOUND (OFF) by FRANKLIN,SPENCER	10:00			
MISSED LAYUP by FRANKLIN,SPENCER	09:58			
	09:58			REBOUND (DEF) by HOLDER,TRA
FOUL by SMITH,JASHAUN	09:54			
	09:54			MISSED FT by MITCHELL,MICKEY
	09:54			REBOUND (DEADB) by TEAM
	09:54	18-13	H 5	GOOD! FT by MITCHELL,MICKEY
SUB IN: GETER,DAMARION	09:54			
SUB OUT: SMITH,JASHAUN	09:54			
	09:54			SUB IN: SHIBEL,VITALIY
	09:54			SUB OUT: WHITE,ROMELLO
MISSED LAYUP by MONTAGUE,JAHLEEM	09:36			
	09:36			BLOCK by JUSTICE,KODI
REBOUND (OFF) by MONTAGUE,JAHLEEM	09:36			
FOUL by MONTAGUE,JAHLEEM	09:34			
TURNOVER by MONTAGUE,JAHLEEM	09:34			
	09:28			SUB IN: EVANS II,SHANNON
	09:28			SUB OUT: MITCHELL,MICKEY
	09:24	21-13	H 8	GOOD! 3PTR by EVANS II,SHANNON
	09:24			ASSIST by MARTIN,REMY
GOOD! LAYUP by GETER,DAMARION [PNT]	09:06	21-15	H 6	
	09:06			FOUL by SHIBEL,VITALIY
GOOD! FT by GETER,DAMARION	09:06	21-16	H 5	
SUB IN: SHIELDS,CHRIS	09:06			
SUB IN: ASHE,BK	09:06			
SUB OUT: MONTAGUE,JAHLEEM	09:06			
SUB OUT: CINTRON,JORDAN	09:06			
	08:59	23-16	H 7	GOOD! JUMPER by JUSTICE,KODI
	08:59			ASSIST by MARTIN,REMY
MISSED 3PTR by CHAPMAN,KAMIL	08:48			
REBOUND (OFF) by SHIELDS,CHRIS	08:48			
GOOD! LAYUP by SHIELDS,CHRIS [PNT]	08:43	23-18	H 5	
	08:31	25-18	H 7	GOOD! LAYUP by JUSTICE,KODI [PNT]
	08:31			ASSIST by MARTIN,REMY

VISITORS: Longwood	Time	Score	Margin	HOME: Arizona State
MISSED LAYUP by ASHE,BK	08:06			
	08:06			REBOUND (DEF) by SHIBEL,VITALIY
	07:56			TURNOVER by HOLDER,TRA
STEAL by CHAPMAN,KAMIL	07:54			
GOOD! JUMPER by SHIELDS,CHRIS [PNT]	07:38	25-20	H 5	
ASSIST by GETER,DAMARION	07:38			
	07:21			TURNOVER by MARTIN,REMY
TIMEOUT media	07:18			
	07:18			SUB IN: LAKE,DE'QUON
	07:18			SUB IN: MITCHELL,MICKEY
	07:18			SUB OUT: MARTIN,REMY
	07:18			SUB OUT: SHIBEL,VITALIY
MISSED LAYUP by SHIELDS,CHRIS	06:54			
	06:54			BLOCK by MITCHELL,MICKEY
	06:52			REBOUND (DEF) by HOLDER,TRA
FOUL by CHAPMAN,KAMIL	06:46			
	06:46	26-20	H 6	GOOD! FT by EVANS II,SHANNON
	06:46			MISSED FT by EVANS II,SHANNON
REBOUND (DEF) by SHIELDS,CHRIS	06:46			
SUB IN: SMITH,JASHAUN	06:46			
SUB IN: MONTAGUE,JAHEEM	06:46			
SUB OUT: CHAPMAN,KAMIL	06:46			
SUB OUT: FRANKLIN,SPENCER	06:46			
MISSED 3PTR by SMITH,JASHAUN	06:27			
	06:27			REBOUND (DEF) by LAKE,DE'QUON
	06:18			MISSED 3PTR by HOLDER,TRA
REBOUND (DEF) by TEAM	06:18			
	06:13			FOUL by MITCHELL,MICKEY
MISSED 3PTR by ASHE,BK	05:53			
	05:53			REBOUND (DEF) by HOLDER,TRA
	05:47	28-20	H 8	GOOD! LAYUP by HOLDER,TRA [FB/PNT]
TURNOVER by GETER,DAMARION	05:18			
SUB IN: CINTRON,JORDAN	05:18			
SUB OUT: SHIELDS,CHRIS	05:18			
	05:04			MISSED 3PTR by JUSTICE,KODI
	05:04			REBOUND (OFF) by LAKE,DE'QUON
FOUL by MONTAGUE,JAHEEM	05:02			
	05:02	29-20	H 9	GOOD! FT by LAKE,DE'QUON
	05:02			MISSED FT by LAKE,DE'QUON
REBOUND (DEF) by MONTAGUE,JAHEEM	05:02			
GOOD! LAYUP by MONTAGUE,JAHEEM [PNT]	04:34	29-22	H 7	
ASSIST by GETER,DAMARION	04:34			
	04:21			FOUL by MITCHELL,MICKEY
	04:21			TURNOVER by MITCHELL,MICKEY
SUB IN: FRANKLIN,SPENCER	04:21			
SUB OUT: MONTAGUE,JAHEEM	04:21			
	04:21			SUB IN: MARTIN,REMY
	04:21			SUB IN: WHITE,ROMELLO
	04:21			SUB OUT: LAKE,DE'QUON
	04:21			SUB OUT: MITCHELL,MICKEY
MISSED JUMPER by SMITH,JASHAUN	04:04			
REBOUND (OFF) by GETER,DAMARION	04:04			
MISSED JUMPER by GETER,DAMARION	04:01			
REBOUND (OFF) by FRANKLIN,SPENCER	04:01			
GOOD! TIPIN by FRANKLIN,SPENCER [PNT]	03:57	29-24	H 5	
	03:49			MISSED LAYUP by JUSTICE,KODI
	03:49			REBOUND (OFF) by TEAM
	03:45			TIMEOUT MEDIA
	03:39			MISSED LAYUP by HOLDER,TRA
BLOCK by GETER,DAMARION	03:39			
	03:37			REBOUND (OFF) by TEAM
	03:28			MISSED DUNK by WHITE,ROMELLO
REBOUND (DEF) by GETER,DAMARION	03:28			
GOOD! 3PTR by ASHE,BK	03:10	29-27	H 2	
FOUL by FRANKLIN,SPENCER	02:58			
	02:58	30-27	H 3	GOOD! FT by HOLDER,TRA
	02:58			MISSED FT by HOLDER,TRA
REBOUND (DEF) by GETER,DAMARION	02:58			
	02:58			SUB IN: SHIBEL,VITALIY
	02:58			SUB OUT: WHITE,ROMELLO
MISSED JUMPER by GETER,DAMARION	02:32			
REBOUND (OFF) by FRANKLIN,SPENCER	02:32			
GOOD! TIPIN by FRANKLIN,SPENCER [PNT]	02:27	30-29	H 1	
	02:16			MISSED 3PTR by EVANS II,SHANNON
REBOUND (DEF) by ASHE,BK	02:16			

VISITORS: Longwood	Time	Score	Margin	HOME: Arizona State
	01:50			FOUL by SHIBEL,VITALIY
GOOD! FT by FRANKLIN,SPENCER	01:50	30-30	T	
MISSED FT by FRANKLIN,SPENCER	01:50			
	01:50			REBOUND (DEF) by LAKE,DE'QUON
SUB IN: SHIELDS,CHRIS	01:50			
SUB OUT: ASHE,BK	01:50			
	01:50			SUB IN: LAKE,DE'QUON
	01:50			SUB OUT: SHIBEL,VITALIY
	01:40			MISSED 3PTR by JUSTICE,KODI
	01:40			REBOUND (OFF) by LAKE,DE'QUON
FOUL by SHIELDS,CHRIS	01:39			
	01:39	31-30	H 1	GOOD! FT by LAKE,DE'QUON
	01:39	32-30	H 2	GOOD! FT by LAKE,DE'QUON
TURNOVER by SHIELDS,CHRIS	01:22			
	01:03	34-30	H 4	GOOD! DUNK by LAKE,DE'QUON [PNT]
	01:03			ASSIST by EVANS II,SHANNON
TIMEOUT 30SEC	00:53			
SUB IN: ASHE,BK	00:53			
SUB OUT: CINTRON,JORDAN	00:53			
MISSED JUMPER by SMITH,JASHAUN	00:38			
REBOUND (OFF) by SHIELDS,CHRIS	00:38			
MISSED LAYUP by SHIELDS,CHRIS	00:28			
	00:28			REBOUND (DEF) by LAKE,DE'QUON
FOUL by SMITH,JASHAUN	00:09			
	00:09			MISSED FT by HOLDER,TRA
	00:09			REBOUND (DEADB) by TEAM
	00:09	35-30	H 5	GOOD! FT by HOLDER,TRA
	00:09			TIMEOUT 30SEC
SUB IN: CHAPMAN,KAMIL	00:09			
SUB OUT: SMITH,JASHAUN	00:09			
	00:09			SUB IN: WHITE,ROMELLO
	00:09			SUB IN: SHIBEL,VITALIY
	00:09			SUB OUT: LAKE,DE'QUON
	00:09			SUB OUT: HOLDER,TRA

Longwood 30, Arizona State 35

Period 1-only	In Paint	Off T/O	2nd Chance	Fast Break	Bench	
LWU	16	9	6	0	7	Score tied - 6 times
ASU	10	9	3	6	12	Lead changed - 2 times

Official Basketball Box Score -- Game Totals -- Second Half Statistics
Longwood vs Arizona State
12/19/2017 7 p.m. MT at Ned Wulk Court/Wells Fargo Arena-Tempe

Longwood 31 • 3-9

##	Player		Total			3-Ptr			Rebounds			PF	TP	A	TO	Blk	Stl	Min
			FG-FGA	FG-FGA	FT-FTA	FG-FGA	FG-FGA	FT-FTA	Off	Def	Tot							
02	ASHE,BK	g	0-7	0-3	2-2	0-3	0-3	2-2	0	3	3	2	2	1	3	0	1	17
03	CHAPMAN,KAMIL	g	5-5	5-5	1-2	0-1	1-1	1-2	0	1	1	1	16	0	2	0	2	15
21	SMITH,JASHAUN	f	2-5	1-2	0-1	0-0	0-0	0-1	0	0	0	2	5	0	1	0	0	12
24	GETER,DAMARION	f	1-2	0-1	0-2	1-2	2-3	0-2	1	2	3	3	2	1	3	1	1	17
30	SHIELDS,CHRIS	f	0-3	0-1	1-2	0-1	1-1	1-2	0	1	1	1	1	0	2	0	0	13
00	EZEANI,DOMINIC		0-0	0-0	0-0	0-0	0-0	0-0	0	0	0	0	0	1	0	0	0	1
11	MONTAGUE,JAHLLEEM		0-1	0-0	0-0	0-0	0-0	0-0	0	0	0	0	0	0	0	0	0	1
13	FRANKLIN,SPENCER		0-1	0-0	2-2	0-1	1-1	2-2	0	1	1	1	2	1	0	0	0	12
20	CINTRON,JORDAN		1-2	0-0	1-4	1-2	3-3	1-4	1	2	3	3	3	3	4	0	1	12
	TEAM								1	3	4	0			0			
Totals			9-26	6-12	7-15	3	13	16	13	31		7	15	1	5			100

FG % Half: 9-26 34.6%
 3FG % Half: 6-12 33.3%
 FT % Half: 7-15 46.7%

Arizona State 60 • 11-0

##	Player		Total			3-Ptr			Rebounds			PF	TP	A	TO	Blk	Stl	Min
			FG-FGA	FG-FGA	FT-FTA	FG-FGA	FG-FGA	FT-FTA	Off	Def	Tot							
00	HOLDER,TRA	g	3-8	1-4	3-3	1-4	1-2	3-3	1	1	2	1	10	4	3	0	6	15
10	SHIBEL,VITALIY	f	1-1	0-0	0-0	0-0	0-0	0-0	0	0	0	0	2	0	0	0	0	2
11	EVANS II,SHANNON	g	0-6	0-6	0-0	0-1	1-1	0-0	0	1	1	0	0	0	0	0	0	14
23	WHITE,ROMELLO	f	3-4	0-0	1-3	2-2	4-4	1-3	2	2	4	2	7	1	0	0	0	12
44	JUSTICE,KODI	g	4-6	4-6	0-0	0-3	3-3	0-0	0	3	3	2	12	3	0	0	3	14
01	MARTIN,REMY		5-7	1-2	2-4	2-3	5-5	2-4	2	3	5	2	13	4	0	0	1	14
03	MITCHELL,MICKEY		2-2	0-0	3-4	2-2	4-4	3-4	2	2	4	0	7	1	2	1	0	15
22	WITHERILL,AUSTIN		0-1	0-1	0-0	0-0	0-0	0-0	0	0	0	0	0	0	0	0	0	2
24	SALZMAN,JORDAN		0-0	0-0	0-0	0-0	0-0	0-0	0	0	0	0	0	0	0	0	0	1
25	FOGERTY,GRANT		0-0	0-0	0-0	0-0	0-0	0-0	0	0	0	0	0	0	0	0	0	1
35	LAKE,DE'QUON		3-4	0-0	3-6	1-3	4-4	3-6	1	3	4	3	9	0	0	0	0	10
	TEAM					0	2	2	0			0			0			
Totals			21-39	6-19	12-20	8	17	25	10	60		13	5	1	10			100

FG % Half: 21-39 53.8%
 3FG % Half: 6-19 26.7%
 FT % Half: 12-20 60.0%

Officials: Bob Staffen, Tom Nally, D.G. Nelson
 Technical Fouls: Longwood- None. Arizona State- None.
 ASU enters game ranked third in AP Poll
 10-0 record entering game is best start in ASU history.

Score by periods	1st	2nd	Total
Longwood	30	31	61
Arizona State	35	60	95

Points	In Paint	Off T/O	2nd Chance	Fast Break	Bench
LWU	6	5	0	3	5
ASU	26	17	7	8	29

Last FG - LWU 2nd-00:17, ASU 2nd-00:38.
 LWU led for 0:00. ASU led for 20:00. Game was tied for 0:00.

Score tied - 0 times
 Lead changed - 0 times

Longwood vs Arizona State
12/19/2017; 7 p.m. MT at Ned Wulk Court/Wells Fargo Arena-Tempe
Period 2 Play-By-Play

VISITORS: Longwood	Time	Score	Margin	HOME: Arizona State
	20:00			SUB IN: MITCHELL,MICKEY
	20:00			SUB OUT: SHIBEL,VITALIY
MISSED JUMPER by SMITH,JASHAUN	19:35			
	19:35			REBOUND (DEF) by MITCHELL,MICKEY
	19:23	38-30	H 8	GOOD! 3PTR by JUSTICE,KODI
	19:23			ASSIST by HOLDER,TRA
	18:56			FOUL by HOLDER,TRA
GOOD! LAYUP by SMITH,JASHAUN [PNT]	18:47	38-32	H 6	
ASSIST by GETER,DAMARION	18:47			
	18:34			MISSED 3PTR by JUSTICE,KODI
REBOUND (DEF) by SHIELDS,CHRIS	18:34			
MISSED 3PTR by ASHE,BK	18:12			
REBOUND (OFF) by TEAM	18:12			
	18:09			FOUL by WHITE,ROMELLO
FOUL by CHAPMAN,KAMIL	18:09			
TURNOVER by CHAPMAN,KAMIL	18:09			
	17:58			TURNOVER by MITCHELL,MICKEY
STEAL by CHAPMAN,KAMIL	17:54			
GOOD! LAYUP by GETER,DAMARION [PNT]	17:45	38-34	H 4	
	17:26	40-34	H 6	GOOD! LAYUP by HOLDER,TRA [PNT]
	17:26			ASSIST by WHITE,ROMELLO
FOUL by ASHE,BK	17:26			
	17:26	41-34	H 7	GOOD! FT by HOLDER,TRA
SUB IN: MONTAGUE,JAHEEM	17:26			
SUB OUT: CHAPMAN,KAMIL	17:26			
MISSED JUMPER by MONTAGUE,JAHEEM	17:04			
	17:04			REBOUND (DEF) by JUSTICE,KODI
FOUL by SMITH,JASHAUN	17:00			
	17:00	42-34	H 8	GOOD! FT by HOLDER,TRA
	17:00	43-34	H 9	GOOD! FT by HOLDER,TRA
SUB IN: CINTRON,JORDAN	17:00			
SUB OUT: SMITH,JASHAUN	17:00			
TURNOVER by GETER,DAMARION	16:54			
	16:52			STEAL by HOLDER,TRA
	16:50			TURNOVER by HOLDER,TRA
STEAL by GETER,DAMARION	16:48			
TURNOVER by GETER,DAMARION	16:47			
	16:46			STEAL by HOLDER,TRA
	16:31	46-34	H 12	GOOD! 3PTR by JUSTICE,KODI
	16:31			ASSIST by HOLDER,TRA
MISSED 3PTR by GETER,DAMARION	16:10			
	16:10			REBOUND (DEF) by HOLDER,TRA
	16:04	48-34	H 14	GOOD! LAYUP by WHITE,ROMELLO [PNT]
	16:04			ASSIST by JUSTICE,KODI
FOUL by CINTRON,JORDAN	16:04			
	16:04			MISSED FT by WHITE,ROMELLO
REBOUND (DEF) by GETER,DAMARION	16:04			
SUB IN: FRANKLIN,SPENCER	16:04			
SUB IN: SMITH,JASHAUN	16:04			
SUB OUT: MONTAGUE,JAHEEM	16:04			
SUB OUT: CINTRON,JORDAN	16:04			
TURNOVER by ASHE,BK	15:59			
	15:59			TIMEOUT media
	15:42			MISSED 3PTR by EVANS II,SHANNON
	15:42			REBOUND (OFF) by WHITE,ROMELLO
	15:37			MISSED 3PTR by EVANS II,SHANNON
	15:37			REBOUND (OFF) by MITCHELL,MICKEY
	15:32	50-34	H 16	GOOD! TIPIN by MITCHELL,MICKEY [PNT]
	15:22			SUB IN: MARTIN,REMY
	15:22			SUB OUT: EVANS II,SHANNON
	15:11			FOUL by MARTIN,REMY
MISSED FT by SHIELDS,CHRIS	15:11			
REBOUND (DEADB) by TEAM	15:11			
GOOD! FT by SHIELDS,CHRIS	15:11	50-35	H 15	
FOUL by SMITH,JASHAUN	14:53			
SUB IN: CINTRON,JORDAN	14:53			
SUB OUT: SMITH,JASHAUN	14:53			
	14:43			MISSED 3PTR by HOLDER,TRA
REBOUND (DEF) by FRANKLIN,SPENCER	14:43			

VISITORS: Longwood	Time	Score	Margin	HOME: Arizona State
MISSED LAYUP by ASHE,BK	14:15			
	14:15			REBOUND (DEF) by TEAM
	14:13			SUB IN: EVANS II,SHANNON
	14:13			SUB OUT: HOLDER,TRA
	14:08	52-35	H 17	GOOD! LAYUP by WHITE,ROMELLO [PNT]
	14:08			ASSIST by MITCHELL,MICKEY
TURNOVER by GETER,DAMARION	13:40			
	13:39			STEAL by JUSTICE,KODI
	13:36	54-35	H 19	GOOD! DUNK by MITCHELL,MICKEY [FB/PNT]
	13:36			ASSIST by JUSTICE,KODI
TIMEOUT 30SEC	13:33			
	13:33			SUB IN: LAKE,DE'QUON
	13:33			SUB OUT: MITCHELL,MICKEY
	13:18			FOUL by WHITE,ROMELLO
MISSED FT by CINTRON,JORDAN	13:18			
REBOUND (DEADB) by TEAM	13:18			
GOOD! FT by CINTRON,JORDAN	13:18	54-36	H 18	
	12:52	57-36	H 21	GOOD! 3PTR by MARTIN,REMY
TURNOVER by SHIELDS,CHRIS	12:37			
	12:36			SUB IN: HOLDER,TRA
	12:36			SUB OUT: JUSTICE,KODI
	12:30			MISSED 3PTR by MARTIN,REMY
REBOUND (DEF) by TEAM	12:30			
SUB IN: CHAPMAN,KAMIL	12:24			
SUB OUT: SHIELDS,CHRIS	12:24			
GOOD! LAYUP by CINTRON,JORDAN [PNT]	12:12	57-38	H 19	
ASSIST by FRANKLIN,SPENCER	12:12			
FOUL by FRANKLIN,SPENCER	11:56			
	11:56			TIMEOUT MEDIA
	11:56			MISSED FT by LAKE,DE'QUON
	11:56			REBOUND (DEADB) by TEAM
	11:56	58-38	H 20	GOOD! FT by LAKE,DE'QUON
	11:56			SUB IN: MITCHELL,MICKEY
	11:56			SUB OUT: WHITE,ROMELLO
TURNOVER by CINTRON,JORDAN	11:52			
	11:51			STEAL by HOLDER,TRA
	11:50	60-38	H 22	GOOD! LAYUP by HOLDER,TRA [FB/PNT]
GOOD! 3PTR by CHAPMAN,KAMIL [FB]	11:39	60-41	H 19	
ASSIST by CINTRON,JORDAN	11:39			
	11:14	63-41	H 22	GOOD! 3PTR by HOLDER,TRA
	11:14			ASSIST by MARTIN,REMY
GOOD! 3PTR by CHAPMAN,KAMIL	10:56	63-44	H 19	
ASSIST by CINTRON,JORDAN	10:56			
	10:53			TIMEOUT 30SEC
	10:34	65-44	H 21	GOOD! JUMPER by MARTIN,REMY
	10:24			FOUL by LAKE,DE'QUON
MISSED FT by CHAPMAN,KAMIL	10:24			
REBOUND (DEADB) by TEAM	10:24			
GOOD! FT by CHAPMAN,KAMIL	10:24	65-45	H 20	
FOUL by ASHE,BK	10:13			
	10:13			MISSED FT by LAKE,DE'QUON
	10:13			REBOUND (DEADB) by TEAM
	10:13	66-45	H 21	GOOD! FT by LAKE,DE'QUON
TURNOVER by ASHE,BK	10:13			
	10:05			TURNOVER by MITCHELL,MICKEY
STEAL by CHAPMAN,KAMIL	10:03			
MISSED LAYUP by ASHE,BK	10:01			
	10:01			BLOCK by MITCHELL,MICKEY
	09:59			REBOUND (DEF) by EVANS II,SHANNON
	09:53			MISSED 3PTR by EVANS II,SHANNON
	09:53			REBOUND (OFF) by HOLDER,TRA
	09:39			MISSED 3PTR by HOLDER,TRA
REBOUND (DEF) by ASHE,BK	09:38			
MISSED LAYUP by ASHE,BK	09:37			
	09:36			REBOUND (DEF) by LAKE,DE'QUON
	09:24	68-45	H 23	GOOD! LAYUP by LAKE,DE'QUON [PNT]
	09:24			ASSIST by MARTIN,REMY
	09:14			FOUL by LAKE,DE'QUON
GOOD! FT by ASHE,BK	09:14	68-46	H 22	
GOOD! FT by ASHE,BK	09:14	68-47	H 21	
SUB IN: SHIELDS,CHRIS	09:14			
SUB OUT: FRANKLIN,SPENCER	09:14			
	09:14			SUB IN: JUSTICE,KODI
	09:14			SUB IN: WHITE,ROMELLO
	09:14			SUB OUT: LAKE,DE'QUON

VISITORS: Longwood	Time	Score	Margin	HOME: Arizona State
	09:14			SUB OUT: MITCHELL,MICKEY
	09:01	70-47	H 23	GOOD! DUNK by WHITE,ROMELLO [PNT]
	09:01			ASSIST by HOLDER,TRA
MISSED LAYUP by CINTRON,JORDAN	08:48			
	08:48			REBOUND (DEF) by WHITE,ROMELLO
	08:43			MISSED JUMPER by MARTIN,REMY
REBOUND (DEF) by GETER,DAMARION	08:43			
TIMEOUT 30SEC	08:34			
TURNOVER by ASHE,BK	08:27			
	08:26			STEAL by HOLDER,TRA
	08:22			MISSED LAYUP by HOLDER,TRA
	08:22			REBOUND (OFF) by MARTIN,REMY
	08:18	72-47	H 25	GOOD! LAYUP by MARTIN,REMY [PNT]
MISSED LAYUP by SHIELDS,CHRIS	08:12			
REBOUND (OFF) by GETER,DAMARION	08:12			
	08:09			FOUL by MARTIN,REMY
MISSED FT by GETER,DAMARION	08:09			
REBOUND (DEADB) by TEAM	08:09			
MISSED FT by GETER,DAMARION	08:09			
	08:09			REBOUND (DEF) by WHITE,ROMELLO
SUB IN: FRANKLIN,SPENCER	08:09			
SUB IN: SMITH,JASHAUN	08:09			
SUB OUT: ASHE,BK	08:09			
SUB OUT: SHIELDS,CHRIS	08:09			
FOUL by CINTRON,JORDAN	08:08			
	08:08	73-47	H 26	GOOD! FT by WHITE,ROMELLO
	08:08			MISSED FT by WHITE,ROMELLO
	08:08			SUB IN: MITCHELL,MICKEY
	08:08			SUB OUT: MARTIN,REMY
	08:07			REBOUND (OFF) by MITCHELL,MICKEY
FOUL by GETER,DAMARION	08:07			
	08:07	74-47	H 27	GOOD! FT by MITCHELL,MICKEY
	08:07	75-47	H 28	GOOD! FT by MITCHELL,MICKEY
SUB IN: SHIELDS,CHRIS	08:07			
SUB OUT: GETER,DAMARION	08:07			
TURNOVER by SHIELDS,CHRIS	07:57			
	07:55			STEAL by JUSTICE,KODI
	07:53			MISSED 3PTR by EVANS II,SHANNON
REBOUND (DEF) by CHAPMAN,KAMIL	07:53			
TURNOVER by CHAPMAN,KAMIL	07:51			
	07:49			STEAL by HOLDER,TRA
	07:48			TURNOVER by HOLDER,TRA
STEAL by CINTRON,JORDAN	07:48			
TURNOVER by CINTRON,JORDAN	07:48			
	07:48			STEAL by HOLDER,TRA
	07:47			TIMEOUT media
	07:46			MISSED 3PTR by JUSTICE,KODI
REBOUND (DEF) by CINTRON,JORDAN	07:46			
	07:36			FOUL by JUSTICE,KODI
MISSED FT by SMITH,JASHAUN	07:36			
	07:36			REBOUND (DEF) by JUSTICE,KODI
SUB IN: GETER,DAMARION	07:36			
SUB IN: ASHE,BK	07:36			
SUB OUT: FRANKLIN,SPENCER	07:36			
SUB OUT: CINTRON,JORDAN	07:36			
	07:15	78-47	H 31	GOOD! 3PTR by JUSTICE,KODI
	07:15			ASSIST by HOLDER,TRA
	07:02			SUB IN: MARTIN,REMY
	07:02			SUB OUT: EVANS II,SHANNON
MISSED 3PTR by SHIELDS,CHRIS	06:50			
	06:50			REBOUND (DEF) by JUSTICE,KODI
	06:41	81-47	H 34	GOOD! 3PTR by JUSTICE,KODI
	06:41			ASSIST by MARTIN,REMY
GOOD! 3PTR by SMITH,JASHAUN	06:20	81-50	H 31	
	06:08			MISSED 3PTR by HOLDER,TRA
	06:08			REBOUND (OFF) by WHITE,ROMELLO
	06:00			MISSED LAYUP by WHITE,ROMELLO
BLOCK by GETER,DAMARION	06:00			
	05:59			REBOUND (OFF) by MARTIN,REMY
FOUL by SHIELDS,CHRIS	05:59			
	05:59			MISSED FT by MARTIN,REMY
	05:59			REBOUND (DEADB) by TEAM
	05:59			MISSED FT by MARTIN,REMY
REBOUND (DEF) by ASHE,BK	05:59			
SUB IN: CINTRON,JORDAN	05:59			

VISITORS: Longwood	Time	Score	Margin	HOME: Arizona State
SUB OUT: SHIELDS,CHRIS	05:59			
	05:59			SUB IN: LAKE,DE'QUON
	05:59			SUB IN: EVANS II,SHANNON
	05:59			SUB OUT: MITCHELL,MICKEY
	05:59			SUB OUT: HOLDER,TRA
MISSED 3PTR by ASHE,BK	05:40			
	05:40			REBOUND (DEF) by MARTIN,REMY
	05:31	83-50	H 33	GOOD! DUNK by LAKE,DE'QUON [PNT]
	05:31			ASSIST by JUSTICE,KODI
TURNOVER by CINTRON,JORDAN	05:17			
	05:16			STEAL by JUSTICE,KODI
	05:08	85-50	H 35	GOOD! JUMPER by MARTIN,REMY [FB]
MISSED 3PTR by SMITH,JASHAUN	04:50			
	04:50			REBOUND (DEF) by LAKE,DE'QUON
	04:41			MISSED 3PTR by EVANS II,SHANNON
REBOUND (DEF) by TEAM	04:41			
SUB IN: FRANKLIN,SPENCER	04:38			
SUB OUT: CINTRON,JORDAN	04:38			
	04:38			SUB IN: HOLDER,TRA
	04:38			SUB IN: MITCHELL,MICKEY
	04:38			SUB OUT: JUSTICE,KODI
	04:38			SUB OUT: WHITE,ROMELLO
	04:24			FOUL by LAKE,DE'QUON
GOOD! FT by FRANKLIN,SPENCER	04:24	85-51	H 34	
GOOD! FT by FRANKLIN,SPENCER	04:24	85-52	H 33	
	04:10			MISSED JUMPER by HOLDER,TRA
	04:10			REBOUND (OFF) by LAKE,DE'QUON
FOUL by GETER,DAMARION	04:08			
	04:08			MISSED FT by LAKE,DE'QUON
	04:08			REBOUND (DEADB) by TEAM
	04:08	86-52	H 34	GOOD! FT by LAKE,DE'QUON
MISSED JUMPER by FRANKLIN,SPENCER	03:58			
	03:58			REBOUND (DEF) by LAKE,DE'QUON
	03:51			MISSED 3PTR by EVANS II,SHANNON
REBOUND (DEF) by ASHE,BK	03:51			
MISSED LAYUP by ASHE,BK	03:42			
	03:42			REBOUND (DEF) by TEAM
	03:40			TIMEOUT MEDIA
	03:40			SUB IN: JUSTICE,KODI
	03:40			SUB OUT: EVANS II,SHANNON
	03:25	88-52	H 36	GOOD! LAYUP by LAKE,DE'QUON [PNT]
MISSED 3PTR by ASHE,BK	03:02			
	03:02			REBOUND (DEF) by MARTIN,REMY
	02:56			TURNOVER by HOLDER,TRA
STEAL by ASHE,BK	02:55			
GOOD! 3PTR by CHAPMAN,KAMIL	02:47	88-55	H 33	
ASSIST by ASHE,BK	02:47			
FOUL by GETER,DAMARION	02:22			
	02:22			MISSED FT by MITCHELL,MICKEY
	02:22			REBOUND (DEADB) by TEAM
	02:22	89-55	H 34	GOOD! FT by MITCHELL,MICKEY
SUB IN: SHIELDS,CHRIS	02:22			
SUB IN: CINTRON,JORDAN	02:22			
SUB OUT: GETER,DAMARION	02:22			
SUB OUT: ASHE,BK	02:22			
MISSED JUMPER by SHIELDS,CHRIS	02:09			
REBOUND (OFF) by CINTRON,JORDAN	02:09			
	02:04			FOUL by JUSTICE,KODI
MISSED FT by CINTRON,JORDAN	02:04			
REBOUND (DEADB) by TEAM	02:04			
MISSED FT by CINTRON,JORDAN	02:04			
	02:04			REBOUND (DEF) by MITCHELL,MICKEY
	02:04			SUB IN: WITHERILL,AUSTIN
	02:04			SUB IN: SHIBEL,VITALIY
	02:04			SUB OUT: HOLDER,TRA
	02:04			SUB OUT: JUSTICE,KODI
	01:53			MISSED DUNK by LAKE,DE'QUON
REBOUND (DEF) by CINTRON,JORDAN	01:53			
GOOD! 3PTR by CHAPMAN,KAMIL	01:40	89-58	H 31	
ASSIST by CINTRON,JORDAN	01:40			
	01:25			MISSED 3PTR by WITHERILL,AUSTIN
REBOUND (DEF) by TEAM	01:25			
TURNOVER by CINTRON,JORDAN	01:12			
	01:01	91-58	H 33	GOOD! LAYUP by SHIBEL,VITALIY [PNT]
	01:01			ASSIST by MARTIN,REMY

VISITORS: Longwood	Time	Score	Margin	HOME: Arizona State
MISSED JUMPER by SMITH,JASHAUN	00:44			
	00:44			REBOUND (DEF) by MARTIN,REMY
	00:38	93-58	H 35	GOOD! LAYUP by MARTIN,REMY [FB/PNT]
SUB IN: EZEANI,DOMINIC	00:31			
SUB OUT: SHIELDS,CHRIS	00:31			
	00:31			SUB IN: FOGERTY,GRANT
	00:31			SUB IN: SALZMAN,JORDAN
	00:31			SUB OUT: MARTIN,REMY
	00:31			SUB OUT: MITCHELL,MICKEY
TURNOVER by SMITH,JASHAUN	00:28			
	00:28			STEAL by MARTIN,REMY
FOUL by CINTRON,JORDAN	00:28			
	00:28	94-58	H 36	GOOD! FT by MARTIN,REMY
	00:28	95-58	H 37	GOOD! FT by MARTIN,REMY
GOOD! 3PTR by CHAPMAN,KAMIL	00:17	95-61	H 34	
ASSIST by EZEANI,DOMINIC	00:17			

Longwood 61, Arizona State 95

Period 2-only	In Paint	Off T/O	2nd Chance	Fast Break	Bench	
LWU	6	5	0	3	5	Score tied - 0 times
ASU	26	17	7	8	29	Lead changed - 0 times

Longwood vs Arizona State
12/19/2017; 7 p.m. MT at Ned Wulk Court/Wells Fargo Arena-Tempe
Scoring/Runs Reference

Period 1

Longwood	VRun	Score	Margin	HRun	Arizona State
		0-2	2		JUSTICE LAYUP [P] [F] - 19:04
18:43 - SHIELDS LAYUP [P]	-	2-2	0		
17:47 - ASHE 3PTR	5-0	5-2	-3		
		5-5	0		HOLDER 3PTR - 17:36
16:37 - ASHE FT	-	6-5	-1		
16:01 - GETER JUMPER	3-0	8-5	-3		
		8-6	-2		MITCHELL FT - 15:44
		8-7	-1	2-0	MITCHELL FT - 15:44
		8-10	2	5-0	EVANS II 3PTR - 14:46
14:01 - ASHE LAYUP [P]	-	10-10	0		
		10-11	1		LAKE FT - 13:36
		10-12	2	2-0	LAKE FT - 13:36
		10-14	4	4-0	MITCHELL DUNK [P] [F] - 13:08
12:11 - ASHE 3PTR	-	13-14	1		
		13-17	4		HOLDER 3PTR - 10:26
		13-18	5	4-0	MITCHELL FT - 09:54
		13-21	8	7-0	EVANS II 3PTR - 09:24
09:06 - GETER LAYUP [P]	-	15-21	6		
09:06 - GETER FT	3-0	16-21	5		
		16-23	7		JUSTICE JUMPER - 08:59
08:43 - SHIELDS LAYUP [P]	-	18-23	5		
		18-25	7		JUSTICE LAYUP [P] - 08:31
07:38 - SHIELDS JUMPER [P]	-	20-25	5		
		20-26	6		EVANS II FT - 06:46
		20-28	8	3-0	HOLDER LAYUP [P] [F] - 05:47
		20-29	9	4-0	LAKE FT - 05:02
04:34 - MONTAGUE LAYUP [P]	-	22-29	7		
03:57 - FRANKLIN TIPIN [P]	4-0	24-29	5		
03:10 - ASHE 3PTR	7-0	27-29	2		
		27-30	3		HOLDER FT - 02:58
02:27 - FRANKLIN TIPIN [P]	-	29-30	1		
01:50 - FRANKLIN FT	3-0	30-30	0		
		30-31	1		LAKE FT - 01:39
		30-32	2	2-0	LAKE FT - 01:39
		30-34	4	4-0	LAKE DUNK [P] - 01:03
		30-35	5	5-0	HOLDER FT - 00:09

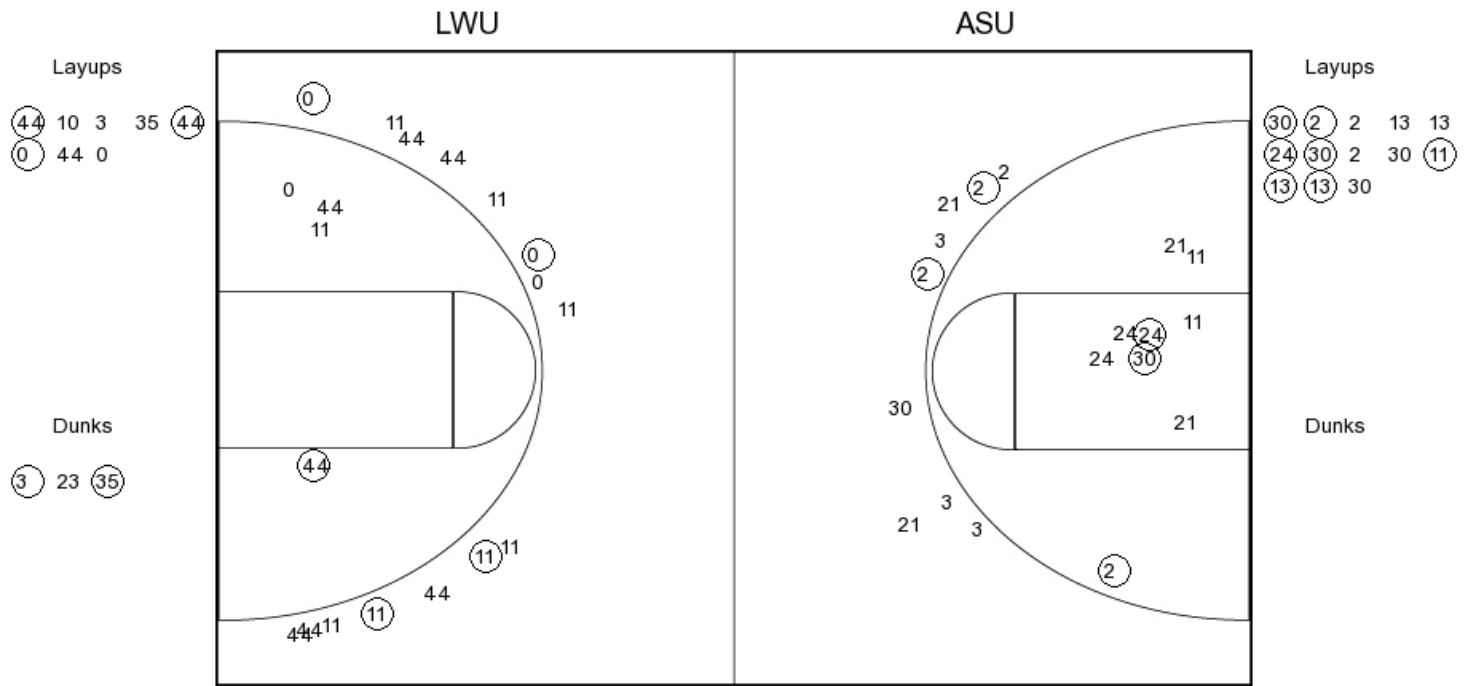
Longwood vs Arizona State
12/19/2017; 7 p.m. MT at Ned Wulk Court/Wells Fargo Arena-Tempe
Scoring/Runs Reference

Period 2

Longwood	VRun	Score	Margin	HRun	Arizona State
		30-38	8		JUSTICE 3PTR - 19:23
18:47 - SMITH LAYUP [P]	-	32-38	6		
17:45 - GETER LAYUP [P]	4-0	34-38	4		
		34-40	6		HOLDER LAYUP [P] - 17:26
		34-41	7	3-0	HOLDER FT - 17:26
		34-42	8	4-0	HOLDER FT - 17:00
		34-43	9	5-0	HOLDER FT - 17:00
		34-46	12	8-0	JUSTICE 3PTR - 16:31
		34-48	14	10-0	WHITE LAYUP [P] - 16:04
		34-50	16	12-0	MITCHELL TIPIN [P] - 15:32
15:11 - SHIELDS FT	-	35-50	15		
		35-52	17		WHITE LAYUP [P] - 14:08
		35-54	19	4-0	MITCHELL DUNK [P] [F] - 13:36
13:18 - CINTRON FT	-	36-54	18		
		36-57	21		MARTIN 3PTR - 12:52
12:12 - CINTRON LAYUP [P]	-	38-57	19		
		38-58	20		LAKE FT - 11:56
		38-60	22	3-0	HOLDER LAYUP [P] [F] - 11:50
11:39 - CHAPMAN 3PTR [F]	-	41-60	19		
		41-63	22		HOLDER 3PTR - 11:14
10:56 - CHAPMAN 3PTR	-	44-63	19		
		44-65	21		MARTIN JUMPER - 10:34
10:24 - CHAPMAN FT	-	45-65	20		
		45-66	21		LAKE FT - 10:13
		45-68	23	3-0	LAKE LAYUP [P] - 09:24
09:14 - ASHE FT	-	46-68	22		
09:14 - ASHE FT	2-0	47-68	21		
		47-70	23		WHITE DUNK [P] - 09:01
		47-72	25	4-0	MARTIN LAYUP [P] - 08:18
		47-73	26	5-0	WHITE FT - 08:08
		47-74	27	6-0	MITCHELL FT - 08:07
		47-75	28	7-0	MITCHELL FT - 08:07
		47-78	31	10-0	JUSTICE 3PTR - 07:15
		47-81	34	13-0	JUSTICE 3PTR - 06:41
06:20 - SMITH 3PTR	-	50-81	31		
		50-83	33		LAKE DUNK [P] - 05:31
		50-85	35	4-0	MARTIN JUMPER [F] - 05:08
04:24 - FRANKLIN FT	-	51-85	34		
04:24 - FRANKLIN FT	2-0	52-85	33		
		52-86	34		LAKE FT - 04:08
		52-88	36	3-0	LAKE LAYUP [P] - 03:25
02:47 - CHAPMAN 3PTR	-	55-88	33		
		55-89	34		MITCHELL FT - 02:22
01:40 - CHAPMAN 3PTR	-	58-89	31		
		58-91	33		SHIBEL LAYUP [P] - 01:01
		58-93	35	4-0	MARTIN LAYUP [P] [F] - 00:38
		58-94	36	5-0	MARTIN FT - 00:28
		58-95	37	6-0	MARTIN FT - 00:28
00:17 - CHAPMAN 3PTR	-	61-95	34		

Longwood vs Arizona State
 OFFICIAL SHOT CHART
 12/19/2017 at Ned Wulk Court/Wells Fargo Arena-Tempe

PERIOD 1



LWU PERIOD 1

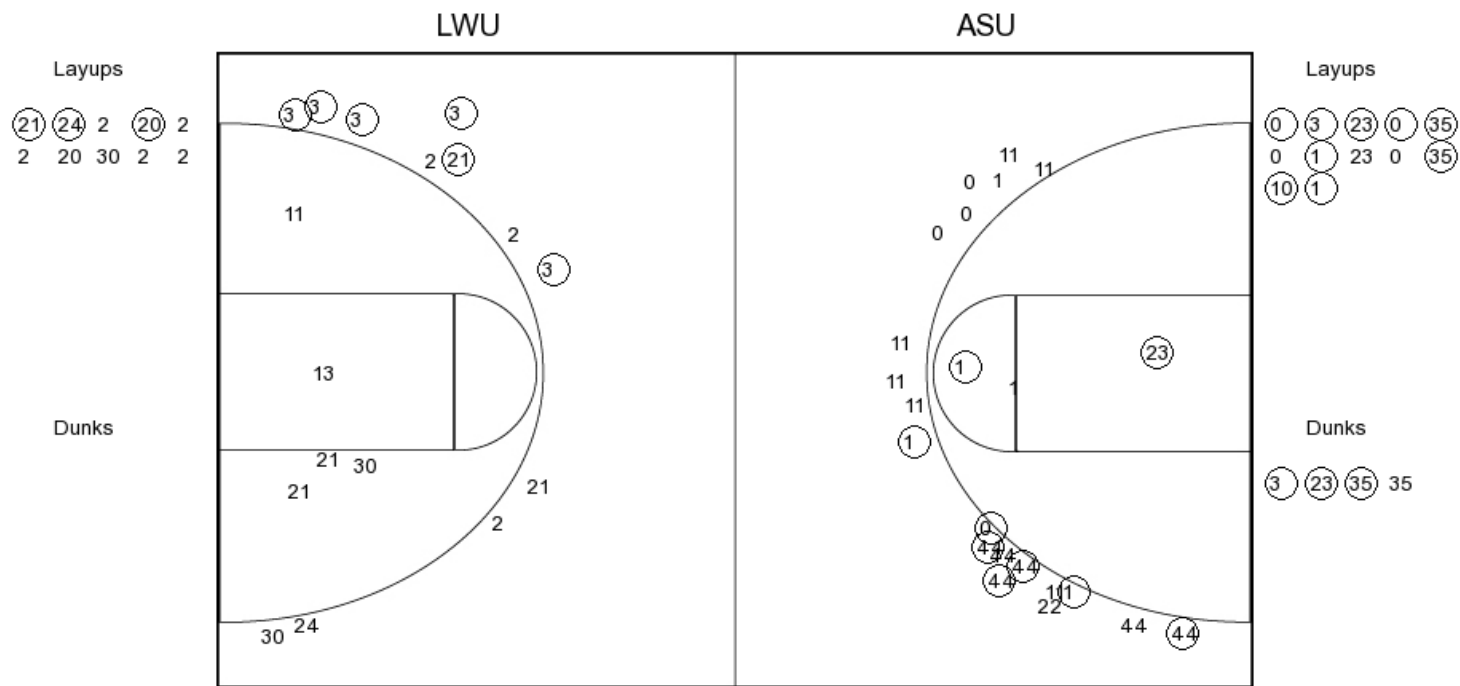
FG Made	12
FG Attempted	31
3PFG Made	3
3PFG Attempted	9

ASU PERIOD 1

FG Made	10
FG Attempted	30
3PFG Made	4
3PFG Attempted	15

Longwood vs Arizona State
 OFFICIAL SHOT CHART
 12/19/2017 at Ned Wulk Court/Wells Fargo Arena-Tempe

PERIOD 2



LWU PERIOD 2

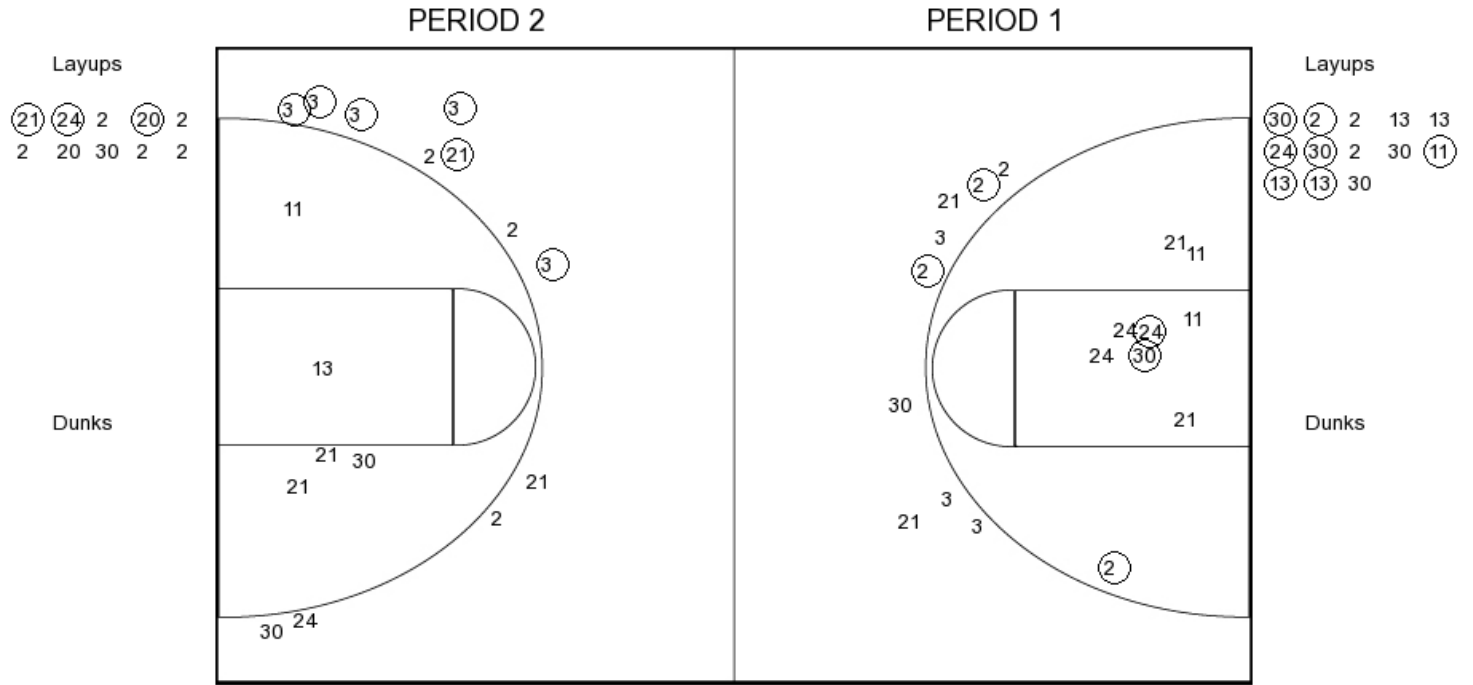
FG Made	9
FG Attempted	26
3PFG Made	6
3PFG Attempted	12

ASU PERIOD 2

FG Made	21
FG Attempted	39
3PFG Made	6
3PFG Attempted	19

Longwood vs Arizona State
 OFFICIAL SHOT CHART
 12/19/2017 at Ned Wulk Court/Wells Fargo Arena-Tempe

Longwood



LWU PERIOD 1

FG Made	12
FG Attempted	31
3PFG Made	3
3PFG Attempted	9

LWU PERIOD 2

FG Made	9
FG Attempted	26
3PFG Made	6
3PFG Attempted	12

