

FINAL SCORE



Missouri

21-5, 9-4 SEC

59



Auburn

13-12, 4-9 SEC

51

February 15, 2018 • Auburn Arena -- Auburn, Ala.

FINAL STATISTICS

Official Basketball Box Score -- Game Totals -- Final Statistics
Missouri vs Auburn
 2/15/2018 6:00 p.m. at Auburn Arena -- Auburn, Ala.



Missouri 59 - 21-5, 9-4 SEC

##	Player	g	Total			Rebounds			PF	TP	A	TO	Blk	Stl	Min
			FG-FGA	3-Ptr FG-FGA	FT-FTA	Off	Def	Tot							
03	CUNNINGHAM,SOPHIE	g	4-7	2-5	2-3	0	3	3	2	12	2	3	0	1	40
05	ALDRIDGE,LAUREN	g	1-5	1-5	2-2	1	4	5	3	5	4	6	0	1	36
21	PORTER,CIERRA	f	3-4	0-0	1-1	2	5	7	5	7	2	3	1	0	16
22	FRERICKS,JORDAN	f	9-15	0-0	1-2	1	7	8	3	19	4	3	3	2	33
23	SMITH,AMBER	g	2-9	1-4	2-4	1	9	10	1	7	3	6	2	3	22
02	ROUNDTRREE,JORDAN		1-1	1-1	2-2	0	1	1	0	5	1	0	1	0	12
13	SCHUCHTS,HANNAH		0-0	0-0	0-0	0	0	0	1	0	0	1	0	0	2
20	MICHAEL,KAYLA		0-1	0-0	2-2	0	1	1	0	2	2	0	0	0	7
24	CHAVIS,JORDAN		0-3	0-3	0-0	0	1	1	0	0	0	1	0	1	16
34	TAHANE,EMMANUELLE		1-2	0-0	0-0	0	1	1	1	2	1	1	0	0	16
TEAM						1	5	6	0		0				
TOTALS			21-47	5-18	12-16	6	37	43	16	59	19	24	7	8	200

Deadball Rebounds: 3,0

FG %	1st Half: 11-26 42.3%	2nd Half: 10-21 47.6%	Game: 21-47 44.7%	4th Qtr 7-9 77.8%
	1st Qtr 7-13 53.8%	2nd Qtr 4-13 30.8%	3rd Qtr 3-12 25.0%	
3FG %	1st Half: 3-10 30.0%	2nd Half: 2-8 25.0%	Game: 5-18 27.8%	4th Qtr 1-2 50.0%
	1st Qtr 2-6 33.3%	2nd Qtr 1-4 25.0%	3rd Qtr 1-6 16.7%	
FT %	1st Half: 5-7 71.4%	2nd Half: 7-9 77.8%	Game: 12-16 75.0%	4th Qtr 3-4 75.0%
	1st Qtr 3-5 60.0%	2nd Qtr 2-2 100.0%	3rd Qtr 4-5 80.0%	

Auburn 51 - 13-12, 4-9 SEC

##	Player	g	Total			Rebounds			PF	TP	A	TO	Blk	Stl	Min
			FG-FGA	3-Ptr FG-FGA	FT-FTA	Off	Def	Tot							
00	ALEXANDER,DAISA	g	6-21	1-5	0-2	2	4	6	3	13	0	2	0	5	27
04	JACKSON,ABIGAYLE	f	0-2	0-1	0-0	0	2	2	3	0	0	0	0	0	8
15	JONES,JAZMINE	f	2-5	0-0	0-0	5	3	8	3	4	0	2	0	4	26
20	THOMPSON,UNIQUE	f	3-8	0-0	2-7	3	4	7	4	8	3	2	0	1	27
33	MCKAY,JANIAH	g	7-21	0-1	4-4	3	3	6	1	18	4	2	0	2	37
03	SANDERS,ERICA		0-3	0-0	0-0	0	1	1	3	0	0	0	0	0	15
05	JONES,EMARI		2-7	2-5	0-0	3	1	4	3	6	0	2	0	3	31
14	LEWIS,TIFFANY		1-9	0-4	0-0	0	0	0	1	2	0	1	0	2	16
23	JONES,JESSICA		0-0	0-0	0-0	2	2	4	1	0	0	1	1	1	13
TEAM						4	1	5	0		0				
TOTALS			21-76	3-16	6-13	22	21	43	22	51	7	12	1	18	200

Deadball Rebounds: 3,0

FG %	1st Half: 7-38 18.4%	2nd Half: 14-38 36.8%	Game: 21-76 27.6%	4th Qtr 7-20 35.0%
	1st Qtr 3-21 14.3%	2nd Qtr 4-17 23.5%	3rd Qtr 7-18 38.9%	
3FG %	1st Half: 2-13 15.4%	2nd Half: 1-3 33.3%	Game: 3-16 18.8%	4th Qtr 1-2 50.0%
	1st Qtr 1-10 10.0%	2nd Qtr 1-3 33.3%	3rd Qtr 0-1 00.0%	
FT %	1st Half: 0-4 00.0%	2nd Half: 6-9 66.7%	Game: 6-13 46.2%	4th Qtr 2-2 100.0%
	1st Qtr 0-0 0%	2nd Qtr 0-4 00.0%	3rd Qtr 4-7 57.1%	

Officials: Lisa Mattingly, Laura Morris, Bryan Enterline
 Technical Fouls: Missouri- None. Auburn- None.
 Attendance: 1759

Score by periods	1st	2nd	3rd	4th	Total
Missouri	19	11	11	18	59
Auburn	7	9	18	17	51

Points	In Paint	Off T/O	2nd Chance	Fast Break	Bench
MU-W	30	9	1	8	9
AU	18	14	1	10	8

Last FG - MU-W 4th-00:56, AU 4th-00:17.
 Largest lead - Missouri by 17 3rd-08:49; Auburn by 2 1st-08:31
 MU-W led for 37:33. AU led for 0:41. Game was tied for 1:46.

Score tied - 1 times; Lead changed - 2 times

Official Basketball Box Score -- Game Totals -- First Half Statistics
 Missouri vs Auburn
 2/15/2018 6:00 p.m. at Auburn Arena -- Auburn, Ala.



Missouri 30 • 21-5, 9-4 SEC

##	Player	g	Total		3-Ptr	FT-FTA	Rebounds			PF	TP	A	TO	Blk	Stl	Min
			FG-FGA	FG-FGA	FG-FGA		Off	Def	Tot							
03	CUNNINGHAM,SOPHIE	g	2-3	2-3	0-0	0	3	3	1	6	2	0	0	0	20	
05	ALDRIDGE,LAUREN	g	0-2	0-2	0-0	1	2	3	0	0	3	3	0	1	16	
21	PORTER,CIERRA	f	2-2	0-0	1-1	2	3	5	2	5	1	0	0	0	7	
22	FRERICKS,JORDAN	f	5-9	0-0	1-2	1	2	3	1	11	1	2	2	1	15	
23	SMITH,AMBER	g	2-7	1-3	1-2	1	6	7	0	6	2	2	2	1	16	
02	ROUNDTREE,JORDAN		0-0	0-0	0-0	0	0	0	0	0	0	0	1	0	4	
13	SCHUCHTS,HANNAH		0-0	0-0	0-0	0	0	0	1	0	0	1	0	0	2	
20	MICHAEL,KAYLA		0-1	0-0	2-2	0	1	1	0	2	2	0	0	0	7	
24	CHAVIS,JORDAN		0-2	0-2	0-0	0	1	1	0	0	0	0	0	0	8	
34	TAHANE,EMMANUELLE		0-0	0-0	0-0	0	0	0	1	0	0	0	0	0	5	
TEAM						0	2	2	0		0					
Totals			11-26	3-10	5-7	5	20	25	6	30	11	8	5	3	100	
FG %	1st Qtr	7-13	53.8%	2nd Qtr	4-13	30.8%	Half:	11-26	42.3%							
3FG %	1st Qtr	2-6	33.3%	2nd Qtr	1-4	25.0%	Half:	3-10	30.0%							
FT %	1st Qtr	3-5	60.0%	2nd Qtr	2-2	100.0%	Half:	5-7	71.4%							

Auburn 16 • 13-12, 4-9 SEC

##	Player	g	Total		3-Ptr	FT-FTA	Rebounds			PF	TP	A	TO	Blk	Stl	Min
			FG-FGA	FG-FGA	FG-FGA		Off	Def	Tot							
00	ALEXANDER,DAISA	g	2-5	1-4	0-0	0	0	0	2	5	0	1	0	0	9	
04	JACKSON,ABIGAYLE	f	0-2	0-1	0-0	0	2	2	2	0	0	0	0	0	7	
15	JONES,JAZMINE	f	0-2	0-0	0-0	3	2	5	1	0	0	0	0	1	12	
20	THOMPSON,UNIQUE	f	1-5	0-0	0-4	3	1	4	1	2	1	0	0	1	13	
33	MCKAY,JANIAH	g	2-10	0-1	0-0	1	2	3	0	4	1	1	0	0	19	
03	SANDERS,ERICA		0-3	0-0	0-0	0	1	1	0	0	0	0	0	0	8	
05	JONES,EMARI		1-3	1-3	0-0	0	1	1	1	3	0	0	0	2	13	
14	LEWIS,TIFFANY		1-8	0-4	0-0	0	0	0	1	2	0	1	0	2	12	
23	JONES,JESSICA		0-0	0-0	0-0	2	1	3	0	0	0	1	1	0	7	
TEAM						4	0	4	0		0					
Totals			7-38	2-13	0-4	13	10	23	8	16	2	4	1	6	100	
FG %	1st Qtr	3-21	14.3%	2nd Qtr	4-17	23.5%	Half:	7-38	18.4%							
3FG %	1st Qtr	1-10	10.0%	2nd Qtr	1-3	33.3%	Half:	2-13	15.4%							
FT %	1st Qtr	0-0	0%	2nd Qtr	0-4	00.0%	Half:	0-4	00.0%							

Officials: Lisa Mattingly, Laura Morris, Bryan Enterline
 Technical Fouls: Missouri- None. Auburn- None.

Score by periods	1st	2nd	3rd	4th	Total
Missouri	19	11	11	18	59
Auburn	7	9	18	17	51

Points	In Paint	Off T/O	2nd Chance	Fast Break	Bench
MU-W	14	0	1	4	2
Auburn	4	0	4	0	5

Last FG - MU-W 2nd-05:25, AU 2nd-03:43.
 MU-W led for 17:33. AU led for 0:41. Game was tied for 1:46.

Score tied - 1 times
 Lead changed - 2 times

Missouri vs Auburn
2/15/2018; 6:00 p.m. at Auburn Arena -- Auburn, Ala.
Period 1 Play-By-Play



VISITORS: Missouri	Time	Score	Margin	HOME: Auburn
MISSED LAYUP by FRERICKS,JORDAN	09:50			
REBOUND (OFF) by PORTER,CIERRA	09:50			
MISSED LAYUP by FRERICKS,JORDAN	09:35			
	09:35			REBOUND (DEF) by JACKSON,ABIGAYLE
	09:22			MISSED JUMPER by MCKAY,JANIAH
REBOUND (DEF) by PORTER,CIERRA	09:22			
MISSED 3PTR by CUNNINGHAM,SOPHIE	09:07			
REBOUND (OFF) by FRERICKS,JORDAN	09:07			
	09:04			FOUL by ALEXANDER,DAISA
MISSED 3PTR by ALDRIDGE,LAUREN	08:53			
REBOUND (OFF) by PORTER,CIERRA	08:53			
	08:46			FOUL by JONES,JAZMINE
MISSED FT by FRERICKS,JORDAN	08:46			
REBOUND (DEADB) by TEAM	08:46			
GOOD! FT by FRERICKS,JORDAN	08:46	0-1	V 1	
	08:31	3-1	H 2	GOOD! 3PTR by ALEXANDER,DAISA
	08:31			ASSIST by MCKAY,JANIAH
TURNOVER by FRERICKS,JORDAN	08:08			
	07:58			MISSED 3PTR by ALEXANDER,DAISA
REBOUND (DEF) by PORTER,CIERRA	07:58			
GOOD! LAYUP by FRERICKS,JORDAN [FB/PNT]	07:50	3-3	T	
ASSIST by CUNNINGHAM,SOPHIE	07:50			
	07:31			MISSED JUMPER by JACKSON,ABIGAYLE
REBOUND (DEF) by CUNNINGHAM,SOPHIE	07:31			
GOOD! LAYUP by PORTER,CIERRA [PNT]	07:18	3-5	V 2	
ASSIST by SMITH,AMBER	07:17			
	06:59			MISSED JUMPER by JONES,JAZMINE
REBOUND (DEF) by SMITH,AMBER	06:59			
GOOD! LAYUP by PORTER,CIERRA [PNT]	06:42	3-7	V 4	
ASSIST by FRERICKS,JORDAN	06:42			
	06:42			FOUL by THOMPSON,UNIQUE
GOOD! FT by PORTER,CIERRA	06:42	3-8	V 5	
	06:42			SUB IN: JONES,EMARI
	06:42			SUB OUT: JACKSON,ABIGAYLE
	06:24			MISSED JUMPER by MCKAY,JANIAH
	06:24			REBOUND (OFF) by JONES,JAZMINE
	06:12	5-8	V 3	GOOD! LAYUP by MCKAY,JANIAH [PNT]
	05:54			FOUL by JONES,EMARI
GOOD! LAYUP by FRERICKS,JORDAN [PNT]	05:52	5-10	V 5	
ASSIST by ALDRIDGE,LAUREN	05:52			
	05:40	7-10	V 3	GOOD! JUMPER by ALEXANDER,DAISA
TURNOVER by ALDRIDGE,LAUREN	05:19			
	05:17			STEAL by JONES,EMARI
	05:13			MISSED JUMPER by MCKAY,JANIAH
REBOUND (DEF) by SMITH,AMBER	05:13			
GOOD! 3PTR by SMITH,AMBER	05:00	7-13	V 6	
ASSIST by PORTER,CIERRA	05:00			
	04:45			MISSED 3PTR by JONES,EMARI
REBOUND (DEF) by PORTER,CIERRA	04:45			
GOOD! LAYUP by FRERICKS,JORDAN [PNT]	04:33	7-15	V 8	
ASSIST by ALDRIDGE,LAUREN	04:33			
FOUL by PORTER,CIERRA	04:20			
	04:20			TIMEOUT MEDIA
SUB IN: MICHAEL,KAYLA	04:20			
SUB IN: CHAVIS,JORDAN	04:20			
SUB OUT: FRERICKS,JORDAN	04:20			
SUB OUT: SMITH,AMBER	04:20			
	04:20			SUB IN: SANDERS,ERICA
	04:20			SUB IN: LEWIS,TIFFANY
	04:20			SUB IN: JONES,JESSICA
	04:20			SUB OUT: ALEXANDER,DAISA
	04:20			SUB OUT: JONES,JAZMINE
	04:20			SUB OUT: THOMPSON,UNIQUE
	04:17			MISSED 3PTR by LEWIS,TIFFANY
REBOUND (DEF) by TEAM	04:17			
GOOD! 3PTR by CUNNINGHAM,SOPHIE	03:55	7-18	V 11	
ASSIST by MICHAEL,KAYLA	03:55			
	03:38			MISSED 3PTR by LEWIS,TIFFANY
	03:38			REBOUND (OFF) by JONES,JESSICA

VISITORS: Missouri	Time	Score	Margin	HOME: Auburn
	03:15			MISSED JUMPER by SANDERS,ERICA
REBOUND (DEF) by CUNNINGHAM,SOPHIE	03:15			
TURNOVER by ALDRIDGE,LAUREN	03:03			
	03:03			STEAL by LEWIS,TIFFANY
FOUL by PORTER,CIERRA	03:03			
SUB IN: FRERICKS,JORDAN	03:03			
SUB OUT: PORTER,CIERRA	03:03			
	03:03			SUB IN: ALEXANDER,DAISA
	03:03			SUB OUT: MCKAY,JANIAH
	02:36			MISSED 3PTR by ALEXANDER,DAISA
	02:36			REBOUND (OFF) by TEAM
SUB IN: SMITH,AMBER	02:34			
SUB OUT: ALDRIDGE,LAUREN	02:34			
	02:17			MISSED 3PTR by LEWIS,TIFFANY
	02:17			REBOUND (OFF) by TEAM
	02:16			SUB IN: THOMPSON,UNIQUE
	02:16			SUB IN: JACKSON,ABIGAYLE
	02:16			SUB IN: MCKAY,JANIAH
	02:16			SUB OUT: JONES,EMARI
	02:16			SUB OUT: LEWIS,TIFFANY
	02:16			SUB OUT: JONES,JESSICA
	01:55			MISSED 3PTR by MCKAY,JANIAH
	01:55			REBOUND (OFF) by MCKAY,JANIAH
	01:52			MISSED JUMPER by MCKAY,JANIAH
BLOCK by FRERICKS,JORDAN	01:52			
	01:50			REBOUND (OFF) by THOMPSON,UNIQUE
	01:48			MISSED JUMPER by THOMPSON,UNIQUE
REBOUND (DEF) by CHAVIS,JORDAN	01:48			
MISSED 3PTR by CHAVIS,JORDAN	01:22			
	01:22			REBOUND (DEF) by JACKSON,ABIGAYLE
	01:14			MISSED JUMPER by SANDERS,ERICA
REBOUND (DEF) by CUNNINGHAM,SOPHIE	01:14			
TURNOVER by FRERICKS,JORDAN	01:03			
	01:01			STEAL by THOMPSON,UNIQUE
	00:48			MISSED 3PTR by JACKSON,ABIGAYLE
REBOUND (DEF) by MICHAEL,KAYLA	00:48			
MISSED 3PTR by SMITH,AMBER	00:32			
	00:32			REBOUND (DEF) by MCKAY,JANIAH
	00:08			MISSED 3PTR by ALEXANDER,DAISA
REBOUND (DEF) by SMITH,AMBER	00:08			
	00:01			FOUL by JACKSON,ABIGAYLE
MISSED FT by SMITH,AMBER	00:01			
REBOUND (DEADB) by TEAM	00:01			
GOOD! FT by SMITH,AMBER	00:01	7-19	V 12	
SUB IN: SCHUCHTS,HANNAH	00:01			
SUB IN: ALDRIDGE,LAUREN	00:01			
SUB OUT: CUNNINGHAM,SOPHIE	00:01			
SUB OUT: MICHAEL,KAYLA	00:01			

Missouri 19, Auburn 7

Period 1-only	In Paint	Off T/O	2nd Chance	Fast Break	Bench	
MU-W	10	0	1	2	0	Score tied - 2 times
AU	2	0	2	0	0	Lead changed - 2 times

Missouri vs Auburn
 2/15/2018; 6:00 p.m. at Auburn Arena -- Auburn, Ala.
 Period 2 Play-By-Play



VISITORS: Missouri	Time	Score	Margin	HOME: Auburn
SUB IN: SCHUCHTS,HANNAH	10:00			
SUB IN: CHAVIS,JORDAN	10:00			
SUB OUT: PORTER,CIERRA	10:00			
SUB OUT: FRERICKS,JORDAN	10:00			
	09:44			TURNOVER by ALEXANDER,DAISA
	09:36			FOUL by ALEXANDER,DAISA
	09:36			SUB IN: LEWIS,TIFFANY
	09:36			SUB IN: JONES,EMARI
	09:36			SUB OUT: ALEXANDER,DAISA
	09:36			SUB OUT: JACKSON,ABIGAYLE
MISSED LAYUP by SMITH,AMBER	09:21			
REBOUND (OFF) by SMITH,AMBER	09:21			
MISSED JUMPER by SMITH,AMBER	09:12			
	09:12			REBOUND (DEF) by JONES,EMARI
	09:04			MISSED LAYUP by MCKAY,JANIAH
	09:04			REBOUND (OFF) by THOMPSON,UNIQUE
	09:00	9-19	V 10	GOOD! LAYUP by THOMPSON,UNIQUE [PNT]
TURNOVER by SCHUCHTS,HANNAH	08:32			
	08:29			STEAL by JONES,EMARI
	08:25			MISSED JUMPER by MCKAY,JANIAH
	08:25			REBOUND (OFF) by THOMPSON,UNIQUE
FOUL by SCHUCHTS,HANNAH	08:16			
	08:16			MISSED FT by THOMPSON,UNIQUE
	08:16			REBOUND (DEADB) by TEAM
	08:16			MISSED FT by THOMPSON,UNIQUE
REBOUND (DEF) by SMITH,AMBER	08:16			
SUB IN: ROUNDTREE,JORDAN	08:16			
SUB IN: FRERICKS,JORDAN	08:16			
SUB OUT: SCHUCHTS,HANNAH	08:16			
SUB OUT: CHAVIS,JORDAN	08:16			
MISSED JUMPER by SMITH,AMBER	07:57			
	07:57			REBOUND (DEF) by THOMPSON,UNIQUE
FOUL by CUNNINGHAM,SOPHIE	07:54			
	07:45			MISSED JUMPER by THOMPSON,UNIQUE
BLOCK by FRERICKS,JORDAN	07:45			
REBOUND (DEF) by FRERICKS,JORDAN	07:42			
GOOD! LAYUP by FRERICKS,JORDAN [PNT]	07:31	9-21	V 12	
ASSIST by SMITH,AMBER	07:31			
	07:07	12-21	V 9	GOOD! 3PTR by JONES,EMARI
	07:07			ASSIST by THOMPSON,UNIQUE
GOOD! LAYUP by FRERICKS,JORDAN [FB/PNT]	06:52	12-23	V 11	
ASSIST by CUNNINGHAM,SOPHIE	06:52			
	06:33			MISSED 3PTR by LEWIS,TIFFANY
REBOUND (DEF) by SMITH,AMBER	06:33			
GOOD! JUMPER by SMITH,AMBER	06:18	12-25	V 13	
ASSIST by ALDRIDGE,LAUREN	06:18			
	05:51			MISSED JUMPER by LEWIS,TIFFANY
BLOCK by ROUNDTREE,JORDAN	05:51			
	05:51			REBOUND (OFF) by TEAM
SUB IN: TAHANE,EMMANUELLE	05:51			
SUB IN: MICHAEL,KAYLA	05:51			
SUB OUT: FRERICKS,JORDAN	05:51			
SUB OUT: SMITH,AMBER	05:51			
	05:51			SUB IN: JONES,JESSICA
	05:51			SUB IN: SANDERS,ERICA
	05:51			SUB OUT: JONES,JAZMINE
	05:51			SUB OUT: THOMPSON,UNIQUE
	05:49			MISSED JUMPER by LEWIS,TIFFANY
REBOUND (DEF) by ALDRIDGE,LAUREN	05:49			
GOOD! 3PTR by CUNNINGHAM,SOPHIE	05:25	12-28	V 16	
ASSIST by MICHAEL,KAYLA	05:25			
	04:54			MISSED LAYUP by MCKAY,JANIAH
REBOUND (DEF) by ALDRIDGE,LAUREN	04:54			
MISSED JUMPER by MICHAEL,KAYLA	04:35			
	04:35			REBOUND (DEF) by SANDERS,ERICA
	04:25	14-28	V 14	GOOD! JUMPER by MCKAY,JANIAH
	04:02			FOUL by LEWIS,TIFFANY
TIMEOUT media	04:02			
GOOD! FT by MICHAEL,KAYLA	04:02	14-29	V 15	

VISITORS: Missouri	Time	Score	Margin	HOME: Auburn
GOOD! FT by MICHAEL,KAYLA	04:02	14-30	V 16	
SUB IN: FRERICKS,JORDAN	04:02			
SUB IN: CHAVIS,JORDAN	04:01			
SUB IN: SMITH,AMBER	04:01			
SUB OUT: CUNNINGHAM,SOPHIE	04:01			
SUB OUT: ALDRIDGE,LAUREN	04:01			
SUB OUT: TAHANE,EMMANUELLE	04:01			
SUB OUT: MICHAEL,KAYLA	04:01			
SUB OUT: ROUNDTREE,JORDAN	04:01			
	03:43	16-30	V 14	GOOD! JUMPER by LEWIS, TIFFANY
TURNOVER by SMITH,AMBER	03:27			
SUB IN: ALDRIDGE,LAUREN	03:27			
SUB OUT: CHAVIS,JORDAN	03:27			
	03:04			TURNOVER by MCKAY, JANIAH
STEAL by ALDRIDGE,LAUREN	03:04			
MISSED LAYUP by FRERICKS,JORDAN	02:48			
	02:48			BLOCK by JONES, JESSICA
REBOUND (OFF) by ALDRIDGE,LAUREN	02:46			
MISSED LAYUP by FRERICKS,JORDAN	02:41			
	02:41			REBOUND (DEF) by JONES, JESSICA
	02:25			MISSED JUMPER by SANDERS, ERICA
	02:25			REBOUND (OFF) by JONES, JESSICA
	02:20			TURNOVER by JONES, JESSICA
STEAL by FRERICKS,JORDAN	02:18			
	02:03			SUB IN: JACKSON, ABIGAYLE
	02:03			SUB IN: THOMPSON, UNIQUE
	02:03			SUB IN: JONES, JAZMINE
	02:03			SUB OUT: JONES, EMARI
	02:03			SUB OUT: JONES, JESSICA
	02:03			SUB OUT: SANDERS, ERICA
MISSED 3PTR by ALDRIDGE,LAUREN	01:56			
	01:56			REBOUND (DEF) by MCKAY, JANIAH
	01:46			MISSED LAYUP by THOMPSON, UNIQUE
REBOUND (DEF) by SMITH,AMBER	01:46			
TURNOVER by ALDRIDGE,LAUREN	01:40			
	01:38			STEAL by JONES, JAZMINE
	01:30			MISSED JUMPER by THOMPSON, UNIQUE
	01:30			REBOUND (OFF) by JONES, JAZMINE
FOUL by FRERICKS,JORDAN	01:27			
	01:27			MISSED FT by THOMPSON, UNIQUE
	01:27			REBOUND (DEADB) by TEAM
	01:27			MISSED FT by THOMPSON, UNIQUE
REBOUND (DEF) by FRERICKS,JORDAN	01:27			
SUB IN: MICHAEL,KAYLA	01:27			
SUB IN: CHAVIS,JORDAN	01:27			
SUB OUT: ALDRIDGE,LAUREN	01:27			
SUB OUT: SMITH,AMBER	01:27			
	01:13			FOUL by JACKSON, ABIGAYLE
	01:13			SUB IN: JONES, EMARI
	01:13			SUB IN: JONES, JESSICA
	01:13			SUB OUT: JACKSON, ABIGAYLE
	01:13			SUB OUT: THOMPSON, UNIQUE
MISSED 3PTR by CHAVIS,JORDAN	01:03			
	01:03			REBOUND (DEF) by JONES, JAZMINE
FOUL by TAHANE,EMMANUELLE	01:01			
SUB IN: SMITH,AMBER	01:01			
	00:41			TURNOVER by LEWIS, TIFFANY
STEAL by SMITH,AMBER	00:39			
TURNOVER by SMITH,AMBER	00:38			
	00:36			STEAL by LEWIS, TIFFANY
	00:34			MISSED LAYUP by LEWIS, TIFFANY
BLOCK by SMITH,AMBER	00:34			
	00:34			REBOUND (OFF) by TEAM
	00:27			MISSED 3PTR by JONES, EMARI
	00:27			REBOUND (OFF) by JONES, JAZMINE
	00:24			MISSED JUMPER by JONES, JAZMINE
BLOCK by SMITH,AMBER	00:24			
REBOUND (DEF) by TEAM	00:23			
MISSED 3PTR by SMITH,AMBER	00:01			
	00:01			REBOUND (DEF) by JONES, JAZMINE

	Period 2-only	In Paint	Off T/O	2nd Chance	Fast Break	Bench	
MU	4	4	0	0	2	2	Score tied - 0 times
AU	2	2	0	2	0	5	Lead changed - 0 times

Official Basketball Box Score -- Game Totals -- Second Half Statistics
 Missouri vs Auburn
 2/15/2018 6:00 p.m. at Auburn Arena -- Auburn, Ala.



Missouri 29 • 21-5, 9-4 SEC

##	Player		Total		3-Ptr	Rebounds			PF	TP	A	TO	Blk	Stl	Min
			FG-FGA	FG-FGA	FT-FTA	Off	Def	Tot							
03	CUNNINGHAM,SOPHIE	g	2-4	0-2	2-3	0	0	0	1	6	0	3	0	1	20
05	ALDRIDGE,LAUREN	g	1-3	1-3	2-2	0	2	2	3	5	1	3	0	0	20
21	PORTER,CIERRA	f	1-2	0-0	0-0	0	2	2	3	2	1	3	1	0	9
22	FRERICKS,JORDAN	f	4-6	0-0	0-0	0	5	5	2	8	3	1	1	1	18
23	SMITH,AMBER	g	0-2	0-1	1-2	0	3	3	1	1	1	4	0	2	6
02	ROUNDTREE,JORDAN		1-1	1-1	2-2	0	1	1	0	5	1	0	0	0	8
13	SCHUCHTS,HANNAH		0-0	0-0	0-0	0	0	0	0	0	0	0	0	0	0
20	MICHAEL,KAYLA		0-0	0-0	0-0	0	0	0	0	0	0	0	0	0	0
24	CHAVIS,JORDAN		0-1	0-1	0-0	0	0	0	0	0	0	1	0	1	8
34	TAHANE,EMMANUELLE		1-2	0-0	0-0	0	1	1	0	2	1	1	0	0	11
TEAM						1	3	4	0		0				
Totals			10-21	2-8	7-9	1	17	18	10	29	8	16	2	5	100

FG %	3rd Qtr	3-12	25.0%	4th Qtr	7-9	77.8%	Half:	10-21	47.6%
3FG %	3rd Qtr	1-6	16.7%	4th Qtr	1-2	50.0%	Half:	2-8	30.0%
FT %	3rd Qtr	4-5	80.0%	4th Qtr	3-4	75.0%	Half:	7-9	77.8%

Auburn 35 • 13-12, 4-9 SEC

##	Player		Total		3-Ptr	Rebounds			PF	TP	A	TO	Blk	Stl	Min
			FG-FGA	FG-FGA	FT-FTA	Off	Def	Tot							
00	ALEXANDER,DAISA	g	4-16	0-1	0-2	2	4	6	1	8	0	1	0	5	18
04	JACKSON,ABIGAYLE	f	0-0	0-0	0-0	0	0	0	1	0	0	0	0	0	1
15	JONES,JAZMINE	f	2-3	0-0	0-0	2	1	3	2	4	0	2	0	3	14
20	THOMPSON,UNIQUE	f	2-3	0-0	2-3	0	3	3	3	6	2	2	0	0	14
33	MCKAY,JANIAH	g	5-11	0-0	4-4	2	1	3	1	14	3	1	0	2	18
03	SANDERS,ERICA		0-0	0-0	0-0	0	0	0	3	0	0	0	0	0	7
05	JONES,EMARI		1-4	1-2	0-0	3	0	3	2	3	0	2	0	1	18
14	LEWIS,TIFFANY		0-1	0-0	0-0	0	0	0	0	0	0	0	0	0	4
23	JONES,JESSICA		0-0	0-0	0-0	0	1	1	1	0	0	0	0	1	6
TEAM						0	1	1	0		0				
Totals			14-38	1-3	6-9	9	11	20	14	35	5	8	0	12	100

FG %	3rd Qtr	7-18	38.9%	4th Qtr	7-20	35.0%	Half:	14-38	36.8%
3FG %	3rd Qtr	0-1	00.0%	4th Qtr	1-2	50.0%	Half:	1-3	15.4%
FT %	3rd Qtr	4-7	57.1%	4th Qtr	2-2	100.0%	Half:	6-9	66.7%

Officials: Lisa Mattingly, Laura Morris, Bryan Enterline
 Technical Fouls: Missouri- None. Auburn- None.

Score by periods	1st	2nd	3rd	4th	Total
Missouri	19	11	11	18	59
Auburn	7	9	18	17	51

Points	In Paint	Off T/O	2nd Chance	Fast Break	Bench
MU-W	16	9	0	4	7
Auburn	14	14	6	10	3

Last FG - MU-W 4th-00:56, AU 4th-00:17.
 MU-W led for 20:00. AU led for 0:00. Game was tied for 0:00.

Score tied - 0 times
 Lead changed - 0 times

Missouri vs Auburn
 2/15/2018; 6:00 p.m. at Auburn Arena -- Auburn, Ala.
 Period 3 Play-By-Play



VISITORS: Missouri	Time	Score	Margin	HOME: Auburn
	09:40			MISSED JUMPER by ALEXANDER,DAISA
REBOUND (DEF) by SMITH,AMBER	09:40			
MISSED 3PTR by ALDRIDGE,LAUREN	09:27			
	09:27			REBOUND (DEF) by TEAM
	09:11			TURNOVER by ALEXANDER,DAISA
STEAL by CUNNINGHAM,SOPHIE	09:11			
	09:04			FOUL by JACKSON,ABIGAYLE
	09:04			SUB IN: JONES,EMARI
	09:04			SUB OUT: JACKSON,ABIGAYLE
GOOD! 3PTR by ALDRIDGE,LAUREN	08:49	16-33	V 17	
ASSIST by PORTER,CIERRA	08:49			
	08:28			MISSED JUMPER by JONES,JAZMINE
REBOUND (DEF) by SMITH,AMBER	08:28			
TURNOVER by PORTER,CIERRA	08:18			
	08:16			STEAL by MCKAY,JANIAH
	08:14	18-33	V 15	GOOD! LAYUP by JONES,JAZMINE [FB/PNT]
	08:14			ASSIST by MCKAY,JANIAH
TURNOVER by ALDRIDGE,LAUREN	07:53			
	07:53			STEAL by MCKAY,JANIAH
FOUL by ALDRIDGE,LAUREN	07:53			
SUB IN: CHAVIS,JORDAN	07:53			
SUB OUT: SMITH,AMBER	07:53			
	07:41			MISSED JUMPER by ALEXANDER,DAISA
	07:41			REBOUND (OFF) by JONES,EMARI
	07:38			MISSED JUMPER by JONES,EMARI
BLOCK by PORTER,CIERRA	07:38			
	07:36			REBOUND (OFF) by JONES,EMARI
FOUL by FRERICKS,JORDAN	07:33			
FOUL by CUNNINGHAM,SOPHIE	07:28			
	07:28	19-33	V 14	GOOD! FT by THOMPSON,UNIQUE
	07:28	20-33	V 13	GOOD! FT by THOMPSON,UNIQUE
MISSED LAYUP by FRERICKS,JORDAN	07:17			
REBOUND (OFF) by TEAM	07:16			
MISSED JUMPER by PORTER,CIERRA	07:09			
	07:08			REBOUND (DEF) by THOMPSON,UNIQUE
	06:57	22-33	V 11	GOOD! JUMPER by MCKAY,JANIAH
	06:46			FOUL by SANDERS,ERICA
MISSED 3PTR by ALDRIDGE,LAUREN	06:40			
	06:38			REBOUND (DEF) by MCKAY,JANIAH
	06:28	24-33	V 9	GOOD! JUMPER by MCKAY,JANIAH [FB]
TIMEOUT 30SEC	06:19			
	06:16			FOUL by SANDERS,ERICA
	06:16			SUB IN: SANDERS,ERICA
	06:16			SUB OUT: JONES,JAZMINE
	06:07			FOUL by THOMPSON,UNIQUE
MISSED 3PTR by CUNNINGHAM,SOPHIE	06:03			
	06:03			REBOUND (DEF) by ALEXANDER,DAISA
	05:52			TURNOVER by MCKAY,JANIAH
STEAL by FRERICKS,JORDAN	05:50			
GOOD! LAYUP by FRERICKS,JORDAN [PNT]	05:29	24-35	V 11	
	05:08	26-35	V 9	GOOD! JUMPER by THOMPSON,UNIQUE [PNT]
	05:07			ASSIST by MCKAY,JANIAH
FOUL by PORTER,CIERRA	05:07			
	05:07			MISSED FT by THOMPSON,UNIQUE
REBOUND (DEF) by FRERICKS,JORDAN	05:06			
TURNOVER by FRERICKS,JORDAN	04:47			
	04:47			TIMEOUT media
SUB IN: SMITH,AMBER	04:45			
SUB OUT: PORTER,CIERRA	04:45			
	04:36	28-35	V 7	GOOD! LAYUP by THOMPSON,UNIQUE [PNT]
MISSED LAYUP by FRERICKS,JORDAN	04:07			
	04:07			REBOUND (DEF) by THOMPSON,UNIQUE
	03:54			TURNOVER by JONES,EMARI
STEAL by SMITH,AMBER	03:52			
MISSED JUMPER by SMITH,AMBER	03:29			
	03:29			REBOUND (DEF) by ALEXANDER,DAISA
	03:13			MISSED 3PTR by JONES,EMARI
	03:12			REBOUND (OFF) by MCKAY,JANIAH
FOUL by ALDRIDGE,LAUREN	03:12			

VISITORS: Missouri	Time	Score	Margin	HOME: Auburn
	03:12	29-35	V 6	GOOD! FT by MCKAY,JANIAH
	03:12	30-35	V 5	GOOD! FT by MCKAY,JANIAH
SUB IN: PORTER,CIERRA	03:12			
SUB OUT: SMITH,AMBER	03:12			
TURNOVER by ALDRIDGE,LAUREN	03:08			
	03:08			STEAL by ALEXANDER,DAISA
	03:01			MISSED JUMPER by THOMPSON,UNIQUE
REBOUND (DEF) by FRERICKS,JORDAN	03:01			
GOOD! LAYUP by CUNNINGHAM,SOPHIE [FB/PNT]	02:55	30-37	V 7	
ASSIST by FRERICKS,JORDAN	02:55			
	02:55			FOUL by SANDERS,ERICA
GOOD! FT by CUNNINGHAM,SOPHIE	02:55	30-38	V 8	
	02:55			SUB IN: JONES,JAZMINE
	02:55			SUB OUT: SANDERS,ERICA
	02:36			FOUL by THOMPSON,UNIQUE
	02:36			TURNOVER by THOMPSON,UNIQUE
TURNOVER by CHAVIS,JORDAN	02:20			
	02:16			STEAL by ALEXANDER,DAISA
	02:11			MISSED LAYUP by MCKAY,JANIAH
REBOUND (DEF) by FRERICKS,JORDAN	02:11			
MISSED 3PTR by CHAVIS,JORDAN	01:59			
	01:59			REBOUND (DEF) by ALEXANDER,DAISA
	01:53	32-38	V 6	GOOD! JUMPER by ALEXANDER,DAISA [FB]
	01:52			TIMEOUT TEAM
SUB IN: SMITH,AMBER	01:52			
SUB OUT: CHAVIS,JORDAN	01:52			
	01:52			SUB IN: JONES,JESSICA
	01:52			SUB OUT: MCKAY,JANIAH
TURNOVER by SMITH,AMBER	01:50			
	01:48			STEAL by JONES,JAZMINE
	01:47			TURNOVER by JONES,JAZMINE
STEAL by SMITH,AMBER	01:46			
TURNOVER by SMITH,AMBER	01:44			
	01:43			STEAL by JONES,EMARI
	01:42			FOUL by JONES,EMARI
	01:42			TURNOVER by JONES,EMARI
	01:42			SUB IN: LEWIS,TIFFANY
	01:42			SUB OUT: THOMPSON,UNIQUE
TURNOVER by CUNNINGHAM,SOPHIE	01:30			
	01:28			STEAL by ALEXANDER,DAISA
	01:25			MISSED JUMPER by ALEXANDER,DAISA
REBOUND (DEF) by PORTER,CIERRA	01:25			
TURNOVER by PORTER,CIERRA	01:21			
	01:21			STEAL by ALEXANDER,DAISA
	01:15	34-38	V 4	GOOD! LAYUP by ALEXANDER,DAISA [FB/PNT]
FOUL by PORTER,CIERRA	01:15			
	01:15			MISSED LAYUP by ALEXANDER,DAISA
REBOUND (DEF) by PORTER,CIERRA	01:15			
MISSED 3PTR by CUNNINGHAM,SOPHIE	00:58			
	00:58			REBOUND (DEF) by JONES,JESSICA
	00:43			MISSED JUMPER by JONES,EMARI
REBOUND (DEF) by ALDRIDGE,LAUREN	00:43			
	00:41			FOUL by JONES,JESSICA
GOOD! FT by ALDRIDGE,LAUREN	00:41	34-39	V 5	
GOOD! FT by ALDRIDGE,LAUREN	00:41	34-40	V 6	
SUB IN: TAHANE,EMMANUELLE	00:41			
SUB OUT: PORTER,CIERRA	00:41			
	00:41			SUB IN: MCKAY,JANIAH
	00:41			SUB IN: SANDERS,ERICA
	00:41			SUB OUT: JONES,JAZMINE
	00:41			SUB OUT: LEWIS,TIFFANY
	00:21			MISSED JUMPER by ALEXANDER,DAISA
	00:21			REBOUND (OFF) by ALEXANDER,DAISA
FOUL by SMITH,AMBER	00:20			
	00:20			MISSED FT by ALEXANDER,DAISA
	00:20			REBOUND (DEADB) by TEAM
	00:20			MISSED FT by ALEXANDER,DAISA
REBOUND (DEF) by SMITH,AMBER	00:20			
	00:20			SUB IN: JONES,JAZMINE
	00:20			SUB OUT: SANDERS,ERICA
	00:04			FOUL by JONES,EMARI
GOOD! FT by SMITH,AMBER	00:04	34-41	V 7	
MISSED FT by SMITH,AMBER	00:04			
	00:04			REBOUND (DEF) by JONES,JAZMINE

Period 3-only	In Paint	Off T/O	2nd Chance	Fast Break	Bench	
MU-W	4	5	0	2	0	Score tied - 0 times
AU	8	8	4	8	0	Lead changed - 0 times

Missouri vs Auburn
 2/15/2018; 6:00 p.m. at Auburn Arena -- Auburn, Ala.
 Period 4 Play-By-Play



VISITORS: Missouri	Time	Score	Margin	HOME: Auburn
SUB IN: CHAVIS,JORDAN	10:00			
SUB IN: TAHANE,EMMANUELLE	10:00			
SUB OUT: PORTER,CIERRA	10:00			
SUB OUT: SMITH,AMBER	10:00			
	10:00			SUB IN: JONES,EMARI
	10:00			SUB OUT: JACKSON,ABIGAYLE
GOOD! LAYUP by FRERICKS,JORDAN [PNT]	09:48	34-43	V 9	
ASSIST by SMITH,AMBER	09:48			
	09:27	36-43	V 7	GOOD! JUMPER by ALEXANDER,DAISA
TURNOVER by SMITH,AMBER	08:58			
	08:56			STEAL by JONES,JAZMINE
	08:54			TURNOVER by JONES,JAZMINE
STEAL by CHAVIS,JORDAN	08:53			
GOOD! LAYUP by FRERICKS,JORDAN [PNT]	08:49	36-45	V 9	
ASSIST by ALDRIDGE,LAUREN	08:49			
	08:35			MISSED 3PTR by ALEXANDER,DAISA
	08:35			REBOUND (OFF) by JONES,JAZMINE
	08:31			MISSED JUMPER by ALEXANDER,DAISA
BLOCK by FRERICKS,JORDAN	08:31			
REBOUND (DEF) by TEAM	08:30			
MISSED 3PTR by SMITH,AMBER	08:06			
	08:06			REBOUND (DEF) by THOMPSON,UNIQUE
	07:52	38-45	V 7	GOOD! LAYUP by ALEXANDER,DAISA [PNT]
TURNOVER by SMITH,AMBER	07:32			
	07:32			STEAL by ALEXANDER,DAISA
SUB IN: ROUNDTREE,JORDAN	07:32			
SUB IN: SMITH,AMBER	07:32			
SUB OUT: CHAVIS,JORDAN	07:32			
	07:28			MISSED JUMPER by ALEXANDER,DAISA
REBOUND (DEF) by FRERICKS,JORDAN	07:28			
GOOD! 3PTR by ROUNDTREE,JORDAN	07:15	38-48	V 10	
ASSIST by FRERICKS,JORDAN	07:15			
	06:51			FOUL by THOMPSON,UNIQUE
	06:51			TURNOVER by THOMPSON,UNIQUE
SUB IN: PORTER,CIERRA	06:51			
SUB OUT: FRERICKS,JORDAN	06:51			
	06:51			SUB IN: SANDERS,ERICA
	06:51			SUB IN: JONES,JESSICA
	06:51			SUB IN: LEWIS,TIFFANY
	06:51			SUB OUT: ALEXANDER,DAISA
	06:51			SUB OUT: JONES,JAZMINE
	06:51			SUB OUT: THOMPSON,UNIQUE
GOOD! LAYUP by PORTER,CIERRA [PNT]	06:36	38-50	V 12	
ASSIST by TAHANE,EMMANUELLE	06:36			
	06:07			MISSED JUMPER by MCKAY,JANIAH
	06:07			REBOUND (OFF) by MCKAY,JANIAH
FOUL by ALDRIDGE,LAUREN	06:02			
	05:57	40-50	V 10	GOOD! LAYUP by MCKAY,JANIAH [PNT]
TURNOVER by CUNNINGHAM,SOPHIE	05:46			
	05:33			MISSED LAYUP by LEWIS,TIFFANY
REBOUND (DEF) by ROUNDTREE,JORDAN	05:33			
GOOD! LAYUP by CUNNINGHAM,SOPHIE [FB/PNT]	05:27	40-52	V 12	
ASSIST by ROUNDTREE,JORDAN	05:27			
	05:12			MISSED JUMPER by MCKAY,JANIAH
REBOUND (DEF) by TAHANE,EMMANUELLE	05:12			
FOUL by PORTER,CIERRA	04:47			
TURNOVER by PORTER,CIERRA	04:47			
	04:47			TIMEOUT media
SUB IN: FRERICKS,JORDAN	04:47			
SUB OUT: PORTER,CIERRA	04:47			
	04:47			SUB IN: THOMPSON,UNIQUE
	04:47			SUB IN: ALEXANDER,DAISA
	04:47			SUB IN: JONES,JAZMINE
	04:47			SUB OUT: SANDERS,ERICA
	04:47			SUB OUT: JONES,JESSICA
	04:47			SUB OUT: MCKAY,JANIAH
	04:34	42-52	V 10	GOOD! JUMPER by JONES,JAZMINE
	04:34			ASSIST by THOMPSON,UNIQUE
GOOD! LAYUP by FRERICKS,JORDAN [PNT]	04:01	42-54	V 12	

VISITORS: Missouri	Time	Score	Margin	HOME: Auburn
	03:44			MISSED JUMPER by ALEXANDER,DAISA
REBOUND (DEF) by TEAM	03:44			
	03:42			SUB IN: MCKAY,JANIAH
	03:42			SUB IN: JONES,JESSICA
	03:42			SUB OUT: THOMPSON,UNIQUE
	03:42			SUB OUT: LEWIS,TIFFANY
TURNOVER by TAHANE,EMMANUELLE	03:36			
	03:36			SUB IN: THOMPSON,UNIQUE
	03:36			SUB OUT: JONES,JESSICA
	03:19	44-54	V 10	GOOD! JUMPER by MCKAY,JANIAH
	03:19			ASSIST by THOMPSON,UNIQUE
TIMEOUT 30SEC	03:01			
TURNOVER by ALDRIDGE,LAUREN	02:54			
	02:50			STEAL by JONES,JESSICA
	02:41			MISSED LAYUP by MCKAY,JANIAH
REBOUND (DEF) by TEAM	02:41			
	02:27			FOUL by JONES,JAZMINE
GOOD! FT by ROUNDTREE,JORDAN	02:27	44-55	V 11	
GOOD! FT by ROUNDTREE,JORDAN	02:27	44-56	V 12	
	02:27			SUB IN: JONES,JESSICA
	02:27			SUB OUT: THOMPSON,UNIQUE
	02:16			MISSED JUMPER by MCKAY,JANIAH
	02:16			REBOUND (OFF) by JONES,EMARI
	02:10			MISSED JUMPER by ALEXANDER,DAISA
	02:10			REBOUND (OFF) by ALEXANDER,DAISA
	01:55			MISSED LAYUP by MCKAY,JANIAH
REBOUND (DEF) by ALDRIDGE,LAUREN	01:51			
	01:51			FOUL by JONES,JAZMINE
MISSED LAYUP by TAHANE,EMMANUELLE	01:26			
	01:26			REBOUND (DEF) by ALEXANDER,DAISA
	01:18			MISSED JUMPER by ALEXANDER,DAISA
	01:18			REBOUND (OFF) by JONES,JAZMINE
	01:15			TIMEOUT 30SEC
	01:08			MISSED JUMPER by ALEXANDER,DAISA
REBOUND (DEF) by FRERICKS,JORDAN	01:08			
GOOD! LAYUP by TAHANE,EMMANUELLE [PNT]	00:56	44-58	V 14	
ASSIST by FRERICKS,JORDAN	00:56			
FOUL by FRERICKS,JORDAN	00:49			
	00:49	45-58	V 13	GOOD! FT by MCKAY,JANIAH
	00:49	46-58	V 12	GOOD! FT by MCKAY,JANIAH
	00:46			FOUL by ALEXANDER,DAISA
TIMEOUT 30SEC	00:46			
	00:46			SUB IN: THOMPSON,UNIQUE
	00:46			SUB IN: SANDERS,ERICA
	00:46			SUB OUT: JONES,JESSICA
	00:46			SUB OUT: JONES,EMARI
TURNOVER by CUNNINGHAM,SOPHIE	00:30			
	00:28			STEAL by JONES,JAZMINE
	00:25	48-58	V 10	GOOD! LAYUP by MCKAY,JANIAH [FB/PNT]
	00:21			FOUL by MCKAY,JANIAH
MISSED FT by CUNNINGHAM,SOPHIE	00:21			
REBOUND (DEADB) by TEAM	00:21			
GOOD! FT by CUNNINGHAM,SOPHIE	00:21	48-59	V 11	
	00:21			TIMEOUT 30SEC
	00:21			SUB IN: JONES,EMARI
	00:21			SUB IN: JONES,JESSICA
	00:21			SUB OUT: THOMPSON,UNIQUE
	00:21			SUB OUT: SANDERS,ERICA
	00:17	51-59	V 8	GOOD! 3PTR by JONES,EMARI
	00:17			ASSIST by MCKAY,JANIAH
	00:17			TIMEOUT 30SEC
	00:17			SUB IN: SANDERS,ERICA
	00:17			SUB OUT: JONES,EMARI

Missouri 59, Auburn 51

Period 4-only	In Paint	Off T/O	2nd Chance	Fast Break	Bench	
MU-W	12	4	0	2	7	Score tied - 0 times
AU	6	6	2	2	3	Lead changed - 0 times

Missouri vs Auburn
 2/15/2018; 6:00 p.m. at Auburn Arena -- Auburn, Ala.
 Scoring/Runs Reference



Period 1

Missouri	VRun	Score	Margin	HRun	Auburn
08:46 - FRERICKS FT	-	1-0	-1		
		1-3	2		ALEXANDER 3PTR - 08:31
07:50 - FRERICKS LAYUP [P] [F]	-	3-3	0		
07:18 - PORTER LAYUP [P]	4-0	5-3	-2		
06:42 - PORTER LAYUP [P]	6-0	7-3	-4		
06:42 - PORTER FT	7-0	8-3	-5		
		8-5	-3		MCKAY LAYUP [P] - 06:12
05:52 - FRERICKS LAYUP [P]	-	10-5	-5		
		10-7	-3		ALEXANDER JUMPER - 05:40
05:00 - SMITH 3PTR	-	13-7	-6		
04:33 - FRERICKS LAYUP [P]	5-0	15-7	-8		
03:55 - CUNNINGHAM 3PTR	8-0	18-7	-11		
00:01 - SMITH FT	9-0	19-7	-12		

Missouri vs Auburn
 2/15/2018; 6:00 p.m. at Auburn Arena -- Auburn, Ala.
 Scoring/Runs Reference



Period 2

Missouri	VRun	Score	Margin	HRun	Auburn
		19-9	-10		THOMPSON LAYUP [P] - 09:00
07:31 - FRERICKS LAYUP [P]	-	21-9	-12		
		21-12	-9		JONES 3PTR - 07:07
06:52 - FRERICKS LAYUP [P] [F]	-	23-12	-11		
06:18 - SMITH JUMPER	4-0	25-12	-13		
05:25 - CUNNINGHAM 3PTR	7-0	28-12	-16		
		28-14	-14		MCKAY JUMPER - 04:25
04:02 - MICHAEL FT	-	29-14	-15		
04:02 - MICHAEL FT	2-0	30-14	-16		
		30-16	-14		LEWIS JUMPER - 03:43

Missouri vs Auburn
 2/15/2018; 6:00 p.m. at Auburn Arena -- Auburn, Ala.
 Scoring/Runs Reference



Period 3

Missouri	VRun	Score	Margin	HRun	Auburn
08:49 - ALDRIDGE 3PTR	-	33-16	-17		
		33-18	-15		JONES LAYUP [P] [F] - 08:14
		33-19	-14	3-0	THOMPSON FT - 07:28
		33-20	-13	4-0	THOMPSON FT - 07:28
		33-22	-11	6-0	MCKAY JUMPER - 06:57
		33-24	-9	8-0	MCKAY JUMPER [F] - 06:28
05:29 - FRERICKS LAYUP [P]	-	35-24	-11		
		35-26	-9		THOMPSON JUMPER [P] - 05:08
		35-28	-7	4-0	THOMPSON LAYUP [P] - 04:36
		35-29	-6	5-0	MCKAY FT - 03:12
		35-30	-5	6-0	MCKAY FT - 03:12
02:55 - CUNNINGHAM LAYUP [P] [F]	-	37-30	-7		
02:55 - CUNNINGHAM FT	3-0	38-30	-8		
		38-32	-6		ALEXANDER JUMPER [F] - 01:53
		38-34	-4	4-0	ALEXANDER LAYUP [P] [F] - 01:15
00:41 - ALDRIDGE FT	-	39-34	-5		
00:41 - ALDRIDGE FT	2-0	40-34	-6		
00:04 - SMITH FT	3-0	41-34	-7		

Missouri vs Auburn
 2/15/2018; 6:00 p.m. at Auburn Arena -- Auburn, Ala.
 Scoring/Runs Reference

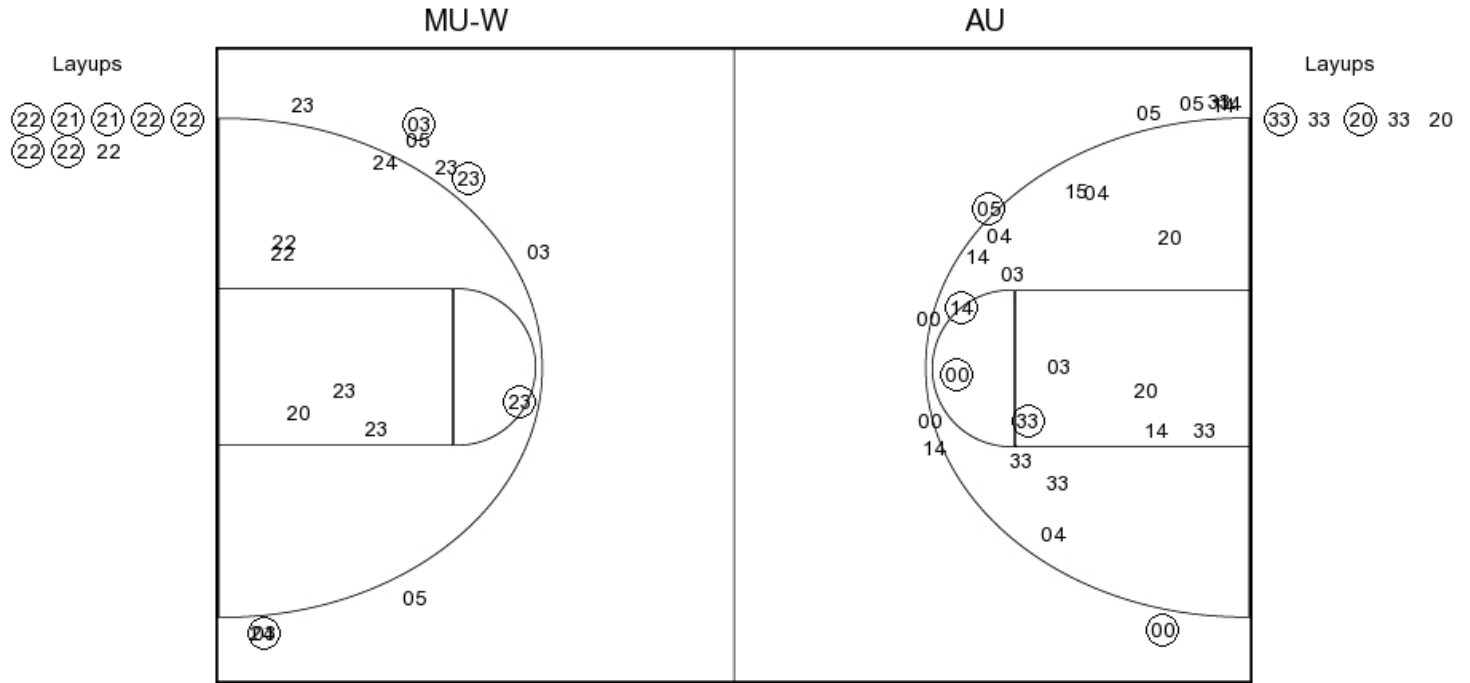


Period 4

Missouri	VRun	Score	Margin	HRun	Auburn
09:48 - FRERICKS LAYUP [P]	-	43-34	-9		
		43-36	-7		ALEXANDER JUMPER - 09:27
08:49 - FRERICKS LAYUP [P]	-	45-36	-9		
		45-38	-7		ALEXANDER LAYUP [P] - 07:52
07:15 - ROUNDTREE 3PTR	-	48-38	-10		
06:36 - PORTER LAYUP [P]	5-0	50-38	-12		
		50-40	-10		MCKAY LAYUP [P] - 05:57
05:27 - CUNNINGHAM LAYUP [P] [F]	-	52-40	-12		
		52-42	-10		JONES JUMPER - 04:34
04:01 - FRERICKS LAYUP [P]	-	54-42	-12		
		54-44	-10		MCKAY JUMPER - 03:19
02:27 - ROUNDTREE FT	-	55-44	-11		
02:27 - ROUNDTREE FT	2-0	56-44	-12		
00:56 - TAHANE LAYUP [P]	4-0	58-44	-14		
		58-45	-13		MCKAY FT - 00:49
		58-46	-12	2-0	MCKAY FT - 00:49
		58-48	-10	4-0	MCKAY LAYUP [P] [F] - 00:25
00:21 - CUNNINGHAM FT	-	59-48	-11		
		59-51	-8		JONES 3PTR - 00:17



PERIOD 1



MU-W PERIOD 1

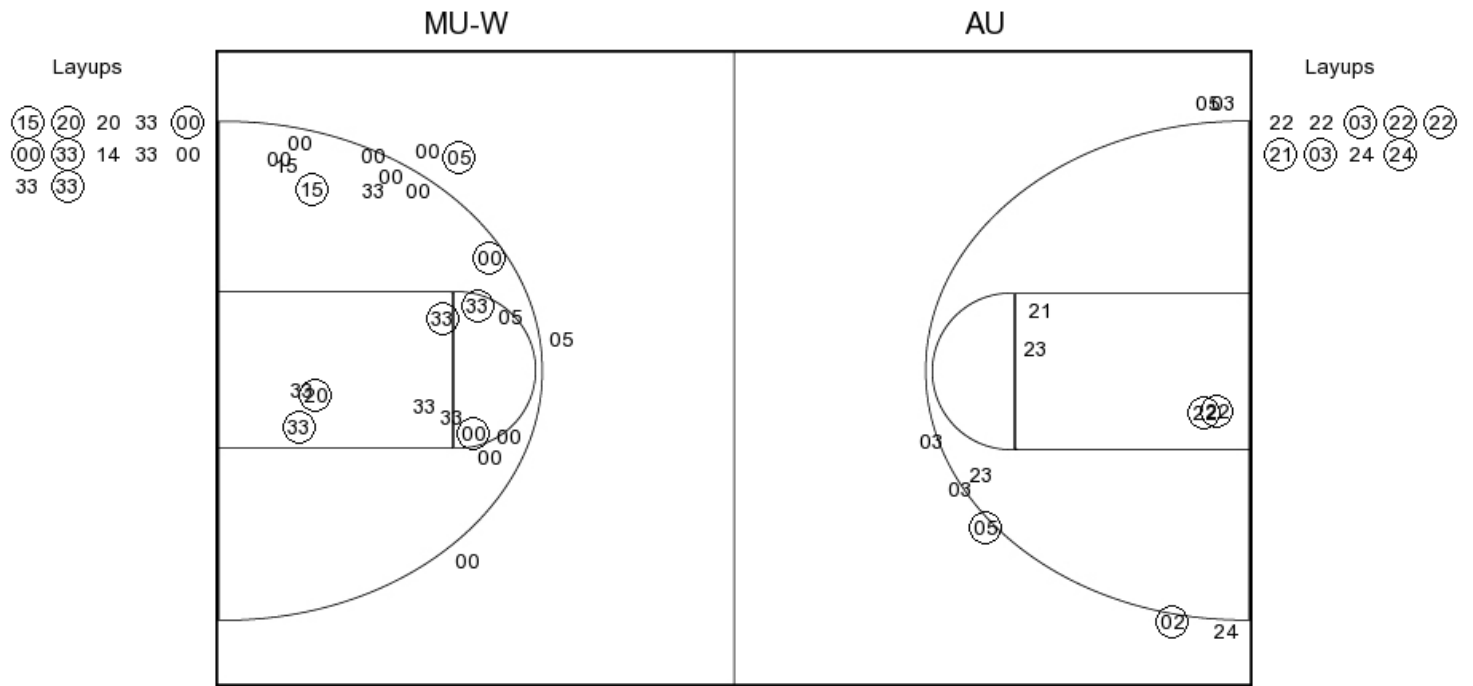
FG Made	11
FG Attempted	26
3PFG Made	3
3PFG Attempted	10

AU PERIOD 1

FG Made	7
FG Attempted	38
3PFG Made	2
3PFG Attempted	13



PERIOD 2



MU-W PERIOD 2

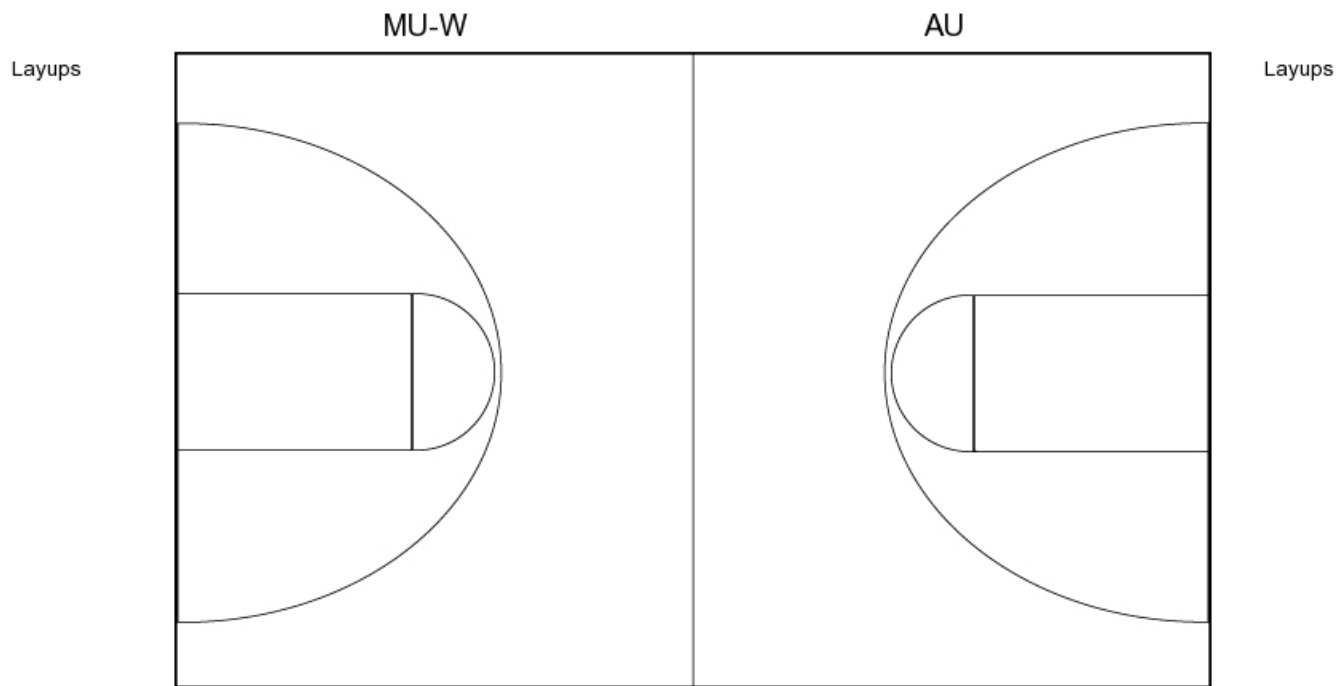
FG Made
 FG Attempted
 3PFG Made
 3PFG Attempted

AU PERIOD 2

FG Made
 FG Attempted
 3PFG Made
 3PFG Attempted



PERIOD 3



MU-W PERIOD 3

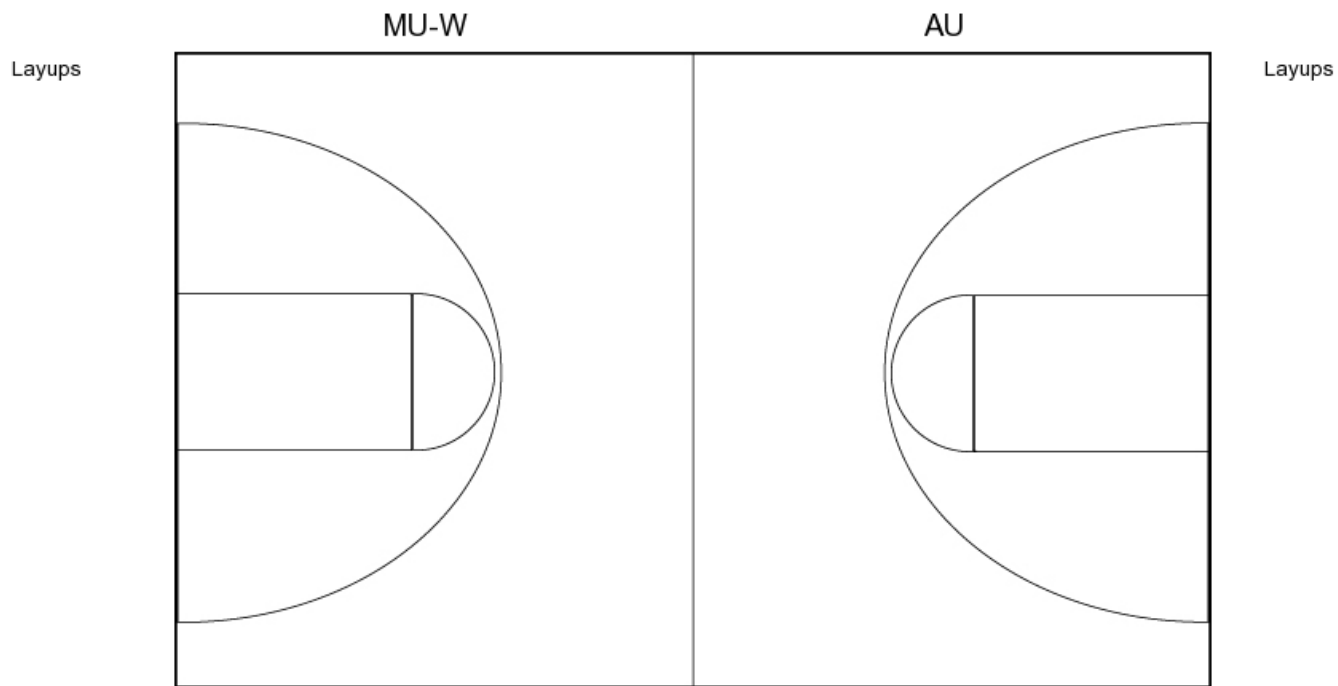
FG Made	10
FG Attempted	21
3PFG Made	2
3PFG Attempted	8

AU PERIOD 3

FG Made	14
FG Attempted	38
3PFG Made	1
3PFG Attempted	3



PERIOD 4



MU-W PERIOD 4

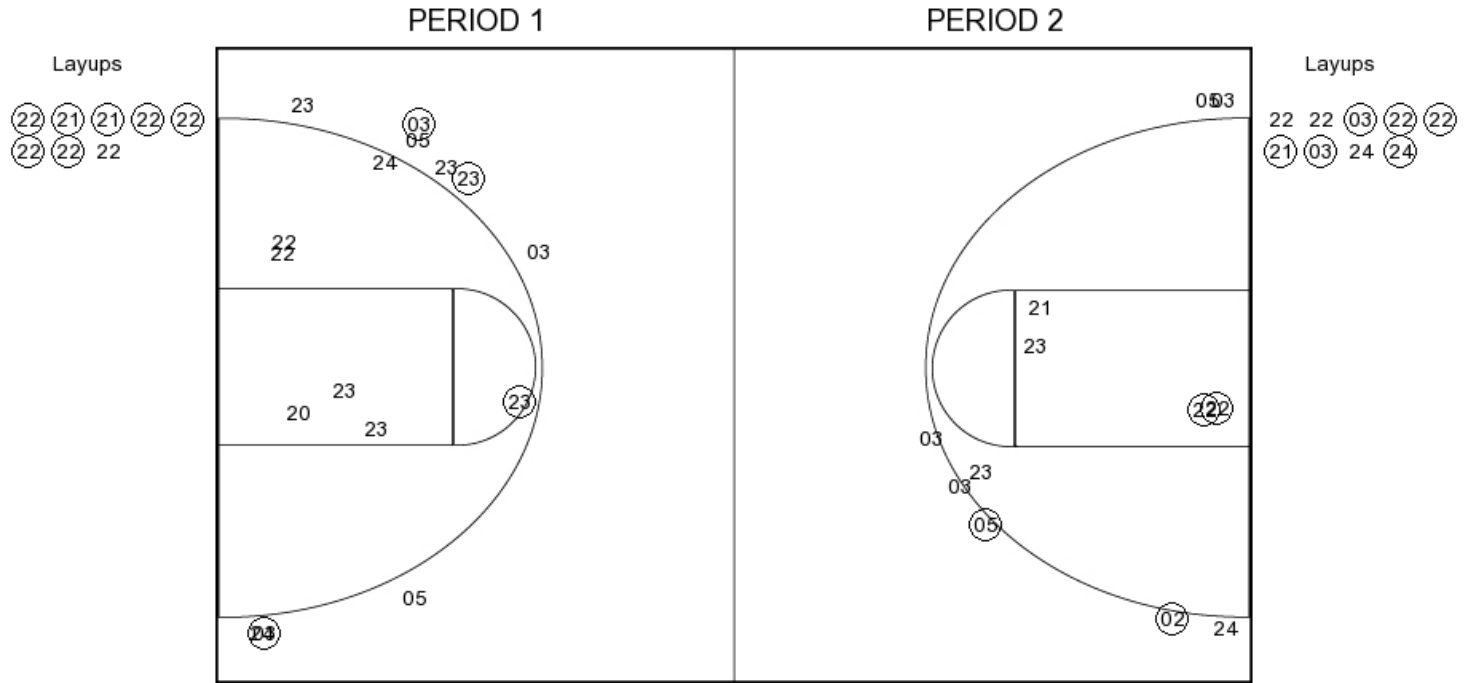
FG Made
FG Attempted
3PFG Made
3PFG Attempted

AU PERIOD 4

FG Made
FG Attempted
3PFG Made
3PFG Attempted



Missouri



MU-W PERIOD 1

FG Made	11
FG Attempted	26
3PFG Made	3
3PFG Attempted	10

MU-W PERIOD 2

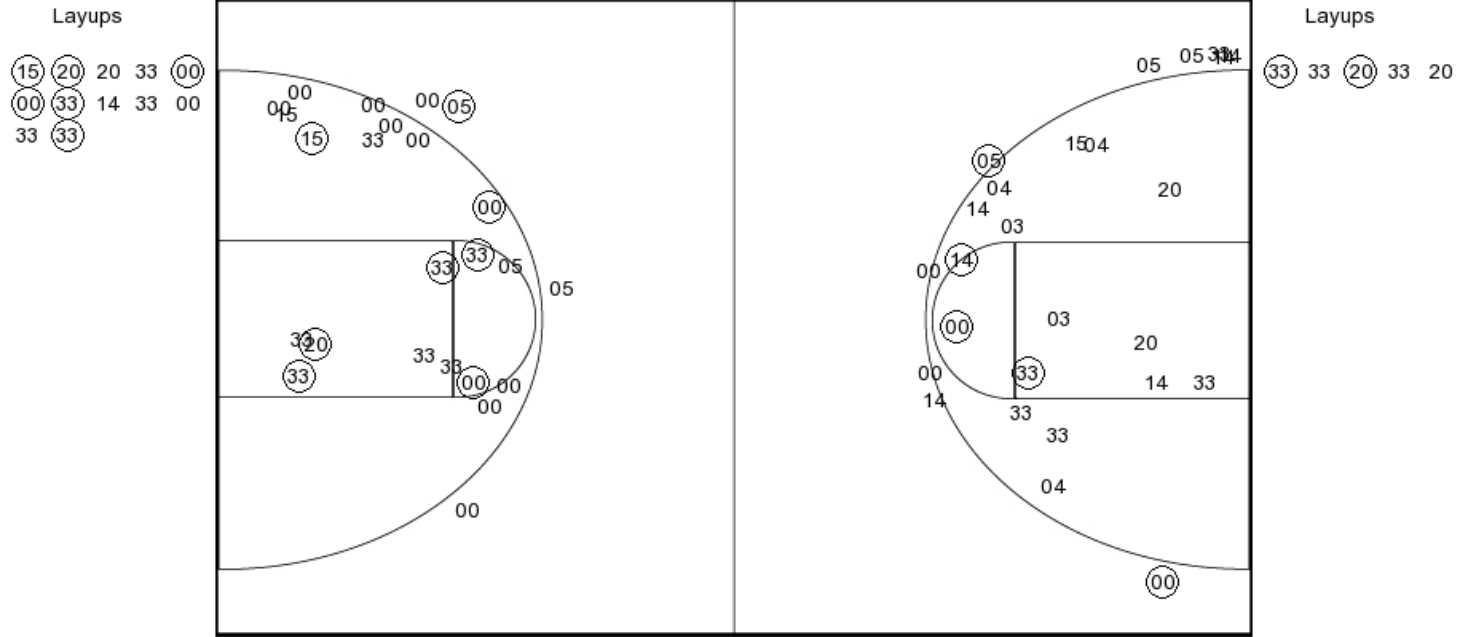
FG Made	
FG Attempted	
3PFG Made	
3PFG Attempted	



Auburn

PERIOD 2

PERIOD 1



AU PERIOD 1

FG Made	7
FG Attempted	38
3PFG Made	2
3PFG Attempted	13

AU PERIOD 2

FG Made	
FG Attempted	
3PFG Made	
3PFG Attempted	