

FINAL SCORE

#24/- LSU

48

#7/6 South Carolina 57

February 22, 2018 • Columbia, S.C./Colonial Life Arena

FINAL STATISTICS

Official Basketball Box Score -- Game Totals -- Final Statistics
#24/- LSU vs #7/6 South Carolina
2/22/2018 6:30 p.m. at Columbia, S.C./Colonial Life Arena

#24/- LSU 48 -

##	Player		Total		3-Ptr		FT-FTA		Rebounds			PF	TP	A	TO	Blk	Stl	Min
			FG-FGA		FG-FGA		FT-FTA		Off	Def	Tot							
00	JACKSON,CHLOE	g	8-16		0-1		0-0		1	3	4	2	16	2	2	0	3	40
05	MITCHELL,AYANA	f	3-7		0-0		1-1		3	2	5	4	7	0	1	0	1	18
11	LOUIS,RAIGYNE	g	7-20		1-3		2-2		3	5	8	1	17	3	0	0	6	40
13	RICHARD-HARRIS,J	g	0-3		0-3		0-0		0	4	4	0	0	2	0	0	0	36
24	AIFUWA,FAUSTINE	c	1-7		0-0		0-2		1	3	4	3	2	0	0	2	0	19
03	POINTER,KHAYLA		2-8		0-2		0-0		0	1	1	3	4	1	1	0	2	20
04	FARLEY,RAVEN		0-2		0-0		0-0		1	1	2	1	0	0	0	1	0	9
10	PATTERSON,DEKERIYA		1-2		0-1		0-0		0	0	0	1	2	0	0	0	0	9
15	BIDIKUINDILA,Y		0-0		0-0		0-0		0	0	0	0	0	0	0	0	0	3
30	CHERRY,JAILIN		0-2		0-1		0-0		0	0	0	1	0	0	0	0	0	6
TEAM									2	2	4	0			1			
TOTALS			22-67		1-11		3-5		11	21	32	16	48	8	5	3	12	200

Deadball Rebounds: 1,0

FG %	1st Half:	10-38	26.3%	2nd Half:	12-29	41.4%	Game:	22-67	32.8%									
	1st Qtr	3-15	20.0%	2nd Qtr	7-23	30.4%	3rd Qtr	3-13	23.1%					4th Qtr		9-16	56.3%	
3FG %	1st Half:	1-7	14.3%	2nd Half:	0-4	00.0%	Game:	1-11	09.1%									
	1st Qtr	0-2	00.0%	2nd Qtr	1-5	20.0%	3rd Qtr	0-1	00.0%					4th Qtr		0-3	00.0%	
FT %	1st Half:	2-2	100.0%	2nd Half:	1-3	33.3%	Game:	3-5	60.0%									
	1st Qtr	2-2	100.0%	2nd Qtr	0-0	0%	3rd Qtr	1-3	33.3%					4th Qtr		0-0	0%	

#7/6 South Carolina 57 -

##	Player		Total		3-Ptr		FT-FTA		Rebounds			PF	TP	A	TO	Blk	Stl	Min
			FG-FGA		FG-FGA		FT-FTA		Off	Def	Tot							
04	CLINEY,DONIAH	g	1-3		0-0		0-0		0	2	2	0	2	3	4	0	0	32
10	JACKSON,BIANCA	g	2-9		1-3		3-4		0	3	3	1	8	1	0	0	0	37
22	WILSON,A'JA	f	11-21		0-0		5-7		7	17	24	2	27	4	1	0	0	33
35	JENNINGS,ALEXIS	f	5-7		0-0		0-2		1	4	5	3	10	0	3	2	0	28
52	HARRIS,TYASHA	g	1-7		1-4		1-2		0	4	4	0	4	5	2	1	2	35
00	PATRICK,VICTORIA		0-2		0-2		0-0		0	1	1	0	0	0	2	1	0	12
21	HERBERT HARRIGAN,M		1-5		0-1		0-0		2	1	3	1	2	2	1	1	0	16
23	WILLIAMS,LADAZHIA		0-0		0-0		0-0		0	0	0	0	0	0	0	0	0	0
24	GRISSETT,LELE		2-3		0-0		0-0		3	2	5	3	4	0	1	1	1	7
TEAM									2	1	3	0			0			
TOTALS			23-57		2-10		9-15		15	35	50	10	57	15	14	6	3	200

Deadball Rebounds: 4,0

FG %	1st Half:	12-31	38.7%	2nd Half:	11-26	42.3%	Game:	23-57	40.4%									
	1st Qtr	6-16	37.5%	2nd Qtr	6-15	40.0%	3rd Qtr	6-14	42.9%					4th Qtr		5-12	41.7%	
3FG %	1st Half:	0-5	00.0%	2nd Half:	2-5	40.0%	Game:	2-10	20.0%									
	1st Qtr	0-3	00.0%	2nd Qtr	0-2	00.0%	3rd Qtr	1-3	33.3%					4th Qtr		1-2	50.0%	
FT %	1st Half:	4-9	44.4%	2nd Half:	5-6	83.3%	Game:	9-15	60.0%									
	1st Qtr	1-1	100.0%	2nd Qtr	3-8	37.5%	3rd Qtr	3-4	75.0%					4th Qtr		2-2	100.0%	

Officials: Mark Zentz, Felicia Grinter, Laura Morris
Technical Fouls: #24/- LSU- None. #7/6 South Carolina- None.

Score by periods	1st	2nd	3rd	4th	Total
#24/- LSU	8	15	7	18	48
#7/6 South Carolina	13	15	16	13	57

Last FG - LSU 4th-02:28, SC 4th-02:47.
Largest lead - #24/- LSU by ; #7/6 South Carolina by 14 3rd-00:15
LSU led for 0:00. SC led for 39:31. Game was tied for 0:23.

Points	In Paint	Off T/O	2nd Chance	Fast Break	Bench
LSU	30	22	11	20	6
SC	38	4	19	0	6

Score tied - 0 times; Lead changed - 0 times

Official Basketball Box Score -- Game Totals -- First Half Statistics
#24/- LSU vs #7/6 South Carolina
2/22/2018 6:30 p.m. at Columbia, S.C./Colonial Life Arena

#24/- LSU 23 •

##	Player		Total		3-Ptr		FT-FTA	Rebounds			PF	TP	A	TO	Blk	Stl	Min
			FG	FGA	FG	FGA		Off	Def	Tot							
00	JACKSON,CHLOE	g	3-7		0-0		0-0	0	2	2	1	6	2	1	0	1	20
05	MITCHELL,AYANA	f	1-3		0-0		0-0	0	0	0	2	2	0	0	0	0	4
11	LOUIS,RAIGYNE	g	4-12		1-3		2-2	3	4	7	0	11	1	0	0	2	20
13	RICHARD-HARRIS,J	g	0-2		0-2		0-0	0	4	4	0	0	1	0	0	0	20
24	AIFUWA,FAUSTINE	c	0-4		0-0		0-0	1	3	4	2	0	0	0	1	0	12
03	POINTER,KHAYLA		2-8		0-2		0-0	0	1	1	1	4	1	0	0	2	14
04	FARLEY,RAVEN		0-2		0-0		0-0	1	1	2	1	0	0	0	1	0	9
10	PATTERSON,DEKERIYA		0-0		0-0		0-0	0	0	0	0	0	0	0	0	0	0
15	BIDIKUINDILA,Y		0-0		0-0		0-0	0	0	0	0	0	0	0	0	0	1
30	CHERRY,JAILIN		0-0		0-0		0-0	0	0	0	0	0	0	0	0	0	0
TEAM								1	0	1	0			1			
Totals			10-38		1-7		2-2	6	15	21	7	23	5	2	2	5	100
FG %	1st Qtr	3-15	20.0%	2nd Qtr	7-23	30.4%	Half:	10-38		26.3%							
3FG %	1st Qtr	0-2	00.0%	2nd Qtr	1-5	20.0%	Half:	1-7		14.3%							
FT %	1st Qtr	2-2	100.0%	2nd Qtr	0-0	0%	Half:	2-2		100.0%							

#7/6 South Carolina 28 •

##	Player		Total		3-Ptr		FT-FTA	Rebounds			PF	TP	A	TO	Blk	Stl	Min
			FG	FGA	FG	FGA		Off	Def	Tot							
04	CLINEY,DONIAH	g	0-1		0-0		0-0	0	0	0	0	0	2	2	0	0	17
10	JACKSON,BIANCA	g	1-4		0-1		1-2	0	2	2	0	3	1	0	0	0	17
22	WILSON,A'JA	f	5-13		0-0		3-5	3	12	15	0	13	2	0	0	0	18
35	JENNINGS,ALEXIS	f	3-4		0-0		0-2	1	3	4	0	6	0	1	1	0	13
52	HARRIS,TYASHA	g	0-2		0-1		0-0	0	2	2	0	0	1	0	0	0	15
00	PATRICK,VICTORIA		0-2		0-2		0-0	0	1	1	0	0	0	2	1	0	8
21	HERBERT HARRIGAN,M		1-3		0-1		0-0	0	1	1	1	2	1	1	1	0	10
23	WILLIAMS,LADAZHIA		0-0		0-0		0-0	0	0	0	0	0	0	0	0	0	0
24	GRISSETT,LELE		2-2		0-0		0-0	1	0	1	2	4	0	1	1	0	2
TEAM								1	1	2	0			0			
Totals			12-31		0-5		4-9	6	22	28	3	28	7	7	4	0	100
FG %	1st Qtr	6-16	37.5%	2nd Qtr	6-15	40.0%	Half:	12-31		38.7%							
3FG %	1st Qtr	0-3	00.0%	2nd Qtr	0-2	00.0%	Half:	0-5		00.0%							
FT %	1st Qtr	1-1	100.0%	2nd Qtr	3-8	37.5%	Half:	4-9		44.4%							

Officials: Mark Zentz, Felicia Grinter, Laura Morris
Technical Fouls: #24/- LSU- None. #7/6 South Carolina- None.

Score by periods	1st	2nd	3rd	4th	Total
#24/- LSU	8	15	7	18	48
#7/6 South Carolina	13	15	16	13	57

Last FG - LSU 2nd-02:00, SC 2nd-00:02.
LSU led for 0:00. SC led for 19:37. Game was tied for 0:23.

Points	In	Off	2nd	Fast	Bench
	Paint	T/O	Chance	Break	
LSU	14	12	6	6	4
	20	2	8	0	6

Score tied - 0 times
Lead changed - 0 times

#24/- LSU vs #7/6 South Carolina
2/22/2018; 6:30 p.m. at Columbia, S.C./Colonial Life Arena
Period 1 Play-By-Play

VISITORS: #24/- LSU	Time	Score	Margin	HOME: #7/6 South Carolina
	09:37	2-0	H 2	GOOD! JUMPER by WILSON,A'JA
MISSED JUMPER by AIFUWA,FAUSTINE	09:04			
	09:04			REBOUND (DEF) by WILSON,A'JA
	08:48			MISSED JUMPER by WILSON,A'JA
REBOUND (DEF) by AIFUWA,FAUSTINE	08:48			
MISSED LAYUP by MITCHELL,AYANA	08:27			
	08:27			REBOUND (DEF) by WILSON,A'JA
	08:09			MISSED JUMPER by JACKSON,BIANCA
REBOUND (DEF) by JACKSON,CHLOE	08:09			
MISSED JUMPER by AIFUWA,FAUSTINE	07:47			
	07:47			REBOUND (DEF) by WILSON,A'JA
	07:35	4-0	H 4	GOOD! JUMPER by WILSON,A'JA [PNT]
FOUL by MITCHELL,AYANA	07:35			
	07:35	5-0	H 5	GOOD! FT by WILSON,A'JA
SUB IN: FARLEY,RAVEN	07:35			
SUB OUT: MITCHELL,AYANA	07:35			
GOOD! LAYUP by LOUIS,RAIGYNE [PNT]	07:20	5-2	H 3	
	07:00			MISSED 3PTR by JACKSON,BIANCA
REBOUND (DEF) by AIFUWA,FAUSTINE	07:00			
MISSED 3PTR by LOUIS,RAIGYNE	06:51			
	06:51			REBOUND (DEF) by WILSON,A'JA
	06:34			MISSED JUMPER by WILSON,A'JA
BLOCK by AIFUWA,FAUSTINE	06:34			
REBOUND (DEF) by RICHARD-HARRIS,J	06:33			
MISSED JUMPER by LOUIS,RAIGYNE	06:27			
	06:27			REBOUND (DEF) by JENNINGS,ALEXIS
	06:13	7-2	H 5	GOOD! JUMPER by WILSON,A'JA [PNT]
	06:13			ASSIST by CLINEY,DONIAH
MISSED JUMPER by JACKSON,CHLOE	05:46			
	05:46			REBOUND (DEF) by WILSON,A'JA
	05:34			MISSED JUMPER by WILSON,A'JA
REBOUND (DEF) by LOUIS,RAIGYNE	05:34			
MISSED 3PTR by LOUIS,RAIGYNE	05:05			
	05:05			REBOUND (DEF) by TEAM
	04:58			TIMEOUT MEDIA
	04:58			SUB IN: GRISSETT,LELE
	04:58			SUB IN: HERBERT HARRIGAN,M
	04:58			SUB OUT: WILSON,A'JA
	04:58			SUB OUT: JENNINGS,ALEXIS
	04:38			MISSED JUMPER by JACKSON,BIANCA
	04:38			REBOUND (OFF) by GRISSETT,LELE
	04:35	9-2	H 7	GOOD! JUMPER by GRISSETT,LELE [PNT]
MISSED LAYUP by FARLEY,RAVEN	04:16			
	04:16			REBOUND (DEF) by HERBERT HARRIGAN,M
	03:51	11-2	H 9	GOOD! LAYUP by GRISSETT,LELE [PNT]
	03:51			ASSIST by HERBERT HARRIGAN,M
SUB IN: POINTER,KHAYLA	03:25			
SUB IN: MITCHELL,AYANA	03:25			
SUB OUT: FARLEY,RAVEN	03:25			
SUB OUT: AIFUWA,FAUSTINE	03:25			
	03:25			SUB IN: PATRICK,VICTORIA
	03:25			SUB OUT: CLINEY,DONIAH
GOOD! LAYUP by MITCHELL,AYANA [PNT]	03:14	11-4	H 7	
ASSIST by POINTER,KHAYLA	03:14			
	02:53			TURNOVER by GRISSETT,LELE
	02:53			FOUL by GRISSETT,LELE
MISSED JUMPER by MITCHELL,AYANA	02:38			
REBOUND (OFF) by LOUIS,RAIGYNE	02:38			
	02:36			BLOCK by GRISSETT,LELE
MISSED JUMPER by LOUIS,RAIGYNE	02:36			
REBOUND (OFF) by LOUIS,RAIGYNE	02:36			
	02:32			FOUL by GRISSETT,LELE
GOOD! FT by LOUIS,RAIGYNE	02:32	11-5	H 6	
GOOD! FT by LOUIS,RAIGYNE	02:32	11-6	H 5	
	02:32			SUB IN: WILSON,A'JA
	02:32			SUB OUT: GRISSETT,LELE
	02:16			FOUL by HERBERT HARRIGAN,M
	02:16			TURNOVER by HERBERT HARRIGAN,M
GOOD! LAYUP by LOUIS,RAIGYNE [PNT]	02:01	11-8	H 3	

VISITORS: # 24/- LSU	Time	Score	Margin	HOME: #7/6 South Carolina
FOUL by MITCHELL,AYANA	01:38			
SUB IN: AIFUWA,FAUSTINE	01:38			
SUB OUT: MITCHELL,AYANA	01:38			
	01:38			SUB IN: CLINEY,DONIYAH
	01:38			SUB OUT: JACKSON,BIANCA
	01:19			MISSED 3PTR by HERBERT HARRIGAN,M
REBOUND (DEF) by RICHARD-HARRIS,J	01:19			
MISSED JUMPER by JACKSON,CHLOE	01:12			
	01:12			REBOUND (DEF) by HARRIS,TYASHA
	00:58			MISSED LAYUP by WILSON,A'JA
REBOUND (DEF) by LOUIS,RAIGYNE	00:58			
TURNOVER by JACKSON,CHLOE	00:53			
	00:36			MISSED 3PTR by HARRIS,TYASHA
	00:36			REBOUND (OFF) by WILSON,A'JA
	00:31	13-8	H 5	GOOD! LAYUP by WILSON,A'JA [PNT]
	00:27			SUB IN: JACKSON,BIANCA
	00:27			SUB OUT: HARRIS,TYASHA
MISSED JUMPER by POINTER,KHAYLA	00:11			
	00:11			REBOUND (DEF) by WILSON,A'JA
	00:00			MISSED LAYUP by CLINEY,DONIYAH
	00:00			REBOUND (DEADB) by TEAM

#24/- LSU 8, #7/6 South Carolina 13

Period 1-only	In Paint	Off T/O	2nd Chance	Fast Break	Bench	
LSU	6	4	2	0	0	Score tied - 0 times
SC	10	2	4	0	4	Lead changed - 0 times

#24/- LSU vs #7/6 South Carolina
2/22/2018; 6:30 p.m. at Columbia, S.C./Colonial Life Arena
Period 2 Play-By-Play

VISITORS: #24/- LSU	Time	Score	Margin	HOME: #7/6 South Carolina
SUB IN: POINTER,KHAYLA	10:00			
SUB OUT: MITCHELL,AYANA	10:00			
	10:00			SUB IN: PATRICK,VICTORIA
	10:00			SUB IN: HERBERT HARRIGAN,M
	10:00			SUB OUT: JENNINGS,ALEXIS
	10:00			SUB OUT: HARRIS,TYASHA
MISSED 3PTR by RICHARD-HARRIS,J	09:45			
	09:45			REBOUND (DEF) by JACKSON,BIANCA
	09:31			TURNOVER by PATRICK,VICTORIA
STEAL by LOUIS,RAIGYNE	09:30			
GOOD! LAYUP by LOUIS,RAIGYNE [FB/PNT]	09:29	13-10	H 3	
	09:17			TURNOVER by CLINEY,DONIAH
STEAL by POINTER,KHAYLA	09:16			
GOOD! LAYUP by JACKSON,CHLOE [FB/PNT]	09:14	13-12	H 1	
	08:56			MISSED 3PTR by PATRICK,VICTORIA
	08:56			REBOUND (OFF) by WILSON,A'JA
	08:52	15-12	H 3	GOOD! JUMPER by WILSON,A'JA [PNT]
MISSED 3PTR by POINTER,KHAYLA	08:31			
REBOUND (OFF) by AIFUWA,FAUSTINE	08:31			
MISSED JUMPER by AIFUWA,FAUSTINE	08:28			
	08:28			REBOUND (DEF) by WILSON,A'JA
FOUL by JACKSON,CHLOE	08:11			
	08:11			MISSED FT by WILSON,A'JA
	08:11			REBOUND (DEADB) by TEAM
	08:11			MISSED FT by WILSON,A'JA
REBOUND (DEF) by AIFUWA,FAUSTINE	08:11			
	08:11			SUB IN: JENNINGS,ALEXIS
	08:11			SUB OUT: HERBERT HARRIGAN,M
MISSED JUMPER by LOUIS,RAIGYNE	07:57			
	07:57			REBOUND (DEF) by WILSON,A'JA
	07:51			TURNOVER by CLINEY,DONIAH
STEAL by JACKSON,CHLOE	07:49			
GOOD! LAYUP by POINTER,KHAYLA [FB/PNT]	07:47	15-14	H 1	
ASSIST by JACKSON,CHLOE	07:47			
	07:34	17-14	H 3	GOOD! LAYUP by JENNINGS,ALEXIS [PNT]
	07:34			ASSIST by WILSON,A'JA
MISSED JUMPER by AIFUWA,FAUSTINE	07:14			
	07:13			REBOUND (DEF) by WILSON,A'JA
	07:06			MISSED JUMPER by WILSON,A'JA
REBOUND (DEF) by JACKSON,CHLOE	07:06			
MISSED 3PTR by RICHARD-HARRIS,J	06:51			
	06:51			REBOUND (DEF) by JENNINGS,ALEXIS
FOUL by AIFUWA,FAUSTINE	06:22			
	06:22	18-14	H 4	GOOD! FT by WILSON,A'JA
	06:22	19-14	H 5	GOOD! FT by WILSON,A'JA
SUB IN: FARLEY,RAVEN	06:22			
SUB OUT: AIFUWA,FAUSTINE	06:22			
	06:22			SUB IN: HERBERT HARRIGAN,M
	06:22			SUB OUT: CLINEY,DONIAH
MISSED JUMPER by JACKSON,CHLOE	06:08			
	06:08			BLOCK by JENNINGS,ALEXIS
	06:06			REBOUND (DEF) by PATRICK,VICTORIA
	05:47			TURNOVER by PATRICK,VICTORIA
STEAL by LOUIS,RAIGYNE	05:47			
MISSED LAYUP by POINTER,KHAYLA	05:42			
	05:42			BLOCK by HERBERT HARRIGAN,M
REBOUND (OFF) by TEAM	05:41			
GOOD! JUMPER by JACKSON,CHLOE	05:33	19-16	H 3	
ASSIST by RICHARD-HARRIS,J	05:33			
	05:16			MISSED 3PTR by PATRICK,VICTORIA
REBOUND (DEF) by LOUIS,RAIGYNE	05:16			
MISSED LAYUP by JACKSON,CHLOE	05:05			
REBOUND (OFF) by LOUIS,RAIGYNE	05:05			
	05:04			BLOCK by PATRICK,VICTORIA
MISSED TIPIN by LOUIS,RAIGYNE	05:03			
	05:03			REBOUND (DEF) by JACKSON,BIANCA
FOUL by FARLEY,RAVEN	04:55			
	04:55			TIMEOUT media
	04:55	20-16	H 4	GOOD! FT by JACKSON,BIANCA

VISITORS: # 24/- LSU	Time	Score	Margin	HOME: #7/6 South Carolina
	04:55			MISSED FT by JACKSON,BIANCA
REBOUND (DEF) by FARLEY,RAVEN	04:55			
	04:55			SUB IN: HARRIS,TYASHA
	04:55			SUB IN: CLINEY,DONIYAH
	04:55			SUB OUT: HERBERT HARRIGAN,M
	04:55			SUB OUT: PATRICK,VICTORIA
TURNOVER by TEAM	04:24			
	04:24			TURNOVER by JENNINGS,ALEXIS
STEAL by POINTER,KHAYLA	04:24			
MISSED JUMPER by LOUIS,RAIGYNE	04:09			
	04:09			REBOUND (DEF) by WILSON,A'JA
	03:57	22-16	H 6	GOOD! JUMPER by JENNINGS,ALEXIS [PNT]
	03:57			ASSIST by JACKSON,BIANCA
GOOD! LAYUP by POINTER,KHAYLA [PNT]	03:41	22-18	H 4	
	03:32	24-18	H 6	GOOD! JUMPER by JACKSON,BIANCA
	03:32			ASSIST by CLINEY,DONIYAH
MISSED LAYUP by FARLEY,RAVEN	03:17			
REBOUND (OFF) by FARLEY,RAVEN	03:17			
GOOD! JUMPER by JACKSON,CHLOE	03:12	24-20	H 4	
ASSIST by LOUIS,RAIGYNE	03:12			
	02:43	26-20	H 6	GOOD! JUMPER by JENNINGS,ALEXIS [PNT]
	02:43			ASSIST by WILSON,A'JA
MISSED 3PTR by POINTER,KHAYLA	02:27			
	02:27			REBOUND (DEF) by JENNINGS,ALEXIS
	02:16			MISSED LAYUP by WILSON,A'JA
	02:16			REBOUND (OFF) by WILSON,A'JA
	02:14			MISSED JUMPER by WILSON,A'JA
BLOCK by FARLEY,RAVEN	02:14			
REBOUND (DEF) by POINTER,KHAYLA	02:13			
GOOD! 3PTR by LOUIS,RAIGYNE	02:00	26-23	H 3	
ASSIST by JACKSON,CHLOE	02:00			
FOUL by POINTER,KHAYLA	01:53			
SUB IN: AIFUWA,FAUSTINE	01:53			
SUB OUT: FARLEY,RAVEN	01:53			
	01:53			SUB IN: HERBERT HARRIGAN,M
	01:53			SUB OUT: JACKSON,BIANCA
	01:46			MISSED JUMPER by WILSON,A'JA
REBOUND (DEF) by RICHARD-HARRIS,J	01:46			
MISSED LAYUP by POINTER,KHAYLA	01:38			
	01:38			REBOUND (DEF) by WILSON,A'JA
FOUL by AIFUWA,FAUSTINE	01:29			
	01:29			MISSED FT by JENNINGS,ALEXIS
	01:29			REBOUND (DEADB) by TEAM
	01:29			MISSED FT by JENNINGS,ALEXIS
REBOUND (DEF) by RICHARD-HARRIS,J	01:29			
SUB IN: BIDIKUINDILA,Y	01:29			
SUB OUT: AIFUWA,FAUSTINE	01:29			
MISSED JUMPER by POINTER,KHAYLA	01:16			
	01:16			REBOUND (DEF) by HARRIS,TYASHA
	00:59			MISSED JUMPER by HERBERT HARRIGAN,M
	00:59			REBOUND (OFF) by JENNINGS,ALEXIS
	00:55			MISSED JUMPER by JENNINGS,ALEXIS
REBOUND (DEF) by LOUIS,RAIGYNE	00:55			
MISSED JUMPER by LOUIS,RAIGYNE	00:33			
	00:33			REBOUND (DEF) by WILSON,A'JA
	00:06			MISSED JUMPER by HARRIS,TYASHA
	00:06			REBOUND (OFF) by TEAM
	00:04			TIMEOUT 30SEC
	00:02	28-23	H 5	GOOD! JUMPER by HERBERT HARRIGAN,M [PNT]
	00:02			ASSIST by HARRIS,TYASHA

#24/- LSU 23, #7/6 South Carolina 28

Period 2-only	In Paint	Off T/O	2nd Chance	Fast Break	Bench	
LSU	8	8	4	6	4	Score tied - 0 times
SC	10	0	4	0	2	Lead changed - 0 times

Official Basketball Box Score -- Game Totals -- Second Half Statistics
#24/- LSU vs #7/6 South Carolina
2/22/2018 6:30 p.m. at Columbia, S.C./Colonial Life Arena

#24/- LSU 25 •

##	Player		Total		3-Ptr		Rebounds			PF	TP	A	TO	Blk	Stl	Min
			FG-FGA		FG-FGA		Off	Def	Tot							
00	JACKSON,CHLOE	g	5-9		0-1		1	1	2	1	10	0	1	0	2	20
05	MITCHELL,AYANA	f	2-4		0-0		3	2	5	2	5	0	1	0	1	14
11	LOUIS,RAIGYNE	g	3-8		0-0		0	1	1	1	6	2	0	0	4	20
13	RICHARD-HARRIS,J	g	0-1		0-1		0	0	0	0	0	1	0	0	0	16
24	AIFUWA,FAUSTINE	c	1-3		0-0		0	0	0	1	2	0	0	1	0	7
03	POINTER,KHAYLA		0-0		0-0		0	0	0	2	0	0	1	0	0	6
04	FARLEY,RAVEN		0-0		0-0		0	0	0	0	0	0	0	0	0	0
10	PATTERSON,DEKERIYA		1-2		0-1		0	0	0	1	2	0	0	0	0	9
15	BIDIKUINDILA,Y		0-0		0-0		0	0	0	0	0	0	0	0	0	2
30	CHERRY,JAILIN		0-2		0-1		0	0	0	1	0	0	0	0	0	6
TEAM							1	2	3	0		0				
Totals			12-29		0-4		5	6	11	9	25	3	3	1	7	100
FG %	3rd Qtr	3-13	23.1%	4th Qtr	9-16	56.3%	Half:	12-29	41.4%							
3FG %	3rd Qtr	0-1	00.0%	4th Qtr	0-3	00.0%	Half:	0-4	14.3%							
FT %	3rd Qtr	1-3	33.3%	4th Qtr	0-0	0%	Half:	1-3	33.3%							

#7/6 South Carolina 29 •

##	Player		Total		3-Ptr		Rebounds			PF	TP	A	TO	Blk	Stl	Min
			FG-FGA		FG-FGA		Off	Def	Tot							
04	CLINEY,DONIYAH	g	1-2		0-0		0	2	2	0	2	1	2	0	0	15
10	JACKSON,BIANCA	g	1-5		1-2		0	1	1	1	5	0	0	0	0	20
22	WILSON,A'JA	f	6-8		0-0		4	5	9	2	14	2	1	0	0	15
35	JENNINGS,ALEXIS	f	2-3		0-0		0	1	1	3	4	0	2	1	0	15
52	HARRIS,TYASHA	g	1-5		1-3		0	2	2	0	4	4	2	1	2	20
00	PATRICK,VICTORIA		0-0		0-0		0	0	0	0	0	0	0	0	0	4
21	HERBERT HARRIGAN,M		0-2		0-0		2	0	2	0	0	1	0	0	0	6
23	WILLIAMS,LADAZHIA		0-0		0-0		0	0	0	0	0	0	0	0	0	0
24	GRISSETT,LELE		0-1		0-0		2	2	4	1	0	0	0	0	1	5
TEAM							1	0	1	0		0				
Totals			11-26		2-5		9	13	22	7	29	8	7	2	3	100
FG %	3rd Qtr	6-14	42.9%	4th Qtr	5-12	41.7%	Half:	11-26	42.3%							
3FG %	3rd Qtr	1-3	33.3%	4th Qtr	1-2	50.0%	Half:	2-5	00.0%							
FT %	3rd Qtr	3-4	75.0%	4th Qtr	2-2	100.0%	Half:	5-6	83.3%							

Officials: Mark Zentz, Felicia Grinter, Laura Morris
Technical Fouls: #24/- LSU- None. #7/6 South Carolina- None.

Score by periods	1st	2nd	3rd	4th	Total
#24/- LSU	8	15	7	18	48
#7/6 South Carolina	13	15	16	13	57

Last FG - LSU 4th-02:28, SC 4th-02:47.
LSU led for 0:00. SC led for 19:54. Game was tied for 0:00.

Points	In	Off	2nd	Fast	Bench
	Paint	T/O	Chance	Break	
LSU	16	10	5	14	2
	18	2	11	0	0

Score tied - 0 times
Lead changed - 0 times

#24/- LSU vs #7/6 South Carolina
2/22/2018; 6:30 p.m. at Columbia, S.C./Colonial Life Arena
Period 3 Play-By-Play

VISITORS: #24/- LSU	Time	Score	Margin	HOME: #7/6 South Carolina
FOUL by AIFUWA,FAUSTINE	09:41			
	09:18	30-23	H 7	GOOD! JUMPER by WILSON,A'JA [PNT]
SUB IN: CHERRY,JAILIN	08:57			
SUB OUT: AIFUWA,FAUSTINE	08:57			
MISSED JUMPER by LOUIS,RAIGYNE	08:51			
	08:51			REBOUND (DEF) by JENNINGS,ALEXIS
	08:23			MISSED 3PTR by JACKSON,BIANCA
REBOUND (DEF) by TEAM	08:23			
MISSED JUMPER by LOUIS,RAIGYNE	07:51			
REBOUND (OFF) by MITCHELL,AYANA	07:51			
GOOD! LAYUP by MITCHELL,AYANA [PNT]	07:45	30-25	H 5	
	07:45			FOUL by WILSON,A'JA
GOOD! FT by MITCHELL,AYANA	07:45	30-26	H 4	
	07:25			TURNOVER by CLINEY,DONIAH
STEAL by LOUIS,RAIGYNE	07:24			
MISSED JUMPER by CHERRY,JAILIN	07:14			
	07:14			REBOUND (DEF) by JACKSON,BIANCA
	06:58			TURNOVER by JENNINGS,ALEXIS
STEAL by JACKSON,CHLOE	06:57			
GOOD! LAYUP by JACKSON,CHLOE [FB/PNT]	06:55	30-28	H 2	
	06:26			MISSED JUMPER by JACKSON,BIANCA
	06:26			REBOUND (OFF) by WILSON,A'JA
FOUL by MITCHELL,AYANA	06:24			
FOUL by MITCHELL,AYANA	06:16			
	06:15	32-28	H 4	GOOD! LAYUP by WILSON,A'JA [PNT]
	06:15			ASSIST by HARRIS,TYASHA
	06:02			FOUL by WILSON,A'JA
SUB IN: BIDIKUINDILA,Y	06:02			
SUB OUT: MITCHELL,AYANA	06:02			
MISSED LAYUP by JACKSON,CHLOE	05:52			
	05:52			REBOUND (DEF) by CLINEY,DONIAH
FOUL by CHERRY,JAILIN	05:37			
	05:26	34-28	H 6	GOOD! JUMPER by CLINEY,DONIAH [PNT]
	05:26			ASSIST by WILSON,A'JA
MISSED JUMPER by JACKSON,CHLOE	05:05			
	05:05			REBOUND (DEF) by CLINEY,DONIAH
	04:46	36-28	H 8	GOOD! JUMPER by WILSON,A'JA [PNT]
	04:46			ASSIST by CLINEY,DONIAH
MISSED JUMPER by LOUIS,RAIGYNE	04:27			
	04:27			REBOUND (DEF) by WILSON,A'JA
	04:01			MISSED 3PTR by HARRIS,TYASHA
	04:01			REBOUND (OFF) by WILSON,A'JA
	03:59	38-28	H 10	GOOD! JUMPER by WILSON,A'JA [PNT]
TIMEOUT 30SEC	03:49			
SUB IN: AIFUWA,FAUSTINE	03:49			
SUB OUT: BIDIKUINDILA,Y	03:49			
MISSED JUMPER by LOUIS,RAIGYNE	03:44			
REBOUND (OFF) by JACKSON,CHLOE	03:44			
MISSED 3PTR by CHERRY,JAILIN	03:25			
	03:25			REBOUND (DEF) by HARRIS,TYASHA
	02:59			TIMEOUT MEDIA
SUB IN: POINTER,KHAYLA	02:59			
SUB OUT: CHERRY,JAILIN	02:59			
	02:59			SUB IN: GRISSETT,LELE
	02:59			SUB IN: HERBERT HARRIGAN,M
	02:59			SUB OUT: WILSON,A'JA
	02:59			SUB OUT: JENNINGS,ALEXIS
	02:54			MISSED JUMPER by HARRIS,TYASHA
	02:54			REBOUND (OFF) by GRISSETT,LELE
	02:47			MISSED JUMPER by CLINEY,DONIAH
REBOUND (DEF) by TEAM	02:47			
	02:27			FOUL by GRISSETT,LELE
MISSED FT by AIFUWA,FAUSTINE	02:27			
REBOUND (DEADB) by TEAM	02:27			
MISSED FT by AIFUWA,FAUSTINE	02:27			
	02:27			REBOUND (DEF) by GRISSETT,LELE
	02:08			MISSED JUMPER by HERBERT HARRIGAN,M
BLOCK by AIFUWA,FAUSTINE	02:08			
	02:07			REBOUND (OFF) by HERBERT HARRIGAN,M

VISITORS: # 24 /- LSU	Time	Score	Margin	HOME: # 7/6 South Carolina
	02:06	41-28	H 13	GOOD! 3PTR by HARRIS,TYASHA
	02:06			ASSIST by HERBERT HARRIGAN,M
TURNOVER by POINTER,KHAYLA	01:42			
	01:40			STEAL by GRISSETT,LELE
	01:32			MISSED LAYUP by HARRIS,TYASHA
	01:32			REBOUND (OFF) by GRISSETT,LELE
	01:30			MISSED JUMPER by GRISSETT,LELE
REBOUND (DEF) by LOUIS,RAIGYNE	01:30			
GOOD! JUMPER by AIFUWA,FAUSTINE [FB/PNT]	01:21	41-30	H 11	
ASSIST by RICHARD-HARRIS,J	01:21			
FOUL by POINTER,KHAYLA	00:53			
	00:53	42-30	H 12	GOOD! FT by JACKSON,BIANCA
	00:53	43-30	H 13	GOOD! FT by JACKSON,BIANCA
MISSED JUMPER by AIFUWA,FAUSTINE	00:39			
	00:39			REBOUND (DEF) by GRISSETT,LELE
FOUL by POINTER,KHAYLA	00:15			
	00:15			MISSED FT by HARRIS,TYASHA
	00:15			REBOUND (DEADB) by TEAM
	00:15	44-30	H 14	GOOD! FT by HARRIS,TYASHA
SUB IN: PATTERSON,DEKERIYA	00:15			
SUB OUT: POINTER,KHAYLA	00:15			
MISSED JUMPER by AIFUWA,FAUSTINE	00:00			
	00:00			BLOCK by HARRIS,TYASHA
	00:00			REBOUND (DEF) by HARRIS,TYASHA

#24/- LSU 30, #7/6 South Carolina 44

Period 3-only	In Paint	Off T/O	2nd Chance	Fast Break	Bench	
LSU	6	2	3	4	0	Score tied - 0 times
SC	10	0	7	0	0	Lead changed - 0 times

#24/- LSU vs #7/6 South Carolina
2/22/2018; 6:30 p.m. at Columbia, S.C./Colonial Life Arena
Period 4 Play-By-Play

VISITORS: #24/- LSU	Time	Score	Margin	HOME: #7/6 South Carolina
SUB IN: PATTERSON,DEKERIYA	10:00			
SUB OUT: AIFUWA,FAUSTINE	10:00			
	10:00			SUB IN: HERBERT HARRIGAN,M
	10:00			SUB IN: GRISSETT,LELE
	10:00			SUB OUT: WILSON,A'JA
	10:00			SUB OUT: JENNINGS,ALEXIS
MISSED 3PTR by PATTERSON,DEKERIYA	09:44			
REBOUND (OFF) by MITCHELL,AYANA	09:44			
MISSED LAYUP by MITCHELL,AYANA	09:39			
REBOUND (OFF) by MITCHELL,AYANA	09:39			
GOOD! JUMPER by MITCHELL,AYANA [PNT]	09:36	44-32	H 12	
	09:24			TURNOVER by CLINEY,DONIAH
STEAL by LOUIS,RAIGYNE	09:23			
GOOD! LAYUP by LOUIS,RAIGYNE [FB/PNT]	09:21	44-34	H 10	
	08:47			MISSED JUMPER by JACKSON,BIANCA
	08:47			REBOUND (OFF) by HERBERT HARRIGAN,M
	08:45			MISSED JUMPER by HERBERT HARRIGAN,M
REBOUND (DEF) by MITCHELL,AYANA	08:45			
GOOD! JUMPER by JACKSON,CHLOE	08:34	44-36	H 8	
ASSIST by LOUIS,RAIGYNE	08:34			
	08:20			TURNOVER by HARRIS,TYASHA
STEAL by MITCHELL,AYANA	08:20			
GOOD! LAYUP by JACKSON,CHLOE [FB/PNT]	08:15	44-38	H 6	
	08:01			TIMEOUT 30SEC
SUB IN: POINTER,KHAYLA	08:01			
SUB OUT: RICHARD-HARRIS,J	08:01			
	08:01			SUB IN: WILSON,A'JA
	08:01			SUB IN: PATRICK,VICTORIA
	08:01			SUB IN: JENNINGS,ALEXIS
	08:01			SUB OUT: CLINEY,DONIAH
	08:01			SUB OUT: HERBERT HARRIGAN,M
	08:01			SUB OUT: GRISSETT,LELE
	07:52			TURNOVER by JENNINGS,ALEXIS
STEAL by LOUIS,RAIGYNE	07:50			
GOOD! LAYUP by LOUIS,RAIGYNE [FB/PNT]	07:47	44-40	H 4	
FOUL by LOUIS,RAIGYNE	07:23			
	07:23	45-40	H 5	GOOD! FT by WILSON,A'JA
	07:23	46-40	H 6	GOOD! FT by WILSON,A'JA
GOOD! JUMPER by JACKSON,CHLOE	06:56	46-42	H 4	
	06:25	49-42	H 7	GOOD! 3PTR by JACKSON,BIANCA
	06:25			ASSIST by HARRIS,TYASHA
GOOD! JUMPER by PATTERSON,DEKERIYA	06:04	49-44	H 5	
	05:48	51-44	H 7	GOOD! JUMPER by JENNINGS,ALEXIS [PNT]
	05:48			ASSIST by HARRIS,TYASHA
MISSED JUMPER by MITCHELL,AYANA	05:26			
	05:26			BLOCK by JENNINGS,ALEXIS
REBOUND (OFF) by TEAM	05:25			
MISSED JUMPER by LOUIS,RAIGYNE	05:17			
	05:17			REBOUND (DEF) by WILSON,A'JA
	05:04			TURNOVER by HARRIS,TYASHA
STEAL by LOUIS,RAIGYNE	05:02			
GOOD! LAYUP by JACKSON,CHLOE [FB/PNT]	04:59	51-46	H 5	
ASSIST by LOUIS,RAIGYNE	04:59			
	04:33			MISSED JUMPER by WILSON,A'JA
	04:33			REBOUND (OFF) by WILSON,A'JA
	04:32	53-46	H 7	GOOD! JUMPER by WILSON,A'JA [PNT]
MISSED 3PTR by JACKSON,CHLOE	04:17			
	04:17			REBOUND (DEF) by WILSON,A'JA
	04:05	55-46	H 9	GOOD! JUMPER by WILSON,A'JA [PNT]
	04:05			ASSIST by HARRIS,TYASHA
TIMEOUT TEAM	03:54			
SUB IN: RICHARD-HARRIS,J	03:54			
SUB OUT: POINTER,KHAYLA	03:54			
	03:54			SUB IN: HERBERT HARRIGAN,M
	03:54			SUB OUT: PATRICK,VICTORIA
TURNOVER by JACKSON,CHLOE	03:43			
	03:43			STEAL by HARRIS,TYASHA
FOUL by JACKSON,CHLOE	03:43			
	03:24			MISSED JUMPER by JENNINGS,ALEXIS

VISITORS: # 24/- LSU	Time	Score	Margin	HOME: #7/6 South Carolina
	03:24			REBOUND (OFF) by TEAM
FOUL by PATTERSON,DEKERIYA	03:23			
	03:23			SUB IN: CLINEY,DONIYAH
	03:23			SUB OUT: HERBERT HARRIGAN,M
	03:04			MISSED 3PTR by HARRIS,TYASHA
	03:04			REBOUND (OFF) by WILSON,A'JA
	02:47	57-46	H 11	GOOD! LAYUP by JENNINGS,ALEXIS [PNT]
	02:47			ASSIST by WILSON,A'JA
GOOD! JUMPER by LOUIS,RAIGYNE [FB]	02:28	57-48	H 9	
SUB IN: AIFUWA,FAUSTINE	02:28			
SUB OUT: PATTERSON,DEKERIYA	02:28			
	02:21			FOUL by JENNINGS,ALEXIS
	02:12			FOUL by JACKSON,BIANCA
	02:01			FOUL by JENNINGS,ALEXIS
MISSED JUMPER by JACKSON,CHLOE	01:56			
	01:56			REBOUND (DEF) by WILSON,A'JA
	01:25			MISSED JUMPER by WILSON,A'JA
REBOUND (DEF) by MITCHELL,AYANA	01:25			
	01:22			FOUL by JENNINGS,ALEXIS
TIMEOUT 30SEC	01:17			
	01:13			TURNOVER by WILSON,A'JA
STEAL by JACKSON,CHLOE	01:12			
TURNOVER by MITCHELL,AYANA	01:06			
	01:05			STEAL by HARRIS,TYASHA
	00:44			MISSED JUMPER by JACKSON,BIANCA
REBOUND (DEF) by JACKSON,CHLOE	00:44			
MISSED 3PTR by RICHARD-HARRIS,J	00:29			
	00:29			REBOUND (DEF) by WILSON,A'JA
	00:27			TIMEOUT 30SEC
	00:26			SUB IN: WILLIAMS,LADAZHIA
	00:26			SUB IN: GRISSETT,LELE
	00:26			SUB IN: HERBERT HARRIGAN,M
	00:26			SUB IN: PATRICK,VICTORIA
	00:26			SUB OUT: WILSON,A'JA
	00:26			SUB OUT: CLINEY,DONIYAH
	00:26			SUB OUT: JENNINGS,ALEXIS
	00:26			SUB OUT: HARRIS,TYASHA
	00:23			TIMEOUT 30SEC

#24/- LSU 48, #7/6 South Carolina 57

Period 4-only	In Paint	Off T/O	2nd Chance	Fast Break	Bench	
LSU	10	8	2	10	2	Score tied - 0 times
SC	8	2	4	0	0	Lead changed - 0 times

#24/- LSU vs #7/6 South Carolina
2/22/2018; 6:30 p.m. at Columbia, S.C./Colonial Life Arena
Scoring/Runs Reference

Period 1

# 24/- LSU	VRun	Score	Margin	HRun	# 7/6 South Carolina
		0-2	2		WILSON JUMPER - 09:37
		0-4	4	NaN-0	WILSON JUMPER [P] - 07:35
		0-5	5	NaN-0	WILSON FT - 07:35
07:20 - LOUIS LAYUP [P]	-	2-5	3		
		2-7	5		WILSON JUMPER [P] - 06:13
		2-9	7	4-0	GRISSETT JUMPER [P] - 04:35
		2-11	9	6-0	GRISSETT LAYUP [P] - 03:51
03:14 - MITCHELL LAYUP [P]	-	4-11	7		
02:32 - LOUIS FT	3-0	5-11	6		
02:32 - LOUIS FT	4-0	6-11	5		
02:01 - LOUIS LAYUP [P]	6-0	8-11	3		
		8-13	5		WILSON LAYUP [P] - 00:31

#24/- LSU vs #7/6 South Carolina
2/22/2018; 6:30 p.m. at Columbia, S.C./Colonial Life Arena
Scoring/Runs Reference

Period 2

# 24/- LSU	VRun	Score	Margin	HRun	# 7/6 South Carolina
09:29 - LOUIS LAYUP [P] [F]	-	10-13	3		
09:14 - JACKSON LAYUP [P] [F]	NaN-0	12-13	1		
		12-15	3		WILSON JUMPER [P] - 08:52
07:47 - POINTER LAYUP [P] [F]	-	14-15	1		
		14-17	3		JENNINGS LAYUP [P] - 07:34
		14-18	4	3-0	WILSON FT - 06:22
		14-19	5	4-0	WILSON FT - 06:22
05:33 - JACKSON JUMPER	-	16-19	3		
		16-20	4		JACKSON FT - 04:55
		16-22	6	3-0	JENNINGS JUMPER [P] - 03:57
03:41 - POINTER LAYUP [P]	-	18-22	4		
		18-24	6		JACKSON JUMPER - 03:32
03:12 - JACKSON JUMPER	-	20-24	4		
		20-26	6		JENNINGS JUMPER [P] - 02:43
02:00 - LOUIS 3PTR	-	23-26	3		
		23-28	5		HERBERT HARRIGAN JUMPER [P] - 00:02

#24/- LSU vs #7/6 South Carolina
2/22/2018; 6:30 p.m. at Columbia, S.C./Colonial Life Arena
Scoring/Runs Reference

Period 3

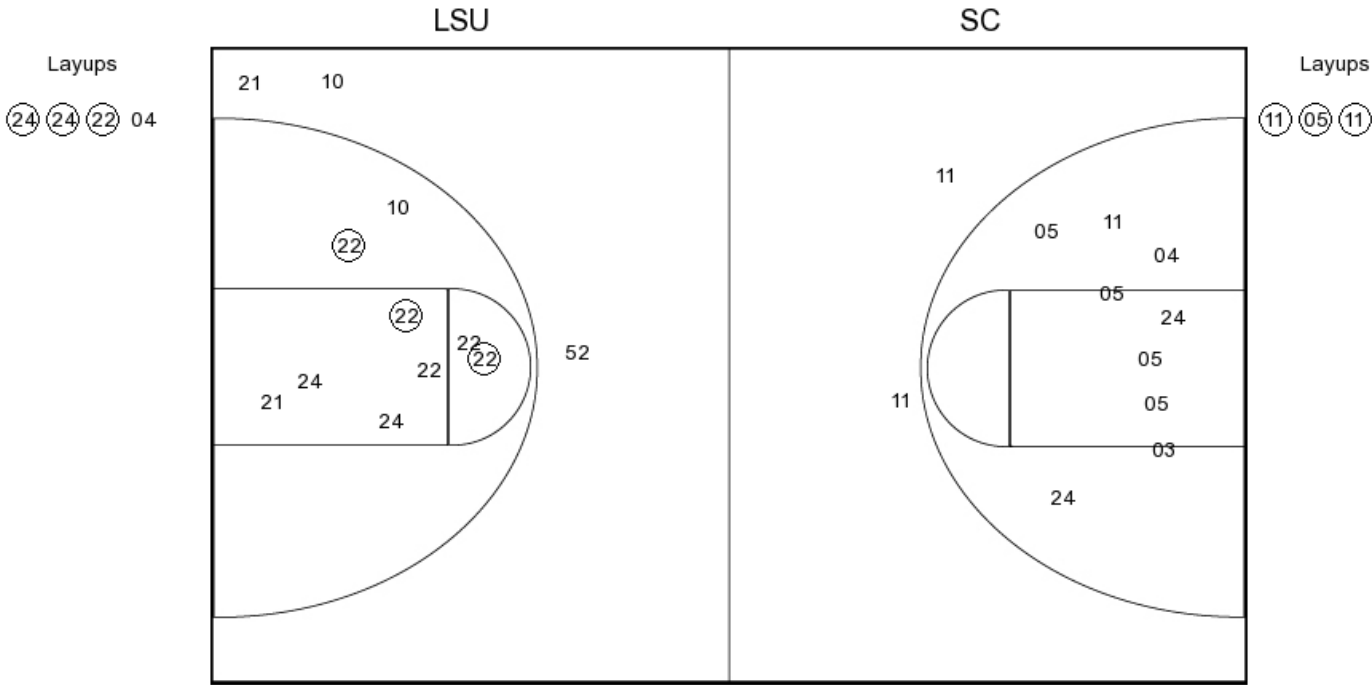
#24/- LSU	VRun	Score	Margin	HRun	#7/6 South Carolina
		23-30	7		WILSON JUMPER [P] - 09:18
07:45 - MITCHELL LAYUP [P]	-	25-30	5		
07:45 - MITCHELL FT	3-0	26-30	4		
06:55 - JACKSON LAYUP [P] [F]	5-0	28-30	2		
		28-32	4		WILSON LAYUP [P] - 06:15
		28-34	6	4-0	CLINEY JUMPER [P] - 05:26
		28-36	8	6-0	WILSON JUMPER [P] - 04:46
		28-38	10	8-0	WILSON JUMPER [P] - 03:59
		28-41	13	11-0	HARRIS 3PTR - 02:06
01:21 - AIFUWA JUMPER [P] [F]	-	30-41	11		
		30-42	12		JACKSON FT - 00:53
		30-43	13	2-0	JACKSON FT - 00:53
		30-44	14	3-0	HARRIS FT - 00:15

#24/- LSU vs #7/6 South Carolina
2/22/2018; 6:30 p.m. at Columbia, S.C./Colonial Life Arena
Scoring/Runs Reference

Period 4

# 24/- LSU	VRun	Score	Margin	HRun	# 7/6 South Carolina
09:36 - MITCHELL JUMPER [P]	-	32-44	12		
09:21 - LOUIS LAYUP [P] [F]	NaN-0	34-44	10		
08:34 - JACKSON JUMPER	NaN-0	36-44	8		
08:15 - JACKSON LAYUP [P] [F]	NaN-0	38-44	6		
07:47 - LOUIS LAYUP [P] [F]	NaN-0	40-44	4		
		40-45	5		WILSON FT - 07:23
		40-46	6	2-0	WILSON FT - 07:23
06:56 - JACKSON JUMPER	-	42-46	4		
		42-49	7		JACKSON 3PTR - 06:25
06:04 - PATTERSON JUMPER	-	44-49	5		
		44-51	7		JENNINGS JUMPER [P] - 05:48
04:59 - JACKSON LAYUP [P] [F]	-	46-51	5		
		46-53	7		WILSON JUMPER [P] - 04:32
		46-55	9	4-0	WILSON JUMPER [P] - 04:05
		46-57	11	6-0	JENNINGS LAYUP [P] - 02:47
02:28 - LOUIS JUMPER [F]	-	48-57	9		

PERIOD 1



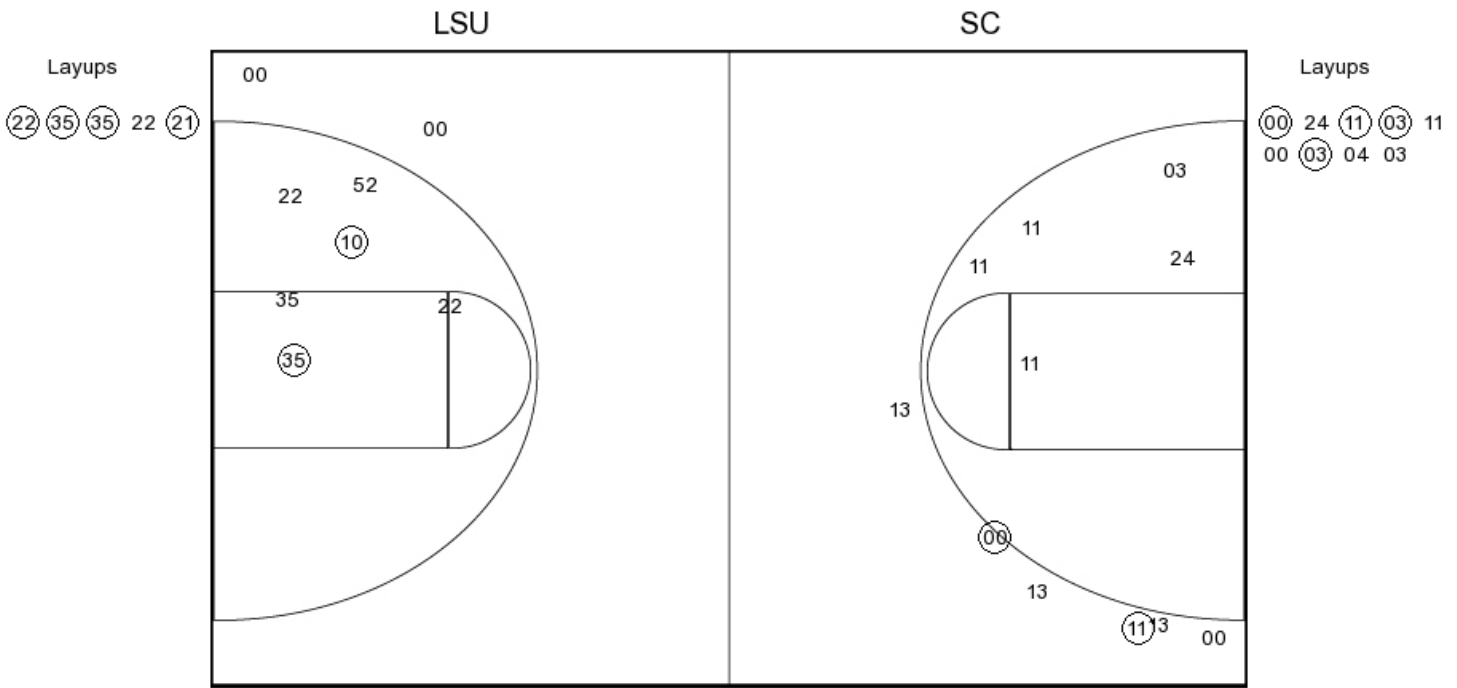
LSU PERIOD 1

FG Made	10
FG Attempted	38
3PFG Made	1
3PFG Attempted	7

SC PERIOD 1

FG Made	12
FG Attempted	31
3PFG Made	0
3PFG Attempted	5

PERIOD 2



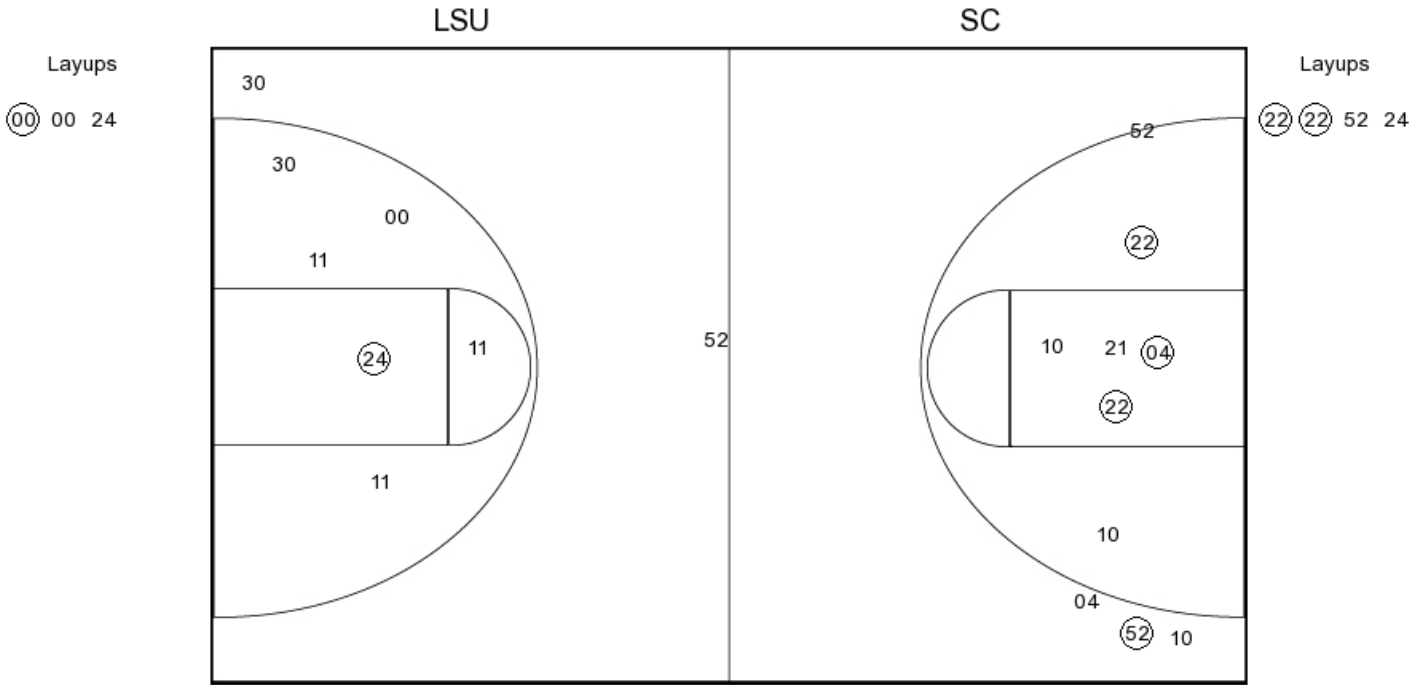
LSU PERIOD 2

FG Made
FG Attempted
3PFG Made
3PFG Attempted

SC PERIOD 2

FG Made
FG Attempted
3PFG Made
3PFG Attempted

PERIOD 3



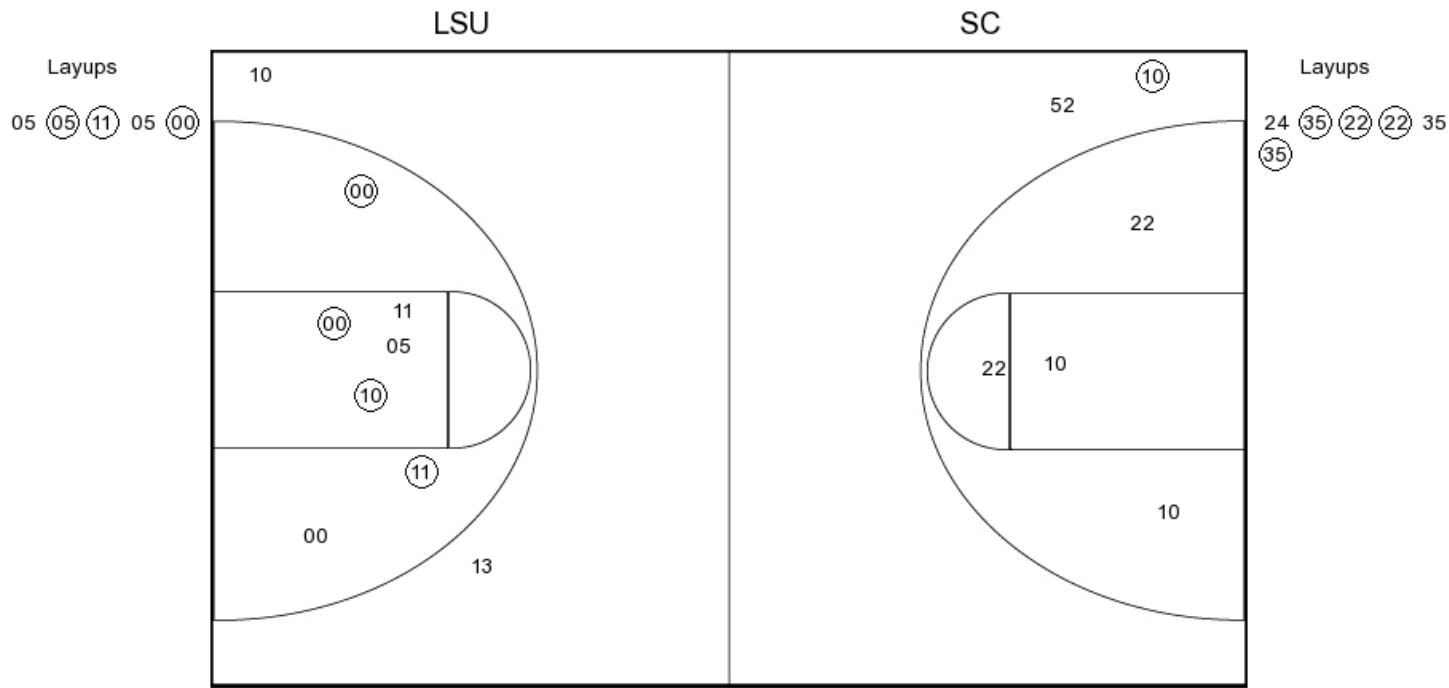
LSU PERIOD 3

FG Made	12
FG Attempted	29
3PFG Made	0
3PFG Attempted	4

SC PERIOD 3

FG Made	11
FG Attempted	26
3PFG Made	2
3PFG Attempted	5

PERIOD 4



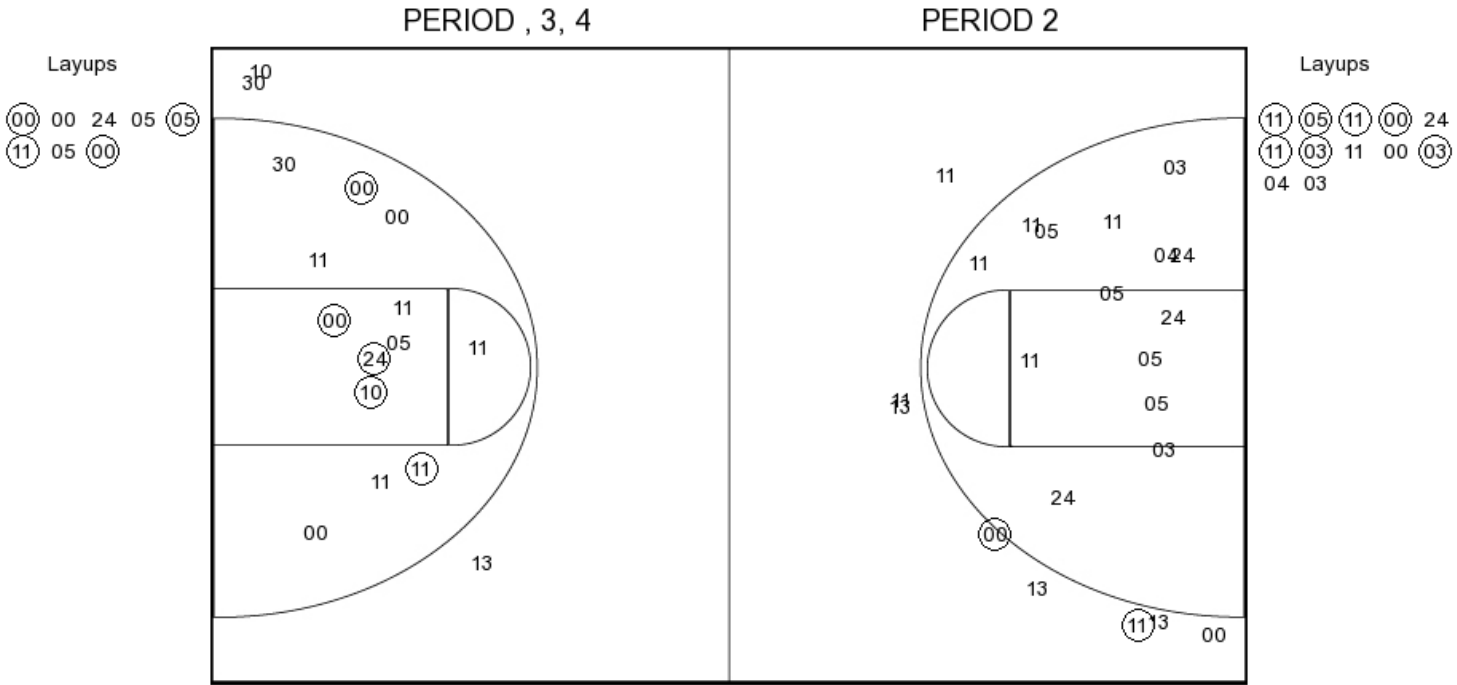
LSU PERIOD 4

FG Made
FG Attempted
3PFG Made
3PFG Attempted

SC PERIOD 4

FG Made
FG Attempted
3PFG Made
3PFG Attempted

#24/- LSU



LSU PERIOD 1

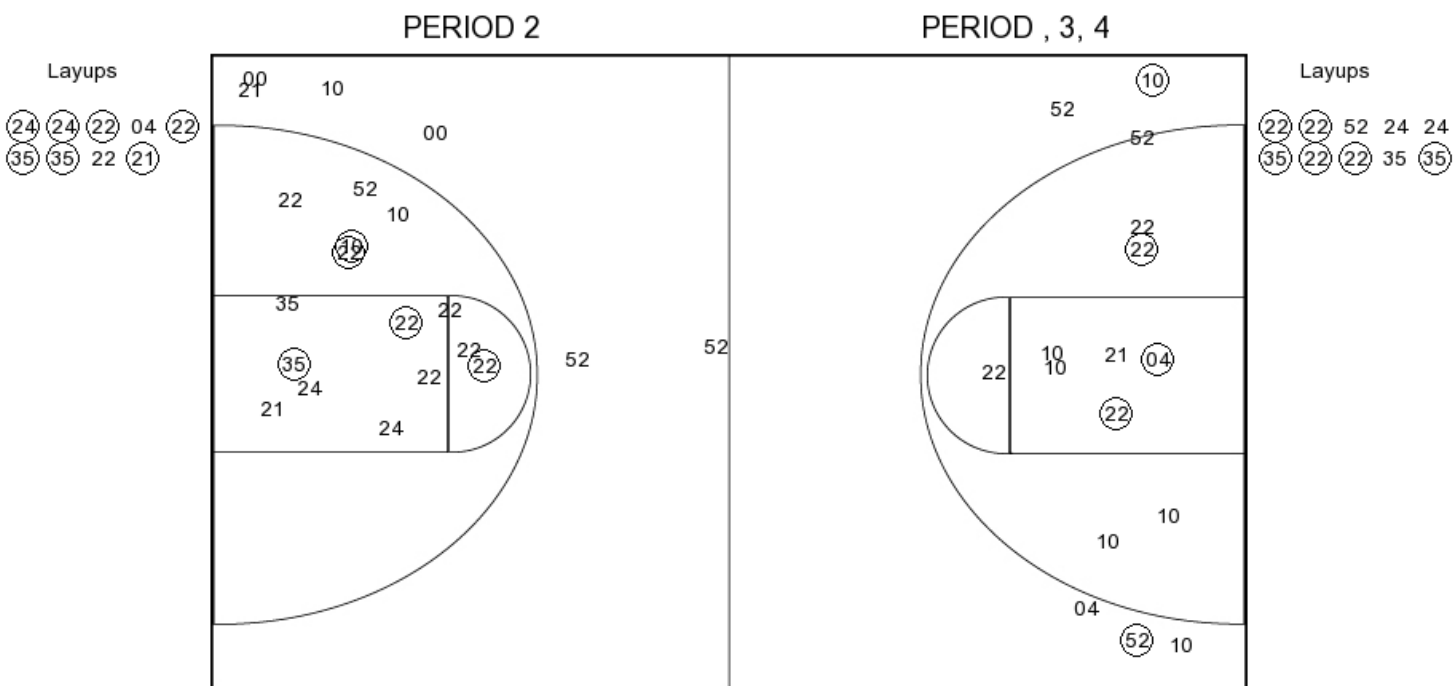
FG Made	10
FG Attempted	38
3PFG Made	1
3PFG Attempted	7

LSU PERIOD 2

FG Made	
FG Attempted	
3PFG Made	
3PFG Attempted	

#24/- LSU vs #7/6 South Carolina
OFFICIAL SHOT CHART
2/22/2018 at Columbia, S.C./Colonial Life Arena

#7/6 South Carolina



SC PERIOD 1

FG Made	12
FG Attempted	31
3PFG Made	0
3PFG Attempted	5

SC PERIOD 2

FG Made
FG Attempted
3PFG Made
3PFG Attempted