

**FINAL SCORE**

**Coll. of Charleston**

2-5

**43**

**#5/6 South Carolina**

8-1

**69**

**December 05, 2017 • Columbia, S.C./Colonial Life Arena**

**FINAL STATISTICS**

**Official Basketball Box Score -- Game Totals -- Final Statistics**  
**Coll. of Charleston vs #5/6 South Carolina**  
**12/5/2017 7 p.m. at Columbia, S.C./Colonial Life Arena**

**Coll. of Charleston 43 - 2-5**

##	Player	g	Total	3-Ptr	FT-FTA	Rebounds			PF	TP	A	TO	Blk	Stl	Min
			FG-FGA	FG-FGA		Off	Def	Tot							
02	HUFF,DARIEN		2-8	2-4	4-4	1	4	5	2	10	1	0	0	5	32
03	BROWN,SHICLASIA		3-18	1-2	0-0	2	4	6	3	7	4	3	0	1	35
15	BROWN,T ANISHA		2-9	0-0	2-2	4	2	6	3	6	0	8	0	1	27
21	LARSON,BAILEIGH		2-4	0-0	3-4	1	3	4	3	7	0	4	0	1	17
25	FORD,DEJA		0-8	0-1	0-0	1	1	2	2	0	1	1	0	1	29
05	DORSEY,CAILIN		0-1	0-1	0-0	0	1	1	2	0	1	0	0	0	10
10	HEATH,DEE		0-1	0-0	1-2	0	0	0	0	1	0	0	0	0	5
11	GOODSON,BRYANNA		2-6	1-3	0-0	0	0	0	0	5	0	1	0	0	13
20	SULLIVAN,BRI		0-2	0-0	0-0	0	3	3	2	0	0	2	0	0	12
23	BOYD,BRI		3-6	0-0	1-4	3	2	5	2	7	0	1	1	2	14
24	MADDOX,LEXI		0-1	0-0	0-0	0	1	1	0	0	0	0	0	0	6
TEAM						1	4	5	0		1				
TOTALS			14-64	4-11	11-16	13	25	38	19	43	7	21	1	11	200

Deadball Rebounds: 2,1

FG %	1st Half: 3-30 10.0%	2nd Half: 11-34 32.4%	Game: 14-64 21.9%	4th Qtr	6-17 35.3%
	1st Qtr 2-12 16.7%	2nd Qtr 1-18 05.6%	3rd Qtr 5-17 29.4%		
3FG %	1st Half: 2-5 40.0%	2nd Half: 2-6 33.3%	Game: 4-11 36.4%	4th Qtr	0-3 00.0%
	1st Qtr 2-2 100.0%	2nd Qtr 0-3 00.0%	3rd Qtr 2-3 66.7%		
FT %	1st Half: 2-2 100.0%	2nd Half: 9-14 64.3%	Game: 11-16 68.8%	4th Qtr	4-8 50.0%
	1st Qtr 0-0 0%	2nd Qtr 2-2 100.0%	3rd Qtr 5-6 83.3%		

**#5/6 South Carolina 69 - 8-1**

##	Player	g	Total	3-Ptr	FT-FTA	Rebounds			PF	TP	A	TO	Blk	Stl	Min
			FG-FGA	FG-FGA		Off	Def	Tot							
04	CLINEY,DONIYAH		0-3	0-0	0-0	2	2	4	2	0	1	3	1	0	21
10	JACKSON,BIANCA		3-8	0-2	0-0	2	8	10	3	6	3	0	0	1	33
22	WILSON,A'JA		10-20	0-1	6-7	4	11	15	0	26	0	1	1	3	22
35	JENNINGS,ALEXIS		5-7	0-0	2-2	1	4	5	2	12	1	2	3	0	21
52	HARRIS,TYASHA		2-7	0-3	5-6	0	4	4	0	9	7	4	1	5	38
00	PATRICK,VICTORIA		1-5	1-4	0-0	0	0	0	1	3	0	3	0	0	19
21	HERBERT HARRIGAN,M		1-7	0-0	0-0	1	2	3	2	2	1	1	4	0	20
23	WILLIAMS,LADAZHIA		0-1	0-0	1-2	1	1	2	4	1	1	2	0	1	12
24	GRISSET T,LELE		4-5	0-0	2-8	2	4	6	0	10	3	0	0	2	14
TEAM						2	1	3	0		1				
TOTALS			26-63	1-10	16-25	15	37	52	14	69	17	17	10	12	200

Deadball Rebounds: 5,3

FG %	1st Half: 13-36 36.1%	2nd Half: 13-27 48.1%	Game: 26-63 41.3%	4th Qtr	5-13 38.5%
	1st Qtr 7-22 31.8%	2nd Qtr 6-14 42.9%	3rd Qtr 8-14 57.1%		
3FG %	1st Half: 0-6 00.0%	2nd Half: 1-4 25.0%	Game: 1-10 10.0%	4th Qtr	1-3 33.3%
	1st Qtr 0-3 00.0%	2nd Qtr 0-3 00.0%	3rd Qtr 0-1 00.0%		
FT %	1st Half: 8-11 72.7%	2nd Half: 8-14 57.1%	Game: 16-25 64.0%	4th Qtr	5-10 50.0%
	1st Qtr 5-6 83.3%	2nd Qtr 3-5 60.0%	3rd Qtr 3-4 75.0%		

Officials: Bryan Enterline, Scott Yarbrough, Amy Bonner  
 Technical Fouls: Coll. of Charleston- None. #5/6 South Carolina- None.  
 Attendance: 11732

Score by periods	1st	2nd	3rd	4th	Total
Coll. of Charleston	6	4	17	16	43
#5/6 South Carolina	19	15	19	16	69

Points	In Paint	Off T/O	2nd Chance	Fast Break	Bench
COFC	12	14	6	7	13
SC	42	23	11	17	16

Last FG - COFC 4th-02:13, SC 4th-01:18.  
 Largest lead - Coll. of Charleston by 1 1st-08:30; #5/6 South Carolina by 28 4th-08:10  
 COFC led for 0:15. SC led for 38:23. Game was tied for 1:09.

Score tied - 0 times; Lead changed - 2 times

**Official Basketball Box Score -- Game Totals -- First Half Statistics**  
**Coll. of Charleston vs #5/6 South Carolina**  
**12/5/2017 7 p.m. at Columbia, S.C./Colonial Life Arena**

**Coll. of Charleston 10 • 2-5**

##	Player	g	Total			3-Ptr			Rebounds			PF	TP	A	TO	Blk	Stl	Min
			FG-FGA	FG-FGA	FT-FTA	FG-FGA	FG-FGA	FT-FTA	Off	Def	Tot							
02	HUFF,DARIEN		0-2	0-1	0-0	1	2	3	1	0	1	0	0	0	3		16	
03	BROWN,SHICLASIA		2-11	1-1	0-0	1	3	4	1	5	1	1	0	0		20		
15	BROWN,TANISHA		0-3	0-0	2-2	1	1	2	2	2	0	6	0	0		17		
21	LARSON,BAILEIGH		0-2	0-0	0-0	0	2	2	2	0	0	3	0	1		7		
25	FORD,DEJA		0-8	0-1	0-0	1	1	2	1	0	1	1	0	0		18		
05	DORSEY,CAILIN		0-0	0-0	0-0	0	0	0	0	0	0	0	0	0		3		
10	HEATH,DEE		0-0	0-0	0-0	0	0	0	0	0	0	0	0	0		0		
11	GOODSON,BRYANNA		1-2	1-2	0-0	0	0	0	0	3	0	0	0	0		6		
20	SULLIVAN,BRI		0-1	0-0	0-0	0	0	0	0	0	0	0	0	0		5		
23	BOYD,BRI		0-1	0-0	0-0	0	0	0	2	0	0	0	0	1		6		
24	MADDOX,LEXI		0-0	0-0	0-0	0	0	0	0	0	0	0	0	0		2		
TEAM						1	2	3	0		1							
Totals			3-30	2-5	2-2	5	11	16	9	10	3	12	0	5		100		

FG % 1st Qtr 2-12 16.7% 2nd Qtr 1-18 05.6% Half: 3-30 10.0%  
 3FG % 1st Qtr 2-2 100.0% 2nd Qtr 0-3 00.0% Half: 2-5 40.0%  
 FT % 1st Qtr 0-0 0% 2nd Qtr 2-2 100.0% Half: 2-2 100.0%

**#5/6 South Carolina 34 • 8-1**

##	Player	g	Total			3-Ptr			Rebounds			PF	TP	A	TO	Blk	Stl	Min
			FG-FGA	FG-FGA	FT-FTA	FG-FGA	FG-FGA	FT-FTA	Off	Def	Tot							
04	CLINEY,DONIYAH		0-3	0-0	0-0	2	2	4	2	0	1	3	0	0		11		
10	JACKSON,BIANCA		1-4	0-2	0-0	1	4	5	0	2	1	0	0	0		17		
22	WILSON,A'JA		7-15	0-1	4-5	3	8	11	0	18	0	0	1	2		15		
35	JENNINGS,ALEXIS		3-4	0-0	2-2	1	4	5	1	8	1	1	2	0		15		
52	HARRIS,TYASHA		1-4	0-2	1-2	0	1	1	0	3	3	2	1	2		18		
00	PATRICK,VICTORIA		0-2	0-1	0-0	0	0	0	1	0	0	1	0	0		6		
21	HERBERT HARRIGAN,M		0-1	0-0	0-0	1	0	1	0	0	1	0	2	0		8		
23	WILLIAMS,LADAZHIA		0-1	0-0	0-0	0	0	0	1	0	0	1	0	1		5		
24	GRISSETT,LELE		1-2	0-0	1-2	2	1	3	0	3	2	0	0	0		5		
TEAM						2	1	3	0		1							
Totals			13-36	0-6	8-11	12	21	33	5	34	9	9	6	5		100		

FG % 1st Qtr 7-22 31.8% 2nd Qtr 6-14 42.9% Half: 13-36 36.1%  
 3FG % 1st Qtr 0-3 00.0% 2nd Qtr 0-3 00.0% Half: 0-6 00.0%  
 FT % 1st Qtr 5-6 83.3% 2nd Qtr 3-5 60.0% Half: 8-11 72.7%

Officials: Bryan Enterline, Scott Yarbrough, Amy Bonner  
 Technical Fouls: Coll. of Charleston- None. #5/6 South Carolina- None.

Score by periods	1st	2nd	3rd	4th	Total
Coll. of Charleston	6	4	17	16	<b>43</b>
#5/6 South Carolina	19	15	19	16	<b>69</b>

Points	In Paint	Off T/O	2nd Chance	Fast Break	Bench
COFC	2	2	0	2	3
	24	10	9	6	3

Last FG - COFC 2nd-04:51, SC 2nd-00:34.  
 COFC led for 0:15. SC led for 18:24. Game was tied for 1:09.

Score tied - 0 times  
 Lead changed - 2 times

**Coll. of Charleston vs #5/6 South Carolina**  
**12/5/2017; 7 p.m. at Columbia, S.C./Colonial Life Arena**  
**Period 1 Play-By-Play**

VISITORS: Coll. of Charleston	Time	Score	Margin	HOME: #5/6 South Carolina
	09:39			MISSED JUMPER by WILSON,A'JA
	09:39			REBOUND (OFF) by TEAM
	09:31			TURNOVER by CLINEY,DONIYAH
STEAL by HUFF,DARIEN	09:30			
MISSED JUMPER by FORD,DEJA	09:27			
	09:27			REBOUND (DEF) by JENNINGS,ALEXIS
	09:11			TURNOVER by HARRIS,TYASHA
MISSED JUMPER by LARSON,BAILEIGH	08:59			
	08:59			REBOUND (DEF) by WILSON,A'JA
	08:51	2-0	H 2	GOOD! JUMPER by JACKSON,BIANCA [FB]
	08:51			ASSIST by HARRIS,TYASHA
GOOD! 3PTR by BROWN,SHICLASIA	08:30	2-3	V 1	
ASSIST by FORD,DEJA	08:30			
	08:20			MISSED 3PTR by HARRIS,TYASHA
	08:20			REBOUND (OFF) by WILSON,A'JA
	08:15	4-3	H 1	GOOD! JUMPER by WILSON,A'JA [PNT]
	08:05			FOUL by CLINEY,DONIYAH
TURNOVER by BROWN,TANISHA	07:46			
	07:43			STEAL by WILSON,A'JA
	07:41			MISSED JUMPER by CLINEY,DONIYAH
REBOUND (DEF) by BROWN,SHICLASIA	07:41			
MISSED LAYUP by BROWN,SHICLASIA	07:31			
	07:31			REBOUND (DEF) by WILSON,A'JA
FOUL by BROWN,TANISHA	07:22			
	07:22	5-3	H 2	GOOD! FT by JENNINGS,ALEXIS
	07:22	6-3	H 3	GOOD! FT by JENNINGS,ALEXIS
TURNOVER by BROWN,TANISHA	07:13			
FOUL by FORD,DEJA	06:57			
	06:57	7-3	H 4	GOOD! FT by WILSON,A'JA
	06:57	8-3	H 5	GOOD! FT by WILSON,A'JA
MISSED JUMPER by LARSON,BAILEIGH	06:39			
	06:39			REBOUND (DEF) by JENNINGS,ALEXIS
	06:31			MISSED JUMPER by JACKSON,BIANCA
	06:31			REBOUND (OFF) by CLINEY,DONIYAH
	06:26			MISSED LAYUP by CLINEY,DONIYAH
REBOUND (DEF) by TEAM	06:26			
MISSED JUMPER by FORD,DEJA	06:14			
	06:14			REBOUND (DEF) by WILSON,A'JA
	06:04			MISSED JUMPER by WILSON,A'JA
REBOUND (DEF) by BROWN,SHICLASIA	06:04			
TURNOVER by LARSON,BAILEIGH	05:51			
	05:31			MISSED JUMPER by WILSON,A'JA
	05:31			REBOUND (OFF) by TEAM
	05:28			MISSED JUMPER by WILSON,A'JA
REBOUND (DEF) by LARSON,BAILEIGH	05:28			
TURNOVER by LARSON,BAILEIGH	05:24			
	05:23			STEAL by HARRIS,TYASHA
	05:21			TURNOVER by HARRIS,TYASHA
STEAL by HUFF,DARIEN	05:20			
MISSED JUMPER by FORD,DEJA	04:57			
	04:57			REBOUND (DEF) by JENNINGS,ALEXIS
	04:44			MISSED JUMPER by WILSON,A'JA
	04:44			REBOUND (DEADB) by TEAM
FOUL by LARSON,BAILEIGH	04:43			
	04:43			TIMEOUT MEDIA
	04:43			SUB IN: GRISSETT,LELE
	04:43			SUB IN: HERBERT HARRIGAN,M
	04:43			SUB OUT: WILSON,A'JA
	04:43			SUB OUT: JENNINGS,ALEXIS
	04:41			MISSED JUMPER by HARRIS,TYASHA
REBOUND (DEF) by BROWN,SHICLASIA	04:41			
TURNOVER by LARSON,BAILEIGH	04:33			
	04:07	10-3	H 7	GOOD! JUMPER by GRISSETT,LELE [PNT]
MISSED JUMPER by BROWN,SHICLASIA	03:48			
	03:48			BLOCK by HERBERT HARRIGAN,M
	03:46			REBOUND (DEADB) by TEAM
FOUL by BROWN,SHICLASIA	03:46			
	03:37			TURNOVER by CLINEY,DONIYAH
STEAL by LARSON,BAILEIGH	03:36			

VISITORS: Coll. of Charleston	Time	Score	Margin	HOME: #5/6 South Carolina
	03:36			FOUL by CLINEY,DONIYAH
	03:36			SUB IN: PATRICK,VICTORIA
	03:36			SUB OUT: CLINEY,DONIYAH
TURNOVER by BROWN,TANISHA	03:24			
	03:07			MISSED 3PTR by JACKSON,BIANCA
REBOUND (DEF) by LARSON,BAILEIGH	03:07			
MISSED JUMPER by BROWN,SHICLASIA	02:55			
	02:55			REBOUND (DEF) by GRISSETT,LELE
	02:39			MISSED JUMPER by HERBERT HARRIGAN,M
	02:39			REBOUND (OFF) by GRISSETT,LELE
FOUL by LARSON,BAILEIGH	02:36			
	02:36	11-3	H 8	GOOD! FT by GRISSETT,LELE
	02:36			MISSED FT by GRISSETT,LELE
	02:36			REBOUND (OFF) by WILSON,A'JA
SUB IN: GOODSON,BRYANNA	02:36			
SUB IN: BOYD,BRI	02:36			
SUB OUT: HUFF,DARIEN	02:36			
SUB OUT: LARSON,BAILEIGH	02:36			
	02:36			SUB IN: WILSON,A'JA
	02:36			SUB OUT: JACKSON,BIANCA
	02:33	13-3	H 10	GOOD! JUMPER by WILSON,A'JA [PNT]
MISSED JUMPER by BROWN,SHICLASIA	02:13			
	02:13			BLOCK by WILSON,A'JA
	02:12			REBOUND (DEF) by WILSON,A'JA
	02:04	15-3	H 12	GOOD! JUMPER by WILSON,A'JA [PNT]
	02:04			ASSIST by GRISSETT,LELE
	01:59			FOUL by PATRICK,VICTORIA
TURNOVER by BROWN,TANISHA	01:48			
	01:47			STEAL by WILSON,A'JA
	01:42			MISSED JUMPER by PATRICK,VICTORIA
	01:42			REBOUND (OFF) by WILSON,A'JA
	01:30			TURNOVER by PATRICK,VICTORIA
SUB IN: HUFF,DARIEN	01:30			
SUB OUT: FORD,DEJA	01:30			
TURNOVER by BROWN,SHICLASIA	01:15			
	01:03			MISSED JUMPER by GRISSETT,LELE
	01:03			REBOUND (OFF) by GRISSETT,LELE
	01:00	17-3	H 14	GOOD! JUMPER by WILSON,A'JA [PNT]
	00:55			ASSIST by GRISSETT,LELE
MISSED LAYUP by BROWN,TANISHA	00:33			
	00:33			REBOUND (DEF) by HARRIS,TYASHA
	00:25	19-3	H 16	GOOD! LAYUP by WILSON,A'JA [FB/PNT]
	00:25			ASSIST by HARRIS,TYASHA
GOOD! 3PTR by GOODSON,BRYANNA	00:15	19-6	H 13	
ASSIST by BROWN,SHICLASIA	00:15			
	00:03			MISSED 3PTR by WILSON,A'JA
	00:03			REBOUND (OFF) by HERBERT HARRIGAN,M

Coll. of Charleston 6, #5/6 South Carolina 19

Period 1-only	In Paint	Off T/O	2nd Chance	Fast Break	Bench	
COFC	0	0	0	0	3	Score tied - 0 times
SC	12	6	7	4	3	Lead changed - 2 times

**Coll. of Charleston vs #5/6 South Carolina**  
**12/5/2017; 7 p.m. at Columbia, S.C./Colonial Life Arena**  
**Period 2 Play-By-Play**

VISITORS: Coll. of Charleston	Time	Score	Margin	HOME: #5/6 South Carolina
SUB IN: BOYD,BRI	10:00			
SUB IN: GOODSON,BRYANNA	10:00			
SUB OUT: LARSON,BAILEIGH	10:00			
SUB OUT: FORD,DEJA	10:00			
	10:00			SUB IN: HERBERT HARRIGAN,M
	10:00			SUB OUT: HARRIS,TYASHA
MISSED 3PTR by GOODSON,BRYANNA	09:50			
REBOUND (OFF) by HUFF,DARIEN	09:50			
MISSED JUMPER by BROWN,SHICLASIA	09:20			
REBOUND (OFF) by TEAM	09:20			
TURNOVER by TEAM	09:17			
	09:02	21-6	H 15	GOOD! LAYUP by JENNINGS,ALEXIS [PNT]
	09:02			ASSIST by HERBERT HARRIGAN,M
MISSED JUMPER by BROWN,TANISHA	08:48			
	08:48			REBOUND (DEF) by WILSON,A'JA
FOUL by BOYD,BRI	08:36			
SUB IN: FORD,DEJA	08:36			
SUB OUT: GOODSON,BRYANNA	08:36			
	08:26			TURNOVER by CLINEY,DONIYAH
STEAL by BOYD,BRI	08:25			
MISSED JUMPER by BROWN,SHICLASIA	08:09			
	08:09			REBOUND (DEF) by CLINEY,DONIYAH
	08:02			MISSED LAYUP by CLINEY,DONIYAH
REBOUND (DEF) by TEAM	08:02			
	08:01			SUB IN: HARRIS,TYASHA
	08:01			SUB OUT: CLINEY,DONIYAH
MISSED LAYUP by FORD,DEJA	07:48			
	07:48			BLOCK by HERBERT HARRIGAN,M
REBOUND (OFF) by FORD,DEJA	07:46			
MISSED JUMPER by BOYD,BRI	07:37			
	07:37			BLOCK by JENNINGS,ALEXIS
	07:36			REBOUND (DEF) by WILSON,A'JA
FOUL by BOYD,BRI	07:27			
	07:27	22-6	H 16	GOOD! FT by WILSON,A'JA
	07:27	23-6	H 17	GOOD! FT by WILSON,A'JA
SUB IN: MADDOX,LEXI	07:27			
SUB OUT: BOYD,BRI	07:27			
	07:27			SUB IN: WILLIAMS,LADAZHIA
	07:27			SUB OUT: HERBERT HARRIGAN,M
MISSED 3PTR by HUFF,DARIEN	07:09			
	07:09			REBOUND (DEF) by JACKSON,BIANCA
	06:49			MISSED 3PTR by HARRIS,TYASHA
REBOUND (DEF) by HUFF,DARIEN	06:49			
MISSED JUMPER by FORD,DEJA	06:40			
	06:40			REBOUND (DEF) by WILSON,A'JA
	06:29			MISSED 3PTR by JACKSON,BIANCA
REBOUND (DEF) by HUFF,DARIEN	06:29			
MISSED JUMPER by HUFF,DARIEN	06:21			
	06:21			REBOUND (DEF) by JACKSON,BIANCA
	05:57	25-6	H 19	GOOD! LAYUP by WILSON,A'JA [PNT]
	05:57			ASSIST by JENNINGS,ALEXIS
MISSED JUMPER by FORD,DEJA	05:32			
	05:32			BLOCK by JENNINGS,ALEXIS
	05:30			REBOUND (DEF) by JACKSON,BIANCA
	05:23	27-6	H 21	GOOD! JUMPER by HARRIS,TYASHA [FB/PNT]
TIMEOUT 30SEC	05:20			
SUB IN: SULLIVAN,BRI	05:20			
SUB OUT: MADDOX,LEXI	05:20			
	05:20			SUB IN: PATRICK,VICTORIA
	05:20			SUB OUT: WILSON,A'JA
	05:05			FOUL by JENNINGS,ALEXIS
GOOD! FT by BROWN,TANISHA	05:05	27-7	H 20	
GOOD! FT by BROWN,TANISHA	05:05	27-8	H 19	
	04:55			TURNOVER by WILLIAMS,LADAZHIA
STEAL by HUFF,DARIEN	04:54			
GOOD! LAYUP by BROWN,SHICLASIA [FB/PNT]	04:51	27-10	H 17	
ASSIST by HUFF,DARIEN	04:51			
	04:37	29-10	H 19	GOOD! LAYUP by JENNINGS,ALEXIS [PNT]
	04:37			ASSIST by JACKSON,BIANCA

VISITORS: Coll. of Charleston	Time	Score	Margin	HOME: #5/6 South Carolina
TURNOVER by BROWN,TANISHA	04:20			
	04:18			STEAL by WILLIAMS,LADAZHIA
	04:03			MISSED JUMPER by JENNINGS,ALEXIS
REBOUND (DEF) by FORD,DEJA	04:03			
TURNOVER by BROWN,TANISHA	03:53			
	03:53			STEAL by HARRIS,TYASHA
SUB IN: DORSEY,CAILIN	03:53			
SUB OUT: BROWN,TANISHA	03:53			
	03:34			MISSED 3PTR by PATRICK,VICTORIA
REBOUND (DEADB) by TEAM	03:34			
	03:31			FOUL by WILLIAMS,LADAZHIA
MISSED JUMPER by BROWN,SHICLASIA	03:19			
	03:19			REBOUND (DEF) by TEAM
	02:50			MISSED JUMPER by WILLIAMS,LADAZHIA
	02:50			REBOUND (OFF) by JACKSON,BIANCA
	02:47			TURNOVER by TEAM
	02:47			SUB IN: WILSON,A'JA
	02:47			SUB IN: CLINEY,DONIYAH
	02:47			SUB OUT: PATRICK,VICTORIA
	02:47			SUB OUT: WILLIAMS,LADAZHIA
MISSED JUMPER by BROWN,SHICLASIA	02:29			
REBOUND (OFF) by BROWN,SHICLASIA	02:29			
MISSED JUMPER by BROWN,SHICLASIA	02:26			
	02:26			REBOUND (DEF) by WILSON,A'JA
	02:10			MISSED JUMPER by WILSON,A'JA
	02:10			REBOUND (OFF) by JENNINGS,ALEXIS
	02:08			TURNOVER by JENNINGS,ALEXIS
MISSED JUMPER by FORD,DEJA	01:56			
	01:56			REBOUND (DEF) by JENNINGS,ALEXIS
FOUL by HUFF,DARIEN	01:48			
	01:48			MISSED FT by HARRIS,TYASHA
	01:48			REBOUND (DEADB) by TEAM
	01:48	30-10	H 20	GOOD! FT by HARRIS,TYASHA
SUB IN: BROWN,TANISHA	01:48			
SUB IN: GOODSON,BRYANNA	01:48			
SUB OUT: HUFF,DARIEN	01:48			
SUB OUT: DORSEY,CAILIN	01:48			
MISSED JUMPER by SULLIVAN,BRI	01:28			
REBOUND (OFF) by BROWN,TANISHA	01:28			
MISSED JUMPER by BROWN,TANISHA	01:24			
	01:24			REBOUND (DEF) by JACKSON,BIANCA
	01:11	32-10	H 22	GOOD! JUMPER by WILSON,A'JA [PNT]
	01:11			ASSIST by HARRIS,TYASHA
FOUL by BROWN,TANISHA	01:11			
	01:11			MISSED FT by WILSON,A'JA
REBOUND (DEF) by BROWN,TANISHA	01:11			
TURNOVER by FORD,DEJA	01:00			
	01:00			TIMEOUT 30SEC
SUB IN: DORSEY,CAILIN	00:58			
SUB OUT: BROWN,TANISHA	00:58			
	00:49			MISSED LAYUP by WILSON,A'JA
	00:49			REBOUND (OFF) by CLINEY,DONIYAH
	00:34	34-10	H 24	GOOD! JUMPER by JENNINGS,ALEXIS [PNT]
	00:34			ASSIST by CLINEY,DONIYAH
MISSED 3PTR by FORD,DEJA	00:04			
	00:04			BLOCK by HARRIS,TYASHA
	00:02			REBOUND (DEF) by CLINEY,DONIYAH

Coll. of Charleston 10, #5/6 South Carolina 34

Period 2-only	In Paint	Off T/O	2nd Chance	Fast Break	Bench	
COFC	2	2	0	2	0	Score tied - 0 times
SC	12	4	2	2	0	Lead changed - 0 times

**Official Basketball Box Score -- Game Totals -- Second Half Statistics**  
**Coll. of Charleston vs #5/6 South Carolina**  
**12/5/2017 7 p.m. at Columbia, S.C./Colonial Life Arena**

**Coll. of Charleston 33 • 2-5**

##	Player	g	Total		3-Ptr	Rebounds			PF	TP	A	TO	Blk	Stl	Min
			FG-FGA	FG-FGA	FT-FTA	Off	Def	Tot							
02	HUFF,DARIEN	g	2-6	2-3	4-4	0	2	2	1	10	0	0	0	2	16
03	BROWN,SHICLASIA	g	1-7	0-1	0-0	1	1	2	2	2	3	2	0	1	15
15	BROWN,TANISHA	f	2-6	0-0	0-0	3	1	4	1	4	0	2	0	1	10
21	LARSON,BAILEIGH	c	2-2	0-0	3-4	1	1	2	1	7	0	1	0	0	10
25	FORD,DEJA	g	0-0	0-0	0-0	0	0	0	1	0	0	0	0	1	11
05	DORSEY,CAILIN		0-1	0-1	0-0	0	1	1	2	0	1	0	0	0	7
10	HEATH,DEE		0-1	0-0	1-2	0	0	0	0	1	0	0	0	0	5
11	GOODSON,BRYANNA		1-4	0-1	0-0	0	0	0	0	2	0	1	0	0	7
20	SULLIVAN,BRI		0-1	0-0	0-0	0	3	3	2	0	0	2	0	0	7
23	BOYD,BRI		3-5	0-0	1-4	3	2	5	0	7	0	1	1	1	8
24	MADDOX,LEXI		0-1	0-0	0-0	0	1	1	0	0	0	0	0	0	4
TEAM						0	2	2	0		0				
Totals			11-34	2-6	9-14	8	14	22	10	33	4	9	1	6	100
FG %	3rd Qtr	5-17	29.4%	4th Qtr	6-17	35.3%	Half:	11-34	32.4%						
3FG %	3rd Qtr	2-3	66.7%	4th Qtr	0-3	00.0%	Half:	2-6	40.0%						
FT %	3rd Qtr	5-6	83.3%	4th Qtr	4-8	50.0%	Half:	9-14	64.3%						

**#5/6 South Carolina 35 • 8-1**

##	Player	g	Total		3-Ptr	Rebounds			PF	TP	A	TO	Blk	Stl	Min
			FG-FGA	FG-FGA	FT-FTA	Off	Def	Tot							
04	CLINEY,DONIYAH	g	0-0	0-0	0-0	0	0	0	0	0	0	0	1	0	10
10	JACKSON,BIANCA	g	2-4	0-0	0-0	1	4	5	3	4	2	0	0	1	16
22	WILSON,A'JA	f	3-5	0-0	2-2	1	3	4	0	8	0	1	0	1	7
35	JENNINGS,ALEXIS	f	2-3	0-0	0-0	0	0	0	1	4	0	1	1	0	6
52	HARRIS,TYASHA	g	1-3	0-1	4-4	0	3	3	0	6	4	2	0	3	20
00	PATRICK,VICTORIA		1-3	1-3	0-0	0	0	0	0	3	0	2	0	0	13
21	HERBERT HARRIGAN,M		1-6	0-0	0-0	0	2	2	2	2	0	1	2	0	12
23	WILLIAMS,LADAZHIA		0-0	0-0	1-2	1	1	2	3	1	1	1	0	0	7
24	GRISSETT,LELE		3-3	0-0	1-6	0	3	3	0	7	1	0	0	2	9
TEAM						0	0	0	0		0				
Totals			13-27	1-4	8-14	3	16	19	9	35	8	8	4	7	100
FG %	3rd Qtr	8-14	57.1%	4th Qtr	5-13	38.5%	Half:	13-27	48.1%						
3FG %	3rd Qtr	0-1	00.0%	4th Qtr	1-3	33.3%	Half:	1-4	00.0%						
FT %	3rd Qtr	3-4	75.0%	4th Qtr	5-10	50.0%	Half:	8-14	57.1%						

Officials: Bryan Enterline, Scott Yarbrough, Amy Bonner  
 Technical Fouls: Coll. of Charleston- None. #5/6 South Carolina- None.

Score by periods	1st	2nd	3rd	4th	Total
Coll. of Charleston	6	4	17	16	<b>43</b>
#5/6 South Carolina	19	15	19	16	<b>69</b>

Points	In Paint	Off T/O	2nd Chance	Fast Break	Bench
COFC	10	12	6	5	10
	18	13	2	11	13

Last FG - COFC 4th-02:13, SC 4th-01:18.  
 COFC led for 0:00. SC led for 19:59. Game was tied for 0:00.

Score tied - 0 times  
 Lead changed - 0 times



**Coll. of Charleston vs #5/6 South Carolina**  
**12/5/2017; 7 p.m. at Columbia, S.C./Colonial Life Arena**  
**Period 3 Play-By-Play**

VISITORS: Coll. of Charleston	Time	Score	Margin	HOME: #5/6 South Carolina
GOOD! 3PTR by HUFF,DARIEN	09:49	34-13	H 21	
ASSIST by BROWN,SHICLASIA	09:49			
	09:28			TURNOVER by WILSON,A'JA
STEAL by HUFF,DARIEN	09:27			
MISSED LAYUP by BROWN,SHICLASIA	09:23			
	09:23			REBOUND (DEF) by JACKSON,BIANCA
FOUL by BROWN,SHICLASIA	09:20			
	09:01	36-13	H 23	GOOD! LAYUP by JENNINGS,ALEXIS [PNT]
	09:01			ASSIST by JACKSON,BIANCA
MISSED LAYUP by BROWN,TANISHA	08:41			
	08:41			REBOUND (DEF) by WILSON,A'JA
	08:37			TURNOVER by HARRIS,TYASHA
STEAL by FORD,DEJA	08:35			
GOOD! 3PTR by HUFF,DARIEN [FB]	08:32	36-16	H 20	
ASSIST by BROWN,SHICLASIA	08:32			
	08:04			TURNOVER by JENNINGS,ALEXIS
STEAL by HUFF,DARIEN	08:03			
	08:00			FOUL by JACKSON,BIANCA
GOOD! FT by HUFF,DARIEN	08:00	36-17	H 19	
GOOD! FT by HUFF,DARIEN	08:00	36-18	H 18	
FOUL by BROWN,SHICLASIA	07:47			
	07:47			FOUL by JENNINGS,ALEXIS
GOOD! FT by HUFF,DARIEN	07:47	36-19	H 17	
GOOD! FT by HUFF,DARIEN	07:47	36-20	H 16	
	07:47			SUB IN: HERBERT HARRIGAN,M
	07:47			SUB OUT: JENNINGS,ALEXIS
GOOD! JUMPER by BROWN,TANISHA	07:28	36-22	H 14	
FOUL by LARSON,BAILEIGH	07:17			
FOUL by BROWN,TANISHA	07:10			
	07:10	37-22	H 15	GOOD! FT by WILSON,A'JA
	07:10	38-22	H 16	GOOD! FT by WILSON,A'JA
SUB IN: SULLIVAN,BRI	07:10			
SUB OUT: BROWN,TANISHA	07:10			
MISSED LAYUP by BROWN,SHICLASIA	06:55			
	06:55			REBOUND (DEF) by JACKSON,BIANCA
	06:45			MISSED JUMPER by HERBERT HARRIGAN,M
REBOUND (DEF) by HUFF,DARIEN	06:45			
TURNOVER by SULLIVAN,BRI	06:33			
	06:32			STEAL by WILSON,A'JA
	06:28	40-22	H 18	GOOD! LAYUP by WILSON,A'JA [FB/PNT]
TURNOVER by LARSON,BAILEIGH	06:07			
	06:07			STEAL by HARRIS,TYASHA
	05:50	42-22	H 20	GOOD! JUMPER by WILSON,A'JA
MISSED JUMPER by BROWN,SHICLASIA	05:35			
REBOUND (OFF) by BROWN,SHICLASIA	05:35			
MISSED JUMPER by HUFF,DARIEN	05:20			
	05:20			BLOCK by CLINEY,DONIYAH
REBOUND (OFF) by LARSON,BAILEIGH	05:17			
	05:16			FOUL by JACKSON,BIANCA
GOOD! FT by LARSON,BAILEIGH	05:16	42-23	H 19	
MISSED FT by LARSON,BAILEIGH	05:16			
	05:16			REBOUND (DEF) by WILSON,A'JA
	05:16			SUB IN: GRISSETT,LELE
	05:16			SUB OUT: CLINEY,DONIYAH
	04:59			MISSED 3PTR by HARRIS,TYASHA
REBOUND (DEF) by SULLIVAN,BRI	04:59			
GOOD! LAYUP by LARSON,BAILEIGH [PNT]	04:47	42-25	H 17	
ASSIST by BROWN,SHICLASIA	04:47			
	04:36			MISSED LAYUP by WILSON,A'JA
REBOUND (DEF) by SULLIVAN,BRI	04:36			
TURNOVER by BROWN,SHICLASIA	04:23			
	04:22			STEAL by HARRIS,TYASHA
	04:09			MISSED JUMPER by HERBERT HARRIGAN,M
	04:09			REBOUND (DEADB) by TEAM
FOUL by SULLIVAN,BRI	04:08			
	04:08			TIMEOUT MEDIA
	04:08	43-25	H 18	GOOD! FT by GRISSETT,LELE
	04:08			MISSED FT by GRISSETT,LELE
	04:08			REBOUND (OFF) by WILSON,A'JA

VISITORS: Coll. of Charleston	Time	Score	Margin	HOME: #5/6 South Carolina
SUB IN: BOYD,BRI	04:08			
SUB IN: BROWN,TANISHA	04:08			
SUB OUT: SULLIVAN,BRI	04:08			
SUB OUT: LARSON,BAILEIGH	04:08			
	04:08			SUB IN: CLINEY,DONIYAH
	04:08			SUB OUT: JACKSON,BIANCA
	04:04	45-25	H 20	GOOD! LAYUP by WILSON,A'JA [PNT]
MISSED LAYUP by BROWN,TANISHA	03:43			
REBOUND (OFF) by BROWN,TANISHA	03:43			
MISSED JUMPER by BROWN,TANISHA	03:38			
REBOUND (OFF) by BOYD,BRI	03:38			
GOOD! JUMPER by BOYD,BRI [PNT]	03:35	45-27	H 18	
	03:20			MISSED JUMPER by WILSON,A'JA
REBOUND (DEF) by BOYD,BRI	03:20			
MISSED 3PTR by BROWN,SHICLASIA	03:04			
	03:04			REBOUND (DEF) by WILSON,A'JA
	02:51			MISSED JUMPER by HERBERT HARRIGAN,M
REBOUND (DEF) by TEAM	02:51			
SUB IN: GOODSON,BRYANNA	02:48			
SUB OUT: FORD,DEJA	02:48			
	02:48			SUB IN: PATRICK,VICTORIA
	02:48			SUB OUT: WILSON,A'JA
TURNOVER by BROWN,TANISHA	02:26			
	02:25			STEAL by HARRIS,TYASHA
	02:19			TURNOVER by HERBERT HARRIGAN,M
STEAL by BROWN,TANISHA	02:18			
TURNOVER by BROWN,TANISHA	02:15			
	01:56	47-27	H 20	GOOD! LAYUP by HERBERT HARRIGAN,M [PNT]
	01:56			ASSIST by GRISSETT,LELE
MISSED LAYUP by BROWN,SHICLASIA	01:43			
	01:43			BLOCK by HERBERT HARRIGAN,M
	01:41			REBOUND (DEF) by HARRIS,TYASHA
	01:38	49-27	H 22	GOOD! LAYUP by GRISSETT,LELE [FB/PNT]
	01:38			ASSIST by HARRIS,TYASHA
MISSED JUMPER by HUFF,DARIEN	01:29			
	01:29			REBOUND (DEF) by HERBERT HARRIGAN,M
SUB IN: DORSEY,CAILIN	01:16			
SUB IN: HEATH,DEE	01:16			
SUB OUT: BROWN,SHICLASIA	01:16			
SUB OUT: BROWN,TANISHA	01:16			
	01:16			SUB IN: JENNINGS,ALEXIS
	01:16			SUB OUT: GRISSETT,LELE
	01:07	51-27	H 24	GOOD! LAYUP by JENNINGS,ALEXIS [PNT]
	01:07			ASSIST by HARRIS,TYASHA
MISSED JUMPER by GOODSON,BRYANNA	00:48			
	00:48			REBOUND (DEF) by HERBERT HARRIGAN,M
	00:25	53-27	H 26	GOOD! JUMPER by HARRIS,TYASHA
	00:10			SUB IN: JACKSON,BIANCA
	00:10			SUB OUT: HARRIS,TYASHA
MISSED JUMPER by HUFF,DARIEN	00:08			
REBOUND (OFF) by BOYD,BRI	00:08			
TURNOVER by BOYD,BRI	00:04			
	00:03			STEAL by JACKSON,BIANCA

Coll. of Charleston 27, #5/6 South Carolina 53

Period 3-only	In Paint	Off T/O	2nd Chance	Fast Break	Bench	
COFC	4	9	3	3	2	Score tied - 0 times
SC	12	9	2	4	5	Lead changed - 0 times

**Coll. of Charleston vs #5/6 South Carolina**  
**12/5/2017; 7 p.m. at Columbia, S.C./Colonial Life Arena**  
**Period 4 Play-By-Play**

VISITORS: Coll. of Charleston	Time	Score	Margin	HOME: #5/6 South Carolina
	10:00			SUB IN: PATRICK,VICTORIA
	10:00			SUB IN: HERBERT HARRIGAN,M
	10:00			SUB OUT: WILSON,A'JA
	10:00			SUB OUT: HARRIS,TYASHA
	09:37			MISSED JUMPER by HERBERT HARRIGAN,M
	09:37			REBOUND (OFF) by JACKSON,BIANCA
	09:33			MISSED JUMPER by JACKSON,BIANCA
REBOUND (DEF) by BROWN,TANISHA	09:33			
	09:30			SUB IN: HARRIS,TYASHA
	09:30			SUB OUT: CLINEY,DONIYAH
	09:02			FOUL by HERBERT HARRIGAN,M
GOOD! FT by LARSON,BAILEIGH	09:02	53-28	H 25	
GOOD! FT by LARSON,BAILEIGH	09:02	53-29	H 24	
	08:40			TURNOVER by HARRIS,TYASHA
STEAL by BROWN,SHICLASIA	08:39			
MISSED LAYUP by BROWN,SHICLASIA	08:35			
	08:35			REBOUND (DEF) by JACKSON,BIANCA
	08:28	55-29	H 26	GOOD! JUMPER by JACKSON,BIANCA [FB]
TURNOVER by BROWN,SHICLASIA	08:15			
FOUL by FORD,DEJA	08:10			
	08:10	56-29	H 27	GOOD! FT by HARRIS,TYASHA
	08:10	57-29	H 28	GOOD! FT by HARRIS,TYASHA
SUB IN: BOYD,BRI	08:10			
SUB IN: DORSEY,CAILIN	08:10			
SUB OUT: LARSON,BAILEIGH	08:10			
SUB OUT: FORD,DEJA	08:10			
GOOD! JUMPER by BROWN,TANISHA	07:56	57-31	H 26	
	07:35			MISSED JUMPER by JENNINGS,ALEXIS
REBOUND (DEF) by HUFF,DARIEN	07:35			
	07:26			FOUL by JACKSON,BIANCA
MISSED JUMPER by BOYD,BRI	07:21			
	07:21			BLOCK by JENNINGS,ALEXIS
	07:18			REBOUND (DEF) by JACKSON,BIANCA
	07:12			TURNOVER by PATRICK,VICTORIA
	07:12			SUB IN: WILLIAMS,LADAZHIA
	07:12			SUB OUT: JENNINGS,ALEXIS
MISSED JUMPER by BROWN,TANISHA	06:56			
	06:56			BLOCK by HERBERT HARRIGAN,M
REBOUND (OFF) by BROWN,TANISHA	06:53			
	06:52			FOUL by WILLIAMS,LADAZHIA
GOOD! FT by BOYD,BRI	06:52	57-32	H 25	
MISSED FT by BOYD,BRI	06:52			
	06:52			REBOUND (DEF) by WILLIAMS,LADAZHIA
	06:35			MISSED JUMPER by HERBERT HARRIGAN,M
	06:35			REBOUND (OFF) by WILLIAMS,LADAZHIA
	06:29			TURNOVER by WILLIAMS,LADAZHIA
STEAL by BOYD,BRI	06:27			
GOOD! JUMPER by BOYD,BRI	06:20	57-34	H 23	
ASSIST by DORSEY,CAILIN	06:20			
	05:56			MISSED 3PTR by PATRICK,VICTORIA
REBOUND (DEF) by DORSEY,CAILIN	05:56			
MISSED 3PTR by HUFF,DARIEN	05:49			
REBOUND (OFF) by BROWN,TANISHA	05:49			
MISSED 3PTR by DORSEY,CAILIN	05:43			
REBOUND (DEADB) by TEAM	05:43			
	05:40			FOUL by HERBERT HARRIGAN,M
SUB IN: GOODSON,BRYANNA	05:40			
SUB IN: LARSON,BAILEIGH	05:40			
SUB IN: SULLIVAN,BRI	05:40			
SUB OUT: BROWN,SHICLASIA	05:40			
SUB OUT: BROWN,TANISHA	05:40			
SUB OUT: BOYD,BRI	05:40			
TURNOVER by GOODSON,BRYANNA	05:27			
	05:26			STEAL by GRISSETT,LELE
FOUL by HUFF,DARIEN	05:25			
	05:25			MISSED FT by GRISSETT,LELE
	05:25			REBOUND (DEADB) by TEAM
	05:25			MISSED FT by GRISSETT,LELE
REBOUND (DEF) by LARSON,BAILEIGH	05:25			

VISITORS: Coll. of Charleston	Time	Score	Margin	HOME: #5/6 South Carolina
	05:25			SUB IN: GRISSETT,LELE
	05:25			SUB OUT: HERBERT HARRIGAN,M
TURNOVER by SULLIVAN,BRI	05:12			
	05:11			STEAL by GRISSETT,LELE
FOUL by SULLIVAN,BRI	05:08			
	05:08	58-34	H 24	GOOD! FT by HARRIS, TYASHA
	05:08	59-34	H 25	GOOD! FT by HARRIS, TYASHA
GOOD! JUMPER by GOODSON,BRYANNA	04:47	59-36	H 23	
	04:37	61-36	H 25	GOOD! JUMPER by GRISSETT,LELE [PNT]
	04:37			ASSIST by WILLIAMS,LADAZHIA
GOOD! LAYUP by LARSON,BAILEIGH [PNT]	04:19	61-38	H 23	
	04:13	63-38	H 25	GOOD! LAYUP by JACKSON,BIANCA [FB/PNT]
	04:13			ASSIST by HARRIS, TYASHA
MISSED JUMPER by GOODSON,BRYANNA	03:56			
	03:56			REBOUND (DEF) by HARRIS, TYASHA
FOUL by DORSEY,CAILIN	03:48			
	03:48			TIMEOUT MEDIA
	03:48	64-38	H 26	GOOD! FT by WILLIAMS,LADAZHIA
	03:48			MISSED FT by WILLIAMS,LADAZHIA
REBOUND (DEF) by MADDOX,LEXI	03:48			
SUB IN: FORD,DEJA	03:48			
SUB IN: MADDOX,LEXI	03:48			
SUB IN: BOYD,BRI	03:48			
SUB IN: BROWN,SHICLASIA	03:48			
SUB IN: HEATH,DEE	03:48			
SUB OUT: HUFF,DARIEN	03:48			
SUB OUT: GOODSON,BRYANNA	03:48			
SUB OUT: LARSON,BAILEIGH	03:48			
SUB OUT: SULLIVAN,BRI	03:48			
SUB OUT: DORSEY,CAILIN	03:48			
MISSED LAYUP by BOYD,BRI	03:30			
REBOUND (OFF) by BOYD,BRI	03:30			
GOOD! LAYUP by BOYD,BRI [PNT]	03:25	64-40	H 24	
	03:19	66-40	H 26	GOOD! LAYUP by GRISSETT,LELE [PNT]
	03:19			ASSIST by JACKSON,BIANCA
	02:59			FOUL by WILLIAMS,LADAZHIA
MISSED FT by BOYD,BRI	02:59			
REBOUND (DEADB) by TEAM	02:59			
MISSED FT by BOYD,BRI	02:59			
	02:59			REBOUND (DEF) by GRISSETT,LELE
	02:45			MISSED LAYUP by JACKSON,BIANCA
BLOCK by BOYD,BRI	02:45			
REBOUND (DEF) by BOYD,BRI	02:43			
	02:38			FOUL by WILLIAMS,LADAZHIA
GOOD! FT by HEATH,DEE	02:38	66-41	H 25	
MISSED FT by HEATH,DEE	02:38			
	02:38			REBOUND (DEF) by GRISSETT,LELE
	02:21			MISSED JUMPER by HARRIS, TYASHA
REBOUND (DEF) by BROWN,SHICLASIA	02:21			
GOOD! LAYUP by BROWN,SHICLASIA [FB/PNT]	02:13	66-43	H 23	
	01:52			TURNOVER by PATRICK,VICTORIA
SUB IN: DORSEY,CAILIN	01:52			
SUB IN: GOODSON,BRYANNA	01:52			
SUB IN: SULLIVAN,BRI	01:52			
SUB OUT: FORD,DEJA	01:52			
SUB OUT: BOYD,BRI	01:52			
SUB OUT: BROWN,SHICLASIA	01:52			
MISSED JUMPER by MADDOX,LEXI	01:26			
	01:26			REBOUND (DEF) by HARRIS, TYASHA
	01:18	69-43	H 26	GOOD! 3PTR by PATRICK,VICTORIA [FB]
	01:18			ASSIST by HARRIS, TYASHA
MISSED JUMPER by SULLIVAN,BRI	00:59			
	00:59			REBOUND (DEADB) by TEAM
FOUL by DORSEY,CAILIN	00:56			
	00:56			MISSED FT by GRISSETT,LELE
	00:56			REBOUND (DEADB) by TEAM
	00:56			MISSED FT by GRISSETT,LELE
REBOUND (DEF) by SULLIVAN,BRI	00:56			
MISSED LAYUP by HEATH,DEE	00:44			
	00:44			REBOUND (DEF) by GRISSETT,LELE
	00:19			MISSED 3PTR by PATRICK,VICTORIA
REBOUND (DEF) by TEAM	00:19			
MISSED 3PTR by GOODSON,BRYANNA	00:03			
	00:03			REBOUND (DEADB) by TEAM

<b>Period 4-only</b>	<b>In Paint</b>	<b>Off T/O</b>	<b>2nd Chance</b>	<b>Fast Break</b>	<b>Bench</b>	
COFC	6	3	3	2	8	Score tied - 0 times
SC	6	4	0	7	8	Lead changed - 0 times

**Coll. of Charleston vs #5/6 South Carolina**  
**12/5/2017; 7 p.m. at Columbia, S.C./Colonial Life Arena**  
**Scoring/Runs Reference**

**Period 1**

Coll. of Charleston	VRun	Score	Margin	HRun	# 5/6 South Carolina
		0-2	2		JACKSON JUMPER [F] - 08:51
08:30 - BROWN 3PTR	-	3-2	-1		
		3-4	1		WILSON JUMPER [P] - 08:15
		3-5	2	3-0	JENNINGS FT - 07:22
		3-6	3	4-0	JENNINGS FT - 07:22
		3-7	4	5-0	WILSON FT - 06:57
		3-8	5	6-0	WILSON FT - 06:57
		3-10	7	8-0	GRISSETT JUMPER [P] - 04:07
		3-11	8	9-0	GRISSETT FT - 02:36
		3-13	10	11-0	WILSON JUMPER [P] - 02:33
		3-15	12	13-0	WILSON JUMPER [P] - 02:04
		3-17	14	15-0	WILSON JUMPER [P] - 01:00
		3-19	16	17-0	WILSON LAYUP [P] [F] - 00:25
00:15 - GOODSON 3PTR	-	6-19	13		

**Coll. of Charleston vs #5/6 South Carolina**  
**12/5/2017; 7 p.m. at Columbia, S.C./Colonial Life Arena**  
**Scoring/Runs Reference**

**Period 2**

Coll. of Charleston	VRun	Score	Margin	HRun	# 5/6 South Carolina
		6-21	15		JENNINGS LAYUP [P] - 09:02
		6-22	16	NaN-0	WILSON FT - 07:27
		6-23	17	NaN-0	WILSON FT - 07:27
		6-25	19	NaN-0	WILSON LAYUP [P] - 05:57
		6-27	21	NaN-0	HARRIS JUMPER [P] [F] - 05:23
05:05 - BROWN FT	-	7-27	20		
05:05 - BROWN FT	2-0	8-27	19		
04:51 - BROWN LAYUP [P] [F]	4-0	10-27	17		
		10-29	19		JENNINGS LAYUP [P] - 04:37
		10-30	20	3-0	HARRIS FT - 01:48
		10-32	22	5-0	WILSON JUMPER [P] - 01:11
		10-34	24	7-0	JENNINGS JUMPER [P] - 00:34

**Coll. of Charleston vs #5/6 South Carolina**  
**12/5/2017; 7 p.m. at Columbia, S.C./Colonial Life Arena**  
**Scoring/Runs Reference**

**Period 3**

Coll. of Charleston	VRun	Score	Margin	HRun	# 5/6 South Carolina
09:49 - HUFF 3PTR	-	13-34	21		
		13-36	23		JENNINGS LAYUP [P] - 09:01
08:32 - HUFF 3PTR [F]	-	16-36	20		
08:00 - HUFF FT	4-0	17-36	19		
08:00 - HUFF FT	5-0	18-36	18		
07:47 - HUFF FT	6-0	19-36	17		
07:47 - HUFF FT	7-0	20-36	16		
07:28 - BROWN JUMPER	9-0	22-36	14		
		22-37	15		WILSON FT - 07:10
		22-38	16	2-0	WILSON FT - 07:10
		22-40	18	4-0	WILSON LAYUP [P] [F] - 06:28
		22-42	20	6-0	WILSON JUMPER - 05:50
05:16 - LARSON FT	-	23-42	19		
04:47 - LARSON LAYUP [P]	3-0	25-42	17		
		25-43	18		GRISSETT FT - 04:08
		25-45	20	3-0	WILSON LAYUP [P] - 04:04
03:35 - BOYD JUMPER [P]	-	27-45	18		
		27-47	20		HERBERT HARRIGAN LAYUP [P] - 01:56
		27-49	22	4-0	GRISSETT LAYUP [P] [F] - 01:38
		27-51	24	6-0	JENNINGS LAYUP [P] - 01:07
		27-53	26	8-0	HARRIS JUMPER - 00:25



**Coll. of Charleston vs #5/6 South Carolina**  
**12/5/2017; 7 p.m. at Columbia, S.C./Colonial Life Arena**  
**Scoring/Runs Reference**

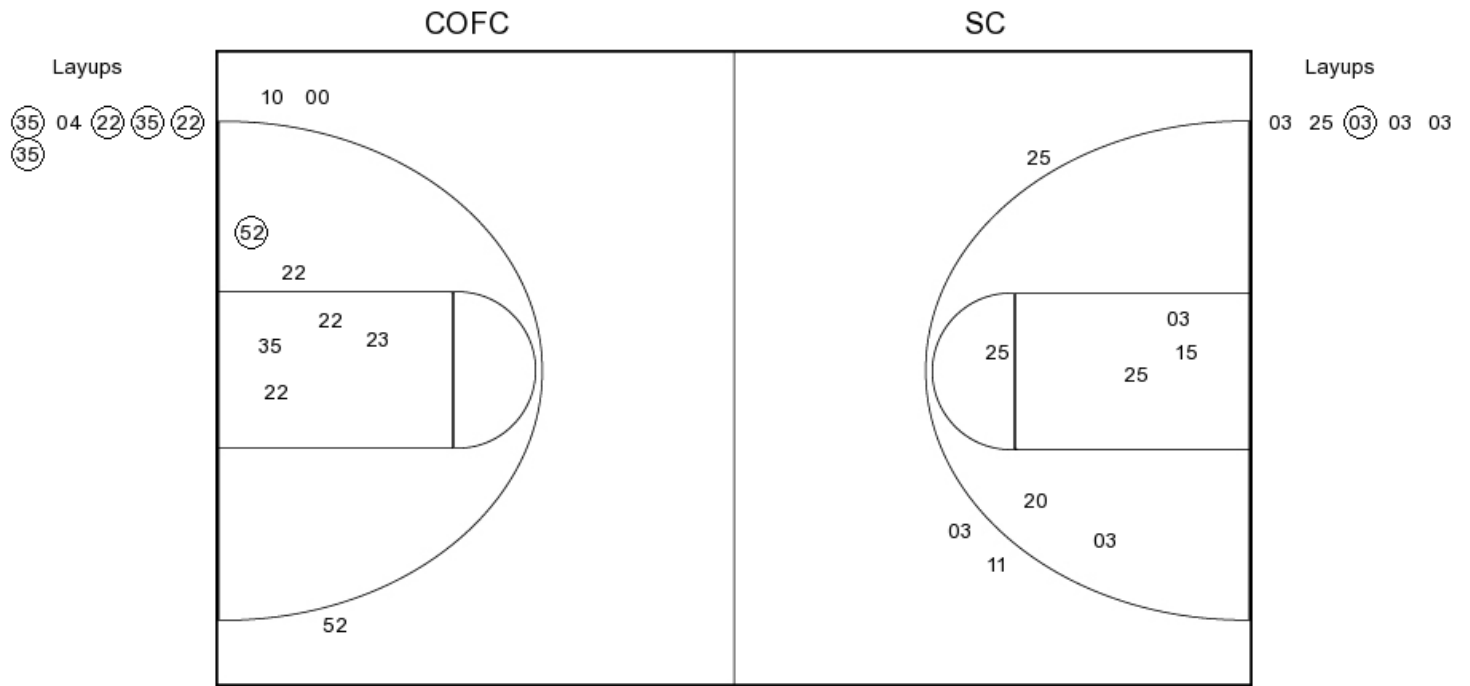
**Period 4**

Coll. of Charleston	VRun	Score	Margin	HRun	# 5/6 South Carolina
09:02 - LARSON FT	-	28-53	25		
09:02 - LARSON FT	NaN-0	29-53	24		
		29-55	26		JACKSON JUMPER [F] - 08:28
		29-56	27	3-0	HARRIS FT - 08:10
		29-57	28	4-0	HARRIS FT - 08:10
07:56 - BROWN JUMPER	-	31-57	26		
06:52 - BOYD FT	3-0	32-57	25		
06:20 - BOYD JUMPER	5-0	34-57	23		
		34-58	24		HARRIS FT - 05:08
		34-59	25	2-0	HARRIS FT - 05:08
04:47 - GOODSON JUMPER	-	36-59	23		
		36-61	25		GRISSETT JUMPER [P] - 04:37
04:19 - LARSON LAYUP [P]	-	38-61	23		
		38-63	25		JACKSON LAYUP [P] [F] - 04:13
		38-64	26	3-0	WILLIAMS FT - 03:48
03:25 - BOYD LAYUP [P]	-	40-64	24		
		40-66	26		GRISSETT LAYUP [P] - 03:19
02:38 - HEATH FT	-	41-66	25		
02:13 - BROWN LAYUP [P] [F]	3-0	43-66	23		
		43-69	26		PATRICK 3PTR [F] - 01:18



Coll. of Charleston vs #5/6 South Carolina  
 OFFICIAL SHOT CHART  
 12/5/2017 at Columbia, S.C./Colonial Life Arena

**PERIOD 2**



**COFC PERIOD 2**

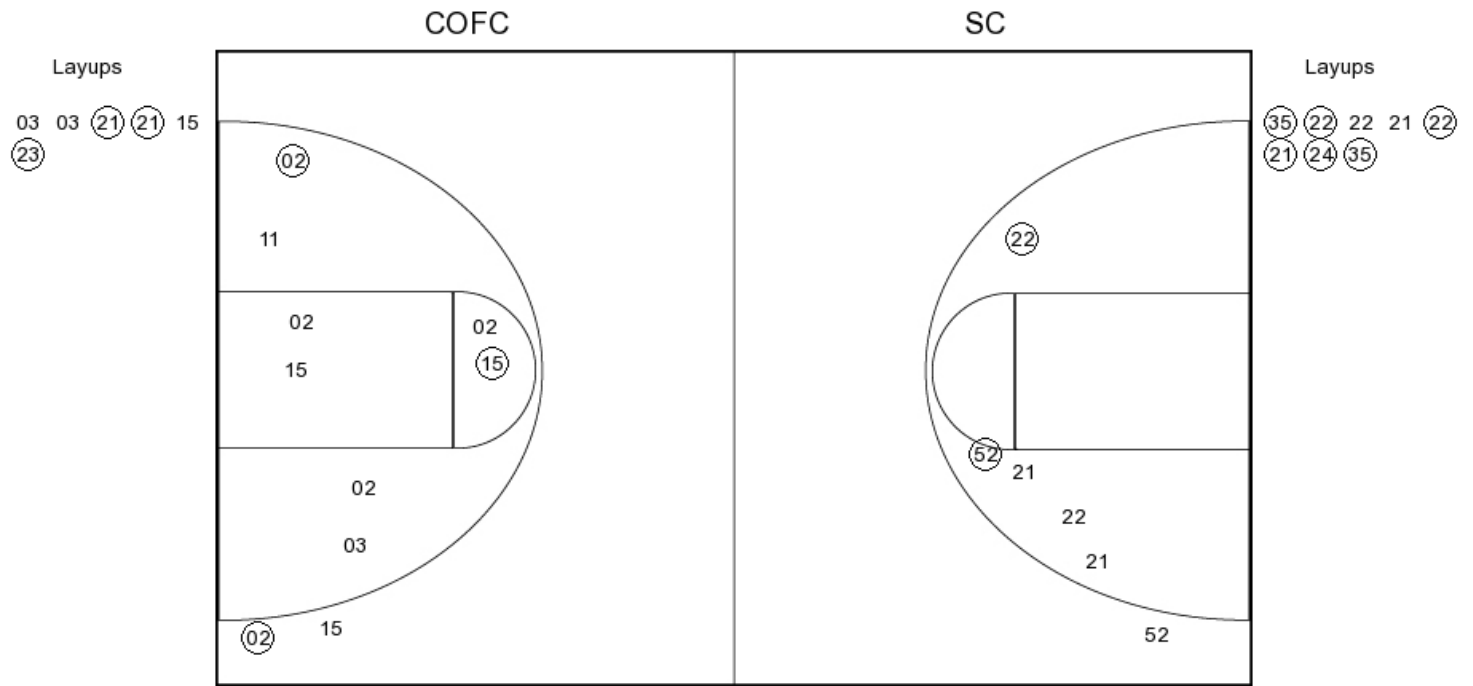
FG Made  
 FG Attempted  
 3PFG Made  
 3PFG Attempted

**SC PERIOD 2**

FG Made  
 FG Attempted  
 3PFG Made  
 3PFG Attempted

Coll. of Charleston vs #5/6 South Carolina  
 OFFICIAL SHOT CHART  
 12/5/2017 at Columbia, S.C./Colonial Life Arena

**PERIOD 3**



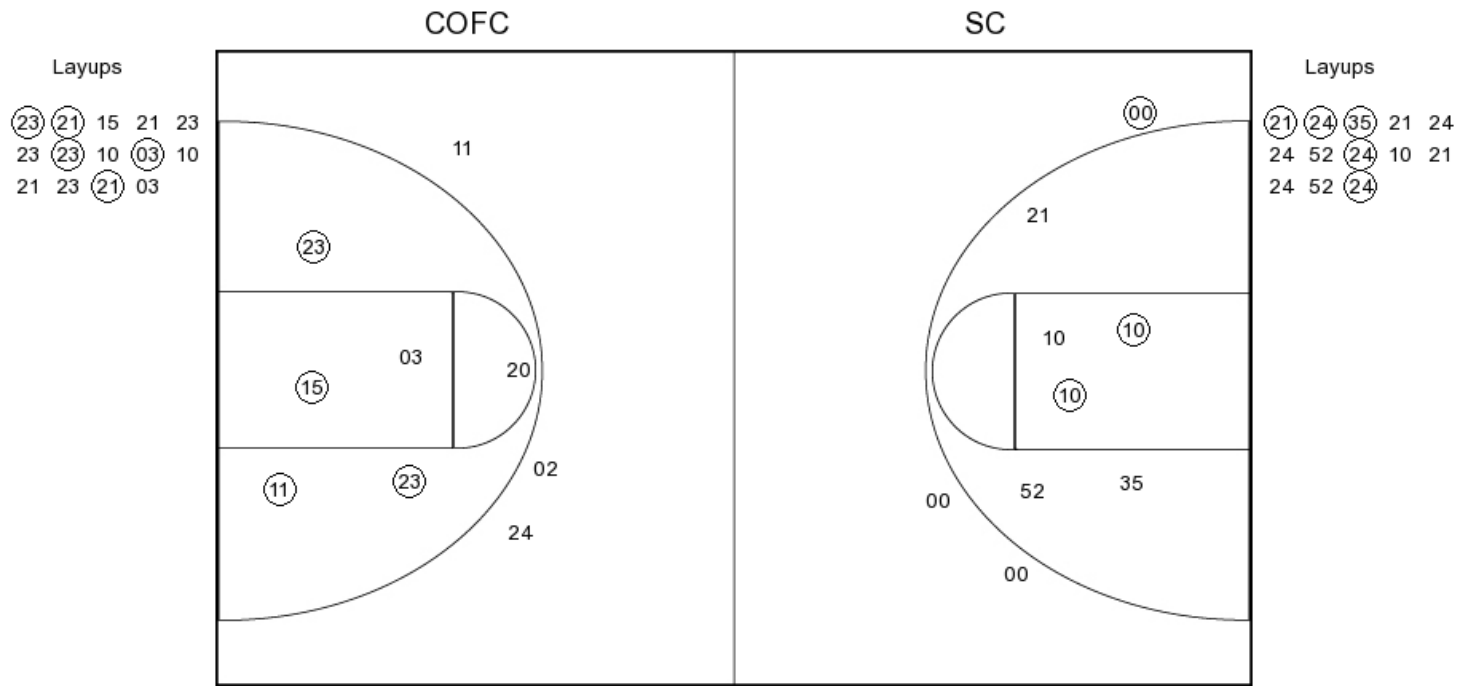
**COFC PERIOD 3**

FG Made	11
FG Attempted	34
3PFG Made	2
3PFG Attempted	6

**SC PERIOD 3**

FG Made	13
FG Attempted	27
3PFG Made	1
3PFG Attempted	4

**PERIOD 4**



**COFC PERIOD 4**

FG Made  
 FG Attempted  
 3PFG Made  
 3PFG Attempted

**SC PERIOD 4**

FG Made  
 FG Attempted  
 3PFG Made  
 3PFG Attempted

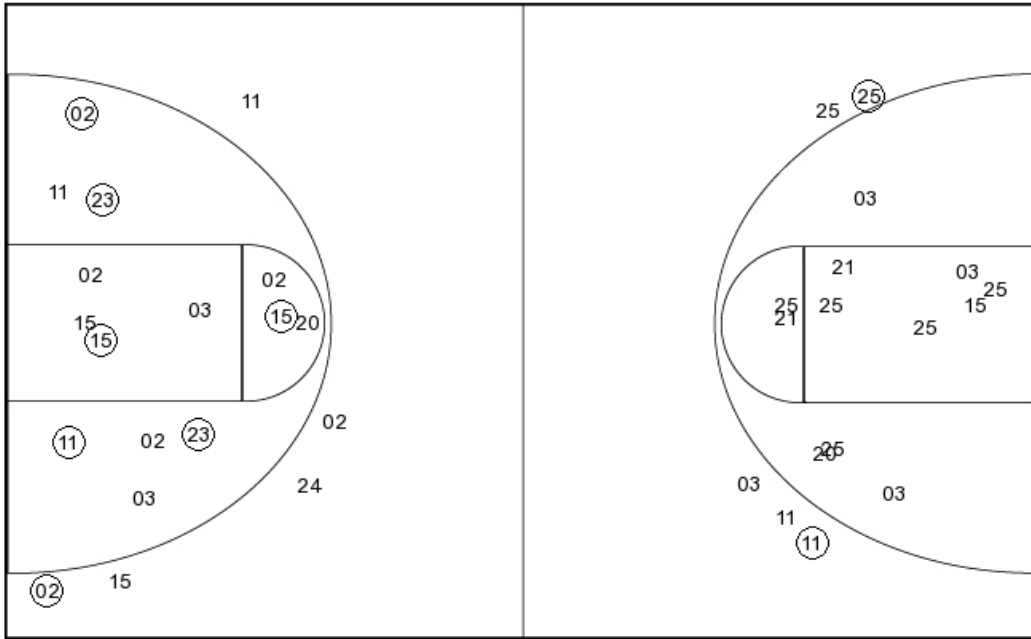
Coll. of Charleston vs #5/6 South Carolina  
 OFFICIAL SHOT CHART  
 12/5/2017 at Columbia, S.C./Colonial Life Arena

Coll. of Charleston

PERIOD , 3, 4

PERIOD 2

Layups  
 03 03 (21) (21) 15  
 (23) (23) (21) 15 21  
 23 23 (23) 10 (03)  
 10 21 23 (21) 03



Layups  
 15 (15) 15 03 25  
 (03) 03 03

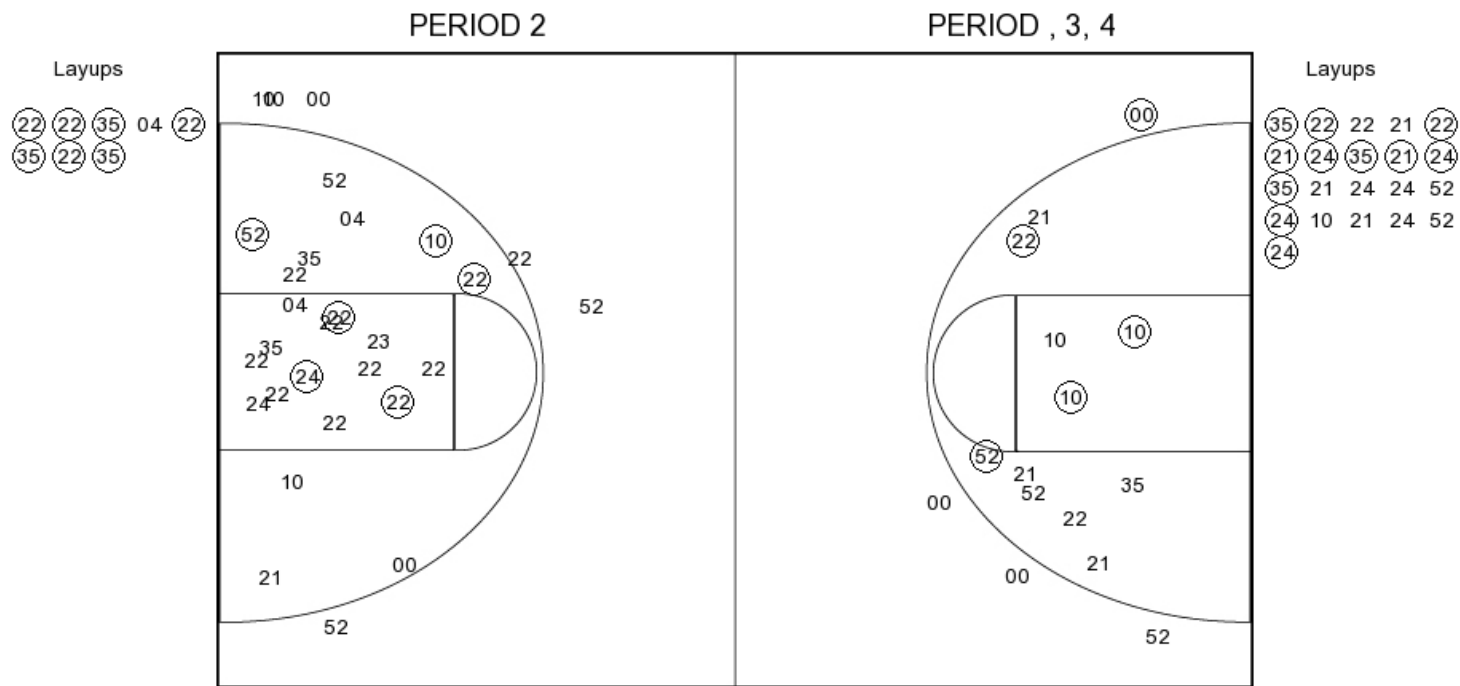
**COFC PERIOD 1**

FG Made 3  
 FG Attempted 30  
 3PFG Made 2  
 3PFG Attempted 5

**COFC PERIOD 2**

FG Made  
 FG Attempted  
 3PFG Made  
 3PFG Attempted

#5/6 South Carolina



**SC PERIOD 1**

FG Made	13
FG Attempted	36
3PFG Made	0
3PFG Attempted	6

**SC PERIOD 2**

FG Made	
FG Attempted	
3PFG Made	
3PFG Attempted	