

FINAL SCORE

Tulsa

4-5

41

ARKANSAS

6-3

67

December 10, 2017 • Fayetteville, Ark. (Bud Walton Arena)

FINAL STATISTICS

Official Basketball Box Score -- Game Totals -- Final Statistics
Tulsa vs ARKANSAS
12/10/2017 2 p.m. at Fayetteville, Ark. (Bud Walton Arena)

Tulsa 41 - 4-5

##	Player		Total		3-Ptr	FT-FTA	Rebounds			PF	TP	A	TO	Blk	Stl	Min
			FG-FGA	FG-FGA	FG-FGA		Off	Def	Tot							
02	PEREZ,TATYANA	g	1-8	0-3	0-0	0	1	1		0	2	2	0	0	1	23
03	WAKEFIELD,ERIKA	g	3-8	0-1	0-0	0	4	4		3	6	0	0	0	1	27
12	DICKSON,SHUG	g	3-10	0-1	1-1	0	3	3		2	7	0	0	0	1	19
21	LESCAY,REBECCA	g	0-5	0-0	0-0	1	2	3		2	0	0	0	0	1	21
33	POLK,CRYSTAL	f	4-11	0-0	0-1	4	4	8		1	8	0	2	2	0	19
00	ELLIOTT,KENDRIAN		1-5	0-0	4-6	3	3	6		3	6	0	1	1	0	18
04	RICHARDS,ADDISON		0-1	0-1	0-0	1	1	2		0	0	0	0	0	0	6
05	BUTLER,JASMINE		2-3	0-0	0-0	1	1	2		0	4	0	0	0	0	5
10	GAULDEN,ALEXIS		0-3	0-2	0-0	0	2	2		3	0	2	2	0	0	15
11	PARKER,EBONY		2-7	2-6	0-0	1	1	2		1	6	1	0	0	0	20
22	BRADY,MORGAN		0-6	0-2	2-2	0	1	1		1	2	0	1	0	0	15
25	SCALES,TYJAE'		0-2	0-0	0-0	1	3	4		0	0	0	0	0	0	12
TEAM						1	0	1		0		1				
TOTALS			16-69	2-16	7-10	13	26	39		16	41	5	7	3	4	200

Deadball Rebounds: 0,2

FG %	1st Half:	9-34	26.5%	2nd Half:	7-35	20.0%	Game:	16-69	23.2%							
	1st Qtr	5-15	33.3%	2nd Qtr	4-19	21.1%	3rd Qtr	3-17	17.6%	4th Qtr	4-18	22.2%				
3FG %	1st Half:	2-11	18.2%	2nd Half:	0-5	00.0%	Game:	2-16	12.5%							
	1st Qtr	0-3	00.0%	2nd Qtr	2-8	25.0%	3rd Qtr	0-2	00.0%	4th Qtr	0-3	00.0%				
FT %	1st Half:	4-5	80.0%	2nd Half:	3-5	60.0%	Game:	7-10	70.0%							
	1st Qtr	2-3	66.7%	2nd Qtr	2-2	100.0%	3rd Qtr	1-3	33.3%	4th Qtr	2-2	100.0%				

ARKANSAS 67 - 6-3

##	Player		Total		3-Ptr	FT-FTA	Rebounds			PF	TP	A	TO	Blk	Stl	Min
			FG-FGA	FG-FGA	FG-FGA		Off	Def	Tot							
03	MONK,MALICA	g	4-10	2-4	4-4	1	3	4		2	14	3	3	0	1	25
10	WILLIAMS,KIARA	c	6-9	0-0	1-4	4	3	7		2	13	2	0	2	0	17
14	MASON,JAILYN	g	5-11	1-4	0-0	0	5	5		0	11	6	0	0	0	30
21	COSPER,DEVIN	g	5-16	1-9	0-0	2	9	11		3	11	0	3	2	0	29
22	ZIMMERMAN,BAILEY	f	2-6	0-3	2-3	2	5	7		0	6	1	0	0	0	25
01	NORTHCROSS-BAKER,RA		0-4	0-3	1-4	2	7	9		1	1	1	2	1	0	23
04	SWENSON,KEIRYN		2-7	1-5	2-2	2	4	6		0	7	0	0	1	0	21
13	SPANGLER,GRAYCE		0-0	0-0	0-0	0	1	1		0	0	0	0	0	0	2
20	STOUT,SYDNEY		0-0	0-0	0-0	0	1	1		0	0	0	0	0	0	3
24	THOMAS,TAYLAH		1-3	1-1	1-2	4	3	7		1	4	0	0	0	1	19
30	WEAVER,MACY		0-1	0-0	0-0	0	1	1		1	0	0	0	1	0	6
TEAM						2	0	2		0		1				
TOTALS			25-67	6-29	11-19	19	42	61		10	67	13	9	7	2	200

Deadball Rebounds: 3,1

FG %	1st Half:	13-34	38.2%	2nd Half:	12-33	36.4%	Game:	25-67	37.3%							
	1st Qtr	7-15	46.7%	2nd Qtr	6-19	31.6%	3rd Qtr	5-18	27.8%	4th Qtr	7-15	46.7%				
3FG %	1st Half:	3-12	25.0%	2nd Half:	3-17	17.6%	Game:	6-29	20.7%							
	1st Qtr	2-3	66.7%	2nd Qtr	1-9	11.1%	3rd Qtr	1-10	10.0%	4th Qtr	2-7	28.6%				
FT %	1st Half:	6-13	46.2%	2nd Half:	5-6	83.3%	Game:	11-19	57.9%							
	1st Qtr	5-9	55.6%	2nd Qtr	1-4	25.0%	3rd Qtr	2-2	100.0%	4th Qtr	3-4	75.0%				

Officials: Susan Blauch, Ed Sidlasky, Darren McClure
 Technical Fouls: Tulsa- None. ARKANSAS- None.
 Attendance: 1821

Estimated Actual Attendance: 1,453

Score by periods	1st	2nd	3rd	4th	Total
Tulsa	12	12	7	10	41
ARKANSAS	21	14	13	19	67

Points	In Paint	Off T/O	2nd Chance	Fast Break	Bench
TLS	26	8	10	4	18
AR	30	7	13	6	12

Last FG - TLS 4th-01:07, AR 4th-03:31.
 Largest lead - Tulsa by 2 1st-09:14; ARKANSAS by 30 4th-01:53
 TLS led for 1:11. AR led for 38:03. Game was tied for 0:46.

Score tied - 0 times; Lead changed - 1 times

Official Basketball Box Score -- Game Totals -- First Half Statistics
Tulsa vs ARKANSAS
12/10/2017 2 p.m. at Fayetteville, Ark. (Bud Walton Arena)

Tulsa 24 • 4-5

##	Player		Total		3-Ptr		FT-FTA		Rebounds			PF	TP	A	TO	Blk	Stl	Min
			FG	FGA	FG	FGA	FT	FTA	Off	Def	Tot							
02	PEREZ,TATYANA	g	0-4		0-2		0-0		0	1	1	0	0	2	0	0	0	16
03	WAKEFIELD,ERIKA	g	1-2		0-0		0-0		0	0	0	2	2	0	0	0	1	10
12	DICKSON,SHUG	g	2-4		0-1		1-1		0	1	1	2	5	0	0	0	1	11
21	LESCAY,REBECCA	g	0-2		0-0		0-0		1	0	1	1	0	0	0	0	0	13
33	POLK,CRYSTAL	f	3-8		0-0		0-0		3	4	7	1	6	0	2	2	0	13
00	ELLIOTT,KENDRIAN		0-0		0-0		1-2		0	1	1	2	1	0	1	1	0	1
04	RICHARDS,ADDISON		0-1		0-1		0-0		1	1	2	0	0	0	0	0	0	4
05	BUTLER,JASMINE		1-2		0-0		0-0		1	0	1	0	2	0	0	0	0	3
10	GAULDEN,ALEXIS		0-0		0-0		0-0		0	0	0	2	0	1	0	0	0	3
11	PARKER,EBONY		2-5		2-5		0-0		0	0	0	1	6	1	0	0	0	6
22	BRADY,MORGAN		0-4		0-2		2-2		0	1	1	1	2	0	1	0	0	11
25	SCALES,TYJAE'		0-2		0-0		0-0		1	2	3	0	0	0	0	0	0	9
TEAM									1	0	1	0			1			
Totals			9-34		2-11		4-5		8	11	19	12	24	4	5	3	2	100
FG %	1st Qtr	5-15	33.3%	2nd Qtr	4-19	21.1%	Half:	9-34	26.5%									
3FG %	1st Qtr	0-3	00.0%	2nd Qtr	2-8	25.0%	Half:	2-11	18.2%									
FT %	1st Qtr	2-3	66.7%	2nd Qtr	2-2	100.0%	Half:	4-5	80.0%									

ARKANSAS 35 • 6-3

##	Player		Total		3-Ptr		FT-FTA		Rebounds			PF	TP	A	TO	Blk	Stl	Min
			FG	FGA	FG	FGA	FT	FTA	Off	Def	Tot							
03	MONK,MALICA	g	2-5		1-2		2-2		0	0	0	2	7	1	2	0	0	15
10	WILLIAMS,KIARA	c	4-6		0-0		1-4		3	1	4	1	9	1	0	2	0	11
14	MASON,JAILYN	g	1-5		1-2		0-0		0	3	3	0	3	5	0	0	0	16
21	COSPER,DEVIN	g	4-10		1-5		0-0		2	5	7	0	9	0	2	1	0	19
22	ZIMMERMAN,BAILEY	f	1-3		0-1		2-3		1	3	4	0	4	1	0	0	0	12
01	NORTHCROSS-BAKER,RA		0-0		0-0		0-2		0	2	2	1	0	0	1	0	0	9
04	SWENSON,KEIRYN		1-4		0-2		0-0		2	2	4	0	2	0	0	1	0	9
13	SPANGLER,GRAYCE		0-0		0-0		0-0		0	0	0	0	0	0	0	0	0	0
20	STOUT,SYDNEY		0-0		0-0		0-0		0	0	0	0	0	0	0	0	0	0
24	THOMAS,TAYLAH		0-1		0-0		1-2		2	2	4	0	1	0	0	0	0	9
30	WEAVER,MACY		0-0		0-0		0-0		0	0	0	0	0	0	0	0	0	0
TEAM									2	0	2	0			0			
Totals			13-34		3-12		6-13		12	18	30	4	35	8	5	4	0	100
FG %	1st Qtr	7-15	46.7%	2nd Qtr	6-19	31.6%	Half:	13-34	38.2%									
3FG %	1st Qtr	2-3	66.7%	2nd Qtr	1-9	11.1%	Half:	3-12	25.0%									
FT %	1st Qtr	5-9	55.6%	2nd Qtr	1-4	25.0%	Half:	6-13	46.2%									

Officials: Susan Blauch, Ed Sidlasky, Darren McClure
 Technical Fouls: Tulsa- None. ARKANSAS- None.
 Estimated Actual Attendance: 1,453

Score by periods	1st	2nd	3rd	4th	Total
Tulsa	12	12	7	10	41
ARKANSAS	21	14	13	19	67

Points	In	Off	2nd	Fast	Bench
	Paint	T/O	Chance	Break	
TLS	12	3	4	2	11
	18	5	8	2	3

Last FG - TLS 2nd-03:23, AR 2nd-01:00.
 TLS led for 1:11. AR led for 18:03. Game was tied for 0:46.

Score tied - 0 times
 Lead changed - 1 times

Tulsa vs ARKANSAS
12/10/2017; 2 p.m. at Fayetteville, Ark. (Bud Walton Arena)
Period 1 Play-By-Play

VISITORS: Tulsa	Time	Score	Margin	HOME: ARKANSAS
MISSED JUMPER by POLK,CRYSTAL	09:29			
	09:29			REBOUND (DEF) by MASON,JAILYN
	09:20			MISSED JUMPER by WILLIAMS,KIARA
REBOUND (DEF) by DICKSON,SHUG	09:20			
GOOD! LAYUP by DICKSON,SHUG [FB/PNT]	09:14	0-2	V 2	
	09:03			MISSED LAYUP by COSPER,DEVIN
BLOCK by POLK,CRYSTAL	09:03			
	09:02			REBOUND (OFF) by TEAM
	08:49			MISSED LAYUP by MONK,MALICA
REBOUND (DEF) by POLK,CRYSTAL	08:49			
MISSED 3PTR by PEREZ,TATYANA	08:26			
	08:26			REBOUND (DEF) by MASON,JAILYN
	08:03	3-2	H 1	GOOD! 3PTR by MASON,JAILYN
	08:03			ASSIST by WILLIAMS,KIARA
TURNOVER by POLK,CRYSTAL	07:39			
FOUL by LESCAY,REBECCA	07:21			
	07:14			TURNOVER by COSPER,DEVIN
TURNOVER by POLK,CRYSTAL	07:02			
	06:53			MISSED 3PTR by COSPER,DEVIN
	06:53			REBOUND (OFF) by WILLIAMS,KIARA
	06:48	5-2	H 3	GOOD! LAYUP by WILLIAMS,KIARA [PNT]
MISSED JUMPER by LESCAY,REBECCA	06:34			
REBOUND (OFF) by LESCAY,REBECCA	06:34			
GOOD! JUMPER by WAKEFIELD,ERIKA	06:19	5-4	H 1	
FOUL by WAKEFIELD,ERIKA	06:10			
SUB IN: ELLIOTT,KENDRIAN	06:10			
SUB OUT: POLK,CRYSTAL	06:10			
FOUL by ELLIOTT,KENDRIAN	06:04			
	06:04	6-4	H 2	GOOD! FT by WILLIAMS,KIARA
	06:04			MISSED FT by WILLIAMS,KIARA
	06:04			REBOUND (OFF) by COSPER,DEVIN
	05:56			MISSED JUMPER by MASON,JAILYN
	05:56			REBOUND (OFF) by WILLIAMS,KIARA
	05:53			MISSED JUMPER by WILLIAMS,KIARA
BLOCK by ELLIOTT,KENDRIAN	05:49			
REBOUND (DEF) by ELLIOTT,KENDRIAN	05:48			
MISSED JUMPER by DICKSON,SHUG	05:43			
	05:43			REBOUND (DEF) by ZIMMERMAN,BAILEY
	05:37			TURNOVER by MONK,MALICA
STEAL by DICKSON,SHUG	05:36			
	05:26			FOUL by WILLIAMS,KIARA
GOOD! FT by ELLIOTT,KENDRIAN	05:26	6-5	H 1	
MISSED FT by ELLIOTT,KENDRIAN	05:26			
	05:26			REBOUND (DEF) by ZIMMERMAN,BAILEY
	05:13	8-5	H 3	GOOD! LAYUP by COSPER,DEVIN [PNT]
FOUL by ELLIOTT,KENDRIAN	04:54			
TURNOVER by ELLIOTT,KENDRIAN	04:54			
	04:54			TIMEOUT media
SUB IN: POLK,CRYSTAL	04:54			
SUB OUT: ELLIOTT,KENDRIAN	04:54			
	04:54			SUB IN: THOMAS,TAYLAH
	04:54			SUB IN: SWENSON,KEIRYN
	04:54			SUB IN: NORTHCROSS-BAKER,RA
	04:54			SUB OUT: WILLIAMS,KIARA
	04:54			SUB OUT: MASON,JAILYN
	04:54			SUB OUT: ZIMMERMAN,BAILEY
	04:43	11-5	H 6	GOOD! 3PTR by COSPER,DEVIN
	04:43			ASSIST by MONK,MALICA
GOOD! LAYUP by POLK,CRYSTAL [PNT]	04:28	11-7	H 4	
	04:16	13-7	H 6	GOOD! LAYUP by COSPER,DEVIN [PNT]
SUB IN: GAULDEN,ALEXIS	04:00			
SUB OUT: PEREZ,TATYANA	04:00			
GOOD! LAYUP by DICKSON,SHUG [PNT]	03:44	13-9	H 4	
	03:43			FOUL by NORTHCROSS-BAKER,RA
GOOD! FT by DICKSON,SHUG	03:43	13-10	H 3	
	03:33			FOUL by MONK,MALICA
	03:33			TURNOVER by MONK,MALICA
MISSED JUMPER by WAKEFIELD,ERIKA	03:16			
	03:16			REBOUND (DEF) by SWENSON,KEIRYN

VISITORS: Tulsa	Time	Score	Margin	HOME: ARKANSAS
FOUL by GAULDEN,ALEXIS	02:57			
	02:57			MISSED FT by NORTHCROSS-BAKER,RA
	02:57			REBOUND (DEADB) by TEAM
	02:57			MISSED FT by NORTHCROSS-BAKER,RA
	02:57			REBOUND (OFF) by SWENSON,KEIRYN
	02:55			MISSED JUMPER by SWENSON,KEIRYN
BLOCK by POLK,CRYSTAL	02:55			
REBOUND (DEF) by POLK,CRYSTAL	02:54			
GOOD! JUMPER by POLK,CRYSTAL [PNT]	02:32	13-12	H 1	
ASSIST by GAULDEN,ALEXIS	02:32			
	02:20			TURNOVER by NORTHCROSS-BAKER,RA
STEAL by WAKEFIELD,ERIKA	02:19			
MISSED JUMPER by POLK,CRYSTAL	02:09			
	02:09			REBOUND (DEF) by SWENSON,KEIRYN
	02:02			MISSED JUMPER by MONK,MALICA
	02:02			REBOUND (OFF) by THOMAS,TAYLAH
FOUL by POLK,CRYSTAL	02:00			
	02:00	14-12	H 2	GOOD! FT by THOMAS,TAYLAH
	02:00			MISSED FT by THOMAS,TAYLAH
REBOUND (DEF) by POLK,CRYSTAL	02:00			
MISSED JUMPER by POLK,CRYSTAL	01:29			
	01:29			REBOUND (DEF) by NORTHCROSS-BAKER,RA
	01:18	16-12	H 4	GOOD! LAYUP by MONK,MALICA [PNT]
MISSED JUMPER by POLK,CRYSTAL	00:58			
	00:58			REBOUND (DEF) by THOMAS,TAYLAH
FOUL by GAULDEN,ALEXIS	00:51			
	00:51	17-12	H 5	GOOD! FT by MONK,MALICA
	00:51	18-12	H 6	GOOD! FT by MONK,MALICA
SUB IN: BRADY,MORGAN	00:51			
SUB IN: SCALES,TYJAE'	00:51			
SUB OUT: GAULDEN,ALEXIS	00:51			
SUB OUT: POLK,CRYSTAL	00:51			
	00:51			SUB IN: ZIMMERMAN,BAILEY
	00:51			SUB IN: MASON,JAILYN
	00:51			SUB OUT: MONK,MALICA
	00:51			SUB OUT: COSPER,DEVIN
MISSED 3PTR by DICKSON,SHUG	00:36			
	00:36			REBOUND (DEF) by ZIMMERMAN,BAILEY
	00:09	20-12	H 8	GOOD! LAYUP by ZIMMERMAN,BAILEY [PNT]
	00:09			ASSIST by MASON,JAILYN
FOUL by WAKEFIELD,ERIKA	00:08			
	00:08	21-12	H 9	GOOD! FT by ZIMMERMAN,BAILEY
SUB IN: PEREZ,TATYANA	00:08			
SUB OUT: WAKEFIELD,ERIKA	00:08			
MISSED 3PTR by PEREZ,TATYANA	00:01			
	00:01			REBOUND (DEF) by NORTHCROSS-BAKER,RA

Tulsa 12, ARKANSAS 21

Period 1-only	In Paint	Off T/O	2nd Chance	Fast Break	Bench	
TLS	8	1	2	2	1	Score tied - 0 times
AR	10	5	3	0	1	Lead changed - 0 times

Tulsa vs ARKANSAS
12/10/2017; 2 p.m. at Fayetteville, Ark. (Bud Walton Arena)
Period 2 Play-By-Play

VISITORS: Tulsa	Time	Score	Margin	HOME: ARKANSAS
SUB IN: BRADY,MORGAN	10:00			
SUB IN: SCALES,TYJAE'	10:00			
SUB OUT: WAKEFIELD,ERIK	10:00			
SUB OUT: POLK,CRYSTAL	10:00			
	09:51			MISSED 3PTR by MONK,MALICA
	09:51			REBOUND (OFF) by ZIMMERMAN,BAILEY
FOUL by DICKSON,SHUG	09:45			
	09:45			MISSED FT by ZIMMERMAN,BAILEY
	09:45			REBOUND (DEADB) by TEAM
	09:45	22-12	H 10	GOOD! FT by ZIMMERMAN,BAILEY
	09:30			FOUL by MONK,MALICA
GOOD! FT by BRADY,MORGAN	09:30	22-13	H 9	
GOOD! FT by BRADY,MORGAN	09:30	22-14	H 8	
	09:21			MISSED 3PTR by COSPER,DEVIN
	09:21			REBOUND (OFF) by WILLIAMS,KIARA
	09:06			MISSED JUMPER by MASON,JAILYN
REBOUND (DEF) by SCALES,TYJAE'	09:06			
MISSED JUMPER by LESCAY,REBECCA	08:47			
	08:47			BLOCK by COSPER,DEVIN
REBOUND (OFF) by SCALES,TYJAE'	08:44			
MISSED JUMPER by SCALES,TYJAE'	08:42			
	08:42			REBOUND (DEF) by COSPER,DEVIN
FOUL by DICKSON,SHUG	08:34			
	08:34			MISSED FT by WILLIAMS,KIARA
	08:34			REBOUND (DEADB) by TEAM
	08:34			MISSED FT by WILLIAMS,KIARA
	08:34			REBOUND (OFF) by COSPER,DEVIN
SUB IN: RICHARDS,ADDISON	08:34			
SUB IN: POLK,CRYSTAL	08:34			
SUB OUT: DICKSON,SHUG	08:34			
SUB OUT: LESCAY,REBECCA	08:34			
	08:21	24-14	H 10	GOOD! JUMPER by COSPER,DEVIN
	08:20			ASSIST by MASON,JAILYN
MISSED JUMPER by PEREZ,TATYANA	07:58			
	07:58			BLOCK by WILLIAMS,KIARA
	07:57			REBOUND (DEF) by WILLIAMS,KIARA
	07:44			MISSED 3PTR by MASON,JAILYN
	07:44			REBOUND (OFF) by TEAM
	07:40			TURNOVER by COSPER,DEVIN
MISSED 3PTR by BRADY,MORGAN	07:14			
REBOUND (OFF) by POLK,CRYSTAL	07:14			
GOOD! JUMPER by POLK,CRYSTAL [PNT]	07:11	24-16	H 8	
	06:59			MISSED 3PTR by ZIMMERMAN,BAILEY
REBOUND (DEF) by POLK,CRYSTAL	06:59			
MISSED 3PTR by BRADY,MORGAN	06:51			
REBOUND (OFF) by RICHARDS,ADDISON	06:51			
MISSED JUMPER by BRADY,MORGAN	06:45			
	06:45			REBOUND (DEF) by COSPER,DEVIN
	06:37	26-16	H 10	GOOD! LAYUP by WILLIAMS,KIARA [PNT]
	06:37			ASSIST by MASON,JAILYN
MISSED 3PTR by RICHARDS,ADDISON	06:24			
	06:24			REBOUND (DEF) by COSPER,DEVIN
	06:15			MISSED JUMPER by MASON,JAILYN
REBOUND (DEF) by BRADY,MORGAN	06:15			
FOUL by BRADY,MORGAN	06:09			
TURNOVER by BRADY,MORGAN	06:09			
SUB IN: PARKER,EBONY	06:09			
SUB OUT: POLK,CRYSTAL	06:09			
	05:50			MISSED JUMPER by ZIMMERMAN,BAILEY
REBOUND (DEF) by RICHARDS,ADDISON	05:50			
GOOD! 3PTR by PARKER,EBONY	05:39	26-19	H 7	
ASSIST by PEREZ,TATYANA	05:39			
	05:23	29-19	H 10	GOOD! 3PTR by MONK,MALICA
	05:23			ASSIST by ZIMMERMAN,BAILEY
MISSED JUMPER by SCALES,TYJAE'	04:56			
	04:56			BLOCK by WILLIAMS,KIARA
	04:54			REBOUND (DEF) by COSPER,DEVIN
	04:50	31-19	H 12	GOOD! LAYUP by WILLIAMS,KIARA [FB/PNT]
	04:50			ASSIST by MASON,JAILYN

VISITORS: Tulsa	Time	Score	Margin	HOME: ARKANSAS
MISSED 3PTR by PARKER,EBONY	04:32			
	04:32			REBOUND (DEF) by MASON,JAILYN
	04:23	33-19	H 14	GOOD! LAYUP by WILLIAMS,KIARA [PNT]
	04:23			ASSIST by MASON,JAILYN
TIMEOUT 30SEC	04:16			
SUB IN: BUTLER,JASMINE	04:16			
SUB OUT: RICHARDS,ADDISON	04:16			
	04:16			SUB IN: NORTHCROSS-BAKER,RA
	04:16			SUB IN: SWENSON,KEIRYN
	04:16			SUB IN: THOMAS,TAYLAH
	04:16			SUB OUT: MONK,MALICA
	04:16			SUB OUT: WILLIAMS,KIARA
	04:16			SUB OUT: ZIMMERMAN,BAILEY
GOOD! LAYUP by BUTLER,JASMINE [PNT]	03:54	33-21	H 12	
ASSIST by PARKER,EBONY	03:54			
	03:35			MISSED JUMPER by THOMAS,TAYLAH
REBOUND (DEF) by PEREZ,TATYANA	03:35			
GOOD! 3PTR by PARKER,EBONY	03:23	33-24	H 9	
ASSIST by PEREZ,TATYANA	03:23			
	03:01			MISSED JUMPER by COSPER,DEVIN
REBOUND (DEF) by SCALES,TYJAE'	03:01			
MISSED 3PTR by PARKER,EBONY	02:35			
REBOUND (OFF) by BUTLER,JASMINE	02:35			
MISSED 3PTR by PARKER,EBONY	02:11			
REBOUND (OFF) by TEAM	02:11			
SUB IN: POLK,CRYSTAL	02:08			
SUB OUT: SCALES,TYJAE'	02:08			
MISSED JUMPER by BUTLER,JASMINE	02:02			
REBOUND (OFF) by POLK,CRYSTAL	02:02			
MISSED JUMPER by PEREZ,TATYANA	01:40			
	01:40			REBOUND (DEF) by COSPER,DEVIN
	01:31			MISSED 3PTR by SWENSON,KEIRYN
REBOUND (DEADB) by TEAM	01:31			
SUB IN: LESCAY,REBECCA	01:28			
SUB OUT: BUTLER,JASMINE	01:28			
MISSED JUMPER by POLK,CRYSTAL	01:12			
	01:12			REBOUND (DEF) by THOMAS,TAYLAH
	01:03			MISSED 3PTR by COSPER,DEVIN
	01:03			REBOUND (OFF) by SWENSON,KEIRYN
	01:00	35-24	H 11	GOOD! JUMPER by SWENSON,KEIRYN [PNT]
MISSED JUMPER by BRADY,MORGAN	00:39			
	00:39			BLOCK by SWENSON,KEIRYN
REBOUND (OFF) by POLK,CRYSTAL	00:38			
TURNOVER by TEAM	00:26			
	00:05			MISSED 3PTR by SWENSON,KEIRYN
	00:05			REBOUND (OFF) by THOMAS,TAYLAH
FOUL by PARKER,EBONY	00:03			
	00:00			MISSED 3PTR by COSPER,DEVIN
REBOUND (DEADB) by TEAM	00:00			

Tulsa 24, ARKANSAS 35

Period 2-only	In Paint	Off T/O	2nd Chance	Fast Break	Bench	
TLS	4	2	2	0	10	Score tied - 0 times
AR	8	0	5	2	2	Lead changed - 0 times

Official Basketball Box Score -- Game Totals -- Second Half Statistics
Tulsa vs ARKANSAS
12/10/2017 2 p.m. at Fayetteville, Ark. (Bud Walton Arena)

Tulsa 17 • 4-5

##	Player		Total		3-Ptr		FT-FTA	Rebounds			PF	TP	A	TO	Blk	Stl	Min
			FG	FGA	FG	FGA		Off	Def	Tot							
02	PEREZ,TATYANA	g	1-4		0-1		0-0	0	0	0	0	2	0	0	0	1	7
03	WAKEFIELD,ERIKA	g	2-6		0-1		0-0	0	4	4	1	4	0	0	0	0	17
12	DICKSON,SHUG	g	1-6		0-0		0-0	0	2	2	0	2	0	0	0	0	8
21	LESCAY,REBECCA	g	0-3		0-0		0-0	0	2	2	1	0	0	0	0	1	8
33	POLK,CRYSTAL	f	1-3		0-0		0-1	1	0	1	0	2	0	0	0	0	6
00	ELLIOTT,KENDRIAN		1-5		0-0		3-4	3	2	5	1	5	0	0	0	0	17
04	RICHARDS,ADDISON		0-0		0-0		0-0	0	0	0	0	0	0	0	0	0	2
05	BUTLER,JASMINE		1-1		0-0		0-0	0	1	1	0	2	0	0	0	0	2
10	GAULDEN,ALEXIS		0-3		0-2		0-0	0	2	2	1	0	1	2	0	0	12
11	PARKER,EBONY		0-2		0-1		0-0	1	1	2	0	0	0	0	0	0	14
22	BRADY,MORGAN		0-2		0-0		0-0	0	0	0	0	0	0	0	0	0	4
25	SCALES,TYJAE'		0-0		0-0		0-0	0	1	1	0	0	0	0	0	0	3
TEAM								0	0	0	0			0			
Totals			7-35		0-5		3-5	5	15	20	4	17	1	2	0	2	100

FG % 3rd Qtr 3-17 17.6% 4th Qtr 4-18 22.2% Half: 7-35 20.0%
 3FG % 3rd Qtr 0-2 00.0% 4th Qtr 0-3 00.0% Half: 0-5 18.2%
 FT % 3rd Qtr 1-3 33.3% 4th Qtr 2-2 100.0% Half: 3-5 60.0%

ARKANSAS 32 • 6-3

##	Player		Total		3-Ptr		FT-FTA	Rebounds			PF	TP	A	TO	Blk	Stl	Min
			FG	FGA	FG	FGA		Off	Def	Tot							
03	MONK,MALICA	g	2-5		1-2		2-2	1	3	4	0	7	2	1	0	1	10
10	WILLIAMS,KIARA	c	2-3		0-0		0-0	1	2	3	1	4	1	0	0	0	6
14	MASON,JAILYN	g	4-6		0-2		0-0	0	2	2	0	8	1	0	0	0	14
21	COSPER,DEVIN	g	1-6		0-4		0-0	0	4	4	3	2	0	1	1	0	10
22	ZIMMERMAN,BAILEY	f	1-3		0-2		0-0	1	2	3	0	2	0	0	0	0	13
01	NORTHCROSS-BAKER,RA		0-4		0-3		1-2	2	5	7	0	1	1	1	1	0	14
04	SWENSON,KEIRYN		1-3		1-3		2-2	0	2	2	0	5	0	0	0	0	12
13	SPANGLER,GRAYCE		0-0		0-0		0-0	0	1	1	0	0	0	0	0	0	2
20	STOUT,SYDNEY		0-0		0-0		0-0	0	1	1	0	0	0	0	0	0	3
24	THOMAS,TAYLAH		1-2		1-1		0-0	2	1	3	1	3	0	0	0	1	10
30	WEAVER,MACY		0-1		0-0		0-0	0	1	1	1	0	0	0	1	0	6
TEAM								0	0	0	0			1			
Totals			12-33		3-17		5-6	7	24	31	6	32	5	4	3	2	100

FG % 3rd Qtr 5-18 27.8% 4th Qtr 7-15 46.7% Half: 12-33 36.4%
 3FG % 3rd Qtr 1-10 10.0% 4th Qtr 2-7 28.6% Half: 3-17 25.0%
 FT % 3rd Qtr 2-2 100.0% 4th Qtr 3-4 75.0% Half: 5-6 83.3%

Officials: Susan Blauch, Ed Sidlasky, Darren McClure
 Technical Fouls: Tulsa- None. ARKANSAS- None.
 Estimated Actual Attendance: 1,453

Score by periods	1st	2nd	3rd	4th	Total
Tulsa	12	12	7	10	41
ARKANSAS	21	14	13	19	67

Points	In	Off	2nd	Fast	Bench
	Paint	T/O	Chance	Break	
TLS	14	5	6	2	7
	12	2	5	4	9

Last FG - TLS 4th-01:07, AR 4th-03:31.
 TLS led for 0:00. AR led for 20:00. Game was tied for 0:00.

Score tied - 0 times
 Lead changed - 0 times

Tulsa vs ARKANSAS
12/10/2017; 2 p.m. at Fayetteville, Ark. (Bud Walton Arena)
Period 3 Play-By-Play

VISITORS: Tulsa	Time	Score	Margin	HOME: ARKANSAS
SUB IN: GAULDEN,ALEXIS	10:00			
SUB OUT: PEREZ,TATYANA	10:00			
SUB OUT: LESCAY,REBECCA	10:00			
MISSED JUMPER by DICKSON,SHUG	09:47			
	09:47			REBOUND (DEF) by ZIMMERMAN,BAILEY
	09:38			MISSED JUMPER by COSPER,DEVIN
	09:38			REBOUND (OFF) by WILLIAMS,KIARA
	09:28			MISSED JUMPER by WILLIAMS,KIARA
REBOUND (DEF) by DICKSON,SHUG	09:28			
MISSED JUMPER by GAULDEN,ALEXIS	09:19			
	09:19			REBOUND (DEF) by WILLIAMS,KIARA
	09:14	37-24	H 13	GOOD! LAYUP by MONK,MALICA [FB/PNT]
	09:14			ASSIST by WILLIAMS,KIARA
MISSED JUMPER by POLK,CRYSTAL	08:52			
REBOUND (OFF) by ELLIOTT,KENDRIAN	08:52			
GOOD! JUMPER by ELLIOTT,KENDRIAN [PNT]	08:49	37-26	H 11	
	08:35			MISSED 3PTR by ZIMMERMAN,BAILEY
REBOUND (DEF) by DICKSON,SHUG	08:35			
MISSED JUMPER by ELLIOTT,KENDRIAN	08:19			
	08:19			REBOUND (DEF) by MONK,MALICA
	08:10	39-26	H 13	GOOD! LAYUP by WILLIAMS,KIARA [PNT]
	08:10			ASSIST by MONK,MALICA
MISSED JUMPER by DICKSON,SHUG	07:38			
REBOUND (OFF) by POLK,CRYSTAL	07:38			
GOOD! LAYUP by POLK,CRYSTAL [PNT]	07:26	39-28	H 11	
ASSIST by GAULDEN,ALEXIS	07:26			
	07:25			FOUL by COSPER,DEVIN
MISSED FT by POLK,CRYSTAL	07:25			
	07:25			REBOUND (DEF) by ZIMMERMAN,BAILEY
	07:18			MISSED 3PTR by COSPER,DEVIN
REBOUND (DEF) by WAKEFIELD,ERIKA	07:18			
MISSED JUMPER by DICKSON,SHUG	06:56			
	06:56			BLOCK by COSPER,DEVIN
	06:54			REBOUND (DEF) by WILLIAMS,KIARA
	06:41	41-28	H 13	GOOD! LAYUP by WILLIAMS,KIARA [PNT]
	06:41			ASSIST by MONK,MALICA
	06:27			FOUL by WILLIAMS,KIARA
SUB IN: PARKER,EBONY	06:27			
SUB OUT: DICKSON,SHUG	06:27			
TURNOVER by GAULDEN,ALEXIS	06:23			
	06:22			STEAL by MONK,MALICA
FOUL by GAULDEN,ALEXIS	06:18			
	06:18	42-28	H 14	GOOD! FT by MONK,MALICA
	06:18	43-28	H 15	GOOD! FT by MONK,MALICA
MISSED 3PTR by GAULDEN,ALEXIS	05:49			
	05:49			REBOUND (DEF) by MASON,JAILYN
	05:43			MISSED 3PTR by MONK,MALICA
REBOUND (DEF) by GAULDEN,ALEXIS	05:43			
MISSED JUMPER by WAKEFIELD,ERIKA	05:34			
	05:34			REBOUND (DEF) by COSPER,DEVIN
	05:26	45-28	H 17	GOOD! LAYUP by COSPER,DEVIN [FB/PNT]
GOOD! LAYUP by WAKEFIELD,ERIKA [PNT]	04:55	45-30	H 15	
	04:40			MISSED 3PTR by COSPER,DEVIN
REBOUND (DEF) by PARKER,EBONY	04:40			
MISSED JUMPER by POLK,CRYSTAL	04:22			
	04:22			REBOUND (DEF) by COSPER,DEVIN
FOUL by WAKEFIELD,ERIKA	04:15			
	04:15			TIMEOUT MEDIA
SUB IN: LESCAY,REBECCA	04:15			
SUB OUT: POLK,CRYSTAL	04:15			
	04:15			SUB IN: NORTHCROSS-BAKER,RA
	04:15			SUB IN: THOMAS,TAYLAH
	04:15			SUB IN: SWENSON,KEIRYN
	04:15			SUB OUT: WILLIAMS,KIARA
	04:15			SUB OUT: MASON,JAILYN
	04:15			SUB OUT: ZIMMERMAN,BAILEY
	04:04			MISSED 3PTR by COSPER,DEVIN
REBOUND (DEF) by LESCAY,REBECCA	04:04			
MISSED JUMPER by LESCAY,REBECCA	03:44			

VISITORS: Tulsa	Time	Score	Margin	HOME: ARKANSAS
	03:44			REBOUND (DEF) by MONK,MALICA
	03:36			FOUL by COSPER,DEVIN
	03:36			TURNOVER by COSPER,DEVIN
	03:24			FOUL by COSPER,DEVIN
GOOD! FT by ELLIOTT,KENDRIAN	03:24	45-31	H 14	
MISSED FT by ELLIOTT,KENDRIAN	03:24			
	03:24			REBOUND (DEF) by MONK,MALICA
	03:01			MISSED 3PTR by NORTHCROSS-BAKER,RA
	03:01			REBOUND (OFF) by THOMAS,TAYLAH
	02:46			MISSED 3PTR by COSPER,DEVIN
	02:46			REBOUND (OFF) by NORTHCROSS-BAKER,RA
	02:18	48-31	H 17	GOOD! 3PTR by MONK,MALICA
MISSED JUMPER by WAKEFIELD,ERIKA	02:06			
	02:06			REBOUND (DEF) by COSPER,DEVIN
	01:53			MISSED JUMPER by MONK,MALICA
REBOUND (DEF) by LESCAY,REBECCA	01:53			
TURNOVER by GAULDEN,ALEXIS	01:43			
	01:42			STEAL by THOMAS,TAYLAH
	01:34			TURNOVER by MONK,MALICA
STEAL by LESCAY,REBECCA	01:33			
MISSED 3PTR by GAULDEN,ALEXIS	01:28			
	01:28			REBOUND (DEF) by COSPER,DEVIN
	01:14			MISSED 3PTR by NORTHCROSS-BAKER,RA
REBOUND (DEF) by ELLIOTT,KENDRIAN	01:14			
MISSED JUMPER by LESCAY,REBECCA	00:58			
	00:58			REBOUND (DEF) by NORTHCROSS-BAKER,RA
	00:34			MISSED 3PTR by SWENSON,KEIRYN
REBOUND (DEF) by WAKEFIELD,ERIKA	00:34			
MISSED JUMPER by WAKEFIELD,ERIKA	00:24			
	00:24			REBOUND (DEF) by NORTHCROSS-BAKER,RA
	00:00			MISSED JUMPER by MONK,MALICA
	00:00			REBOUND (OFF) by MONK,MALICA
Tulsa 31, ARKANSAS 48				

Period 3-only	In Paint	Off T/O	2nd Chance	Fast Break	Bench	
TLS	6	1	4	0	3	Score tied - 0 times
AR	8	2	3	4	0	Lead changed - 0 times

Tulsa vs ARKANSAS
12/10/2017; 2 p.m. at Fayetteville, Ark. (Bud Walton Arena)
Period 4 Play-By-Play

VISITORS: Tulsa	Time	Score	Margin	HOME: ARKANSAS
SUB IN: PARKER,EBONY	10:00			
SUB IN: ELLIOTT,KENDRIAN	10:00			
SUB IN: GAULDEN,ALEXIS	10:00			
SUB OUT: WAKEFIELD,ERIK	10:00			
SUB OUT: LESCAY,REBECCA	10:00			
SUB OUT: POLK,CRYSTAL	10:00			
	10:00			SUB IN: THOMAS,TAYLAH
	10:00			SUB IN: NORTHCROSS-BAKER,RA
	10:00			SUB IN: SWENSON,KEIRYN
	10:00			SUB OUT: MONK,MALICA
	10:00			SUB OUT: WILLIAMS,KIARA
	10:00			SUB OUT: COSPER,DEVIN
	09:35			MISSED 3PTR by NORTHCROSS-BAKER,RA
REBOUND (DEF) by GAULDEN,ALEXIS	09:35			
MISSED 3PTR by PEREZ,TATYANA	09:28			
	09:28			REBOUND (DEF) by SWENSON,KEIRYN
	09:00	50-31	H 19	GOOD! JUMPER by MASON,JAILYN
MISSED JUMPER by ELLIOTT,KENDRIAN	08:41			
	08:41			REBOUND (DEF) by NORTHCROSS-BAKER,RA
	08:32	53-31	H 22	GOOD! 3PTR by SWENSON,KEIRYN
	08:32			ASSIST by NORTHCROSS-BAKER,RA
TIMEOUT 30SEC	08:23			
SUB IN: BRADY,MORGAN	08:23			
SUB IN: WAKEFIELD,ERIK	08:23			
SUB OUT: PEREZ,TATYANA	08:23			
SUB OUT: GAULDEN,ALEXIS	08:23			
GOOD! LAYUP by DICKSON,SHUG [PNT]	08:12	53-33	H 20	
	07:57	55-33	H 22	GOOD! JUMPER by MASON,JAILYN
MISSED JUMPER by DICKSON,SHUG	07:35			
	07:35			BLOCK by NORTHCROSS-BAKER,RA
	07:34			REBOUND (DEF) by NORTHCROSS-BAKER,RA
	07:28			MISSED 3PTR by MASON,JAILYN
	07:28			REBOUND (OFF) by THOMAS,TAYLAH
	07:24			MISSED JUMPER by THOMAS,TAYLAH
	07:24			REBOUND (OFF) by ZIMMERMAN,BAILEY
	07:22	57-33	H 24	GOOD! JUMPER by ZIMMERMAN,BAILEY [PNT]
MISSED JUMPER by BRADY,MORGAN	07:05			
	07:05			REBOUND (DEF) by THOMAS,TAYLAH
	06:55	60-33	H 27	GOOD! 3PTR by THOMAS,TAYLAH
	06:55			ASSIST by MASON,JAILYN
MISSED JUMPER by PARKER,EBONY	06:34			
REBOUND (OFF) by PARKER,EBONY	06:34			
	06:26			FOUL by THOMAS,TAYLAH
GOOD! FT by ELLIOTT,KENDRIAN	06:26	60-34	H 26	
GOOD! FT by ELLIOTT,KENDRIAN	06:26	60-35	H 25	
	06:26			SUB IN: WEAVER,MACY
	06:26			SUB OUT: THOMAS,TAYLAH
	06:12	62-35	H 27	GOOD! JUMPER by MASON,JAILYN
MISSED JUMPER by DICKSON,SHUG	06:00			
	05:57			REBOUND (DEF) by WEAVER,MACY
FOUL by ELLIOTT,KENDRIAN	05:52			
	05:52	63-35	H 28	GOOD! FT by SWENSON,KEIRYN
	05:52	64-35	H 29	GOOD! FT by SWENSON,KEIRYN
SUB IN: PEREZ,TATYANA	05:52			
SUB IN: LESCAY,REBECCA	05:52			
SUB OUT: BRADY,MORGAN	05:52			
SUB OUT: DICKSON,SHUG	05:52			
MISSED JUMPER by ELLIOTT,KENDRIAN	05:36			
	05:36			BLOCK by WEAVER,MACY
REBOUND (OFF) by ELLIOTT,KENDRIAN	05:34			
MISSED JUMPER by ELLIOTT,KENDRIAN	05:33			
REBOUND (OFF) by ELLIOTT,KENDRIAN	05:33			
MISSED JUMPER by PEREZ,TATYANA	05:23			
	05:23			REBOUND (DEF) by MASON,JAILYN
	05:15			MISSED 3PTR by ZIMMERMAN,BAILEY
	05:15			REBOUND (OFF) by NORTHCROSS-BAKER,RA
	04:58			TIMEOUT media
	04:34			TURNOVER by TEAM
GOOD! LAYUP by WAKEFIELD,ERIK [PNT]	04:26	64-37	H 27	

VISITORS: Tulsa	Time	Score	Margin	HOME: ARKANSAS
	04:10			MISSED 3PTR by MASON,JAILYN
REBOUND (DEF) by ELLIOTT,KENDRIAN	04:10			
MISSED 3PTR by WAKEFIELD,ERIK	03:51			
	03:51			REBOUND (DEF) by NORTHCROSS-BAKER,RA
	03:31	66-37	H 29	GOOD! LAYUP by MASON,JAILYN [PNT]
MISSED 3PTR by PARKER,EBONY	03:14			
	03:14			REBOUND (DEF) by SWENSON,KEIRYN
	03:08			TIMEOUT 30SEC
SUB IN: SCALES,TYJAE'	03:08			
SUB OUT: ELLIOTT,KENDRIAN	03:08			
	03:08			SUB IN: STOUT,SYDNEY
	03:08			SUB OUT: ZIMMERMAN,BAILEY
	02:46			MISSED 3PTR by SWENSON,KEIRYN
REBOUND (DEF) by WAKEFIELD,ERIK	02:46			
MISSED JUMPER by LESCAY,REBECCA	02:39			
	02:39			REBOUND (DEF) by STOUT,SYDNEY
	02:31			MISSED JUMPER by NORTHCROSS-BAKER,RA
REBOUND (DEF) by WAKEFIELD,ERIK	02:31			
MISSED JUMPER by PEREZ,TATYANA	02:23			
	02:23			REBOUND (DEADB) by TEAM
	02:22			SUB IN: THOMAS,TAYLAH
	02:22			SUB IN: SPANGLER,GRAYCE
	02:22			SUB OUT: WEAVER,MACY
	02:22			SUB OUT: MASON,JAILYN
FOUL by LESCAY,REBECCA	01:53			
	01:53	67-37	H 30	GOOD! FT by NORTHCROSS-BAKER,RA
	01:53			MISSED FT by NORTHCROSS-BAKER,RA
REBOUND (DEF) by BUTLER,JASMINE	01:53			
SUB IN: BUTLER,JASMINE	01:53			
SUB IN: RICHARDS,ADDISON	01:53			
SUB IN: BRADY,MORGAN	01:53			
SUB OUT: PARKER,EBONY	01:53			
SUB OUT: LESCAY,REBECCA	01:53			
SUB OUT: WAKEFIELD,ERIK	01:53			
	01:53			SUB IN: WEAVER,MACY
	01:53			SUB OUT: SWENSON,KEIRYN
	01:52			FOUL by WEAVER,MACY
GOOD! LAYUP by BUTLER,JASMINE [PNT]	01:23	67-39	H 28	
	01:11			TURNOVER by NORTHCROSS-BAKER,RA
STEAL by PEREZ,TATYANA	01:10			
GOOD! LAYUP by PEREZ,TATYANA [FB/PNT]	01:07	67-41	H 26	
	00:38			MISSED JUMPER by WEAVER,MACY
REBOUND (DEF) by SCALES,TYJAE'	00:38			
MISSED JUMPER by BRADY,MORGAN	00:18			
	00:18			REBOUND (DEF) by SPANGLER,GRAYCE

Tulsa 41, ARKANSAS 67

Period 4-only	In Paint	Off T/O	2nd Chance	Fast Break	Bench	
TLS	8	4	2	2	4	Score tied - 0 times
AR	4	0	2	0	9	Lead changed - 0 times

Tulsa vs ARKANSAS
12/10/2017; 2 p.m. at Fayetteville, Ark. (Bud Walton Arena)
Scoring/Runs Reference

Period 1					
Tulsa	VRun	Score	Margin	HRun	ARKANSAS
09:14 - DICKSON LAYUP [P] [F]	-	2-0	-2		
		2-3	1		MASON 3PTR - 08:03
		2-5	3	5-0	WILLIAMS LAYUP [P] - 06:48
06:19 - WAKEFIELD JUMPER	-	4-5	1		
		4-6	2		WILLIAMS FT - 06:04
05:26 - ELLIOTT FT	-	5-6	1		
		5-8	3		COSPER LAYUP [P] - 05:13
		5-11	6	5-0	COSPER 3PTR - 04:43
04:28 - POLK LAYUP [P]	-	7-11	4		
		7-13	6		COSPER LAYUP [P] - 04:16
03:44 - DICKSON LAYUP [P]	-	9-13	4		
03:43 - DICKSON FT	3-0	10-13	3		
02:32 - POLK JUMPER [P]	5-0	12-13	1		
		12-14	2		THOMAS FT - 02:00
		12-16	4	3-0	MONK LAYUP [P] - 01:18
		12-17	5	4-0	MONK FT - 00:51
		12-18	6	5-0	MONK FT - 00:51
		12-20	8	7-0	ZIMMERMAN LAYUP [P] - 00:09
		12-21	9	8-0	ZIMMERMAN FT - 00:08

Tulsa vs ARKANSAS
12/10/2017; 2 p.m. at Fayetteville, Ark. (Bud Walton Arena)
Scoring/Runs Reference

Period 2

Tulsa	VRun	Score	Margin	HRun	ARKANSAS
		12-22	10		ZIMMERMAN FT - 09:45
09:30 - BRADY FT	-	13-22	9		
09:30 - BRADY FT	2-0	14-22	8		
		14-24	10		COSPER JUMPER - 08:21
07:11 - POLK JUMPER [P]	-	16-24	8		
		16-26	10		WILLIAMS LAYUP [P] - 06:37
05:39 - PARKER 3PTR	-	19-26	7		
		19-29	10		MONK 3PTR - 05:23
		19-31	12	5-0	WILLIAMS LAYUP [P] [F] - 04:50
		19-33	14	7-0	WILLIAMS LAYUP [P] - 04:23
03:54 - BUTLER LAYUP [P]	-	21-33	12		
03:23 - PARKER 3PTR	5-0	24-33	9		
		24-35	11		SWENSON JUMPER [P] - 01:00

Tulsa vs ARKANSAS
12/10/2017; 2 p.m. at Fayetteville, Ark. (Bud Walton Arena)
Scoring/Runs Reference

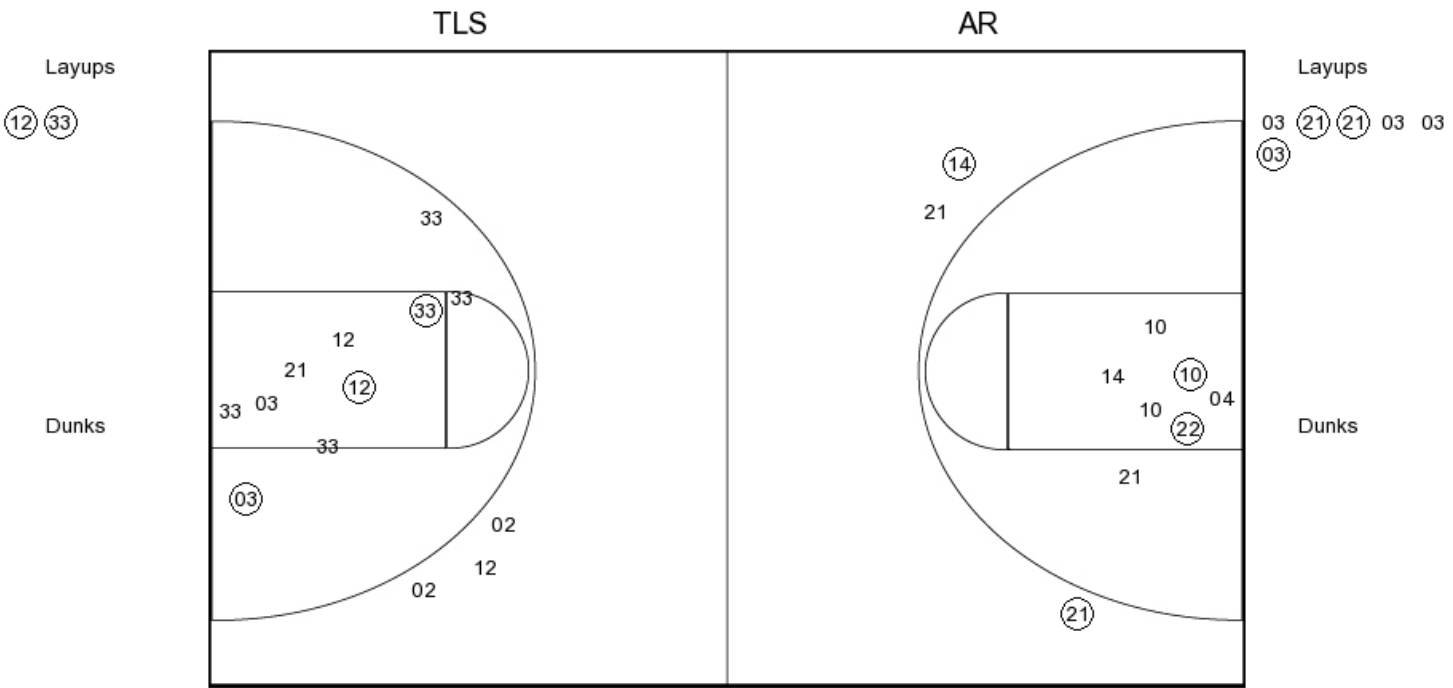
Period 3

Tulsa	VRun	Score	Margin	HRun	ARKANSAS
		24-37	13		MONK LAYUP [P] [F] - 09:14
08:49 - ELLIOTT JUMPER [P]	-	26-37	11		
		26-39	13		WILLIAMS LAYUP [P] - 08:10
07:26 - POLK LAYUP [P]	-	28-39	11		
		28-41	13		WILLIAMS LAYUP [P] - 06:41
		28-42	14	3-0	MONK FT - 06:18
		28-43	15	4-0	MONK FT - 06:18
		28-45	17	6-0	COSPER LAYUP [P] [F] - 05:26
04:55 - WAKEFIELD LAYUP [P]	-	30-45	15		
03:24 - ELLIOTT FT	3-0	31-45	14		
		31-48	17		MONK 3PTR - 02:18

Tulsa vs ARKANSAS
12/10/2017; 2 p.m. at Fayetteville, Ark. (Bud Walton Arena)
Scoring/Runs Reference

Period 4					
Tulsa	VRun	Score	Margin	HRun	ARKANSAS
		31-50	19		MASON JUMPER - 09:00
		31-53	22	NaN-0	SWENSON 3PTR - 08:32
08:12 - DICKSON LAYUP [P]	-	33-53	20		
		33-55	22		MASON JUMPER - 07:57
		33-57	24	4-0	ZIMMERMAN JUMPER [P] - 07:22
		33-60	27	7-0	THOMAS 3PTR - 06:55
06:26 - ELLIOTT FT	-	34-60	26		
06:26 - ELLIOTT FT	2-0	35-60	25		
		35-62	27		MASON JUMPER - 06:12
		35-63	28	3-0	SWENSON FT - 05:52
		35-64	29	4-0	SWENSON FT - 05:52
04:26 - WAKEFIELD LAYUP [P]	-	37-64	27		
		37-66	29		MASON LAYUP [P] - 03:31
		37-67	30	3-0	NORTHCROSS-BAKER FT - 01:53
01:23 - BUTLER LAYUP [P]	-	39-67	28		
01:07 - PEREZ LAYUP [P] [F]	4-0	41-67	26		

PERIOD 1



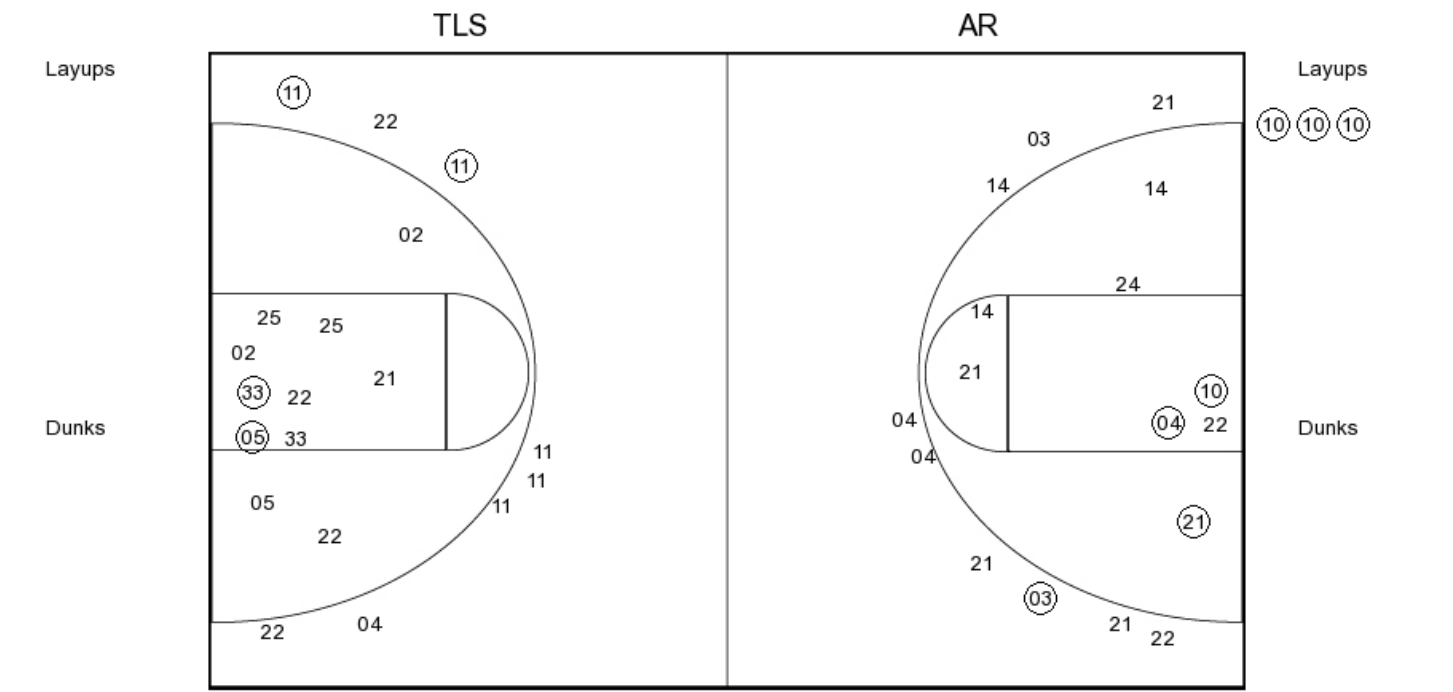
TLS PERIOD 1

FG Made	9
FG Attempted	34
3PFG Made	2
3PFG Attempted	11

AR PERIOD 1

FG Made	13
FG Attempted	34
3PFG Made	3
3PFG Attempted	12

PERIOD 2



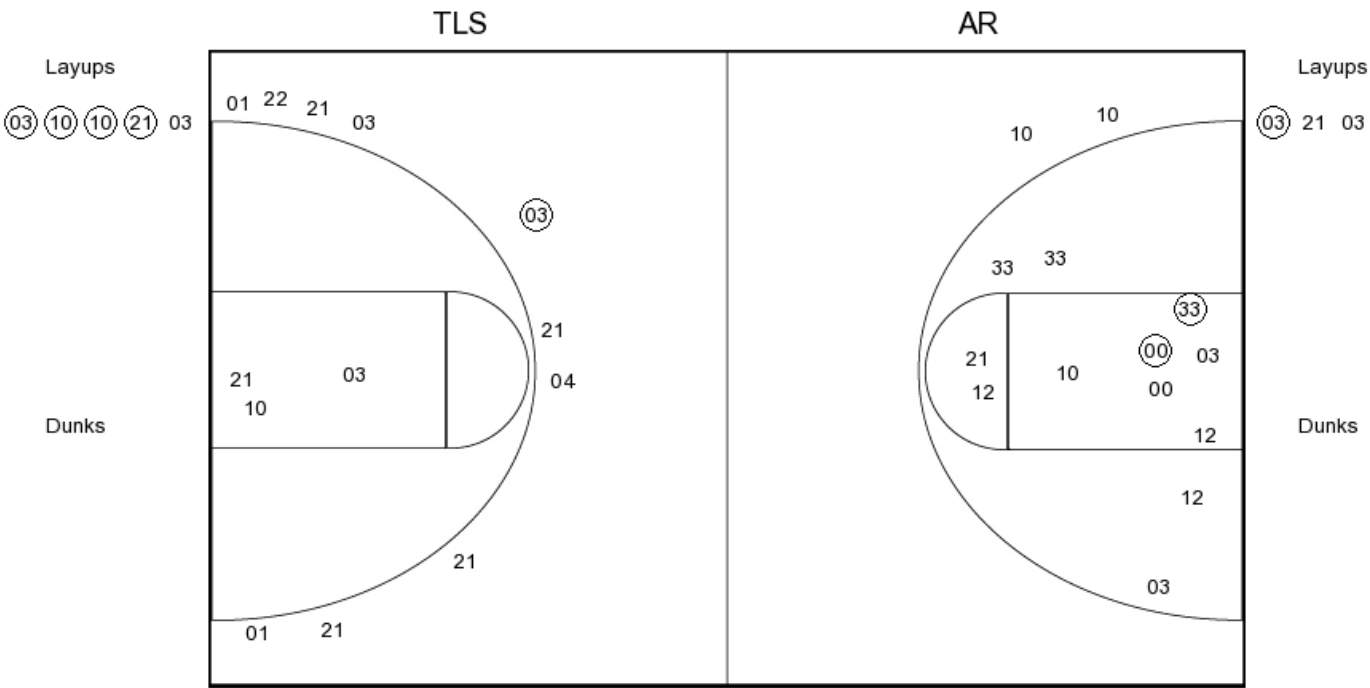
TLS PERIOD 2

FG Made
FG Attempted
3PFG Made
3PFG Attempted

AR PERIOD 2

FG Made
FG Attempted
3PFG Made
3PFG Attempted

PERIOD 3



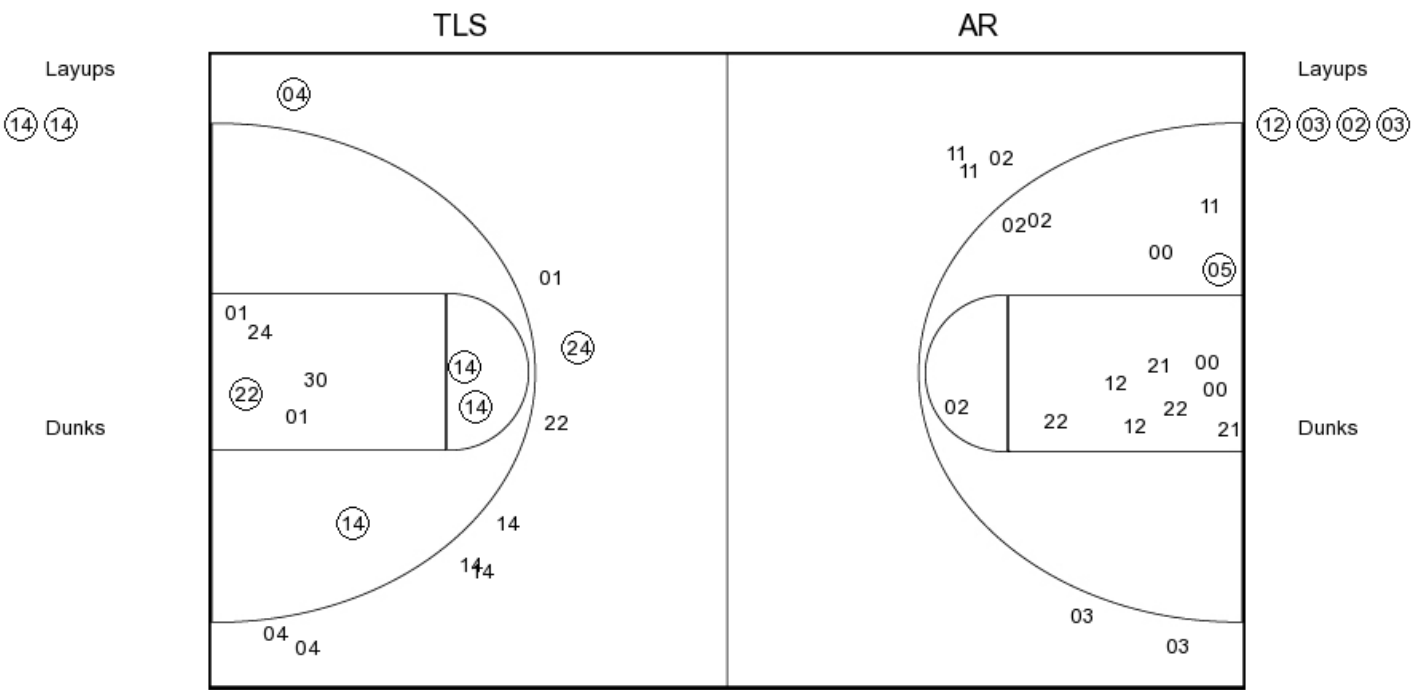
TLS PERIOD 3

FG Made	7
FG Attempted	35
3PFG Made	0
3PFG Attempted	5

AR PERIOD 3

FG Made	12
FG Attempted	33
3PFG Made	3
3PFG Attempted	17

PERIOD 4



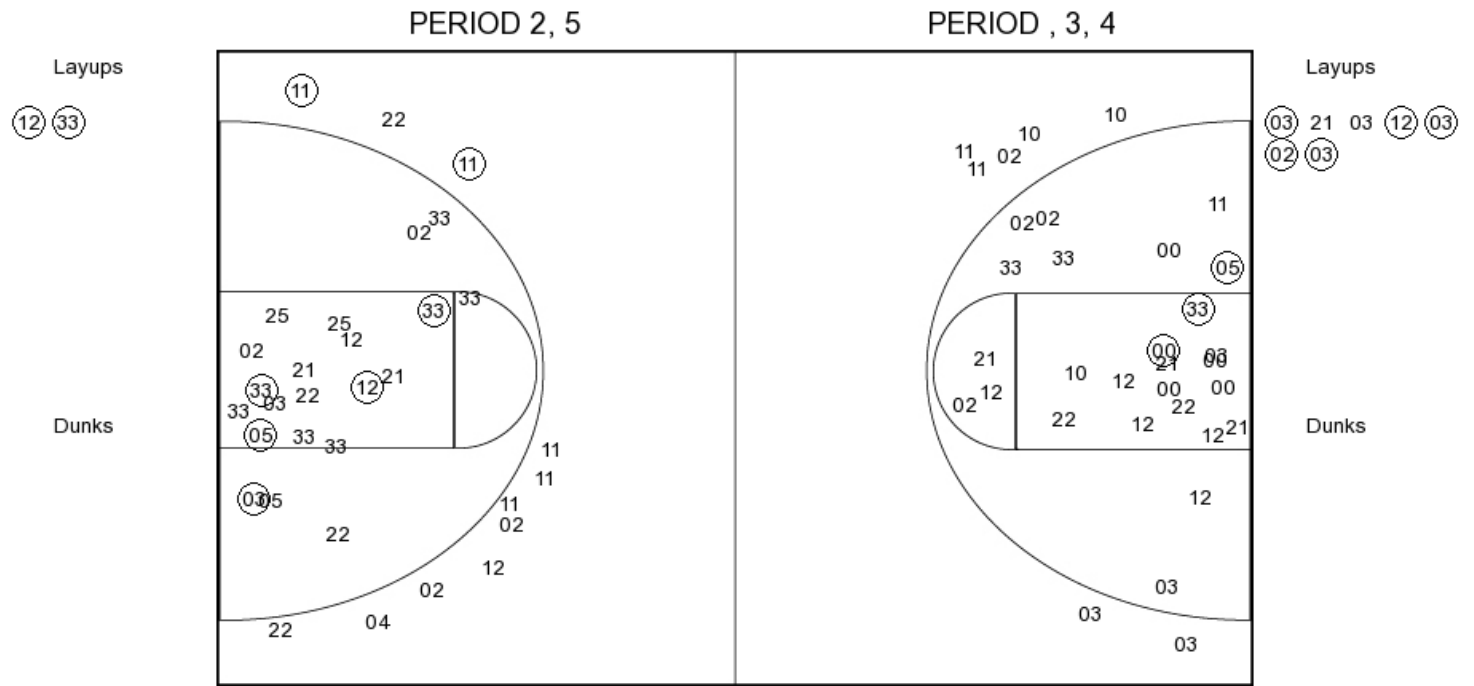
TLS PERIOD 4

FG Made
FG Attempted
3PFG Made
3PFG Attempted

AR PERIOD 4

FG Made
FG Attempted
3PFG Made
3PFG Attempted

Tulsa



TLS PERIOD 1

FG Made	9
FG Attempted	34
3PFG Made	2
3PFG Attempted	11

TLS PERIOD 2

FG Made
FG Attempted
3PFG Made
3PFG Attempted

ARKANSAS

