

FINAL SCORE

ACU

3-1

65

ARKANSAS

4-2

79

November 29, 2017 • Fayetteville, Ark. (Bud Walton Arena)

FINAL STATISTICS

Official Basketball Box Score -- Game Totals -- Final Statistics
ACU vs ARKANSAS
11/29/2017 7 p.m. at Fayetteville, Ark. (Bud Walton Arena)

ACU 65 - 3-1

##	Player	g	Total		3-Ptr	Rebounds			PF	TP	A	TO	Blk	Stl	Min
			FG-FGA	FG-FGA	FT-FTA	Off	Def	Tot							
03	GOLIGHTLY,DOMINIQUE	g	8-20	7-15	1-2	1	7	8	2	24	1	1	2	1	35
10	WRIGHT,BREANNA	g	0-5	0-5	2-2	3	1	4	3	2	4	3	0	2	31
11	WILLIAMSON,SARA	g	2-11	1-1	0-2	2	3	5	2	5	4	1	0	2	28
13	OLUOCH,TAUDENCIAH	c	4-7	1-2	0-0	1	0	1	0	9	0	1	0	0	12
22	ALLEN,SIERRA	f	1-2	0-0	0-2	2	1	3	4	2	2	3	0	1	16
12	LARSON,JOSIE		1-6	1-6	0-0	0	3	3	1	3	1	0	0	1	17
14	HERRERA,PAM		0-0	0-0	0-0	0	0	0	0	0	0	1	0	0	2
21	GALINDO,KAYLA		1-4	1-3	0-0	1	1	2	2	3	3	2	0	0	14
25	KIRGAN,LEXI		3-6	0-0	0-0	2	2	4	2	6	1	2	2	0	16
30	ROWE,LAURA		0-1	0-1	0-0	0	0	0	0	0	0	0	0	0	2
32	MABRY,MAKAYLA		4-6	0-1	3-3	2	5	7	1	11	1	2	1	0	19
33	ADAMS,ALYSSA		0-1	0-0	0-0	2	0	2	4	0	0	2	1	1	10
TEAM						2	2	4	0			2			
TOTALS			24-69	11-34	6-11	18	25	43	21	65	17	20	6	8	202

Deadball Rebounds: 3,2

FG %	1st Half:	9-30	30.0%	2nd Half:	15-39	38.5%	Game:	24-69	34.8%					
	1st Qtr	5-16	31.3%	2nd Qtr	4-14	28.6%	3rd Qtr	9-21	42.9%	4th Qtr	6-18			33.3%
3FG %	1st Half:	4-18	22.2%	2nd Half:	7-16	43.8%	Game:	11-34	32.4%					
	1st Qtr	4-13	30.8%	2nd Qtr	0-5	00.0%	3rd Qtr	3-8	37.5%	4th Qtr	4-8			50.0%
FT %	1st Half:	2-6	33.3%	2nd Half:	4-5	80.0%	Game:	6-11	54.5%					
	1st Qtr	0-0	0%	2nd Qtr	2-6	33.3%	3rd Qtr	2-3	66.7%	4th Qtr	2-2			100.0%

ARKANSAS 79 - 4-2

##	Player	g	Total		3-Ptr	Rebounds			PF	TP	A	TO	Blk	Stl	Min
			FG-FGA	FG-FGA	FT-FTA	Off	Def	Tot							
03	MONK,MALICA	g	5-14	1-2	4-6	0	2	2	2	15	1	2	0	1	29
10	WILLIAMS,KIARA	f	4-6	0-0	4-5	5	3	8	0	12	0	0	1	3	20
14	MASON,JAILYN	g	5-13	3-7	0-0	0	7	7	1	13	8	3	1	2	34
21	COSPER,DEVIN	g	4-10	2-5	1-2	0	3	3	4	11	1	3	1	2	21
22	ZIMMERMAN,BAILEY	f	1-4	0-1	1-2	4	2	6	1	3	2	2	1	1	25
01	NORTHCROSS-BAKER,RA		3-6	2-4	7-8	1	2	3	2	15	1	0	0	1	21
04	SWENSON,KEIRYN		1-3	1-2	0-0	1	1	2	0	3	0	1	0	1	17
13	SPANGLER,GRAYCE		0-2	0-2	0-0	0	0	0	0	0	0	1	0	0	6
20	STOUT,SYDNEY		0-2	0-1	0-0	1	0	1	0	0	0	0	0	0	3
24	THOMAS,TAYLAH		2-7	1-1	2-4	3	4	7	2	7	0	0	0	2	20
30	WEAVER,MACY		0-1	0-0	0-0	0	1	1	0	0	0	0	0	0	3
TEAM						2	2	4	1			0			
TOTALS			25-68	10-25	19-27	17	27	44	13	79	13	12	4	13	199

Deadball Rebounds: 7,2

FG %	1st Half:	10-33	30.3%	2nd Half:	15-35	42.9%	Game:	25-68	36.8%					
	1st Qtr	7-17	41.2%	2nd Qtr	3-16	18.8%	3rd Qtr	7-18	38.9%	4th Qtr	8-17			47.1%
3FG %	1st Half:	1-9	11.1%	2nd Half:	9-16	56.3%	Game:	10-25	40.0%					
	1st Qtr	1-4	25.0%	2nd Qtr	0-5	00.0%	3rd Qtr	4-7	57.1%	4th Qtr	5-9			55.6%
FT %	1st Half:	13-17	76.5%	2nd Half:	6-10	60.0%	Game:	19-27	70.4%					
	1st Qtr	5-8	62.5%	2nd Qtr	8-9	88.9%	3rd Qtr	2-6	33.3%	4th Qtr	4-4			100.0%

Officials: Mark Zentz, Bruce Morris, Pualani Spurlock
 Technical Fouls: ACU- None. ARKANSAS- COSPER,DEVIN; TEAM;
 Attendance: 1132

Estimated Actual Attendance: 706

Score by periods	1st	2nd	3rd	4th	Total
ACU	14	10	23	18	65
ARKANSAS	20	14	20	25	79

Points	In Paint	Off T/O	2nd Chance	Fast Break	Bench
ACU	18	7	16	0	23
AR	20	28	9	0	25

Last FG - ACU 4th-00:34, AR 4th-02:21.
 Largest lead - ACU by 1 1st-09:21; ARKANSAS by 24 4th-05:36
 ACU led for 0:21. AR led for 38:59. Game was tied for 0:40.

Score tied - 1 times; Lead changed - 2 times

Official Basketball Box Score -- Game Totals -- First Half Statistics
ACU vs ARKANSAS
11/29/2017 7 p.m. at Fayetteville, Ark. (Bud Walton Arena)

ACU 24 • 3-1

##	Player	g	Total			3-Ptr			Rebounds			PF	TP	A	TO	Blk	Stl	Min
			FG-FGA	FG-FGA	FT-FTA	FG-FGA	FG-FGA	FT-FTA	Off	Def	Tot							
03	GOLIGHTLY,DOMINIQUE	g	1-6	1-5	0-0	1	3	4	1	3	1	1	1	0			15	
10	WRIGHT,BREANNA	g	0-4	0-4	2-2	1	0	1	1	2	1	2	0	2			16	
11	WILLIAMSON,SARA	g	0-2	0-0	0-2	0	1	1	0	0	1	0	0	0			12	
13	OLUOCH,TAUDENCIAH	c	2-3	1-2	0-0	0	0	0	0	5	0	1	0	0			5	
22	ALLEN,SIERRA	f	1-1	0-0	0-2	2	0	2	2	2	1	3	0	0			11	
12	LARSON,JOSIE		1-4	1-4	0-0	0	1	1	1	3	0	0	0	1			8	
14	HERRERA,PAM		0-0	0-0	0-0	0	0	0	0	0	0	0	0	0			0	
21	GALINDO,KAYLA		1-4	1-3	0-0	1	1	2	2	3	1	1	0	0			9	
25	KIRGAN,LEXI		2-4	0-0	0-0	2	2	4	2	4	0	1	0	0			8	
30	ROWE,LAURA		0-0	0-0	0-0	0	0	0	0	0	0	0	0	0			0	
32	MABRY,MAKAYLA		1-1	0-0	0-0	1	4	5	0	2	0	2	0	0			11	
33	ADAMS,ALYSSA		0-1	0-0	0-0	0	0	0	2	0	0	0	1	0			5	
TEAM						1	0	1	0			2						
Totals			9-30	4-18	2-6	9	12	21	11	24	5	13	2	3			100	
FG %	1st Qtr	5-16	31.3%	2nd Qtr	4-14	28.6%	Half:	9-30	30.0%									
3FG %	1st Qtr	4-13	30.8%	2nd Qtr	0-5	00.0%	Half:	4-18	22.2%									
FT %	1st Qtr	0-0	0%	2nd Qtr	2-6	33.3%	Half:	2-6	33.3%									

ARKANSAS 34 • 4-2

##	Player	g	Total			3-Ptr			Rebounds			PF	TP	A	TO	Blk	Stl	Min
			FG-FGA	FG-FGA	FT-FTA	FG-FGA	FG-FGA	FT-FTA	Off	Def	Tot							
03	MONK,MALICA	g	2-7	0-1	3-4	0	1	1	1	7	1	2	0	1			17	
10	WILLIAMS,KIARA	f	4-6	0-0	2-3	4	2	6	0	10	0	0	1	2			10	
14	MASON,JAILYN	g	2-5	1-2	0-0	0	3	3	0	5	2	0	1	1			16	
21	COSPER,DEVIN	g	1-7	0-3	1-2	0	2	2	3	3	1	3	1	2			15	
22	ZIMMERMAN,BAILEY	f	1-2	0-1	1-2	1	1	2	1	3	0	1	0	0			13	
01	NORTHCROSS-BAKER,RA		0-1	0-1	4-4	0	1	1	1	4	1	0	0	1			9	
04	SWENSON,KEIRYN		0-2	0-1	0-0	1	1	2	0	0	0	1	0	1			10	
13	SPANGLER,GRAYCE		0-0	0-0	0-0	0	0	0	0	0	0	0	0	0			0	
20	STOUT,SYDNEY		0-0	0-0	0-0	0	0	0	0	0	0	0	0	0			0	
24	THOMAS,TAYLAH		0-3	0-0	2-2	3	2	5	1	2	0	0	0	1			10	
30	WEAVER,MACY		0-0	0-0	0-0	0	0	0	0	0	0	0	0	0			0	
TEAM						2	1	3	0			0						
Totals			10-33	1-9	13-17	11	14	25	7	34	5	7	3	9			100	
FG %	1st Qtr	7-17	41.2%	2nd Qtr	3-16	18.8%	Half:	10-33	30.3%									
3FG %	1st Qtr	1-4	25.0%	2nd Qtr	0-5	00.0%	Half:	1-9	11.1%									
FT %	1st Qtr	5-8	62.5%	2nd Qtr	8-9	88.9%	Half:	13-17	76.5%									

Officials: Mark Zentz, Bruce Morris, Pualani Spurlock
 Technical Fouls: ACU- None. ARKANSAS- COSPER,DEVIN;
 Estimated Actual Attendance: 706

Score by periods	1st	2nd	3rd	4th	Total
ACU	14	10	23	18	65
ARKANSAS	20	14	20	25	79

Points	In Paint	Off T/O	2nd Chance	Fast Break	Bench
ACU	6	4	7	0	12
ARKANSAS	16	8	7	0	6

Last FG - ACU 2nd-03:16, AR 2nd-02:02.
 ACU led for 0:21. AR led for 18:59. Game was tied for 0:40.

Score tied - 1 times
 Lead changed - 2 times

ACU vs ARKANSAS
11/29/2017; 7 p.m. at Fayetteville, Ark. (Bud Walton Arena)
Period 1 Play-By-Play

VISITORS: ACU	Time	Score	Margin	HOME: ARKANSAS
	09:50	2-0	H 2	GOOD! LAYUP by MONK,MALICA [PNT]
GOOD! 3PTR by OLUOCH,TAUDENCIAH	09:21	2-3	V 1	
ASSIST by ALLEN,SIERRA	09:21			
	09:00	4-3	H 1	GOOD! LAYUP by WILLIAMS,KIARA [PNT]
	09:00			ASSIST by MASON,JAILYN
TURNOVER by ALLEN,SIERRA	08:28			
	08:27			STEAL by WILLIAMS,KIARA
	08:18			MISSED 3PTR by COSPER,DEVIN
REBOUND (DEF) by WILLIAMSON,SARA	08:18			
MISSED 3PTR by OLUOCH,TAUDENCIAH	08:04			
	08:04			REBOUND (DEF) by ZIMMERMAN,BAILEY
	07:54	6-3	H 3	GOOD! LAYUP by MONK,MALICA [PNT]
MISSED 3PTR by GOLIGHTLY,DOMINIQUE	07:39			
	07:39			REBOUND (DEF) by COSPER,DEVIN
	07:31	8-3	H 5	GOOD! LAYUP by WILLIAMS,KIARA [PNT]
	07:31			ASSIST by COSPER,DEVIN
TURNOVER by WRIGHT,BREANNA	07:20			
	07:20			STEAL by MONK,MALICA
SUB IN: LARSON,JOSIE	07:20			
SUB IN: KIRGAN,LEXI	07:20			
SUB OUT: WILLIAMSON,SARA	07:20			
SUB OUT: OLUOCH,TAUDENCIAH	07:20			
	07:07			TURNOVER by COSPER,DEVIN
STEAL by WRIGHT,BREANNA	07:05			
TURNOVER by ALLEN,SIERRA	06:58			
	06:56			STEAL by COSPER,DEVIN
	06:40			TURNOVER by COSPER,DEVIN
STEAL by LARSON,JOSIE	06:39			
MISSED 3PTR by LARSON,JOSIE	06:32			
	06:32			REBOUND (DEF) by MASON,JAILYN
FOUL by LARSON,JOSIE	06:25			
	06:25			MISSED FT by ZIMMERMAN,BAILEY
	06:25			REBOUND (DEADB) by TEAM
	06:25	9-3	H 6	GOOD! FT by ZIMMERMAN,BAILEY
SUB IN: GALINDO,KAYLA	06:25			
SUB OUT: LARSON,JOSIE	06:25			
MISSED JUMPER by KIRGAN,LEXI	05:57			
REBOUND (OFF) by GALINDO,KAYLA	05:57			
TURNOVER by TEAM	05:54			
	05:46			MISSED LAYUP by MONK,MALICA
BLOCK by GOLIGHTLY,DOMINIQUE	05:46			
REBOUND (DEF) by KIRGAN,LEXI	05:45			
MISSED 3PTR by WRIGHT,BREANNA	05:17			
REBOUND (OFF) by KIRGAN,LEXI	05:17			
TURNOVER by TEAM	05:13			
SUB IN: ADAMS,ALYSSA	05:13			
SUB IN: MABRY,MAKAYLA	05:13			
SUB OUT: KIRGAN,LEXI	05:13			
SUB OUT: ALLEN,SIERRA	05:13			
	04:59	11-3	H 8	GOOD! JUMPER by MASON,JAILYN [PNT]
MISSED 3PTR by WRIGHT,BREANNA	04:45			
REBOUND (OFF) by TEAM	04:45			
TIMEOUT MEDIA	04:42			
SUB IN: LARSON,JOSIE	04:42			
SUB OUT: WRIGHT,BREANNA	04:42			
	04:42			SUB IN: THOMAS,TAYLAH
	04:42			SUB IN: NORTHCROSS-BAKER,RA
	04:42			SUB OUT: WILLIAMS,KIARA
	04:42			SUB OUT: MASON,JAILYN
TURNOVER by MABRY,MAKAYLA	04:36			
	04:27			MISSED JUMPER by THOMAS,TAYLAH
REBOUND (DEF) by MABRY,MAKAYLA	04:27			
MISSED 3PTR by GOLIGHTLY,DOMINIQUE	04:19			
	04:19			REBOUND (DEF) by NORTHCROSS-BAKER,RA
	04:11			SUB IN: SWENSON,KEIRYN
	04:11			SUB OUT: ZIMMERMAN,BAILEY
	04:07			MISSED 3PTR by COSPER,DEVIN
	04:07			REBOUND (OFF) by THOMAS,TAYLAH
FOUL by ADAMS,ALYSSA	04:04			

VISITORS: ACU	Time	Score	Margin	HOME: ARKANSAS
	04:01			MISSED JUMPER by COSPER,DEVIN
REBOUND (DEF) by GALINDO,KAYLA	04:01			
	03:59			FOUL by THOMAS,TAYLAH
GOOD! 3PTR by LARSON,JOSIE	03:44	11-6	H 5	
ASSIST by GOLIGHTLY,DOMINIQUE	03:44			
	03:32			MISSED JUMPER by MONK,MALICA
	03:32			REBOUND (OFF) by TEAM
SUB IN: ALLEN,SIERRA	03:29			
SUB OUT: ADAMS,ALYSSA	03:29			
	03:26			MISSED JUMPER by COSPER,DEVIN
REBOUND (DEF) by GOLIGHTLY,DOMINIQUE	03:26			
GOOD! 3PTR by GOLIGHTLY,DOMINIQUE	03:16	11-9	H 2	
ASSIST by GALINDO,KAYLA	03:16			
FOUL by GALINDO,KAYLA	03:06			
	03:06			MISSED FT by MONK,MALICA
	03:06			REBOUND (DEADB) by TEAM
	03:06	12-9	H 3	GOOD! FT by MONK,MALICA
	03:06			SUB IN: ZIMMERMAN,BAILEY
	03:06			SUB OUT: COSPER,DEVIN
MISSED 3PTR by GOLIGHTLY,DOMINIQUE	02:53			
REBOUND (OFF) by GOLIGHTLY,DOMINIQUE	02:53			
GOOD! 3PTR by GALINDO,KAYLA	02:47	12-12	T	
	02:26			MISSED 3PTR by SWENSON,KEIRYN
REBOUND (DEF) by GOLIGHTLY,DOMINIQUE	02:26			
TURNOVER by GALINDO,KAYLA	02:21			
	02:21			STEAL by SWENSON,KEIRYN
FOUL by ALLEN,SIERRA	02:17			
	02:17	13-12	H 1	GOOD! FT by NORTHCROSS-BAKER,RA
	02:17	14-12	H 2	GOOD! FT by NORTHCROSS-BAKER,RA
	02:17			SUB IN: MASON,JAILYN
	02:17			SUB OUT: MONK,MALICA
MISSED 3PTR by LARSON,JOSIE	02:13			
	02:13			REBOUND (DEF) by THOMAS,TAYLAH
	02:00	16-12	H 4	GOOD! JUMPER by ZIMMERMAN,BAILEY
	02:00			ASSIST by MASON,JAILYN
MISSED JUMPER by GALINDO,KAYLA	01:42			
	01:42			BLOCK by MASON,JAILYN
	01:40			REBOUND (DEF) by MASON,JAILYN
	01:32			MISSED LAYUP by SWENSON,KEIRYN
REBOUND (DEF) by MABRY,MAKAYLA	01:32			
MISSED 3PTR by GALINDO,KAYLA	01:22			
	01:22			REBOUND (DEF) by THOMAS,TAYLAH
	01:05	19-12	H 7	GOOD! 3PTR by MASON,JAILYN
	01:04			ASSIST by NORTHCROSS-BAKER,RA
TIMEOUT 30SEC	01:03			
SUB IN: WILLIAMSON,SARA	01:03			
SUB IN: WRIGHT,BREANNA	01:03			
SUB OUT: GOLIGHTLY,DOMINIQUE	01:03			
SUB OUT: LARSON,JOSIE	01:03			
	01:03			SUB IN: WILLIAMS,KIARA
	01:03			SUB OUT: THOMAS,TAYLAH
GOOD! JUMPER by ALLEN,SIERRA	00:35	19-14	H 5	
ASSIST by WRIGHT,BREANNA	00:35			
FOUL by WRIGHT,BREANNA	00:26			
	00:26			MISSED FT by WILLIAMS,KIARA
	00:26			REBOUND (DEADB) by TEAM
	00:26	20-14	H 6	GOOD! FT by WILLIAMS,KIARA
TURNOVER by MABRY,MAKAYLA	00:06			
	00:05			STEAL by WILLIAMS,KIARA
	00:01			MISSED JUMPER by WILLIAMS,KIARA
REBOUND (DEADB) by TEAM	00:01			

ACU 14, ARKANSAS 20

Period 1-only	In Paint	Off T/O	2nd Chance	Fast Break	Bench	
ACU	0	0	3	0	6	Score tied - 2 times
AR	10	4	0	0	2	Lead changed - 2 times

ACU vs ARKANSAS
11/29/2017; 7 p.m. at Fayetteville, Ark. (Bud Walton Arena)
Period 2 Play-By-Play

VISITORS: ACU	Time	Score	Margin	HOME: ARKANSAS
SUB IN: KIRGAN,LEXI	10:00			
SUB IN: GALINDO,KAYLA	10:00			
SUB OUT: GOLIGHTLY,DOMINIQUE	10:00			
SUB OUT: OLUOCH,TAUDENCIAH	10:00			
MISSED JUMPER by KIRGAN,LEXI	09:40			
	09:40			REBOUND (DEF) by WILLIAMS,KIARA
	09:29			MISSED JUMPER by COSPER,DEVIN
	09:29			REBOUND (OFF) by WILLIAMS,KIARA
	09:21			MISSED 3PTR by COSPER,DEVIN
	09:21			REBOUND (OFF) by WILLIAMS,KIARA
	09:16	22-14	H 8	GOOD! LAYUP by WILLIAMS,KIARA [PNT]
FOUL by ALLEN,SIERRA	09:16			
	09:16	23-14	H 9	GOOD! FT by WILLIAMS,KIARA
SUB IN: ADAMS,ALYSSA	09:16			
SUB OUT: ALLEN,SIERRA	09:16			
MISSED JUMPER by WILLIAMSON,SARA	08:49			
REBOUND (OFF) by WRIGHT,BREANNA	08:49			
TURNOVER by KIRGAN,LEXI	08:38			
	08:37			STEAL by MASON,JAILYN
	08:31			FOUL by MONK,MALICA
	08:31			TURNOVER by MONK,MALICA
SUB IN: GOLIGHTLY,DOMINIQUE	08:31			
SUB OUT: GALINDO,KAYLA	08:31			
MISSED JUMPER by ADAMS,ALYSSA	08:11			
	08:11			BLOCK by WILLIAMS,KIARA
REBOUND (OFF) by KIRGAN,LEXI	08:10			
GOOD! LAYUP by KIRGAN,LEXI [PNT]	08:06	23-16	H 7	
	08:03	25-16	H 9	GOOD! LAYUP by WILLIAMS,KIARA [PNT]
	08:03			ASSIST by MONK,MALICA
MISSED 3PTR by WRIGHT,BREANNA	07:36			
	07:36			REBOUND (DEF) by MONK,MALICA
	07:27			MISSED LAYUP by MASON,JAILYN
	07:27			REBOUND (OFF) by WILLIAMS,KIARA
	07:25			MISSED JUMPER by WILLIAMS,KIARA
BLOCK by ADAMS,ALYSSA	07:25			
	07:23			REBOUND (OFF) by ZIMMERMAN,BAILEY
	07:09			FOUL by ZIMMERMAN,BAILEY
	07:09			TURNOVER by ZIMMERMAN,BAILEY
MISSED 3PTR by GOLIGHTLY,DOMINIQUE	06:55			
	06:55			REBOUND (DEF) by WILLIAMS,KIARA
	06:48			TURNOVER by MONK,MALICA
TURNOVER by WRIGHT,BREANNA	06:21			
	06:20			STEAL by COSPER,DEVIN
	06:14			MISSED 3PTR by MASON,JAILYN
	06:14			REBOUND (OFF) by WILLIAMS,KIARA
	06:06			MISSED 3PTR by ZIMMERMAN,BAILEY
	06:06			REBOUND (OFF) by TEAM
	06:01			SUB IN: THOMAS,TAYLAH
	06:01			SUB IN: SWENSON,KEIRYN
	06:01			SUB OUT: WILLIAMS,KIARA
	06:01			SUB OUT: ZIMMERMAN,BAILEY
FOUL by ADAMS,ALYSSA	05:51			
	05:51	26-16	H 10	GOOD! FT by MONK,MALICA
	05:51	27-16	H 11	GOOD! FT by MONK,MALICA
SUB IN: MABRY,MAKAYLA	05:51			
SUB OUT: ADAMS,ALYSSA	05:51			
	05:51			SUB IN: NORTHCROSS-BAKER,RA
	05:51			SUB OUT: MONK,MALICA
GOOD! LAYUP by KIRGAN,LEXI [PNT]	05:38	27-18	H 9	
FOUL by KIRGAN,LEXI	05:23			
	05:07			MISSED JUMPER by MASON,JAILYN
REBOUND (DEF) by KIRGAN,LEXI	05:07			
MISSED 3PTR by WRIGHT,BREANNA	04:45			
REBOUND (OFF) by MABRY,MAKAYLA	04:45			
GOOD! JUMPER by MABRY,MAKAYLA	04:41	27-20	H 7	
FOUL by KIRGAN,LEXI	04:23			
	04:23			TIMEOUT media
	04:23	28-20	H 8	GOOD! FT by COSPER,DEVIN
	04:23			MISSED FT by COSPER,DEVIN

VISITORS: ACU	Time	Score	Margin	HOME: ARKANSAS
REBOUND (DEF) by MABRY,MAKAYLA	04:23			
SUB IN: OLUOCH,TAUDENCIAH	04:23			
SUB OUT: KIRGAN,LEXI	04:23			
	04:23			SUB OUT: MASON,JAILYN
TURNOVER by GOLIGHTLY,DOMINIQUE	04:15			
	04:14			STEAL by NORTHCROSS-BAKER,RA
FOUL by GOLIGHTLY,DOMINIQUE	04:10			
	04:10	29-20	H 9	GOOD! FT by NORTHCROSS-BAKER,RA
	04:10	30-20	H 10	GOOD! FT by NORTHCROSS-BAKER,RA
TURNOVER by OLUOCH,TAUDENCIAH	03:46			
	03:45			STEAL by THOMAS,TAYLAH
	03:40			MISSED 3PTR by NORTHCROSS-BAKER,RA
	03:40			REBOUND (OFF) by THOMAS,TAYLAH
	03:34			MISSED JUMPER by THOMAS,TAYLAH
REBOUND (DEF) by MABRY,MAKAYLA	03:34			
GOOD! LAYUP by OLUOCH,TAUDENCIAH [PNT]	03:16	30-22	H 8	
ASSIST by WILLIAMSON,SARA	03:16			
	02:51			MISSED JUMPER by MONK,MALICA
REBOUND (DEF) by GOLIGHTLY,DOMINIQUE	02:51			
MISSED JUMPER by GOLIGHTLY,DOMINIQUE	02:44			
	02:44			BLOCK by COSPER,DEVIN
	02:43			REBOUND (DEF) by COSPER,DEVIN
	02:40			FOUL by COSPER,DEVIN
	02:40			FOUL (TECH) by COSPER,DEVIN
	02:40			TURNOVER by COSPER,DEVIN
	02:40			FOUL by COSPER,DEVIN
GOOD! FT by WRIGHT,BREANNA	02:40	30-23	H 7	
GOOD! FT by WRIGHT,BREANNA	02:40	30-24	H 6	
SUB IN: LARSON,JOSIE	02:40			
SUB IN: ALLEN,SIERRA	02:40			
SUB OUT: OLUOCH,TAUDENCIAH	02:40			
SUB OUT: GOLIGHTLY,DOMINIQUE	02:40			
MISSED JUMPER by WILLIAMSON,SARA	02:12			
	02:12			REBOUND (DEF) by SWENSON,KEIRYN
	02:02	32-24	H 8	GOOD! LAYUP by COSPER,DEVIN [PNT]
	01:54			FOUL by COSPER,DEVIN
MISSED FT by WILLIAMSON,SARA	01:54			
REBOUND (DEADB) by TEAM	01:54			
MISSED FT by WILLIAMSON,SARA	01:54			
REBOUND (OFF) by ALLEN,SIERRA	01:54			
	01:54			SUB IN: MASON,JAILYN
	01:54			SUB OUT: COSPER,DEVIN
TURNOVER by ALLEN,SIERRA	01:51			
SUB IN: GALINDO,KAYLA	01:51			
SUB OUT: WILLIAMSON,SARA	01:51			
	01:32			MISSED JUMPER by THOMAS,TAYLAH
REBOUND (DEF) by LARSON,JOSIE	01:32			
MISSED 3PTR by GALINDO,KAYLA	01:24			
	01:24			REBOUND (DEF) by TEAM
	00:55			MISSED 3PTR by MONK,MALICA
	00:55			REBOUND (OFF) by SWENSON,KEIRYN
	00:50			TURNOVER by SWENSON,KEIRYN
STEAL by WRIGHT,BREANNA	00:49			
MISSED 3PTR by LARSON,JOSIE	00:26			
REBOUND (OFF) by ALLEN,SIERRA	00:26			
	00:23			FOUL by NORTHCROSS-BAKER,RA
MISSED FT by ALLEN,SIERRA	00:23			
REBOUND (DEADB) by TEAM	00:23			
MISSED FT by ALLEN,SIERRA	00:23			
	00:23			REBOUND (DEF) by MASON,JAILYN
	00:07			MISSED JUMPER by MONK,MALICA
	00:07			REBOUND (OFF) by THOMAS,TAYLAH
FOUL by GALINDO,KAYLA	00:03			
	00:03	33-24	H 9	GOOD! FT by THOMAS,TAYLAH
	00:03	34-24	H 10	GOOD! FT by THOMAS,TAYLAH

ACU 24, ARKANSAS 34

Period 2-only	In Paint	Off T/O	2nd Chance	Fast Break	Bench	
ACU	6	4	4	0	6	Score tied - 0 times
AR	6	4	7	0	4	Lead changed - 0 times

Official Basketball Box Score -- Game Totals -- Second Half Statistics
ACU vs ARKANSAS
11/29/2017 7 p.m. at Fayetteville, Ark. (Bud Walton Arena)

ACU 41 • 3-1

##	Player		Total			3-Ptr			Rebounds			PF	TP	A	TO	Blk	Stl	Min
			FG-FGA	FG-FGA	FT-FTA	FG-FGA	FG-FGA	FT-FTA	Off	Def	Tot							
03	GOLIGHTLY,DOMINIQUE	g	7-14	6-10	1-2	0	4	4	1	21	0	0	1	1			20	
10	WRIGHT,BREANNA	g	0-1	0-1	0-0	2	1	3	2	0	3	1	0	0			15	
11	WILLIAMSON,SARA	g	2-9	1-1	0-0	2	2	4	2	5	3	1	0	2			16	
13	OLUOCH,TAUDENCIAH	c	2-4	0-0	0-0	1	0	1	0	4	0	0	0	0			7	
22	ALLEN,SIERRA	f	0-1	0-0	0-0	0	1	1	2	0	1	0	0	1			5	
12	LARSON,JOSIE		0-2	0-2	0-0	0	2	2	0	0	1	0	0	0			9	
14	HERRERA,PAM		0-0	0-0	0-0	0	0	0	0	0	0	1	0	0			2	
21	GALINDO,KAYLA		0-0	0-0	0-0	0	0	0	0	0	2	1	0	0			5	
25	KIRGAN,LEXI		1-2	0-0	0-0	0	0	0	0	2	1	1	2	0			8	
30	ROWE,LAURA		0-1	0-1	0-0	0	0	0	0	0	0	0	0	0			2	
32	MABRY,MAKAYLA		3-5	0-1	3-3	1	1	2	1	9	1	0	1	0			8	
33	ADAMS,ALYSSA		0-0	0-0	0-0	2	0	2	2	0	0	2	0	1			5	
TEAM						1	2	3	0			0						
Totals			15-39	7-16	4-5	9	13	22	10	41	12	7	4	5			102	
FG %	3rd Qtr	9-21	42.9%	4th Qtr	6-18	33.3%	Half:	15-39	38.5%									
3FG %	3rd Qtr	3-8	37.5%	4th Qtr	4-8	50.0%	Half:	7-16	22.2%									
FT %	3rd Qtr	2-3	66.7%	4th Qtr	2-2	100.0%	Half:	4-5	80.0%									

ARKANSAS 45 • 4-2

##	Player		Total			3-Ptr			Rebounds			PF	TP	A	TO	Blk	Stl	Min
			FG-FGA	FG-FGA	FT-FTA	FG-FGA	FG-FGA	FT-FTA	Off	Def	Tot							
03	MONK,MALICA	g	3-7	1-1	1-2	0	1	1	1	8	0	0	0	0			12	
10	WILLIAMS,KIARA	f	0-0	0-0	2-2	1	1	2	0	2	0	0	0	1			10	
14	MASON,JAILYN	g	3-8	2-5	0-0	0	4	4	1	8	6	3	0	1			18	
21	COSPER,DEVIN	g	3-3	2-2	0-0	0	1	1	1	8	0	0	0	0			6	
22	ZIMMERMAN,BAILEY	f	0-2	0-0	0-0	3	1	4	0	0	2	1	1	1			12	
01	NORTHCROSS-BAKER,RA		3-5	2-3	3-4	1	1	2	1	11	0	0	0	0			12	
04	SWENSON,KEIRYN		1-1	1-1	0-0	0	0	0	0	3	0	0	0	0			7	
13	SPANGLER,GRAYCE		0-2	0-2	0-0	0	0	0	0	0	0	1	0	0			6	
20	STOUT,SYDNEY		0-2	0-1	0-0	1	0	1	0	0	0	0	0	0			3	
24	THOMAS,TAYLAH		2-4	1-1	0-2	0	2	2	1	5	0	0	0	1			10	
30	WEAVER,MACY		0-1	0-0	0-0	0	1	1	0	0	0	0	0	0			3	
TEAM						0	1	1	1			0						
Totals			15-35	9-16	6-10	6	13	19	6	45	8	5	1	4			99	
FG %	3rd Qtr	7-18	38.9%	4th Qtr	8-17	47.1%	Half:	15-35	42.9%									
3FG %	3rd Qtr	4-7	57.1%	4th Qtr	5-9	55.6%	Half:	9-16	11.1%									
FT %	3rd Qtr	2-6	33.3%	4th Qtr	4-4	100.0%	Half:	6-10	60.0%									

Officials: Mark Zentz, Bruce Morris, Pualani Spurlock
 Technical Fouls: ACU- None. ARKANSAS- TEAM;
 Estimated Actual Attendance: 706

Score by periods	1st	2nd	3rd	4th	Total
ACU	14	10	23	18	65
ARKANSAS	20	14	20	25	79

Points	In	Off	2nd	Fast	Bench
	Paint	T/O	Chance	Break	
ACU	12	3	9	0	11
ARKANSAS	4	20	2	0	19

Last FG - ACU 4th-00:34, AR 4th-02:21.
 ACU led for 0:00. AR led for 20:00. Game was tied for 0:00.

Score tied - 0 times
 Lead changed - 0 times

ACU vs ARKANSAS
11/29/2017; 7 p.m. at Fayetteville, Ark. (Bud Walton Arena)
Period 3 Play-By-Play

VISITORS: ACU	Time	Score	Margin	HOME: ARKANSAS
MISSED LAYUP by OLUOCH,TAUDENCIAH	09:51			
REBOUND (OFF) by TEAM	09:51			
MISSED JUMPER by GOLIGHTLY,DOMINIQUE	09:43			
	09:43			REBOUND (DEF) by WILLIAMS,KIARA
	09:35			MISSED 3PTR by MASON,JAILYN
REBOUND (DEADB) by TEAM	09:35			
	09:06			FOUL by COSPER,DEVIN
	09:06			SUB IN: NORTHCROSS-BAKER,RA
	09:06			SUB OUT: COSPER,DEVIN
GOOD! LAYUP by GOLIGHTLY,DOMINIQUE [PNT]	09:05	34-26	H 8	
ASSIST by WILLIAMSON,SARA	09:05			
	08:53			MISSED LAYUP by MONK,MALICA
	08:53			REBOUND (OFF) by NORTHCROSS-BAKER,RA
	08:49			MISSED JUMPER by MONK,MALICA
	08:49			REBOUND (OFF) by ZIMMERMAN,BAILEY
	08:44			TURNOVER by ZIMMERMAN,BAILEY
STEAL by ALLEN,SIERRA	08:43			
GOOD! 3PTR by GOLIGHTLY,DOMINIQUE	08:35	34-29	H 5	
ASSIST by ALLEN,SIERRA	08:35			
	08:15			MISSED JUMPER by MASON,JAILYN
REBOUND (DEF) by WILLIAMSON,SARA	08:15			
MISSED LAYUP by OLUOCH,TAUDENCIAH	08:06			
REBOUND (OFF) by OLUOCH,TAUDENCIAH	08:06			
GOOD! TIPIN by OLUOCH,TAUDENCIAH [PNT]	08:03	34-31	H 3	
	08:01			TIMEOUT 30SEC
FOUL by ALLEN,SIERRA	07:53			
	07:53			MISSED FT by MONK,MALICA
	07:53			REBOUND (DEADB) by TEAM
	07:53	35-31	H 4	GOOD! FT by MONK,MALICA
SUB IN: ADAMS,ALYSSA	07:53			
SUB OUT: ALLEN,SIERRA	07:53			
TURNOVER by ADAMS,ALYSSA	07:37			
	07:29	38-31	H 7	GOOD! 3PTR by NORTHCROSS-BAKER,RA
	07:29			ASSIST by MASON,JAILYN
TURNOVER by ADAMS,ALYSSA	07:10			
SUB IN: MABRY,MAKAYLA	07:10			
SUB OUT: ADAMS,ALYSSA	07:10			
	07:02	40-31	H 9	GOOD! JUMPER by MONK,MALICA
TURNOVER by WRIGHT,BREANNA	06:51			
	06:50			STEAL by ZIMMERMAN,BAILEY
	06:43	43-31	H 12	GOOD! 3PTR by MASON,JAILYN
	06:43			ASSIST by ZIMMERMAN,BAILEY
MISSED 3PTR by GOLIGHTLY,DOMINIQUE	06:23			
REBOUND (OFF) by WILLIAMSON,SARA	06:23			
MISSED JUMPER by WILLIAMSON,SARA	06:09			
	06:09			REBOUND (DEF) by MASON,JAILYN
FOUL by WILLIAMSON,SARA	05:56			
	05:47	46-31	H 15	GOOD! 3PTR by NORTHCROSS-BAKER,RA
	05:47			ASSIST by ZIMMERMAN,BAILEY
MISSED 3PTR by WRIGHT,BREANNA	05:28			
REBOUND (OFF) by WILLIAMSON,SARA	05:28			
GOOD! JUMPER by OLUOCH,TAUDENCIAH	05:02	46-33	H 13	
ASSIST by WILLIAMSON,SARA	05:02			
FOUL by WRIGHT,BREANNA	04:51			
	04:51			TIMEOUT MEDIA
SUB IN: KIRGAN,LEXI	04:51			
SUB OUT: OLUOCH,TAUDENCIAH	04:51			
	04:45			TURNOVER by MASON,JAILYN
STEAL by WILLIAMSON,SARA	04:44			
MISSED JUMPER by WILLIAMSON,SARA	04:42			
	04:42			BLOCK by ZIMMERMAN,BAILEY
REBOUND (OFF) by WRIGHT,BREANNA	04:41			
MISSED 3PTR by MABRY,MAKAYLA	04:29			
REBOUND (OFF) by WRIGHT,BREANNA	04:29			
MISSED 3PTR by GOLIGHTLY,DOMINIQUE	04:15			
	04:15			REBOUND (DEADB) by TEAM
FOUL by MABRY,MAKAYLA	04:14			
	04:03			MISSED 3PTR by MASON,JAILYN
	04:03			REBOUND (OFF) by ZIMMERMAN,BAILEY

VISITORS: ACU	Time	Score	Margin	HOME: ARKANSAS
	03:59			MISSED JUMPER by ZIMMERMAN,BAILEY
BLOCK by KIRGAN,LEXI	03:59			
REBOUND (DEF) by WILLIAMSON,SARA	03:57			
GOOD! 3PTR by WILLIAMSON,SARA	03:49	46-36	H 10	
ASSIST by MABRY,MAKAYLA	03:49			
	03:34			MISSED 3PTR by NORTHCROSS-BAKER,RA
	03:34			REBOUND (OFF) by ZIMMERMAN,BAILEY
	03:31			MISSED JUMPER by ZIMMERMAN,BAILEY
REBOUND (DEF) by MABRY,MAKAYLA	03:31			
GOOD! LAYUP by MABRY,MAKAYLA [PNT]	03:08	46-38	H 8	
ASSIST by KIRGAN,LEXI	03:08			
	03:08			FOUL by NORTHCROSS-BAKER,RA
GOOD! FT by MABRY,MAKAYLA	03:08	46-39	H 7	
SUB IN: LARSON,JOSIE	03:08			
SUB OUT: MABRY,MAKAYLA	03:08			
	03:08			SUB IN: THOMAS,TAYLAH
	03:08			SUB IN: SWENSON,KEIRYN
	03:08			SUB OUT: WILLIAMS,KIARA
	03:08			SUB OUT: ZIMMERMAN,BAILEY
	02:59			MISSED JUMPER by MASON,JAILYN
	02:59			REBOUND (DEADB) by TEAM
FOUL by WRIGHT,BREANNA	02:57			
	02:57			MISSED FT by THOMAS,TAYLAH
	02:57			REBOUND (DEADB) by TEAM
	02:57			MISSED FT by THOMAS,TAYLAH
REBOUND (DEF) by GOLIGHTLY,DOMINIQUE	02:57			
SUB IN: GALINDO,KAYLA	02:57			
SUB OUT: WRIGHT,BREANNA	02:57			
	02:41			FOUL by MONK,MALICA
MISSED LAYUP by WILLIAMSON,SARA	02:29			
	02:29			REBOUND (DEF) by NORTHCROSS-BAKER,RA
	02:16			MISSED JUMPER by MONK,MALICA
BLOCK by KIRGAN,LEXI	02:16			
REBOUND (DEF) by TEAM	02:16			
	02:16			FOUL (TECH) by TEAM
	02:16			FOUL by TEAM
GOOD! FT by GOLIGHTLY,DOMINIQUE	02:16	46-40	H 6	
MISSED FT by GOLIGHTLY,DOMINIQUE	02:16			
REBOUND (DEADB) by TEAM	02:16			
GOOD! 3PTR by GOLIGHTLY,DOMINIQUE	01:59	46-43	H 3	
ASSIST by GALINDO,KAYLA	01:59			
	01:46	48-43	H 5	GOOD! LAYUP by MONK,MALICA [PNT]
MISSED 3PTR by LARSON,JOSIE	01:18			
	01:18			REBOUND (DEF) by TEAM
	01:06			MISSED JUMPER by MONK,MALICA
BLOCK by GOLIGHTLY,DOMINIQUE	01:06			
REBOUND (DEF) by GOLIGHTLY,DOMINIQUE	01:05			
MISSED JUMPER by WILLIAMSON,SARA	01:00			
	01:00			REBOUND (DEF) by MONK,MALICA
FOUL by GOLIGHTLY,DOMINIQUE	00:54			
	00:54			MISSED FT by NORTHCROSS-BAKER,RA
	00:54			REBOUND (DEADB) by TEAM
	00:54	49-43	H 6	GOOD! FT by NORTHCROSS-BAKER,RA
	00:54			SUB IN: ZIMMERMAN,BAILEY
	00:54			SUB OUT: MONK,MALICA
GOOD! JUMPER by KIRGAN,LEXI	00:40	49-45	H 4	
ASSIST by LARSON,JOSIE	00:40			
	00:19	51-45	H 6	GOOD! JUMPER by NORTHCROSS-BAKER,RA
	00:19			ASSIST by MASON,JAILYN
GOOD! LAYUP by WILLIAMSON,SARA [PNT]	00:05	51-47	H 4	
ASSIST by GALINDO,KAYLA	00:05			
	00:00	54-47	H 7	GOOD! 3PTR by MASON,JAILYN

ACU 47, ARKANSAS 54

Period 3-only	In Paint	Off T/O	2nd Chance	Fast Break	Bench	
ACU	8	3	4	0	5	Score tied - 0 times
AR	2	8	0	0	9	Lead changed - 0 times

ACU vs ARKANSAS
11/29/2017; 7 p.m. at Fayetteville, Ark. (Bud Walton Arena)
Period 4 Play-By-Play

VISITORS: ACU	Time	Score	Margin	HOME: ARKANSAS
SUB IN: GALINDO,KAYLA	10:00			
SUB IN: KIRGAN,LEXI	10:00			
SUB IN: LARSON,JOSIE	10:00			
SUB OUT: WRIGHT,BREANNA	10:00			
SUB OUT: OLUOCH,TAUDENCIAH	10:00			
SUB OUT: ALLEN,SIERRA	10:00			
	10:00			SUB IN: THOMAS,TAYLAH
	10:00			SUB IN: NORTHCROSS-BAKER,RA
	10:00			SUB IN: SWENSON,KEIRYN
	10:00			SUB OUT: MONK,MALICA
	10:00			SUB OUT: WILLIAMS,KIARA
	10:00			SUB OUT: COSPER,DEVIN
	09:41			MISSED JUMPER by THOMAS,TAYLAH
REBOUND (DEF) by LARSON,JOSIE	09:41			
GOOD! 3PTR by GOLIGHTLY,DOMINIQUE	09:32	54-50	H 4	
ASSIST by WILLIAMSON,SARA	09:32			
	09:12	56-50	H 6	GOOD! LAYUP by THOMAS,TAYLAH [PNT]
TURNOVER by GALINDO,KAYLA	09:03			
	09:02			STEAL by THOMAS,TAYLAH
	08:50	59-50	H 9	GOOD! 3PTR by SWENSON,KEIRYN
	08:50			ASSIST by MASON,JAILYN
MISSED JUMPER by KIRGAN,LEXI	08:26			
	08:26			REBOUND (DEF) by ZIMMERMAN,BAILEY
FOUL by WILLIAMSON,SARA	08:18			
	08:18	60-50	H 10	GOOD! FT by NORTHCROSS-BAKER,RA
	08:18	61-50	H 11	GOOD! FT by NORTHCROSS-BAKER,RA
SUB IN: WRIGHT,BREANNA	08:18			
SUB OUT: GALINDO,KAYLA	08:18			
	08:18			SUB IN: WILLIAMS,KIARA
	08:18			SUB IN: MONK,MALICA
	08:18			SUB IN: COSPER,DEVIN
	08:18			SUB OUT: THOMAS,TAYLAH
	08:18			SUB OUT: NORTHCROSS-BAKER,RA
	08:18			SUB OUT: SWENSON,KEIRYN
TURNOVER by KIRGAN,LEXI	08:10			
	07:58	64-50	H 14	GOOD! 3PTR by COSPER,DEVIN
	07:58			ASSIST by MASON,JAILYN
TURNOVER by WILLIAMSON,SARA	07:30			
	07:29			STEAL by WILLIAMS,KIARA
	07:24	67-50	H 17	GOOD! 3PTR by MONK,MALICA
	07:24			ASSIST by MASON,JAILYN
TIMEOUT 30SEC	07:21			
SUB IN: ROWE,LAURA	07:21			
SUB IN: HERRERA,PAM	07:21			
SUB IN: ADAMS,ALYSSA	07:21			
SUB OUT: WILLIAMSON,SARA	07:21			
SUB OUT: KIRGAN,LEXI	07:21			
SUB OUT: LARSON,JOSIE	07:21			
MISSED JUMPER by GOLIGHTLY,DOMINIQUE	07:07			
	07:07			REBOUND (DEF) by MASON,JAILYN
	06:56			TURNOVER by MASON,JAILYN
STEAL by ADAMS,ALYSSA	06:55			
MISSED 3PTR by ROWE,LAURA	06:50			
	06:50			REBOUND (DEF) by MASON,JAILYN
	06:34	69-50	H 19	GOOD! JUMPER by COSPER,DEVIN
TURNOVER by HERRERA,PAM	06:20			
	06:19			STEAL by MASON,JAILYN
	06:10	72-50	H 22	GOOD! 3PTR by COSPER,DEVIN
MISSED LAYUP by GOLIGHTLY,DOMINIQUE	05:53			
	05:53			REBOUND (DEF) by COSPER,DEVIN
	05:46			MISSED 3PTR by MASON,JAILYN
	05:46			REBOUND (OFF) by WILLIAMS,KIARA
FOUL by ADAMS,ALYSSA	05:36			
	05:36	73-50	H 23	GOOD! FT by WILLIAMS,KIARA
	05:36	74-50	H 24	GOOD! FT by WILLIAMS,KIARA
SUB IN: WILLIAMSON,SARA	05:36			
SUB IN: LARSON,JOSIE	05:36			
SUB OUT: ROWE,LAURA	05:36			
SUB OUT: HERRERA,PAM	05:36			

VISITORS: ACU	Time	Score	Margin	HOME: ARKANSAS
	05:36			SUB IN: SPANGLER,GRAYCE
	05:36			SUB IN: SWENSON,KEIRYN
	05:36			SUB IN: THOMAS,TAYLAH
	05:36			SUB OUT: WILLIAMS,KIARA
	05:36			SUB OUT: MONK,MALICA
	05:36			SUB OUT: ZIMMERMAN,BAILEY
MISSED 3PTR by GOLIGHTLY,DOMINIQUE	05:26			
REBOUND (OFF) by ADAMS,ALYSSA	05:26			
MISSED JUMPER by WILLIAMSON,SARA	05:05			
REBOUND (OFF) by ADAMS,ALYSSA	05:05			
	05:03			FOUL by THOMAS,TAYLAH
GOOD! 3PTR by GOLIGHTLY,DOMINIQUE	04:59	74-53	H 21	
SUB IN: ALLEN,SIERRA	04:37			
SUB OUT: LARSON,JOSIE	04:37			
	04:34			TURNOVER by SPANGLER,GRAYCE
STEAL by WILLIAMSON,SARA	04:33			
MISSED JUMPER by WILLIAMSON,SARA	04:28			
	04:28			REBOUND (DEF) by MASON,JAILYN
	04:08			MISSED JUMPER by THOMAS,TAYLAH
REBOUND (DEF) by GOLIGHTLY,DOMINIQUE	04:08			
GOOD! 3PTR by GOLIGHTLY,DOMINIQUE	03:59	74-56	H 18	
ASSIST by WRIGHT,BREANNA	03:59			
FOUL by ADAMS,ALYSSA	03:51			
SUB IN: MABRY,MAKAYLA	03:51			
SUB OUT: ADAMS,ALYSSA	03:51			
	03:49	76-56	H 20	GOOD! JUMPER by MASON,JAILYN
MISSED JUMPER by MABRY,MAKAYLA	03:30			
REBOUND (OFF) by MABRY,MAKAYLA	03:30			
	03:27			FOUL by MASON,JAILYN
GOOD! FT by MABRY,MAKAYLA	03:27	76-57	H 19	
GOOD! FT by MABRY,MAKAYLA	03:27	76-58	H 18	
	03:27			SUB IN: STOUT,SYDNEY
	03:27			SUB IN: WEAVER,MACY
	03:27			SUB OUT: SWENSON,KEIRYN
	03:27			SUB OUT: COSPER,DEVIN
	03:11			MISSED 3PTR by SPANGLER,GRAYCE
REBOUND (DEF) by ALLEN,SIERRA	03:11			
GOOD! 3PTR by GOLIGHTLY,DOMINIQUE	03:01	76-61	H 15	
ASSIST by WRIGHT,BREANNA	03:01			
	02:40			TURNOVER by MASON,JAILYN
STEAL by GOLIGHTLY,DOMINIQUE	02:39			
MISSED LAYUP by WILLIAMSON,SARA	02:34			
	02:34			REBOUND (DEF) by THOMAS,TAYLAH
FOUL by ALLEN,SIERRA	02:32			
SUB IN: LARSON,JOSIE	02:32			
SUB OUT: WILLIAMSON,SARA	02:32			
	02:21	79-61	H 18	GOOD! 3PTR by THOMAS,TAYLAH
	02:21			ASSIST by MASON,JAILYN
MISSED JUMPER by ALLEN,SIERRA	02:04			
	02:04			REBOUND (DEF) by THOMAS,TAYLAH
	01:53			MISSED 3PTR by STOUT,SYDNEY
REBOUND (DEF) by GOLIGHTLY,DOMINIQUE	01:53			
SUB IN: OLUOCH,TAUDENCIAH	01:47			
SUB OUT: ALLEN,SIERRA	01:47			
MISSED 3PTR by GOLIGHTLY,DOMINIQUE	01:43			
	01:43			REBOUND (DEF) by WEAVER,MACY
	01:39			TIMEOUT 30SEC
	01:39			SUB IN: NORTHCROSS-BAKER,RA
	01:39			SUB OUT: MASON,JAILYN
	01:29			MISSED JUMPER by WEAVER,MACY
REBOUND (DEF) by WRIGHT,BREANNA	01:29			
GOOD! LAYUP by MABRY,MAKAYLA [PNT]	01:16	79-63	H 16	
ASSIST by WRIGHT,BREANNA	01:16			
	01:00			MISSED 3PTR by SPANGLER,GRAYCE
REBOUND (DEF) by TEAM	01:00			
GOOD! LAYUP by MABRY,MAKAYLA [PNT]	00:34	79-65	H 14	
	00:08			MISSED JUMPER by NORTHCROSS-BAKER,RA
	00:08			REBOUND (OFF) by STOUT,SYDNEY
	00:06			MISSED JUMPER by STOUT,SYDNEY
BLOCK by MABRY,MAKAYLA	00:06			
REBOUND (DEF) by LARSON,JOSIE	00:04			
MISSED 3PTR by LARSON,JOSIE	00:01			
	00:01			REBOUND (DEADB) by TEAM

Period 4-only	In Paint	Off T/O	2nd Chance	Fast Break	Bench	
ACU	4	0	5	0	6	Score tied - 0 times
AR	2	12	2	0	10	Lead changed - 0 times

ACU vs ARKANSAS
11/29/2017; 7 p.m. at Fayetteville, Ark. (Bud Walton Arena)
Scoring/Runs Reference

Period 1

ACU	VRun	Score	Margin	HRun	ARKANSAS
		0-2	2		MONK LAYUP [P] - 09:50
09:21 - OLUOCH 3PTR	-	3-2	-1		
		3-4	1		WILLIAMS LAYUP [P] - 09:00
		3-6	3	4-0	MONK LAYUP [P] - 07:54
		3-8	5	6-0	WILLIAMS LAYUP [P] - 07:31
		3-9	6	7-0	ZIMMERMAN FT - 06:25
		3-11	8	9-0	MASON JUMPER [P] - 04:59
03:44 - LARSON 3PTR	-	6-11	5		
03:16 - GOLIGHTLY 3PTR	6-0	9-11	2		
		9-12	3		MONK FT - 03:06
02:47 - GALINDO 3PTR	-	12-12	0		
		12-13	1		NORTHCROSS-BAKER FT - 02:17
		12-14	2	2-0	NORTHCROSS-BAKER FT - 02:17
		12-16	4	4-0	ZIMMERMAN JUMPER - 02:00
		12-19	7	7-0	MASON 3PTR - 01:05
00:35 - ALLEN JUMPER	-	14-19	5		
		14-20	6		WILLIAMS FT - 00:26

ACU vs ARKANSAS
11/29/2017; 7 p.m. at Fayetteville, Ark. (Bud Walton Arena)
Scoring/Runs Reference

Period 2

ACU	VRun	Score	Margin	HRun	ARKANSAS
		14-22	8		WILLIAMS LAYUP [P] - 09:16
		14-23	9	NaN-0	WILLIAMS FT - 09:16
08:06 - KIRGAN LAYUP [P]	-	16-23	7		
		16-25	9		WILLIAMS LAYUP [P] - 08:03
		16-26	10	3-0	MONK FT - 05:51
		16-27	11	4-0	MONK FT - 05:51
05:38 - KIRGAN LAYUP [P]	-	18-27	9		
04:41 - MABRY JUMPER	4-0	20-27	7		
		20-28	8		COSPER FT - 04:23
		20-29	9	2-0	NORTHCROSS-BAKER FT - 04:10
		20-30	10	3-0	NORTHCROSS-BAKER FT - 04:10
03:16 - OLUOCH LAYUP [P]	-	22-30	8		
02:40 - WRIGHT FT	3-0	23-30	7		
02:40 - WRIGHT FT	4-0	24-30	6		
		24-32	8		COSPER LAYUP [P] - 02:02
		24-33	9	3-0	THOMAS FT - 00:03
		24-34	10	4-0	THOMAS FT - 00:03

ACU vs ARKANSAS
11/29/2017; 7 p.m. at Fayetteville, Ark. (Bud Walton Arena)
Scoring/Runs Reference

Period 3

ACU	VRun	Score	Margin	HRun	ARKANSAS
09:05 - GOLIGHTLY LAYUP [P]	-	26-34	8		
08:35 - GOLIGHTLY 3PTR	NaN-0	29-34	5		
08:03 - OLUOCH TIPIN [P]	NaN-0	31-34	3		
		31-35	4		MONK FT - 07:53
		31-38	7	4-0	NORTHCROSS-BAKER 3PTR - 07:29
		31-40	9	6-0	MONK JUMPER - 07:02
		31-43	12	9-0	MASON 3PTR - 06:43
		31-46	15	12-0	NORTHCROSS-BAKER 3PTR - 05:47
05:02 - OLUOCH JUMPER	-	33-46	13		
03:49 - WILLIAMSON 3PTR	5-0	36-46	10		
03:08 - MABRY LAYUP [P]	7-0	38-46	8		
03:08 - MABRY FT	8-0	39-46	7		
02:16 - GOLIGHTLY FT	9-0	40-46	6		
01:59 - GOLIGHTLY 3PTR	12-0	43-46	3		
		43-48	5		MONK LAYUP [P] - 01:46
		43-49	6	3-0	NORTHCROSS-BAKER FT - 00:54
00:40 - KIRGAN JUMPER	-	45-49	4		
		45-51	6		NORTHCROSS-BAKER JUMPER - 00:19
00:05 - WILLIAMSON LAYUP [P]	-	47-51	4		
		47-54	7		MASON 3PTR - 00:00

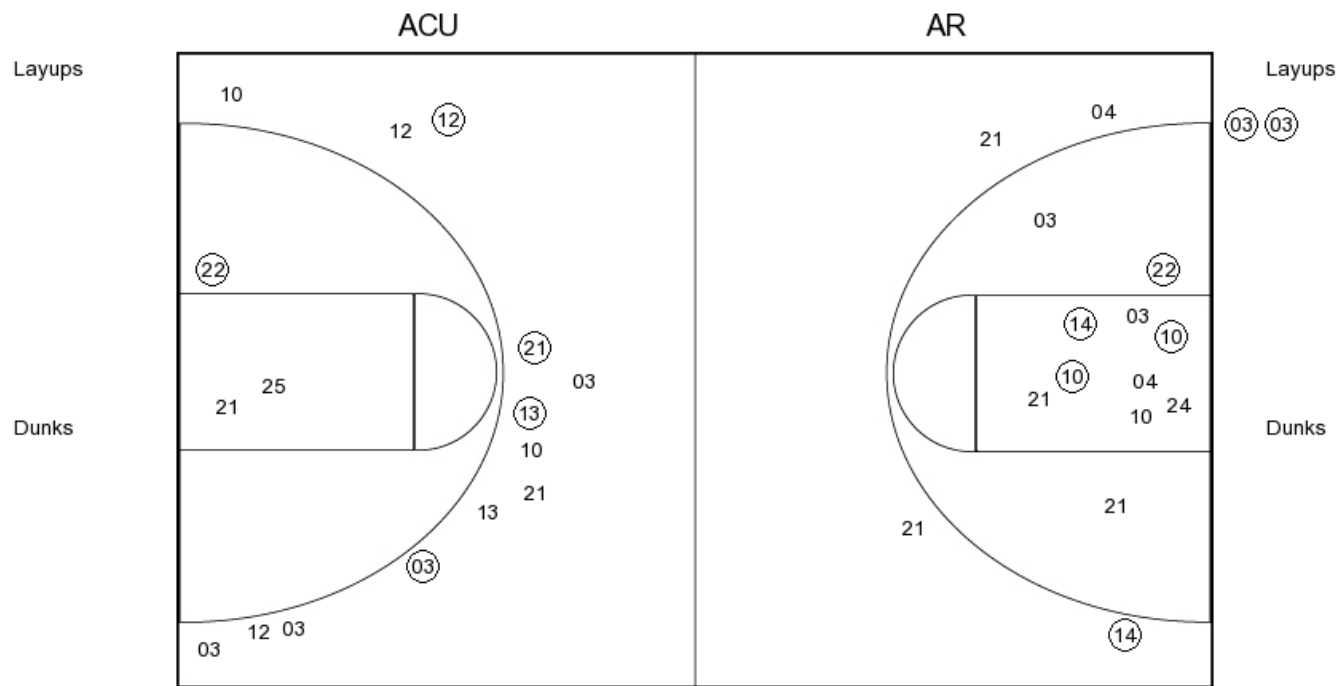
ACU vs ARKANSAS
11/29/2017; 7 p.m. at Fayetteville, Ark. (Bud Walton Arena)
Scoring/Runs Reference

Period 4

ACU	VRun	Score	Margin	HRun	ARKANSAS
09:32 - GOLIGHTLY 3PTR	-	50-54	4		
		50-56	6		THOMAS LAYUP [P] - 09:12
		50-59	9	5-0	SWENSON 3PTR - 08:50
		50-60	10	6-0	NORTHCROSS-BAKER FT - 08:18
		50-61	11	7-0	NORTHCROSS-BAKER FT - 08:18
		50-64	14	10-0	COSPER 3PTR - 07:58
		50-67	17	13-0	MONK 3PTR - 07:24
		50-69	19	15-0	COSPER JUMPER - 06:34
		50-72	22	18-0	COSPER 3PTR - 06:10
		50-73	23	19-0	WILLIAMS FT - 05:36
		50-74	24	20-0	WILLIAMS FT - 05:36
04:59 - GOLIGHTLY 3PTR	-	53-74	21		
03:59 - GOLIGHTLY 3PTR	6-0	56-74	18		
		56-76	20		MASON JUMPER - 03:49
03:27 - MABRY FT	-	57-76	19		
03:27 - MABRY FT	2-0	58-76	18		
03:01 - GOLIGHTLY 3PTR	5-0	61-76	15		
		61-79	18		THOMAS 3PTR - 02:21
01:16 - MABRY LAYUP [P]	-	63-79	16		
00:34 - MABRY LAYUP [P]	4-0	65-79	14		

ACU vs ARKANSAS
OFFICIAL SHOT CHART
 11/29/2017 at Fayetteville, Ark. (Bud Walton Arena)

PERIOD 1



ACU PERIOD 1

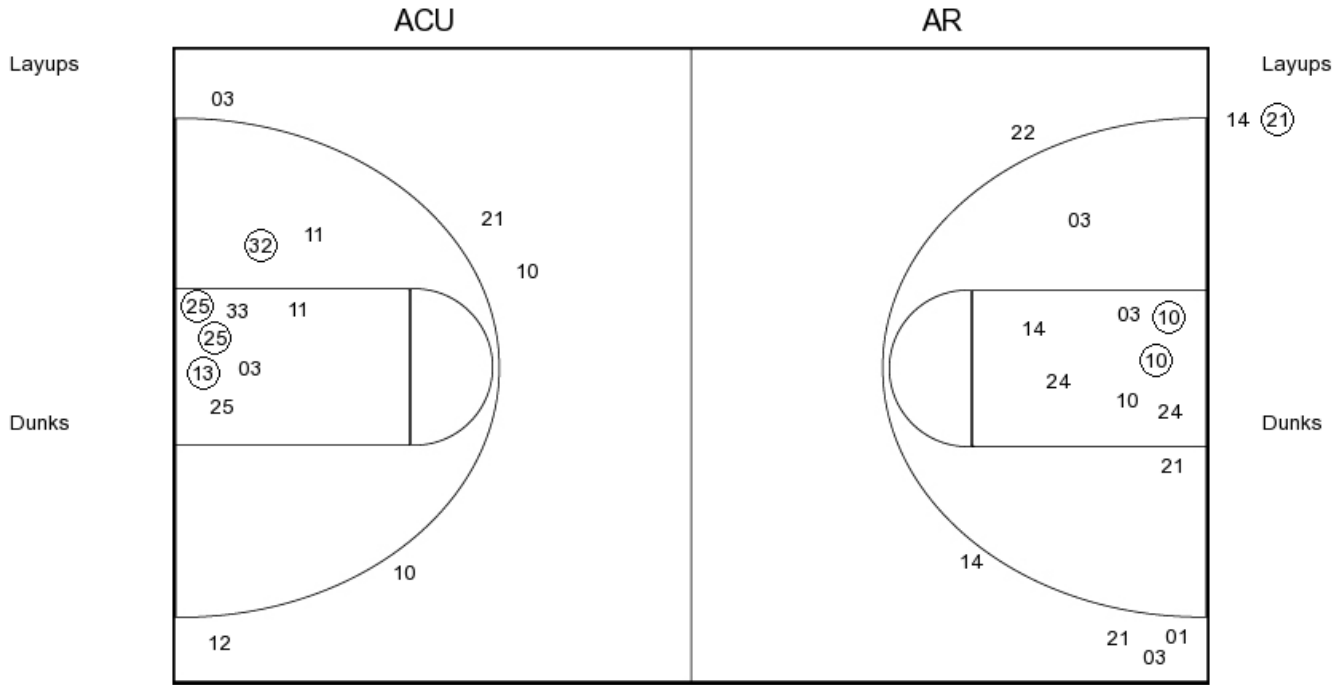
FG Made	9
FG Attempted	30
3PFG Made	4
3PFG Attempted	18

AR PERIOD 1

FG Made	10
FG Attempted	33
3PFG Made	1
3PFG Attempted	9

**ACU vs ARKANSAS
OFFICIAL SHOT CHART
11/29/2017 at Fayetteville, Ark. (Bud Walton Arena)**

PERIOD 2



ACU PERIOD 2

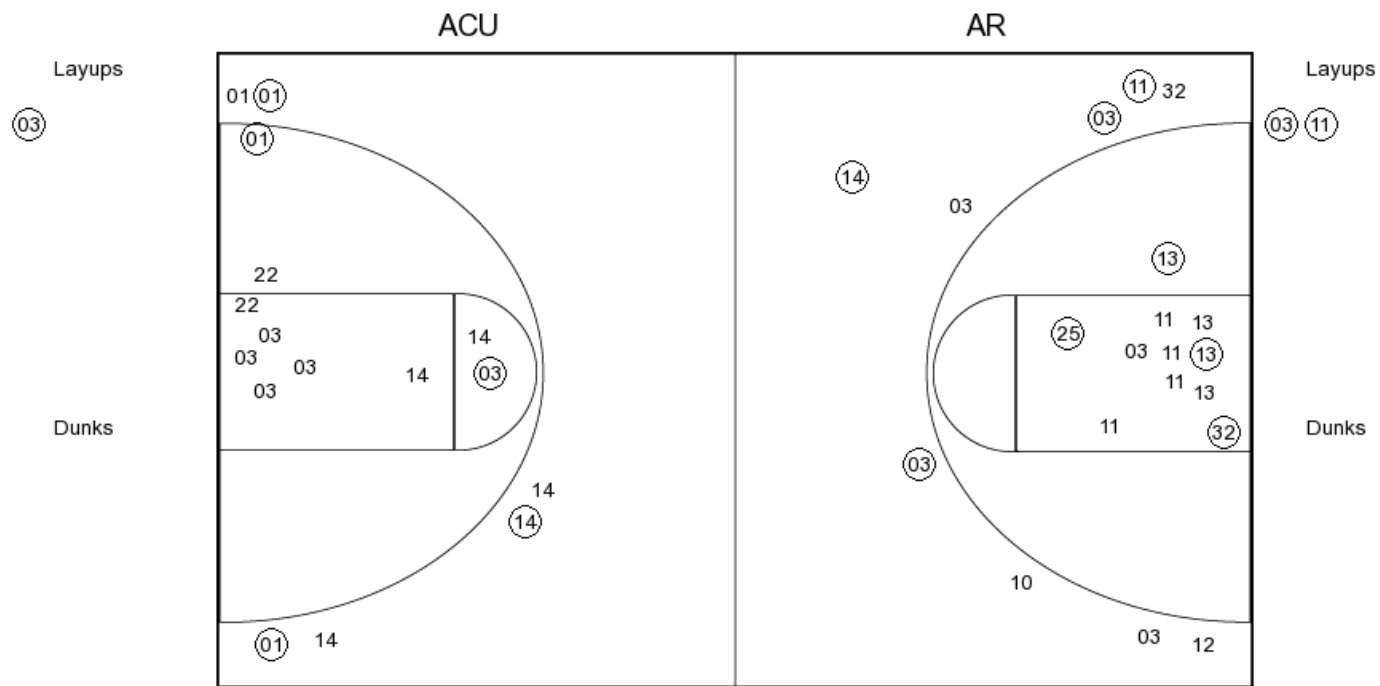
FG Made
FG Attempted
3PFG Made
3PFG Attempted

AR PERIOD 2

FG Made
FG Attempted
3PFG Made
3PFG Attempted

ACU vs ARKANSAS
OFFICIAL SHOT CHART
 11/29/2017 at Fayetteville, Ark. (Bud Walton Arena)

PERIOD 3



ACU PERIOD 3

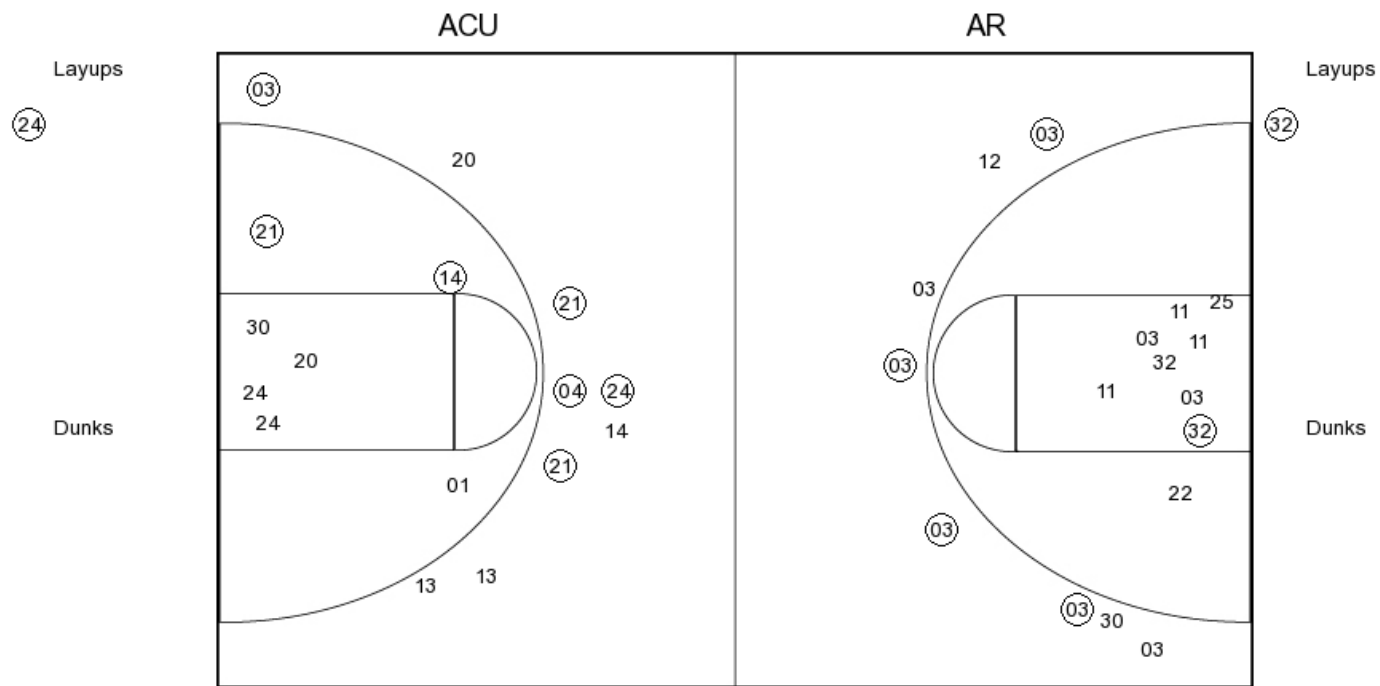
FG Made	15
FG Attempted	39
3PFG Made	7
3PFG Attempted	16

AR PERIOD 3

FG Made	15
FG Attempted	35
3PFG Made	9
3PFG Attempted	16

ACU vs ARKANSAS
OFFICIAL SHOT CHART
 11/29/2017 at Fayetteville, Ark. (Bud Walton Arena)

PERIOD 4



ACU PERIOD 4

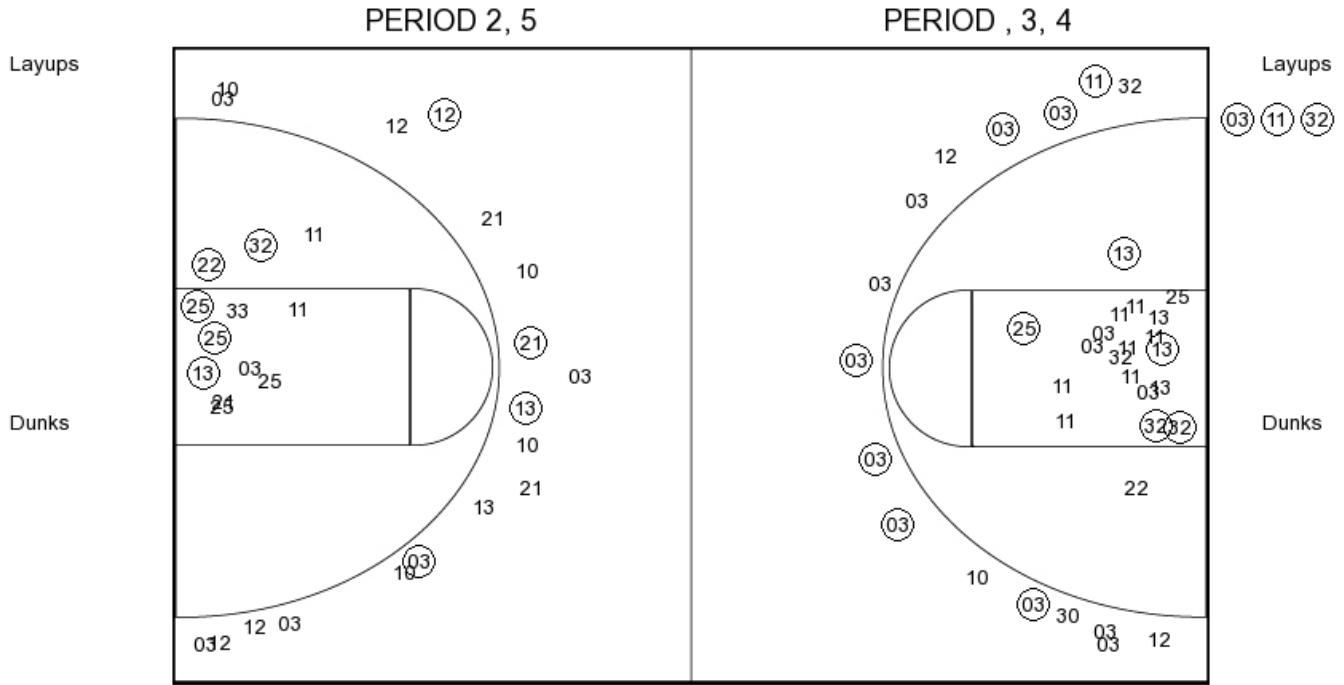
FG Made
 FG Attempted
 3PFG Made
 3PFG Attempted

AR PERIOD 4

FG Made
 FG Attempted
 3PFG Made
 3PFG Attempted

ACU vs ARKANSAS
OFFICIAL SHOT CHART
 11/29/2017 at Fayetteville, Ark. (Bud Walton Arena)

ACU



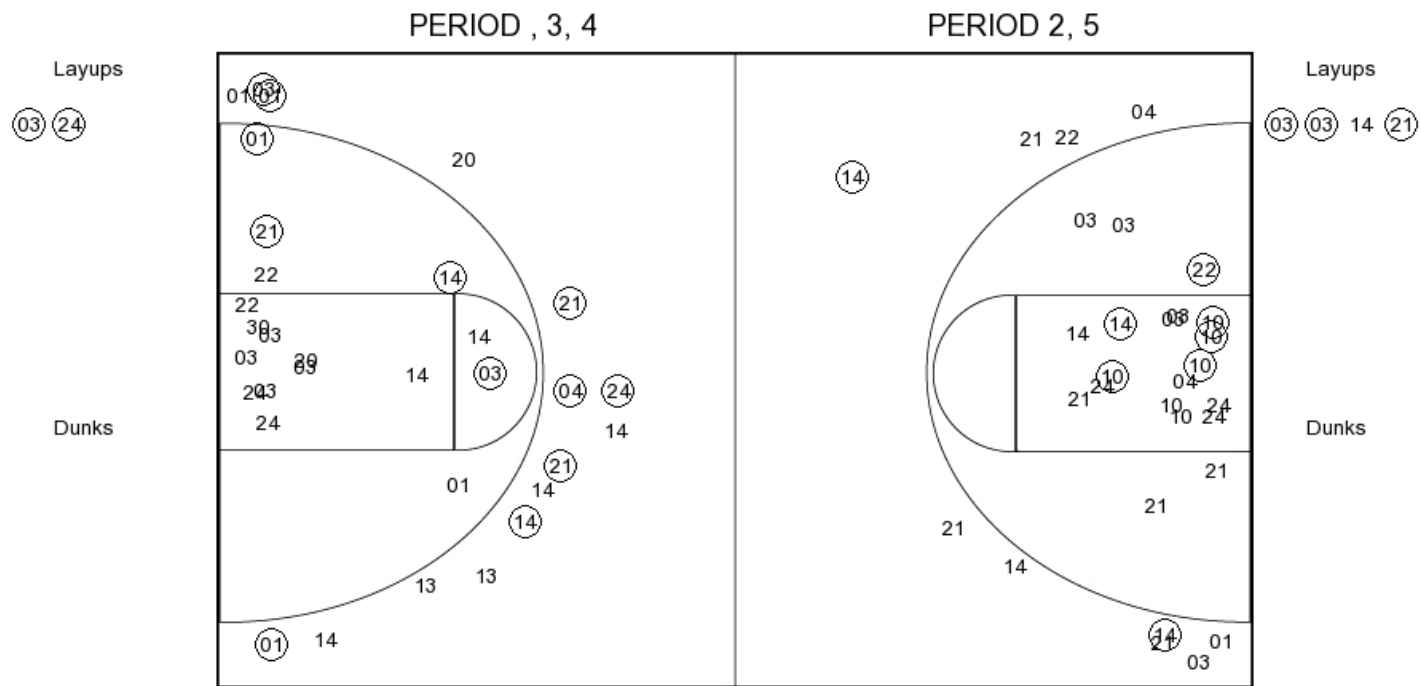
ACU PERIOD 1

FG Made	9
FG Attempted	30
3PFG Made	4
3PFG Attempted	18

ACU PERIOD 2

FG Made	
FG Attempted	
3PFG Made	
3PFG Attempted	

ARKANSAS



AR PERIOD 1

FG Made	10
FG Attempted	33
3PFG Made	1
3PFG Attempted	9

AR PERIOD 2

FG Made	
FG Attempted	
3PFG Made	
3PFG Attempted	