

MSU MOORHEAD VS. CENTRAL MISSOURI



3/10/2017

Searcy, Ark. (Rhodes-Reaves Field House)

FINAL STATS

Central Mo.
(23-6)

56

Minn. St. Moorhead
(24-4)

45

Start Time: 7:30 p.m.

Officials: Michelle Kramer, Mary Toberman and Allyn Richardson

Attendance: 0

Official Basketball Box Score -- Game Totals -- Final Statistics
Central Mo. vs Minn. St. Moorhead
3/10/2017 7:30 p.m. at Searcy, Ark. (Rhodes-Reaves Field House)

Central Mo. 56 - 23-6

##	Player		Total FG-FGA	3-Ptr FG-FGA	FT-FTA	Rebounds			PF	TP	A	TO	Blk	Stl	Min
						Off	Def	Tot							
00	REDMOND, PAIGE	g	3-12	1-5	2-2	0	4	4	2	9	1	3	1	0	35
03	LEE, KAYONNA	f	2-9	0-0	6-10	4	7	11	1	10	0	2	0	1	36
13	WILLIAMS, KELSEY	g	1-6	0-3	0-0	1	2	3	1	2	3	0	0	1	23
20	SKAGGS, MEGAN	f	6-13	2-8	3-4	0	1	1	4	17	0	1	1	3	37
23	DUFFY, ASHLEY	g	7-15	2-5	0-0	0	9	9	2	16	4	2	0	2	32
02	CROCKETT, SYDNEY		0-4	0-3	0-0	1	1	2	4	0	0	0	0	0	24
24	SKAGGS, SYDNEY		0-0	0-0	2-2	0	1	1	2	2	0	0	0	0	7
25	GLADBACH, KENDRA		0-1	0-1	0-0	0	0	0	0	0	0	0	0	0	6
TEAM						3	3	6	0		0				
TOTALS			19-60	5-25	13-18	9	28	37	16	56	8	8	2	7	200

Deadball Rebounds: 2, 1

FG %	1st Half: 7-30	23.3%	2nd Half: 12-30	40.0%	Game: 19-60	31.7%			
	1st Qtr 4-18	22.2%	2nd Qtr 3-12	25.0%	3rd Qtr 5-16	31.3%	4th Qtr 7-14	50.0%	
3FG %	1st Half: 2-12	16.7%	2nd Half: 3-13	23.1%	Game: 5-25	20.0%			
	1st Qtr 2-10	20.0%	2nd Qtr 0-2	00.0%	3rd Qtr 2-7	28.6%	4th Qtr 1-6	16.7%	
FT %	1st Half: 4-4	100.0%	2nd Half: 9-14	64.3%	Game: 13-18	72.2%			
	1st Qtr 0-0	0%	2nd Qtr 4-4	100.0%	3rd Qtr 3-4	75.0%	4th Qtr 6-10	60.0%	

Minn. St. Moorhead 45 - 24-4

##	Player		Total FG-FGA	3-Ptr FG-FGA	FT-FTA	Rebounds			PF	TP	A	TO	Blk	Stl	Min
						Off	Def	Tot							
02	THORSON, CASSIDY	g	1-13	0-7	2-2	4	5	9	1	4	2	2	0	1	32
12	VOLKERT, JACKY	g	8-17	0-4	6-8	1	5	6	2	22	0	5	0	2	38
22	WYHE, NATALIE VAN	g	0-4	0-2	0-0	0	6	6	4	0	3	3	1	0	26
33	HAM, MORGAN	f	1-4	0-3	0-0	0	1	1	0	2	0	1	0	0	15
42	SANNES, DREW	f	7-15	0-1	2-2	2	4	6	3	16	0	0	3	0	33
05	SELENSKY, KOURTNEY		0-0	0-0	0-0	0	2	2	1	0	0	1	1	0	11
11	HART, JESSICA		0-1	0-0	0-0	0	3	3	1	0	1	3	1	0	10
32	GALEGHER, SHANNON		0-2	0-0	1-2	4	5	9	5	1	0	1	1	0	26
51	HINTZ, MEGAN		0-1	0-0	0-0	0	1	1	0	0	0	2	0	0	8
TEAM						1	3	4	0		0				
TOTALS			17-57	0-17	11-14	12	35	47	17	45	6	18	7	3	199

Deadball Rebounds: 2, 0

FG %	1st Half: 10-29	34.5%	2nd Half: 7-28	25.0%	Game: 17-57	29.8%			
	1st Qtr 4-15	26.7%	2nd Qtr 6-14	42.9%	3rd Qtr 2-12	16.7%	4th Qtr 5-16	31.3%	
3FG %	1st Half: 0-8	00.0%	2nd Half: 0-9	00.0%	Game: 0-17	00.0%			
	1st Qtr 0-3	00.0%	2nd Qtr 0-5	00.0%	3rd Qtr 0-5	00.0%	4th Qtr 0-4	00.0%	
FT %	1st Half: 2-4	50.0%	2nd Half: 9-10	90.0%	Game: 11-14	78.6%			
	1st Qtr 1-3	33.3%	2nd Qtr 1-1	100.0%	3rd Qtr 6-6	100.0%	4th Qtr 3-4	75.0%	

Officials: Michelle Kramer, Mary Toberman and Allyn Richardson
 Technical Fouls: Central Mo.- None. Minn. St. Moorhead- None.
 Attendance: 0

Score by periods	1st	2nd	3rd	4th	Total
Central Mo.	10	10	15	21	56
Minn. St. Moorhead	9	13	10	13	45

	In	Off	2nd	Fast	
Points	Paint	T/O	Chance	Break	Bench
UCM	24	20	6	2	2
MSUMW	22	8	6	2	1

Last FG - UCM 4th-01:57, MSUMW 4th-03:31.
 Largest lead - Central Mo. by 12 3rd-04:32; Minn. St. Moorhead by 6 2nd-03:16
 UCM led for 31:10. MSUMW led for 4:51. Game was tied for 3:59.

Score tied - 3 times
 Lead changed - 2 times

Official Basketball Box Score -- Game Totals -- First Half Statistics
Central Mo. vs Minn. St. Moorhead
3/10/2017 7:30 p.m. at Searcy, Ark. (Rhodes-Reaves Field House)

Central Mo. 20 • 23-6

##	Player		Total		FT-FTA	Rebounds			PF	TP	A	TO	Blk	Stl	Min
			FG-FGA	3-Ptr FG-FGA		Off	Def	Tot							
00	REDMOND, PAIGE	g	0-4	0-2	0-0	0	2	2	0	0	1	2	1	0	15
03	LEE, KAYONNA	f	0-4	0-0	2-2	1	4	5	0	2	0	1	0	1	18
13	WILLIAMS, KELSEY	g	1-4	0-1	0-0	0	2	2	1	2	1	0	0	1	13
20	SKAGGS, MEGAN	f	3-6	2-5	0-0	0	0	0	1	8	0	1	1	2	17
23	DUFFY, ASHLEY	g	3-9	0-2	0-0	0	3	3	2	6	1	1	0	0	14
02	CROCKETT, SYDNEY		0-2	0-1	0-0	1	1	2	1	0	0	0	0	0	12
24	SKAGGS, SYDNEY		0-0	0-0	2-2	0	1	1	1	2	0	0	0	0	5
25	GLADBACH, KENDRA		0-1	0-1	0-0	0	0	0	0	0	0	0	0	0	6
TEAM						3	0	3	0		0				
Totals			7-30	2-12	4-4	5	13	18	6	20	3	5	2	4	100

FG % 1st Qtr 4-18 22.2% 2nd Qtr 3-12 25.0% Half: 7-30 23.3%
 3FG % 1st Qtr 2-10 20.0% 2nd Qtr 0-2 00.0% Half: 2-12 16.7%
 FT % 1st Qtr 0-0 0% 2nd Qtr 4-4 100.0% Half: 4-4 100.0%

Minn. St. Moorhead 22 • 24-4

##	Player		Total		FT-FTA	Rebounds			PF	TP	A	TO	Blk	Stl	Min
			FG-FGA	3-Ptr FG-FGA		Off	Def	Tot							
02	THORSON, CASSIDY	g	1-7	0-4	0-0	1	3	4	1	2	1	1	0	1	17
12	VOLKERT, JACKY	g	6-9	0-1	2-4	1	2	3	0	14	0	2	0	2	19
22	WYHE, NATALIE VAN	g	0-3	0-1	0-0	0	2	2	3	0	1	1	1	0	11
33	HAM, MORGAN	f	0-2	0-2	0-0	0	1	1	0	0	0	1	0	0	11
42	SANNES, DREW	f	3-5	0-0	0-0	1	1	2	1	6	0	0	1	0	14
05	SELENSKY, KOURTNEY		0-0	0-0	0-0	0	0	0	0	0	0	1	1	0	3
11	HART, JESSICA		0-0	0-0	0-0	0	3	3	0	0	1	2	1	0	6
32	GALEGHER, SHANNON		0-2	0-0	0-0	3	4	7	1	0	0	1	1	0	13
51	HINTZ, MEGAN		0-1	0-0	0-0	0	1	1	0	0	0	1	0	0	6
TEAM						1	1	2	0		0				
Totals			10-29	0-8	2-4	7	18	25	6	22	3	10	5	3	100

FG % 1st Qtr 4-15 26.7% 2nd Qtr 6-14 42.9% Half: 10-29 34.5%
 3FG % 1st Qtr 0-3 00.0% 2nd Qtr 0-5 00.0% Half: 0-8 00.0%
 FT % 1st Qtr 1-3 33.3% 2nd Qtr 1-1 100.0% Half: 2-4 50.0%

Officials: Michelle Kramer, Mary Toberman and Allyn Richardson
 Technical Fouls: Central Mo.- None. Minn. St. Moorhead- None.

Score by periods	1st	2nd	3rd	4th	Total
Central Mo.	10	10	15	21	56
Minn. St. Moorhead	9	13	10	13	45

Points	In Paint	Off T/O	2nd Chance	Fast Break	Bench
UCM	8	12	0	0	2
	14	4	1	2	0

Last FG - UCM 2nd-00:35, MSUMW 2nd-00:21.
 UCM led for 12:17. MSUMW led for 4:33. Game was tied for 3:10.

Score tied - 2 times
 Lead changed - 1 times

Central Mo. vs Minn. St. Moorhead
3/10/2017; 7:30 p.m. at Searcy, Ark. (Rhodes-Reaves Field House)
Period 1 Play-By-Play

VISITORS: Central Mo.	Time	Score	Margin	HOME: Minn. St. Moorhead
MISSED 3PTR by DUFFY,ASHLEY	09:35			
	09:35			REBOUND (DEF) by VOLKERT,JACKY
	09:27			MISSED 3PTR by THORSON,CASSIDY
REBOUND (DEF) by DUFFY,ASHLEY	09:27			
MISSED LAYUP by LEE,KAYONNA	09:08			
	09:08			BLOCK by SANNES,DREW
REBOUND (OFF) by TEAM	09:07			
MISSED 3PTR by REDMOND,PAIGE	09:07			
REBOUND (OFF) by LEE,KAYONNA	09:07			
TURNOVER by SKAGGS,MEGAN	08:53			
	08:51			STEAL by VOLKERT,JACKY
	08:38			TURNOVER by HAM,MORGAN
GOOD! LAYUP by DUFFY,ASHLEY [PNT]	08:20	0-2	V 2	
	08:05			MISSED JUMPER by VOLKERT,JACKY
	08:05			REBOUND (OFF) by VOLKERT,JACKY
	07:56			FOUL by THORSON,CASSIDY
	07:56			TURNOVER by THORSON,CASSIDY
TURNOVER by REDMOND,PAIGE	07:45			
	07:45			STEAL by THORSON,CASSIDY
	07:32			MISSED JUMPER by SANNES,DREW
REBOUND (DEF) by WILLIAMS,KELSEY	07:32			
	07:24			FOUL by WYHE,NATALIE VAN
	07:24			SUB IN: GALEGHER,SHANNON
	07:24			SUB OUT: HAM,MORGAN
TURNOVER by DUFFY,ASHLEY	07:17			
	07:16			STEAL by VOLKERT,JACKY
	07:14	2-2	T	GOOD! LAYUP by VOLKERT,JACKY [FB/PNT]
FOUL by DUFFY,ASHLEY	07:13			
	07:13			MISSED FT by VOLKERT,JACKY
	07:13			REBOUND (OFF) by GALEGHER,SHANNON
	07:07			MISSED LAYUP by GALEGHER,SHANNON
REBOUND (DEF) by LEE,KAYONNA	07:07			
MISSED 3PTR by SKAGGS,MEGAN	06:59			
	06:59			REBOUND (DEF) by TEAM
SUB IN: CROCKETT,SYDNEY	06:56			
SUB OUT: WILLIAMS,KELSEY	06:56			
	06:56			SUB IN: HINTZ,MEGAN
	06:56			SUB OUT: SANNES,DREW
	06:30			MISSED LAYUP by WYHE,NATALIE VAN
	06:30			REBOUND (OFF) by GALEGHER,SHANNON
FOUL by SKAGGS,MEGAN	06:28			
	06:09			TURNOVER by HINTZ,MEGAN
GOOD! 3PTR by SKAGGS,MEGAN	05:58	2-5	V 3	
ASSIST by REDMOND,PAIGE	05:58			
	05:39			MISSED 3PTR by WYHE,NATALIE VAN
REBOUND (DEF) by LEE,KAYONNA	05:39			
GOOD! LAYUP by DUFFY,ASHLEY [PNT]	05:26	2-7	V 5	
	05:18			MISSED LAYUP by HINTZ,MEGAN
REBOUND (DEF) by LEE,KAYONNA	05:18			
MISSED LAYUP by LEE,KAYONNA	05:01			
	05:01			REBOUND (DEF) by HINTZ,MEGAN
	04:49			MISSED LAYUP by WYHE,NATALIE VAN
REBOUND (DEF) by CROCKETT,SYDNEY	04:49			
MISSED LAYUP by REDMOND,PAIGE	04:35			
	04:35			BLOCK by WYHE,NATALIE VAN
REBOUND (OFF) by TEAM	04:35			
TIMEOUT media	04:34			
SUB IN: SKAGGS,SYDNEY	04:34			
SUB IN: WILLIAMS,KELSEY	04:34			

VISITORS: Central Mo.	Time	Score	Margin	HOME: Minn. St. Moorhead
SUB OUT: REDMOND,PAIGE	04:34			
SUB OUT: LEE,KAYONNA	04:34			
	04:34			SUB IN: HART,JESSICA
	04:34			SUB IN: SANNES,DREW
	04:34			SUB OUT: WYHE,NATALIE VAN
	04:34			SUB OUT: HINTZ,MEGAN
MISSED JUMPER by WILLIAMS,KELSEY	04:18			
	04:18			REBOUND (DEF) by GALEGHER,SHANNON
	04:05			MISSED 3PTR by VOLKERT,JACKY
REBOUND (DEF) by DUFFY,ASHLEY	04:05			
MISSED 3PTR by SKAGGS,MEGAN	03:53			
	03:53			REBOUND (DEF) by GALEGHER,SHANNON
	03:41	4-7	V 3	GOOD! JUMPER by SANNES,DREW
	03:41			ASSIST by HART,JESSICA
MISSED 3PTR by DUFFY,ASHLEY	03:25			
	03:25			REBOUND (DEF) by VOLKERT,JACKY
FOUL by SKAGGS,SYDNEY	03:20			
SUB IN: GLADBACH,KENDRA	03:20			
SUB OUT: DUFFY,ASHLEY	03:20			
	03:06			MISSED LAYUP by SANNES,DREW
	03:06			REBOUND (OFF) by GALEGHER,SHANNON
FOUL by WILLIAMS,KELSEY	02:55			
	02:55			MISSED FT by VOLKERT,JACKY
	02:55			REBOUND (DEADB) by TEAM
	02:55	5-7	V 2	GOOD! FT by VOLKERT,JACKY
MISSED LAYUP by CROCKETT,SYDNEY	02:42			
	02:42			BLOCK by GALEGHER,SHANNON
	02:40			REBOUND (DEF) by HART,JESSICA
	02:31			TURNOVER by HART,JESSICA
STEAL by WILLIAMS,KELSEY	02:29			
GOOD! 3PTR by SKAGGS,MEGAN	02:23	5-10	V 5	
ASSIST by WILLIAMS,KELSEY	02:23			
	02:10			TURNOVER by HART,JESSICA
STEAL by SKAGGS,MEGAN	02:09			
	02:09			FOUL by GALEGHER,SHANNON
SUB IN: LEE,KAYONNA	02:09			
SUB IN: REDMOND,PAIGE	02:09			
SUB OUT: SKAGGS,SYDNEY	02:09			
SUB OUT: CROCKETT,SYDNEY	02:09			
	02:09			SUB IN: HAM,MORGAN
	02:09			SUB IN: WYHE,NATALIE VAN
	02:09			SUB OUT: HART,JESSICA
	02:09			SUB OUT: GALEGHER,SHANNON
MISSED 3PTR by WILLIAMS,KELSEY	02:06			
	02:06			REBOUND (DEF) by THORSON,CASSIDY
	01:52	7-10	V 3	GOOD! LAYUP by VOLKERT,JACKY [PNT]
TURNOVER by REDMOND,PAIGE	01:42			
	01:29	9-10	V 1	GOOD! LAYUP by SANNES,DREW [PNT]
	01:29			ASSIST by WYHE,NATALIE VAN
MISSED 3PTR by SKAGGS,MEGAN	01:18			
	01:18			REBOUND (DEF) by WYHE,NATALIE VAN
	00:55			MISSED LAYUP by THORSON,CASSIDY
BLOCK by SKAGGS,MEGAN	00:55			
	00:54			REBOUND (OFF) by TEAM
	00:51			SUB IN: SELENSKY,KOURTNEY
	00:51			SUB OUT: THORSON,CASSIDY
SUB IN: DUFFY,ASHLEY	00:45			
SUB OUT: WILLIAMS,KELSEY	00:45			
	00:38			TURNOVER by VOLKERT,JACKY
STEAL by SKAGGS,MEGAN	00:36			
MISSED 3PTR by REDMOND,PAIGE	00:10			
	00:10			REBOUND (DEF) by WYHE,NATALIE VAN
	00:02			TURNOVER by WYHE,NATALIE VAN
MISSED JUMPER by LEE,KAYONNA	00:01			

VISITORS: Central Mo.

Time Score Margin

HOME: Minn. St. Moorhead

00:00

BLOCK by SELENSKY,KOURTNEY

REBOUND (OFF) by TEAM

00:00

Central Mo. 10, Minn. St. Moorhead 9

Period 1-only	In Paint	Off T/O	2nd Chance	Fast Break	Bench	
UCM	4	8	0	0	0	Score tied - 0 times
MSUMW	6	4	1	2	0	Lead changed - 0 times

Central Mo. vs Minn. St. Moorhead
3/10/2017; 7:30 p.m. at Searcy, Ark. (Rhodes-Reaves Field House)
Period 2 Play-By-Play

VISITORS: Central Mo.	Time	Score	Margin	HOME: Minn. St. Moorhead
SUB IN: CROCKETT,SYDNEY	10:00			
SUB OUT: WILLIAMS,KELSEY	10:00			
	10:00			SUB IN: SELENSKY,KOURTNEY
	10:00			SUB OUT: THORSON,CASSIDY
	09:33			TURNOVER by SELENSKY,KOURTNEY
STEAL by LEE,KAYONNA	09:29			
GOOD! JUMPER by SKAGGS,MEGAN	09:14	9-12	V 3	
ASSIST by DUFFY,ASHLEY	09:14			
	08:58			TURNOVER by VOLKERT,JACKY
	08:58			SUB IN: THORSON,CASSIDY
	08:58			SUB OUT: SELENSKY,KOURTNEY
MISSED JUMPER by DUFFY,ASHLEY	08:41			
REBOUND (OFF) by CROCKETT,SYDNEY	08:41			
	08:39			FOUL by WYHE,NATALIE VAN
MISSED LAYUP by DUFFY,ASHLEY	08:30			
	08:30			REBOUND (DEF) by THORSON,CASSIDY
	08:03	11-12	V 1	GOOD! JUMPER by VOLKERT,JACKY
	08:03			ASSIST by THORSON,CASSIDY
TURNOVER by LEE,KAYONNA	07:43			
	07:43			SUB IN: HINTZ,MEGAN
	07:43			SUB IN: GALEGHER,SHANNON
	07:43			SUB IN: HART,JESSICA
	07:43			SUB OUT: WYHE,NATALIE VAN
	07:43			SUB OUT: HAM,MORGAN
	07:43			SUB OUT: SANNES,DREW
	07:16			MISSED LAYUP by THORSON,CASSIDY
BLOCK by REDMOND,PAIGE	07:16			
REBOUND (DEF) by REDMOND,PAIGE	07:16			
MISSED LAYUP by REDMOND,PAIGE	06:51			
	06:51			BLOCK by HART,JESSICA
	06:49			REBOUND (DEF) by HART,JESSICA
	06:44			MISSED 3PTR by THORSON,CASSIDY
	06:44			REBOUND (OFF) by THORSON,CASSIDY
FOUL by CROCKETT,SYDNEY	06:39			
SUB IN: WILLIAMS,KELSEY	06:39			
SUB OUT: REDMOND,PAIGE	06:39			
	06:32			TURNOVER by GALEGHER,SHANNON
GOOD! JUMPER by DUFFY,ASHLEY [PNT]	06:12	11-14	V 3	
	05:54	13-14	V 1	GOOD! LAYUP by VOLKERT,JACKY [PNT]
MISSED JUMPER by LEE,KAYONNA	05:35			
	05:35			REBOUND (DEF) by GALEGHER,SHANNON
	05:16			MISSED 3PTR by THORSON,CASSIDY
REBOUND (DEF) by DUFFY,ASHLEY	05:16			
MISSED LAYUP by DUFFY,ASHLEY	05:09			
	05:09			REBOUND (DEF) by THORSON,CASSIDY
	04:47	15-14	H 1	GOOD! LAYUP by VOLKERT,JACKY [PNT]
MISSED JUMPER by DUFFY,ASHLEY	04:23			
	04:23			REBOUND (DEF) by GALEGHER,SHANNON
	04:03	17-14	H 3	GOOD! JUMPER by THORSON,CASSIDY
MISSED 3PTR by CROCKETT,SYDNEY	03:40			
	03:40			REBOUND (DEF) by HART,JESSICA
	03:20	19-14	H 5	GOOD! JUMPER by VOLKERT,JACKY [PNT]
FOUL by DUFFY,ASHLEY	03:20			
	03:16			TIMEOUT MEDIA
	03:16	20-14	H 6	GOOD! FT by VOLKERT,JACKY
SUB IN: REDMOND,PAIGE	03:16			
SUB IN: SKAGGS,SYDNEY	03:16			
SUB IN: GLADBACH,KENDRA	03:16			
SUB OUT: CROCKETT,SYDNEY	03:16			

VISITORS: Central Mo.	Time	Score	Margin	HOME: Minn. St. Moorhead
SUB OUT: SKAGGS,MEGAN	03:16			
SUB OUT: DUFFY,ASHLEY	03:16			
	03:16			SUB IN: SANNES,DREW
	03:16			SUB IN: HAM,MORGAN
	03:16			SUB IN: SELENSKY,KOURTNEY
	03:16			SUB IN: WYHE,NATALIE VAN
	03:16			SUB OUT: THORSON,CASSIDY
	03:16			SUB OUT: VOLKERT,JACKY
	03:16			SUB OUT: HINTZ,MEGAN
	03:16			SUB OUT: HART,JESSICA
MISSED 3PTR by GLADBACH,KENDRA	02:57			
	02:57			REBOUND (DEF) by HAM,MORGAN
	02:36			MISSED JUMPER by GALEGHER,SHANNON
REBOUND (DEF) by REDMOND,PAIGE	02:36			
	02:28			FOUL by WYHE,NATALIE VAN
GOOD! FT by SKAGGS,SYDNEY	02:28	20-15	H 5	
GOOD! FT by SKAGGS,SYDNEY	02:28	20-16	H 4	
	02:28			SUB IN: VOLKERT,JACKY
	02:28			SUB IN: THORSON,CASSIDY
	02:28			SUB OUT: SELENSKY,KOURTNEY
	02:28			SUB OUT: WYHE,NATALIE VAN
	02:18			MISSED 3PTR by HAM,MORGAN
REBOUND (DEF) by WILLIAMS,KELSEY	02:18			
	01:57			FOUL by SANNES,DREW
GOOD! FT by LEE,KAYONNA	01:57	20-17	H 3	
GOOD! FT by LEE,KAYONNA	01:57	20-18	H 2	
	01:43			MISSED JUMPER by VOLKERT,JACKY
REBOUND (DEF) by SKAGGS,SYDNEY	01:43			
MISSED LAYUP by WILLIAMS,KELSEY	01:20			
	01:20			REBOUND (DEF) by SANNES,DREW
	01:08			MISSED 3PTR by THORSON,CASSIDY
	01:08			REBOUND (OFF) by SANNES,DREW
	00:57			MISSED 3PTR by HAM,MORGAN
REBOUND (DEF) by LEE,KAYONNA	00:57			
GOOD! LAYUP by WILLIAMS,KELSEY [PNT]	00:35	20-20	T	
	00:21	22-20	H 2	GOOD! JUMPER by SANNES,DREW [PNT]
SUB IN: SKAGGS,MEGAN	00:11			
SUB OUT: WILLIAMS,KELSEY	00:11			

Central Mo. 20, Minn. St. Moorhead 22

Period 2-only	In Paint	Off T/O	2nd Chance	Fast Break	Bench	
UCM	4	4	0	0	2	Score tied - 2 times
MSUMW	8	0	0	0	0	Lead changed - 0 times

Official Basketball Box Score -- Game Totals -- Second Half Statistics
Central Mo. vs Minn. St. Moorhead
3/10/2017 7:30 p.m. at Searcy, Ark. (Rhodes-Reaves Field House)

Central Mo. 36 • 23-6

##	Player		Total		3-Ptr	Rebounds			PF	TP	A	TO	Blk	Stl	Min
			FG-FGA	FG-FGA	FT-FTA	Off	Def	Tot							
00	REDMOND, PAIGE	g	3-8	1-3	2-2	0	2	2	2	9	0	1	0	0	20
03	LEE, KAYONNA	f	2-5	0-0	4-8	3	3	6	1	8	0	1	0	0	18
13	WILLIAMS, KELSEY	g	0-2	0-2	0-0	1	0	1	0	0	2	0	0	0	10
20	SKAGGS, MEGAN	f	3-7	0-3	3-4	0	1	1	3	9	0	0	0	1	20
23	DUFFY, ASHLEY	g	4-6	2-3	0-0	0	6	6	0	10	3	1	0	2	18
02	CROCKETT, SYDNEY		0-2	0-2	0-0	0	0	0	3	0	0	0	0	0	12
24	SKAGGS, SYDNEY		0-0	0-0	0-0	0	0	0	1	0	0	0	0	0	2
25	GLADBACH, KENDRA		0-0	0-0	0-0	0	0	0	0	0	0	0	0	0	0
TEAM						0	3	3	0		0				
Totals			12-30	3-13	9-14	4	15	19	10	36	5	3	0	3	100

FG %	3rd Qtr	5-16	31.3%	4th Qtr	7-14	50.0%	Half:	12-30	40.0%
3FG %	3rd Qtr	2-7	28.6%	4th Qtr	1-6	16.7%	Half:	3-13	16.7%
FT %	3rd Qtr	3-4	75.0%	4th Qtr	6-10	60.0%	Half:	9-14	64.3%

Minn. St. Moorhead 23 • 24-4

##	Player		Total		3-Ptr	Rebounds			PF	TP	A	TO	Blk	Stl	Min
			FG-FGA	FG-FGA	FT-FTA	Off	Def	Tot							
02	THORSON, CASSIDY	g	0-6	0-3	2-2	3	2	5	0	2	1	1	0	0	15
12	VOLKERT, JACKY	g	2-8	0-3	4-4	0	3	3	2	8	0	3	0	0	19
22	WYHE, NATALIE VAN	g	0-1	0-1	0-0	0	4	4	1	0	2	2	0	0	15
33	HAM, MORGAN	f	1-2	0-1	0-0	0	0	0	0	2	0	0	0	0	4
42	SANNES, DREW	f	4-10	0-1	2-2	1	3	4	2	10	0	0	2	0	19
05	SELENSKY, KOURTNEY		0-0	0-0	0-0	0	2	2	1	0	0	0	0	0	8
11	HART, JESSICA		0-1	0-0	0-0	0	0	0	1	0	0	1	0	0	4
32	GALEGHER, SHANNON		0-0	0-0	1-2	1	1	2	4	1	0	0	0	0	13
51	HINTZ, MEGAN		0-0	0-0	0-0	0	0	0	0	0	0	1	0	0	2
TEAM						0	2	2	0		0				
Totals			7-28	0-9	9-10	5	17	22	11	23	3	8	2	0	99

FG %	3rd Qtr	2-12	16.7%	4th Qtr	5-16	31.3%	Half:	7-28	25.0%
3FG %	3rd Qtr	0-5	00.0%	4th Qtr	0-4	00.0%	Half:	0-9	00.0%
FT %	3rd Qtr	6-6	100.0%	4th Qtr	3-4	75.0%	Half:	9-10	90.0%

Officials: Michelle Kramer, Mary Toberman and Allyn Richardson
 Technical Fouls: Central Mo.- None. Minn. St. Moorhead- None.

Score by periods	1st	2nd	3rd	4th	Total
Central Mo.	10	10	15	21	56
Minn. St. Moorhead	9	13	10	13	45

Points	In	Off	2nd	Fast	Bench
	Paint	T/O	Chance	Break	
UCM	16	8	6	2	0
	8	4	5	0	1

Last FG - UCM 4th-01:57, MSUMW 4th-03:31.
 UCM led for 18:53. MSUMW led for 0:18. Game was tied for 0:49.

Score tied - 1 times
 Lead changed - 1 times

Central Mo. vs Minn. St. Moorhead
3/10/2017; 7:30 p.m. at Searcy, Ark. (Rhodes-Reaves Field House)
Period 3 Play-By-Play

VISITORS: Central Mo.	Time	Score	Margin	HOME: Minn. St. Moorhead
MISSED LAYUP by LEE,KAYONNA	09:47			
	09:47			BLOCK by SANNES,DREW
	09:44			REBOUND (DEF) by WYHE,NATALIE VAN
	09:44			TURNOVER by WYHE,NATALIE VAN
GOOD! JUMPER by SKAGGS,MEGAN	09:42	22-22	T	
ASSIST by DUFFY,ASHLEY	09:42			
	09:14			MISSED LAYUP by THORSON,CASSIDY
	09:14			REBOUND (OFF) by THORSON,CASSIDY
	09:11			MISSED LAYUP by THORSON,CASSIDY
REBOUND (DEF) by DUFFY,ASHLEY	09:11			
GOOD! 3PTR by REDMOND,PAIGE	08:53	22-25	V 3	
	08:39			MISSED 3PTR by THORSON,CASSIDY
REBOUND (DEF) by LEE,KAYONNA	08:39			
MISSED 3PTR by SKAGGS,MEGAN	08:30			
	08:30			REBOUND (DEF) by WYHE,NATALIE VAN
	08:21			MISSED 3PTR by WYHE,NATALIE VAN
REBOUND (DEF) by TEAM	08:21			
	08:17			SUB IN: GALEGHER,SHANNON
	08:17			SUB OUT: HAM,MORGAN
MISSED JUMPER by SKAGGS,MEGAN	08:05			
REBOUND (OFF) by WILLIAMS,KELSEY	08:05			
GOOD! 3PTR by DUFFY,ASHLEY	07:53	22-28	V 6	
ASSIST by WILLIAMS,KELSEY	07:53			
	07:32			TURNOVER by VOLKERT,JACKY
	07:32			SUB IN: HART,JESSICA
	07:32			SUB OUT: WYHE,NATALIE VAN
MISSED LAYUP by REDMOND,PAIGE	07:24			
	07:24			REBOUND (DEF) by SANNES,DREW
	07:13			MISSED LAYUP by VOLKERT,JACKY
REBOUND (DEF) by TEAM	07:13			
MISSED 3PTR by WILLIAMS,KELSEY	06:53			
	06:53			REBOUND (DEF) by THORSON,CASSIDY
	06:40			FOUL by HART,JESSICA
	06:40			TURNOVER by HART,JESSICA
MISSED 3PTR by REDMOND,PAIGE	06:25			
	06:25			REBOUND (DEF) by VOLKERT,JACKY
	06:05			MISSED LAYUP by SANNES,DREW
REBOUND (DEF) by TEAM	06:05			
	06:03			SUB IN: WYHE,NATALIE VAN
	06:03			SUB IN: HINTZ,MEGAN
	06:03			SUB OUT: VOLKERT,JACKY
	06:03			SUB OUT: SANNES,DREW
GOOD! LAYUP by LEE,KAYONNA [PNT]	05:45	22-30	V 8	
	05:36			TIMEOUT 30SEC
	05:36			TIMEOUT MEDIA
SUB IN: CROCKETT,SYDNEY	05:34			
SUB OUT: WILLIAMS,KELSEY	05:34			
FOUL by CROCKETT,SYDNEY	05:15			
	05:09			TURNOVER by HINTZ,MEGAN
	05:09			SUB IN: SANNES,DREW
	05:09			SUB IN: VOLKERT,JACKY
	05:09			SUB OUT: THORSON,CASSIDY
	05:09			SUB OUT: HINTZ,MEGAN
GOOD! JUMPER by SKAGGS,MEGAN [PNT]	04:58	22-32	V 10	
ASSIST by DUFFY,ASHLEY	04:58			
	04:52			FOUL by WYHE,NATALIE VAN
	04:52			TURNOVER by WYHE,NATALIE VAN
	04:32			FOUL by SANNES,DREW
GOOD! FT by LEE,KAYONNA	04:32	22-33	V 11	

VISITORS: Central Mo.	Time	Score	Margin	HOME: Minn. St. Moorhead
GOOD! FT by LEE,KAYONNA	04:32	22-34	V 12	
	04:11			MISSED JUMPER by HART,JESSICA
REBOUND (DEF) by REDMOND,PAIGE	04:11			
FOUL by REDMOND,PAIGE	04:09			
TURNOVER by REDMOND,PAIGE	04:09			
	04:07			MISSED 3PTR by THORSON,CASSIDY
REBOUND (DEF) by LEE,KAYONNA	04:07			
MISSED JUMPER by LEE,KAYONNA	03:38			
	03:38			REBOUND (DEF) by TEAM
FOUL by CROCKETT,SYDNEY	03:36			
SUB IN: WILLIAMS,KELSEY	03:36			
SUB OUT: CROCKETT,SYDNEY	03:36			
	03:36			SUB IN: SELENSKY,KOURTNEY
	03:36			SUB OUT: HART,JESSICA
	03:24			TURNOVER by THORSON,CASSIDY
STEAL by SKAGGS,MEGAN	03:23			
	03:22			FOUL by GALEGHER,SHANNON
MISSED LAYUP by REDMOND,PAIGE	03:17			
	03:17			REBOUND (DEF) by SANNES,DREW
	03:05			MISSED 3PTR by VOLKERT,JACKY
	03:05			REBOUND (OFF) by SANNES,DREW
FOUL by SKAGGS,MEGAN	03:02			
	03:02	23-34	V 11	GOOD! FT by SANNES,DREW
	03:02	24-34	V 10	GOOD! FT by SANNES,DREW
	02:45			FOUL by SELENSKY,KOURTNEY
GOOD! FT by SKAGGS,MEGAN	02:45	24-35	V 11	
MISSED FT by SKAGGS,MEGAN	02:45			
	02:45			REBOUND (DEF) by GALEGHER,SHANNON
	02:34	26-35	V 9	GOOD! LAYUP by SANNES,DREW [PNT]
MISSED LAYUP by REDMOND,PAIGE	02:04			
	02:04			REBOUND (DEF) by VOLKERT,JACKY
FOUL by REDMOND,PAIGE	01:54			
	01:54	27-35	V 8	GOOD! FT by VOLKERT,JACKY
	01:54	28-35	V 7	GOOD! FT by VOLKERT,JACKY
TURNOVER by LEE,KAYONNA	01:42			
SUB IN: CROCKETT,SYDNEY	01:42			
SUB IN: SKAGGS,SYDNEY	01:42			
SUB OUT: LEE,KAYONNA	01:42			
SUB OUT: DUFFY,ASHLEY	01:42			
	01:28	30-35	V 5	GOOD! JUMPER by SANNES,DREW
	01:25			SUB IN: THORSON,CASSIDY
	01:25			SUB OUT: WYHE,NATALIE VAN
MISSED 3PTR by CROCKETT,SYDNEY	01:04			
	01:04			REBOUND (DEF) by SELENSKY,KOURTNEY
FOUL by SKAGGS,SYDNEY	00:37			
	00:37	31-35	V 4	GOOD! FT by VOLKERT,JACKY
	00:37	32-35	V 3	GOOD! FT by VOLKERT,JACKY
MISSED 3PTR by WILLIAMS,KELSEY	00:09			
	00:09			REBOUND (DEF) by SELENSKY,KOURTNEY
	00:00			MISSED 3PTR by VOLKERT,JACKY
	00:00			REBOUND (DEADB) by TEAM

Central Mo. 56, Minn. St. Moorhead 45

Period 3-only	In Paint	Off T/O	2nd Chance	Fast Break	Bench	
UCM	4	6	3	0	0	Score tied - 2 times
MSUMW	2	2	2	0	0	Lead changed - 2 times

Central Mo. vs Minn. St. Moorhead
3/10/2017; 7:30 p.m. at Searcy, Ark. (Rhodes-Reaves Field House)
Period 4 Play-By-Play

VISITORS: Central Mo.	Time	Score	Margin	HOME: Minn. St. Moorhead
	10:00			SUB IN: GALEGHER,SHANNON
	10:00			SUB IN: SELENSKY,KOURTNEY
	10:00			SUB OUT: WYHE,NATALIE VAN
	10:00			SUB OUT: HAM,MORGAN
GOOD! LAYUP by DUFFY,ASHLEY [PNT]	09:52	32-37	V 5	
	09:30	34-37	V 3	GOOD! JUMPER by VOLKERT,JACKY
	09:30			ASSIST by THORSON,CASSIDY
GOOD! 3PTR by DUFFY,ASHLEY	09:10	34-40	V 6	
ASSIST by WILLIAMS,KELSEY	09:10			
	08:46			MISSED LAYUP by SANNES,DREW
	08:46			REBOUND (OFF) by GALEGHER,SHANNON
FOUL by SKAGGS,MEGAN	08:44			
	08:44	35-40	V 5	GOOD! FT by GALEGHER,SHANNON
	08:44			MISSED FT by GALEGHER,SHANNON
REBOUND (DEF) by DUFFY,ASHLEY	08:44			
MISSED LAYUP by LEE,KAYONNA	08:27			
REBOUND (OFF) by LEE,KAYONNA	08:27			
	08:25			FOUL by GALEGHER,SHANNON
MISSED FT by LEE,KAYONNA	08:25			
REBOUND (DEADB) by TEAM	08:25			
GOOD! FT by LEE,KAYONNA	08:25	35-41	V 6	
	08:25			SUB IN: HINTZ,MEGAN
	08:25			SUB OUT: GALEGHER,SHANNON
	08:06	37-41	V 4	GOOD! LAYUP by VOLKERT,JACKY [PNT]
MISSED 3PTR by SKAGGS,MEGAN	07:59			
REBOUND (OFF) by LEE,KAYONNA	07:59			
SUB IN: CROCKETT,SYDNEY	07:55			
SUB OUT: WILLIAMS,KELSEY	07:55			
	07:55			SUB IN: HAM,MORGAN
	07:55			SUB IN: WYHE,NATALIE VAN
	07:55			SUB OUT: HINTZ,MEGAN
	07:55			SUB OUT: SELENSKY,KOURTNEY
MISSED 3PTR by DUFFY,ASHLEY	07:51			
	07:51			REBOUND (DEF) by SANNES,DREW
	07:29	39-41	V 2	GOOD! JUMPER by HAM,MORGAN [PNT]
	07:29			ASSIST by WYHE,NATALIE VAN
MISSED 3PTR by REDMOND,PAIGE	07:07			
	07:07			REBOUND (DEF) by THORSON,CASSIDY
	06:51			MISSED 3PTR by HAM,MORGAN
REBOUND (DEF) by REDMOND,PAIGE	06:51			
	06:42			FOUL by VOLKERT,JACKY
GOOD! FT by REDMOND,PAIGE	06:42	39-42	V 3	
GOOD! FT by REDMOND,PAIGE	06:42	39-43	V 4	
	06:42			SUB IN: SELENSKY,KOURTNEY
	06:42			SUB OUT: THORSON,CASSIDY
	06:32			TURNOVER by VOLKERT,JACKY
STEAL by DUFFY,ASHLEY	06:31			
GOOD! LAYUP by DUFFY,ASHLEY [FB/PNT]	06:28	39-45	V 6	
	06:04			SUB IN: THORSON,CASSIDY
	06:04			SUB IN: GALEGHER,SHANNON
	06:04			SUB OUT: SELENSKY,KOURTNEY
	06:04			SUB OUT: HAM,MORGAN
	06:03	41-45	V 4	GOOD! JUMPER by SANNES,DREW
	05:48			FOUL by GALEGHER,SHANNON
GOOD! LAYUP by SKAGGS,MEGAN [PNT]	05:46	41-47	V 6	
ASSIST by DUFFY,ASHLEY	05:46			
	05:32			MISSED JUMPER by SANNES,DREW
REBOUND (DEF) by DUFFY,ASHLEY	05:32			
	05:29			SUB IN: SELENSKY,KOURTNEY

VISITORS: Central Mo.	Time	Score	Margin	HOME: Minn. St. Moorhead
	05:29			SUB OUT: GALEGHER,SHANNON
TURNOVER by DUFFY,ASHLEY	05:05			
	04:51			MISSED LAYUP by SANNES,DREW
	04:51			REBOUND (OFF) by THORSON,CASSIDY
	04:49			MISSED LAYUP by THORSON,CASSIDY
	04:49			REBOUND (OFF) by THORSON,CASSIDY
FOUL by LEE,KAYONNA	04:45			
	04:45			TIMEOUT media
	04:45	42-47	V 5	GOOD! FT by THORSON,CASSIDY
	04:42	43-47	V 4	GOOD! FT by THORSON,CASSIDY
GOOD! LAYUP by REDMOND,PAIGE [PNT]	04:32	43-49	V 6	
	04:15			MISSED JUMPER by VOLKERT,JACKY
REBOUND (DEF) by DUFFY,ASHLEY	04:15			
MISSED 3PTR by CROCKETT,SYDNEY	03:49			
	03:49			REBOUND (DEF) by TEAM
FOUL by SKAGGS,MEGAN	03:47			
	03:47			SUB IN: GALEGHER,SHANNON
	03:47			SUB OUT: SELENSKY,KOURTNEY
	03:31	45-49	V 4	GOOD! JUMPER by SANNES,DREW [PNT]
	03:31			ASSIST by WYHE,NATALIE VAN
MISSED 3PTR by SKAGGS,MEGAN	03:05			
REBOUND (OFF) by LEE,KAYONNA	03:05			
TIMEOUT 30SEC	02:57			
GOOD! LAYUP by REDMOND,PAIGE [PNT]	02:48	45-51	V 6	
	02:24			MISSED JUMPER by VOLKERT,JACKY
REBOUND (DEF) by DUFFY,ASHLEY	02:24			
GOOD! LAYUP by LEE,KAYONNA [PNT]	01:57	45-53	V 8	
FOUL by CROCKETT,SYDNEY	01:35			
	01:27			MISSED JUMPER by SANNES,DREW
REBOUND (DEADB) by TEAM	01:27			
	01:25			FOUL by VOLKERT,JACKY
MISSED LAYUP by DUFFY,ASHLEY	01:13			
	01:13			BLOCK by SANNES,DREW
	01:11			REBOUND (DEF) by WYHE,NATALIE VAN
	01:04			TURNOVER by VOLKERT,JACKY
STEAL by DUFFY,ASHLEY	01:03			
MISSED FT by LEE,KAYONNA	00:56			
REBOUND (DEADB) by TEAM	00:56			
MISSED FT by LEE,KAYONNA	00:56			
	00:56			REBOUND (DEF) by VOLKERT,JACKY
	00:49			MISSED 3PTR by THORSON,CASSIDY
REBOUND (DEF) by LEE,KAYONNA	00:49			
	00:40			FOUL by SANNES,DREW
GOOD! FT by LEE,KAYONNA	00:40	45-54	V 9	
MISSED FT by LEE,KAYONNA	00:40			
	00:40			REBOUND (DEF) by WYHE,NATALIE VAN
	00:31			MISSED 3PTR by SANNES,DREW
REBOUND (DEF) by SKAGGS,MEGAN	00:31			
	00:28			FOUL by GALEGHER,SHANNON
GOOD! FT by SKAGGS,MEGAN	00:28	45-55	V 10	
GOOD! FT by SKAGGS,MEGAN	00:28	45-56	V 11	
	00:28			SUB IN: HART,JESSICA
	00:28			SUB OUT: GALEGHER,SHANNON
	00:18			MISSED 3PTR by VOLKERT,JACKY
REBOUND (DEF) by DUFFY,ASHLEY	00:18			

Central Mo. 56, Minn. St. Moorhead 45

Period 4-only	In Paint	Off T/O	2nd Chance	Fast Break	Bench	
UCM	12	2	3	2	0	Score tied - 0 times
MSUMW	6	2	3	0	1	Lead changed - 0 times

Central Mo. vs Minn. St. Moorhead
3/10/2017; 7:30 p.m. at Searcy, Ark. (Rhodes-Reaves Field House)
Scoring/Runs Reference

Period 1

Central Mo.	Score	Marg	Minn. St. Moorhead
08:20 - DUFFY LAYUP [P]	2	2-0 -2	
		2-2 0 2	VOLKERT LAYUP [P] [F] - 07:14
05:58 - SKAGGS 3PTR	3	5-2 -3	
05:26 - DUFFY LAYUP [P]	2	7-2 -5	
		7-4 -3 2	SANNES JUMPER - 03:41
		7-5 -2 1	VOLKERT FT - 02:55
02:23 - SKAGGS 3PTR	3	10-5 -5	
		10-7 -3 2	VOLKERT LAYUP [P] - 01:52
		10-9 -1 2	SANNES LAYUP [P] - 01:29

Period 3

Central Mo.	Score	Marg	Minn. St. Moorhead
09:42 - SKAGGS JUMPER	2	22-22 0	
08:53 - REDMOND 3PTR	3	25-22 -3	
07:53 - DUFFY 3PTR	3	28-22 -6	
05:45 - LEE LAYUP [P]	2	30-22 -8	
04:58 - SKAGGS JUMPER [P]	2	32-22 -10	
04:32 - LEE FT	1	33-22 -11	
04:32 - LEE FT	1	34-22 -12	
		34-23 -11 1	SANNES FT - 03:02
		34-24 -10 1	SANNES FT - 03:02
02:45 - SKAGGS FT	1	35-24 -11	
		35-26 -9 2	SANNES LAYUP [P] - 02:34
		35-27 -8 1	VOLKERT FT - 01:54
		35-28 -7 1	VOLKERT FT - 01:54
		35-30 -5 2	SANNES JUMPER - 01:28
		35-31 -4 1	VOLKERT FT - 00:37
		35-32 -3 1	VOLKERT FT - 00:37

Period 2

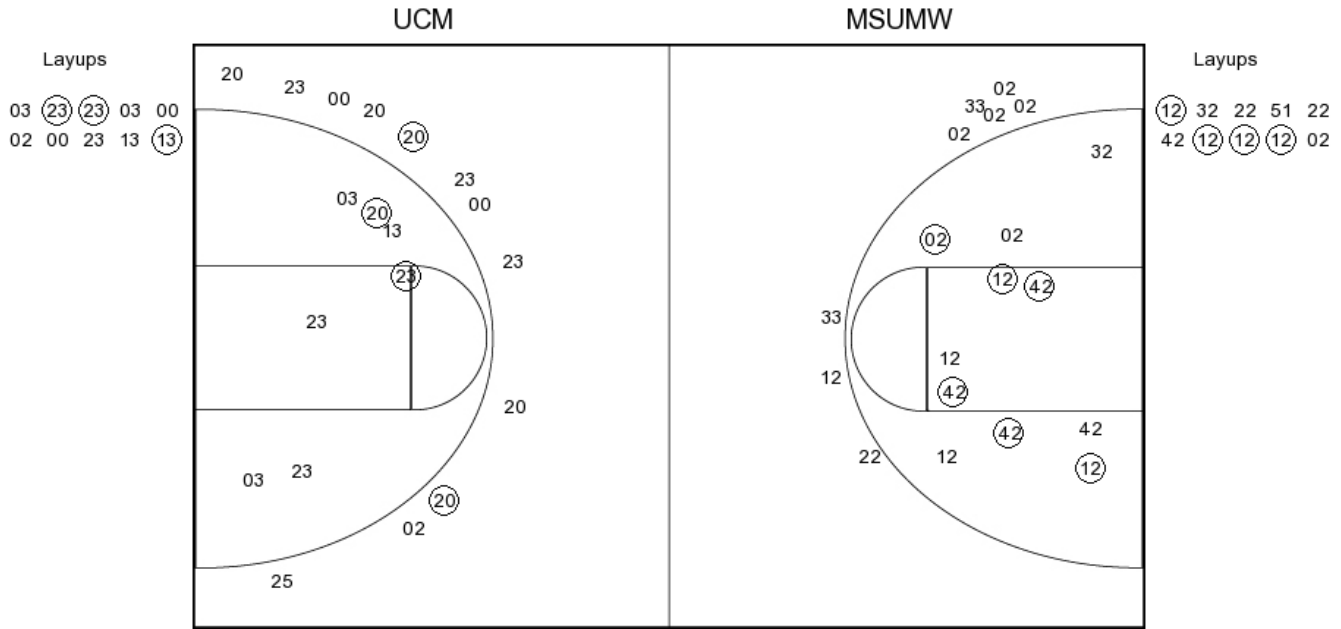
Central Mo.	Score	Marg	Minn. St. Moorhead
09:14 - SKAGGS JUMPER	2	12-9 -3	
		12-11 -1 2	VOLKERT JUMPER - 08:03
06:12 - DUFFY JUMPER [P]	2	14-11 -3	
		14-13 -1 2	VOLKERT LAYUP [P] - 05:54
		14-15 1 2	VOLKERT LAYUP [P] - 04:47
		14-17 3 2	THORSON JUMPER - 04:03
		14-19 5 2	VOLKERT JUMPER [P] - 03:20
		14-20 6 1	VOLKERT FT - 03:16
02:28 - SKAGGS FT	1	15-20 5	
02:28 - SKAGGS FT	1	16-20 4	
01:57 - LEE FT	1	17-20 3	
01:57 - LEE FT	1	18-20 2	
00:35 - WILLIAMS LAYUP [P]	2	20-20 0	
		20-22 2 2	SANNES JUMPER [P] - 00:21

Period 4

Central Mo.	Score	Marg	Minn. St. Moorhead
09:52 - DUFFY LAYUP [P]	2	37-32 -5	
		37-34 -3 2	VOLKERT JUMPER - 09:30
09:10 - DUFFY 3PTR	3	40-34 -6	
		40-35 -5 1	GALEGHAN FT - 08:44
08:25 - LEE FT	1	41-35 -6	
		41-37 -4 2	VOLKERT LAYUP [P] - 08:06
		41-39 -2 2	HAM JUMPER [P] - 07:29
06:42 - REDMOND FT	1	42-39 -3	
06:42 - REDMOND FT	1	43-39 -4	
06:28 - DUFFY LAYUP [P] [F]	2	45-39 -6	
		45-41 -4 2	SANNES JUMPER - 06:03
05:46 - SKAGGS LAYUP [P]	2	47-41 -6	
		47-42 -5 1	THORSON FT - 04:45
		47-43 -4 1	THORSON FT - 04:42
04:32 - REDMOND LAYUP [P]	2	49-43 -6	
		49-45 -4 2	SANNES JUMPER [P] - 03:31
02:48 - REDMOND LAYUP [P]	2	51-45 -6	
01:57 - LEE LAYUP [P]	2	53-45 -8	
00:40 - LEE FT	1	54-45 -9	
00:28 - SKAGGS FT	1	55-45 -10	
00:28 - SKAGGS FT	1	56-45 -11	

Central Mo. vs Minn. St. Moorhead
OFFICIAL SHOT CHART
 3/10/2017 at Searcy, Ark. (Rhodes-Reaves Field House)

PERIOD 1



UCM PERIOD 1

FG Made	7
FG Attempted	30
3PFG Made	2
3PFG Attempted	12

MSUMW PERIOD 1

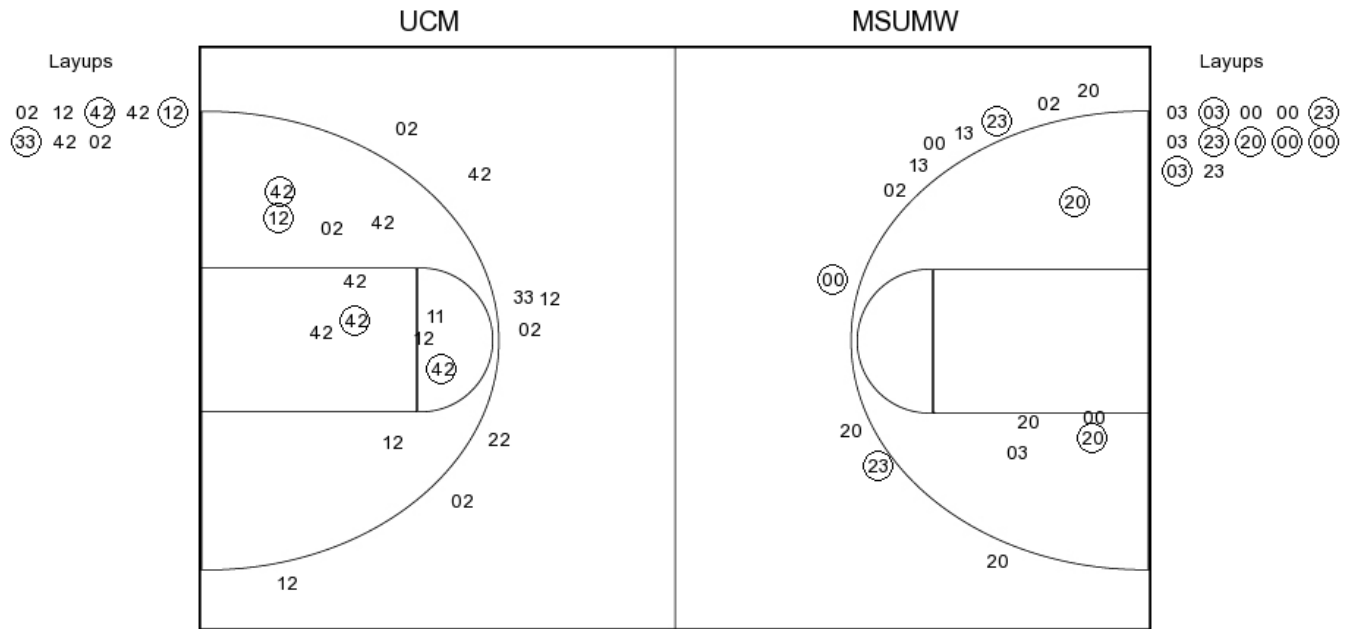
FG Made	10
FG Attempted	29
3PFG Made	0
3PFG Attempted	8

Central Mo. vs Minn. St. Moorhead

OFFICIAL SHOT CHART

3/10/2017 at Searcy, Ark. (Rhodes-Reaves Field House)

PERIOD 2



UCM PERIOD 2

- FG Made
- FG Attempted
- 3PFG Made
- 3PFG Attempted

MSUMW PERIOD 2

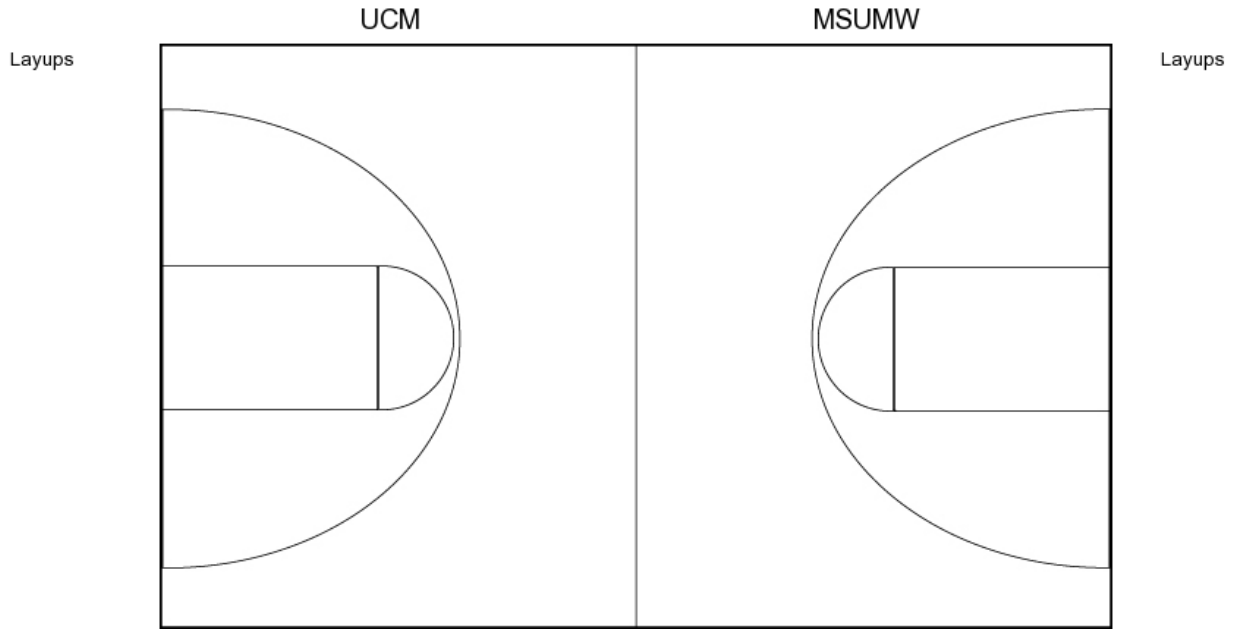
- FG Made
- FG Attempted
- 3PFG Made
- 3PFG Attempted

Central Mo. vs Minn. St. Moorhead

OFFICIAL SHOT CHART

3/10/2017 at Searcy, Ark. (Rhodes-Reaves Field House)

PERIOD 3



UCM PERIOD 3

FG Made	12
FG Attempted	30
3PFG Made	3
3PFG Attempted	13

MSUMW PERIOD 3

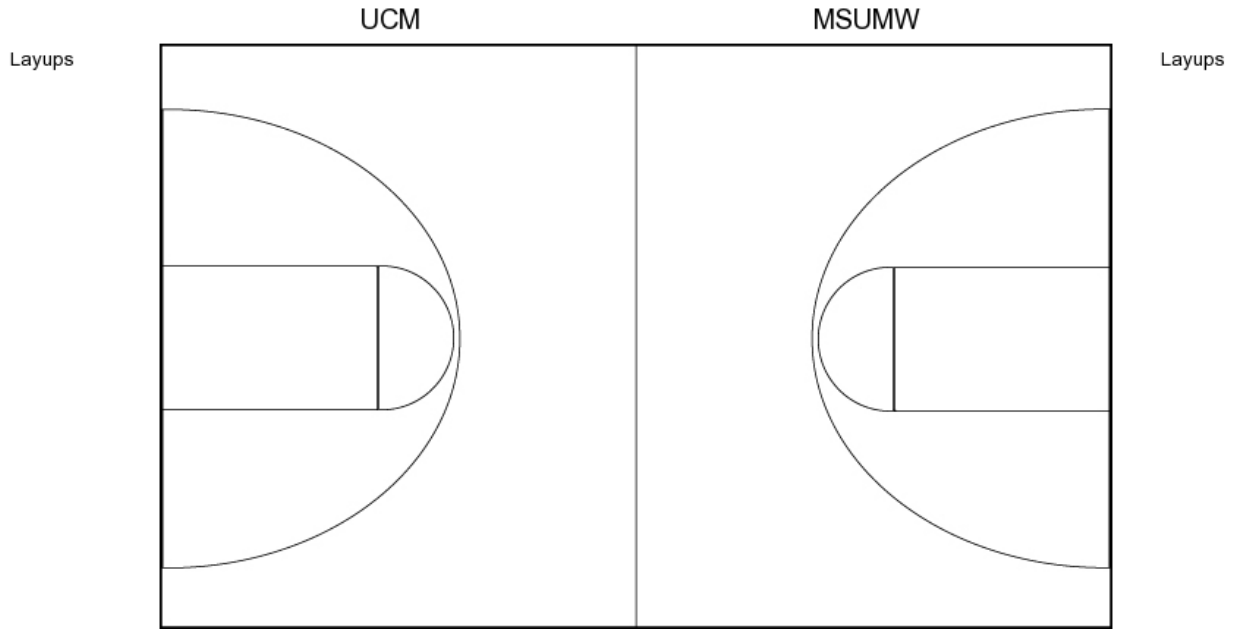
FG Made	7
FG Attempted	28
3PFG Made	0
3PFG Attempted	9

Central Mo. vs Minn. St. Moorhead

OFFICIAL SHOT CHART

3/10/2017 at Searcy, Ark. (Rhodes-Reaves Field House)

PERIOD 4



UCM PERIOD 4

FG Made
FG Attempted
3PFG Made
3PFG Attempted

MSUMW PERIOD 4

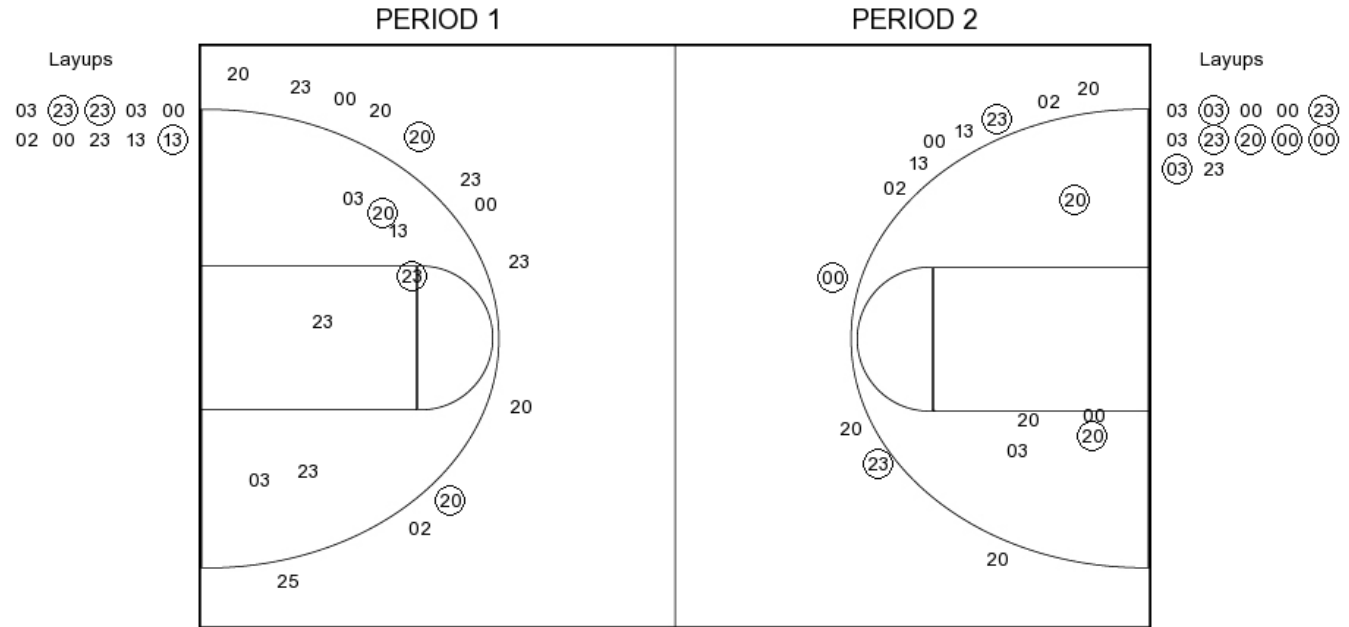
FG Made
FG Attempted
3PFG Made
3PFG Attempted

Central Mo. vs Minn. St. Moorhead

OFFICIAL SHOT CHART

3/10/2017 at Searcy, Ark. (Rhodes-Reaves Field House)

Central Mo.



<u>UCM PERIOD 1</u>	
FG Made	7
FG Attempted	30
3PFG Made	2
3PFG Attempted	12

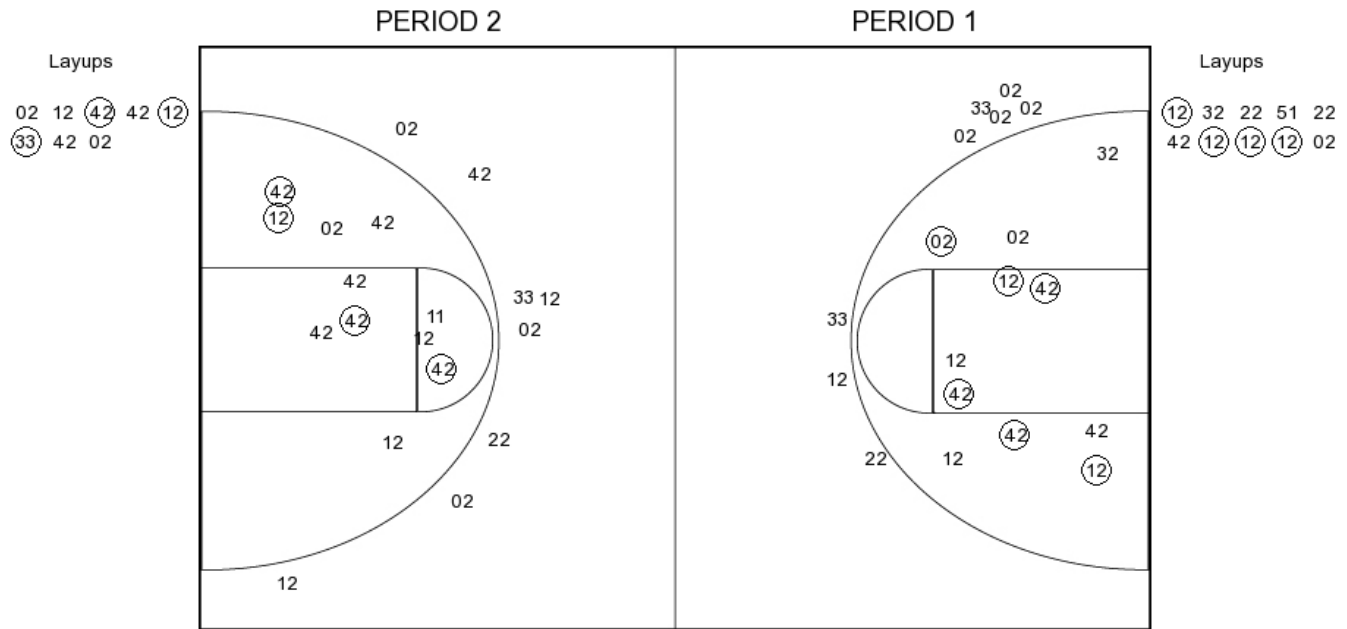
<u>UCM PERIOD 2</u>	
FG Made	1
FG Attempted	1
3PFG Made	0
3PFG Attempted	0

Central Mo. vs Minn. St. Moorhead

OFFICIAL SHOT CHART

3/10/2017 at Searcy, Ark. (Rhodes-Reaves Field House)

Minn. St. Moorhead



MSUMW PERIOD 1

FG Made	10
FG Attempted	29
3PFG Made	0
3PFG Attempted	8

MSUMW PERIOD 2

FG Made	
FG Attempted	
3PFG Made	
3PFG Attempted	