



CENTRAL OKLAHOMA VS. PITTSBURG STATE

3/10/2017

Searcy, Ark. (Rhodes-Reaves Field House)

FINAL STATS

Pittsburg State
(24-5)

75

Central Okla.
(25-7)

51

Start Time: 2:30 p.m

Officials: Misty Overstreet, Steve Denegrad and Jake Coody

Attendance: 0

Official Basketball Box Score -- Game Totals -- Final Statistics
Pittsburg State vs Central Okla.
3/10/2017 2:30 p.m at Searcy, Ark. (Rhodes-Reaves Field House)

Pittsburg State 75 - 24-5

##	Player		Total			3-Ptr			Rebounds			PF	TP	A	TO	Blk	Stl	Min
			FG-FGA	FG-FGA	FT-FTA	FG-FGA	FG-FGA	FT-FTA	Off	Def	Tot							
10	LUNGWITZ,PAIGE	g	5-10	2-4	3-3	1	3	4	2	15	3	0	2	1			31	
11	LOPEZ,SHELBY	g	4-13	3-11	1-2	0	2	2	2	12	1	0	0	0			23	
12	HERLOCKER,HADYN	g	1-6	1-5	0-0	1	1	2	1	3	5	0	0	1			26	
15	BURGESS,MIKAELA	g	1-7	0-5	0-0	1	3	4	0	2	1	1	0	2			31	
32	NORTHCUTT,MADISON	f	5-8	0-1	1-1	3	7	10	4	11	1	1	1	0			20	
04	ALVARADO,ATHENA		6-10	0-0	1-1	3	1	4	2	13	0	2	0	1			14	
14	IMHOFF,PAIGE		2-4	1-3	0-0	1	2	3	0	5	3	0	0	2			25	
21	BRODIE,MORGAN		0-0	0-0	0-0	0	0	0	1	0	0	0	0	0			2	
23	MCPHERSON,BRENLEE		5-6	1-2	1-2	0	0	0	1	12	2	2	0	1			16	
33	BAUZA RUPERT,MARINA		1-1	0-0	0-0	0	1	1	0	2	0	0	0	0			6	
35	MAHER,MEGHAN		0-1	0-1	0-0	0	0	0	0	0	0	1	0	0			5	
42	DELAGARZA,MICAELA		0-0	0-0	0-0	0	0	0	0	0	0	0	0	0			2	
	TEAM					1	7	8	0									
	TOTALS		30-66	8-32	7-9	11	27	38	13	75	16	8	3	8			201	

Deadball Rebounds: 0,0

FG %	1st Half:	18-39	46.2%	2nd Half:	12-27	44.4%	Game:	30-66	45.5%								
	1st Qtr	6-19	31.6%	2nd Qtr	12-20	60.0%	3rd Qtr	8-14	57.1%	4th Qtr	4-13			30.8%			
3FG %	1st Half:	6-20	30.0%	2nd Half:	2-12	16.7%	Game:	8-32	25.0%								
	1st Qtr	1-8	12.5%	2nd Qtr	5-12	41.7%	3rd Qtr	2-6	33.3%	4th Qtr	0-6			00.0%			
FT %	1st Half:	0-0	0%	2nd Half:	7-9	77.8%	Game:	7-9	77.8%								
	1st Qtr	0-0	0%	2nd Qtr	0-0	0%	3rd Qtr	5-6	83.3%	4th Qtr	2-3			66.7%			

Central Okla. 51 - 25-7

##	Player		Total			3-Ptr			Rebounds			PF	TP	A	TO	Blk	Stl	Min
			FG-FGA	FG-FGA	FT-FTA	FG-FGA	FG-FGA	FT-FTA	Off	Def	Tot							
11	ANDERSON,MARLEY	g	1-4	0-2	0-0	1	4	5	0	2	2	3	0	0			31	
13	BLESSINGTON,BLAKE	g	3-5	1-3	4-4	1	3	4	1	11	1	1	0	0			30	
22	MURILLO,MELINDA	g	5-15	1-4	0-0	0	4	4	2	11	2	4	0	2			35	
25	MASON,OLIVIA	f	0-4	0-3	0-0	1	4	5	2	0	0	2	0	0			31	
42	COOPER,JESHEON	f	4-12	0-0	6-6	3	4	7	1	14	0	2	1	0			20	
00	BRYAN,HAYLEY		1-1	0-0	0-0	0	1	1	1	2	1	0	0	0			11	
21	BRYSON,SHATOYA		2-4	0-2	0-0	0	0	0	2	4	1	0	1	0			20	
30	WOMACK,MEGAN		3-6	0-0	1-2	0	5	5	1	7	1	3	0	1			18	
33	STEPHENS,ASHLEY		0-0	0-0	0-0	0	0	0	0	0	0	0	0	0			2	
45	SMITH,IREON		0-0	0-0	0-0	0	0	0	0	0	0	0	0	0			2	
	TEAM					0	2	2	0									
	TOTALS		19-51	2-14	11-12	6	27	33	10	51	8	15	2	3			200	

Deadball Rebounds: 0,0

FG %	1st Half:	10-26	38.5%	2nd Half:	9-25	36.0%	Game:	19-51	37.3%								
	1st Qtr	4-13	30.8%	2nd Qtr	6-13	46.2%	3rd Qtr	5-14	35.7%	4th Qtr	4-11			36.4%			
3FG %	1st Half:	2-7	28.6%	2nd Half:	0-7	00.0%	Game:	2-14	14.3%								
	1st Qtr	1-4	25.0%	2nd Qtr	1-3	33.3%	3rd Qtr	0-6	00.0%	4th Qtr	0-1			00.0%			
FT %	1st Half:	0-0	0%	2nd Half:	11-12	91.7%	Game:	11-12	91.7%								
	1st Qtr	0-0	0%	2nd Qtr	0-0	0%	3rd Qtr	8-8	100.0%	4th Qtr	3-4			75.0%			

Officials: Misty Overstreet, Steve Denegrud and Jake Coody
 Technical Fouls: Pittsburg State- None. Central Okla.- None.
 Attendance: 0

Score by periods	1st	2nd	3rd	4th	Total
Pittsburg State	13	29	23	10	75
Central Okla.	9	13	18	11	51

Points	In Paint	Off T/O	2nd Chance	Fast Break	Bench
PSU	40	14	14	0	32
UCO	30	8	14	0	13

Last FG - PSU 4th-00:47, UCO 4th-03:51.
 Largest lead - Pittsburg State by 31 3rd-05:09; Central Okla. by 3 1st-05:48
 PSU led for 33:58. UCO led for 4:26. Game was tied for 1:35.

Score tied - 1 times
 Lead changed - 3 times

Official Basketball Box Score -- Game Totals -- First Half Statistics
Pittsburg State vs Central Okla.
3/10/2017 2:30 p.m at Searcy, Ark. (Rhodes-Reaves Field House)

Pittsburg State 42 • 24-5

##	Player	g	Total			3-Ptr			Rebounds			PF	TP	A	TO	Blk	Stl	Min
			FG-FGA	FG-FGA	FT-FTA	FG-FGA	FG-FGA	FT-FTA	Off	Def	Tot							
10	LUNGWITZ, PAIGE	g	2-5	1-2	0-0	1	2	3	2	5	2	0	1	1			15	
11	LOPEZ, SHELBY	g	4-10	3-8	0-0	0	1	1	0	11	1	0	0	0			14	
12	HERLOCKER, HADYN	g	0-3	0-3	0-0	1	1	2	1	0	4	0	0	1			14	
15	BURGESS, MIKAELA	g	1-4	0-2	0-0	1	1	2	0	2	1	1	0	2			17	
32	NORTHCUTT, MADISON	f	3-5	0-1	0-0	2	7	9	0	6	0	1	1	0			11	
04	ALVARADO, ATHENA		2-4	0-0	0-0	1	1	2	0	4	0	1	0	1			7	
14	IMHOFF, PAIGE		2-3	1-2	0-0	0	1	1	0	5	2	0	0	0			13	
21	BRODIE, MORGAN		0-0	0-0	0-0	0	0	0	0	0	0	0	0	0			0	
23	MCPHERSON, BRENLEE		3-4	1-2	0-0	0	0	0	0	7	1	1	0	0			7	
33	BAUZA RUPERT, MARINA		1-1	0-0	0-0	0	0	0	0	2	0	0	0	0			2	
35	MAHER, MEGHAN		0-0	0-0	0-0	0	0	0	0	0	0	0	0	0			0	
42	DELAGARZA, MICAELA		0-0	0-0	0-0	0	0	0	0	0	0	0	0	0			0	
TEAM						1	2	3	0									
Totals			18-39	6-20	0-0	7	16	23	3	42	11	4	2	5			100	
FG %	1st Qtr	6-19	31.6%	2nd Qtr	12-20	60.0%	Half:	18-39	46.2%									
3FG %	1st Qtr	1-8	12.5%	2nd Qtr	5-12	41.7%	Half:	6-20	30.0%									
FT %	1st Qtr	0-0	0%	2nd Qtr	0-0	0%	Half:	0-0	0%									

Central Okla. 22 • 25-7

##	Player	g	Total			3-Ptr			Rebounds			PF	TP	A	TO	Blk	Stl	Min
			FG-FGA	FG-FGA	FT-FTA	FG-FGA	FG-FGA	FT-FTA	Off	Def	Tot							
11	ANDERSON, MARLEY	g	1-3	0-1	0-0	0	2	2	0	2	2	3	0	0			18	
13	BLESSINGTON, BLAKE	g	2-4	1-3	0-0	0	0	0	0	5	0	1	0	0			15	
22	MURILLO, MELINDA	g	3-7	1-2	0-0	0	3	3	0	7	1	3	0	2			18	
25	MASON, OLIVIA	f	0-2	0-1	0-0	0	1	1	1	0	0	2	0	0			15	
42	COOPER, JESHEON	f	2-6	0-0	0-0	0	2	2	0	4	0	1	0	0			10	
00	BRYAN, HAYLEY		1-1	0-0	0-0	0	0	0	0	2	1	0	0	0			6	
21	BRYSON, SHATOYA		0-0	0-0	0-0	0	0	0	0	0	0	0	1	0			8	
30	WOMACK, MEGAN		1-3	0-0	0-0	0	4	4	0	2	1	0	0	1			10	
33	STEPHENS, ASHLEY		0-0	0-0	0-0	0	0	0	0	0	0	0	0	0			0	
45	SMITH, IREON		0-0	0-0	0-0	0	0	0	0	0	0	0	0	0			0	
TEAM						0	2	2	0									
Totals			10-26	2-7	0-0	0	14	14	1	22	5	10	1	3			100	
FG %	1st Qtr	4-13	30.8%	2nd Qtr	6-13	46.2%	Half:	10-26	38.5%									
3FG %	1st Qtr	1-4	25.0%	2nd Qtr	1-3	33.3%	Half:	2-7	28.6%									
FT %	1st Qtr	0-0	0%	2nd Qtr	0-0	0%	Half:	0-0	0%									

Officials: Misty Overstreet, Steve Denegrud and Jake Coody
 Technical Fouls: Pittsburg State- None. Central Okla.- None.

Score by periods	1st	2nd	3rd	4th	Total
Pittsburg State	13	29	23	10	75
Central Okla.	9	13	18	11	51

Points	In Paint	Off T/O	2nd Chance	Fast Break	Bench
PSU	20	10	8	0	18
	14	2	0	0	4

Last FG - PSU 2nd-00:03, UCO 2nd-01:05.
 PSU led for 13:59. UCO led for 4:26. Game was tied for 1:35.

Score tied - 1 times
 Lead changed - 3 times

Pittsburg State vs Central Okla.
3/10/2017; 2:30 p.m at Searcy, Ark. (Rhodes-Reaves Field House)
Period 1 Play-By-Play

VISITORS: Pittsburg State	Time	Score	Margin	HOME: Central Okla.
	09:46	2-0	H 2	GOOD! LAYUP by ANDERSON,MARLEY [PNT]
MISSED 3PTR by LOPEZ,SHELBY	09:32			
	09:32			REBOUND (DEF) by ANDERSON,MARLEY
	09:20			MISSED 3PTR by BLESSINGTON,BLAKE
REBOUND (DEF) by LUNGWITZ,PAIGE	09:20			
TURNOVER by BURGESS,MIKAELA	09:00			
	08:58			STEAL by MURILLO,MELINDA
	08:55			MISSED LAYUP by MASON,OLIVIA
REBOUND (DEF) by BURGESS,MIKAELA	08:55			
GOOD! JUMPER by BURGESS,MIKAELA	08:40	2-2	T	
	08:26			TURNOVER by MASON,OLIVIA
STEAL by BURGESS,MIKAELA	08:22			
MISSED LAYUP by BURGESS,MIKAELA	08:10			
REBOUND (OFF) by HERLOCKER,HADYN	08:10			
MISSED 3PTR by BURGESS,MIKAELA	07:57			
REBOUND (OFF) by LUNGWITZ,PAIGE	07:57			
MISSED 3PTR by HERLOCKER,HADYN	07:53			
	07:53			REBOUND (DEF) by MURILLO,MELINDA
	07:44			MISSED LAYUP by MURILLO,MELINDA
BLOCK by NORTHCUTT,MADISON	07:44			
REBOUND (DEF) by LUNGWITZ,PAIGE	07:41			
GOOD! LAYUP by NORTHCUTT,MADISON [PNT]	07:19	2-4	V 2	
	07:05			TURNOVER by ANDERSON,MARLEY
SUB IN: IMHOFF,PAIGE	07:05			
SUB IN: ALVARADO,ATHENA	07:05			
SUB OUT: BURGESS,MIKAELA	07:05			
SUB OUT: NORTHCUTT,MADISON	07:05			
MISSED LAYUP by LUNGWITZ,PAIGE	06:46			
	06:46			REBOUND (DEF) by COOPER,JESHEON
	06:32	5-4	H 1	GOOD! 3PTR by BLESSINGTON,BLAKE
	06:32			ASSIST by ANDERSON,MARLEY
MISSED JUMPER by LOPEZ,SHELBY	06:10			
	06:10			REBOUND (DEF) by ANDERSON,MARLEY
FOUL by LUNGWITZ,PAIGE	05:52			
SUB IN: BURGESS,MIKAELA	05:52			
SUB OUT: HERLOCKER,HADYN	05:52			
	05:48	7-4	H 3	GOOD! LAYUP by MURILLO,MELINDA [PNT]
GOOD! LAYUP by IMHOFF,PAIGE [PNT]	05:37	7-6	H 1	
	05:16			MISSED JUMPER by COOPER,JESHEON
REBOUND (DEF) by ALVARADO,ATHENA	05:16			
MISSED LAYUP by ALVARADO,ATHENA	05:06			
	05:06			REBOUND (DEF) by COOPER,JESHEON
	05:02			TURNOVER by COOPER,JESHEON
SUB IN: MCPHERSON,BRENLEE	05:02			
SUB OUT: LOPEZ,SHELBY	05:02			
	05:02			SUB IN: WOMACK,MEGAN
	05:02			SUB IN: BRYAN,HAYLEY
	05:02			SUB OUT: MASON,OLIVIA
	05:02			SUB OUT: COOPER,JESHEON
TURNOVER by MCPHERSON,BRENLEE	04:48			
	04:47			STEAL by MURILLO,MELINDA
	04:32	9-6	H 3	GOOD! LAYUP by BRYAN,HAYLEY [PNT]
TURNOVER by ALVARADO,ATHENA	04:14			
	04:14			TIMEOUT MEDIA
	04:08			TURNOVER by MURILLO,MELINDA
MISSED LAYUP by NORTHCUTT,MADISON	03:58			
	03:58			BLOCK by BRYSON,SHATOYA
REBOUND (OFF) by BURGESS,MIKAELA	03:55			
GOOD! LAYUP by LUNGWITZ,PAIGE [PNT]	03:41	9-8	H 1	

VISITORS: Pittsburg State	Time	Score	Margin	HOME: Central Okla.
	03:25			TURNOVER by MURILLO,MELINDA
STEAL by BURGESS,MIKAELA	03:24			
GOOD! 3PTR by MCPHERSON,BRENLEE	03:12	9-11	V 2	
ASSIST by LUNGWITZ,PAIGE	03:12			
	02:49			MISSED LAYUP by WOMACK,MEGAN
BLOCK by LUNGWITZ,PAIGE	02:49			
REBOUND (DEF) by NORTHCUTT,MADISON	02:41			
MISSED LAYUP by LUNGWITZ,PAIGE	02:33			
	02:33			REBOUND (DEF) by WOMACK,MEGAN
	02:30			MISSED LAYUP by MURILLO,MELINDA
REBOUND (DEF) by NORTHCUTT,MADISON	02:30			
MISSED 3PTR by LUNGWITZ,PAIGE	02:25			
	02:25			REBOUND (DEF) by TEAM
SUB IN: HERLOCKER,HADYN	02:21			
SUB IN: NORTHCUTT,MADISON	02:21			
SUB IN: LOPEZ,SHELBY	02:21			
SUB OUT: LUNGWITZ,PAIGE	02:21			
SUB OUT: BURGESS,MIKAELA	02:21			
SUB OUT: ALVARADO,ATHENA	02:21			
	02:21			SUB IN: BRYSON,SHATOYA
	02:21			SUB IN: MASON,OLIVIA
	02:21			SUB OUT: MURILLO,MELINDA
	02:21			SUB OUT: BRYAN,HAYLEY
	02:16			TURNOVER by ANDERSON,MARLEY
MISSED 3PTR by NORTHCUTT,MADISON	01:56			
	01:56			REBOUND (DEF) by WOMACK,MEGAN
	01:41			MISSED 3PTR by BLESSINGTON,BLAKE
REBOUND (DEF) by TEAM	01:41			
GOOD! LAYUP by MCPHERSON,BRENLEE [PNT]	01:22	9-13	V 4	
	01:06			MISSED LAYUP by ANDERSON,MARLEY
REBOUND (DEF) by NORTHCUTT,MADISON	01:06			
MISSED 3PTR by IMHOFF,PAIGE	00:49			
	00:49			REBOUND (DEF) by WOMACK,MEGAN
	00:28			TURNOVER by ANDERSON,MARLEY
STEAL by HERLOCKER,HADYN	00:27			
MISSED 3PTR by LOPEZ,SHELBY	00:21			
	00:21			REBOUND (DEF) by WOMACK,MEGAN
FOUL by HERLOCKER,HADYN	00:05			
SUB IN: BURGESS,MIKAELA	00:05			
SUB OUT: HERLOCKER,HADYN	00:05			
	00:05			SUB IN: COOPER,JESHEON
	00:05			SUB IN: BRYAN,HAYLEY
	00:05			SUB OUT: WOMACK,MEGAN
	00:05			SUB OUT: MASON,OLIVIA
	00:03			MISSED 3PTR by ANDERSON,MARLEY
REBOUND (DEF) by IMHOFF,PAIGE	00:03			

Pittsburg State 13, Central Okla. 9

Period 1-only	In Paint	Off T/O	2nd Chance	Fast Break	Bench	
PSU	8	5	2	0	7	Score tied - 2 times
UCO	6	2	0	0	2	Lead changed - 4 times

Pittsburg State vs Central Okla.
3/10/2017; 2:30 p.m at Searcy, Ark. (Rhodes-Reaves Field House)
Period 2 Play-By-Play

VISITORS: Pittsburg State	Time	Score	Margin	HOME: Central Okla.
SUB IN: IMHOFF,PAIGE	10:00			
SUB IN: MCPHERSON,BRENLEE	10:00			
SUB OUT: LUNGWITZ,PAIGE	10:00			
SUB OUT: HERLOCKER,HADYN	10:00			
	10:00			SUB IN: BRYSON,SHATOYA
	10:00			SUB IN: BRYAN,HAYLEY
	10:00			SUB OUT: BLESSINGTON,BLAKE
	10:00			SUB OUT: MASON,OLIVIA
GOOD! LAYUP by MCPHERSON,BRENLEE [PNT]	09:58	9-15	V 6	
ASSIST by IMHOFF,PAIGE	09:58			
	09:41			MISSED JUMPER by COOPER,JESHEON
REBOUND (DEF) by NORTHCUTT,MADISON	09:41			
MISSED 3PTR by MCPHERSON,BRENLEE	09:25			
	09:25			REBOUND (DEF) by MURILLO,MELINDA
	09:11			MISSED JUMPER by COOPER,JESHEON
REBOUND (DEF) by NORTHCUTT,MADISON	09:11			
MISSED 3PTR by LOPEZ,SHELBY	08:55			
REBOUND (OFF) by NORTHCUTT,MADISON	08:55			
GOOD! LAYUP by NORTHCUTT,MADISON [PNT]	08:52	9-17	V 8	
	08:32	11-17	V 6	GOOD! LAYUP by COOPER,JESHEON [PNT]
	08:32			ASSIST by BRYAN,HAYLEY
GOOD! 3PTR by LOPEZ,SHELBY	08:15	11-20	V 9	
ASSIST by MCPHERSON,BRENLEE	08:15			
	07:59			MISSED JUMPER by COOPER,JESHEON
REBOUND (DEF) by TEAM	07:59			
SUB IN: ALVARADO,ATHENA	07:54			
SUB IN: HERLOCKER,HADYN	07:54			
SUB IN: LUNGWITZ,PAIGE	07:54			
SUB OUT: LOPEZ,SHELBY	07:54			
SUB OUT: MCPHERSON,BRENLEE	07:54			
SUB OUT: NORTHCUTT,MADISON	07:54			
	07:54			SUB IN: MASON,OLIVIA
	07:54			SUB OUT: BRYAN,HAYLEY
MISSED 3PTR by HERLOCKER,HADYN	07:28			
REBOUND (OFF) by ALVARADO,ATHENA	07:28			
MISSED 3PTR by BURGESS,MIKAELA	07:17			
REBOUND (OFF) by TEAM	07:17			
GOOD! LAYUP by ALVARADO,ATHENA [PNT]	07:02	11-22	V 11	
ASSIST by HERLOCKER,HADYN	07:02			
	06:42	13-22	V 9	GOOD! JUMPER by COOPER,JESHEON [PNT]
	06:42			ASSIST by MURILLO,MELINDA
GOOD! 3PTR by IMHOFF,PAIGE	06:34	13-25	V 12	
ASSIST by HERLOCKER,HADYN	06:34			
	06:23	15-25	V 10	GOOD! JUMPER by MURILLO,MELINDA
MISSED LAYUP by ALVARADO,ATHENA	06:13			
	06:13			REBOUND (DEF) by MASON,OLIVIA
	06:04			MISSED LAYUP by MURILLO,MELINDA
REBOUND (DEF) by HERLOCKER,HADYN	06:04			
GOOD! 3PTR by LUNGWITZ,PAIGE	05:56	15-28	V 13	
ASSIST by BURGESS,MIKAELA	05:56			
	05:32			TURNOVER by MASON,OLIVIA
STEAL by ALVARADO,ATHENA	05:30			
GOOD! LAYUP by ALVARADO,ATHENA [PNT]	05:23	15-30	V 15	
ASSIST by IMHOFF,PAIGE	05:23			
	05:20			TIMEOUT 30SEC
	05:20			TIMEOUT MEDIA
SUB IN: LOPEZ,SHELBY	05:20			
SUB IN: BAUZA RUPERT,MARINA	05:20			
SUB OUT: IMHOFF,PAIGE	05:20			

VISITORS: Pittsburg State	Time	Score	Margin	HOME: Central Okla.
SUB OUT: ALVARADO,ATHENA	05:20			
	05:20			SUB IN: WOMACK,MEGAN
	05:20			SUB IN: BLESSINGTON,BLAKE
	05:20			SUB OUT: ANDERSON,MARLEY
	05:20			SUB OUT: COOPER,JESHEON
	05:11			MISSED 3PTR by MASON,OLIVIA
REBOUND (DEF) by LOPEZ,SHELBY	05:11			
GOOD! 3PTR by LOPEZ,SHELBY	04:51	15-33	V 18	
ASSIST by LUNGWITZ,PAIGE	04:51			
	04:37	18-33	V 15	GOOD! 3PTR by MURILLO,MELINDA
	04:37			ASSIST by WOMACK,MEGAN
GOOD! LAYUP by BAUZA RUPERT,MARINA [PNT]	04:14	18-35	V 17	
ASSIST by LOPEZ,SHELBY	04:14			
FOUL by LUNGWITZ,PAIGE	04:00			
SUB IN: IMHOFF,PAIGE	04:00			
SUB OUT: LUNGWITZ,PAIGE	04:00			
	03:47			TURNOVER by MURILLO,MELINDA
SUB IN: NORTHCUTT,MADISON	03:47			
SUB OUT: BAUZA RUPERT,MARINA	03:47			
	03:47			SUB IN: ANDERSON,MARLEY
	03:47			SUB OUT: BRYSON,SHATOYA
MISSED 3PTR by HERLOCKER,HADYN	03:18			
	03:18			REBOUND (DEF) by TEAM
	02:52			MISSED LAYUP by WOMACK,MEGAN
REBOUND (DEF) by NORTHCUTT,MADISON	02:52			
TIMEOUT 30SEC	02:44			
SUB IN: LUNGWITZ,PAIGE	02:44			
SUB OUT: IMHOFF,PAIGE	02:44			
MISSED 3PTR by LOPEZ,SHELBY	02:35			
REBOUND (OFF) by NORTHCUTT,MADISON	02:35			
GOOD! LAYUP by NORTHCUTT,MADISON [PNT]	02:33	18-37	V 19	
	02:13			MISSED 3PTR by MURILLO,MELINDA
REBOUND (DEF) by NORTHCUTT,MADISON	02:13			
GOOD! JUMPER by LOPEZ,SHELBY	02:00	18-39	V 21	
ASSIST by HERLOCKER,HADYN	02:00			
	01:45	20-39	V 19	GOOD! LAYUP by BLESSINGTON,BLAKE [PNT]
MISSED 3PTR by LOPEZ,SHELBY	01:18			
	01:18			REBOUND (DEF) by MURILLO,MELINDA
	01:05	22-39	V 17	GOOD! LAYUP by WOMACK,MEGAN [PNT]
	01:05			ASSIST by ANDERSON,MARLEY
TURNOVER by NORTHCUTT,MADISON	00:37			
	00:37			STEAL by WOMACK,MEGAN
	00:23			TURNOVER by BLESSINGTON,BLAKE
STEAL by LUNGWITZ,PAIGE	00:21			
	00:04			FOUL by MASON,OLIVIA
GOOD! 3PTR by LOPEZ,SHELBY	00:03	22-42	V 20	
ASSIST by HERLOCKER,HADYN	00:03			

Pittsburg State 42, Central Okla. 22

Period 2-only	In Paint	Off T/O	2nd Chance	Fast Break	Bench	
PSU	12	5	6	0	11	Score tied - 0 times
UCO	8	0	0	0	2	Lead changed - 0 times

Official Basketball Box Score -- Game Totals -- Second Half Statistics
Pittsburg State vs Central Okla.
3/10/2017 2:30 p.m at Searcy, Ark. (Rhodes-Reaves Field House)

Pittsburg State 33 • 24-5

##	Player		Total		3-Ptr	Rebounds			PF	TP	A	TO	Blk	Stl	Min
			FG-FGA	FG-FGA	FT-FTA	Off	Def	Tot							
10	LUNGWITZ, PAIGE	g	3-5	1-2	3-3	0	1	1	0	10	1	0	1	0	16
11	LOPEZ, SHELBY	g	0-3	0-3	1-2	0	1	1	2	1	0	0	0	9	
12	HERLOCKER, HADYN	g	1-3	1-2	0-0	0	0	0	0	3	1	0	0	12	
15	BURGESS, MIKAELA	g	0-3	0-3	0-0	0	2	2	0	0	0	0	0	14	
32	NORTHCUTT, MADISON	f	2-3	0-0	1-1	1	0	1	4	5	1	0	0	9	
04	ALVARADO, ATHENA		4-6	0-0	1-1	2	0	2	2	9	0	1	0	7	
14	IMHOFF, PAIGE		0-1	0-1	0-0	1	1	2	0	0	1	0	0	12	
21	BRODIE, MORGAN		0-0	0-0	0-0	0	0	0	1	0	0	0	0	2	
23	MCPHERSON, BRENLEE		2-2	0-0	1-2	0	0	0	1	5	1	1	0	9	
33	BAUZA RUPERT, MARINA		0-0	0-0	0-0	0	1	1	0	0	0	0	0	4	
35	MAHER, MEGHAN		0-1	0-1	0-0	0	0	0	0	0	0	1	0	5	
42	DELAGARZA, MICAELA		0-0	0-0	0-0	0	0	0	0	0	0	0	0	2	
TEAM						0	5	5	0			1			
Totals			12-27	2-12	7-9	4	11	15	10	33	5	4	1	3	101
FG %	3rd Qtr	8-14	57.1%	4th Qtr	4-13	30.8%	Half:	12-27	44.4%						
3FG %	3rd Qtr	2-6	33.3%	4th Qtr	0-6	00.0%	Half:	2-12	30.0%						
FT %	3rd Qtr	5-6	83.3%	4th Qtr	2-3	66.7%	Half:	7-9	77.8%						

Central Okla. 29 • 25-7

##	Player		Total		3-Ptr	Rebounds			PF	TP	A	TO	Blk	Stl	Min
			FG-FGA	FG-FGA	FT-FTA	Off	Def	Tot							
11	ANDERSON, MARLEY	g	0-1	0-1	0-0	1	2	3	0	0	0	0	0	13	
13	BLESSINGTON, BLAKE	g	1-1	0-0	4-4	1	3	4	1	6	1	0	0	15	
22	MURILLO, MELINDA	g	2-8	0-2	0-0	0	1	1	2	4	1	1	0	17	
25	MASON, OLIVIA	f	0-2	0-2	0-0	1	3	4	1	0	0	0	0	16	
42	COOPER, JESHEON	f	2-6	0-0	6-6	3	2	5	1	10	0	1	1	10	
00	BRYAN, HAYLEY		0-0	0-0	0-0	0	1	1	1	0	0	0	0	5	
21	BRYSON, SHATOYA		2-4	0-2	0-0	0	0	0	2	4	1	0	0	12	
30	WOMACK, MEGAN		2-3	0-0	1-2	0	1	1	1	5	0	3	0	8	
33	STEPHENS, ASHLEY		0-0	0-0	0-0	0	0	0	0	0	0	0	0	2	
45	SMITH, IREON		0-0	0-0	0-0	0	0	0	0	0	0	0	0	2	
TEAM						0	0	0	0		0				
Totals			9-25	0-7	11-12	6	13	19	9	29	3	5	1	0	100
FG %	3rd Qtr	5-14	35.7%	4th Qtr	4-11	36.4%	Half:	9-25	36.0%						
3FG %	3rd Qtr	0-6	00.0%	4th Qtr	0-1	00.0%	Half:	0-7	28.6%						
FT %	3rd Qtr	8-8	100.0%	4th Qtr	3-4	75.0%	Half:	11-12	91.7%						

Officials: Misty Overstreet, Steve Denegrud and Jake Coody
 Technical Fouls: Pittsburg State- None. Central Okla.- None.

Score by periods	1st	2nd	3rd	4th	Total
Pittsburg State	13	29	23	10	75
Central Okla.	9	13	18	11	51

Points	In	Off	2nd	Fast	Bench
	Paint	T/O	Chance	Break	
PSU	20	4	6	0	14
	16	6	2	0	9

Last FG - PSU 4th-00:47, UCO 4th-03:51.
 PSU led for 19:59. UCO led for 0:00. Game was tied for 0:00.

Score tied - 0 times
 Lead changed - 0 times

Pittsburg State vs Central Okla.
3/10/2017; 2:30 p.m at Searcy, Ark. (Rhodes-Reaves Field House)
Period 3 Play-By-Play

VISITORS: Pittsburg State	Time	Score	Margin	HOME: Central Okla.
MISSED 3PTR by LOPEZ,SHELBY	09:49			
	09:49			REBOUND (DEF) by ANDERSON,MARLEY
FOUL by LOPEZ,SHELBY	09:36			
	09:36	23-42	V 19	GOOD! FT by COOPER,JESHEON
	09:36	24-42	V 18	GOOD! FT by COOPER,JESHEON
MISSED 3PTR by BURGESS,MIKAELA	09:25			
	09:25			REBOUND (DEF) by BLESSINGTON,BLAKE
	09:12			MISSED JUMPER by MURILLO,MELINDA
BLOCK by LUNGWITZ,PAIGE	09:12			
	09:10			REBOUND (OFF) by COOPER,JESHEON
	09:08			MISSED LAYUP by COOPER,JESHEON
	09:08			REBOUND (OFF) by COOPER,JESHEON
FOUL by NORTHCUTT,MADISON	09:06			
	08:56			MISSED 3PTR by ANDERSON,MARLEY
REBOUND (DEF) by TEAM	08:56			
GOOD! LAYUP by NORTHCUTT,MADISON [PNT]	08:39	24-44	V 20	
ASSIST by LUNGWITZ,PAIGE	08:39			
	08:39			FOUL by MURILLO,MELINDA
GOOD! FT by NORTHCUTT,MADISON	08:39	24-45	V 21	
	08:27	26-45	V 19	GOOD! JUMPER by COOPER,JESHEON [PNT]
	08:27			ASSIST by BLESSINGTON,BLAKE
	08:14			FOUL by MURILLO,MELINDA
GOOD! 3PTR by HERLOCKER,HADYN	08:01	26-48	V 22	
ASSIST by NORTHCUTT,MADISON	08:01			
	07:48			MISSED 3PTR by MASON,OLIVIA
	07:48			REBOUND (OFF) by ANDERSON,MARLEY
FOUL by LOPEZ,SHELBY	07:39			
FOUL by NORTHCUTT,MADISON	07:33			
	07:24			MISSED 3PTR by MURILLO,MELINDA
REBOUND (DEF) by TEAM	07:24			
GOOD! LAYUP by LUNGWITZ,PAIGE [PNT]	06:54	26-50	V 24	
	06:48			SUB IN: BRYSON,SHATOYA
	06:48			SUB OUT: ANDERSON,MARLEY
	06:36			MISSED 3PTR by MASON,OLIVIA
	06:36			REBOUND (OFF) by MASON,OLIVIA
	06:29			MISSED 3PTR by BRYSON,SHATOYA
REBOUND (DEF) by TEAM	06:29			
SUB IN: MCPHERSON,BRENLEE	06:25			
SUB IN: ALVARADO,ATHENA	06:25			
SUB OUT: LOPEZ,SHELBY	06:25			
SUB OUT: NORTHCUTT,MADISON	06:25			
GOOD! LAYUP by ALVARADO,ATHENA [PNT]	06:08	26-52	V 26	
	06:07			FOUL by COOPER,JESHEON
GOOD! FT by ALVARADO,ATHENA	06:07	26-53	V 27	
SUB IN: IMHOFF,PAIGE	06:07			
SUB OUT: HERLOCKER,HADYN	06:07			
	06:07			SUB IN: WOMACK,MEGAN
	06:07			SUB OUT: COOPER,JESHEON
	05:56			FOUL by WOMACK,MEGAN
	05:56			TURNOVER by WOMACK,MEGAN
MISSED JUMPER by ALVARADO,ATHENA	05:38			
REBOUND (OFF) by ALVARADO,ATHENA	05:38			
GOOD! LAYUP by ALVARADO,ATHENA [PNT]	05:35	26-55	V 29	
	05:24			TURNOVER by WOMACK,MEGAN
STEAL by MCPHERSON,BRENLEE	05:22			
	05:09			FOUL by BRYSON,SHATOYA
GOOD! FT by LUNGWITZ,PAIGE	05:09	26-56	V 30	
GOOD! FT by LUNGWITZ,PAIGE	05:09	26-57	V 31	
SUB IN: HERLOCKER,HADYN	05:07			

VISITORS: Pittsburg State	Time	Score	Margin	HOME: Central Okla.
SUB OUT: LUNGWITZ,PAIGE	05:07			
	04:42	28-57	V 29	GOOD! JUMPER by WOMACK,MEGAN [PNT]
	04:42			ASSIST by MURILLO,MELINDA
TURNOVER by ALVARADO,ATHENA	04:21			
	04:20			TIMEOUT MEDIA
SUB IN: LUNGWITZ,PAIGE	04:20			
SUB IN: NORTHCUTT,MADISON	04:20			
SUB OUT: BURGESS,MIKAELA	04:20			
SUB OUT: ALVARADO,ATHENA	04:20			
	04:08	30-57	V 27	GOOD! LAYUP by WOMACK,MEGAN [PNT]
GOOD! LAYUP by MCPHERSON,BRENLEE [PNT]	03:51	30-59	V 29	
	03:41	32-59	V 27	GOOD! LAYUP by BRYSON,SHATOYA [PNT]
MISSED LAYUP by NORTHCUTT,MADISON	03:23			
	03:23			REBOUND (DEF) by BLESSINGTON,BLAKE
FOUL by NORTHCUTT,MADISON	03:22			
	03:22	33-59	V 26	GOOD! FT by BLESSINGTON,BLAKE
	03:22	34-59	V 25	GOOD! FT by BLESSINGTON,BLAKE
SUB IN: ALVARADO,ATHENA	03:22			
SUB IN: BURGESS,MIKAELA	03:22			
SUB OUT: HERLOCKER,HADYN	03:22			
SUB OUT: NORTHCUTT,MADISON	03:22			
MISSED 3PTR by IMHOFF,PAIGE	03:03			
	03:03			REBOUND (DEF) by BLESSINGTON,BLAKE
	02:45			MISSED LAYUP by WOMACK,MEGAN
REBOUND (DEF) by BURGESS,MIKAELA	02:45			
FOUL by MCPHERSON,BRENLEE	02:35			
TURNOVER by MCPHERSON,BRENLEE	02:35			
	02:35			SUB IN: COOPER,JESHEON
	02:35			SUB OUT: WOMACK,MEGAN
FOUL by ALVARADO,ATHENA	02:24			
	02:24	35-59	V 24	GOOD! FT by COOPER,JESHEON
	02:24	36-59	V 23	GOOD! FT by COOPER,JESHEON
SUB IN: LOPEZ,SHELBY	02:24			
SUB OUT: MCPHERSON,BRENLEE	02:24			
MISSED 3PTR by LOPEZ,SHELBY	02:09			
REBOUND (OFF) by ALVARADO,ATHENA	02:09			
GOOD! LAYUP by ALVARADO,ATHENA [PNT]	02:05	36-61	V 25	
	01:49			MISSED 3PTR by MURILLO,MELINDA
REBOUND (DEF) by IMHOFF,PAIGE	01:49			
	01:43			SUB IN: ANDERSON,MARLEY
	01:43			SUB IN: BRYAN,HAYLEY
	01:43			SUB OUT: BLESSINGTON,BLAKE
	01:43			SUB OUT: MASON,OLIVIA
GOOD! 3PTR by LUNGWITZ,PAIGE	01:30	36-64	V 28	
ASSIST by IMHOFF,PAIGE	01:30			
FOUL by ALVARADO,ATHENA	01:15			
	01:15	37-64	V 27	GOOD! FT by COOPER,JESHEON
	01:15	38-64	V 26	GOOD! FT by COOPER,JESHEON
GOOD! FT by LOPEZ,SHELBY	00:45	38-65	V 27	
MISSED FT by LOPEZ,SHELBY	00:45			
	00:45			REBOUND (DEF) by COOPER,JESHEON
SUB IN: BAUZA RUPERT,MARINA	00:45			
SUB IN: HERLOCKER,HADYN	00:45			
SUB IN: MAHER,MEGHAN	00:45			
SUB OUT: ALVARADO,ATHENA	00:45			
SUB OUT: IMHOFF,PAIGE	00:45			
SUB OUT: BURGESS,MIKAELA	00:45			
	00:43			FOUL by BRYAN,HAYLEY
	00:37	40-65	V 25	GOOD! JUMPER by MURILLO,MELINDA
TURNOVER by TEAM	00:01			

Period 3-only	In Paint	Off T/O	2nd Chance	Fast Break	Bench	
PSU	12	4	4	0	9	Score tied - 0 times
UCO	8	4	0	0	6	Lead changed - 0 times

Pittsburg State vs Central Okla.
3/10/2017; 2:30 p.m at Searcy, Ark. (Rhodes-Reaves Field House)
Period 4 Play-By-Play

VISITORS: Pittsburg State	Time	Score	Margin	HOME: Central Okla.
SUB IN: BAUZA RUPERT,MARINA	10:00			
SUB IN: MAHER,MEGHAN	10:00			
SUB OUT: BURGESS,MIKAELA	10:00			
SUB OUT: NORTHCUTT,MADISON	10:00			
	10:00			SUB IN: BRYAN,HAYLEY
	10:00			SUB OUT: BLESSINGTON,BLAKE
	09:48			MISSED LAYUP by COOPER,JESHEON
	09:48			REBOUND (OFF) by COOPER,JESHEON
	09:46			TURNOVER by COOPER,JESHEON
MISSED 3PTR by HERLOCKER,HADYN	09:26			
	09:26			REBOUND (DEF) by COOPER,JESHEON
	09:16	42-65	V 23	GOOD! LAYUP by MURILLO,MELINDA [PNT]
MISSED 3PTR by LOPEZ,SHELBY	08:48			
	08:48			REBOUND (DEF) by MURILLO,MELINDA
	08:30			MISSED JUMPER by COOPER,JESHEON
REBOUND (DEF) by BAUZA RUPERT,MARINA	08:30			
MISSED 3PTR by LUNGWITZ,PAIGE	08:22			
	08:22			REBOUND (DEF) by BRYAN,HAYLEY
	07:59			MISSED LAYUP by MURILLO,MELINDA
REBOUND (DEF) by LOPEZ,SHELBY	07:59			
MISSED LAYUP by HERLOCKER,HADYN	07:48			
	07:48			BLOCK by COOPER,JESHEON
	07:45			REBOUND (DEF) by MASON,OLIVIA
	07:32			MISSED LAYUP by MURILLO,MELINDA
REBOUND (DEF) by LUNGWITZ,PAIGE	07:32			
TURNOVER by MAHER,MEGHAN	07:25			
SUB IN: MCPHERSON,BRENLEE	07:25			
SUB IN: NORTHCUTT,MADISON	07:25			
SUB IN: IMHOFF,PAIGE	07:25			
SUB IN: BURGESS,MIKAELA	07:25			
SUB OUT: LOPEZ,SHELBY	07:25			
SUB OUT: HERLOCKER,HADYN	07:25			
SUB OUT: BAUZA RUPERT,MARINA	07:25			
SUB OUT: MAHER,MEGHAN	07:25			
	07:25			SUB IN: BRYSON,SHATOYA
	07:25			SUB IN: BLESSINGTON,BLAKE
	07:25			SUB OUT: BRYAN,HAYLEY
	07:25			SUB OUT: MURILLO,MELINDA
	07:00	44-65	V 21	GOOD! LAYUP by COOPER,JESHEON [PNT]
	07:00			ASSIST by BRYSON,SHATOYA
GOOD! LAYUP by NORTHCUTT,MADISON [PNT]	06:36	44-67	V 23	
ASSIST by MCPHERSON,BRENLEE	06:36			
	06:17			MISSED JUMPER by COOPER,JESHEON
REBOUND (DEF) by BURGESS,MIKAELA	06:17			
MISSED 3PTR by BURGESS,MIKAELA	06:01			
REBOUND (OFF) by NORTHCUTT,MADISON	06:01			
	05:42			FOUL by BLESSINGTON,BLAKE
SUB IN: HERLOCKER,HADYN	05:42			
SUB OUT: LUNGWITZ,PAIGE	05:42			
	05:42			SUB IN: WOMACK,MEGAN
	05:42			SUB OUT: COOPER,JESHEON
MISSED 3PTR by BURGESS,MIKAELA	05:34			
	05:34			REBOUND (DEF) by ANDERSON,MARLEY
	05:26	46-67	V 21	GOOD! JUMPER by BRYSON,SHATOYA [PNT]
	04:51			FOUL by MASON,OLIVIA
TIMEOUT MEDIA	04:51			
GOOD! FT by MCPHERSON,BRENLEE	04:51	46-68	V 22	
MISSED FT by MCPHERSON,BRENLEE	04:51			
	04:51			REBOUND (DEF) by MASON,OLIVIA

VISITORS: Pittsburg State	Time	Score	Margin	HOME: Central Okla.
	04:39			MISSED 3PTR by BRYSON,SHATOYA
REBOUND (DEF) by TEAM	04:39			
SUB IN: LUNGWITZ,PAIGE	04:36			
SUB OUT: MCPHERSON,BRENLEE	04:36			
GOOD! LAYUP by LUNGWITZ,PAIGE [PNT]	04:08	46-70	V 24	
	04:08			FOUL by BRYSON,SHATOYA
GOOD! FT by LUNGWITZ,PAIGE	04:08	46-71	V 25	
	04:08			SUB IN: MURILLO,MELINDA
	04:08			SUB OUT: BRYSON,SHATOYA
FOUL by NORTHCUTT,MADISON	03:53			
	03:53	47-71	V 24	GOOD! FT by WOMACK,MEGAN
	03:53			MISSED FT by WOMACK,MEGAN
	03:53			REBOUND (OFF) by BLESSINGTON,BLAKE
SUB IN: ALVARADO,ATHENA	03:53			
SUB OUT: NORTHCUTT,MADISON	03:53			
	03:51	49-71	V 22	GOOD! LAYUP by BLESSINGTON,BLAKE [PNT]
MISSED JUMPER by ALVARADO,ATHENA	03:28			
	03:28			REBOUND (DEF) by MASON,OLIVIA
	03:09			MISSED JUMPER by MURILLO,MELINDA
REBOUND (DEF) by TEAM	03:09			
GOOD! LAYUP by ALVARADO,ATHENA [PNT]	02:41	49-73	V 24	
ASSIST by HERLOCKER,HADYN	02:41			
	02:21			TURNOVER by WOMACK,MEGAN
STEAL by IMHOFF,PAIGE	02:19			
MISSED LAYUP by LUNGWITZ,PAIGE	01:58			
	01:58			REBOUND (DEF) by WOMACK,MEGAN
	01:54			TIMEOUT MEDIA
SUB IN: BRODIE,MORGAN	01:54			
SUB IN: MCPHERSON,BRENLEE	01:54			
SUB IN: MAHER,MEGHAN	01:54			
SUB IN: DELAGARZA,MICAELA	01:54			
SUB OUT: HERLOCKER,HADYN	01:54			
SUB OUT: LUNGWITZ,PAIGE	01:54			
SUB OUT: ALVARADO,ATHENA	01:54			
SUB OUT: BURGESS,MIKAELA	01:54			
	01:54			SUB IN: BRYSON,SHATOYA
	01:54			SUB IN: SMITH,IREON
	01:54			SUB IN: STEPHENS,ASHLEY
	01:54			SUB OUT: ANDERSON,MARLEY
	01:54			SUB OUT: MASON,OLIVIA
	01:54			SUB OUT: WOMACK,MEGAN
FOUL by BRODIE,MORGAN	01:29			
	01:29	50-73	V 23	GOOD! FT by BLESSINGTON,BLAKE
	01:29	51-73	V 22	GOOD! FT by BLESSINGTON,BLAKE
MISSED 3PTR by MAHER,MEGHAN	01:05			
REBOUND (OFF) by IMHOFF,PAIGE	01:05			
GOOD! LAYUP by MCPHERSON,BRENLEE [PNT]	00:47	51-75	V 24	
	00:20			TURNOVER by MURILLO,MELINDA
STEAL by IMHOFF,PAIGE	00:19			

Pittsburg State 75, Central Okla. 51

Period 4-only	In Paint	Off T/O	2nd Chance	Fast Break	Bench	
PSU	8	0	2	0	5	Score tied - 0 times
UCO	8	2	2	0	3	Lead changed - 0 times

Pittsburg State vs Central Okla.
3/10/2017; 2:30 p.m at Searcy, Ark. (Rhodes-Reaves Field House)
Scoring/Runs Reference

Period 1

Pittsburg State	Score	Marg	Central Okla.
	0-2	2 2	ANDERSON LAYUP [P] - 09:46
08:40 - BURGESS JUMPER	2	2-2	0
07:19 - NORTHCUTT LAYUP [P]	2	4-2	-2
	4-5	1 3	BLESSINGTON 3PTR - 06:32
	4-7	3 2	MURILLO LAYUP [P] - 05:48
05:37 - IMHOFF LAYUP [P]	2	6-7	1
	6-9	3 2	BRYAN LAYUP [P] - 04:32
03:41 - LUNGWITZ LAYUP [P]	2	8-9	1
03:12 - MCPHERSON 3PTR	3	11-9	-2
01:22 - MCPHERSON LAYUP [P]	2	13-9	-4

Period 2

Pittsburg State	Score	Marg	Central Okla.
09:58 - MCPHERSON LAYUP [P]	2	15-9	-6
08:52 - NORTHCUTT LAYUP [P]	2	17-9	-8
	17-11	-6	2 COOPER LAYUP [P] - 08:32
08:15 - LOPEZ 3PTR	3	20-11	-9
07:02 - ALVARADO LAYUP [P]	2	22-11	-11
	22-13	-9	2 COOPER JUMPER [P] - 06:42
06:34 - IMHOFF 3PTR	3	25-13	-12
	25-15	-10	2 MURILLO JUMPER - 06:23
05:56 - LUNGWITZ 3PTR	3	28-15	-13
05:23 - ALVARADO LAYUP [P]	2	30-15	-15
04:51 - LOPEZ 3PTR	3	33-15	-18
	33-18	-15	3 MURILLO 3PTR - 04:37
04:14 - BAUZA RUPERT LAYUP [P]	2	35-18	-17
02:33 - NORTHCUTT LAYUP [P]	2	37-18	-19
02:00 - LOPEZ JUMPER	2	39-18	-21
	39-20	-19	2 BLESSINGTON LAYUP [P] - 01:45
	39-22	-17	2 WOMACK LAYUP [P] - 01:05
00:03 - LOPEZ 3PTR	3	42-22	-20

Period 3

Pittsburg State	Score	Marg	Central Okla.
	42-23	-19 1	COOPER FT - 09:36
	42-24	-18 1	COOPER FT - 09:36
08:39 - NORTHCUTT LAYUP [P]	2	44-24 -20	
08:39 - NORTHCUTT FT	1	45-24 -21	
	45-26	-19 2	COOPER JUMPER [P] - 08:27
08:01 - HERLOCKER 3PTR	3	48-26 -22	
06:54 - LUNGWITZ LAYUP [P]	2	50-26 -24	
06:08 - ALVARADO LAYUP [P]	2	52-26 -26	
06:07 - ALVARADO FT	1	53-26 -27	
05:35 - ALVARADO LAYUP [P]	2	55-26 -29	
05:09 - LUNGWITZ FT	1	56-26 -30	
05:09 - LUNGWITZ FT	1	57-26 -31	
	57-28	-29 2	WOMACK JUMPER [P] - 04:42
	57-30	-27 2	WOMACK LAYUP [P] - 04:08
03:51 - MCPHERSON LAYUP [P]	2	59-30 -29	
	59-32	-27 2	BRYSON LAYUP [P] - 03:41
	59-33	-26 1	BLESSINGTON FT - 03:22
	59-34	-25 1	BLESSINGTON FT - 03:22
	59-35	-24 1	COOPER FT - 02:24
	59-36	-23 1	COOPER FT - 02:24
02:05 - ALVARADO LAYUP [P]	2	61-36 -25	
01:30 - LUNGWITZ 3PTR	3	64-36 -28	
	64-37	-27 1	COOPER FT - 01:15
	64-38	-26 1	COOPER FT - 01:15
00:45 - LOPEZ FT	1	65-38 -27	
	65-40	-25 2	MURILLO JUMPER - 00:37

Period 4

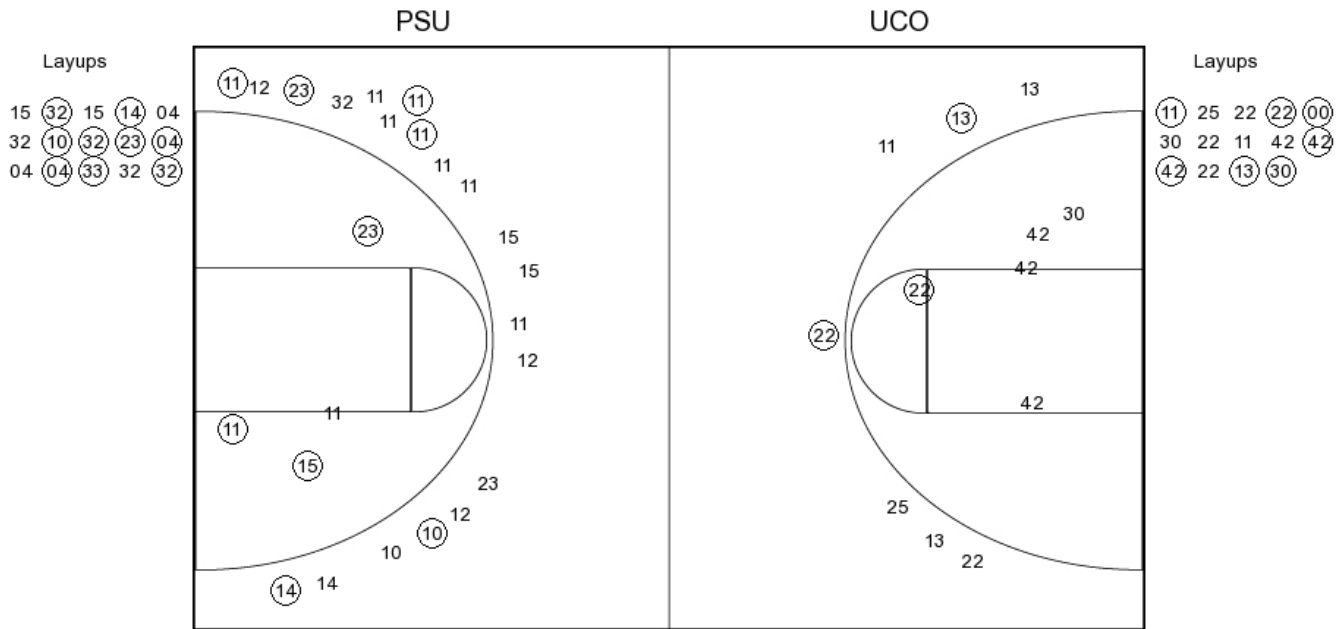
Pittsburg State	Score	Marg	Central Okla.
	65-42	-23 2	MURILLO LAYUP [P] - 09:16
	65-44	-21 2	COOPER LAYUP [P] - 07:00
06:36 - NORTHCUTT LAYUP [P]	2	67-44 -23	
	67-46	-21 2	BRYSON JUMPER [P] - 05:26
04:51 - MCPHERSON FT	1	68-46 -22	
04:08 - LUNGWITZ LAYUP [P]	2	70-46 -24	
04:08 - LUNGWITZ FT	1	71-46 -25	
	71-47	-24 1	WOMACK FT - 03:53
	71-49	-22 2	BLESSINGTON LAYUP [P] - 03:51
02:41 - ALVARADO LAYUP [P]	2	73-49 -24	
	73-50	-23 1	BLESSINGTON FT - 01:29
	73-51	-22 1	BLESSINGTON FT - 01:29
00:47 - MCPHERSON LAYUP [P]	2	75-51 -24	

Pittsburg State vs Central Okla.

OFFICIAL SHOT CHART

3/10/2017 at Searcy, Ark. (Rhodes-Reaves Field House)

PERIOD 1



PSU PERIOD 1

FG Made	18
FG Attempted	39
3PFG Made	6
3PFG Attempted	20

UCO PERIOD 1

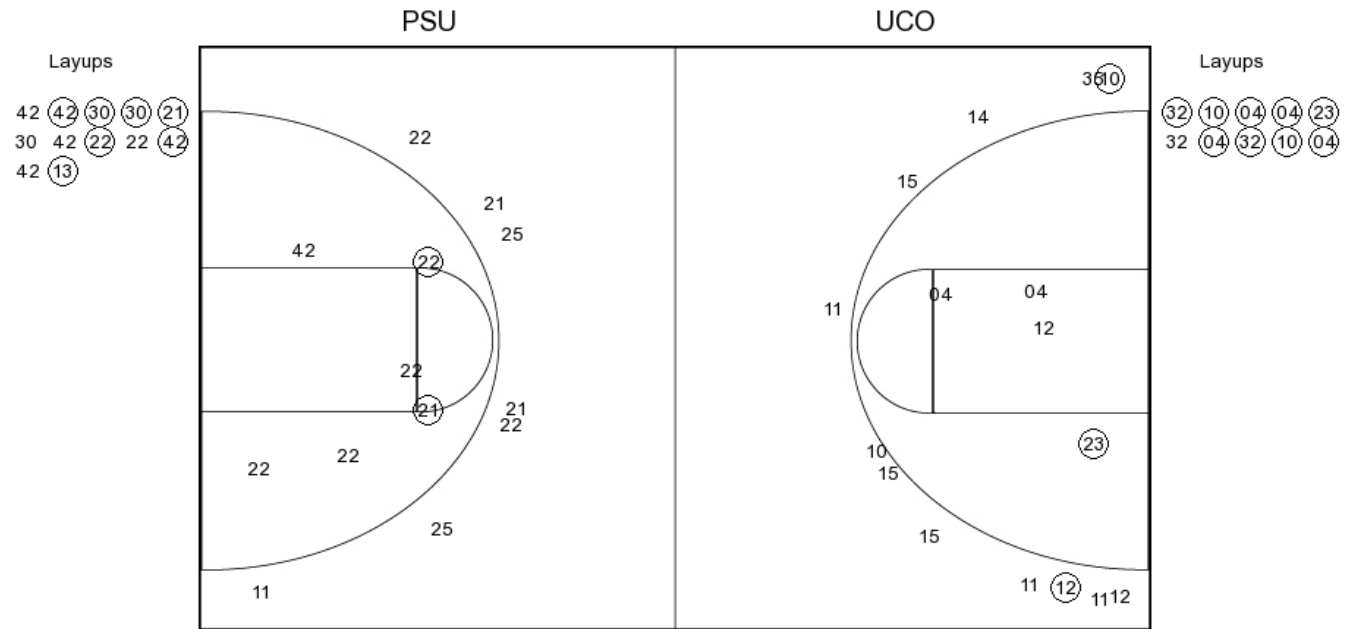
FG Made	10
FG Attempted	26
3PFG Made	2
3PFG Attempted	7

Pittsburg State vs Central Okla.

OFFICIAL SHOT CHART

3/10/2017 at Searcy, Ark. (Rhodes-Reaves Field House)

PERIOD 2



PSU PERIOD 2
 FG Made
 FG Attempted
 3PFG Made
 3PFG Attempted

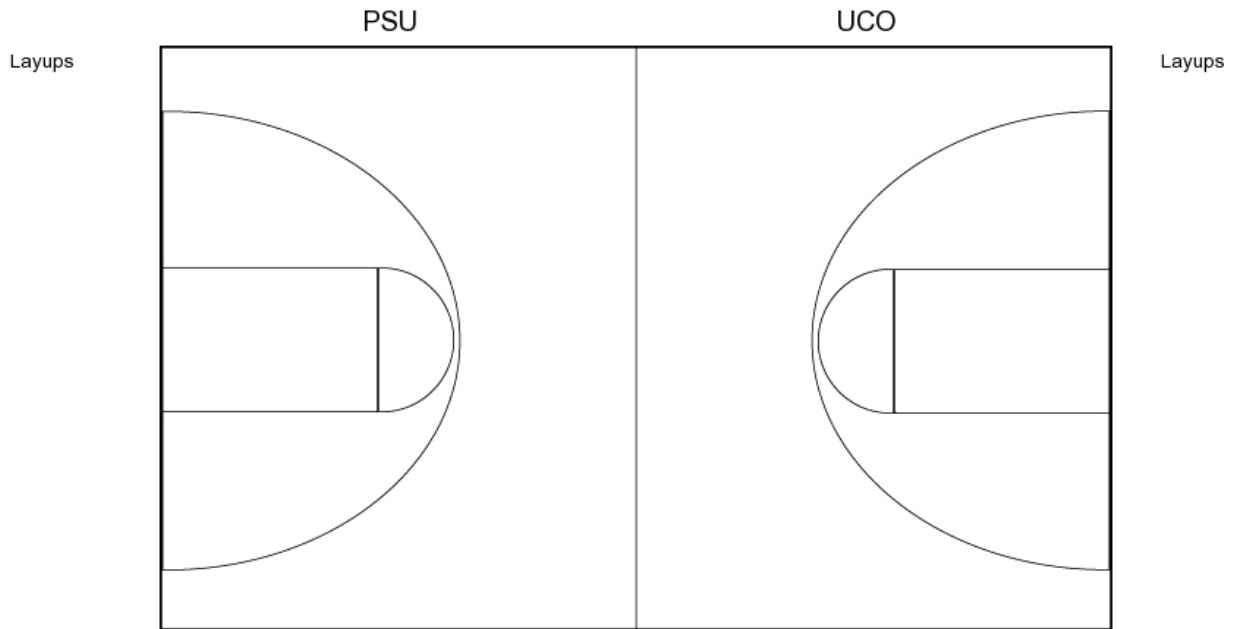
UCO PERIOD 2
 FG Made
 FG Attempted
 3PFG Made
 3PFG Attempted

Pittsburg State vs Central Okla.

OFFICIAL SHOT CHART

3/10/2017 at Searcy, Ark. (Rhodes-Reaves Field House)

PERIOD 3



<u>PSU PERIOD 3</u>	
FG Made	12
FG Attempted	27
3PFG Made	2
3PFG Attempted	12

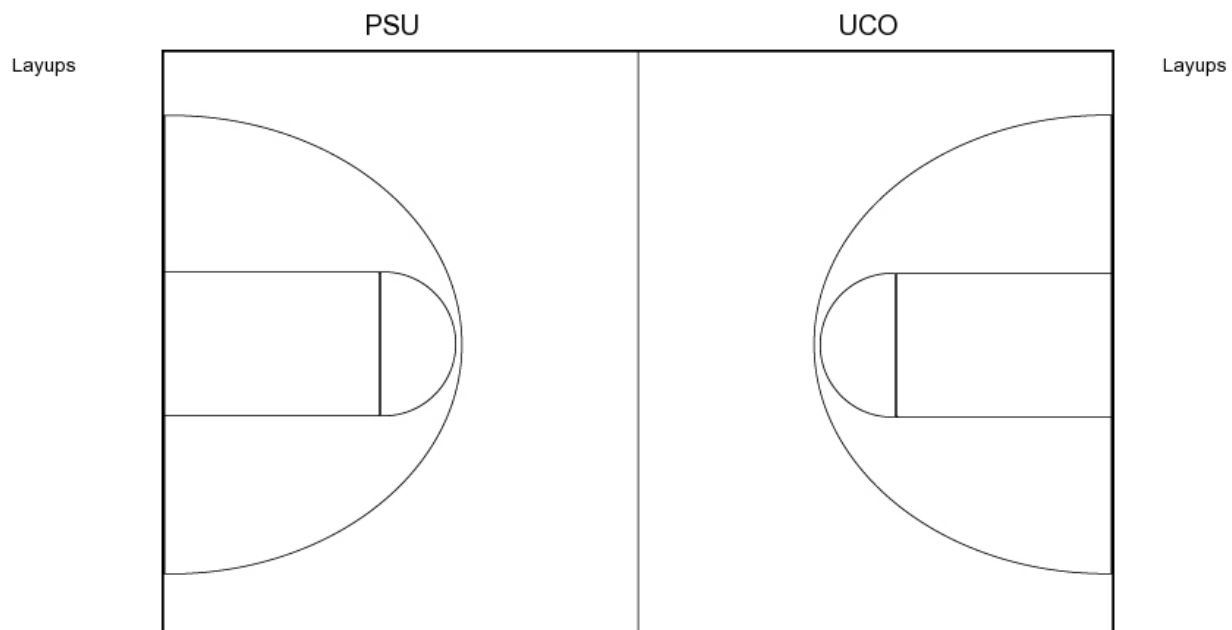
<u>UCO PERIOD 3</u>	
FG Made	9
FG Attempted	25
3PFG Made	0
3PFG Attempted	7

Pittsburg State vs Central Okla.

OFFICIAL SHOT CHART

3/10/2017 at Searcy, Ark. (Rhodes-Reaves Field House)

PERIOD 4



PSU PERIOD 4
FG Made
FG Attempted
3PFG Made
3PFG Attempted

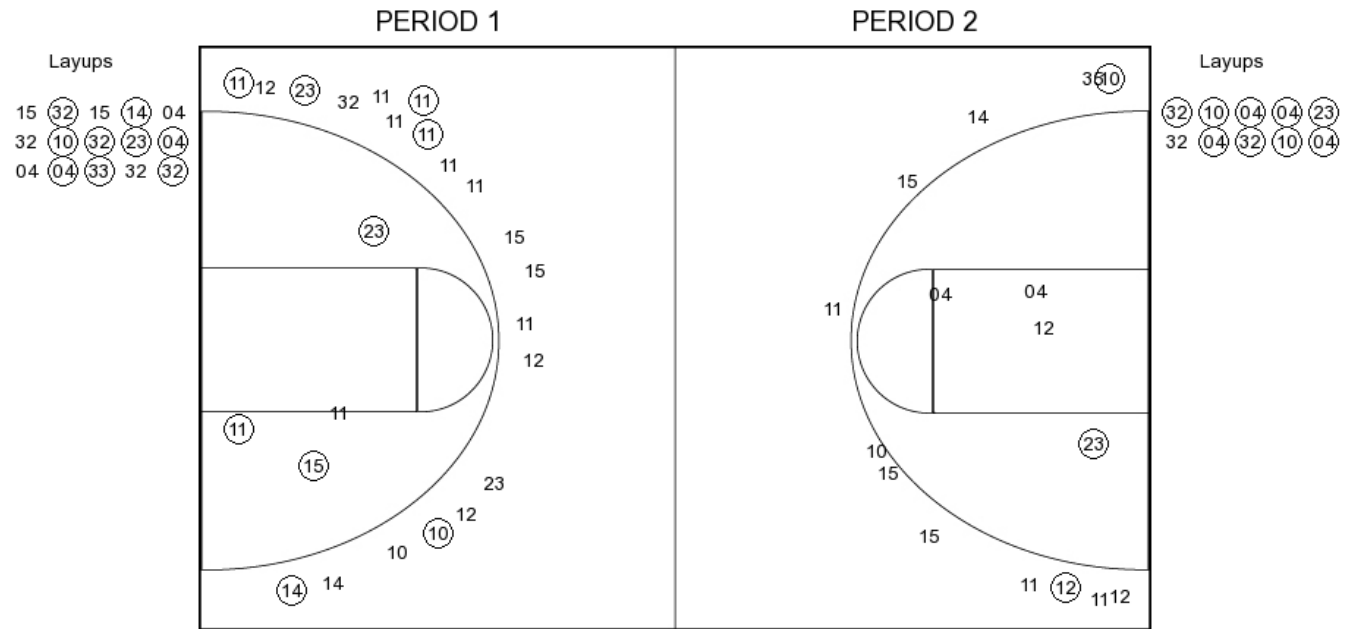
UCO PERIOD 4
FG Made
FG Attempted
3PFG Made
3PFG Attempted

Pittsburg State vs Central Okla.

OFFICIAL SHOT CHART

3/10/2017 at Searcy, Ark. (Rhodes-Reaves Field House)

Pittsburg State



PSU PERIOD 1

FG Made	18
FG Attempted	39
3PFG Made	6
3PFG Attempted	20

PSU PERIOD 2

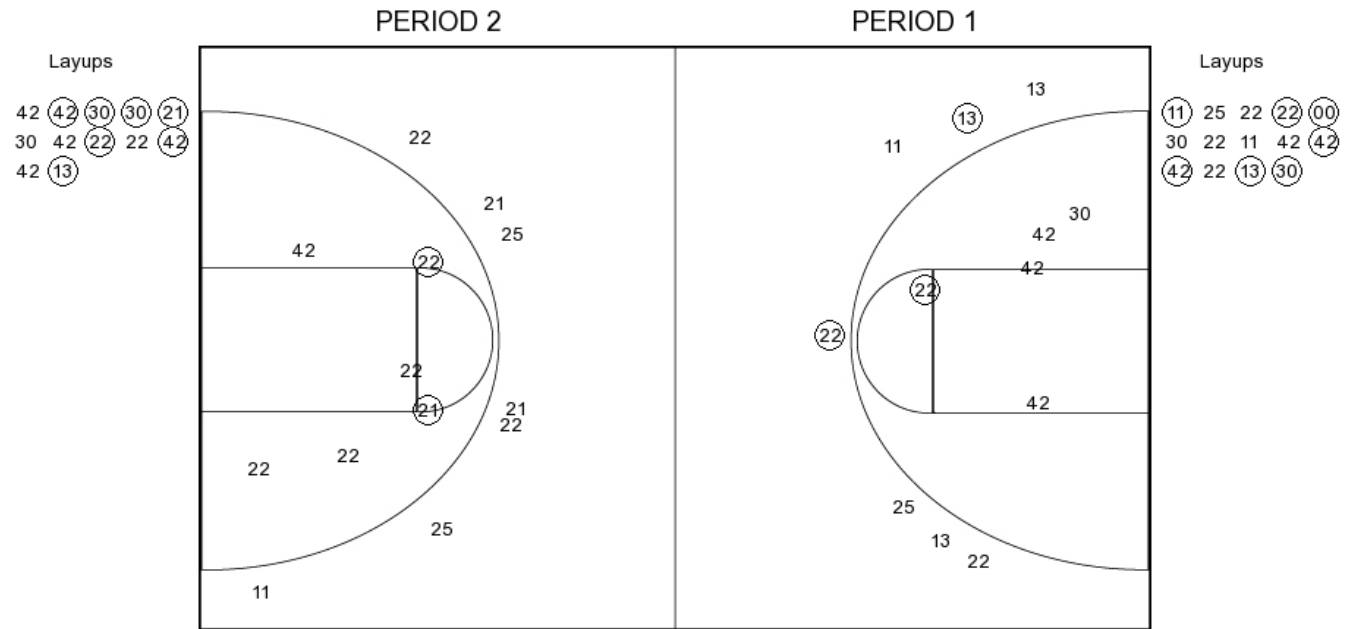
FG Made	18
FG Attempted	39
3PFG Made	6
3PFG Attempted	20

Pittsburg State vs Central Okla.

OFFICIAL SHOT CHART

3/10/2017 at Searcy, Ark. (Rhodes-Reaves Field House)

Central Okla.



UCO PERIOD 1

FG Made	10
FG Attempted	26
3PFG Made	2
3PFG Attempted	7

UCO PERIOD 2

FG Made	
FG Attempted	
3PFG Made	
3PFG Attempted	