



WEST VIRGINIA VS. KANSAS STATE

2/11/2017

WVU Coliseum, Morgntown, W.Va.

FINAL STATS

West Virginia

(20-5/8-4)

85

Kansas State

(16-9/5-7)

66

Start Time: Noon

Officials: Don Daily, James Breeding, Kerby Sitton

Attendance: 14074

Official Basketball Box Score -- Game Totals -- Final Statistics
Kansas State vs West Virginia
2/11/2017 Noon at WVU Coliseum, Morgntown, W.Va.

Kansas State 66 - 16-9/5-7

| ## | Player | S | Total | | | Rebounds | | | PF | TP | A | TO | Blk | Stl | Min |
|--------|-----------------|---|--------|-----|--------|----------|---------|---------|----|----|----|----|-----|-----|-----|
| | | | FG-FGA | 3PT | FG-FGA | FT-FTA | Off Reb | Def Reb | | | | | | | |
| 03 | STOKES,KAMAU | g | 1-6 | 0-3 | 10-12 | 0 | 2 | 2 | 4 | 12 | 1 | 4 | 0 | 0 | 26 |
| 05 | BROWN,BARRY | g | 0-5 | 0-2 | 10-16 | 0 | 4 | 4 | 3 | 10 | 3 | 3 | 0 | 5 | 33 |
| 20 | SNEED,XAVIER | f | 4-8 | 2-5 | 0-0 | 1 | 0 | 1 | 4 | 10 | 1 | 2 | 0 | 0 | 20 |
| 25 | IWUNDU,WESLEY | f | 4-7 | 2-2 | 4-5 | 1 | 7 | 8 | 3 | 14 | 0 | 6 | 0 | 3 | 29 |
| 32 | WADE,DEAN | f | 1-6 | 0-2 | 3-4 | 2 | 6 | 8 | 2 | 5 | 2 | 1 | 0 | 0 | 33 |
| 01 | ERVIN II,CARLBE | | 0-1 | 0-1 | 0-0 | 0 | 0 | 0 | 3 | 0 | 0 | 2 | 0 | 0 | 10 |
| 10 | MAURICE,ISAIAH | | 1-2 | 0-0 | 0-0 | 0 | 1 | 1 | 2 | 2 | 0 | 1 | 0 | 0 | 6 |
| 11 | PATRICK,BRIAN | | 4-4 | 3-3 | 0-0 | 0 | 0 | 0 | 0 | 11 | 1 | 0 | 0 | 1 | 18 |
| 12 | SCHOEN,MASON | | 0-1 | 0-0 | 0-0 | 0 | 0 | 0 | 0 | 0 | 0 | 0 | 0 | 0 | 2 |
| 13 | WINTER,ZACH | | 0-1 | 0-1 | 0-0 | 0 | 0 | 0 | 0 | 0 | 2 | 0 | 0 | 0 | 2 |
| 24 | MCATEE,PIERSON | | 0-0 | 0-0 | 0-0 | 0 | 0 | 0 | 0 | 0 | 0 | 0 | 0 | 0 | 2 |
| 35 | BUDKE,AUSTIN | | 1-5 | 0-2 | 0-3 | 1 | 1 | 2 | 2 | 2 | 0 | 0 | 0 | 0 | 17 |
| 45 | KINNAMON,KADE | | 0-0 | 0-0 | 0-0 | 0 | 0 | 0 | 1 | 0 | 0 | 0 | 0 | 0 | 2 |
| TEAM | | | | | | 0 | 0 | 0 | 0 | | 0 | | | | |
| TOTALS | | | | | | 5 | 21 | 26 | 24 | 66 | 10 | 19 | 0 | 9 | 200 |

Deadball Rebounds: 4,0

| | | | | | | | | | |
|-------|-----------|-------|-------|-----------|-------|-------|-------|-------|-------|
| FG % | 1st Half: | 9-26 | 34.6% | 2nd Half: | 7-20 | 35.0% | Game: | 16-46 | 34.8% |
| 3FG % | 1st Half: | 4-12 | 33.3% | 2nd Half: | 3-9 | 33.3% | Game: | 7-21 | 33.3% |
| FT % | 1st Half: | 12-18 | 66.7% | 2nd Half: | 15-22 | 68.2% | Game: | 27-40 | 67.5% |

West Virginia 85 - 20-5/8-4

| ## | Player | S | Total | | | Rebounds | | | PF | TP | A | TO | Blk | Stl | Min |
|--------|------------------|---|--------|-----|--------|----------|---------|---------|----|----|----|----|-----|-----|-----|
| | | | FG-FGA | 3PT | FG-FGA | FT-FTA | Off Reb | Def Reb | | | | | | | |
| 02 | CARTER,JEVON | g | 6-11 | 2-4 | 5-5 | 1 | 8 | 9 | 2 | 19 | 2 | 4 | 0 | 2 | 31 |
| 11 | ADRIAN.NATHAN | f | 3-5 | 0-1 | 1-3 | 0 | 5 | 5 | 4 | 7 | 0 | 2 | 0 | 1 | 19 |
| 12 | PHILLIP.TARIK | g | 2-12 | 0-1 | 3-4 | 3 | 1 | 4 | 3 | 7 | 6 | 4 | 0 | 2 | 33 |
| 23 | AHMAD.ESA | f | 5-6 | 0-0 | 1-1 | 0 | 1 | 1 | 3 | 11 | 3 | 3 | 1 | 0 | 19 |
| 45 | MACON,ELIJAH | f | 3-4 | 0-0 | 2-2 | 1 | 2 | 3 | 4 | 8 | 0 | 1 | 0 | 0 | 16 |
| 00 | MYERS,TEYVON | | 2-6 | 0-0 | 0-0 | 1 | 3 | 4 | 1 | 4 | 3 | 2 | 0 | 0 | 11 |
| 03 | BOLDEN,JAMES | | 3-5 | 2-2 | 1-2 | 0 | 2 | 2 | 0 | 9 | 0 | 0 | 0 | 0 | 8 |
| 04 | MILES JR.,DAXTER | | 0-2 | 0-2 | 2-2 | 0 | 1 | 1 | 3 | 2 | 0 | 0 | 0 | 1 | 12 |
| 13 | LONG,JAMES | | 0-0 | 0-0 | 0-0 | 0 | 0 | 0 | 0 | 0 | 0 | 0 | 0 | 0 | 2 |
| 14 | HARLER.CHASE | | 0-1 | 0-1 | 0-0 | 0 | 0 | 0 | 0 | 0 | 0 | 0 | 0 | 0 | 2 |
| 15 | WEST,LAMONT | | 3-5 | 0-1 | 0-0 | 2 | 7 | 9 | 3 | 6 | 0 | 0 | 0 | 0 | 19 |
| 20 | WATKINS.BRANDON | | 2-3 | 0-0 | 0-0 | 2 | 1 | 3 | 2 | 4 | 0 | 0 | 0 | 0 | 9 |
| 21 | ROUTT,LOGAN | | 1-1 | 0-0 | 0-0 | 1 | 0 | 1 | 0 | 2 | 0 | 0 | 0 | 0 | 2 |
| 25 | BENDER,MACIEJ | | 0-0 | 0-0 | 0-0 | 0 | 1 | 1 | 1 | 0 | 0 | 0 | 0 | 0 | 4 |
| 50 | KONATE,SAGABA | | 2-3 | 0-0 | 2-2 | 2 | 2 | 4 | 3 | 6 | 1 | 1 | 1 | 0 | 13 |
| TEAM | | | | | | 0 | 0 | 0 | 1 | | 1 | | | | |
| TOTALS | | | | | | 13 | 34 | 47 | 30 | 85 | 15 | 18 | 2 | 6 | 200 |

Deadball Rebounds: 2,0

| | | | | | | | | | |
|-------|-----------|-------|-------|-----------|-------|-------|-------|-------|-------|
| FG % | 1st Half: | 12-30 | 40.0% | 2nd Half: | 20-34 | 58.8% | Game: | 32-64 | 50.0% |
| 3FG % | 1st Half: | 2-7 | 28.6% | 2nd Half: | 2-5 | 40.0% | Game: | 4-12 | 33.3% |
| FT % | 1st Half: | 8-10 | 80.0% | 2nd Half: | 9-11 | 81.8% | Game: | 17-21 | 81.0% |

Officials: Don Daily, James Breeding, Kerby Sitton
 Technical Fouls: Kansas State- None. West Virginia- MACON,ELIJAH; TEAM;
 Attendance: 14074

| Score by periods | 1st | 2nd | Total |
|------------------|-----|-----|-------|
| Kansas State | 34 | 32 | 66 |
| West Virginia | 34 | 51 | 85 |

| | In | Off | 2nd | Fast | |
|--------|-------|---------|------------|------------|-------|
| Points | Paint | Off T/O | 2nd Chance | Fast Break | Bench |
| KS | 18 | 9 | 2 | 2 | 15 |
| WVU | 50 | 25 | 2 | 4 | 33 |

Last FG - KS 2nd-00:33, WVU 2nd-00:55.
 Largest lead - Kansas State by 8 1st-13:51; West Virginia by 22 2nd-00:43
 KS led for 14:14. WVU led for 22:14. Game was tied for 3:32.

Score tied - 5 times
 Lead changed - 3 times

Official Basketball Box Score -- Game Totals -- First Half Statistics
Kansas State vs West Virginia
2/11/2017 Noon at WVU Coliseum, Morgntown, W.Va.

Kansas State 34 • 16-9/5-7

| ## | Player | S | Total | | | Rebounds | | | PF | TP | A | TO | Blk | Stl | Min | |
|--------|-----------------|---|--------|------------|--------|----------|---------|---------|----|----|----|----|-----|-----|-----|-----|
| | | | FG-FGA | 3PT FG-FGA | FT-FTA | Off Reb | Def Reb | Tot Reb | | | | | | | | |
| 03 | STOKES,KAMAU | g | 0-3 | 0-2 | 2-2 | 0 | 1 | 1 | 2 | 2 | 1 | 1 | 0 | 0 | 13 | |
| 05 | BROWN,BARRY | g | 0-3 | 0-1 | 6-11 | 0 | 2 | 2 | 0 | 6 | 2 | 1 | 0 | 2 | 19 | |
| 20 | SNEED,XAVIER | f | 2-4 | 1-3 | 0-0 | 0 | 0 | 0 | 2 | 5 | 1 | 0 | 0 | 0 | 9 | |
| 25 | IWUNDU,WESLEY | f | 3-6 | 2-2 | 2-3 | 1 | 6 | 7 | 2 | 10 | 0 | 1 | 0 | 1 | 14 | |
| 32 | WADE,DEAN | f | 1-3 | 0-0 | 2-2 | 1 | 5 | 6 | 0 | 4 | 1 | 0 | 0 | 0 | 17 | |
| 01 | ERVIN II,CARLBE | | 0-1 | 0-1 | 0-0 | 0 | 0 | 0 | 2 | 0 | 0 | 2 | 0 | 0 | 8 | |
| 10 | MAURICE,ISAIAH | | 1-2 | 0-0 | 0-0 | 0 | 1 | 1 | 2 | 2 | 0 | 1 | 0 | 0 | 4 | |
| 11 | PATRICK,BRIAN | | 2-2 | 1-1 | 0-0 | 0 | 0 | 0 | 0 | 5 | 0 | 0 | 0 | 0 | 6 | |
| 12 | SCHOEN,MASON | | 0-0 | 0-0 | 0-0 | 0 | 0 | 0 | 0 | 0 | 0 | 0 | 0 | 0 | 0 | |
| 13 | WINTER,ZACH | | 0-0 | 0-0 | 0-0 | 0 | 0 | 0 | 0 | 0 | 0 | 0 | 0 | 0 | 0 | |
| 24 | MCATEE,PIERSON | | 0-0 | 0-0 | 0-0 | 0 | 0 | 0 | 0 | 0 | 0 | 0 | 0 | 0 | 0 | |
| 35 | BUDKE,AUSTIN | | 0-2 | 0-2 | 0-0 | 0 | 1 | 1 | 2 | 0 | 0 | 0 | 0 | 0 | 10 | |
| 45 | KINNAMON,KADE | | 0-0 | 0-0 | 0-0 | 0 | 0 | 0 | 0 | 0 | 0 | 0 | 0 | 0 | 0 | |
| TEAM | | | | | | 0 | 0 | 0 | 0 | | 0 | | | | | |
| Totals | | | | 9-26 | 4-12 | 12-18 | 2 | 16 | 18 | 12 | 34 | 5 | 6 | 0 | 3 | 100 |

FG % Half: 9-26 34.6%
 3FG % Half: 4-12 33.3%
 FT % Half: 12-18 66.7%

West Virginia 34 • 20-5/8-4

| ## | Player | S | Total | | | Rebounds | | | PF | TP | A | TO | Blk | Stl | Min | |
|--------|------------------|---|--------|------------|--------|----------|---------|---------|----|----|----|----|-----|-----|-----|-----|
| | | | FG-FGA | 3PT FG-FGA | FT-FTA | Off Reb | Def Reb | Tot Reb | | | | | | | | |
| 02 | CARTER,JEVON | g | 2-5 | 1-2 | 4-4 | 0 | 4 | 4 | 2 | 9 | 1 | 0 | 0 | 0 | 13 | |
| 11 | ADRIAN.NATHAN | f | 2-4 | 0-1 | 1-3 | 0 | 5 | 5 | 2 | 5 | 0 | 2 | 0 | 0 | 14 | |
| 12 | PHILLIP,TARIK | g | 1-5 | 0-0 | 0-0 | 1 | 0 | 1 | 1 | 2 | 2 | 1 | 0 | 1 | 15 | |
| 23 | AHMAD,ESA | f | 1-2 | 0-0 | 1-1 | 0 | 0 | 0 | 2 | 3 | 1 | 3 | 0 | 0 | 8 | |
| 45 | MACON,ELIJAH | f | 1-2 | 0-0 | 0-0 | 0 | 0 | 0 | 1 | 2 | 0 | 1 | 0 | 0 | 9 | |
| 00 | MYERS,TEYVON | | 1-2 | 0-0 | 0-0 | 0 | 1 | 1 | 0 | 2 | 1 | 0 | 0 | 0 | 6 | |
| 03 | BOLDEN,JAMES | | 2-4 | 1-1 | 0-0 | 0 | 1 | 1 | 0 | 5 | 0 | 0 | 0 | 0 | 6 | |
| 04 | MILES JR.,DAXTER | | 0-2 | 0-2 | 0-0 | 0 | 1 | 1 | 2 | 0 | 0 | 0 | 0 | 0 | 4 | |
| 13 | LONG,JAMES | | 0-0 | 0-0 | 0-0 | 0 | 0 | 0 | 0 | 0 | 0 | 0 | 0 | 0 | 0 | |
| 14 | HARLER,CHASE | | 0-0 | 0-0 | 0-0 | 0 | 0 | 0 | 0 | 0 | 0 | 0 | 0 | 0 | 0 | |
| 15 | WEST,LAMONT | | 1-3 | 0-1 | 0-0 | 1 | 6 | 7 | 1 | 2 | 0 | 0 | 0 | 0 | 12 | |
| 20 | WATKINS.BRANDON | | 1-1 | 0-0 | 0-0 | 1 | 1 | 2 | 2 | 2 | 0 | 0 | 0 | 0 | 3 | |
| 21 | ROUTT.LOGAN | | 0-0 | 0-0 | 0-0 | 0 | 0 | 0 | 0 | 0 | 0 | 0 | 0 | 0 | 0 | |
| 25 | BENDER,MACIEJ | | 0-0 | 0-0 | 0-0 | 0 | 0 | 0 | 1 | 0 | 0 | 0 | 0 | 0 | 2 | |
| 50 | KONATE,SAGABA | | 0-0 | 0-0 | 2-2 | 1 | 1 | 2 | 1 | 2 | 1 | 1 | 1 | 0 | 8 | |
| TEAM | | | | | | 0 | 0 | 0 | 0 | | 0 | | | | | |
| Totals | | | | 12-30 | 2-7 | 8-10 | 4 | 20 | 24 | 15 | 34 | 6 | 8 | 1 | 1 | 100 |

FG % Half: 12-30 40.0%
 3FG % Half: 2-7 28.6%
 FT % Half: 8-10 80.0%

Officials: Don Daily, James Breeding, Kerby Sitton
 Technical Fouls: Kansas State- None. West Virginia- None.

| Score by periods | 1st | 2nd | Total |
|------------------|-----|-----|-------|
| Kansas State | 34 | 32 | 66 |
| West Virginia | 34 | 51 | 85 |

| Points | In Paint | Off T/O | 2nd Chance | Fast Break | Bench |
|--------|----------|---------|------------|------------|-------|
| KS | 10 | 4 | 0 | 0 | 7 |
| WVU | 18 | 7 | 7 | 0 | 13 |

Last FG - KS 1st-02:46, WVU 1st-01:26.
 KS led for 12:01. WVU led for 4:47. Game was tied for 3:12.

Score tied - 5 times
 Lead changed - 2 times

Kansas State vs West Virginia
2/11/2017; Noon at WVU Coliseum, Morgntown, W.Va.
Period 1 Play-By-Play

| VISITORS: Kansas State | Time | Score | Margin | HOME: West Virginia |
|-----------------------------------|-------|-------|--------|--------------------------------------|
| GOOD! 3PTR by IWUNDU,WESLEY | 19:43 | 0-3 | V 3 | |
| ASSIST by SNEED,XAVIER | 19:43 | | | |
| | 19:21 | | | MISSED JUMPER by MACON,ELIJAH |
| REBOUND (DEF) by IWUNDU,WESLEY | 19:21 | | | |
| MISSED JUMPER by BROWN,BARRY | 19:06 | | | |
| | 19:06 | | | REBOUND (DEF) by CARTER,JEVON |
| | 18:55 | | | MISSED LAYUP by CARTER,JEVON |
| REBOUND (DEF) by WADE,DEAN | 18:55 | | | |
| TURNOVER by STOKES,KAMAU | 18:48 | | | |
| | 18:46 | | | STEAL by PHILLIP,TARIK |
| | 18:43 | | | MISSED LAYUP by PHILLIP,TARIK |
| | 18:43 | | | REBOUND (OFF) by PHILLIP,TARIK |
| | 18:41 | | | MISSED LAYUP by PHILLIP,TARIK |
| REBOUND (DEF) by BROWN,BARRY | 18:41 | | | |
| | 18:32 | | | FOUL by CARTER,JEVON |
| GOOD! FT by BROWN,BARRY | 18:32 | 0-4 | V 4 | |
| MISSED FT by BROWN,BARRY | 18:32 | | | |
| | 18:32 | | | REBOUND (DEF) by ADRIAN,NATHAN |
| | 18:32 | | | SUB IN: WEST,LAMONT |
| | 18:32 | | | SUB OUT: AHMAD,ESA |
| FOUL by STOKES,KAMAU | 18:15 | | | |
| | 18:14 | 2-4 | V 2 | GOOD! LAYUP by WEST,LAMONT [PNT] |
| | 18:14 | | | ASSIST by CARTER,JEVON |
| MISSED 3PTR by STOKES,KAMAU | 17:53 | | | |
| | 17:53 | | | REBOUND (DEF) by WEST,LAMONT |
| | 17:43 | | | TURNOVER by MACON,ELIJAH |
| | 17:43 | | | FOUL by MACON,ELIJAH |
| | 17:43 | | | SUB IN: WATKINS,BRANDON |
| | 17:43 | | | SUB OUT: MACON,ELIJAH |
| MISSED 3PTR by SNEED,XAVIER | 17:21 | | | |
| REBOUND (OFF) by WADE,DEAN | 17:21 | | | |
| MISSED 3PTR by BROWN,BARRY | 17:15 | | | |
| | 17:15 | | | REBOUND (DEF) by WATKINS,BRANDON |
| | 16:56 | | | MISSED LAYUP by PHILLIP,TARIK |
| REBOUND (DEF) by IWUNDU,WESLEY | 16:56 | | | |
| GOOD! 3PTR by SNEED,XAVIER | 16:50 | 2-7 | V 5 | |
| ASSIST by STOKES,KAMAU | 16:50 | | | |
| | 16:15 | | | MISSED LAYUP by PHILLIP,TARIK |
| | 16:15 | | | REBOUND (OFF) by WATKINS,BRANDON |
| | 16:13 | 4-7 | V 3 | GOOD! LAYUP by WATKINS,BRANDON [PNT] |
| TIMEOUT MEDIA | 15:53 | | | |
| | 15:53 | | | SUB IN: AHMAD,ESA |
| | 15:53 | | | SUB OUT: WEST,LAMONT |
| | 15:45 | | | FOUL by WATKINS,BRANDON |
| GOOD! LAYUP by SNEED,XAVIER [PNT] | 15:33 | 4-9 | V 5 | |
| | 15:19 | 6-9 | V 3 | GOOD! LAYUP by ADRIAN,NATHAN [PNT] |
| | 15:19 | | | ASSIST by AHMAD,ESA |
| FOUL by SNEED,XAVIER | 15:15 | | | |
| | 15:15 | | | MISSED FT by ADRIAN,NATHAN |
| REBOUND (DEF) by IWUNDU,WESLEY | 15:15 | | | |
| | 15:15 | | | SUB IN: KONATE,SAGABA |
| | 15:15 | | | SUB IN: MYERS,TEYVON |
| | 15:15 | | | SUB OUT: PHILLIP,TARIK |

| VISITORS: Kansas State | Time | Score | Margin | HOME: West Virginia |
|-------------------------------------|-------|-------|--------|-----------------------------------|
| | 15:15 | | | SUB OUT: WATKINS,BRANDON |
| MISSED LAYUP by WADE,DEAN | 14:56 | | | |
| | 14:56 | | | REBOUND (DEF) by ADRIAN,NATHAN |
| | 14:29 | | | TURNOVER by AHMAD,ESA |
| | 14:29 | | | FOUL by AHMAD,ESA |
| SUB IN: ERVIN II,CARLBE | 14:29 | | | |
| SUB IN: MAURICE,ISAIAH | 14:29 | | | |
| SUB OUT: BROWN,BARRY | 14:29 | | | |
| SUB OUT: SNEED,XAVIER | 14:29 | | | |
| GOOD! LAYUP by MAURICE,ISAIAH [PNT] | 14:18 | 6-11 | V 5 | |
| ASSIST by WADE,DEAN | 14:18 | | | |
| | 14:04 | | | MISSED 3PTR by CARTER,JEVON |
| REBOUND (DEF) by IWUNDU,WESLEY | 14:04 | | | |
| GOOD! LAYUP by IWUNDU,WESLEY [PNT] | 13:51 | 6-13 | V 7 | |
| | 13:51 | | | FOUL by ADRIAN,NATHAN |
| GOOD! FT by IWUNDU,WESLEY | 13:51 | 6-14 | V 8 | |
| SUB IN: BUDKE,AUSTIN | 13:51 | | | |
| SUB OUT: WADE,DEAN | 13:51 | | | |
| | 13:51 | | | SUB IN: WEST,LAMONT |
| | 13:51 | | | SUB OUT: ADRIAN,NATHAN |
| | 13:35 | | | MISSED 3PTR by WEST,LAMONT |
| REBOUND (DEF) by MAURICE,ISAIAH | 13:35 | | | |
| TURNOVER by IWUNDU,WESLEY | 13:07 | | | |
| FOUL by IWUNDU,WESLEY | 13:07 | | | |
| SUB IN: BROWN,BARRY | 13:07 | | | |
| SUB OUT: STOKES,KAMAU | 13:07 | | | |
| | 13:07 | | | SUB IN: MACON,ELIJAH |
| | 13:07 | | | SUB OUT: KONATE,SAGABA |
| | 12:44 | 8-14 | V 6 | GOOD! LAYUP by MYERS,TEYVON [PNT] |
| MISSED LAYUP by MAURICE,ISAIAH | 12:27 | | | |
| | 12:27 | | | REBOUND (DEF) by WEST,LAMONT |
| | 12:19 | | | TURNOVER by AHMAD,ESA |
| SUB IN: WADE,DEAN | 12:19 | | | |
| SUB IN: STOKES,KAMAU | 12:19 | | | |
| SUB OUT: MAURICE,ISAIAH | 12:19 | | | |
| SUB OUT: IWUNDU,WESLEY | 12:19 | | | |
| | 12:19 | | | SUB IN: BOLDEN,JAMES |
| | 12:19 | | | SUB OUT: CARTER,JEVON |
| MISSED 3PTR by STOKES,KAMAU | 12:05 | | | |
| | 12:05 | | | REBOUND (DEF) by MYERS,TEYVON |
| | 11:58 | 11-14 | V 3 | GOOD! 3PTR by BOLDEN,JAMES |
| | 11:58 | | | ASSIST by MYERS,TEYVON |
| TURNOVER by ERVIN II,CARLBE | 11:39 | | | |
| | 11:39 | | | TIMEOUT MEDIA |
| FOUL by SNEED,XAVIER | 11:39 | | | |
| SUB IN: SNEED,XAVIER | 11:39 | | | |
| SUB IN: IWUNDU,WESLEY | 11:39 | | | |
| SUB OUT: ERVIN II,CARLBE | 11:39 | | | |
| | 11:39 | | | SUB IN: PHILLIP,TARIK |
| | 11:39 | | | SUB OUT: MYERS,TEYVON |
| | 11:34 | | | TURNOVER by AHMAD,ESA |
| | 11:30 | | | SUB IN: ADRIAN,NATHAN |
| | 11:30 | | | SUB OUT: AHMAD,ESA |
| MISSED JUMPER by BROWN,BARRY | 11:14 | | | |
| | 11:14 | | | REBOUND (DEF) by ADRIAN,NATHAN |
| FOUL by STOKES,KAMAU | 11:02 | | | |
| | 11:02 | | | TURNOVER by ADRIAN,NATHAN |
| SUB IN: ERVIN II,CARLBE | 11:02 | | | |

| VISITORS: Kansas State | Time | Score | Margin | HOME: West Virginia |
|--------------------------------|-------|-------|--------|--------------------------------|
| SUB OUT: STOKES,KAMAU | 11:02 | | | |
| STEAL by IWUNDU,WESLEY | 10:59 | | | |
| MISSED LAYUP by IWUNDU,WESLEY | 10:51 | | | |
| | 10:51 | | | REBOUND (DEF) by ADRIAN,NATHAN |
| FOUL by BUDKE,AUSTIN | 10:36 | | | |
| FOUL by BUDKE,AUSTIN | 10:36 | | | |
| | 10:36 | | | MISSED FT by ADRIAN,NATHAN |
| REBOUND (DEF) by IWUNDU,WESLEY | 10:36 | | | |
| | 10:36 | | | SUB IN: WATKINS,BRANDON |
| | 10:36 | | | SUB OUT: MACON,ELIJAH |
| | 10:15 | | | FOUL by WATKINS,BRANDON |
| | 10:15 | | | SUB IN: KONATE,SAGABA |
| | 10:15 | | | SUB OUT: WATKINS,BRANDON |
| MISSED 3PTR by ERVIN II,CARLBE | 10:08 | | | |
| | 10:08 | | | REBOUND (DEF) by BOLDEN,JAMES |
| | 10:03 | 13-14 | V 1 | GOOD! JUMPER by BOLDEN,JAMES |
| MISSED 3PTR by BUDKE,AUSTIN | 09:27 | | | |
| REBOUND (OFF) by IWUNDU,WESLEY | 09:27 | | | |
| MISSED LAYUP by IWUNDU,WESLEY | 09:25 | | | |
| | 09:25 | | | REBOUND (DEF) by ADRIAN,NATHAN |
| | 09:14 | | | MISSED 3PTR by ADRIAN,NATHAN |
| | 09:14 | | | REBOUND (OFF) by WEST,LAMONT |
| FOUL by ERVIN II,CARLBE | 09:06 | | | |
| | 09:06 | 14-14 | T | GOOD! FT by KONATE,SAGABA |
| | 09:06 | 15-14 | H 1 | GOOD! FT by KONATE,SAGABA |
| | 09:06 | | | FOUL by MILES JR.,DAXTER |
| GOOD! FT by BROWN,BARRY | 09:06 | 15-15 | T | |
| MISSED FT by BROWN,BARRY | 09:06 | | | |
| | 09:06 | | | REBOUND (DEF) by CARTER,JEVON |
| SUB IN: MAURICE,ISAIAH | 09:06 | | | |
| SUB IN: PATRICK,BRIAN | 09:06 | | | |
| SUB OUT: BUDKE,AUSTIN | 09:06 | | | |
| SUB OUT: WADE,DEAN | 09:06 | | | |
| | 09:06 | | | SUB IN: CARTER,JEVON |
| | 09:06 | | | SUB IN: AHMAD,ESA |
| | 09:06 | | | SUB IN: MILES JR.,DAXTER |
| | 09:06 | | | SUB OUT: BOLDEN,JAMES |
| | 09:06 | | | SUB OUT: WEST,LAMONT |
| | 09:06 | | | SUB OUT: PHILLIP,TARIK |
| | 08:46 | | | MISSED JUMPER by AHMAD,ESA |
| REBOUND (DEF) by BROWN,BARRY | 08:46 | | | |
| | 08:44 | | | FOUL by MILES JR.,DAXTER |
| MISSED FT by BROWN,BARRY | 08:42 | | | |
| | 08:42 | | | REBOUND (DEF) by KONATE,SAGABA |
| | 08:42 | | | SUB IN: PHILLIP,TARIK |
| | 08:42 | | | SUB OUT: MILES JR.,DAXTER |
| | 08:22 | 17-15 | H 2 | GOOD! LAYUP by AHMAD,ESA [PNT] |
| | 08:22 | | | ASSIST by PHILLIP,TARIK |
| FOUL by MAURICE,ISAIAH | 08:22 | | | |
| | 08:22 | 18-15 | H 3 | GOOD! FT by AHMAD,ESA |
| TURNOVER by MAURICE,ISAIAH | 08:16 | | | |
| SUB IN: WADE,DEAN | 08:16 | | | |
| SUB OUT: MAURICE,ISAIAH | 08:16 | | | |
| | 07:57 | | | TIMEOUT MEDIA |
| FOUL by IWUNDU,WESLEY | 07:57 | | | |
| | 07:57 | 19-15 | H 4 | GOOD! FT by CARTER,JEVON |
| | 07:57 | 20-15 | H 5 | GOOD! FT by CARTER,JEVON |
| SUB OUT: IWUNDU,WESLEY | 07:57 | | | |

| VISITORS: Kansas State | Time | Score | Margin | HOME: West Virginia |
|--------------------------------|-------|-------|--------|-----------------------------------|
| TURNOVER by ERVIN II,CARLBE | 07:45 | | | |
| | 07:45 | | | SUB IN: MACON,ELIJAH |
| | 07:45 | | | SUB OUT: KONATE,SAGABA |
| | 07:24 | 23-15 | H 8 | GOOD! 3PTR by CARTER,JEVON |
| | 07:24 | | | ASSIST by PHILLIP,TARIK |
| MISSED 3PTR by SNEED,XAVIER | 06:52 | | | |
| | 06:52 | | | REBOUND (DEF) by CARTER,JEVON |
| SUB IN: STOKES,KAMAU | 06:50 | | | |
| SUB IN: IWUNDU,WESLEY | 06:50 | | | |
| SUB OUT: PATRICK,BRIAN | 06:50 | | | |
| SUB OUT: ERVIN II,CARLBE | 06:50 | | | |
| | 06:50 | | | SUB IN: BOLDEN,JAMES |
| | 06:50 | | | SUB OUT: PHILLIP,TARIK |
| | 06:42 | | | MISSED JUMPER by CARTER,JEVON |
| REBOUND (DEF) by IWUNDU,WESLEY | 06:42 | | | |
| | 06:35 | | | FOUL by AHMAD,ESA |
| MISSED FT by BROWN,BARRY | 06:35 | | | |
| REBOUND (DEADB) by TEAM | 06:35 | | | |
| MISSED FT by BROWN,BARRY | 06:35 | | | |
| | 06:35 | | | REBOUND (DEF) by CARTER,JEVON |
| | 06:35 | | | SUB IN: WEST,LAMONT |
| | 06:35 | | | SUB OUT: AHMAD,ESA |
| | 06:12 | | | MISSED JUMPER by BOLDEN,JAMES |
| REBOUND (DEF) by WADE,DEAN | 06:12 | | | |
| | 06:10 | | | FOUL by WEST,LAMONT |
| GOOD! FT by WADE,DEAN | 06:10 | 23-16 | H 7 | |
| GOOD! FT by WADE,DEAN | 06:10 | 23-17 | H 6 | |
| | 06:03 | 25-17 | H 8 | GOOD! LAYUP by CARTER,JEVON [PNT] |
| GOOD! DUNK by WADE,DEAN [PNT] | 05:44 | 25-19 | H 6 | |
| ASSIST by BROWN,BARRY | 05:44 | | | |
| | 05:23 | | | TURNOVER by ADRIAN,NATHAN |
| STEAL by BROWN,BARRY | 05:23 | | | |
| | 05:23 | | | FOUL by CARTER,JEVON |
| GOOD! FT by BROWN,BARRY | 05:23 | 25-20 | H 5 | |
| GOOD! FT by BROWN,BARRY | 05:23 | 25-21 | H 4 | |
| | 05:23 | | | SUB IN: BENDER,MACIEJ |
| | 05:23 | | | SUB IN: PHILLIP,TARIK |
| | 05:23 | | | SUB OUT: CARTER,JEVON |
| | 05:23 | | | SUB OUT: ADRIAN,NATHAN |
| | 05:05 | 27-21 | H 6 | GOOD! LAYUP by MACON,ELIJAH [PNT] |
| | 04:53 | | | FOUL by BENDER,MACIEJ |
| GOOD! FT by IWUNDU,WESLEY | 04:53 | 27-22 | H 5 | |
| MISSED FT by IWUNDU,WESLEY | 04:53 | | | |
| | 04:53 | | | REBOUND (DEF) by WEST,LAMONT |
| SUB IN: BUDKE,AUSTIN | 04:53 | | | |
| SUB OUT: SNEED,XAVIER | 04:53 | | | |
| | 04:53 | | | SUB IN: KONATE,SAGABA |
| | 04:53 | | | SUB OUT: MACON,ELIJAH |
| | 04:40 | | | MISSED LAYUP by WEST,LAMONT |
| REBOUND (DEF) by WADE,DEAN | 04:40 | | | |
| MISSED LAYUP by IWUNDU,WESLEY | 04:32 | | | |
| | 04:32 | | | BLOCK by KONATE,SAGABA |
| | 04:30 | | | REBOUND (DEF) by WEST,LAMONT |
| | 04:26 | | | MISSED LAYUP by BOLDEN,JAMES |
| REBOUND (DEF) by BUDKE,AUSTIN | 04:26 | | | |
| GOOD! 3PTR by IWUNDU,WESLEY | 04:18 | 27-25 | H 2 | |
| | 04:10 | | | TURNOVER by PHILLIP,TARIK |
| STEAL by BROWN,BARRY | 04:10 | | | |

| VISITORS: Kansas State | Time | Score | Margin | HOME: West Virginia |
|------------------------------------|-------|-------|--------|------------------------------------|
| SUB IN: PATRICK,BRIAN | 04:10 | | | |
| SUB OUT: IWUNDU,WESLEY | 04:10 | | | |
| | 04:10 | | | SUB IN: MYERS,TEYVON |
| | 04:10 | | | SUB OUT: BOLDEN,JAMES |
| MISSED LAYUP by WADE,DEAN | 04:03 | | | |
| | 04:03 | | | REBOUND (DEF) by WEST,LAMONT |
| | 03:43 | | | MISSED JUMPER by MYERS,TEYVON |
| REBOUND (DEF) by STOKES,KAMAU | 03:43 | | | |
| GOOD! LAYUP by PATRICK,BRIAN [PNT] | 03:35 | 27-27 | T | |
| | 03:16 | | | TURNOVER by KONATE,SAGABA |
| | 03:16 | | | FOUL by KONATE,SAGABA |
| TIMEOUT MEDIA | 03:16 | | | |
| | 03:16 | | | SUB IN: MILES JR.,DAXTER |
| | 03:16 | | | SUB IN: ADRIAN,NATHAN |
| | 03:16 | | | SUB OUT: BENDER,MACIEJ |
| | 03:16 | | | SUB OUT: WEST,LAMONT |
| MISSED LAYUP by STOKES,KAMAU | 03:03 | | | |
| | 03:03 | | | REBOUND (DEF) by MILES JR.,DAXTER |
| | 02:56 | | | MISSED 3PTR by MILES JR.,DAXTER |
| REBOUND (DEF) by WADE,DEAN | 02:56 | | | |
| GOOD! 3PTR by PATRICK,BRIAN | 02:46 | 27-30 | V 3 | |
| ASSIST by BROWN,BARRY | 02:46 | | | |
| | 02:14 | 29-30 | V 1 | GOOD! LAYUP by PHILLIP,TARIK [PNT] |
| | 01:58 | | | FOUL by PHILLIP,TARIK |
| GOOD! FT by BROWN,BARRY | 01:58 | 29-31 | V 2 | |
| GOOD! FT by BROWN,BARRY | 01:58 | 29-32 | V 3 | |
| SUB IN: MAURICE,ISAIAH | 01:58 | | | |
| SUB IN: ERVIN II,CARLBE | 01:58 | | | |
| SUB OUT: WADE,DEAN | 01:58 | | | |
| SUB OUT: STOKES,KAMAU | 01:58 | | | |
| | 01:58 | | | SUB IN: CARTER,JEVON |
| | 01:58 | | | SUB OUT: MYERS,TEYVON |
| | 01:31 | | | MISSED LAYUP by ADRIAN,NATHAN |
| | 01:31 | | | REBOUND (OFF) by KONATE,SAGABA |
| | 01:26 | 31-32 | V 1 | GOOD! LAYUP by ADRIAN,NATHAN [PNT] |
| | 01:26 | | | ASSIST by KONATE,SAGABA |
| FOUL by MAURICE,ISAIAH | 01:26 | | | |
| | 01:26 | 32-32 | T | GOOD! FT by ADRIAN,NATHAN |
| SUB IN: STOKES,KAMAU | 01:26 | | | |
| SUB IN: WADE,DEAN | 01:26 | | | |
| SUB OUT: MAURICE,ISAIAH | 01:26 | | | |
| SUB OUT: ERVIN II,CARLBE | 01:26 | | | |
| | 01:26 | | | SUB IN: MACON,ELIJAH |
| | 01:26 | | | SUB OUT: KONATE,SAGABA |
| | 01:21 | | | FOUL by ADRIAN,NATHAN |
| GOOD! FT by STOKES,KAMAU | 01:21 | 32-33 | V 1 | |
| GOOD! FT by STOKES,KAMAU | 01:21 | 32-34 | V 2 | |
| SUB IN: ERVIN II,CARLBE | 01:21 | | | |
| SUB OUT: STOKES,KAMAU | 01:21 | | | |
| FOUL by ERVIN II,CARLBE | 01:17 | | | |
| | 01:17 | 33-34 | V 1 | GOOD! FT by CARTER,JEVON |
| | 01:17 | 34-34 | T | GOOD! FT by CARTER,JEVON |
| SUB IN: STOKES,KAMAU | 01:17 | | | |
| SUB OUT: ERVIN II,CARLBE | 01:17 | | | |
| | 01:17 | | | SUB IN: WEST,LAMONT |
| | 01:17 | | | SUB OUT: ADRIAN,NATHAN |
| TURNOVER by BROWN,BARRY | 00:52 | | | |
| SUB IN: ERVIN II,CARLBE | 00:52 | | | |

| VISITORS: Kansas State | Time | Score | Margin | HOME: West Virginia |
|-----------------------------|-------|-------|--------|---------------------------------|
| SUB OUT: STOKES,KAMAU | 00:52 | | | |
| | 00:28 | | | MISSED 3PTR by MILES JR.,DAXTER |
| REBOUND (DEF) by WADE,DEAN | 00:28 | | | |
| MISSED 3PTR by BUDKE,AUSTIN | 00:02 | | | |
| | 00:02 | | | REBOUND (DEF) by WEST,LAMONT |

Kansas State 34, West Virginia 34

| Period 1-only | In Paint | Off T/O | 2nd Chance | Fast Break | Bench | |
|---------------|-------------|------------|---------------|---------------|-------|------------------------|
| KS | 10 | 4 | 0 | 0 | 7 | Score tied - 4 times |
| WVU | 18 | 7 | 7 | 0 | 13 | Lead changed - 2 times |

Official Basketball Box Score -- Game Totals -- Second Half Statistics
Kansas State vs West Virginia
2/11/2017 Noon at WVU Coliseum, Morgntown, W.Va.

Kansas State 32 • 16-9/5-7

| ## | Player | S | Total | | | Rebounds | | | PF | TP | A | TO | Blk | Stl | Min | |
|--------|-----------------|---|--------|-----|--------|----------|---------|---------|----|----|----|----|-----|-----|-----|---------|
| | | | FG-FGA | 3PT | FG-FGA | FT-FTA | Off Reb | Def Reb | | | | | | | | Tot Reb |
| 03 | STOKES,KAMAU | g | 1-3 | | 0-1 | 8-10 | 0 | 1 | 1 | 2 | 10 | 0 | 3 | 0 | 0 | 13 |
| 05 | BROWN,BARRY | g | 0-2 | | 0-1 | 4-5 | 0 | 2 | 2 | 3 | 4 | 1 | 2 | 0 | 3 | 14 |
| 20 | SNEED,XAVIER | f | 2-4 | | 1-2 | 0-0 | 1 | 0 | 1 | 2 | 5 | 0 | 2 | 0 | 0 | 11 |
| 25 | IWUNDU,WESLEY | f | 1-1 | | 0-0 | 2-2 | 0 | 1 | 1 | 1 | 4 | 0 | 5 | 0 | 2 | 15 |
| 32 | WADE,DEAN | f | 0-3 | | 0-2 | 1-2 | 1 | 1 | 2 | 2 | 1 | 1 | 1 | 0 | 0 | 16 |
| 01 | ERVIN II,CARLBE | | 0-0 | | 0-0 | 0-0 | 0 | 0 | 0 | 1 | 0 | 0 | 0 | 0 | 0 | 2 |
| 10 | MAURICE,ISAIAH | | 0-0 | | 0-0 | 0-0 | 0 | 0 | 0 | 0 | 0 | 0 | 0 | 0 | 0 | 2 |
| 11 | PATRICK,BRIAN | | 2-2 | | 2-2 | 0-0 | 0 | 0 | 0 | 0 | 6 | 1 | 0 | 0 | 1 | 12 |
| 12 | SCHOEN,MASON | | 0-1 | | 0-0 | 0-0 | 0 | 0 | 0 | 0 | 0 | 0 | 0 | 0 | 0 | 2 |
| 13 | WINTER,ZACH | | 0-1 | | 0-1 | 0-0 | 0 | 0 | 0 | 0 | 0 | 2 | 0 | 0 | 0 | 2 |
| 24 | MCATEE,PIERSON | | 0-0 | | 0-0 | 0-0 | 0 | 0 | 0 | 0 | 0 | 0 | 0 | 0 | 0 | 2 |
| 35 | BUDKE,AUSTIN | | 1-3 | | 0-0 | 0-3 | 1 | 0 | 1 | 0 | 2 | 0 | 0 | 0 | 0 | 7 |
| 45 | KINNAMON,KADE | | 0-0 | | 0-0 | 0-0 | 0 | 0 | 0 | 1 | 0 | 0 | 0 | 0 | 0 | 2 |
| TEAM | | | | | | | 0 | 0 | 0 | 0 | | 0 | | | | |
| Totals | | | | | | | 3 | 5 | 8 | 12 | 32 | 5 | 13 | 0 | 6 | 100 |

FG % Half: 7-20 35.0%
 3FG % Half: 3-9 33.3%
 FT % Half: 15-22 68.2%

West Virginia 51 • 20-5/8-4

| ## | Player | S | Total | | | Rebounds | | | PF | TP | A | TO | Blk | Stl | Min | |
|--------|------------------|---|--------|-----|--------|----------|---------|---------|----|----|----|----|-----|-----|-----|---------|
| | | | FG-FGA | 3PT | FG-FGA | FT-FTA | Off Reb | Def Reb | | | | | | | | Tot Reb |
| 02 | CARTER,JEVON | g | 4-6 | | 1-2 | 1-1 | 1 | 4 | 5 | 0 | 10 | 1 | 4 | 0 | 2 | 18 |
| 11 | ADRIAN.NATHAN | f | 1-1 | | 0-0 | 0-0 | 0 | 0 | 0 | 2 | 2 | 0 | 0 | 0 | 1 | 5 |
| 12 | PHILLIP,TARIK | g | 1-7 | | 0-1 | 3-4 | 2 | 1 | 3 | 2 | 5 | 4 | 3 | 0 | 1 | 18 |
| 23 | AHMAD,ESA | f | 4-4 | | 0-0 | 0-0 | 0 | 1 | 1 | 1 | 8 | 2 | 0 | 1 | 0 | 11 |
| 45 | MACON,ELIJAH | f | 2-2 | | 0-0 | 2-2 | 1 | 2 | 3 | 3 | 6 | 0 | 0 | 0 | 0 | 7 |
| 00 | MYERS,TEYVON | | 1-4 | | 0-0 | 0-0 | 1 | 2 | 3 | 1 | 2 | 2 | 2 | 0 | 0 | 5 |
| 03 | BOLDEN,JAMES | | 1-1 | | 1-1 | 1-2 | 0 | 1 | 1 | 0 | 4 | 0 | 0 | 0 | 0 | 2 |
| 04 | MILES JR.,DAXTER | | 0-0 | | 0-0 | 2-2 | 0 | 0 | 0 | 1 | 2 | 0 | 0 | 0 | 1 | 8 |
| 13 | LONG,JAMES | | 0-0 | | 0-0 | 0-0 | 0 | 0 | 0 | 0 | 0 | 0 | 0 | 0 | 0 | 2 |
| 14 | HARLER,CHASE | | 0-1 | | 0-1 | 0-0 | 0 | 0 | 0 | 0 | 0 | 0 | 0 | 0 | 0 | 2 |
| 15 | WEST,LAMONT | | 2-2 | | 0-0 | 0-0 | 1 | 1 | 2 | 2 | 4 | 0 | 0 | 0 | 0 | 7 |
| 20 | WATKINS,BRANDON | | 1-2 | | 0-0 | 0-0 | 1 | 0 | 1 | 0 | 2 | 0 | 0 | 0 | 0 | 6 |
| 21 | ROUTT,LOGAN | | 1-1 | | 0-0 | 0-0 | 1 | 0 | 1 | 0 | 2 | 0 | 0 | 0 | 0 | 2 |
| 25 | BENDER,MACIEJ | | 0-0 | | 0-0 | 0-0 | 0 | 1 | 1 | 0 | 0 | 0 | 0 | 0 | 0 | 2 |
| 50 | KONATE,SAGABA | | 2-3 | | 0-0 | 0-0 | 1 | 1 | 2 | 2 | 4 | 0 | 0 | 0 | 0 | 5 |
| TEAM | | | | | | | 0 | 0 | 0 | 1 | | 1 | | | | |
| Totals | | | | | | | 9 | 14 | 23 | 15 | 51 | 9 | 10 | 1 | 5 | 100 |

FG % Half: 20-34 58.8%
 3FG % Half: 2-5 28.6%
 FT % Half: 9-11 81.8%

Officials: Don Daily, James Breeding, Kerby Sitton
 Technical Fouls: Kansas State- None. West Virginia- MACON,ELIJAH; TEAM;

| Score by periods | 1st | 2nd | Total |
|------------------|-----|-----|-------|
| Kansas State | 34 | 32 | 66 |
| West Virginia | 34 | 51 | 85 |

| Points | In Paint | Off T/O | 2nd Chance | Fast Break | Bench |
|--------|----------|---------|------------|------------|-------|
| KS | 8 | 5 | 2 | 2 | 8 |
| WVU | 32 | 18 | 8 | 4 | 20 |

Last FG - KS 2nd-00:33, WVU 2nd-00:55.
 KS led for 2:13. WVU led for 17:27. Game was tied for 0:20.

Score tied - 0 times
 Lead changed - 1 times

Kansas State vs West Virginia
2/11/2017; Noon at WVU Coliseum, Morgntown, W.Va.
Period 2 Play-By-Play

| VISITORS: Kansas State | Time | Score | Margin | HOME: West Virginia |
|--------------------------------|-------|-------|--------|-------------------------------------|
| | 20:00 | | | SUB IN: WEST,LAMONT |
| | 20:00 | | | SUB OUT: ADRIAN,NATHAN |
| GOOD! 3PTR by SNEED,XAVIER | 19:40 | 34-37 | V 3 | |
| ASSIST by WADE,DEAN | 19:40 | | | |
| | 19:17 | | | TURNOVER by PHILLIP,TARIK |
| STEAL by BROWN,BARRY | 19:16 | | | |
| TURNOVER by BROWN,BARRY | 19:13 | | | |
| | 19:01 | 36-37 | V 1 | GOOD! JUMPER by AHMAD,ESA |
| | 18:37 | | | FOUL (TECH) by TEAM |
| | 18:37 | | | FOUL by TEAM |
| GOOD! FT by STOKES,KAMAU | 18:37 | 36-38 | V 2 | |
| GOOD! FT by STOKES,KAMAU | 18:37 | 36-39 | V 3 | |
| MISSED 3PTR by WADE,DEAN | 18:27 | | | |
| | 18:27 | | | REBOUND (DEF) by CARTER,JEVON |
| | 18:13 | | | MISSED LAYUP by CARTER,JEVON |
| REBOUND (DEF) by IWUNDU,WESLEY | 18:13 | | | |
| | 18:02 | | | FOUL by WEST,LAMONT |
| | 18:02 | | | FOUL by MACON,ELIJAH |
| | 18:02 | | | SUB IN: ADRIAN,NATHAN |
| | 18:02 | | | SUB IN: KONATE,SAGABA |
| | 18:02 | | | SUB OUT: WEST,LAMONT |
| | 18:02 | | | SUB OUT: MACON,ELIJAH |
| TURNOVER by IWUNDU,WESLEY | 17:48 | | | |
| | 17:47 | | | STEAL by ADRIAN,NATHAN |
| | 17:43 | 38-39 | V 1 | GOOD! DUNK by AHMAD,ESA [FB/PNT] |
| | 17:43 | | | ASSIST by CARTER,JEVON |
| TURNOVER by IWUNDU,WESLEY | 17:35 | | | |
| | 17:27 | 40-39 | H 1 | GOOD! DUNK by KONATE,SAGABA [PNT] |
| | 17:27 | | | ASSIST by PHILLIP,TARIK |
| MISSED 3PTR by BROWN,BARRY | 17:02 | | | |
| | 17:02 | | | REBOUND (DEF) by AHMAD,ESA |
| | 16:55 | | | MISSED LAYUP by PHILLIP,TARIK |
| | 16:55 | | | REBOUND (OFF) by KONATE,SAGABA |
| | 16:52 | 42-39 | H 3 | GOOD! LAYUP by KONATE,SAGABA [PNT] |
| TIMEOUT 30SEC | 16:50 | | | |
| SUB IN: BUDKE,AUSTIN | 16:50 | | | |
| SUB OUT: WADE,DEAN | 16:50 | | | |
| TURNOVER by SNEED,XAVIER | 16:35 | | | |
| FOUL by SNEED,XAVIER | 16:35 | | | |
| | 16:21 | 44-39 | H 5 | GOOD! JUMPER by ADRIAN,NATHAN [PNT] |
| | 16:21 | | | ASSIST by AHMAD,ESA |
| | 15:59 | | | FOUL by AHMAD,ESA |
| TIMEOUT MEDIA | 15:59 | | | |
| SUB IN: WADE,DEAN | 15:59 | | | |
| SUB OUT: SNEED,XAVIER | 15:59 | | | |
| | 15:59 | | | SUB IN: BOLDEN,JAMES |
| | 15:59 | | | SUB OUT: AHMAD,ESA |
| | 15:48 | | | FOUL by ADRIAN,NATHAN |
| GOOD! FT by STOKES,KAMAU | 15:48 | 44-40 | H 4 | |
| MISSED FT by STOKES,KAMAU | 15:48 | | | |
| | 15:48 | | | REBOUND (DEF) by WEST,LAMONT |
| | 15:48 | | | SUB IN: WEST,LAMONT |
| | 15:48 | | | SUB IN: MILES JR.,DAXTER |

| VISITORS: Kansas State | Time | Score | Margin | HOME: West Virginia |
|-----------------------------------|-------|-------|--------|----------------------------------|
| | 15:48 | | | SUB OUT: ADRIAN,NATHAN |
| | 15:48 | | | SUB OUT: BOLDEN,JAMES |
| | 15:28 | | | TURNOVER by PHILLIP,TARIK |
| TURNOVER by STOKES,KAMAU | 15:18 | | | |
| FOUL by STOKES,KAMAU | 15:18 | | | |
| FOUL by IWUNDU,WESLEY | 15:00 | | | |
| SUB IN: ERVIN II,CARLBE | 15:00 | | | |
| SUB OUT: STOKES,KAMAU | 15:00 | | | |
| FOUL by ERVIN II,CARLBE | 14:53 | | | |
| | 14:53 | 45-40 | H 5 | GOOD! FT by MILES JR.,DAXTER |
| | 14:53 | 46-40 | H 6 | GOOD! FT by MILES JR.,DAXTER |
| | 14:36 | | | FOUL by KONATE,SAGABA |
| MISSED FT by BUDKE,AUSTIN | 14:36 | | | |
| REBOUND (DEADB) by TEAM | 14:36 | | | |
| MISSED FT by BUDKE,AUSTIN | 14:36 | | | |
| | 14:36 | | | REBOUND (DEF) by PHILLIP,TARIK |
| | 14:36 | | | SUB IN: WATKINS,BRANDON |
| | 14:36 | | | SUB OUT: KONATE,SAGABA |
| FOUL by WADE,DEAN | 14:14 | | | |
| | 14:14 | 47-40 | H 7 | GOOD! FT by PHILLIP,TARIK |
| | 14:14 | 48-40 | H 8 | GOOD! FT by PHILLIP,TARIK |
| SUB IN: PATRICK,BRIAN | 14:14 | | | |
| SUB IN: STOKES,KAMAU | 14:14 | | | |
| SUB OUT: ERVIN II,CARLBE | 14:14 | | | |
| SUB OUT: IWUNDU,WESLEY | 14:14 | | | |
| | 14:07 | | | FOUL by PHILLIP,TARIK |
| GOOD! FT by BROWN,BARRY | 14:07 | 48-41 | H 7 | |
| GOOD! FT by BROWN,BARRY | 14:07 | 48-42 | H 6 | |
| | 13:52 | | | MISSED LAYUP by PHILLIP,TARIK |
| | 13:52 | | | REBOUND (OFF) by PHILLIP,TARIK |
| | 13:51 | | | MISSED LAYUP by PHILLIP,TARIK |
| | 13:51 | | | REBOUND (OFF) by CARTER,JEVON |
| | 13:44 | | | TURNOVER by CARTER,JEVON |
| STEAL by BROWN,BARRY | 13:43 | | | |
| TURNOVER by STOKES,KAMAU | 13:42 | | | |
| | 13:41 | | | STEAL by MILES JR.,DAXTER |
| | 13:19 | | | MISSED LAYUP by PHILLIP,TARIK |
| | 13:19 | | | REBOUND (OFF) by PHILLIP,TARIK |
| | 13:17 | | | MISSED LAYUP by PHILLIP,TARIK |
| | 13:17 | | | REBOUND (OFF) by WEST,LAMONT |
| | 13:15 | 50-42 | H 8 | GOOD! LAYUP by WEST,LAMONT [PNT] |
| MISSED LAYUP by BUDKE,AUSTIN | 13:13 | | | |
| REBOUND (OFF) by WADE,DEAN | 13:13 | | | |
| MISSED LAYUP by WADE,DEAN | 13:05 | | | |
| REBOUND (OFF) by BUDKE,AUSTIN | 13:05 | | | |
| GOOD! LAYUP by BUDKE,AUSTIN [PNT] | 13:03 | 50-44 | H 6 | |
| FOUL by STOKES,KAMAU | 12:49 | | | |
| SUB IN: IWUNDU,WESLEY | 12:49 | | | |
| SUB IN: SNEED,XAVIER | 12:49 | | | |
| SUB OUT: BROWN,BARRY | 12:49 | | | |
| SUB OUT: STOKES,KAMAU | 12:49 | | | |
| | 12:49 | | | SUB IN: MACON,ELIJAH |
| | 12:49 | | | SUB OUT: WATKINS,BRANDON |
| FOUL by SNEED,XAVIER | 12:44 | | | |
| | 12:44 | | | MISSED FT by PHILLIP,TARIK |
| | 12:44 | | | REBOUND (DEADB) by TEAM |
| | 12:44 | 51-44 | H 7 | GOOD! FT by PHILLIP,TARIK |
| SUB IN: BROWN,BARRY | 12:44 | | | |

| VISITORS: Kansas State | Time | Score | Margin | HOME: West Virginia |
|-----------------------------|-------|-------|--------|--------------------------------------|
| SUB OUT: SNEED,XAVIER | 12:44 | | | |
| | 12:27 | | | FOUL by MILES JR.,DAXTER |
| MISSED FT by BUDKE,AUSTIN | 12:27 | | | |
| | 12:27 | | | REBOUND (DEF) by MACON,ELIJAH |
| | 12:27 | | | SUB IN: MYERS,TEYVON |
| | 12:27 | | | SUB OUT: MILES JR.,DAXTER |
| | 12:03 | 53-44 | H 9 | GOOD! LAYUP by WEST,LAMONT [PNT] |
| | 12:03 | | | ASSIST by MYERS,TEYVON |
| TURNOVER by WADE,DEAN | 11:51 | | | |
| | 11:51 | | | STEAL by CARTER,JEVON |
| FOUL by WADE,DEAN | 11:50 | | | |
| | 11:50 | | | TIMEOUT MEDIA |
| | 11:27 | | | MISSED 3PTR by PHILLIP,TARIK |
| | 11:27 | | | REBOUND (OFF) by MACON,ELIJAH |
| | 11:25 | 55-44 | H 11 | GOOD! LAYUP by MACON,ELIJAH [PNT] |
| | 11:21 | | | FOUL by MYERS,TEYVON |
| MISSED FT by BROWN,BARRY | 11:21 | | | |
| | 11:21 | | | REBOUND (DEF) by CARTER,JEVON |
| SUB IN: MAURICE,ISAIAH | 11:21 | | | |
| SUB OUT: BUDKE,AUSTIN | 11:21 | | | |
| | 11:09 | 57-44 | H 13 | GOOD! LAYUP by MYERS,TEYVON [PNT] |
| | 10:47 | | | FOUL by WEST,LAMONT |
| | 10:47 | | | FOUL (TECH) by MACON,ELIJAH |
| | 10:47 | | | FOUL by MACON,ELIJAH |
| GOOD! FT by STOKES,KAMAU | 10:47 | 57-45 | H 12 | |
| GOOD! FT by STOKES,KAMAU | 10:47 | 57-46 | H 11 | |
| GOOD! FT by IWUNDU,WESLEY | 10:47 | 57-47 | H 10 | |
| GOOD! FT by IWUNDU,WESLEY | 10:47 | 57-48 | H 9 | |
| SUB IN: STOKES,KAMAU | 10:47 | | | |
| SUB OUT: BROWN,BARRY | 10:47 | | | |
| | 10:47 | | | SUB IN: ADRIAN,NATHAN |
| | 10:47 | | | SUB IN: KONATE,SAGABA |
| | 10:47 | | | SUB OUT: WEST,LAMONT |
| | 10:47 | | | SUB OUT: MACON,ELIJAH |
| | 10:34 | 60-48 | H 12 | GOOD! 3PTR by CARTER,JEVON |
| | 10:34 | | | ASSIST by PHILLIP,TARIK |
| | 10:29 | | | FOUL by KONATE,SAGABA |
| MISSED FT by WADE,DEAN | 10:29 | | | |
| REBOUND (DEADB) by TEAM | 10:29 | | | |
| GOOD! FT by WADE,DEAN | 10:29 | 60-49 | H 11 | |
| | 10:29 | | | SUB IN: WATKINS,BRANDON |
| | 10:29 | | | SUB OUT: KONATE,SAGABA |
| | 10:16 | | | TURNOVER by MYERS,TEYVON |
| TURNOVER by STOKES,KAMAU | 10:13 | | | |
| | 10:01 | 62-49 | H 13 | GOOD! JUMPER by CARTER,JEVON |
| TURNOVER by IWUNDU,WESLEY | 09:52 | | | |
| | 09:51 | | | STEAL by CARTER,JEVON |
| | 09:48 | | | TIMEOUT 30SEC |
| SUB IN: BROWN,BARRY | 09:48 | | | |
| SUB OUT: PATRICK,BRIAN | 09:48 | | | |
| | 09:34 | | | TURNOVER by CARTER,JEVON |
| STEAL by BROWN,BARRY | 09:33 | | | |
| MISSED LAYUP by BROWN,BARRY | 09:29 | | | |
| | 09:29 | | | REBOUND (DEF) by MYERS,TEYVON |
| | 09:13 | 64-49 | H 15 | GOOD! LAYUP by WATKINS,BRANDON [PNT] |
| | 09:13 | | | ASSIST by MYERS,TEYVON |
| | 09:05 | | | FOUL by PHILLIP,TARIK |
| GOOD! FT by BROWN,BARRY | 09:05 | 64-50 | H 14 | |

| VISITORS: Kansas State | Time | Score | Margin | HOME: West Virginia |
|---------------------------------------|-------|-------|--------|-----------------------------------|
| GOOD! FT by BROWN,BARRY | 09:05 | 64-51 | H 13 | |
| | 09:05 | | | MISSED LAYUP by MYERS,TEYVON |
| | 09:05 | | | REBOUND (OFF) by WATKINS,BRANDON |
| SUB IN: SNEED,XAVIER | 09:05 | | | |
| SUB OUT: MAURICE,ISAIAH | 09:05 | | | |
| | 08:43 | | | MISSED LAYUP by WATKINS,BRANDON |
| REBOUND (DEF) by STOKES,KAMAU | 08:43 | | | |
| | 08:43 | | | FOUL by ADRIAN,NATHAN |
| MISSED FT by STOKES,KAMAU | 08:43 | | | |
| REBOUND (DEADB) by TEAM | 08:43 | | | |
| GOOD! FT by STOKES,KAMAU | 08:43 | 64-52 | H 12 | |
| SUB IN: ERVIN II,CARLBE | 08:43 | | | |
| SUB OUT: STOKES,KAMAU | 08:43 | | | |
| | 08:43 | | | SUB IN: AHMAD,ESA |
| | 08:43 | | | SUB OUT: ADRIAN,NATHAN |
| | 08:30 | 66-52 | H 14 | GOOD! DUNK by AHMAD,ESA [PNT] |
| | 08:30 | | | ASSIST by PHILLIP,TARIK |
| SUB IN: STOKES,KAMAU | 08:28 | | | |
| SUB OUT: ERVIN II,CARLBE | 08:28 | | | |
| MISSED 3PTR by SNEED,XAVIER | 08:14 | | | |
| | 08:14 | | | REBOUND (DEF) by MYERS,TEYVON |
| | 08:03 | | | MISSED LAYUP by MYERS,TEYVON |
| | 08:03 | | | REBOUND (OFF) by MYERS,TEYVON |
| | 08:01 | | | MISSED LAYUP by MYERS,TEYVON |
| REBOUND (DEF) by BROWN,BARRY | 08:01 | | | |
| TURNOVER by BROWN,BARRY | 07:58 | | | |
| FOUL by BROWN,BARRY | 07:58 | | | |
| | 07:58 | | | TIMEOUT media |
| SUB IN: PATRICK,BRIAN | 07:58 | | | |
| SUB OUT: STOKES,KAMAU | 07:58 | | | |
| | 07:55 | | | TURNOVER by CARTER,JEVON |
| STEAL by PATRICK,BRIAN | 07:55 | | | |
| GOOD! LAYUP by IWUNDU,WESLEY [FB/PNT] | 07:49 | 66-54 | H 12 | |
| ASSIST by PATRICK,BRIAN | 07:49 | | | |
| | 07:27 | 68-54 | H 14 | GOOD! LAYUP by CARTER,JEVON [PNT] |
| GOOD! DUNK by SNEED,XAVIER [PNT] | 07:09 | 68-56 | H 12 | |
| ASSIST by BROWN,BARRY | 07:09 | | | |
| | 06:49 | | | TURNOVER by MYERS,TEYVON |
| STEAL by IWUNDU,WESLEY | 06:48 | | | |
| SUB IN: STOKES,KAMAU | 06:44 | | | |
| SUB OUT: PATRICK,BRIAN | 06:44 | | | |
| | 06:44 | | | SUB IN: MILES JR.,DAXTER |
| | 06:44 | | | SUB IN: MACON,ELIJAH |
| | 06:44 | | | SUB OUT: MYERS,TEYVON |
| | 06:44 | | | SUB OUT: WATKINS,BRANDON |
| MISSED 3PTR by STOKES,KAMAU | 06:42 | | | |
| REBOUND (OFF) by SNEED,XAVIER | 06:42 | | | |
| MISSED DUNK by SNEED,XAVIER | 06:38 | | | |
| | 06:38 | | | REBOUND (DEF) by CARTER,JEVON |
| FOUL by BROWN,BARRY | 06:17 | | | |
| | 06:17 | 69-56 | H 13 | GOOD! FT by MACON,ELIJAH |
| | 06:17 | 70-56 | H 14 | GOOD! FT by MACON,ELIJAH |
| SUB IN: PATRICK,BRIAN | 06:17 | | | |
| SUB OUT: BROWN,BARRY | 06:17 | | | |
| | 06:17 | | | SUB IN: KONATE,SAGABA |
| | 06:17 | | | SUB OUT: MACON,ELIJAH |
| MISSED 3PTR by WADE,DEAN | 05:58 | | | |
| | 05:58 | | | REBOUND (DEF) by KONATE,SAGABA |

| VISITORS: Kansas State | Time | Score | Margin | HOME: West Virginia |
|-----------------------------------|-------|-------|--------|--------------------------------------|
| | 05:34 | | | MISSED JUMPER by KONATE,SAGABA |
| REBOUND (DEF) by WADE,DEAN | 05:34 | | | |
| TURNOVER by SNEED,XAVIER | 05:28 | | | |
| | 05:28 | | | STEAL by PHILLIP,TARIK |
| | 05:28 | | | SUB IN: MACON,ELIJAH |
| | 05:28 | | | SUB OUT: KONATE,SAGABA |
| | 05:18 | | | TURNOVER by PHILLIP,TARIK |
| STEAL by IWUNDU,WESLEY | 05:17 | | | |
| TURNOVER by IWUNDU,WESLEY | 05:13 | | | |
| TIMEOUT TEAM | 05:13 | | | |
| | 04:48 | 72-56 | H 16 | GOOD! LAYUP by PHILLIP,TARIK [PNT] |
| GOOD! LAYUP by STOKES,KAMAU [PNT] | 04:26 | 72-58 | H 14 | |
| | 04:04 | 74-58 | H 16 | GOOD! DUNK by AHMAD,ESA [PNT] |
| | 04:04 | | | ASSIST by PHILLIP,TARIK |
| | 03:52 | | | FOUL by MACON,ELIJAH |
| TIMEOUT media | 03:52 | | | |
| GOOD! FT by STOKES,KAMAU | 03:52 | 74-59 | H 15 | |
| GOOD! FT by STOKES,KAMAU | 03:52 | 74-60 | H 14 | |
| SUB IN: BUDKE,AUSTIN | 03:52 | | | |
| SUB IN: ERVIN II,CARLBE | 03:52 | | | |
| SUB OUT: WADE,DEAN | 03:52 | | | |
| SUB OUT: STOKES,KAMAU | 03:52 | | | |
| | 03:41 | 76-60 | H 16 | GOOD! DUNK by MACON,ELIJAH [PNT] |
| | 03:41 | | | ASSIST by AHMAD,ESA |
| TURNOVER by IWUNDU,WESLEY | 03:13 | | | |
| SUB IN: BROWN,BARRY | 03:13 | | | |
| SUB IN: STOKES,KAMAU | 03:13 | | | |
| SUB OUT: IWUNDU,WESLEY | 03:13 | | | |
| SUB OUT: ERVIN II,CARLBE | 03:13 | | | |
| | 02:47 | | | MISSED 3PTR by CARTER,JEVON |
| REBOUND (DEF) by BROWN,BARRY | 02:47 | | | |
| MISSED LAYUP by BUDKE,AUSTIN | 02:33 | | | |
| | 02:33 | | | BLOCK by AHMAD,ESA |
| | 02:32 | | | REBOUND (DEF) by MACON,ELIJAH |
| SUB IN: WADE,DEAN | 02:29 | | | |
| SUB OUT: BUDKE,AUSTIN | 02:29 | | | |
| | 02:29 | | | SUB IN: ADRIAN,NATHAN |
| | 02:29 | | | SUB OUT: MACON,ELIJAH |
| | 02:28 | 78-60 | H 18 | GOOD! LAYUP by CARTER,JEVON [FB/PNT] |
| FOUL by BROWN,BARRY | 02:29 | | | |
| | 02:29 | 79-60 | H 19 | GOOD! FT by CARTER,JEVON |
| MISSED JUMPER by STOKES,KAMAU | 02:21 | | | |
| | 02:21 | | | REBOUND (DEF) by CARTER,JEVON |
| | 02:08 | | | TURNOVER by CARTER,JEVON |
| SUB IN: MCATEE,PIERSON | 02:07 | | | |
| SUB IN: WINTER,ZACH | 02:07 | | | |
| SUB IN: SCHOEN,MASON | 02:07 | | | |
| SUB IN: KINNAMON,KADE | 02:07 | | | |
| SUB OUT: BROWN,BARRY | 02:07 | | | |
| SUB OUT: WADE,DEAN | 02:07 | | | |
| SUB OUT: STOKES,KAMAU | 02:07 | | | |
| SUB OUT: SNEED,XAVIER | 02:07 | | | |
| | 01:52 | | | SUB IN: BENDER,MACIEJ |
| | 01:52 | | | SUB IN: ROUTT,LOGAN |
| | 01:52 | | | SUB IN: HARLER,CHASE |
| | 01:52 | | | SUB IN: BOLDEN,JAMES |
| | 01:52 | | | SUB IN: LONG,JAMES |
| | 01:52 | | | SUB OUT: CARTER,JEVON |

| VISITORS: Kansas State | Time | Score | Margin | HOME: West Virginia |
|-------------------------------|-------|-------|--------|----------------------------------|
| | 01:52 | | | SUB OUT: AHMAD,ESA |
| | 01:52 | | | SUB OUT: MILES JR.,DAXTER |
| | 01:52 | | | SUB OUT: PHILLIP,TARIK |
| | 01:52 | | | SUB OUT: ADRIAN,NATHAN |
| GOOD! 3PTR by PATRICK,BRIAN | 01:47 | 79-63 | H 16 | |
| ASSIST by WINTER,ZACH | 01:47 | | | |
| | 01:28 | 82-63 | H 19 | GOOD! 3PTR by BOLDEN,JAMES |
| MISSED 3PTR by WINTER,ZACH | 01:10 | | | |
| | 01:10 | | | REBOUND (DEF) by BENDER,MACIEJ |
| | 00:58 | | | MISSED 3PTR by HARLER,CHASE |
| | 00:58 | | | REBOUND (OFF) by ROUTT,LOGAN |
| | 00:55 | 84-63 | H 21 | GOOD! LAYUP by ROUTT,LOGAN [PNT] |
| MISSED JUMPER by SCHOEN,MASON | 00:42 | | | |
| | 00:42 | | | REBOUND (DEF) by BOLDEN,JAMES |
| FOUL by KINNAMON,KADE | 00:43 | | | |
| | 00:43 | | | MISSED FT by BOLDEN,JAMES |
| | 00:43 | | | REBOUND (DEADB) by TEAM |
| | 00:43 | 85-63 | H 22 | GOOD! FT by BOLDEN,JAMES |
| GOOD! 3PTR by PATRICK,BRIAN | 00:33 | 85-66 | H 19 | |
| ASSIST by WINTER,ZACH | 00:33 | | | |
| | 00:01 | | | TURNOVER by TEAM |

Kansas State 66, West Virginia 85

| Period 2-only | In Paint | Off T/O | 2nd Chance | Fast Break | Bench | |
|---------------|-------------|------------|---------------|---------------|-------|------------------------|
| KS | 8 | 5 | 2 | 2 | 8 | Score tied - 0 times |
| WVU | 32 | 18 | 8 | 4 | 20 | Lead changed - 0 times |

Kansas State vs West Virginia

2/11/2017; Noon at WVU Coliseum, Morgntown, W.Va.

Scoring/Runs Reference

Period 1

| Kansas State | Score | Marg | West Virginia |
|---------------------------|-------|-------|--------------------------------|
| 19:43 - IWUNDU 3PTR | 3 | 3-0 | -3 |
| 18:32 - BROWN FT | 1 | 4-0 | -4 |
| | | 4-2 | -2 2 WEST LAYUP [P] - 18:14 |
| 16:50 - SNEED 3PTR | 3 | 7-2 | -5 |
| | | 7-4 | -3 2 WATKINS LAYUP [P] - 16:13 |
| 15:33 - SNEED LAYUP [P] | 2 | 9-4 | -5 |
| | | 9-6 | -3 2 ADRIAN LAYUP [P] - 15:19 |
| 14:18 - MAURICE LAYUP [P] | 2 | 11-6 | -5 |
| 13:51 - IWUNDU LAYUP [P] | 2 | 13-6 | -7 |
| 13:51 - IWUNDU FT | 1 | 14-6 | -8 |
| | | 14-8 | -6 2 MYERS LAYUP [P] - 12:44 |
| | | 14-11 | -3 3 BOLDEN 3PTR - 11:58 |
| | | 14-13 | -1 2 BOLDEN JUMPER - 10:03 |
| | | 14-14 | 0 1 KONATE FT - 09:06 |
| | | 14-15 | 1 1 KONATE FT - 09:06 |
| 09:06 - BROWN FT | 1 | 15-15 | 0 |
| | | 15-17 | 2 2 AHMAD LAYUP [P] - 08:22 |
| | | 15-18 | 3 1 AHMAD FT - 08:22 |
| | | 15-19 | 4 1 CARTER FT - 07:57 |
| | | 15-20 | 5 1 CARTER FT - 07:57 |
| | | 15-23 | 8 3 CARTER 3PTR - 07:24 |
| 06:10 - WADE FT | 1 | 16-23 | 7 |
| 06:10 - WADE FT | 1 | 17-23 | 6 |
| | | 17-25 | 8 2 CARTER LAYUP [P] - 06:03 |
| 05:44 - WADE DUNK [P] | 2 | 19-25 | 6 |
| 05:23 - BROWN FT | 1 | 20-25 | 5 |
| 05:23 - BROWN FT | 1 | 21-25 | 4 |
| | | 21-27 | 6 2 MACON LAYUP [P] - 05:05 |
| 04:53 - IWUNDU FT | 1 | 22-27 | 5 |
| 04:18 - IWUNDU 3PTR | 3 | 25-27 | 2 |
| 03:35 - PATRICK LAYUP [P] | 2 | 27-27 | 0 |
| 02:46 - PATRICK 3PTR | 3 | 30-27 | -3 |
| | | 30-29 | -1 2 PHILLIP LAYUP [P] - 02:14 |
| 01:58 - BROWN FT | 1 | 31-29 | -2 |
| 01:58 - BROWN FT | 1 | 32-29 | -3 |
| | | 32-31 | -1 2 ADRIAN LAYUP [P] - 01:26 |
| | | 32-32 | 0 1 ADRIAN FT - 01:26 |
| 01:21 - STOKES FT | 1 | 33-32 | -1 |
| 01:21 - STOKES FT | 1 | 34-32 | -2 |
| | | 34-33 | -1 1 CARTER FT - 01:17 |
| | | 34-34 | 0 1 CARTER FT - 01:17 |

Period 2

| Kansas State | Score | Marg | West Virginia |
|------------------------------|-------|-------|---------------------------------|
| 19:40 - SNEED 3PTR | 3 | 37-34 | -3 |
| | | 37-36 | -1 2 AHMAD JUMPER - 19:01 |
| 18:37 - STOKES FT | 1 | 38-36 | -2 |
| 18:37 - STOKES FT | 1 | 39-36 | -3 |
| | | 39-38 | -1 2 AHMAD DUNK [P] [F] - 17:43 |
| | | 39-40 | 1 2 KONATE DUNK [P] - 17:27 |
| | | 39-42 | 3 2 KONATE LAYUP [P] - 16:52 |
| | | 39-44 | 5 2 ADRIAN JUMPER [P] - 16:21 |
| 15:48 - STOKES FT | 1 | 40-44 | 4 |
| | | 40-45 | 5 1 MILES JR. FT - 14:53 |
| | | 40-46 | 6 1 MILES JR. FT - 14:53 |
| | | 40-47 | 7 1 PHILLIP FT - 14:14 |
| | | 40-48 | 8 1 PHILLIP FT - 14:14 |
| 14:07 - BROWN FT | 1 | 41-48 | 7 |
| 14:07 - BROWN FT | 1 | 42-48 | 6 |
| | | 42-50 | 8 2 WEST LAYUP [P] - 13:15 |
| 13:03 - BUDKE LAYUP [P] | 2 | 44-50 | 6 |
| | | 44-51 | 7 1 PHILLIP FT - 12:44 |
| | | 44-53 | 9 2 WEST LAYUP [P] - 12:03 |
| | | 44-55 | 11 2 MACON LAYUP [P] - 11:25 |
| | | 44-57 | 13 2 MYERS LAYUP [P] - 11:09 |
| 10:47 - STOKES FT | 1 | 45-57 | 12 |
| 10:47 - STOKES FT | 1 | 46-57 | 11 |
| 10:47 - IWUNDU FT | 1 | 47-57 | 10 |
| 10:47 - IWUNDU FT | 1 | 48-57 | 9 |
| | | 48-60 | 12 3 CARTER 3PTR - 10:34 |
| 10:29 - WADE FT | 1 | 49-60 | 11 |
| | | 49-62 | 13 2 CARTER JUMPER - 10:01 |
| | | 49-64 | 15 2 WATKINS LAYUP [P] - 09:13 |
| 09:05 - BROWN FT | 1 | 50-64 | 14 |
| 09:05 - BROWN FT | 1 | 51-64 | 13 |
| 08:43 - STOKES FT | 1 | 52-64 | 12 |
| | | 52-66 | 14 2 AHMAD DUNK [P] - 08:30 |
| 07:49 - IWUNDU LAYUP [P] [F] | 2 | 54-66 | 12 |
| | | 54-68 | 14 2 CARTER LAYUP [P] - 07:27 |
| 07:09 - SNEED DUNK [P] | 2 | 56-68 | 12 |
| | | 56-69 | 13 1 MACON FT - 06:17 |
| | | 56-70 | 14 1 MACON FT - 06:17 |
| | | 56-72 | 16 2 PHILLIP LAYUP [P] - 04:48 |
| 04:26 - STOKES LAYUP [P] | 2 | 58-72 | 14 |
| | | 58-74 | 16 2 AHMAD DUNK [P] - 04:04 |
| 03:52 - STOKES FT | 1 | 59-74 | 15 |
| 03:52 - STOKES FT | 1 | 60-74 | 14 |
| | | 60-76 | 16 2 MACON DUNK [P] - 03:41 |

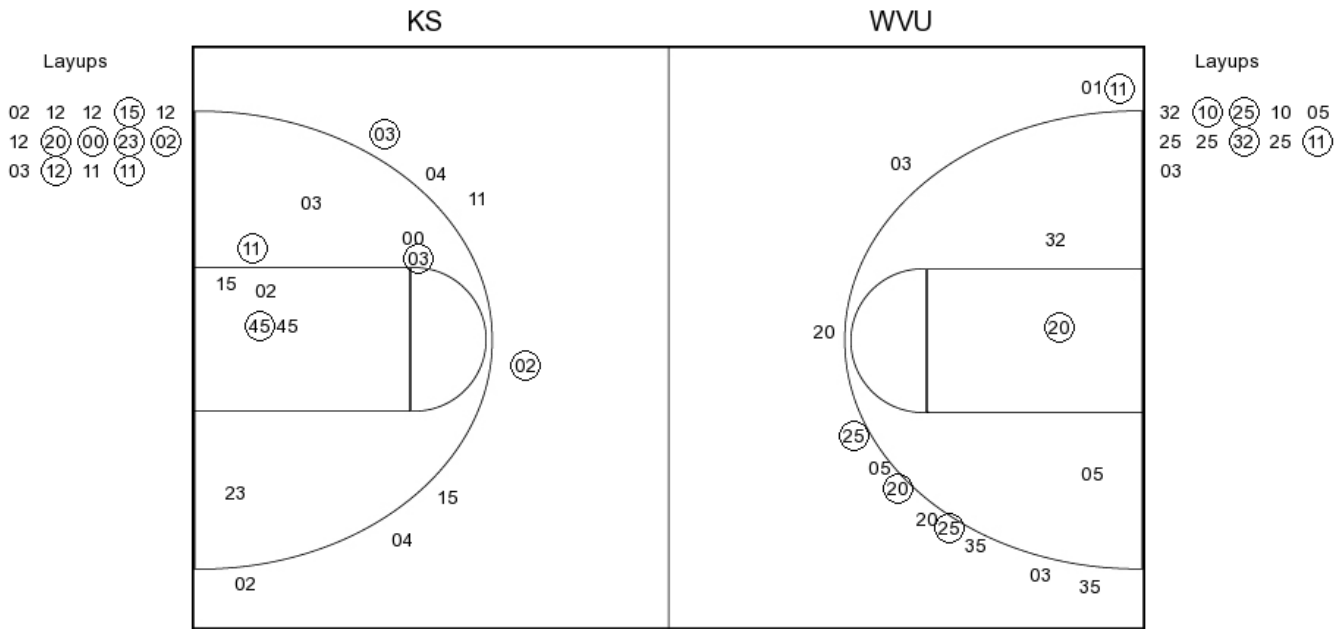
| | | | | |
|----------------------|-------|-------|----|--------------------------------|
| | 60-78 | 18 | 2 | CARTER LAYUP [P][F] - 02:28 |
| | 60-79 | 19 | 1 | CARTER FT - 02:29 |
| 01:47 - PATRICK 3PTR | 3 | 63-79 | 16 | |
| | 63-82 | 19 | 3 | BOLDEN 3PTR - 01:28 |
| | 63-84 | 21 | 2 | ROUTT LAYUP [P] - 00:55 |
| | 63-85 | 22 | 1 | BOLDEN FT - 00:43 |
| 00:33 - PATRICK 3PTR | 3 | 66-85 | 19 | |

Kansas State vs West Virginia

OFFICIAL SHOT CHART

2/11/2017 at WVU Coliseum, Morgntown, W.Va.

PERIOD 1



KS PERIOD 1

| | |
|----------------|----|
| FG Made | 9 |
| FG Attempted | 26 |
| 3PFG Made | 4 |
| 3PFG Attempted | 12 |

WVU PERIOD 1

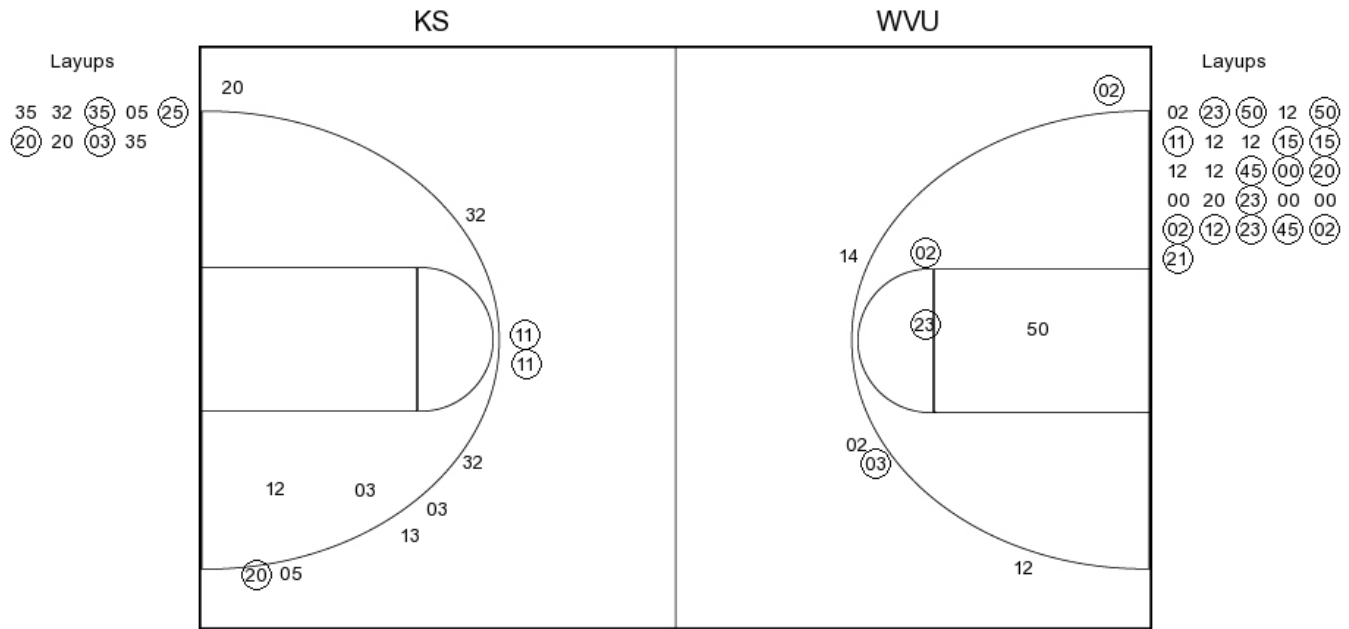
| | |
|----------------|----|
| FG Made | 12 |
| FG Attempted | 30 |
| 3PFG Made | 2 |
| 3PFG Attempted | 7 |

Kansas State vs West Virginia

OFFICIAL SHOT CHART

2/11/2017 at WVU Coliseum, Morgntown, W.Va.

PERIOD 2



KS PERIOD 2

| | |
|----------------|----|
| FG Made | 7 |
| FG Attempted | 20 |
| 3PFG Made | 3 |
| 3PFG Attempted | 9 |

WVU PERIOD 2

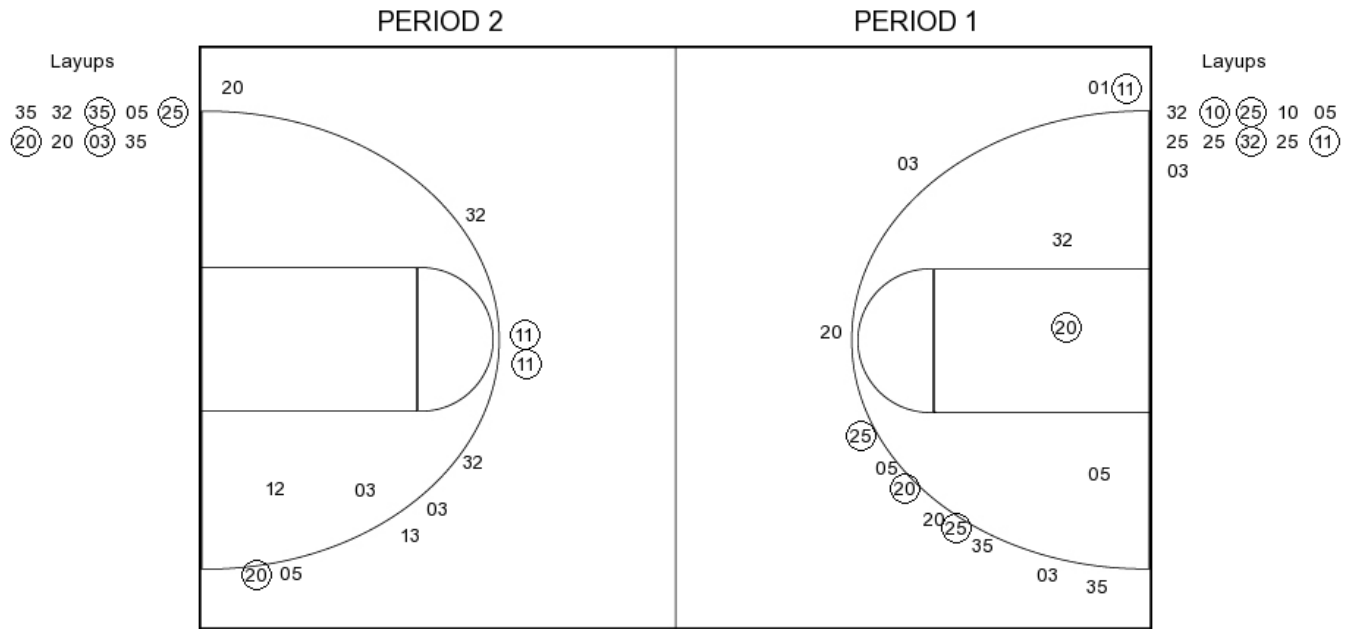
| | |
|----------------|----|
| FG Made | 20 |
| FG Attempted | 34 |
| 3PFG Made | 2 |
| 3PFG Attempted | 5 |

Kansas State vs West Virginia

OFFICIAL SHOT CHART

2/11/2017 at WVU Coliseum, Morgntown, W.Va.

Kansas State



KS PERIOD 1

| | |
|----------------|----|
| FG Made | 9 |
| FG Attempted | 26 |
| 3PFG Made | 4 |
| 3PFG Attempted | 12 |

KS PERIOD 2

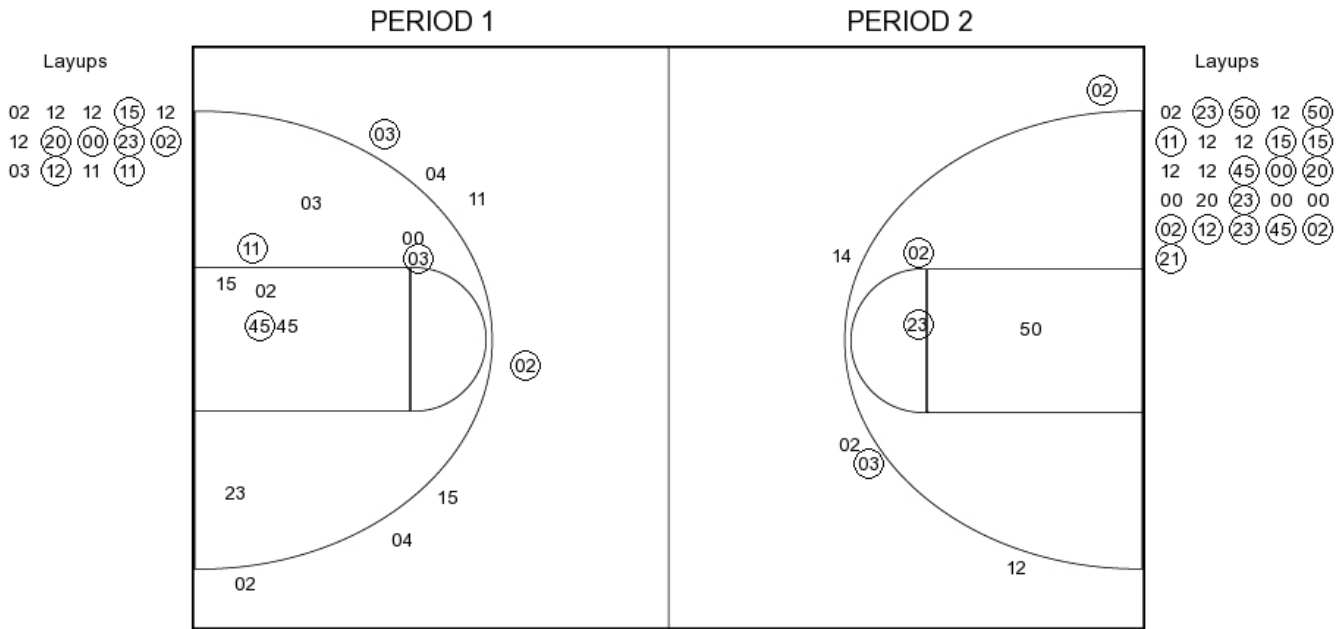
| | |
|----------------|----|
| FG Made | 7 |
| FG Attempted | 20 |
| 3PFG Made | 3 |
| 3PFG Attempted | 9 |

Kansas State vs West Virginia

OFFICIAL SHOT CHART

2/11/2017 at WVU Coliseum, Morgntown, W.Va.

West Virginia



WVU PERIOD 1

| | |
|----------------|----|
| FG Made | 12 |
| FG Attempted | 30 |
| 3PFG Made | 2 |
| 3PFG Attempted | 7 |

WVU PERIOD 2

| | |
|----------------|----|
| FG Made | 20 |
| FG Attempted | 34 |
| 3PFG Made | 2 |
| 3PFG Attempted | 5 |